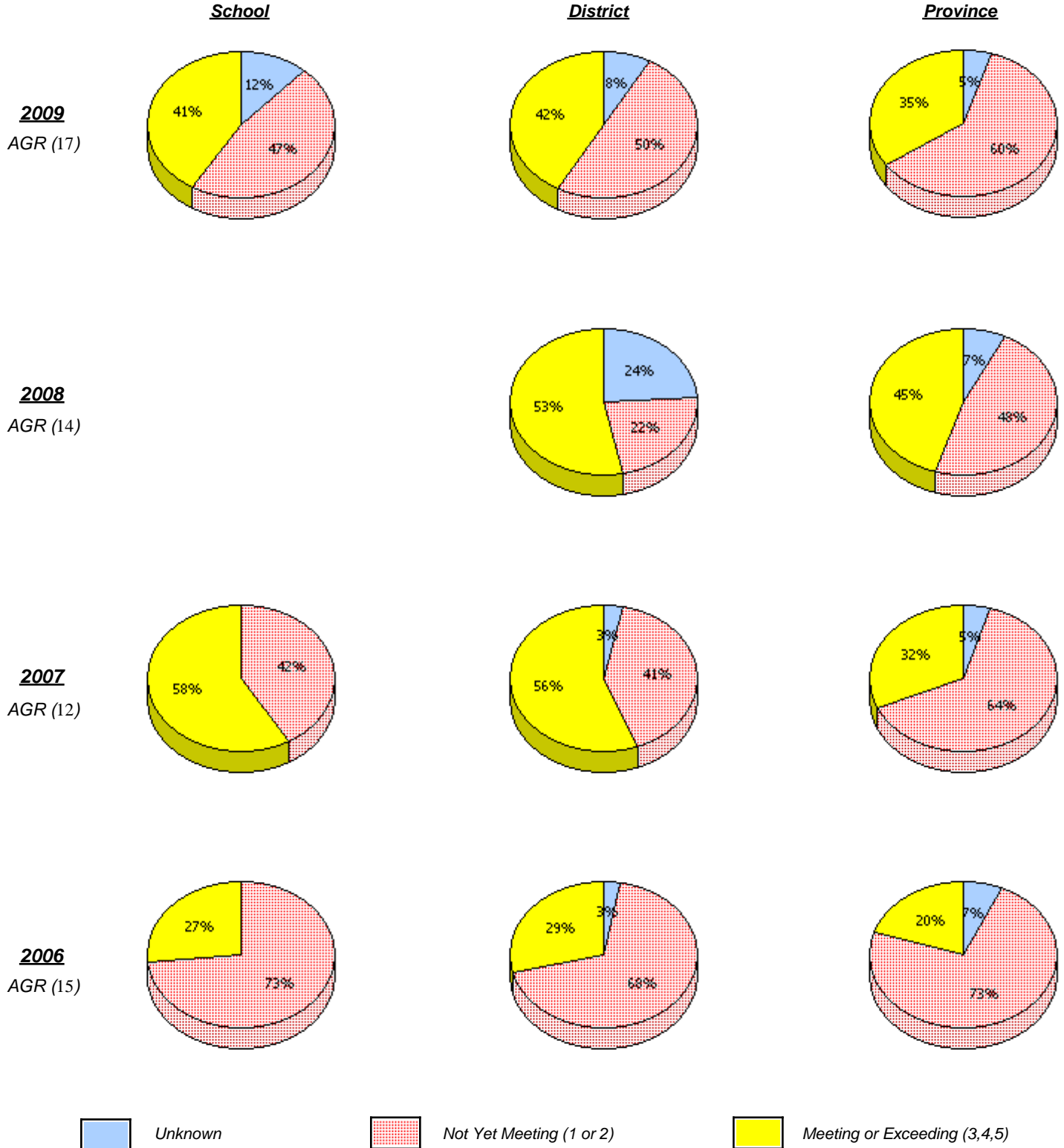


District 803 - Private

School #: 375 Lakecrest -St. John's Independent School

Reasoning



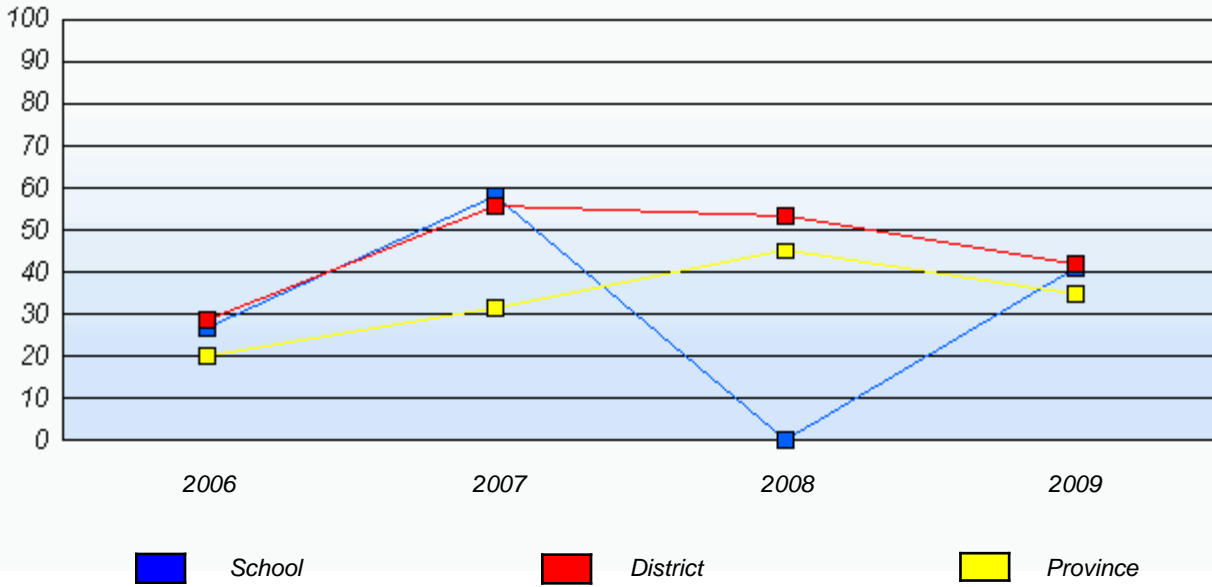
* In some cases, CRT numbers may exceed AGR numbers based on late enrolments. Pie chart is based on the number of students who wrote the CRT.

District 803 - Private

School #: 375 Lakecrest -St. John's Independent School

Reasoning

Percentage of students at level 3 or above (2006 - 2009)

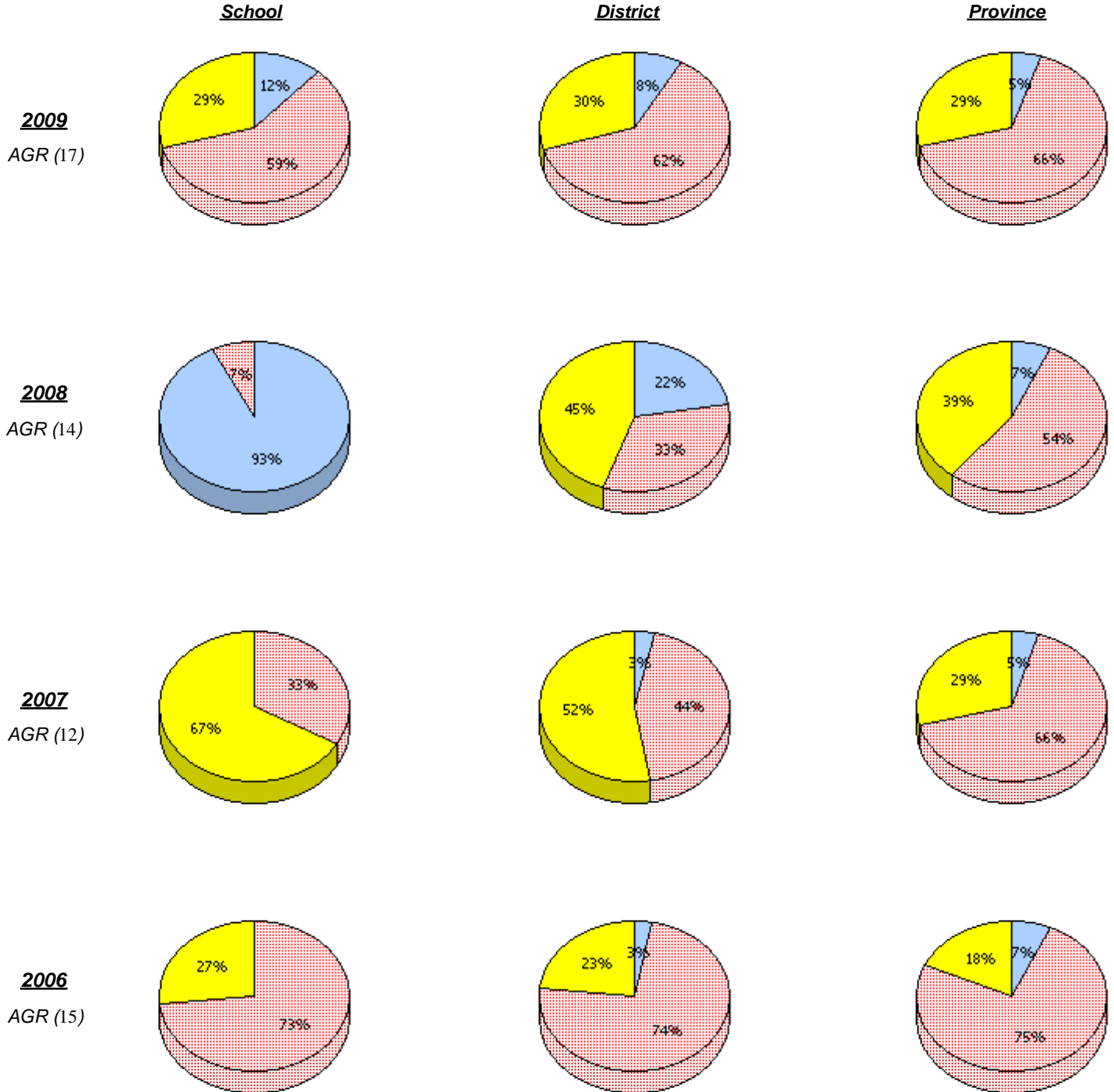


* In some cases, CRT numbers may exceed AGR numbers based on late enrolments. Pie chart is based on the number of students who wrote the CRT.

District 803 - Private

School #: 375 Lakecrest -St. John's Independent School

Communication



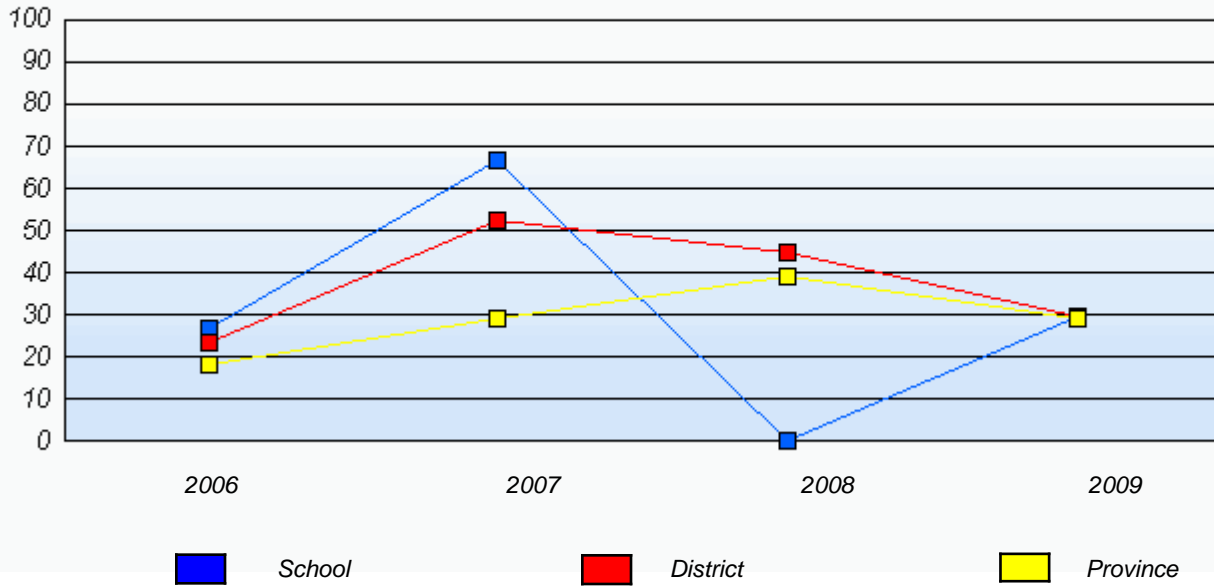
* In some cases, CRT numbers may exceed AGR numbers based on late enrolments. Pie chart is based on the number of students who wrote the CRT.

District 803 - Private

School #: 375 Lakecrest -St. John's Independent School

Communication

Percentage of students at level 3 or above (2006 - 2009)

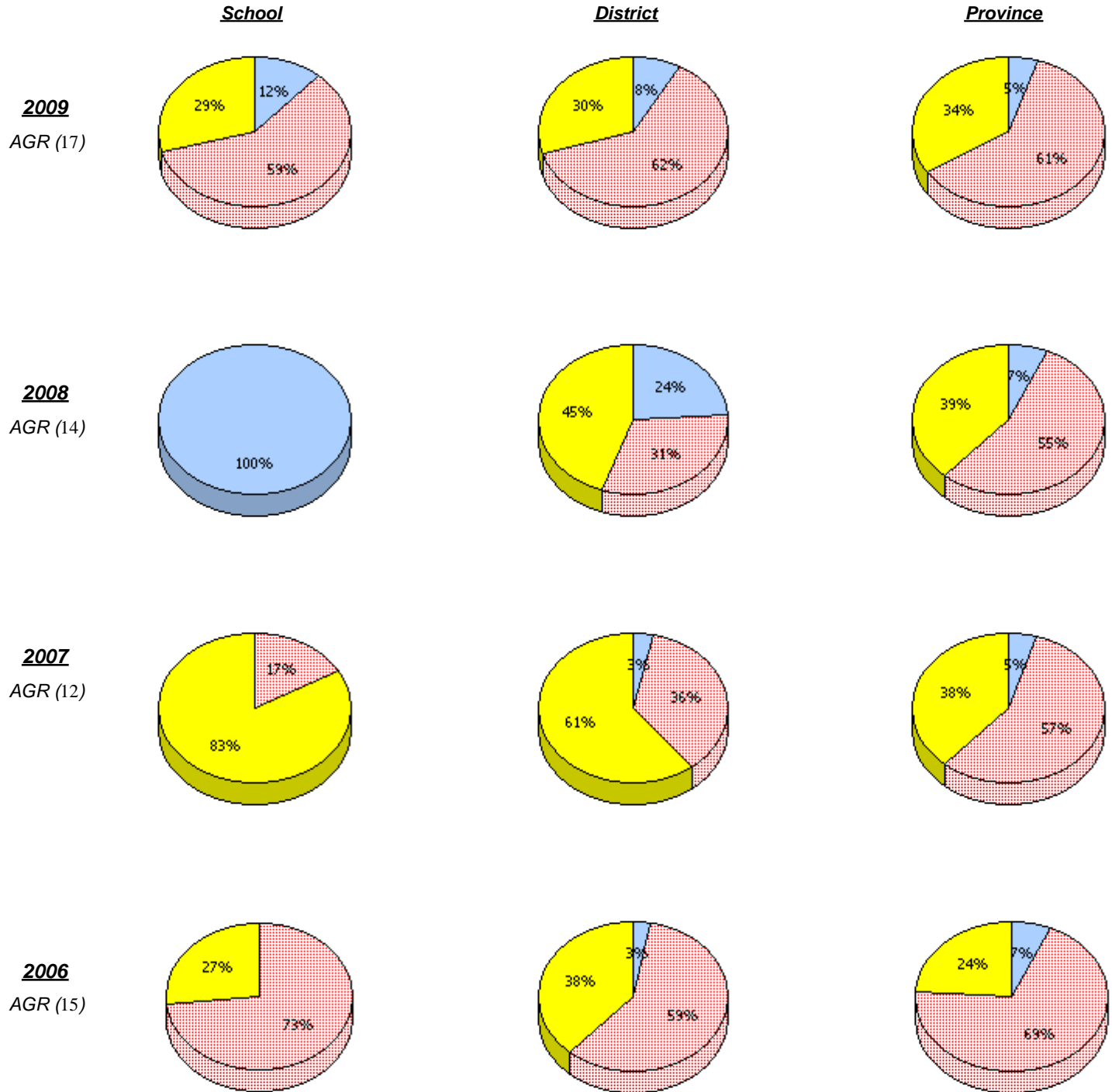


* In some cases, CRT numbers may exceed AGR numbers based on late enrolments. Pie chart is based on the number of students who wrote the CRT.

District 803 - Private

School #: 375 Lakecrest -St. John's Independent School

Connections and Representations



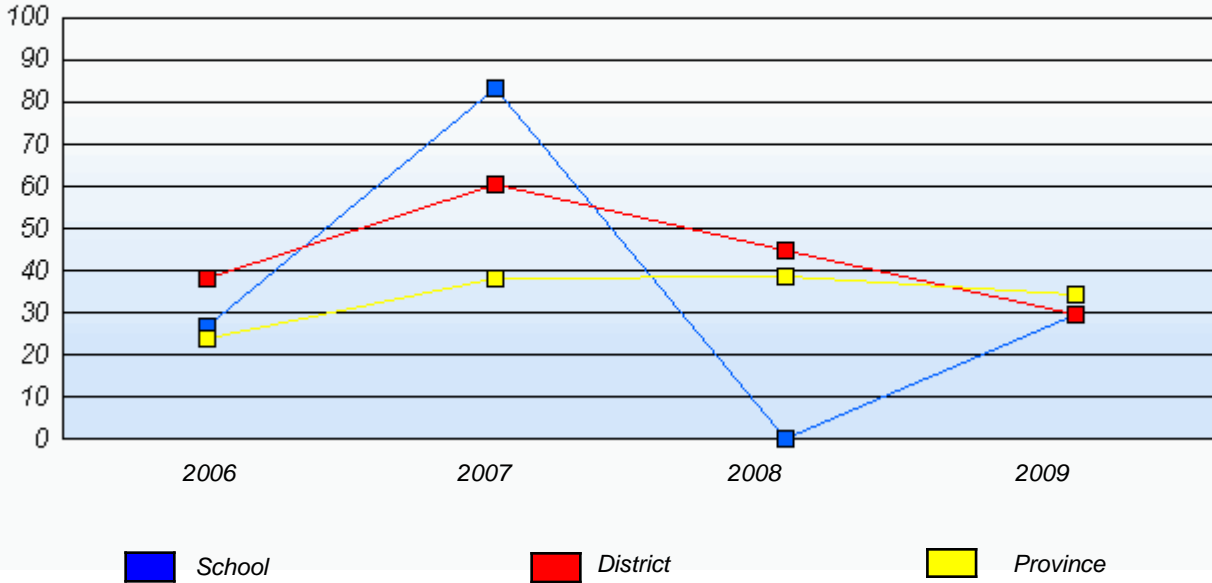
* In some cases, CRT numbers may exceed AGR numbers based on late enrolments. Pie chart is based on the number of students who wrote the CRT.

District 803 - Private

School #: 375 Lakecrest -St. John's Independent School

Connections and Representations

Percentage of students at level 3 or above (2006 - 2009)

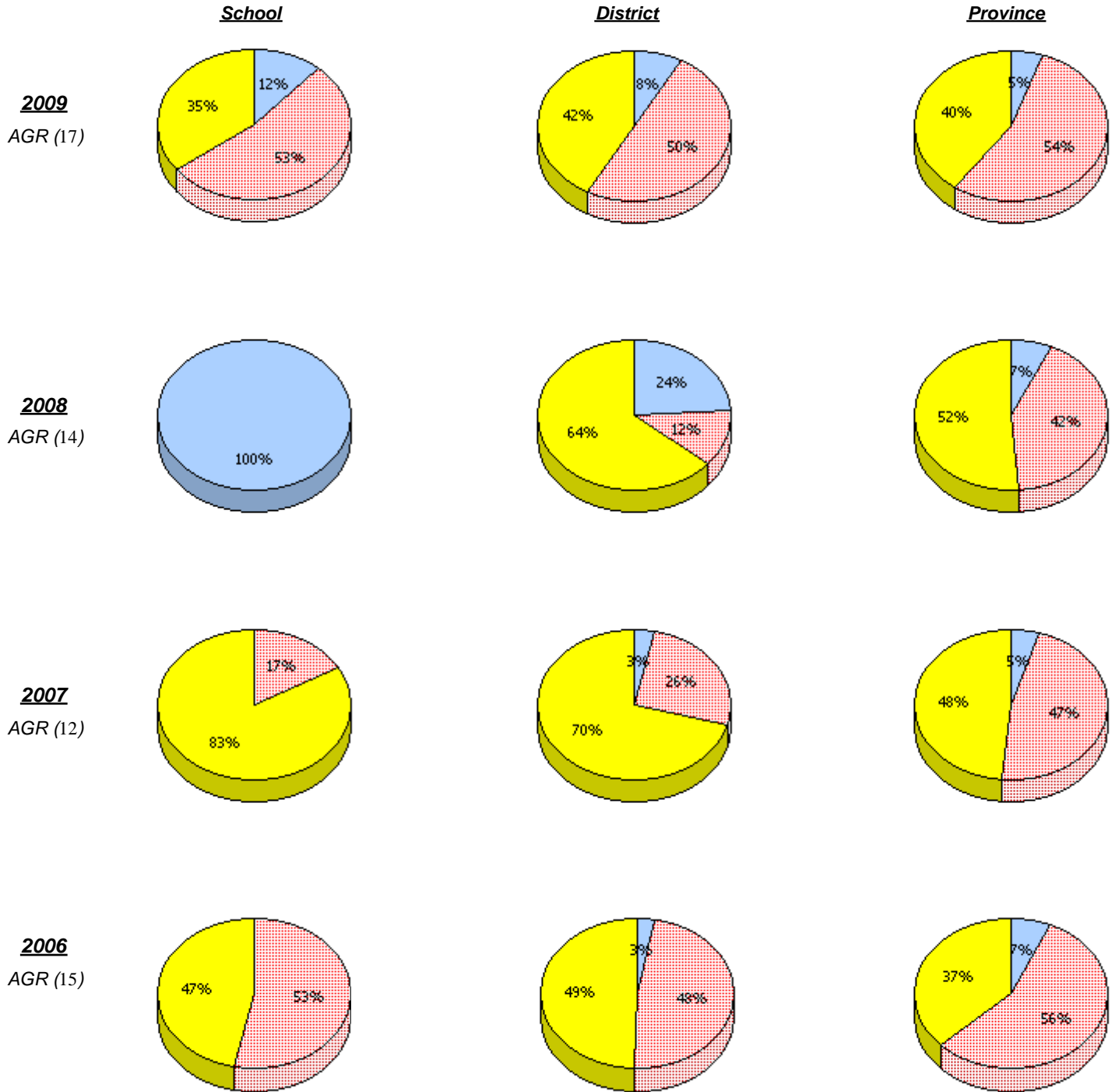


* In some cases, CRT numbers may exceed AGR numbers based on late enrolments. Pie chart is based on the number of students who wrote the CRT.

District 803 - Private

School #: 375 Lakecrest -St. John's Independent School

Problem Solving



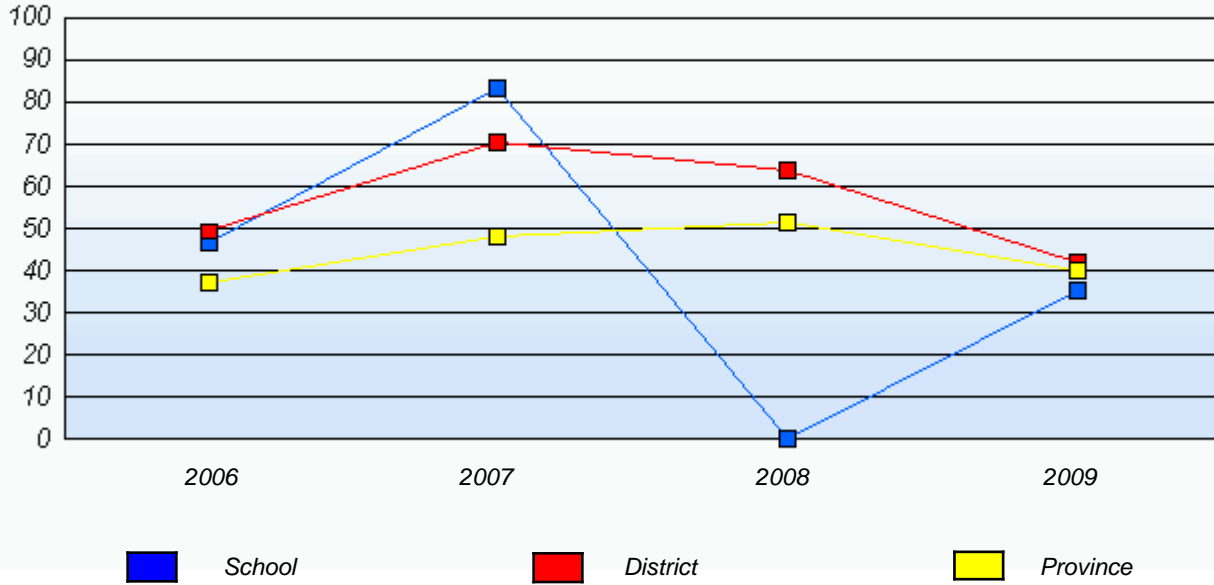
* In some cases, CRT numbers may exceed AGR numbers based on late enrolments. Pie chart is based on the number of students who wrote the CRT.

District 803 - Private

School #: 375 Lakecrest -St. John's Independent School

Problem Solving

Percentage of students at level 3 or above (2006 - 2009)



* In some cases, CRT numbers may exceed AGR numbers based on late enrolments. Pie chart is based on the number of students who wrote the CRT.

District 803 - Private

School #: 450 St. Bonaventure's College

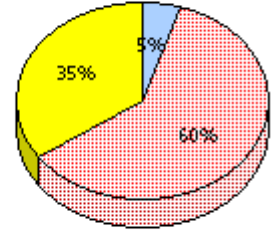
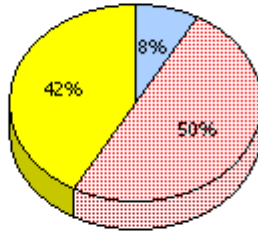
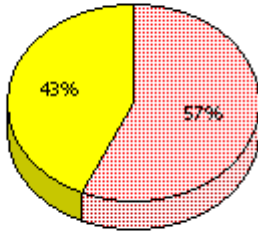
Reasoning

School

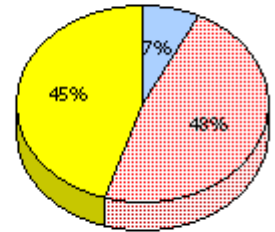
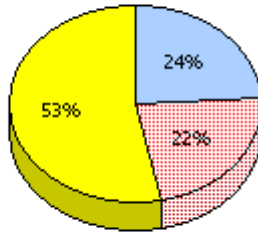
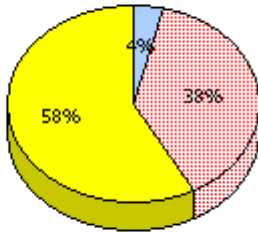
District

Province

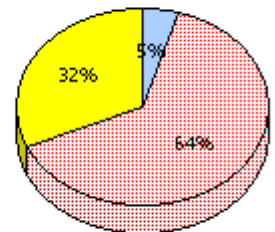
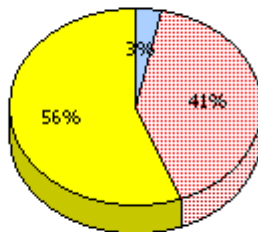
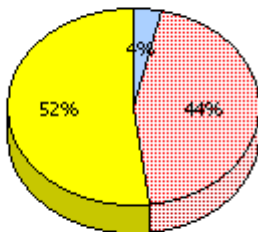
2009
AGR (30)



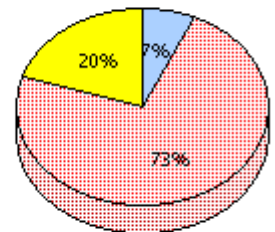
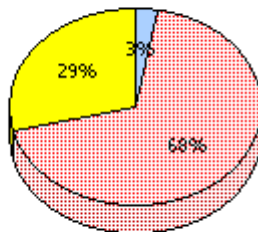
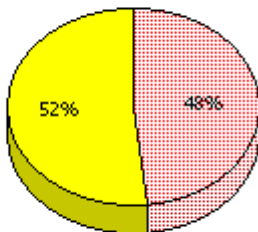
2008
AGR (26)



2007
AGR (27)



2006
AGR (29)



Unknown
 Not Yet Meeting (1 or 2)
 Meeting or Exceeding (3,4,5)

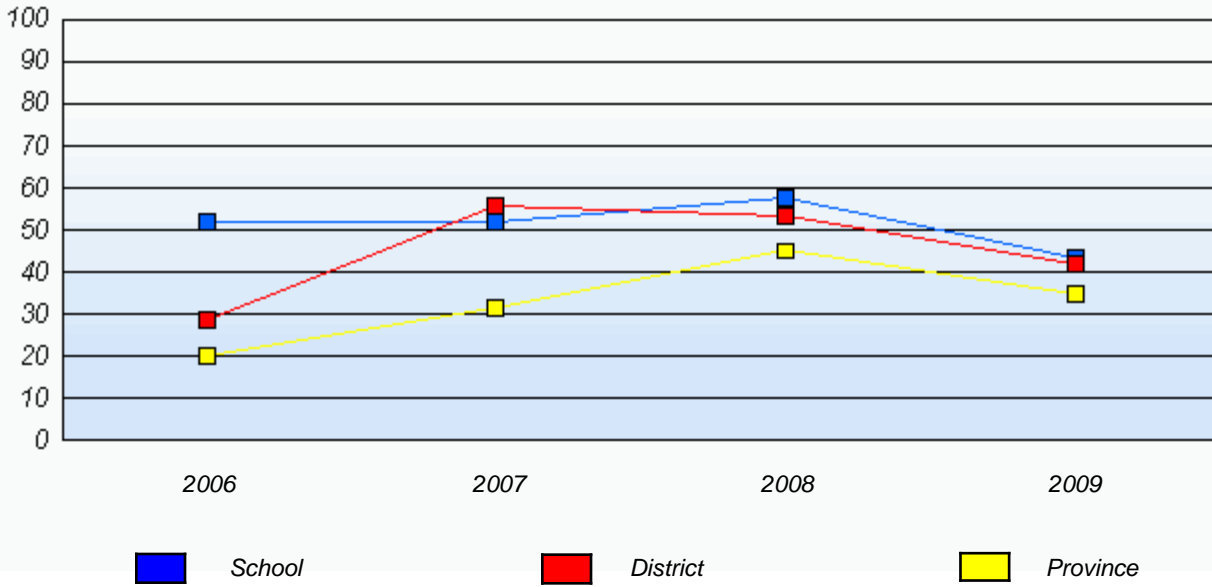
* In some cases, CRT numbers may exceed AGR numbers based on late enrolments. Pie chart is based on the number of students who wrote the CRT.

District 803 - Private

School #: 450 St. Bonaventure's College

Reasoning

Percentage of students at level 3 or above (2006 - 2009)

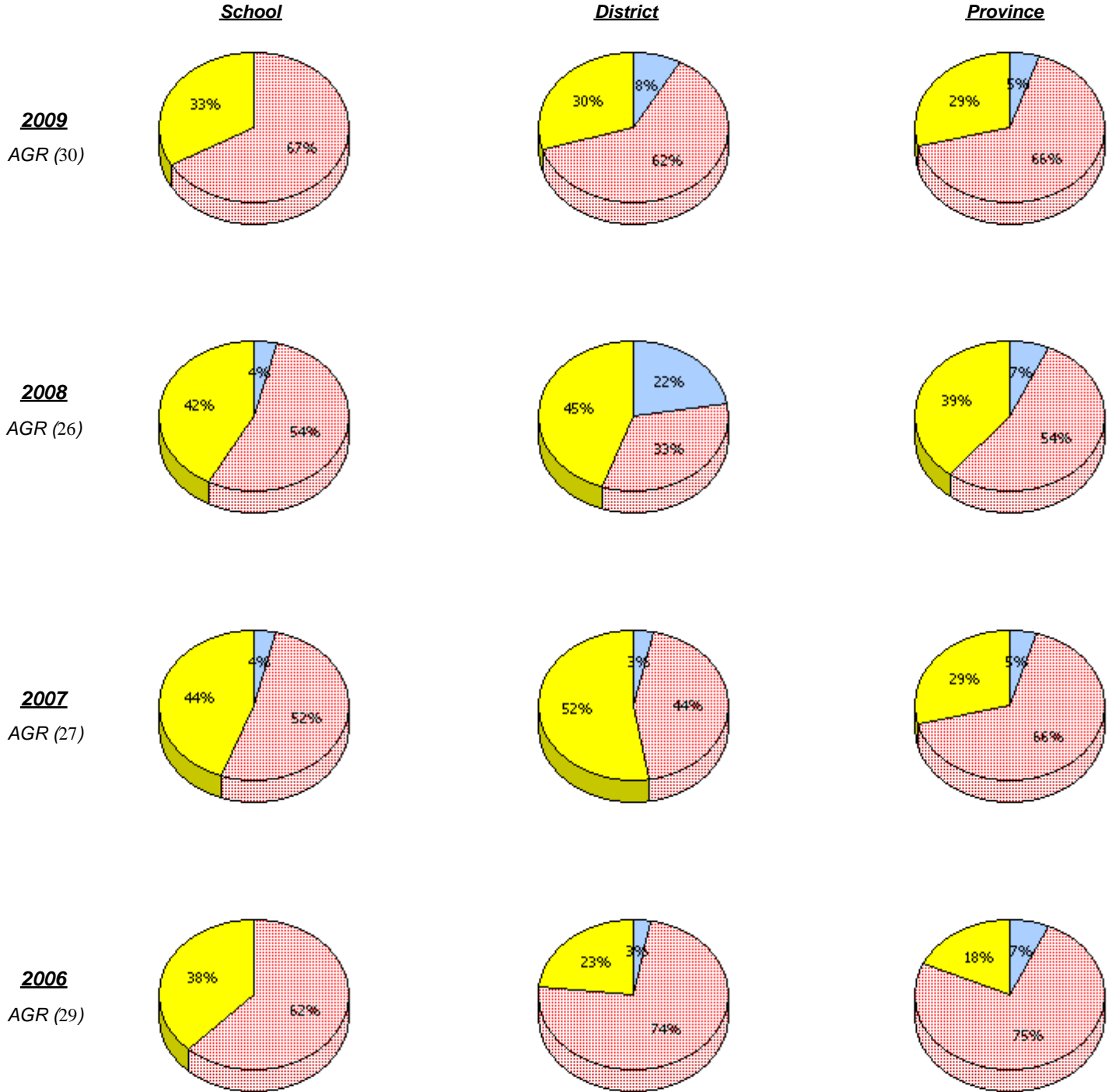


* In some cases, CRT numbers may exceed AGR numbers based on late enrolments. Pie chart is based on the number of students who wrote the CRT.

District 803 - Private

School #: 450 St. Bonaventure's College

Communication



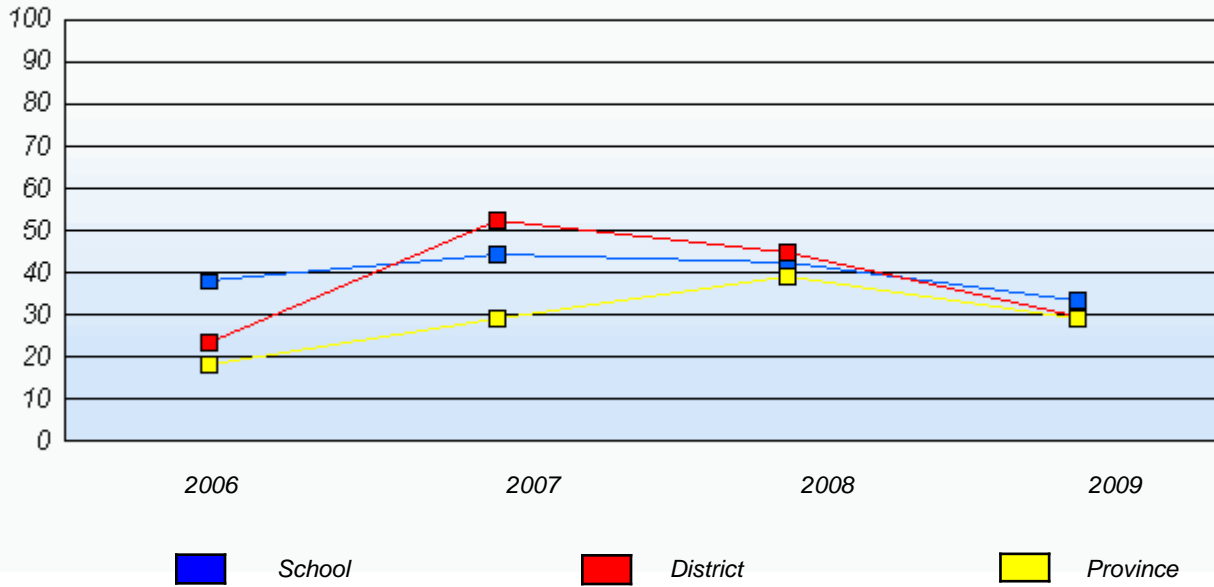
* In some cases, CRT numbers may exceed AGR numbers based on late enrolments. Pie chart is based on the number of students who wrote the CRT.

District 803 - Private

School #: 450 St. Bonaventure's College

Communication

Percentage of students at level 3 or above (2006 - 2009)

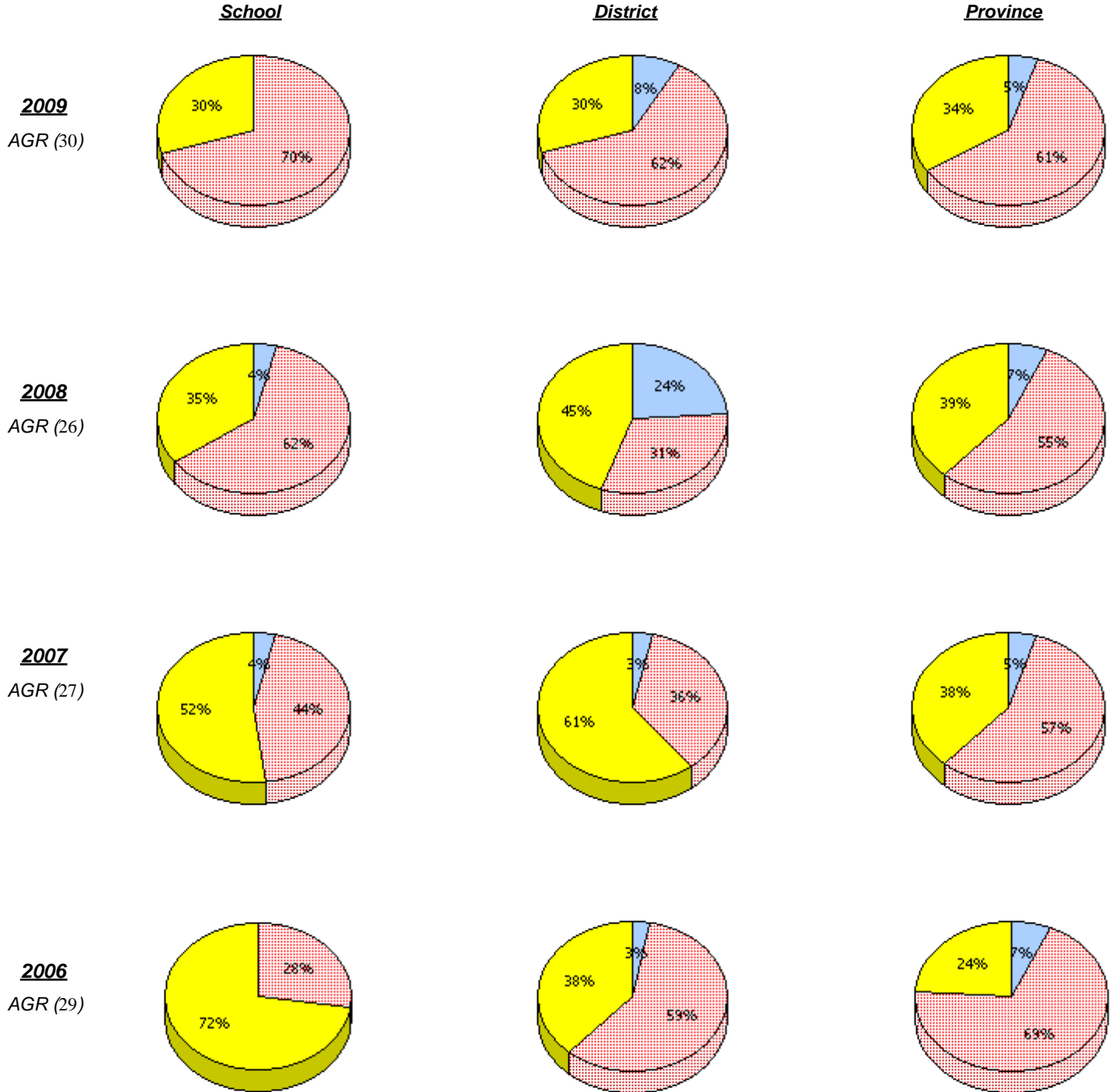


* In some cases, CRT numbers may exceed AGR numbers based on late enrolments. Pie chart is based on the number of students who wrote the CRT.

District 803 - Private

School #: 450 St. Bonaventure's College

Connections and Representations



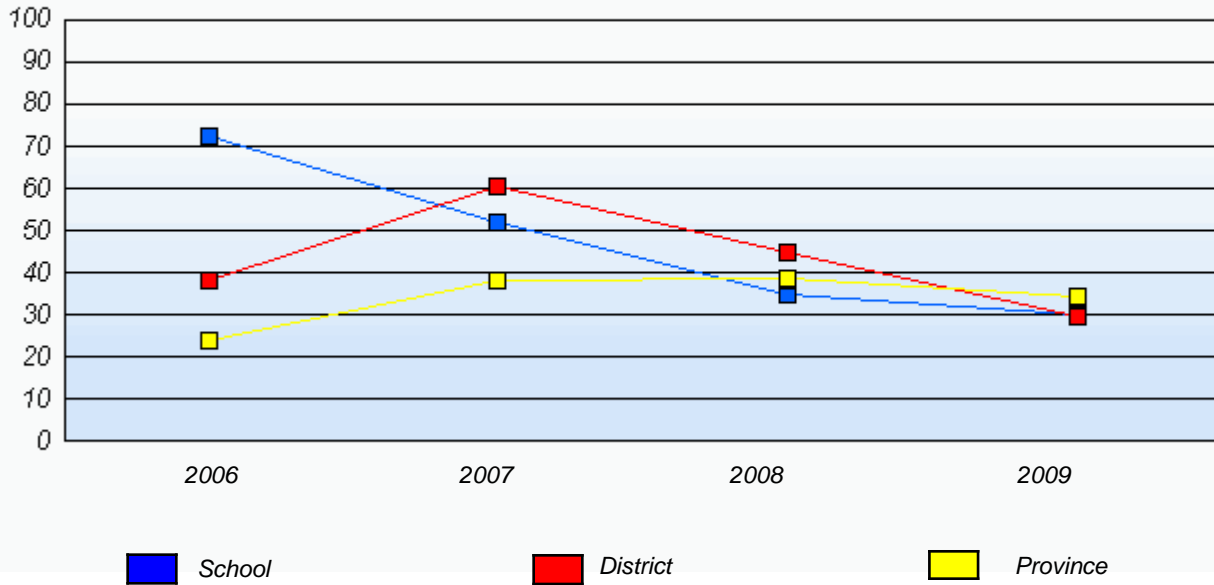
* In some cases, CRT numbers may exceed AGR numbers based on late enrolments. Pie chart is based on the number of students who wrote the CRT.

District 803 - Private

School #: 450 St. Bonaventure's College

Connections and Representations

Percentage of students at level 3 or above (2006 - 2009)

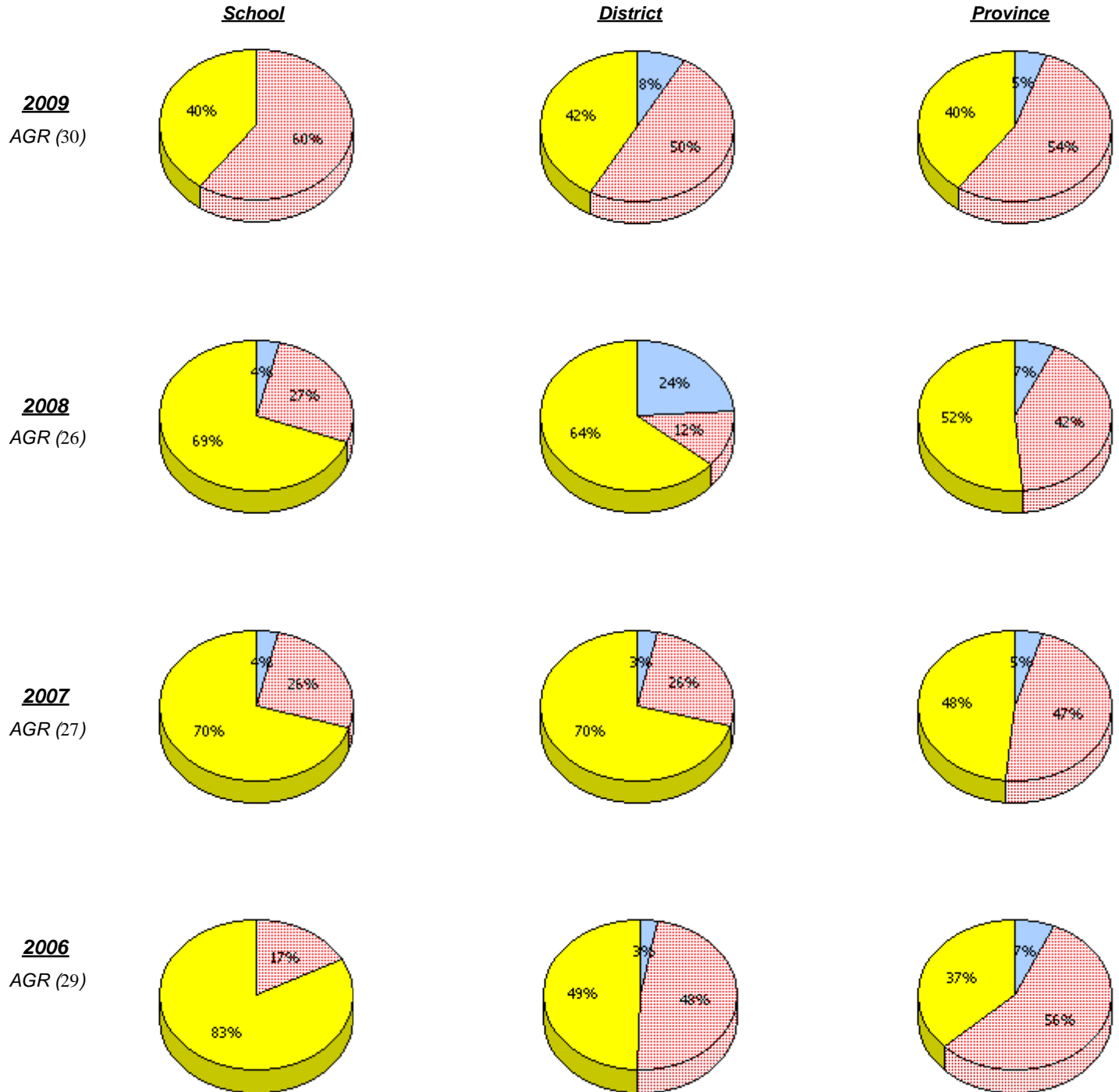


* In some cases, CRT numbers may exceed AGR numbers based on late enrolments. Pie chart is based on the number of students who wrote the CRT.

District 803 - Private

School #: 450 St. Bonaventure's College

Problem Solving



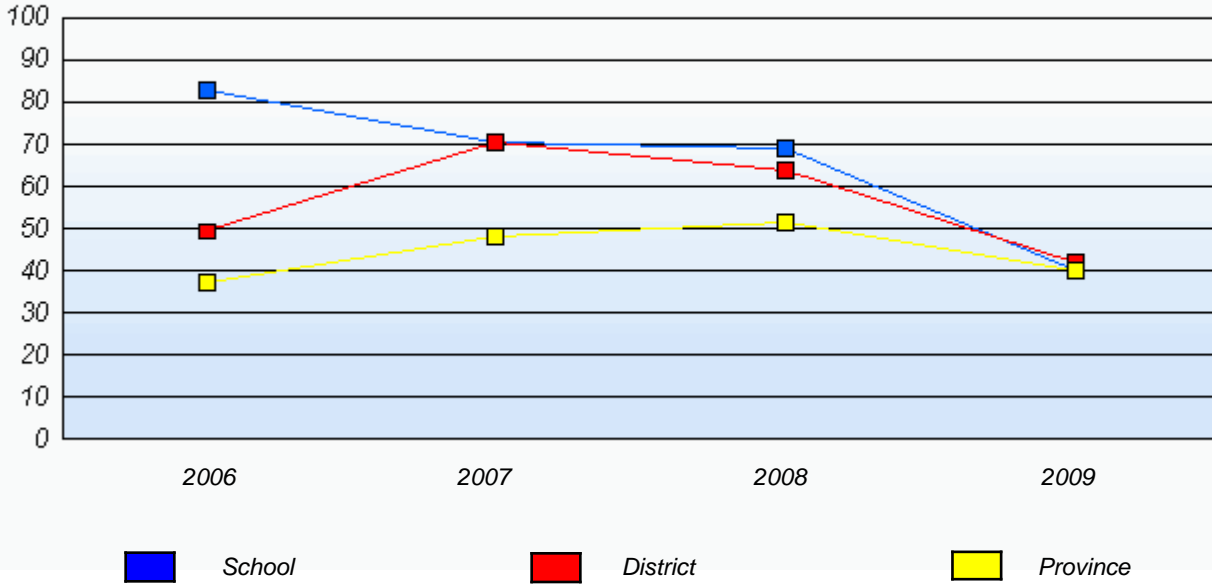
* In some cases, CRT numbers may exceed AGR numbers based on late enrolments. Pie chart is based on the number of students who wrote the CRT.

District 803 - Private

School #: 450 St. Bonaventure's College

Problem Solving

Percentage of students at level 3 or above (2006 - 2009)



* In some cases, CRT numbers may exceed AGR numbers based on late enrolments. Pie chart is based on the number of students who wrote the CRT.

District 803 - Private

School #: 453 Eric G. Lambert All-Grade

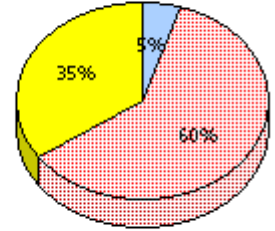
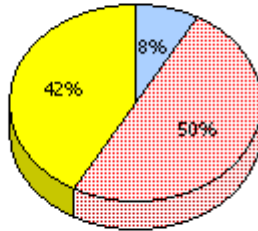
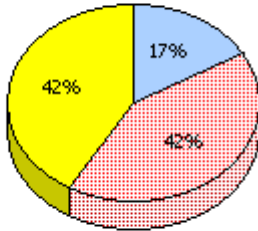
Reasoning

School

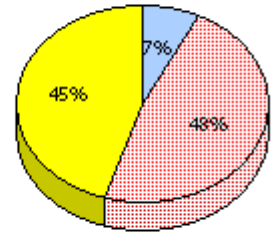
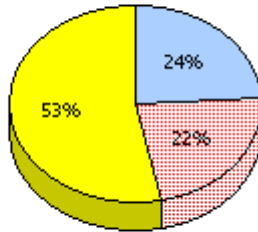
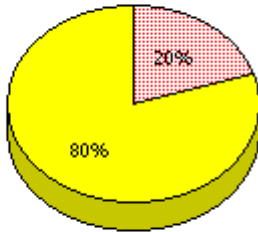
District

Province

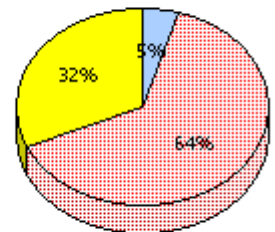
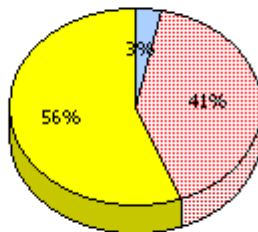
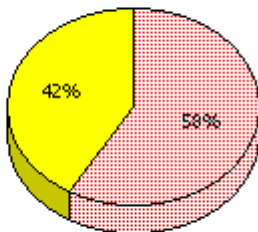
2009
AGR (12)



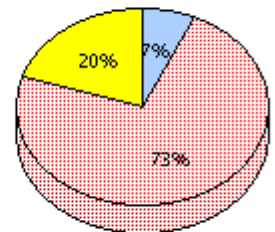
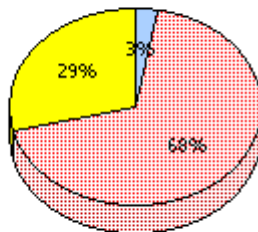
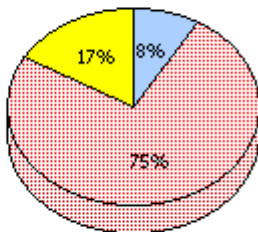
2008
AGR (10)



2007
AGR (11)



2006
AGR (12)



Unknown



Not Yet Meeting (1 or 2)



Meeting or Exceeding (3,4,5)

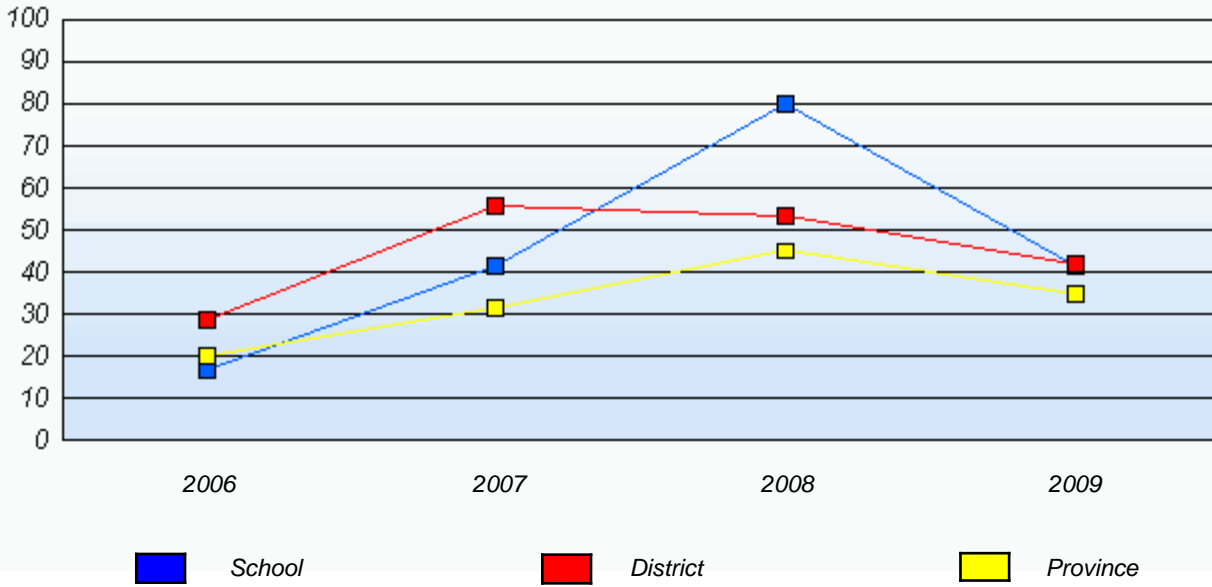
* In some cases, CRT numbers may exceed AGR numbers based on late enrolments. Pie chart is based on the number of students who wrote the CRT.

District 803 - Private

School #: 453 Eric G. Lambert All-Grade

Reasoning

Percentage of students at level 3 or above (2006 - 2009)

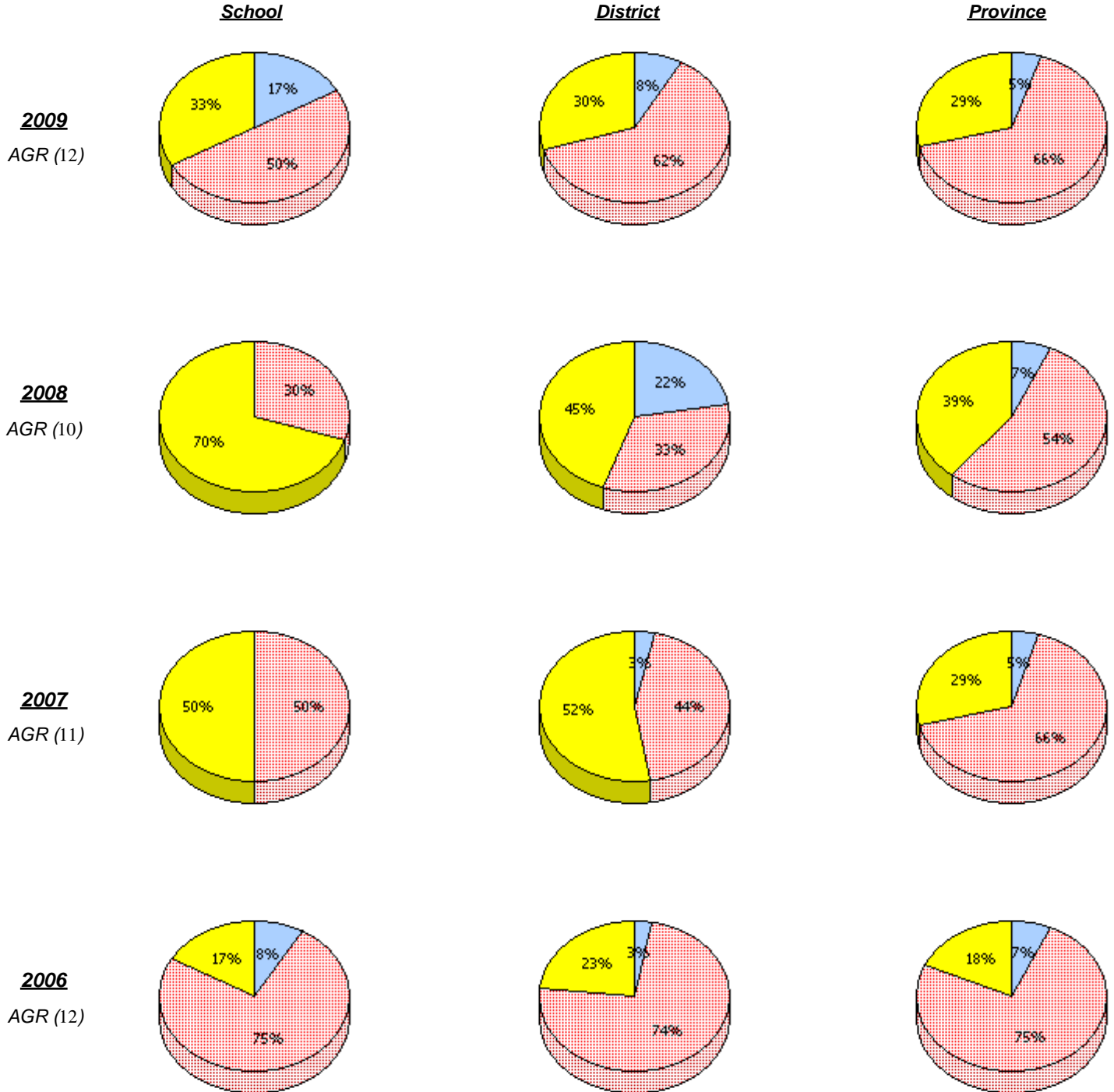


* In some cases, CRT numbers may exceed AGR numbers based on late enrolments. Pie chart is based on the number of students who wrote the CRT.

District 803 - Private

School #: 453 Eric G. Lambert All-Grade

Communication



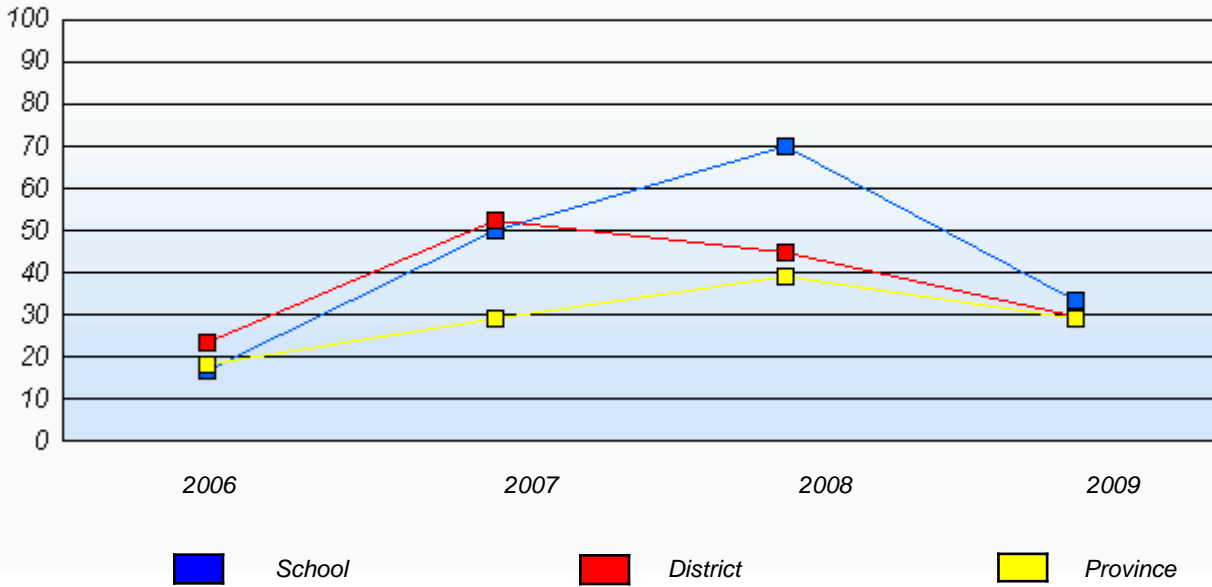
* In some cases, CRT numbers may exceed AGR numbers based on late enrolments. Pie chart is based on the number of students who wrote the CRT.

District 803 - Private

School #: 453 Eric G. Lambert All-Grade

Communication

Percentage of students at level 3 or above (2006 - 2009)

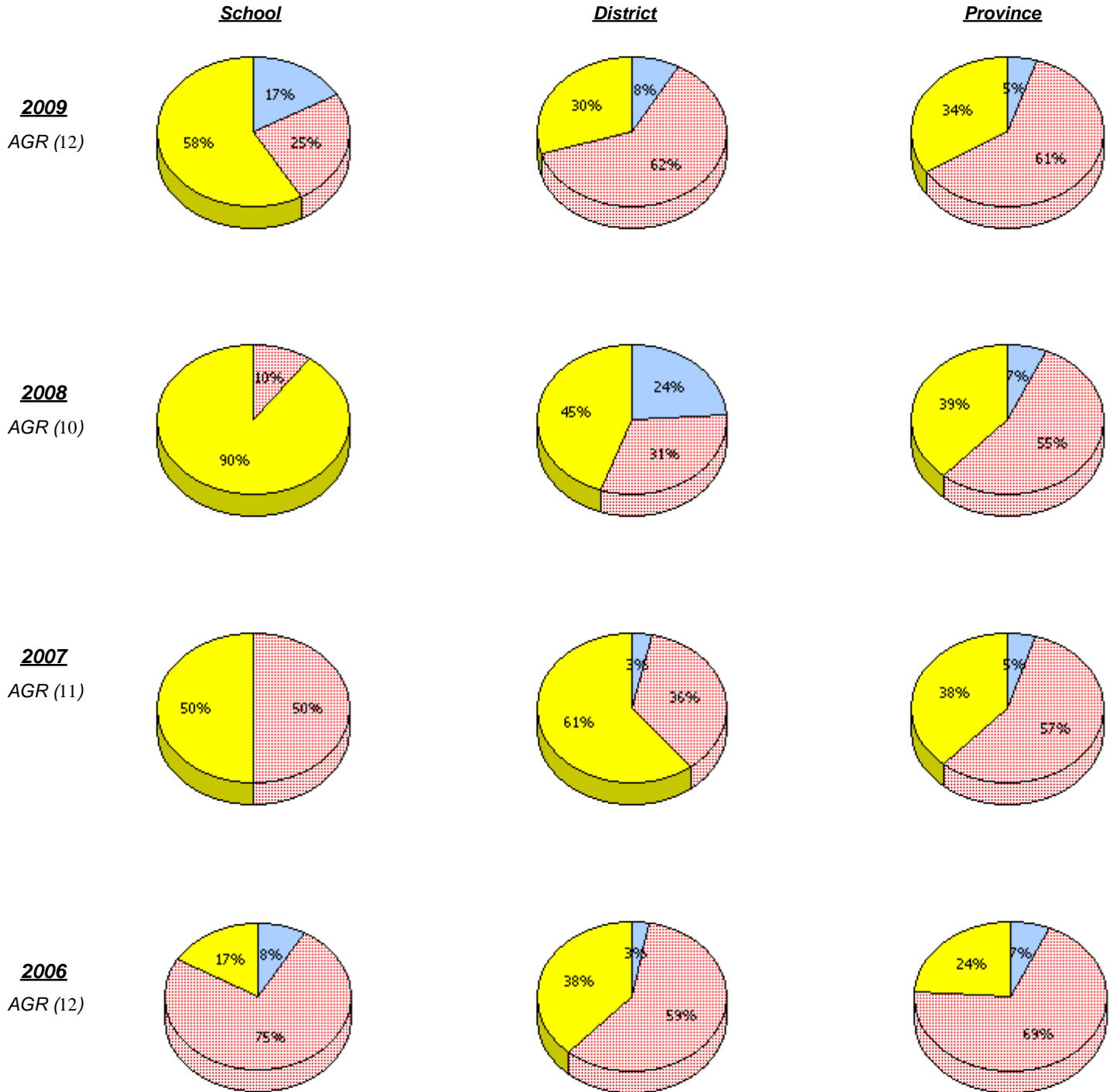


* In some cases, CRT numbers may exceed AGR numbers based on late enrolments. Pie chart is based on the number of students who wrote the CRT.

District 803 - Private

School #: 453 Eric G. Lambert All-Grade

Connections and Representations



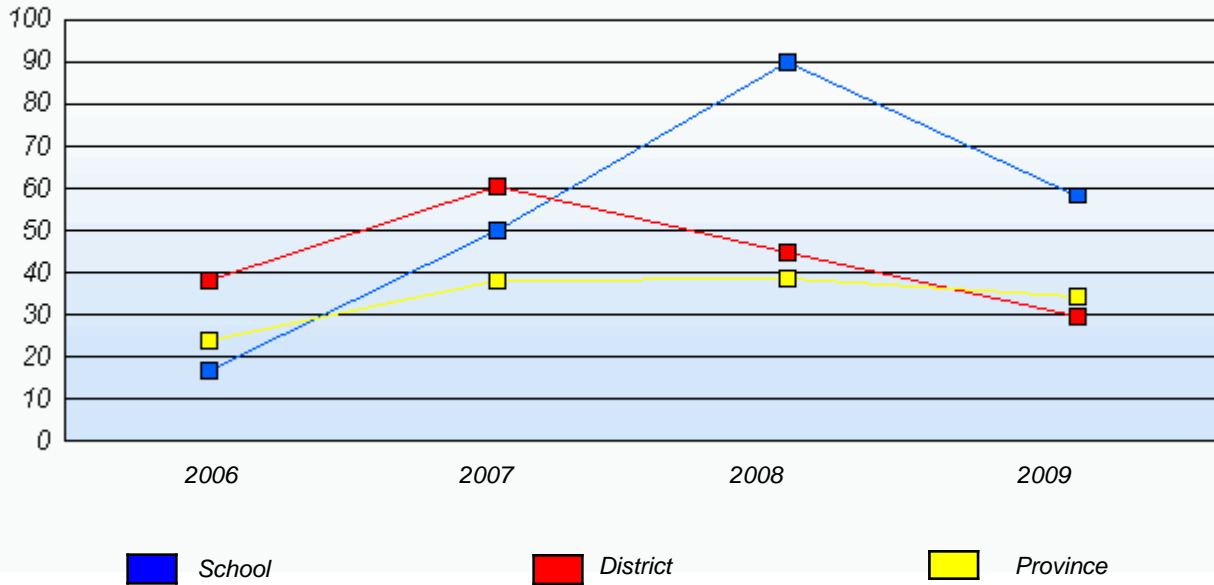
* In some cases, CRT numbers may exceed AGR numbers based on late enrolments. Pie chart is based on the number of students who wrote the CRT.

District 803 - Private

School #: 453 Eric G. Lambert All-Grade

Connections and Representations

Percentage of students at level 3 or above (2006 - 2009)

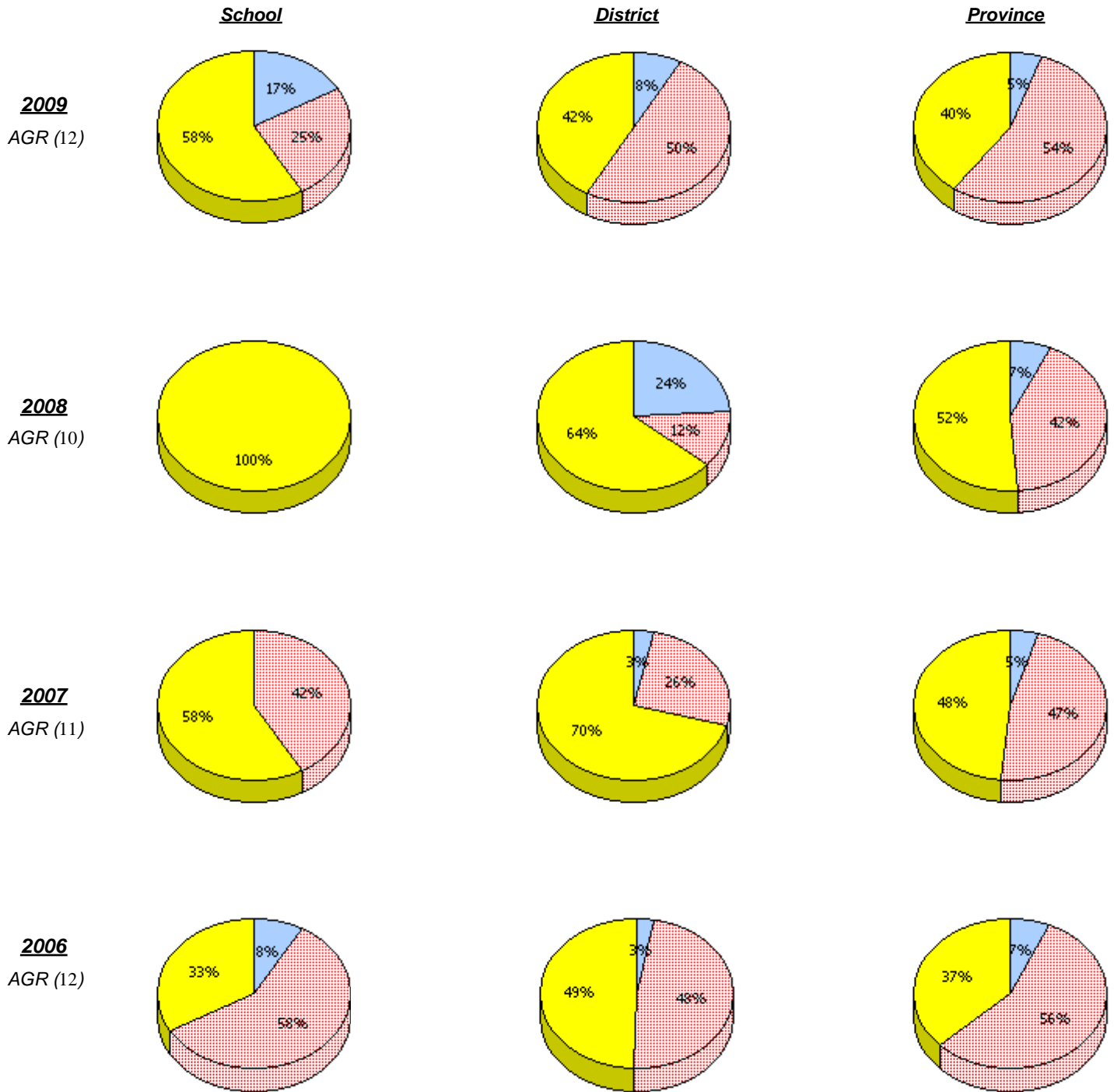


* In some cases, CRT numbers may exceed AGR numbers based on late enrolments. Pie chart is based on the number of students who wrote the CRT.

District 803 - Private

School #: 453 Eric G. Lambert All-Grade

Problem Solving



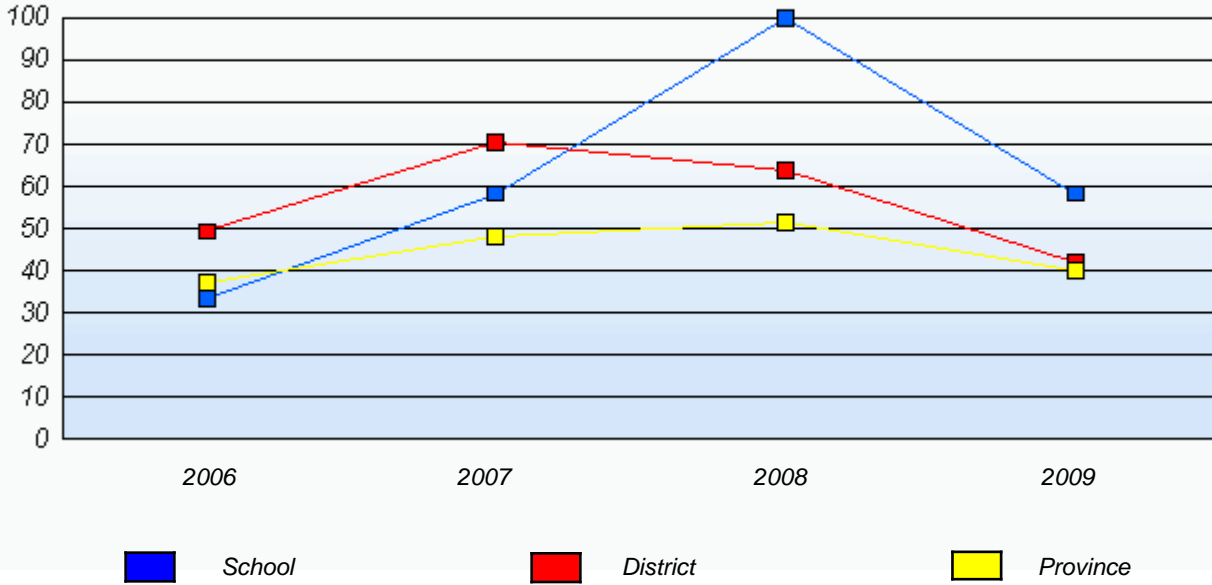
* In some cases, CRT numbers may exceed AGR numbers based on late enrolments. Pie chart is based on the number of students who wrote the CRT.

District 803 - Private

School #: 453 Eric G. Lambert All-Grade

Problem Solving

Percentage of students at level 3 or above (2006 - 2009)



* In some cases, CRT numbers may exceed AGR numbers based on late enrolments. Pie chart is based on the number of students who wrote the CRT.

District 803 - Private

School #: 469 Immaculate Heart of Mary School

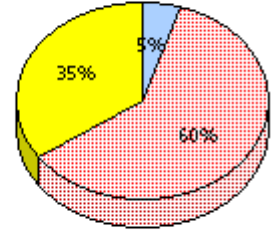
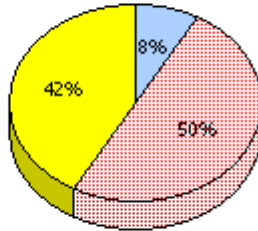
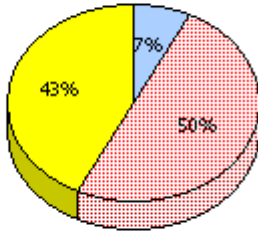
Reasoning

School

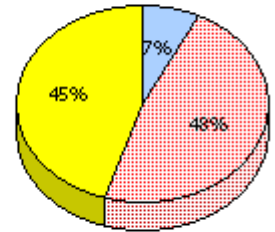
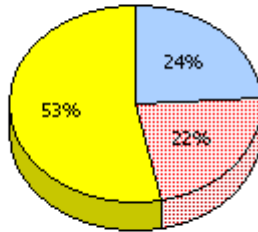
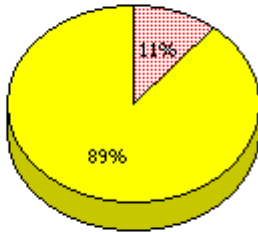
District

Province

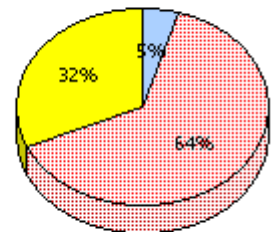
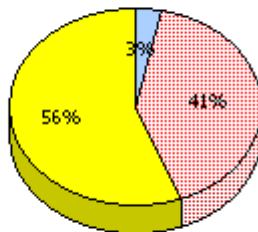
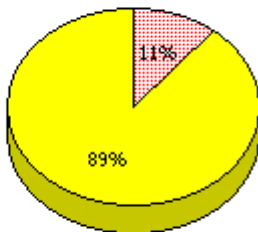
2009
AGR (14)



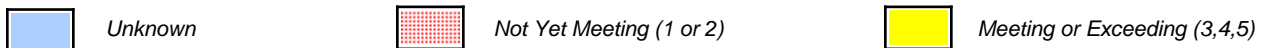
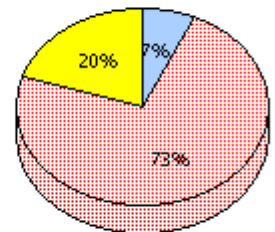
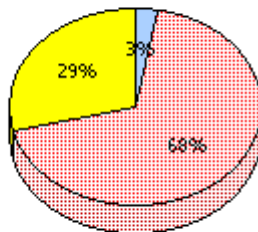
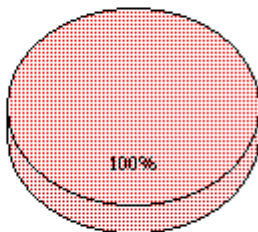
2008
AGR (8)



2007
AGR (9)



2006
AGR (11)



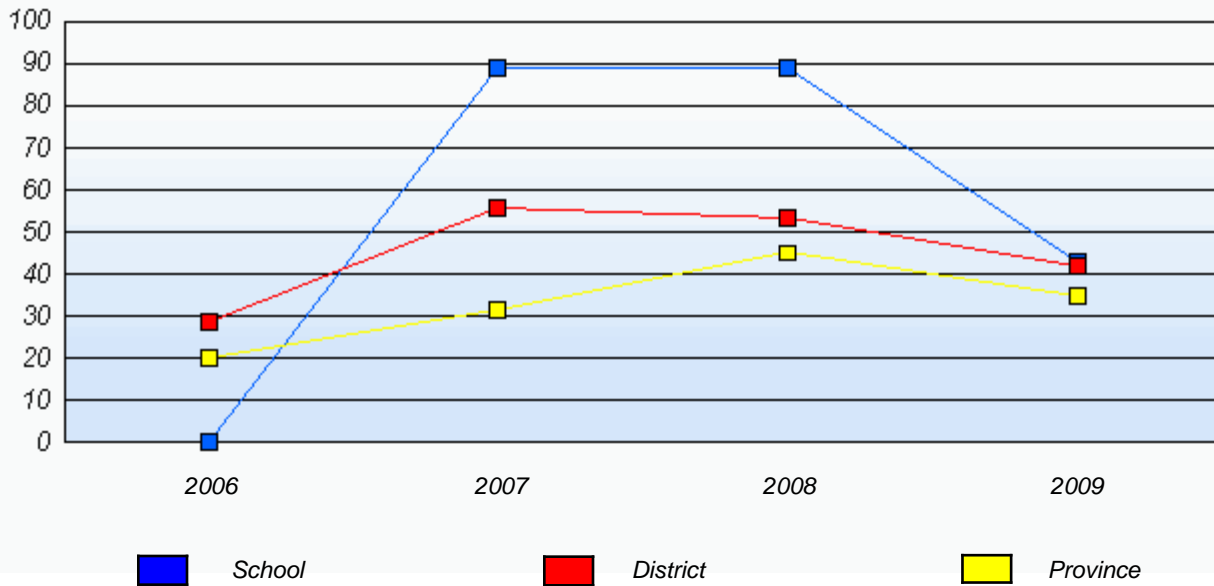
* In some cases, CRT numbers may exceed AGR numbers based on late enrolments. Pie chart is based on the number of students who wrote the CRT.

District 803 - Private

School #: 469 Immaculate Heart of Mary School

Reasoning

Percentage of students at level 3 or above (2006 - 2009)

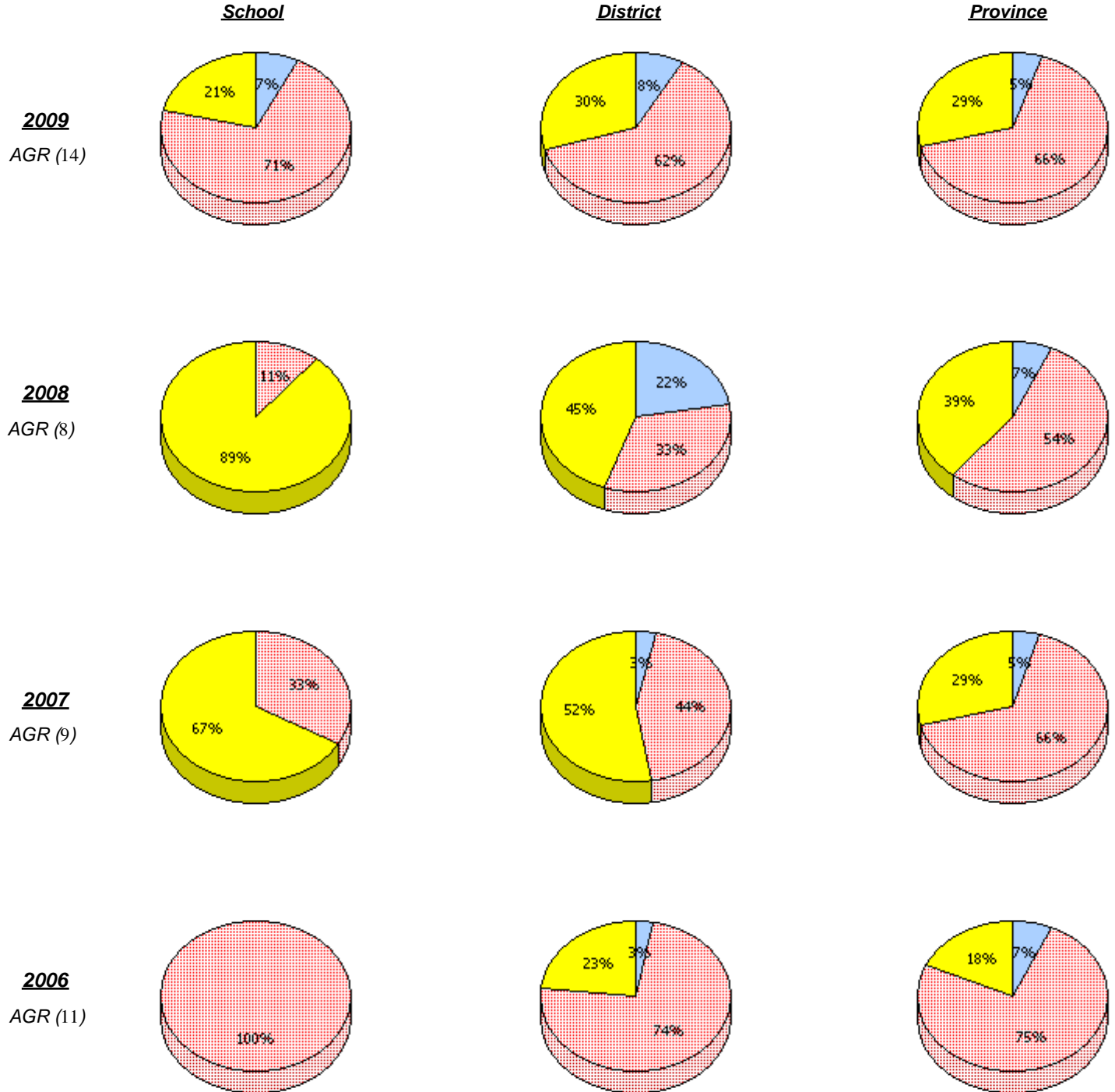


* In some cases, CRT numbers may exceed AGR numbers based on late enrolments. Pie chart is based on the number of students who wrote the CRT.

District 803 - Private

School #: 469 Immaculate Heart of Mary School

Communication



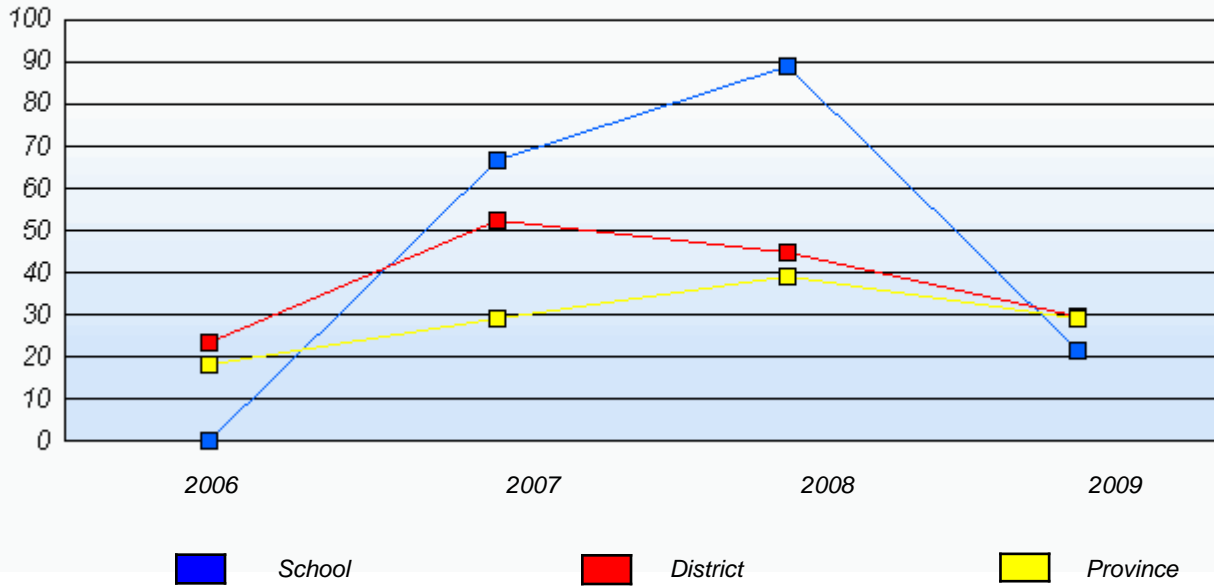
* In some cases, CRT numbers may exceed AGR numbers based on late enrolments. Pie chart is based on the number of students who wrote the CRT.

District 803 - Private

School #: 469 Immaculate Heart of Mary School

Communication

Percentage of students at level 3 or above (2006 - 2009)

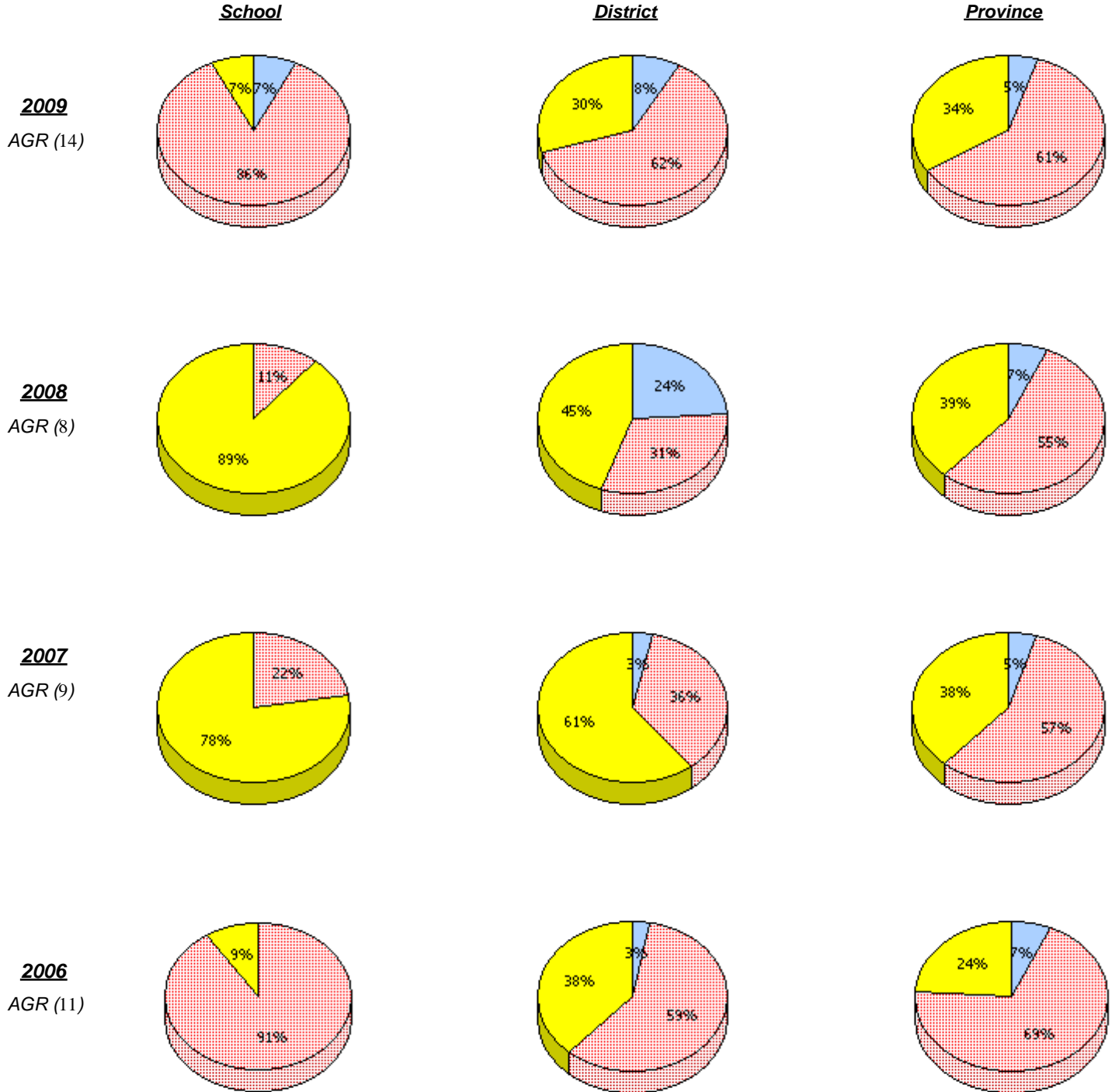


* In some cases, CRT numbers may exceed AGR numbers based on late enrolments. Pie chart is based on the number of students who wrote the CRT.

District 803 - Private

School #: 469 Immaculate Heart of Mary School

Connections and Representations



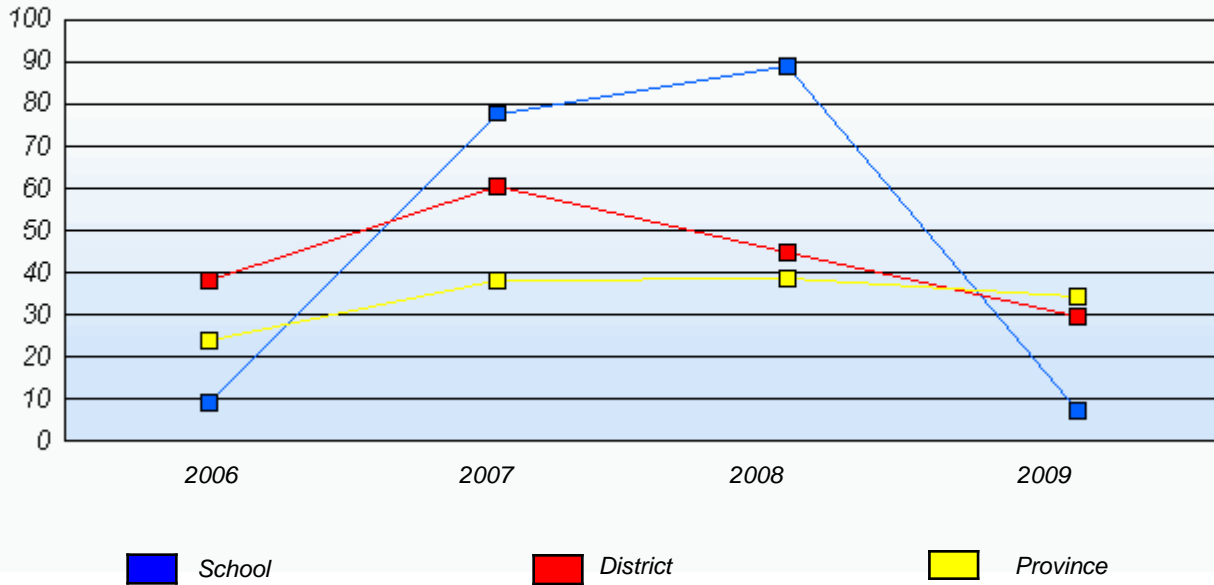
* In some cases, CRT numbers may exceed AGR numbers based on late enrolments. Pie chart is based on the number of students who wrote the CRT.

District 803 - Private

School #: 469 Immaculate Heart of Mary School

Connections and Representations

Percentage of students at level 3 or above (2006 - 2009)

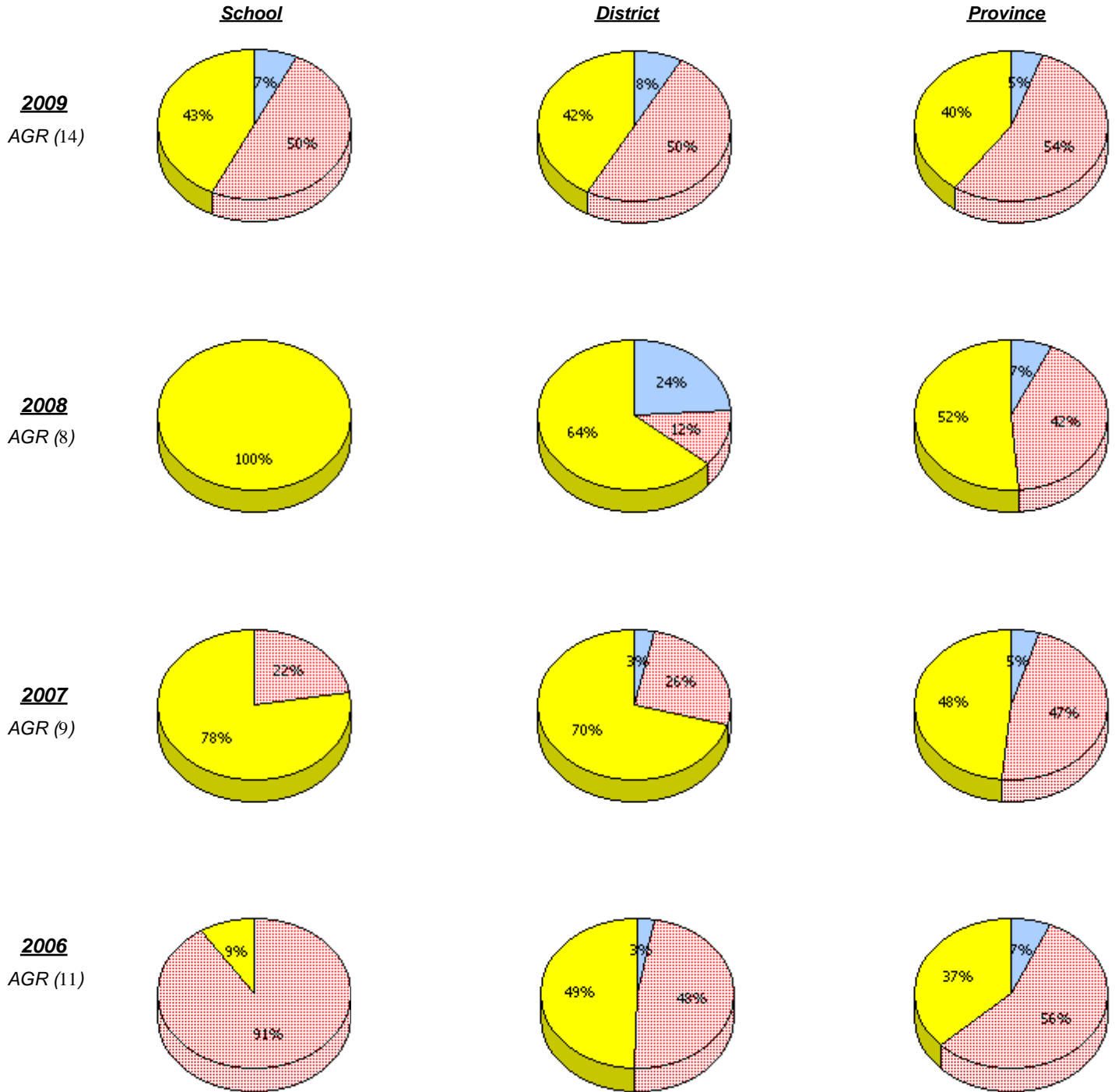


* In some cases, CRT numbers may exceed AGR numbers based on late enrolments. Pie chart is based on the number of students who wrote the CRT.

District 803 - Private

School #: 469 Immaculate Heart of Mary School

Problem Solving

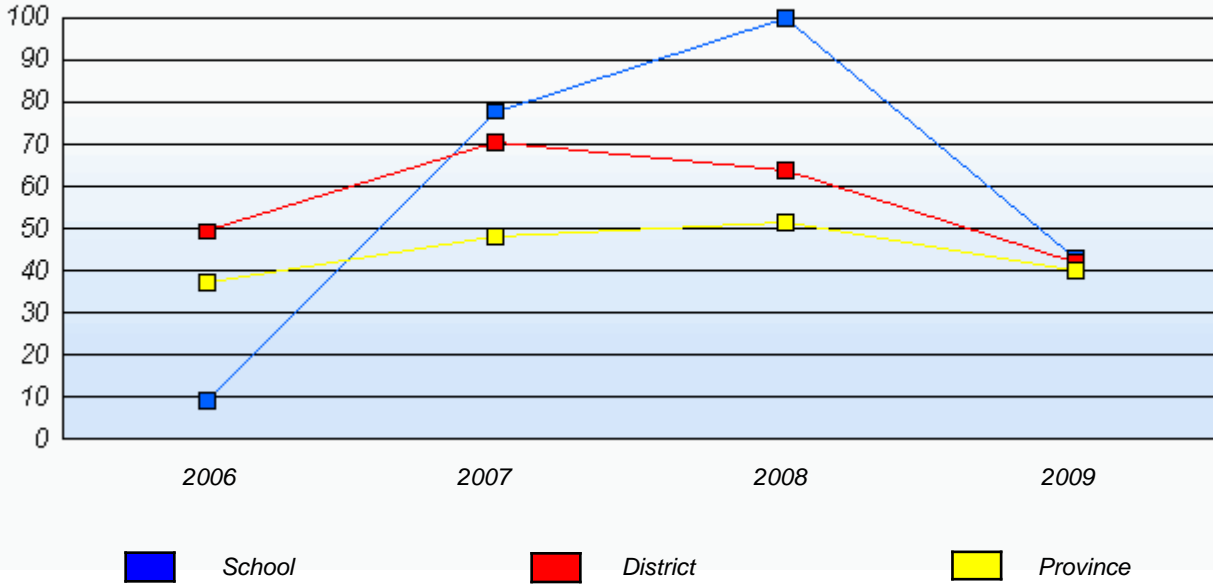


* In some cases, CRT numbers may exceed AGR numbers based on late enrolments. Pie chart is based on the number of students who wrote the CRT.

District 803 - Private

School #: 469 Immaculate Heart of Mary School

Problem Solving
 Percentage of students at level 3 or above (2006 - 2009)



* In some cases, CRT numbers may exceed AGR numbers based on late enrolments. Pie chart is based on the number of students who wrote the CRT.

District 804 - Native Federal

School #: 018 Peenamin McKenzie School

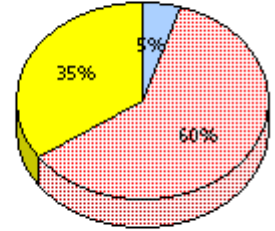
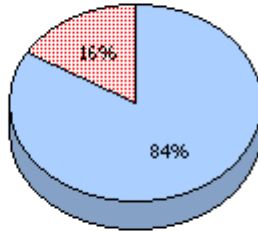
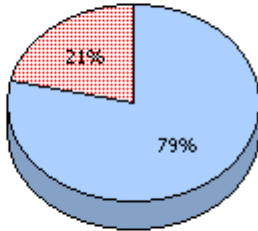
Reasoning

School

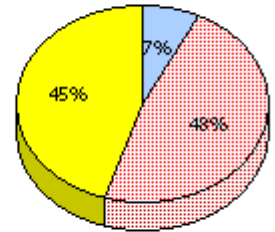
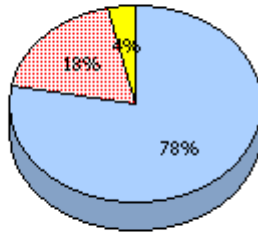
District

Province

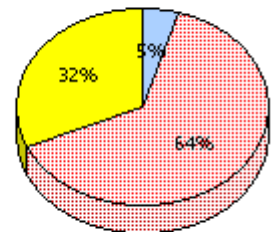
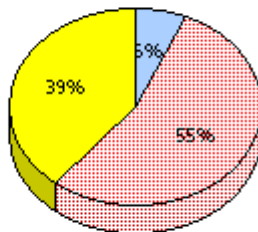
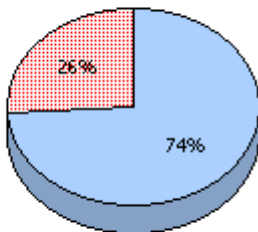
2009
AGR (28)



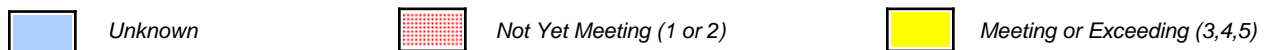
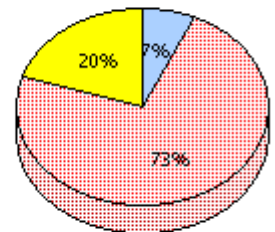
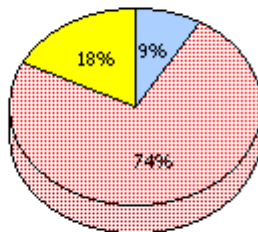
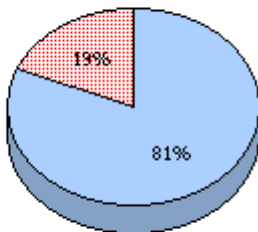
2008
AGR (28)



2007
AGR (27)



2006
AGR (27)



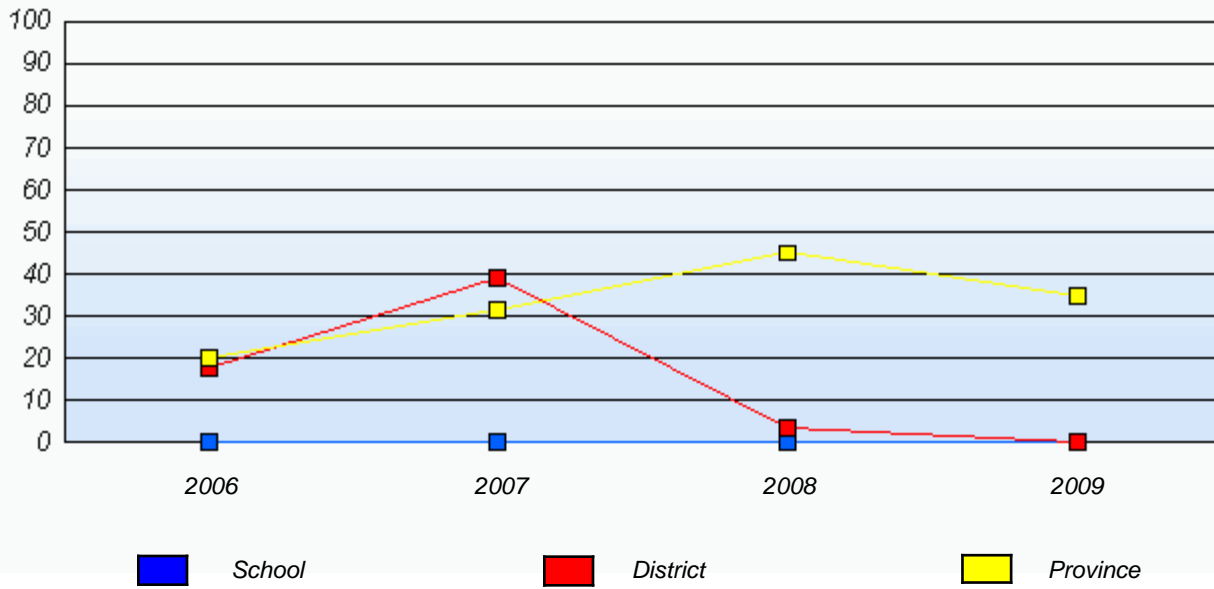
* In some cases, CRT numbers may exceed AGR numbers based on late enrolments. Pie chart is based on the number of students who wrote the CRT.

District 804 - Native Federal

School #: 018 Peenamain McKenzie School

Reasoning

Percentage of students at level 3 or above (2006 - 2009)

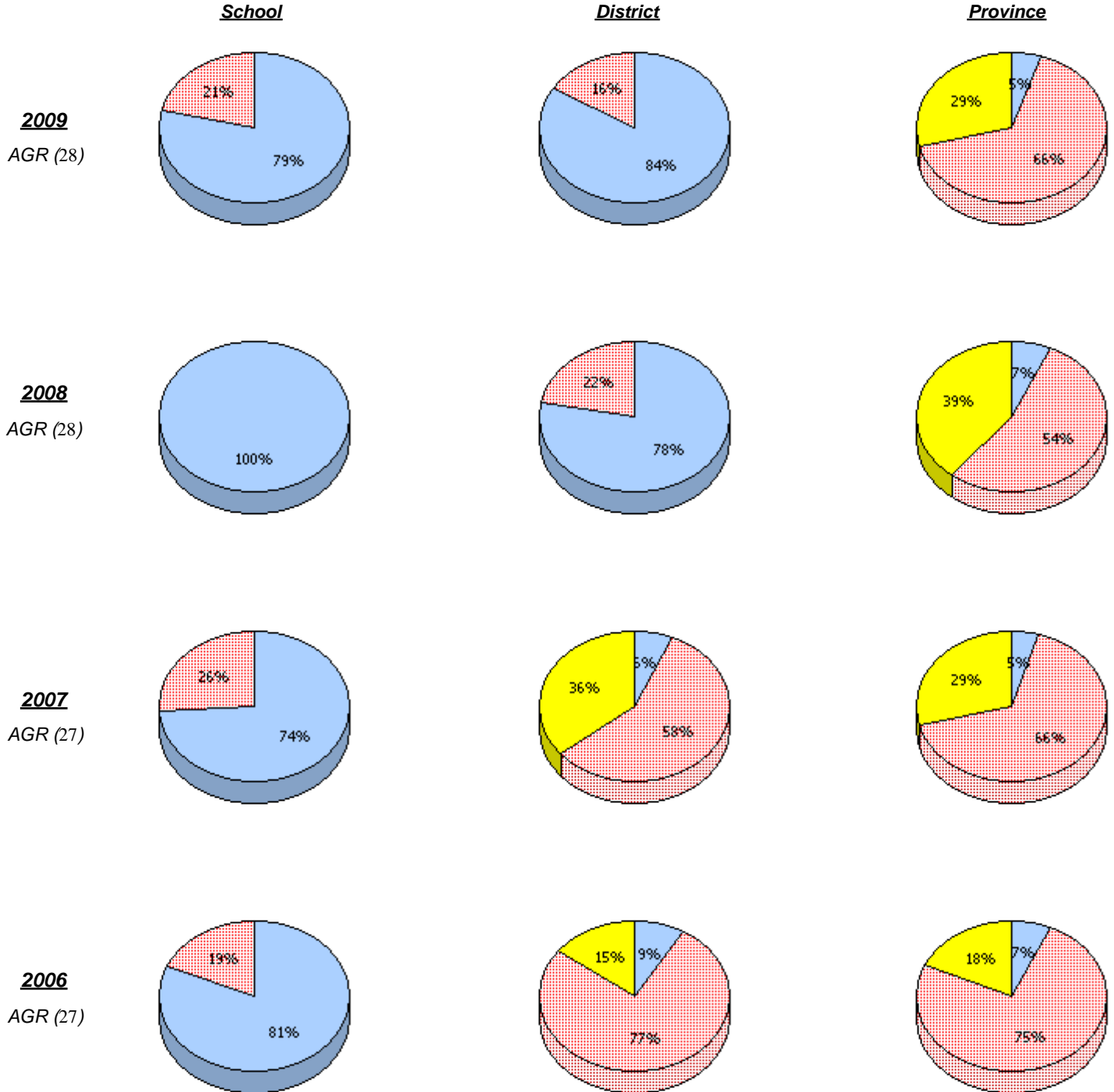


* In some cases, CRT numbers may exceed AGR numbers based on late enrolments. Pie chart is based on the number of students who wrote the CRT.

District 804 - Native Federal

School #: 018 Peenamin McKenzie School

Communication



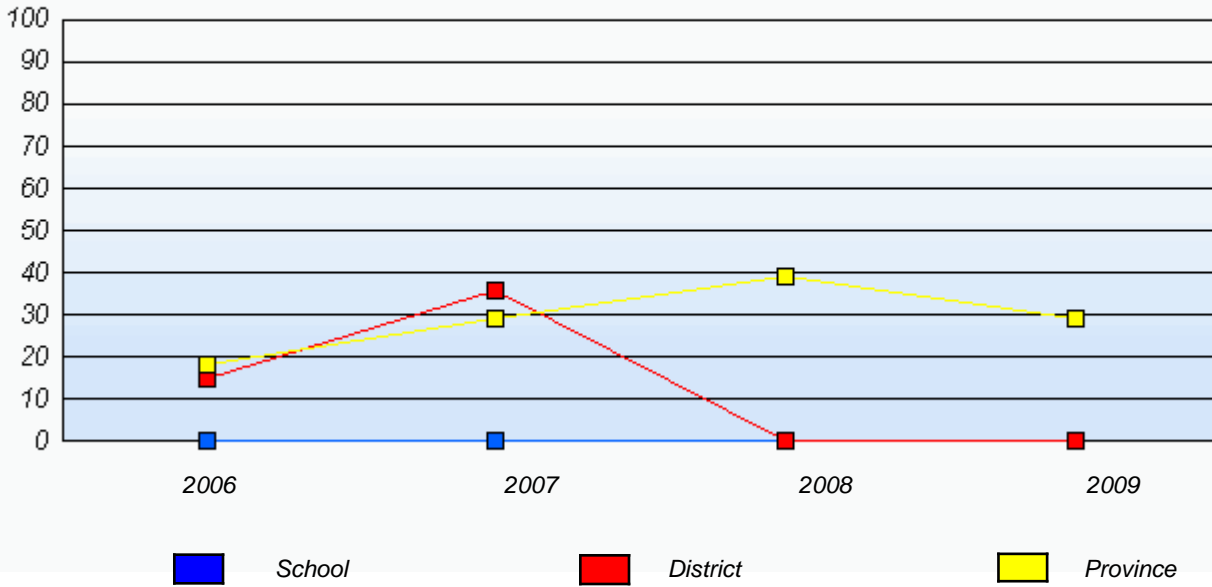
* In some cases, CRT numbers may exceed AGR numbers based on late enrolments. Pie chart is based on the number of students who wrote the CRT.

District 804 - Native Federal

School #: 018 Peenamin McKenzie School

Communication

Percentage of students at level 3 or above (2006 - 2009)

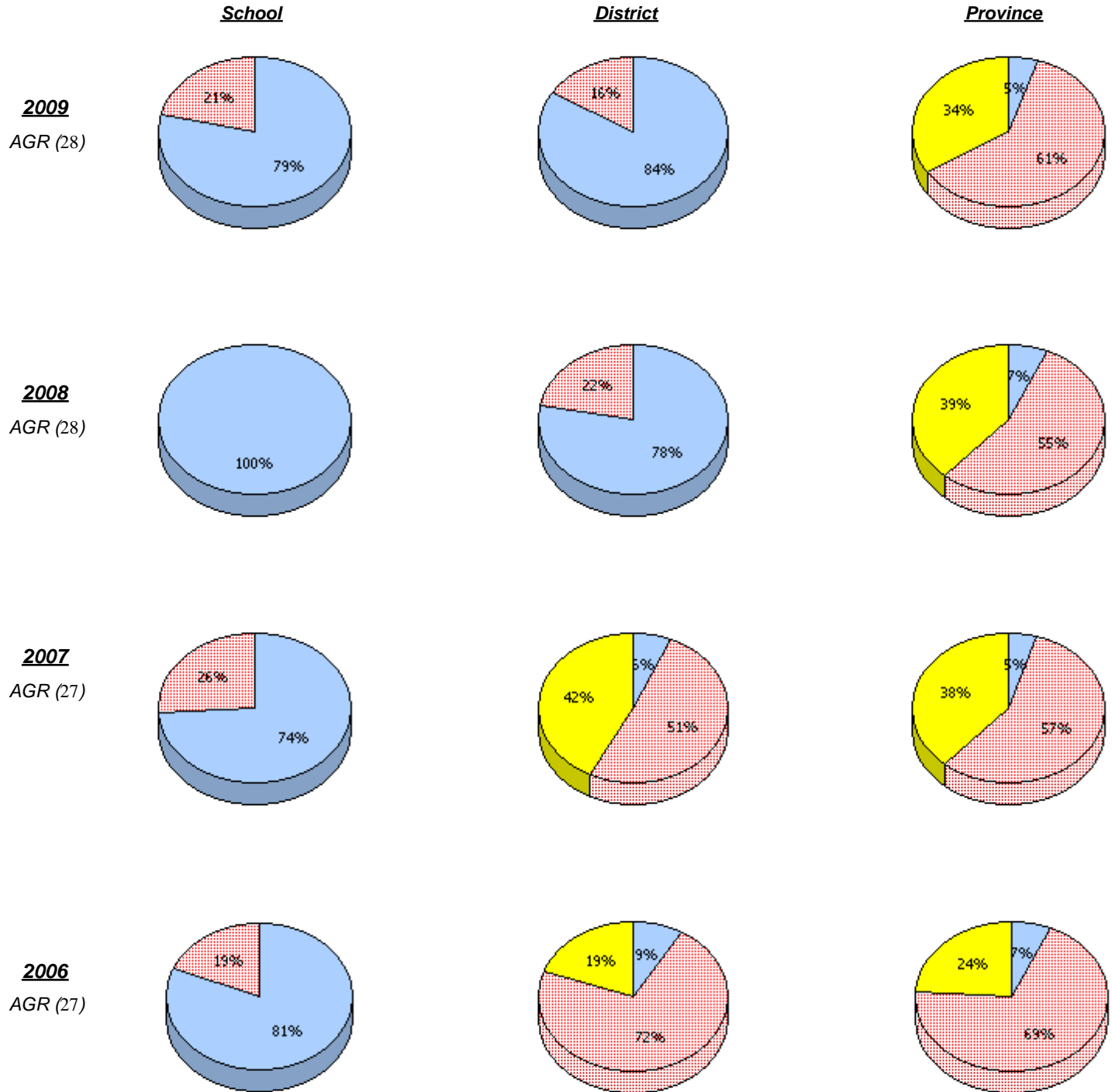


* In some cases, CRT numbers may exceed AGR numbers based on late enrolments. Pie chart is based on the number of students who wrote the CRT.

District 804 - Native Federal

School #: 018 Peenamin McKenzie School

Connections and Representations



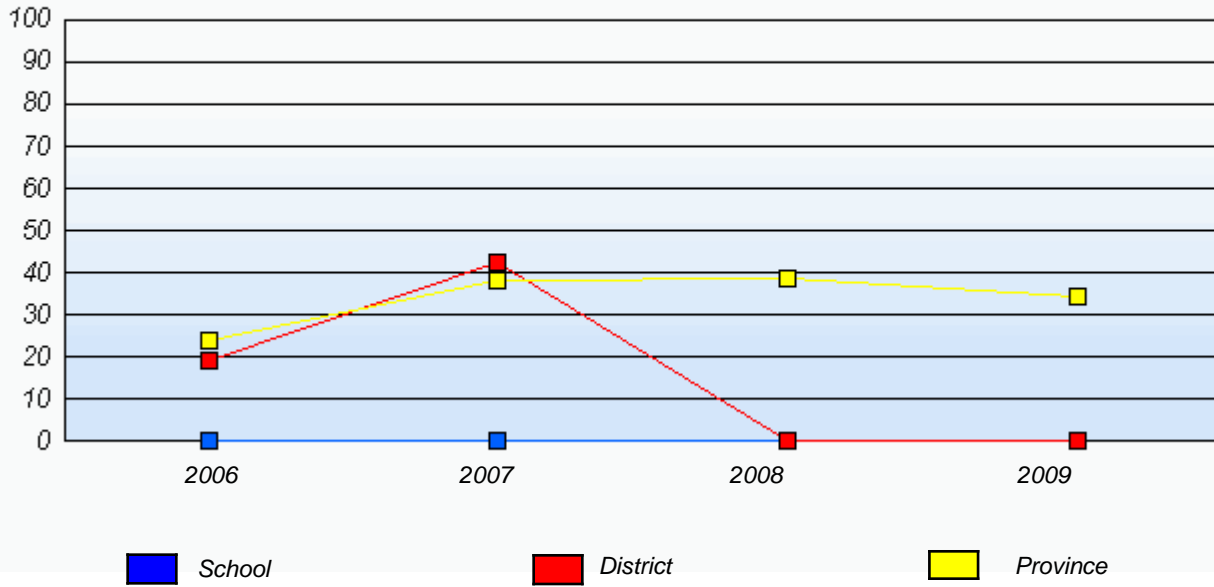
* In some cases, CRT numbers may exceed AGR numbers based on late enrolments. Pie chart is based on the number of students who wrote the CRT.

District 804 - Native Federal

School #: 018 Peenamain McKenzie School

Connections and Representations

Percentage of students at level 3 or above (2006 - 2009)

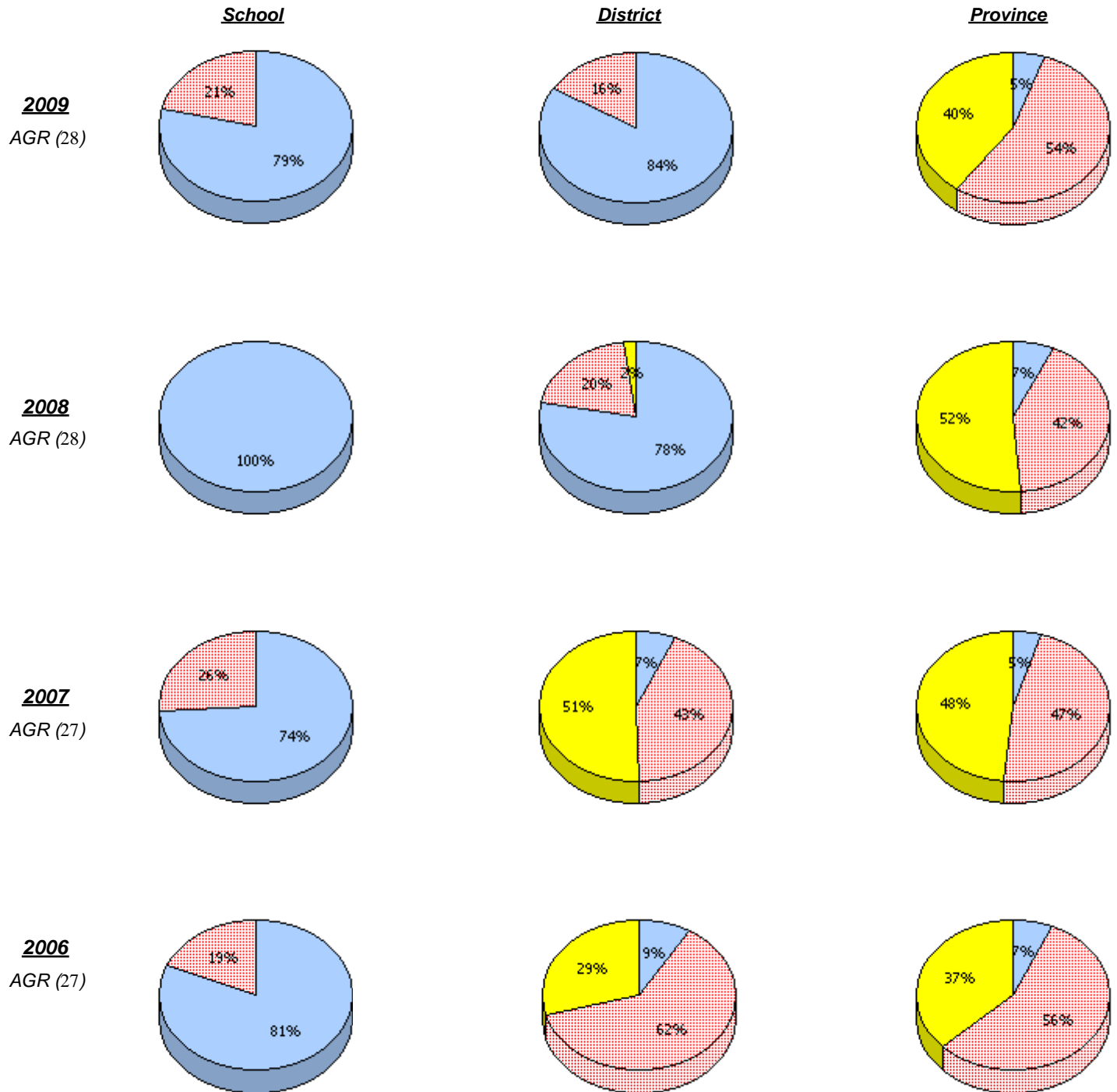


* In some cases, CRT numbers may exceed AGR numbers based on late enrolments. Pie chart is based on the number of students who wrote the CRT.

District 804 - Native Federal

School #: 018 Peenamin McKenzie School

Problem Solving



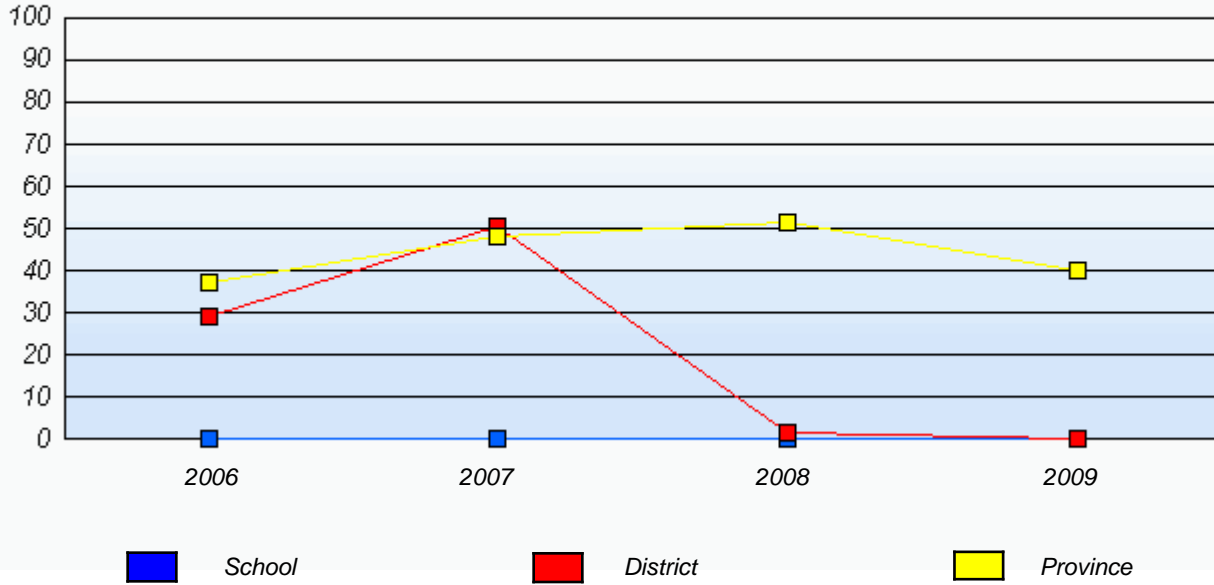
* In some cases, CRT numbers may exceed AGR numbers based on late enrolments. Pie chart is based on the number of students who wrote the CRT.

District 804 - Native Federal

School #: 018 Peenamain McKenzie School

Problem Solving

Percentage of students at level 3 or above (2006 - 2009)



* In some cases, CRT numbers may exceed AGR numbers based on late enrolments. Pie chart is based on the number of students who wrote the CRT.

District 804 - Native Federal

School #: 019 Mushuau Innu Natuashish School

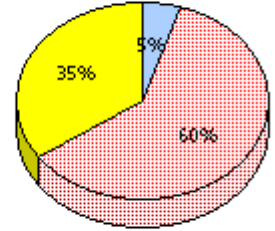
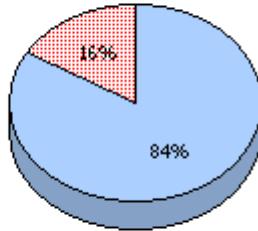
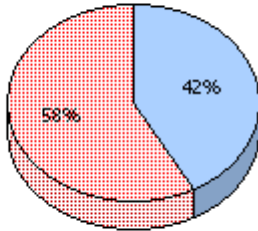
Reasoning

School

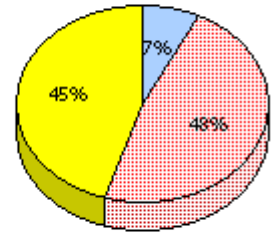
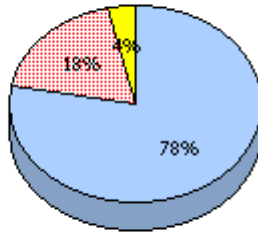
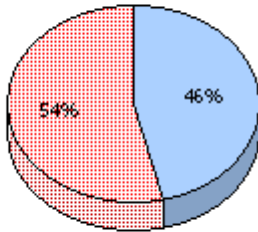
District

Province

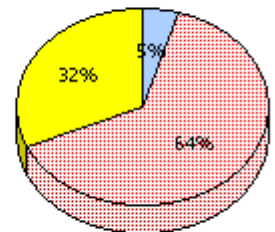
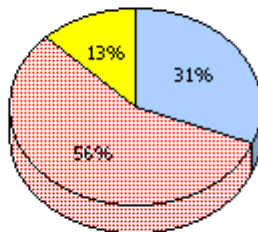
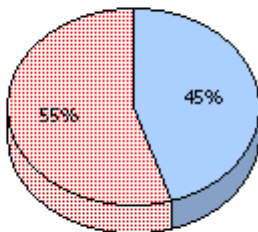
2009
AGR (19)



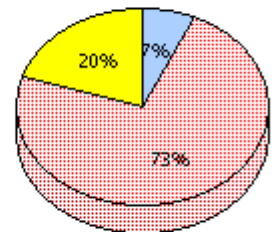
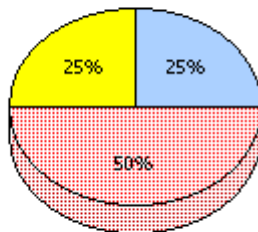
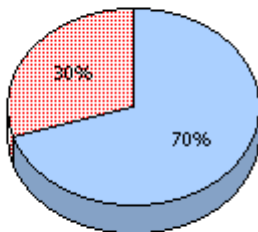
2008
AGR (13)



2007
AGR (20)



2006
AGR (20)



Unknown
 Not Yet Meeting (1 or 2)
 Meeting or Exceeding (3,4,5)

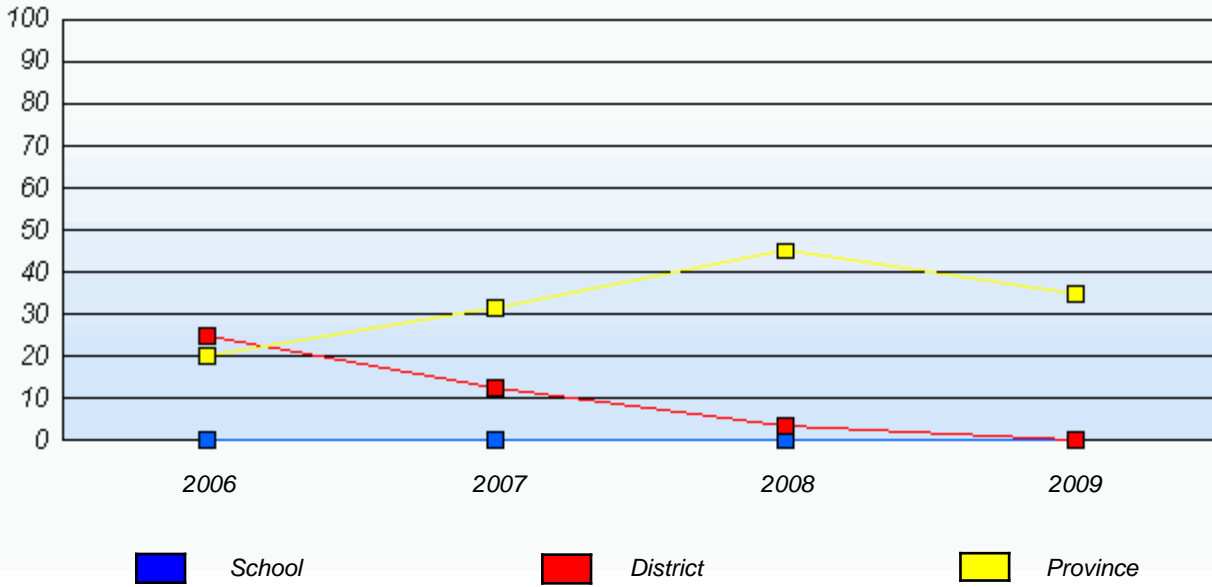
* In some cases, CRT numbers may exceed AGR numbers based on late enrolments. Pie chart is based on the number of students who wrote the CRT.

District 804 - Native Federal

School #: 019 Mushuau Innu Natuashish School

Reasoning

Percentage of students at level 3 or above (2006 - 2009)

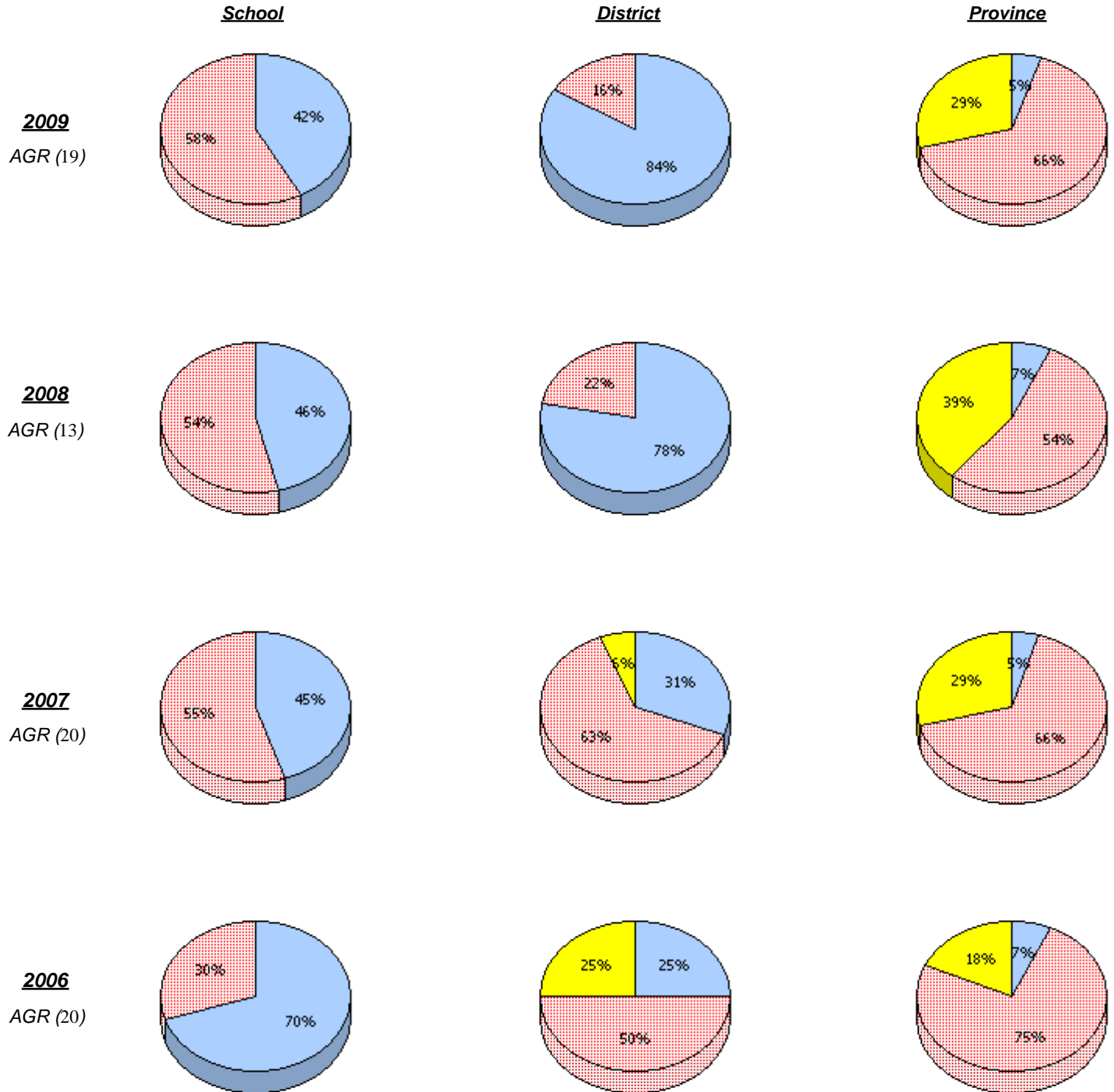


* In some cases, CRT numbers may exceed AGR numbers based on late enrolments. Pie chart is based on the number of students who wrote the CRT.

District 804 - Native Federal

School #: 019 Mushuau Innu Natuashish School

Communication



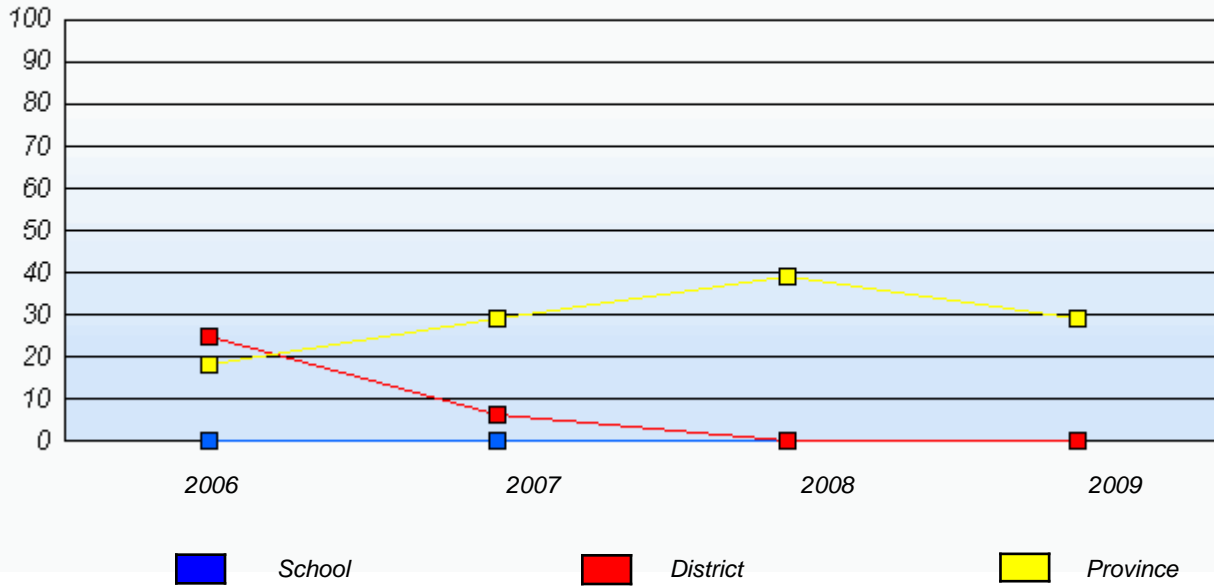
* In some cases, CRT numbers may exceed AGR numbers based on late enrolments. Pie chart is based on the number of students who wrote the CRT.

District 804 - Native Federal

School #: 019 Mushuau Innu Natuashish School

Communication

Percentage of students at level 3 or above (2006 - 2009)

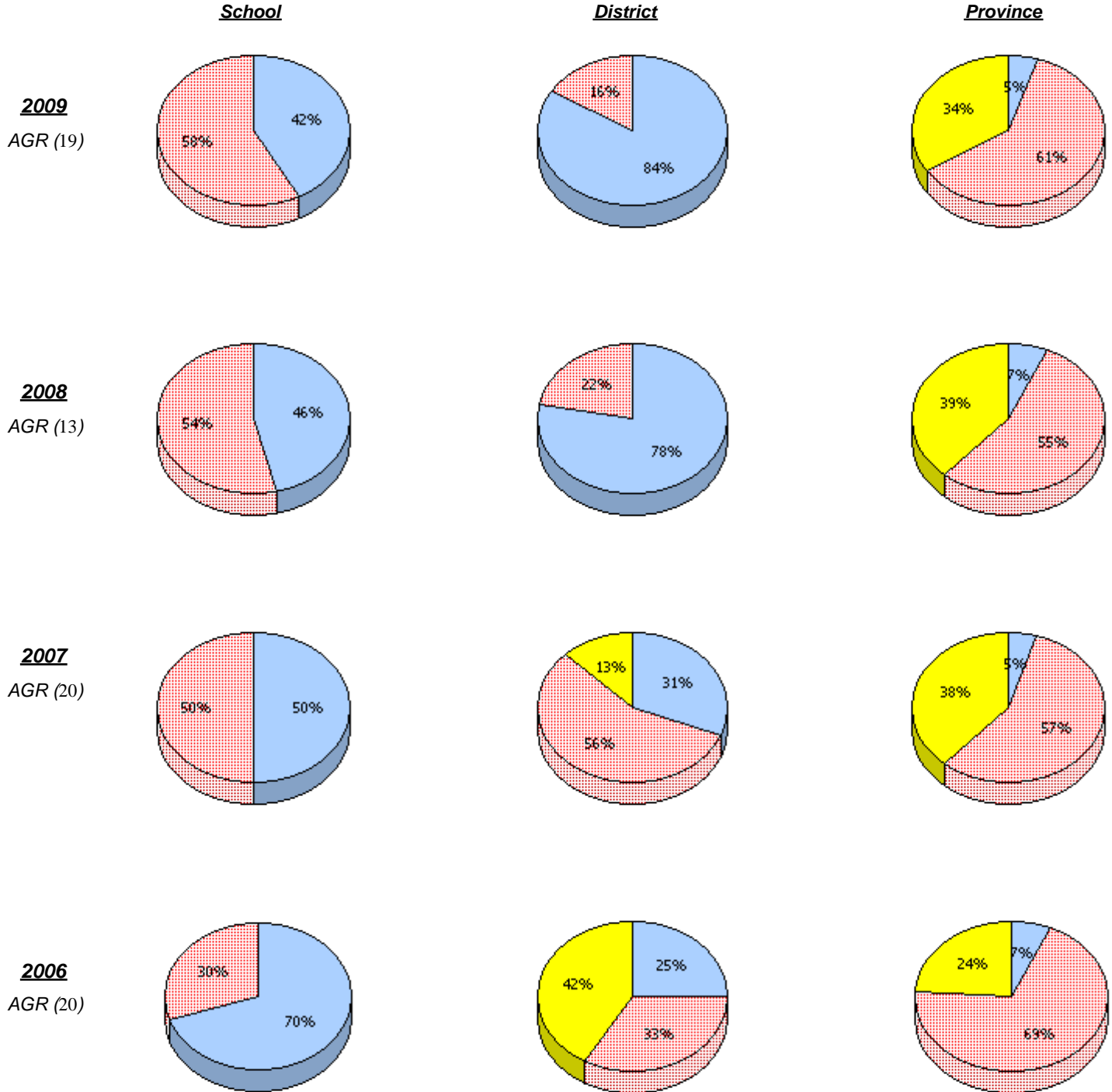


* In some cases, CRT numbers may exceed AGR numbers based on late enrolments. Pie chart is based on the number of students who wrote the CRT.

District 804 - Native Federal

School #: 019 Mushuau Innu Natuashish School

Connections and Representations



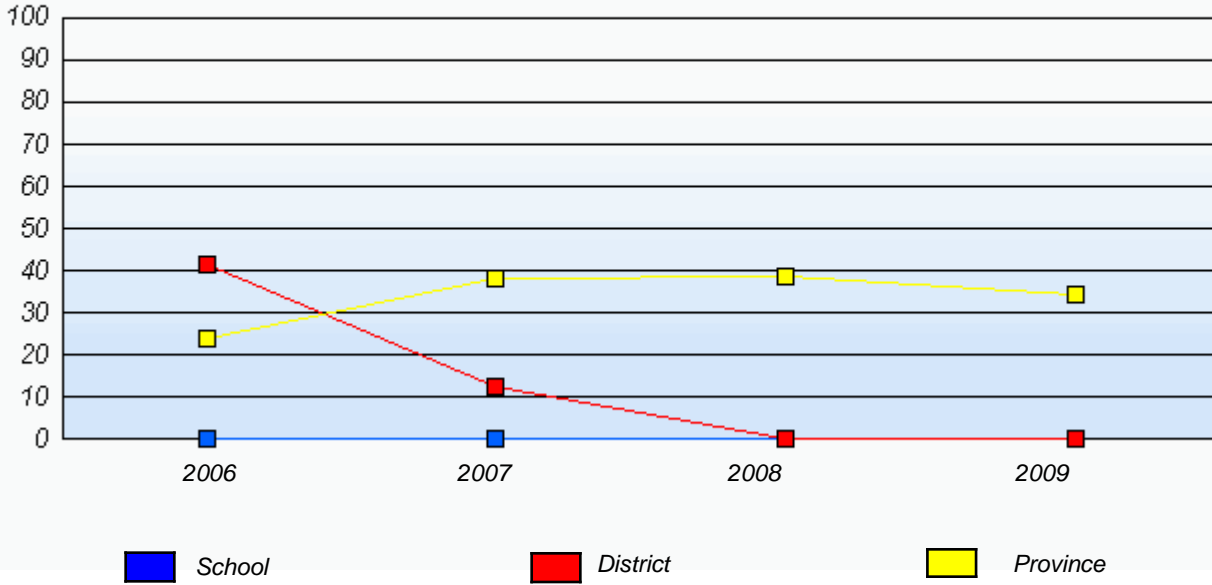
* In some cases, CRT numbers may exceed AGR numbers based on late enrolments. Pie chart is based on the number of students who wrote the CRT.

District 804 - Native Federal

School #: 019 Mushuau Innu Natuashish School

Connections and Representations

Percentage of students at level 3 or above (2006 - 2009)

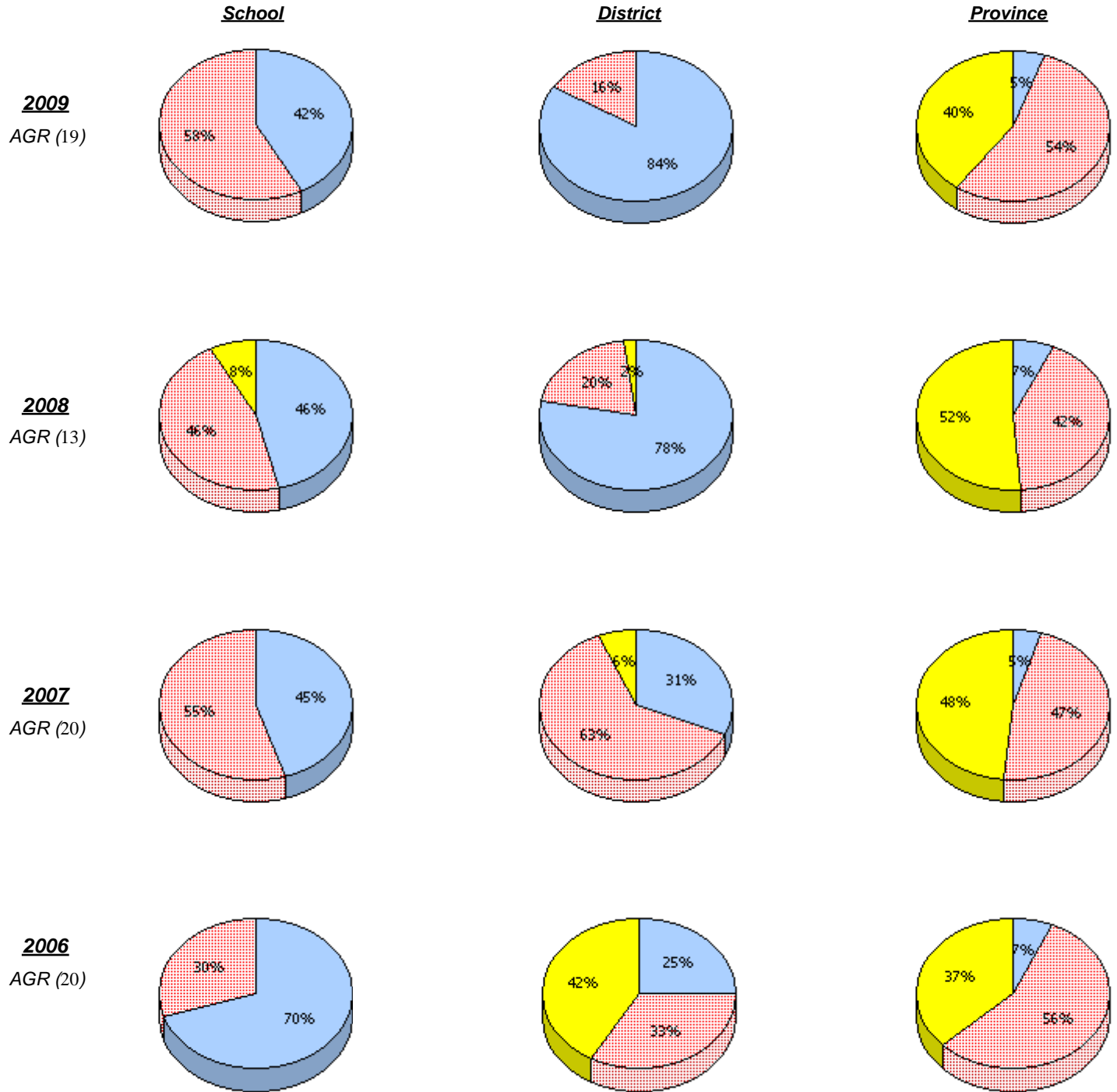


* In some cases, CRT numbers may exceed AGR numbers based on late enrolments. Pie chart is based on the number of students who wrote the CRT.

District 804 - Native Federal

School #: 019 Mushuau Innu Natuashish School

Problem Solving



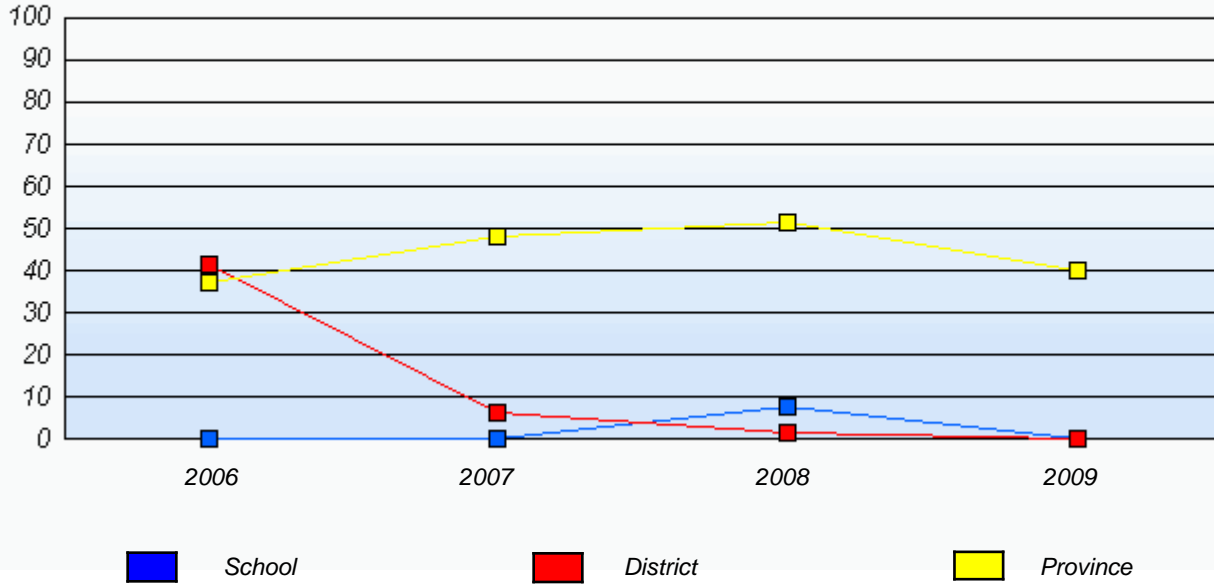
* In some cases, CRT numbers may exceed AGR numbers based on late enrolments. Pie chart is based on the number of students who wrote the CRT.

District 804 - Native Federal

School #: 019 Mushuau Innu Natuashish School

Problem Solving

Percentage of students at level 3 or above (2006 - 2009)



* In some cases, CRT numbers may exceed AGR numbers based on late enrolments. Pie chart is based on the number of students who wrote the CRT.

District 804 - Native Federal

School #: 376 St. Anneway Kegnamogwom

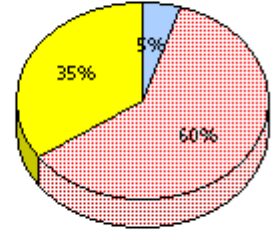
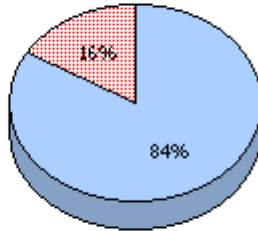
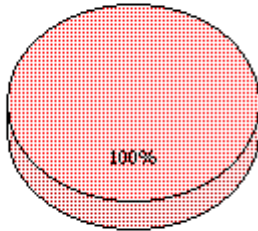
Reasoning

School

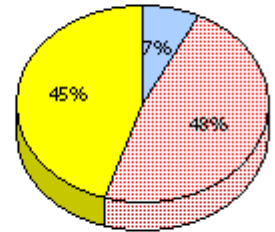
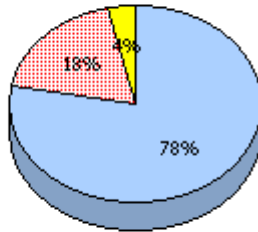
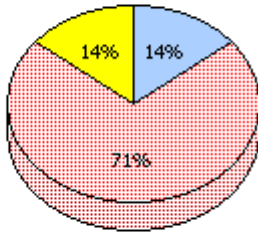
District

Province

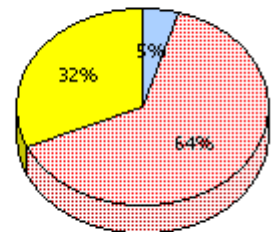
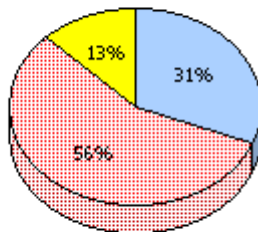
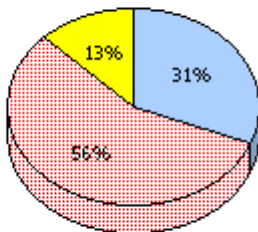
2009
AGR (8)



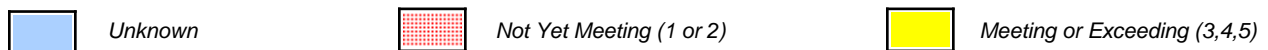
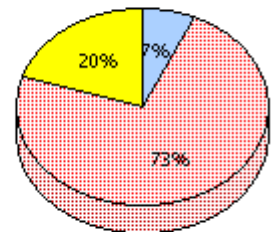
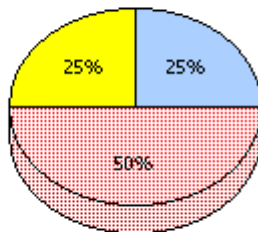
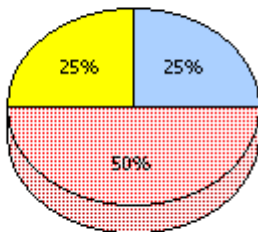
2008
AGR (14)



2007
AGR (16)



2006
AGR (12)



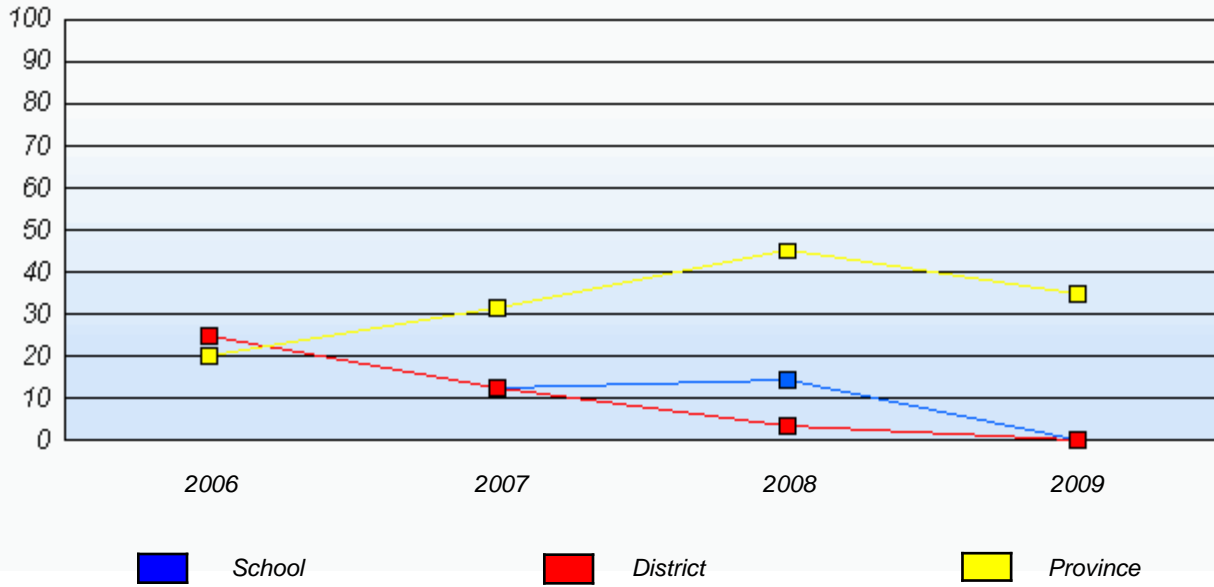
* In some cases, CRT numbers may exceed AGR numbers based on late enrolments. Pie chart is based on the number of students who wrote the CRT.

District 804 - Native Federal

School #: 376 St. Anneway Kegnamogwom

Reasoning

Percentage of students at level 3 or above (2006 - 2009)

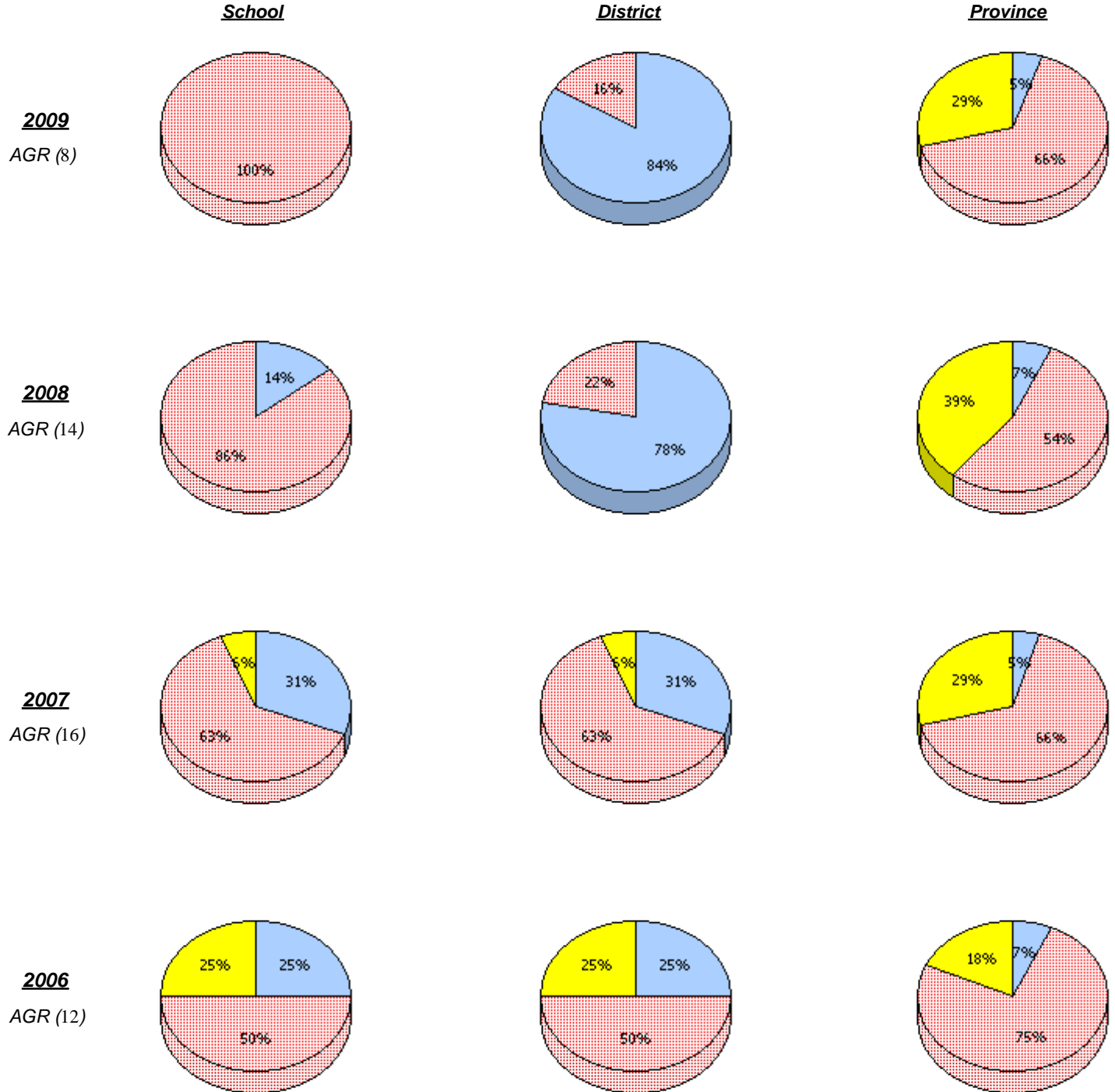


* In some cases, CRT numbers may exceed AGR numbers based on late enrolments. Pie chart is based on the number of students who wrote the CRT.

District 804 - Native Federal

School #: 376 St. Anneway Kegnamogwom

Communication



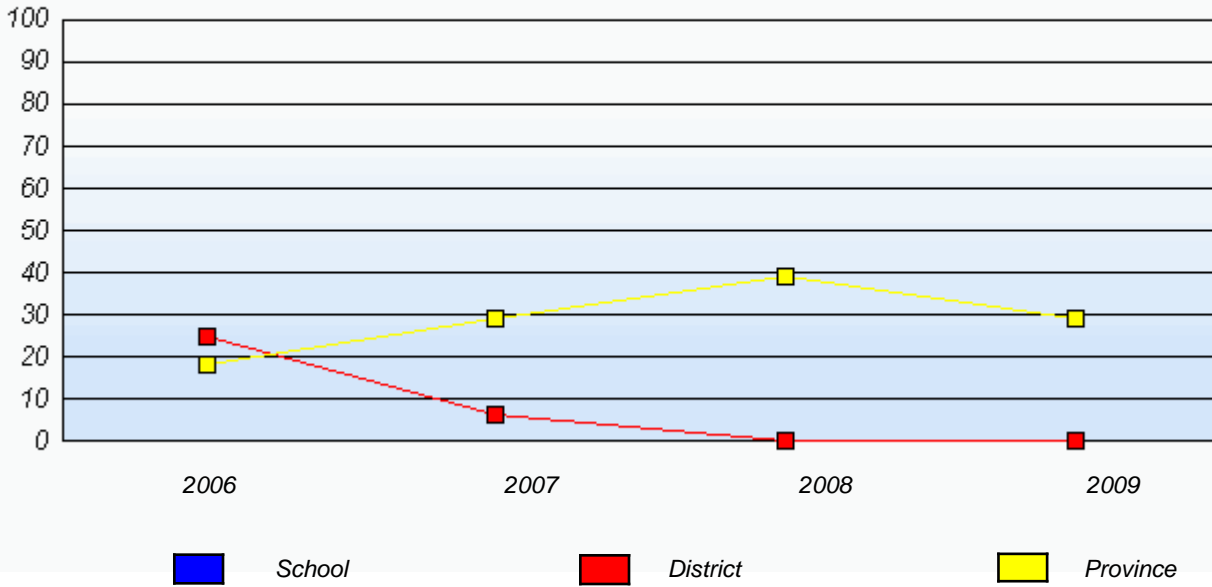
* In some cases, CRT numbers may exceed AGR numbers based on late enrolments. Pie chart is based on the number of students who wrote the CRT.

District 804 - Native Federal

School #: 376 St. Anneway Kegnamogwom

Communication

Percentage of students at level 3 or above (2006 - 2009)

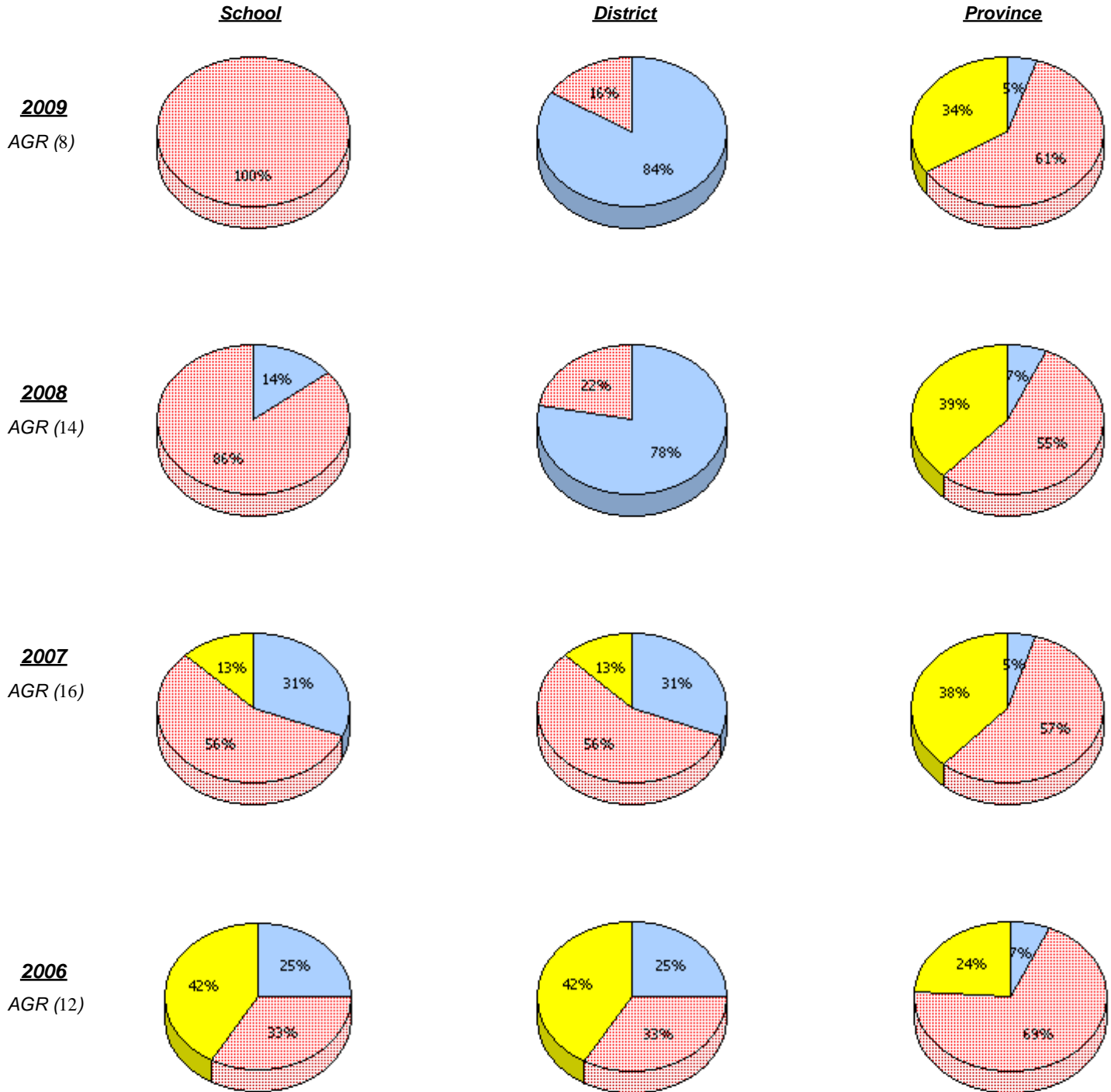


* In some cases, CRT numbers may exceed AGR numbers based on late enrolments. Pie chart is based on the number of students who wrote the CRT.

District 804 - Native Federal

School #: 376 St. Anneway Kegnamogwom

Connections and Representations



* In some cases, CRT numbers may exceed AGR numbers based on late enrolments. Pie chart is based on the number of students who wrote the CRT.

District 804 - Native Federal

School #: 376 St. Anneway Kegnamogwom

Connections and Representations

Percentage of students at level 3 or above (2006 - 2009)

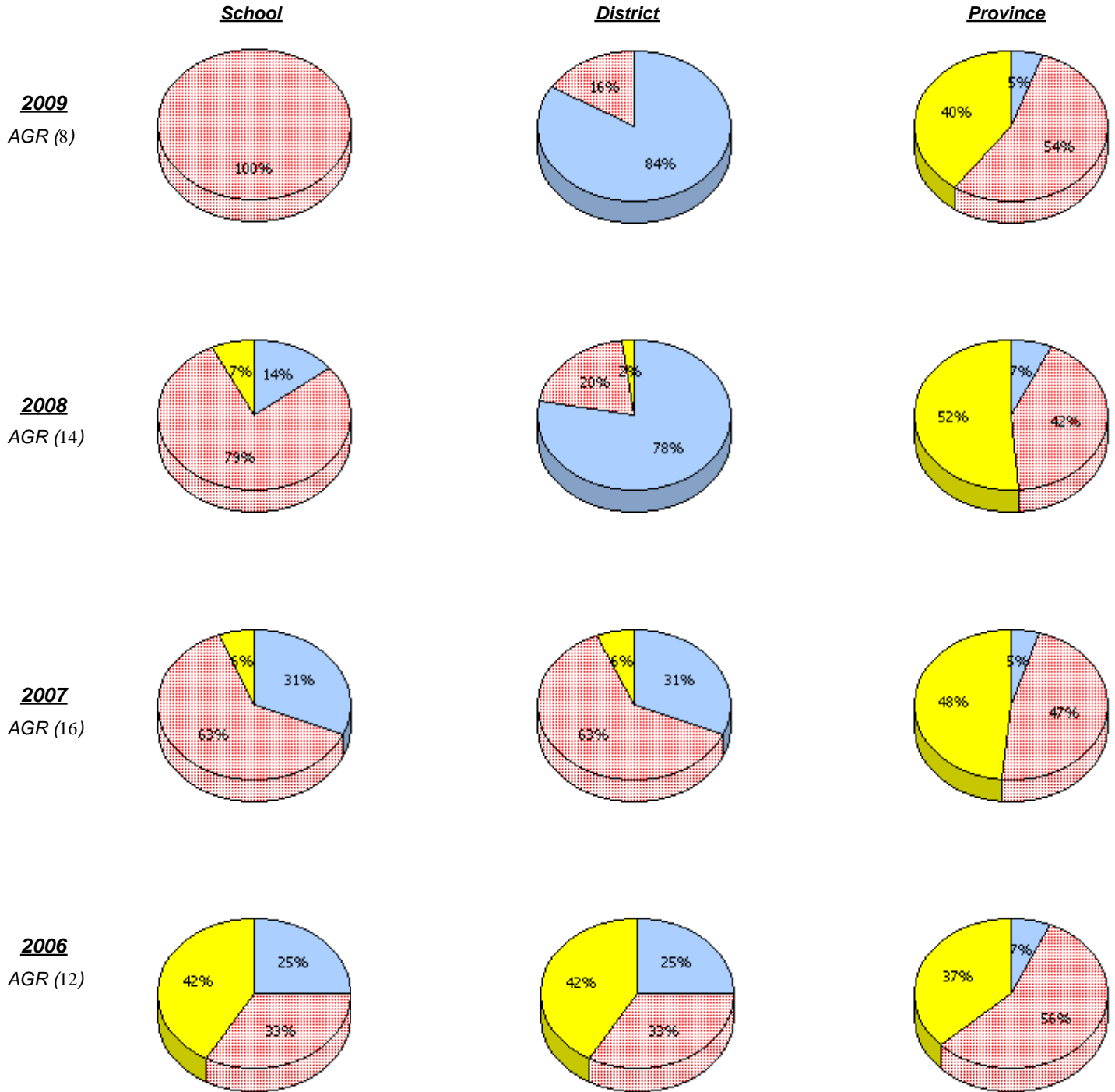


* In some cases, CRT numbers may exceed AGR numbers based on late enrolments. Pie chart is based on the number of students who wrote the CRT.

District 804 - Native Federal

School #: 376 St. Anneway Kegnamogwom

Problem Solving



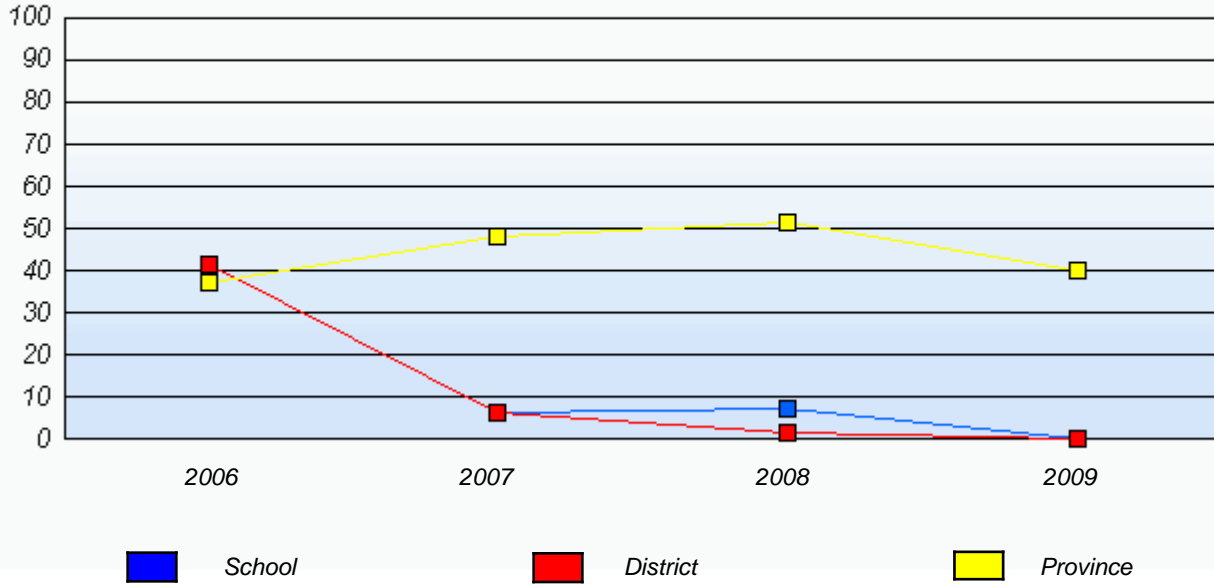
* In some cases, CRT numbers may exceed AGR numbers based on late enrolments. Pie chart is based on the number of students who wrote the CRT.

District 804 - Native Federal

School #: 376 St. Anneway Kegnamogwom

Problem Solving

Percentage of students at level 3 or above (2006 - 2009)



* In some cases, CRT numbers may exceed AGR numbers based on late enrolments. Pie chart is based on the number of students who wrote the CRT.