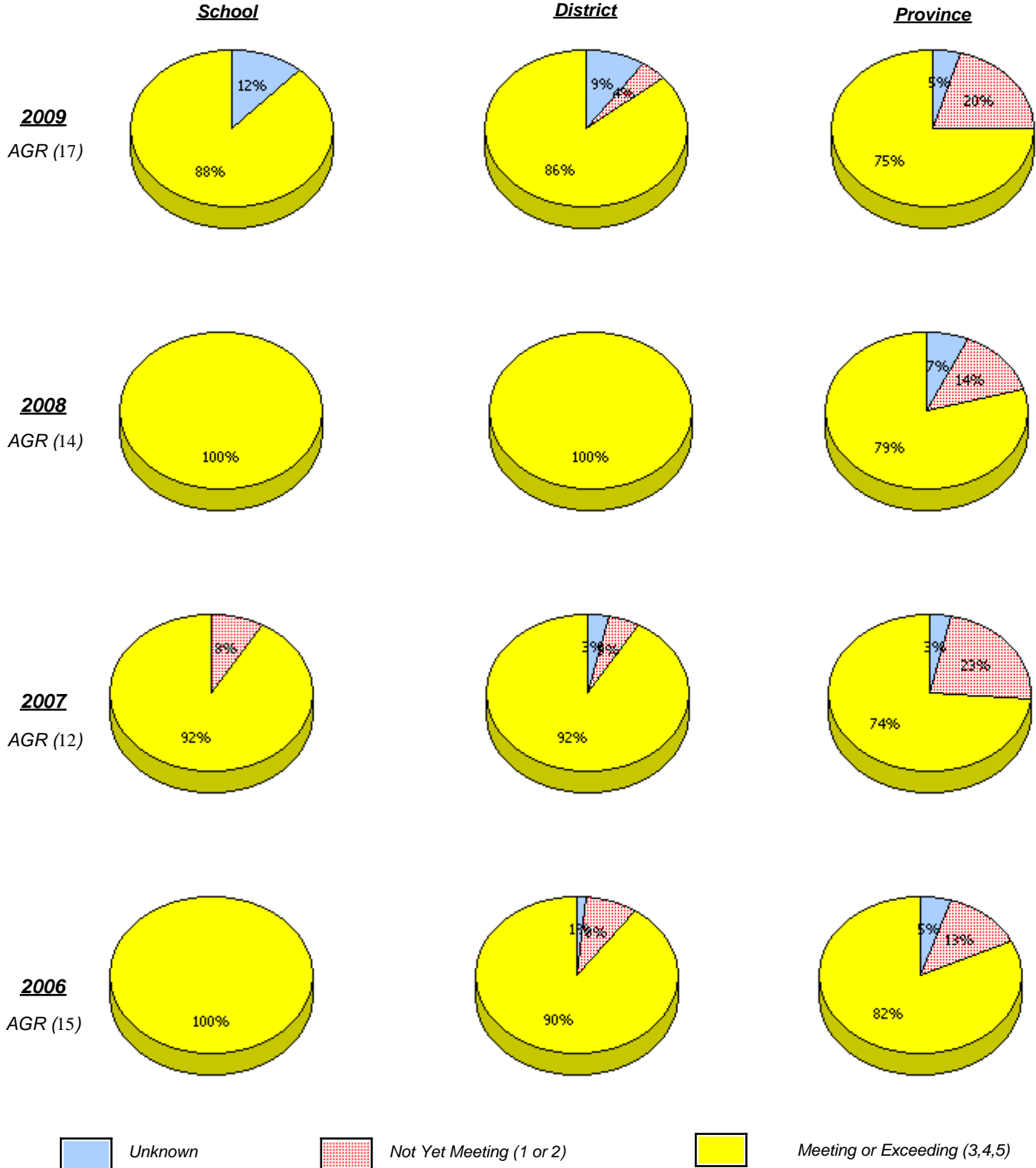


District 803 - Private

School #: 375 Lakecrest -St. John's Independent School

Demand Writing



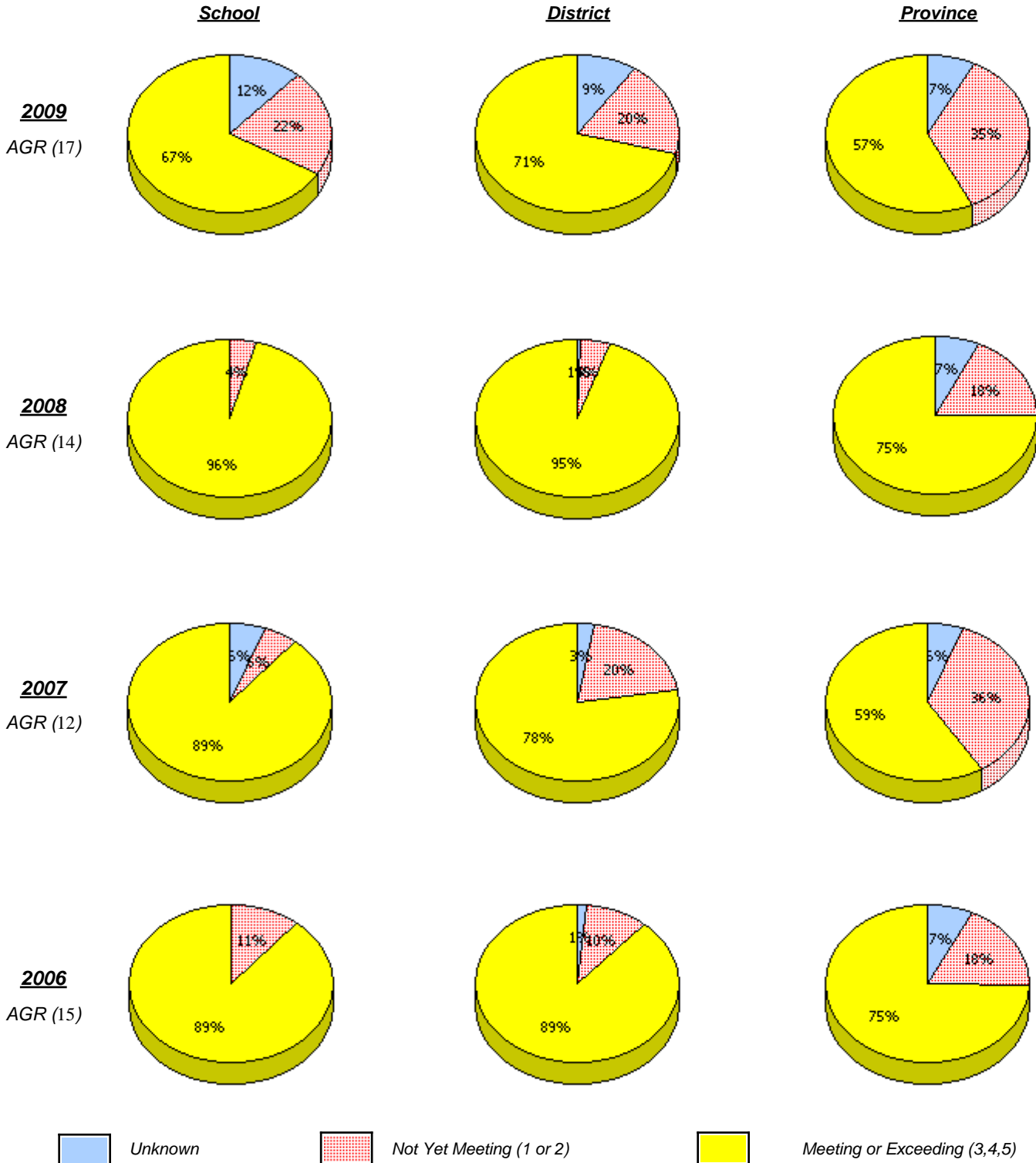
* In some cases, CRT numbers may exceed AGR numbers based on late enrolments. Pie chart is based on the number of students who wrote the CRT.

* Reading score is composite of Information, Visual, and Poet.

District 803 - Private

School #: 375 Lakecrest -St. John's Independent School

Reading



* In some cases, CRT numbers may exceed AGR numbers based on late enrolments. Pie chart is based on the number of students who wrote the CRT.

* Reading score is composite of Information, Visual, and Poet.

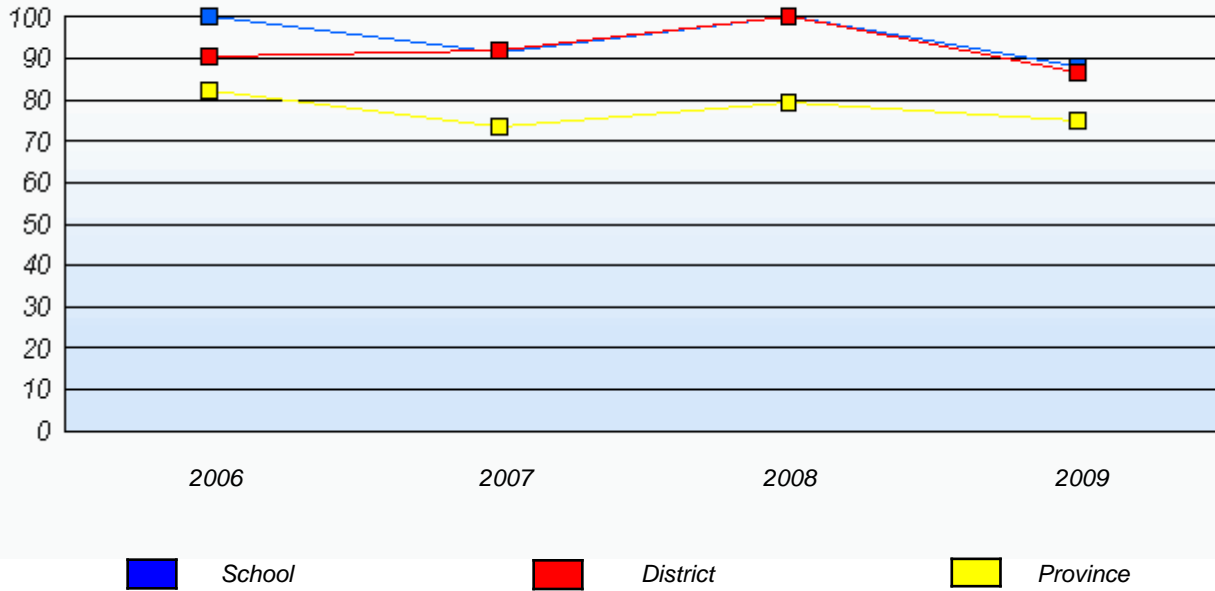
**Elementary English Language Arts
4 Year Provincial Assessment, June 2009
School Report Rubrics
(average scores)**

District 803 - Private

School #: 375 Lakecrest -St. John's Independent School

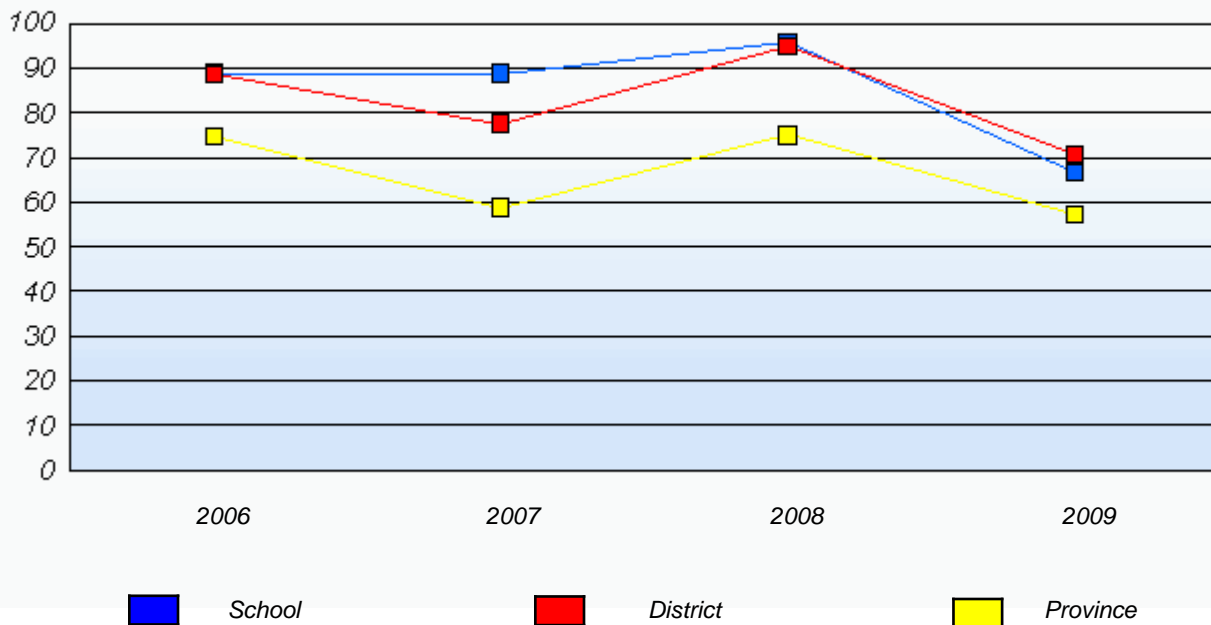
Demand Writing

Percentage of students at level 3 or above (2006 - 2009)



Reading

Percentage of students at level 3 or above (2006 - 2009)



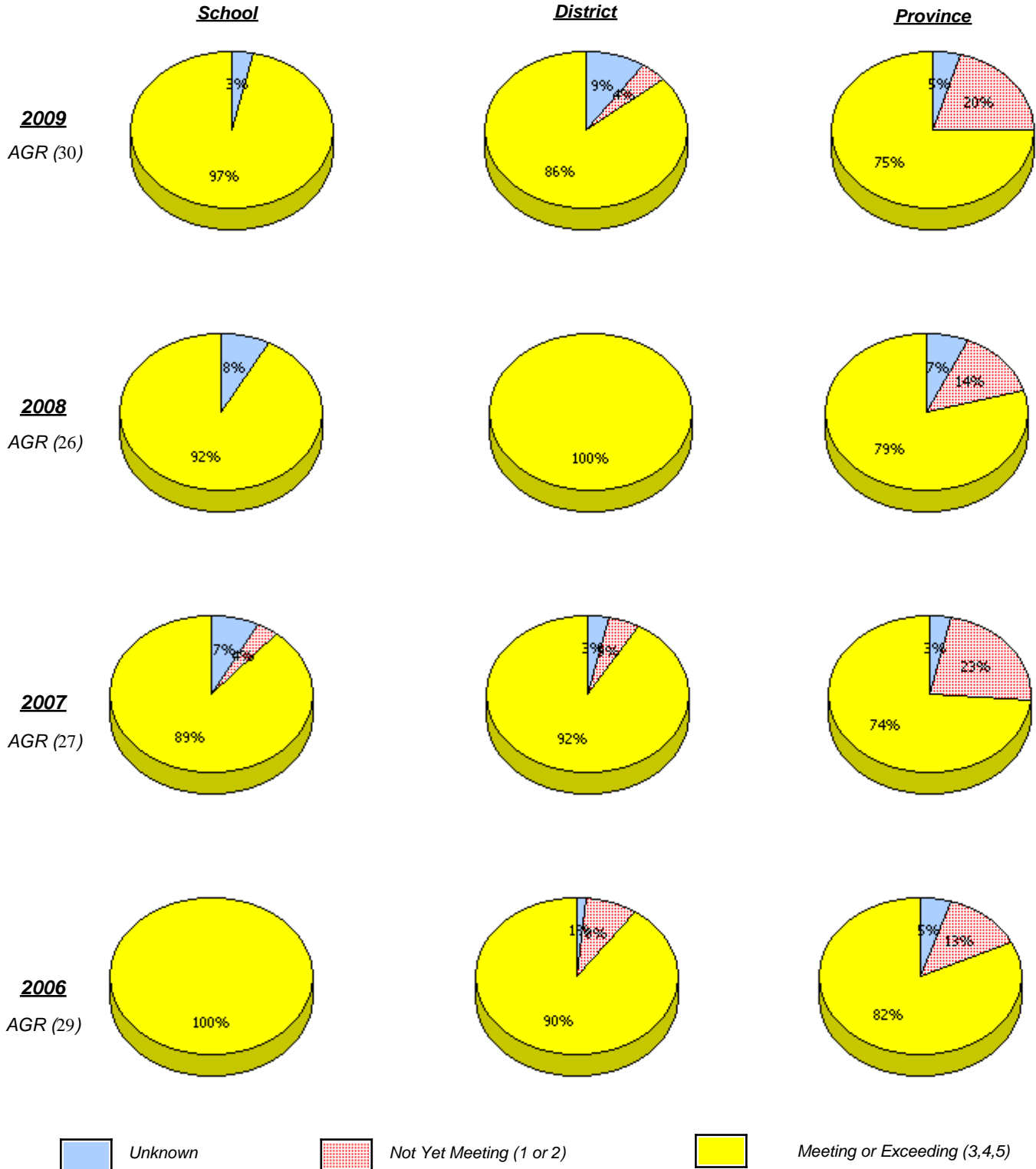
* In some cases, CRT numbers may exceed AGR numbers based on late enrolments. Pie chart is based on the number of students who wrote the CRT.

* Reading score is composite of Information, Visual, and Poet.

District 803 - Private

School #: 450 St. Bonaventure's College

Demand Writing



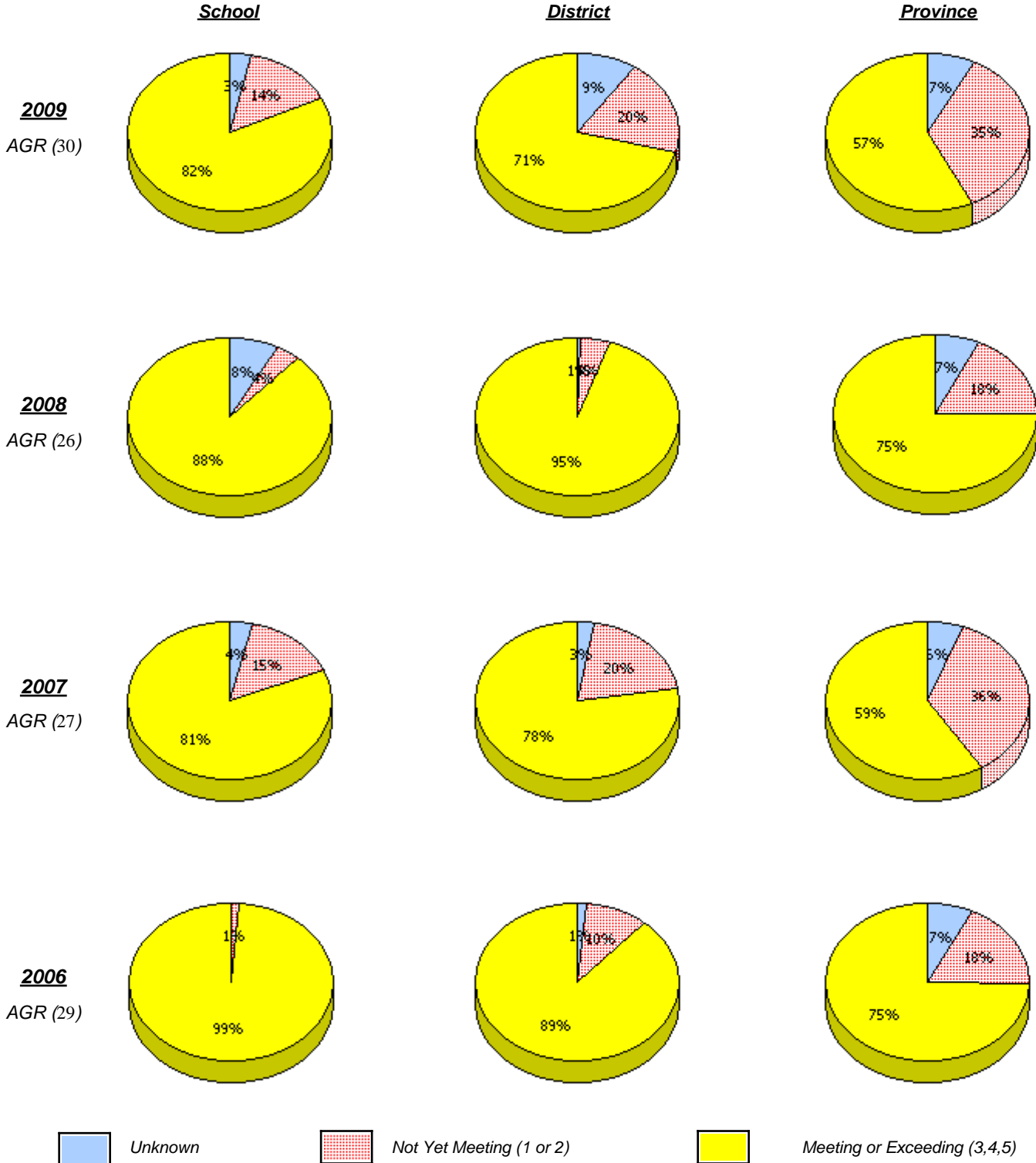
* In some cases, CRT numbers may exceed AGR numbers based on late enrolments. Pie chart is based on the number of students who wrote the CRT.

* Reading score is composite of Information, Visual, and Poet.

District 803 - Private

School #: 450 St. Bonaventure's College

Reading



* In some cases, CRT numbers may exceed AGR numbers based on late enrolments. Pie chart is based on the number of students who wrote the CRT.

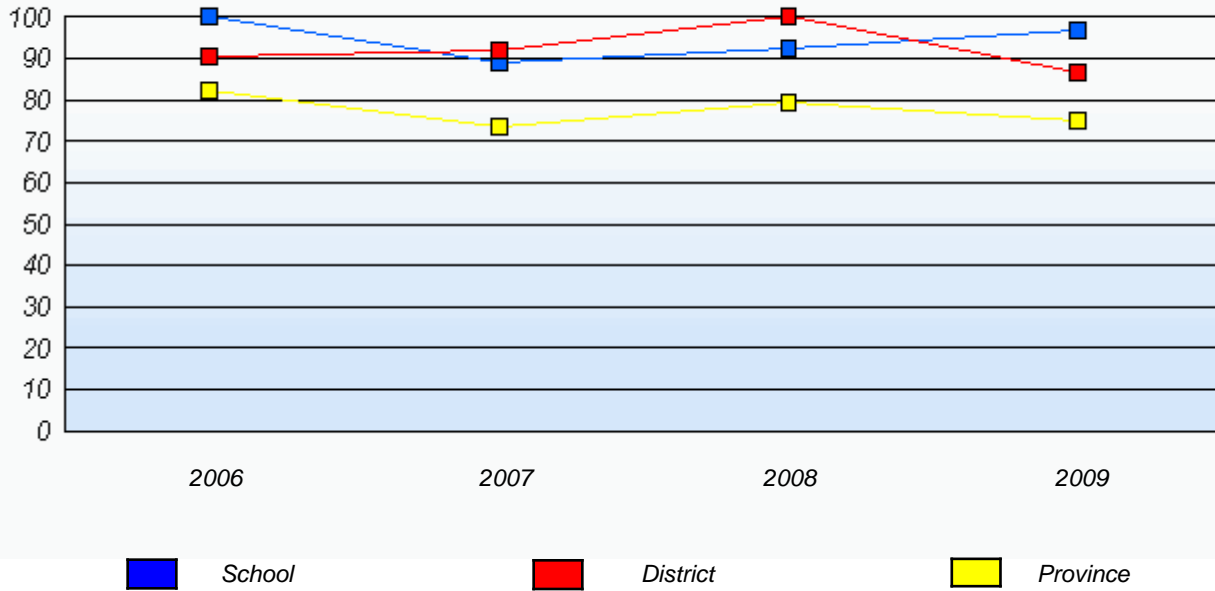
* Reading score is composite of Information, Visual, and Poet.

District 803 - Private

School #: 450 St. Bonaventure's College

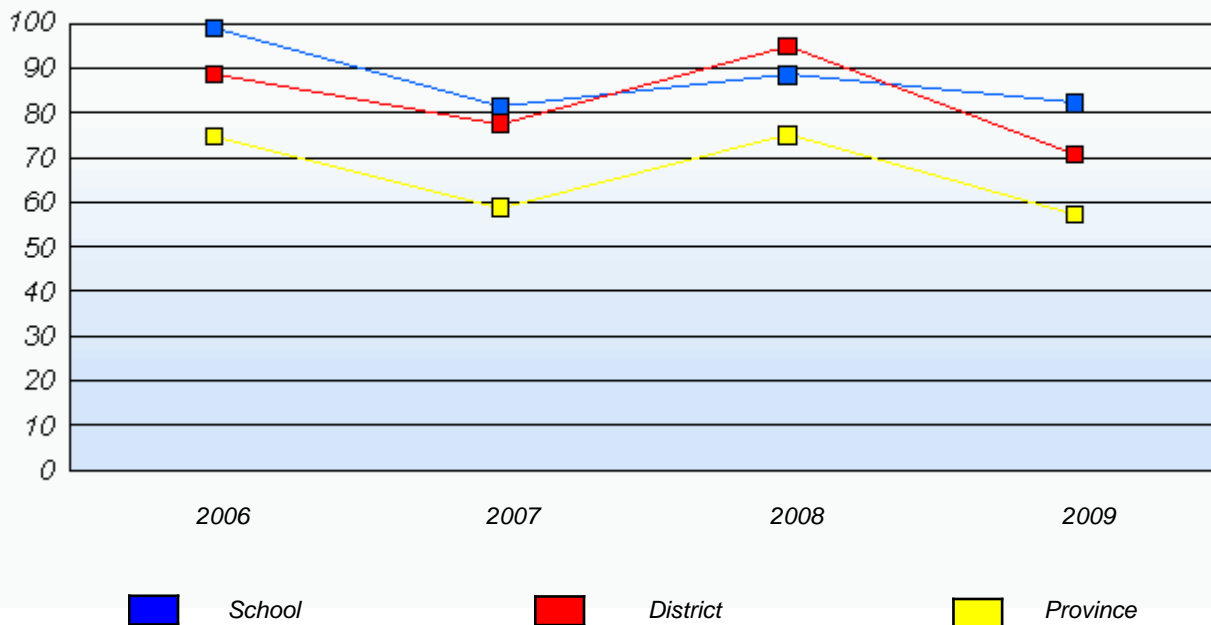
Demand Writing

Percentage of students at level 3 or above (2006 - 2009)



Reading

Percentage of students at level 3 or above (2006 - 2009)



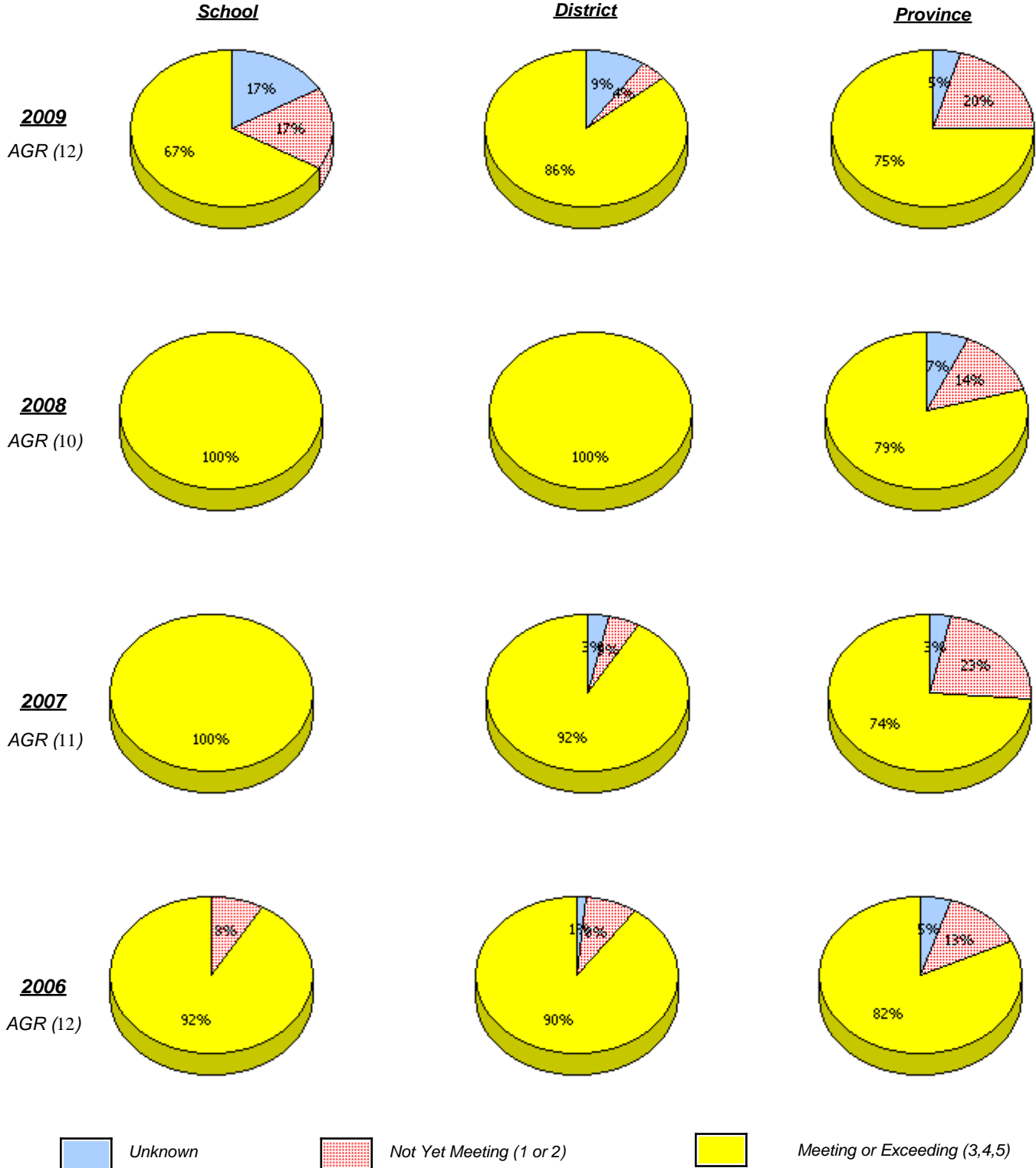
* In some cases, CRT numbers may exceed AGR numbers based on late enrolments. Pie chart is based on the number of students who wrote the CRT.

* Reading score is composite of Information, Visual, and Poet.

District 803 - Private

School #: 453 Eric G. Lambert All-Grade

Demand Writing



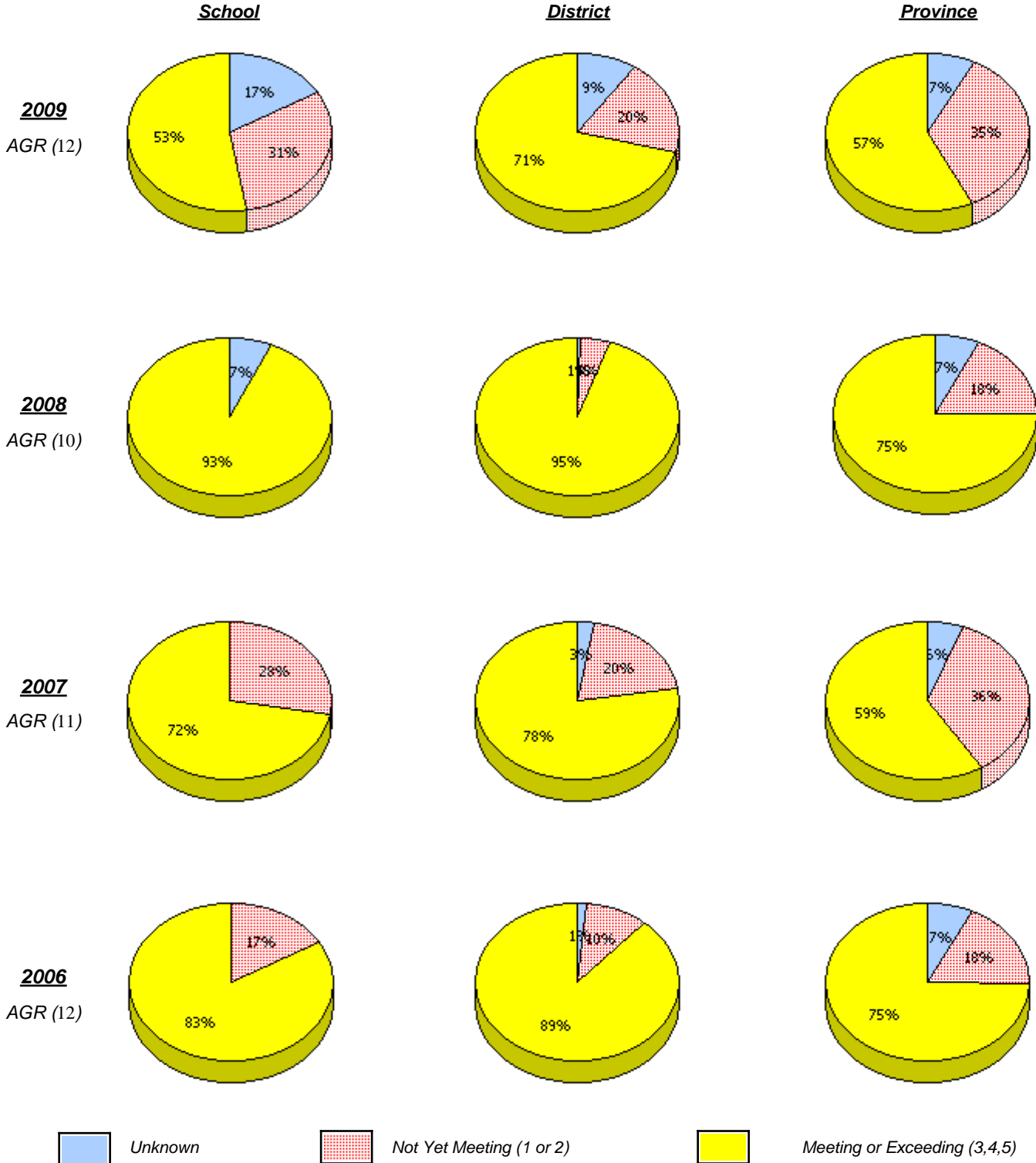
* In some cases, CRT numbers may exceed AGR numbers based on late enrolments. Pie chart is based on the number of students who wrote the CRT.

* Reading score is composite of Information, Visual, and Poet.

District 803 - Private

School #: 453 Eric G. Lambert All-Grade

Reading



* In some cases, CRT numbers may exceed AGR numbers based on late enrolments. Pie chart is based on the number of students who wrote the CRT.

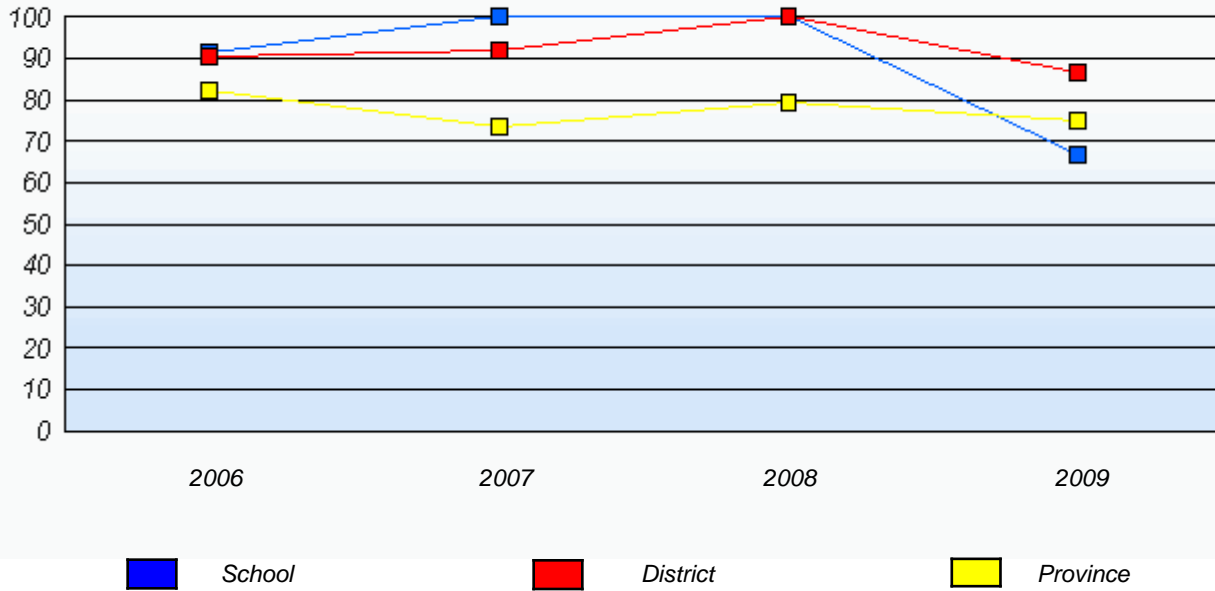
* Reading score is composite of Information, Visual, and Poet.

District 803 - Private

School #: 453 Eric G. Lambert All-Grade

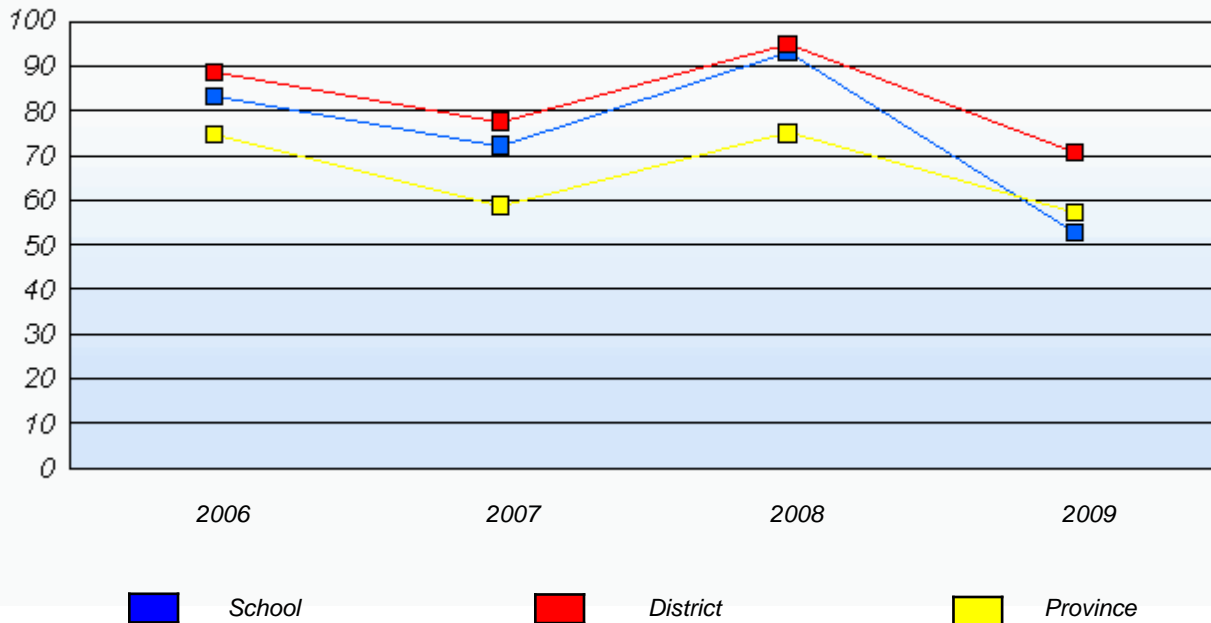
Demand Writing

Percentage of students at level 3 or above (2006 - 2009)



Reading

Percentage of students at level 3 or above (2006 - 2009)



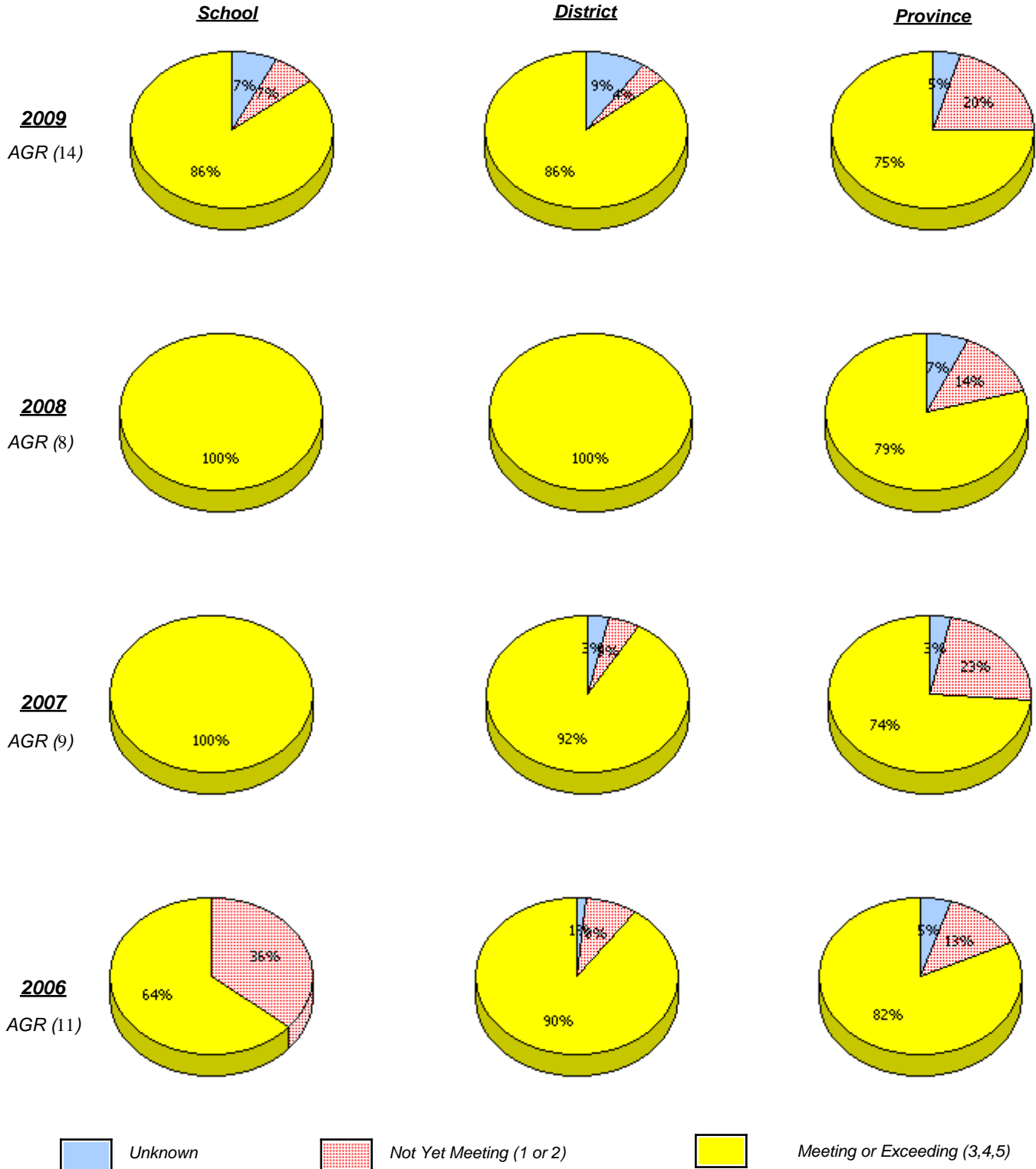
* In some cases, CRT numbers may exceed AGR numbers based on late enrolments. Pie chart is based on the number of students who wrote the CRT.

* Reading score is composite of Information, Visual, and Poet.

District 803 - Private

School #: 469 Immaculate Heart of Mary School

Demand Writing



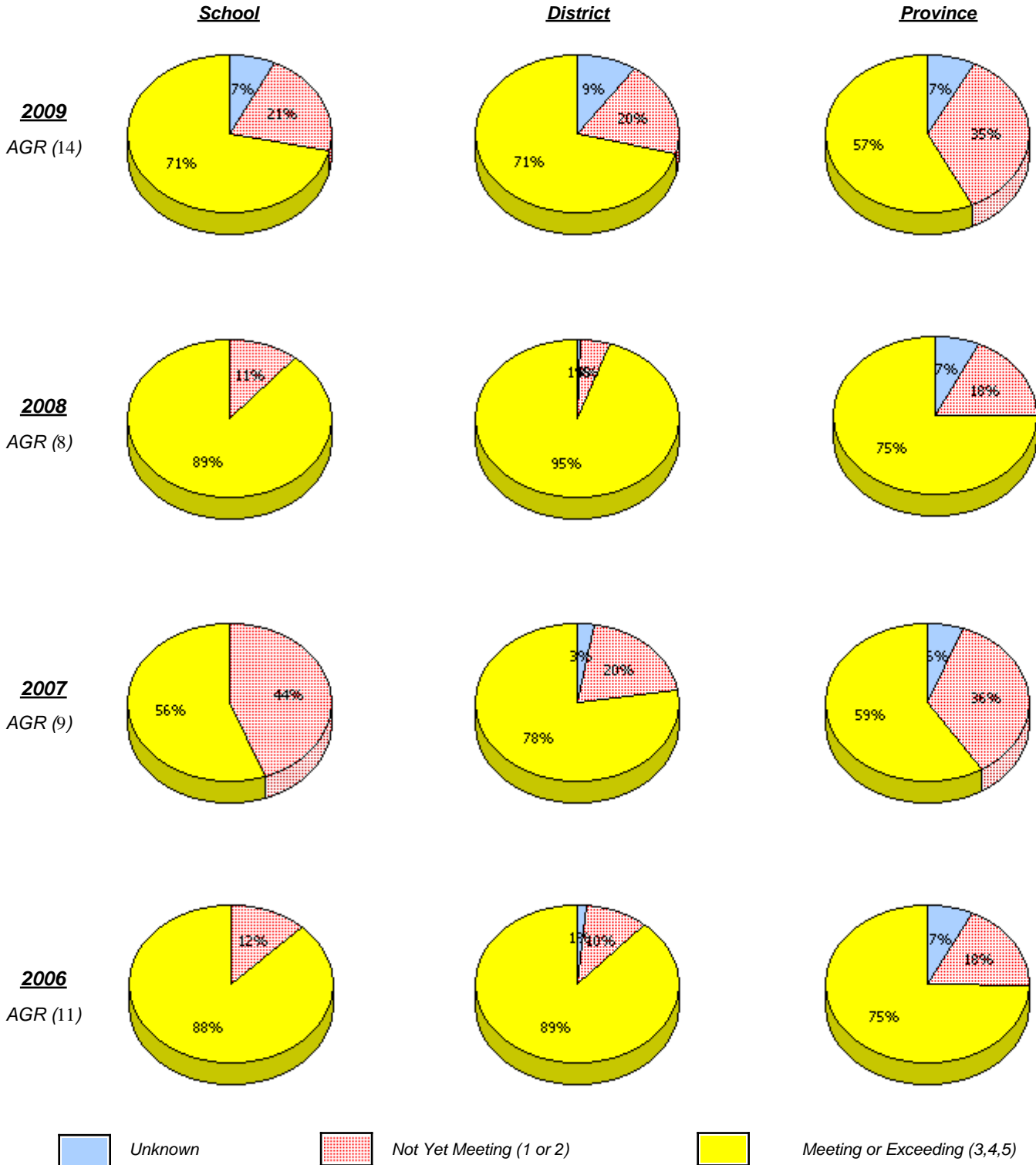
* In some cases, CRT numbers may exceed AGR numbers based on late enrolments. Pie chart is based on the number of students who wrote the CRT.

* Reading score is composite of Information, Visual, and Poet.

District 803 - Private

School #: 469 Immaculate Heart of Mary School

Reading



* In some cases, CRT numbers may exceed AGR numbers based on late enrolments. Pie chart is based on the number of students who wrote the CRT.

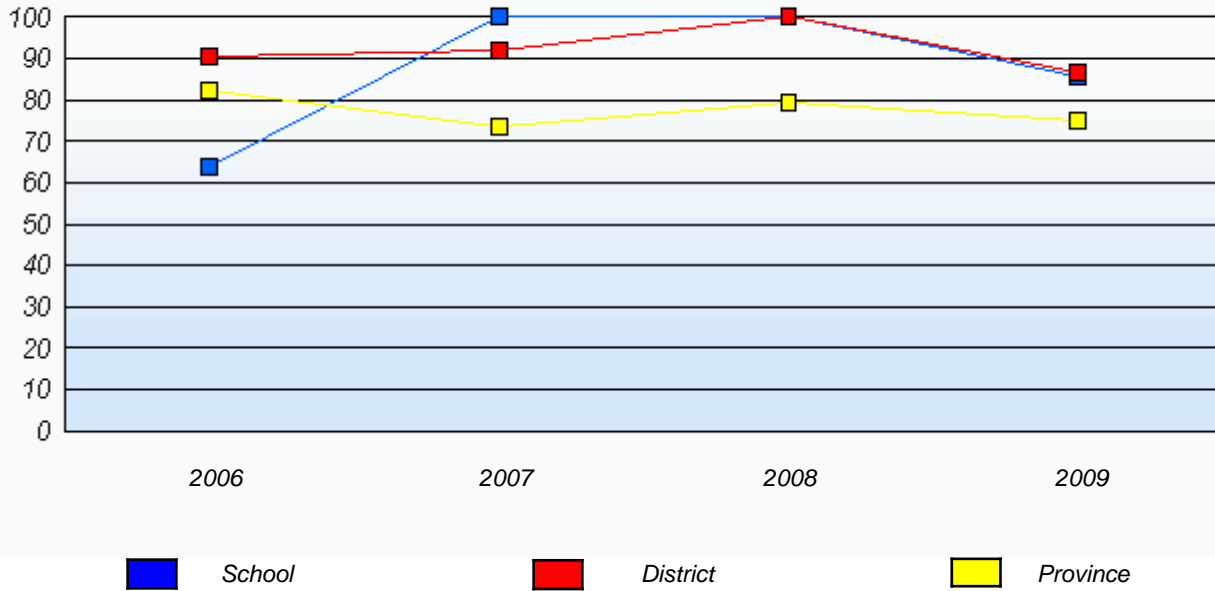
* Reading score is composite of Information, Visual, and Poet.

District 803 - Private

School #: 469 Immaculate Heart of Mary School

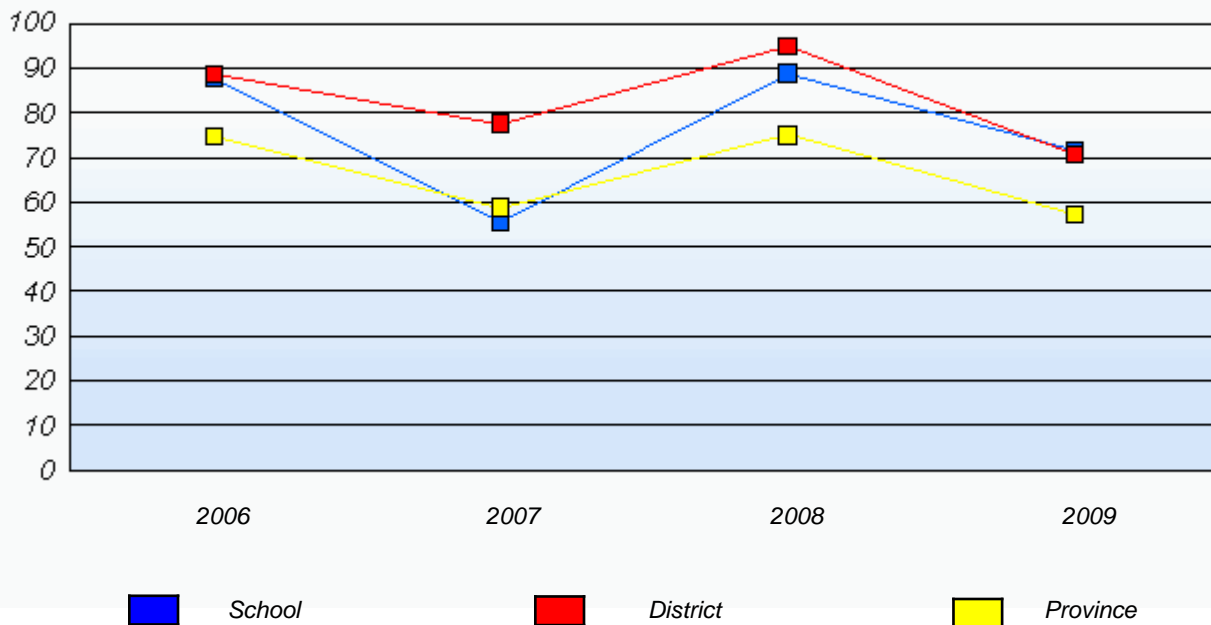
Demand Writing

Percentage of students at level 3 or above (2006 - 2009)



Reading

Percentage of students at level 3 or above (2006 - 2009)



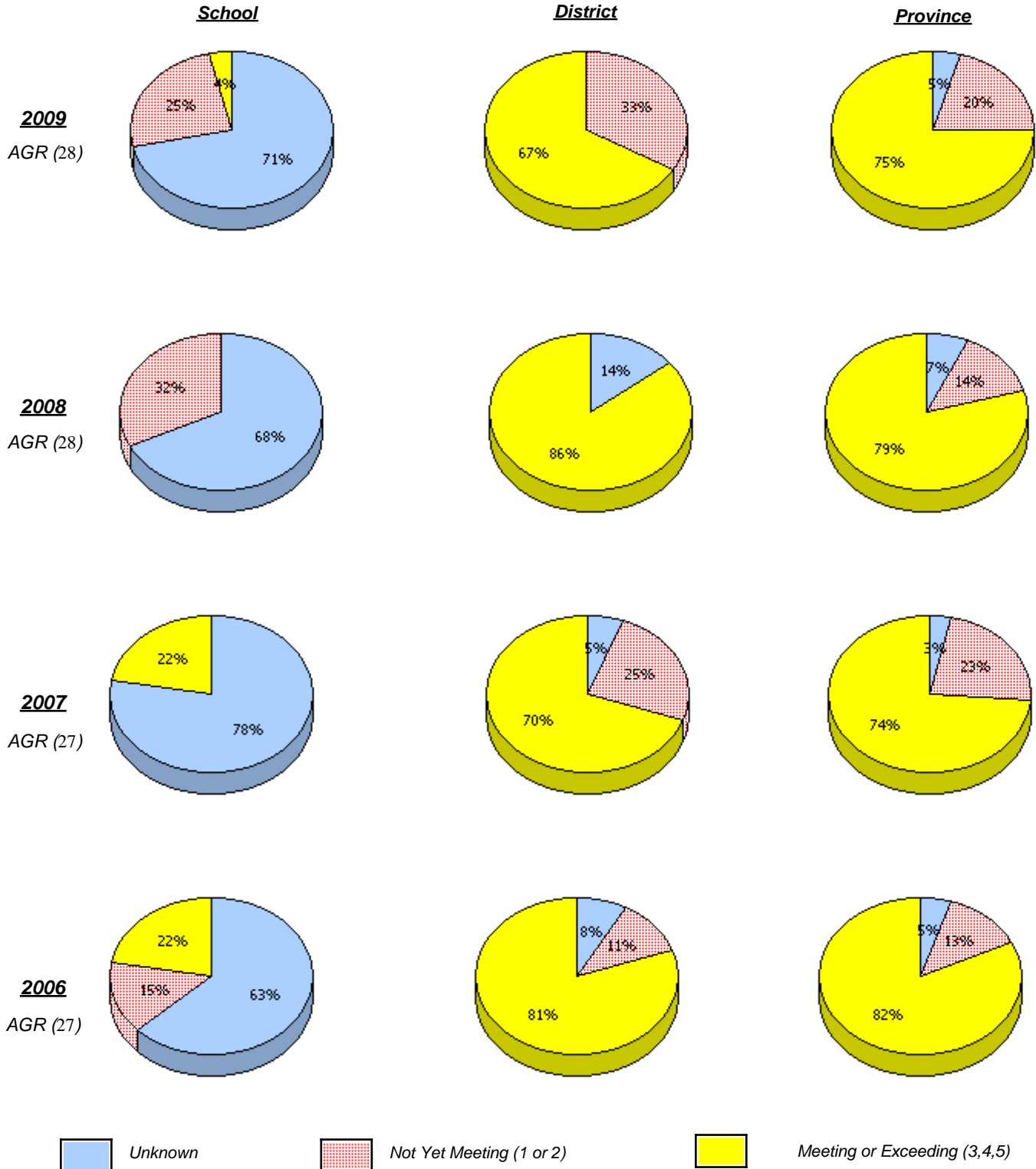
* In some cases, CRT numbers may exceed AGR numbers based on late enrolments. Pie chart is based on the number of students who wrote the CRT.

* Reading score is composite of Information, Visual, and Poet.

District 804 - Native Feder

School #: 018 Peenamim McKenzie School

Demand Writing



* In some cases, CRT numbers may exceed AGR numbers based on late enrolments. Pie chart is based on the number of students who wrote the CRT.

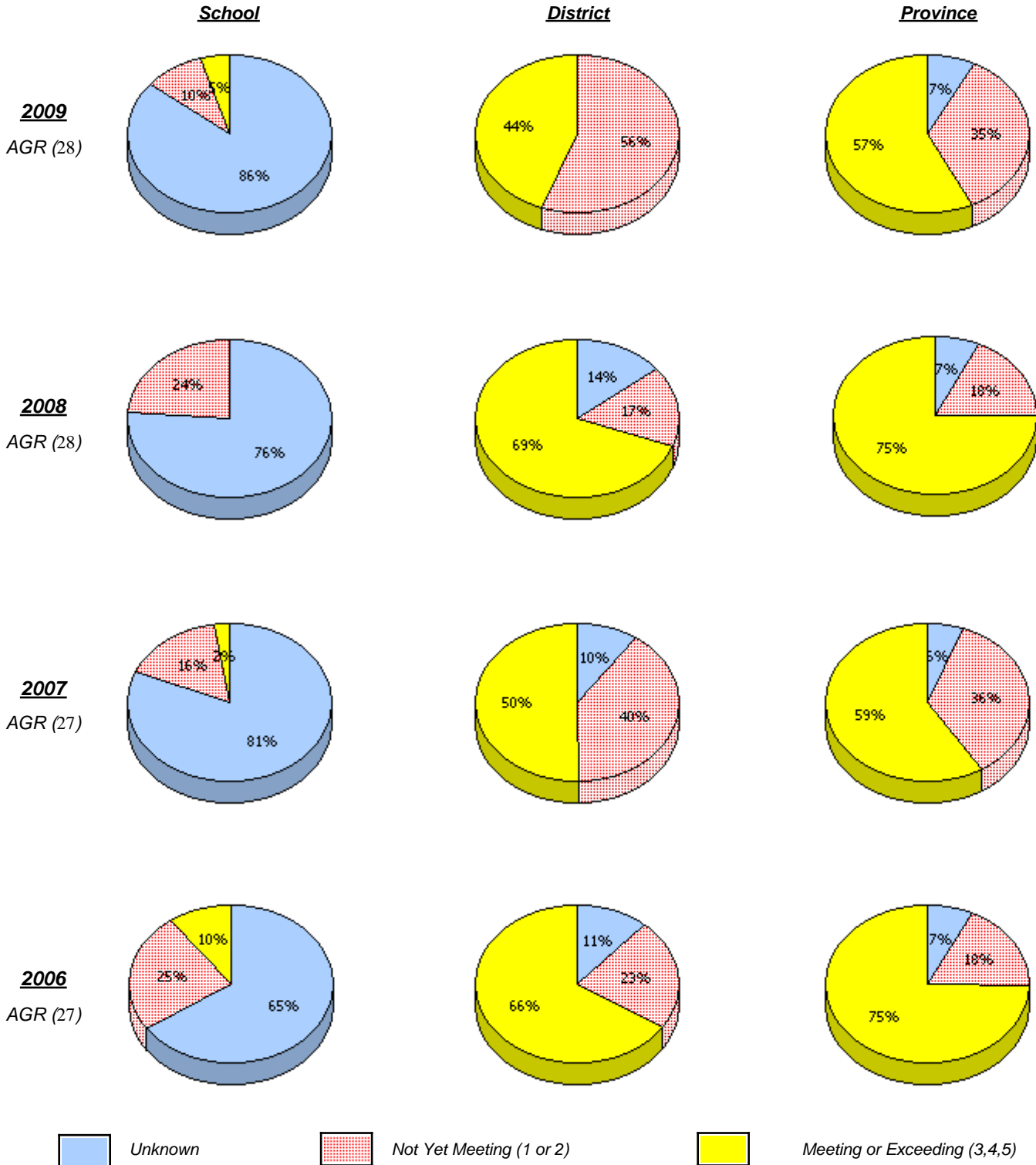
* Reading score is composite of Information, Visual, and Poet.

**Elementary English Language Arts
4 Year Provincial Assessment, June 2009
School Report Rubrics
(average scores)**

District 804 - Native Feder

School #: 018 Peenamin McKenzie School

Reading



* In some cases, CRT numbers may exceed AGR numbers based on late enrolments. Pie chart is based on the number of students who wrote the CRT.

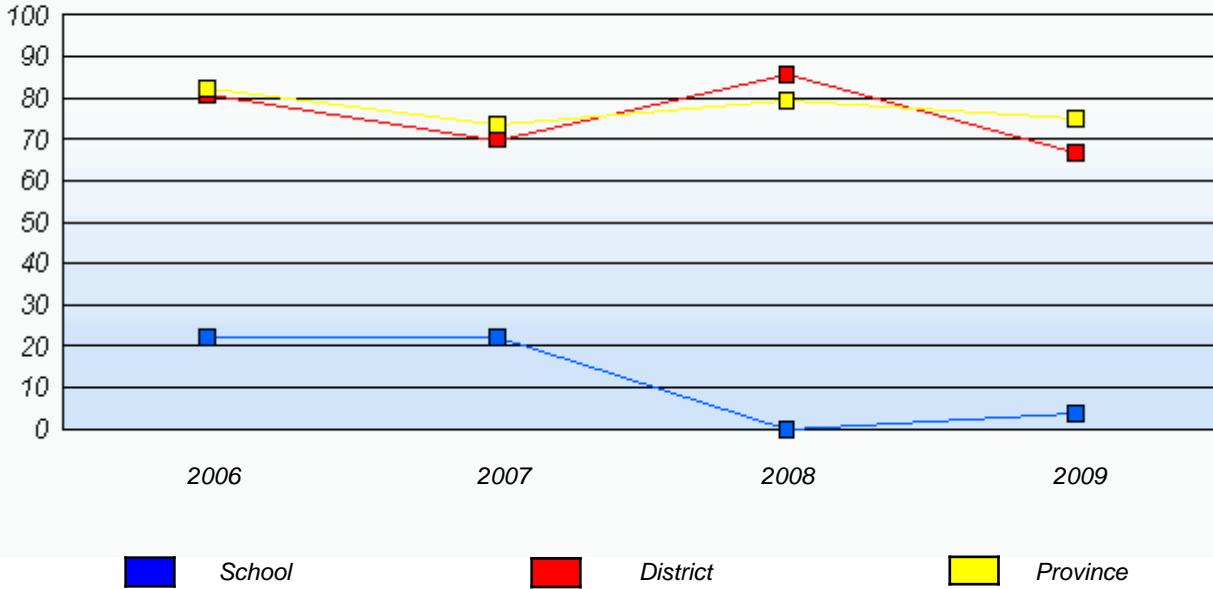
* Reading score is composite of Information, Visual, and Poet.

District 804 - Native Feder

School #: 018 Peenamain McKenzie School

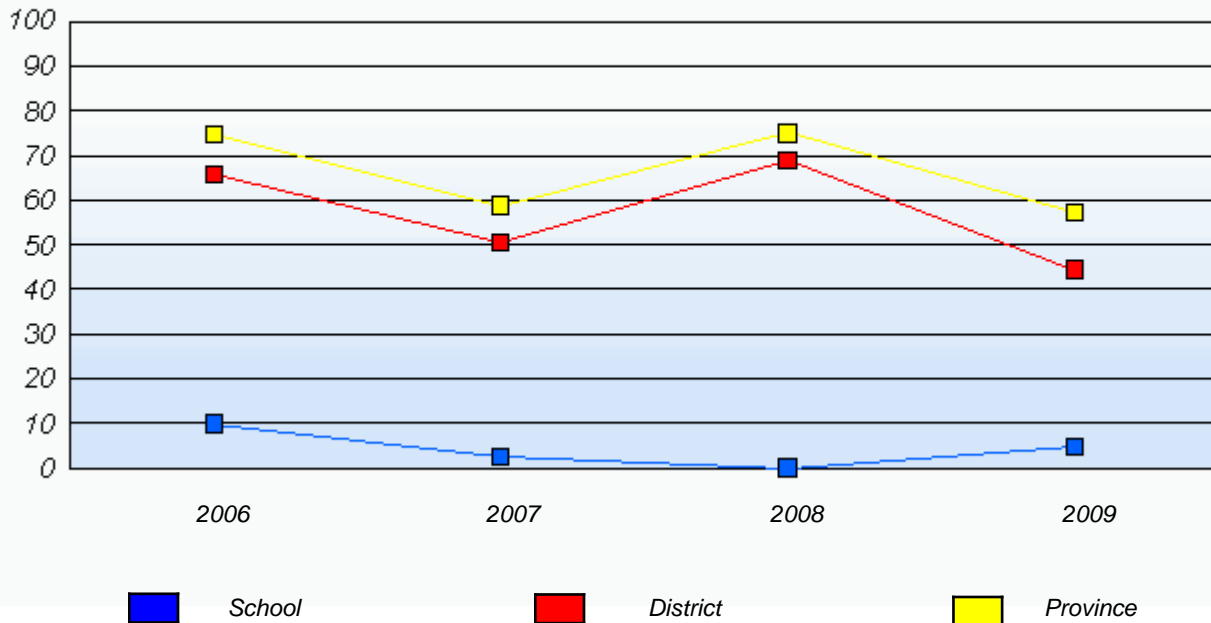
Demand Writing

Percentage of students at level 3 or above (2006 - 2009)



Reading

Percentage of students at level 3 or above (2006 - 2009)



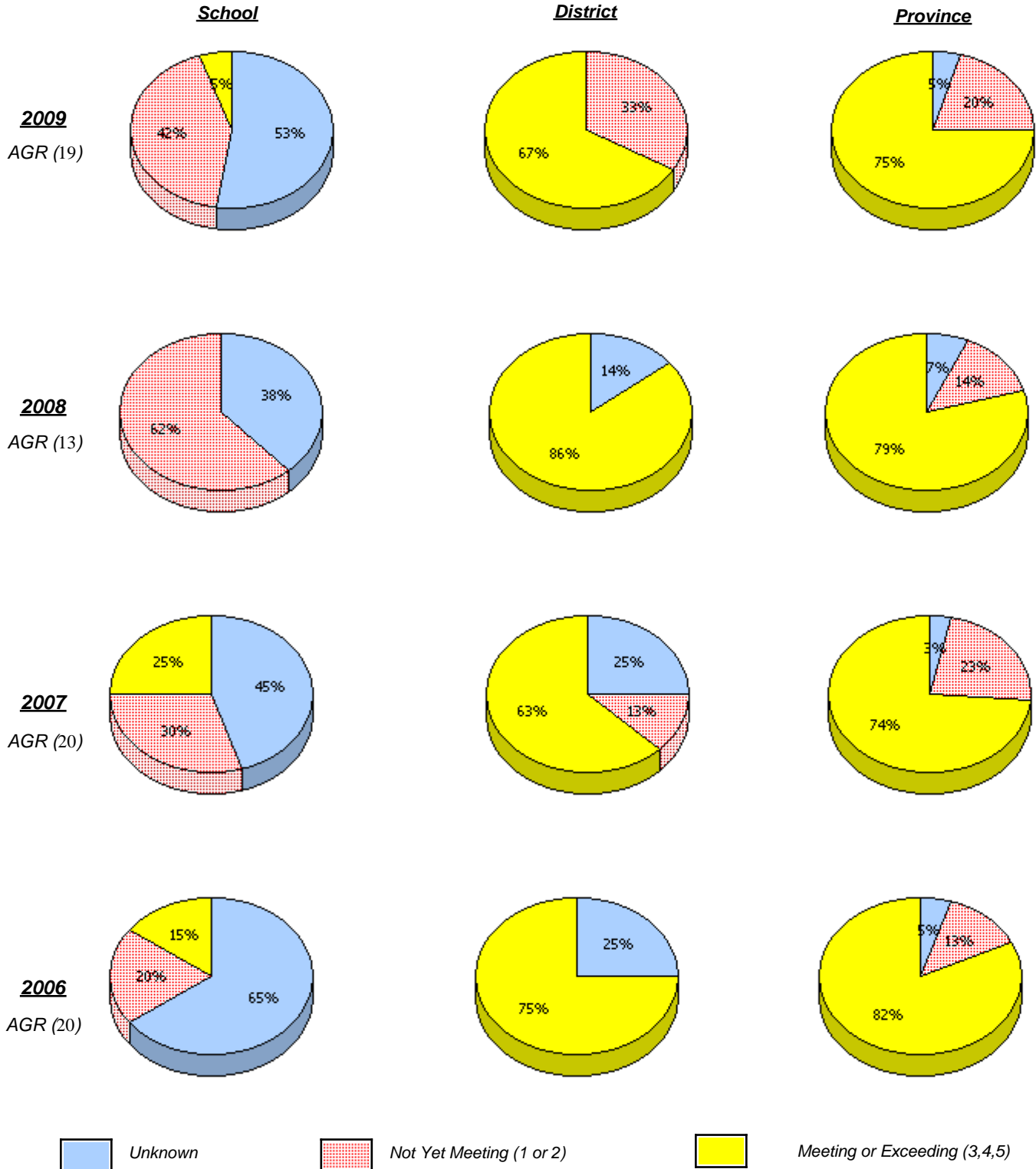
* In some cases, CRT numbers may exceed AGR numbers based on late enrolments. Pie chart is based on the number of students who wrote the CRT.

* Reading score is composite of Information, Visual, and Poet.

District 804 - Native Feder

School #: 019 Mushuau Innu Natuashish School

Demand Writing



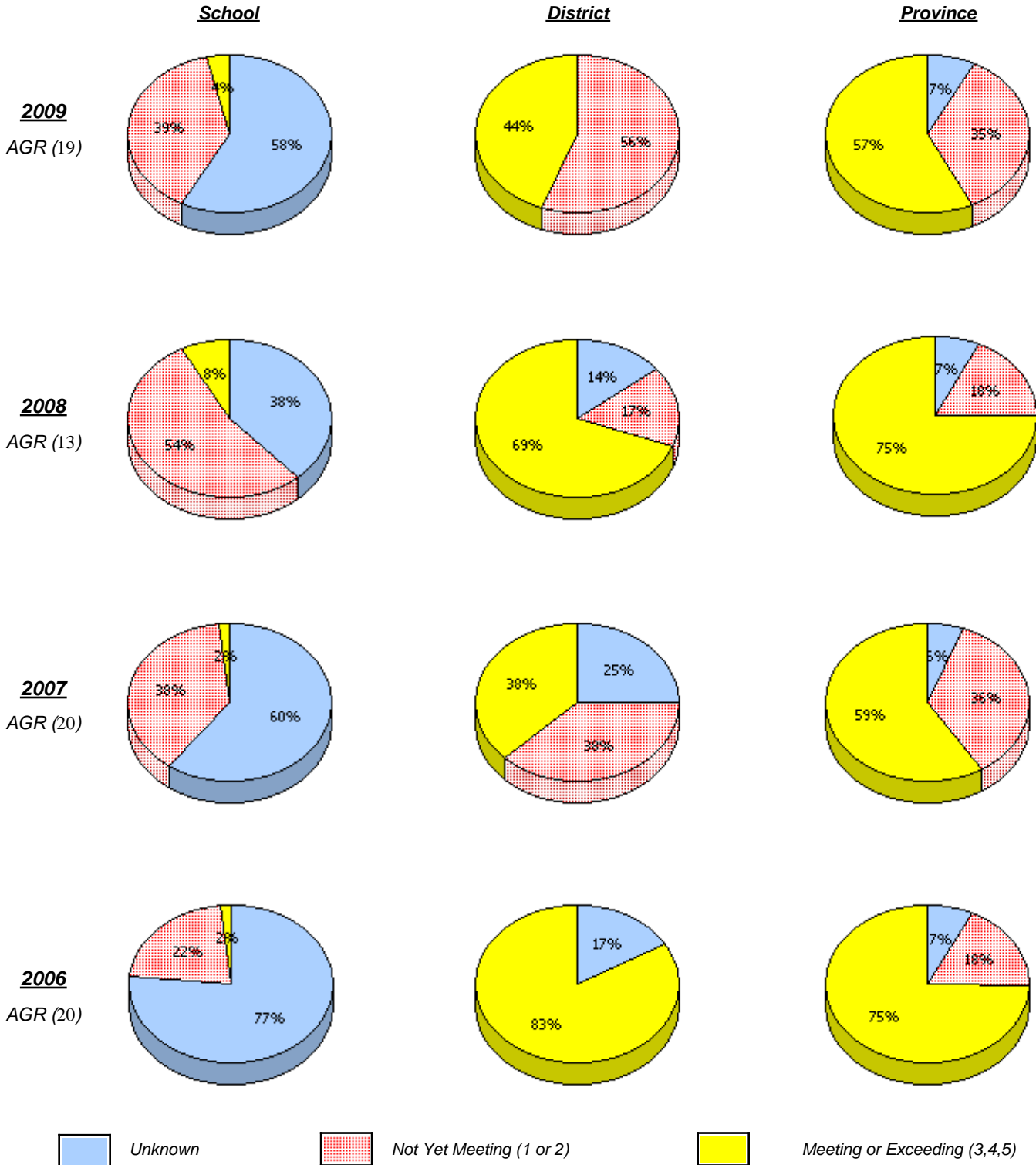
* In some cases, CRT numbers may exceed AGR numbers based on late enrolments. Pie chart is based on the number of students who wrote the CRT.

* Reading score is composite of Information, Visual, and Poet.

District 804 - Native Feder

School #: 019 Mushuau Innu Natuashish School

Reading



* In some cases, CRT numbers may exceed AGR numbers based on late enrolments. Pie chart is based on the number of students who wrote the CRT.

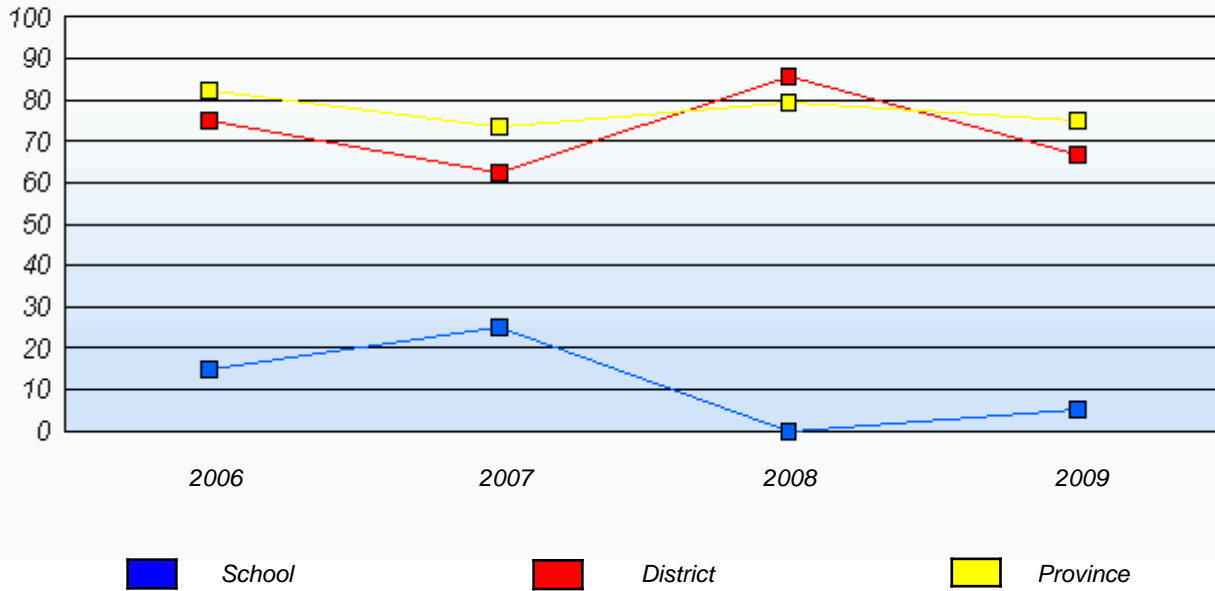
* Reading score is composite of Information, Visual, and Poet.

District 804 - Native Feder

School #: 019 Mushuau Innu Natuashish School

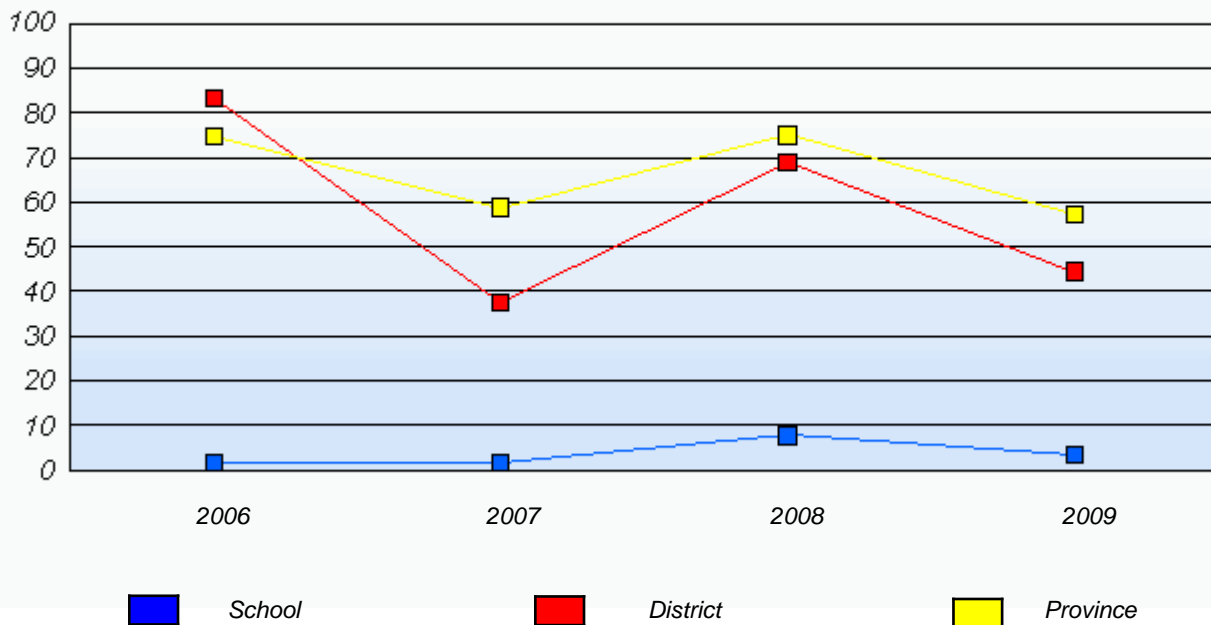
Demand Writing

Percentage of students at level 3 or above (2006 - 2009)



Reading

Percentage of students at level 3 or above (2006 - 2009)



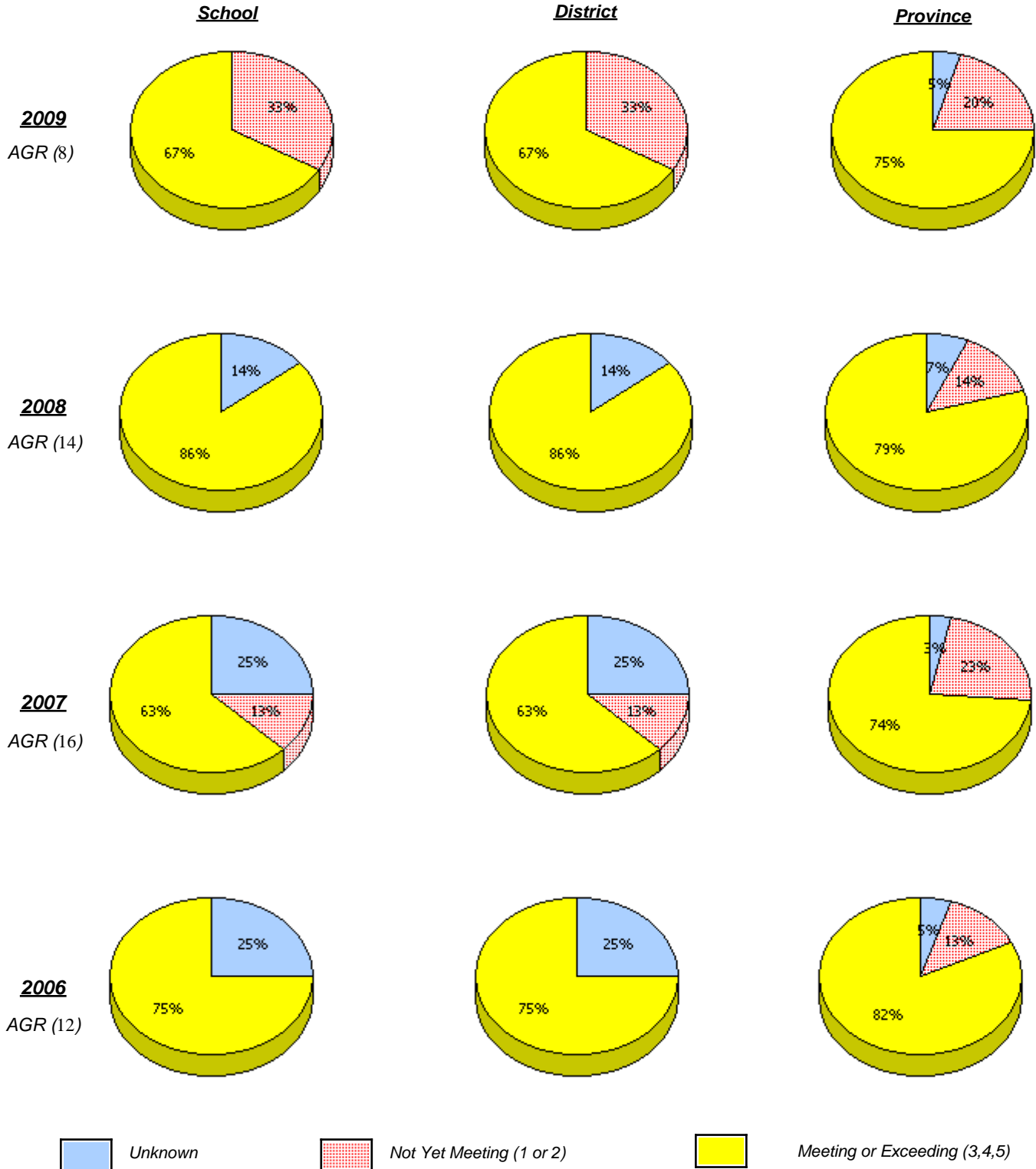
* In some cases, CRT numbers may exceed AGR numbers based on late enrolments. Pie chart is based on the number of students who wrote the CRT.

* Reading score is composite of Information, Visual, and Poet.

District 804 - Native Feder

School #: 376 St. Anneway Kegnamogwom

Demand Writing



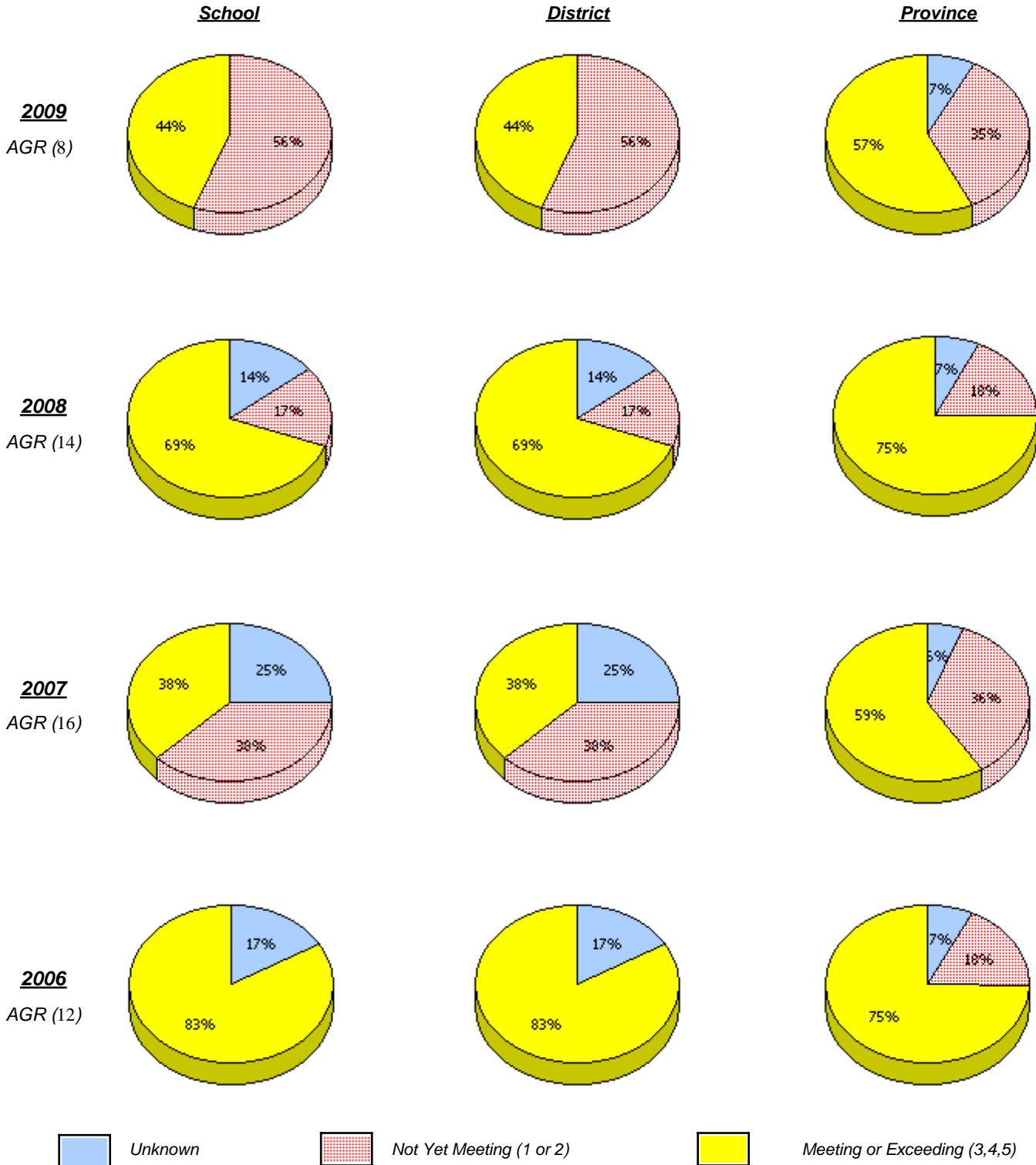
* In some cases, CRT numbers may exceed AGR numbers based on late enrolments. Pie chart is based on the number of students who wrote the CRT.

* Reading score is composite of Information, Visual, and Poet.

District 804 - Native Feder

School #: 376 St. Anneway Kegnamogwom

Reading



* In some cases, CRT numbers may exceed AGR numbers based on late enrolments. Pie chart is based on the number of students who wrote the CRT.

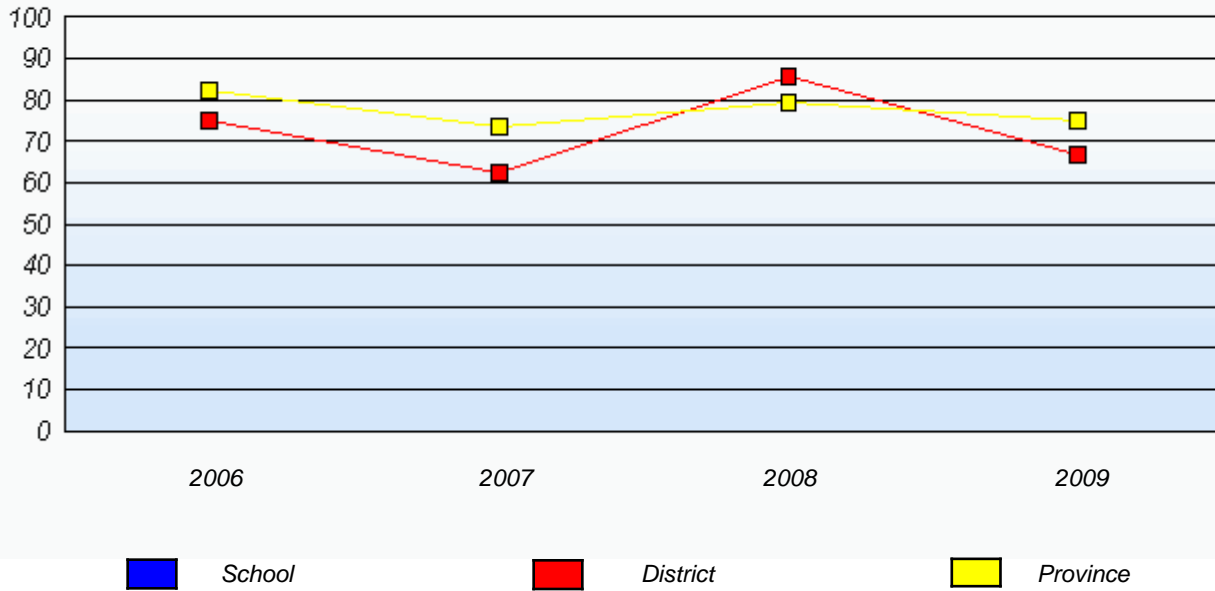
* Reading score is composite of Information, Visual, and Poet.

District 804 - Native Feder

School #: 376 St. Anneway Kegnamogwom

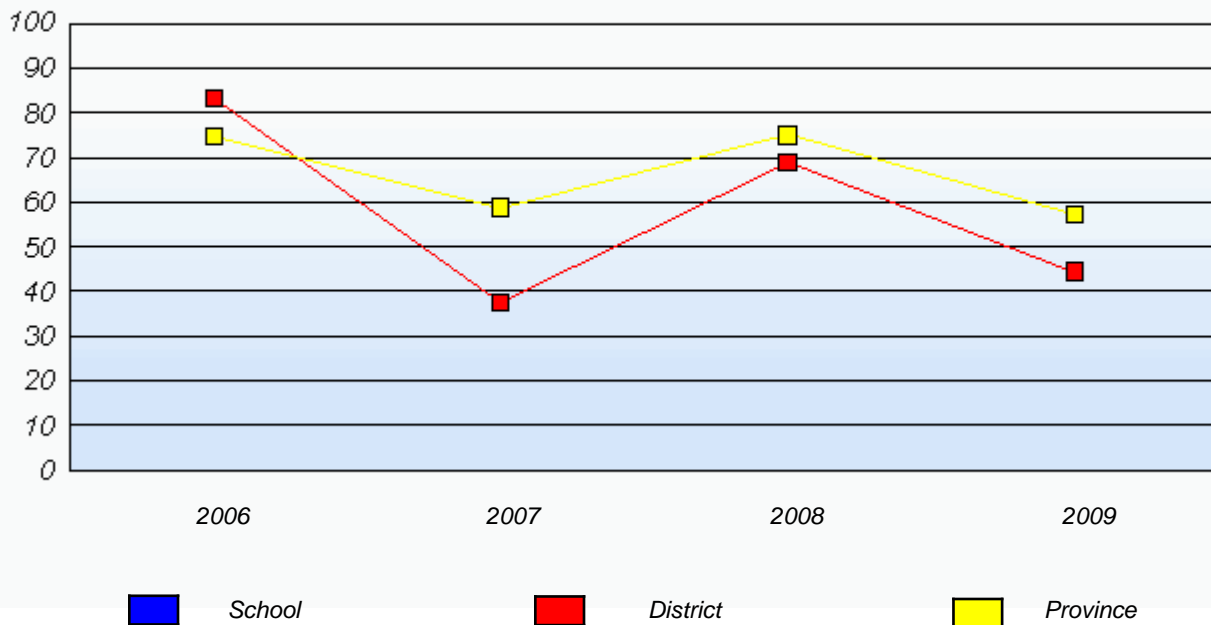
Demand Writing

Percentage of students at level 3 or above (2006 - 2009)



Reading

Percentage of students at level 3 or above (2006 - 2009)



* In some cases, CRT numbers may exceed AGR numbers based on late enrolments. Pie chart is based on the number of students who wrote the CRT.

* Reading score is composite of Information, Visual, and Poet.