

District 1 - Labrador

School #: 001      St. Peter's School

***Demand Writing***

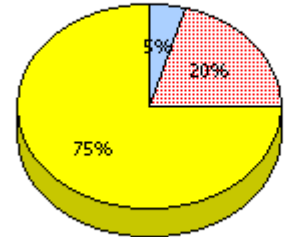
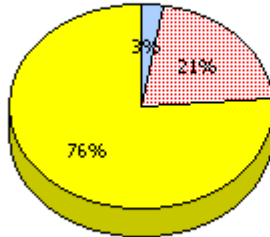
***School***

School data with 5 or fewer students withheld for reasons of confidentiality.

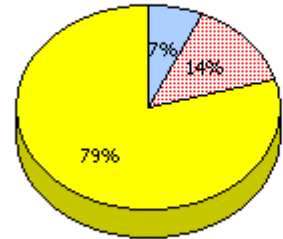
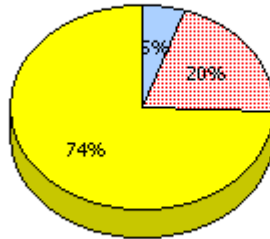
***District***

***Province***

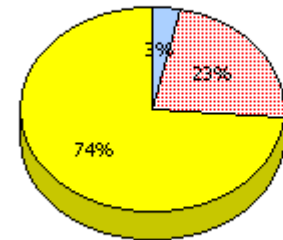
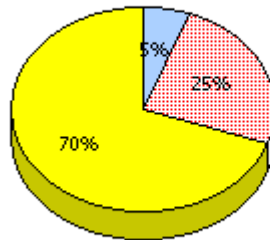
**2009**  
AGR (2)



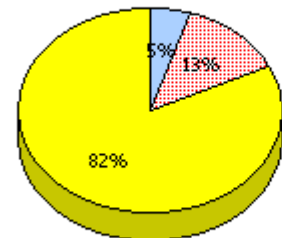
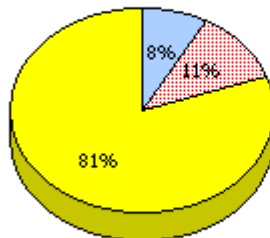
**2008**  
AGR (3)



**2007**  
AGR (2)



**2006**  
AGR (1)



Unknown



Not Yet Meeting (1 or 2)



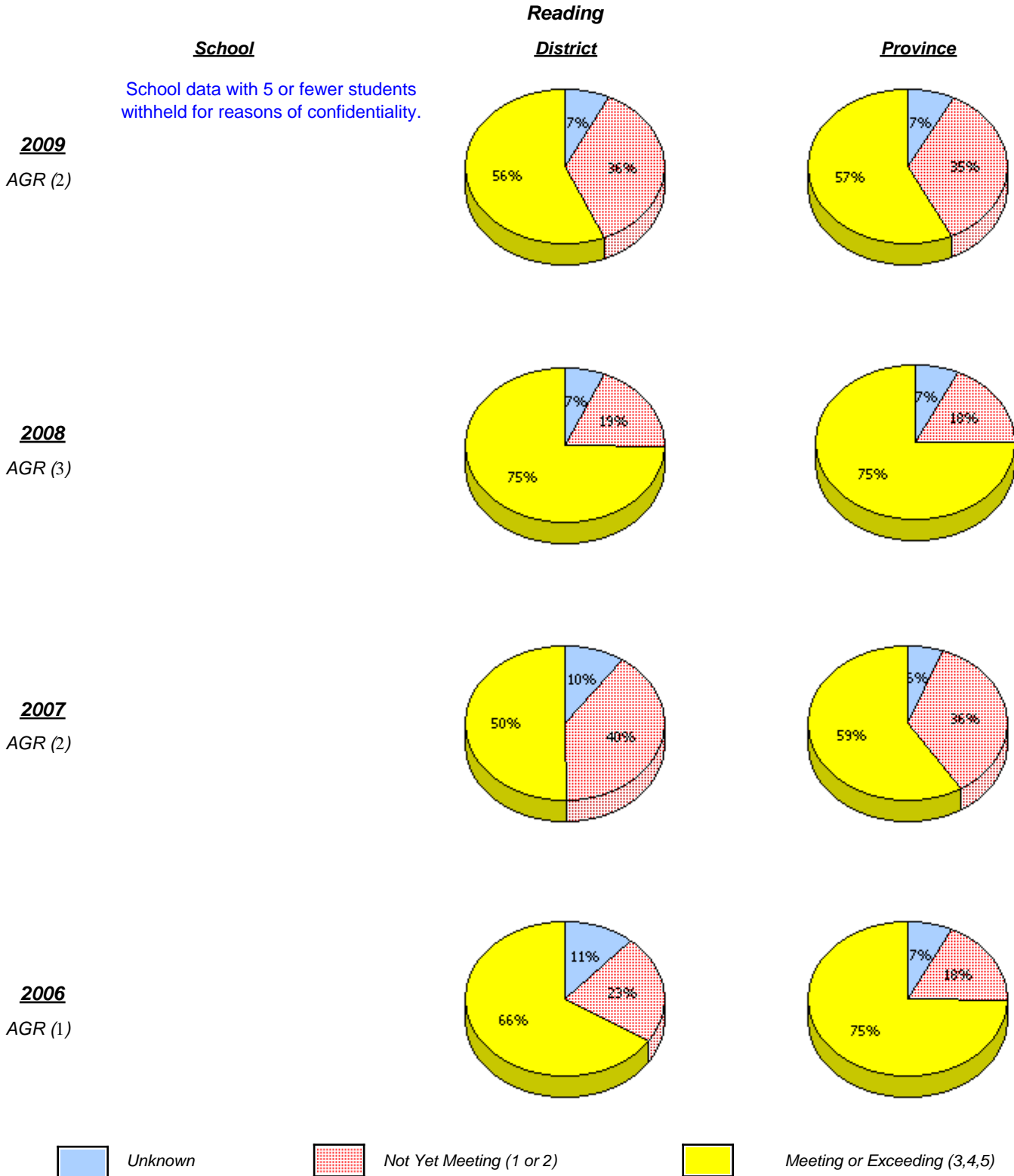
Meeting or Exceeding (3,4,5)

\* In some cases, CRT numbers may exceed AGR numbers based on late enrolments. Pie chart is based on the number of students who wrote the CRT.

\* Reading score is composite of Information, Visual, and Poet.

District 1 - Labrador

School #: 001 St. Peter's School



\* In some cases, CRT numbers may exceed AGR numbers based on late enrolments. Pie chart is based on the number of students who wrote the CRT.

\* Reading score is composite of Information, Visual, and Poet.

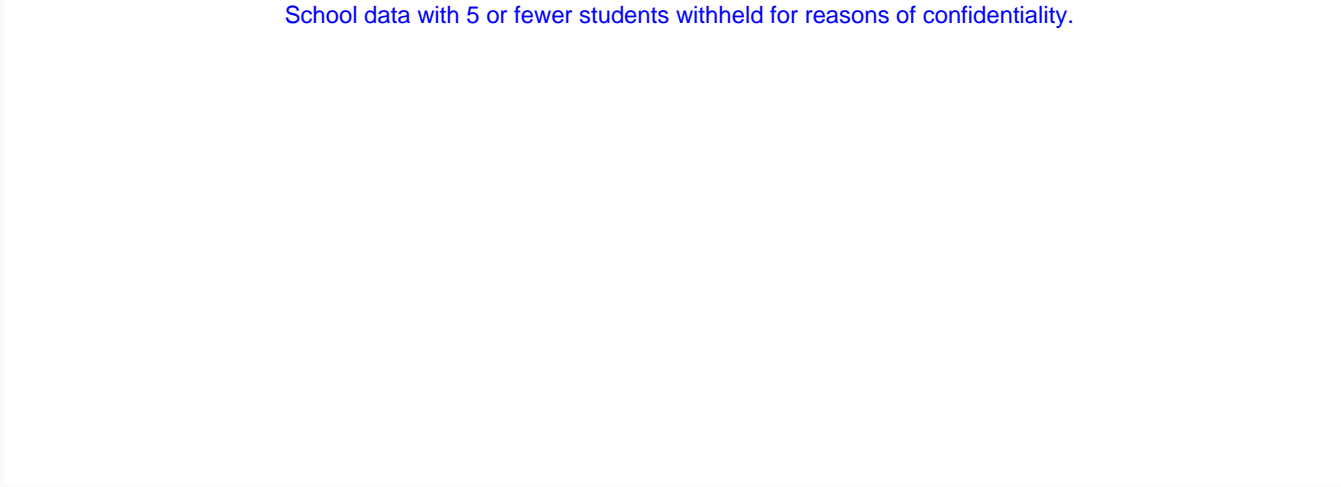
District 1 - Labrador

School #: 001      St. Peter's School

**Demand Writing**

*Percentage of students at level 3 or above (2006 - 2009)*

School data with 5 or fewer students withheld for reasons of confidentiality.




2006

2007

2008

2009

 School

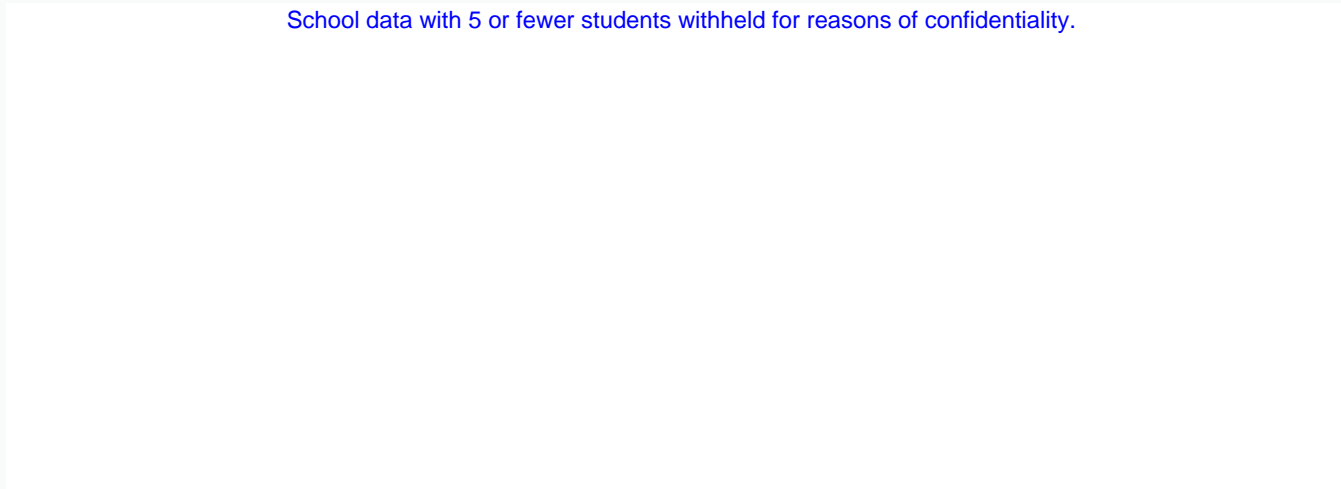
 District

 Province

**Reading**

*Percentage of students at level 3 or above (2006 - 2009)*

School data with 5 or fewer students withheld for reasons of confidentiality.





2006

2007

2008

2009

 School

 District

 Province

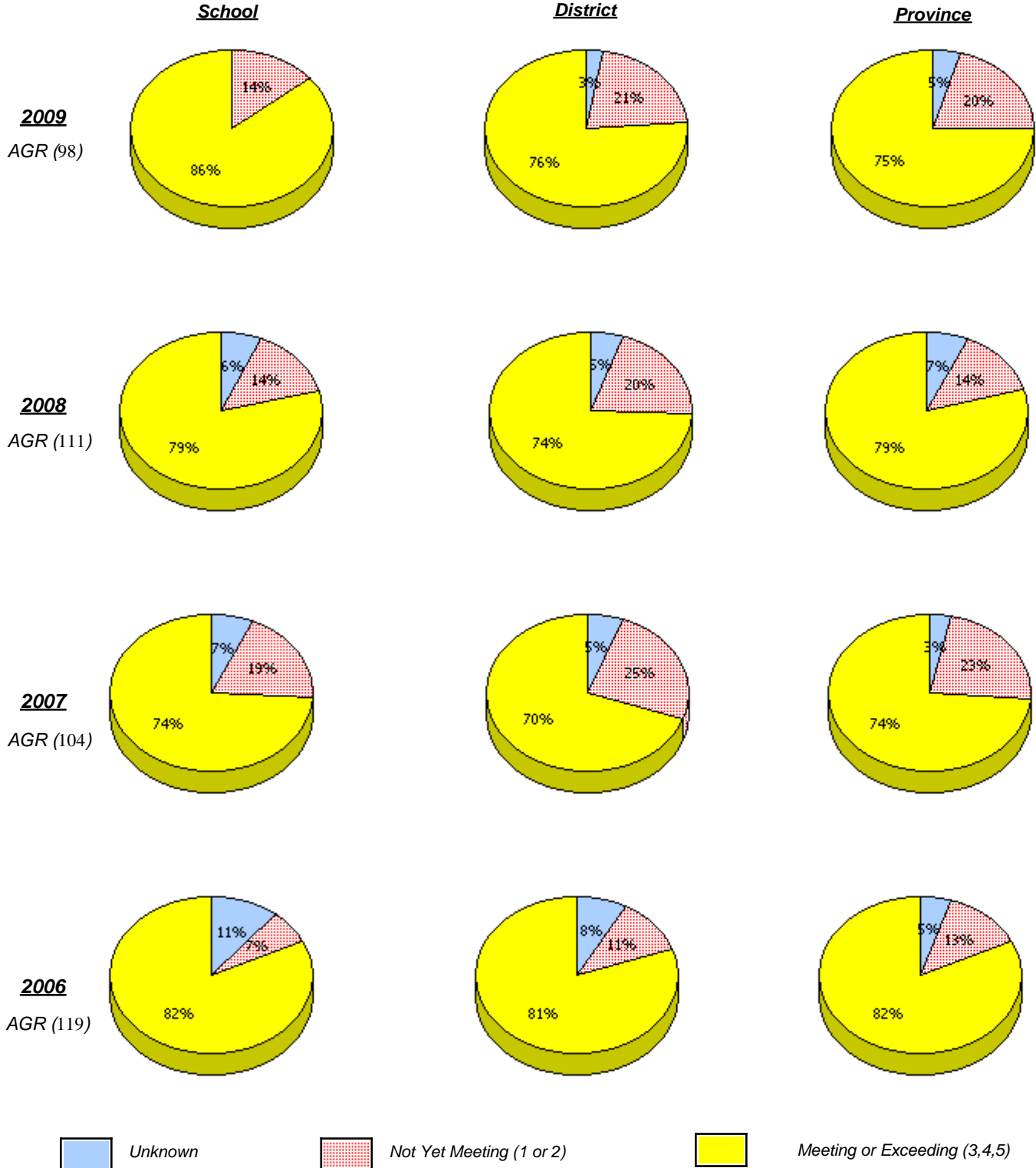
\* In some cases, CRT numbers may exceed AGR numbers based on late enrolments. Pie chart is based on the number of students who wrote the CRT.

\* Reading score is composite of Information, Visual, and Poet.

District 1 - Labrador

School #: 004      Queen of Peace Middle School

***Demand Writing***



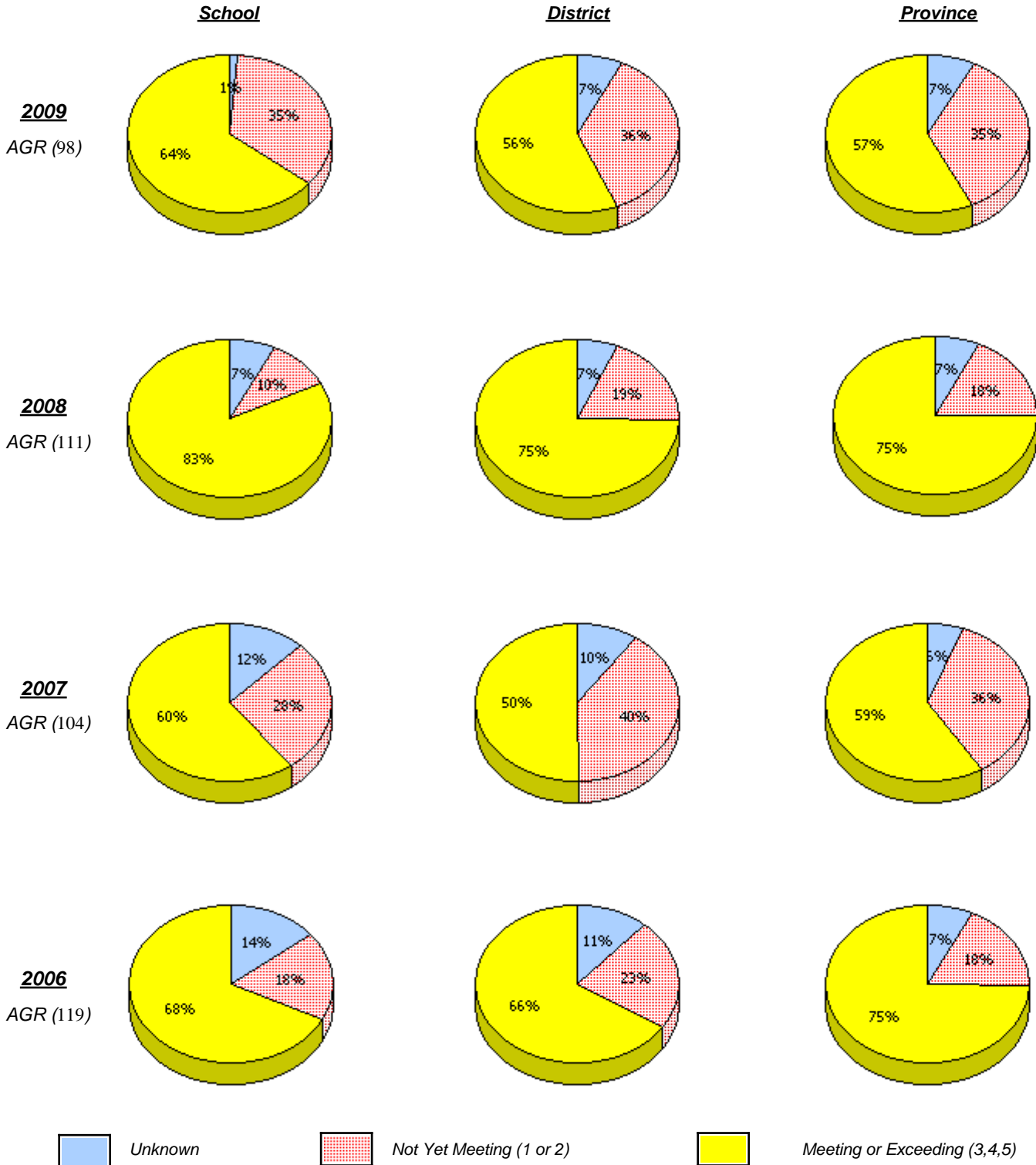
\* In some cases, CRT numbers may exceed AGR numbers based on late enrolments. Pie chart is based on the number of students who wrote the CRT.

\* Reading score is composite of Information, Visual, and Poet.

District 1 - Labrador

School #: 004      Queen of Peace Middle School

**Reading**



\* In some cases, CRT numbers may exceed AGR numbers based on late enrolments. Pie chart is based on the number of students who wrote the CRT.

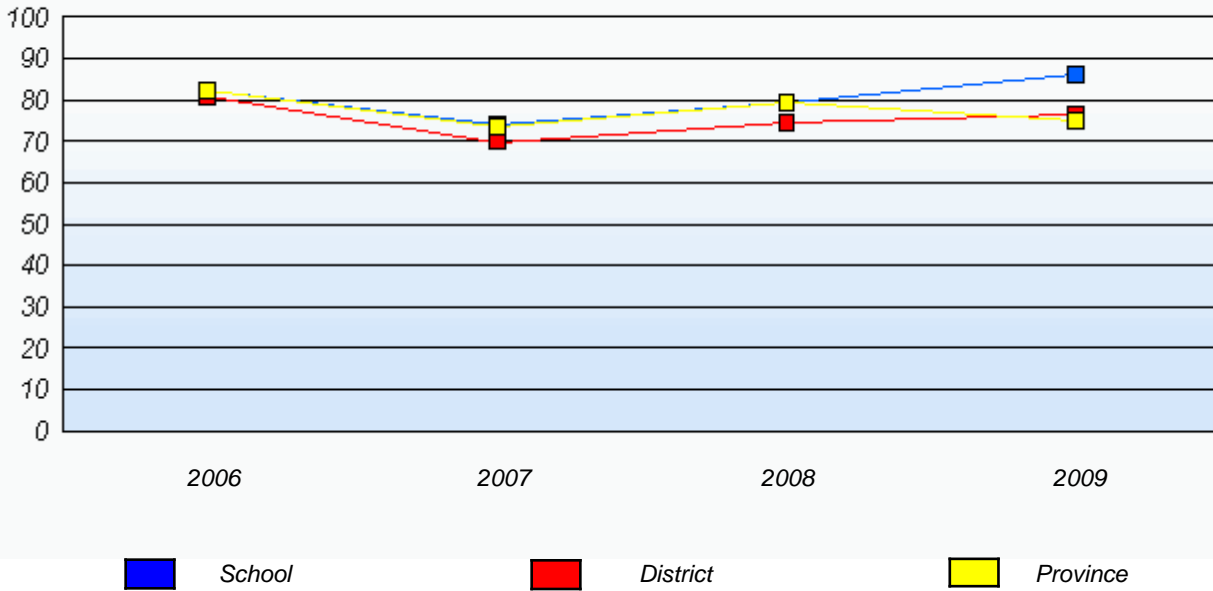
\* Reading score is composite of Information, Visual, and Poet.

District 1 - Labrador

School #: 004      Queen of Peace Middle School

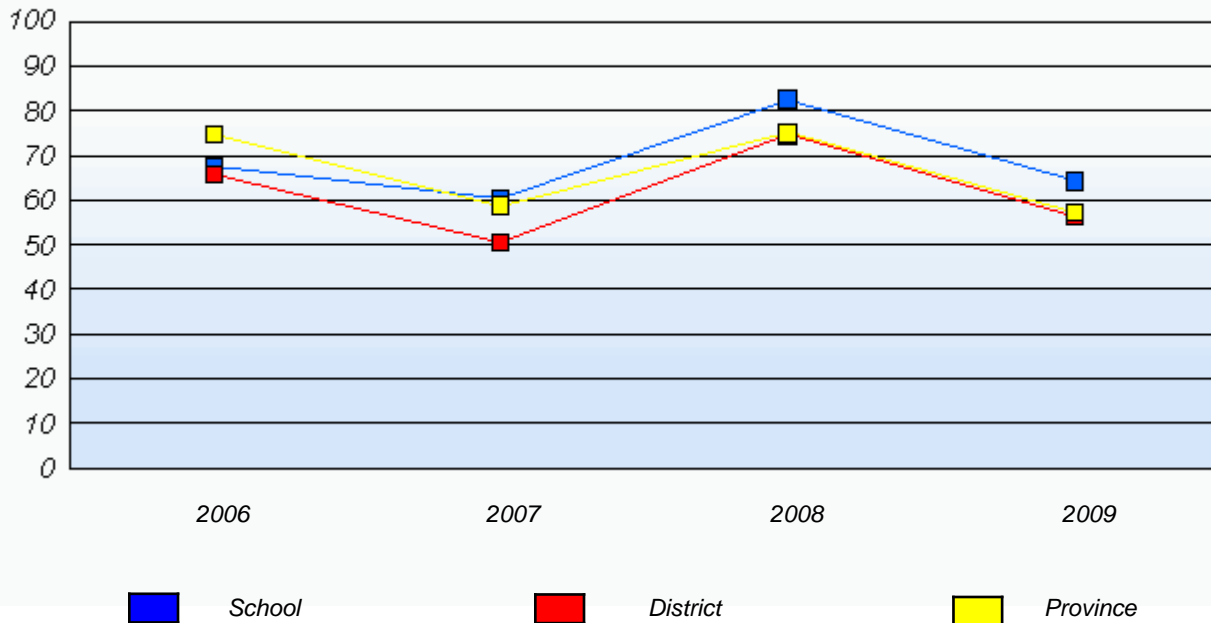
**Demand Writing**

*Percentage of students at level 3 or above (2006 - 2009)*



**Reading**

*Percentage of students at level 3 or above (2006 - 2009)*



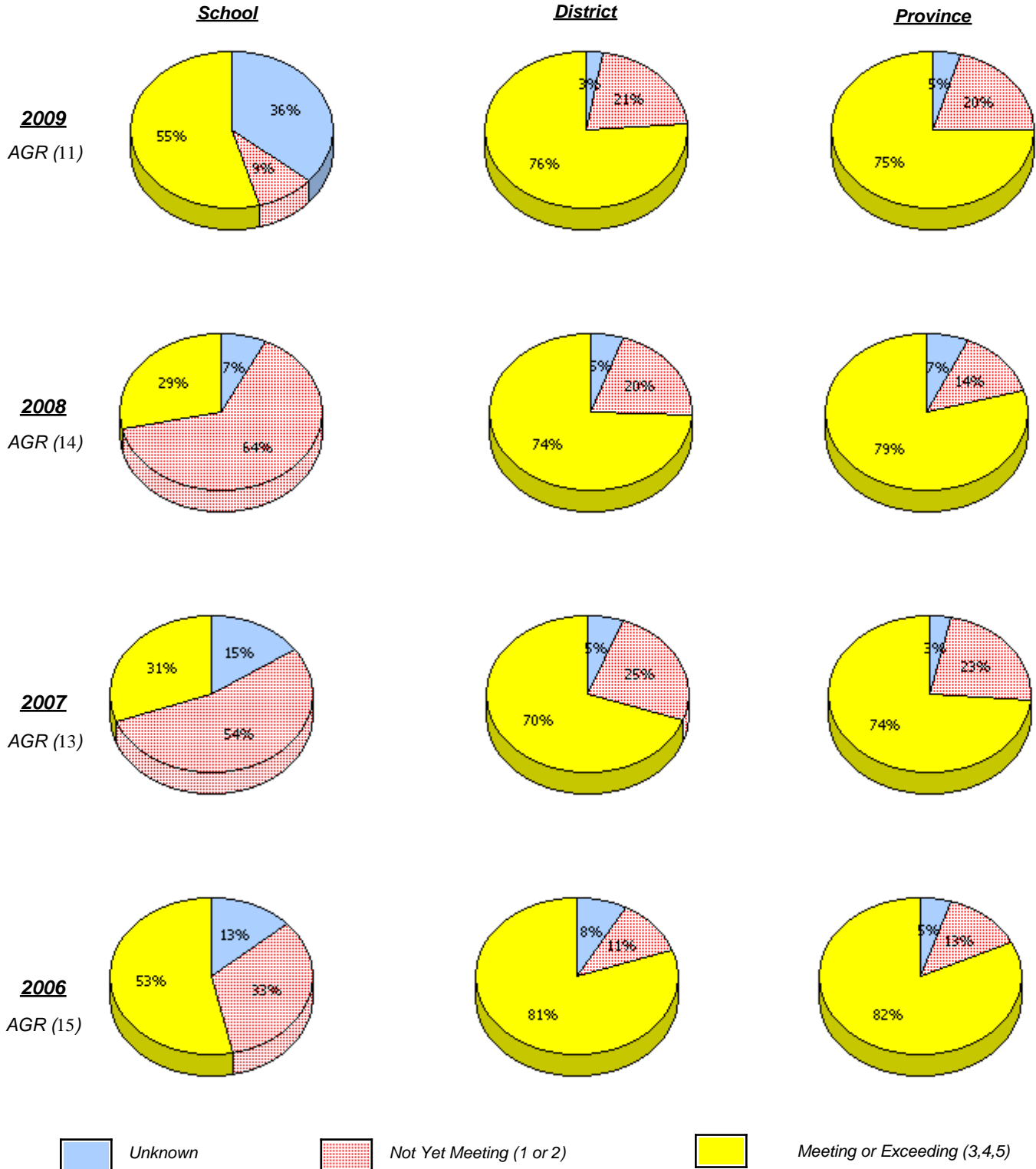
\* In some cases, CRT numbers may exceed AGR numbers based on late enrolments. Pie chart is based on the number of students who wrote the CRT.

\* Reading score is composite of Information, Visual, and Poet.

District 1 - Labrador

School #: 007      Amos Comenius Memorial School

***Demand Writing***



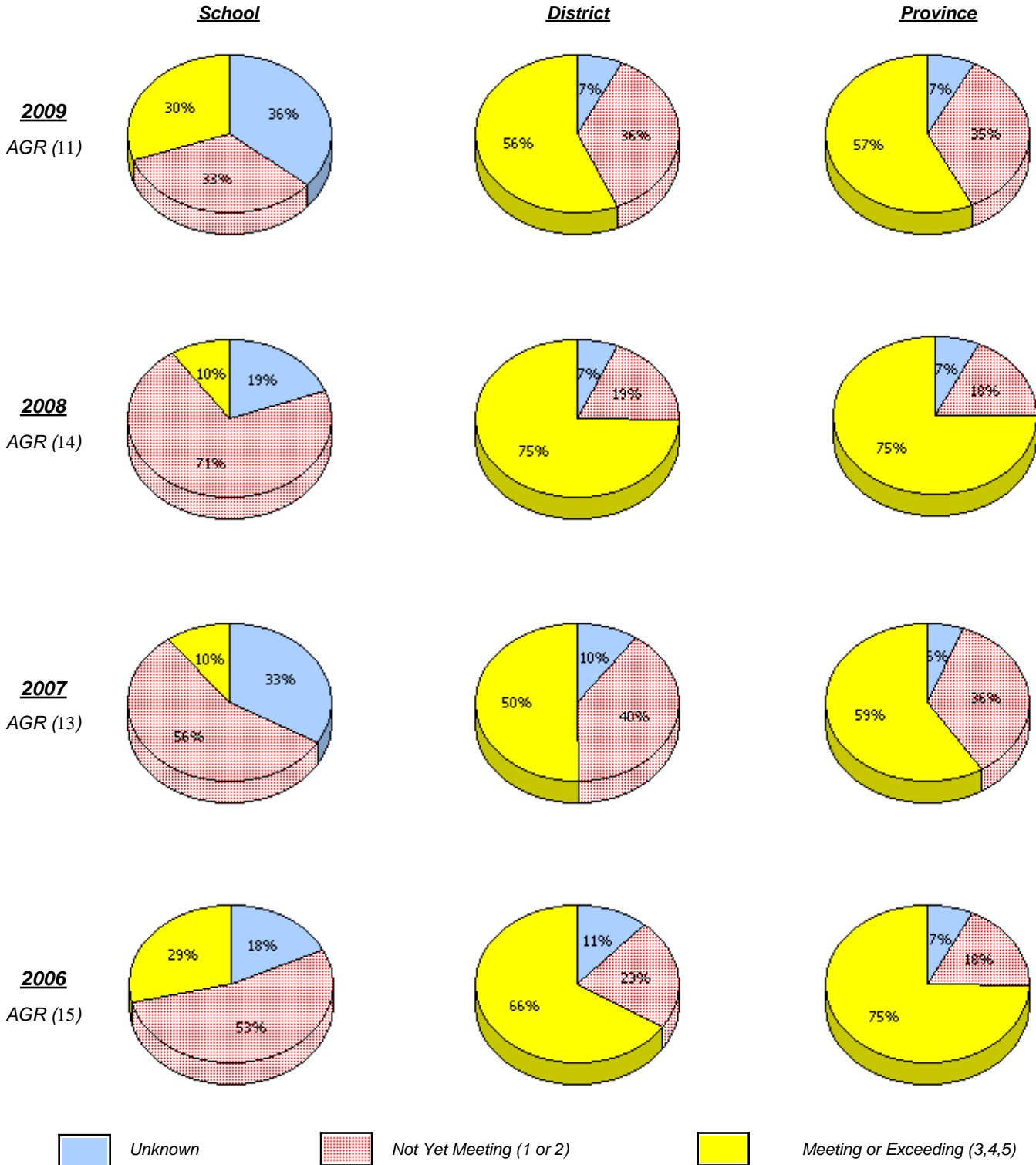
\* In some cases, CRT numbers may exceed AGR numbers based on late enrolments. Pie chart is based on the number of students who wrote the CRT.

\* Reading score is composite of Information, Visual, and Poet.

District 1 - Labrador

School #: 007 Amos Comenius Memorial School

**Reading**



\* In some cases, CRT numbers may exceed AGR numbers based on late enrolments. Pie chart is based on the number of students who wrote the CRT.

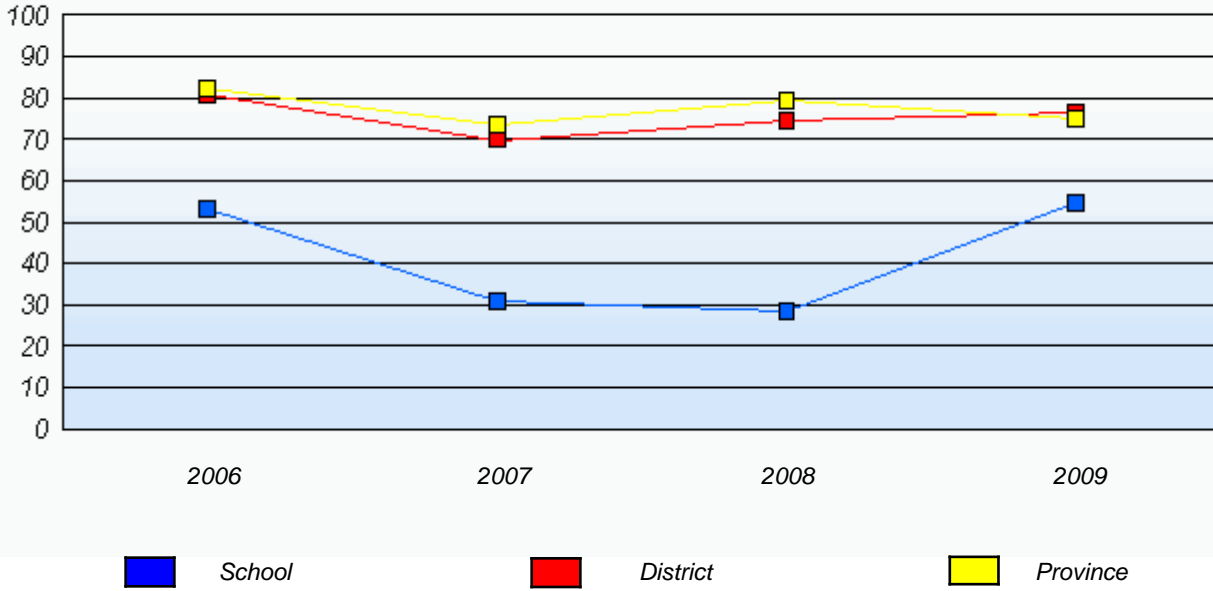
\* Reading score is composite of Information, Visual, and Poet.

District 1 - Labrador

School #: 007      Amos Comenius Memorial School

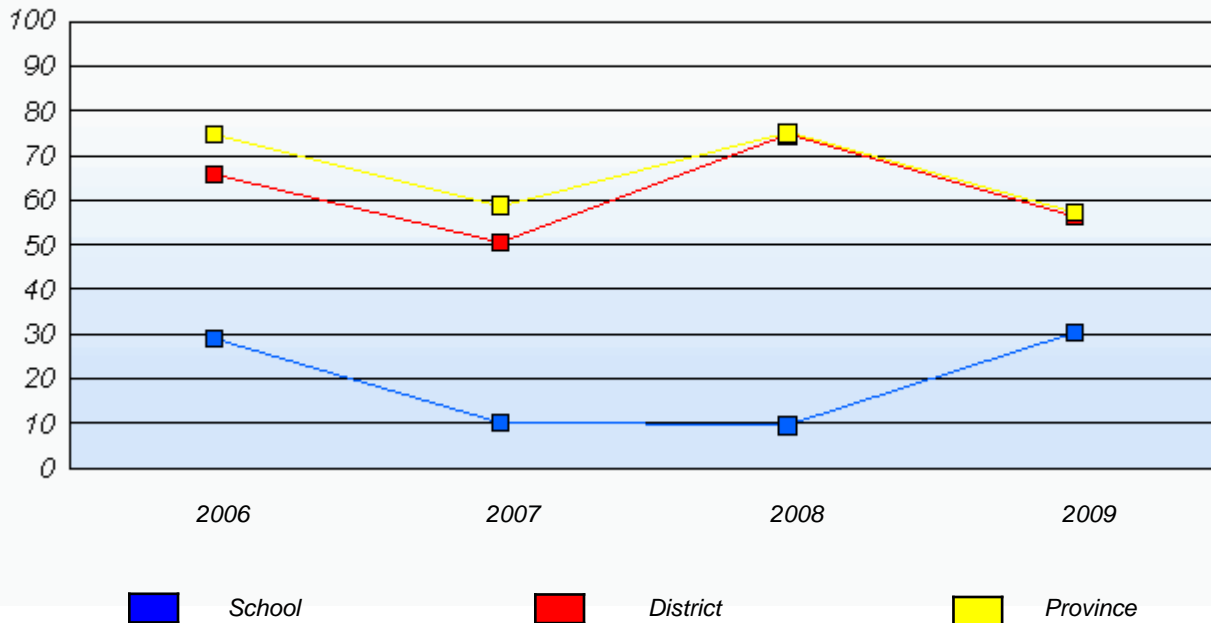
**Demand Writing**

*Percentage of students at level 3 or above (2006 - 2009)*



**Reading**

*Percentage of students at level 3 or above (2006 - 2009)*



\* In some cases, CRT numbers may exceed AGR numbers based on late enrolments. Pie chart is based on the number of students who wrote the CRT.

\* Reading score is composite of Information, Visual, and Poet.

District 1 - Labrador

School #: 012 J.C. Erhardt Memorial School

***Demand Writing***

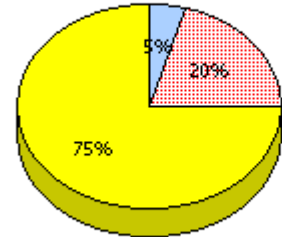
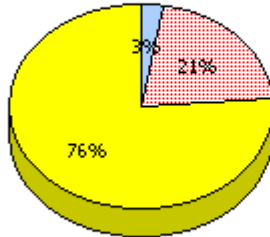
***School***

School data with 5 or fewer students withheld for reasons of confidentiality.

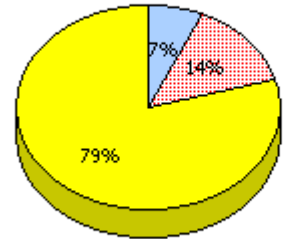
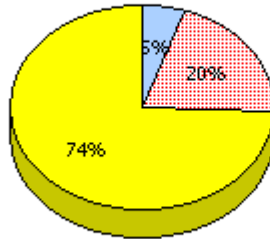
***District***

***Province***

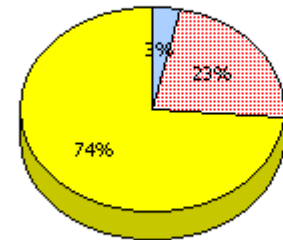
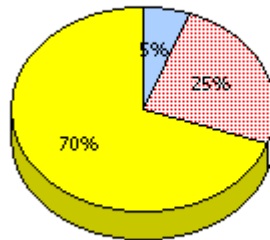
**2009**  
AGR (4)



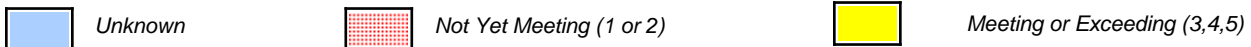
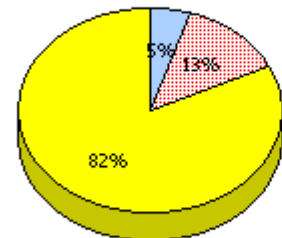
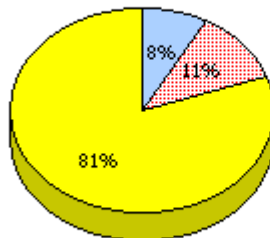
**2008**  
AGR (2)



**2007**  
AGR (6)



**2006**  
AGR (6)



\* In some cases, CRT numbers may exceed AGR numbers based on late enrolments. Pie chart is based on the number of students who wrote the CRT.

\* Reading score is composite of Information, Visual, and Poet.

District 1 - Labrador

School #: 012 J.C. Erhardt Memorial School



\* In some cases, CRT numbers may exceed AGR numbers based on late enrolments. Pie chart is based on the number of students who wrote the CRT.

\* Reading score is composite of Information, Visual, and Poet.

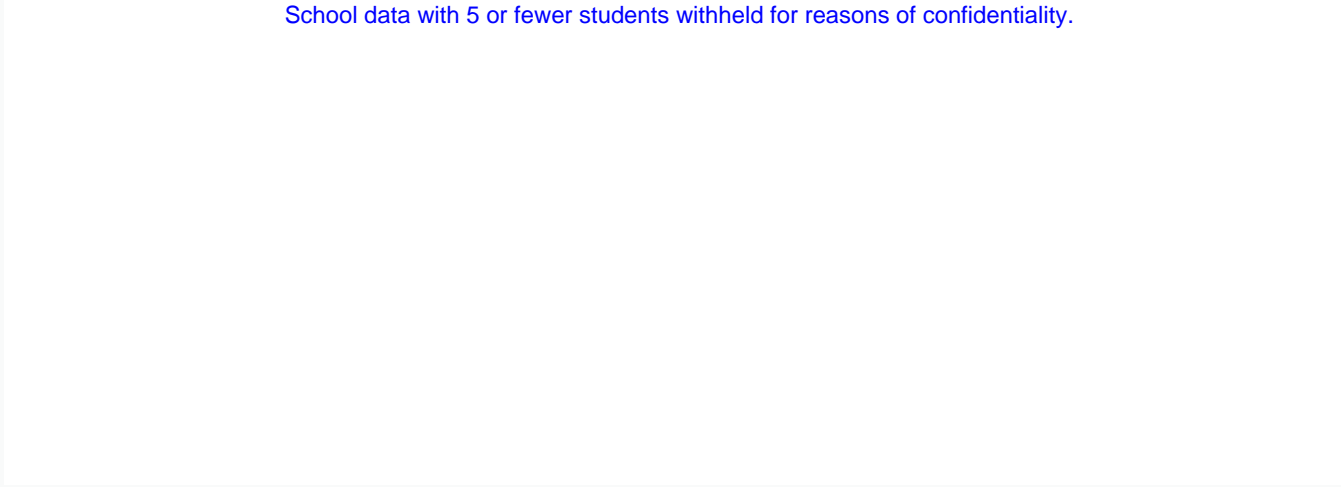
District 1 - Labrador

School #: 012      J.C. Erhardt Memorial School

**Demand Writing**

*Percentage of students at level 3 or above (2006 - 2009)*

School data with 5 or fewer students withheld for reasons of confidentiality.




2006

2007

2008

2009

 School

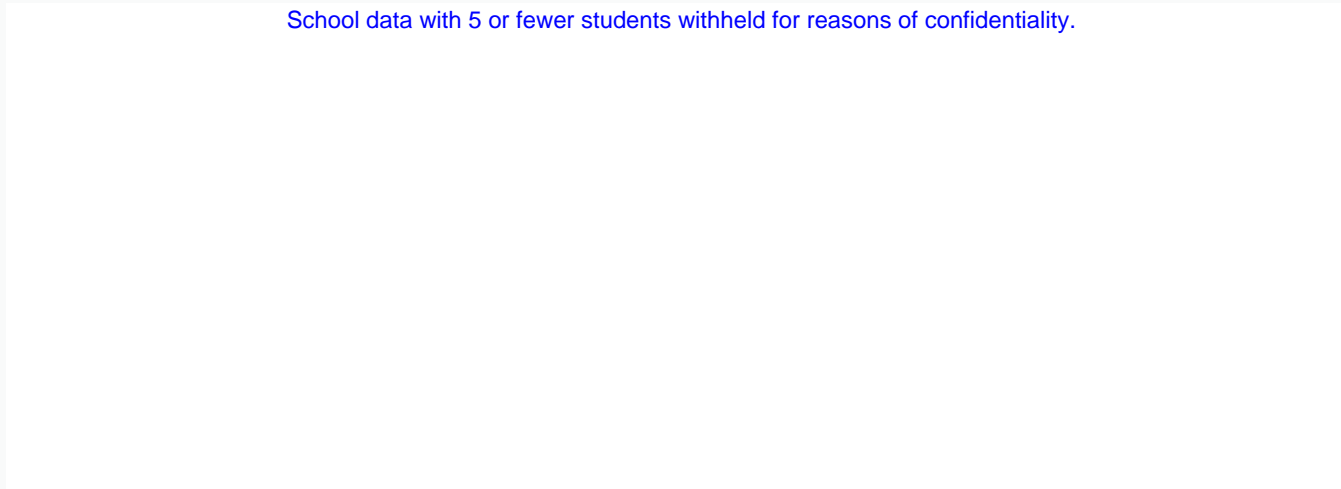
 District

 Province

**Reading**

*Percentage of students at level 3 or above (2006 - 2009)*

School data with 5 or fewer students withheld for reasons of confidentiality.





2006

2007

2008

2009

 School

 District

 Province

\* In some cases, CRT numbers may exceed AGR numbers based on late enrolments. Pie chart is based on the number of students who wrote the CRT.

\* Reading score is composite of Information, Visual, and Poet.

District 1 - Labrador

School #: 013 Mud Lake School

***Demand Writing***

***School***

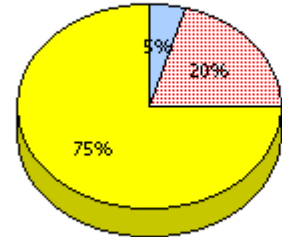
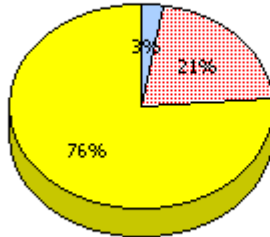
***District***

***Province***

School data with 5 or fewer students withheld for reasons of confidentiality.

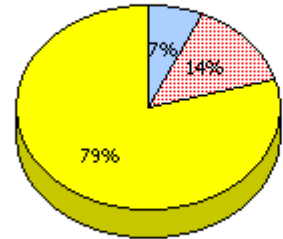
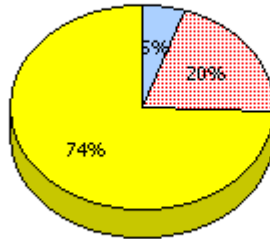
**2009**

AGR (0)



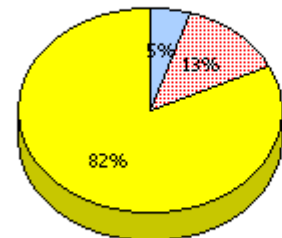
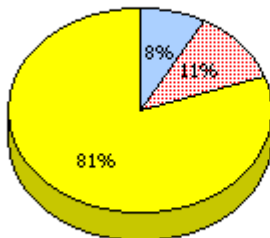
**2008**

AGR (1)



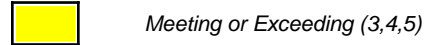
**2007**

AGR (0)



**2006**

AGR (2)



\* In some cases, CRT numbers may exceed AGR numbers based on late enrolments. Pie chart is based on the number of students who wrote the CRT.

\* Reading score is composite of Information, Visual, and Poet.

District 1 - Labrador

School #: 013 Mud Lake School

**Reading**

**School**

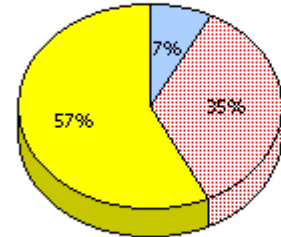
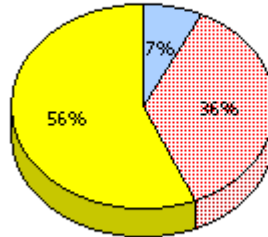
**District**

**Province**

School data with 5 or fewer students withheld for reasons of confidentiality.

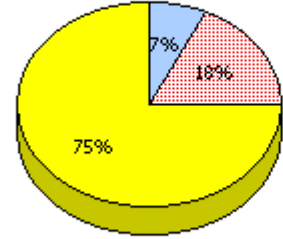
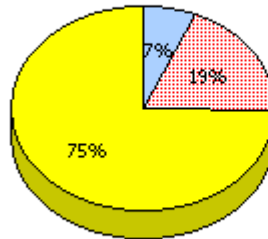
**2009**

AGR (0)



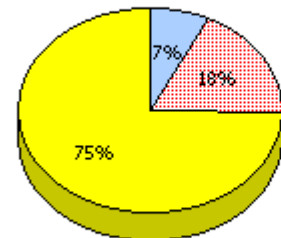
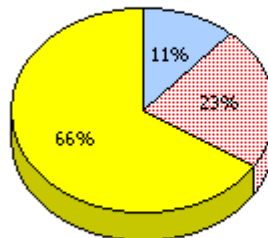
**2008**

AGR (1)



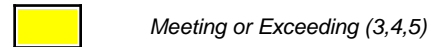
**2007**

AGR (0)



**2006**

AGR (2)



\* In some cases, CRT numbers may exceed AGR numbers based on late enrolments. Pie chart is based on the number of students who wrote the CRT.

\* Reading score is composite of Information, Visual, and Poet.

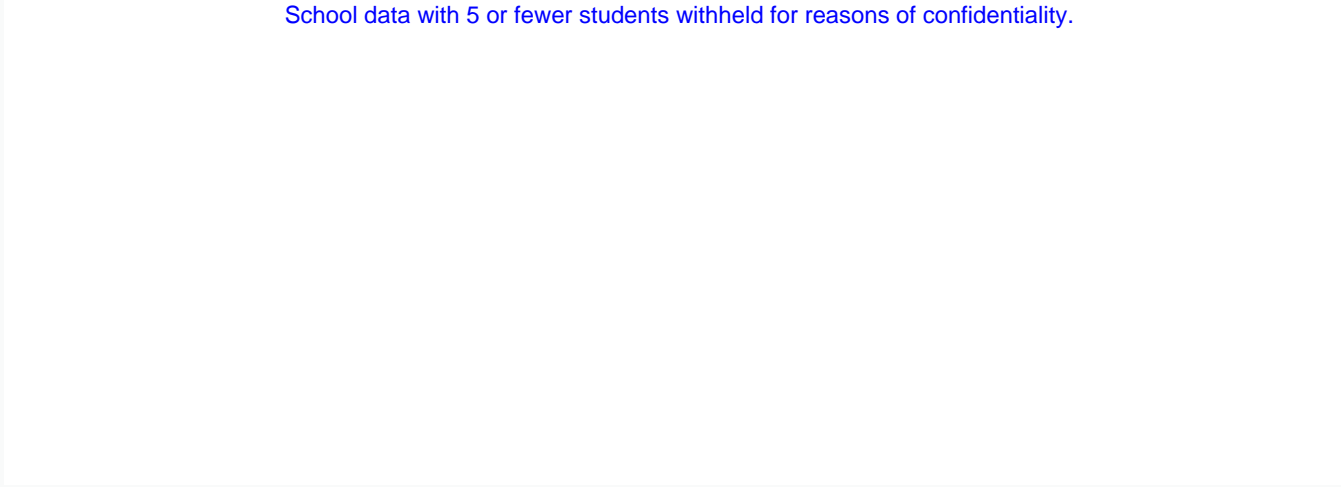
District 1 - Labrador

School #: 013      Mud Lake School

***Demand Writing***

*Percentage of students at level 3 or above (2006 - 2009)*

School data with 5 or fewer students withheld for reasons of confidentiality.




2006

2007

2008

2009

 School

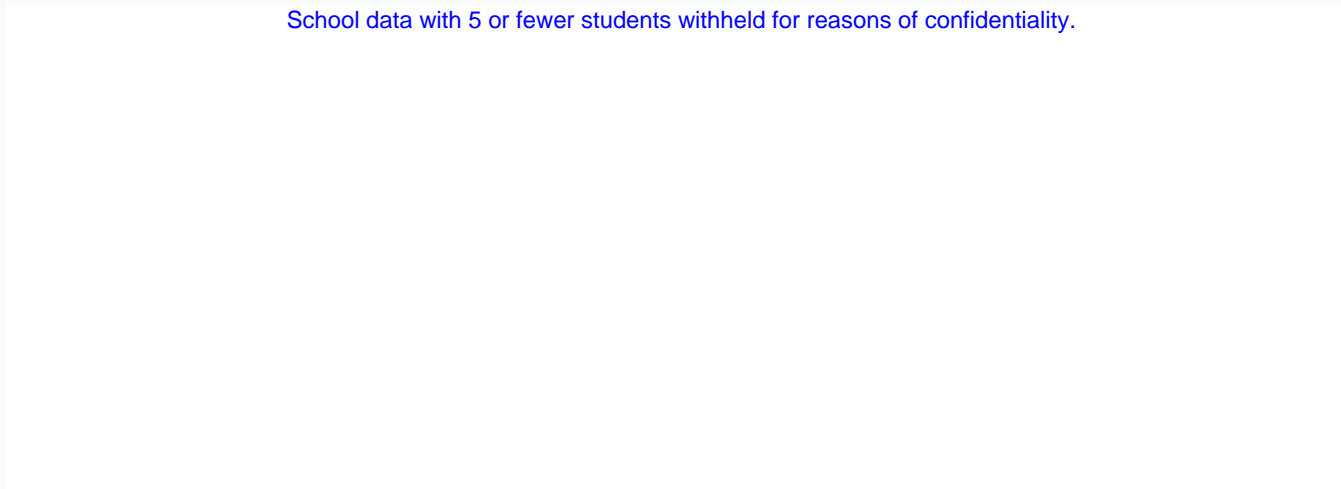
 District

 Province

***Reading***

*Percentage of students at level 3 or above (2006 - 2009)*

School data with 5 or fewer students withheld for reasons of confidentiality.





2006

2007

2008

2009

 School

 District

 Province

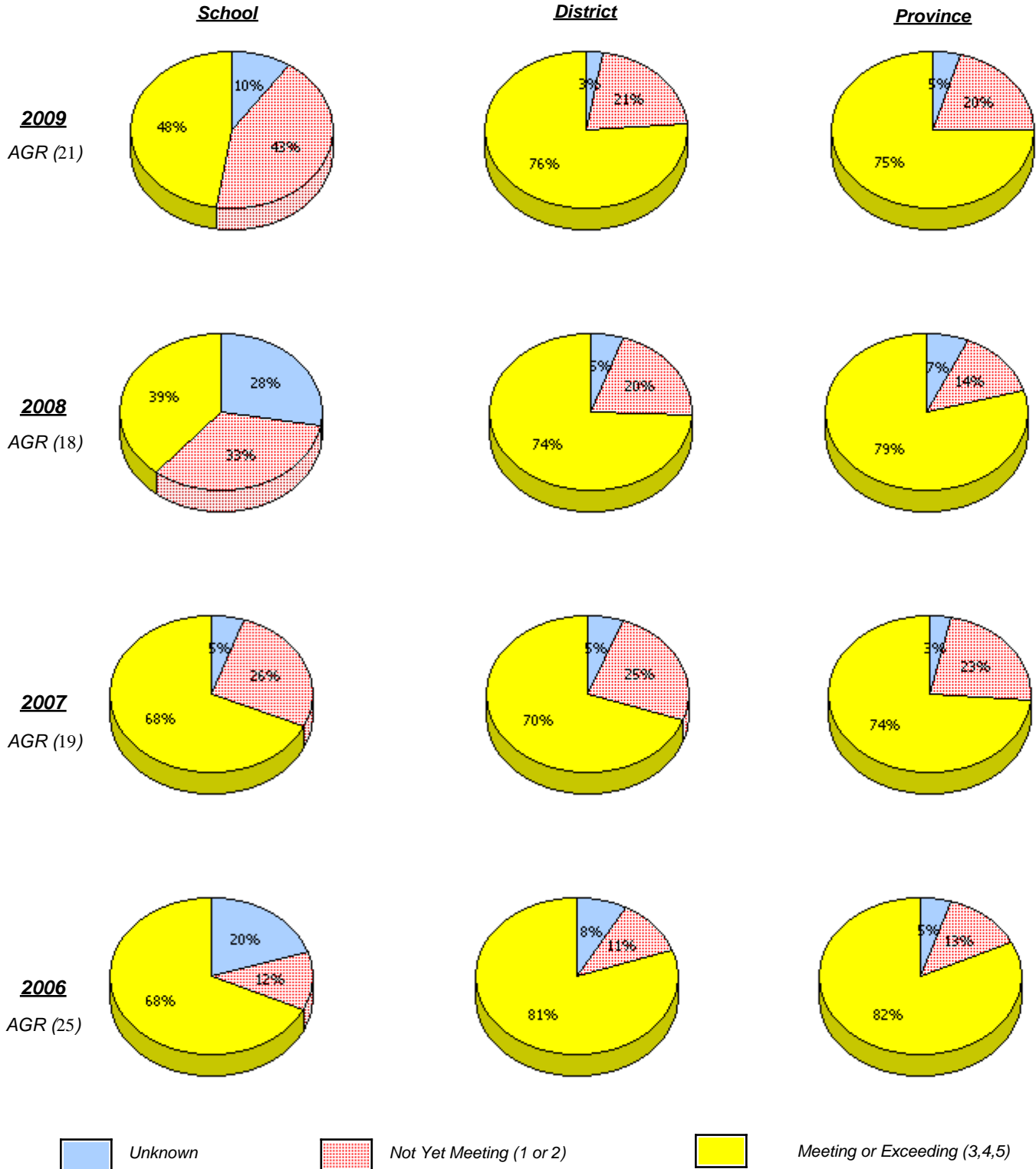
\* In some cases, CRT numbers may exceed AGR numbers based on late enrolments. Pie chart is based on the number of students who wrote the CRT.

\* Reading score is composite of Information, Visual, and Poet.

District 1 - Labrador

School #: 014      Jens Haven Memorial

***Demand Writing***

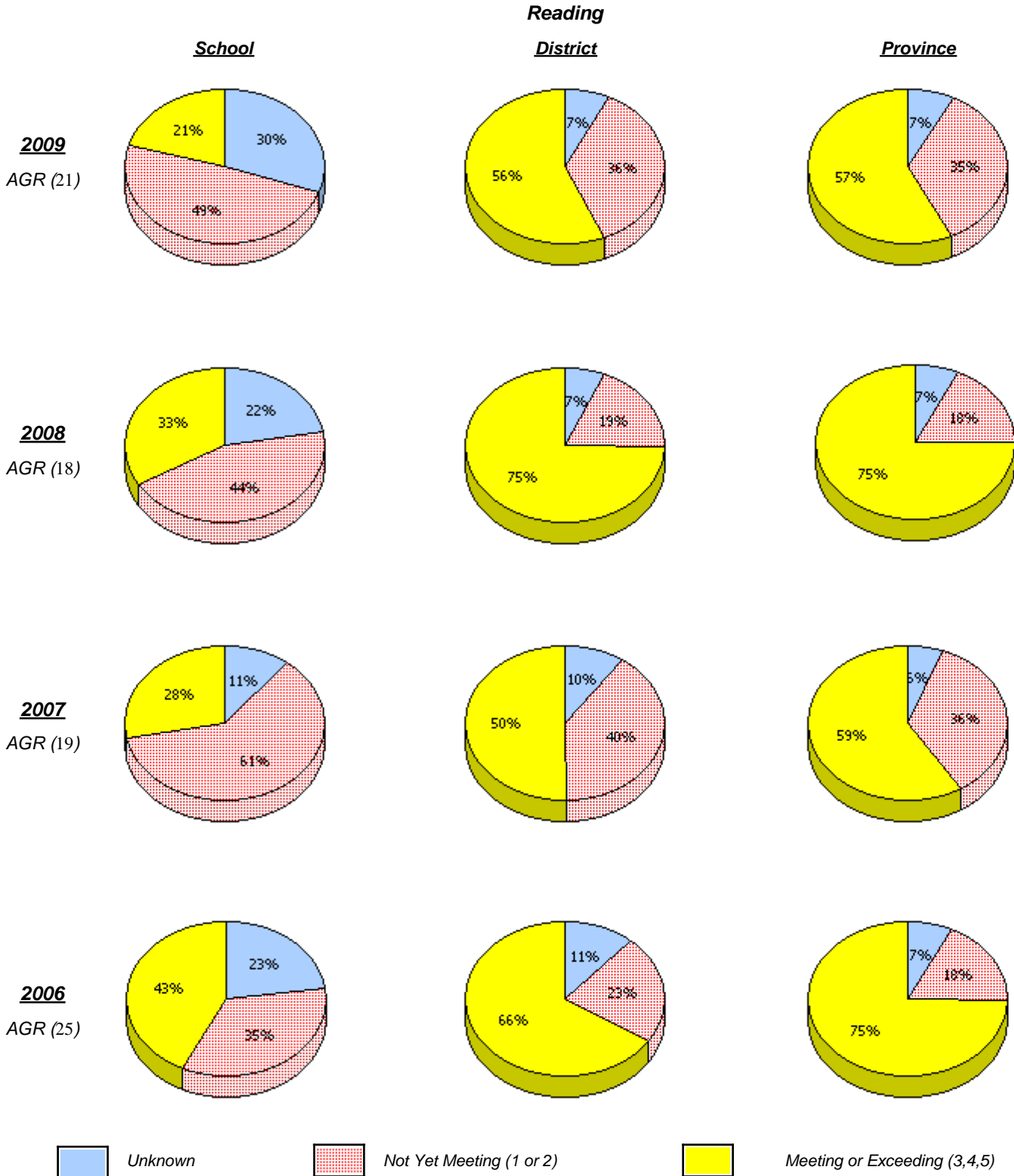


\* In some cases, CRT numbers may exceed AGR numbers based on late enrolments. Pie chart is based on the number of students who wrote the CRT.

\* Reading score is composite of Information, Visual, and Poet.

District 1 - Labrador

School #: 014      Jens Haven Memorial



\* In some cases, CRT numbers may exceed AGR numbers based on late enrolments. Pie chart is based on the number of students who wrote the CRT.

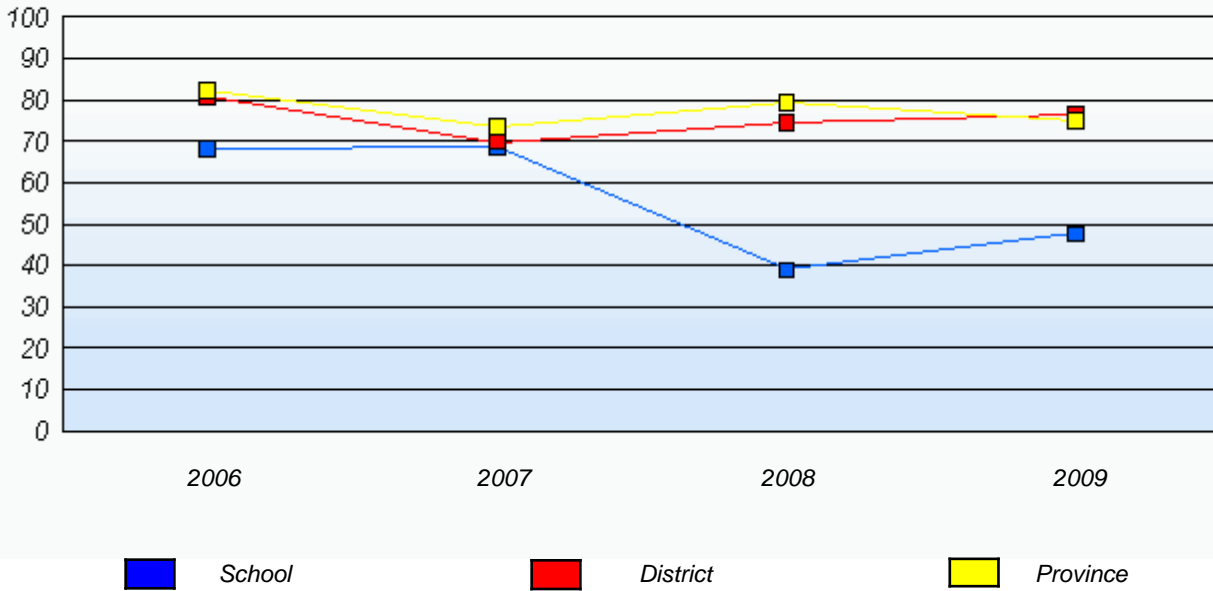
\* Reading score is composite of Information, Visual, and Poet.

District 1 - Labrador

School #: 014      Jens Haven Memorial

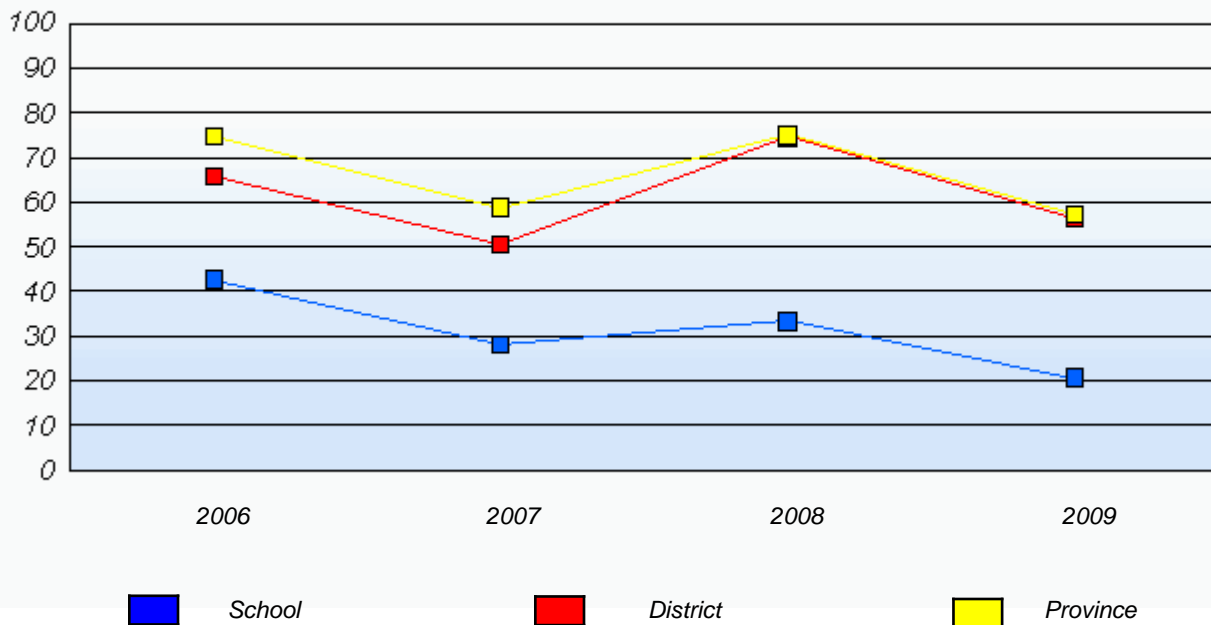
**Demand Writing**

*Percentage of students at level 3 or above (2006 - 2009)*



**Reading**

*Percentage of students at level 3 or above (2006 - 2009)*



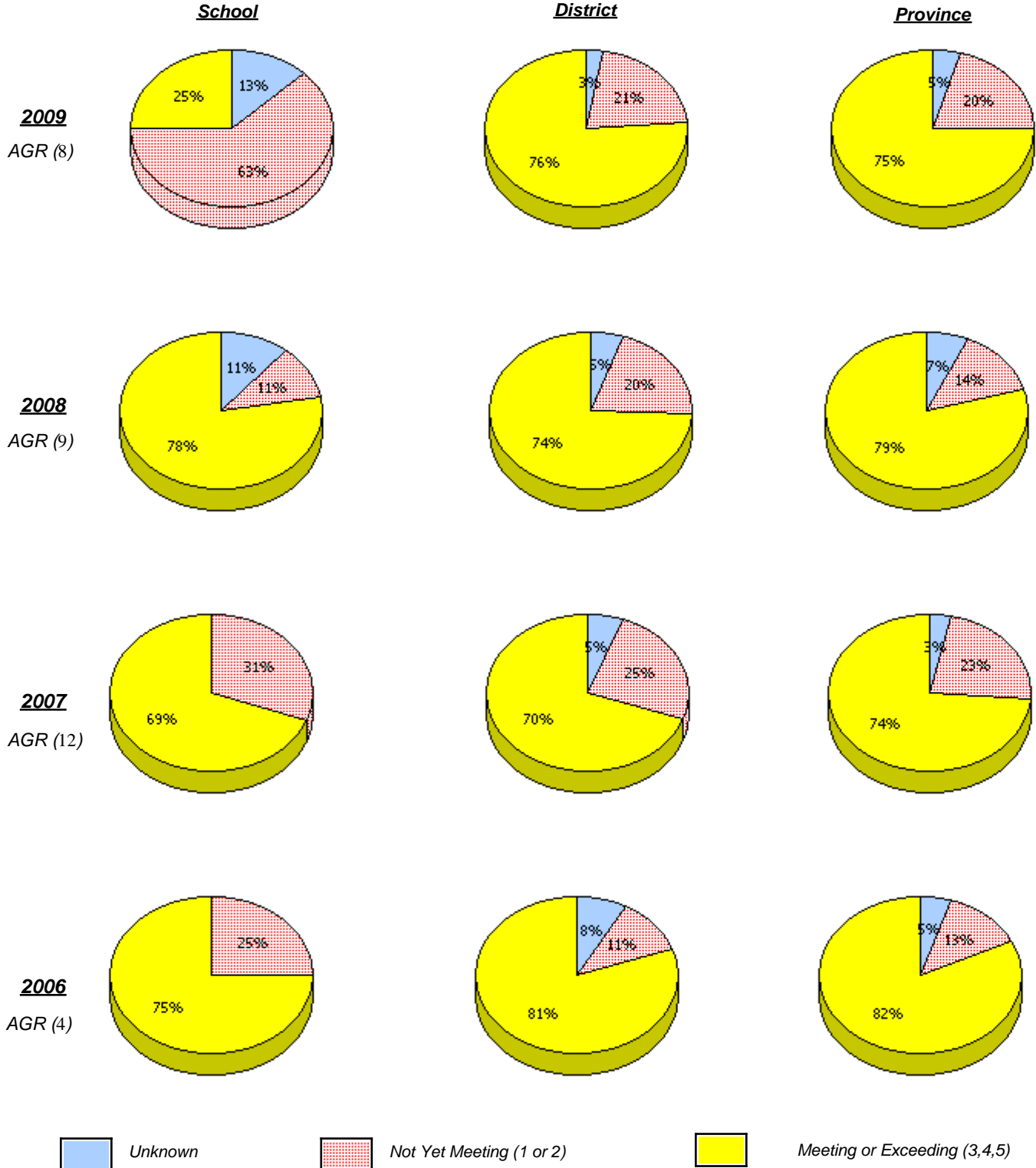
\* In some cases, CRT numbers may exceed AGR numbers based on late enrolments. Pie chart is based on the number of students who wrote the CRT.

\* Reading score is composite of Information, Visual, and Poet.

District 1 - Labrador

School #: 015      Lake Melville School

***Demand Writing***



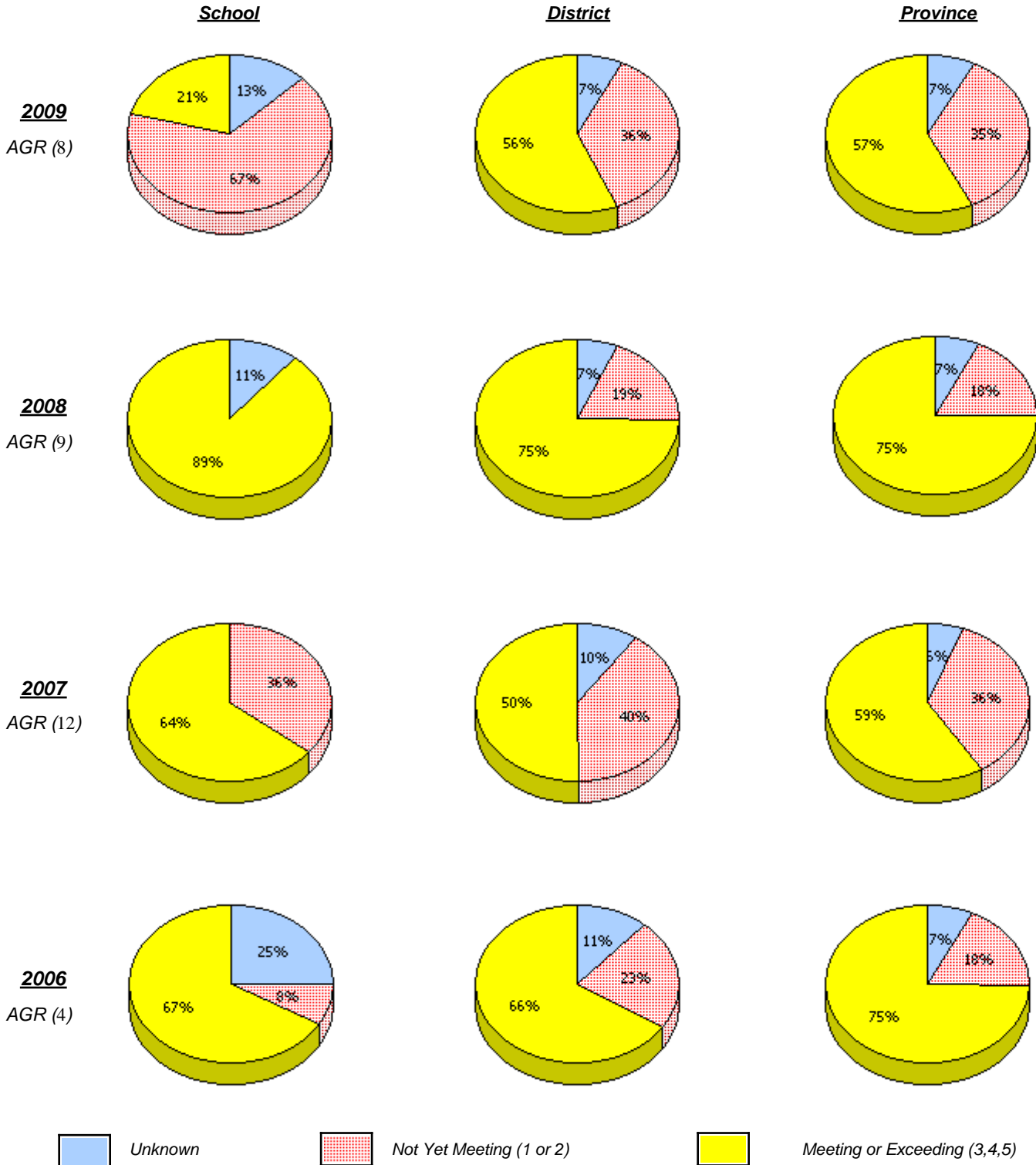
\* In some cases, CRT numbers may exceed AGR numbers based on late enrolments. Pie chart is based on the number of students who wrote the CRT.

\* Reading score is composite of Information, Visual, and Poet.

District 1 - Labrador

School #: 015      Lake Melville School

**Reading**



\* In some cases, CRT numbers may exceed AGR numbers based on late enrolments. Pie chart is based on the number of students who wrote the CRT.

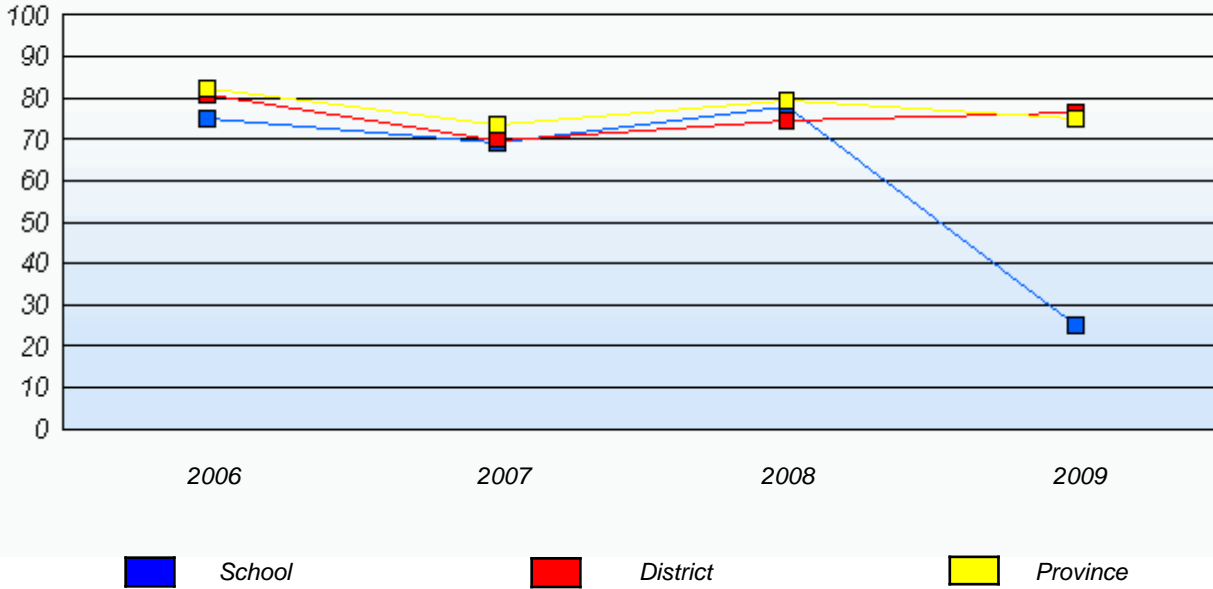
\* Reading score is composite of Information, Visual, and Poet.

District 1 - Labrador

School #: 015      Lake Melville School

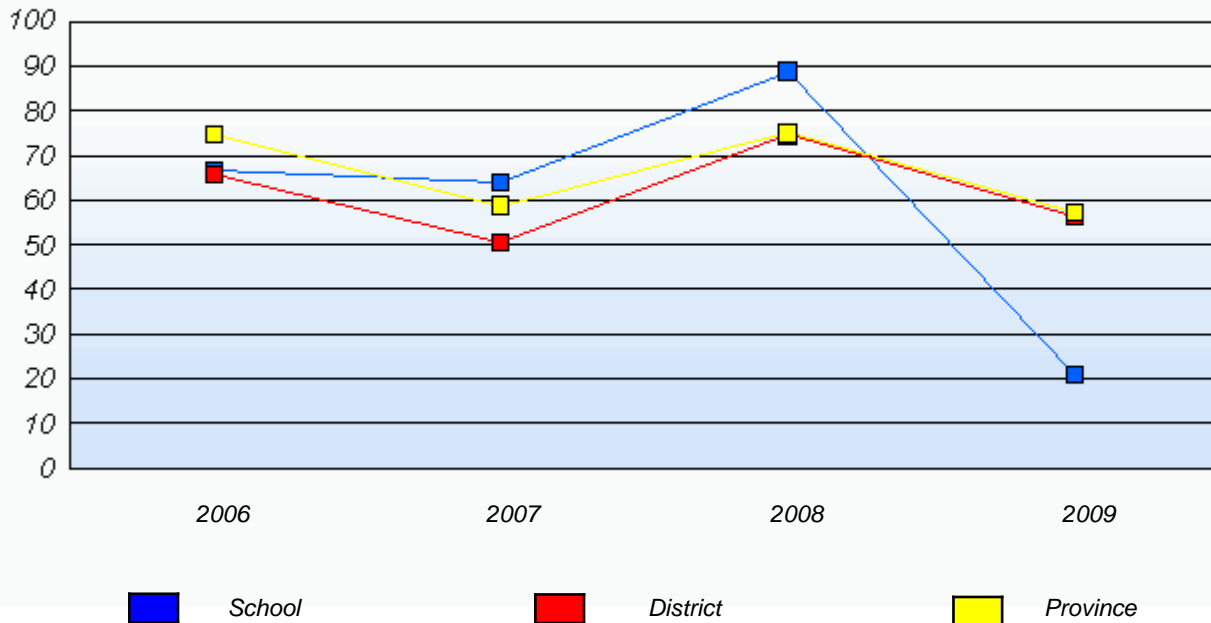
**Demand Writing**

*Percentage of students at level 3 or above (2006 - 2009)*



**Reading**

*Percentage of students at level 3 or above (2006 - 2009)*



\* In some cases, CRT numbers may exceed AGR numbers based on late enrolments. Pie chart is based on the number of students who wrote the CRT.

\* Reading score is composite of Information, Visual, and Poet.

District 1 - Labrador

School #: 016      B.L. Morrison

***Demand Writing***

***School***

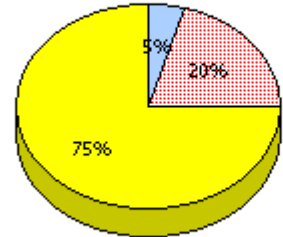
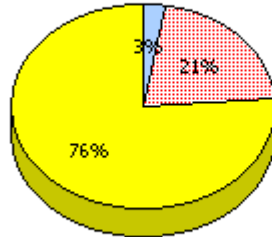
School data with 5 or fewer students withheld for reasons of confidentiality.

***District***

***Province***

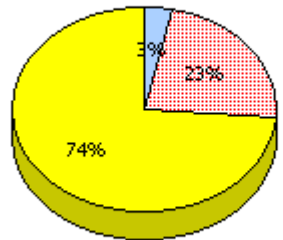
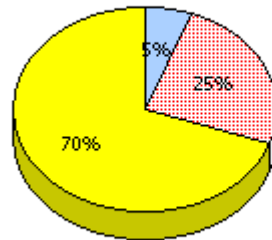
**2009**

AGR (5)



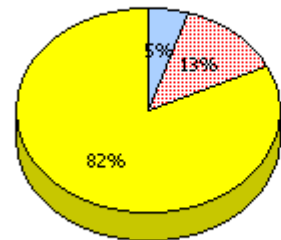
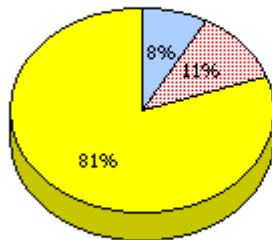
**2008**

AGR (0)



**2007**

AGR (4)



**2006**

AGR (5)



Unknown



Not Yet Meeting (1 or 2)



Meeting or Exceeding (3,4,5)

\* In some cases, CRT numbers may exceed AGR numbers based on late enrolments. Pie chart is based on the number of students who wrote the CRT.

\* Reading score is composite of Information, Visual, and Poet.

District 1 - Labrador

School #: 016 B.L. Morrison

**School**

School data with 5 or fewer students withheld for reasons of confidentiality.

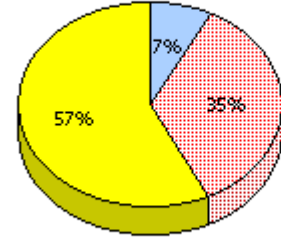
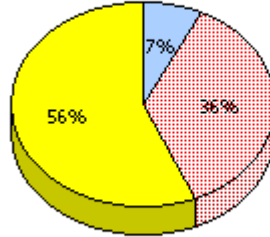
**Reading**

**District**

**Province**

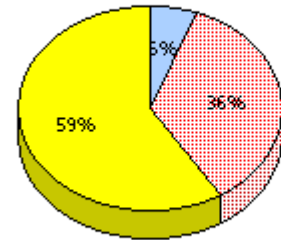
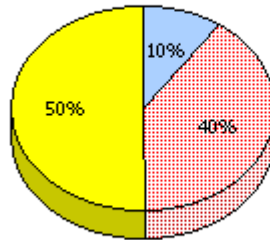
**2009**

AGR (5)



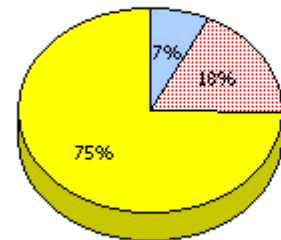
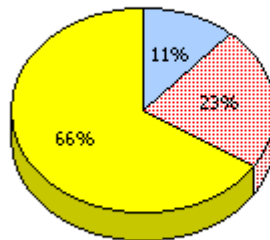
**2008**

AGR (0)



**2007**

AGR (4)



**2006**

AGR (5)

Unknown

Not Yet Meeting (1 or 2)

Meeting or Exceeding (3,4,5)

\* In some cases, CRT numbers may exceed AGR numbers based on late enrolments. Pie chart is based on the number of students who wrote the CRT.

\* Reading score is composite of Information, Visual, and Poet.

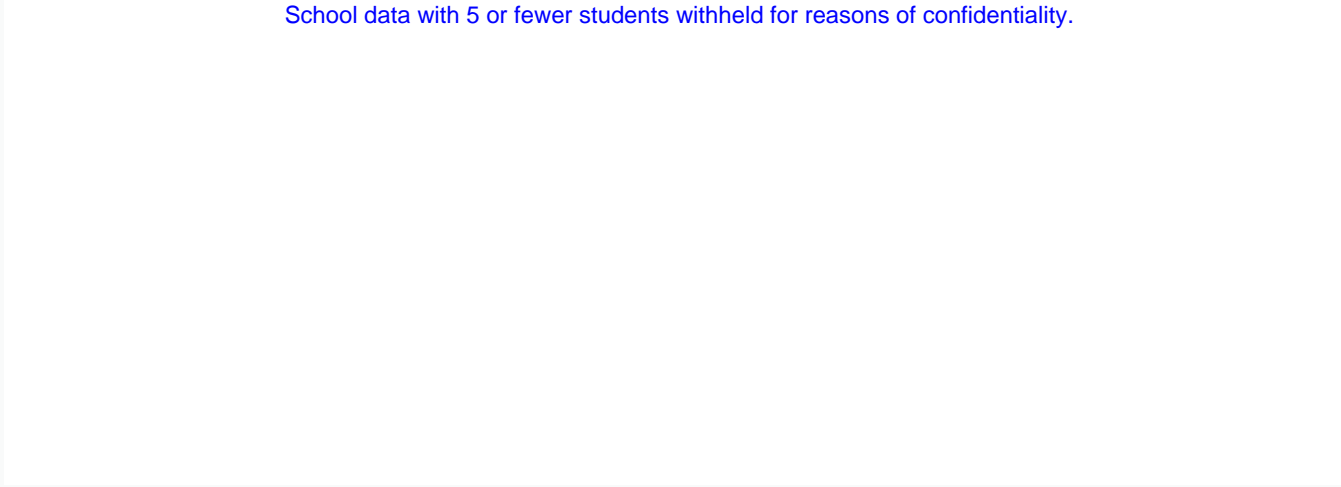
District 1 - Labrador

School #: 016      B.L. Morrison

***Demand Writing***

*Percentage of students at level 3 or above (2006 - 2009)*

*School data with 5 or fewer students withheld for reasons of confidentiality.*




2006

2007

2008

2009

 School

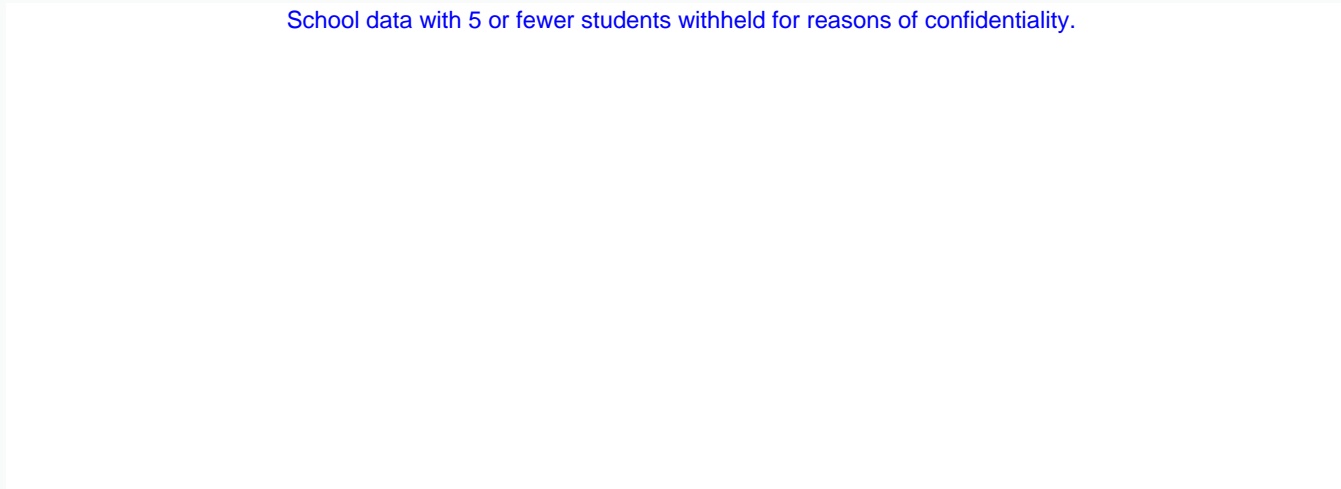
 District

 Province

***Reading***

*Percentage of students at level 3 or above (2006 - 2009)*

*School data with 5 or fewer students withheld for reasons of confidentiality.*





2006

2007

2008

2009

 School

 District

 Province

\* In some cases, CRT numbers may exceed AGR numbers based on late enrolments. Pie chart is based on the number of students who wrote the CRT.

\* Reading score is composite of Information, Visual, and Poet.

District 1 - Labrador

School #: 017 Northern Lights Academy

***Demand Writing***

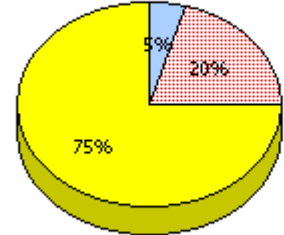
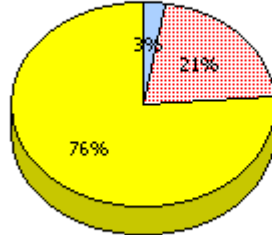
***School***

School data with 5 or fewer students withheld for reasons of confidentiality.

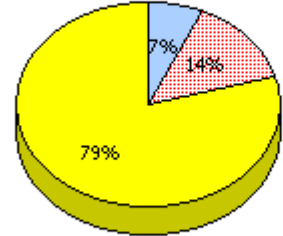
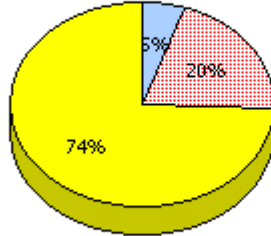
***District***

***Province***

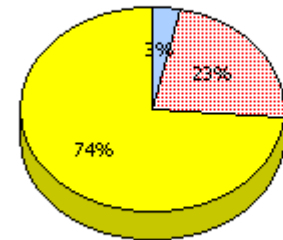
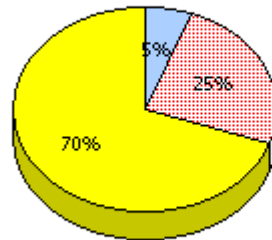
**2009**  
AGR (2)



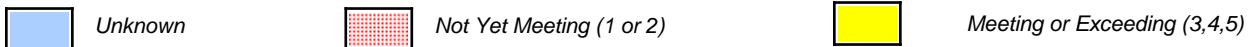
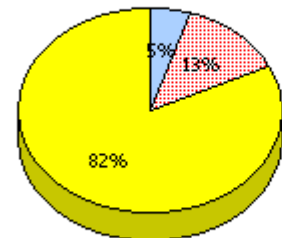
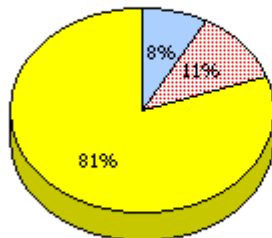
**2008**  
AGR (1)



**2007**  
AGR (3)



**2006**  
AGR (2)



\* In some cases, CRT numbers may exceed AGR numbers based on late enrolments. Pie chart is based on the number of students who wrote the CRT.

\* Reading score is composite of Information, Visual, and Poet.

District 1 - Labrador

School #: 017 Northern Lights Academy



\* In some cases, CRT numbers may exceed AGR numbers based on late enrolments. Pie chart is based on the number of students who wrote the CRT.

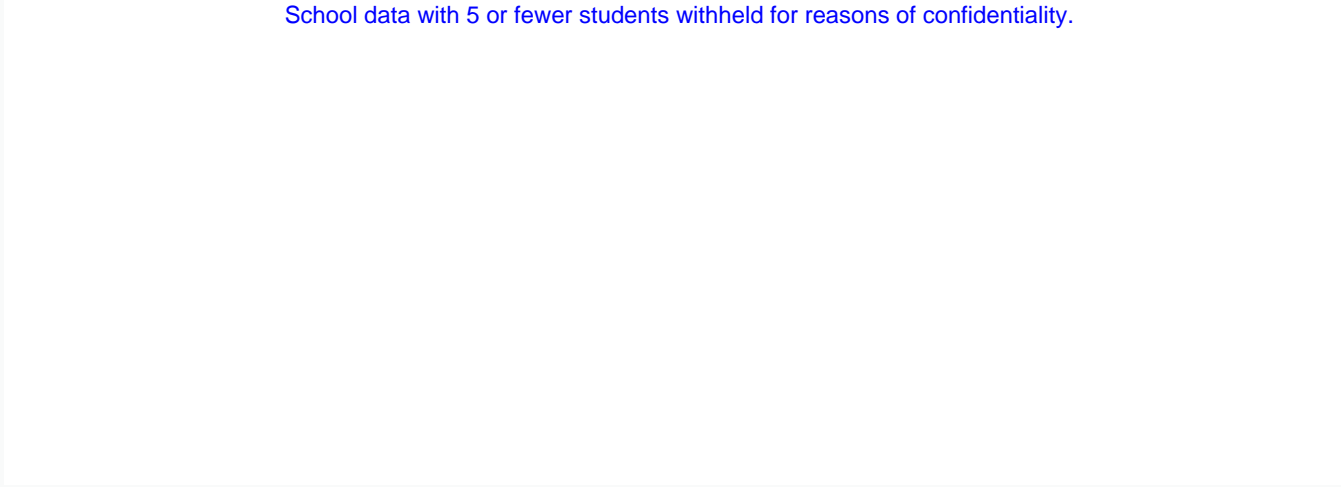
\* Reading score is composite of Information, Visual, and Poet.

District 1 - Labrador

School #: 017 Northern Lights Academy

**Demand Writing**

Percentage of students at level 3 or above (2006 - 2009)  
 School data with 5 or fewer students withheld for reasons of confidentiality.




2006

2007

2008

2009

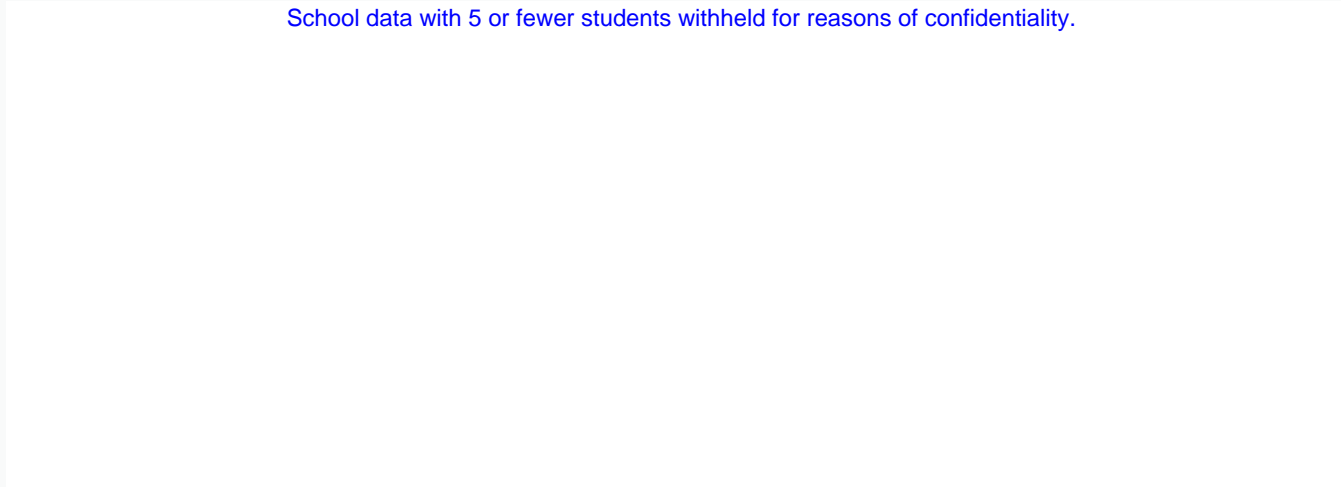
 School

 District

 Province

**Reading**

Percentage of students at level 3 or above (2006 - 2009)  
 School data with 5 or fewer students withheld for reasons of confidentiality.





2006

2007

2008

2009

 School

 District

 Province

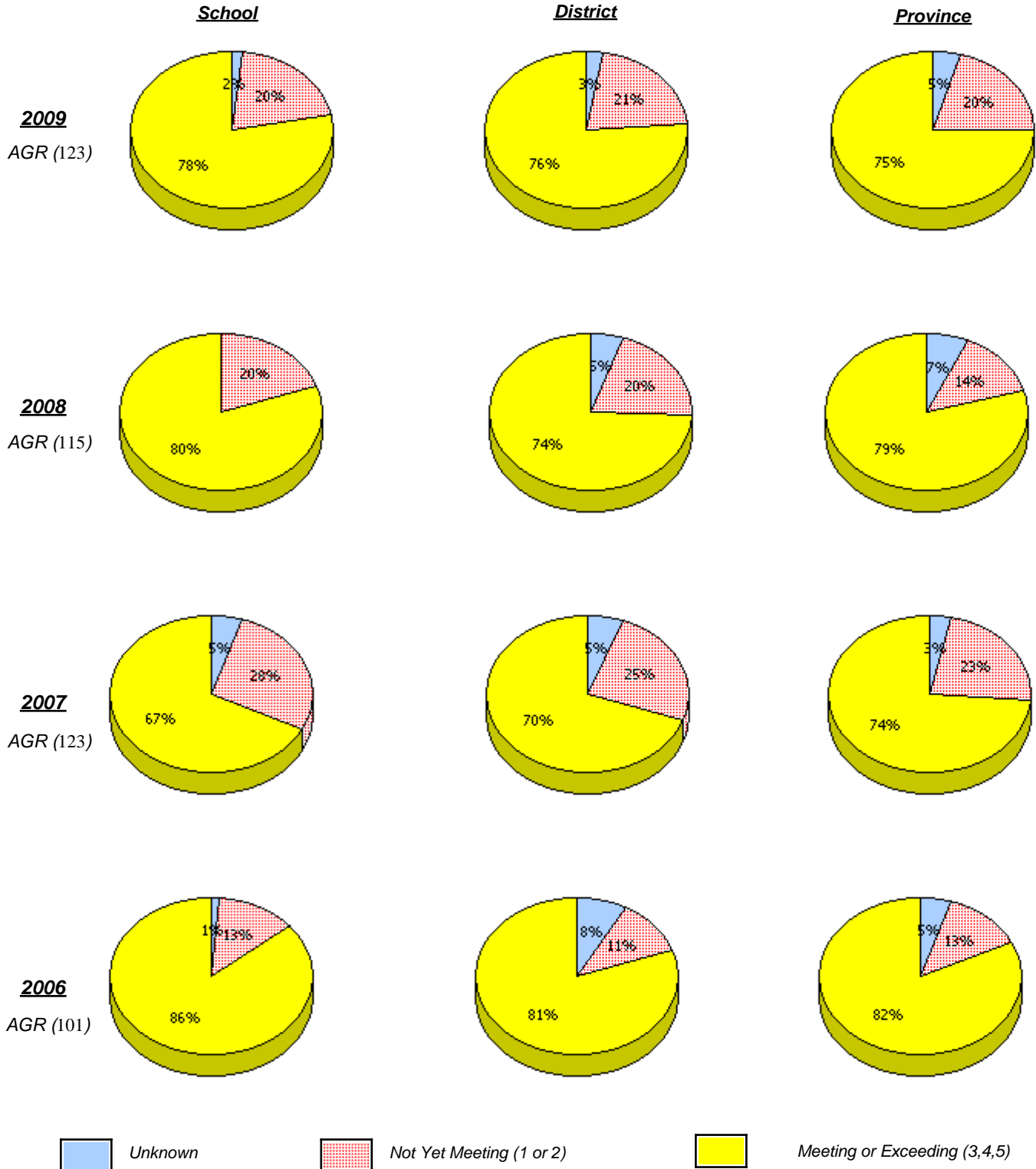
\* In some cases, CRT numbers may exceed AGR numbers based on late enrolments. Pie chart is based on the number of students who wrote the CRT.

\* Reading score is composite of Information, Visual, and Poet.

District 1 - Labrador

School #: 381      J.R. Smallwood Middle School

***Demand Writing***



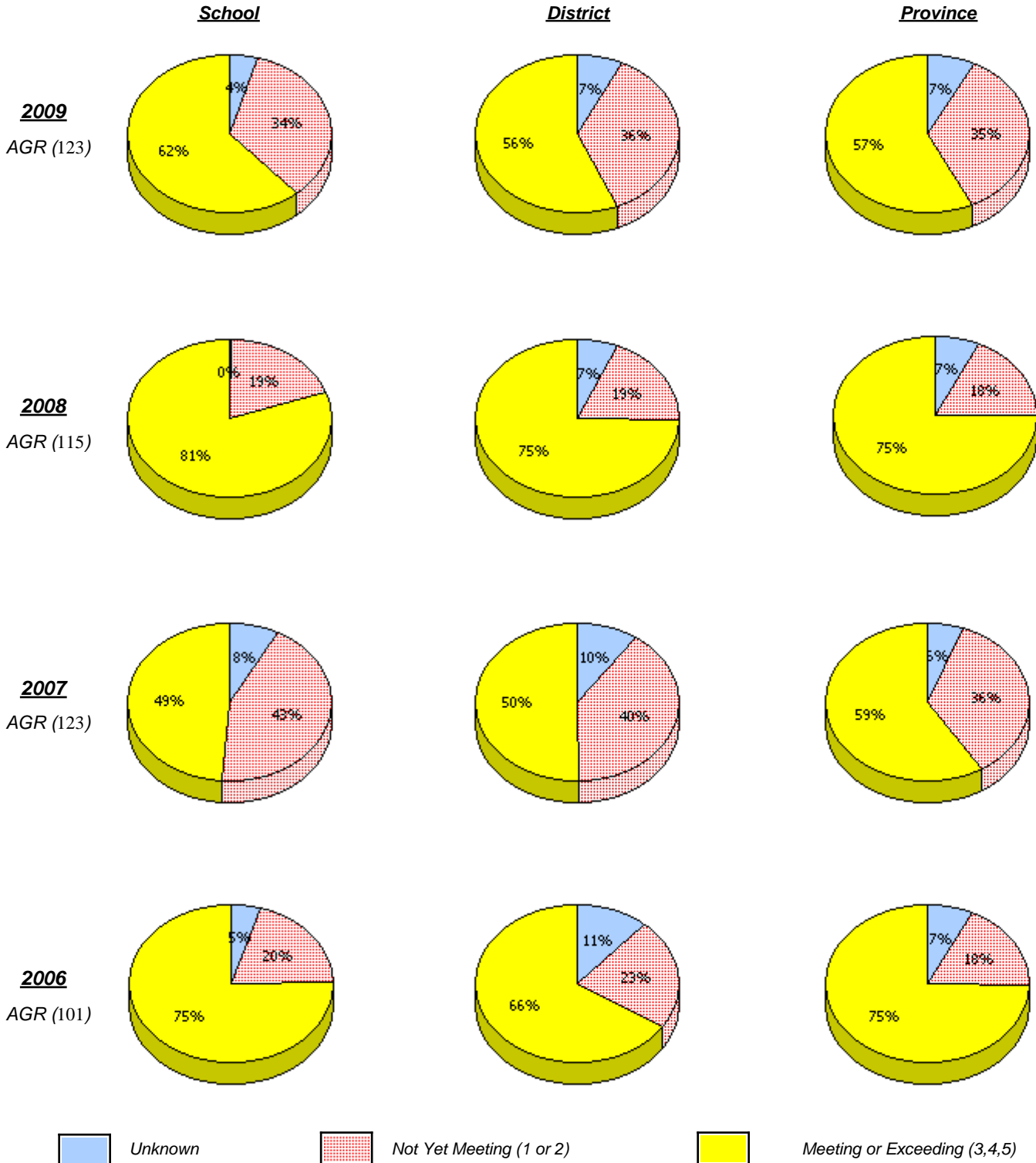
\* In some cases, CRT numbers may exceed AGR numbers based on late enrolments. Pie chart is based on the number of students who wrote the CRT.

\* Reading score is composite of Information, Visual, and Poet.

District 1 - Labrador

School #: 381      J.R. Smallwood Middle School

**Reading**



\* In some cases, CRT numbers may exceed AGR numbers based on late enrolments. Pie chart is based on the number of students who wrote the CRT.

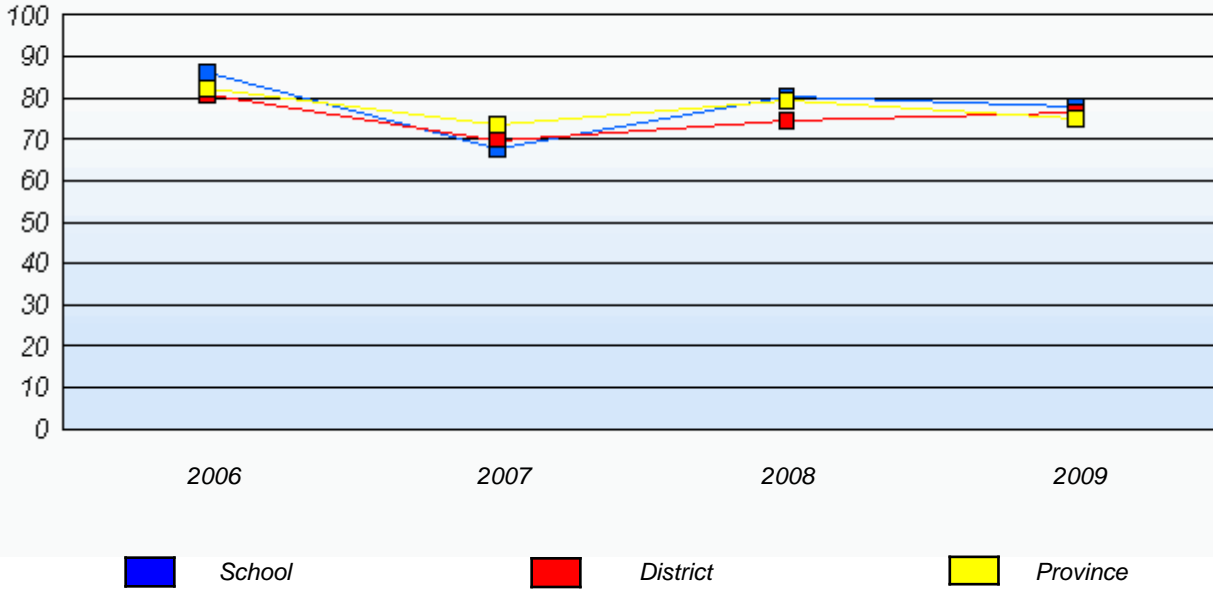
\* Reading score is composite of Information, Visual, and Poet.

District 1 - Labrador

School #: 381      J.R. Smallwood Middle School

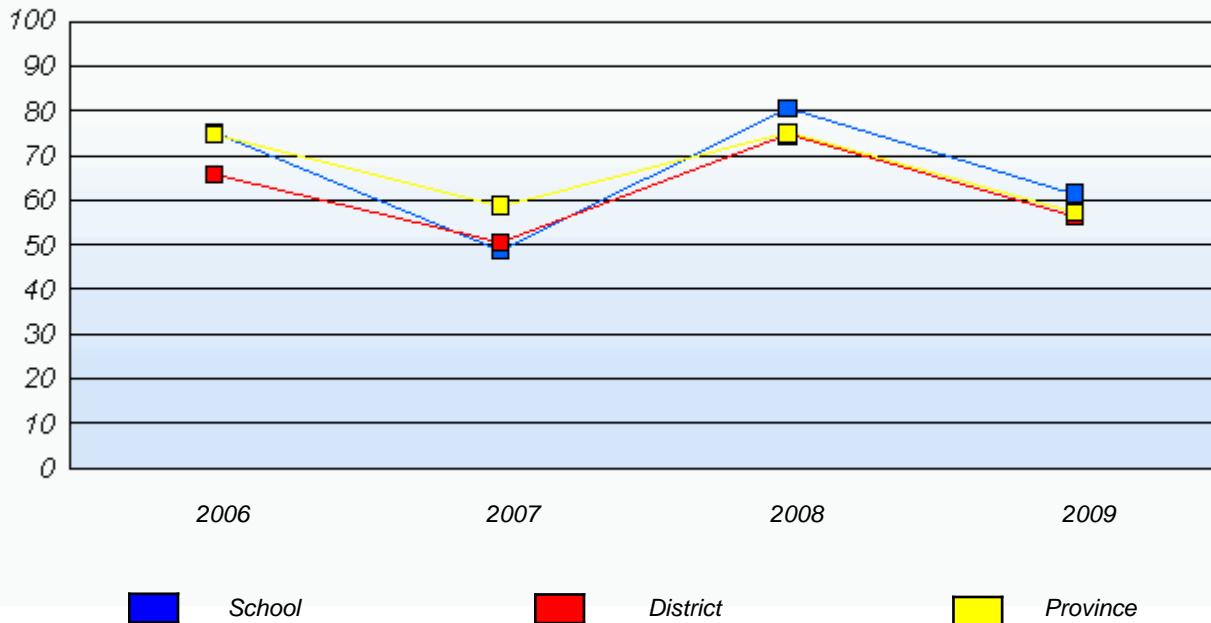
**Demand Writing**

*Percentage of students at level 3 or above (2006 - 2009)*



**Reading**

*Percentage of students at level 3 or above (2006 - 2009)*



\* In some cases, CRT numbers may exceed AGR numbers based on late enrolments. Pie chart is based on the number of students who wrote the CRT.

\* Reading score is composite of Information, Visual, and Poet.