

District 1 - Labrador

School #: 001 St. Peter's School

Demand Writing

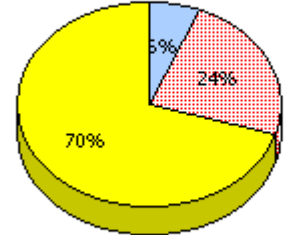
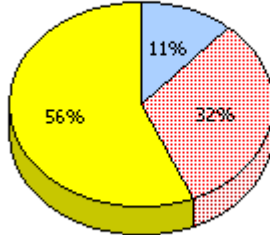
School

School data with 5 or fewer students withheld for reasons of confidentiality.

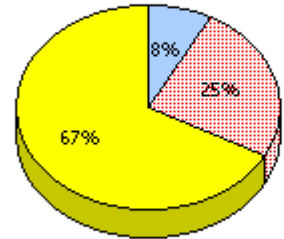
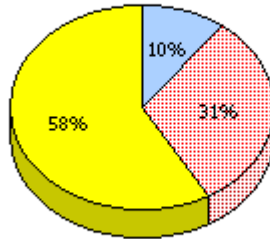
District

Province

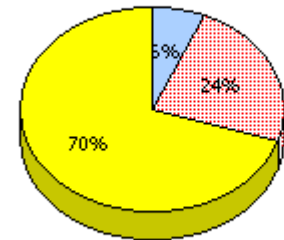
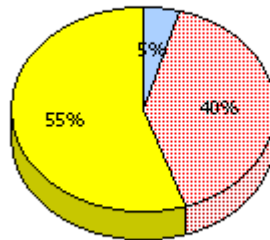
2009
AGR (1)



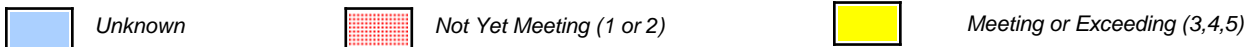
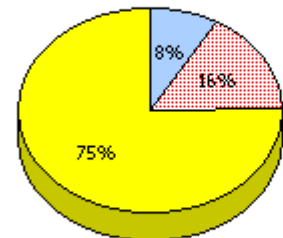
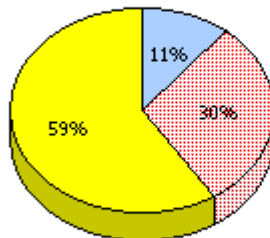
2008
AGR (5)



2007
AGR (2)



2006
AGR (3)



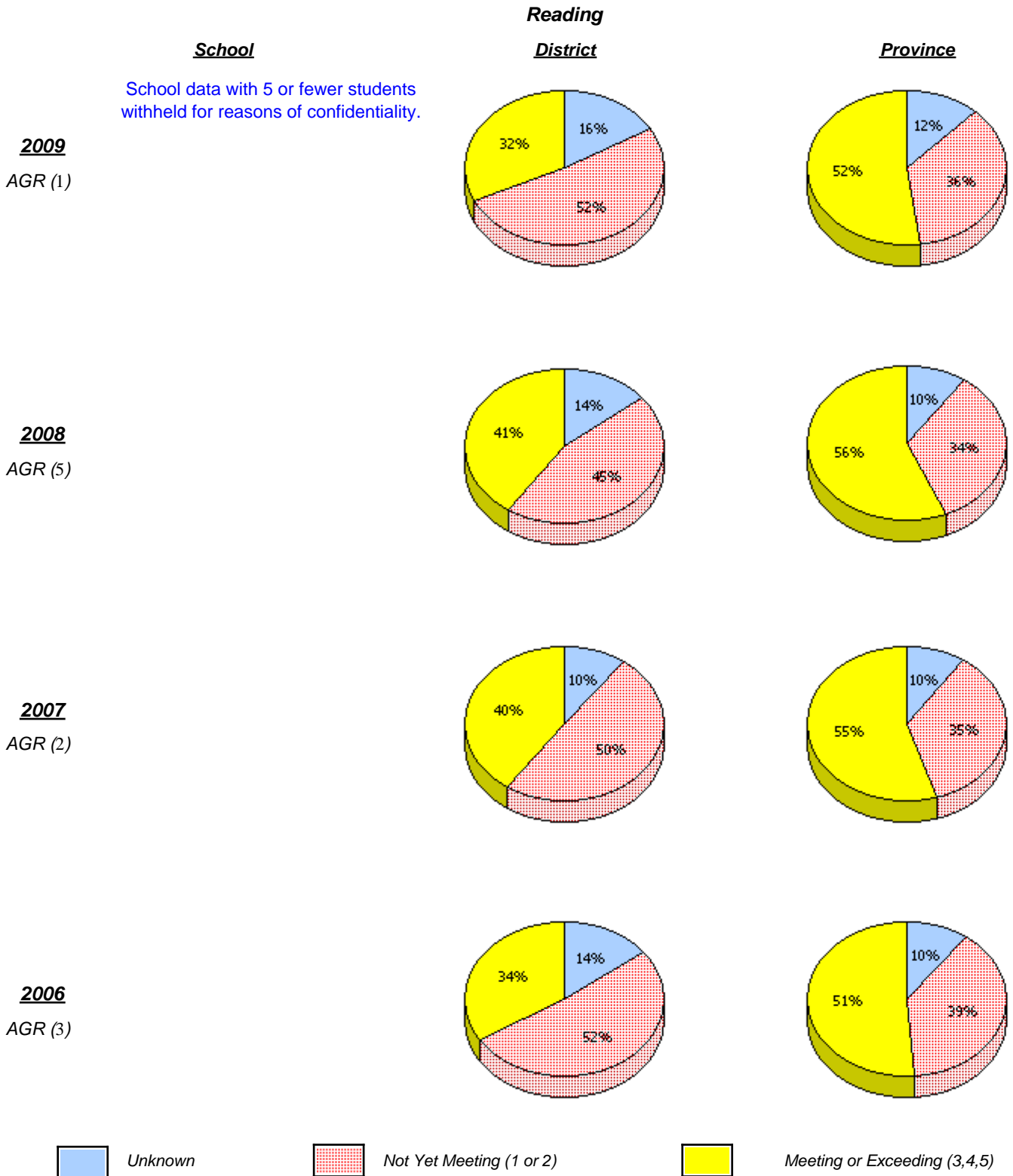
* In some cases, CRT numbers may exceed AGR numbers based on late enrolments. Pie chart is based on the number of students who wrote the CRT.

* French Immersion students not included

* Reading score is composite of Information, Visual, and Poet.

District 1 - Labrador

School #: 001 St. Peter's School



* In some cases, CRT numbers may exceed AGR numbers based on late enrolments. Pie chart is based on the number of students who wrote the CRT.

* French Immersion students not included

* Reading score is composite of Information, Visual, and Poet.

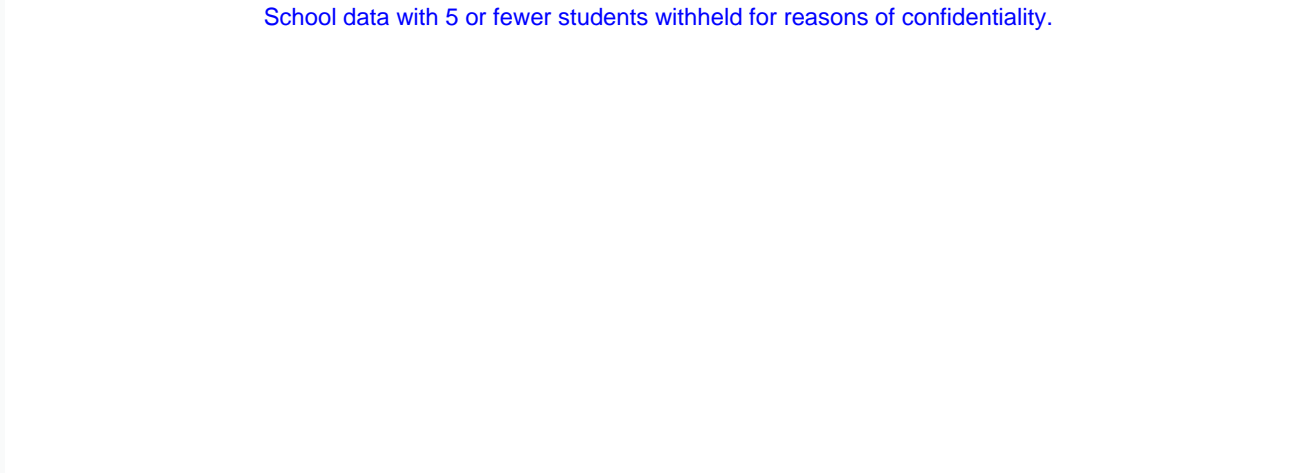
District 1 - Labrador

School #: 001 St. Peter's School

Demand Writing

Percentage of students at level 3 or above (2006 - 2009)

School data with 5 or fewer students withheld for reasons of confidentiality.




2006

2007

2008

2009

 School

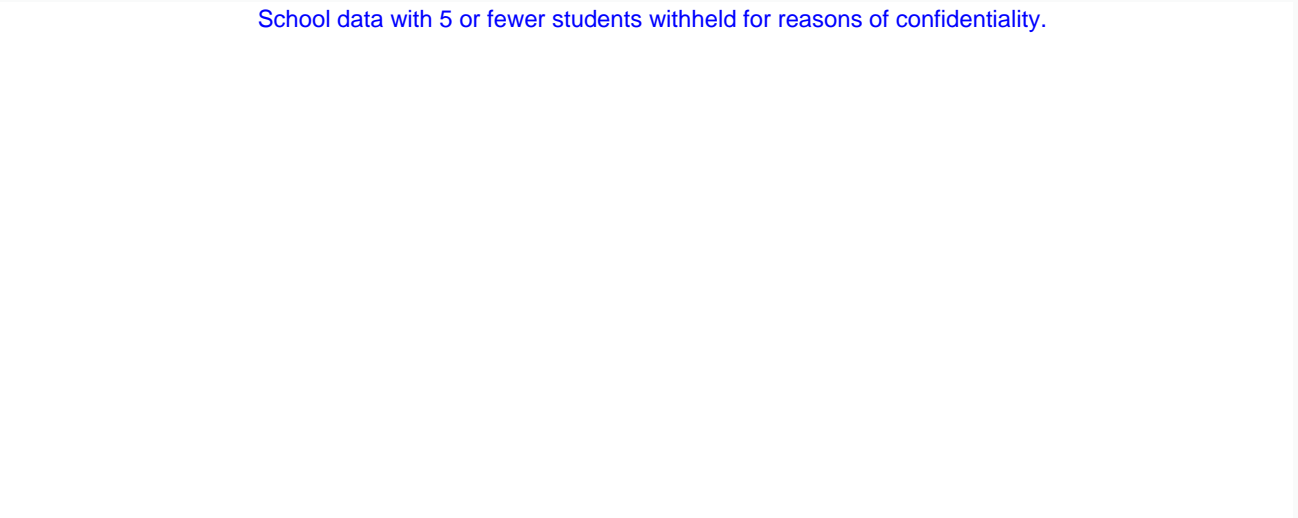
 District

 Province

Reading

Percentage of students at level 3 or above (2006 - 2009)

School data with 5 or fewer students withheld for reasons of confidentiality.





2006

2007

2008

2009

 School

 District

 Province

* In some cases, CRT numbers may exceed AGR numbers based on late enrolments. Pie chart is based on the number of students who wrote the CRT.

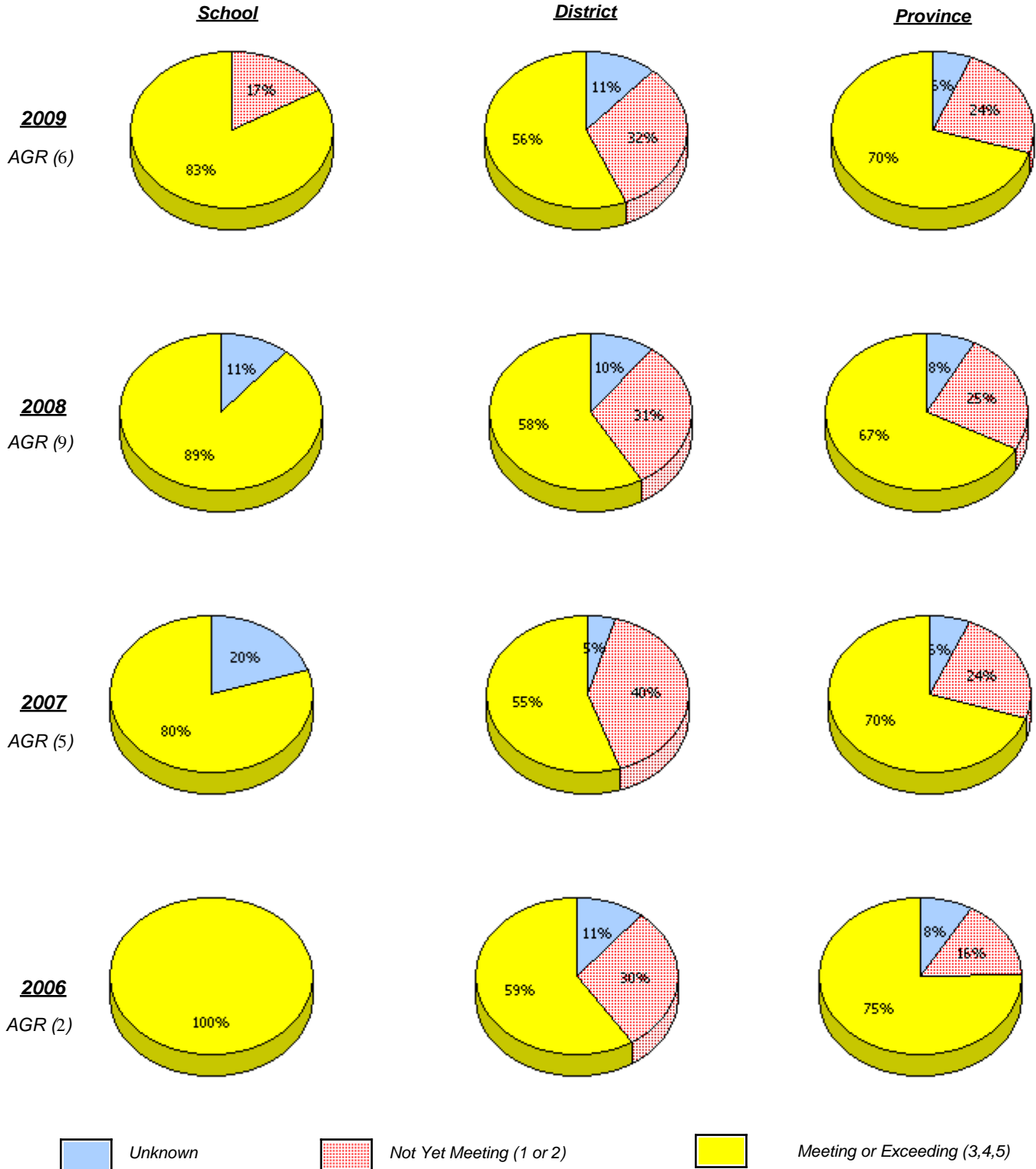
* French Immersion students not included

* Reading score is composite of Information, Visual, and Poet.

District 1 - Labrador

School #: 002 Henry Gordon Academy

Demand Writing



* In some cases, CRT numbers may exceed AGR numbers based on late enrolments. Pie chart is based on the number of students who wrote the CRT.

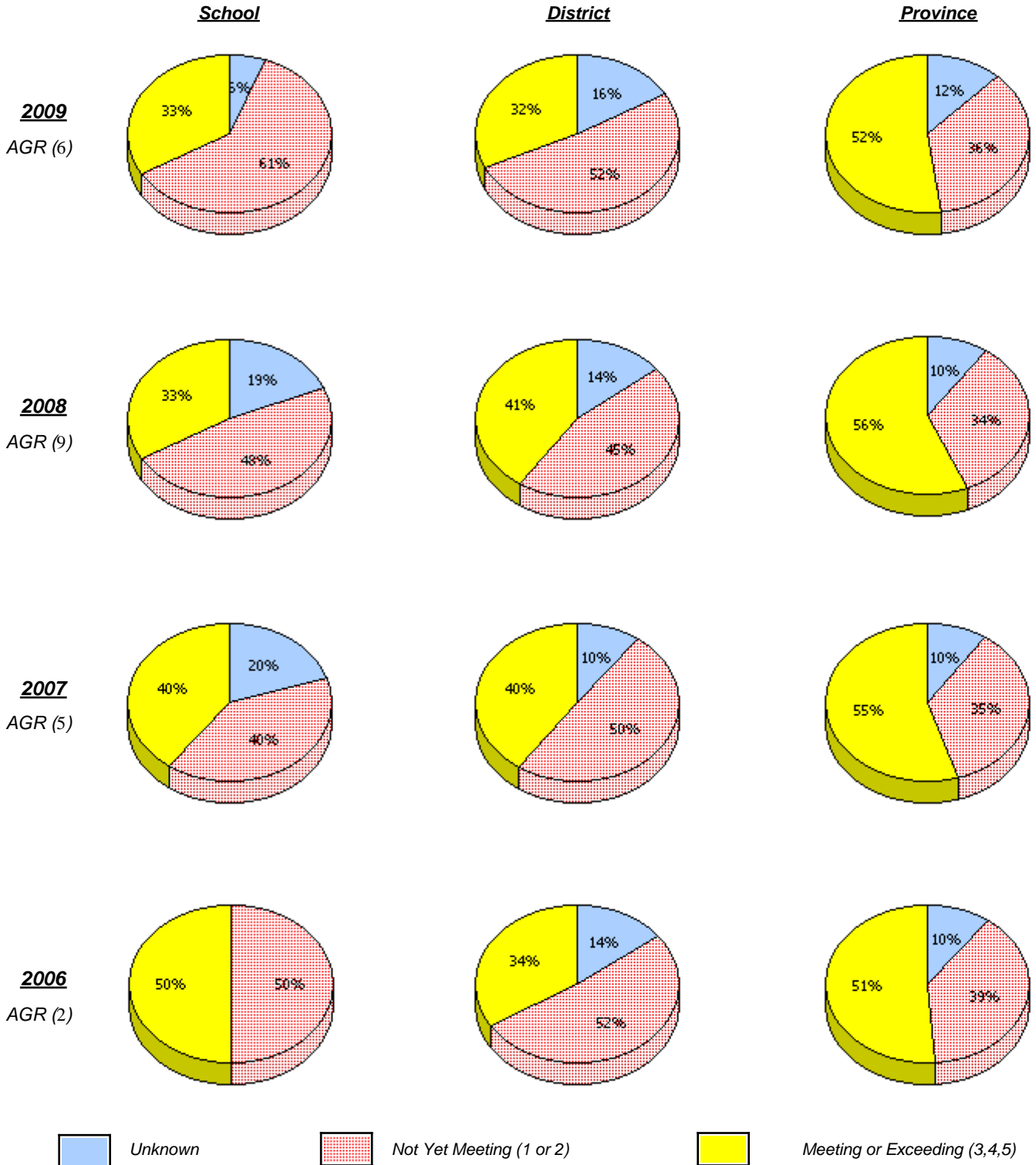
* French Immersion students not included

* Reading score is composite of Information, Visual, and Poet.

District 1 - Labrador

School #: 002 Henry Gordon Academy

Reading



* In some cases, CRT numbers may exceed AGR numbers based on late enrolments. Pie chart is based on the number of students who wrote the CRT.

* French Immersion students not included

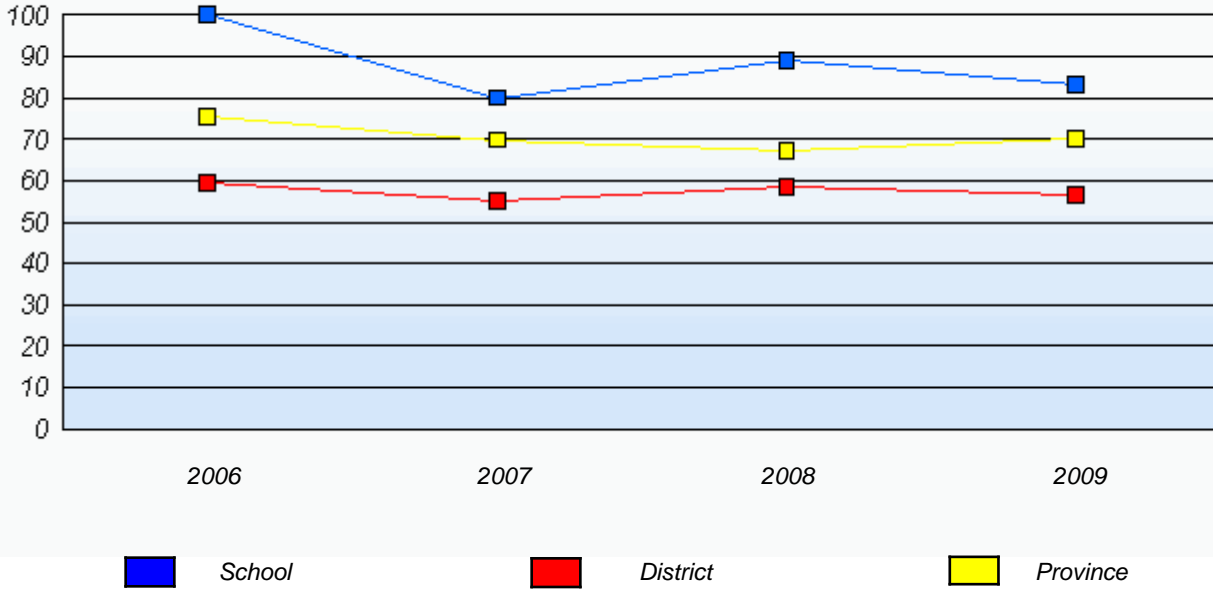
* Reading score is composite of Information, Visual, and Poet.

District 1 - Labrador

School #: 002 Henry Gordon Academy

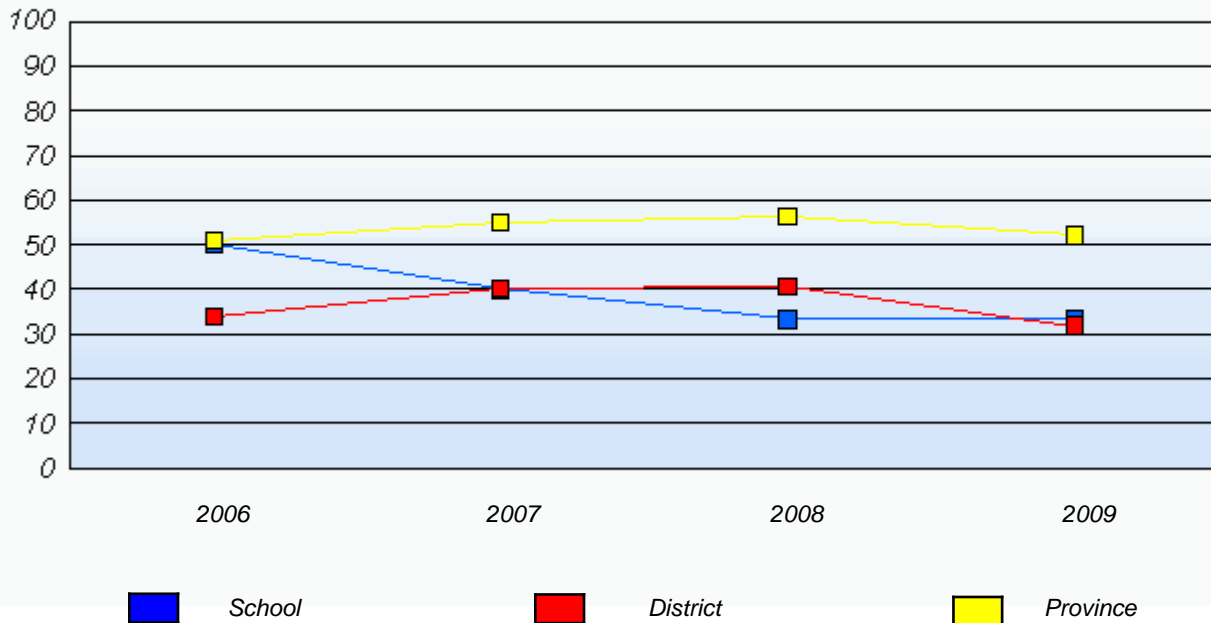
Demand Writing

Percentage of students at level 3 or above (2006 - 2009)



Reading

Percentage of students at level 3 or above (2006 - 2009)



* In some cases, CRT numbers may exceed AGR numbers based on late enrolments. Pie chart is based on the number of students who wrote the CRT.

* French Immersion students not included

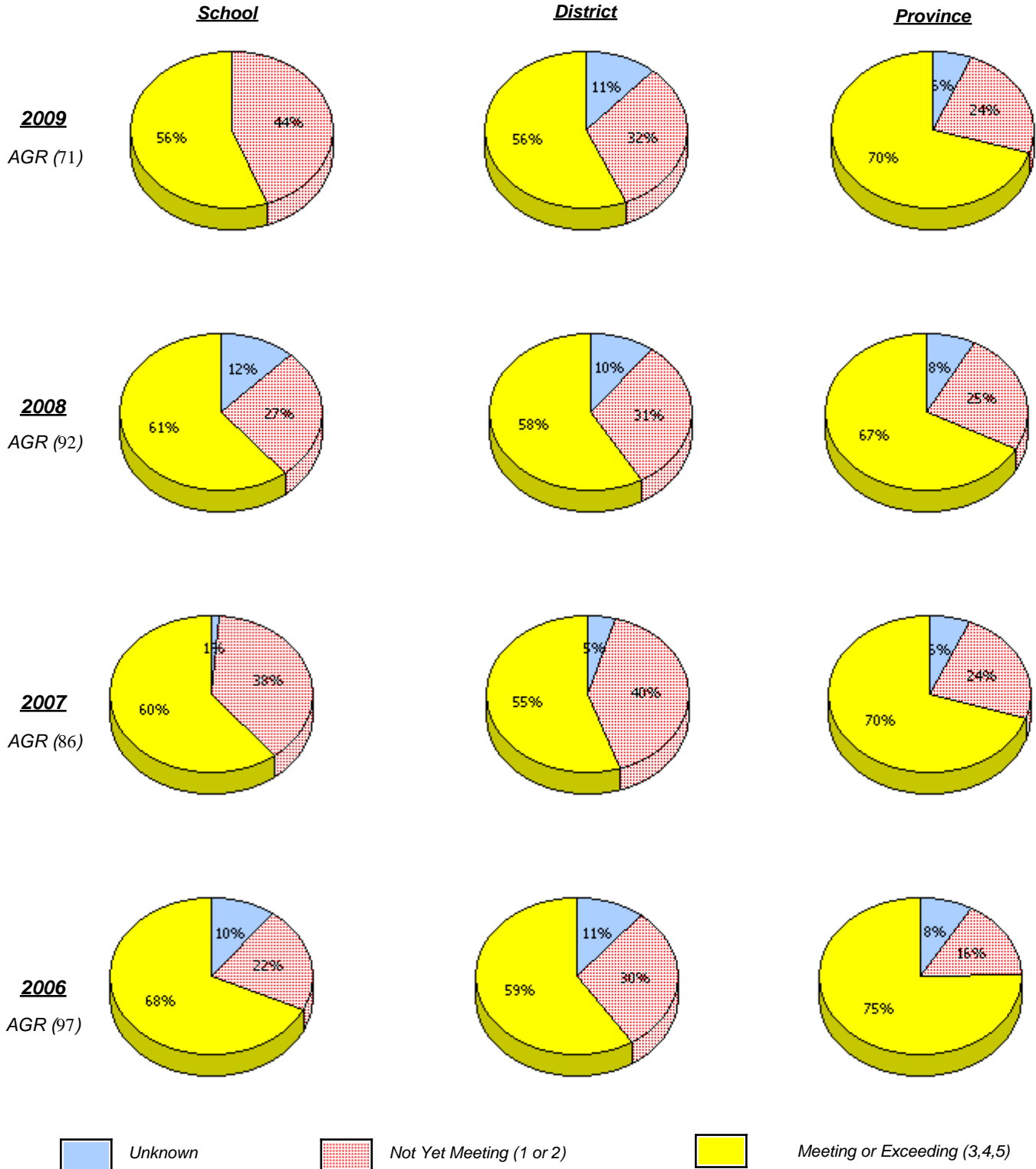
* Reading score is composite of Information, Visual, and Poet.

**Primary English Language Arts
4 Year Provincial Assessment, June 2009
School Report Rubrics
(average scores)**

District 1 - Labrador

School #: 005 Peacock Primary School

Demand Writing



* In some cases, CRT numbers may exceed AGR numbers based on late enrolments. Pie chart is based on the number of students who wrote the CRT.

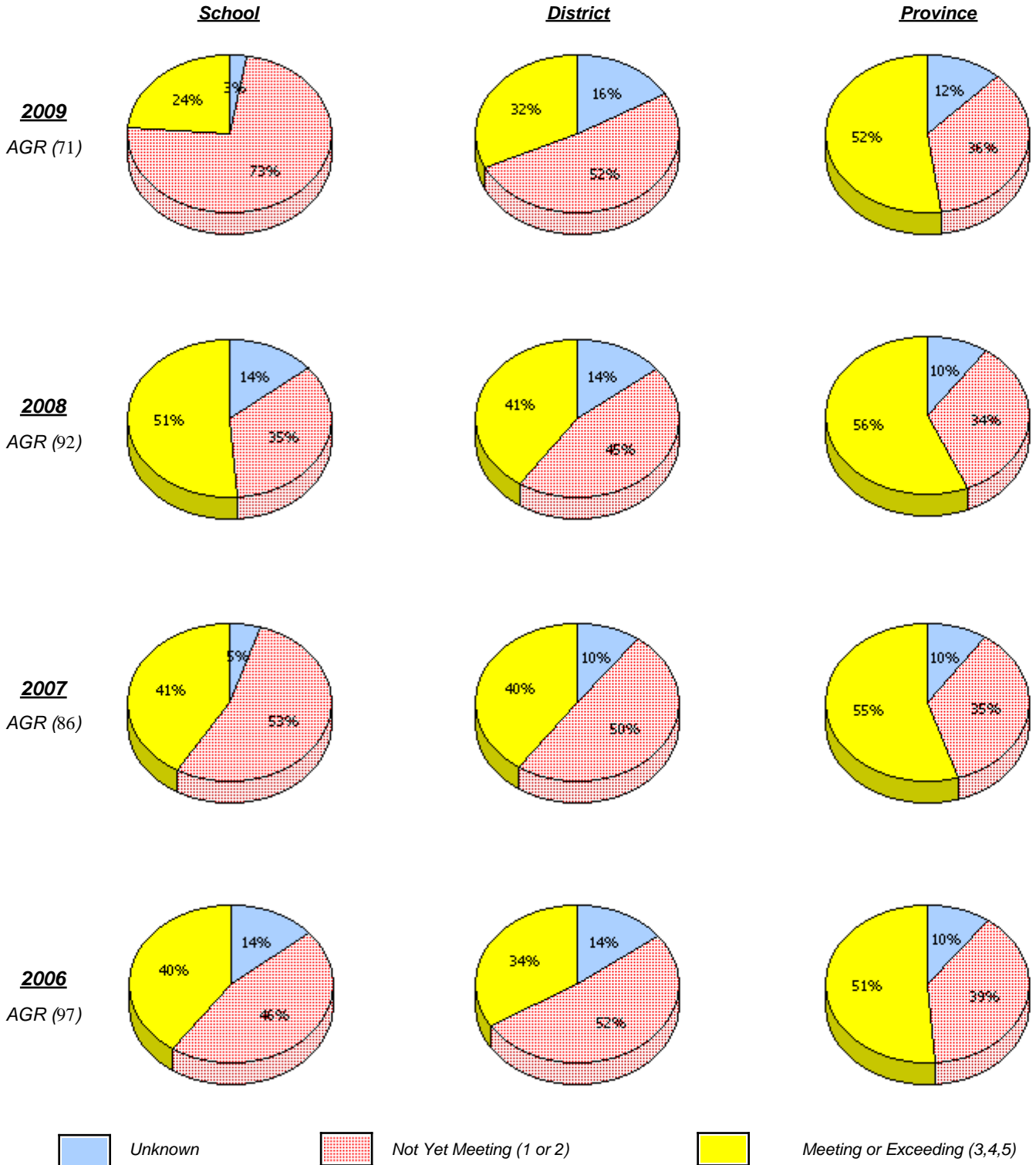
* French Immersion students not included

* Reading score is composite of Information, Visual, and Poet.

District 1 - Labrador

School #: 005 Peacock Primary School

Reading



* In some cases, CRT numbers may exceed AGR numbers based on late enrolments. Pie chart is based on the number of students who wrote the CRT.

* French Immersion students not included

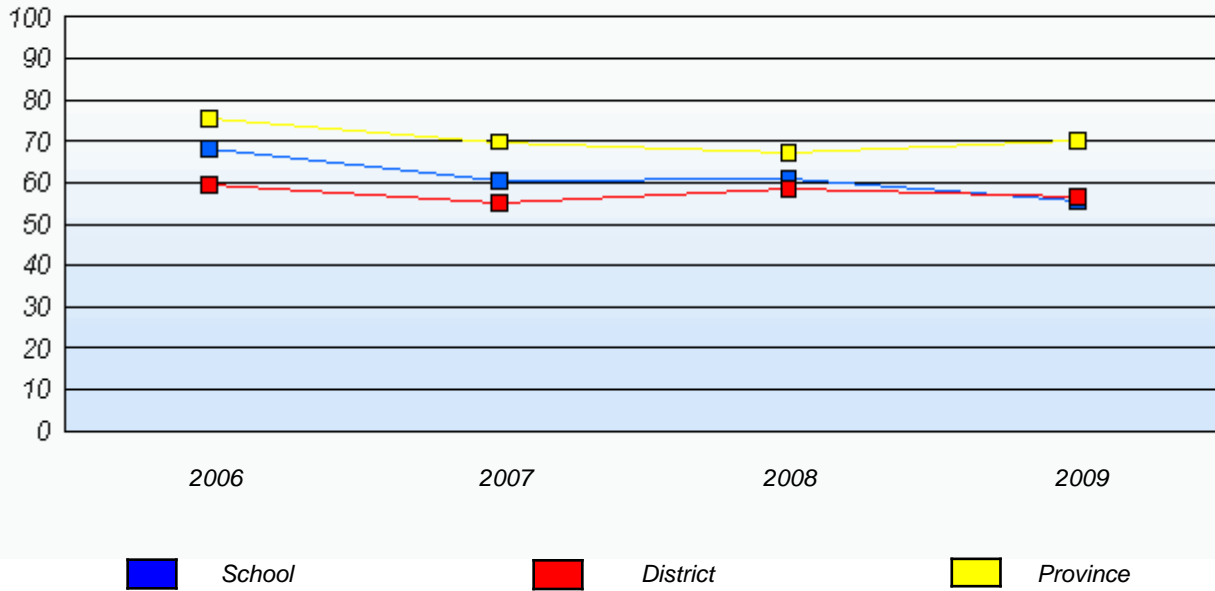
* Reading score is composite of Information, Visual, and Poet.

District 1 - Labrador

School #: 005 Peacock Primary School

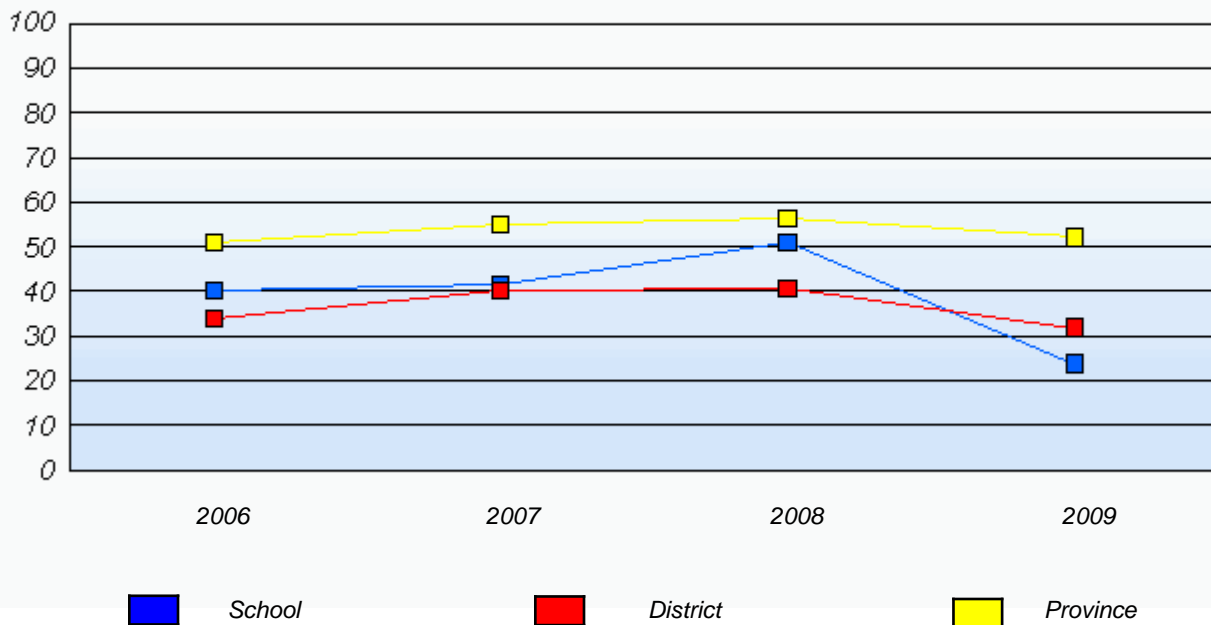
Demand Writing

Percentage of students at level 3 or above (2006 - 2009)



Reading

Percentage of students at level 3 or above (2006 - 2009)



* In some cases, CRT numbers may exceed AGR numbers based on late enrolments. Pie chart is based on the number of students who wrote the CRT.

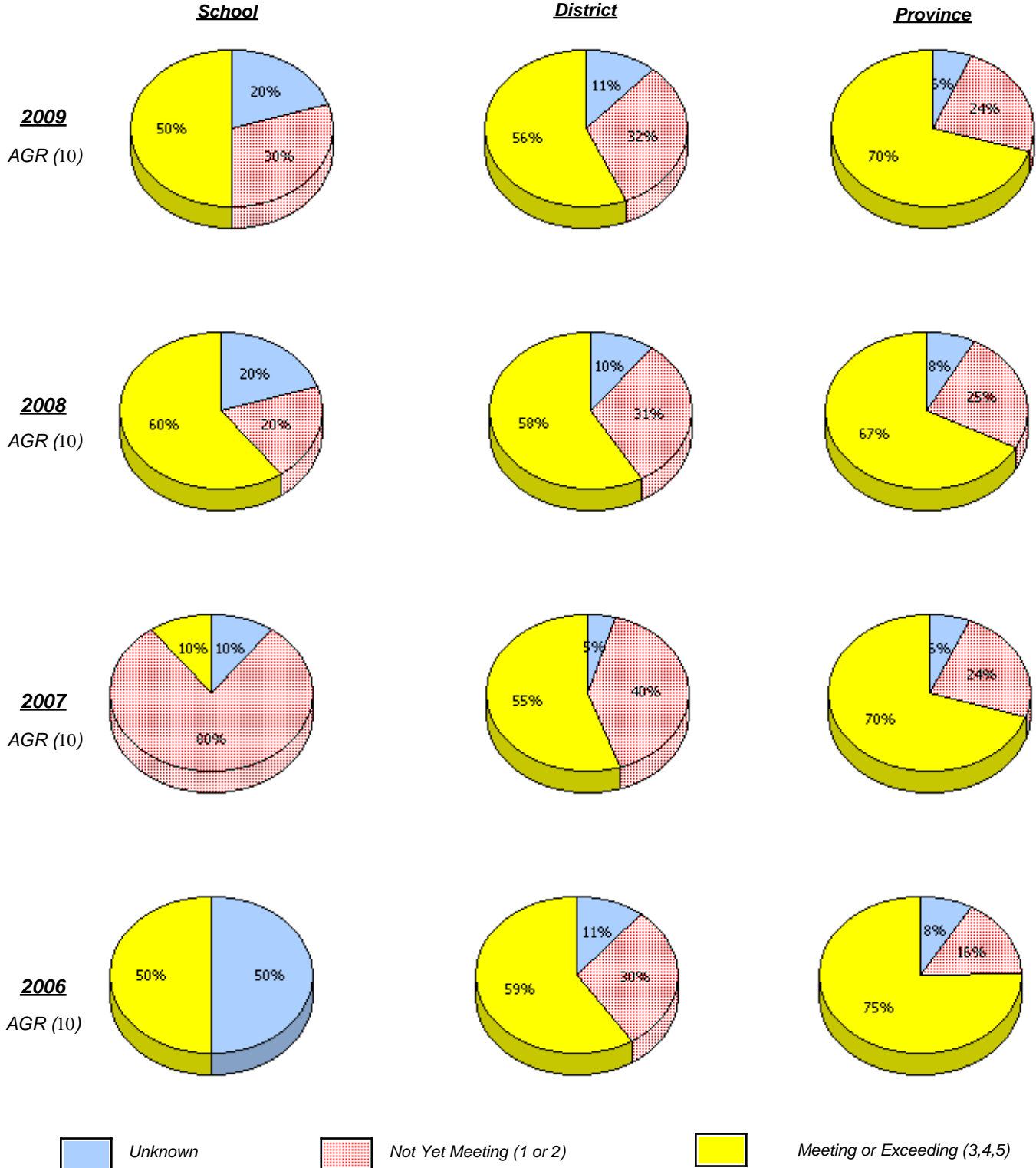
* French Immersion students not included

* Reading score is composite of Information, Visual, and Poet.

District 1 - Labrador

School #: 007 Amos Comenius Memorial School

Demand Writing



* In some cases, CRT numbers may exceed AGR numbers based on late enrolments. Pie chart is based on the number of students who wrote the CRT.

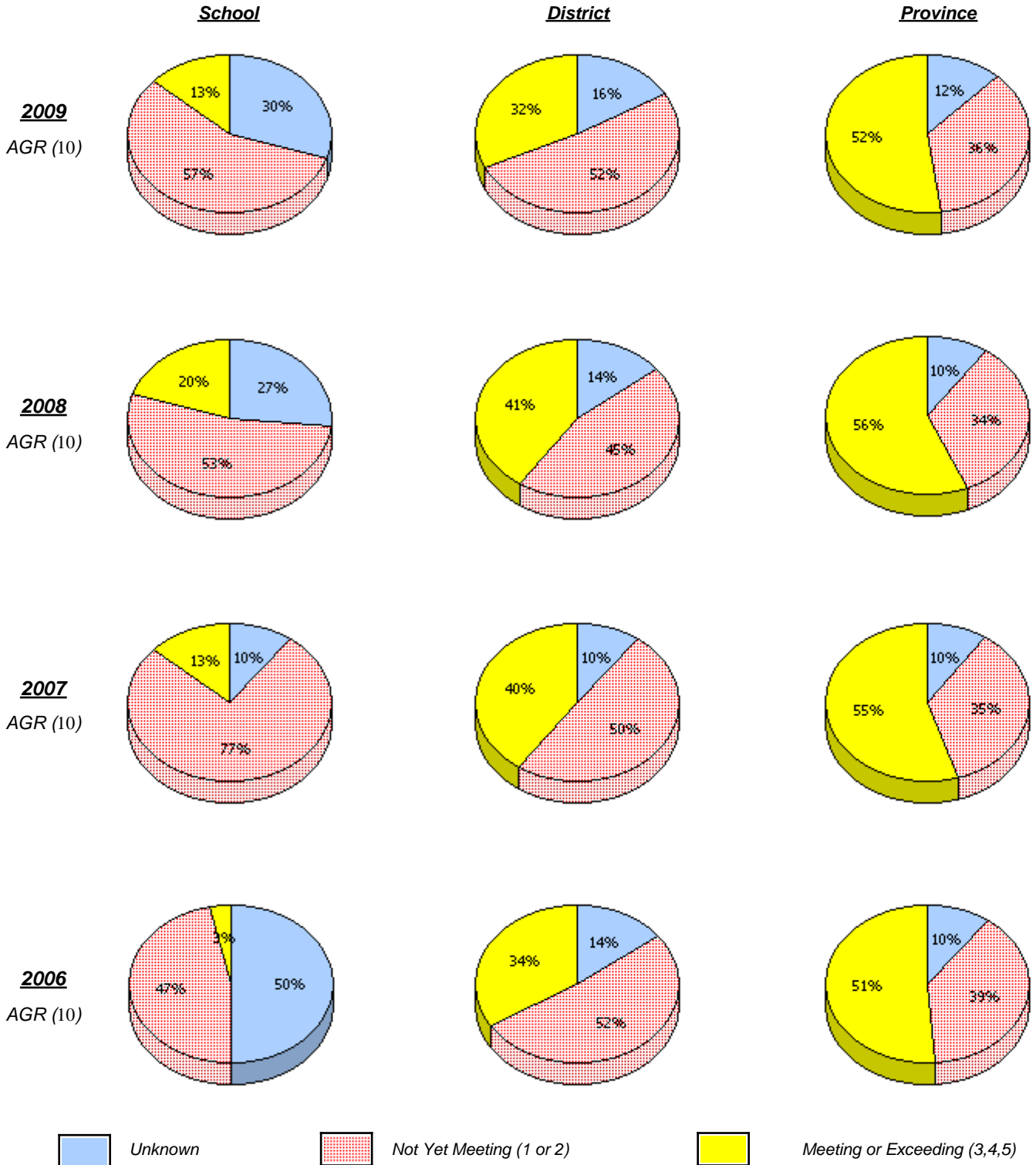
* French Immersion students not included

* Reading score is composite of Information, Visual, and Poet.

District 1 - Labrador

School #: 007 Amos Comenius Memorial School

Reading



* In some cases, CRT numbers may exceed AGR numbers based on late enrolments. Pie chart is based on the number of students who wrote the CRT.

* French Immersion students not included

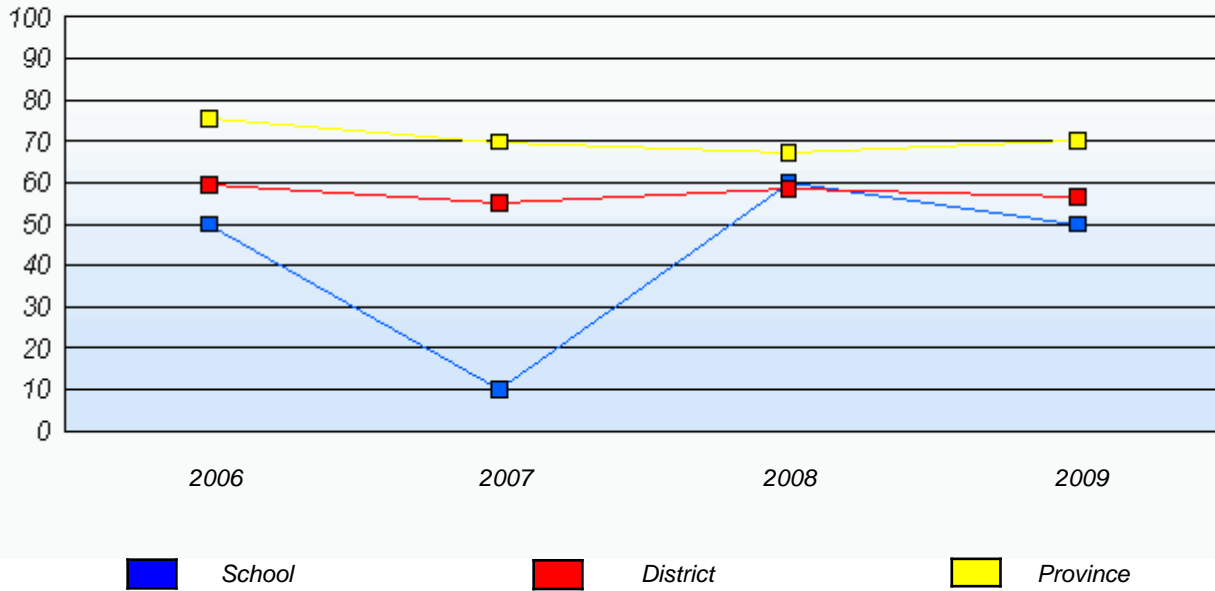
* Reading score is composite of Information, Visual, and Poet.

District 1 - Labrador

School #: 007 Amos Comenius Memorial School

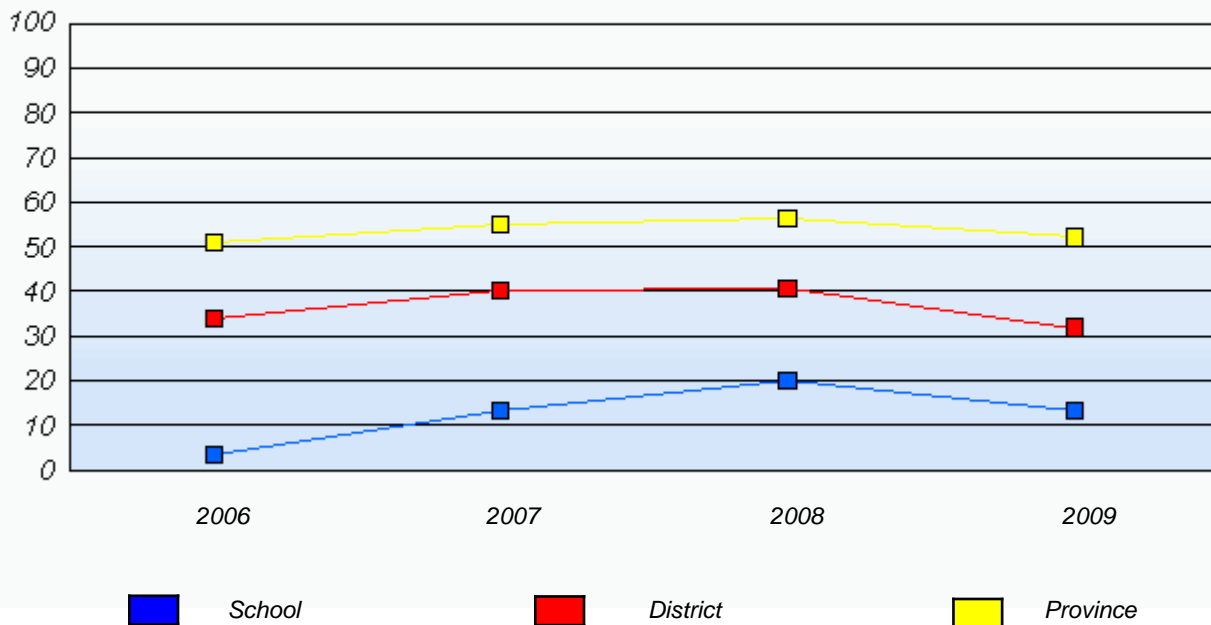
Demand Writing

Percentage of students at level 3 or above (2006 - 2009)



Reading

Percentage of students at level 3 or above (2006 - 2009)



* In some cases, CRT numbers may exceed AGR numbers based on late enrolments. Pie chart is based on the number of students who wrote the CRT.

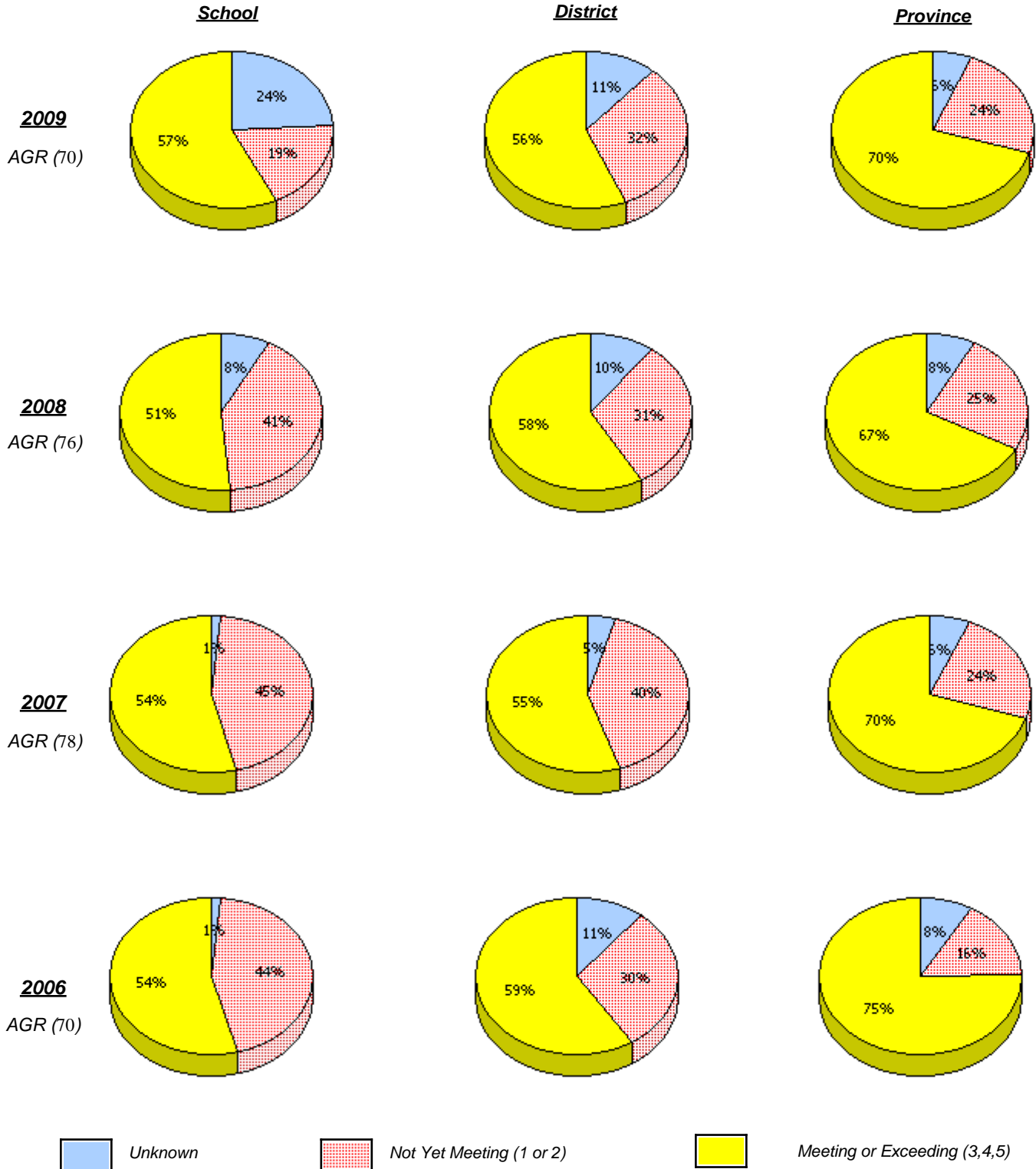
* French Immersion students not included

* Reading score is composite of Information, Visual, and Poet.

District 1 - Labrador

School #: 008 A. P. Low Primary

Demand Writing



* In some cases, CRT numbers may exceed AGR numbers based on late enrolments. Pie chart is based on the number of students who wrote the CRT.

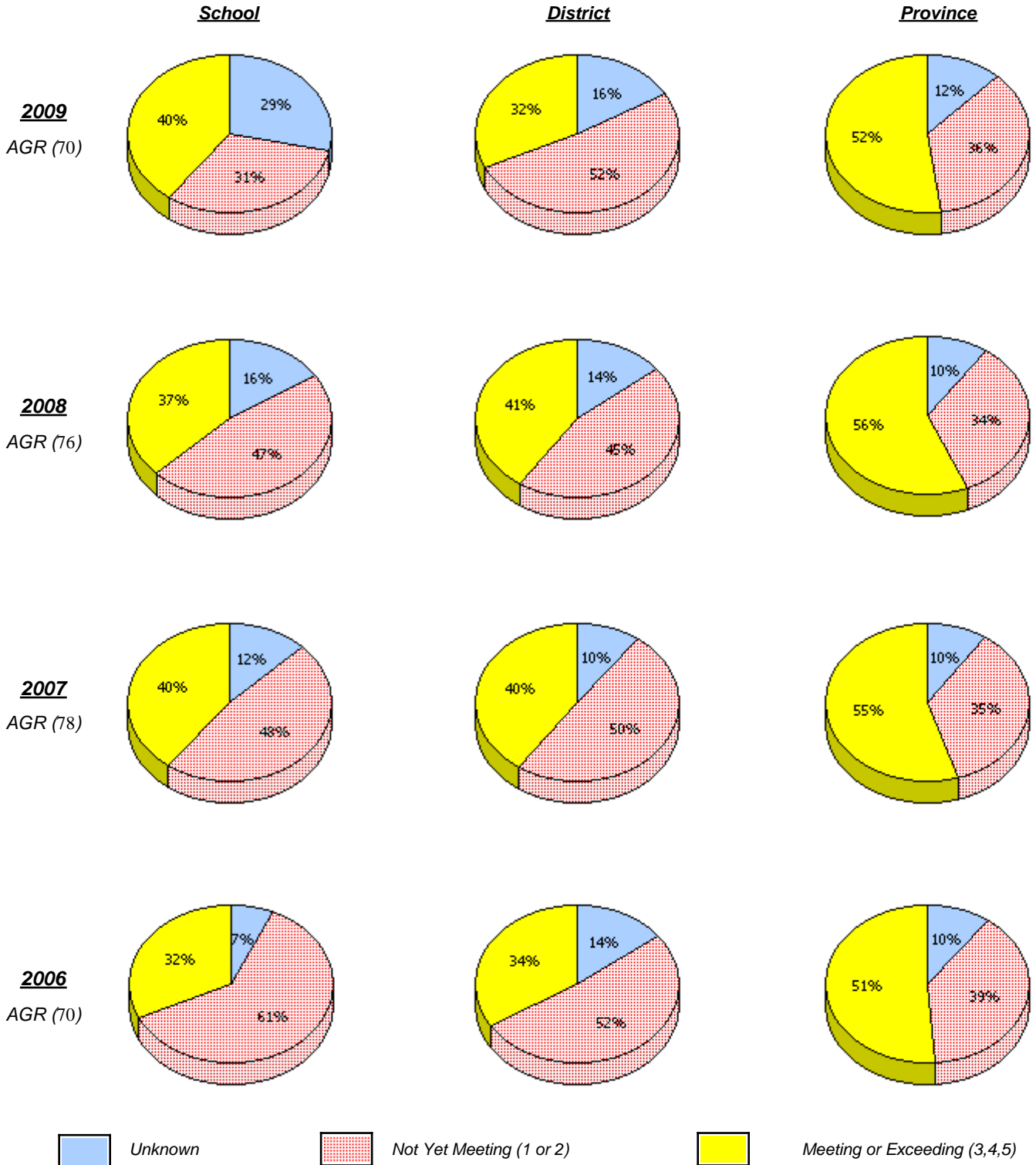
* French Immersion students not included

* Reading score is composite of Information, Visual, and Poet.

District 1 - Labrador

School #: 008 A. P. Low Primary

Reading



* In some cases, CRT numbers may exceed AGR numbers based on late enrolments. Pie chart is based on the number of students who wrote the CRT.

* French Immersion students not included

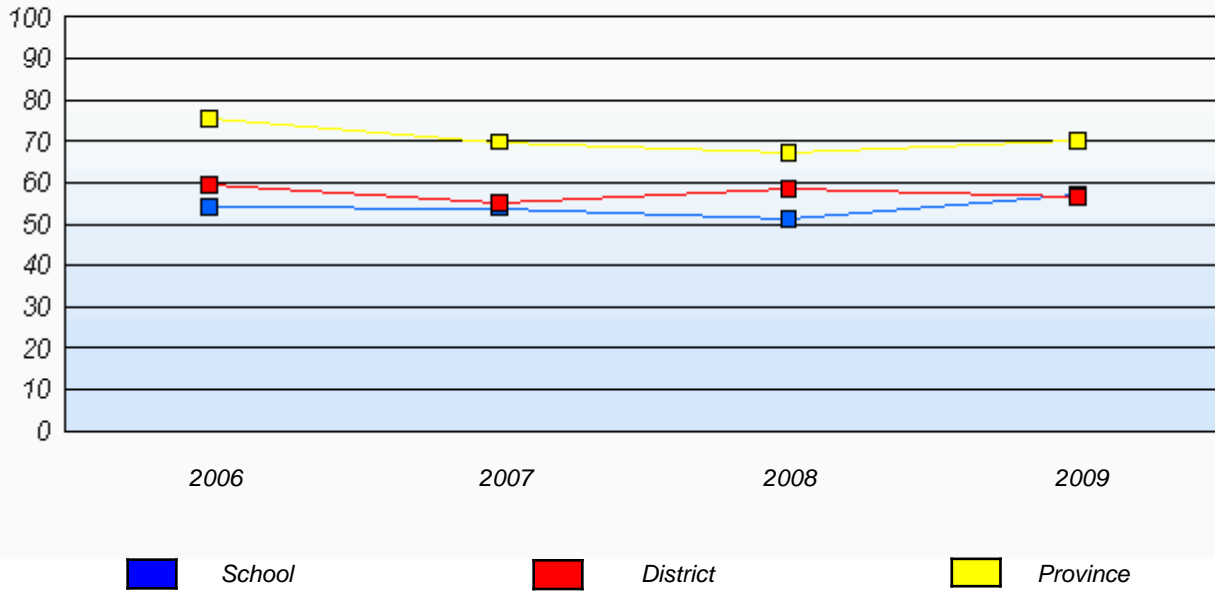
* Reading score is composite of Information, Visual, and Poet.

District 1 - Labrador

School #: 008 A. P. Low Primary

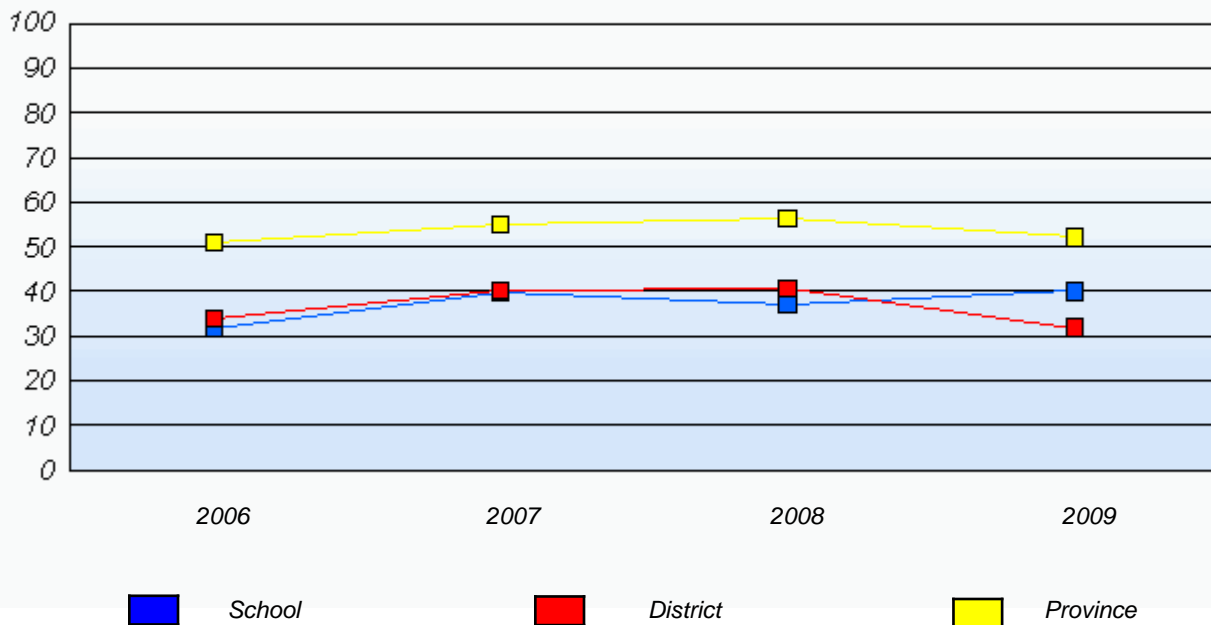
Demand Writing

Percentage of students at level 3 or above (2006 - 2009)



Reading

Percentage of students at level 3 or above (2006 - 2009)



* In some cases, CRT numbers may exceed AGR numbers based on late enrolments. Pie chart is based on the number of students who wrote the CRT.

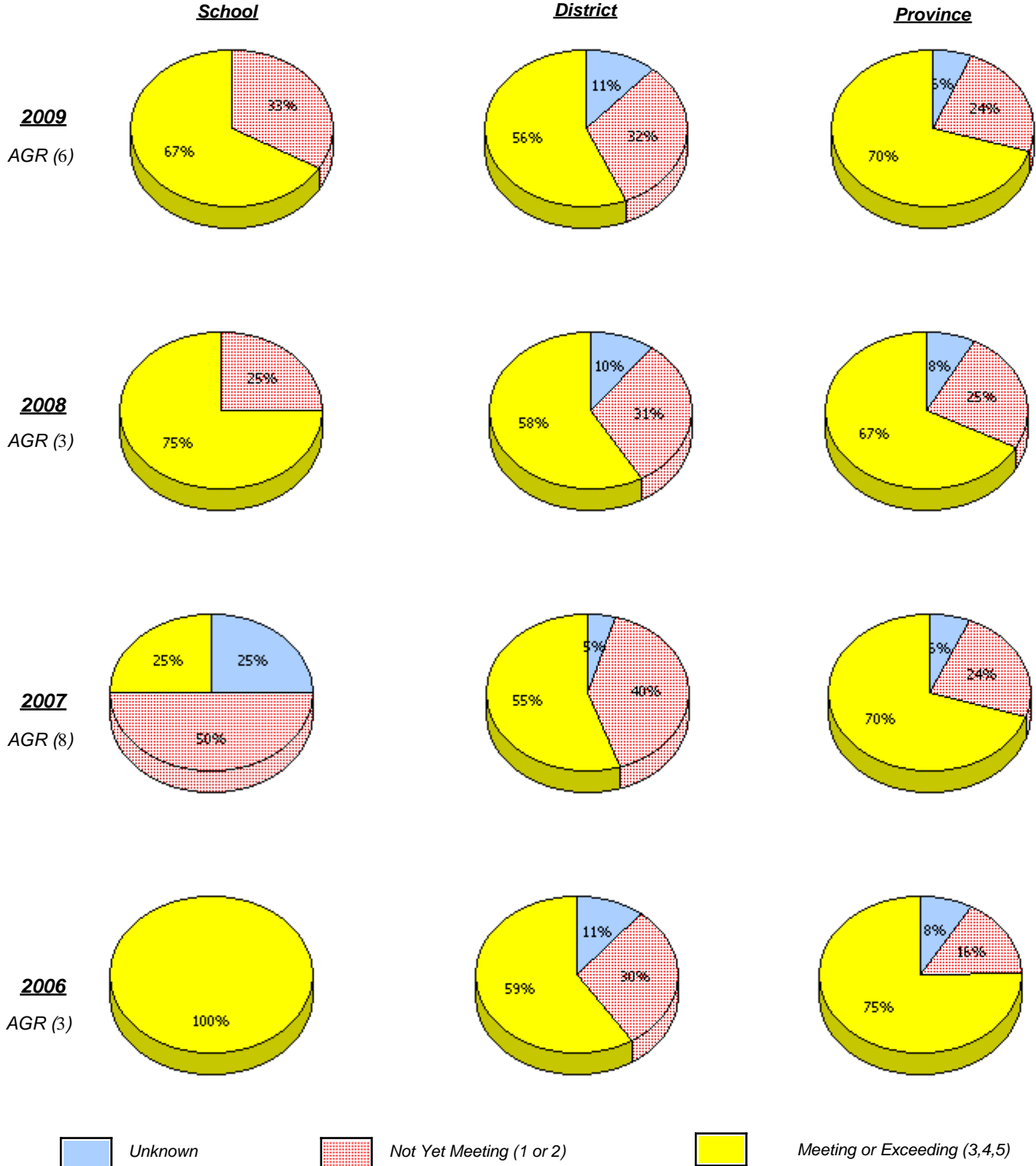
* French Immersion students not included

* Reading score is composite of Information, Visual, and Poet.

District 1 - Labrador

School #: 012 J.C. Erhardt Memorial School

Demand Writing



* In some cases, CRT numbers may exceed AGR numbers based on late enrolments. Pie chart is based on the number of students who wrote the CRT.

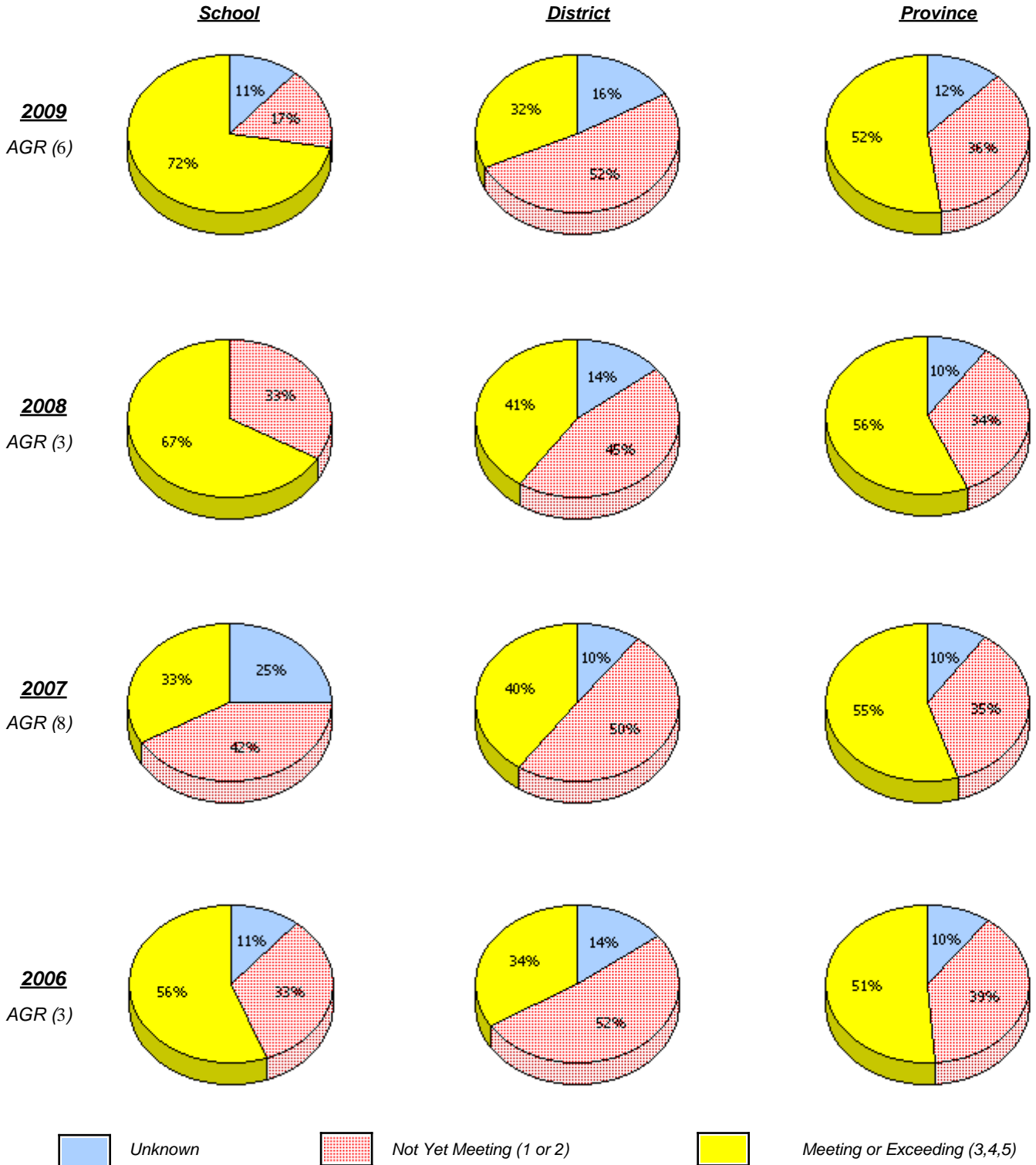
* French Immersion students not included

* Reading score is composite of Information, Visual, and Poet.

District 1 - Labrador

School #: 012 J.C. Erhardt Memorial School

Reading



* In some cases, CRT numbers may exceed AGR numbers based on late enrolments. Pie chart is based on the number of students who wrote the CRT.

* French Immersion students not included

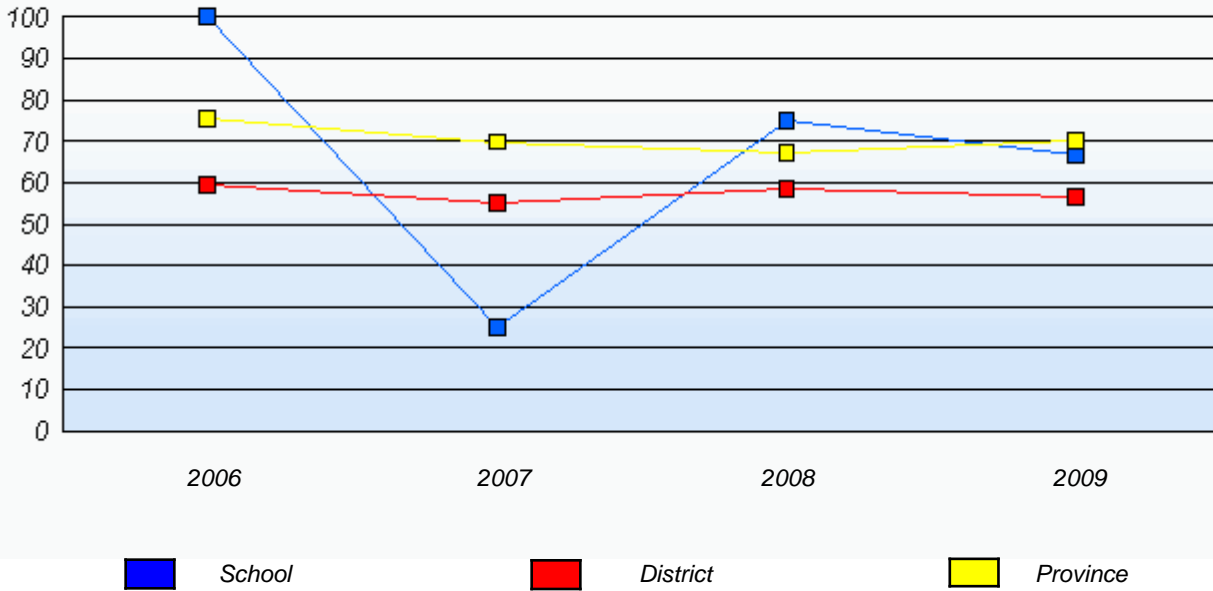
* Reading score is composite of Information, Visual, and Poet.

District 1 - Labrador

School #: 012 J.C. Erhardt Memorial School

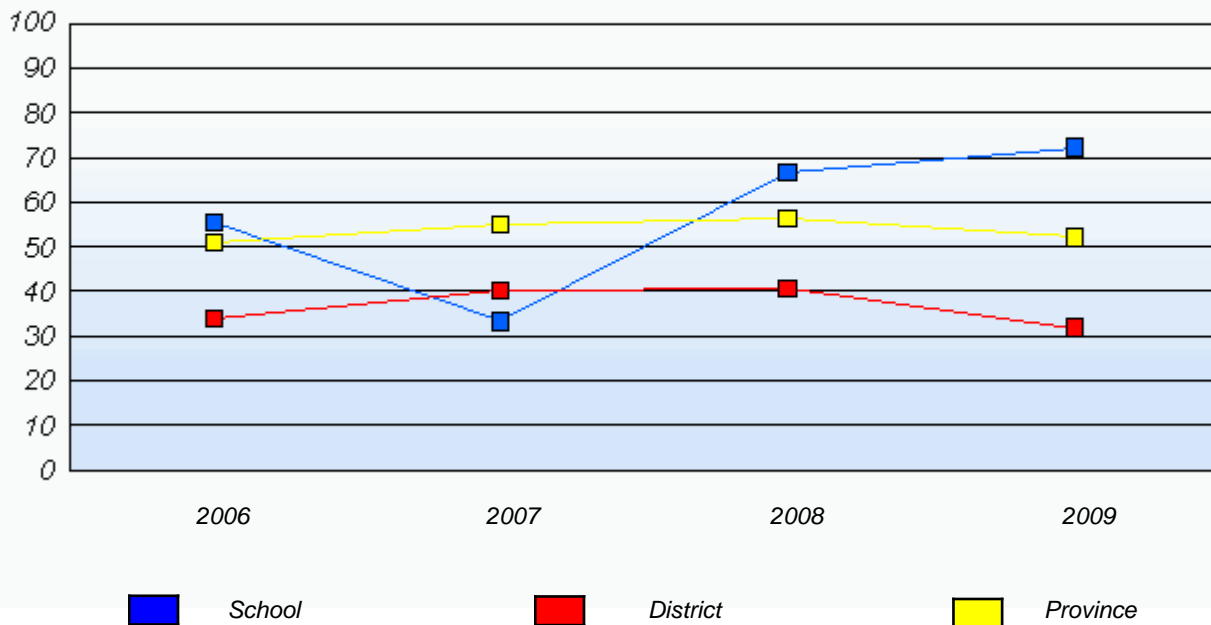
Demand Writing

Percentage of students at level 3 or above (2006 - 2009)



Reading

Percentage of students at level 3 or above (2006 - 2009)



* In some cases, CRT numbers may exceed AGR numbers based on late enrolments. Pie chart is based on the number of students who wrote the CRT.

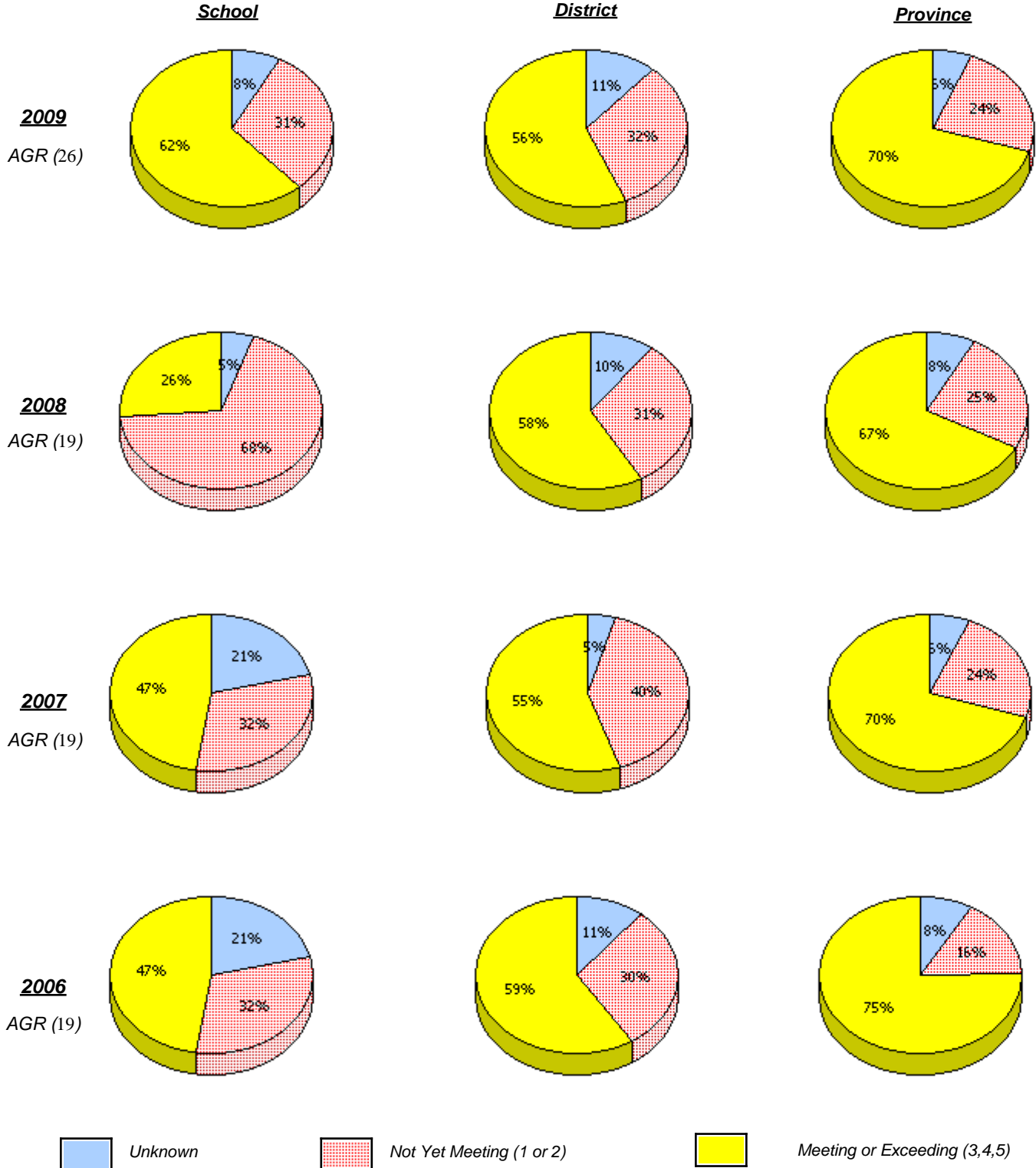
* French Immersion students not included

* Reading score is composite of Information, Visual, and Poet.

District 1 - Labrador

School #: 014 Jens Haven Memorial

Demand Writing



* In some cases, CRT numbers may exceed AGR numbers based on late enrolments. Pie chart is based on the number of students who wrote the CRT.

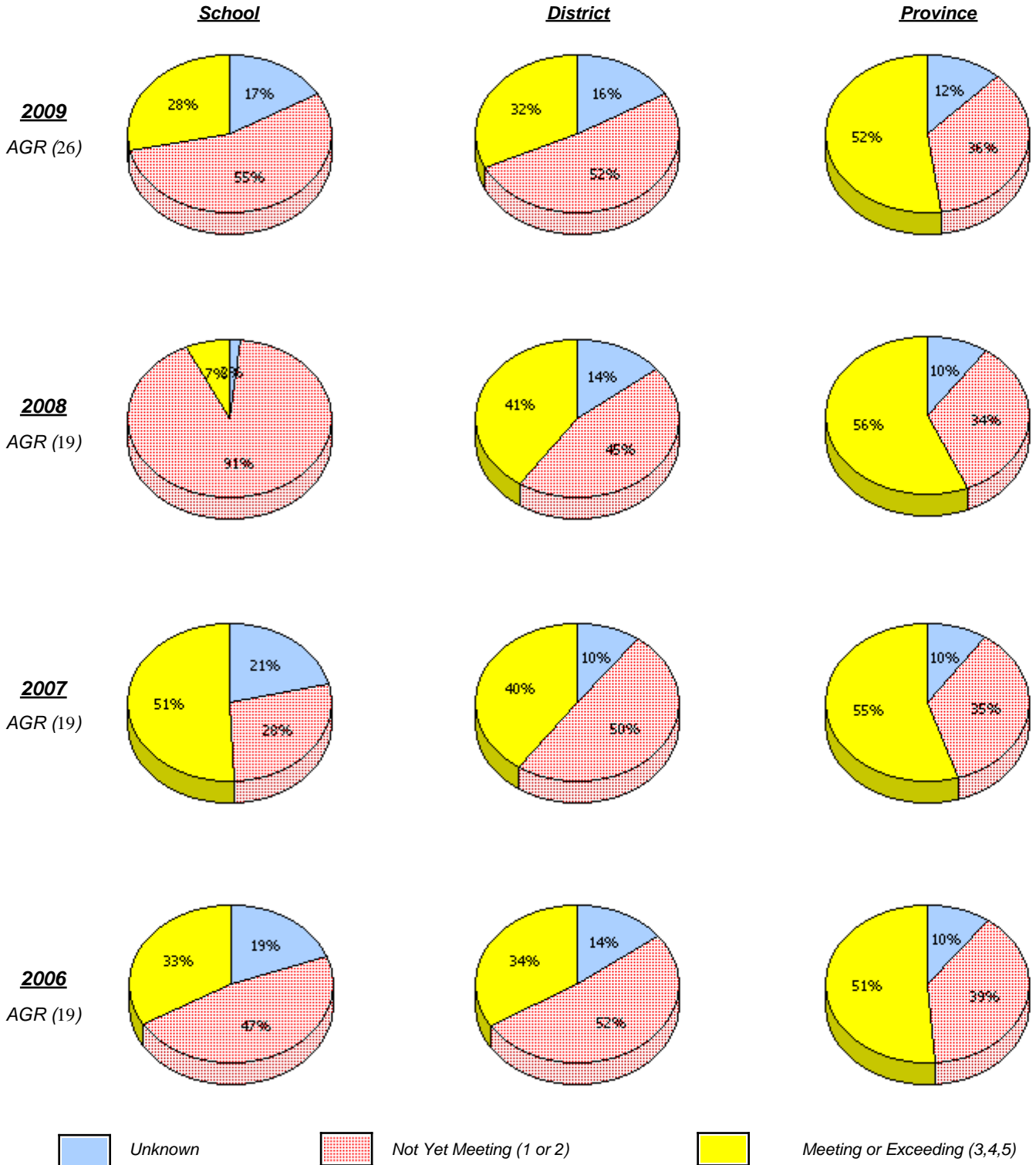
* French Immersion students not included

* Reading score is composite of Information, Visual, and Poet.

District 1 - Labrador

School #: 014 Jens Haven Memorial

Reading



* In some cases, CRT numbers may exceed AGR numbers based on late enrolments. Pie chart is based on the number of students who wrote the CRT.

* French Immersion students not included

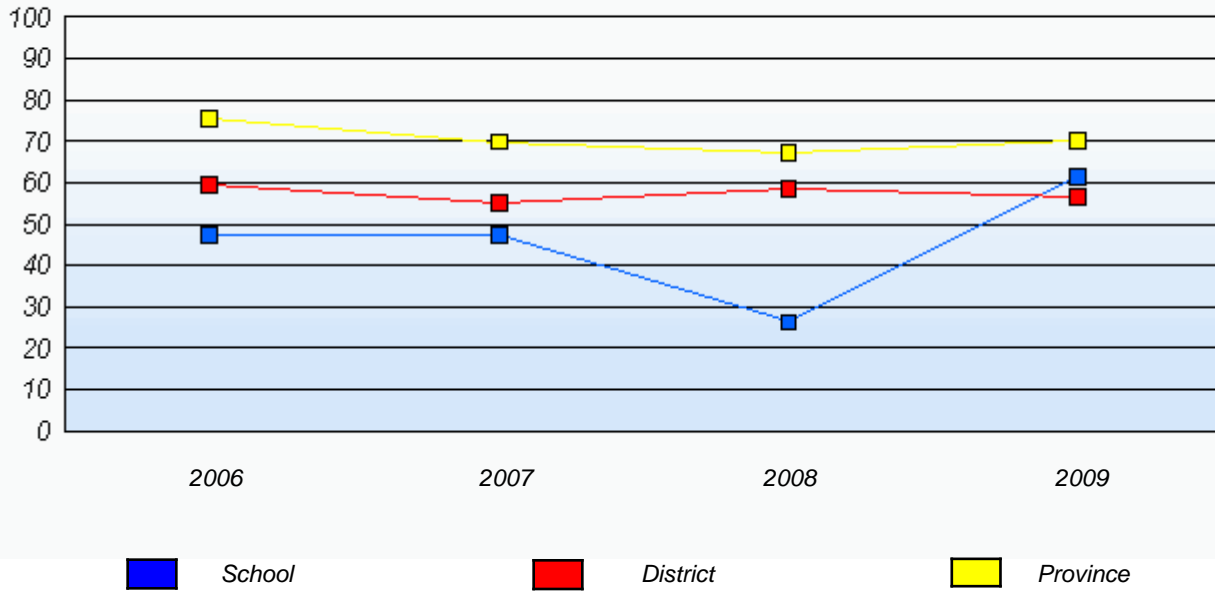
* Reading score is composite of Information, Visual, and Poet.

District 1 - Labrador

School #: 014 Jens Haven Memorial

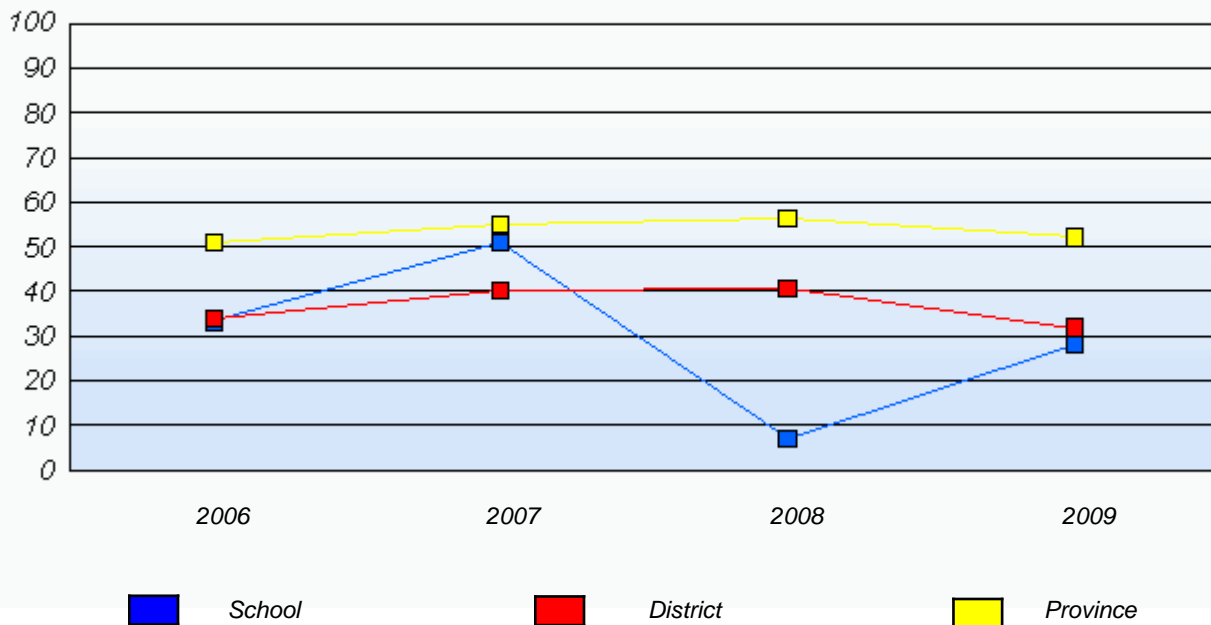
Demand Writing

Percentage of students at level 3 or above (2006 - 2009)



Reading

Percentage of students at level 3 or above (2006 - 2009)



* In some cases, CRT numbers may exceed AGR numbers based on late enrolments. Pie chart is based on the number of students who wrote the CRT.

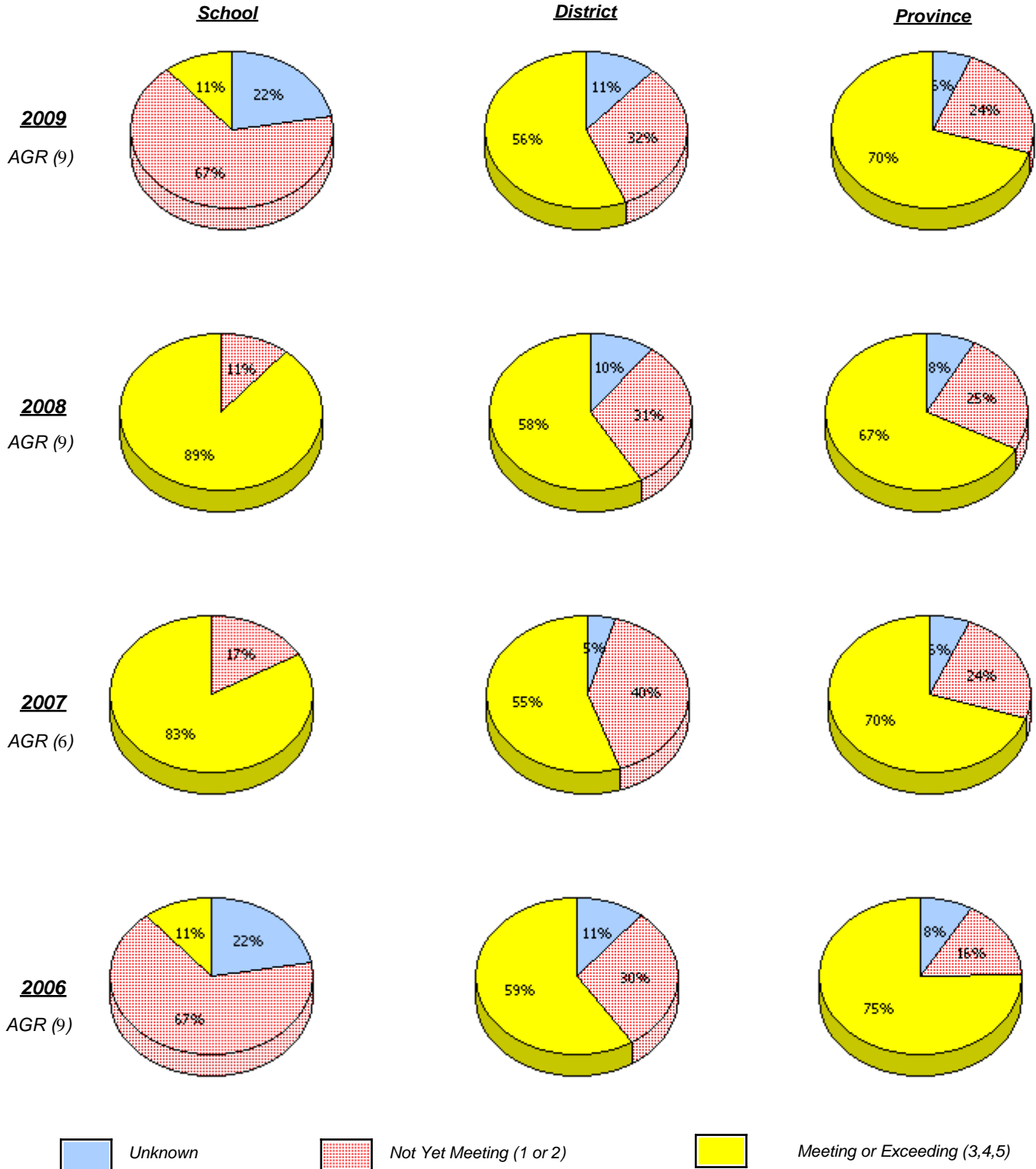
* French Immersion students not included

* Reading score is composite of Information, Visual, and Poet.

District 1 - Labrador

School #: 015 Lake Melville School

Demand Writing



* In some cases, CRT numbers may exceed AGR numbers based on late enrolments. Pie chart is based on the number of students who wrote the CRT.

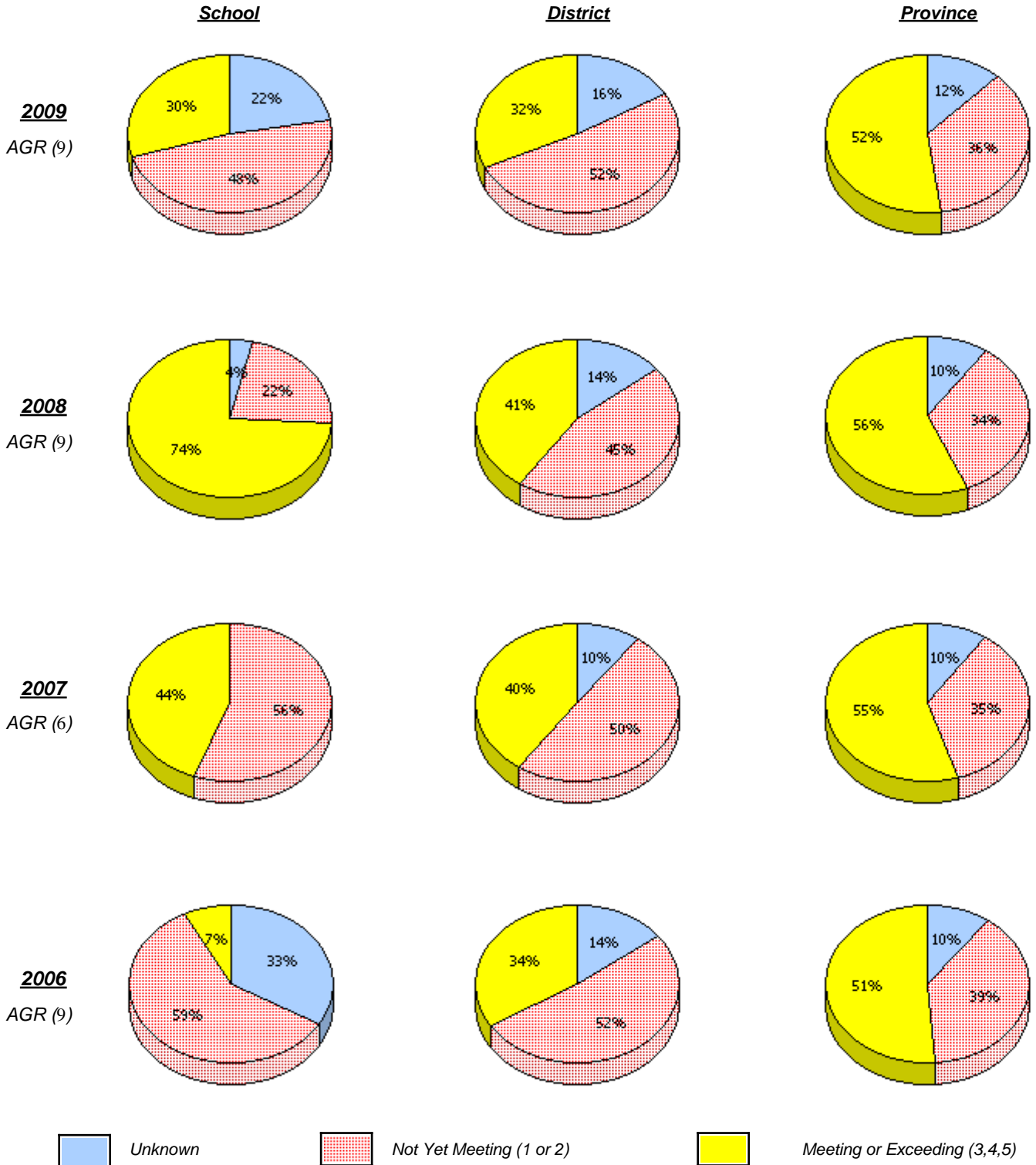
* French Immersion students not included

* Reading score is composite of Information, Visual, and Poet.

District 1 - Labrador

School #: 015 Lake Melville School

Reading



* In some cases, CRT numbers may exceed AGR numbers based on late enrolments. Pie chart is based on the number of students who wrote the CRT.

* French Immersion students not included

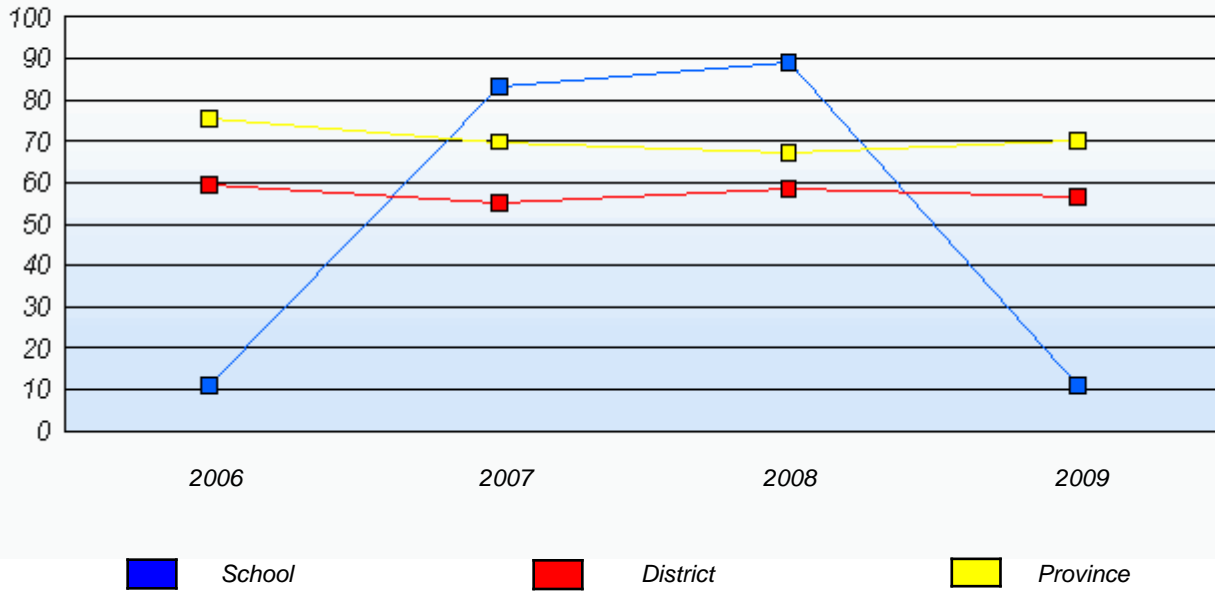
* Reading score is composite of Information, Visual, and Poet.

District 1 - Labrador

School #: 015 Lake Melville School

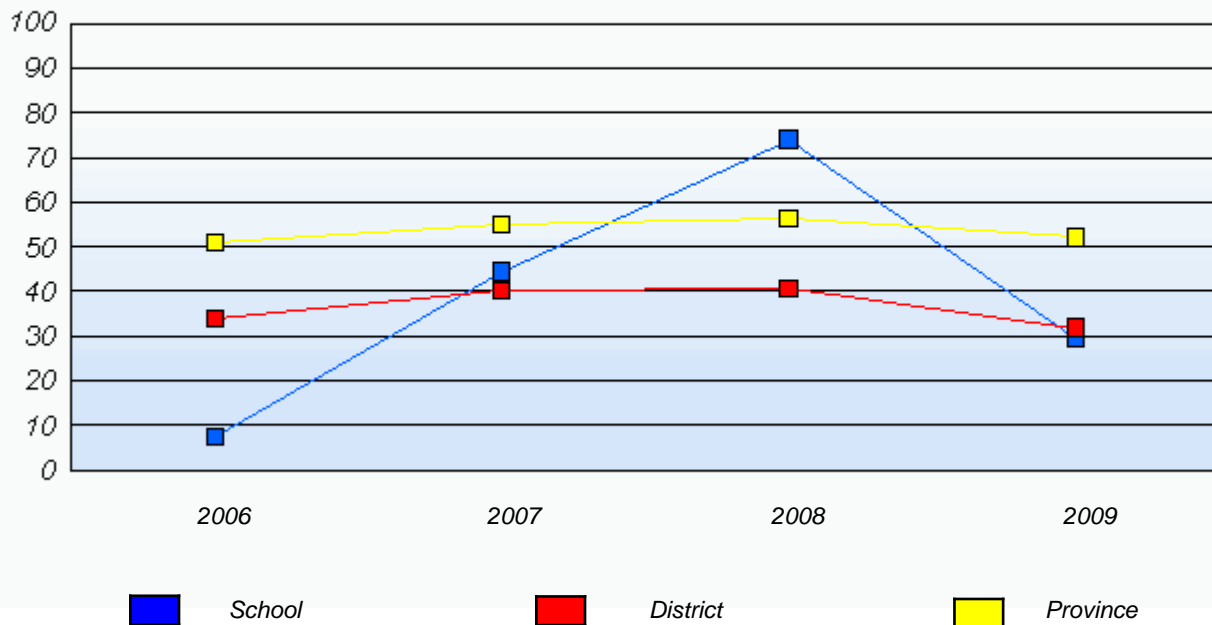
Demand Writing

Percentage of students at level 3 or above (2006 - 2009)



Reading

Percentage of students at level 3 or above (2006 - 2009)



* In some cases, CRT numbers may exceed AGR numbers based on late enrolments. Pie chart is based on the number of students who wrote the CRT.

* French Immersion students not included

* Reading score is composite of Information, Visual, and Poet.

District 1 - Labrador

School #: 017 Northern Lights Academy

Demand Writing

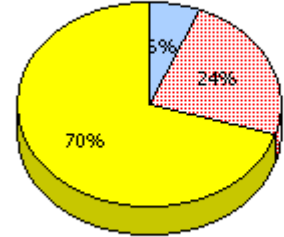
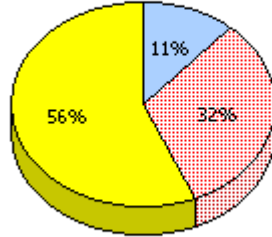
School

School data with 5 or fewer students withheld for reasons of confidentiality.

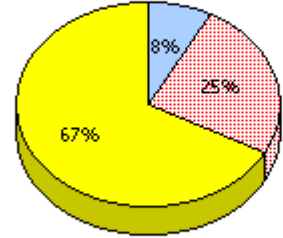
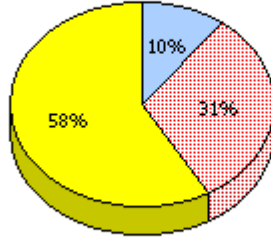
District

Province

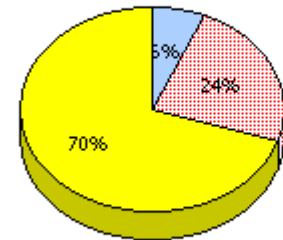
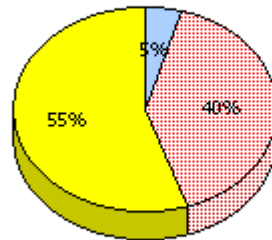
2009
AGR (3)



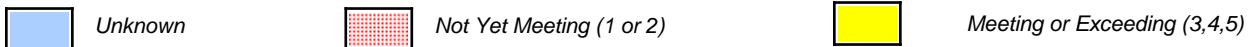
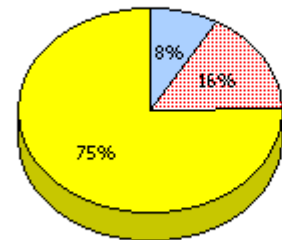
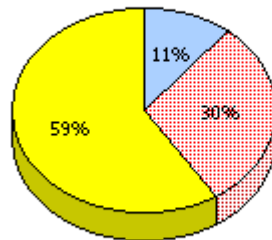
2008
AGR (7)



2007
AGR (3)



2006
AGR (4)



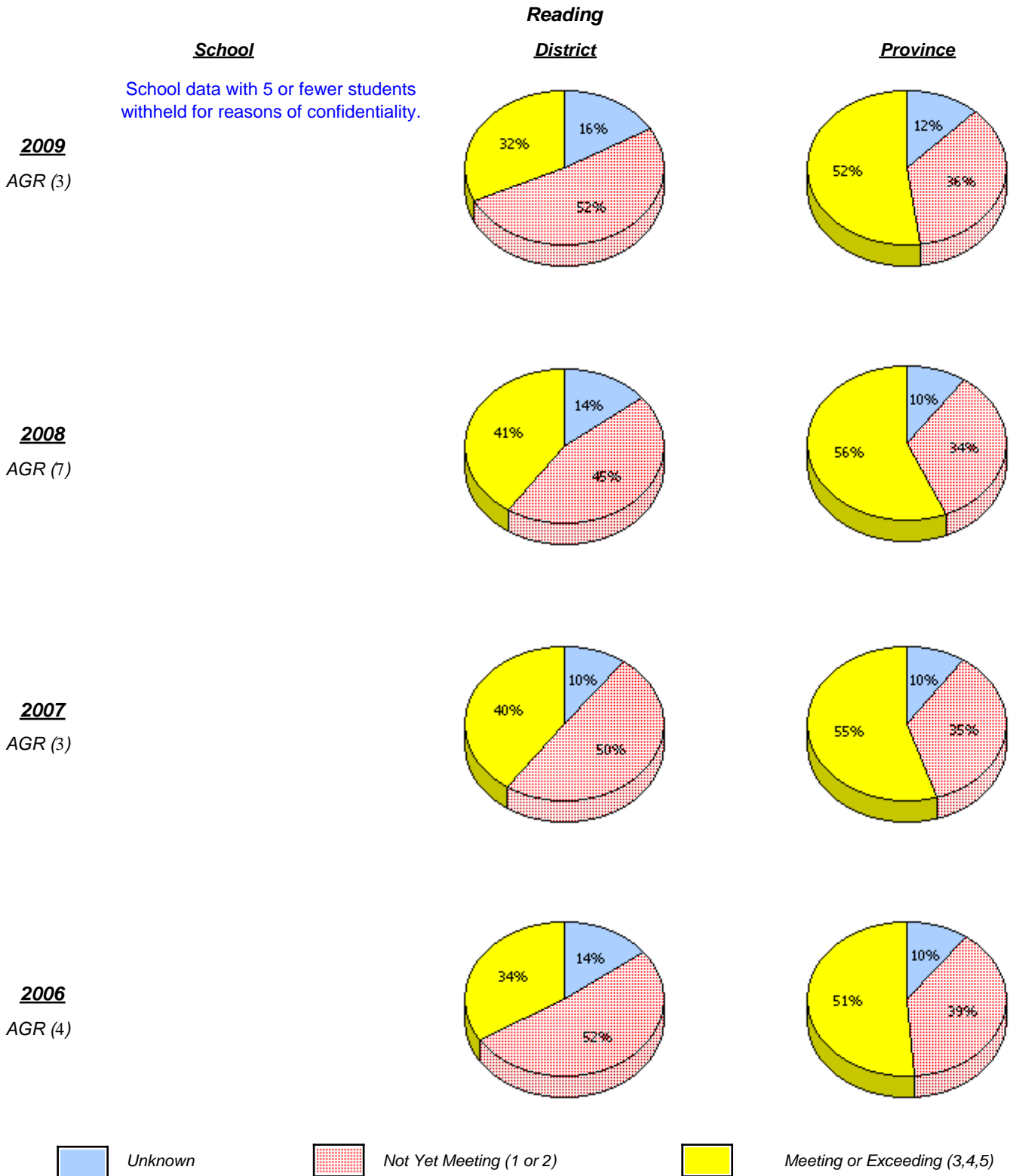
* In some cases, CRT numbers may exceed AGR numbers based on late enrolments. Pie chart is based on the number of students who wrote the CRT.

* French Immersion students not included

* Reading score is composite of Information, Visual, and Poet.

District 1 - Labrador

School #: 017 Northern Lights Academy



* In some cases, CRT numbers may exceed AGR numbers based on late enrolments. Pie chart is based on the number of students who wrote the CRT.

* French Immersion students not included

* Reading score is composite of Information, Visual, and Poet.

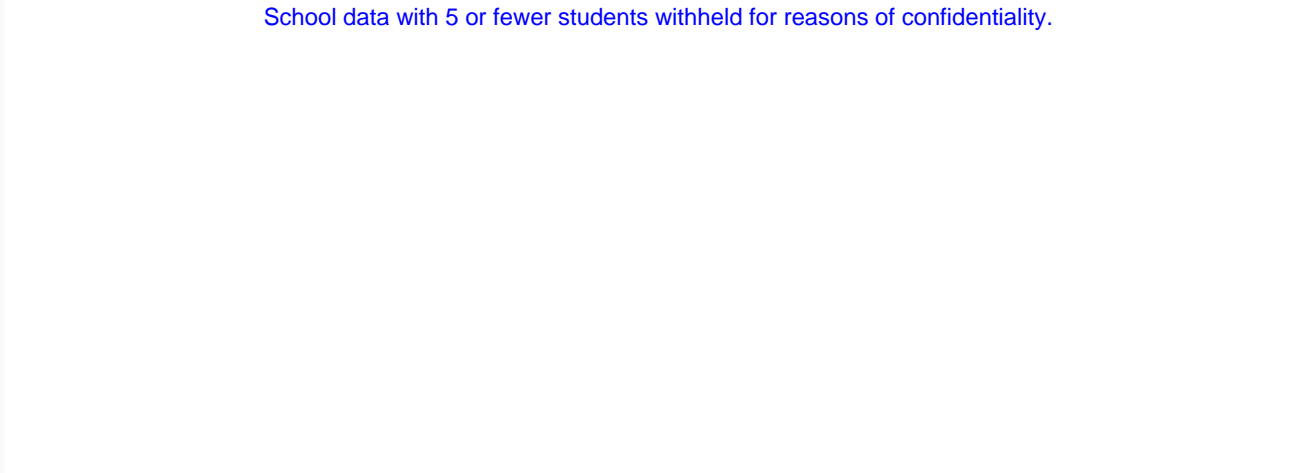
District 1 - Labrador

School #: 017 Northern Lights Academy

Demand Writing

Percentage of students at level 3 or above (2006 - 2009)

School data with 5 or fewer students withheld for reasons of confidentiality.




2006

2007

2008

2009

 School

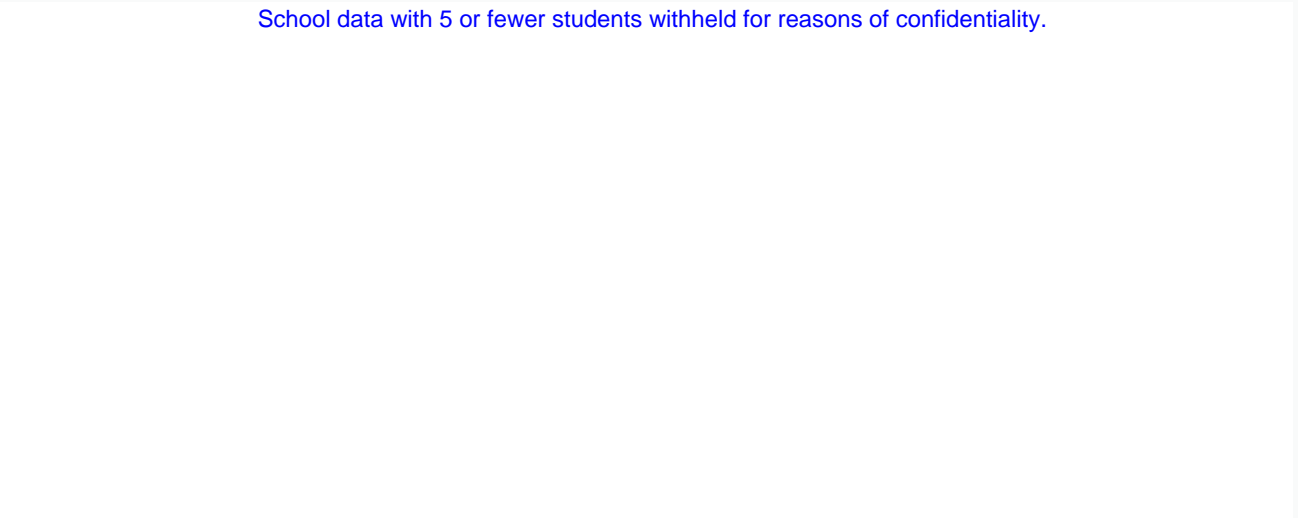
 District

 Province

Reading

Percentage of students at level 3 or above (2006 - 2009)

School data with 5 or fewer students withheld for reasons of confidentiality.





2006

2007

2008

2009

 School

 District

 Province

* In some cases, CRT numbers may exceed AGR numbers based on late enrolments. Pie chart is based on the number of students who wrote the CRT.

* French Immersion students not included

* Reading score is composite of Information, Visual, and Poet.