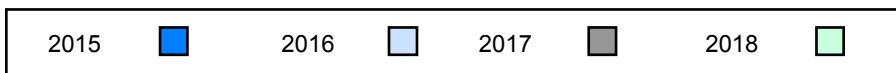
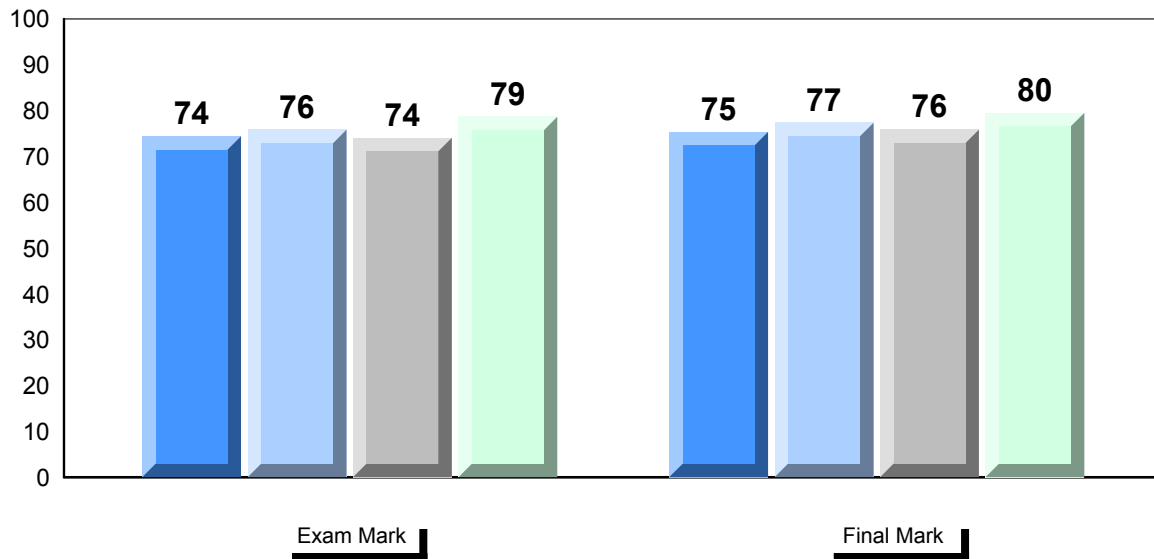


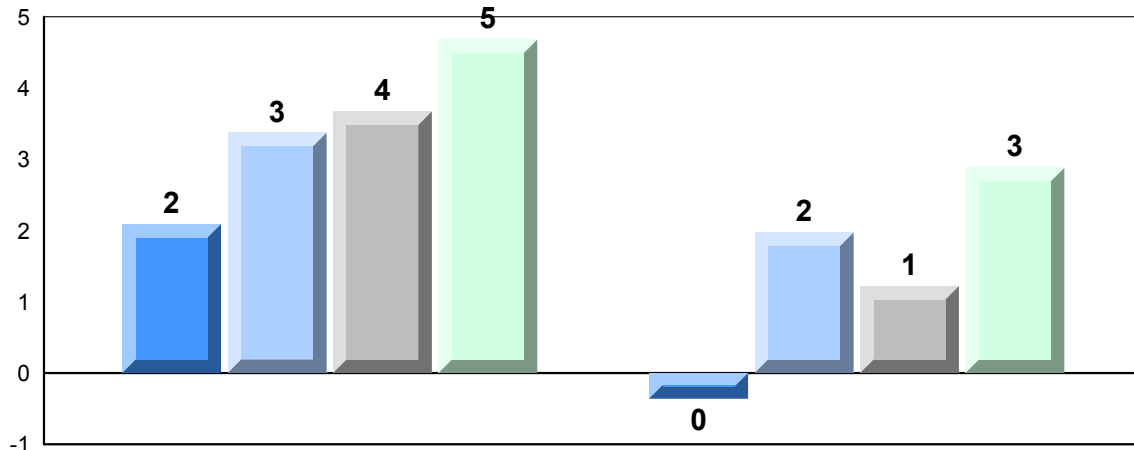
Number of Students	14						
Francais 3202		Public Exam Mark	School vs Region	School vs Province	Final Mark	School vs Region	School vs Province
	School	78.6	▲	▲	79.5	▲	▲
	Region	78.6			79.5		
	Province	74.0			76.6		
Subtest							
Listening	School	86.3	▲	▲			
	Region	86.3					
	Province	79.2					
Reading	School	75.7	▲	▲			
	Region	75.7					
	Province	70.6					
Writing	School	69.7	▲	▲			
	Region	69.7					
	Province	66.0					
Interview	School	81.4	▲	▲			
	Region	81.4					
	Province	80.5					

Average Mark, 2015-2018



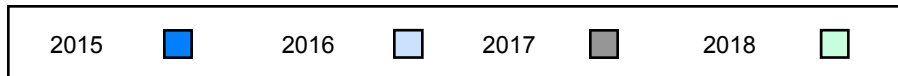
▼ ▲ The school result may appear numerically the same as the district/province due to rounding. The arrow indicates a negligible difference.

Difference from Provincial Mean, 2015-2018

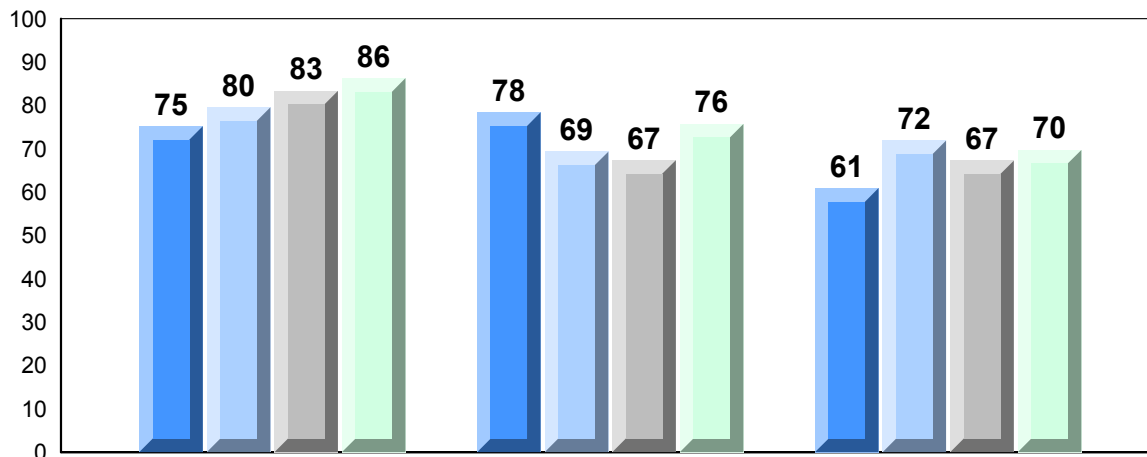


Exam Mark

Final Mark



4 Year Public Exam (Subtest) Mark Trend 2015-2018



Listening

Reading

Writing



Number of Students 16

Francais 3202

Subtest

Listening

Reading

Writing

Interview

School
Region
Province

School
Region
Province

School
Region
Province

School
Region
Province

School
Region
Province

Public Exam Mark

School vs Region

School vs Province

79.8
79.8
74.0



86.8
86.8
79.2



79.0
79.0
70.6



68.0
68.0
66.0



84.0
84.0
80.5



Final Mark

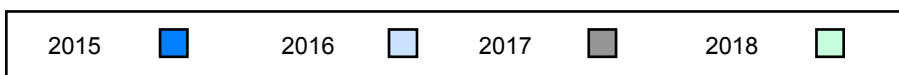
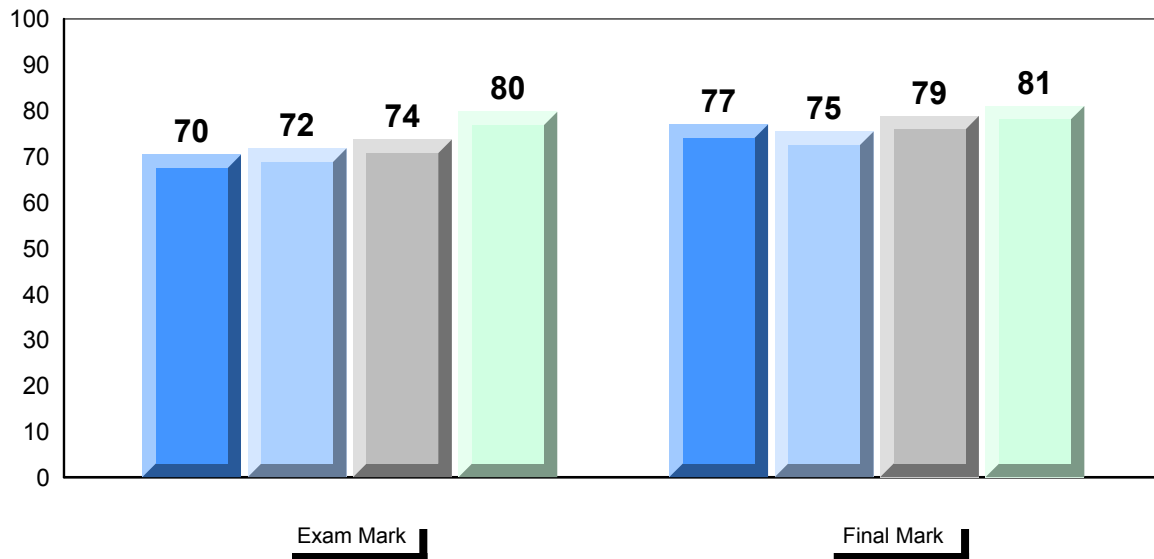
School vs Region

School vs Province

81.0
81.0
76.6

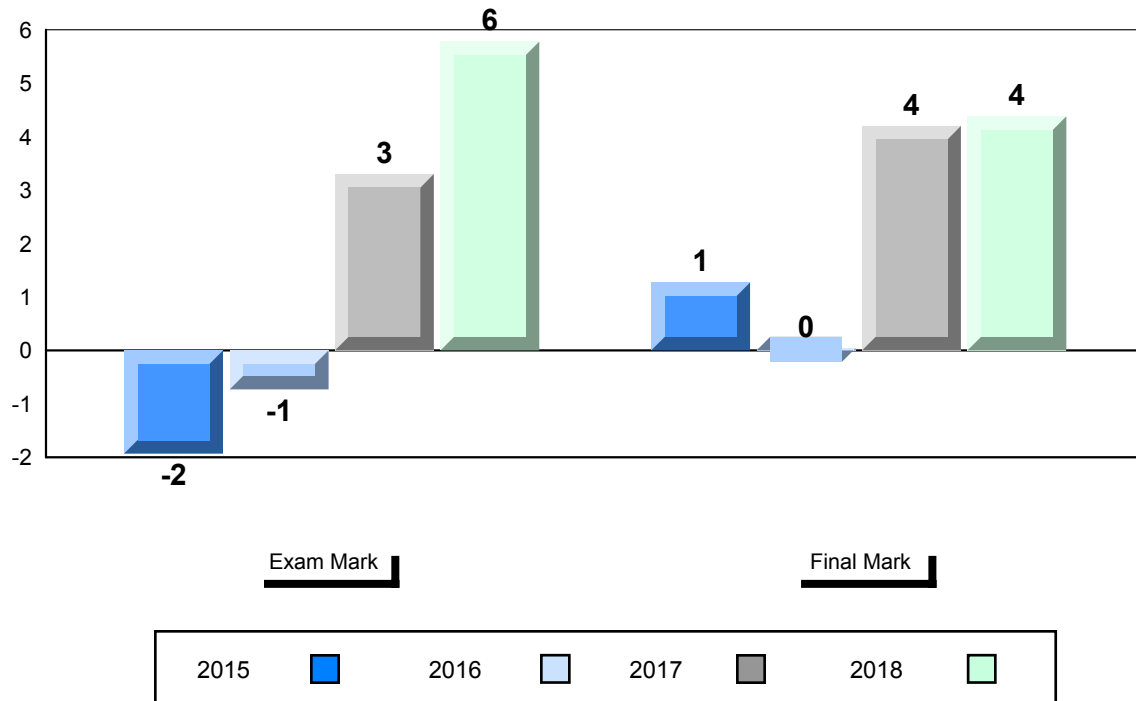


Average Mark, 2015-2018

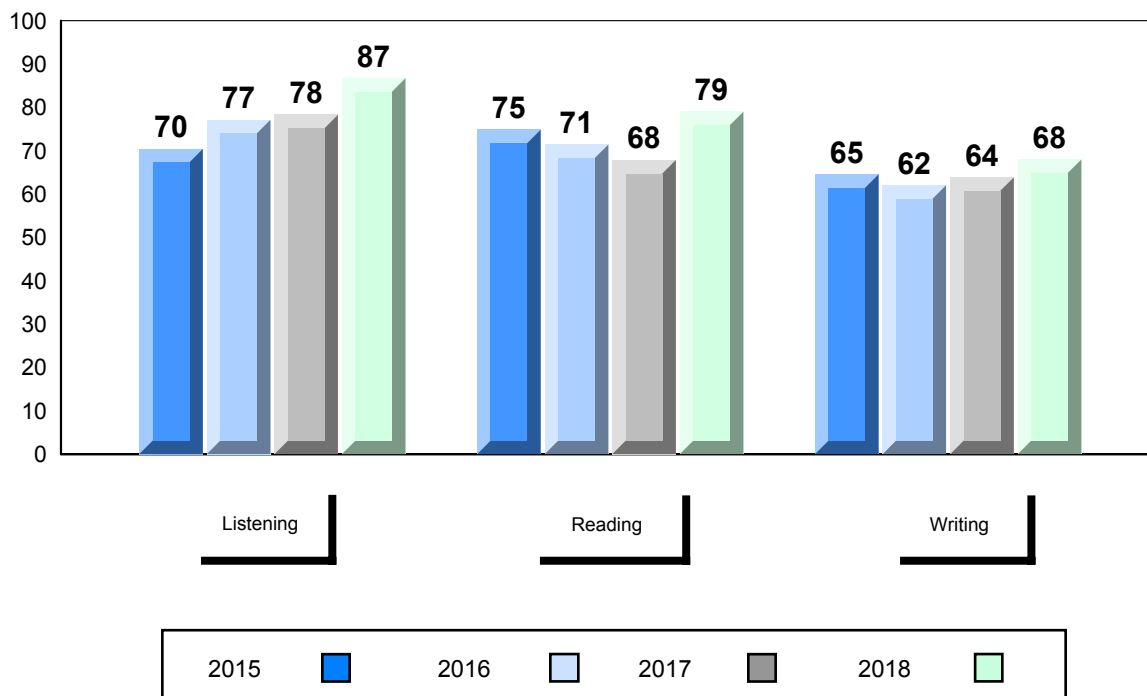


▼ ▲ The school result may appear numerically the same as the district/province due to rounding. The arrow indicates a negligible difference.

Difference from Provincial Mean, 2015-2018



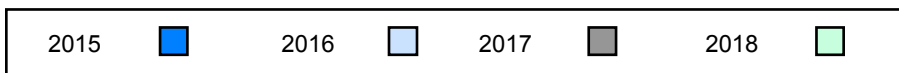
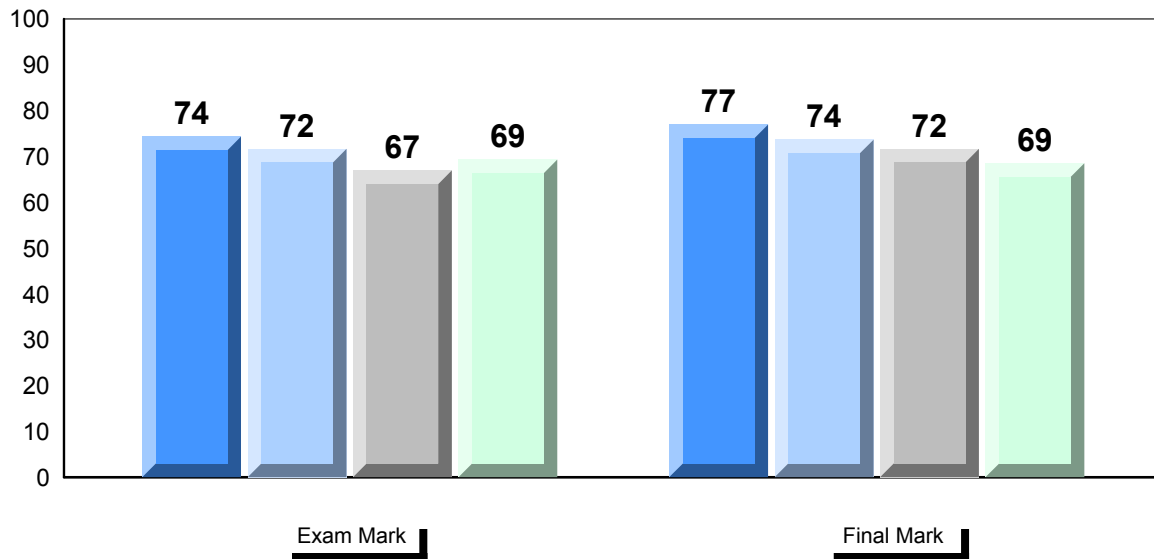
4 Year Public Exam (Subtest) Mark Trend 2015-2018



▼ ▲ The school result may appear numerically the same as the district/province due to rounding. The arrow indicates a negligible difference.

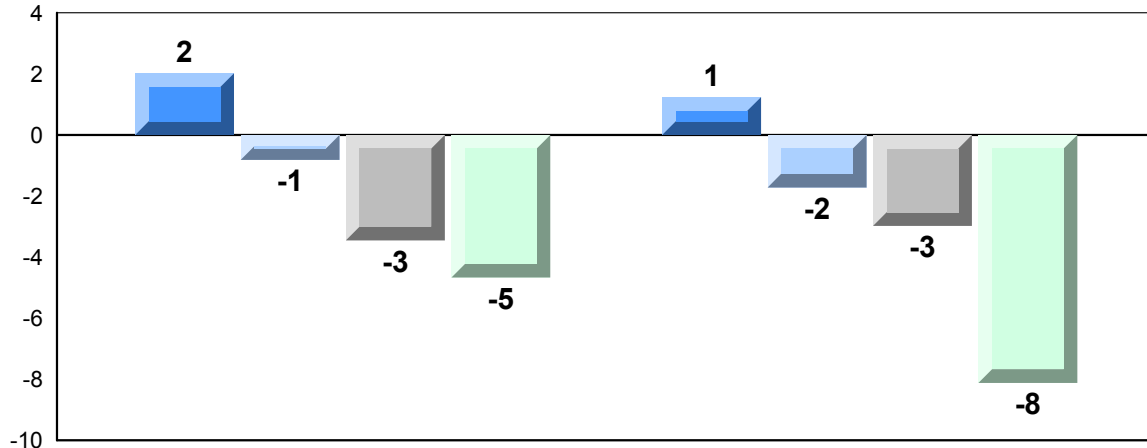
Number of Students	10			
Francais 3202	School	Public Exam Mark	School vs Region	School vs Province
	Region	69.3	▼	▼
	Province	74.9		
		74.0		
Subtest				
Listening	School	75.6	▼	▼
	Region	81.2		
	Province	79.2		
Reading	School	60.8	▼	▼
	Region	67.7		
	Province	70.6		
Writing	School	59.8	▼	▼
	Region	67.4		
	Province	66.0		
Interview	School	80.4	▼	▼
	Region	82.4		
	Province	80.5		

Average Mark, 2015-2018



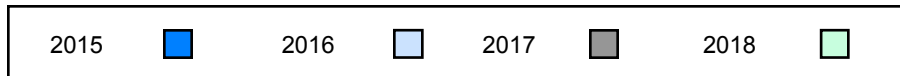
▼ ▲ The school result may appear numerically the same as the district/province due to rounding. The arrow indicates a negligible difference.

Difference from Provincial Mean, 2015-2018

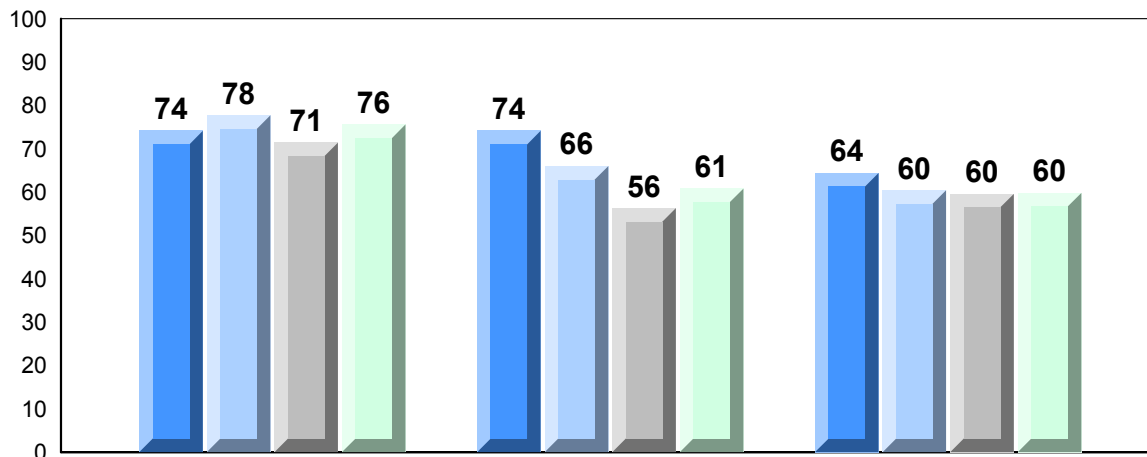


Exam Mark

Final Mark



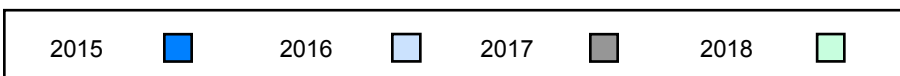
4 Year Public Exam (Subtest) Mark Trend 2015-2018



Listening

Reading

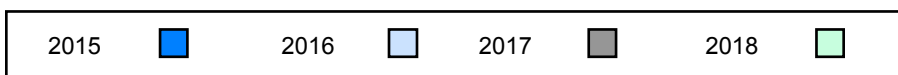
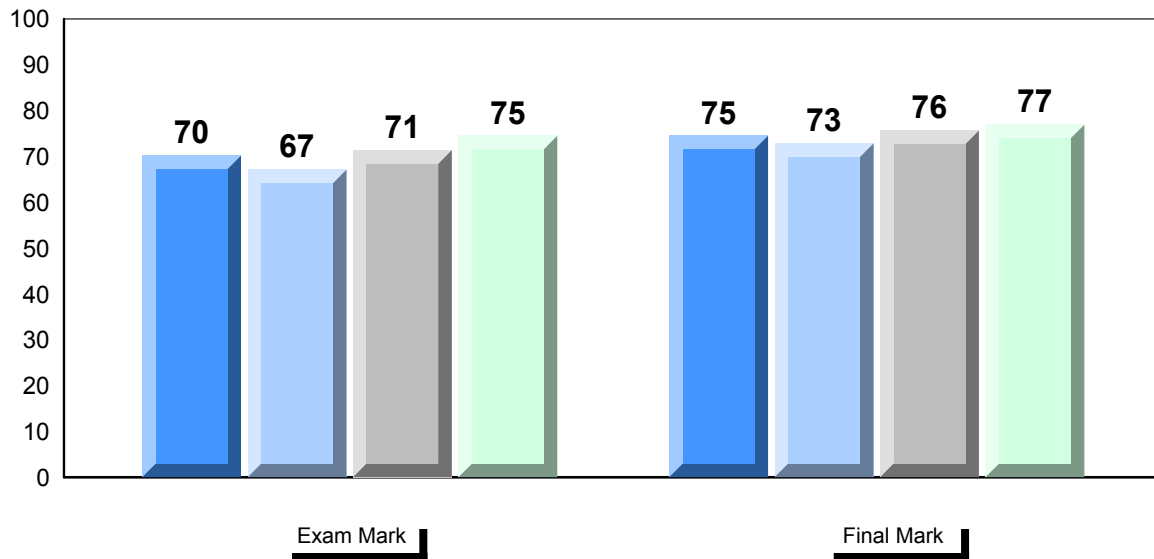
Writing



▼ ▲ The school result may appear numerically the same as the district/province due to rounding. The arrow indicates a negligible difference.

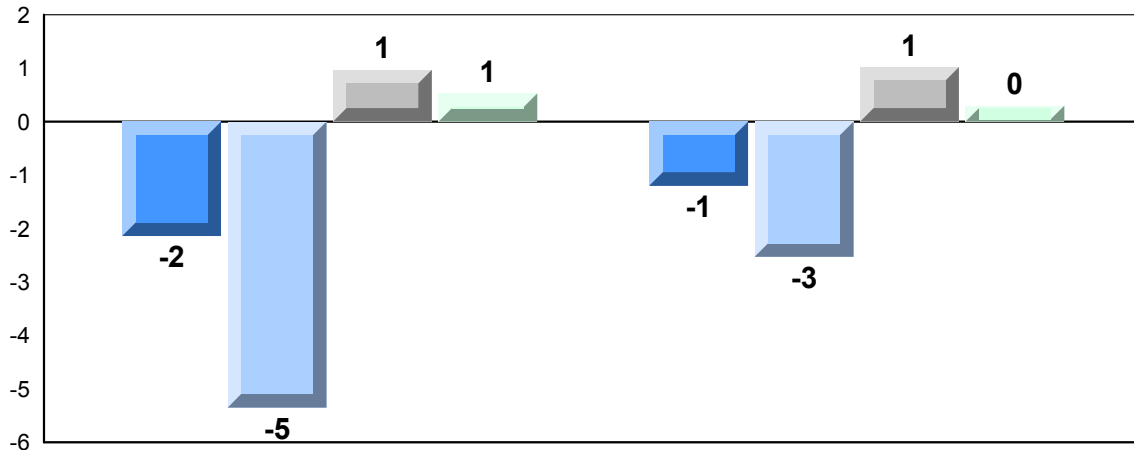
Number of Students		Public Exam Mark			Final Mark		
			School vs Region	School vs Province		School vs Region	School vs Province
Francais 3202	School	74.5	▼	▲	76.9	▼	▲
	Region	74.9					
	Province	74.0					
Subtest							
	Listening	School	78.0	▼	▼		
		Region	81.2				
Province		79.2					
Reading	School	66.7	▼	▼			
	Region	67.7					
	Province	70.6					
Writing	School	73.0	▲	▲			
	Region	67.4					
	Province	66.0					
Interview	School	79.0	▼	▼			
	Region	82.4					
	Province	80.5					

Average Mark, 2015-2018



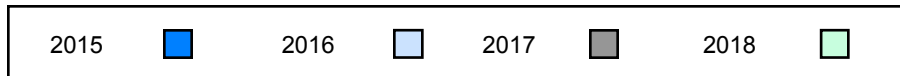
▼ ▲ The school result may appear numerically the same as the district/province due to rounding. The arrow indicates a negligible difference.

Difference from Provincial Mean, 2015-2018

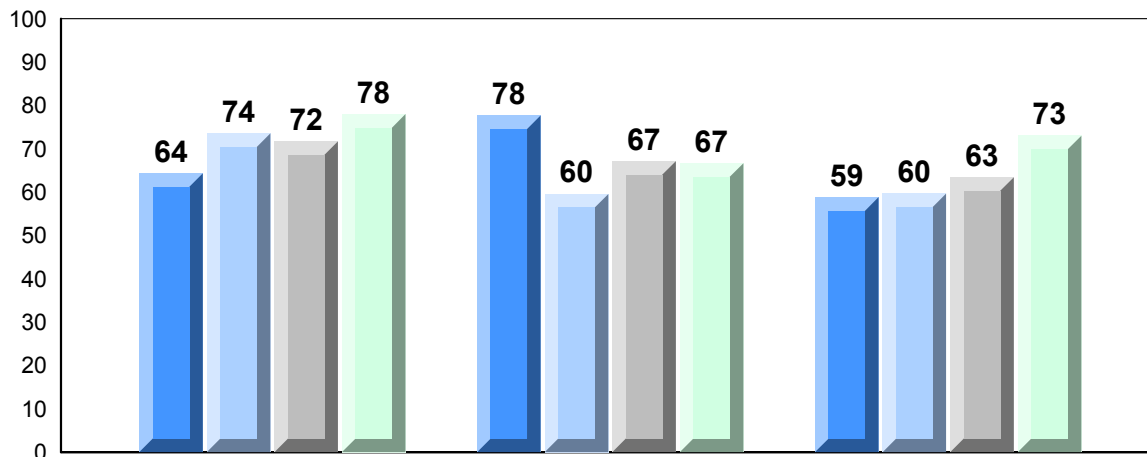


Exam Mark

Final Mark



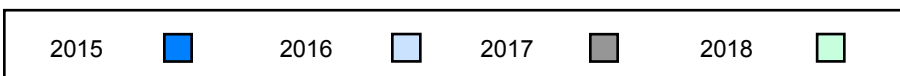
4 Year Public Exam (Subtest) Mark Trend 2015-2018



Listening

Reading

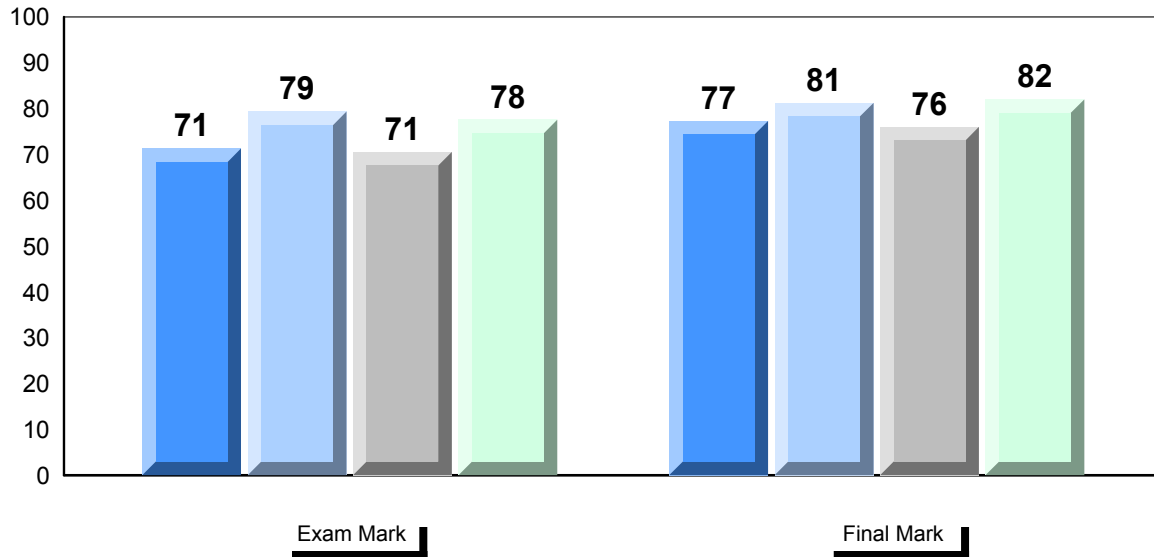
Writing



▼ ▲ The school result may appear numerically the same as the district/province due to rounding. The arrow indicates a negligible difference.

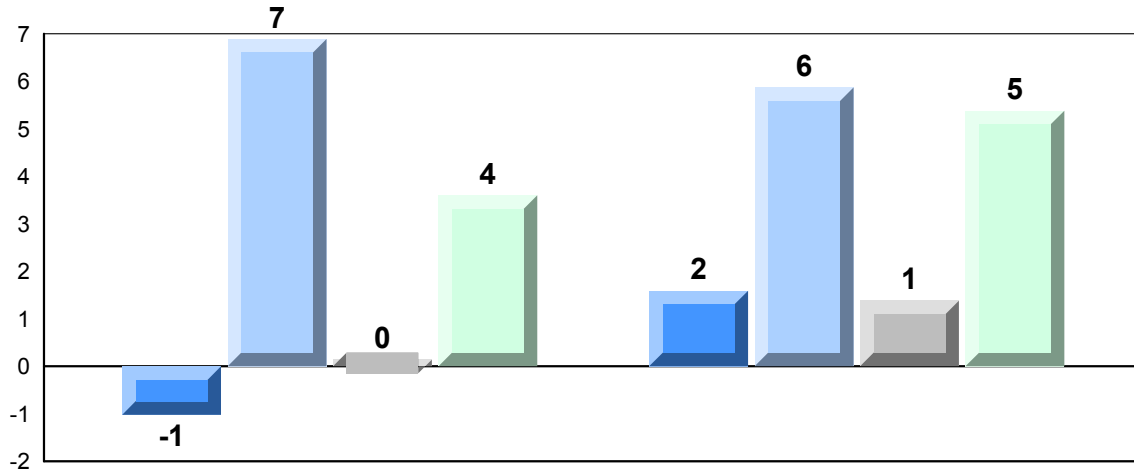
Number of Students	23						
Francais 3202	School	Public Exam Mark	School vs Region	School vs Province	Final Mark	School vs Region	School vs Province
	Region	77.6	▲	▲	82.0	▲	▲
	Province	74.9			77.6		
		74.0			76.6		
Subtest							
Listening	School	85.2	▲	▲			
	Region	81.2					
	Province	79.2					
Reading	School	71.3	▲	▲			
	Region	67.7					
	Province	70.6					
Writing	School	67.8	▲	▲			
	Region	67.4					
	Province	66.0					
Interview	School	85.0	▲	▲			
	Region	82.4					
	Province	80.5					

Average Mark, 2015-2018



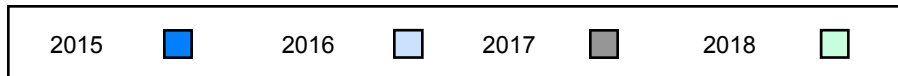
▼ ▲ The school result may appear numerically the same as the district/province due to rounding. The arrow indicates a negligible difference.

Difference from Provincial Mean, 2015-2018

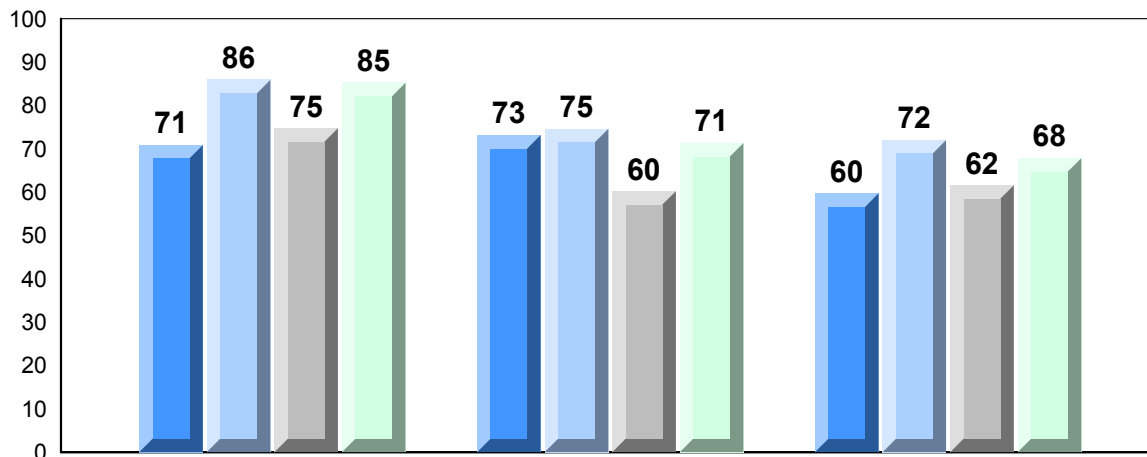


Exam Mark

Final Mark



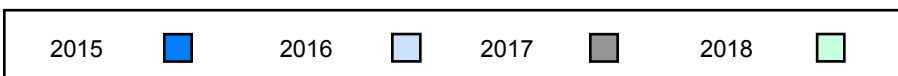
4 Year Public Exam (Subtest) Mark Trend 2015-2018



Listening

Reading

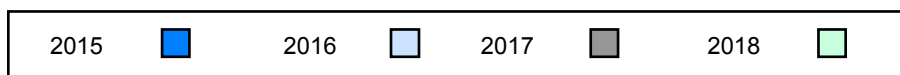
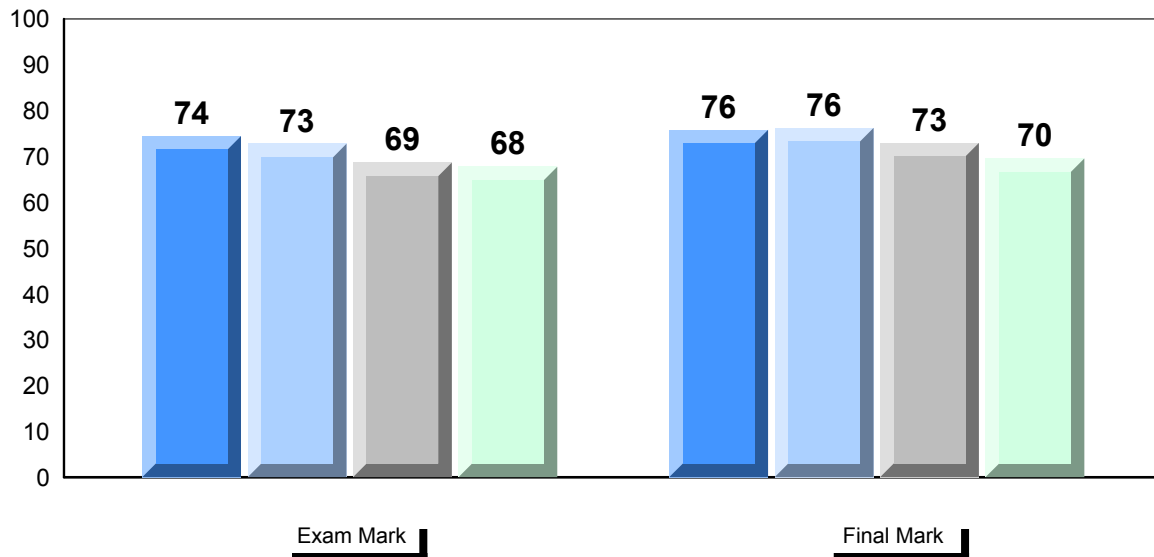
Writing



▼ ▲ The school result may appear numerically the same as the district/province due to rounding. The arrow indicates a negligible difference.

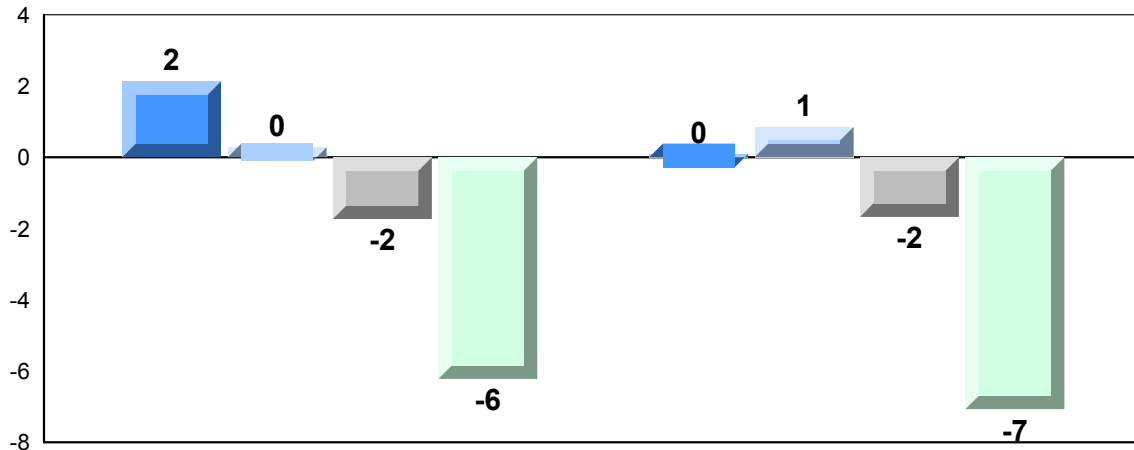
Number of Students		20	Public Exam Mark			Final Mark		
			School vs Region	School vs Province	School vs Region	School vs Province		
Francais 3202	School	67.8	▼	▼	69.6	▼	▼	
	Region	73.5			76.2			
	Province	74.0			76.6			
Subtest								
Listening	School	71.8	▼	▼				
	Region	78.3						
	Province	79.2						
Reading	School	58.8	▼	▼				
	Region	70.4						
	Province	70.6						
Writing	School	64.5	▼	▼				
	Region	65.6						
	Province	66.0						
Interview	School	75.2	▼	▼				
	Region	80.1						
	Province	80.5						

Average Mark, 2015-2018



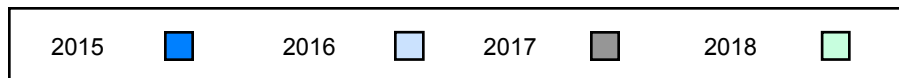
▼ ▲ The school result may appear numerically the same as the district/province due to rounding. The arrow indicates a negligible difference.

Difference from Provincial Mean, 2015-2018

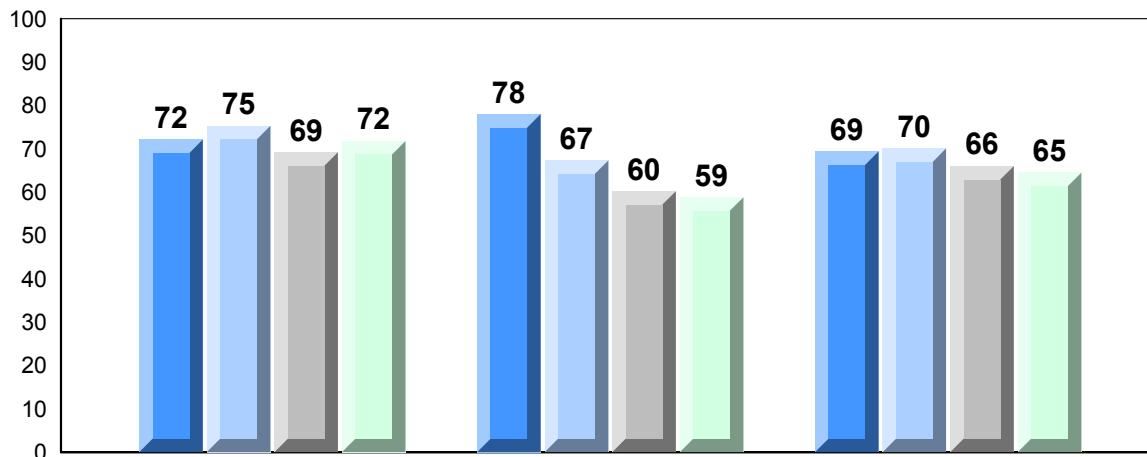


Exam Mark

Final Mark



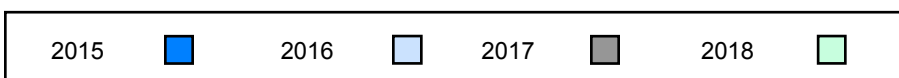
4 Year Public Exam (Subtest) Mark Trend 2015-2018



Listening

Reading

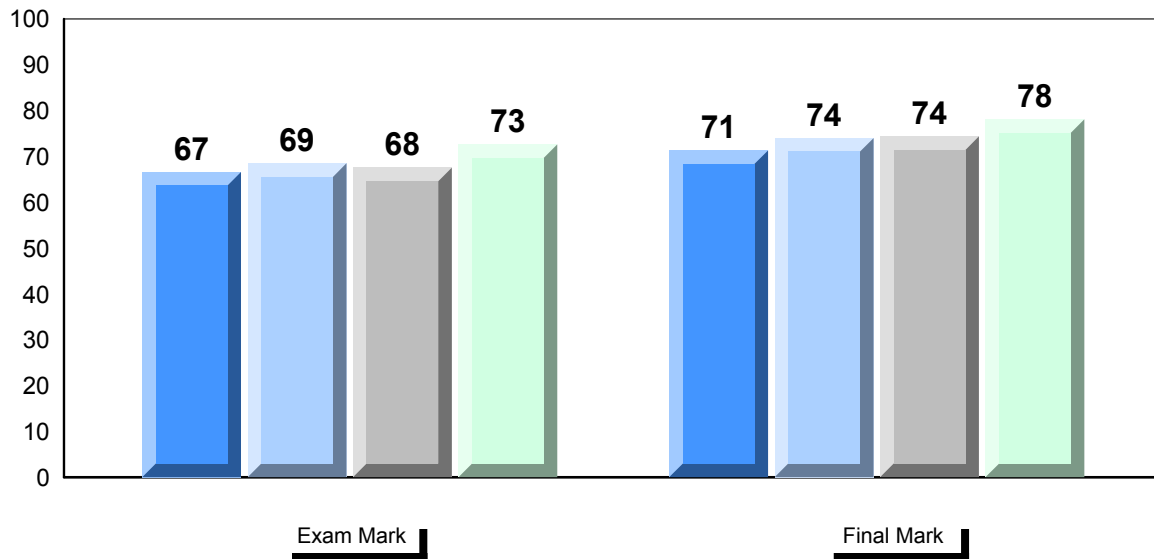
Writing



▼ ▲ The school result may appear numerically the same as the district/province due to rounding. The arrow indicates a negligible difference.

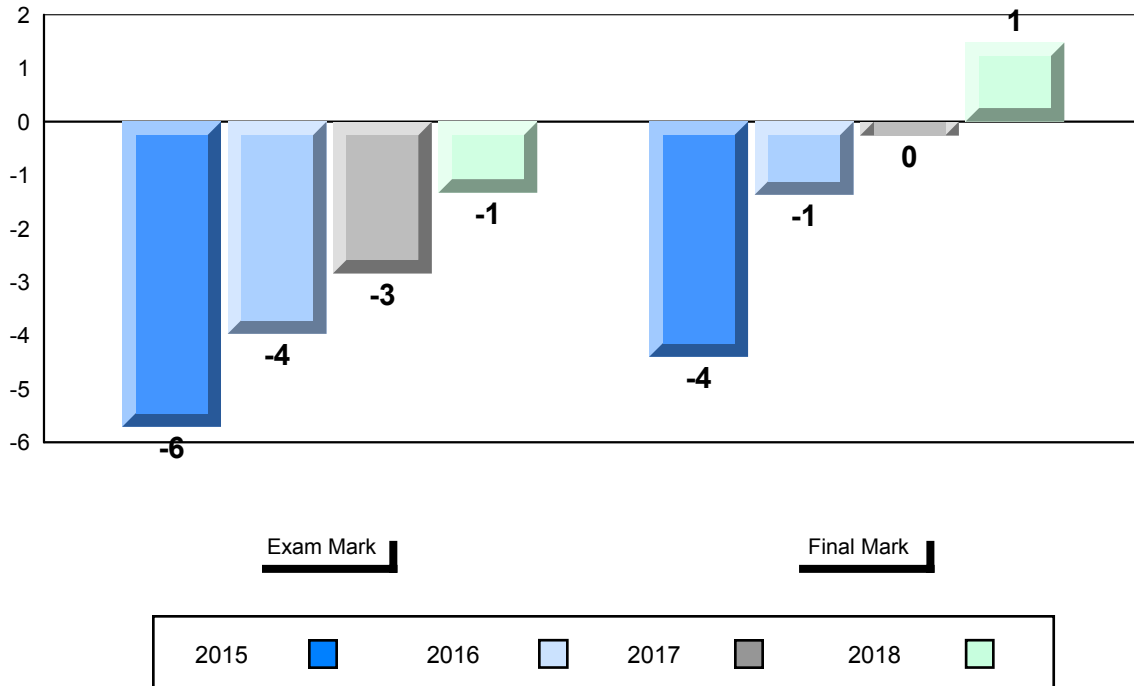
Number of Students	11			
Francais 3202	School	Public Exam Mark	School vs Region	School vs Province
	Region	72.6	▼	▼
	Province	73.5		
		74.0		
Subtest				
Listening	School	69.5	▼	▼
	Region	78.3		
	Province	79.2		
Reading	School	71.6	▲	▲
	Region	70.4		
	Province	70.6		
Writing	School	72.0	▲	▲
	Region	65.6		
	Province	66.0		
Interview	School	76.7	▼	▼
	Region	80.1		
	Province	80.5		
		Final Mark	School vs Region	School vs Province
		78.1	▲	▲
		76.2		
		76.6		

Average Mark, 2015-2018

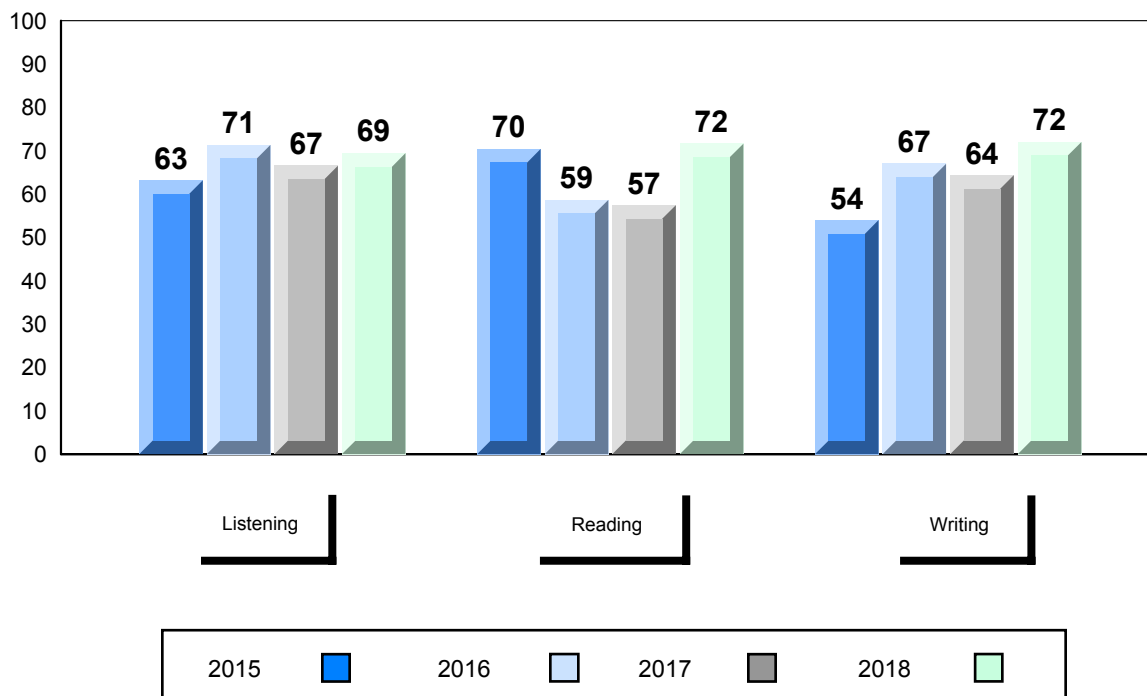


▼ ▲ The school result may appear numerically the same as the district/province due to rounding. The arrow indicates a negligible difference.

Difference from Provincial Mean, 2015-2018



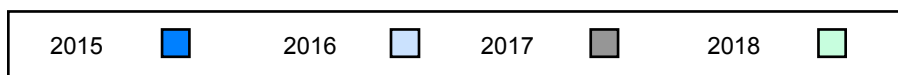
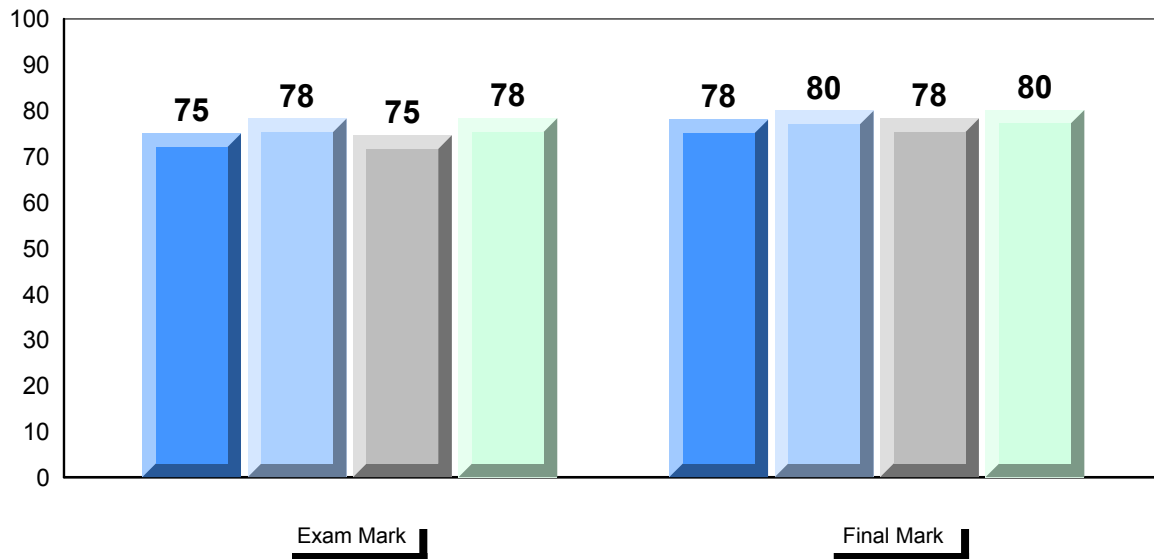
4 Year Public Exam (Subtest) Mark Trend 2015-2018



▼ ▲ The school result may appear numerically the same as the district/province due to rounding. The arrow indicates a negligible difference.

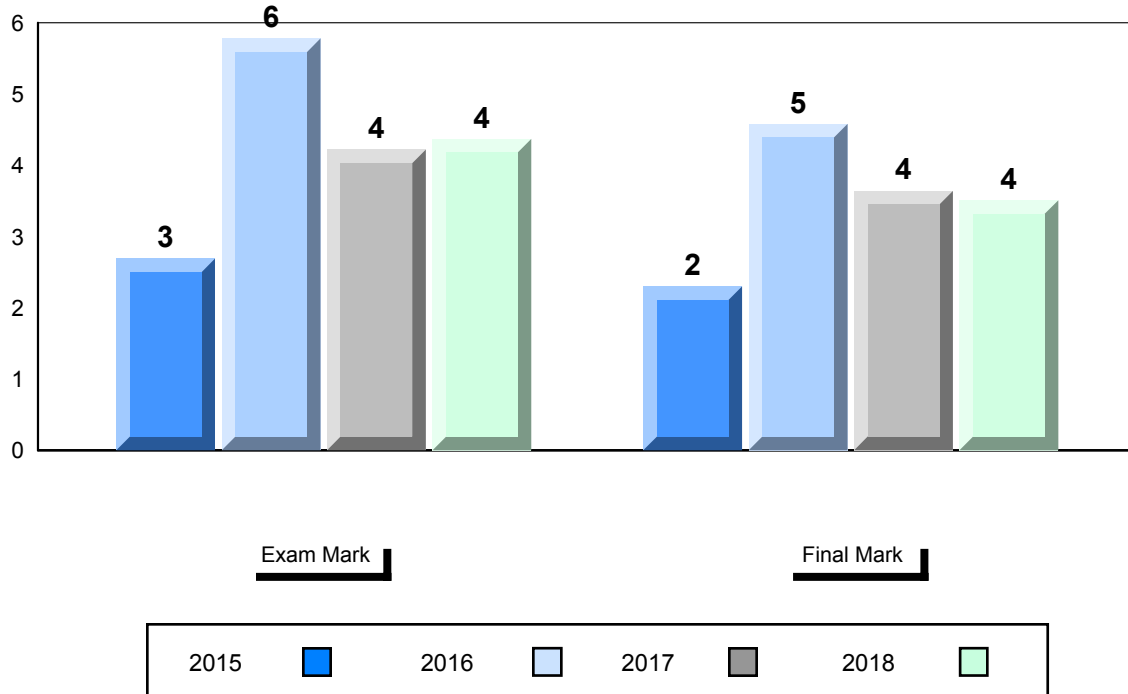
Number of Students	47				
Francais 3202		Public Exam Mark	School vs Region	School vs Province	Final Mark
	School	78.3	▲	▲	80.1
	Region	73.5			76.2
	Province	74.0			76.6
Subtest					
Listening	School	86.0	▲	▲	
	Region	78.3			
	Province	79.2			
Reading	School	77.5	▲	▲	
	Region	70.4			
	Province	70.6			
Writing	School	69.1	▲	▲	
	Region	65.6			
	Province	66.0			
Interview	School	80.3	▲	▼	
	Region	80.1			
	Province	80.5			

Average Mark, 2015-2018



▼ ▲ The school result may appear numerically the same as the district/province due to rounding. The arrow indicates a negligible difference.

Difference from Provincial Mean, 2015-2018



Exam Mark

Final Mark

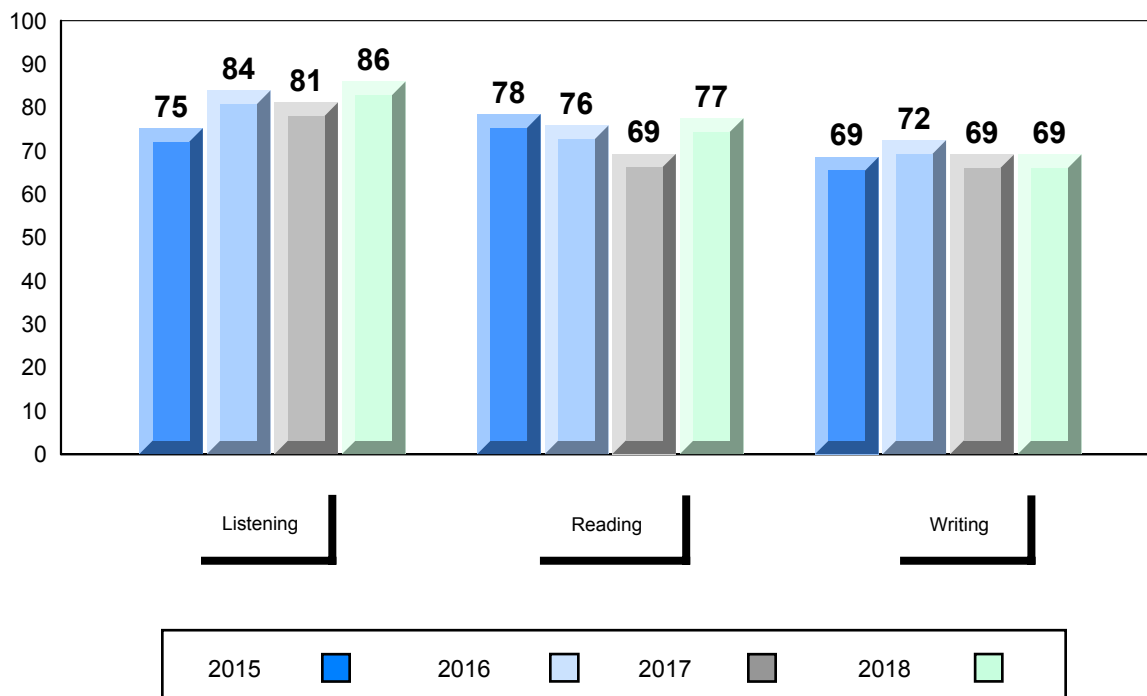
2015

2016

2017

2018

4 Year Public Exam (Subtest) Mark Trend 2015-2018



Listening

Reading

Writing

2015

2016

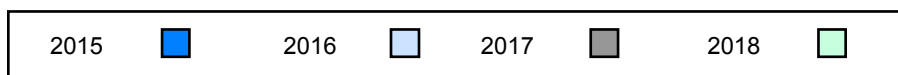
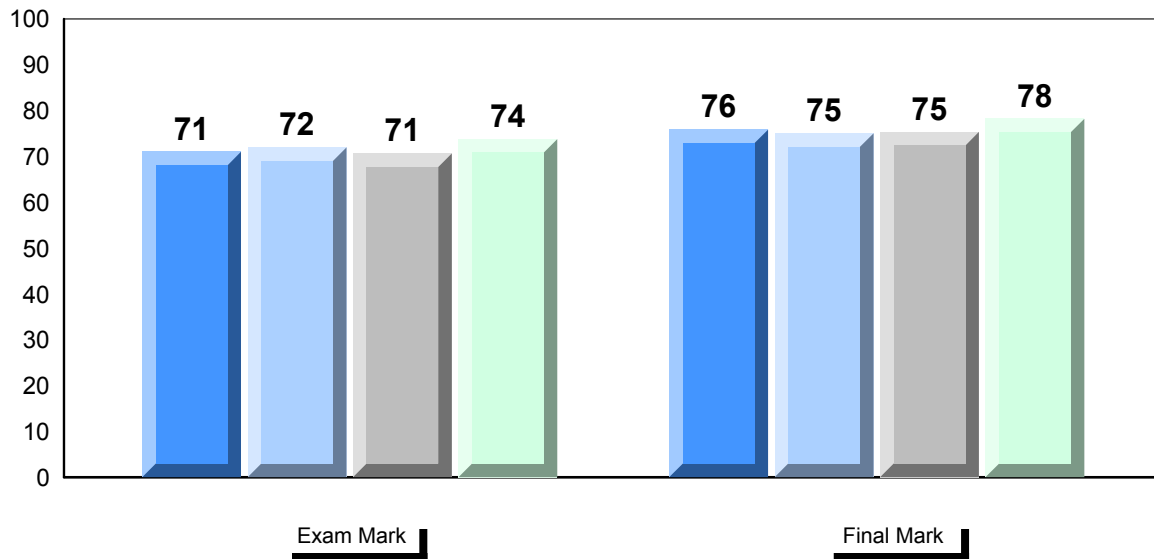
2017

2018

▼ ▲ The school result may appear numerically the same as the district/province due to rounding. The arrow indicates a negligible difference.

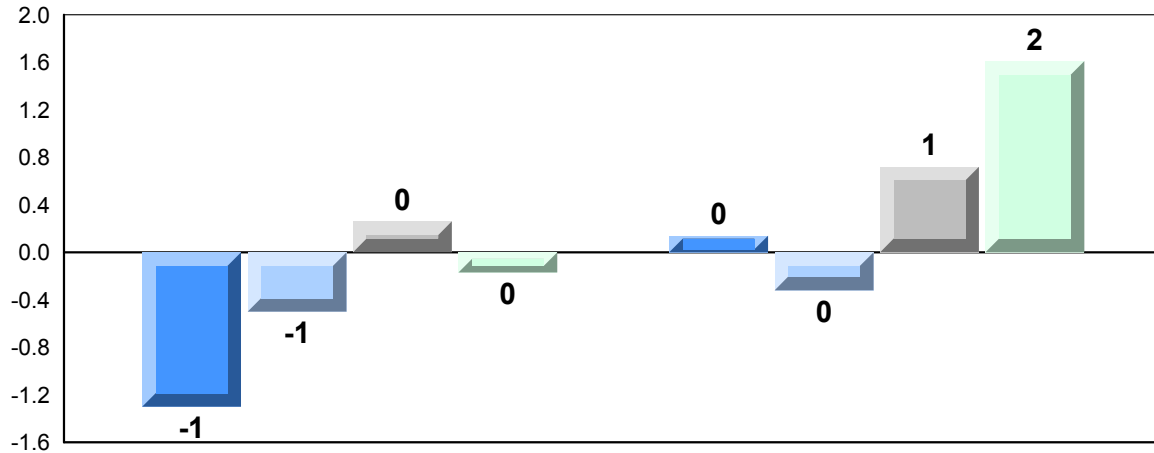
Number of Students	58				
Francais 3202	School	Public Exam Mark	School vs Region	School vs Province	Final Mark
	Region	73.8	▲	▼	78.2
	Province	73.5			76.2
		74.0			76.6
Subtest					
Listening	School	77.7	▼	▼	
	Region	78.3			
	Province	79.2			
Reading	School	70.0	▼	▼	
	Region	70.4			
	Province	70.6			
Writing	School	66.3	▲	▲	
	Region	65.6			
	Province	66.0			
Interview	School	80.1	▲	▼	
	Region	80.1			
	Province	80.5			

Average Mark, 2015-2018



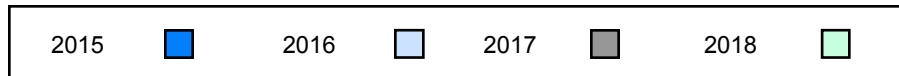
▼ ▲ The school result may appear numerically the same as the district/province due to rounding. The arrow indicates a negligible difference.

Difference from Provincial Mean, 2015-2018

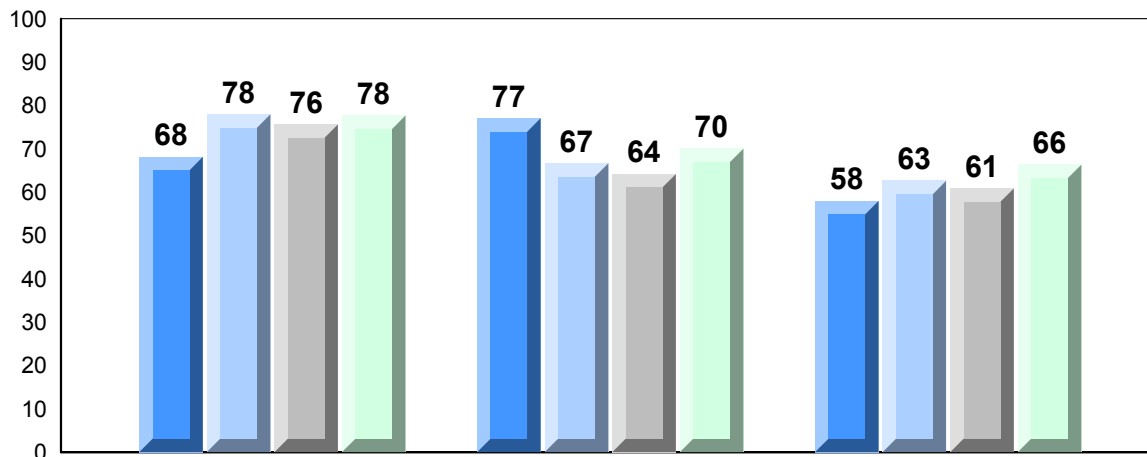


Exam Mark

Final Mark



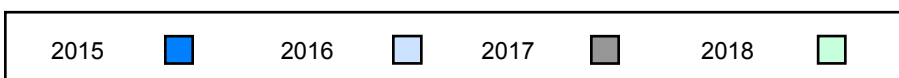
4 Year Public Exam (Subtest) Mark Trend 2015-2018



Listening

Reading

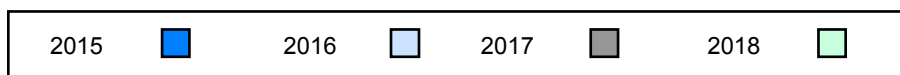
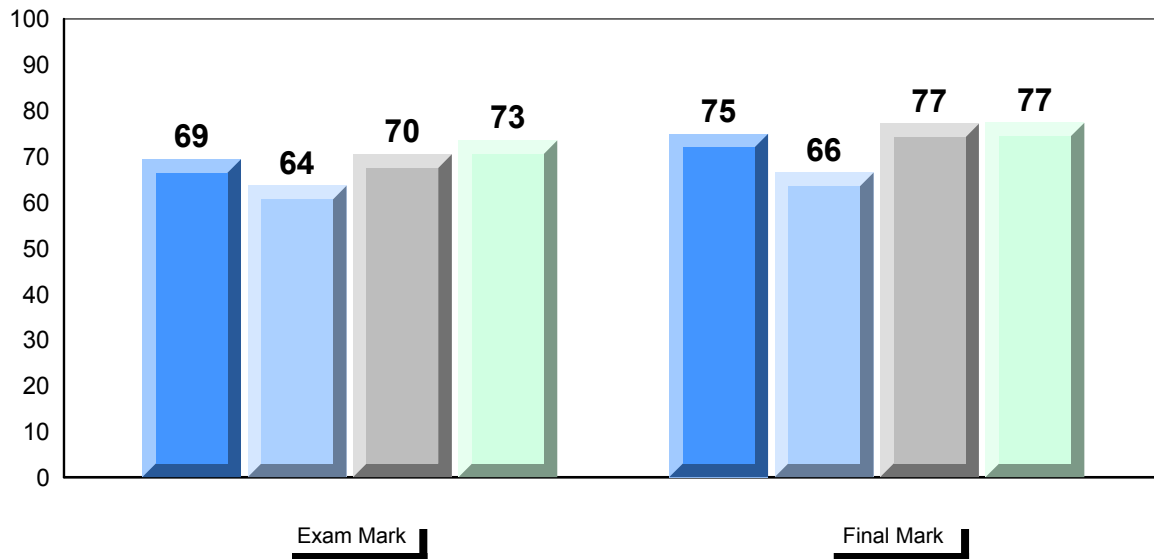
Writing



▼ ▲ The school result may appear numerically the same as the district/province due to rounding. The arrow indicates a negligible difference.

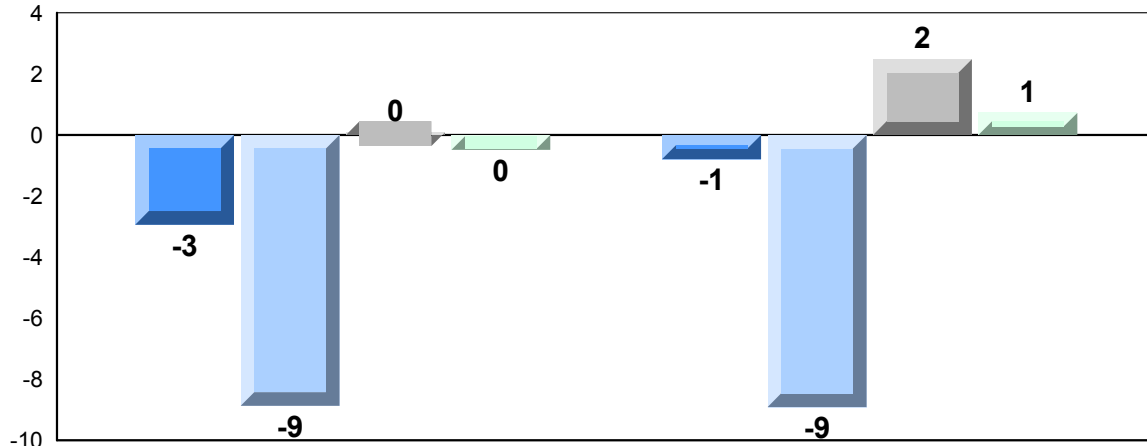
Number of Students		Public Exam Mark			Final Mark		
			School vs Region	School vs Province		School vs Region	School vs Province
Francais 3202	School	20	73.5	▲	▼	77.3	▲
	Region		73.5			76.2	
	Province		74.0			76.6	
Subtest							
Listening	School		73.2	▼	▼		
	Region		78.3				
	Province		79.2				
Reading	School		70.0	▼	▼		
	Region		70.4				
	Province		70.6				
Writing	School		65.6	▲	▼		
	Region		65.6				
	Province		66.0				
Interview	School		87.8	▲	▲		
	Region		80.1				
	Province		80.5				

Average Mark, 2015-2018



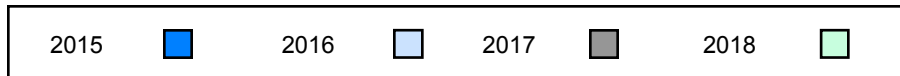
▼ ▲ The school result may appear numerically the same as the district/province due to rounding. The arrow indicates a negligible difference.

Difference from Provincial Mean, 2015-2018

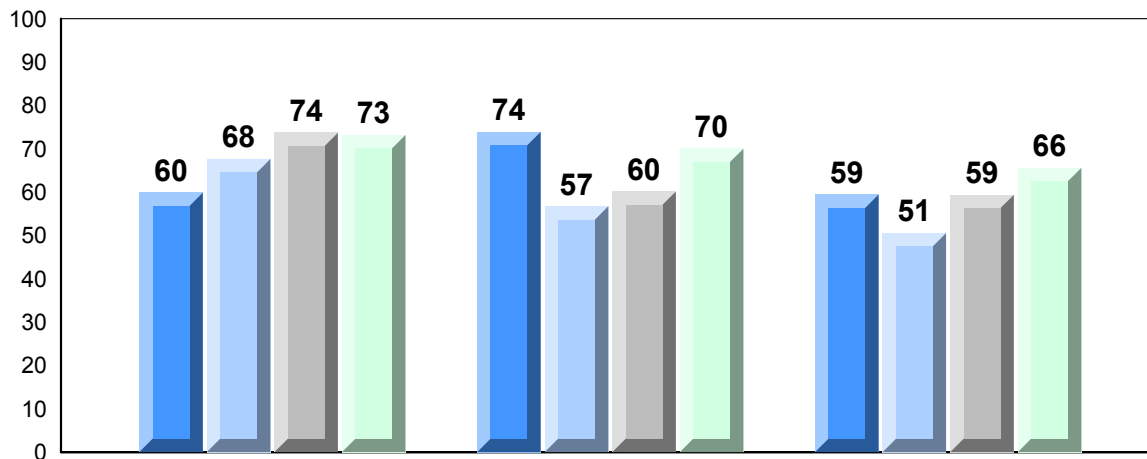


Exam Mark

Final Mark



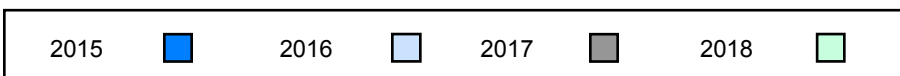
4 Year Public Exam (Subtest) Mark Trend 2015-2018



Listening

Reading

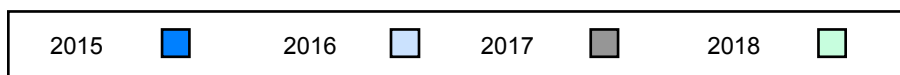
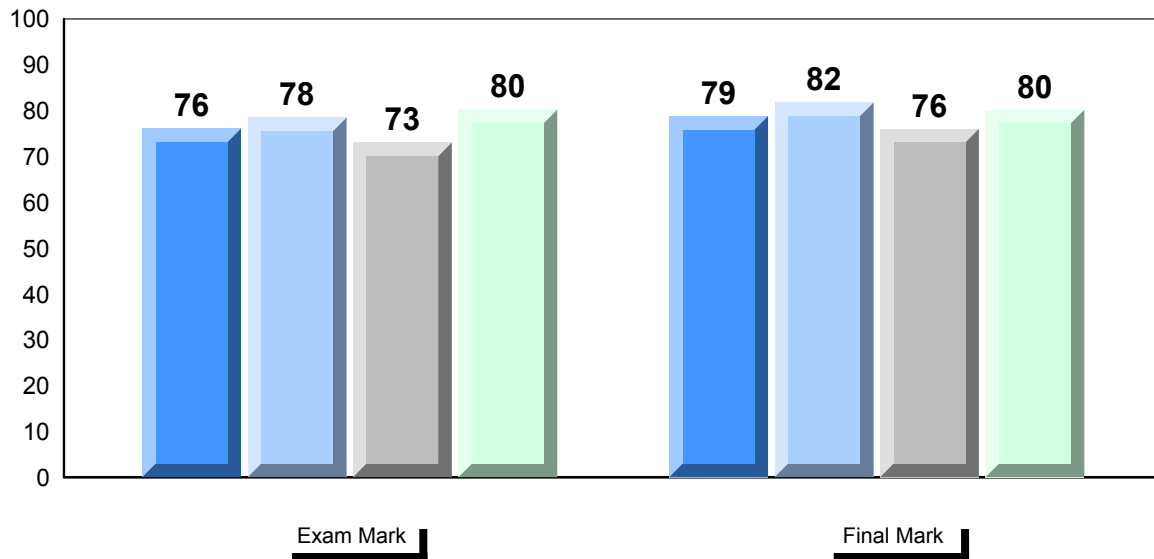
Writing



▼ ▲ The school result may appear numerically the same as the district/province due to rounding. The arrow indicates a negligible difference.

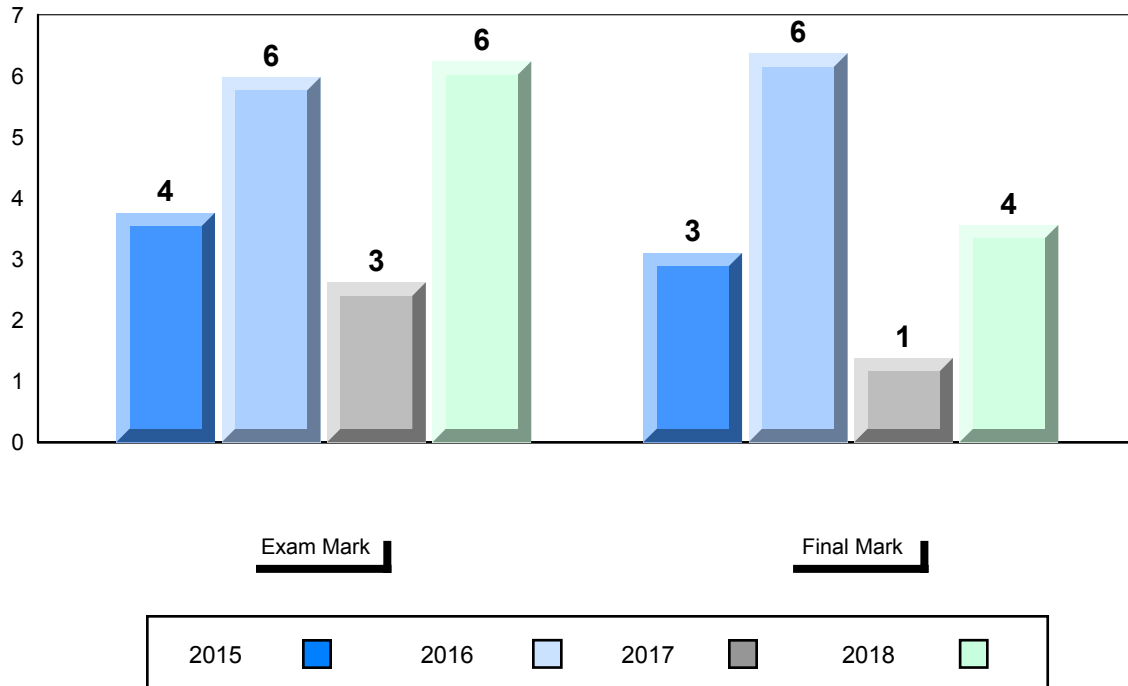
Number of Students		Public Exam Mark			Final Mark		
			School vs Region	School vs Province		School vs Region	School vs Province
Francais 3202	School	80.2	▲	▲	80.2	▲	▲
	Region	73.5			76.2		
	Province	74.0			76.6		
Subtest							
Listening	School	87.8	▲	▲			
	Region	78.3					
	Province	79.2					
Reading	School	77.0	▲	▲			
	Region	70.4					
	Province	70.6					
Writing	School	70.9	▲	▲			
	Region	65.6					
	Province	66.0					
Interview	School	84.0	▲	▲			
	Region	80.1					
	Province	80.5					

Average Mark, 2015-2018

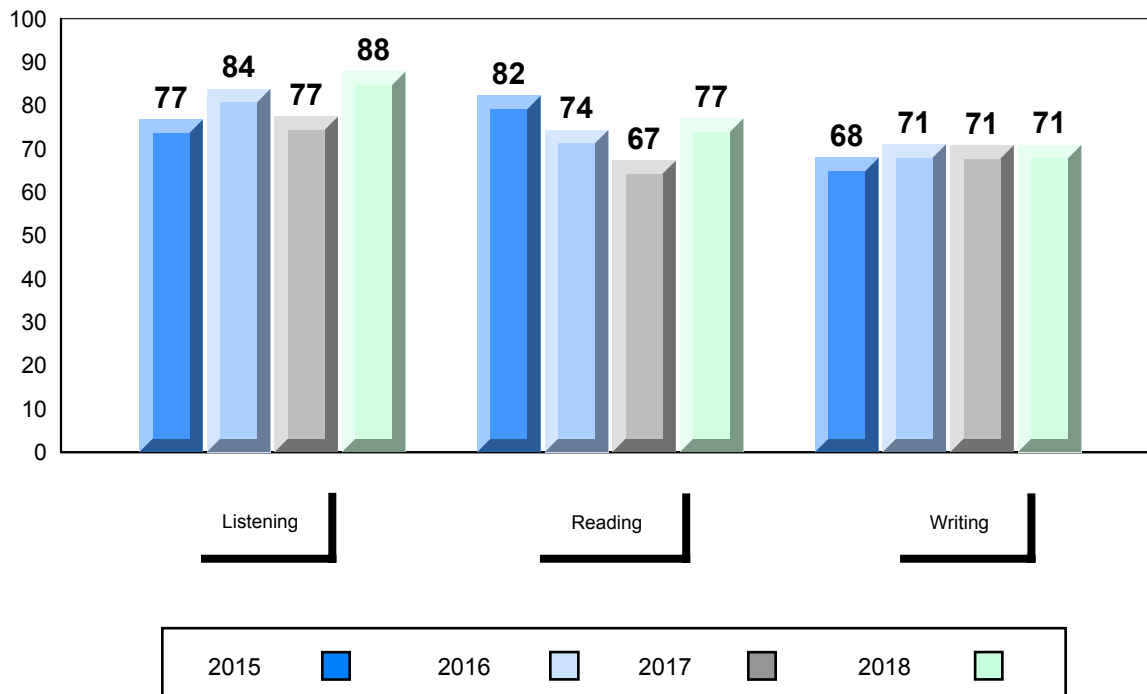


▼ ▲ The school result may appear numerically the same as the district/province due to rounding. The arrow indicates a negligible difference.

Difference from Provincial Mean, 2015-2018



4 Year Public Exam (Subtest) Mark Trend 2015-2018



▼ ▲ The school result may appear numerically the same as the district/province due to rounding. The arrow indicates a negligible difference.

Number of Students 1

Francais 3202 School
 Region
 Province

Subtest

Listening School
 Region
 Province

Reading School
 Region
 Province

Writing School
 Region
 Province

Interview School
 Region
 Province

Public Exam Mark	School vs Region	School vs Province
<i>School data with 5 or fewer students withheld for reasons of confidentiality.</i>		

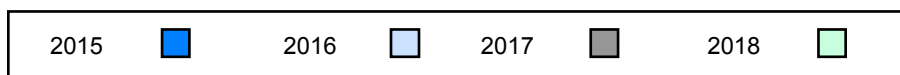
Final Mark	School vs Region	School vs Province
<i>School data with 5 or fewer students withheld for reasons of confidentiality.</i>		

Average Mark, 2015-2018

School data with 5 or fewer students withheld for reasons of confidentiality.

Exam Mark

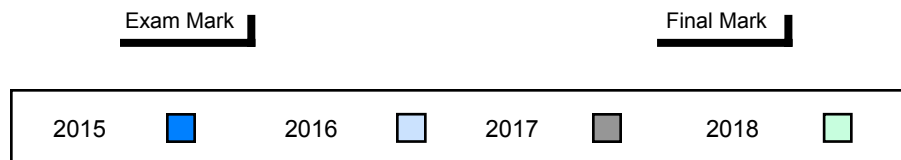
Final Mark



▼ ▲ The school result may appear numerically the same as the district/province due to rounding. The arrow indicates a negligible difference.

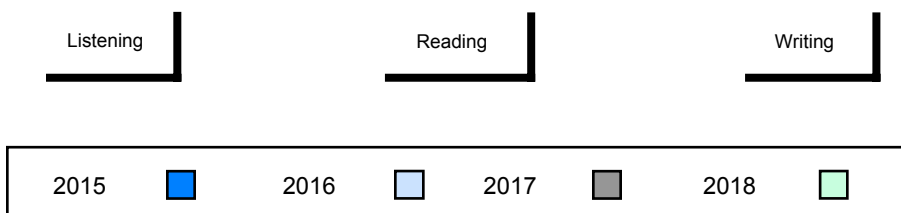
Difference from Provincial Mean, 2015-2018

School data with 5 or fewer students withheld for reasons of confidentiality.



4 Year Public Exam (Subtest) Mark Trend 2015-2018

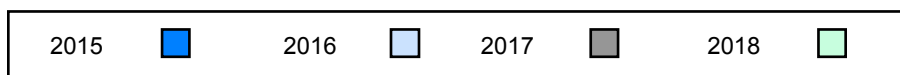
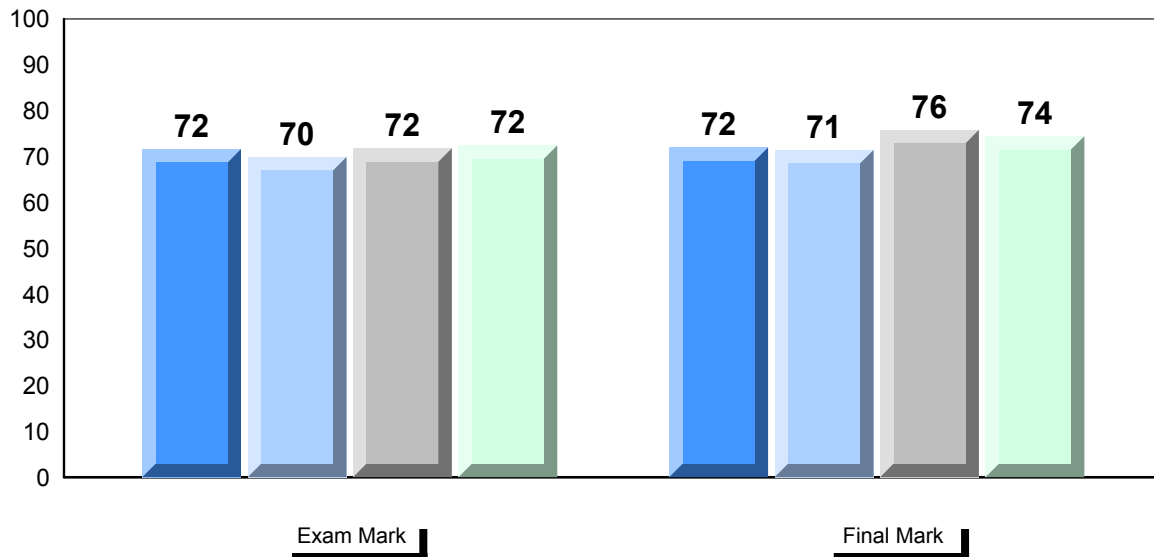
School data with 5 or fewer students withheld for reasons of confidentiality.



▼ ▲ The school result may appear numerically the same as the district/province due to rounding. The arrow indicates a negligible difference.

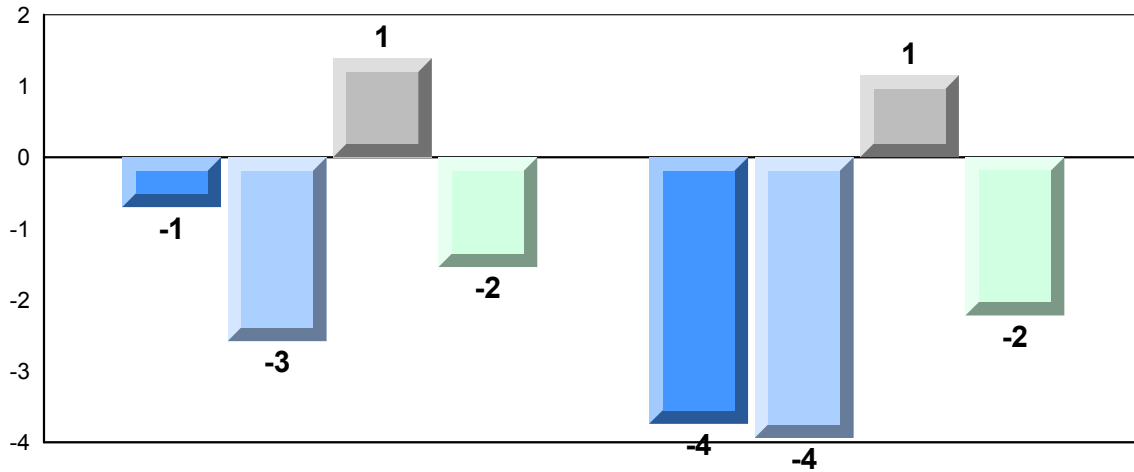
Number of Students	35				
Francais 3202	School	Public Exam Mark	School vs Region	School vs Province	Final Mark
	Region	72.4	▼	▼	74.4
	Province	73.5			76.2
		74.0			76.6
Subtest					
Listening	School	75.1	▼	▼	
	Region	78.3			
	Province	79.2			
Reading	School	69.0	▼	▼	
	Region	70.4			
	Province	70.6			
Writing	School	62.3	▼	▼	
	Region	65.6			
	Province	66.0			
Interview	School	81.9	▲	▲	
	Region	80.1			
	Province	80.5			

Average Mark, 2015-2018



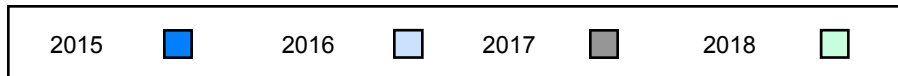
▼ ▲ The school result may appear numerically the same as the district/province due to rounding. The arrow indicates a negligible difference.

Difference from Provincial Mean, 2015-2018

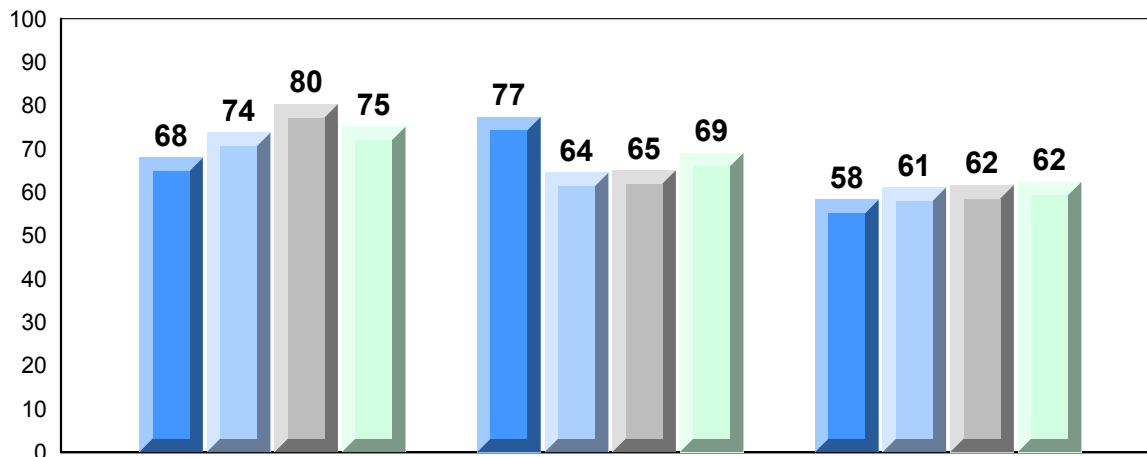


Exam Mark

Final Mark



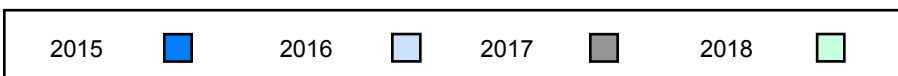
4 Year Public Exam (Subtest) Mark Trend 2015-2018



Listening

Reading

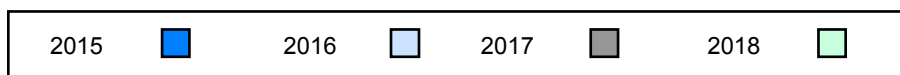
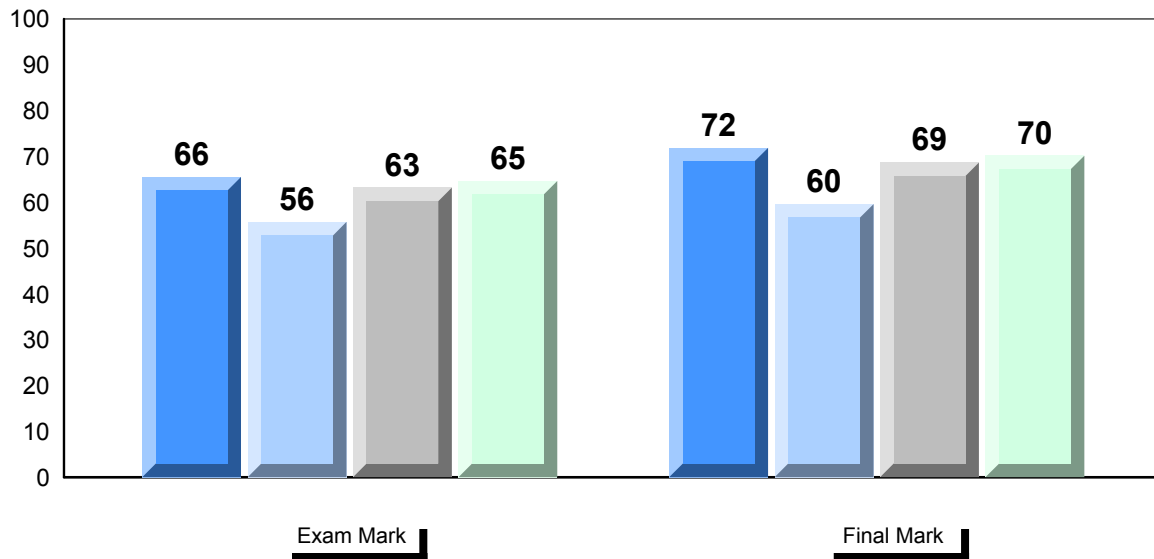
Writing



▼ ▲ The school result may appear numerically the same as the district/province due to rounding. The arrow indicates a negligible difference.

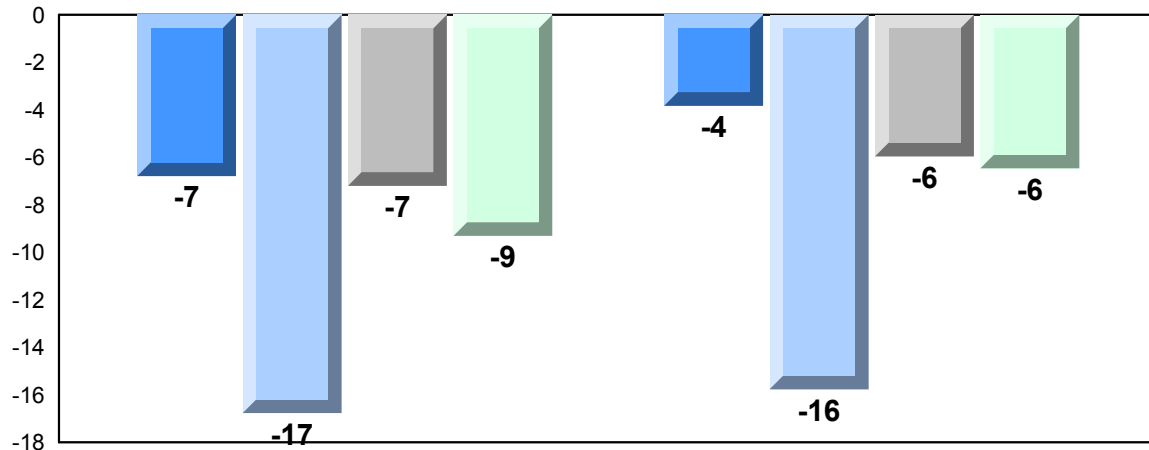
Number of Students		26	Public Exam Mark			Final Mark		
			School vs Region	School vs Province	School vs Region	School vs Province		
Francais 3202	School	64.7	▼	▼	70.2	▼	▼	
	Region	73.5			76.2			
	Province	74.0			76.6			
Subtest								
Listening	School	71.2	▼	▼				
	Region	78.3						
	Province	79.2						
Reading	School	60.5	▼	▼				
	Region	70.4						
	Province	70.6						
Writing	School	58.0	▼	▼				
	Region	65.6						
	Province	66.0						
Interview	School	68.0	▼	▼				
	Region	80.1						
	Province	80.5						

Average Mark, 2015-2018



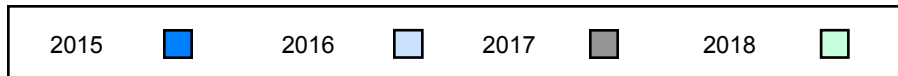
▼ ▲ The school result may appear numerically the same as the district/province due to rounding. The arrow indicates a negligible difference.

Difference from Provincial Mean, 2015-2018

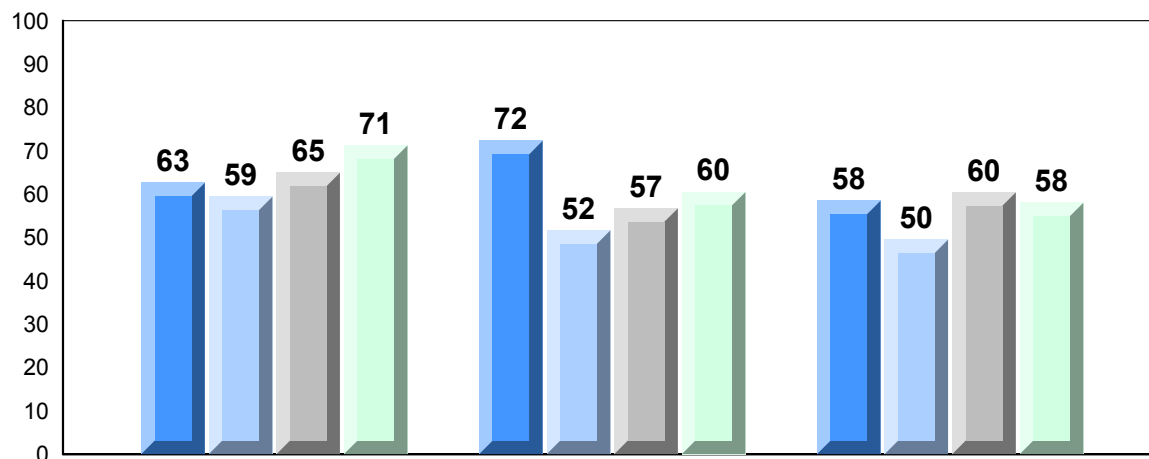


Exam Mark

Final Mark



4 Year Public Exam (Subtest) Mark Trend 2015-2018



Listening

Reading

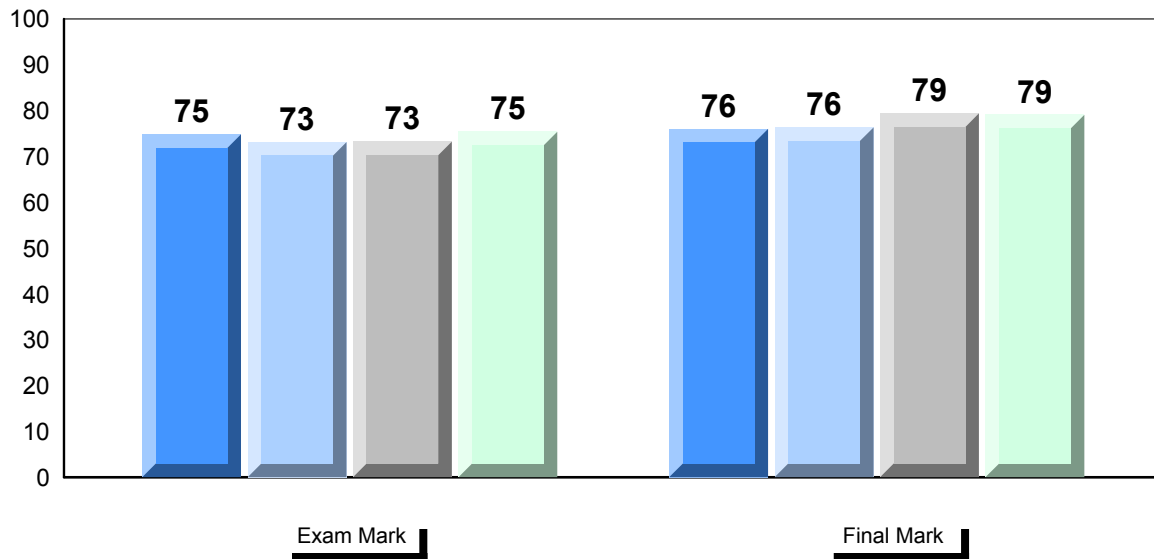
Writing



▼ ▲ The school result may appear numerically the same as the district/province due to rounding. The arrow indicates a negligible difference.

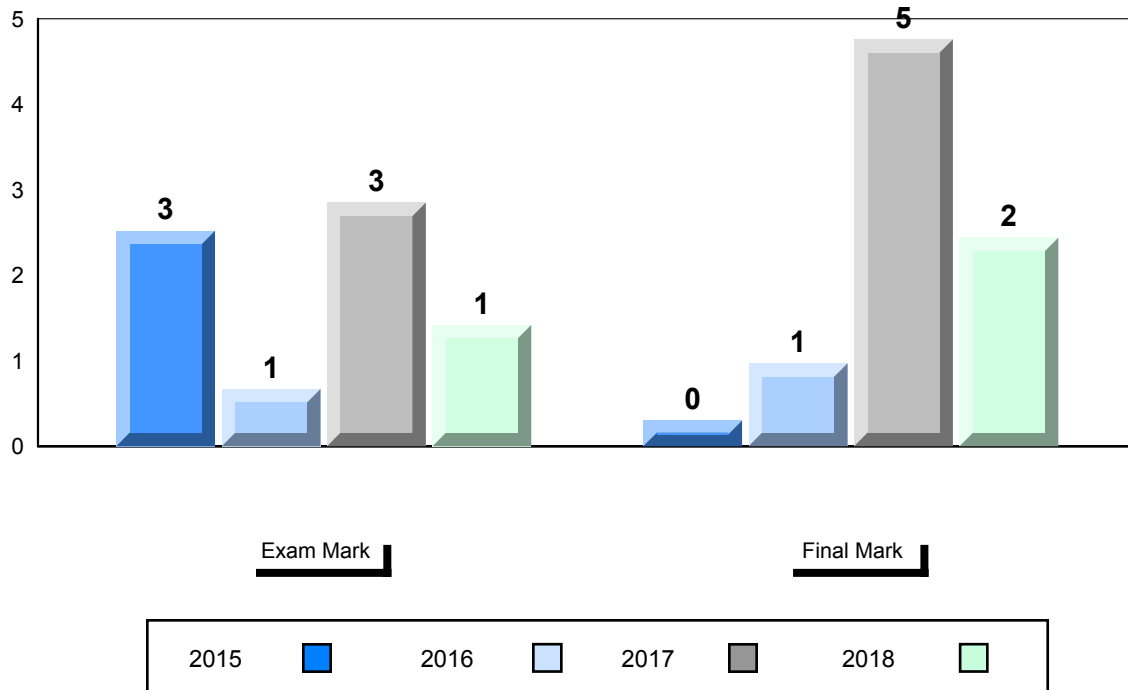
Number of Students		Public Exam Mark			Final Mark		
			School vs Region	School vs Province		School vs Region	School vs Province
Francais 3202	School	75.4	▲	▲	79.1	▲	▲
	Region	73.5					
	Province	74.0					
Subtest							
Listening	School	80.2	▲	▲	76.2		
	Region	78.3					
	Province	79.2					
Reading	School	73.6	▲	▲	76.6		
	Region	70.4					
	Province	70.6					
Writing	School	67.7	▲	▲			
	Region	65.6					
	Province	66.0					
Interview	School	79.1	▼	▼			
	Region	80.1					
	Province	80.5					

Average Mark, 2015-2018

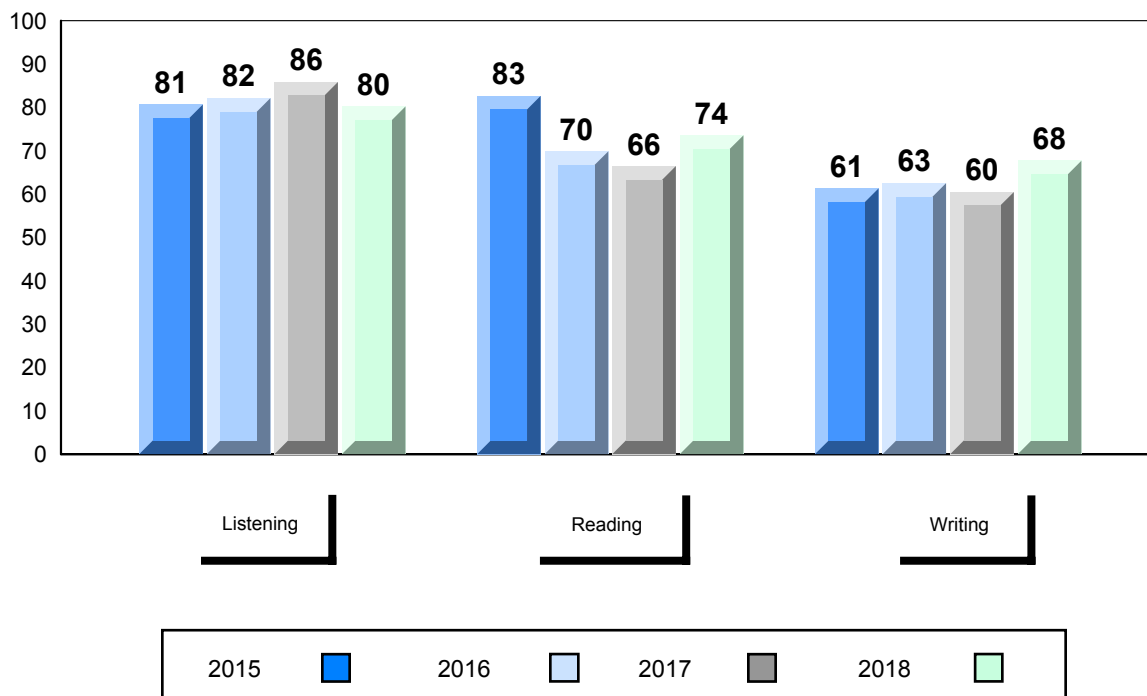


▼ ▲ The school result may appear numerically the same as the district/province due to rounding. The arrow indicates a negligible difference.

Difference from Provincial Mean, 2015-2018



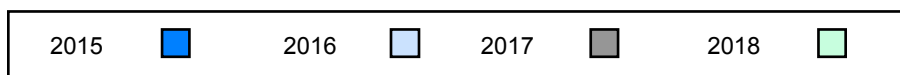
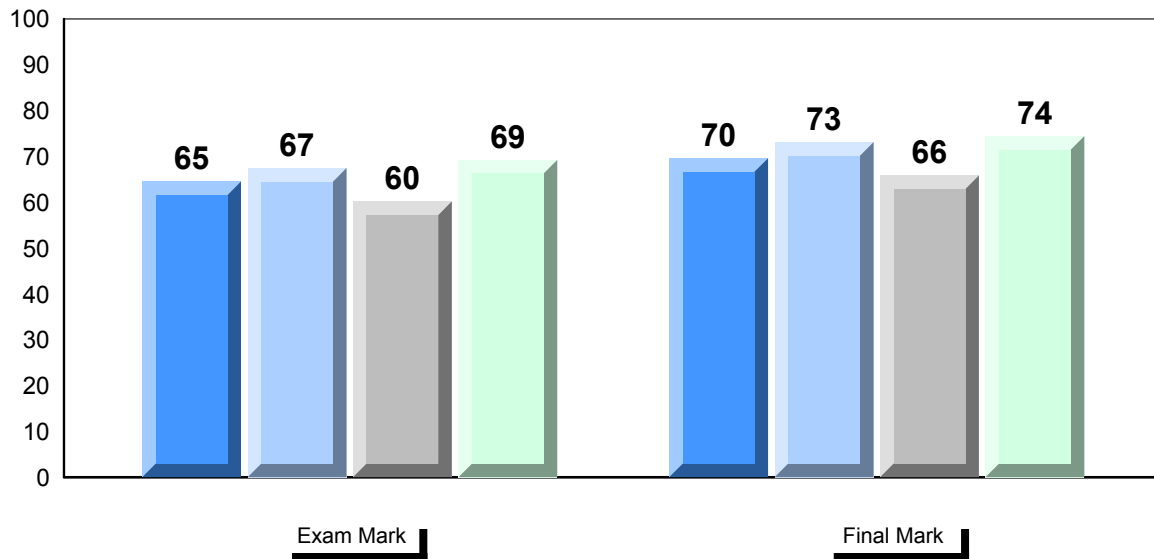
4 Year Public Exam (Subtest) Mark Trend 2015-2018



▼ ▲ The school result may appear numerically the same as the district/province due to rounding. The arrow indicates a negligible difference.

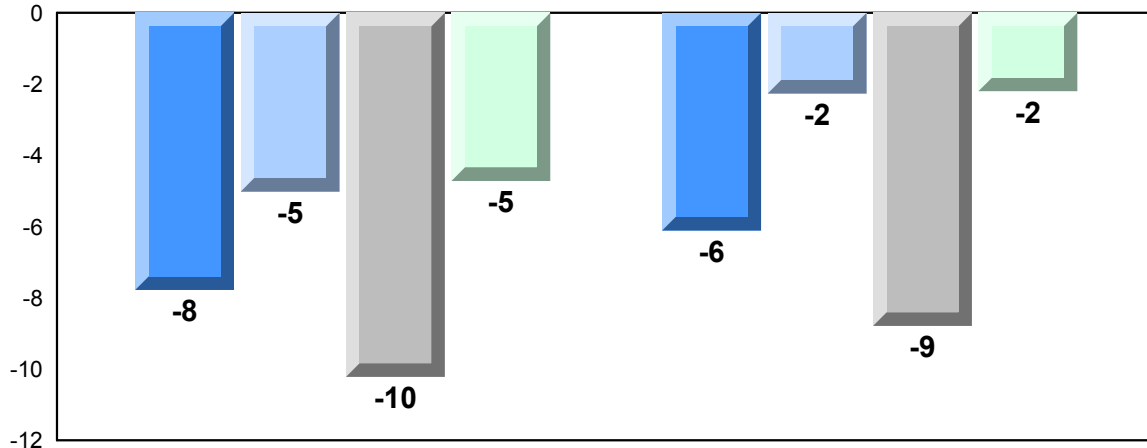
Number of Students	24			
Francais 3202	School	Public Exam Mark	School vs Region	School vs Province
	Region	69.3	▼	▼
	Province	73.5		
		74.0		
Subtest				
Listening	School	70.3	▼	▼
	Region	78.3		
	Province	79.2		
Reading	School	62.8	▼	▼
	Region	70.4		
	Province	70.6		
Writing	School	60.8	▼	▼
	Region	65.6		
	Province	66.0		
Interview	School	82.3	▲	▲
	Region	80.1		
	Province	80.5		
		Final Mark	School vs Region	School vs Province
		74.4	▼	▼
		76.2		
		76.6		

Average Mark, 2015-2018



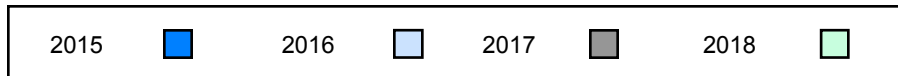
▼ ▲ The school result may appear numerically the same as the district/province due to rounding. The arrow indicates a negligible difference.

Difference from Provincial Mean, 2015-2018

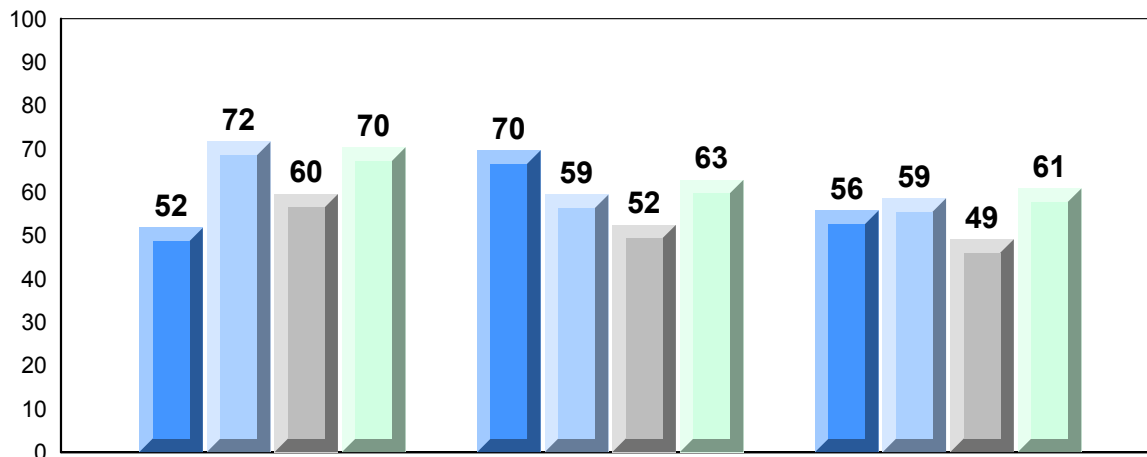


Exam Mark

Final Mark



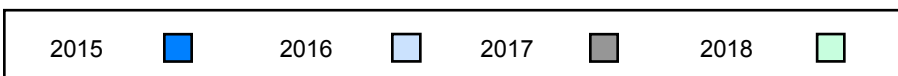
4 Year Public Exam (Subtest) Mark Trend 2015-2018



Listening

Reading

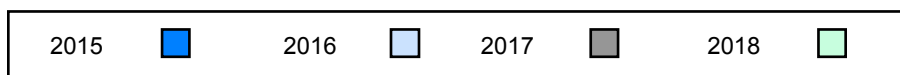
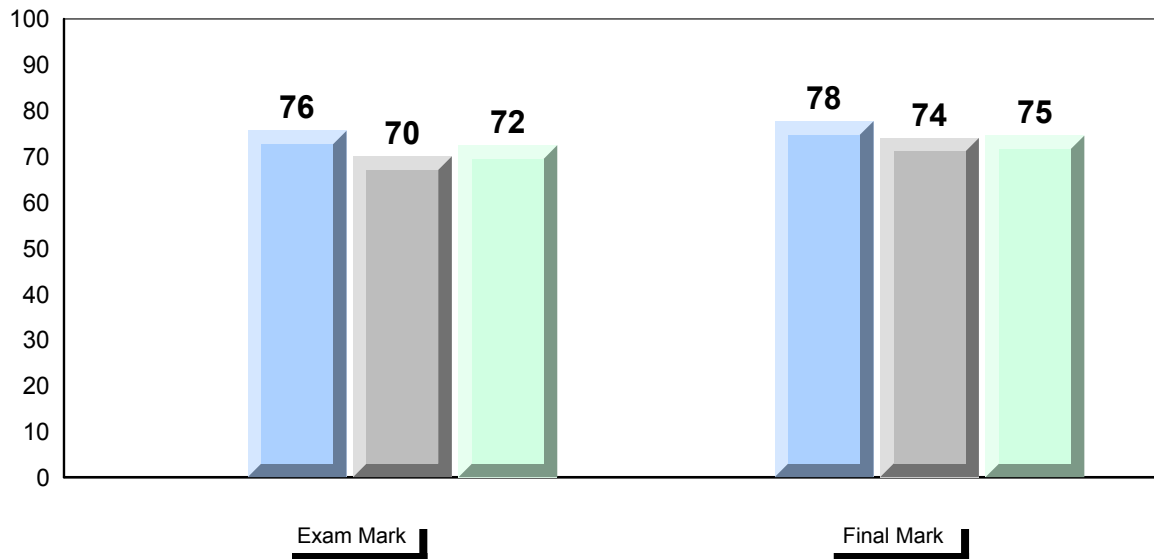
Writing



▼ ▲ The school result may appear numerically the same as the district/province due to rounding. The arrow indicates a negligible difference.

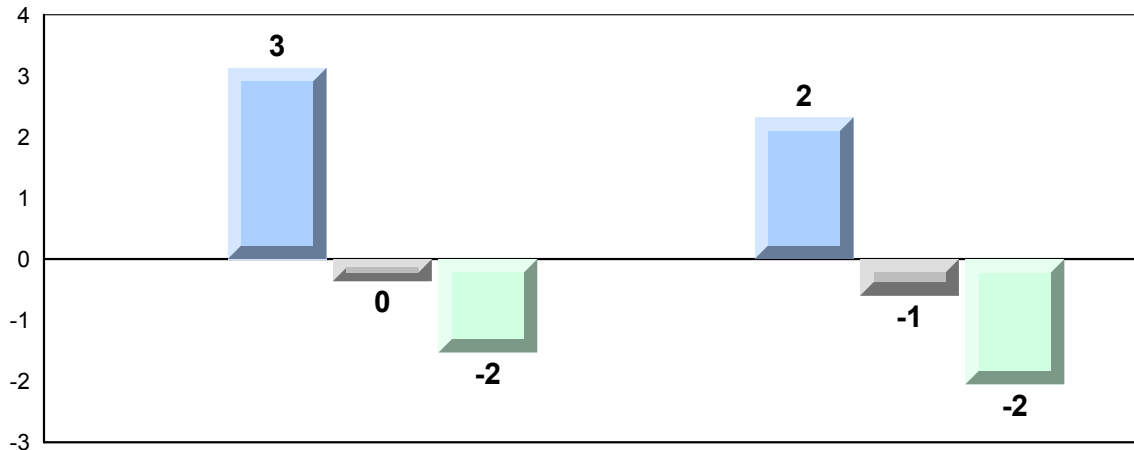
Number of Students	39							
Français 3202	School	Public Exam Mark	School vs Region	School vs Province	Final Mark	School vs Region	School vs Province	
	Region	72.4	▼	▼		74.6	▼	▼
	Province	73.5				76.2		
		74.0				76.6		
Subtest								
Listening	School	77.1	▼	▼				
	Region	78.3						
	Province	79.2						
Reading	School	70.2	▼	▼				
	Region	70.4						
	Province	70.6						
Writing	School	62.2	▼	▼				
	Region	65.6						
	Province	66.0						
Interview	School	79.4	▼	▼				
	Region	80.1						
	Province	80.5						

Average Mark, 2015-2018



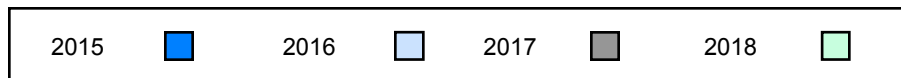
▼ ▲ The school result may appear numerically the same as the district/province due to rounding. The arrow indicates a negligible difference.

Difference from Provincial Mean, 2015-2018

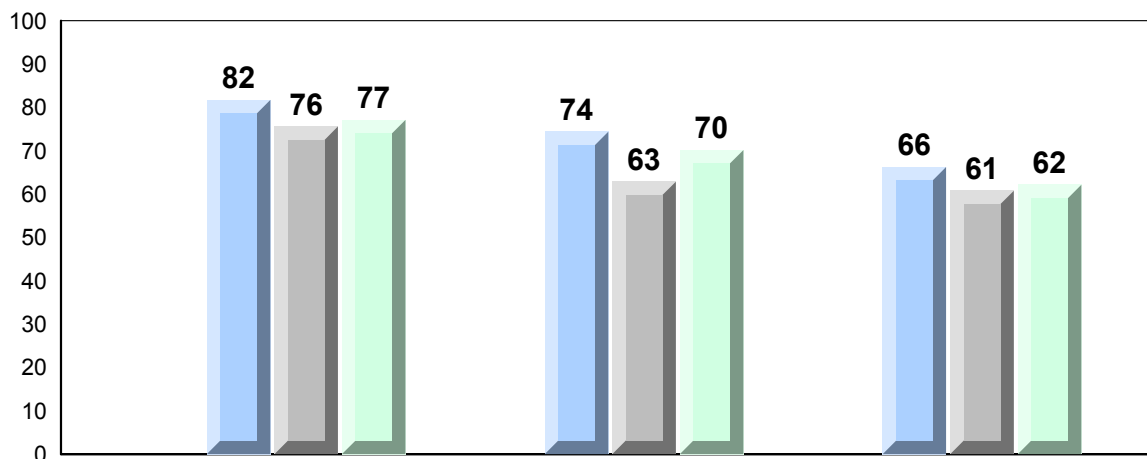


Exam Mark

Final Mark



4 Year Public Exam (Subtest) Mark Trend 2015-2018



Listening

Reading

Writing

