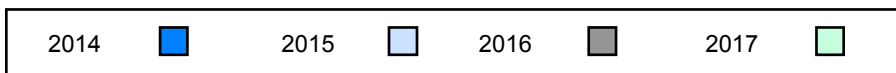
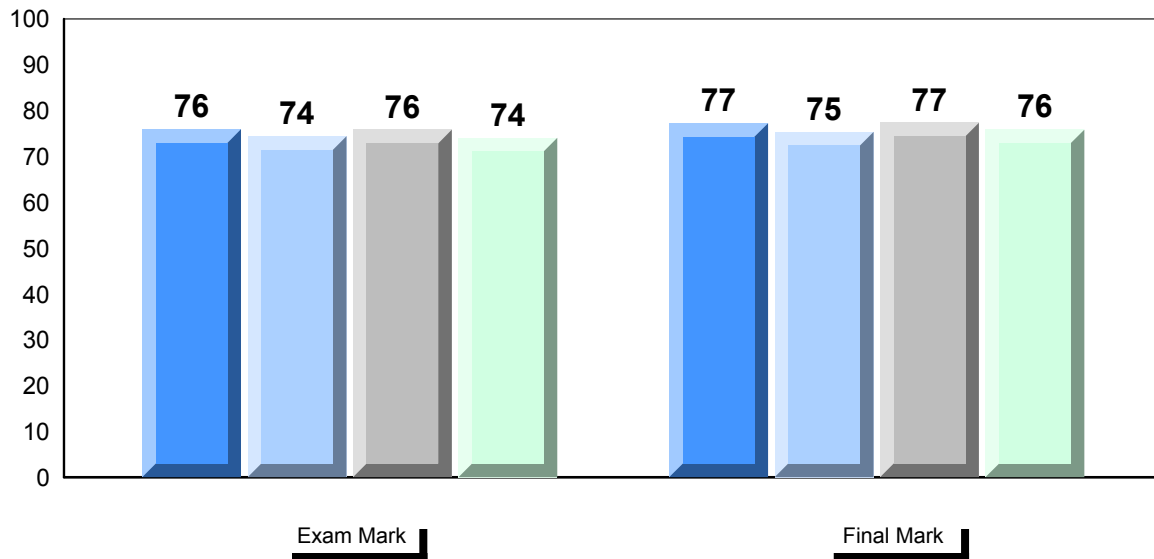


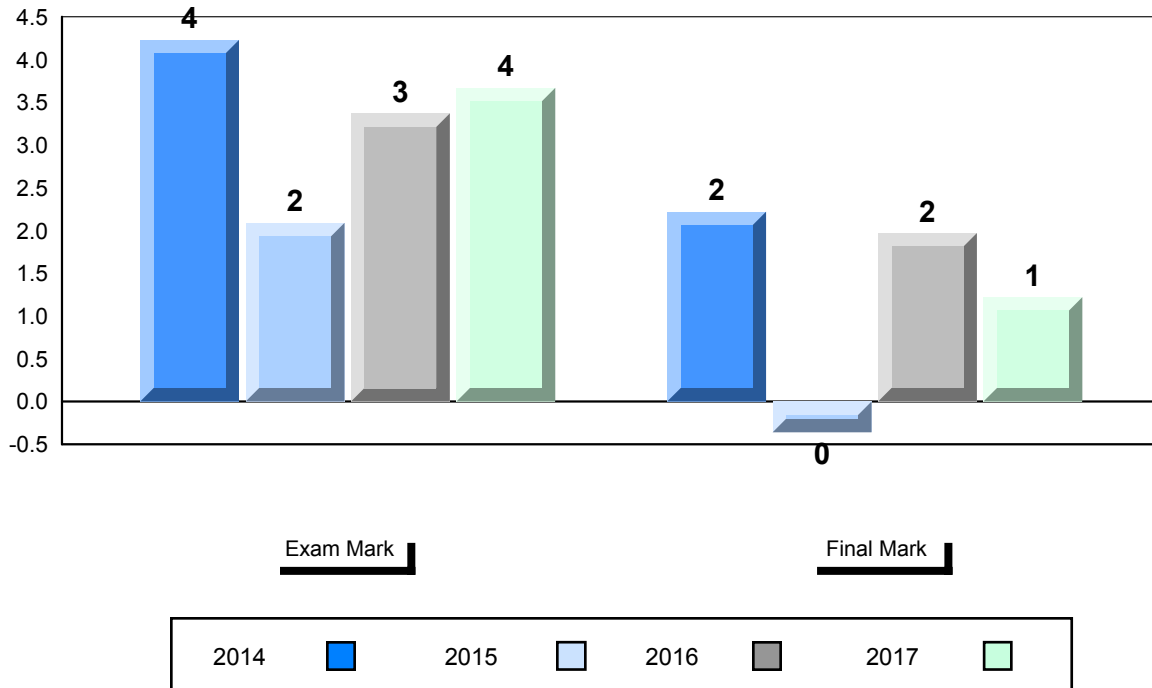
| Number of Students | | Public Exam Mark | | | Final Mark | | |
|----------------------|----------|------------------|------------------|--------------------|----------------------|------------------|--------------------|
| | | | School vs Region | School vs Province | | School vs Region | School vs Province |
| Francais 3202 | School | 74.1 | ▲ | ▲ | 75.8 71.1 74.6 | ▲ | ▲ |
| | Region | 69.0 | | | | | |
| | Province | 70.4 | | | | | |
| Subtest | | | | | | | |
| Listening | School | 83.4 | ▲ | ▲ | | | |
| | Region | 74.7 | | | | | |
| | Province | 74.2 | | | | | |
| Reading | School | 67.4 | ▲ | ▲ | | | |
| | Region | 61.2 | | | | | |
| | Province | 62.6 | | | | | |
| Writing | School | 67.3 | ▲ | ▲ | | | |
| | Region | 61.7 | | | | | |
| | Province | 62.2 | | | | | |
| Interview | School | 77.5 | ▲ | ▼ | | | |
| | Region | 77.3 | | | | | |
| | Province | 78.4 | | | | | |

Average Mark, 2014-2017

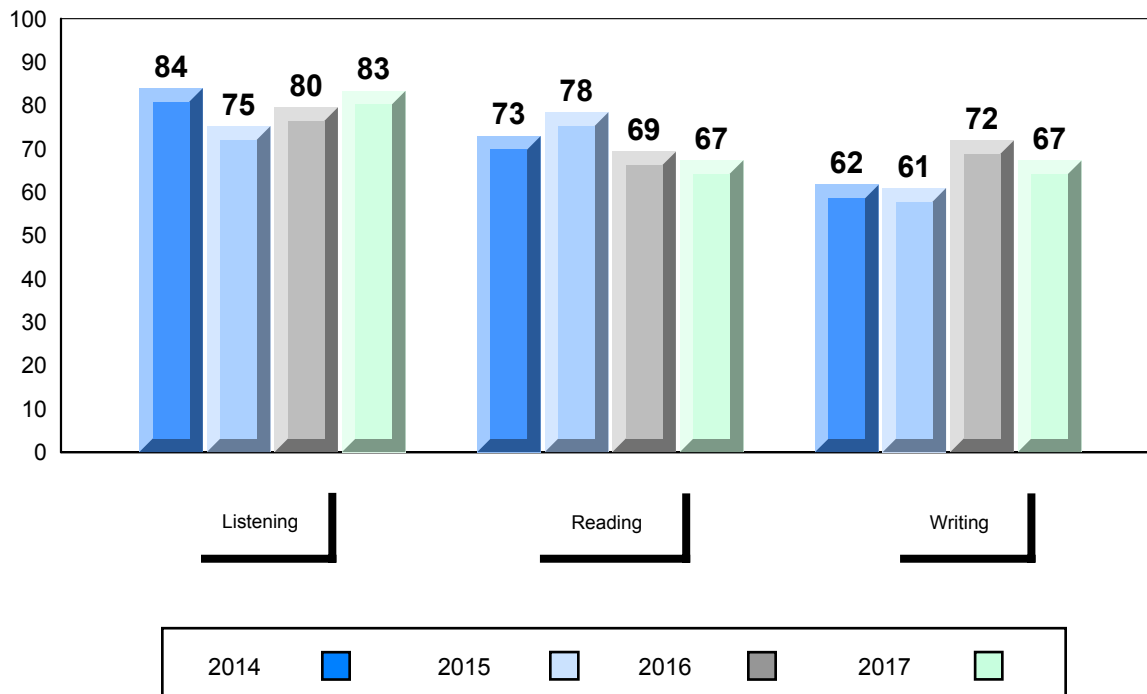


▼ ▲ The school result may appear numerically the same as the district/province due to rounding. The arrow indicates a negligible difference.

Difference from Provincial Mean, 2014-2017



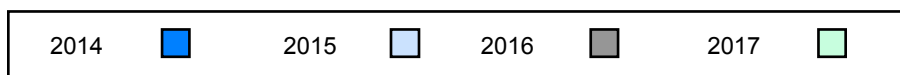
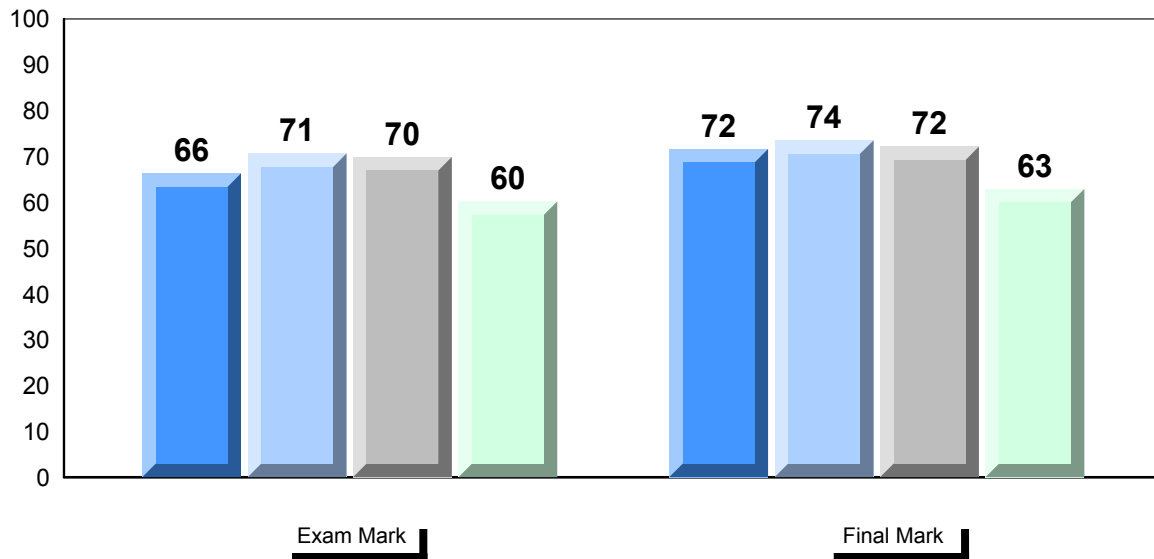
4 Year Public Exam (Subtest) Mark Trend 2014-2017



▼ ▲ The school result may appear numerically the same as the district/province due to rounding. The arrow indicates a negligible difference.

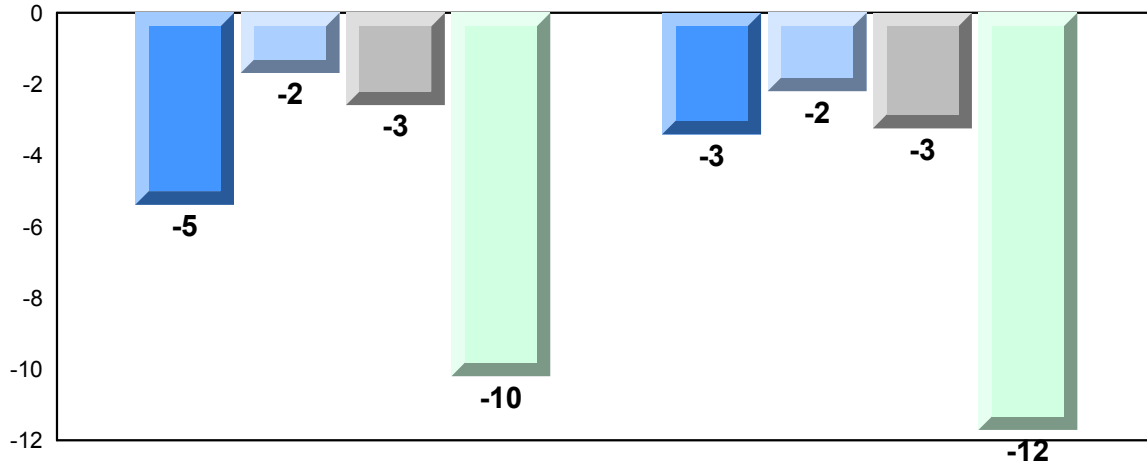
| | | | | | | | |
|----------------------|----------|-------------------------|------------------|--------------------|-------------------|------------------|--------------------|
| Number of Students | 11 | | | | | | |
| Francais 3202 | | Public Exam Mark | School vs Region | School vs Province | Final Mark | School vs Region | School vs Province |
| | School | 60.2 | ▼ | ▼ | 62.9 | ▼ | ▼ |
| | Region | 69.0 | | | 71.1 | | |
| | Province | 70.4 | | | 74.6 | | |
| Subtest | | | | | | | |
| Listening | School | 59.6 | ▼ | ▼ | | | |
| | Region | 74.7 | | | | | |
| | Province | 74.2 | | | | | |
| Reading | School | 50.6 | ▼ | ▼ | | | |
| | Region | 61.2 | | | | | |
| | Province | 62.6 | | | | | |
| Writing | School | 52.2 | ▼ | ▼ | | | |
| | Region | 61.7 | | | | | |
| | Province | 62.2 | | | | | |
| Interview | School | 76.9 | ▼ | ▼ | | | |
| | Region | 77.3 | | | | | |
| | Province | 78.4 | | | | | |

Average Mark, 2014-2017



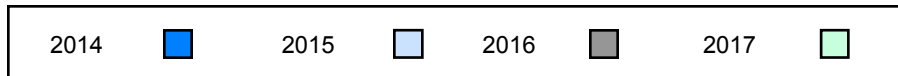
▼ ▲ The school result may appear numerically the same as the district/province due to rounding. The arrow indicates a negligible difference.

Difference from Provincial Mean, 2014-2017

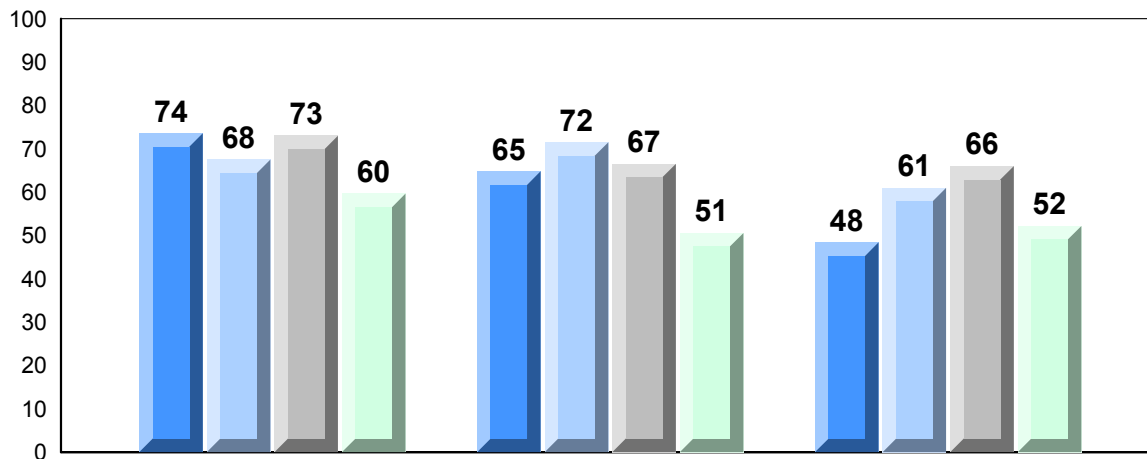


Exam Mark

Final Mark



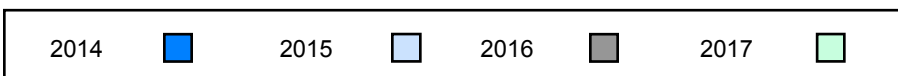
4 Year Public Exam (Subtest) Mark Trend 2014-2017



Listening

Reading

Writing

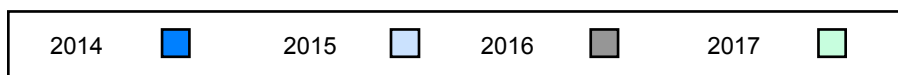
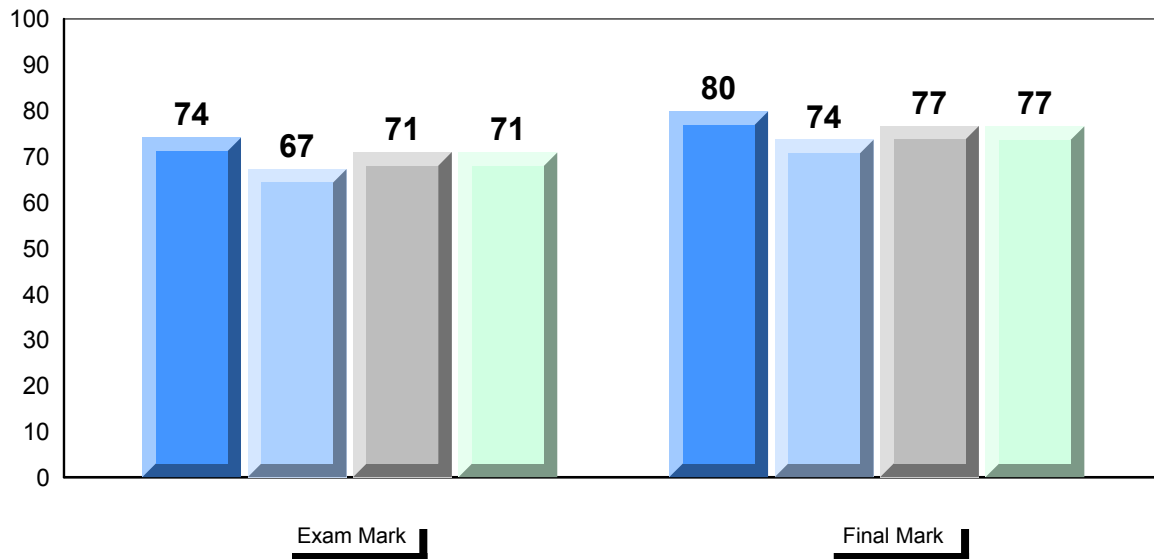


▼ ▲ The school result may appear numerically the same as the district/province due to rounding. The arrow indicates a negligible difference.

| | | | | |
|----------------------|----------|-------------------------|------------------|--------------------|
| Number of Students | 14 | | | |
| Francais 3202 | School | Public Exam Mark | School vs Region | School vs Province |
| | Region | 70.9 | ▼ | ▲ |
| | Province | 72.7 | | |
| | | 70.4 | | |
| Subtest | | | | |
| Listening | School | 74.0 | ▼ | ▼ |
| | Region | 76.9 | | |
| | Province | 74.2 | | |
| Reading | School | 61.4 | ▼ | ▼ |
| | Region | 65.7 | | |
| | Province | 62.6 | | |
| Writing | School | 61.3 | ▼ | ▼ |
| | Region | 63.0 | | |
| | Province | 62.2 | | |
| Interview | School | 85.7 | ▲ | ▲ |
| | Region | 84.5 | | |
| | Province | 78.4 | | |

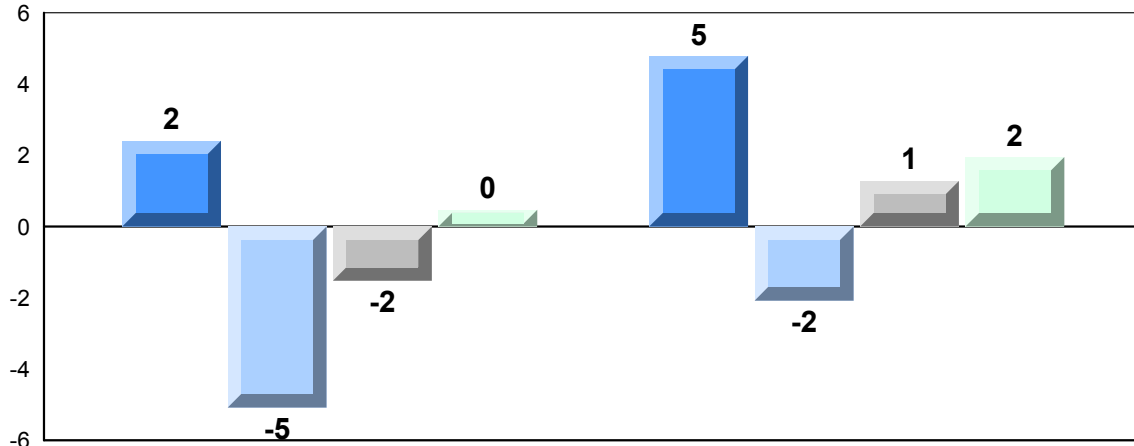
| | | | | |
|--|--|-------------------|------------------|--------------------|
| | | Final Mark | School vs Region | School vs Province |
| | | 76.6 | ▼ | ▲ |
| | | 78.1 | | |
| | | 74.6 | | |

Average Mark, 2014-2017



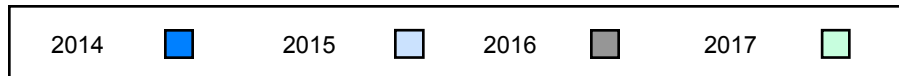
▼ ▲ The school result may appear numerically the same as the district/province due to rounding. The arrow indicates a negligible difference.

Difference from Provincial Mean, 2014-2017

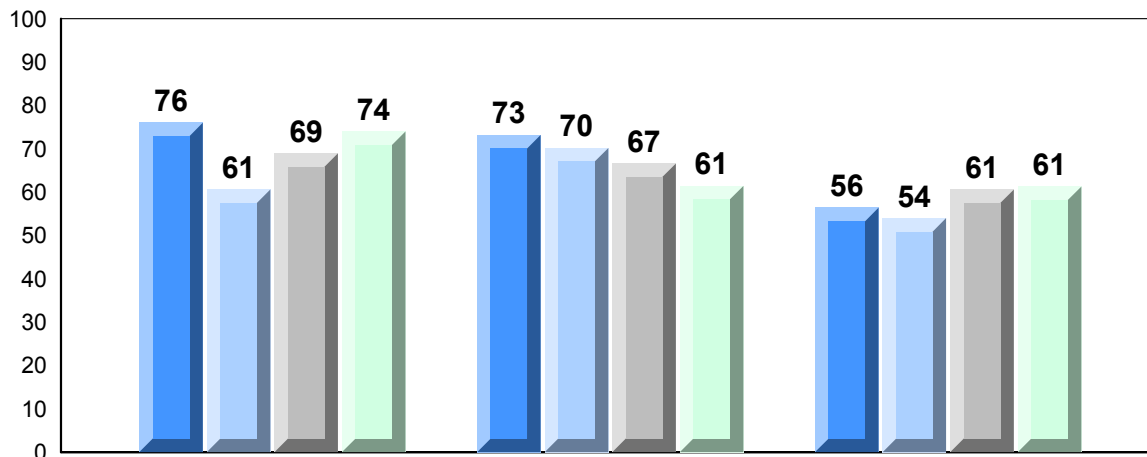


Exam Mark

Final Mark



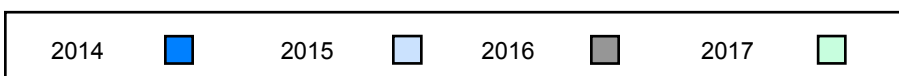
4 Year Public Exam (Subtest) Mark Trend 2014-2017



Listening

Reading

Writing



▼ ▲ The school result may appear numerically the same as the district/province due to rounding. The arrow indicates a negligible difference.

Number of Students 28

Francais 3202

School
Region
Province

Public Exam Mark

School vs Region

School vs Province

73.7
72.7
70.4



Final Mark

School vs Region

School vs Province

78.8
78.1
74.6



Subtest

Listening

School
Region
Province

78.3
76.9
74.2



Reading

School
Region
Province

67.9
65.7
62.6



Writing

School
Region
Province

63.9
63.0
62.2



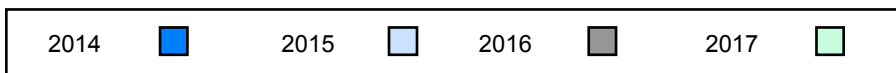
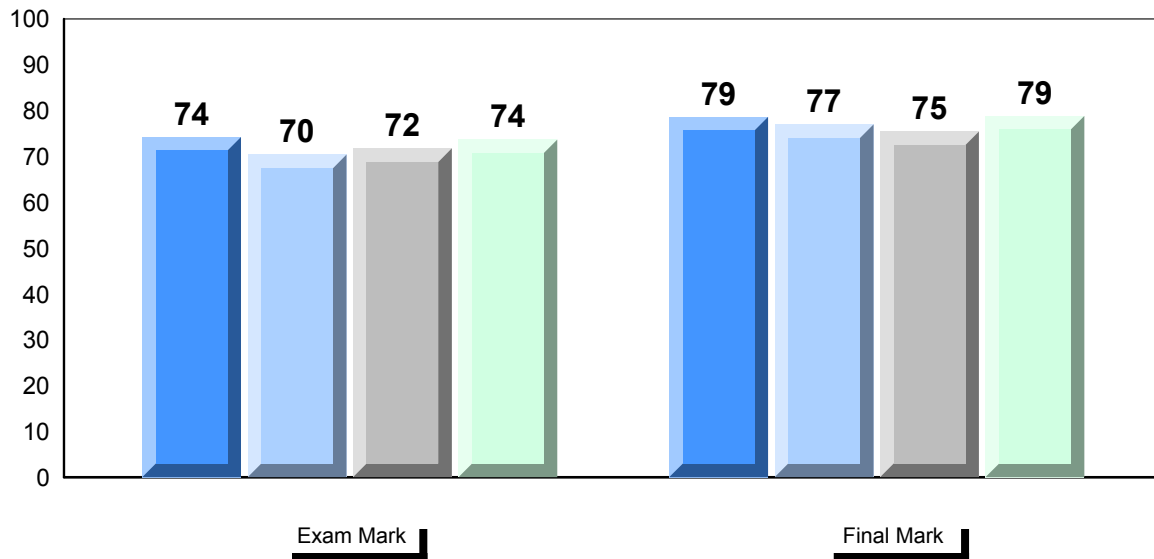
Interview

School
Region
Province

83.9
84.5
78.4

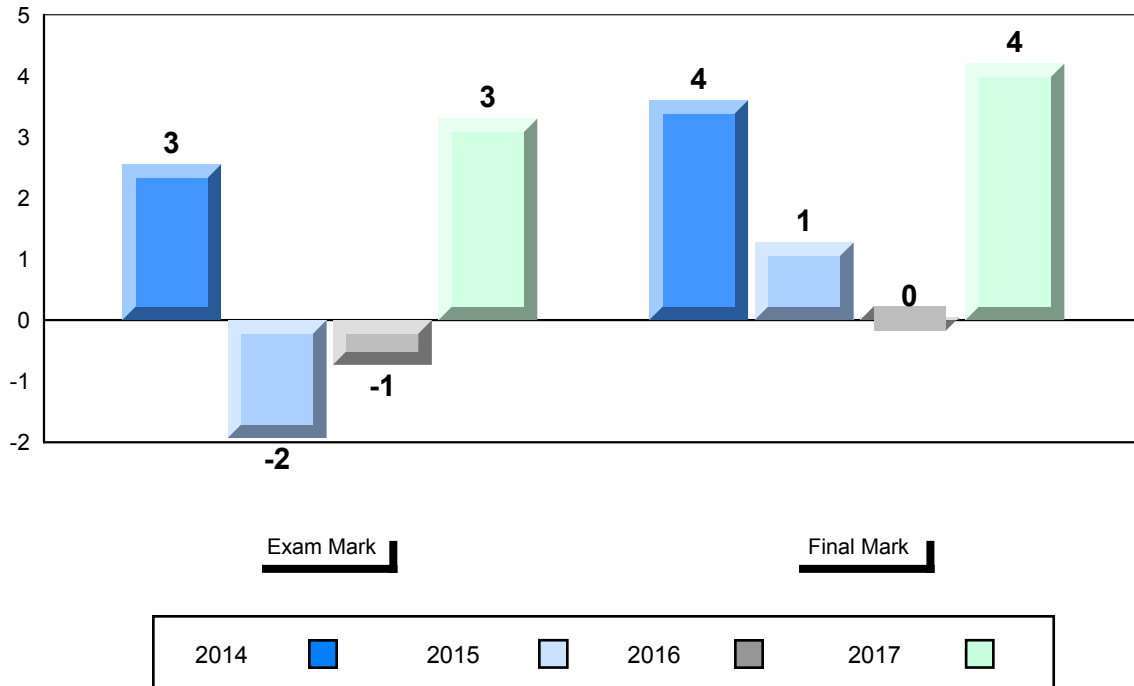


Average Mark, 2014-2017

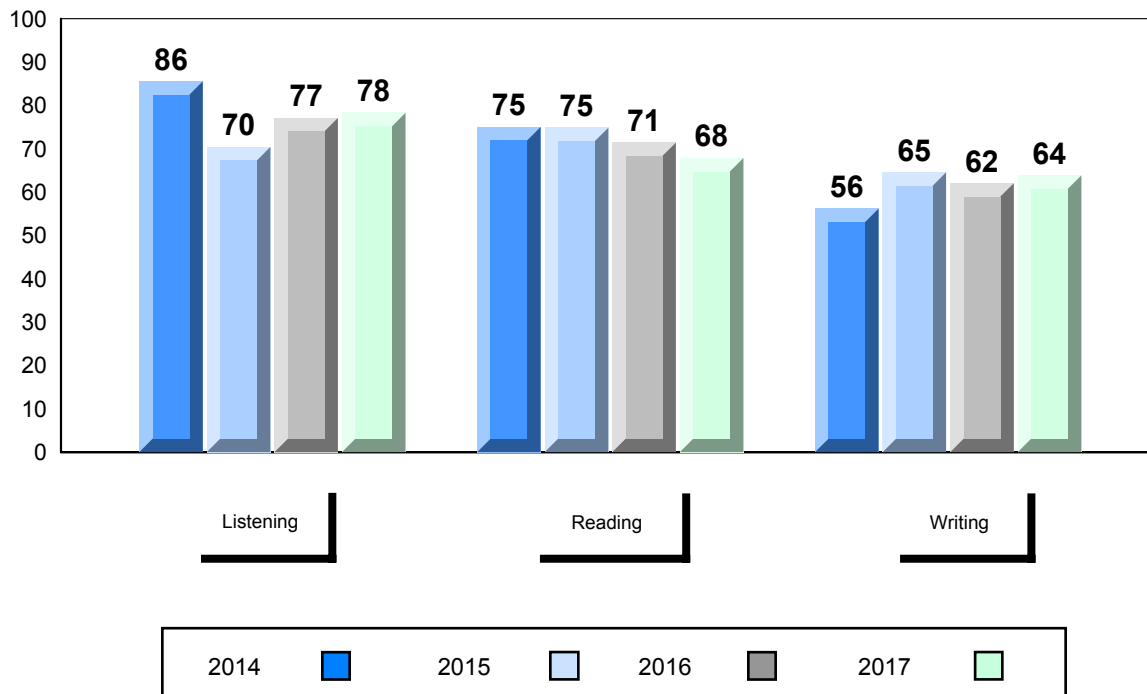


▼ ▲ The school result may appear numerically the same as the district/province due to rounding. The arrow indicates a negligible difference.

Difference from Provincial Mean, 2014-2017



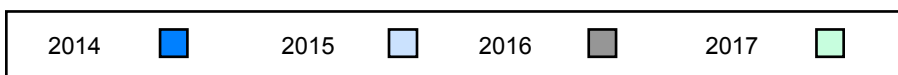
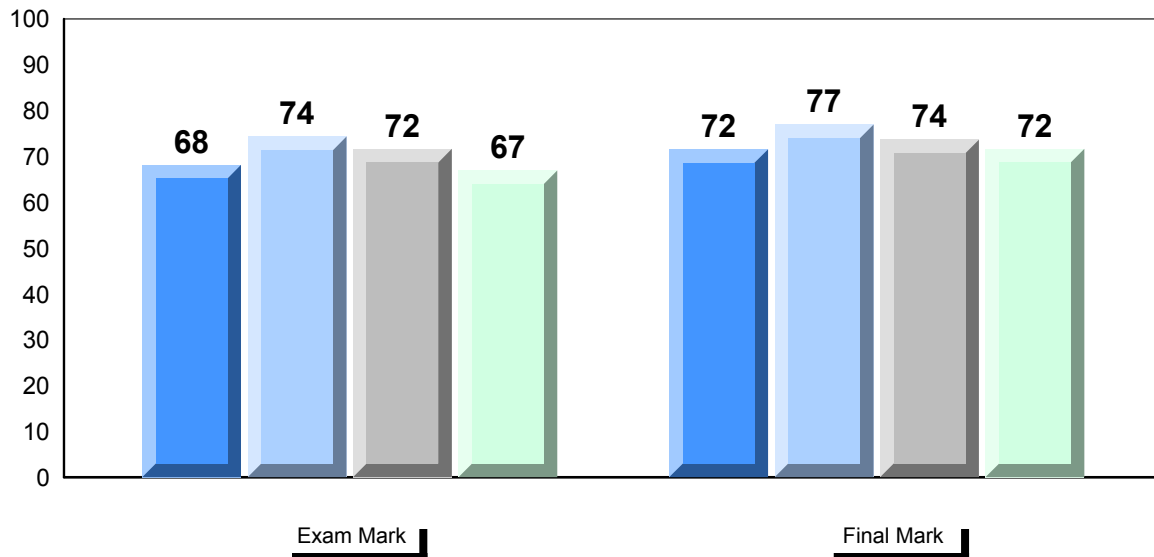
4 Year Public Exam (Subtest) Mark Trend 2014-2017



▼ ▲ The school result may appear numerically the same as the district/province due to rounding. The arrow indicates a negligible difference.

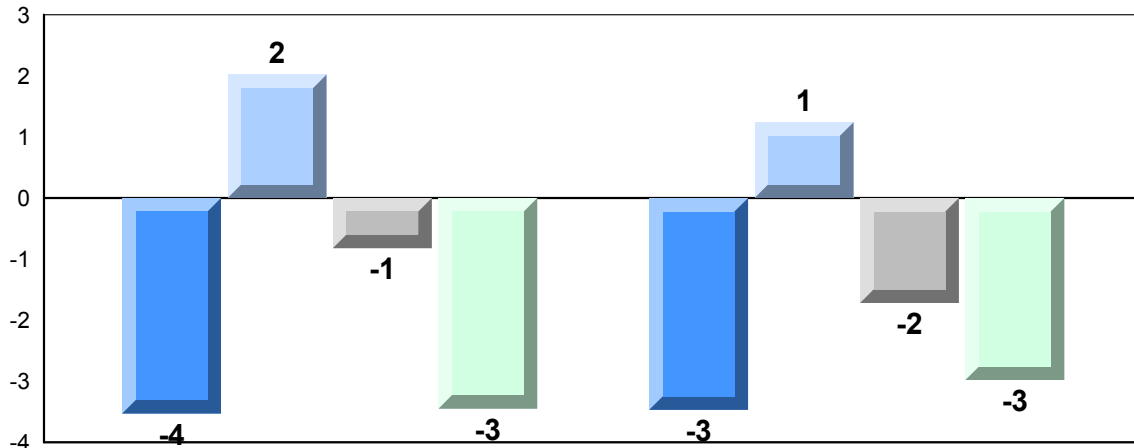
| Number of Students | | 14 | Public Exam Mark | | | Final Mark | | |
|----------------------|----------|------|-------------------------|--------------------|------------------|--------------------|---|--|
| | | | School vs Region | School vs Province | School vs Region | School vs Province | | |
| Francais 3202 | School | 66.9 | ▼ | ▼ | 71.6 | ▼ | ▼ | |
| | Region | 69.8 | | | 74.2 | | | |
| | Province | 70.4 | | | 74.6 | | | |
| Subtest | | | | | | | | |
| Listening | School | 71.4 | ▼ | ▼ | | | | |
| | Region | 74.4 | | | | | | |
| | Province | 74.2 | | | | | | |
| Reading | School | 56.3 | ▼ | ▼ | | | | |
| | Region | 63.0 | | | | | | |
| | Province | 62.6 | | | | | | |
| Writing | School | 59.6 | ▼ | ▼ | | | | |
| | Region | 61.0 | | | | | | |
| | Province | 62.2 | | | | | | |
| Interview | School | 79.1 | ▼ | ▲ | | | | |
| | Region | 79.3 | | | | | | |
| | Province | 78.4 | | | | | | |

Average Mark, 2014-2017



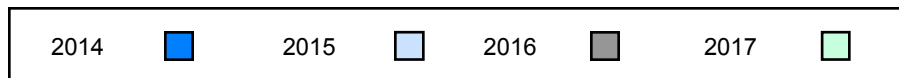
▼ ▲ The school result may appear numerically the same as the district/province due to rounding. The arrow indicates a negligible difference.

Difference from Provincial Mean, 2014-2017

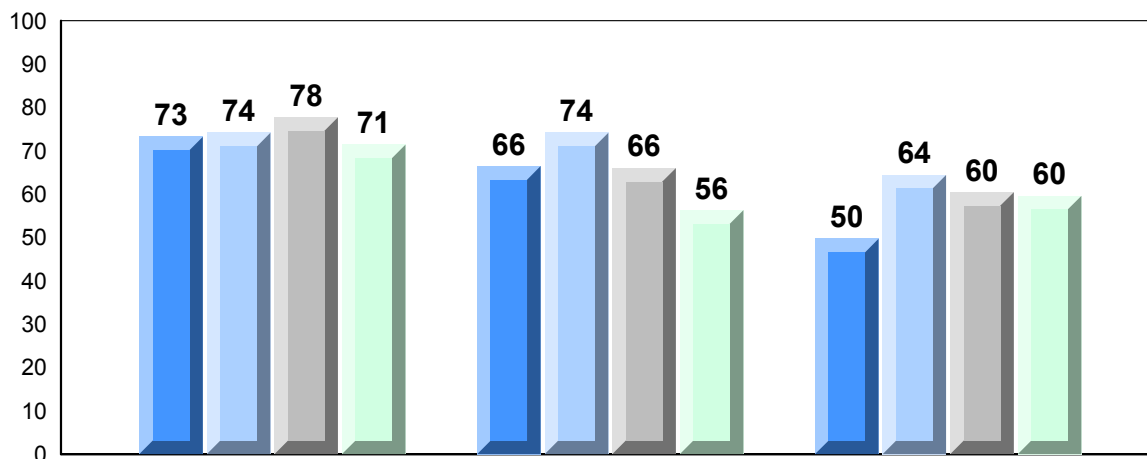


Exam Mark

Final Mark



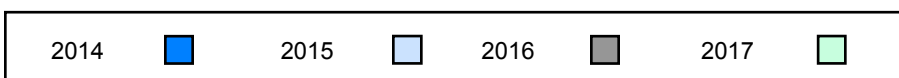
4 Year Public Exam (Subtest) Mark Trend 2014-2017



Listening

Reading

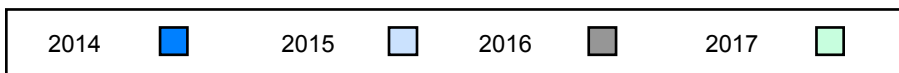
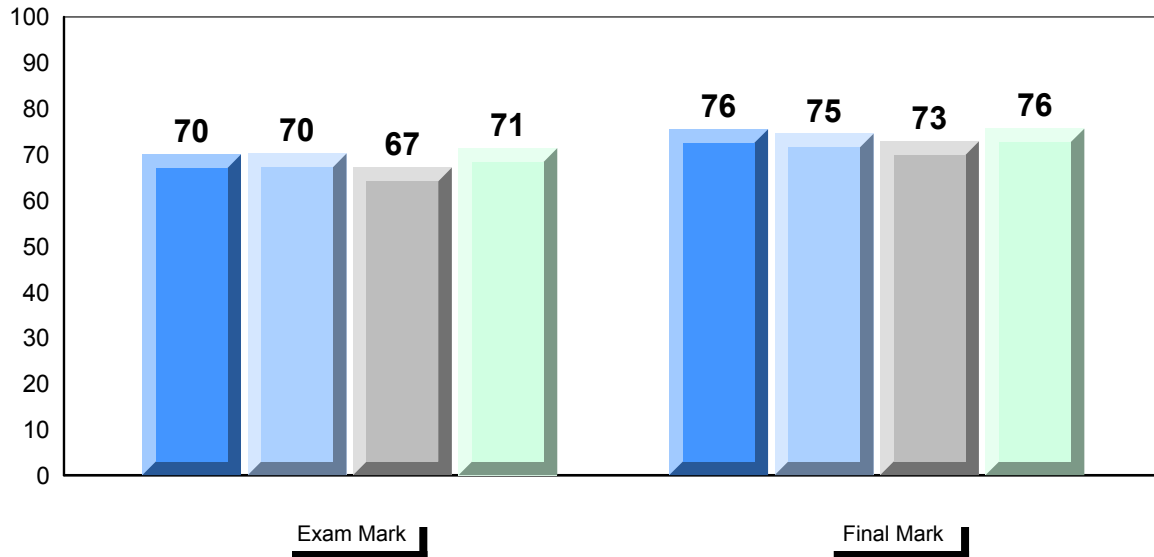
Writing



▼ ▲ The school result may appear numerically the same as the district/province due to rounding. The arrow indicates a negligible difference.

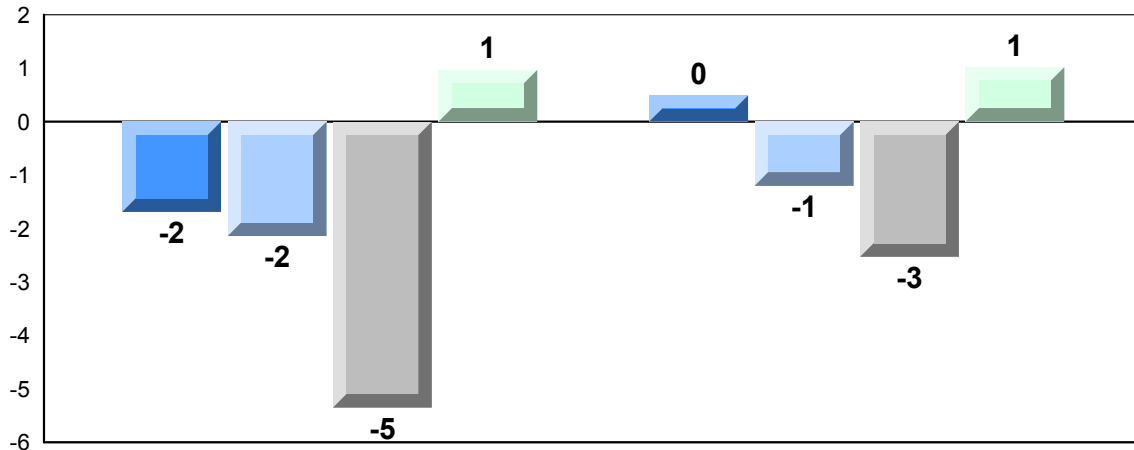
| | | | | |
|----------------------|----------|-------------------------|------------------|--------------------|
| Number of Students | 14 | | | |
| Francais 3202 | School | Public Exam Mark | School vs Region | School vs Province |
| | Region | 71.4 | ▲ | ▲ |
| | Province | 69.8 | | |
| | | 70.4 | | |
| Subtest | | | | |
| Listening | School | 71.7 | ▼ | ▼ |
| | Region | 74.4 | | |
| | Province | 74.2 | | |
| Reading | School | 67.1 | ▲ | ▲ |
| | Region | 63.0 | | |
| | Province | 62.6 | | |
| Writing | School | 63.4 | ▲ | ▲ |
| | Region | 61.0 | | |
| | Province | 62.2 | | |
| Interview | School | 82.3 | ▲ | ▲ |
| | Region | 79.3 | | |
| | Province | 78.4 | | |
| | | | | Final Mark |
| | | | | 75.6 |
| | | | | 74.2 |
| | | | | 74.6 |

Average Mark, 2014-2017



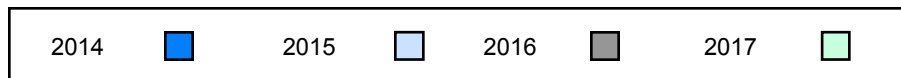
▼ ▲ The school result may appear numerically the same as the district/province due to rounding. The arrow indicates a negligible difference.

Difference from Provincial Mean, 2014-2017

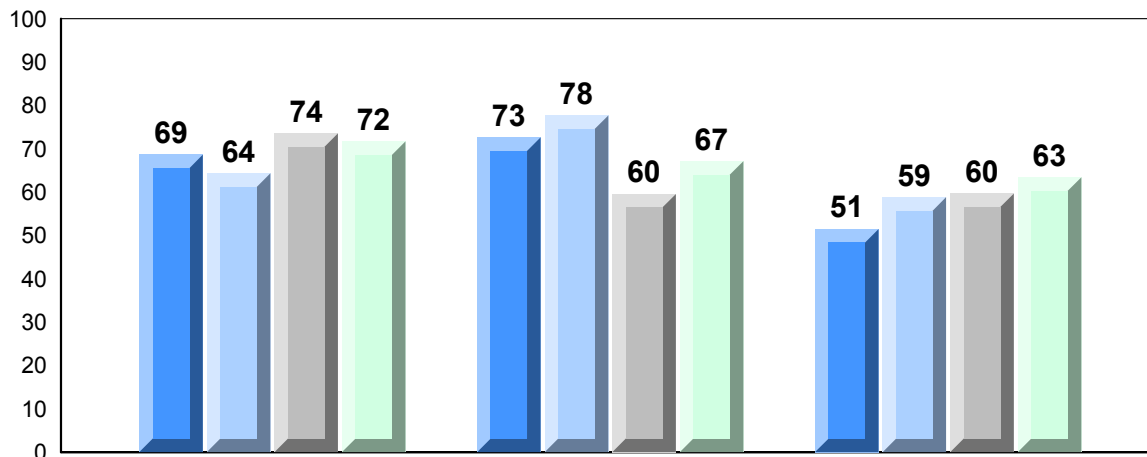


Exam Mark

Final Mark



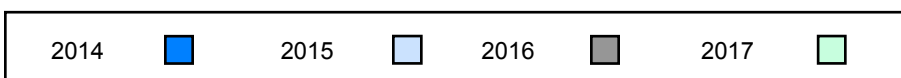
4 Year Public Exam (Subtest) Mark Trend 2014-2017



Listening

Reading

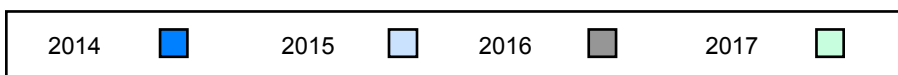
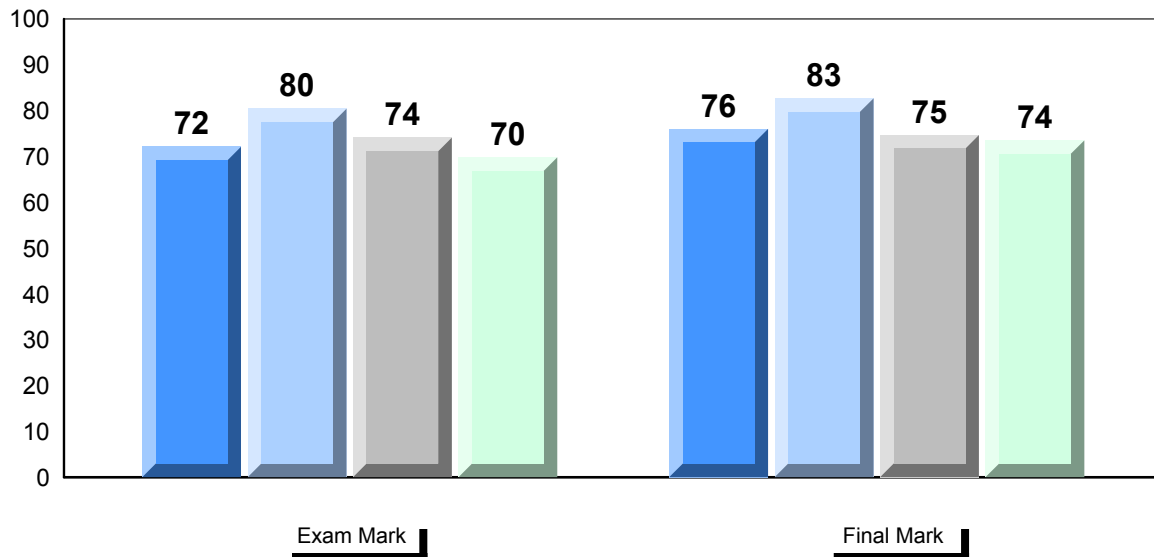
Writing



▼ ▲ The school result may appear numerically the same as the district/province due to rounding. The arrow indicates a negligible difference.

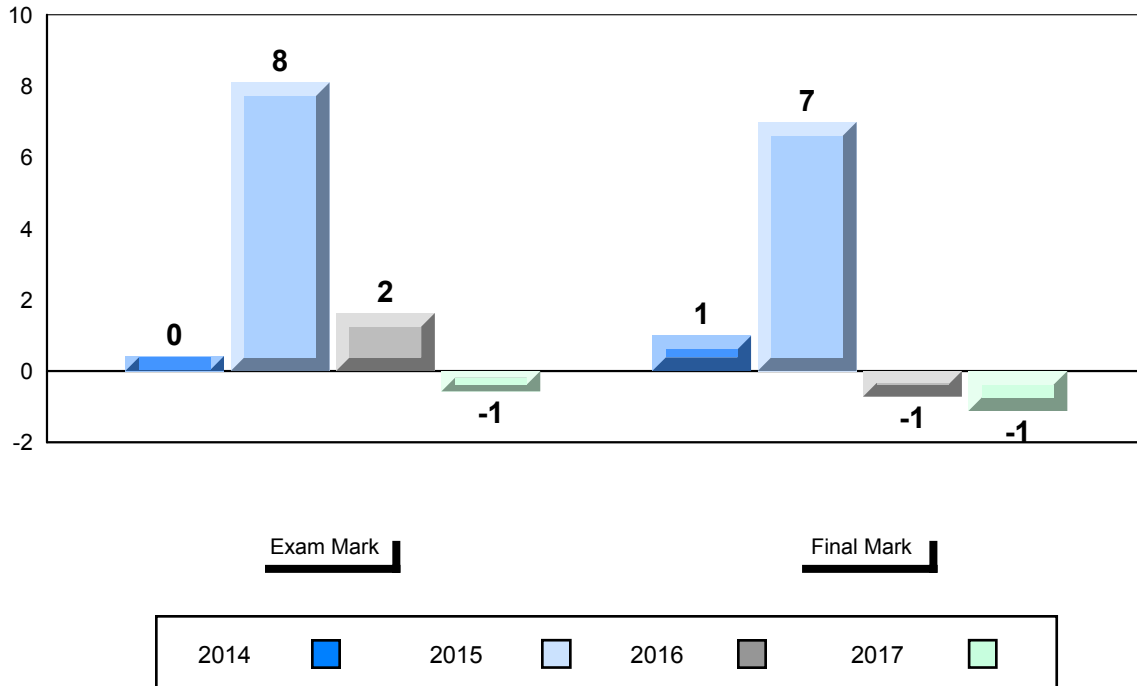
| | | | | | | | |
|----------------------|----------|-------------------------|------------------|--------------------|-------------------|------------------|--------------------|
| Number of Students | 32 | | | | | | |
| Francais 3202 | | Public Exam Mark | School vs Region | School vs Province | Final Mark | School vs Region | School vs Province |
| | School | 69.8 | ▲ | ▼ | 73.5 | ▼ | ▼ |
| | Region | 69.8 | | | 74.2 | | |
| | Province | 70.4 | | | 74.6 | | |
| Subtest | | | | | | | |
| Listening | School | 76.8 | ▲ | ▲ | | | |
| | Region | 74.4 | | | | | |
| | Province | 74.2 | | | | | |
| Reading | School | 65.9 | ▲ | ▲ | | | |
| | Region | 63.0 | | | | | |
| | Province | 62.6 | | | | | |
| Writing | School | 60.3 | ▼ | ▼ | | | |
| | Region | 61.0 | | | | | |
| | Province | 62.2 | | | | | |
| Interview | School | 75.1 | ▼ | ▼ | | | |
| | Region | 79.3 | | | | | |
| | Province | 78.4 | | | | | |

Average Mark, 2014-2017

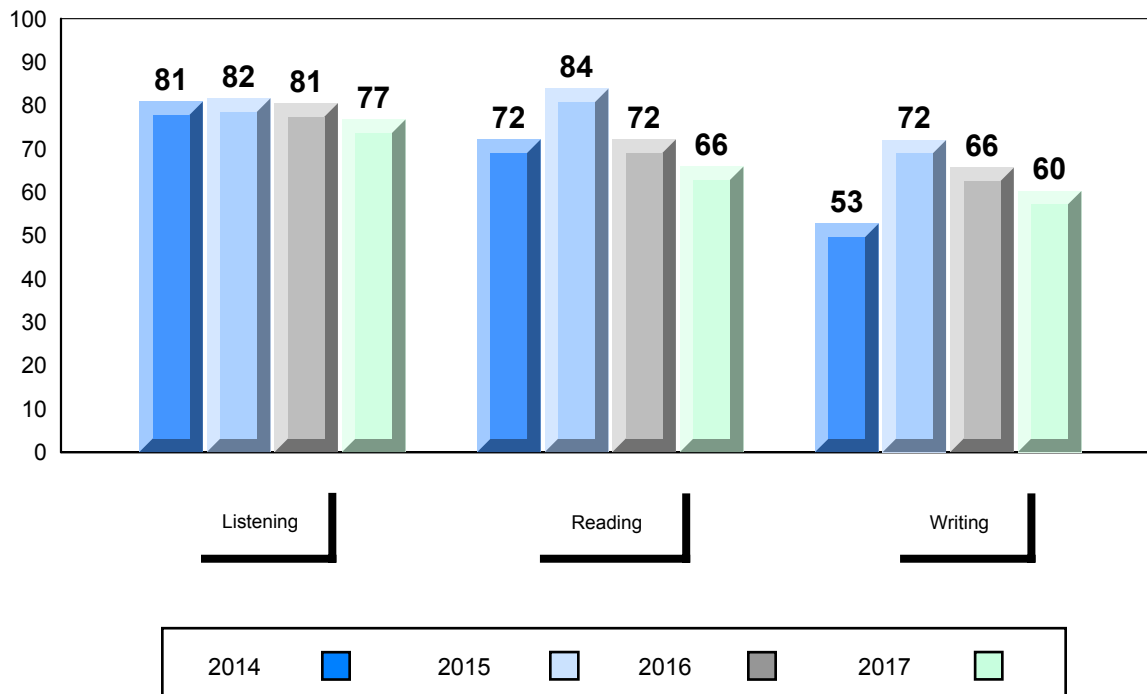


▼ ▲ The school result may appear numerically the same as the district/province due to rounding. The arrow indicates a negligible difference.

Difference from Provincial Mean, 2014-2017



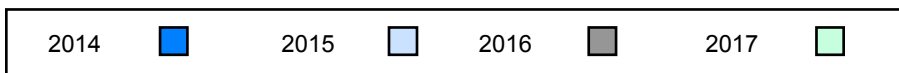
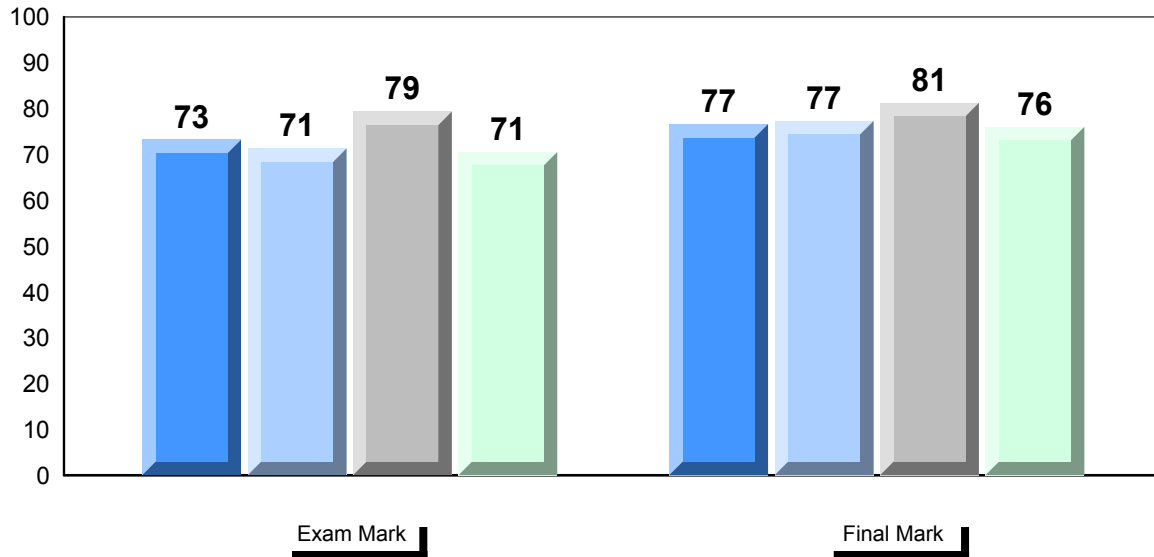
4 Year Public Exam (Subtest) Mark Trend 2014-2017



▼ ▲ The school result may appear numerically the same as the district/province due to rounding. The arrow indicates a negligible difference.

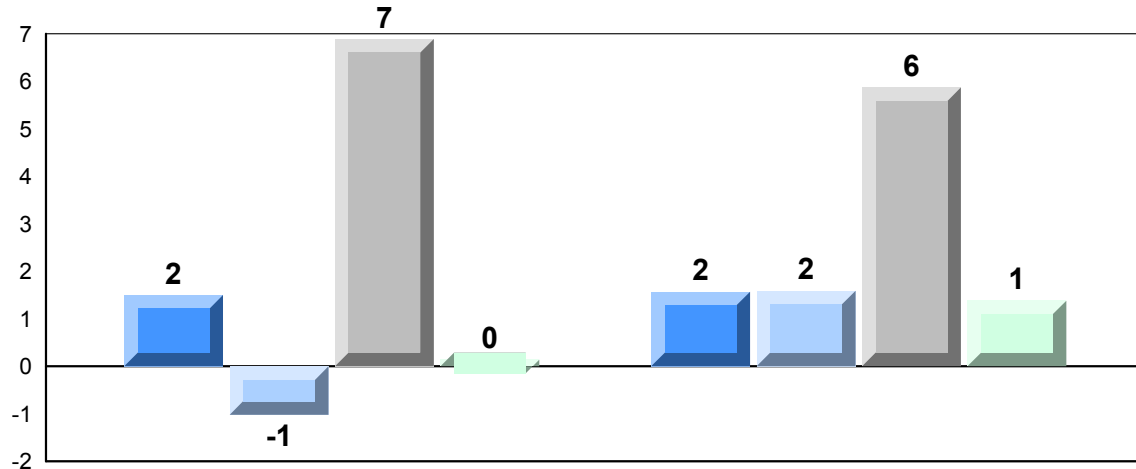
| | | | | | | | |
|----------------------|----------|-------------------------|------------------|--------------------|-------------------|------------------|--------------------|
| Number of Students | 19 | | | | | | |
| | | Public Exam Mark | School vs Region | School vs Province | Final Mark | School vs Region | School vs Province |
| Francais 3202 | School | 70.5 | ▲ | ▲ | 76.0 | ▲ | ▲ |
| | Region | 69.8 | | | 74.2 | | |
| | Province | 70.4 | | | 74.6 | | |
| <u>Subtest</u> | | | | | | | |
| Listening | School | 74.7 | ▲ | ▲ | | | |
| | Region | 74.4 | | | | | |
| | Province | 74.2 | | | | | |
| Reading | School | 60.2 | ▼ | ▼ | | | |
| | Region | 63.0 | | | | | |
| | Province | 62.6 | | | | | |
| Writing | School | 61.6 | ▲ | ▼ | | | |
| | Region | 61.0 | | | | | |
| | Province | 62.2 | | | | | |
| Interview | School | 84.2 | ▲ | ▲ | | | |
| | Region | 79.3 | | | | | |
| | Province | 78.4 | | | | | |

Average Mark, 2014-2017



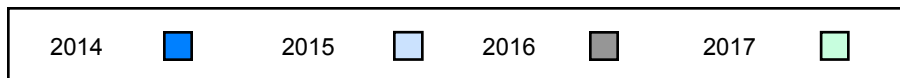
▼ ▲ The school result may appear numerically the same as the district/province due to rounding. The arrow indicates a negligible difference.

Difference from Provincial Mean, 2014-2017

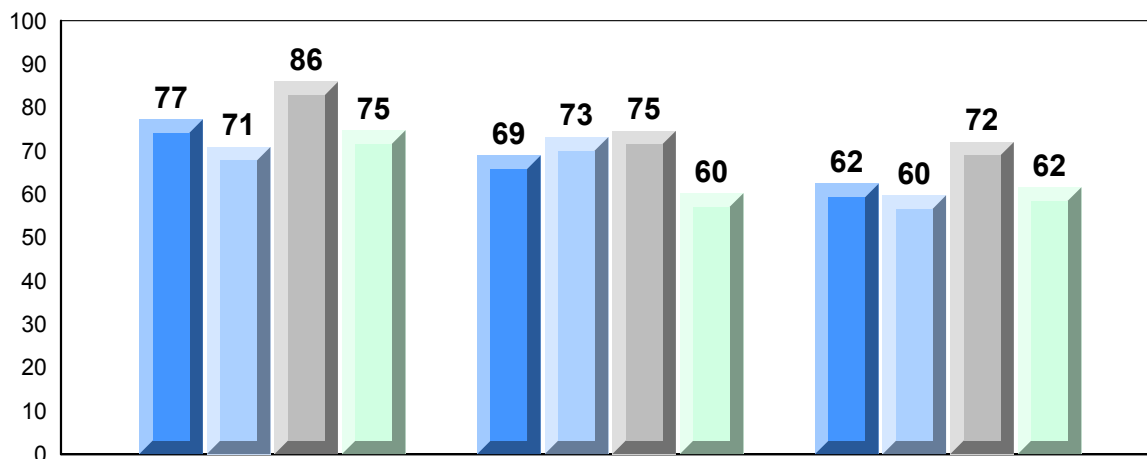


Exam Mark

Final Mark



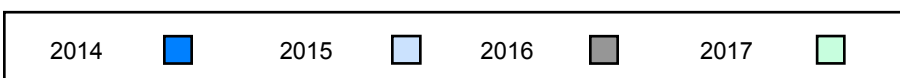
4 Year Public Exam (Subtest) Mark Trend 2014-2017



Listening

Reading

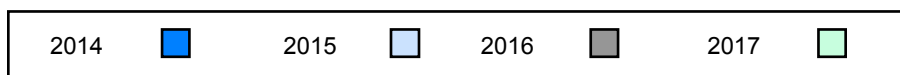
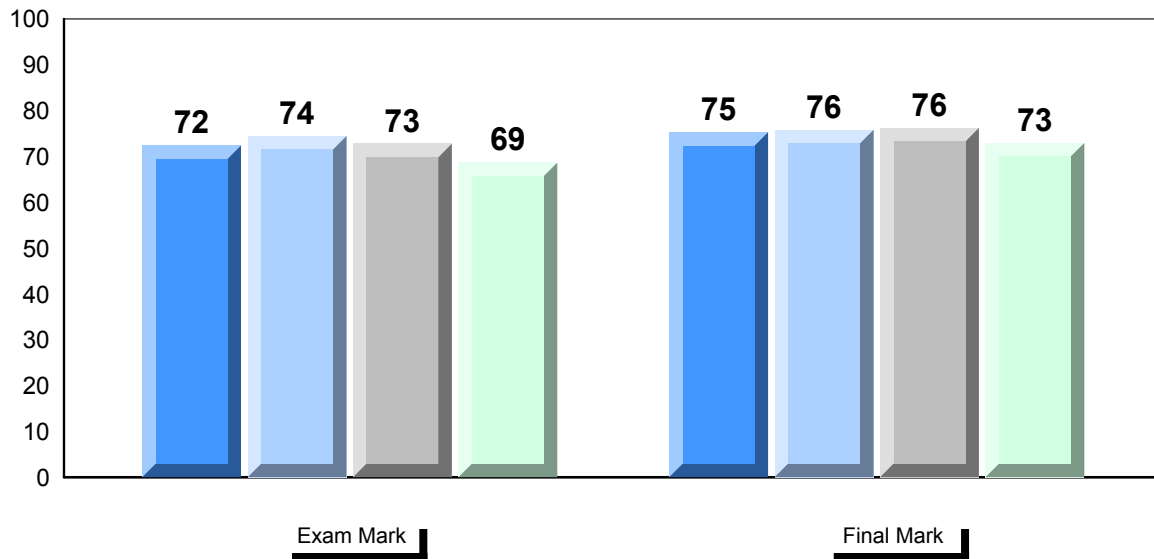
Writing



▼ ▲ The school result may appear numerically the same as the district/province due to rounding. The arrow indicates a negligible difference.

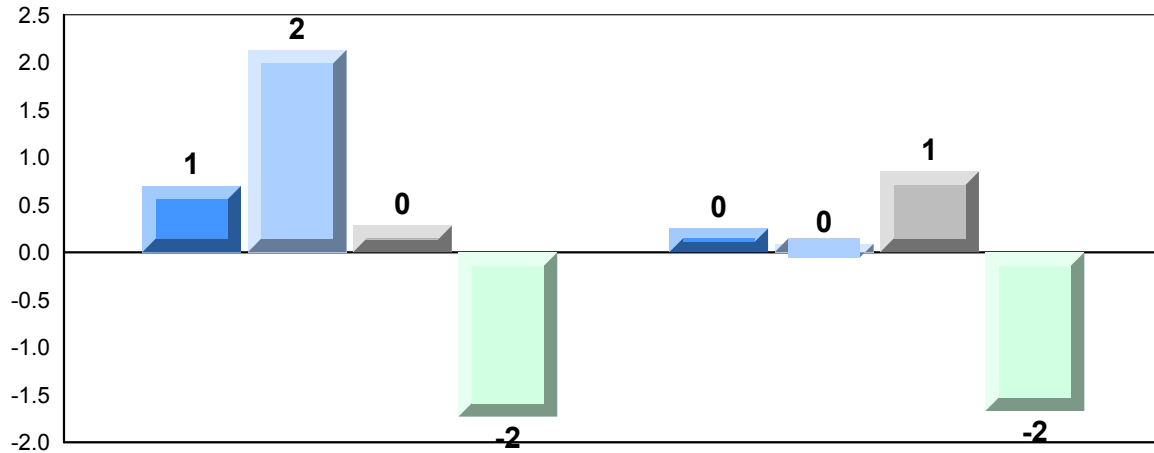
| | | | | | | | |
|----------------------|----------|-------------------------|------------------|--------------------|-------------------|------------------|--------------------|
| Number of Students | 20 | | | | | | |
| Francais 3202 | School | Public Exam Mark | School vs Region | School vs Province | Final Mark | School vs Region | School vs Province |
| | Region | 68.7 | ▼ | ▼ | 73.0 | ▼ | ▼ |
| | Province | 70.4 | | | 74.6 | | |
| | | 70.4 | | | 74.6 | | |
| Subtest | | | | | | | |
| Listening | School | 69.2 | ▼ | ▼ | | | |
| | Region | 73.8 | | | | | |
| | Province | 74.2 | | | | | |
| Reading | School | 60.2 | ▼ | ▼ | | | |
| | Region | 62.3 | | | | | |
| | Province | 62.6 | | | | | |
| Writing | School | 66.0 | ▲ | ▲ | | | |
| | Region | 62.4 | | | | | |
| | Province | 62.2 | | | | | |
| Interview | School | 78.3 | ▲ | ▼ | | | |
| | Region | 77.8 | | | | | |
| | Province | 78.4 | | | | | |

Average Mark, 2014-2017



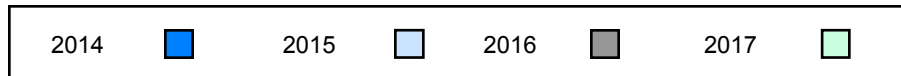
▼ ▲ The school result may appear numerically the same as the district/province due to rounding. The arrow indicates a negligible difference.

Difference from Provincial Mean, 2014-2017

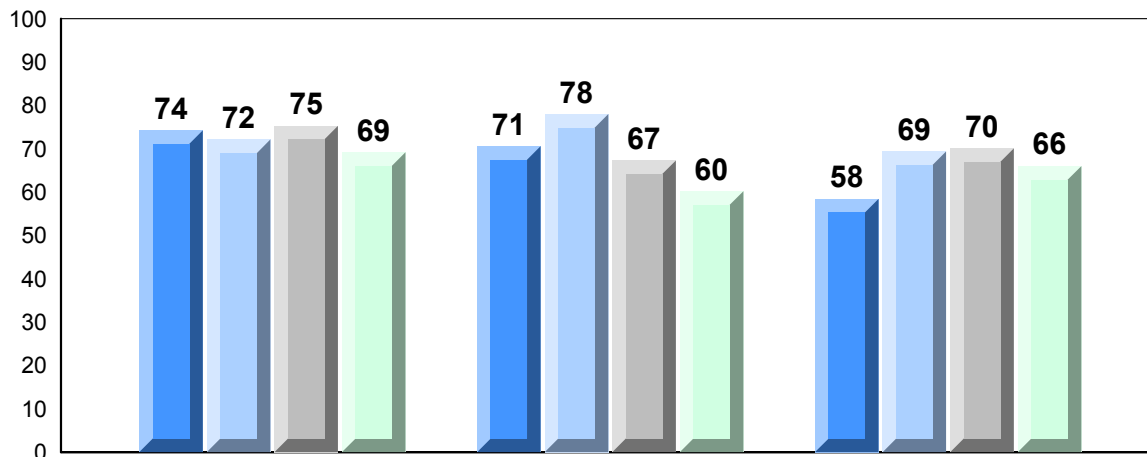


Exam Mark

Final Mark



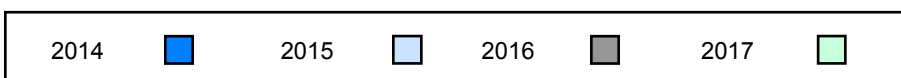
4 Year Public Exam (Subtest) Mark Trend 2014-2017



Listening

Reading

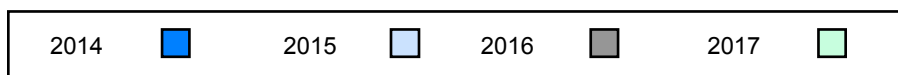
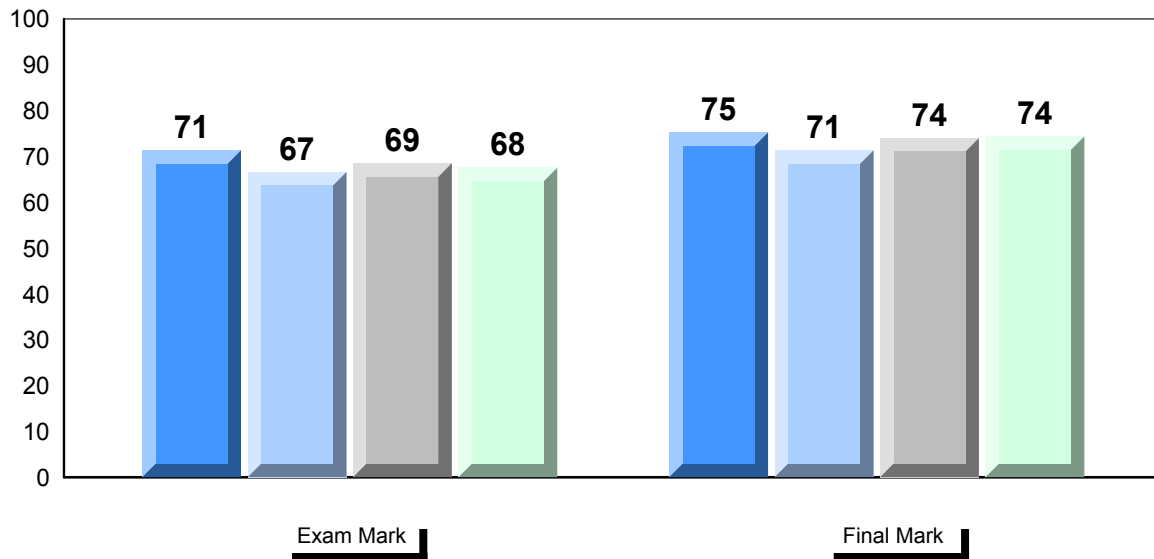
Writing



▼ ▲ The school result may appear numerically the same as the district/province due to rounding. The arrow indicates a negligible difference.

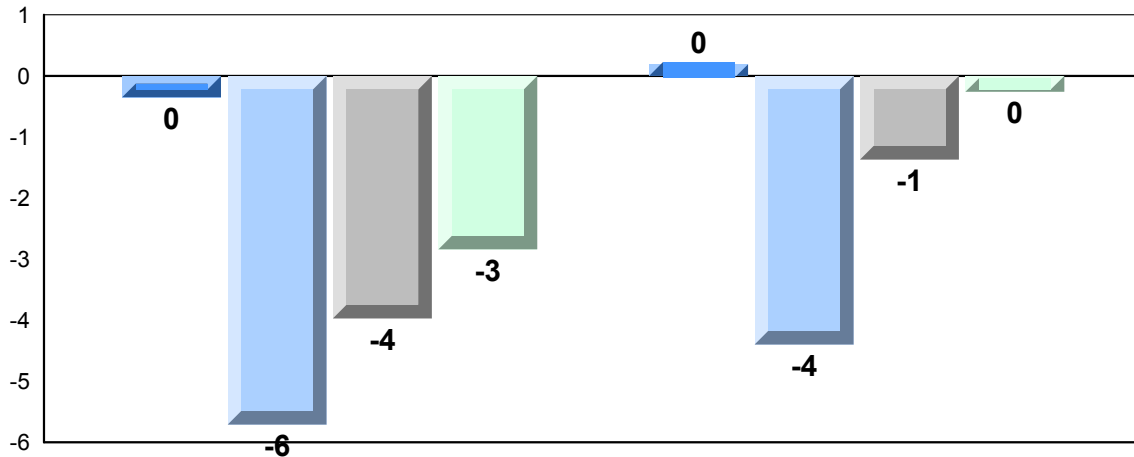
| Number of Students | | 11 | Public Exam Mark | | | Final Mark | | |
|----------------------|----------|------|-------------------------|--------------------|------------------|--------------------|---|--|
| | | | School vs Region | School vs Province | School vs Region | School vs Province | | |
| Francais 3202 | School | 67.6 | ▼ | ▼ | 74.4 | ▼ | ▼ | |
| | Region | 70.4 | | | 74.6 | | | |
| | Province | 70.4 | | | 74.6 | | | |
| Subtest | | | | | | | | |
| Listening | School | 66.6 | ▼ | ▼ | | | | |
| | Region | 73.8 | | | | | | |
| | Province | 74.2 | | | | | | |
| Reading | School | 57.5 | ▼ | ▼ | | | | |
| | Region | 62.3 | | | | | | |
| | Province | 62.6 | | | | | | |
| Writing | School | 64.4 | ▲ | ▲ | | | | |
| | Region | 62.4 | | | | | | |
| | Province | 62.2 | | | | | | |
| Interview | School | 81.1 | ▲ | ▲ | | | | |
| | Region | 77.8 | | | | | | |
| | Province | 78.4 | | | | | | |

Average Mark, 2014-2017



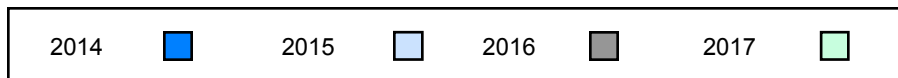
▼ ▲ The school result may appear numerically the same as the district/province due to rounding. The arrow indicates a negligible difference.

Difference from Provincial Mean, 2014-2017

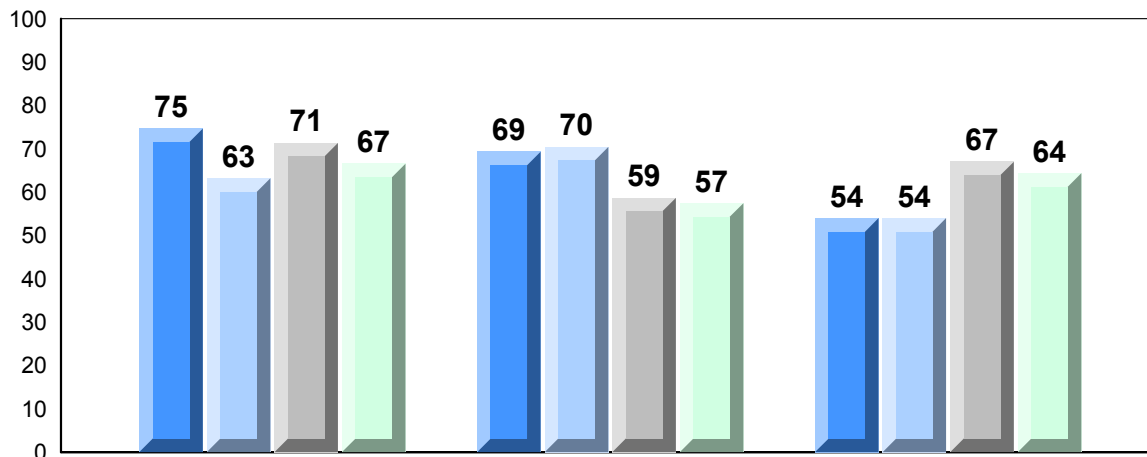


Exam Mark

Final Mark



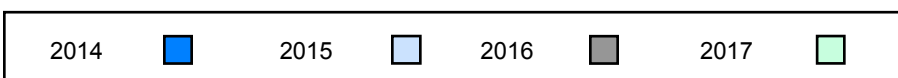
4 Year Public Exam (Subtest) Mark Trend 2014-2017



Listening

Reading

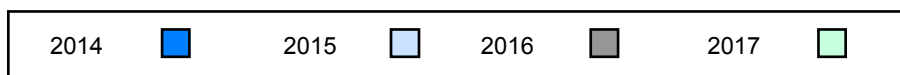
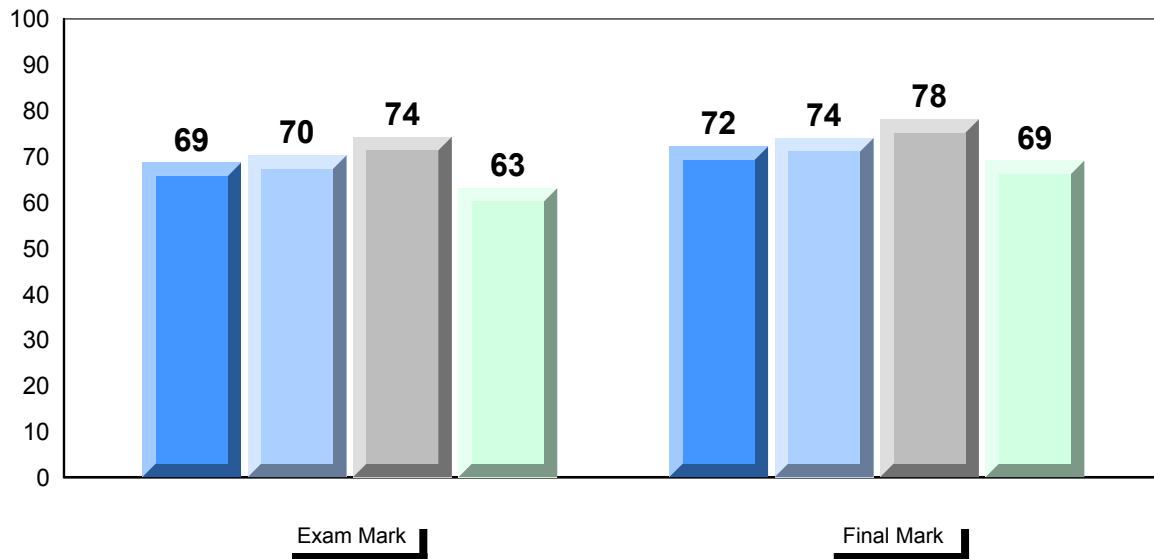
Writing



▼ ▲ The school result may appear numerically the same as the district/province due to rounding. The arrow indicates a negligible difference.

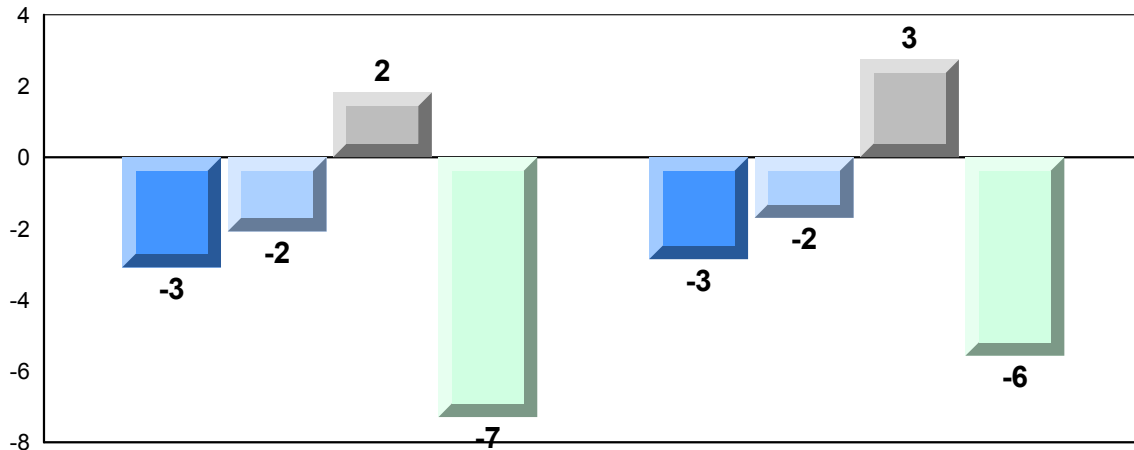
| | | | | | |
|----------------------|----------|-------------------------|------------------|--------------------|-------------------|
| Number of Students | 54 | | | | |
| Francais 3202 | School | Public Exam Mark | School vs Region | School vs Province | Final Mark |
| | Region | 63.1 | ▼ | ▼ | 69.1 |
| | Province | 70.4 | | | 74.6 |
| | | 70.4 | | | 74.6 |
| Subtest | | | | | |
| Listening | School | 67.0 | ▼ | ▼ | |
| | Region | 73.8 | | | |
| | Province | 74.2 | | | |
| Reading | School | 54.8 | ▼ | ▼ | |
| | Region | 62.3 | | | |
| | Province | 62.6 | | | |
| Writing | School | 55.0 | ▼ | ▼ | |
| | Region | 62.4 | | | |
| | Province | 62.2 | | | |
| Interview | School | 74.7 | ▼ | ▼ | |
| | Region | 77.8 | | | |
| | Province | 78.4 | | | |

Average Mark, 2014-2017



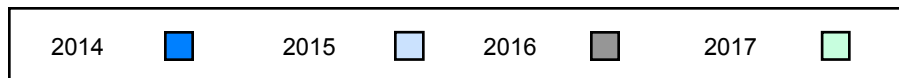
▼ ▲ The school result may appear numerically the same as the district/province due to rounding. The arrow indicates a negligible difference.

Difference from Provincial Mean, 2014-2017

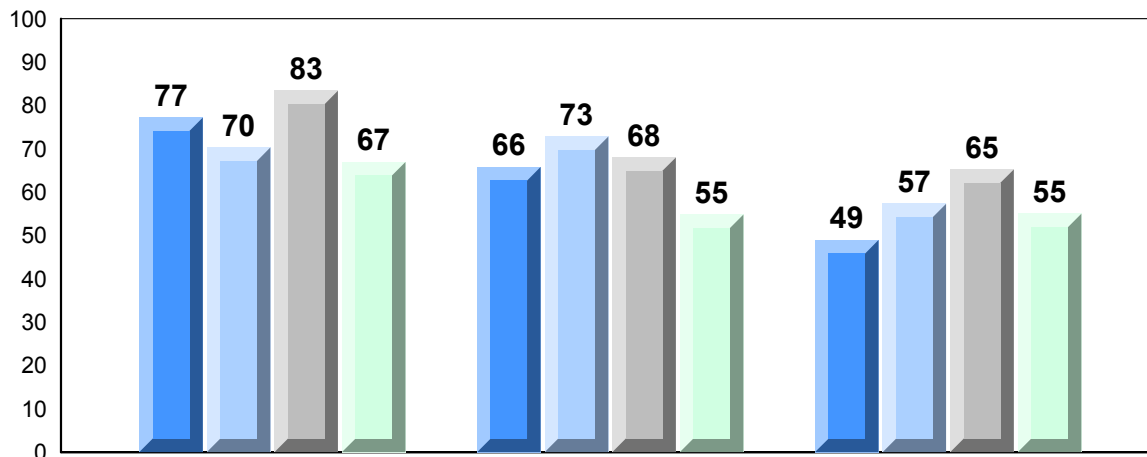


Exam Mark

Final Mark



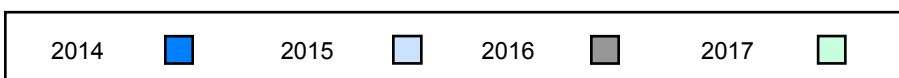
4 Year Public Exam (Subtest) Mark Trend 2014-2017



Listening

Reading

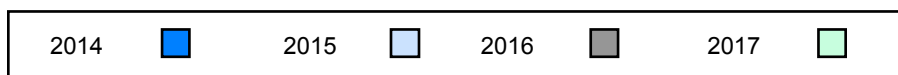
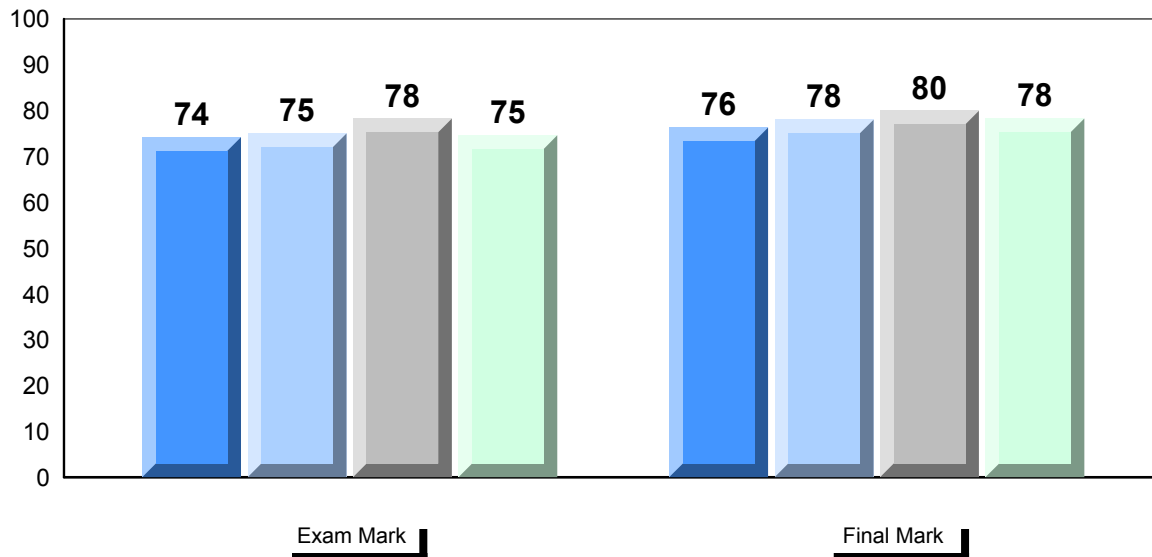
Writing



▼ ▲ The school result may appear numerically the same as the district/province due to rounding. The arrow indicates a negligible difference.

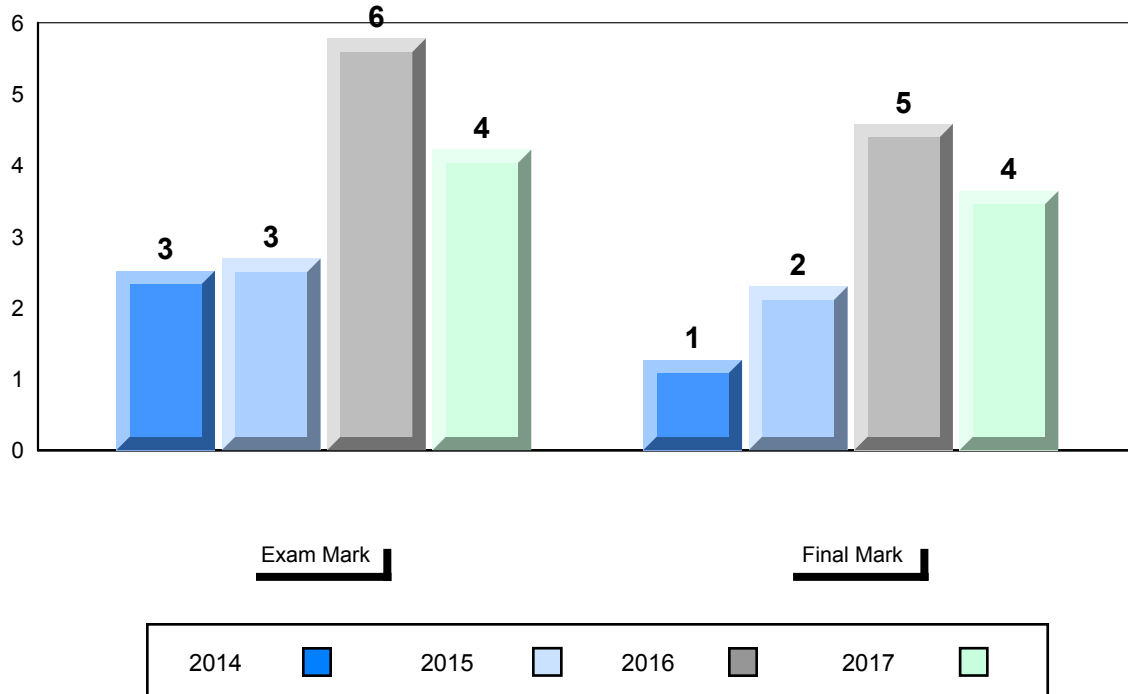
| Number of Students | | Public Exam Mark | | | Final Mark | | |
|----------------------|----------|------------------|------------------|--------------------|------------|------------------|--------------------|
| | | | School vs Region | School vs Province | | School vs Region | School vs Province |
| Francais 3202 | School | 74.6 | ▲ | ▲ | 78.3 | ▲ | ▲ |
| | Region | 70.4 | | | | | |
| | Province | 70.4 | | | | | |
| Subtest | | | | | | | |
| Listening | School | 81.1 | ▲ | ▲ | 74.6 | | |
| | Region | 73.8 | | | | | |
| | Province | 74.2 | | | | | |
| Reading | School | 69.3 | ▲ | ▲ | 74.6 | | |
| | Region | 62.3 | | | | | |
| | Province | 62.6 | | | | | |
| Writing | School | 69.1 | ▲ | ▲ | | | |
| | Region | 62.4 | | | | | |
| | Province | 62.2 | | | | | |
| Interview | School | 78.0 | ▲ | ▼ | | | |
| | Region | 77.8 | | | | | |
| | Province | 78.4 | | | | | |

Average Mark, 2014-2017

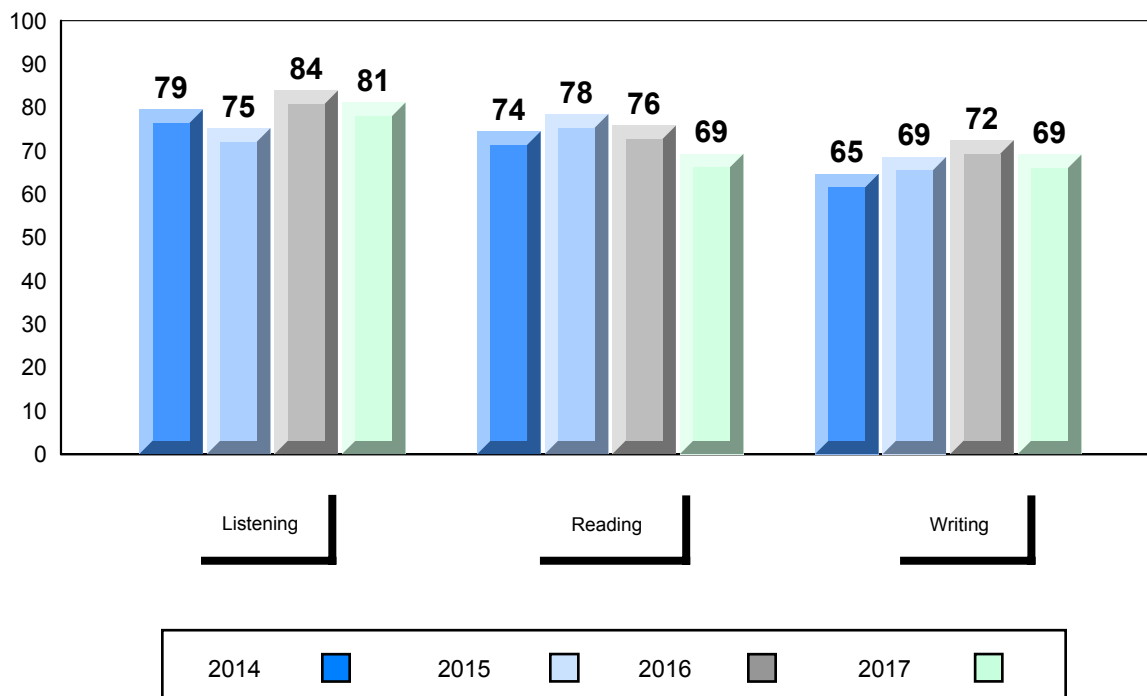


▼ ▲ The school result may appear numerically the same as the district/province due to rounding. The arrow indicates a negligible difference.

Difference from Provincial Mean, 2014-2017



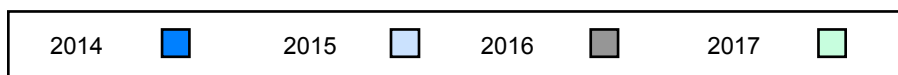
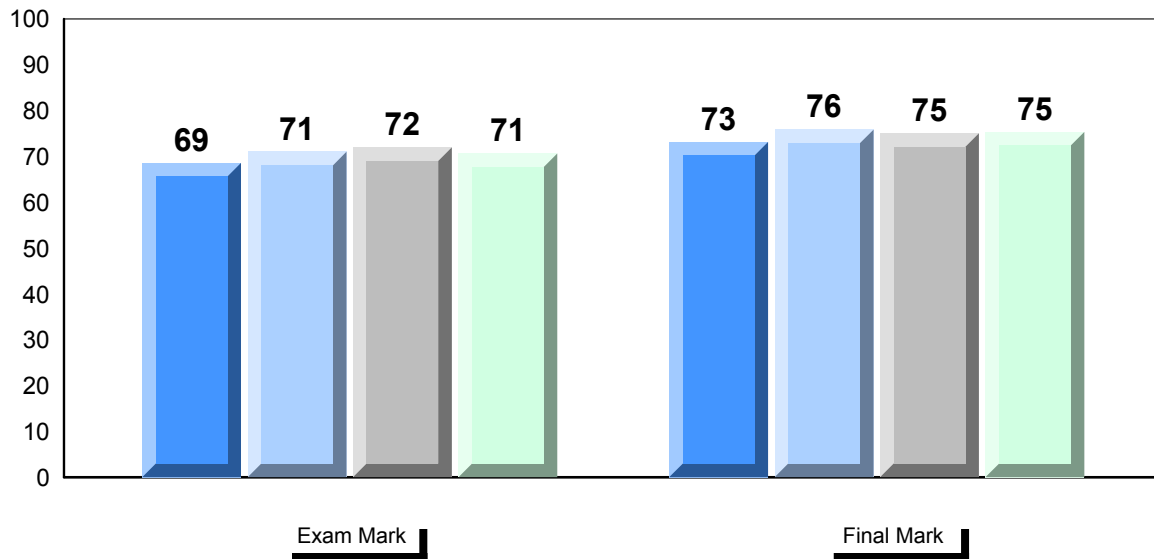
4 Year Public Exam (Subtest) Mark Trend 2014-2017



▼ ▲ The school result may appear numerically the same as the district/province due to rounding. The arrow indicates a negligible difference.

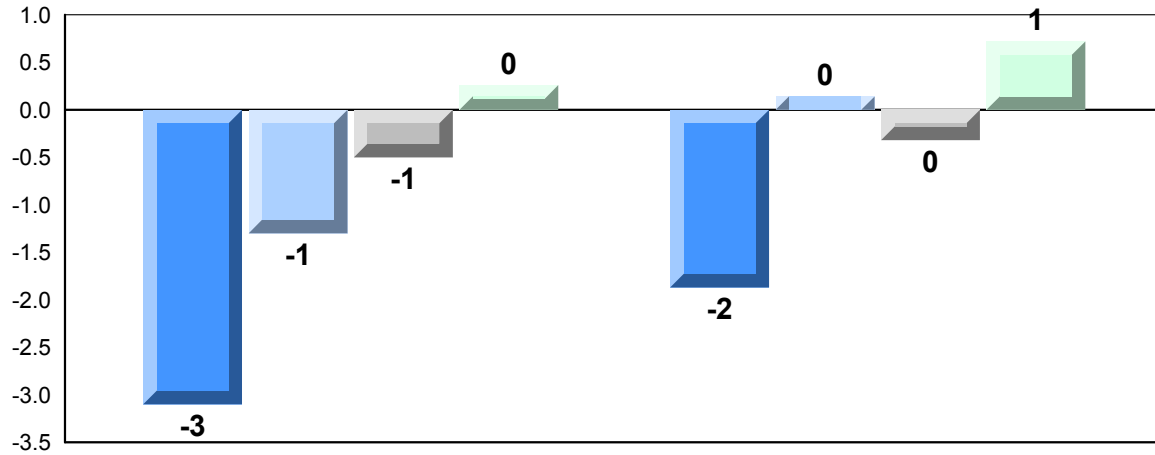
| | | | | | | | |
|----------------------|----------|-------------------------|------------------|--------------------|-------------------|------------------|--------------------|
| Number of Students | 53 | | | | | | |
| Francais 3202 | School | Public Exam Mark | School vs Region | School vs Province | Final Mark | School vs Region | School vs Province |
| | Region | 70.6 | ▲ | ▲ | 75.3 | ▲ | ▲ |
| | Province | 70.4 | | | 74.6 | | |
| | Province | 70.4 | | | 74.6 | | |
| Subtest | | | | | | | |
| Listening | School | 75.6 | ▲ | ▲ | | | |
| | Region | 73.8 | | | | | |
| | Province | 74.2 | | | | | |
| Reading | School | 64.2 | ▲ | ▲ | | | |
| | Region | 62.3 | | | | | |
| | Province | 62.6 | | | | | |
| Writing | School | 60.8 | ▼ | ▼ | | | |
| | Region | 62.4 | | | | | |
| | Province | 62.2 | | | | | |
| Interview | School | 80.9 | ▲ | ▲ | | | |
| | Region | 77.8 | | | | | |
| | Province | 78.4 | | | | | |

Average Mark, 2014-2017



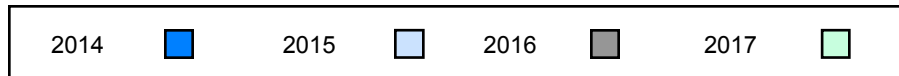
▼ ▲ The school result may appear numerically the same as the district/province due to rounding. The arrow indicates a negligible difference.

Difference from Provincial Mean, 2014-2017

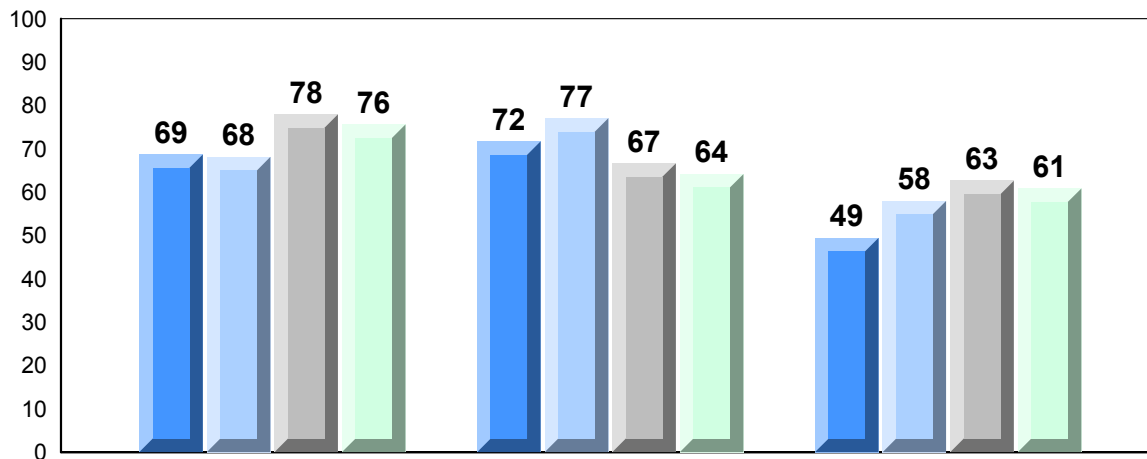


Exam Mark

Final Mark



4 Year Public Exam (Subtest) Mark Trend 2014-2017



Listening

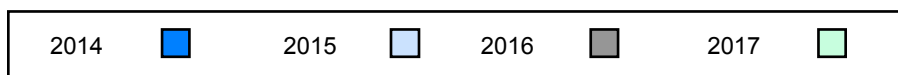
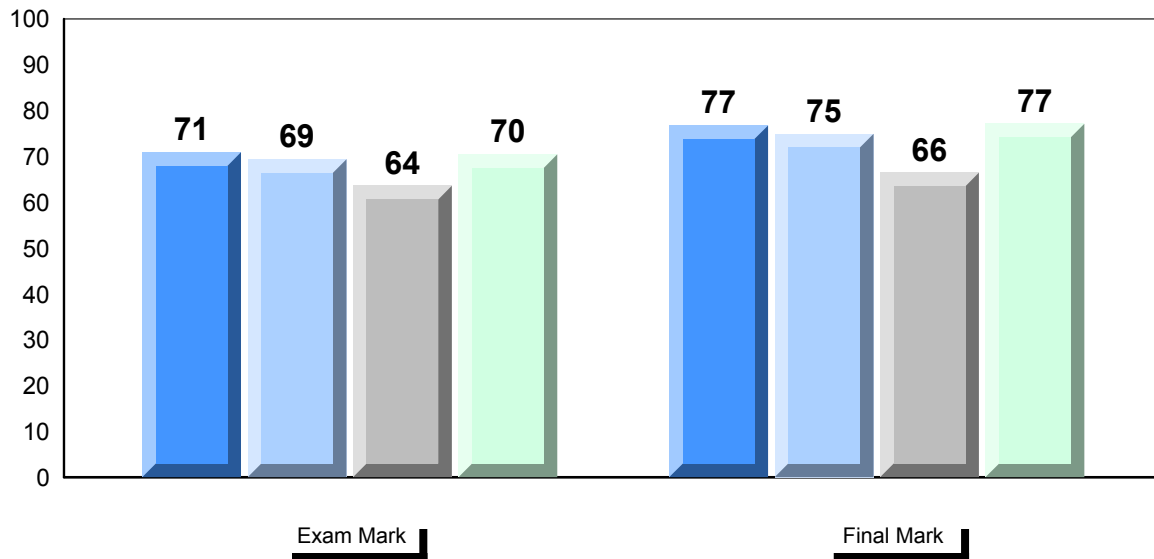
Reading

Writing



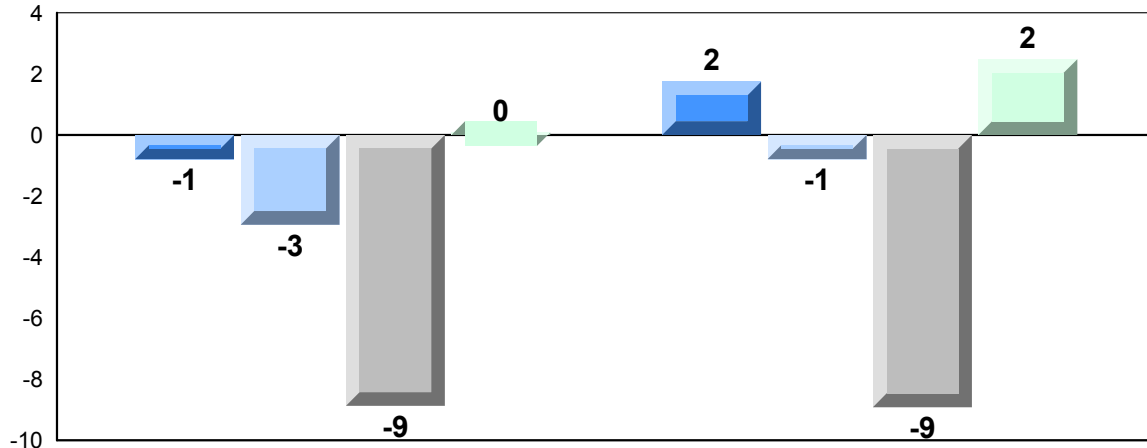
| | | | | | |
|----------------------|----------|-------------------------|------------------|--------------------|-------------------|
| Number of Students | 28 | | | | |
| Francais 3202 | School | Public Exam Mark | School vs Region | School vs Province | Final Mark |
| | Region | 70.5 | ▲ | ▲ | 77.1 |
| | Province | 70.4 | | | 74.6 |
| | | 70.4 | | | 74.6 |
| Subtest | | | | | |
| Listening | School | 73.7 | ▼ | ▼ | |
| | Region | 73.8 | | | |
| | Province | 74.2 | | | |
| Reading | School | 60.1 | ▼ | ▼ | |
| | Region | 62.3 | | | |
| | Province | 62.6 | | | |
| Writing | School | 59.4 | ▼ | ▼ | |
| | Region | 62.4 | | | |
| | Province | 62.2 | | | |
| Interview | School | 87.4 | ▲ | ▲ | |
| | Region | 77.8 | | | |
| | Province | 78.4 | | | |

Average Mark, 2014-2017



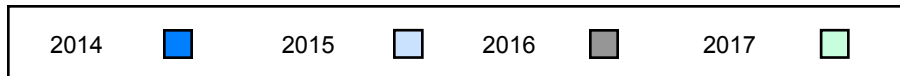
▼ ▲ The school result may appear numerically the same as the district/province due to rounding. The arrow indicates a negligible difference.

Difference from Provincial Mean, 2014-2017

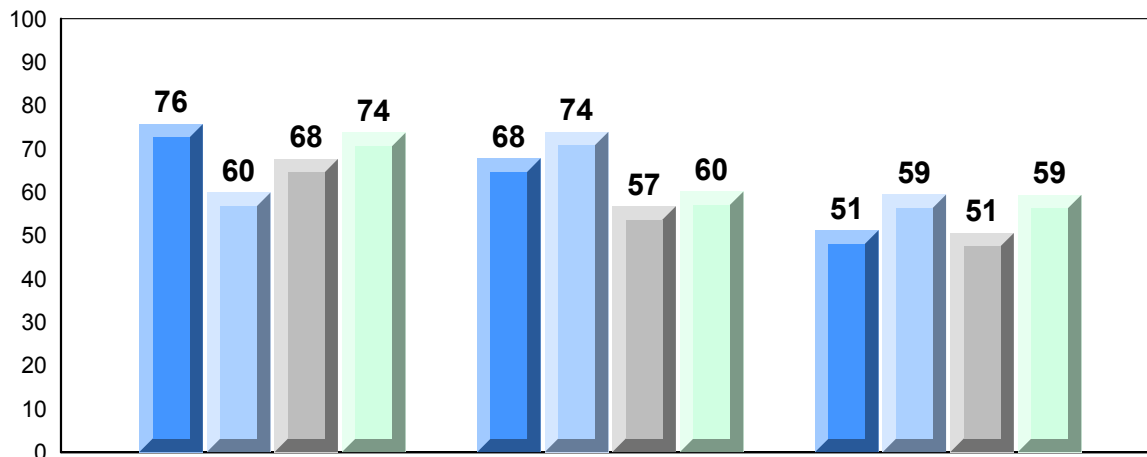


Exam Mark

Final Mark



4 Year Public Exam (Subtest) Mark Trend 2014-2017



Listening

Reading

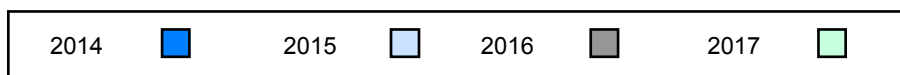
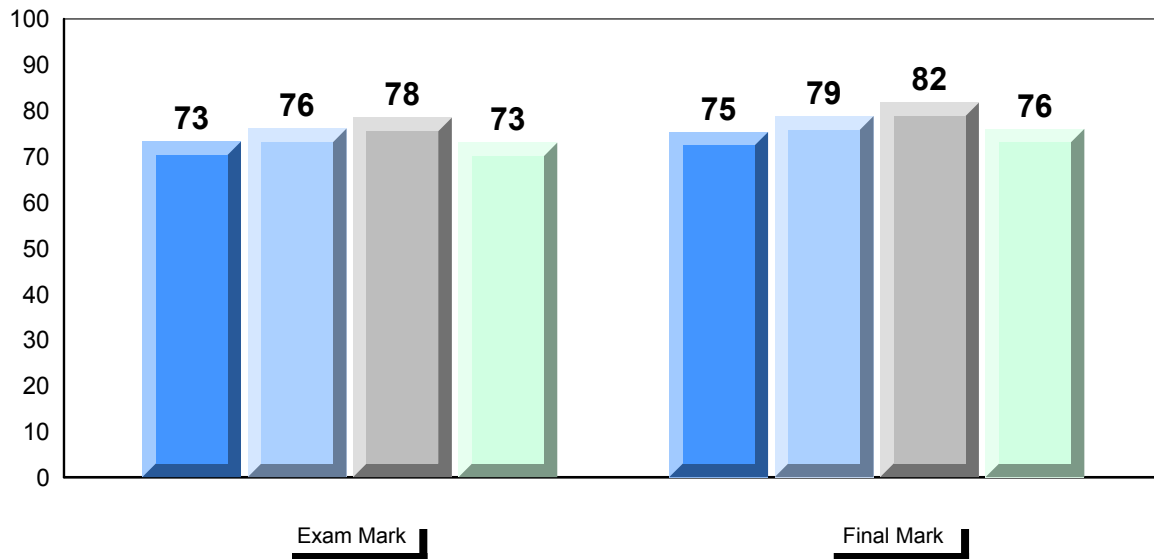
Writing



▼ ▲ The school result may appear numerically the same as the district/province due to rounding. The arrow indicates a negligible difference.

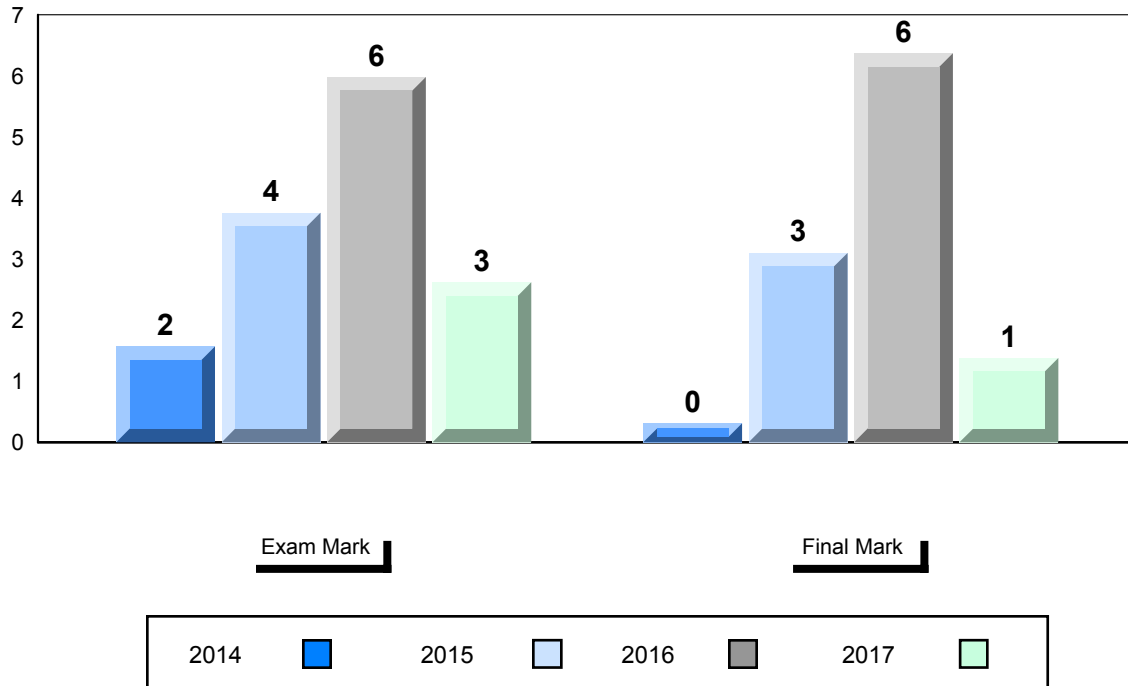
| | | | | | |
|----------------------|----------|-------------------------|------------------|--------------------|-------------------|
| Number of Students | 67 | | | | |
| Francais 3202 | | Public Exam Mark | School vs Region | School vs Province | Final Mark |
| | School | 73.0 | ▲ | ▲ | 76.0 |
| | Region | 70.4 | | | 74.6 |
| | Province | 70.4 | | | 74.6 |
| Subtest | | | | | |
| Listening | School | 77.4 | ▲ | ▲ | |
| | Region | 73.8 | | | |
| | Province | 74.2 | | | |
| Reading | School | 67.3 | ▲ | ▲ | |
| | Region | 62.3 | | | |
| | Province | 62.6 | | | |
| Writing | School | 70.8 | ▲ | ▲ | |
| | Region | 62.4 | | | |
| | Province | 62.2 | | | |
| Interview | School | 75.6 | ▼ | ▼ | |
| | Region | 77.8 | | | |
| | Province | 78.4 | | | |

Average Mark, 2014-2017

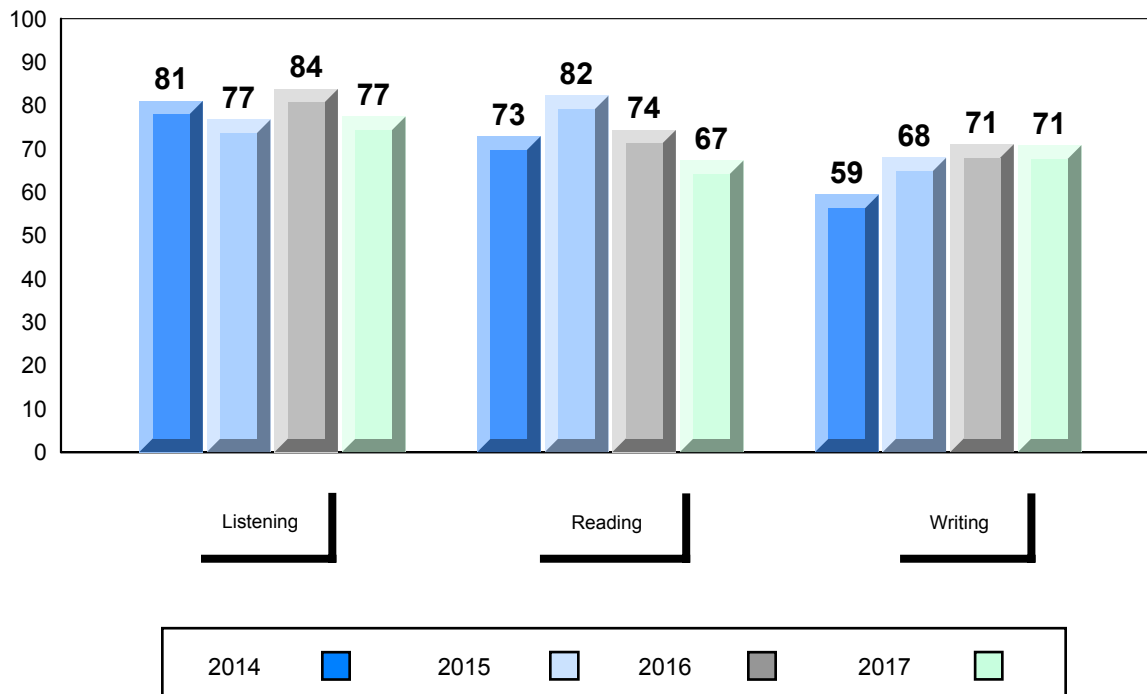


▼ ▲ The school result may appear numerically the same as the district/province due to rounding. The arrow indicates a negligible difference.

Difference from Provincial Mean, 2014-2017



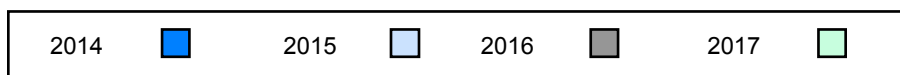
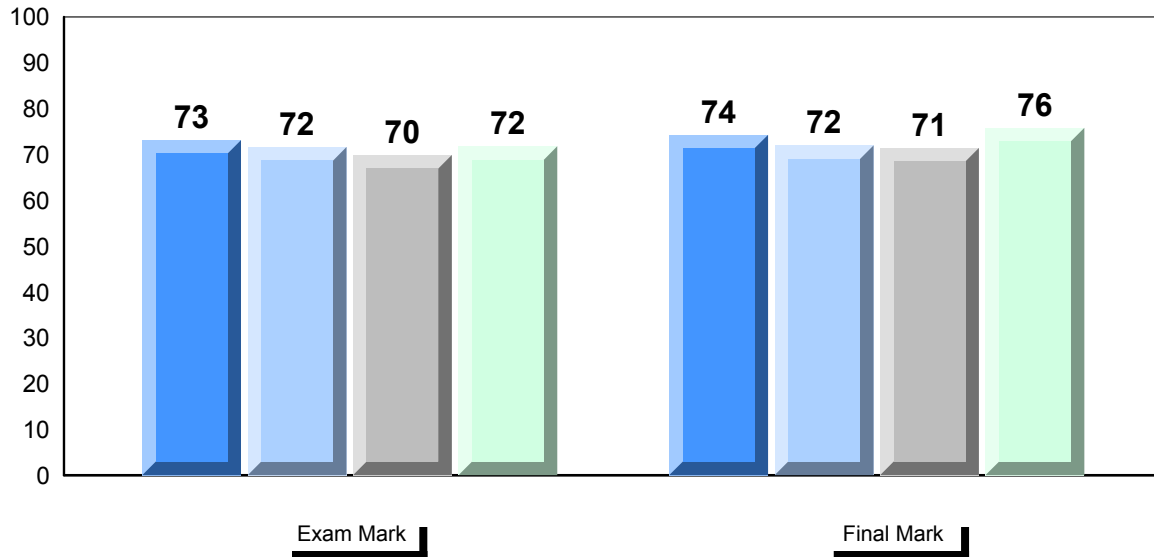
4 Year Public Exam (Subtest) Mark Trend 2014-2017



▼ ▲ The school result may appear numerically the same as the district/province due to rounding. The arrow indicates a negligible difference.

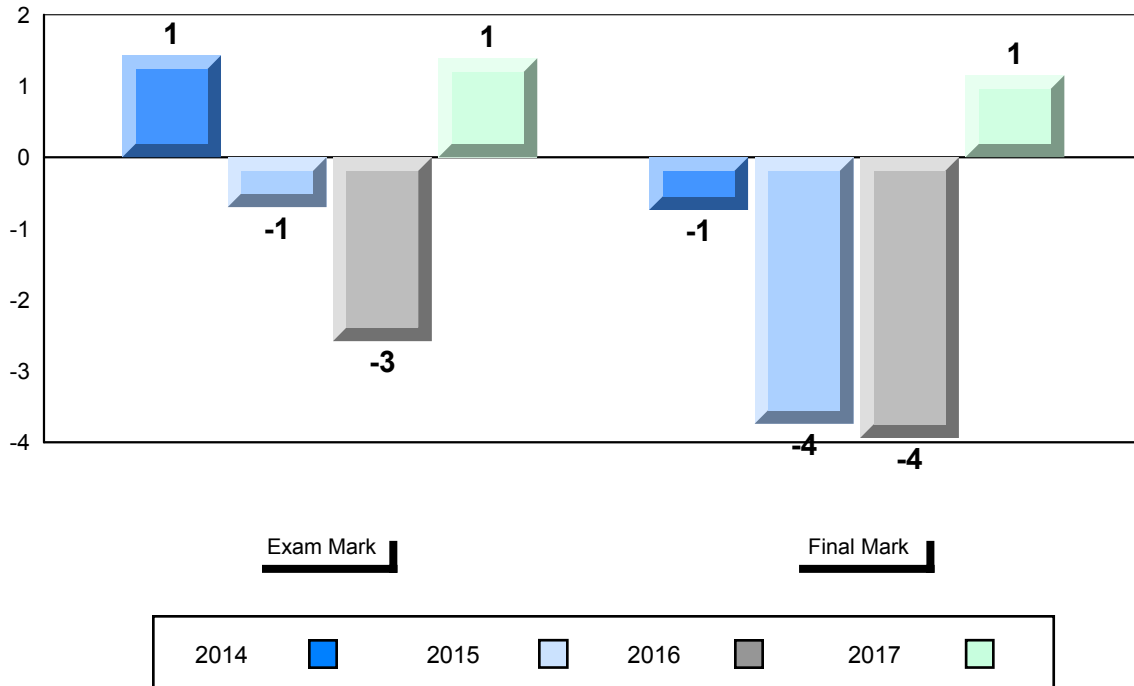
| Number of Students | | Public Exam Mark | | | Final Mark | | |
|----------------------|----------|------------------|------------------|--------------------|------------|------------------|--------------------|
| | | | School vs Region | School vs Province | | School vs Region | School vs Province |
| Francais 3202 | School | 71.8 | ▲ | ▲ | 75.8 | ▲ | ▲ |
| | Region | 70.4 | | | | | |
| | Province | 70.4 | | | | | |
| Subtest | | | | | | | |
| Listening | School | 80.3 | ▲ | ▲ | | | |
| | Region | 73.8 | | | | | |
| | Province | 74.2 | | | | | |
| Reading | School | 65.0 | ▲ | ▲ | | | |
| | Region | 62.3 | | | | | |
| | Province | 62.6 | | | | | |
| Writing | School | 61.6 | ▼ | ▼ | | | |
| | Region | 62.4 | | | | | |
| | Province | 62.2 | | | | | |
| Interview | School | 79.0 | ▲ | ▲ | | | |
| | Region | 77.8 | | | | | |
| | Province | 78.4 | | | | | |

Average Mark, 2014-2017



▼ ▲ The school result may appear numerically the same as the district/province due to rounding. The arrow indicates a negligible difference.

Difference from Provincial Mean, 2014-2017



Exam Mark

Final Mark

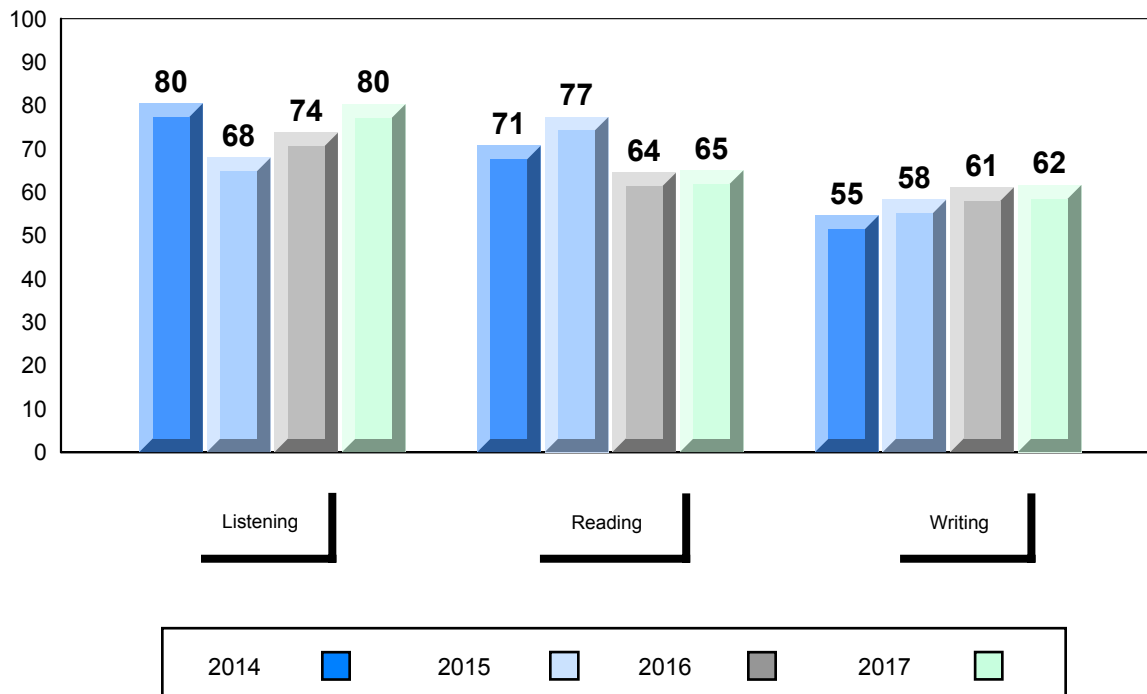
2014

2015

2016

2017

4 Year Public Exam (Subtest) Mark Trend 2014-2017



Listening

Reading

Writing

2014

2015

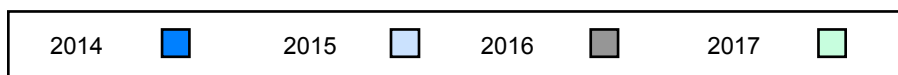
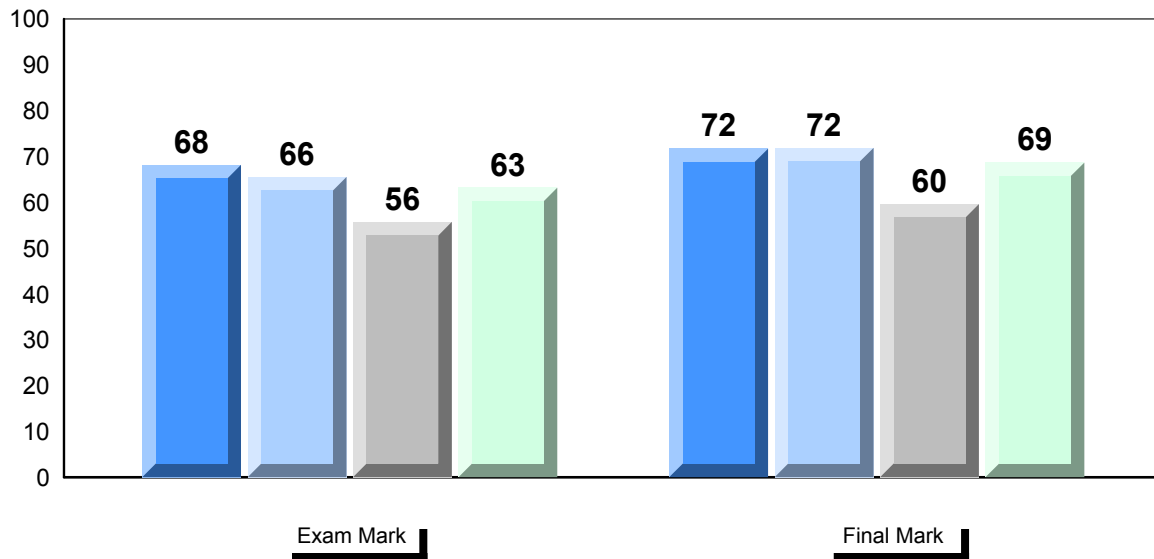
2016

2017

▼ ▲ The school result may appear numerically the same as the district/province due to rounding. The arrow indicates a negligible difference.

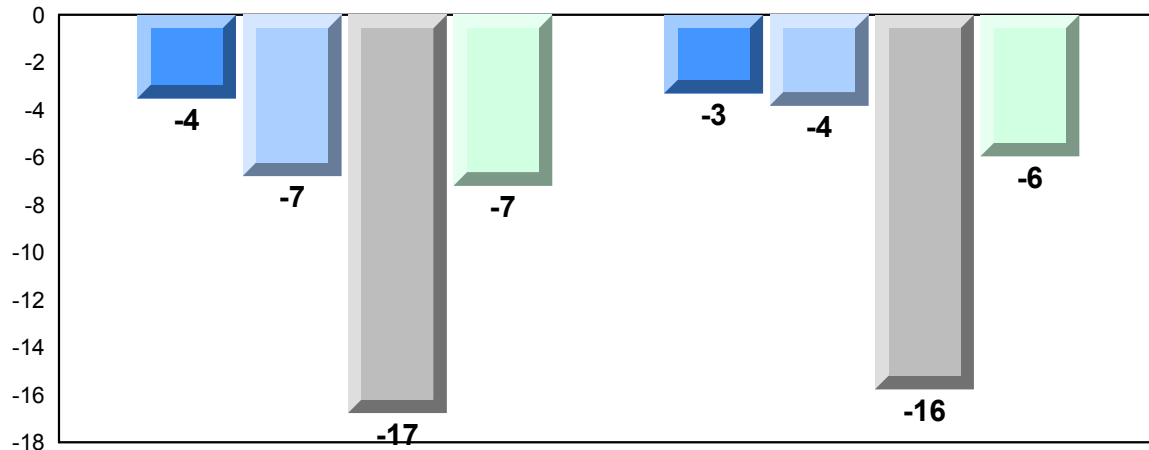
| | | | | | | | | |
|----------------------|----------|-------------------------|------------------|--------------------|-------------------|------------------|--------------------|---|
| Number of Students | 39 | | | | | | | |
| Francais 3202 | School | Public Exam Mark | School vs Region | School vs Province | Final Mark | School vs Region | School vs Province | |
| | Region | 63.2 | ▼ | ▼ | | 68.7 | ▼ | ▼ |
| | Province | 70.4 | | | | 74.6 | | |
| Subtest | | | | | | | | |
| Listening | School | 64.9 | ▼ | ▼ | | | | |
| | Region | 73.8 | | | | | | |
| | Province | 74.2 | | | | | | |
| Reading | School | 56.7 | ▼ | ▼ | | | | |
| | Region | 62.3 | | | | | | |
| | Province | 62.6 | | | | | | |
| Writing | School | 60.4 | ▼ | ▼ | | | | |
| | Region | 62.4 | | | | | | |
| | Province | 62.2 | | | | | | |
| Interview | School | 69.4 | ▼ | ▼ | | | | |
| | Region | 77.8 | | | | | | |
| | Province | 78.4 | | | | | | |

Average Mark, 2014-2017



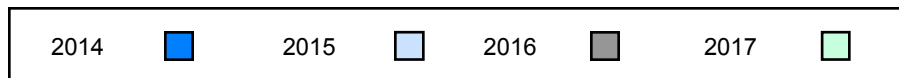
▼ ▲ The school result may appear numerically the same as the district/province due to rounding. The arrow indicates a negligible difference.

Difference from Provincial Mean, 2014-2017

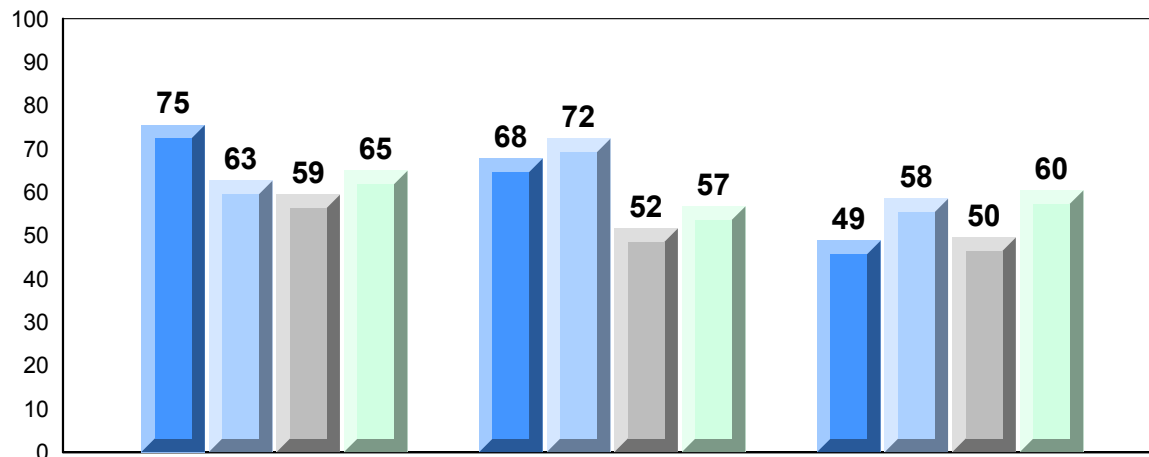


Exam Mark

Final Mark



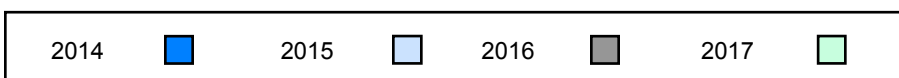
4 Year Public Exam (Subtest) Mark Trend 2014-2017



Listening

Reading

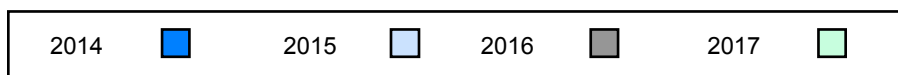
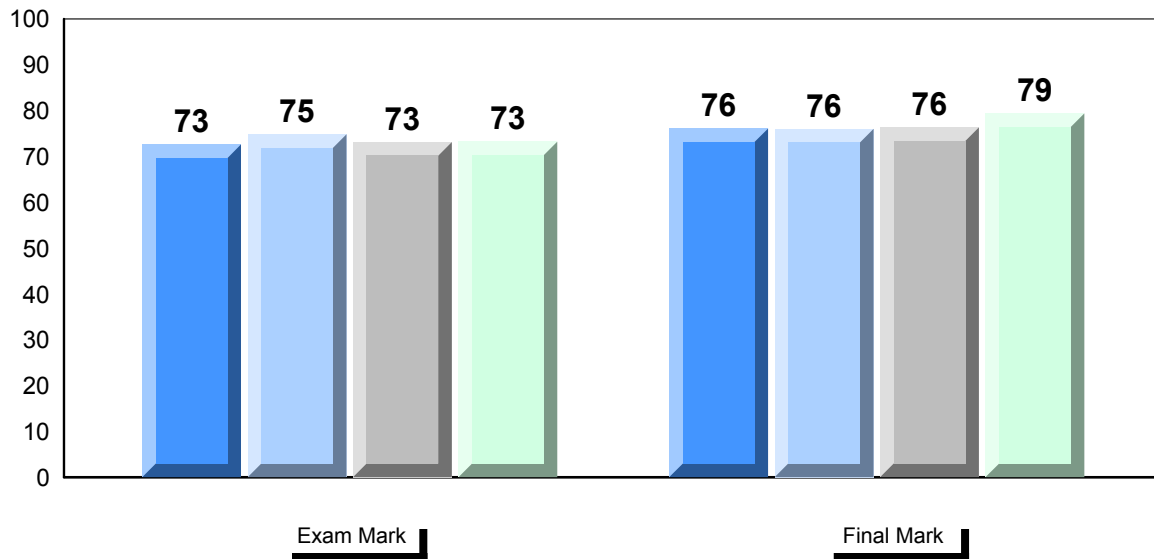
Writing



▼ ▲ The school result may appear numerically the same as the district/province due to rounding. The arrow indicates a negligible difference.

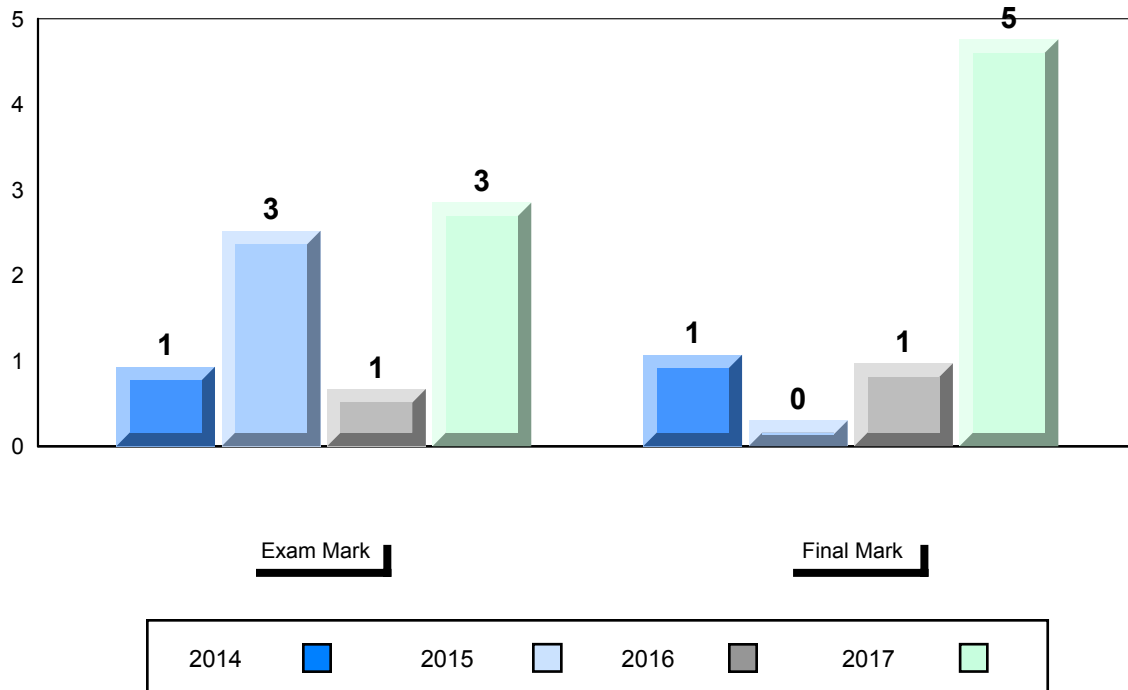
| Number of Students | | Public Exam Mark | | | Final Mark | | |
|----------------------|----------|------------------|------------------|--------------------|------------|------------------|--------------------|
| | | | School vs Region | School vs Province | | School vs Region | School vs Province |
| Francais 3202 | School | 73.2 | ▲ | ▲ | 79.4 | ▲ | ▲ |
| | Region | 70.4 | | | | | |
| | Province | 70.4 | | | | | |
| Subtest | | | | | | | |
| Listening | School | 85.9 | ▲ | ▲ | 74.6 | | |
| | Region | 73.8 | | | | | |
| | Province | 74.2 | | | | | |
| Reading | School | 66.5 | ▲ | ▲ | 74.6 | | |
| | Region | 62.3 | | | | | |
| | Province | 62.6 | | | | | |
| Writing | School | 60.5 | ▼ | ▼ | 74.6 | | |
| | Region | 62.4 | | | | | |
| | Province | 62.2 | | | | | |
| Interview | School | 79.4 | ▲ | ▲ | 74.6 | | |
| | Region | 77.8 | | | | | |
| | Province | 78.4 | | | | | |

Average Mark, 2014-2017

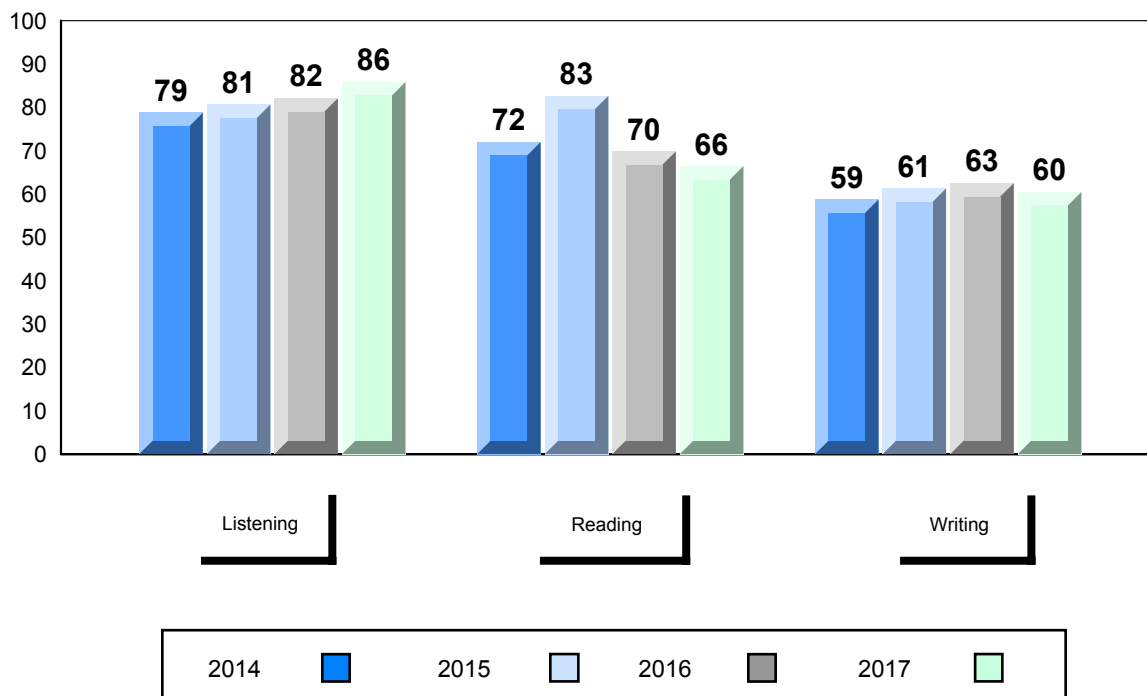


▼ ▲ The school result may appear numerically the same as the district/province due to rounding. The arrow indicates a negligible difference.

Difference from Provincial Mean, 2014-2017



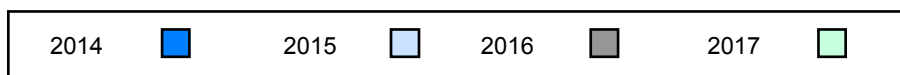
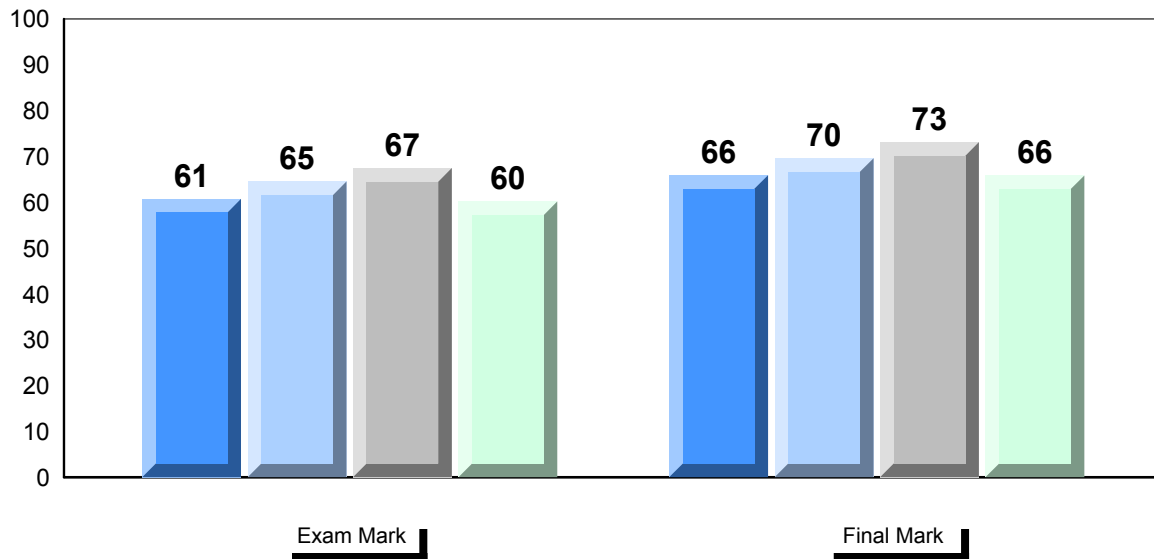
4 Year Public Exam (Subtest) Mark Trend 2014-2017



▼ ▲ The school result may appear numerically the same as the district/province due to rounding. The arrow indicates a negligible difference.

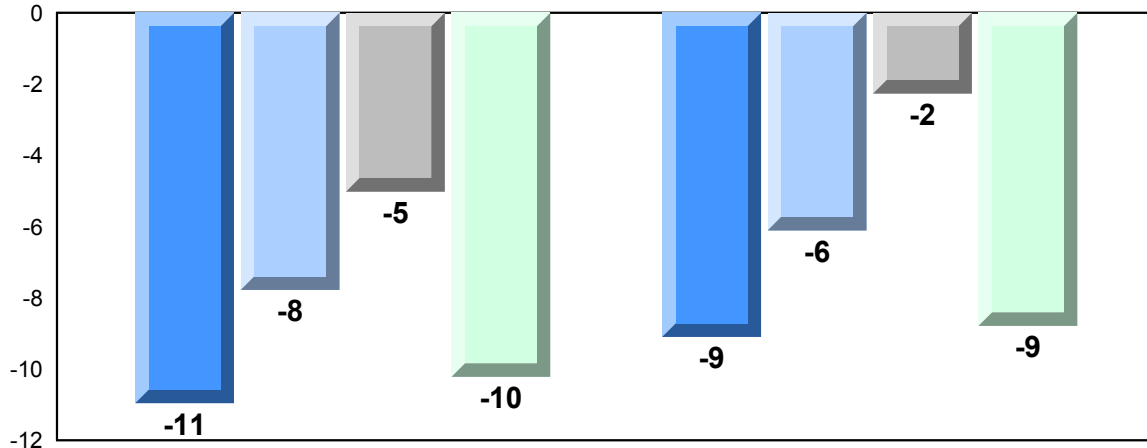
| Number of Students | | 18 | Public Exam Mark | | | Final Mark | | |
|----------------------|----------|------|-------------------------|--------------------|------------------|--------------------|---|--|
| | | | School vs Region | School vs Province | School vs Region | School vs Province | | |
| Francais 3202 | School | 60.2 | ▼ | ▼ | 65.8 | ▼ | ▼ | |
| | Region | 70.4 | | | 74.6 | | | |
| | Province | 70.4 | | | 74.6 | | | |
| Subtest | | | | | | | | |
| Listening | School | 59.6 | ▼ | ▼ | | | | |
| | Region | 73.8 | | | | | | |
| | Province | 74.2 | | | | | | |
| Reading | School | 52.4 | ▼ | ▼ | | | | |
| | Region | 62.3 | | | | | | |
| | Province | 62.6 | | | | | | |
| Writing | School | 49.1 | ▼ | ▼ | | | | |
| | Region | 62.4 | | | | | | |
| | Province | 62.2 | | | | | | |
| Interview | School | 77.4 | ▼ | ▼ | | | | |
| | Region | 77.8 | | | | | | |
| | Province | 78.4 | | | | | | |

Average Mark, 2014-2017



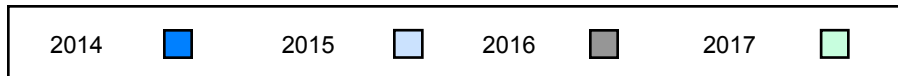
▼ ▲ The school result may appear numerically the same as the district/province due to rounding. The arrow indicates a negligible difference.

Difference from Provincial Mean, 2014-2017

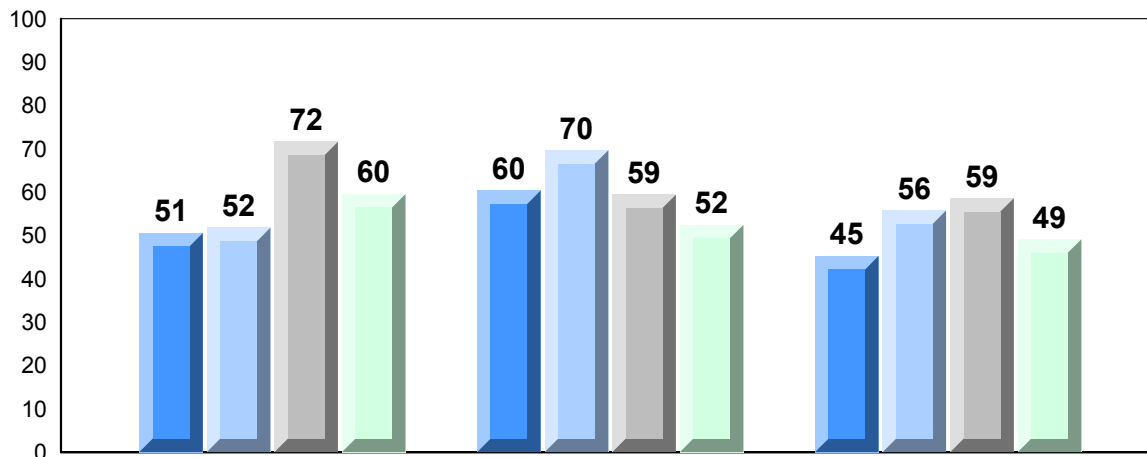


Exam Mark

Final Mark



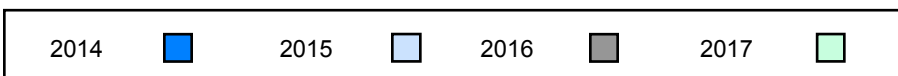
4 Year Public Exam (Subtest) Mark Trend 2014-2017



Listening

Reading

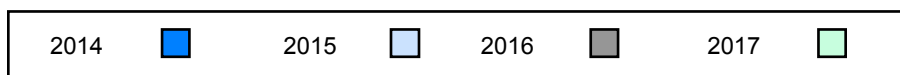
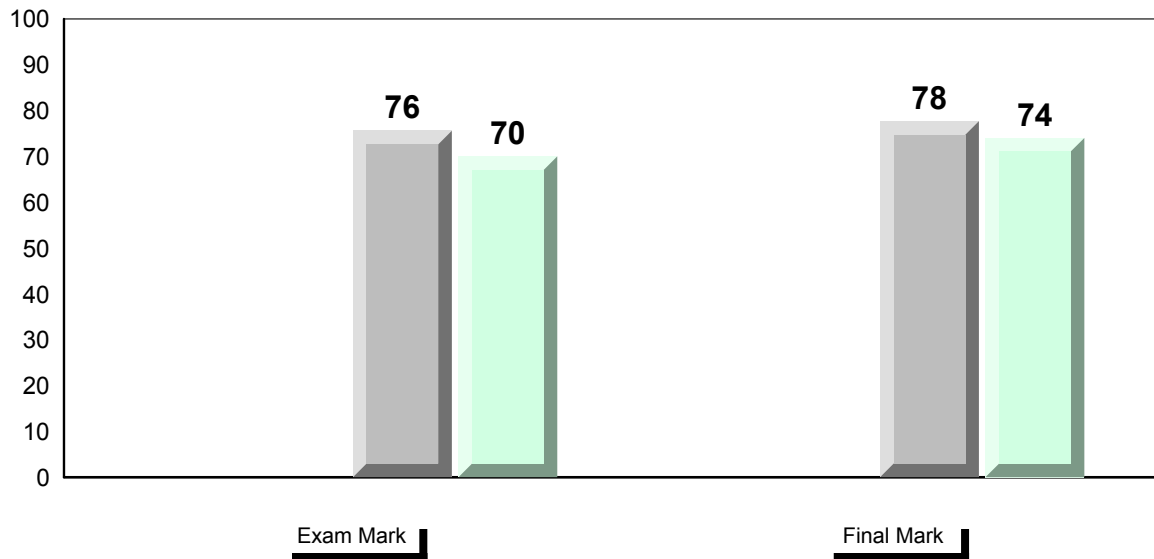
Writing



▼ ▲ The school result may appear numerically the same as the district/province due to rounding. The arrow indicates a negligible difference.

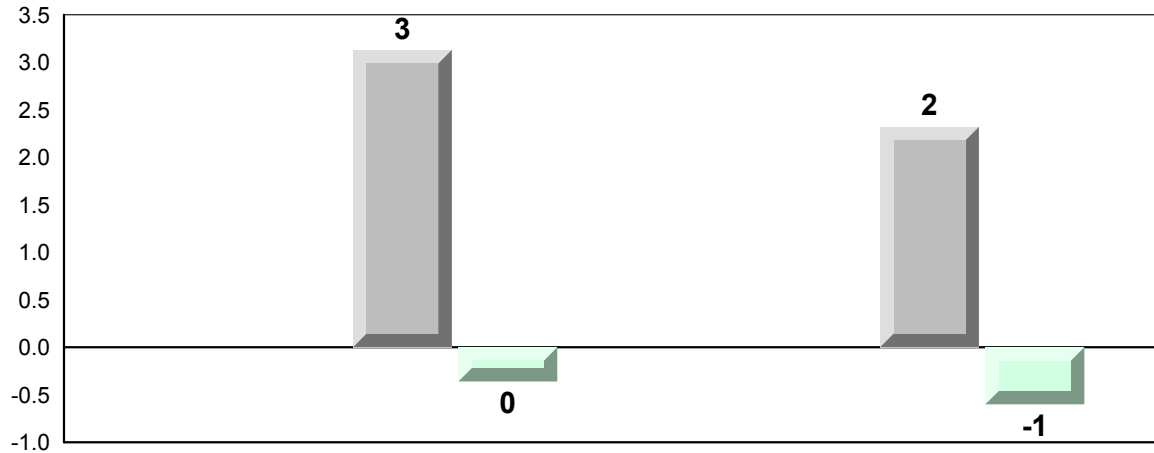
| Number of Students | | Public Exam Mark | | | Final Mark | | |
|----------------------|----------|------------------|------------------|--------------------|------------|------------------|--------------------|
| | | | School vs Region | School vs Province | | School vs Region | School vs Province |
| Francais 3202 | School | 70.0 | ▼ | ▼ | 74.0 | ▼ | ▼ |
| | Region | 70.4 | | | | | |
| | Province | 70.4 | | | | | |
| Subtest | | | | | | | |
| Listening | School | 75.6 | ▲ | ▲ | 74.6 | | |
| | Region | 73.8 | | | | | |
| | Province | 74.2 | | | | | |
| Reading | School | 62.9 | ▲ | ▲ | 74.6 | | |
| | Region | 62.3 | | | | | |
| | Province | 62.6 | | | | | |
| Writing | School | 60.8 | ▼ | ▼ | | | |
| | Region | 62.4 | | | | | |
| | Province | 62.2 | | | | | |
| Interview | School | 79.8 | ▲ | ▲ | | | |
| | Region | 77.8 | | | | | |
| | Province | 78.4 | | | | | |

Average Mark, 2014-2017



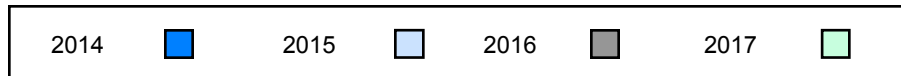
▼ ▲ The school result may appear numerically the same as the district/province due to rounding. The arrow indicates a negligible difference.

Difference from Provincial Mean, 2014-2017

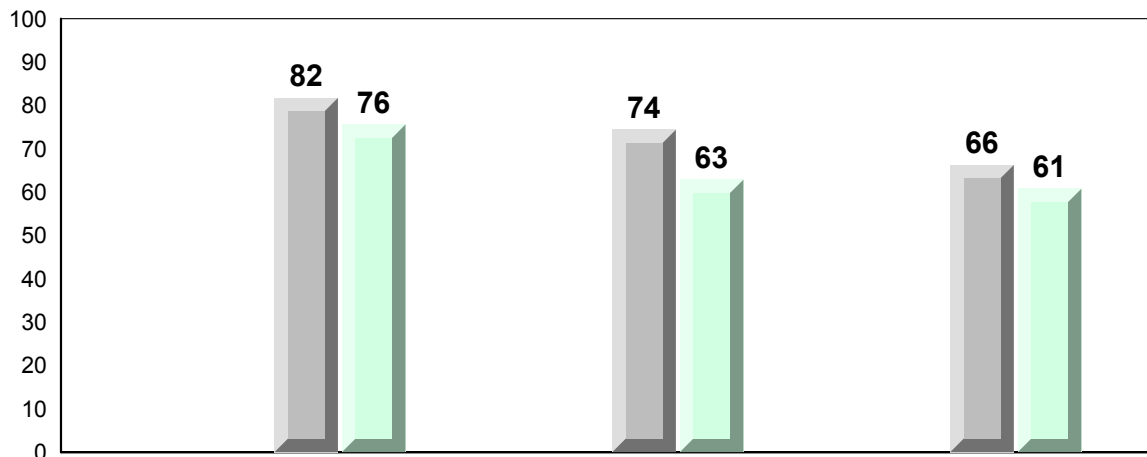


Exam Mark

Final Mark



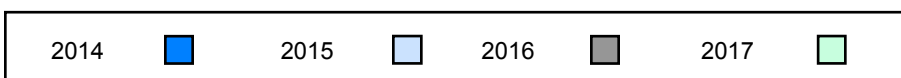
4 Year Public Exam (Subtest) Mark Trend 2014-2017



Listening

Reading

Writing



▼ ▲ The school result may appear numerically the same as the district/province due to rounding. The arrow indicates a negligible difference.