

Number of Students : 3

Multiple Choice

Non-Fiction

School
Region
Province

Mark	School vs Region	School vs Province
School data with 5 or fewer students withheld for reasons of confidentiality.	q	P
	P	P
	q	q

Closed Responses*

Demand Writing

School
Region
Province

Non-Fiction Reading

School
Region
Province

* How to interpret the results for Closed Responses

On the Demand Writing (Creative) section, the students in First Baptist Academy scored 100.0%. This means 100.0% of the students met or exceeded the cut score for this section.

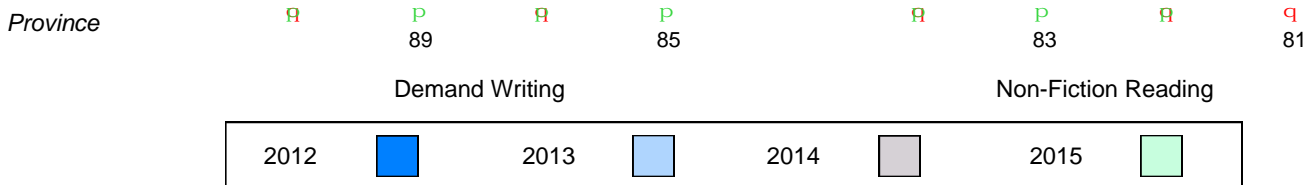
4 Year Provincial Assessment(Subtest) Mark Trend 2012-2015

Multiple Choice

School data with 5 or fewer students withheld for reasons of confidentiality.

Written Response: Percentage of students meeting/exceeding grade level expectations 2012-2015

School data with 5 or fewer students withheld for reasons of confidentiality.



Difference from Provincial Mean, 2012-15

Multiple Choice

School data with 5 or fewer students withheld for reasons of confidentiality.

Non-Fiction

Difference from Provincial Mean, 2012-15

Written Response: Percentage of students meeting/exceeding grade level expectations 2012-2015

School data with 5 or fewer students withheld for reasons of confidentiality.



Number of Students : 8

Multiple Choice

Non-Fiction

School
Region
Province

Mark	School vs Region	School vs Province
80.0	P	P
76.9		
68.4		
100.0	P	P
90.5		
85.3		
87.5	P	P
86.0		
80.6		

Closed Responses*

Demand Writing

School
Region
Province

Non-Fiction Reading

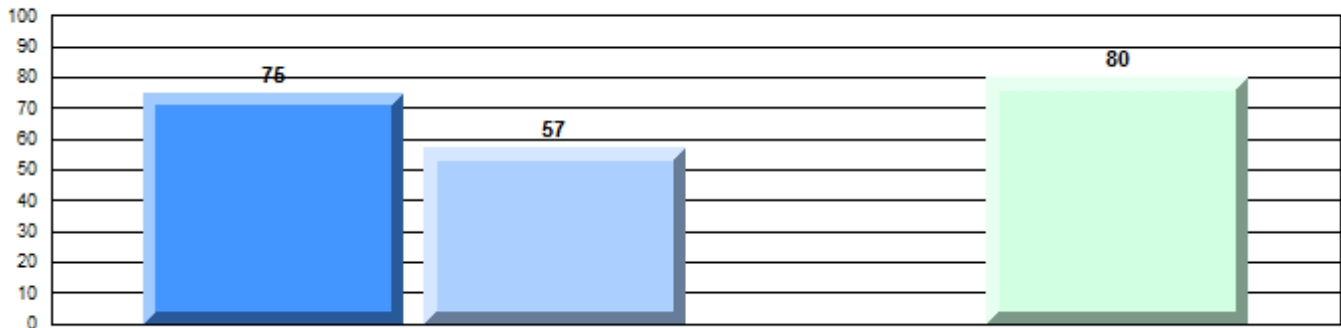
School
Region
Province

* How to interpret the results for Closed Responses

On the Demand Writing (Creative) section, the students in Lakecrest-St. John's Independent School scored 100.0%. This means 100.0% of the students met or exceeded the cut score for this section.

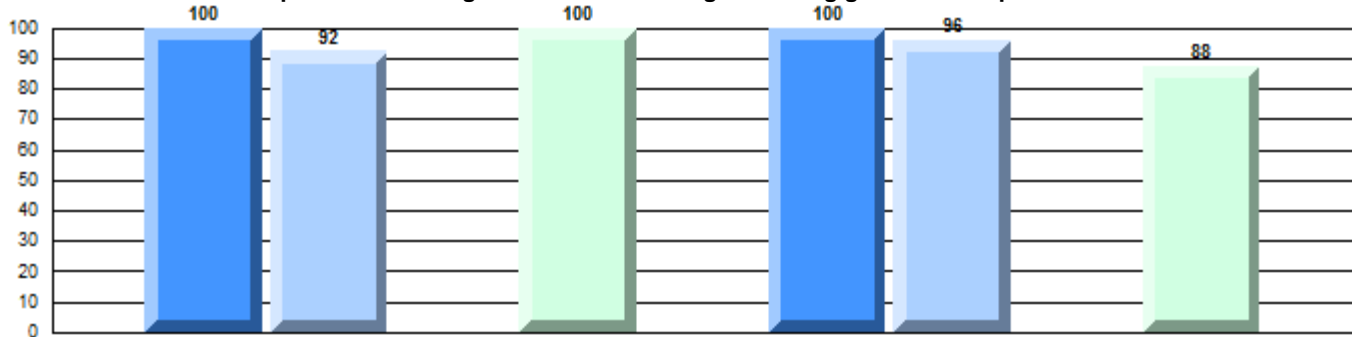
4 Year Provincial Assessment(Subtest) Mark Trend 2012-2015

Multiple Choice



Non-Fiction

Written Response: Percentage of students meeting/exceeding grade level expectations 2012-2015



Province

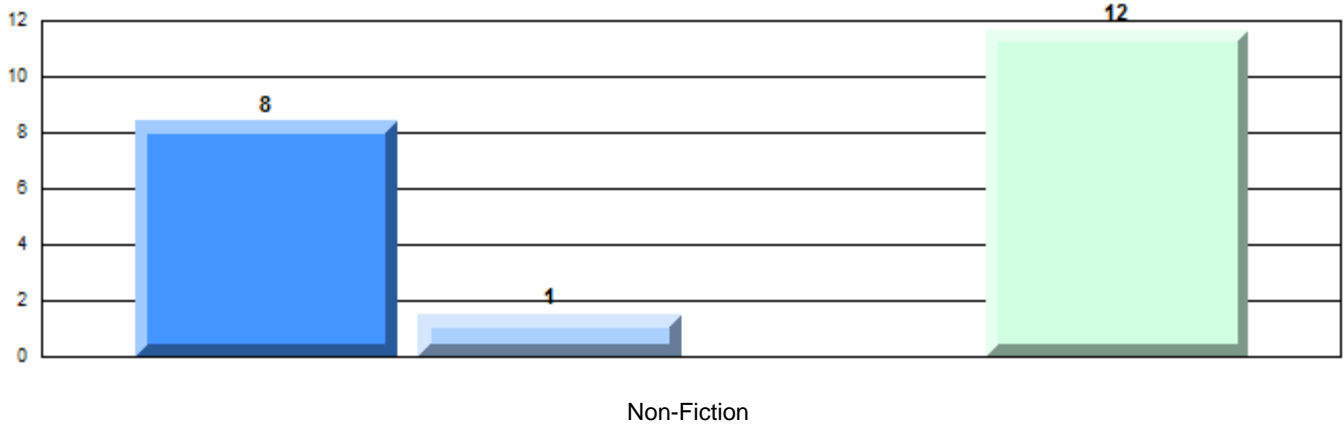
P 91 P 89 R P 85 P 92 P 83 R P 81

Demand Writing

Non-Fiction Reading

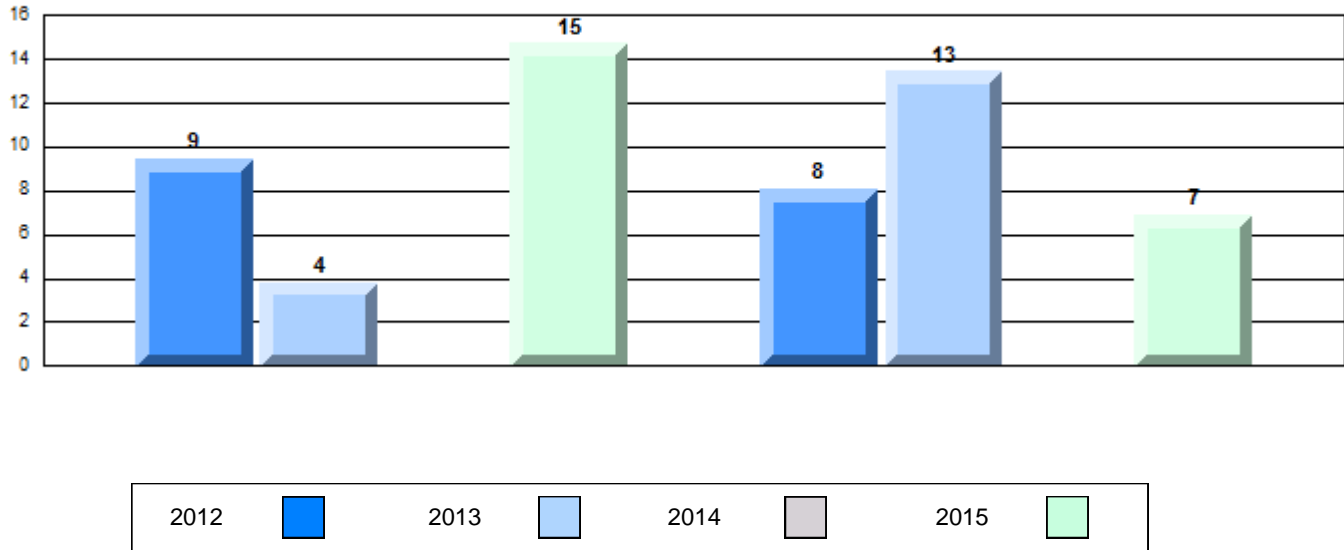


Difference from Provincial Mean, 2012-15
Multiple Choice



Difference from Provincial Mean, 2012-15

Written Response: Percentage of students meeting/exceeding grade level expectations 2012-2015



Number of Students : 20

Multiple Choice

Non-Fiction

School
Region
Province

Mark	School vs Region	School vs Province
77.0	P	P
76.9		
68.4		

Closed Responses*

Demand Writing

School
Region
Province

100.0	P	P
90.5		
85.3		

Non-Fiction Reading

School
Region
Province

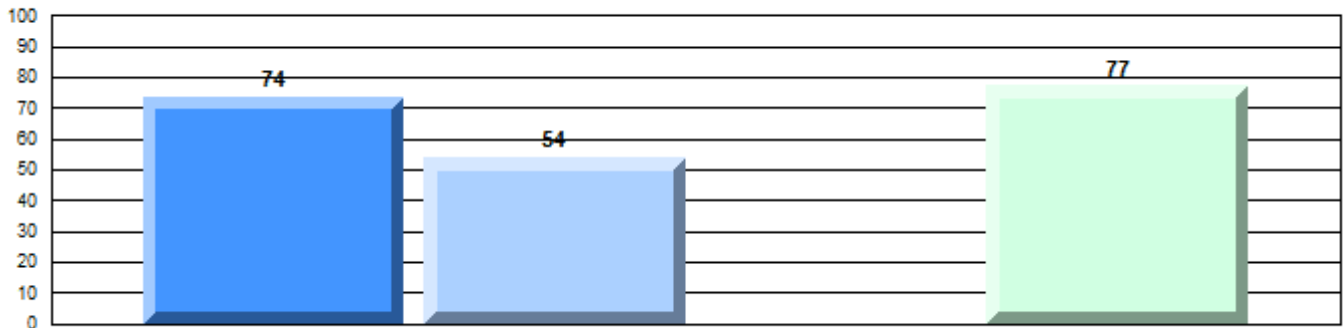
90.0	P	P
86.0		
80.6		

* How to interpret the results for Closed Responses

On the Demand Writing (Creative) section, the students in St. Bonaventure's College scored 100.0%. This means 100.0% of the students met or exceeded the cut score for this section.

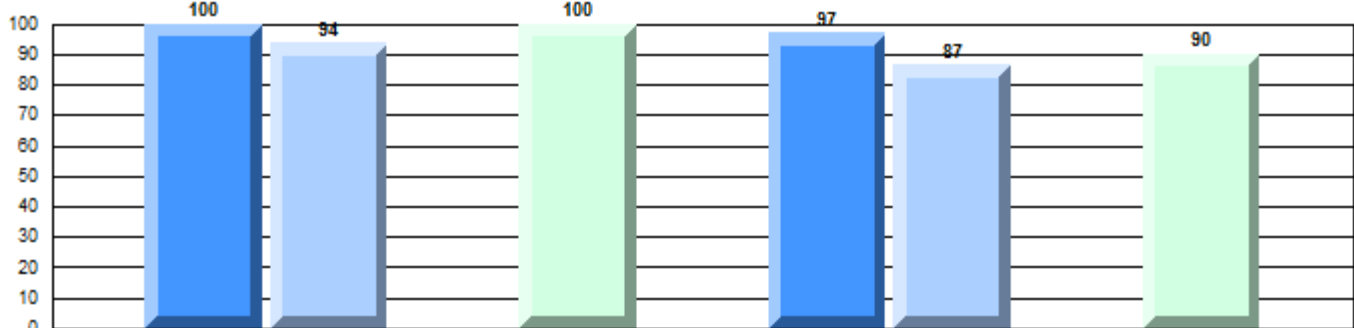
4 Year Provincial Assessment(Subtest) Mark Trend 2012-2015

Multiple Choice



Non-Fiction

Written Response: Percentage of students meeting/exceeding grade level expectations 2012-2015



Province

P

91

P

89

R

P

85

P

92

P

83

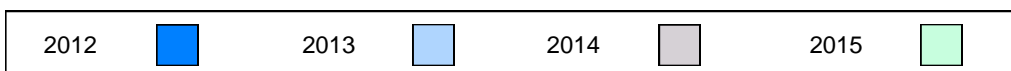
R

P

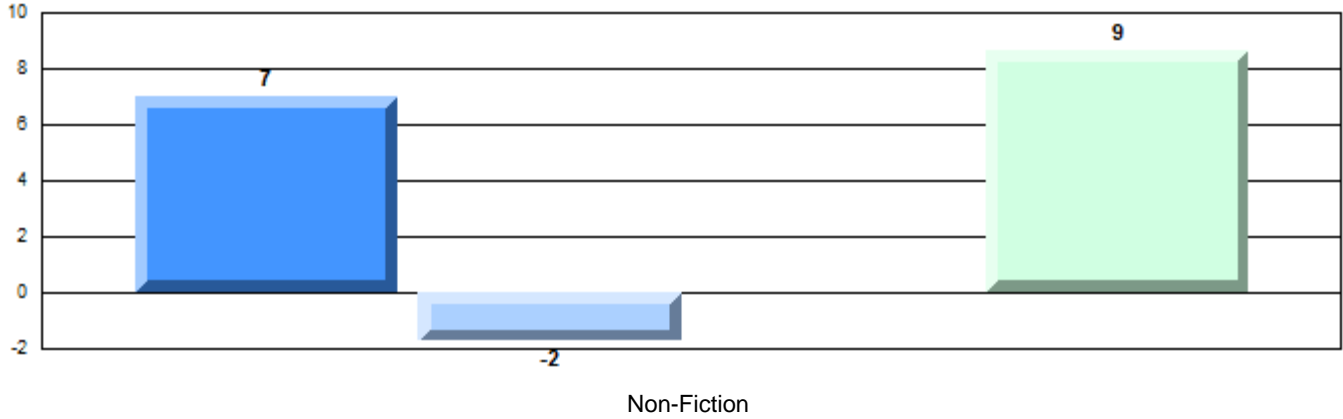
81

Demand Writing

Non-Fiction Reading

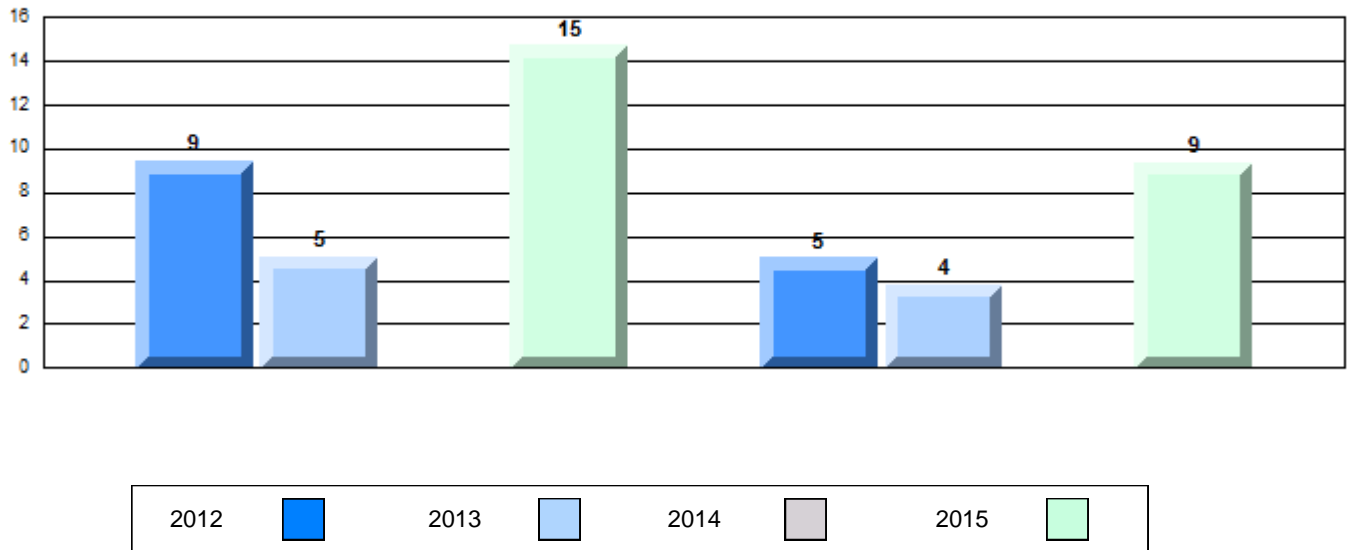


Difference from Provincial Mean, 2012-15
Multiple Choice



Difference from Provincial Mean, 2012-15

Written Response: Percentage of students meeting/exceeding grade level expectations 2012-2015



Number of Students : 9

Multiple Choice

Non-Fiction

School
Region
Province

Mark	School vs Region	School vs Province
75.6	Q	P
76.9		
68.4		

Closed Responses*

Demand Writing

School
Region
Province

66.7	Q	Q
90.5		
85.3		

Non-Fiction Reading

School
Region
Province

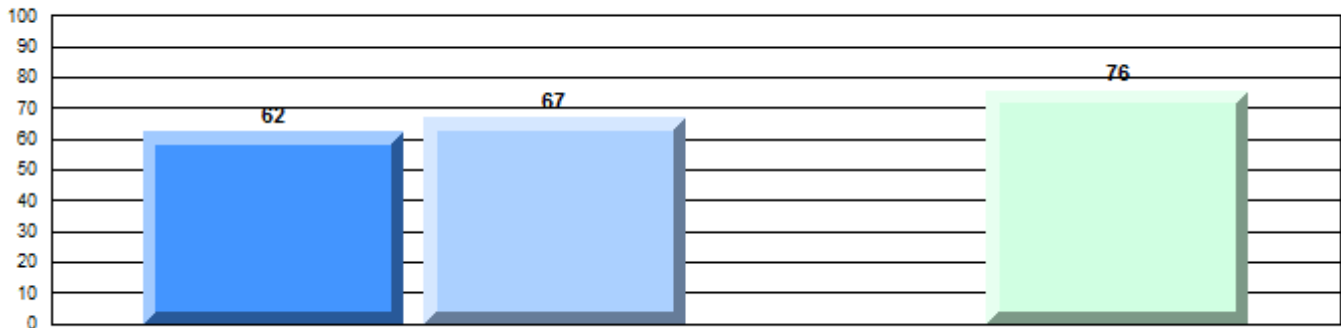
88.9	P	P
86.0		
80.6		

* How to interpret the results for Closed Responses

On the Demand Writing (Creative) section, the students in Eric G. Lambert All-Grade scored 66.7%. This means 66.7% of the students met or exceeded the cut score for this section.

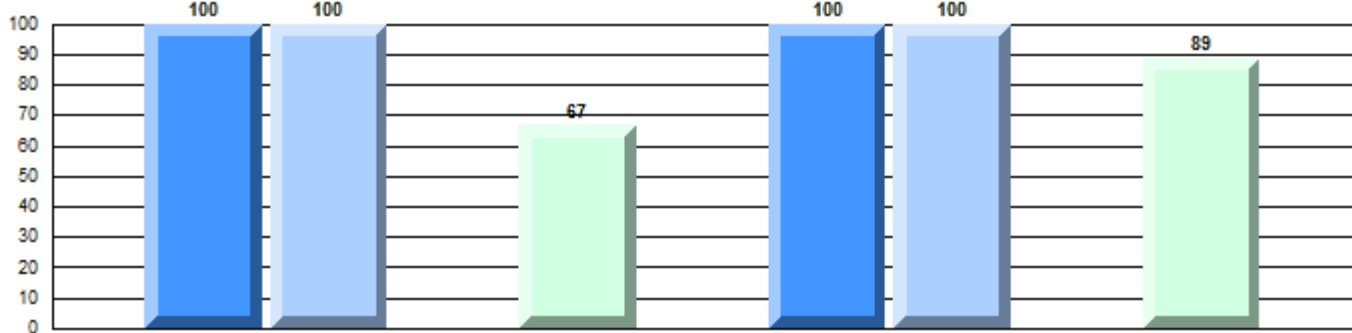
4 Year Provincial Assessment(Subtest) Mark Trend 2012-2015

Multiple Choice



Non-Fiction

Written Response: Percentage of students meeting/exceeding grade level expectations 2012-2015

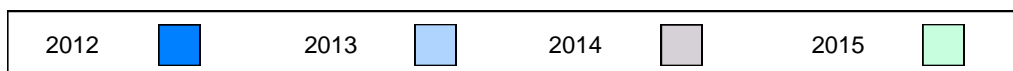


Province

P 91 P 89 Q 85 Q 85 P 92 P 83 Q 81 P 81

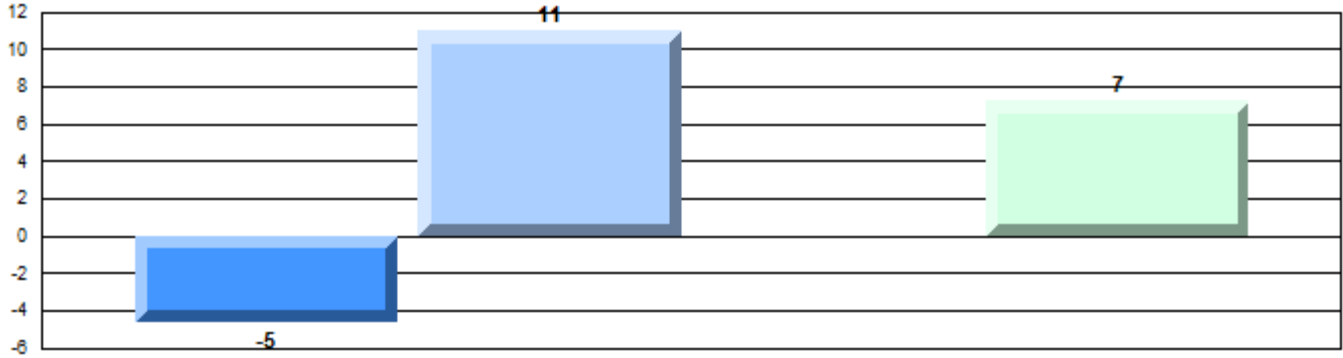
Demand Writing

Non-Fiction Reading



Difference from Provincial Mean, 2012-15

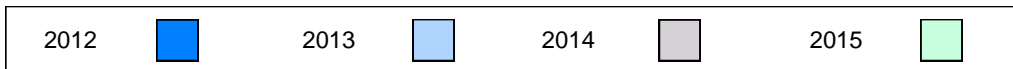
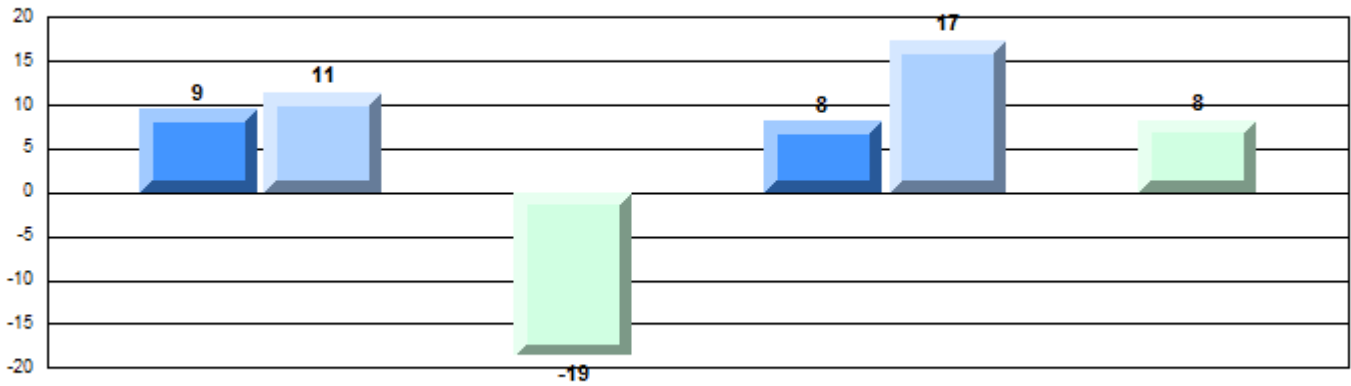
Multiple Choice



Non-Fiction

Difference from Provincial Mean, 2012-15

Written Response: Percentage of students meeting/exceeding grade level expectations 2012-2015



Number of Students : 3

Multiple Choice

Non-Fiction

School
Region
Province

Closed Responses*

Demand Writing

School
Region
Province

Non-Fiction Reading

School
Region
Province

Mark	School vs Region	School vs Province
School data with 5 or fewer students withheld for reasons of confidentiality.	q	P
	q	q
	q	q

* How to interpret the results for Closed Responses

On the Demand Writing (Creative) section, the students in Immaculate Heart of Mary School scored 66.7%. This means 66.7% of the students met or exceeded the cut score for this section.

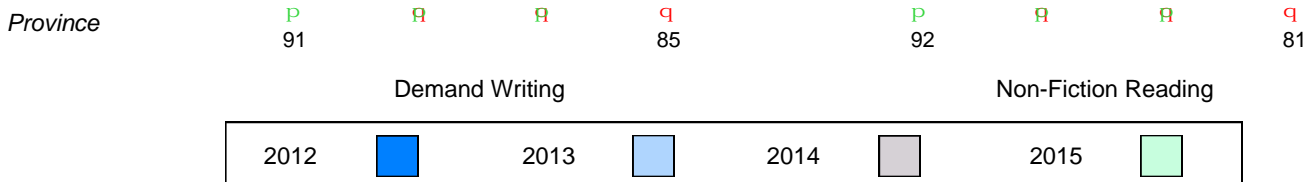
4 Year Provincial Assessment(Subtest) Mark Trend 2012-2015

Multiple Choice

School data with 5 or fewer students withheld for reasons of confidentiality.

Written Response: Percentage of students meeting/exceeding grade level expectations 2012-2015

School data with 5 or fewer students withheld for reasons of confidentiality.



Difference from Provincial Mean, 2012-15

Multiple Choice

School data with 5 or fewer students withheld for reasons of confidentiality.

Non-Fiction

Difference from Provincial Mean, 2012-15

Written Response: Percentage of students meeting/exceeding grade level expectations 2012-2015

School data with 5 or fewer students withheld for reasons of confidentiality.



Number of Students : 7

Multiple Choice

Non-Fiction

School
Region
Province

Mark	School vs Region	School vs Province
47.1	q	q
51.0		
68.4		

Closed Responses*

Demand Writing

School
Region
Province

42.9	q	q
70.0		
85.3		

Non-Fiction Reading

School
Region
Province

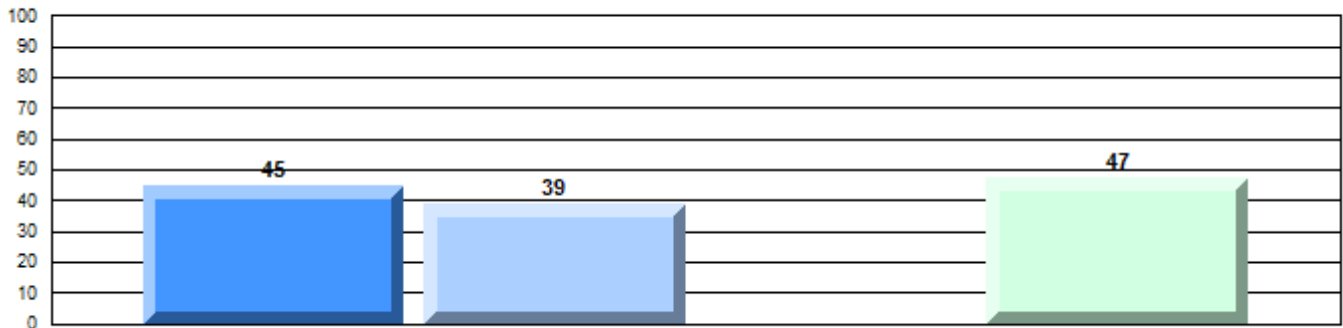
20.0	q	q
50.0		
80.6		

* How to interpret the results for Closed Responses

On the Demand Writing (Creative) section, the students in Sheshatshiu Innu School scored 42.9%. This means 42.9% of the students met or exceeded the cut score for this section.

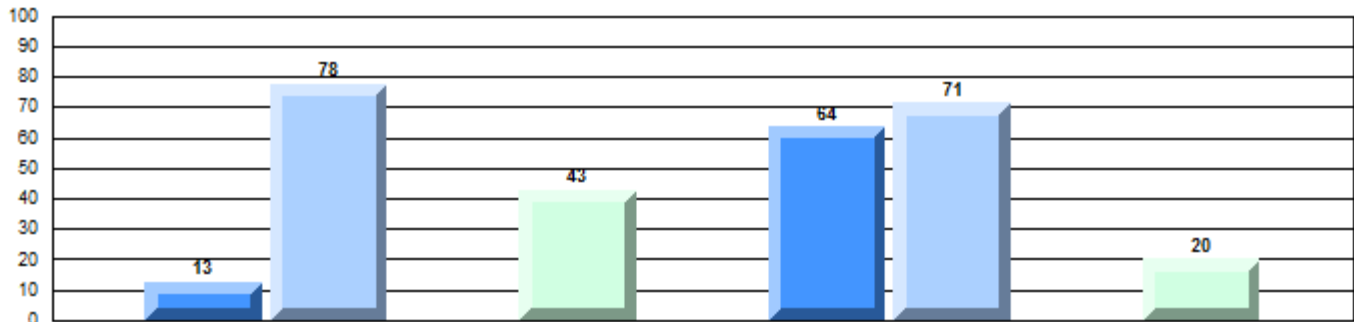
4 Year Provincial Assessment(Subtest) Mark Trend 2012-2015

Multiple Choice



Non-Fiction

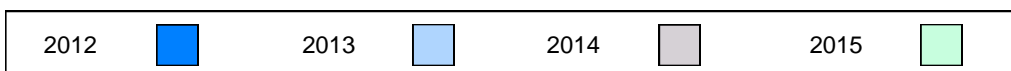
Written Response: Percentage of students meeting/exceeding grade level expectations 2012-2015



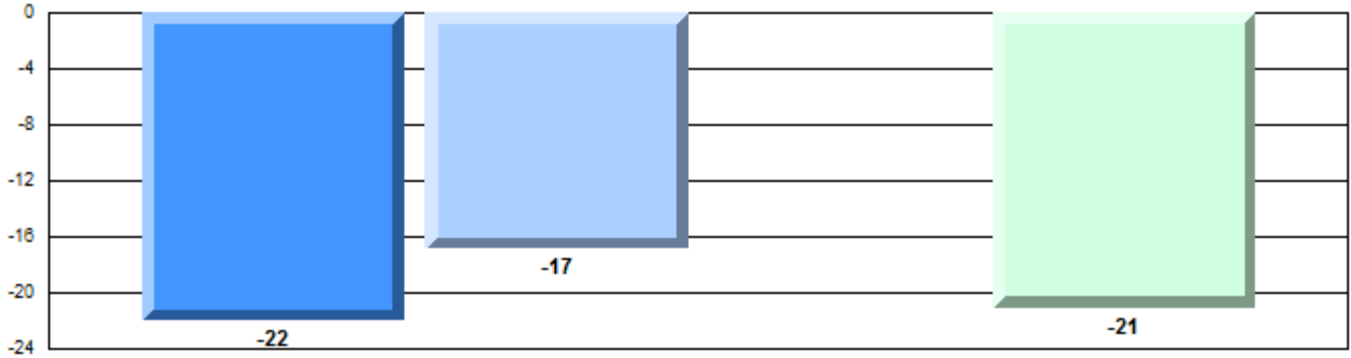
Province

Demand Writing

Non-Fiction Reading



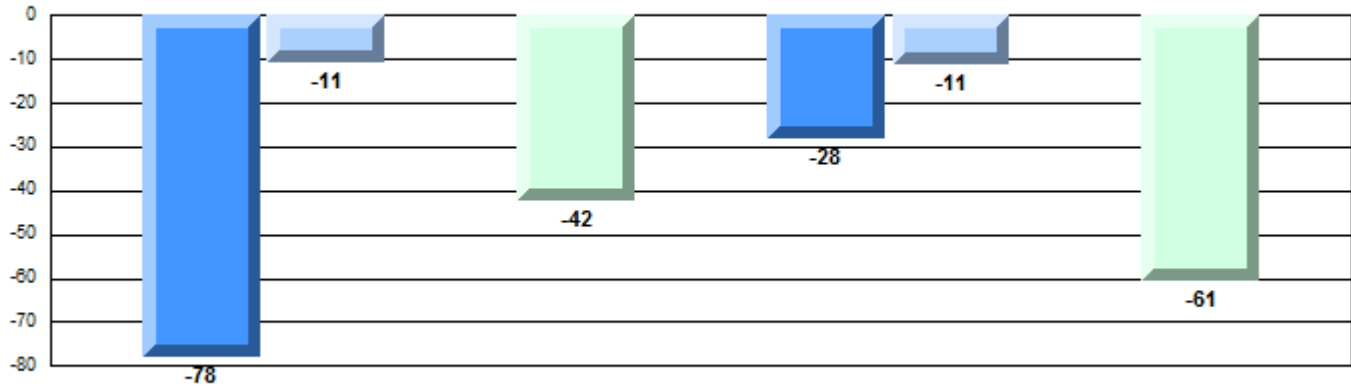
Difference from Provincial Mean, 2012-15
Multiple Choice



Non-Fiction

Difference from Provincial Mean, 2012-15

Written Response: Percentage of students meeting/exceeding grade level expectations 2012-2015



Number of Students : 7

Multiple Choice

Non-Fiction

School
Region
Province

Mark	School vs Region	School vs Province
31.7	q	q
51.0		
68.4		

Closed Responses*

Demand Writing

School
Region
Province

40.0	q	q
70.0		
85.3		

Non-Fiction Reading

School
Region
Province

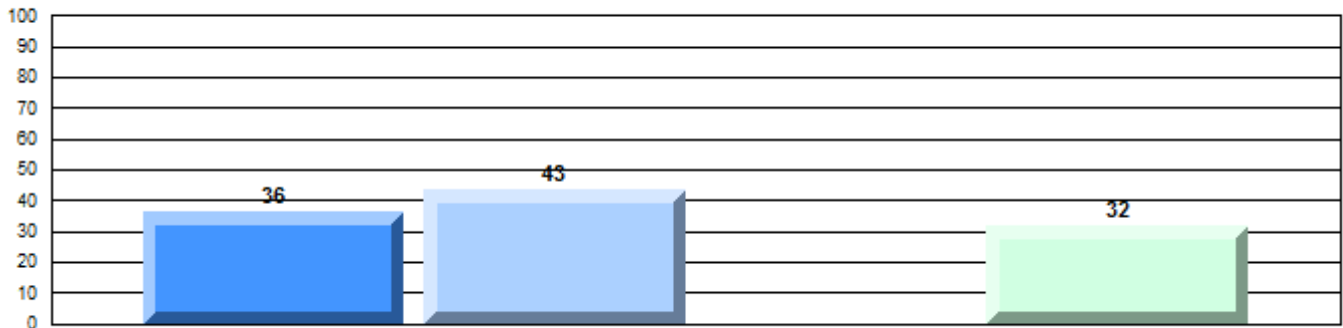
0.0	q	q
50.0		
80.6		

* How to interpret the results for Closed Responses

On the Demand Writing (Creative) section, the students in Mushuau Innu Natuashish School scored 40.0%. This means 40.0% of the students met or exceeded the cut score for this section.

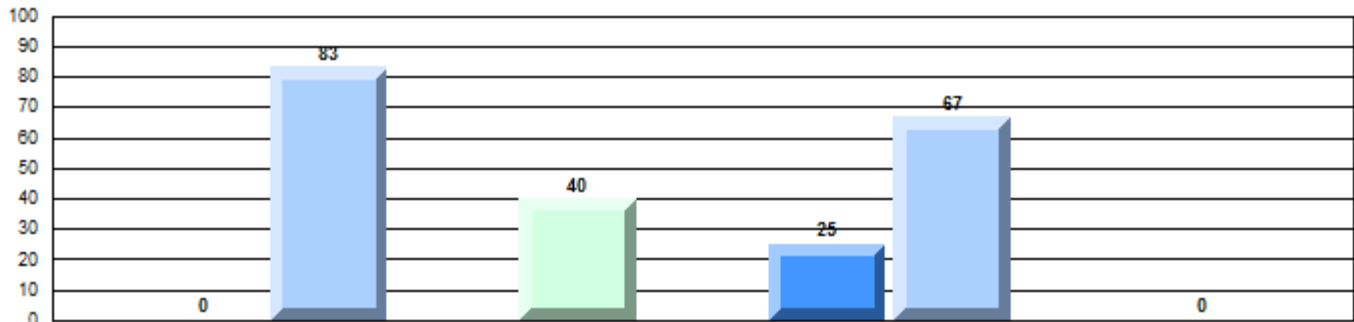
4 Year Provincial Assessment(Subtest) Mark Trend 2012-2015

Multiple Choice



Non-Fiction

Written Response: Percentage of students meeting/exceeding grade level expectations 2012-2015

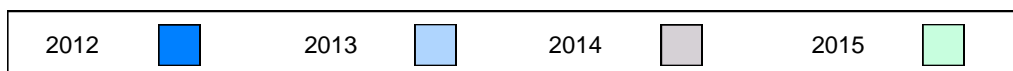


Province

q 91 q 89 q 85 q 92 q 83 q 81

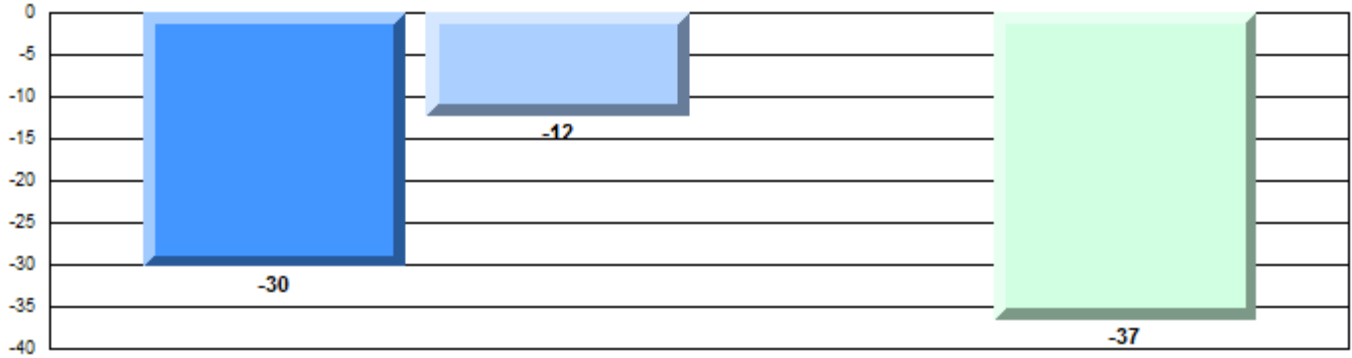
Demand Writing

Non-Fiction Reading



Difference from Provincial Mean, 2012-15

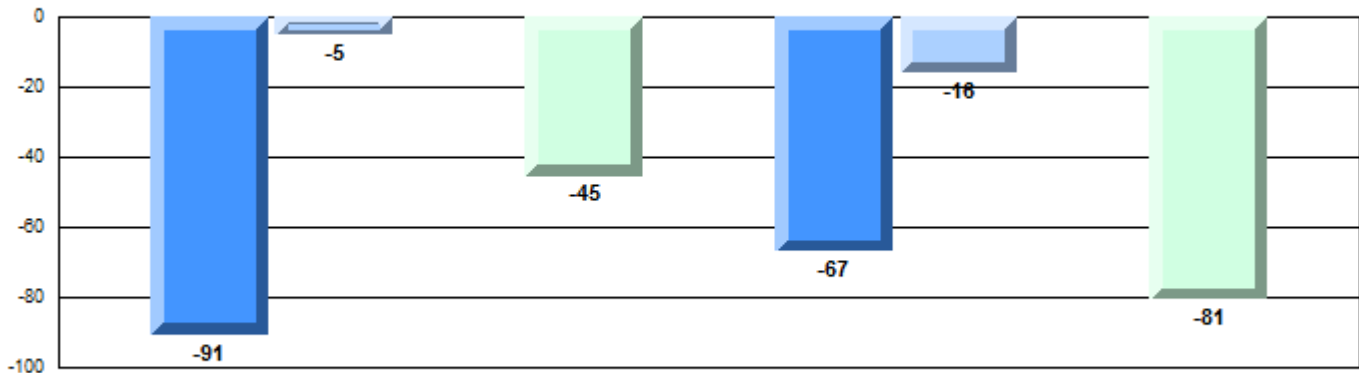
Multiple Choice



Non-Fiction

Difference from Provincial Mean, 2012-15

Written Response: Percentage of students meeting/exceeding grade level expectations 2012-2015



Number of Students : 10

Multiple Choice

Non-Fiction

School
Region
Province

Mark	School vs Region	School vs Province
51.0	P	Q
51.0		
68.4		
70.0	P	Q
70.0		
85.3		
50.0	P	Q
50.0		
80.6		

Closed Responses*

Demand Writing

School
Region
Province

Non-Fiction Reading

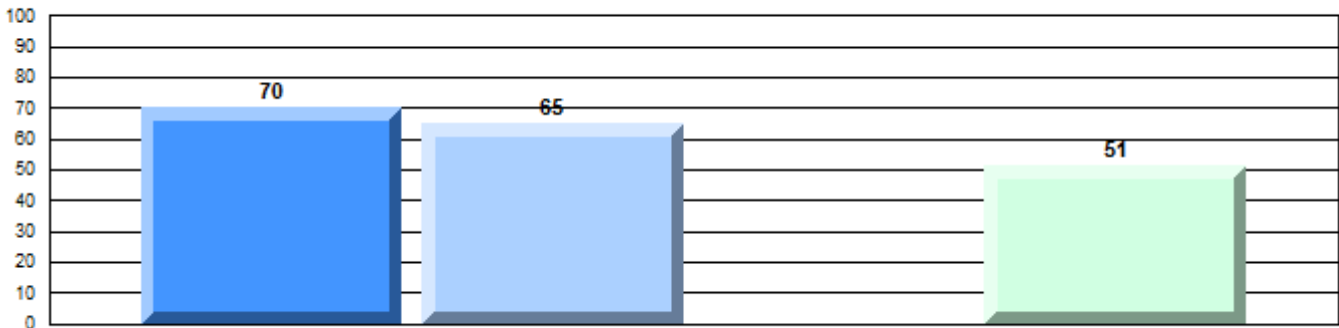
School
Region
Province

* How to interpret the results for Closed Responses

On the Demand Writing (Creative) section, the students in Se't Anneway Kegnamogwom scored 70.0%. This means 70.0% of the students met or exceeded the cut score for this section.

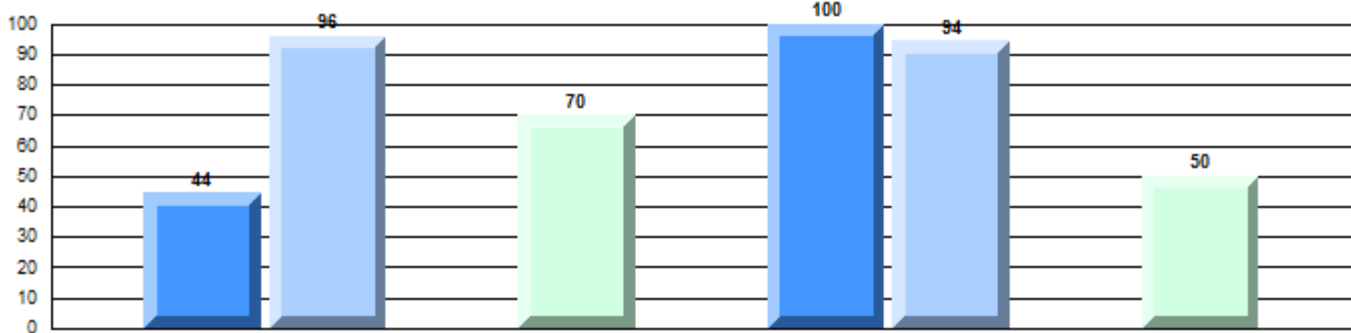
4 Year Provincial Assessment(Subtest) Mark Trend 2012-2015

Multiple Choice



Non-Fiction

Written Response: Percentage of students meeting/exceeding grade level expectations 2012-2015

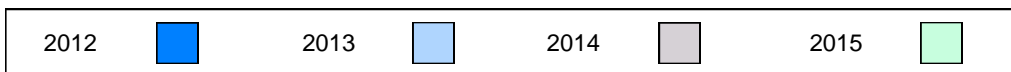


Province

Q 91 P 89 Q 85 P 92 P 83 Q 81

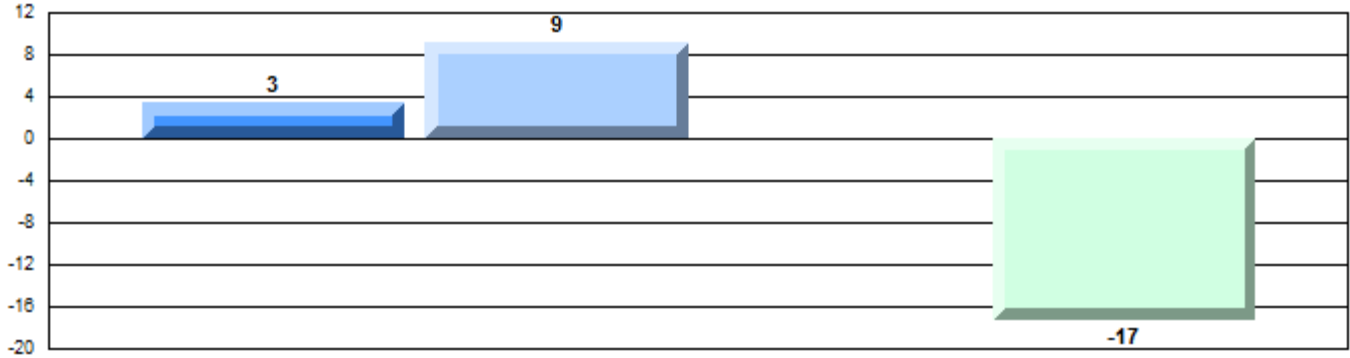
Demand Writing

Non-Fiction Reading



Difference from Provincial Mean, 2012-15

Multiple Choice



Non-Fiction

Difference from Provincial Mean, 2012-15

Written Response: Percentage of students meeting/exceeding grade level expectations 2012-2015

