

Number of Students : 7

Multiple Choice

Non-Fiction

School
Region
Province

Mark	School vs Region	School vs Province
65.7	P	Q
64.6		
68.4		

Closed Responses*

Demand Writing

School
Region
Province

42.9	Q	Q
71.4		
85.3		

Non-Fiction Reading

School
Region
Province

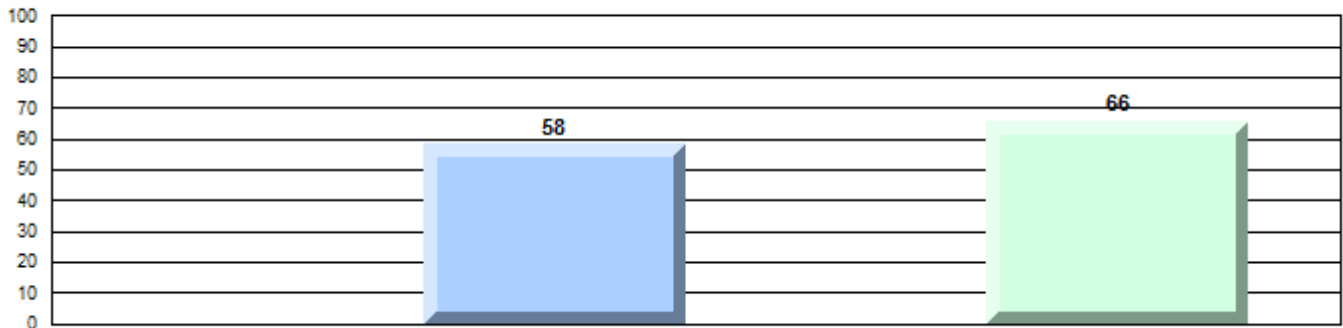
57.1	Q	Q
66.5		
80.6		

* How to interpret the results for Closed Responses

On the Demand Writing (Creative) section, the students in Henry Gordon Academy scored 42.9%. This means 42.9% of the students met or exceeded the cut score for this section.

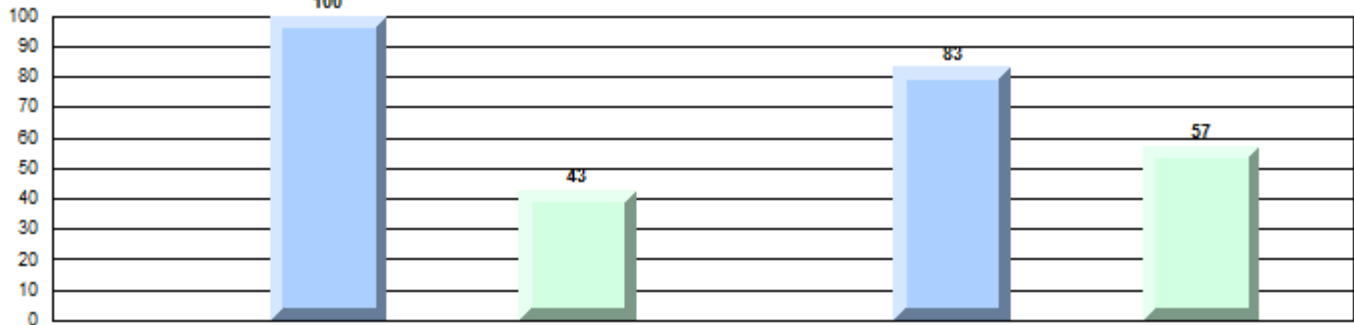
4 Year Provincial Assessment(Subtest) Mark Trend 2012-2015

Multiple Choice



Non-Fiction

Written Response: Percentage of students meeting/exceeding grade level expectations 2012-2015

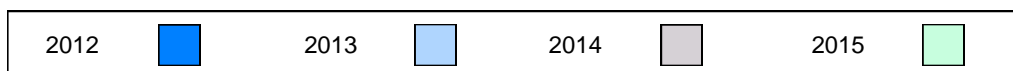


Province

P Q Q Q

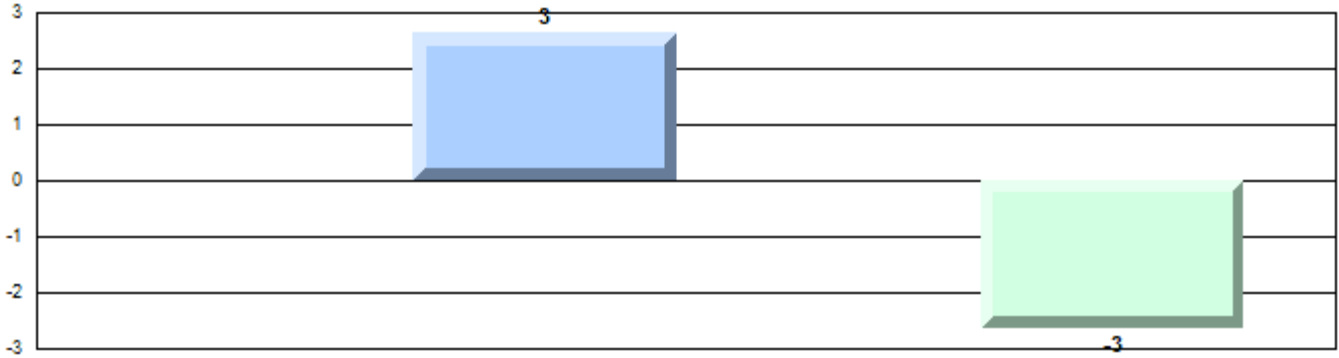
Demand Writing

Non-Fiction Reading



Difference from Provincial Mean, 2012-15

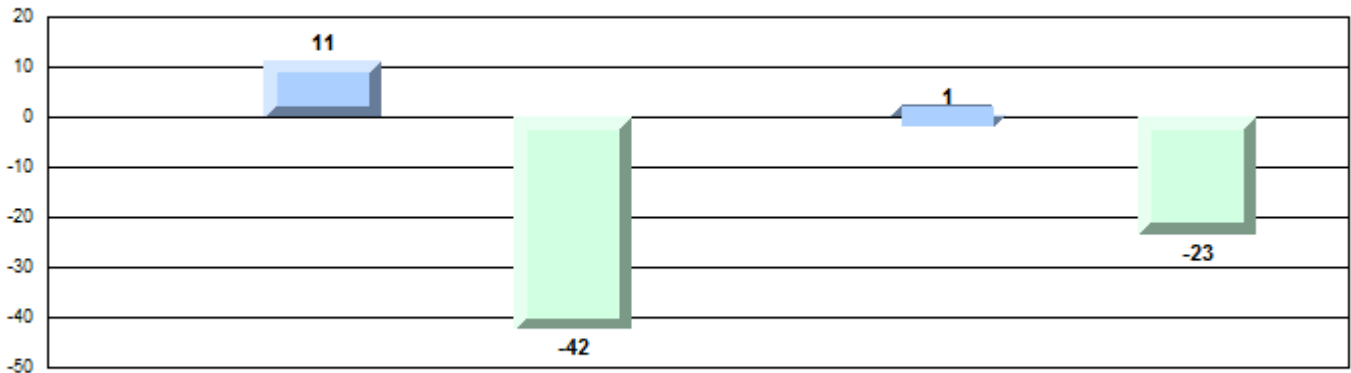
Multiple Choice



Non-Fiction

Difference from Provincial Mean, 2012-15

Written Response: Percentage of students meeting/exceeding grade level expectations 2012-2015



Number of Students : 6

Multiple Choice

Non-Fiction

School
Region
Province

Mark	School vs Region	School vs Province
60.0	q	q
64.6		
68.4		

Closed Responses*

Demand Writing

School
Region
Province

33.3	q	q
71.4		
85.3		

Non-Fiction Reading

School
Region
Province

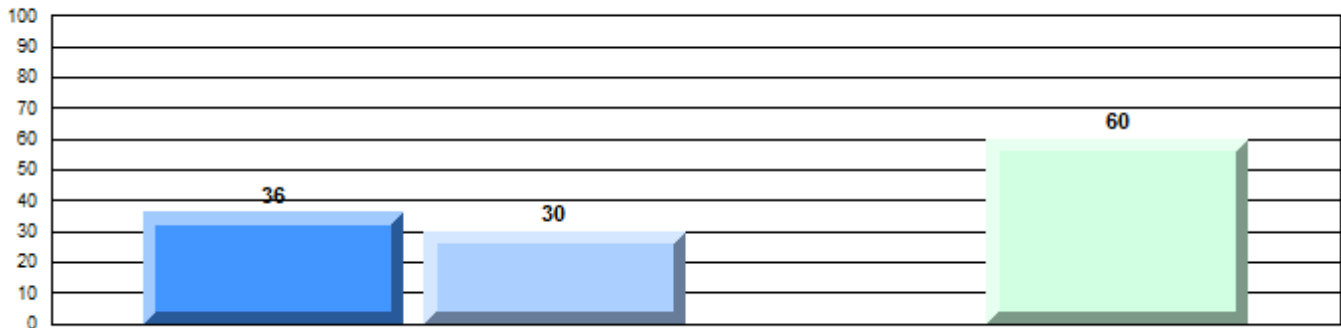
66.7	p	q
66.5		
80.6		

* How to interpret the results for Closed Responses

On the Demand Writing (Creative) section, the students in Amos Comenius Memorial School scored 33.3%. This means 33.3% of the students met or exceeded the cut score for this section.

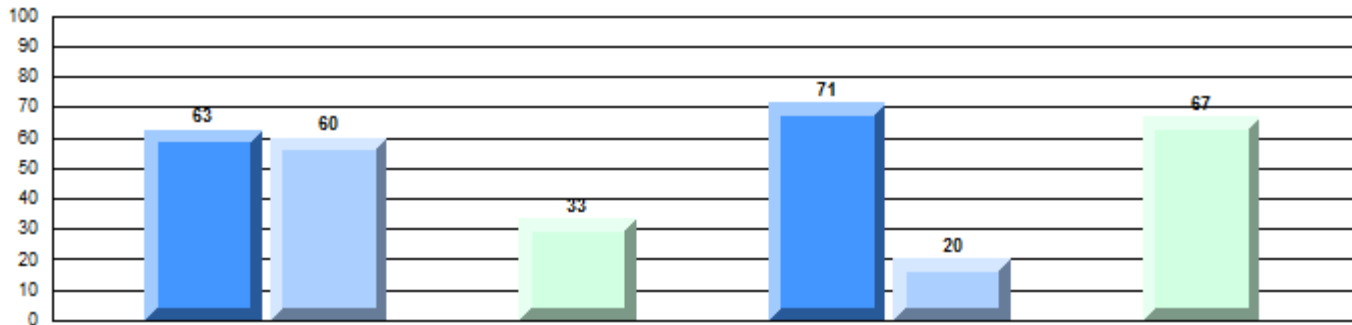
4 Year Provincial Assessment(Subtest) Mark Trend 2012-2015

Multiple Choice



Non-Fiction

Written Response: Percentage of students meeting/exceeding grade level expectations 2012-2015

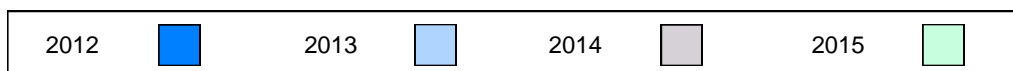


Province

q 91 q 89 p 85 q 92 q 83 p 81

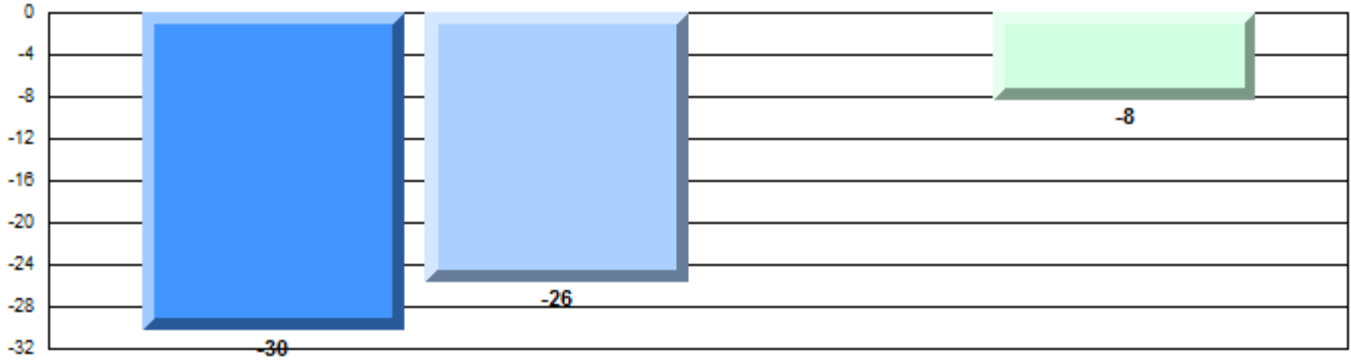
Demand Writing

Non-Fiction Reading



Difference from Provincial Mean, 2012-15

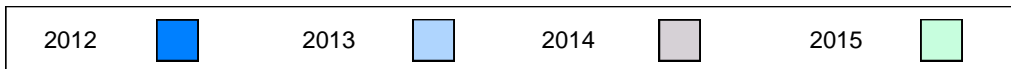
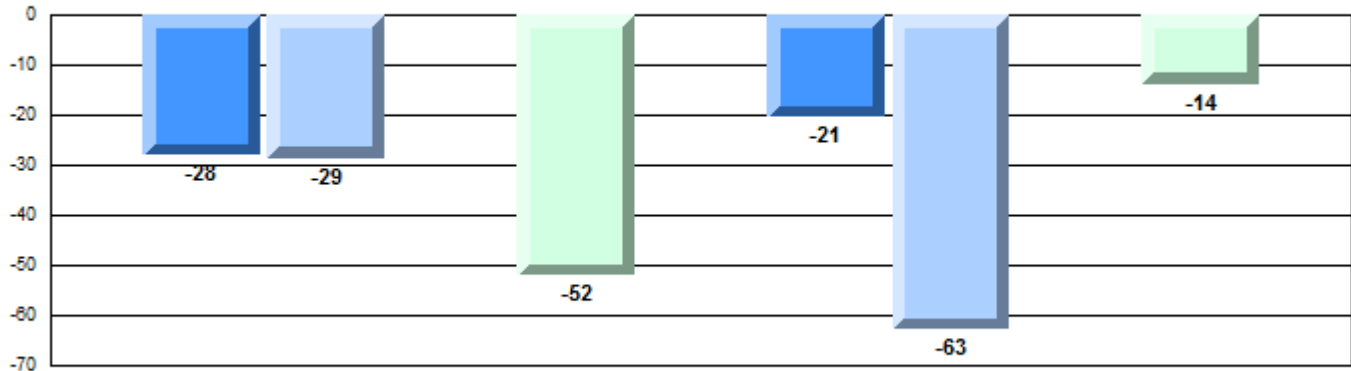
Multiple Choice



Non-Fiction

Difference from Provincial Mean, 2012-15

Written Response: Percentage of students meeting/exceeding grade level expectations 2012-2015



Number of Students : 93

Multiple Choice

Non-Fiction

School
Region
Province

Mark	School vs Region	School vs Province
65.9	P	Q
64.6		
68.4		

Closed Responses*

Demand Writing

School
Region
Province

69.9	Q	Q
71.4		
85.3		

Non-Fiction Reading

School
Region
Province

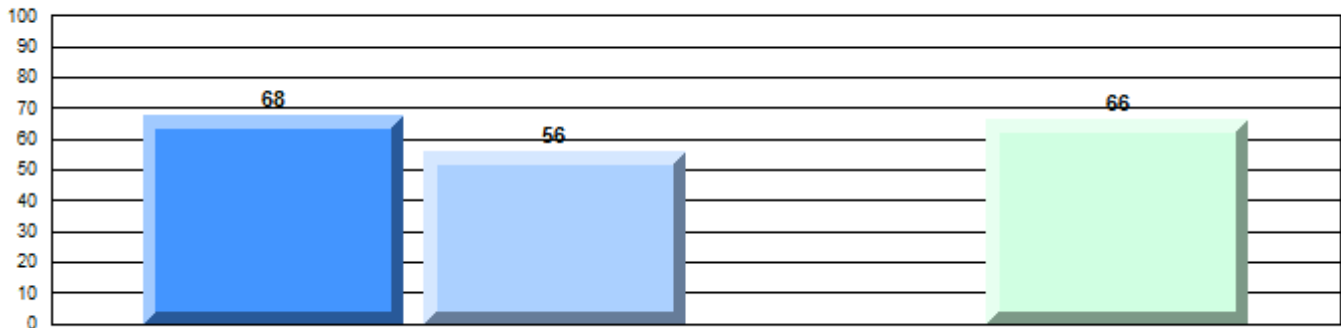
77.5	P	Q
66.5		
80.6		

* How to interpret the results for Closed Responses

On the Demand Writing (Creative) section, the students in Menihek High School scored 69.9%. This means 69.9% of the students met or exceeded the cut score for this section.

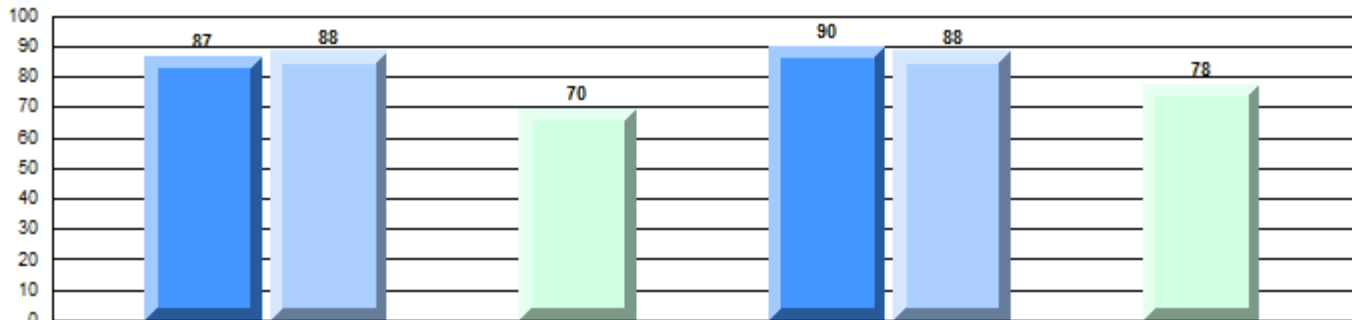
4 Year Provincial Assessment(Subtest) Mark Trend 2012-2015

Multiple Choice



Non-Fiction

Written Response: Percentage of students meeting/exceeding grade level expectations 2012-2015

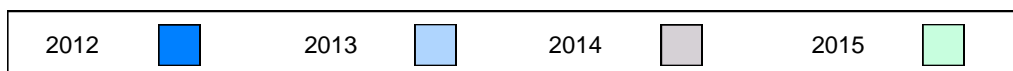


Province

Q 91 Q 89 Q 85 Q 92 P 83 Q 81

Demand Writing

Non-Fiction Reading



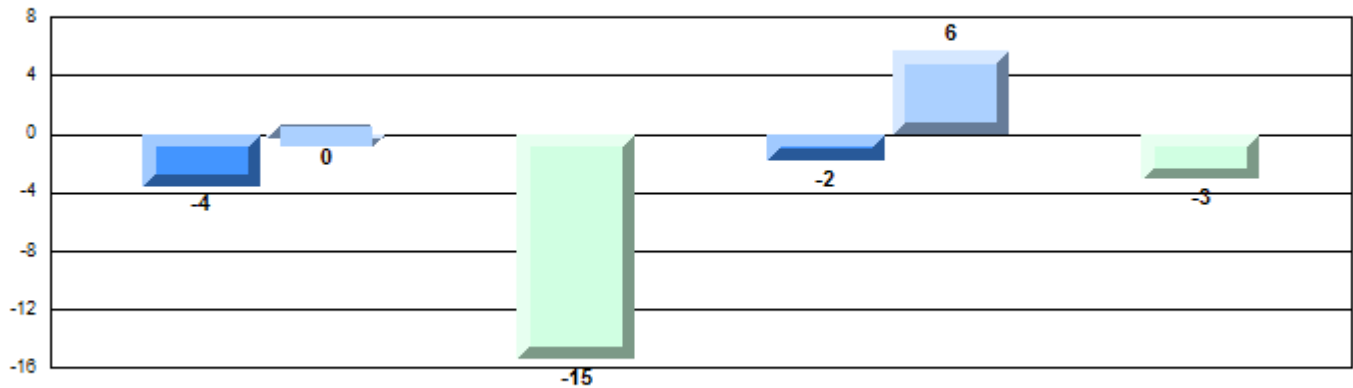
Difference from Provincial Mean, 2012-15

Multiple Choice



Difference from Provincial Mean, 2012-15

Written Response: Percentage of students meeting/exceeding grade level expectations 2012-2015



Number of Students : 5

Multiple Choice

Non-Fiction

School
Region
Province

Mark	School vs Region	School vs Province
School data with 5 or fewer students withheld for reasons of confidentiality.	P	P
	q	q
	q	q

Closed Responses*

Demand Writing

School
Region
Province

Non-Fiction Reading

School
Region
Province

* How to interpret the results for Closed Responses

On the Demand Writing (Creative) section, the students in J.C. Erhardt Memorial School scored 60.0%. This means 60.0% of the students met or exceeded the cut score for this section.

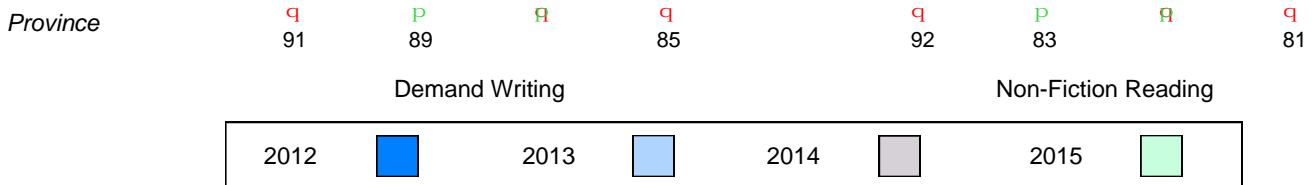
4 Year Provincial Assessment(Subtest) Mark Trend 2012-2015

Multiple Choice

School data with 5 or fewer students withheld for reasons of confidentiality.

Written Response: Percentage of students meeting/exceeding grade level expectations 2012-2015

School data with 5 or fewer students withheld for reasons of confidentiality.



Difference from Provincial Mean, 2012-15

Multiple Choice

School data with 5 or fewer students withheld for reasons of confidentiality.

Non-Fiction

Difference from Provincial Mean, 2012-15

Written Response: Percentage of students meeting/exceeding grade level expectations 2012-2015

School data with 5 or fewer students withheld for reasons of confidentiality.



Number of Students : 21

Multiple Choice

Non-Fiction

School
Region
Province

62.6
64.6
68.4

Mark School vs Region School vs Province

q q

Closed Responses*

Demand Writing

School
Region
Province

66.7
71.4
85.3

q q

Non-Fiction Reading

School
Region
Province

42.1
66.5
80.6

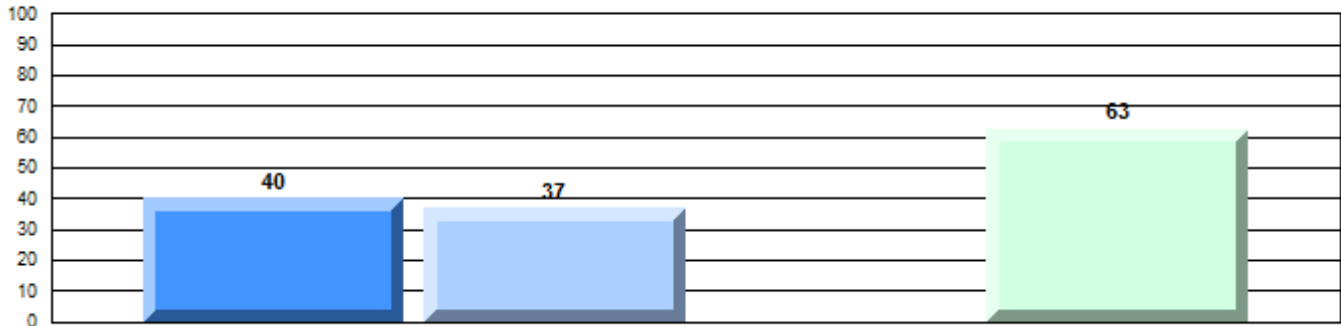
q q

* How to interpret the results for Closed Responses

On the Demand Writing (Creative) section, the students in Jens Haven Memorial scored 66.7%. This means 66.7% of the students met or exceeded the cut score for this section.

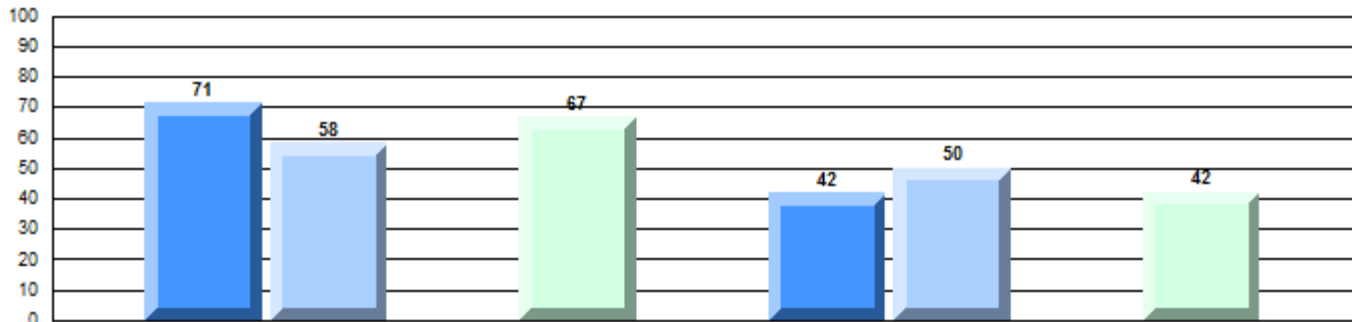
4 Year Provincial Assessment(Subtest) Mark Trend 2012-2015

Multiple Choice



Non-Fiction

Written Response: Percentage of students meeting/exceeding grade level expectations 2012-2015

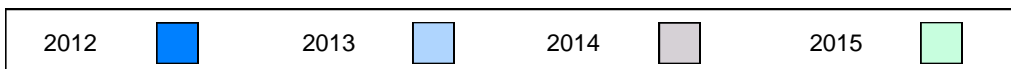


Province

q 91 q 89 q 85 q 92 q 83 q 81

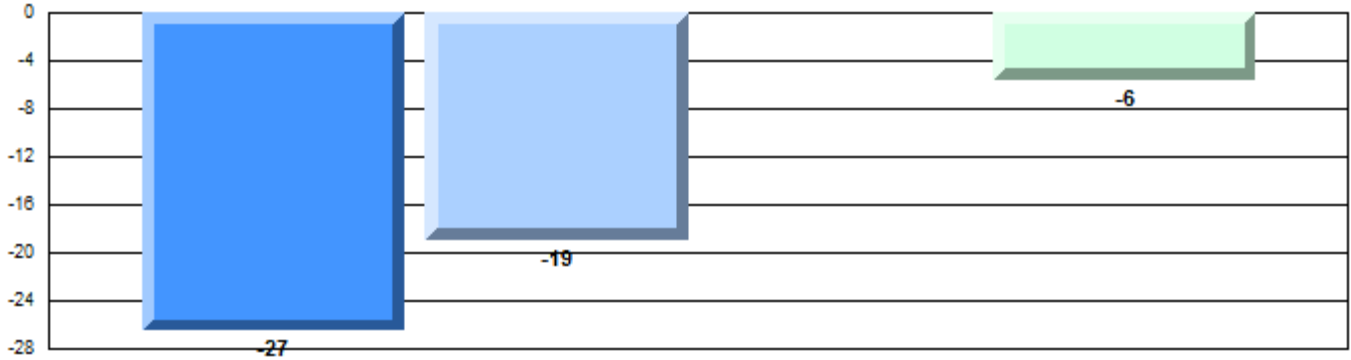
Demand Writing

Non-Fiction Reading



Difference from Provincial Mean, 2012-15

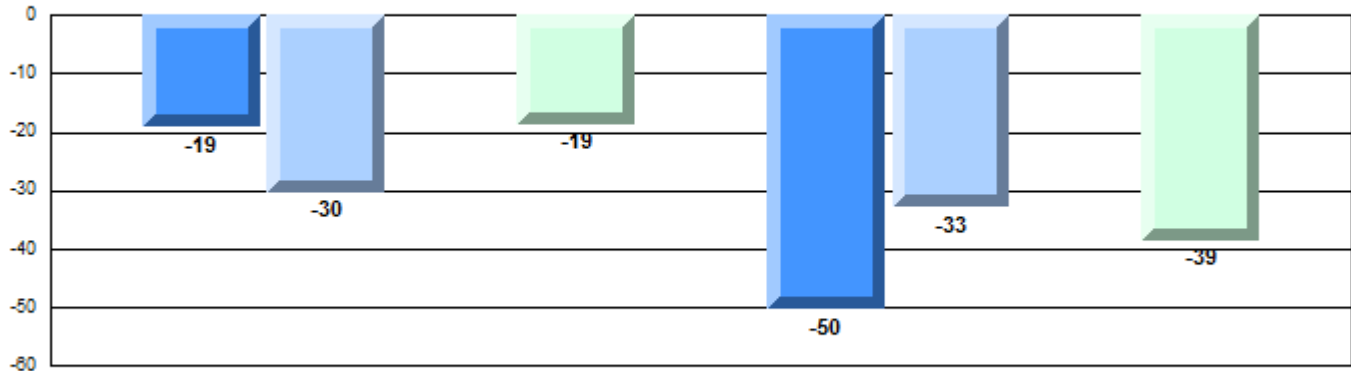
Multiple Choice



Non-Fiction

Difference from Provincial Mean, 2012-15

Written Response: Percentage of students meeting/exceeding grade level expectations 2012-2015



Number of Students : 7

Multiple Choice

Non-Fiction

School
Region
Province

Mark	School vs Region	School vs Province
54.3	q	q
64.6		
68.4		
57.1	q	q
71.4		
85.3		
28.6	q	q
66.5		
80.6		

Closed Responses*

Demand Writing

School
Region
Province

Non-Fiction Reading

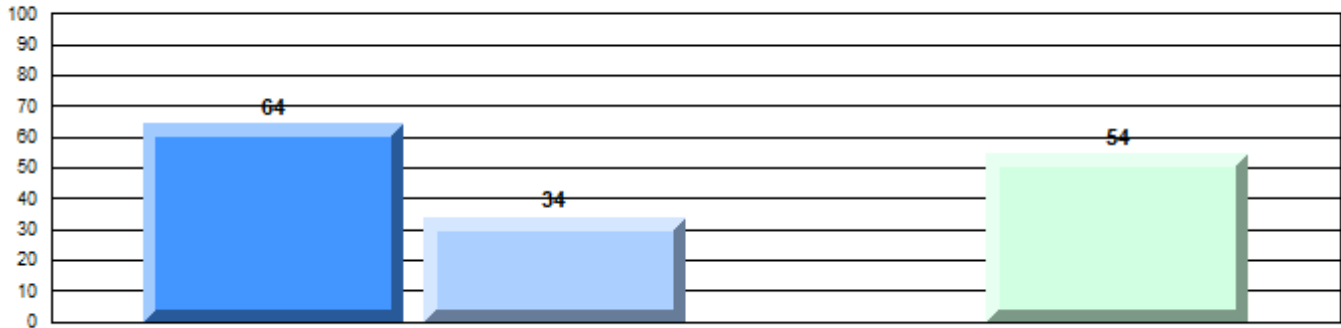
School
Region
Province

* How to interpret the results for Closed Responses

On the Demand Writing (Creative) section, the students in Lake Melville School scored 57.1%. This means 57.1% of the students met or exceeded the cut score for this section.

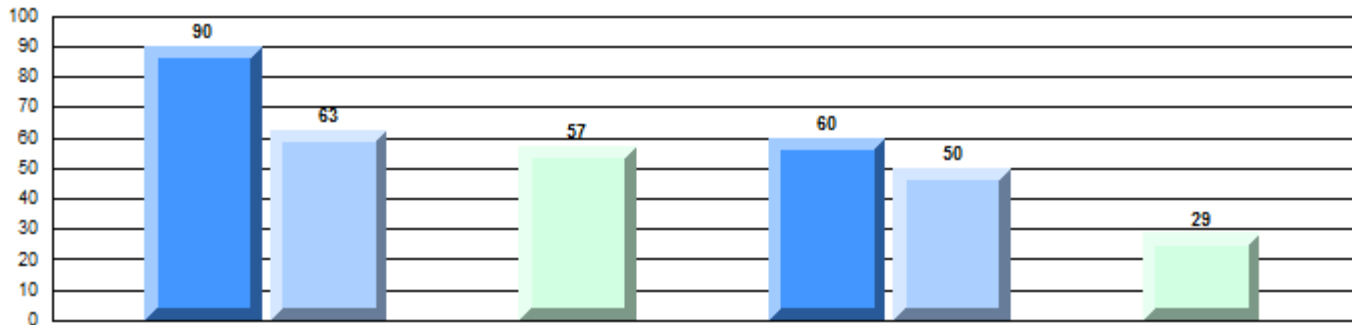
4 Year Provincial Assessment(Subtest) Mark Trend 2012-2015

Multiple Choice



Non-Fiction

Written Response: Percentage of students meeting/exceeding grade level expectations 2012-2015



Province

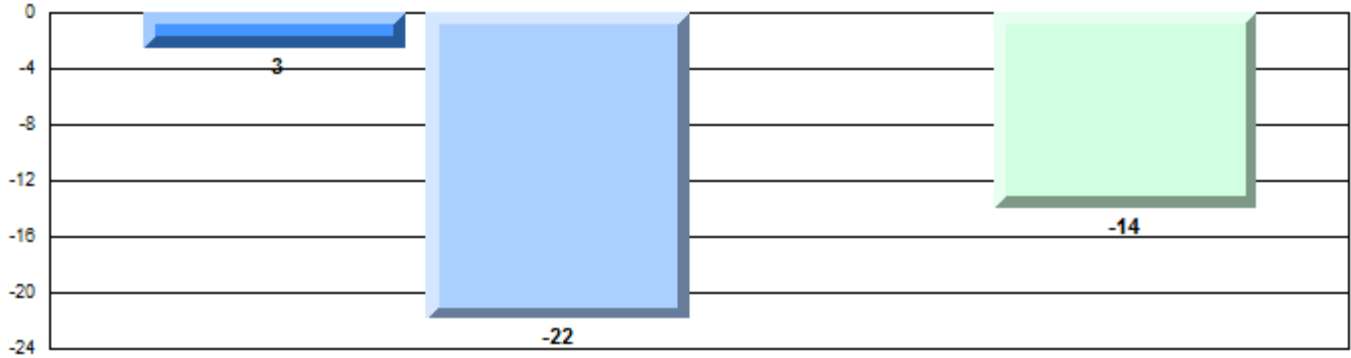
q 91 q 89 q 85 q 92 q 83 q 81

Demand Writing

Non-Fiction Reading



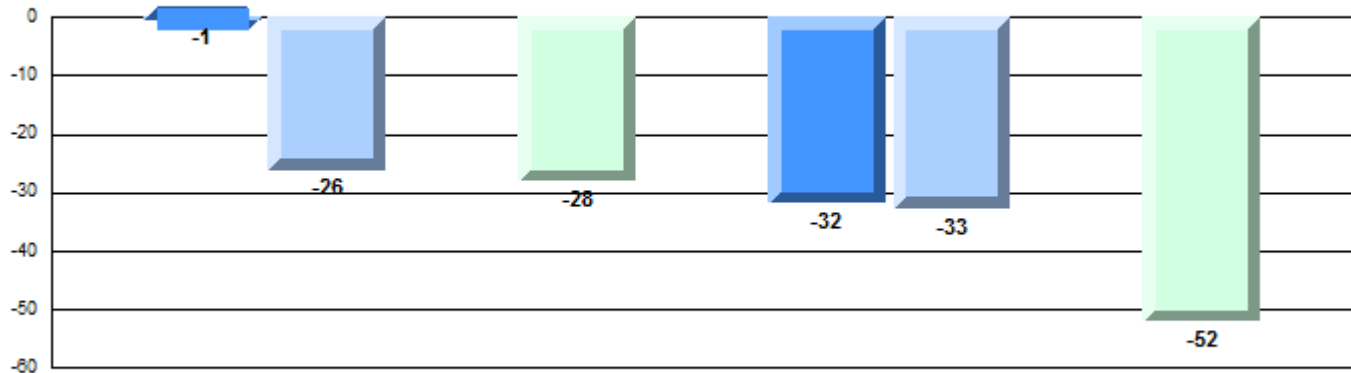
Difference from Provincial Mean, 2012-15
Multiple Choice



Non-Fiction

Difference from Provincial Mean, 2012-15

Written Response: Percentage of students meeting/exceeding grade level expectations 2012-2015



Number of Students : 3

Multiple Choice

Non-Fiction

School
Region
Province

Mark	School vs Region	School vs Province
School data with 5 or fewer students withheld for reasons of confidentiality.	Q	Q
	Q	Q
	P	P

Closed Responses*

Demand Writing

School
Region
Province

Non-Fiction Reading

School
Region
Province

* How to interpret the results for Closed Responses

On the Demand Writing (Creative) section, the students in Northern Lights Academy scored 66.7%. This means 66.7% of the students met or exceeded the cut score for this section.

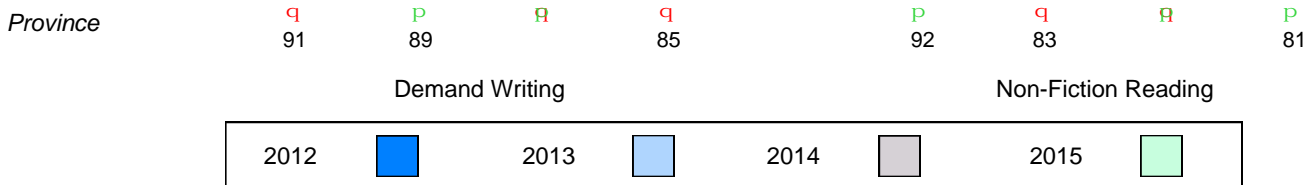
4 Year Provincial Assessment(Subtest) Mark Trend 2012-2015

Multiple Choice

School data with 5 or fewer students withheld for reasons of confidentiality.

Written Response: Percentage of students meeting/exceeding grade level expectations 2012-2015

School data with 5 or fewer students withheld for reasons of confidentiality.



Difference from Provincial Mean, 2012-15

Multiple Choice

School data with 5 or fewer students withheld for reasons of confidentiality.

Non-Fiction

Difference from Provincial Mean, 2012-15

Written Response: Percentage of students meeting/exceeding grade level expectations 2012-2015

School data with 5 or fewer students withheld for reasons of confidentiality.



Number of Students : 83

Multiple Choice

Non-Fiction

School
Region
Province

64.5
64.6
68.4

Mark School vs Region School vs Province

q

q

Closed Responses*

Demand Writing

School
Region
Province

81.7
71.4
85.3

p

q

Non-Fiction Reading

School
Region
Province

65.1
66.5
80.6

q

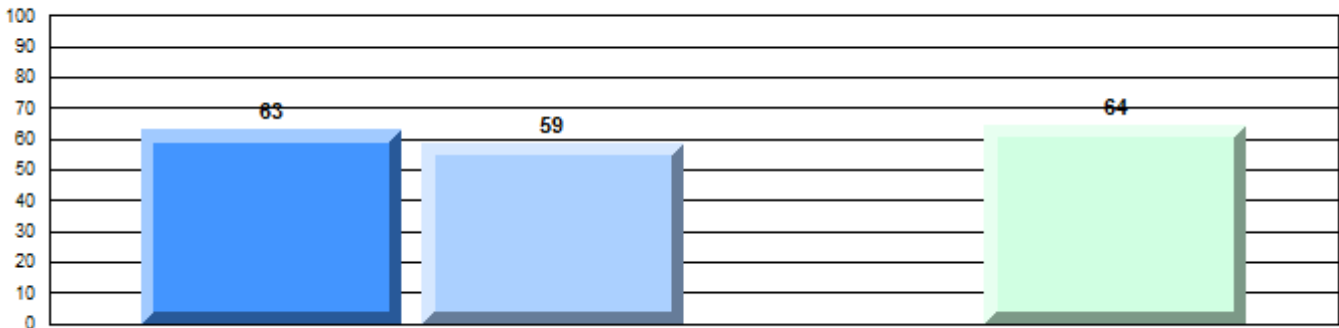
q

* How to interpret the results for Closed Responses

On the Demand Writing (Creative) section, the students in Mealy Mountain Collegiate scored 81.7%. This means 81.7% of the students met or exceeded the cut score for this section.

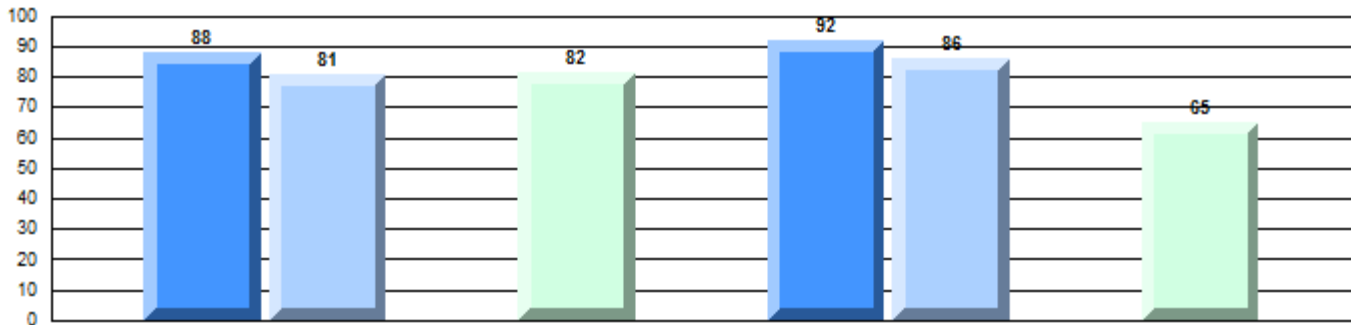
4 Year Provincial Assessment(Subtest) Mark Trend 2012-2015

Multiple Choice



Non-Fiction

Written Response: Percentage of students meeting/exceeding grade level expectations 2012-2015



Province

q

q

q

q

p

p

q

q

91

89

85

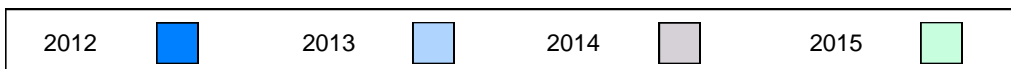
92

83

81

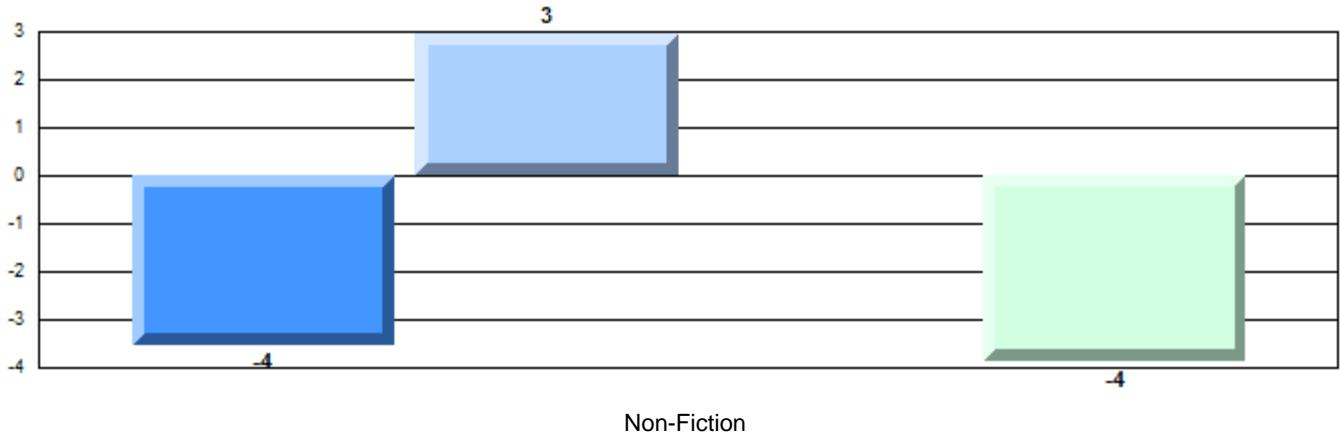
Demand Writing

Non-Fiction Reading



Difference from Provincial Mean, 2012-15

Multiple Choice



Difference from Provincial Mean, 2012-15

Written Response: Percentage of students meeting/exceeding grade level expectations 2012-2015

