

District 803 - Private

School #: 373 First Baptist Academy

Demand Writing

School

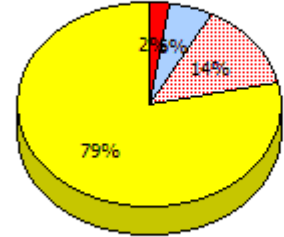
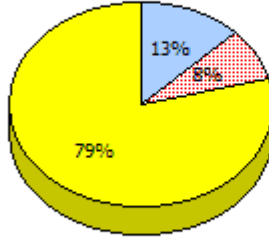
*School data with 5 or fewer students
withheld for reasons of confidentiality.*

Region

Province

2015

Apr 30,
2015 (3)

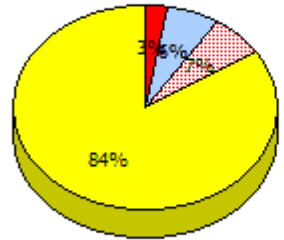
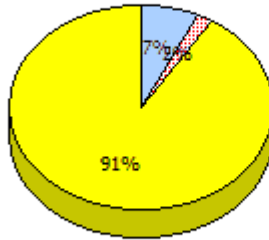


2014

N/A

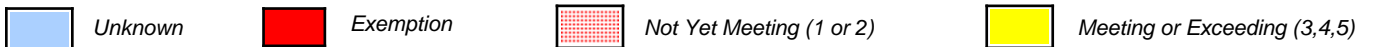
2013

AGR (2)



2012

AGR (0)



* In some cases, Provincial Assessment numbers may exceed AGR numbers based on late enrolments. Pie chart is based on the number of students who wrote the Provincial Assessment.

District 803 - Private

School #: 373 First Baptist Academy

School

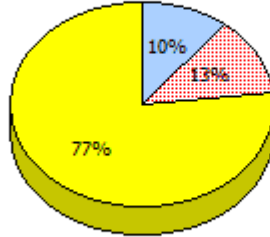
School data with 5 or fewer students withheld for reasons of confidentiality.

2015

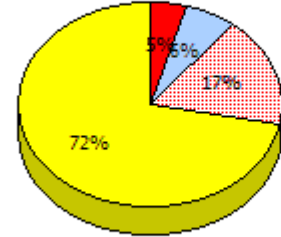
Apr 30,
2015(3)

Reading

Region



Province

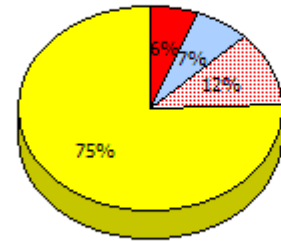
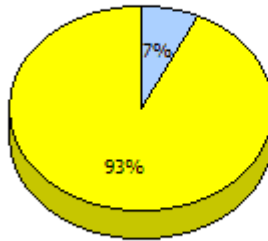


2014

N/A

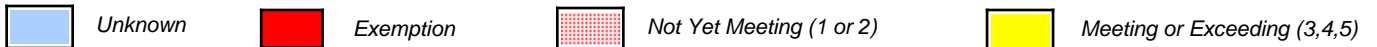
2013

AGR (2)



2012

AGR (0)



* In some cases, Provincial Assessment numbers may exceed AGR numbers based on late enrolments. Pie chart is based on the number of students who wrote the Provincial Assessment.

Intermediate English Language Arts
4 Year Provincial Assessment, June 2015
Student Population Report
 (average scores)

District 803 - Private

School #: 373 First Baptist Academy

Demand Writing

Percentage of students meeting/exceeding (2012 - 2015)

School data with 5 or fewer students withheld for reasons of confidentiality.



Reading

Percentage of students meeting/exceeding (2012 - 2015)

School data with 5 or fewer students withheld for reasons of confidentiality.



* In some cases, Provincial Assessment numbers may exceed AGR numbers based on late enrolments. Pie chart is based on the number of students who wrote the Provincial Assessment.

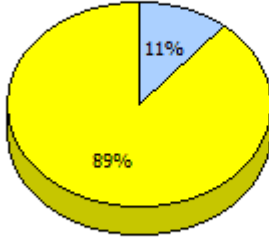
District 803 - Private

School #: 375 Lakecrest-St. John's Independent School

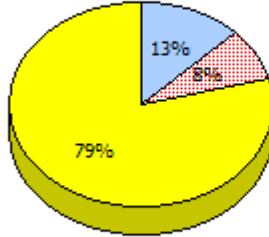
Demand Writing

2015
Apr 30,
2015 (9)

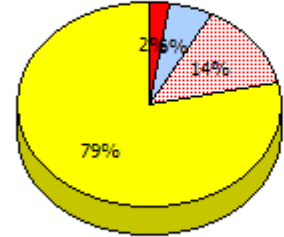
School



Region

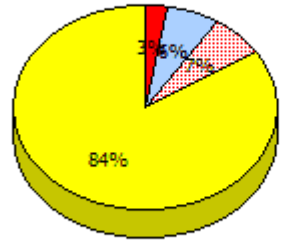
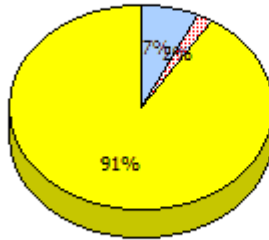
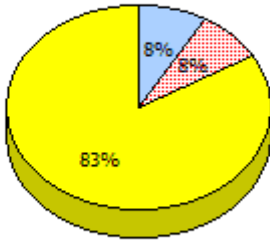


Province

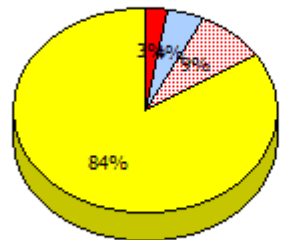
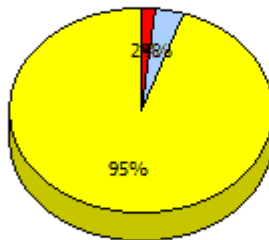
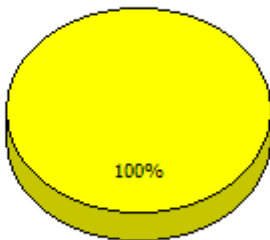


2014
N/A

2013
AGR (12)



2012
AGR (8)



Unknown	Exemption	Not Yet Meeting (1 or 2)	Meeting or Exceeding (3,4,5)
---------	-----------	--------------------------	------------------------------

* In some cases, Provincial Assessment numbers may exceed AGR numbers based on late enrolments. Pie chart is based on the number of students who wrote the Provincial Assessment.

District 803 - Private

School #: 375 Lakecrest-St. John's Independent School

Reading

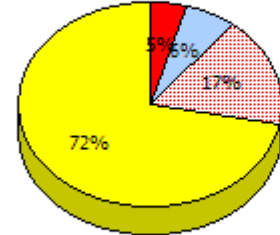
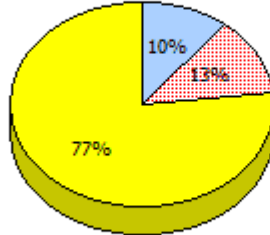
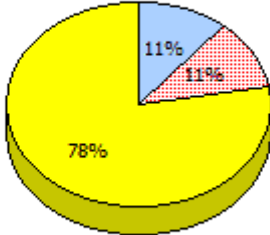
School

Region

Province

2015

Apr 30, 2015(9)

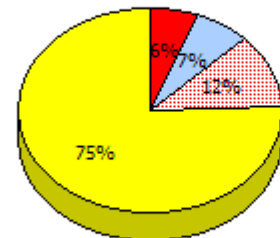
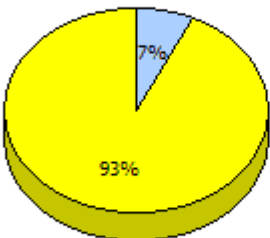
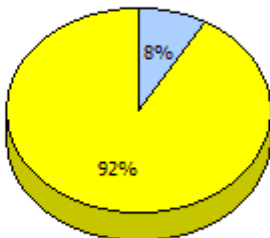


2014

N/A

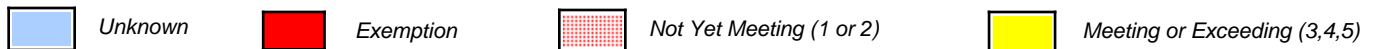
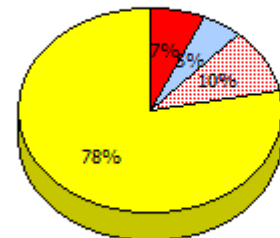
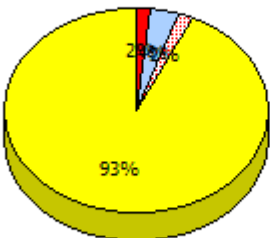
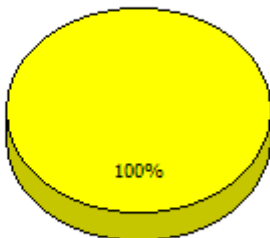
2013

AGR (12)



2012

AGR (8)

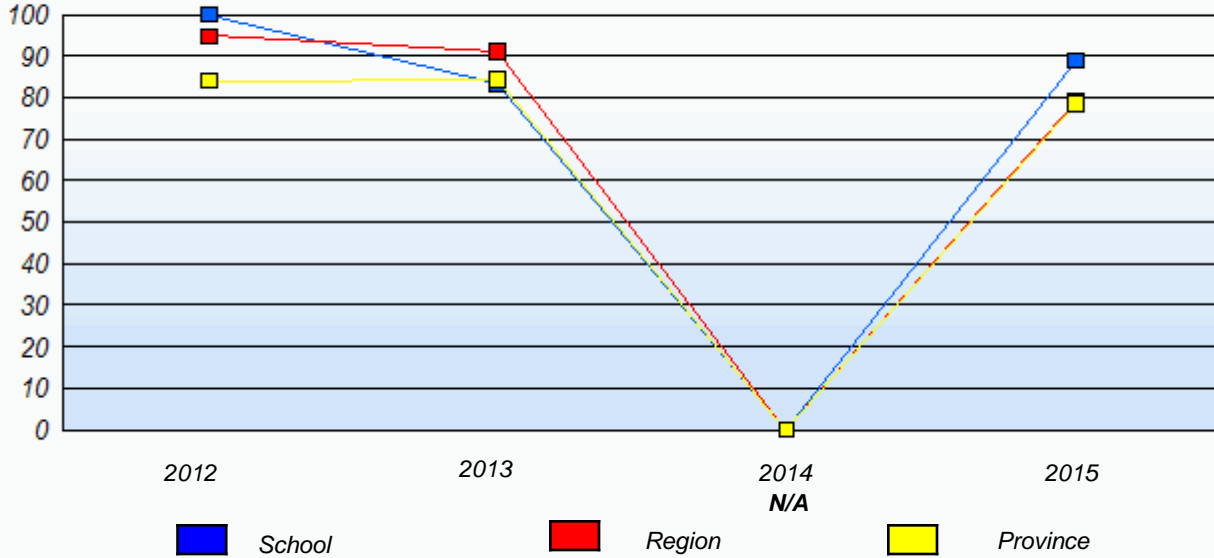


* In some cases, Provincial Assessment numbers may exceed AGR numbers based on late enrolments. Pie chart is based on the number of students who wrote the Provincial Assessment.

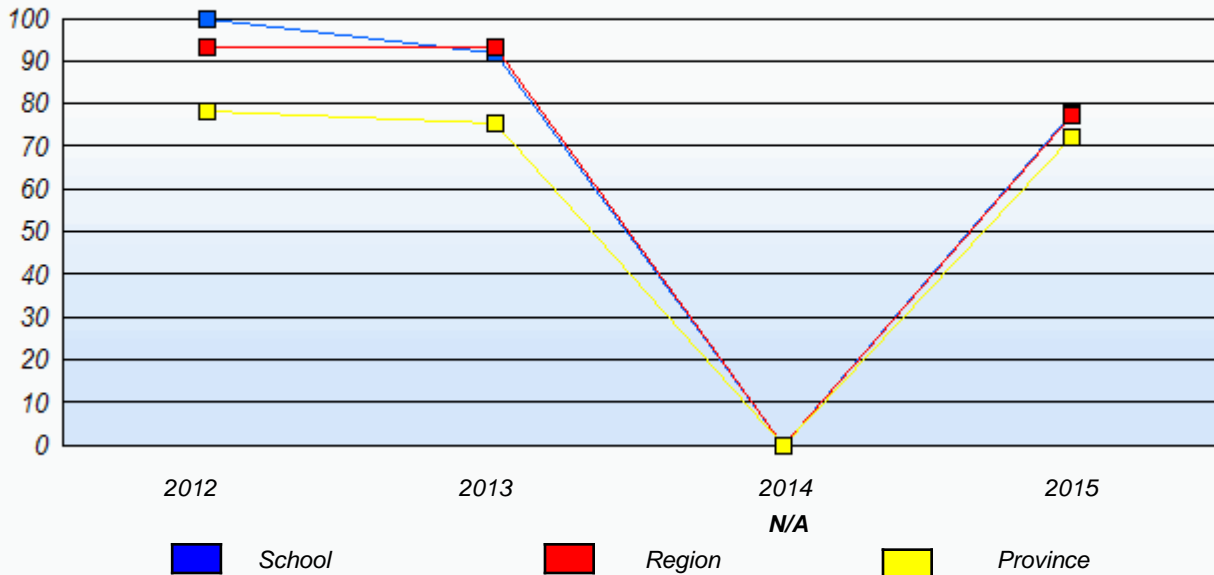
District 803 - Private

School #: 375 Lakecrest-St. John's Independent School

Demand Writing
Percentage of students meeting/exceeding (2012 - 2015)



Reading
Percentage of students meeting/exceeding (2012 - 2015)



* In some cases, Provincial Assessment numbers may exceed AGR numbers based on late enrolments. Pie chart is based on the number of students who wrote the Provincial Assessment.

Mushuau Innu Natuashish School and Sheshatshiu Innu School are excluded from region and provincial results.

District 803 - Private

School #: 450 St. Bonaventure's College

Demand Writing

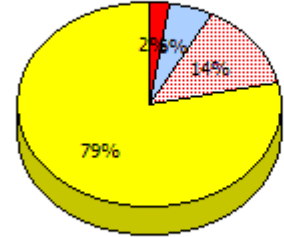
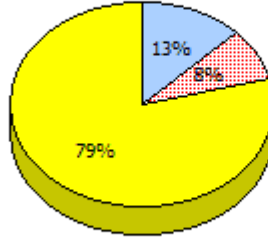
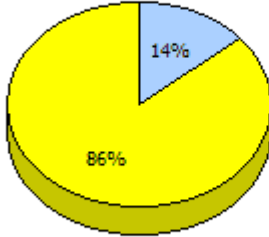
School

Region

Province

2015

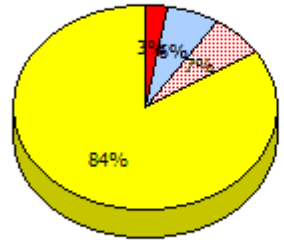
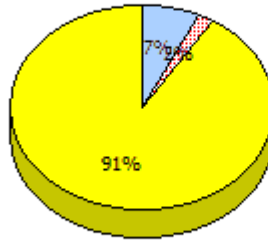
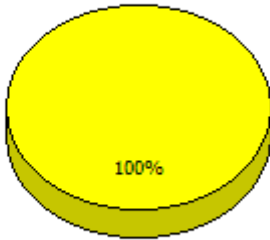
Apr 30,
2015 (22)



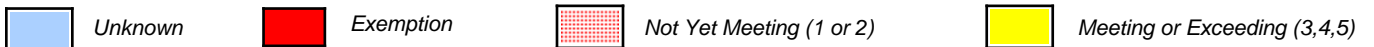
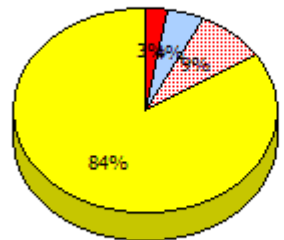
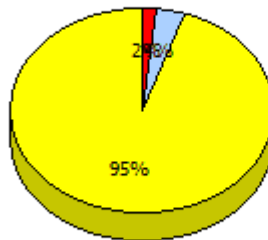
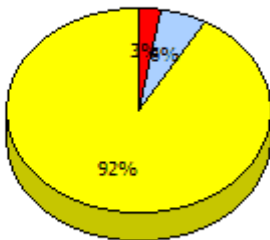
2014

N/A

2013
AGR (31)



2012
AGR (36)



* In some cases, Provincial Assessment numbers may exceed AGR numbers based on late enrolments. Pie chart is based on the number of students who wrote the Provincial Assessment.

District 803 - Private

School #: 450 St. Bonaventure's College

Reading

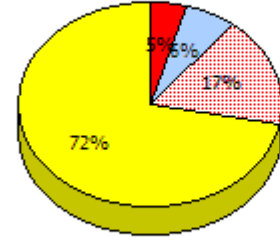
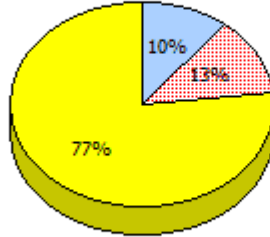
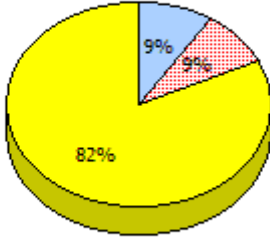
School

Region

Province

2015

Apr 30, 2015(22)

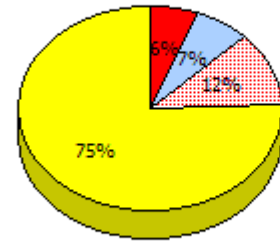
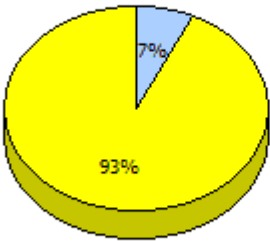
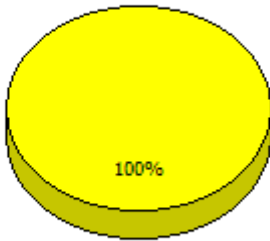


2014

N/A

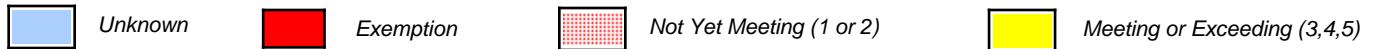
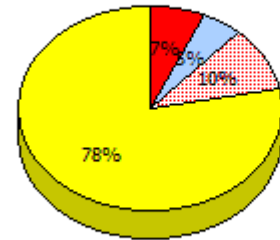
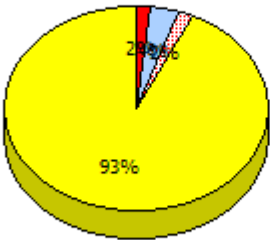
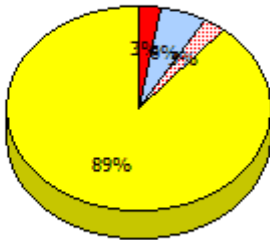
2013

AGR (31)



2012

AGR (36)

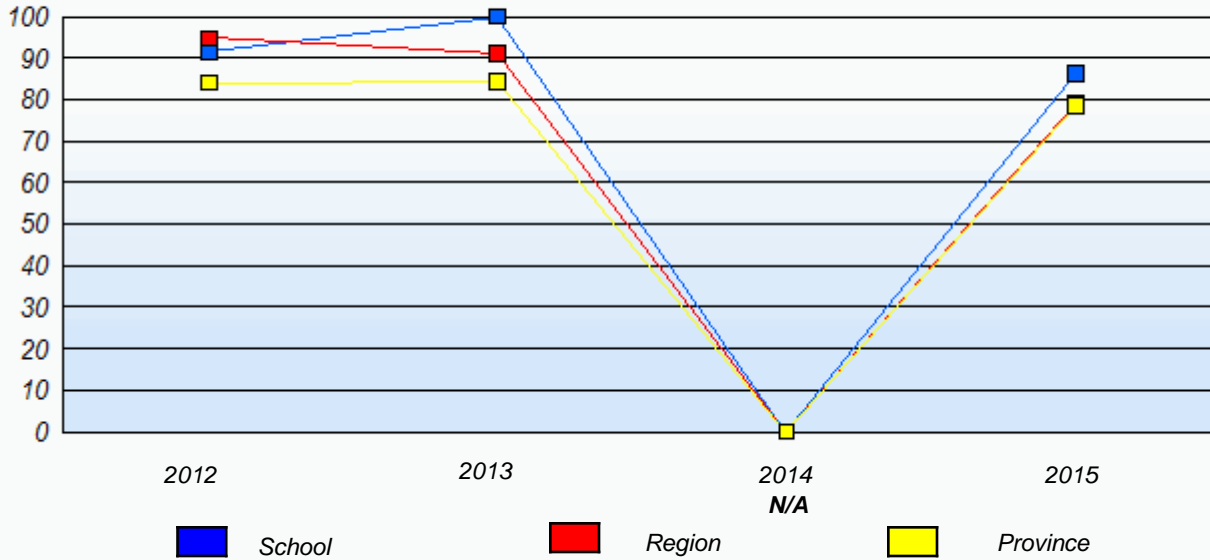


* In some cases, Provincial Assessment numbers may exceed AGR numbers based on late enrolments. Pie chart is based on the number of students who wrote the Provincial Assessment.

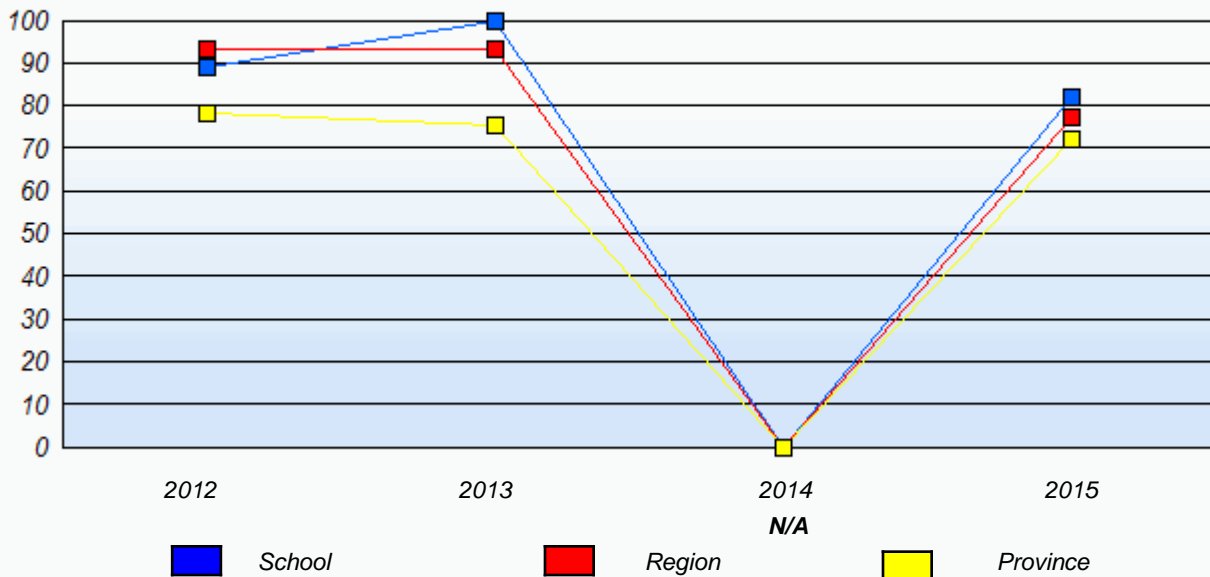
District 803 - Private

School #: 450 St. Bonaventure's College

Demand Writing
Percentage of students meeting/exceeding (2012 - 2015)



Reading
Percentage of students meeting/exceeding (2012 - 2015)



* In some cases, Provincial Assessment numbers may exceed AGR numbers based on late enrolments. Pie chart is based on the number of students who wrote the Provincial Assessment.

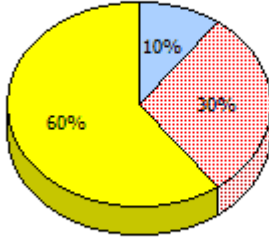
District 803 - Private

School #: 453 Eric G. Lambert All-Grade

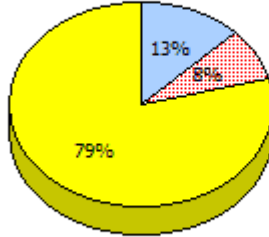
Demand Writing

2015
Apr 30,
2015 (10)

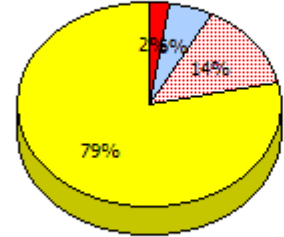
School



Region

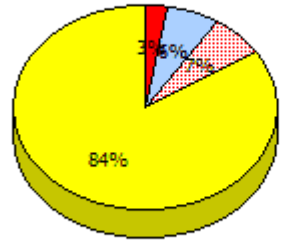
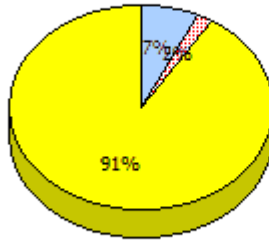
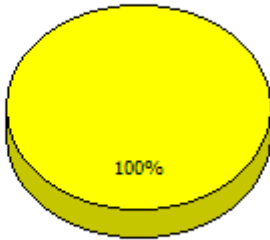


Province

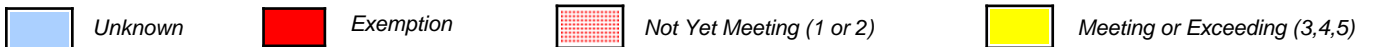
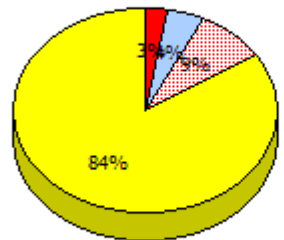
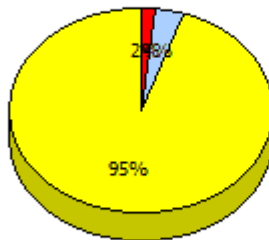
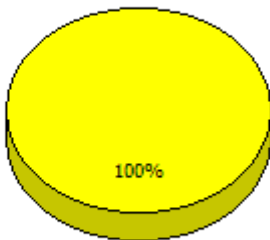


2014
N/A

2013
AGR (9)



2012
AGR (10)



* In some cases, Provincial Assessment numbers may exceed AGR numbers based on late enrolments. Pie chart is based on the number of students who wrote the Provincial Assessment.

District 803 - Private

School #: 453 Eric G. Lambert All-Grade

Reading

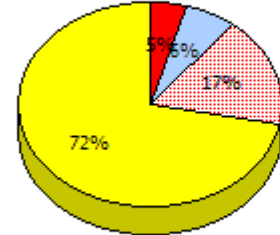
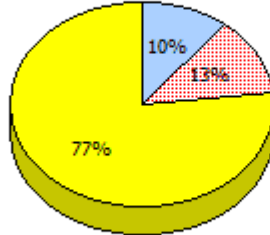
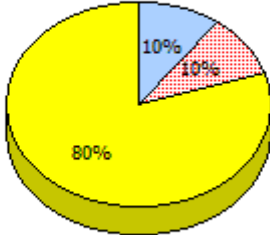
School

Region

Province

2015

Apr 30,
2015(10)

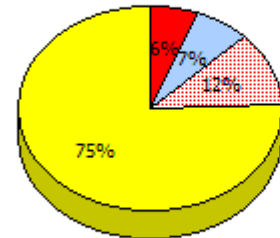
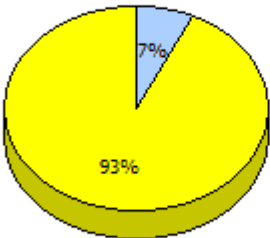
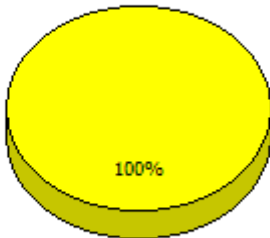


2014

N/A

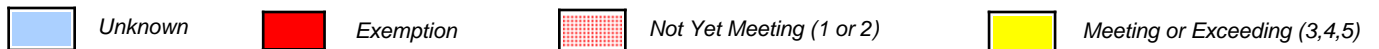
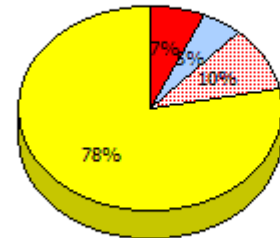
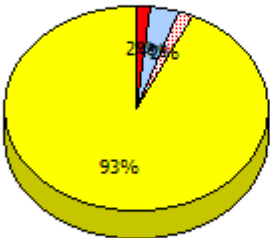
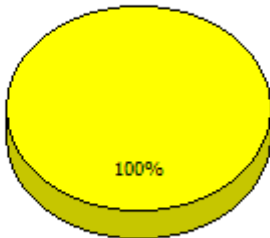
2013

AGR (9)



2012

AGR (10)

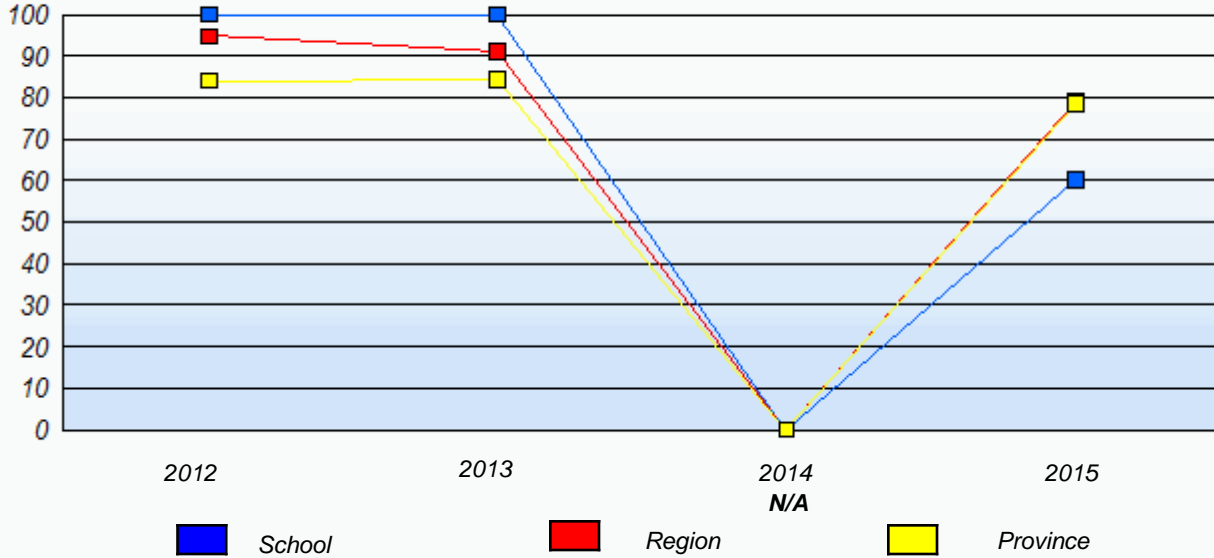


* In some cases, Provincial Assessment numbers may exceed AGR numbers based on late enrolments. Pie chart is based on the number of students who wrote the Provincial Assessment.

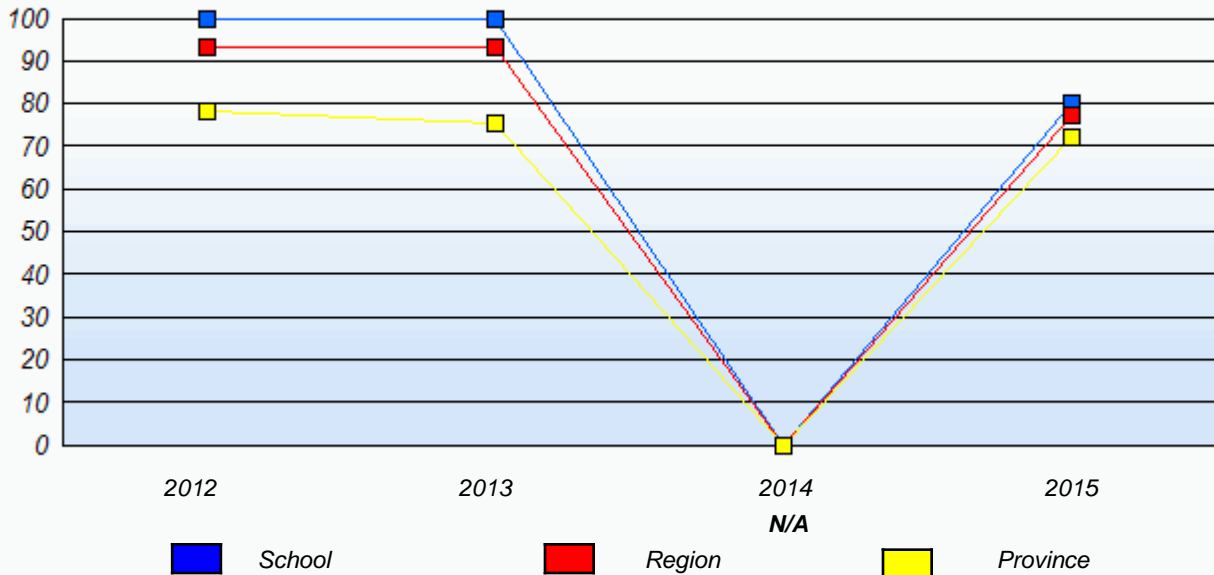
District 803 - Private

School #: 453 Eric G. Lambert All-Grade

Demand Writing
Percentage of students meeting/exceeding (2012 - 2015)



Reading
Percentage of students meeting/exceeding (2012 - 2015)



* In some cases, Provincial Assessment numbers may exceed AGR numbers based on late enrolments. Pie chart is based on the number of students who wrote the Provincial Assessment.

District 803 - Private

School #: 469 Immaculate Heart of Mary School

Demand Writing

School

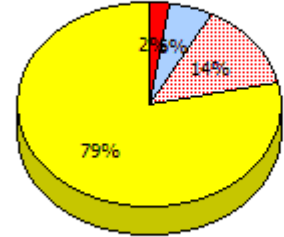
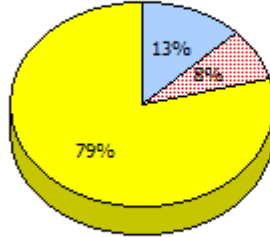
School data with 5 or fewer students withheld for reasons of confidentiality.

Region

Province

2015

Apr 30,
2015 (4)



2014

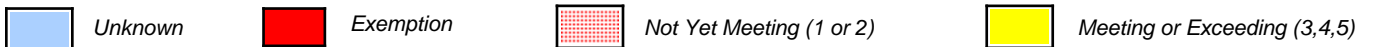
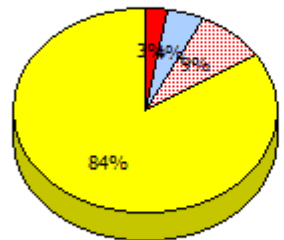
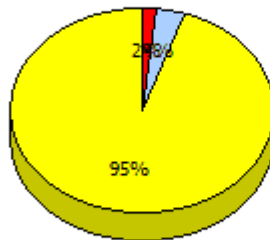
N/A

2013

AGR (0)

2012

AGR (3)



* In some cases, Provincial Assessment numbers may exceed AGR numbers based on late enrolments. Pie chart is based on the number of students who wrote the Provincial Assessment.

District 803 - Private

School #: 469 Immaculate Heart of Mary School

School

School data with 5 or fewer students withheld for reasons of confidentiality.

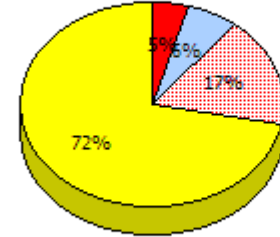
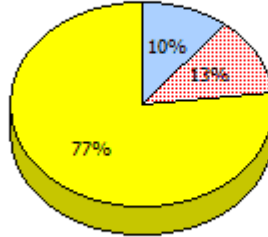
Reading

Region

Province

2015

Apr 30,
2015(4)



2014

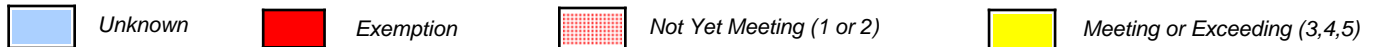
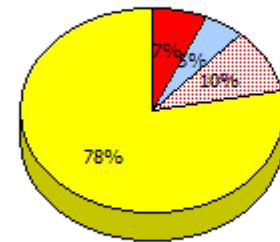
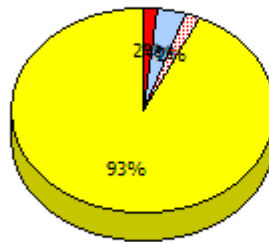
N/A

2013

AGR (0)

2012

AGR (3)



* In some cases, Provincial Assessment numbers may exceed AGR numbers based on late enrolments. Pie chart is based on the number of students who wrote the Provincial Assessment.

Intermediate English Language Arts
4 Year Provincial Assessment, June 2015
Student Population Report
 (average scores)

District 803 - Private

School #: 469 Immaculate Heart of Mary School

Demand Writing

Percentage of students meeting/exceeding (2012 - 2015)

School data with 5 or fewer students withheld for reasons of confidentiality.



Reading

Percentage of students meeting/exceeding (2012 - 2015)

School data with 5 or fewer students withheld for reasons of confidentiality.

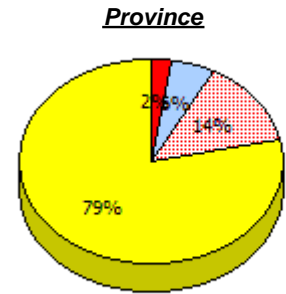
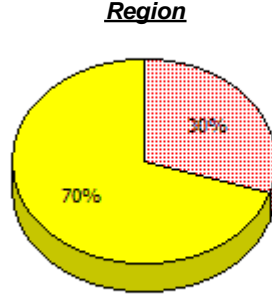
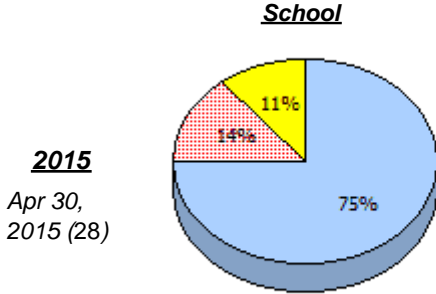


* In some cases, Provincial Assessment numbers may exceed AGR numbers based on late enrolments. Pie chart is based on the number of students who wrote the Provincial Assessment.

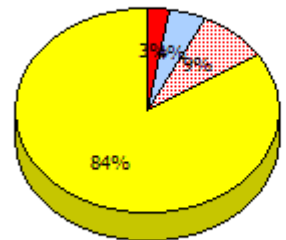
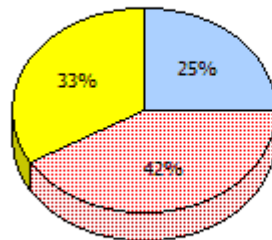
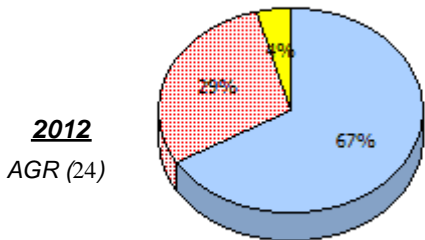
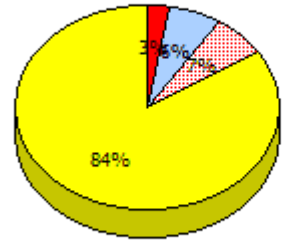
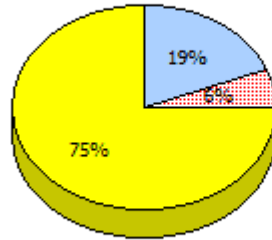
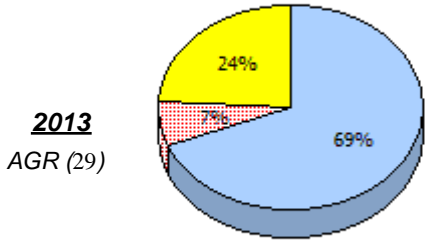
District 804 - Native Federal

School #: 018 Sheshatshiu Innu School

Demand Writing



2014
N/A



Unknown	Exemption	Not Yet Meeting (1 or 2)	Meeting or Exceeding (3,4,5)
---------	-----------	--------------------------	------------------------------

* In some cases, Provincial Assessment numbers may exceed AGR numbers based on late enrolments. Pie chart is based on the number of students who wrote the Provincial Assessment.

District 804 - Native Federal

School #: 018 Sheshatshiu Innu School

Reading

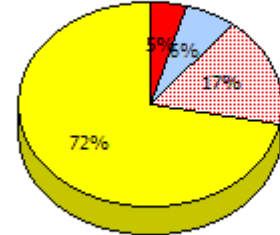
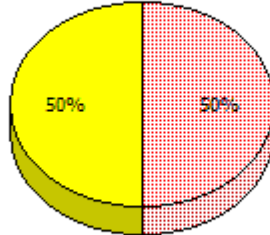
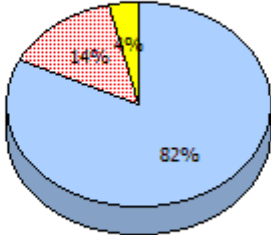
School

Region

Province

2015

Apr 30, 2015(28)

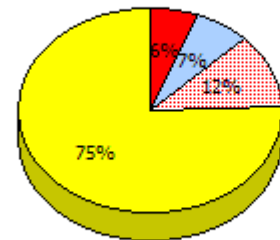
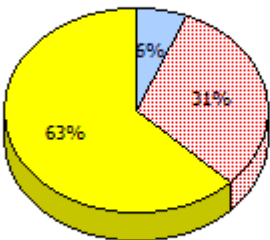
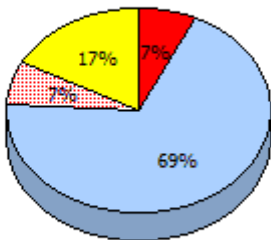


2014

N/A

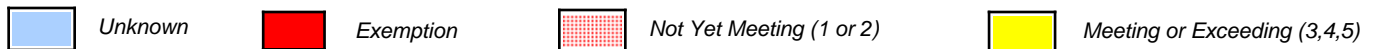
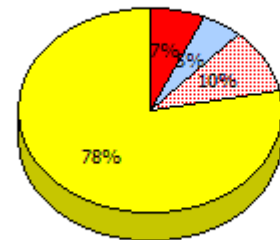
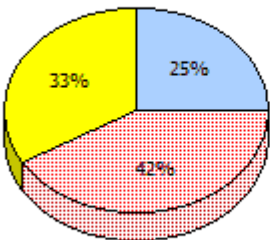
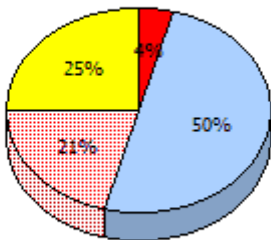
2013

AGR (29)



2012

AGR (24)

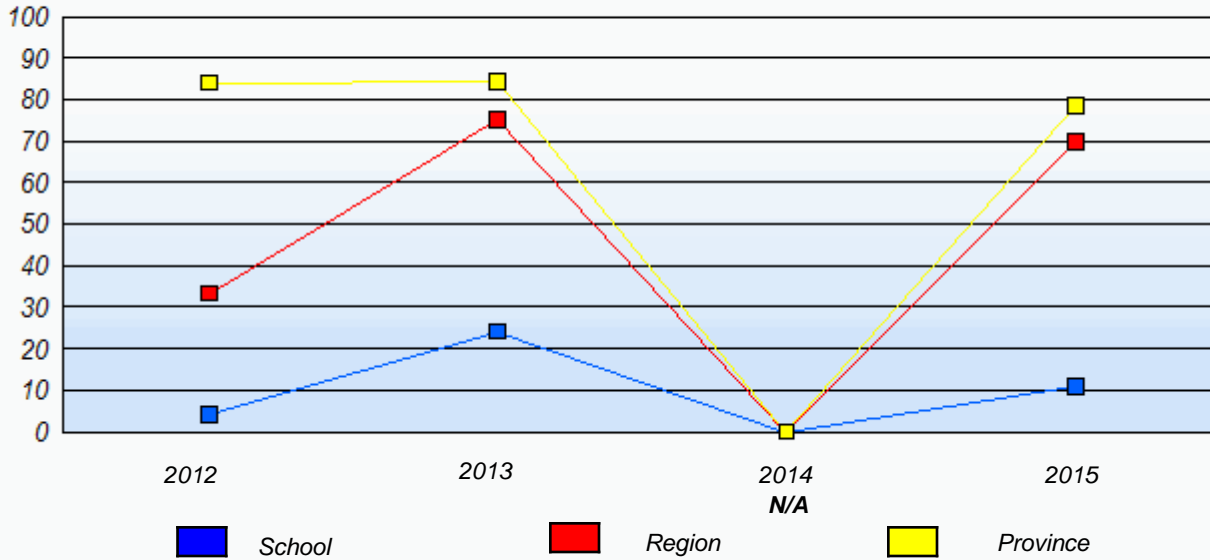


* In some cases, Provincial Assessment numbers may exceed AGR numbers based on late enrolments. Pie chart is based on the number of students who wrote the Provincial Assessment.

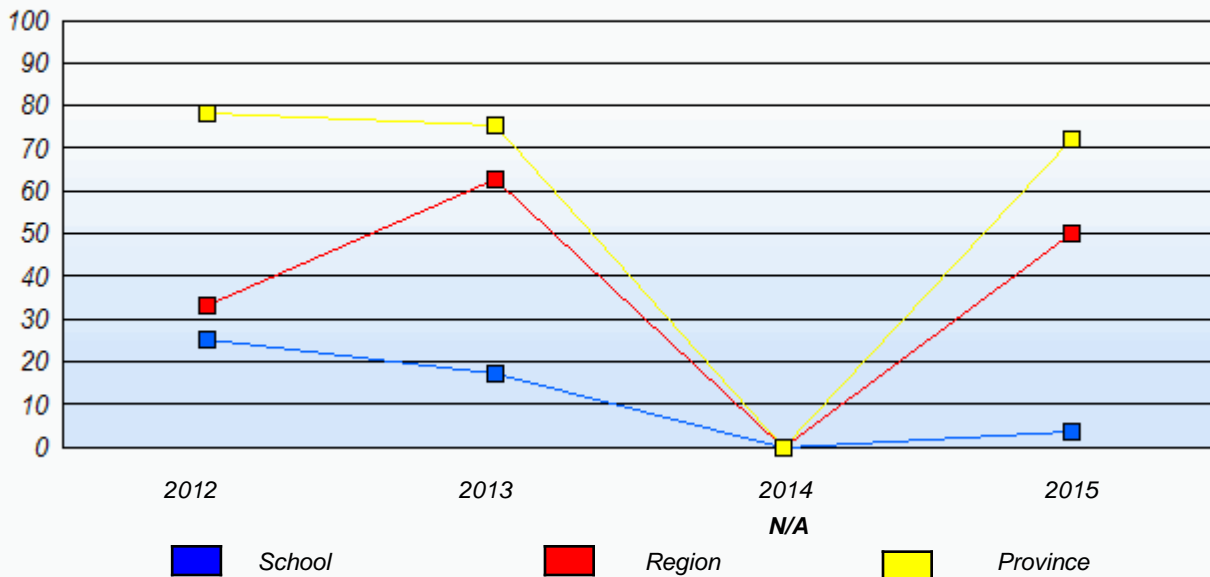
District 804 - Native Federal

School #: 018 Sheshatshiu Innu School

Demand Writing
Percentage of students meeting/exceeding (2012 - 2015)



Reading
Percentage of students meeting/exceeding (2012 - 2015)

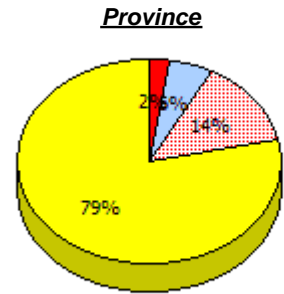
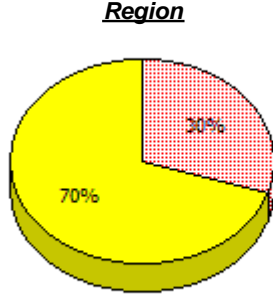
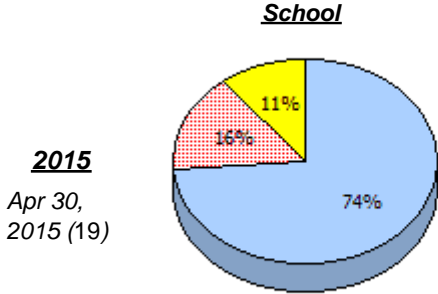


* In some cases, Provincial Assessment numbers may exceed AGR numbers based on late enrolments. Pie chart is based on the number of students who wrote the Provincial Assessment.

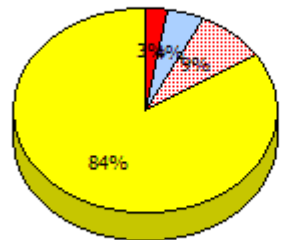
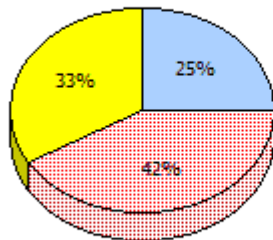
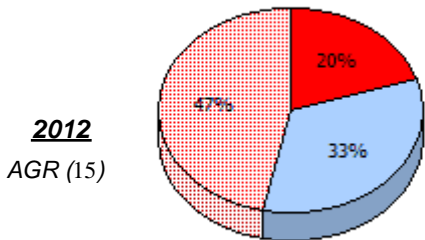
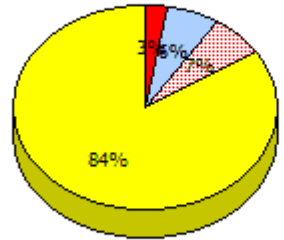
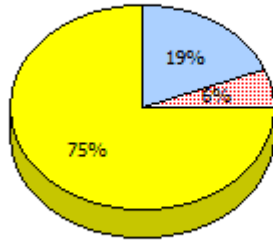
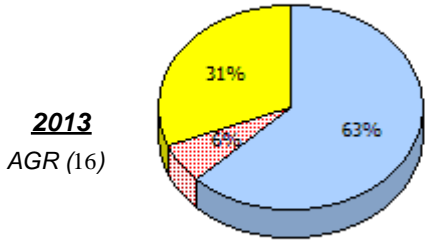
District 804 - Native Federal

School #: 019 Mushuau Innu Natuashish School

Demand Writing



2014
N/A



Unknown
 Exemption
 Not Yet Meeting (1 or 2)
 Meeting or Exceeding (3,4,5)

* In some cases, Provincial Assessment numbers may exceed AGR numbers based on late enrolments. Pie chart is based on the number of students who wrote the Provincial Assessment.

District 804 - Native Federal

School #: 019 Mushuau Innu Natuashish School

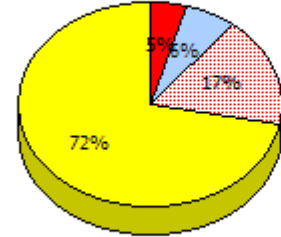
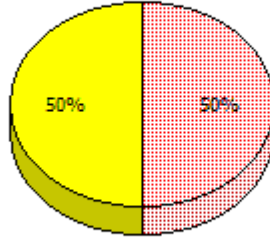
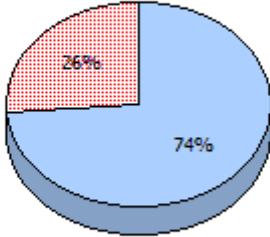
Reading

School

Region

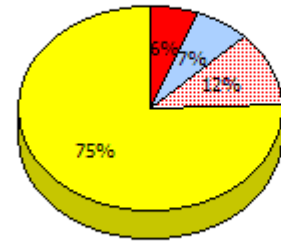
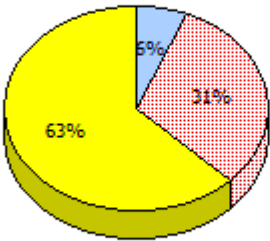
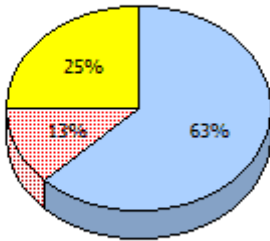
Province

2015
Apr 30,
2015(19)

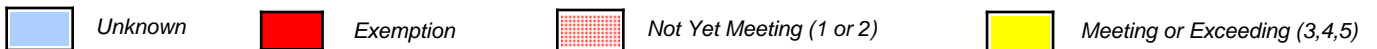
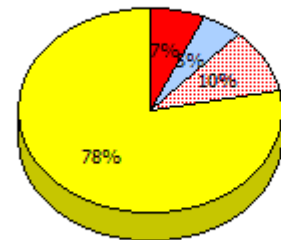
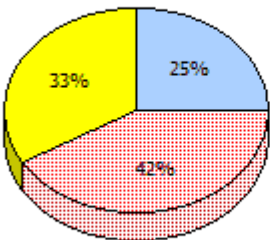
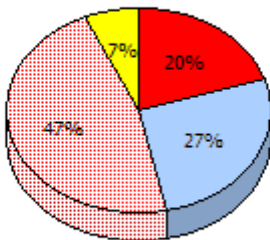


2014
N/A

2013
AGR (16)



2012
AGR (15)

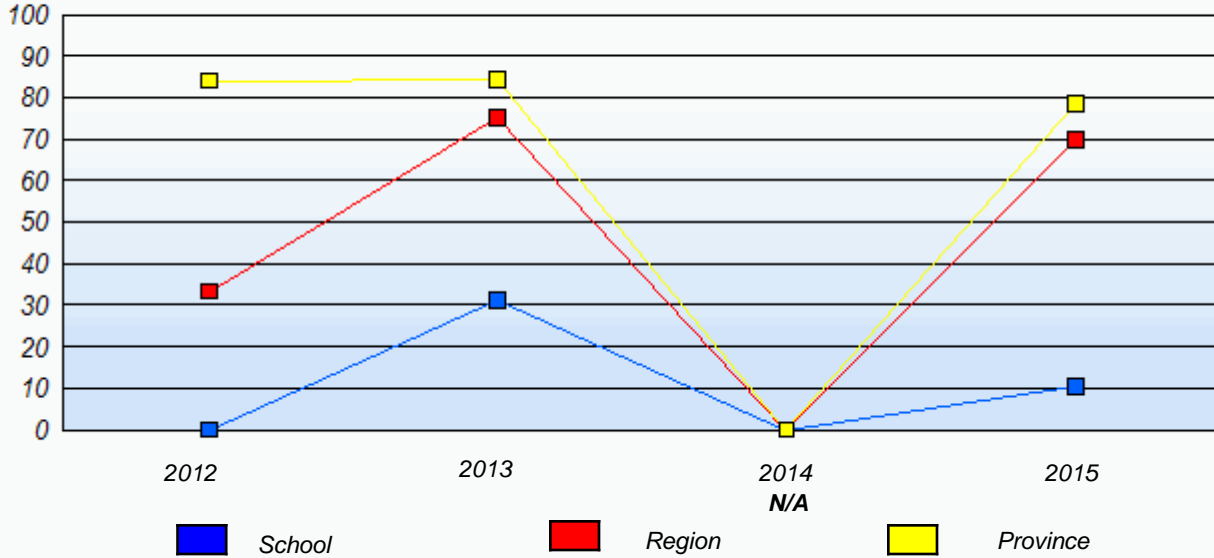


* In some cases, Provincial Assessment numbers may exceed AGR numbers based on late enrolments. Pie chart is based on the number of students who wrote the Provincial Assessment.

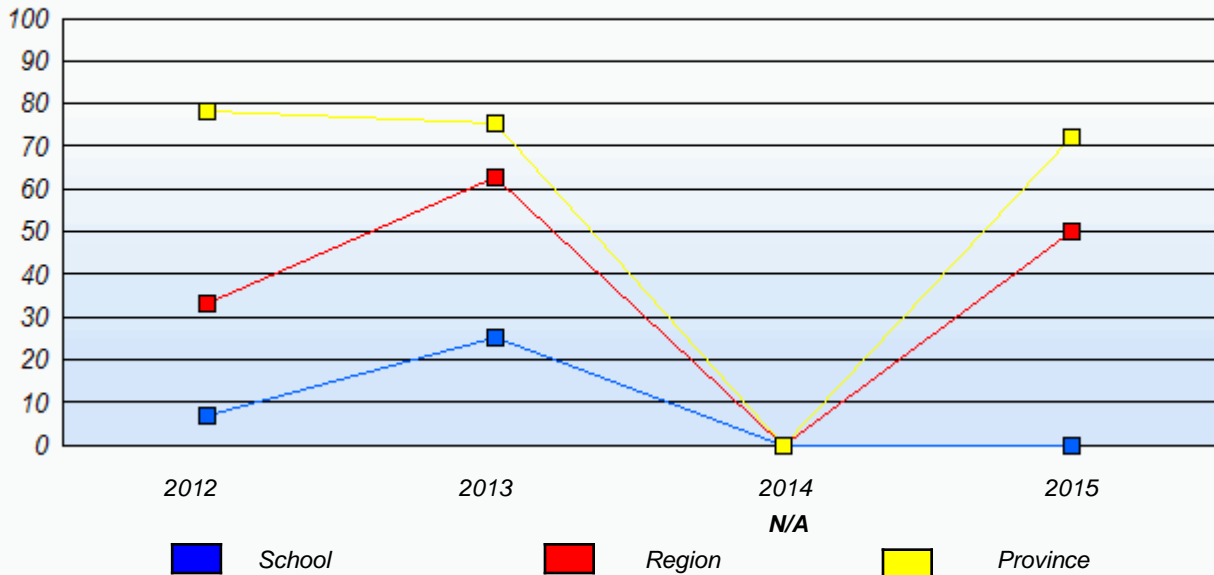
District 804 - Native Federal

School #: 019 Mushuau Innu Natuashish School

Demand Writing
Percentage of students meeting/exceeding (2012 - 2015)



Reading
Percentage of students meeting/exceeding (2012 - 2015)

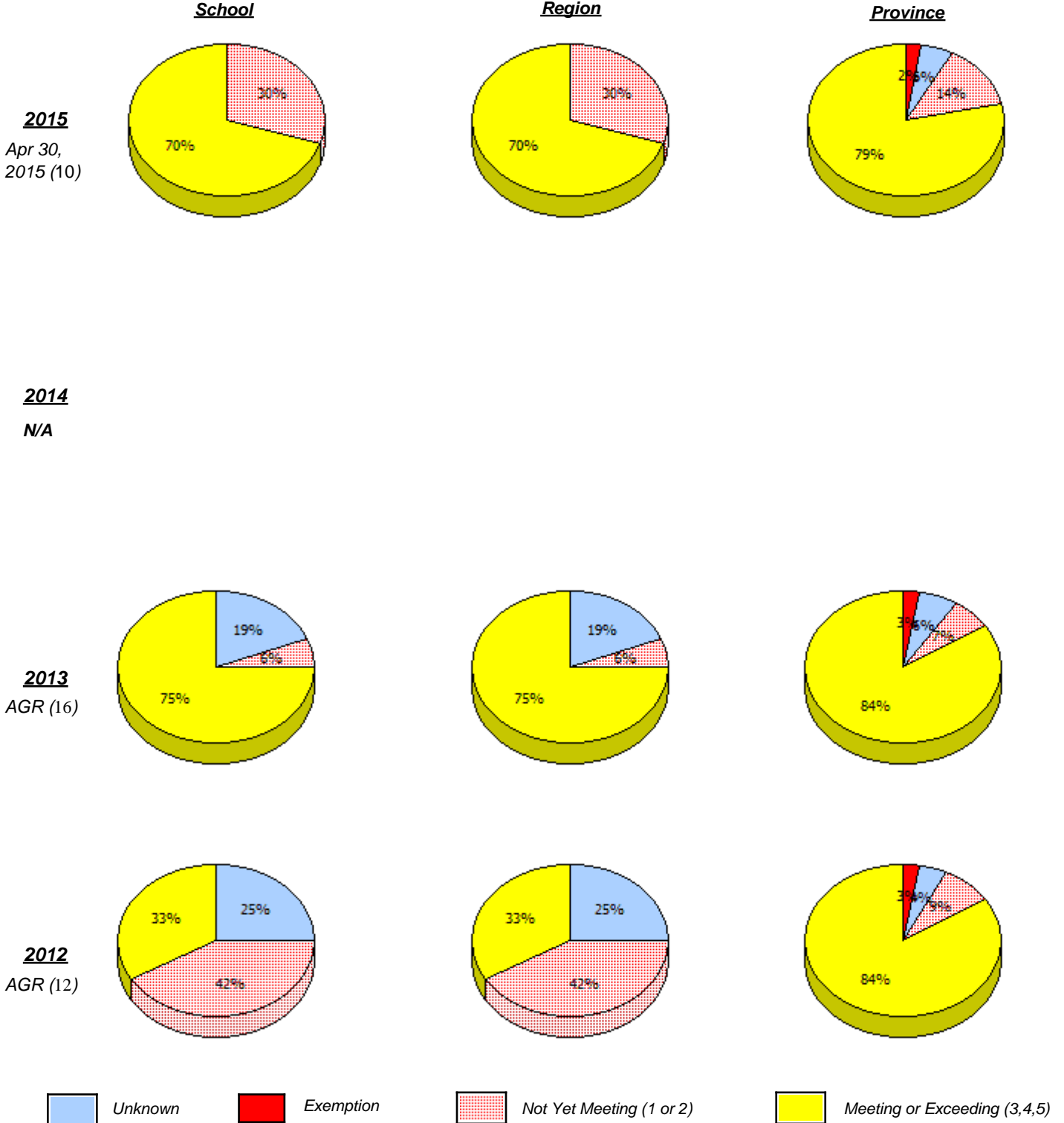


* In some cases, Provincial Assessment numbers may exceed AGR numbers based on late enrolments. Pie chart is based on the number of students who wrote the Provincial Assessment.

District 804 - Native Federal

School #: 376 Se't Anneway Kegnamogwom

Demand Writing



* In some cases, Provincial Assessment numbers may exceed AGR numbers based on late enrolments. Pie chart is based on the number of students who wrote the Provincial Assessment.

District 804 - Native Federal

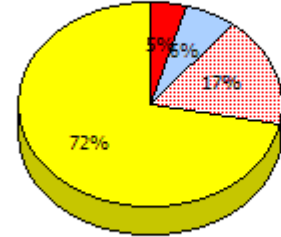
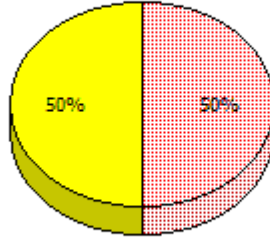
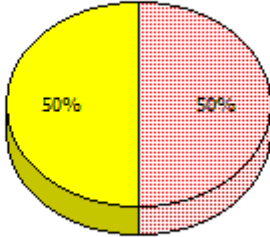
School #: 376 Se't Anneway Kegnamogwom

Reading
Region

School

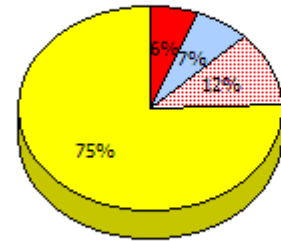
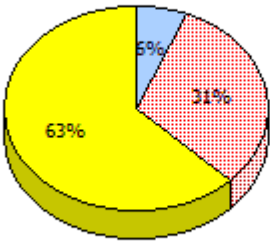
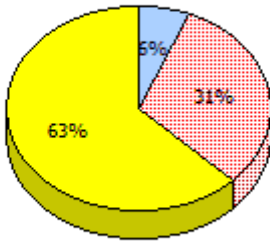
Province

2015
Apr 30,
2015(10)

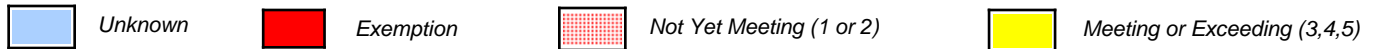
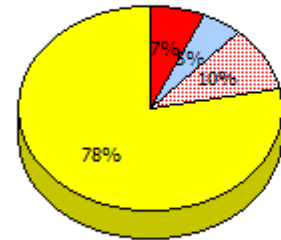
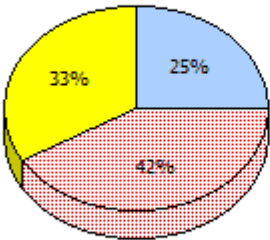
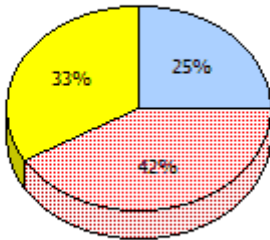


2014
N/A

2013
AGR (16)



2012
AGR (12)

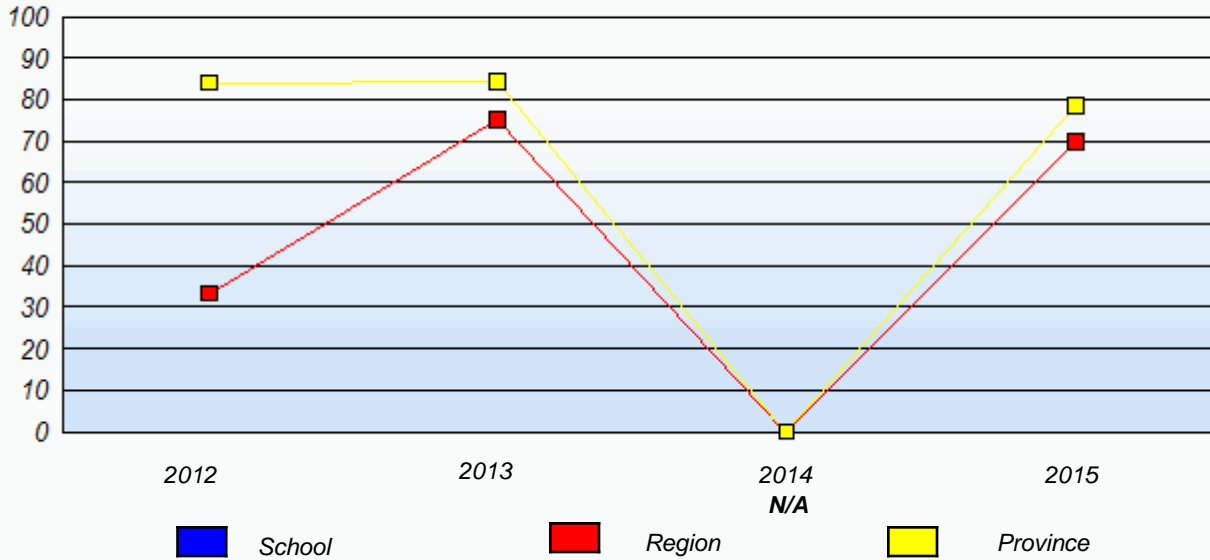


* In some cases, Provincial Assessment numbers may exceed AGR numbers based on late enrolments. Pie chart is based on the number of students who wrote the Provincial Assessment.

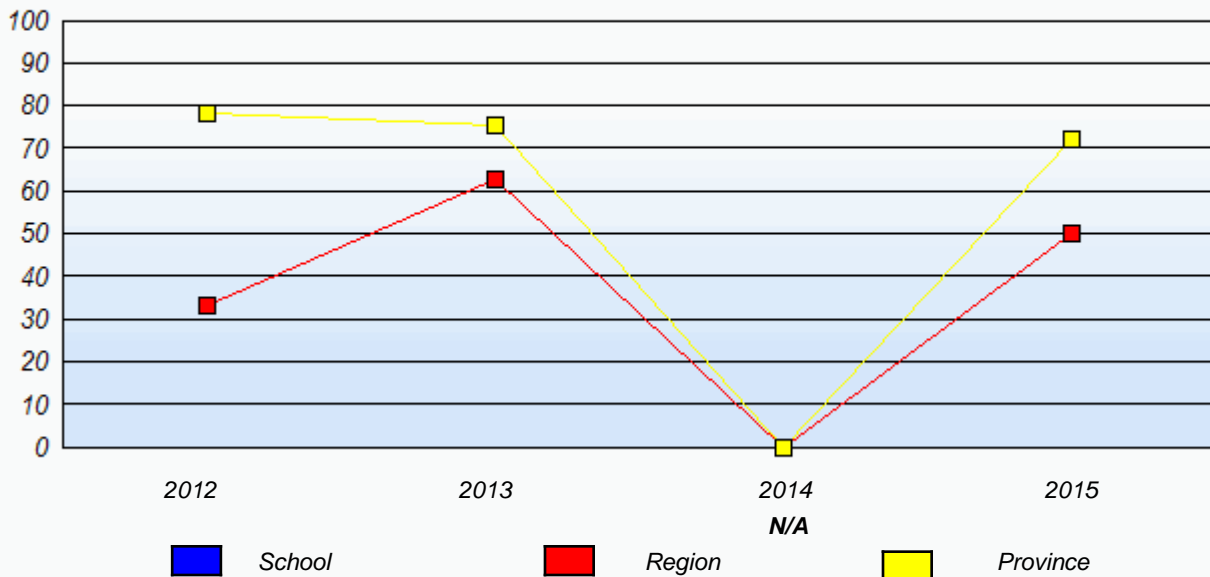
District 804 - Native Federal

School #: 376 Se't Anneway Kegnamogwom

Demand Writing
Percentage of students meeting/exceeding (2012 - 2015)



Reading
Percentage of students meeting/exceeding (2012 - 2015)



* In some cases, Provincial Assessment numbers may exceed AGR numbers based on late enrolments. Pie chart is based on the number of students who wrote the Provincial Assessment.