

NLESD - Labrador Region

School #: 001 St. Peter's School

Demand Writing

School

Region

Province

Creative Writing

Persuasive Writing

Creative Writing

Persuasive Writing

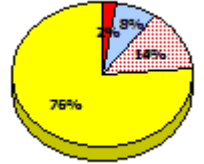
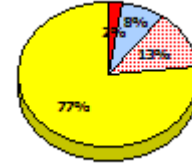
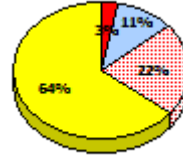
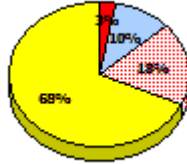
Creative Writing

Persuasive Writing

2015

School data with 5 or fewer students withheld for reasons of confidentiality.

Apr 30, 2015 (1)

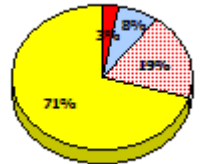
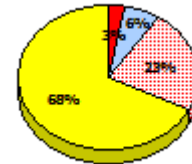
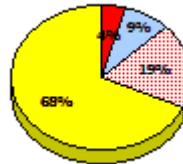
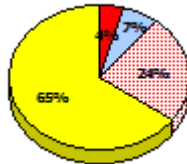


2014

N/A

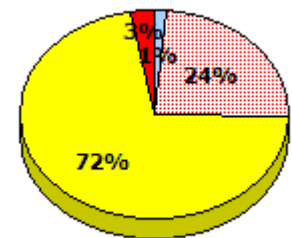
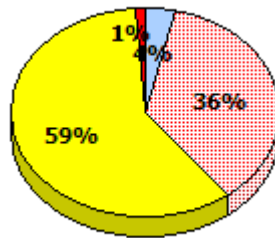
2013

AGR (4)



2012

AGR (1)



Exemption

Unknown

Not Yet Meeting

Meeting or Exceeding

* In some cases, Provincial Assessment numbers may exceed AGR numbers based on late enrolments. Pie chart is based on the number of students who wrote the Provincial Assessment.

* Mushuau Innu Natuashish School and Sheshatshiu Innu School are excluded from region and provincial results.

Source: Division of Evaluation and Research, Department of Education and Early Childhood Development

NLESD - Labrador Region

School #: 001 St. Peter's School

Reading

School

Region

Province

Non - Fiction

Fiction

Non - Fiction

Fiction

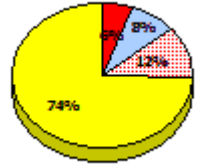
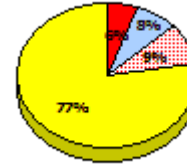
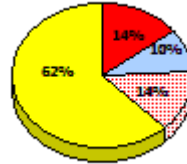
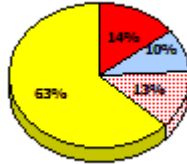
Non - Fiction

Fiction

2015

Apr 30,
2013 (1)

*School data with 5 or fewer students
withheld for reasons of confidentiality.*

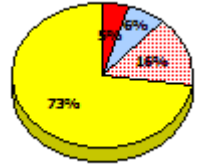
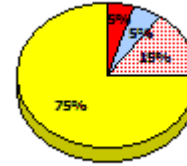
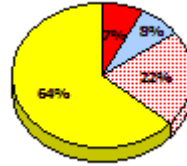
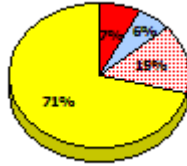


2014

N/A

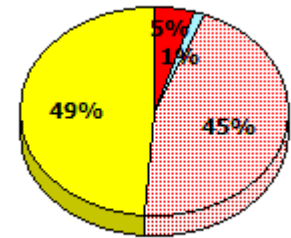
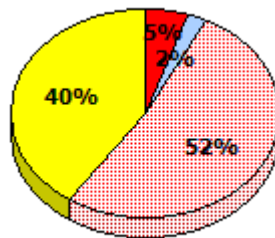
2013

AGR (4)



2012

AGR (1)



* In some cases, Provincial Assessment numbers may exceed AGR numbers based on late enrolments. Pie chart is based on the number of students who wrote the Provincial Assessment.

* Mushuau Innu Natuashish School and Sheshatshiu Innu School are excluded from region and provincial results.

Source: Division of Evaluation and Research, Department of Education and Early Childhood Development

Elementary English Language Arts
4 Year Provincial Assessment, June 2015
Student Population Report
 (average scores)

NLESD - Labrador Region

School #: 001 St. Peter's School

Demand Writing

Percentage of students meeting/exceeding (2012 - 2015)

School data with 5 or fewer students withheld for reasons of confidentiality.



Reading

Percentage of students meeting/exceeding (2012 - 2015)

School data with 5 or fewer students withheld for reasons of confidentiality.



* In some cases, Provincial Assessment numbers may exceed AGR numbers based on late enrolments. Pie chart is based on the number of students who wrote the Provincial Assessment.

* Mushuau Innu Natuashish School and Sheshatshiu Innu School are excluded from region and provincial results.

Source: Division of Evaluation and Research, Department of Education and Early Childhood Development

NLESD - Labrador Region

School #: 002 Henry Gordon Academy

Demand Writing

School

Region

Province

Creative Writing

Persuasive Writing

Creative Writing

Persuasive Writing

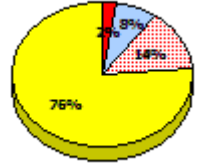
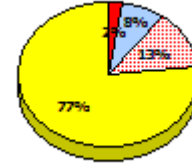
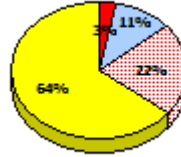
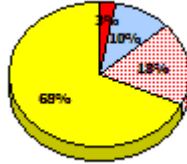
Creative Writing

Persuasive Writing

2015

School data with 5 or fewer students withheld for reasons of confidentiality.

Apr 30, 2015 (5)

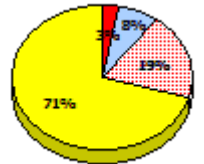
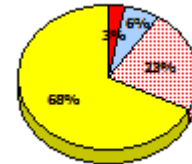
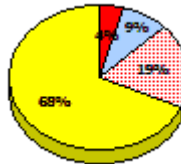
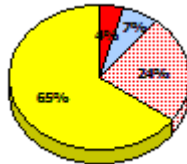


2014

N/A

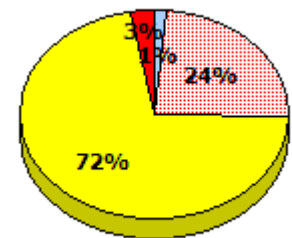
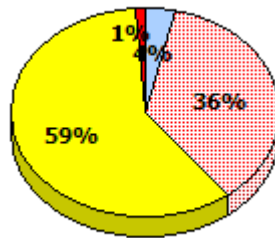
2013

AGR (3)



2012

AGR (7)



Exemption

Unknown

Not Yet Meeting

Meeting or Exceeding

* In some cases, Provincial Assessment numbers may exceed AGR numbers based on late enrolments. Pie chart is based on the number of students who wrote the Provincial Assessment.

* Mushuau Innu Natuashish School and Sheshatshiu Innu School are excluded from region and provincial results.

Source: Division of Evaluation and Research, Department of Education and Early Childhood Development

NLESD - Labrador Region

School #: 002 Henry Gordon Academy

Reading

School

Region

Province

Non - Fiction

Fiction

Non - Fiction

Fiction

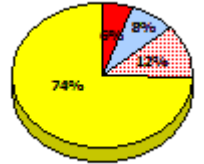
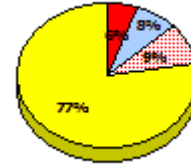
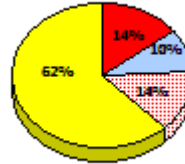
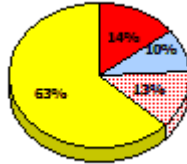
Non - Fiction

Fiction

2015

Apr 30,
2013 (5)

*School data with 5 or fewer students
withheld for reasons of confidentiality.*

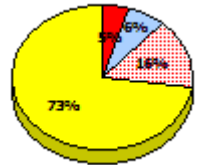
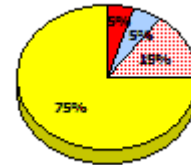
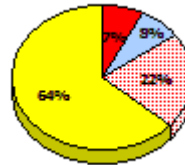
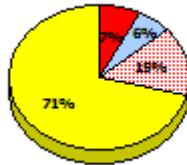


2014

N/A

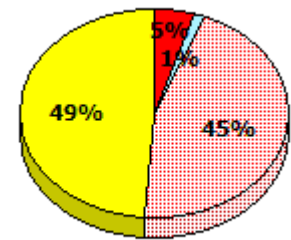
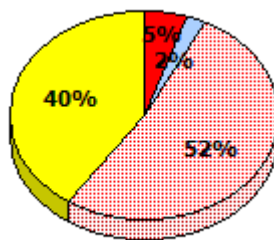
2013

AGR (3)



2012

AGR (7)



* In some cases, Provincial Assessment numbers may exceed AGR numbers based on late enrolments. Pie chart is based on the number of students who wrote the Provincial Assessment.

* Mushuau Innu Natuashish School and Sheshatshiu Innu School are excluded from region and provincial results.

Source: Division of Evaluation and Research, Department of Education and Early Childhood Development

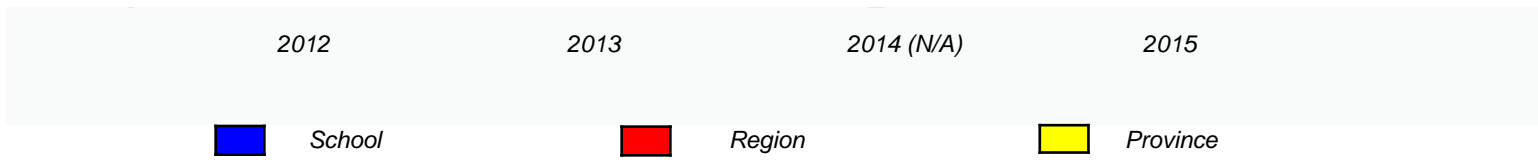
NLESD - Labrador Region

School #: 002 Henry Gordon Academy

Demand Writing

Percentage of students meeting/exceeding (2012 - 2015)

School data with 5 or fewer students withheld for reasons of confidentiality.



Reading

Percentage of students meeting/exceeding (2012 - 2015)

School data with 5 or fewer students withheld for reasons of confidentiality.



* In some cases, Provincial Assessment numbers may exceed AGR numbers based on late enrolments. Pie chart is based on the number of students who wrote the Provincial Assessment.

* Mushuau Innu Natuashish School and Sheshatshiu Innu School are excluded from region and provincial results.

NLESD - Labrador Region

School #: 004 Queen of Peace Middle School

Demand Writing

School

Region

Province

Creative Writing

Persuasive Writing

Creative Writing

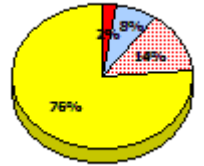
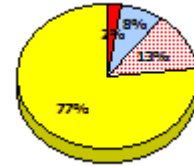
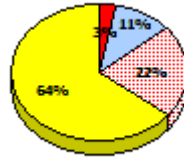
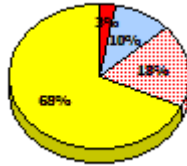
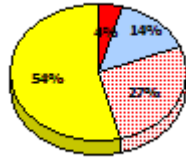
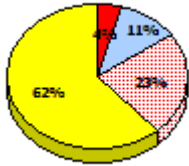
Persuasive Writing

Creative Writing

Persuasive Writing

2015

Apr 30, 2015 (91)

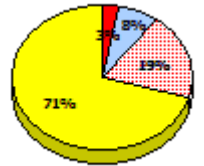
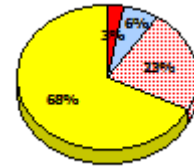
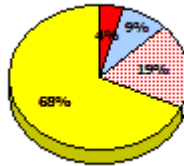
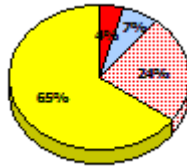
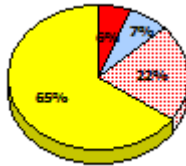
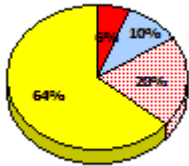


2014

N/A

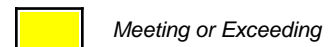
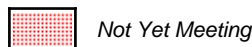
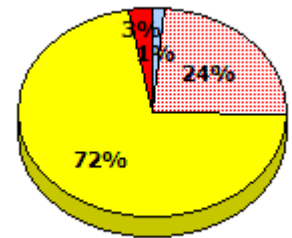
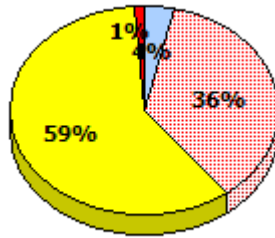
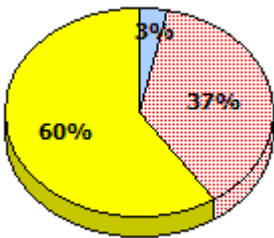
2013

AGR (69)



2012

AGR (89)



* In some cases, Provincial Assessment numbers may exceed AGR numbers based on late enrolments. Pie chart is based on the number of students who wrote the Provincial Assessment.

* Mushuau Innu Natuashish School and Sheshatshiu Innu School are excluded from region and provincial results.

Source: Division of Evaluation and Research, Department of Education and Early Childhood Development

NLESD - Labrador Region

School #: 004 Queen of Peace Middle School

Reading

School

Region

Province

Non - Fiction

Fiction

Non - Fiction

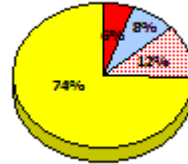
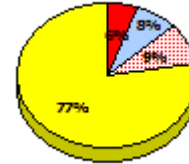
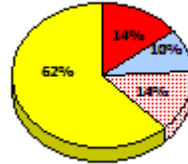
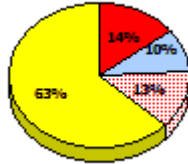
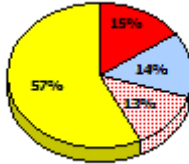
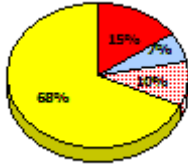
Fiction

Non - Fiction

Fiction

2015

Apr 30,
2013 (91)

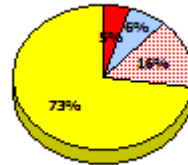
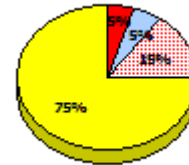
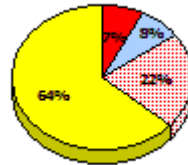
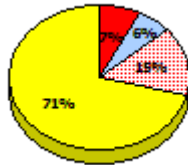
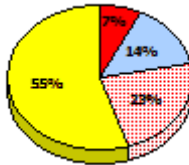
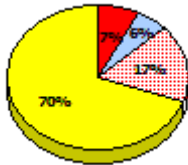


2014

N/A

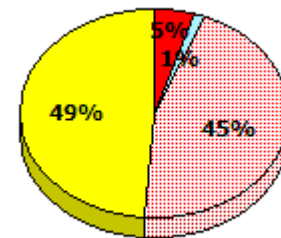
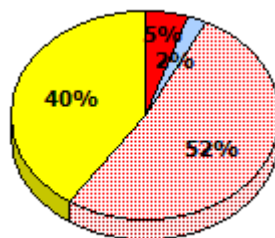
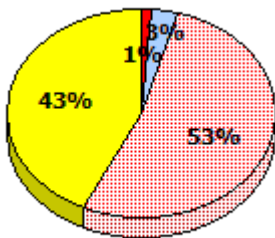
2013

AGR (69)



2012

AGR (89)



Exemption
 Unknown
 Not Yet Meeting
 Meeting or Exceeding

* In some cases, Provincial Assessment numbers may exceed AGR numbers based on late enrolments. Pie chart is based on the number of students who wrote the Provincial Assessment.

* Mushuau Innu Natuashish School and Sheshatshiu Innu School are excluded from region and provincial results.

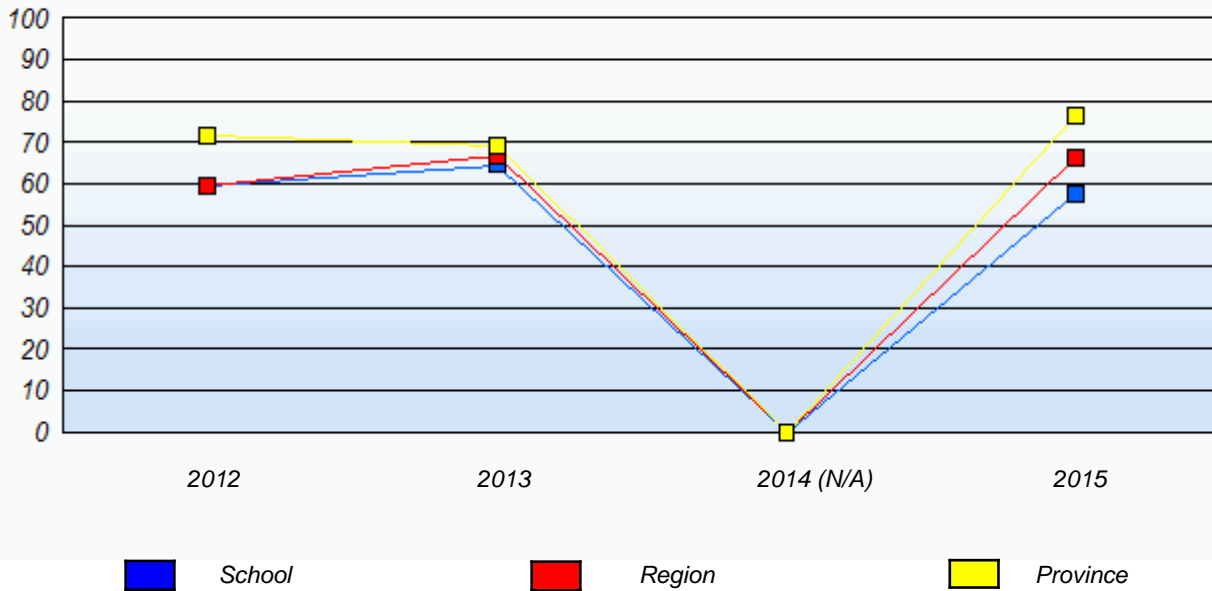
Source: Division of Evaluation and Research, Department of Education and Early Childhood Development

NLESD - Labrador Region

School #: 004 Queen of Peace Middle School

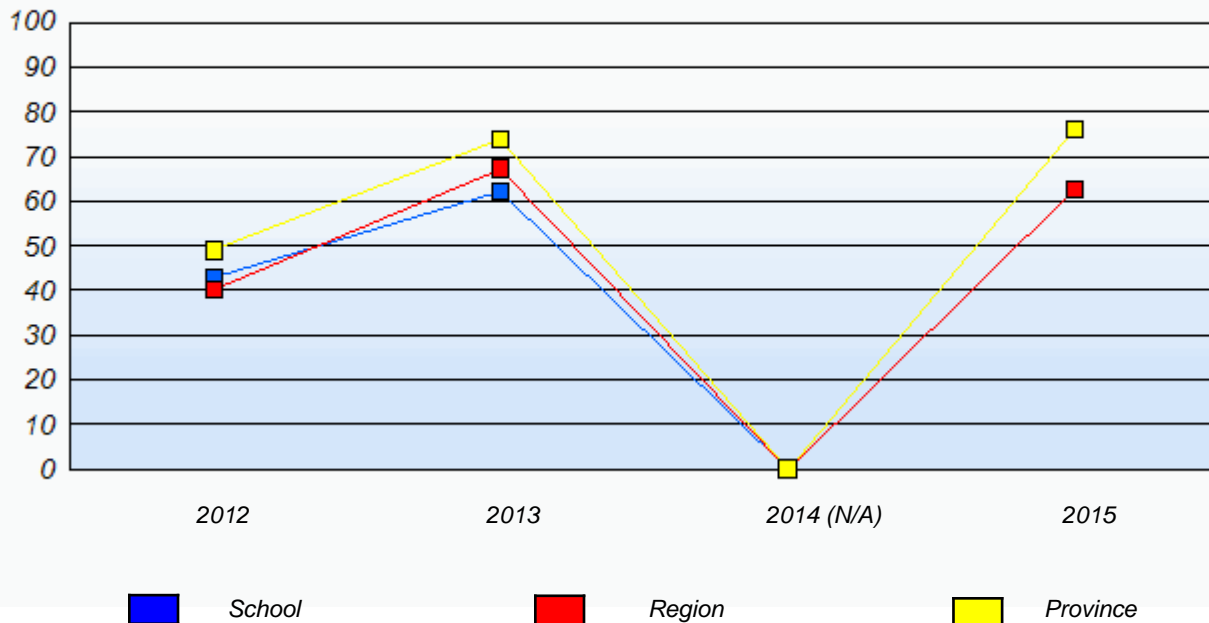
Demand Writing

Percentage of students meeting/exceeding (2012 - 2015)



Reading

Percentage of students meeting/exceeding (2012 - 2015)



* In some cases, Provincial Assessment numbers may exceed AGR numbers based on late enrolments. Pie chart is based on the number of students who wrote the Provincial Assessment.

* Mushuau Innu Natuashish School and Sheshatshiu Innu School are excluded from region and provincial results.

Source: Division of Evaluation and Research, Department of Education and Early Childhood Development

NLESD - Labrador Region

School #: 007 Amos Comenius Memorial School

Demand Writing

School

Region

Province

Creative Writing

Persuasive Writing

Creative Writing

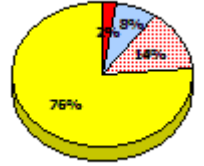
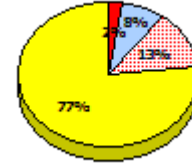
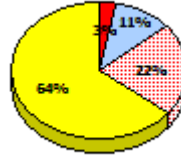
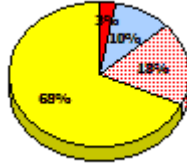
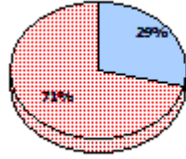
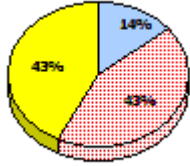
Persuasive Writing

Creative Writing

Persuasive Writing

2015

Apr 30, 2015 (7)

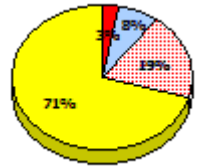
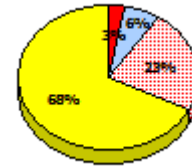
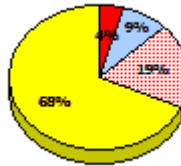
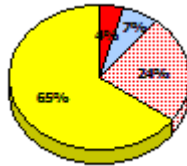
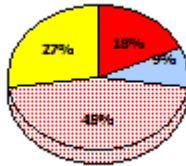
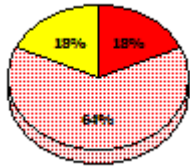


2014

N/A

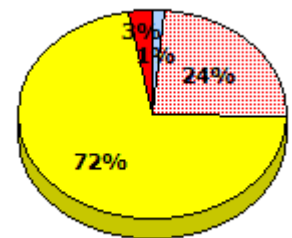
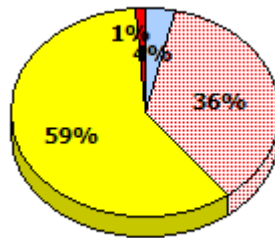
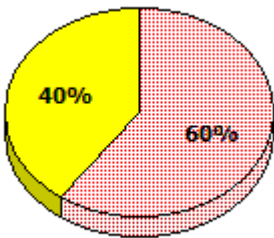
2013

AGR (11)



2012

AGR (10)



Exemption

Unknown

Not Yet Meeting

Meeting or Exceeding

* In some cases, Provincial Assessment numbers may exceed AGR numbers based on late enrolments. Pie chart is based on the number of students who wrote the Provincial Assessment.

* Mushuau Innu Natuashish School and Sheshatshiu Innu School are excluded from region and provincial results.

Source: Division of Evaluation and Research, Department of Education and Early Childhood Development

NLESD - Labrador Region

School #: 007 Amos Comenius Memorial School

Reading

School

Region

Province

Non - Fiction

Fiction

Non - Fiction

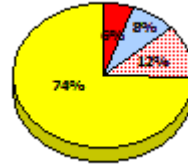
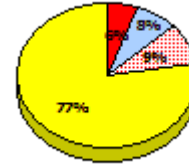
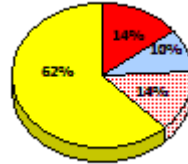
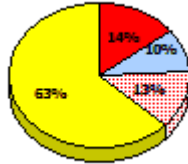
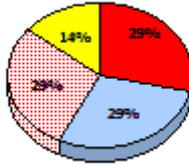
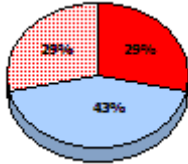
Fiction

Non - Fiction

Fiction

2015

Apr 30,
2013 (7)

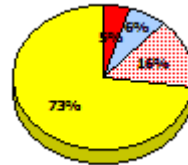
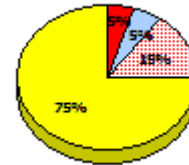
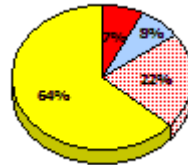
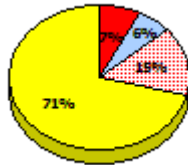
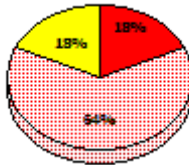
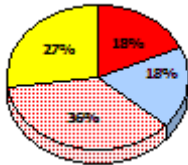


2014

N/A

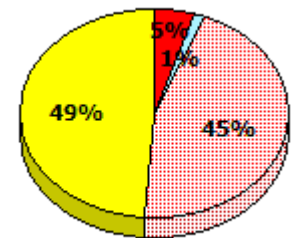
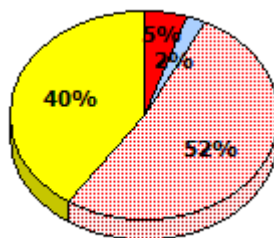
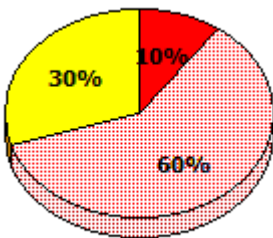
2013

AGR (11)



2012

AGR (10)



Exemption
 Unknown
 Not Yet Meeting
 Meeting or Exceeding

* In some cases, Provincial Assessment numbers may exceed AGR numbers based on late enrolments. Pie chart is based on the number of students who wrote the Provincial Assessment.

* Mushuau Innu Natuashish School and Sheshatshiu Innu School are excluded from region and provincial results.

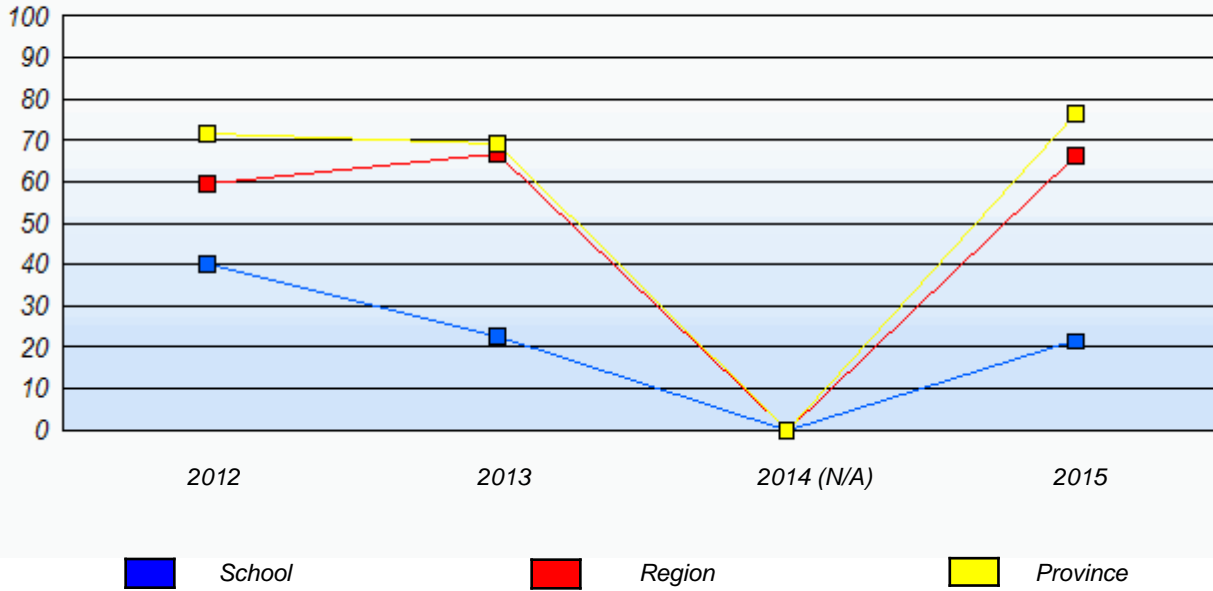
Source: Division of Evaluation and Research, Department of Education and Early Childhood Development

NLESD - Labrador Region

School #: 007 Amos Comenius Memorial School

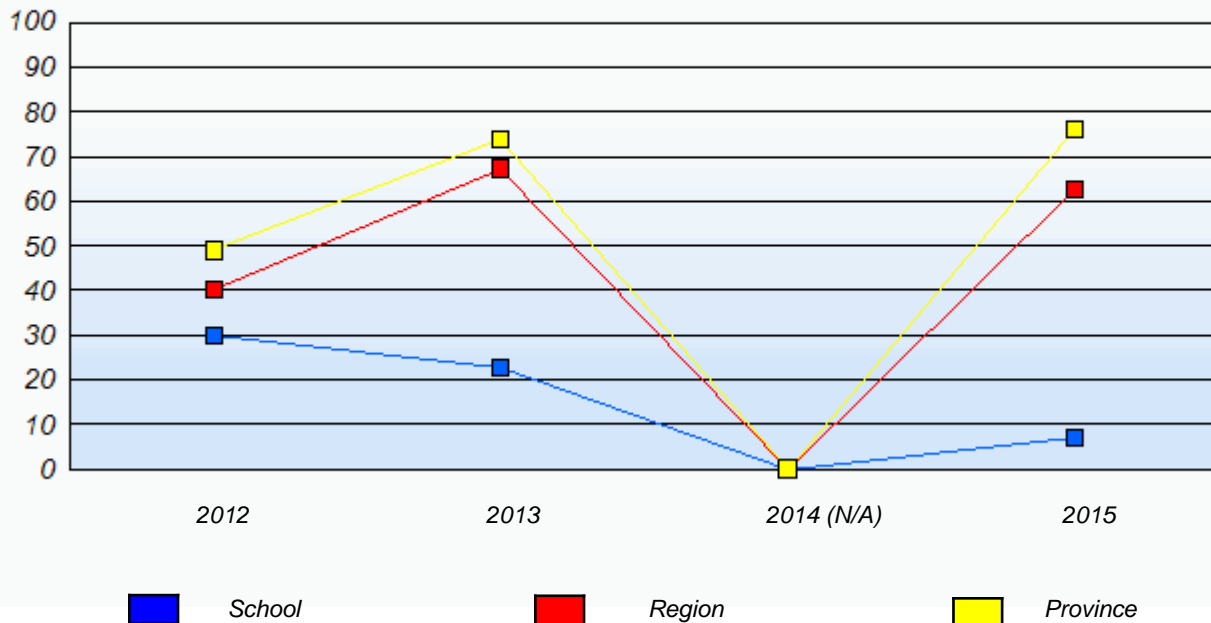
Demand Writing

Percentage of students meeting/exceeding (2012 - 2015)



Reading

Percentage of students meeting/exceeding (2012 - 2015)



* In some cases, Provincial Assessment numbers may exceed AGR numbers based on late enrolments. Pie chart is based on the number of students who wrote the Provincial Assessment.

* Mushuau Innu Natuashish School and Sheshatshiu Innu School are excluded from region and provincial results.

Source: Division of Evaluation and Research, Department of Education and Early Childhood Development

NLESD - Labrador Region

School #: 012 J.C. Erhardt Memorial School

Demand Writing

School

Region

Province

Creative Writing

Persuasive Writing

Creative Writing

Persuasive Writing

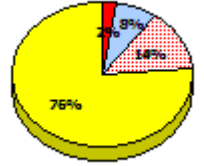
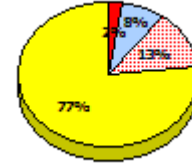
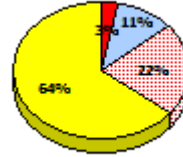
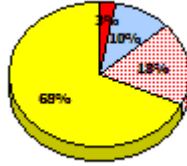
Creative Writing

Persuasive Writing

2015

School data with 5 or fewer students withheld for reasons of confidentiality.

Apr 30, 2015 (4)



2014

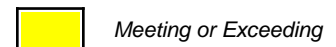
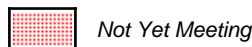
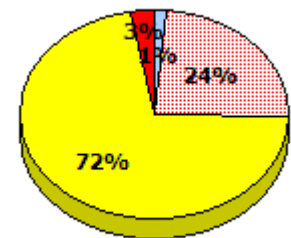
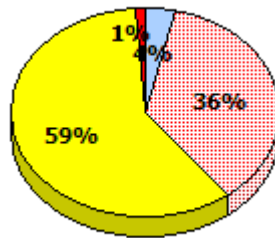
N/A

2013

AGR (0)

2012

AGR (7)



* In some cases, Provincial Assessment numbers may exceed AGR numbers based on late enrolments. Pie chart is based on the number of students who wrote the Provincial Assessment.

* Mushuau Innu Natuashish School and Sheshatshiu Innu School are excluded from region and provincial results.

Source: Division of Evaluation and Research, Department of Education and Early Childhood Development

NLESD - Labrador Region

School #: 012 J.C. Erhardt Memorial School

Reading

School

Region

Province

Non - Fiction

Fiction

Non - Fiction

Fiction

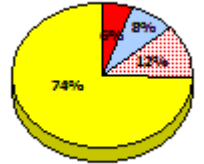
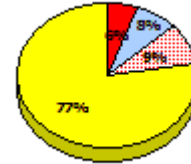
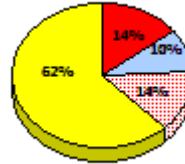
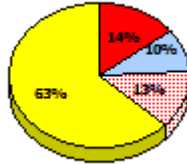
Non - Fiction

Fiction

2015

Apr 30,
2013 (4)

*School data with 5 or fewer students
withheld for reasons of confidentiality.*



2014

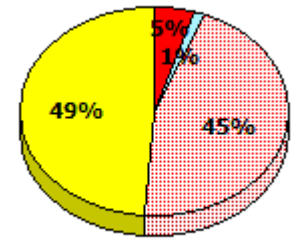
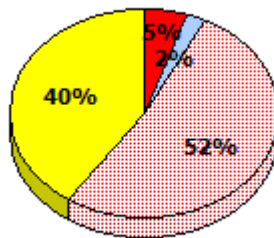
N/A

2013

AGR (0)

2012

AGR (7)



Exemption

Unknown

Not Yet Meeting

Meeting or Exceeding

* In some cases, Provincial Assessment numbers may exceed AGR numbers based on late enrolments. Pie chart is based on the number of students who wrote the Provincial Assessment.

* Mushuau Innu Natuashish School and Sheshatshiu Innu School are excluded from region and provincial results.

Source: Division of Evaluation and Research, Department of Education and Early Childhood Development

NLESD - Labrador Region

School #: 012 J.C. Erhardt Memorial School

Demand Writing

Percentage of students meeting/exceeding (2012 - 2015)

School data with 5 or fewer students withheld for reasons of confidentiality.



Reading

Percentage of students meeting/exceeding (2012 - 2015)

School data with 5 or fewer students withheld for reasons of confidentiality.



* In some cases, Provincial Assessment numbers may exceed AGR numbers based on late enrolments. Pie chart is based on the number of students who wrote the Provincial Assessment.

* Mushuau Innu Natuashish School and Sheshatshiu Innu School are excluded from region and provincial results.

NLESD - Labrador Region

School #: 014 Jens Haven Memorial

Demand Writing

School

Region

Province

Creative Writing

Persuasive Writing

Creative Writing

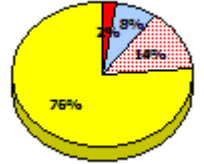
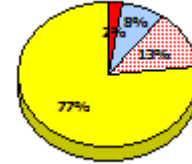
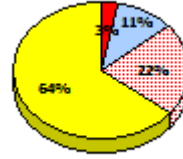
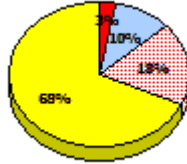
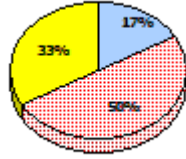
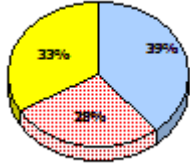
Persuasive Writing

Creative Writing

Persuasive Writing

2015

Apr 30, 2015 (18)

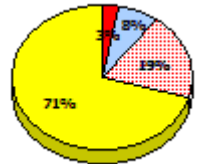
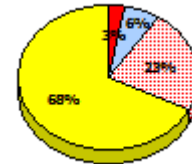
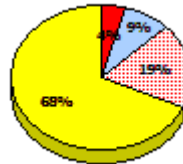
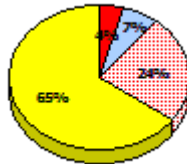
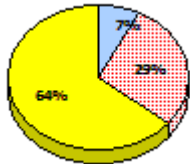


2014

N/A

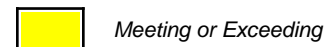
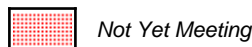
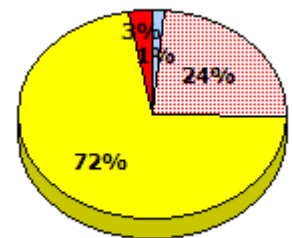
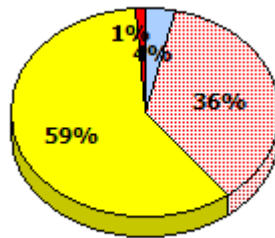
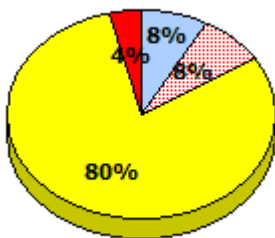
2013

AGR (14)



2012

AGR (25)



* In some cases, Provincial Assessment numbers may exceed AGR numbers based on late enrolments. Pie chart is based on the number of students who wrote the Provincial Assessment.

* Mushuau Innu Natuashish School and Sheshatshiu Innu School are excluded from region and provincial results.

Source: Division of Evaluation and Research, Department of Education and Early Childhood Development

NLESD - Labrador Region

School #: 014 Jens Haven Memorial

Reading

School

Region

Province

Non - Fiction

Fiction

Non - Fiction

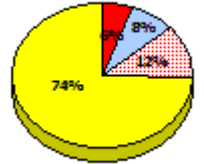
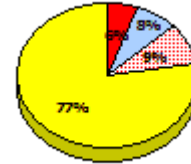
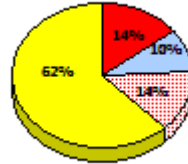
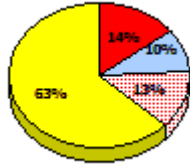
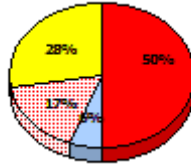
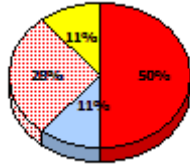
Fiction

Non - Fiction

Fiction

2015

Apr 30,
2013 (18)

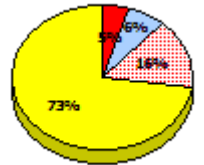
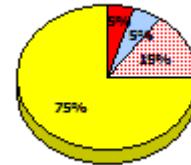
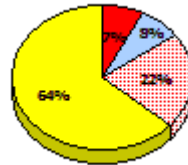
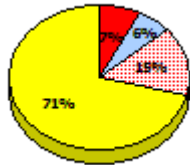
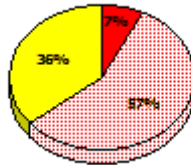
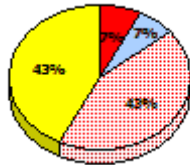


2014

N/A

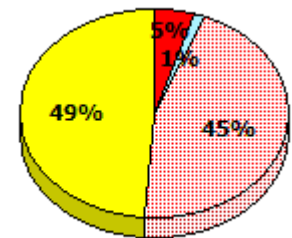
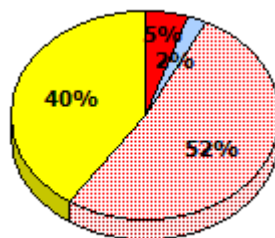
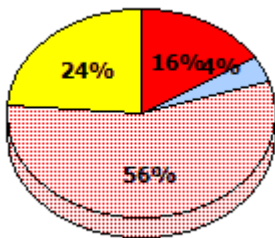
2013

AGR (14)



2012

AGR (25)



* In some cases, Provincial Assessment numbers may exceed AGR numbers based on late enrolments. Pie chart is based on the number of students who wrote the Provincial Assessment.

* Mushuau Innu Natuashish School and Sheshatshiu Innu School are excluded from region and provincial results.

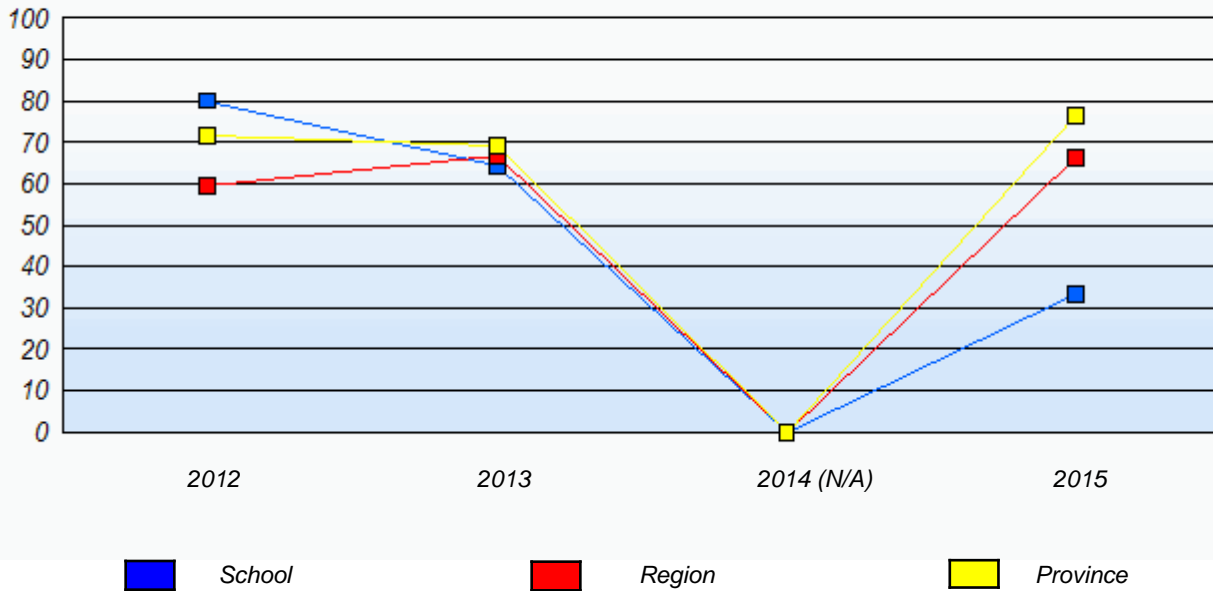
Source: Division of Evaluation and Research, Department of Education and Early Childhood Development

NLESD - Labrador Region

School #: 014 Jens Haven Memorial

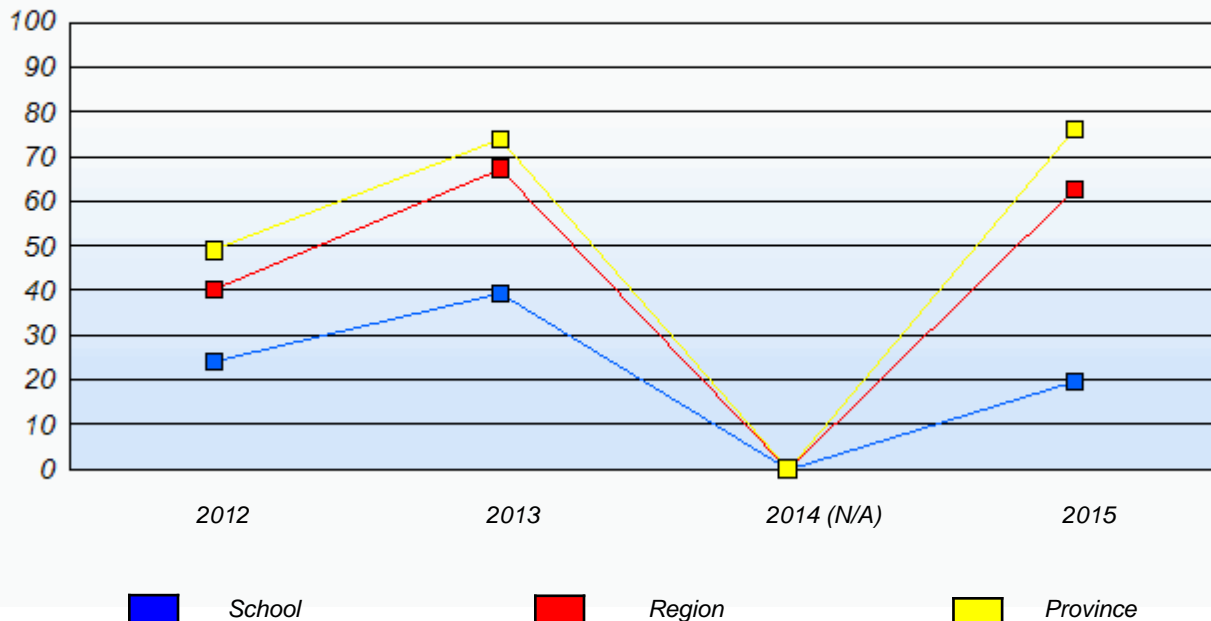
Demand Writing

Percentage of students meeting/exceeding (2012 - 2015)



Reading

Percentage of students meeting/exceeding (2012 - 2015)



* In some cases, Provincial Assessment numbers may exceed AGR numbers based on late enrolments. Pie chart is based on the number of students who wrote the Provincial Assessment.

* Mushuau Innu Natuashish School and Sheshatshiu Innu School are excluded from region and provincial results.

Source: Division of Evaluation and Research, Department of Education and Early Childhood Development

NLESD - Labrador Region

School #: 015 Lake Melville School

Demand Writing

School

Region

Province

Creative Writing

Persuasive Writing

Creative Writing

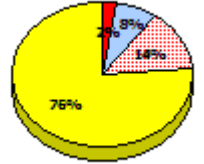
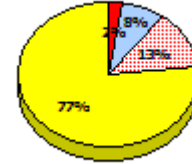
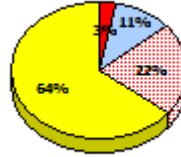
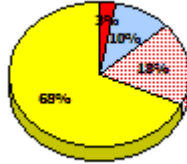
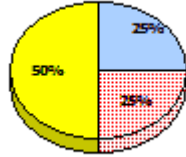
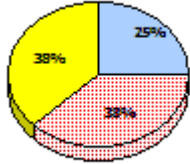
Persuasive Writing

Creative Writing

Persuasive Writing

2015

Apr 30, 2015 (8)

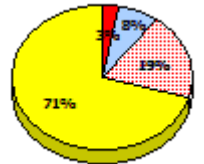
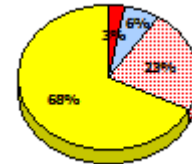
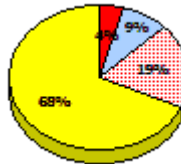
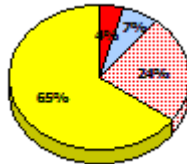


2014

N/A

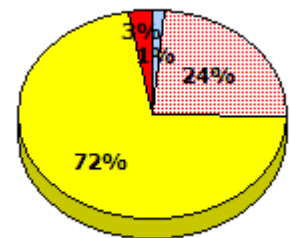
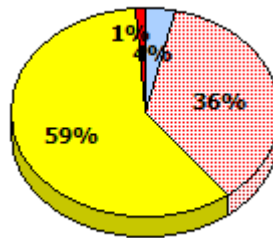
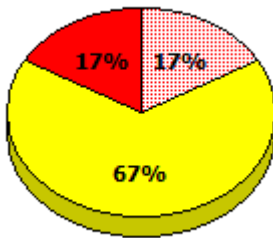
2013

AGR (6)



2012

AGR (6)



* In some cases, Provincial Assessment numbers may exceed AGR numbers based on late enrolments. Pie chart is based on the number of students who wrote the Provincial Assessment.

* Mushuau Innu Natuashish School and Sheshatshiu Innu School are excluded from region and provincial results.

Source: Division of Evaluation and Research, Department of Education and Early Childhood Development

NLESD - Labrador Region

School #: 015 Lake Melville School

Reading

School

Region

Province

Non - Fiction

Fiction

Non - Fiction

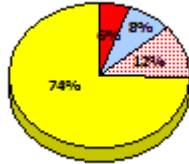
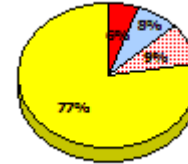
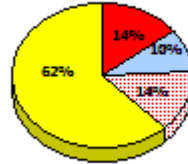
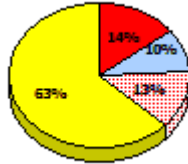
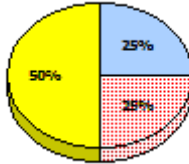
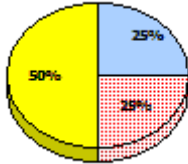
Fiction

Non - Fiction

Fiction

2015

Apr 30,
2013 (8)

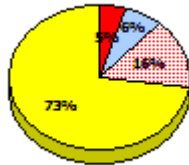
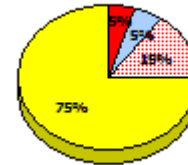
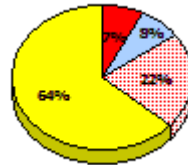
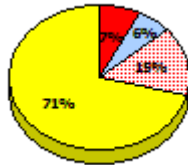


2014

N/A

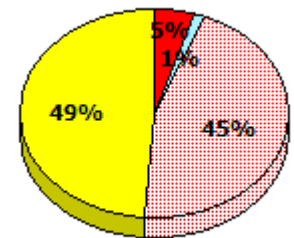
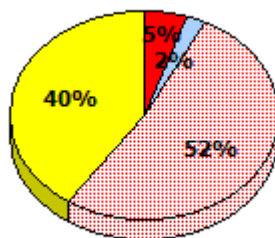
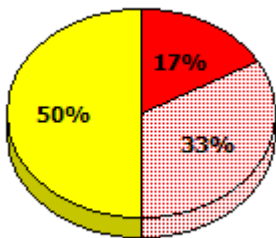
2013

AGR (6)



2012

AGR (6)



Exemption
 Unknown
 Not Yet Meeting
 Meeting or Exceeding

* In some cases, Provincial Assessment numbers may exceed AGR numbers based on late enrolments. Pie chart is based on the number of students who wrote the Provincial Assessment.

* Mushuau Innu Natuashish School and Sheshatshiu Innu School are excluded from region and provincial results.

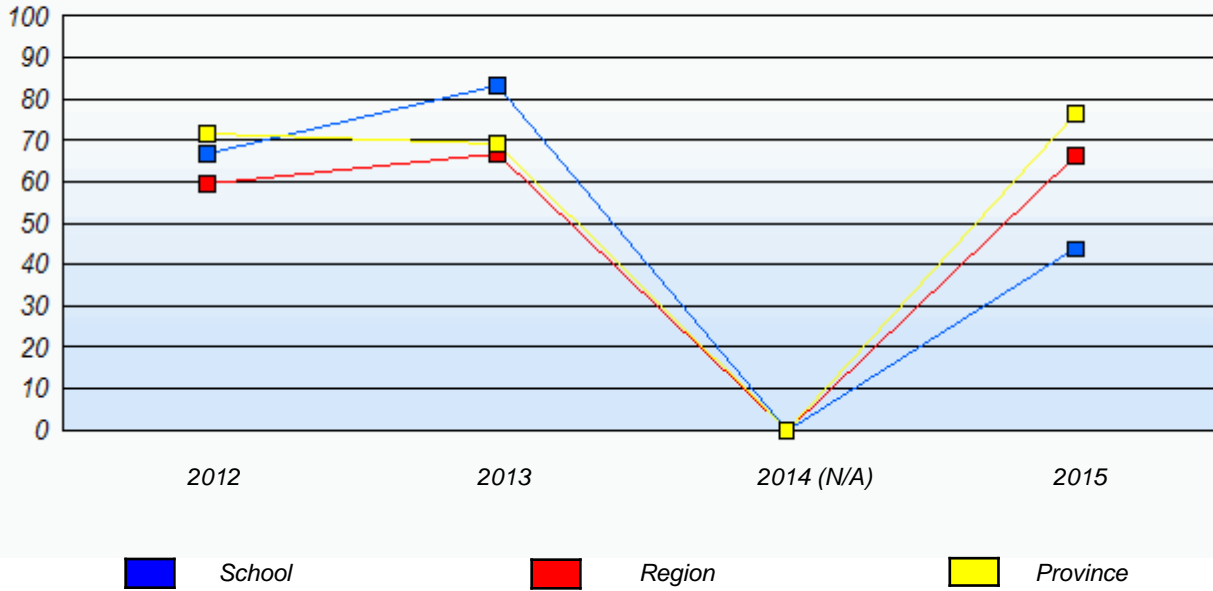
Source: Division of Evaluation and Research, Department of Education and Early Childhood Development

NLESD - Labrador Region

School #: 015 Lake Melville School

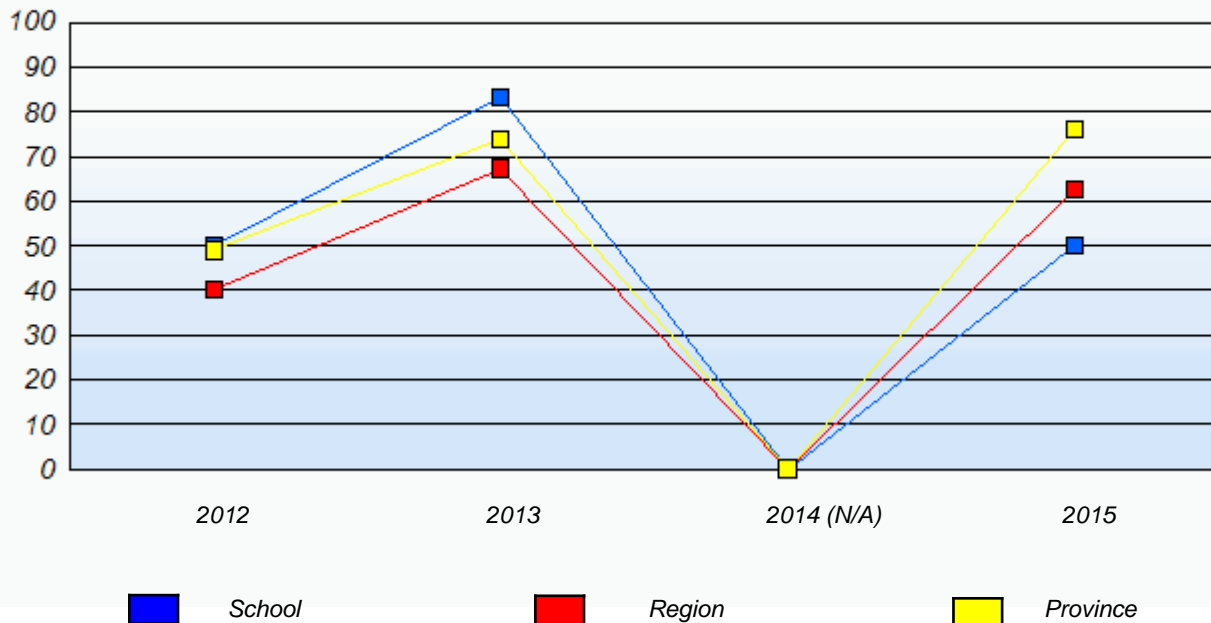
Demand Writing

Percentage of students meeting/exceeding (2012 - 2015)



Reading

Percentage of students meeting/exceeding (2012 - 2015)



* In some cases, Provincial Assessment numbers may exceed AGR numbers based on late enrolments. Pie chart is based on the number of students who wrote the Provincial Assessment.

* Mushuau Innu Natuashish School and Sheshatshiu Innu School are excluded from region and provincial results.

Source: Division of Evaluation and Research, Department of Education and Early Childhood Development

NLESD - Labrador Region

School #: 016 B.L. Morrison

Demand Writing

School

Region

Province

Creative Writing

Persuasive Writing

Creative Writing

Persuasive Writing

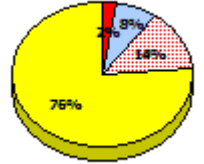
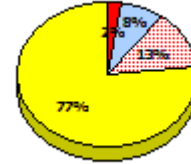
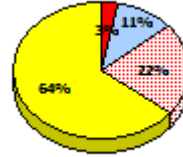
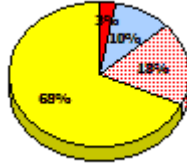
Creative Writing

Persuasive Writing

2015

School data with 5 or fewer students withheld for reasons of confidentiality.

Apr 30, 2015 (1)

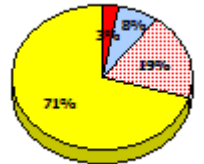
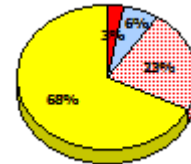
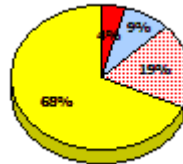
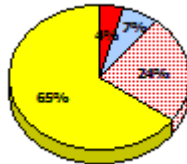


2014

N/A

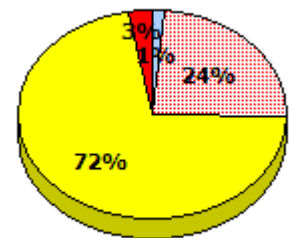
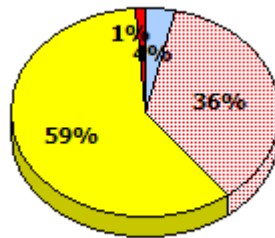
2013

AGR (4)



2012

AGR (2)



Exemption

Unknown

Not Yet Meeting

Meeting or Exceeding

* In some cases, Provincial Assessment numbers may exceed AGR numbers based on late enrolments. Pie chart is based on the number of students who wrote the Provincial Assessment.

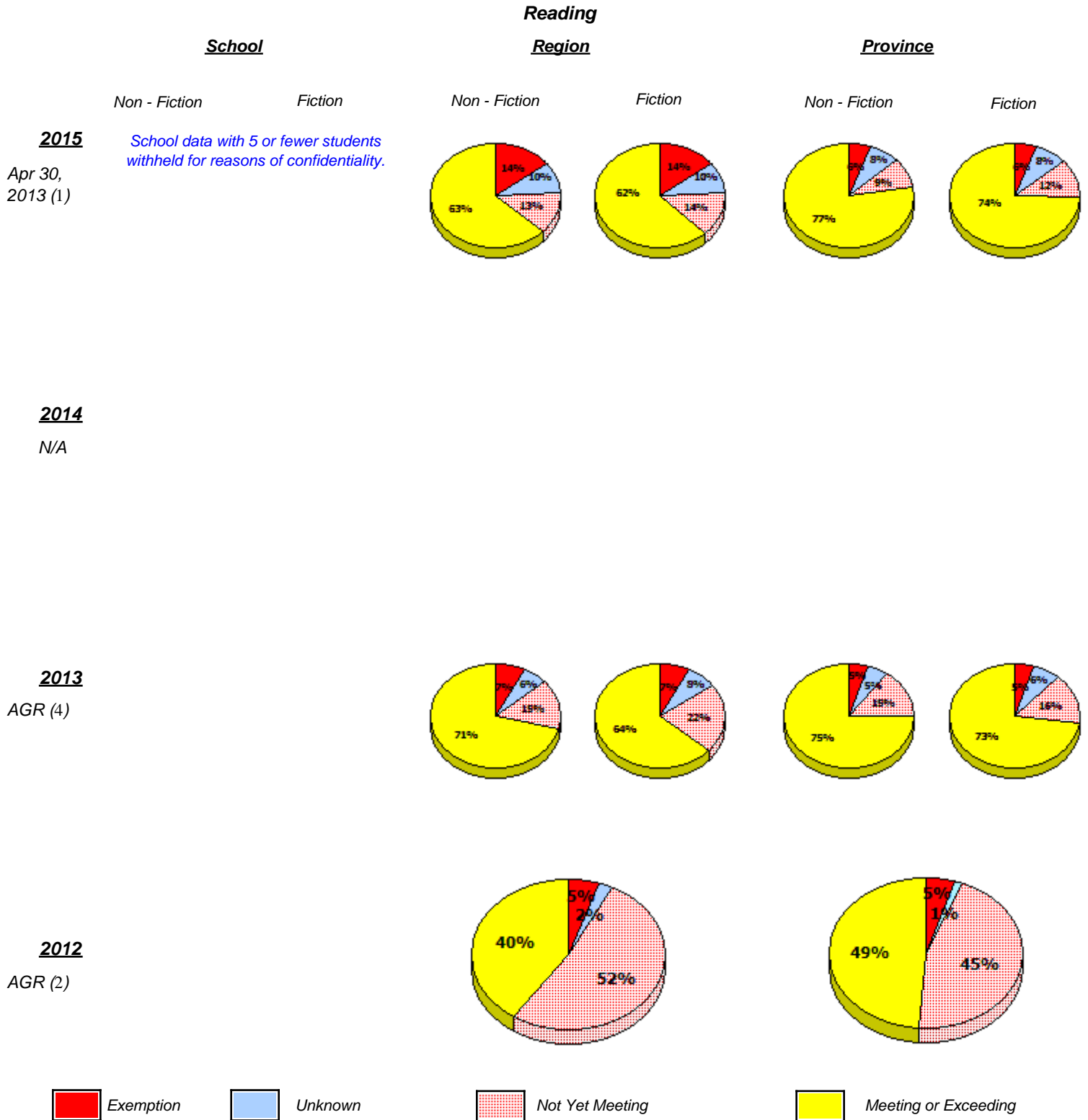
* Mushuau Innu Natuashish School and Sheshatshiu Innu School are excluded from region and provincial results.

Source: Division of Evaluation and Research, Department of Education and Early Childhood Development

**Elementary English Language Arts
4 Year Provincial Assessment, June 2015
Student Population Report**
(average scores)

NLESD - Labrador Region

School #: 016 B.L. Morrison



* In some cases, Provincial Assessment numbers may exceed AGR numbers based on late enrolments. Pie chart is based on the number of students who wrote the Provincial Assessment.

* Mushuau Innu Natuashish School and Sheshatshiu Innu School are excluded from region and provincial results.

Source: Division of Evaluation and Research, Department of Education and Early Childhood Development

NLESD - Labrador Region

School #: 016 B.L. Morrison

Demand Writing

Percentage of students meeting/exceeding (2012 - 2015)

School data with 5 or fewer students withheld for reasons of confidentiality.



Reading

Percentage of students meeting/exceeding (2012 - 2015)

School data with 5 or fewer students withheld for reasons of confidentiality.



* In some cases, Provincial Assessment numbers may exceed AGR numbers based on late enrolments. Pie chart is based on the number of students who wrote the Provincial Assessment.

* Mushuau Innu Natuashish School and Sheshatshiu Innu School are excluded from region and provincial results.

NLESD - Labrador Region

School #: 017 Northern Lights Academy

Demand Writing

School

Region

Province

Creative Writing

Persuasive Writing

Creative Writing

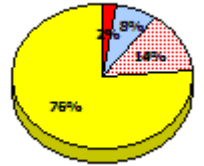
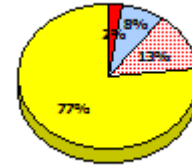
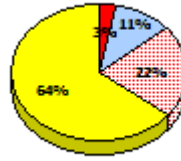
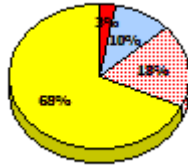
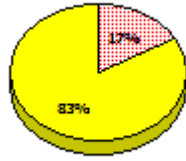
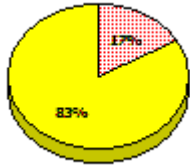
Persuasive Writing

Creative Writing

Persuasive Writing

2015

Apr 30, 2015 (6)

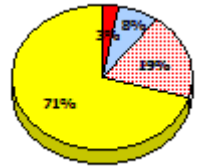
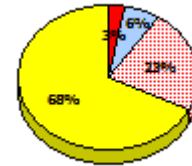
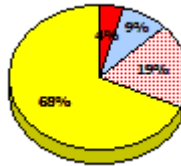
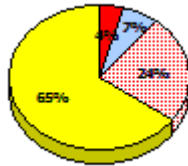


2014

N/A

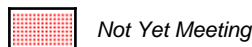
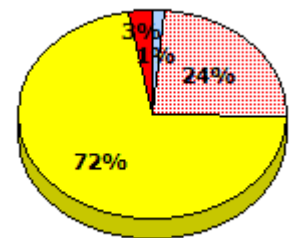
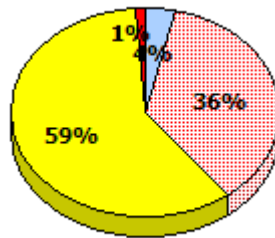
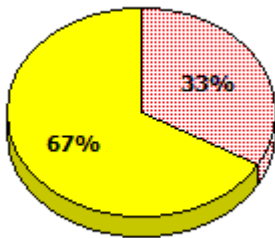
2013

AGR (3)



2012

AGR (3)



* In some cases, Provincial Assessment numbers may exceed AGR numbers based on late enrolments. Pie chart is based on the number of students who wrote the Provincial Assessment.

* Mushuau Innu Natuashish School and Sheshatshiu Innu School are excluded from region and provincial results.

Source: Division of Evaluation and Research, Department of Education and Early Childhood Development

NLESD - Labrador Region

School #: 017 Northern Lights Academy

Reading

School

Region

Province

Non - Fiction

Fiction

Non - Fiction

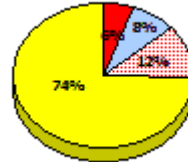
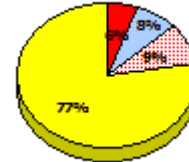
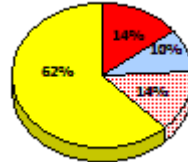
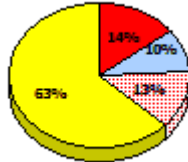
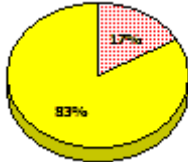
Fiction

Non - Fiction

Fiction

2015

Apr 30, 2013 (6)

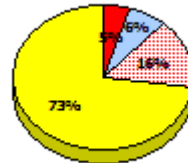
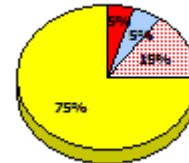
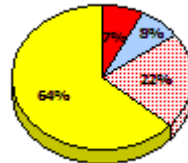
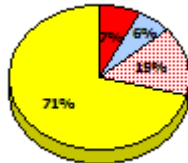


2014

N/A

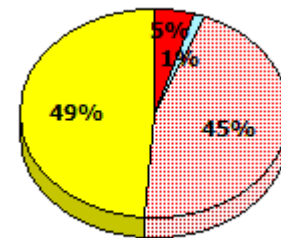
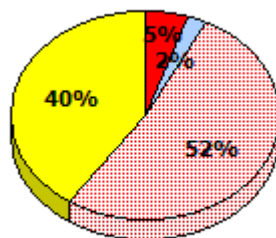
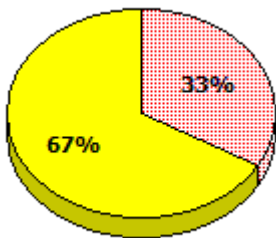
2013

AGR (3)



2012

AGR (3)



* In some cases, Provincial Assessment numbers may exceed AGR numbers based on late enrolments. Pie chart is based on the number of students who wrote the Provincial Assessment.

* Mushuau Innu Natuashish School and Sheshatshiu Innu School are excluded from region and provincial results.

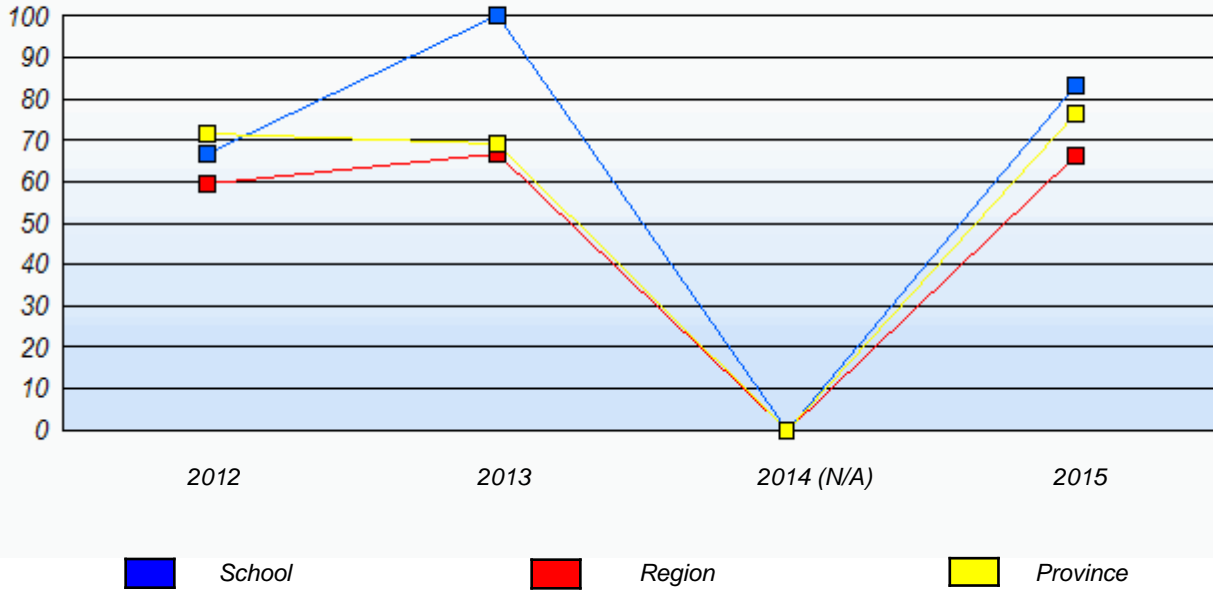
Source: Division of Evaluation and Research, Department of Education and Early Childhood Development

NLESD - Labrador Region

School #: 017 Northern Lights Academy

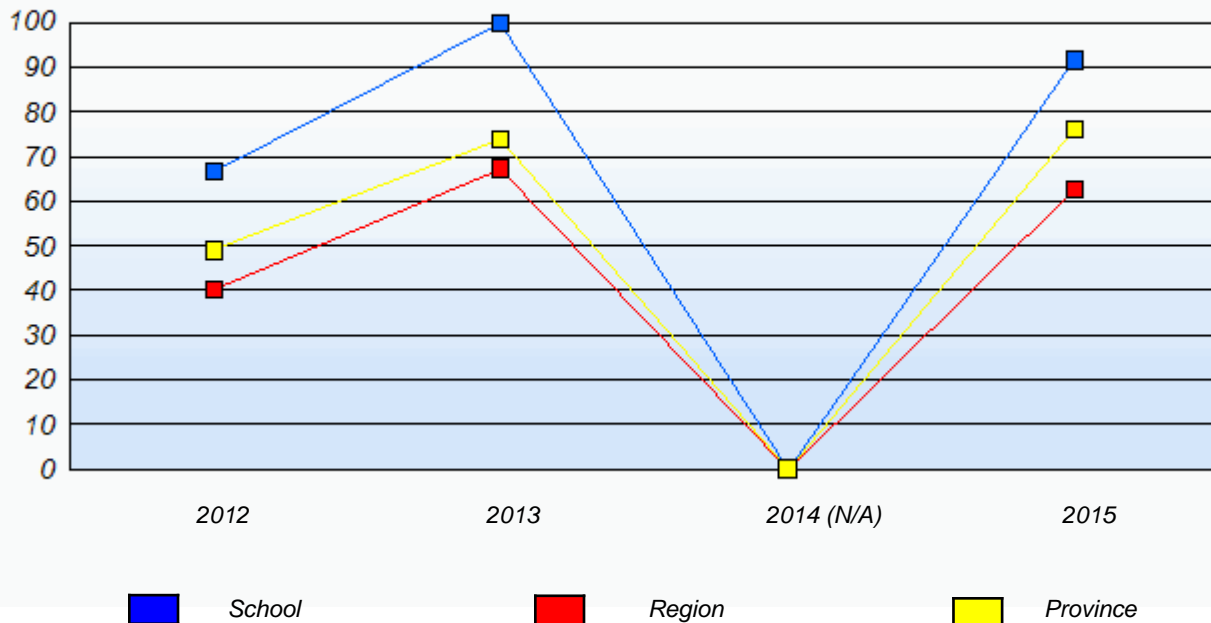
Demand Writing

Percentage of students meeting/exceeding (2012 - 2015)



Reading

Percentage of students meeting/exceeding (2012 - 2015)



* In some cases, Provincial Assessment numbers may exceed AGR numbers based on late enrolments. Pie chart is based on the number of students who wrote the Provincial Assessment.

* Mushuau Innu Natuashish School and Sheshatshiu Innu School are excluded from region and provincial results.

NLESD - Labrador Region

School #: 381 J.R. Smallwood Middle School

Demand Writing

School

Region

Province

Creative Writing

Persuasive Writing

Creative Writing

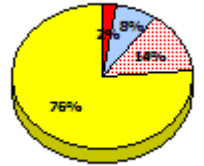
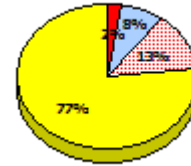
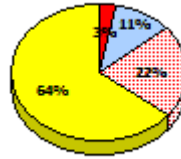
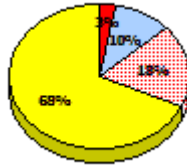
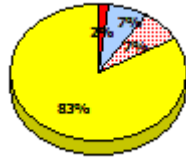
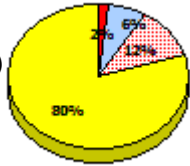
Persuasive Writing

Creative Writing

Persuasive Writing

2015

Apr 30, 2015 (108)

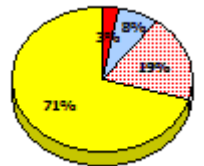
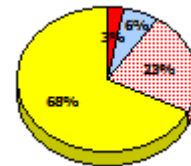
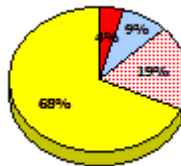
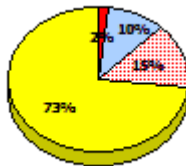


2014

N/A

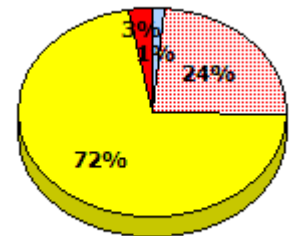
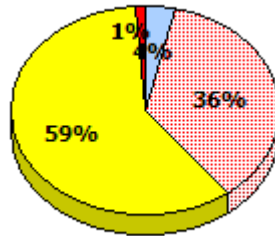
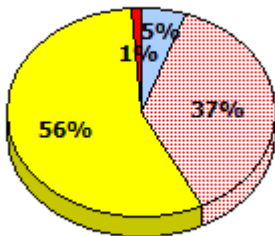
2013

AGR (108)



2012

AGR (94)



* In some cases, Provincial Assessment numbers may exceed AGR numbers based on late enrolments. Pie chart is based on the number of students who wrote the Provincial Assessment.

* Mushuau Innu Natuashish School and Sheshatshiu Innu School are excluded from region and provincial results.

NLESD - Labrador Region

School #: 381 J.R. Smallwood Middle School

Reading

School

Region

Province

Non - Fiction

Fiction

Non - Fiction

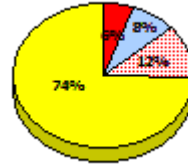
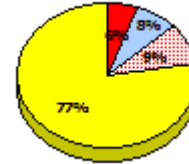
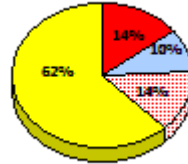
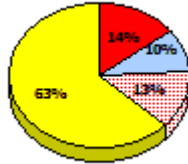
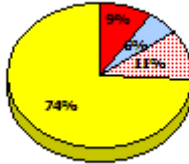
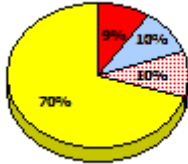
Fiction

Non - Fiction

Fiction

2015

Apr 30,
2013 (108)

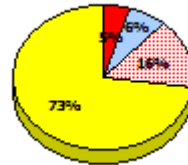
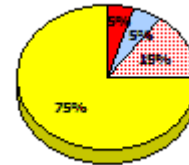
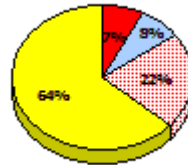
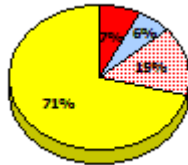
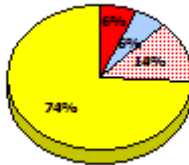
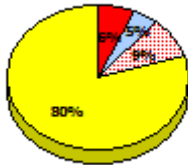


2014

N/A

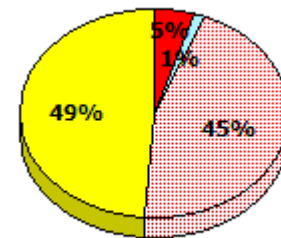
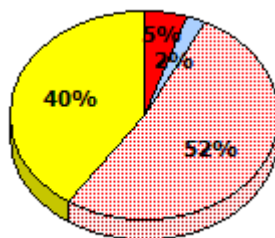
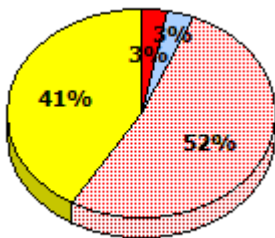
2013

AGR (108)



2012

AGR (94)



Exemption

Unknown

Not Yet Meeting

Meeting or Exceeding

* In some cases, Provincial Assessment numbers may exceed AGR numbers based on late enrolments. Pie chart is based on the number of students who wrote the Provincial Assessment.

* Mushuau Innu Natuashish School and Sheshatshiu Innu School are excluded from region and provincial results.

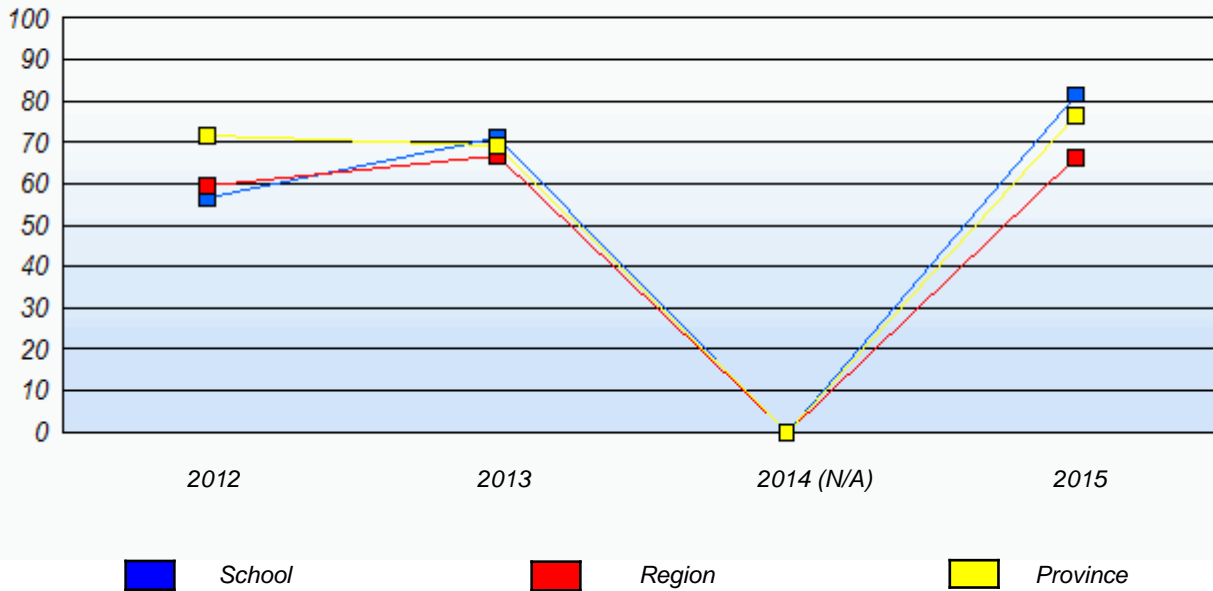
Source: Division of Evaluation and Research, Department of Education and Early Childhood Development

NLESD - Labrador Region

School #: 381 J.R. Smallwood Middle School

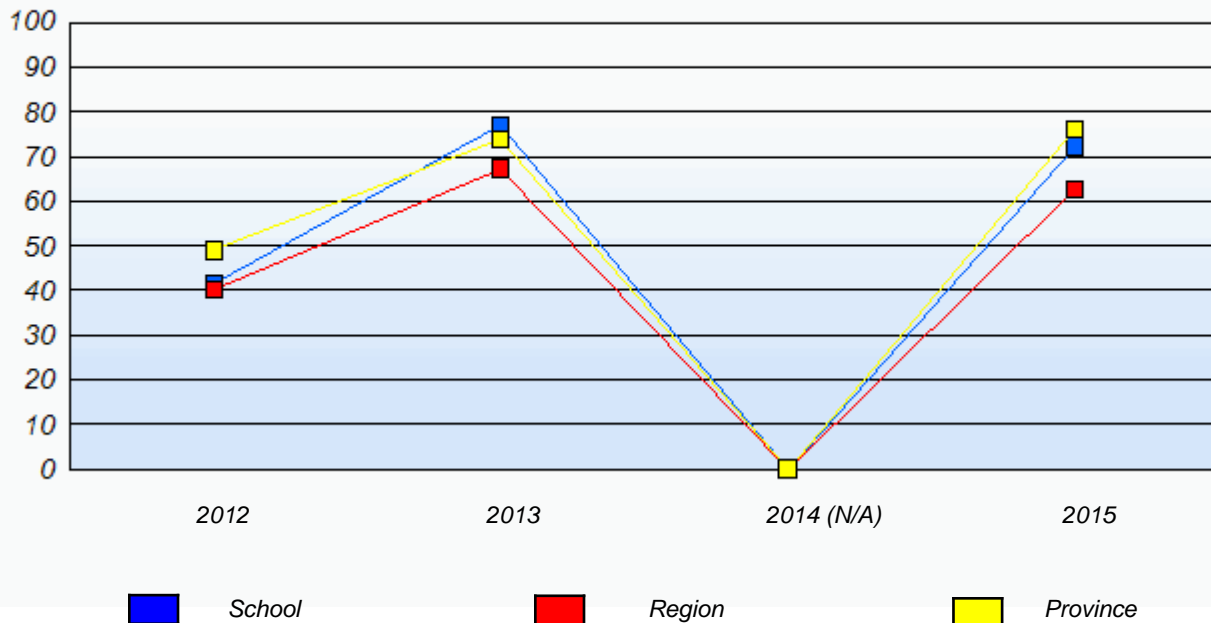
Demand Writing

Percentage of students meeting/exceeding (2012 - 2015)



Reading

Percentage of students meeting/exceeding (2012 - 2015)



* In some cases, Provincial Assessment numbers may exceed AGR numbers based on late enrolments. Pie chart is based on the number of students who wrote the Provincial Assessment.

* Mushuau Innu Natuashish School and Sheshatshiu Innu School are excluded from region and provincial results.

Source: Division of Evaluation and Research, Department of Education and Early Childhood Development