

**Primary English Language Arts  
4 Year Provincial Assessment, June 2015  
Student Population Report**  
(average scores)

District 803 - Private

School #: 373      First Baptist Academy

***Demand Writing***

***School***

***Region***

***Province***

*Creative Writing*

*Persuasive Writing*

*Creative Writing*

*Persuasive Writing*

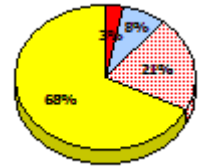
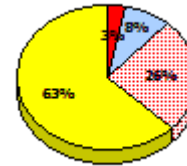
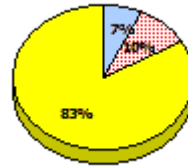
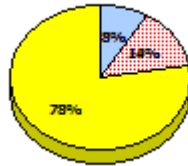
*Creative Writing*

*Persuasive Writing*

**2015**

*School data with 5 or fewer students withheld for reasons of confidentiality.*

Apr 30, 2015 (2)

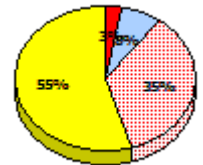
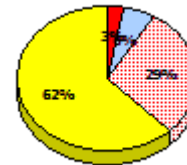
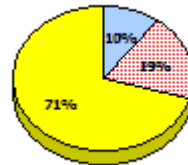
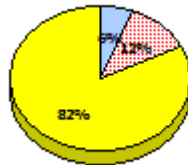


**2014**

N/A

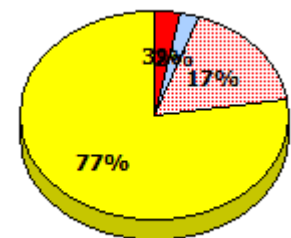
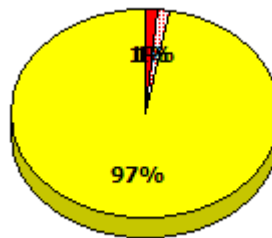
**2013**

Apr 30, 2013 (1)



**2012**

AGR (3)



\* In some cases, Provincial Assessment numbers may exceed AGR numbers based on late enrolments. Pie chart is based on the number of students who wrote the Provincial Assessment.

\* Mushuau Innu Natuashish School and Sheshatshiu Innu School are excluded from region and provincial results.

**Primary English Language Arts  
4 Year Provincial Assessment, June 2015  
Student Population Report**  
(average scores)

District 803 - Private

School #: 373      First Baptist Academy

**Reading**

**School**

**Region**

**Province**

*Non - Fiction*

*Fiction*

*Non - Fiction*

*Fiction*

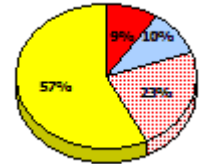
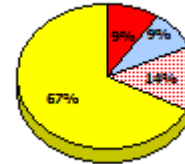
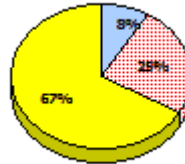
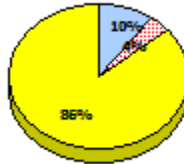
*Non - Fiction*

*Fiction*

**2015**

*School data with 5 or fewer students withheld for reasons of confidentiality.*

Apr 30, 2015 (2)

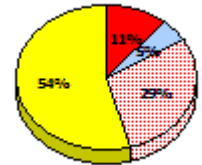
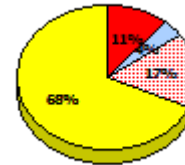
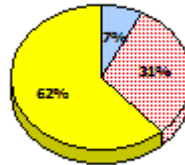


**2014**

N/A

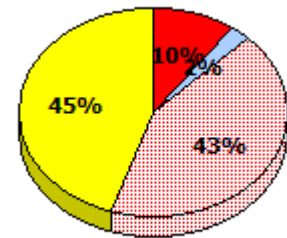
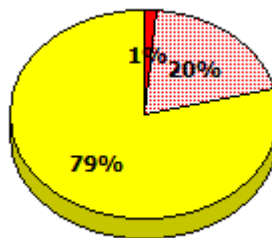
**2013**

Apr 30, 2013 (1)



**2012**

AGR (3)



\* In some cases, Provincial Assessment numbers may exceed AGR numbers based on late enrolments. Pie chart is based on the number of students who wrote the Provincial Assessment.

\* Mushuau Innu Natuashish School and Sheshatshiu Innu School are excluded from region and provincial results.

**Primary English Language Arts**  
**4 Year Provincial Assessment, June 2015**  
**Student Population Report**  
 (average scores)

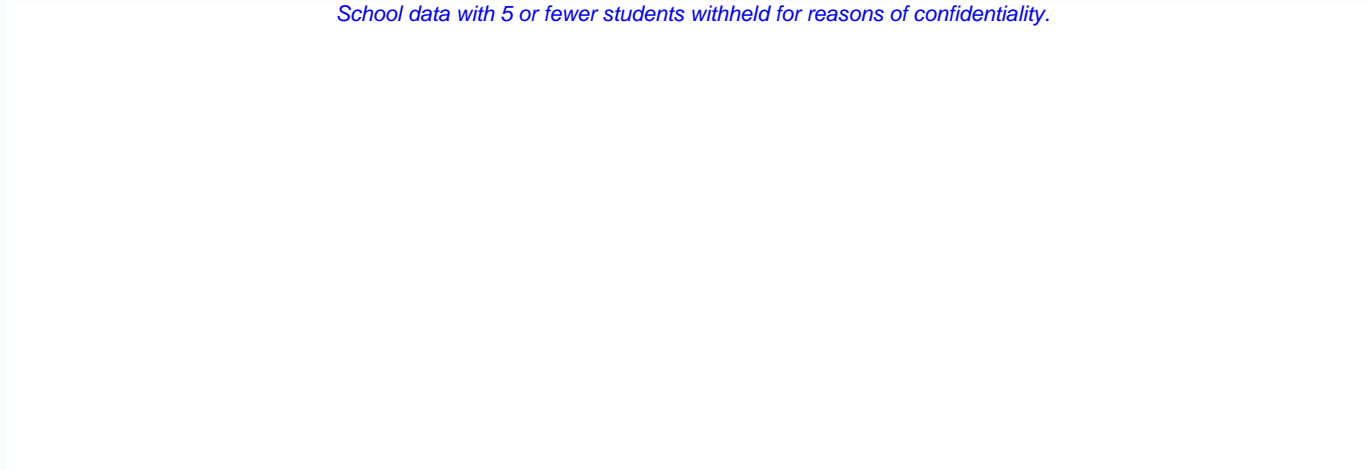
District 803 - Private

School #: 373      First Baptist Academy

**Demand Writing**

*Percentage of students meeting/exceeding (2012 - 2015)*

*School data with 5 or fewer students withheld for reasons of confidentiality.*



2012

2013

2014 (N/A)

2015



School



Region

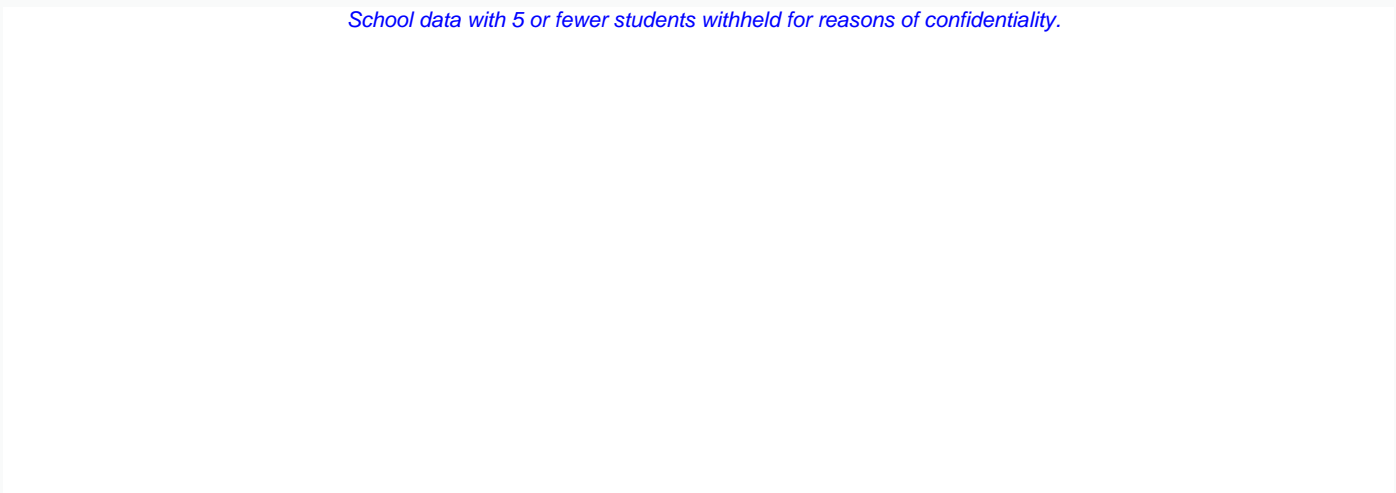


Province

**Reading**

*Percentage of students meeting/exceeding (2012 - 2015)*

*School data with 5 or fewer students withheld for reasons of confidentiality.*



2012

2013

2014 (N/A)

2015



School



Region



Province

\* In some cases, Provincial Assessment numbers may exceed AGR numbers based on late enrolments. Pie chart is based on the number of students who wrote the Provincial Assessment.

\* Mushuau Innu Natuashish School and Sheshatshiu Innu School are excluded from region and provincial results.

**Primary English Language Arts  
4 Year Provincial Assessment, June 2015  
Student Population Report**  
(average scores)

District 803 - Private

School #: 375 Lakecrest-St. John's Independent School

***Demand Writing***

***School***

***Region***

***Province***

*Creative Writing*

*Persuasive Writing*

*Creative Writing*

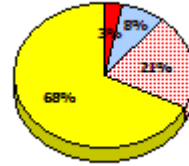
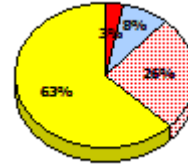
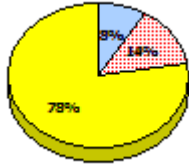
*Persuasive Writing*

*Creative Writing*

*Persuasive Writing*

**2015**

Apr 30, 2015 (21)

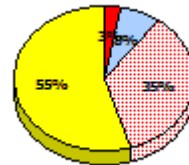
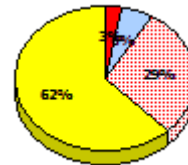
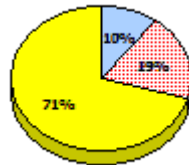
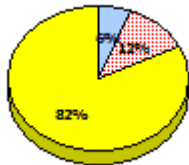
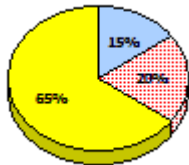
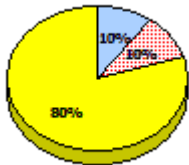


**2014**

N/A

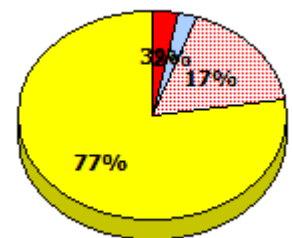
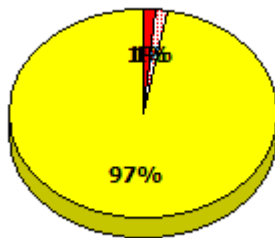
**2013**

Apr 30, 2013 (20)



**2012**

AGR (20)



\* In some cases, Provincial Assessment numbers may exceed AGR numbers based on late enrolments. Pie chart is based on the number of students who wrote the Provincial Assessment.

\* Mushuau Innu Natuashish School and Sheshatshiu Innu School are excluded from region and provincial results.

**Primary English Language Arts  
4 Year Provincial Assessment, June 2015  
Student Population Report  
(average scores)**

District 803 - Private

School #: 375 Lakecrest-St. John's Independent School

**Reading**

**School**

**Region**

**Province**

*Non - Fiction*

*Fiction*

*Non - Fiction*

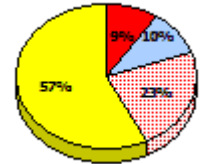
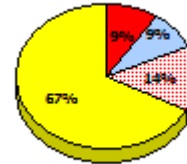
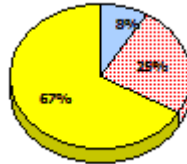
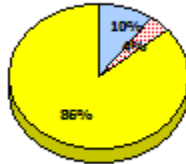
*Fiction*

*Non - Fiction*

*Fiction*

**2015**

Apr 30,  
2015 (21)

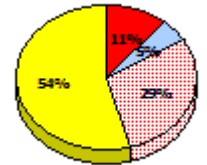
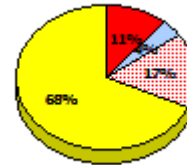
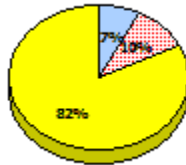
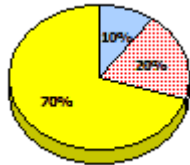
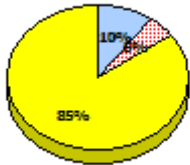


**2014**

N/A

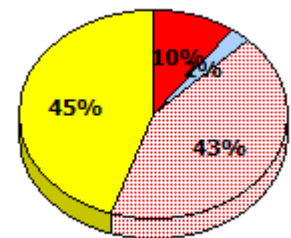
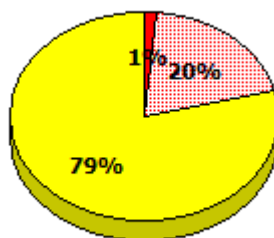
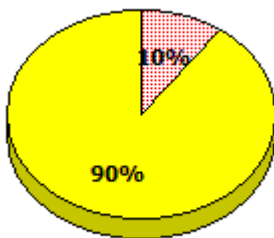
**2013**

Apr 30,  
2013 (20)



**2012**

AGR (20)



\* In some cases, Provincial Assessment numbers may exceed AGR numbers based on late enrolments. Pie chart is based on the number of students who wrote the Provincial Assessment.

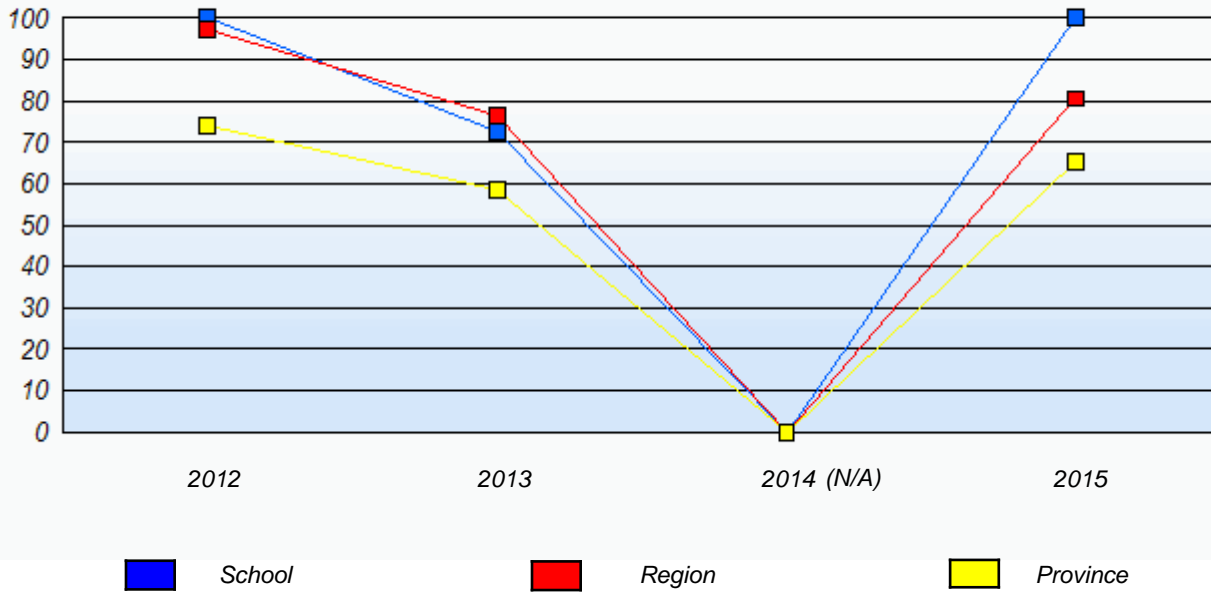
\* Mushuau Innu Natuashish School and Sheshatshiu Innu School are excluded from region and provincial results.

**Primary English Language Arts  
4 Year Provincial Assessment, June 2015  
Student Population Report**  
(average scores)

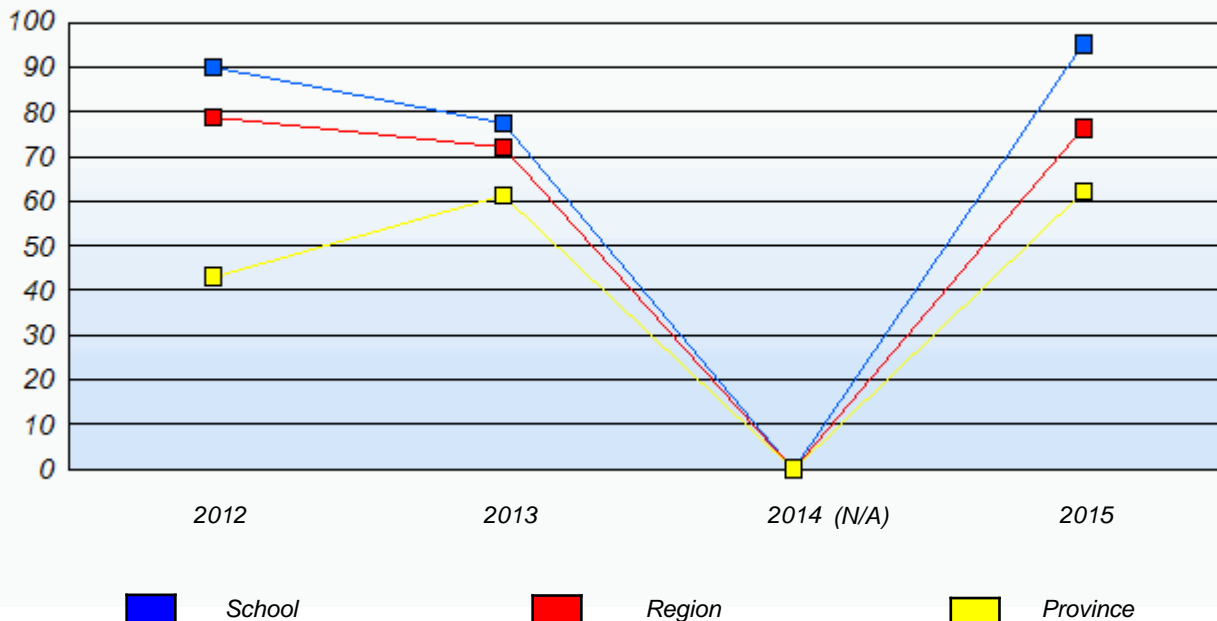
District 803 - Private

School #: 375 Lakecrest-St. John's Independent School

**Demand Writing**  
Percentage of students meeting/exceeding (2012 - 2015)



**Reading**  
Percentage of students meeting/exceeding (2012 - 2015)



\* In some cases, Provincial Assessment numbers may exceed AGR numbers based on late enrolments. Pie chart is based on the number of students who wrote the Provincial Assessment.

\* Mushuau Innu Natuashish School and Sheshatshiu Innu School are excluded from region and provincial results.

District 803 - Private

School #: 450 St. Bonaventure's College

***Demand Writing***

***School***

***Region***

***Province***

*Creative Writing*

*Persuasive Writing*

*Creative Writing*

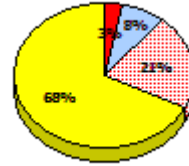
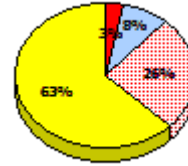
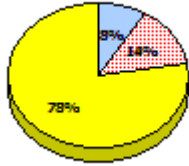
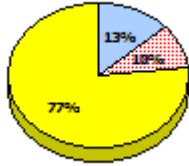
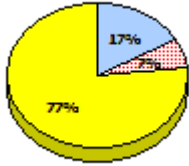
*Persuasive Writing*

*Creative Writing*

*Persuasive Writing*

**2015**

Apr 30, 2015 (30)

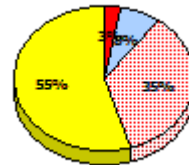
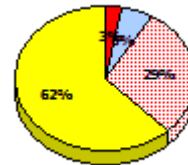
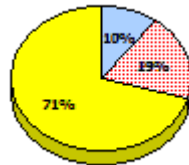
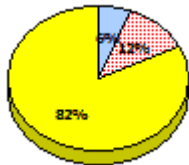
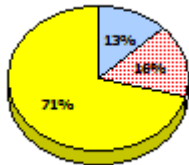
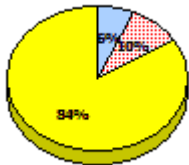


**2014**

N/A

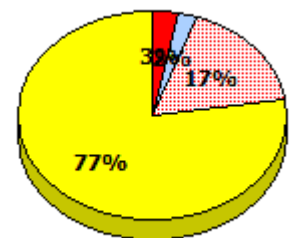
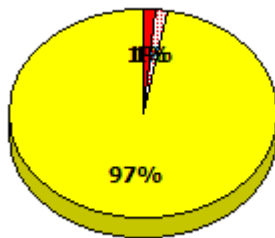
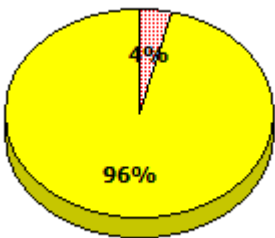
**2013**

Apr 30, 2013 (31)



**2012**

AGR (26)



\* In some cases, Provincial Assessment numbers may exceed AGR numbers based on late enrolments. Pie chart is based on the number of students who wrote the Provincial Assessment.

\* Mushuau Innu Natuashish School and Sheshatshiu Innu School are excluded from region and provincial results.

District 803 - Private

School #: 450 St. Bonaventure's College

**Reading**

**School**

**Region**

**Province**

*Non - Fiction*

*Fiction*

*Non - Fiction*

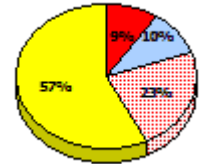
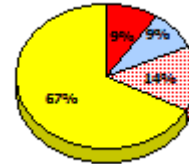
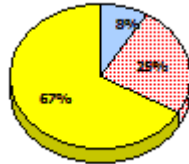
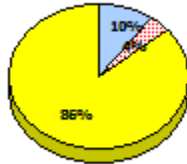
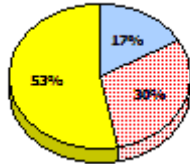
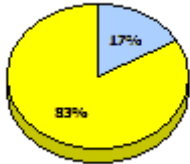
*Fiction*

*Non - Fiction*

*Fiction*

**2015**

Apr 30,  
2015 (30)

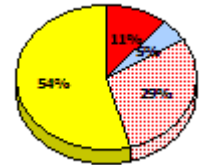
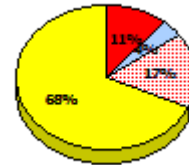
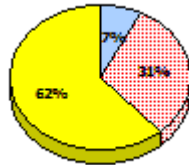
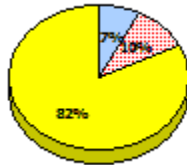
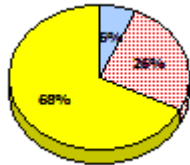
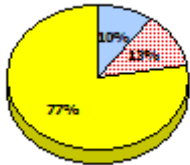


**2014**

N/A

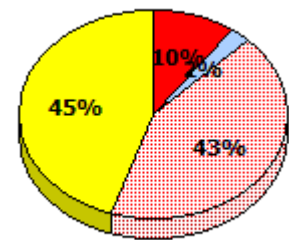
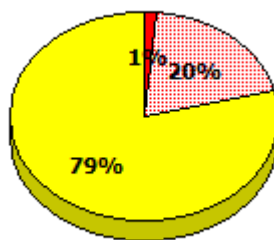
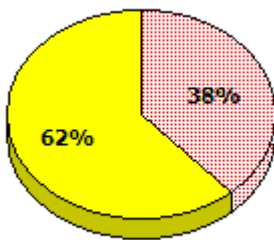
**2013**

Apr 30,  
2013 (31)



**2012**

AGR (26)



Exemption    
  Unknown    
  Not Yet Meeting    
  Meeting or Exceeding

\* In some cases, Provincial Assessment numbers may exceed AGR numbers based on late enrolments. Pie chart is based on the number of students who wrote the Provincial Assessment.

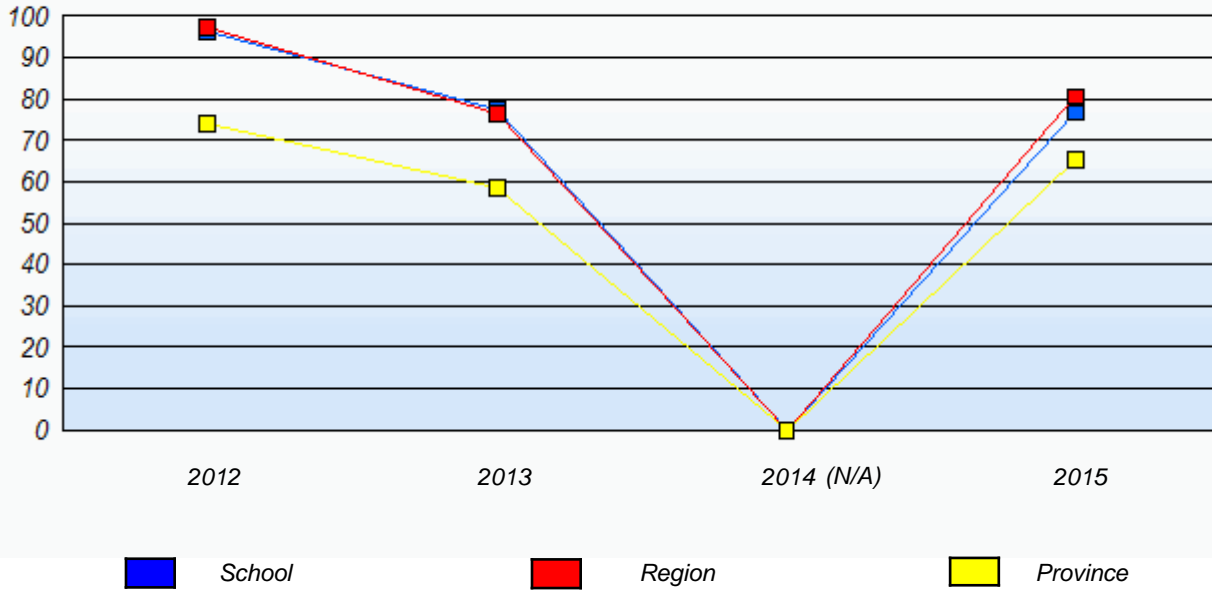
\* Mushuau Innu Natuashish School and Sheshatshiu Innu School are excluded from region and provincial results.



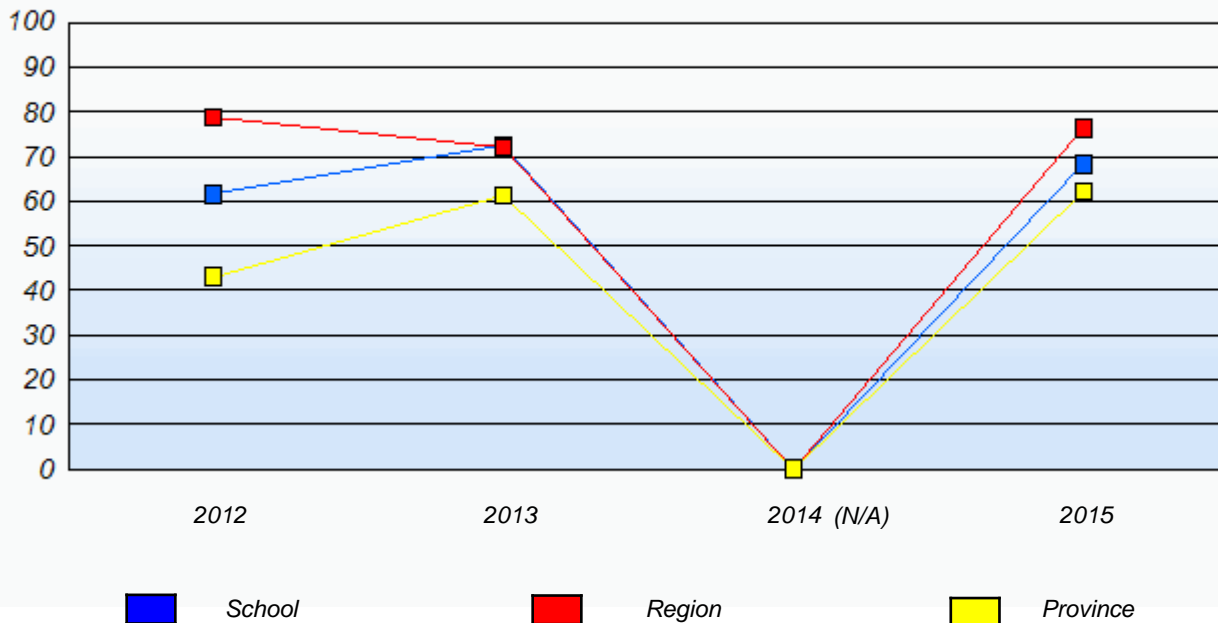
District 803 - Private

School #: 450 St. Bonaventure's College

**Demand Writing**  
Percentage of students meeting/exceeding (2012 - 2015)



**Reading**  
Percentage of students meeting/exceeding (2012 - 2015)



\* In some cases, Provincial Assessment numbers may exceed AGR numbers based on late enrolments. Pie chart is based on the number of students who wrote the Provincial Assessment.

\* Mushuau Innu Natuashish School and Sheshatshiu Innu School are excluded from region and provincial results.

District 803 - Private

School #: 453      Eric G. Lambert All-Grade

***Demand Writing***

***School***

***Region***

***Province***

*Creative Writing*

*Persuasive Writing*

*Creative Writing*

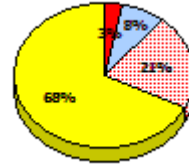
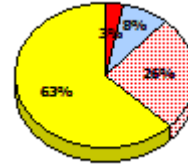
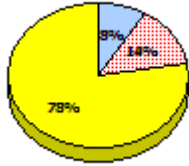
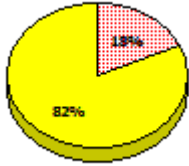
*Persuasive Writing*

*Creative Writing*

*Persuasive Writing*

**2015**

Apr 30, 2015 (11)

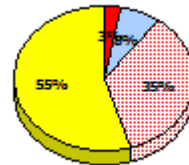
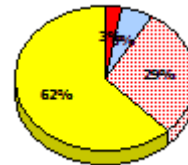
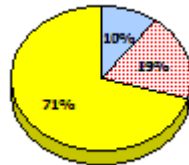
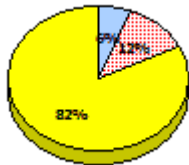


**2014**

N/A

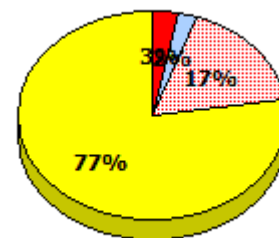
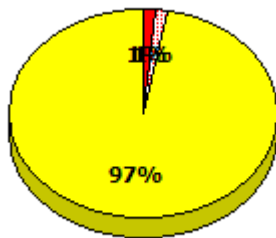
**2013**

Apr 30, 2013 (7)



**2012**

AGR (10)



\* In some cases, Provincial Assessment numbers may exceed AGR numbers based on late enrolments. Pie chart is based on the number of students who wrote the Provincial Assessment.

\* Mushuau Innu Natuashish School and Sheshatshiu Innu School are excluded from region and provincial results.

**Primary English Language Arts  
4 Year Provincial Assessment, June 2015  
Student Population Report**  
(average scores)

District 803 - Private

School #: 453 Eric G. Lambert All-Grade

**Reading**

**School**

**Region**

**Province**

*Non - Fiction*

*Fiction*

*Non - Fiction*

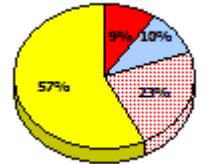
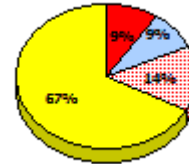
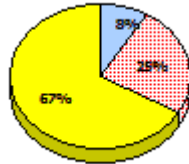
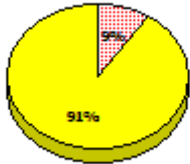
*Fiction*

*Non - Fiction*

*Fiction*

**2015**

Apr 30,  
2015 (11)

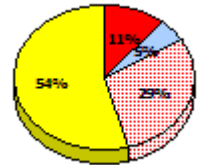
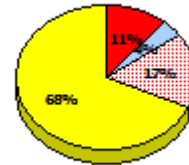
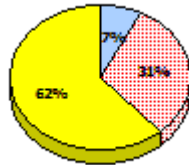
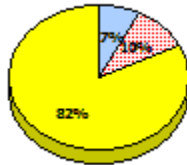
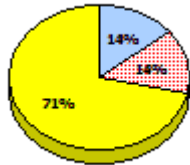


**2014**

N/A

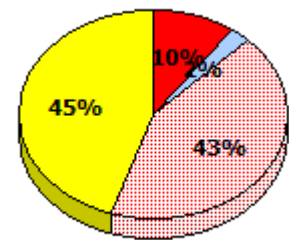
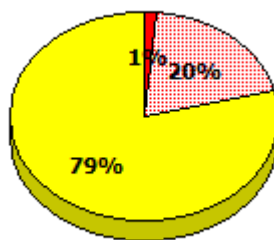
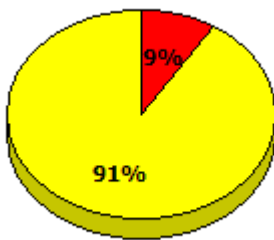
**2013**

Apr 30,  
2013 (7)



**2012**

AGR (10)



Exemption    
  Unknown    
  Not Yet Meeting    
  Meeting or Exceeding

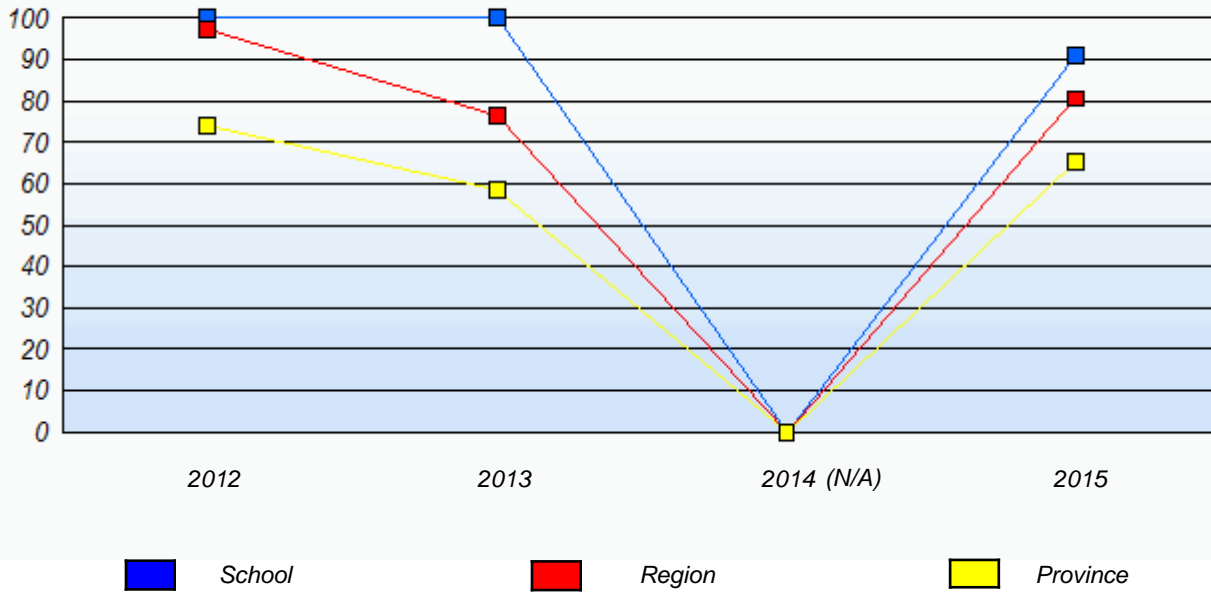
\* In some cases, Provincial Assessment numbers may exceed AGR numbers based on late enrolments. Pie chart is based on the number of students who wrote the Provincial Assessment.

\* Mushuau Innu Natuashish School and Sheshatshiu Innu School are excluded from region and provincial results.

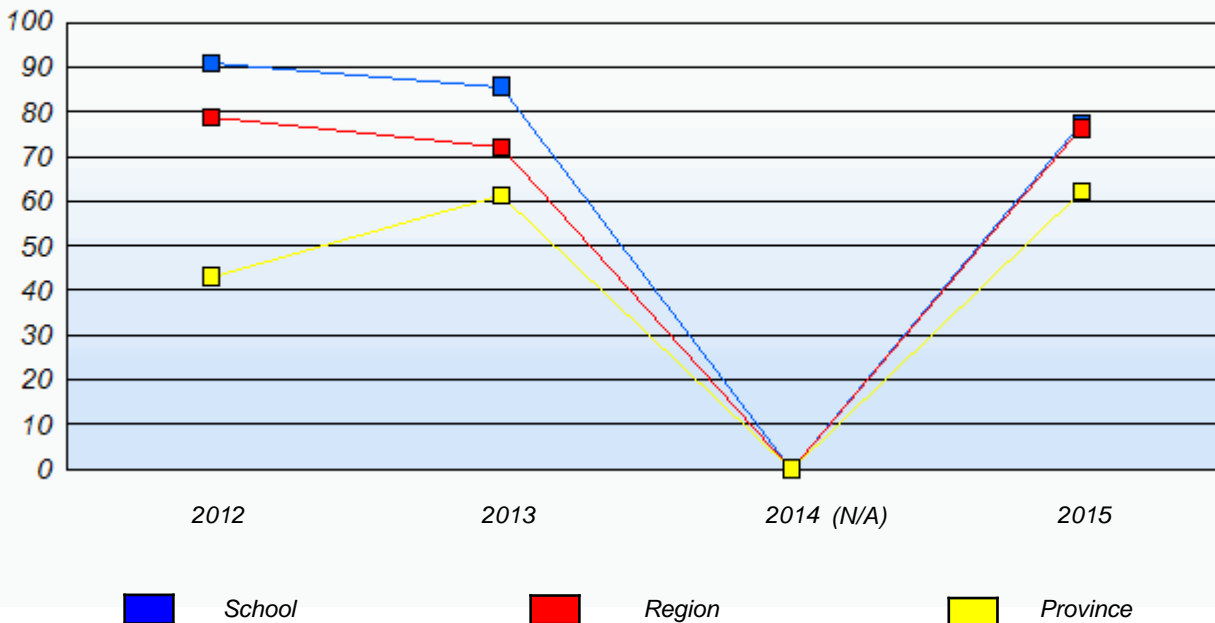
District 803 - Private

School #: 453      Eric G. Lambert All-Grade

**Demand Writing**  
Percentage of students meeting/exceeding (2012 - 2015)



**Reading**  
Percentage of students meeting/exceeding (2012 - 2015)



\* In some cases, Provincial Assessment numbers may exceed AGR numbers based on late enrolments. Pie chart is based on the number of students who wrote the Provincial Assessment.

\* Mushuau Innu Natuashish School and Sheshatshiu Innu School are excluded from region and provincial results.

District 803 - Private

School #: 469      Immaculate Heart of Mary School

***Demand Writing***

***School***

***Region***

***Province***

*Creative Writing*

*Persuasive Writing*

*Creative Writing*

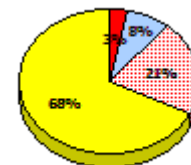
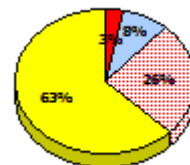
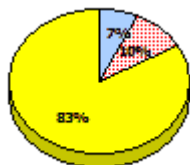
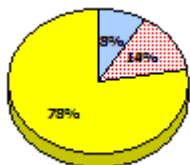
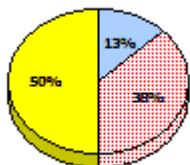
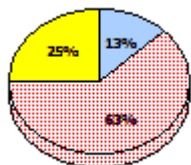
*Persuasive Writing*

*Creative Writing*

*Persuasive Writing*

**2015**

Apr 30, 2015 (8)

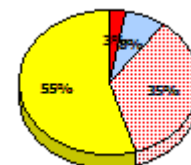
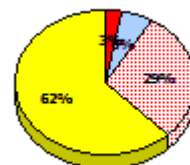
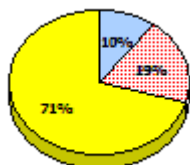
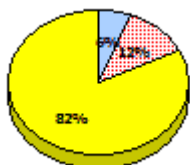
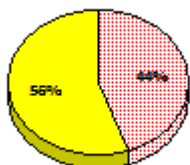
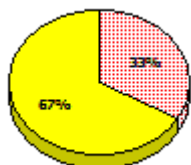


**2014**

N/A

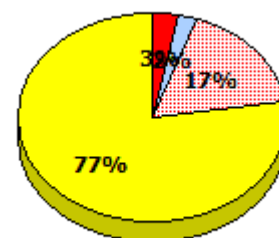
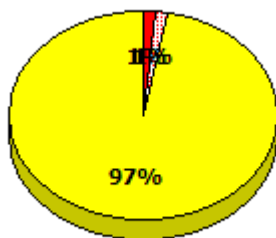
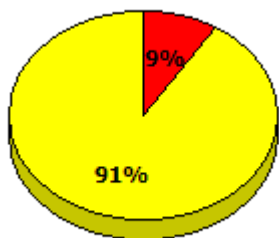
**2013**

Apr 30, 2013 (9)



**2012**

AGR (11)



\* In some cases, Provincial Assessment numbers may exceed AGR numbers based on late enrolments. Pie chart is based on the number of students who wrote the Provincial Assessment.

\* Mushuau Innu Natuashish School and Sheshatshiu Innu School are excluded from region and provincial results.

District 803 - Private

School #: 469 Immaculate Heart of Mary School

**Reading**

**School**

**Region**

**Province**

*Non - Fiction*

*Fiction*

*Non - Fiction*

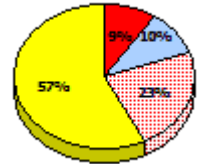
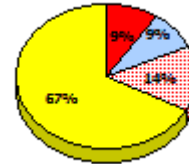
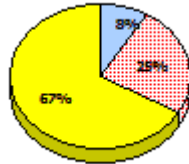
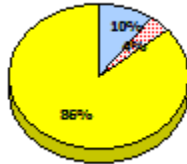
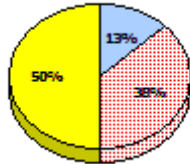
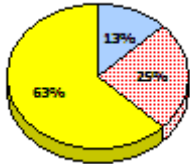
*Fiction*

*Non - Fiction*

*Fiction*

**2015**

Apr 30,  
2015 (8)

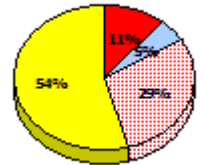
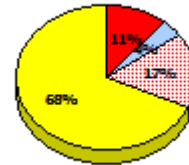
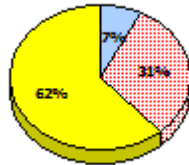
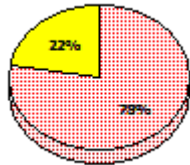
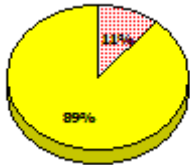


**2014**

N/A

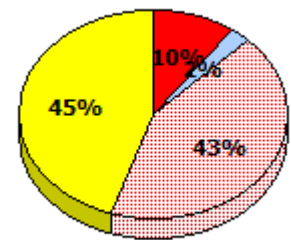
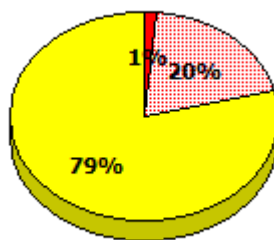
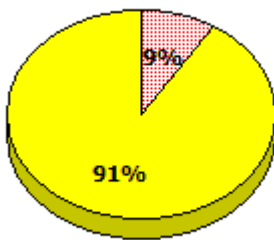
**2013**

Apr 30,  
2013 (9)



**2012**

AGR (11)



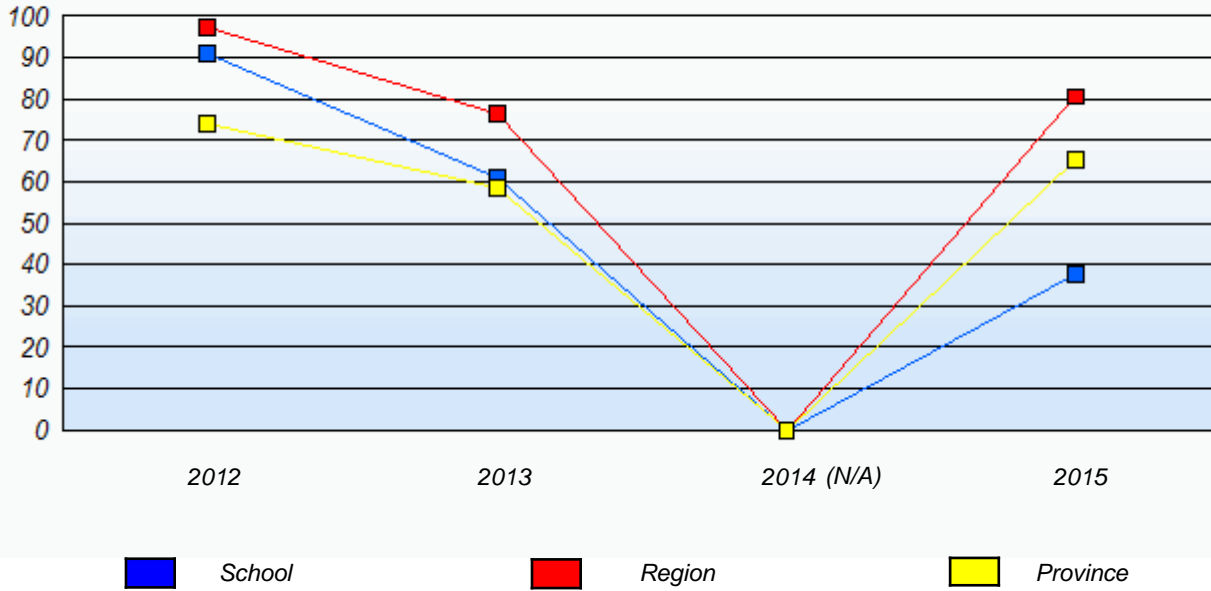
\* In some cases, Provincial Assessment numbers may exceed AGR numbers based on late enrolments. Pie chart is based on the number of students who wrote the Provincial Assessment.

\* Mushuau Innu Natuashish School and Sheshatshiu Innu School are excluded from region and provincial results.

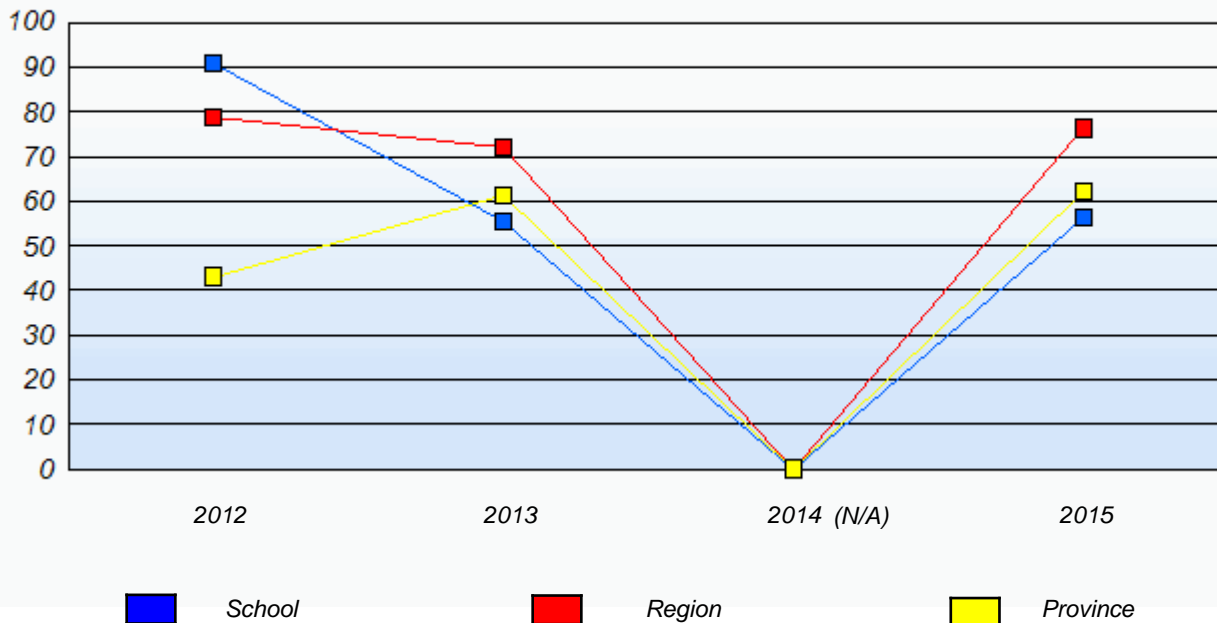
District 803 - Private

School #: 469 Immaculate Heart of Mary School

**Demand Writing**  
Percentage of students meeting/exceeding (2012 - 2015)



**Reading**  
Percentage of students meeting/exceeding (2012 - 2015)



\* In some cases, Provincial Assessment numbers may exceed AGR numbers based on late enrolments. Pie chart is based on the number of students who wrote the Provincial Assessment.

\* Mushuau Innu Natuashish School and Sheshatshiu Innu School are excluded from region and provincial results.

District 804 - Native Federal

School #: 018 Sheshatshiu Innu School

***Demand Writing***

***School***

***Region***

***Province***

*Creative Writing*

*Persuasive Writing*

*Creative Writing*

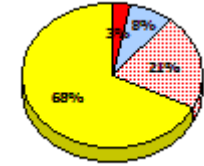
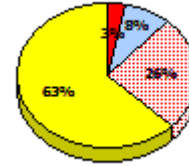
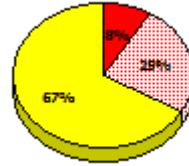
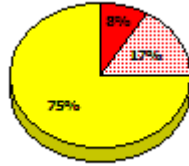
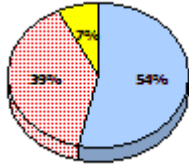
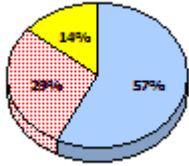
*Persuasive Writing*

*Creative Writing*

*Persuasive Writing*

**2015**

Apr 30, 2015 (28)

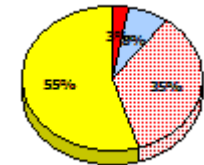
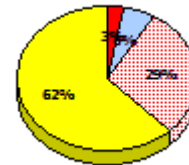
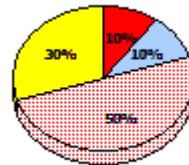
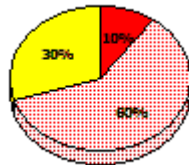
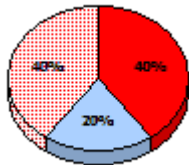
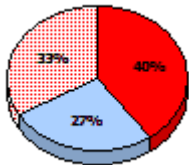


**2014**

N/A

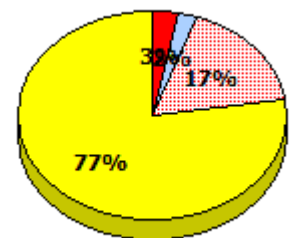
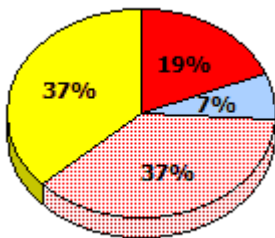
**2013**

Apr 30, 2013 (15)



**2012**

AGR (27)



\* In some cases, Provincial Assessment numbers may exceed AGR numbers based on late enrolments. Pie chart is based on the number of students who wrote the Provincial Assessment.

\* Mushuau Innu Natuashish School and Sheshatshiu Innu School are excluded from region and provincial results.



District 804 - Native Federal

School #: 018 Sheshatshiu Innu School

**Reading**

**School**

**Region**

**Province**

*Non - Fiction*

*Fiction*

*Non - Fiction*

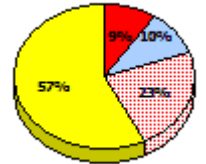
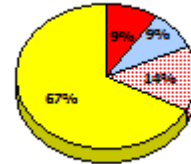
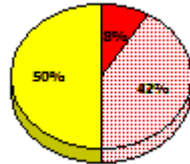
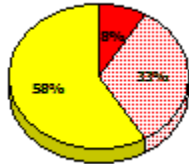
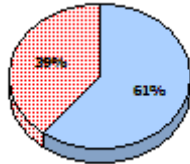
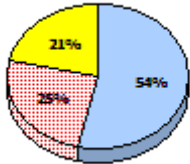
*Fiction*

*Non - Fiction*

*Fiction*

**2015**

Apr 30,  
2015 (28)

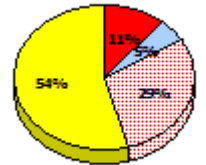
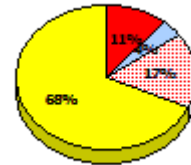
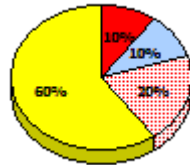
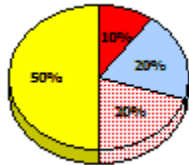
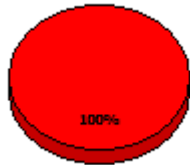
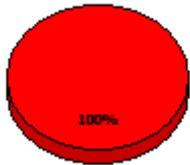


**2014**

N/A

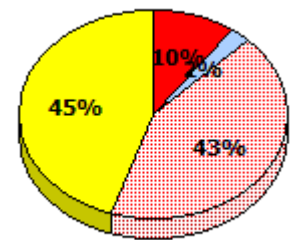
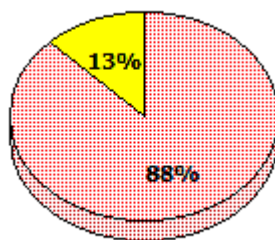
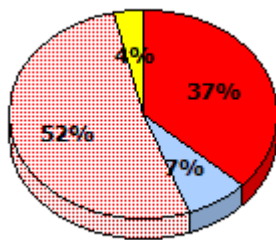
**2013**

Apr 30,  
2013 (15)



**2012**

AGR (27)



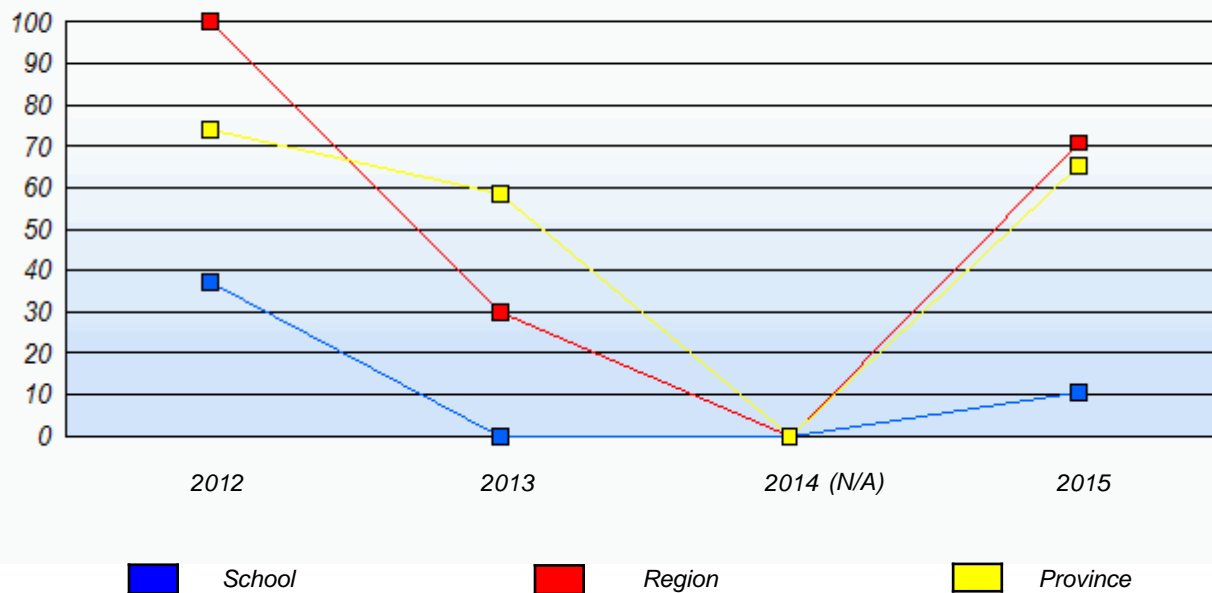
\* In some cases, Provincial Assessment numbers may exceed AGR numbers based on late enrolments. Pie chart is based on the number of students who wrote the Provincial Assessment.

\* Mushuau Innu Natuashish School and Sheshatshiu Innu School are excluded from region and provincial results.

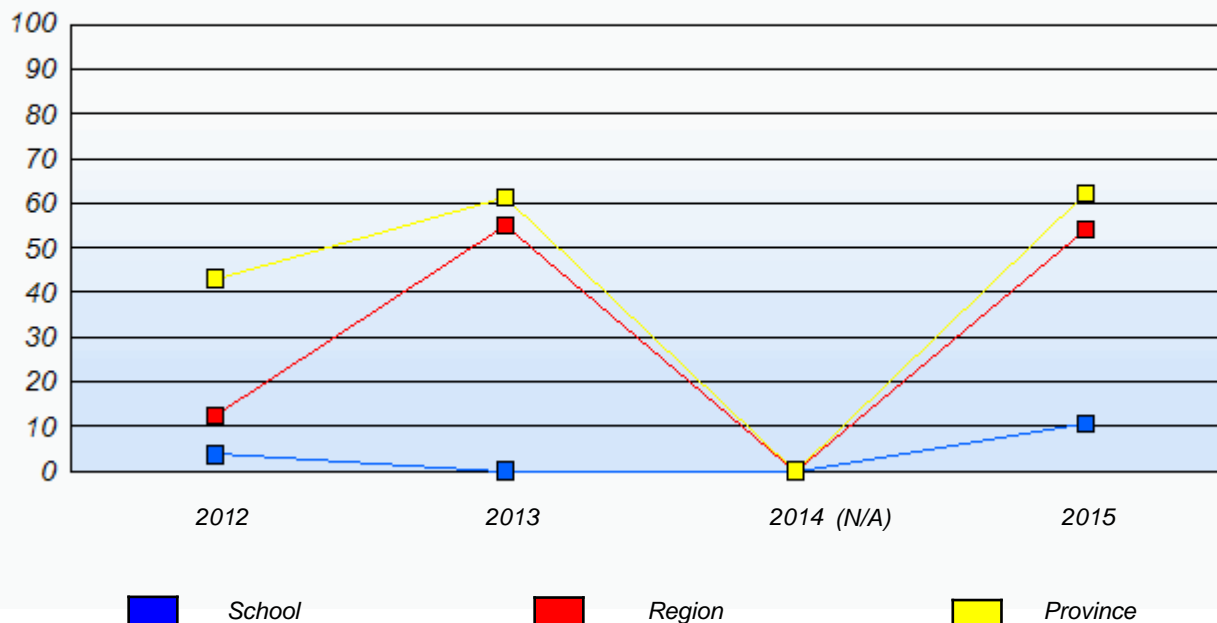
District 804 - Native Federal

School #: 018      Sheshatshiu Innu School

**Demand Writing**  
 Percentage of students meeting/exceeding (2012 - 2015)



**Reading**  
 Percentage of students meeting/exceeding (2012 - 2015)



\* In some cases, Provincial Assessment numbers may exceed AGR numbers based on late enrolments. Pie chart is based on the number of students who wrote the Provincial Assessment.

\* Mushuau Innu Natuashish School and Sheshatshiu Innu School are excluded from region and provincial results.

District 804 - Native Federal

School #: 019      Mushuau Innu Natuashish School

***Demand Writing***

***School***

***Region***

***Province***

*Creative Writing*

*Persuasive Writing*

*Creative Writing*

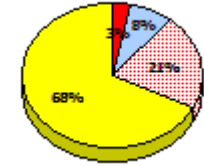
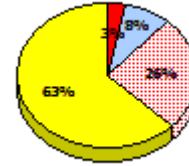
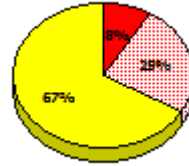
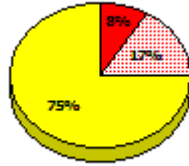
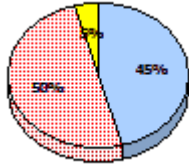
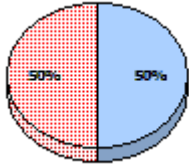
*Persuasive Writing*

*Creative Writing*

*Persuasive Writing*

**2015**

Apr 30, 2015 (22)

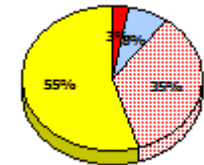
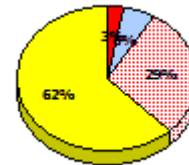
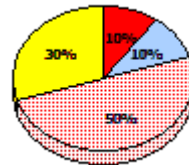
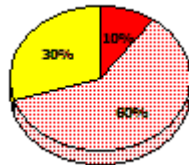
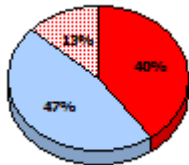
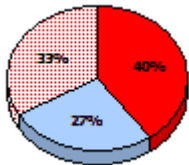


**2014**

N/A

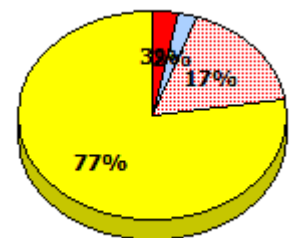
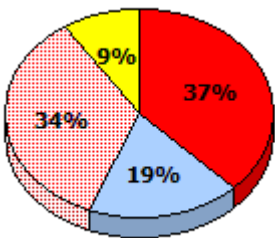
**2013**

Apr 30, 2013 (15)



**2012**

AGR (32)



\* In some cases, Provincial Assessment numbers may exceed AGR numbers based on late enrolments. Pie chart is based on the number of students who wrote the Provincial Assessment.

\* Mushuau Innu Natuashish School and Sheshatshiu Innu School are excluded from region and provincial results.

District 804 - Native Federal

School #: 019      Mushuau Innu Natuashish School

**Reading**

**School**

**Region**

**Province**

*Non - Fiction*

*Fiction*

*Non - Fiction*

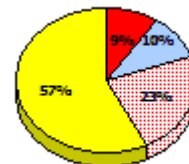
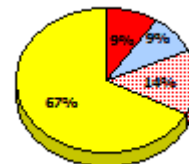
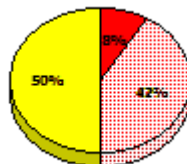
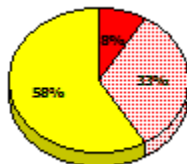
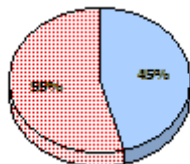
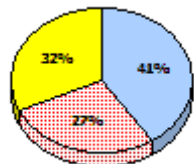
*Fiction*

*Non - Fiction*

*Fiction*

**2015**

Apr 30,  
2015 (22)

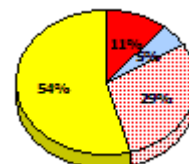
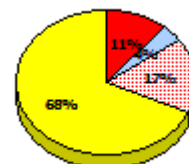
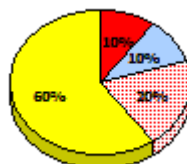
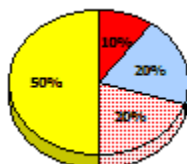
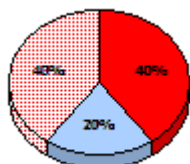
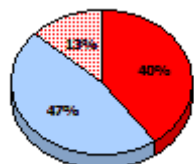


**2014**

N/A

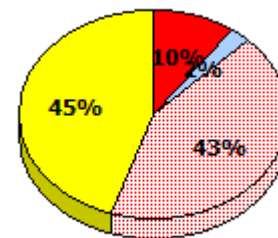
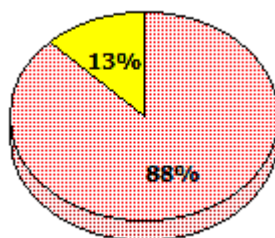
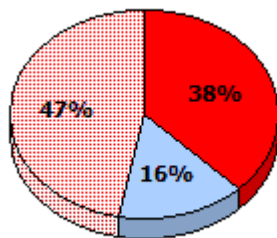
**2013**

Apr 30,  
2013 (15)



**2012**

AGR (32)



\* In some cases, Provincial Assessment numbers may exceed AGR numbers based on late enrolments. Pie chart is based on the number of students who wrote the Provincial Assessment.

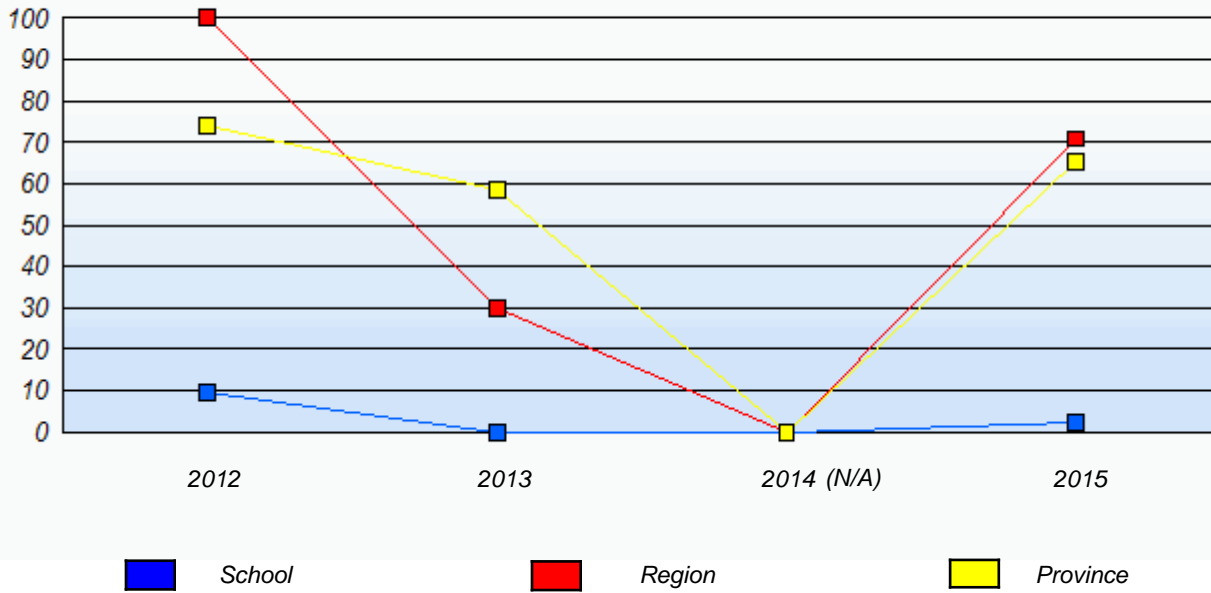
\* Mushuau Innu Natuashish School and Sheshatshiu Innu School are excluded from region and provincial results.

**Primary English Language Arts  
4 Year Provincial Assessment, June 2015  
Student Population Report**  
(average scores)

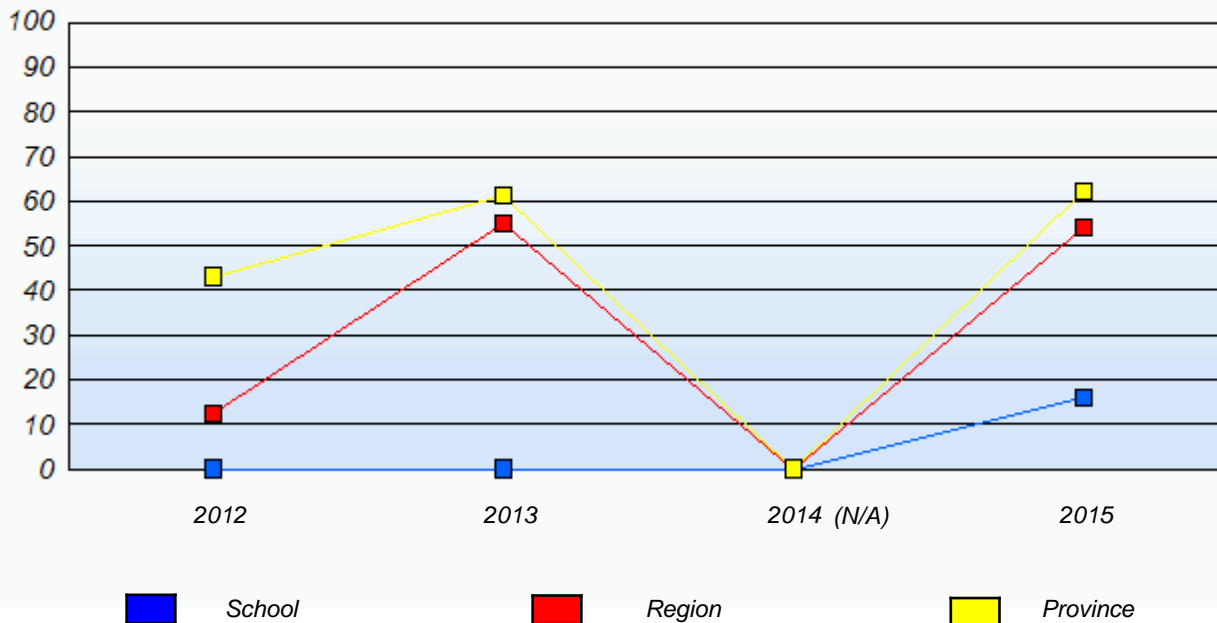
District 804 - Native Federal

School #: 019      Mushuau Innu Natuashish School

**Demand Writing**  
Percentage of students meeting/exceeding (2012 - 2015)



**Reading**  
Percentage of students meeting/exceeding (2012 - 2015)



\* In some cases, Provincial Assessment numbers may exceed AGR numbers based on late enrolments. Pie chart is based on the number of students who wrote the Provincial Assessment.

\* Mushuau Innu Natuashish School and Sheshatshiu Innu School are excluded from region and provincial results.

District 804 - Native Federal

School #: 376      Se't Anneway Kegnamogwom

***Demand Writing***

***School***

***Region***

***Province***

*Creative Writing*

*Persuasive Writing*

*Creative Writing*

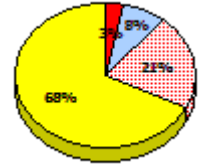
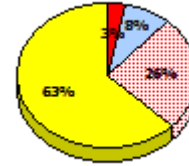
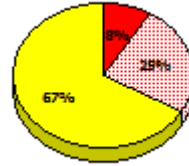
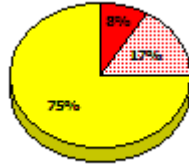
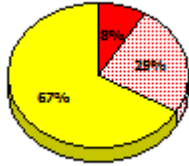
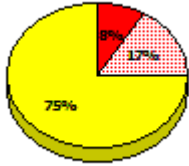
*Persuasive Writing*

*Creative Writing*

*Persuasive Writing*

**2015**

Apr 30, 2015 (12)

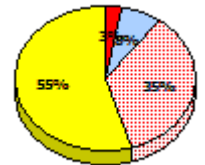
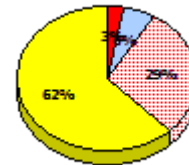
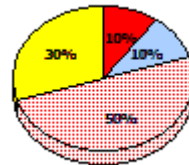
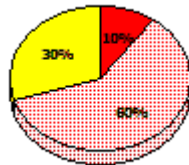
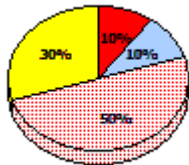
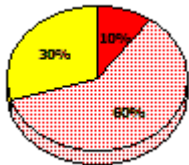


**2014**

N/A

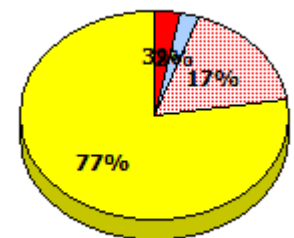
**2013**

Apr 30, 2013 (10)



**2012**

AGR (8)



\* In some cases, Provincial Assessment numbers may exceed AGR numbers based on late enrolments. Pie chart is based on the number of students who wrote the Provincial Assessment.

\* Mushuau Innu Natuashish School and Sheshatshiu Innu School are excluded from region and provincial results.

District 804 - Native Federal

School #: 376      Se't Anneway Kegnamogwom

**Reading**

**School**

**Region**

**Province**

*Non - Fiction*

*Fiction*

*Non - Fiction*

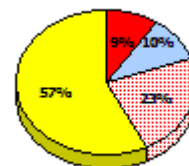
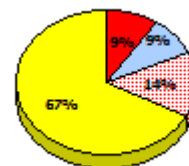
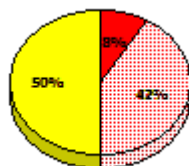
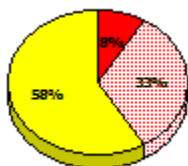
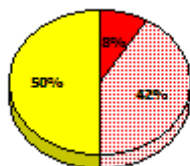
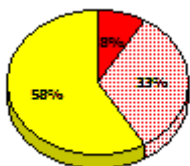
*Fiction*

*Non - Fiction*

*Fiction*

**2015**

Apr 30,  
2015 (12)

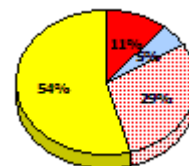
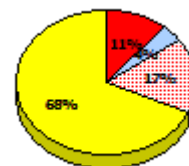
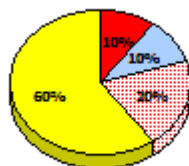
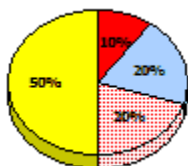
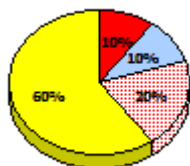
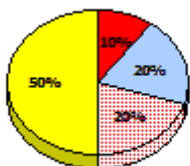


**2014**

N/A

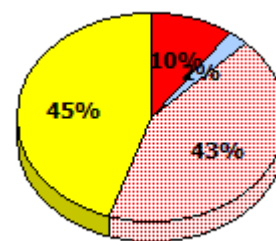
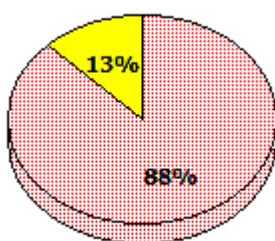
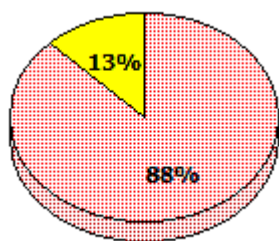
**2013**

Apr 30,  
2013 (10)



**2012**

AGR (8)



*Exemption*     
  *Unknown*     
  *Not Yet Meeting*     
  *Meeting or Exceeding*

\* In some cases, Provincial Assessment numbers may exceed AGR numbers based on late enrolments. Pie chart is based on the number of students who wrote the Provincial Assessment.

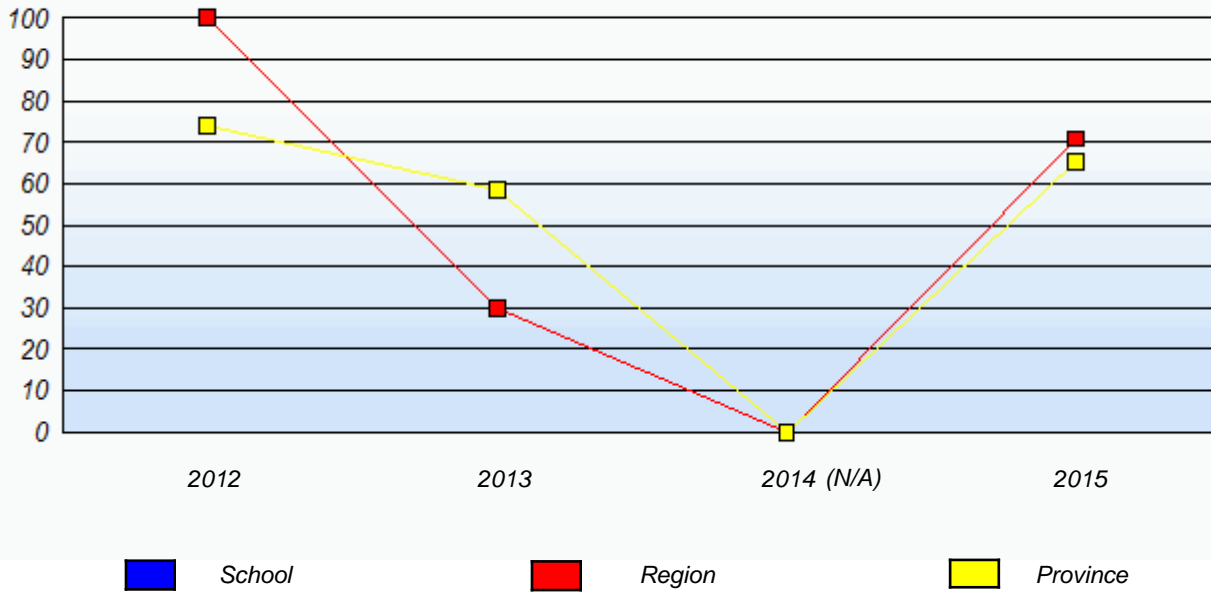
\* Mushuau Innu Natuashish School and Sheshatshiu Innu School are excluded from region and provincial results.

District 804 - Native Federal

School #: 376      Se't Anneway Kegnamogwom

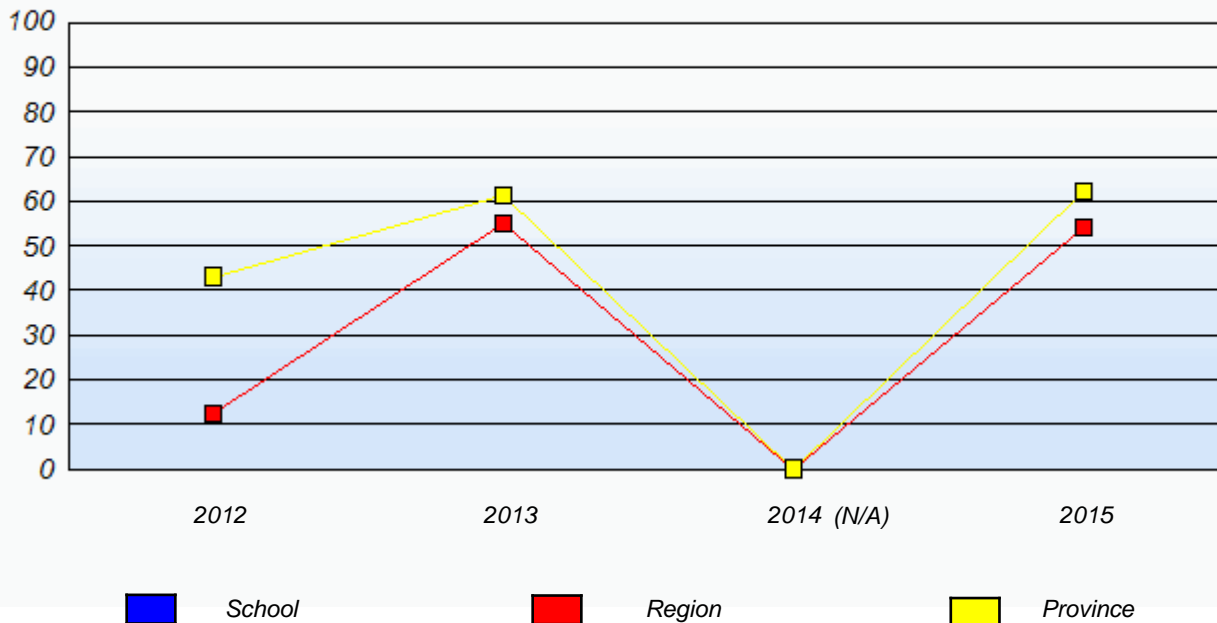
**Demand Writing**

Percentage of students meeting/exceeding (2012 - 2015)



**Reading**

Percentage of students meeting/exceeding (2012 - 2015)



\* In some cases, Provincial Assessment numbers may exceed AGR numbers based on late enrolments. Pie chart is based on the number of students who wrote the Provincial Assessment.

\* Mushuau Innu Natuashish School and Sheshatshiu Innu School are excluded from region and provincial results.