

NLESD - Labrador Region

School #: 002 Henry Gordon Academy

***Demand Writing***

***School***

***Region***

***Province***

*Creative Writing*

*Persuasive Writing*

*Creative Writing*

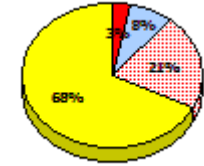
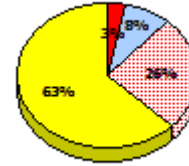
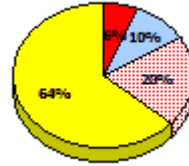
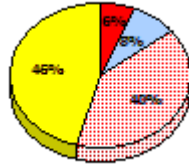
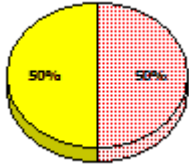
*Persuasive Writing*

*Creative Writing*

*Persuasive Writing*

**2015**

Apr 30, 2015 (5)

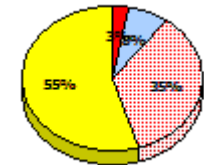
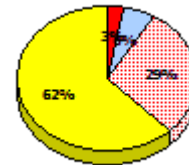
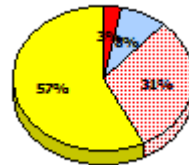
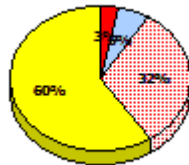
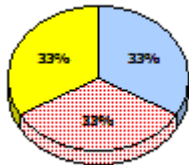


**2014**

N/A

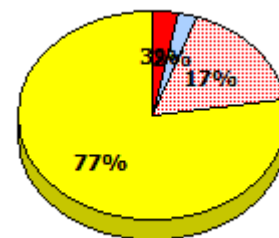
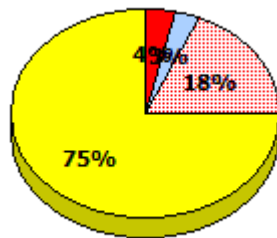
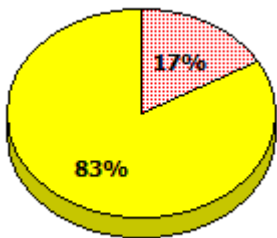
**2013**

Apr 30, 2013 (3)



**2012**

AGR (5)



\* In some cases, Provincial Assessment numbers may exceed AGR numbers based on late enrolments. Pie chart is based on the number of students who wrote the Provincial Assessment.

\* Mushuau Innu Natuashish School and Sheshatshiu Innu School are excluded from region and provincial results.

NLESD - Labrador Region

School #: 002 Henry Gordon Academy

**Reading**

**School**

**Region**

**Province**

*Non - Fiction*

*Fiction*

*Non - Fiction*

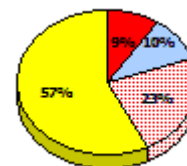
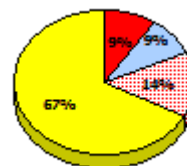
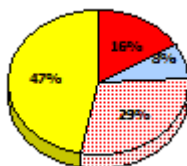
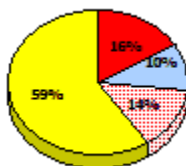
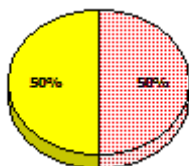
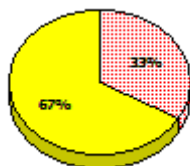
*Fiction*

*Non - Fiction*

*Fiction*

**2015**

Apr 30,  
2015 (5)

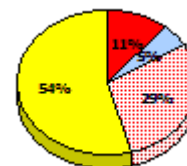
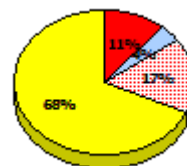
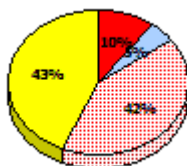
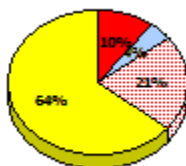


**2014**

N/A

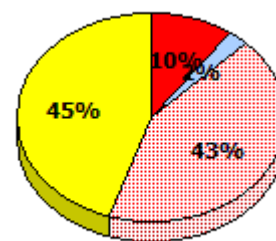
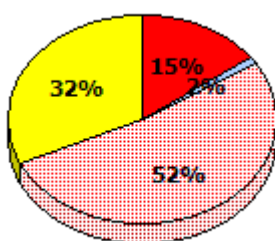
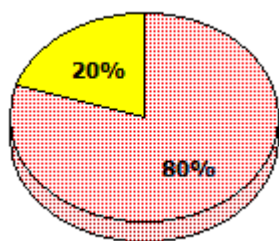
**2013**

Apr 30,  
2013 (3)



**2012**

AGR (5)



Exemption    
  Unknown    
  Not Yet Meeting    
  Meeting or Exceeding

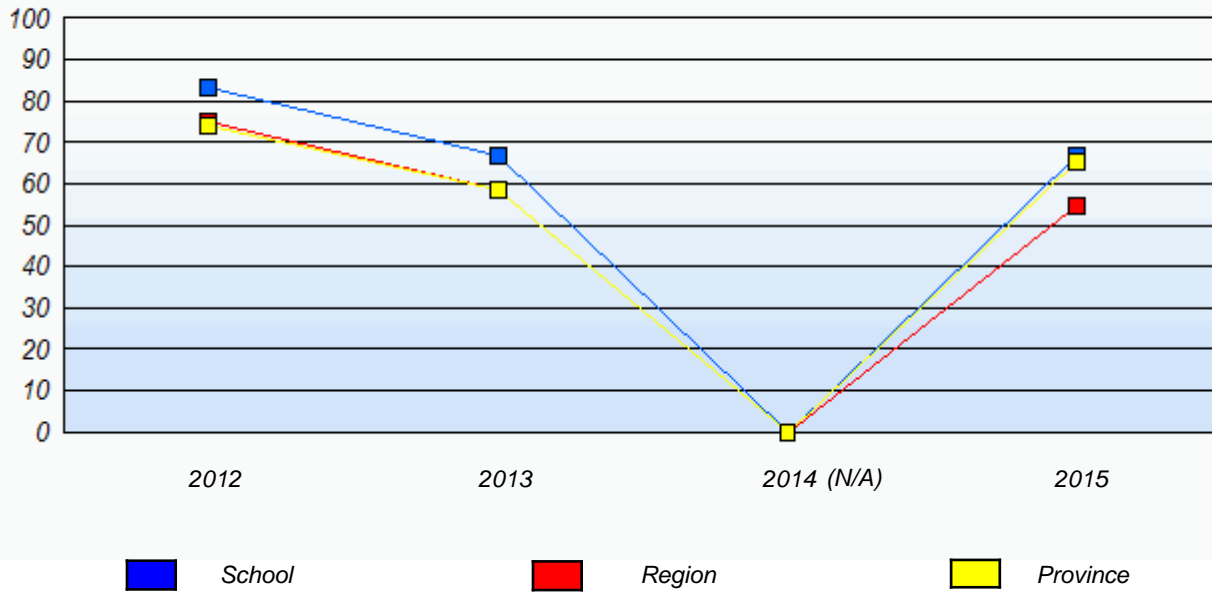
\* In some cases, Provincial Assessment numbers may exceed AGR numbers based on late enrolments. Pie chart is based on the number of students who wrote the Provincial Assessment.

\* Mushuau Innu Natuashish School and Sheshatshiu Innu School are excluded from region and provincial results.

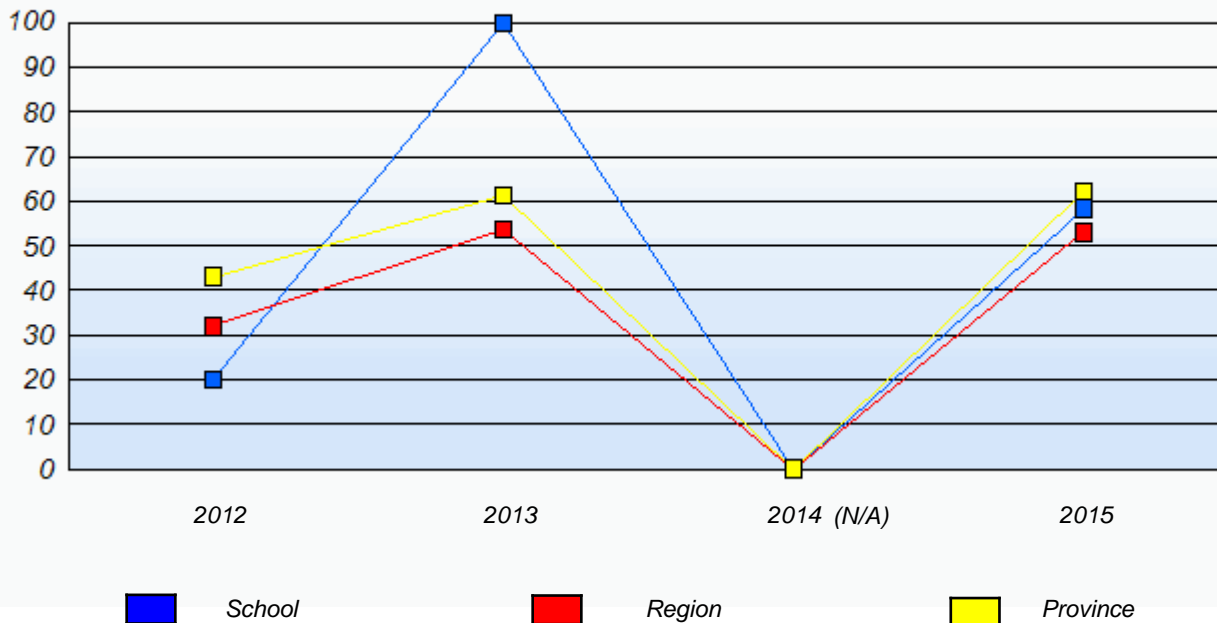
NLESD - Labrador Region

School #: 002 Henry Gordon Academy

**Demand Writing**  
Percentage of students meeting/exceeding (2012 - 2015)



**Reading**  
Percentage of students meeting/exceeding (2012 - 2015)



\* In some cases, Provincial Assessment numbers may exceed AGR numbers based on late enrolments. Pie chart is based on the number of students who wrote the Provincial Assessment.

\* Mushuau Innu Natuashish School and Sheshatshiu Innu School are excluded from region and provincial results.

NLESD - Labrador Region

School #: 005 Peacock Primary School

***Demand Writing***

***School***

***Region***

***Province***

*Creative Writing*

*Persuasive Writing*

*Creative Writing*

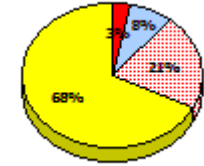
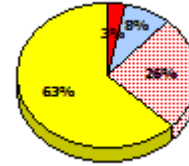
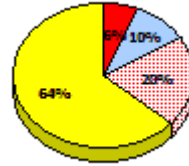
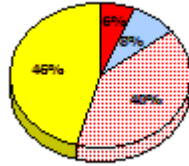
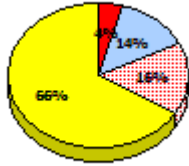
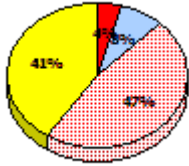
*Persuasive Writing*

*Creative Writing*

*Persuasive Writing*

**2015**

Apr 30, 2015 (74)

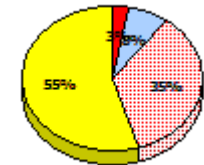
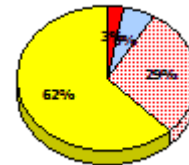
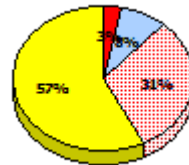
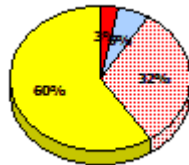
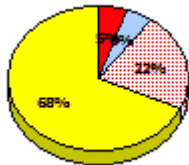
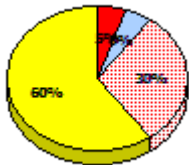


**2014**

N/A

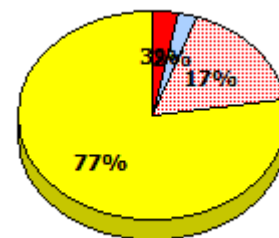
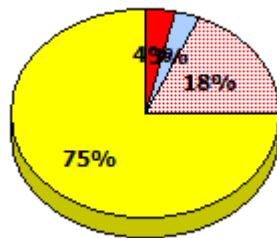
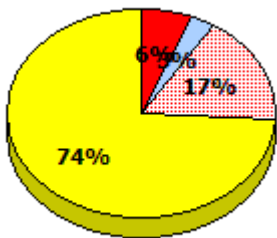
**2013**

Apr 30, 2013 (82)



**2012**

AGR (66)



\* In some cases, Provincial Assessment numbers may exceed AGR numbers based on late enrolments. Pie chart is based on the number of students who wrote the Provincial Assessment.

\* Mushuau Innu Natuashish School and Sheshatshiu Innu School are excluded from region and provincial results.

NLESD - Labrador Region

School #: 005 Peacock Primary School

**Reading**

**School**

**Region**

**Province**

*Non - Fiction*

*Fiction*

*Non - Fiction*

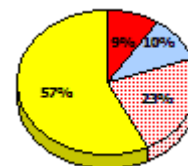
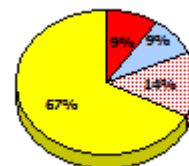
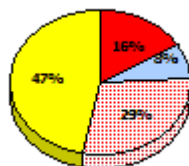
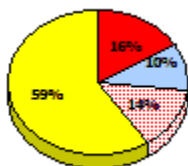
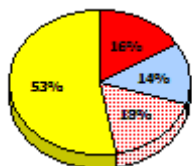
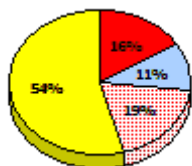
*Fiction*

*Non - Fiction*

*Fiction*

**2015**

Apr 30,  
2015 (74)

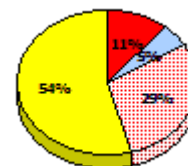
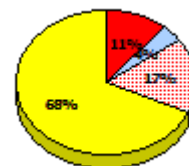
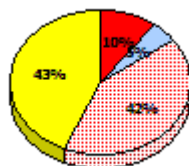
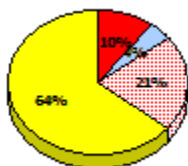
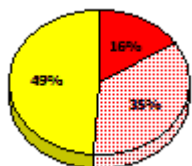
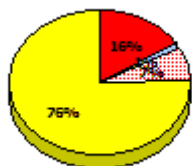


**2014**

N/A

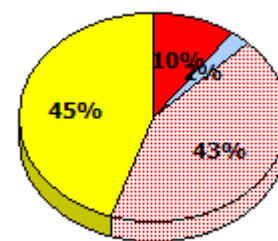
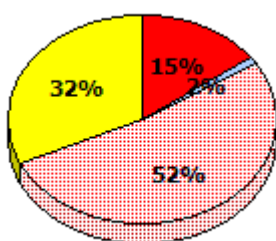
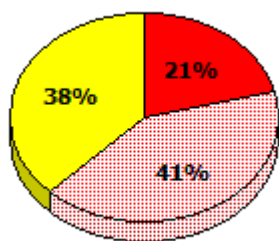
**2013**

Apr 30,  
2013 (82)



**2012**

AGR (66)



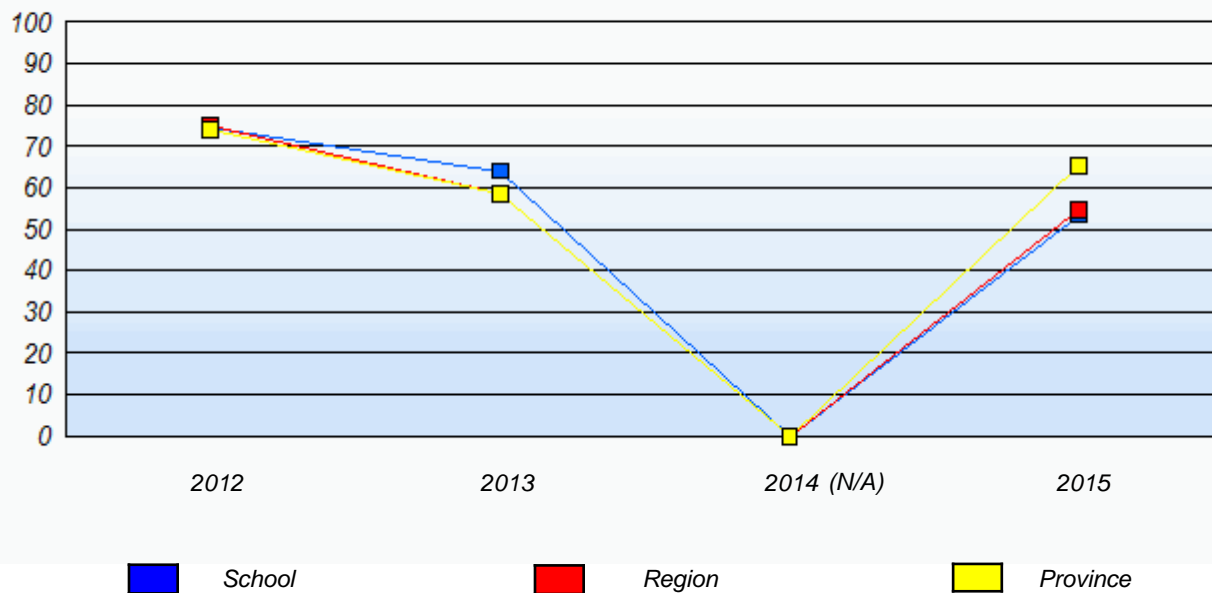
\* In some cases, Provincial Assessment numbers may exceed AGR numbers based on late enrolments. Pie chart is based on the number of students who wrote the Provincial Assessment.

\* Mushuau Innu Natuashish School and Sheshatshiu Innu School are excluded from region and provincial results.

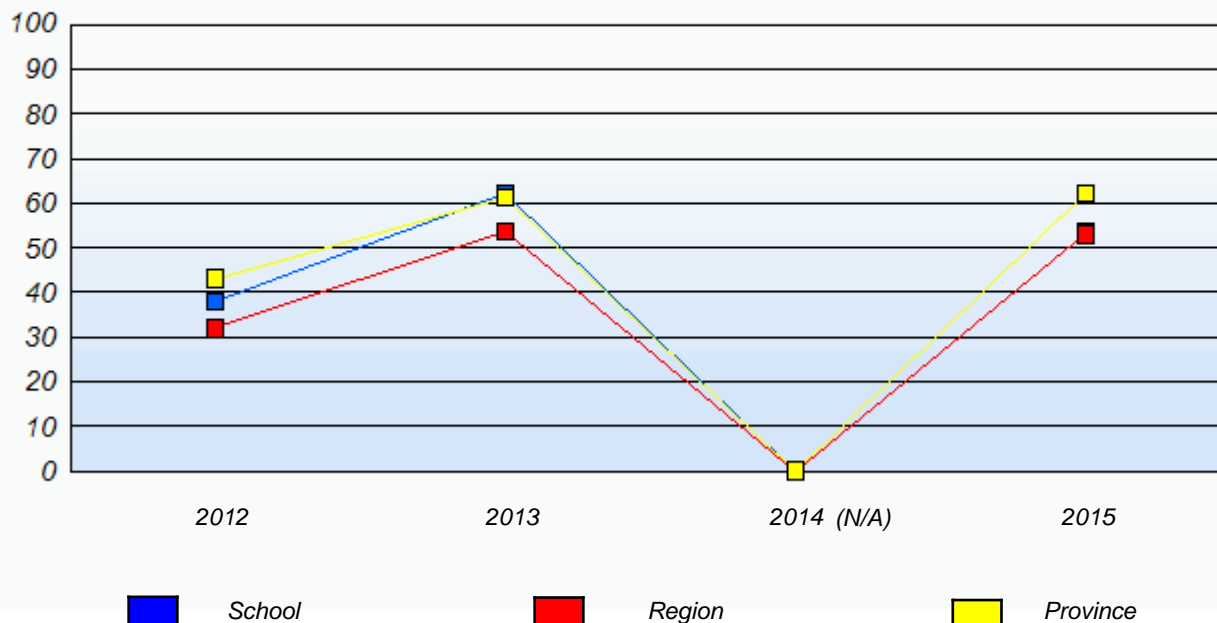
NLESD - Labrador Region

School #: 005 Peacock Primary School

**Demand Writing**  
Percentage of students meeting/exceeding (2012 - 2015)



**Reading**  
Percentage of students meeting/exceeding (2012 - 2015)



\* In some cases, Provincial Assessment numbers may exceed AGR numbers based on late enrolments. Pie chart is based on the number of students who wrote the Provincial Assessment.

\* Mushuau Innu Natuashish School and Sheshatshiu Innu School are excluded from region and provincial results.

NLESD - Labrador Region

School #: 007      Amos Comenius Memorial School

***Demand Writing***

***School***

***Region***

***Province***

*Creative Writing*

*Persuasive Writing*

*Creative Writing*

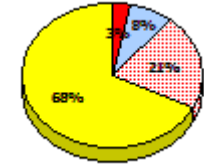
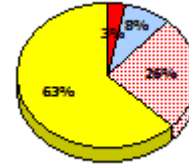
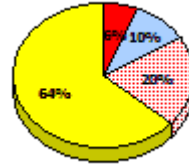
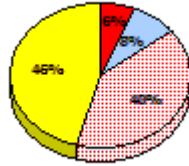
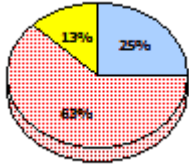
*Persuasive Writing*

*Creative Writing*

*Persuasive Writing*

**2015**

Apr 30, 2015 (8)

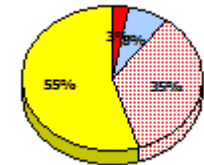
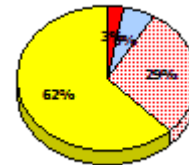
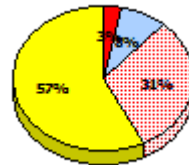
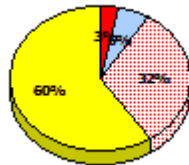
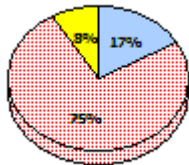


**2014**

N/A

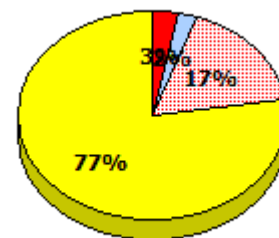
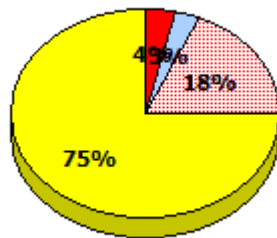
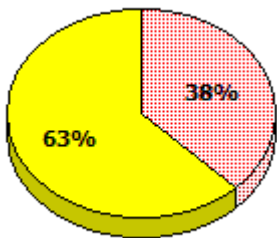
**2013**

Apr 30, 2013 (12)



**2012**

AGR (8)



\* In some cases, Provincial Assessment numbers may exceed AGR numbers based on late enrolments. Pie chart is based on the number of students who wrote the Provincial Assessment.

\* Mushuau Innu Natuashish School and Sheshatshiu Innu School are excluded from region and provincial results.

NLESD - Labrador Region

School #: 007 Amos Comenius Memorial School

**Reading**

**School**

**Region**

**Province**

*Non - Fiction*

*Fiction*

*Non - Fiction*

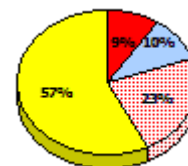
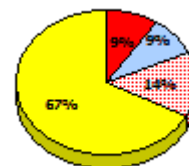
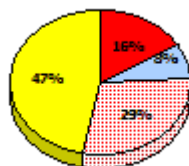
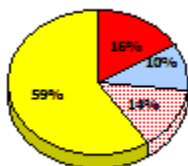
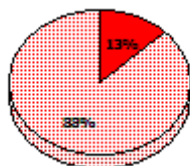
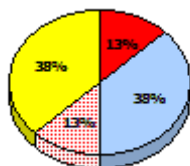
*Fiction*

*Non - Fiction*

*Fiction*

**2015**

Apr 30,  
2015 (8)

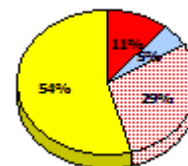
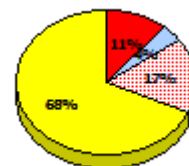
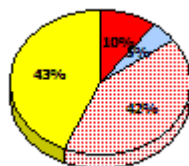
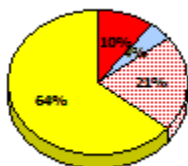
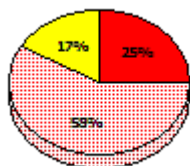
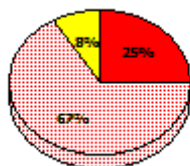


**2014**

N/A

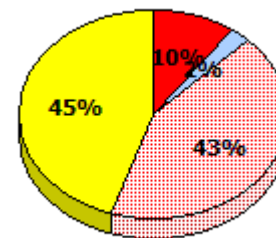
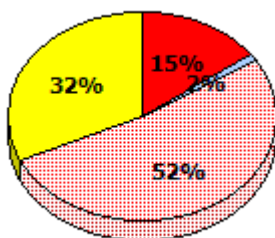
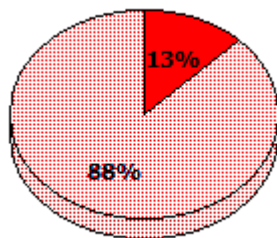
**2013**

Apr 30,  
2013 (12)



**2012**

AGR (8)



\* In some cases, Provincial Assessment numbers may exceed AGR numbers based on late enrolments. Pie chart is based on the number of students who wrote the Provincial Assessment.

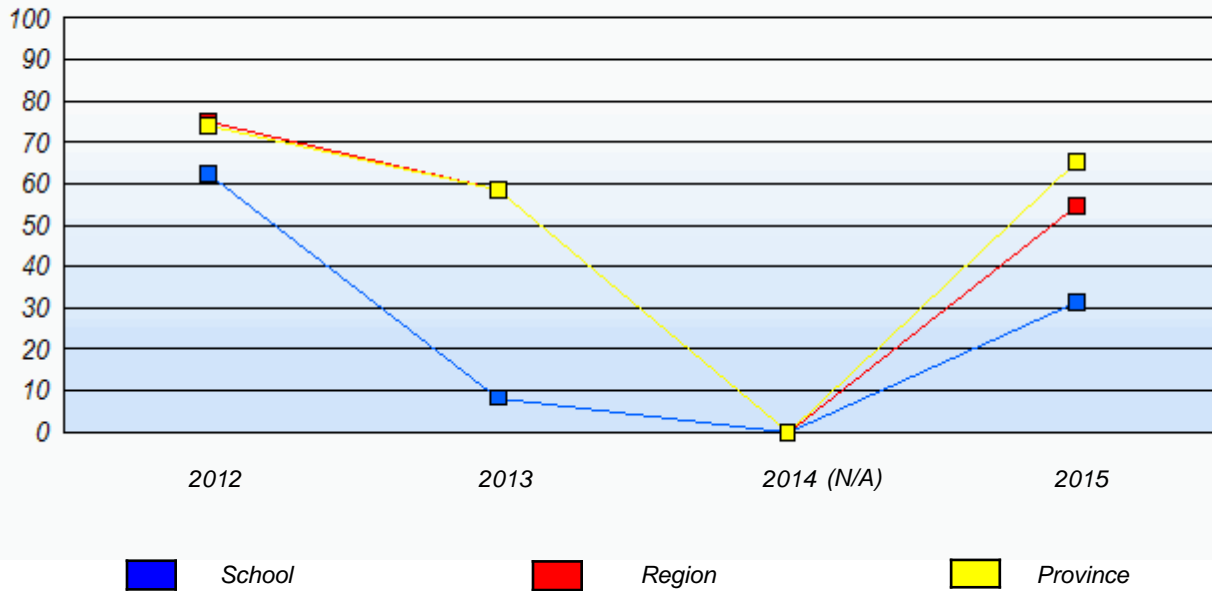
\* Mushuau Innu Natuashish School and Sheshatshiu Innu School are excluded from region and provincial results.



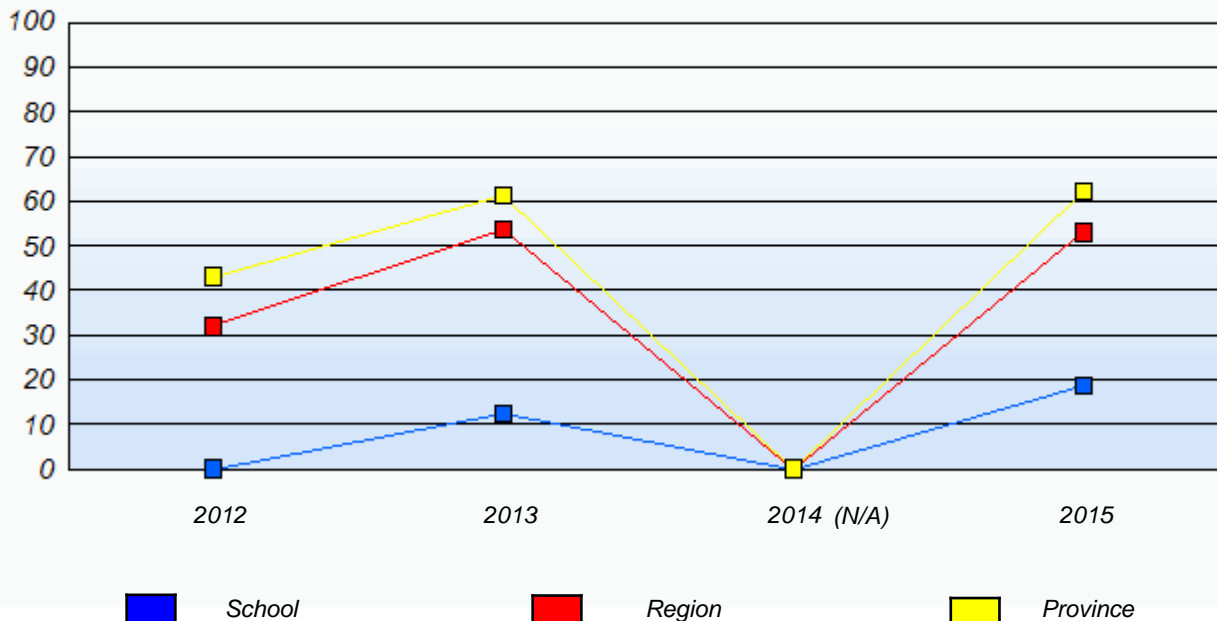
NLESD - Labrador Region

School #: 007      Amos Comenius Memorial School

**Demand Writing**  
Percentage of students meeting/exceeding (2012 - 2015)



**Reading**  
Percentage of students meeting/exceeding (2012 - 2015)



\* In some cases, Provincial Assessment numbers may exceed AGR numbers based on late enrolments. Pie chart is based on the number of students who wrote the Provincial Assessment.

\* Mushuau Innu Natuashish School and Sheshatshiu Innu School are excluded from region and provincial results.

NLESD - Labrador Region

School #: 008     A. P. Low Primary

***Demand Writing***

***School***

***Region***

***Province***

*Creative Writing*

*Persuasive Writing*

*Creative Writing*

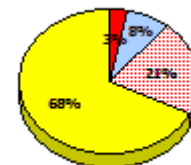
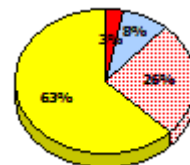
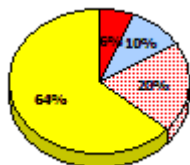
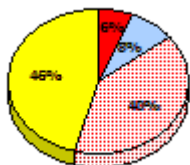
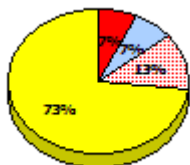
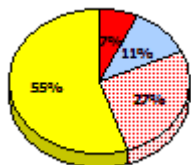
*Persuasive Writing*

*Creative Writing*

*Persuasive Writing*

**2015**

Apr 30, 2015 (71)

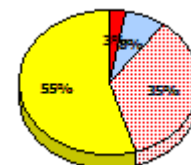
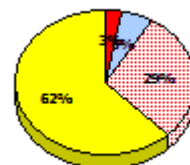
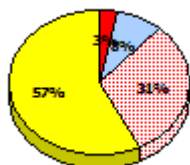
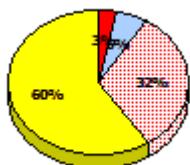
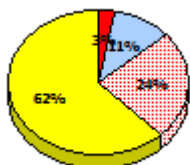
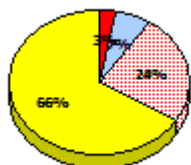


**2014**

N/A

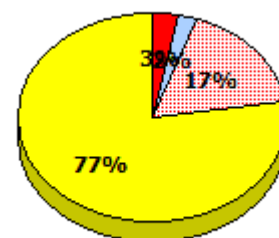
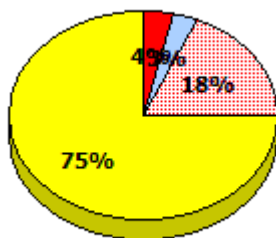
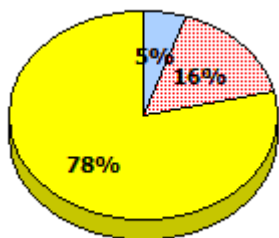
**2013**

Apr 30, 2013 (74)



**2012**

AGR (79)



\* In some cases, Provincial Assessment numbers may exceed AGR numbers based on late enrolments. Pie chart is based on the number of students who wrote the Provincial Assessment.

\* Mushuau Innu Natuashish School and Sheshatshiu Innu School are excluded from region and provincial results.

NLESD - Labrador Region

School #: 008     A. P. Low Primary

**Reading**

**School**

**Region**

**Province**

*Non - Fiction*

*Fiction*

*Non - Fiction*

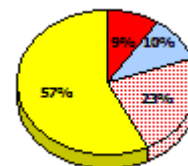
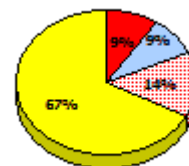
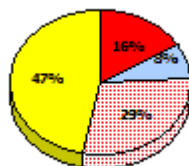
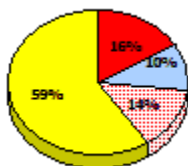
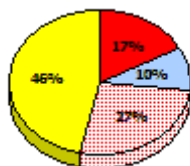
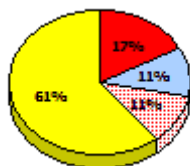
*Fiction*

*Non - Fiction*

*Fiction*

**2015**

Apr 30,  
2015 (71)

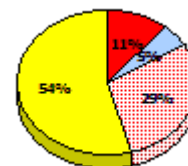
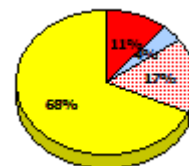
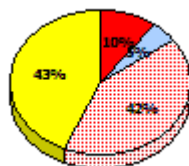
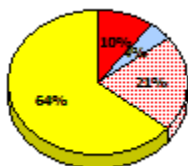
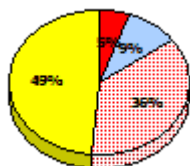
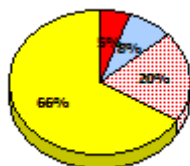


**2014**

N/A

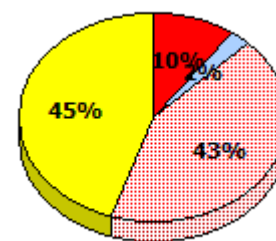
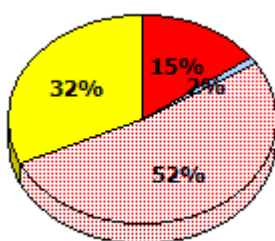
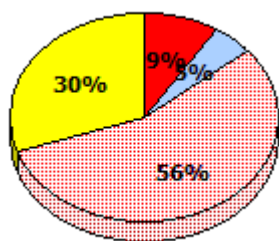
**2013**

Apr 30,  
2013 (74)



**2012**

AGR (79)



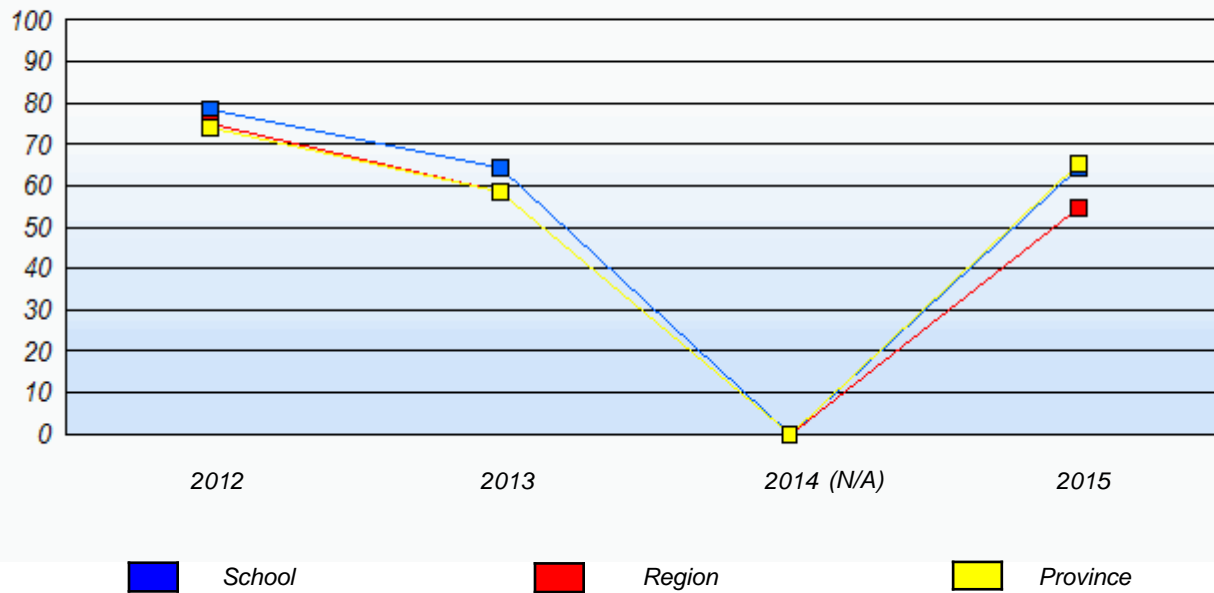
\* In some cases, Provincial Assessment numbers may exceed AGR numbers based on late enrolments. Pie chart is based on the number of students who wrote the Provincial Assessment.

\* Mushuau Innu Natuashish School and Sheshatshiu Innu School are excluded from region and provincial results.

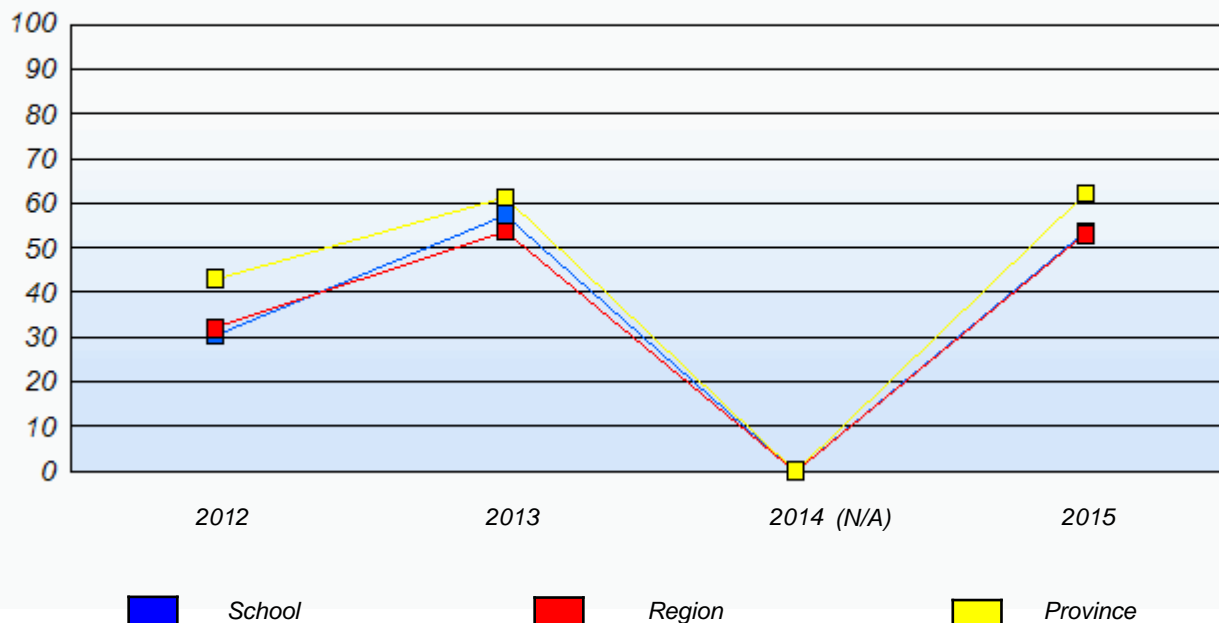
NLESD - Labrador Region

School #: 008      A. P. Low Primary

**Demand Writing**  
Percentage of students meeting/exceeding (2012 - 2015)



**Reading**  
Percentage of students meeting/exceeding (2012 - 2015)



\* In some cases, Provincial Assessment numbers may exceed AGR numbers based on late enrolments. Pie chart is based on the number of students who wrote the Provincial Assessment.

\* Mushuau Innu Natuashish School and Sheshatshiu Innu School are excluded from region and provincial results.

NLESD - Labrador Region

School #: 012 J.C. Erhardt Memorial School

***Demand Writing***

***School***

***Region***

***Province***

*Creative Writing*

*Persuasive Writing*

*Creative Writing*

*Persuasive Writing*

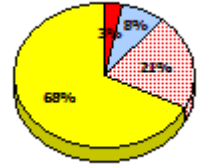
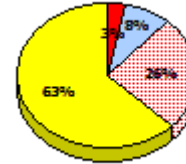
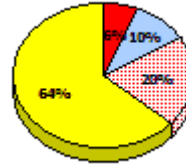
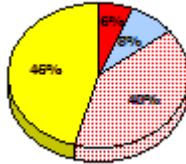
*Creative Writing*

*Persuasive Writing*

**2015**

*School data with 5 or fewer students withheld for reasons of confidentiality.*

Apr 30, 2015 (5)

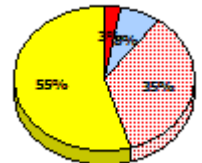
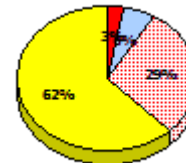
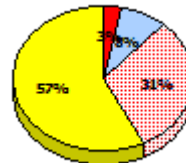
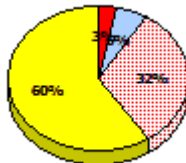


**2014**

N/A

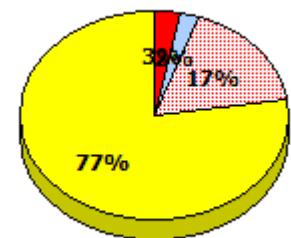
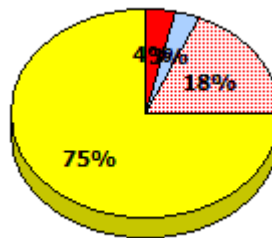
**2013**

Apr 30, 2013 (4)



**2012**

AGR (4)



\* In some cases, Provincial Assessment numbers may exceed AGR numbers based on late enrolments. Pie chart is based on the number of students who wrote the Provincial Assessment.

\* Mushuau Innu Natuashish School and Sheshatshiu Innu School are excluded from region and provincial results.

NLESD - Labrador Region

School #: 012 J.C. Erhardt Memorial School

**Reading**

**School**

**Region**

**Province**

*Non - Fiction*

*Fiction*

*Non - Fiction*

*Fiction*

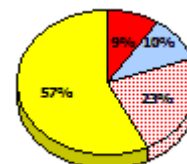
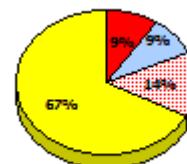
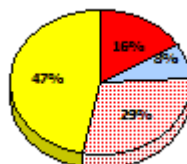
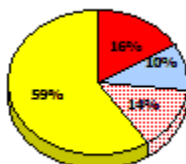
*Non - Fiction*

*Fiction*

**2015**

*School data with 5 or fewer students withheld for reasons of confidentiality.*

Apr 30, 2015 (5)

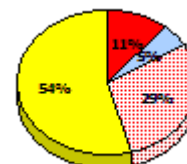
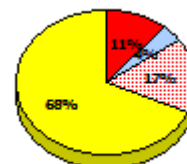
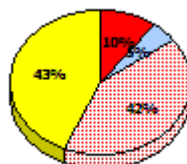
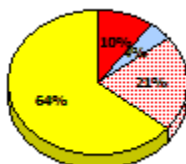


**2014**

N/A

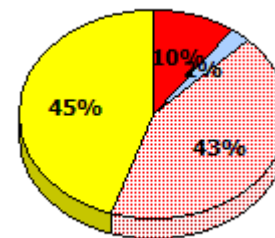
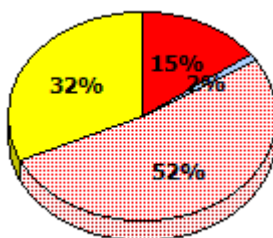
**2013**

Apr 30, 2013 (4)



**2012**

AGR (4)



\* In some cases, Provincial Assessment numbers may exceed AGR numbers based on late enrolments. Pie chart is based on the number of students who wrote the Provincial Assessment.

\* Mushuau Innu Natuashish School and Sheshatshiu Innu School are excluded from region and provincial results.

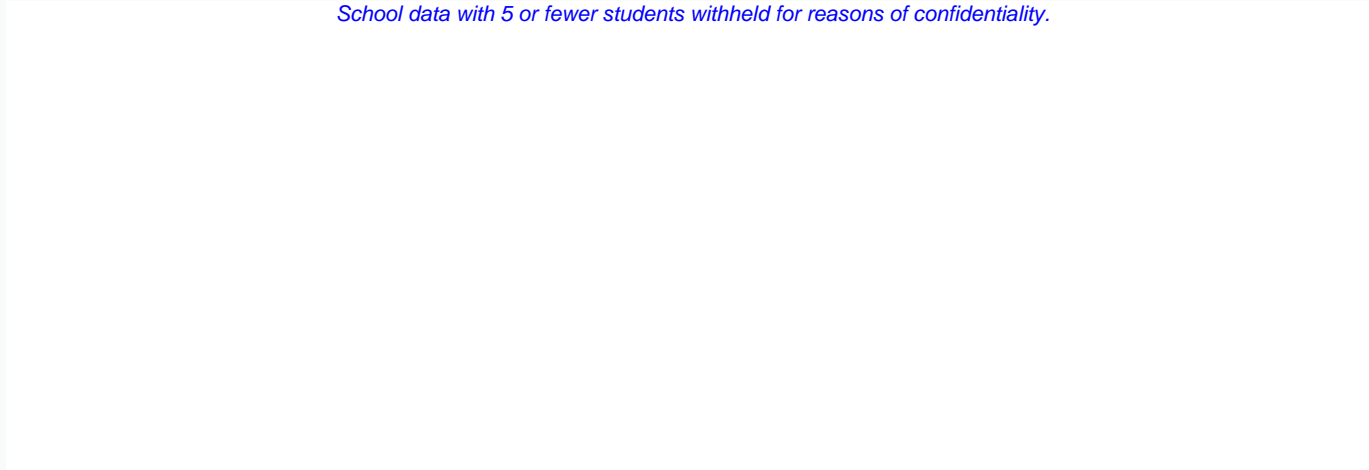
NLESD - Labrador Region

School #: 012      J.C. Erhardt Memorial School

**Demand Writing**

*Percentage of students meeting/exceeding (2012 - 2015)*

*School data with 5 or fewer students withheld for reasons of confidentiality.*



2012

2013

2014 (N/A)

2015



School



Region

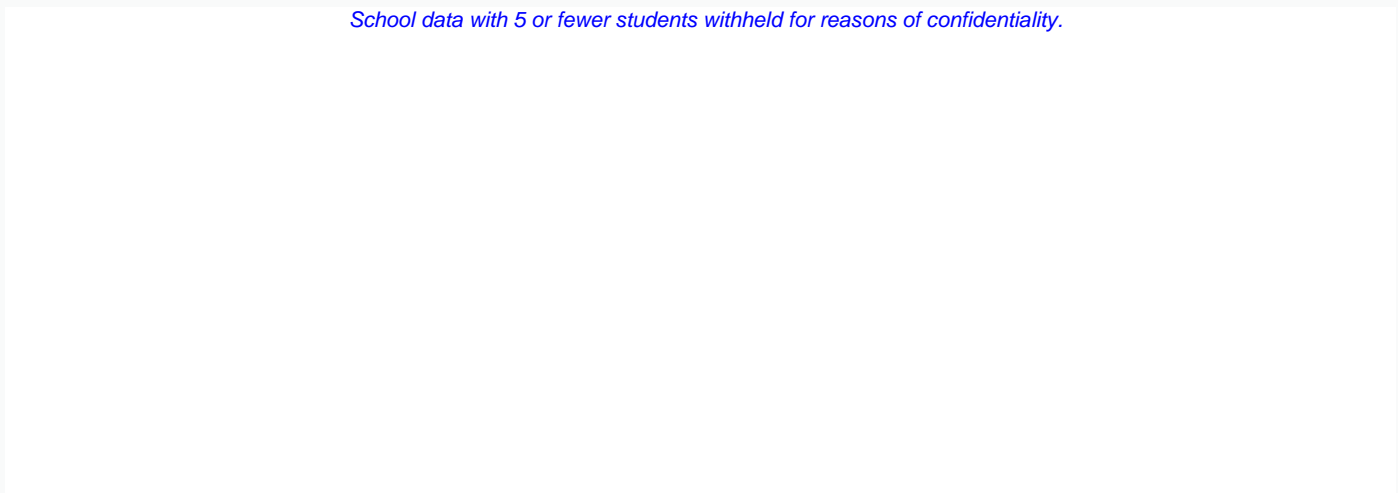


Province

**Reading**

*Percentage of students meeting/exceeding (2012 - 2015)*

*School data with 5 or fewer students withheld for reasons of confidentiality.*



2012

2013

2014 (N/A)

2015



School



Region



Province

\* In some cases, Provincial Assessment numbers may exceed AGR numbers based on late enrolments. Pie chart is based on the number of students who wrote the Provincial Assessment.

\* Mushuau Innu Natuashish School and Sheshatshiu Innu School are excluded from region and provincial results.

NLESD - Labrador Region

School #: 014      Jens Haven Memorial

***Demand Writing***

***School***

***Region***

***Province***

*Creative Writing*

*Persuasive Writing*

*Creative Writing*

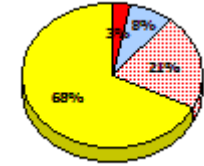
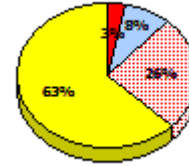
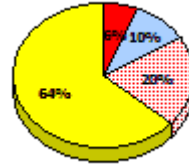
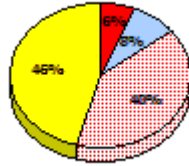
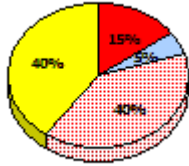
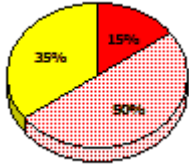
*Persuasive Writing*

*Creative Writing*

*Persuasive Writing*

**2015**

Apr 30, 2015 (20)

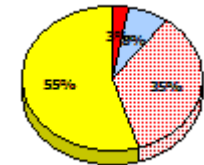
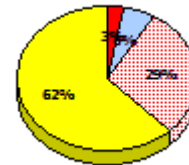
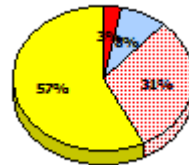
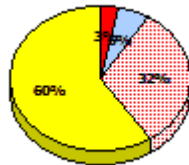
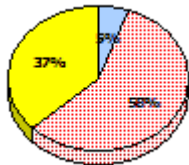
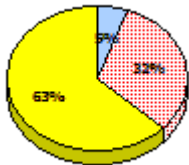


**2014**

N/A

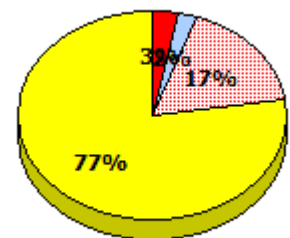
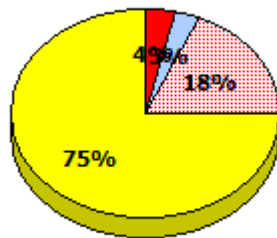
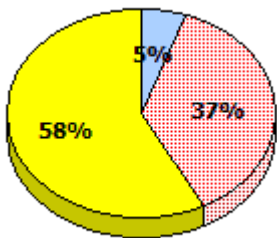
**2013**

Apr 30, 2013 (19)



**2012**

AGR (19)



\* In some cases, Provincial Assessment numbers may exceed AGR numbers based on late enrolments. Pie chart is based on the number of students who wrote the Provincial Assessment.

\* Mushuau Innu Natuashish School and Sheshatshiu Innu School are excluded from region and provincial results.



NLESD - Labrador Region

School #: 014      Jens Haven Memorial

**Reading**

**School**

**Region**

**Province**

*Non - Fiction*

*Fiction*

*Non - Fiction*

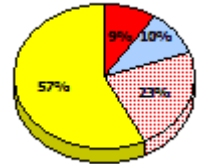
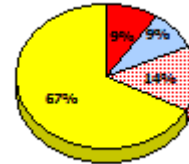
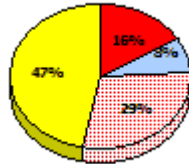
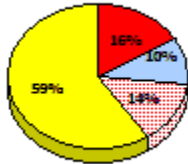
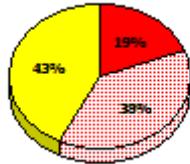
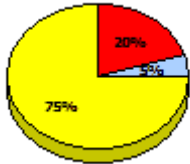
*Fiction*

*Non - Fiction*

*Fiction*

**2015**

Apr 30,  
2015 (20)

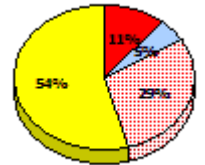
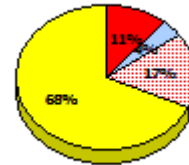
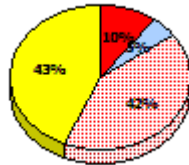
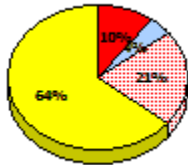
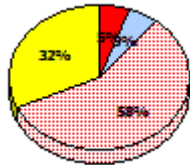
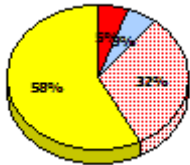


**2014**

N/A

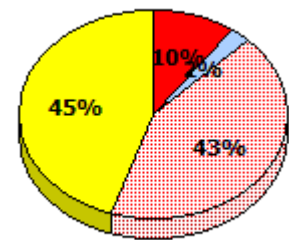
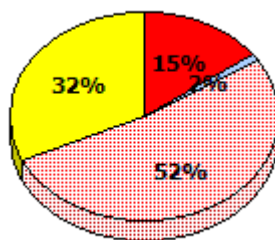
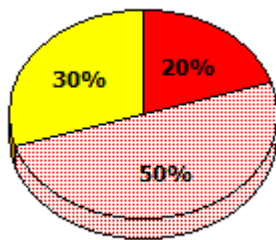
**2013**

Apr 30,  
2013 (19)



**2012**

AGR (19)



*Exemption*     
  *Unknown*     
  *Not Yet Meeting*     
  *Meeting or Exceeding*

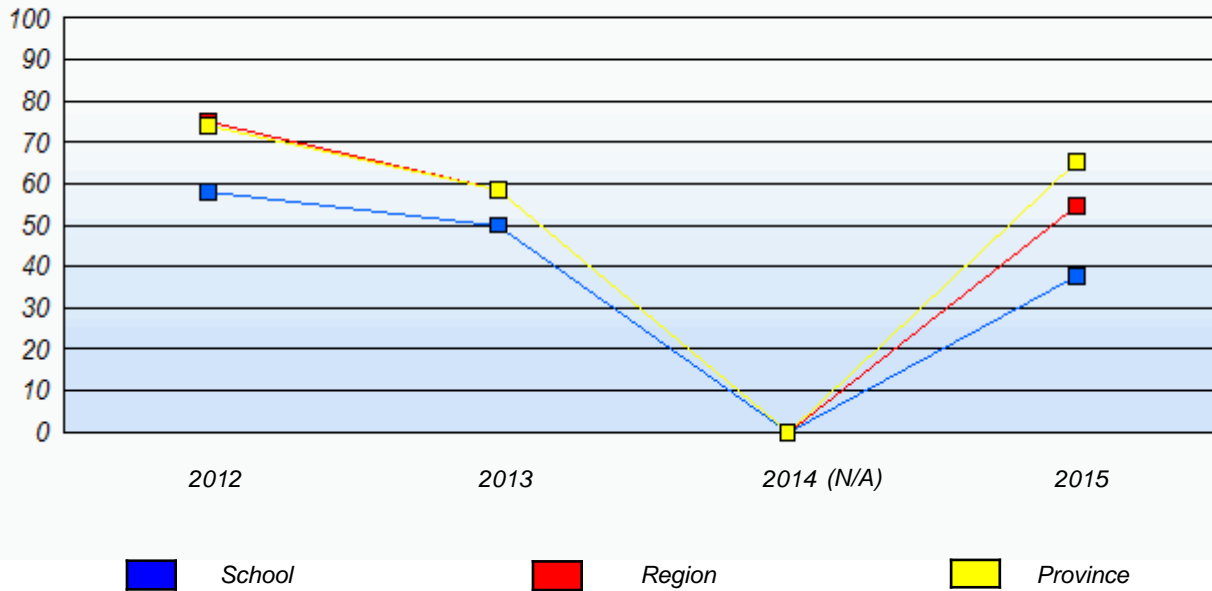
\* In some cases, Provincial Assessment numbers may exceed AGR numbers based on late enrolments. Pie chart is based on the number of students who wrote the Provincial Assessment.

\* Mushuau Innu Natuashish School and Sheshatshiu Innu School are excluded from region and provincial results.

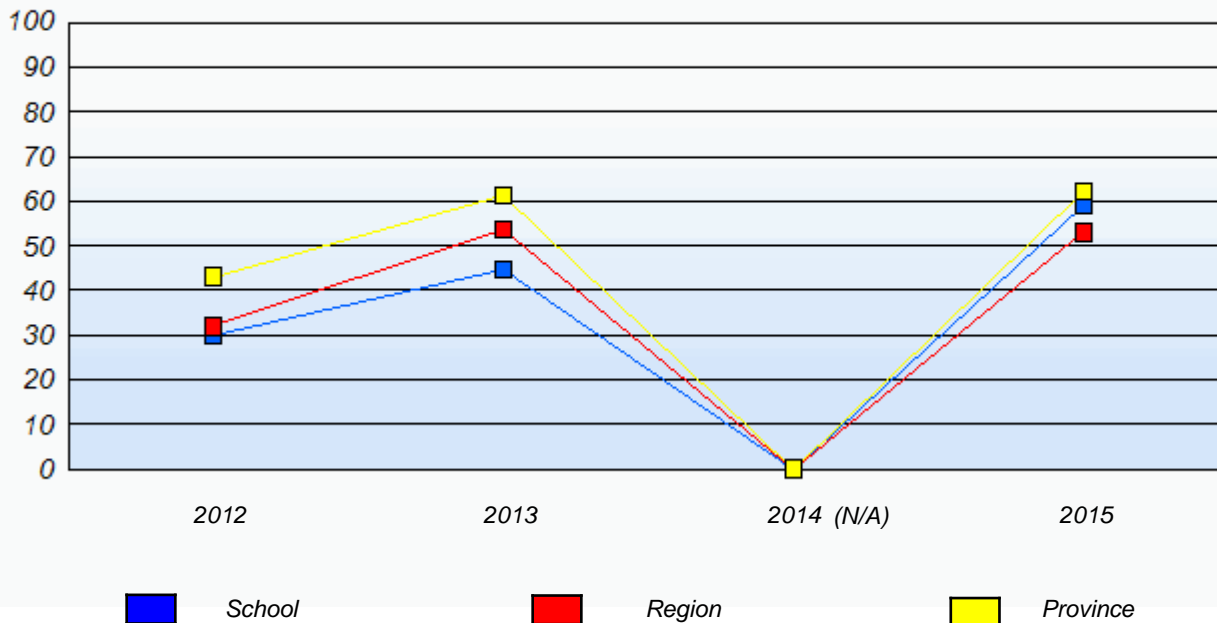
NLESD - Labrador Region

School #: 014      Jens Haven Memorial

**Demand Writing**  
 Percentage of students meeting/exceeding (2012 - 2015)



**Reading**  
 Percentage of students meeting/exceeding (2012 - 2015)



\* In some cases, Provincial Assessment numbers may exceed AGR numbers based on late enrolments. Pie chart is based on the number of students who wrote the Provincial Assessment.

\* Mushuau Innu Natuashish School and Sheshatshiu Innu School are excluded from region and provincial results.

NLESD - Labrador Region

School #: 015      Lake Melville School

***Demand Writing***

***School***

***Region***

***Province***

*Creative Writing*

*Persuasive Writing*

*Creative Writing*

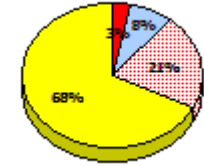
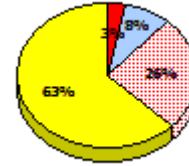
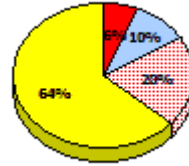
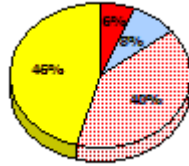
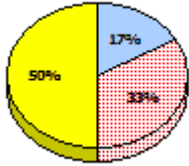
*Persuasive Writing*

*Creative Writing*

*Persuasive Writing*

**2015**

Apr 30, 2015 (6)

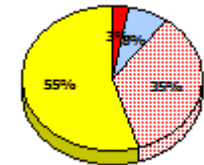
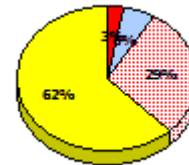
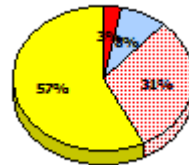
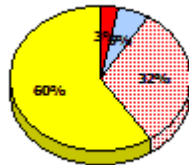
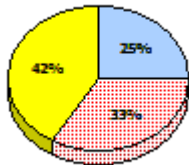
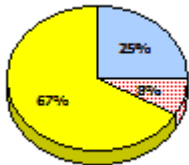


**2014**

N/A

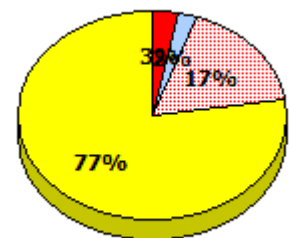
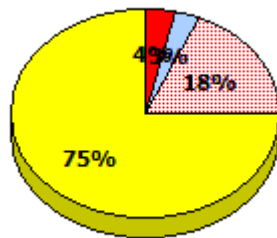
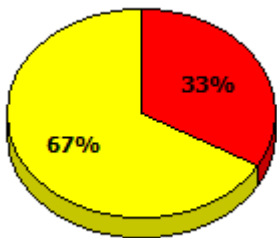
**2013**

Apr 30, 2013 (12)



**2012**

AGR (9)



\* In some cases, Provincial Assessment numbers may exceed AGR numbers based on late enrolments. Pie chart is based on the number of students who wrote the Provincial Assessment.

\* Mushuau Innu Natuashish School and Sheshatshiu Innu School are excluded from region and provincial results.

NLESD - Labrador Region

School #: 015      Lake Melville School

**Reading**

**School**

**Region**

**Province**

*Non - Fiction*

*Fiction*

*Non - Fiction*

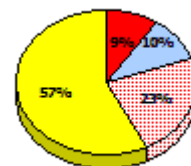
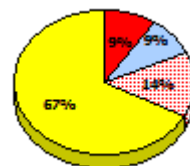
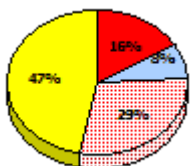
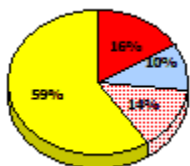
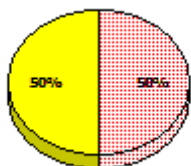
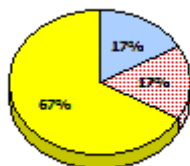
*Fiction*

*Non - Fiction*

*Fiction*

**2015**

Apr 30,  
2015 (6)

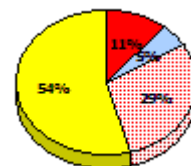
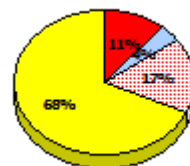
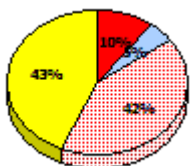
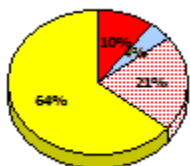
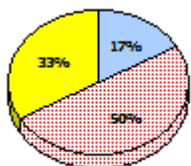
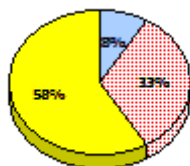


**2014**

N/A

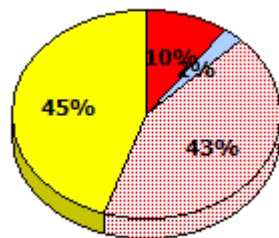
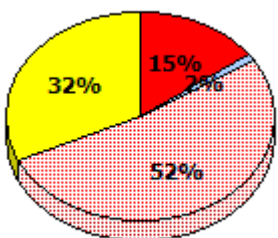
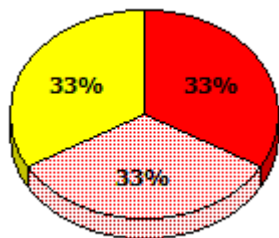
**2013**

Apr 30,  
2013 (12)



**2012**

AGR (9)



Exemption     
  Unknown     
  Not Yet Meeting     
  Meeting or Exceeding

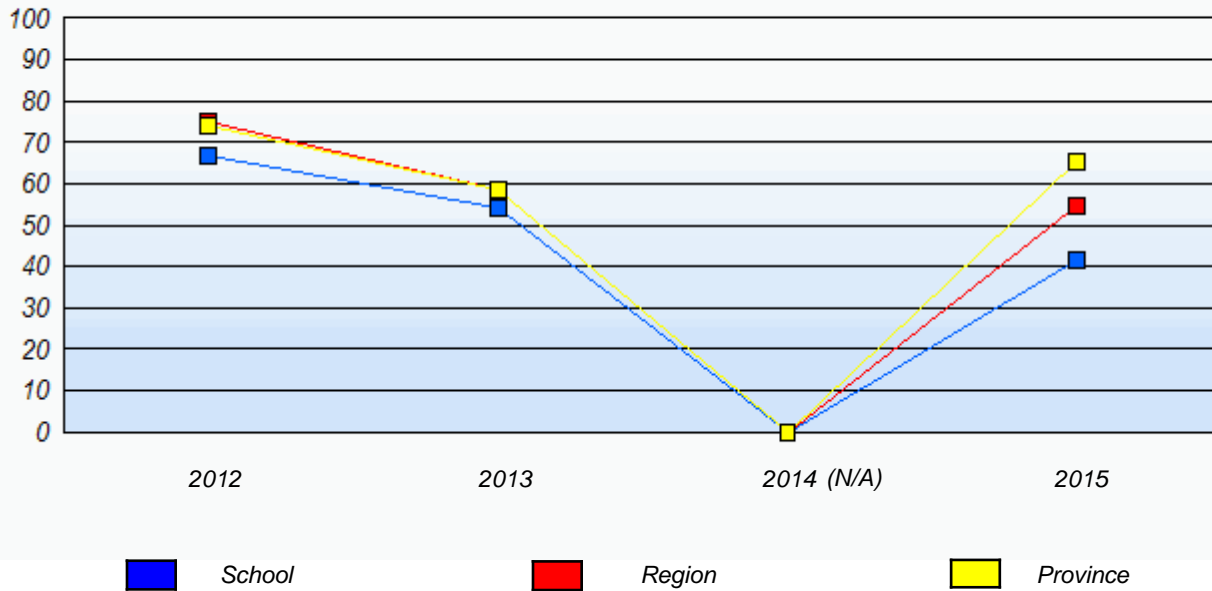
\* In some cases, Provincial Assessment numbers may exceed AGR numbers based on late enrolments. Pie chart is based on the number of students who wrote the Provincial Assessment.

\* Mushuau Innu Natuashish School and Sheshatshiu Innu School are excluded from region and provincial results.

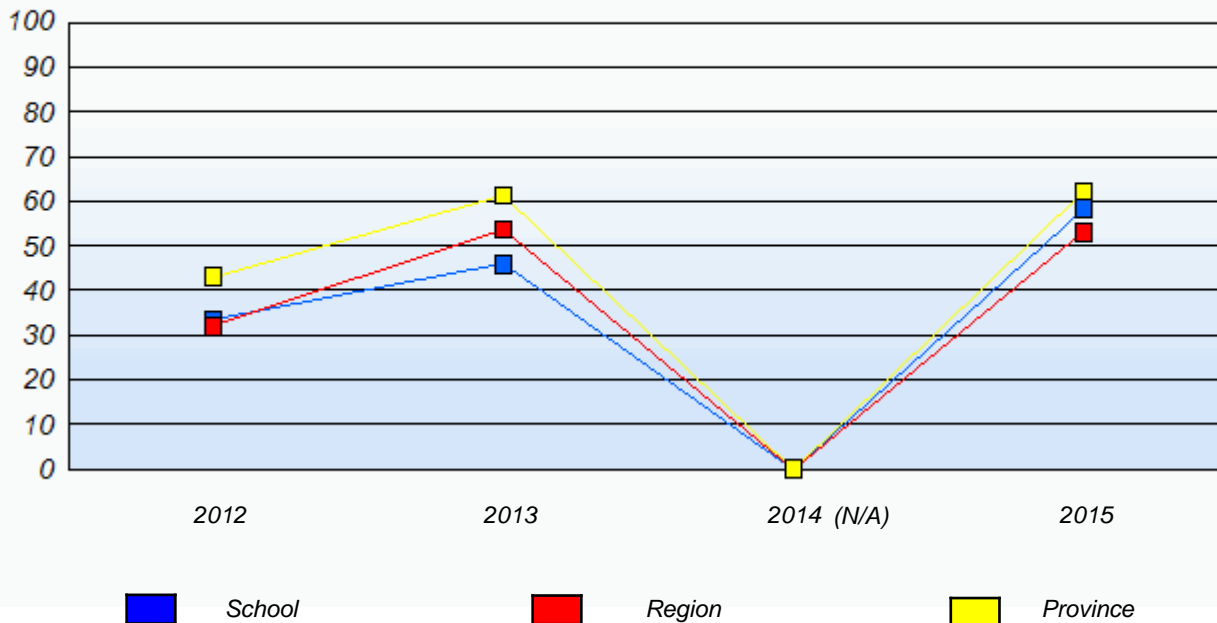
NLESD - Labrador Region

School #: 015      Lake Melville School

**Demand Writing**  
Percentage of students meeting/exceeding (2012 - 2015)



**Reading**  
Percentage of students meeting/exceeding (2012 - 2015)



\* In some cases, Provincial Assessment numbers may exceed AGR numbers based on late enrolments. Pie chart is based on the number of students who wrote the Provincial Assessment.

\* Mushuau Innu Natuashish School and Sheshatshiu Innu School are excluded from region and provincial results.

NLESD - Labrador Region

School #: 016      B.L. Morrison

***Demand Writing***

***School***

***Region***

***Province***

*Creative Writing*

*Persuasive Writing*

*Creative Writing*

*Persuasive Writing*

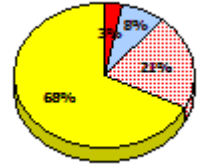
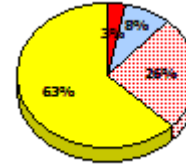
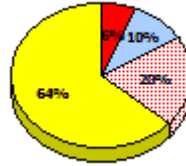
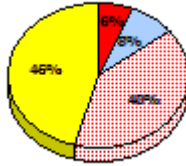
*Creative Writing*

*Persuasive Writing*

**2015**

*School data with 5 or fewer students withheld for reasons of confidentiality.*

Apr 30, 2015 (4)

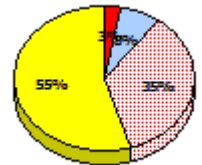
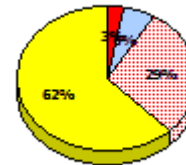
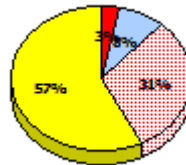
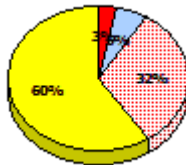


**2014**

N/A

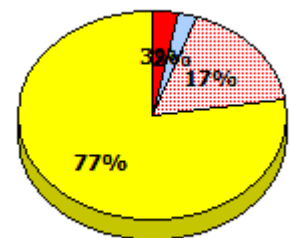
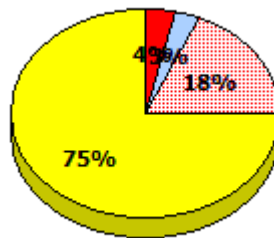
**2013**

Apr 30, 2013 (2)



**2012**

AGR (1)



\* In some cases, Provincial Assessment numbers may exceed AGR numbers based on late enrolments. Pie chart is based on the number of students who wrote the Provincial Assessment.

\* Mushuau Innu Natuashish School and Sheshatshiu Innu School are excluded from region and provincial results.

**Primary English Language Arts  
4 Year Provincial Assessment, June 2015  
Student Population Report**  
(average scores)

NLESD - Labrador Region

School #: 016      B.L. Morrison

**Reading**

**School**

**Region**

**Province**

*Non - Fiction*

*Fiction*

*Non - Fiction*

*Fiction*

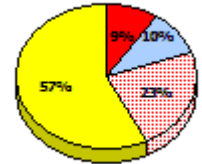
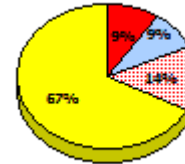
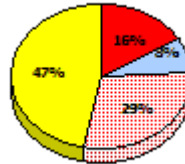
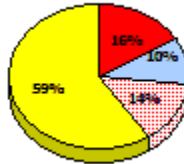
*Non - Fiction*

*Fiction*

**2015**

*School data with 5 or fewer students withheld for reasons of confidentiality.*

Apr 30,  
2015 (4)

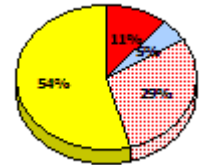
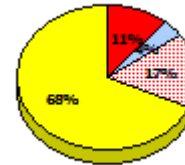
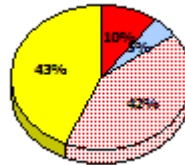
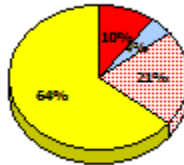


**2014**

N/A

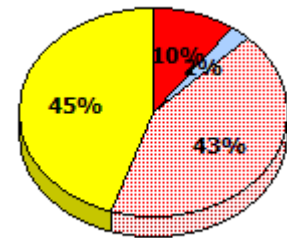
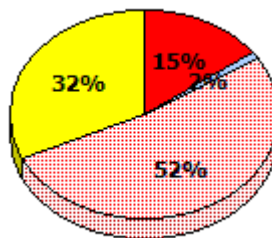
**2013**

Apr 30,  
2013 (2)



**2012**

AGR (1)



\* In some cases, Provincial Assessment numbers may exceed AGR numbers based on late enrolments. Pie chart is based on the number of students who wrote the Provincial Assessment.

\* Mushuau Innu Natuashish School and Sheshatshiu Innu School are excluded from region and provincial results.

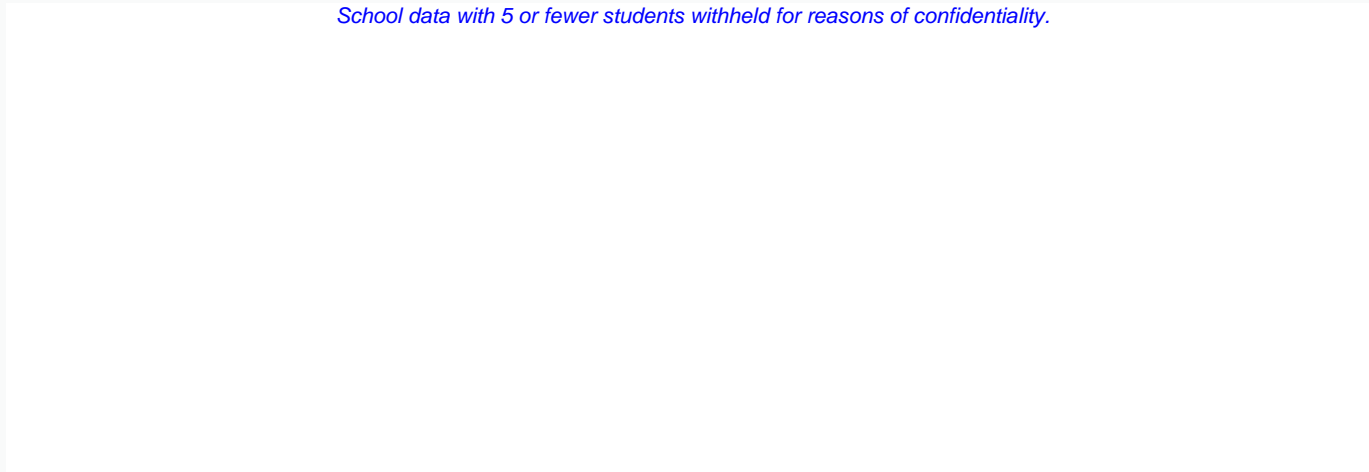
NLESD - Labrador Region

School #: 016      B.L. Morrison

**Demand Writing**

*Percentage of students meeting/exceeding (2012 - 2015)*

*School data with 5 or fewer students withheld for reasons of confidentiality.*



2012

2013

2014 (N/A)

2015



School



Region

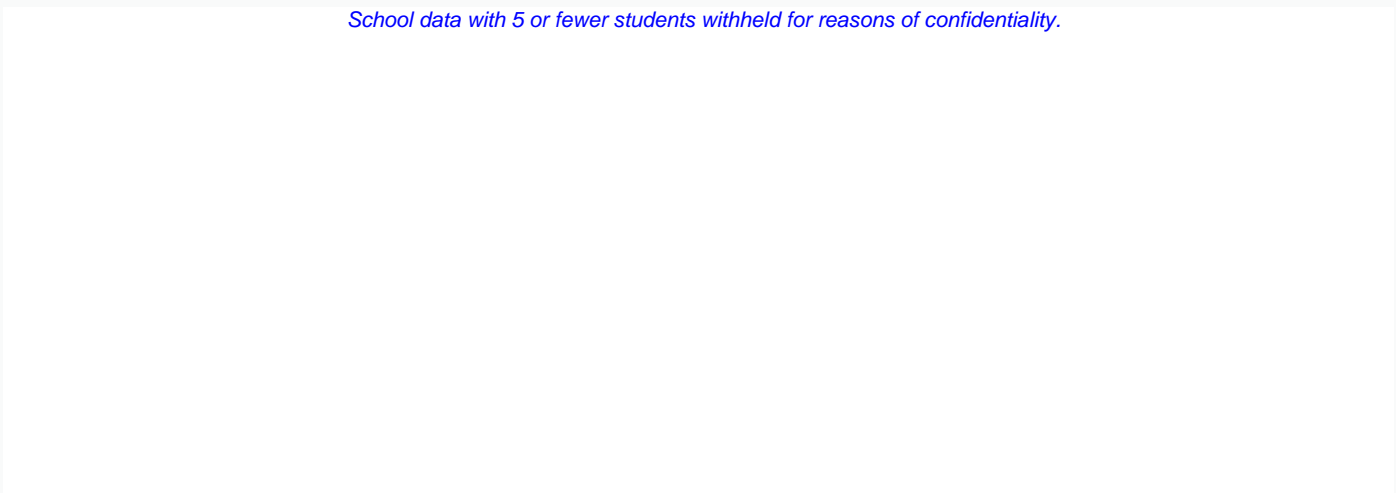


Province

**Reading**

*Percentage of students meeting/exceeding (2012 - 2015)*

*School data with 5 or fewer students withheld for reasons of confidentiality.*



2012

2013

2014 (N/A)

2015



School



Region



Province

\* In some cases, Provincial Assessment numbers may exceed AGR numbers based on late enrolments. Pie chart is based on the number of students who wrote the Provincial Assessment.

\* Mushuau Innu Natuashish School and Sheshatshiu Innu School are excluded from region and provincial results.



NLESD - Labrador Region

School #: 017 Northern Lights Academy

***Demand Writing***

***School***

***Region***

***Province***

*Creative Writing*

*Persuasive Writing*

*Creative Writing*

*Persuasive Writing*

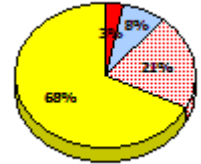
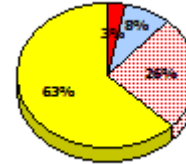
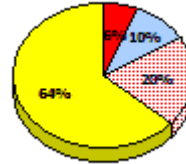
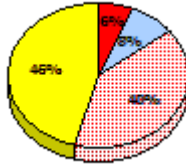
*Creative Writing*

*Persuasive Writing*

**2015**

*School data with 5 or fewer students withheld for reasons of confidentiality.*

Apr 30, 2015 (2)

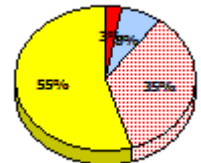
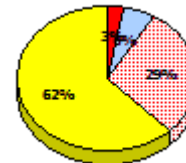
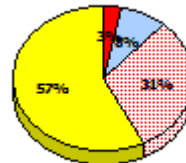
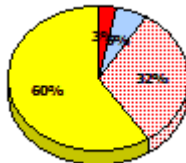


**2014**

N/A

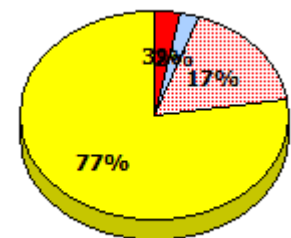
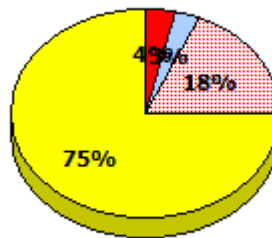
**2013**

Apr 30, 2013 (5)



**2012**

AGR (5)



\* In some cases, Provincial Assessment numbers may exceed AGR numbers based on late enrolments. Pie chart is based on the number of students who wrote the Provincial Assessment.

\* Mushuau Innu Natuashish School and Sheshatshiu Innu School are excluded from region and provincial results.

NLESD - Labrador Region

School #: 017 Northern Lights Academy

**Reading**

**School**

**Region**

**Province**

*Non - Fiction*

*Fiction*

*Non - Fiction*

*Fiction*

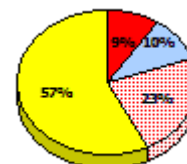
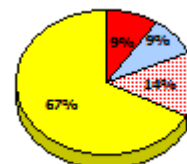
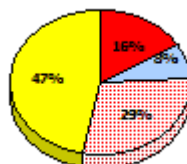
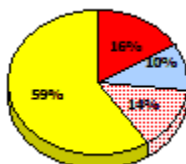
*Non - Fiction*

*Fiction*

**2015**

*School data with 5 or fewer students withheld for reasons of confidentiality.*

Apr 30, 2015 (2)

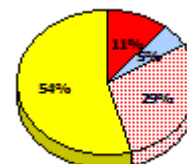
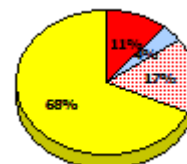
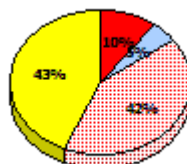
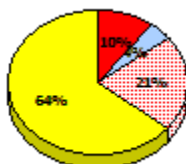


**2014**

N/A

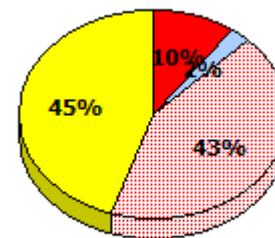
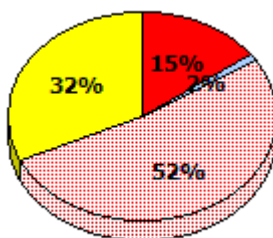
**2013**

Apr 30, 2013 (5)



**2012**

AGR (5)



\* In some cases, Provincial Assessment numbers may exceed AGR numbers based on late enrolments. Pie chart is based on the number of students who wrote the Provincial Assessment.

\* Mushuau Innu Natuashish School and Sheshatshiu Innu School are excluded from region and provincial results.

**Primary English Language Arts**  
**4 Year Provincial Assessment, June 2015**  
**Student Population Report**  
 (average scores)

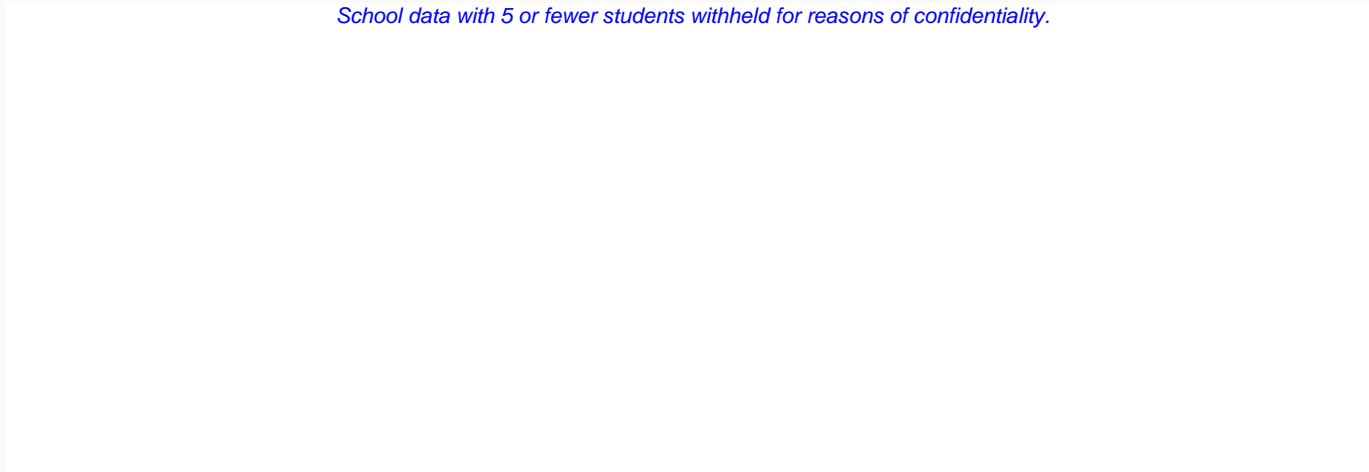
NLESD - Labrador Region

School #: 017 Northern Lights Academy

**Demand Writing**

*Percentage of students meeting/exceeding (2012 - 2015)*

*School data with 5 or fewer students withheld for reasons of confidentiality.*



2012

2013

2014 (N/A)

2015



School



Region

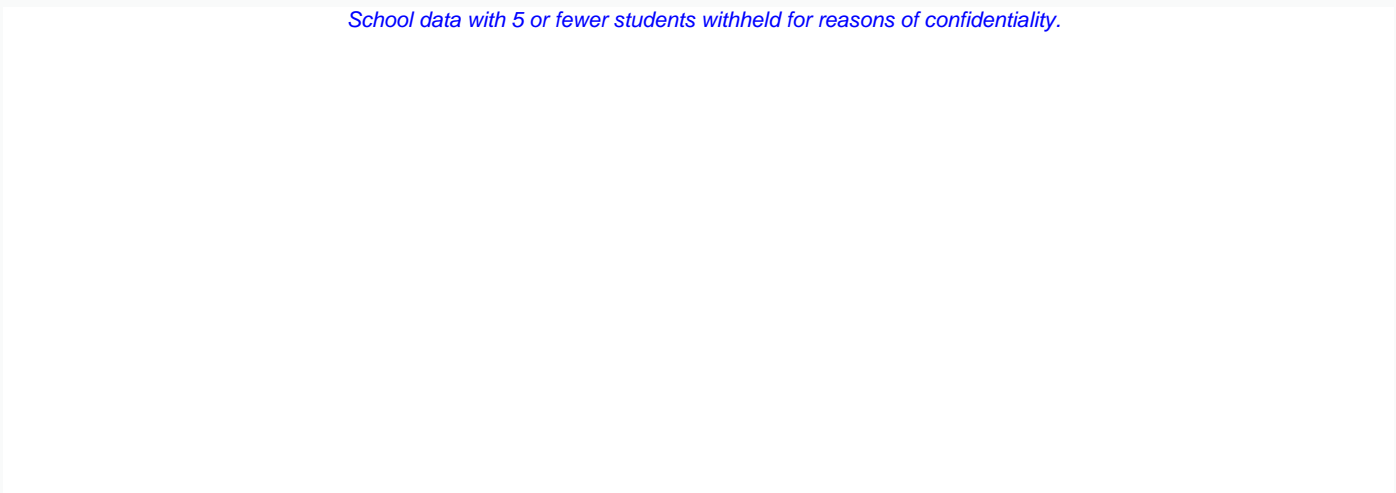


Province

**Reading**

*Percentage of students meeting/exceeding (2012 - 2015)*

*School data with 5 or fewer students withheld for reasons of confidentiality.*



2012

2013

2014 (N/A)

2015



School



Region



Province

\* In some cases, Provincial Assessment numbers may exceed AGR numbers based on late enrolments. Pie chart is based on the number of students who wrote the Provincial Assessment.

\* Mushuau Innu Natuashish School and Sheshatshiu Innu School are excluded from region and provincial results.