

Number of Students 15

Francais 3202

School
Region
Province

Public Exam Mark

School vs Region

School vs Province

74.4
73.1
72.3

P

P

Final Mark

School vs Region

School vs Province

75.3
74.7
75.7

P

q

Subtest

Listening

School
Region
Province

75.2
72.5
69.6

P

P

Reading

School
Region
Province

78.4
76.0
76.4

P

P

Writing

School
Region
Province

60.9
61.0
62.0

q

q

Interview

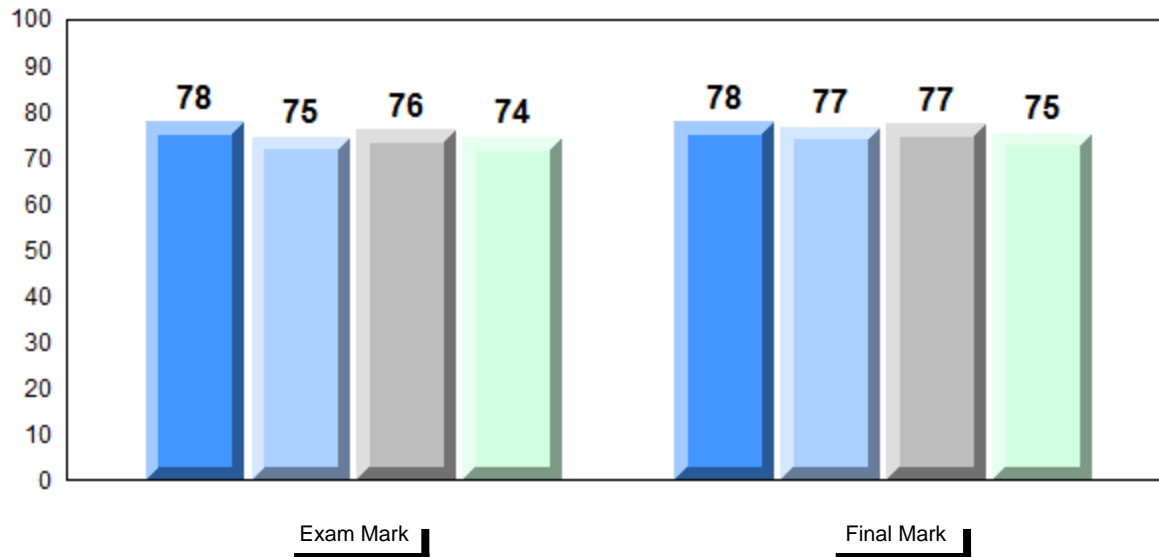
School
Region
Province

82.3
82.1
78.2

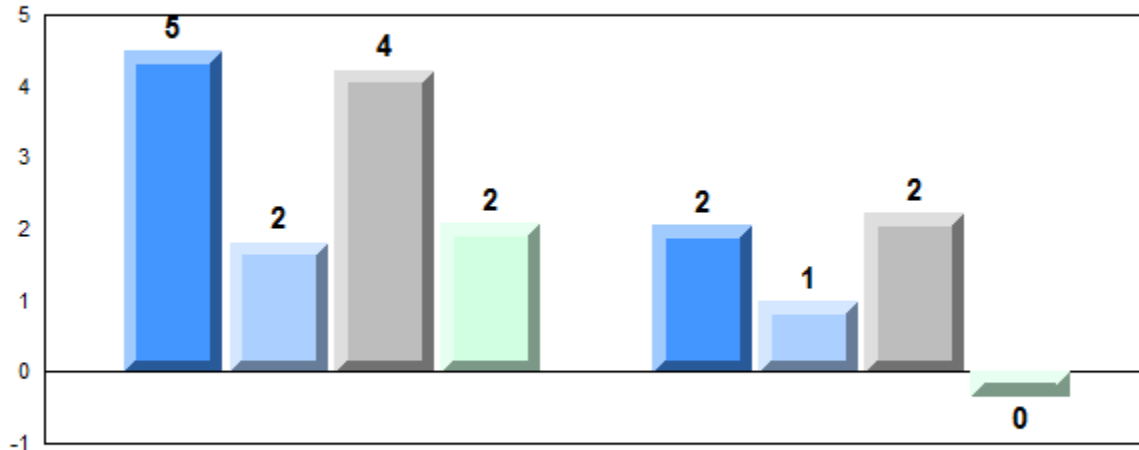
P

P

Average Mark, 2012-2015

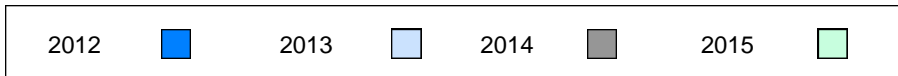


Difference from Provincial Mean, 2012-2015

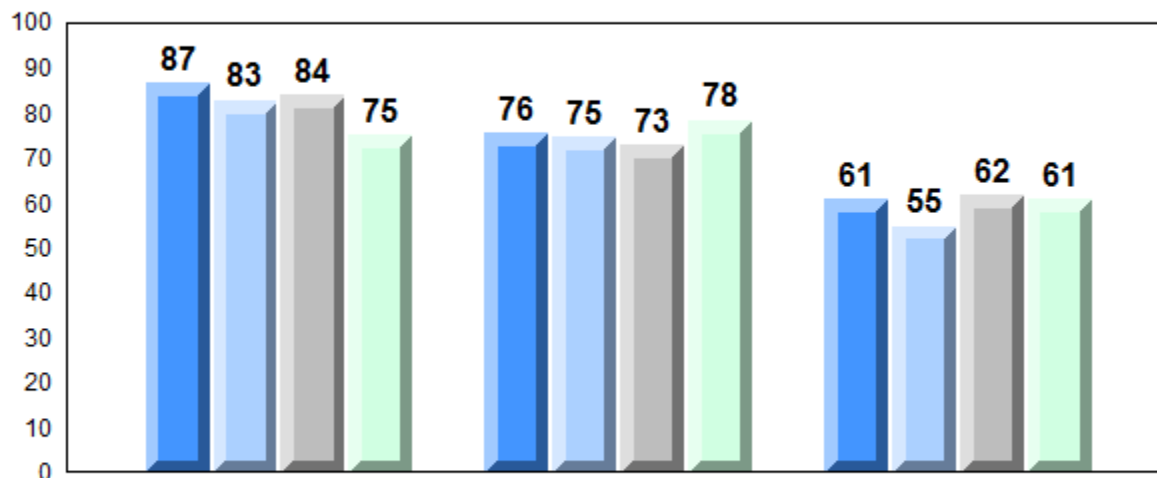


Exam Mark

Final Mark



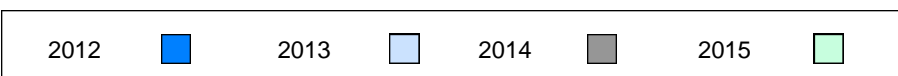
4 Year Public Exam (Subtest) Mark Trend 2012-2015



Listening

Reading

Writing



Number of Students 8

Francais 3202

Subtest

Listening

Reading

Writing

Interview

School
Region
Province

School
Region
Province

School
Region
Province

School
Region
Province

School
Region
Province

Public Exam Mark

School vs Region

School vs Province

70.6
73.1
72.3

q

q

67.5
72.5
69.6

q

q

71.5
76.0
76.4

q

q

61.0
61.0
62.0

p

q

81.8
82.1
78.2

q

p

Final Mark

School vs Region

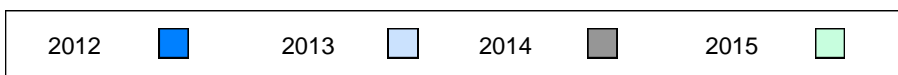
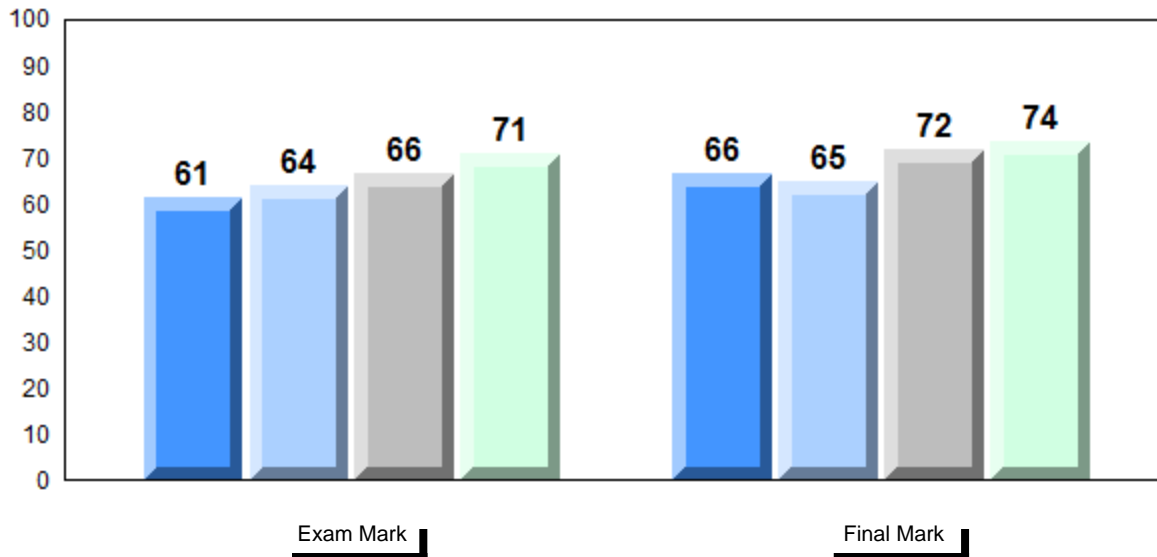
School vs Province

73.5
74.7
75.7

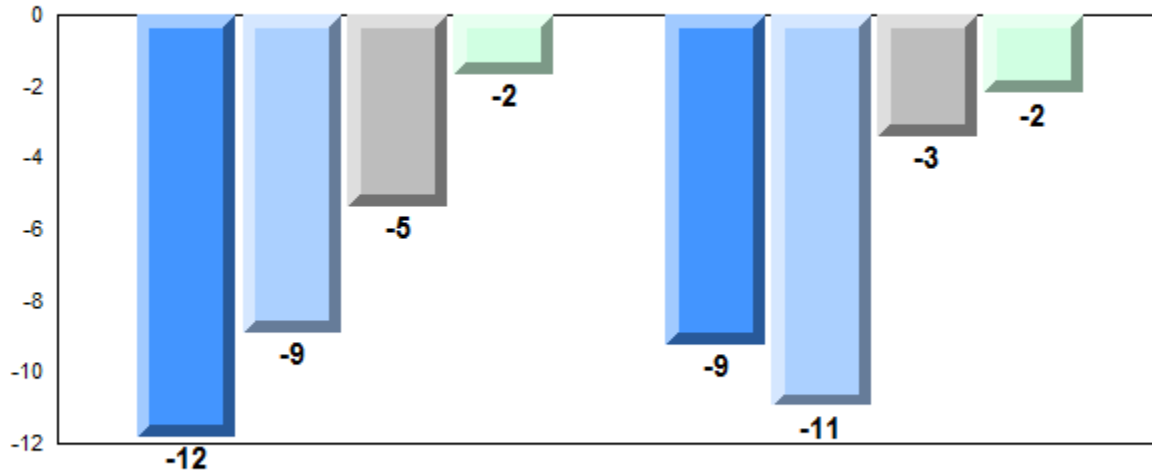
q

q

Average Mark, 2012-2015

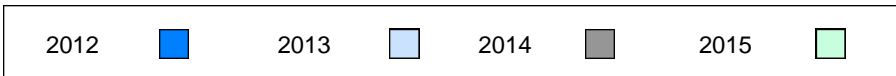


Difference from Provincial Mean, 2012-2015

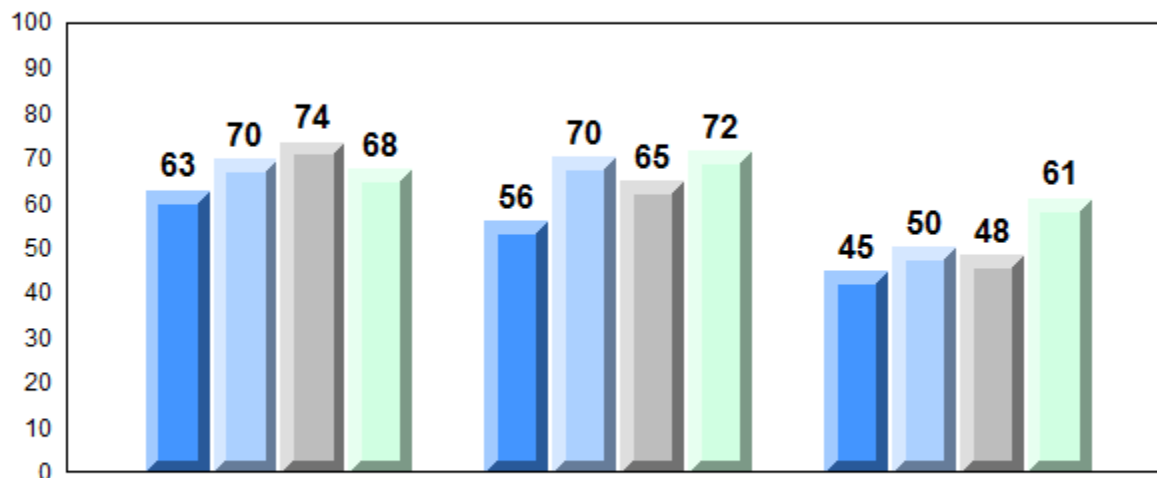


Exam Mark

Final Mark



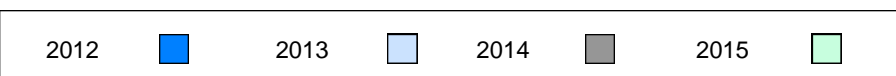
4 Year Public Exam (Subtest) Mark Trend 2012-2015



Listening

Reading

Writing



NLESD - Western Region

#119 - Stephenville High, Stephenville

Grades: 9-12

Number of Students 13

Francais 3202

School
Region
Province

Public Exam Mark

School vs Region

School vs Province

67.2
69.4
72.3

q

q

Final Mark

School vs Region

School vs Province

73.6
75.9
75.7

q

q

Subtest

Listening

School
Region
Province

60.6
67.6
69.6

q

q

Reading

School
Region
Province

70.2
73.4
76.4

q

q

Writing

School
Region
Province

54.0
60.6
62.0

q

q

Interview

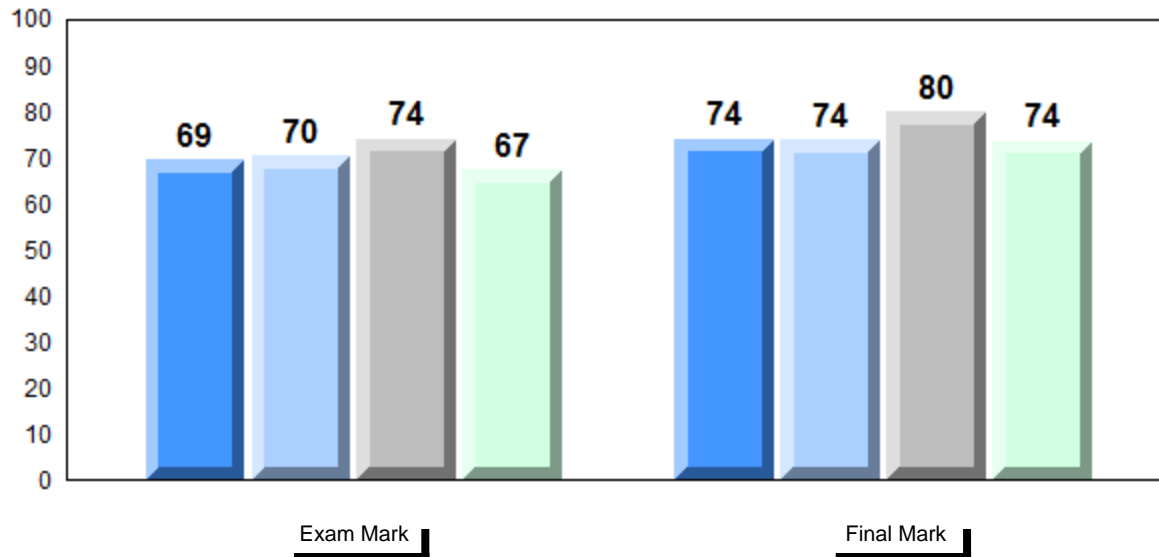
School
Region
Province

83.1
75.6
78.2

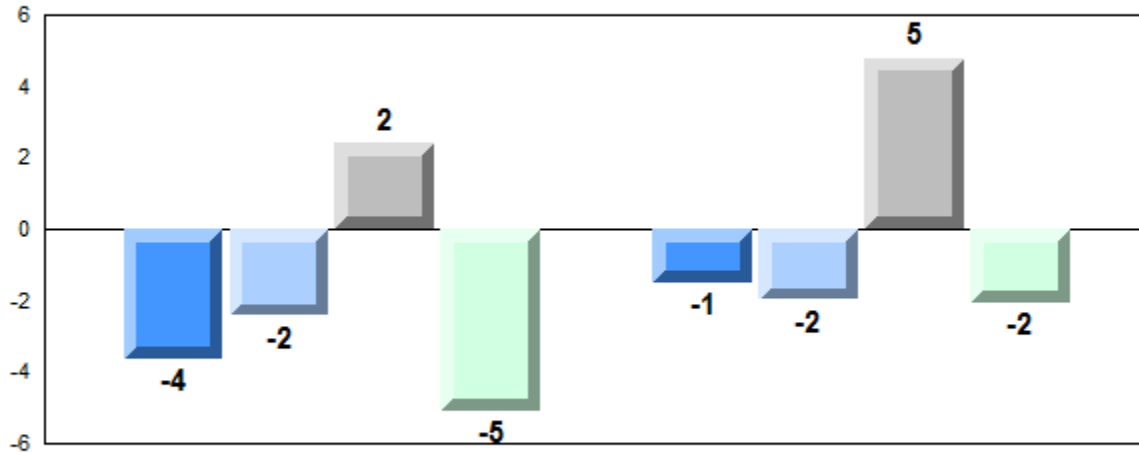
p

p

Average Mark, 2012-2015

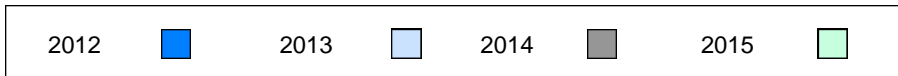


Difference from Provincial Mean, 2012-2015

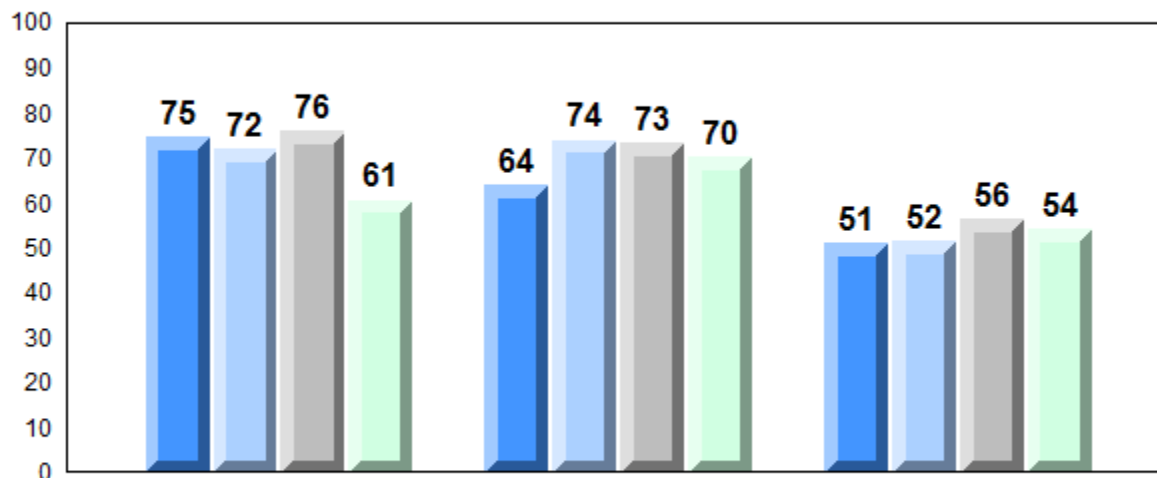


Exam Mark

Final Mark



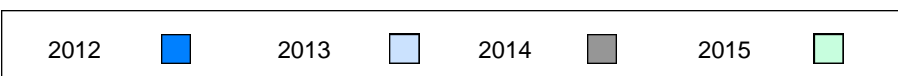
4 Year Public Exam (Subtest) Mark Trend 2012-2015



Listening

Reading

Writing



Number of Students 28

Francais 3202

School
Region
Province

Public Exam Mark

School vs Region

School vs Province

70.4
69.4
72.3

P

q

Final Mark

School vs Region

School vs Province

77.0
75.9
75.7

P

P

Subtest

Listening

School
Region
Province

70.4
67.6
69.6

P

P

Reading

School
Region
Province

74.9
73.4
76.4

P

q

Writing

School
Region
Province

64.6
60.6
62.0

P

P

Interview

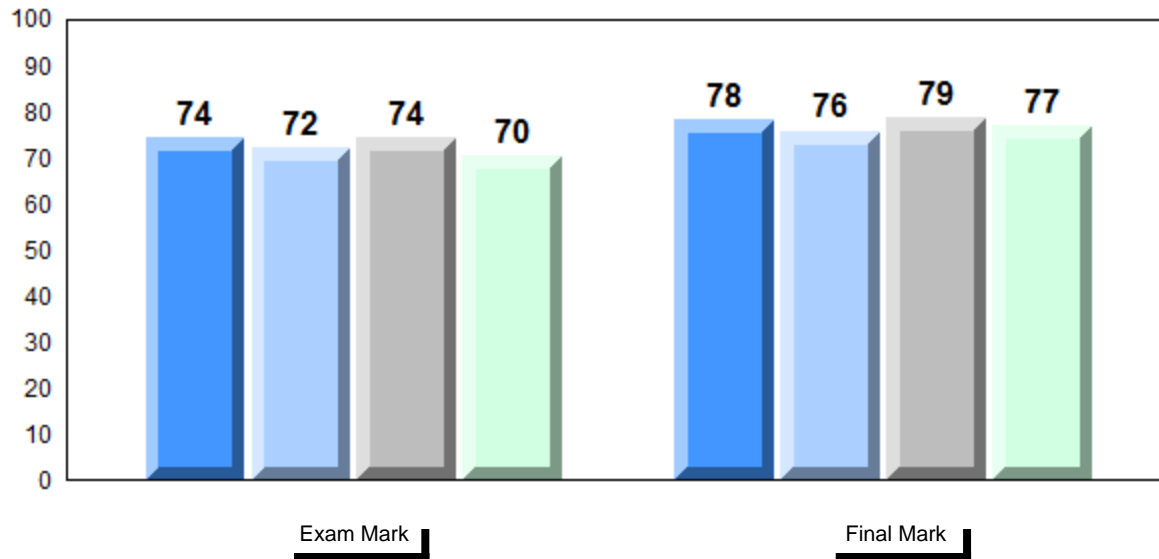
School
Region
Province

71.9
75.6
78.2

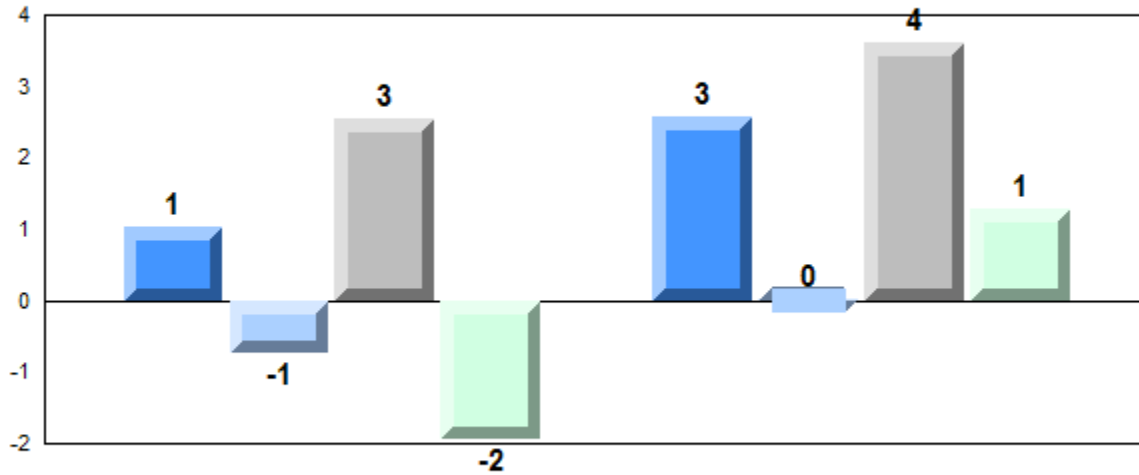
q

q

Average Mark, 2012-2015

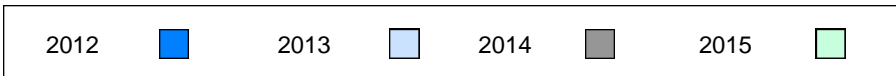


Difference from Provincial Mean, 2012-2015

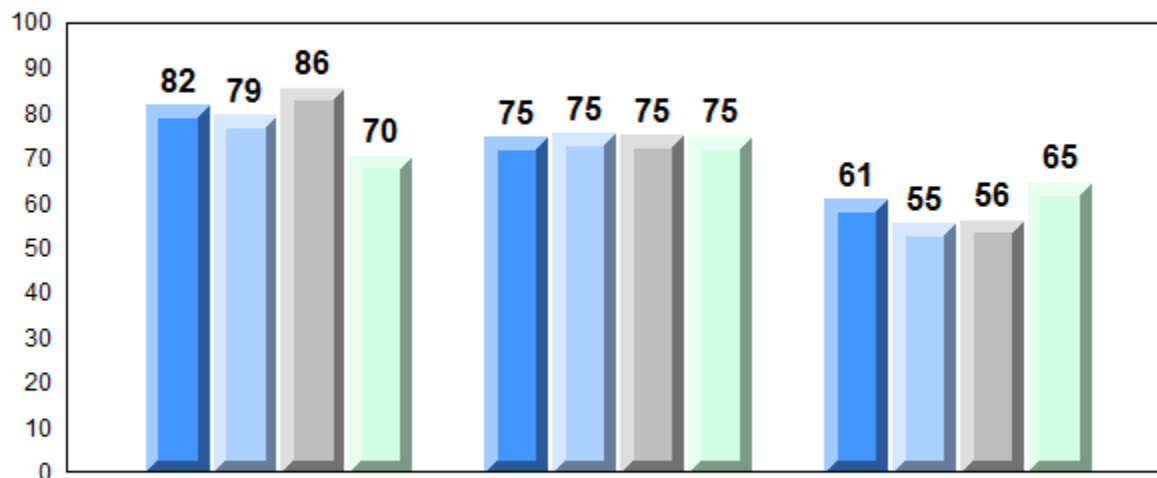


Exam Mark

Final Mark



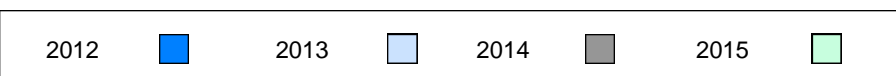
4 Year Public Exam (Subtest) Mark Trend 2012-2015



Listening

Reading

Writing



Number of Students 22

Francais 3202

School
Region
Province

Public Exam Mark

School vs Region

School vs Province

80.4
76.0
72.3

P

P

Final Mark

School vs Region

School vs Province

82.7
80.1
75.7

P

P

Subtest

Listening

School
Region
Province

81.6
76.4
69.6

P

P

Reading

School
Region
Province

83.8
78.6
76.4

P

P

Writing

School
Region
Province

72.0
66.0
62.0

P

P

Interview

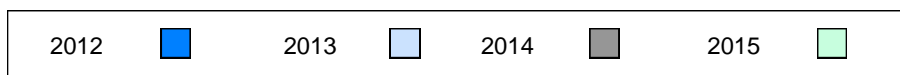
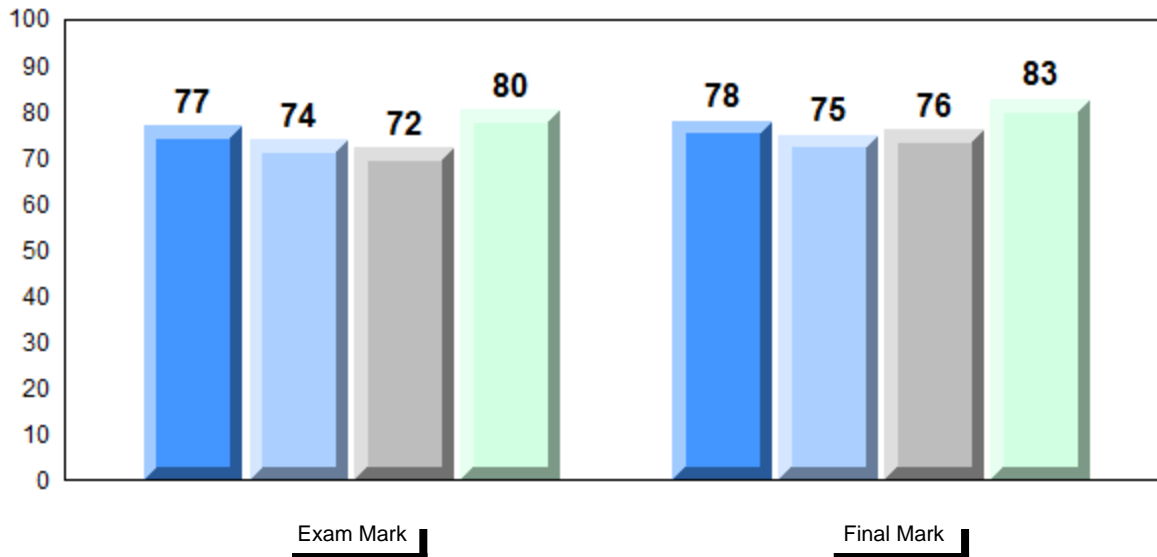
School
Region
Province

83.3
81.9
78.2

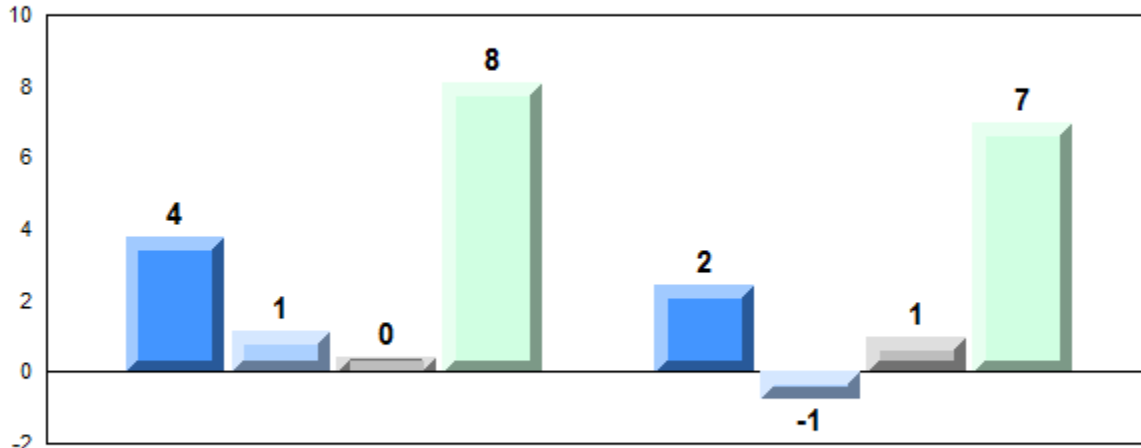
P

P

Average Mark, 2012-2015

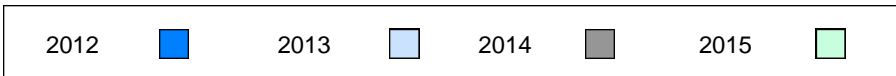


Difference from Provincial Mean, 2012-2015

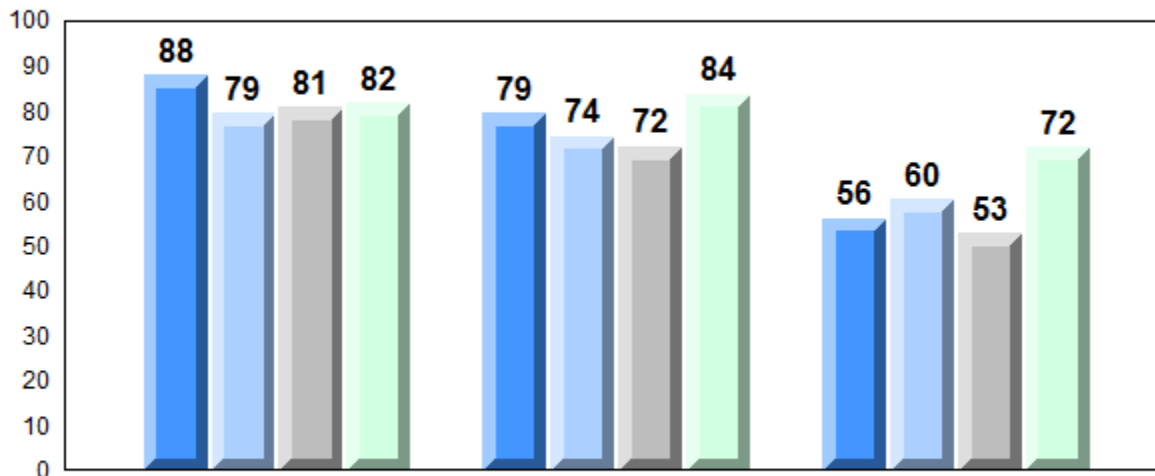


Exam Mark

Final Mark



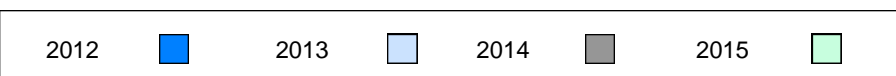
4 Year Public Exam (Subtest) Mark Trend 2012-2015



Listening

Reading

Writing



NLESD - Central Region

#480 - Exploits Valley High, Grand Falls-Windsor

Grades: 10-12

Number of Students 21

Francais 3202

School
Region
Province

Public Exam Mark

School vs Region

School vs Province

71.3
76.0
72.3

q

q

Final Mark

School vs Region

School vs Province

77.3
80.1
75.7

q

P

Subtest

Listening

School
Region
Province

70.9
76.4
69.6

q

P

Reading

School
Region
Province

73.1
78.6
76.4

q

q

Writing

School
Region
Province

59.7
66.0
62.0

q

q

Interview

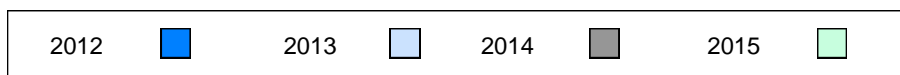
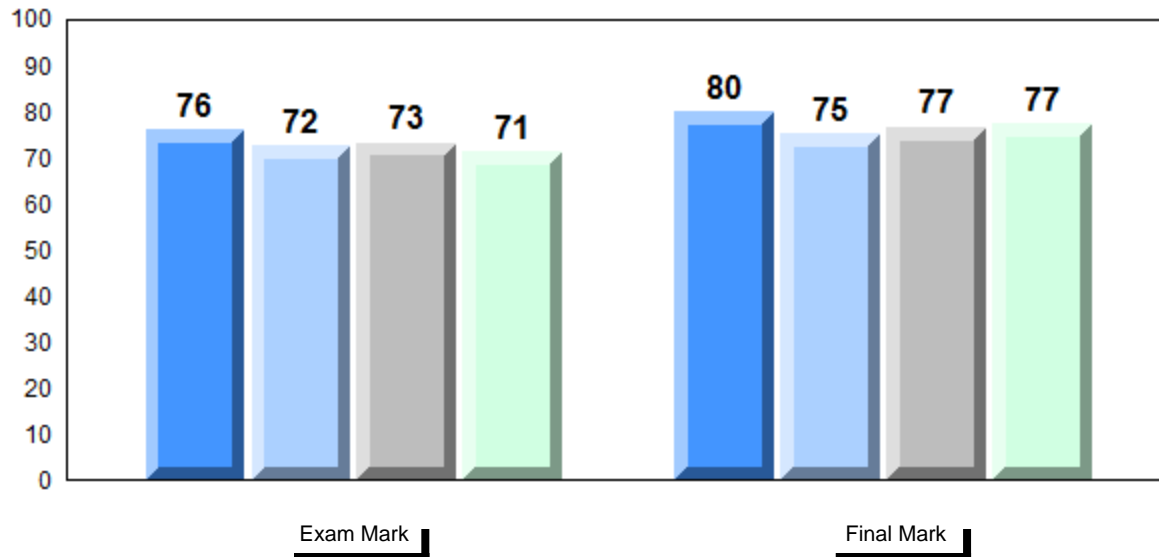
School
Region
Province

80.5
81.9
78.2

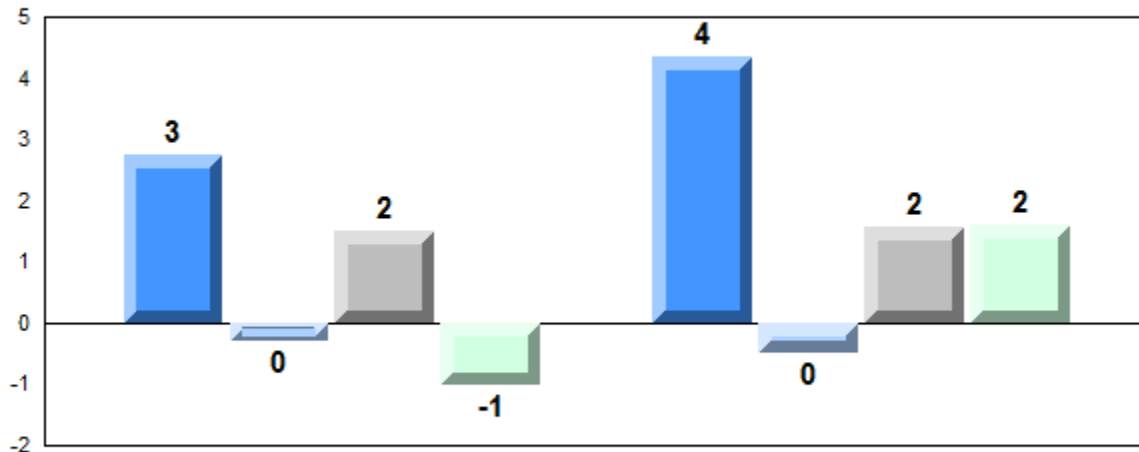
q

P

Average Mark, 2012-2015

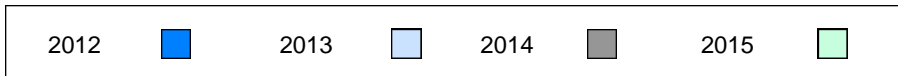


Difference from Provincial Mean, 2012-2015

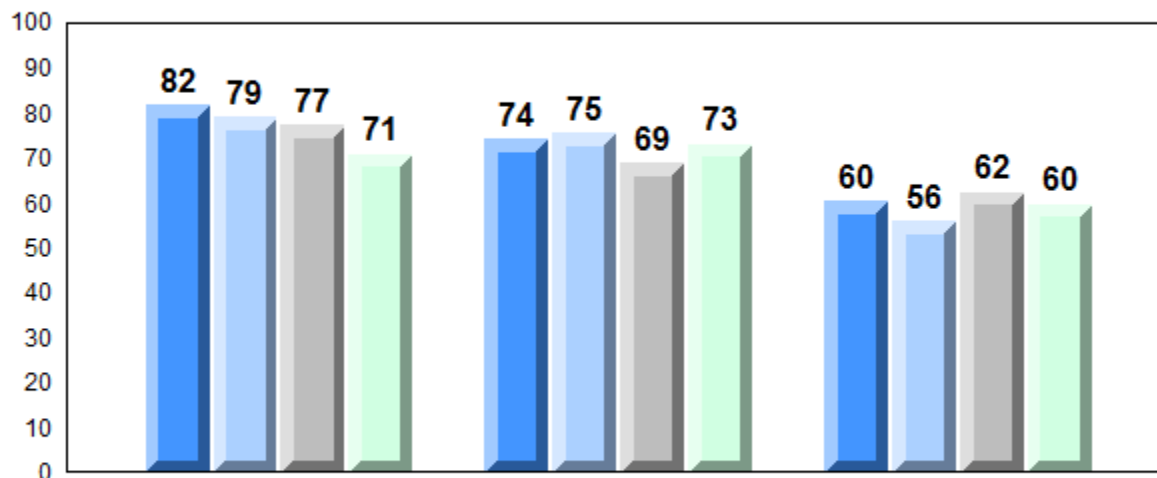


Exam Mark

Final Mark



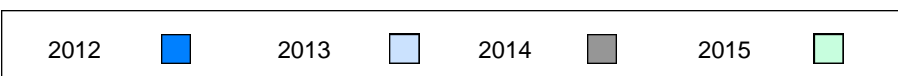
4 Year Public Exam (Subtest) Mark Trend 2012-2015



Listening

Reading

Writing



NLESD - Eastern Region

#219 - Marystown Central High School, Marystown

Grades: 10-12

Number of Students 15

Francais 3202

Subtest

Listening

Reading

Writing

Interview

School
Region
Province

School
Region
Province

School
Region
Province

School
Region
Province

School
Region
Province

Public Exam Mark

School vs Region

School vs Province

74.3
72.2
72.3

P

P

74.1
69.0
69.6

P

P

74.1
76.5
76.4

q

q

64.4
61.8
62.0

P

P

83.7
77.9
78.2

P

P

Final Mark

School vs Region

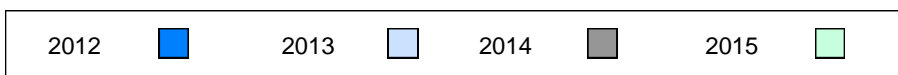
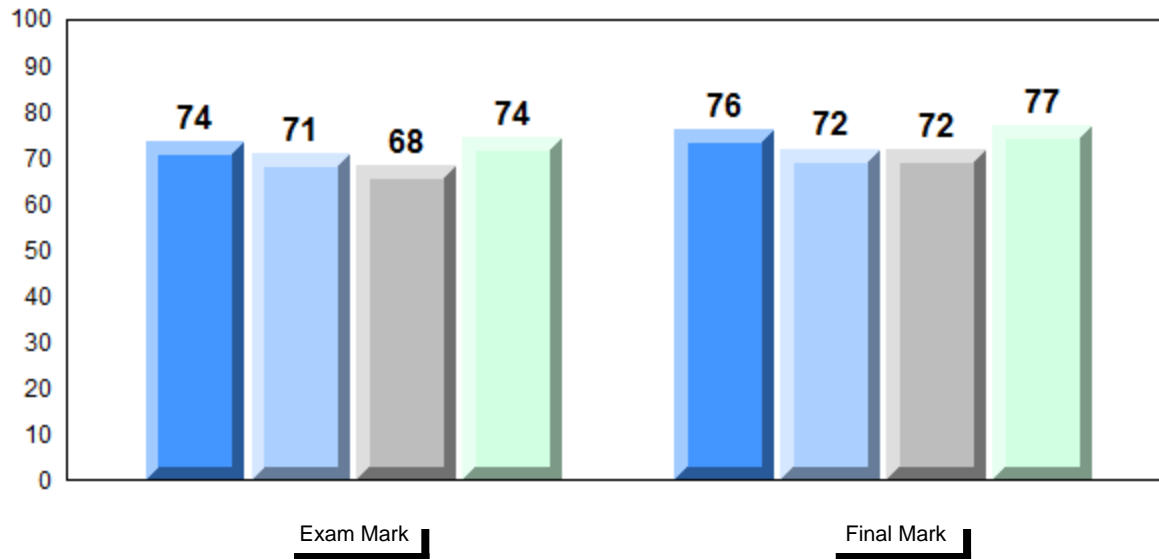
School vs Province

76.9
75.4
75.7

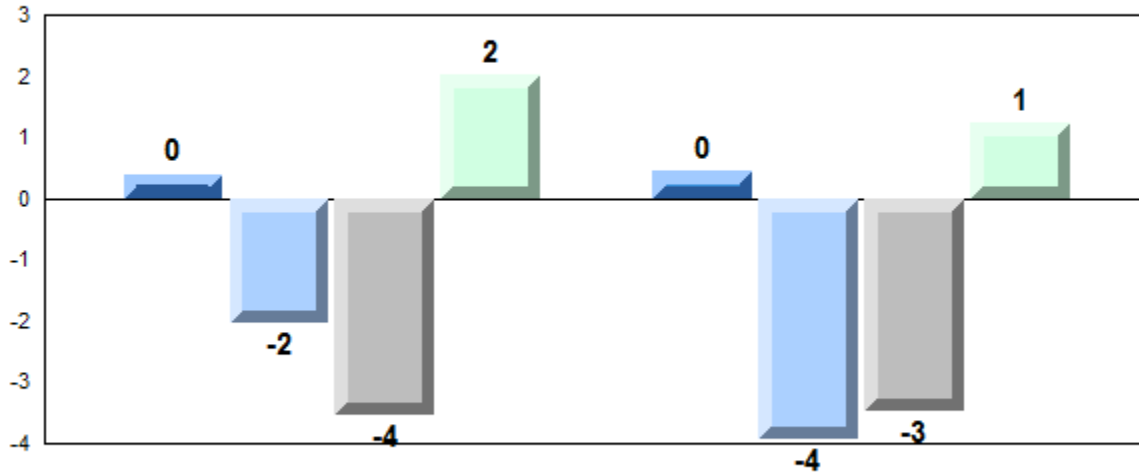
P

P

Average Mark, 2012-2015

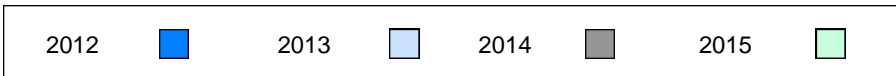


Difference from Provincial Mean, 2012-2015

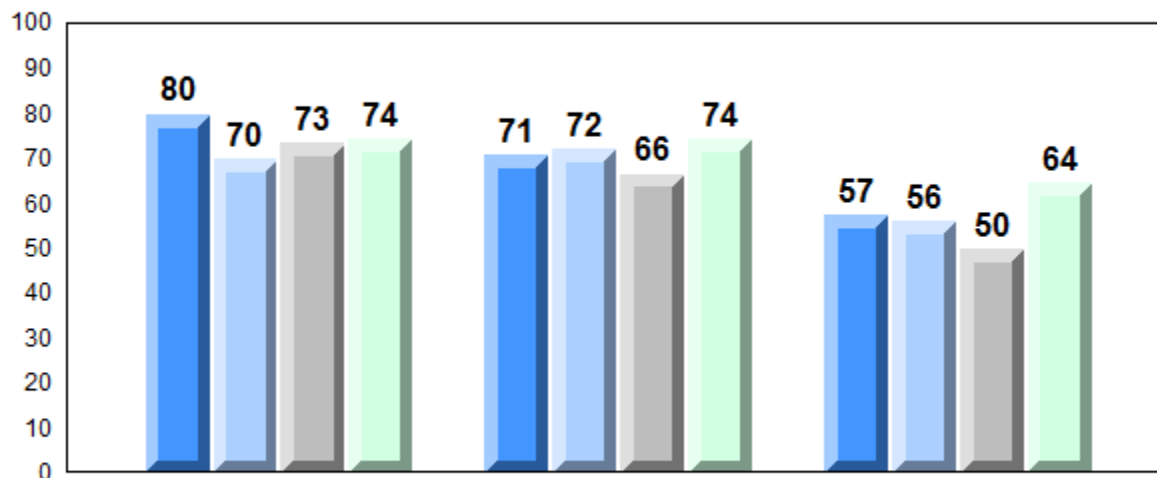


Exam Mark

Final Mark



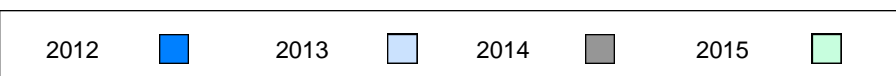
4 Year Public Exam (Subtest) Mark Trend 2012-2015



Listening

Reading

Writing



NLESD - Eastern Region

#235 - Clarenville High School, Clarenville

Grades: 10-12

Number of Students 12

Francais 3202

School
Region
Province

**Public
Exam
Mark**

School
vs
Region

School
vs
Province

70.2
72.2
72.3

q

q

**Final
Mark**

School
vs
Region

School
vs
Province

74.5
75.4
75.7

q

q

Subtest

Listening

School
Region
Province

64.3
69.0
69.6

q

q

Reading

School
Region
Province

77.7
76.5
76.4

p

p

Writing

School
Region
Province

58.8
61.8
62.0

q

q

Interview

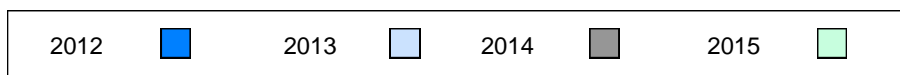
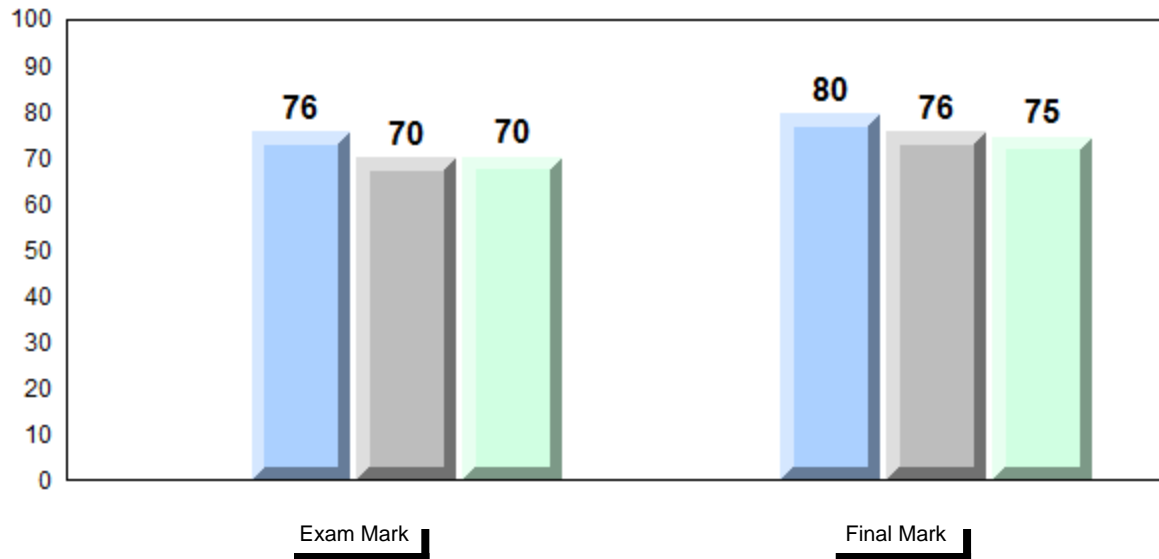
School
Region
Province

78.3
77.9
78.2

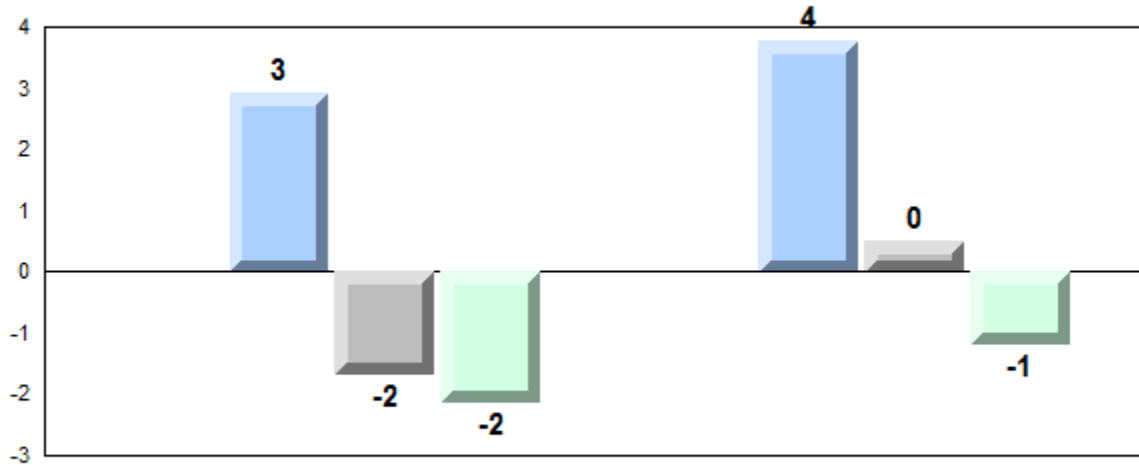
p

p

Average Mark, 2012-2015

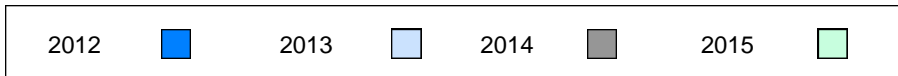


Difference from Provincial Mean, 2012-2015

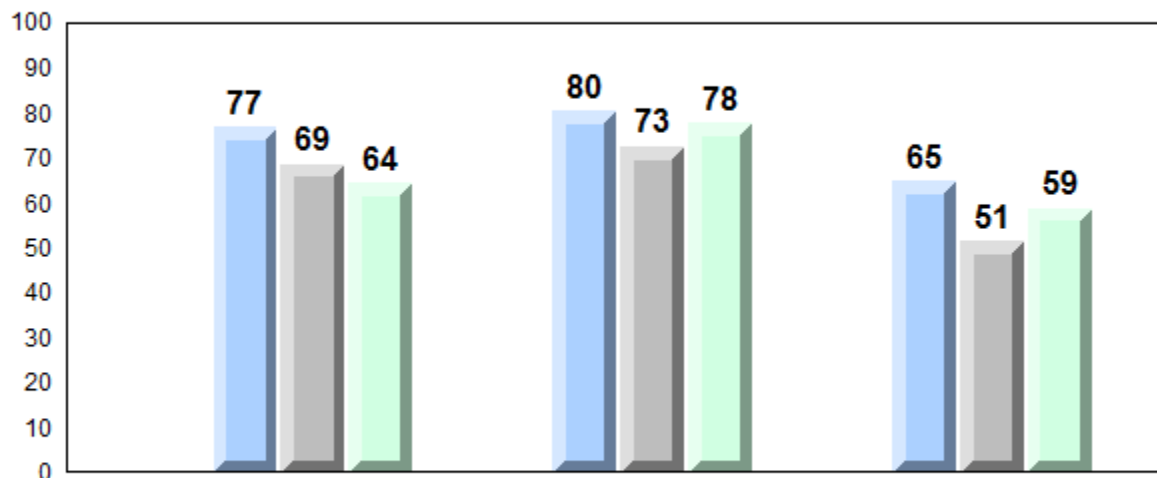


Exam Mark

Final Mark



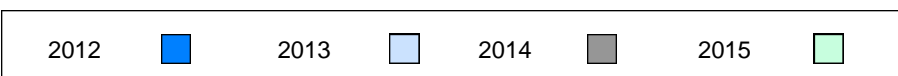
4 Year Public Exam (Subtest) Mark Trend 2012-2015



Listening

Reading

Writing



NLESD - Eastern Region

#249 - Ascension Collegiate, Bay Roberts

Grades: 10-12

Number of Students 32

Francais 3202

Subtest

Listening

Reading

Writing

Interview

School
Region
Province

School
Region
Province

School
Region
Province

School
Region
Province

School
Region
Province

Public Exam Mark

School vs Region

School vs Province

74.4
72.2
72.3

P

P

72.1
69.0
69.6

P

P

78.0
76.5
76.4

P

P

69.4
61.8
62.0

P

P

77.2
77.9
78.2

q

q

Final Mark

School vs Region

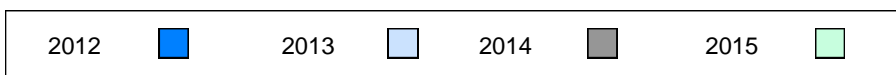
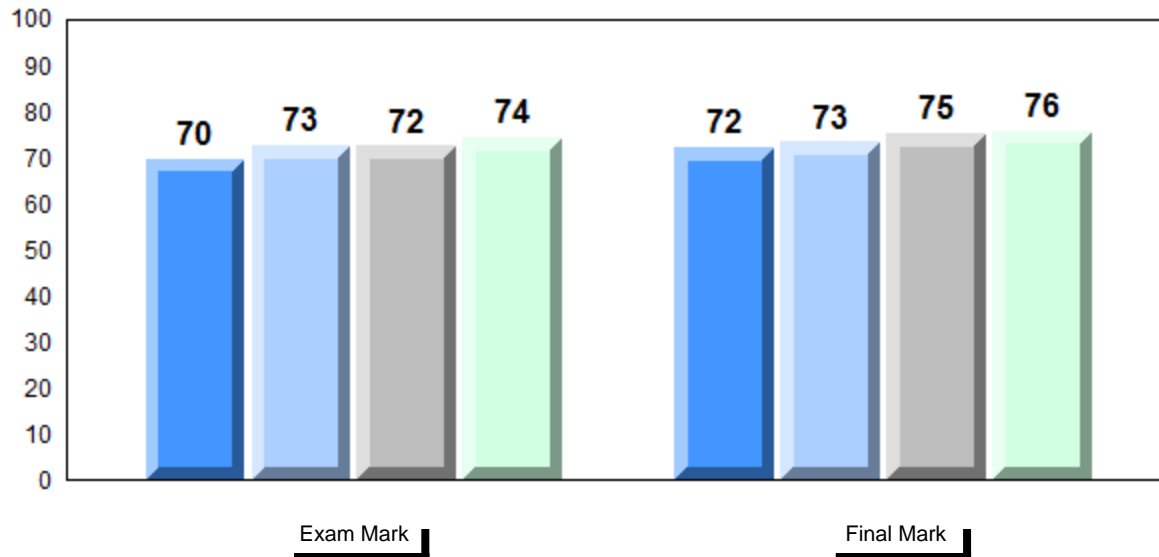
School vs Province

75.8
75.4
75.7

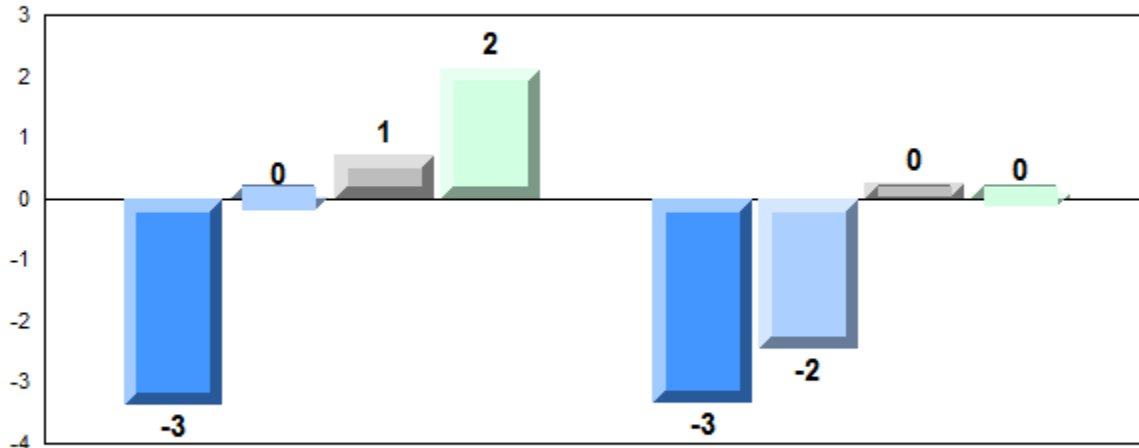
P

P

Average Mark, 2012-2015

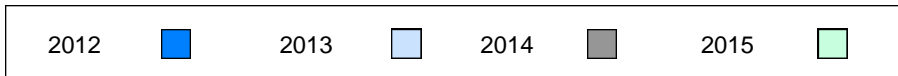


Difference from Provincial Mean, 2012-2015

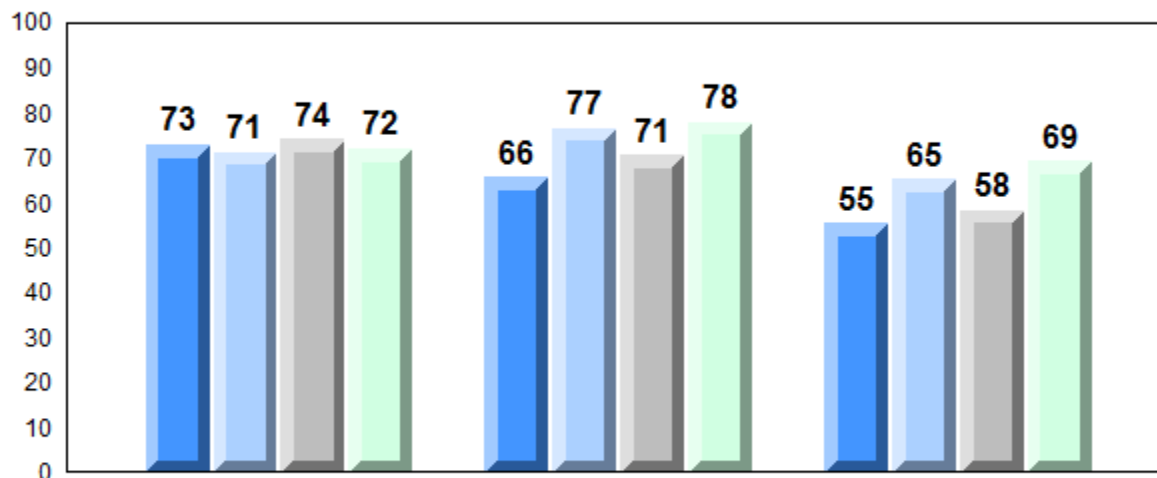


Exam Mark

Final Mark



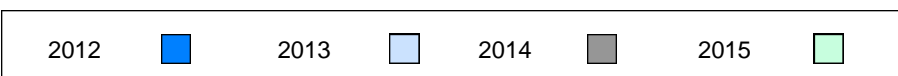
4 Year Public Exam (Subtest) Mark Trend 2012-2015



Listening

Reading

Writing



NLESD - Eastern Region

#253 - Carbonear Collegiate, Carbonear

Grades: 9-12

Number of Students 10

Francais 3202

School
Region
Province

Public Exam Mark

School vs Region

School vs Province

66.6
72.2
72.3

q

q

Final Mark

School vs Region

School vs Province

71.3
75.4
75.7

q

q

Subtest

Listening

School
Region
Province

63.2
69.0
69.6

q

q

Reading

School
Region
Province

70.4
76.5
76.4

q

q

Writing

School
Region
Province

54.0
61.8
62.0

q

q

Interview

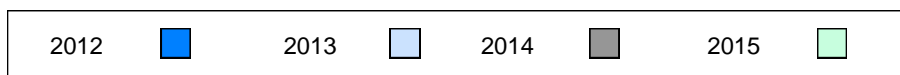
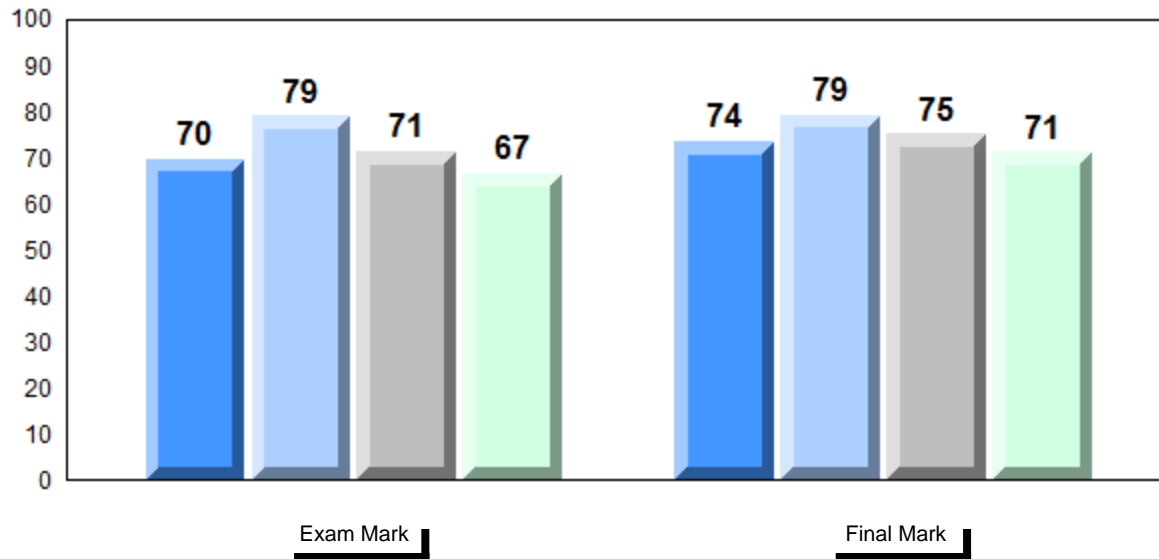
School
Region
Province

78.2
77.9
78.2

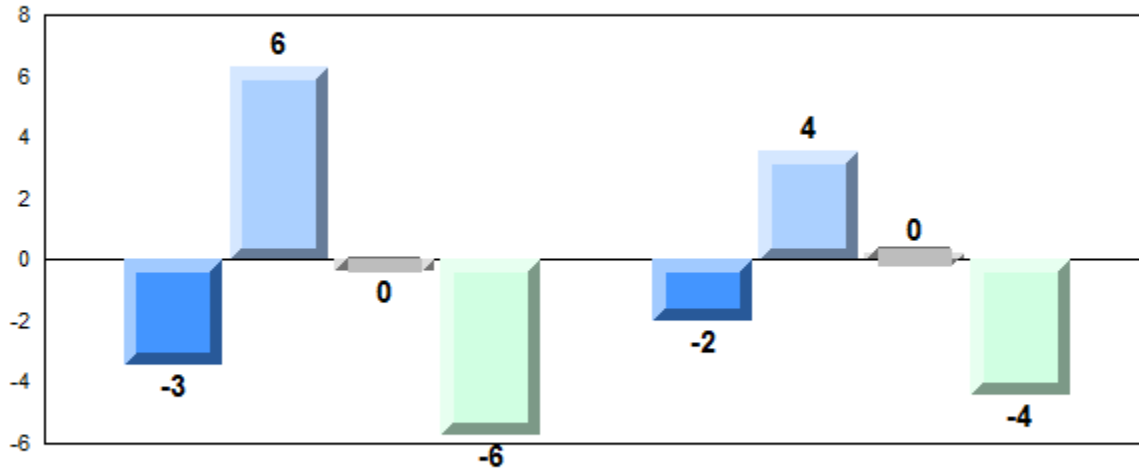
p

q

Average Mark, 2012-2015

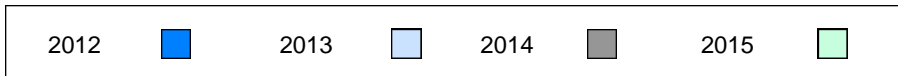


Difference from Provincial Mean, 2012-2015

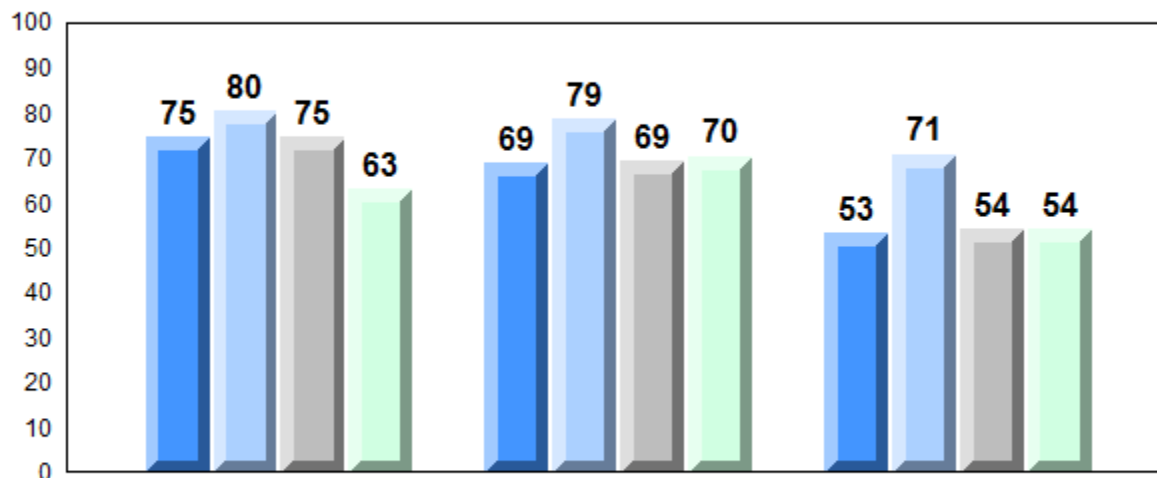


Exam Mark

Final Mark



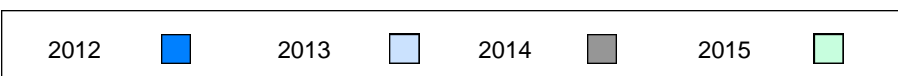
4 Year Public Exam (Subtest) Mark Trend 2012-2015



Listening

Reading

Writing



NLESD - Eastern Region

#302 - Queen Elizabeth Regional High, Conception Bay South (

Grades: 10-12

Number of Students 35

Francais 3202

School
Region
Province

Public Exam Mark

School vs Region

School vs Province

70.2
72.2
72.3

q

q

Final Mark

School vs Region

School vs Province

74.0
75.4
75.7

q

q

Subtest

Listening

School
Region
Province

70.3
69.0
69.6

p

p

Reading

School
Region
Province

72.8
76.5
76.4

q

q

Writing

School
Region
Province

57.3
61.8
62.0

q

q

Interview

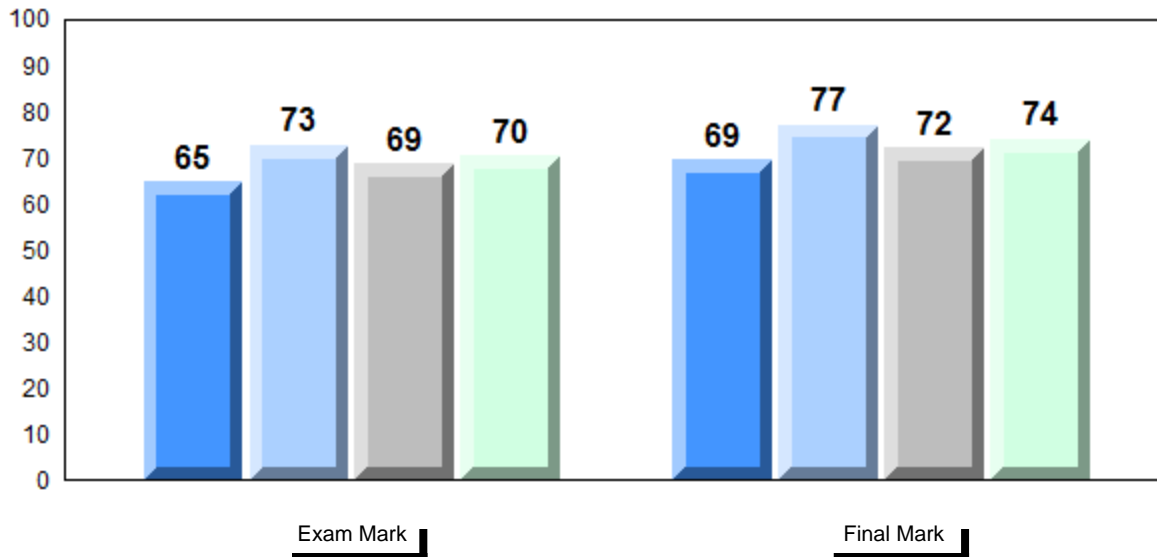
School
Region
Province

79.5
77.9
78.2

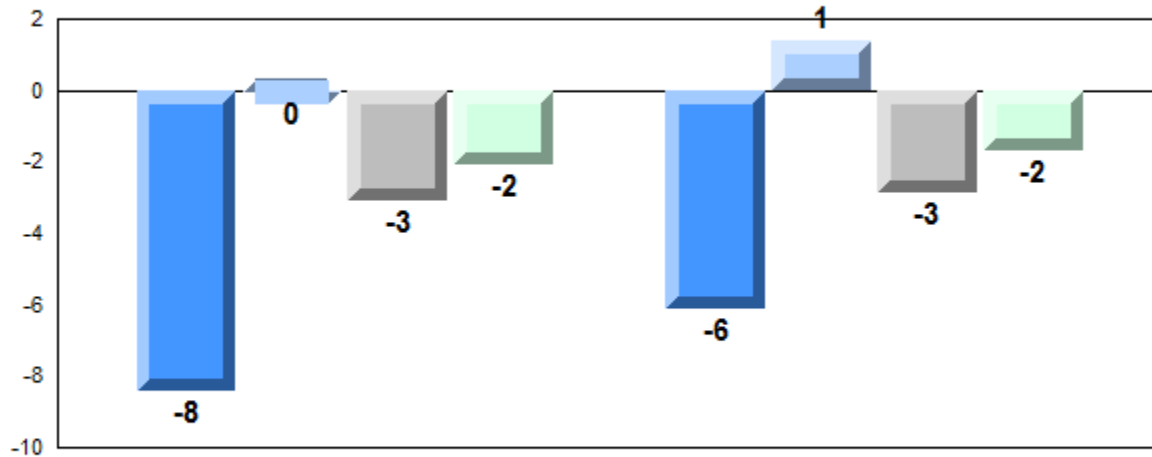
p

p

Average Mark, 2012-2015

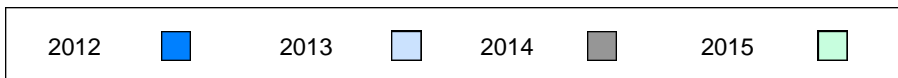


Difference from Provincial Mean, 2012-2015

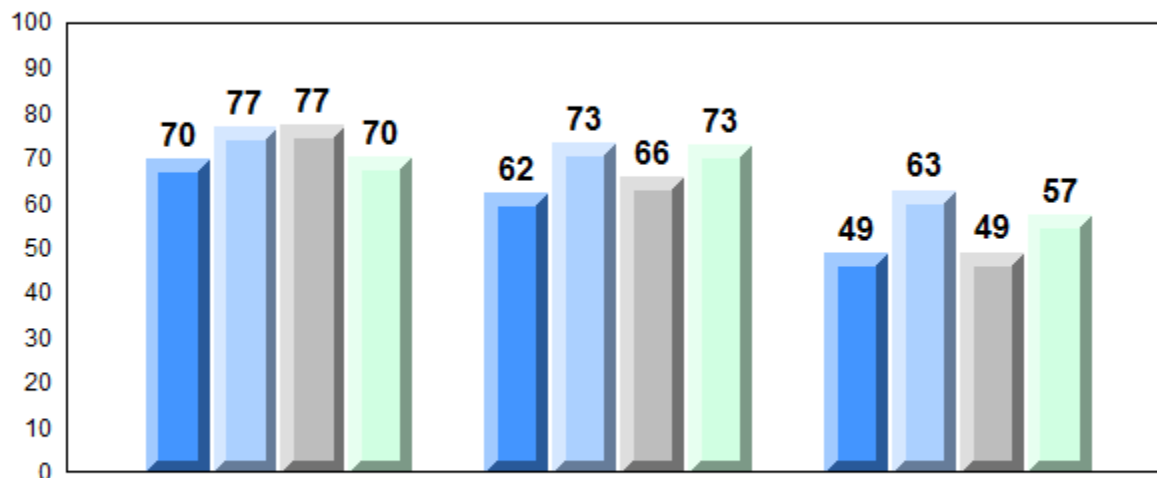


Exam Mark

Final Mark



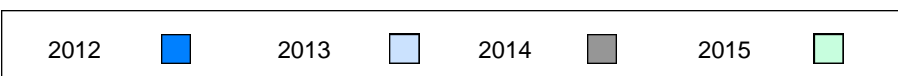
4 Year Public Exam (Subtest) Mark Trend 2012-2015



Listening

Reading

Writing



NLESD - Eastern Region

#304 - Holy Spirit High, Conception Bay South (Manuels)

Grades: 9-12

Number of Students 36

Francais 3202

Subtest

Listening

Reading

Writing

Interview

School
Region
Province

School
Region
Province

School
Region
Province

School
Region
Province

School
Region
Province

Public Exam Mark

School vs Region

School vs Province

75.0
72.2
72.3

P

P

75.2
69.0
69.6

P

P

78.4
76.5
76.4

P

P

68.6
61.8
62.0

P

P

77.1
77.9
78.2

q

q

Final Mark

School vs Region

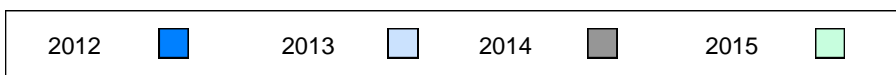
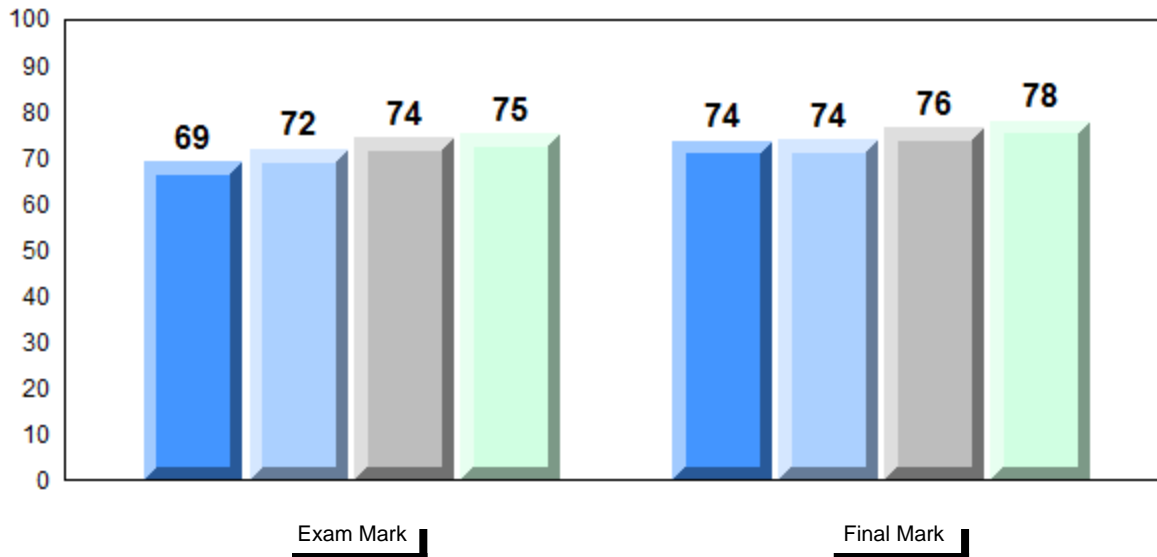
School vs Province

78.0
75.4
75.7

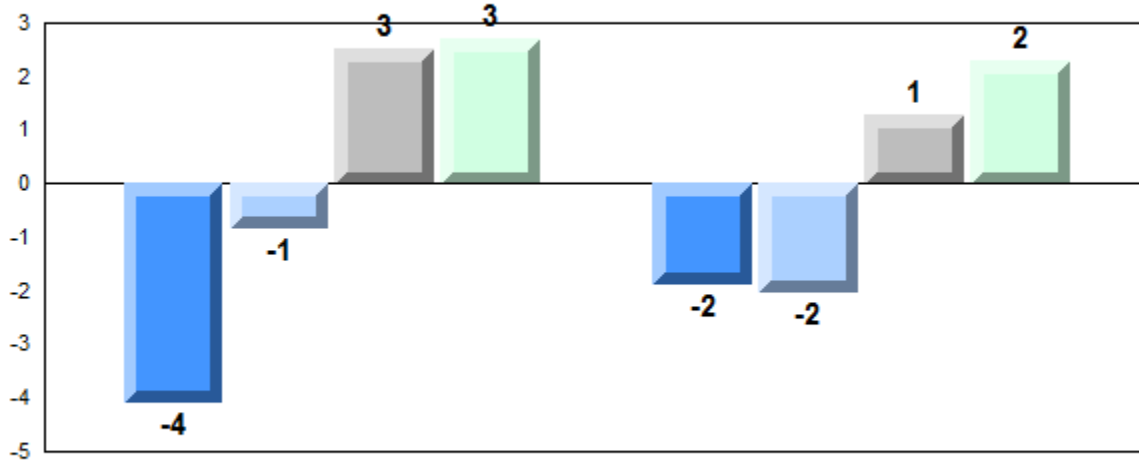
P

P

Average Mark, 2012-2015

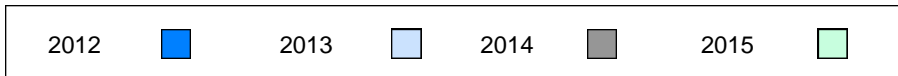


Difference from Provincial Mean, 2012-2015

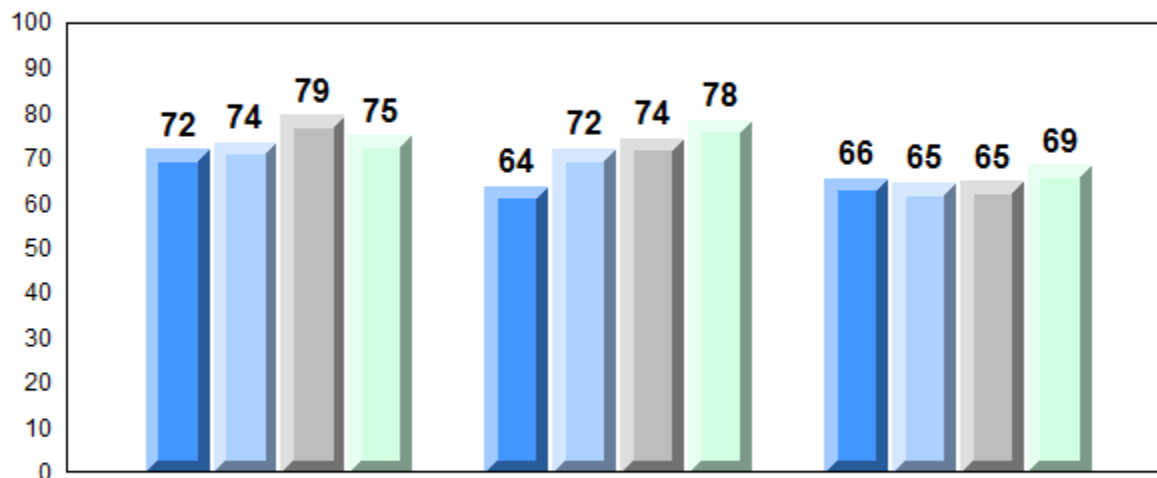


Exam Mark

Final Mark



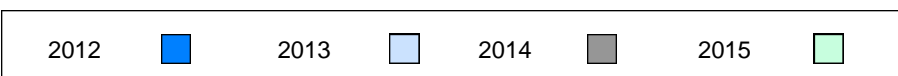
4 Year Public Exam (Subtest) Mark Trend 2012-2015



Listening

Reading

Writing



Number of Students 69

Francais 3202

Subtest

Listening

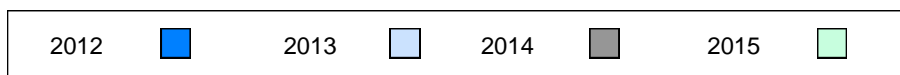
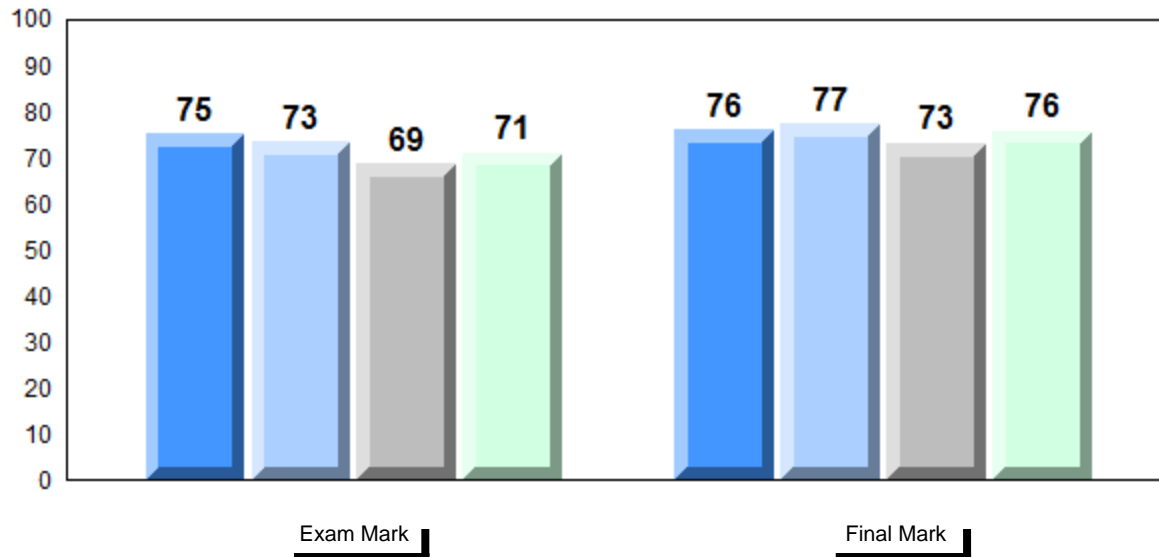
Reading

Writing

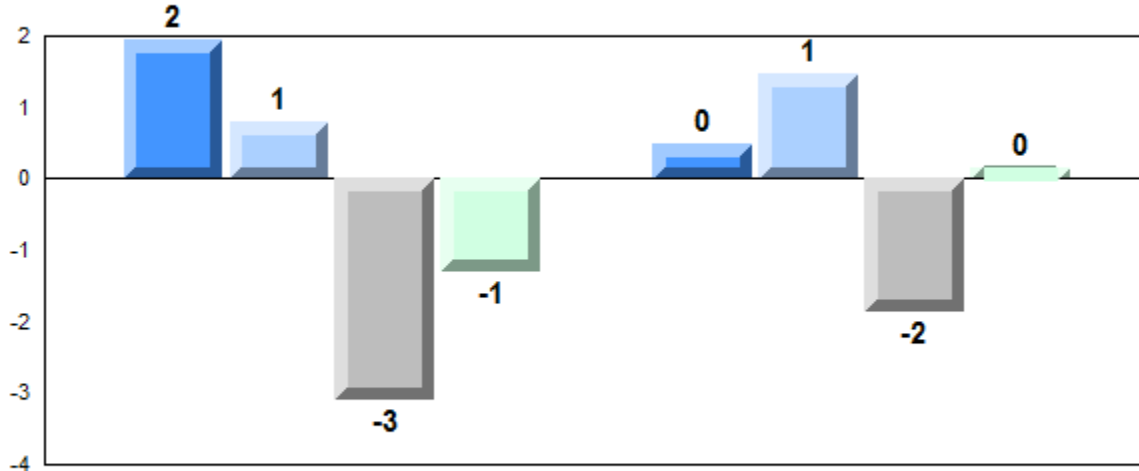
Interview

| | | Public Exam Mark | School vs Region | School vs Province | | | Final Mark | School vs Region | School vs Province |
|------------------|----------|-------------------------|------------------|--------------------|--|--|-------------------|------------------|--------------------|
| | School | 71.0 | q | q | | | 75.8 | p | p |
| | Region | 72.2 | | | | | 75.4 | | |
| | Province | 72.3 | | | | | 75.7 | | |
| Listening | School | 68.1 | q | q | | | | | |
| | Region | 69.0 | | | | | | | |
| | Province | 69.6 | | | | | | | |
| Reading | School | 77.0 | p | p | | | | | |
| | Region | 76.5 | | | | | | | |
| | Province | 76.4 | | | | | | | |
| Writing | School | 58.0 | q | q | | | | | |
| | Region | 61.8 | | | | | | | |
| | Province | 62.0 | | | | | | | |
| Interview | School | 80.0 | p | p | | | | | |
| | Region | 77.9 | | | | | | | |
| | Province | 78.2 | | | | | | | |

Average Mark, 2012-2015

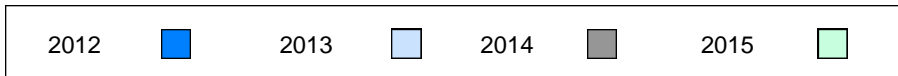


Difference from Provincial Mean, 2012-2015

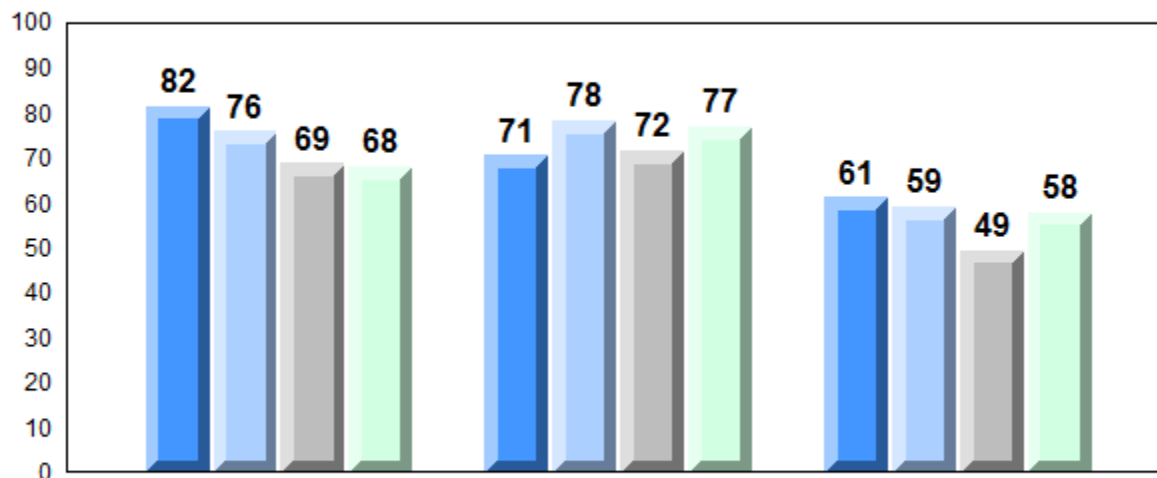


Exam Mark

Final Mark



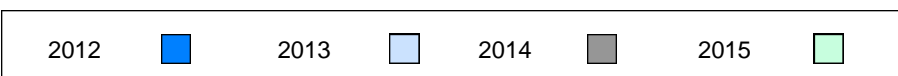
4 Year Public Exam (Subtest) Mark Trend 2012-2015



Listening

Reading

Writing



NLESD - Eastern Region

#313 - O'Donel High School, Mount Pearl

Grades: 10-12

Number of Students 32

Francais 3202

School
Region
Province

Public Exam Mark

School vs Region

School vs Province

69.4
72.2
72.3

q

q

Final Mark

School vs Region

School vs Province

74.9
75.4
75.7

q

q

Subtest

Listening

School
Region
Province

59.9
69.0
69.6

q

q

Reading

School
Region
Province

73.9
76.5
76.4

q

q

Writing

School
Region
Province

59.4
61.8
62.0

q

q

Interview

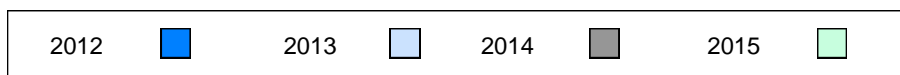
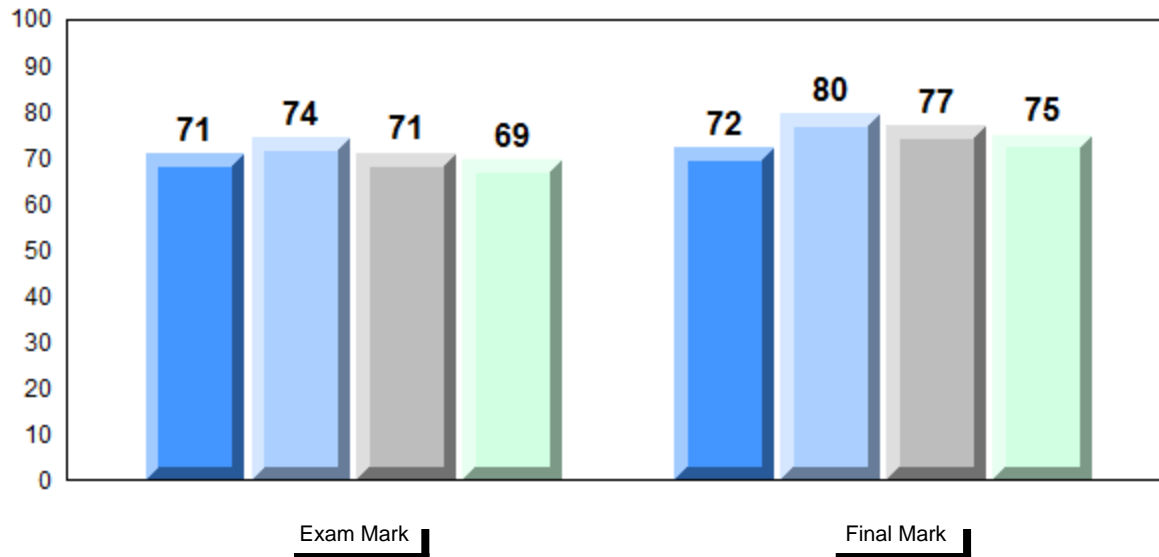
School
Region
Province

83.1
77.9
78.2

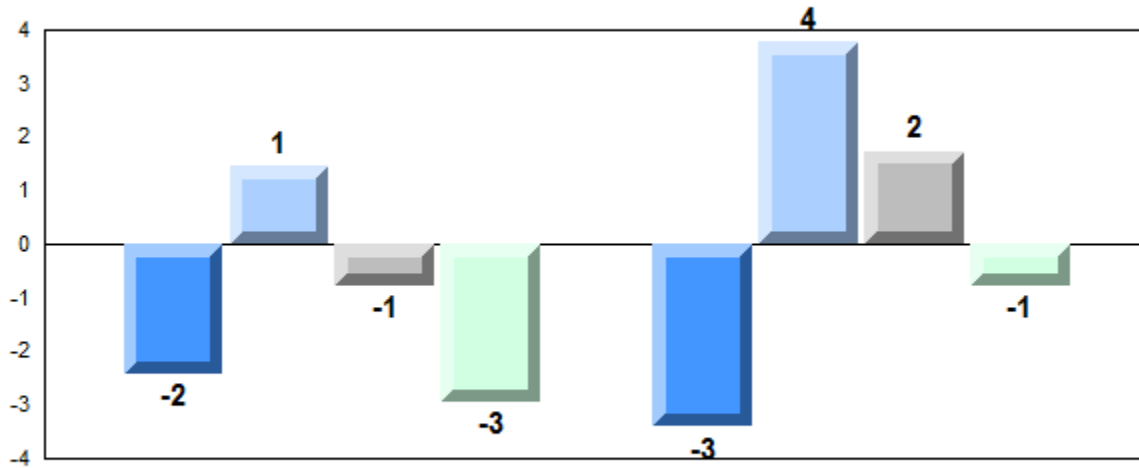
p

p

Average Mark, 2012-2015

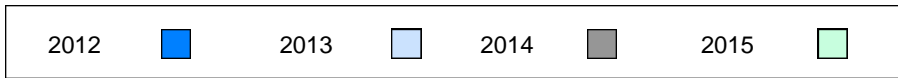


Difference from Provincial Mean, 2012-2015

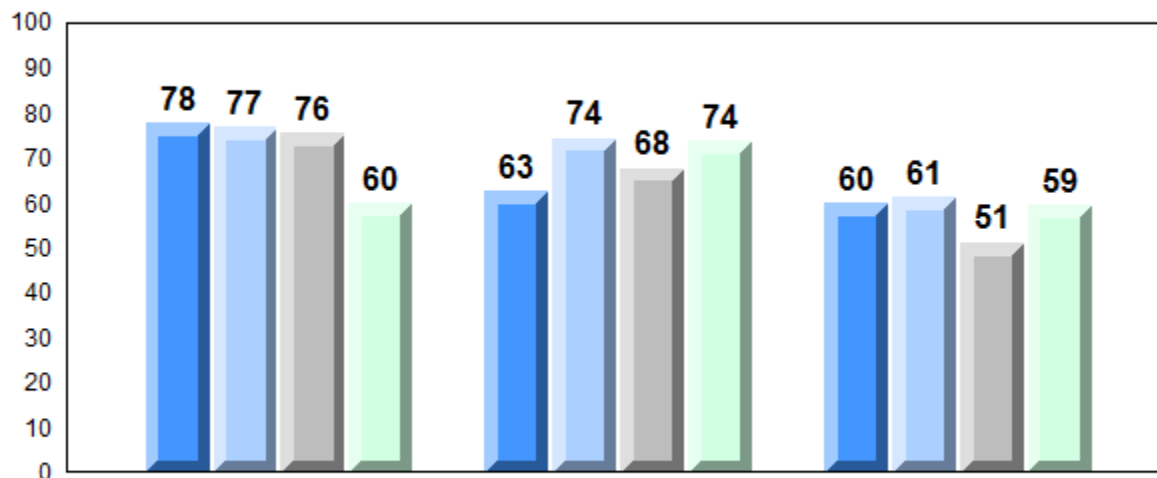


Exam Mark

Final Mark



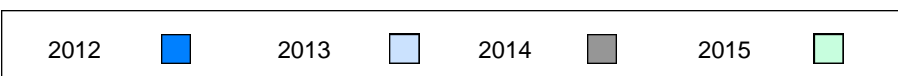
4 Year Public Exam (Subtest) Mark Trend 2012-2015



Listening

Reading

Writing



NLESD - Eastern Region

#327 - Bishops College High, St. John's

Grades: 10-12

Number of Students 21

Francais 3202

School
Region
Province

Public Exam Mark

School vs Region

School vs Province

62.4
72.2
72.3

q

q

Final Mark

School vs Region

School vs Province

66.5
75.4
75.7

q

q

Subtest

Listening

School
Region
Province

57.5
69.0
69.6

q

q

Reading

School
Region
Province

66.5
76.5
76.4

q

q

Writing

School
Region
Province

52.2
61.8
62.0

q

q

Interview

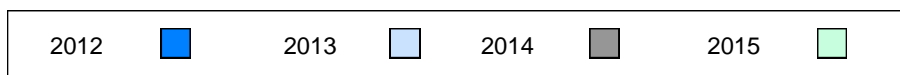
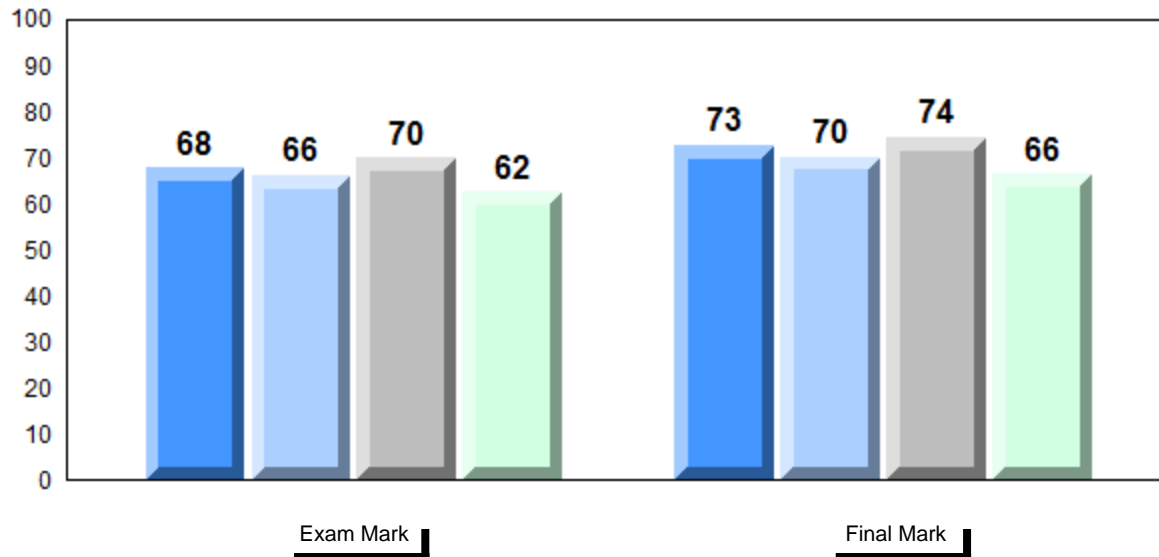
School
Region
Province

72.5
77.9
78.2

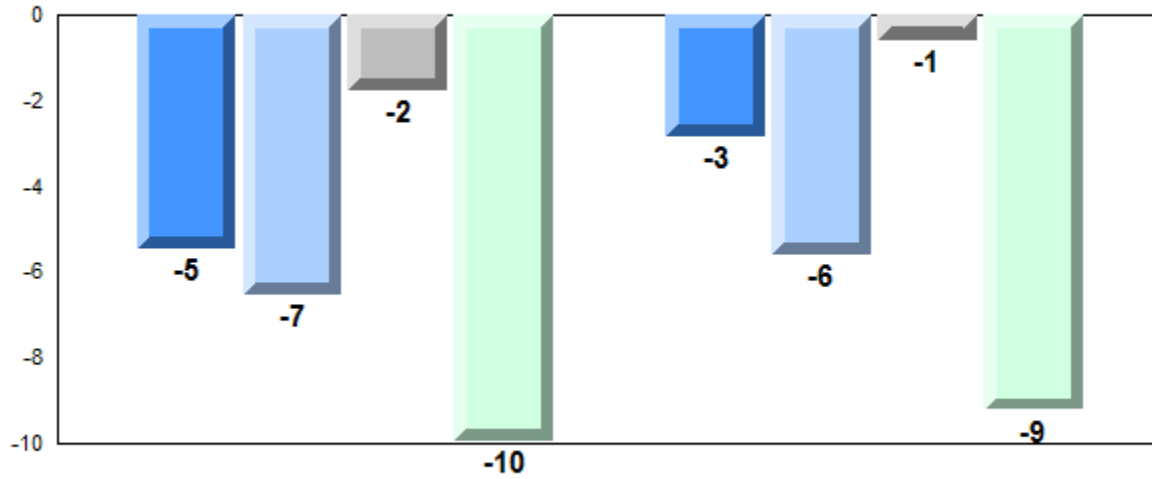
q

q

Average Mark, 2012-2015

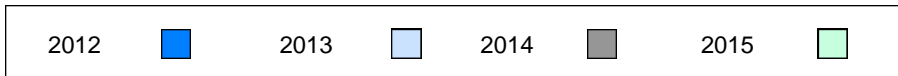


Difference from Provincial Mean, 2012-2015

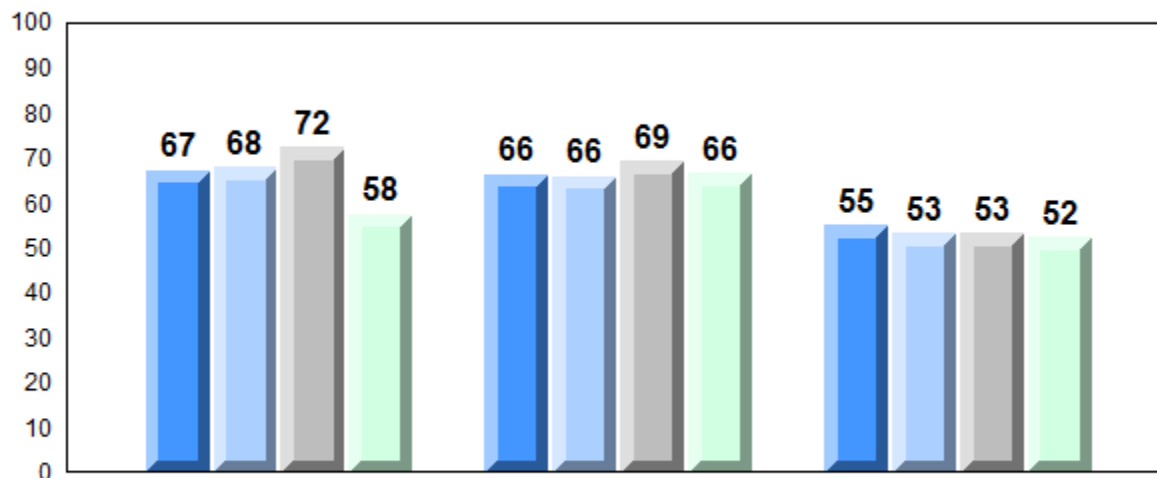


Exam Mark

Final Mark



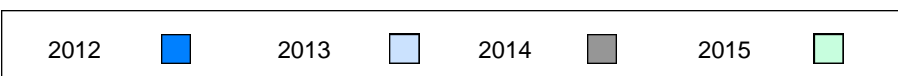
4 Year Public Exam (Subtest) Mark Trend 2012-2015



Listening

Reading

Writing



NLESD - Eastern Region

#328 - Booth Memorial High School, St. John's

Grades: 10-12

Number of Students 20

Francais 3202

School
Region
Province

Public Exam Mark

School vs Region

School vs Province

77.7
72.2
72.3

P

P

Final Mark

School vs Region

School vs Province

81.4
75.4
75.7

P

P

Subtest

Listening

School
Region
Province

79.4
69.0
69.6

P

P

Reading

School
Region
Province

82.2
76.5
76.4

P

P

Writing

School
Region
Province

73.5
61.8
62.0

P

P

Interview

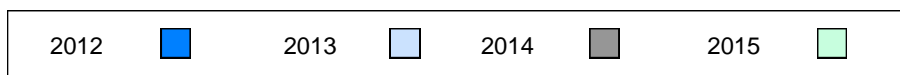
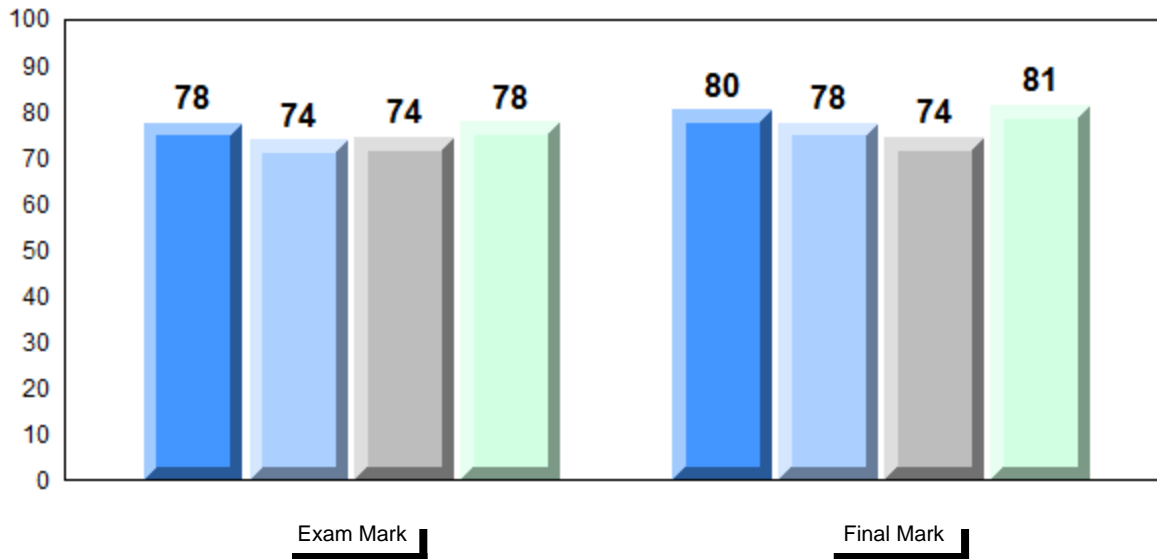
School
Region
Province

74.3
77.9
78.2

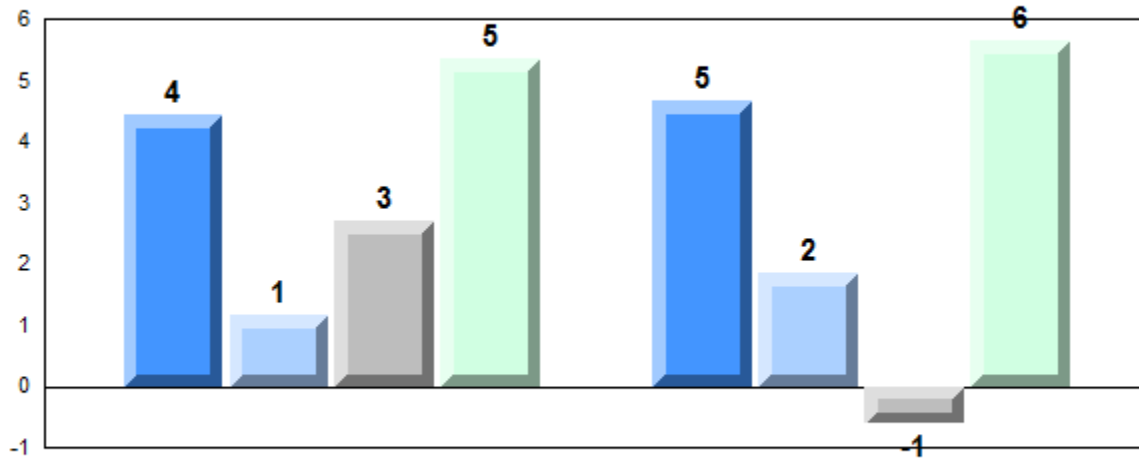
q

q

Average Mark, 2012-2015

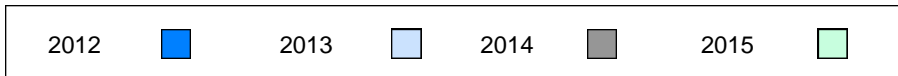


Difference from Provincial Mean, 2012-2015

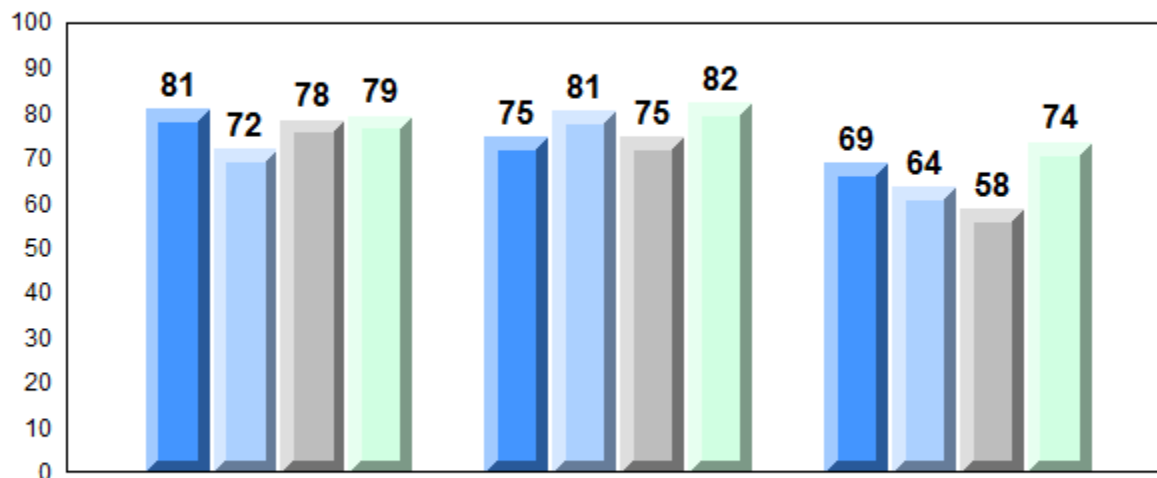


Exam Mark

Final Mark



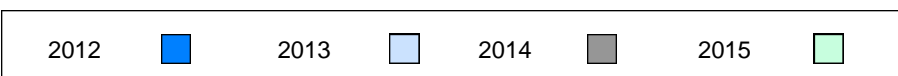
4 Year Public Exam (Subtest) Mark Trend 2012-2015



Listening

Reading

Writing



NLESD - Eastern Region

#336 - Gonzaga Regional High, St. John's

Grades: 10-12

Number of Students 67

Francais 3202

Subtest

Listening

Reading

Writing

Interview

School
Region
Province

School
Region
Province

School
Region
Province

School
Region
Province

School
Region
Province

Public Exam Mark

School vs Region

School vs Province

76.1
72.2
72.3

P

P

76.7
69.0
69.6

P

P

82.2
76.5
76.4

P

P

67.9
61.8
62.0

P

P

76.4
77.9
78.2

q

q

Final Mark

School vs Region

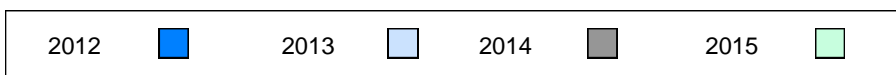
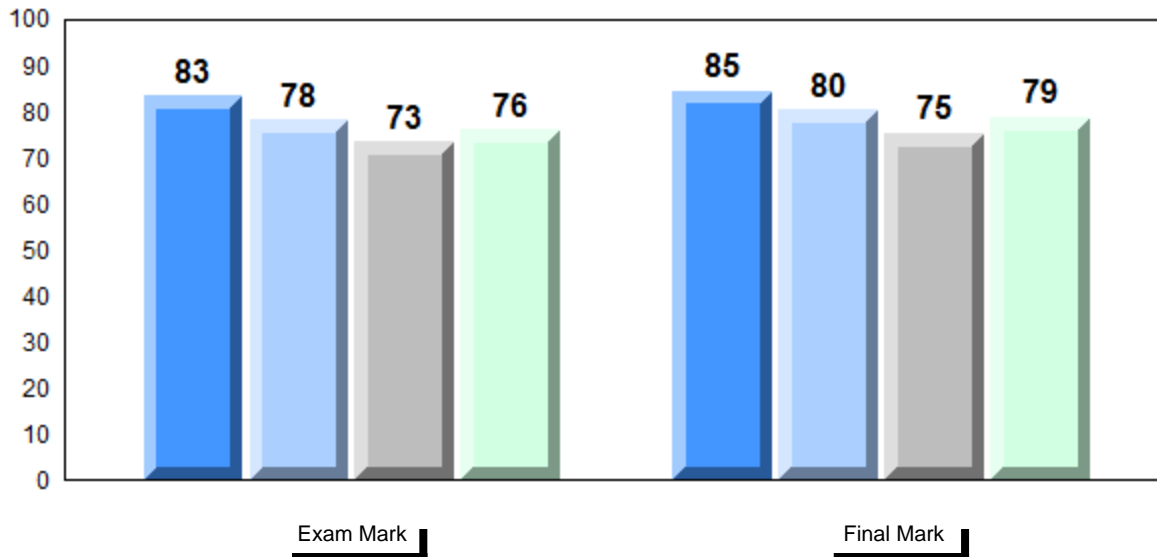
School vs Province

78.8
75.4
75.7

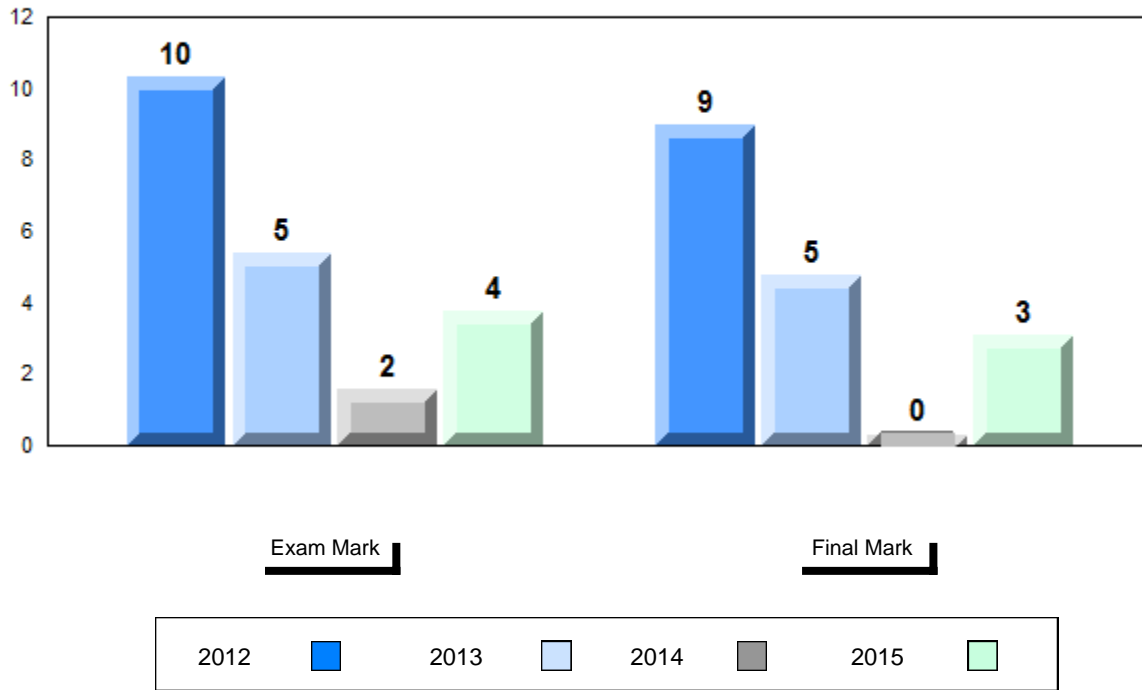
P

P

Average Mark, 2012-2015

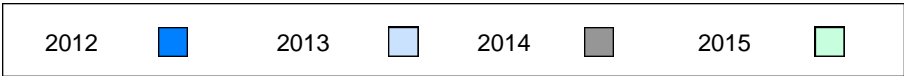


Difference from Provincial Mean, 2012-2015

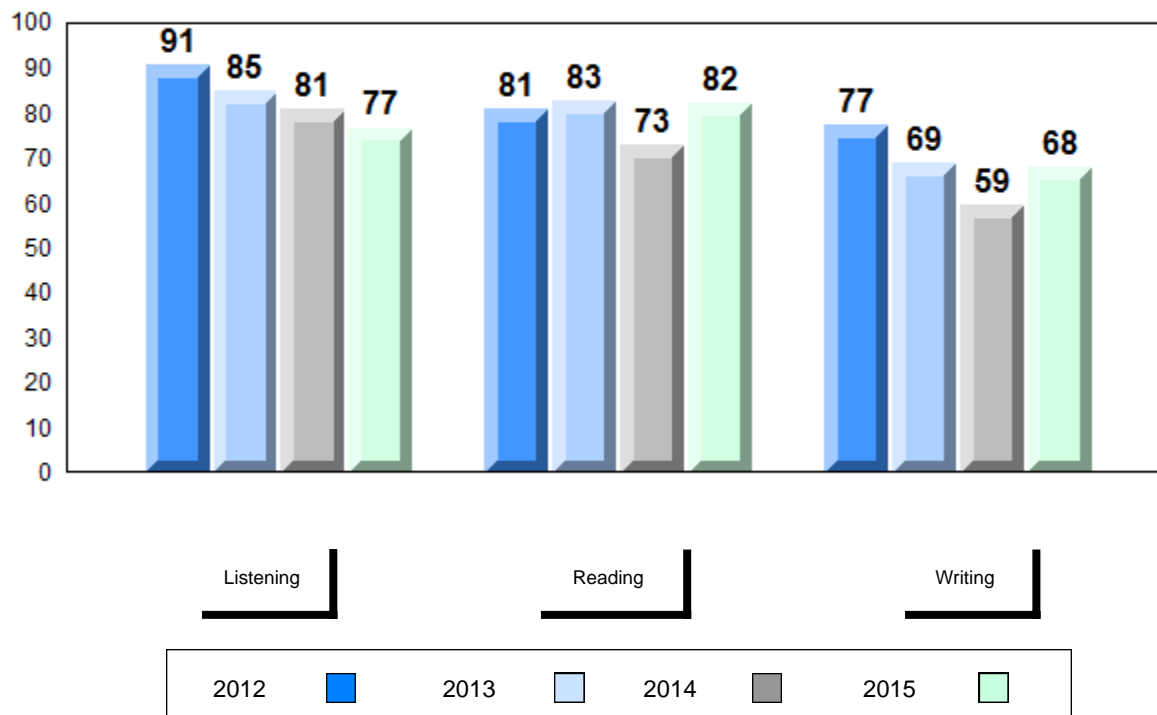


Exam Mark

Final Mark



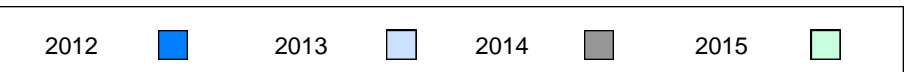
4 Year Public Exam (Subtest) Mark Trend 2012-2015



Listening

Reading

Writing



Number of Students 49

Francais 3202

Subtest

Listening

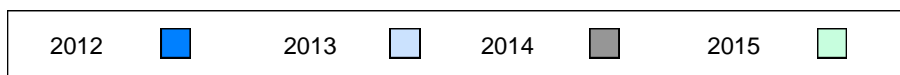
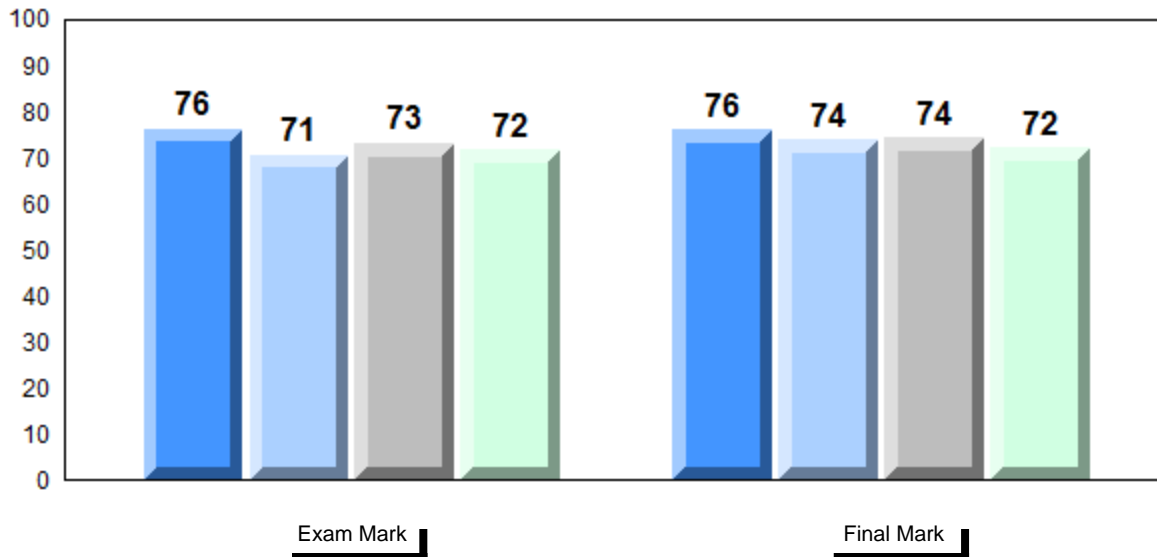
Reading

Writing

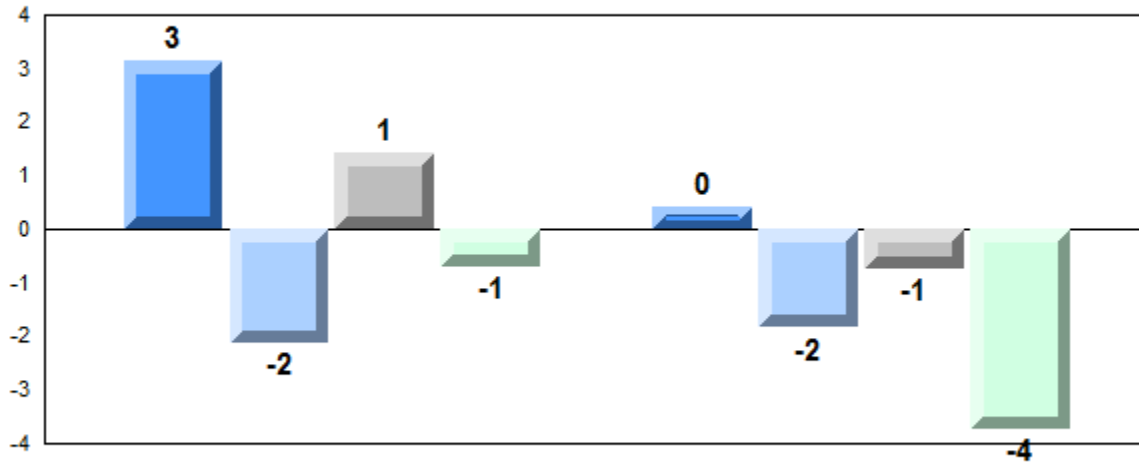
Interview

| | | Public Exam Mark | School vs Region | School vs Province | Final Mark | School vs Region | School vs Province |
|------------------|----------|-------------------------|------------------|--------------------|-------------------|------------------|--------------------|
| | School | 71.6 | q | q | 72.0 | q | q |
| | Region | 72.2 | | | 75.4 | | |
| | Province | 72.3 | | | 75.7 | | |
| Listening | School | 67.9 | q | q | | | |
| | Region | 69.0 | | | | | |
| | Province | 69.6 | | | | | |
| Reading | School | 77.3 | p | p | | | |
| | Region | 76.5 | | | | | |
| | Province | 76.4 | | | | | |
| Writing | School | 58.2 | q | q | | | |
| | Region | 61.8 | | | | | |
| | Province | 62.0 | | | | | |
| Interview | School | 81.9 | p | p | | | |
| | Region | 77.9 | | | | | |
| | Province | 78.2 | | | | | |

Average Mark, 2012-2015

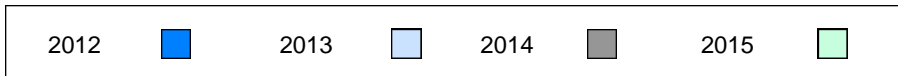


Difference from Provincial Mean, 2012-2015

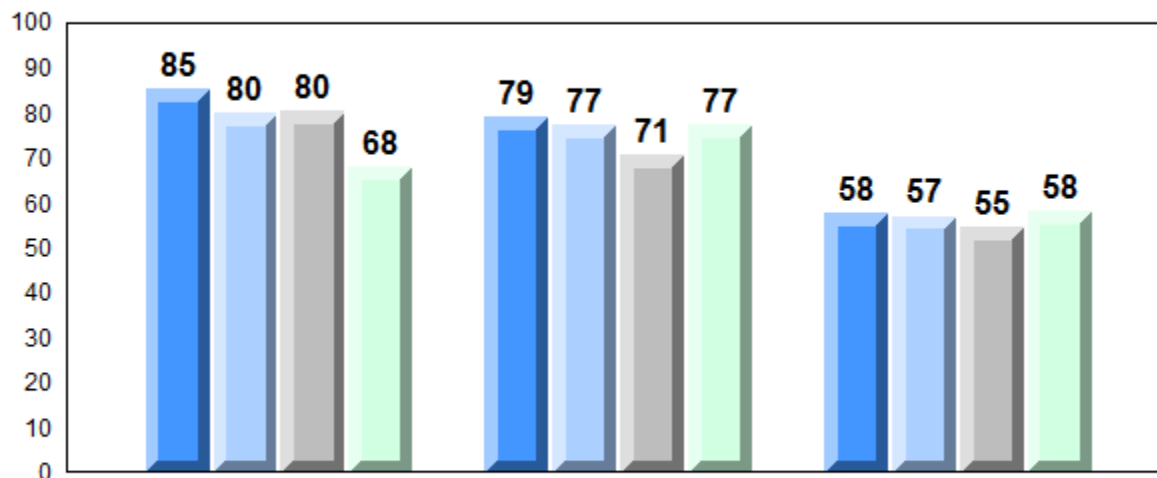


Exam Mark

Final Mark



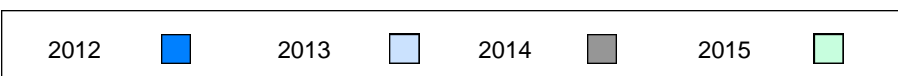
4 Year Public Exam (Subtest) Mark Trend 2012-2015



Listening

Reading

Writing



NLESD - Eastern Region

#354 - St. Kevin's High, St. John's (Goulds)

Grades: 9-12

Number of Students 29

Francais 3202

Subtest

Listening

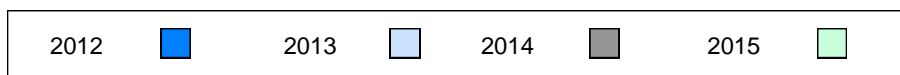
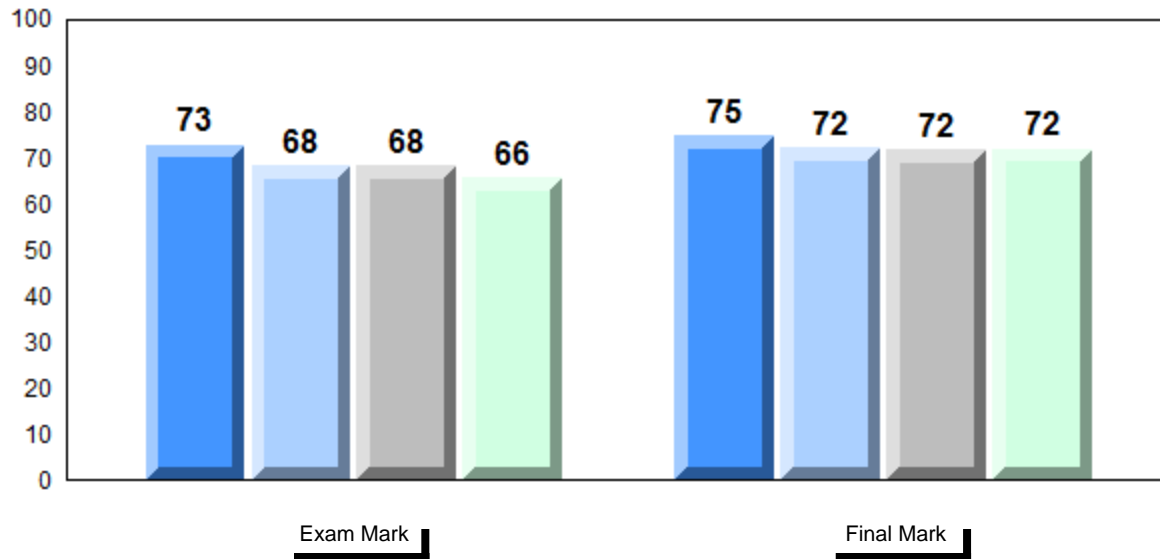
Reading

Writing

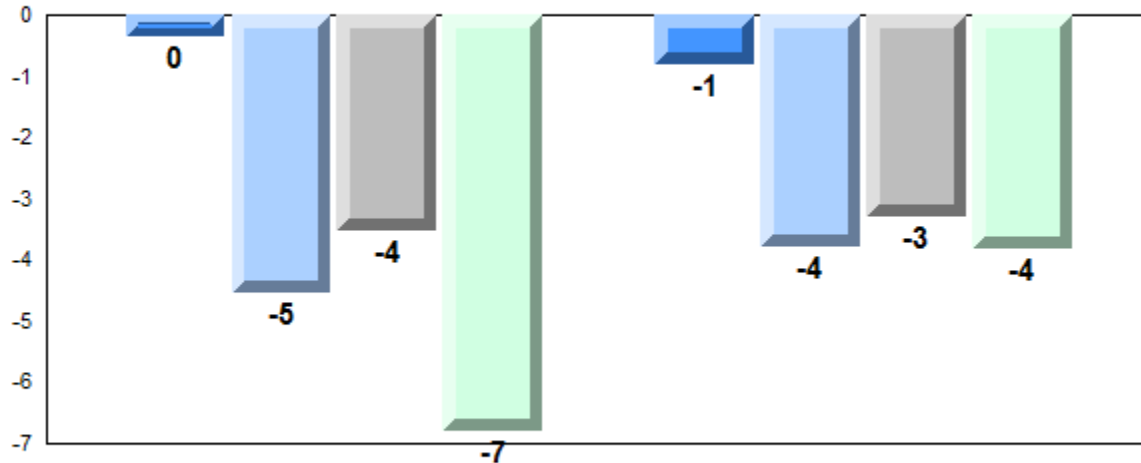
Interview

| | | Public Exam Mark | School vs Region | School vs Province | Final Mark | School vs Region | School vs Province |
|------------------|----------|-------------------------|------------------|--------------------|-------------------|------------------|--------------------|
| | School | 65.5 | q | q | 71.9 | q | q |
| | Region | 72.2 | | | 75.4 | | |
| | Province | 72.3 | | | 75.7 | | |
| Listening | School | 62.6 | q | q | | | |
| | Region | 69.0 | | | | | |
| | Province | 69.6 | | | | | |
| Reading | School | 72.3 | q | q | | | |
| | Region | 76.5 | | | | | |
| | Province | 76.4 | | | | | |
| Writing | School | 58.5 | q | q | | | |
| | Region | 61.8 | | | | | |
| | Province | 62.0 | | | | | |
| Interview | School | 67.5 | q | q | | | |
| | Region | 77.9 | | | | | |
| | Province | 78.2 | | | | | |

Average Mark, 2012-2015

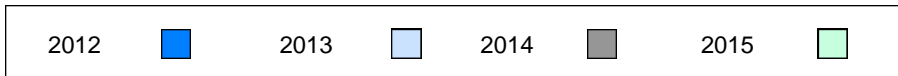


Difference from Provincial Mean, 2012-2015

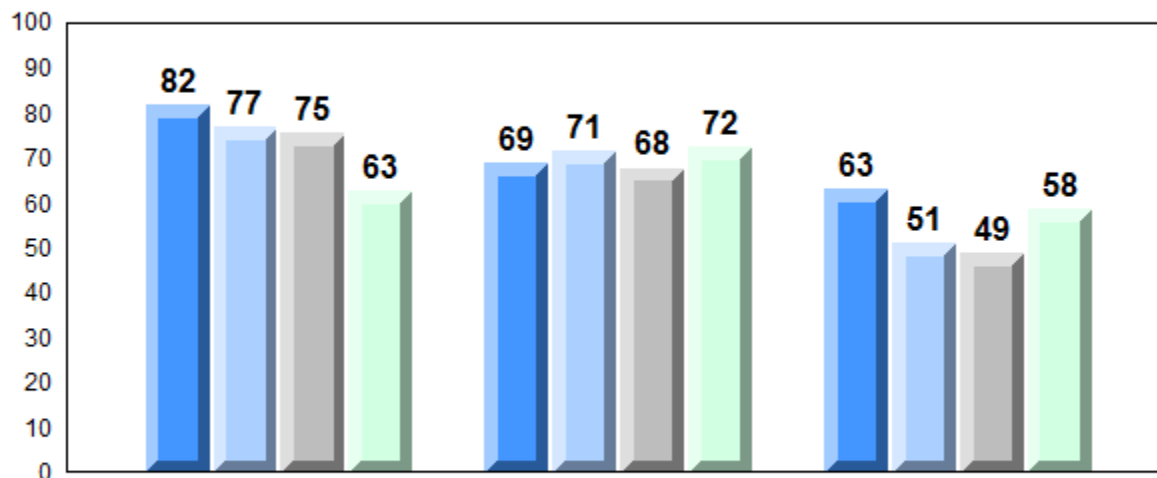


Exam Mark

Final Mark



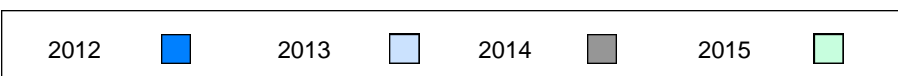
4 Year Public Exam (Subtest) Mark Trend 2012-2015



Listening

Reading

Writing



NLESD - Eastern Region

#368 - Holy Trinity High, Torbay

Grades: 7-12

Number of Students 6

Francais 3202

School
Region
Province

Public Exam Mark

School vs Region

School vs Province

74.8
72.2
72.3

P

P

Final Mark

School vs Region

School vs Province

76.0
75.4
75.7

P

P

Subtest

Listening

School
Region
Province

80.7
69.0
69.6

P

P

Reading

School
Region
Province

82.7
76.5
76.4

P

P

Writing

School
Region
Province

61.3
61.8
62.0

q

q

Interview

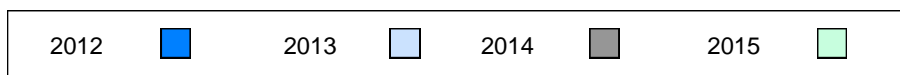
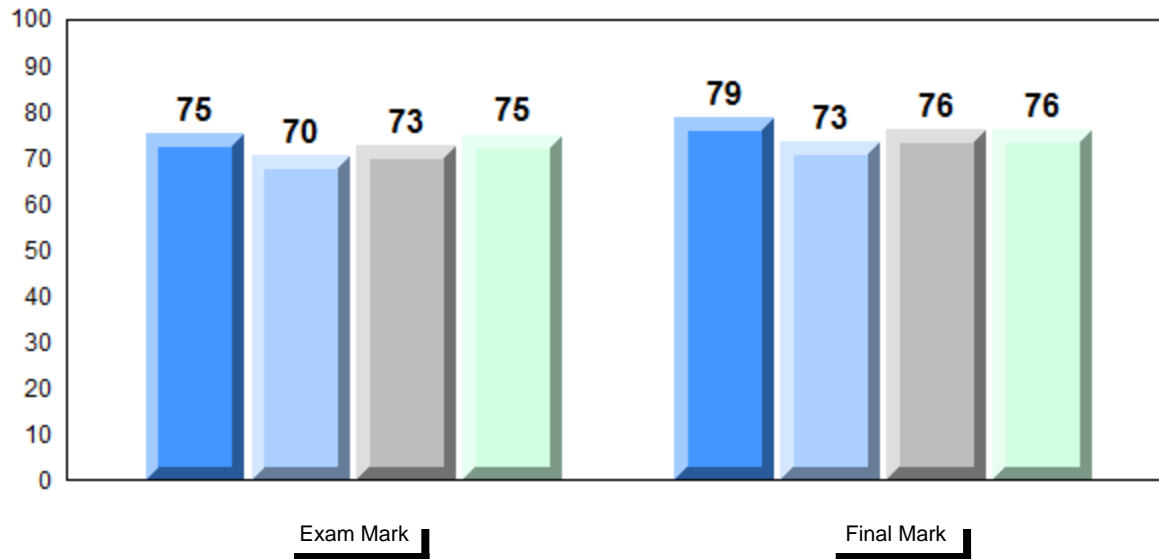
School
Region
Province

73.0
77.9
78.2

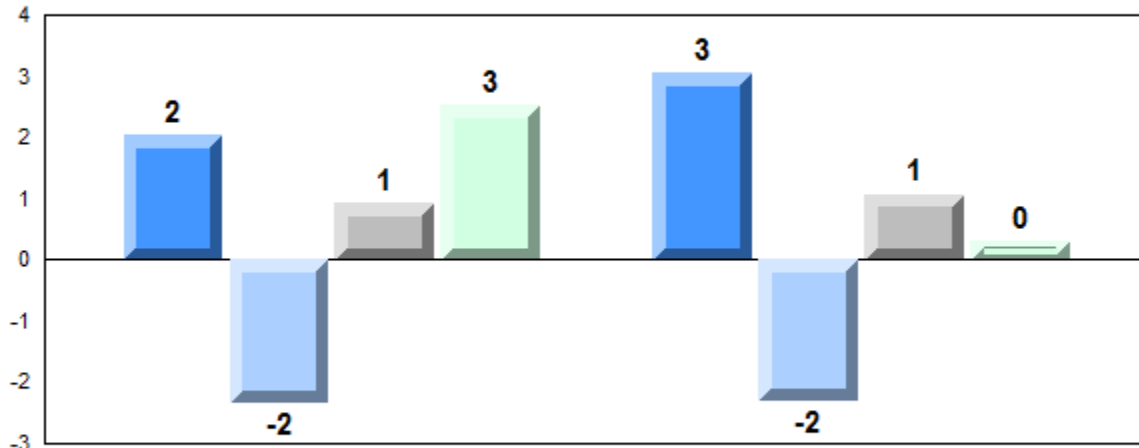
q

q

Average Mark, 2012-2015

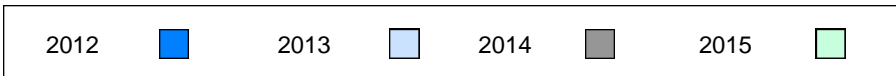


Difference from Provincial Mean, 2012-2015

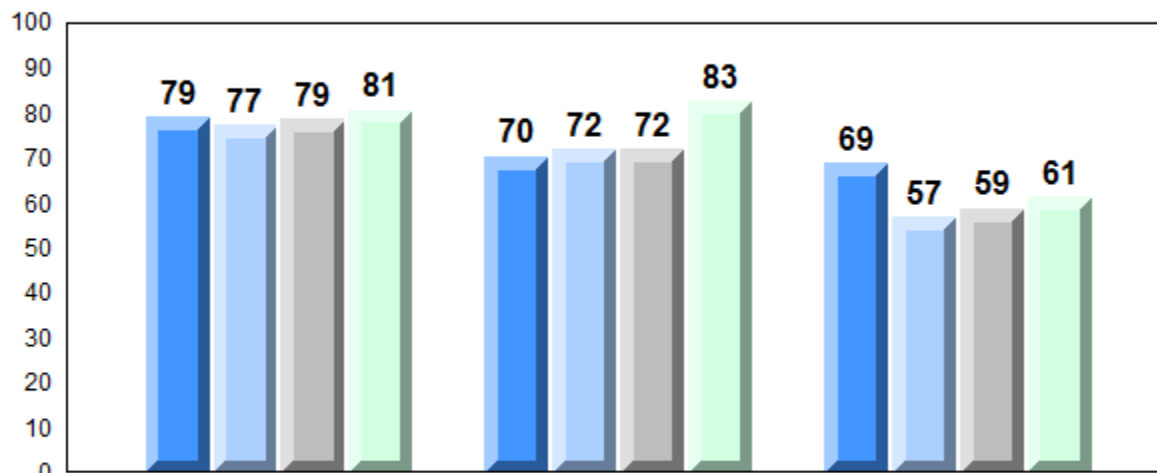


Exam Mark

Final Mark



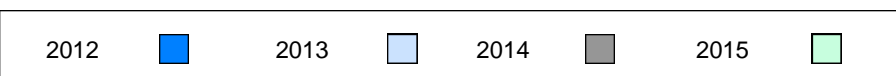
4 Year Public Exam (Subtest) Mark Trend 2012-2015



Listening

Reading

Writing



NLESD - Eastern Region

#464 - Crescent Collegiate, Blaketown

Grades: 7-12

Number of Students 17

Francais 3202

School
Region
Province

**Public
Exam
Mark**

School
vs
Region

School
vs
Province

64.5
72.2
72.3

q

q

**Final
Mark**

School
vs
Region

School
vs
Province

69.6
75.4
75.7

q

q

Subtest

Listening

School
Region
Province

51.8
69.0
69.6

q

q

Reading

School
Region
Province

69.7
76.5
76.4

q

q

Writing

School
Region
Province

55.8
61.8
62.0

q

q

Interview

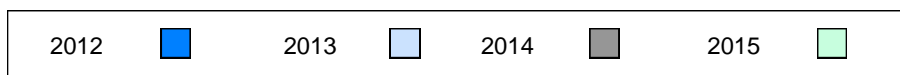
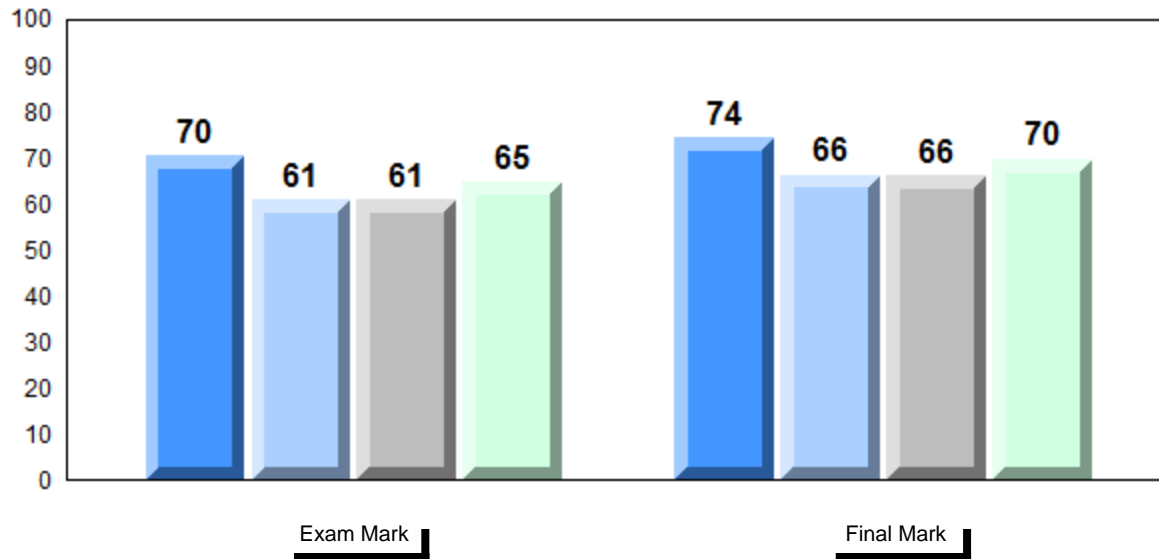
School
Region
Province

79.5
77.9
78.2

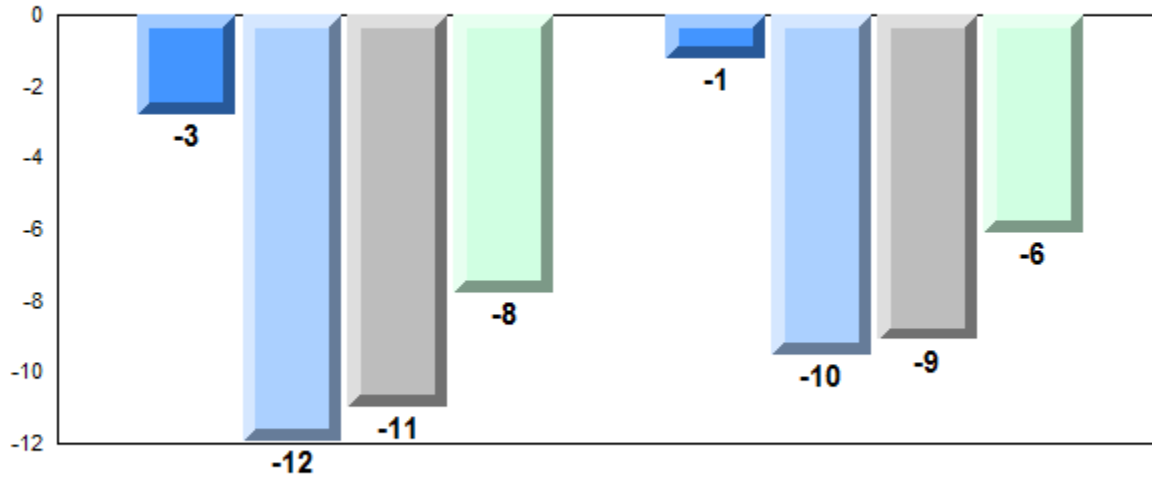
p

p

Average Mark, 2012-2015

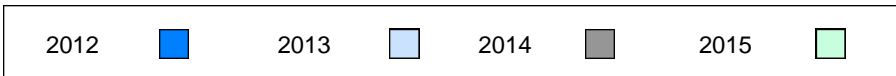


Difference from Provincial Mean, 2012-2015

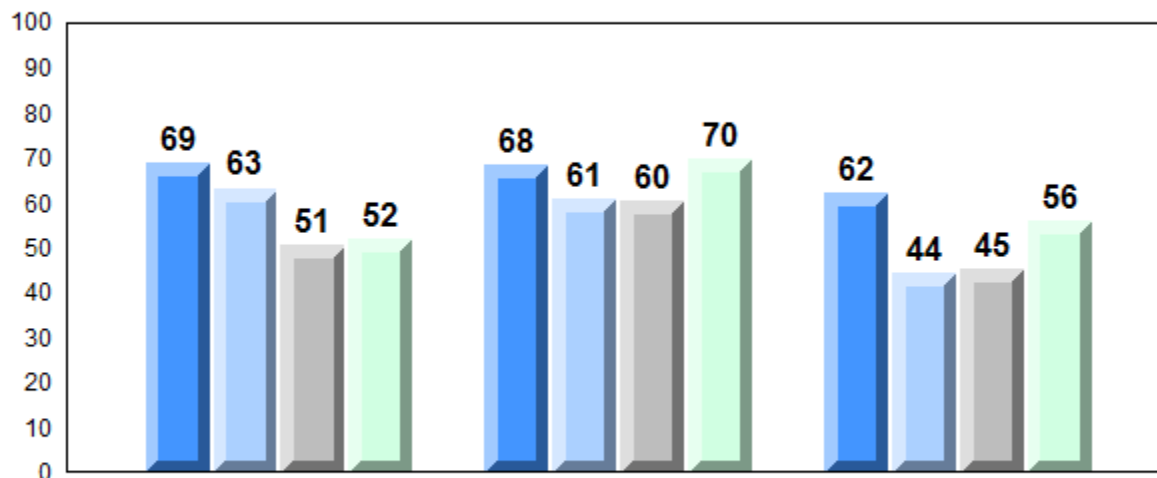


Exam Mark

Final Mark



4 Year Public Exam (Subtest) Mark Trend 2012-2015



Listening

Reading

Writing

