

District 5 - Conseil scolaire francophone

School #: 095 École Notre-Dame du Cap

School

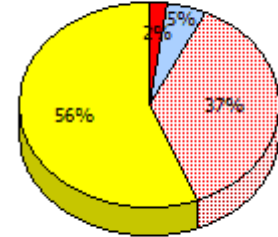
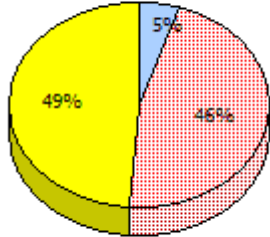
School data with 5 or fewer students withheld for reasons of confidentiality.

Region

Province

2014

AGR (2)

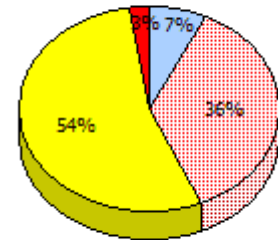
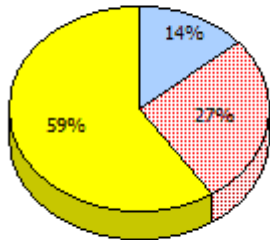


2013

N/A

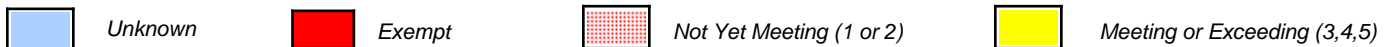
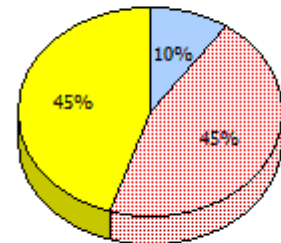
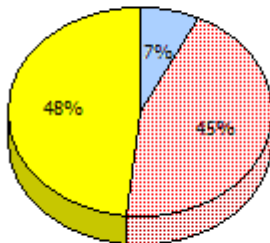
2012

AGR (10)



2011

AGR (9)



In some cases, CRT numbers may exceed AGR numbers based on late enrolments. Pie chart is based on the number of students who wrote the CRT.

District 5 - Conseil scolaire francophone

School #: 095 École Notre-Dame du Cap

Percentage of students meeting/exceeding (2011 - 2014)

School data with 5 or fewer students withheld for reasons of confidentiality.



In some cases, CRT numbers may exceed AGR numbers based on late enrolments. Pie chart is based on the number of students who wrote the CRT.

District 5 - Conseil scolaire francophone

School #: 107 École Sainte-Anne

School

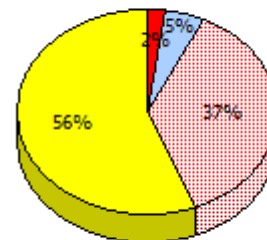
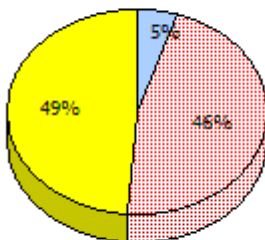
School data with 5 or fewer students withheld for reasons of confidentiality.

Region

Province

2014

AGR (3)

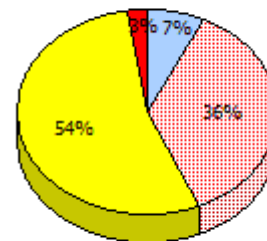
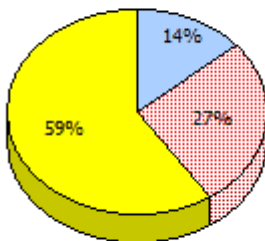


2013

N/A

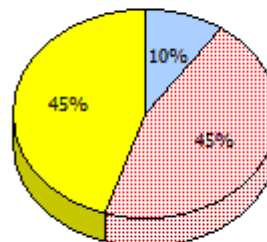
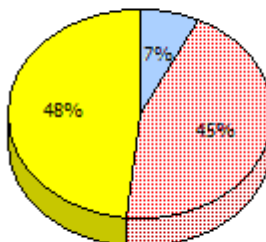
2012

AGR (4)



2011

AGR (7)



Unknown



Exempt



Not Yet Meeting (1 or 2)



Meeting or Exceeding (3,4,5)

In some cases, CRT numbers may exceed AGR numbers based on late enrolments. Pie chart is based on the number of students who wrote the CRT.

District 5 - Conseil scolaire francophone

School #: 107 École Sainte-Anne

Percentage of students meeting/exceeding (2011 - 2014)

School data with 5 or fewer students withheld for reasons of confidentiality.



In some cases, CRT numbers may exceed AGR numbers based on late enrolments. Pie chart is based on the number of students who wrote the CRT.

District 5 - Conseil scolaire francophone

School #: 459 Centre éducatif l'ENVOL

School

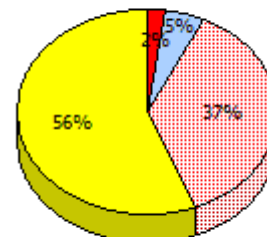
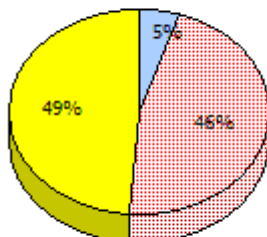
School data with 5 or fewer students withheld for reasons of confidentiality.

Region

Province

2014

AGR (2)

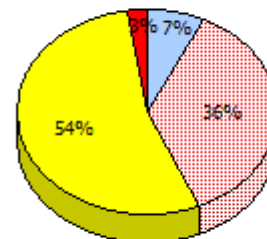
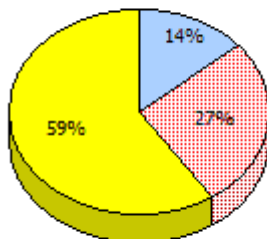


2013

N/A

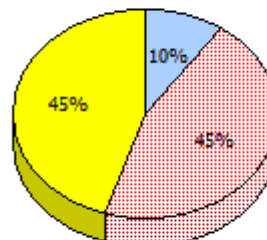
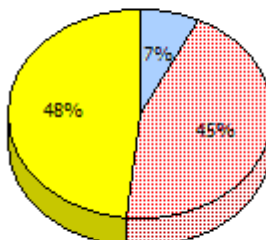
2012

AGR (2)



2011

AGR (5)



Unknown



Exempt



Not Yet Meeting (1 or 2)



Meeting or Exceeding (3,4,5)

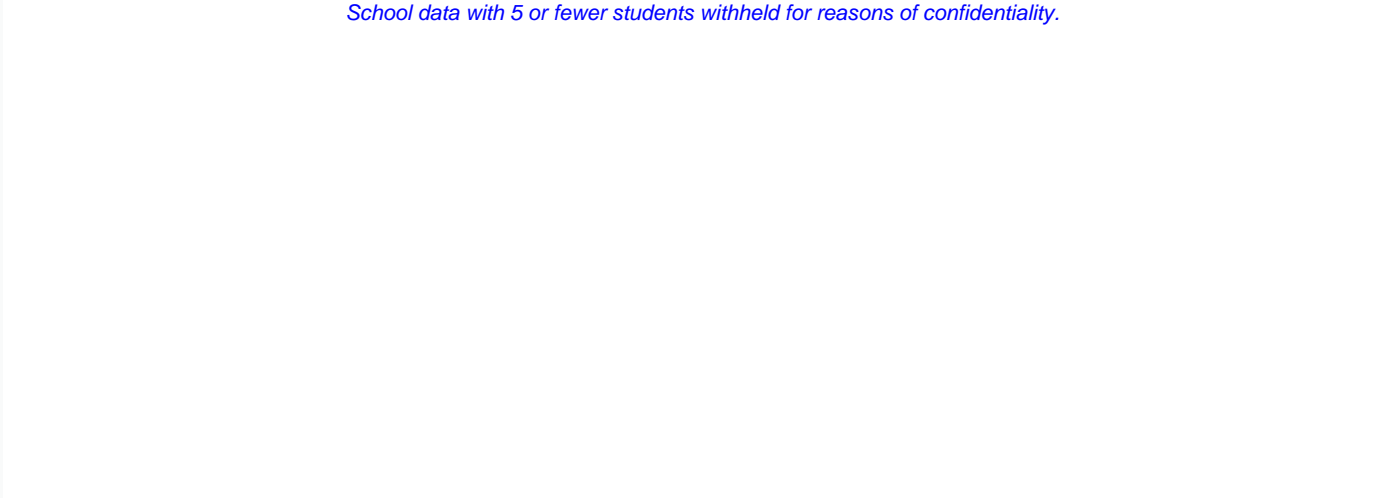
In some cases, CRT numbers may exceed AGR numbers based on late enrolments. Pie chart is based on the number of students who wrote the CRT.

District 5 - Conseil scolaire francophone

School #: 459 Centre éducatif l'ENVOL

Percentage of students meeting/exceeding (2011 - 2014)

School data with 5 or fewer students withheld for reasons of confidentiality.

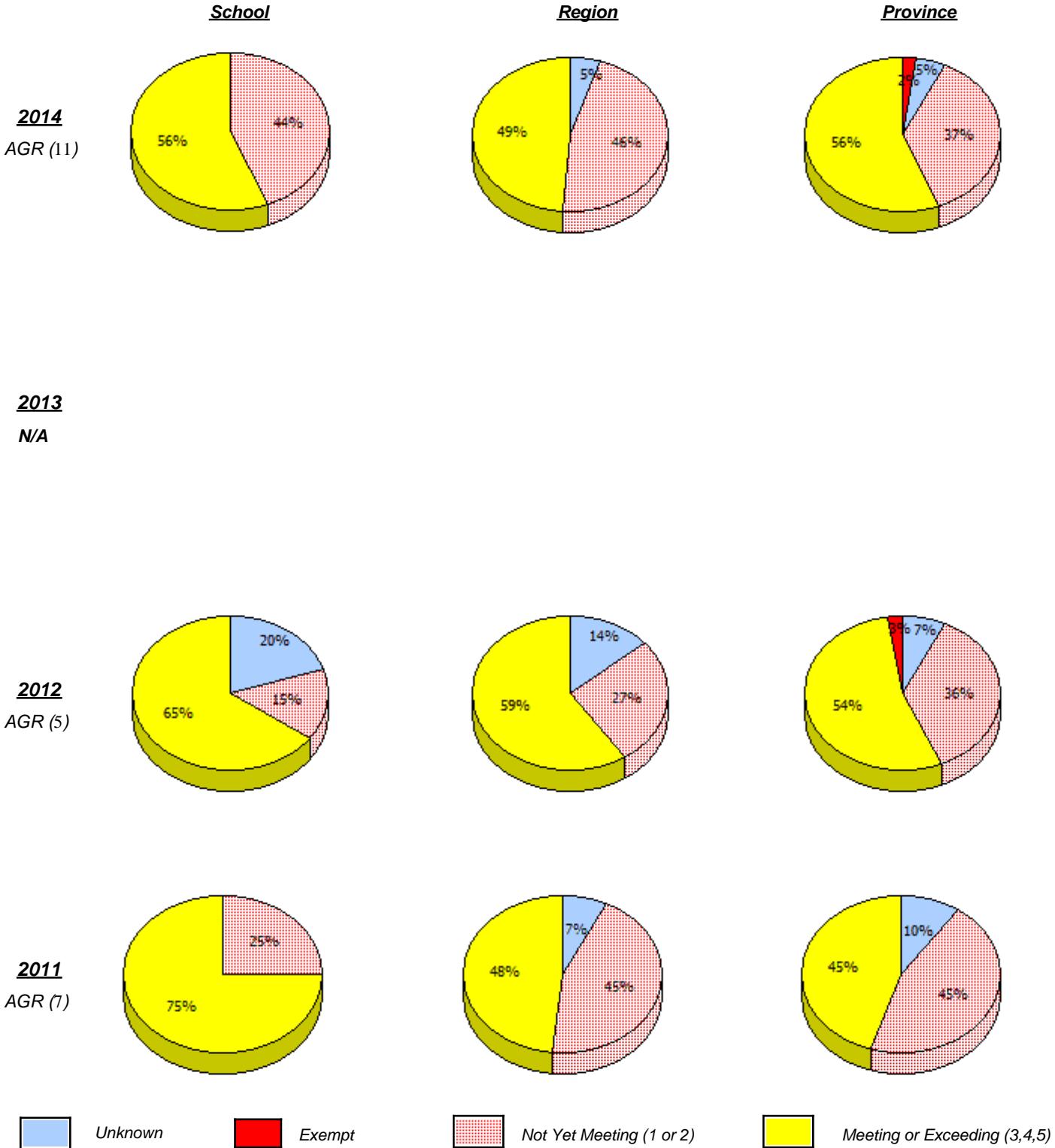


2011	2012	2013 N/A	2014
 School	 Region		 Province

In some cases, CRT numbers may exceed AGR numbers based on late enrolments. Pie chart is based on the number of students who wrote the CRT.

District 5 - Conseil scolaire francophone

School #: 460 École des Grands-Vents



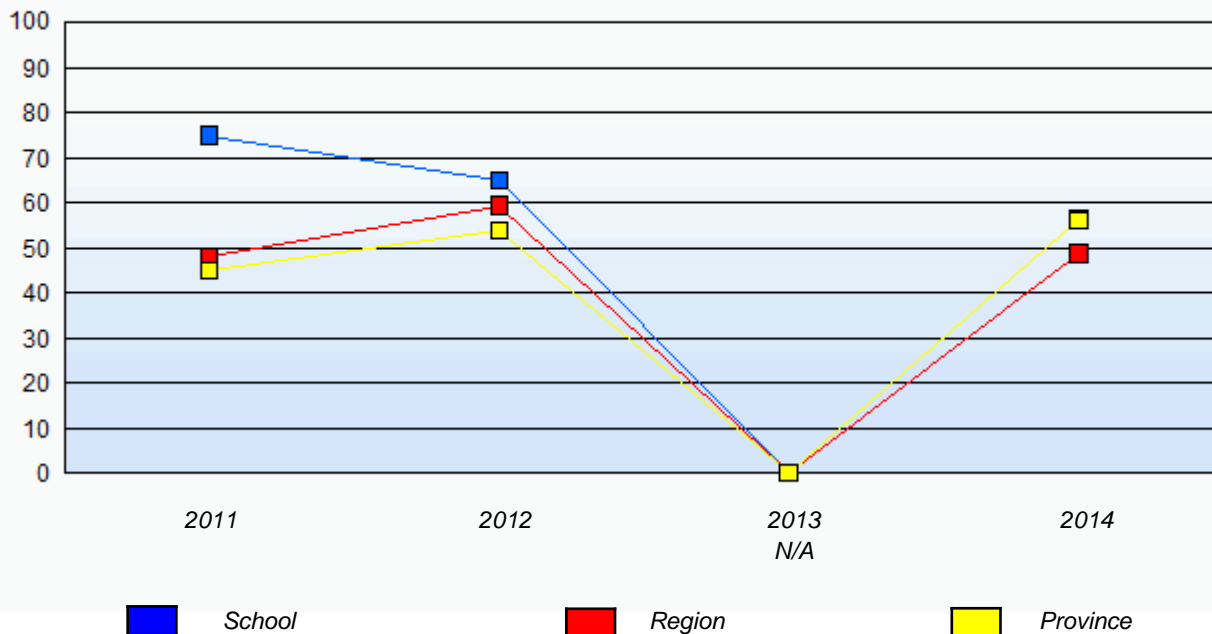
In some cases, CRT numbers may exceed AGR numbers based on late enrolments. Pie chart is based on the number of students who wrote the CRT.

Elementary Mathematics
4 Year Provincial Assessment, June 2014
School Report Criteria/Content
 (% of students who answered correctly)

District 5 - Conseil scolaire francophone

School #: 460 École des Grands-Vents

Percentage of students meeting/exceeding (2011 - 2014)



In some cases, CRT numbers may exceed AGR numbers based on late enrolments. Pie chart is based on the number of students who wrote the CRT.

District 5 - Conseil scolaire francophone

School #: 472 École Boréale

School

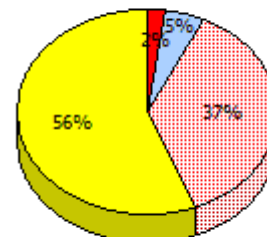
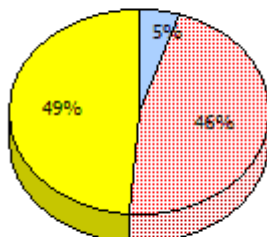
School data with 5 or fewer students withheld for reasons of confidentiality.

Region

Province

2014

AGR (2)

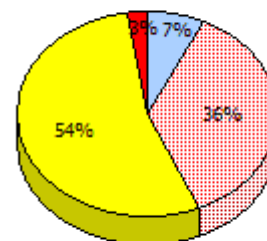
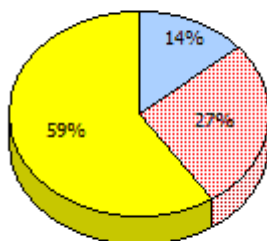


2013

N/A

2012

AGR (3)



2011

AGR (0)



Unknown



Exempt



Not Yet Meeting (1 or 2)



Meeting or Exceeding (3,4,5)

In some cases, CRT numbers may exceed AGR numbers based on late enrolments. Pie chart is based on the number of students who wrote the CRT.

District 5 - Conseil scolaire francophone

School #: 472 École Boréale

Percentage of students meeting/exceeding (2011 - 2014)

School data with 5 or fewer students withheld for reasons of confidentiality.



In some cases, CRT numbers may exceed AGR numbers based on late enrolments. Pie chart is based on the number of students who wrote the CRT.

District 803 - Private

School #: 373 First Baptist Academy

School

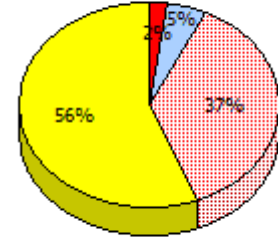
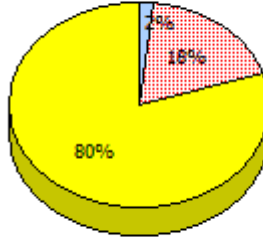
School data with 5 or fewer students withheld for reasons of confidentiality.

Region

Province

2014

AGR (2)

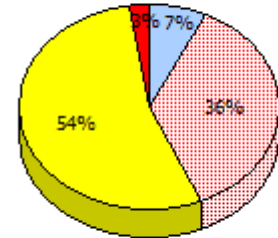
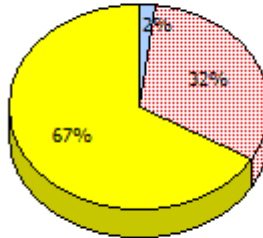


2013

N/A

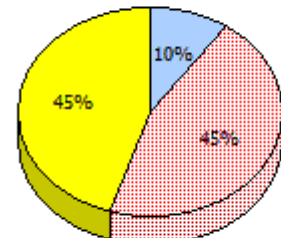
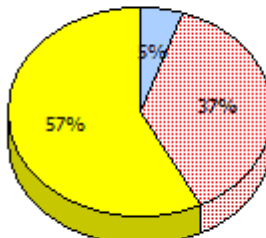
2012

AGR (4)



2011

AGR (4)



Unknown
 Exempt
 Not Yet Meeting (1 or 2)
 Meeting or Exceeding (3,4,5)

In some cases, CRT numbers may exceed AGR numbers based on late enrolments. Pie chart is based on the number of students who wrote the CRT.

District 803 - Private

School #: 373 First Baptist Academy

Percentage of students meeting/exceeding (2011 - 2014)

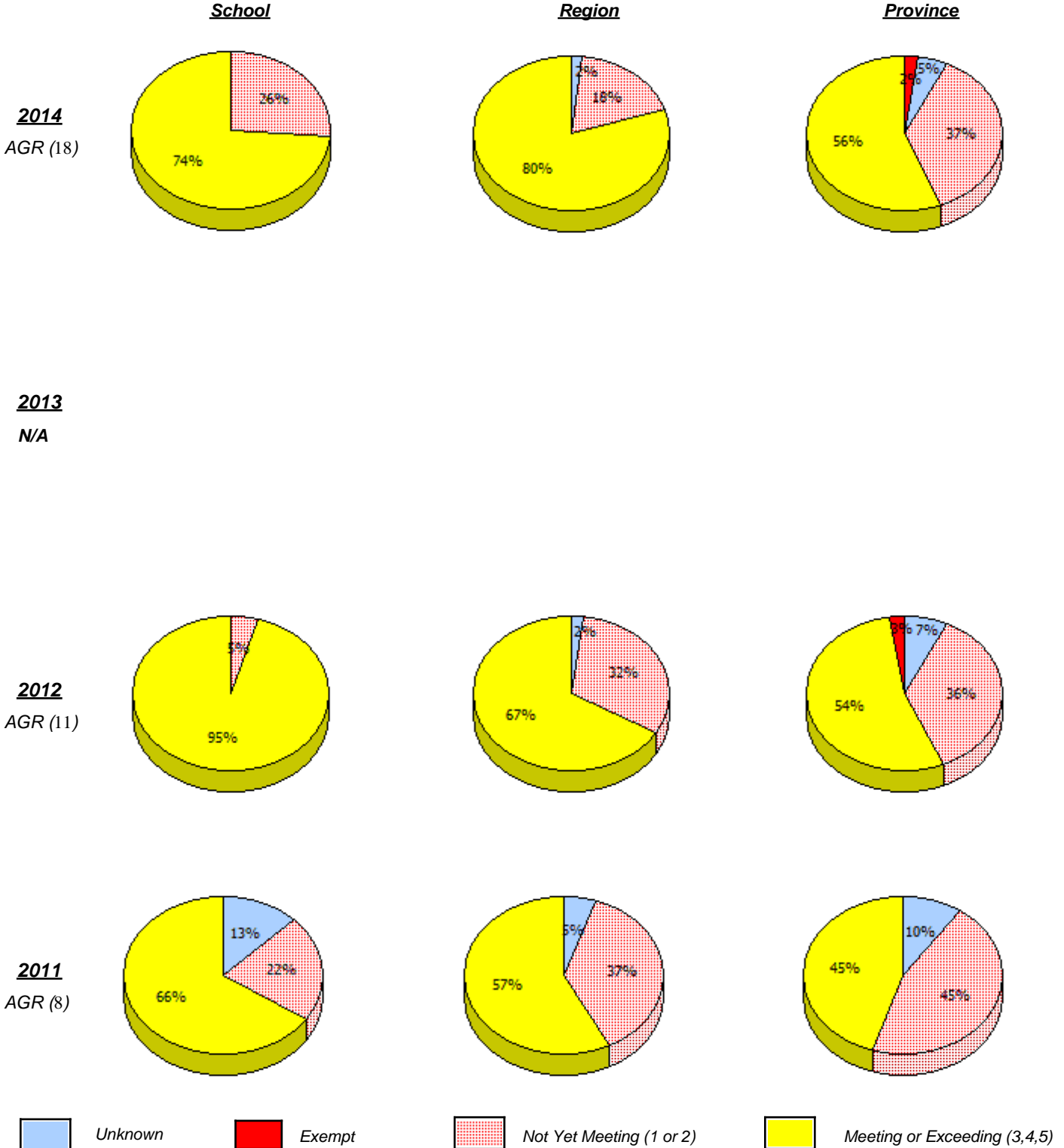
School data with 5 or fewer students withheld for reasons of confidentiality.



In some cases, CRT numbers may exceed AGR numbers based on late enrolments. Pie chart is based on the number of students who wrote the CRT.

District 803 - Private

School #: 375 Lakecrest -St. John's Independent School

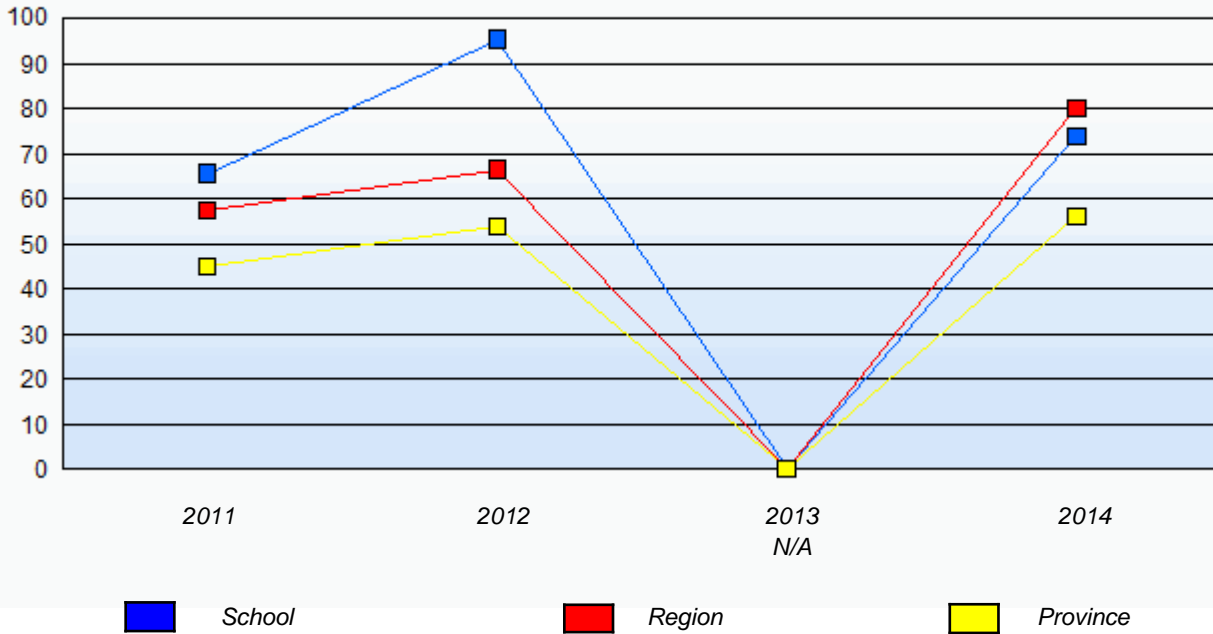


In some cases, CRT numbers may exceed AGR numbers based on late enrolments. Pie chart is based on the number of students who wrote the CRT.

District 803 - Private

School #: 375 Lakecrest -St. John's Independent School

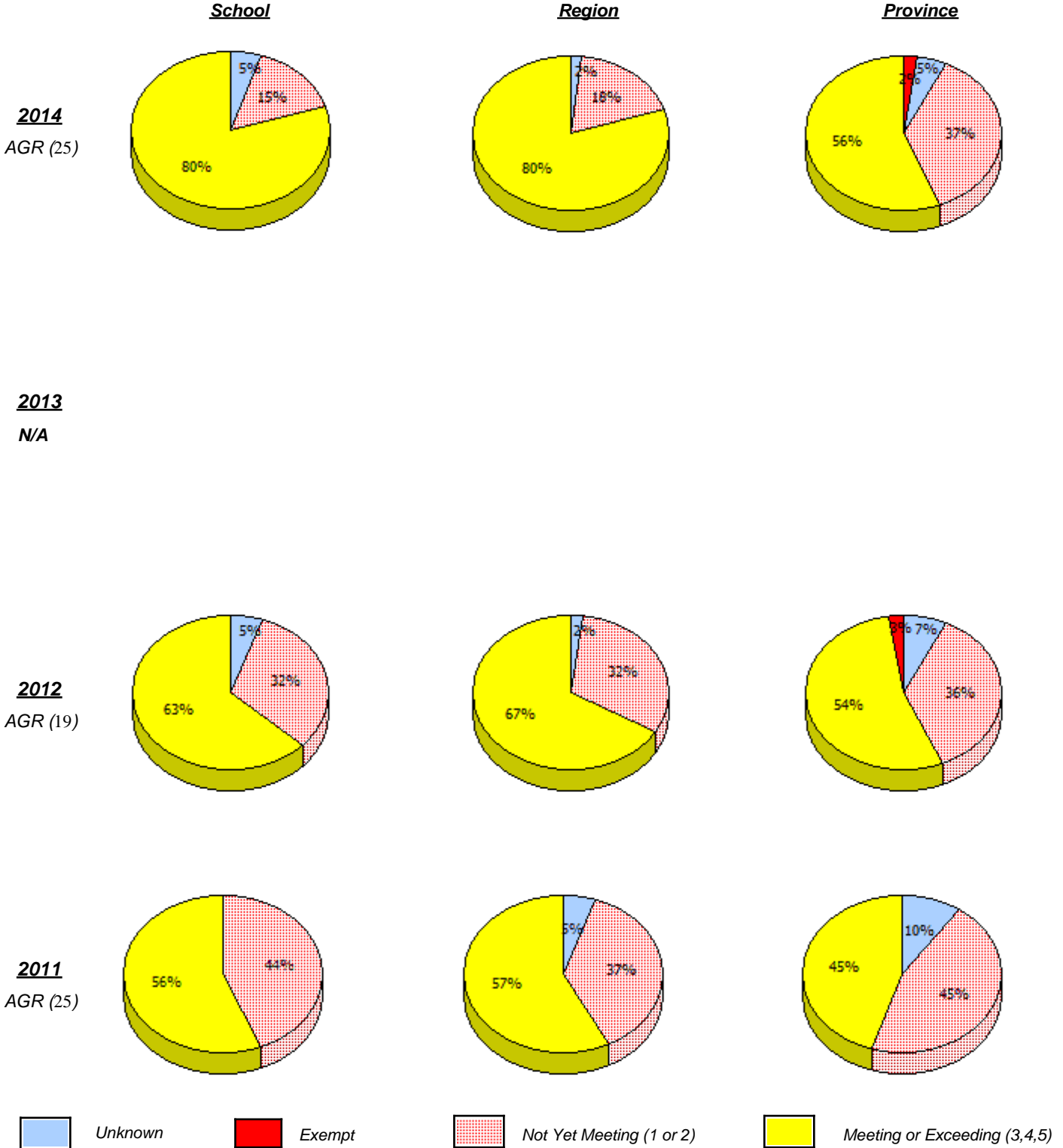
Percentage of students meeting/exceeding (2011 - 2014)



In some cases, CRT numbers may exceed AGR numbers based on late enrolments. Pie chart is based on the number of students who wrote the CRT.

District 803 - Private

School #: 450 St. Bonaventure's College

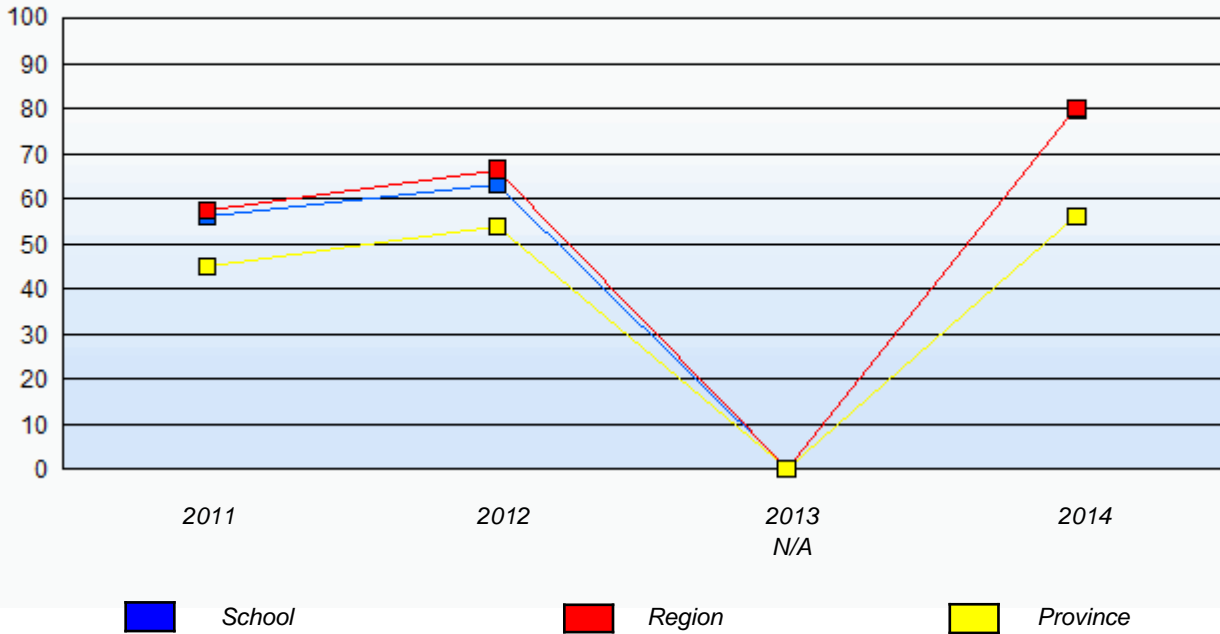


In some cases, CRT numbers may exceed AGR numbers based on late enrolments. Pie chart is based on the number of students who wrote the CRT.

District 803 - Private

School #: 450 St. Bonaventure's College

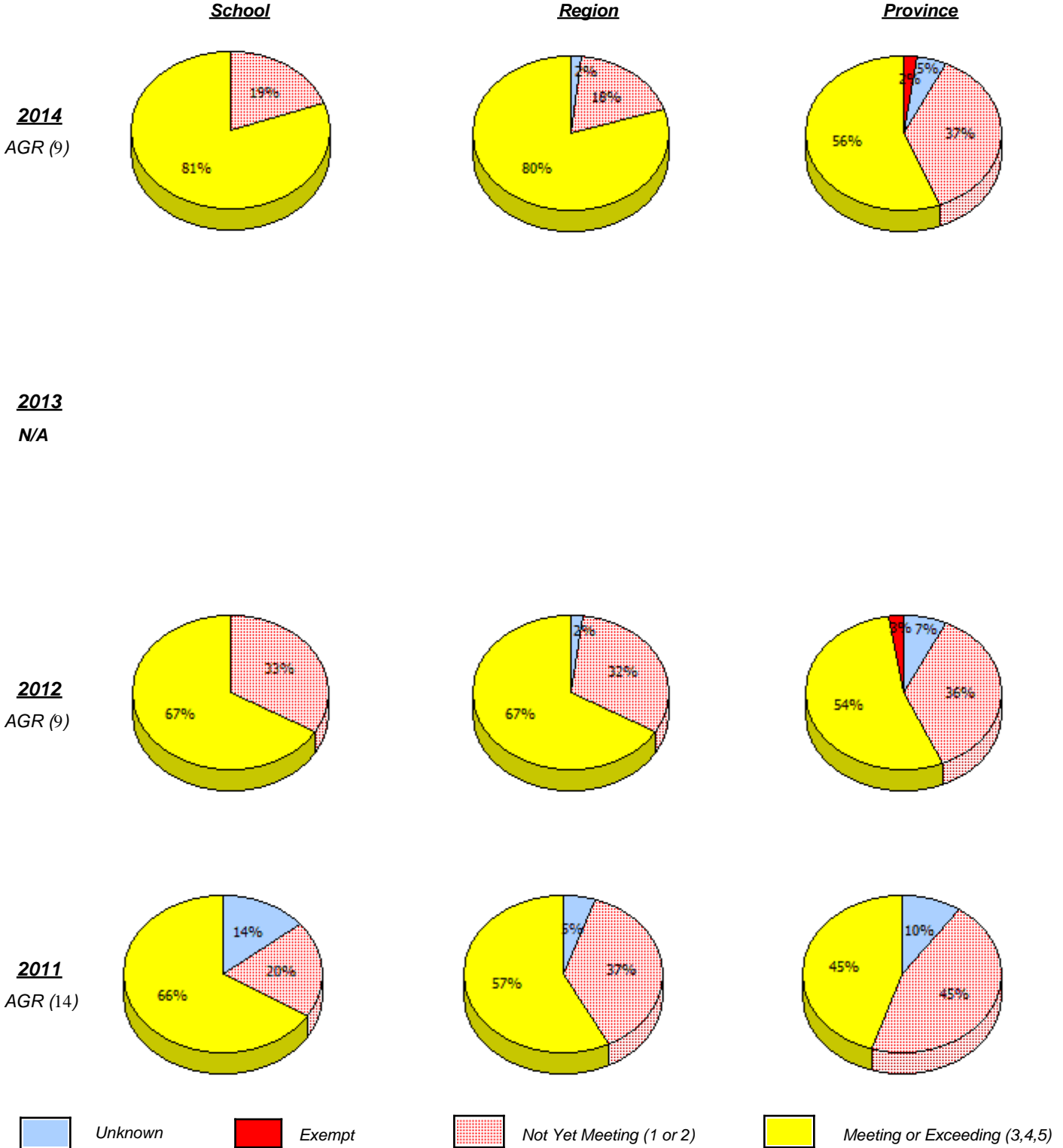
Percentage of students meeting/exceeding (2011 - 2014)



In some cases, CRT numbers may exceed AGR numbers based on late enrolments. Pie chart is based on the number of students who wrote the CRT.

District 803 - Private

School #: 453 Eric G. Lambert All-Grade



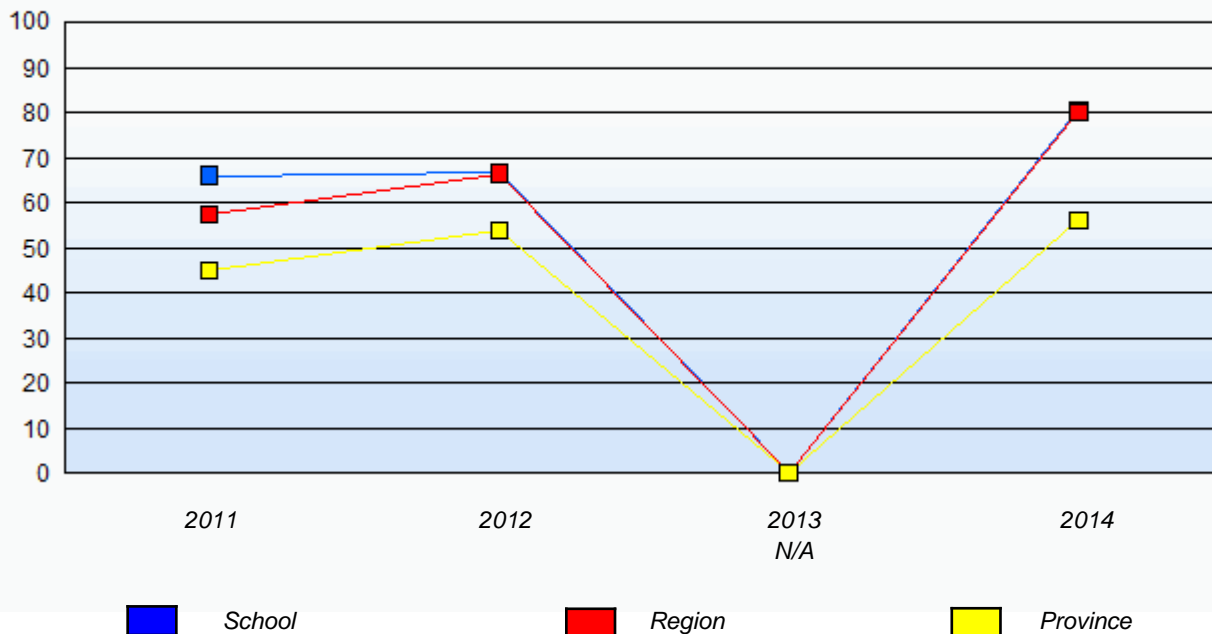
In some cases, CRT numbers may exceed AGR numbers based on late enrolments. Pie chart is based on the number of students who wrote the CRT.

Elementary Mathematics
4 Year Provincial Assessment, June 2014
School Report Criteria/Content
 (% of students who answered correctly)

District 803 - Private

School #: 453 Eric G. Lambert All-Grade

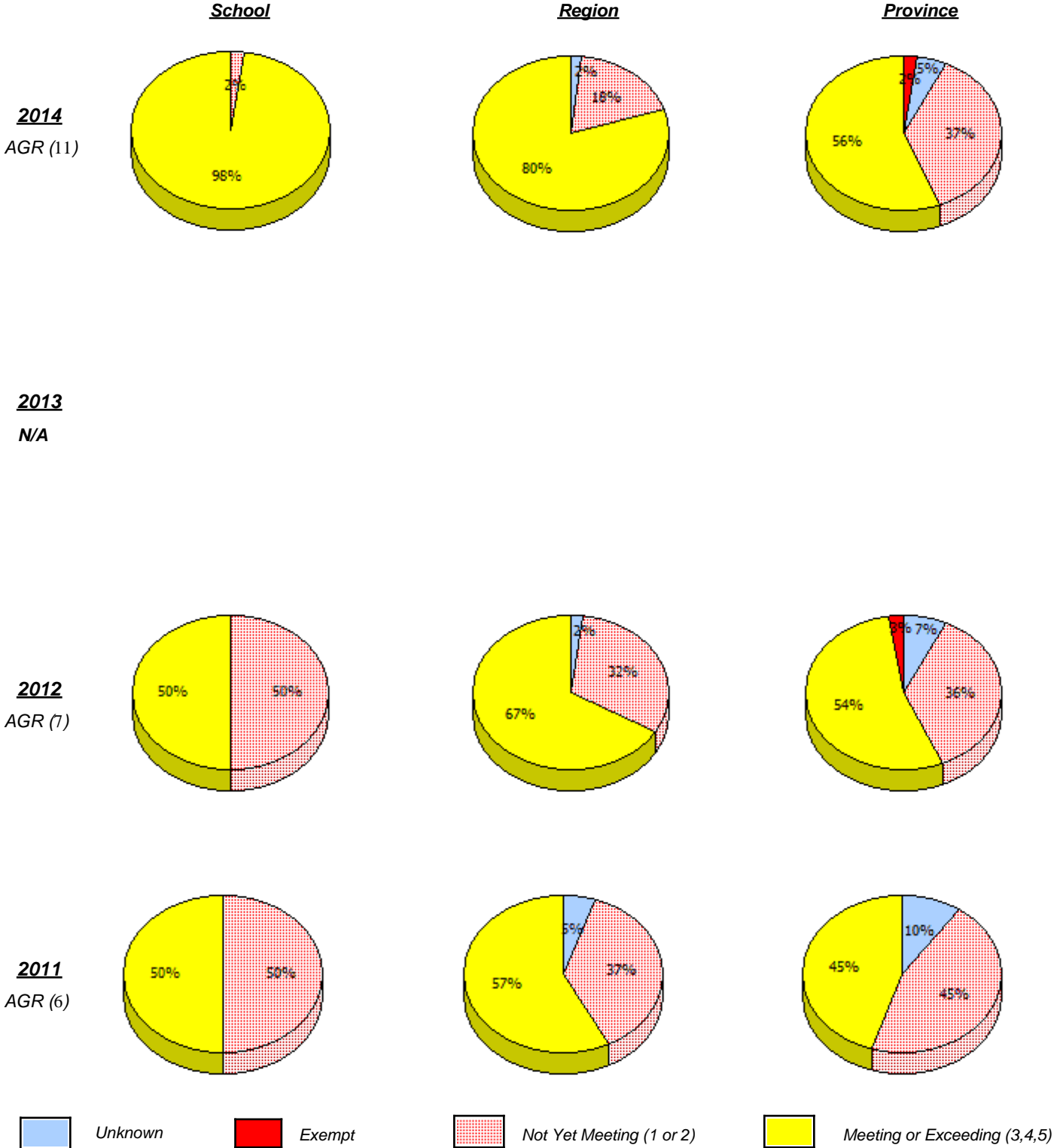
Percentage of students meeting/exceeding (2011 - 2014)



In some cases, CRT numbers may exceed AGR numbers based on late enrolments. Pie chart is based on the number of students who wrote the CRT.

District 803 - Private

School #: 469 Immaculate Heart of Mary School

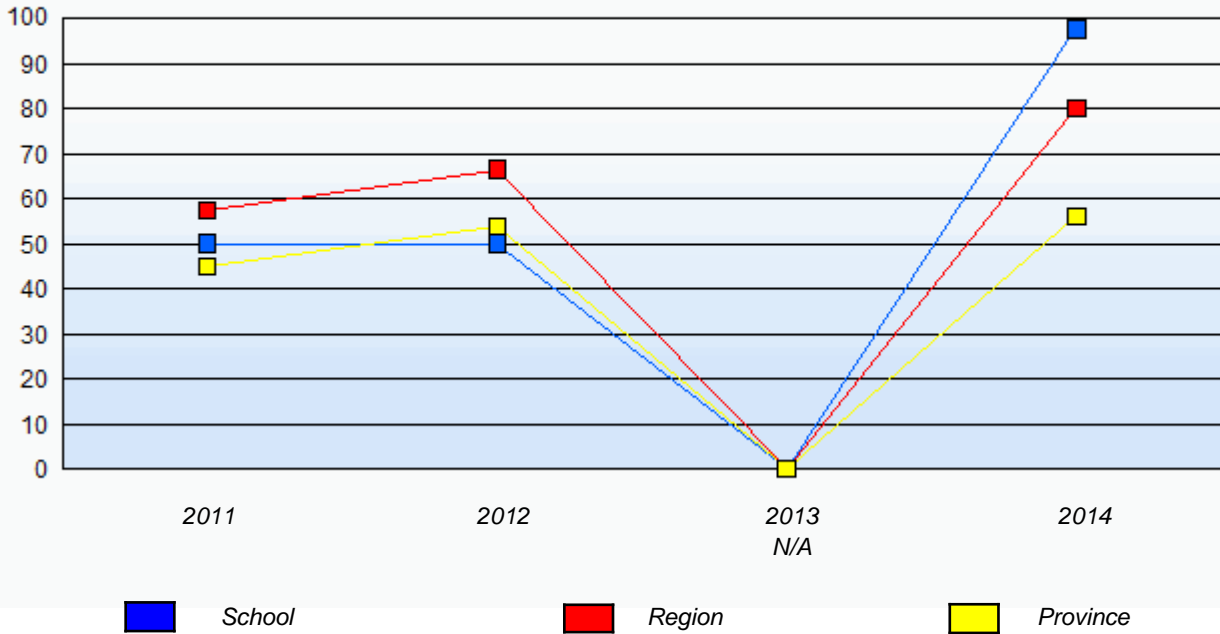


In some cases, CRT numbers may exceed AGR numbers based on late enrolments. Pie chart is based on the number of students who wrote the CRT.

District 803 - Private

School #: 469 Immaculate Heart of Mary School

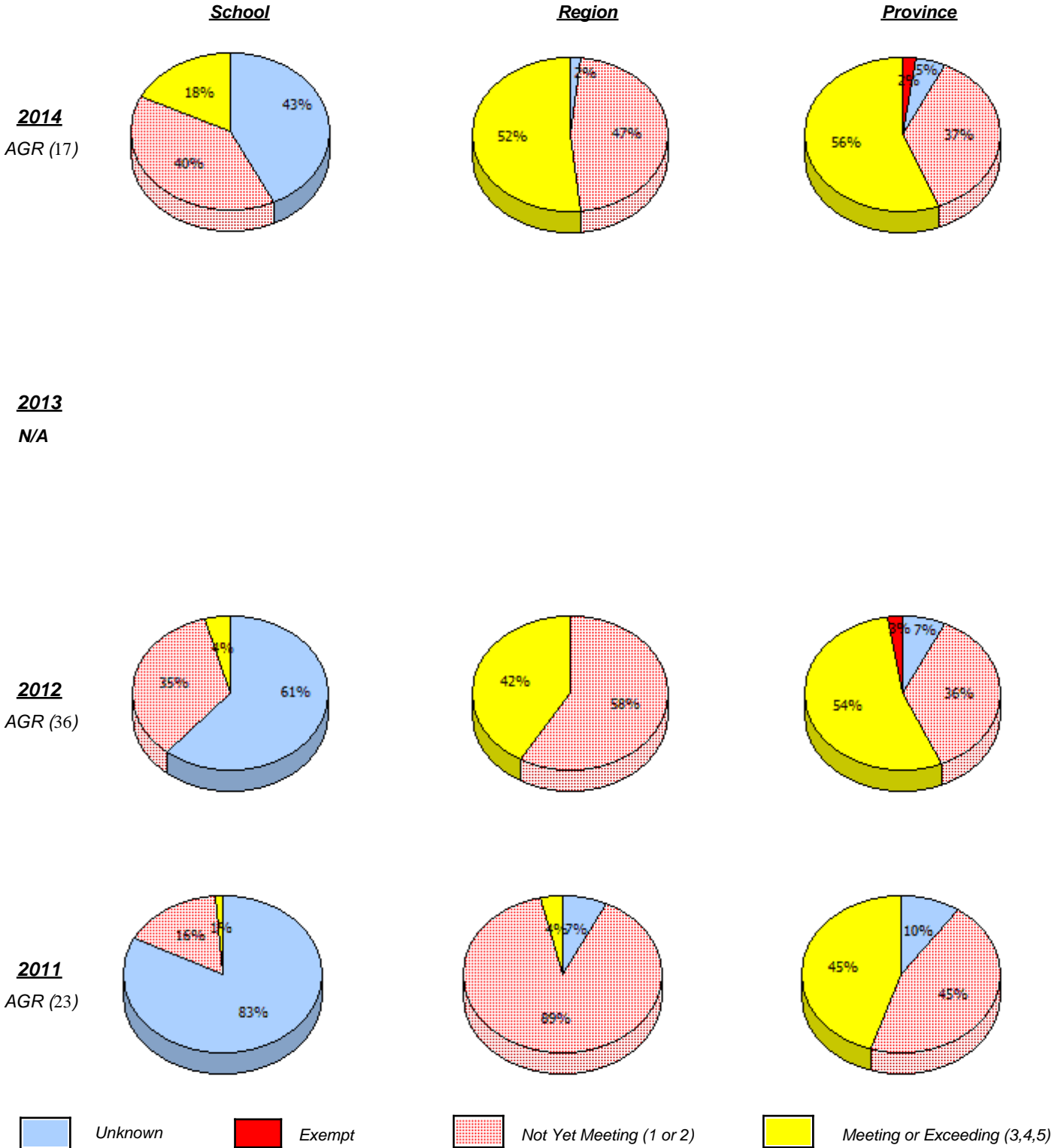
Percentage of students meeting/exceeding (2011 - 2014)



In some cases, CRT numbers may exceed AGR numbers based on late enrolments. Pie chart is based on the number of students who wrote the CRT.

District 804 - Native Federal

School #: 018 Sheshatshiu Innu School

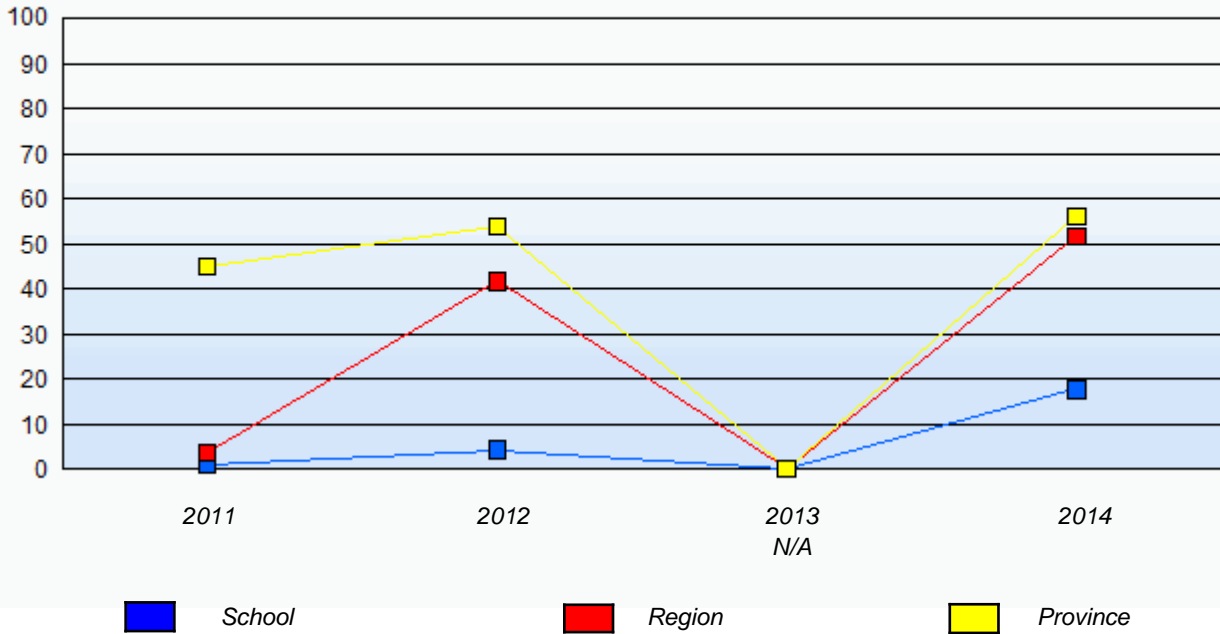


In some cases, CRT numbers may exceed AGR numbers based on late enrolments. Pie chart is based on the number of students who wrote the CRT.

District 804 - Native Federal

School #: 018 Sheshatshiu Innu School

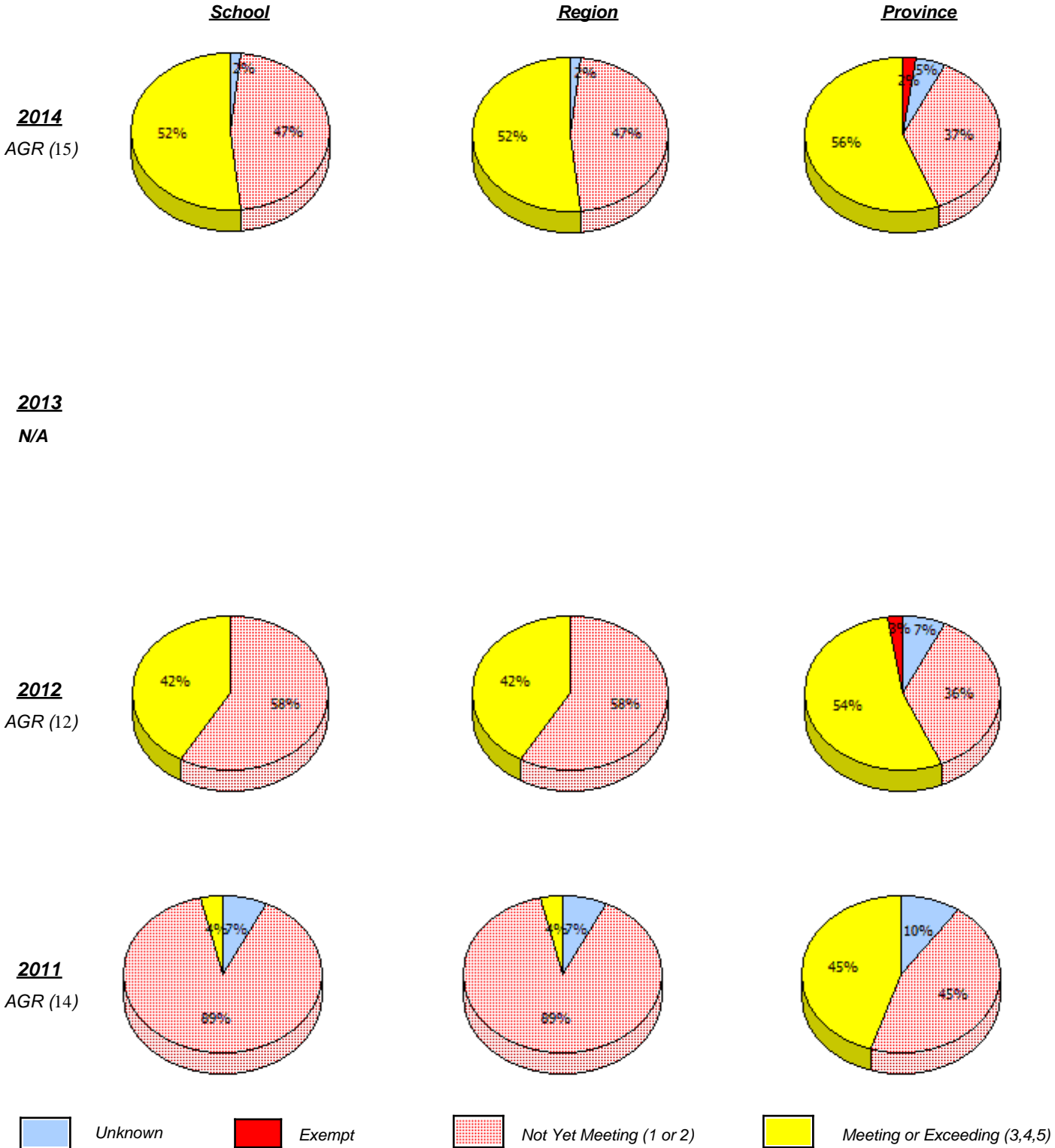
Percentage of students meeting/exceeding (2011 - 2014)



In some cases, CRT numbers may exceed AGR numbers based on late enrolments. Pie chart is based on the number of students who wrote the CRT.

District 804 - Native Federal

School #: 376 Se't Anneway Kegnamogwom

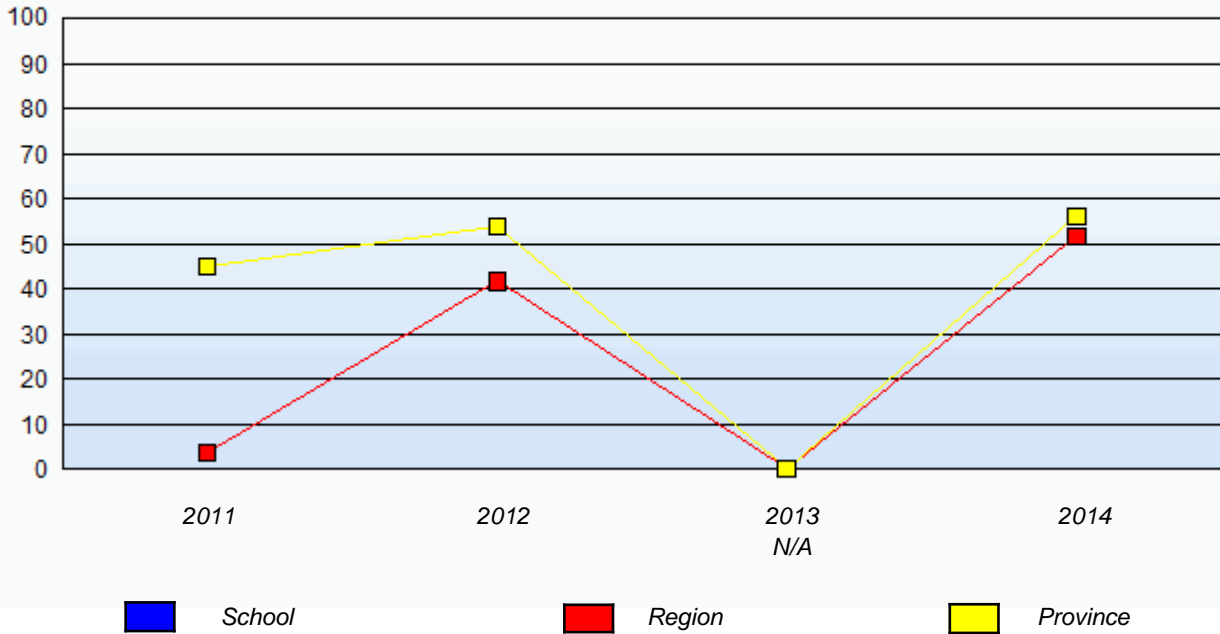


In some cases, CRT numbers may exceed AGR numbers based on late enrolments. Pie chart is based on the number of students who wrote the CRT.

District 804 - Native Federal

School #: 376 Se't Anneway Kegnamogwom

Percentage of students meeting/exceeding (2011 - 2014)



In some cases, CRT numbers may exceed AGR numbers based on late enrolments. Pie chart is based on the number of students who wrote the CRT.