

NLESD - Labrador Region

School #: 002 Henry Gordon Academy

School

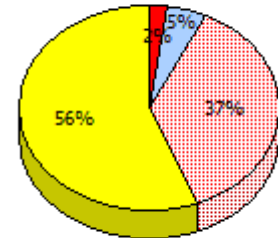
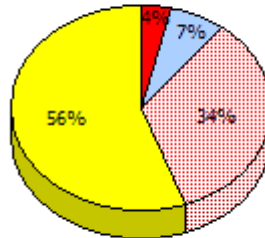
School data with 5 or fewer students withheld for reasons of confidentiality.

Region

Province

2014

AGR (5)

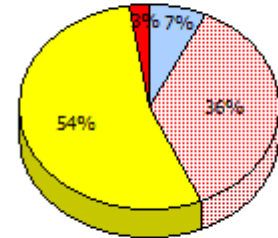
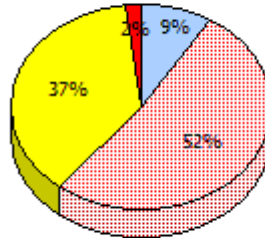


2013

N/A

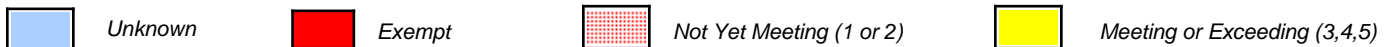
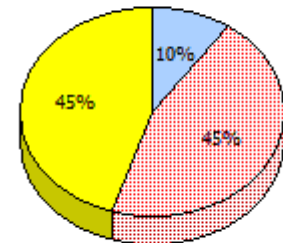
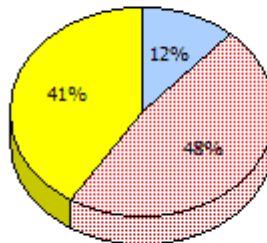
2012

AGR (7)



2011

AGR (7)



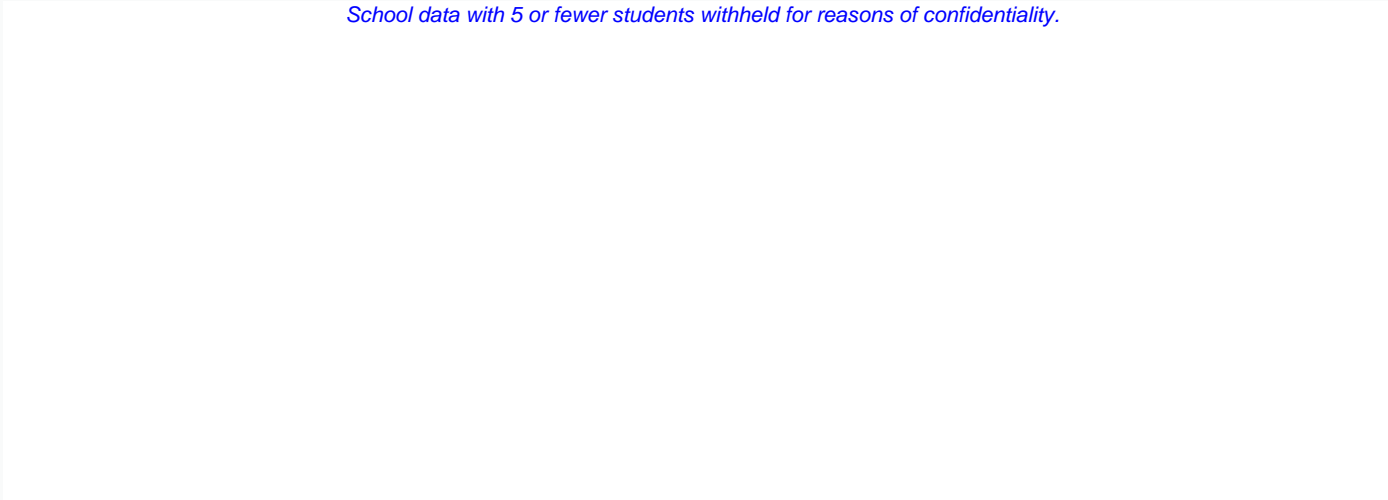
In some cases, CRT numbers may exceed AGR numbers based on late enrolments. Pie chart is based on the number of students who wrote the CRT.

NLESD - Labrador Region

School #: 002 Henry Gordon Academy

Percentage of students meeting/exceeding (2011 - 2014)

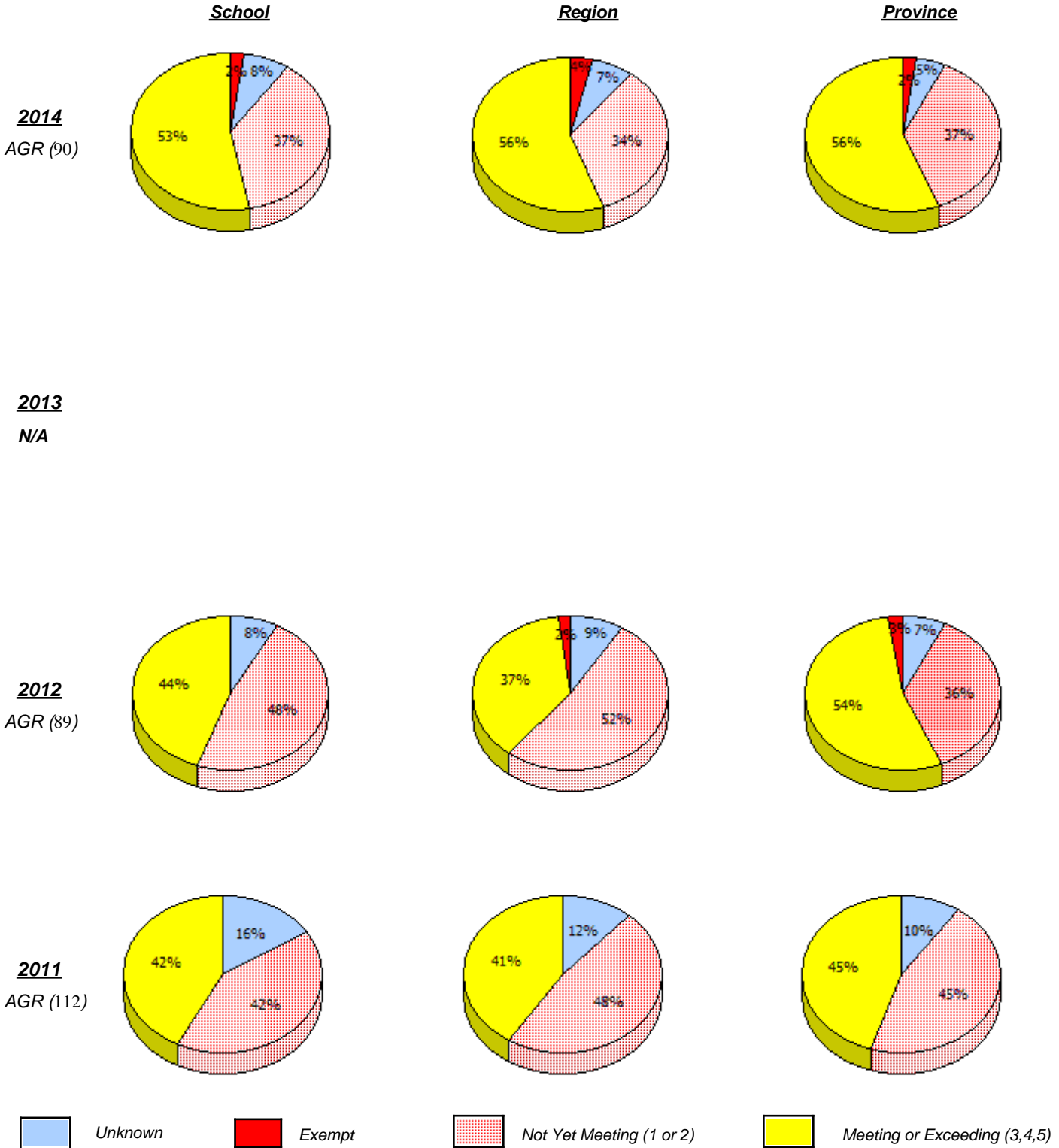
School data with 5 or fewer students withheld for reasons of confidentiality.



In some cases, CRT numbers may exceed AGR numbers based on late enrolments. Pie chart is based on the number of students who wrote the CRT.

NLESD - Labrador Region

School #: 004 Queen of Peace Middle School



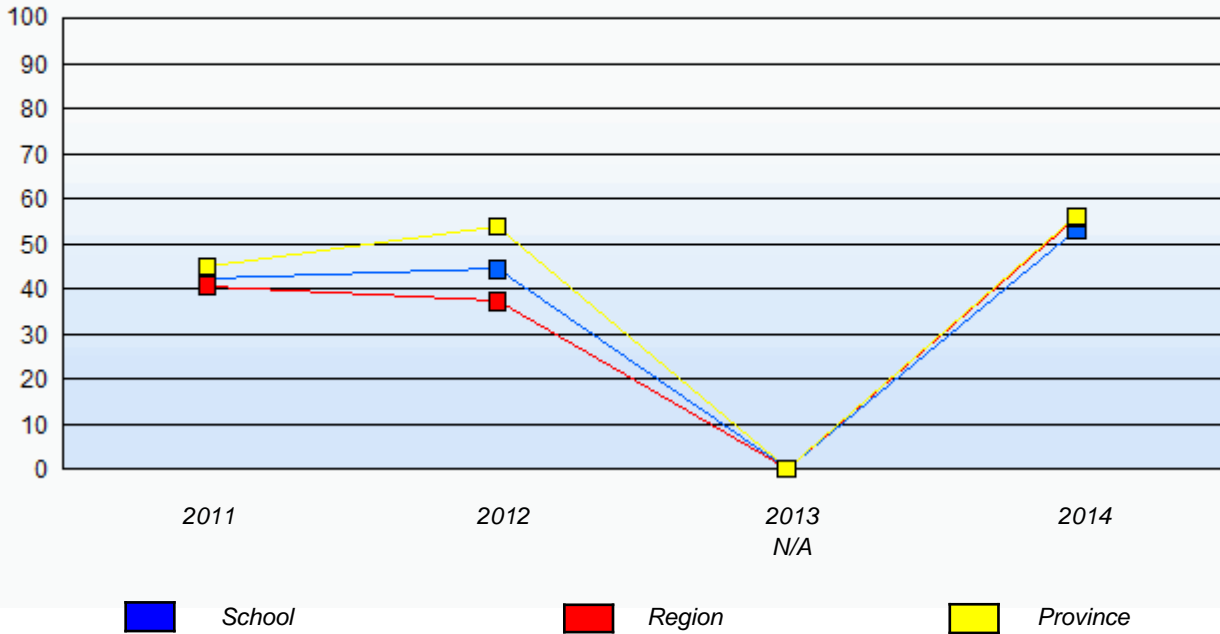
In some cases, CRT numbers may exceed AGR numbers based on late enrolments. Pie chart is based on the number of students who wrote the CRT.

Elementary Mathematics
4 Year Provincial Assessment, June 2014
School Report Criteria/Content
 (% of students who answered correctly)

NLESD - Labrador Region

School #: 004 Queen of Peace Middle School

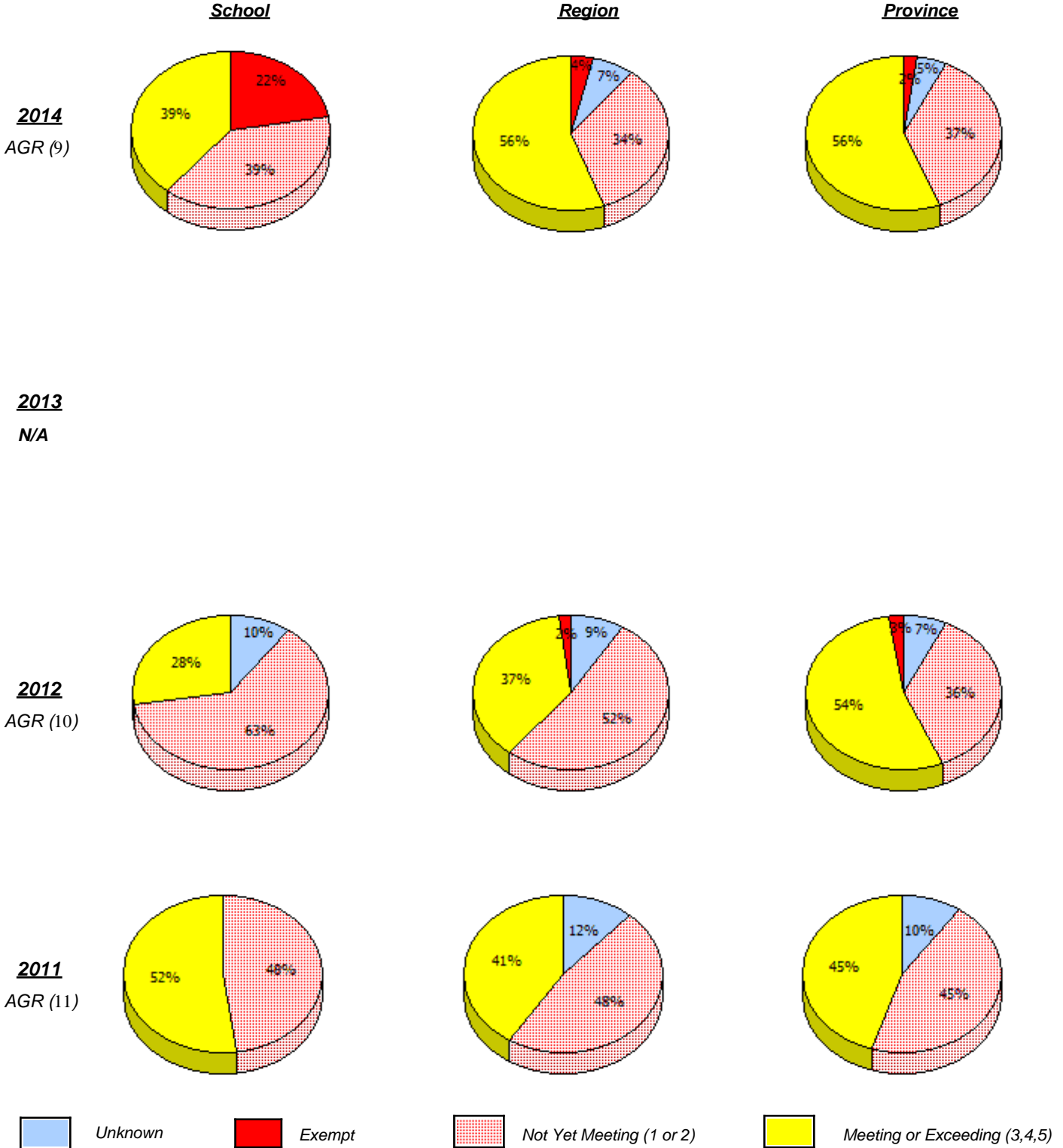
Percentage of students meeting/exceeding (2011 - 2014)



In some cases, CRT numbers may exceed AGR numbers based on late enrolments. Pie chart is based on the number of students who wrote the CRT.

NLESD - Labrador Region

School #: 007 Amos Comenius Memorial School



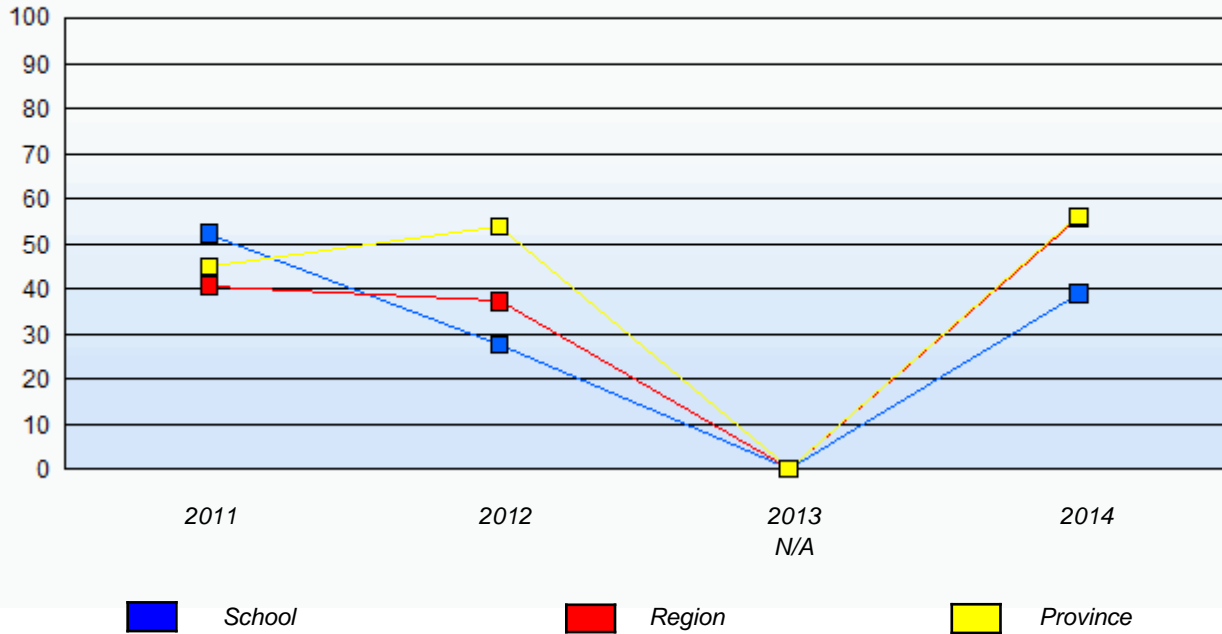
In some cases, CRT numbers may exceed AGR numbers based on late enrolments. Pie chart is based on the number of students who wrote the CRT.

Elementary Mathematics
4 Year Provincial Assessment, June 2014
School Report Criteria/Content
 (% of students who answered correctly)

NLESD - Labrador Region

School #: 007 Amos Comenius Memorial School

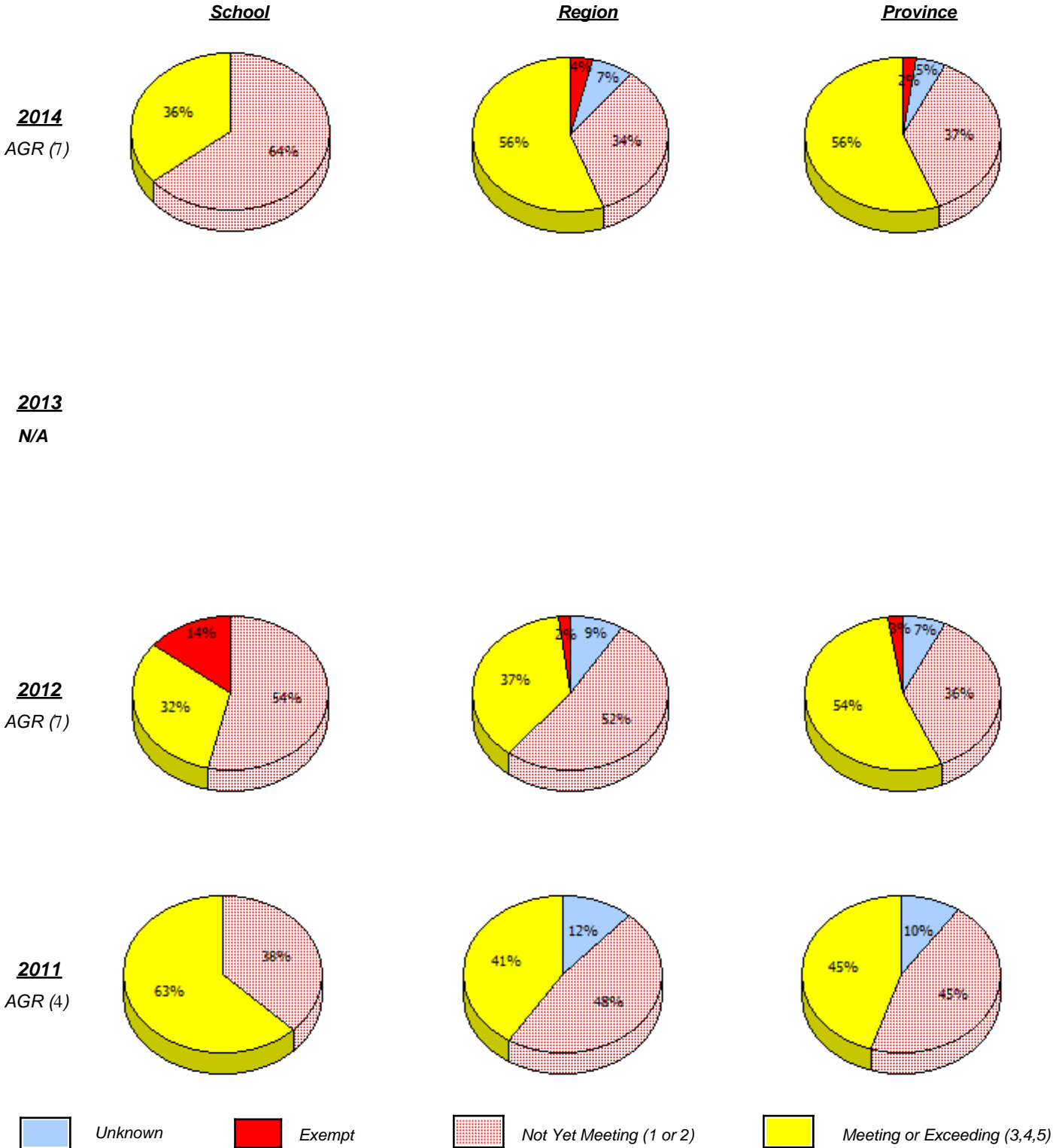
Percentage of students meeting/exceeding (2011 - 2014)



In some cases, CRT numbers may exceed AGR numbers based on late enrolments. Pie chart is based on the number of students who wrote the CRT.

NLESD - Labrador Region

School #: 012 J.C. Erhardt Memorial School



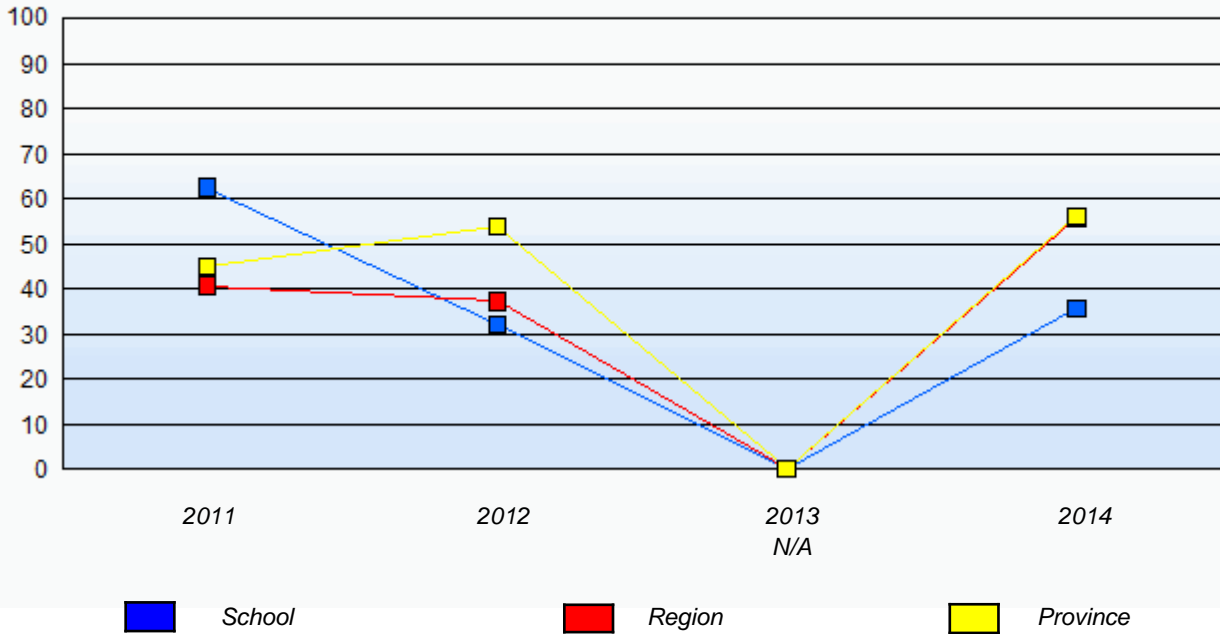
In some cases, CRT numbers may exceed AGR numbers based on late enrolments. Pie chart is based on the number of students who wrote the CRT.

Elementary Mathematics
4 Year Provincial Assessment, June 2014
School Report Criteria/Content
 (% of students who answered correctly)

NLESD - Labrador Region

School #: 012 J.C. Erhardt Memorial School

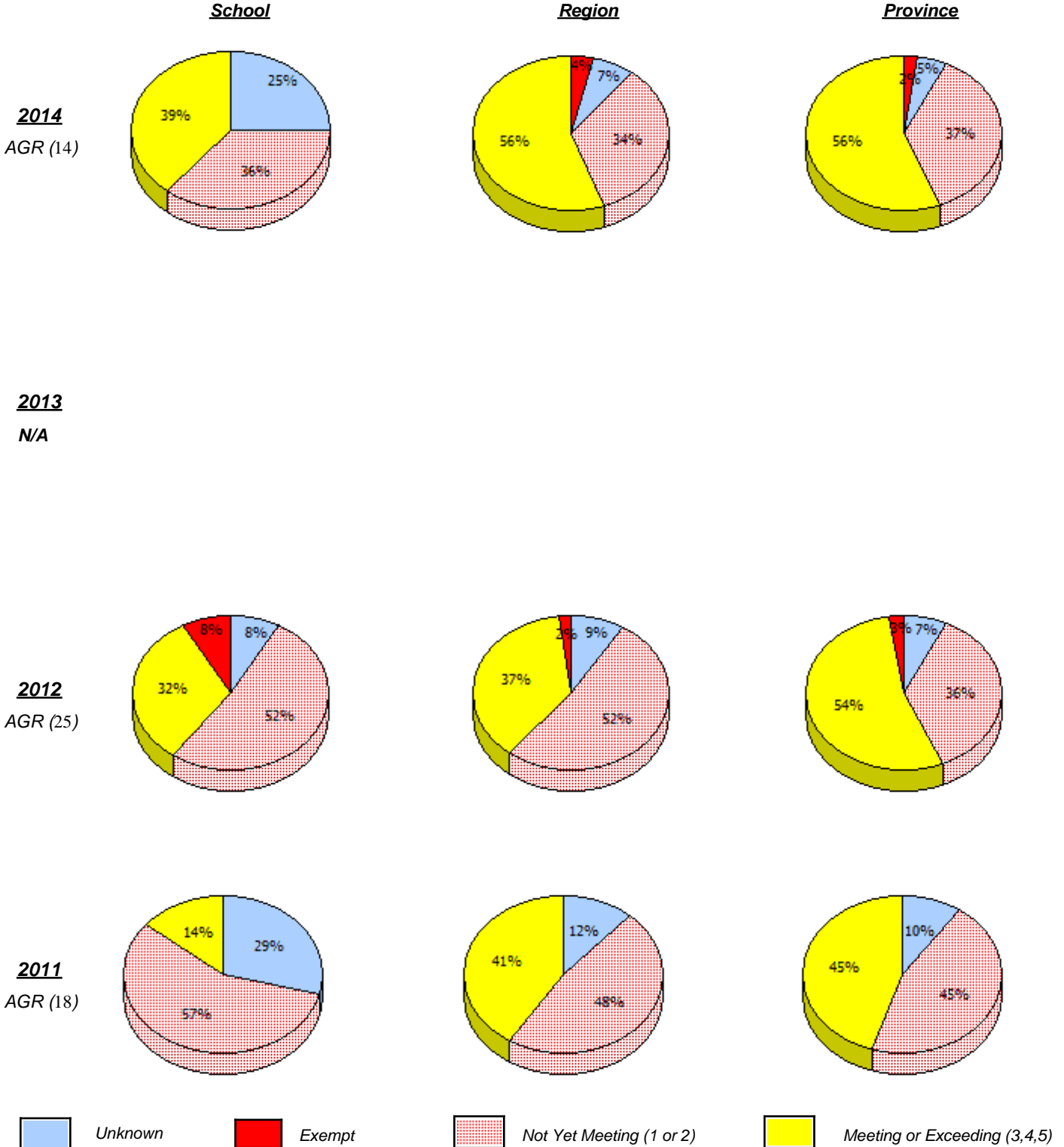
Percentage of students meeting/exceeding (2011 - 2014)



In some cases, CRT numbers may exceed AGR numbers based on late enrolments. Pie chart is based on the number of students who wrote the CRT.

NLESD - Labrador Region

School #: 014 Jens Haven Memorial



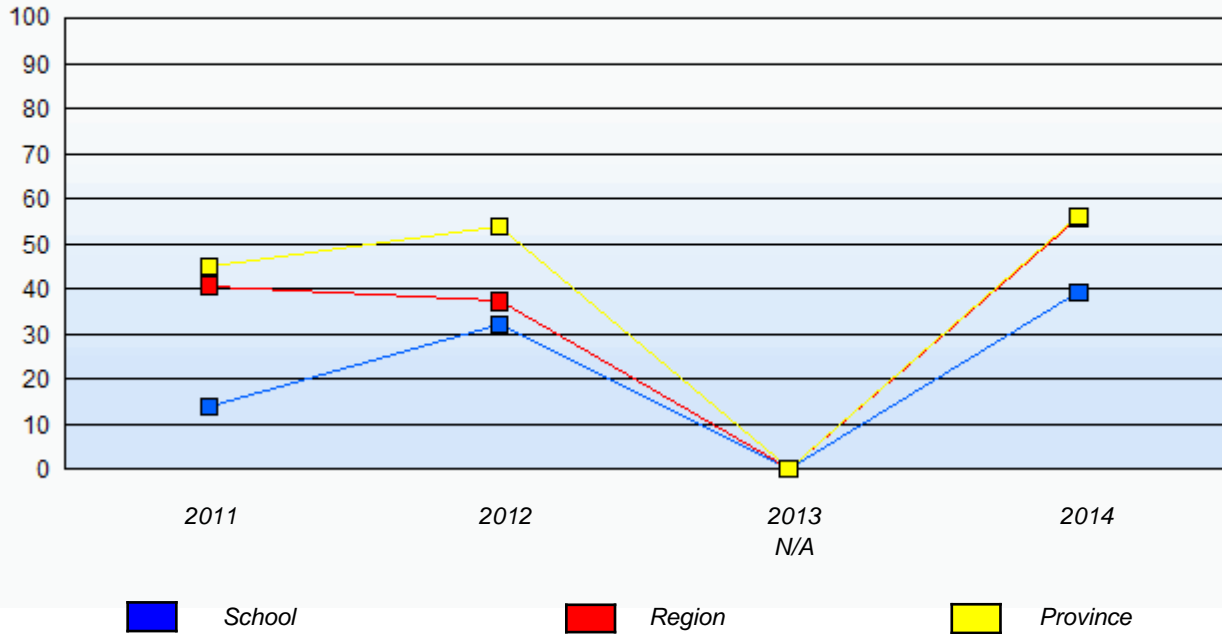
In some cases, CRT numbers may exceed AGR numbers based on late enrolments. Pie chart is based on the number of students who wrote the CRT.

Elementary Mathematics
4 Year Provincial Assessment, June 2014
School Report Criteria/Content
 (% of students who answered correctly)

NLESD - Labrador Region

School #: 014 Jens Haven Memorial

Percentage of students meeting/exceeding (2011 - 2014)



In some cases, CRT numbers may exceed AGR numbers based on late enrolments. Pie chart is based on the number of students who wrote the CRT.

NLESD - Labrador Region

School #: 015 Lake Melville School

School

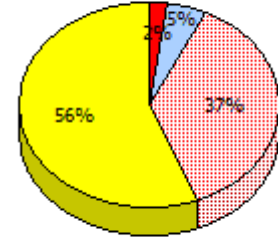
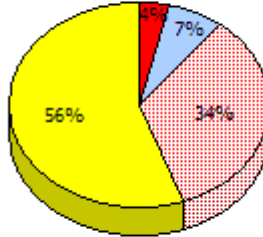
School data with 5 or fewer students withheld for reasons of confidentiality.

Region

Province

2014

AGR (5)

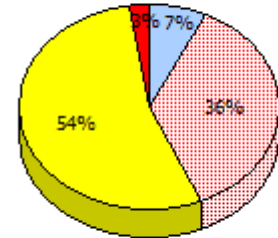
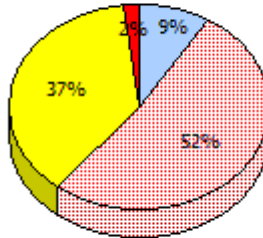


2013

N/A

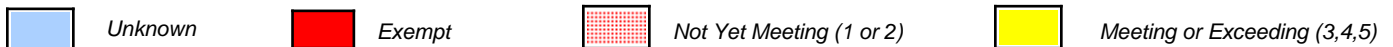
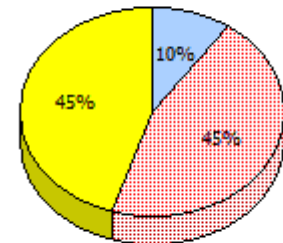
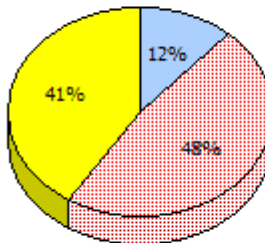
2012

AGR (6)



2011

AGR (7)



In some cases, CRT numbers may exceed AGR numbers based on late enrolments. Pie chart is based on the number of students who wrote the CRT.

NLESD - Labrador Region

School #: 015 Lake Melville School

Percentage of students meeting/exceeding (2011 - 2014)

School data with 5 or fewer students withheld for reasons of confidentiality.



In some cases, CRT numbers may exceed AGR numbers based on late enrolments. Pie chart is based on the number of students who wrote the CRT.

NLESD - Labrador Region

School #: 016 B.L. Morrison

School

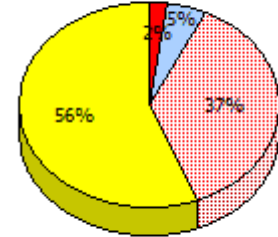
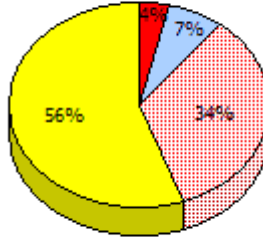
School data with 5 or fewer students withheld for reasons of confidentiality.

Region

Province

2014

AGR (3)

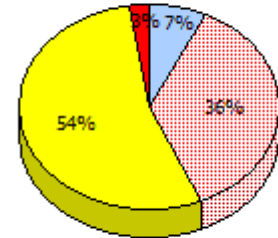
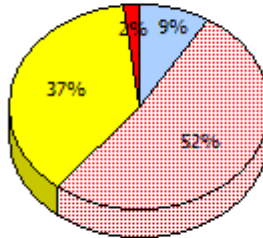


2013

N/A

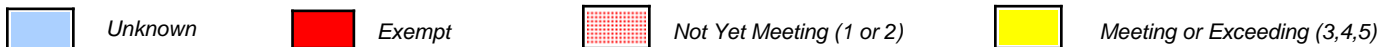
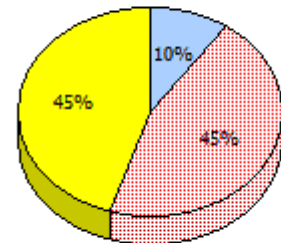
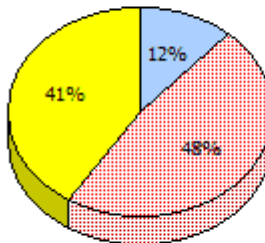
2012

AGR (2)



2011

AGR (5)



In some cases, CRT numbers may exceed AGR numbers based on late enrolments. Pie chart is based on the number of students who wrote the CRT.

NLESD - Labrador Region

School #: 016 B.L. Morrison

Percentage of students meeting/exceeding (2011 - 2014)

School data with 5 or fewer students withheld for reasons of confidentiality.



In some cases, CRT numbers may exceed AGR numbers based on late enrolments. Pie chart is based on the number of students who wrote the CRT.

NLESD - Labrador Region

School #: 017 Northern Lights Academy

School

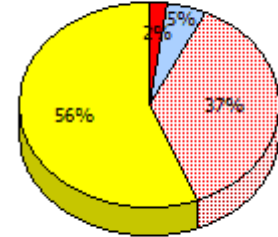
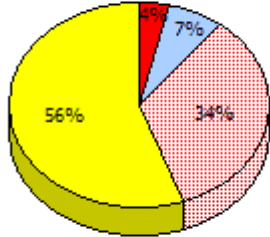
School data with 5 or fewer students withheld for reasons of confidentiality.

Region

Province

2014

AGR (2)

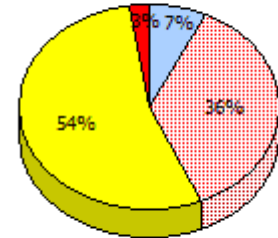
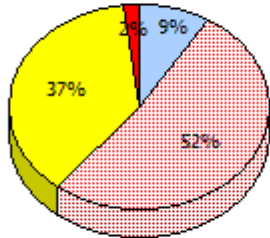


2013

N/A

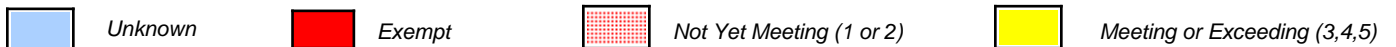
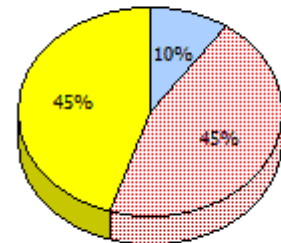
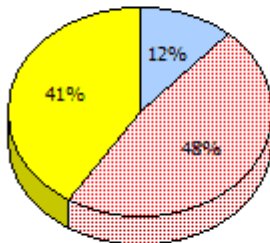
2012

AGR (3)



2011

AGR (7)



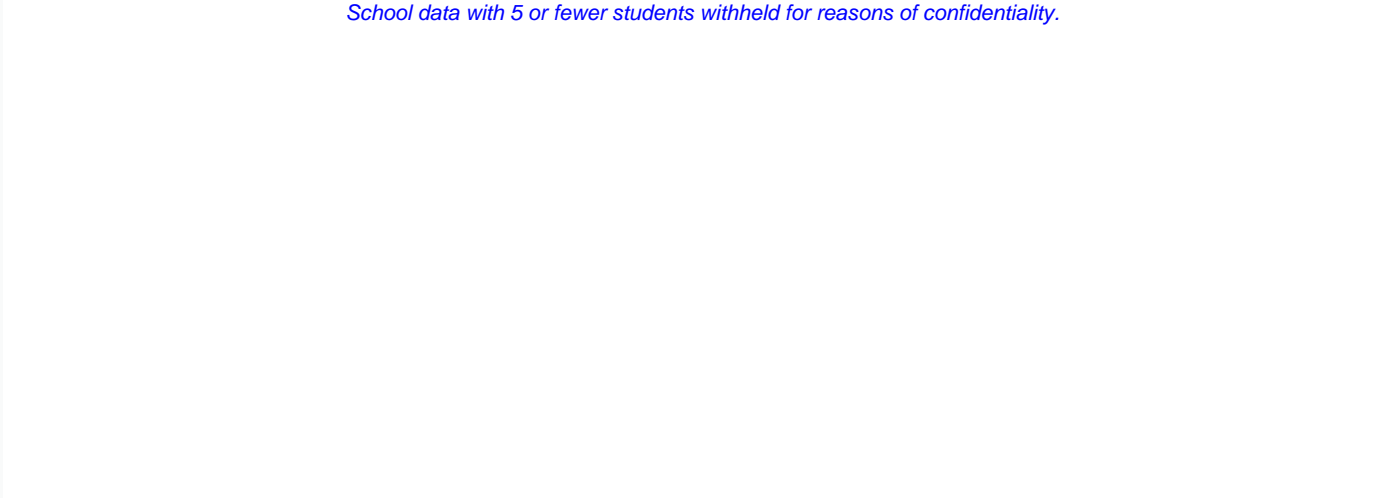
In some cases, CRT numbers may exceed AGR numbers based on late enrolments. Pie chart is based on the number of students who wrote the CRT.

NLESD - Labrador Region

School #: 017 Northern Lights Academy

Percentage of students meeting/exceeding (2011 - 2014)

School data with 5 or fewer students withheld for reasons of confidentiality.

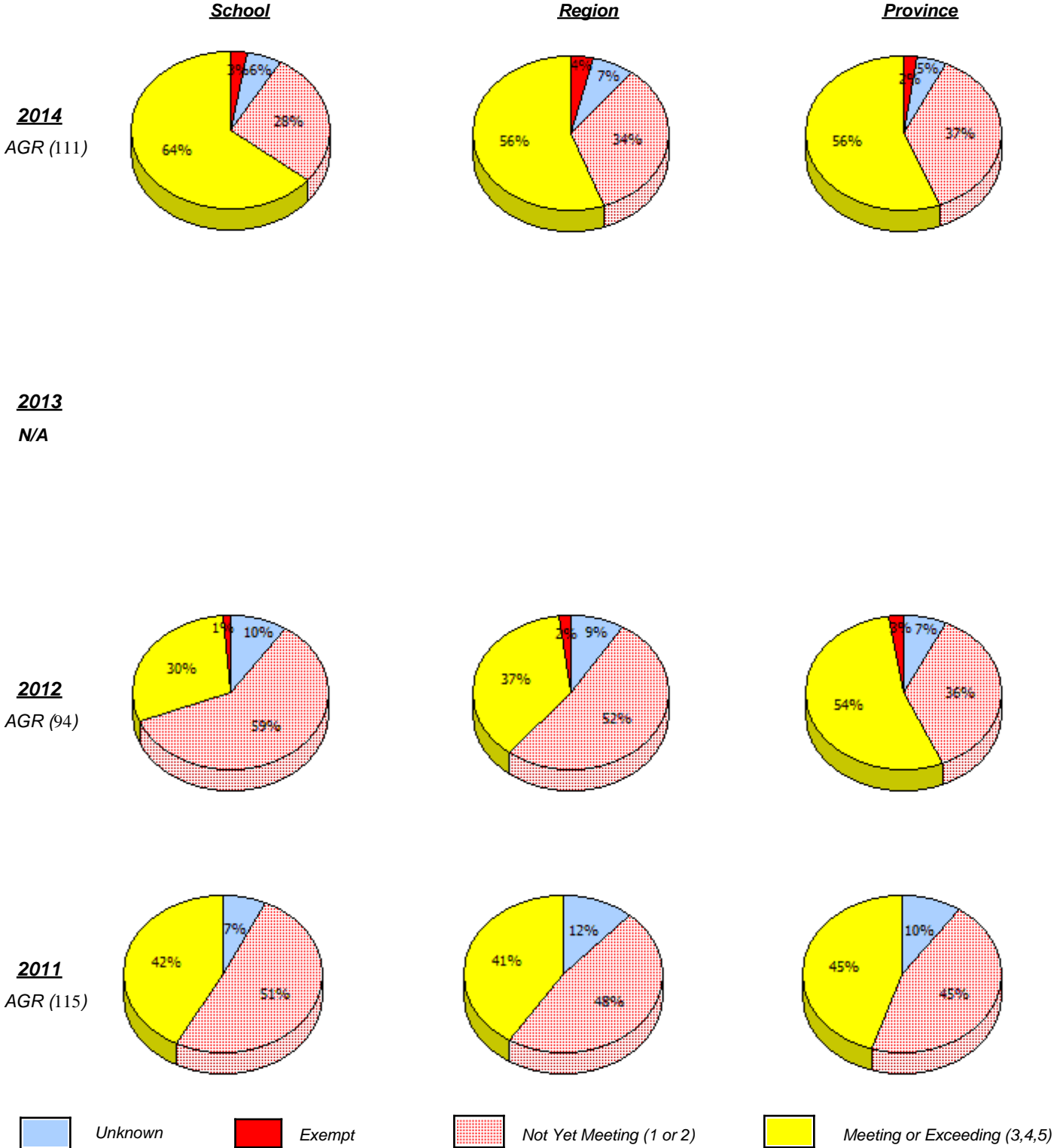


2011	2012	2013 N/A	2014
 School	 Region		 Province

In some cases, CRT numbers may exceed AGR numbers based on late enrolments. Pie chart is based on the number of students who wrote the CRT.

NLESD - Labrador Region

School #: 381 J.R. Smallwood Middle School



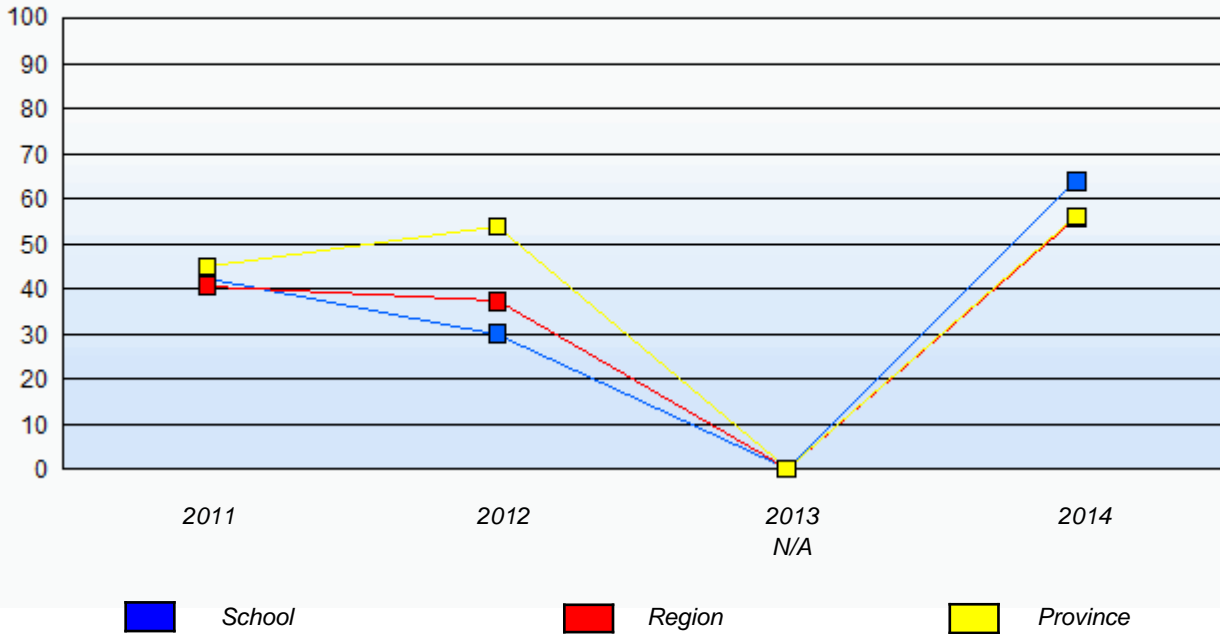
In some cases, CRT numbers may exceed AGR numbers based on late enrolments. Pie chart is based on the number of students who wrote the CRT.

Elementary Mathematics
4 Year Provincial Assessment, June 2014
School Report Criteria/Content
 (% of students who answered correctly)

NLESD - Labrador Region

School #: 381 J.R. Smallwood Middle School

Percentage of students meeting/exceeding (2011 - 2014)



In some cases, CRT numbers may exceed AGR numbers based on late enrolments. Pie chart is based on the number of students who wrote the CRT.