

NLESD - Labrador Region

School #: 001 St. Peter's School

School

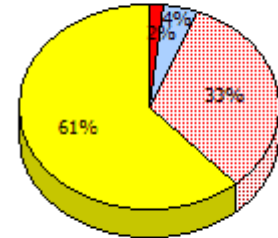
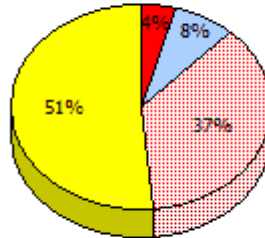
School data with 5 or fewer students withheld for reasons of confidentiality.

Region

Province

2014

AGR (4)

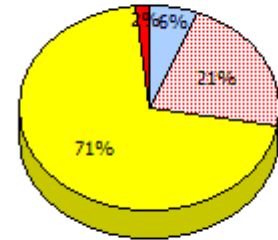
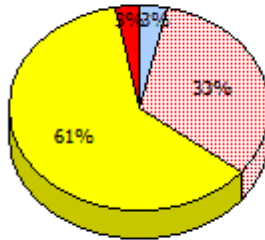


2013

No Testing

2012

AGR (1)



2011

AGR (0)



* In some cases, CRT numbers may exceed AGR numbers based on late enrolments. Pie chart is based on the number of students who wrote the CRT.

* Number Operations score is composite of Reasoning, Communication, Connections and Representations, and Problem Solving.

Source: Division of Evaluation and Research, Department of Education and Early Childhood Development

Primary Mathematics
4 Year Provincial Assessment, June 2014
School Report Criteria/Content
(% of students who answered correctly)

NLESD - Labrador Region

School #: 001 St. Peter's School

Percentage of students meeting/exceeding (2011 - 2014)
School data with 5 or fewer students withheld for reasons of confidentiality.

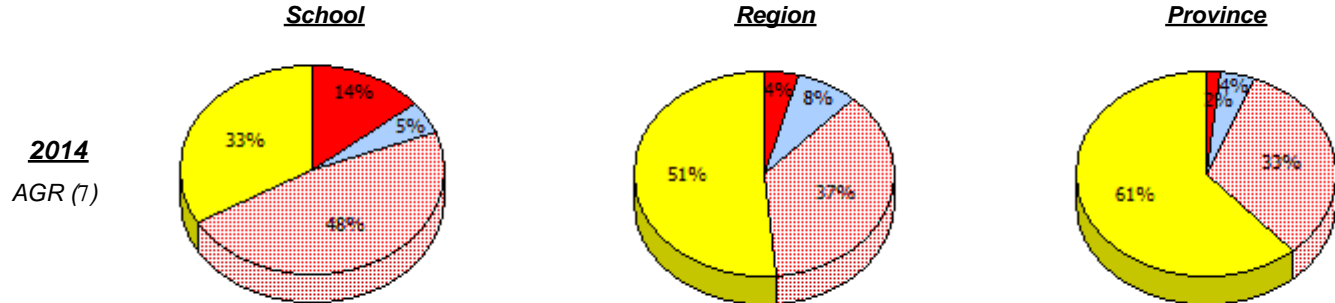


* In some cases, CRT numbers may exceed AGR numbers based on late enrolments. Pie chart is based on the number of students who wrote the CRT.

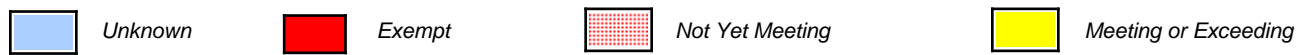
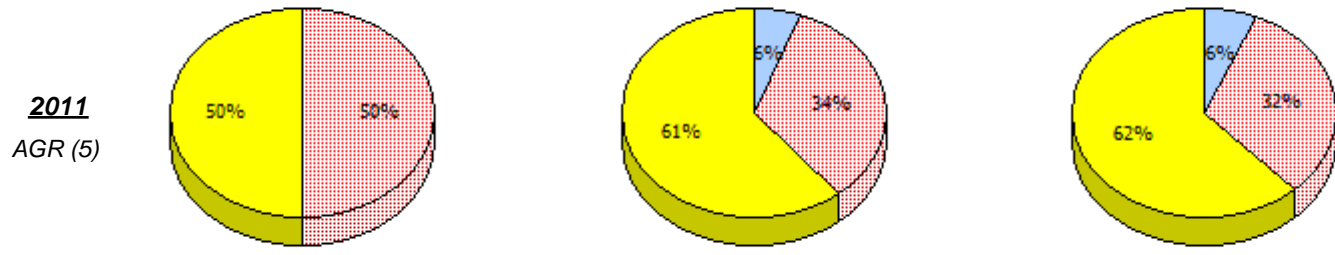
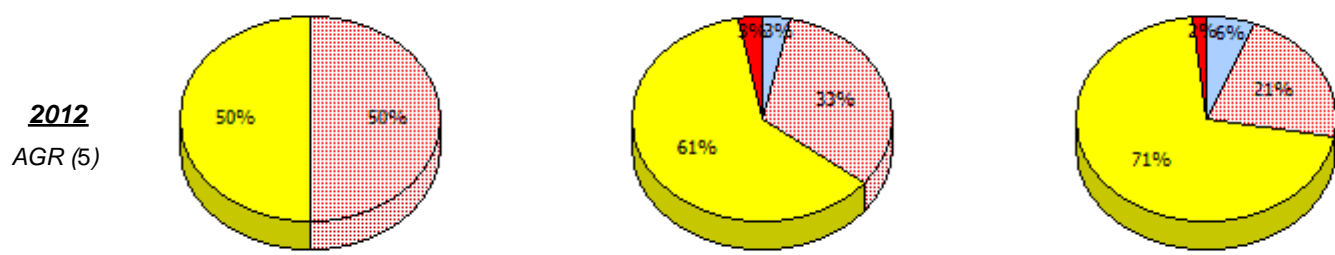
* Number Operations score is composite of Reasoning, Communication, Connections and Representations, and Problem Solving.

NLESD - Labrador Region

School #: 002 Henry Gordon Academy



2013
No Testing



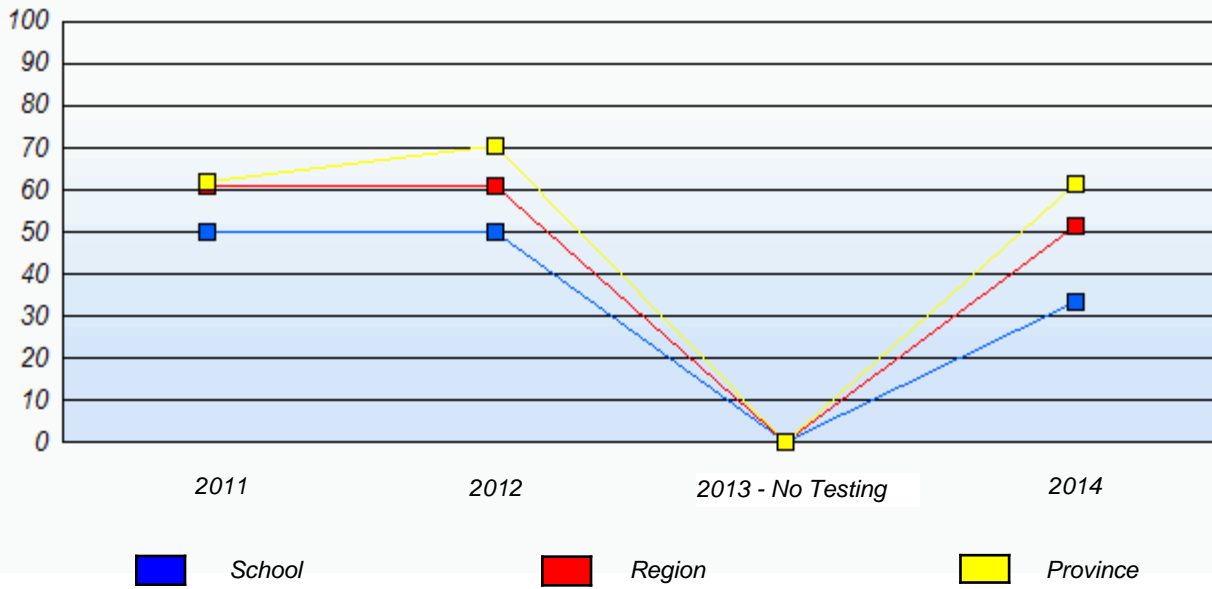
* In some cases, CRT numbers may exceed AGR numbers based on late enrolments. Pie chart is based on the number of students who wrote the CRT.
 * Number Operations score is composite of Reasoning, Communication, Connections and Representations, and Problem Solving.
 Source: Division of Evaluation and Research, Department of Education and Early Childhood Development

Primary Mathematics
4 Year Provincial Assessment, June 2014
School Report Criteria/Content
 (% of students who answered correctly)

NLESD - Labrador Region

School #: 002 Henry Gordon Academy

Percentage of students meeting/exceeding (2011 - 2014)



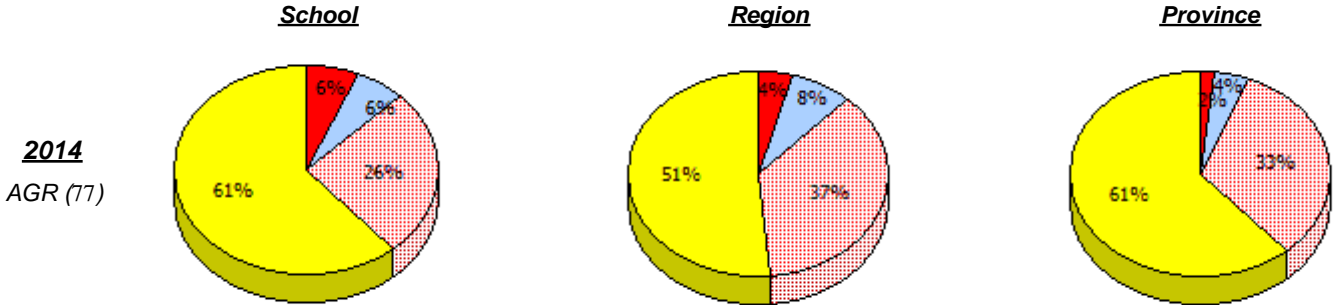
* In some cases, CRT numbers may exceed AGR numbers based on late enrolments. Pie chart is based on the number of students who wrote the CRT.

* Number Operations score is composite of Reasoning, Communication, Connections and Representations, and Problem Solving.

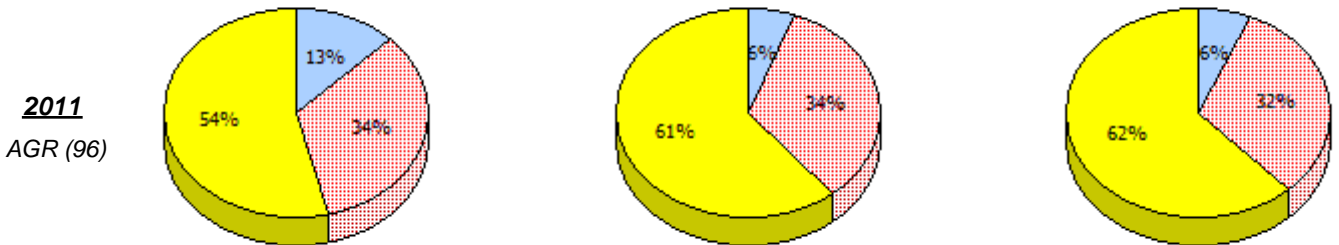
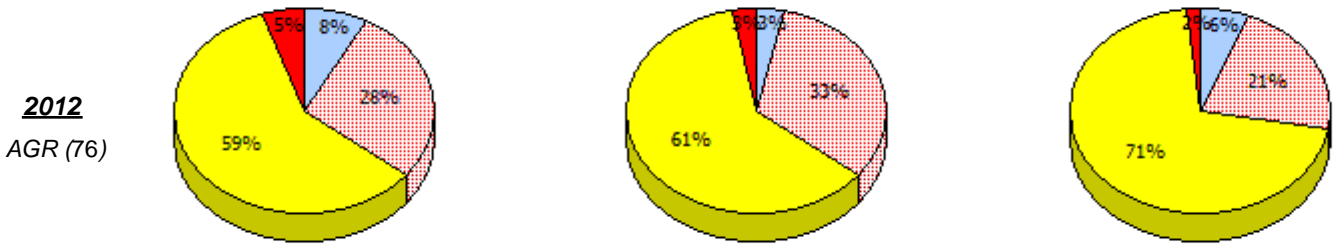
Source: Division of Evaluation and Research, Department of Education and Early Childhood Development

NLESD - Labrador Region

School #: 005 Peacock Primary School



2013
No Testing



* In some cases, CRT numbers may exceed AGR numbers based on late enrolments. Pie chart is based on the number of students who wrote the CRT.

* Number Operations score is composite of Reasoning, Communication, Connections and Representations, and Problem Solving.

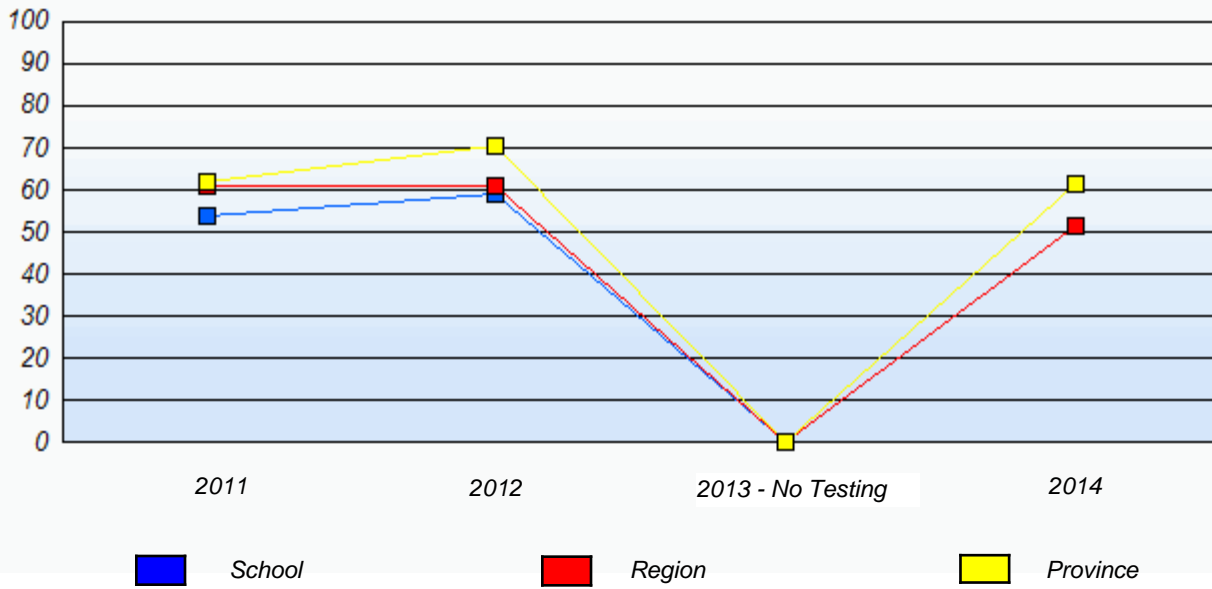
Source: Division of Evaluation and Research, Department of Education and Early Childhood Development

Primary Mathematics
4 Year Provincial Assessment, June 2014
School Report Criteria/Content
 (% of students who answered correctly)

NLESD - Labrador Region

School #: 005 Peacock Primary School

Percentage of students meeting/exceeding (2011 - 2014)



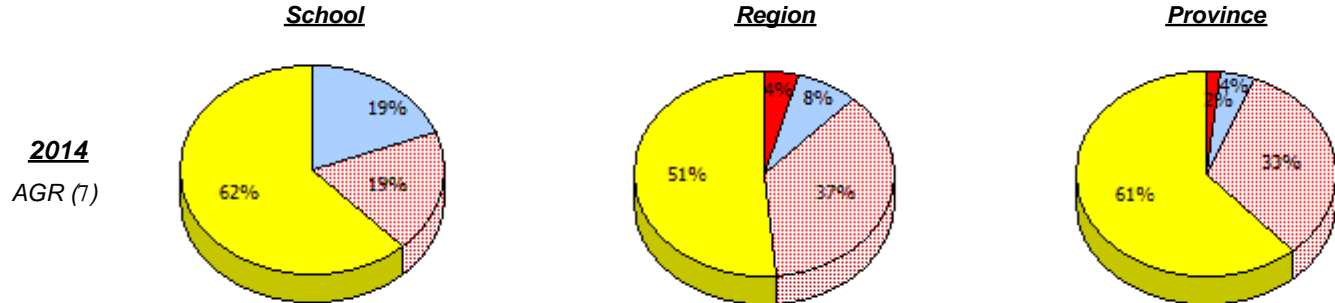
* In some cases, CRT numbers may exceed AGR numbers based on late enrolments. Pie chart is based on the number of students who wrote the CRT.

* Number Operations score is composite of Reasoning, Communication, Connections and Representations, and Problem Solving.

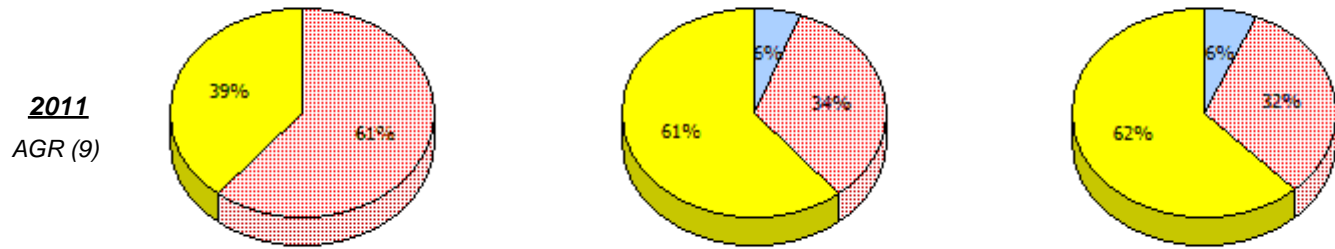
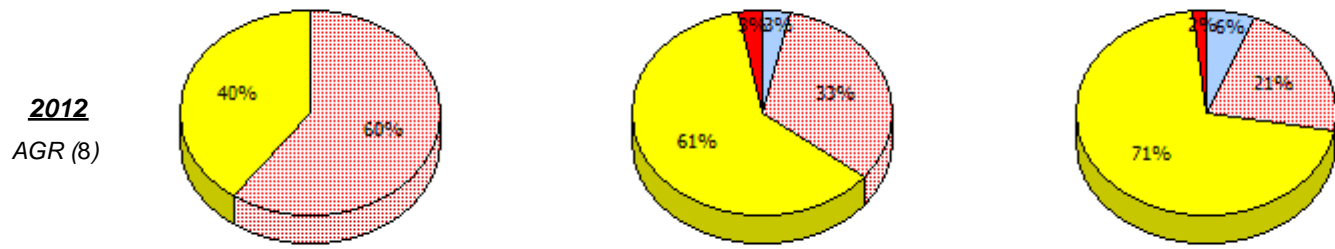
Source: Division of Evaluation and Research, Department of Education and Early Childhood Development

NLESD - Labrador Region

School #: 007 Amos Comenius Memorial School



2013
No Testing



* In some cases, CRT numbers may exceed AGR numbers based on late enrolments. Pie chart is based on the number of students who wrote the CRT.

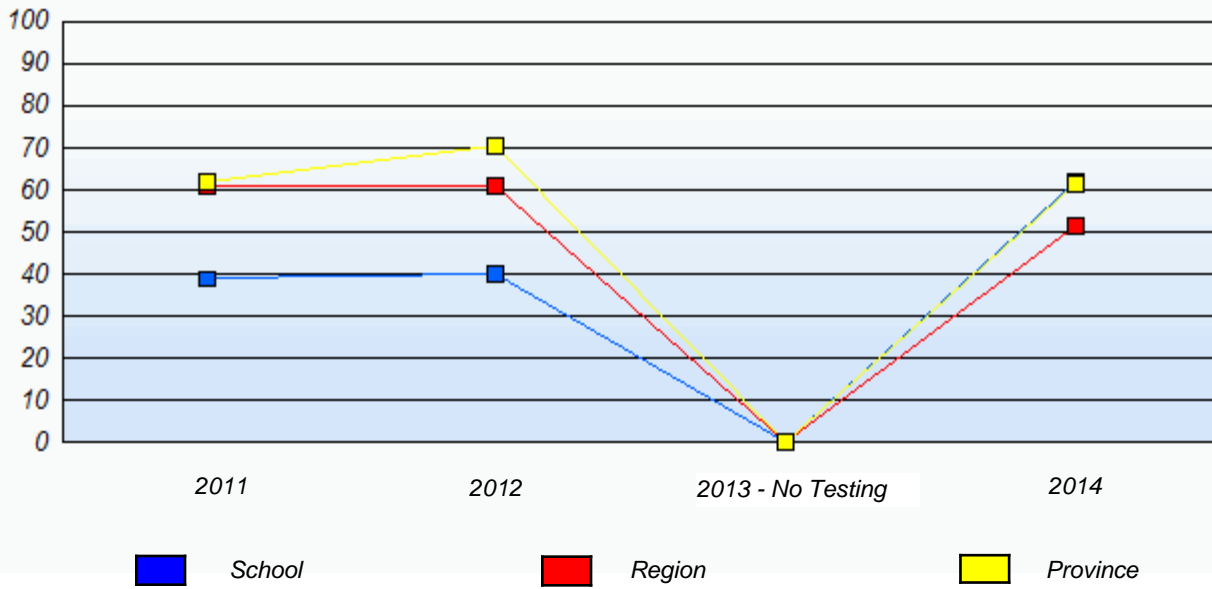
* Number Operations score is composite of Reasoning, Communication, Connections and Representations, and Problem Solving.

Source: Division of Evaluation and Research, Department of Education and Early Childhood Development

NLESD - Labrador Region

School #: 007 Amos Comenius Memorial School

Percentage of students meeting/exceeding (2011 - 2014)



* In some cases, CRT numbers may exceed AGR numbers based on late enrolments. Pie chart is based on the number of students who wrote the CRT.

* Number Operations score is composite of Reasoning, Communication, Connections and Representations, and Problem Solving.

Source: Division of Evaluation and Research, Department of Education and Early Childhood Development

NLESD - Labrador Region

School #: 008 A. P. Low Primary



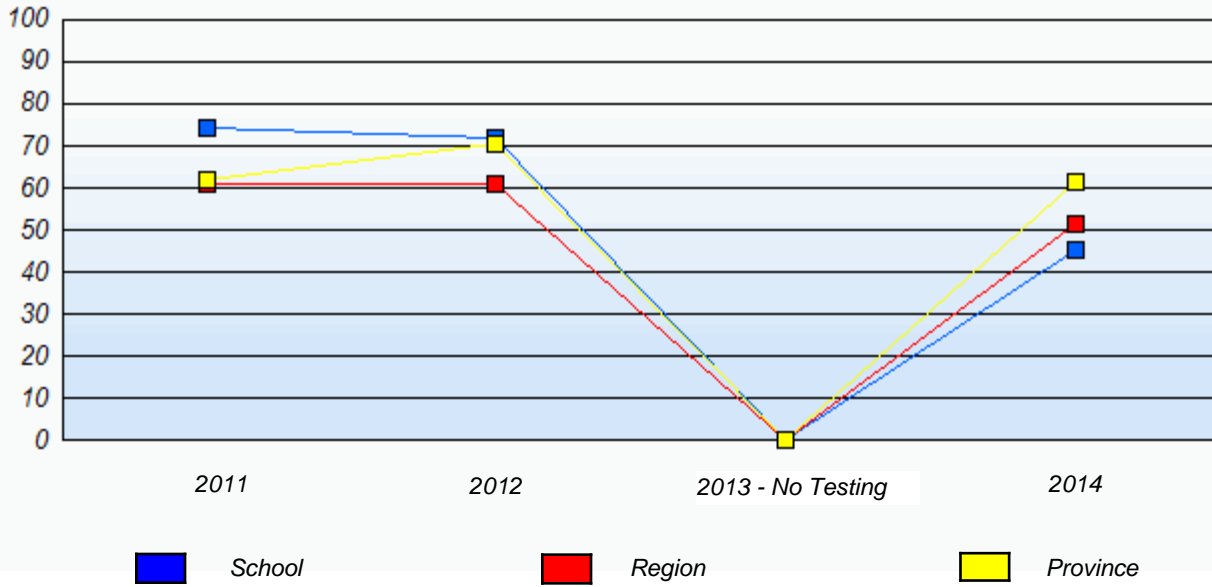
* In some cases, CRT numbers may exceed AGR numbers based on late enrolments. Pie chart is based on the number of students who wrote the CRT.

* Number Operations score is composite of Reasoning, Communication, Connections and Representations, and Problem Solving.

NLESD - Labrador Region

School #: 008 A. P. Low Primary

Percentage of students meeting/exceeding (2011 - 2014)



* In some cases, CRT numbers may exceed AGR numbers based on late enrolments. Pie chart is based on the number of students who wrote the CRT.

* Number Operations score is composite of Reasoning, Communication, Connections and Representations, and Problem Solving.

NLESD - Labrador Region

School #: 012 J.C. Erhardt Memorial School

School

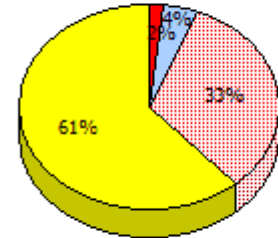
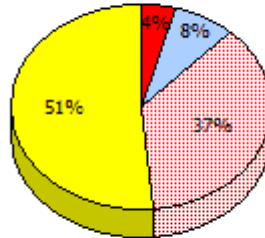
School data with 5 or fewer students withheld for reasons of confidentiality.

Region

Province

2014

AGR (4)

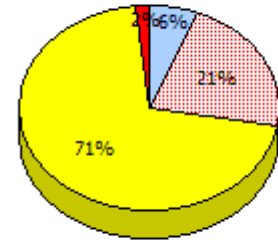
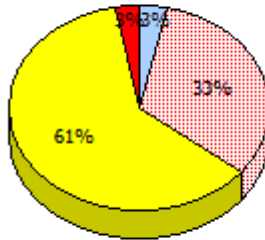


2013

No Testing

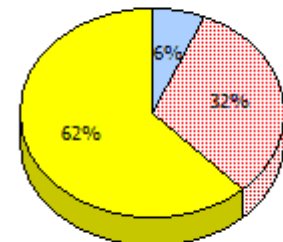
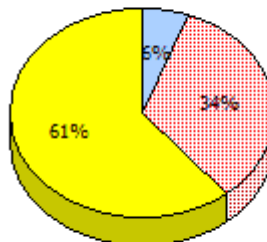
2012

AGR (4)



2011

AGR (5)



Unknown
 Exempt
 Not Yet Meeting
 Meeting or Exceeding

* In some cases, CRT numbers may exceed AGR numbers based on late enrolments. Pie chart is based on the number of students who wrote the CRT.

* Number Operations score is composite of Reasoning, Communication, Connections and Representations, and Problem Solving.

Source: Division of Evaluation and Research, Department of Education and Early Childhood Development

Primary Mathematics
4 Year Provincial Assessment, June 2014
School Report Criteria/Content
 (% of students who answered correctly)

NLESD - Labrador Region

School #: 012 J.C. Erhardt Memorial School

Percentage of students meeting/exceeding (2011 - 2014)
School data with 5 or fewer students withheld for reasons of confidentiality.

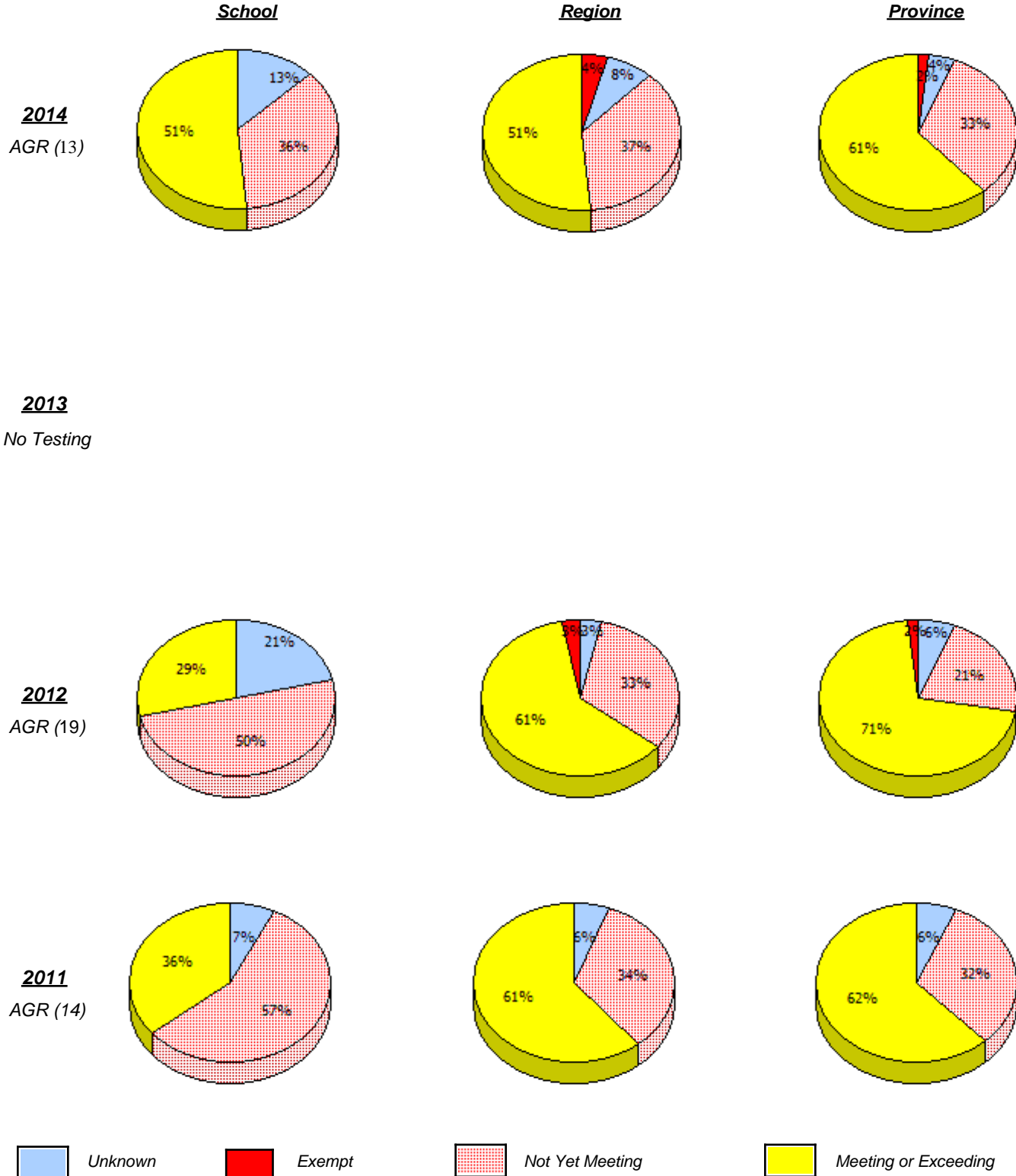


* In some cases, CRT numbers may exceed AGR numbers based on late enrolments. Pie chart is based on the number of students who wrote the CRT.

* Number Operations score is composite of Reasoning, Communication, Connections and Representations, and Problem Solving.

NLESD - Labrador Region

School #: 014 Jens Haven Memorial



* In some cases, CRT numbers may exceed AGR numbers based on late enrolments. Pie chart is based on the number of students who wrote the CRT.

* Number Operations score is composite of Reasoning, Communication, Connections and Representations, and Problem Solving.

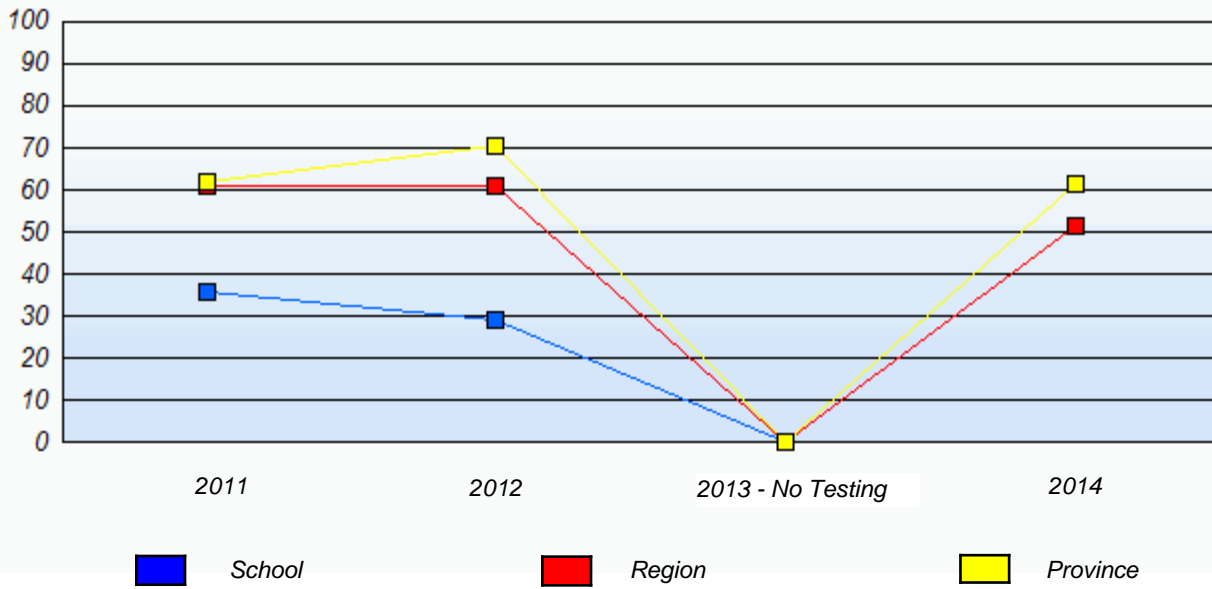
Source: Division of Evaluation and Research, Department of Education and Early Childhood Development

Primary Mathematics
4 Year Provincial Assessment, June 2014
School Report Criteria/Content
 (% of students who answered correctly)

NLESD - Labrador Region

School #: 014 Jens Haven Memorial

Percentage of students meeting/exceeding (2011 - 2014)

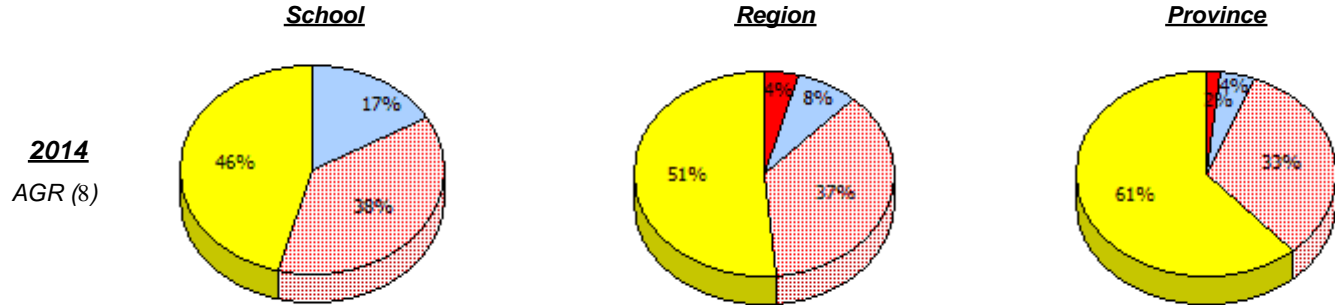


* In some cases, CRT numbers may exceed AGR numbers based on late enrolments. Pie chart is based on the number of students who wrote the CRT.

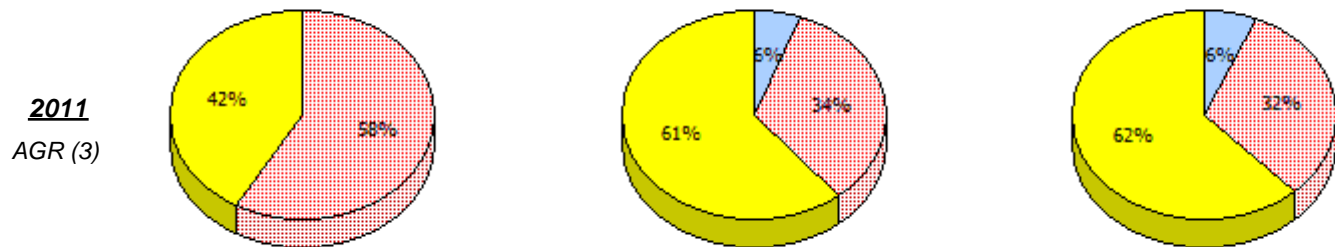
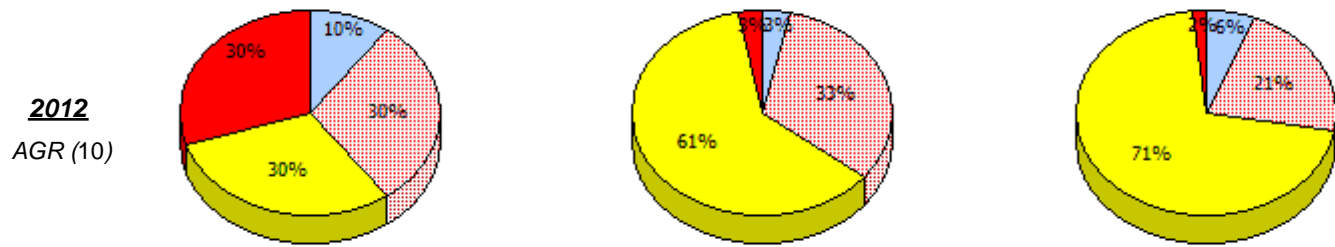
* Number Operations score is composite of Reasoning, Communication, Connections and Representations, and Problem Solving.

NLESD - Labrador Region

School #: 015 Lake Melville School



2013
No Testing



Unknown
 Exempt
 Not Yet Meeting
 Meeting or Exceeding

* In some cases, CRT numbers may exceed AGR numbers based on late enrolments. Pie chart is based on the number of students who wrote the CRT.

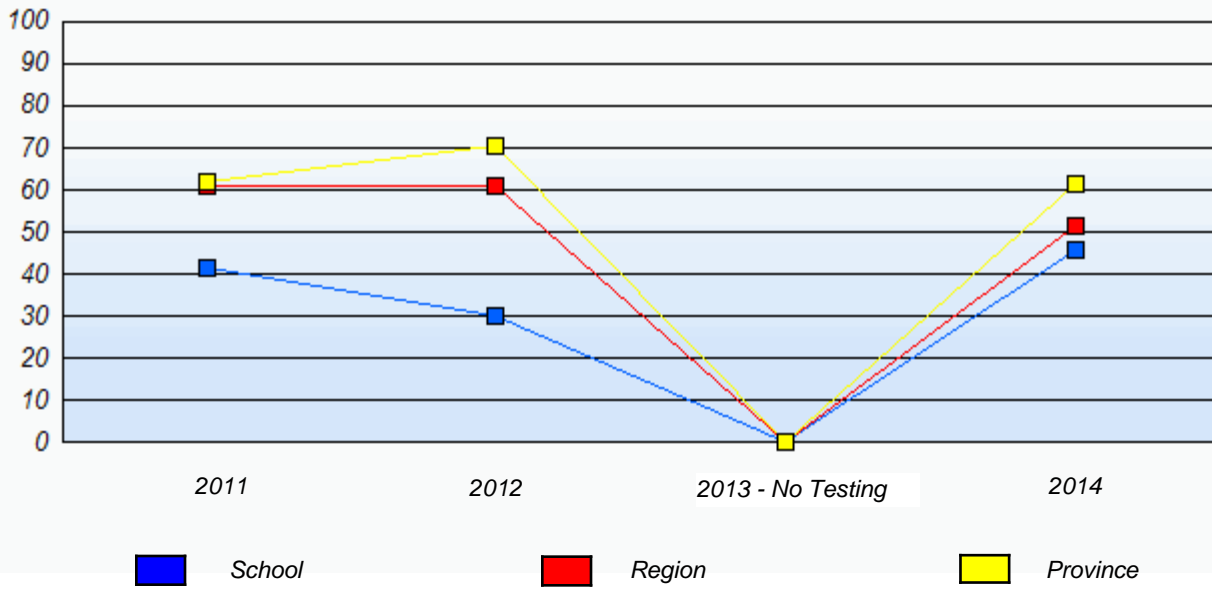
* Number Operations score is composite of Reasoning, Communication, Connections and Representations, and Problem Solving.

Source: Division of Evaluation and Research, Department of Education and Early Childhood Development

NLESD - Labrador Region

School #: 015 Lake Melville School

Percentage of students meeting/exceeding (2011 - 2014)



* In some cases, CRT numbers may exceed AGR numbers based on late enrolments. Pie chart is based on the number of students who wrote the CRT.

* Number Operations score is composite of Reasoning, Communication, Connections and Representations, and Problem Solving.

Source: Division of Evaluation and Research, Department of Education and Early Childhood Development

NLESD - Labrador Region

School #: 016 B.L. Morrison

School

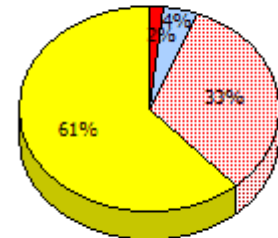
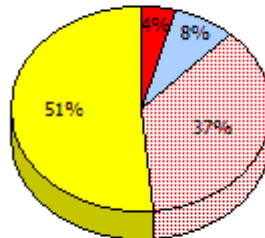
School data with 5 or fewer students withheld for reasons of confidentiality.

Region

Province

2014

AGR (1)

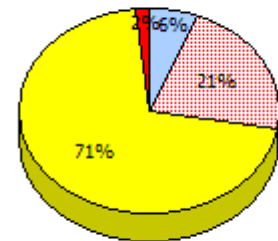
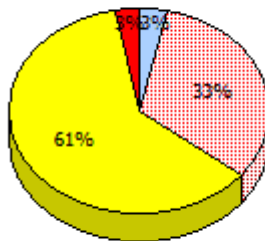


2013

No Testing

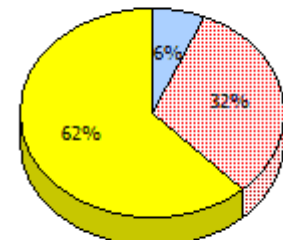
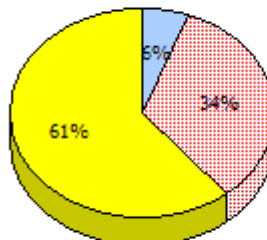
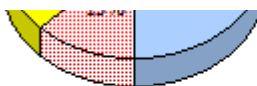
2012

AGR (1)



2011

AGR (4)



Unknown
 Exempt
 Not Yet Meeting
 Meeting or Exceeding

* In some cases, CRT numbers may exceed AGR numbers based on late enrolments. Pie chart is based on the number of students who wrote the CRT.

* Number Operations score is composite of Reasoning, Communication, Connections and Representations, and Problem Solving.

Source: Division of Evaluation and Research, Department of Education and Early Childhood Development

NLESD - Labrador Region

School #: 016 B.L. Morrison

Percentage of students meeting/exceeding (2011 - 2014)
School data with 5 or fewer students withheld for reasons of confidentiality.



* In some cases, CRT numbers may exceed AGR numbers based on late enrolments. Pie chart is based on the number of students who wrote the CRT.

* Number Operations score is composite of Reasoning, Communication, Connections and Representations, and Problem Solving.

Source: Division of Evaluation and Research, Department of Education and Early Childhood Development

NLESD - Labrador Region

School #: 017 Northern Lights Academy

School

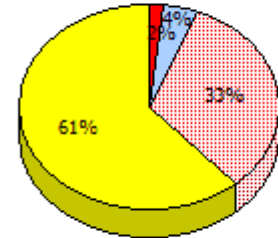
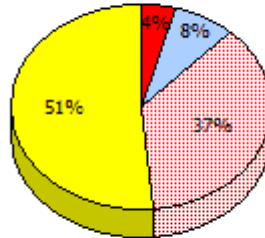
School data with 5 or fewer students withheld for reasons of confidentiality.

Region

Province

2014

AGR (6)

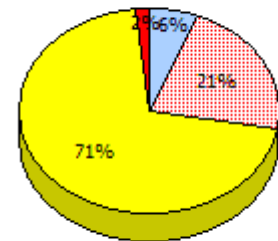
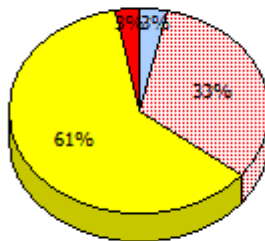


2013

No Testing

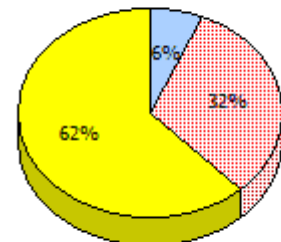
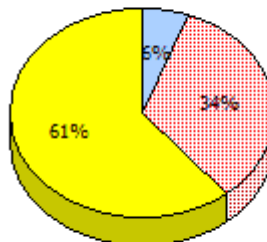
2012

AGR (5)



2011

AGR (2)



Unknown
 Exempt
 Not Yet Meeting
 Meeting or Exceeding

* In some cases, CRT numbers may exceed AGR numbers based on late enrolments. Pie chart is based on the number of students who wrote the CRT.

* Number Operations score is composite of Reasoning, Communication, Connections and Representations, and Problem Solving.

Source: Division of Evaluation and Research, Department of Education and Early Childhood Development

Primary Mathematics
4 Year Provincial Assessment, June 2014
School Report Criteria/Content
(% of students who answered correctly)

NLESD - Labrador Region

School #: 017 Northern Lights Academy

Percentage of students meeting/exceeding (2011 - 2014)
School data with 5 or fewer students withheld for reasons of confidentiality.



* In some cases, CRT numbers may exceed AGR numbers based on late enrolments. Pie chart is based on the number of students who wrote the CRT.

* Number Operations score is composite of Reasoning, Communication, Connections and Representations, and Problem Solving.