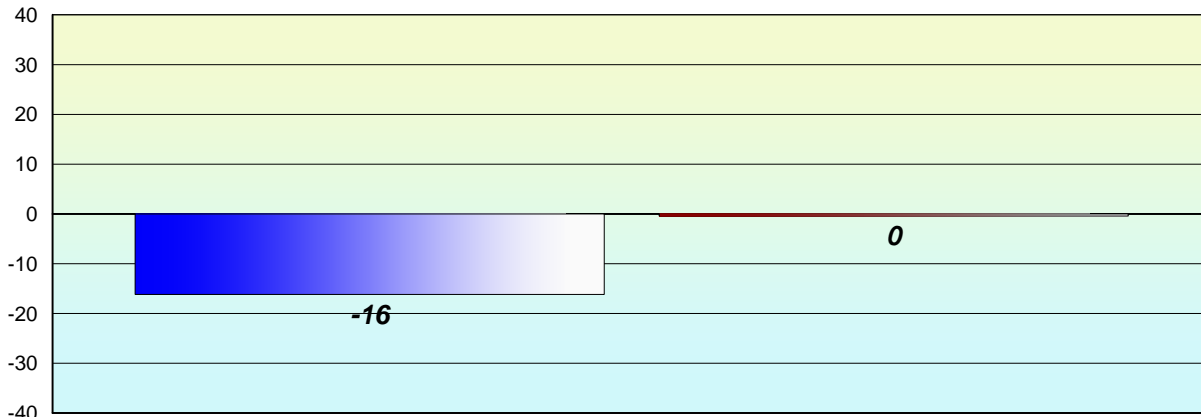


**Longitudinal  
Cohort of students  
Difference from Provincial Mean 2012 - 2013**

**Reading**



Grade 2 (2012) Reading Record

Grade 3 (2013) CRT

% of students at Grade Level = 74%

% of students at Level 3 and above = 67%



***Longitudinal  
Cohort of students  
Difference from Provincial Mean 2012 - 2013***

***Reading***

*School data with 5 or fewer students withheld for reasons of confidentiality.*

*Grade 2 (2012) Reading Record*

*% of students at Grade Level = 74%*

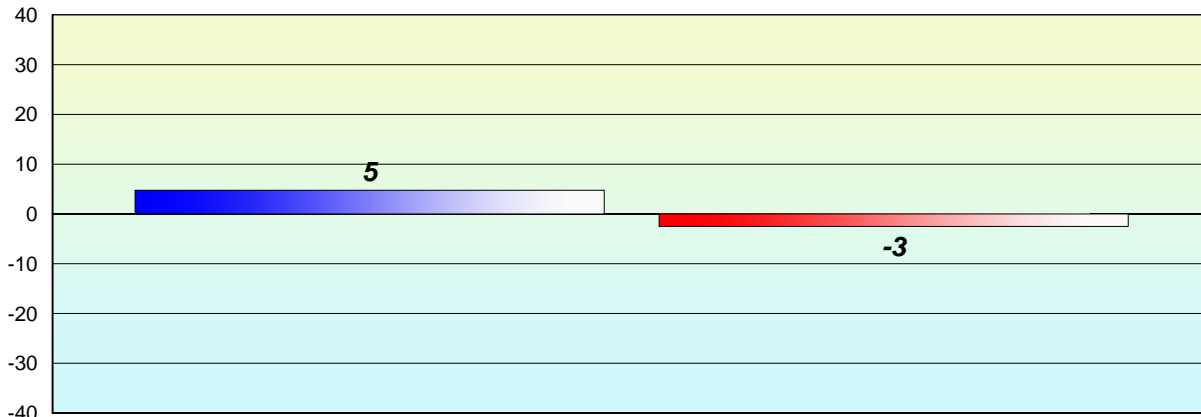
*Grade 3 (2013) CRT*

*% of students at Level 3 and above = 67%*



**Longitudinal  
Cohort of students  
Difference from Provincial Mean 2012 - 2013**

**Reading**



Grade 2 (2012) Reading Record

Grade 3 (2013) CRT

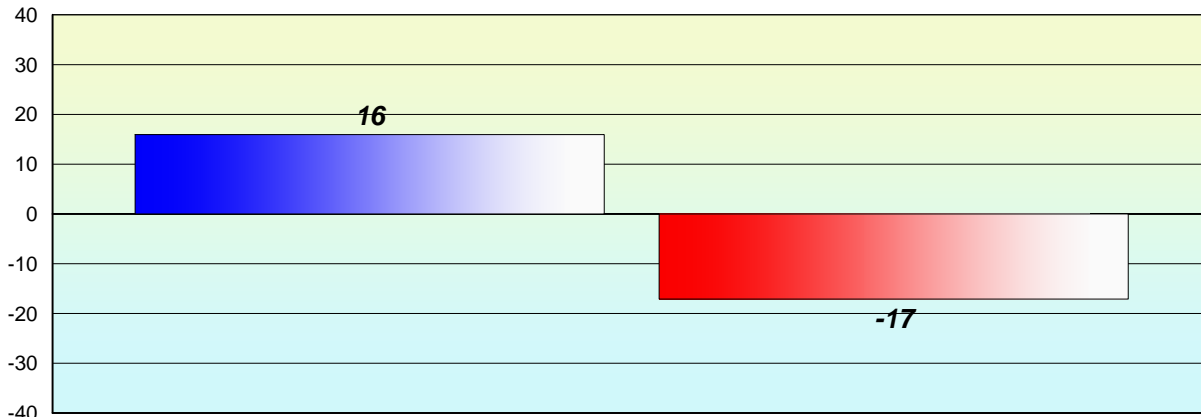
% of students at Grade Level = 74%

% of students at Level 3 and above = 67%



**Longitudinal  
Cohort of students  
Difference from Provincial Mean 2012 - 2013**

**Reading**



Grade 2 (2012) Reading Record

Grade 3 (2013) CRT

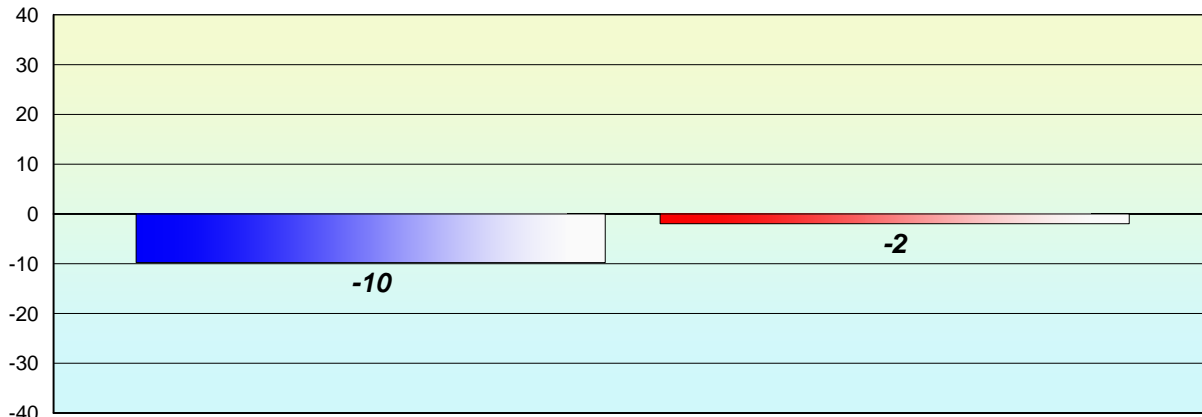
% of students at Grade Level = 74%

% of students at Level 3 and above = 67%



**Longitudinal  
Cohort of students  
Difference from Provincial Mean 2012 - 2013**

**Reading**



Grade 2 (2012) Reading Record

Grade 3 (2013) CRT

% of students at Grade Level = 74%

% of students at Level 3 and above = 67%



**Longitudinal  
Cohort of students  
Difference from Provincial Mean 2012 - 2013**

**Reading**

*School data with 5 or fewer students withheld for reasons of confidentiality.*

*Grade 2 (2012) Reading Record*

*% of students at Grade Level = 74%*

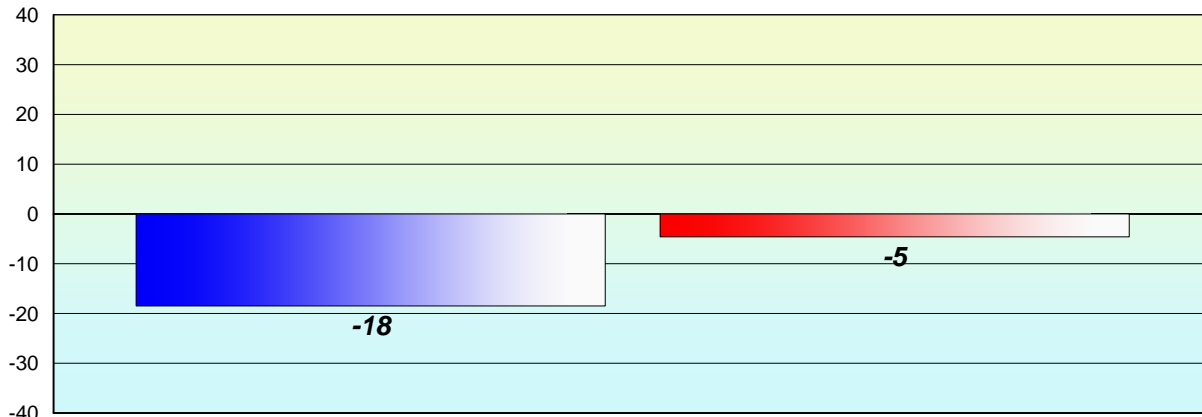
*Grade 3 (2013) CRT*

*% of students at Level 3 and above = 67%*



**Longitudinal  
Cohort of students  
Difference from Provincial Mean 2012 - 2013**

**Reading**



Grade 2 (2012) Reading Record

Grade 3 (2013) CRT

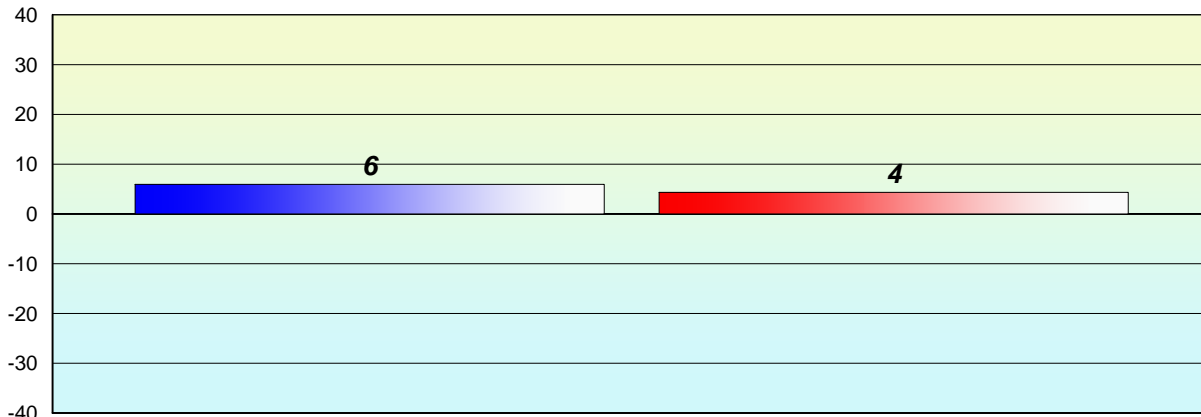
% of students at Grade Level = 74%

% of students at Level 3 and above = 67%



**Longitudinal  
Cohort of students  
Difference from Provincial Mean 2012 - 2013**

**Reading**



Grade 2 (2012) Reading Record

Grade 3 (2013) CRT

% of students at Grade Level = 74%

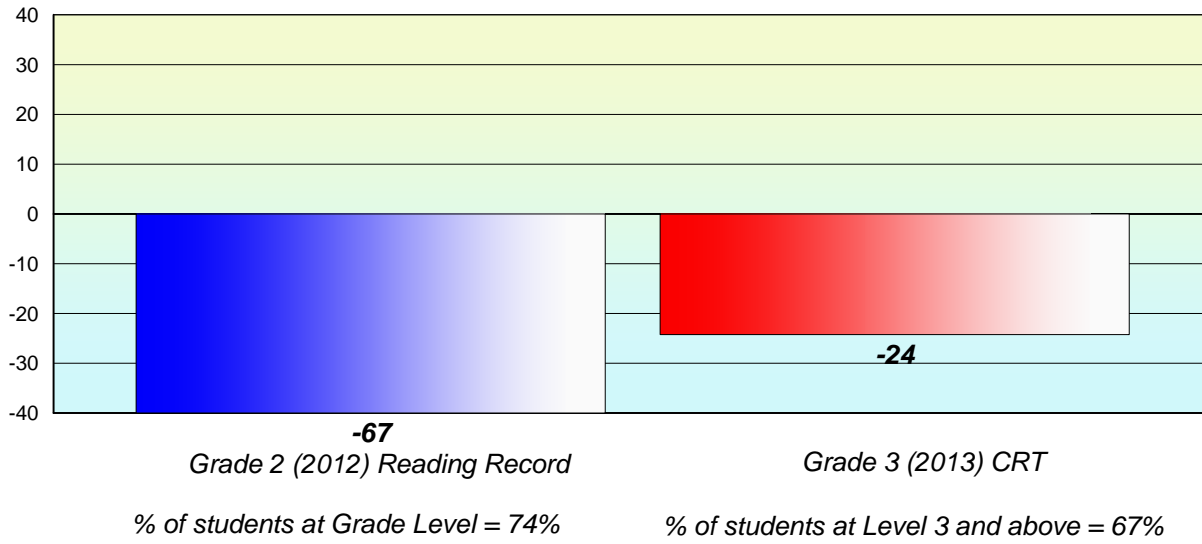
% of students at Level 3 and above = 67%





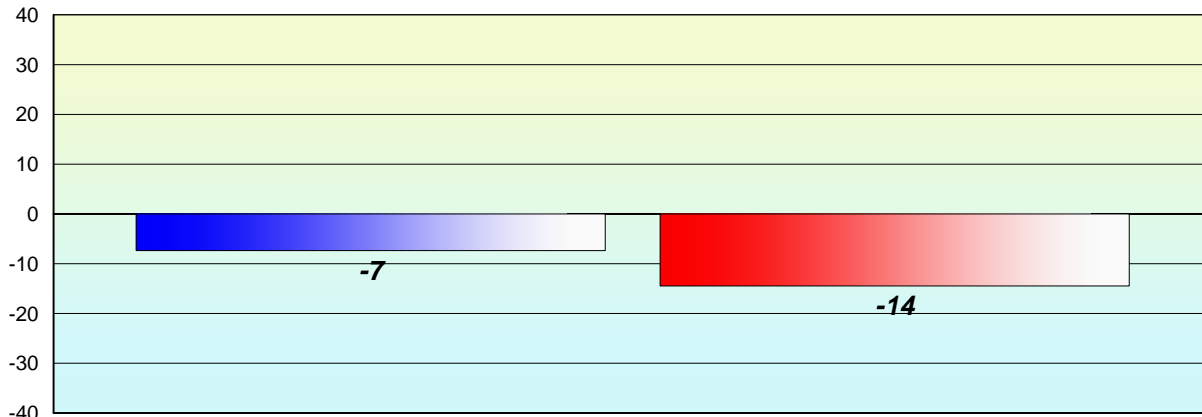
**Longitudinal  
Cohort of students  
Difference from Provincial Mean 2012 - 2013**

**Reading**



**Longitudinal  
Cohort of students  
Difference from Provincial Mean 2012 - 2013**

**Reading**



Grade 2 (2012) Reading Record

Grade 3 (2013) CRT

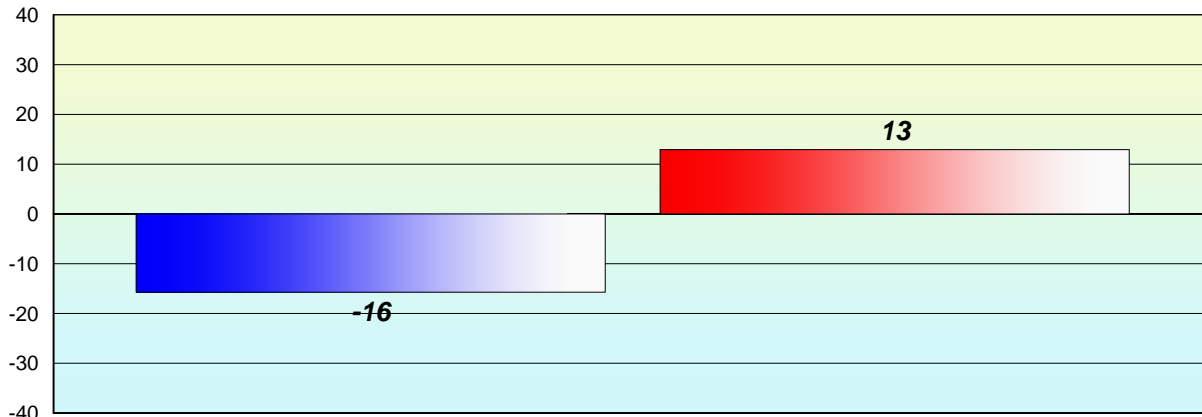
% of students at Grade Level = 74%

% of students at Level 3 and above = 67%



**Longitudinal  
Cohort of students  
Difference from Provincial Mean 2012 - 2013**

**Reading**



Grade 2 (2012) Reading Record

Grade 3 (2013) CRT

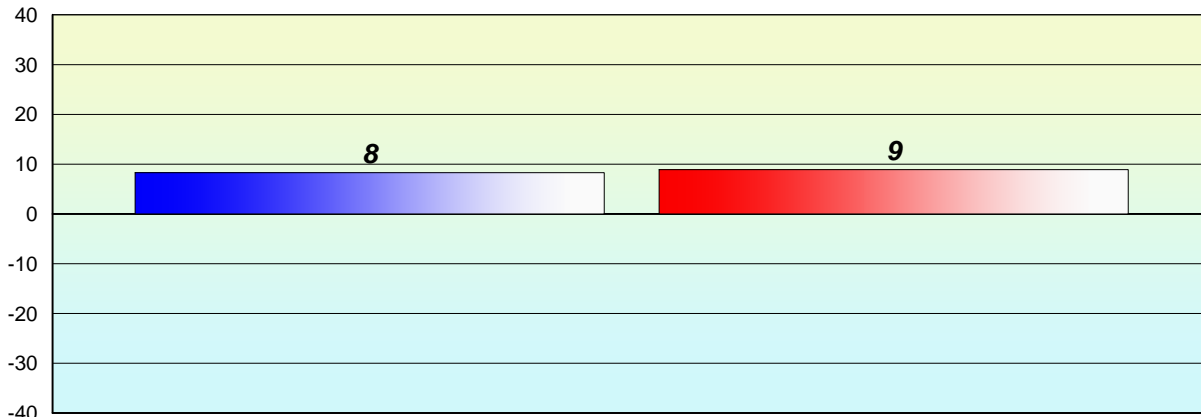
% of students at Grade Level = 74%

% of students at Level 3 and above = 67%



**Longitudinal  
Cohort of students  
Difference from Provincial Mean 2012 - 2013**

**Reading**



Grade 2 (2012) Reading Record

Grade 3 (2013) CRT

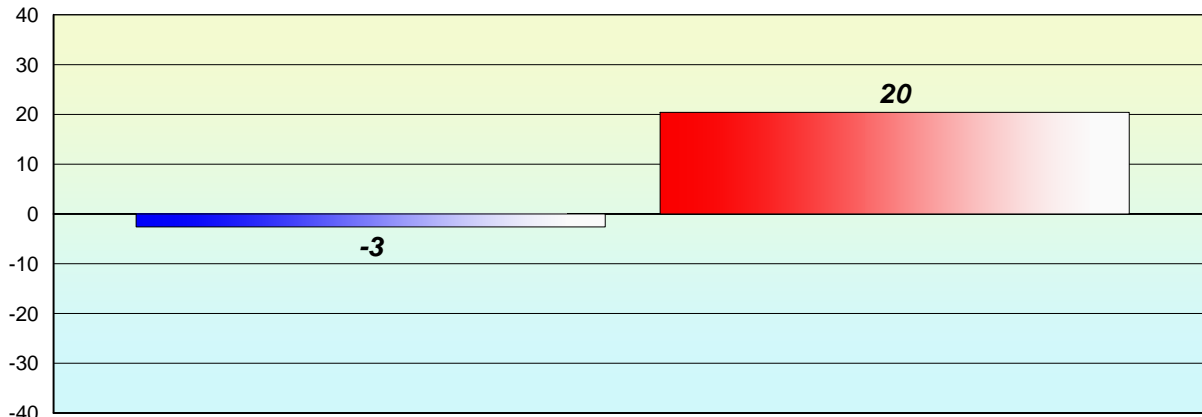
% of students at Grade Level = 74%

% of students at Level 3 and above = 67%



**Longitudinal  
Cohort of students  
Difference from Provincial Mean 2012 - 2013**

**Reading**



Grade 2 (2012) Reading Record

Grade 3 (2013) CRT

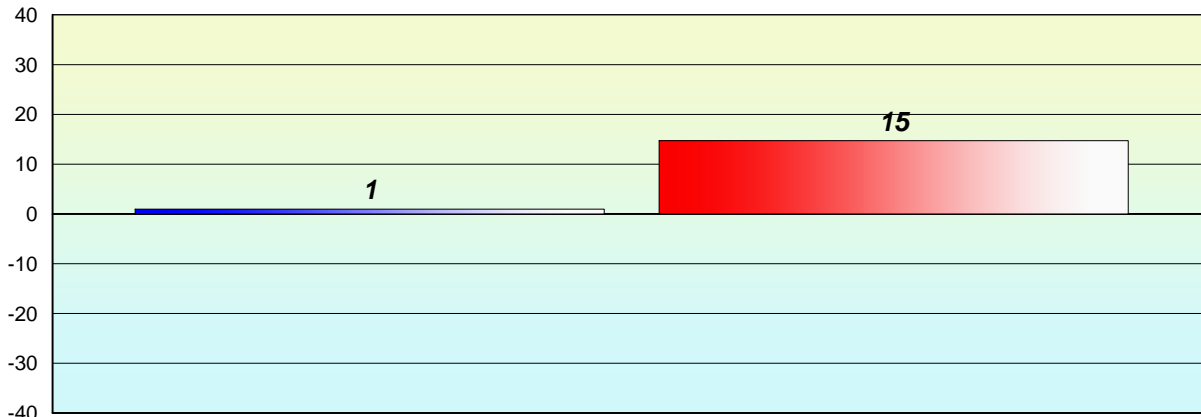
% of students at Grade Level = 74%

% of students at Level 3 and above = 67%



**Longitudinal  
Cohort of students  
Difference from Provincial Mean 2012 - 2013**

**Reading**



Grade 2 (2012) Reading Record

Grade 3 (2013) CRT

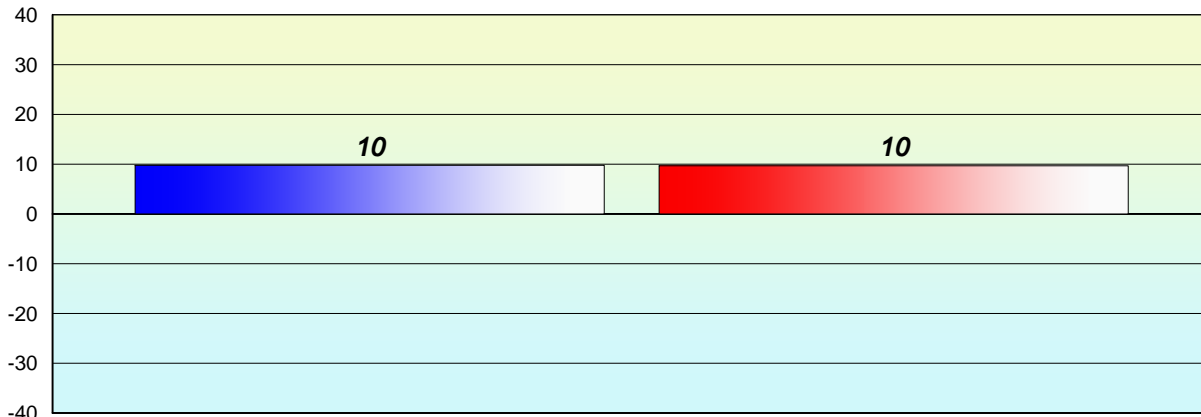
% of students at Grade Level = 74%

% of students at Level 3 and above = 67%



**Longitudinal  
Cohort of students  
Difference from Provincial Mean 2012 - 2013**

**Reading**



Grade 2 (2012) Reading Record

Grade 3 (2013) CRT

% of students at Grade Level = 74%

% of students at Level 3 and above = 67%



**Longitudinal  
Cohort of students  
Difference from Provincial Mean 2012 - 2013**

**Reading**

*School data with 5 or fewer students withheld for reasons of confidentiality.*

*Grade 2 (2012) Reading Record*

*% of students at Grade Level = 74%*

*Grade 3 (2013) CRT*

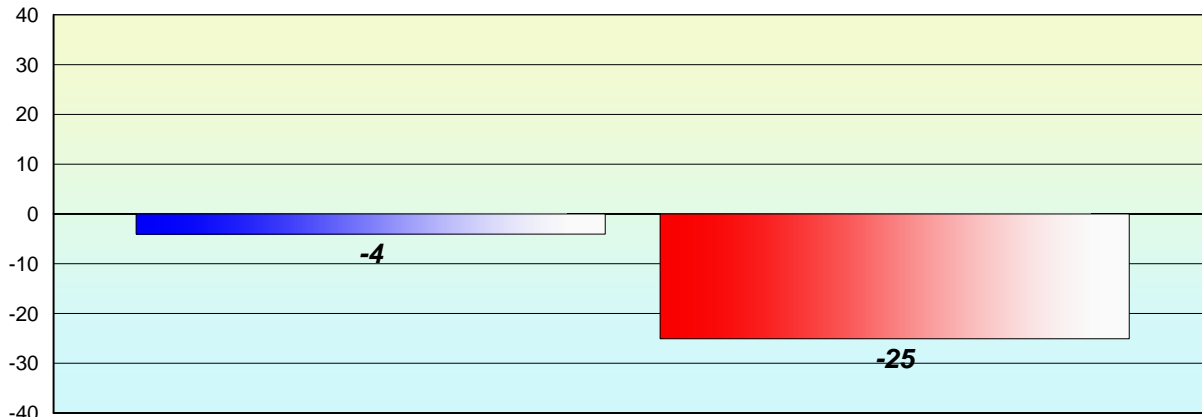
*% of students at Level 3 and above = 67%*





**Longitudinal  
Cohort of students  
Difference from Provincial Mean 2012 - 2013**

**Reading**



Grade 2 (2012) Reading Record

Grade 3 (2013) CRT

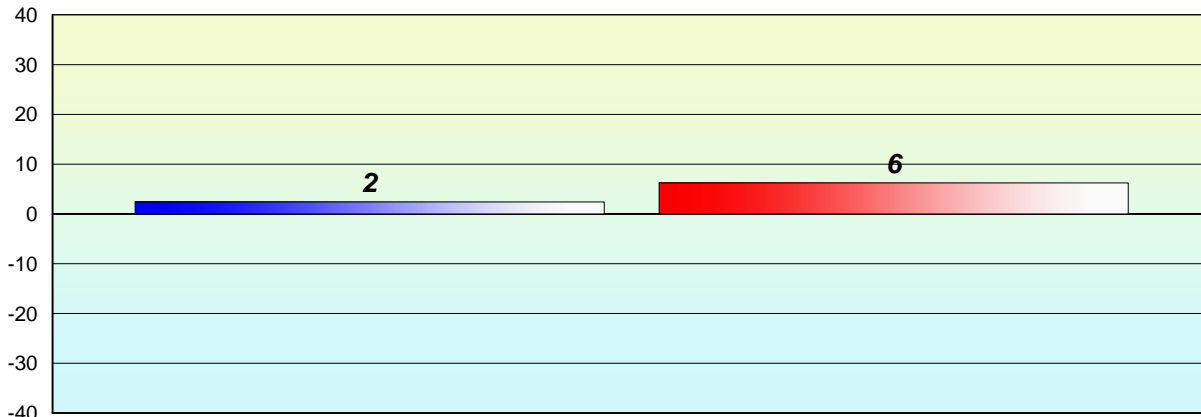
% of students at Grade Level = 74%

% of students at Level 3 and above = 67%



**Longitudinal  
Cohort of students  
Difference from Provincial Mean 2012 - 2013**

**Reading**



Grade 2 (2012) Reading Record

Grade 3 (2013) CRT

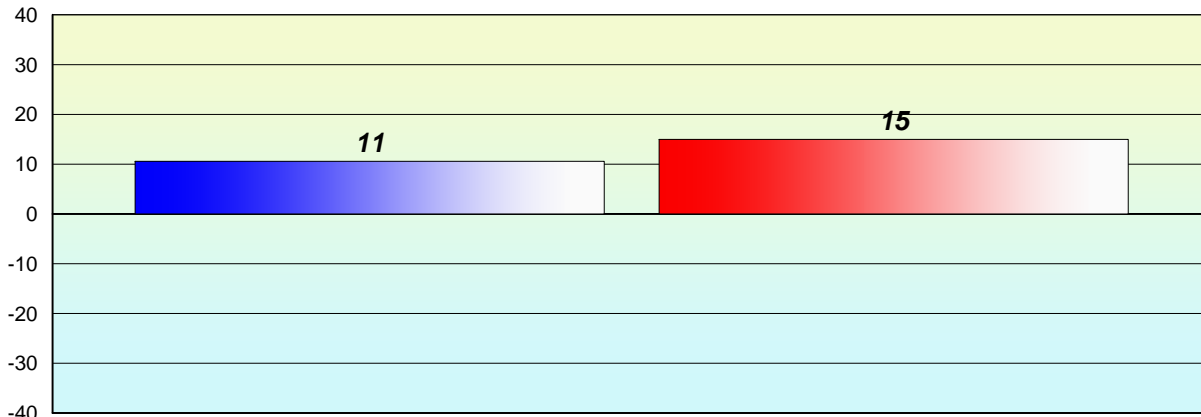
% of students at Grade Level = 74%

% of students at Level 3 and above = 67%



**Longitudinal  
Cohort of students  
Difference from Provincial Mean 2012 - 2013**

**Reading**



Grade 2 (2012) Reading Record

Grade 3 (2013) CRT

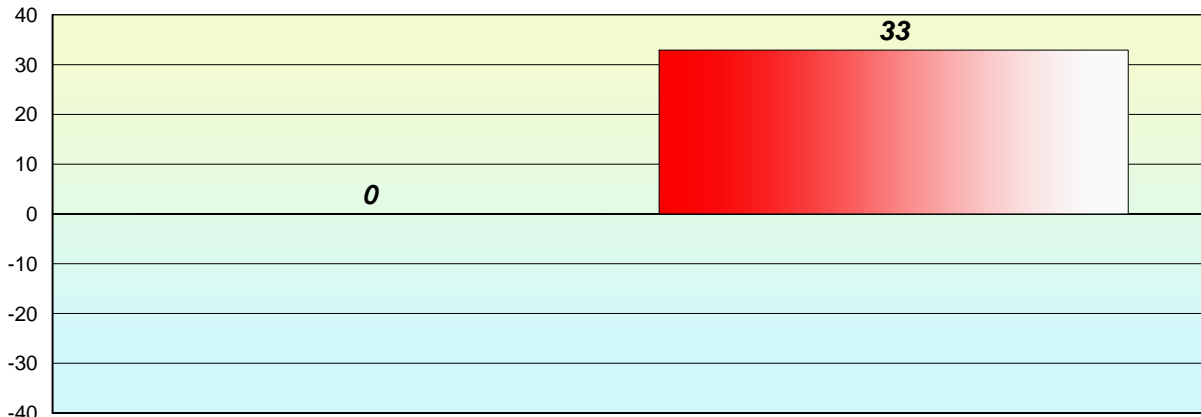
% of students at Grade Level = 74%

% of students at Level 3 and above = 67%



**Longitudinal  
Cohort of students  
Difference from Provincial Mean 2012 - 2013**

**Reading**



Grade 2 (2012) Reading Record

Grade 3 (2013) CRT

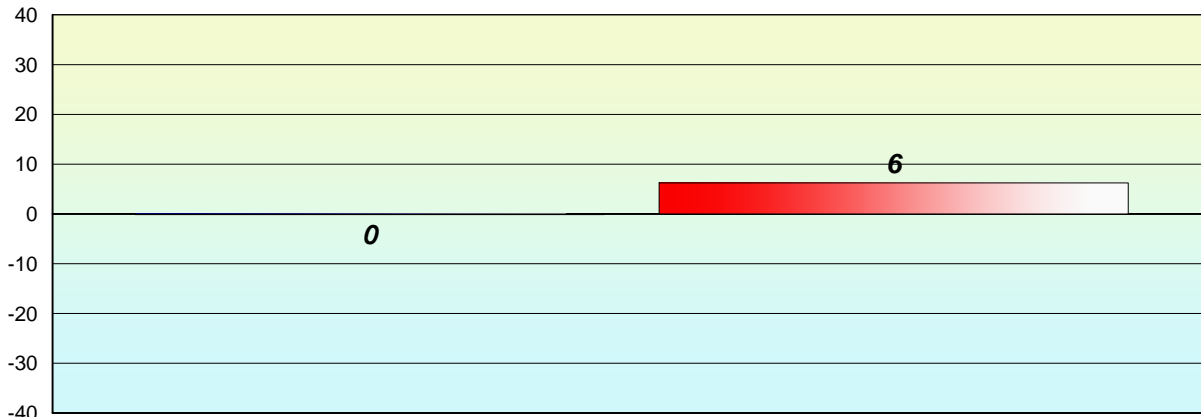
% of students at Grade Level = 74%

% of students at Level 3 and above = 67%



**Longitudinal  
Cohort of students  
Difference from Provincial Mean 2012 - 2013**

**Reading**



Grade 2 (2012) Reading Record

Grade 3 (2013) CRT

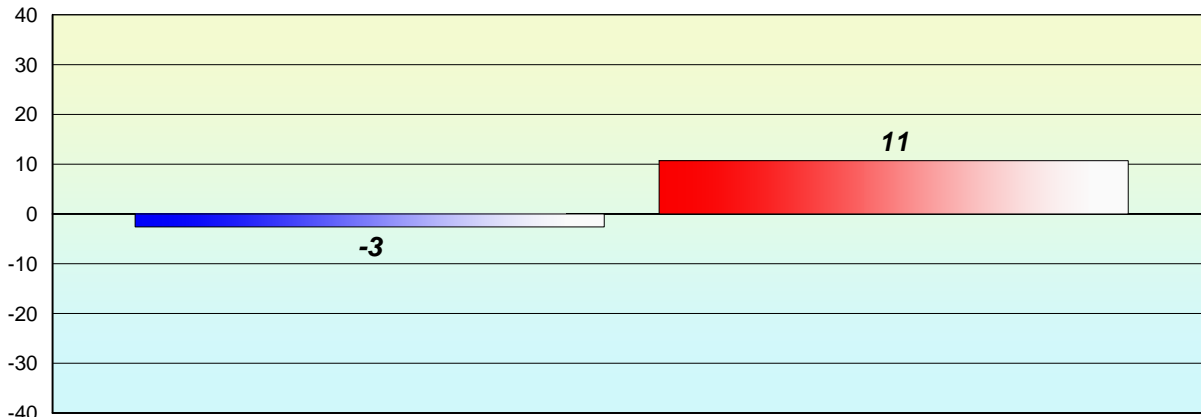
% of students at Grade Level = 74%

% of students at Level 3 and above = 67%



**Longitudinal  
Cohort of students  
Difference from Provincial Mean 2012 - 2013**

**Reading**



Grade 2 (2012) Reading Record

Grade 3 (2013) CRT

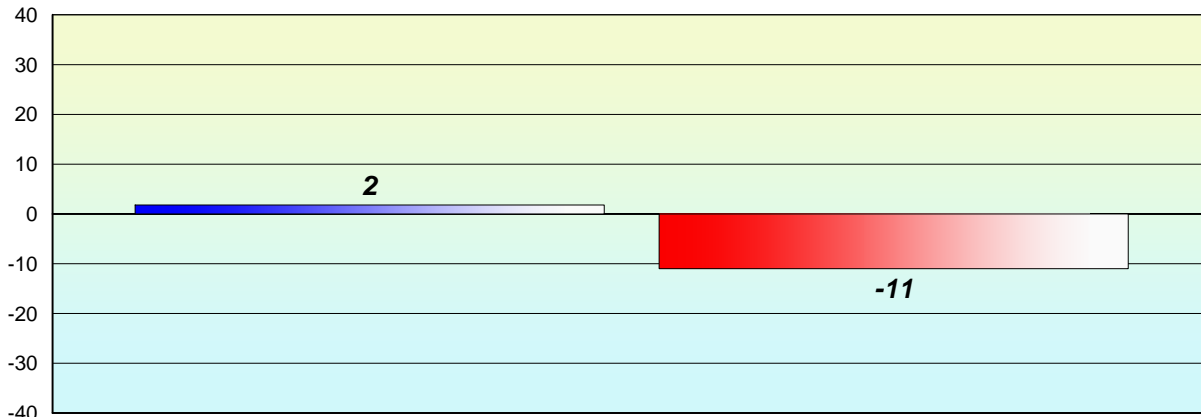
% of students at Grade Level = 74%

% of students at Level 3 and above = 67%



**Longitudinal  
Cohort of students  
Difference from Provincial Mean 2012 - 2013**

**Reading**



Grade 2 (2012) Reading Record

Grade 3 (2013) CRT

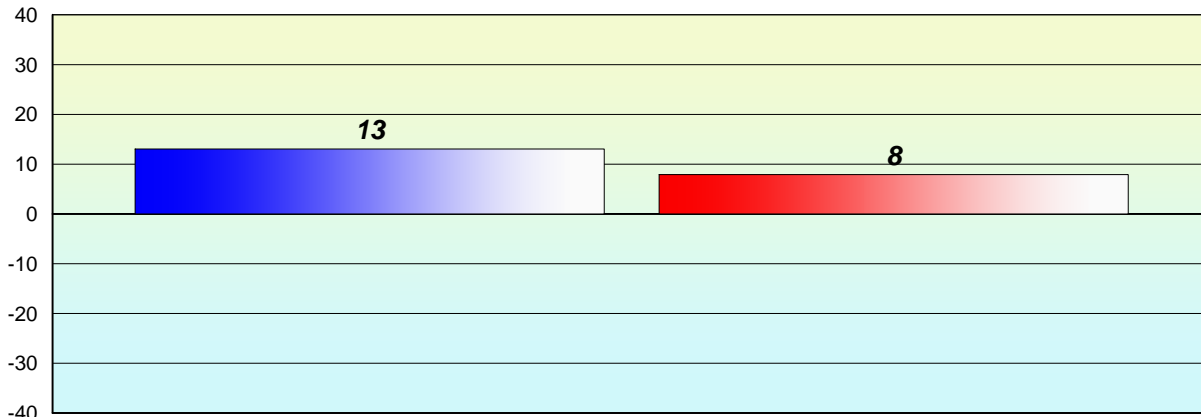
% of students at Grade Level = 74%

% of students at Level 3 and above = 67%



**Longitudinal  
Cohort of students  
Difference from Provincial Mean 2012 - 2013**

**Reading**



Grade 2 (2012) Reading Record

% of students at Grade Level = 74%

Grade 3 (2013) CRT

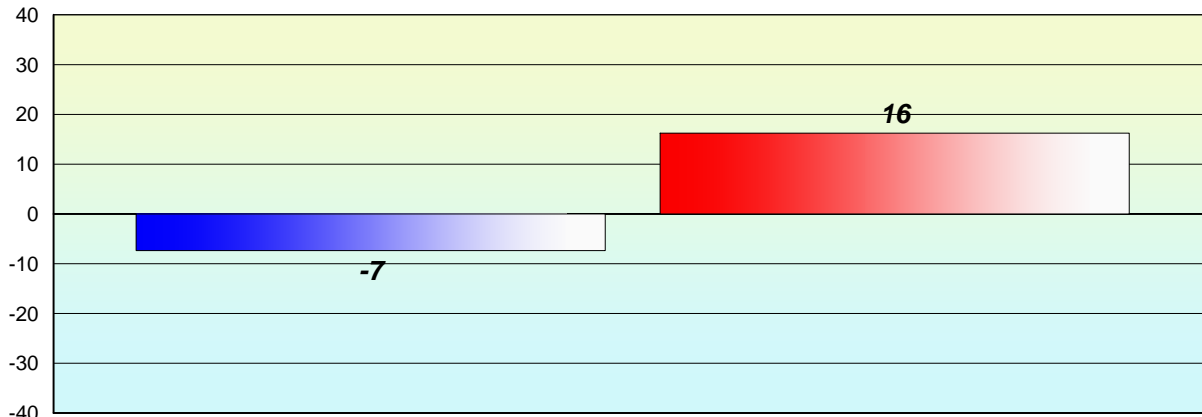
% of students at Level 3 and above = 67%





**Longitudinal  
Cohort of students  
Difference from Provincial Mean 2012 - 2013**

**Reading**



Grade 2 (2012) Reading Record

Grade 3 (2013) CRT

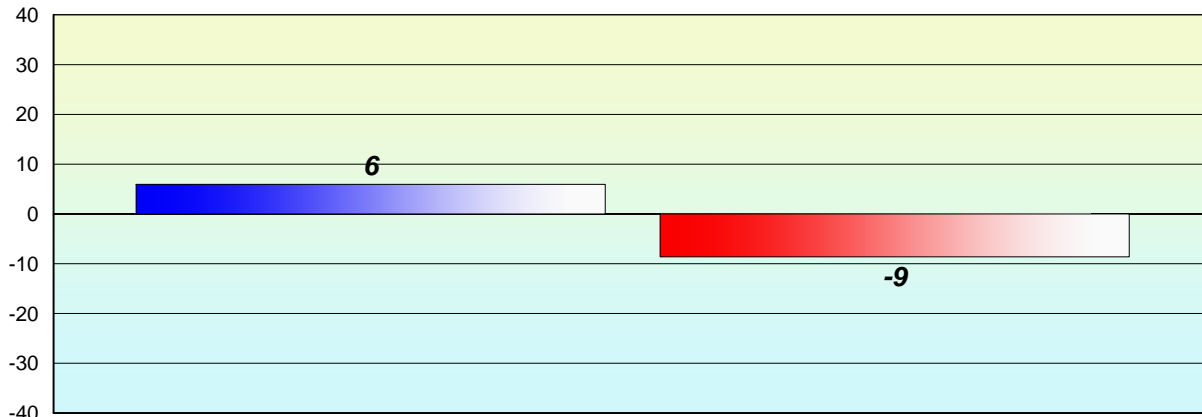
% of students at Grade Level = 74%

% of students at Level 3 and above = 67%



**Longitudinal  
Cohort of students  
Difference from Provincial Mean 2012 - 2013**

**Reading**



Grade 2 (2012) Reading Record

Grade 3 (2013) CRT

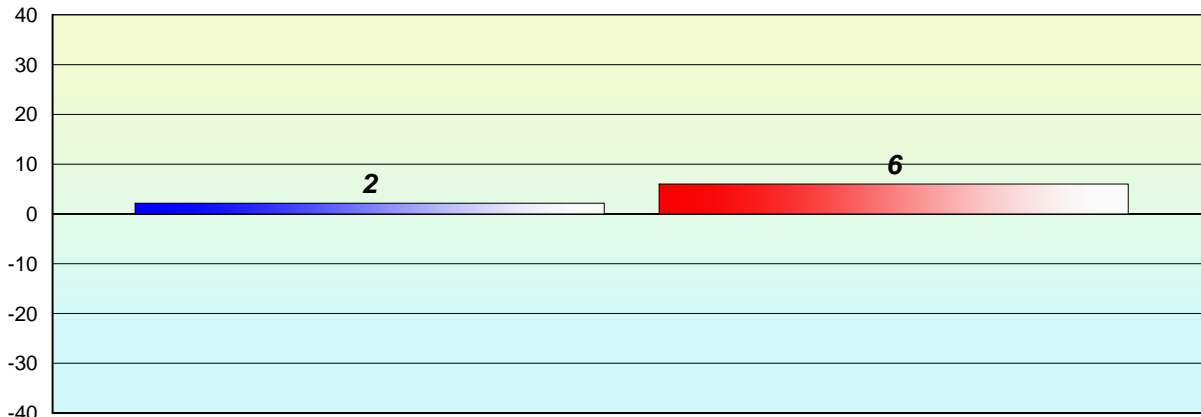
% of students at Grade Level = 74%

% of students at Level 3 and above = 67%



**Longitudinal  
Cohort of students  
Difference from Provincial Mean 2012 - 2013**

**Reading**



Grade 2 (2012) Reading Record

Grade 3 (2013) CRT

% of students at Grade Level = 74%

% of students at Level 3 and above = 67%



**Longitudinal  
Cohort of students  
Difference from Provincial Mean 2012 - 2013**

**Reading**

*School data with 5 or fewer students withheld for reasons of confidentiality.*

*Grade 2 (2012) Reading Record*

*% of students at Grade Level = 74%*

*Grade 3 (2013) CRT*

*% of students at Level 3 and above = 67%*



**Longitudinal  
Cohort of students  
Difference from Provincial Mean 2012 - 2013**

**Reading**

*School data with 5 or fewer students withheld for reasons of confidentiality.*

*Grade 2 (2012) Reading Record*

*% of students at Grade Level = 74%*

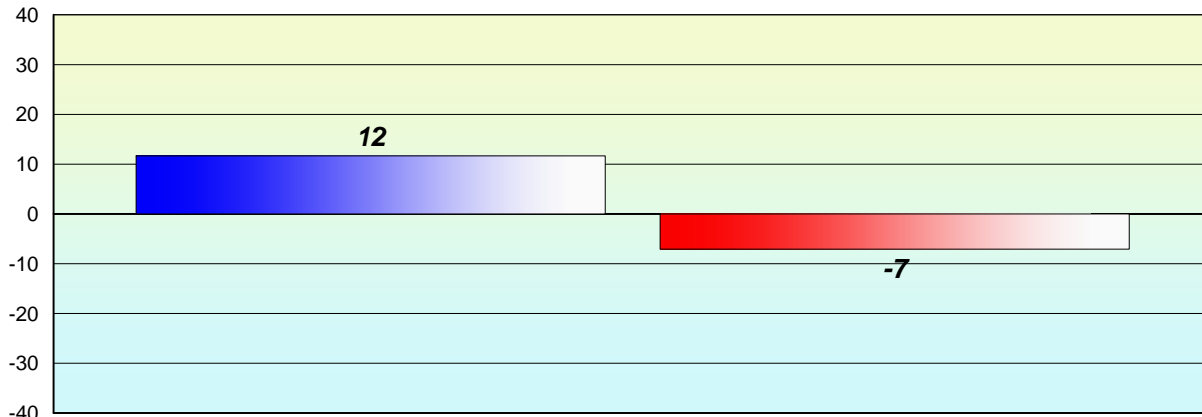
*Grade 3 (2013) CRT*

*% of students at Level 3 and above = 67%*



**Longitudinal  
Cohort of students  
Difference from Provincial Mean 2012 - 2013**

**Reading**



Grade 2 (2012) Reading Record

% of students at Grade Level = 74%

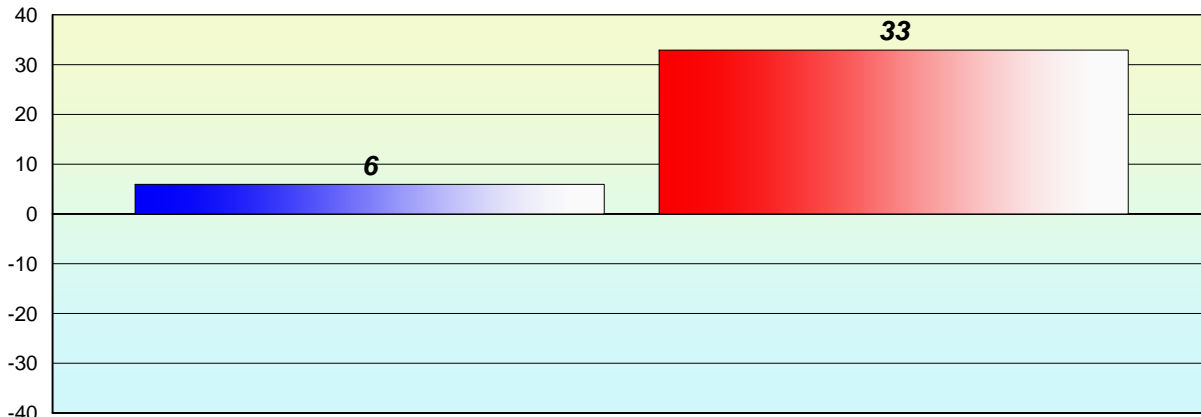
Grade 3 (2013) CRT

% of students at Level 3 and above = 67%



**Longitudinal  
Cohort of students  
Difference from Provincial Mean 2012 - 2013**

**Reading**



Grade 2 (2012) Reading Record

% of students at Grade Level = 74%

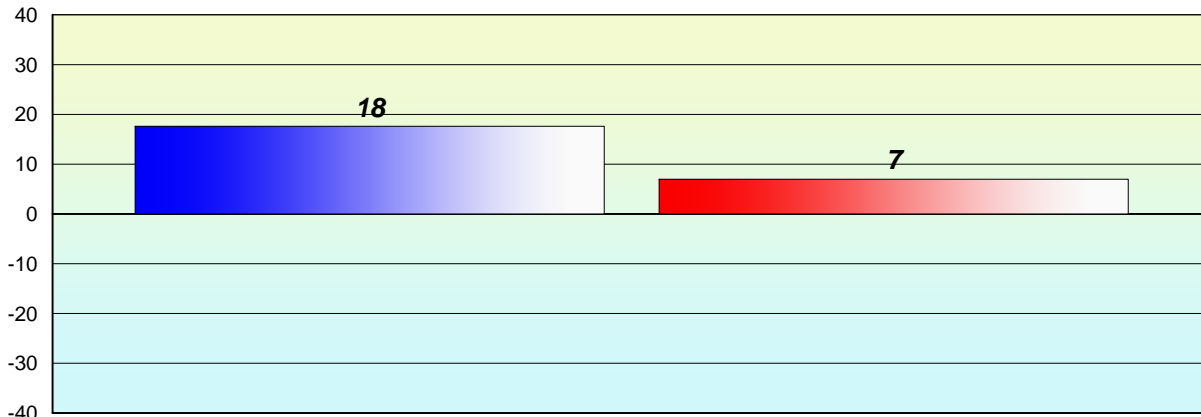
Grade 3 (2013) CRT

% of students at Level 3 and above = 67%



**Longitudinal  
Cohort of students  
Difference from Provincial Mean 2012 - 2013**

**Reading**



Grade 2 (2012) Reading Record

Grade 3 (2013) CRT

% of students at Grade Level = 74%

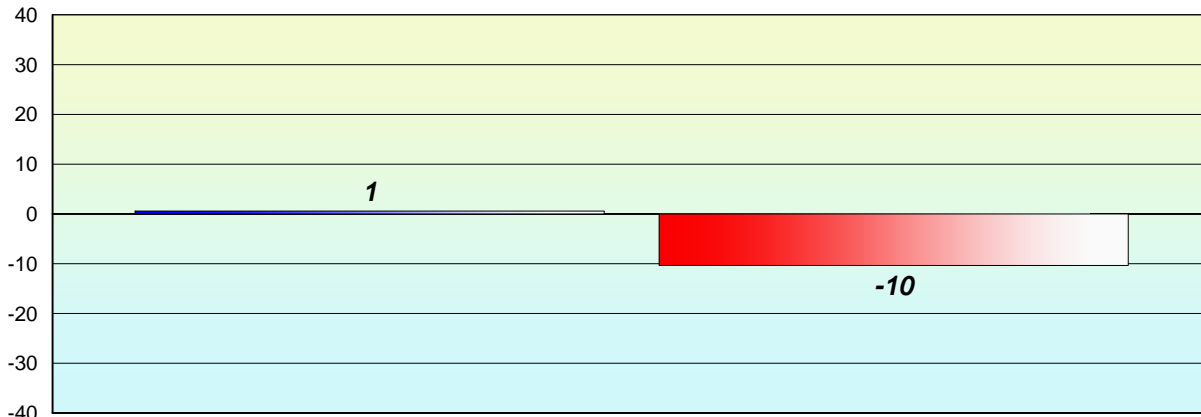
% of students at Level 3 and above = 67%





**Longitudinal  
Cohort of students  
Difference from Provincial Mean 2012 - 2013**

**Reading**



Grade 2 (2012) Reading Record

Grade 3 (2013) CRT

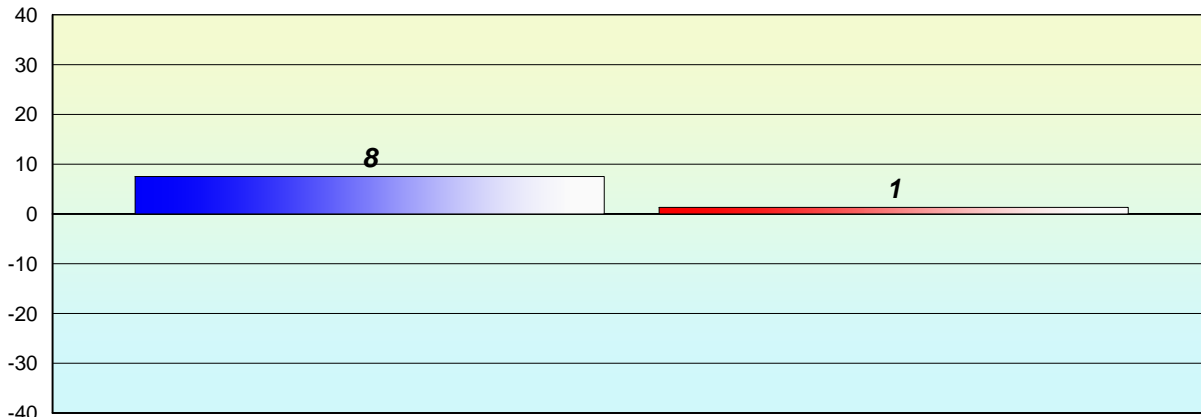
% of students at Grade Level = 74%

% of students at Level 3 and above = 67%



**Longitudinal  
Cohort of students  
Difference from Provincial Mean 2012 - 2013**

**Reading**



Grade 2 (2012) Reading Record

Grade 3 (2013) CRT

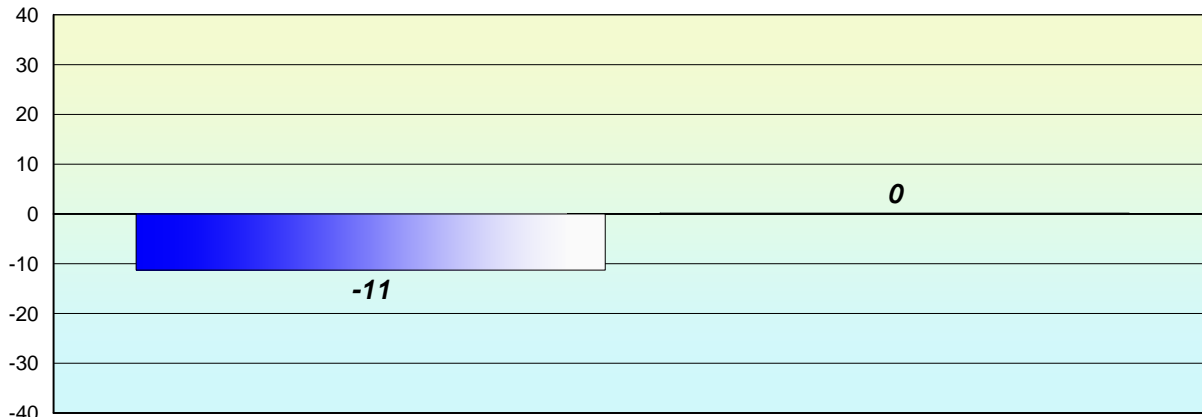
% of students at Grade Level = 74%

% of students at Level 3 and above = 67%



**Longitudinal  
Cohort of students  
Difference from Provincial Mean 2012 - 2013**

**Reading**



Grade 2 (2012) Reading Record

Grade 3 (2013) CRT

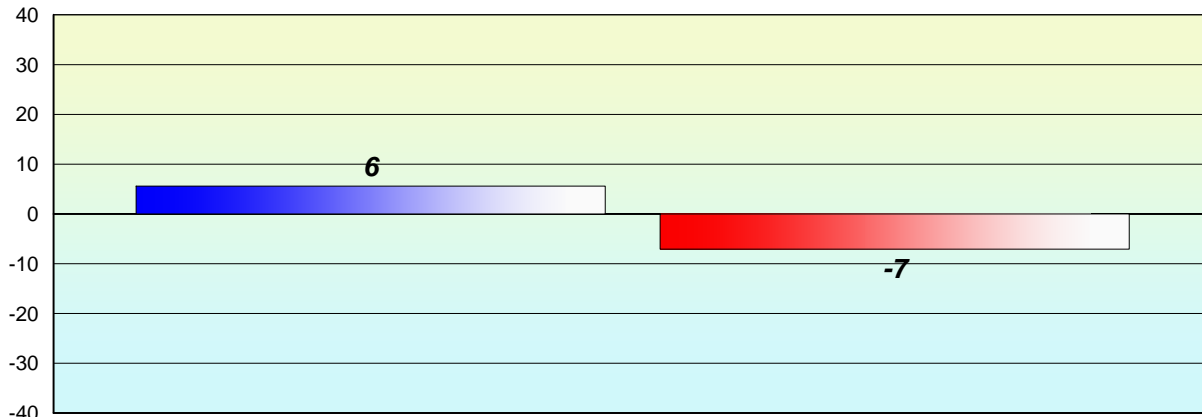
% of students at Grade Level = 74%

% of students at Level 3 and above = 67%



**Longitudinal  
Cohort of students  
Difference from Provincial Mean 2012 - 2013**

**Reading**



Grade 2 (2012) Reading Record

Grade 3 (2013) CRT

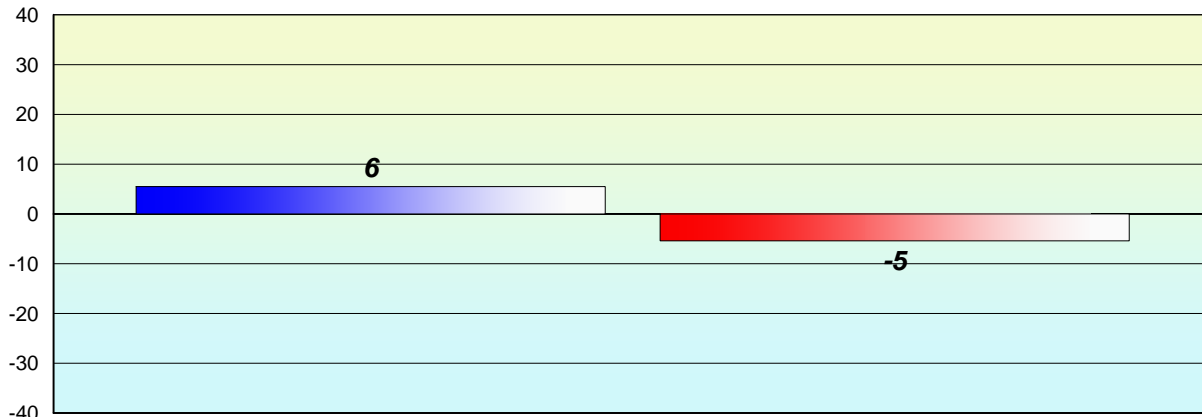
% of students at Grade Level = 74%

% of students at Level 3 and above = 67%



**Longitudinal  
Cohort of students  
Difference from Provincial Mean 2012 - 2013**

**Reading**



Grade 2 (2012) Reading Record

Grade 3 (2013) CRT

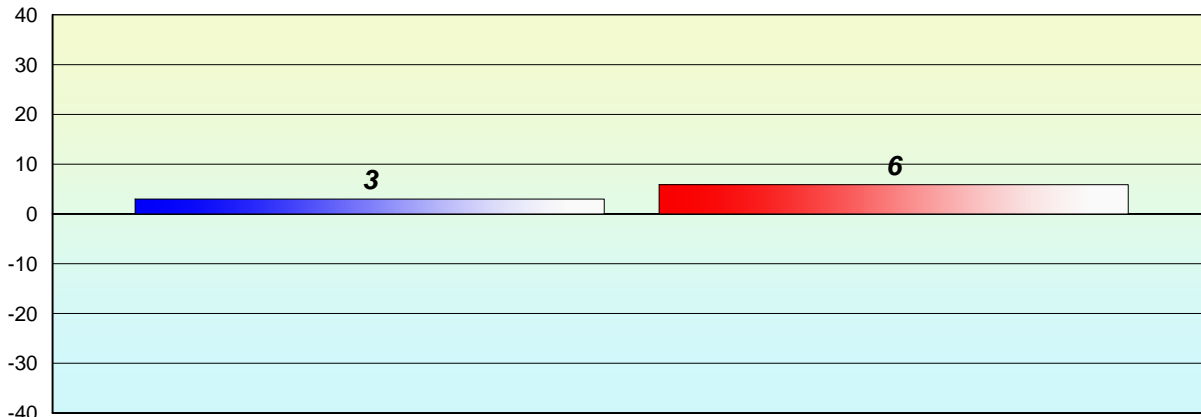
% of students at Grade Level = 74%

% of students at Level 3 and above = 67%



**Longitudinal  
Cohort of students  
Difference from Provincial Mean 2012 - 2013**

**Reading**



Grade 2 (2012) Reading Record

Grade 3 (2013) CRT

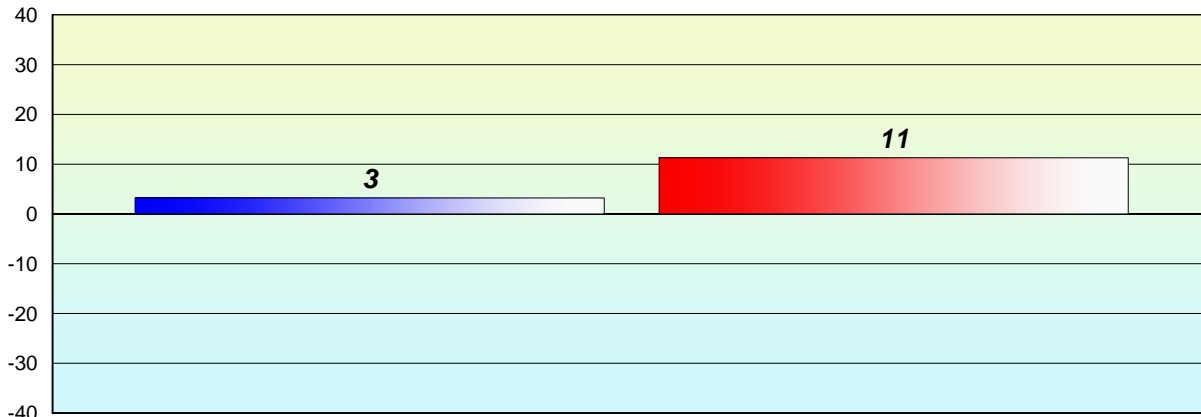
% of students at Grade Level = 74%

% of students at Level 3 and above = 67%



**Longitudinal  
Cohort of students  
Difference from Provincial Mean 2012 - 2013**

**Reading**



Grade 2 (2012) Reading Record

Grade 3 (2013) CRT

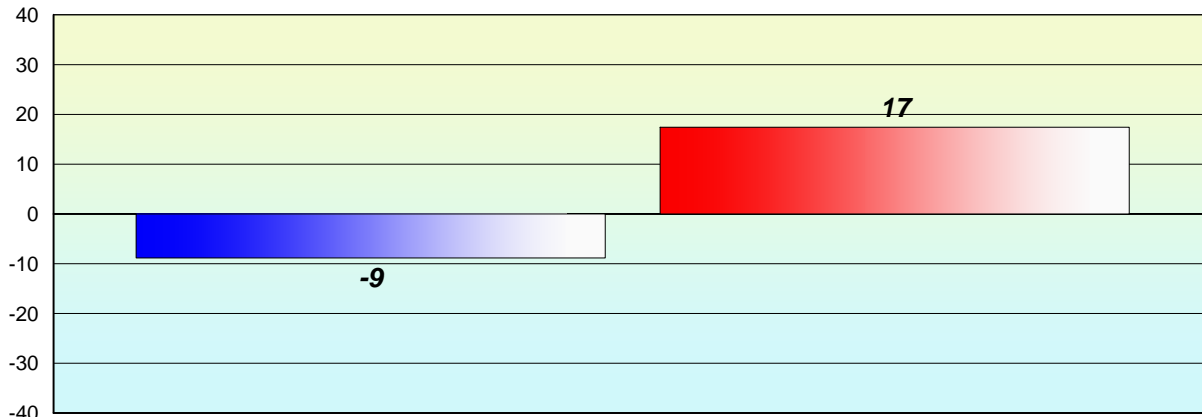
% of students at Grade Level = 74%

% of students at Level 3 and above = 67%



**Longitudinal  
Cohort of students  
Difference from Provincial Mean 2012 - 2013**

**Reading**



Grade 2 (2012) Reading Record

Grade 3 (2013) CRT

% of students at Grade Level = 74%

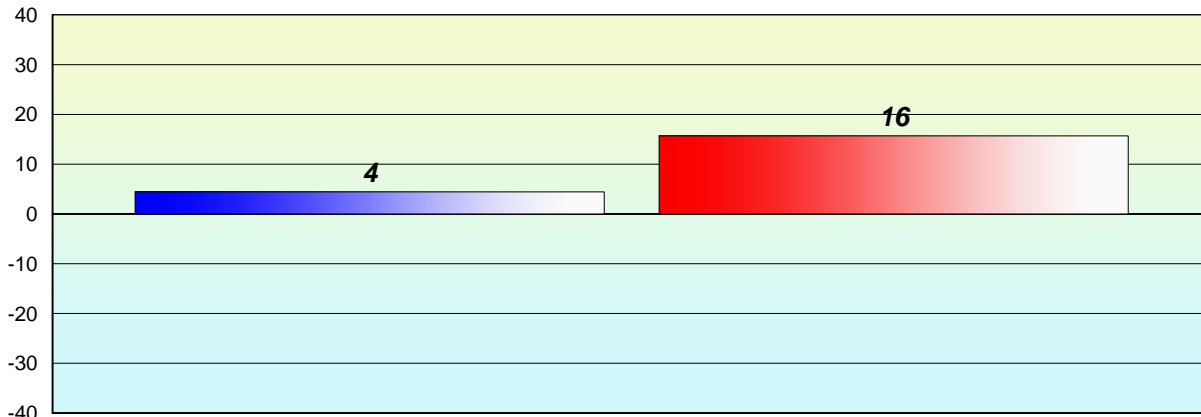
% of students at Level 3 and above = 67%





**Longitudinal  
Cohort of students  
Difference from Provincial Mean 2012 - 2013**

**Reading**



Grade 2 (2012) Reading Record

Grade 3 (2013) CRT

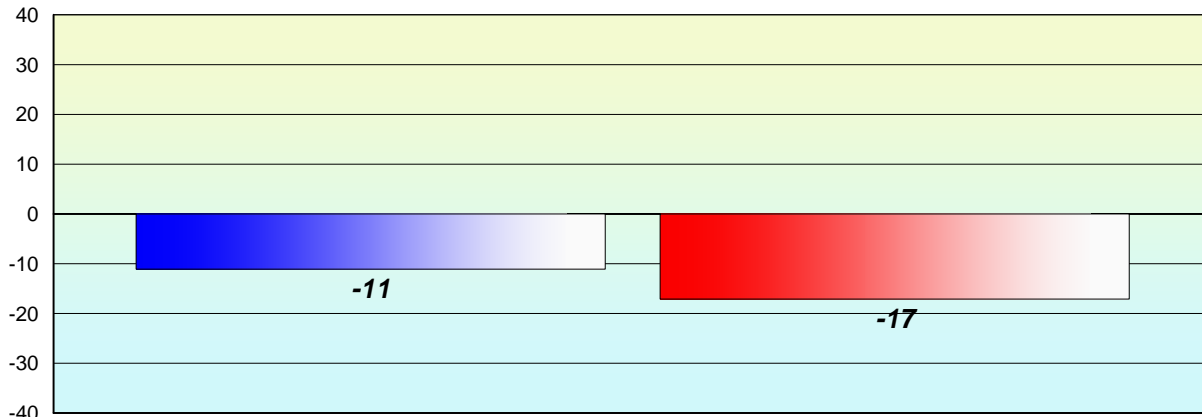
% of students at Grade Level = 74%

% of students at Level 3 and above = 67%



**Longitudinal  
Cohort of students  
Difference from Provincial Mean 2012 - 2013**

**Reading**



Grade 2 (2012) Reading Record

Grade 3 (2013) CRT

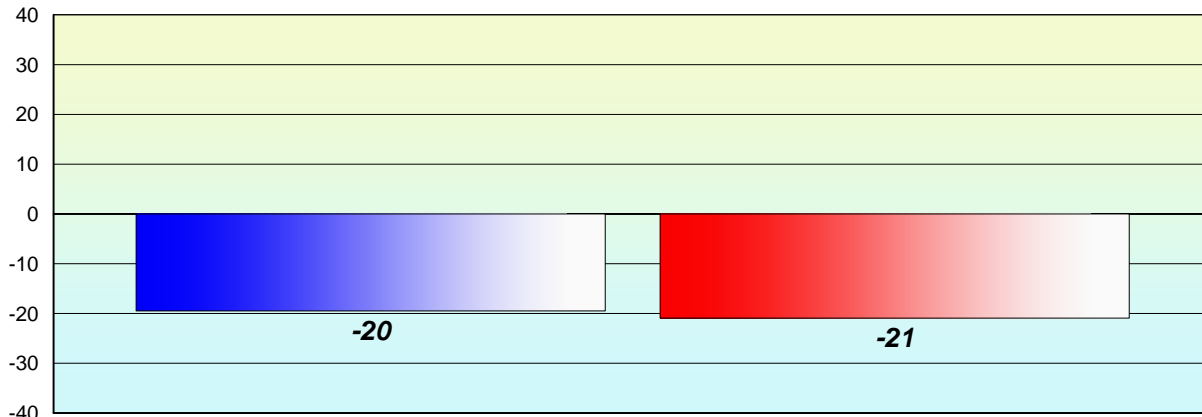
% of students at Grade Level = 74%

% of students at Level 3 and above = 67%



**Longitudinal  
Cohort of students  
Difference from Provincial Mean 2012 - 2013**

**Reading**



Grade 2 (2012) Reading Record

Grade 3 (2013) CRT

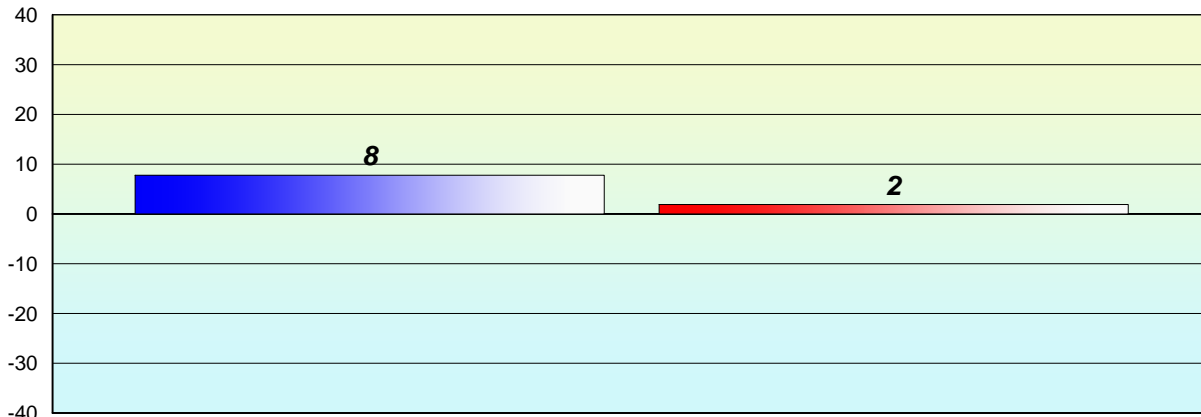
% of students at Grade Level = 74%

% of students at Level 3 and above = 67%



**Longitudinal  
Cohort of students  
Difference from Provincial Mean 2012 - 2013**

**Reading**



Grade 2 (2012) Reading Record

Grade 3 (2013) CRT

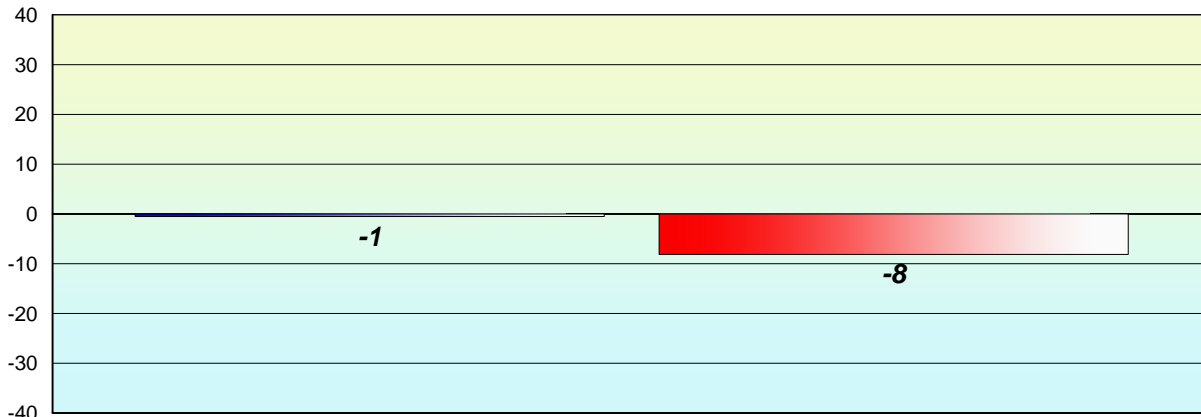
% of students at Grade Level = 74%

% of students at Level 3 and above = 67%



**Longitudinal  
Cohort of students  
Difference from Provincial Mean 2012 - 2013**

**Reading**



Grade 2 (2012) Reading Record

Grade 3 (2013) CRT

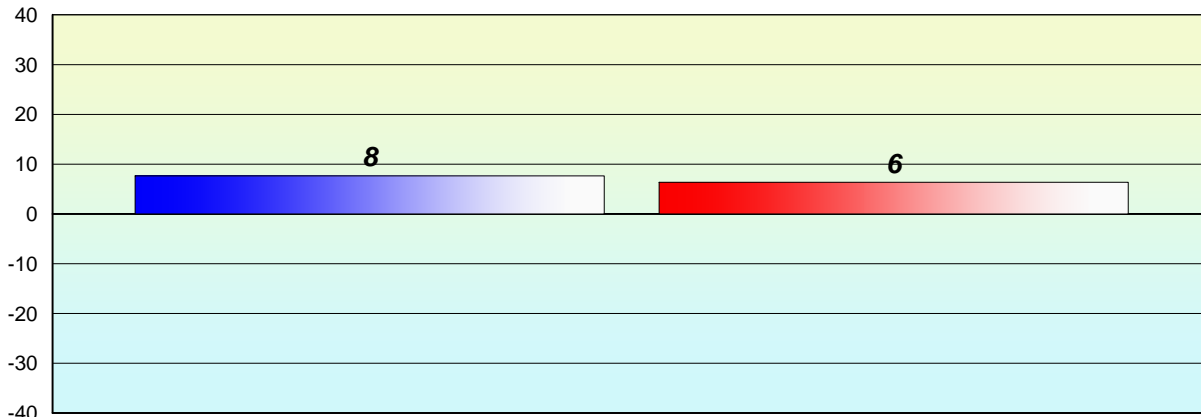
% of students at Grade Level = 74%

% of students at Level 3 and above = 67%



**Longitudinal  
Cohort of students  
Difference from Provincial Mean 2012 - 2013**

**Reading**



Grade 2 (2012) Reading Record

% of students at Grade Level = 74%

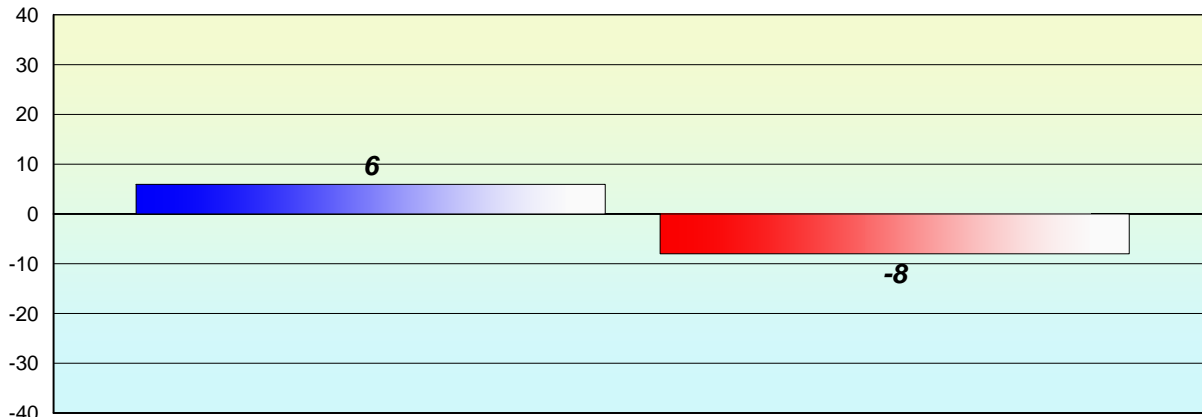
Grade 3 (2013) CRT

% of students at Level 3 and above = 67%



**Longitudinal  
Cohort of students  
Difference from Provincial Mean 2012 - 2013**

**Reading**



Grade 2 (2012) Reading Record

Grade 3 (2013) CRT

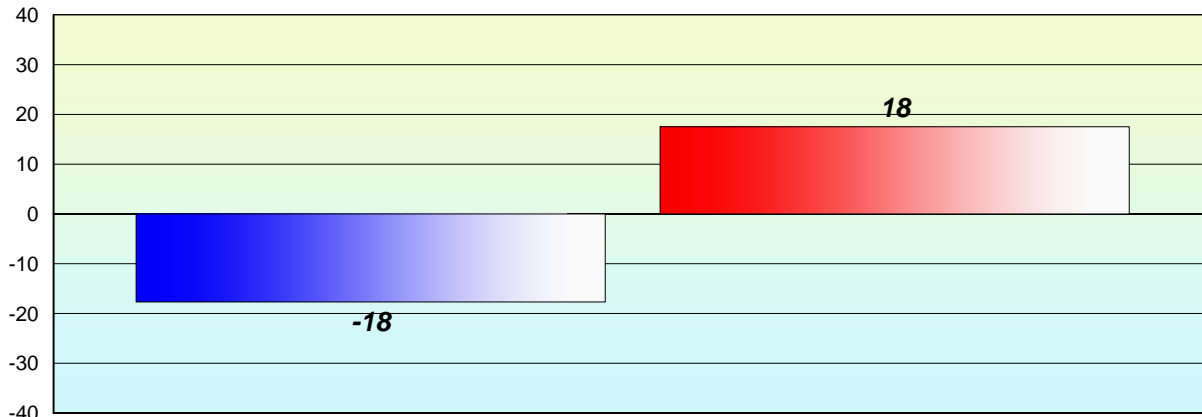
% of students at Grade Level = 74%

% of students at Level 3 and above = 67%



**Longitudinal  
Cohort of students  
Difference from Provincial Mean 2012 - 2013**

**Reading**



Grade 2 (2012) Reading Record

Grade 3 (2013) CRT

% of students at Grade Level = 74%

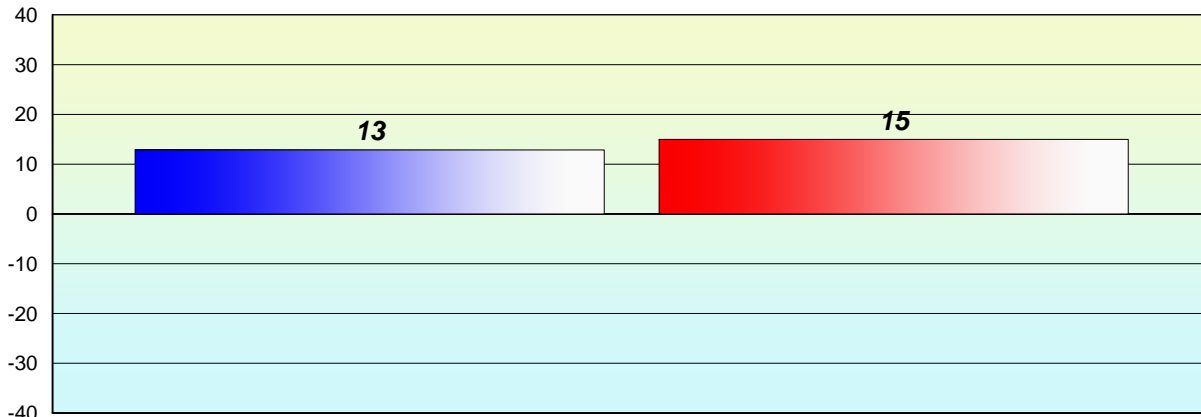
% of students at Level 3 and above = 67%





**Longitudinal  
Cohort of students  
Difference from Provincial Mean 2012 - 2013**

**Reading**



Grade 2 (2012) Reading Record

Grade 3 (2013) CRT

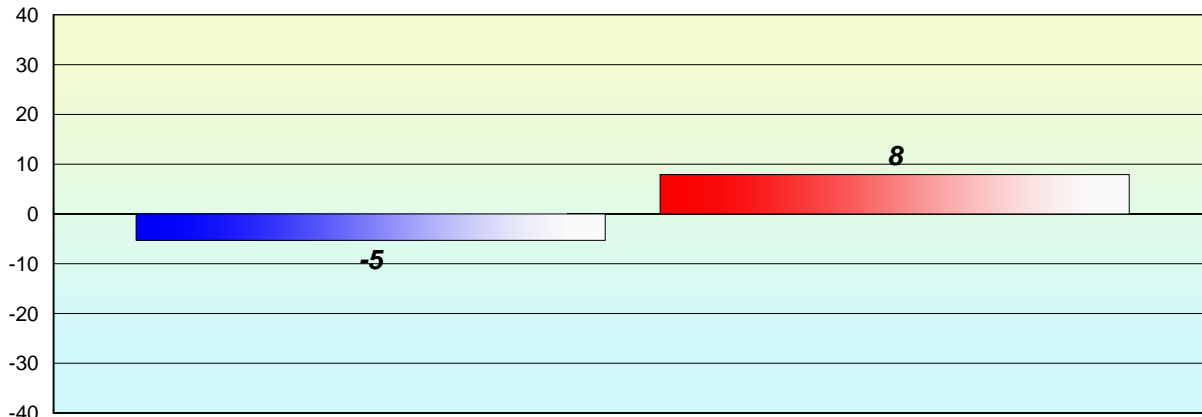
% of students at Grade Level = 74%

% of students at Level 3 and above = 67%



**Longitudinal  
Cohort of students  
Difference from Provincial Mean 2012 - 2013**

**Reading**



Grade 2 (2012) Reading Record

Grade 3 (2013) CRT

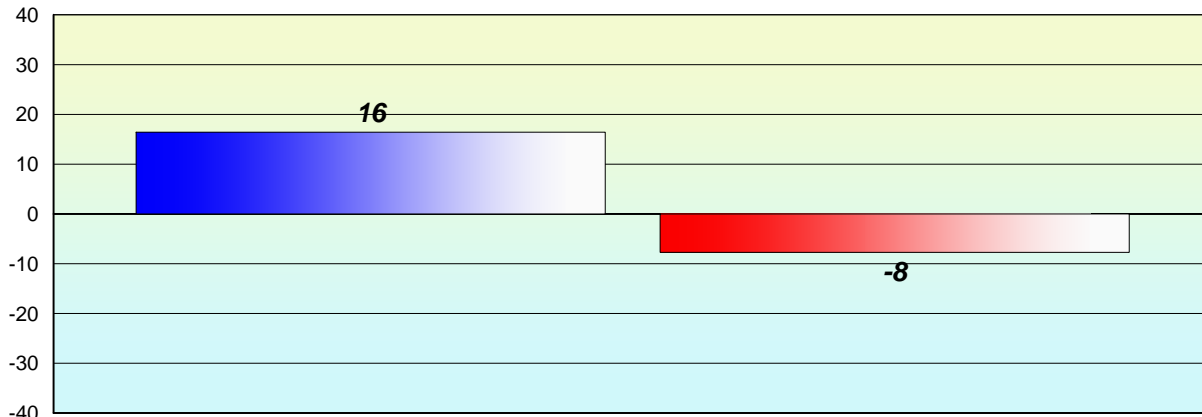
% of students at Grade Level = 74%

% of students at Level 3 and above = 67%



**Longitudinal  
Cohort of students  
Difference from Provincial Mean 2012 - 2013**

**Reading**



Grade 2 (2012) Reading Record

Grade 3 (2013) CRT

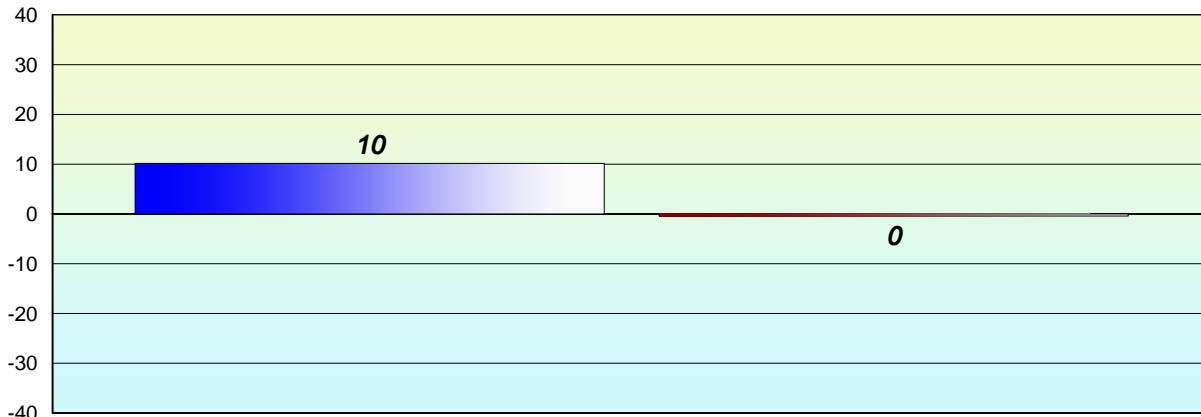
% of students at Grade Level = 74%

% of students at Level 3 and above = 67%



**Longitudinal  
Cohort of students  
Difference from Provincial Mean 2012 - 2013**

**Reading**



Grade 2 (2012) Reading Record

Grade 3 (2013) CRT

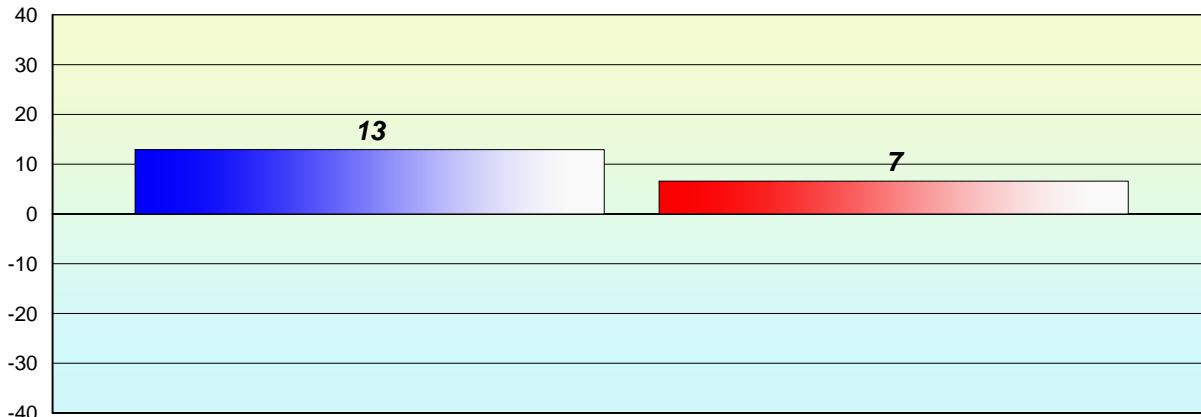
% of students at Grade Level = 74%

% of students at Level 3 and above = 67%



**Longitudinal  
Cohort of students  
Difference from Provincial Mean 2012 - 2013**

**Reading**



Grade 2 (2012) Reading Record

Grade 3 (2013) CRT

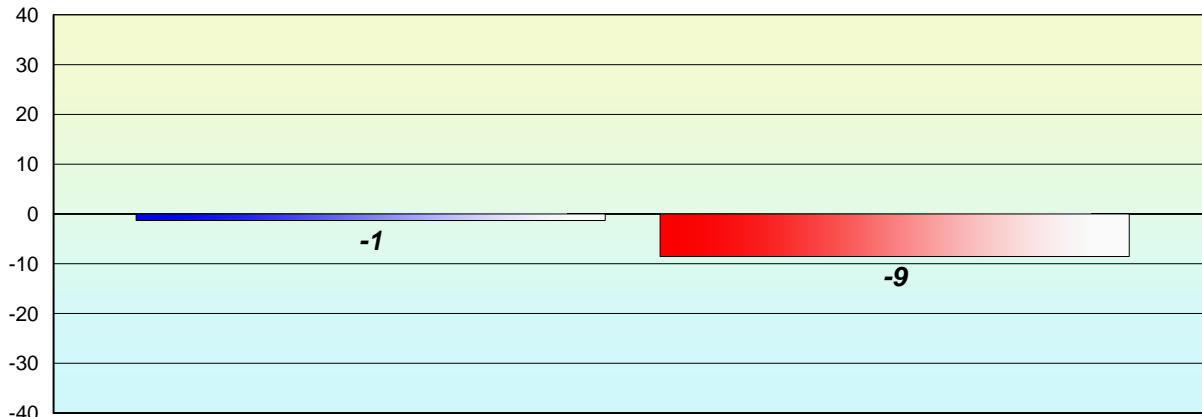
% of students at Grade Level = 74%

% of students at Level 3 and above = 67%



**Longitudinal  
Cohort of students  
Difference from Provincial Mean 2012 - 2013**

**Reading**



Grade 2 (2012) Reading Record

Grade 3 (2013) CRT

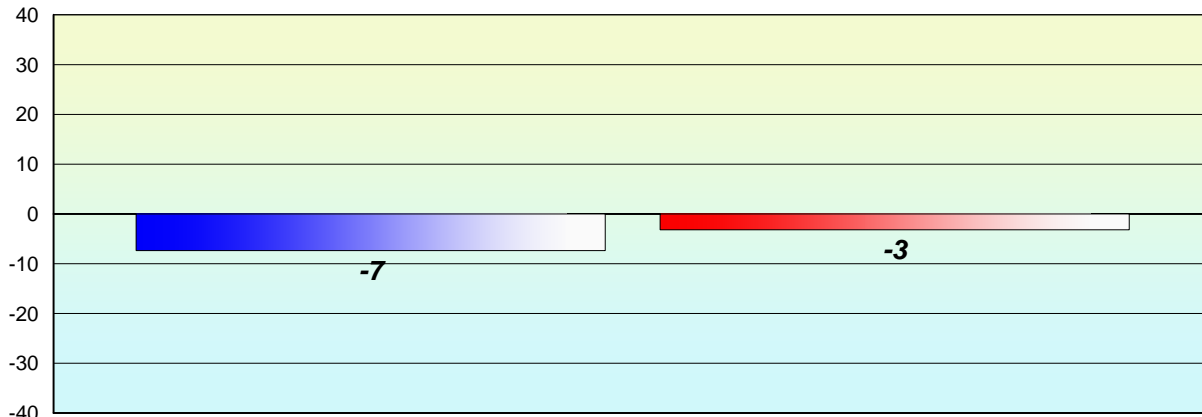
% of students at Grade Level = 74%

% of students at Level 3 and above = 67%



**Longitudinal  
Cohort of students  
Difference from Provincial Mean 2012 - 2013**

**Reading**



Grade 2 (2012) Reading Record

Grade 3 (2013) CRT

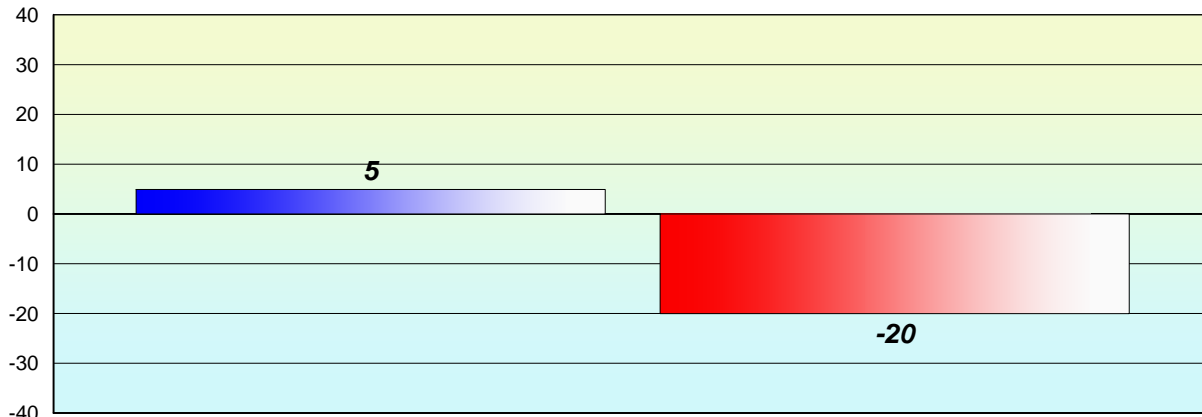
% of students at Grade Level = 74%

% of students at Level 3 and above = 67%



**Longitudinal  
Cohort of students  
Difference from Provincial Mean 2012 - 2013**

**Reading**



Grade 2 (2012) Reading Record

Grade 3 (2013) CRT

% of students at Grade Level = 74%

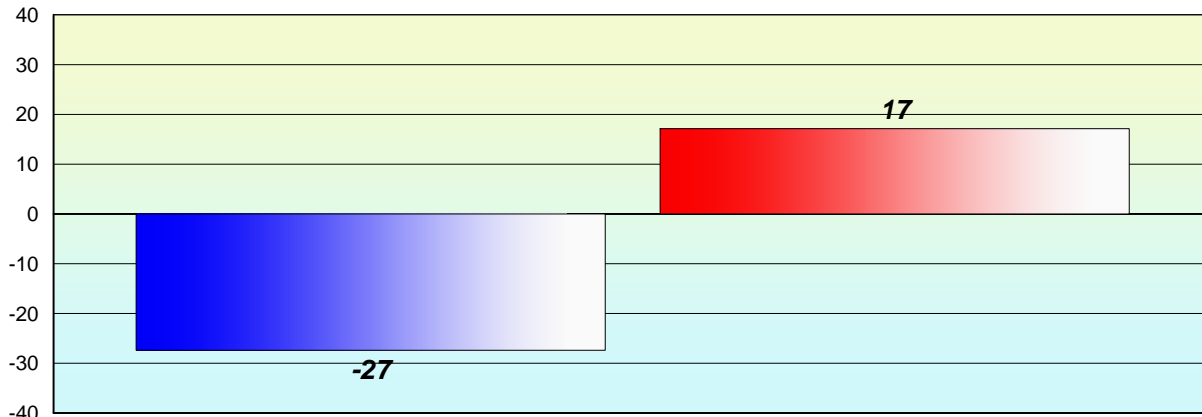
% of students at Level 3 and above = 67%





**Longitudinal  
Cohort of students  
Difference from Provincial Mean 2012 - 2013**

**Reading**



Grade 2 (2012) Reading Record

Grade 3 (2013) CRT

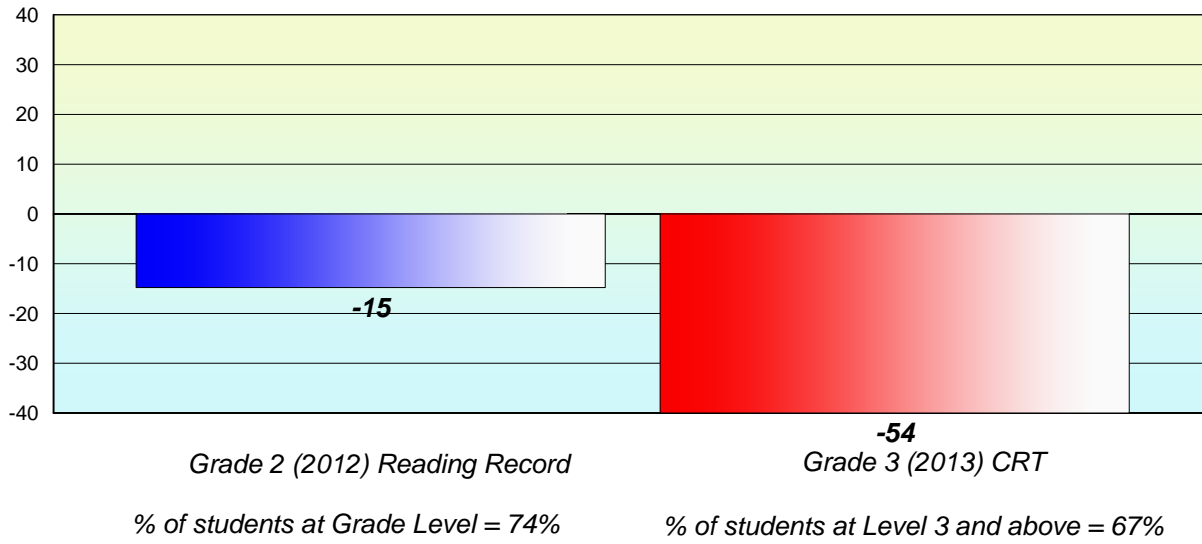
% of students at Grade Level = 74%

% of students at Level 3 and above = 67%



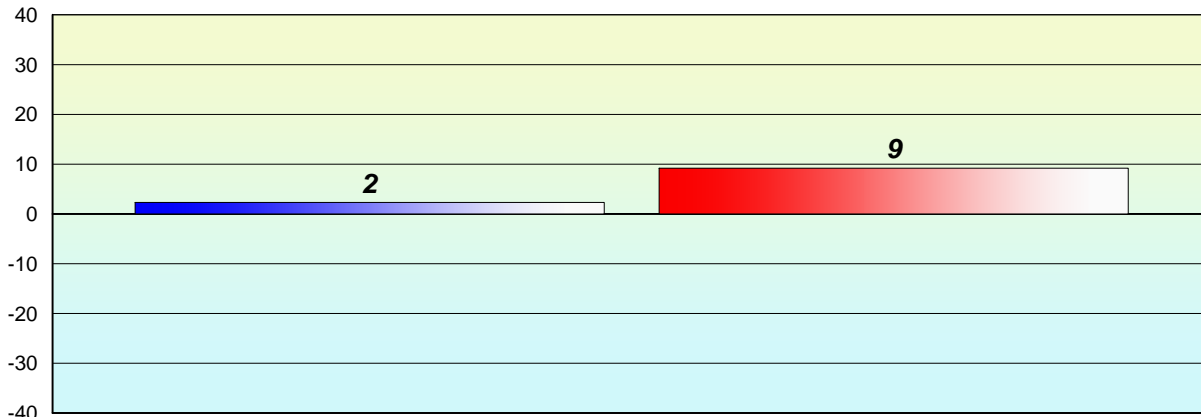
**Longitudinal  
Cohort of students  
Difference from Provincial Mean 2012 - 2013**

**Reading**



**Longitudinal  
Cohort of students  
Difference from Provincial Mean 2012 - 2013**

**Reading**



Grade 2 (2012) Reading Record

Grade 3 (2013) CRT

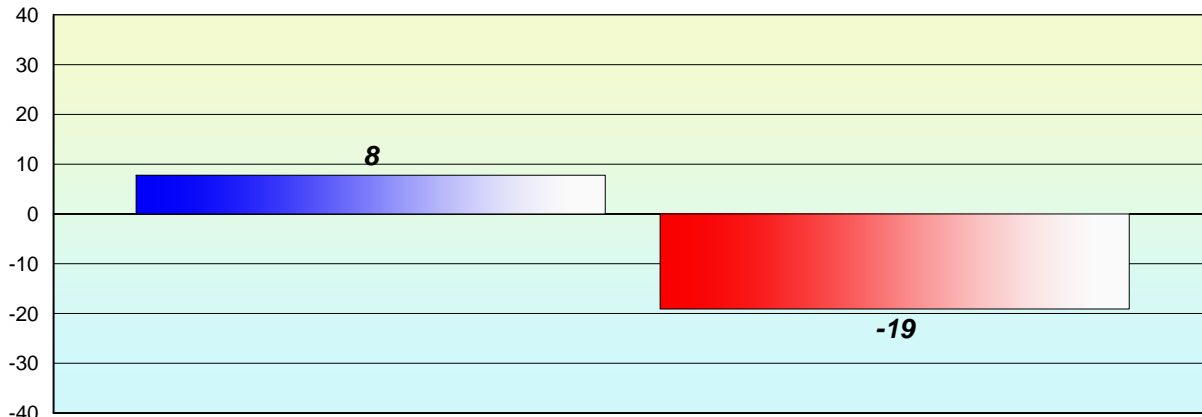
% of students at Grade Level = 74%

% of students at Level 3 and above = 67%



**Longitudinal  
Cohort of students  
Difference from Provincial Mean 2012 - 2013**

**Reading**



Grade 2 (2012) Reading Record

Grade 3 (2013) CRT

% of students at Grade Level = 74%

% of students at Level 3 and above = 67%



**Longitudinal  
Cohort of students  
Difference from Provincial Mean 2012 - 2013**

**Reading**

*School data with 5 or fewer students withheld for reasons of confidentiality.*

*Grade 2 (2012) Reading Record*

*% of students at Grade Level = 74%*

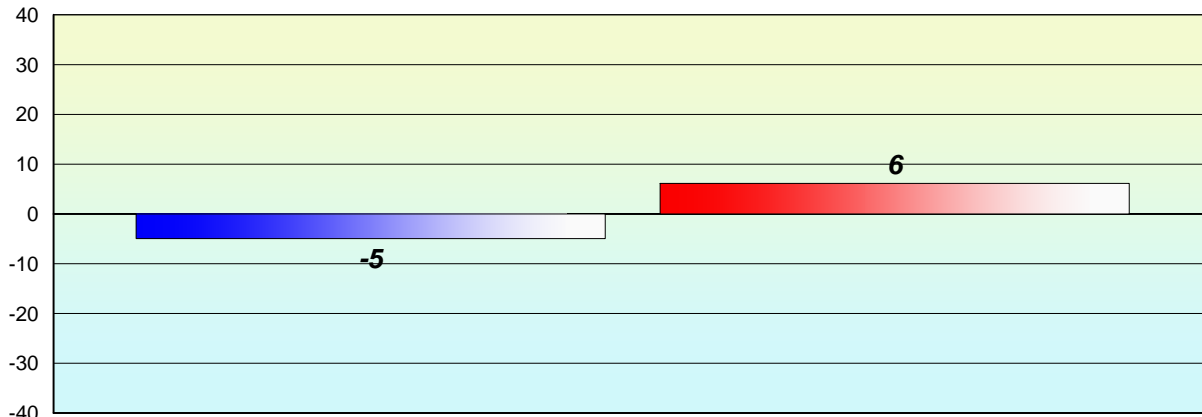
*Grade 3 (2013) CRT*

*% of students at Level 3 and above = 67%*



**Longitudinal  
Cohort of students  
Difference from Provincial Mean 2012 - 2013**

**Reading**



Grade 2 (2012) Reading Record

Grade 3 (2013) CRT

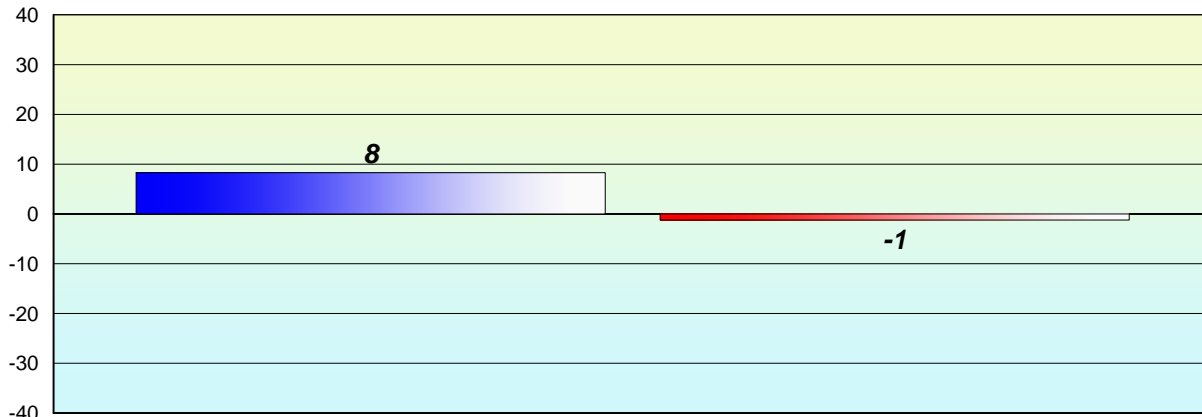
% of students at Grade Level = 74%

% of students at Level 3 and above = 67%



**Longitudinal  
Cohort of students  
Difference from Provincial Mean 2012 - 2013**

**Reading**



Grade 2 (2012) Reading Record

% of students at Grade Level = 74%

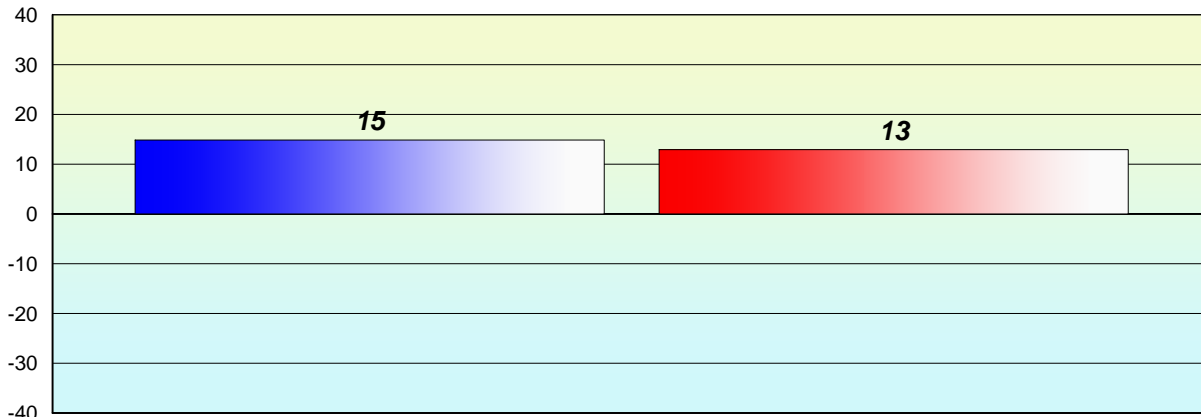
Grade 3 (2013) CRT

% of students at Level 3 and above = 67%



**Longitudinal  
Cohort of students  
Difference from Provincial Mean 2012 - 2013**

**Reading**



Grade 2 (2012) Reading Record

Grade 3 (2013) CRT

% of students at Grade Level = 74%

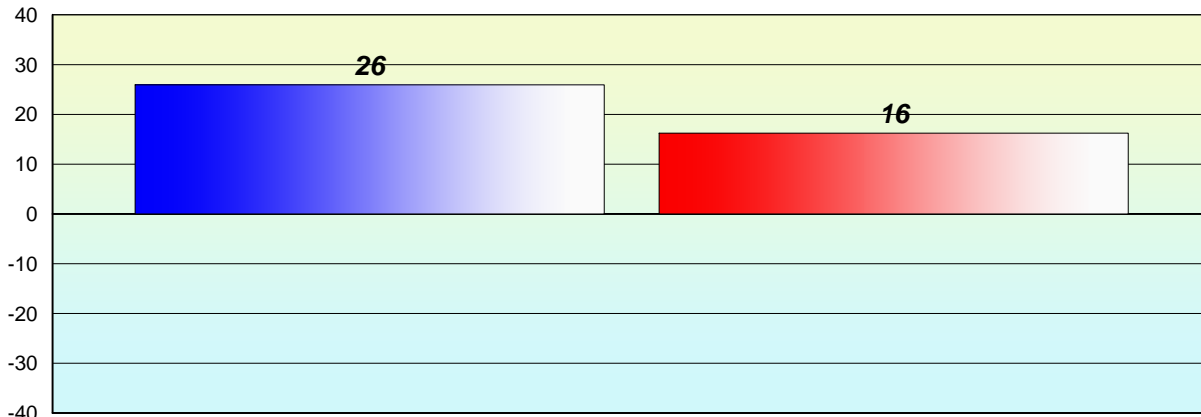
% of students at Level 3 and above = 67%





**Longitudinal  
Cohort of students  
Difference from Provincial Mean 2012 - 2013**

**Reading**



Grade 2 (2012) Reading Record

% of students at Grade Level = 74%

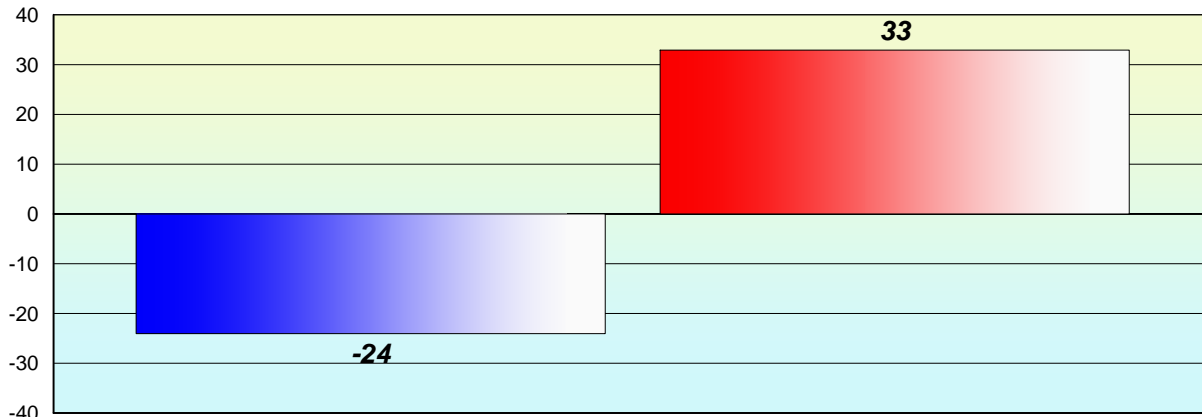
Grade 3 (2013) CRT

% of students at Level 3 and above = 67%



**Longitudinal  
Cohort of students  
Difference from Provincial Mean 2012 - 2013**

**Reading**



Grade 2 (2012) Reading Record

Grade 3 (2013) CRT

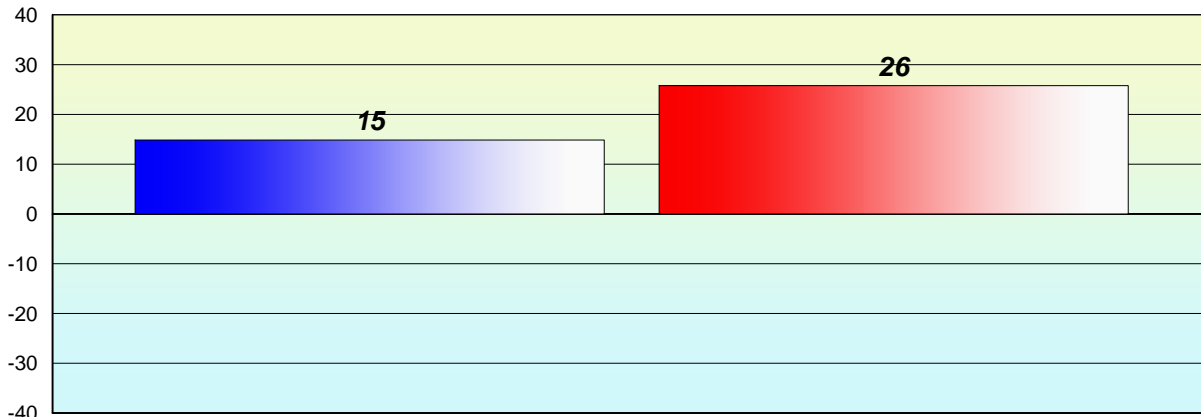
% of students at Grade Level = 74%

% of students at Level 3 and above = 67%



**Longitudinal  
Cohort of students  
Difference from Provincial Mean 2012 - 2013**

**Reading**



Grade 2 (2012) Reading Record

Grade 3 (2013) CRT

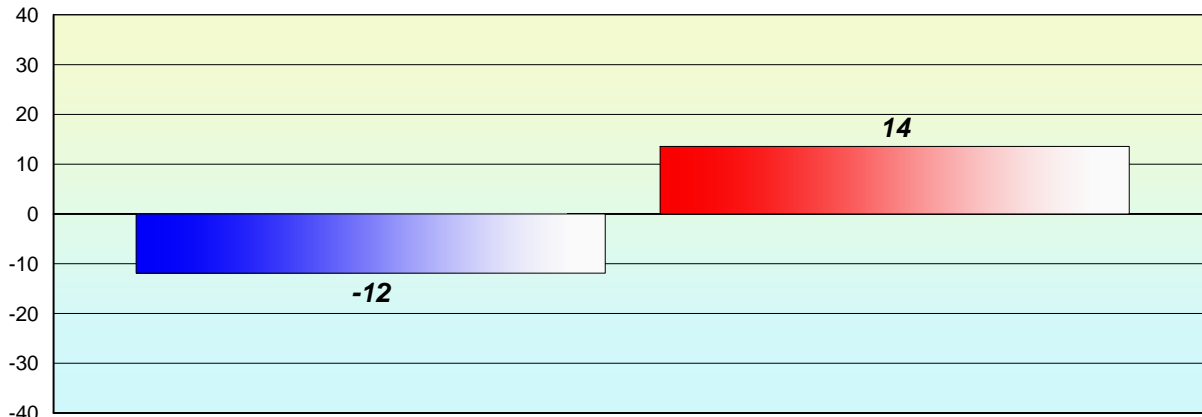
% of students at Grade Level = 74%

% of students at Level 3 and above = 67%



**Longitudinal  
Cohort of students  
Difference from Provincial Mean 2012 - 2013**

**Reading**



Grade 2 (2012) Reading Record

Grade 3 (2013) CRT

% of students at Grade Level = 74%

% of students at Level 3 and above = 67%



**Longitudinal  
Cohort of students  
Difference from Provincial Mean 2012 - 2013**

**Reading**

*School data with 5 or fewer students withheld for reasons of confidentiality.*

*Grade 2 (2012) Reading Record*

*% of students at Grade Level = 74%*

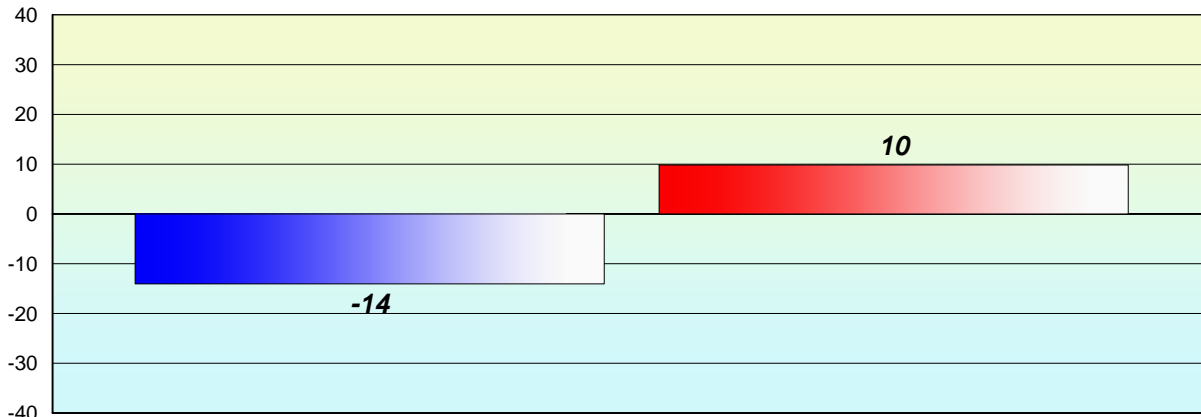
*Grade 3 (2013) CRT*

*% of students at Level 3 and above = 67%*



**Longitudinal  
Cohort of students  
Difference from Provincial Mean 2012 - 2013**

**Reading**



Grade 2 (2012) Reading Record

Grade 3 (2013) CRT

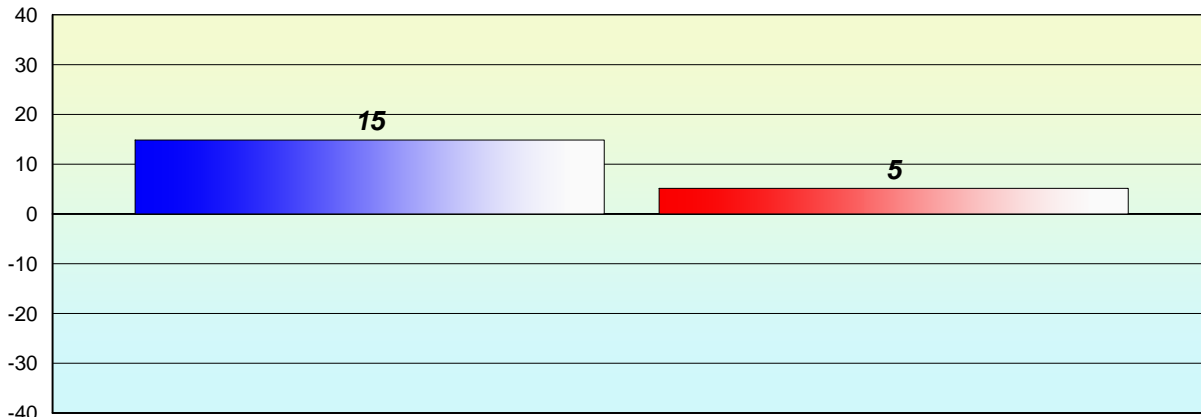
% of students at Grade Level = 74%

% of students at Level 3 and above = 67%



**Longitudinal  
Cohort of students  
Difference from Provincial Mean 2012 - 2013**

**Reading**



Grade 2 (2012) Reading Record

% of students at Grade Level = 74%

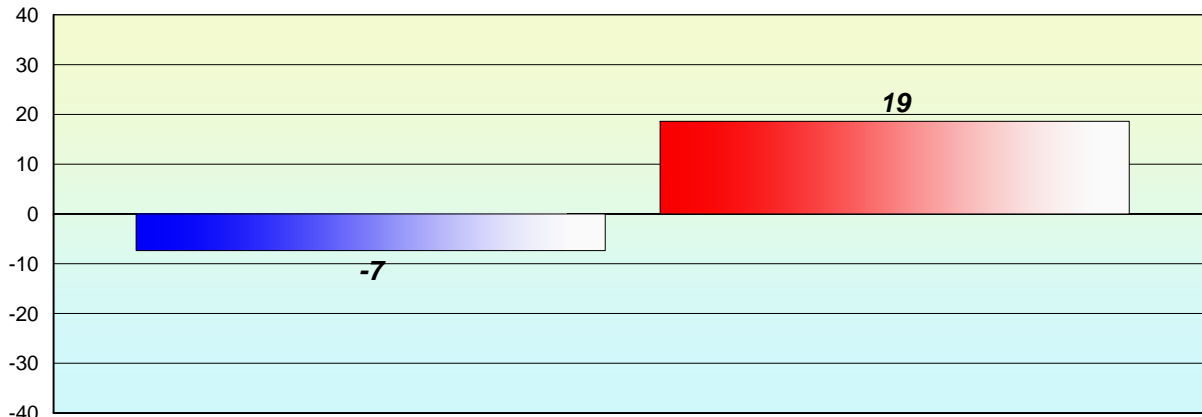
Grade 3 (2013) CRT

% of students at Level 3 and above = 67%



**Longitudinal  
Cohort of students  
Difference from Provincial Mean 2012 - 2013**

**Reading**



Grade 2 (2012) Reading Record

Grade 3 (2013) CRT

% of students at Grade Level = 74%

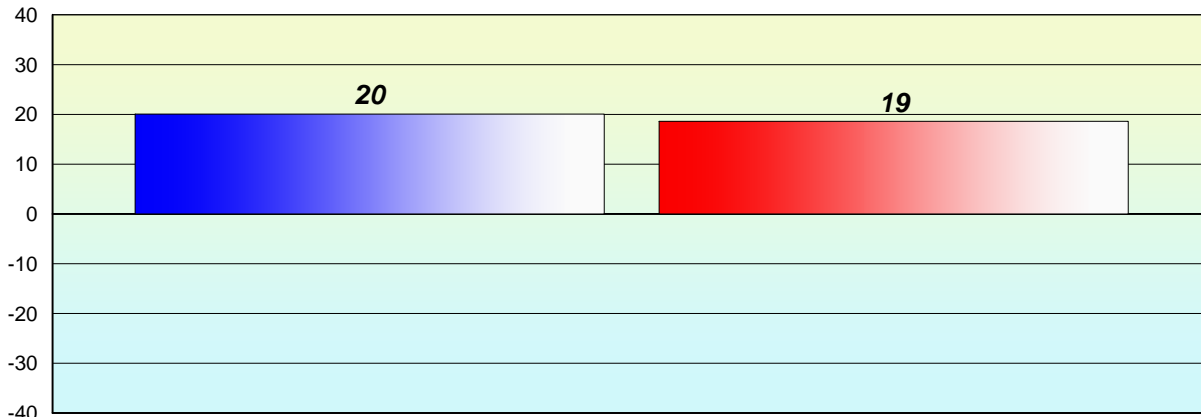
% of students at Level 3 and above = 67%





**Longitudinal  
Cohort of students  
Difference from Provincial Mean 2012 - 2013**

**Reading**



Grade 2 (2012) Reading Record

Grade 3 (2013) CRT

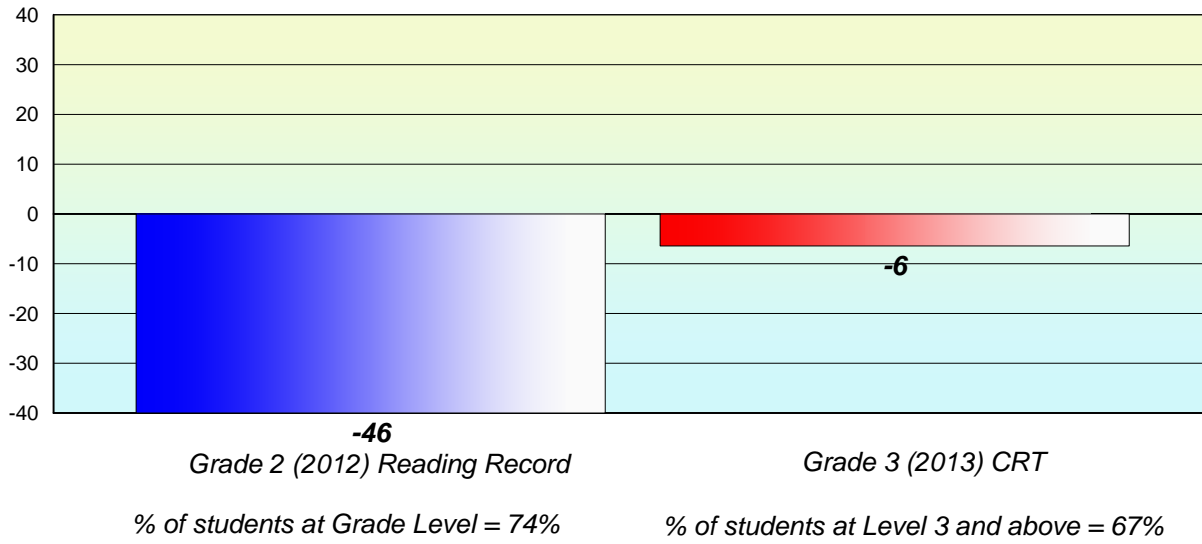
% of students at Grade Level = 74%

% of students at Level 3 and above = 67%



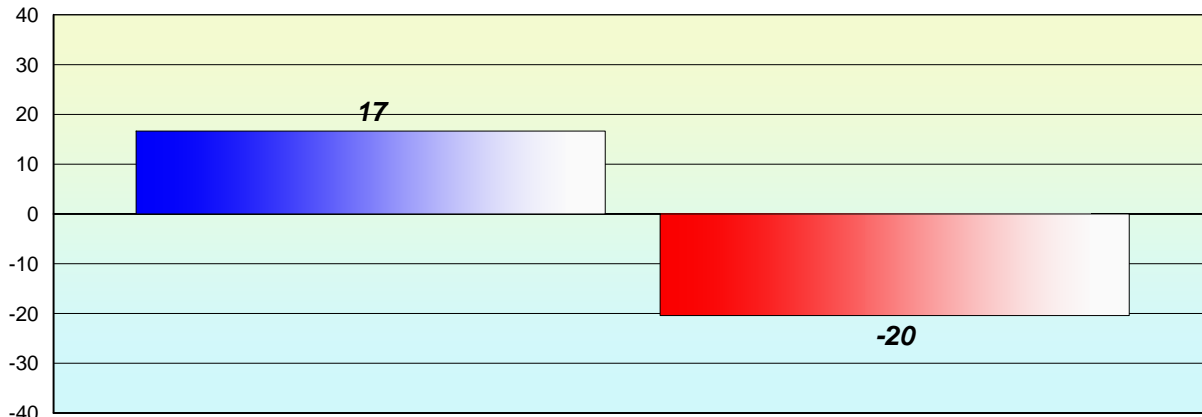
**Longitudinal  
Cohort of students  
Difference from Provincial Mean 2012 - 2013**

**Reading**



**Longitudinal  
Cohort of students  
Difference from Provincial Mean 2012 - 2013**

**Reading**



Grade 2 (2012) Reading Record

Grade 3 (2013) CRT

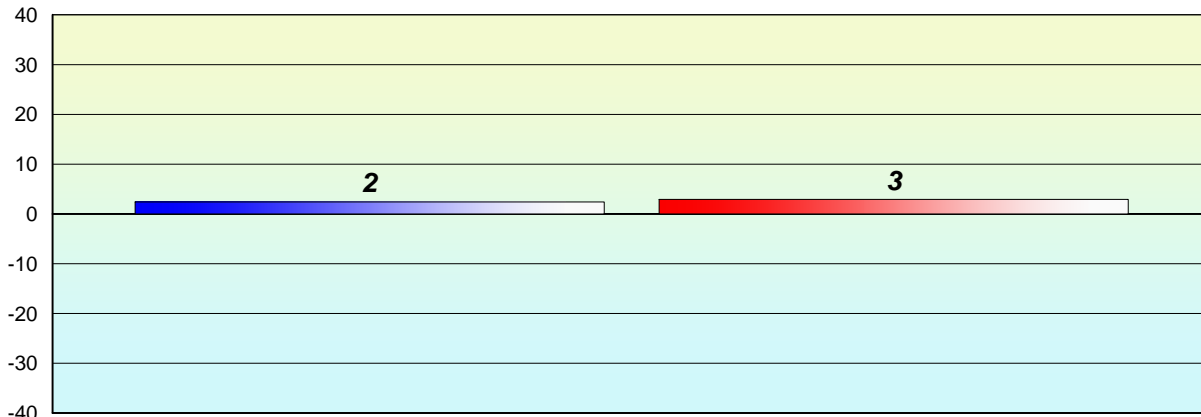
% of students at Grade Level = 74%

% of students at Level 3 and above = 67%



**Longitudinal  
Cohort of students  
Difference from Provincial Mean 2012 - 2013**

**Reading**



Grade 2 (2012) Reading Record

Grade 3 (2013) CRT

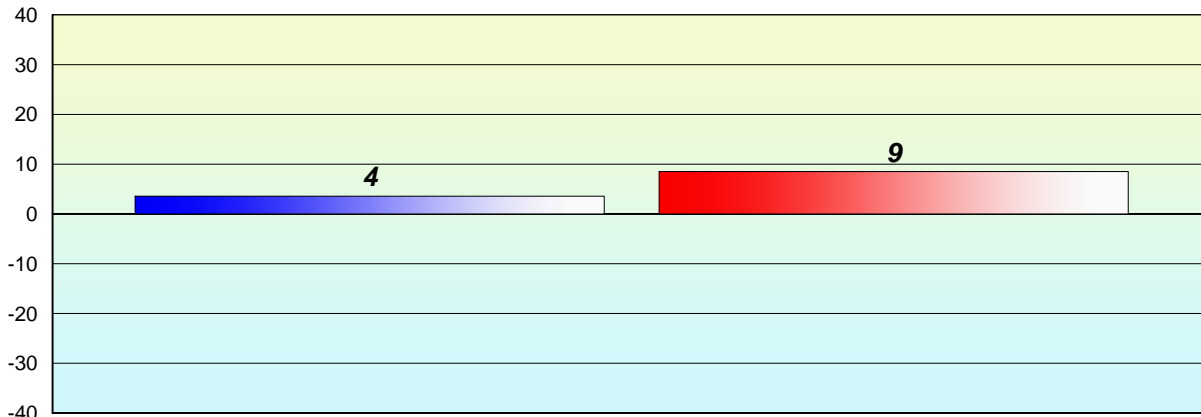
% of students at Grade Level = 74%

% of students at Level 3 and above = 67%



**Longitudinal  
Cohort of students  
Difference from Provincial Mean 2012 - 2013**

**Reading**



Grade 2 (2012) Reading Record

Grade 3 (2013) CRT

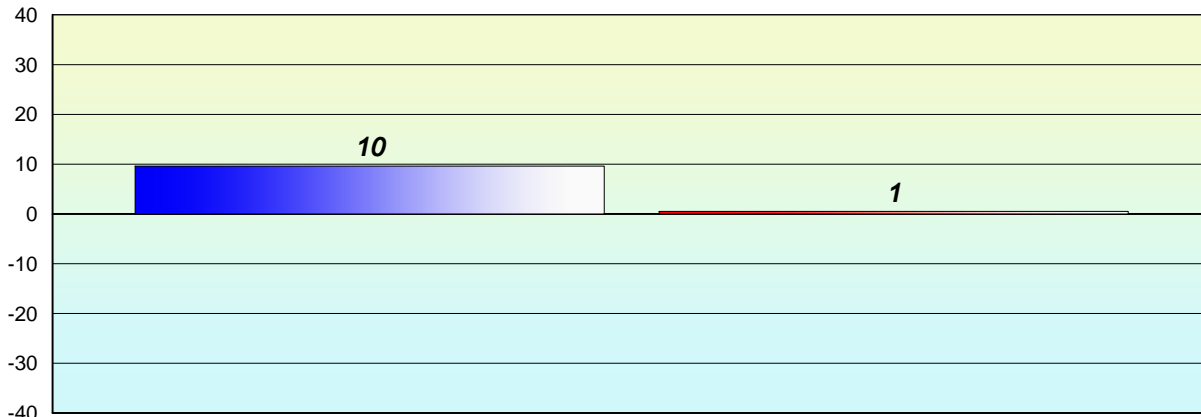
% of students at Grade Level = 74%

% of students at Level 3 and above = 67%



**Longitudinal  
Cohort of students  
Difference from Provincial Mean 2012 - 2013**

**Reading**



Grade 2 (2012) Reading Record

% of students at Grade Level = 74%

Grade 3 (2013) CRT

% of students at Level 3 and above = 67%

