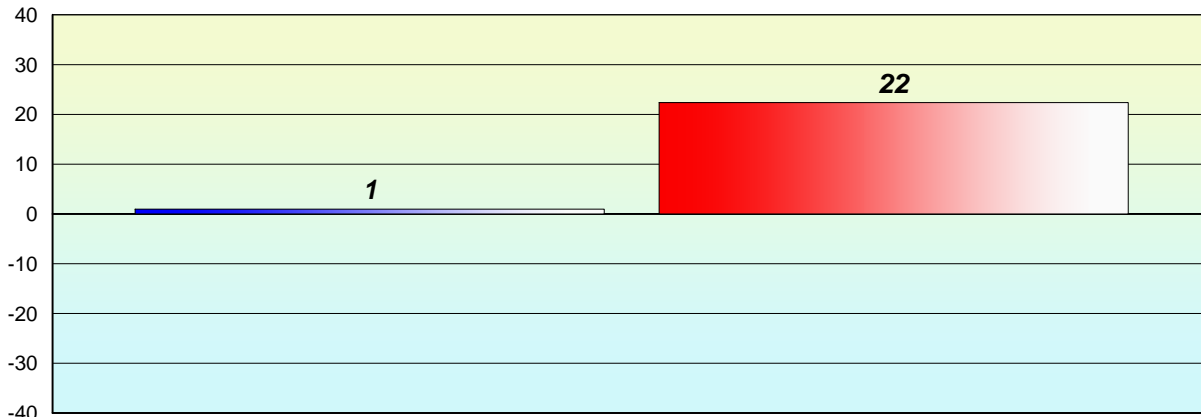


**Longitudinal
Cohort of students
Difference from Provincial Mean 2012 - 2013**

Reading



Grade 2 (2012) Reading Record

Grade 3 (2013) CRT

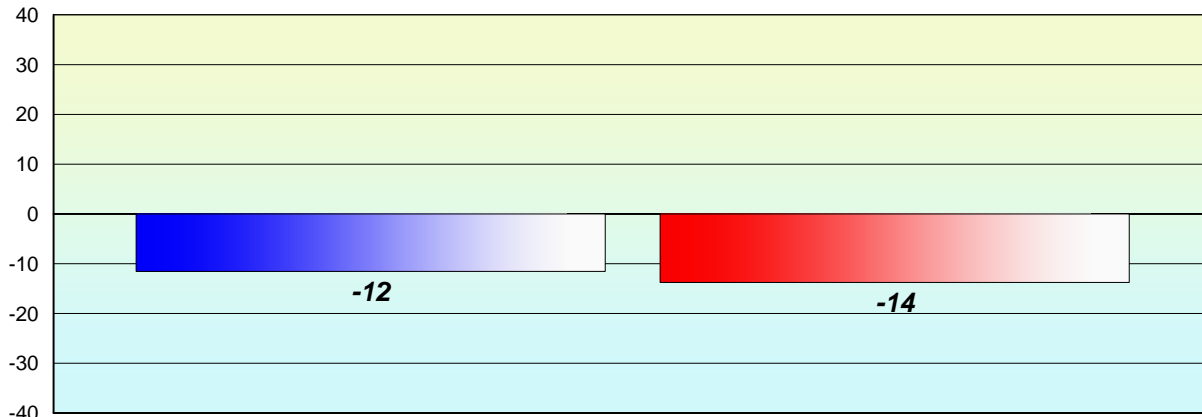
% of students at Grade Level = 74%

% of students at Level 3 and above = 67%



**Longitudinal
Cohort of students
Difference from Provincial Mean 2012 - 2013**

Reading



Grade 2 (2012) Reading Record

Grade 3 (2013) CRT

% of students at Grade Level = 74%

% of students at Level 3 and above = 67%



**Longitudinal
Cohort of students
Difference from Provincial Mean 2012 - 2013**

Reading

School data with 5 or fewer students withheld for reasons of confidentiality.

Grade 2 (2012) Reading Record

% of students at Grade Level = 74%

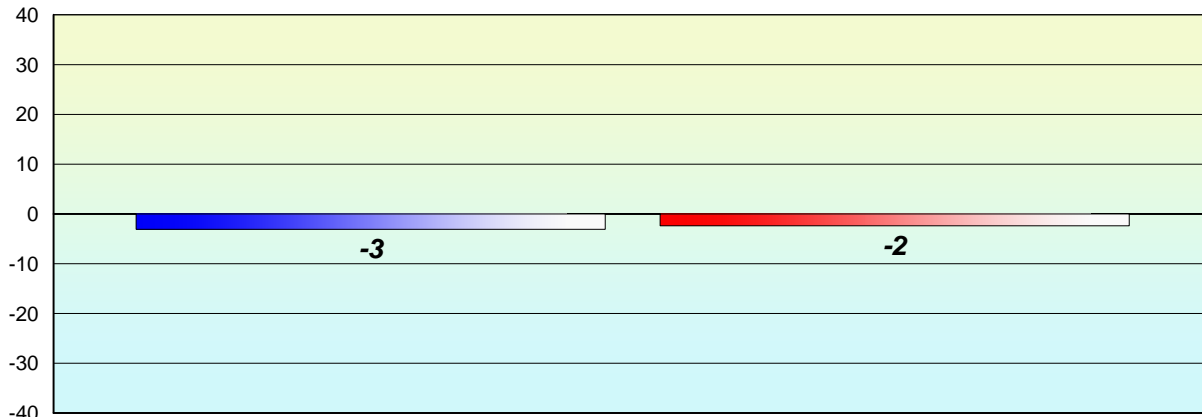
Grade 3 (2013) CRT

% of students at Level 3 and above = 67%



**Longitudinal
Cohort of students
Difference from Provincial Mean 2012 - 2013**

Reading



Grade 2 (2012) Reading Record

Grade 3 (2013) CRT

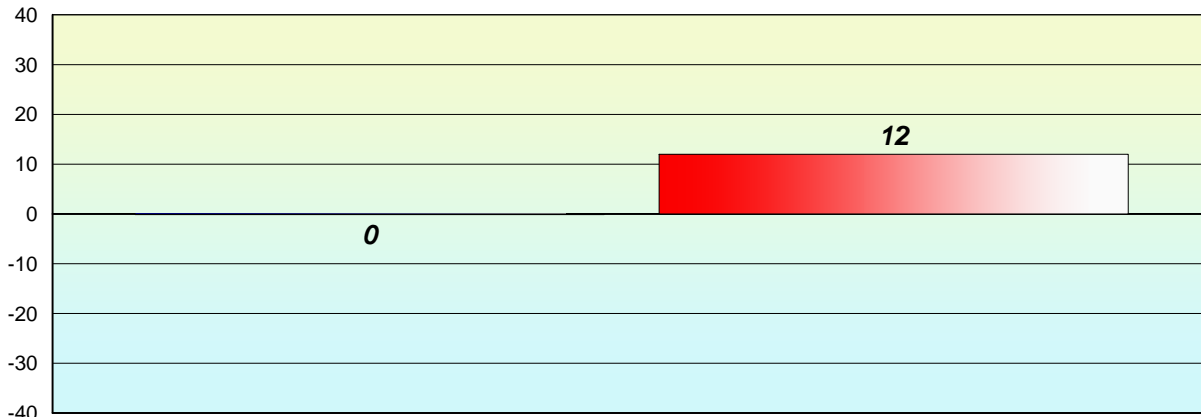
% of students at Grade Level = 74%

% of students at Level 3 and above = 67%



**Longitudinal
Cohort of students
Difference from Provincial Mean 2012 - 2013**

Reading



Grade 2 (2012) Reading Record

Grade 3 (2013) CRT

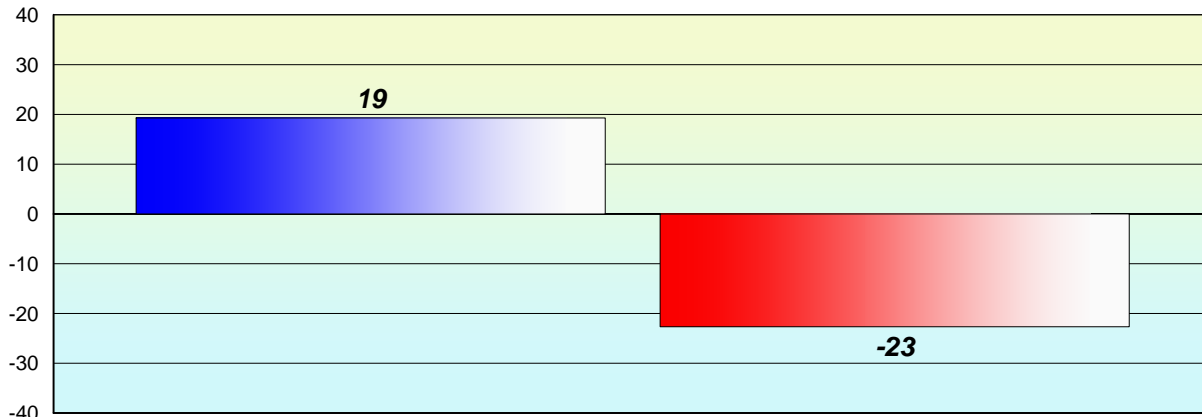
% of students at Grade Level = 74%

% of students at Level 3 and above = 67%



**Longitudinal
Cohort of students
Difference from Provincial Mean 2012 - 2013**

Reading



Grade 2 (2012) Reading Record

% of students at Grade Level = 74%

Grade 3 (2013) CRT

% of students at Level 3 and above = 67%



**Longitudinal
Cohort of students
Difference from Provincial Mean 2012 - 2013**

Reading

School data with 5 or fewer students withheld for reasons of confidentiality.

Grade 2 (2012) Reading Record

% of students at Grade Level = 74%

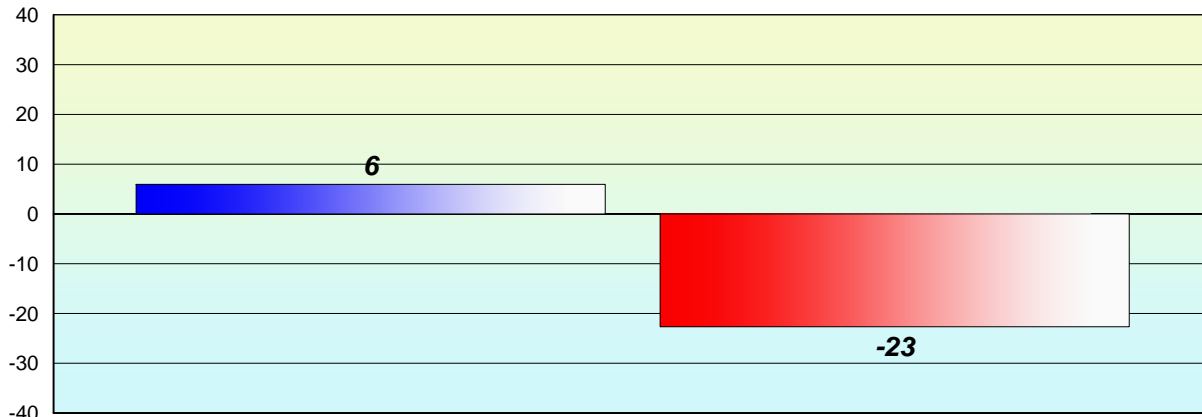
Grade 3 (2013) CRT

% of students at Level 3 and above = 67%



**Longitudinal
Cohort of students
Difference from Provincial Mean 2012 - 2013**

Reading



Grade 2 (2012) Reading Record

Grade 3 (2013) CRT

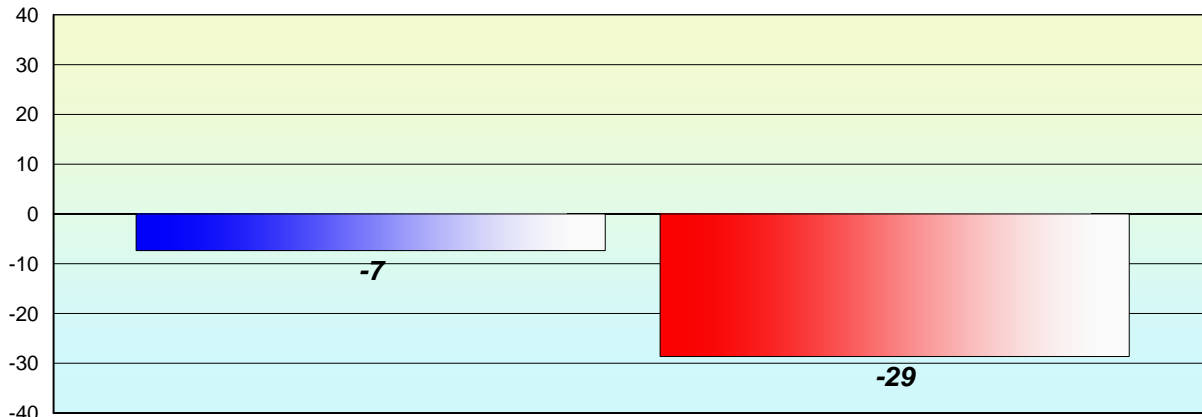
% of students at Grade Level = 74%

% of students at Level 3 and above = 67%



**Longitudinal
Cohort of students
Difference from Provincial Mean 2012 - 2013**

Reading



Grade 2 (2012) Reading Record

% of students at Grade Level = 74%

Grade 3 (2013) CRT

% of students at Level 3 and above = 67%



**Longitudinal
Cohort of students
Difference from Provincial Mean 2012 - 2013**

Reading

School data with 5 or fewer students withheld for reasons of confidentiality.

Grade 2 (2012) Reading Record

% of students at Grade Level = 74%

Grade 3 (2013) CRT

% of students at Level 3 and above = 67%



**Longitudinal
Cohort of students
Difference from Provincial Mean 2012 - 2013**

Reading

School data with 5 or fewer students withheld for reasons of confidentiality.

Grade 2 (2012) Reading Record

% of students at Grade Level = 74%

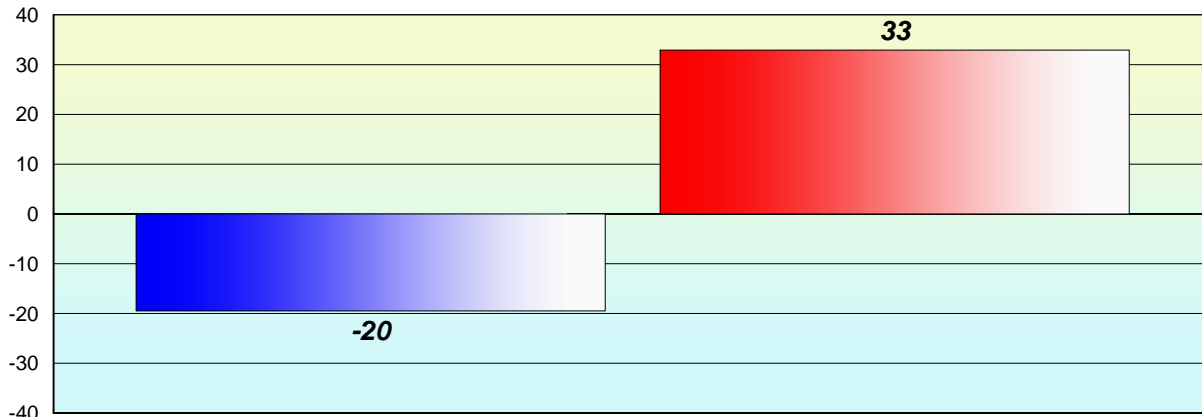
Grade 3 (2013) CRT

% of students at Level 3 and above = 67%



**Longitudinal
Cohort of students
Difference from Provincial Mean 2012 - 2013**

Reading



Grade 2 (2012) Reading Record

Grade 3 (2013) CRT

% of students at Grade Level = 74%

% of students at Level 3 and above = 67%



**Longitudinal
Cohort of students
Difference from Provincial Mean 2012 - 2013**

Reading

School data with 5 or fewer students withheld for reasons of confidentiality.

Grade 2 (2012) Reading Record

% of students at Grade Level = 74%

Grade 3 (2013) CRT

% of students at Level 3 and above = 67%



**Longitudinal
Cohort of students
Difference from Provincial Mean 2012 - 2013**

Reading

School data with 5 or fewer students withheld for reasons of confidentiality.

Grade 2 (2012) Reading Record

% of students at Grade Level = 74%

Grade 3 (2013) CRT

% of students at Level 3 and above = 67%



**Longitudinal
Cohort of students
Difference from Provincial Mean 2012 - 2013**

Reading

School data with 5 or fewer students withheld for reasons of confidentiality.

Grade 2 (2012) Reading Record

% of students at Grade Level = 74%

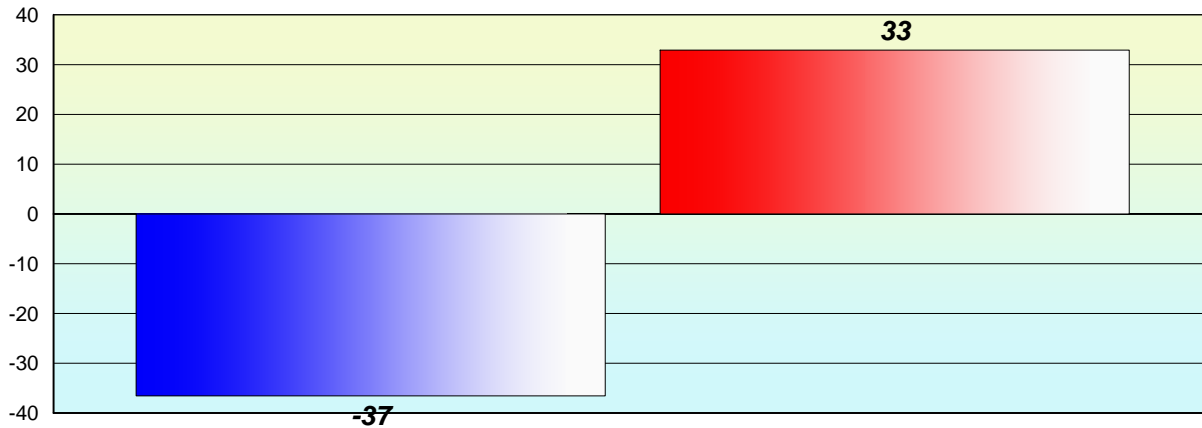
Grade 3 (2013) CRT

% of students at Level 3 and above = 67%



**Longitudinal
Cohort of students
Difference from Provincial Mean 2012 - 2013**

Reading



Grade 2 (2012) Reading Record

Grade 3 (2013) CRT

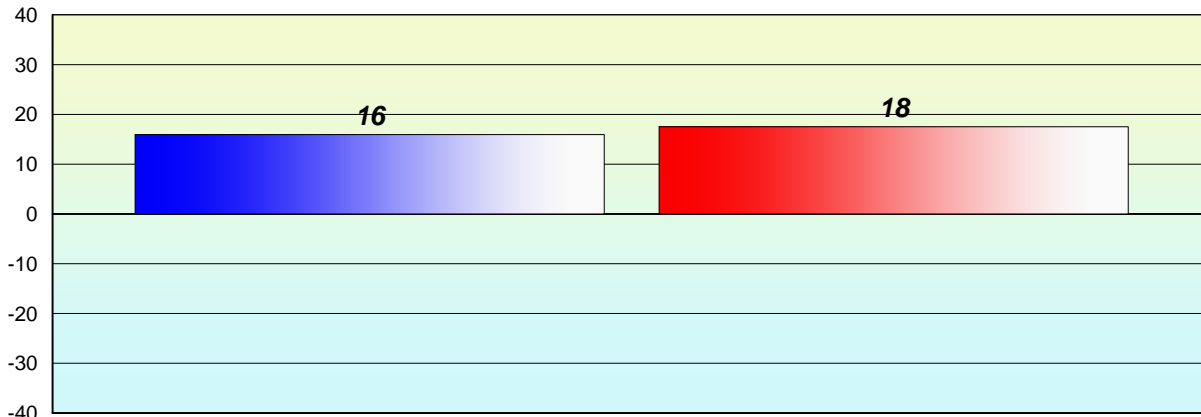
% of students at Grade Level = 74%

% of students at Level 3 and above = 67%



**Longitudinal
Cohort of students
Difference from Provincial Mean 2012 - 2013**

Reading



Grade 2 (2012) Reading Record

Grade 3 (2013) CRT

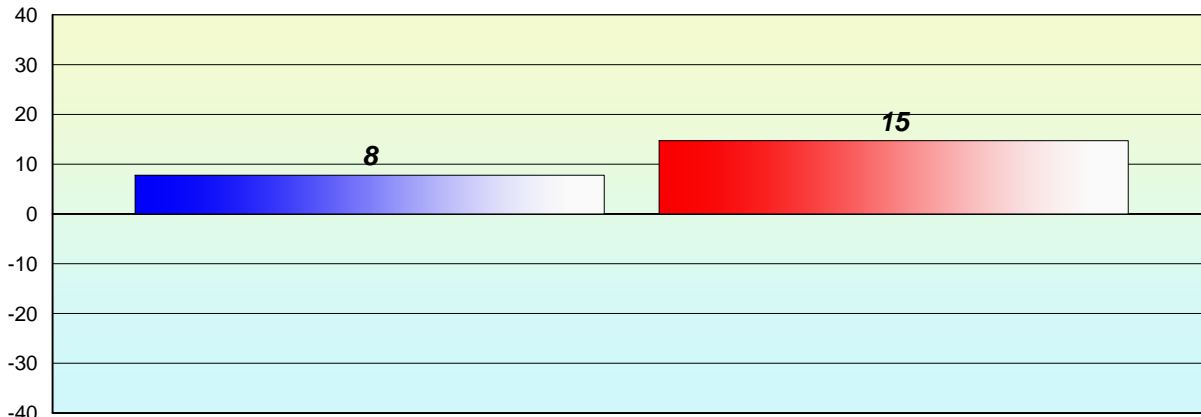
% of students at Grade Level = 74%

% of students at Level 3 and above = 67%



**Longitudinal
Cohort of students
Difference from Provincial Mean 2012 - 2013**

Reading



Grade 2 (2012) Reading Record

Grade 3 (2013) CRT

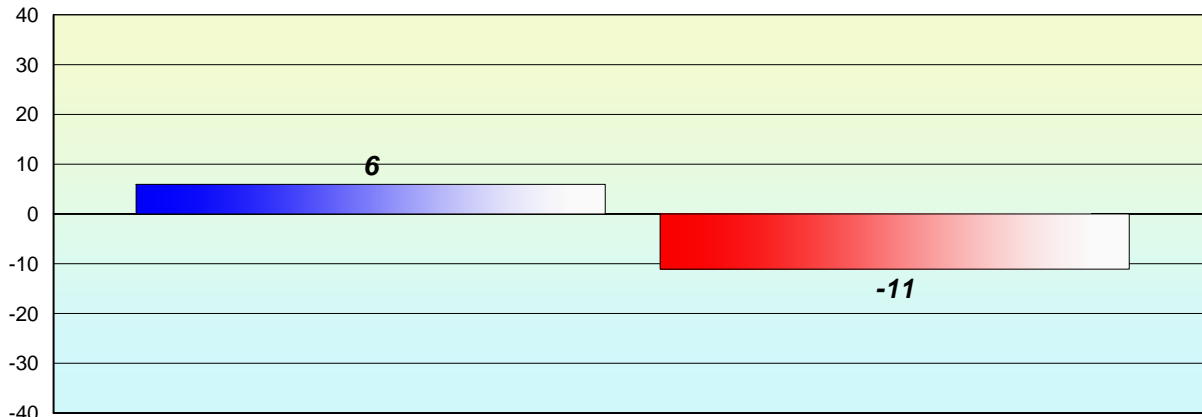
% of students at Grade Level = 74%

% of students at Level 3 and above = 67%



**Longitudinal
Cohort of students
Difference from Provincial Mean 2012 - 2013**

Reading



Grade 2 (2012) Reading Record

Grade 3 (2013) CRT

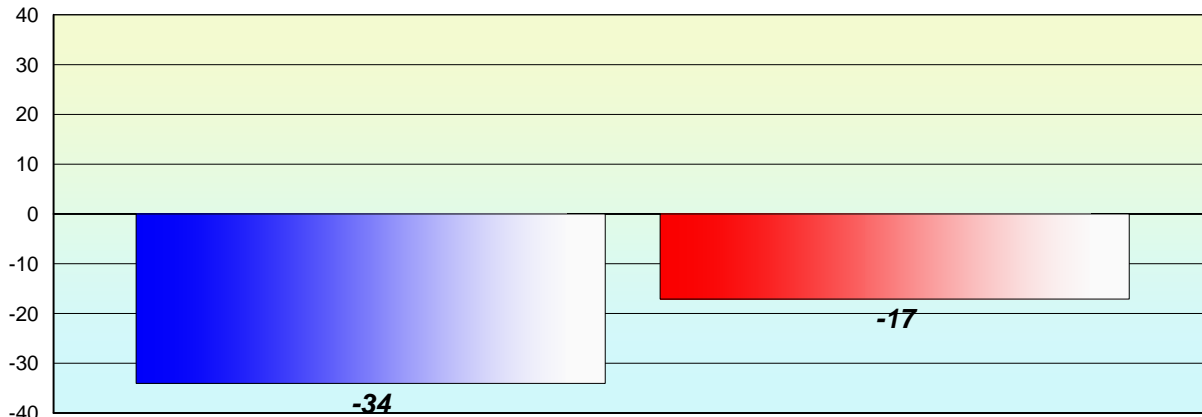
% of students at Grade Level = 74%

% of students at Level 3 and above = 67%



**Longitudinal
Cohort of students
Difference from Provincial Mean 2012 - 2013**

Reading



Grade 2 (2012) Reading Record

Grade 3 (2013) CRT

% of students at Grade Level = 74%

% of students at Level 3 and above = 67%



**Longitudinal
Cohort of students
Difference from Provincial Mean 2012 - 2013**

Reading

School data with 5 or fewer students withheld for reasons of confidentiality.

Grade 2 (2012) Reading Record

% of students at Grade Level = 74%

Grade 3 (2013) CRT

% of students at Level 3 and above = 67%



**Longitudinal
Cohort of students
Difference from Provincial Mean 2012 - 2013**

Reading

School data with 5 or fewer students withheld for reasons of confidentiality.

Grade 2 (2012) Reading Record

% of students at Grade Level = 74%

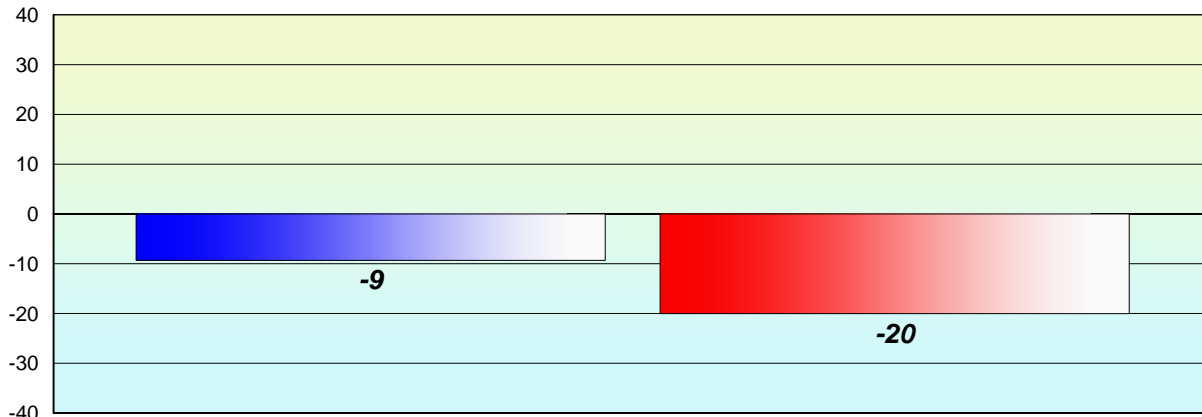
Grade 3 (2013) CRT

% of students at Level 3 and above = 67%



**Longitudinal
Cohort of students
Difference from Provincial Mean 2012 - 2013**

Reading



Grade 2 (2012) Reading Record

Grade 3 (2013) CRT

% of students at Grade Level = 74%

% of students at Level 3 and above = 67%



**Longitudinal
Cohort of students
Difference from Provincial Mean 2012 - 2013**

Reading

School data with 5 or fewer students withheld for reasons of confidentiality.

Grade 2 (2012) Reading Record

% of students at Grade Level = 74%

Grade 3 (2013) CRT

% of students at Level 3 and above = 67%



**Longitudinal
Cohort of students
Difference from Provincial Mean 2012 - 2013**

Reading

School data with 5 or fewer students withheld for reasons of confidentiality.

Grade 2 (2012) Reading Record

% of students at Grade Level = 74%

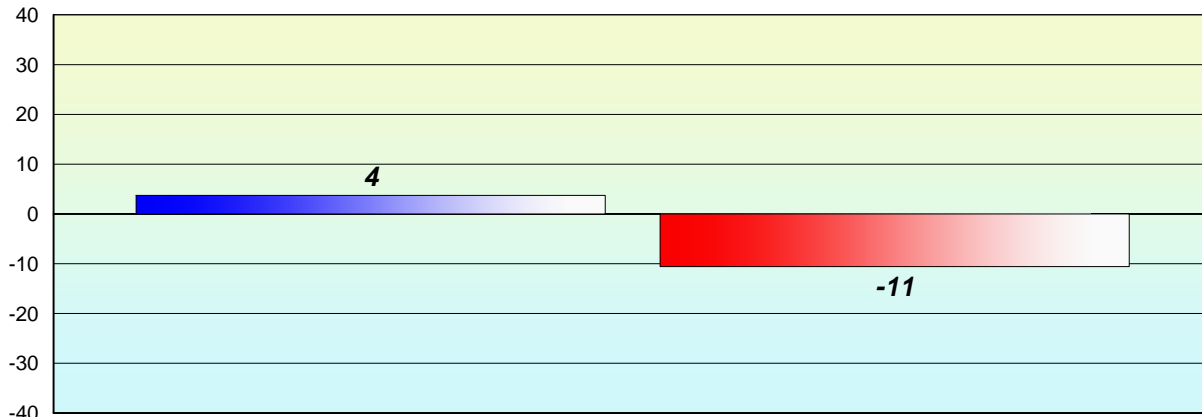
Grade 3 (2013) CRT

% of students at Level 3 and above = 67%



**Longitudinal
Cohort of students
Difference from Provincial Mean 2012 - 2013**

Reading



Grade 2 (2012) Reading Record

Grade 3 (2013) CRT

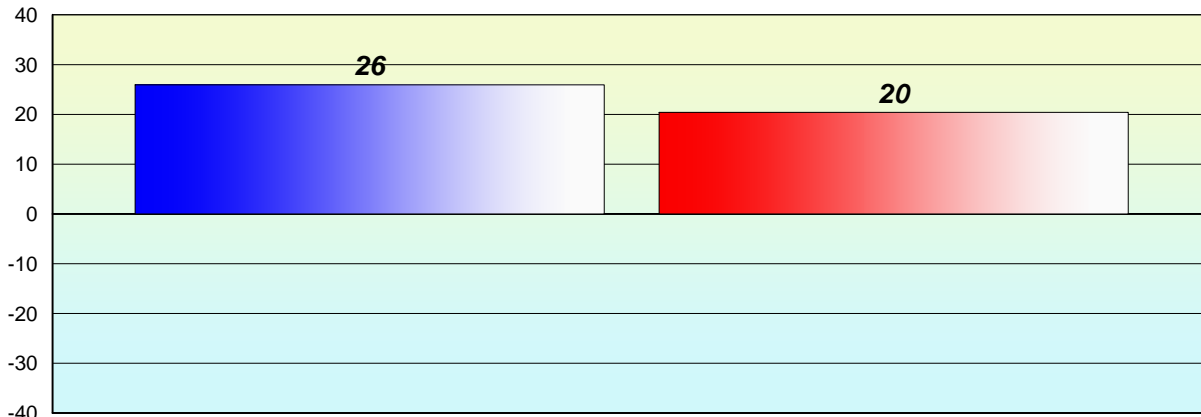
% of students at Grade Level = 74%

% of students at Level 3 and above = 67%



**Longitudinal
Cohort of students
Difference from Provincial Mean 2012 - 2013**

Reading



Grade 2 (2012) Reading Record

Grade 3 (2013) CRT

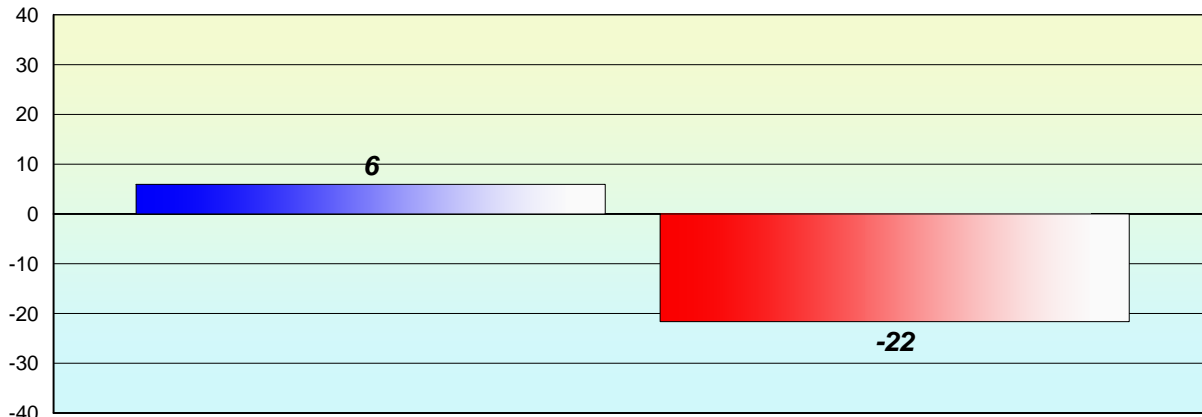
% of students at Grade Level = 74%

% of students at Level 3 and above = 67%



**Longitudinal
Cohort of students
Difference from Provincial Mean 2012 - 2013**

Reading



Grade 2 (2012) Reading Record

% of students at Grade Level = 74%

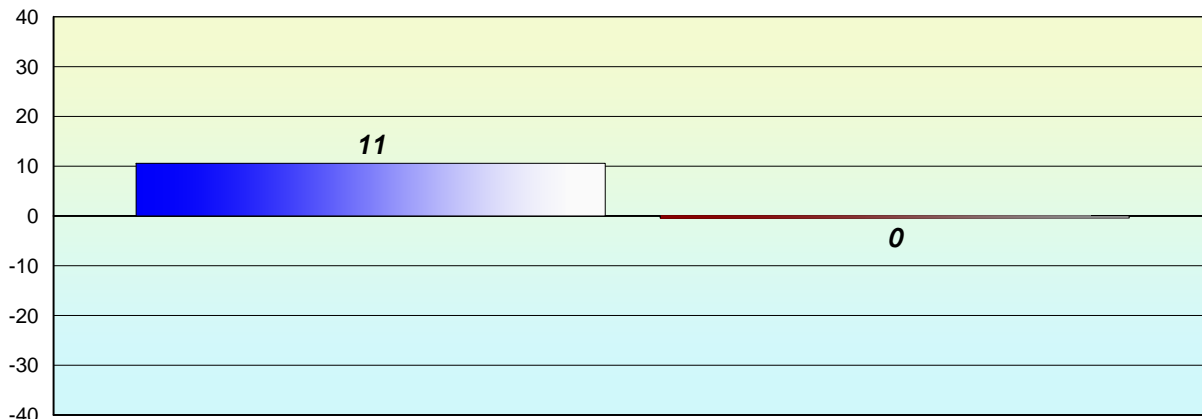
Grade 3 (2013) CRT

% of students at Level 3 and above = 67%



**Longitudinal
Cohort of students
Difference from Provincial Mean 2012 - 2013**

Reading



Grade 2 (2012) Reading Record

% of students at Grade Level = 74%

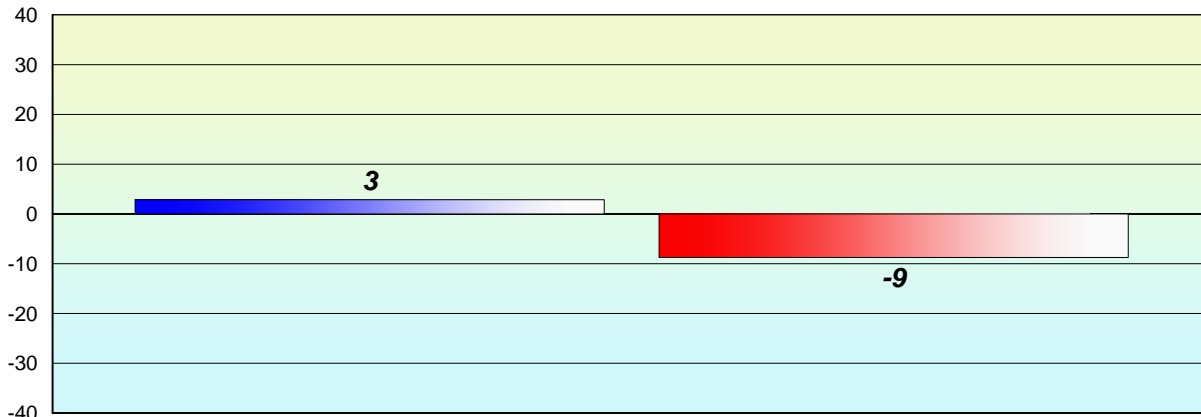
Grade 3 (2013) CRT

% of students at Level 3 and above = 67%



**Longitudinal
Cohort of students
Difference from Provincial Mean 2012 - 2013**

Reading



Grade 2 (2012) Reading Record

Grade 3 (2013) CRT

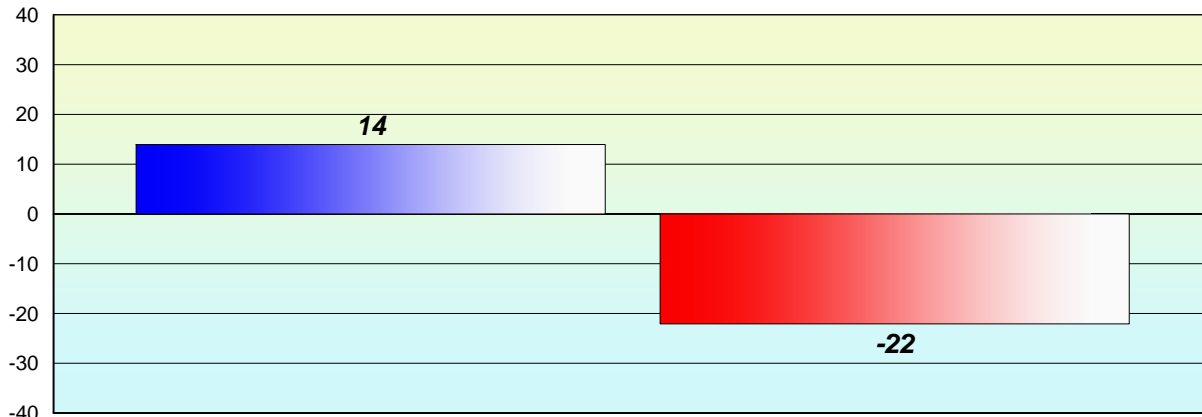
% of students at Grade Level = 74%

% of students at Level 3 and above = 67%



**Longitudinal
Cohort of students
Difference from Provincial Mean 2012 - 2013**

Reading



Grade 2 (2012) Reading Record

Grade 3 (2013) CRT

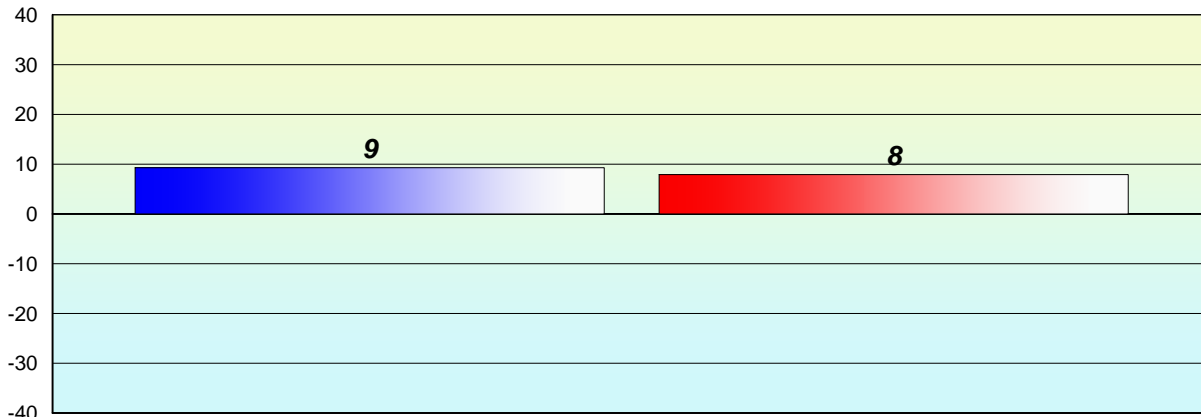
% of students at Grade Level = 74%

% of students at Level 3 and above = 67%



**Longitudinal
Cohort of students
Difference from Provincial Mean 2012 - 2013**

Reading



Grade 2 (2012) Reading Record

Grade 3 (2013) CRT

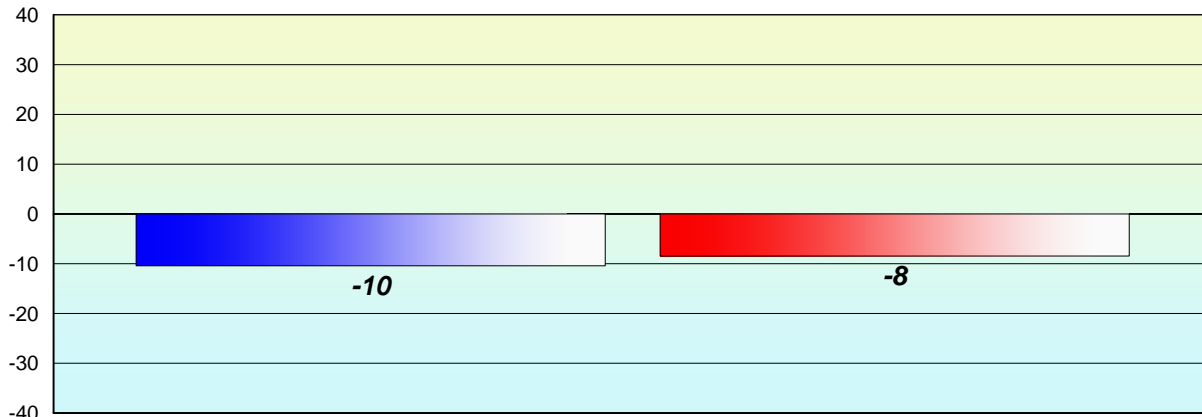
% of students at Grade Level = 74%

% of students at Level 3 and above = 67%



**Longitudinal
Cohort of students
Difference from Provincial Mean 2012 - 2013**

Reading



Grade 2 (2012) Reading Record

% of students at Grade Level = 74%

Grade 3 (2013) CRT

% of students at Level 3 and above = 67%



**Longitudinal
Cohort of students
Difference from Provincial Mean 2012 - 2013**

Reading

School data with 5 or fewer students withheld for reasons of confidentiality.

Grade 2 (2012) Reading Record

% of students at Grade Level = 74%

Grade 3 (2013) CRT

% of students at Level 3 and above = 67%



**Longitudinal
Cohort of students
Difference from Provincial Mean 2012 - 2013**

Reading

School data with 5 or fewer students withheld for reasons of confidentiality.

Grade 2 (2012) Reading Record

% of students at Grade Level = 74%

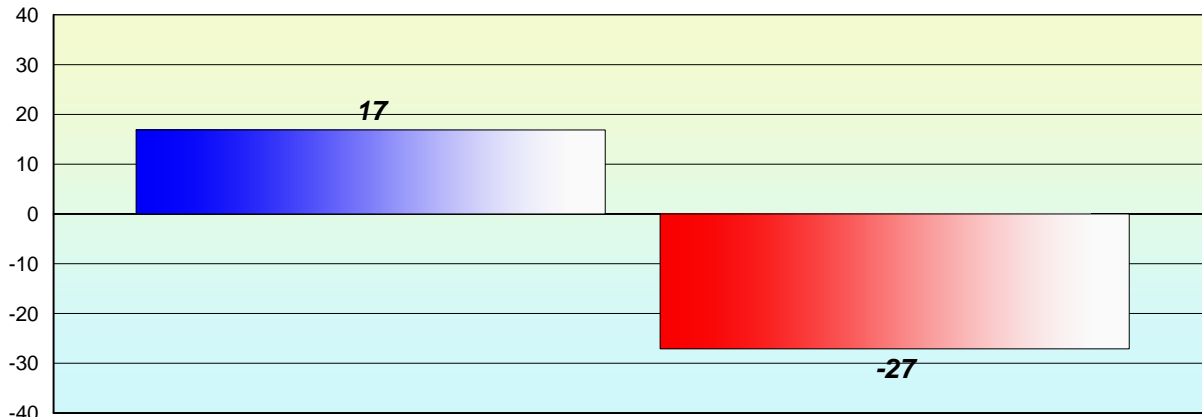
Grade 3 (2013) CRT

% of students at Level 3 and above = 67%



**Longitudinal
Cohort of students
Difference from Provincial Mean 2012 - 2013**

Reading



Grade 2 (2012) Reading Record

% of students at Grade Level = 74%

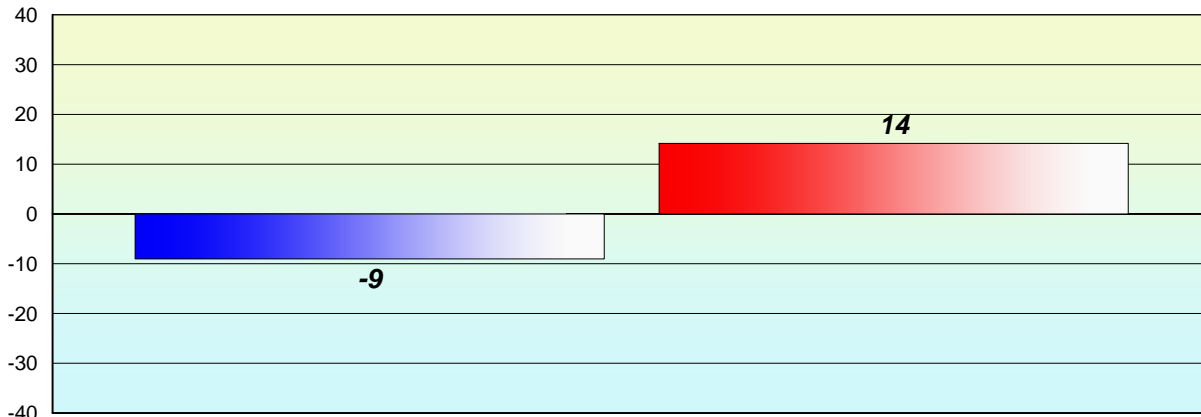
Grade 3 (2013) CRT

% of students at Level 3 and above = 67%



**Longitudinal
Cohort of students
Difference from Provincial Mean 2012 - 2013**

Reading



Grade 2 (2012) Reading Record

Grade 3 (2013) CRT

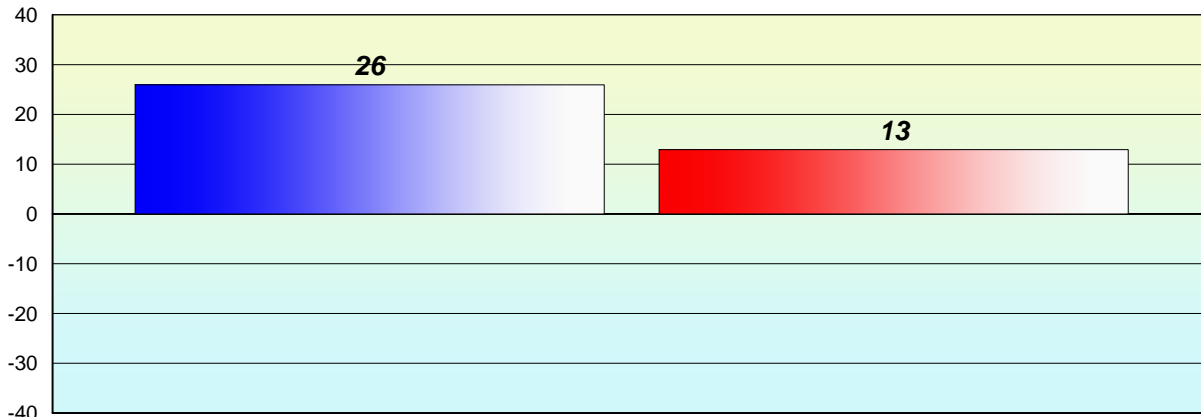
% of students at Grade Level = 74%

% of students at Level 3 and above = 67%



**Longitudinal
Cohort of students
Difference from Provincial Mean 2012 - 2013**

Reading



Grade 2 (2012) Reading Record

% of students at Grade Level = 74%

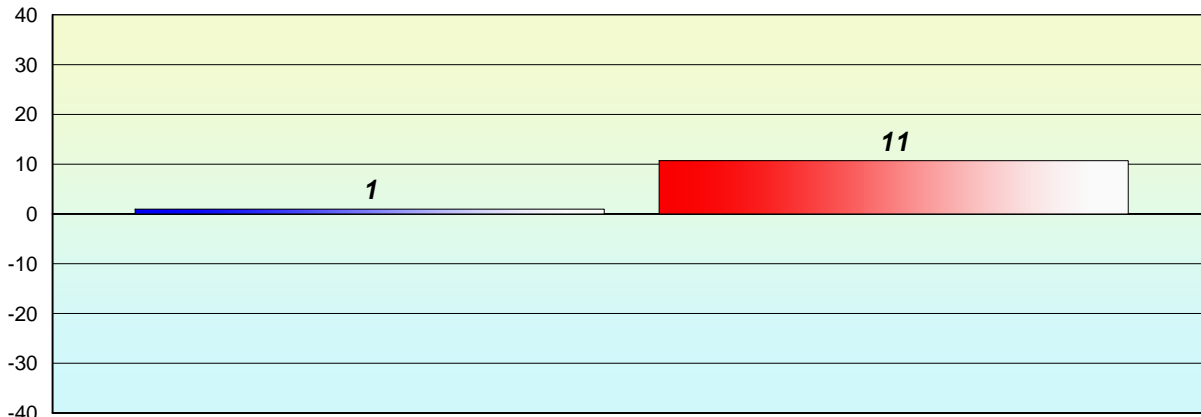
Grade 3 (2013) CRT

% of students at Level 3 and above = 67%



**Longitudinal
Cohort of students
Difference from Provincial Mean 2012 - 2013**

Reading



Grade 2 (2012) Reading Record

Grade 3 (2013) CRT

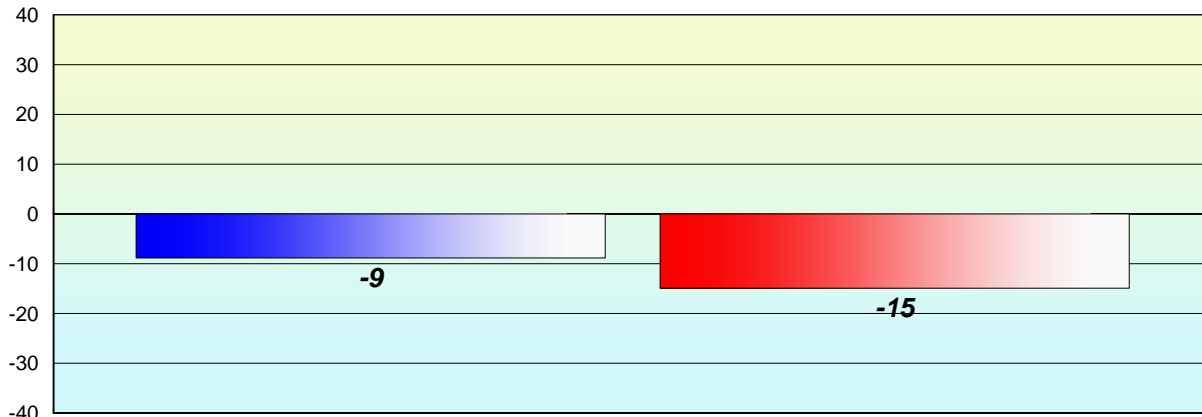
% of students at Grade Level = 74%

% of students at Level 3 and above = 67%



**Longitudinal
Cohort of students
Difference from Provincial Mean 2012 - 2013**

Reading



Grade 2 (2012) Reading Record

Grade 3 (2013) CRT

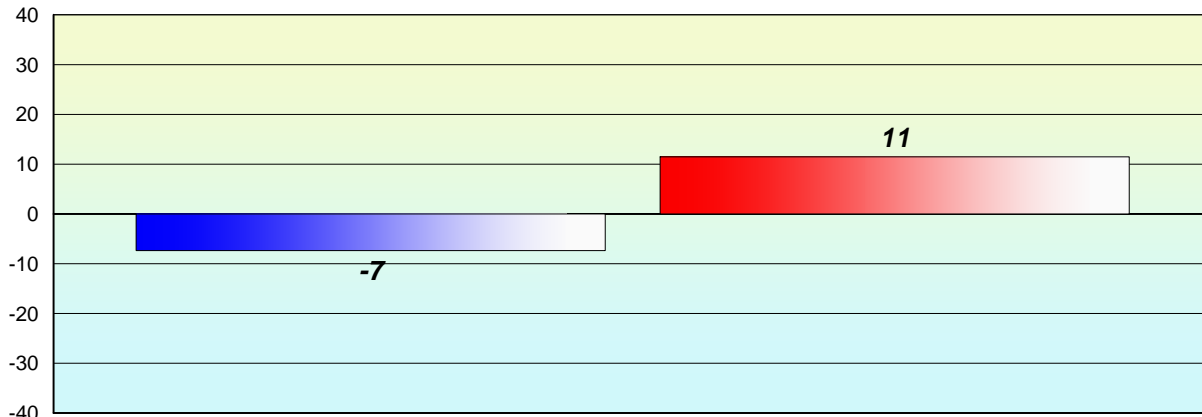
% of students at Grade Level = 74%

% of students at Level 3 and above = 67%



**Longitudinal
Cohort of students
Difference from Provincial Mean 2012 - 2013**

Reading



Grade 2 (2012) Reading Record

Grade 3 (2013) CRT

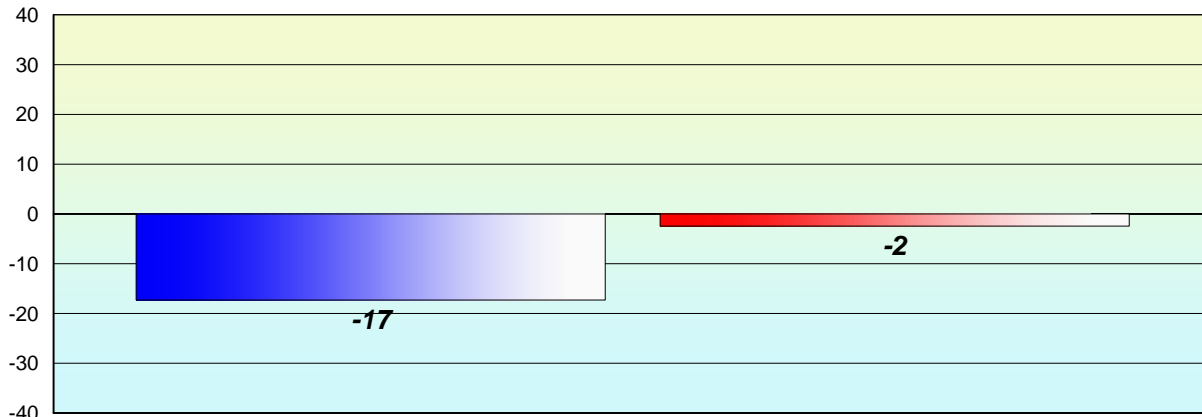
% of students at Grade Level = 74%

% of students at Level 3 and above = 67%



**Longitudinal
Cohort of students
Difference from Provincial Mean 2012 - 2013**

Reading



Grade 2 (2012) Reading Record

Grade 3 (2013) CRT

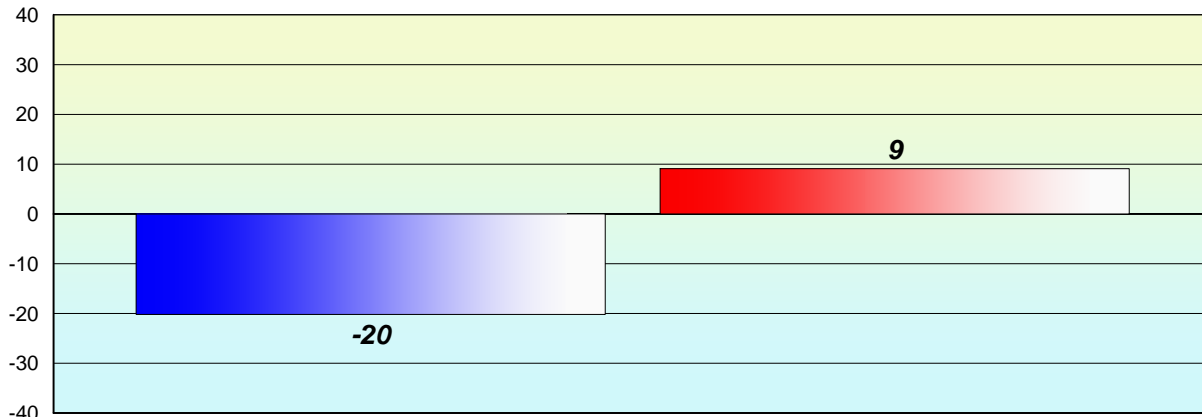
% of students at Grade Level = 74%

% of students at Level 3 and above = 67%



**Longitudinal
Cohort of students
Difference from Provincial Mean 2012 - 2013**

Reading



Grade 2 (2012) Reading Record

Grade 3 (2013) CRT

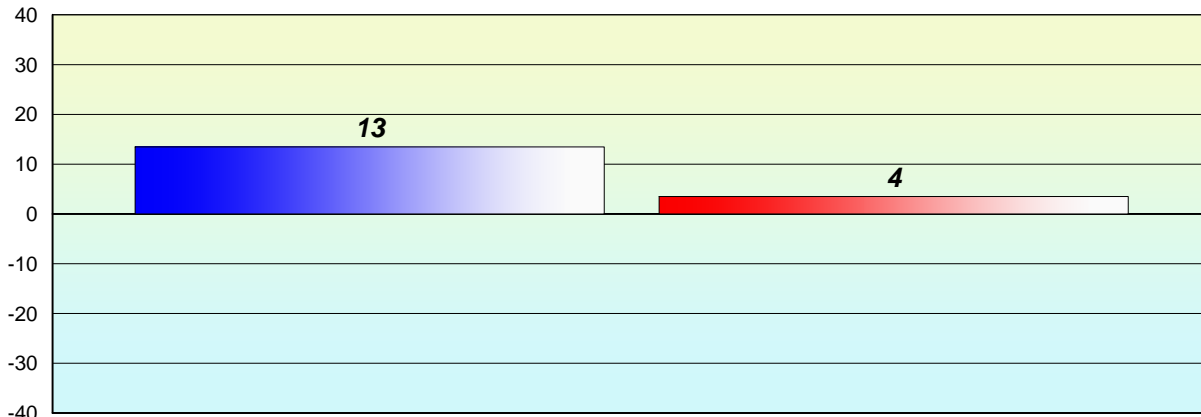
% of students at Grade Level = 74%

% of students at Level 3 and above = 67%



**Longitudinal
Cohort of students
Difference from Provincial Mean 2012 - 2013**

Reading



Grade 2 (2012) Reading Record

% of students at Grade Level = 74%

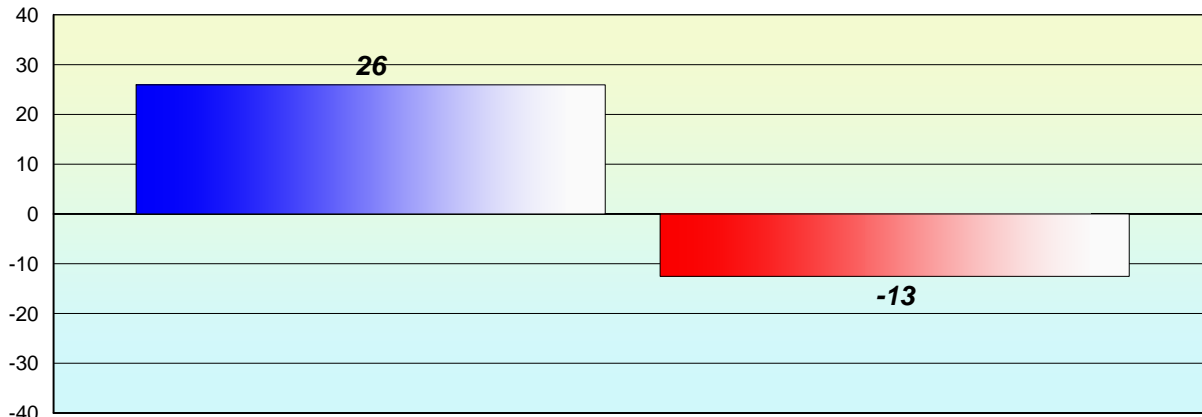
Grade 3 (2013) CRT

% of students at Level 3 and above = 67%



**Longitudinal
Cohort of students
Difference from Provincial Mean 2012 - 2013**

Reading



Grade 2 (2012) Reading Record

Grade 3 (2013) CRT

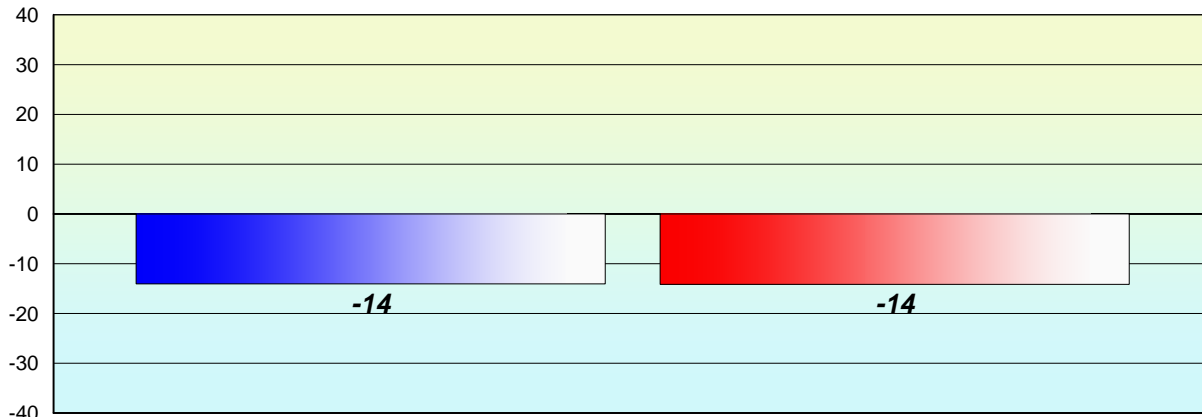
% of students at Grade Level = 74%

% of students at Level 3 and above = 67%



**Longitudinal
Cohort of students
Difference from Provincial Mean 2012 - 2013**

Reading



Grade 2 (2012) Reading Record

Grade 3 (2013) CRT

% of students at Grade Level = 74%

% of students at Level 3 and above = 67%

