

District 803 - Private

School #: 373 First Baptist Academy

Exemption/Unknown Rates

Demand Writing

School data with 5 or fewer students withheld for reasons of confidentiality.

2010 2011 2012 2013

Reading

School data with 5 or fewer students withheld for reasons of confidentiality.

2010 2011 2012 2013



* Reading score is composite of Non Fiction and Poetry.

Mushuau Innu Natuashish School and Sheshatshiu Innu School are excluded from district and provincial results.

Source: Division of Evaluation and Research, Department of Education

District 803 - Private

School #: 373 First Baptist Academy

Participation Rates

Demand Writing

School data with 5 or fewer students withheld for reasons of confidentiality.



Reading

School data with 5 or fewer students withheld for reasons of confidentiality.



* Reading score is composite of Non Fiction and Poetry.

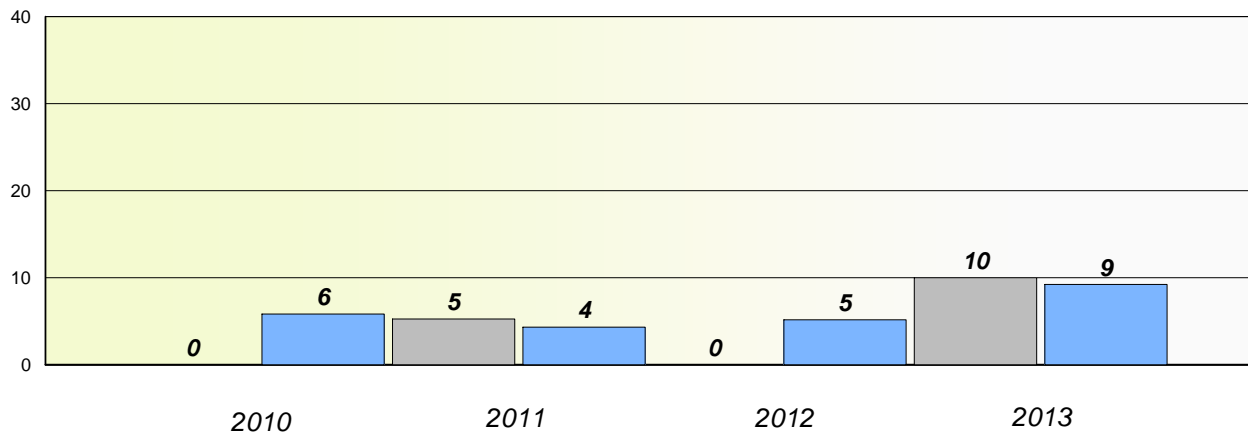
Mushuau Innu Natuashish School and Sheshatshiu Innu School are excluded from district and provincial results.

District 803 - Private

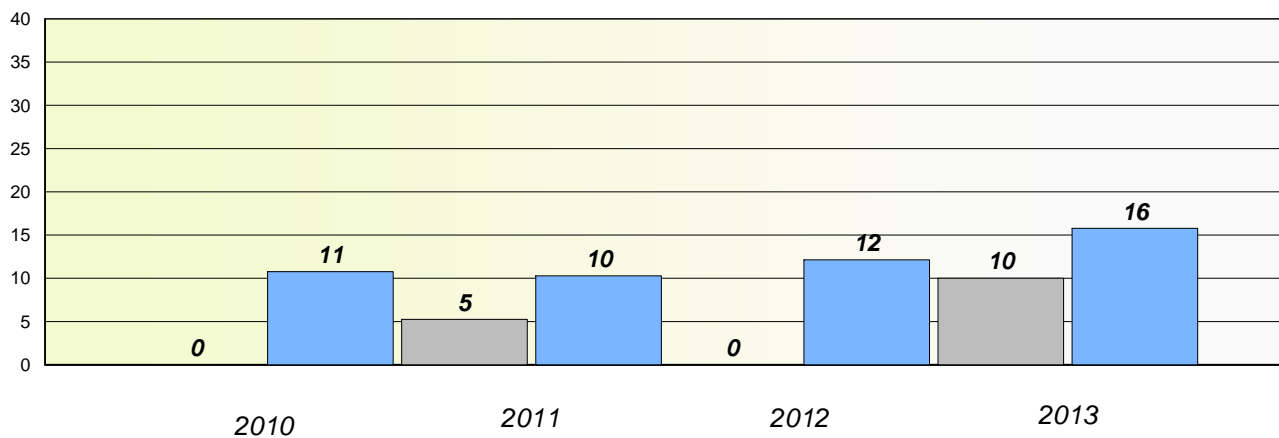
School #: 375 Lakecrest -St. John's Independent School

Exemption/Unknown Rates

Demand Writing



Reading



* Reading score is composite of Non Fiction and Poetry.

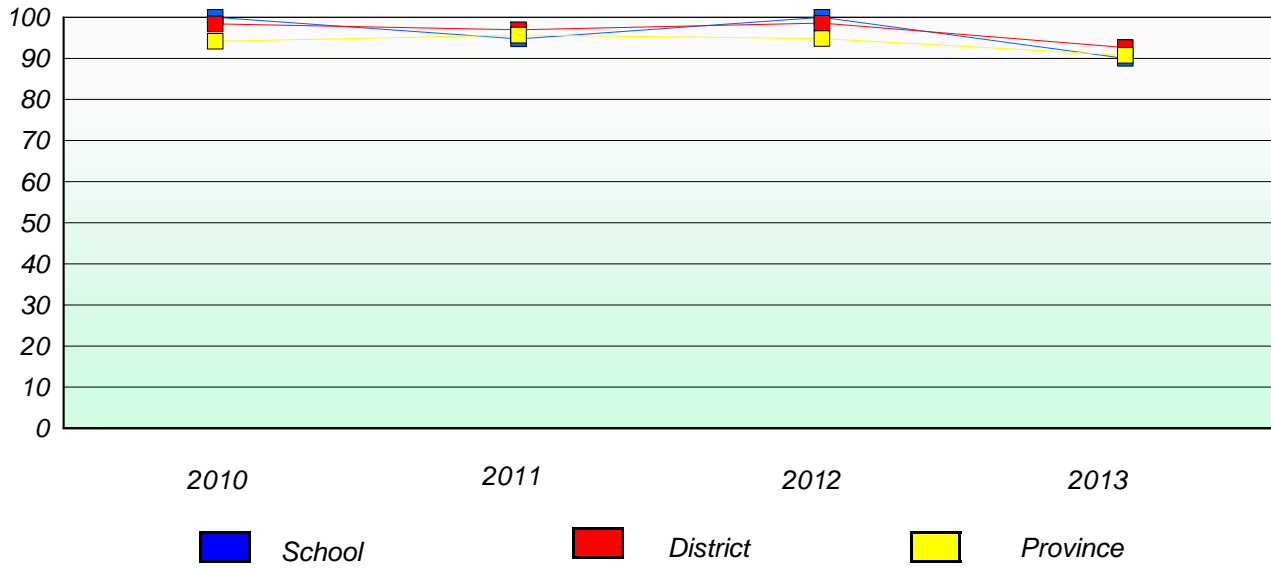
Mushuau Innu Natuashish School and Sheshatshiu Innu School are excluded from district and provincial results.

District 803 - Private

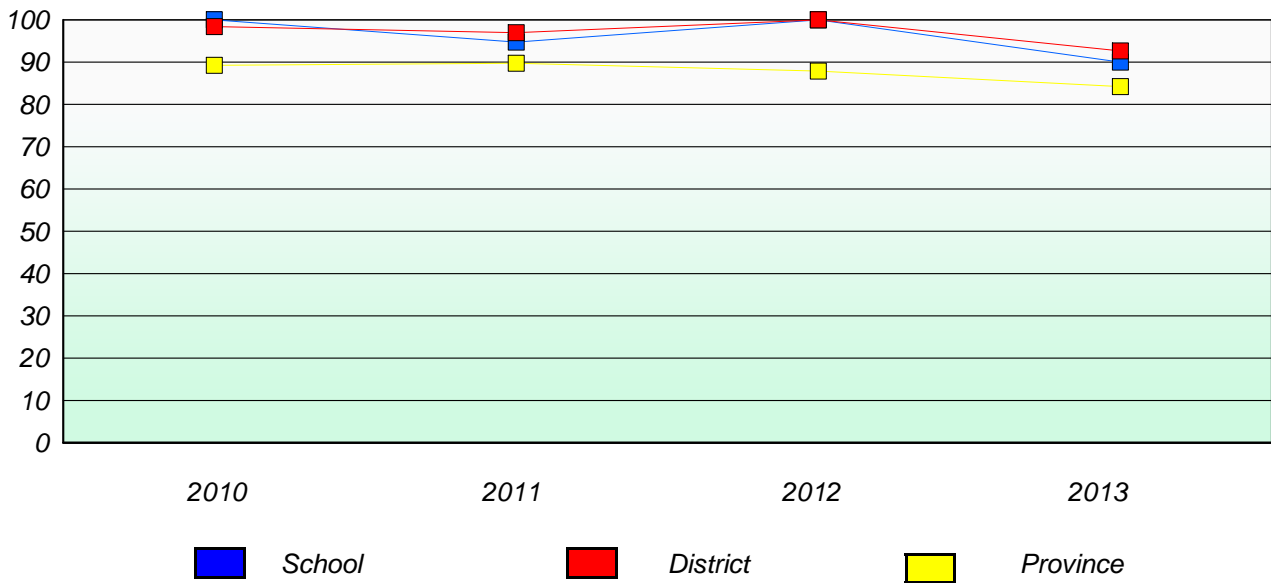
School #: 375 Lakecrest -St. John's Independent School

Participation Rates

Demand Writing



Reading



* Reading score is composite of Non Fiction and Poetry.

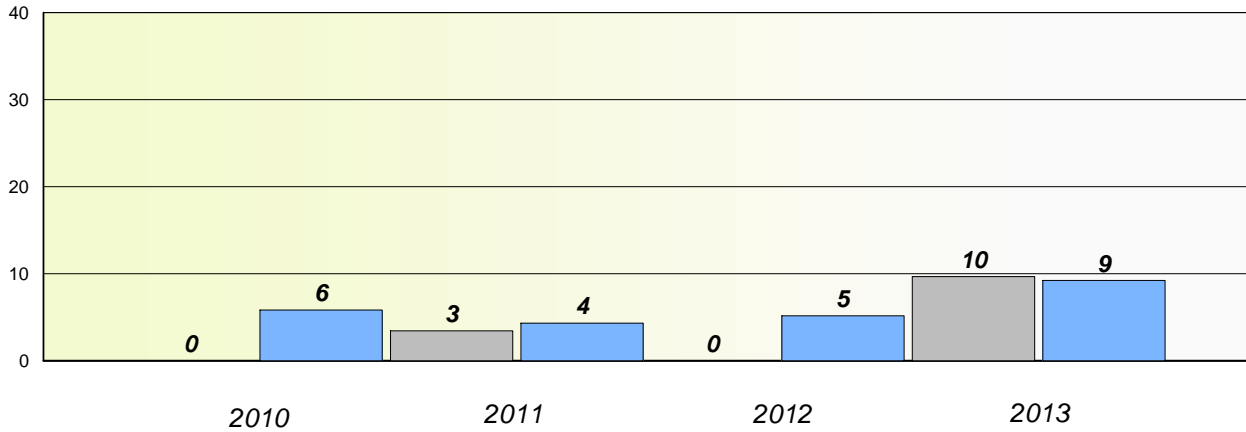
Mushuau Innu Natuashish School and Sheshatshiu Innu School are excluded from district and provincial results.

District 803 - Private

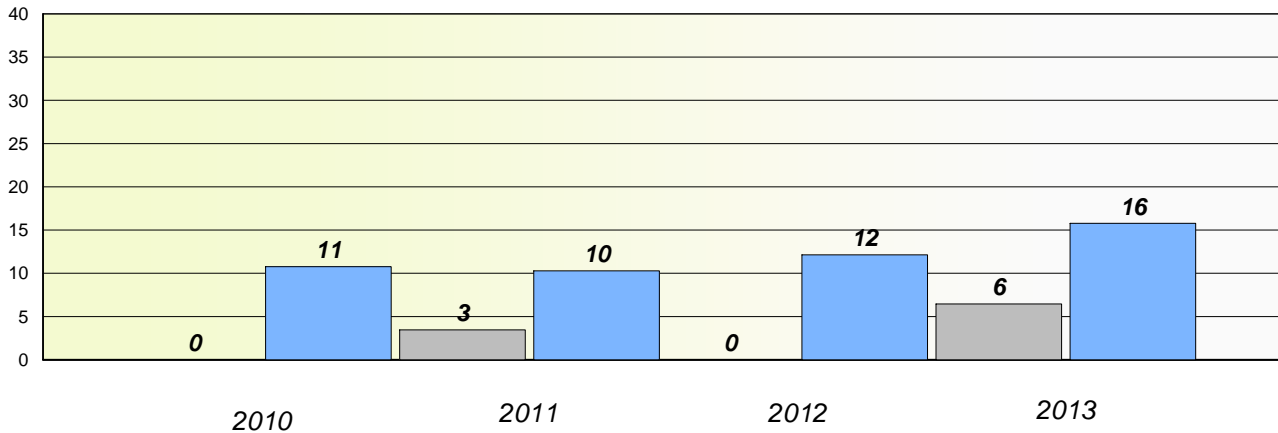
School #: 450 St. Bonaventure's College

Exemption/Unknown Rates

Demand Writing



Reading



* Reading score is composite of Non Fiction and Poetry.

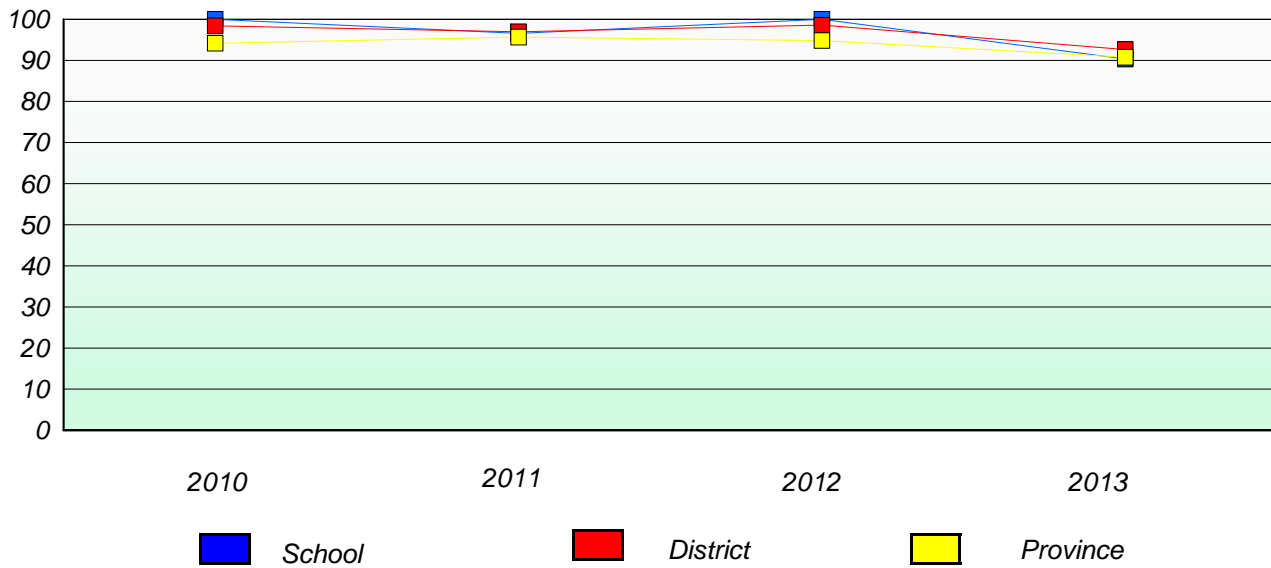
Mushuau Innu Natuashish School and Sheshatshiu Innu School are excluded from district and provincial results.

District 803 - Private

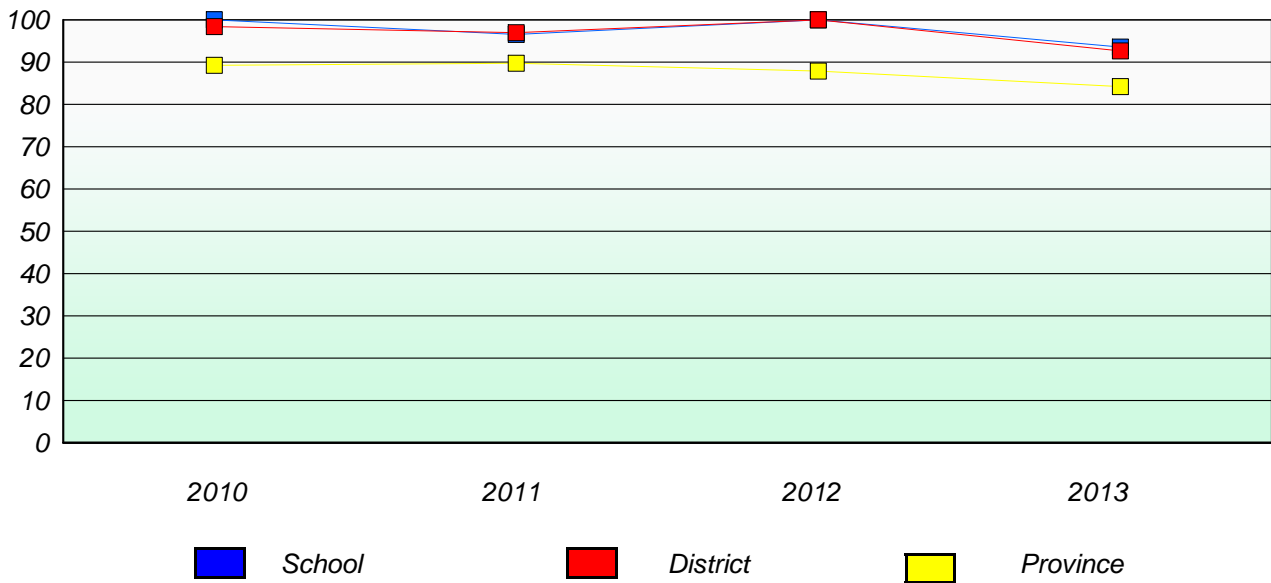
School #: 450 St. Bonaventure's College

Participation Rates

Demand Writing



Reading



* Reading score is composite of Non Fiction and Poetry.

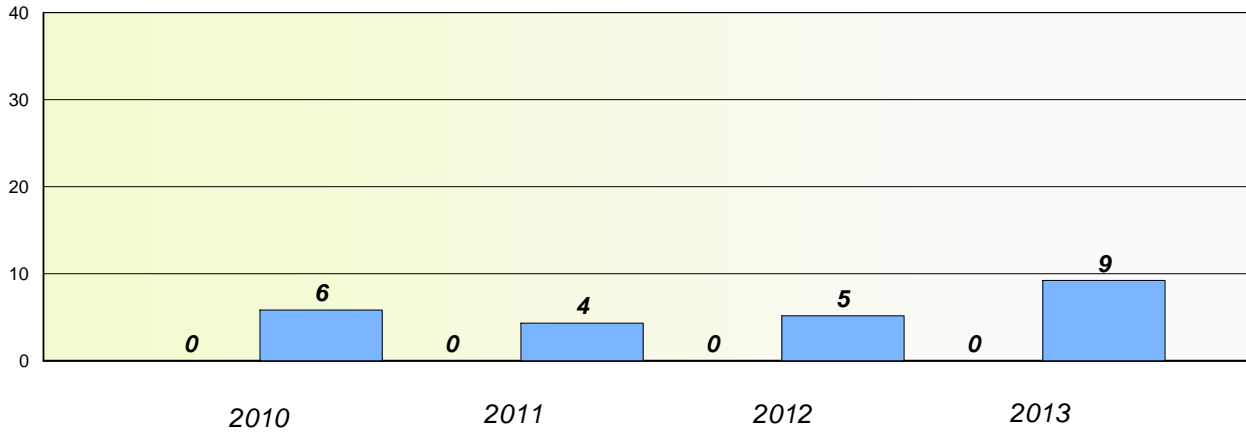
Mushuau Innu Natuashish School and Sheshatshiu Innu School are excluded from district and provincial results.

District 803 - Private

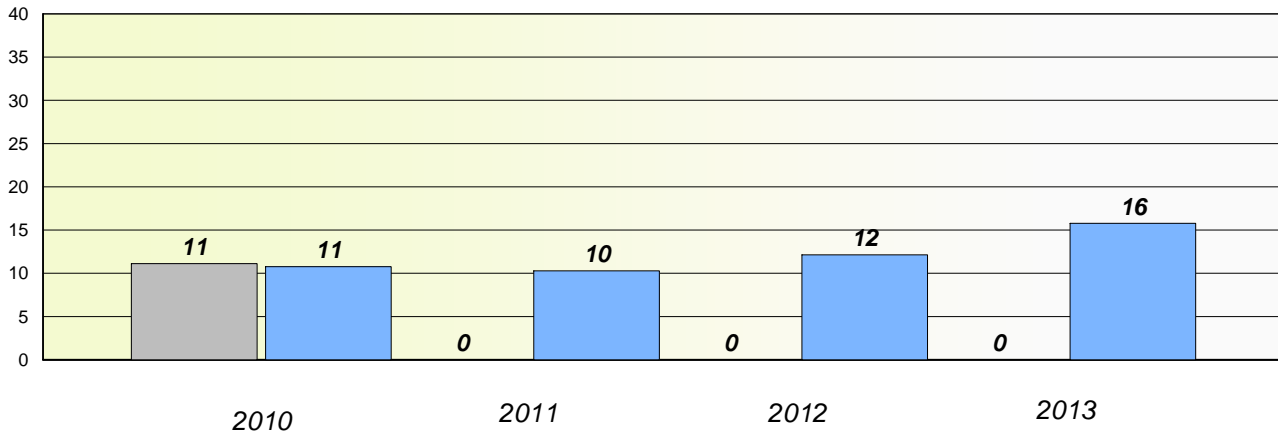
School #: 453 Eric G. Lambert All-Grade

Exemption/Unknown Rates

Demand Writing



Reading



* Reading score is composite of Non Fiction and Poetry.

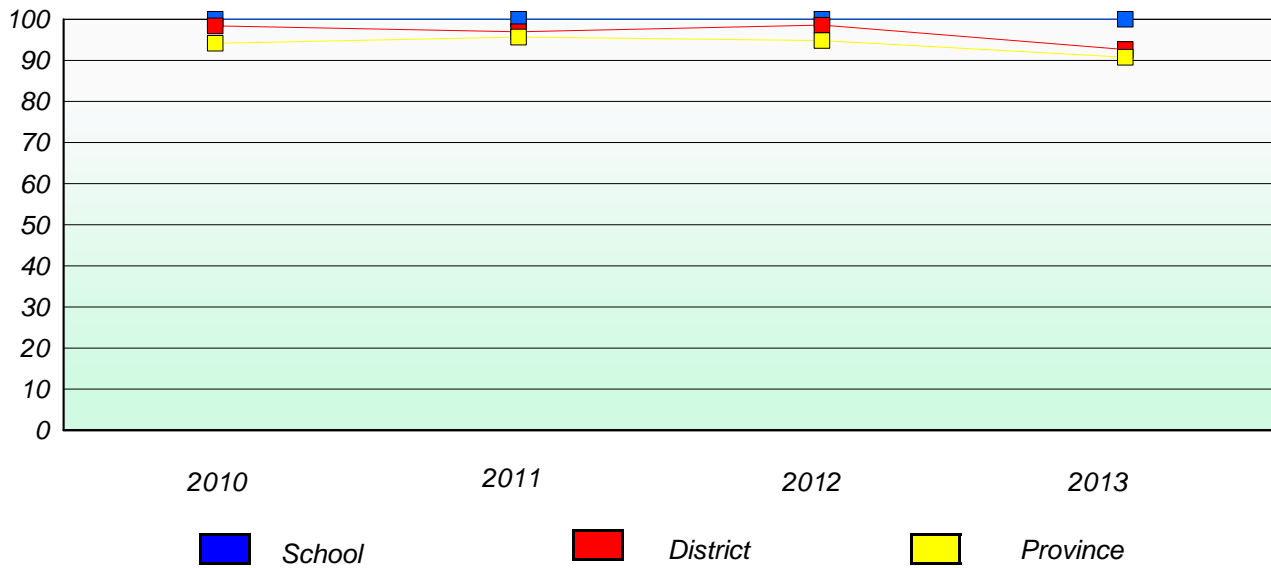
Mushuau Innu Natuashish School and Sheshatshiu Innu School are excluded from district and provincial results.

District 803 - Private

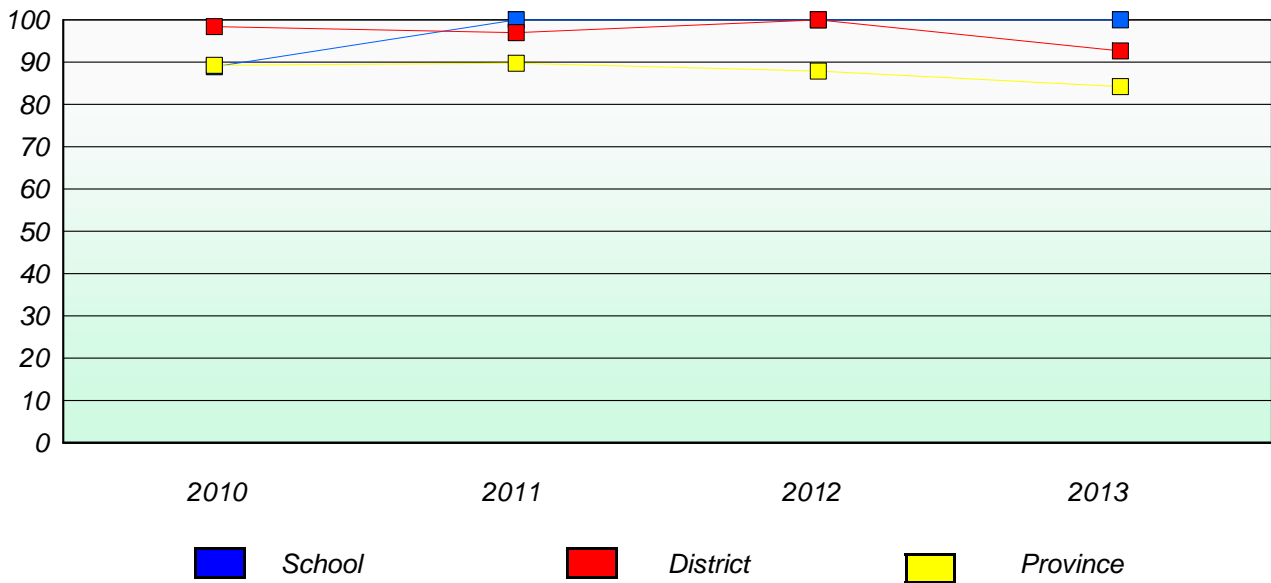
School #: 453 Eric G. Lambert All-Grade

Participation Rates

Demand Writing



Reading



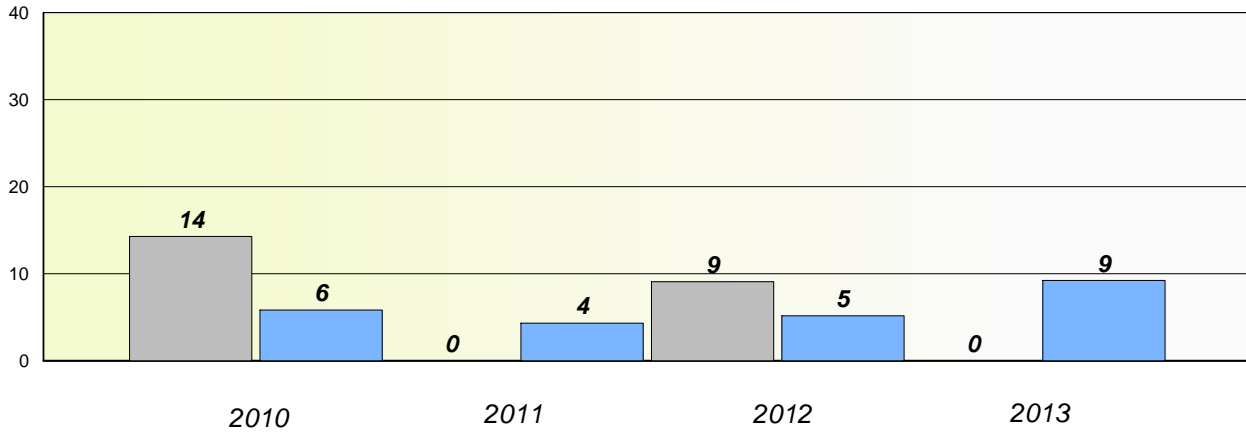
* Reading score is composite of Non Fiction and Poetry.

District 803 - Private

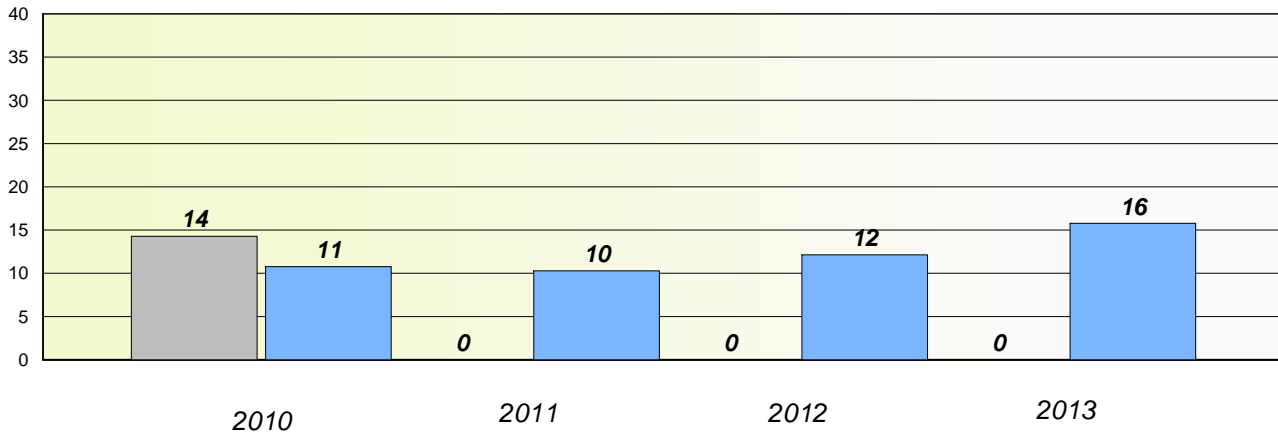
School #: 469 Immaculate Heart of Mary School

Exemption/Unknown Rates

Demand Writing



Reading



* Reading score is composite of Non Fiction and Poetry.

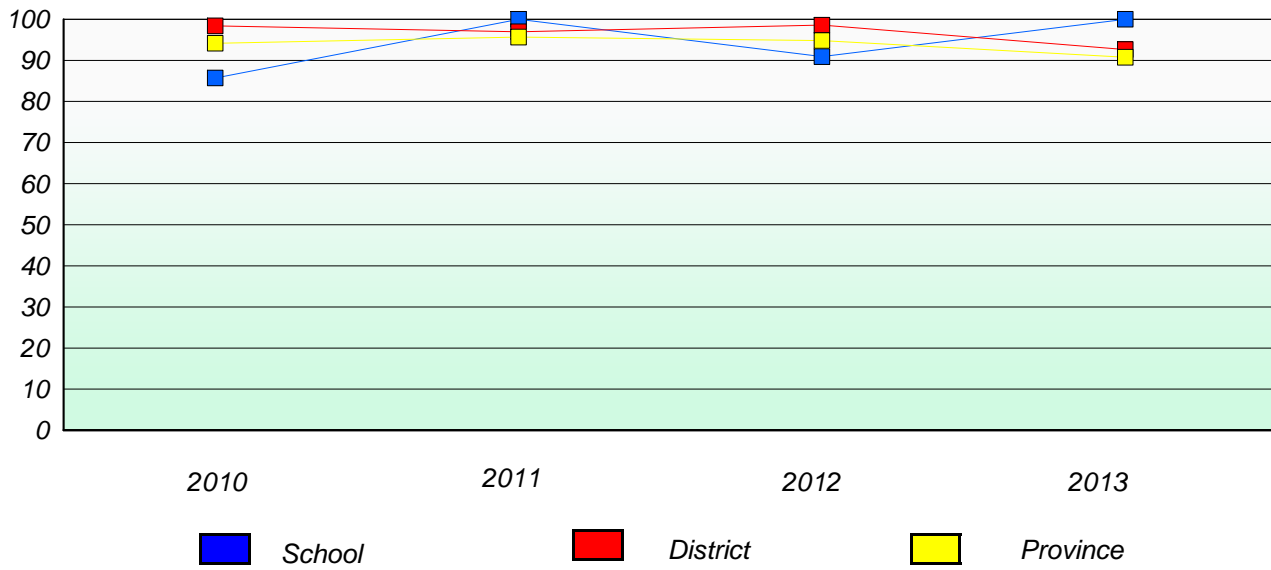
Mushuau Innu Natuashish School and Sheshatshiu Innu School are excluded from district and provincial results.

District 803 - Private

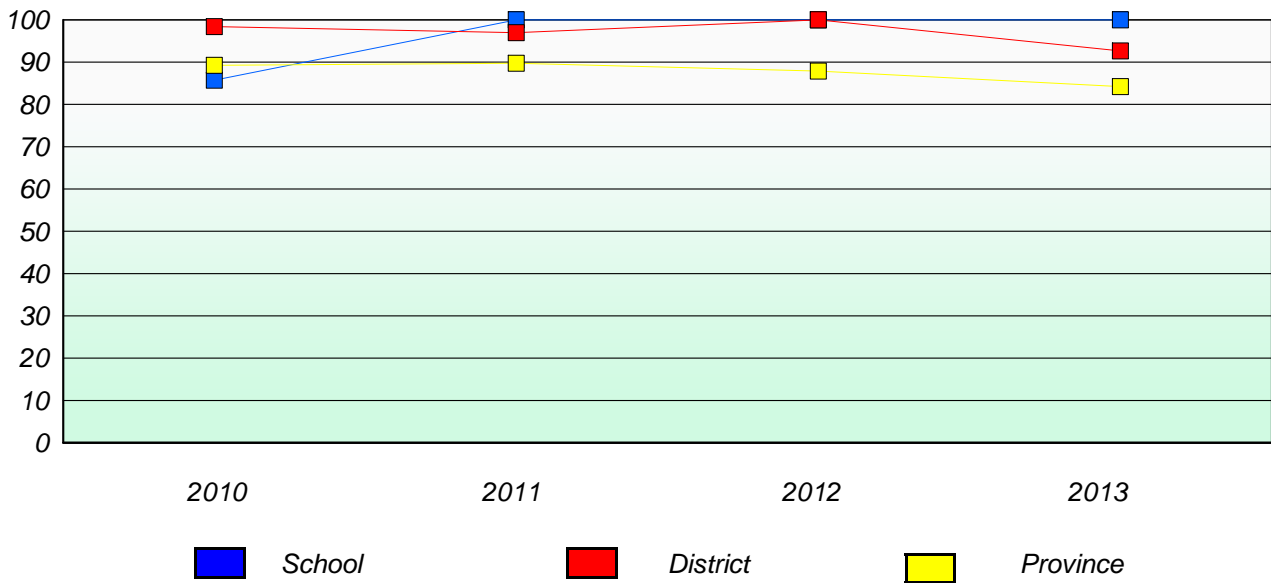
School #: 469 Immaculate Heart of Mary School

Participation Rates

Demand Writing



Reading



* Reading score is composite of Non Fiction and Poetry.

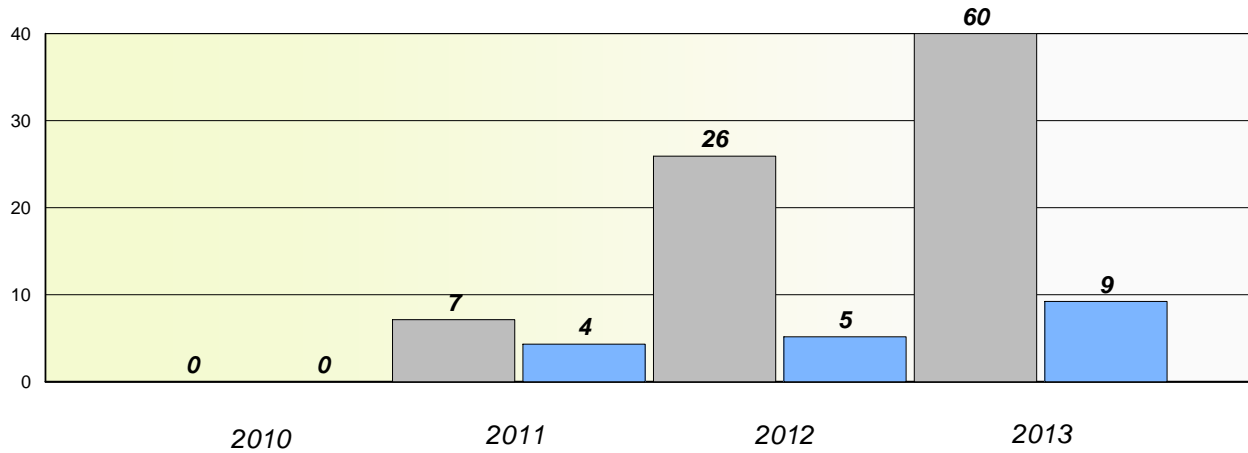
Mushuau Innu Natuashish School and Sheshatshiu Innu School are excluded from district and provincial results.

District 804 - Native Fedeg

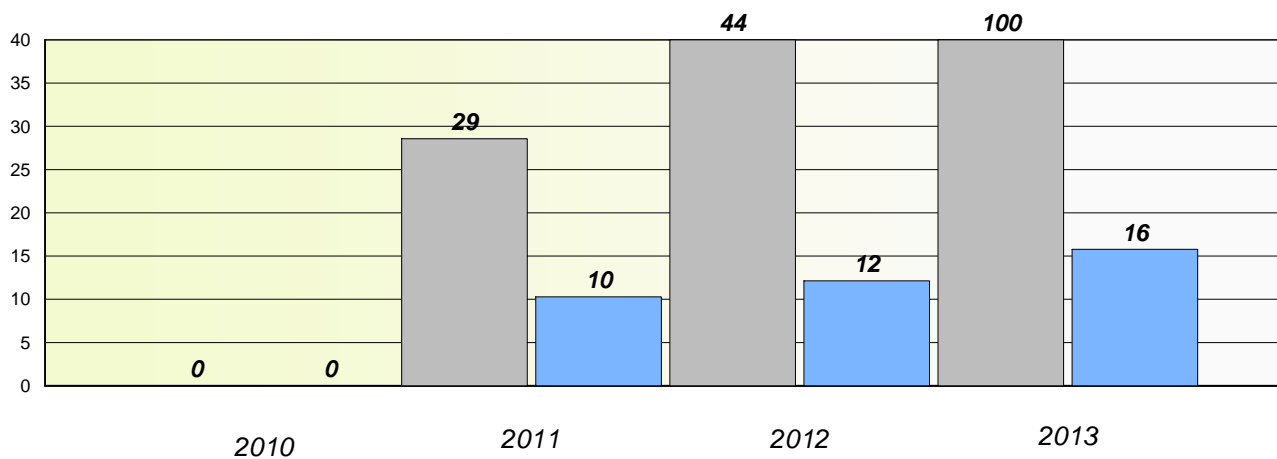
School #: 018 Sheshatshiu Innu School

Exemption/Unknown Rates

Demand Writing



Reading



* Reading score is composite of Non Fiction and Poetry.

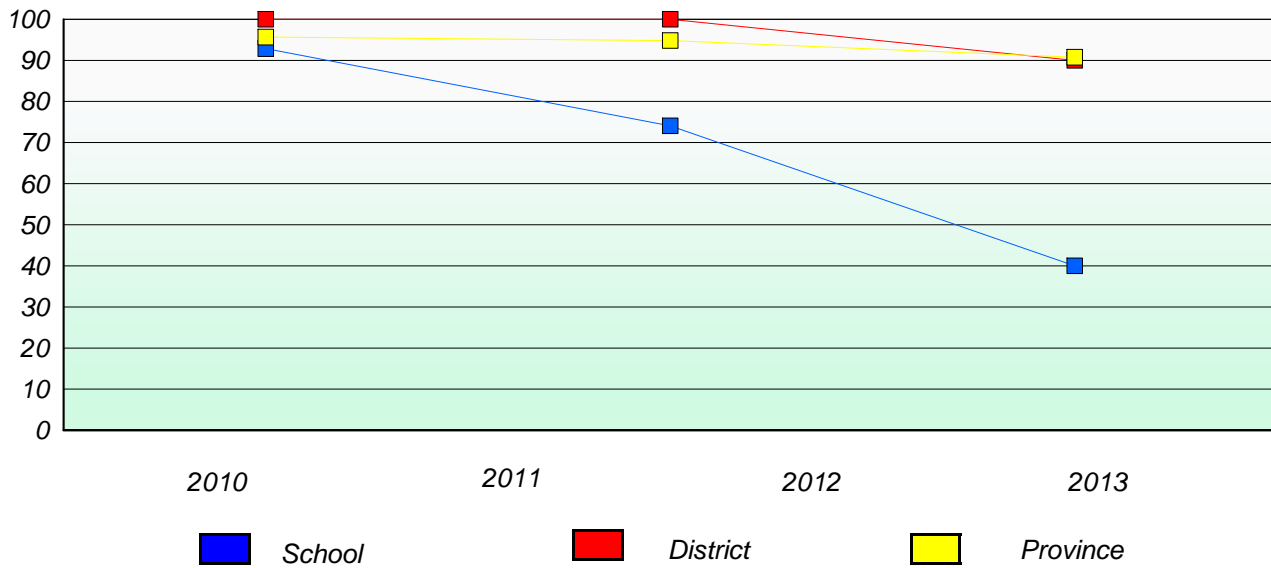
Mushuau Innu Natuashish School and Sheshatshiu Innu School are excluded from district and provincial results.

District 804 - Native Federe

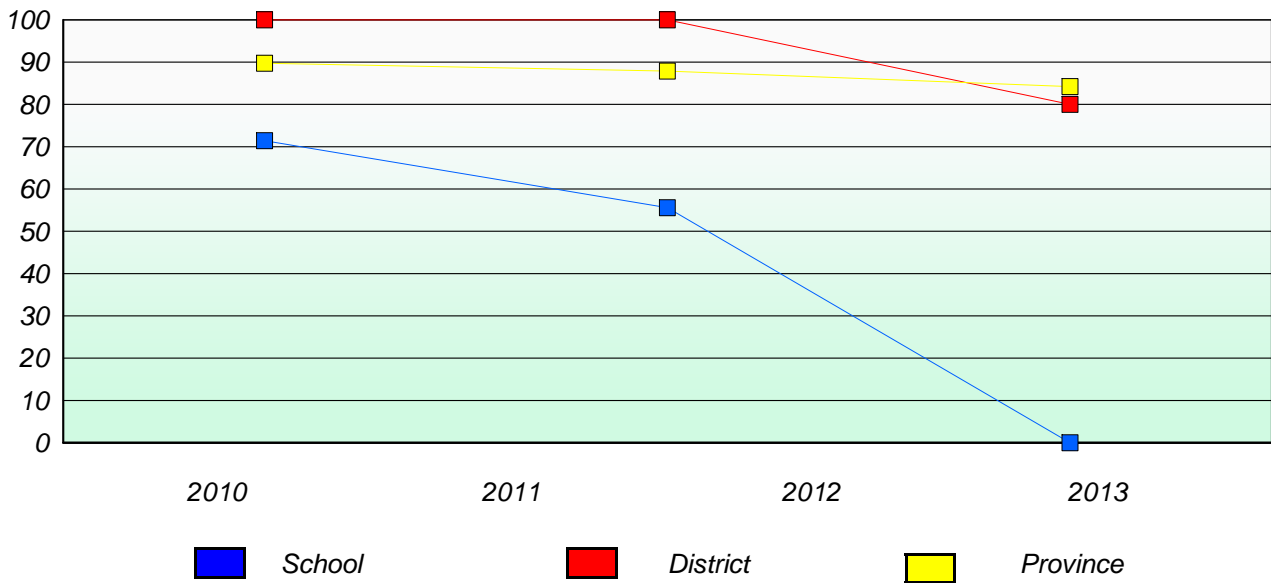
School #: 018 Sheshatshiu Innu School

Participation Rates

Demand Writing



Reading



* Reading score is composite of Non Fiction and Poetry.

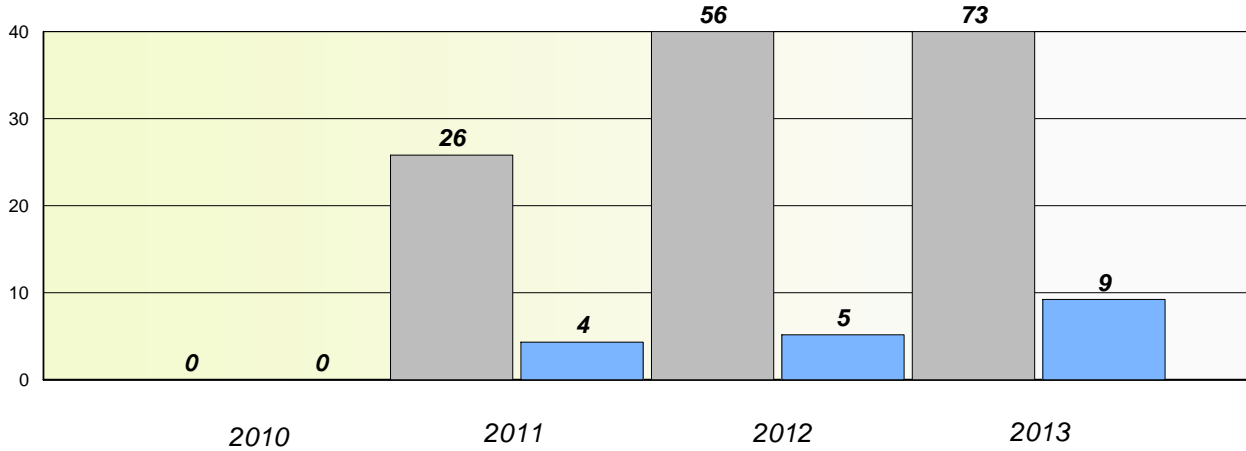
Mushuau Innu Natuashish School and Sheshatshiu Innu School are excluded from district and provincial results.

District 804 - Native Federated

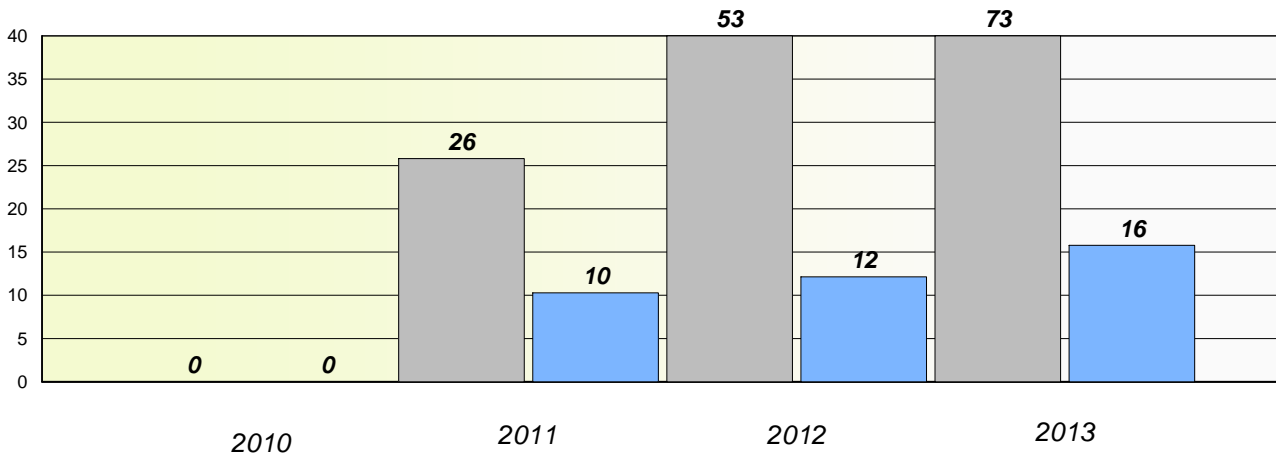
School #: 019 Mushuau Innu Natuashish School

Exemption/Unknown Rates

Demand Writing



Reading



* Reading score is composite of Non Fiction and Poetry.

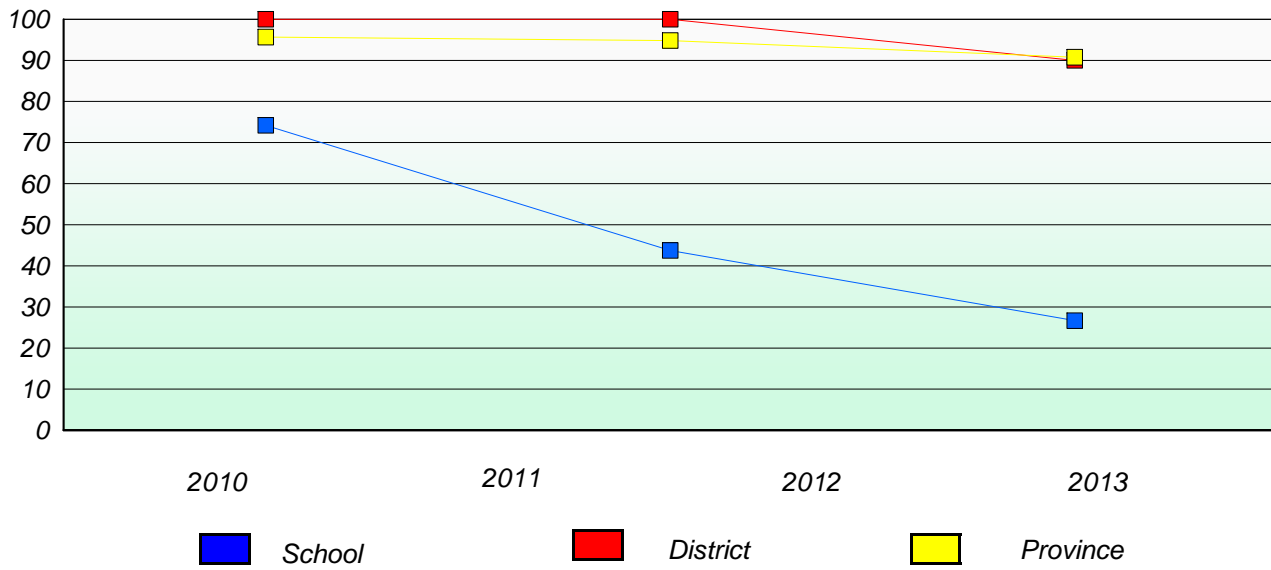
Mushuau Innu Natuashish School and Sheshatshiu Innu School are excluded from district and provincial results.

District 804 - Native Federe

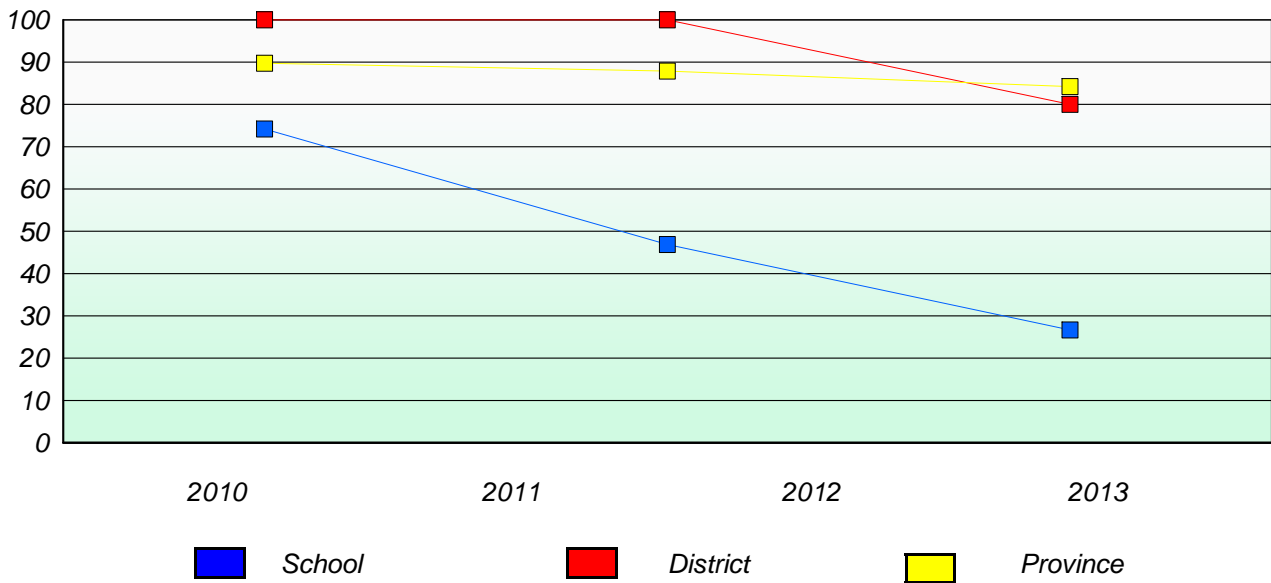
School #: 019 Mushuau Innu Natuashish School

Participation Rates

Demand Writing



Reading



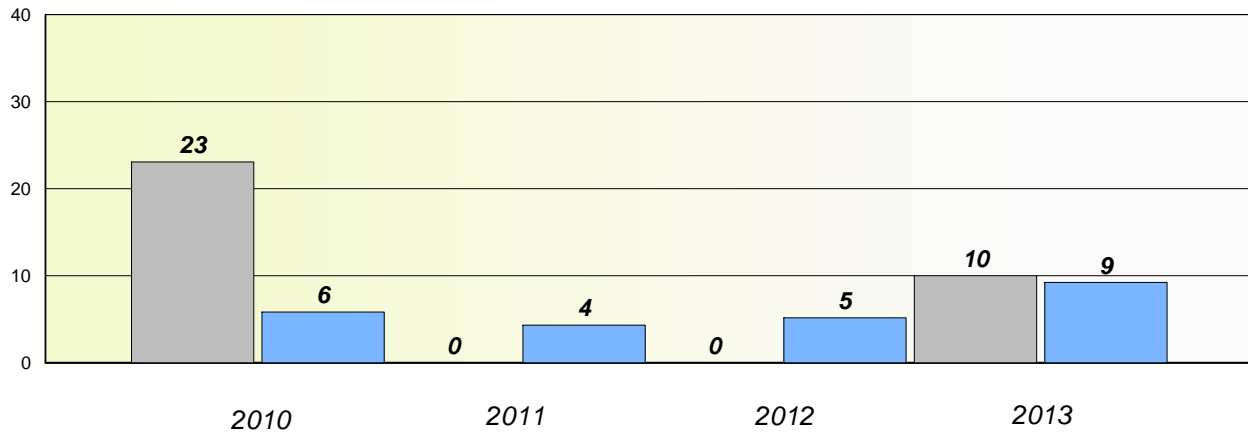
* Reading score is composite of Non Fiction and Poetry.

District 804 - Native Fedeg

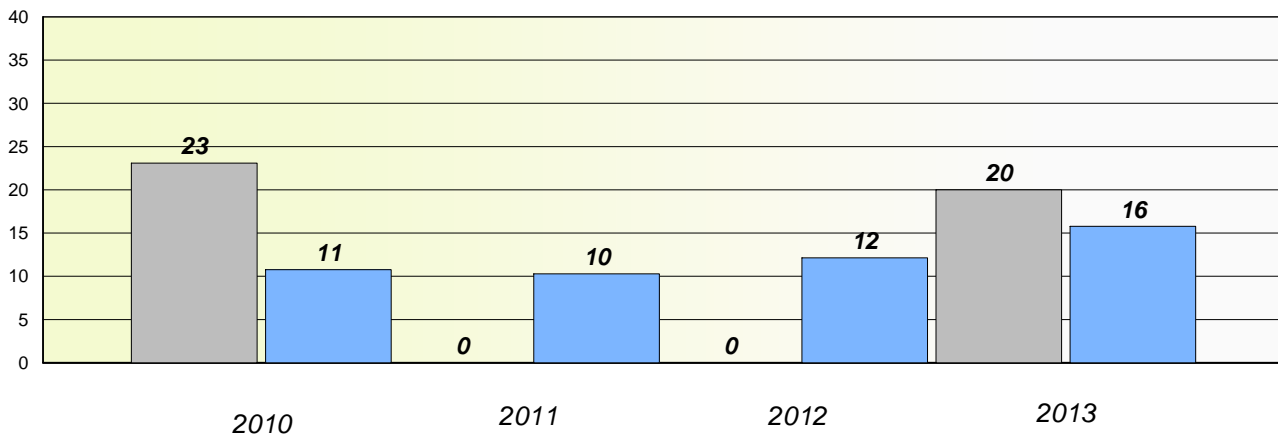
School #: 376 Set Anneway Kegnamogwom

Exemption/Unknown Rates

Demand Writing



Reading



* Reading score is composite of Non Fiction and Poetry.

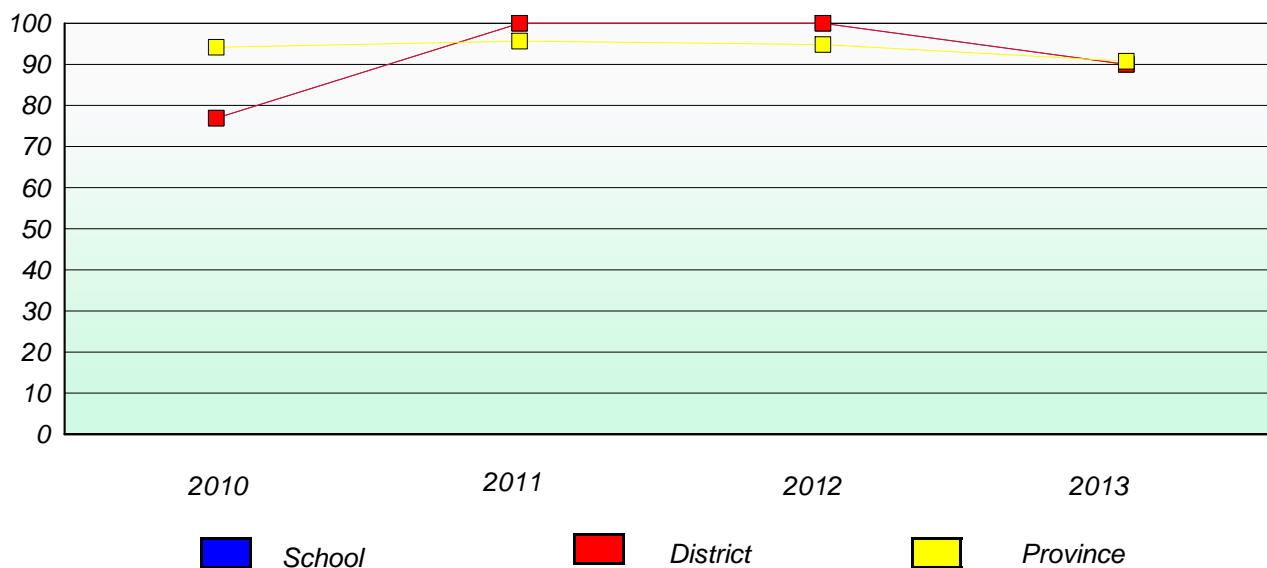
Mushuau Innu Natuashish School and Sheshatshiu Innu School are excluded from district and provincial results.

District 804 - Native Federated

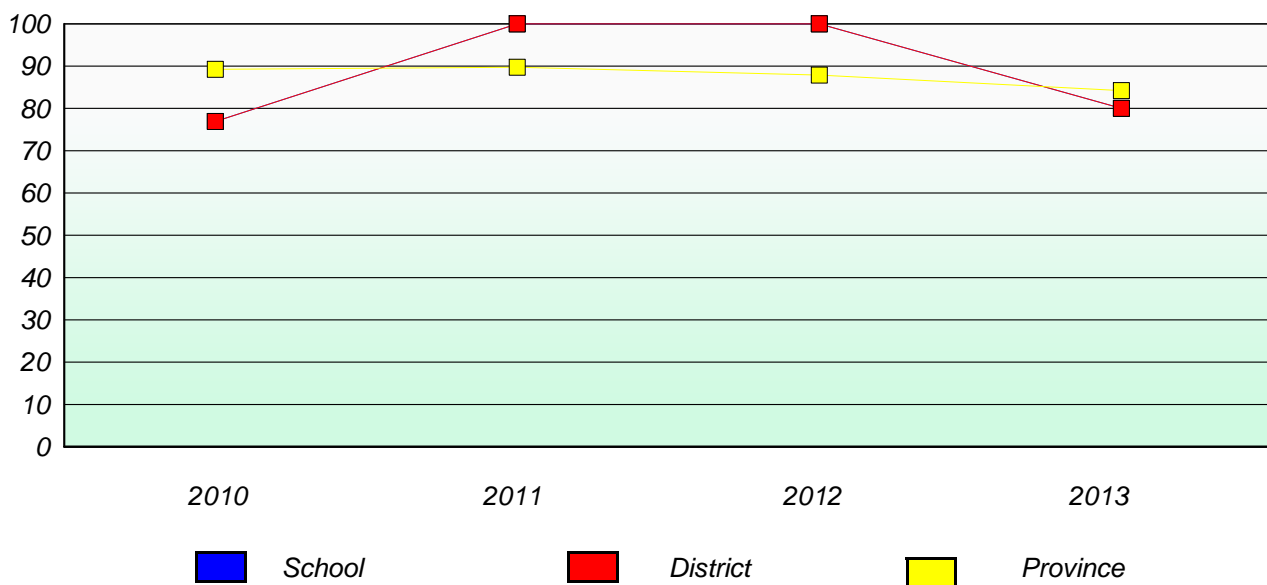
School #: 376 Se't Anneway Kegnamogwom

Participation Rates

Demand Writing



Reading



* Reading score is composite of Non Fiction and Poetry.

Mushuau Innu Natuashish School and Sheshatshiu Innu School are excluded from district and provincial results.