

District 1 - Labrador

School #: 001 St. Peter's School

Exemption/Unknown Rates

Demand Writing

School data with 5 or fewer students withheld for reasons of confidentiality.

2010 2011 2012 2013

Reading

School data with 5 or fewer students withheld for reasons of confidentiality.

2010 2011 2012 2013



* Reading score is composite of Non Fiction and Poetry.

Mushuau Innu Natuashish School and Sheshatshiu Innu School are excluded from district and provincial results.

District 1 - Labrador

School #: 001 St. Peter's School

Participation Rates

Demand Writing

School data with 5 or fewer students withheld for reasons of confidentiality.



Reading

School data with 5 or fewer students withheld for reasons of confidentiality.



* Reading score is composite of Non Fiction and Poetry.

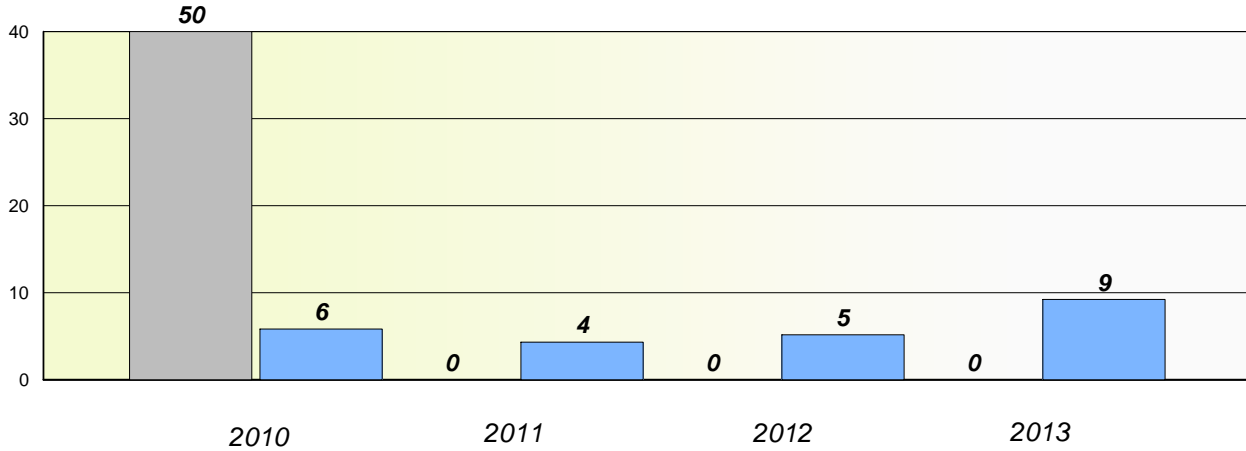
Mushuau Innu Natuashish School and Sheshatshiu Innu School are excluded from district and provincial results.

District 1 - Labrador

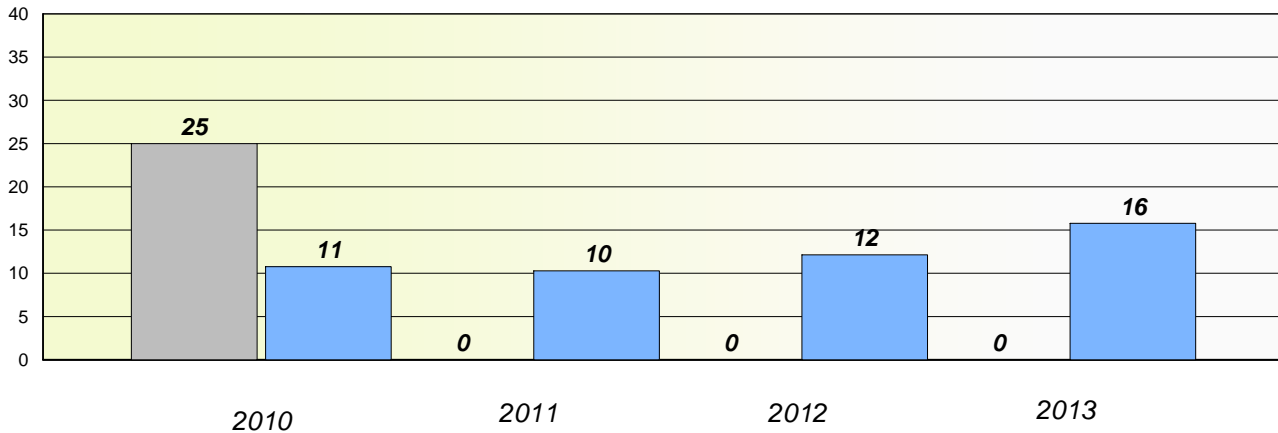
School #: 002 Henry Gordon Academy

Exemption/Unknown Rates

Demand Writing



Reading



* Reading score is composite of Non Fiction and Poetry.

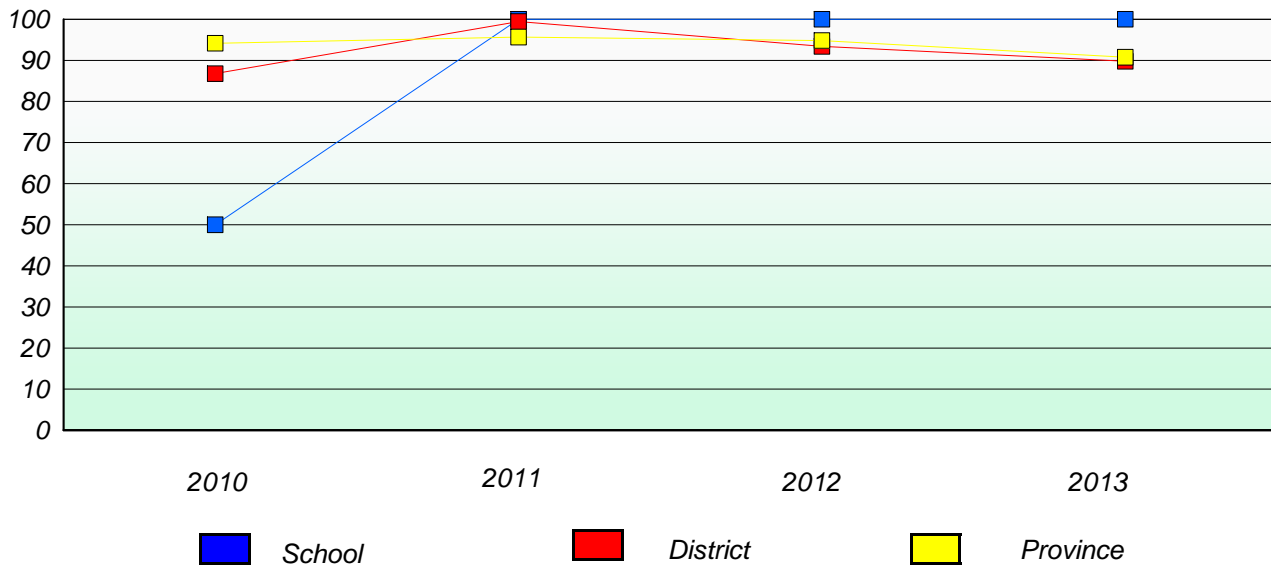
Mushuau Innu Natuashish School and Sheshatshiu Innu School are excluded from district and provincial results.

District 1 - Labrador

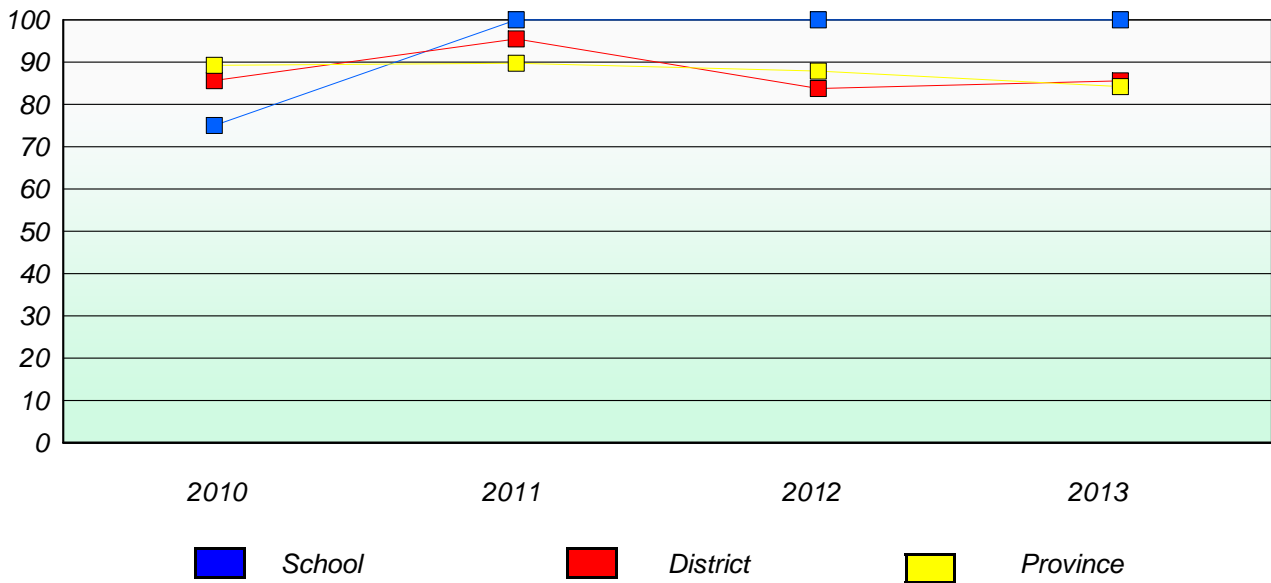
School #: 002 Henry Gordon Academy

Participation Rates

Demand Writing



Reading



* Reading score is composite of Non Fiction and Poetry.

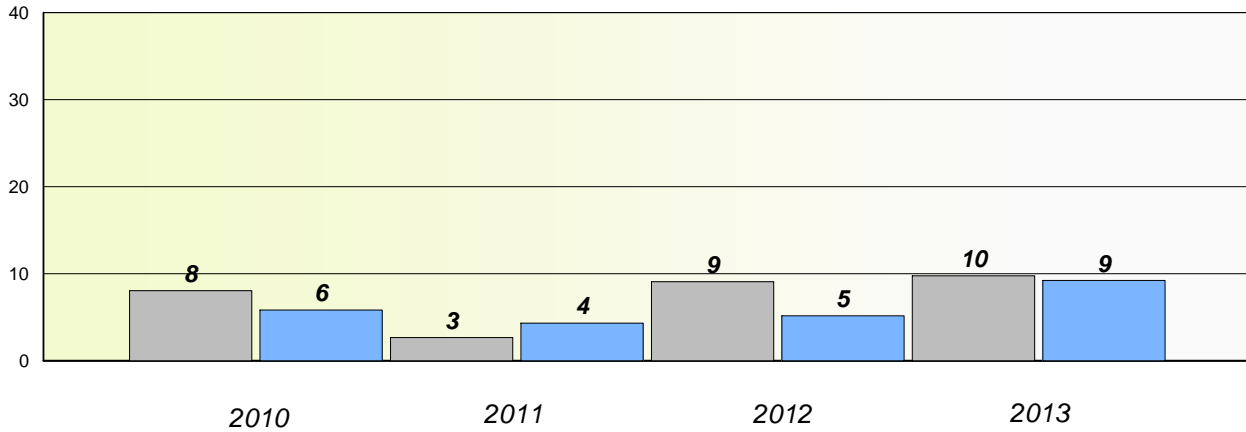
Mushuau Innu Natuashish School and Sheshatshiu Innu School are excluded from district and provincial results.

District 1 - Labrador

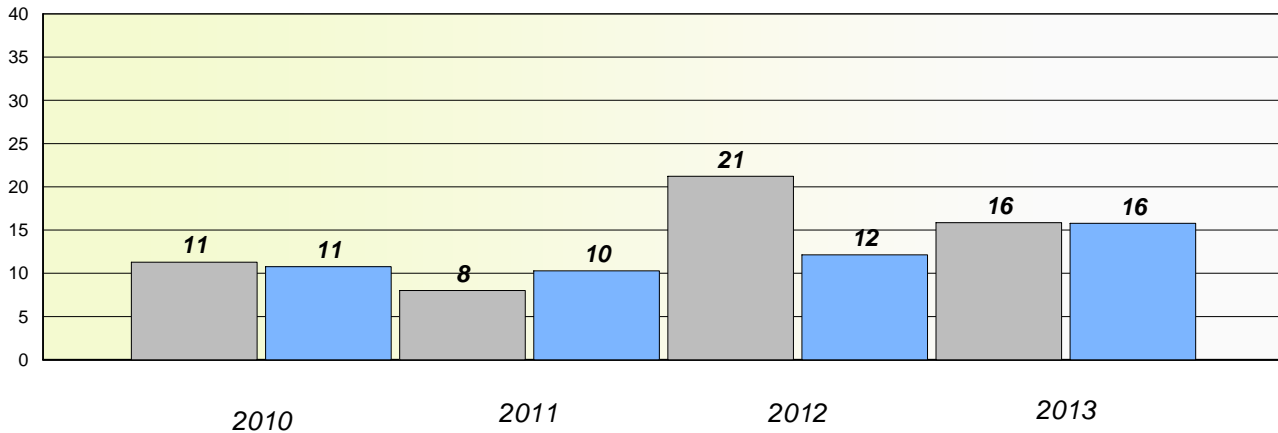
School #: 005 Peacock Primary School

Exemption/Unknown Rates

Demand Writing



Reading



* Reading score is composite of Non Fiction and Poetry.

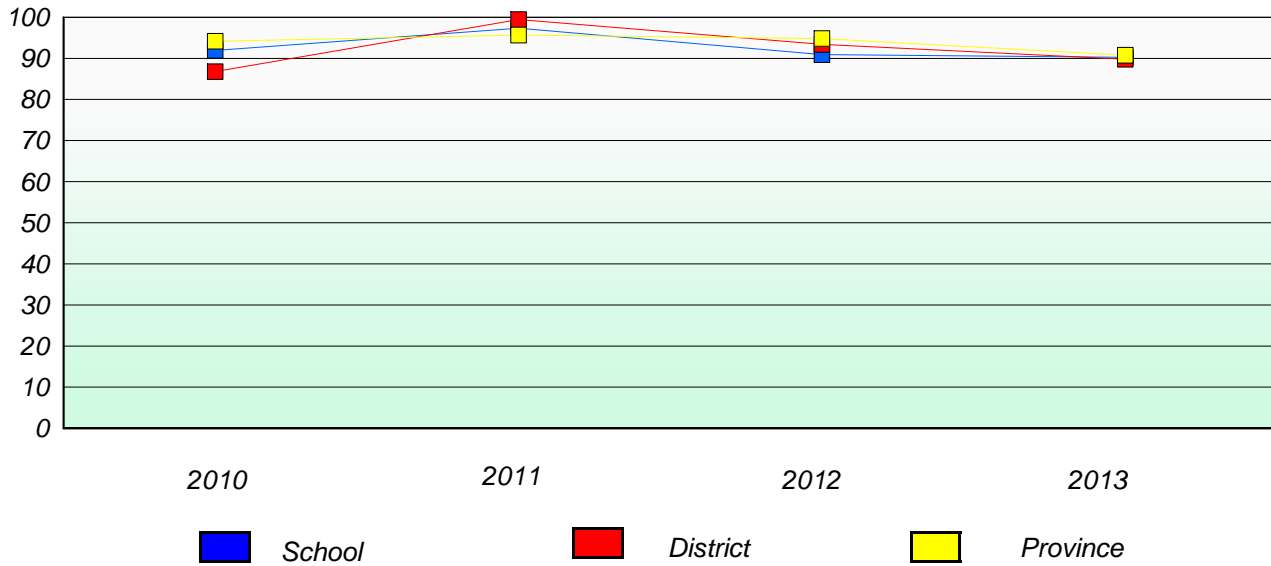
Mushuau Innu Natuashish School and Sheshatshiu Innu School are excluded from district and provincial results.

District 1 - Labrador

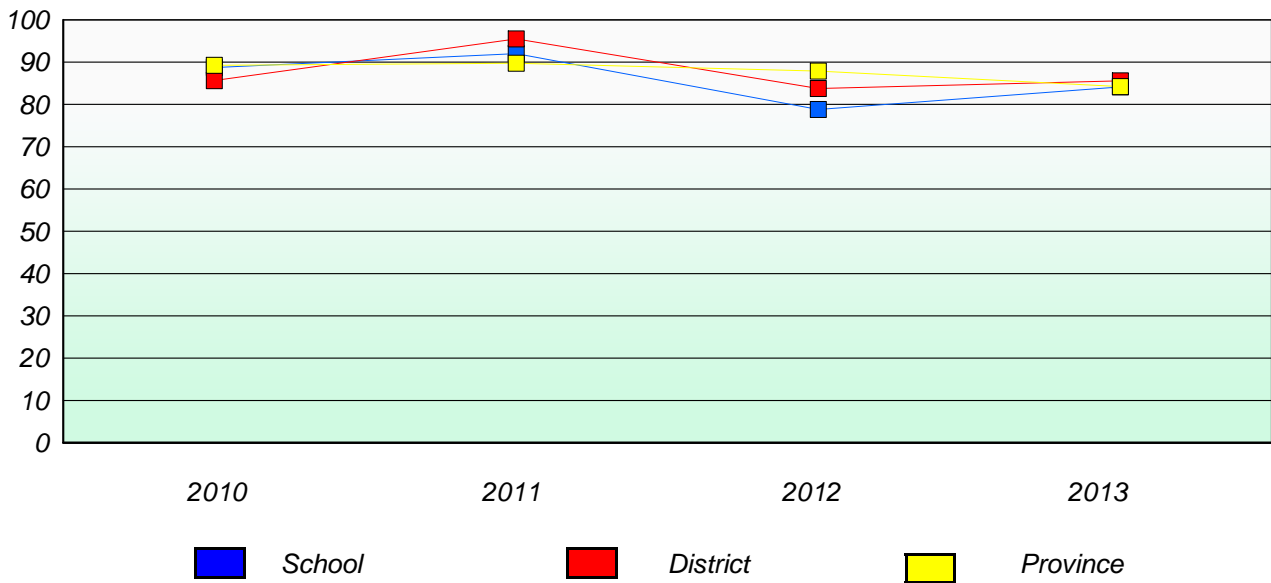
School #: 005 Peacock Primary School

Participation Rates

Demand Writing



Reading



* Reading score is composite of Non Fiction and Poetry.

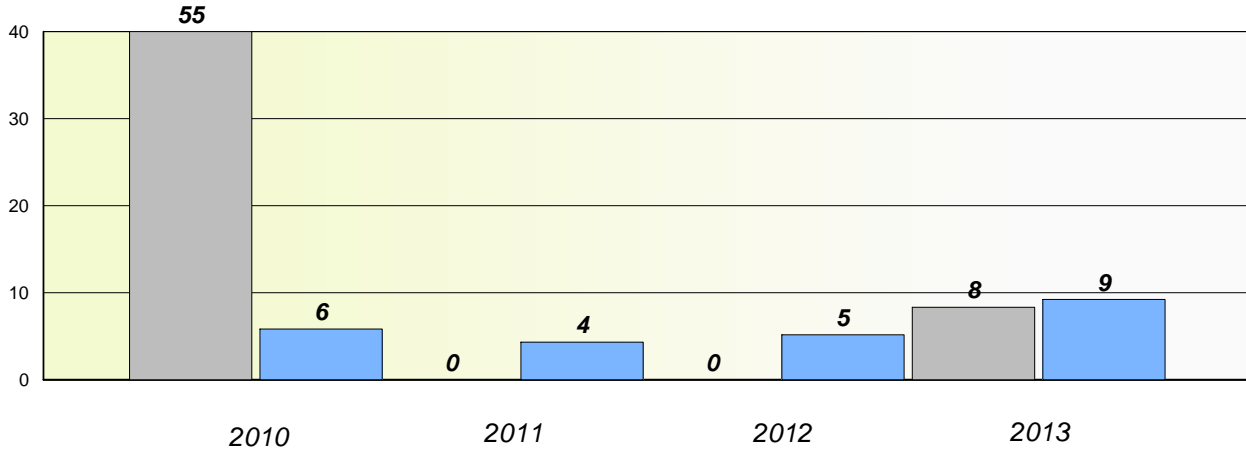
Mushuau Innu Natuashish School and Sheshatshiu Innu School are excluded from district and provincial results.

District 1 - Labrador

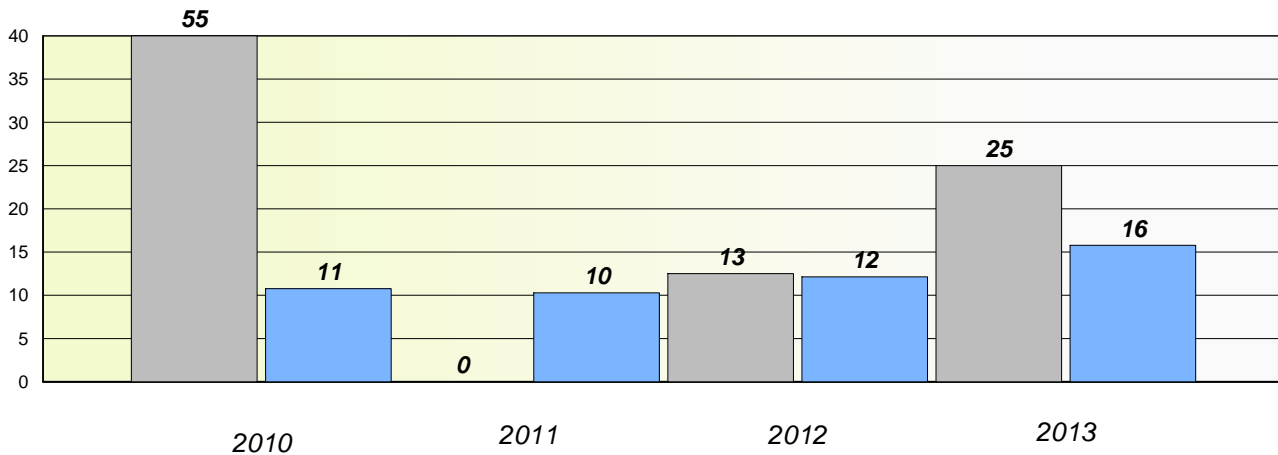
School #: 007 Amos Comenius Memorial School

Exemption/Unknown Rates

Demand Writing



Reading



* Reading score is composite of Non Fiction and Poetry.

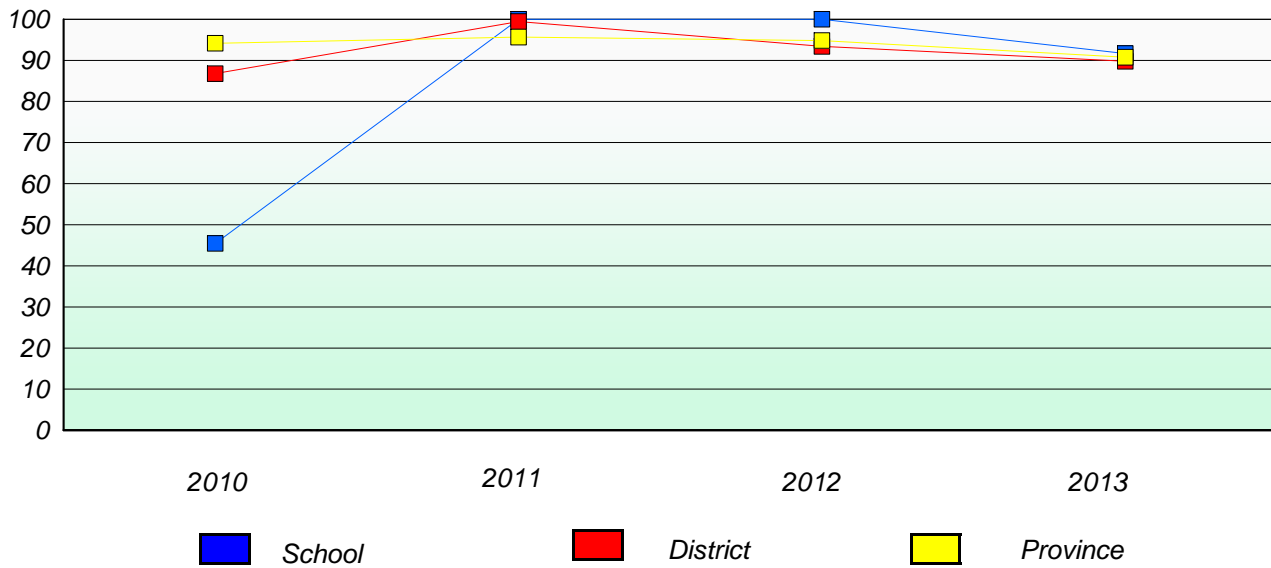
Mushuau Innu Natuashish School and Sheshatshiu Innu School are excluded from district and provincial results.

District 1 - Labrador

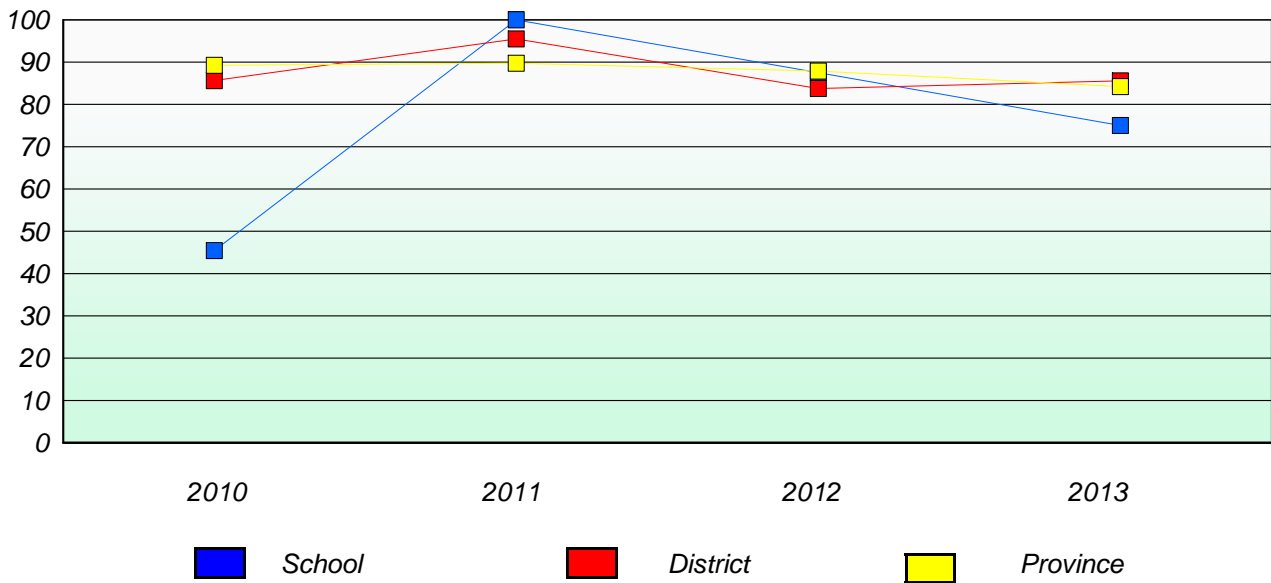
School #: 007 Amos Comenius Memorial School

Participation Rates

Demand Writing



Reading



* Reading score is composite of Non Fiction and Poetry.

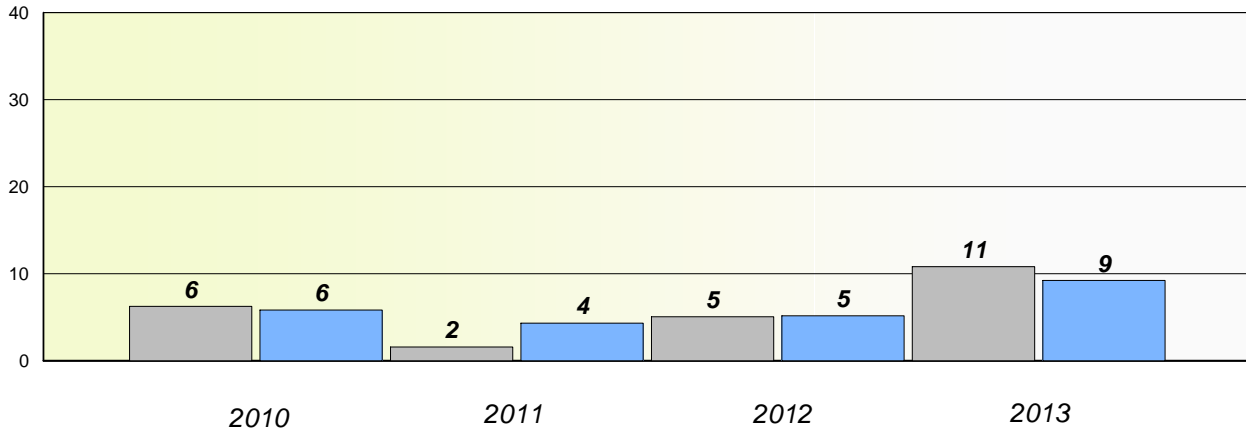
Mushuau Innu Natuashish School and Sheshatshiu Innu School are excluded from district and provincial results.

District 1 - Labrador

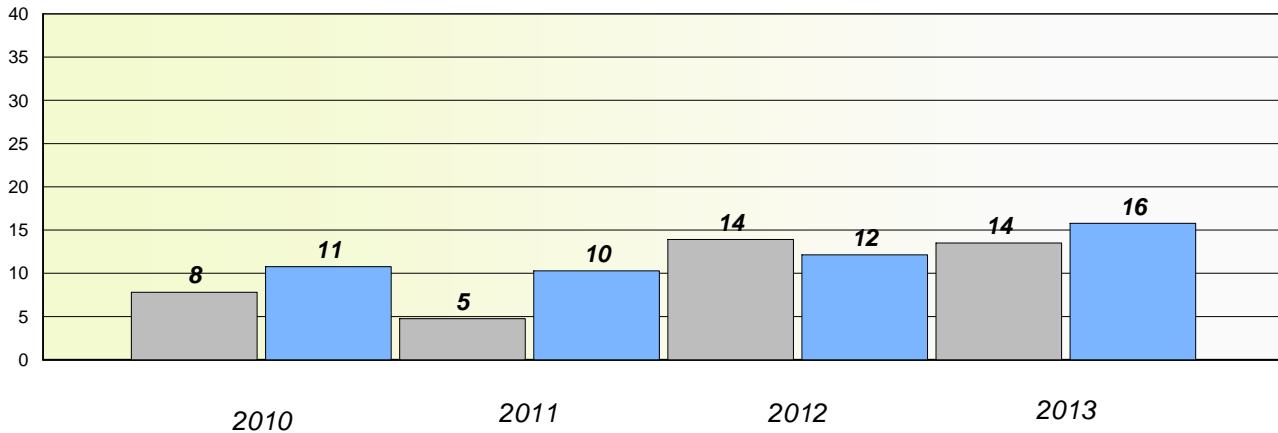
School #: 008 A. P. Low Primary

Exemption/Unknown Rates

Demand Writing



Reading



* Reading score is composite of Non Fiction and Poetry.

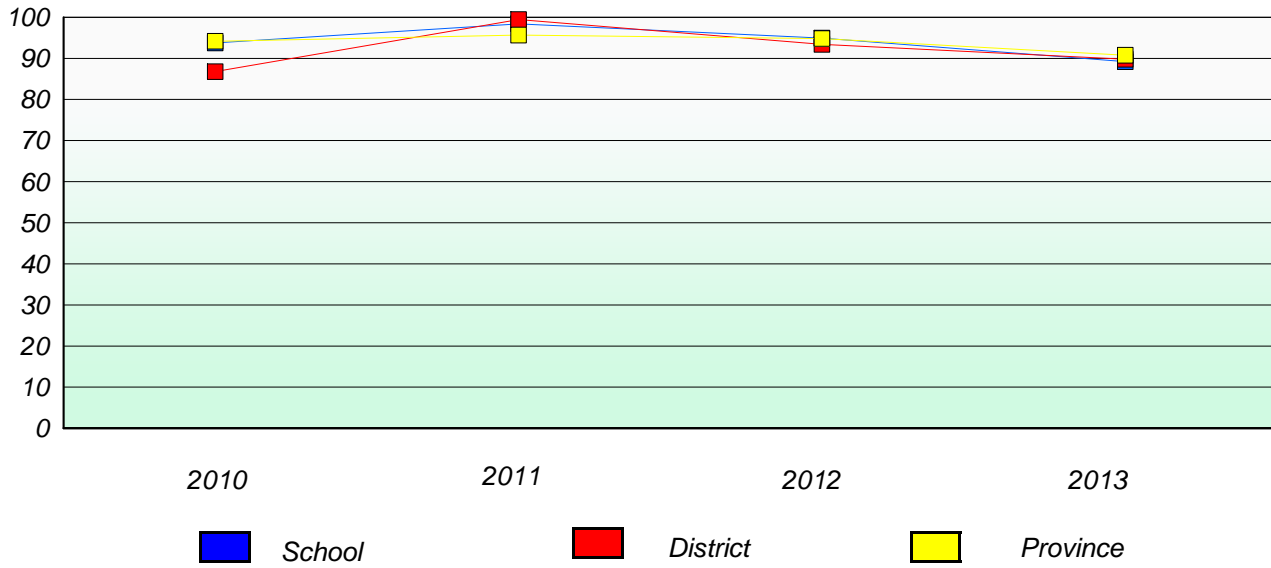
Mushuau Innu Natuashish School and Sheshatshiu Innu School are excluded from district and provincial results.

District 1 - Labrador

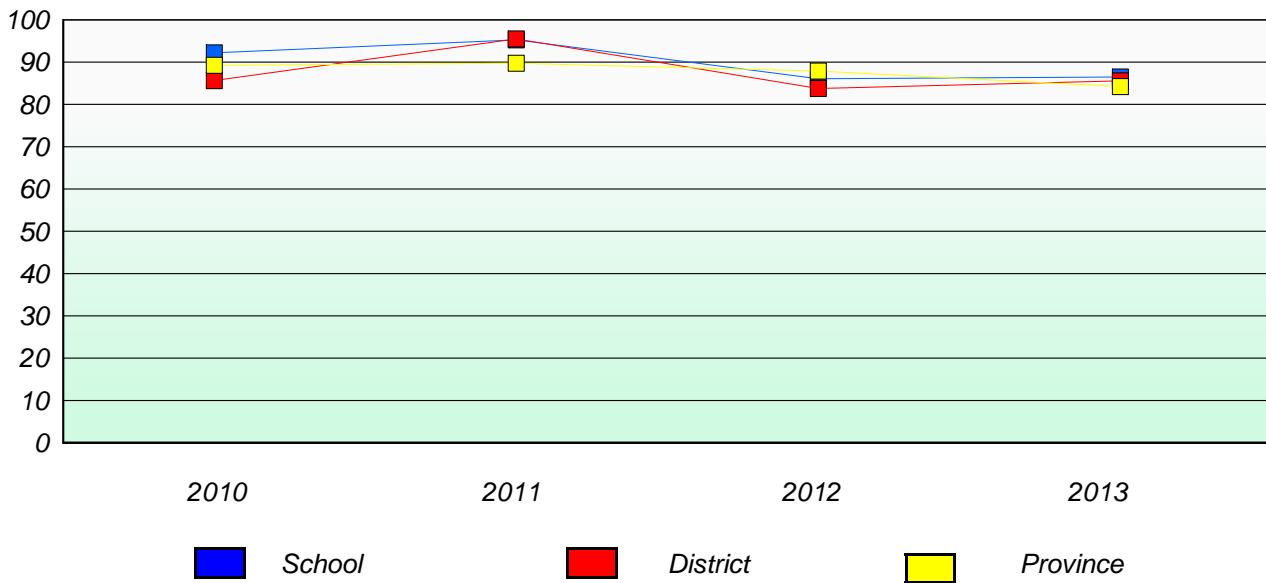
School #: 008 A. P. Low Primary

Participation Rates

Demand Writing



Reading



* Reading score is composite of Non Fiction and Poetry.

Mushuau Innu Natuashish School and Sheshatshiu Innu School are excluded from district and provincial results.

District 1 - Labrador

School #: 012 J.C. Erhardt Memorial School

Exemption/Unknown Rates

Demand Writing

School data with 5 or fewer students withheld for reasons of confidentiality.

2010 2011 2012 2013

Reading

School data with 5 or fewer students withheld for reasons of confidentiality.

2010 2011 2012 2013



* Reading score is composite of Non Fiction and Poetry.

Mushuau Innu Natuashish School and Sheshatshiu Innu School are excluded from district and provincial results.

District 1 - Labrador

School #: 012 J.C. Erhardt Memorial School

Participation Rates

Demand Writing

School data with 5 or fewer students withheld for reasons of confidentiality.



Reading

School data with 5 or fewer students withheld for reasons of confidentiality.



* Reading score is composite of Non Fiction and Poetry.

Mushuau Innu Natuashish School and Sheshatshiu Innu School are excluded from district and provincial results.

District 1 - Labrador

School #: 013 Mud Lake School

Exemption/Unknown Rates

Demand Writing

School data with 5 or fewer students withheld for reasons of confidentiality.

2010 2011 2012 2013

Reading

School data with 5 or fewer students withheld for reasons of confidentiality.

2010 2011 2012 2013



* Reading score is composite of Non Fiction and Poetry.

Mushuau Innu Natuashish School and Sheshatshiu Innu School are excluded from district and provincial results.

District 1 - Labrador

School #: 013 Mud Lake School

Participation Rates

Demand Writing

School data with 5 or fewer students withheld for reasons of confidentiality.



Reading

School data with 5 or fewer students withheld for reasons of confidentiality.



* Reading score is composite of Non Fiction and Poetry.

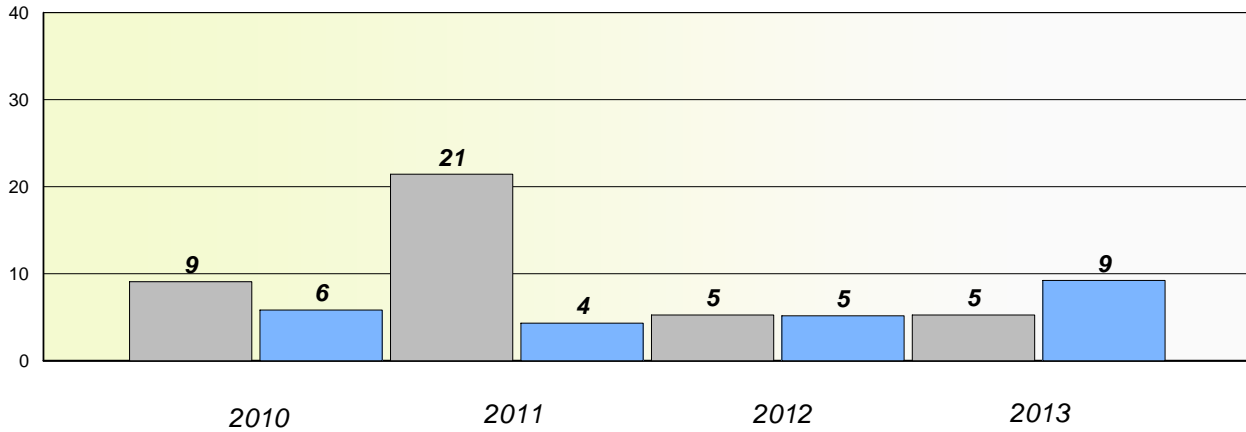
Mushuau Innu Natuashish School and Sheshatshiu Innu School are excluded from district and provincial results.

District 1 - Labrador

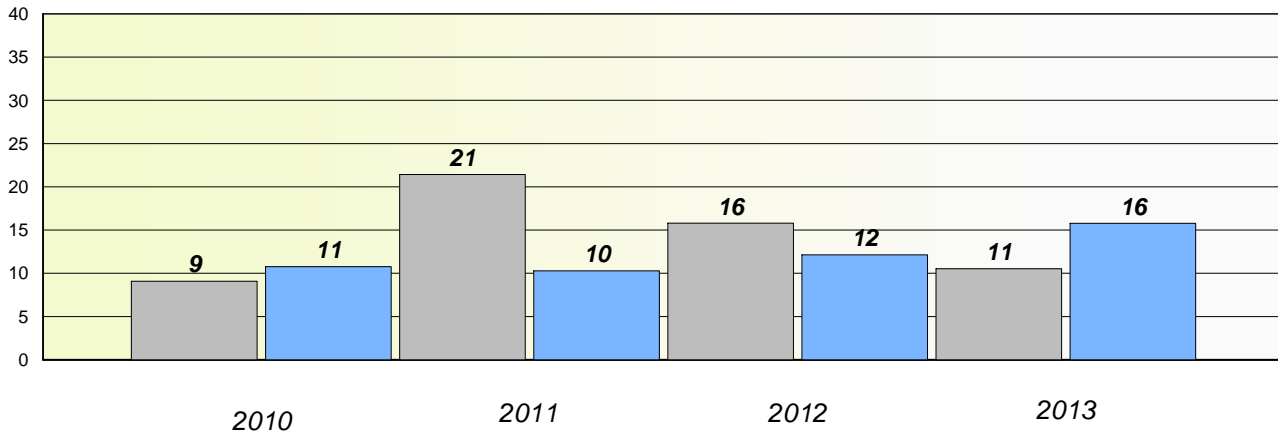
School #: 014 Jens Haven Memorial

Exemption/Unknown Rates

Demand Writing



Reading



* Reading score is composite of Non Fiction and Poetry.

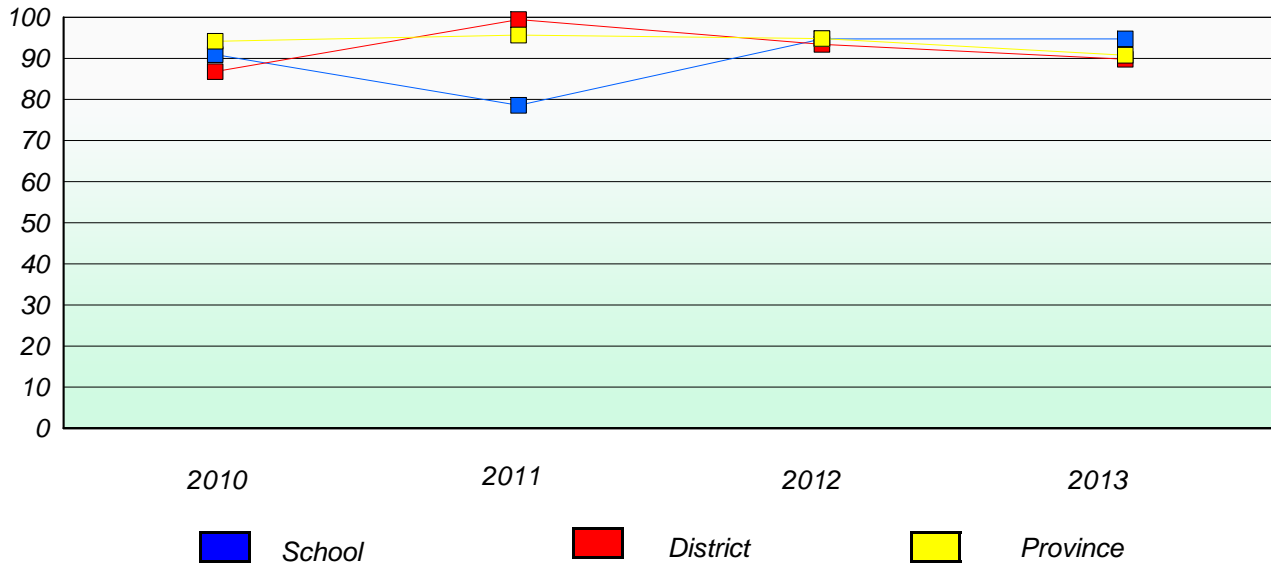
Mushuau Innu Natuashish School and Sheshatshiu Innu School are excluded from district and provincial results.

District 1 - Labrador

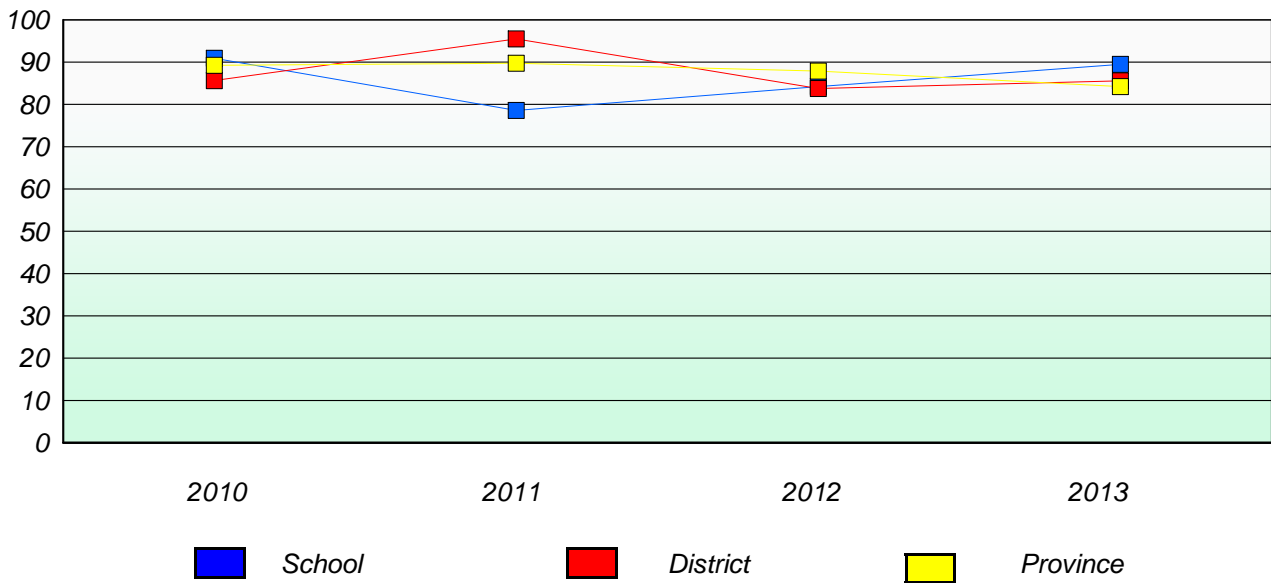
School #: 014 Jens Haven Memorial

Participation Rates

Demand Writing



Reading



* Reading score is composite of Non Fiction and Poetry.

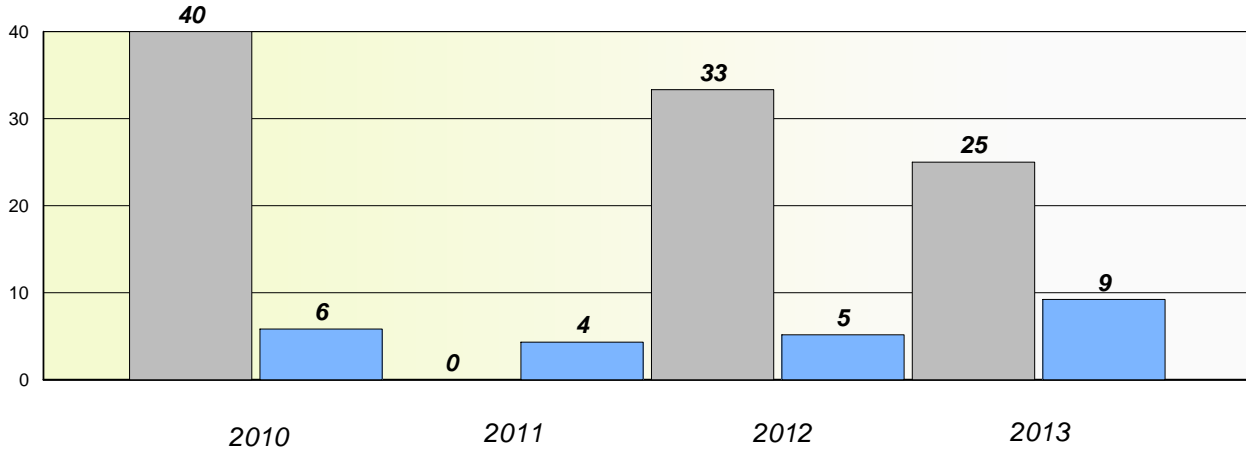
Mushuau Innu Natuashish School and Sheshatshiu Innu School are excluded from district and provincial results.

District 1 - Labrador

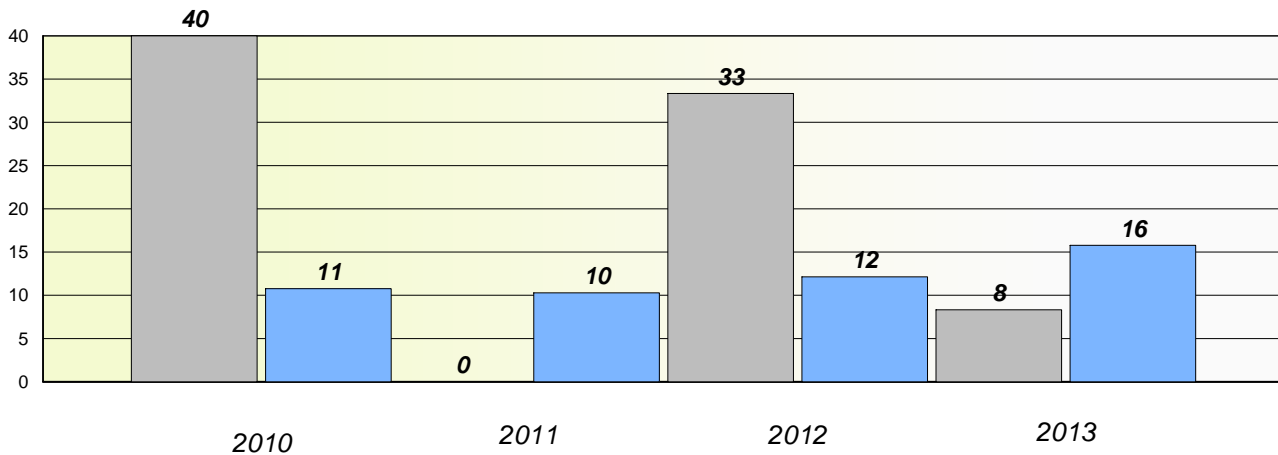
School #: 015 Lake Melville School

Exemption/Unknown Rates

Demand Writing



Reading



* Reading score is composite of Non Fiction and Poetry.

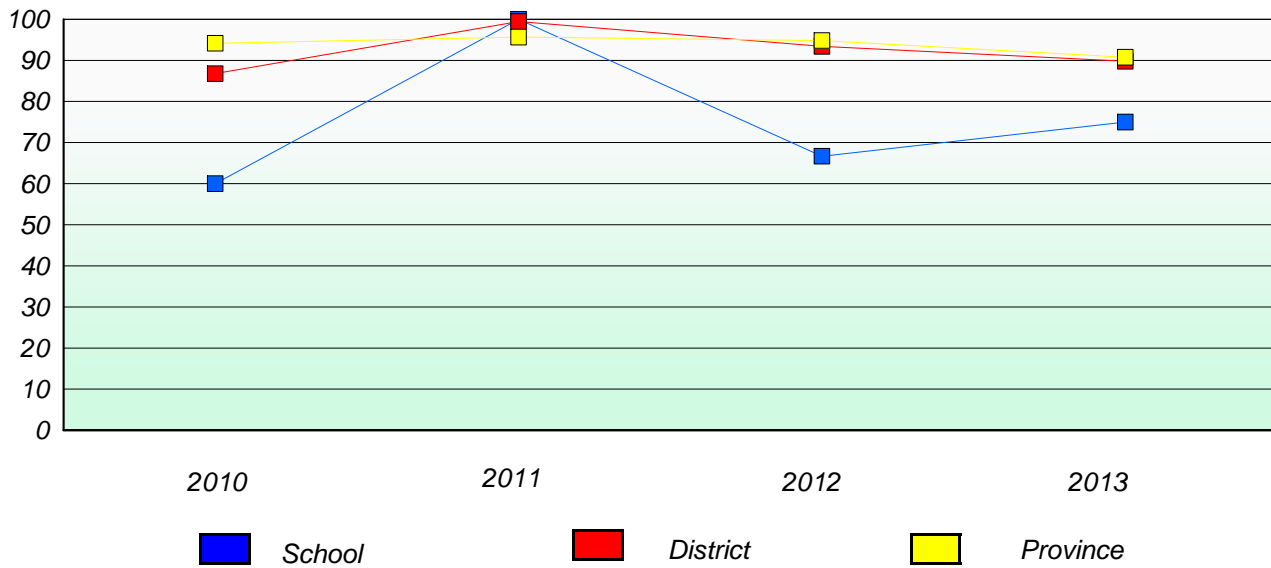
Mushuau Innu Natuashish School and Sheshatshiu Innu School are excluded from district and provincial results.

District 1 - Labrador

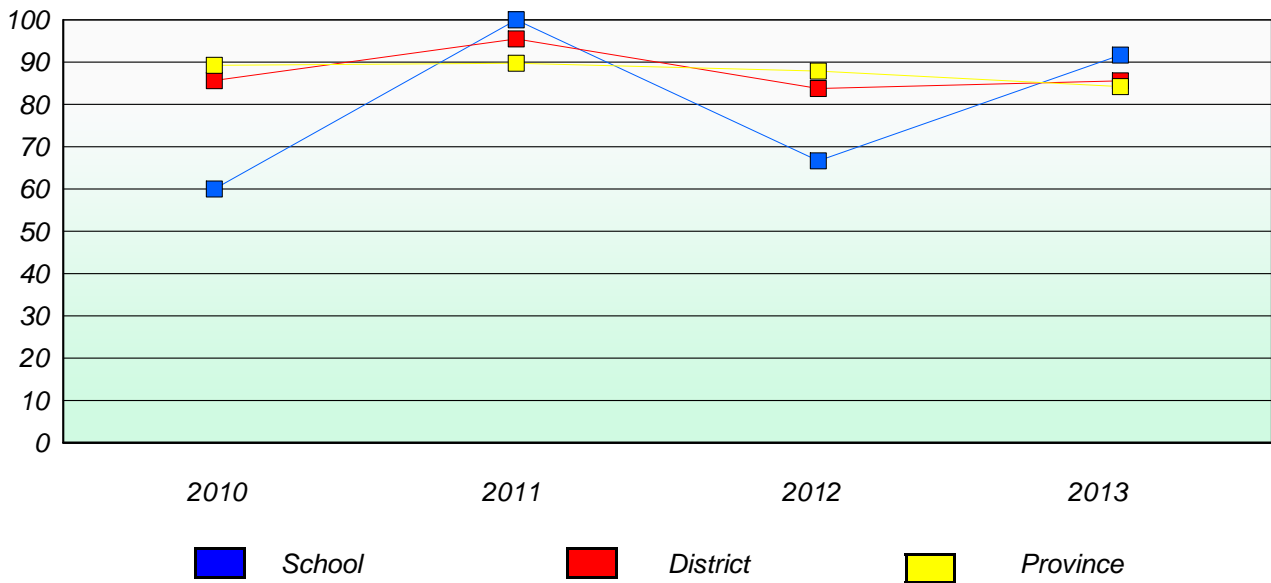
School #: 015 Lake Melville School

Participation Rates

Demand Writing



Reading



* Reading score is composite of Non Fiction and Poetry.

Mushuau Innu Natuashish School and Sheshatshiu Innu School are excluded from district and provincial results.

District 1 - Labrador

School #: 016 B.L. Morrison

Exemption/Unknown Rates

Demand Writing

School data with 5 or fewer students withheld for reasons of confidentiality.

2010 2011 2012 2013

Reading

School data with 5 or fewer students withheld for reasons of confidentiality.

2010 2011 2012 2013



* Reading score is composite of Non Fiction and Poetry.

Mushuau Innu Natuashish School and Sheshatshiu Innu School are excluded from district and provincial results.

District 1 - Labrador

School #: 016 B.L. Morrison

Participation Rates

Demand Writing

School data with 5 or fewer students withheld for reasons of confidentiality.



Reading

School data with 5 or fewer students withheld for reasons of confidentiality.



* Reading score is composite of Non Fiction and Poetry.

Mushuau Innu Natuashish School and Sheshatshiu Innu School are excluded from district and provincial results.

District 1 - Labrador

School #: 017 Northern Lights Academy

Exemption/Unknown Rates

Demand Writing

School data with 5 or fewer students withheld for reasons of confidentiality.

2010 2011 2012 2013

Reading

School data with 5 or fewer students withheld for reasons of confidentiality.

2010 2011 2012 2013



* Reading score is composite of Non Fiction and Poetry.

Mushuau Innu Natuashish School and Sheshatshiu Innu School are excluded from district and provincial results.

District 1 - Labrador

School #: 017 Northern Lights Academy

Participation Rates

Demand Writing

School data with 5 or fewer students withheld for reasons of confidentiality.



Reading

School data with 5 or fewer students withheld for reasons of confidentiality.



* Reading score is composite of Non Fiction and Poetry.

Mushuau Innu Natuashish School and Sheshatshiu Innu School are excluded from district and provincial results.