

English Language Arts

Number of Students : 2

Multiple Choice

Non - Fiction

School
District
Province

Mark	School vs District	School vs Province
School data with 5 or fewer students withheld for reasons of confidentiality.	Q	P

Closed Responses*

Demand Writing

School
District
Province

P

P

Non - Fiction Reading

School
District
Province

P

P

* How to interpret the results for Closed Responses

On the Demand Writing (Creative) section, the students in First Baptist Academy scored 100.0%. This means 100.0% of the students met or exceeded the cut score for this section.

4 Year CRT (Subtest) Mark Trend 2010-2013

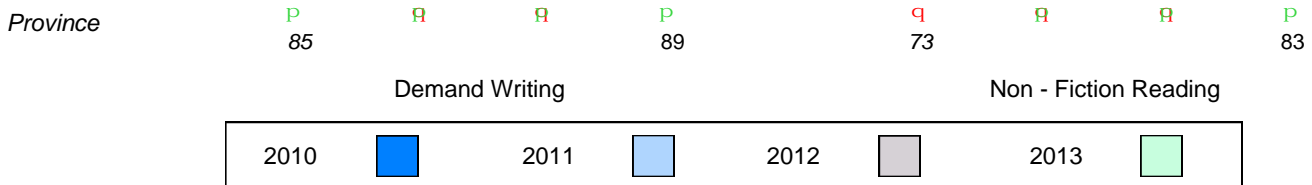
Multiple Choice

School data with 5 or fewer students withheld for reasons of confidentiality.

Non - Fiction

Written Response: Percentage of students meeting/exceeding grade level expectations 2010-2013

School data with 5 or fewer students withheld for reasons of confidentiality.



Difference from Provincial Mean, 2010-13

Multiple Choice

School data with 5 or fewer students withheld for reasons of confidentiality.

Non - Fiction

Difference from Provincial Mean, 2010-13

Written Response: Percentage of students meeting/exceeding grade level expectations 2010-2013

School data with 5 or fewer students withheld for reasons of confidentiality.

Demand Writing

--

Non - Fiction Reading



District 803 - Private

#375 - Lakecrest -St. John's Independent School, St. John's

English Language Arts

Number of Students : 11

Multiple Choice

Non - Fiction

School
District
Province

Mark	School vs District	School vs Province
70.0	P	P
67.4		
55.7		
90.9	Q	P
97.1		
88.7		
100.0	P	P
100.0		
82.7		

Closed Responses*

Demand Writing

School
District
Province

Non - Fiction Reading

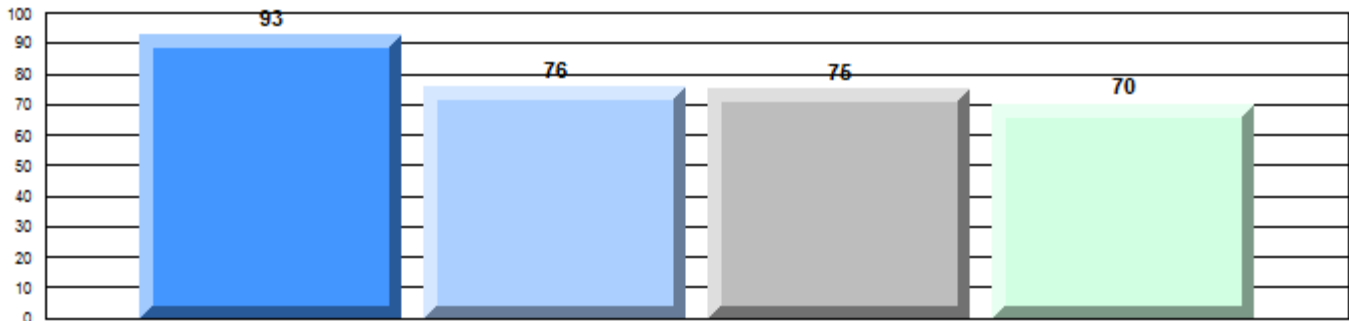
School
District
Province

* How to interpret the results for Closed Responses

On the Demand Writing (Creative) section, the students in Lakecrest -St. John's Independent School scored 90.9%. This means 90.9% of the students met or exceeded the cut score for this section.

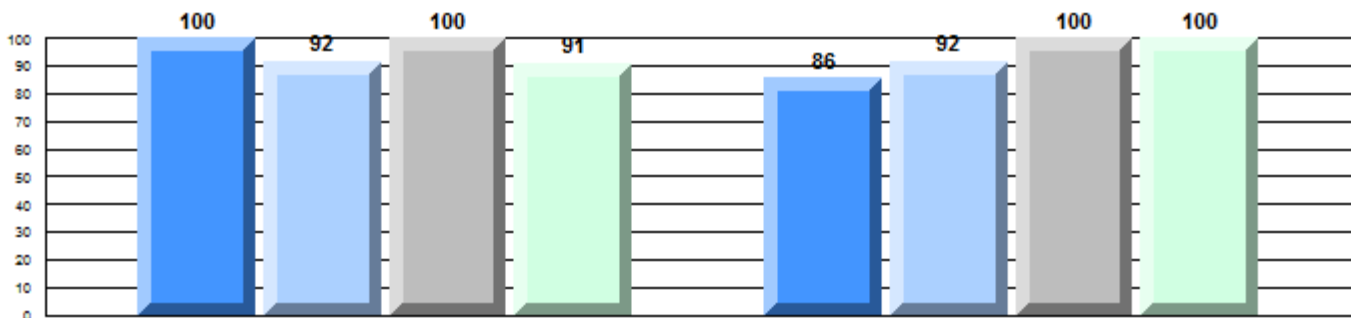
4 Year CRT (Subtest) Mark Trend 2010-2013

Multiple Choice



Non - Fiction

Written Response: Percentage of students meeting/exceeding grade level expectations 2010-2013

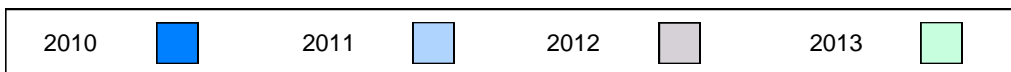


Province

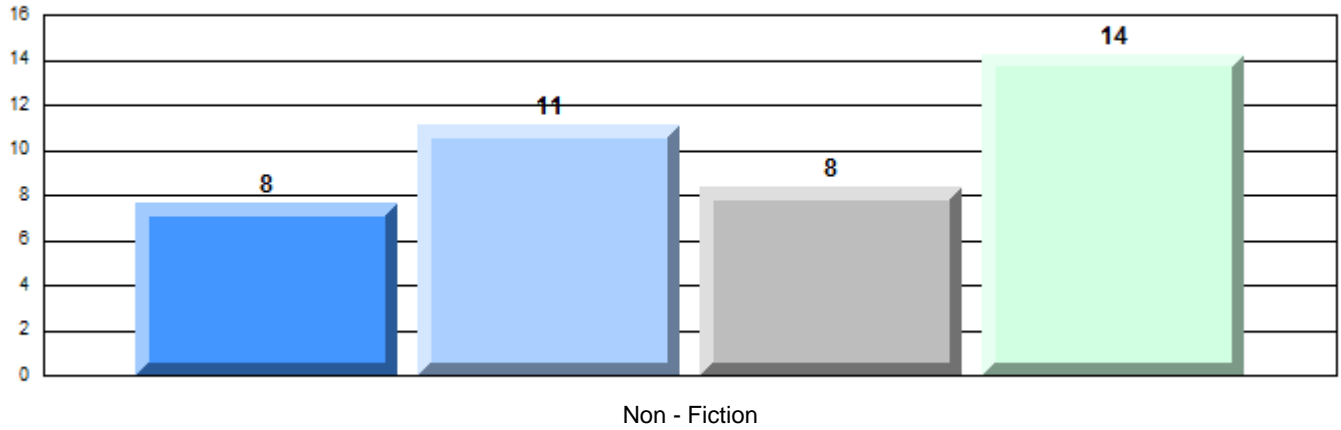
P 85
P 83
P 91
P 89
P 73
P 69
P 92
P 83

Demand Writing

Non - Fiction Reading

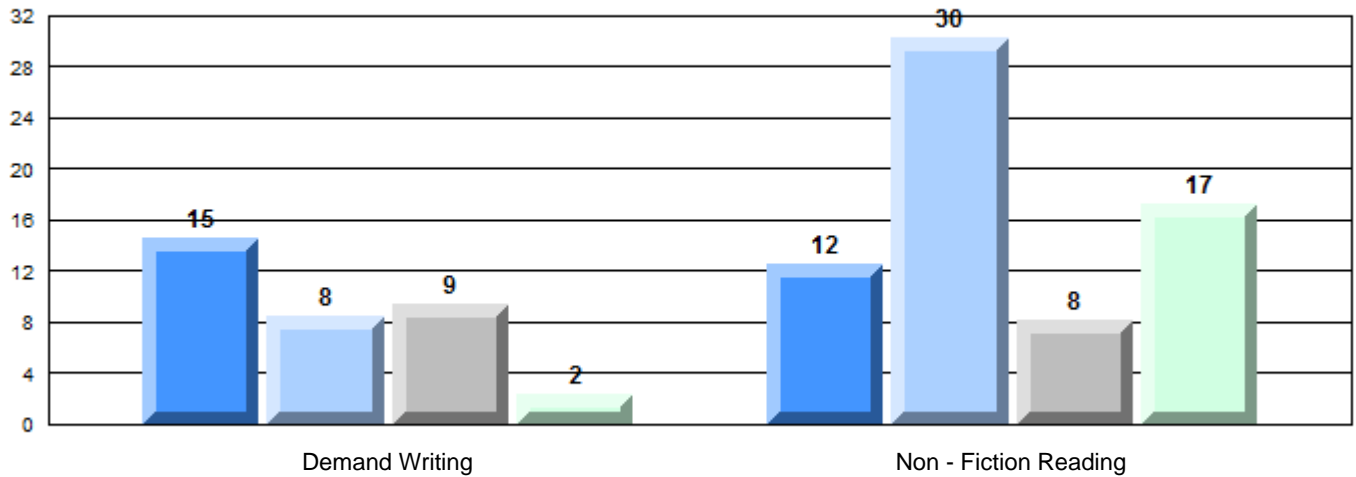


Difference from Provincial Mean, 2010-13
Multiple Choice



Difference from Provincial Mean, 2010-13

Written Response: Percentage of students meeting/exceeding grade level expectations 2010-2013



English Language Arts

Number of Students : 31

Multiple Choice

Non - Fiction

School
District
Province

70.3
67.4
55.7

Mark	School vs District	School vs Province
70.3	P	P
67.4		
55.7		

Closed Responses*

Demand Writing

School
District
Province

100.0
97.1
88.7

Non - Fiction Reading

School
District
Province

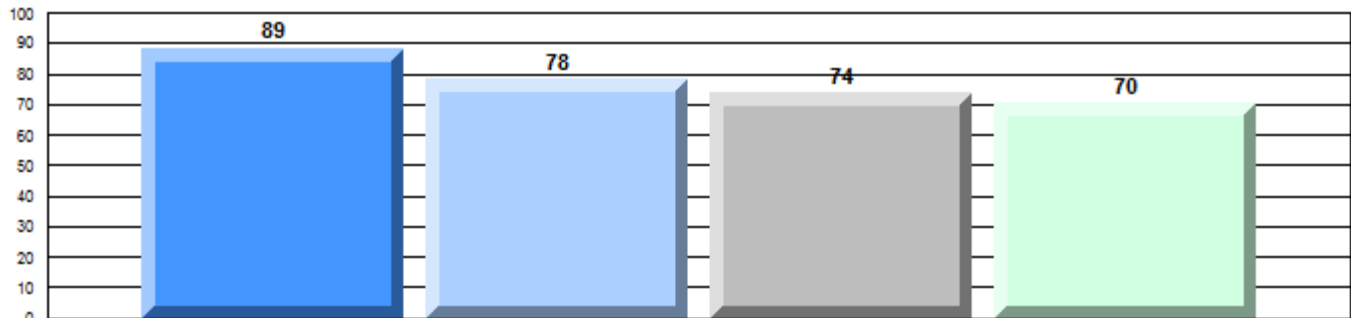
100.0
100.0
82.7

* How to interpret the results for Closed Responses

On the Demand Writing (Creative) section, the students in St. Bonaventure's College scored 100.0%. This means 100.0% of the students met or exceeded the cut score for this section.

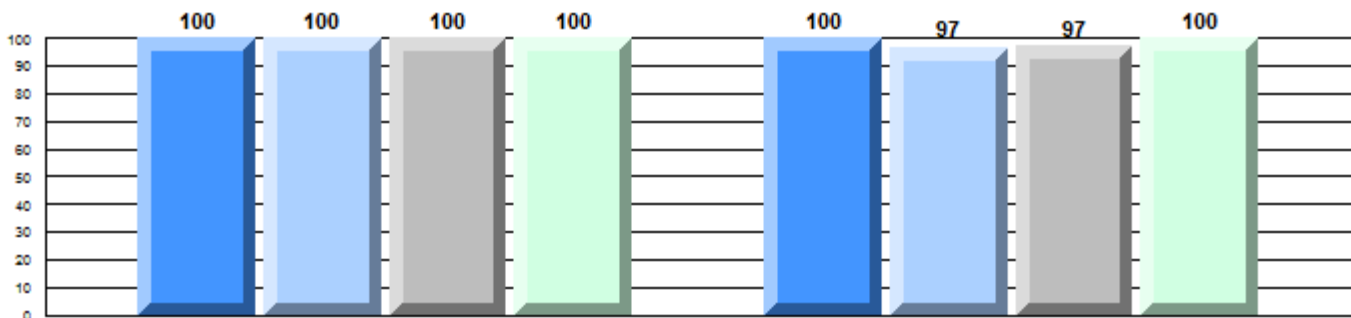
4 Year CRT (Subtest) Mark Trend 2010-2013

Multiple Choice



Non - Fiction

Written Response: Percentage of students meeting/exceeding grade level expectations 2010-2013



Province

P

85

P

83

P

91

P

89

P

73

P

69

P

92

P

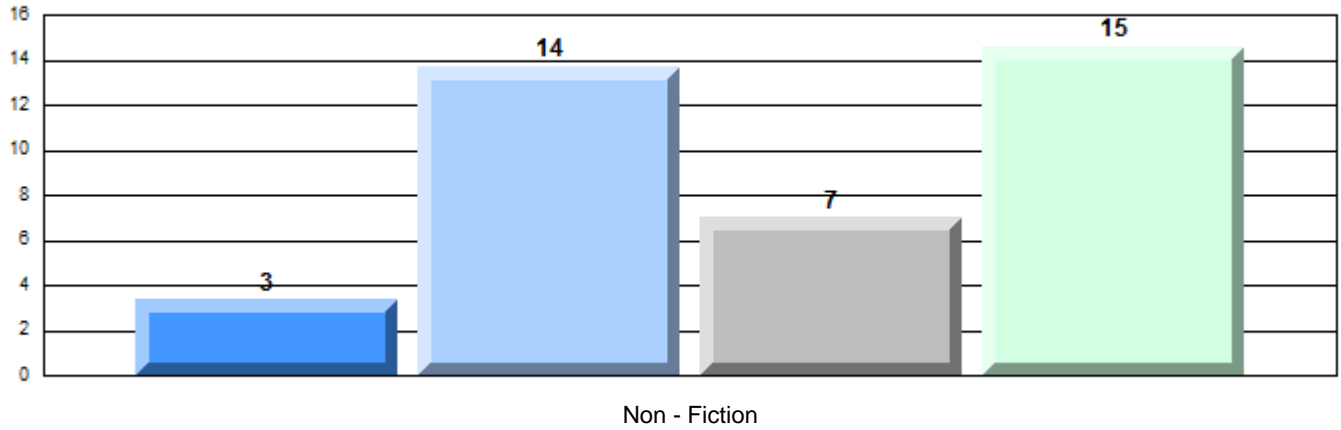
83

Demand Writing

Non - Fiction Reading

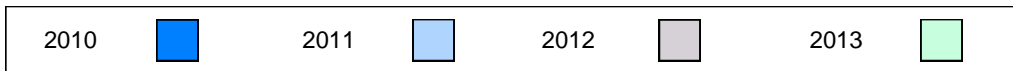
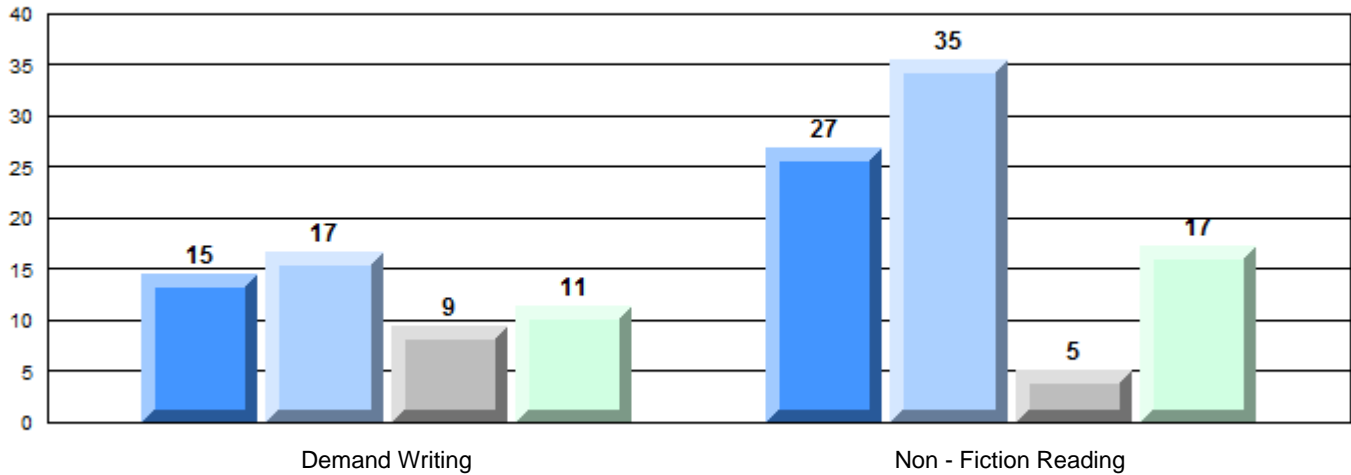


Difference from Provincial Mean, 2010-13
Multiple Choice



Difference from Provincial Mean, 2010-13

Written Response: Percentage of students meeting/exceeding grade level expectations 2010-2013



English Language Arts

Number of Students : 9

Multiple Choice

Non - Fiction

School
District
Province

Mark	School vs District	School vs Province
56.7	Q	P
67.4		
55.7		

Closed Responses*

Demand Writing

School
District
Province

100.0	P	P
97.1		
88.7		

Non - Fiction Reading

School
District
Province

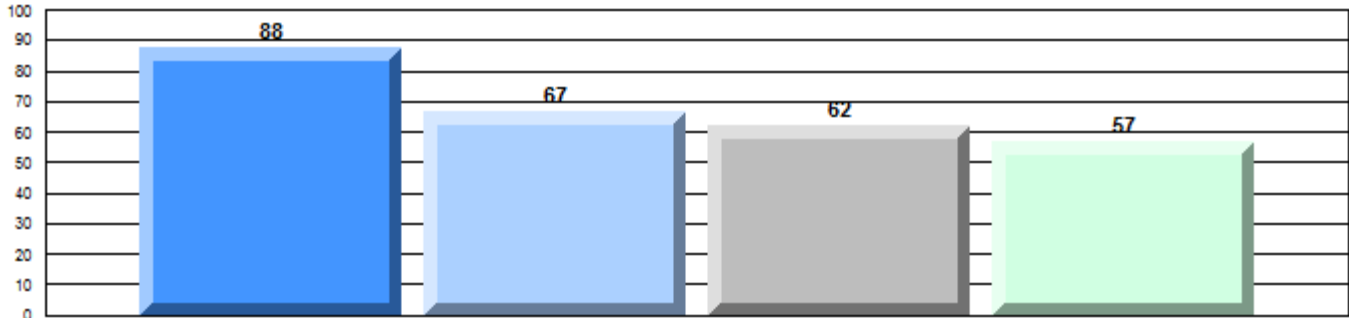
100.0	P	P
100.0		
82.7		

* How to interpret the results for Closed Responses

On the Demand Writing (Creative) section, the students in Eric G. Lambert All-Grade scored 100.0%. This means 100.0% of the students met or exceeded the cut score for this section.

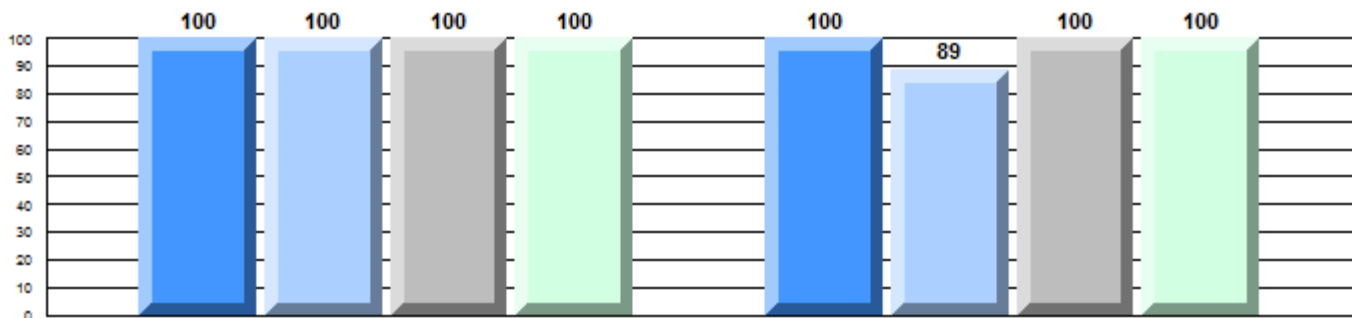
4 Year CRT (Subtest) Mark Trend 2010-2013

Multiple Choice



Non - Fiction

Written Response: Percentage of students meeting/exceeding grade level expectations 2010-2013



Province

P	P	P	P	P	P	P	P
85	83	91	89	73	69	92	83

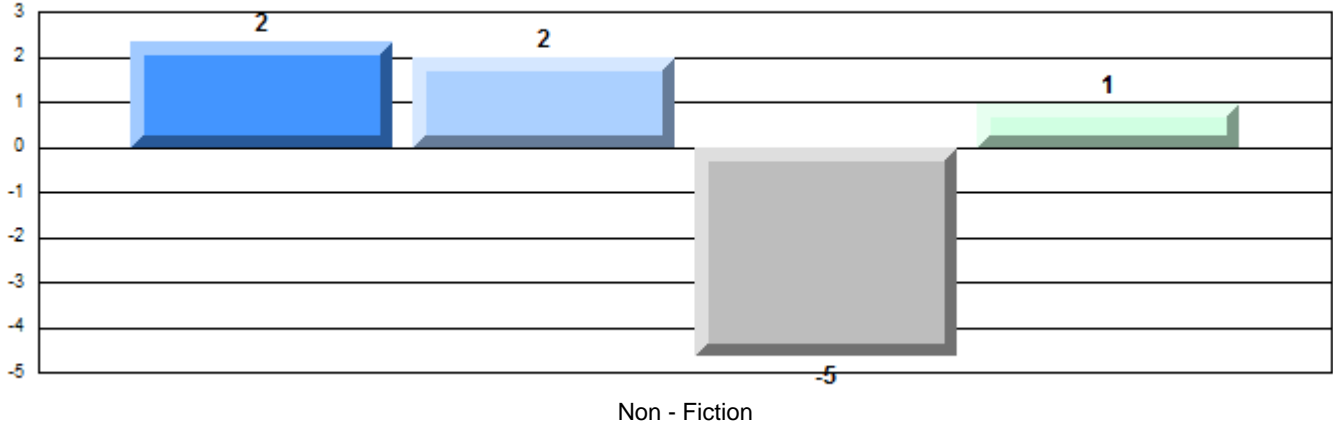
Demand Writing

Non - Fiction Reading



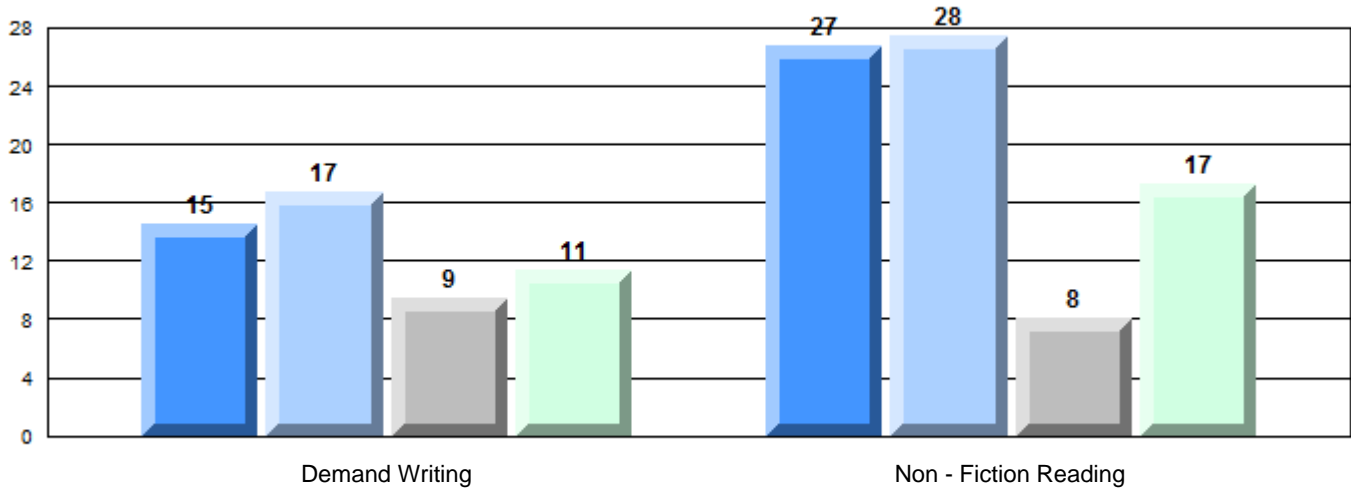
Difference from Provincial Mean, 2010-13

Multiple Choice



Difference from Provincial Mean, 2010-13

Written Response: Percentage of students meeting/exceeding grade level expectations 2010-2013



English Language Arts

Number of Students : 9

Multiple Choice

Non - Fiction

School
District
Province

38.8
49.0
55.7

Mark	School vs District	School vs Province
38.8	q	q
49.0		
55.7		
77.8	q	q
87.5		
88.7		
71.4	p	q
60.0		
82.7		

Closed Responses*

Demand Writing

School
District
Province

77.8
87.5
88.7

Non - Fiction Reading

School
District
Province

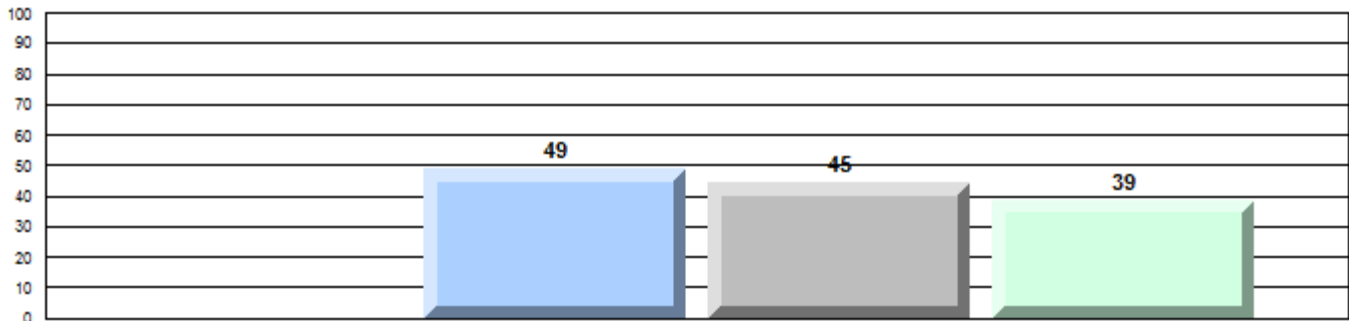
71.4
60.0
82.7

* How to interpret the results for Closed Responses

On the Demand Writing (Creative) section, the students in Sheshatshiu Innu School scored 77.8%. This means 77.8% of the students met or exceeded the cut score for this section.

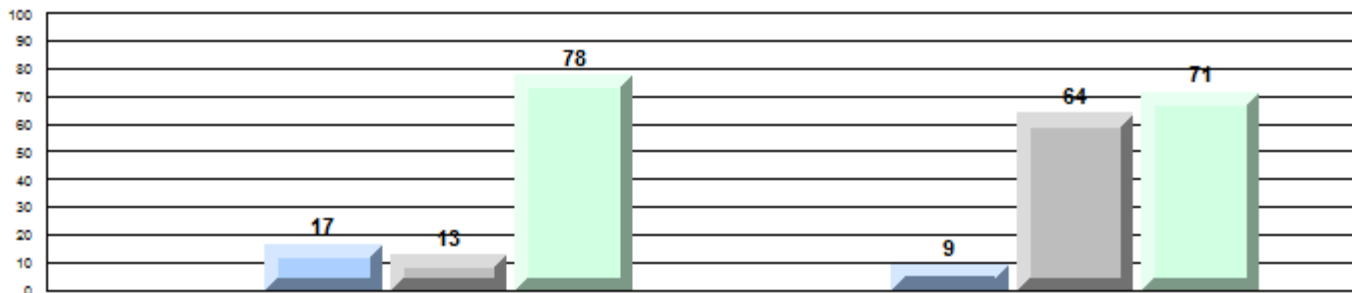
4 Year CRT (Subtest) Mark Trend 2010-2013

Multiple Choice



Non - Fiction

Written Response: Percentage of students meeting/exceeding grade level expectations 2010-2013



Province

q

q

q

q

q

q

q

q

Demand Writing

Non - Fiction Reading

2010



2011



2012

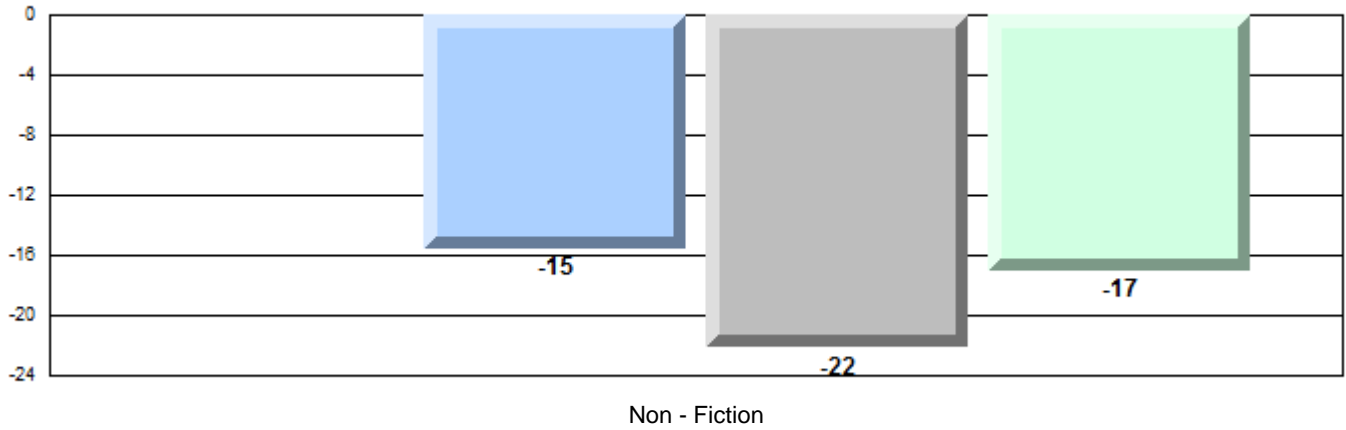


2013



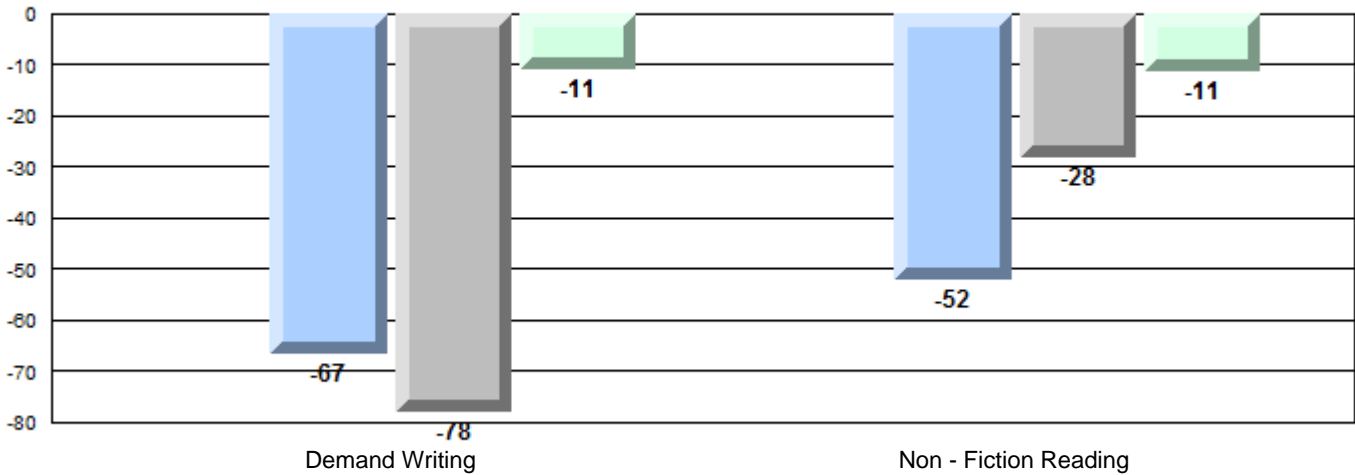
Difference from Provincial Mean, 2010-13

Multiple Choice



Difference from Provincial Mean, 2010-13

Written Response: Percentage of students meeting/exceeding grade level expectations 2010-2013



English Language Arts

Number of Students : 6

Multiple Choice

Non - Fiction

School
District
Province

43.3
49.0
55.7

School vs District
School vs Province

q q

Closed Responses*

Demand Writing

School
District
Province

83.3
87.5
88.7

q q

Non - Fiction Reading

School
District
Province

66.7
60.0
82.7

p q

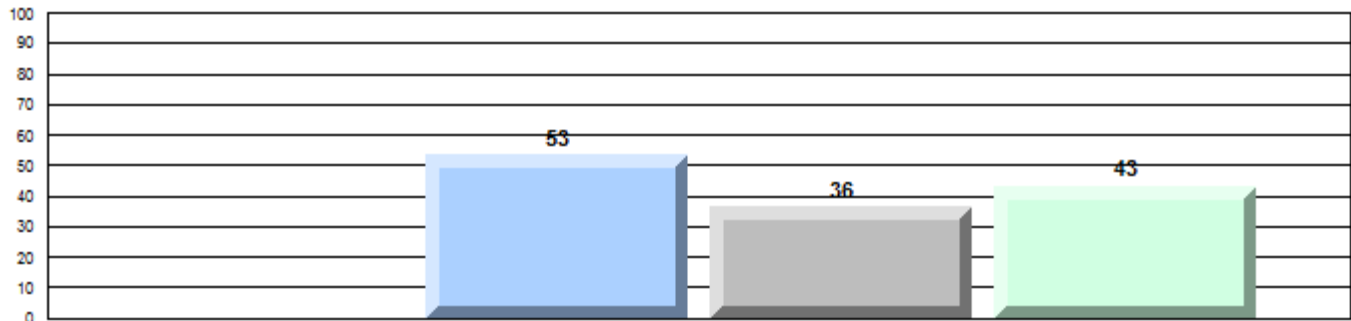
* How to interpret the results for Closed Responses

On the Demand Writing (Creative) section, the students in Mushuau Innu Natuashish School scored 83.3%. This means 83.3% of the students met or exceeded the cut score for this section.

Mark	School vs District	School vs Province
43.3	q	q
49.0		
55.7		
83.3	q	q
87.5		
88.7		
66.7	p	q
60.0		
82.7		

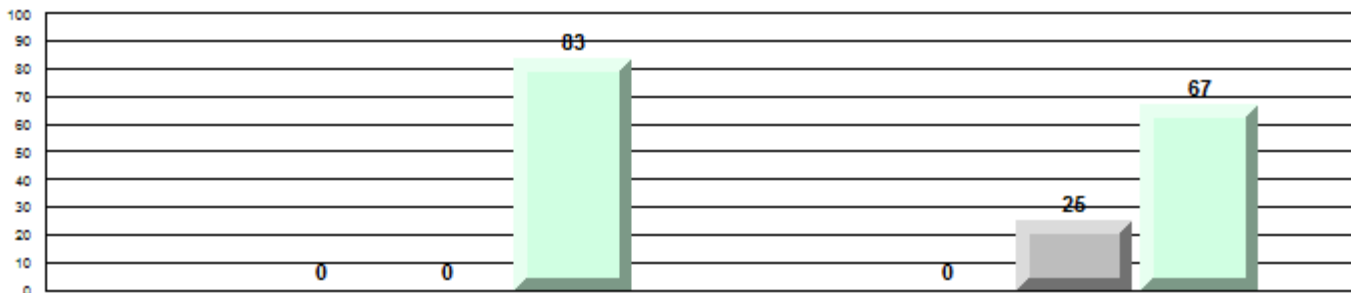
4 Year CRT (Subtest) Mark Trend 2010-2013

Multiple Choice



Non - Fiction

Written Response: Percentage of students meeting/exceeding grade level expectations 2010-2013



Province

p q q q p q q q
 83 91 89 69 92 83

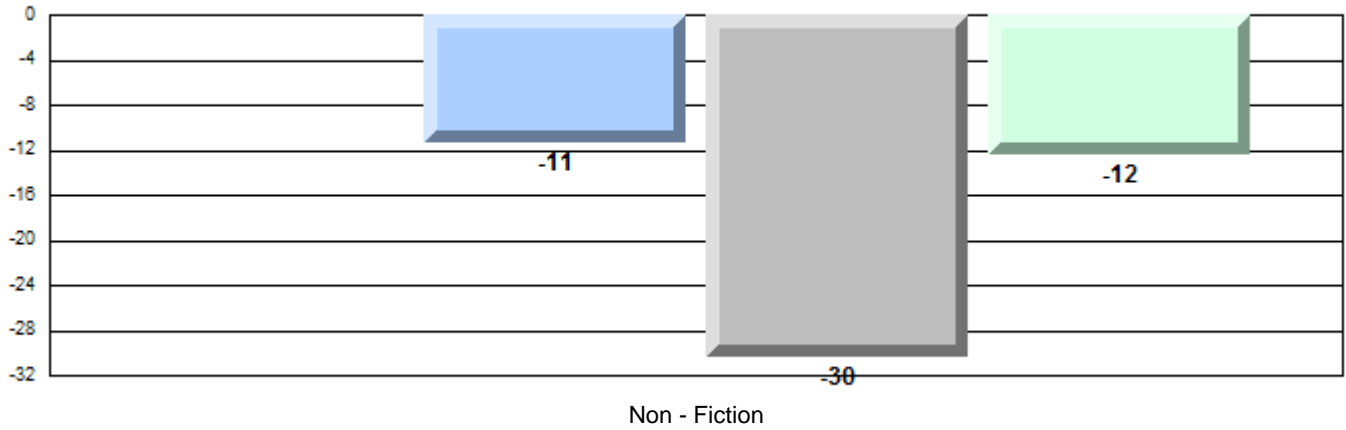
Demand Writing

Non - Fiction Reading



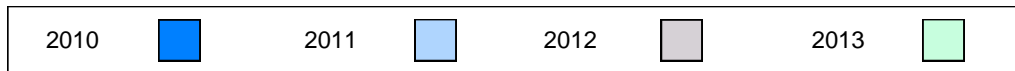
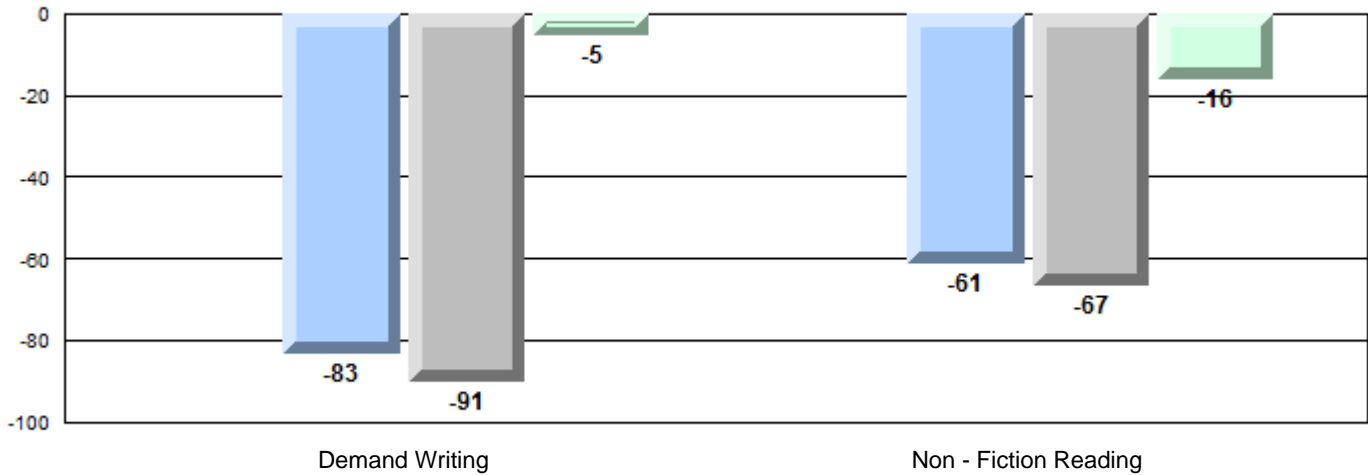
Difference from Provincial Mean, 2010-13

Multiple Choice



Difference from Provincial Mean, 2010-13

Written Response: Percentage of students meeting/exceeding grade level expectations 2010-2013



English Language Arts

Number of Students : 15

Multiple Choice

Non - Fiction

School
District
Province

47.3
49.0
55.7

School vs District
School vs Province

q q

Closed Responses*

Demand Writing

School
District
Province

92.3
87.5
88.7

p p

Non - Fiction Reading

School
District
Province

66.7
60.0
82.7

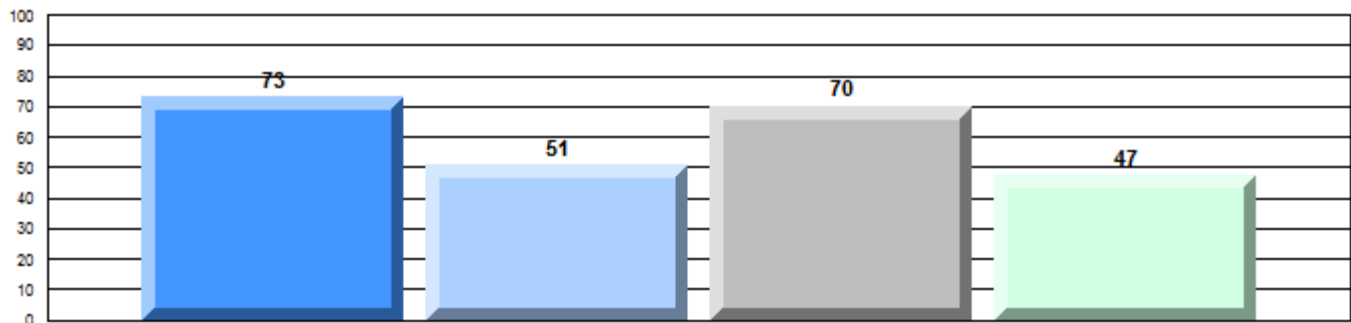
p q

* How to interpret the results for Closed Responses

On the Demand Writing (Creative) section, the students in Se't Anneway Kegnamogwom scored 92.3%. This means 92.3% of the students met or exceeded the cut score for this section.

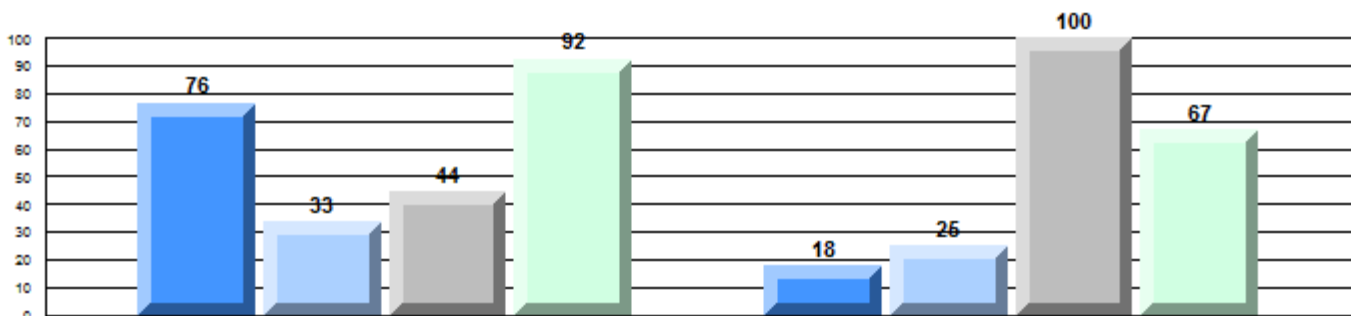
4 Year CRT (Subtest) Mark Trend 2010-2013

Multiple Choice



Non - Fiction

Written Response: Percentage of students meeting/exceeding grade level expectations 2010-2013

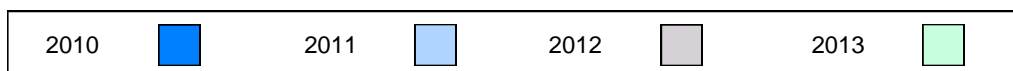


Province

q q q p q q p q
85 83 91 89 73 69 92 83

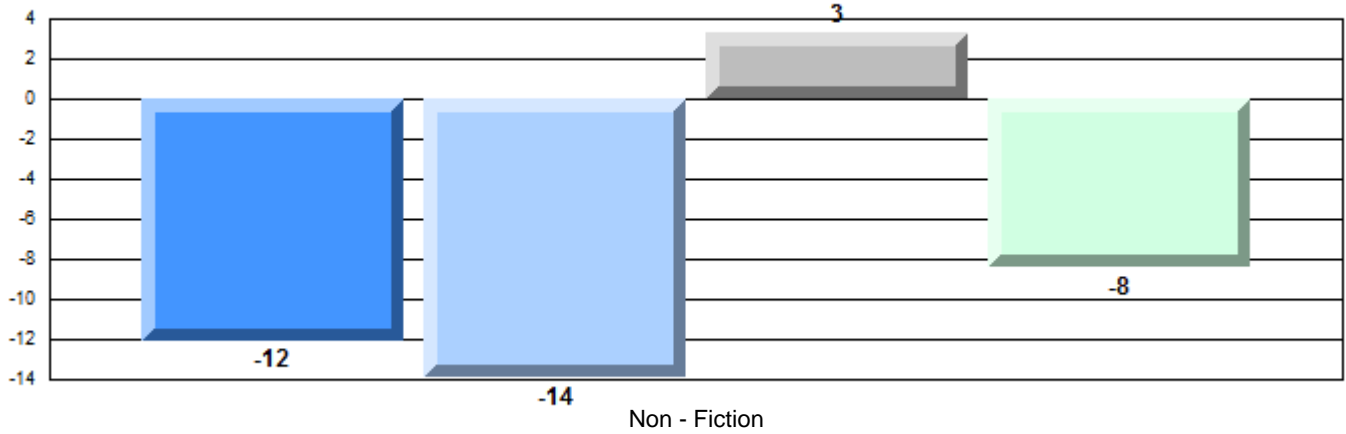
Demand Writing

Non - Fiction Reading



Difference from Provincial Mean, 2010-13

Multiple Choice



Difference from Provincial Mean, 2010-13

Written Response: Percentage of students meeting/exceeding grade level expectations 2010-2013

