

**English Language Arts**

Number of Students : 2

**Multiple Choice**

**Non - Fiction**

School  
District  
Province

Mark	School vs District	School vs Province
School data with 5 or fewer students withheld for reasons of confidentiality.	Q	Q
	P	P
	P	P

**Closed Responses\***

**Demand Writing**

School  
District  
Province

**Non - Fiction Reading**

School  
District  
Province

\* How to interpret the results for Closed Responses

On the Demand Writing (Creative) section, the students in St. Peter's School scored 100.0%. This means 100.0% of the students met or exceeded the cut score for this section.

**4 Year CRT (Subtest) Mark Trend 2010-2013**

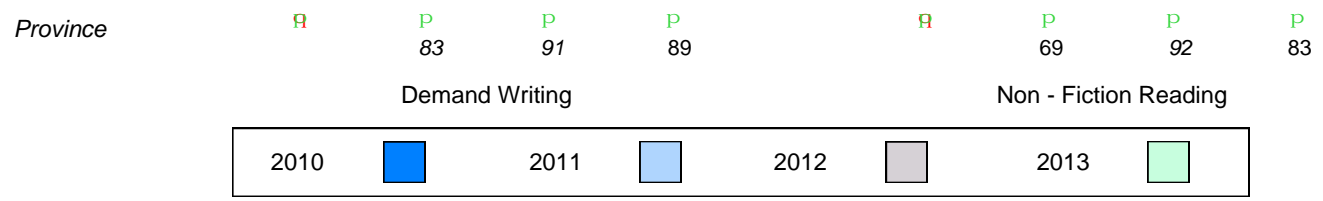
Multiple Choice

School data with 5 or fewer students withheld for reasons of confidentiality.

Non - Fiction

**Written Response: Percentage of students meeting/exceeding grade level expectations 2010-2013**

School data with 5 or fewer students withheld for reasons of confidentiality.



**Difference from Provincial Mean, 2010-13**

Multiple Choice

School data with 5 or fewer students withheld for reasons of confidentiality.

Non - Fiction

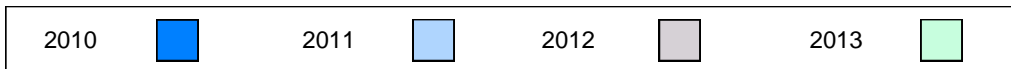
**Difference from Provincial Mean, 2010-13**

**Written Response: Percentage of students meeting/exceeding grade level expectations 2010-2013**

School data with 5 or fewer students withheld for reasons of confidentiality.

Demand Writing

Non - Fiction Reading



## English Language Arts

Number of Students : 6

### Multiple Choice

**Non - Fiction**

School  
District  
Province

58.3  
53.2  
55.7

Mark	School vs District	School vs Province
58.3	P	P
53.2		
55.7		

### Closed Responses\*

**Demand Writing**

School  
District  
Province

100.0  
83.0  
88.7

**Non - Fiction Reading**

School  
District  
Province

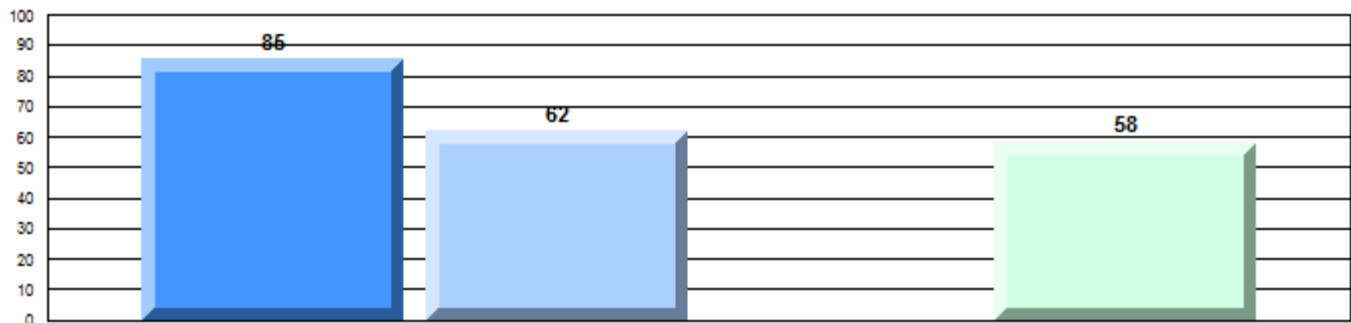
83.3  
77.1  
82.7

\* How to interpret the results for Closed Responses

On the Demand Writing (Creative) section, the students in Henry Gordon Academy scored 100.0%. This means 100.0% of the students met or exceeded the cut score for this section.

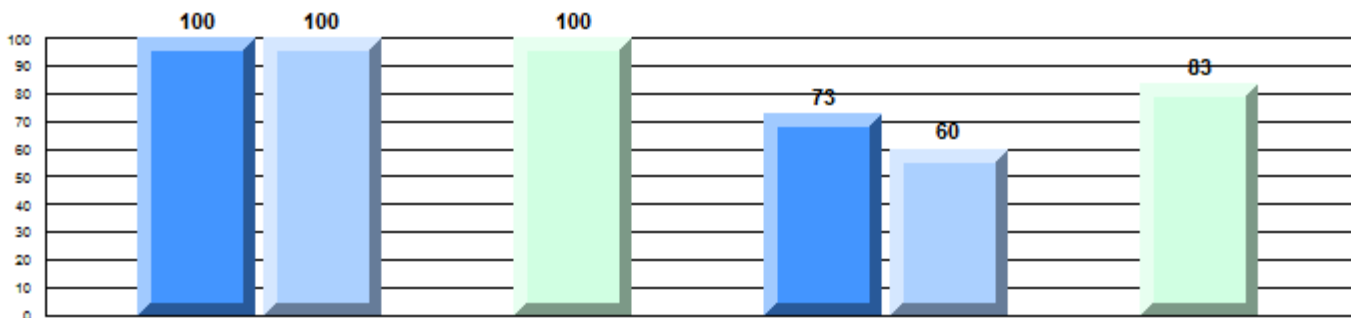
### 4 Year CRT (Subtest) Mark Trend 2010-2013

Multiple Choice



Non - Fiction

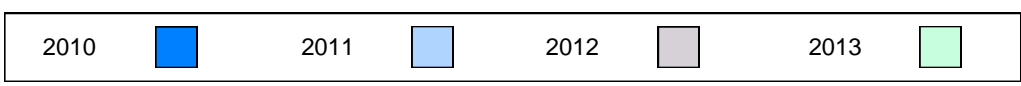
### Written Response: Percentage of students meeting/exceeding grade level expectations 2010-2013



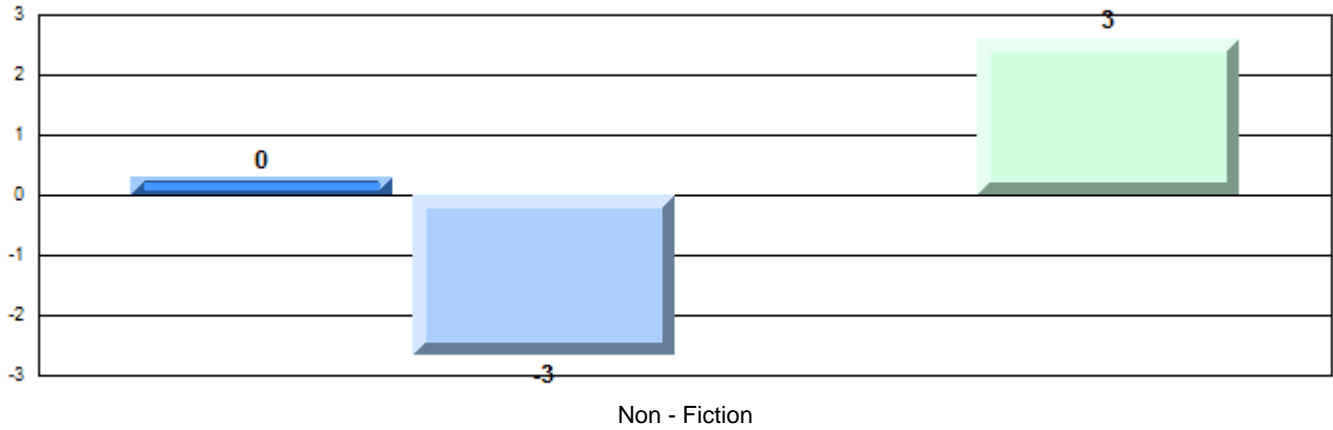
Province

Demand Writing

Non - Fiction Reading

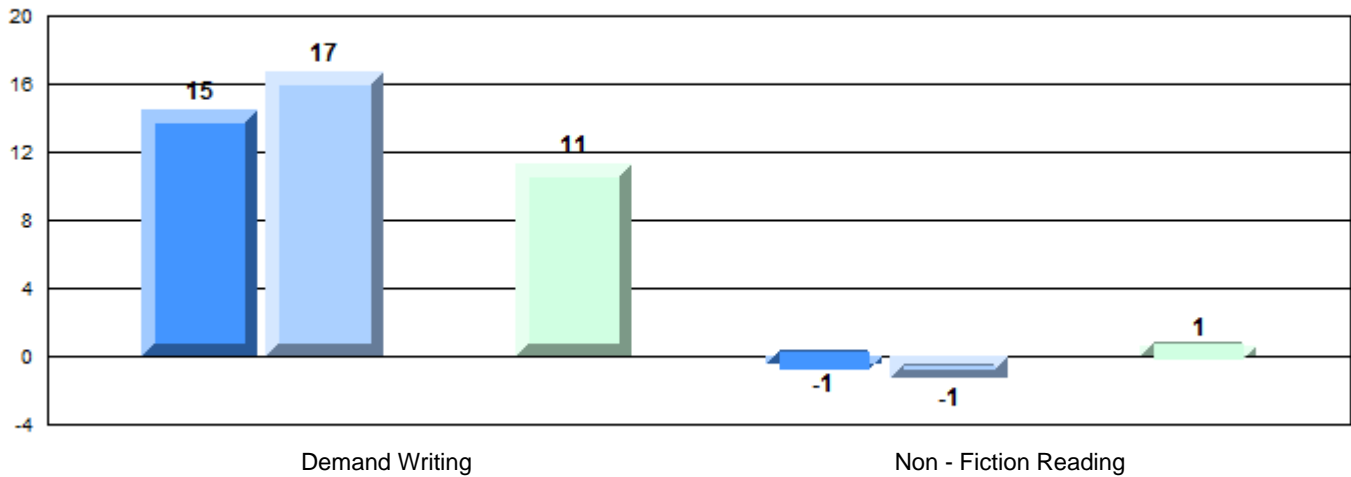


**Difference from Provincial Mean, 2010-13**  
Multiple Choice



**Difference from Provincial Mean, 2010-13**

**Written Response: Percentage of students meeting/exceeding grade level expectations 2010-2013**



## English Language Arts

Number of Students : 6

### Multiple Choice

**Non - Fiction**

School  
District  
Province

Mark	School vs District	School vs Province
30.0	q	q
53.2		
55.7		

### Closed Responses\*

**Demand Writing**

School  
District  
Province

60.0	q	q
83.0		
88.7		

**Non - Fiction Reading**

School  
District  
Province

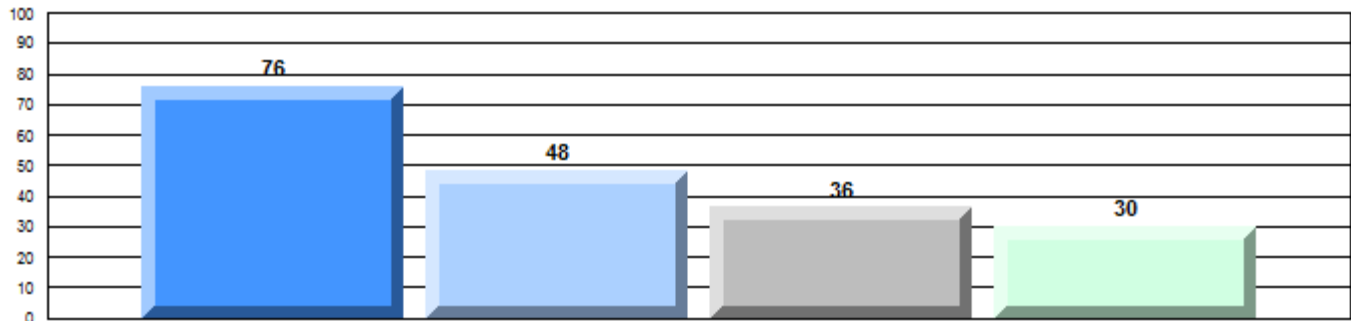
20.0	q	q
77.1		
82.7		

\* How to interpret the results for Closed Responses

On the Demand Writing (Creative) section, the students in Amos Comenius Memorial School scored 60.0%. This means 60.0% of the students met or exceeded the cut score for this section.

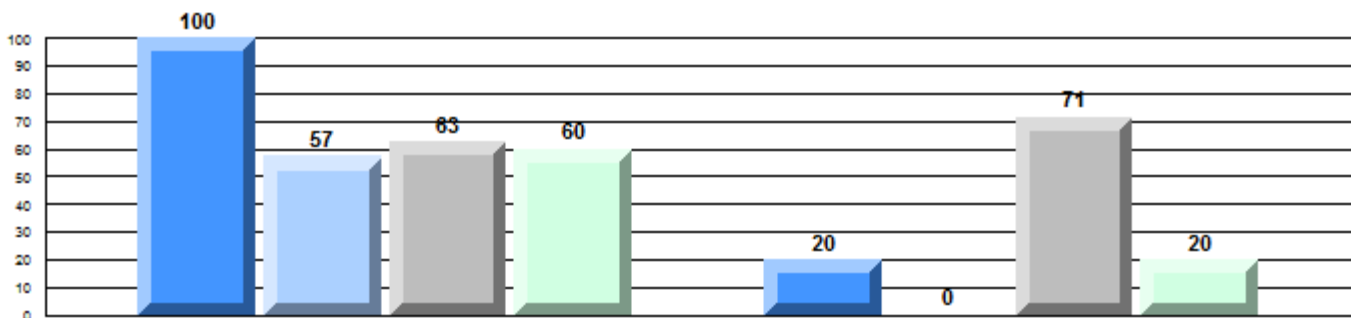
### 4 Year CRT (Subtest) Mark Trend 2010-2013

Multiple Choice



Non - Fiction

### Written Response: Percentage of students meeting/exceeding grade level expectations 2010-2013

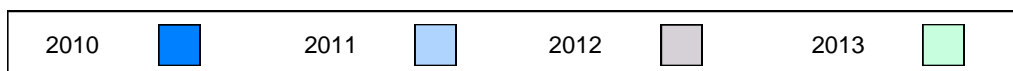


Province

P 85    q 83    q 91    q 89    q 73    q 69    q 92    q 83

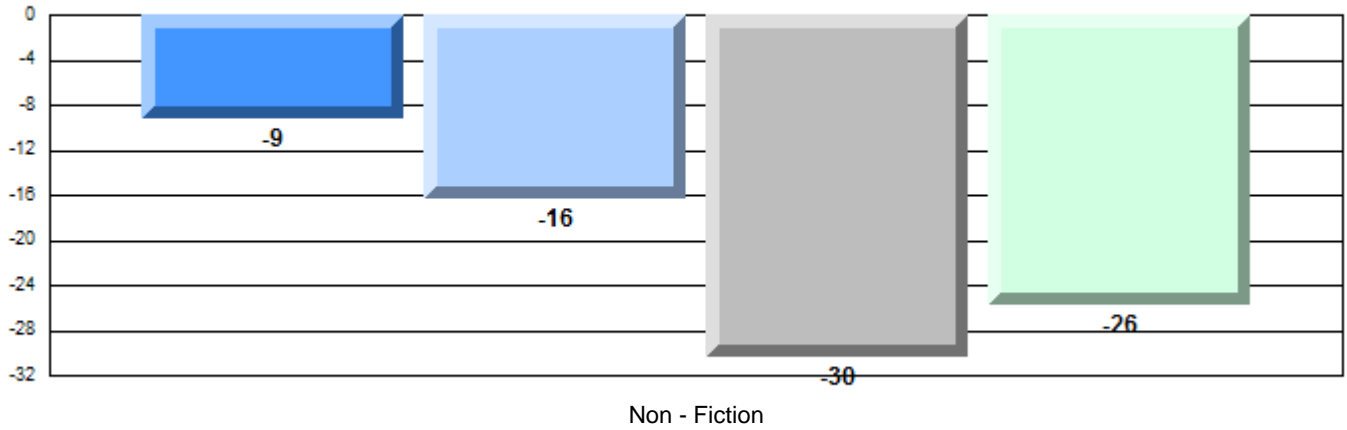
Demand Writing

Non - Fiction Reading



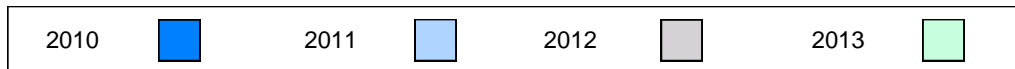
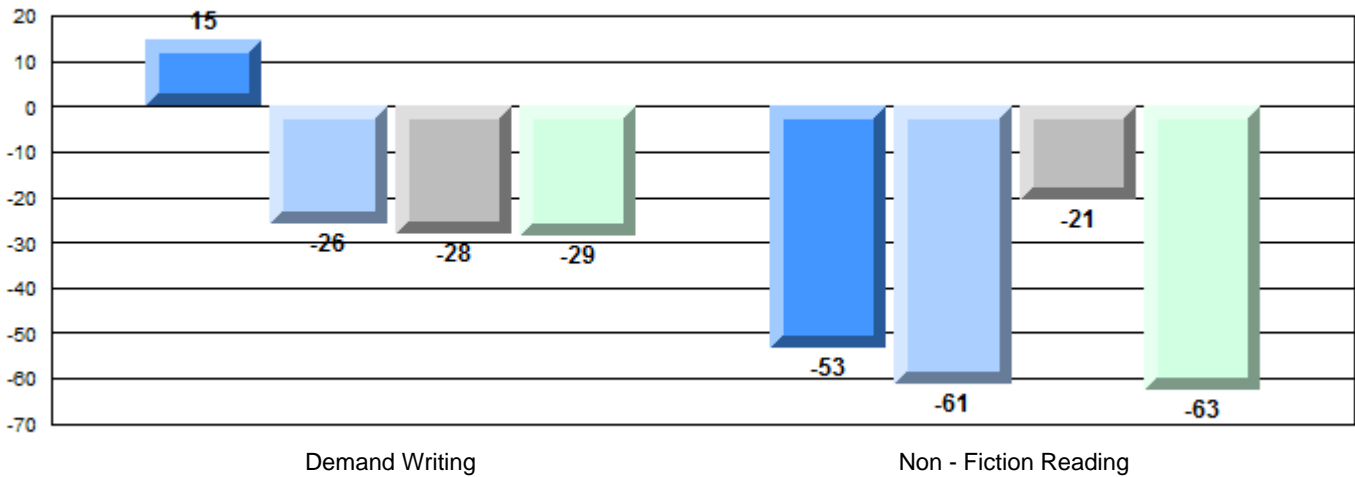
**Difference from Provincial Mean, 2010-13**

Multiple Choice



**Difference from Provincial Mean, 2010-13**

**Written Response: Percentage of students meeting/exceeding grade level expectations 2010-2013**



**English Language Arts**

Number of Students : 121

**Multiple Choice**

**Non - Fiction**

School  
District  
Province

Mark	School vs District	School vs Province
55.8	P	P
53.2		
55.7		

**Closed Responses\***

**Demand Writing**

School  
District  
Province

88.3	P	Q
83.0		
88.7		

**Non - Fiction Reading**

School  
District  
Province

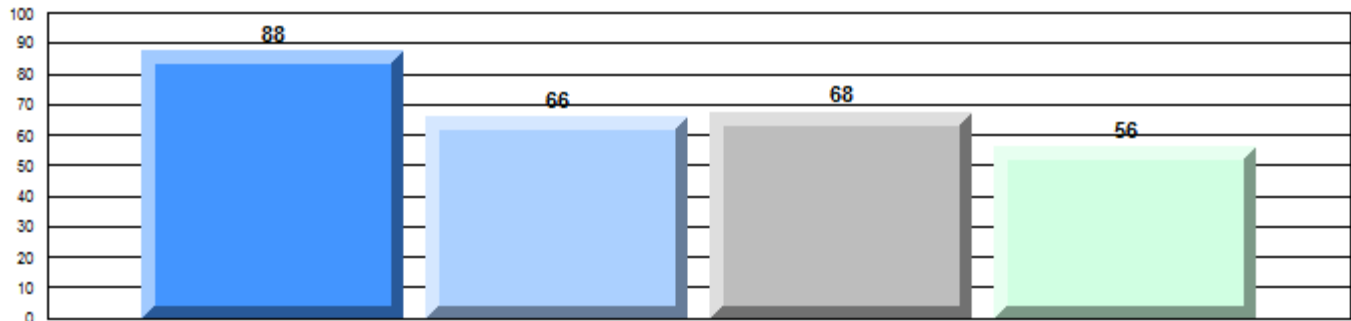
88.4	P	P
77.1		
82.7		

\* How to interpret the results for Closed Responses

On the Demand Writing (Creative) section, the students in Menihek High School scored 88.3%. This means 88.3% of the students met or exceeded the cut score for this section.

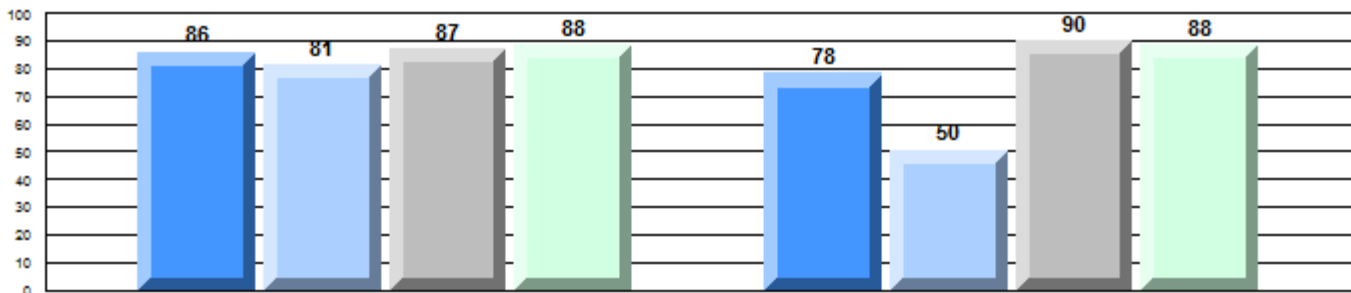
**4 Year CRT (Subtest) Mark Trend 2010-2013**

Multiple Choice



Non - Fiction

**Written Response: Percentage of students meeting/exceeding grade level expectations 2010-2013**



Province

P

Q

Q

Q

P

Q

Q

P

85

83

91

89

73

69

92

83

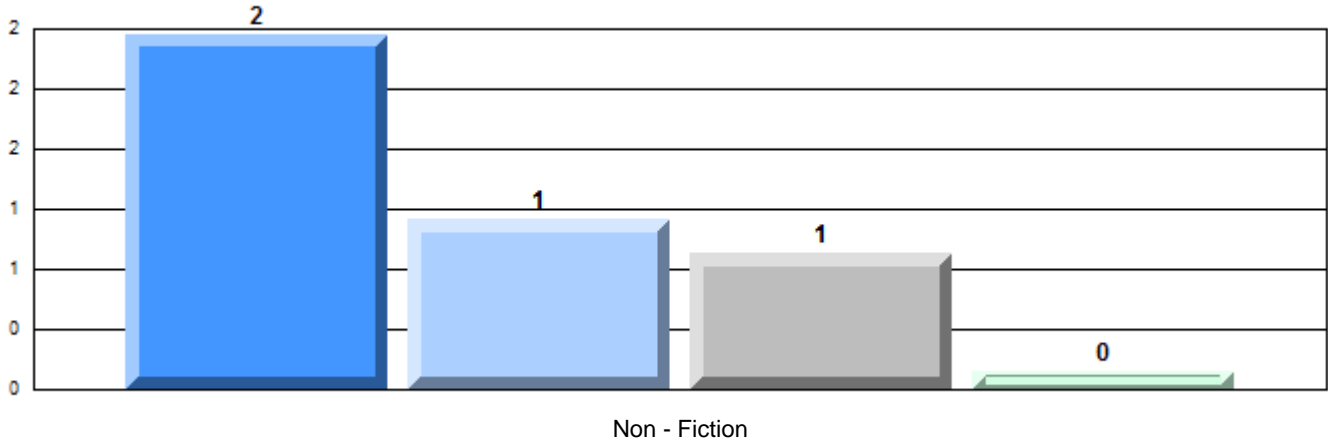
Demand Writing

Non - Fiction Reading



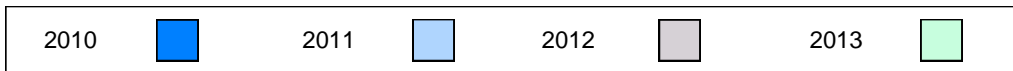
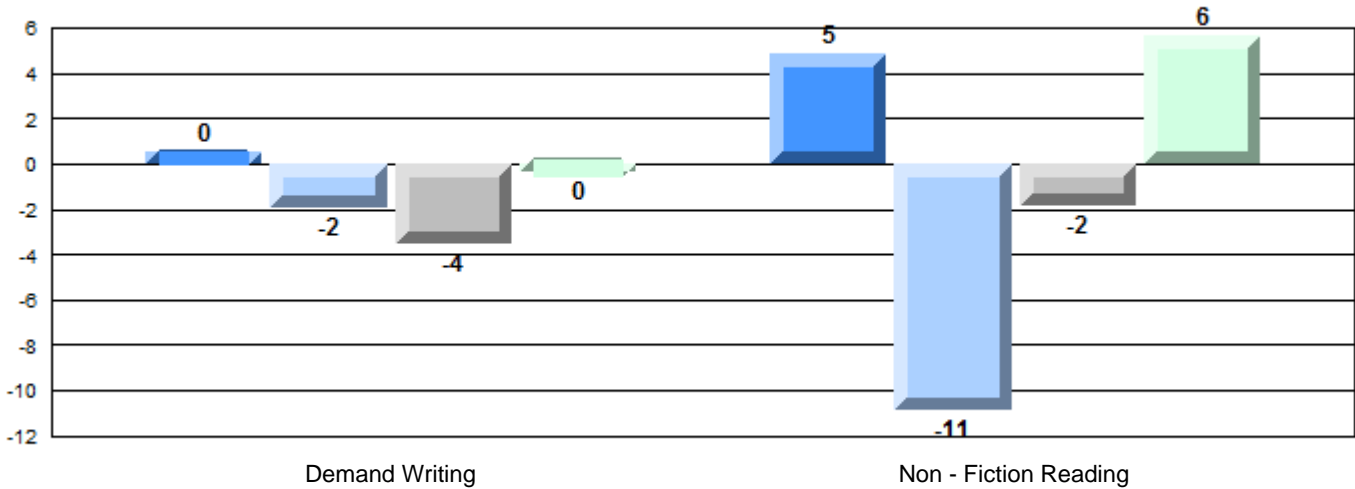
**Difference from Provincial Mean, 2010-13**

Multiple Choice



**Difference from Provincial Mean, 2010-13**

Written Response: Percentage of students meeting/exceeding grade level expectations 2010-2013





## English Language Arts

Number of Students : 10

### Multiple Choice

#### Non - Fiction

School  
District  
Province

52.0  
53.2  
55.7

Mark	School vs District	School vs Province
52.0	q	q
53.2		
55.7		

### Closed Responses\*

#### Demand Writing

School  
District  
Province

90.0  
83.0  
88.7

90.0	p	p
83.0		
88.7		

#### Non - Fiction Reading

School  
District  
Province

90.0  
77.1  
82.7

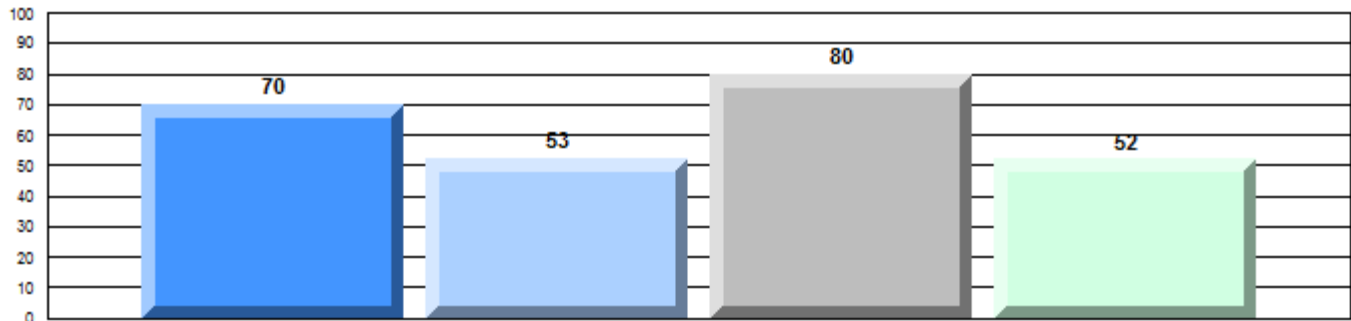
90.0	p	p
77.1		
82.7		

\* How to interpret the results for Closed Responses

On the Demand Writing (Creative) section, the students in J.C. Erhardt Memorial School scored 90.0%. This means 90.0% of the students met or exceeded the cut score for this section.

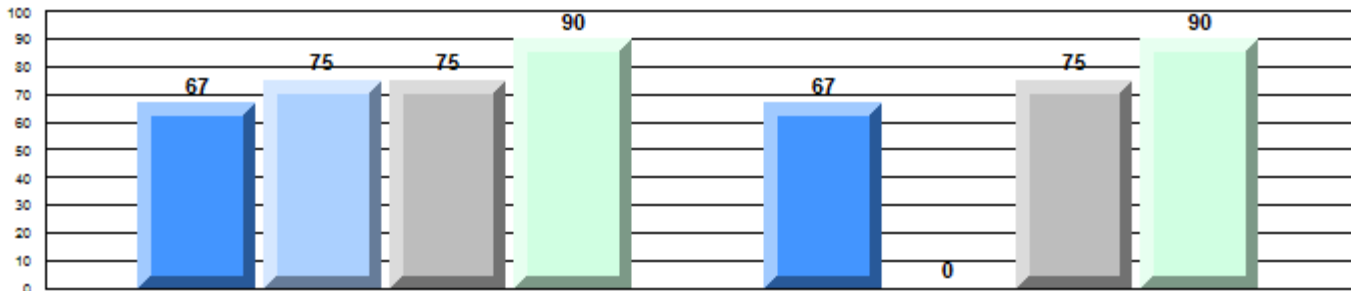
### 4 Year CRT (Subtest) Mark Trend 2010-2013

#### Multiple Choice



#### Non - Fiction

### Written Response: Percentage of students meeting/exceeding grade level expectations 2010-2013



Province

q 85
q 83
q 91
p 89
q 73
q 69
q 92
p 83

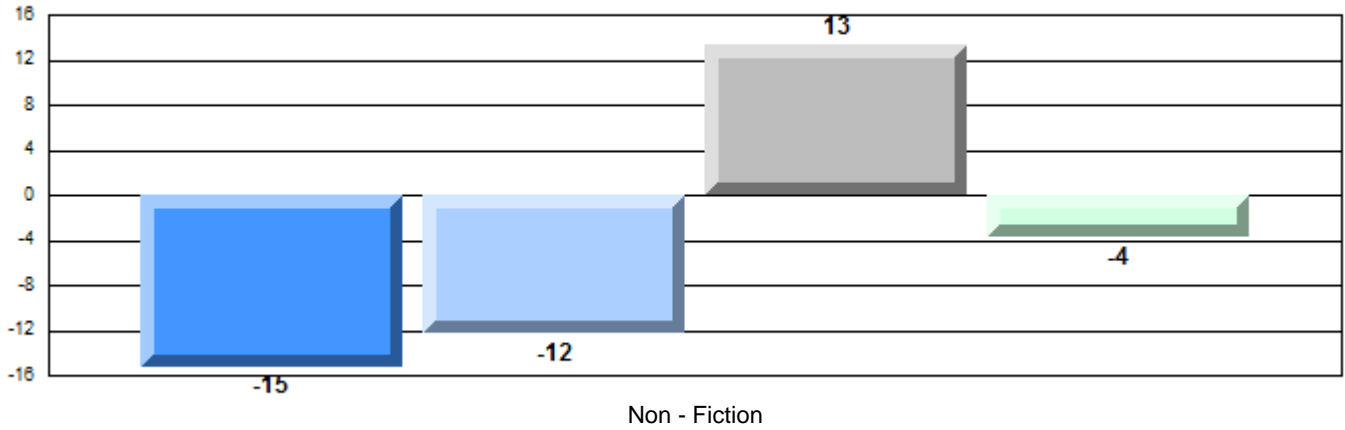
#### Demand Writing

#### Non - Fiction Reading



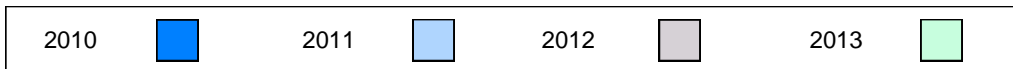
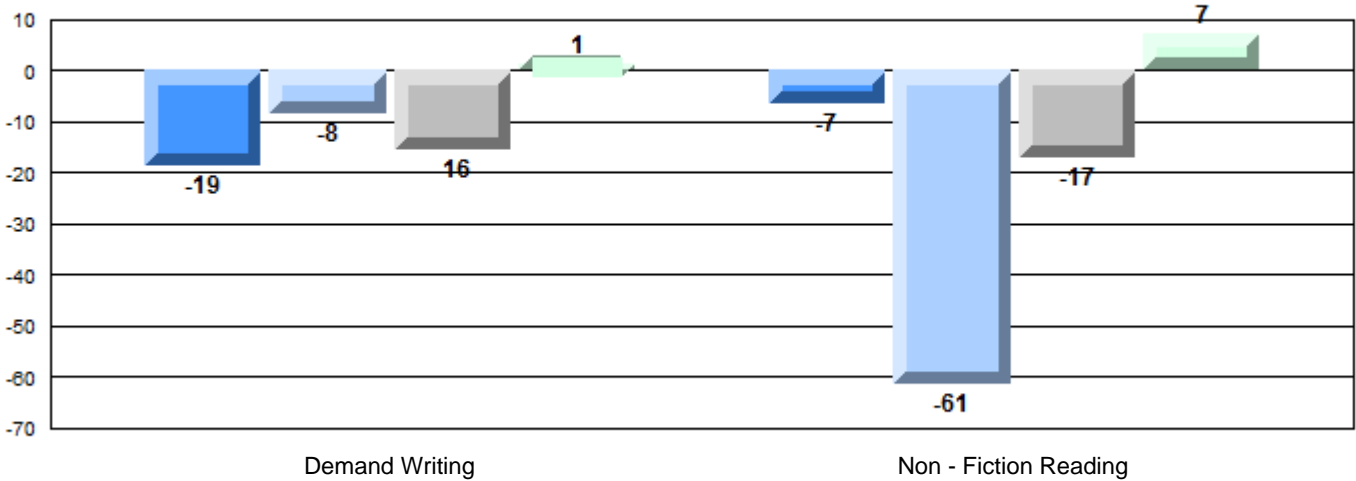
**Difference from Provincial Mean, 2010-13**

Multiple Choice



**Difference from Provincial Mean, 2010-13**

**Written Response: Percentage of students meeting/exceeding grade level expectations 2010-2013**



**English Language Arts**

Number of Students : 12

Mark	School vs District	School vs Province
School	36.7	q
District	53.2	q
Province	55.7	
School	58.3	q
District	83.0	q
Province	88.7	
School	50.0	q
District	77.1	q
Province	82.7	

**Multiple Choice**

**Non - Fiction**

School  
District  
Province

**Closed Responses\***

**Demand Writing**

School  
District  
Province

**Non - Fiction Reading**

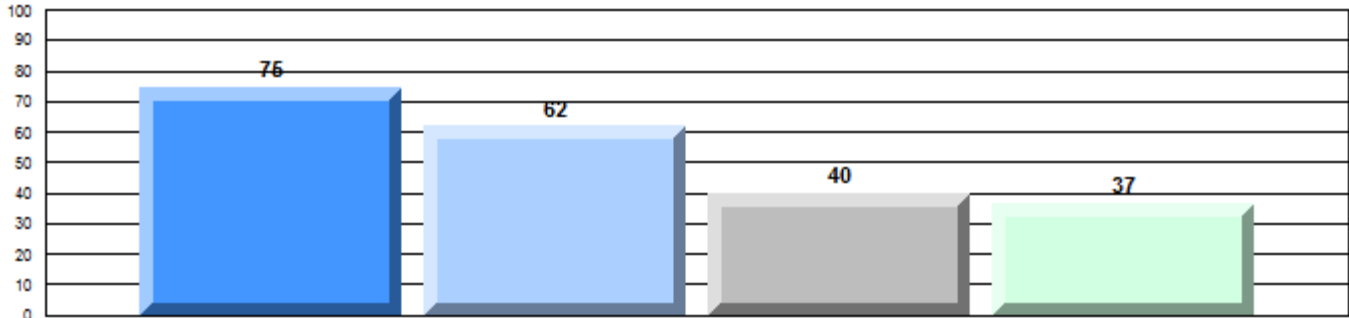
School  
District  
Province

\* How to interpret the results for Closed Responses

On the Demand Writing (Creative) section, the students in Jens Haven Memorial scored 58.3%. This means 58.3% of the students met or exceeded the cut score for this section.

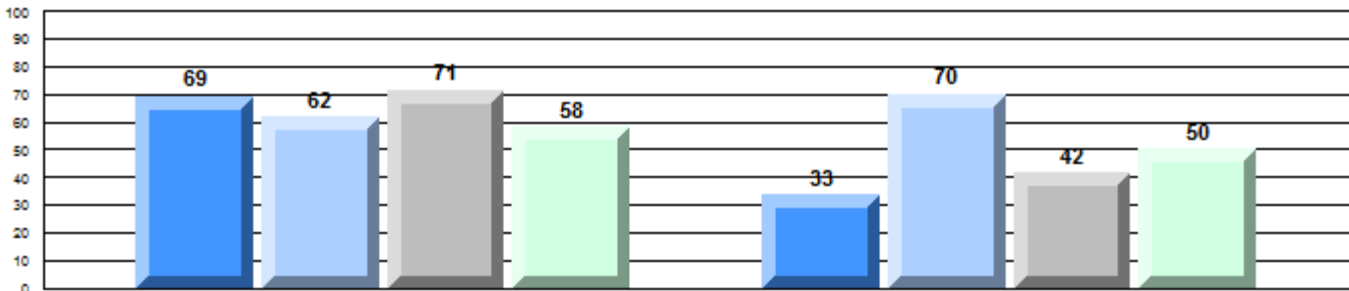
**4 Year CRT (Subtest) Mark Trend 2010-2013**

Multiple Choice



Non - Fiction

**Written Response: Percentage of students meeting/exceeding grade level expectations 2010-2013**

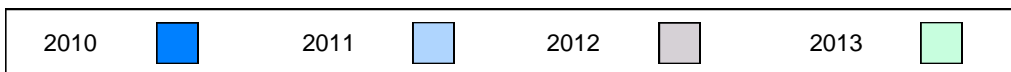


Province

q 85    q 83    q 91    q 89       q 73    p 69    q 92    q 83

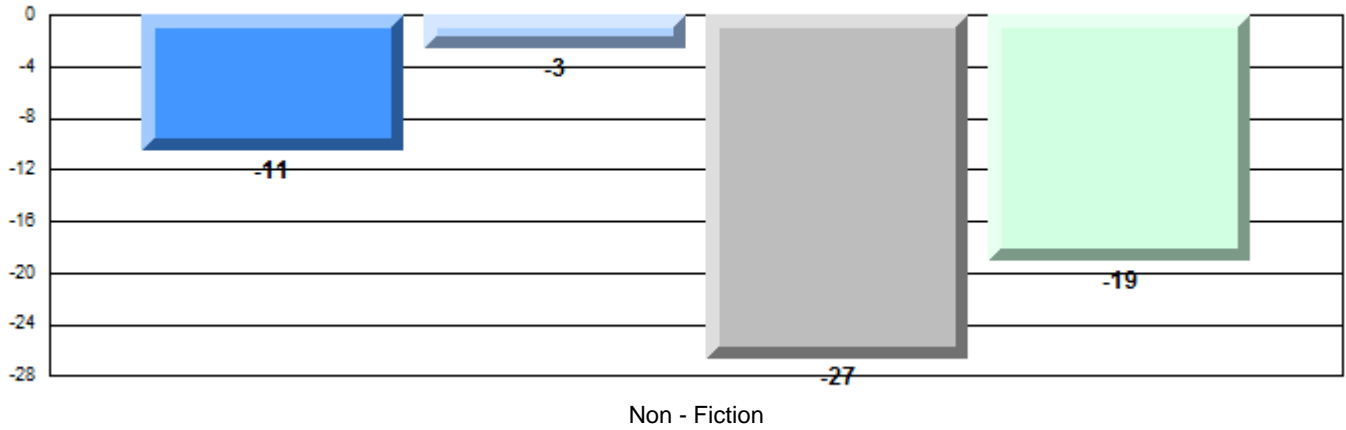
Demand Writing

Non - Fiction Reading



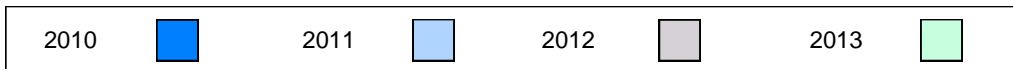
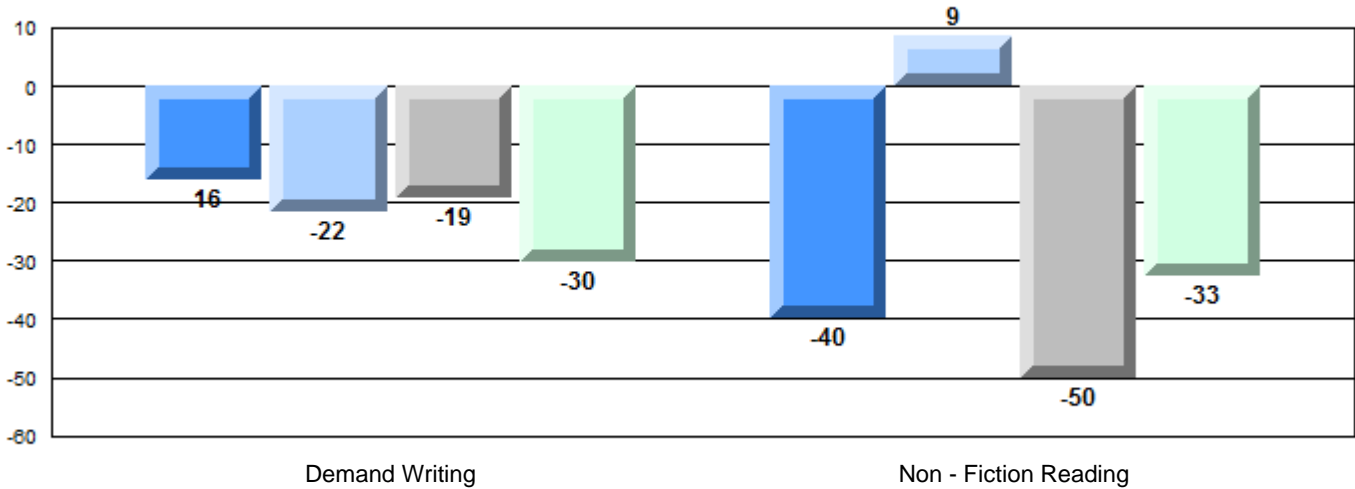
**Difference from Provincial Mean, 2010-13**

Multiple Choice



**Difference from Provincial Mean, 2010-13**

Written Response: Percentage of students meeting/exceeding grade level expectations 2010-2013



**English Language Arts**

Number of Students : 8

**Multiple Choice**

**Non - Fiction**

School  
District  
Province

33.8  
53.2  
55.7

Mark      School vs District      School vs Province

q      q

**Closed Responses\***

**Demand Writing**

School  
District  
Province

62.5  
83.0  
88.7

q      q

**Non - Fiction Reading**

School  
District  
Province

50.0  
77.1  
82.7

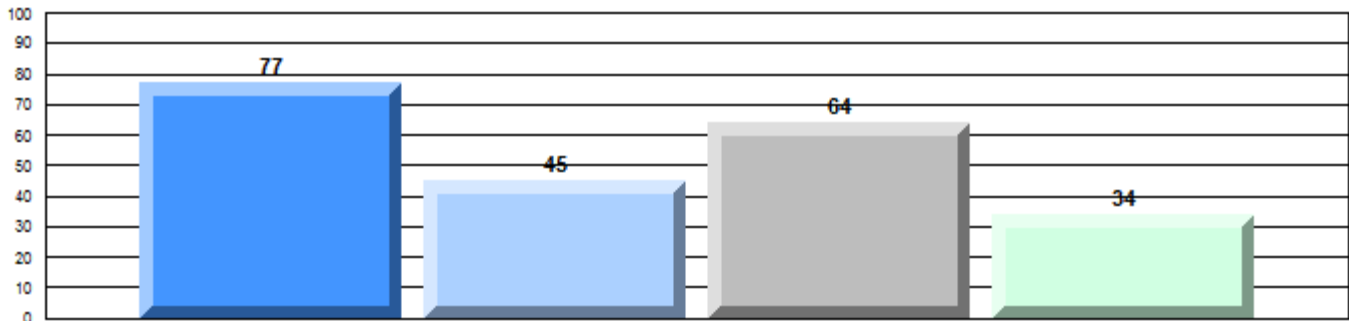
q      q

\* How to interpret the results for Closed Responses

On the Demand Writing (Creative) section, the students in Lake Melville School scored 62.5%. This means 62.5% of the students met or exceeded the cut score for this section.

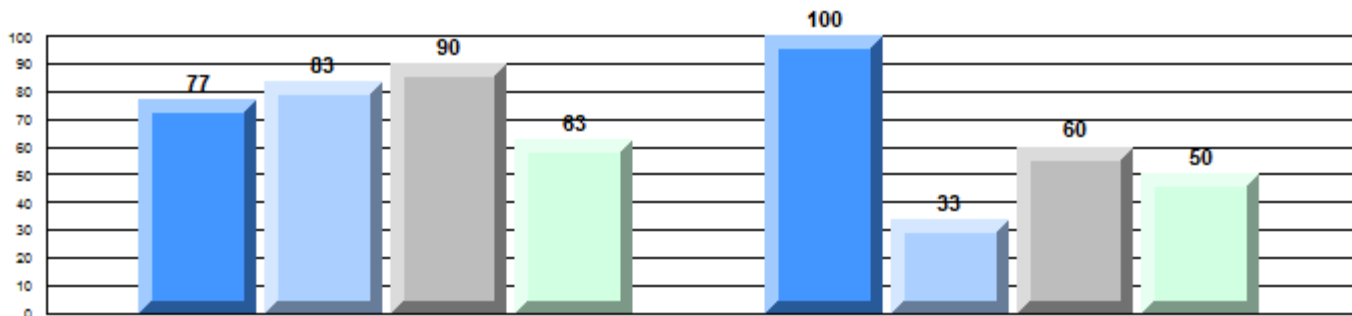
**4 Year CRT (Subtest) Mark Trend 2010-2013**

Multiple Choice



Non - Fiction

**Written Response: Percentage of students meeting/exceeding grade level expectations 2010-2013**



Province

q      P      q      q      P      q      q      q

85      83      91      89      73      69      92      83

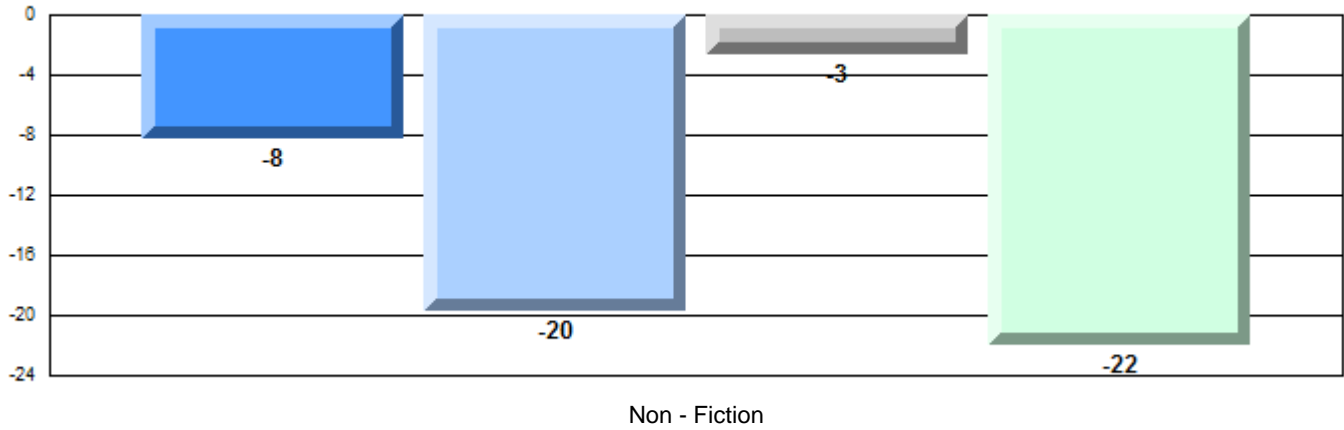
Demand Writing

Non - Fiction Reading



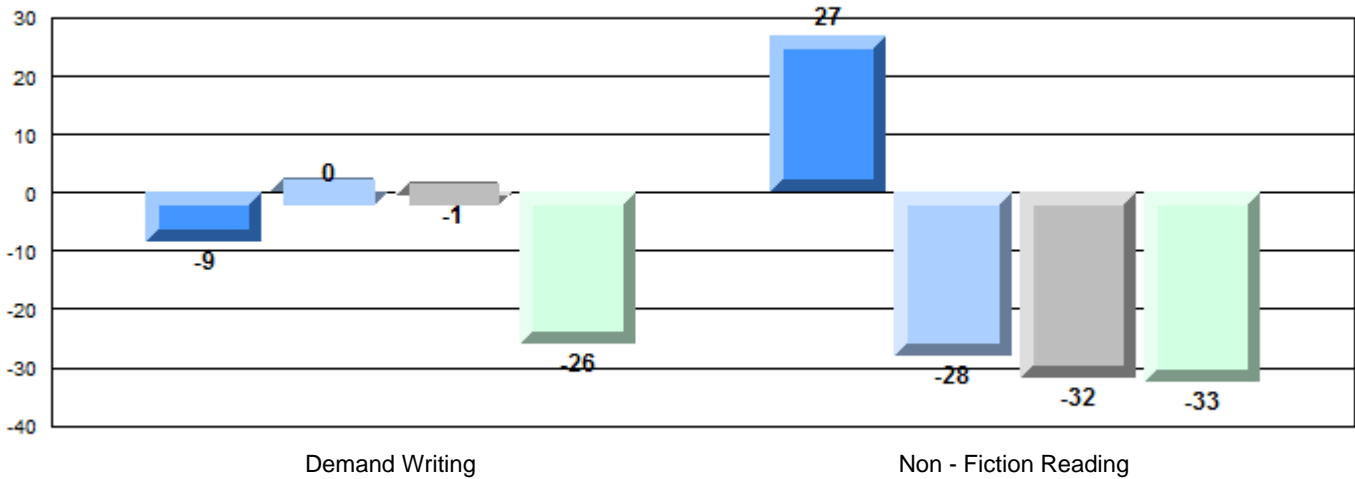
**Difference from Provincial Mean, 2010-13**

Multiple Choice



**Difference from Provincial Mean, 2010-13**

Written Response: Percentage of students meeting/exceeding grade level expectations 2010-2013



**English Language Arts**

Number of Students : 4

Multiple Choice

**Non - Fiction**

School  
District  
Province

Mark	School vs District	School vs Province
School data with 5 or fewer students withheld for reasons of confidentiality.	P	P

Closed Responses\*

**Demand Writing**

School  
District  
Province

	P	P
--	---	---

**Non - Fiction Reading**

School  
District  
Province

	P	P
--	---	---

\* How to interpret the results for Closed Responses

On the Demand Writing (Creative) section, the students in B.L. Morrison scored 100.0%. This means 100.0% of the students met or exceeded the cut score for this section.

**4 Year CRT (Subtest) Mark Trend 2010-2013**

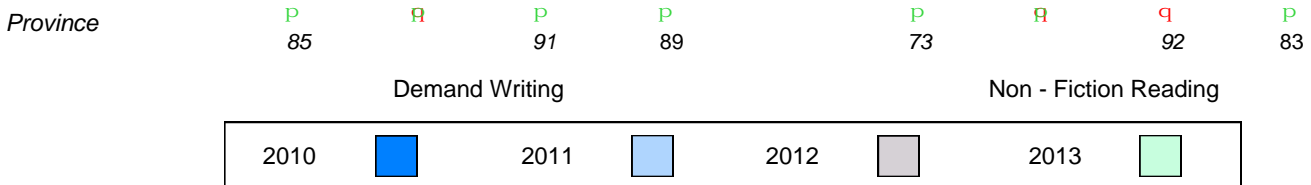
Multiple Choice

School data with 5 or fewer students withheld for reasons of confidentiality.

Non - Fiction

**Written Response: Percentage of students meeting/exceeding grade level expectations 2010-2013**

School data with 5 or fewer students withheld for reasons of confidentiality.



**Difference from Provincial Mean, 2010-13**

Multiple Choice

School data with 5 or fewer students withheld for reasons of confidentiality.

Non - Fiction

**Difference from Provincial Mean, 2010-13**

**Written Response: Percentage of students meeting/exceeding grade level expectations 2010-2013**

School data with 5 or fewer students withheld for reasons of confidentiality.

Demand Writing

Non - Fiction Reading





**English Language Arts**

Number of Students : 2

**Multiple Choice**

**Non - Fiction**

School  
District  
Province

Mark	School vs District	School vs Province
School data with 5 or fewer students withheld for reasons of confidentiality.	P	q
	P	P
	q	q

**Closed Responses\***

**Demand Writing**

School  
District  
Province

**Non - Fiction Reading**

School  
District  
Province

\* How to interpret the results for Closed Responses

On the Demand Writing (Creative) section, the students in Northern Lights Academy scored 100.0%. This means 100.0% of the students met or exceeded the cut score for this section.

**4 Year CRT (Subtest) Mark Trend 2010-2013**

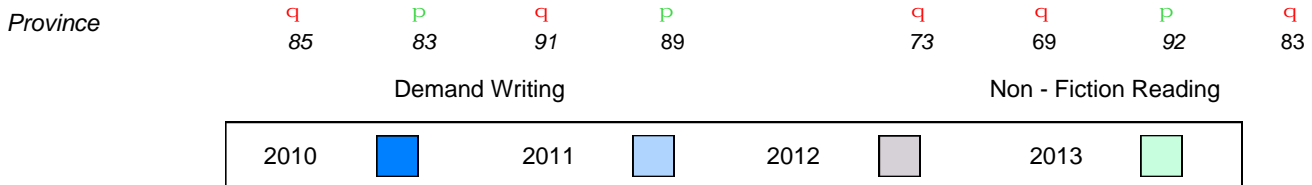
Multiple Choice

School data with 5 or fewer students withheld for reasons of confidentiality.

Non - Fiction

**Written Response: Percentage of students meeting/exceeding grade level expectations 2010-2013**

School data with 5 or fewer students withheld for reasons of confidentiality.



**Difference from Provincial Mean, 2010-13**

Multiple Choice

School data with 5 or fewer students withheld for reasons of confidentiality.

Non - Fiction

**Difference from Provincial Mean, 2010-13**

**Written Response: Percentage of students meeting/exceeding grade level expectations 2010-2013**

School data with 5 or fewer students withheld for reasons of confidentiality.

Demand Writing

Non - Fiction Reading



## English Language Arts

Number of Students : 94

### Multiple Choice

#### Non - Fiction

School  
District  
Province

Mark	School vs District	School vs Province
------	--------------------	--------------------

57.7	P	P
53.2		
55.7		

### Closed Responses\*

#### Demand Writing

School  
District  
Province

94.7	P	P
83.0		
88.7		

#### Non - Fiction Reading

School  
District  
Province

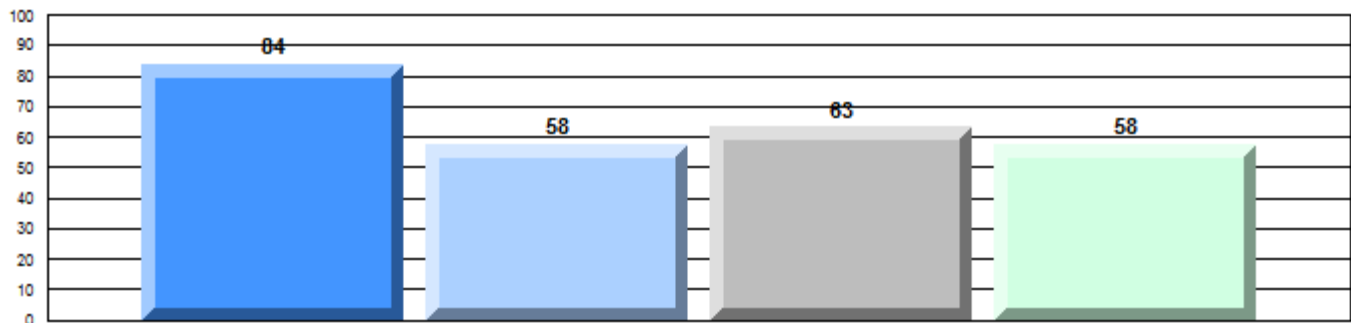
84.0	P	P
77.1		
82.7		

\* How to interpret the results for Closed Responses

On the Demand Writing (Creative) section, the students in Mealy Mountain Collegiate scored 94.7%. This means 94.7% of the students met or exceeded the cut score for this section.

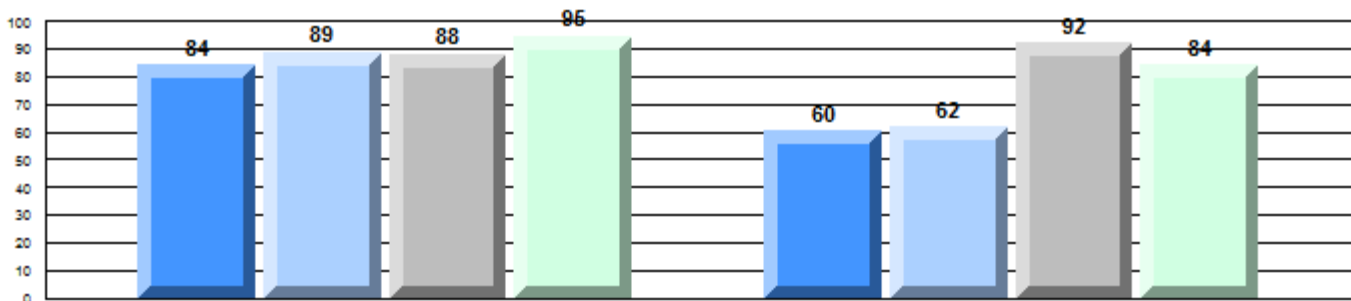
### 4 Year CRT (Subtest) Mark Trend 2010-2013

#### Multiple Choice



#### Non - Fiction

### Written Response: Percentage of students meeting/exceeding grade level expectations 2010-2013



Province

Q

P

Q

P

Q

P

P

P

85

83

91

89

73

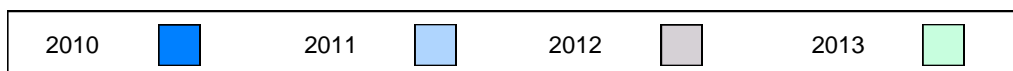
69

92

83

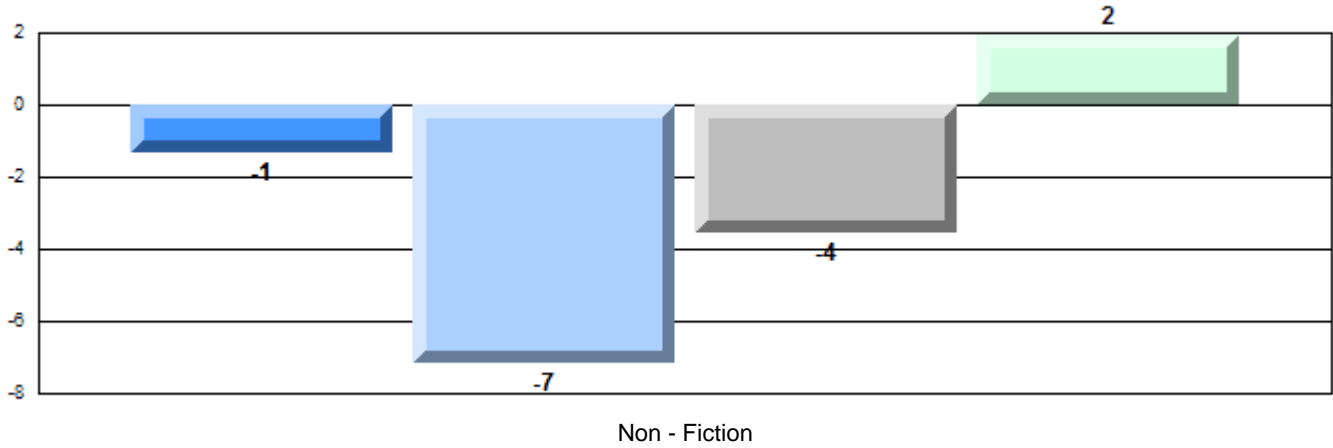
#### Demand Writing

#### Non - Fiction Reading



**Difference from Provincial Mean, 2010-13**

Multiple Choice



**Difference from Provincial Mean, 2010-13**

Written Response: Percentage of students meeting/exceeding grade level expectations 2010-2013

