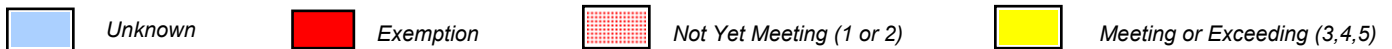
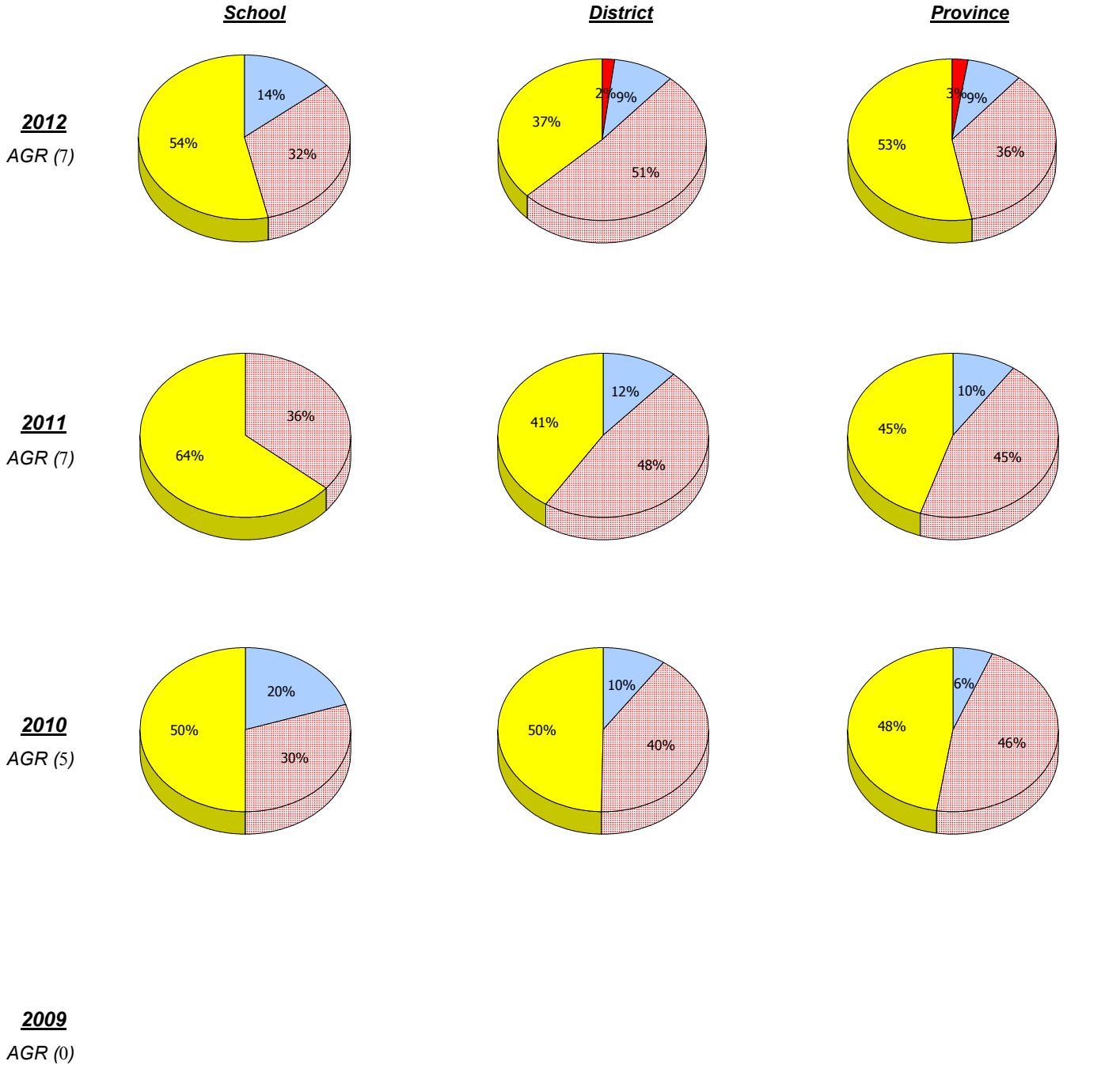


District 1 - Labrador

School #: 002 Henry Gordon Academy

**Number Operations**



In some cases, CRT numbers may exceed AGR numbers based on late enrolments. Pie chart is based on the number of students who wrote the CRT.

Number Operations score is composite of Reasoning, Communication, Connections and Representations, and Problem Solving.

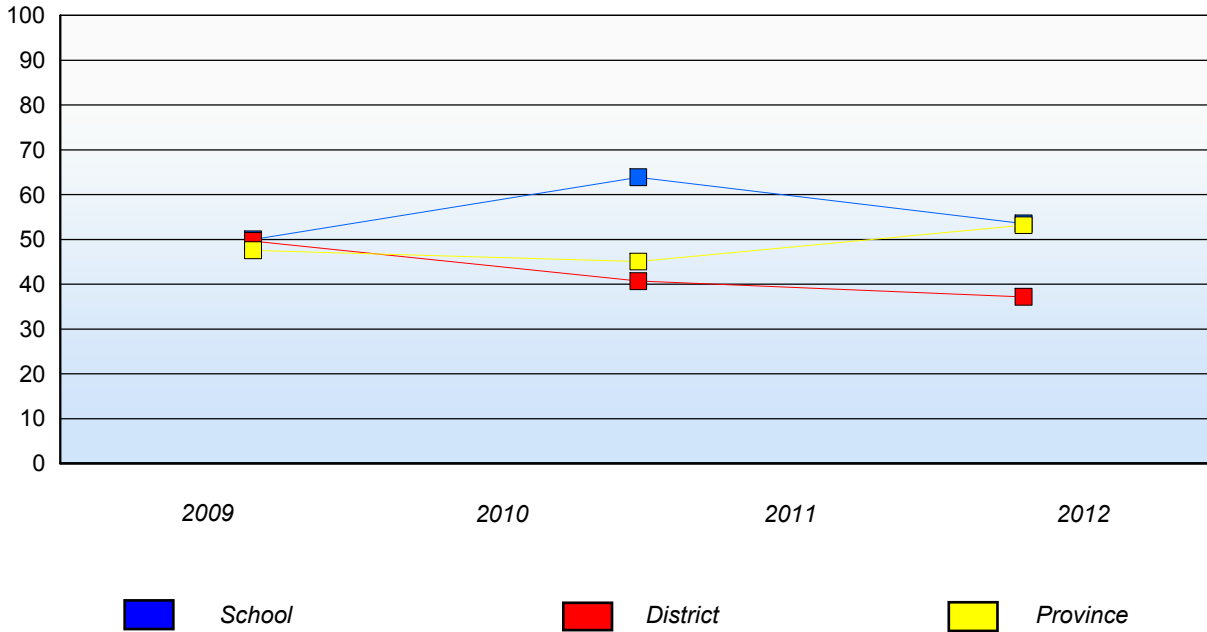
Source: Division of Evaluation and Research, Department of Education

District 1 - Labrador

School #: 002 Henry Gordon Academy

### Number Operations

*Percentage of students at level 3 or above (2009 - 2012)*



In some cases, CRT numbers may exceed AGR numbers based on late enrolments. Pie chart is based on the number of students who wrote the CRT. Number Operations score is composite of Reasoning, Communication, Connections and Representations, and Problem Solving.

Source: Division of Evaluation and Research, Department of Education

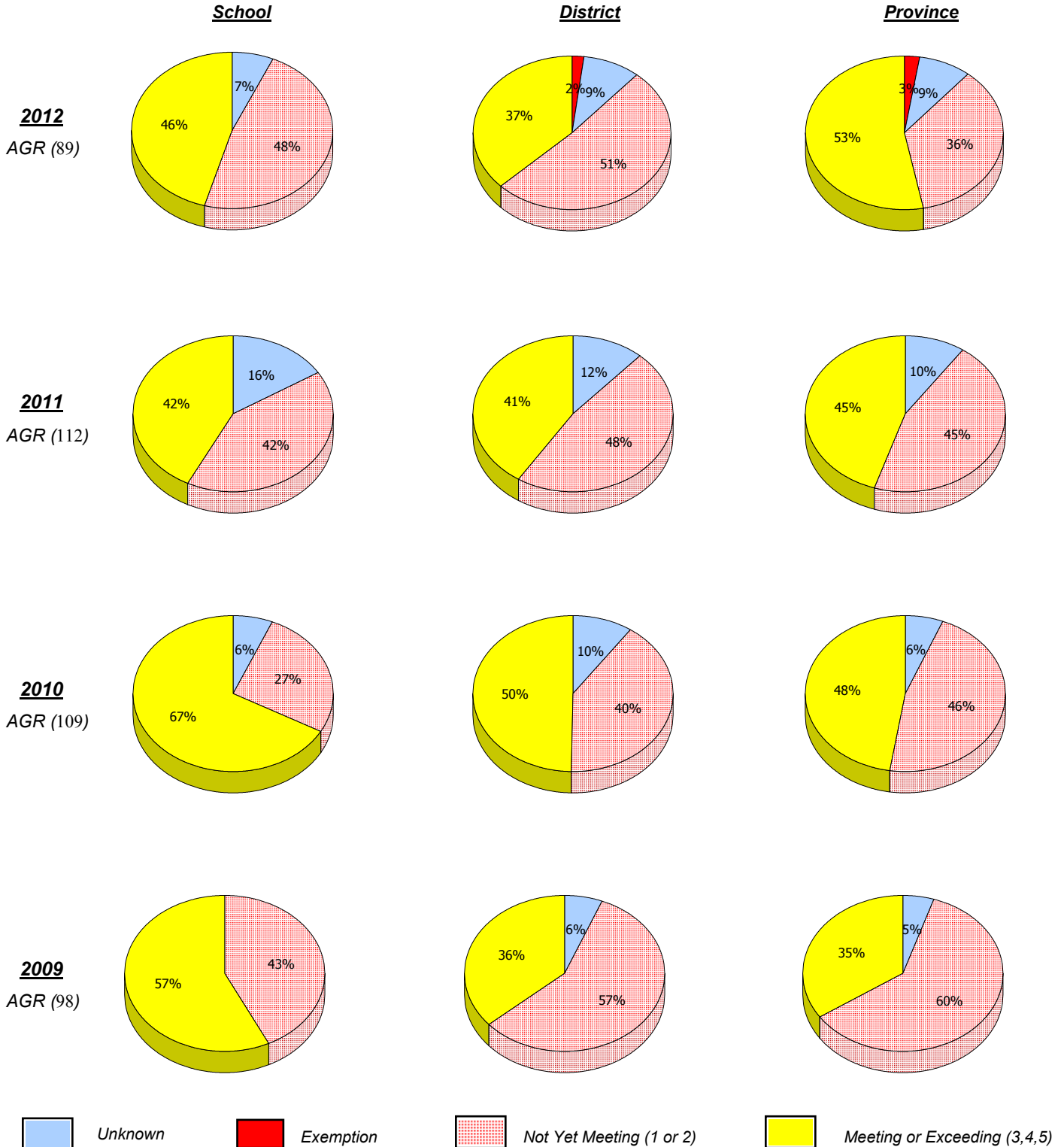
O:\CRT12\MATH\_6\WEB\MTH6\_4YR\_12.RPT

Mushuau Innu Natuashish and Peenamin McKenzie School are excluded from district and provincial results.

District 1 - Labrador

School #: 004 Queen of Peace Middle School

**Number Operations**



In some cases, CRT numbers may exceed AGR numbers based on late enrolments. Pie chart is based on the number of students who wrote the CRT.

Number Operations score is composite of Reasoning, Communication, Connections and Representations, and Problem Solving.

Source: Division of Evaluation and Research, Department of Education

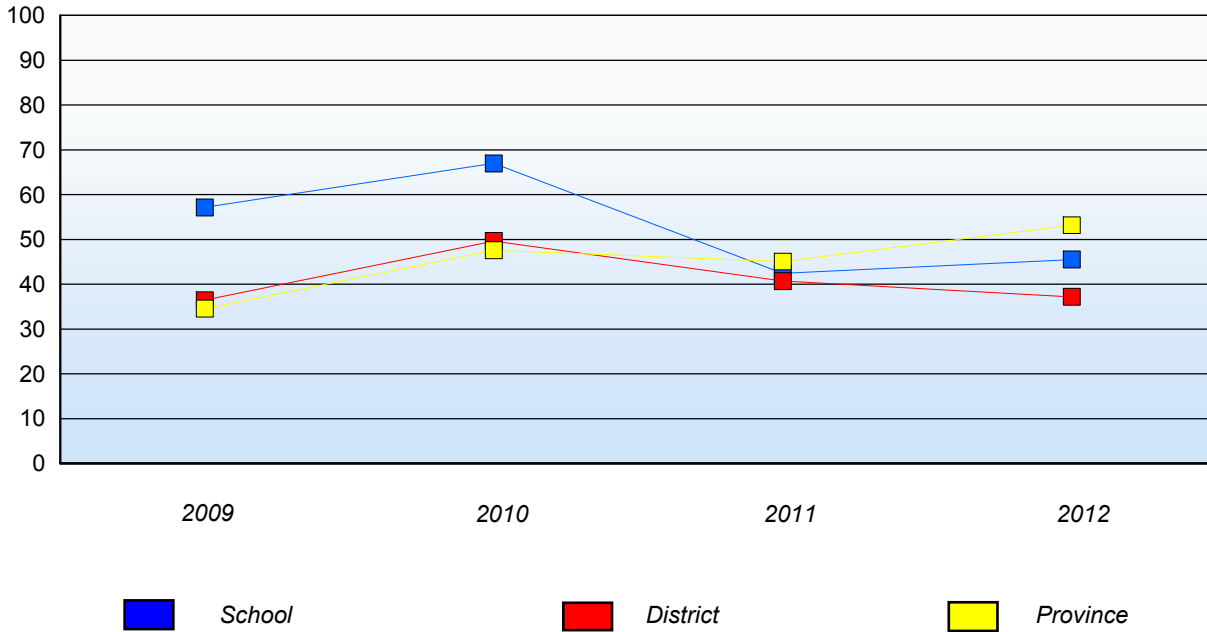
O:\CRT12\MATH\_6\WEB\MTH6\_4YR\_12.RPT

District 1 - Labrador

School #: 004 Queen of Peace Middle School

### Number Operations

*Percentage of students at level 3 or above (2009 - 2012)*



In some cases, CRT numbers may exceed AGR numbers based on late enrolments. Pie chart is based on the number of students who wrote the CRT. Number Operations score is composite of Reasoning, Communication, Connections and Representations, and Problem Solving.

Source: Division of Evaluation and Research, Department of Education

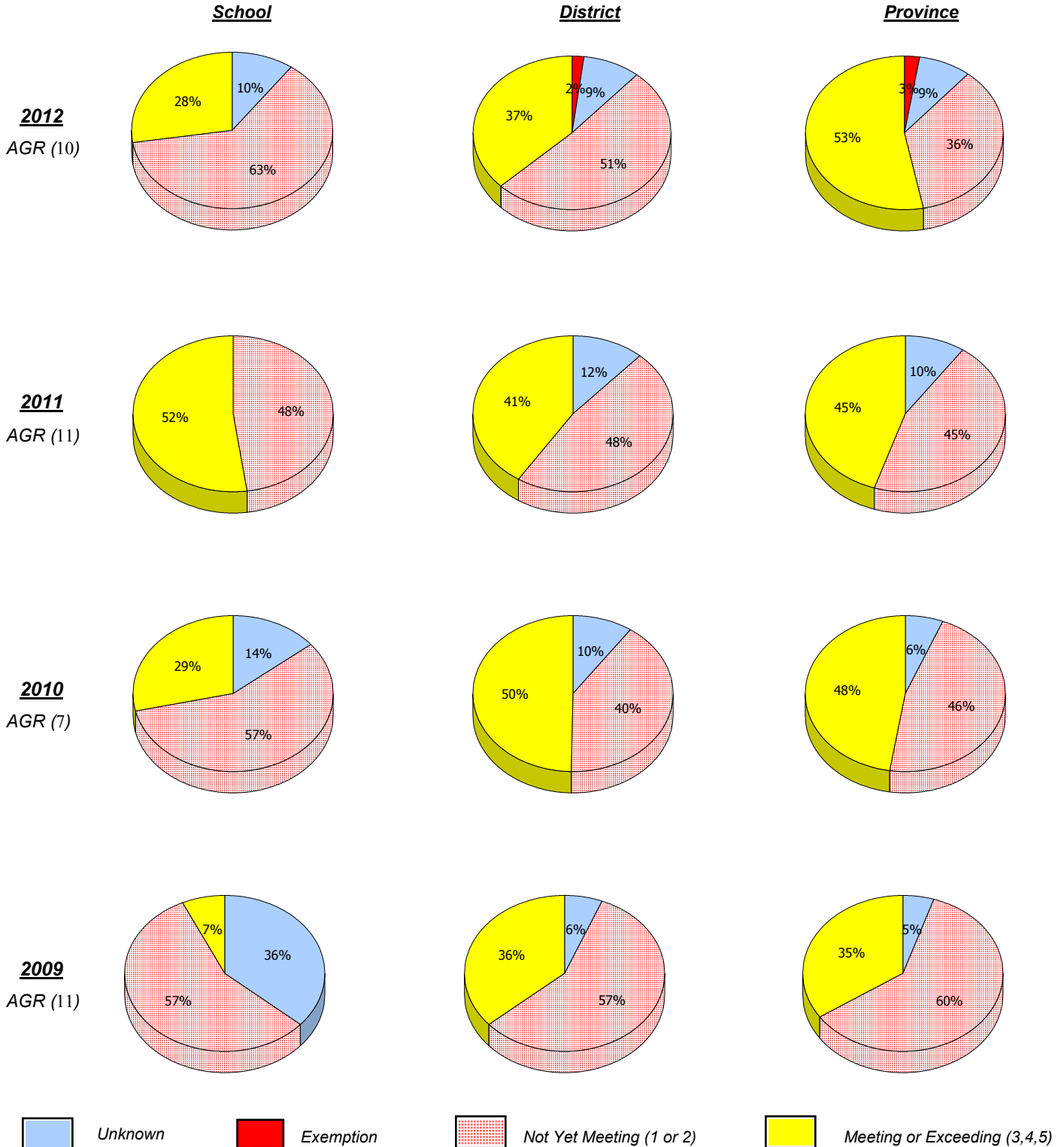
O:\CRT12\MATH\_6\WEB\MTH6\_4YR\_12.RPT

Mushuau Innu Natuashish and Peenamin McKenzie School are excluded from district and provincial results.

District 1 - Labrador

School #: 007 Amos Comenius Memorial School

**Number Operations**



In some cases, CRT numbers may exceed AGR numbers based on late enrolments. Pie chart is based on the number of students who wrote the CRT.

Number Operations score is composite of Reasoning, Communication, Connections and Representations, and Problem Solving.

Source: Division of Evaluation and Research, Department of Education

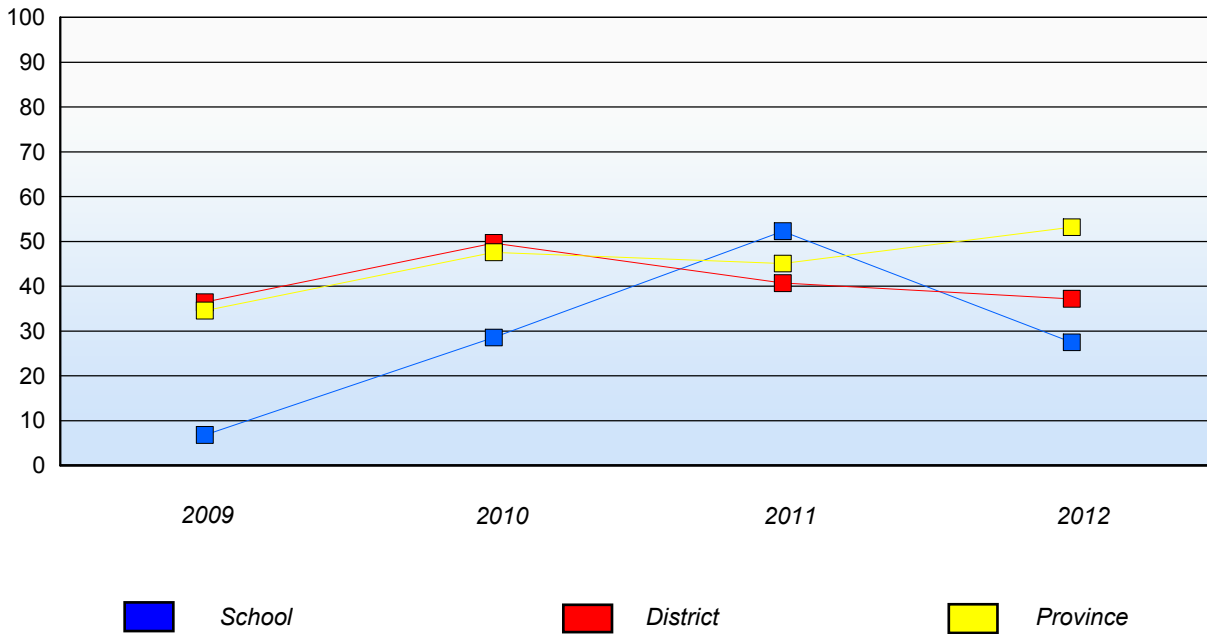
O:\CRT12\MATH\_6\WEB\MTH6\_4YR\_12.RPT

District 1 - Labrador

School #: 007 Amos Comenius Memorial School

### Number Operations

*Percentage of students at level 3 or above (2009 - 2012)*



In some cases, CRT numbers may exceed AGR numbers based on late enrolments. Pie chart is based on the number of students who wrote the CRT.  
 Number Operations score is composite of Reasoning, Communication, Connections and Representations, and Problem Solving.

Source: Division of Evaluation and Research, Department of Education

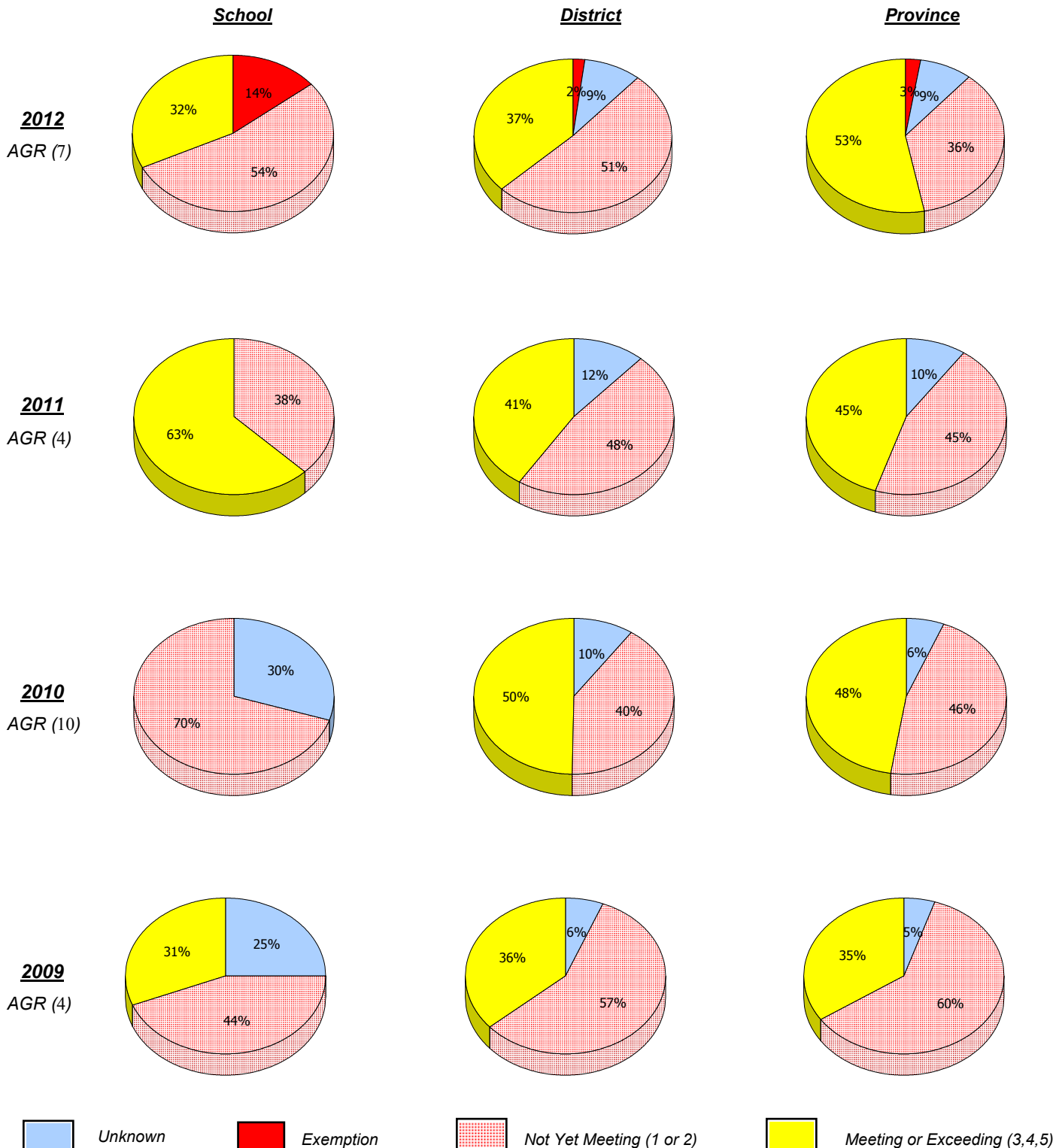
O:\CRT12\MATH\_6\WEB\MTH6\_4YR\_12.RPT

Mushuau Innu Natuashish and Peenamin McKenzie School are excluded from district and provincial results.

District 1 - Labrador

School #: 012 J.C. Erhardt Memorial School

**Number Operations**



In some cases, CRT numbers may exceed AGR numbers based on late enrolments. Pie chart is based on the number of students who wrote the CRT.

Number Operations score is composite of Reasoning, Communication, Connections and Representations, and Problem Solving.

Source: Division of Evaluation and Research, Department of Education

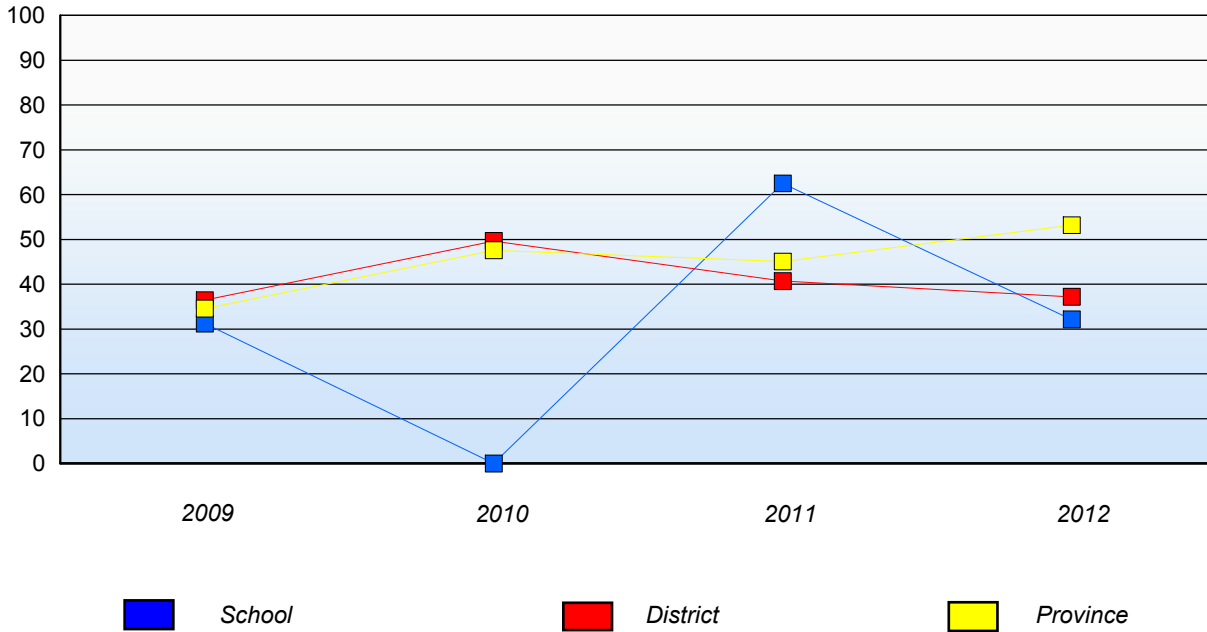
O:\CRT12\MATH\_6\WEB\MTH6\_4YR\_12.RPT

District 1 - Labrador

School #: 012 J.C. Erhardt Memorial School

**Number Operations**

Percentage of students at level 3 or above (2009 - 2012)



In some cases, CRT numbers may exceed AGR numbers based on late enrolments. Pie chart is based on the number of students who wrote the CRT.  
Number Operations score is composite of Reasoning, Communication, Connections and Representations, and Problem Solving.

Source: Division of Evaluation and Research, Department of Education

O:\CRT12\MATH\_6\WEB\MTH6\_4YR\_12.RPT

10/11/2012

8

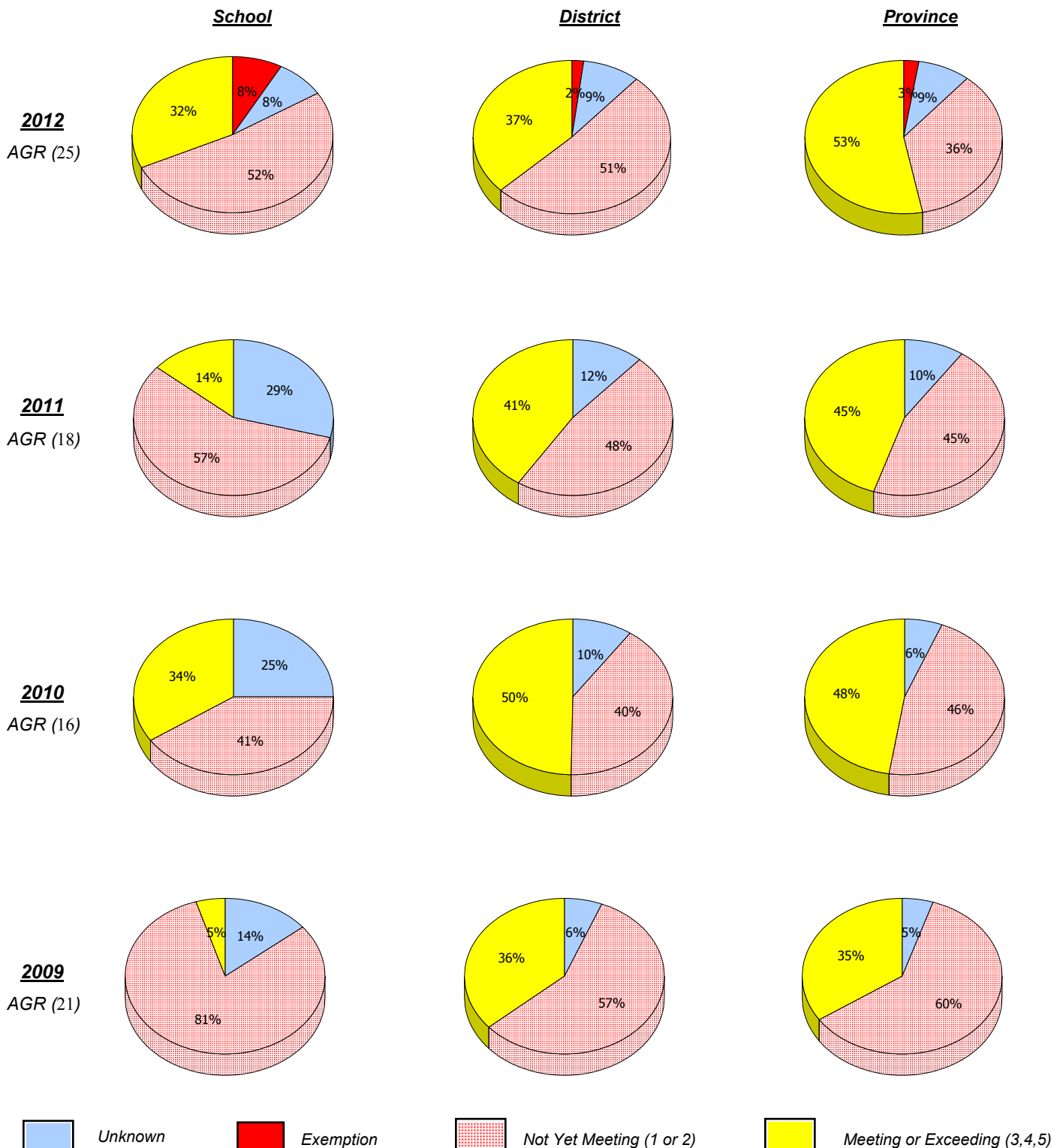
Mushuau Innu Natuashish and Peenamin McKenzie School are excluded from district and provincial results.



District 1 - Labrador

School #: 014 Jens Haven Memorial

**Number Operations**



In some cases, CRT numbers may exceed AGR numbers based on late enrolments. Pie chart is based on the number of students who wrote the CRT.

Number Operations score is composite of Reasoning, Communication, Connections and Representations, and Problem Solving.

Source: Division of Evaluation and Research, Department of Education

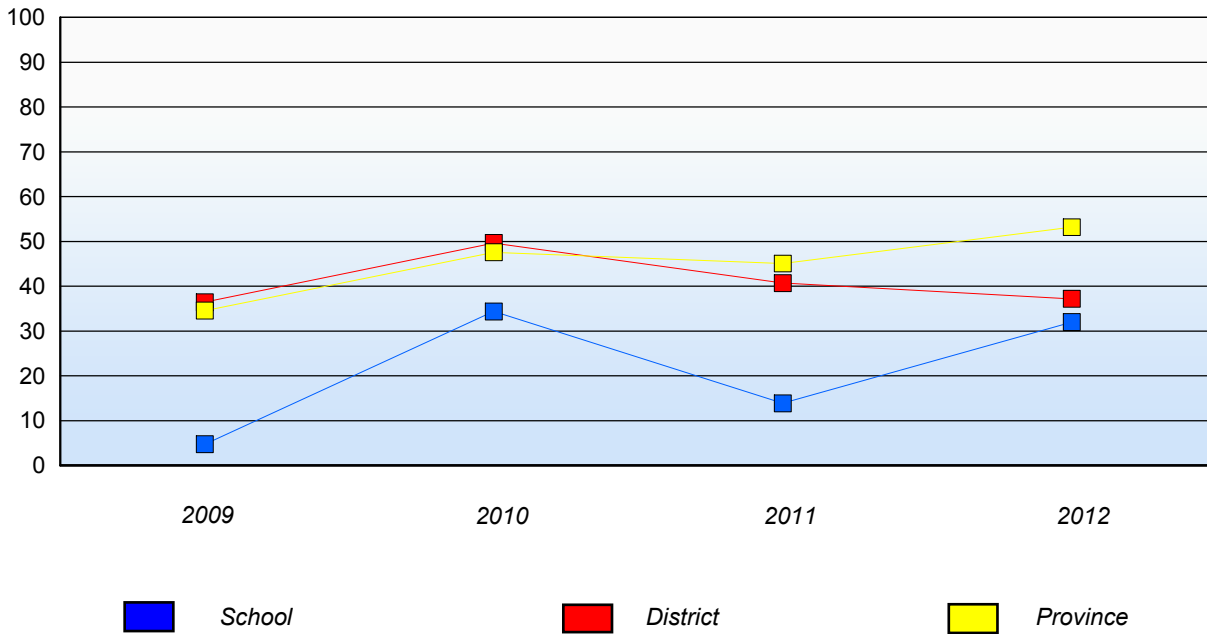
O:\CRT12\MATH\_6\WEB\MTH6\_4YR\_12.RPT

District 1 - Labrador

School #: 014    Jens Haven Memorial

**Number Operations**

*Percentage of students at level 3 or above (2009 - 2012)*



In some cases, CRT numbers may exceed AGR numbers based on late enrolments. Pie chart is based on the number of students who wrote the CRT.  
 Number Operations score is composite of Reasoning, Communication, Connections and Representations, and Problem Solving.

Source: Division of Evaluation and Research, Department of Education

O:\CRT12\MATH\_6\WEB\MTH6\_4YR\_12.RPT

Mushuau Innu Natuashish and Peenamin McKenzie School are excluded from district and provincial results.

District 1 - Labrador

School #: 015 Lake Melville School

**Number Operations**

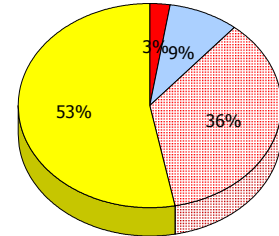
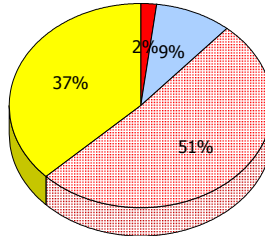
**School**

**District**

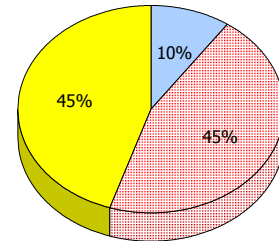
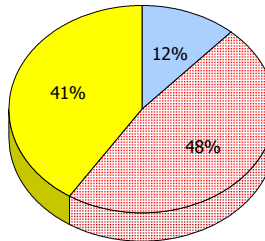
**Province**

**2012**  
AGR (6)

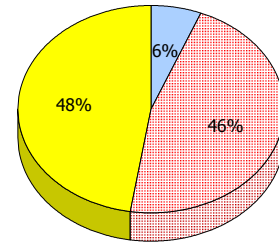
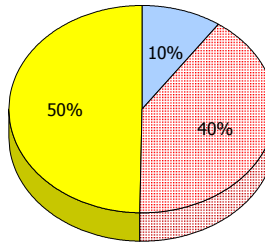
School data with 5 or fewer students withheld for reasons of confidentiality.



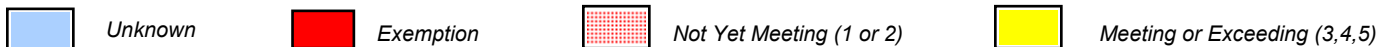
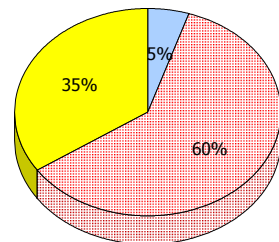
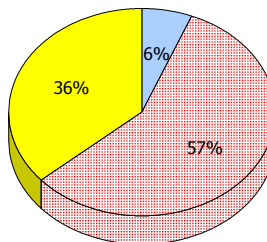
**2011**  
AGR (7)



**2010**  
AGR (9)



**2009**  
AGR (8)



In some cases, CRT numbers may exceed AGR numbers based on late enrolments. Pie chart is based on the number of students who wrote the CRT.

Number Operations score is composite of Reasoning, Communication, Connections and Representations, and Problem Solving.

Source: Division of Evaluation and Research, Department of Education

O:\CRT12\MATH\_6\WEB\MTH6\_4YR\_12.RPT

District 1 - Labrador

School #: 015 Lake Melville School

---

### **Number Operations**

*Percentage of students at level 3 or above (2009 - 2012)*

School data with 5 or fewer students withheld for reasons of confidentiality.

 School

 District

 Province

District 1 - Labrador

School #: 016 B.L. Morrison

**Number Operations**

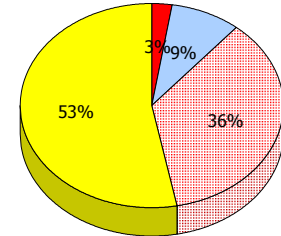
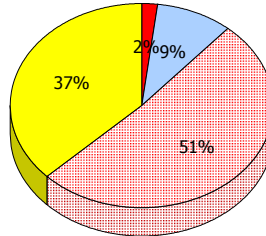
**School**

**District**

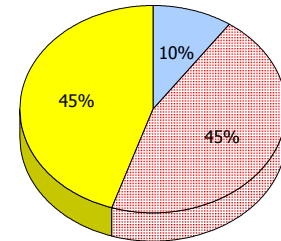
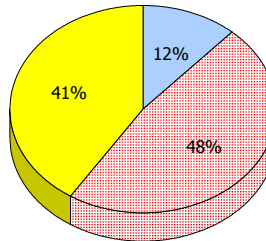
**Province**

**2012**  
AGR (2)

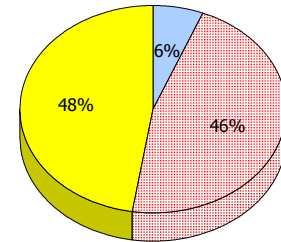
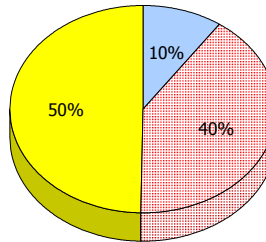
School data with 5 or fewer students withheld for reasons of confidentiality.



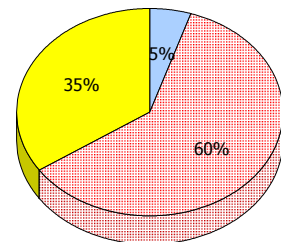
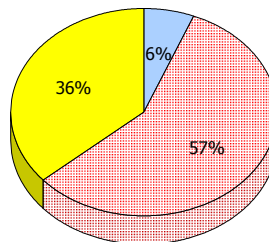
**2011**  
AGR (5)



**2010**  
AGR (5)



**2009**  
AGR (5)



Unknown
  Exemption
  Not Yet Meeting (1 or 2)
  Meeting or Exceeding (3,4,5)

In some cases, CRT numbers may exceed AGR numbers based on late enrolments. Pie chart is based on the number of students who wrote the CRT.

Number Operations score is composite of Reasoning, Communication, Connections and Representations, and Problem Solving.

Source: Division of Evaluation and Research, Department of Education

O:\CRT12\MATH\_6\WEB\MTH6\_4YR\_12.RPT

District 1 - Labrador


School #: 016 B.L. Morrison

---

### **Number Operations**

*Percentage of students at level 3 or above (2009 - 2012)*

School data with 5 or fewer students withheld for reasons of confidentiality.

 School

 District

 Province

District 1 - Labrador

School #: 017 Northern Lights Academy

**Number Operations**

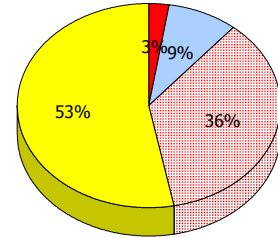
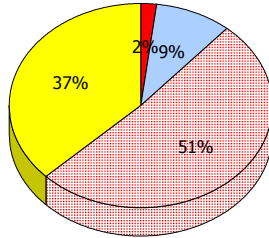
School

District

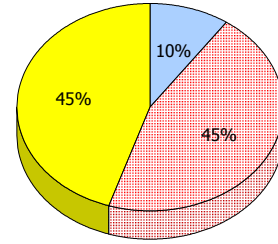
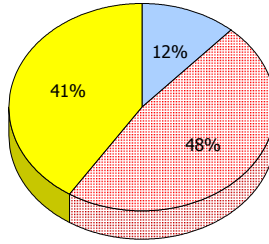
Province

**2012**  
AGR (3)

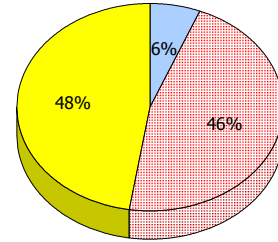
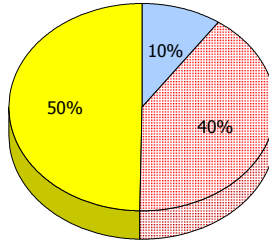
School data with 5 or fewer students withheld for reasons of confidentiality.



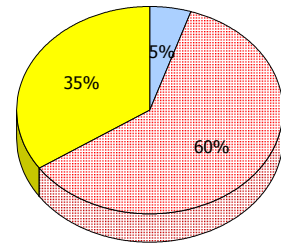
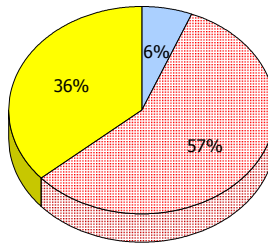
**2011**  
AGR (7)



**2010**  
AGR (2)



**2009**  
AGR (2)



Unknown
  Exemption
  Not Yet Meeting (1 or 2)
  Meeting or Exceeding (3,4,5)

In some cases, CRT numbers may exceed AGR numbers based on late enrolments. Pie chart is based on the number of students who wrote the CRT.

Number Operations score is composite of Reasoning, Communication, Connections and Representations, and Problem Solving.

Source: Division of Evaluation and Research, Department of Education

O:\CRT12\MATH\_6\WEB\MTH6\_4YR\_12.RPT

District 1 - Labrador


School #: 017 Northern Lights Academy

---

**Number Operations**

*Percentage of students at level 3 or above (2009 - 2012)*

School data with 5 or fewer students withheld for reasons of confidentiality.

 School

 District

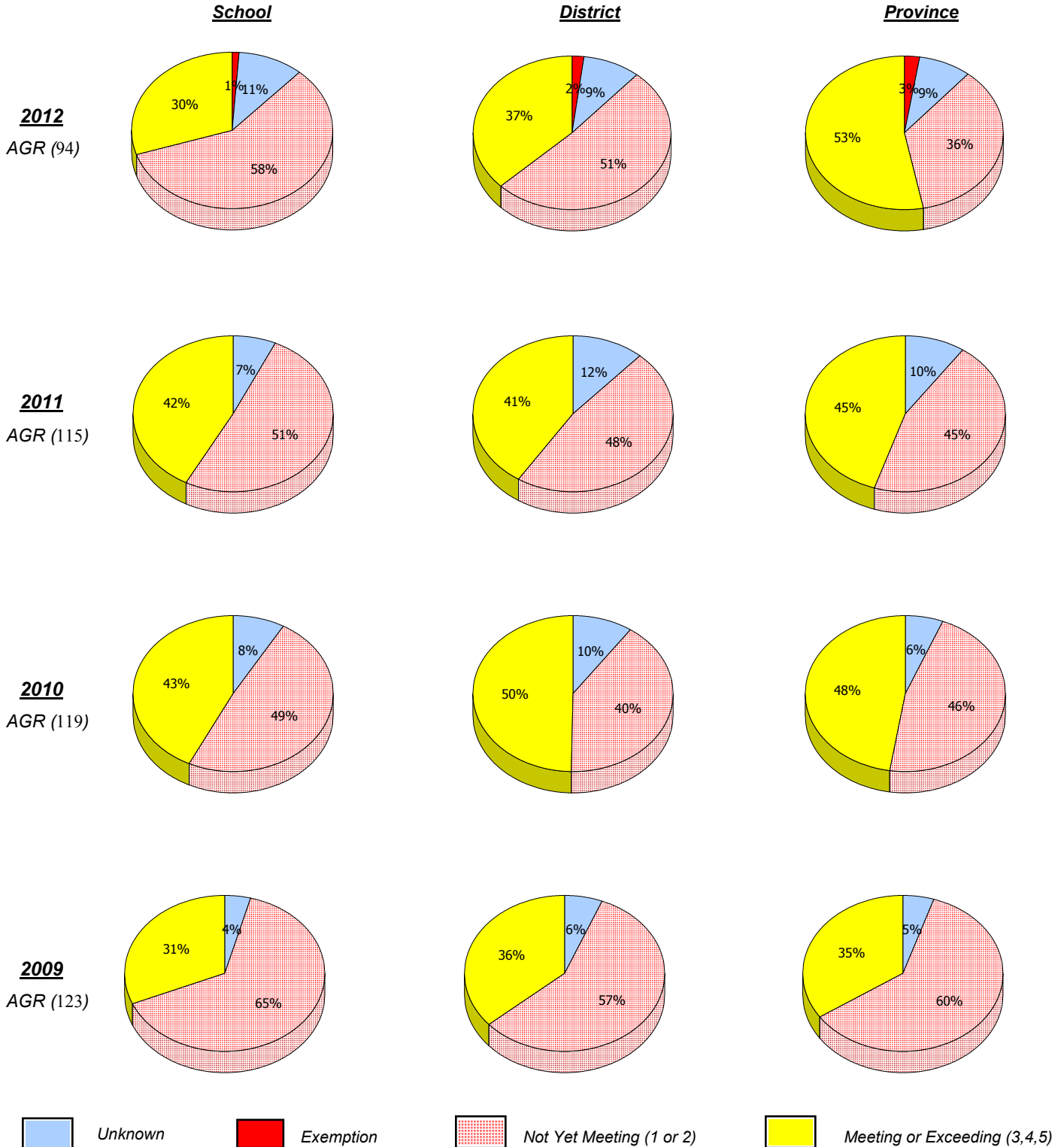
 Province



District 1 - Labrador

School #: 381 J.R. Smallwood Middle School

**Number Operations**



In some cases, CRT numbers may exceed AGR numbers based on late enrolments. Pie chart is based on the number of students who wrote the CRT.

Number Operations score is composite of Reasoning, Communication, Connections and Representations, and Problem Solving.

Source: Division of Evaluation and Research, Department of Education

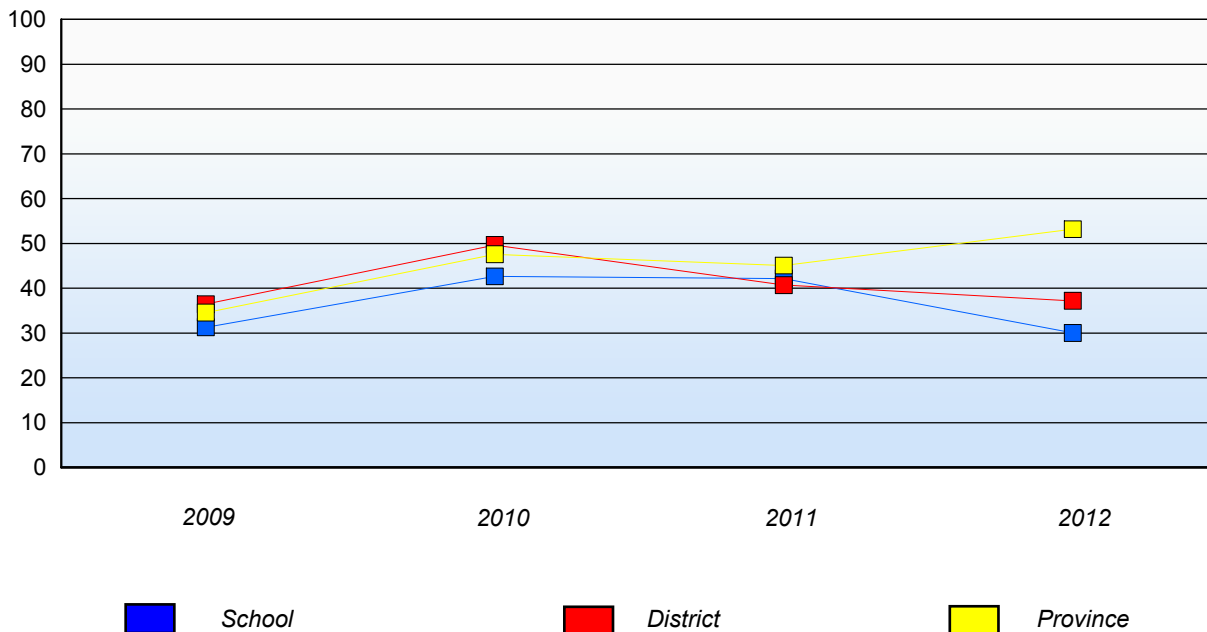
O:\CRT12\MATH\_6\WEB\MTH6\_4YR\_12.RPT

District 1 - Labrador

School #: 381 J.R. Smallwood Middle School

### Number Operations

*Percentage of students at level 3 or above (2009 - 2012)*



In some cases, CRT numbers may exceed AGR numbers based on late enrolments. Pie chart is based on the number of students who wrote the CRT.  
 Number Operations score is composite of Reasoning, Communication, Connections and Representations, and Problem Solving.

Source: Division of Evaluation and Research, Department of Education

O:\CRT12\MATH\_6\WEB\MTH6\_4YR\_12.RPT

Mushuau Innu Natuashish and Peenamin McKenzie School are excluded from district and provincial results.