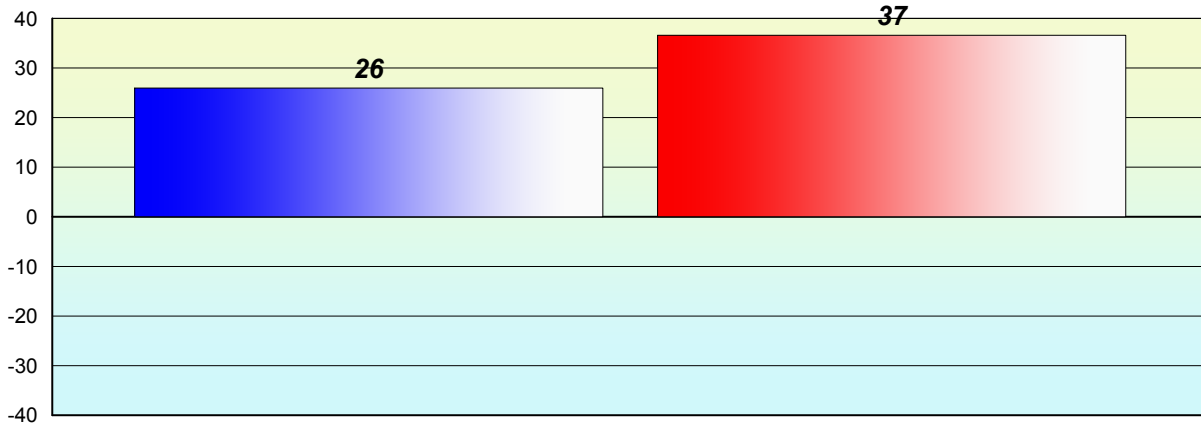


**Longitudinal  
Cohort of students  
Difference from Provincial Mean 2011 - 2012**

**Reading**

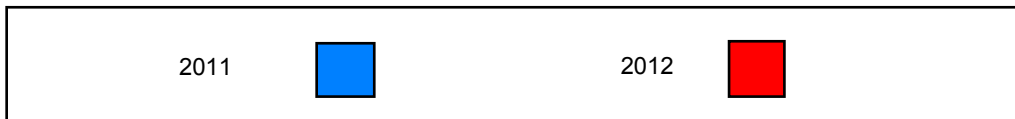


Grade 2 (2011) Reading Record

Grade 3 (2012) CRT

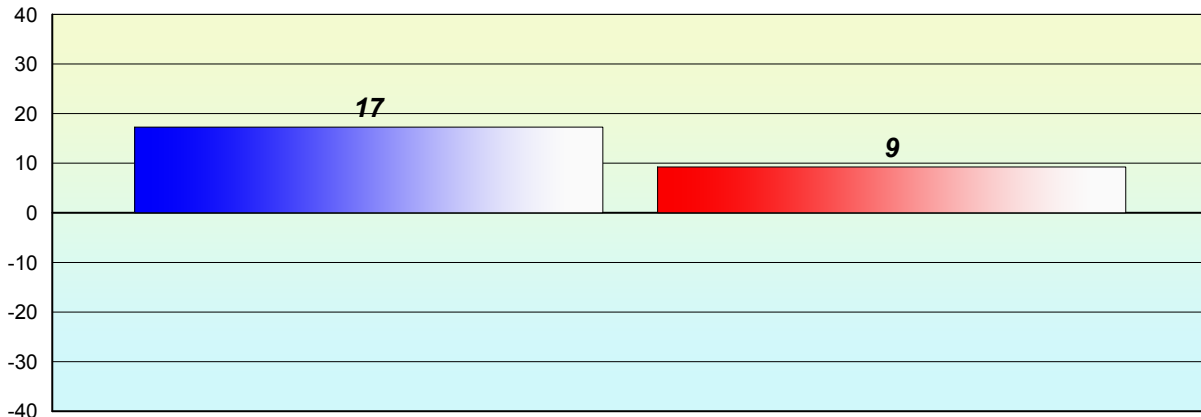
% of students at Grade Level = 74%

% of students at Level 3 and above = 52%



**Longitudinal  
Cohort of students  
Difference from Provincial Mean 2011 - 2012**

**Reading**



Grade 2 (2011) Reading Record

Grade 3 (2012) CRT

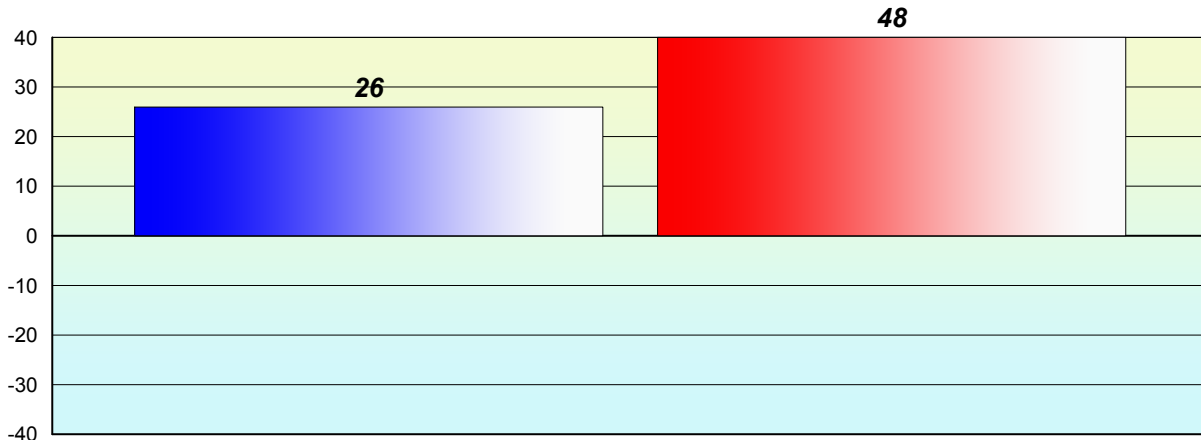
% of students at Grade Level = 74%

% of students at Level 3 and above = 52%



**Longitudinal  
Cohort of students  
Difference from Provincial Mean 2011 - 2012**

**Reading**



Grade 2 (2011) Reading Record

Grade 3 (2012) CRT

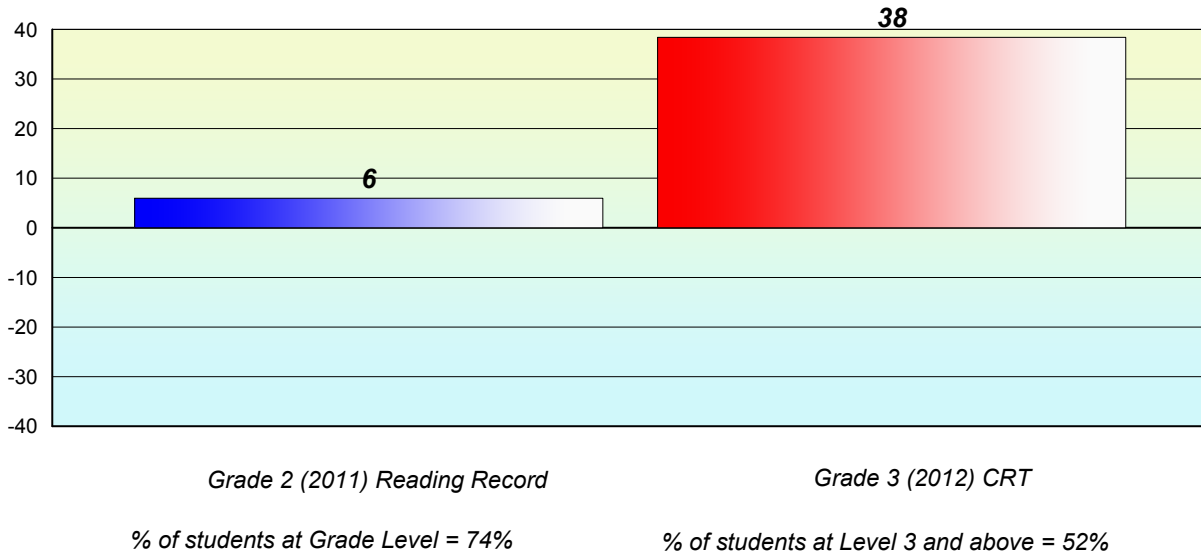
% of students at Grade Level = 74%

% of students at Level 3 and above = 52%



**Longitudinal  
Cohort of students  
Difference from Provincial Mean 2011 - 2012**

**Reading**



\* Reading score (Grade 3) is composite of Non Fiction and Poetry. Results are based on the same cohort of students.  
Source: Division of Evaluation and Research, Department of Education