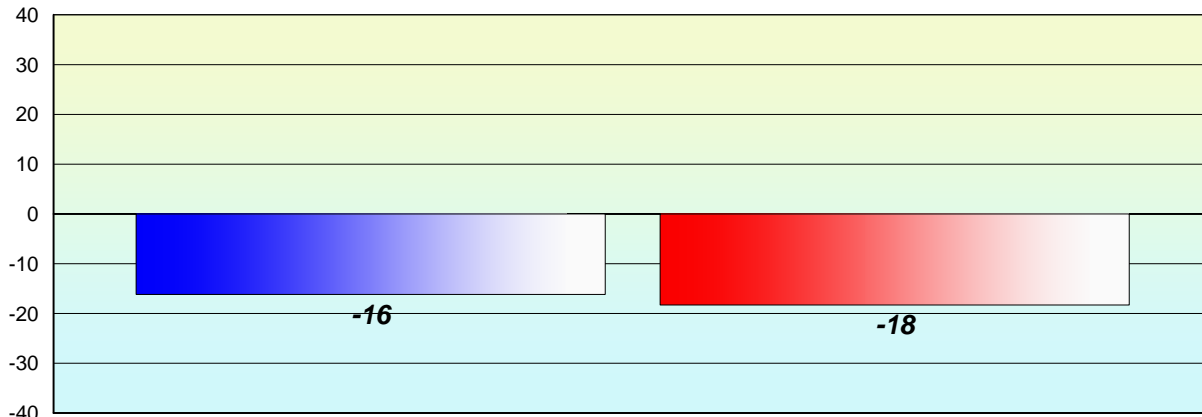


**Longitudinal
Cohort of students
Difference from Provincial Mean 2011 - 2012**

Reading



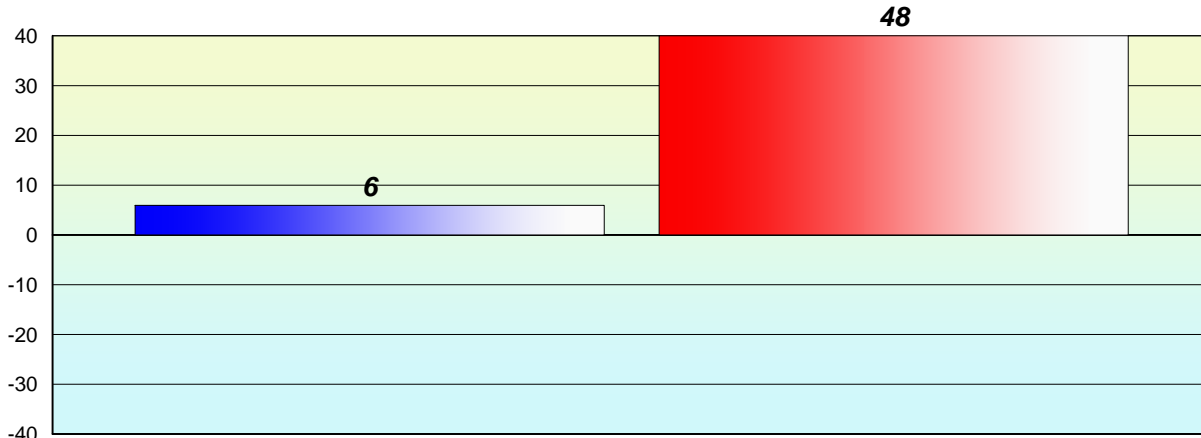
Grade 2 (2011) Reading Record
% of students at Grade Level = 74%

Grade 3 (2012) CRT
% of students at Level 3 and above = 52%



**Longitudinal
Cohort of students
Difference from Provincial Mean 2011 - 2012**

Reading



Grade 2 (2011) Reading Record

Grade 3 (2012) CRT

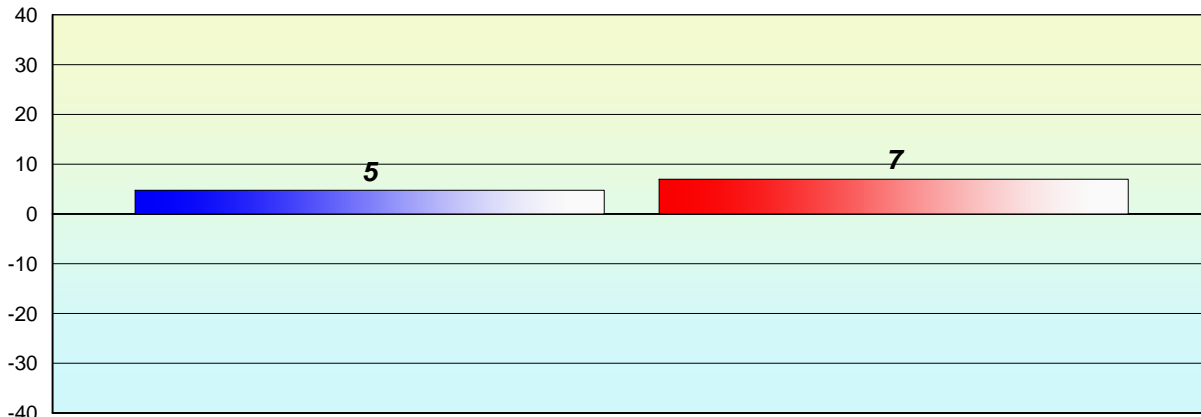
% of students at Grade Level = 74%

% of students at Level 3 and above = 52%



**Longitudinal
Cohort of students
Difference from Provincial Mean 2011 - 2012**

Reading



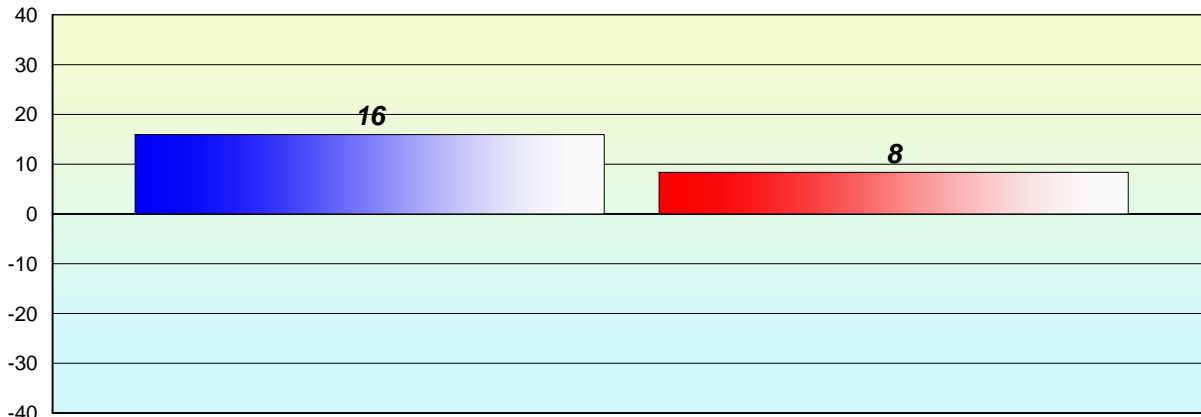
Grade 2 (2011) Reading Record
% of students at Grade Level = 74%

Grade 3 (2012) CRT
% of students at Level 3 and above = 52%



**Longitudinal
Cohort of students
Difference from Provincial Mean 2011 - 2012**

Reading



Grade 2 (2011) Reading Record

Grade 3 (2012) CRT

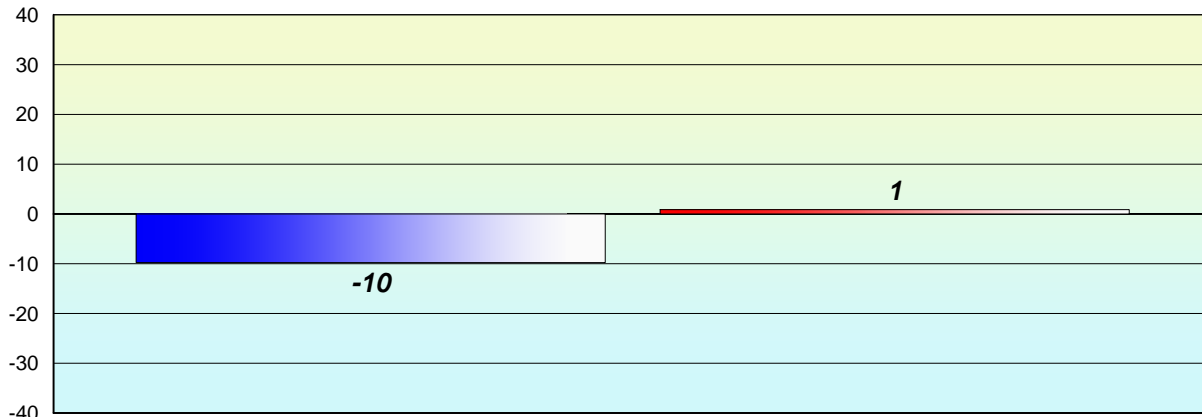
% of students at Grade Level = 74%

% of students at Level 3 and above = 52%



**Longitudinal
Cohort of students
Difference from Provincial Mean 2011 - 2012**

Reading



Grade 2 (2011) Reading Record

Grade 3 (2012) CRT

% of students at Grade Level = 74%

% of students at Level 3 and above = 52%



**Longitudinal
Cohort of students
Difference from Provincial Mean 2011 - 2012**

Reading

School data with 5 or fewer students withheld for reasons of confidentiality.

Grade 2 (2011) Reading Record

% of students at Grade Level = 74%

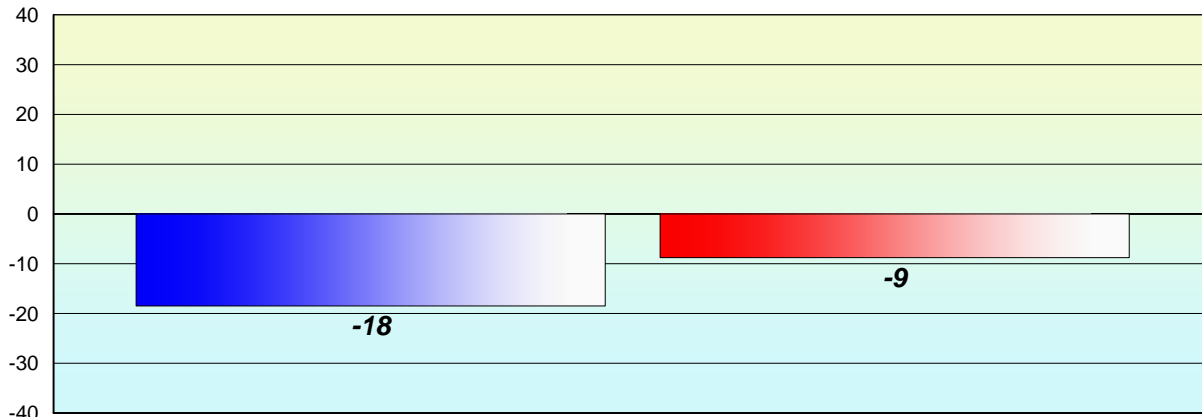
Grade 3 (2012) CRT

% of students at Level 3 and above = 52%



**Longitudinal
Cohort of students
Difference from Provincial Mean 2011 - 2012**

Reading



Grade 2 (2011) Reading Record

Grade 3 (2012) CRT

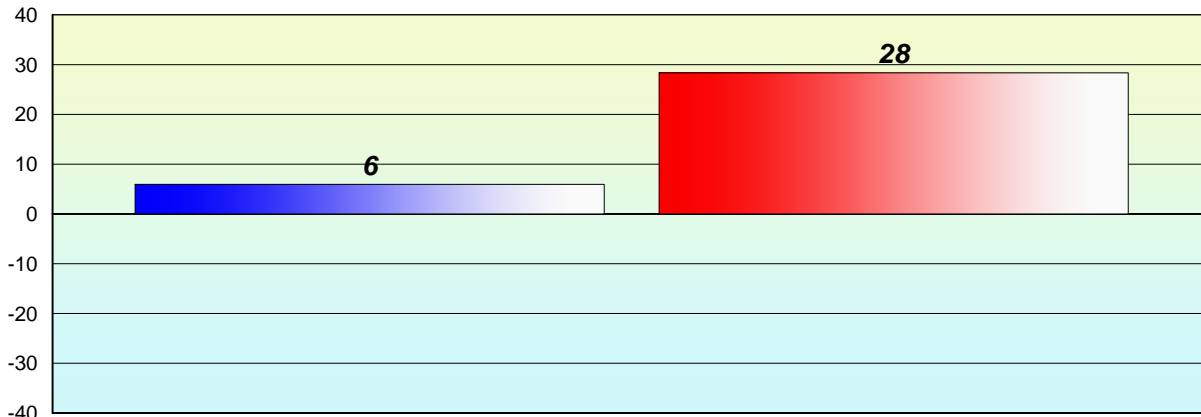
% of students at Grade Level = 74%

% of students at Level 3 and above = 52%



**Longitudinal
Cohort of students
Difference from Provincial Mean 2011 - 2012**

Reading



Grade 2 (2011) Reading Record

Grade 3 (2012) CRT

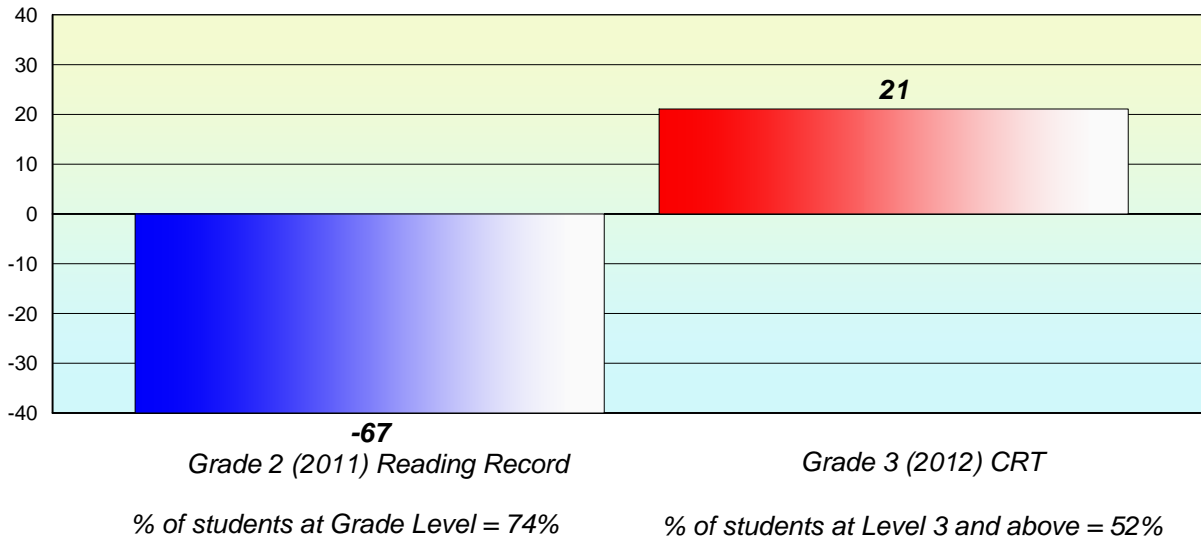
% of students at Grade Level = 74%

% of students at Level 3 and above = 52%



**Longitudinal
Cohort of students
Difference from Provincial Mean 2011 - 2012**

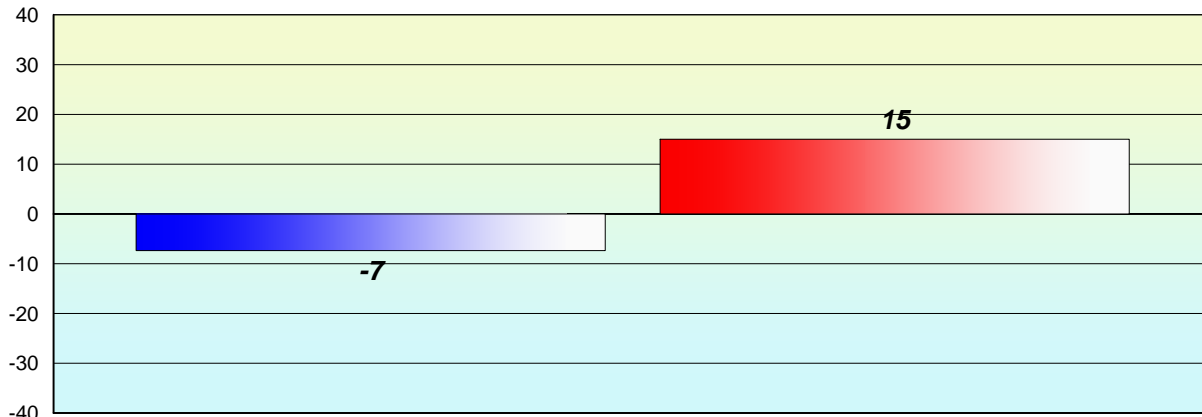
Reading



* Reading score (Grade 3) is composite of Non Fiction and Poetry. Results are based on the same cohort of students.
Source: Division of Evaluation and Research, Department of Education

**Longitudinal
Cohort of students
Difference from Provincial Mean 2011 - 2012**

Reading



Grade 2 (2011) Reading Record

Grade 3 (2012) CRT

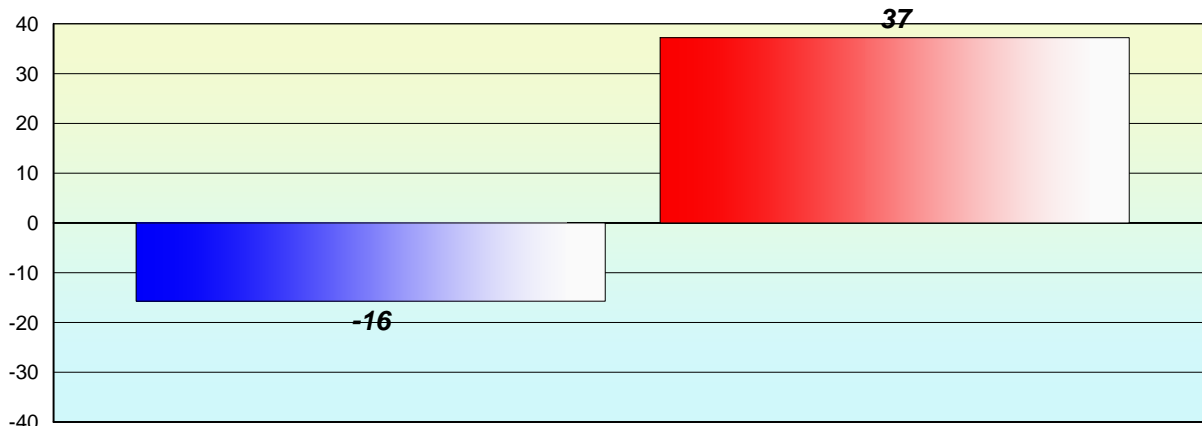
% of students at Grade Level = 74%

% of students at Level 3 and above = 52%



**Longitudinal
Cohort of students
Difference from Provincial Mean 2011 - 2012**

Reading



Grade 2 (2011) Reading Record

Grade 3 (2012) CRT

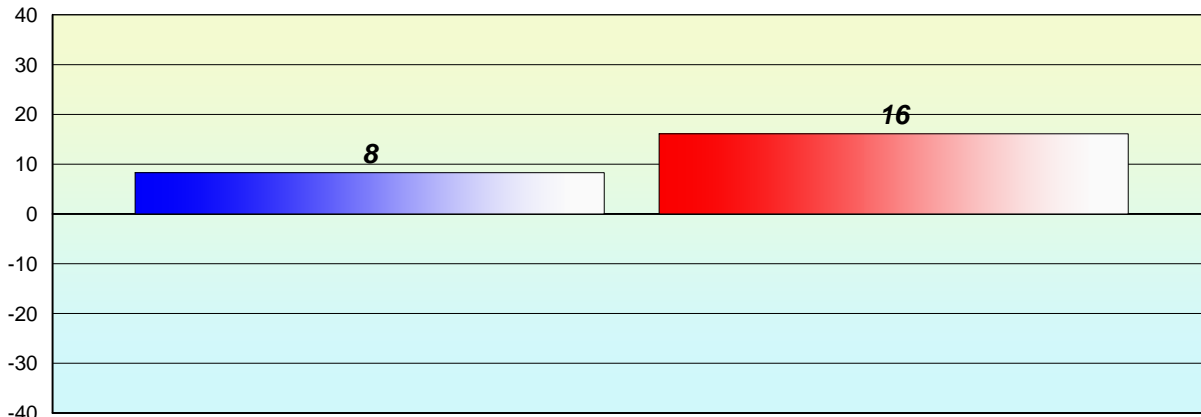
% of students at Grade Level = 74%

% of students at Level 3 and above = 52%



**Longitudinal
Cohort of students
Difference from Provincial Mean 2011 - 2012**

Reading



Grade 2 (2011) Reading Record

Grade 3 (2012) CRT

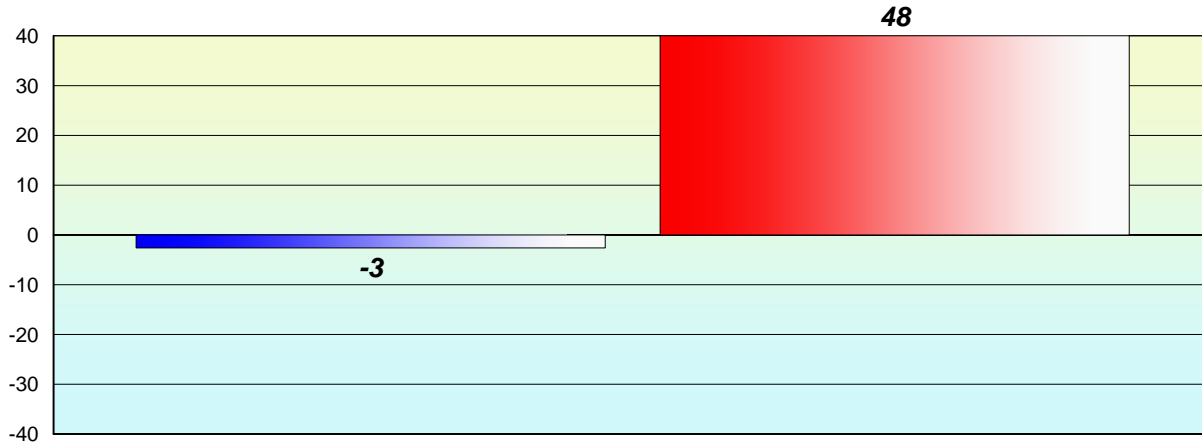
% of students at Grade Level = 74%

% of students at Level 3 and above = 52%



**Longitudinal
Cohort of students
Difference from Provincial Mean 2011 - 2012**

Reading



Grade 2 (2011) Reading Record

Grade 3 (2012) CRT

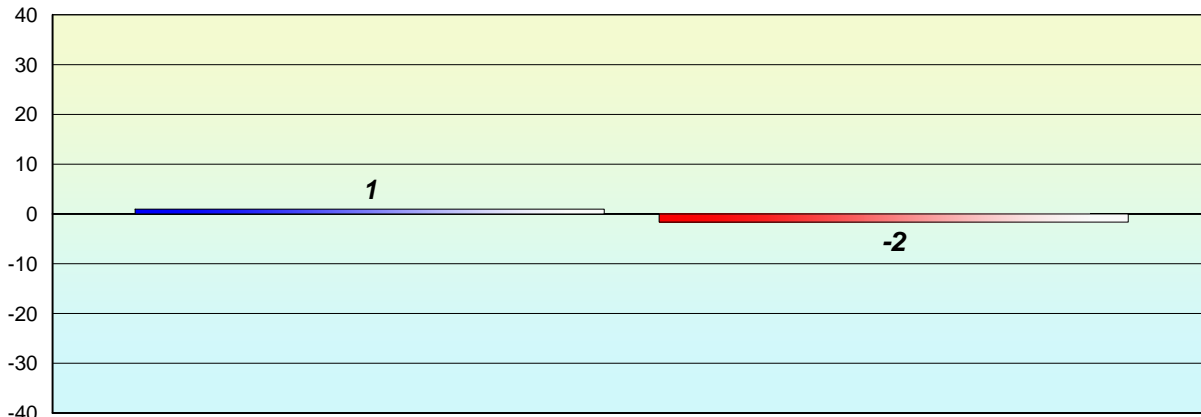
% of students at Grade Level = 74%

% of students at Level 3 and above = 52%



**Longitudinal
Cohort of students
Difference from Provincial Mean 2011 - 2012**

Reading



Grade 2 (2011) Reading Record

% of students at Grade Level = 74%

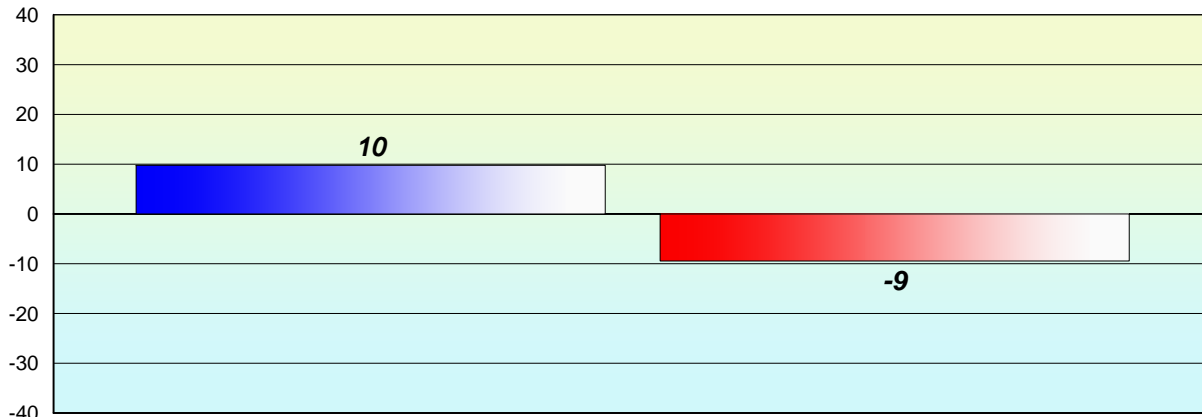
Grade 3 (2012) CRT

% of students at Level 3 and above = 52%



**Longitudinal
Cohort of students
Difference from Provincial Mean 2011 - 2012**

Reading



Grade 2 (2011) Reading Record

% of students at Grade Level = 74%

Grade 3 (2012) CRT

% of students at Level 3 and above = 52%



**Longitudinal
Cohort of students
Difference from Provincial Mean 2011 - 2012**

Reading

School data with 5 or fewer students withheld for reasons of confidentiality.

Grade 2 (2011) Reading Record

% of students at Grade Level = 74%

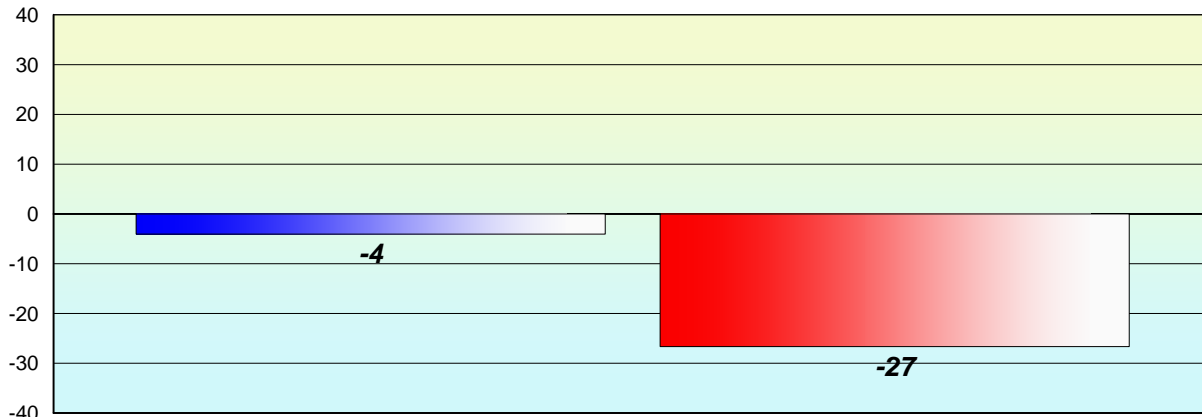
Grade 3 (2012) CRT

% of students at Level 3 and above = 52%



**Longitudinal
Cohort of students
Difference from Provincial Mean 2011 - 2012**

Reading



Grade 2 (2011) Reading Record

Grade 3 (2012) CRT

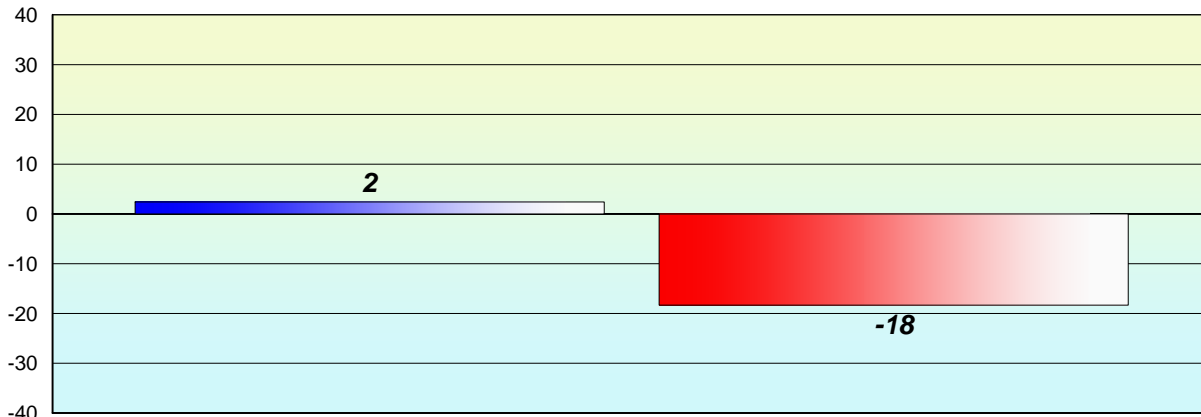
% of students at Grade Level = 74%

% of students at Level 3 and above = 52%



**Longitudinal
Cohort of students
Difference from Provincial Mean 2011 - 2012**

Reading



Grade 2 (2011) Reading Record

Grade 3 (2012) CRT

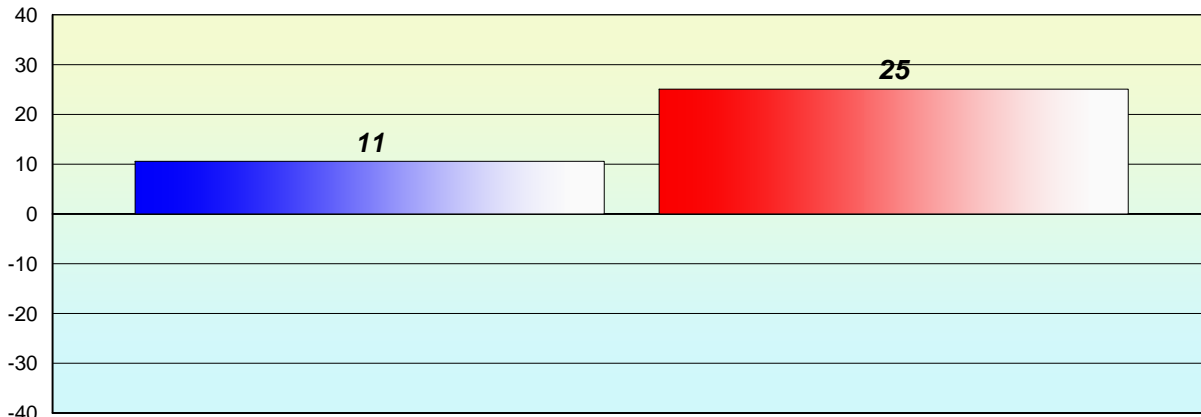
% of students at Grade Level = 74%

% of students at Level 3 and above = 52%



**Longitudinal
Cohort of students
Difference from Provincial Mean 2011 - 2012**

Reading



Grade 2 (2011) Reading Record

% of students at Grade Level = 74%

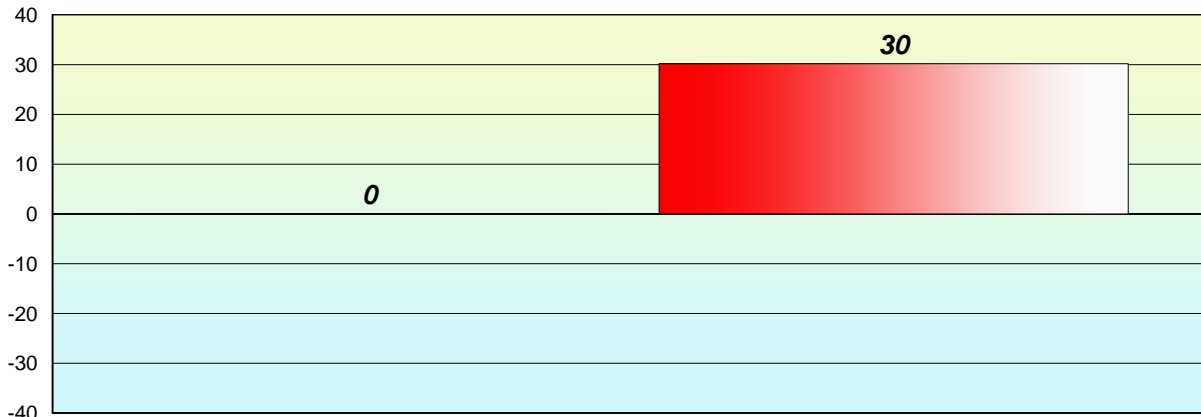
Grade 3 (2012) CRT

% of students at Level 3 and above = 52%



**Longitudinal
Cohort of students
Difference from Provincial Mean 2011 - 2012**

Reading



Grade 2 (2011) Reading Record

Grade 3 (2012) CRT

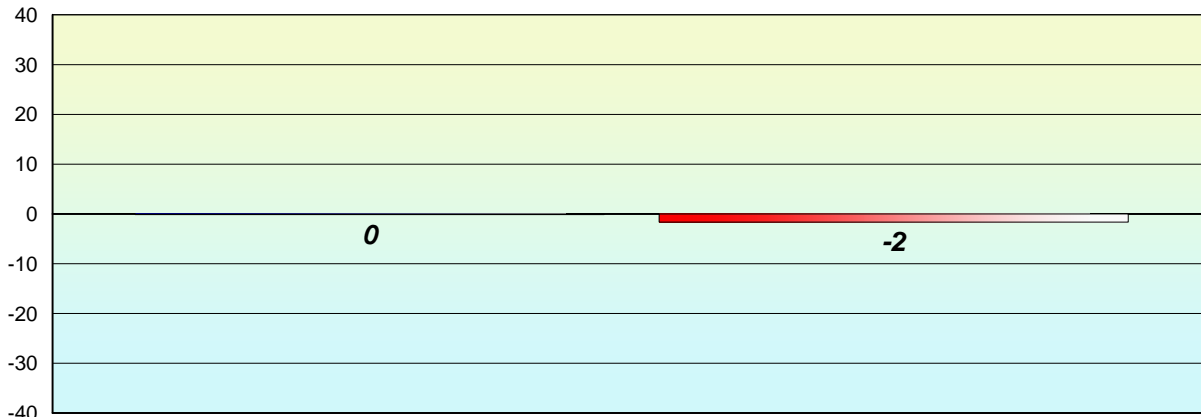
% of students at Grade Level = 74%

% of students at Level 3 and above = 52%



**Longitudinal
Cohort of students
Difference from Provincial Mean 2011 - 2012**

Reading



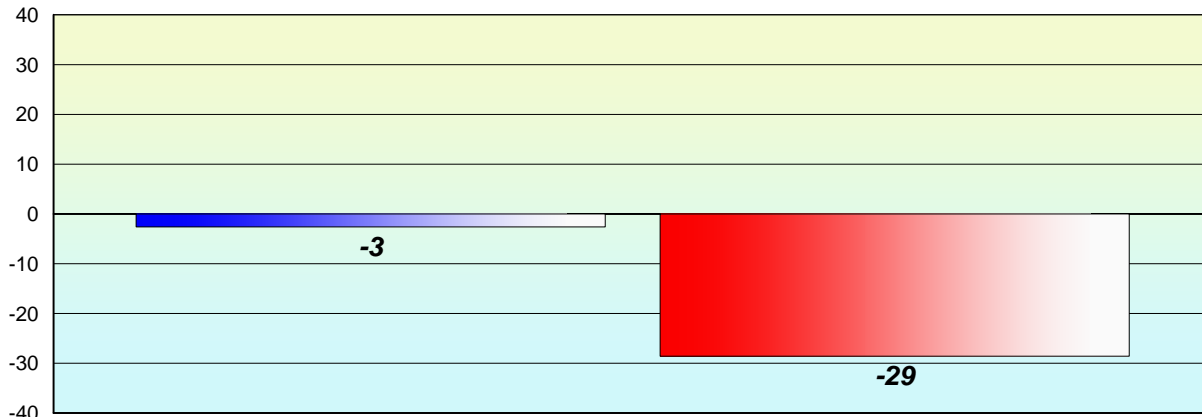
Grade 2 (2011) Reading Record
% of students at Grade Level = 74%

Grade 3 (2012) CRT
% of students at Level 3 and above = 52%



**Longitudinal
Cohort of students
Difference from Provincial Mean 2011 - 2012**

Reading



Grade 2 (2011) Reading Record

Grade 3 (2012) CRT

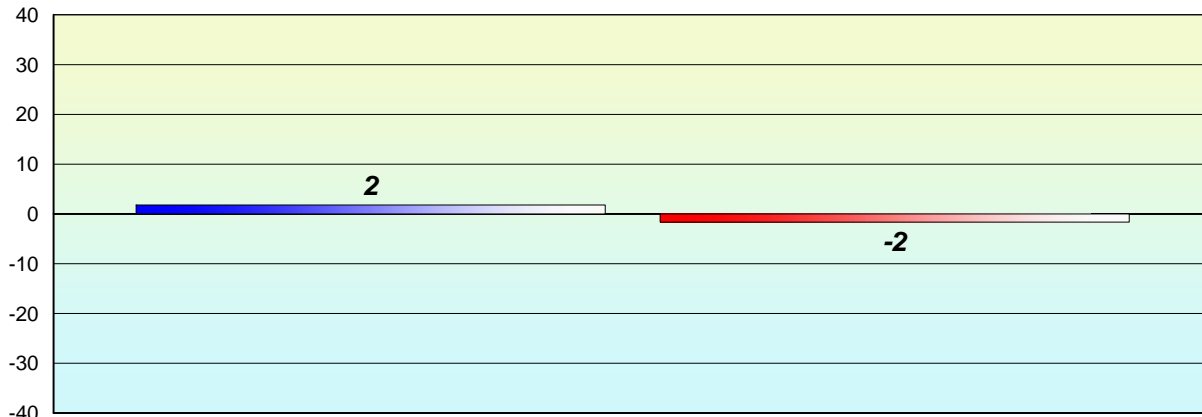
% of students at Grade Level = 74%

% of students at Level 3 and above = 52%



**Longitudinal
Cohort of students
Difference from Provincial Mean 2011 - 2012**

Reading



Grade 2 (2011) Reading Record

Grade 3 (2012) CRT

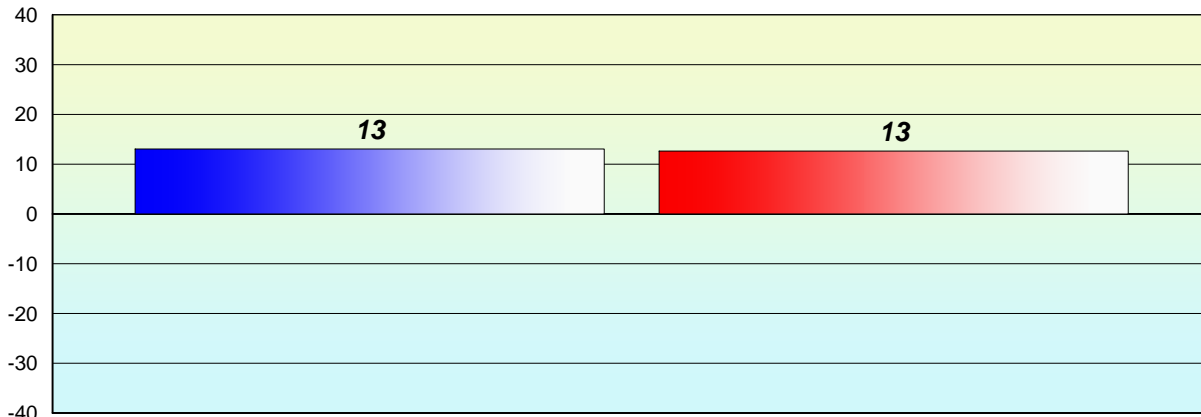
% of students at Grade Level = 74%

% of students at Level 3 and above = 52%



**Longitudinal
Cohort of students
Difference from Provincial Mean 2011 - 2012**

Reading



Grade 2 (2011) Reading Record

Grade 3 (2012) CRT

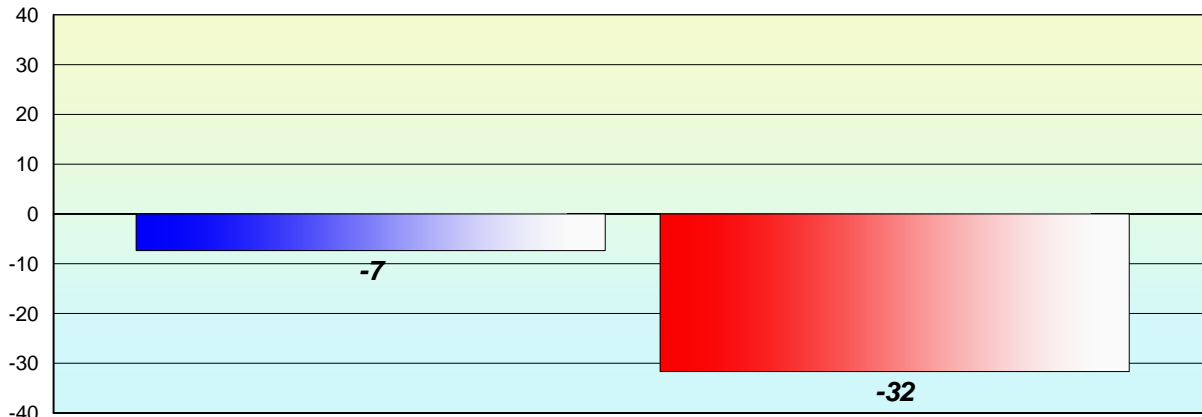
% of students at Grade Level = 74%

% of students at Level 3 and above = 52%



**Longitudinal
Cohort of students
Difference from Provincial Mean 2011 - 2012**

Reading



Grade 2 (2011) Reading Record

Grade 3 (2012) CRT

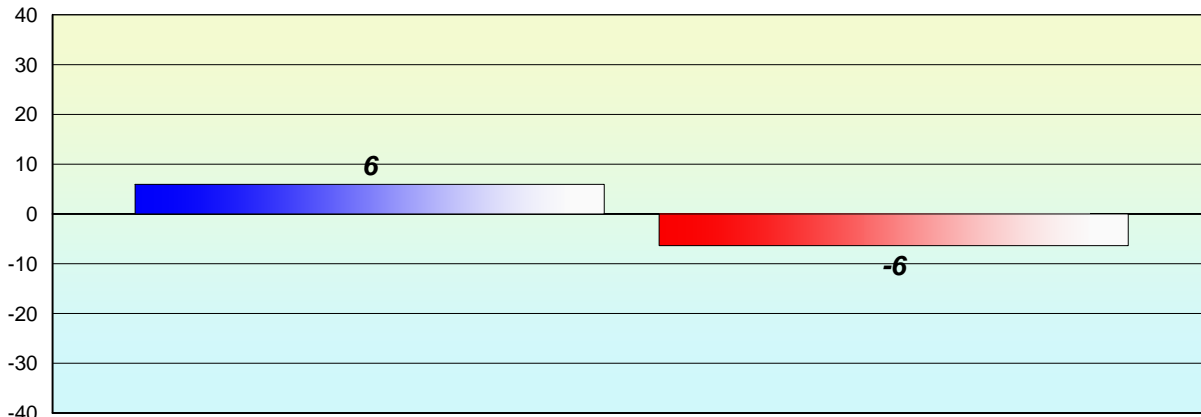
% of students at Grade Level = 74%

% of students at Level 3 and above = 52%



**Longitudinal
Cohort of students
Difference from Provincial Mean 2011 - 2012**

Reading



Grade 2 (2011) Reading Record

% of students at Grade Level = 74%

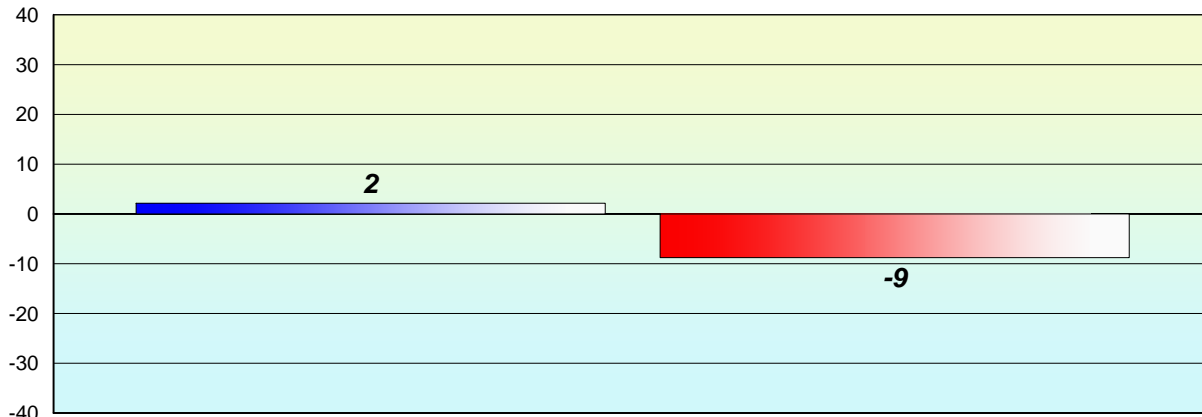
Grade 3 (2012) CRT

% of students at Level 3 and above = 52%



**Longitudinal
Cohort of students
Difference from Provincial Mean 2011 - 2012**

Reading



Grade 2 (2011) Reading Record

Grade 3 (2012) CRT

% of students at Grade Level = 74%

% of students at Level 3 and above = 52%



**Longitudinal
Cohort of students
Difference from Provincial Mean 2011 - 2012**

Reading

School data with 5 or fewer students withheld for reasons of confidentiality.

Grade 2 (2011) Reading Record

% of students at Grade Level = 74%

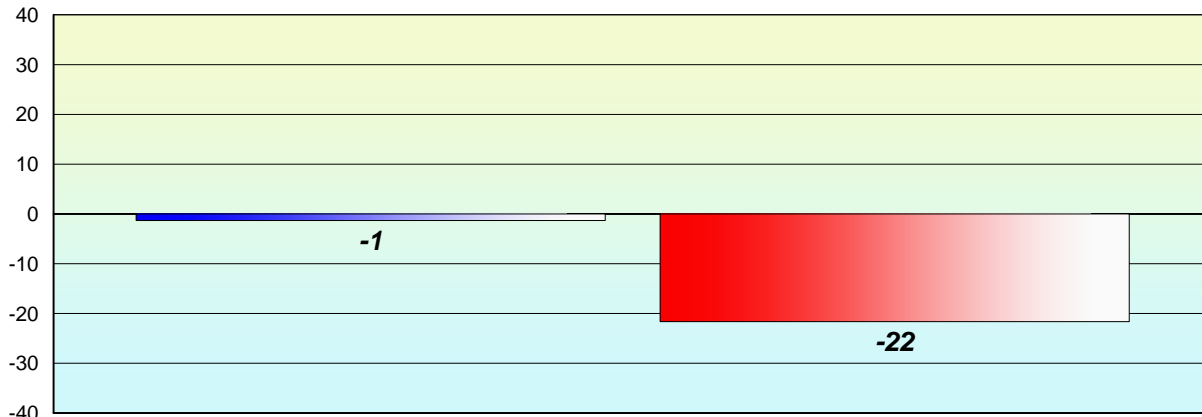
Grade 3 (2012) CRT

% of students at Level 3 and above = 52%



**Longitudinal
Cohort of students
Difference from Provincial Mean 2011 - 2012**

Reading



Grade 2 (2011) Reading Record

Grade 3 (2012) CRT

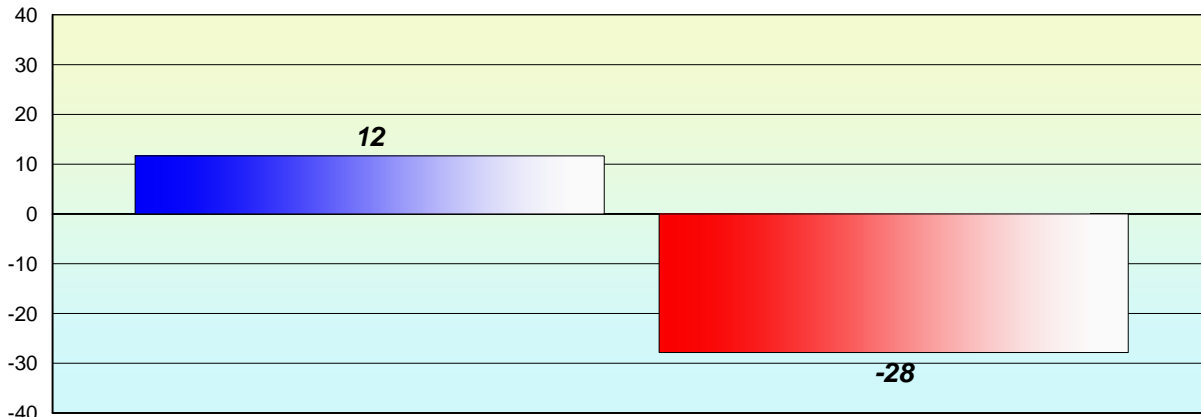
% of students at Grade Level = 74%

% of students at Level 3 and above = 52%



**Longitudinal
Cohort of students
Difference from Provincial Mean 2011 - 2012**

Reading



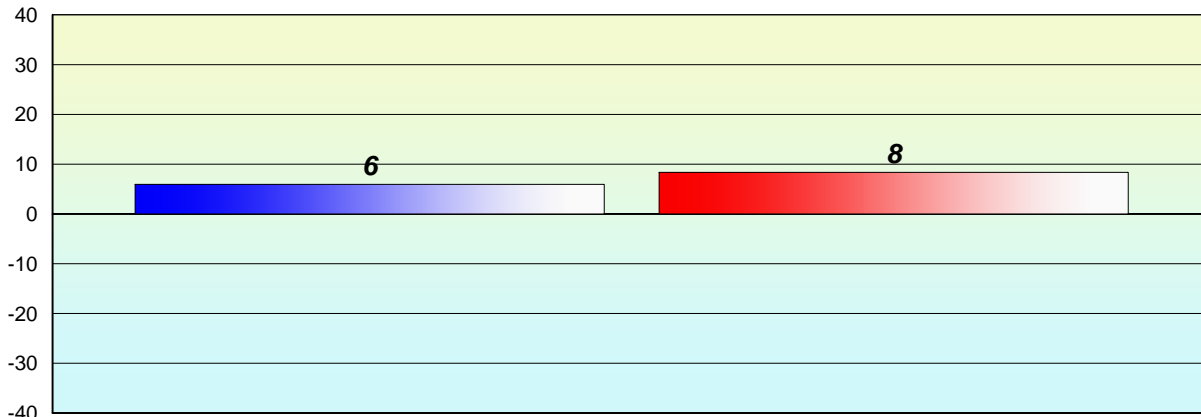
Grade 2 (2011) Reading Record
% of students at Grade Level = 74%

Grade 3 (2012) CRT
% of students at Level 3 and above = 52%



**Longitudinal
Cohort of students
Difference from Provincial Mean 2011 - 2012**

Reading



Grade 2 (2011) Reading Record

% of students at Grade Level = 74%

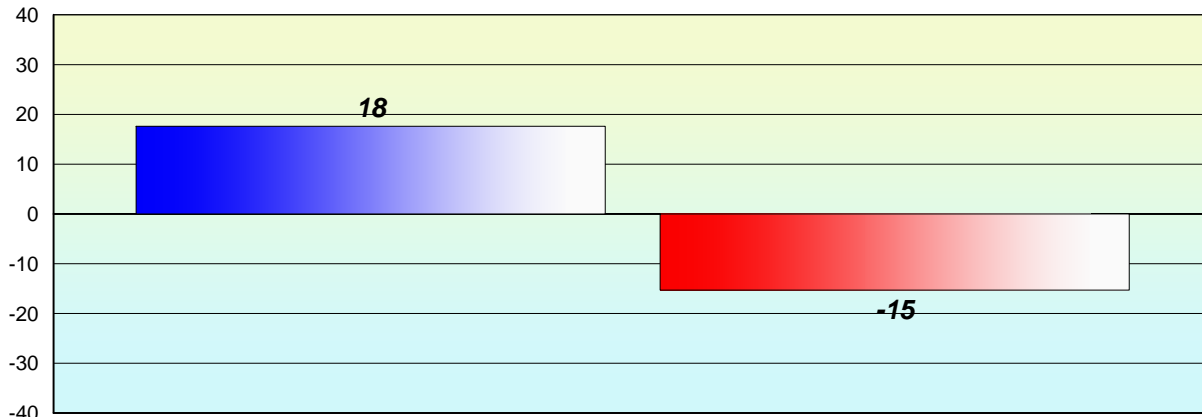
Grade 3 (2012) CRT

% of students at Level 3 and above = 52%



**Longitudinal
Cohort of students
Difference from Provincial Mean 2011 - 2012**

Reading



Grade 2 (2011) Reading Record

Grade 3 (2012) CRT

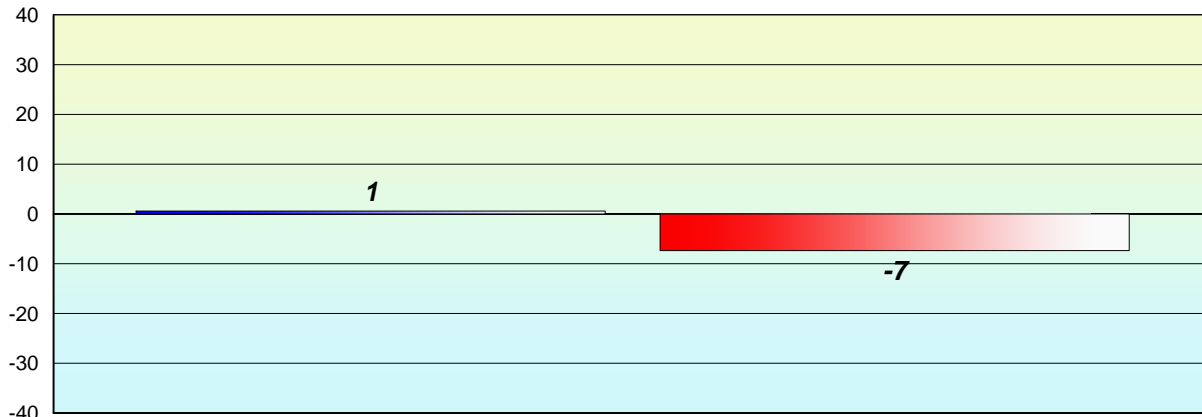
% of students at Grade Level = 74%

% of students at Level 3 and above = 52%



**Longitudinal
Cohort of students
Difference from Provincial Mean 2011 - 2012**

Reading



Grade 2 (2011) Reading Record

Grade 3 (2012) CRT

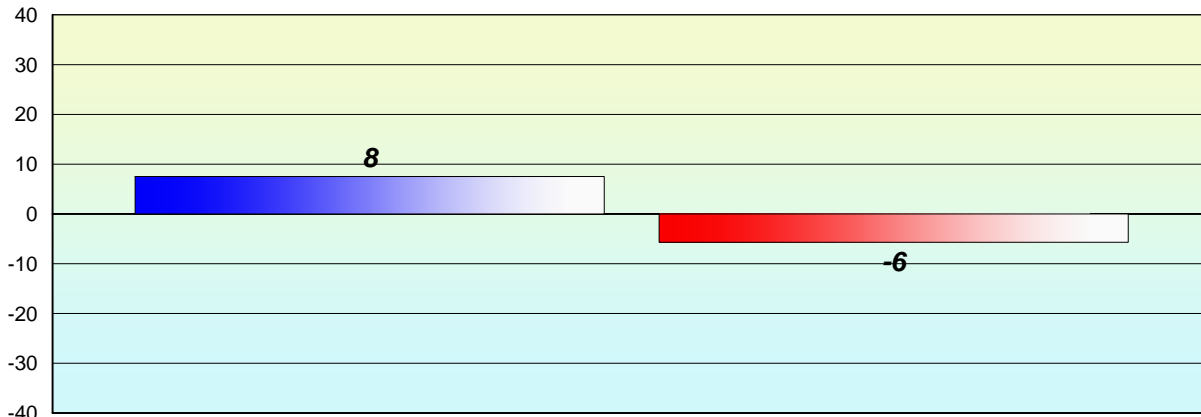
% of students at Grade Level = 74%

% of students at Level 3 and above = 52%



**Longitudinal
Cohort of students
Difference from Provincial Mean 2011 - 2012**

Reading



Grade 2 (2011) Reading Record

% of students at Grade Level = 74%

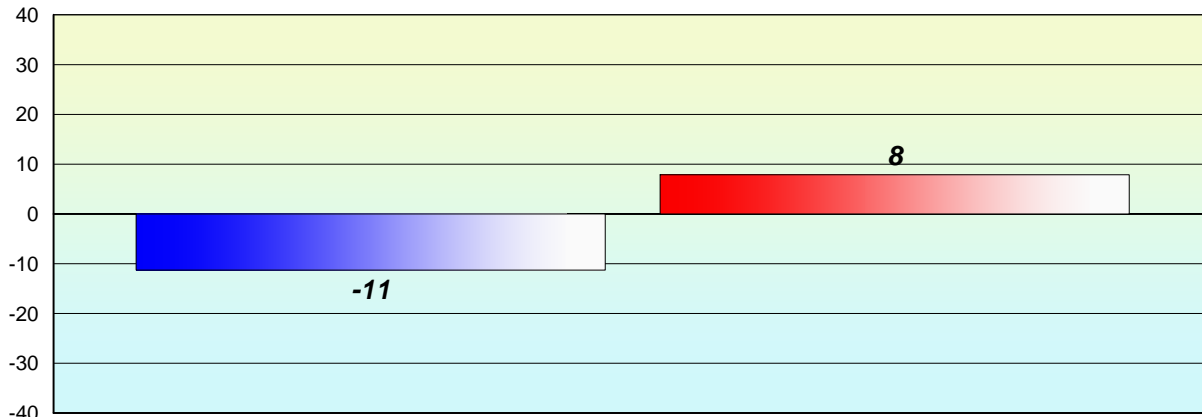
Grade 3 (2012) CRT

% of students at Level 3 and above = 52%



**Longitudinal
Cohort of students
Difference from Provincial Mean 2011 - 2012**

Reading



Grade 2 (2011) Reading Record

Grade 3 (2012) CRT

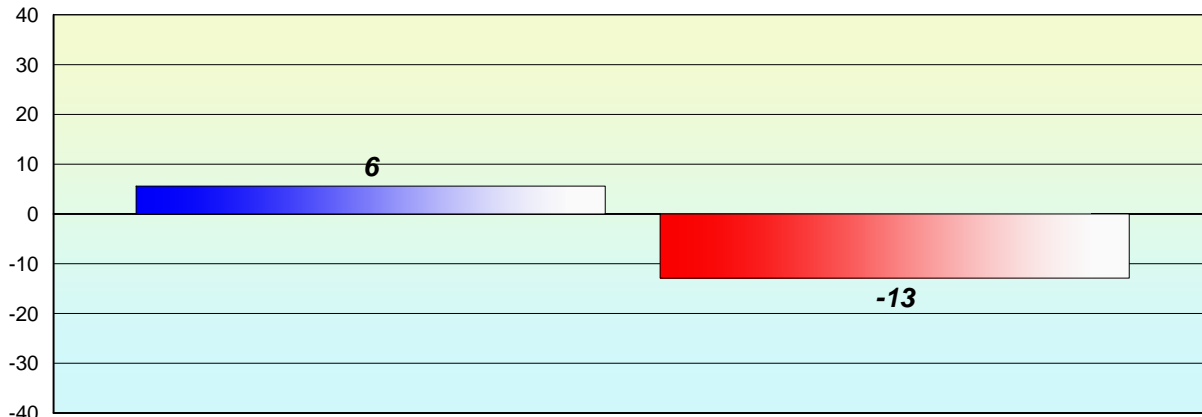
% of students at Grade Level = 74%

% of students at Level 3 and above = 52%



**Longitudinal
Cohort of students
Difference from Provincial Mean 2011 - 2012**

Reading



Grade 2 (2011) Reading Record

Grade 3 (2012) CRT

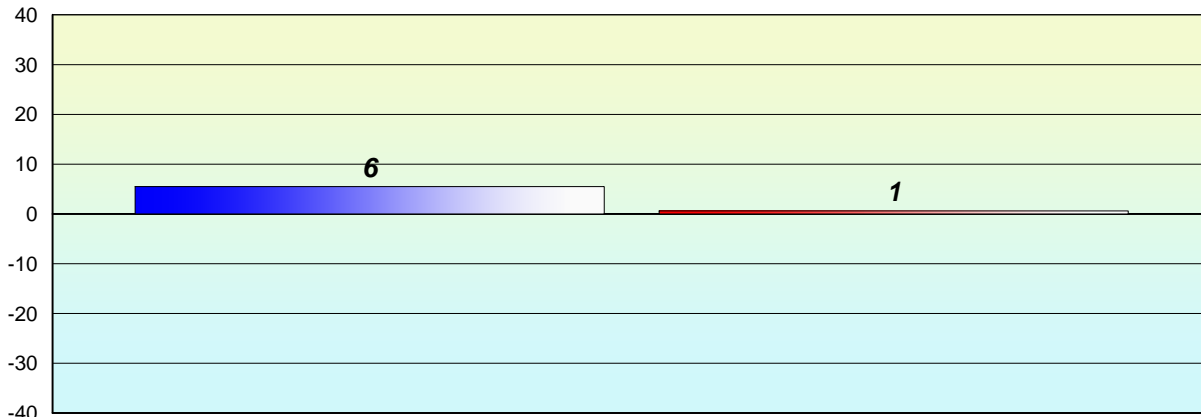
% of students at Grade Level = 74%

% of students at Level 3 and above = 52%



**Longitudinal
Cohort of students
Difference from Provincial Mean 2011 - 2012**

Reading



Grade 2 (2011) Reading Record

Grade 3 (2012) CRT

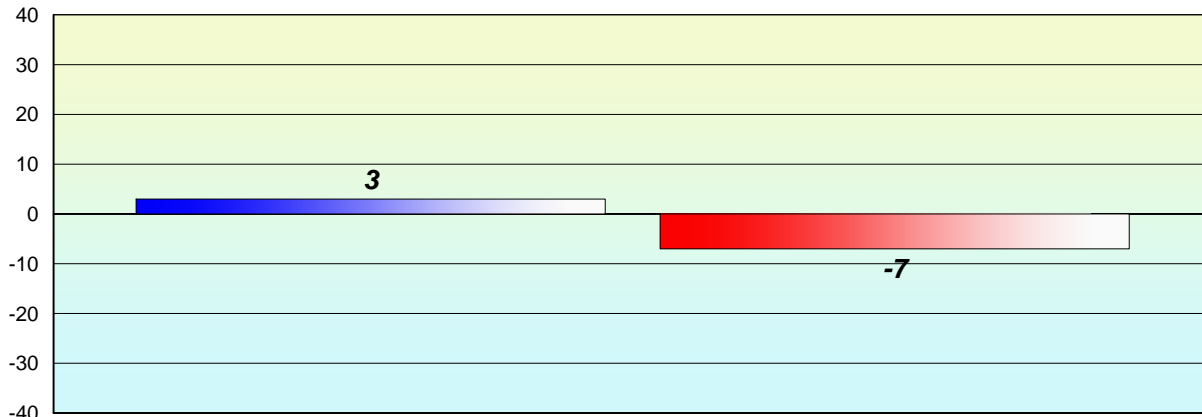
% of students at Grade Level = 74%

% of students at Level 3 and above = 52%



**Longitudinal
Cohort of students
Difference from Provincial Mean 2011 - 2012**

Reading



Grade 2 (2011) Reading Record

Grade 3 (2012) CRT

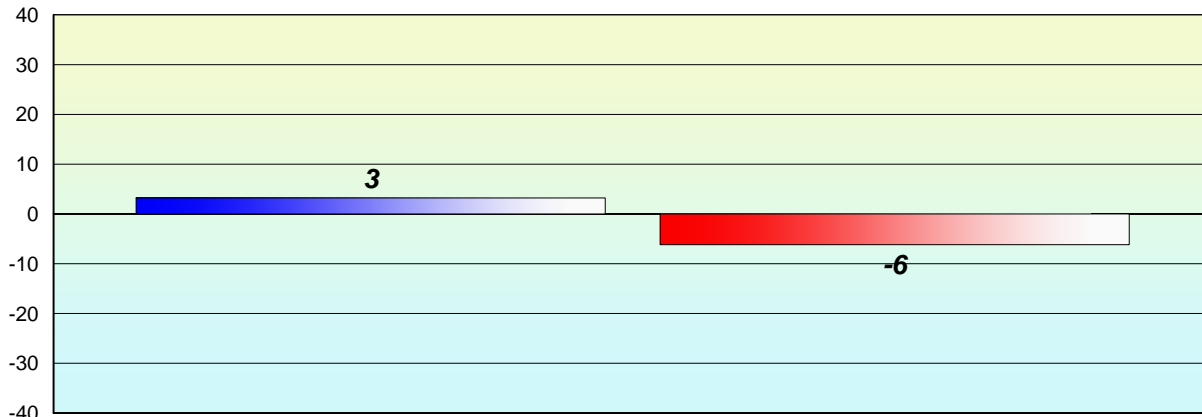
% of students at Grade Level = 74%

% of students at Level 3 and above = 52%



**Longitudinal
Cohort of students
Difference from Provincial Mean 2011 - 2012**

Reading



Grade 2 (2011) Reading Record

Grade 3 (2012) CRT

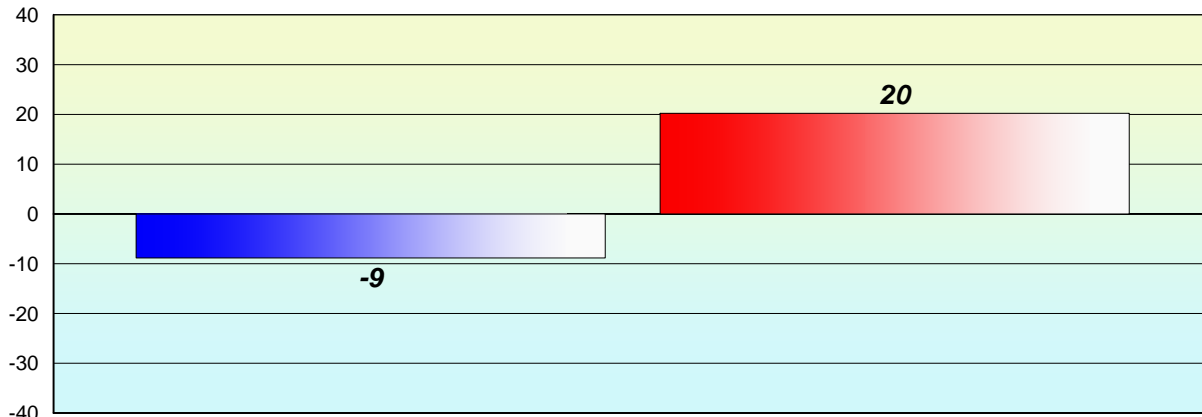
% of students at Grade Level = 74%

% of students at Level 3 and above = 52%



**Longitudinal
Cohort of students
Difference from Provincial Mean 2011 - 2012**

Reading



Grade 2 (2011) Reading Record

Grade 3 (2012) CRT

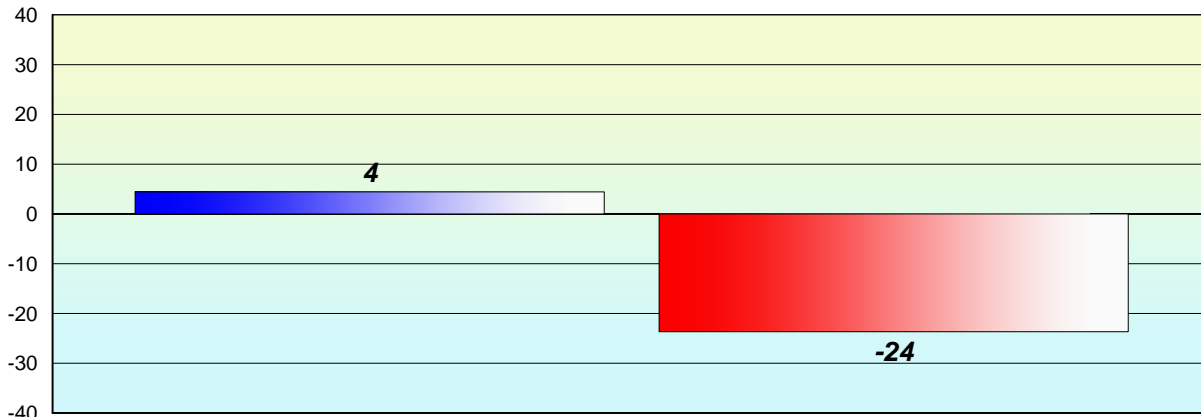
% of students at Grade Level = 74%

% of students at Level 3 and above = 52%



**Longitudinal
Cohort of students
Difference from Provincial Mean 2011 - 2012**

Reading



Grade 2 (2011) Reading Record

% of students at Grade Level = 74%

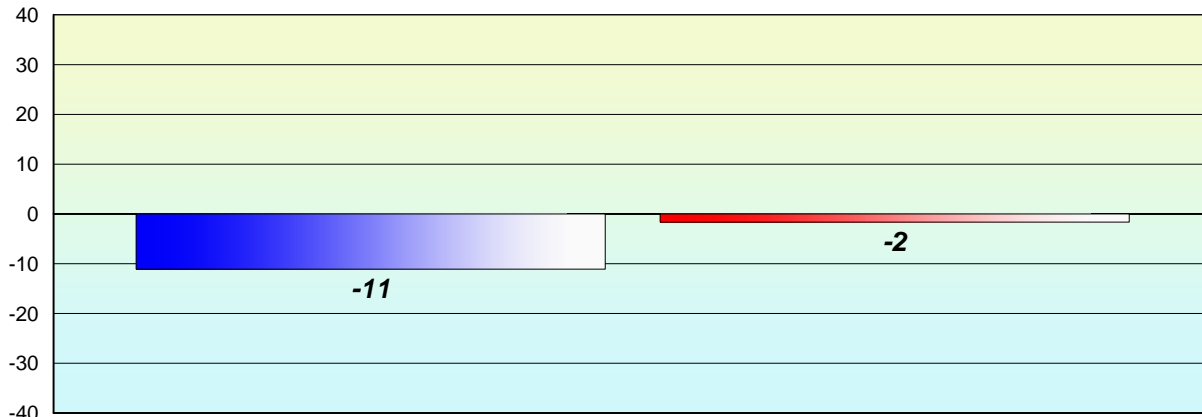
Grade 3 (2012) CRT

% of students at Level 3 and above = 52%



**Longitudinal
Cohort of students
Difference from Provincial Mean 2011 - 2012**

Reading



Grade 2 (2011) Reading Record

% of students at Grade Level = 74%

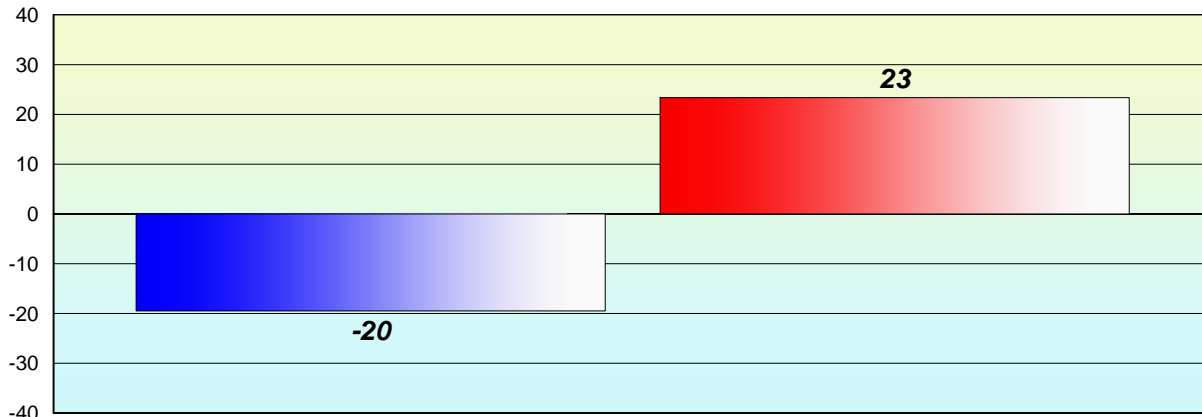
Grade 3 (2012) CRT

% of students at Level 3 and above = 52%



**Longitudinal
Cohort of students
Difference from Provincial Mean 2011 - 2012**

Reading



Grade 2 (2011) Reading Record

Grade 3 (2012) CRT

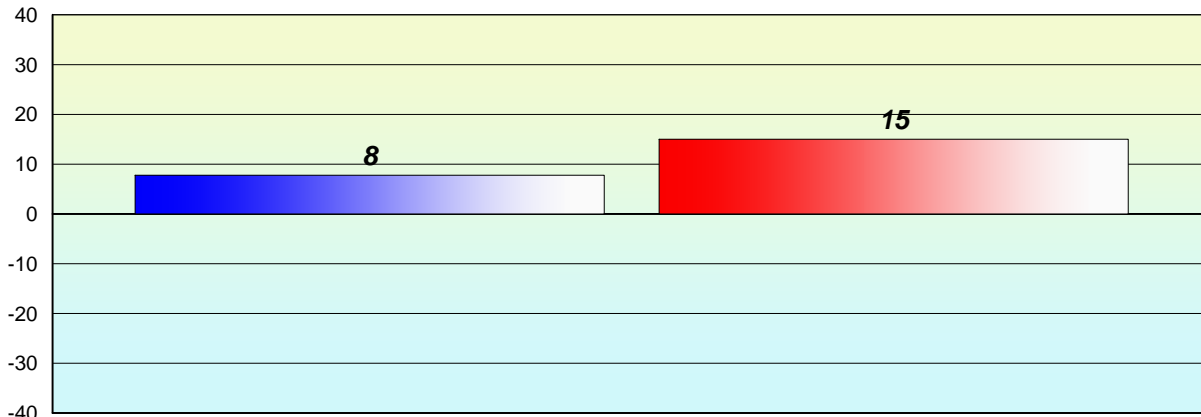
% of students at Grade Level = 74%

% of students at Level 3 and above = 52%



**Longitudinal
Cohort of students
Difference from Provincial Mean 2011 - 2012**

Reading



Grade 2 (2011) Reading Record

Grade 3 (2012) CRT

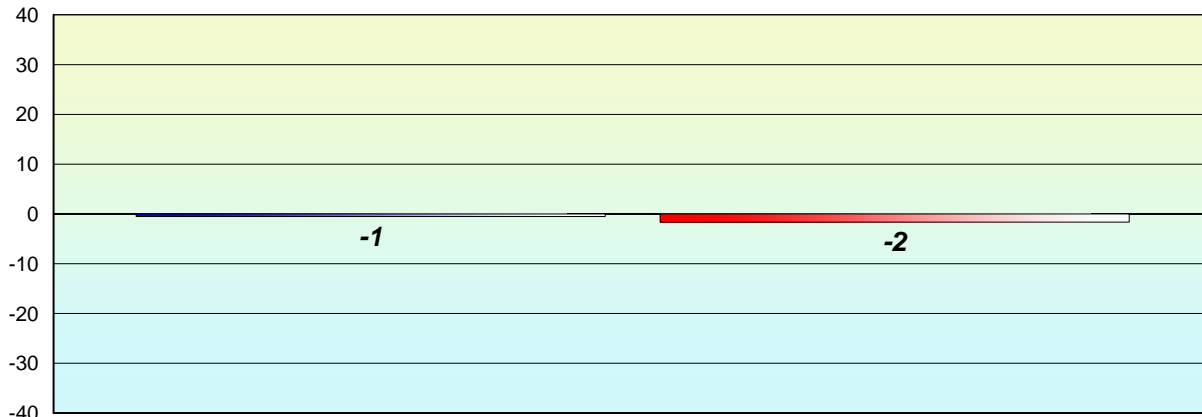
% of students at Grade Level = 74%

% of students at Level 3 and above = 52%



**Longitudinal
Cohort of students
Difference from Provincial Mean 2011 - 2012**

Reading



Grade 2 (2011) Reading Record

% of students at Grade Level = 74%

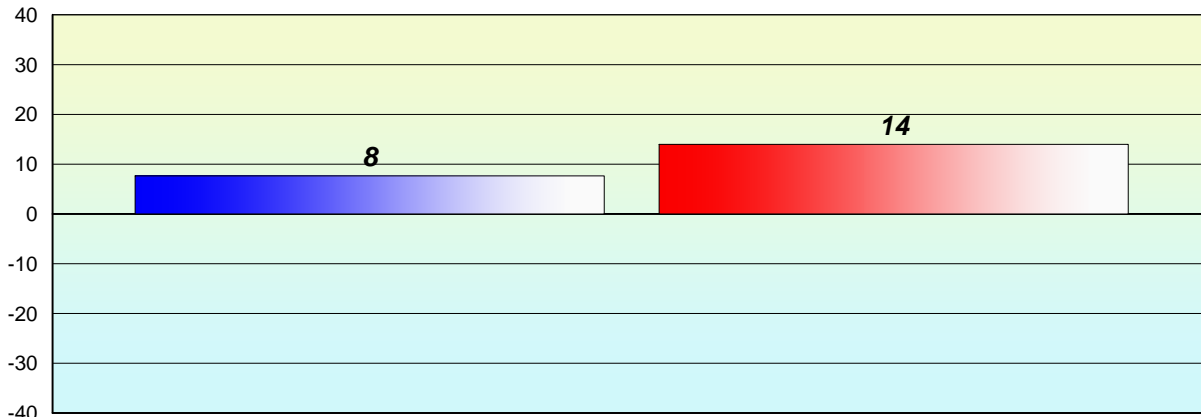
Grade 3 (2012) CRT

% of students at Level 3 and above = 52%



**Longitudinal
Cohort of students
Difference from Provincial Mean 2011 - 2012**

Reading



Grade 2 (2011) Reading Record

Grade 3 (2012) CRT

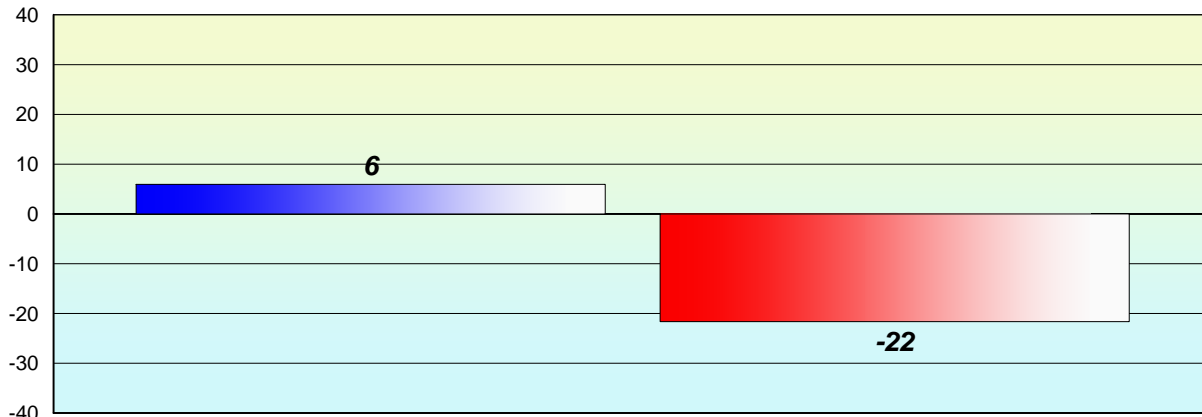
% of students at Grade Level = 74%

% of students at Level 3 and above = 52%



**Longitudinal
Cohort of students
Difference from Provincial Mean 2011 - 2012**

Reading



Grade 2 (2011) Reading Record

Grade 3 (2012) CRT

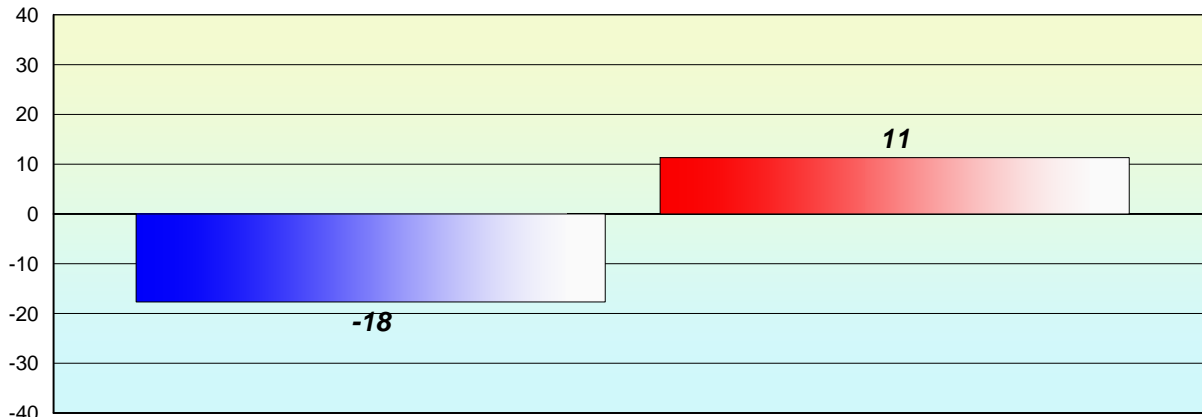
% of students at Grade Level = 74%

% of students at Level 3 and above = 52%



**Longitudinal
Cohort of students
Difference from Provincial Mean 2011 - 2012**

Reading



Grade 2 (2011) Reading Record

Grade 3 (2012) CRT

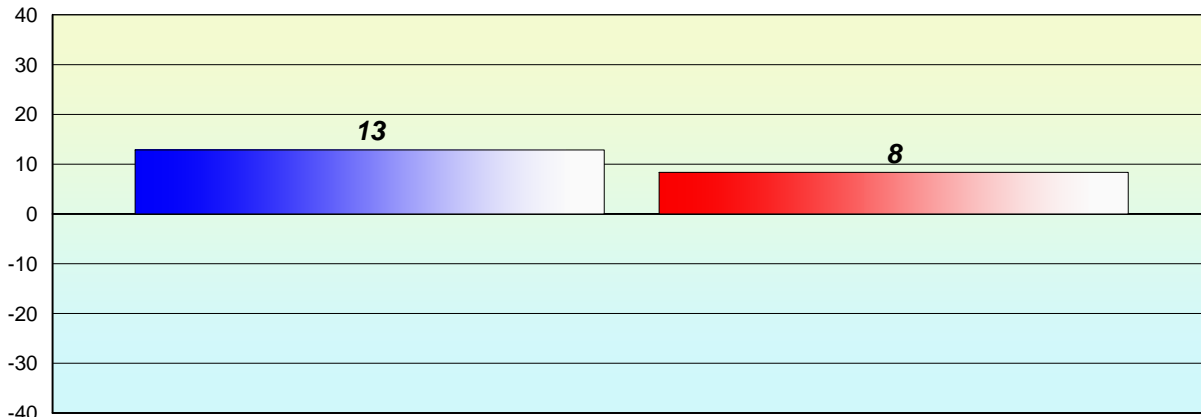
% of students at Grade Level = 74%

% of students at Level 3 and above = 52%



**Longitudinal
Cohort of students
Difference from Provincial Mean 2011 - 2012**

Reading



Grade 2 (2011) Reading Record

Grade 3 (2012) CRT

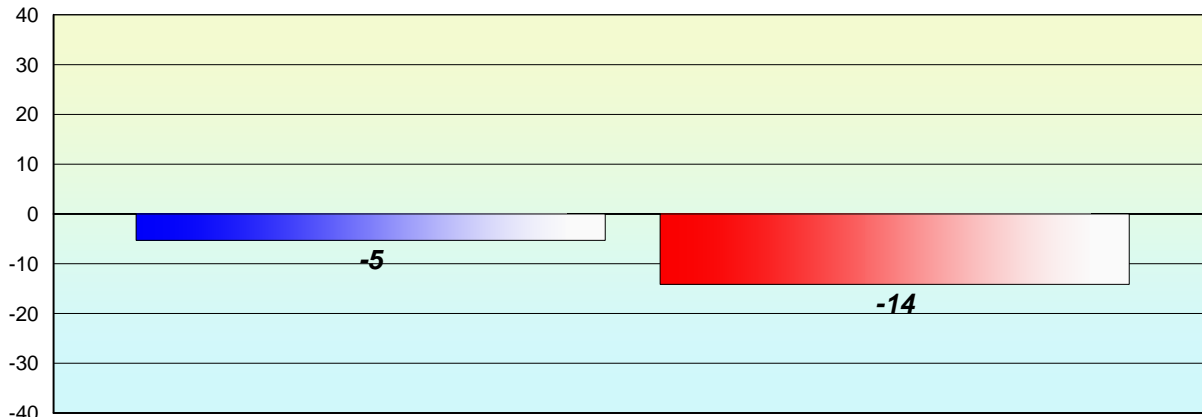
% of students at Grade Level = 74%

% of students at Level 3 and above = 52%



**Longitudinal
Cohort of students
Difference from Provincial Mean 2011 - 2012**

Reading



Grade 2 (2011) Reading Record

Grade 3 (2012) CRT

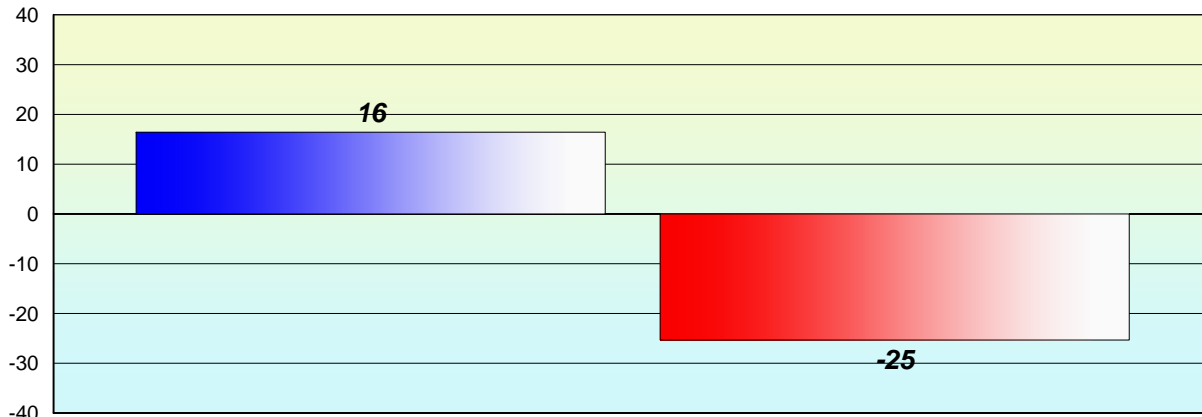
% of students at Grade Level = 74%

% of students at Level 3 and above = 52%



**Longitudinal
Cohort of students
Difference from Provincial Mean 2011 - 2012**

Reading



Grade 2 (2011) Reading Record

% of students at Grade Level = 74%

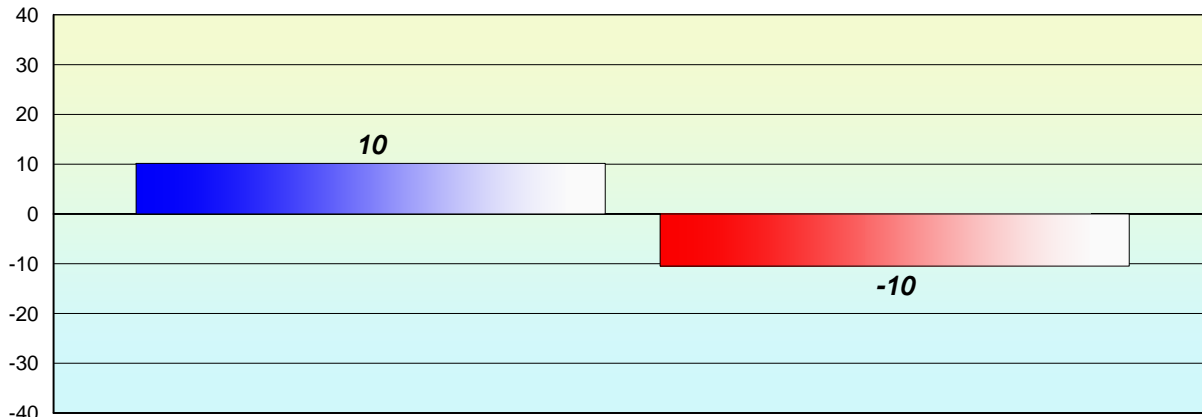
Grade 3 (2012) CRT

% of students at Level 3 and above = 52%



**Longitudinal
Cohort of students
Difference from Provincial Mean 2011 - 2012**

Reading



Grade 2 (2011) Reading Record

Grade 3 (2012) CRT

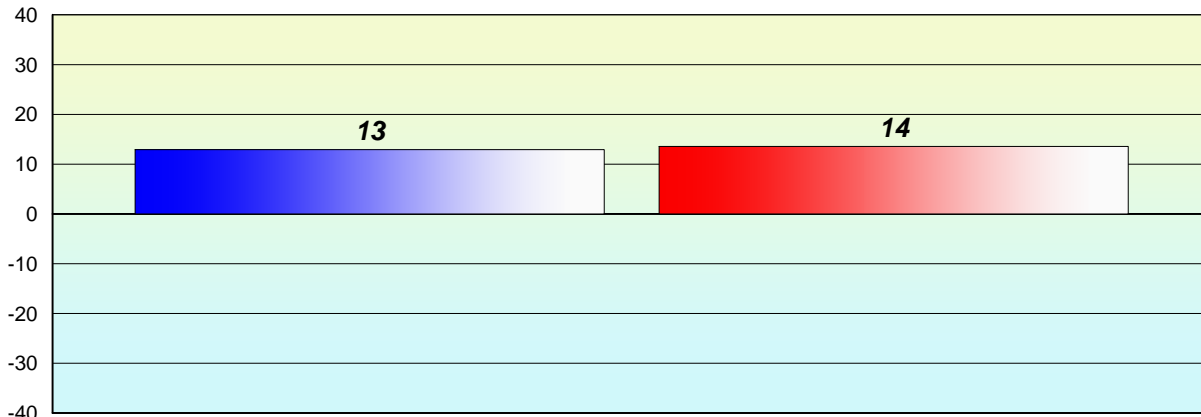
% of students at Grade Level = 74%

% of students at Level 3 and above = 52%



**Longitudinal
Cohort of students
Difference from Provincial Mean 2011 - 2012**

Reading



Grade 2 (2011) Reading Record

Grade 3 (2012) CRT

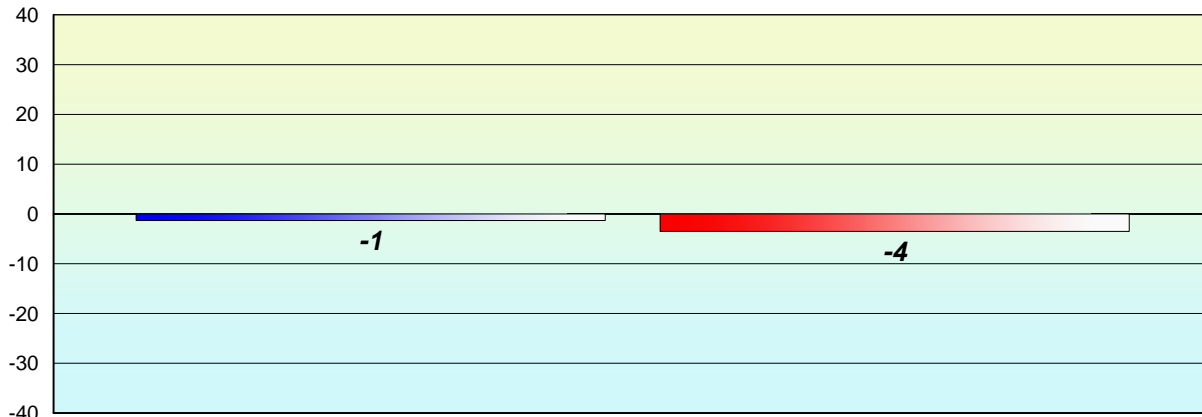
% of students at Grade Level = 74%

% of students at Level 3 and above = 52%



**Longitudinal
Cohort of students
Difference from Provincial Mean 2011 - 2012**

Reading



Grade 2 (2011) Reading Record

Grade 3 (2012) CRT

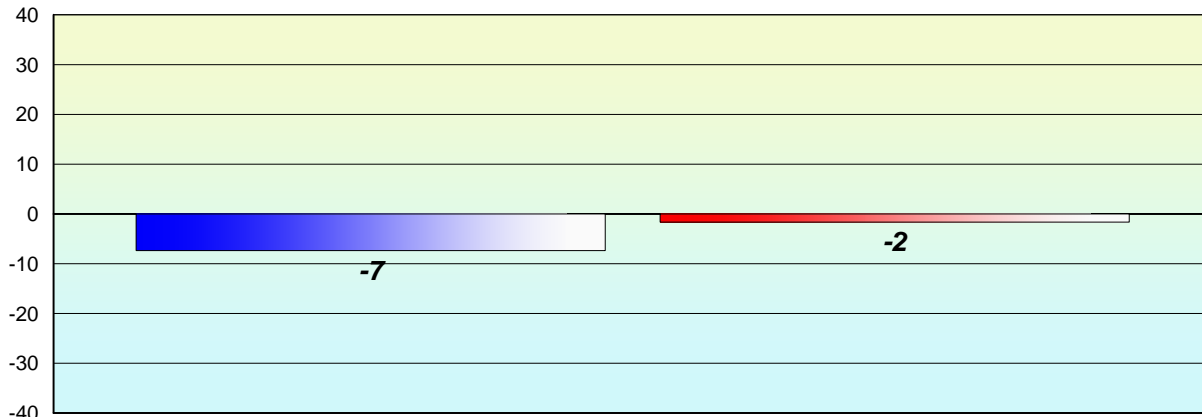
% of students at Grade Level = 74%

% of students at Level 3 and above = 52%



**Longitudinal
Cohort of students
Difference from Provincial Mean 2011 - 2012**

Reading



Grade 2 (2011) Reading Record

% of students at Grade Level = 74%

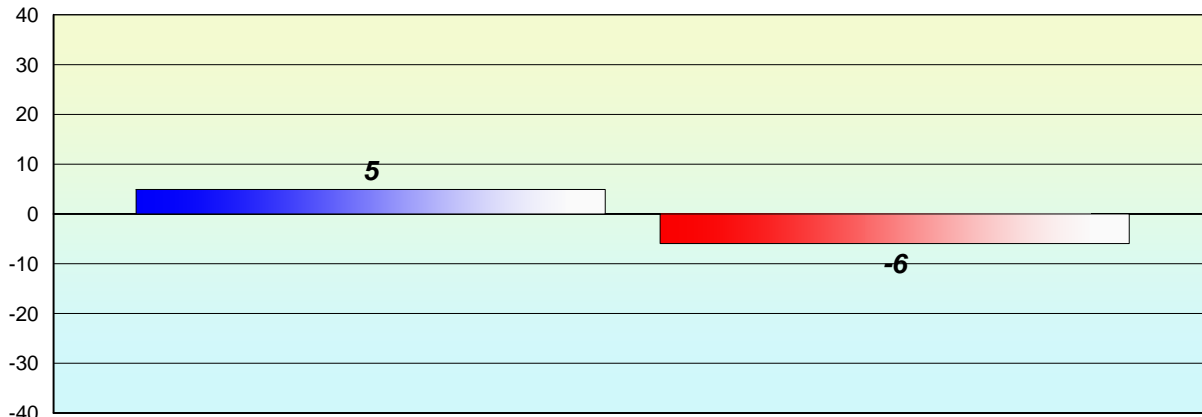
Grade 3 (2012) CRT

% of students at Level 3 and above = 52%



**Longitudinal
Cohort of students
Difference from Provincial Mean 2011 - 2012**

Reading



Grade 2 (2011) Reading Record

% of students at Grade Level = 74%

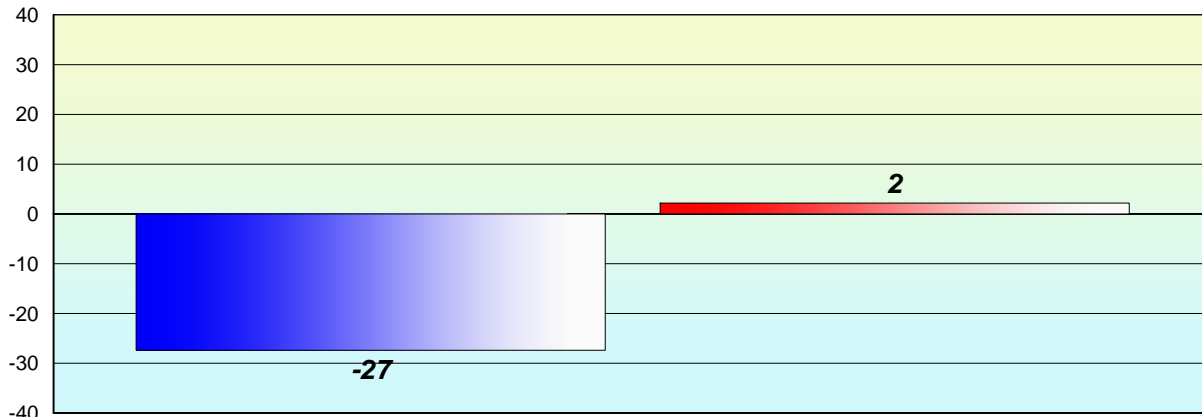
Grade 3 (2012) CRT

% of students at Level 3 and above = 52%



**Longitudinal
Cohort of students
Difference from Provincial Mean 2011 - 2012**

Reading



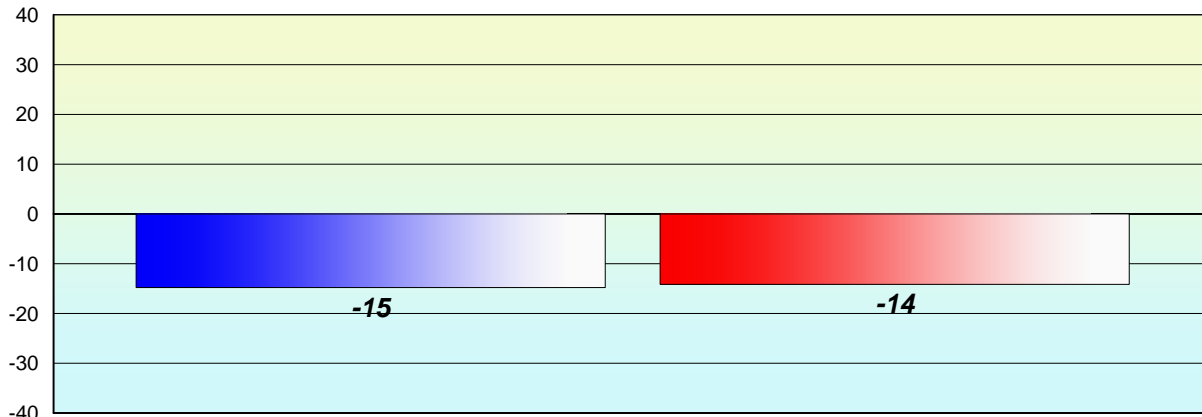
Grade 2 (2011) Reading Record
% of students at Grade Level = 74%

Grade 3 (2012) CRT
% of students at Level 3 and above = 52%



**Longitudinal
Cohort of students
Difference from Provincial Mean 2011 - 2012**

Reading



Grade 2 (2011) Reading Record

Grade 3 (2012) CRT

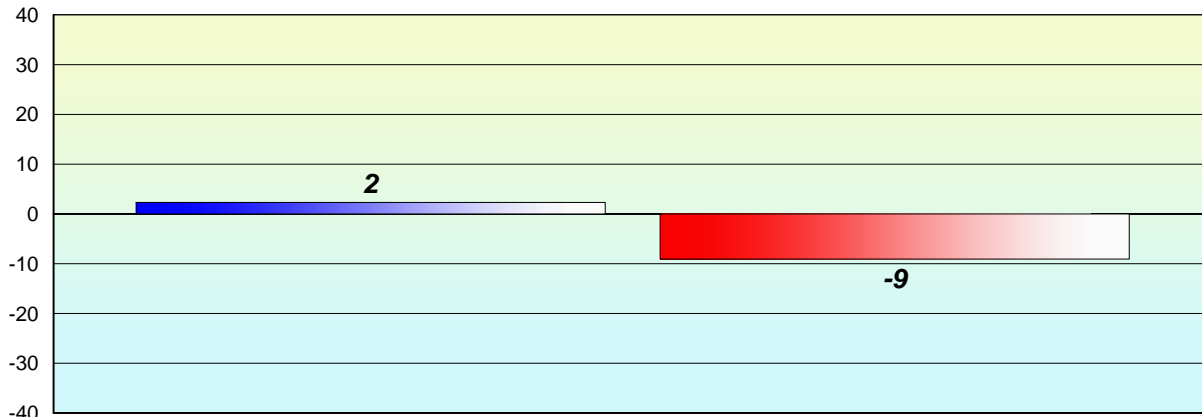
% of students at Grade Level = 74%

% of students at Level 3 and above = 52%



**Longitudinal
Cohort of students
Difference from Provincial Mean 2011 - 2012**

Reading



Grade 2 (2011) Reading Record

Grade 3 (2012) CRT

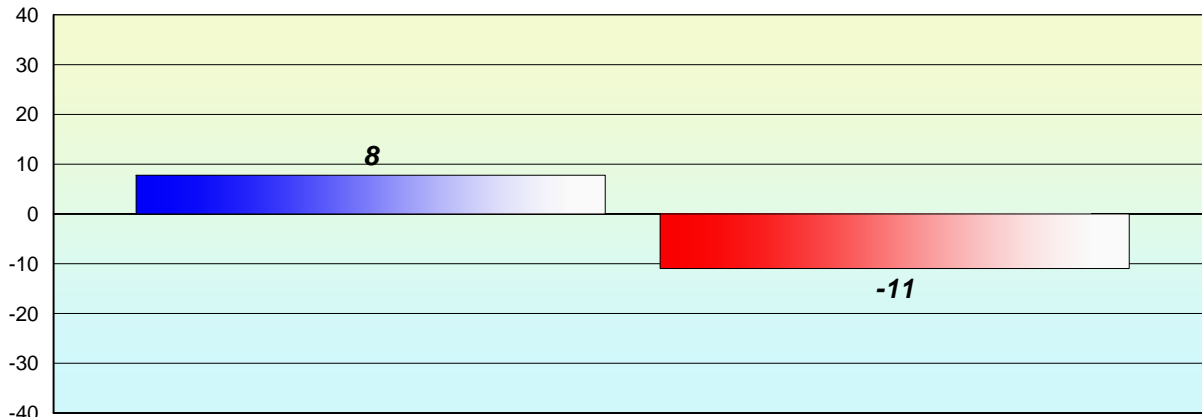
% of students at Grade Level = 74%

% of students at Level 3 and above = 52%



**Longitudinal
Cohort of students
Difference from Provincial Mean 2011 - 2012**

Reading



Grade 2 (2011) Reading Record

% of students at Grade Level = 74%

Grade 3 (2012) CRT

% of students at Level 3 and above = 52%



**Longitudinal
Cohort of students
Difference from Provincial Mean 2011 - 2012**

Reading

School data with 5 or fewer students withheld for reasons of confidentiality.

Grade 2 (2011) Reading Record

% of students at Grade Level = 74%

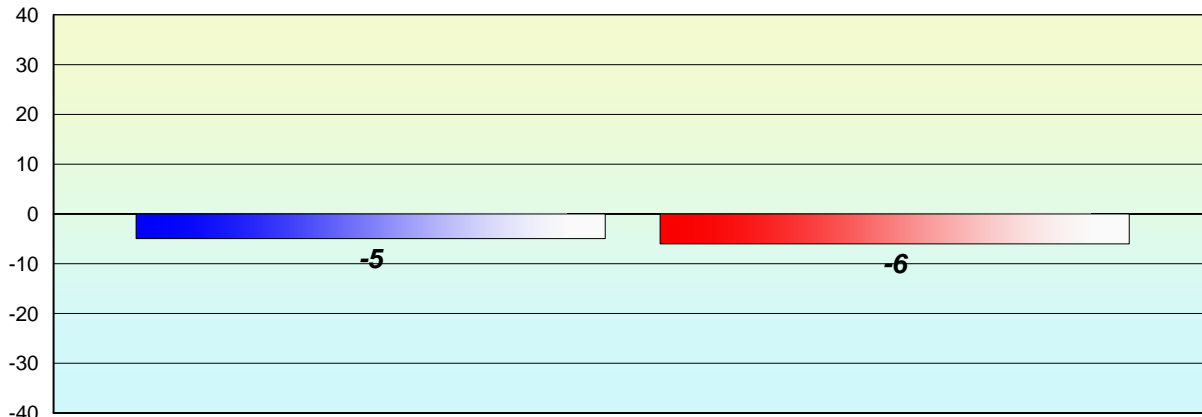
Grade 3 (2012) CRT

% of students at Level 3 and above = 52%



**Longitudinal
Cohort of students
Difference from Provincial Mean 2011 - 2012**

Reading



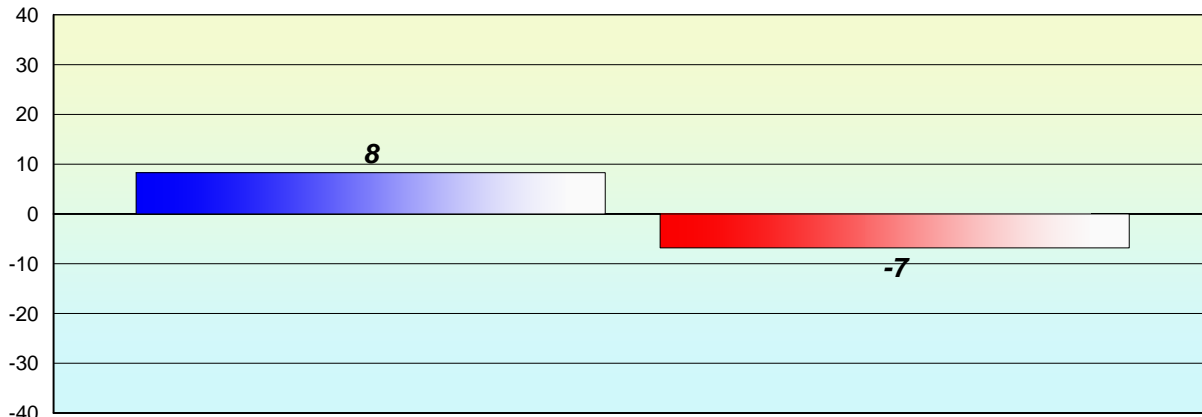
Grade 2 (2011) Reading Record
% of students at Grade Level = 74%

Grade 3 (2012) CRT
% of students at Level 3 and above = 52%



**Longitudinal
Cohort of students
Difference from Provincial Mean 2011 - 2012**

Reading



Grade 2 (2011) Reading Record

% of students at Grade Level = 74%

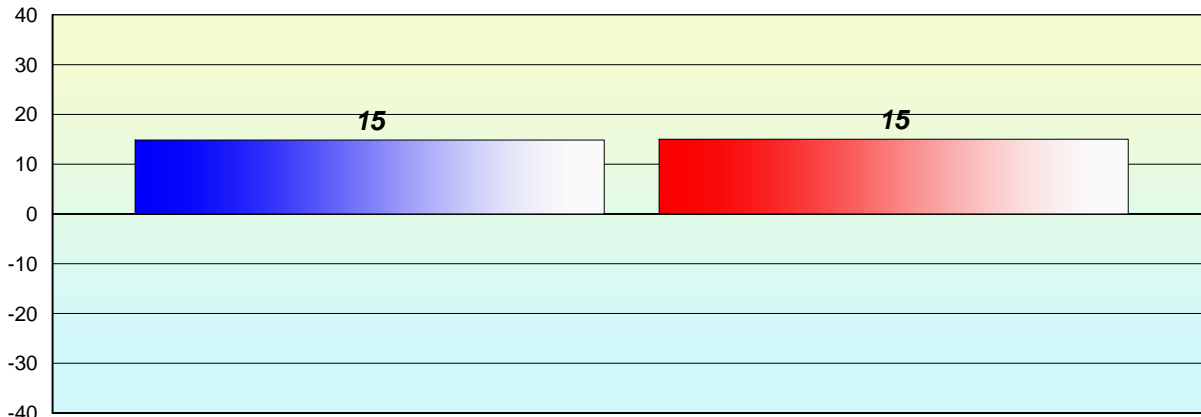
Grade 3 (2012) CRT

% of students at Level 3 and above = 52%



**Longitudinal
Cohort of students
Difference from Provincial Mean 2011 - 2012**

Reading



Grade 2 (2011) Reading Record

Grade 3 (2012) CRT

% of students at Grade Level = 74%

% of students at Level 3 and above = 52%



**Longitudinal
Cohort of students
Difference from Provincial Mean 2011 - 2012**

Reading

School data with 5 or fewer students withheld for reasons of confidentiality.

Grade 2 (2011) Reading Record

% of students at Grade Level = 74%

Grade 3 (2012) CRT

% of students at Level 3 and above = 52%



**Longitudinal
Cohort of students
Difference from Provincial Mean 2011 - 2012**

Reading

School data with 5 or fewer students withheld for reasons of confidentiality.

Grade 2 (2011) Reading Record

% of students at Grade Level = 74%

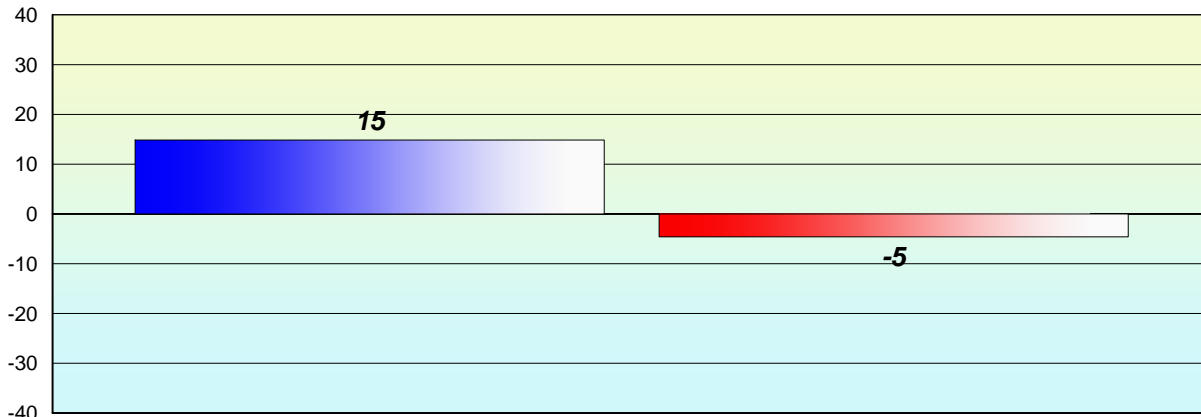
Grade 3 (2012) CRT

% of students at Level 3 and above = 52%



**Longitudinal
Cohort of students
Difference from Provincial Mean 2011 - 2012**

Reading



Grade 2 (2011) Reading Record

% of students at Grade Level = 74%

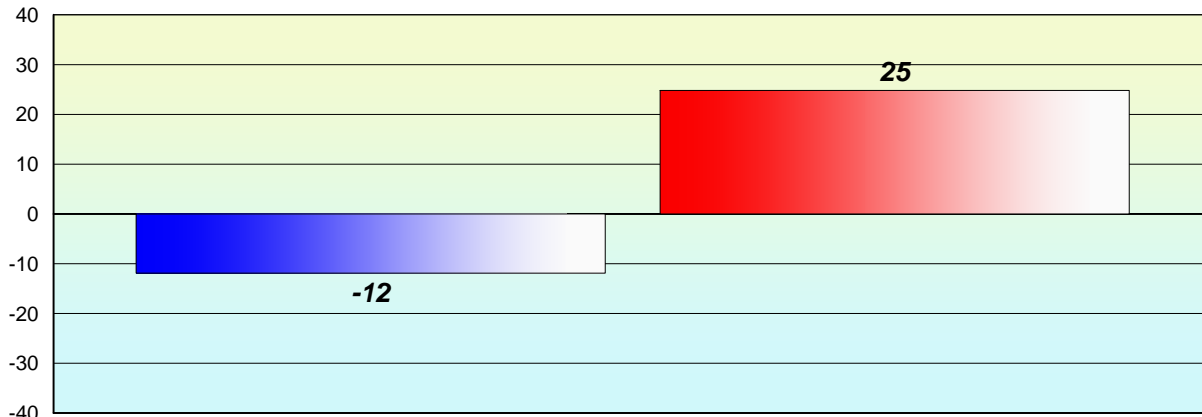
Grade 3 (2012) CRT

% of students at Level 3 and above = 52%



**Longitudinal
Cohort of students
Difference from Provincial Mean 2011 - 2012**

Reading



Grade 2 (2011) Reading Record

Grade 3 (2012) CRT

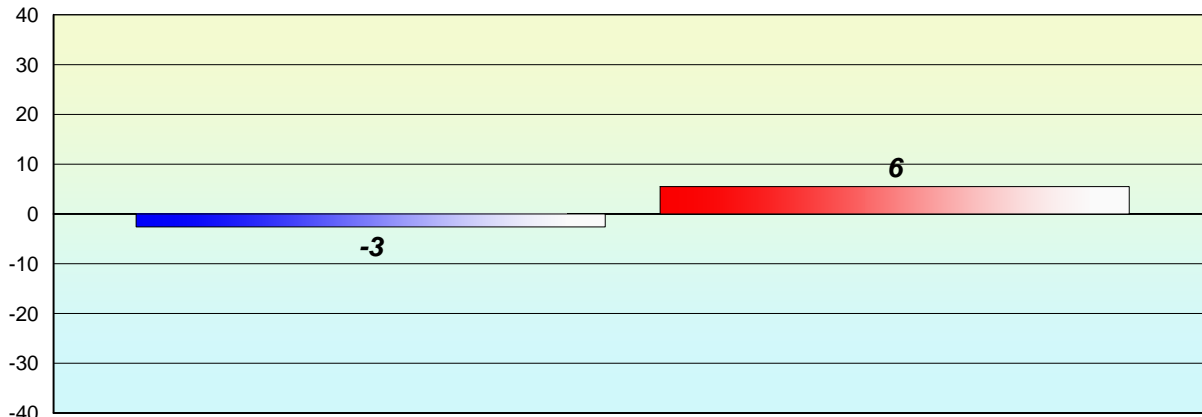
% of students at Grade Level = 74%

% of students at Level 3 and above = 52%



**Longitudinal
Cohort of students
Difference from Provincial Mean 2011 - 2012**

Reading



Grade 2 (2011) Reading Record

Grade 3 (2012) CRT

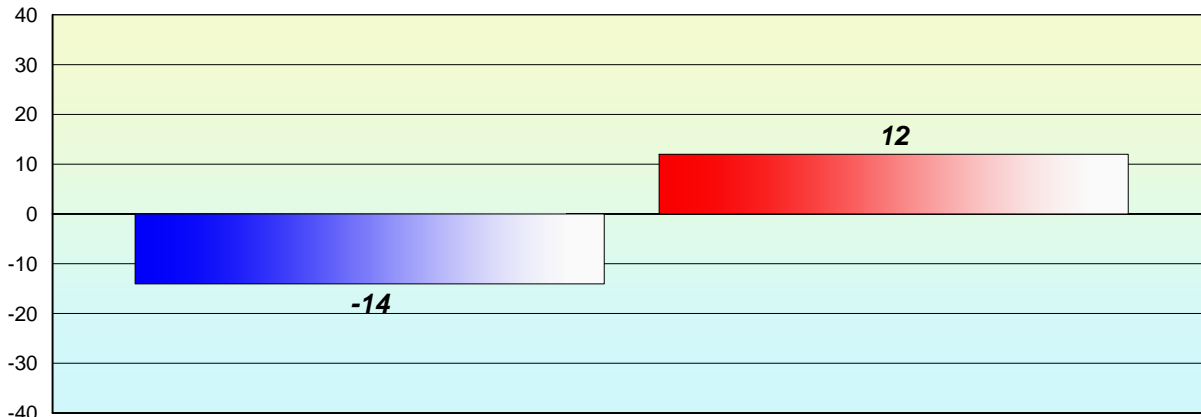
% of students at Grade Level = 74%

% of students at Level 3 and above = 52%



**Longitudinal
Cohort of students
Difference from Provincial Mean 2011 - 2012**

Reading



Grade 2 (2011) Reading Record

% of students at Grade Level = 74%

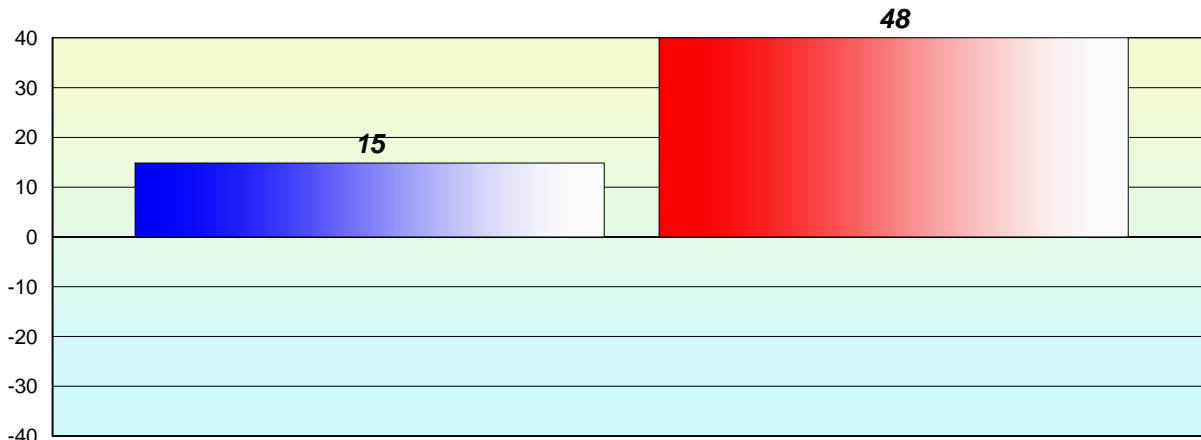
Grade 3 (2012) CRT

% of students at Level 3 and above = 52%



**Longitudinal
Cohort of students
Difference from Provincial Mean 2011 - 2012**

Reading



Grade 2 (2011) Reading Record

Grade 3 (2012) CRT

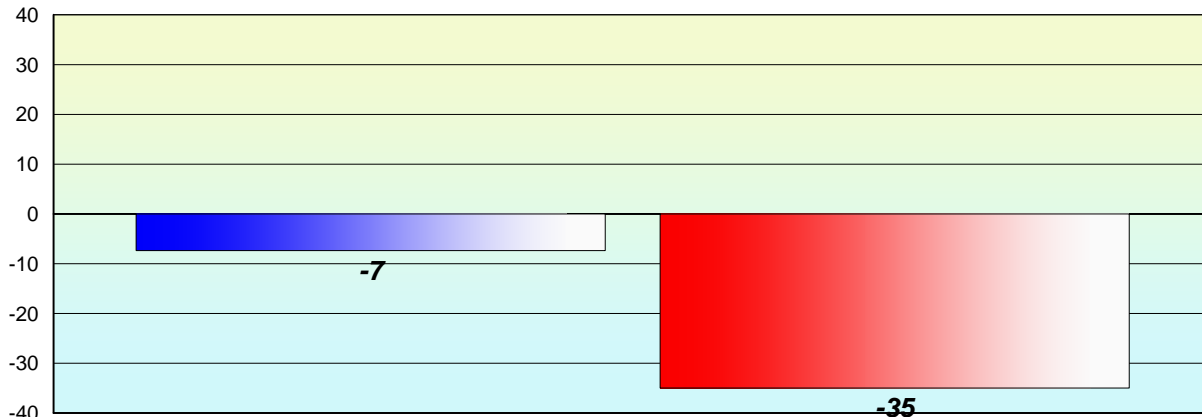
% of students at Grade Level = 74%

% of students at Level 3 and above = 52%



**Longitudinal
Cohort of students
Difference from Provincial Mean 2011 - 2012**

Reading



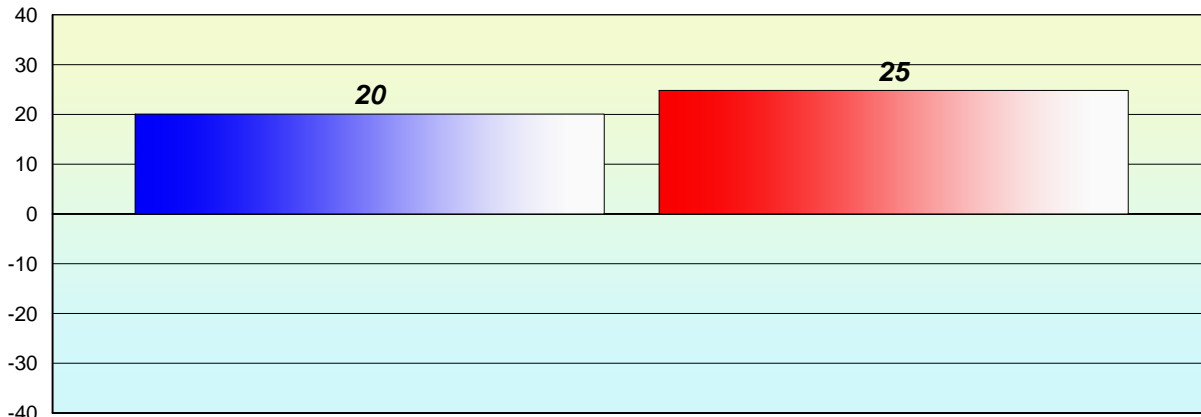
Grade 2 (2011) Reading Record
% of students at Grade Level = 74%

Grade 3 (2012) CRT
% of students at Level 3 and above = 52%



**Longitudinal
Cohort of students
Difference from Provincial Mean 2011 - 2012**

Reading



Grade 2 (2011) Reading Record

Grade 3 (2012) CRT

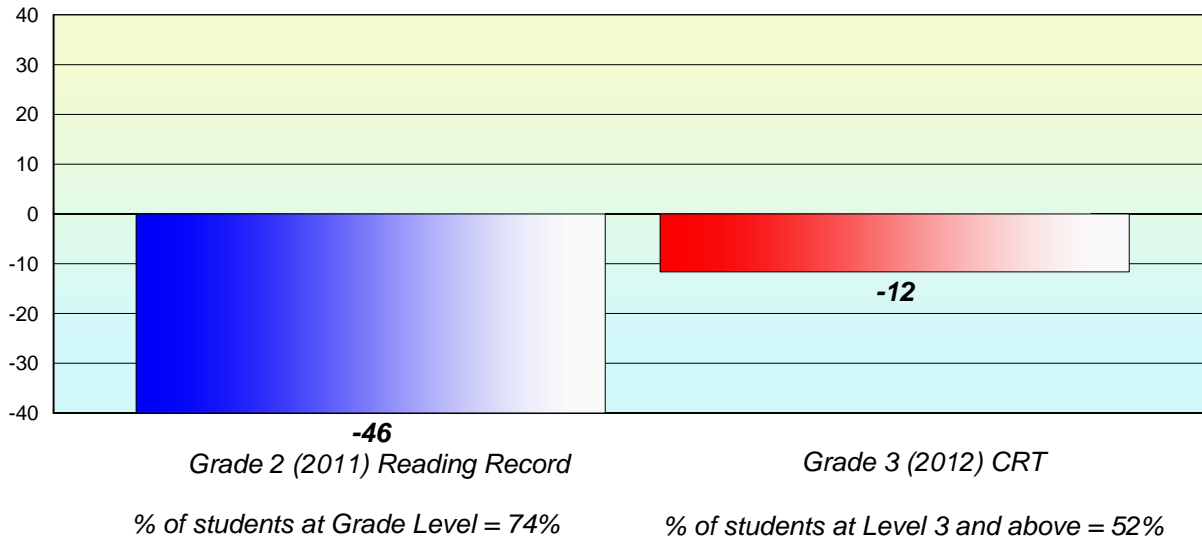
% of students at Grade Level = 74%

% of students at Level 3 and above = 52%



**Longitudinal
Cohort of students
Difference from Provincial Mean 2011 - 2012**

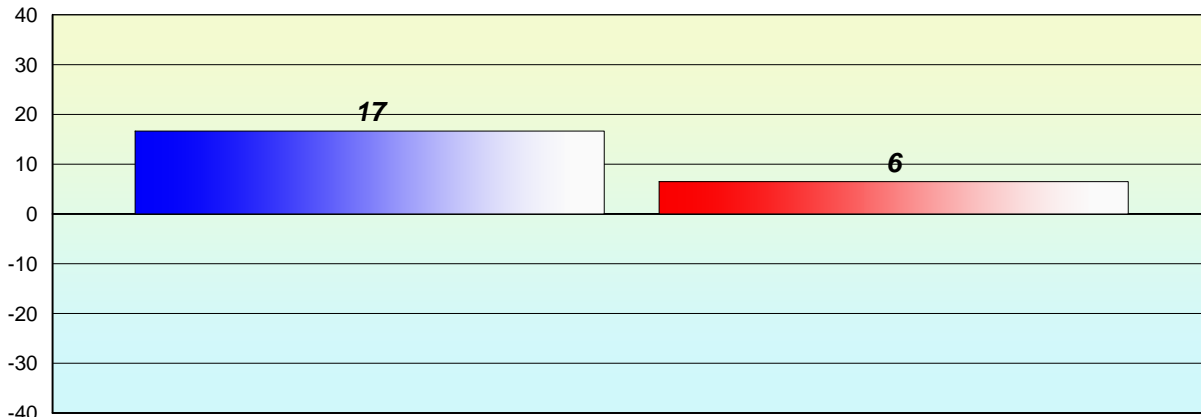
Reading



* Reading score (Grade 3) is composite of Non Fiction and Poetry. Results are based on the same cohort of students.
Source: Division of Evaluation and Research, Department of Education

**Longitudinal
Cohort of students
Difference from Provincial Mean 2011 - 2012**

Reading



Grade 2 (2011) Reading Record

Grade 3 (2012) CRT

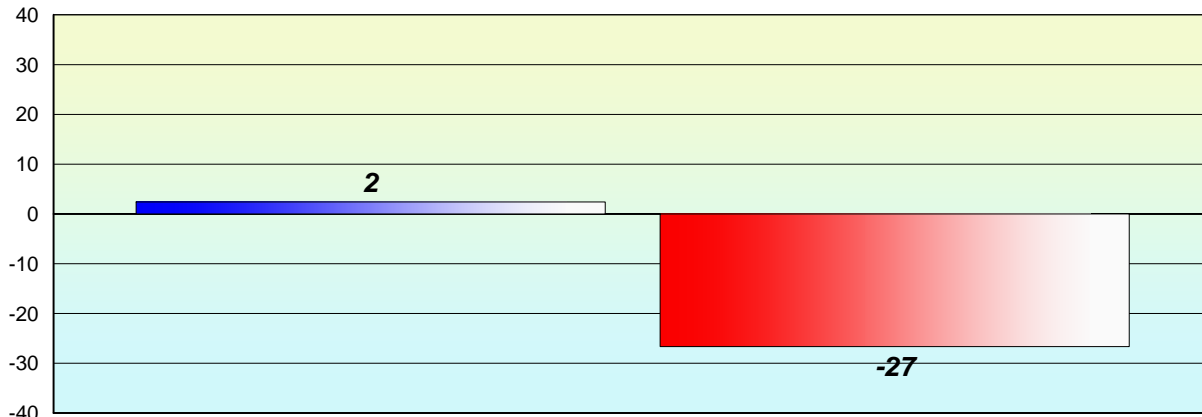
% of students at Grade Level = 74%

% of students at Level 3 and above = 52%



**Longitudinal
Cohort of students
Difference from Provincial Mean 2011 - 2012**

Reading



Grade 2 (2011) Reading Record

Grade 3 (2012) CRT

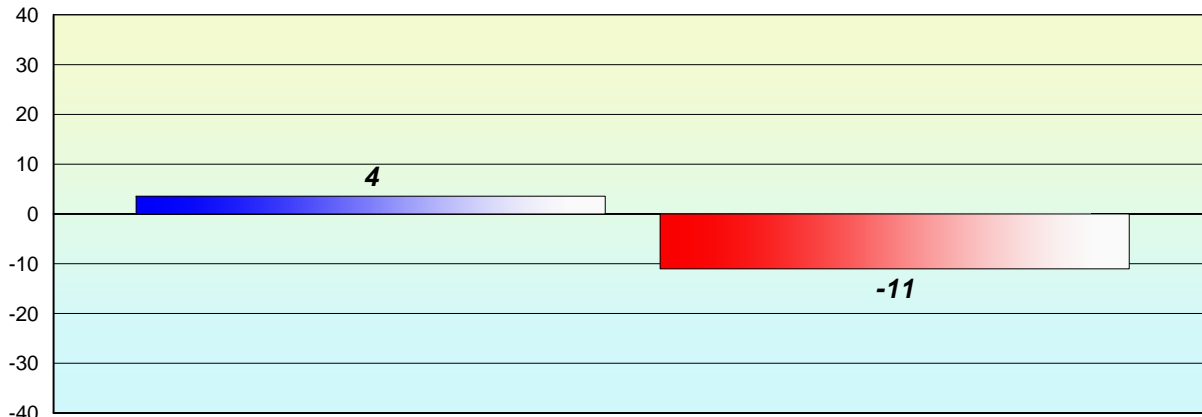
% of students at Grade Level = 74%

% of students at Level 3 and above = 52%



**Longitudinal
Cohort of students
Difference from Provincial Mean 2011 - 2012**

Reading



Grade 2 (2011) Reading Record

% of students at Grade Level = 74%

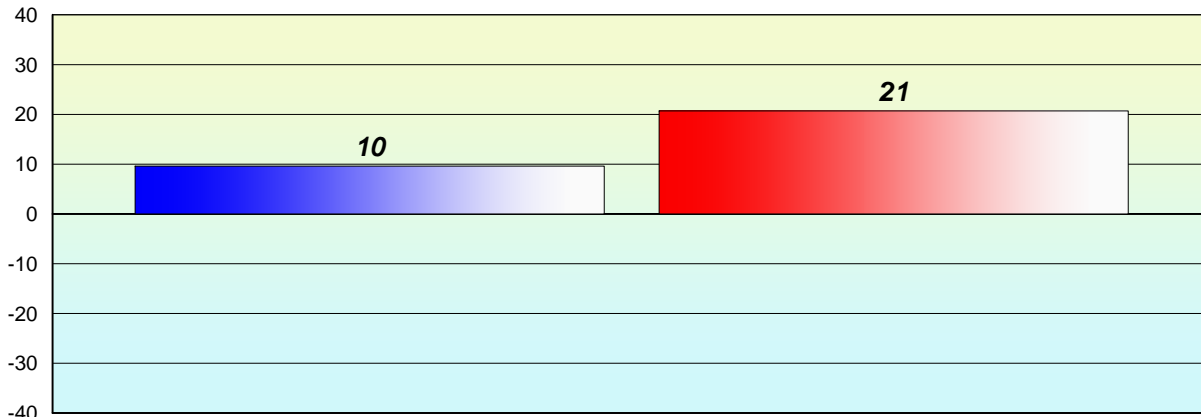
Grade 3 (2012) CRT

% of students at Level 3 and above = 52%



**Longitudinal
Cohort of students
Difference from Provincial Mean 2011 - 2012**

Reading



Grade 2 (2011) Reading Record

% of students at Grade Level = 74%

Grade 3 (2012) CRT

% of students at Level 3 and above = 52%

