

District 1 - Labrador

School #: 001 St. Peter's School

Exemption/Unknown Rates

Demand Writing

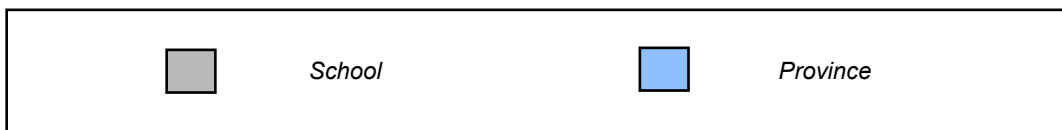
School data with 5 or fewer students withheld for reasons of confidentiality.

2009 2010 2011 2012

Reading

School data with 5 or fewer students withheld for reasons of confidentiality.

2009 2010 2011 2012



* Reading score is composite of Non Fiction and Poetry.

Mushuau Innu Natuashish School and Sheshatshiu Innu School are excluded from district and provincial results.

District 1 - Labrador

School #: 001 St. Peter's School

Participation Rates

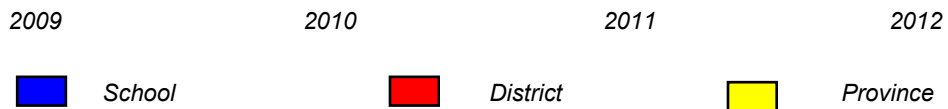
Demand Writing

School data with 5 or fewer students withheld for reasons of confidentiality.



Reading

School data with 5 or fewer students withheld for reasons of confidentiality.



* Reading score is composite of Non Fiction and Poetry.

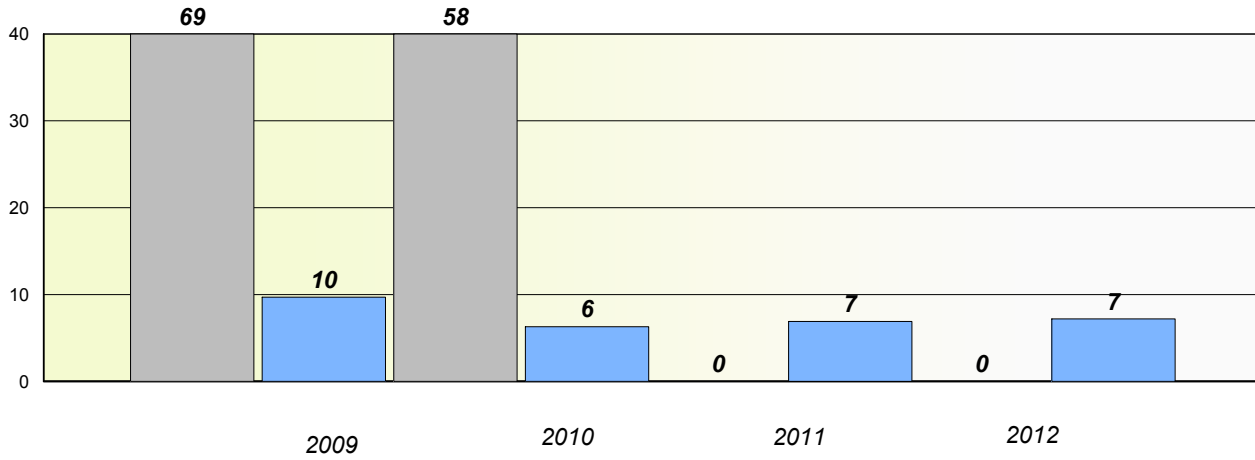
Mushuau Innu Natuashish School and Sheshatshiu Innu School are excluded from district and provincial results.

District 1 - Labrador

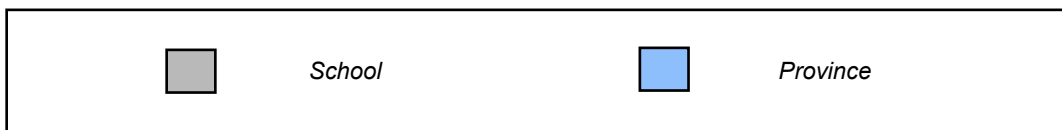
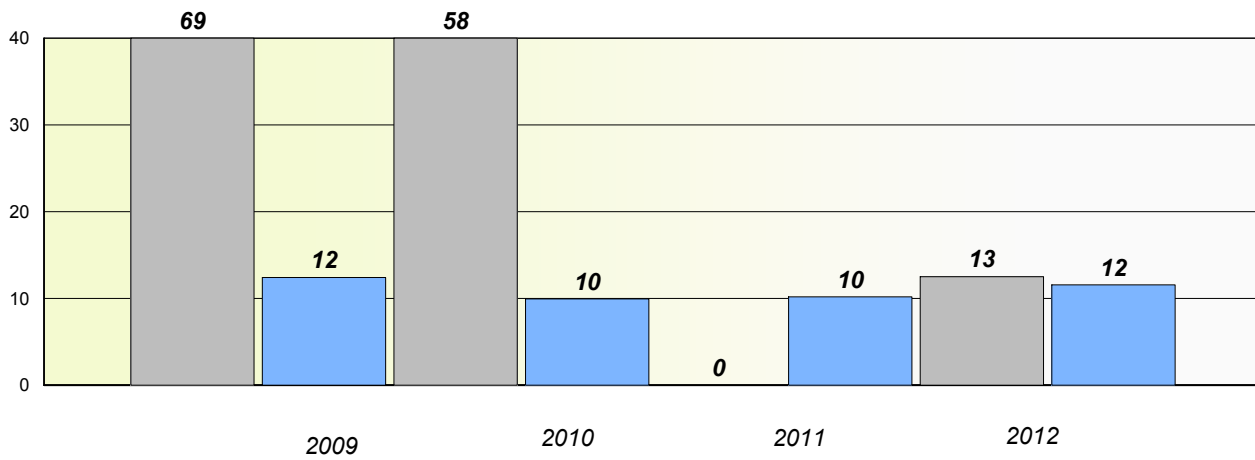
School #: 007 Amos Comenius Memorial School

Exemption/Unknown Rates

Demand Writing



Reading



* Reading score is composite of Non Fiction and Poetry.

Mushuau Innu Natuashish School and Sheshatshiu Innu School are excluded from district and provincial results.

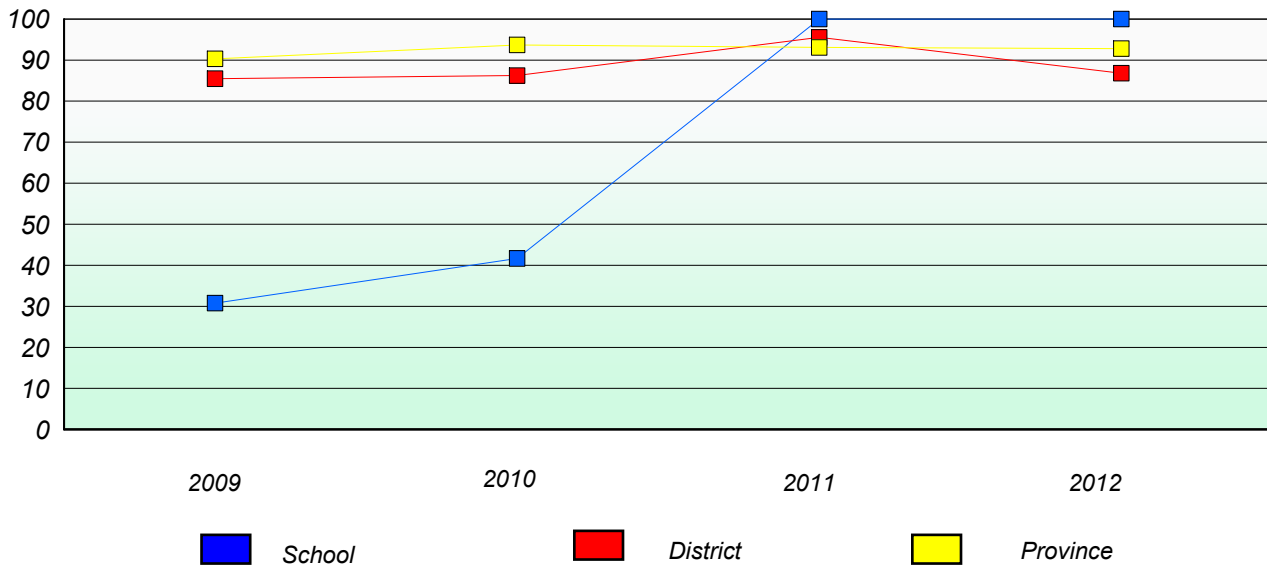
Source: Division of Evaluation and Research, Department of Education

District 1 - Labrador

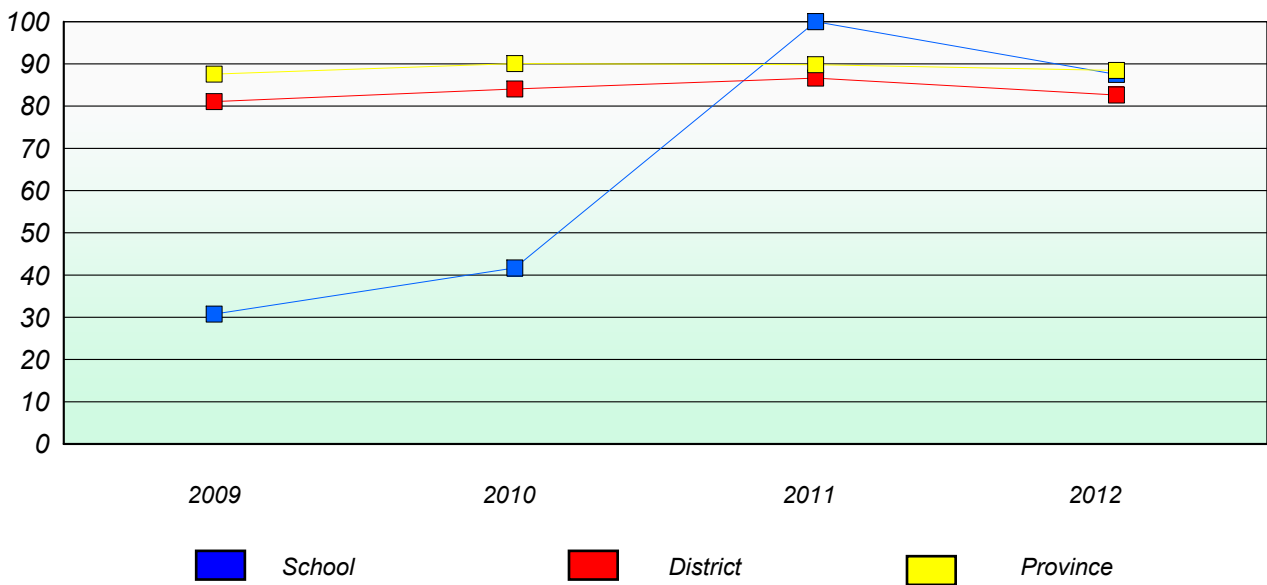
School #: 007 Amos Comenius Memorial School

Participation Rates

Demand Writing



Reading



* Reading score is composite of Non Fiction and Poetry.

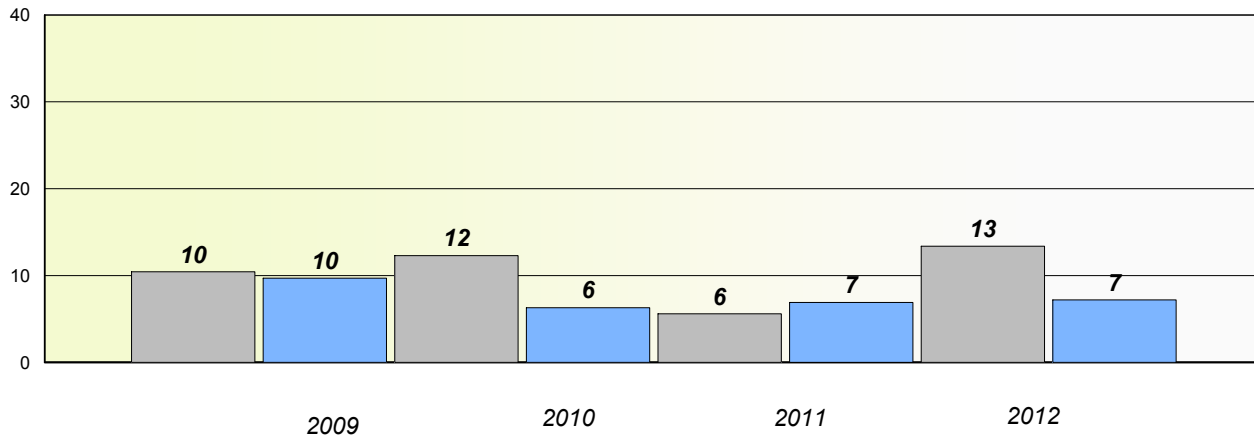
Mushuau Innu Natuashish School and Sheshatshiu Innu School are excluded from district and provincial results.

District 1 - Labrador

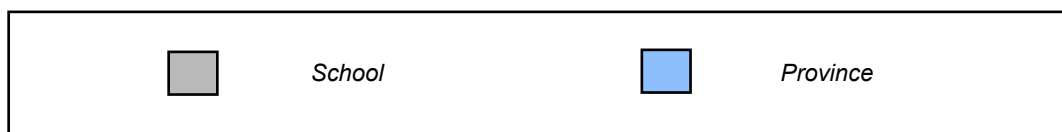
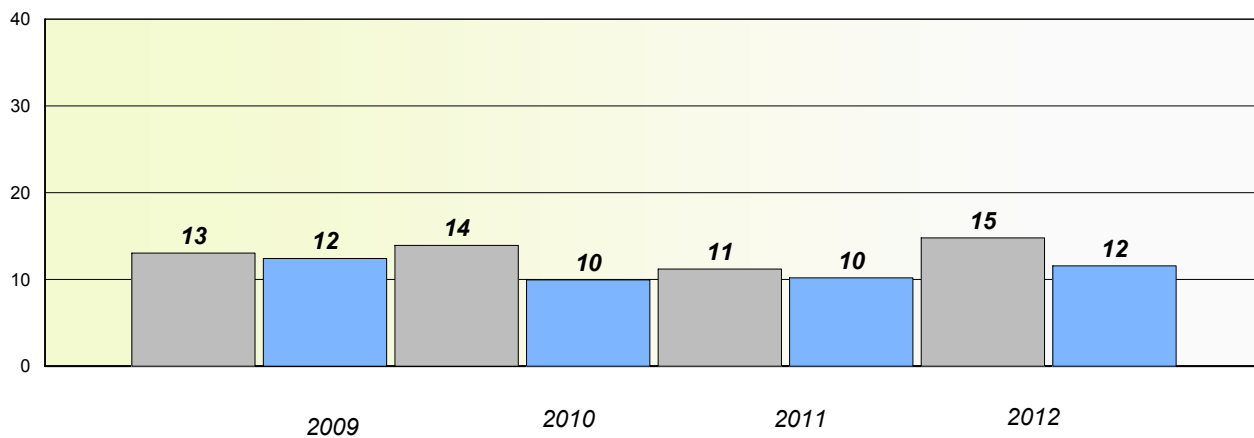
School #: 010 Menihek High School

Exemption/Unknown Rates

Demand Writing



Reading



* Reading score is composite of Non Fiction and Poetry.

Mushuau Innu Natuashish School and Sheshatshiu Innu School are excluded from district and provincial results.

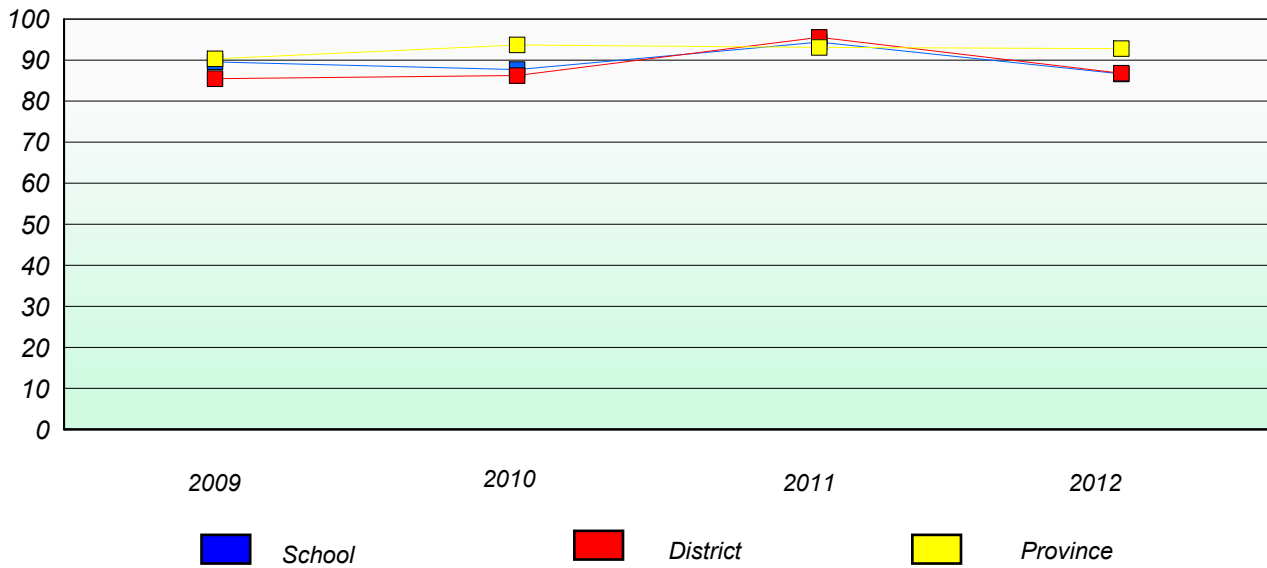
Source: Division of Evaluation and Research, Department of Education

District 1 - Labrador

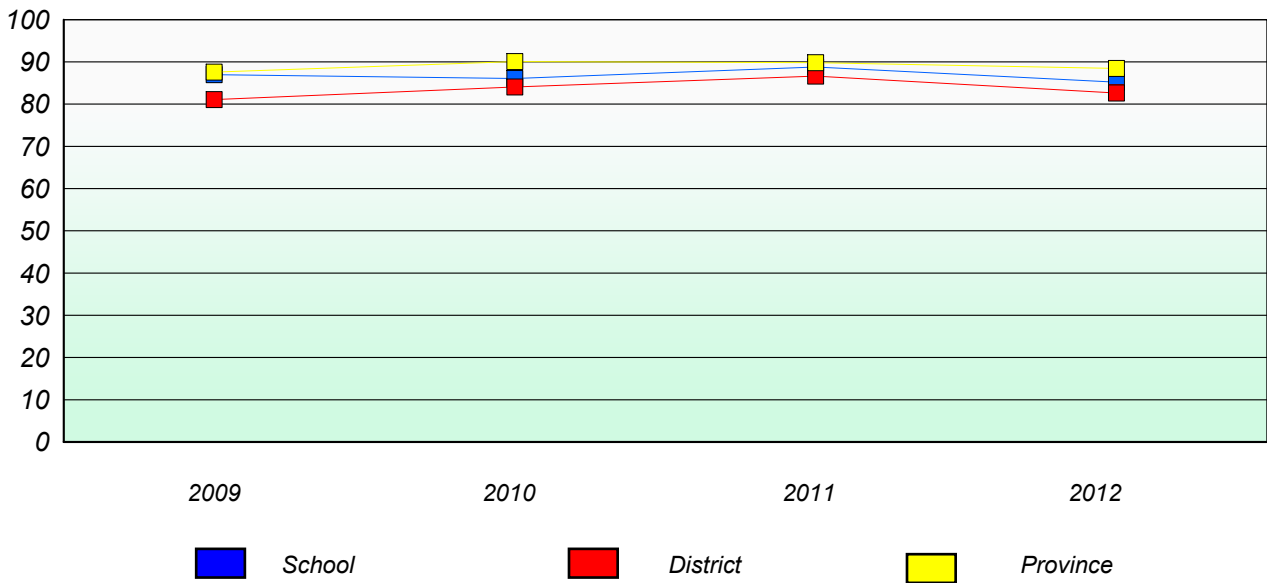
School #: 010 Menihek High School

Participation Rates

Demand Writing



Reading



* Reading score is composite of Non Fiction and Poetry.

Mushuau Innu Natuashish School and Sheshatshiu Innu School are excluded from district and provincial results.

District 1 - Labrador

School #: 012 J.C. Erhardt Memorial School

Exemption/Unknown Rates

Demand Writing

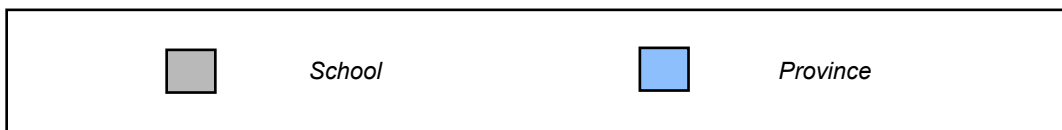
School data with 5 or fewer students withheld for reasons of confidentiality.

2009 2010 2011 2012

Reading

School data with 5 or fewer students withheld for reasons of confidentiality.

2009 2010 2011 2012



* Reading score is composite of Non Fiction and Poetry.

Mushuau Innu Natuashish School and Sheshatshiu Innu School are excluded from district and provincial results.

Source: Division of Evaluation and Research, Department of Education

District 1 - Labrador

School #: 012 J.C. Erhardt Memorial School

Participation Rates

Demand Writing

School data with 5 or fewer students withheld for reasons of confidentiality.



Reading

School data with 5 or fewer students withheld for reasons of confidentiality.



* Reading score is composite of Non Fiction and Poetry.

Mushuau Innu Natuashish School and Sheshatshiu Innu School are excluded from district and provincial results.

District 1 - Labrador

School #: 013 Mud Lake School

Exemption/Unknown Rates

Demand Writing

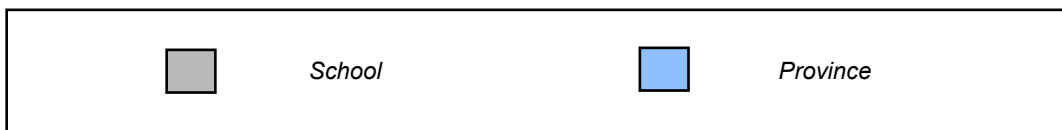
School data with 5 or fewer students withheld for reasons of confidentiality.

2009 2010 2011 2012

Reading

School data with 5 or fewer students withheld for reasons of confidentiality.

2009 2010 2011 2012



* Reading score is composite of Non Fiction and Poetry.

Mushuau Innu Natuashish School and Sheshatshiu Innu School are excluded from district and provincial results.

Source: Division of Evaluation and Research, Department of Education

District 1 - Labrador

School #: 013 Mud Lake School

Participation Rates

Demand Writing

School data with 5 or fewer students withheld for reasons of confidentiality.



Reading

School data with 5 or fewer students withheld for reasons of confidentiality.



* Reading score is composite of Non Fiction and Poetry.

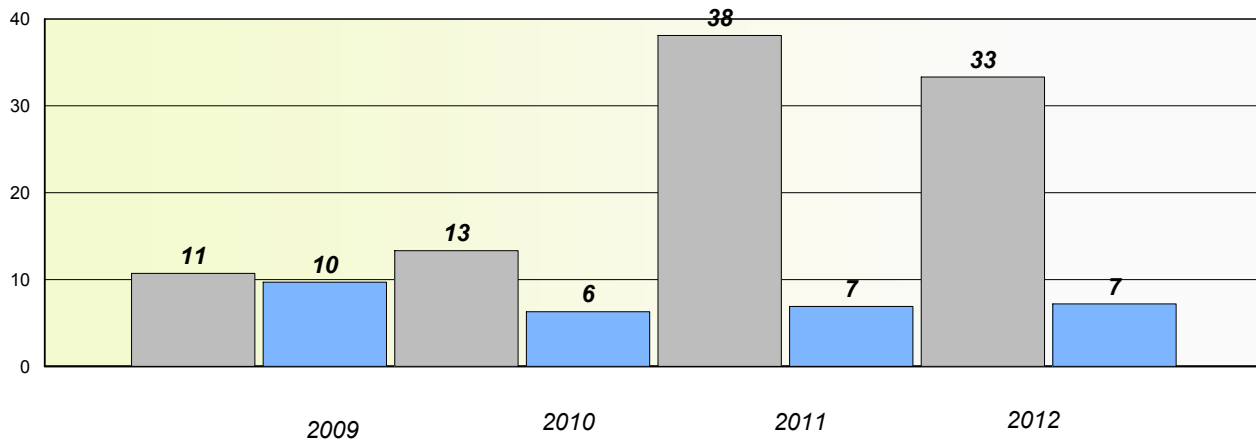
Mushuau Innu Natuashish School and Sheshatshiu Innu School are excluded from district and provincial results.

District 1 - Labrador

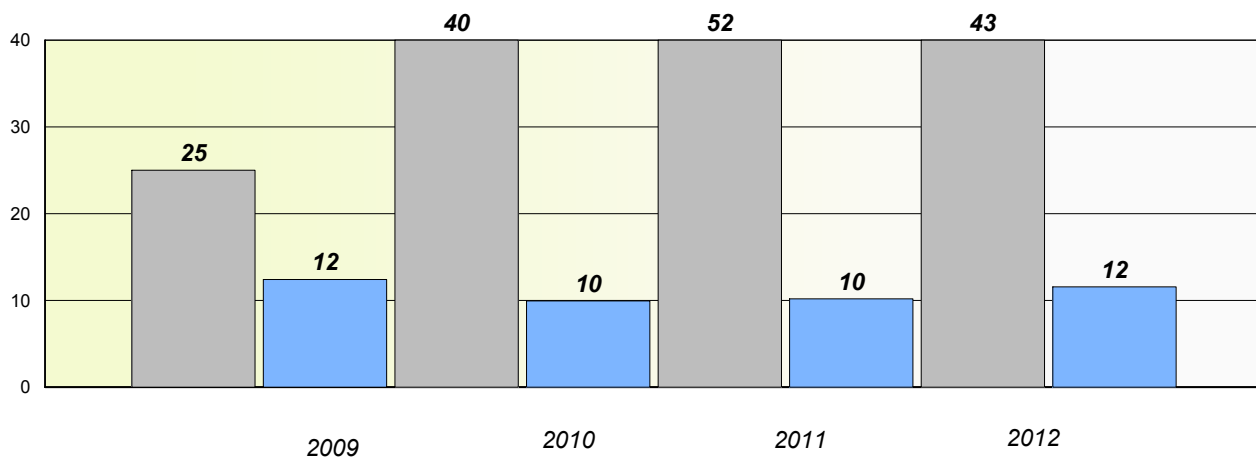
School #: 014 Jens Haven Memorial

Exemption/Unknown Rates

Demand Writing



Reading



* Reading score is composite of Non Fiction and Poetry.

Mushuau Innu Natuashish School and Sheshatshiu Innu School are excluded from district and provincial results.

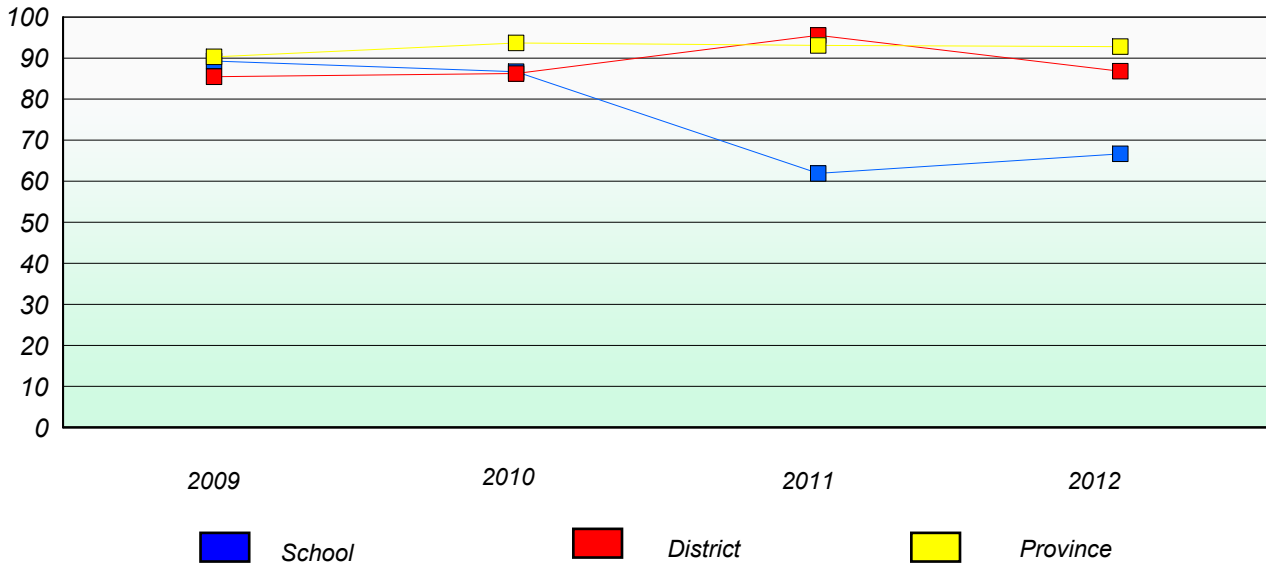
Source: Division of Evaluation and Research, Department of Education

District 1 - Labrador

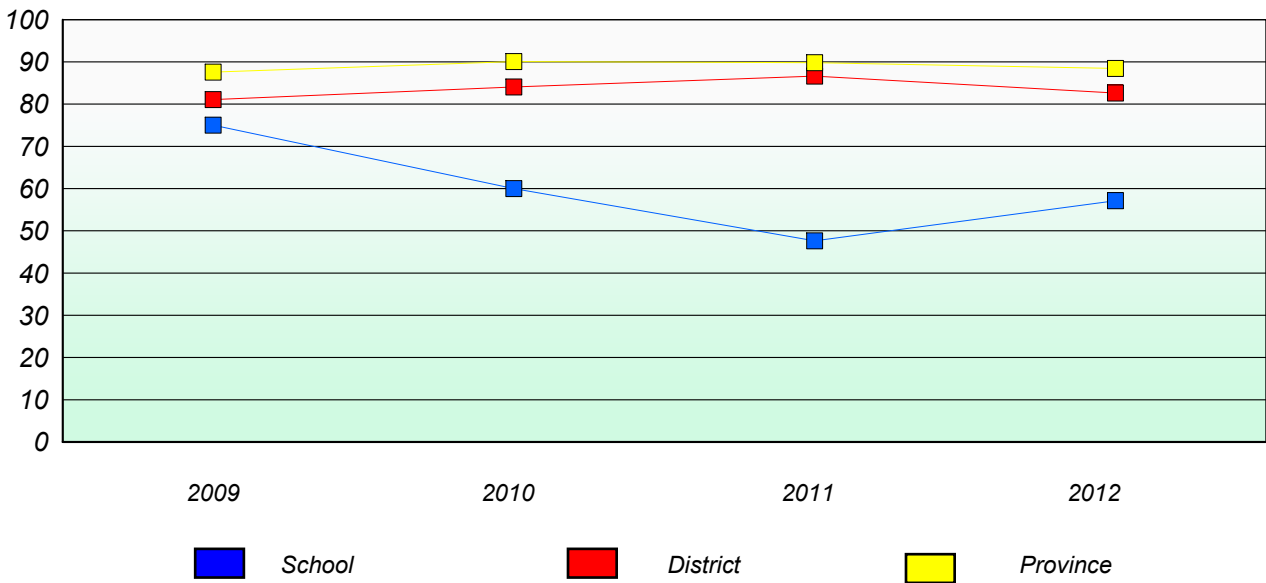
School #: 014 Jens Haven Memorial

Participation Rates

Demand Writing



Reading



* Reading score is composite of Non Fiction and Poetry.

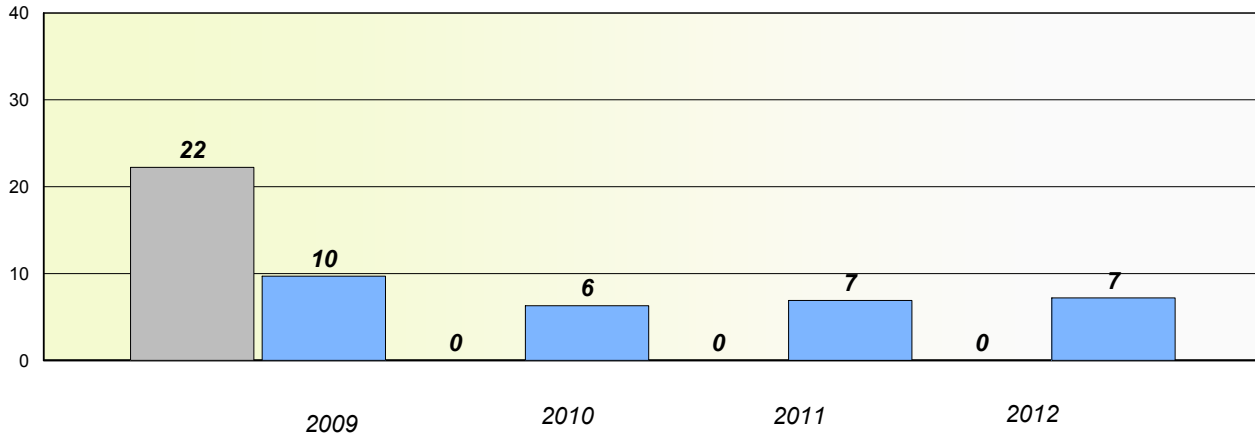
Mushuau Innu Natuashish School and Sheshatshiu Innu School are excluded from district and provincial results.

District 1 - Labrador

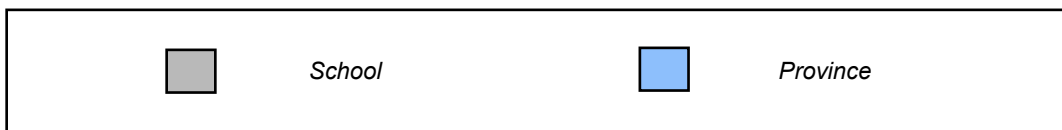
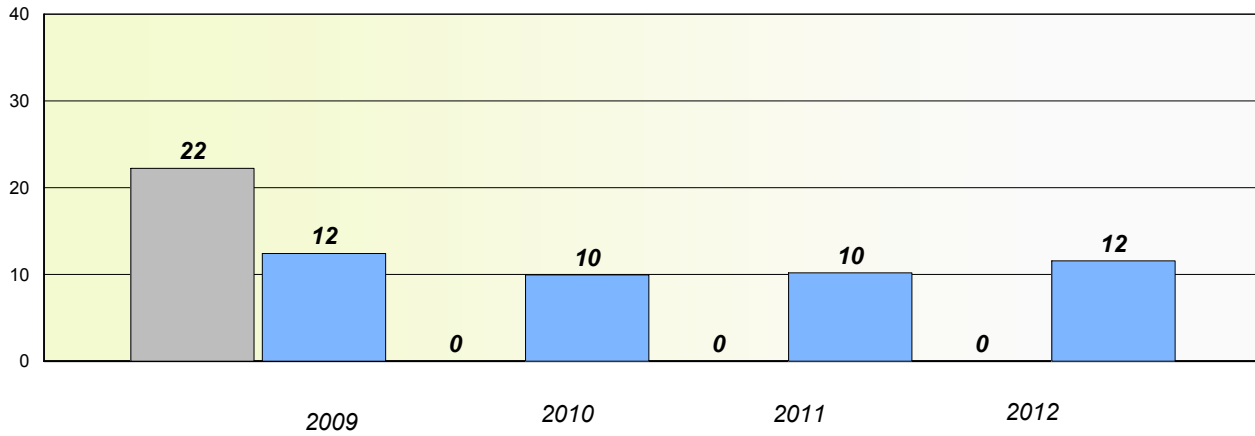
School #: 015 Lake Melville School

Exemption/Unknown Rates

Demand Writing



Reading



* Reading score is composite of Non Fiction and Poetry.

Mushuau Innu Natuashish School and Sheshatshiu Innu School are excluded from district and provincial results.

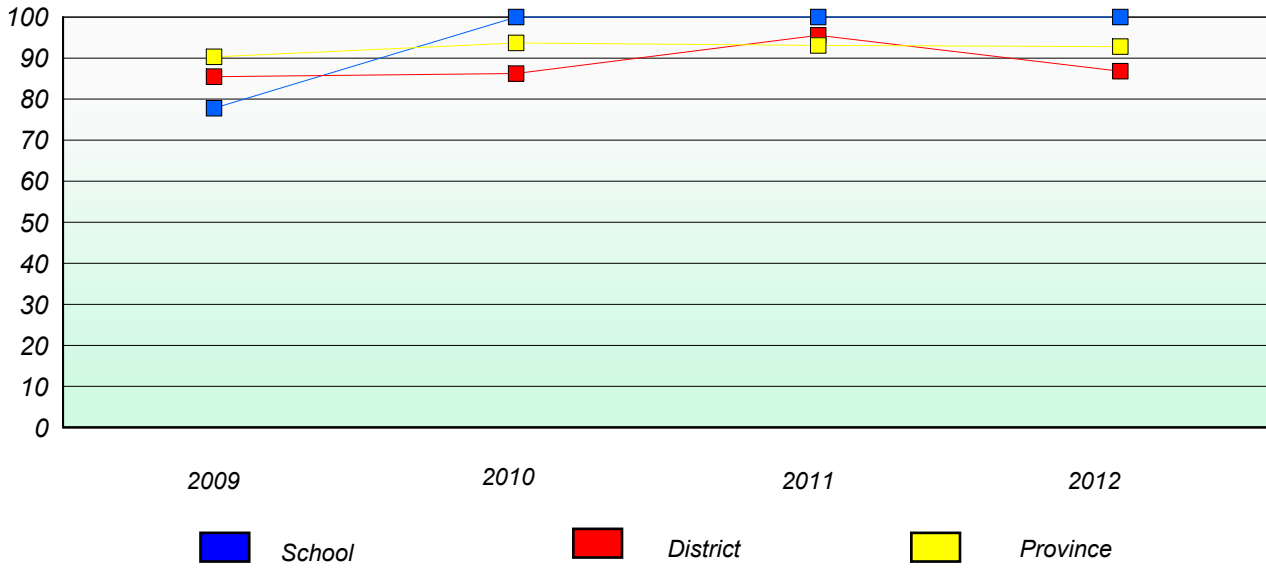
Source: Division of Evaluation and Research, Department of Education

District 1 - Labrador

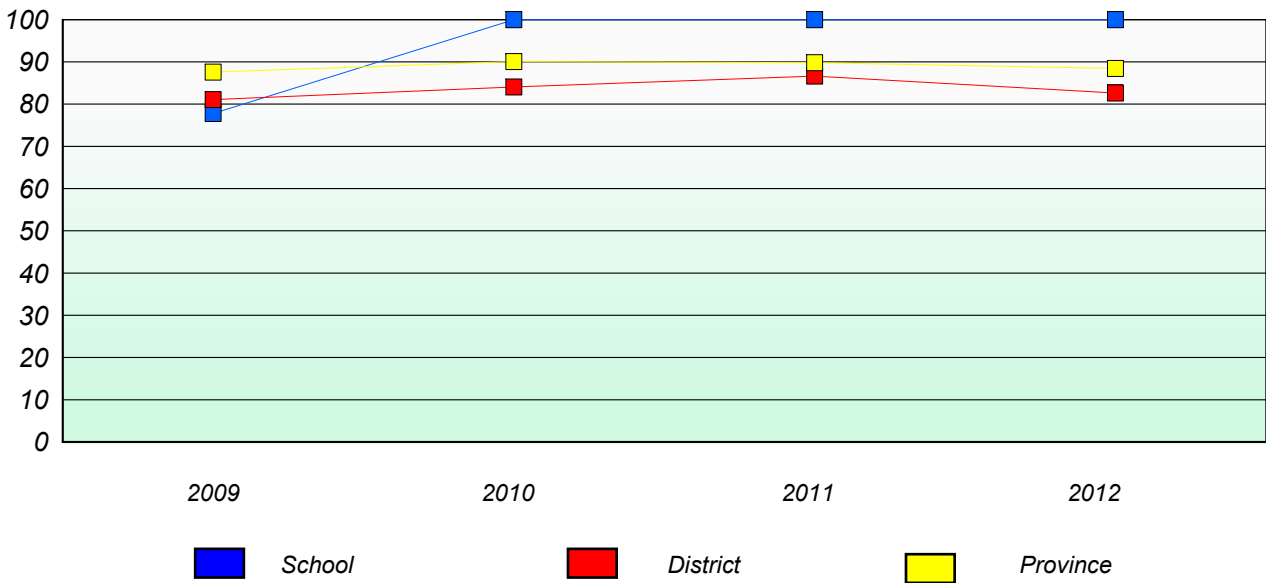
School #: 015 Lake Melville School

Participation Rates

Demand Writing



Reading



* Reading score is composite of Non Fiction and Poetry.

Mushuau Innu Natuashish School and Sheshatshiu Innu School are excluded from district and provincial results.

District 1 - Labrador

School #: 016 B.L. Morrison

Exemption/Unknown Rates

Demand Writing

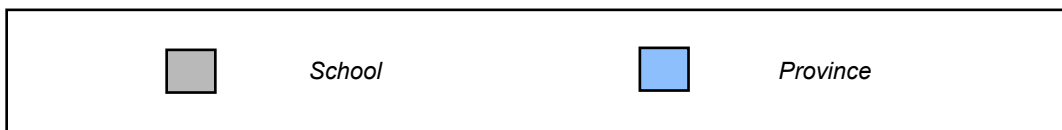
School data with 5 or fewer students withheld for reasons of confidentiality.

2009 2010 2011 2012

Reading

School data with 5 or fewer students withheld for reasons of confidentiality.

2009 2010 2011 2012



* Reading score is composite of Non Fiction and Poetry.

Mushuau Innu Natuashish School and Sheshatshiu Innu School are excluded from district and provincial results.

Source: Division of Evaluation and Research, Department of Education

District 1 - Labrador

School #: 016 B.L. Morrison

Participation Rates

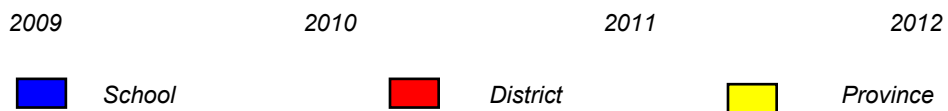
Demand Writing

School data with 5 or fewer students withheld for reasons of confidentiality.



Reading

School data with 5 or fewer students withheld for reasons of confidentiality.



* Reading score is composite of Non Fiction and Poetry.

Mushuau Innu Natuashish School and Sheshatshiu Innu School are excluded from district and provincial results.

District 1 - Labrador

School #: 017 Northern Lights Academy

Exemption/Unknown Rates

Demand Writing

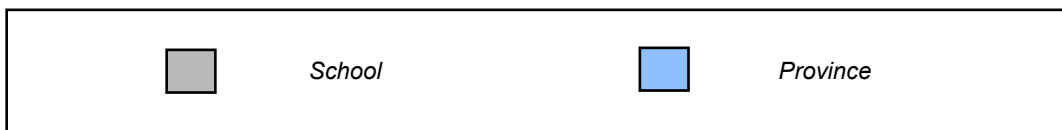
School data with 5 or fewer students withheld for reasons of confidentiality.

2009 2010 2011 2012

Reading

School data with 5 or fewer students withheld for reasons of confidentiality.

2009 2010 2011 2012



* Reading score is composite of Non Fiction and Poetry.

Mushuau Innu Natuashish School and Sheshatshiu Innu School are excluded from district and provincial results.

Source: Division of Evaluation and Research, Department of Education

District 1 - Labrador

School #: 017 Northern Lights Academy

Participation Rates

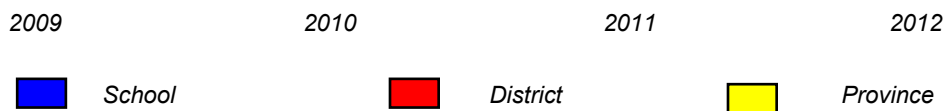
Demand Writing

School data with 5 or fewer students withheld for reasons of confidentiality.



Reading

School data with 5 or fewer students withheld for reasons of confidentiality.



* Reading score is composite of Non Fiction and Poetry.

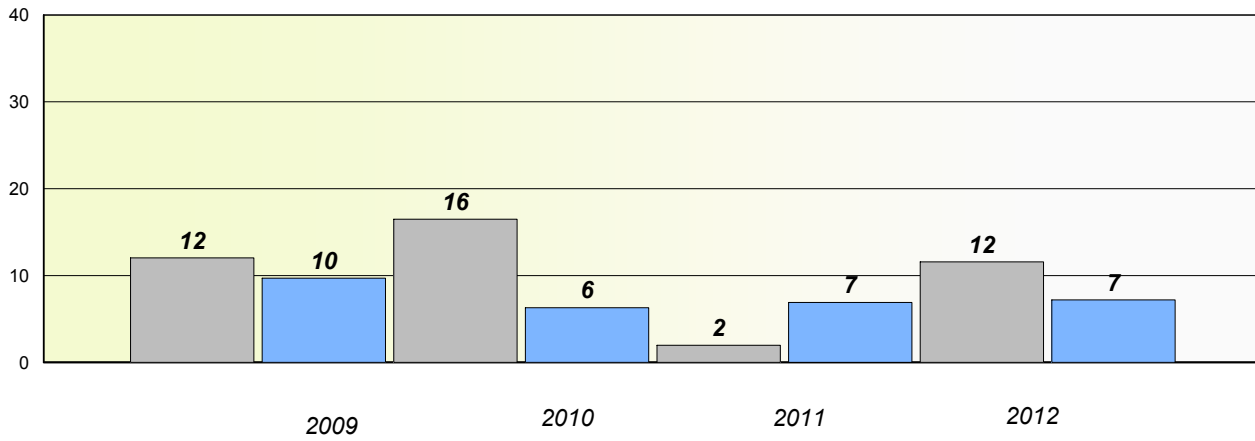
Mushuau Innu Natuashish School and Sheshatshiu Innu School are excluded from district and provincial results.

District 1 - Labrador

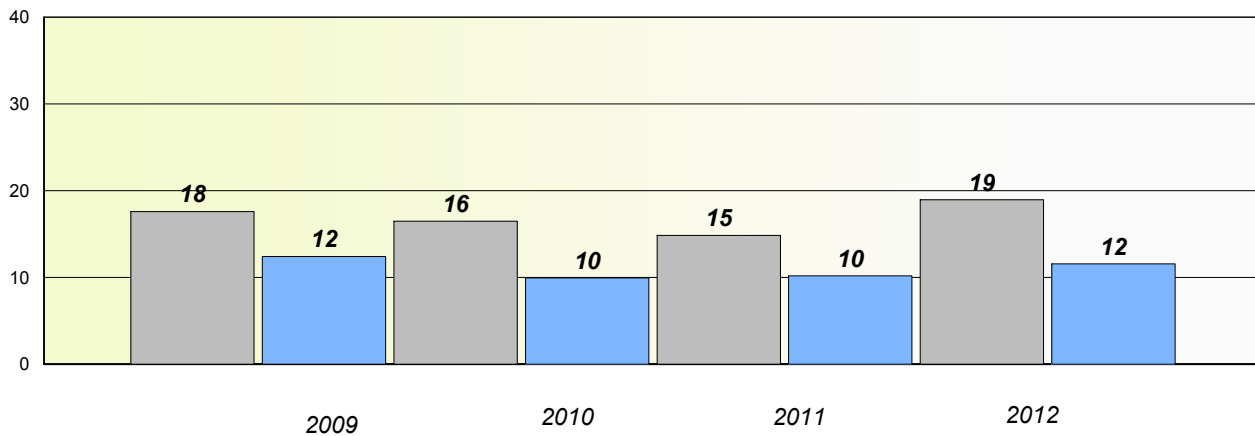
School #: 477 Mealy Mountain Collegiate

Exemption/Unknown Rates

Demand Writing



Reading



* Reading score is composite of Non Fiction and Poetry.

Mushuau Innu Natuashish School and Sheshatshiu Innu School are excluded from district and provincial results.

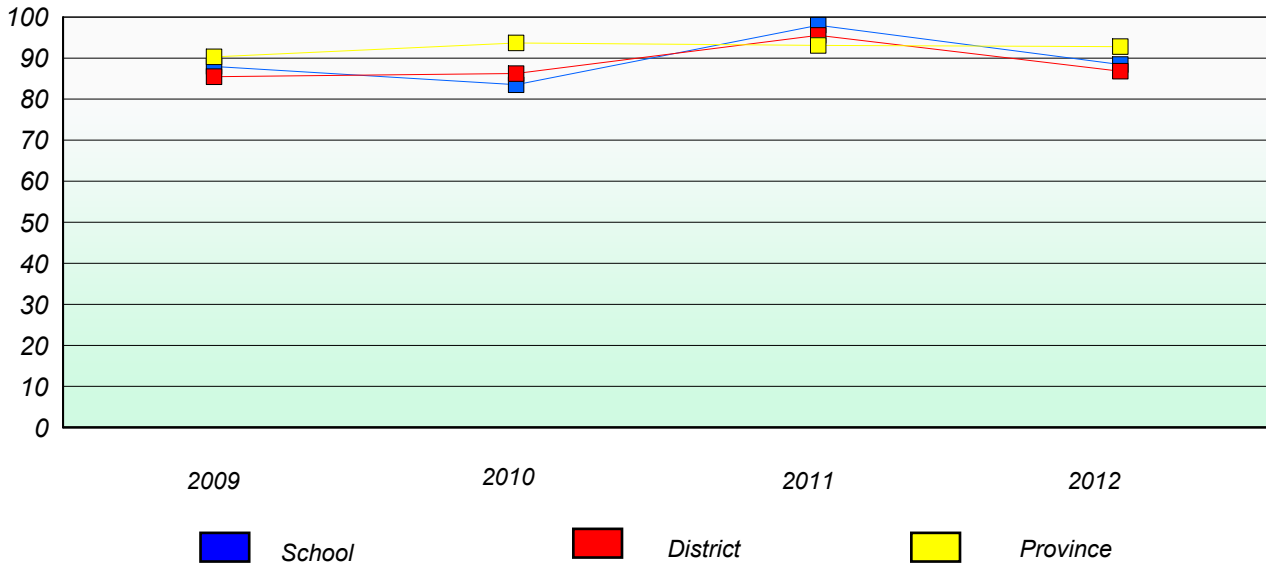
Source: Division of Evaluation and Research, Department of Education

District 1 - Labrador

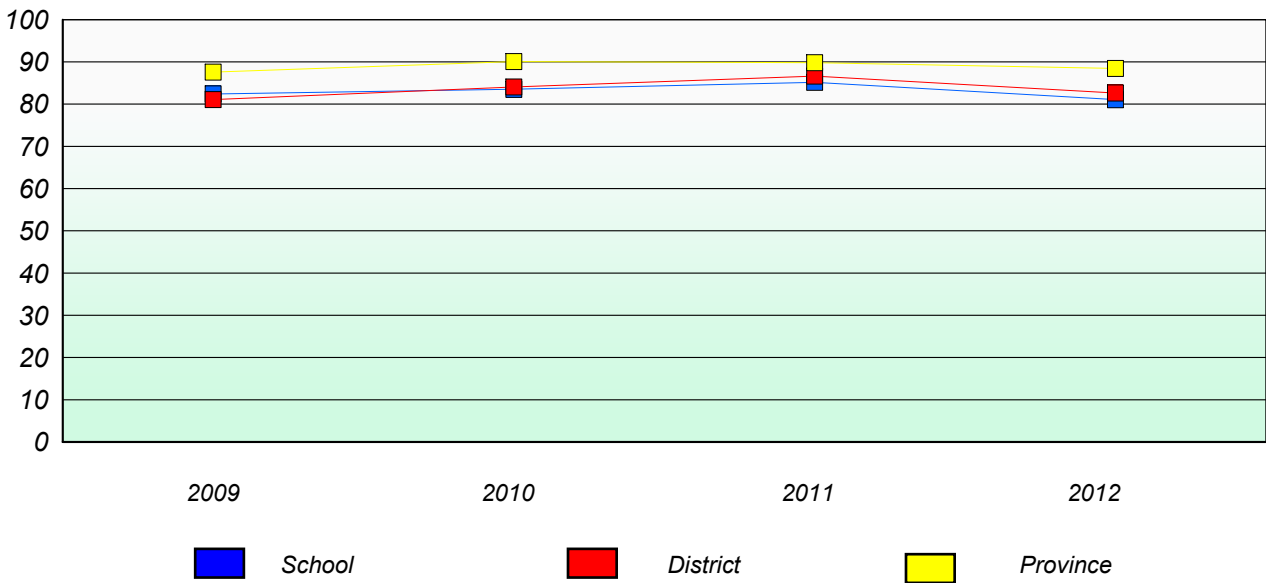
School #: 477 Mealy Mountain Collegiate

Participation Rates

Demand Writing



Reading



* Reading score is composite of Non Fiction and Poetry.

Mushuau Innu Natuashish School and Sheshatshiu Innu School are excluded from district and provincial results.