

District 5 - Conseil scolaire francophone

School #: 095 École Notre-Dame du Cap

Unknown/Exemption Rates

Number Operations

School data with 5 or fewer students withheld for reasons of confidentiality.



Participation Rates

Number Operations

School data with 5 or fewer students withheld for reasons of confidentiality.



District 5 - Conseil scolaire francophone

School #: 107 École Ste-Anne

Unknown/Exemption Rates

Number Operations

School data with 5 or fewer students withheld for reasons of confidentiality.



Participation Rates

Number Operations

School data with 5 or fewer students withheld for reasons of confidentiality.



District 5 - Conseil scolaire francophone

School #: 459 Centre éducatif l'ENVOL

Unknown/Exemption Rates

Number Operations

School data with 5 or fewer students withheld for reasons of confidentiality.



Participation Rates

Number Operations

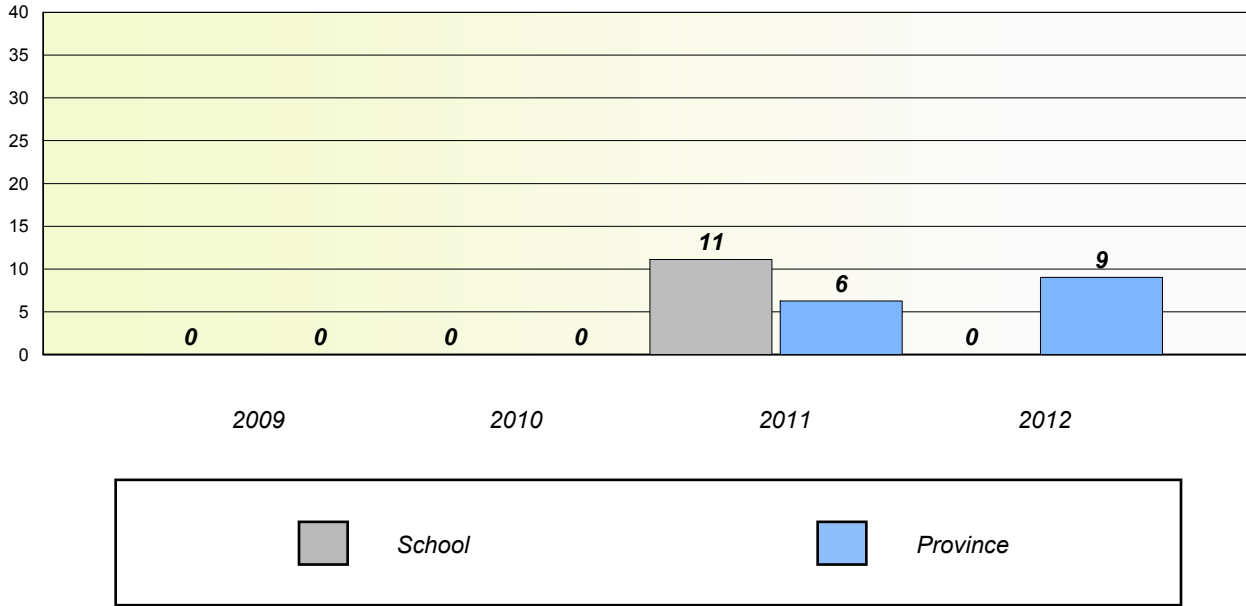
School data with 5 or fewer students withheld for reasons of confidentiality.



District 5 - Conseil scolaire francophone
School #: 460 École des Grands-Vents

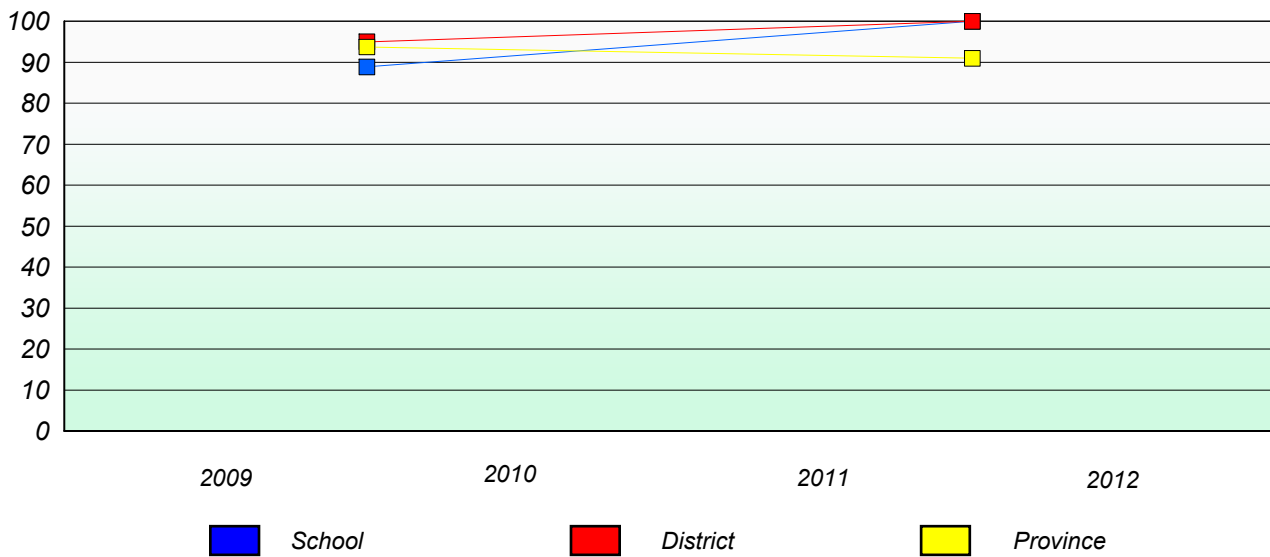
Unknown/Exemption Rates

Number Operations



Participation Rates

Number Operations



* Number Operations are composite of Reasoning, Communication, Connection and Representations, and problem Solving.

District 5 - Conseil scolaire francophone

School #: 472 École Boréale

Unknown/Exemption Rates

Number Operations

School data with 5 or fewer students withheld for reasons of confidentiality.



Participation Rates

Number Operations

School data with 5 or fewer students withheld for reasons of confidentiality.



District 803 - Private

School #: 373 First Baptist Academy

Unknown/Exemption Rates

Number Operations

-- *School data with 5 or fewer students withheld for reasons of confidentiality.*



Participation Rates

Number Operations

School data with 5 or fewer students withheld for reasons of confidentiality.

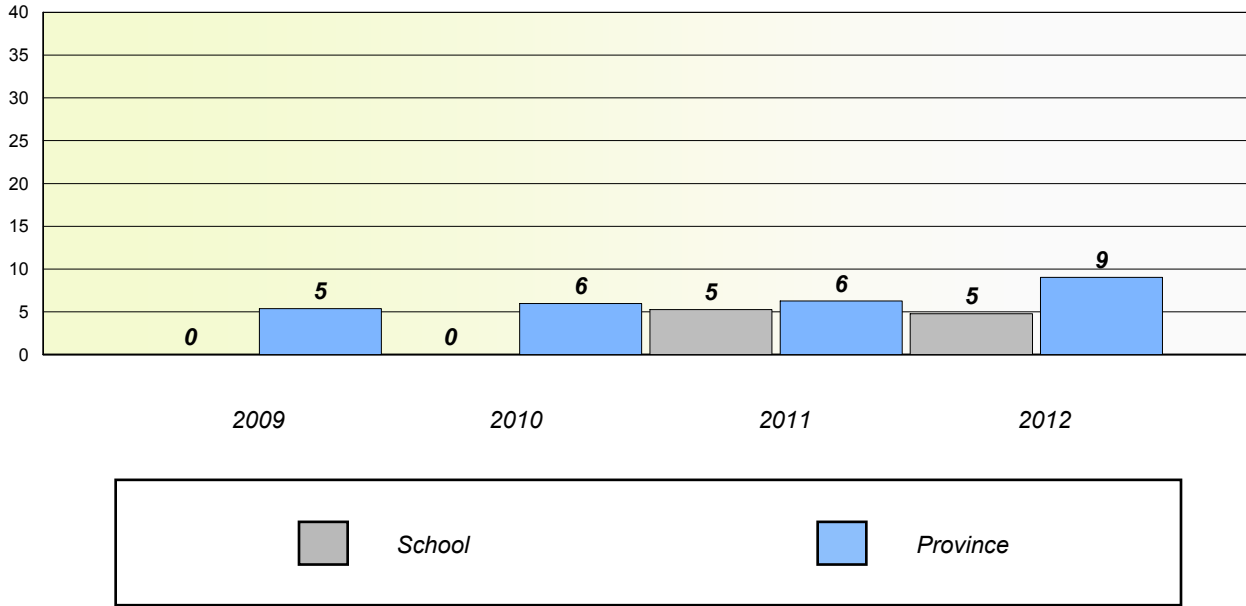


District 803 - Private

School #: 375 Lakecrest -St. John's Independent School

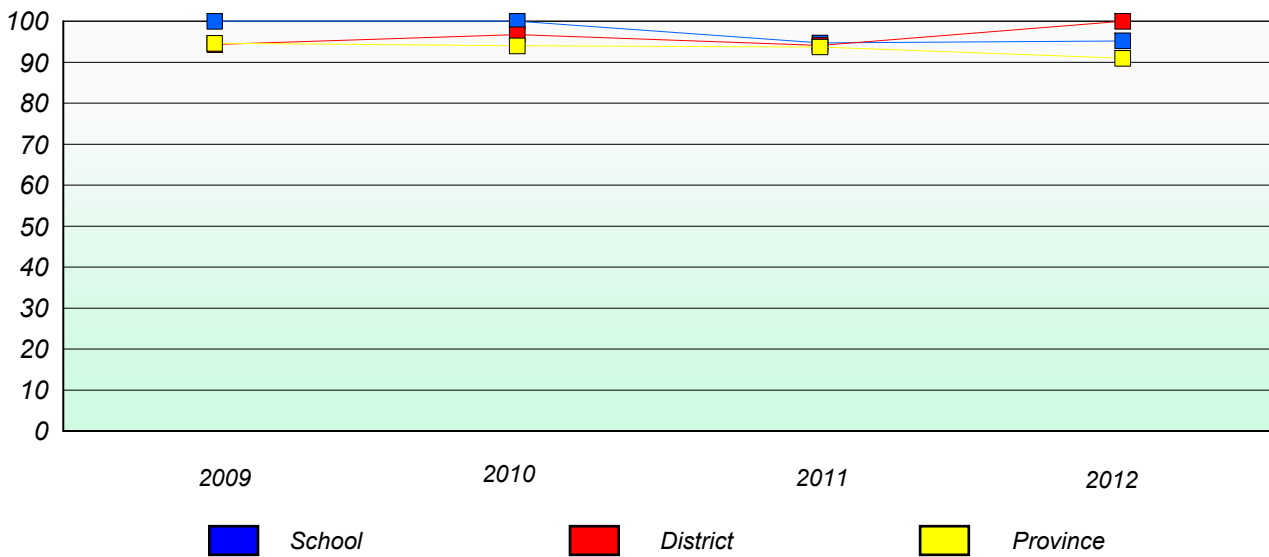
Unknown/Exemption Rates

Number Operations



Participation Rates

Number Operations



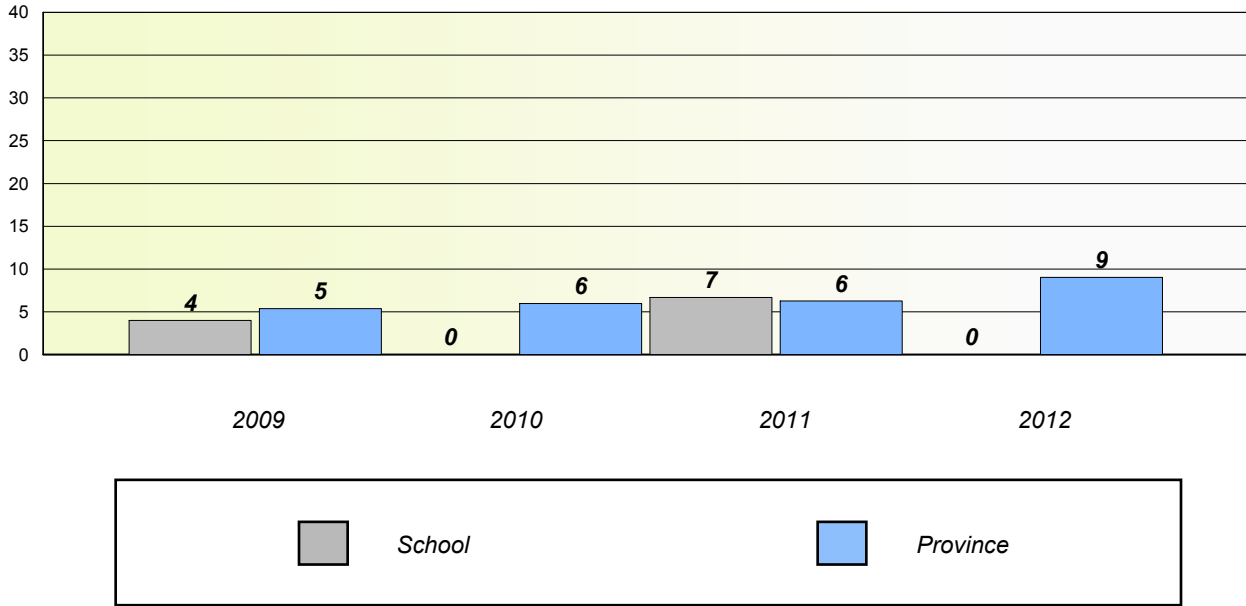
* Number Operations are composite of Reasoning, Communication, Connection and Representations, and problem Solving.

District 803 - Private

School #: 450 St. Bonaventure's College

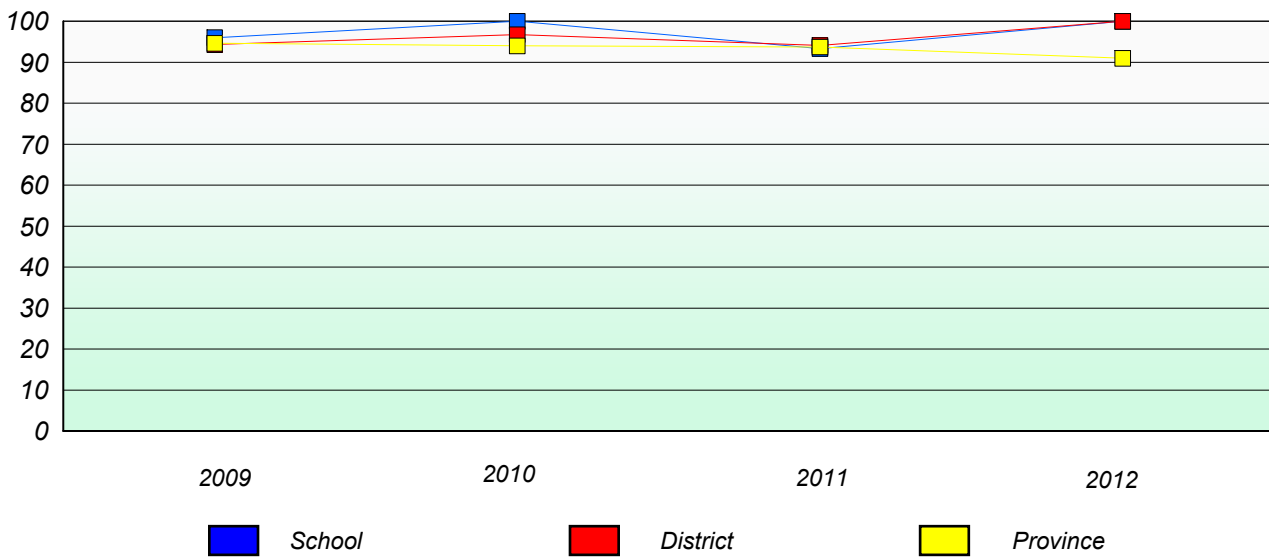
Unknown/Exemption Rates

Number Operations



Participation Rates

Number Operations



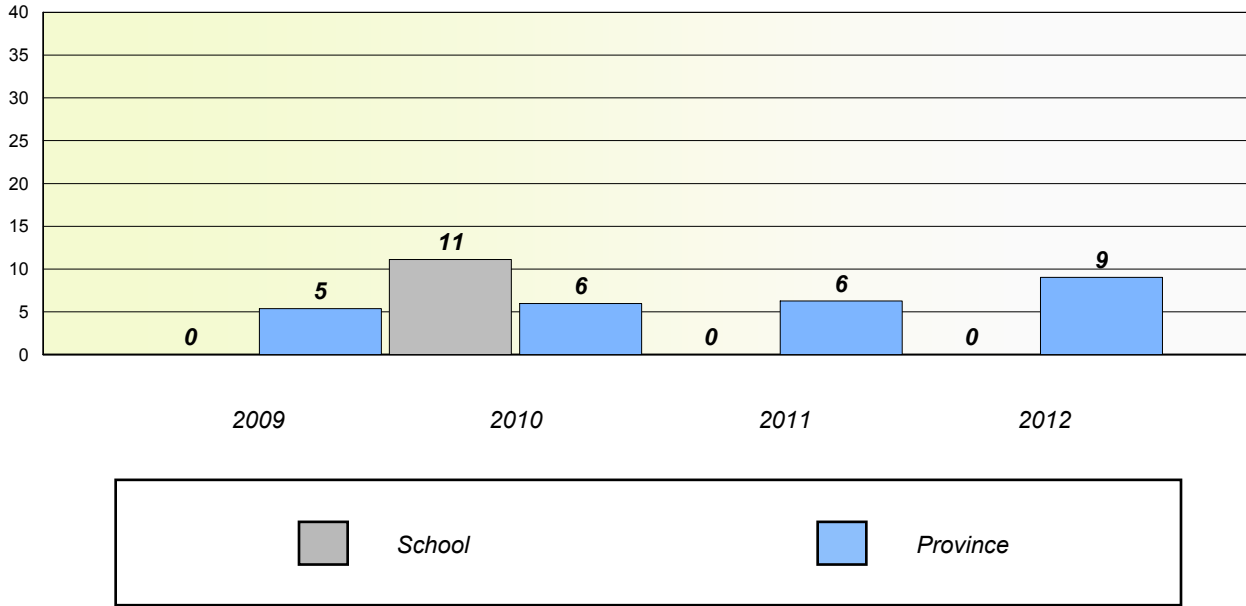
* Number Operations are composite of Reasoning, Communication, Connection and Representations, and problem Solving.

District 803 - Private

School #: 453 Eric G. Lambert All-Grade

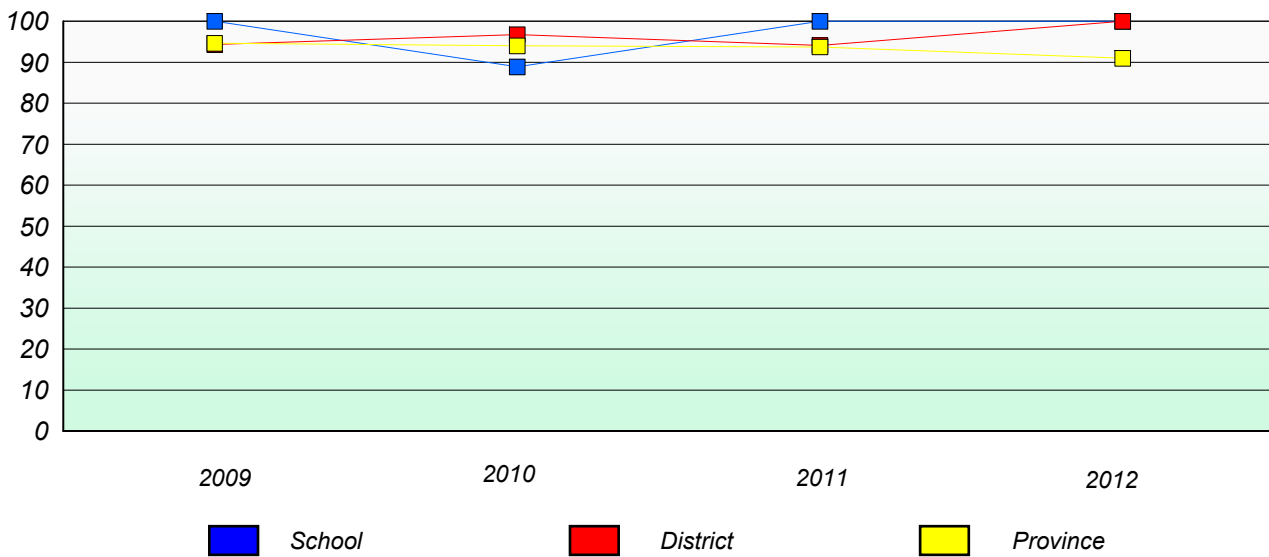
Unknown/Exemption Rates

Number Operations



Participation Rates

Number Operations



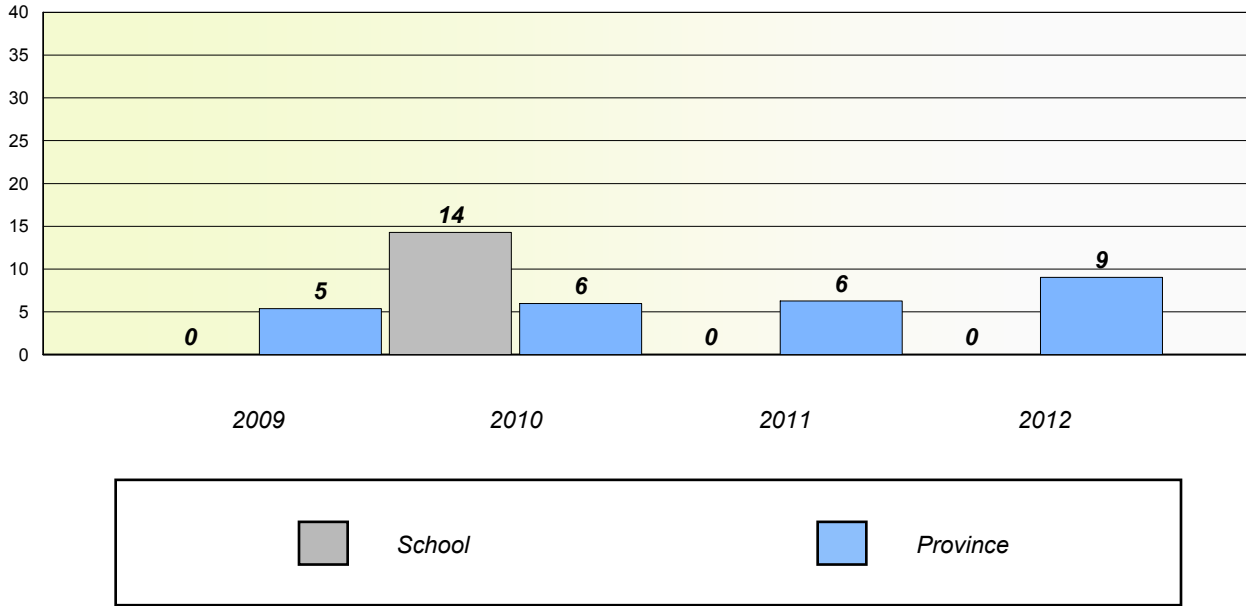
* Number Operations are composite of Reasoning, Communication, Connection and Representations, and problem Solving.

District 803 - Private

School #: 469 Immaculate Heart of Mary School

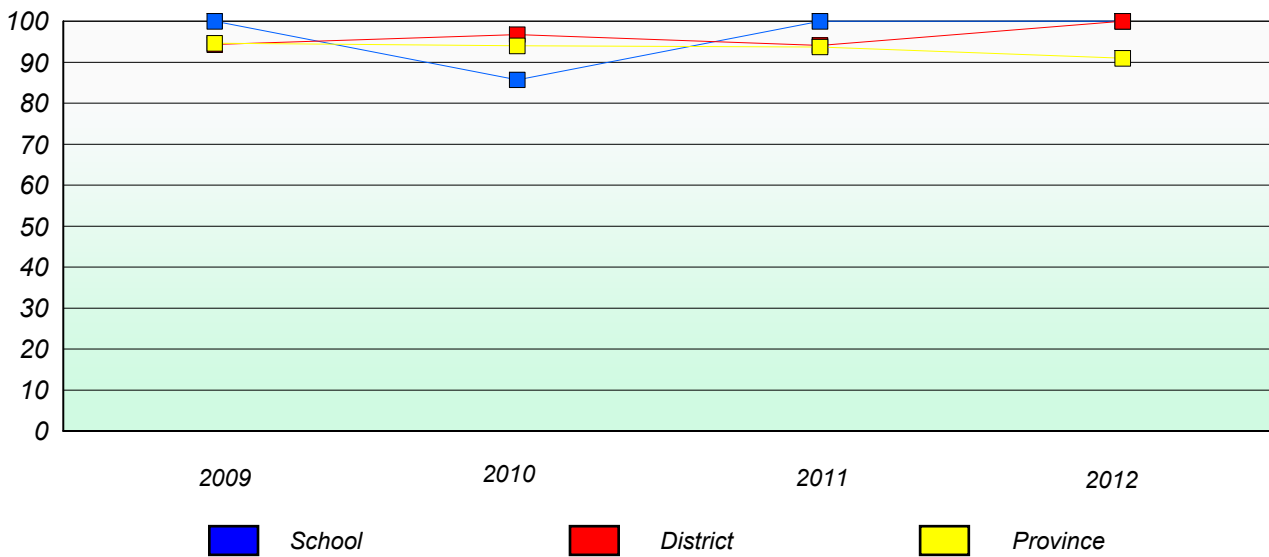
Unknown/Exemption Rates

Number Operations



Participation Rates

Number Operations



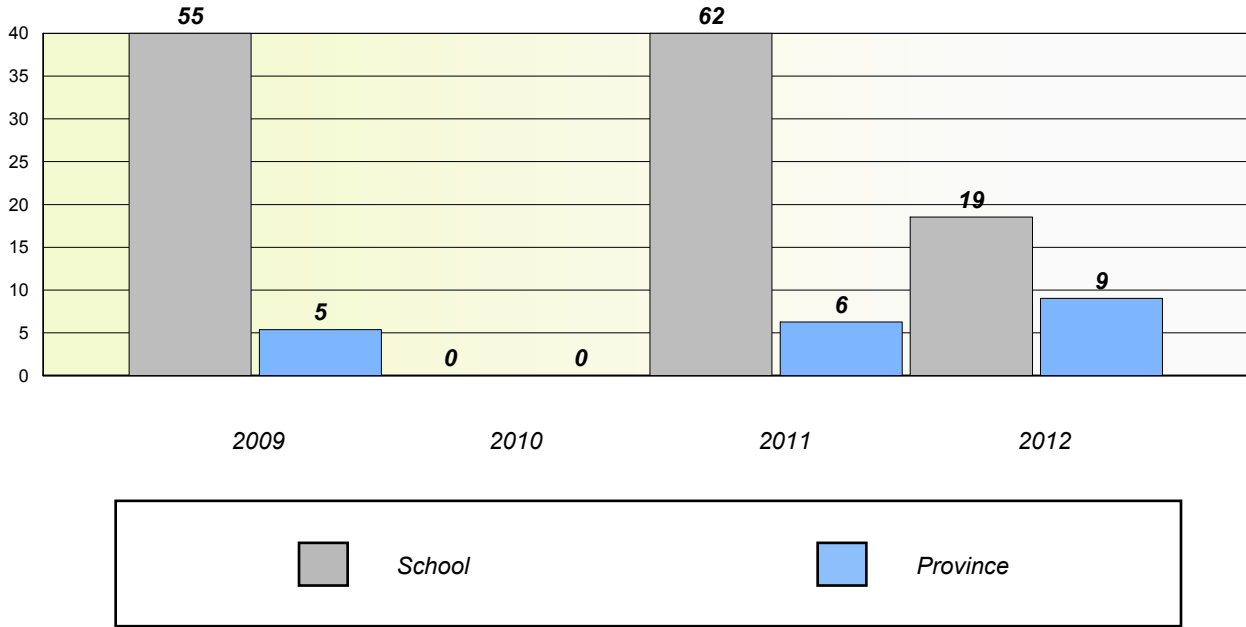
* Number Operations are composite of Reasoning, Communication, Connection and Representations, and problem Solving.

District 804 - Native Federal

School #: 018 Sheshatshiu Innu School

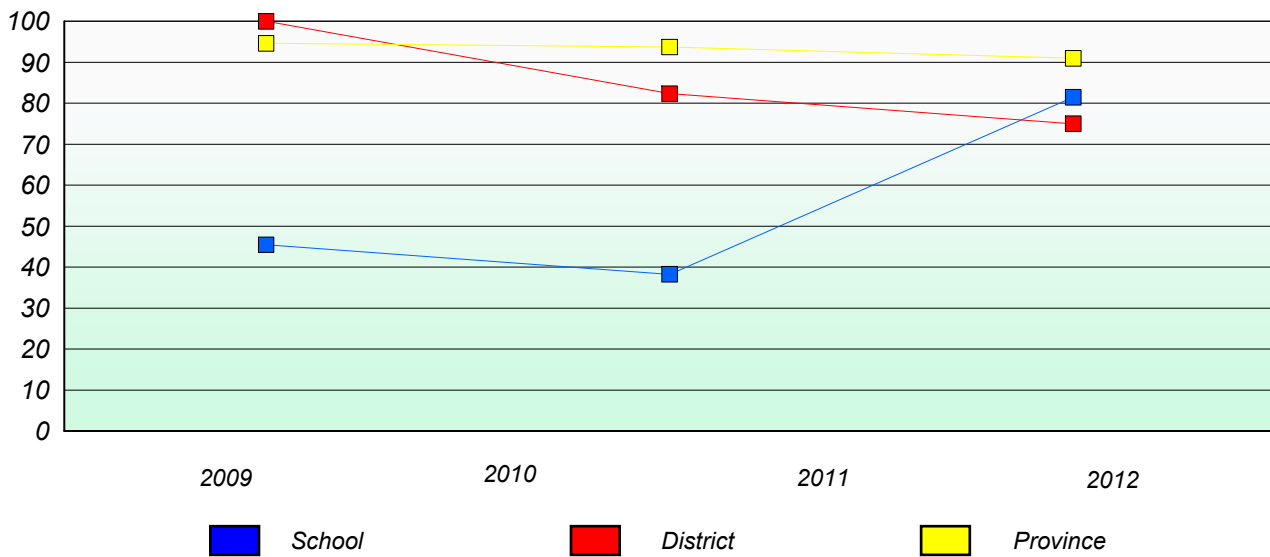
Unknown/Exemption Rates

Number Operations



Participation Rates

Number Operations



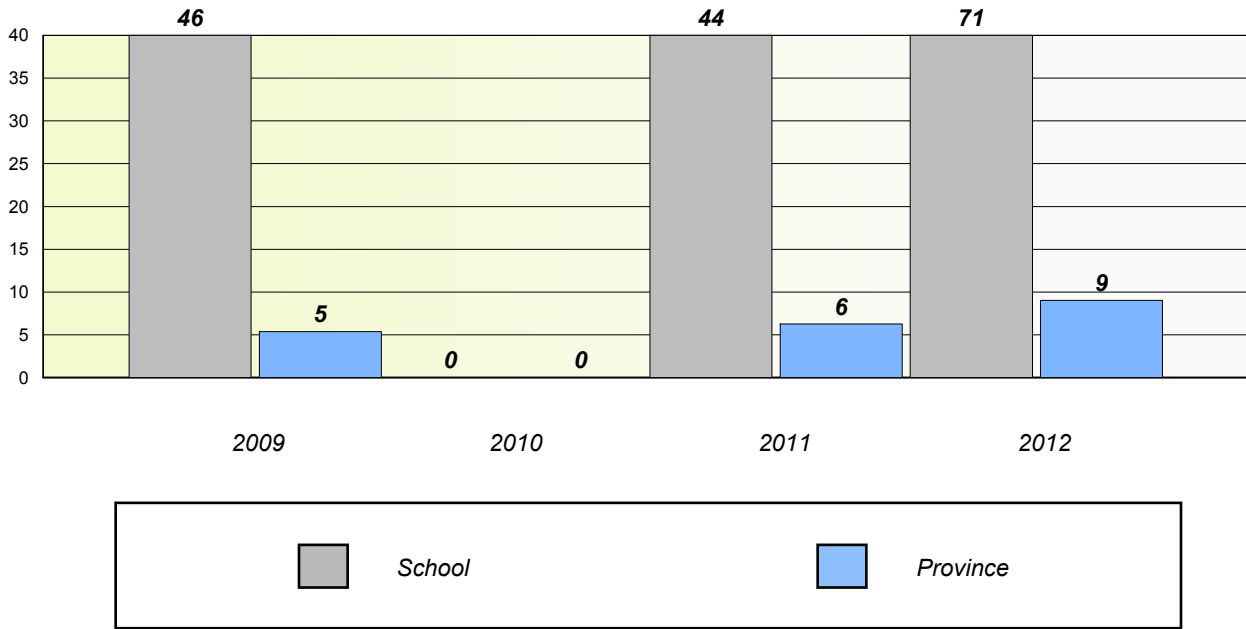
* Number Operations are composite of Reasoning, Communication, Connection and Representations, and problem Solving.

District 804 - Native Federal

School #: 019 Mushuau Innu Natuashish School

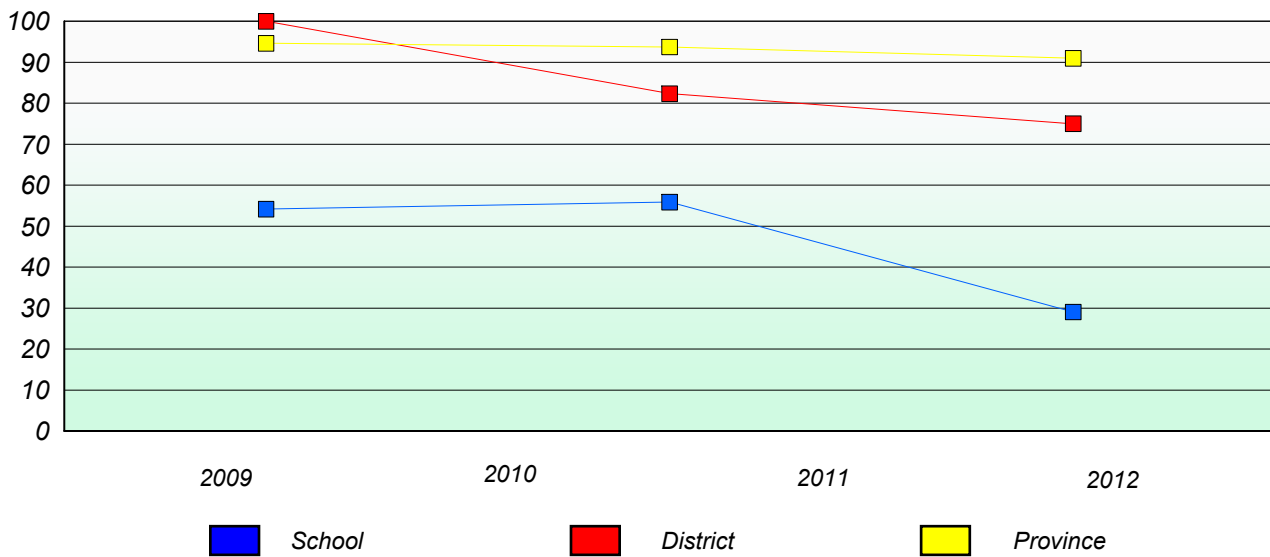
Unknown/Exemption Rates

Number Operations



Participation Rates

Number Operations



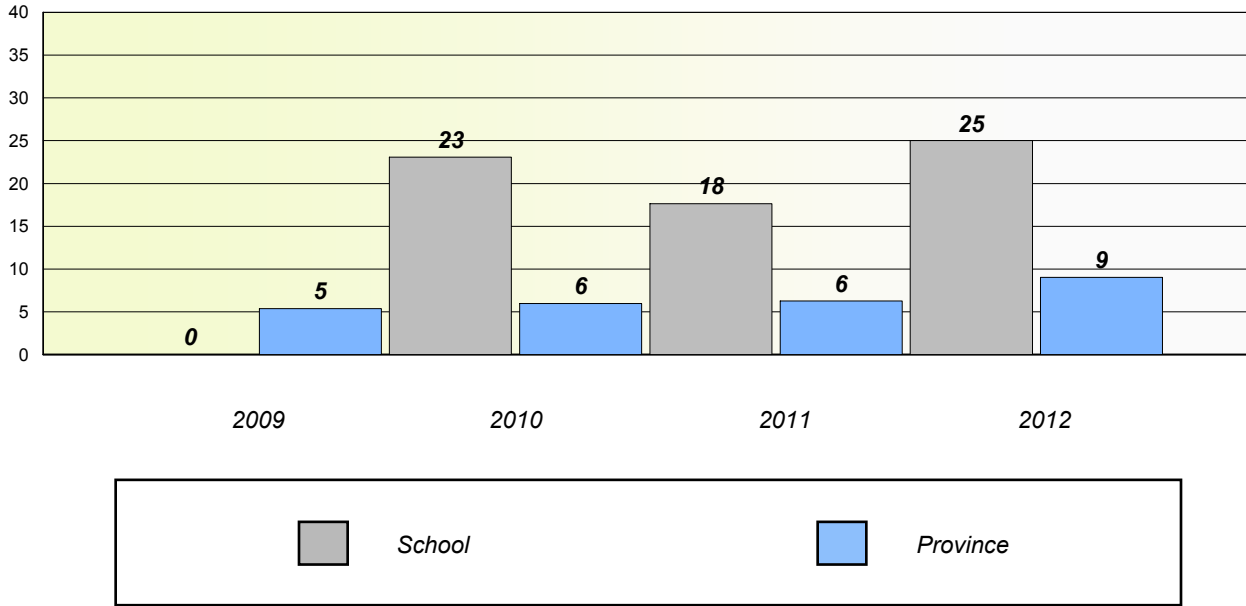
* Number Operations are composite of Reasoning, Communication, Connection and Representations, and problem Solving.

District 804 - Native Federal

School #: 376 Set Anneway Kegnamogwom

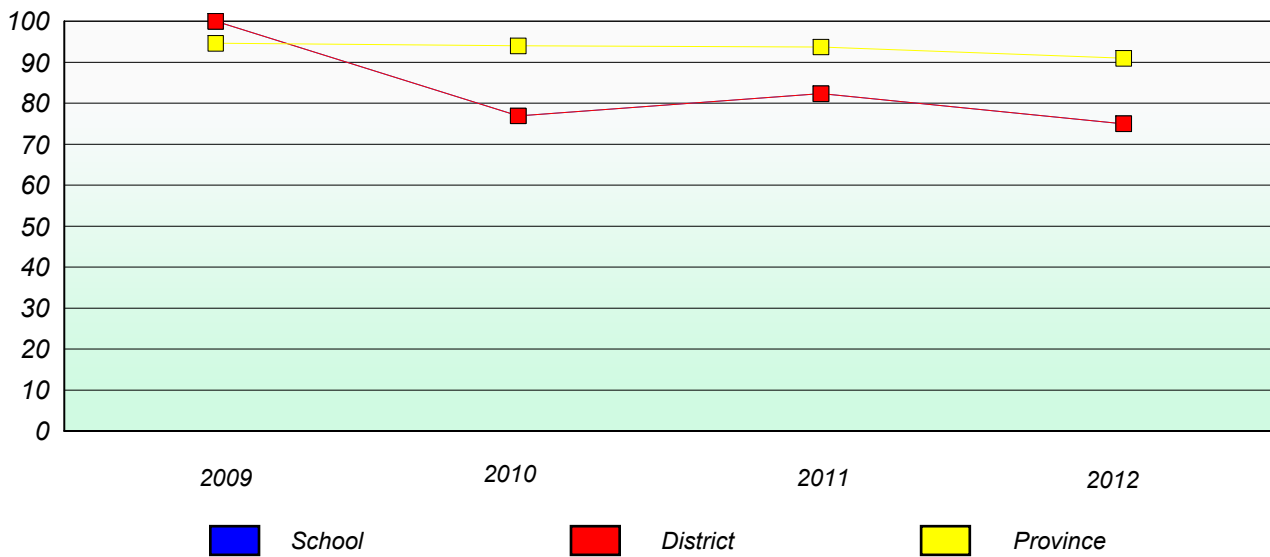
Unknown/Exemption Rates

Number Operations



Participation Rates

Number Operations



* Number Operations are composite of Reasoning, Communication, Connection and Representations, and problem Solving.