

District 1 - Labrador

School #: 001 St. Peter's School

***Demand Writing***

**School**

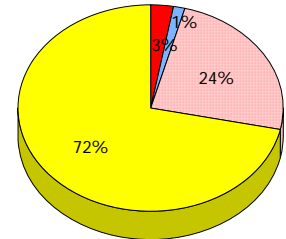
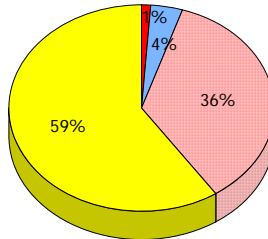
*School data with 5 or fewer students withheld for reasons of confidentiality.*

**District**

**Province**

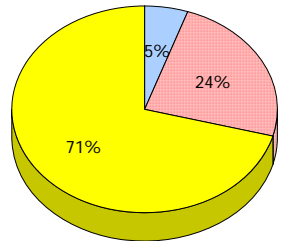
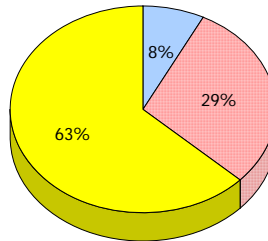
**2012**

Apr 30,  
2012 (1)



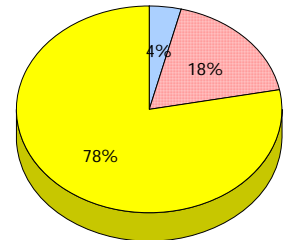
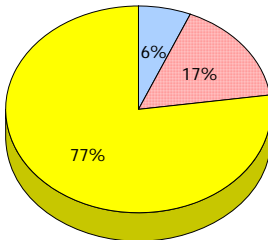
**2011**

AGR (4)



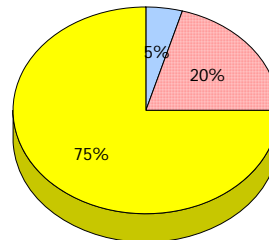
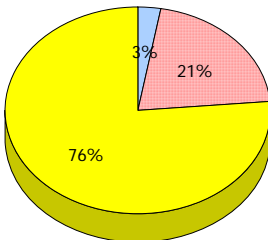
**2010**

AGR (2)



**2009**

AGR (2)



*Exemption*     
  *Unknown*     
  *Not Yet Meeting (1 or 2)*     
  *Meeting or Exceeding (3,4,5)*

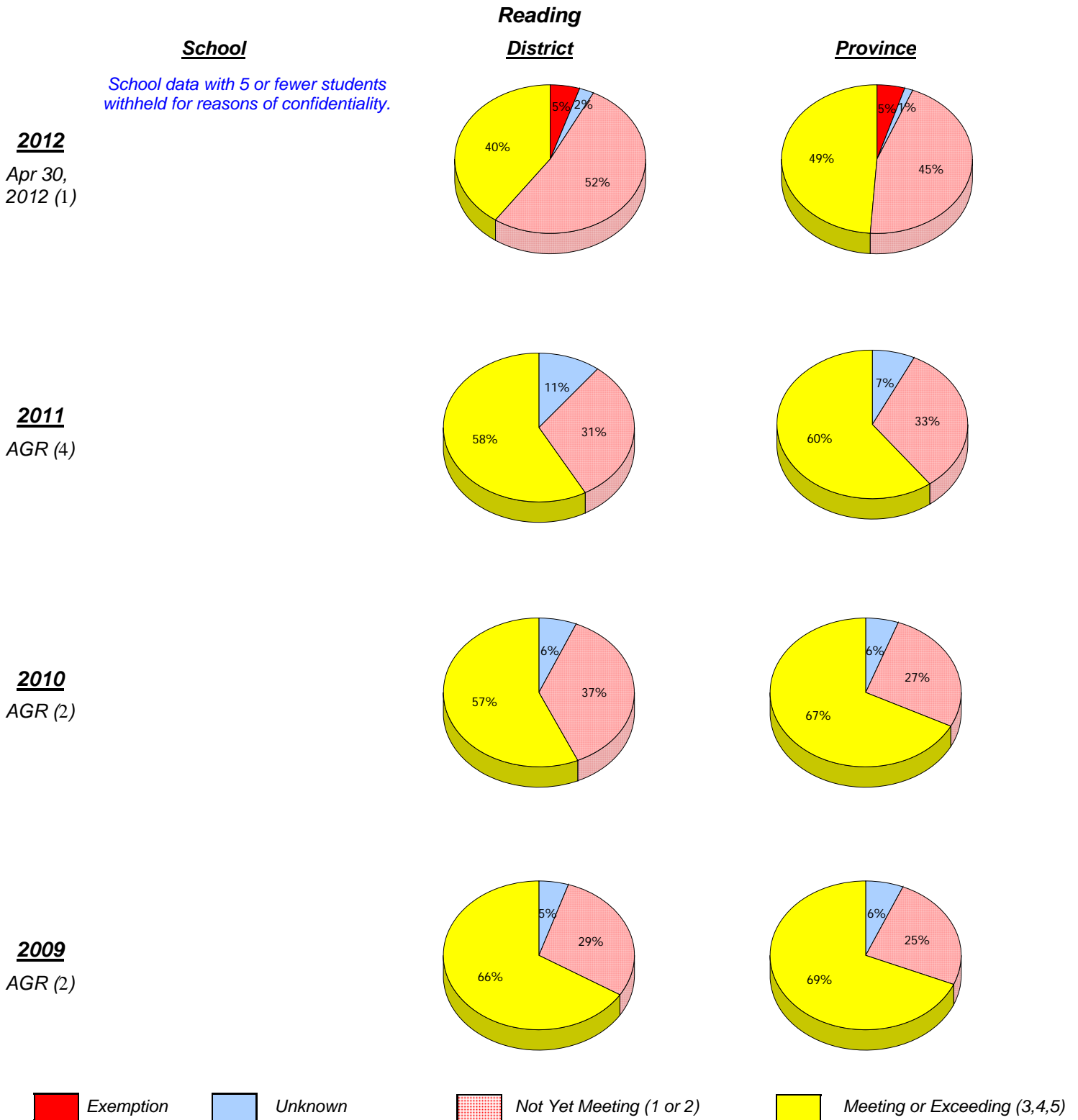
\* In some cases, CRT numbers may exceed AGR numbers based on late enrolments. Pie chart is based on the number of students who wrote the CRT.

\* Mushuau Innu Natuashish School and Sheshatshiu Innu School are excluded from district and provincial results.

\* Reading score is composite of Non Fiction and Poet. Source: Division of Evaluation and Research, Department of Education

District 1 - Labrador

School #: 001 St. Peter's School



\* In some cases, CRT numbers may exceed AGR numbers based on late enrolments. Pie chart is based on the number of students who wrote the CRT.

\* Mushuau Innu Natuashish School and Sheshatshiu Innu School are excluded from district and provincial results.

\* Reading score is composite of Non Fiction and Poet. Source: Division of Evaluation and Research, Department of Education

District 1 - Labrador

School #: 001    St. Peter's School

***Demand Writing***

*Percentage of students at level 3 or above (2009 - 2012)*

*School data with 5 or fewer students withheld for reasons of confidentiality.*



***Reading***

*Percentage of students at level 3 or above (2009 - 2012)*

*School data with 5 or fewer students withheld for reasons of confidentiality.*



\* In some cases, CRT numbers may exceed AGR numbers based on late enrolments. Pie chart is based on the number of students who wrote the CRT.

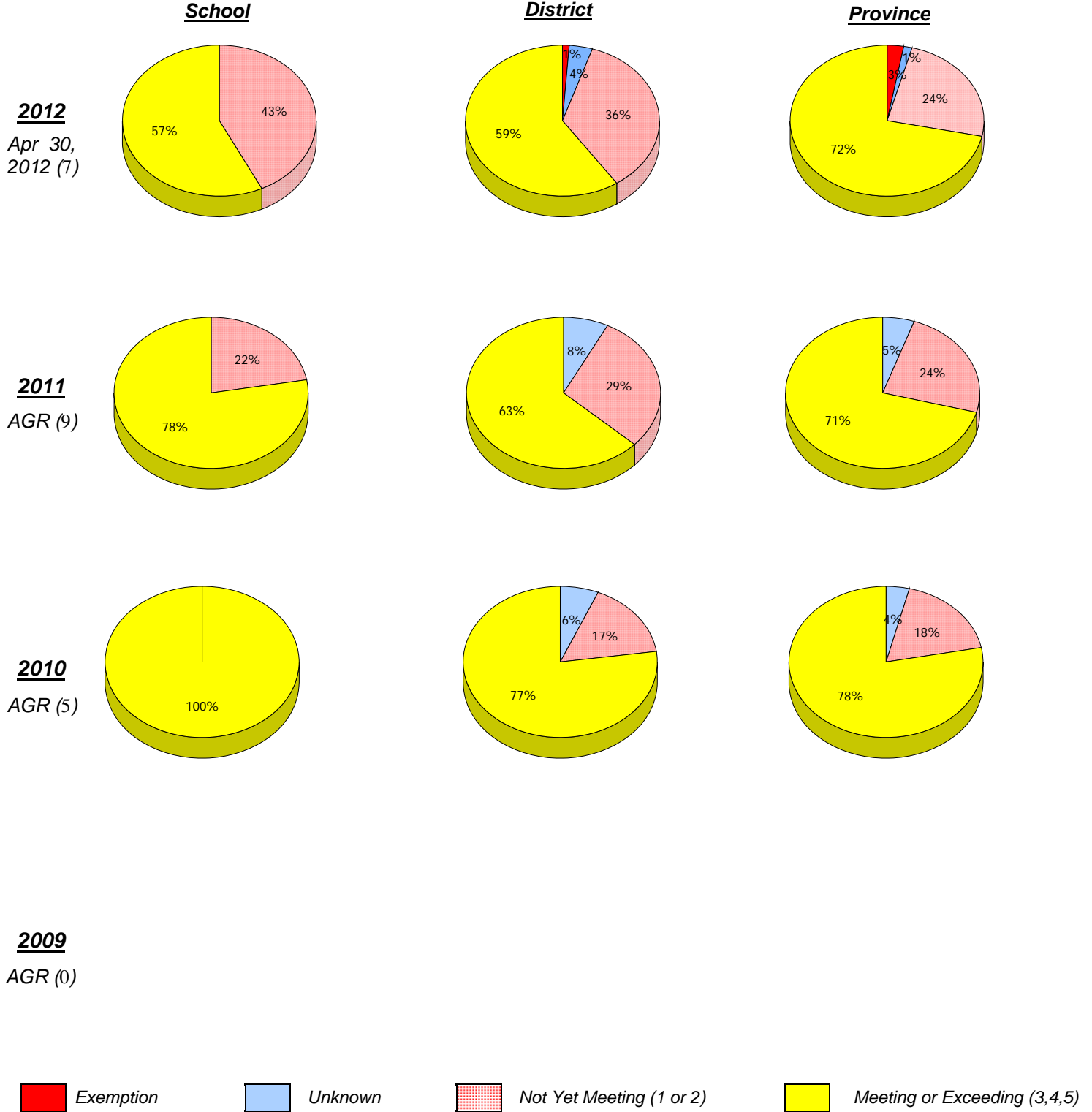
\* Mushuau Innu Natuashish School and Sheshatshiu Innu School are excluded from district and provincial results.

\* Reading score is composite of Non Fiction and Poet. Source: Division of Evaluation and Research, Department of Education

District 1 - Labrador

School #: 002 Henry Gordon Academy

***Demand Writing***



\* In some cases, CRT numbers may exceed AGR numbers based on late enrolments. Pie chart is based on the number of students who wrote the CRT.

\* Mushuau Innu Natuashish School and Sheshatshiu Innu School are excluded from district and provincial results.

\* Reading score is composite of Non Fiction and Poet. Source: Division of Evaluation and Research, Department of Education

District 1 - Labrador

School #: 002 Henry Gordon Academy

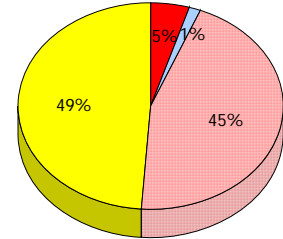
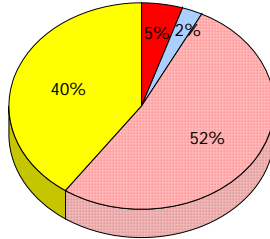
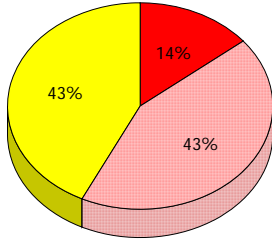
**Reading**

**School**

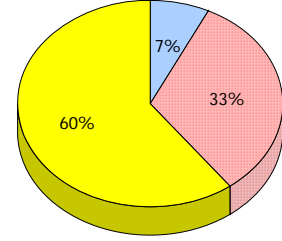
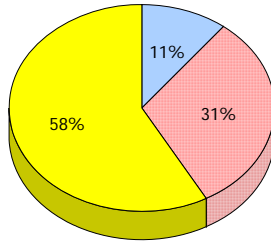
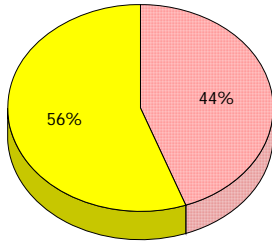
**District**

**Province**

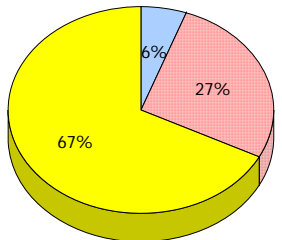
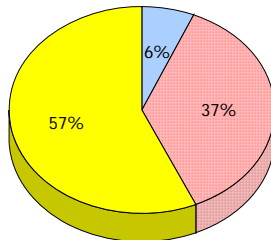
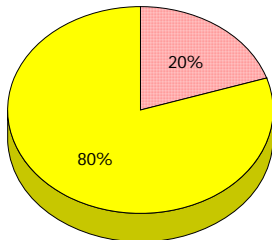
**2012**  
Apr 30,  
2012 (7)



**2011**  
AGR (9)



**2010**  
AGR (5)



**2009**  
AGR (0)

*Exemption*     
  *Unknown*     
  *Not Yet Meeting (1 or 2)*     
  *Meeting or Exceeding (3,4,5)*

\* In some cases, CRT numbers may exceed AGR numbers based on late enrolments. Pie chart is based on the number of students who wrote the CRT.

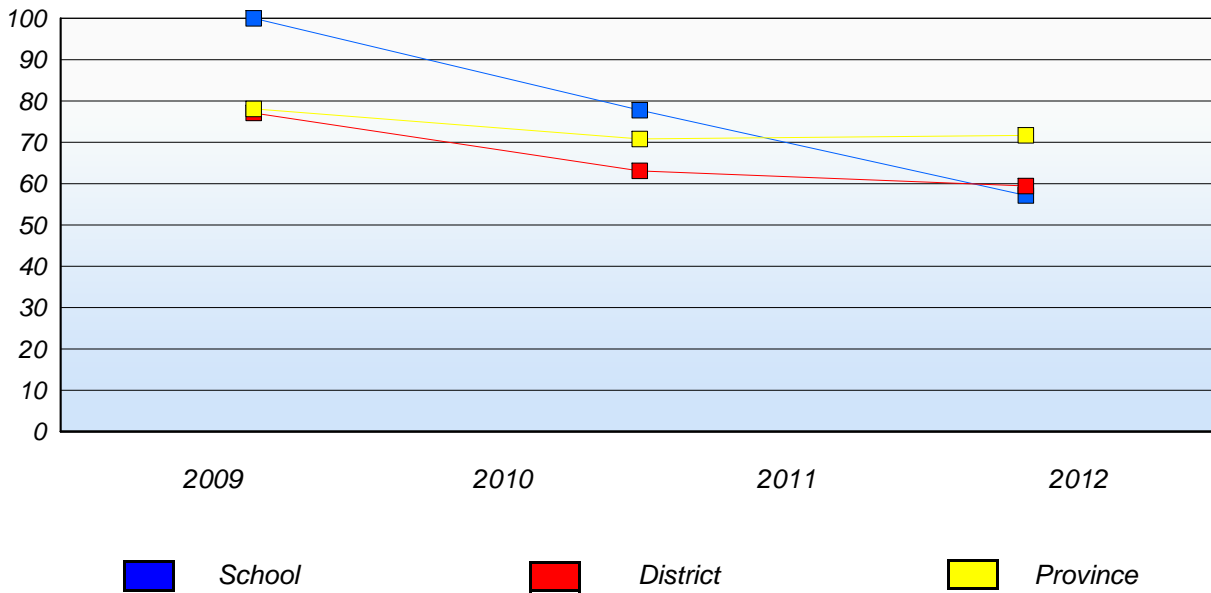
\* Mushuau Innu Natuashish School and Sheshatshiu Innu School are excluded from district and provincial results.

\* Reading score is composite of Non Fiction and Poet. Source: Division of Evaluation and Research, Department of Education

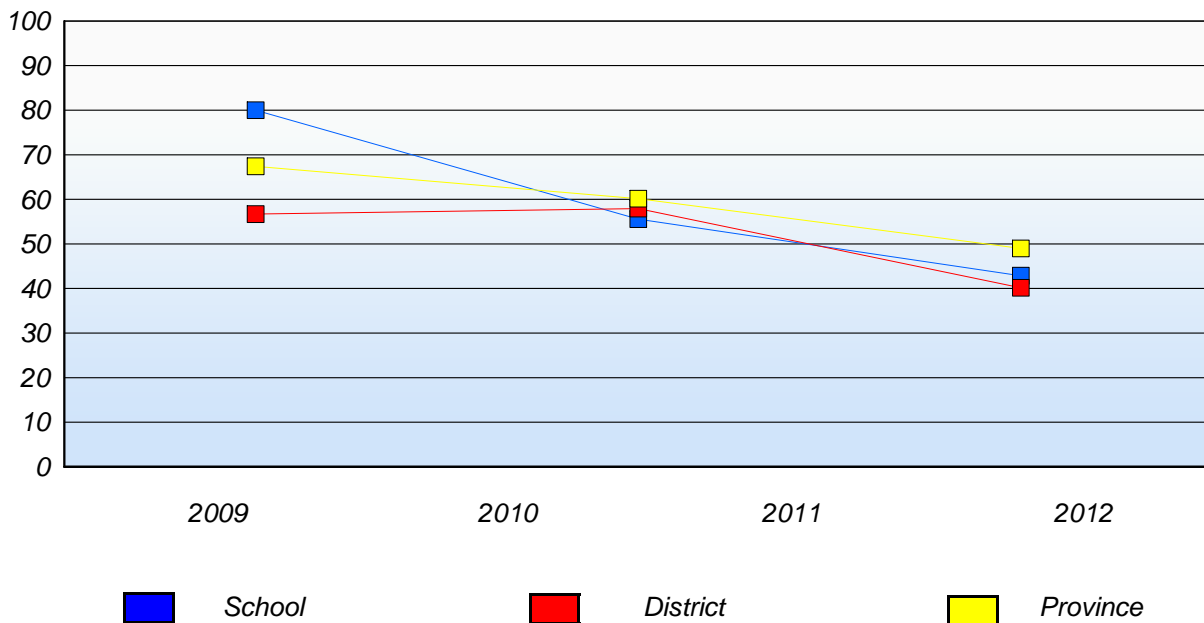
District 1 - Labrador

School #: 002 Henry Gordon Academy

**Demand Writing**  
Percentage of students at level 3 or above (2009 - 2012)



**Reading**  
Percentage of students at level 3 or above (2009 - 2012)



\* In some cases, CRT numbers may exceed AGR numbers based on late enrolments. Pie chart is based on the number of students who wrote the CRT.

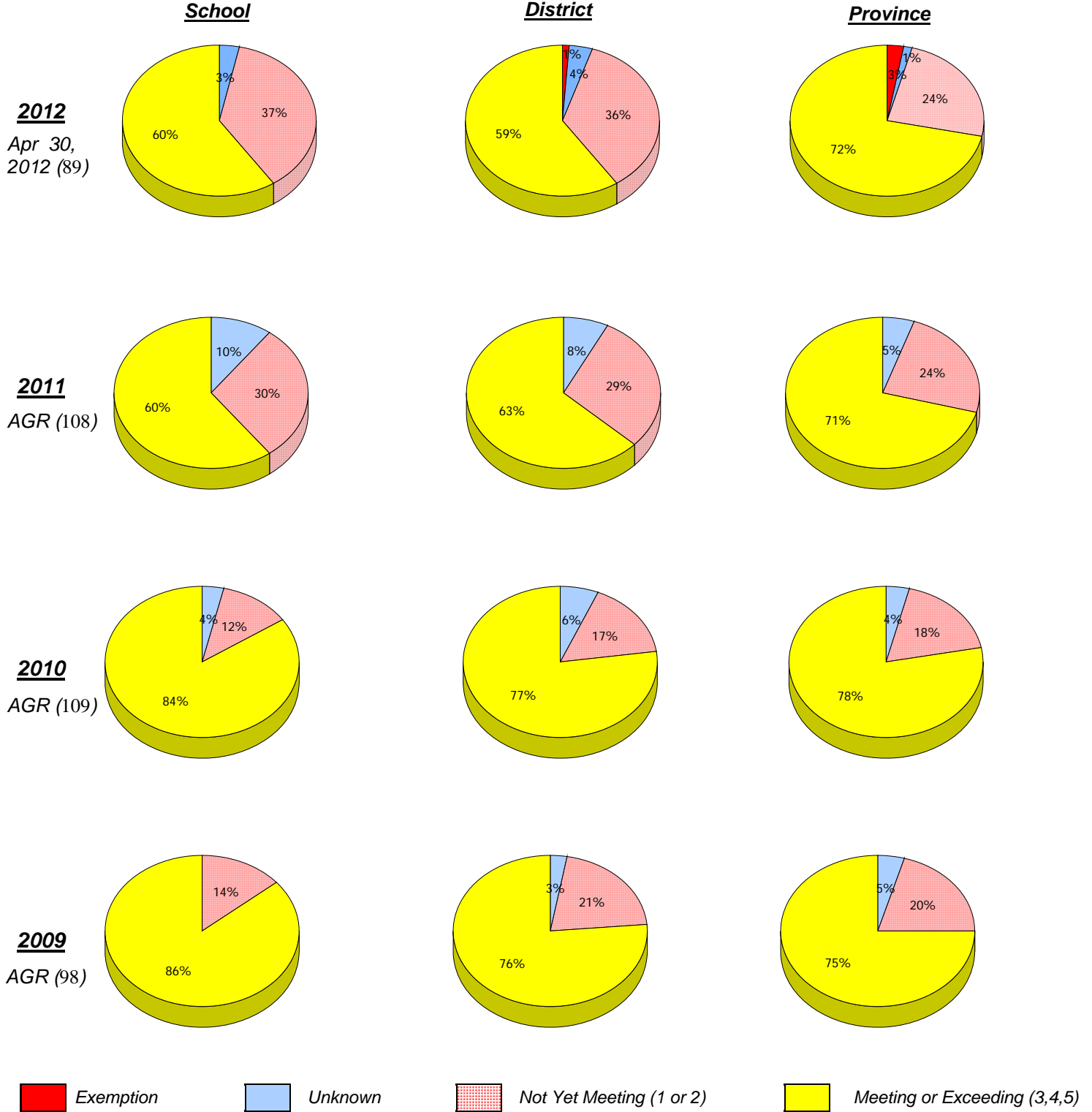
\* Mushuau Innu Natuashish School and Sheshatshiu Innu School are excluded from district and provincial results.

\* Reading score is composite of Non Fiction and Poet. Source: Division of Evaluation and Research, Department of Education

District 1 - Labrador

School #: 004 Queen of Peace Middle School

***Demand Writing***



\* In some cases, CRT numbers may exceed AGR numbers based on late enrolments. Pie chart is based on the number of students who wrote the CRT.

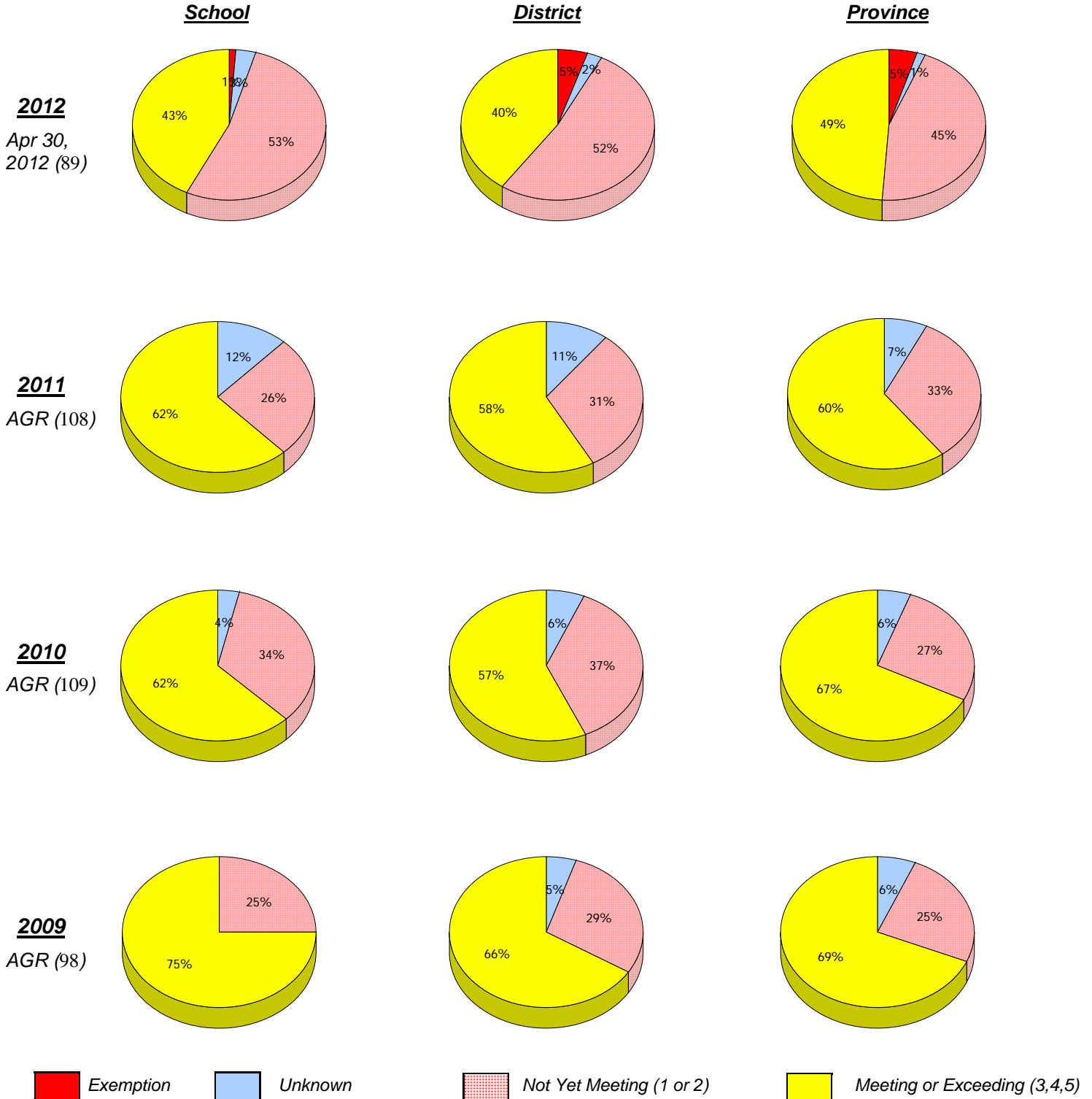
\* Mushuau Innu Natuashish School and Sheshatshiu Innu School are excluded from district and provincial results.

\* Reading score is composite of Non Fiction and Poet. Source: Division of Evaluation and Research, Department of Education

District 1 - Labrador

School #: 004 Queen of Peace Middle School

**Reading**



\* In some cases, CRT numbers may exceed AGR numbers based on late enrolments. Pie chart is based on the number of students who wrote the CRT.

\* Mushuau Innu Natuashish School and Sheshatshiu Innu School are excluded from district and provincial results.

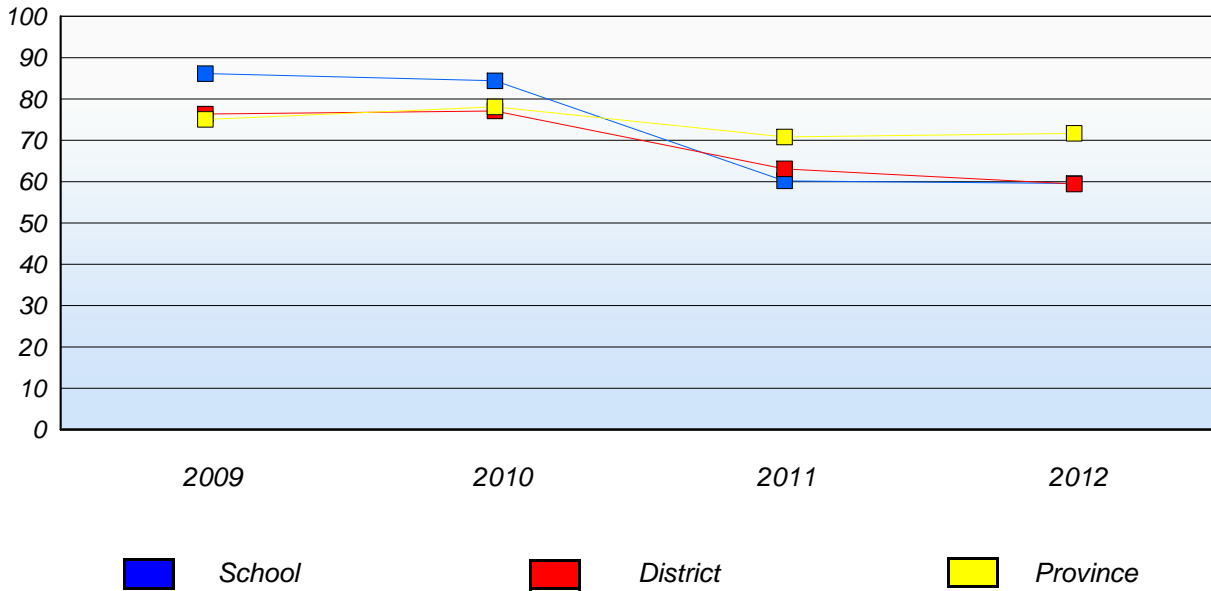
\* Reading score is composite of Non Fiction and Poet. Source: Division of Evaluation and Research, Department of Education



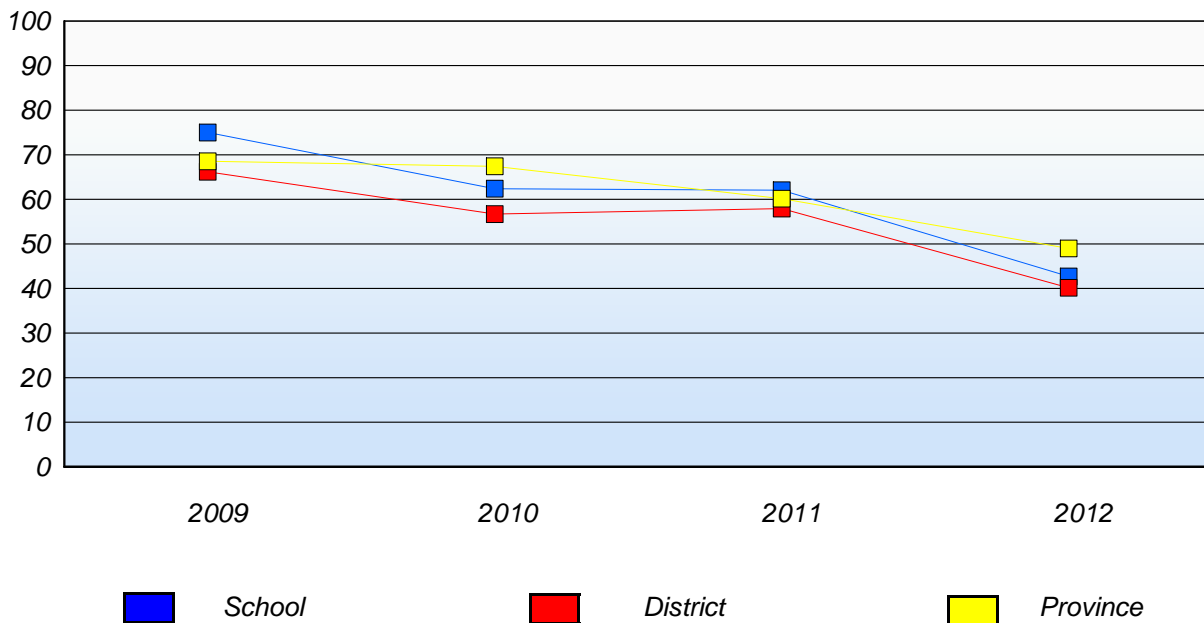
District 1 - Labrador

School #: 004 Queen of Peace Middle School

**Demand Writing**  
Percentage of students at level 3 or above (2009 - 2012)



**Reading**  
Percentage of students at level 3 or above (2009 - 2012)



\* In some cases, CRT numbers may exceed AGR numbers based on late enrolments. Pie chart is based on the number of students who wrote the CRT.

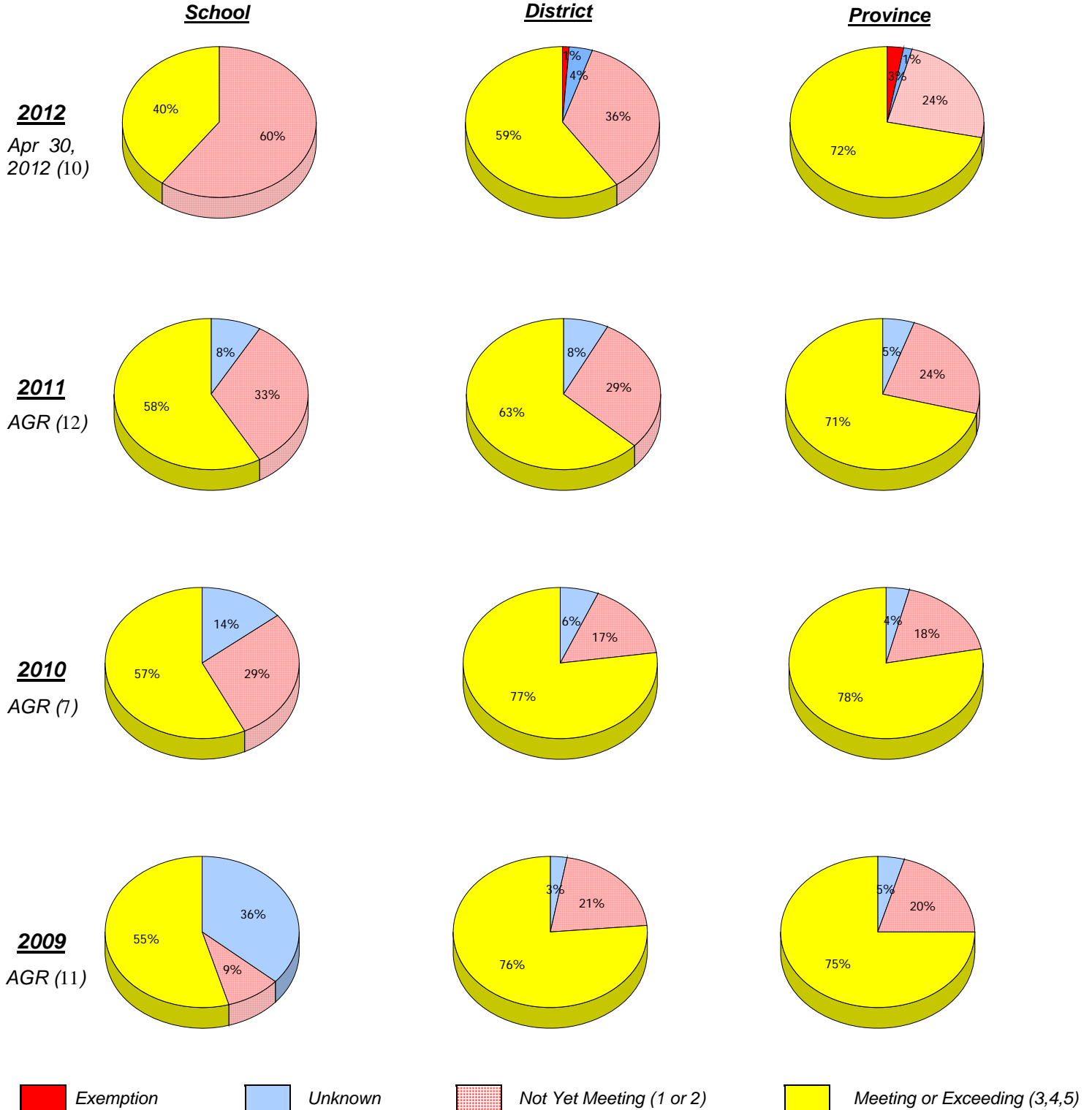
\* Mushuau Innu Natuashish School and Sheshatshiu Innu School are excluded from district and provincial results.

\* Reading score is composite of Non Fiction and Poet. Source: Division of Evaluation and Research, Department of Education

District 1 - Labrador

School #: 007 Amos Comenius Memorial School

***Demand Writing***



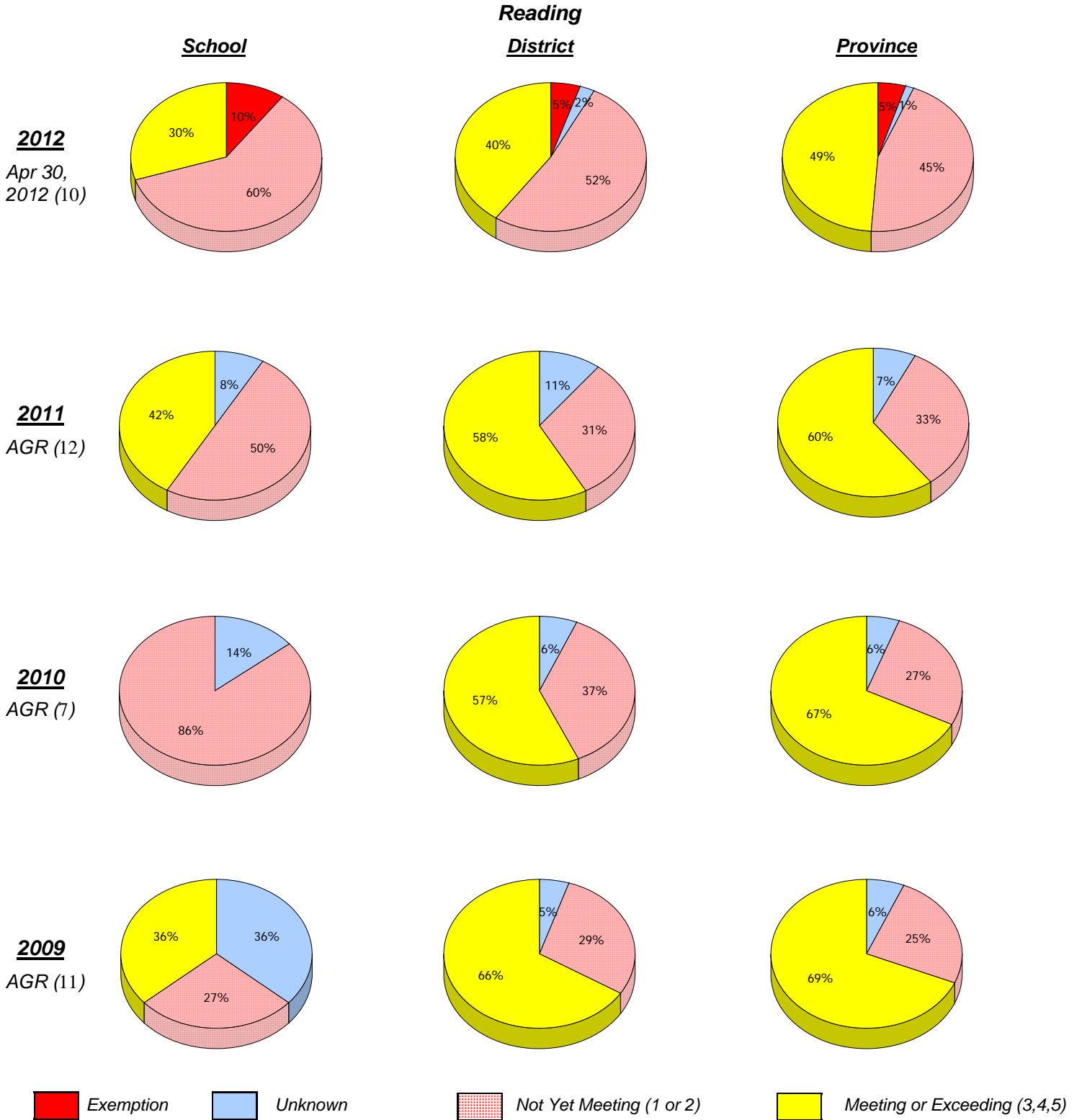
\* In some cases, CRT numbers may exceed AGR numbers based on late enrolments. Pie chart is based on the number of students who wrote the CRT.

\* Mushuau Innu Natuashish School and Sheshatshiu Innu School are excluded from district and provincial results.

\* Reading score is composite of Non Fiction and Poet. Source: Division of Evaluation and Research, Department of Education

**District 1 - Labrador**

School #: 007 Amos Comenius Memorial School



\* In some cases, CRT numbers may exceed AGR numbers based on late enrolments. Pie chart is based on the number of students who wrote the CRT.

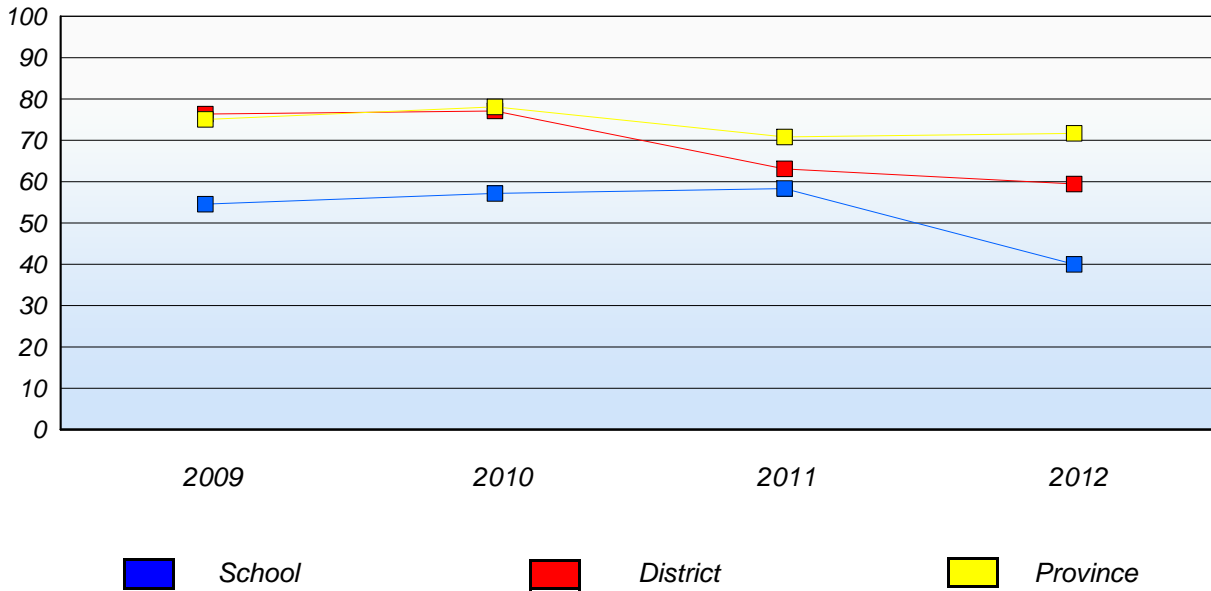
\* Mushuau Innu Natuashish School and Sheshatshiu Innu School are excluded from district and provincial results.

\* Reading score is composite of Non Fiction and Poet. Source: Division of Evaluation and Research, Department of Education

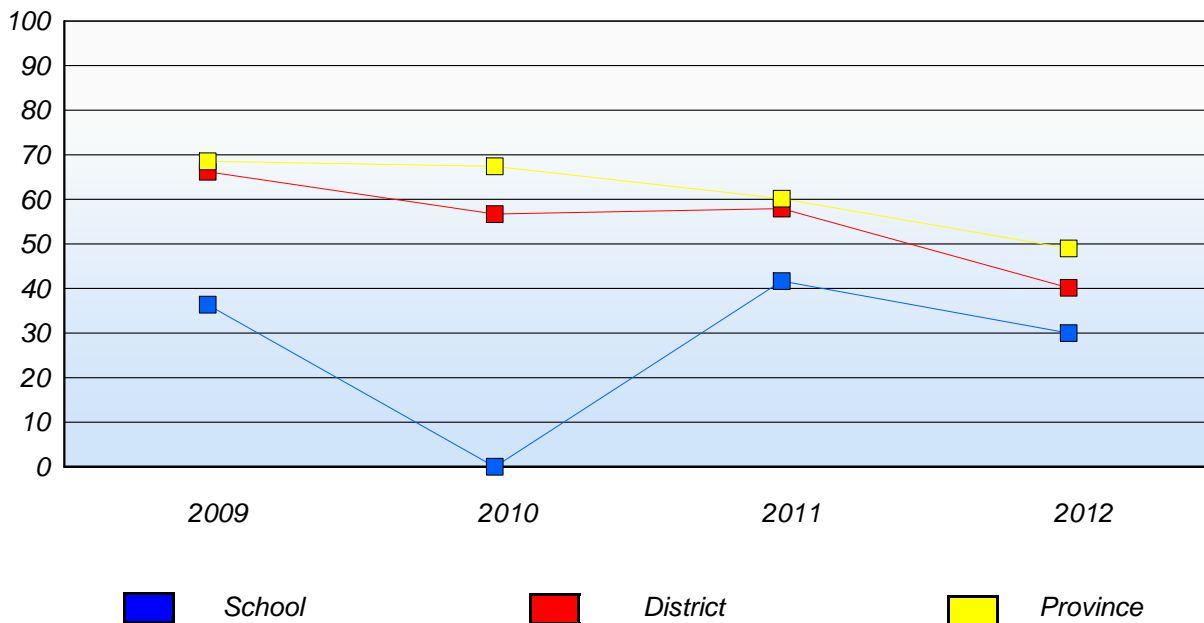
District 1 - Labrador

School #: 007 Amos Comenius Memorial School

**Demand Writing**  
Percentage of students at level 3 or above (2009 - 2012)



**Reading**  
Percentage of students at level 3 or above (2009 - 2012)



\* In some cases, CRT numbers may exceed AGR numbers based on late enrolments. Pie chart is based on the number of students who wrote the CRT.

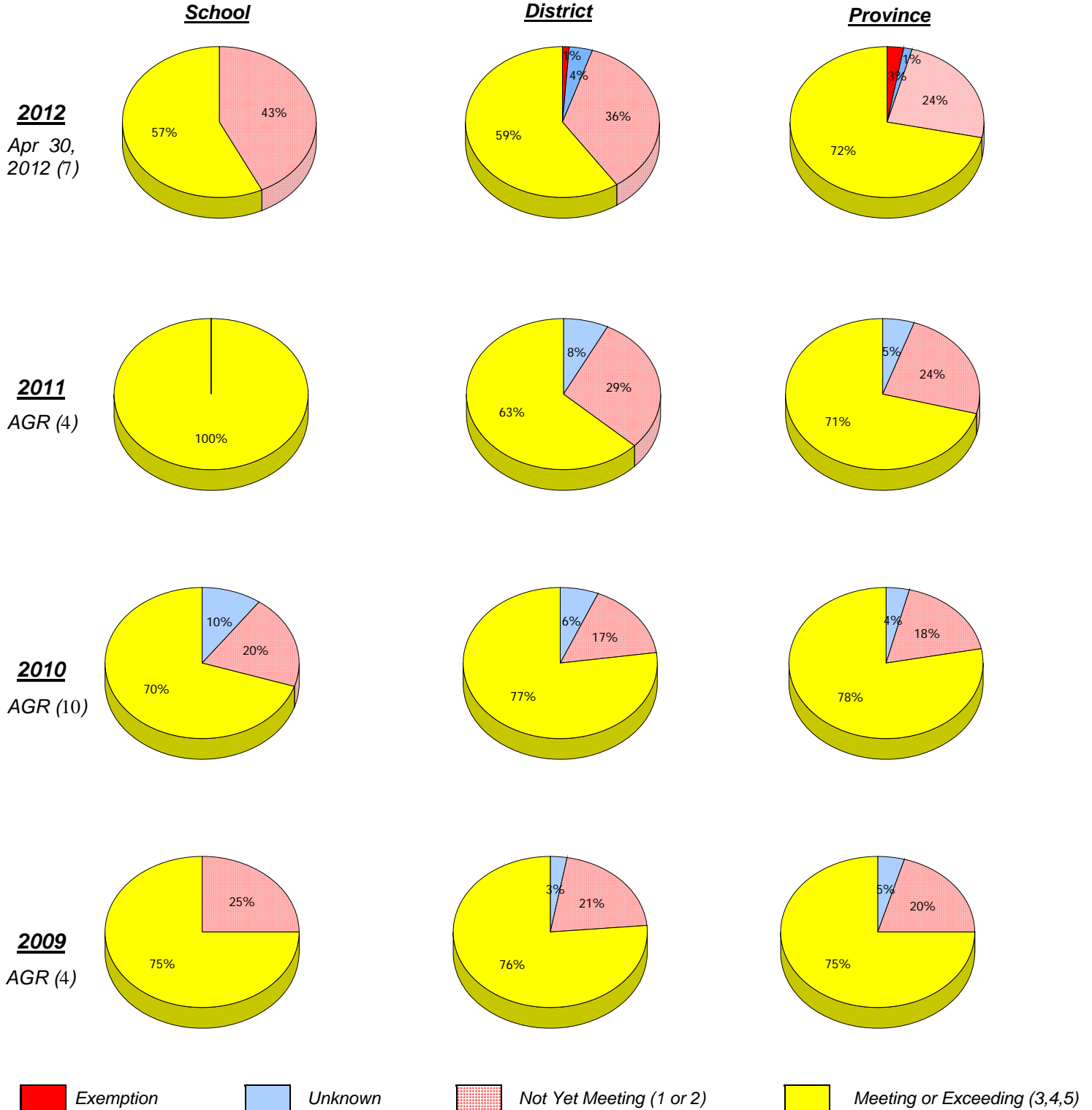
\* Mushuau Innu Natuashish School and Sheshatshiu Innu School are excluded from district and provincial results.

\* Reading score is composite of Non Fiction and Poet. Source: Division of Evaluation and Research, Department of Education

District 1 - Labrador

School #: 012 J.C. Erhardt Memorial School

**Demand Writing**



\* In some cases, CRT numbers may exceed AGR numbers based on late enrolments. Pie chart is based on the number of students who wrote the CRT.

\* Mushuau Innu Natuashish School and Sheshatshiu Innu School are excluded from district and provincial results.

\* Reading score is composite of Non Fiction and Poet. Source: Division of Evaluation and Research, Department of Education

District 1 - Labrador

School #: 012 J.C. Erhardt Memorial School

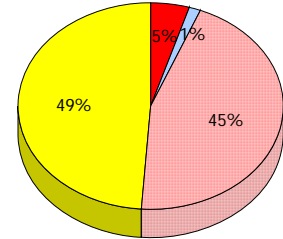
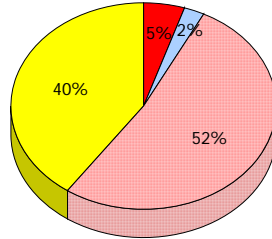
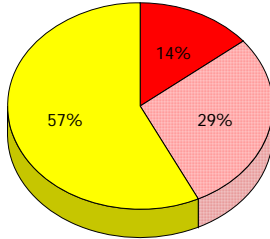
**Reading**

**School**

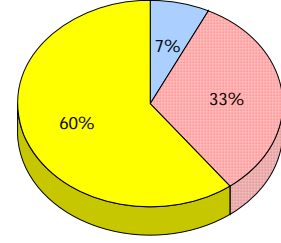
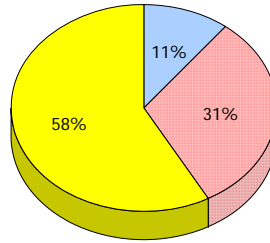
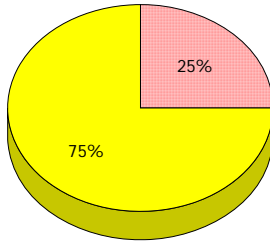
**District**

**Province**

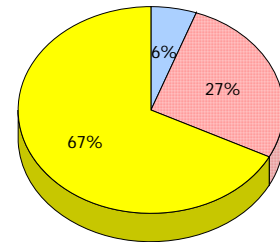
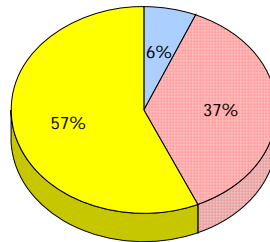
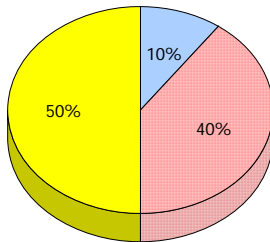
**2012**  
Apr 30,  
2012 (7)



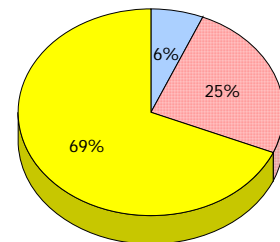
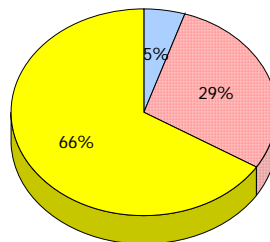
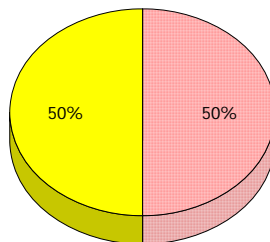
**2011**  
AGR (4)



**2010**  
AGR (10)



**2009**  
AGR (4)



*Exemption*    
  *Unknown*    
  *Not Yet Meeting (1 or 2)*    
  *Meeting or Exceeding (3,4,5)*

\* In some cases, CRT numbers may exceed AGR numbers based on late enrolments. Pie chart is based on the number of students who wrote the CRT.

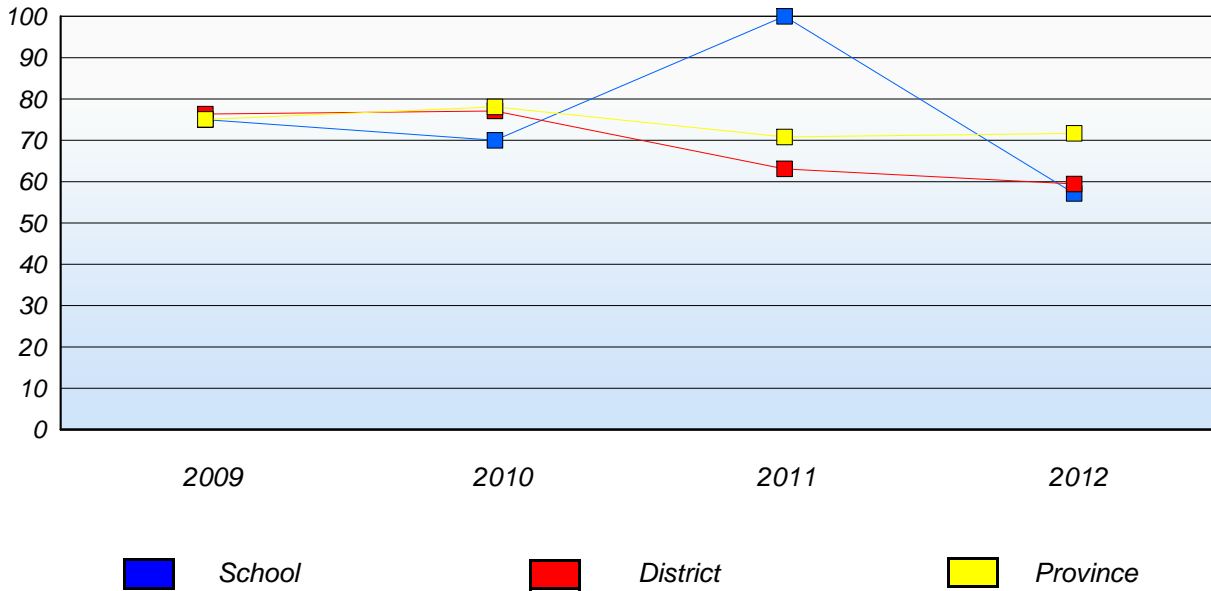
\* Mushuau Innu Natuashish School and Sheshatshiu Innu School are excluded from district and provincial results.

\* Reading score is composite of Non Fiction and Poet. Source: Division of Evaluation and Research, Department of Education

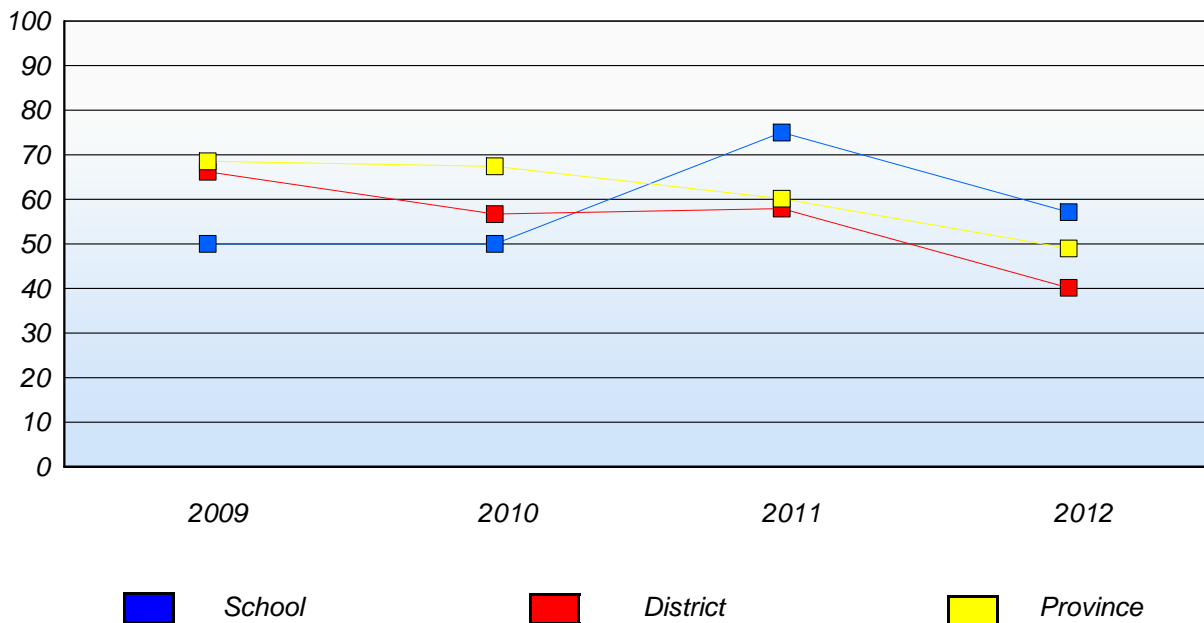
District 1 - Labrador

School #: 012 J.C. Erhardt Memorial School

**Demand Writing**  
Percentage of students at level 3 or above (2009 - 2012)



**Reading**  
Percentage of students at level 3 or above (2009 - 2012)



\* In some cases, CRT numbers may exceed AGR numbers based on late enrolments. Pie chart is based on the number of students who wrote the CRT.

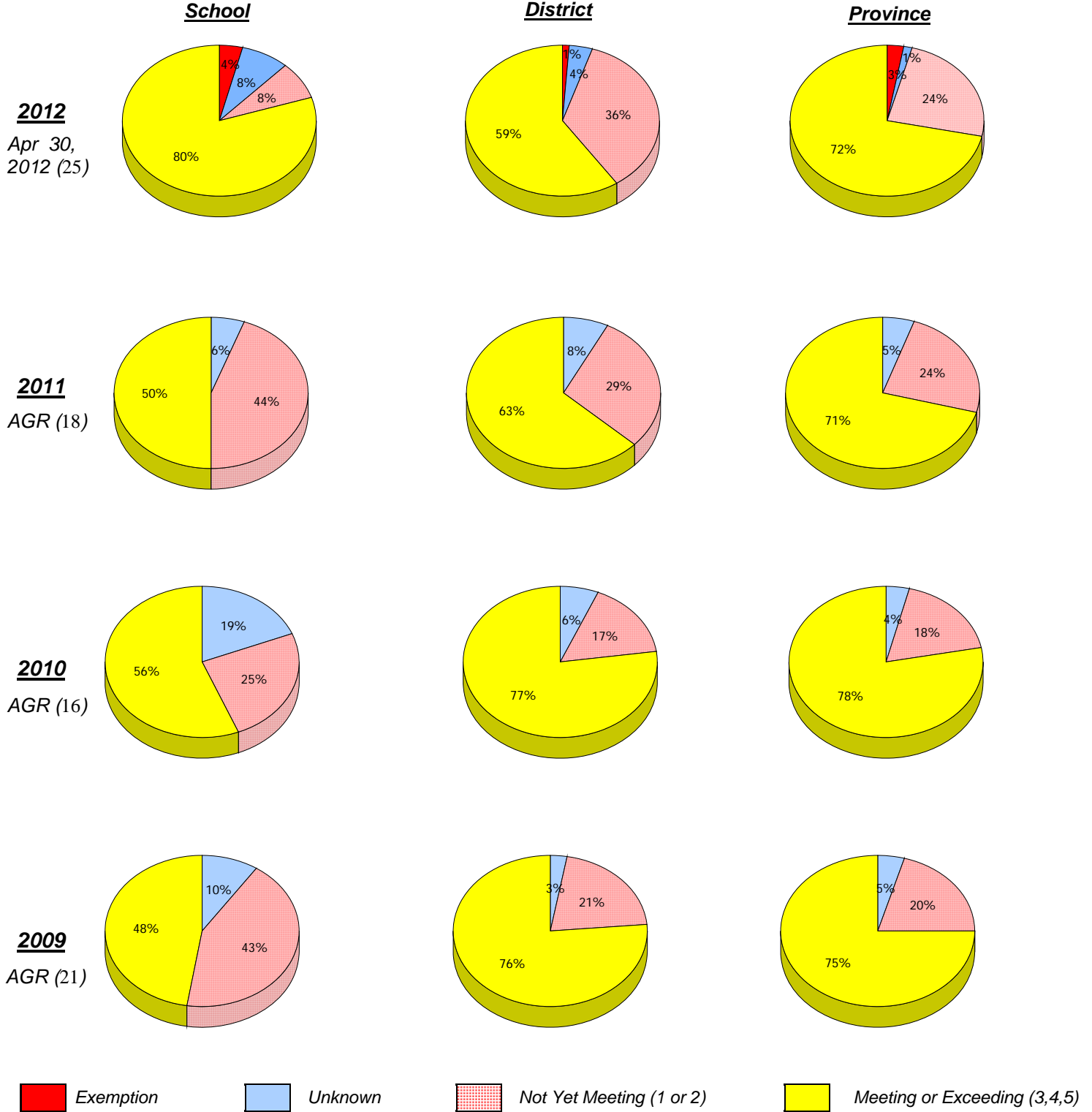
\* Mushuau Innu Natuashish School and Sheshatshiu Innu School are excluded from district and provincial results.

\* Reading score is composite of Non Fiction and Poet. Source: Division of Evaluation and Research, Department of Education

District 1 - Labrador

School #: 014 Jens Haven Memorial

***Demand Writing***



\* In some cases, CRT numbers may exceed AGR numbers based on late enrolments. Pie chart is based on the number of students who wrote the CRT.

\* Mushuau Innu Natuashish School and Sheshatshiu Innu School are excluded from district and provincial results.

\* Reading score is composite of Non Fiction and Poet. Source: Division of Evaluation and Research, Department of Education



**District 1 - Labrador**

School #: 014    Jens Haven Memorial

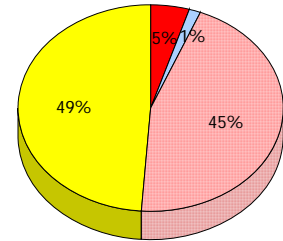
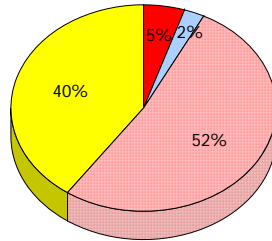
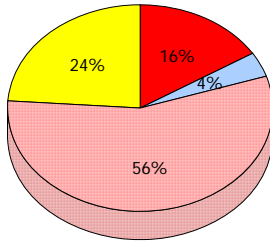
**Reading**

**School**

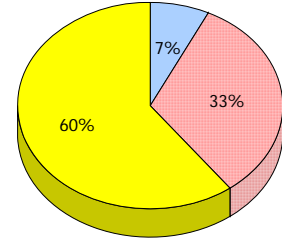
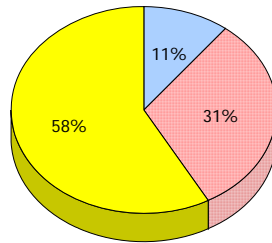
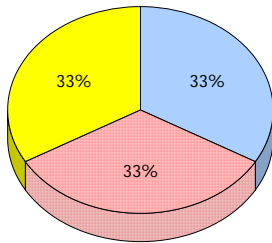
**District**

**Province**

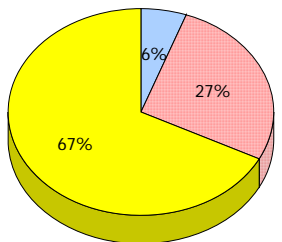
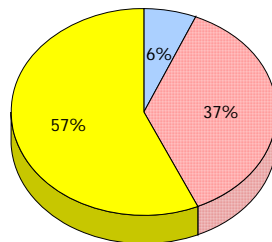
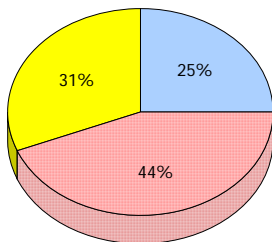
**2012**  
Apr 30,  
2012 (25)



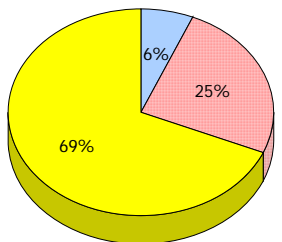
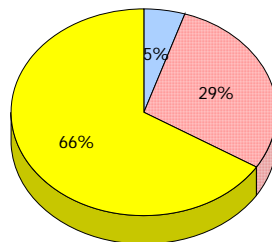
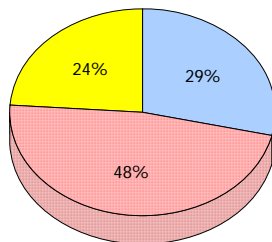
**2011**  
AGR (18)



**2010**  
AGR (16)



**2009**  
AGR (21)



*Exemption*   
  *Unknown*   
  *Not Yet Meeting (1 or 2)*   
  *Meeting or Exceeding (3,4,5)*

\* In some cases, CRT numbers may exceed AGR numbers based on late enrolments. Pie chart is based on the number of students who wrote the CRT.

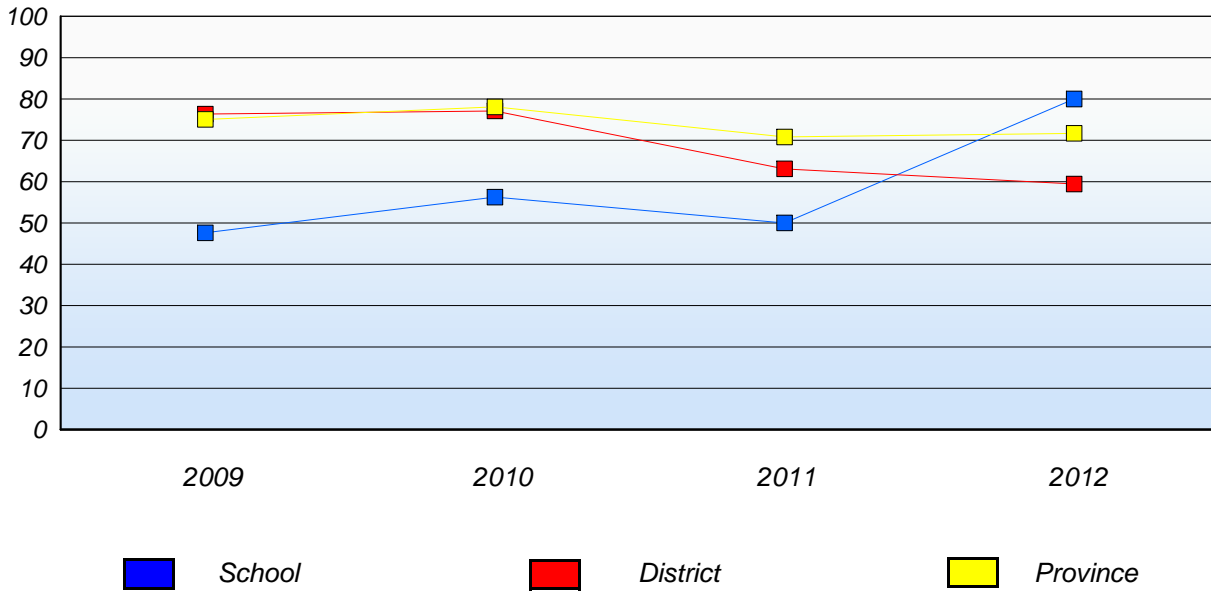
\* Mushuau Innu Natuashish School and Sheshatshiu Innu School are excluded from district and provincial results.

\* Reading score is composite of Non Fiction and Poet. Source: Division of Evaluation and Research, Department of Education

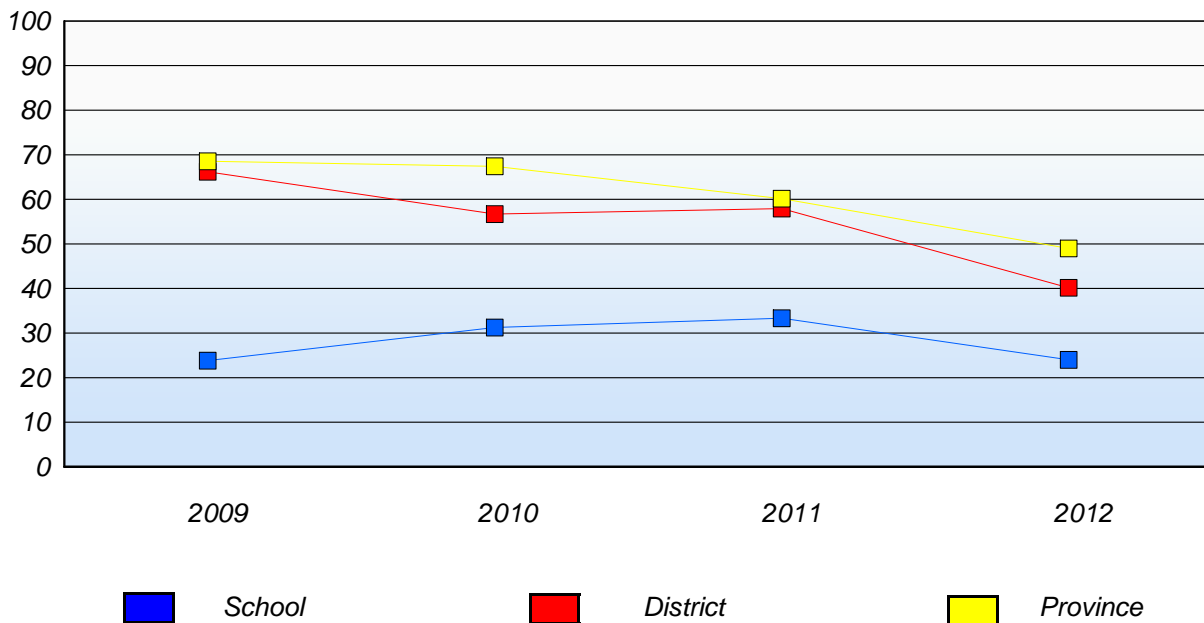
District 1 - Labrador

School #: 014 Jens Haven Memorial

**Demand Writing**  
Percentage of students at level 3 or above (2009 - 2012)



**Reading**  
Percentage of students at level 3 or above (2009 - 2012)



\* In some cases, CRT numbers may exceed AGR numbers based on late enrolments. Pie chart is based on the number of students who wrote the CRT.

\* Mushuau Innu Natuashish School and Sheshatshiu Innu School are excluded from district and provincial results.

\* Reading score is composite of Non Fiction and Poet. Source: Division of Evaluation and Research, Department of Education

District 1 - Labrador

School #: 015 Lake Melville School

***Demand Writing***

**School**

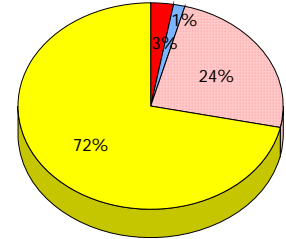
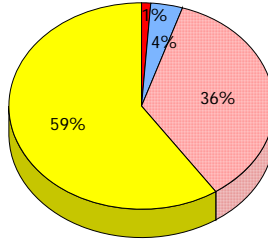
*School data with 5 or fewer students withheld for reasons of confidentiality.*

**District**

**Province**

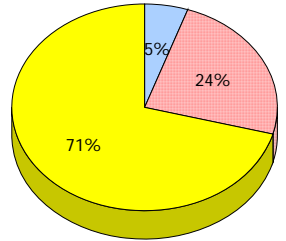
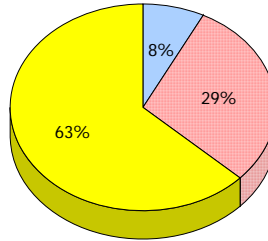
**2012**

Apr 30,  
2012 (6)



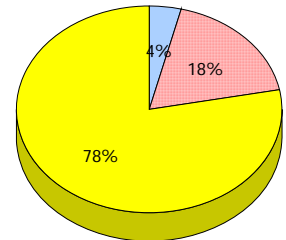
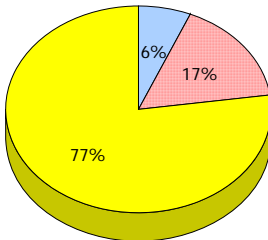
**2011**

AGR (7)



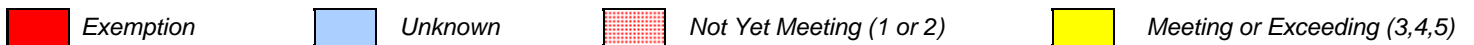
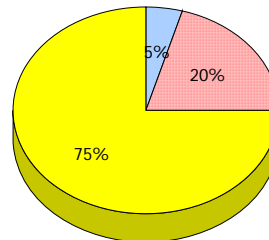
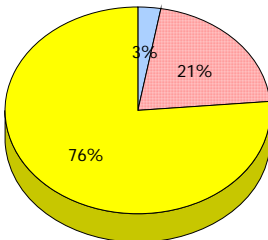
**2010**

AGR (9)



**2009**

AGR (8)



\* In some cases, CRT numbers may exceed AGR numbers based on late enrolments. Pie chart is based on the number of students who wrote the CRT.

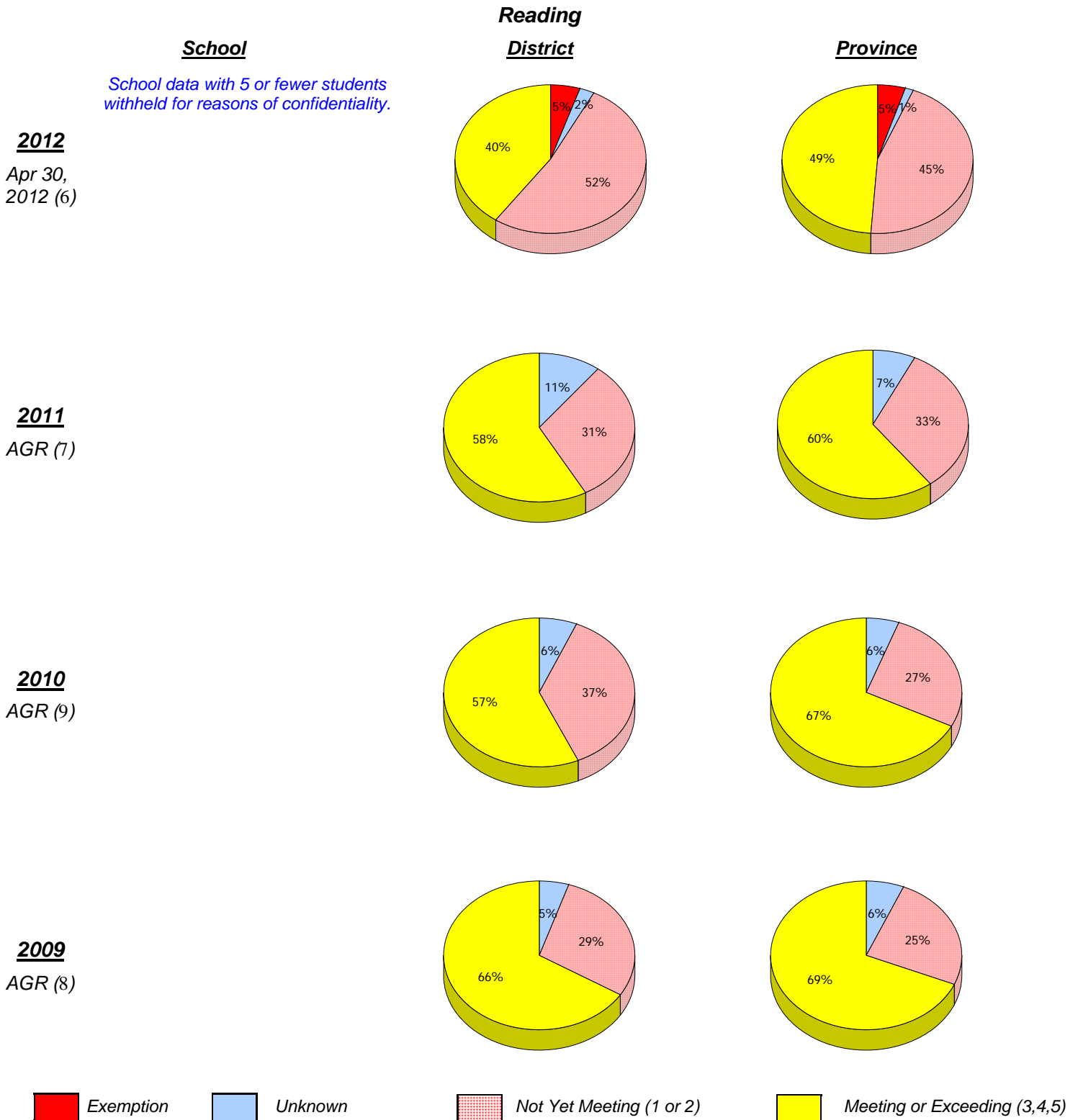
\* Mushuau Innu Natuashish School and Sheshatshiu Innu School are excluded from district and provincial results.

\* Reading score is composite of Non Fiction and Poet. Source: Division of Evaluation and Research, Department of Education

**Elementary English Language Arts  
4 Year Provincial Assessment, June 2012  
School Report Rubrics**  
(average scores)

District 1 - Labrador

School #: 015 Lake Melville School



\* In some cases, CRT numbers may exceed AGR numbers based on late enrolments. Pie chart is based on the number of students who wrote the CRT.

\* Mushuau Innu Natuashish School and Sheshatshiu Innu School are excluded from district and provincial results.

\* Reading score is composite of Non Fiction and Poet. Source: Division of Evaluation and Research, Department of Education

District 1 - Labrador

School #: 015 Lake Melville School

**Demand Writing**

*Percentage of students at level 3 or above (2009 - 2012)*

*School data with 5 or fewer students withheld for reasons of confidentiality.*



**Reading**

*Percentage of students at level 3 or above (2009 - 2012)*

*School data with 5 or fewer students withheld for reasons of confidentiality.*



\* In some cases, CRT numbers may exceed AGR numbers based on late enrolments. Pie chart is based on the number of students who wrote the CRT.

\* Mushuau Innu Natuashish School and Sheshatshiu Innu School are excluded from district and provincial results.

\* Reading score is composite of Non Fiction and Poet. Source: Division of Evaluation and Research, Department of Education

District 1 - Labrador

School #: 016 B.L. Morrison

***Demand Writing***

**School**

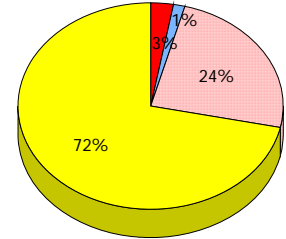
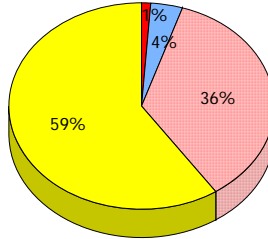
*School data with 5 or fewer students withheld for reasons of confidentiality.*

**District**

**Province**

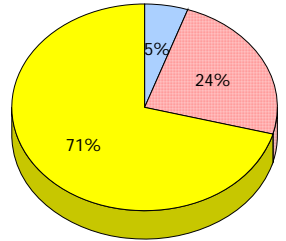
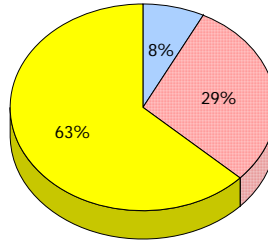
**2012**

Apr 30,  
2012 (2)



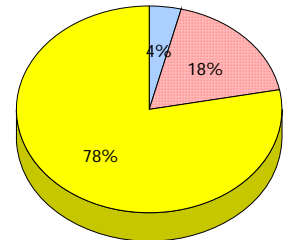
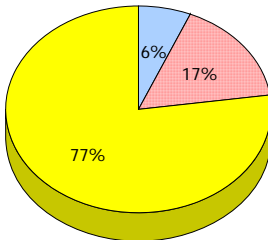
**2011**

AGR (4)



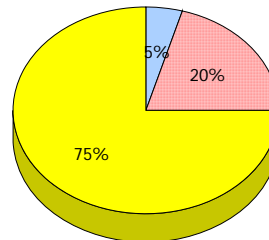
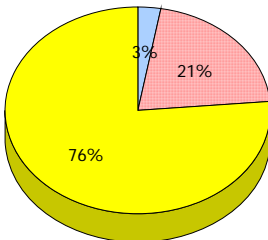
**2010**

AGR (5)



**2009**

AGR (5)



*Exemption*     
  *Unknown*     
  *Not Yet Meeting (1 or 2)*     
  *Meeting or Exceeding (3,4,5)*

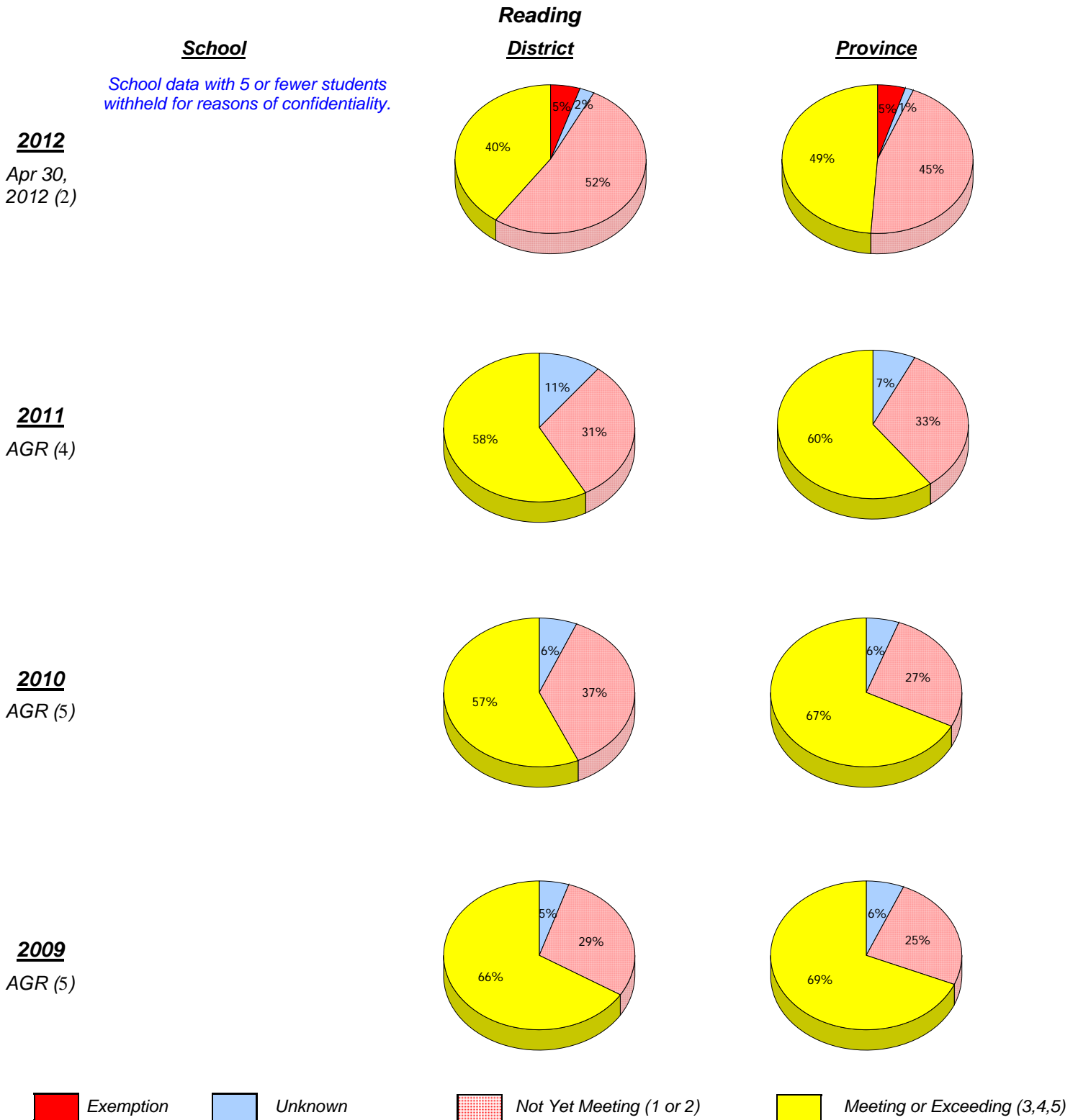
\* In some cases, CRT numbers may exceed AGR numbers based on late enrolments. Pie chart is based on the number of students who wrote the CRT.

\* Mushuau Innu Natuashish School and Sheshatshiu Innu School are excluded from district and provincial results.

\* Reading score is composite of Non Fiction and Poet. Source: Division of Evaluation and Research, Department of Education

District 1 - Labrador

School #: 016 B.L. Morrison



\* In some cases, CRT numbers may exceed AGR numbers based on late enrolments. Pie chart is based on the number of students who wrote the CRT.

\* Mushuau Innu Natuashish School and Sheshatshiu Innu School are excluded from district and provincial results.

\* Reading score is composite of Non Fiction and Poet. Source: Division of Evaluation and Research, Department of Education

District 1 - Labrador

School #: 016 B.L. Morrison

**Demand Writing**

*Percentage of students at level 3 or above (2009 - 2012)*

*School data with 5 or fewer students withheld for reasons of confidentiality.*



**Reading**

*Percentage of students at level 3 or above (2009 - 2012)*

*School data with 5 or fewer students withheld for reasons of confidentiality.*



\* In some cases, CRT numbers may exceed AGR numbers based on late enrolments. Pie chart is based on the number of students who wrote the CRT.

\* Mushuau Innu Natuashish School and Sheshatshiu Innu School are excluded from district and provincial results.

\* Reading score is composite of Non Fiction and Poet. Source: Division of Evaluation and Research, Department of Education



District 1 - Labrador

School #: 017 Northern Lights Academy

***Demand Writing***

**School**

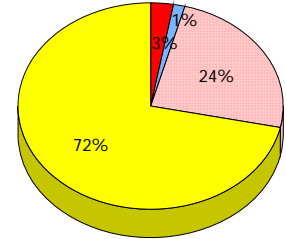
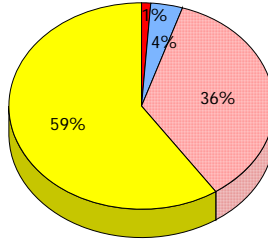
*School data with 5 or fewer students withheld for reasons of confidentiality.*

**District**

**Province**

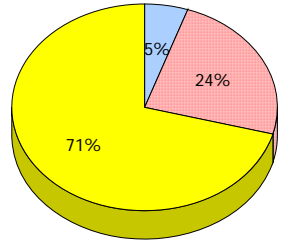
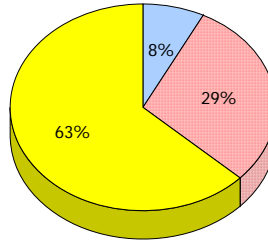
**2012**

Apr 30,  
2012 (3)



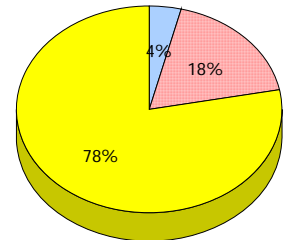
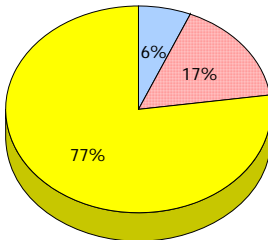
**2011**

AGR (7)



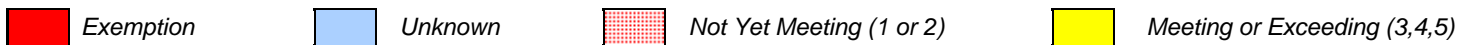
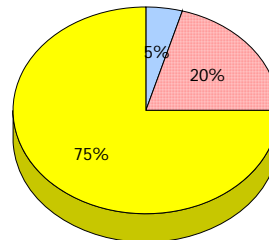
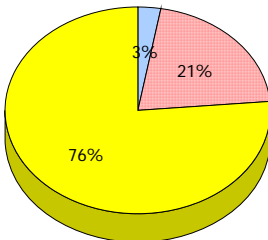
**2010**

AGR (2)



**2009**

AGR (2)



\* In some cases, CRT numbers may exceed AGR numbers based on late enrolments. Pie chart is based on the number of students who wrote the CRT.

\* Mushuau Innu Natuashish School and Sheshatshiu Innu School are excluded from district and provincial results.

\* Reading score is composite of Non Fiction and Poet. Source: Division of Evaluation and Research, Department of Education

District 1 - Labrador

School #: 017 Northern Lights Academy

**School**

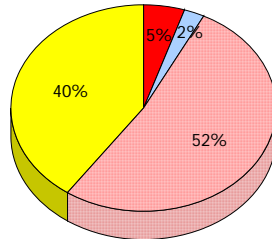
*School data with 5 or fewer students withheld for reasons of confidentiality.*

**2012**

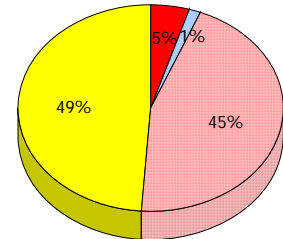
Apr 30,  
2012 (3)

**Reading**

**District**

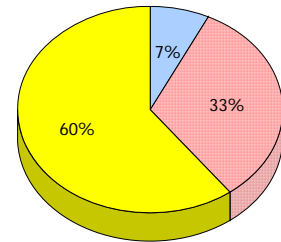
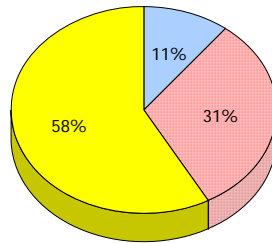


**Province**



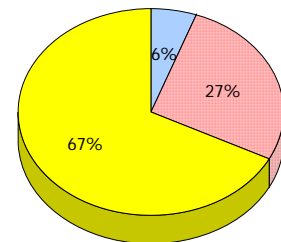
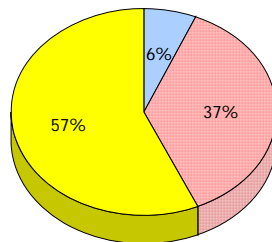
**2011**

AGR (7)



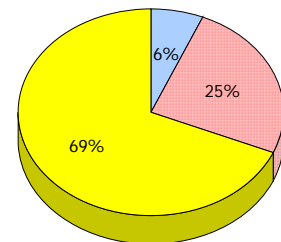
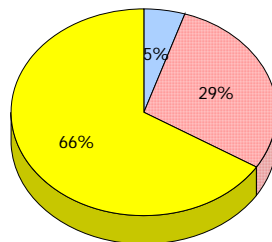
**2010**

AGR (2)



**2009**

AGR (2)



Exemption    
  Unknown    
  Not Yet Meeting (1 or 2)    
  Meeting or Exceeding (3,4,5)

\* In some cases, CRT numbers may exceed AGR numbers based on late enrolments. Pie chart is based on the number of students who wrote the CRT.

\* Mushuau Innu Natuashish School and Sheshatshiu Innu School are excluded from district and provincial results.

\* Reading score is composite of Non Fiction and Poet. Source: Division of Evaluation and Research, Department of Education

District 1 - Labrador

School #: 017 Northern Lights Academy

***Demand Writing***

*Percentage of students at level 3 or above (2009 - 2012)*

*School data with 5 or fewer students withheld for reasons of confidentiality.*



***Reading***

*Percentage of students at level 3 or above (2009 - 2012)*

*School data with 5 or fewer students withheld for reasons of confidentiality.*



\* In some cases, CRT numbers may exceed AGR numbers based on late enrolments. Pie chart is based on the number of students who wrote the CRT.

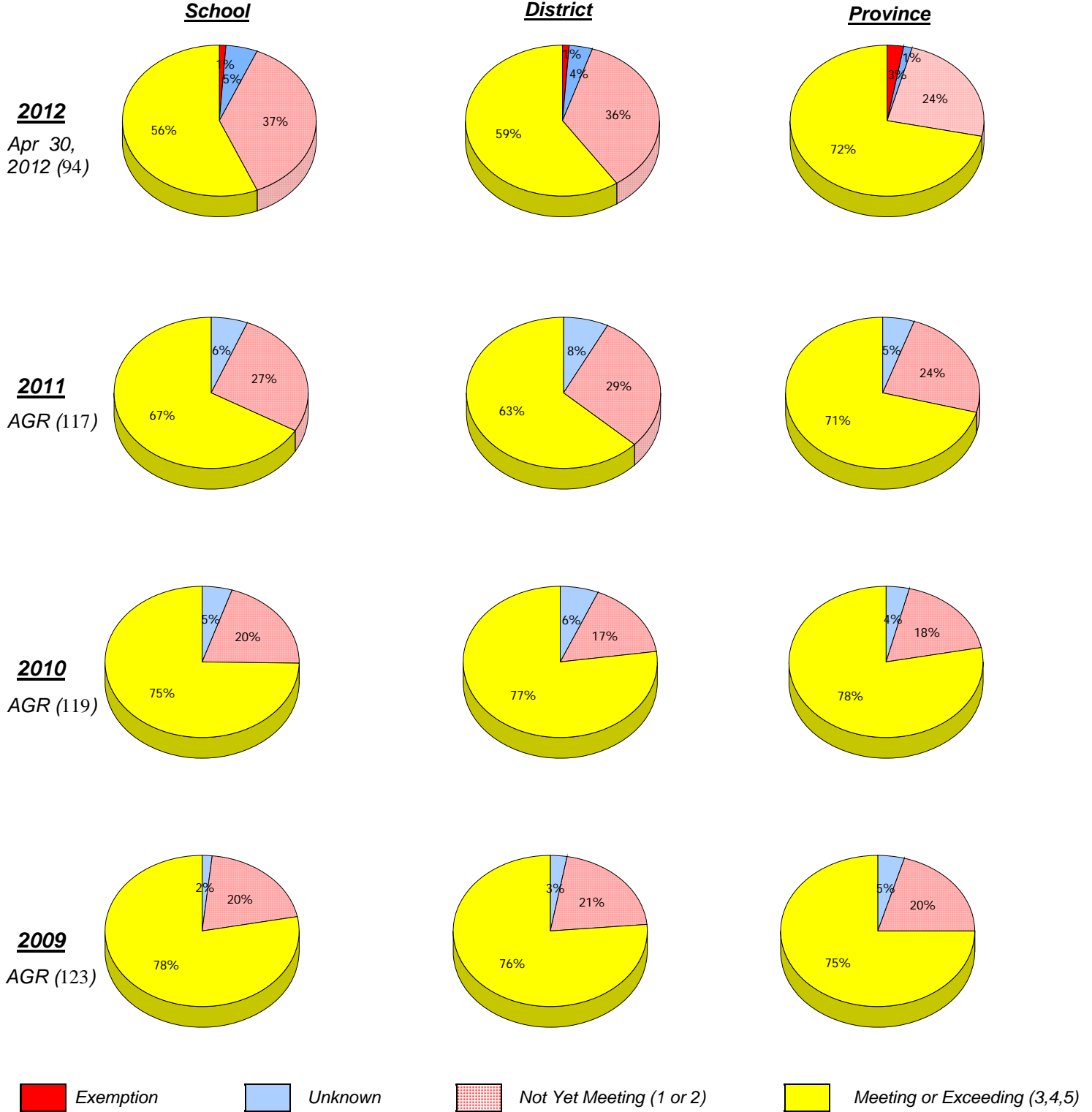
\* Mushuau Innu Natuashish School and Sheshatshiu Innu School are excluded from district and provincial results.

\* Reading score is composite of Non Fiction and Poet. Source: Division of Evaluation and Research, Department of Education

District 1 - Labrador

School #: 381 J.R. Smallwood Middle School

***Demand Writing***



\* In some cases, CRT numbers may exceed AGR numbers based on late enrolments. Pie chart is based on the number of students who wrote the CRT.

\* Mushuau Innu Natuashish School and Sheshatshiu Innu School are excluded from district and provincial results.

\* Reading score is composite of Non Fiction and Poet. Source: Division of Evaluation and Research, Department of Education

**District 1 - Labrador**

School #: 381 J.R. Smallwood Middle School

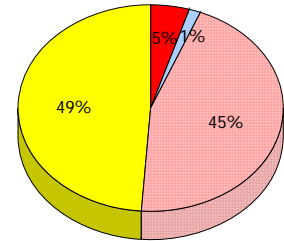
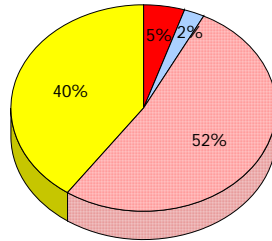
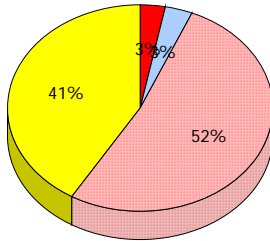
**Reading**

**School**

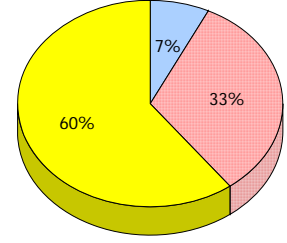
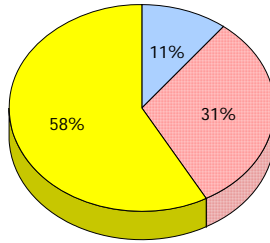
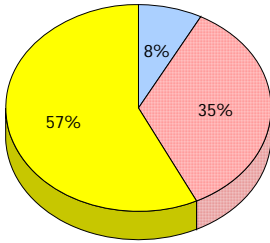
**District**

**Province**

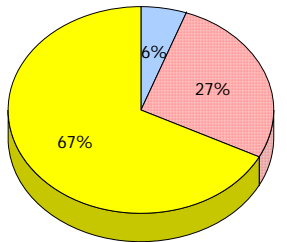
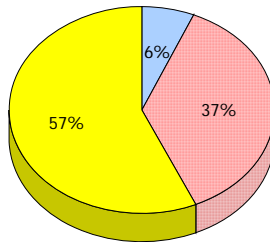
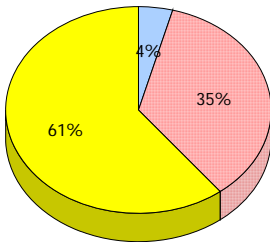
**2012**  
Apr 30,  
2012 (94)



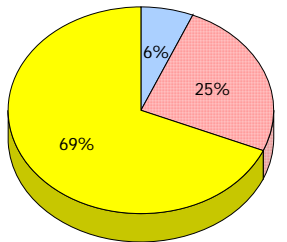
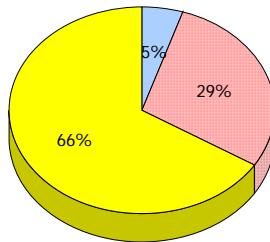
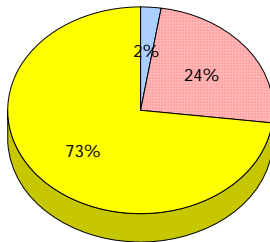
**2011**  
AGR (117)



**2010**  
AGR (119)



**2009**  
AGR (123)



■ Exemption    
 ■ Unknown    
  Not Yet Meeting (1 or 2)    
 ■ Meeting or Exceeding (3,4,5)

\* In some cases, CRT numbers may exceed AGR numbers based on late enrolments. Pie chart is based on the number of students who wrote the CRT.

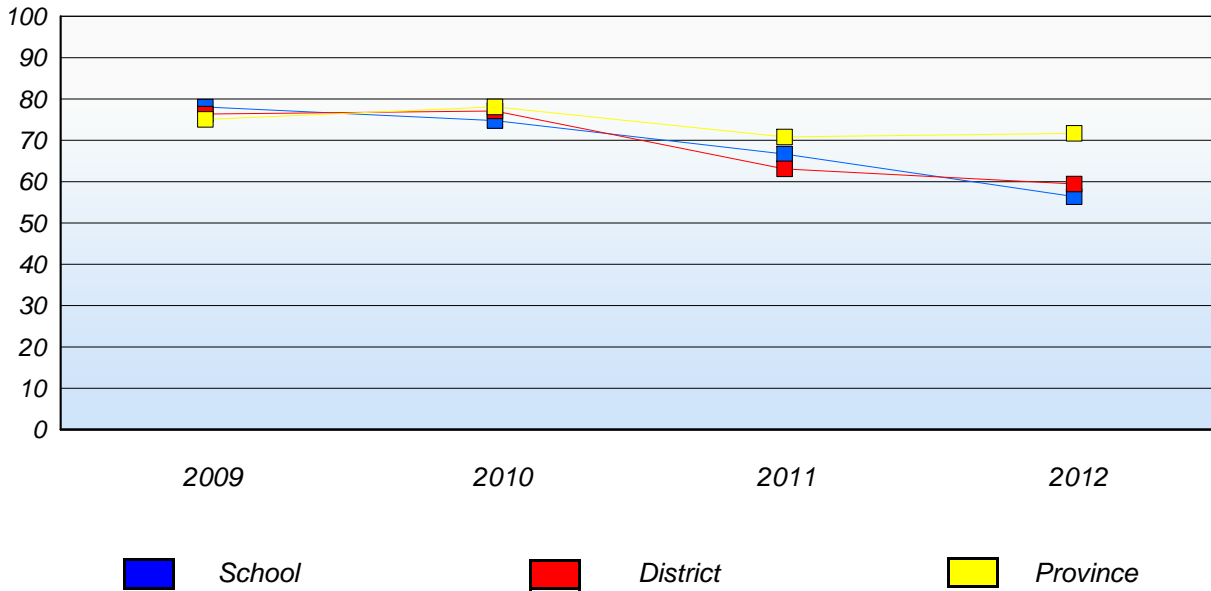
\* Mushuau Innu Natuashish School and Sheshatshiu Innu School are excluded from district and provincial results.

\* Reading score is composite of Non Fiction and Poet. Source: Division of Evaluation and Research, Department of Education

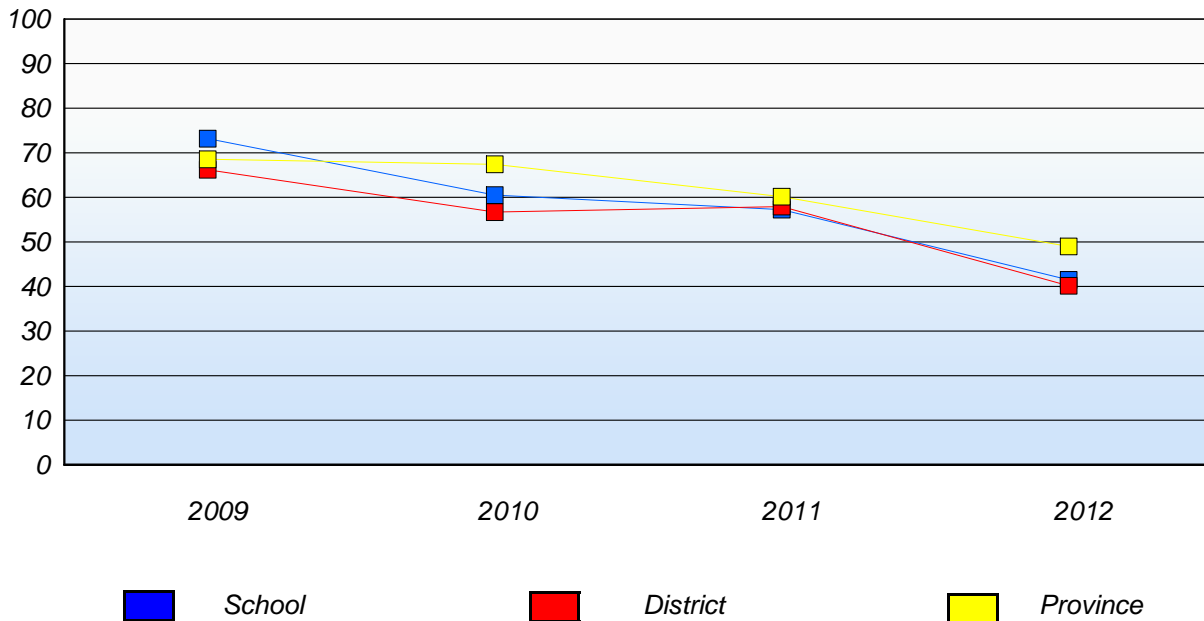
District 1 - Labrador

School #: 381 J.R. Smallwood Middle School

**Demand Writing**  
Percentage of students at level 3 or above (2009 - 2012)



**Reading**  
Percentage of students at level 3 or above (2009 - 2012)



\* In some cases, CRT numbers may exceed AGR numbers based on late enrolments. Pie chart is based on the number of students who wrote the CRT.

\* Mushuau Innu Natuashish School and Sheshatshiu Innu School are excluded from district and provincial results.

\* Reading score is composite of Non Fiction and Poet. Source: Division of Evaluation and Research, Department of Education