

District 803 - Private

School #: 373 First Baptist Academy

Exemption Rates

Demand Writing

School data with 5 or fewer students withheld for reasons of confidentiality.

2008

2009

2010

2011

Reading

School data with 5 or fewer students withheld for reasons of confidentiality.

2008

2009

2010

2011



School



Province

District 803 - Private

School #: 373 First Baptist Academy

Participation Rates

Demand Writing

School data with 5 or fewer students withheld for reasons of confidentiality.



Reading

School data with 5 or fewer students withheld for reasons of confidentiality.



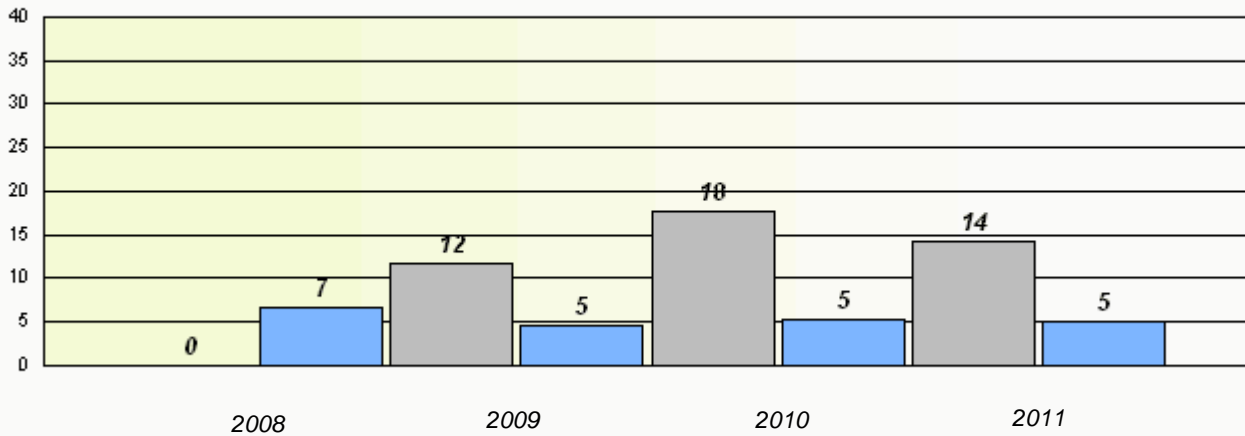
* Reading score is composite of Information and Poetry.

District 803 - Private

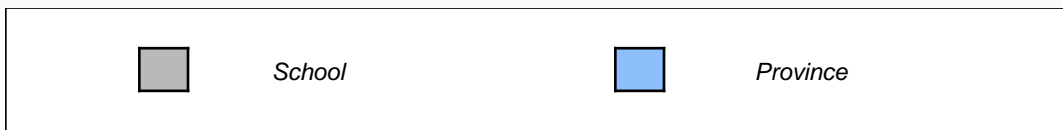
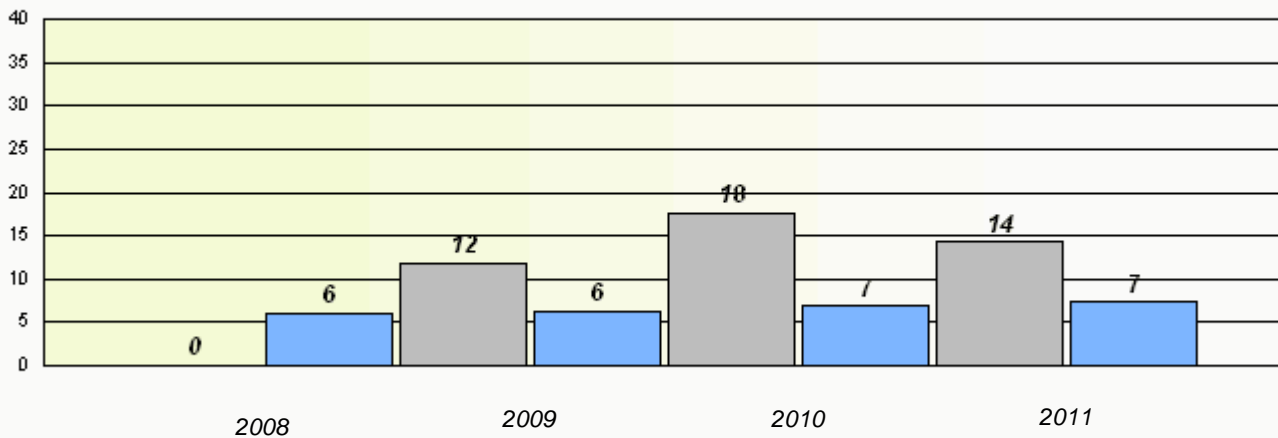
School #: 375 Lakecrest -St. John's Independent Sc

Exemption Rates

Demand Writing



Reading



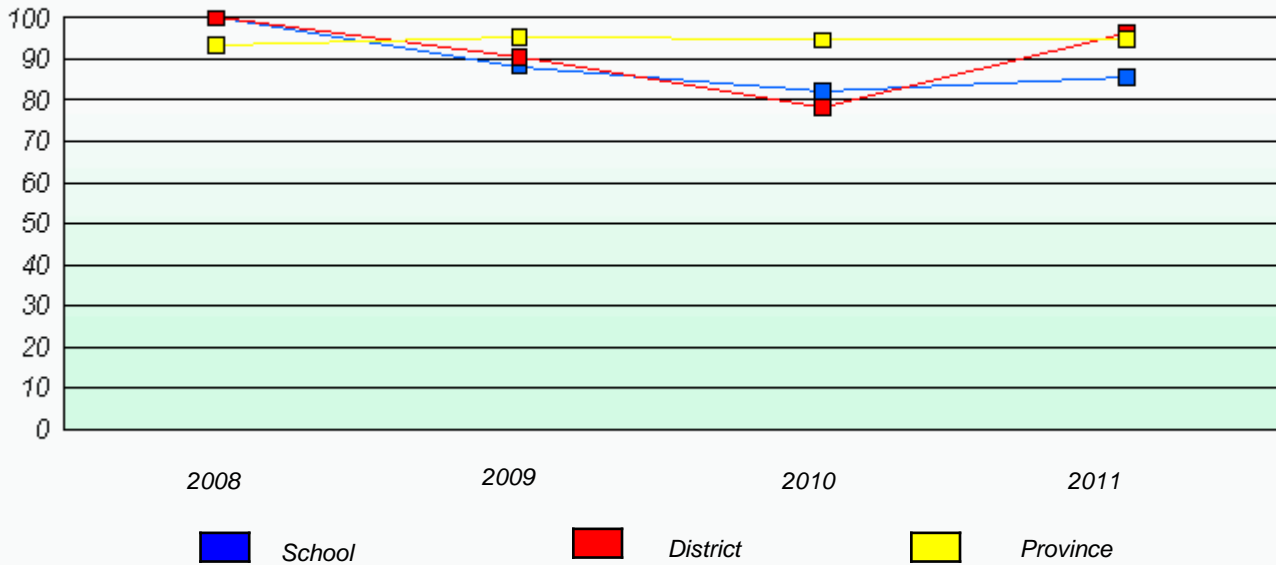
* Reading score is composite of Information and Poetry.

District 803 - Private

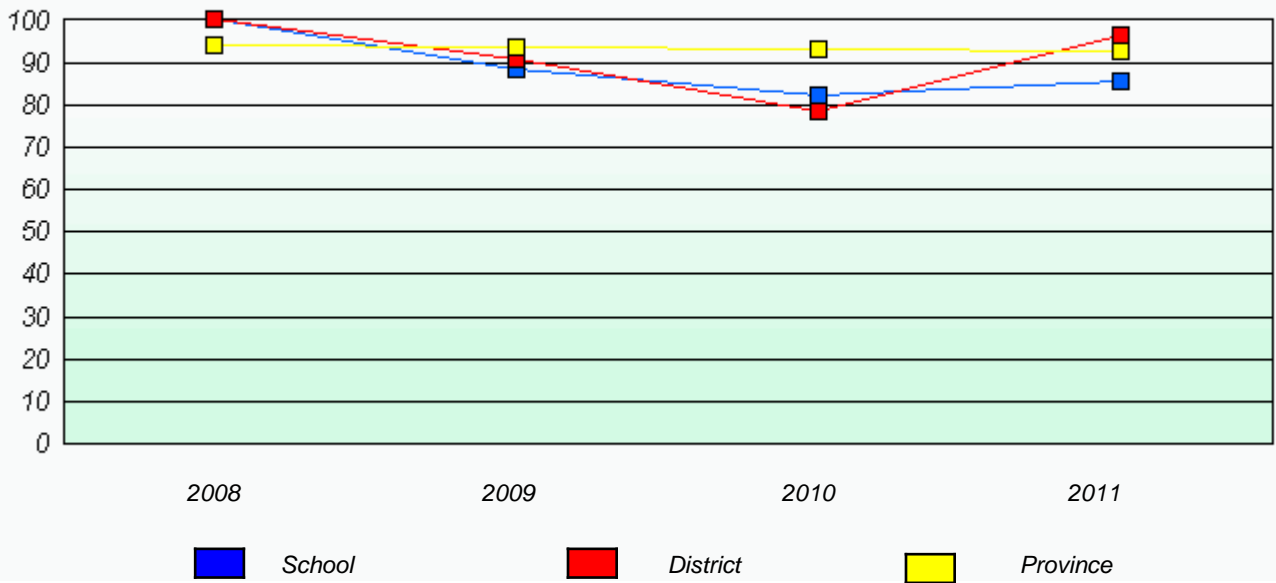
School #: 375 Lakecrest -St. John's Independent Sc

Participation Rates

Demand Writing



Reading



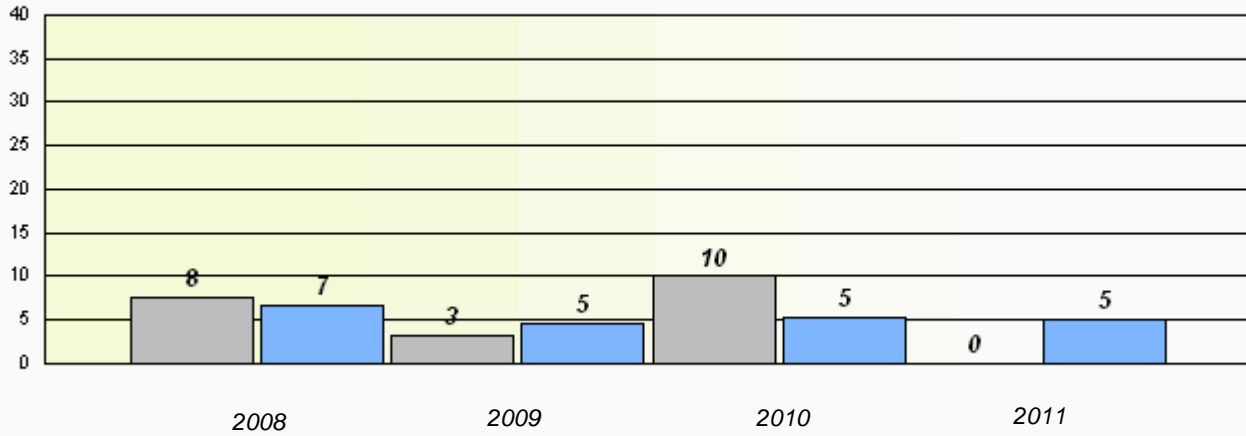
* Reading score is composite of Information and Poetry.

District 803 - Private

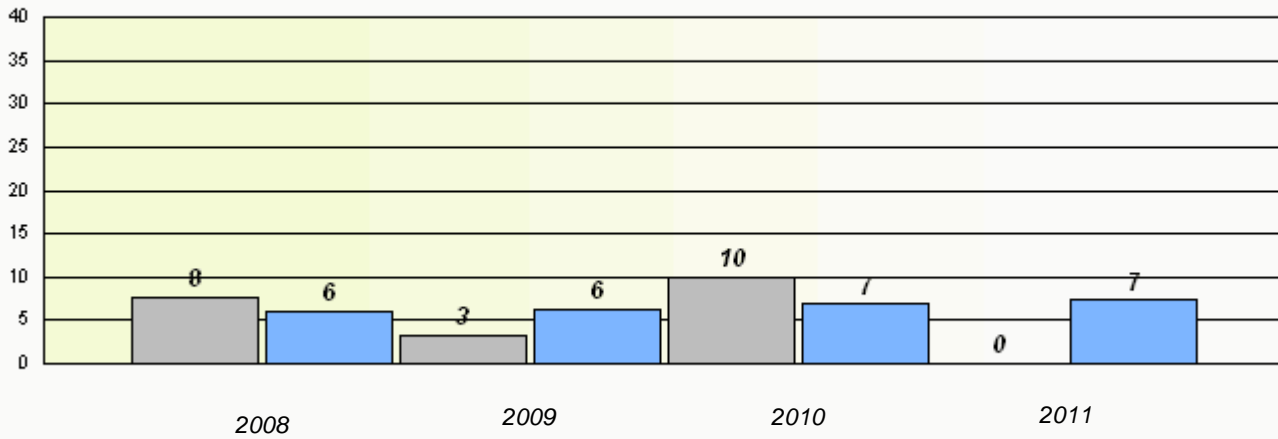
School #: 450 St. Bonaventure's College

Exemption Rates

Demand Writing



Reading



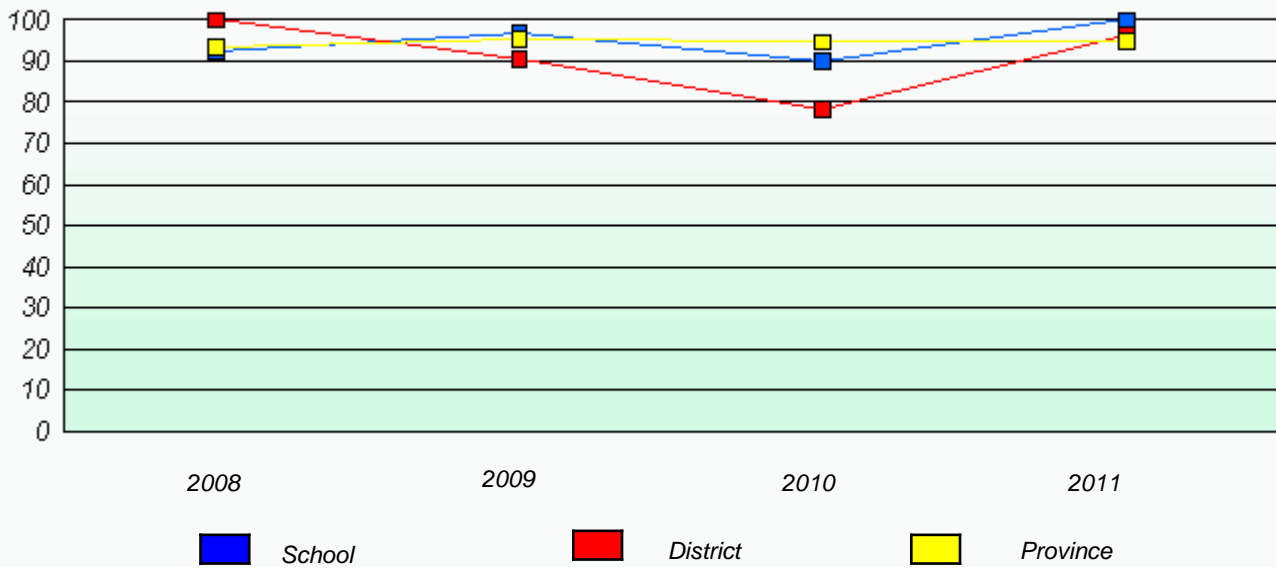
* Reading score is composite of Information and Poetry.

District 803 - Private

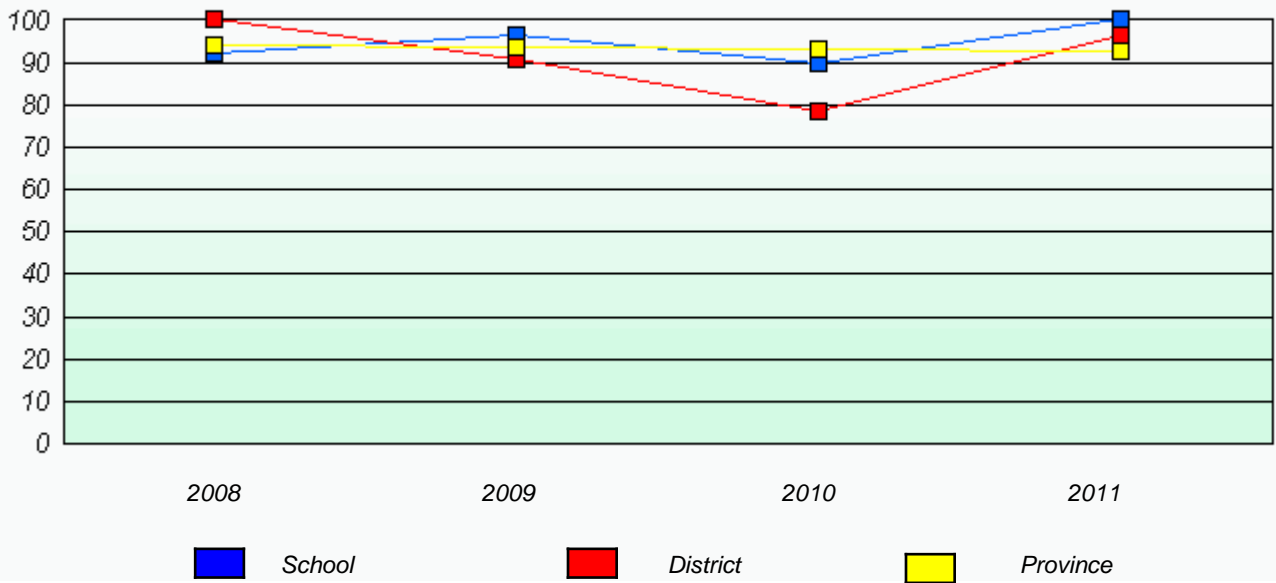
School #: 450 St. Bonaventure's College

Participation Rates

Demand Writing



Reading



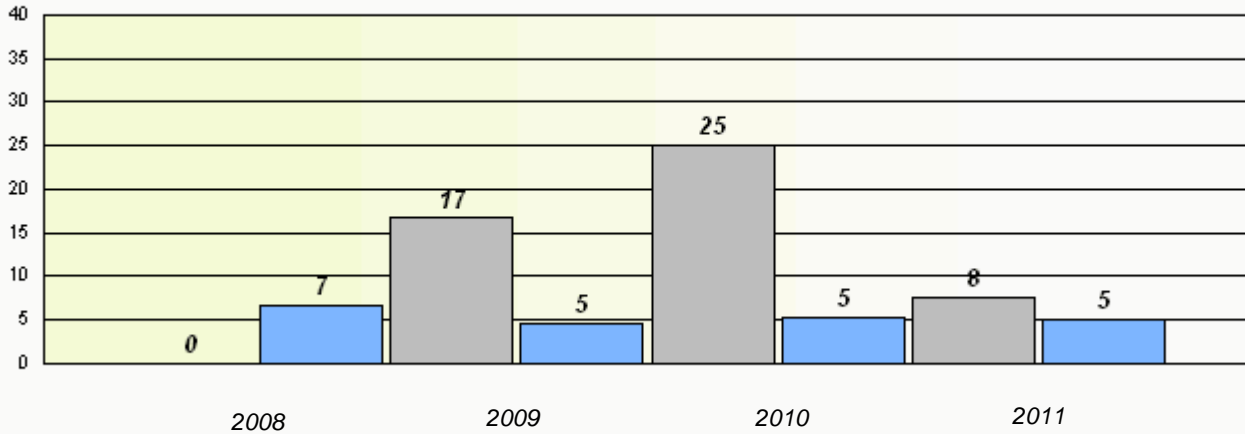
* Reading score is composite of Information and Poetry.

District 803 - Private

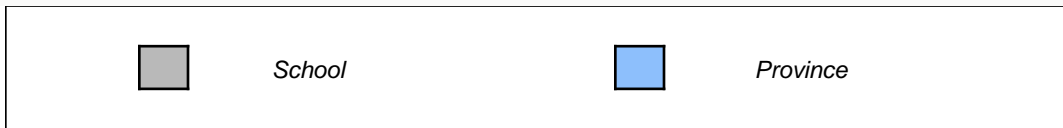
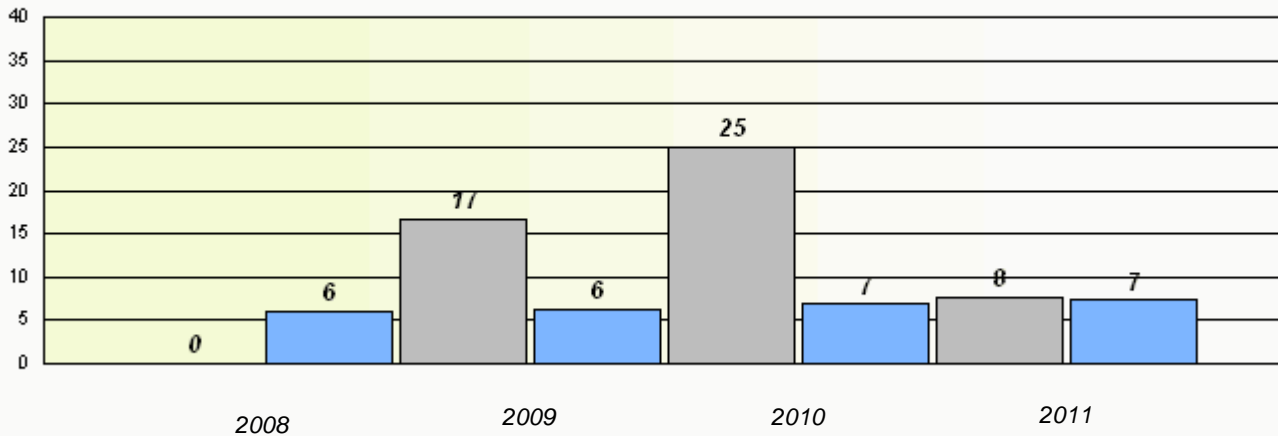
School #: 453 Eric G. Lambert All-Grade

Exemption Rates

Demand Writing



Reading



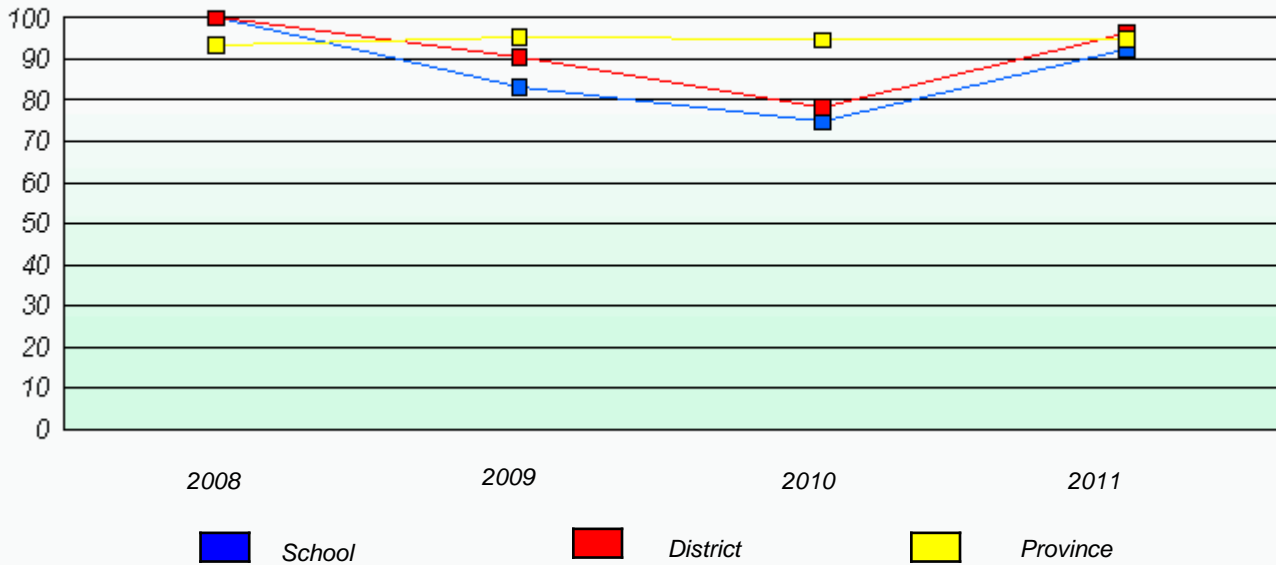
* Reading score is composite of Information and Poetry.

District 803 - Private

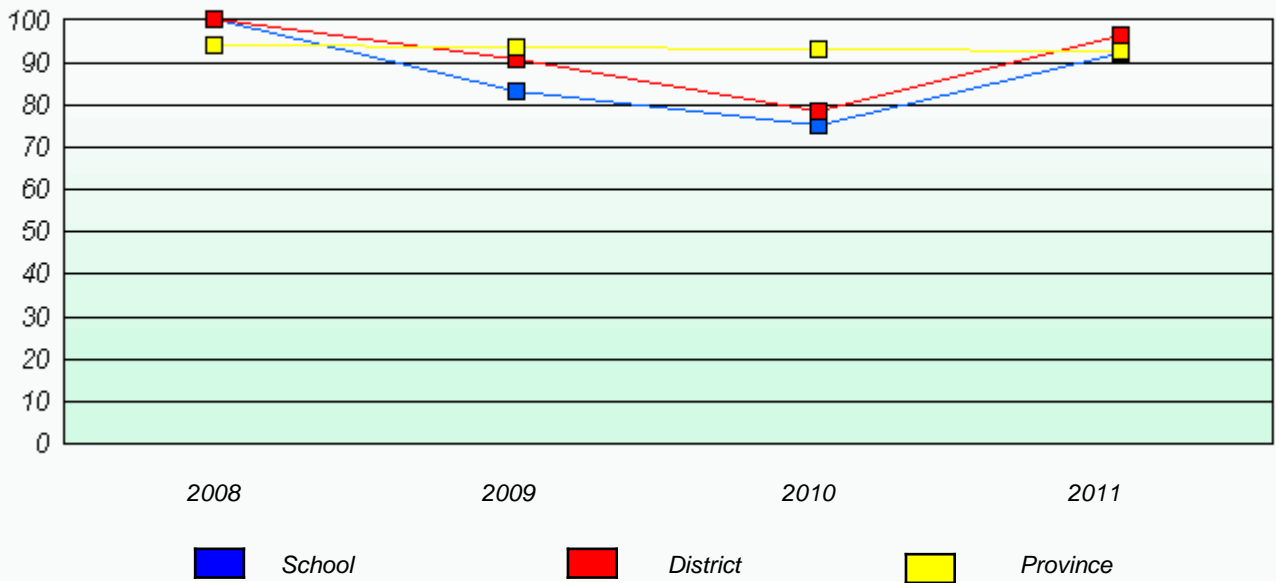
School #: 453 Eric G. Lambert All-Grade

Participation Rates

Demand Writing



Reading



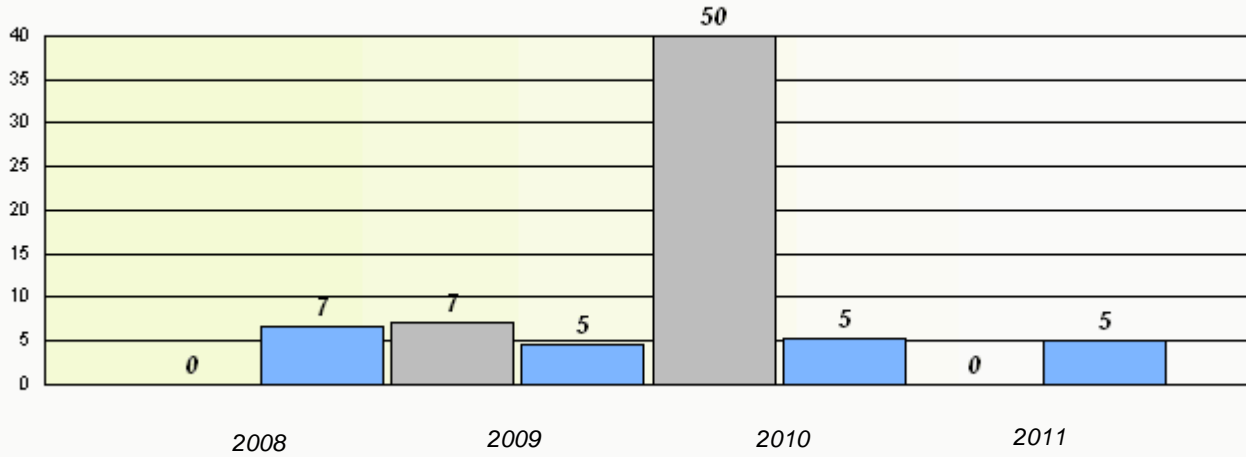
* Reading score is composite of Information and Poetry.

District 803 - Private

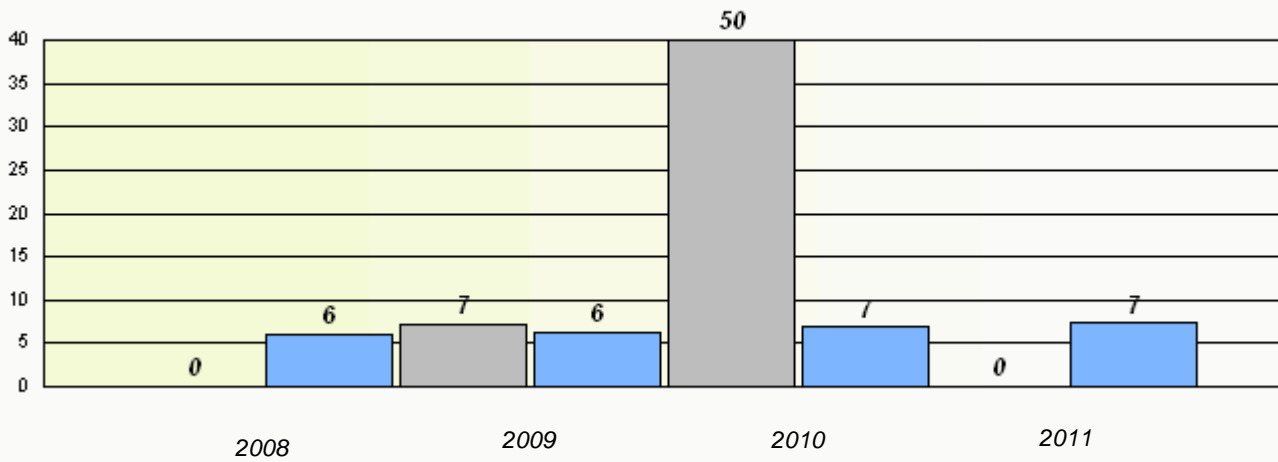
School #: 469 Immaculate Heart of Mary School

Exemption Rates

Demand Writing



Reading



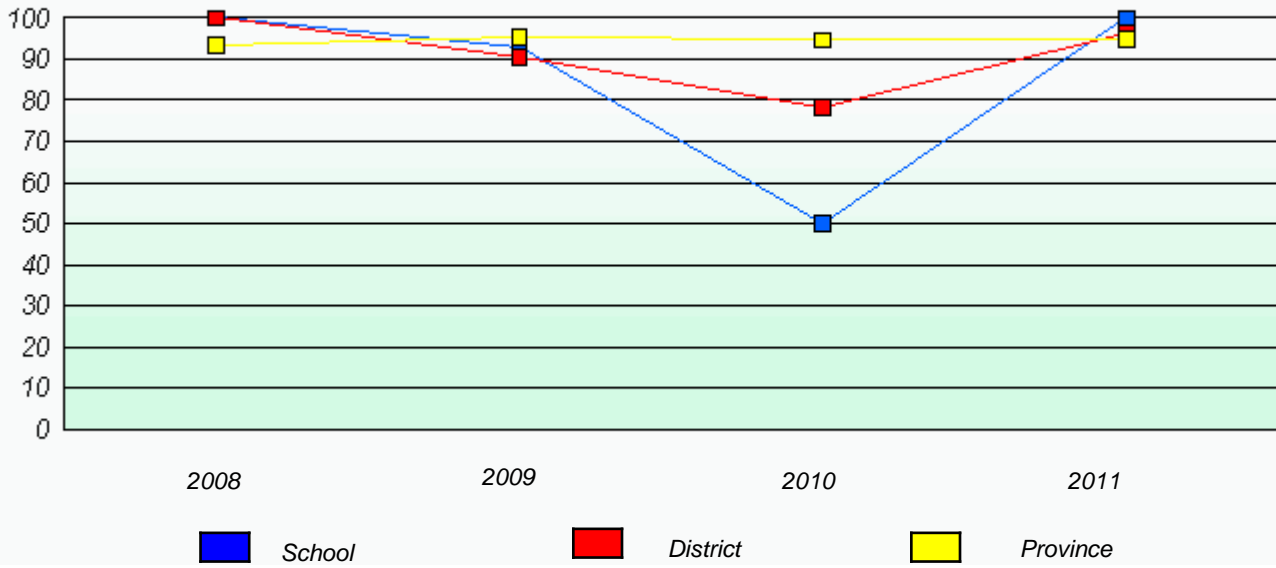
* Reading score is composite of Information and Poetry.

District 803 - Private

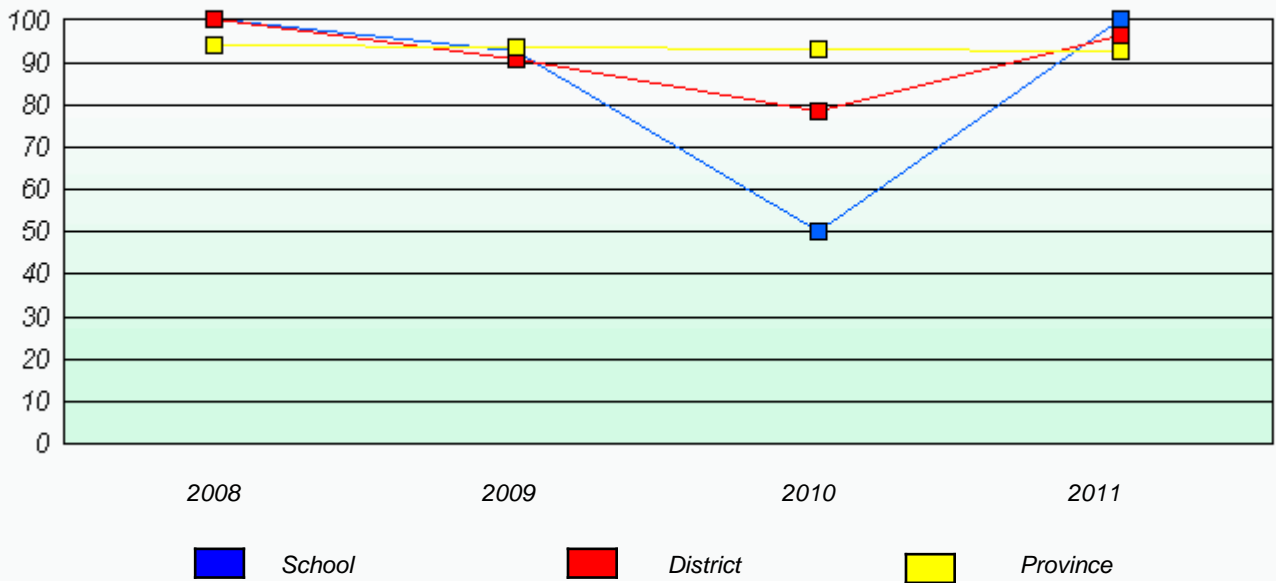
School #: 469 Immaculate Heart of Mary School

Participation Rates

Demand Writing



Reading



* Reading score is composite of Information and Poetry.

District 804 - Native Feder

School #: 018 Sheshatshiu Innu School

Exemption Rates

Demand Writing

School data with 5 or fewer students withheld for reasons of confidentiality.

2008

2009

2010

2011

Reading

School data with 5 or fewer students withheld for reasons of confidentiality.

2008

2009

2010

2011



School



Province

District 804 - Native Feder

School #: 018 Sheshatshiu Innu School

Participation Rates

Demand Writing

School data with 5 or fewer students withheld for reasons of confidentiality.



Reading

School data with 5 or fewer students withheld for reasons of confidentiality.



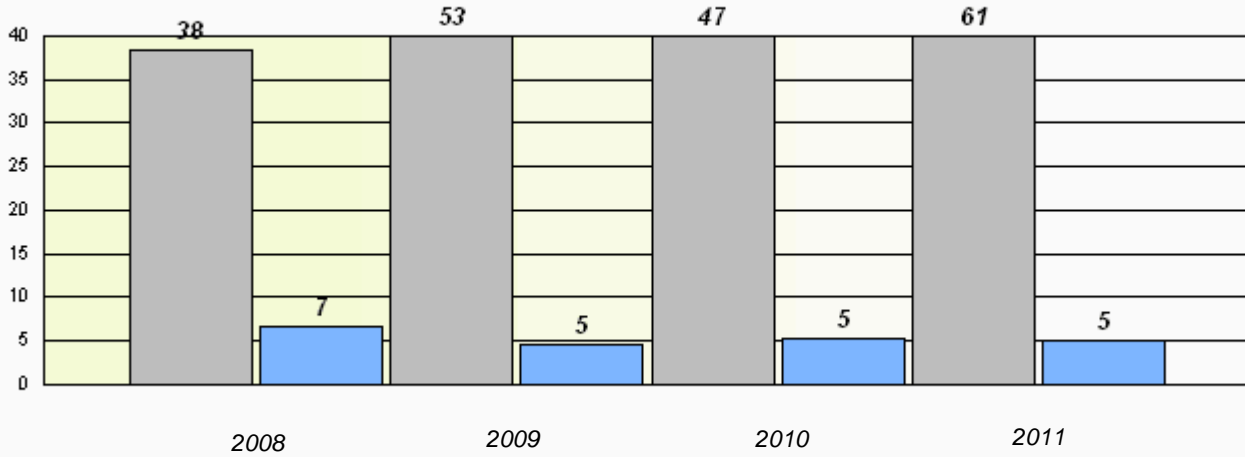
* Reading score is composite of Information and Poetry.

District 804 - Native Feder

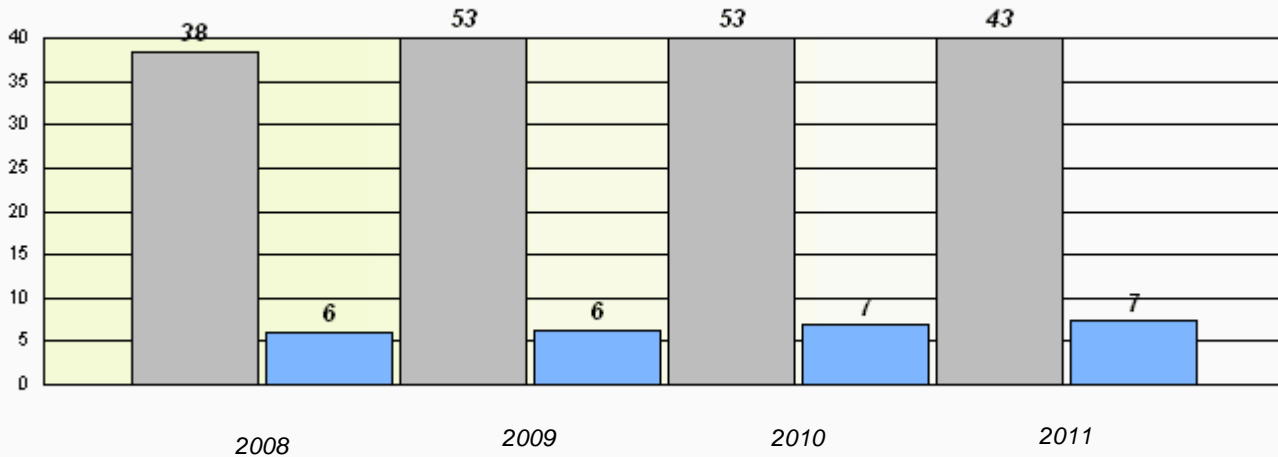
School #: 019 Mushuau Innu Natuashish School

Exemption Rates

Demand Writing



Reading



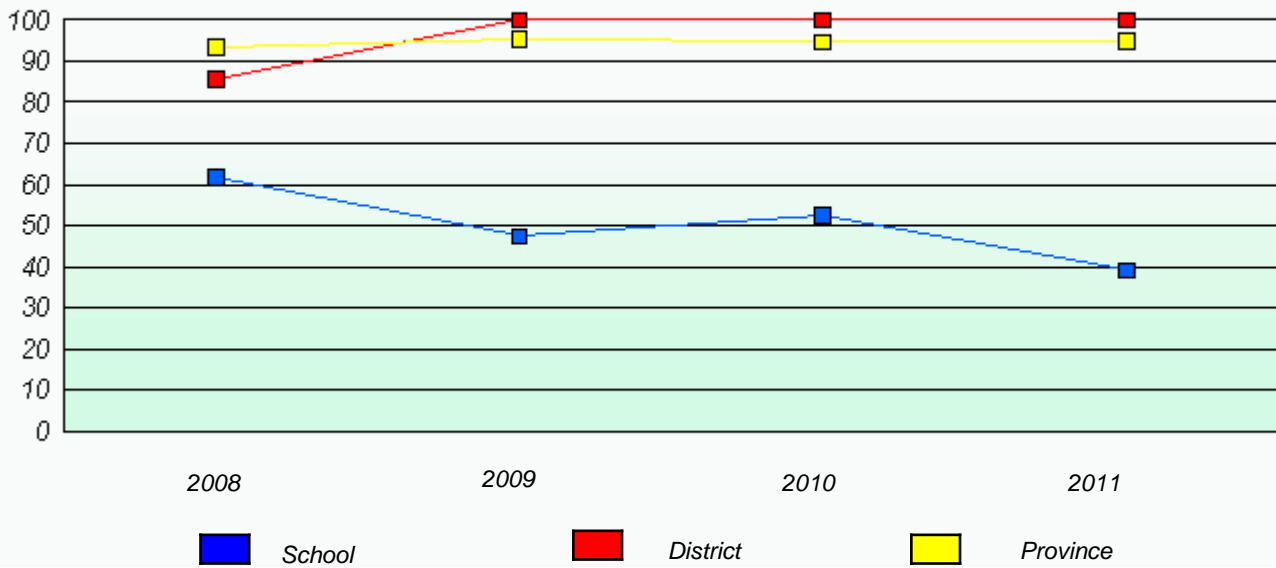
* Reading score is composite of Information and Poetry.

District 804 - Native Feder

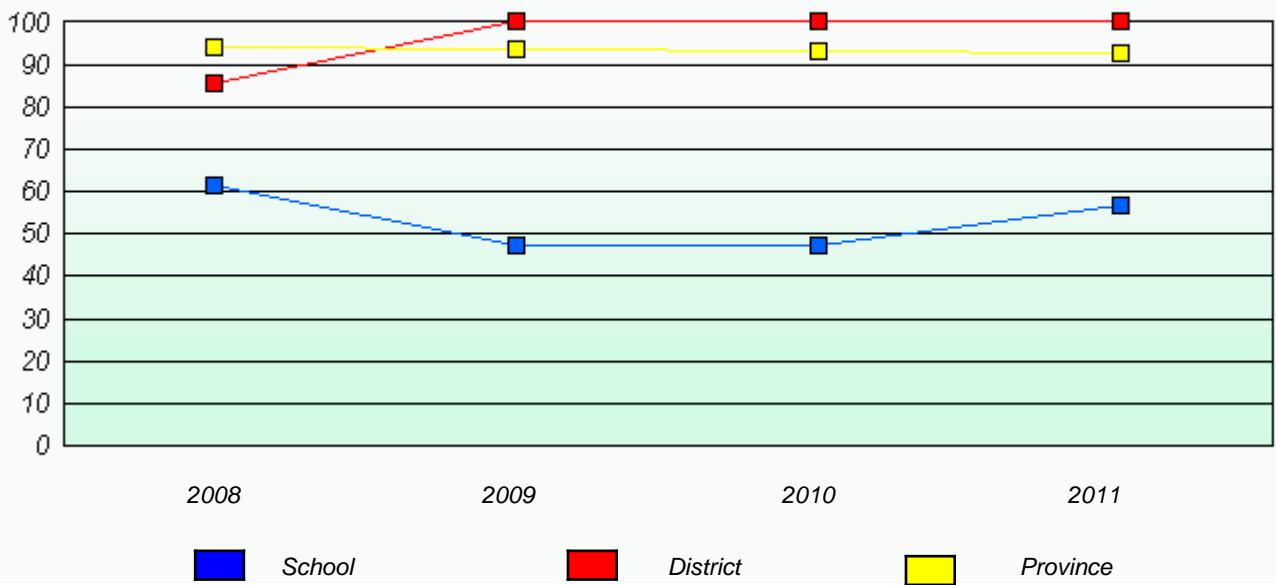
School #: 019 Mushuau Innu Natuashish School

Participation Rates

Demand Writing



Reading



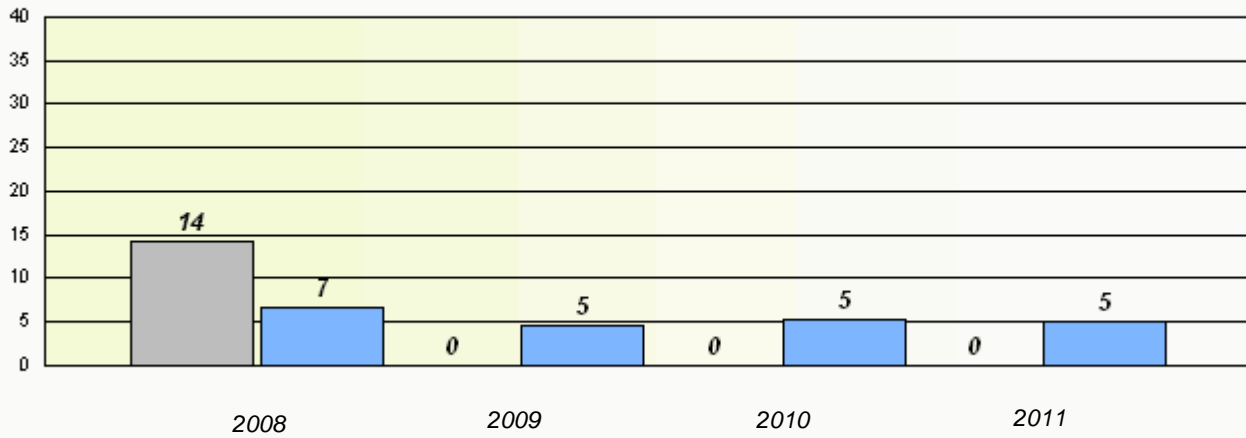
* Reading score is composite of Information and Poetry.

District 804 - Native Feder

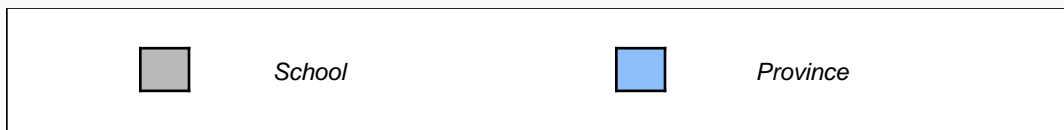
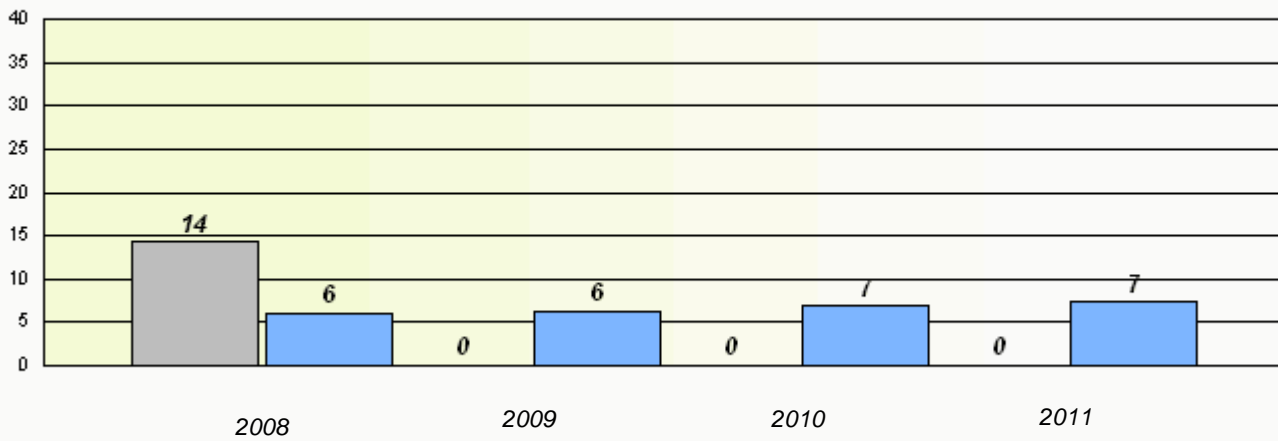
School #: 376 Se't Anneway Kegnamogwom

Exemption Rates

Demand Writing



Reading



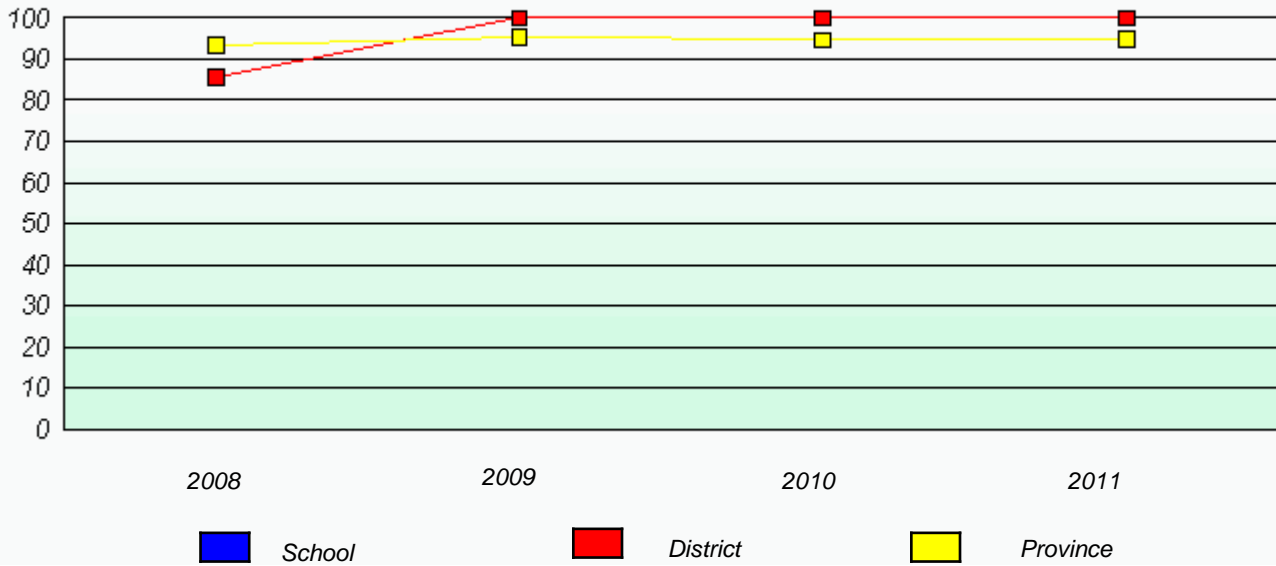
* Reading score is composite of Information and Poetry.

District 804 - Native Feder

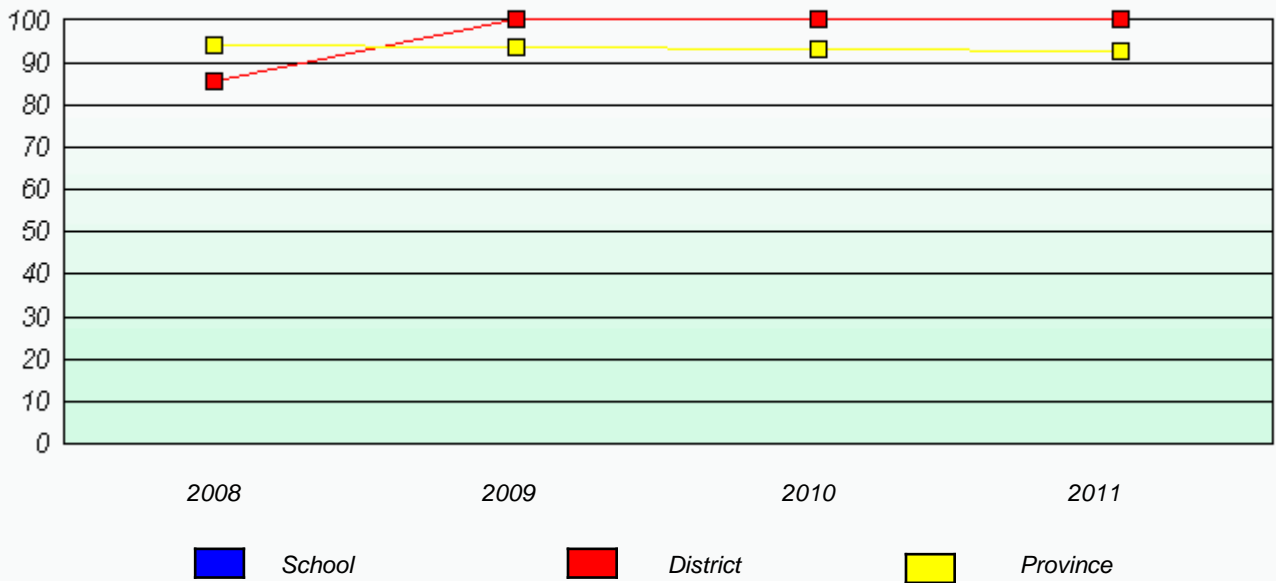
School #: 376 Se't Anneway Kegnamogwom

Participation Rates

Demand Writing



Reading



* Reading score is composite of Information and Poetry.