

District 2 - Western

School #: 022 William Gillett Academy

**Exemption Rates**

**Number Operations**

*School data with 5 or fewer students withheld for reasons of confidentiality.*

2008

2009

2010

2011



School



Province

**Participation Rates**

**Number Operations**

*School data with 5 or fewer students withheld for reasons of confidentiality.*

2008

2009

2010

2011



School



District



Province

District 2 - Western

School #: 023 Sacred Heart AG

### Exemption Rates

#### Number Operations

*School data with 5 or fewer students withheld for reasons of confidentiality.*

2008

2009

2010

2011



School



Province

### Participation Rates

#### Number Operations

*School data with 5 or fewer students withheld for reasons of confidentiality.*

2008

2009

2010

2011



School



District



Province

District 2 - Western

School #: 024 James Cook Memorial

### Exemption Rates

#### Number Operations

*School data with 5 or fewer students withheld for reasons of confidentiality.*

2008

2009

2010

2011



School



Province

### Participation Rates

#### Number Operations

*School data with 5 or fewer students withheld for reasons of confidentiality.*

2008

2009

2010

2011



School



District



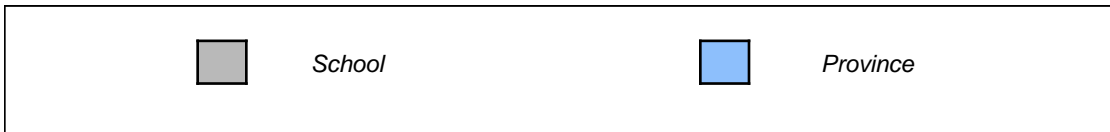
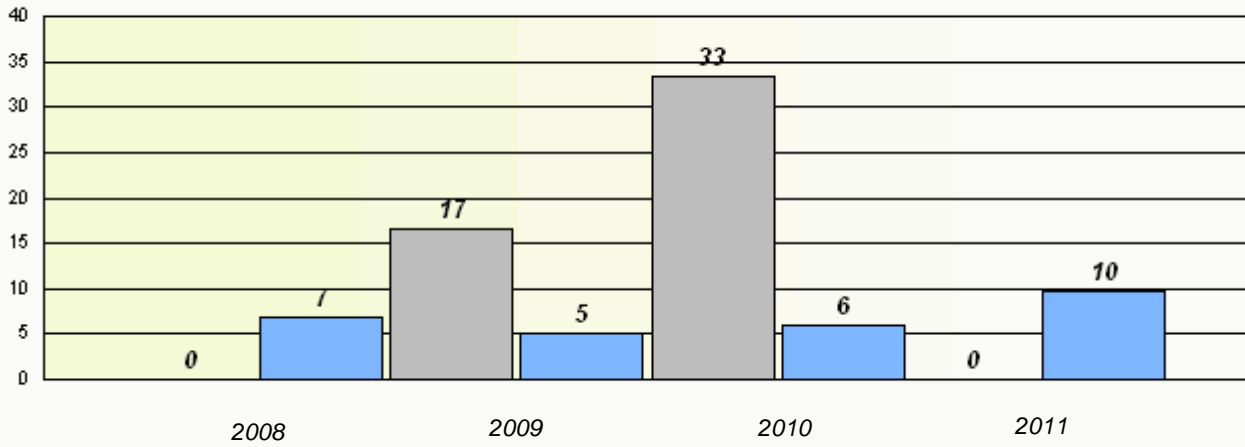
Province

District 2 - Western

School #: 026 H.G. Fillier Academy

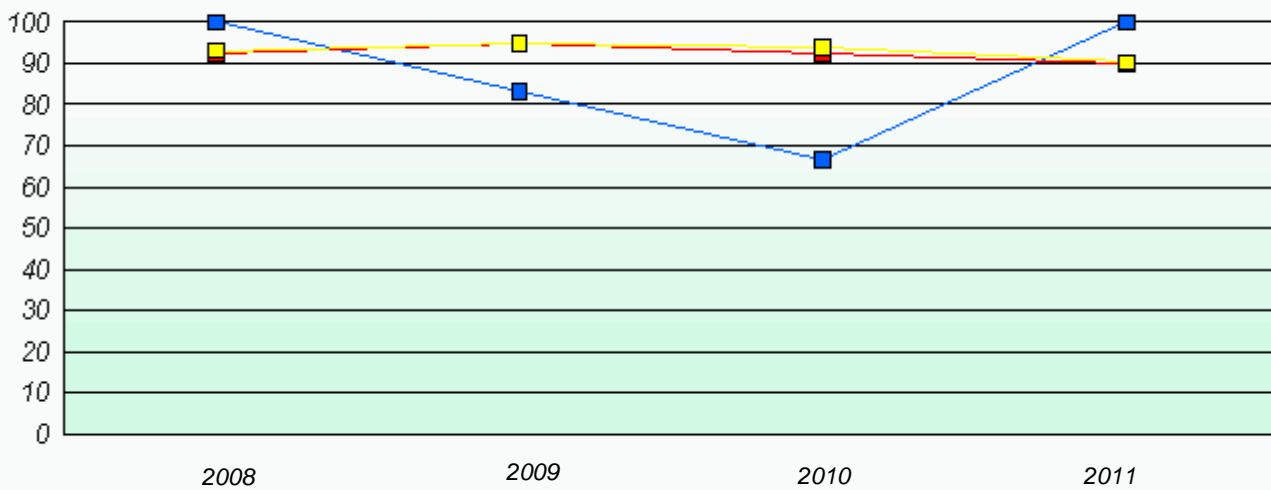
### Exemption Rates

Number Operations



### Participation Rates

Number Operations

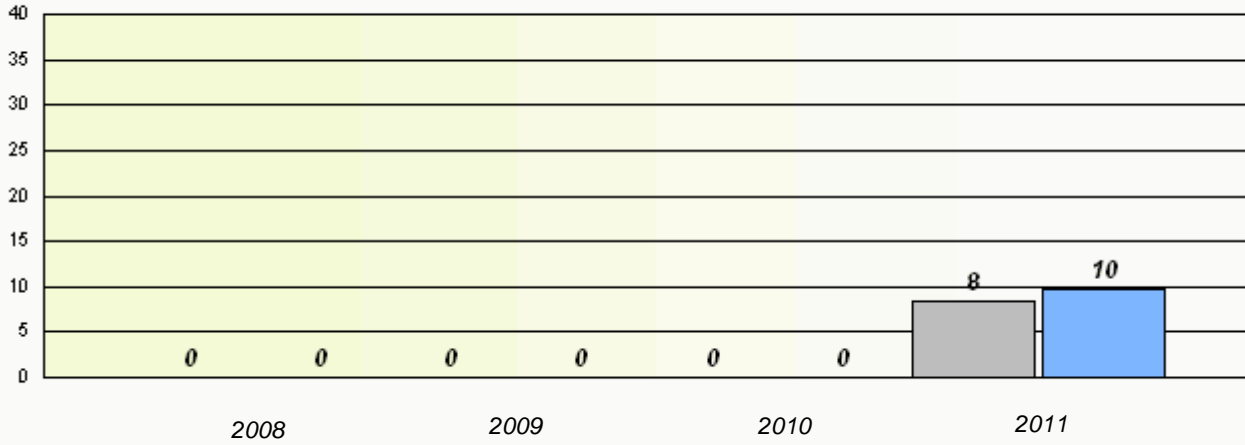


District 2 - Western

School #: 027 Canon Richards Memorial Academy

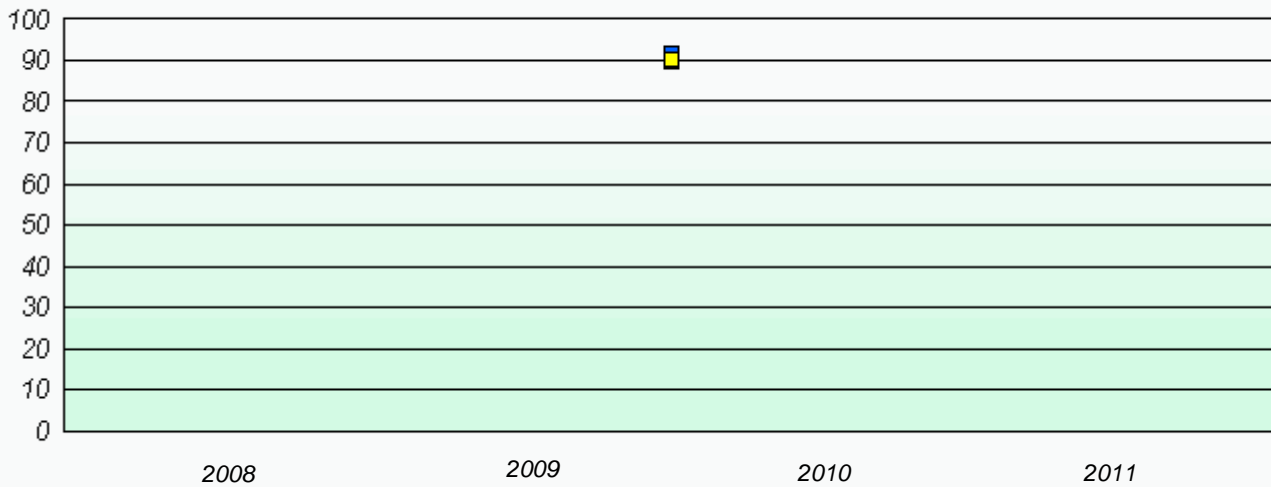
**Exemption Rates**

*Number Operations*



**Participation Rates**

*Number Operations*

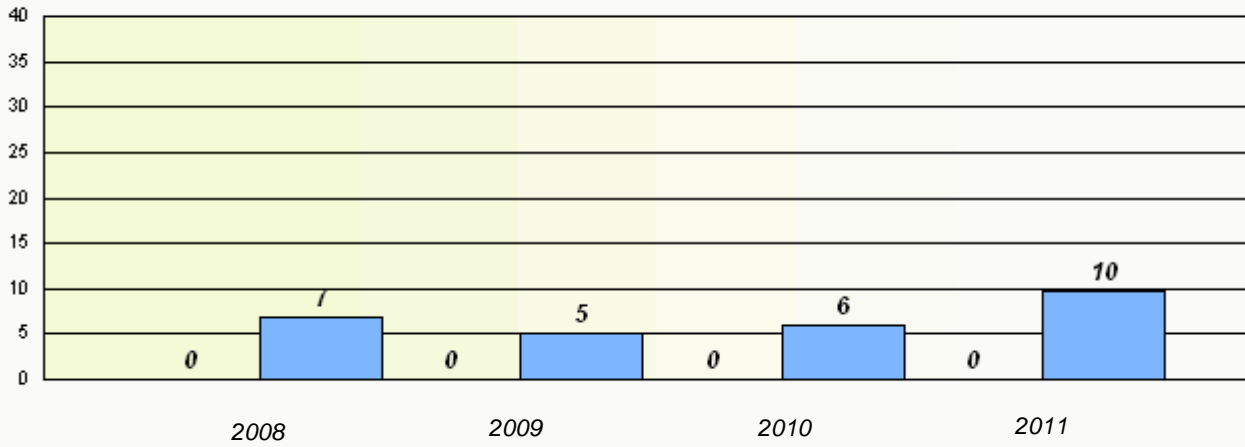


District 2 - Western

School #: 032 Truman Eddison Memorial

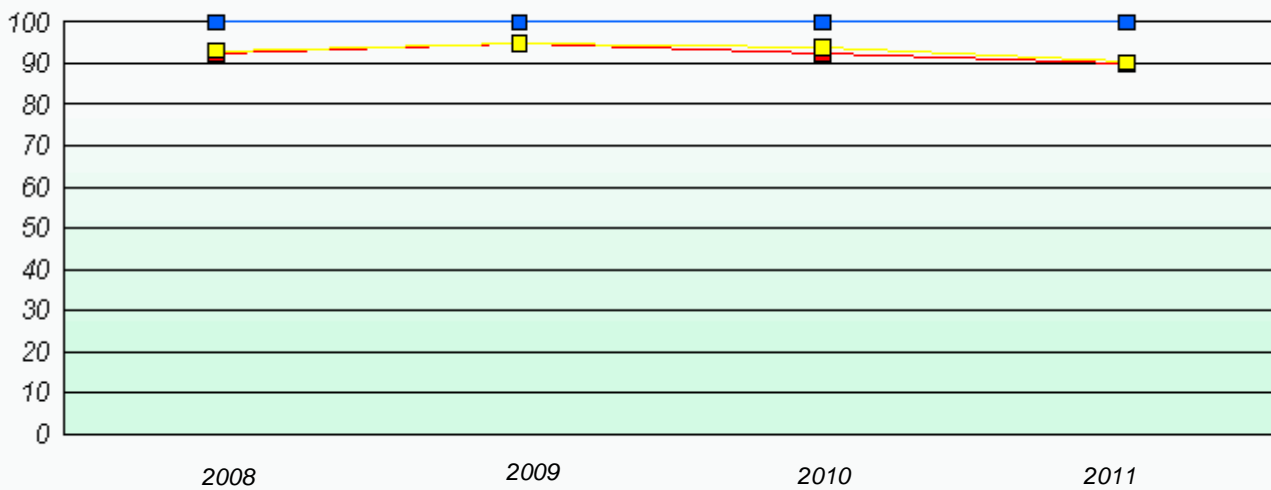
### Exemption Rates

Number Operations



### Participation Rates

Number Operations



District 2 - Western

School #: 040 St. Mary's AG

### Exemption Rates

#### Number Operations

*School data with 5 or fewer students withheld for reasons of confidentiality.*

2008

2009

2010

2011



School



Province

### Participation Rates

#### Number Operations

*School data with 5 or fewer students withheld for reasons of confidentiality.*

2008

2009

2010

2011



School



District



Province

District 2 - Western

School #: 041 Raymond Ward Memorial

**Exemption Rates**

**Number Operations**

*School data with 5 or fewer students withheld for reasons of confidentiality.*

2008

2009

2010

2011



School



Province

**Participation Rates**

**Number Operations**

*School data with 5 or fewer students withheld for reasons of confidentiality.*

2008

2009

2010

2011



School



District



Province



District 2 - Western

School #: 046 D.C. Young School

**Exemption Rates**

**Number Operations**

*School data with 5 or fewer students withheld for reasons of confidentiality.*

2008

2009

2010

2011



School



Province

**Participation Rates**

**Number Operations**

*School data with 5 or fewer students withheld for reasons of confidentiality.*

2008

2009

2010

2011



School



District



Province

District 2 - Western

School #: 050 Basque Memorial

**Exemption Rates**

**Number Operations**

*School data with 5 or fewer students withheld for reasons of confidentiality.*

2008

2009

2010

2011



School



Province

**Participation Rates**

**Number Operations**

*School data with 5 or fewer students withheld for reasons of confidentiality.*

2008

2009

2010

2011



School



District



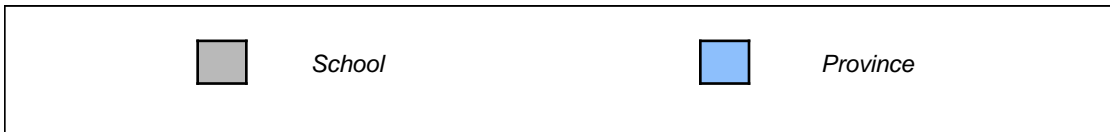
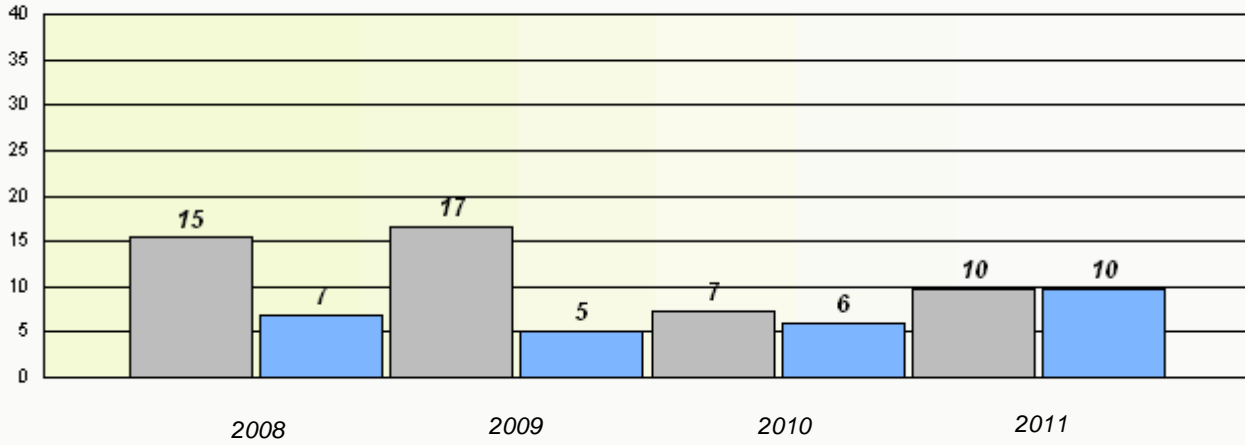
Province

District 2 - Western

School #: 053      St. Anthony Elementary

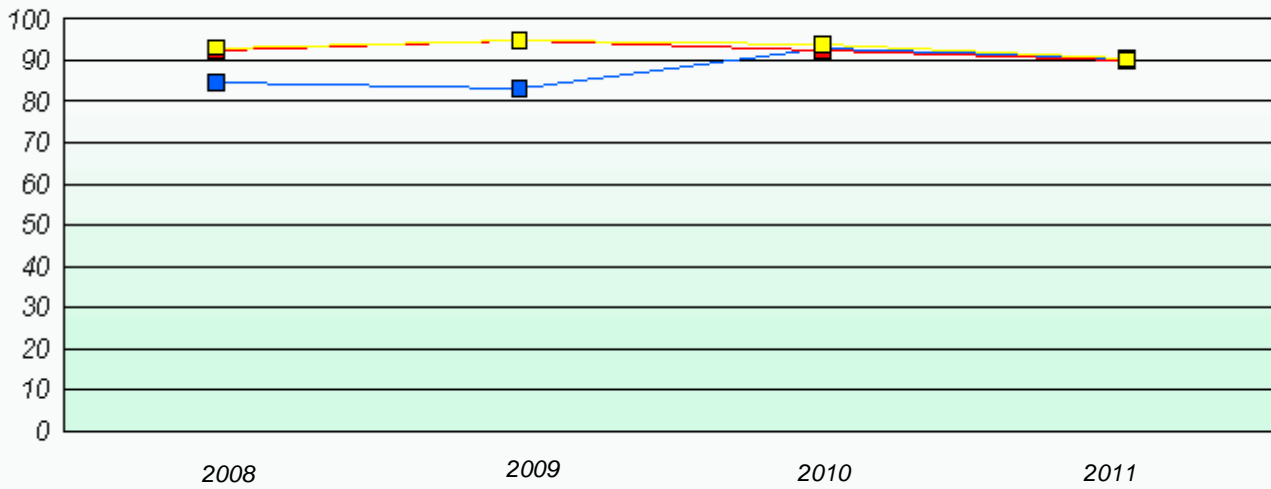
**Exemption Rates**

**Number Operations**



**Participation Rates**

**Number Operations**



District 2 - Western

School #: 054 St. Lewis Academy

### Exemption Rates

#### Number Operations

*School data with 5 or fewer students withheld for reasons of confidentiality.*

2008

2009

2010

2011



School



Province

### Participation Rates

#### Number Operations

*School data with 5 or fewer students withheld for reasons of confidentiality.*

2008

2009

2010

2011



School



District



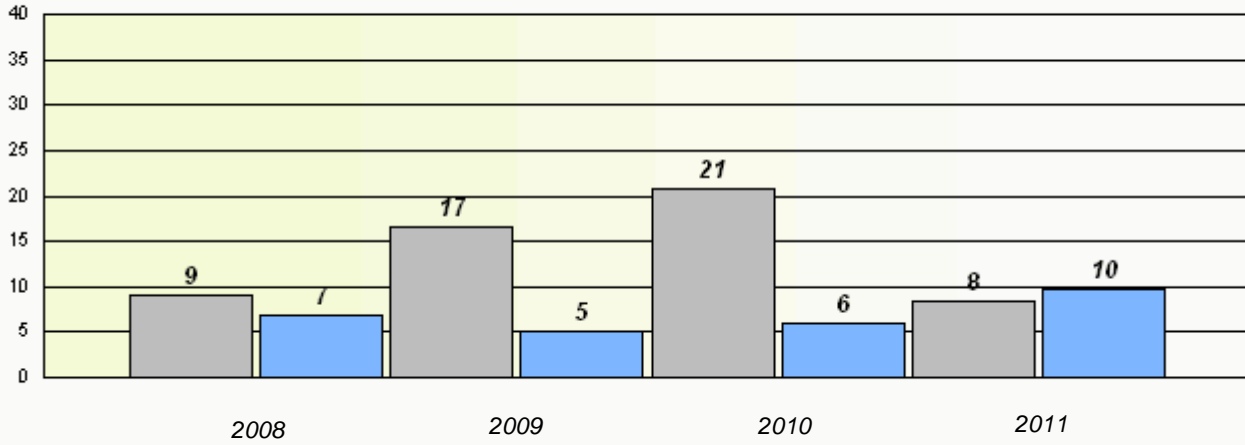
Province

District 2 - Western

School #: 057 St. Peter's Academy

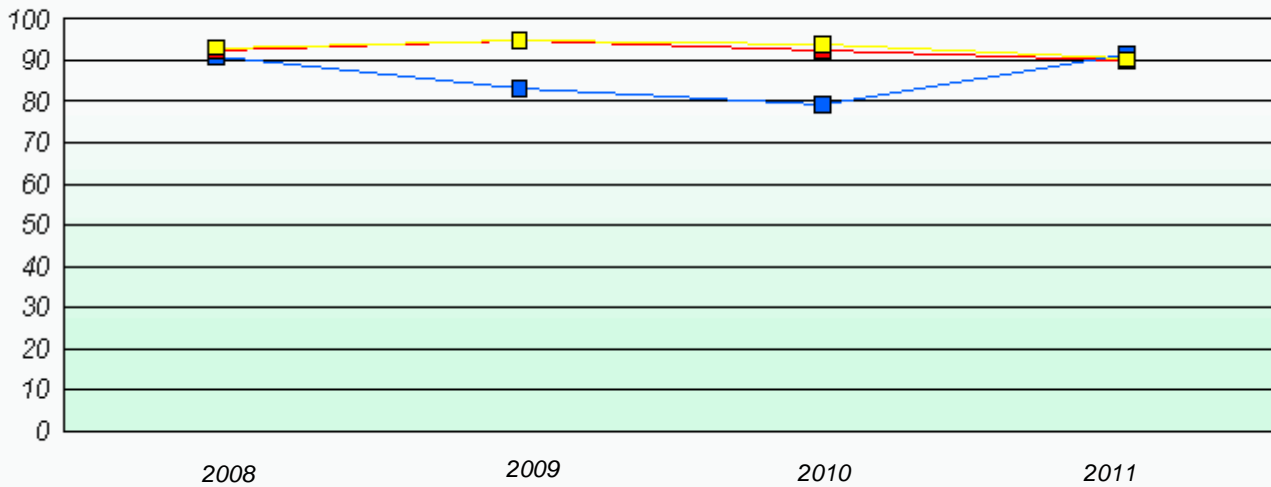
### Exemption Rates

Number Operations



### Participation Rates

Number Operations

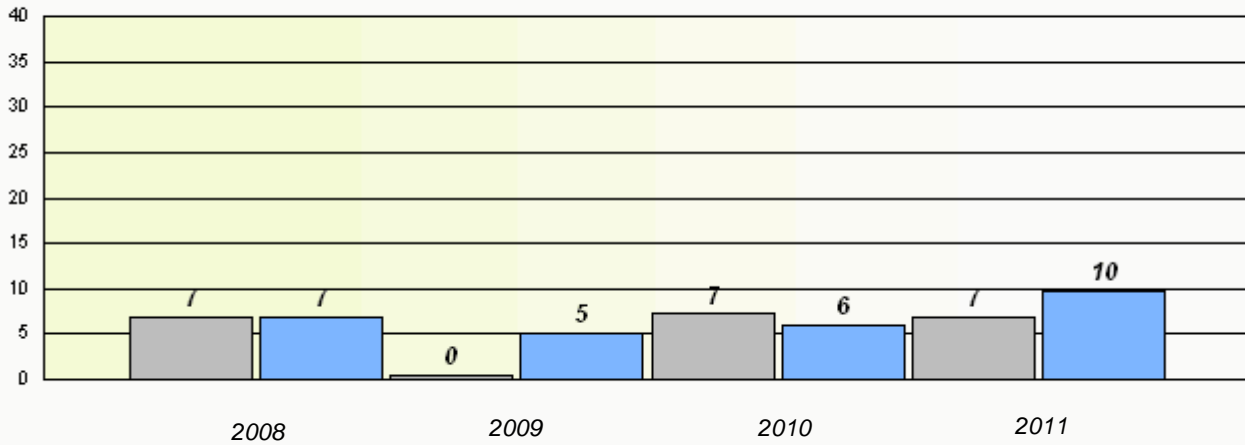


District 2 - Western

School #: 060 C.C. Loughlin Elementary

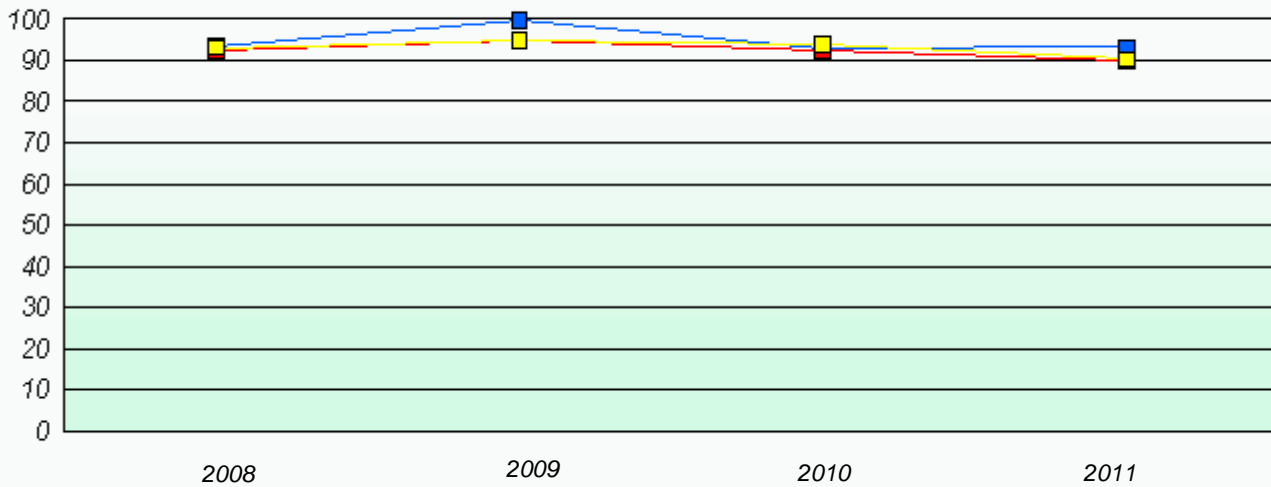
**Exemption Rates**

Number Operations



**Participation Rates**

Number Operations

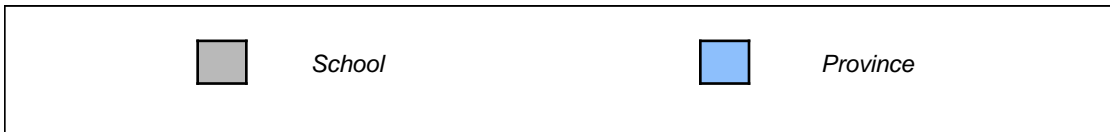
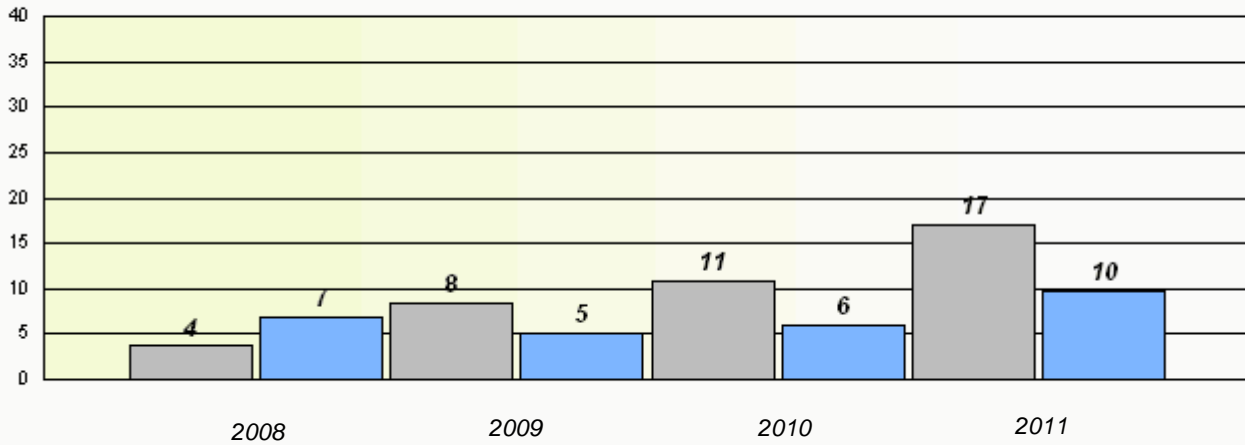


District 2 - Western

School #: 065 Humber Elementary

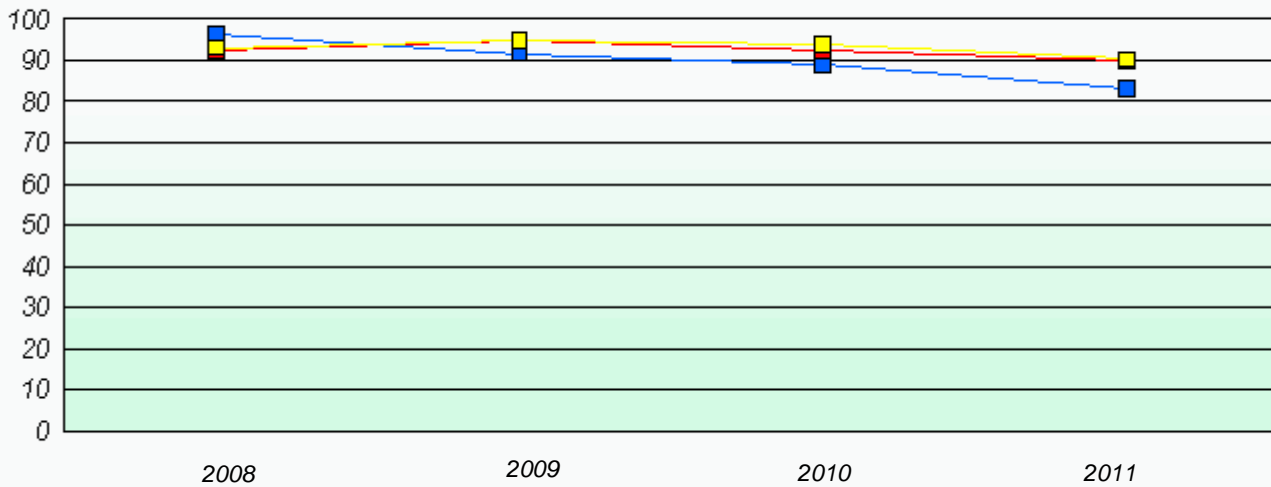
**Exemption Rates**

**Number Operations**



**Participation Rates**

**Number Operations**

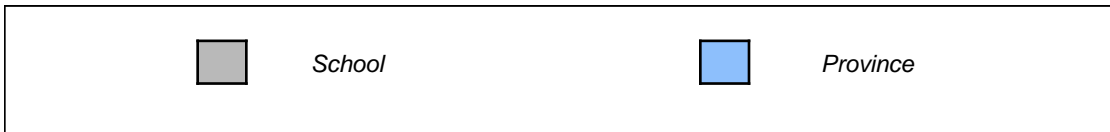
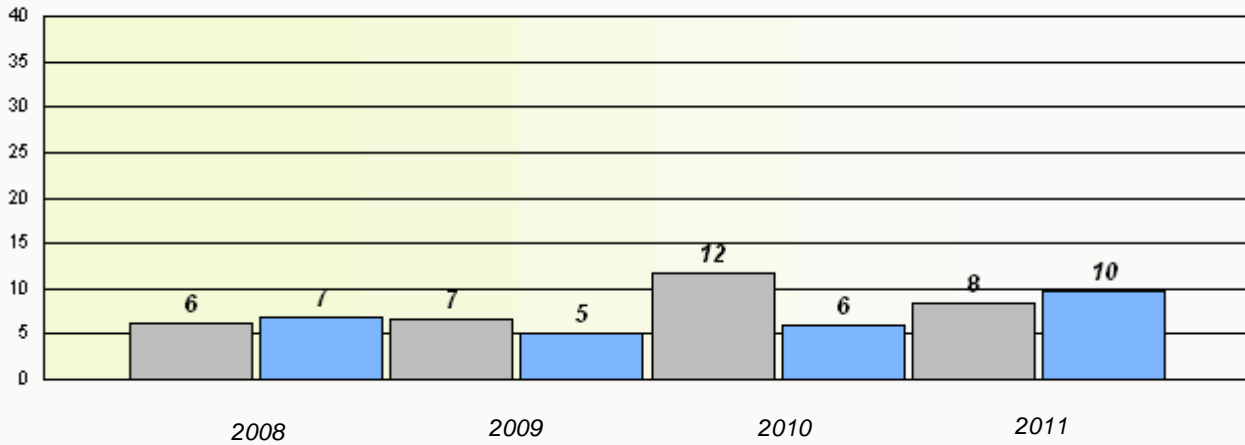


District 2 - Western

School #: 066 J.J. Curling Elementary

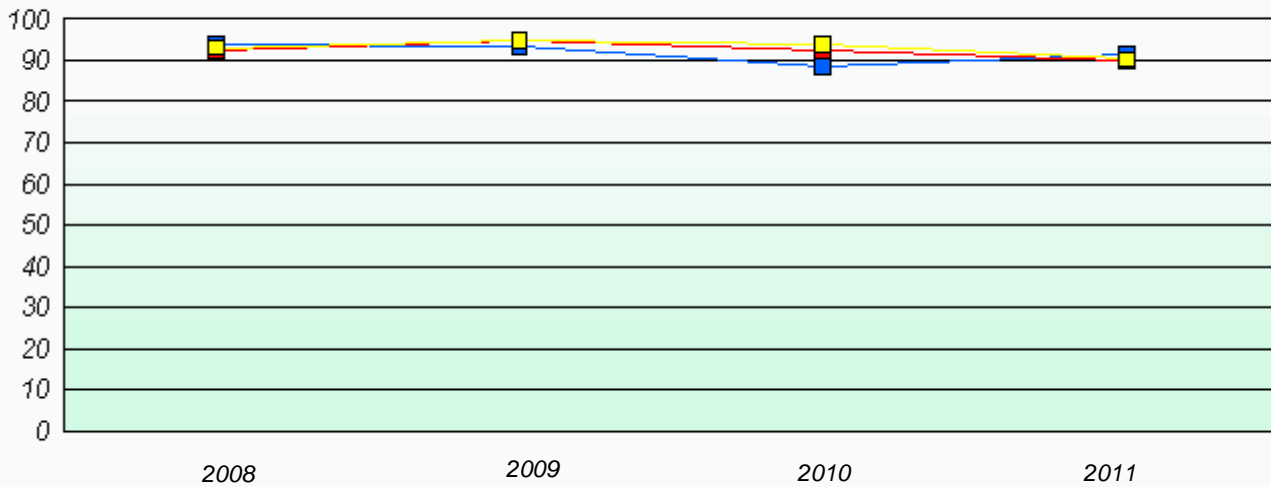
**Exemption Rates**

**Number Operations**



**Participation Rates**

**Number Operations**



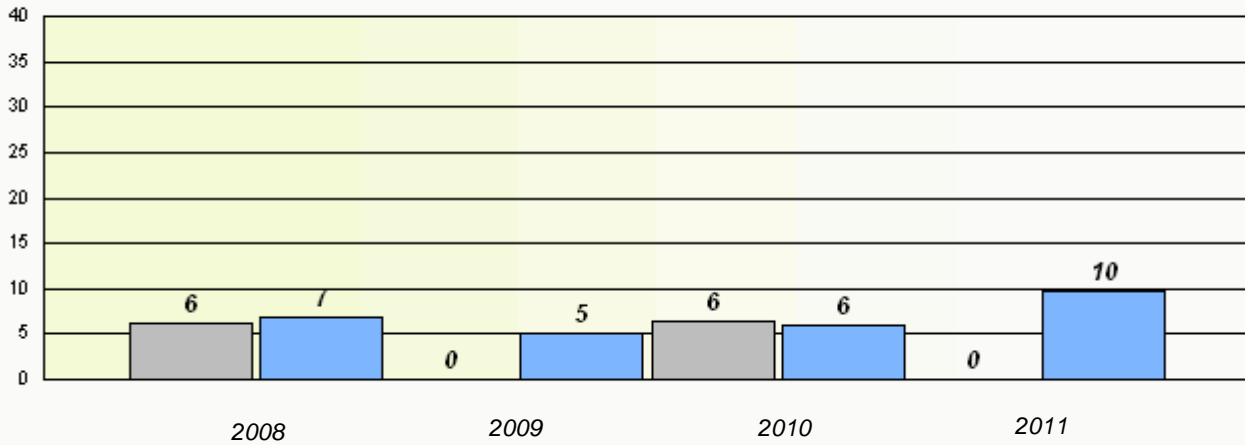


District 2 - Western

School #: 069 Sacred Heart Elementary

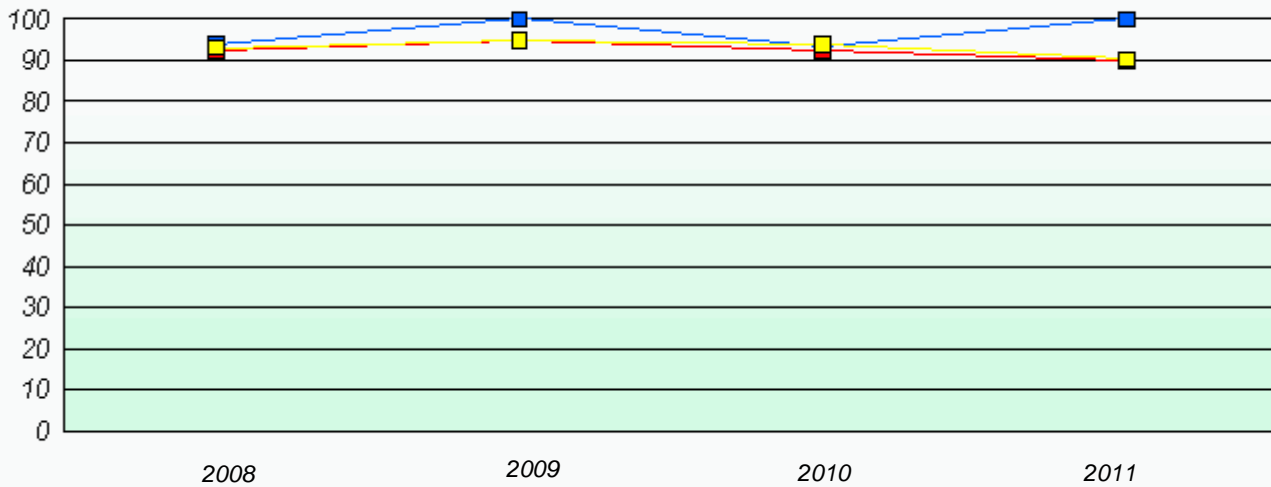
### Exemption Rates

Number Operations



### Participation Rates

Number Operations



District 2 - Western

School #: 070 St. Gerard's Elementary

**Exemption Rates**

**Number Operations**

*School data with 5 or fewer students withheld for reasons of confidentiality.*

2008

2009

2010

2011



School



Province

**Participation Rates**

**Number Operations**

*School data with 5 or fewer students withheld for reasons of confidentiality.*

2008

2009

2010

2011



School



District



Province

District 2 - Western

School #: 072 Holy Cross All Grade School

**Exemption Rates**

**Number Operations**

*School data with 5 or fewer students withheld for reasons of confidentiality.*

2008

2009

2010

2011



School



Province

**Participation Rates**

**Number Operations**

*School data with 5 or fewer students withheld for reasons of confidentiality.*

2008

2009

2010

2011



School



District



Province

District 2 - Western

School #: 075 Hampden Academy

### Exemption Rates

#### Number Operations

*School data with 5 or fewer students withheld for reasons of confidentiality.*

2008

2009

2010

2011



School



Province

### Participation Rates

#### Number Operations

*School data with 5 or fewer students withheld for reasons of confidentiality.*

2008

2009

2010

2011



School



District



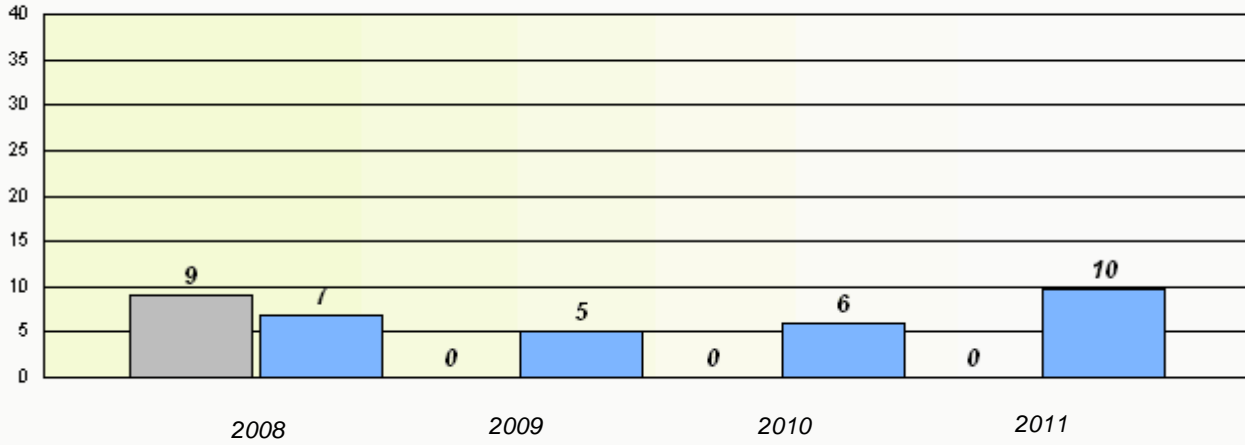
Province

District 2 - Western

School #: 079 St. James All Grade

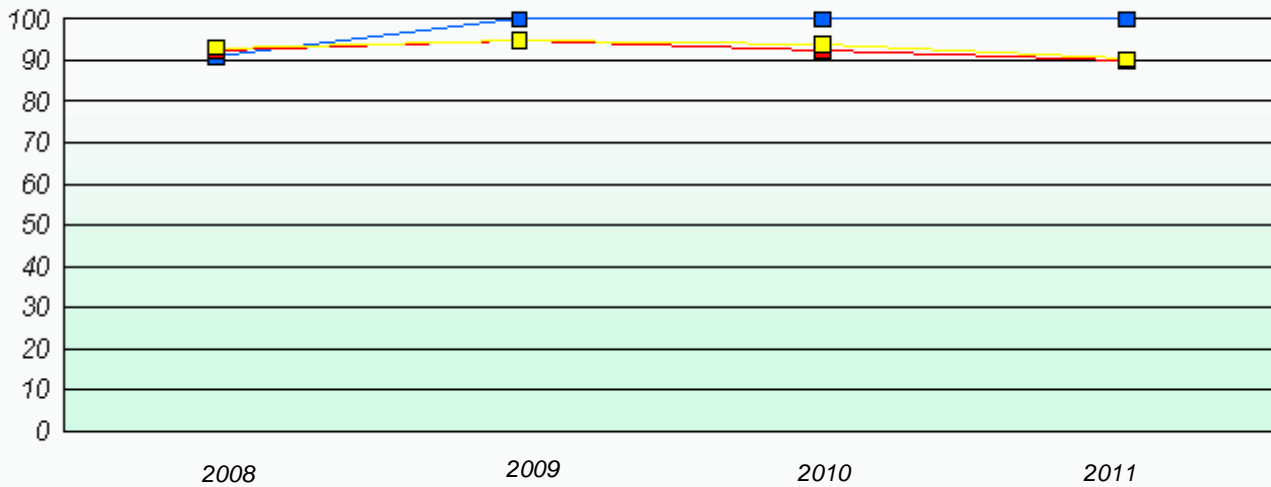
### Exemption Rates

Number Operations



### Participation Rates

Number Operations

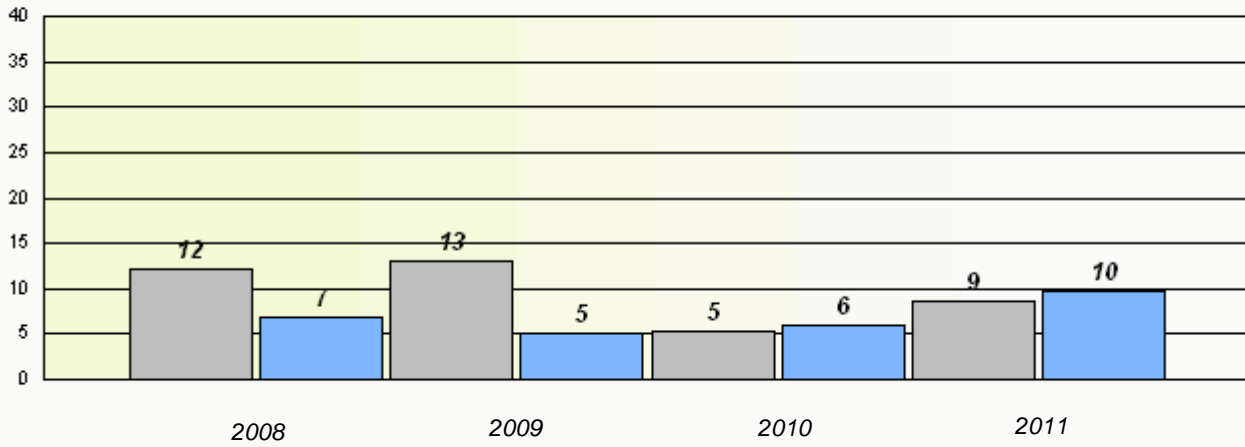


District 2 - Western

School #: 080 Templeton Academy

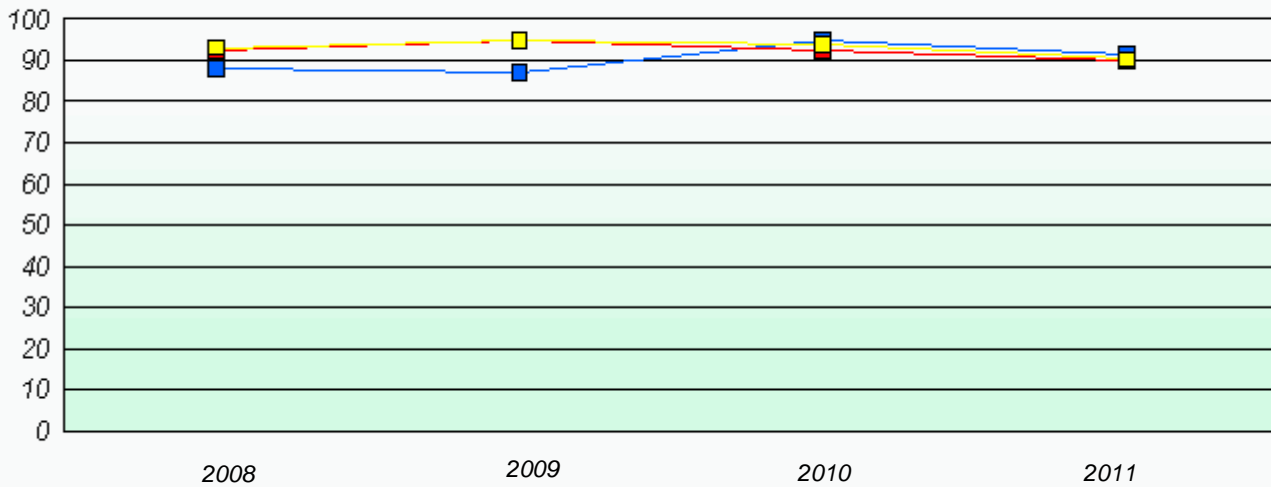
### Exemption Rates

Number Operations



### Participation Rates

Number Operations

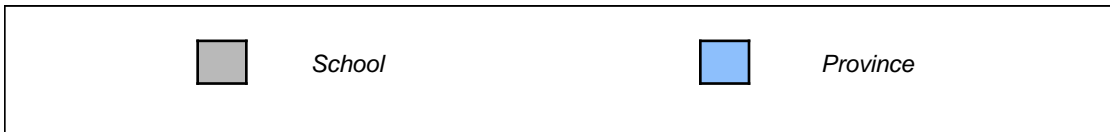
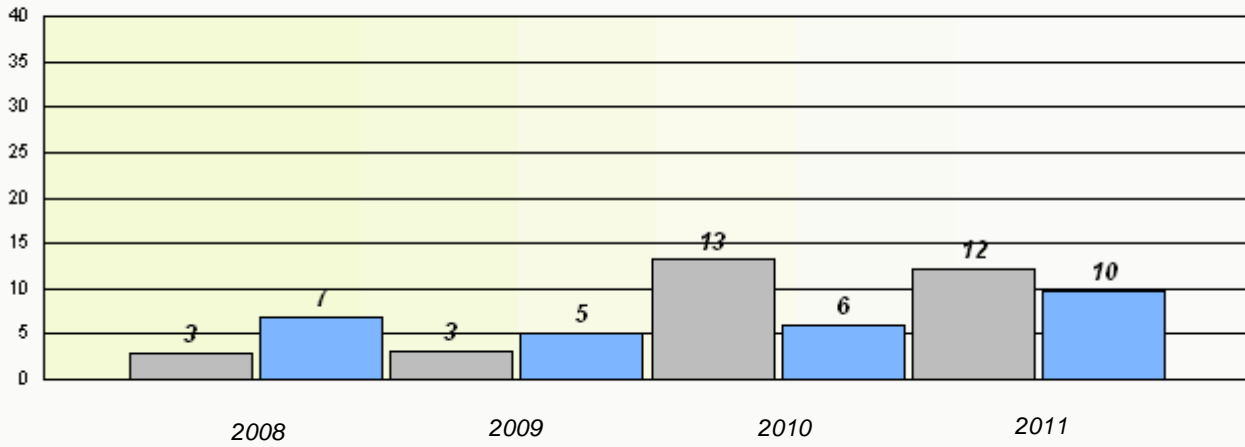


District 2 - Western

School #: 082 Pasadena Elementary School

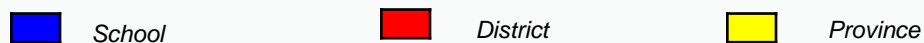
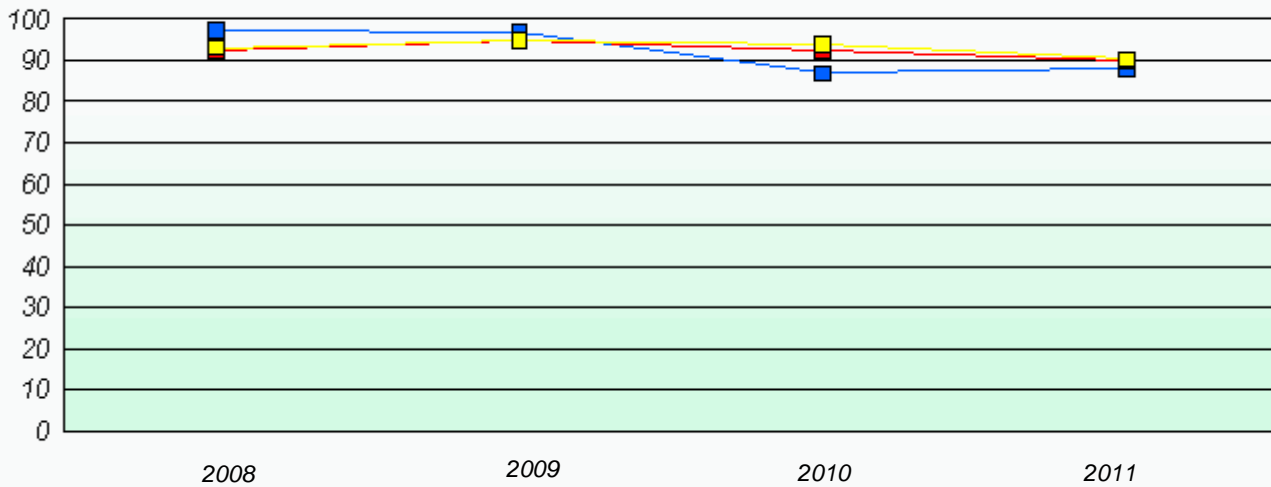
**Exemption Rates**

**Number Operations**



**Participation Rates**

**Number Operations**

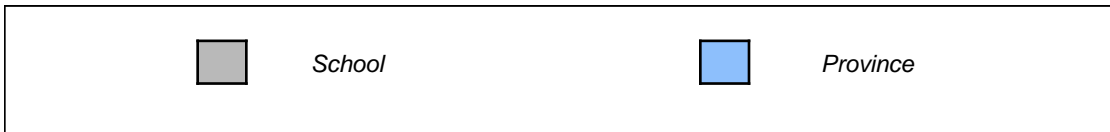
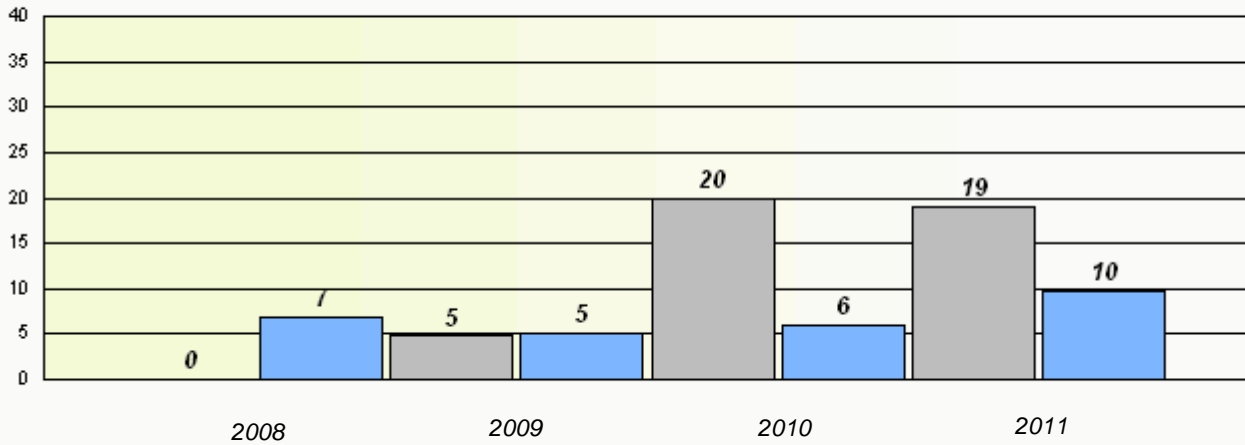


District 2 - Western

School #: 086 Gros Morne Academy

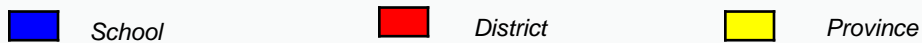
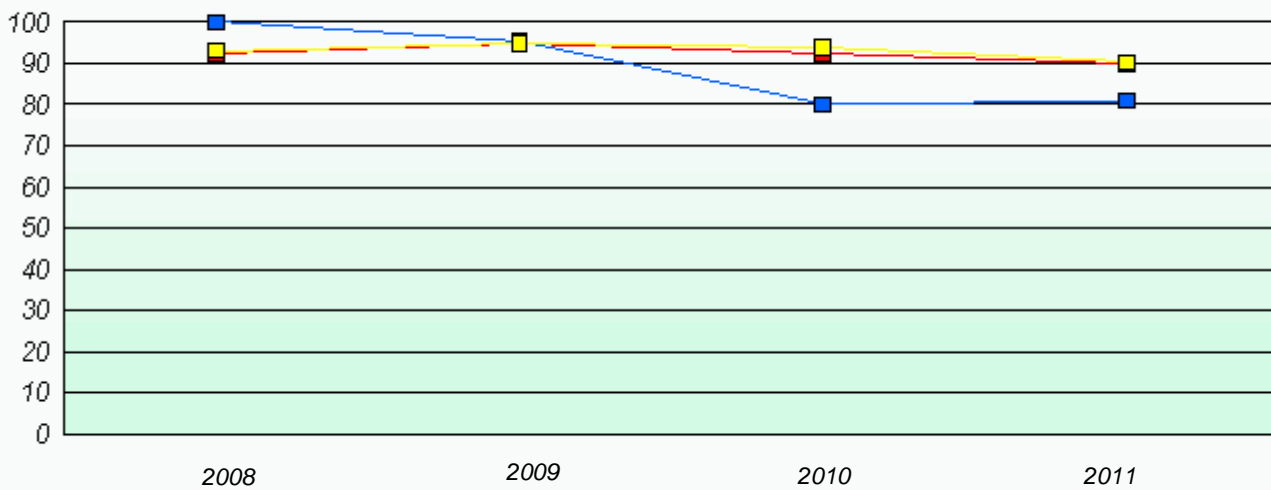
### Exemption Rates

Number Operations



### Participation Rates

Number Operations



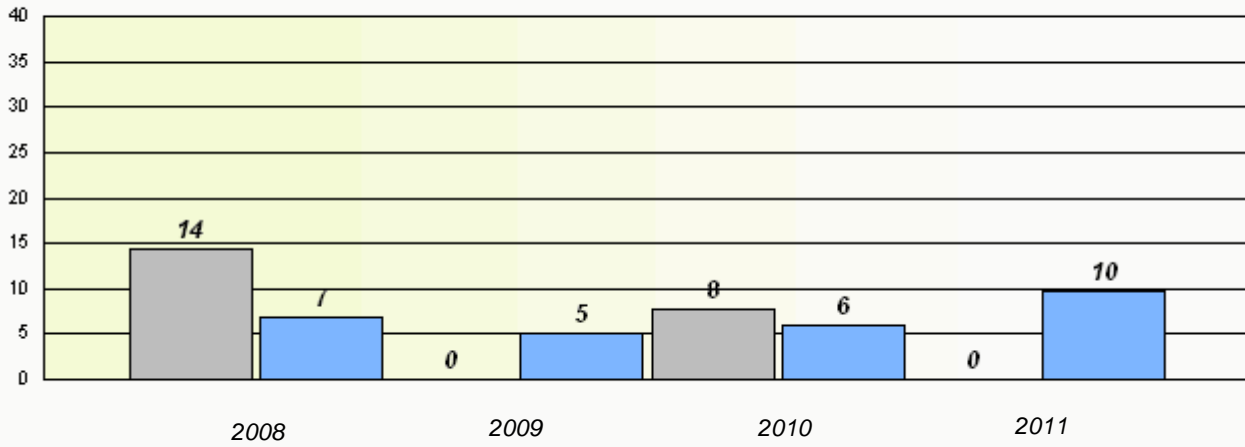


District 2 - Western

School #: 088 Main River Academy

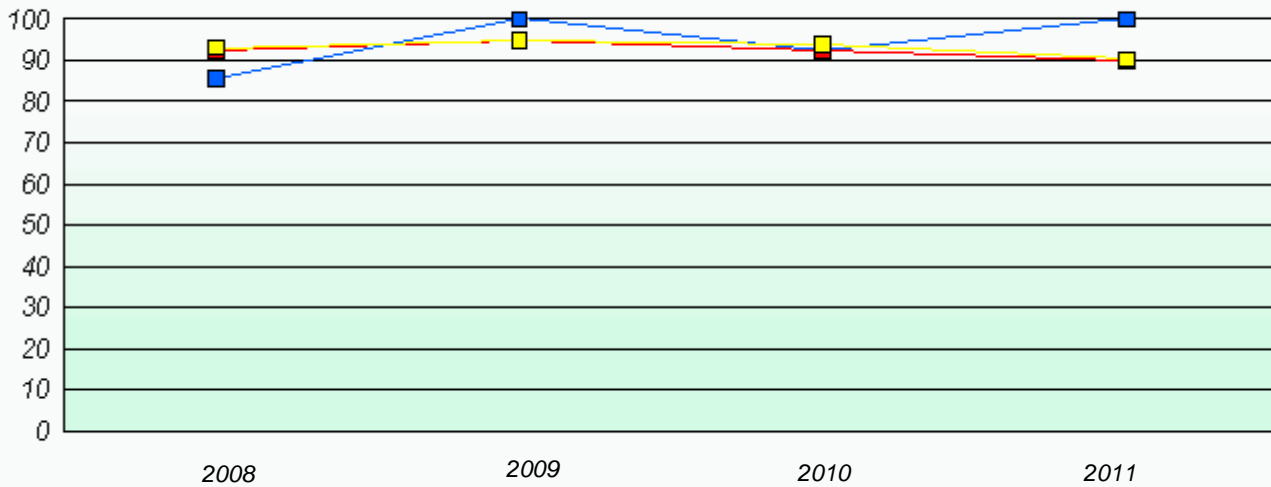
**Exemption Rates**

**Number Operations**



**Participation Rates**

**Number Operations**



District 2 - Western

School #: 089      Jakeman All Grade

### Exemption Rates

#### Number Operations

*School data with 5 or fewer students withheld for reasons of confidentiality.*

2008

2009

2010

2011



School



Province

### Participation Rates

#### Number Operations

*School data with 5 or fewer students withheld for reasons of confidentiality.*

2008

2009

2010

2011



School



District



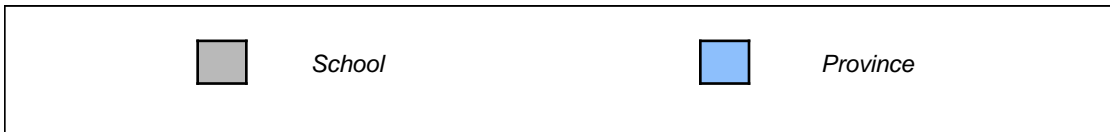
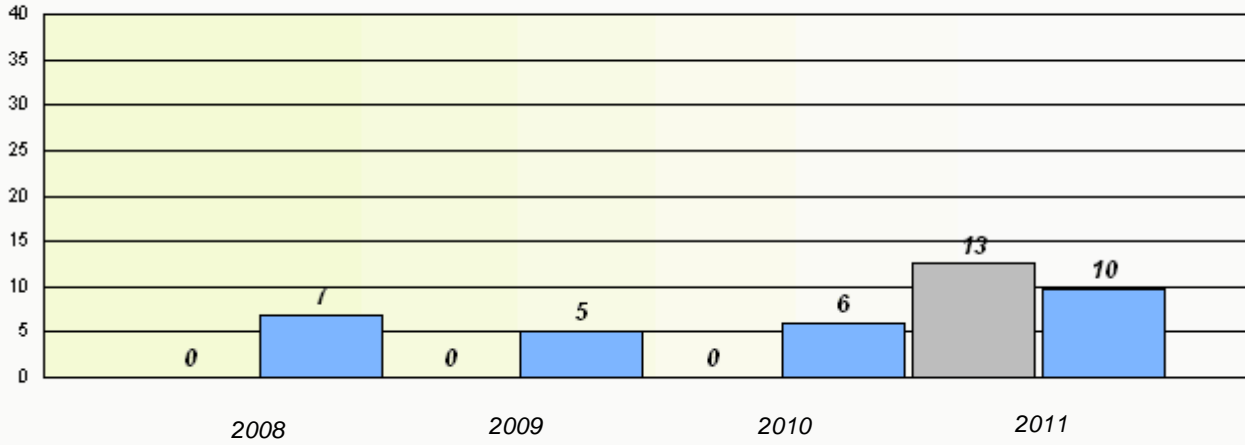
Province

District 2 - Western

School #: 091 Burgeo Academy

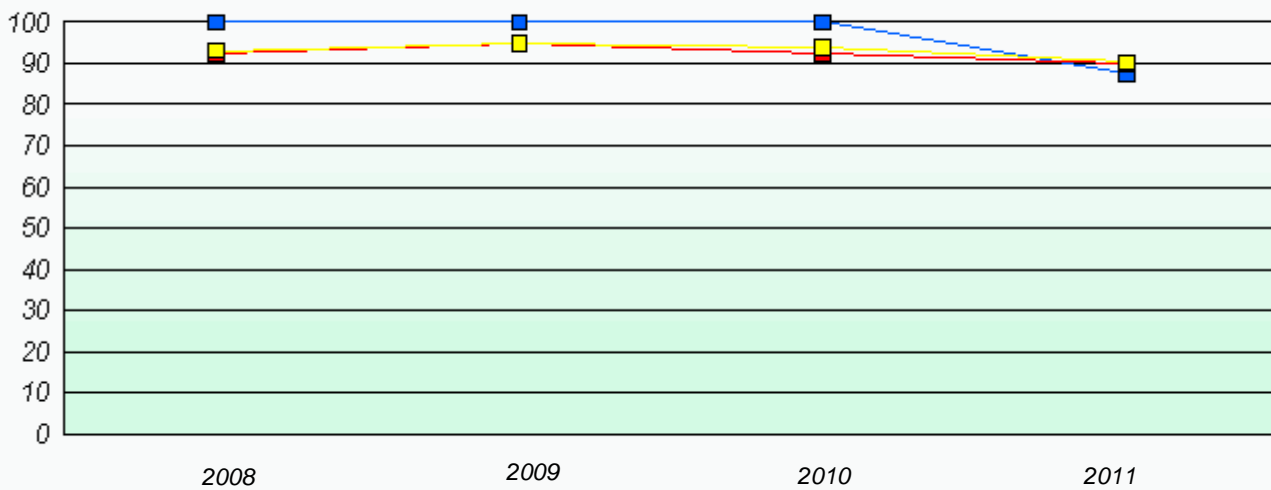
**Exemption Rates**

**Number Operations**



**Participation Rates**

**Number Operations**

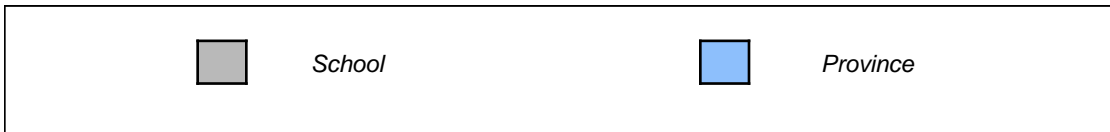
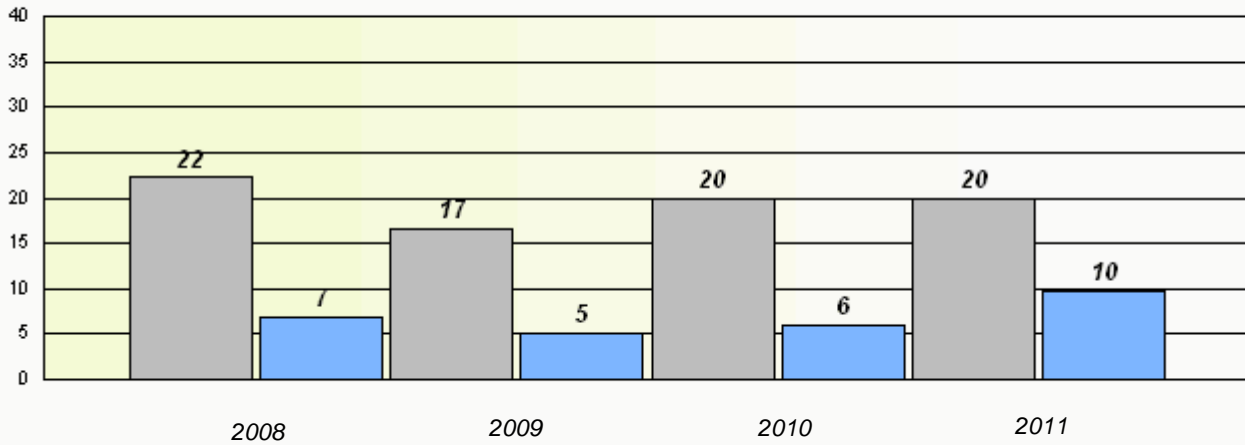


District 2 - Western

School #: 092 Grandy's River Collegiate

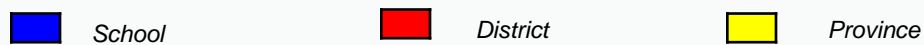
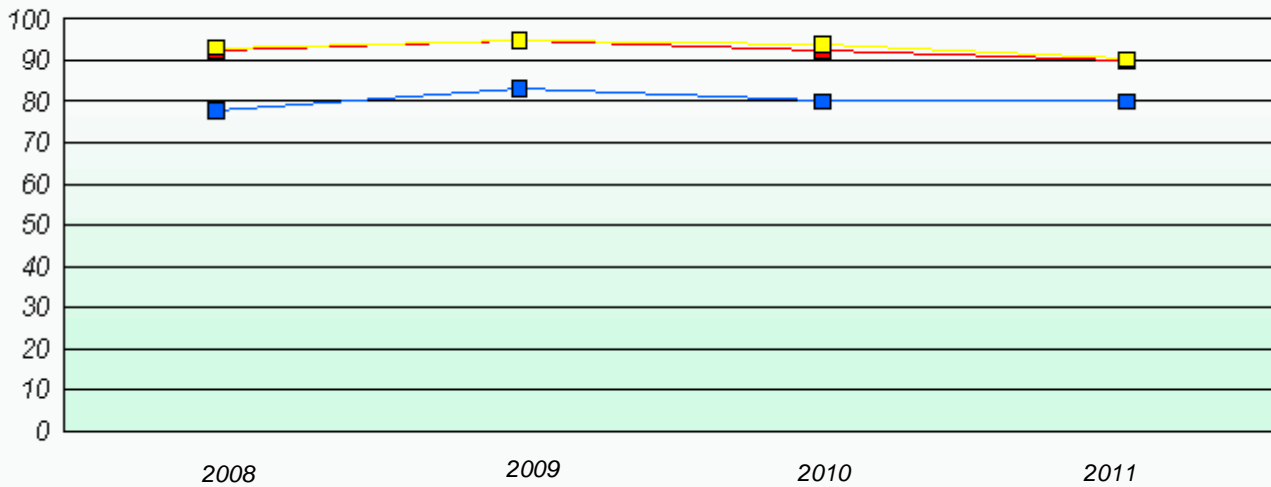
### Exemption Rates

Number Operations



### Participation Rates

Number Operations

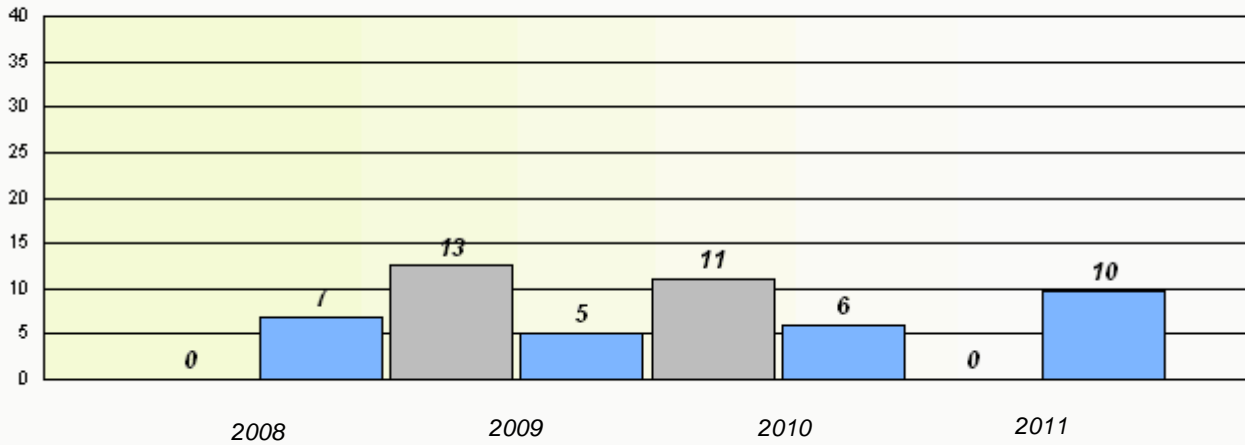


District 2 - Western

School #: 096 Our Lady of the Cape School

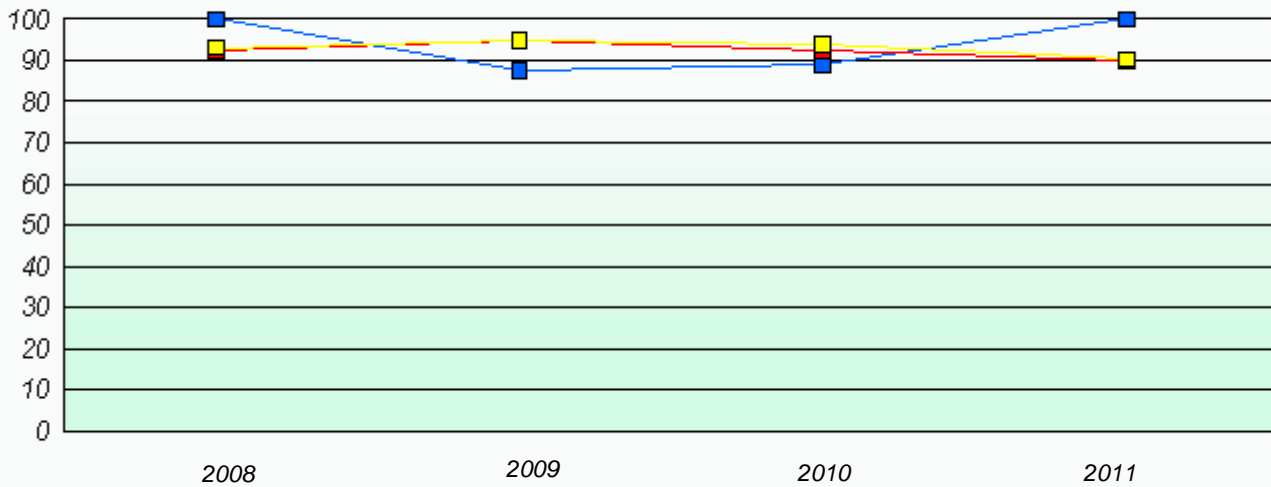
**Exemption Rates**

**Number Operations**



**Participation Rates**

**Number Operations**

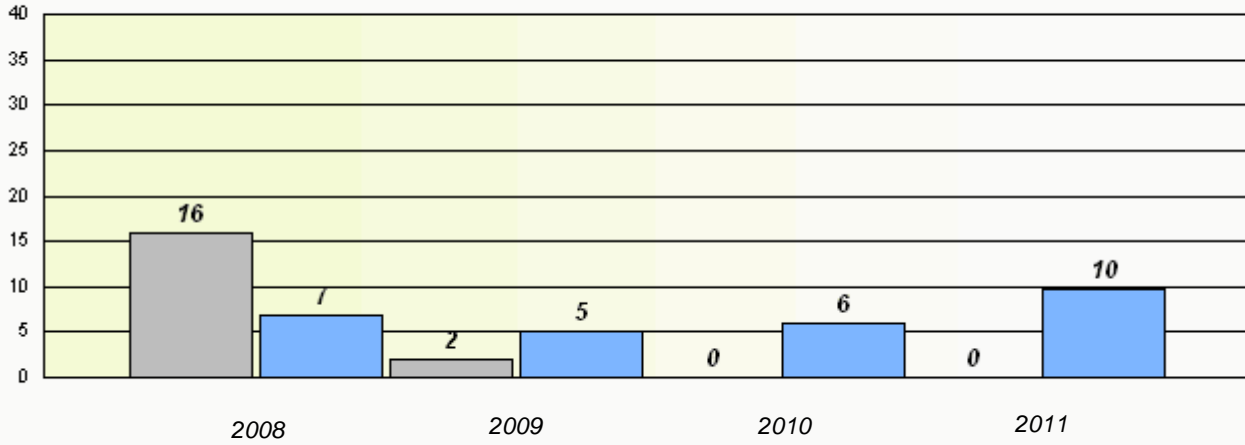


District 2 - Western

School #: 097      St. James' Elementary

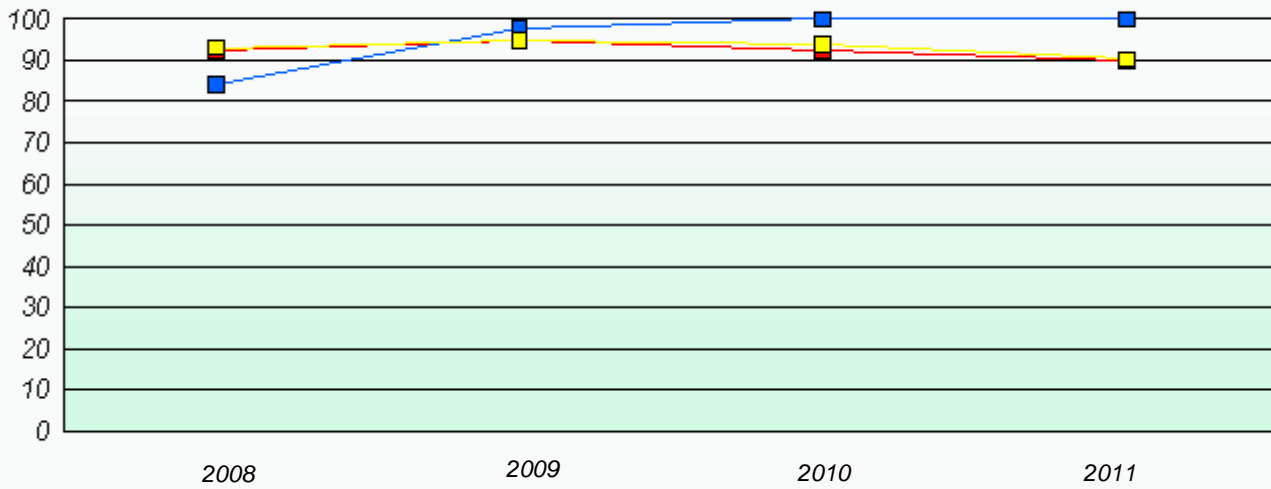
**Exemption Rates**

**Number Operations**



**Participation Rates**

**Number Operations**



District 2 - Western

School #: 102 All Saints All-Grade

### Exemption Rates

#### Number Operations

*School data with 5 or fewer students withheld for reasons of confidentiality.*

2008

2009

2010

2011



School



Province

### Participation Rates

#### Number Operations

*School data with 5 or fewer students withheld for reasons of confidentiality.*

2008

2009

2010

2011



School



District



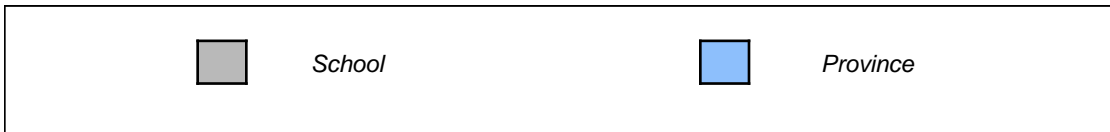
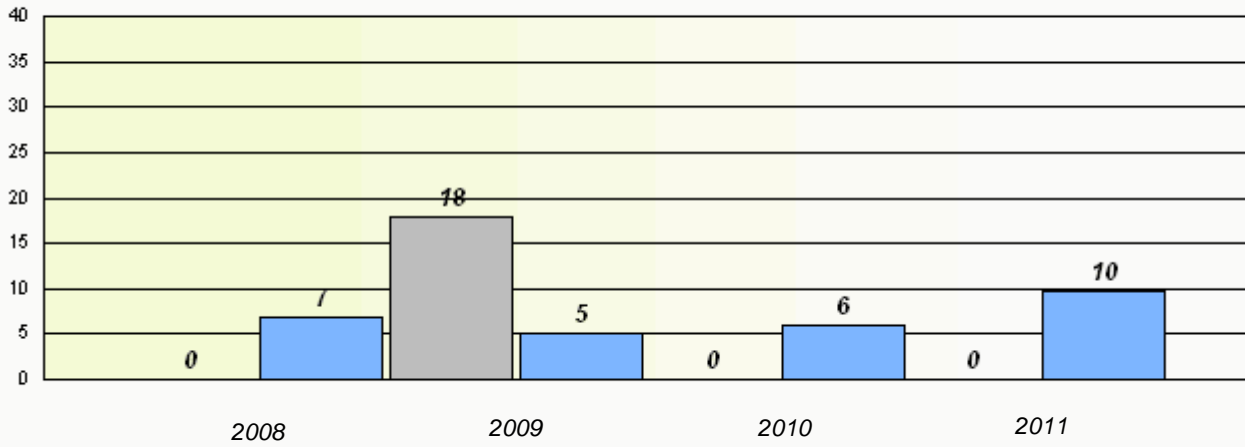
Province

District 2 - Western

School #: 103 LeGallais Memorial

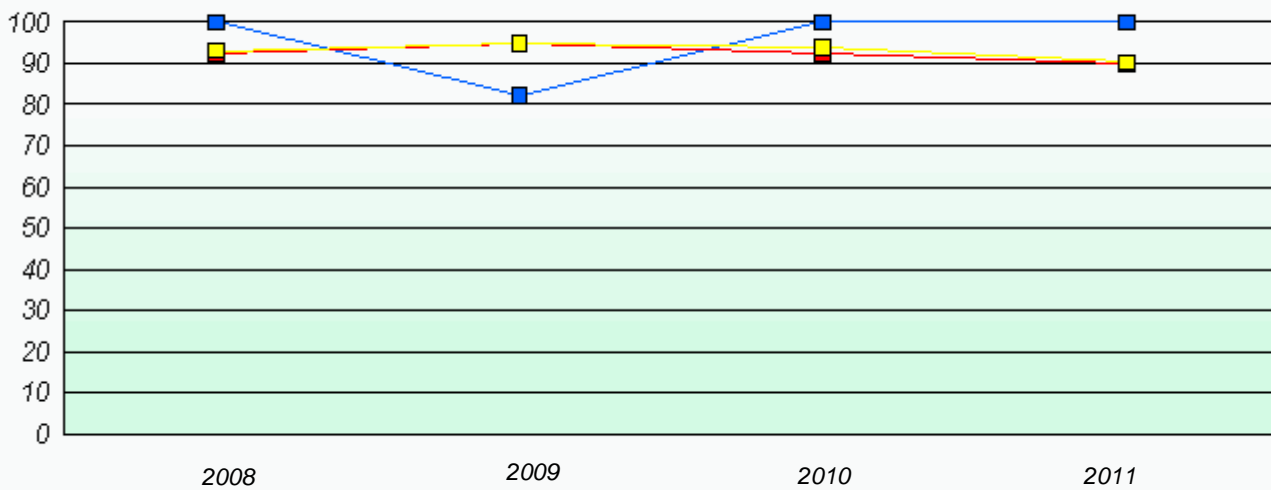
### Exemption Rates

Number Operations



### Participation Rates

Number Operations





District 2 - Western

School #: 104 Douglas Academy

### Exemption Rates

#### Number Operations

*School data with 5 or fewer students withheld for reasons of confidentiality.*

2008

2009

2010

2011



School



Province

### Participation Rates

#### Number Operations

*School data with 5 or fewer students withheld for reasons of confidentiality.*

2008

2009

2010

2011



School



District



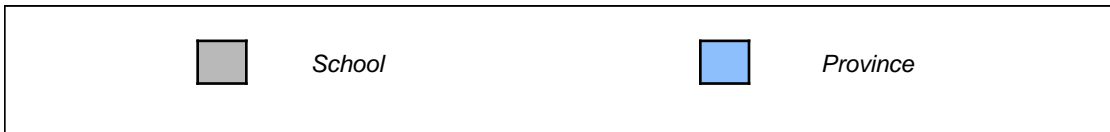
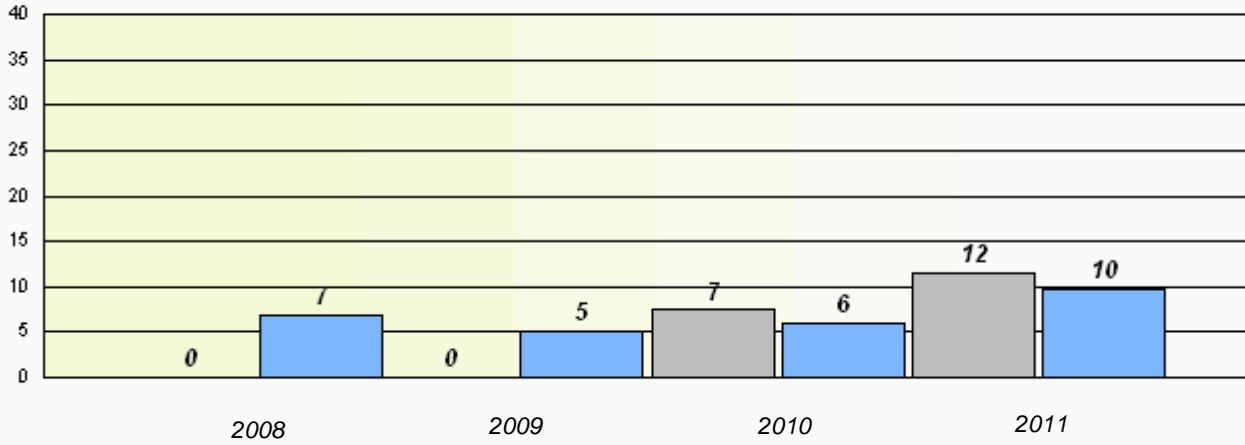
Province

District 2 - Western

School #: 106    Lourdes Elementary

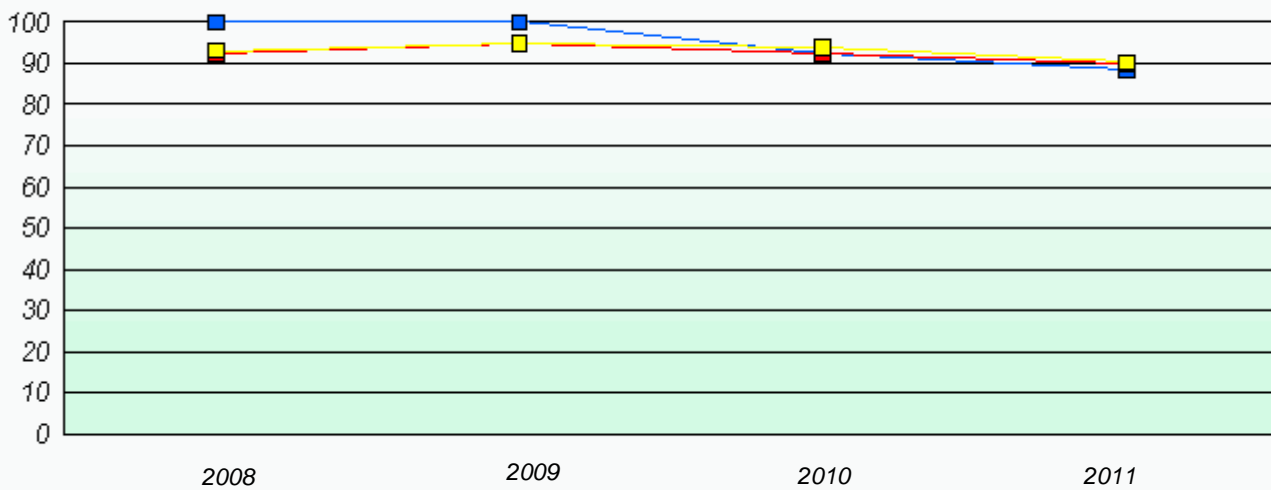
**Exemption Rates**

**Number Operations**



**Participation Rates**

**Number Operations**



District 2 - Western

School #: 111 St. Thomas Aquinas

### Exemption Rates

#### Number Operations

*School data with 5 or fewer students withheld for reasons of confidentiality.*

2008

2009

2010

2011



School



Province

### Participation Rates

#### Number Operations

*School data with 5 or fewer students withheld for reasons of confidentiality.*

2008

2009

2010

2011



School



District



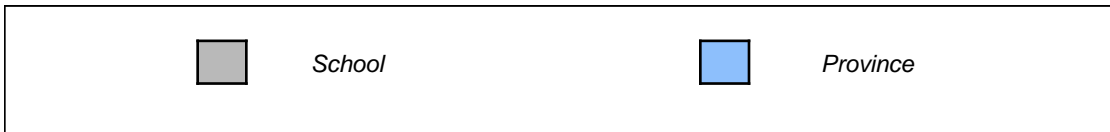
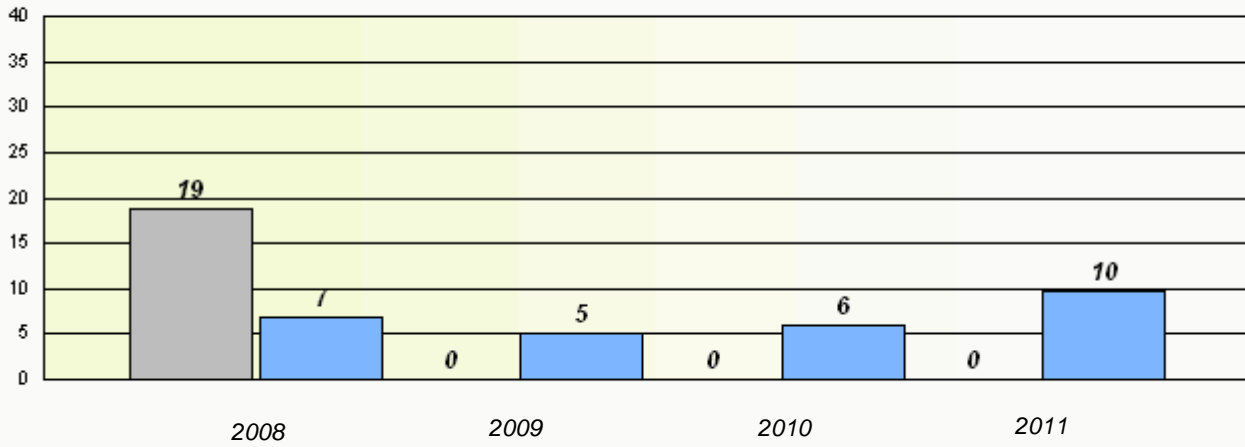
Province

District 2 - Western

School #: 113 St. Boniface All Grade

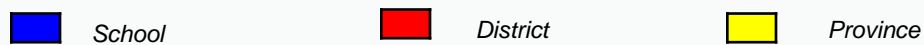
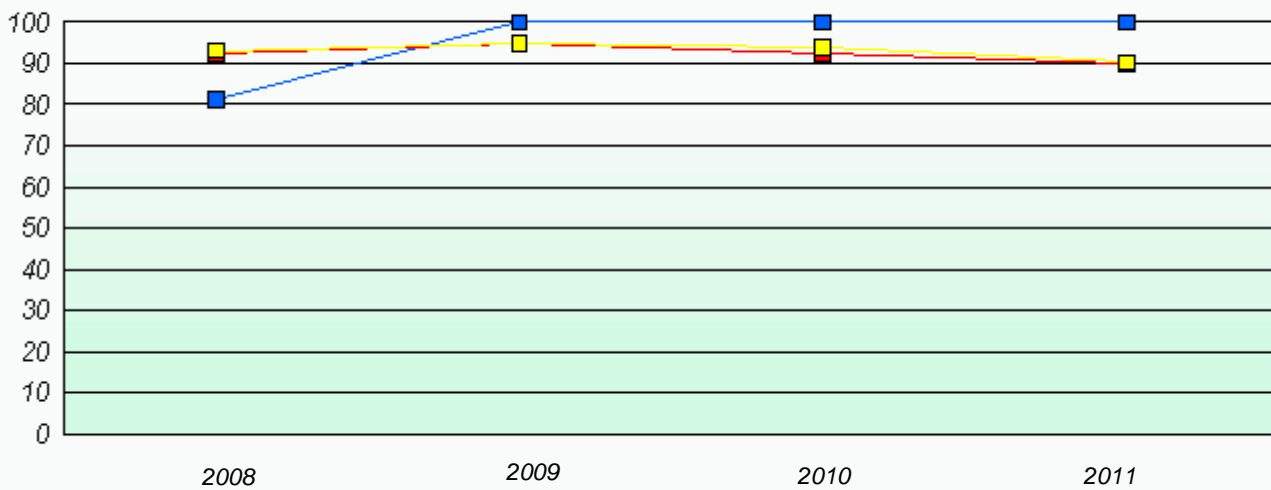
**Exemption Rates**

Number Operations



**Participation Rates**

Number Operations

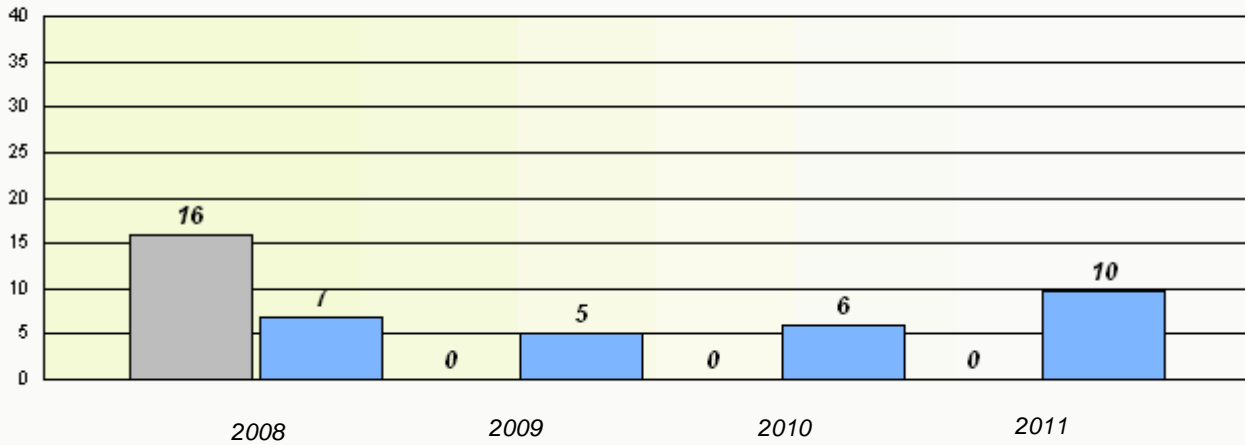


District 2 - Western

School #: 115    Our Lady of Mercy Elementary

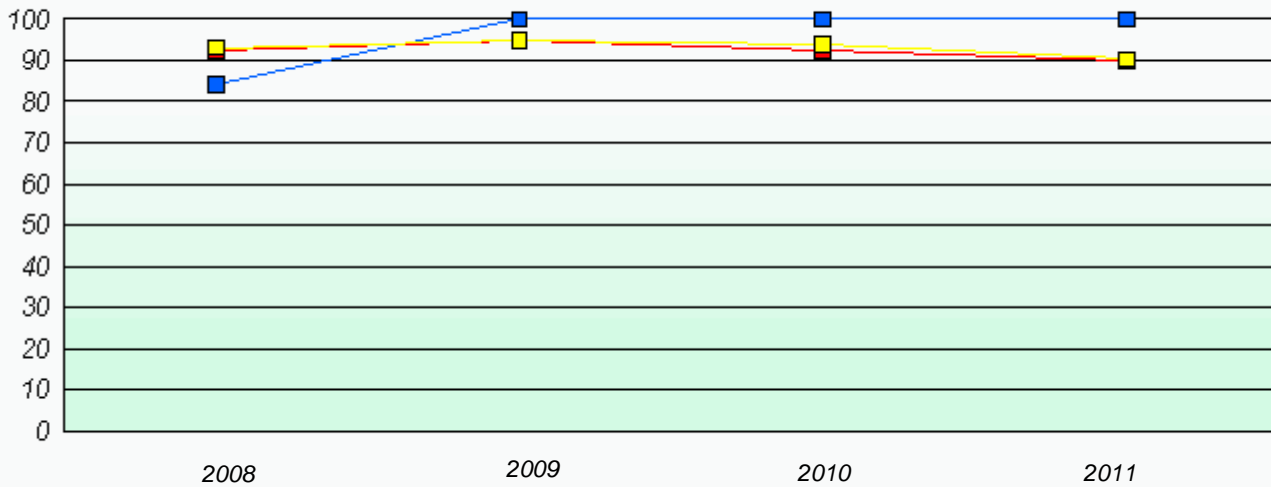
**Exemption Rates**

**Number Operations**



**Participation Rates**

**Number Operations**

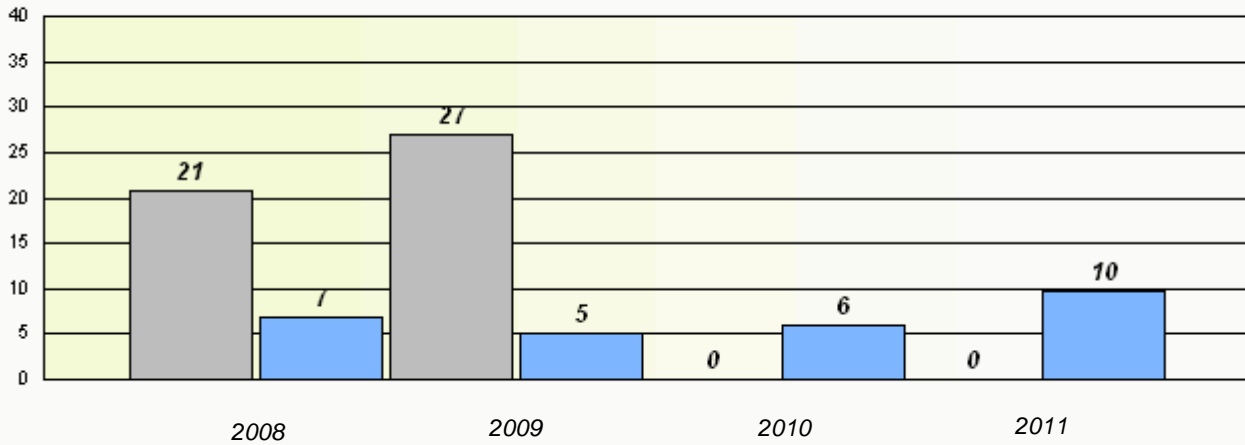


District 2 - Western

School #: 123 St. Michael's Elementary

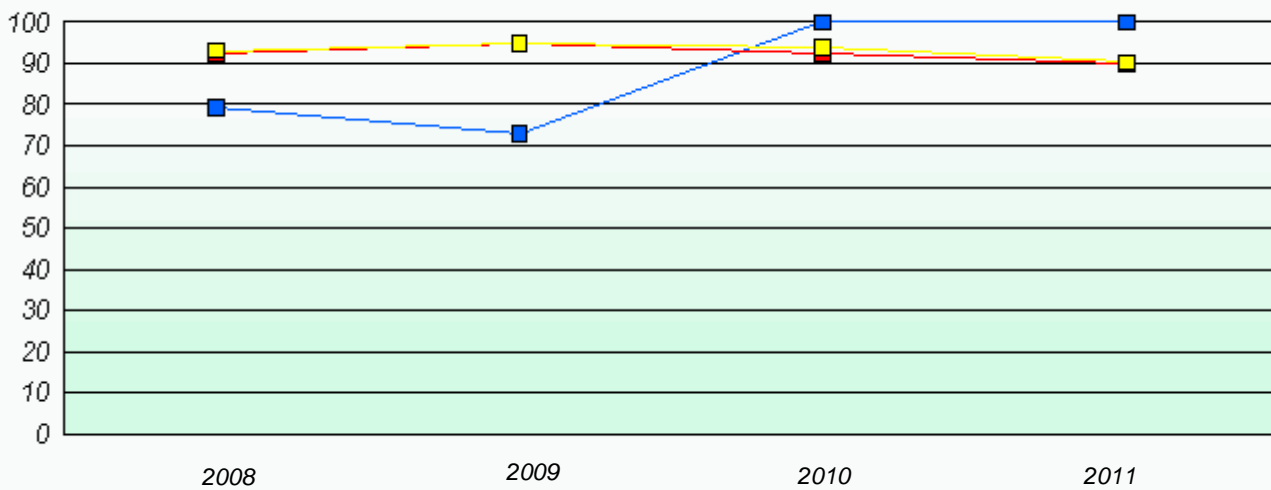
**Exemption Rates**

**Number Operations**



**Participation Rates**

**Number Operations**



District 2 - Western

School #: 137 St. Simon and St. Jude Academy

### Exemption Rates

#### Number Operations

*School data with 5 or fewer students withheld for reasons of confidentiality.*

2008

2009

2010

2011



School



Province

### Participation Rates

#### Number Operations

*School data with 5 or fewer students withheld for reasons of confidentiality.*

2008

2009

2010

2011



School



District



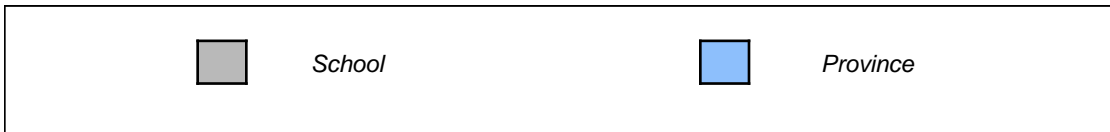
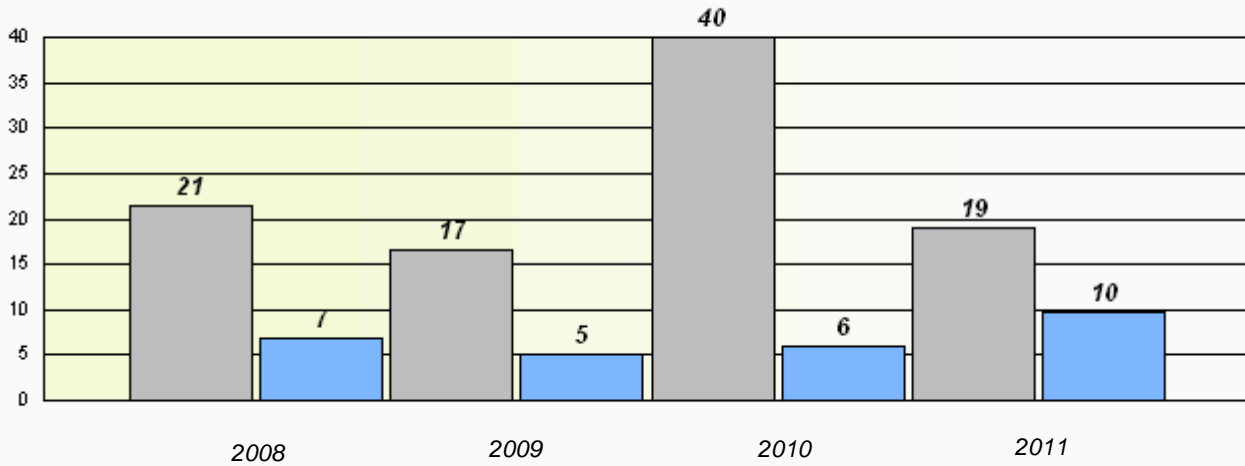
Province

District 2 - Western

School #: 388 Long Range Academy

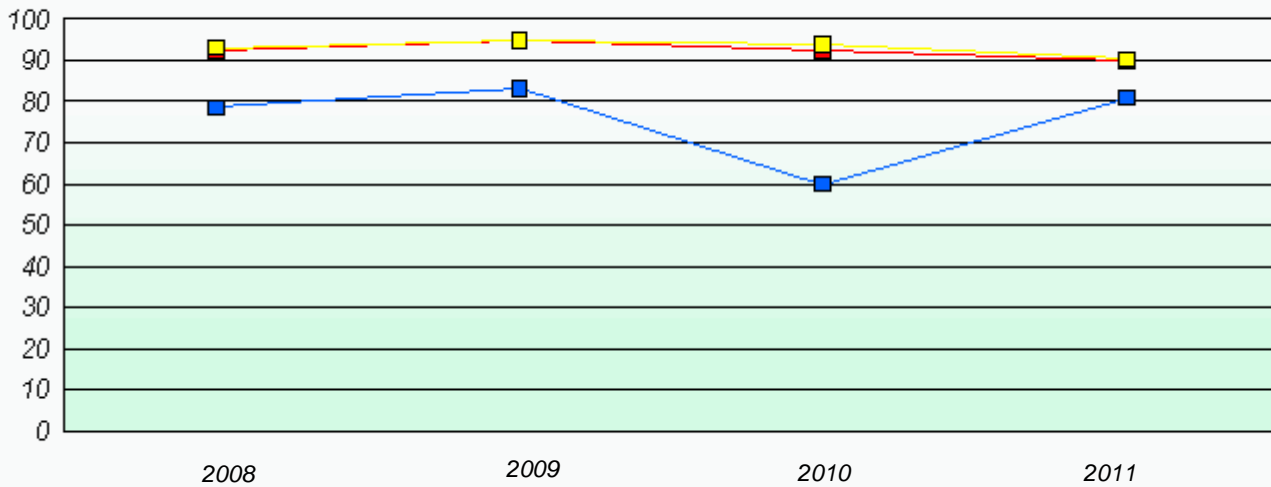
### Exemption Rates

Number Operations



### Participation Rates

Number Operations



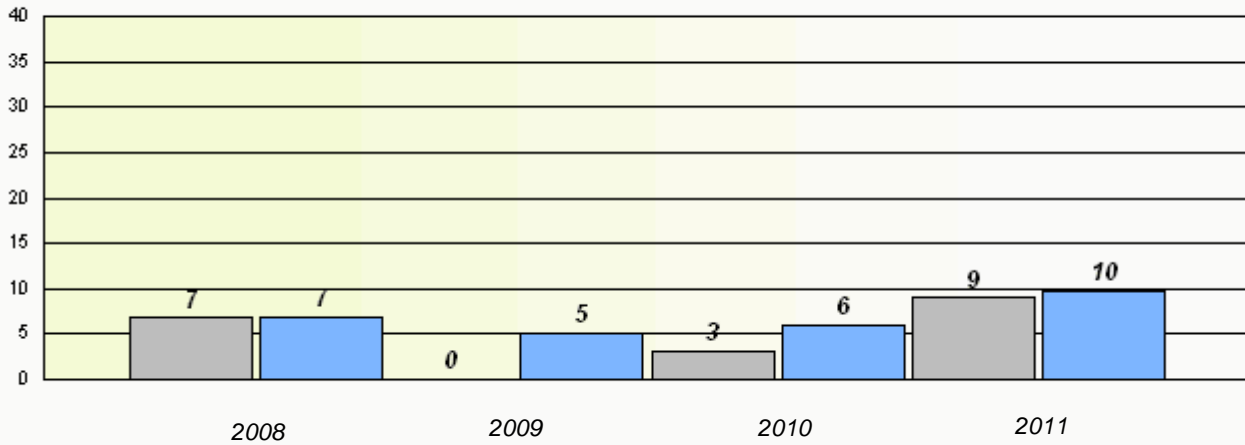


District 2 - Western

School #: 391 Xavier Junior High

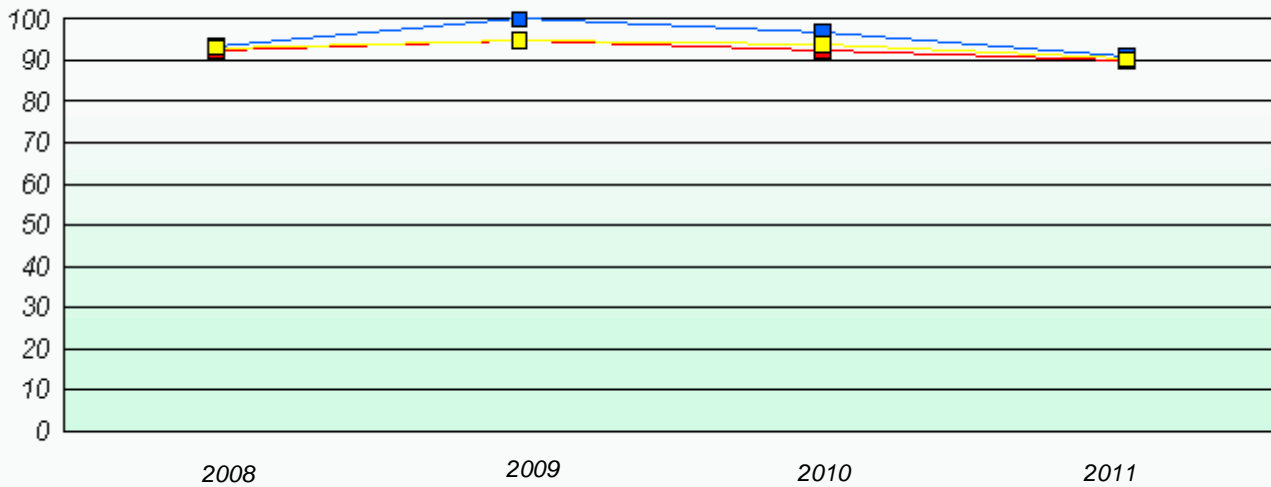
### Exemption Rates

Number Operations



### Participation Rates

Number Operations



District 2 - Western

School #: 393 Bonne Bay Academy

### Exemption Rates

#### Number Operations

*School data with 5 or fewer students withheld for reasons of confidentiality.*

2008

2009

2010

2011



School



Province

### Participation Rates

#### Number Operations

*School data with 5 or fewer students withheld for reasons of confidentiality.*

2008

2009

2010

2011



School



District



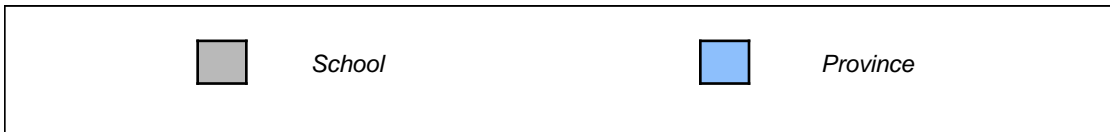
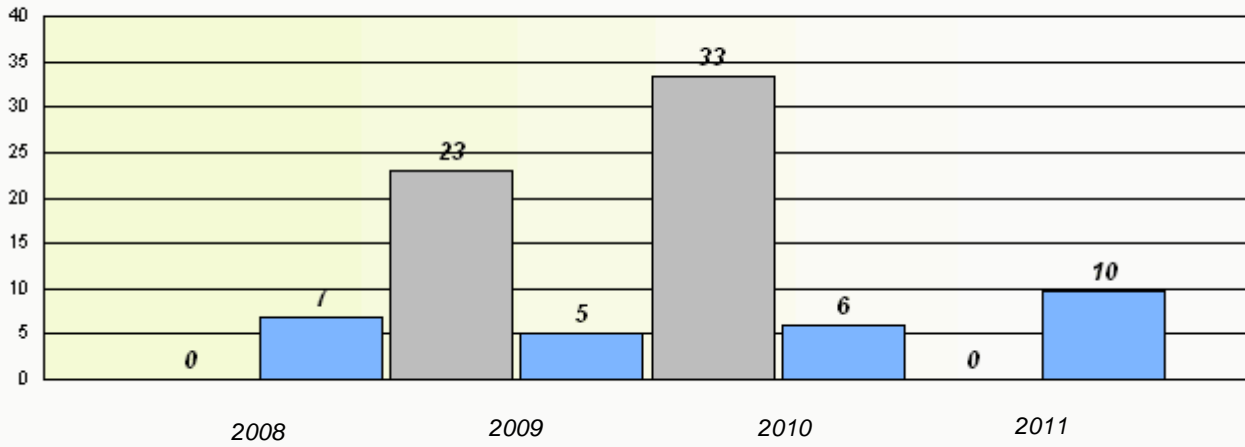
Province

District 2 - Western

School #: 394 E.A. Butler All Grade

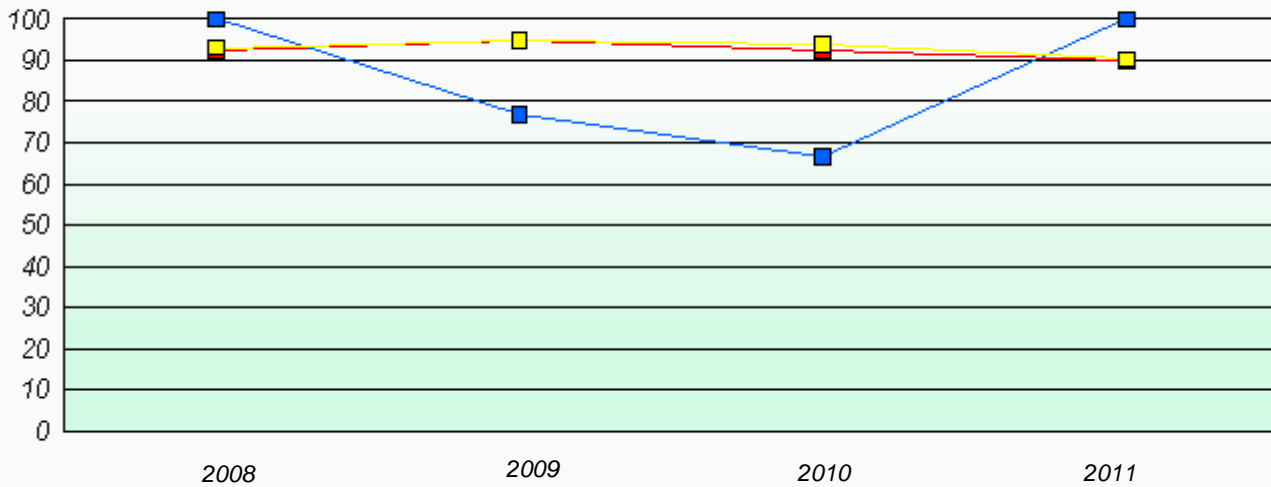
**Exemption Rates**

**Number Operations**



**Participation Rates**

**Number Operations**

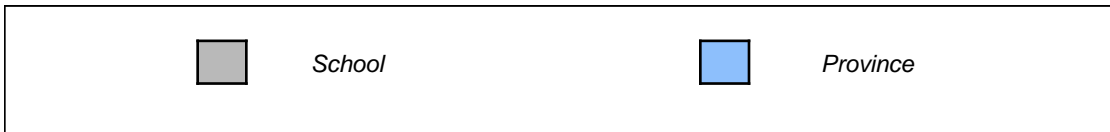
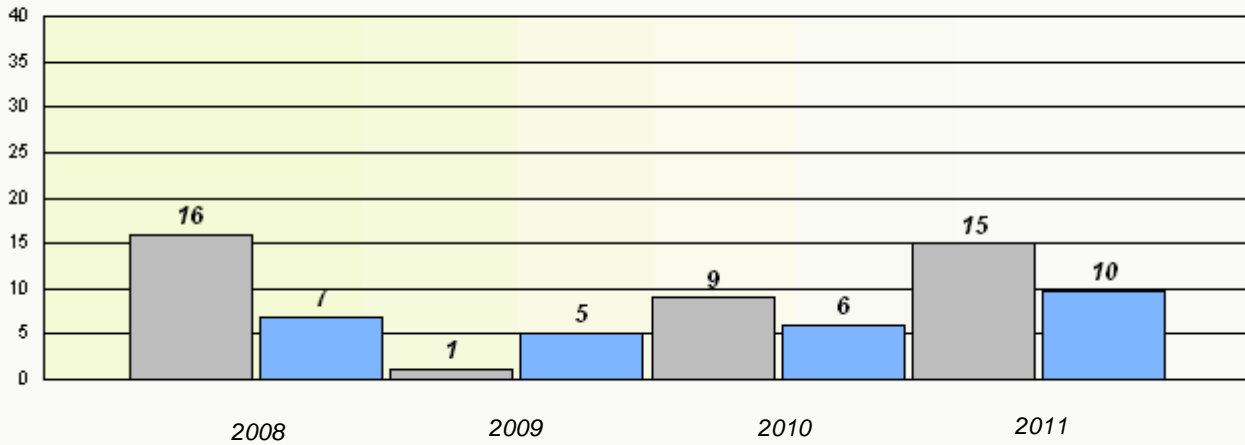


District 2 - Western

School #: 396     Stephenville Middle School

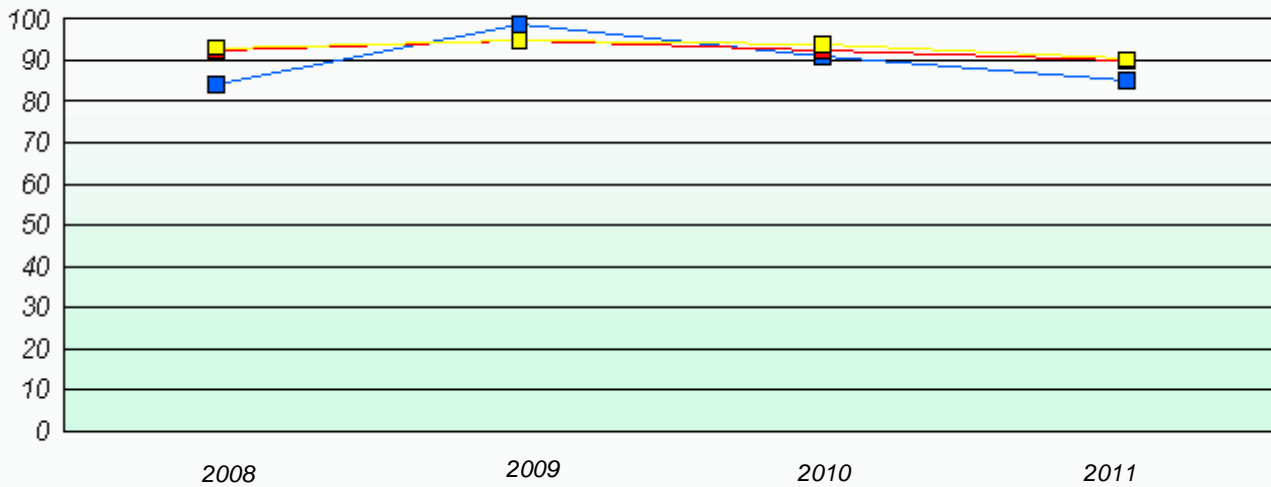
**Exemption Rates**

**Number Operations**



**Participation Rates**

**Number Operations**

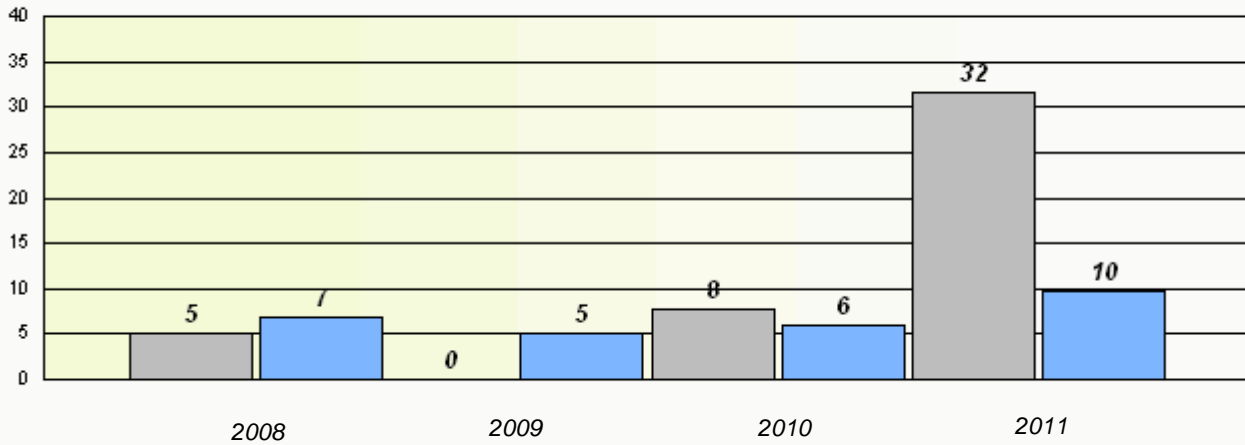


District 2 - Western

School #: 397 Belanger Memorial School

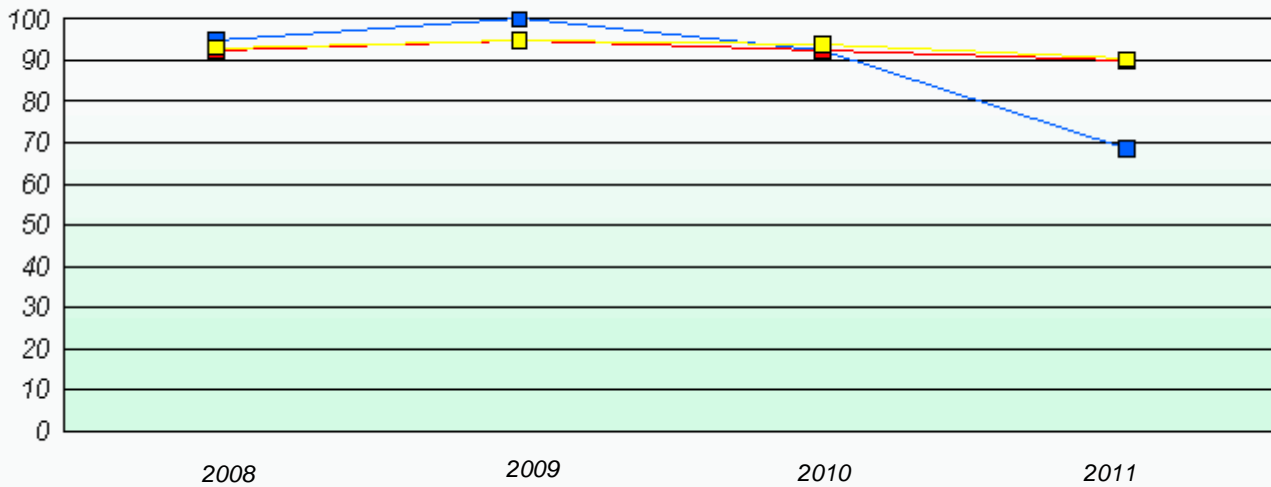
### Exemption Rates

Number Operations



### Participation Rates

Number Operations

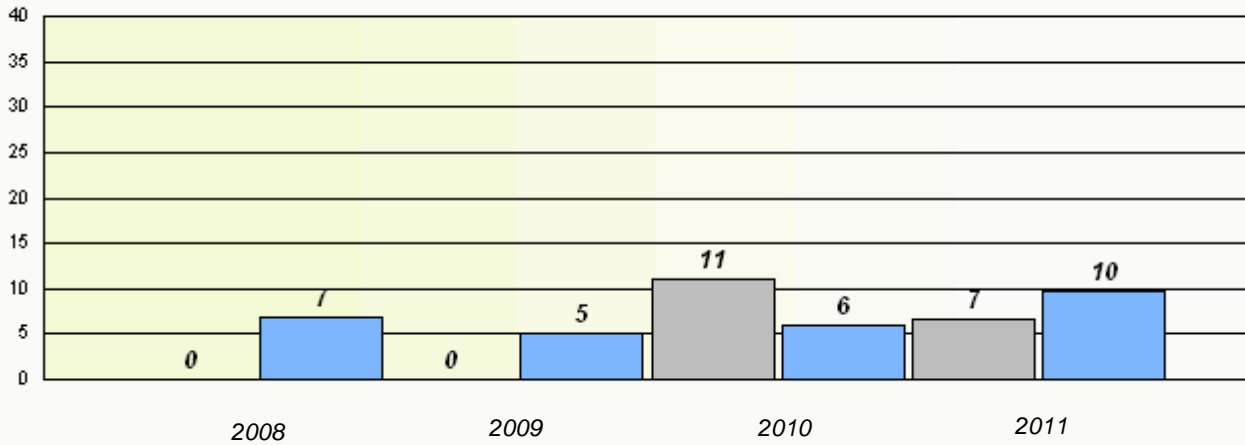


District 2 - Western

School #: 474 Cloud River Academy

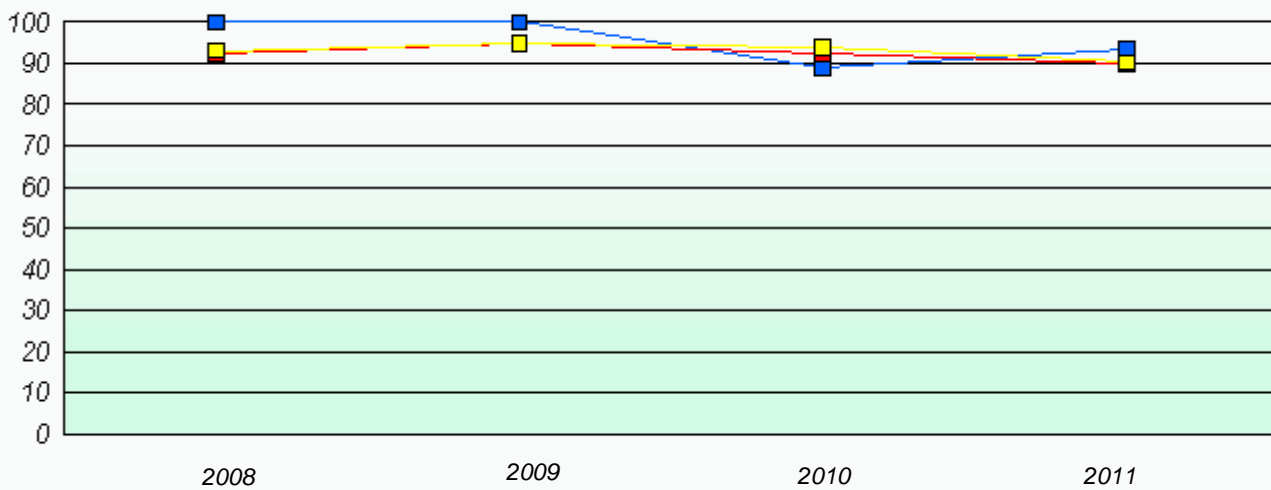
**Exemption Rates**

**Number Operations**



**Participation Rates**

**Number Operations**

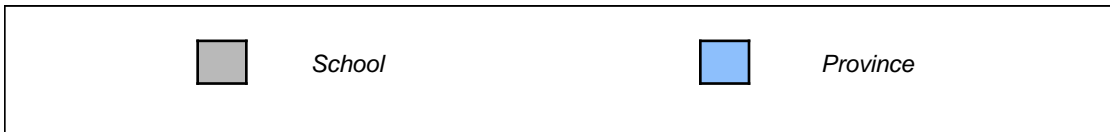
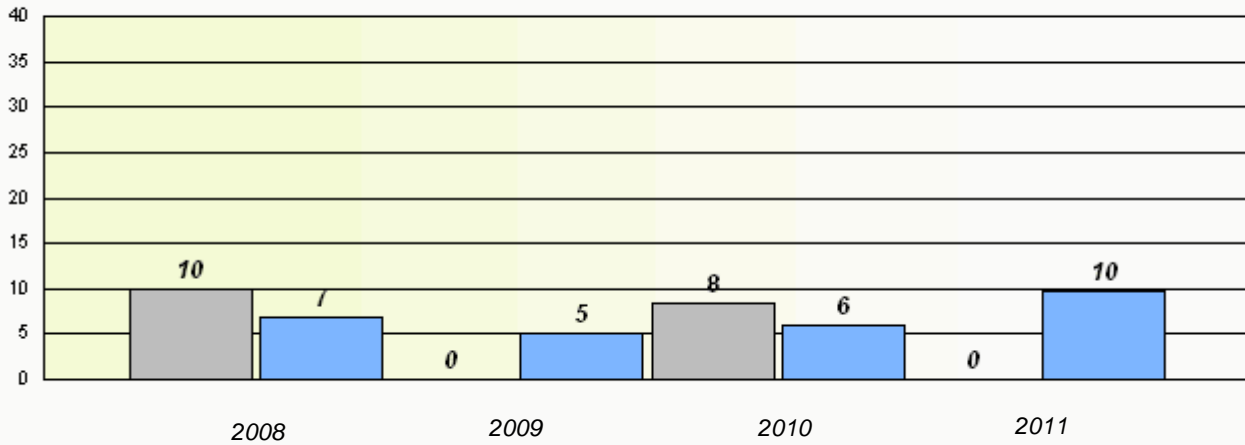


District 2 - Western

School #: 475 Viking Trail Academy

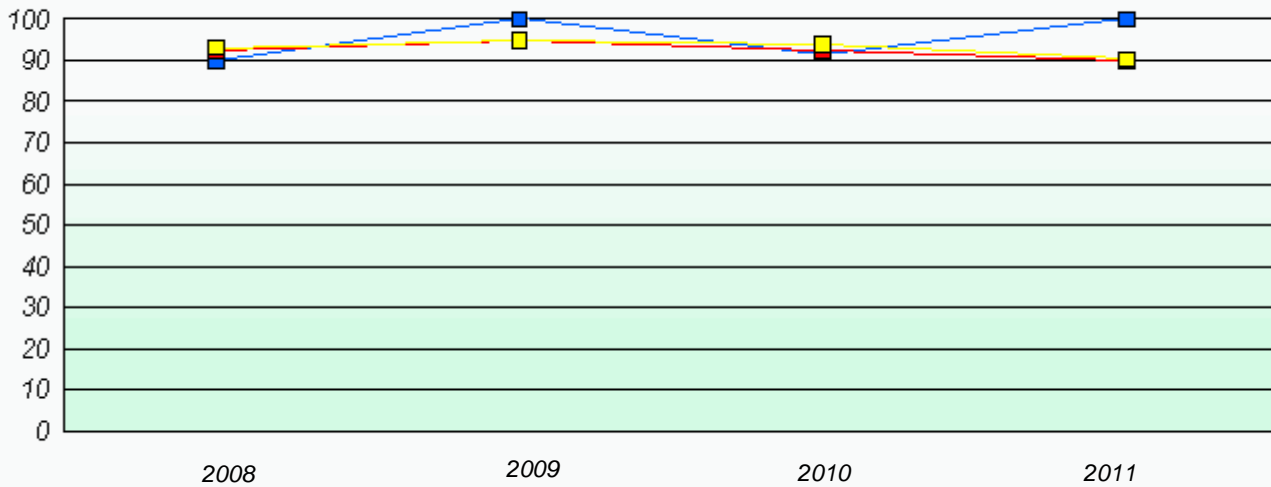
### Exemption Rates

Number Operations



### Participation Rates

Number Operations

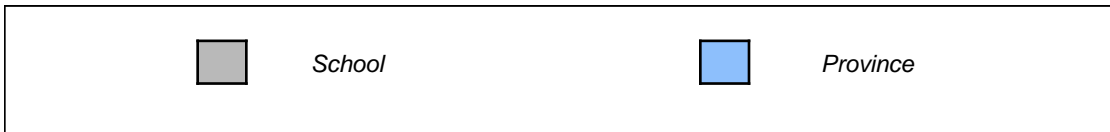
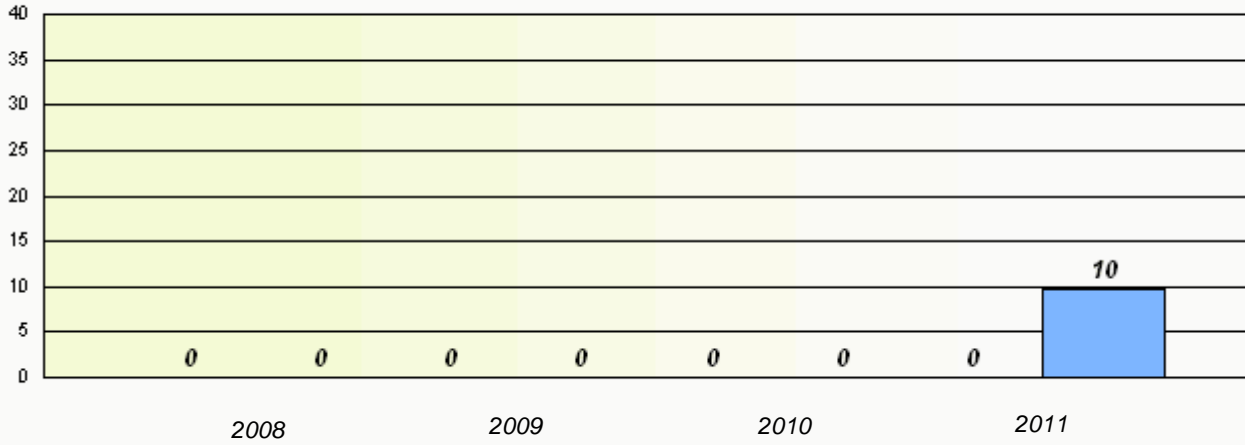


District 2 - Western

School #: 487 Labrador Straits Academy

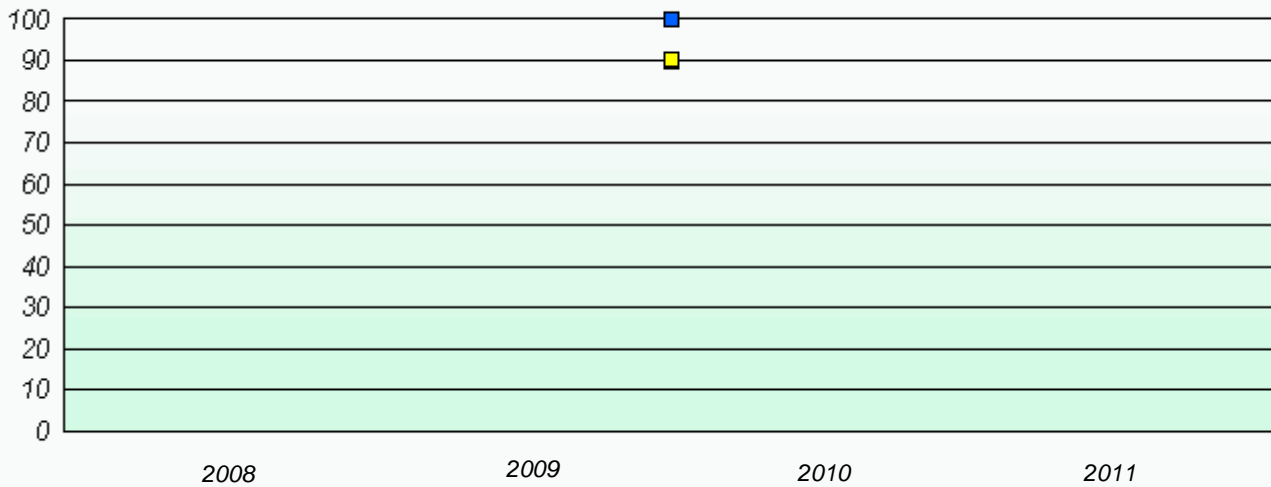
**Exemption Rates**

**Number Operations**



**Participation Rates**

**Number Operations**



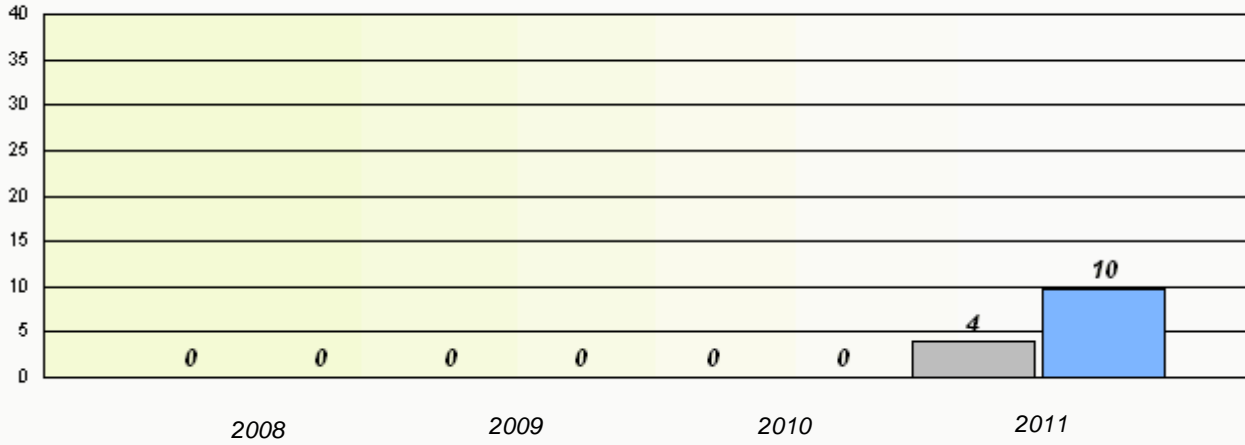


District 2 - Western

School #: 488 French Shore Academy

**Exemption Rates**

**Number Operations**



**Participation Rates**

**Number Operations**

