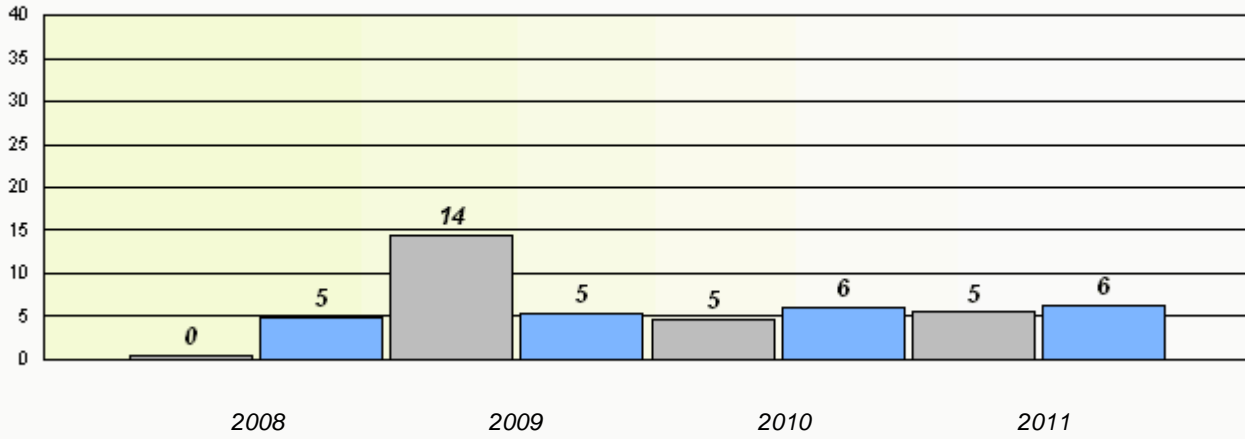


District 3 - Nova Central

School #: 133 Memorial Academy

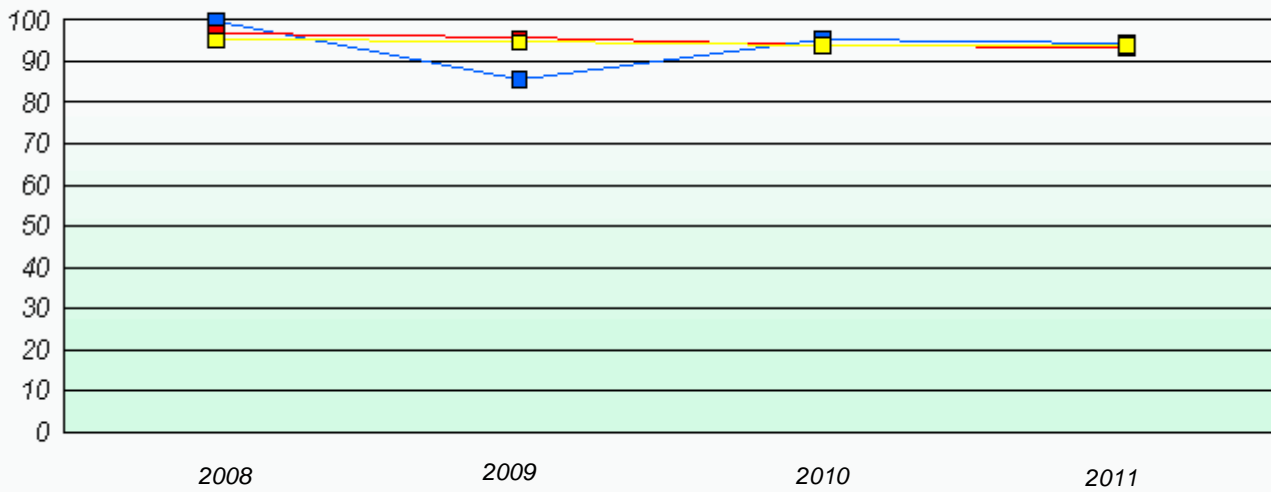
Exemption Rates

Number Operations



Participation Rates

Number Operations



* Number Operations are composite of Reasoning, Communication, Connection and Representations, and problem Solving.

District 3 - Nova Central

School #: 138 Victoria Academy

Exemption Rates

Number Operations

School data with 5 or fewer students withheld for reasons of confidentiality.

2008

2009

2010

2011



School



Province

Participation Rates

Number Operations

School data with 5 or fewer students withheld for reasons of confidentiality.

2008

2009

2010

2011



School



District



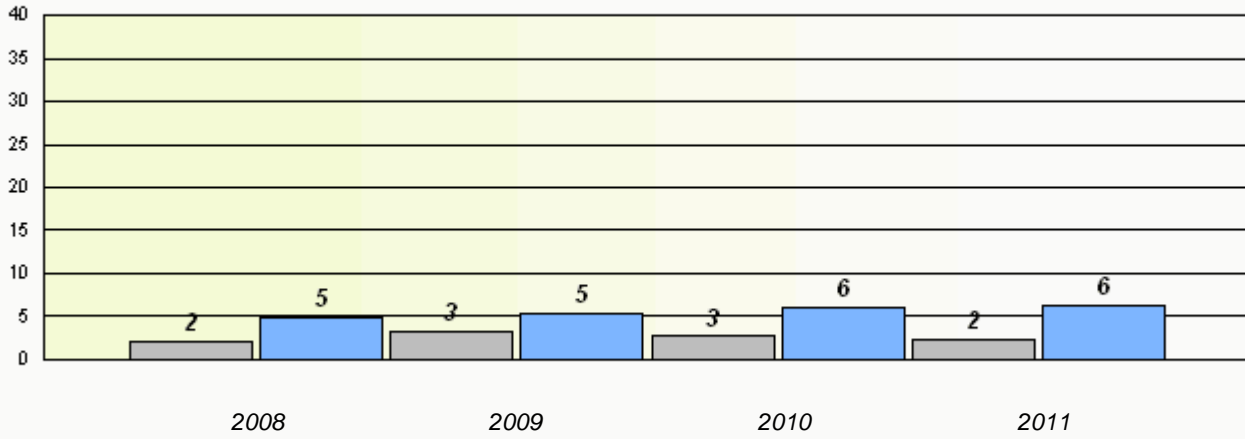
Province

District 3 - Nova Central

School #: 142 Woodland Primary

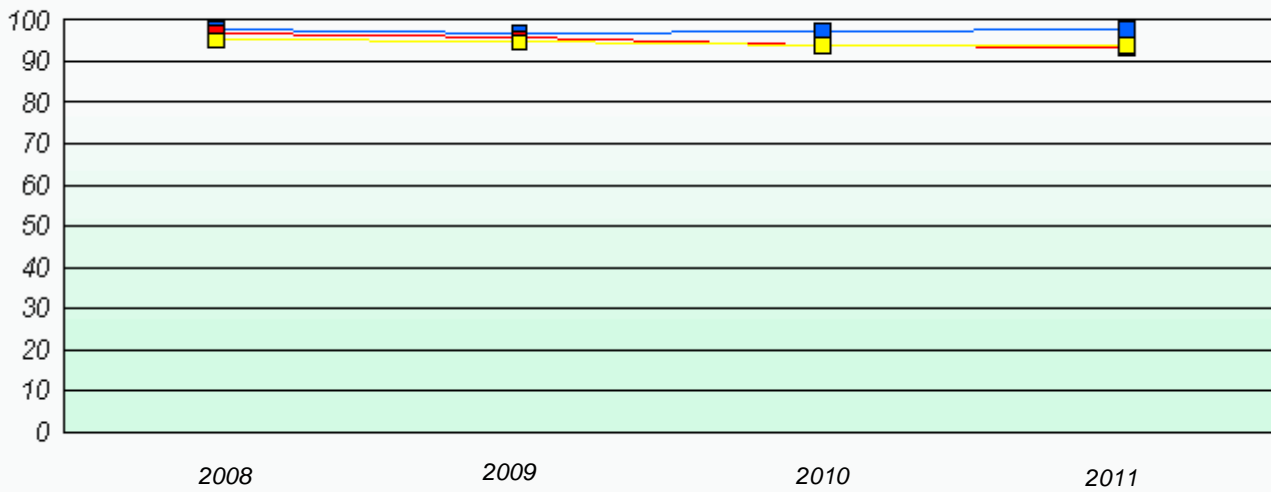
Exemption Rates

Number Operations



Participation Rates

Number Operations



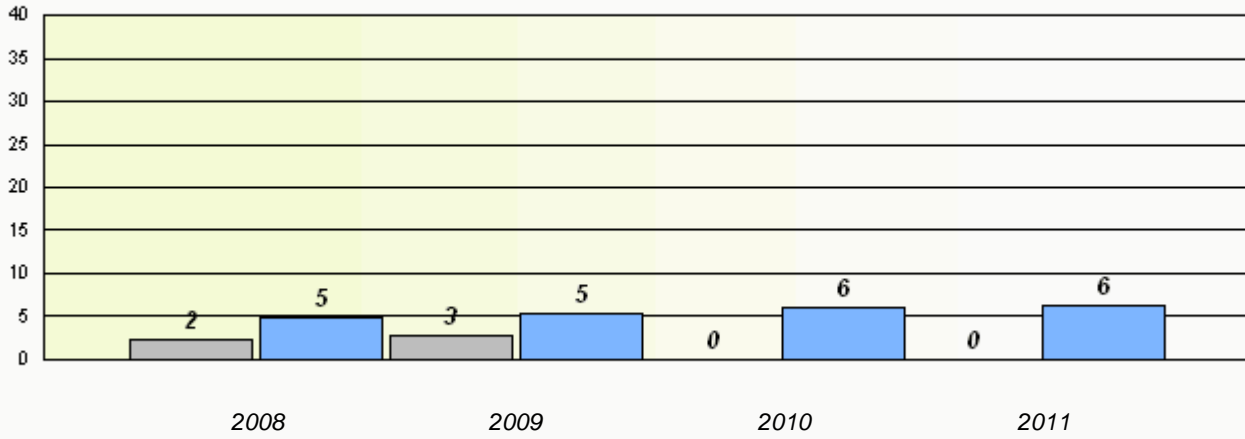
* Number Operations are composite of Reasoning, Communication, Connection and Representations, and problem Solving.

District 3 - Nova Central

School #: 144 Sprucewood Academy

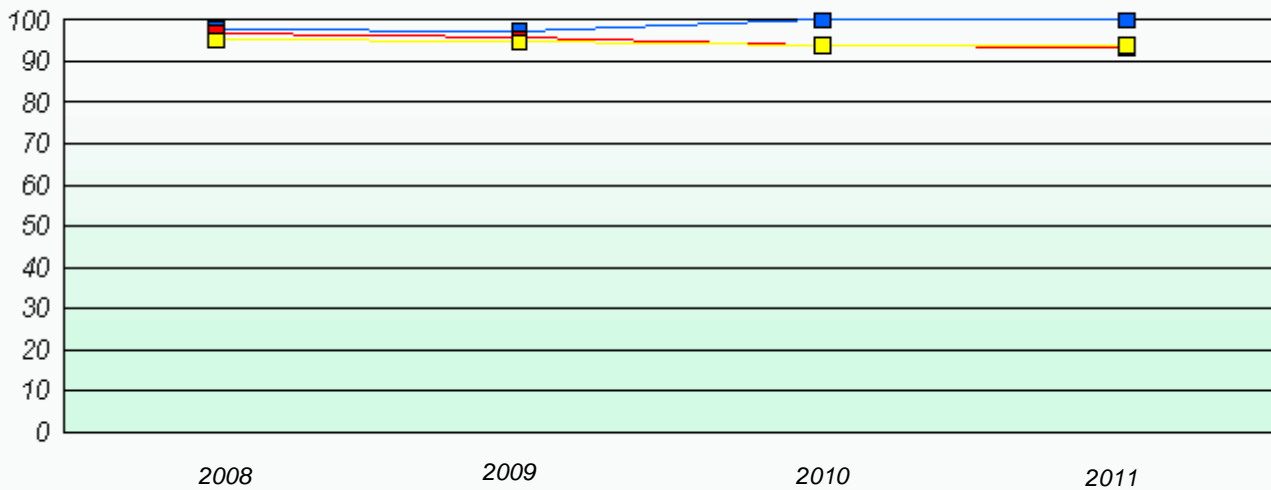
Exemption Rates

Number Operations



Participation Rates

Number Operations



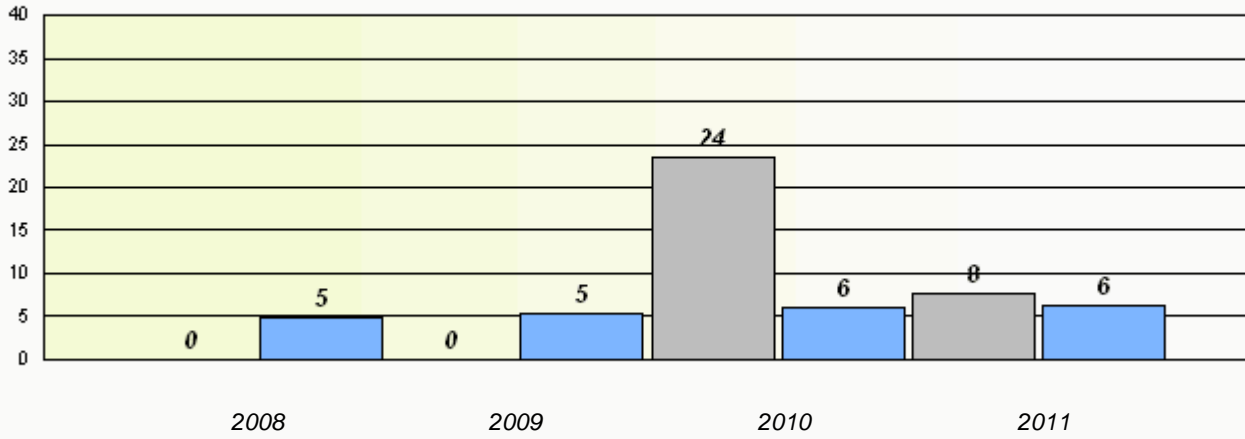
* Number Operations are composite of Reasoning, Communication, Connection and Representations, and problem Solving.

District 3 - Nova Central

School #: 150 St. Joseph's Elementary

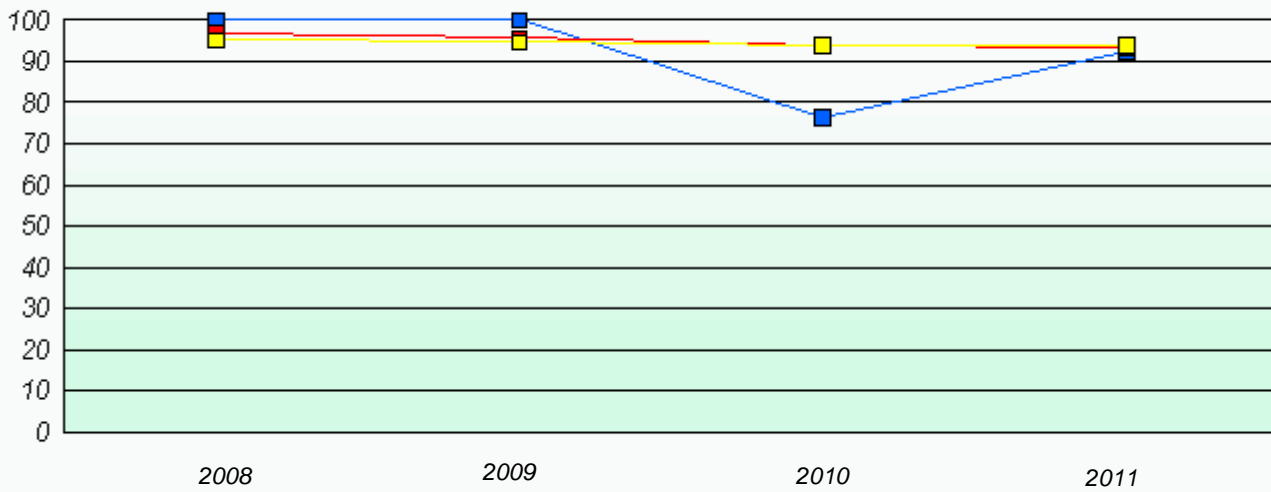
Exemption Rates

Number Operations



Participation Rates

Number Operations



* Number Operations are composite of Reasoning, Communication, Connection and Representations, and problem Solving.

District 3 - Nova Central

School #: 151 John Watkins Academy

Exemption Rates

Number Operations

School data with 5 or fewer students withheld for reasons of confidentiality.

2008

2009

2010

2011



School



Province

Participation Rates

Number Operations

School data with 5 or fewer students withheld for reasons of confidentiality.

2008

2009

2010

2011



School



District



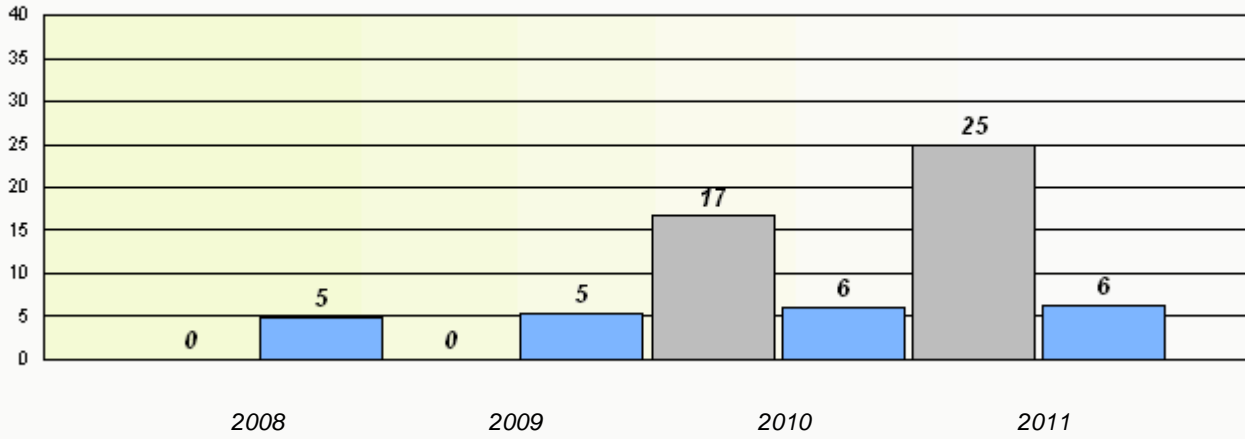
Province

District 3 - Nova Central

School #: 152 Valmont Academy

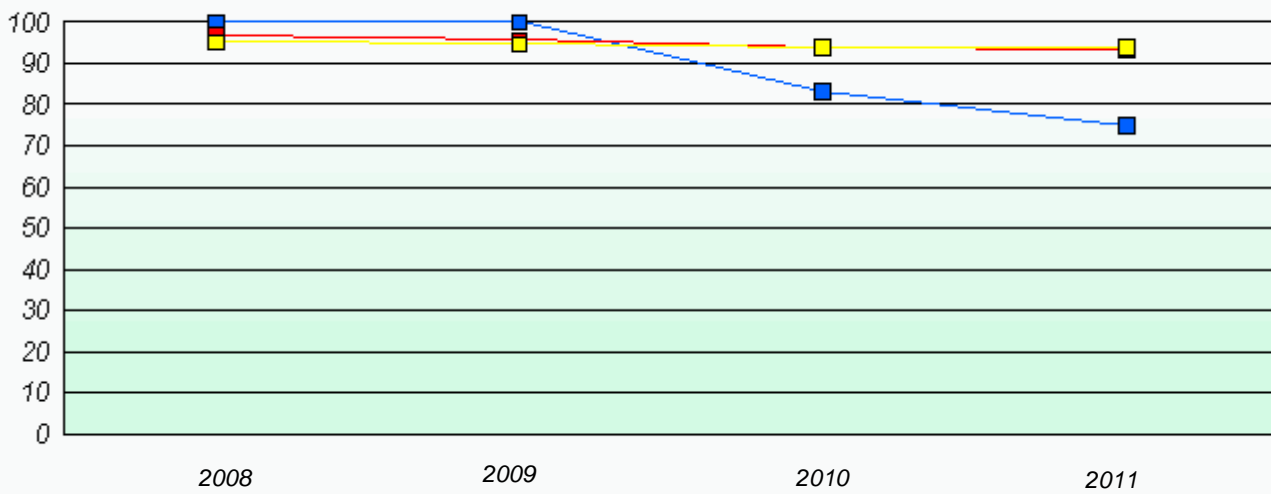
Exemption Rates

Number Operations



Participation Rates

Number Operations



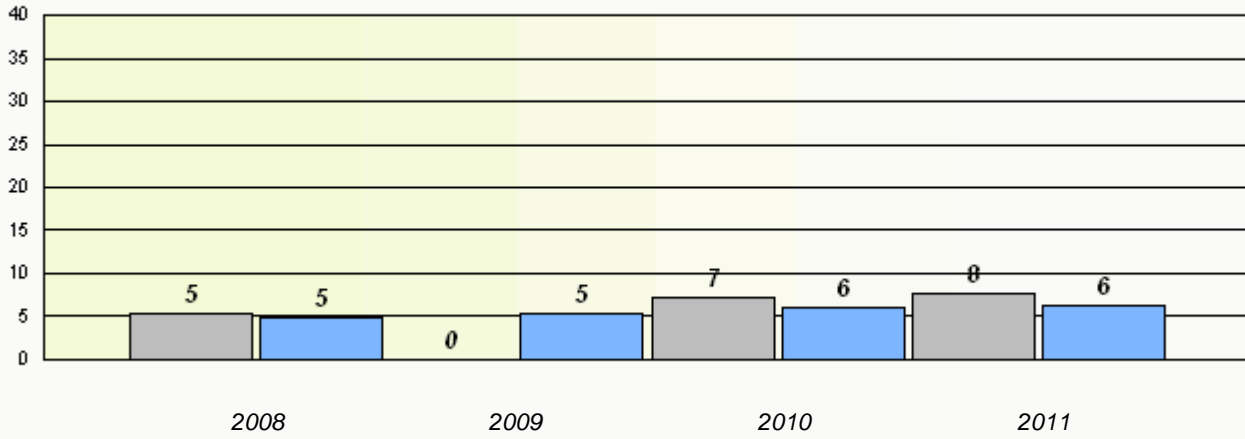
* Number Operations are composite of Reasoning, Communication, Connection and Representations, and problem Solving.

District 3 - Nova Central

School #: 154 Hillside Elementary

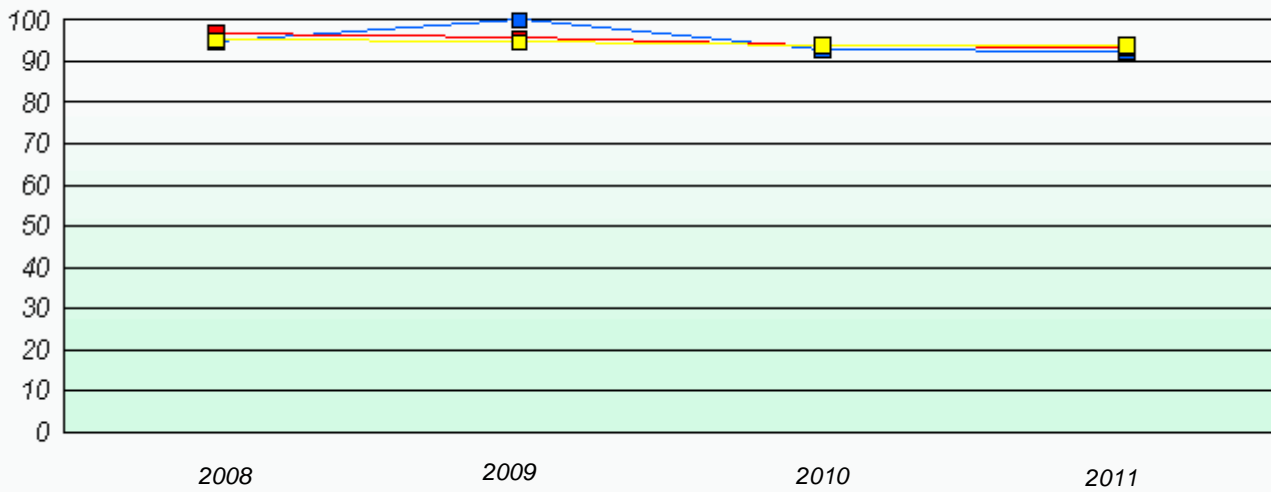
Exemption Rates

Number Operations



Participation Rates

Number Operations



* Number Operations are composite of Reasoning, Communication, Connection and Representations, and problem Solving.

District 3 - Nova Central

School #: 155 Leading Ticks Primary

Exemption Rates

Number Operations

School data with 5 or fewer students withheld for reasons of confidentiality.

2008

2009

2010

2011



School



Province

Participation Rates

Number Operations

School data with 5 or fewer students withheld for reasons of confidentiality.

2008

2009

2010

2011



School



District



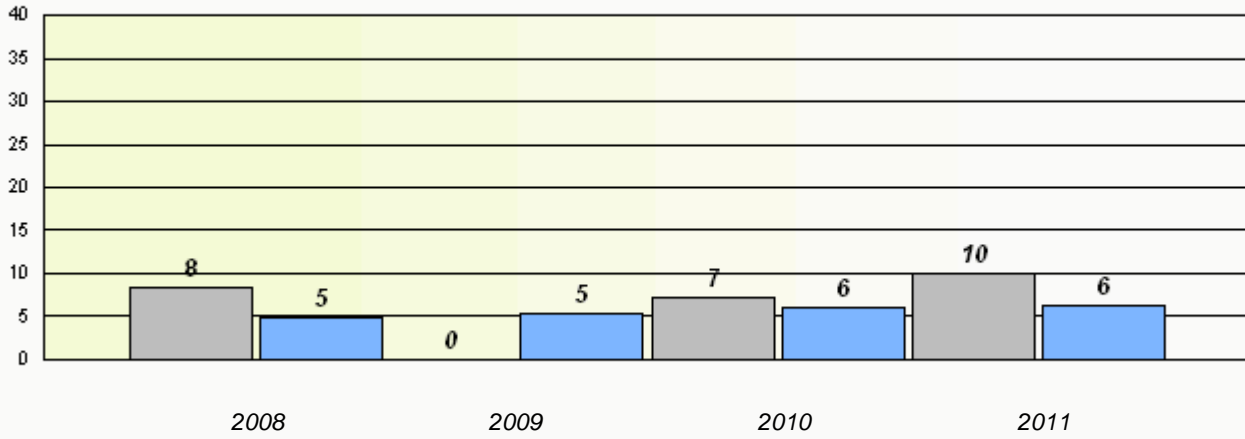
Province

District 3 - Nova Central

School #: 158 MSB Regional Academy

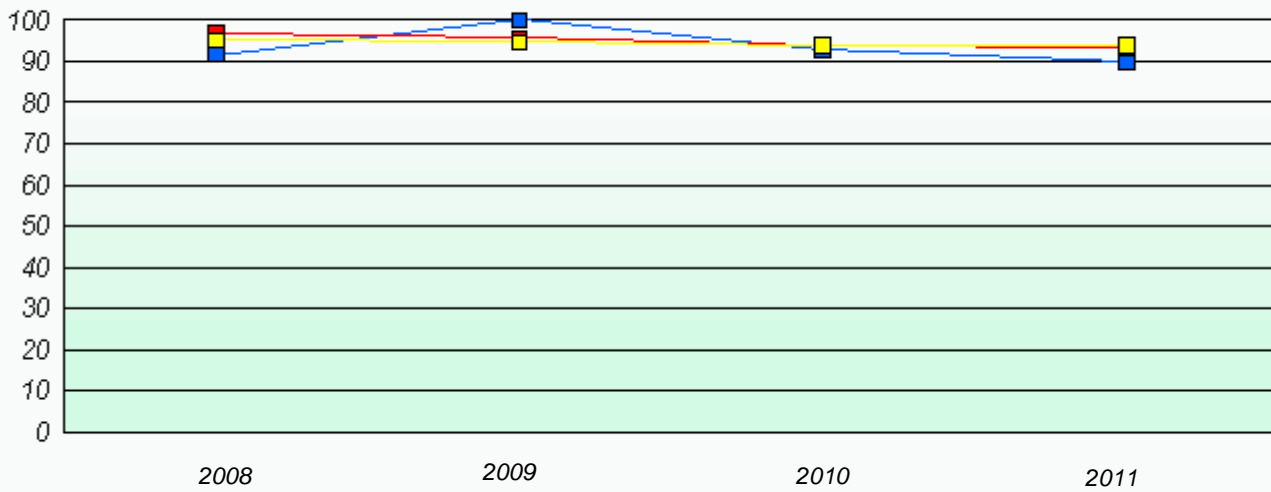
Exemption Rates

Number Operations



Participation Rates

Number Operations



* Number Operations are composite of Reasoning, Communication, Connection and Representations, and problem Solving.

District 3 - Nova Central

School #: 160 Bayview Primary

Exemption Rates

Number Operations

School data with 5 or fewer students withheld for reasons of confidentiality.

2008

2009

2010

2011



School



Province

Participation Rates

Number Operations

School data with 5 or fewer students withheld for reasons of confidentiality.

2008

2009

2010

2011



School



District



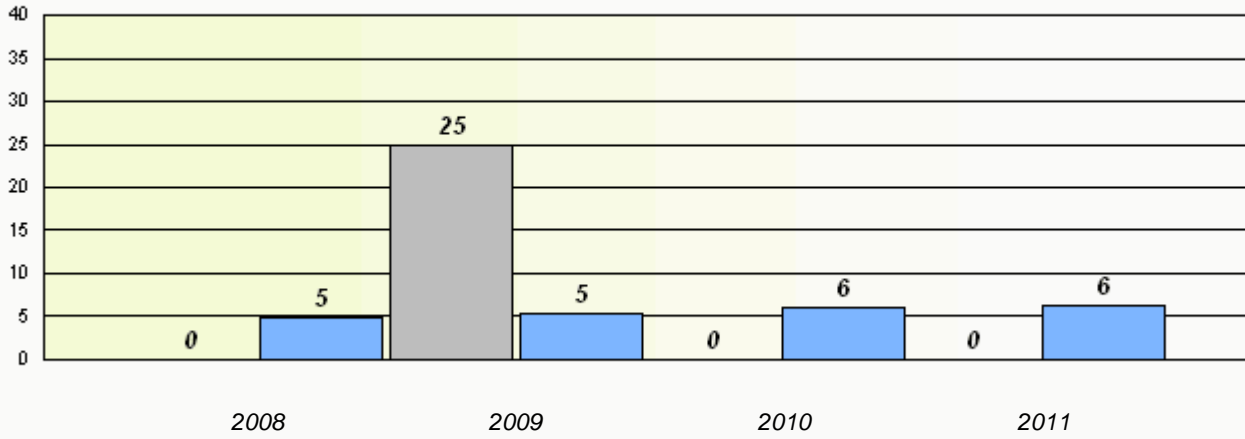
Province

District 3 - Nova Central

School #: 163 Point Leamington Academy

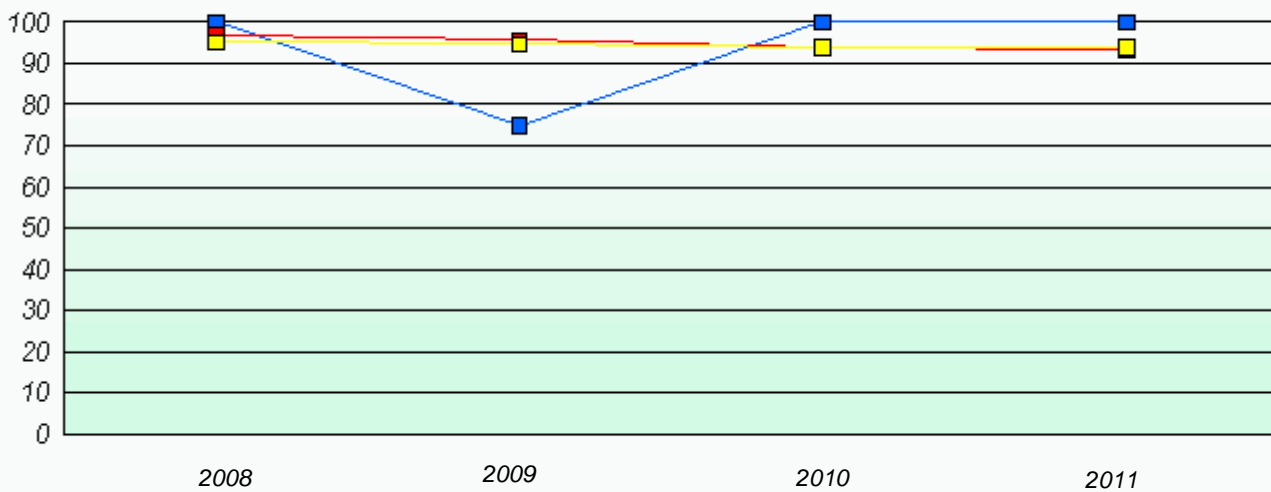
Exemption Rates

Number Operations



Participation Rates

Number Operations



* Number Operations are composite of Reasoning, Communication, Connection and Representations, and problem Solving.

District 3 - Nova Central

School #: 165 St. Stephen's AG

Exemption Rates

Number Operations

School data with 5 or fewer students withheld for reasons of confidentiality.

2008

2009

2010

2011



School



Province

Participation Rates

Number Operations

School data with 5 or fewer students withheld for reasons of confidentiality.

2008

2009

2010

2011



School



District



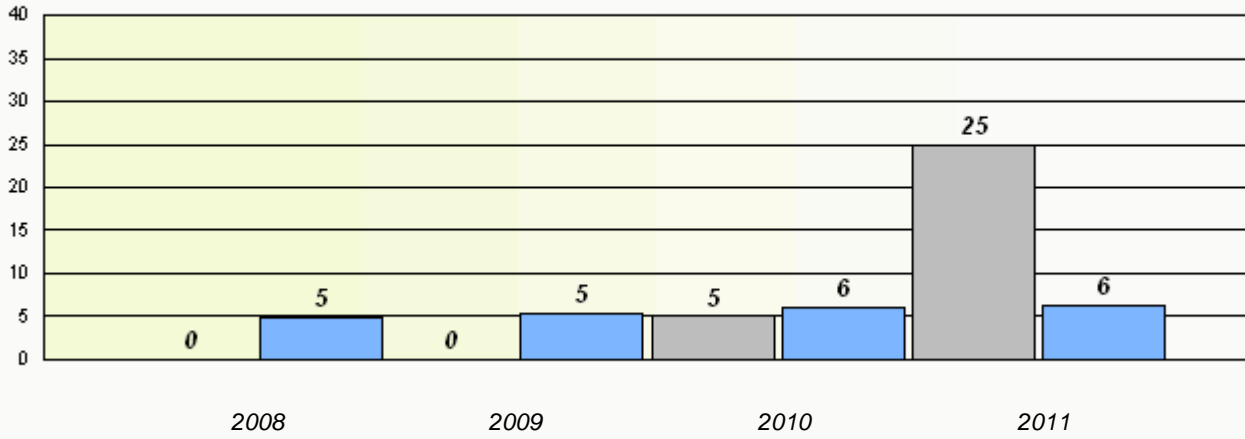
Province

District 3 - Nova Central

School #: 167 Green Bay South Academy

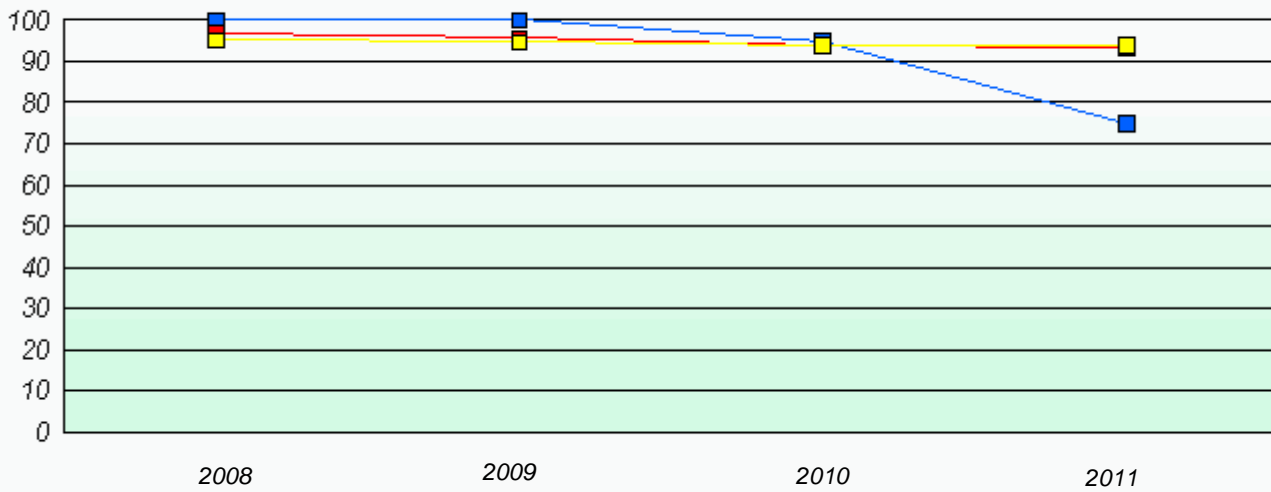
Exemption Rates

Number Operations



Participation Rates

Number Operations



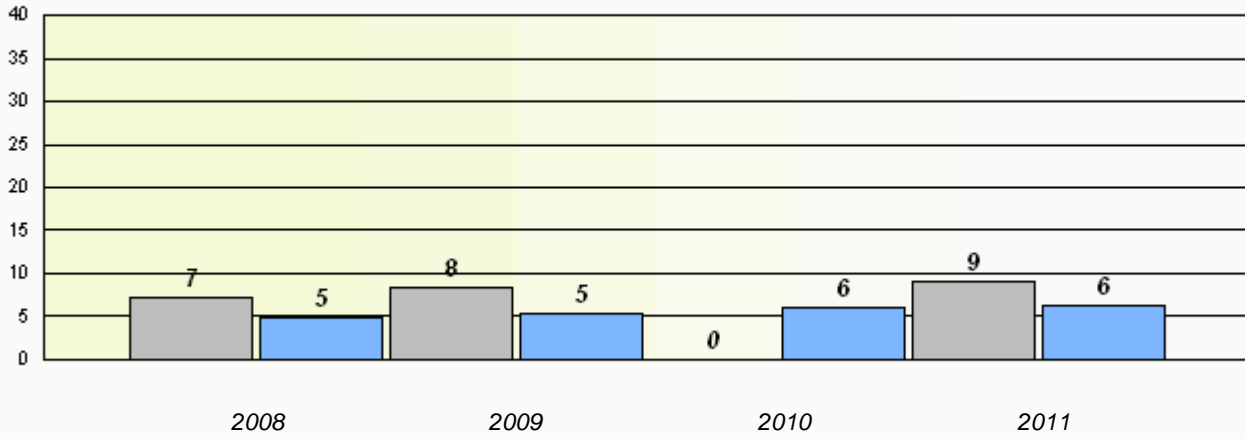
* Number Operations are composite of Reasoning, Communication, Connection and Representations, and problem Solving.

District 3 - Nova Central

School #: 172 Brian Peckford Primary

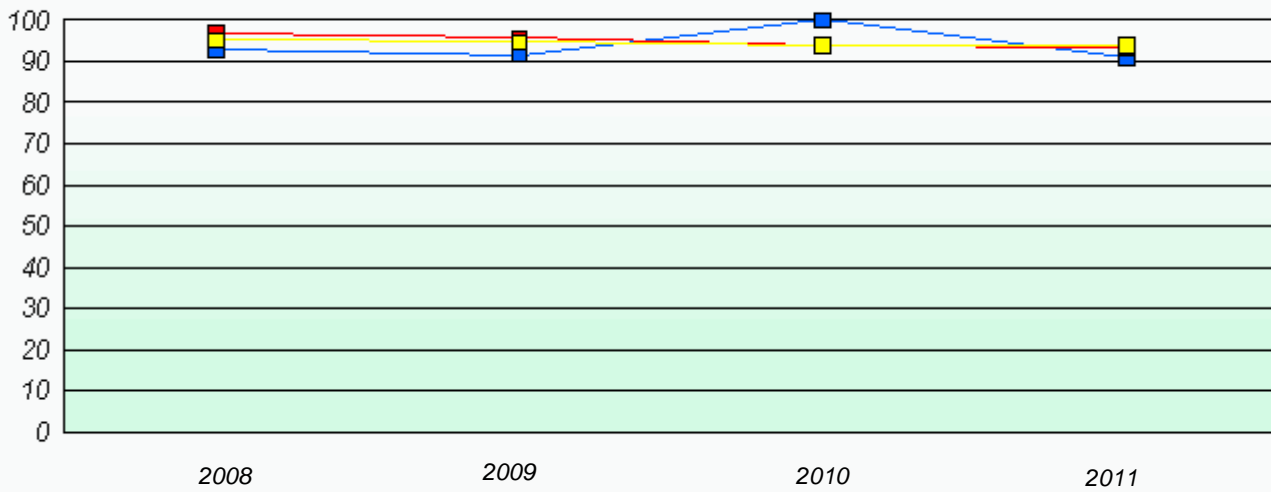
Exemption Rates

Number Operations



Participation Rates

Number Operations



* Number Operations are composite of Reasoning, Communication, Connection and Representations, and problem Solving.

District 3 - Nova Central

School #: 174 St. Peter's Academy

Exemption Rates

Number Operations

School data with 5 or fewer students withheld for reasons of confidentiality.

2008

2009

2010

2011



School



Province

Participation Rates

Number Operations

School data with 5 or fewer students withheld for reasons of confidentiality.

2008

2009

2010

2011



School



District



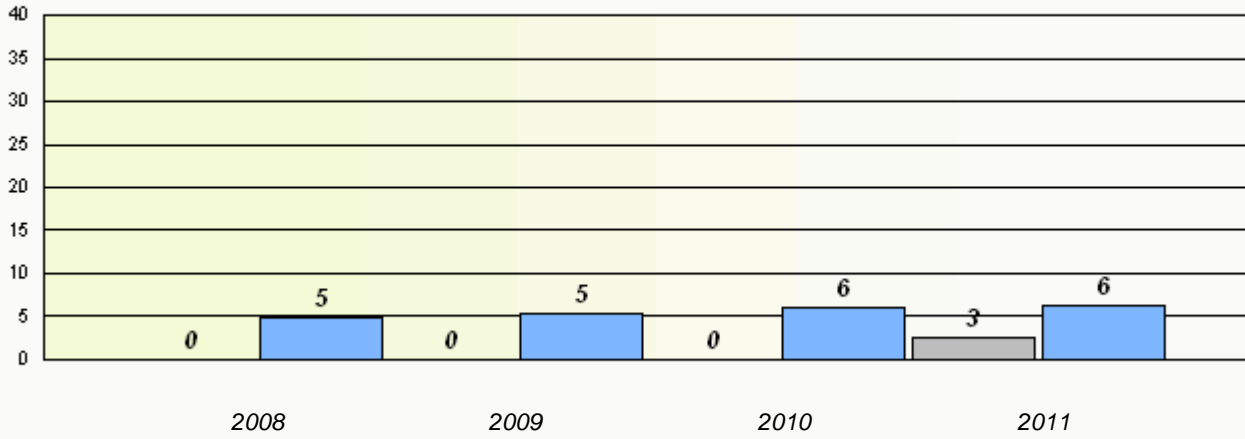
Province

District 3 - Nova Central

School #: 177 Greenwood Academy

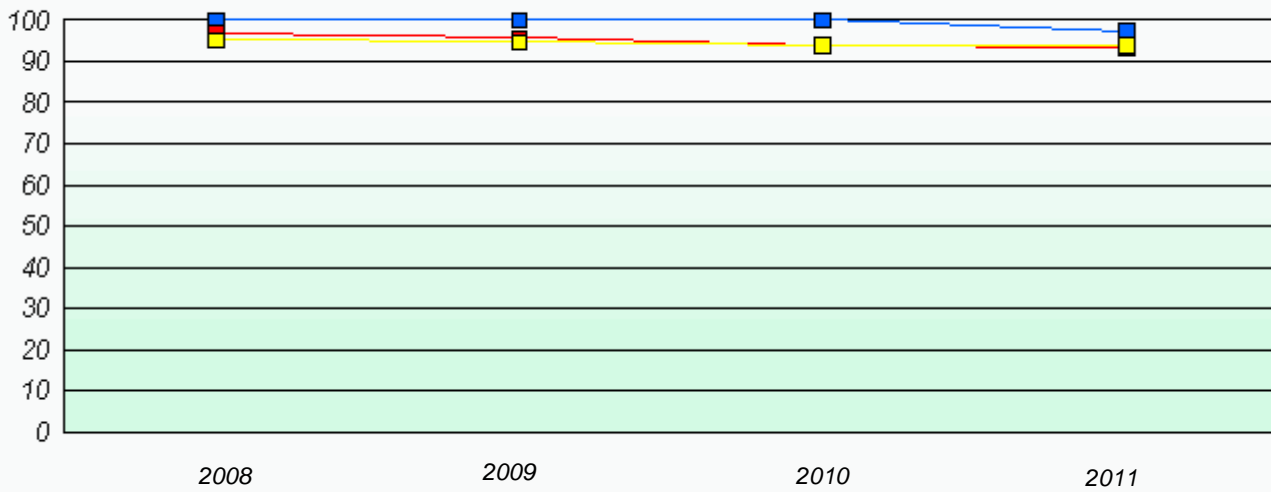
Exemption Rates

Number Operations



Participation Rates

Number Operations



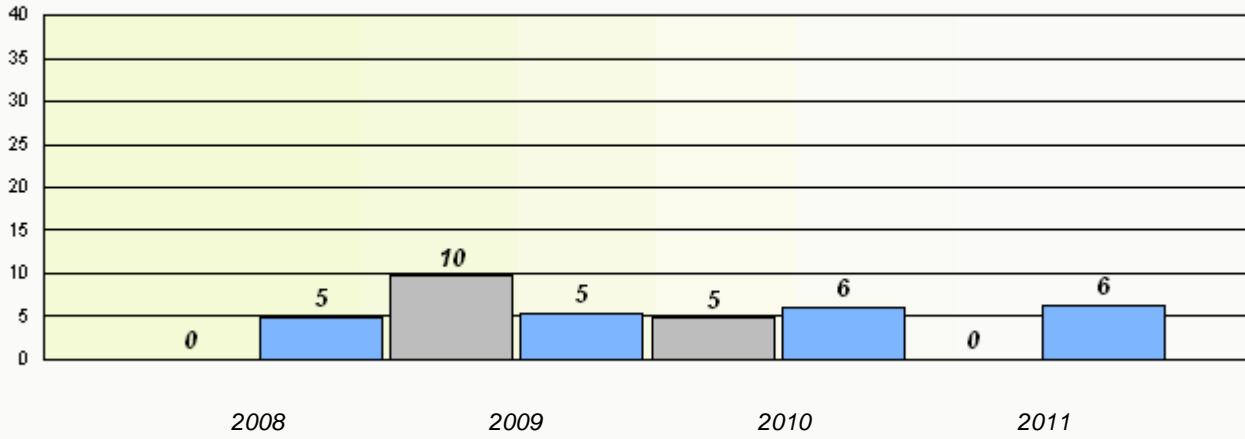
* Number Operations are composite of Reasoning, Communication, Connection and Representations, and problem Solving.

District 3 - Nova Central

School #: 178 Phoenix Academy

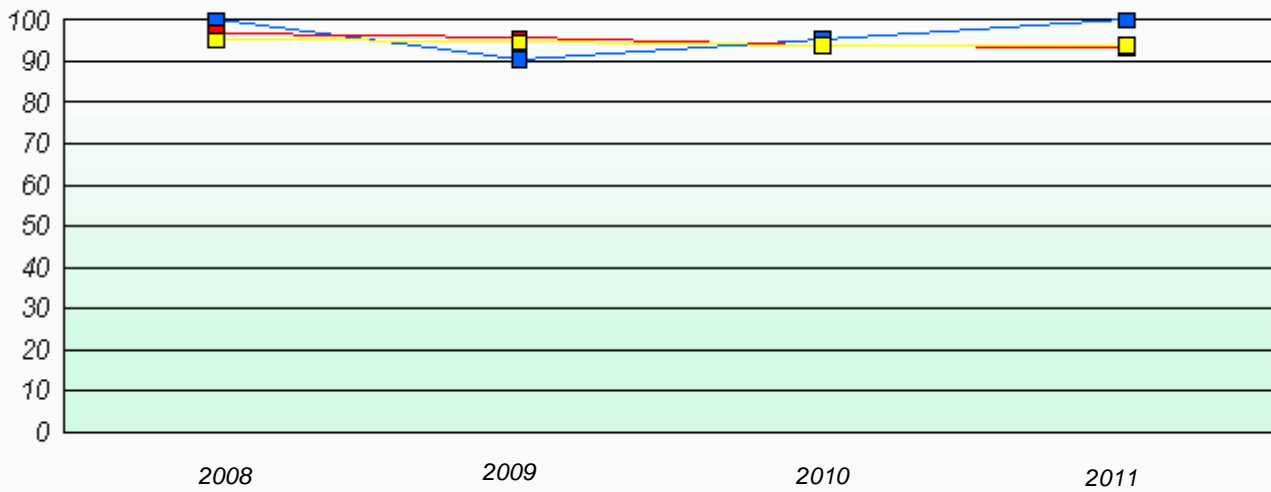
Exemption Rates

Number Operations



Participation Rates

Number Operations



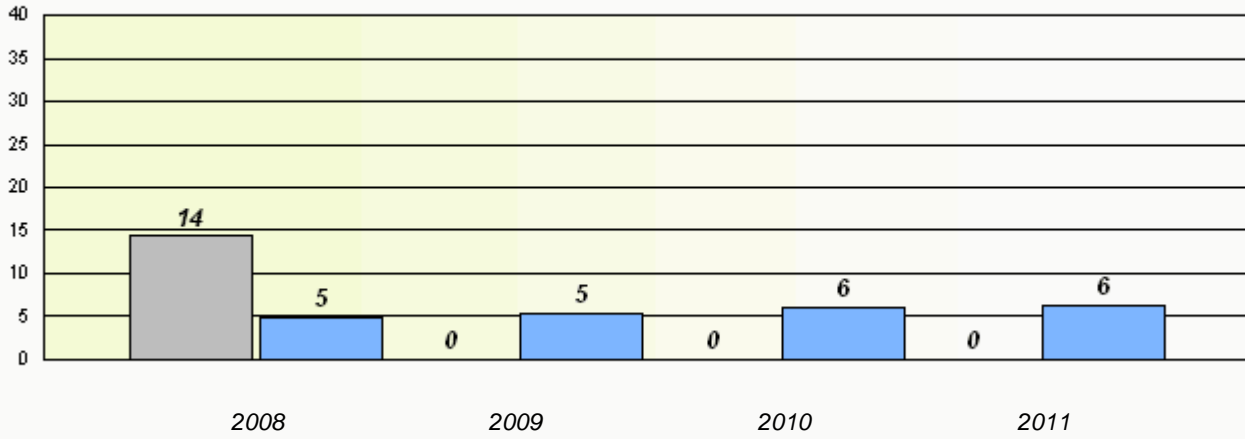
* Number Operations are composite of Reasoning, Communication, Connection and Representations, and problem Solving.

District 3 - Nova Central

School #: 179 Centreville Academy

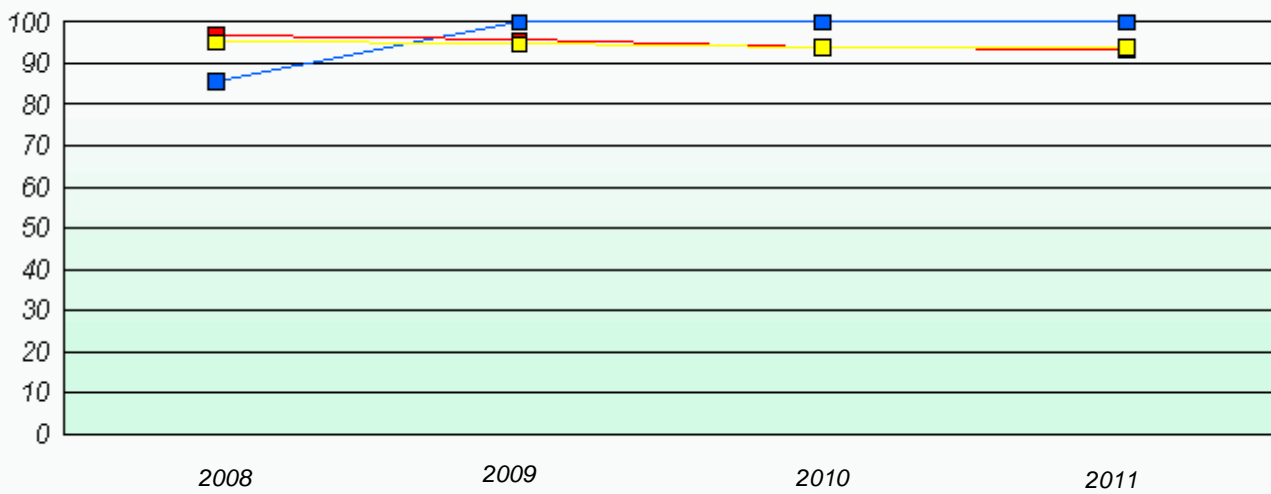
Exemption Rates

Number Operations



Participation Rates

Number Operations



* Number Operations are composite of Reasoning, Communication, Connection and Representations, and problem Solving.

District 3 - Nova Central

School #: 180 A. R. Scammell Academy

Exemption Rates

Number Operations

School data with 5 or fewer students withheld for reasons of confidentiality.

2008

2009

2010

2011



School



Province

Participation Rates

Number Operations

School data with 5 or fewer students withheld for reasons of confidentiality.

2008

2009

2010

2011



School



District



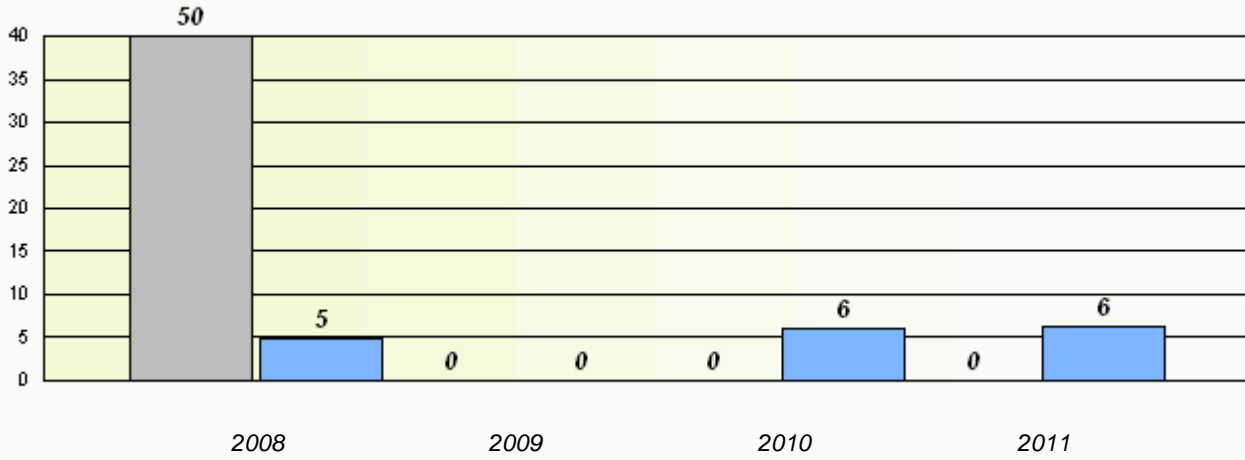
Province

District 3 - Nova Central

School #: 182 Charlottetown Primary

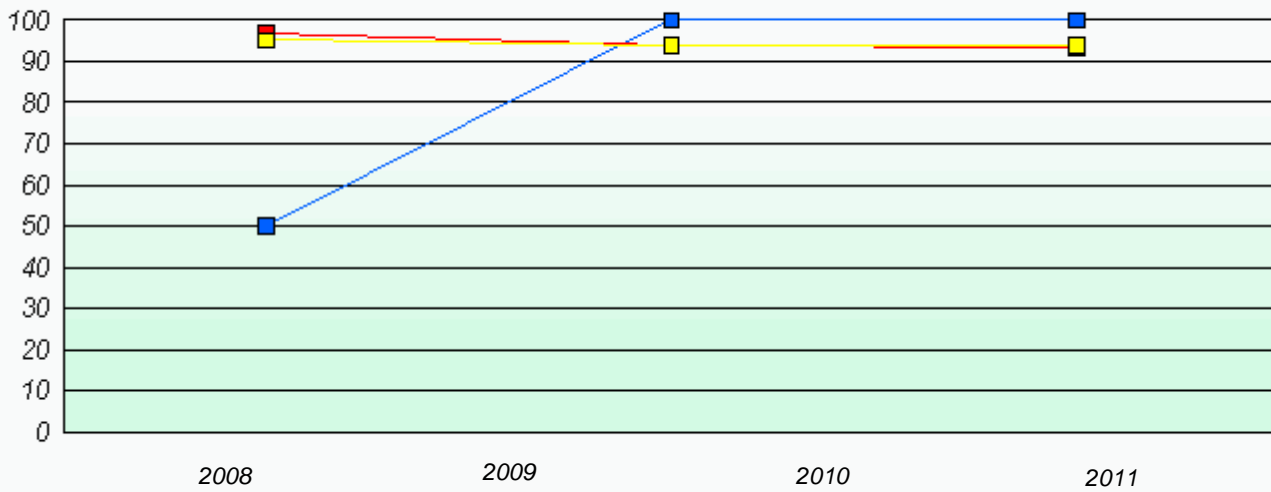
Exemption Rates

Number Operations



Participation Rates

Number Operations



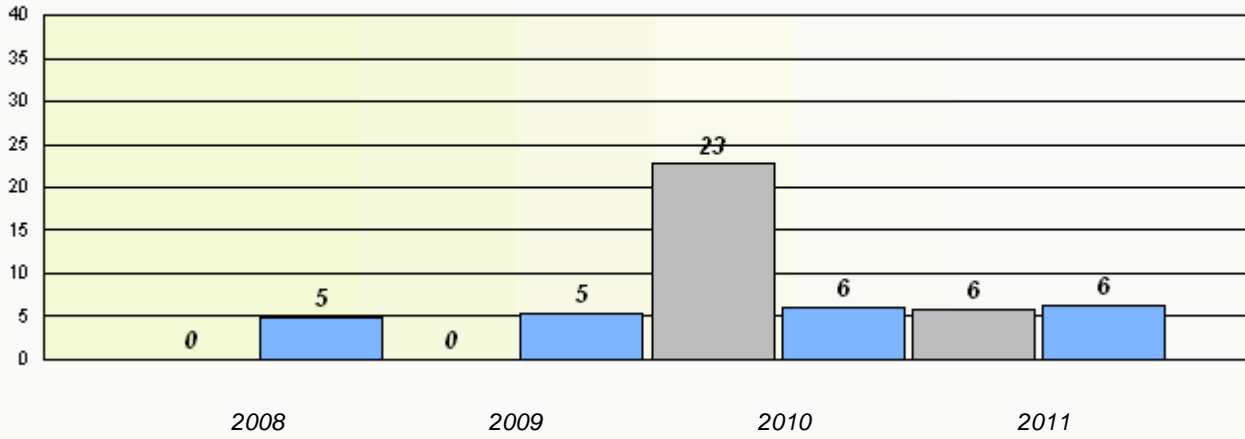
* Number Operations are composite of Reasoning, Communication, Connection and Representations, and problem Solving.

District 3 - Nova Central

School #: 183 William Mercer Academy

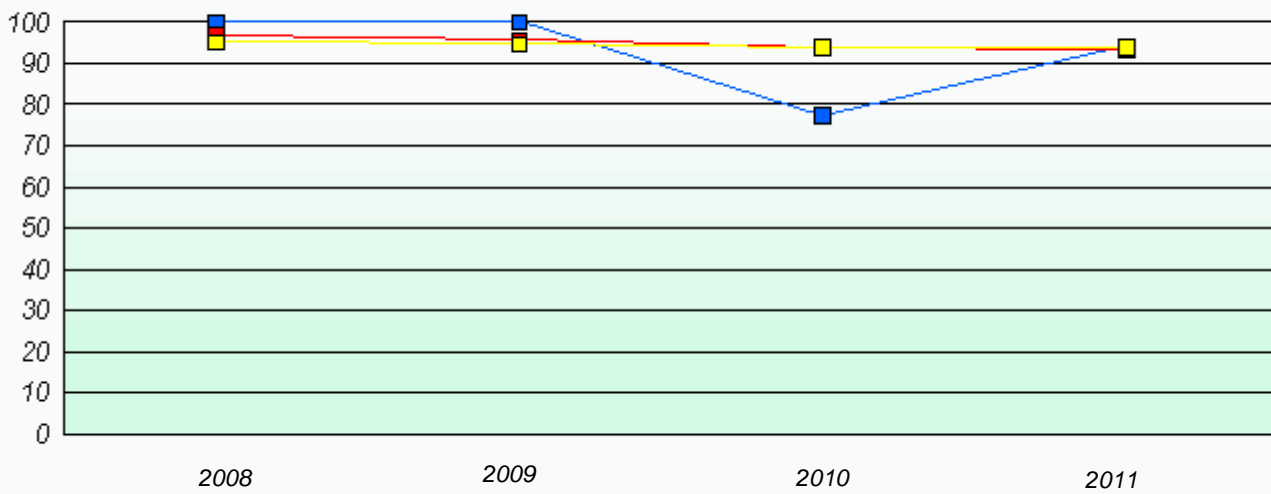
Exemption Rates

Number Operations



Participation Rates

Number Operations



* Number Operations are composite of Reasoning, Communication, Connection and Representations, and problem Solving.

District 3 - Nova Central

School #: 186 Heritage Academy

Exemption Rates

Number Operations

School data with 5 or fewer students withheld for reasons of confidentiality.

2008

2009

2010

2011



School



Province

Participation Rates

Number Operations

School data with 5 or fewer students withheld for reasons of confidentiality.

2008

2009

2010

2011



School



District



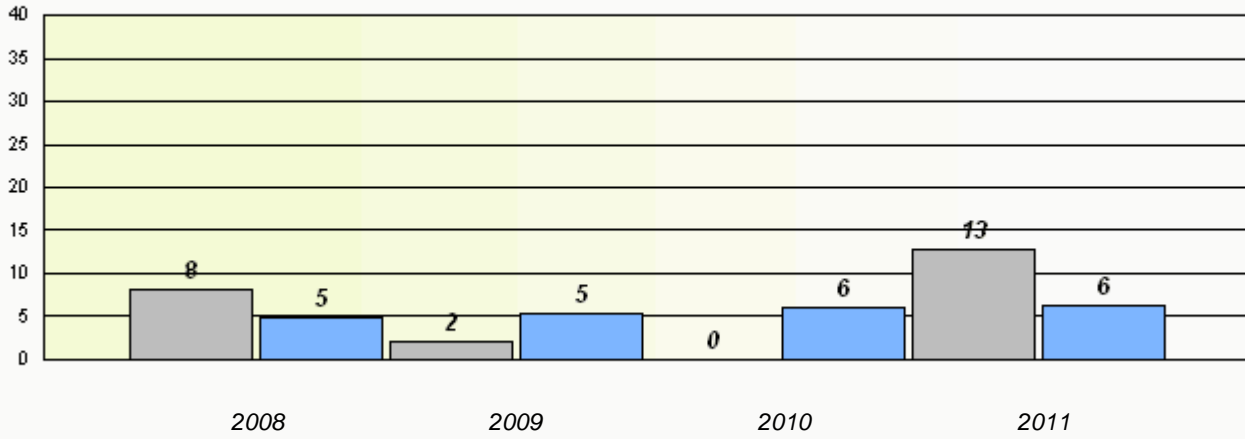
Province

District 3 - Nova Central

School #: 189 Lewisporte Academy

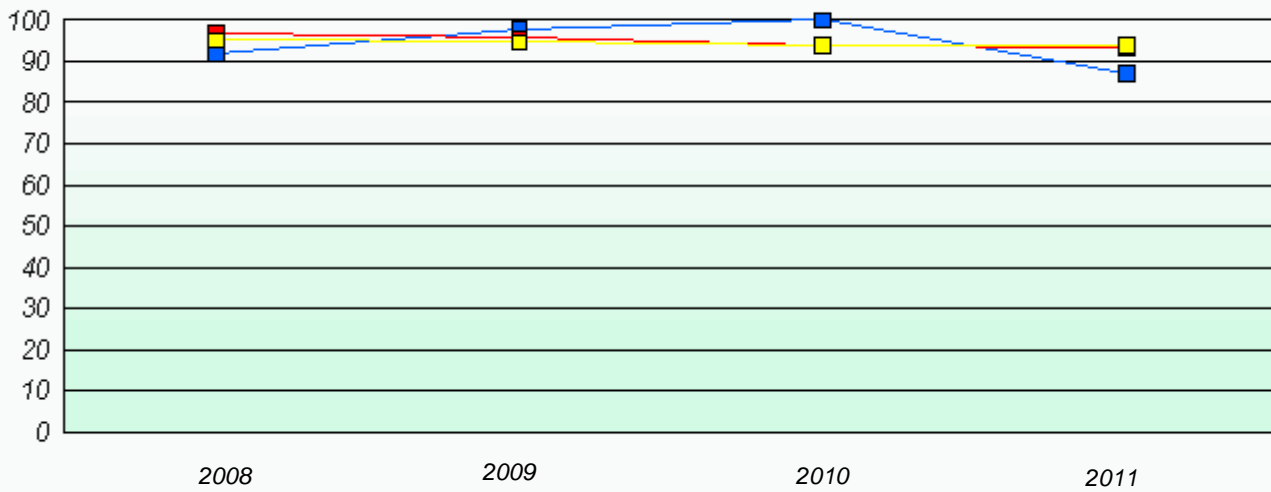
Exemption Rates

Number Operations



Participation Rates

Number Operations



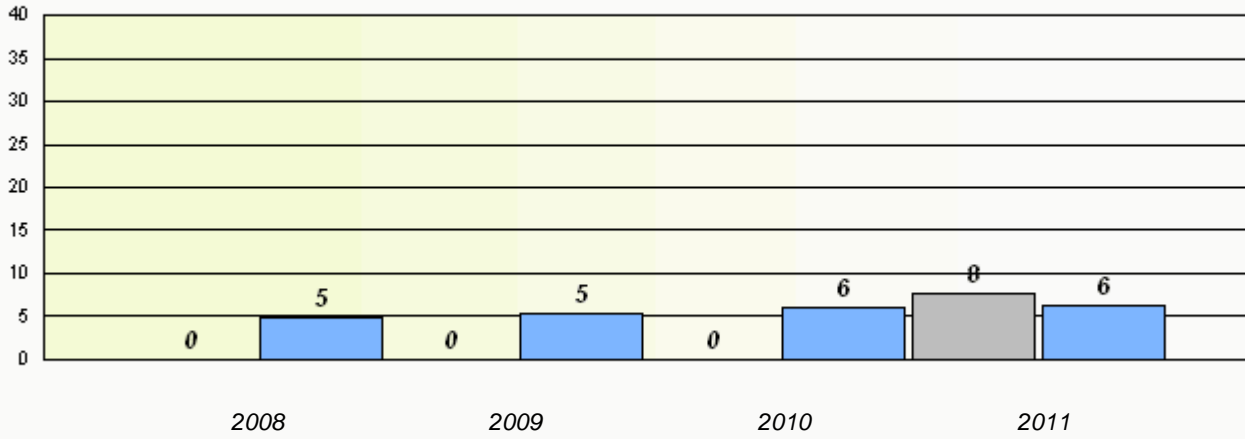
* Number Operations are composite of Reasoning, Communication, Connection and Representations, and problem Solving.

District 3 - Nova Central

School #: 192 Lumsden Academy

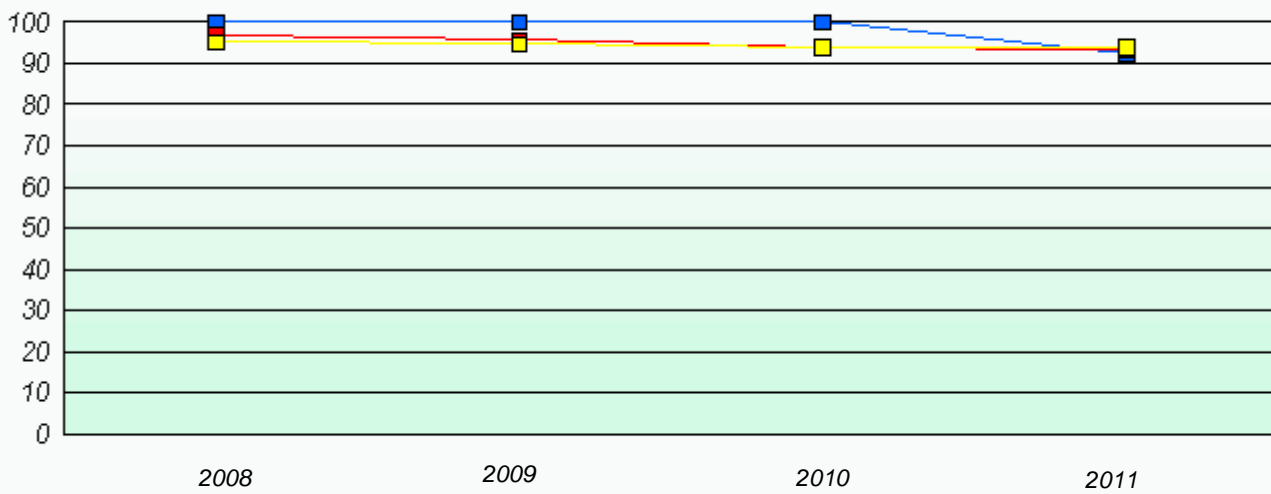
Exemption Rates

Number Operations



Participation Rates

Number Operations



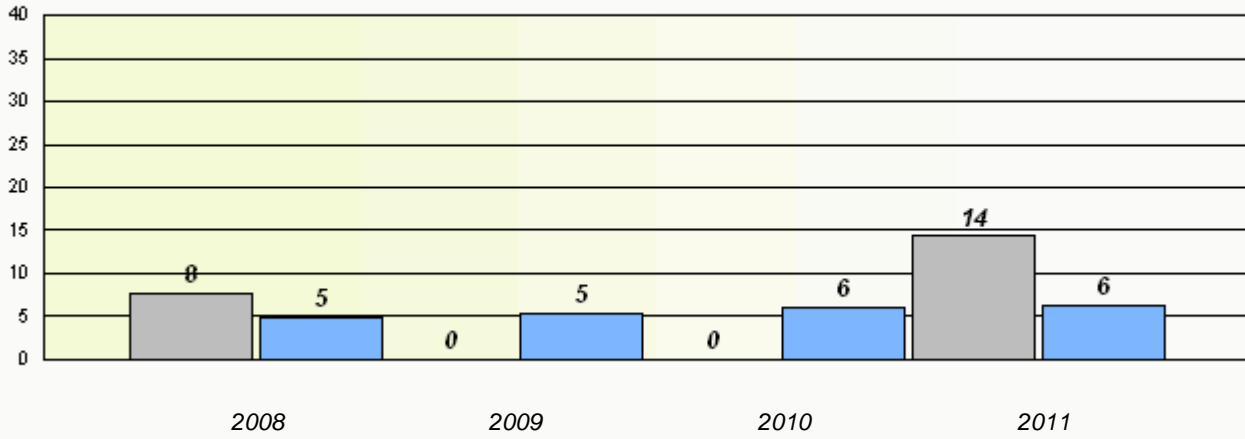
* Number Operations are composite of Reasoning, Communication, Connection and Representations, and problem Solving.

District 3 - Nova Central

School #: 194 Gill Memorial Academy

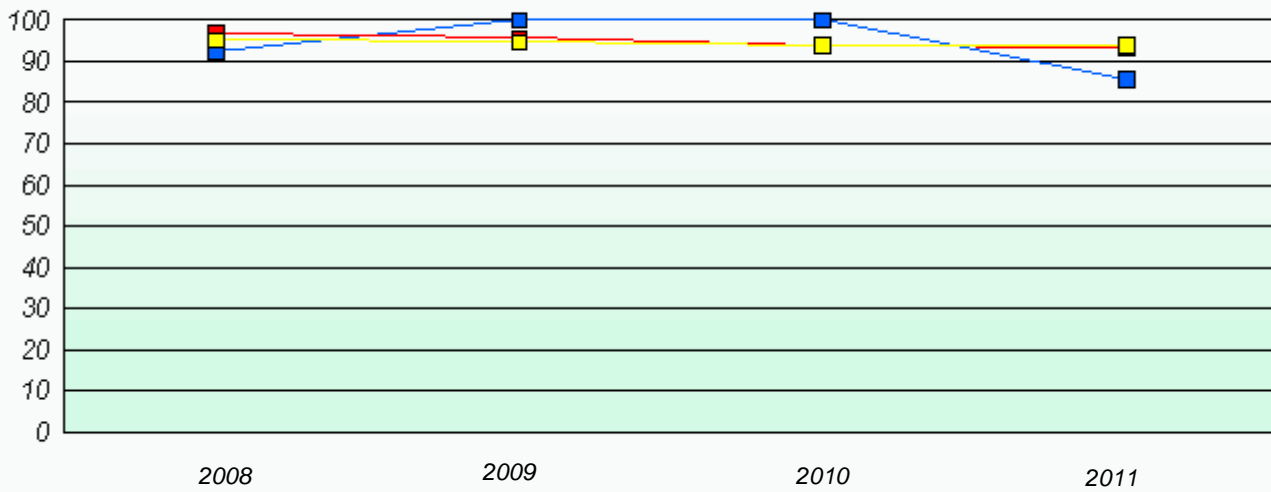
Exemption Rates

Number Operations



Participation Rates

Number Operations



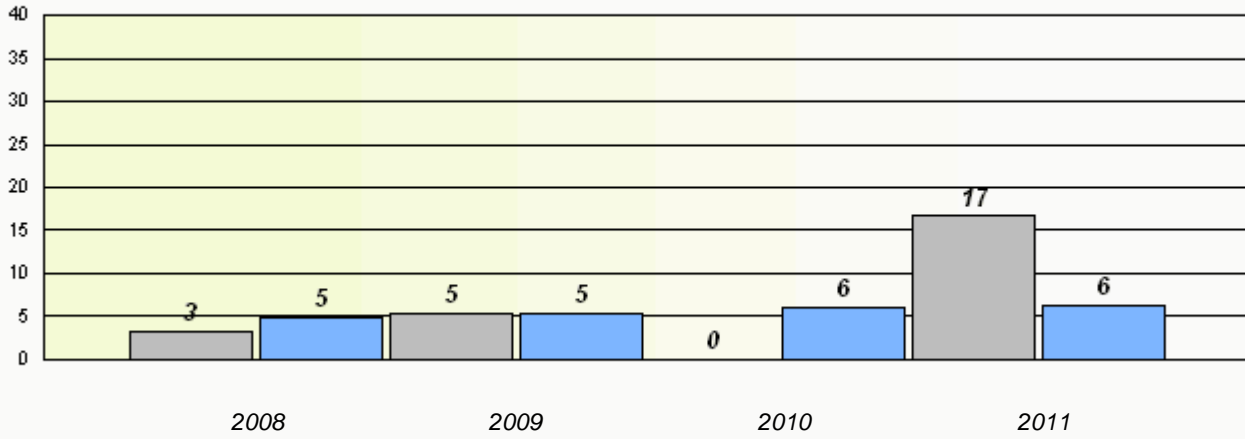
* Number Operations are composite of Reasoning, Communication, Connection and Representations, and problem Solving.

District 3 - Nova Central

School #: 202 Twillingate Island Elementary

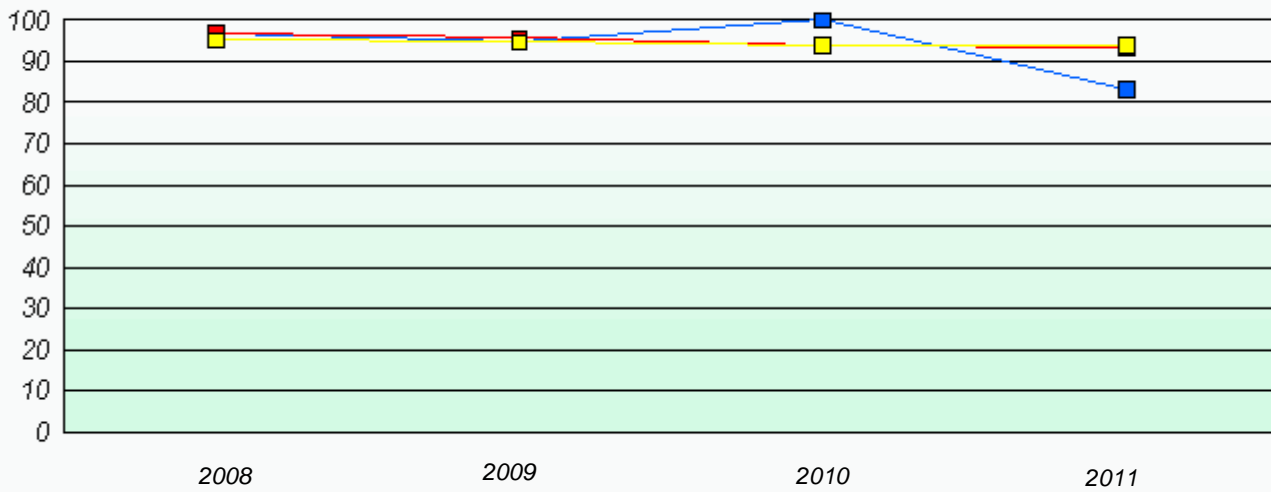
Exemption Rates

Number Operations



Participation Rates

Number Operations



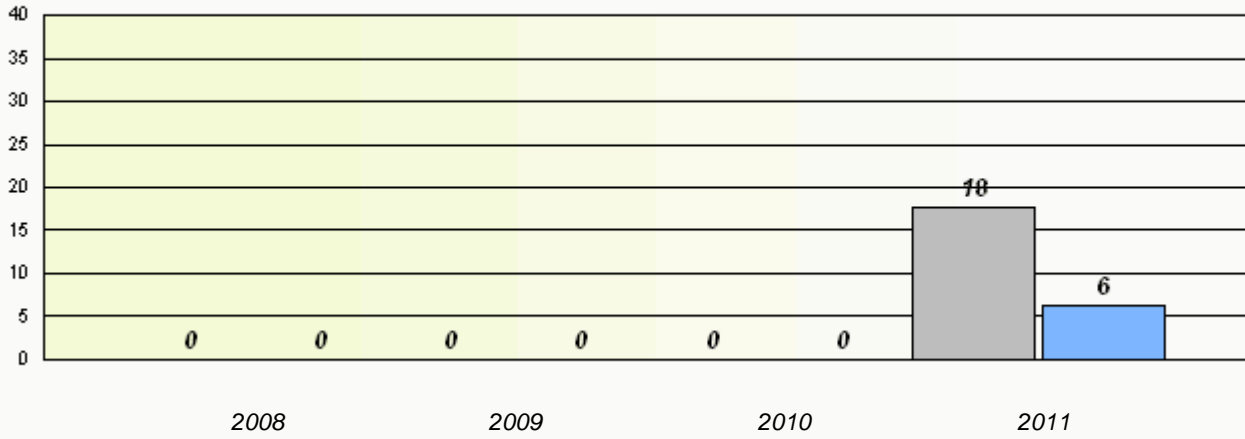
* Number Operations are composite of Reasoning, Communication, Connection and Representations, and problem Solving.

District 3 - Nova Central

School #: 204 Pearson Academy

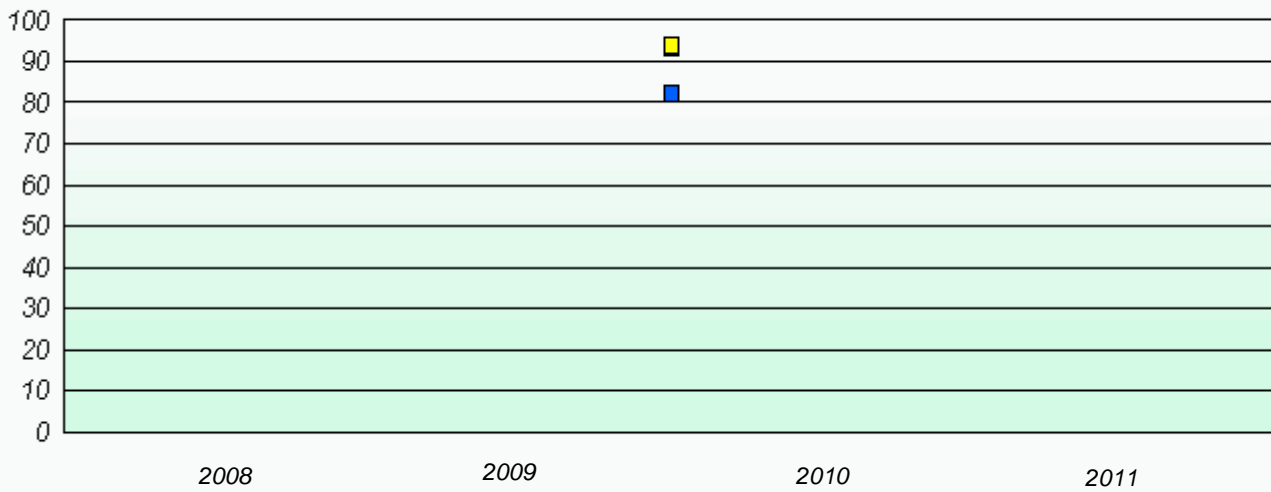
Exemption Rates

Number Operations



Participation Rates

Number Operations



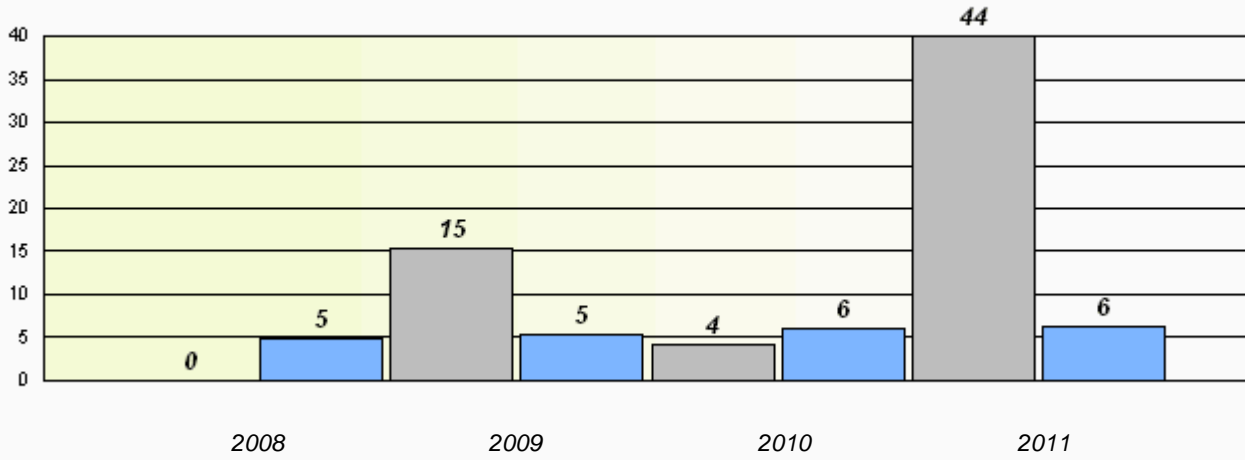
* Number Operations are composite of Reasoning, Communication, Connection and Representations, and problem Solving.

District 3 - Nova Central

School #: 206 Riverwood Academy

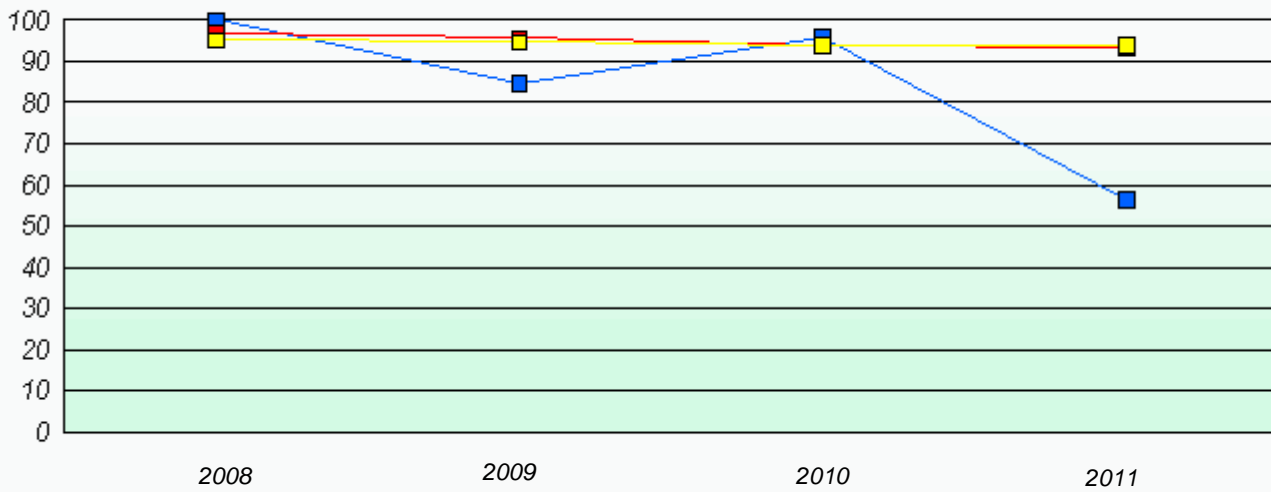
Exemption Rates

Number Operations



Participation Rates

Number Operations



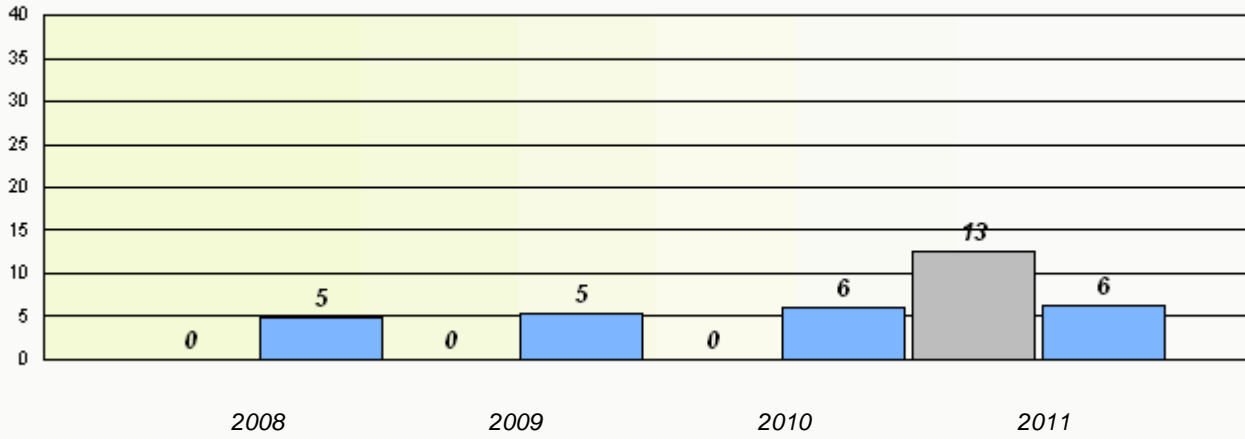
* Number Operations are composite of Reasoning, Communication, Connection and Representations, and problem Solving.

District 3 - Nova Central

School #: 398 Avoca Collegiate

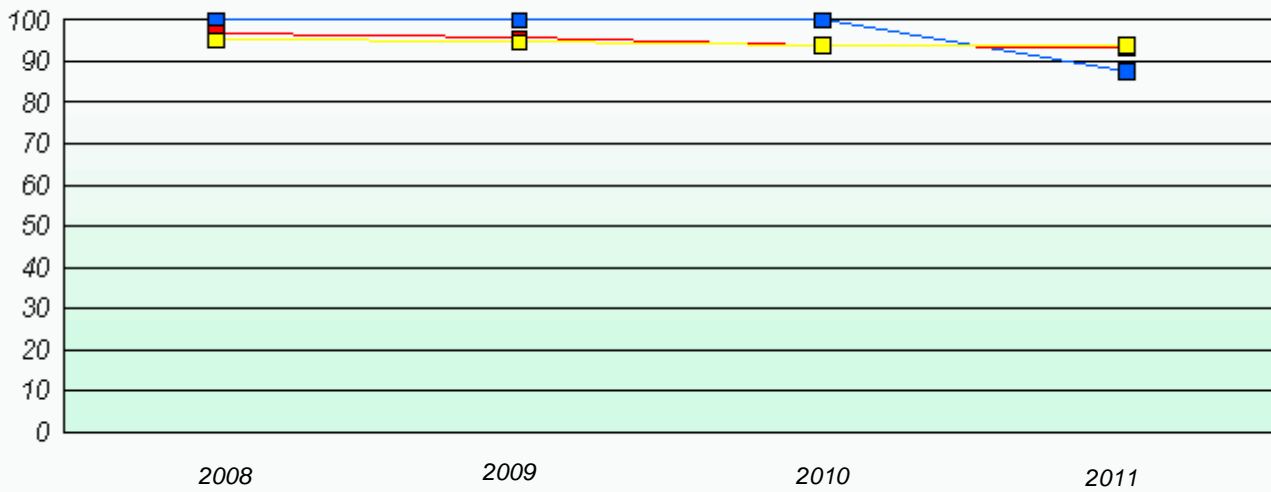
Exemption Rates

Number Operations



Participation Rates

Number Operations



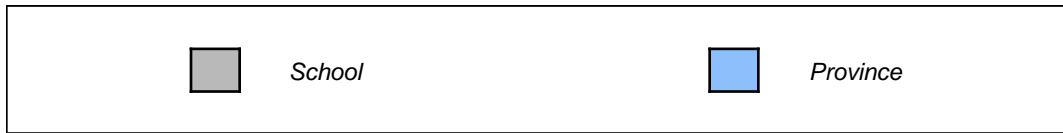
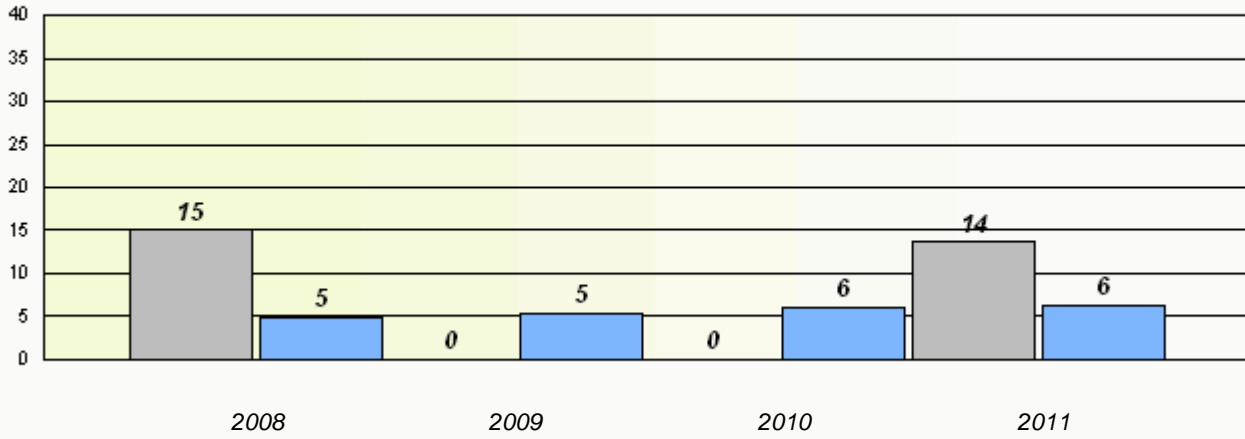
* Number Operations are composite of Reasoning, Communication, Connection and Representations, and problem Solving.

District 3 - Nova Central

School #: 399 Baie Verte Academy

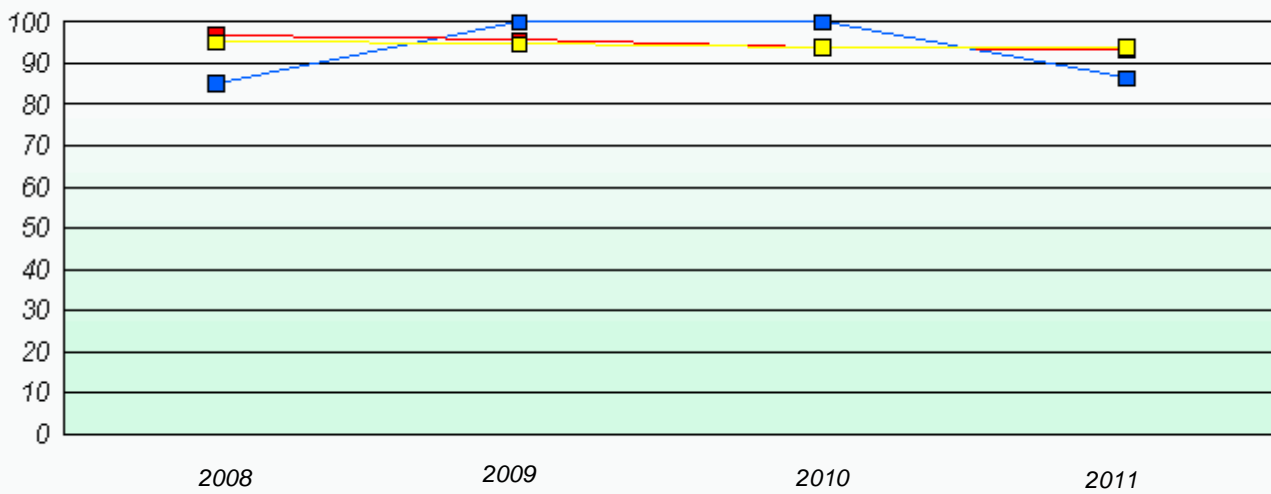
Exemption Rates

Number Operations



Participation Rates

Number Operations



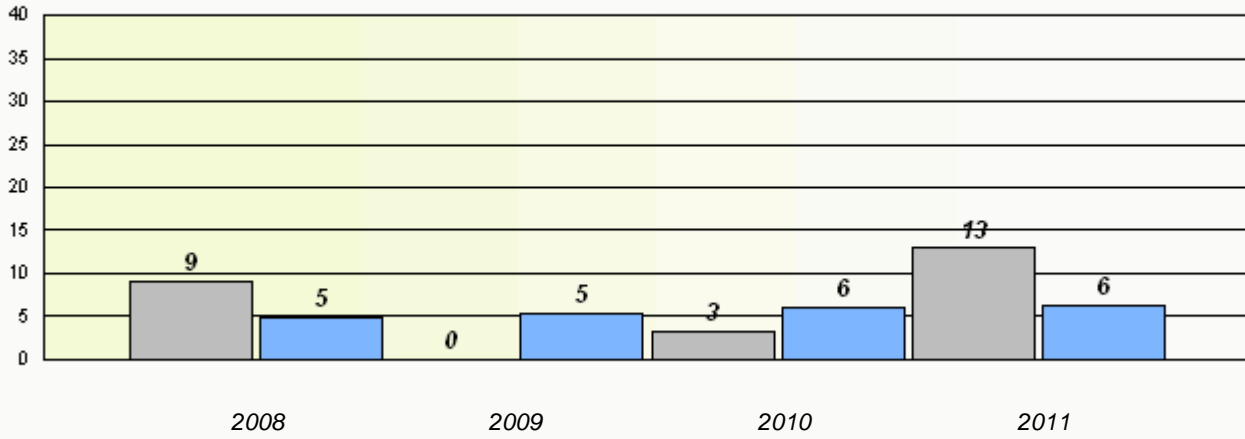
* Number Operations are composite of Reasoning, Communication, Connection and Representations, and problem Solving.

District 3 - Nova Central

School #: 400 Helen Tulk Elementary

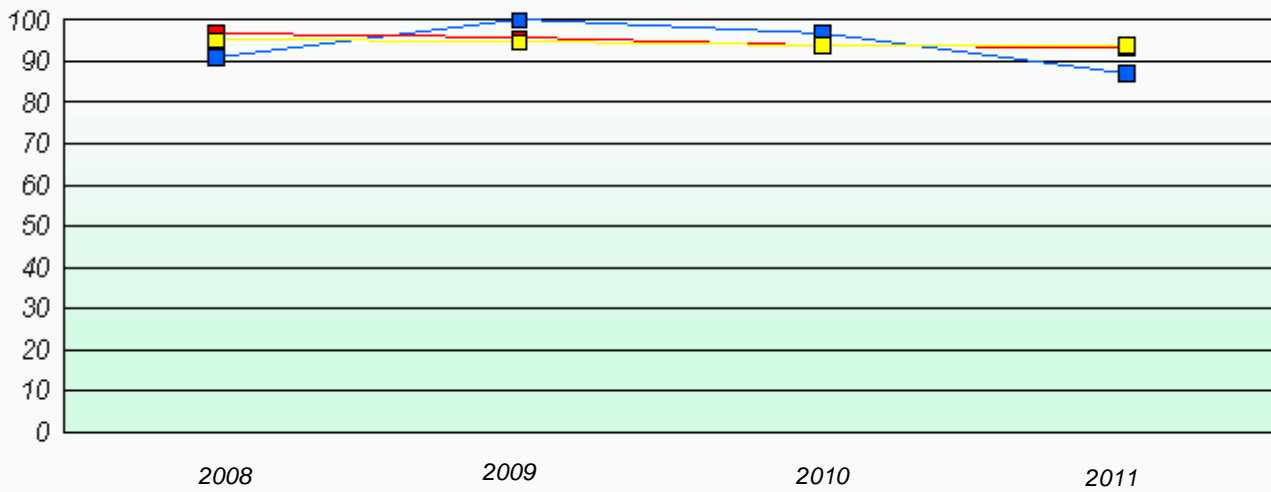
Exemption Rates

Number Operations



Participation Rates

Number Operations



* Number Operations are composite of Reasoning, Communication, Connection and Representations, and problem Solving.

District 3 - Nova Central

School #: 403 Lakeside Academy

Exemption Rates

Number Operations

School data with 5 or fewer students withheld for reasons of confidentiality.

2008

2009

2010

2011



School



Province

Participation Rates

Number Operations

School data with 5 or fewer students withheld for reasons of confidentiality.

2008

2009

2010

2011



School



District



Province

District 3 - Nova Central

School #: 405 Cottrell's Cove Academy

Exemption Rates

Number Operations

School data with 5 or fewer students withheld for reasons of confidentiality.

2008

2009

2010

2011



School



Province

Participation Rates

Number Operations

School data with 5 or fewer students withheld for reasons of confidentiality.

2008

2009

2010

2011



School



District



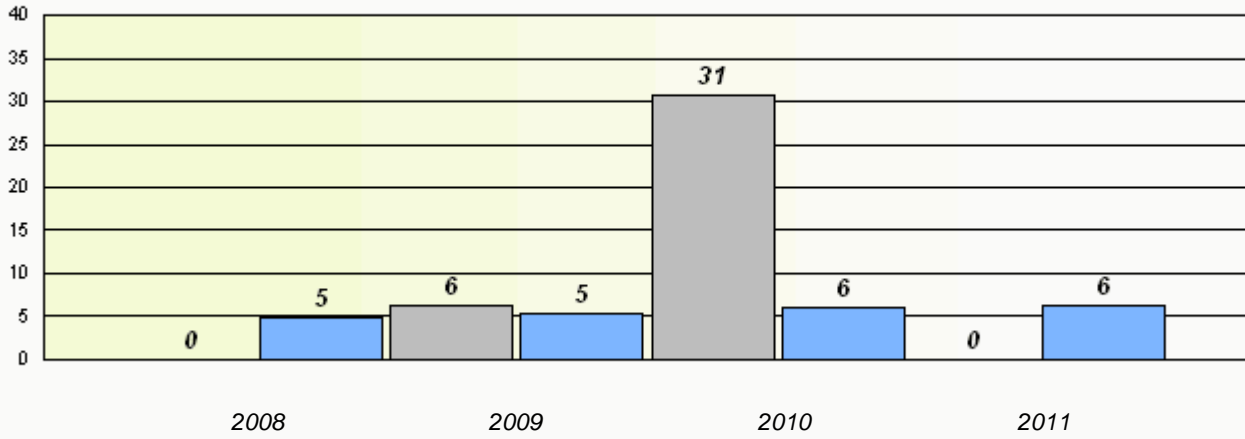
Province

District 3 - Nova Central

School #: 406 Fitzgerald Academy

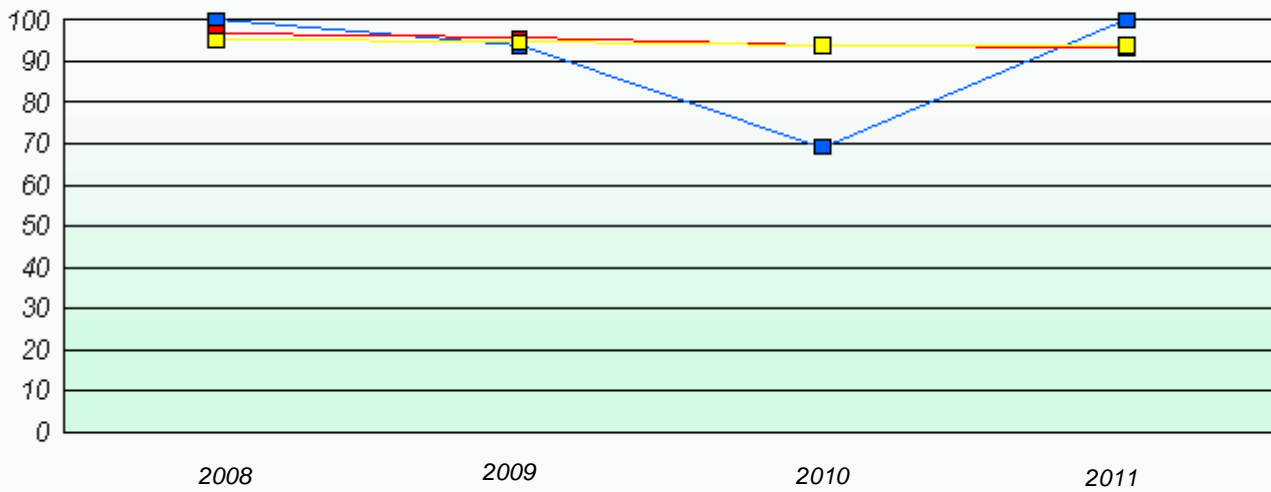
Exemption Rates

Number Operations



Participation Rates

Number Operations



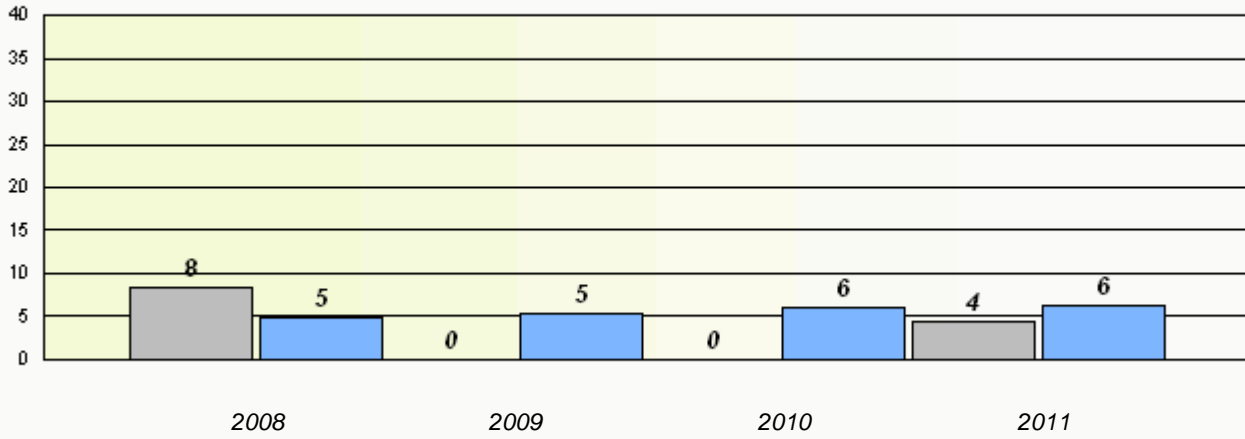
* Number Operations are composite of Reasoning, Communication, Connection and Representations, and problem Solving.

District 3 - Nova Central

School #: 407 Bay d'Espoir Academy

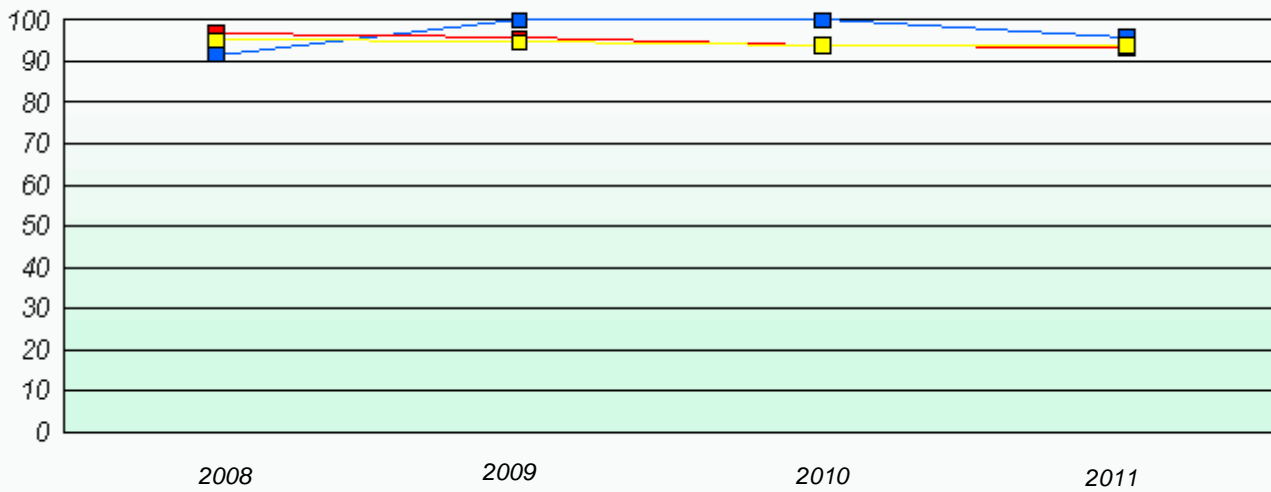
Exemption Rates

Number Operations



Participation Rates

Number Operations



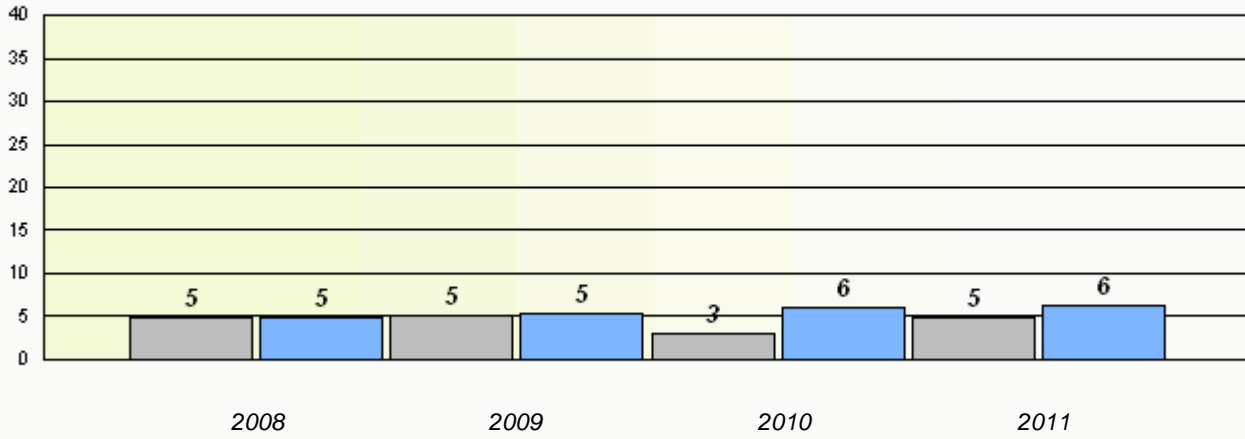
* Number Operations are composite of Reasoning, Communication, Connection and Representations, and problem Solving.

District 3 - Nova Central

School #: 409 Indian River Academy

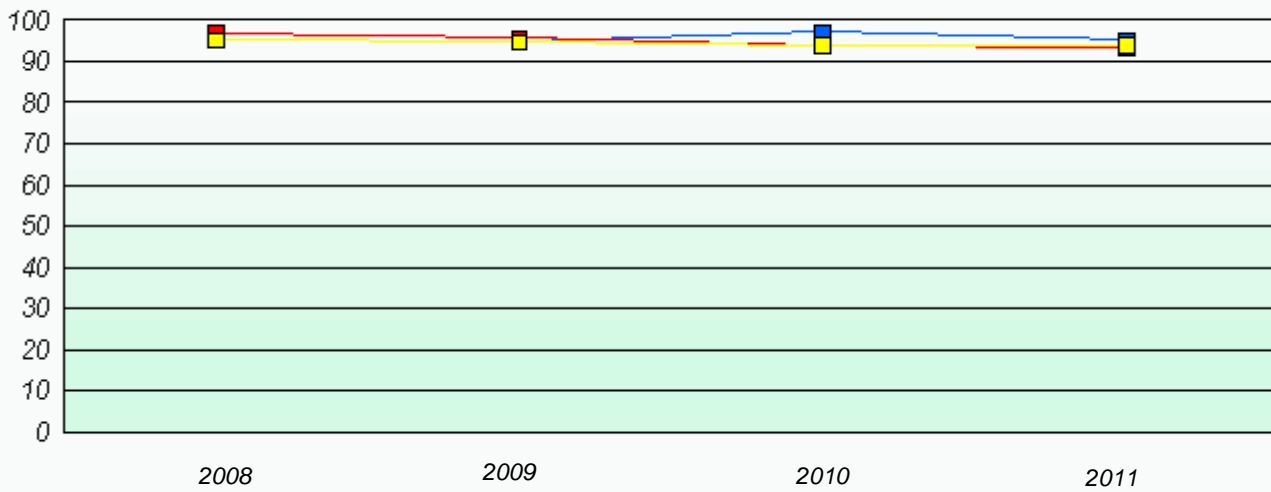
Exemption Rates

Number Operations



Participation Rates

Number Operations



* Number Operations are composite of Reasoning, Communication, Connection and Representations, and problem Solving.

District 3 - Nova Central

School #: 413 Holy Cross School Complex

Exemption Rates

Number Operations

School data with 5 or fewer students withheld for reasons of confidentiality.

2008

2009

2010

2011



School



Province

Participation Rates

Number Operations

School data with 5 or fewer students withheld for reasons of confidentiality.

2008

2009

2010

2011



School



District



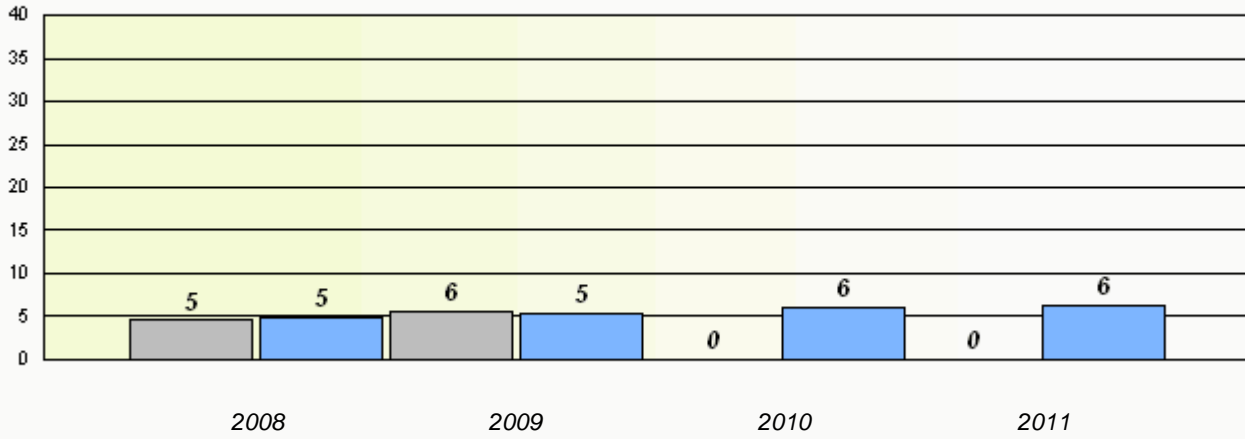
Province

District 3 - Nova Central

School #: 414 Fogo Island Central Academy

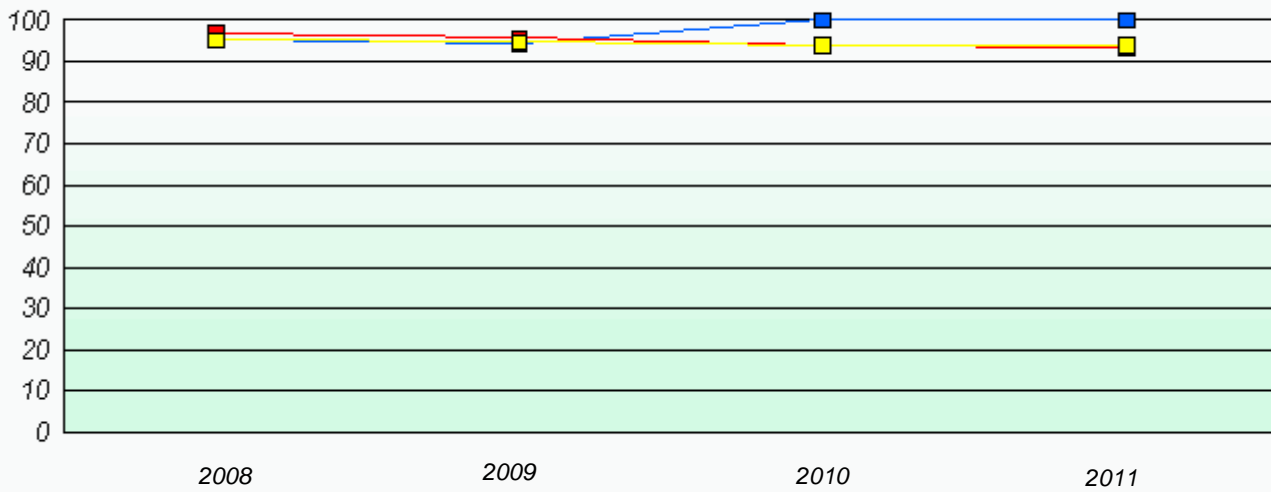
Exemption Rates

Number Operations



Participation Rates

Number Operations



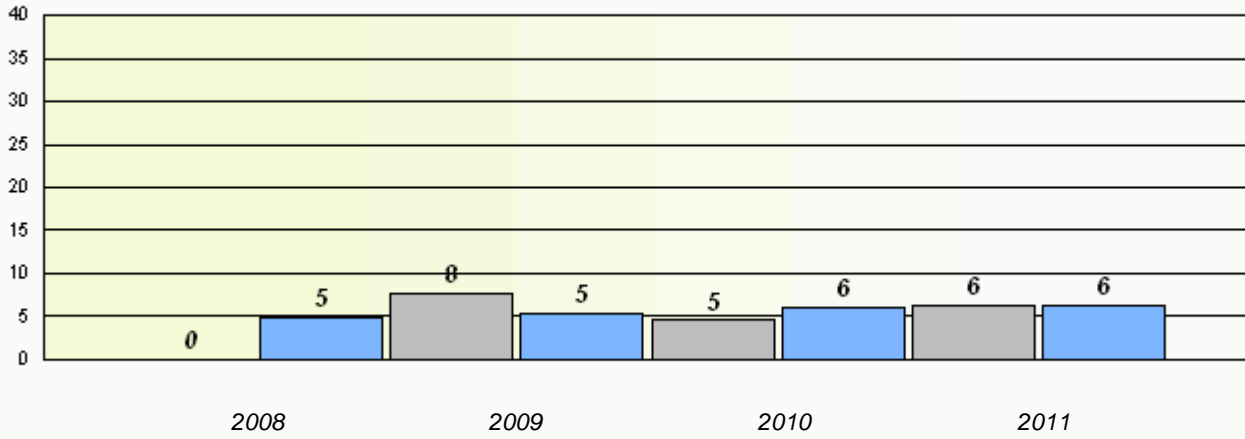
* Number Operations are composite of Reasoning, Communication, Connection and Representations, and problem Solving.

District 3 - Nova Central

School #: 416 Smallwood Academy

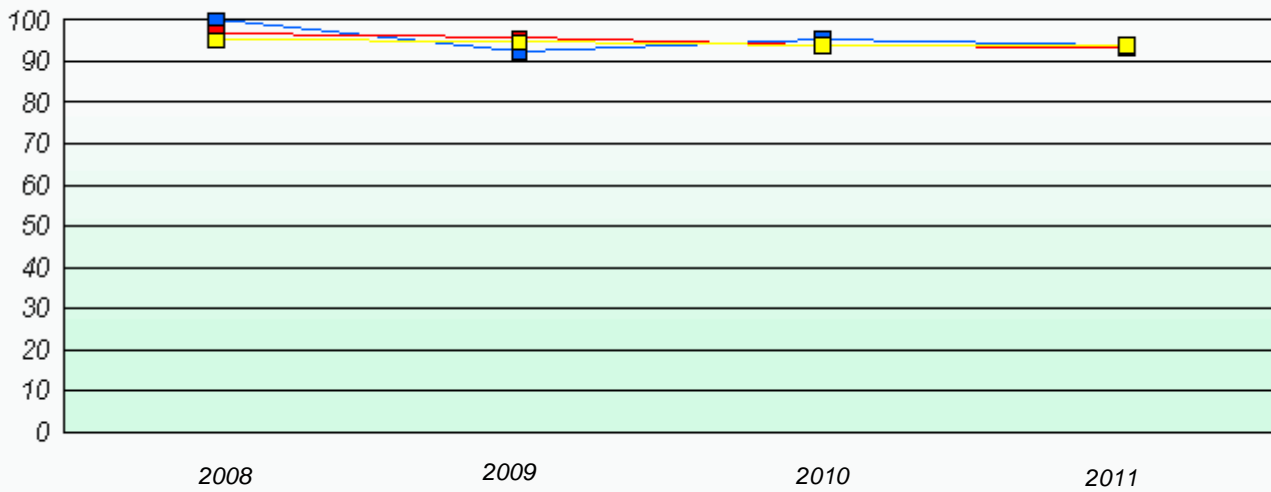
Exemption Rates

Number Operations



Participation Rates

Number Operations



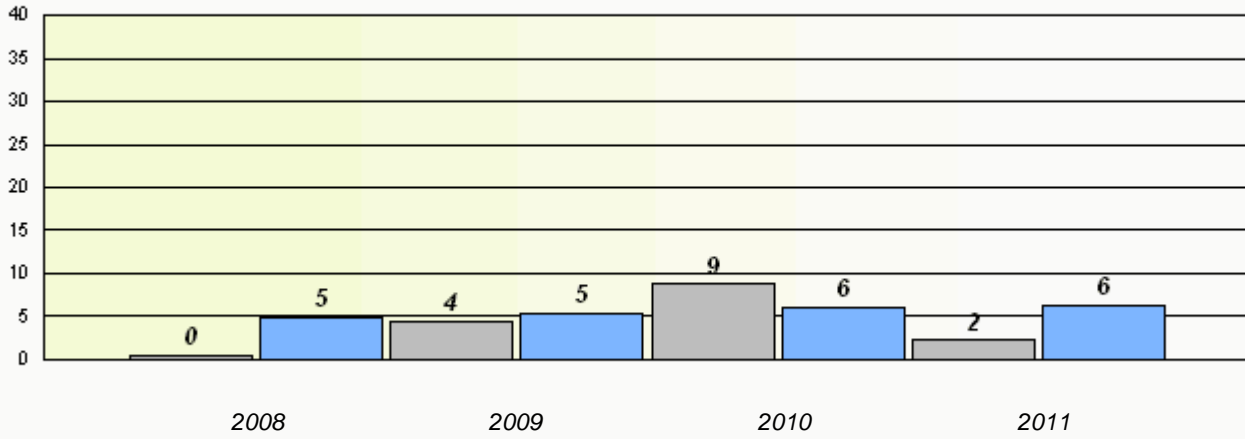
* Number Operations are composite of Reasoning, Communication, Connection and Representations, and problem Solving.

District 3 - Nova Central

School #: 417 Gander Academy

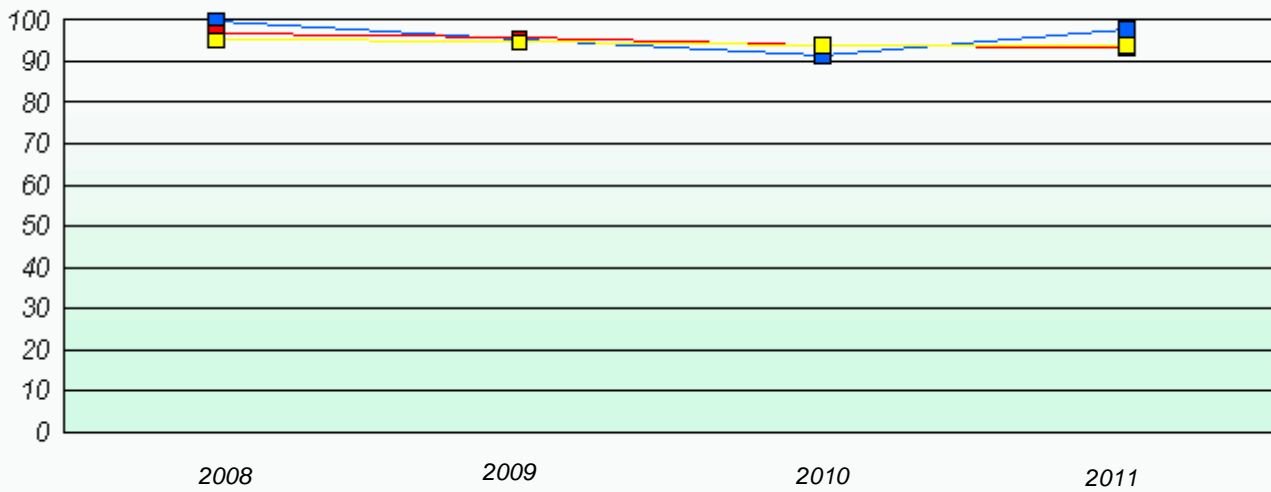
Exemption Rates

Number Operations



Participation Rates

Number Operations



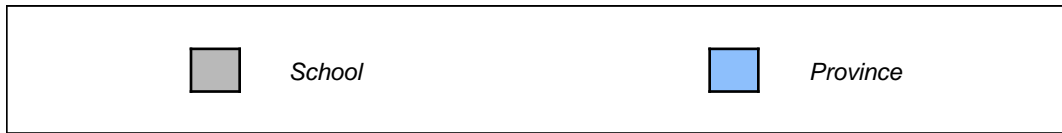
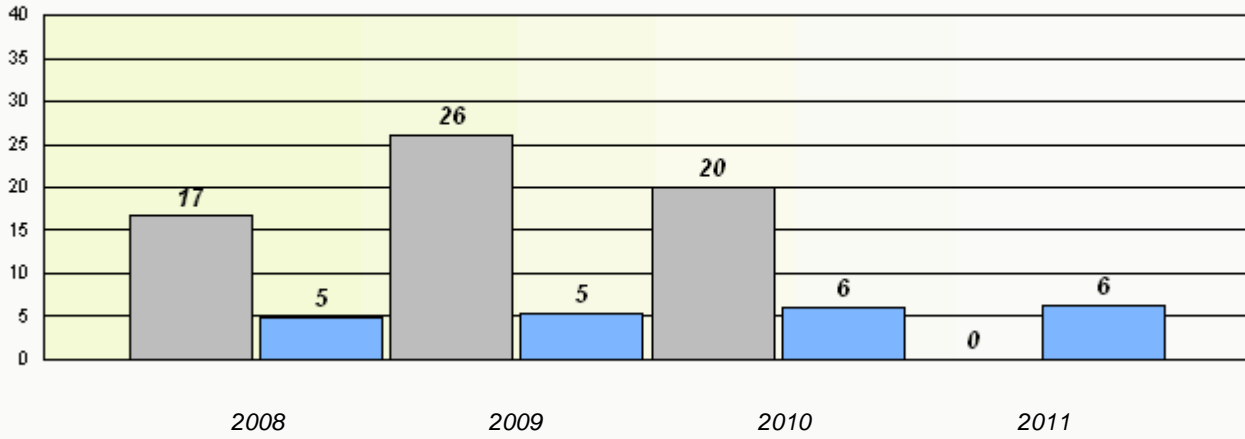
* Number Operations are composite of Reasoning, Communication, Connection and Representations, and problem Solving.

District 3 - Nova Central

School #: 421 Lakewood Academy

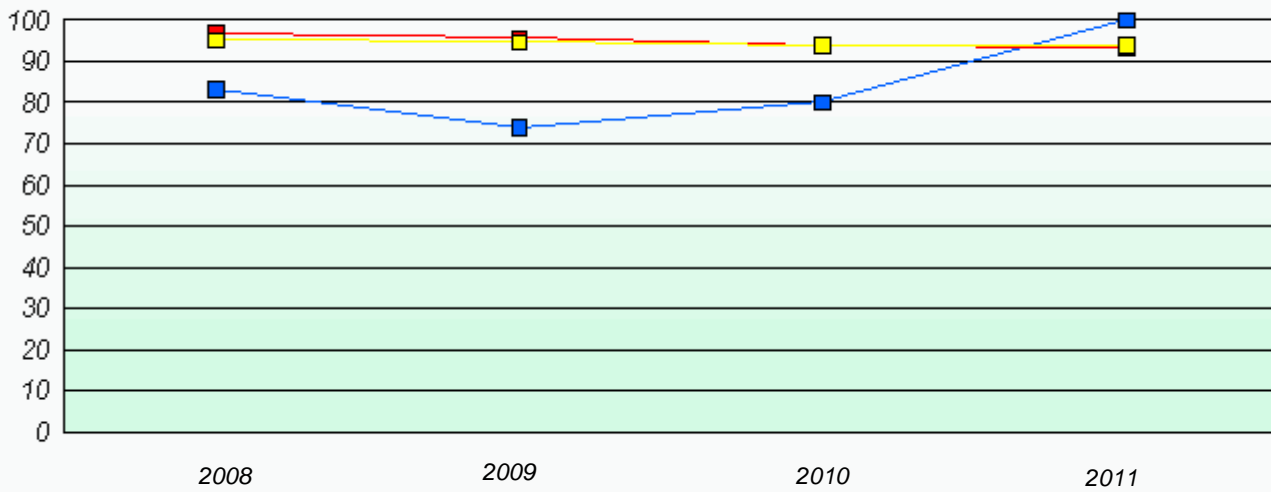
Exemption Rates

Number Operations



Participation Rates

Number Operations



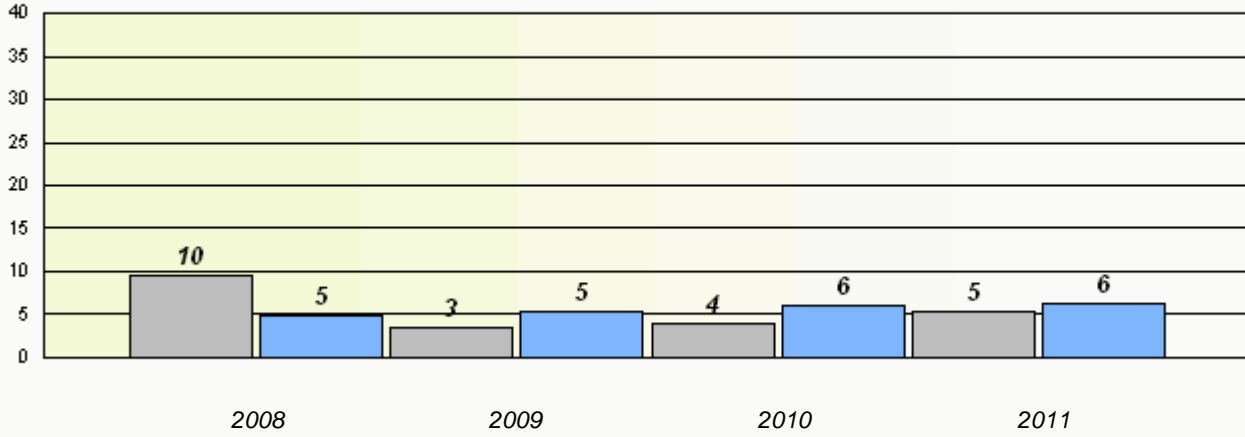
* Number Operations are composite of Reasoning, Communication, Connection and Representations, and problem Solving.

District 3 - Nova Central

School #: 422 Glovertown Academy

Exemption Rates

Number Operations



Participation Rates

Number Operations



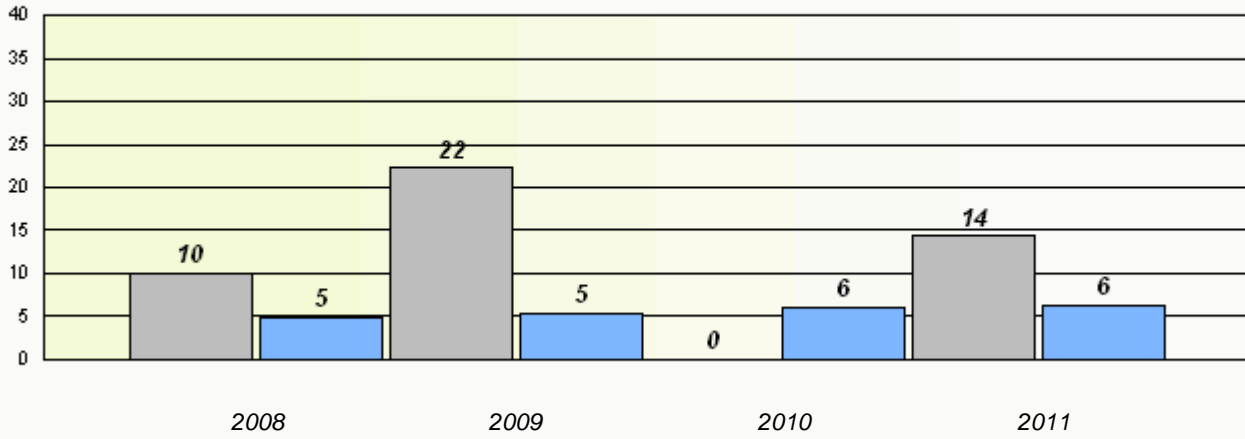
* Number Operations are composite of Reasoning, Communication, Connection and Representations, and problem Solving.

District 3 - Nova Central

School #: 426 Hillview Academy

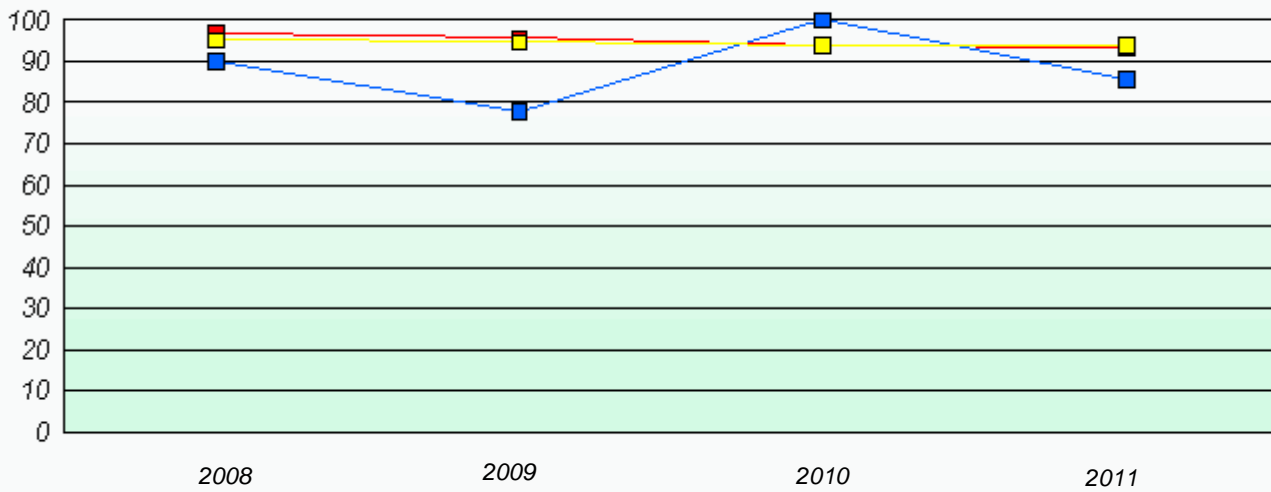
Exemption Rates

Number Operations



Participation Rates

Number Operations



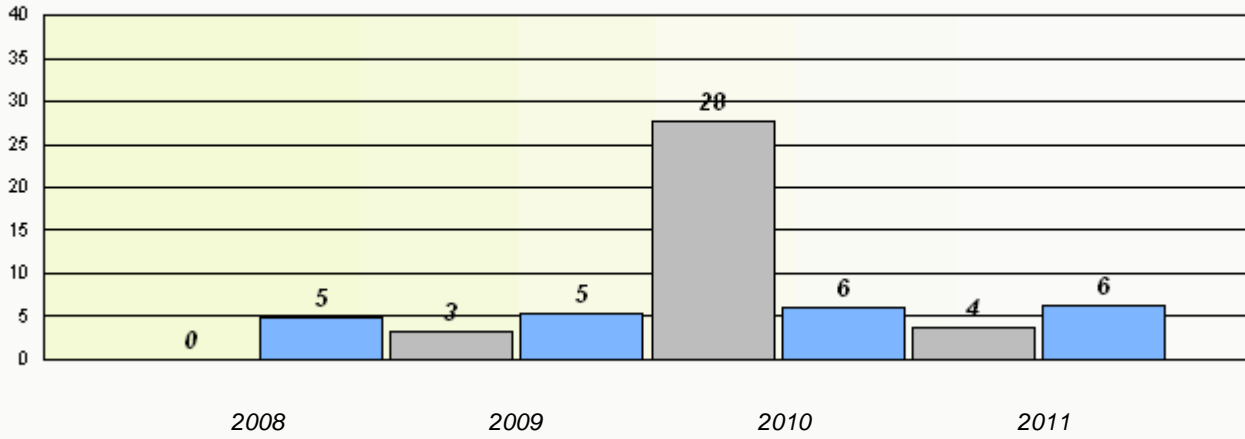
* Number Operations are composite of Reasoning, Communication, Connection and Representations, and problem Solving.

District 3 - Nova Central

School #: 478 New World Island Academy

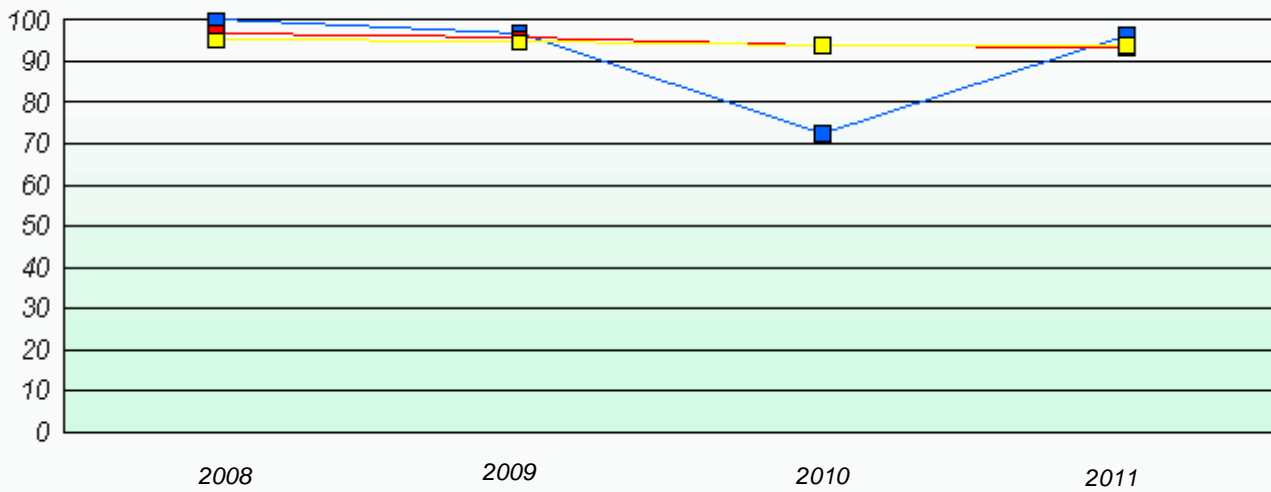
Exemption Rates

Number Operations



Participation Rates

Number Operations



* Number Operations are composite of Reasoning, Communication, Connection and Representations, and problem Solving.