

**English Language Arts**

Number of Students : 12

**Multiple Choice**

<b>Poetic</b>	School	75.8
	District	75.6
	Province	64.7
<b>Informational</b>	School	84.2
	District	82.0
	Province	71.2

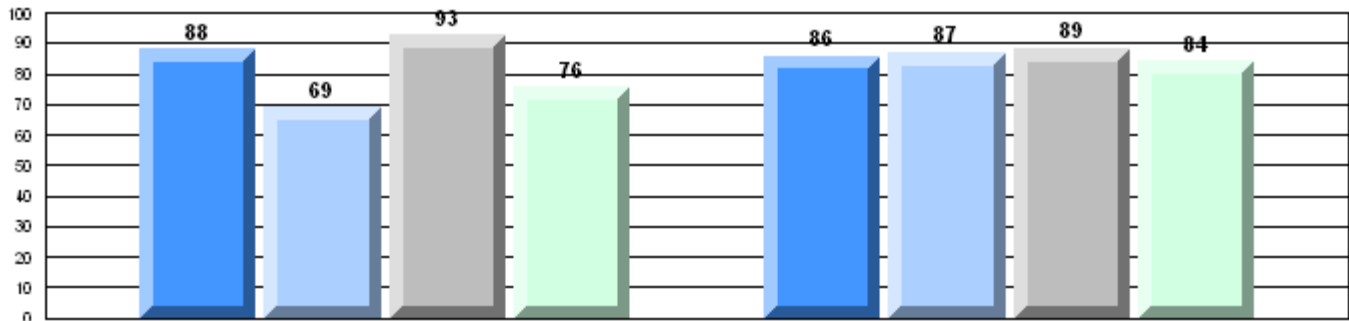
**Rubrics**

<b>Demand Writing</b>	School	91.7
	District	98.1
	Province	83.3
<b>Poetic Reading</b>	School	91.7
	District	92.6
	Province	61.4
<b>Informational Reading</b>	School	83.3
	District	92.6
	Province	69.2

Mark	School vs District	School vs Province
75.8	P	P
75.6		
64.7		
84.2	P	P
82.0		
71.2		
91.7	q	P
98.1		
83.3		
91.7	q	P
92.6		
61.4		
83.3	q	P
92.6		
69.2		

**4 Year CRT (Subtest) Mark Trend 2008-2011**

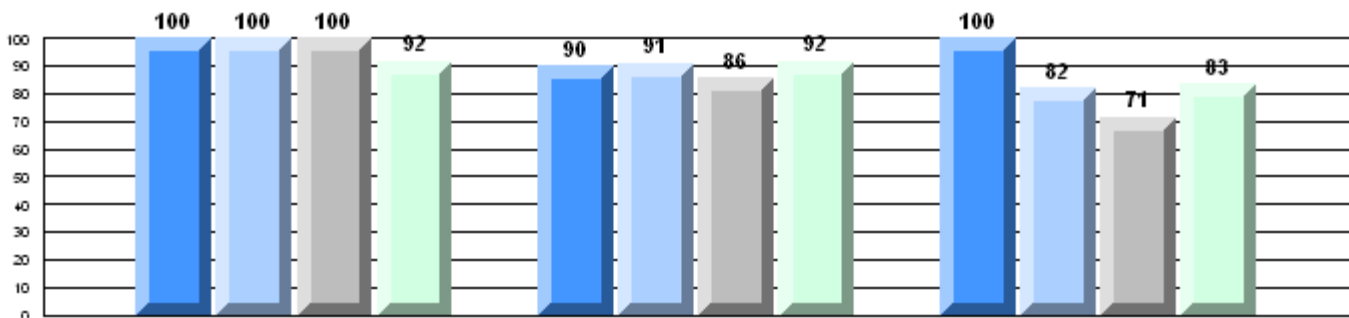
Multiple Choice



Poetic

Informational

**Rubric Results: Percentage of students performing at Level 3 and Above 2008-2011**



Province

P	P	P	P	P	P	P	P	P	P	P	P
86	83	85	83	73	79	73	61	77	82	70	69

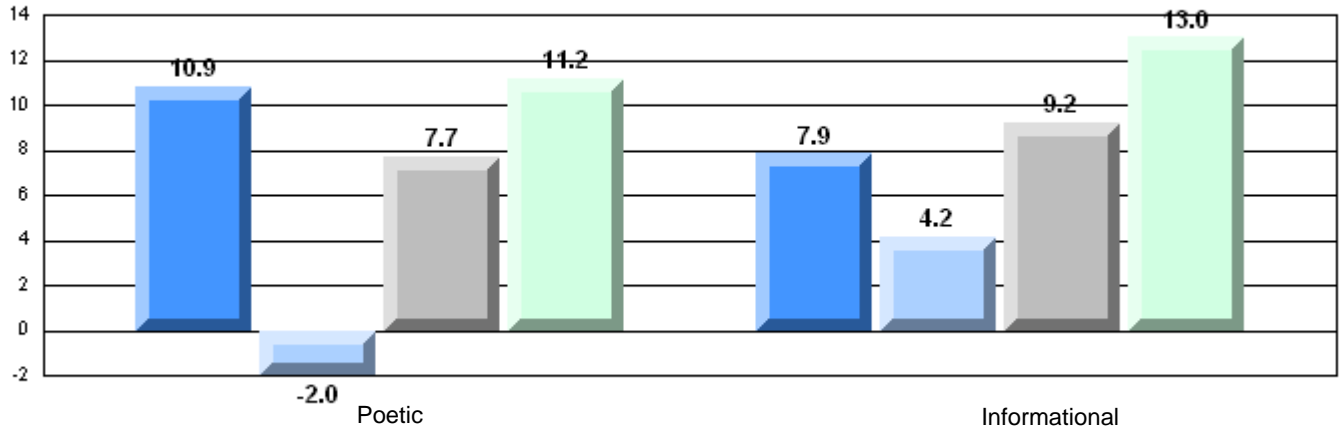
Demand Writing

Poetic Reading

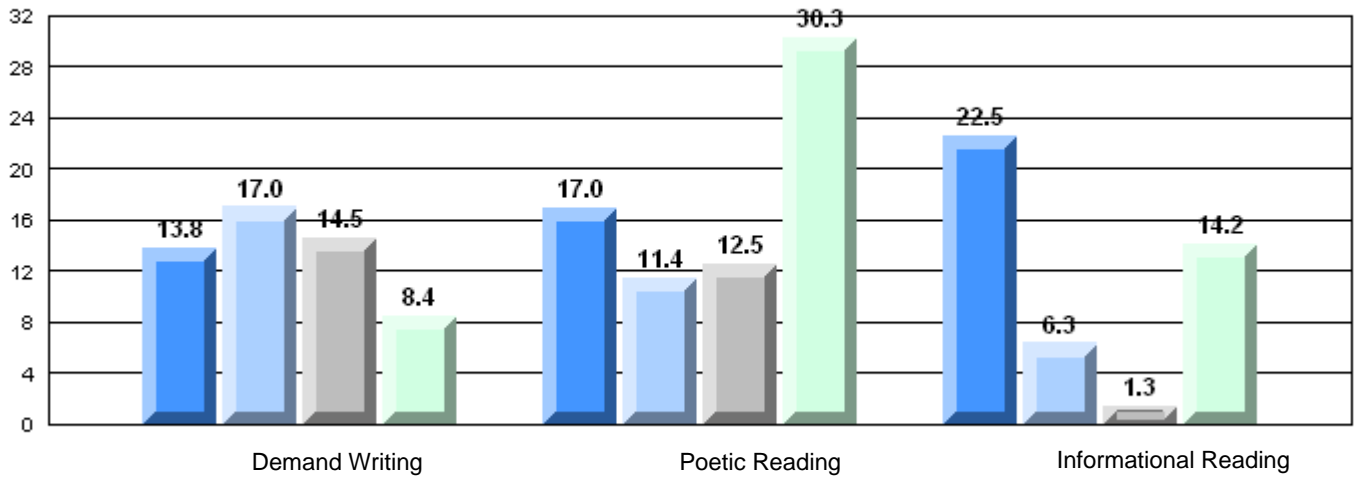
Informational Reading



**Difference from Provincial Mean, 2008-11**  
Multiple Choice



**Difference from Provincial Mean, 2008-11**  
Rubric Results: Percentage of students performing at Level 3 and Above 2008-2011



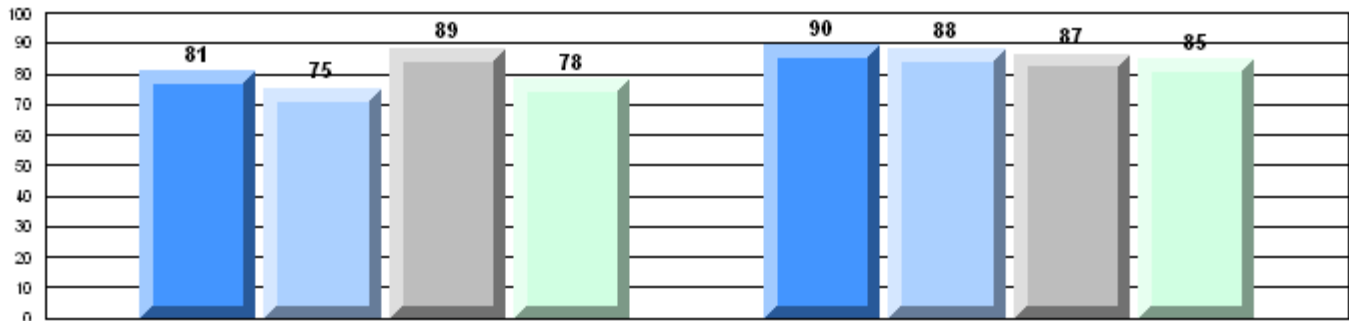
**English Language Arts**

Number of Students : 31

	Mark	School vs District	School vs Province
<b>Multiple Choice</b>	School		
	District		
	Province		
<b>Poetic</b>	School	78.4	P
	District	75.6	
	Province	64.7	P
<b>Informational</b>	School	84.8	P
	District	82.0	
	Province	71.2	P
<b>Rubrics</b>	School	100.0	P
	District	98.1	
	Province	83.3	P
<b>Demand Writing</b>	School	100.0	P
	District	98.1	
	Province	83.3	P
<b>Poetic Reading</b>	School	96.8	P
	District	92.6	
	Province	61.4	P
<b>Informational Reading</b>	School	100.0	P
	District	92.6	
	Province	69.2	P

**4 Year CRT (Subtest) Mark Trend 2008-2011**

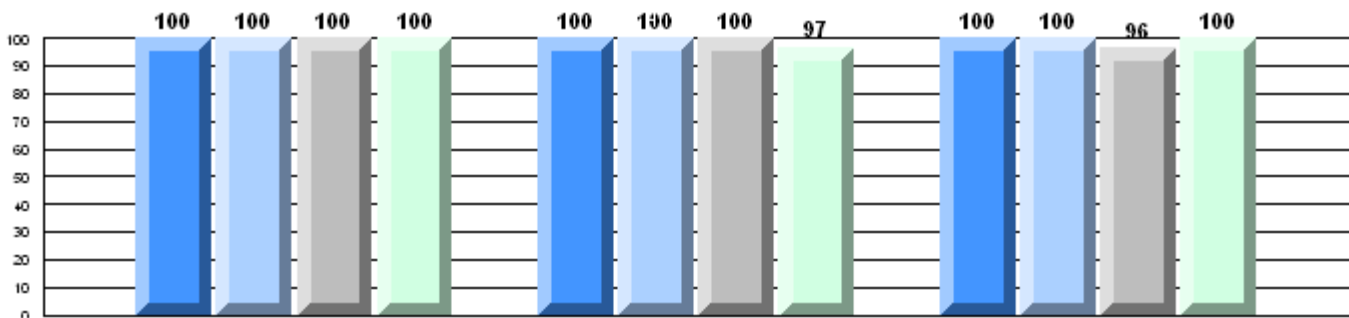
Multiple Choice



Poetic

Informational

**Rubric Results: Percentage of students performing at Level 3 and Above 2008-2011**



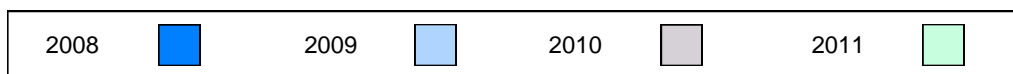
Province

P 86 P 83 P 85 P 83    
 P 73 P 79 P 73 P 61    
 P 77 P 76 P 70 P 69

Demand Writing

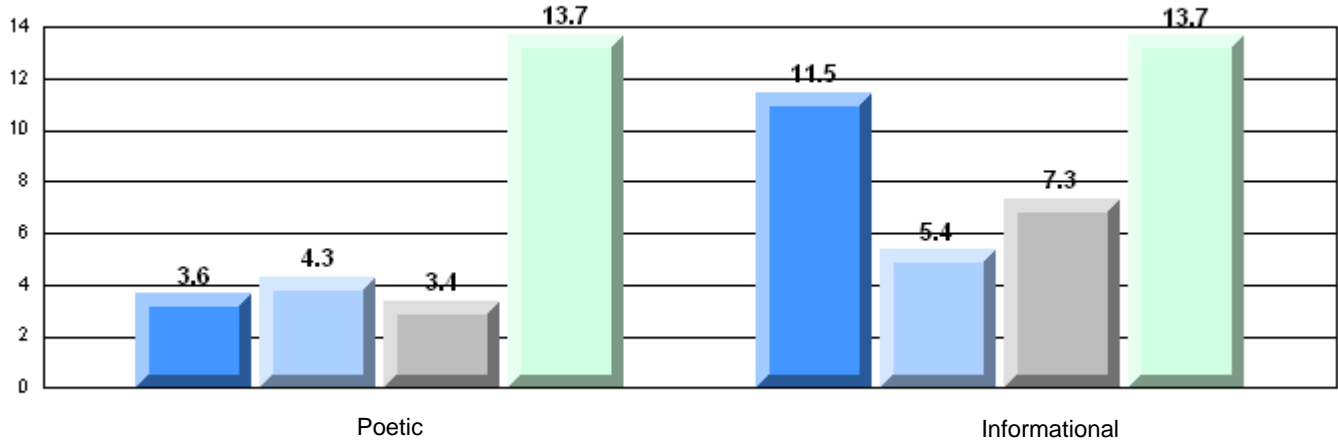
Poetic Reading

Informational Reading



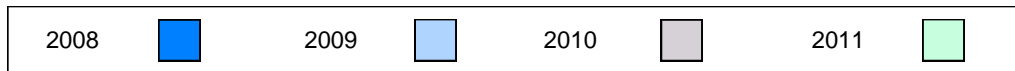
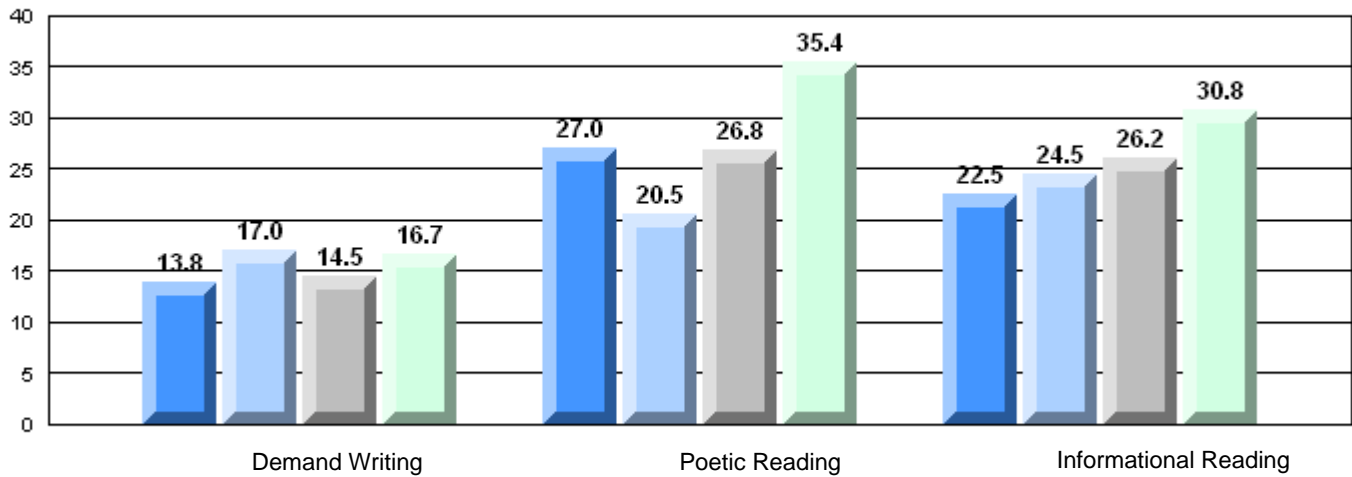
**Difference from Provincial Mean, 2008-11**

Multiple Choice



**Difference from Provincial Mean, 2008-11**

Rubric Results: Percentage of students performing at Level 3 and Above 2008-2011



**English Language Arts**

Number of Students : 9

**Multiple Choice**

**Poetic**

**Informational**

**Rubrics**

**Demand Writing**

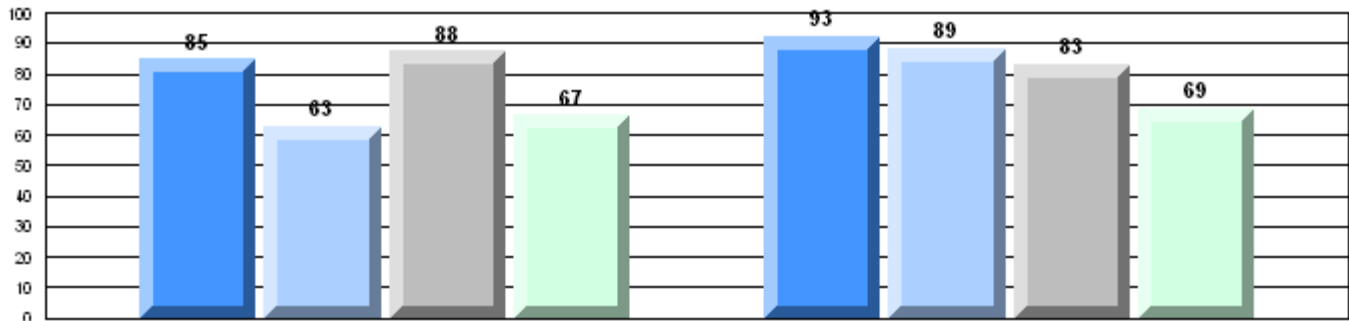
**Poetic Reading**

**Informational Reading**

	Mark	School vs District	School vs Province
Poetic	School	66.7	P
	District	75.6	q
	Province	64.7	
Informational	School	68.9	q
	District	82.0	q
	Province	71.2	
Demand Writing	School	100.0	P
	District	98.1	
	Province	83.3	P
Poetic Reading	School	88.9	q
	District	92.6	P
	Province	61.4	
Informational Reading	School	77.8	q
	District	92.6	P
	Province	69.2	

**4 Year CRT (Subtest) Mark Trend 2008-2011**

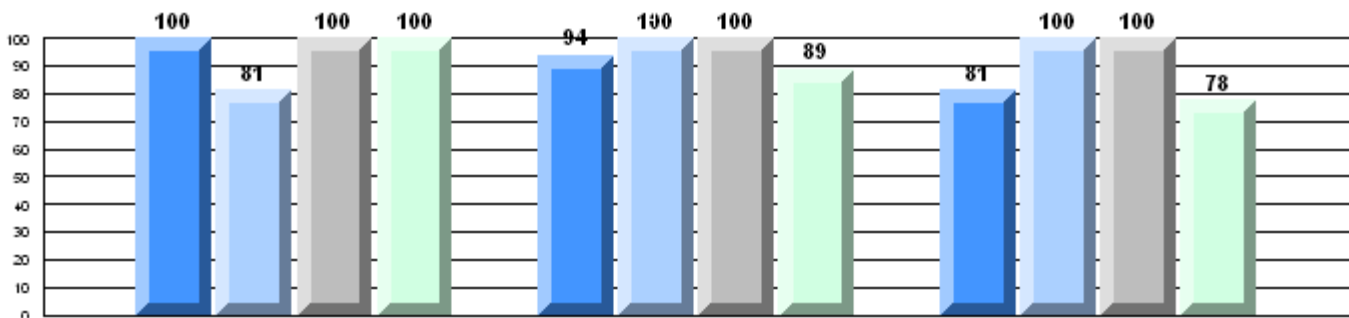
Multiple Choice



Poetic

Informational

**Rubric Results: Percentage of students performing at Level 3 and Above 2008-2011**



Province

P 86 q 83 P 85 P 83    
 P 73 P 79 P 73 P 61    
 P 77 P 76 P 70 P 69

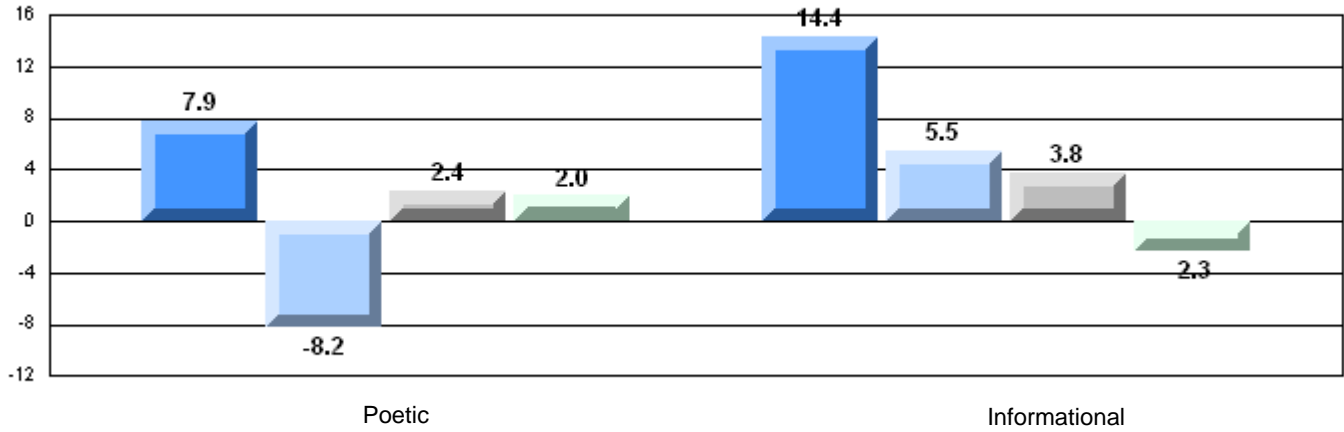
Demand Writing

Poetic Reading

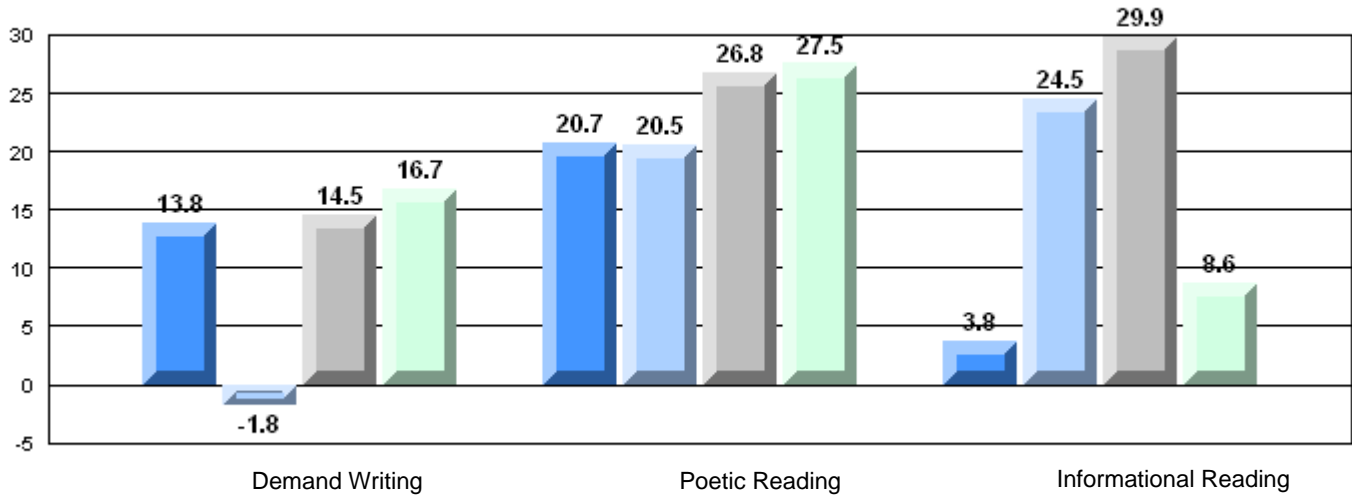
Informational Reading



**Difference from Provincial Mean, 2008-11**  
Multiple Choice



**Difference from Provincial Mean, 2008-11**  
Rubric Results: Percentage of students performing at Level 3 and Above 2008-2011



**English Language Arts**

Number of Students : 2

**Multiple Choice**

**Poetic**

School  
District  
Province

School data with 5 or fewer students withheld for reasons of confidentiality.

Mark      School vs District      School vs Province

q

P

**Informational**

School  
District  
Province

P

P

**Rubrics**

**Demand Writing**

School  
District  
Province

P

P

**Poetic Reading**

School  
District  
Province

q

q

**Informational Reading**

School  
District  
Province

P

P

**4 Year CRT (Subtest) Mark Trend 2008-2011**

Multiple Choice

School data with 5 or fewer students withheld for reasons of confidentiality.

Poetic

Informational

**Rubric Results: Percentage of students performing at Level 3 and Above 2008-2011**

School data with 5 or fewer students withheld for reasons of confidentiality.

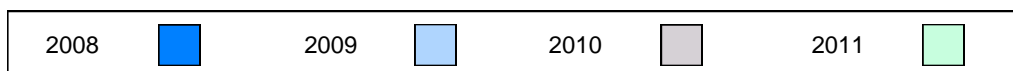
Province

P    P    P    P            P    P    P    q            P    P    P    P  
86   83   85   83            73   79   73   61            77   76   70   69

Demand Writing

Poetic Reading

Informational Reading



**Difference from Provincial Mean, 2008-11**

Multiple Choice

School data with 5 or fewer students withheld for reasons of confidentiality.

Poetic

Informational

**Difference from Provincial Mean, 2008-11**

Rubric Results: Percentage of students performing at Level 3 and Above 2008-2011

School data with 5 or fewer students withheld for reasons of confidentiality.

Demand Writing

Poetic Reading

Informational Reading





**English Language Arts**

Number of Students : 12

**Multiple Choice**

**Poetic**

School  
District  
Province

School data with 5 or fewer students withheld for reasons of confidentiality.

Mark	School vs District	School vs Province
	q	q
	q	q
	q	q
	q	q
	q	q

**Informational**

School  
District  
Province

**Rubrics**

**Demand Writing**

School  
District  
Province

**Poetic Reading**

School  
District  
Province

**Informational Reading**

School  
District  
Province

**4 Year CRT (Subtest) Mark Trend 2008-2011**

Multiple Choice

School data with 5 or fewer students withheld for reasons of confidentiality.

Poetic

Informational

**Rubric Results: Percentage of students performing at Level 3 and Above 2008-2011**

School data with 5 or fewer students withheld for reasons of confidentiality.

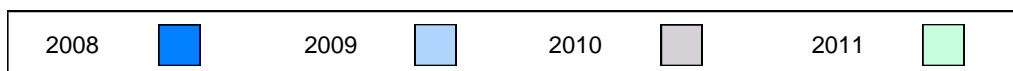
Province

q	q	q	q	q	q	q	q	q	q	q	q
86	83	83	83	73	79	61	77	76	69	69	69

Demand Writing

Poetic Reading

Informational Reading



**Difference from Provincial Mean, 2008-11**

Multiple Choice

[School data with 5 or fewer students withheld for reasons of confidentiality.](#)

Poetic

Informational

**Difference from Provincial Mean, 2008-11**

Rubric Results: Percentage of students performing at Level 3 and Above 2008-2011

[School data with 5 or fewer students withheld for reasons of confidentiality.](#)

Demand Writing

Poetic Reading

Informational Reading



**English Language Arts**

Number of Students : 3

**Multiple Choice**

**Poetic**

School  
District  
Province

School data with 5 or fewer students withheld for reasons of confidentiality.

Mark  
School vs District  
School vs Province

P q

**Informational**

School  
District  
Province

q q

**Rubrics**

**Demand Writing**

School  
District  
Province

q q

**Poetic Reading**

School  
District  
Province

q q

**Informational Reading**

School  
District  
Province

q q

**4 Year CRT (Subtest) Mark Trend 2008-2011**

Multiple Choice

School data with 5 or fewer students withheld for reasons of confidentiality.

Poetic

Informational

**Rubric Results: Percentage of students performing at Level 3 and Above 2008-2011**

School data with 5 or fewer students withheld for reasons of confidentiality.

Province

q q q q q q q q q q  
86 83 83 73 79 61 77 76 69

Demand Writing

Poetic Reading

Informational Reading



**Difference from Provincial Mean, 2008-11**

Multiple Choice

School data with 5 or fewer students withheld for reasons of confidentiality.

Poetic

Informational

**Difference from Provincial Mean, 2008-11**

Rubric Results: Percentage of students performing at Level 3 and Above 2008-2011

School data with 5 or fewer students withheld for reasons of confidentiality.

Demand Writing

Poetic Reading

Informational Reading



**English Language Arts**

Number of Students : 13

**Multiple Choice**

**Poetic**  
School: 50.8  
District: 50.8  
Province: 64.7

**Informational**  
School: 53.9  
District: 53.9  
Province: 71.2

**Rubrics**

**Demand Writing**  
School: 33.3  
District: 33.3  
Province: 83.3

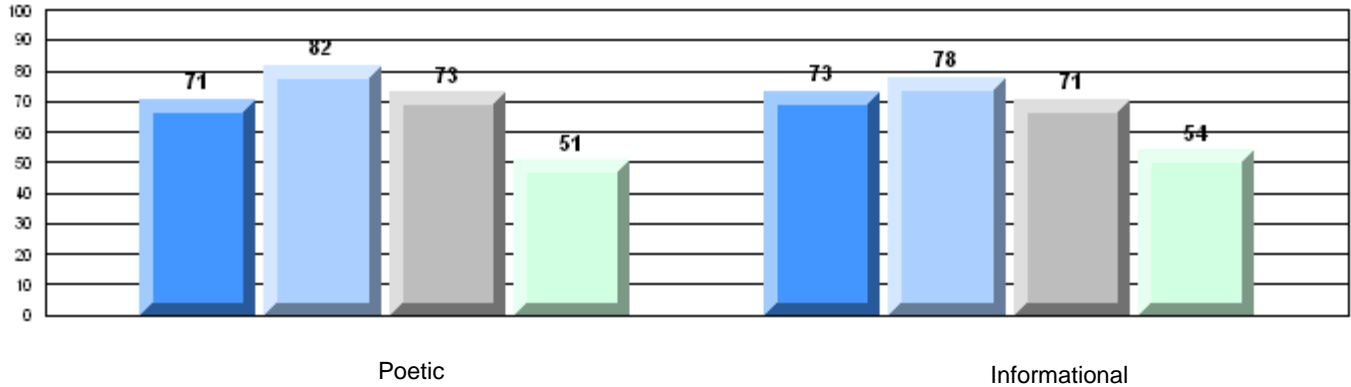
**Poetic Reading**  
School: 25.0  
District: 25.0  
Province: 61.4

**Informational Reading**  
School: 23.1  
District: 23.1  
Province: 69.2

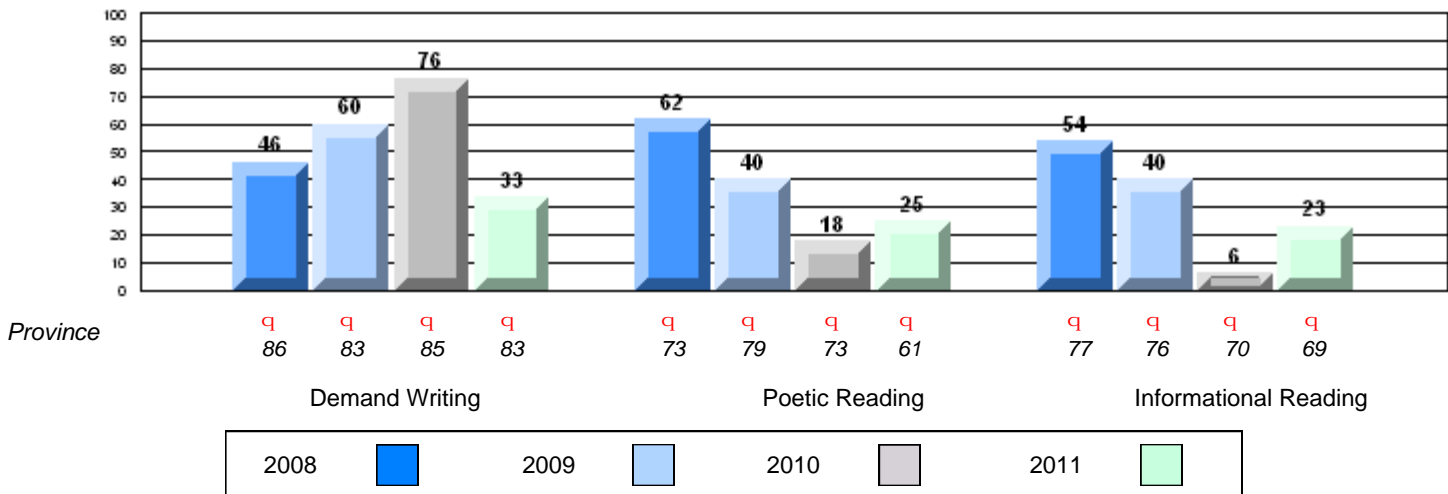
Mark	School vs District	School vs Province
50.8	P	q
50.8		
64.7		
53.9	P	q
53.9		
71.2		
33.3	P	q
33.3		
83.3		
25.0	P	q
25.0		
61.4		
23.1	P	q
23.1		
69.2		

**4 Year CRT (Subtest) Mark Trend 2008-2011**

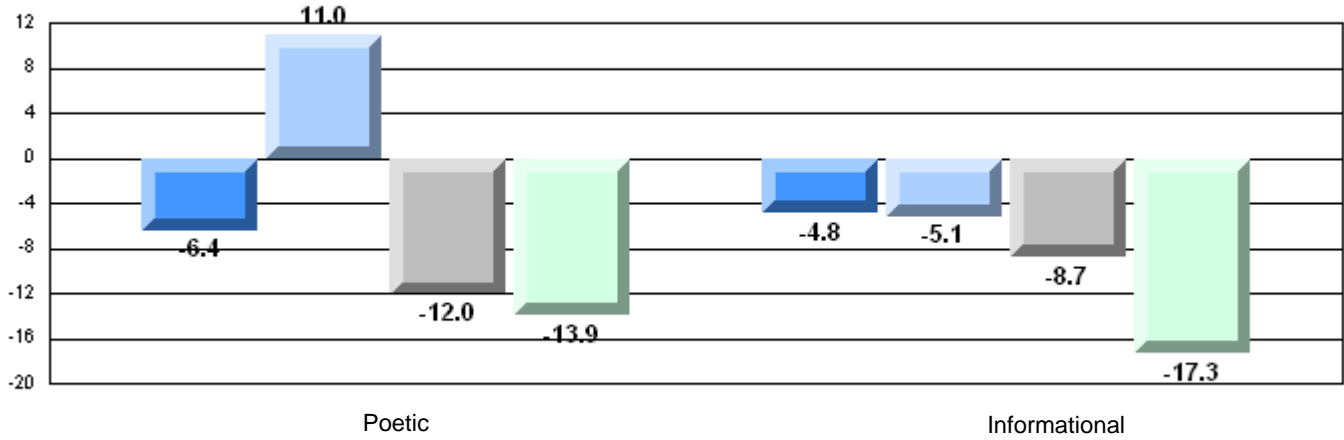
Multiple Choice



**Rubric Results: Percentage of students performing at Level 3 and Above 2008-2011**



**Difference from Provincial Mean, 2008-11**  
Multiple Choice



**Difference from Provincial Mean, 2008-11**  
Rubric Results: Percentage of students performing at Level 3 and Above 2008-2011

