

District 1 - Labrador

School #: 001 St. Peter's School

Demand Writing

School

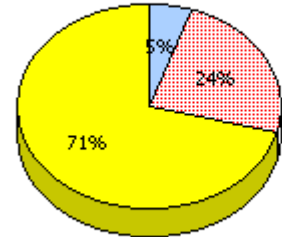
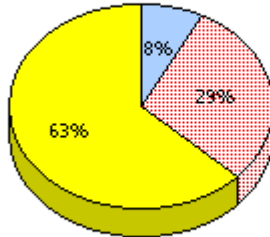
School data with 5 or fewer students withheld for reasons of confidentiality.

District

Province

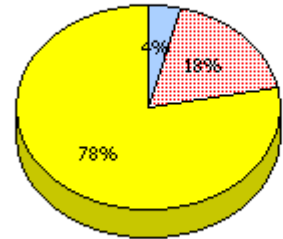
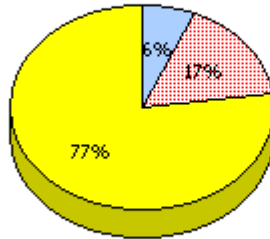
2011

Apr 30,
2011 (4)



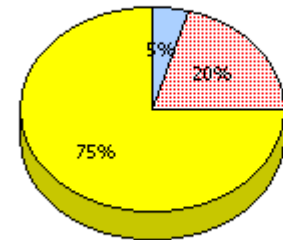
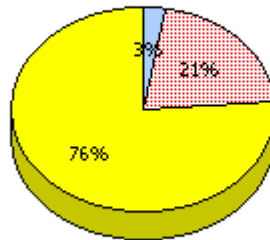
2010

AGR (2)



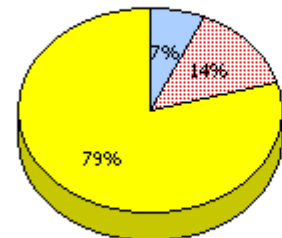
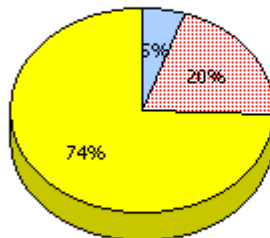
2009

AGR (2)



2008

AGR (3)



Unknown



Not Yet Meeting (1 or 2)



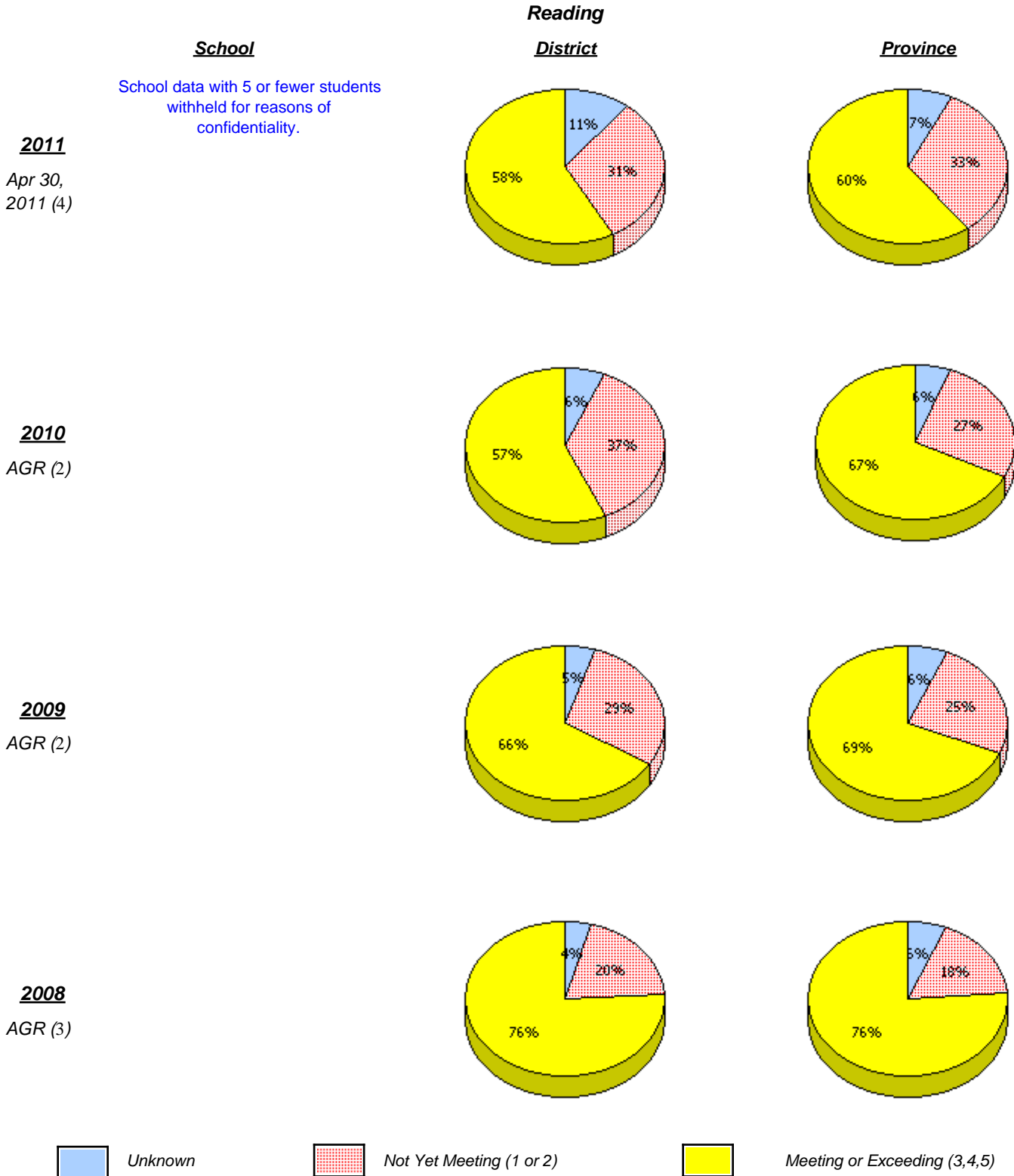
Meeting or Exceeding (3,4,5)

* In some cases, CRT numbers may exceed AGR numbers based on late enrolments. Pie chart is based on the number of students who wrote the CRT.

* Reading score is composite of Information and Poet.

District 1 - Labrador

School #: 001 St. Peter's School



* In some cases, CRT numbers may exceed AGR numbers based on late enrolments. Pie chart is based on the number of students who wrote the CRT.

* Reading score is composite of Information and Poet.

District 1 - Labrador

School #: 001 St. Peter's School

Demand Writing

Percentage of students at level 3 or above (2008 - 2011)

School data with 5 or fewer students withheld for reasons of confidentiality.



Reading

Percentage of students at level 3 or above (2008 - 2011)

School data with 5 or fewer students withheld for reasons of confidentiality.



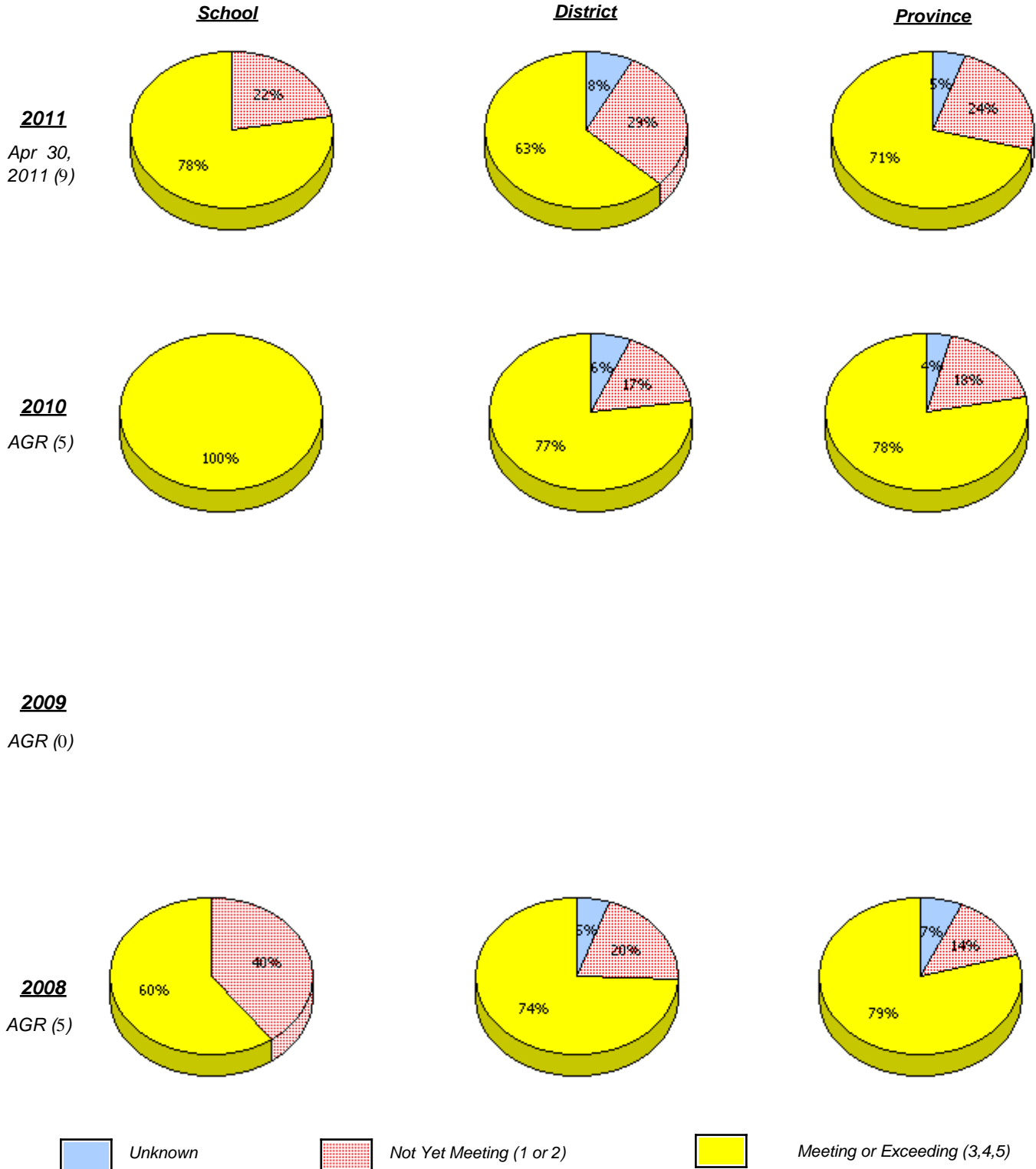
* In some cases, CRT numbers may exceed AGR numbers based on late enrolments. Pie chart is based on the number of students who wrote the CRT.

* Reading score is composite of Information and Poet.

District 1 - Labrador

School #: 002 Henry Gordon Academy

Demand Writing



* In some cases, CRT numbers may exceed AGR numbers based on late enrolments. Pie chart is based on the number of students who wrote the CRT.

* Reading score is composite of Information and Poet.

District 1 - Labrador

School #: 002 Henry Gordon Academy

Reading

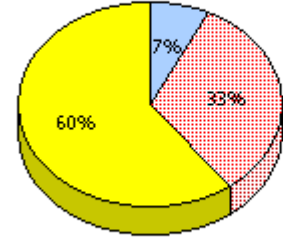
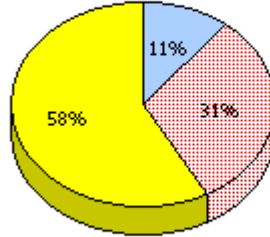
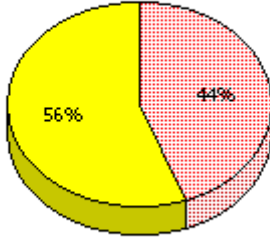
School

District

Province

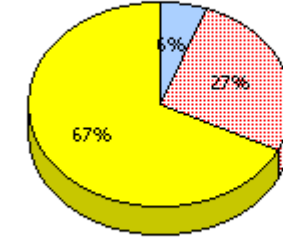
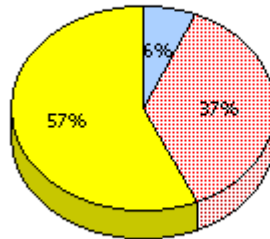
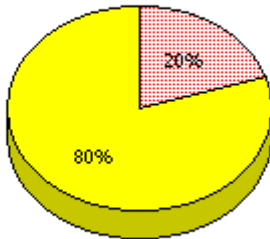
2011

Apr 30,
2011 (9)



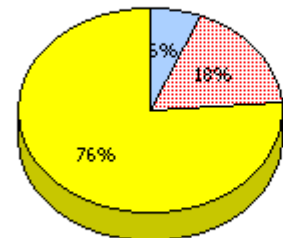
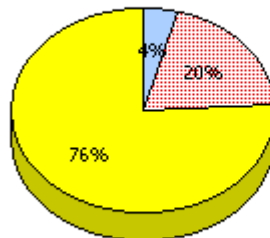
2010

AGR (5)



2009

AGR (0)



2008

AGR (5)

Unknown
 Not Yet Meeting (1 or 2)
 Meeting or Exceeding (3,4,5)

* In some cases, CRT numbers may exceed AGR numbers based on late enrolments. Pie chart is based on the number of students who wrote the CRT.

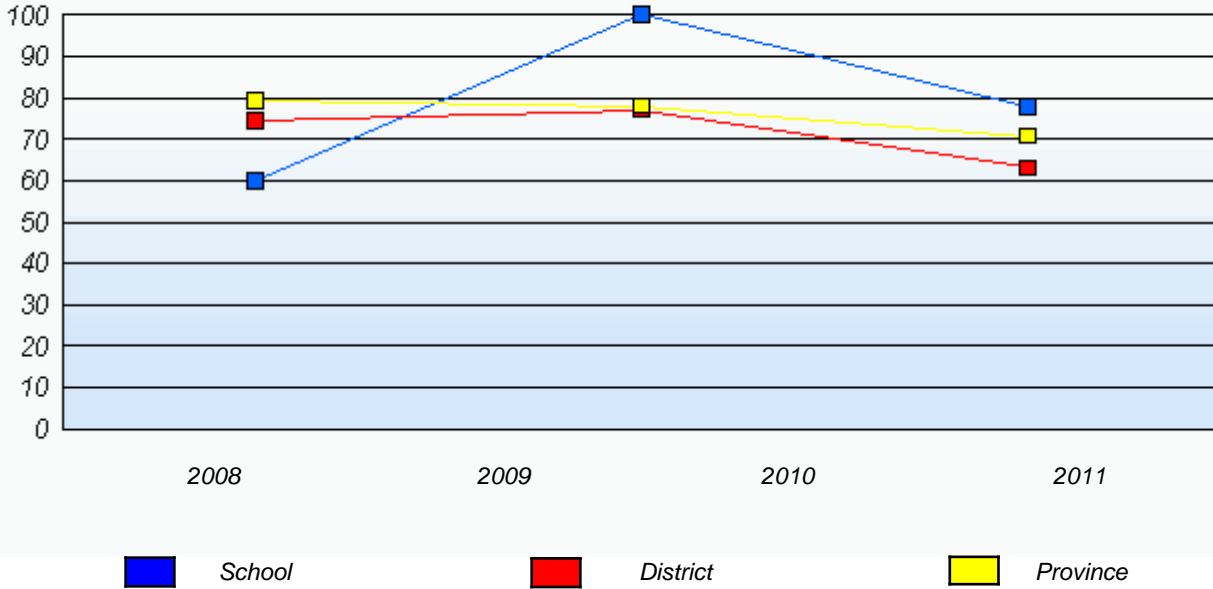
* Reading score is composite of Information and Poet.

District 1 - Labrador

School #: 002 Henry Gordon Academy

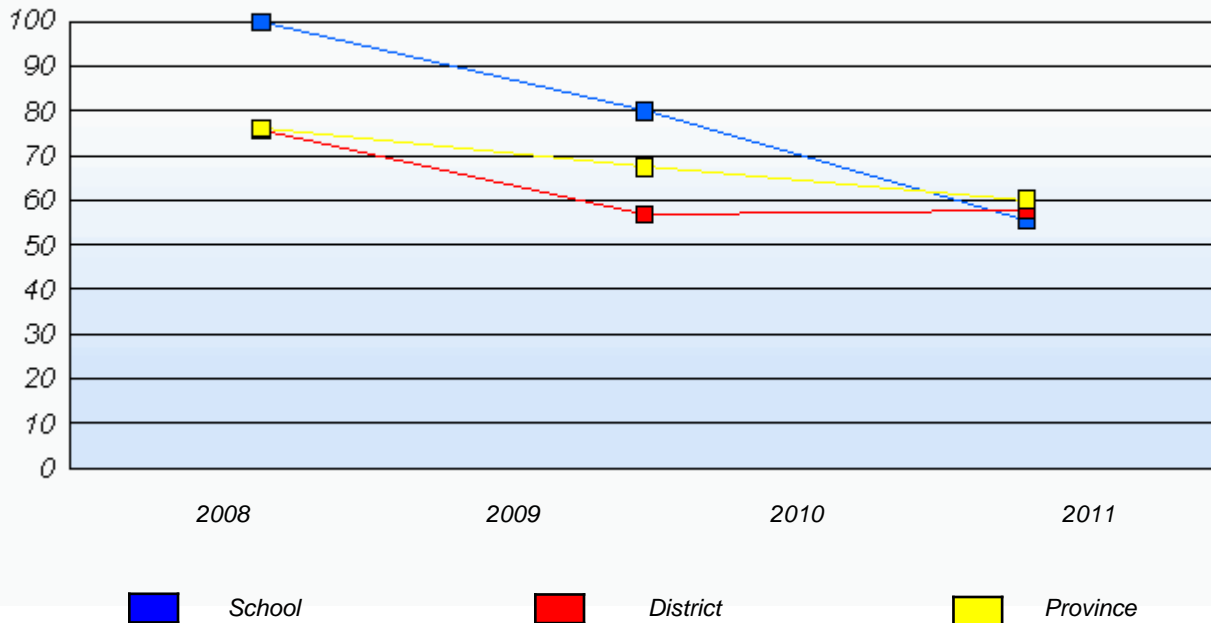
Demand Writing

Percentage of students at level 3 or above (2008 - 2011)



Reading

Percentage of students at level 3 or above (2008 - 2011)



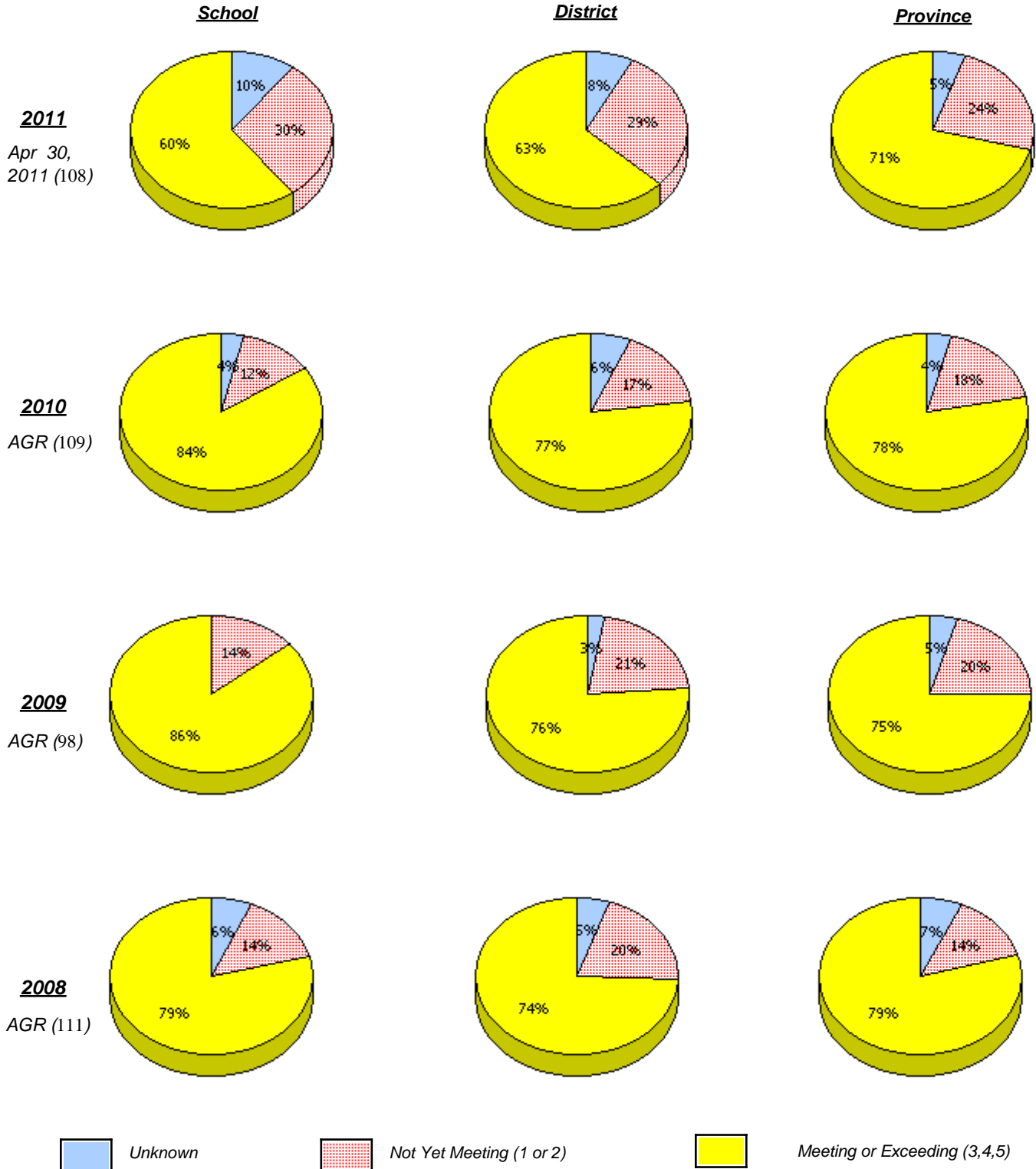
* In some cases, CRT numbers may exceed AGR numbers based on late enrolments. Pie chart is based on the number of students who wrote the CRT.

* Reading score is composite of Information and Poet.

District 1 - Labrador

School #: 004 Queen of Peace Middle School

Demand Writing



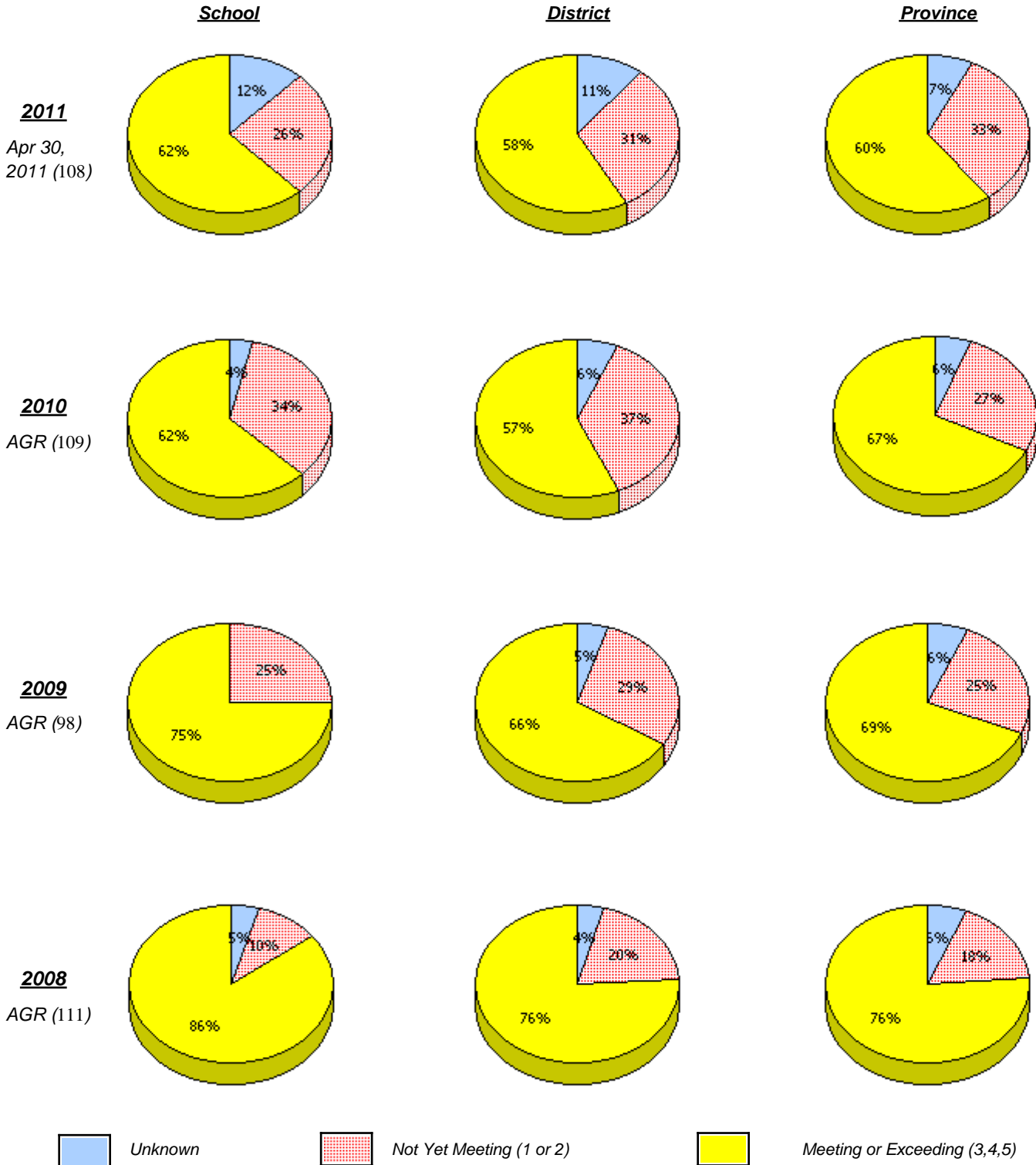
* In some cases, CRT numbers may exceed AGR numbers based on late enrolments. Pie chart is based on the number of students who wrote the CRT.

* Reading score is composite of Information and Poet.

District 1 - Labrador

School #: 004 Queen of Peace Middle School

Reading



* In some cases, CRT numbers may exceed AGR numbers based on late enrolments. Pie chart is based on the number of students who wrote the CRT.

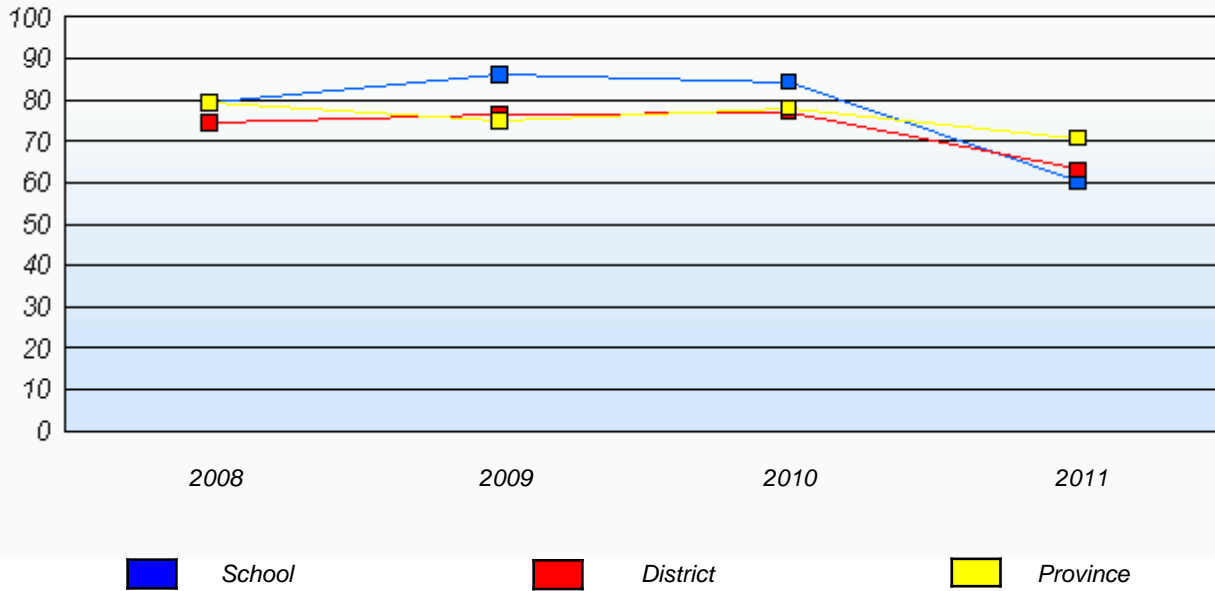
* Reading score is composite of Information and Poet.

District 1 - Labrador

School #: 004 Queen of Peace Middle School

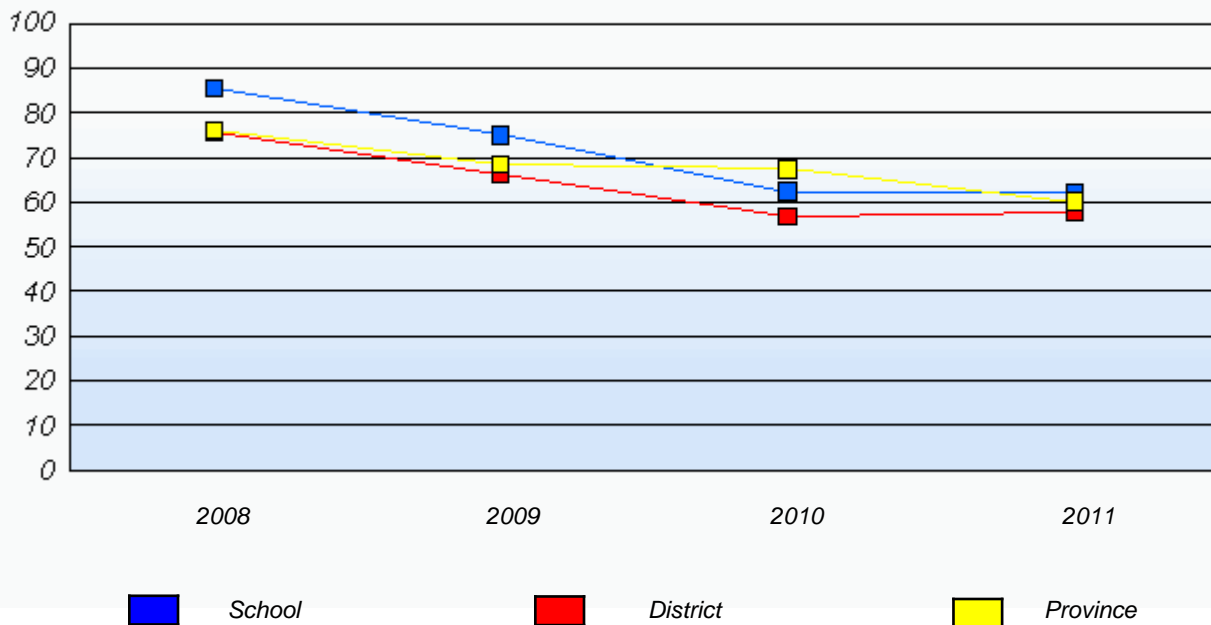
Demand Writing

Percentage of students at level 3 or above (2008 - 2011)



Reading

Percentage of students at level 3 or above (2008 - 2011)



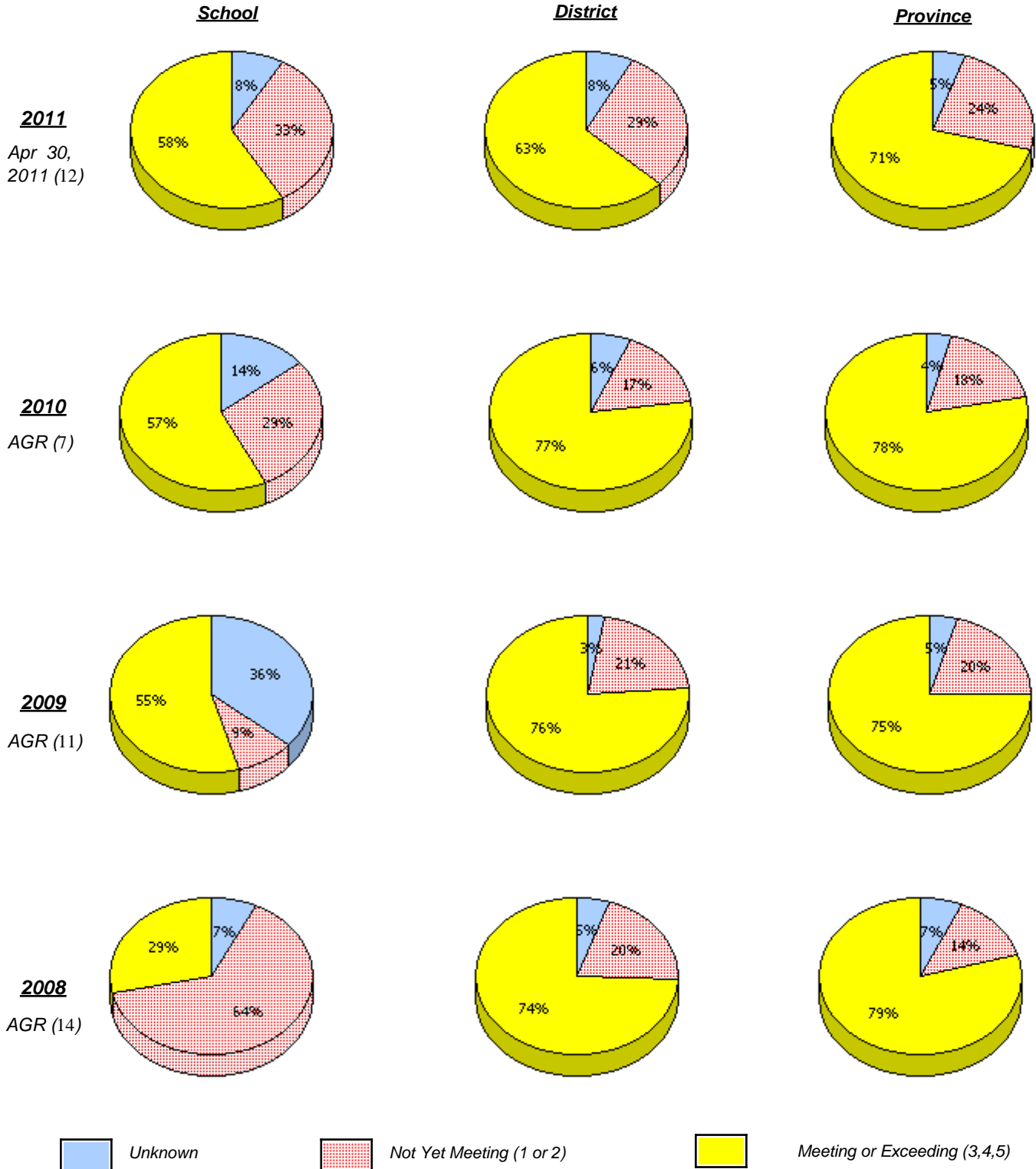
* In some cases, CRT numbers may exceed AGR numbers based on late enrolments. Pie chart is based on the number of students who wrote the CRT.

* Reading score is composite of Information and Poet.

District 1 - Labrador

School #: 007 Amos Comenius Memorial School

Demand Writing



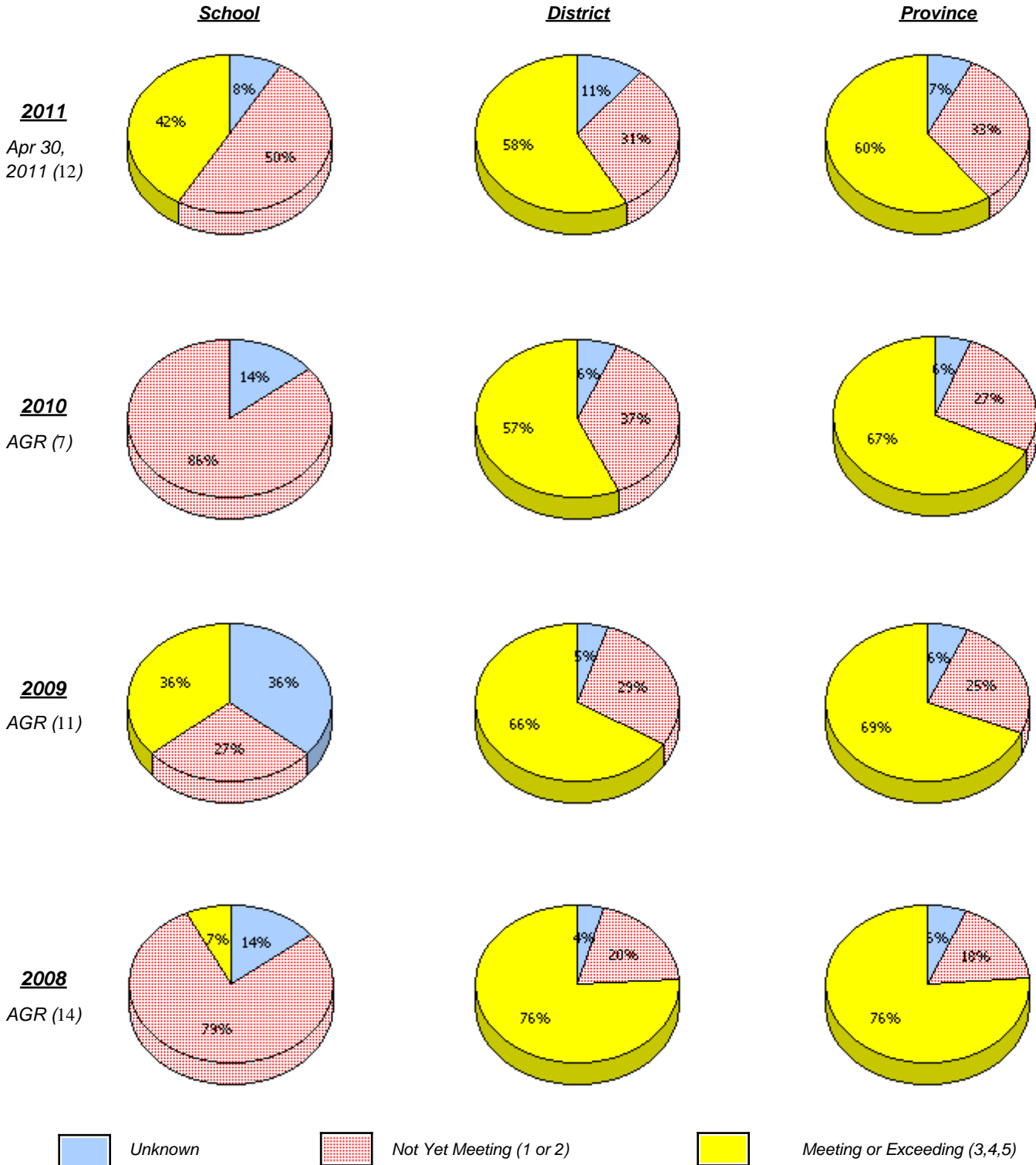
* In some cases, CRT numbers may exceed AGR numbers based on late enrolments. Pie chart is based on the number of students who wrote the CRT.

* Reading score is composite of Information and Poet.

District 1 - Labrador

School #: 007 Amos Comenius Memorial School

Reading



* In some cases, CRT numbers may exceed AGR numbers based on late enrolments. Pie chart is based on the number of students who wrote the CRT.

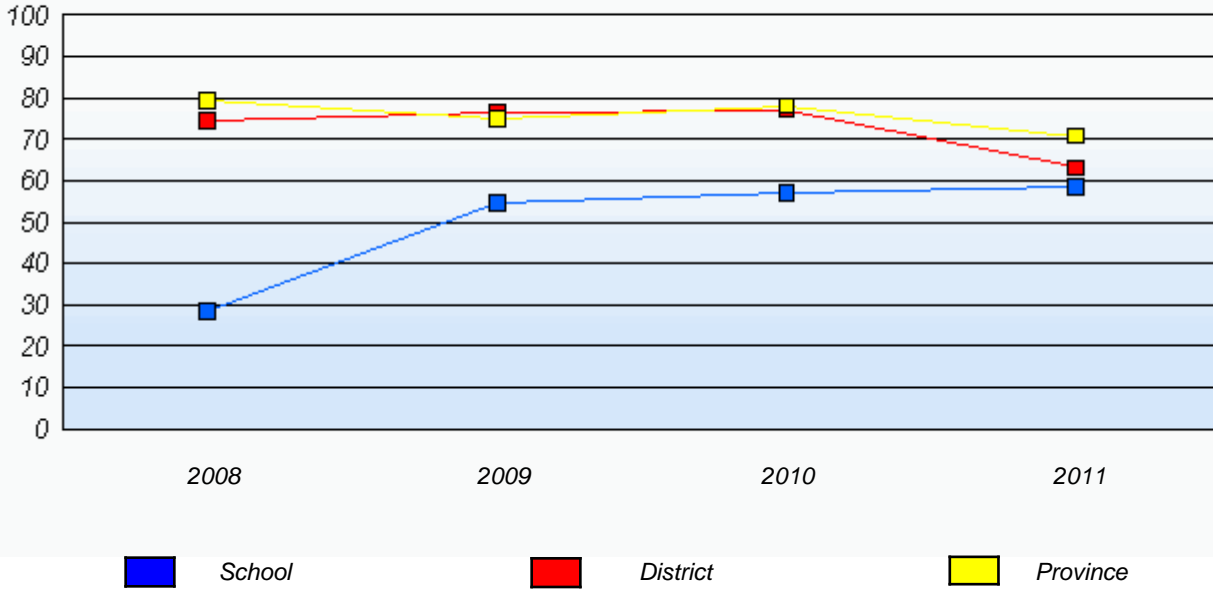
* Reading score is composite of Information and Poet.

District 1 - Labrador

School #: 007 Amos Comenius Memorial School

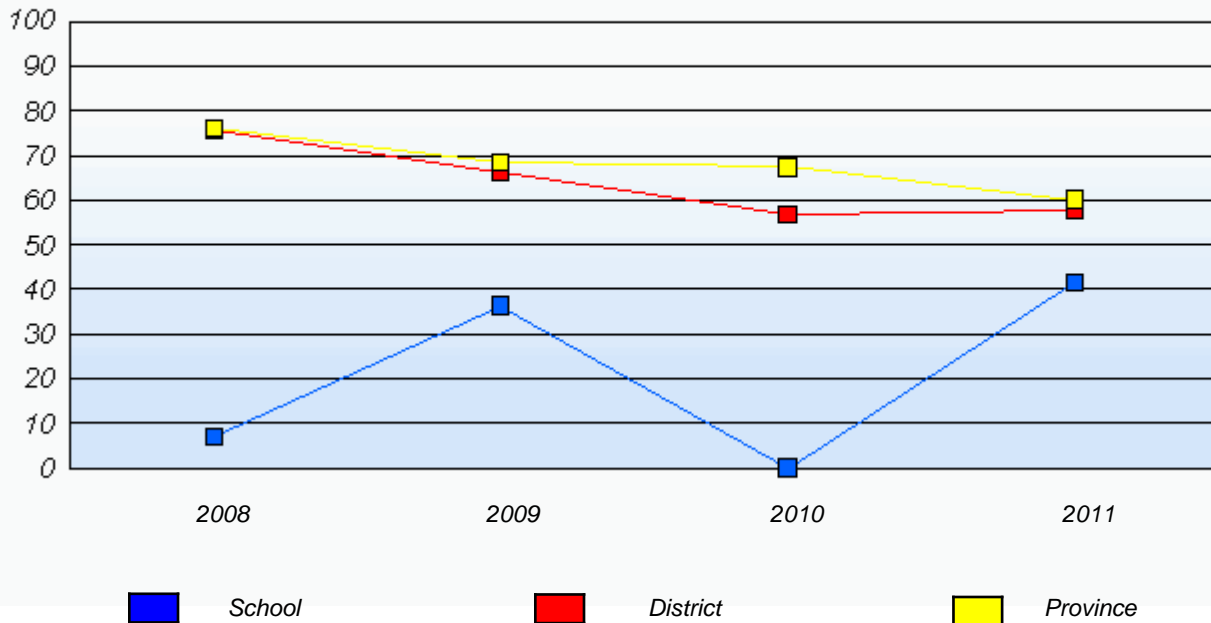
Demand Writing

Percentage of students at level 3 or above (2008 - 2011)



Reading

Percentage of students at level 3 or above (2008 - 2011)



* In some cases, CRT numbers may exceed AGR numbers based on late enrolments. Pie chart is based on the number of students who wrote the CRT.

* Reading score is composite of Information and Poet.

District 1 - Labrador

School #: 012 J.C. Erhardt Memorial School

Demand Writing

School

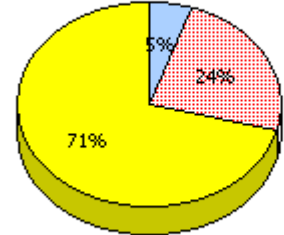
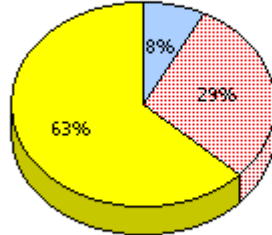
School data with 5 or fewer students withheld for reasons of confidentiality.

District

Province

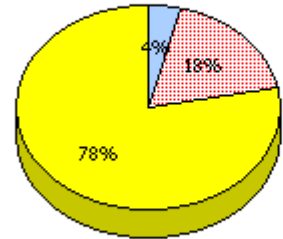
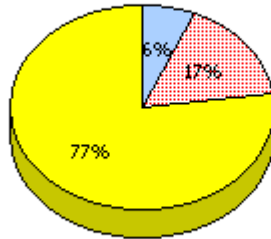
2011

Apr 30,
2011 (4)



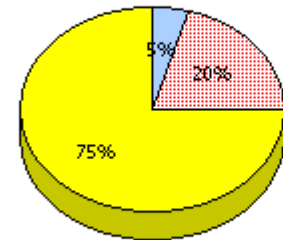
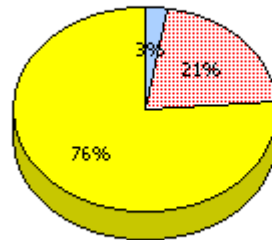
2010

AGR (10)



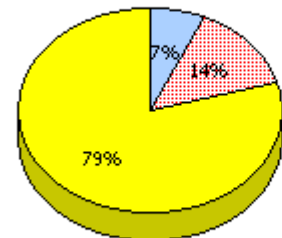
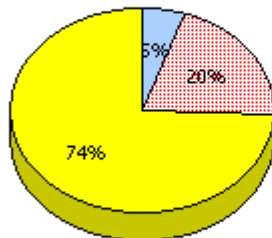
2009

AGR (4)



2008

AGR (2)



Unknown



Not Yet Meeting (1 or 2)



Meeting or Exceeding (3,4,5)

* In some cases, CRT numbers may exceed AGR numbers based on late enrolments. Pie chart is based on the number of students who wrote the CRT.

* Reading score is composite of Information and Poet.

District 1 - Labrador

School #: 012 J.C. Erhardt Memorial School



* In some cases, CRT numbers may exceed AGR numbers based on late enrolments. Pie chart is based on the number of students who wrote the CRT.

* Reading score is composite of Information and Poet.

District 1 - Labrador

School #: 012 J.C. Erhardt Memorial School

Demand Writing

Percentage of students at level 3 or above (2008 - 2011)

School data with 5 or fewer students withheld for reasons of confidentiality.



Reading

Percentage of students at level 3 or above (2008 - 2011)

School data with 5 or fewer students withheld for reasons of confidentiality.



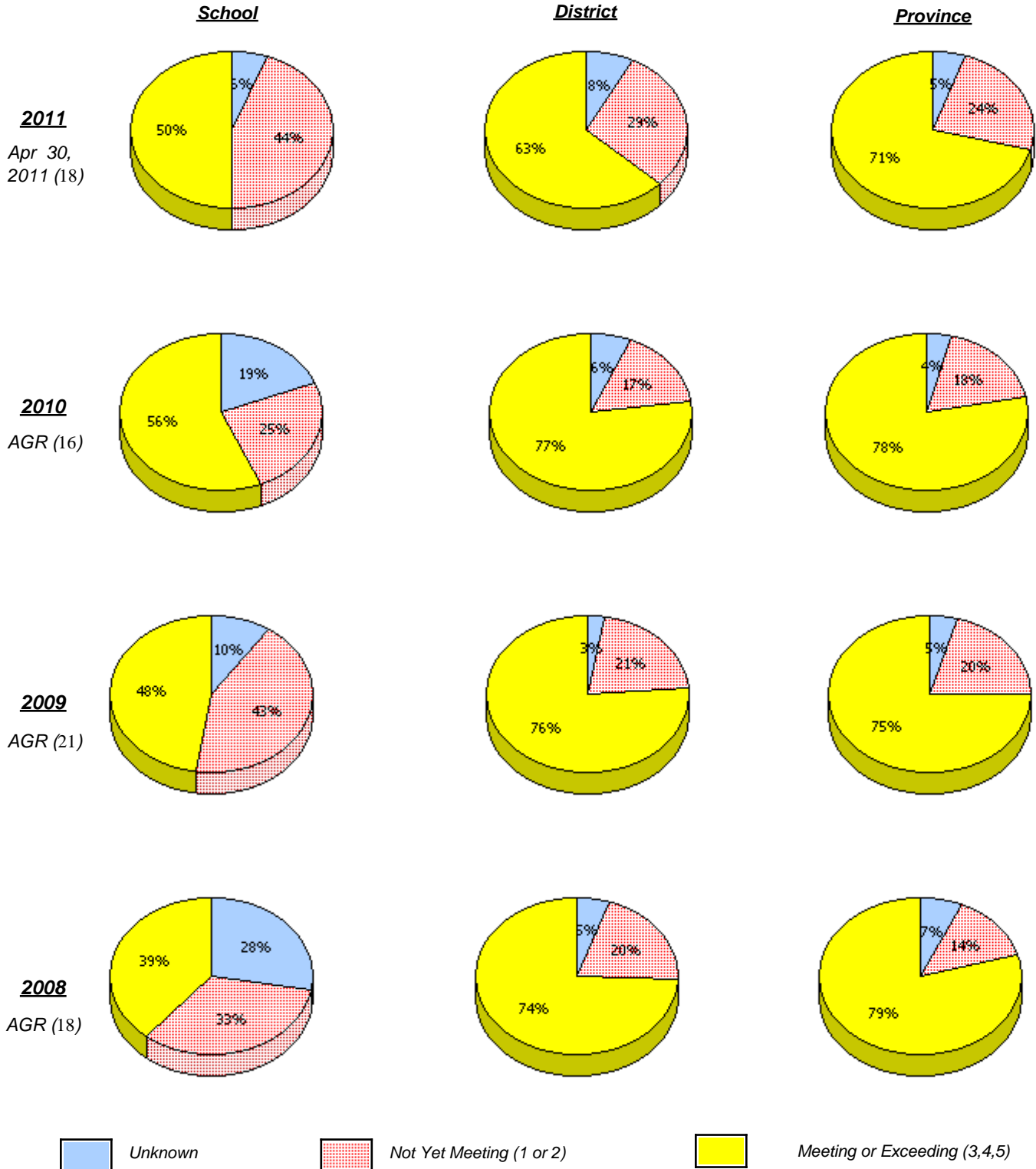
* In some cases, CRT numbers may exceed AGR numbers based on late enrolments. Pie chart is based on the number of students who wrote the CRT.

* Reading score is composite of Information and Poet.

District 1 - Labrador

School #: 014 Jens Haven Memorial

Demand Writing



* In some cases, CRT numbers may exceed AGR numbers based on late enrolments. Pie chart is based on the number of students who wrote the CRT.

* Reading score is composite of Information and Poet.

District 1 - Labrador

School #: 014 Jens Haven Memorial

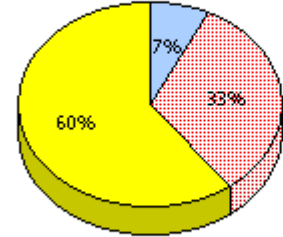
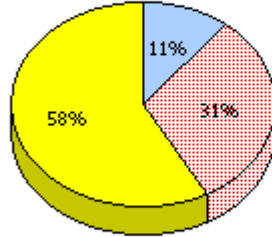
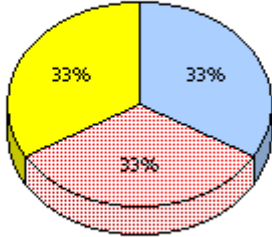
Reading

School

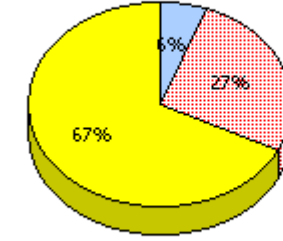
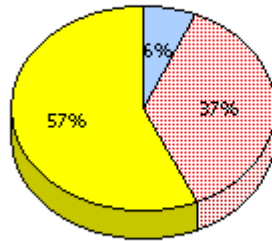
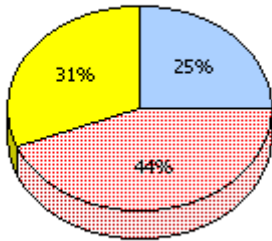
District

Province

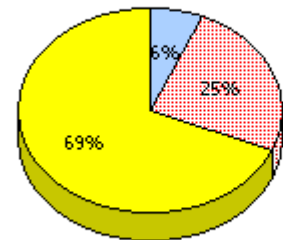
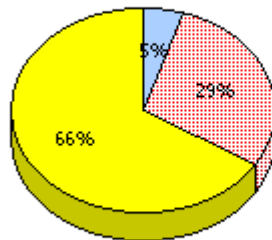
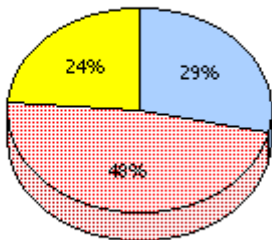
2011
Apr 30,
2011 (18)



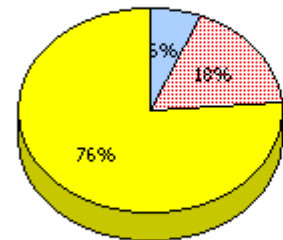
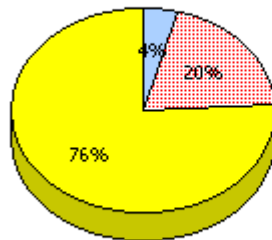
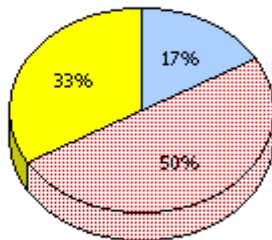
2010
AGR (16)



2009
AGR (21)



2008
AGR (18)



Unknown
 Not Yet Meeting (1 or 2)
 Meeting or Exceeding (3,4,5)

* In some cases, CRT numbers may exceed AGR numbers based on late enrolments. Pie chart is based on the number of students who wrote the CRT.

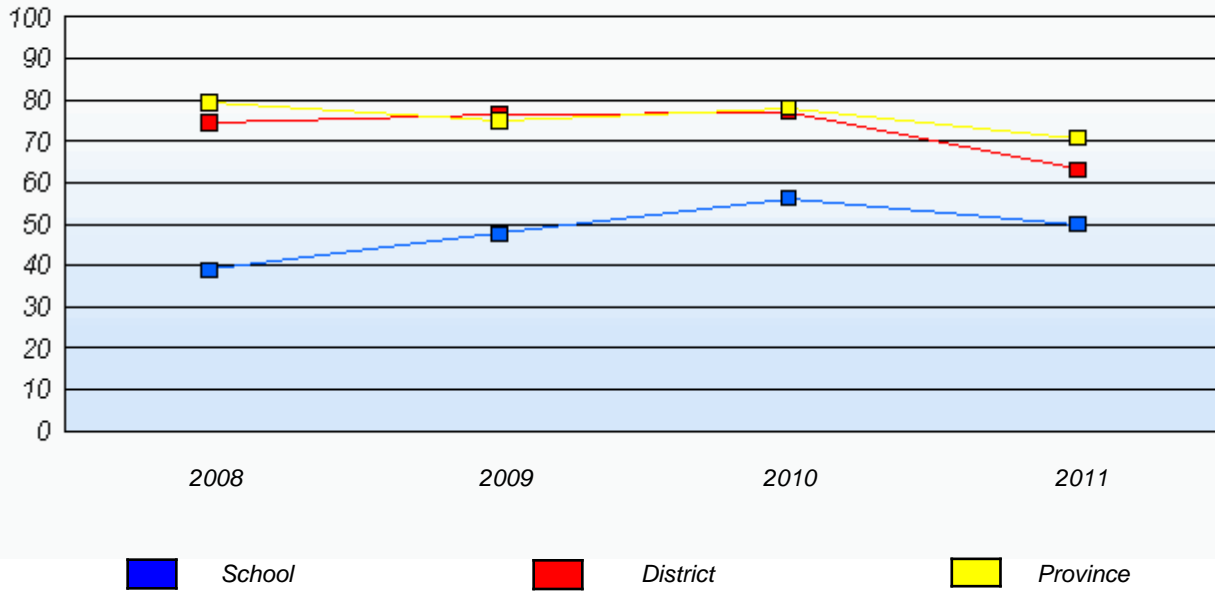
* Reading score is composite of Information and Poet.

District 1 - Labrador

School #: 014 Jens Haven Memorial

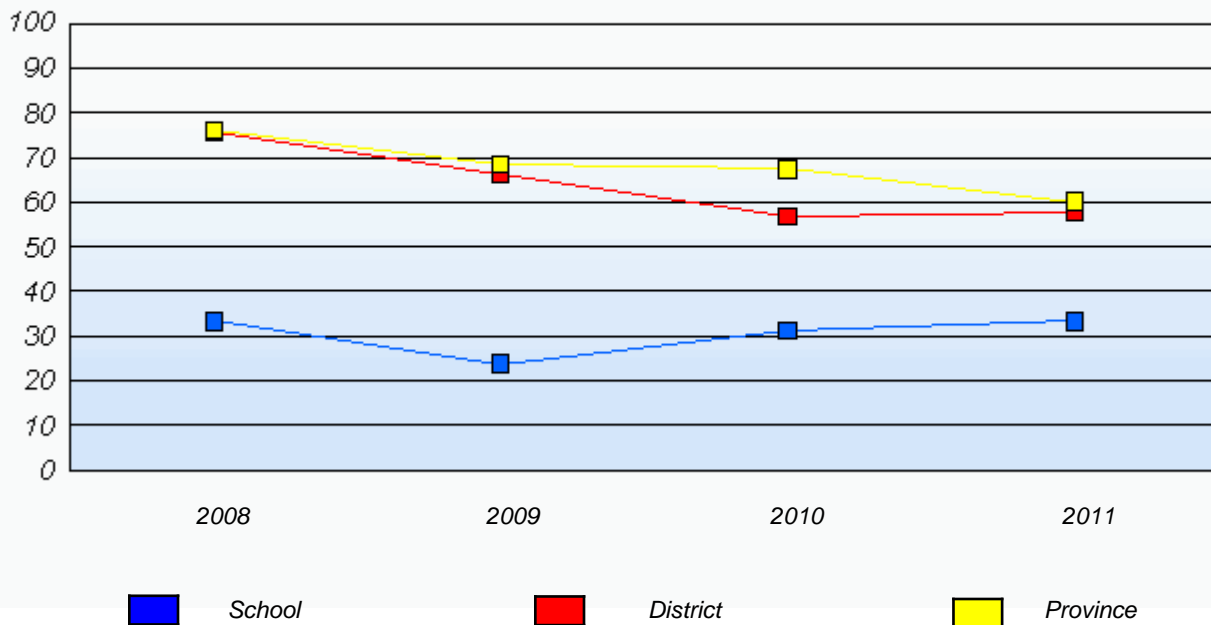
Demand Writing

Percentage of students at level 3 or above (2008 - 2011)



Reading

Percentage of students at level 3 or above (2008 - 2011)



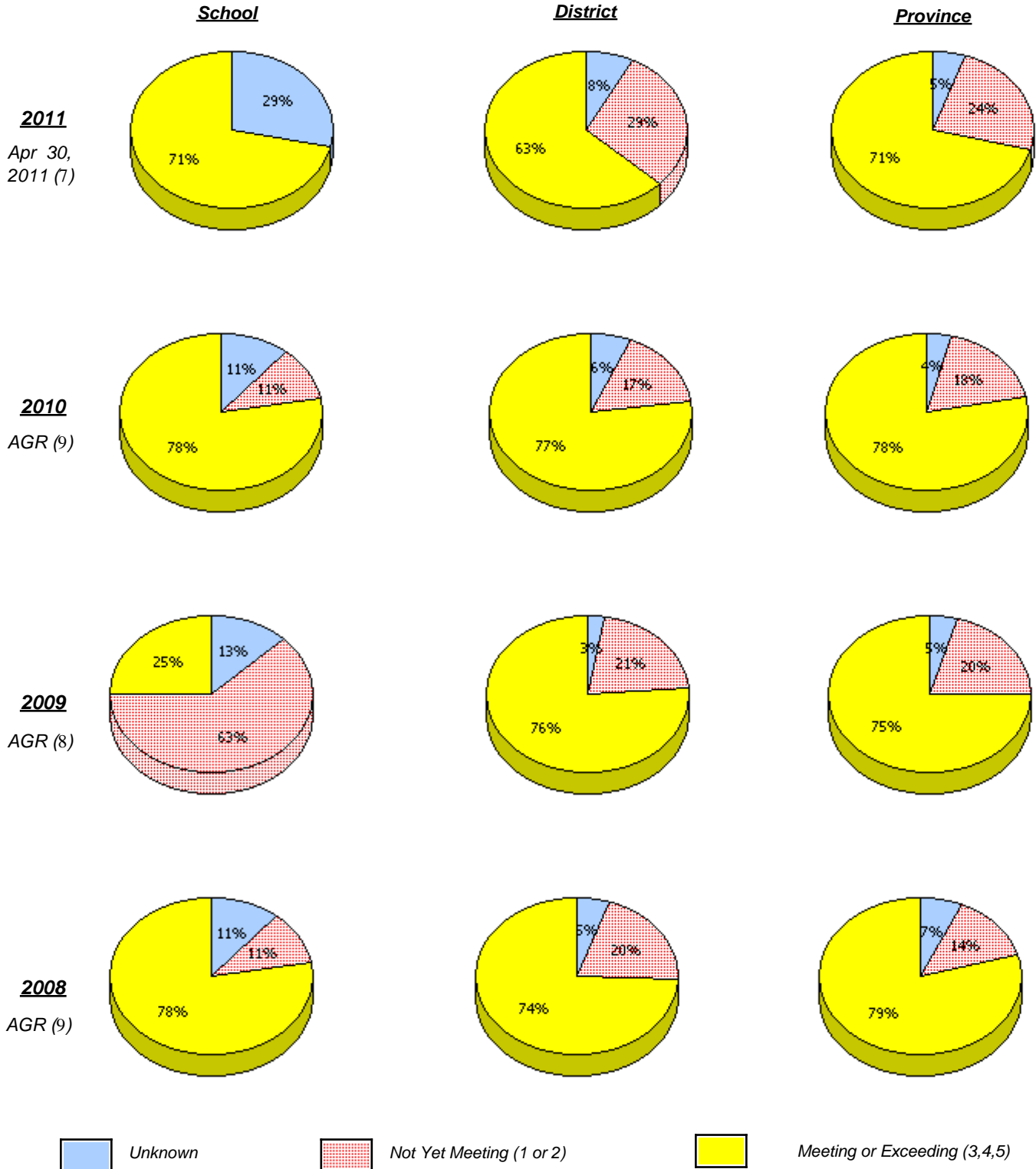
* In some cases, CRT numbers may exceed AGR numbers based on late enrolments. Pie chart is based on the number of students who wrote the CRT.

* Reading score is composite of Information and Poet.

District 1 - Labrador

School #: 015 Lake Melville School

Demand Writing



* In some cases, CRT numbers may exceed AGR numbers based on late enrolments. Pie chart is based on the number of students who wrote the CRT.

* Reading score is composite of Information and Poet.

District 1 - Labrador

School #: 015 Lake Melville School

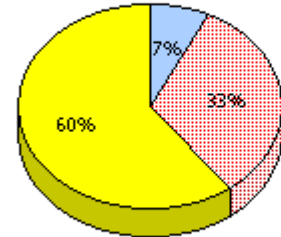
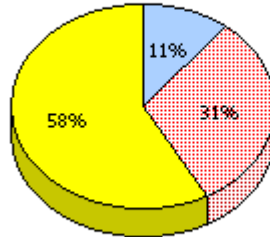
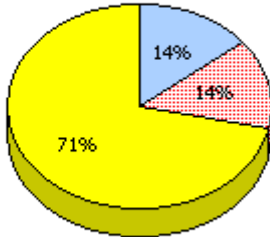
Reading

School

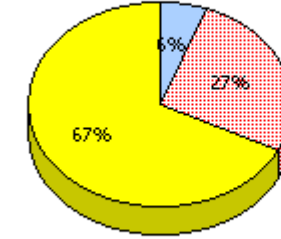
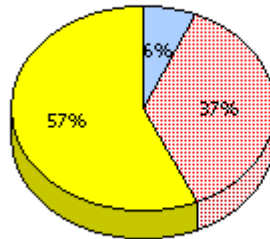
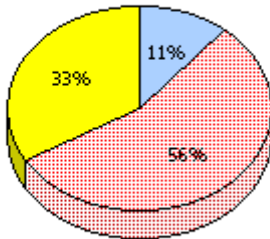
District

Province

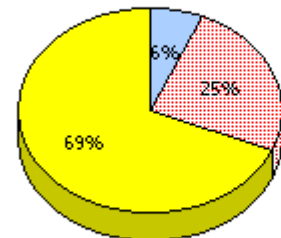
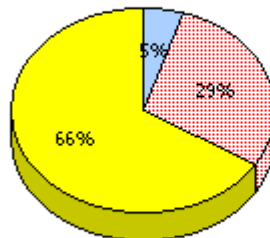
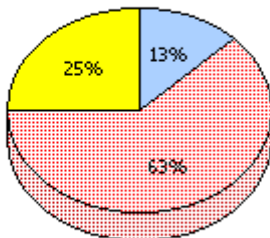
2011
Apr 30,
2011 (7)



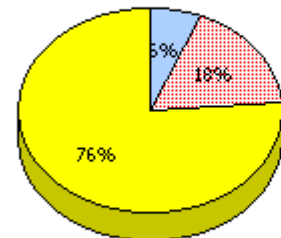
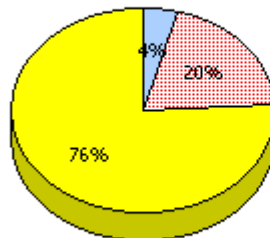
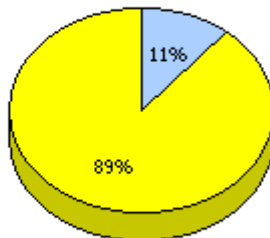
2010
AGR (9)



2009
AGR (8)



2008
AGR (9)



Unknown
 Not Yet Meeting (1 or 2)
 Meeting or Exceeding (3,4,5)

* In some cases, CRT numbers may exceed AGR numbers based on late enrolments. Pie chart is based on the number of students who wrote the CRT.

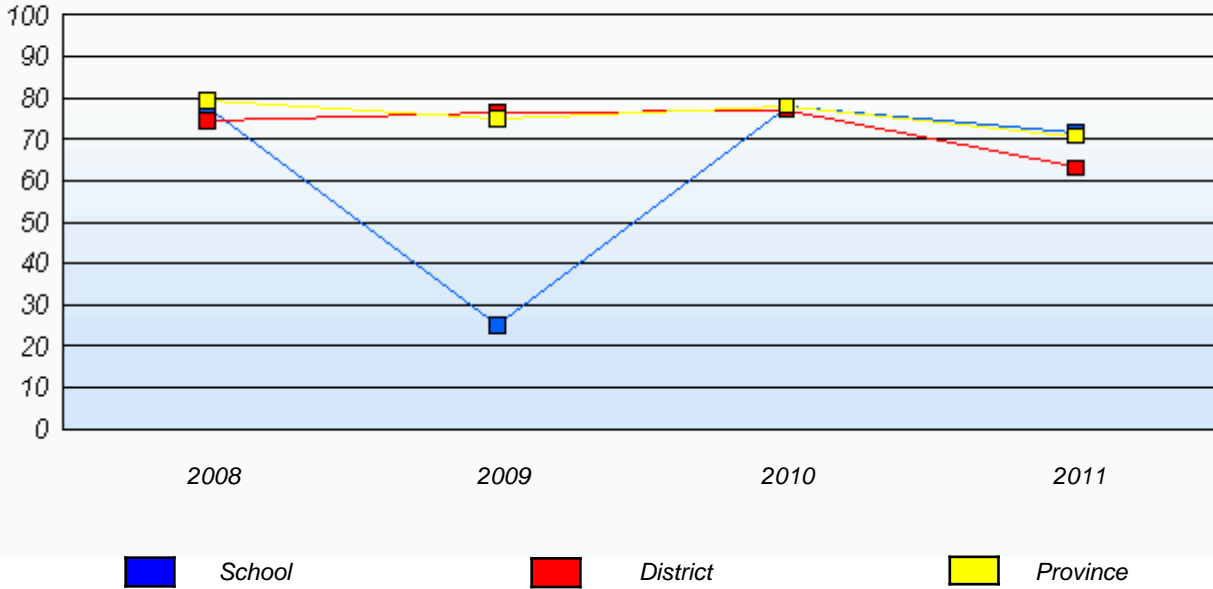
* Reading score is composite of Information and Poet.

District 1 - Labrador

School #: 015 Lake Melville School

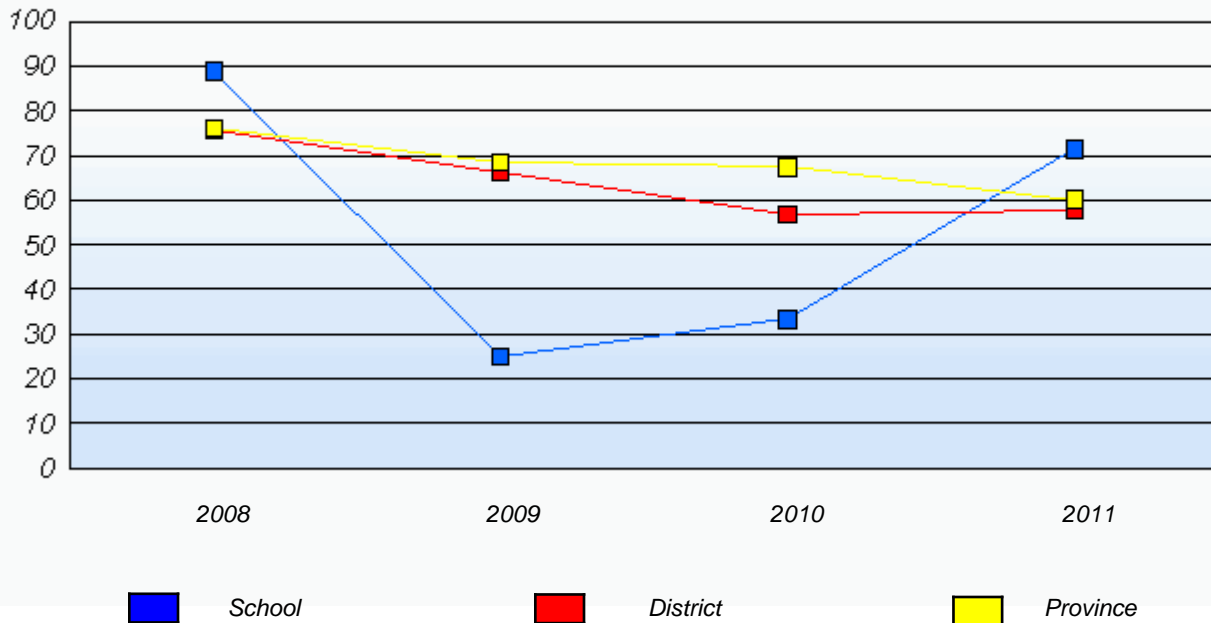
Demand Writing

Percentage of students at level 3 or above (2008 - 2011)



Reading

Percentage of students at level 3 or above (2008 - 2011)



* In some cases, CRT numbers may exceed AGR numbers based on late enrolments. Pie chart is based on the number of students who wrote the CRT.

* Reading score is composite of Information and Poet.

District 1 - Labrador

School #: 016 B.L. Morrison

Demand Writing

School

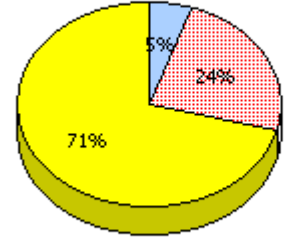
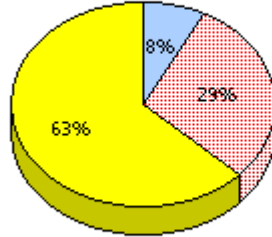
School data with 5 or fewer students withheld for reasons of confidentiality.

District

Province

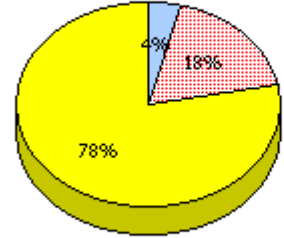
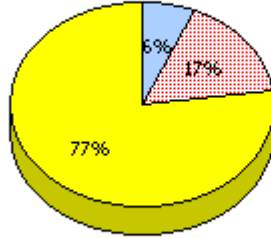
2011

Apr 30,
2011 (4)



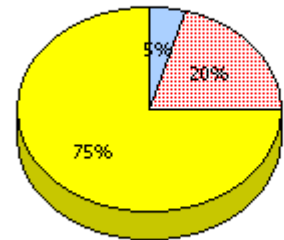
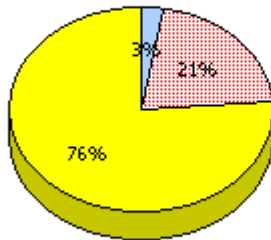
2010

AGR (5)



2009

AGR (5)



2008

AGR (0)



Unknown



Not Yet Meeting (1 or 2)



Meeting or Exceeding (3,4,5)

* In some cases, CRT numbers may exceed AGR numbers based on late enrolments. Pie chart is based on the number of students who wrote the CRT.

* Reading score is composite of Information and Poet.

District 1 - Labrador

School #: 016 B.L. Morrison

School

School data with 5 or fewer students withheld for reasons of confidentiality.

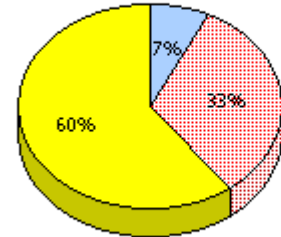
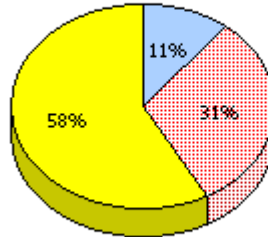
Reading

District

Province

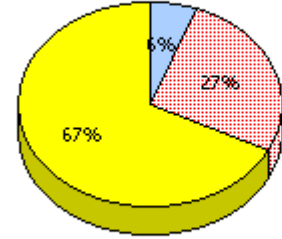
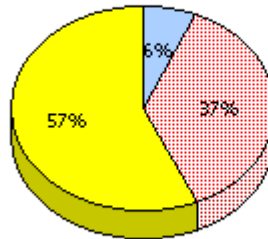
2011

Apr 30, 2011 (4)



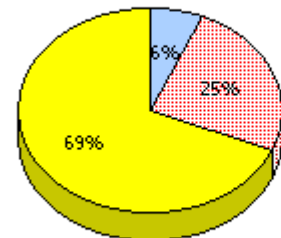
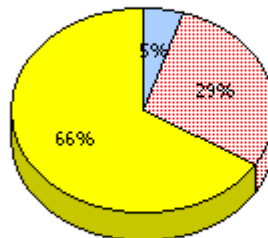
2010

AGR (5)



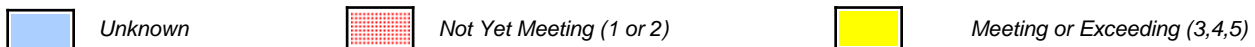
2009

AGR (5)



2008

AGR (0)



* In some cases, CRT numbers may exceed AGR numbers based on late enrolments. Pie chart is based on the number of students who wrote the CRT.

* Reading score is composite of Information and Poet.

District 1 - Labrador

School #: 016 B.L. Morrison

Demand Writing

Percentage of students at level 3 or above (2008 - 2011)

School data with 5 or fewer students withheld for reasons of confidentiality.



Reading

Percentage of students at level 3 or above (2008 - 2011)

School data with 5 or fewer students withheld for reasons of confidentiality.



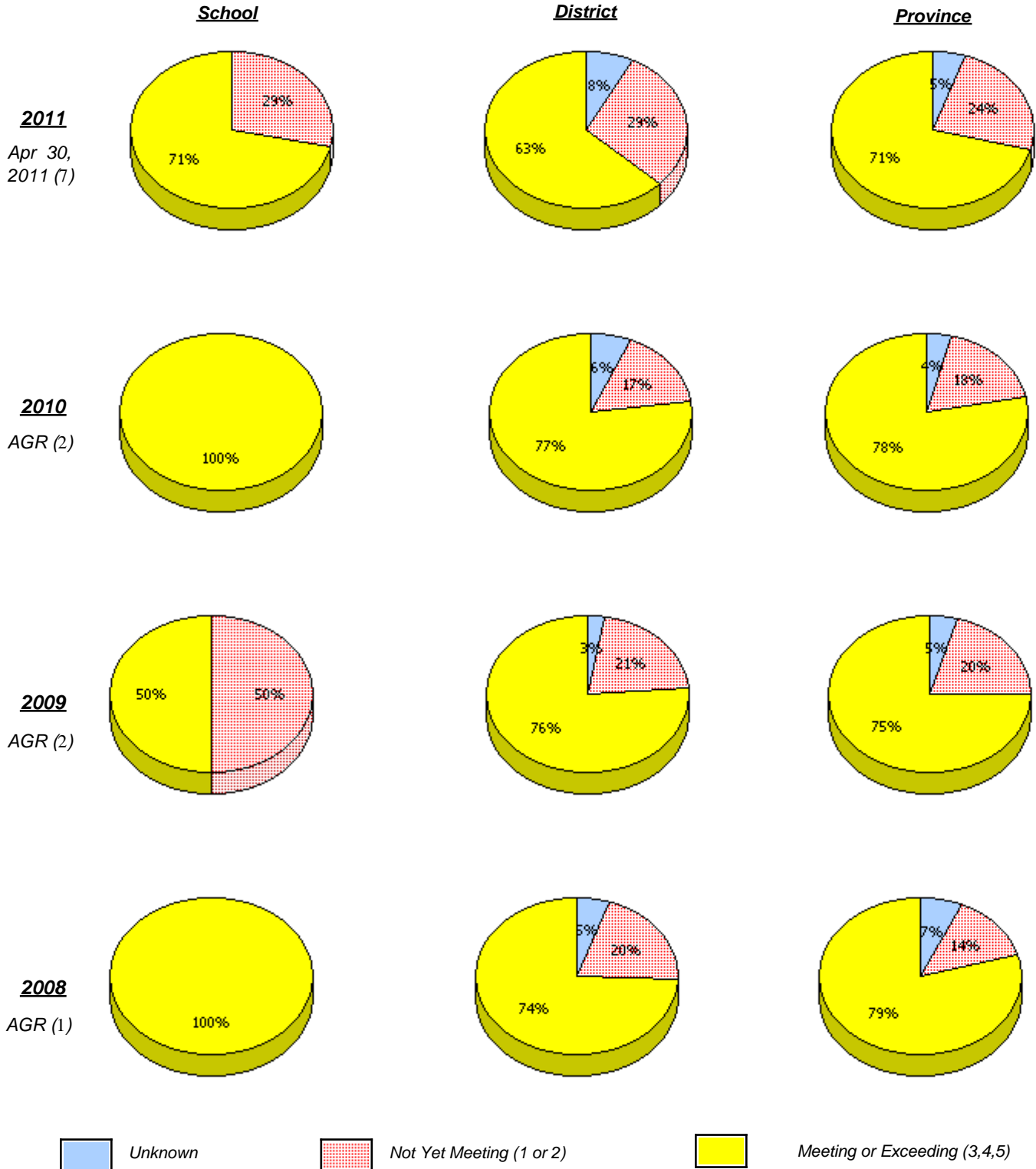
* In some cases, CRT numbers may exceed AGR numbers based on late enrolments. Pie chart is based on the number of students who wrote the CRT.

* Reading score is composite of Information and Poet.

District 1 - Labrador

School #: 017 Northern Lights Academy

Demand Writing



* In some cases, CRT numbers may exceed AGR numbers based on late enrolments. Pie chart is based on the number of students who wrote the CRT.

* Reading score is composite of Information and Poet.

District 1 - Labrador

School #: 017 Northern Lights Academy

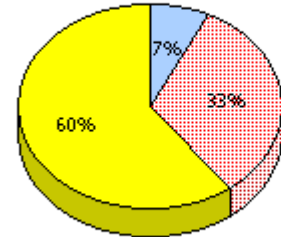
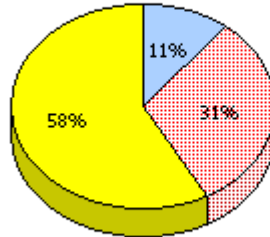
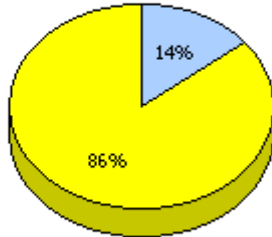
Reading

School

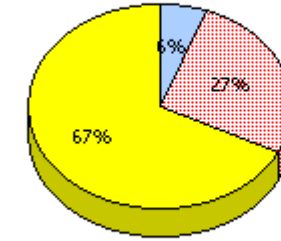
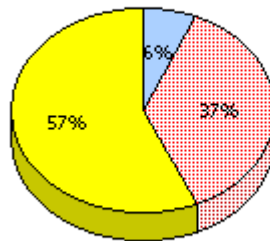
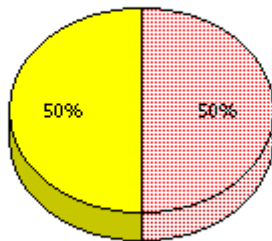
District

Province

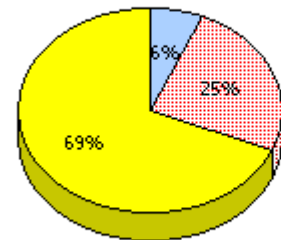
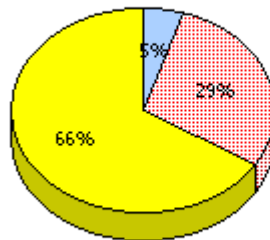
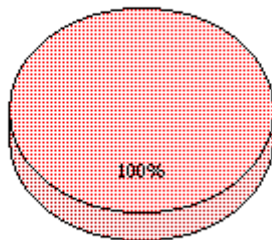
2011
Apr 30,
2011 (7)



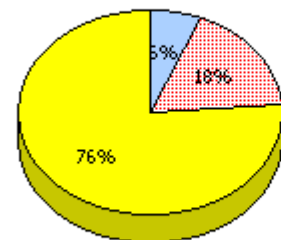
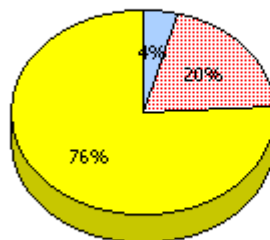
2010
AGR (2)



2009
AGR (2)



2008
AGR (1)



Unknown
 Not Yet Meeting (1 or 2)
 Meeting or Exceeding (3,4,5)

* In some cases, CRT numbers may exceed AGR numbers based on late enrolments. Pie chart is based on the number of students who wrote the CRT.

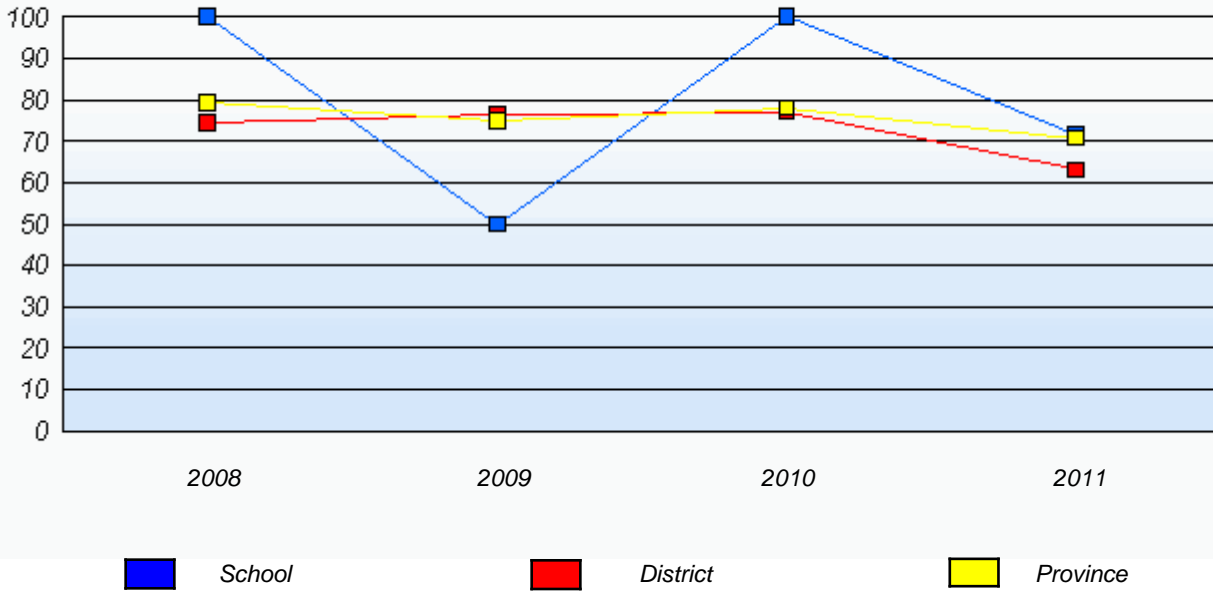
* Reading score is composite of Information and Poet.

District 1 - Labrador

School #: 017 Northern Lights Academy

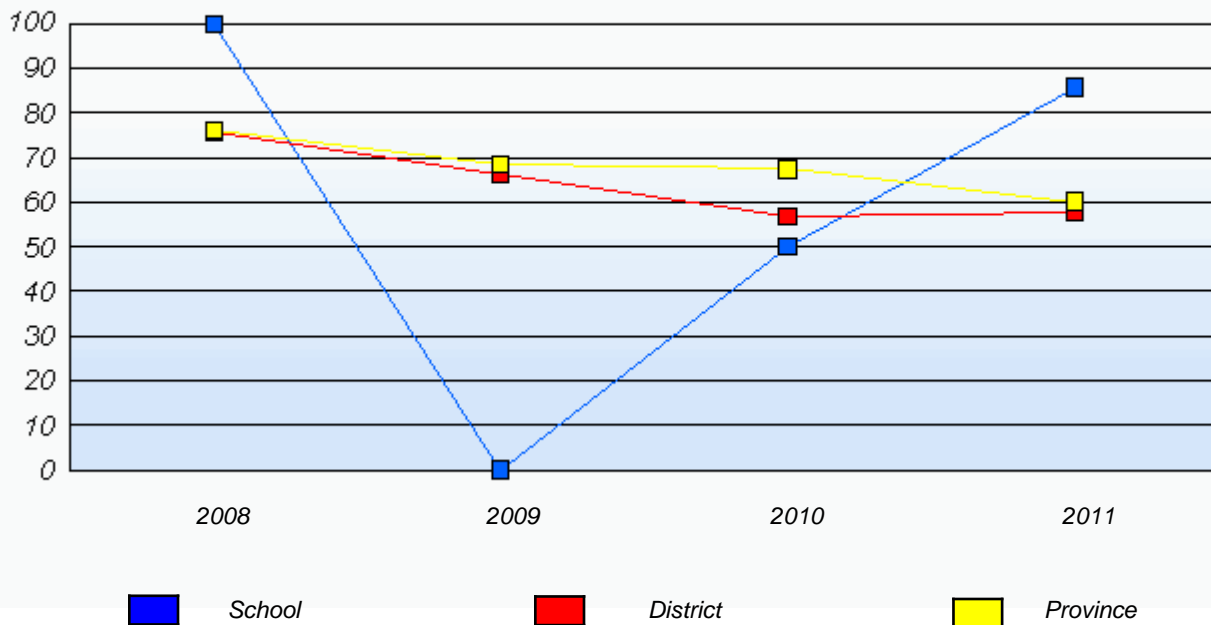
Demand Writing

Percentage of students at level 3 or above (2008 - 2011)



Reading

Percentage of students at level 3 or above (2008 - 2011)



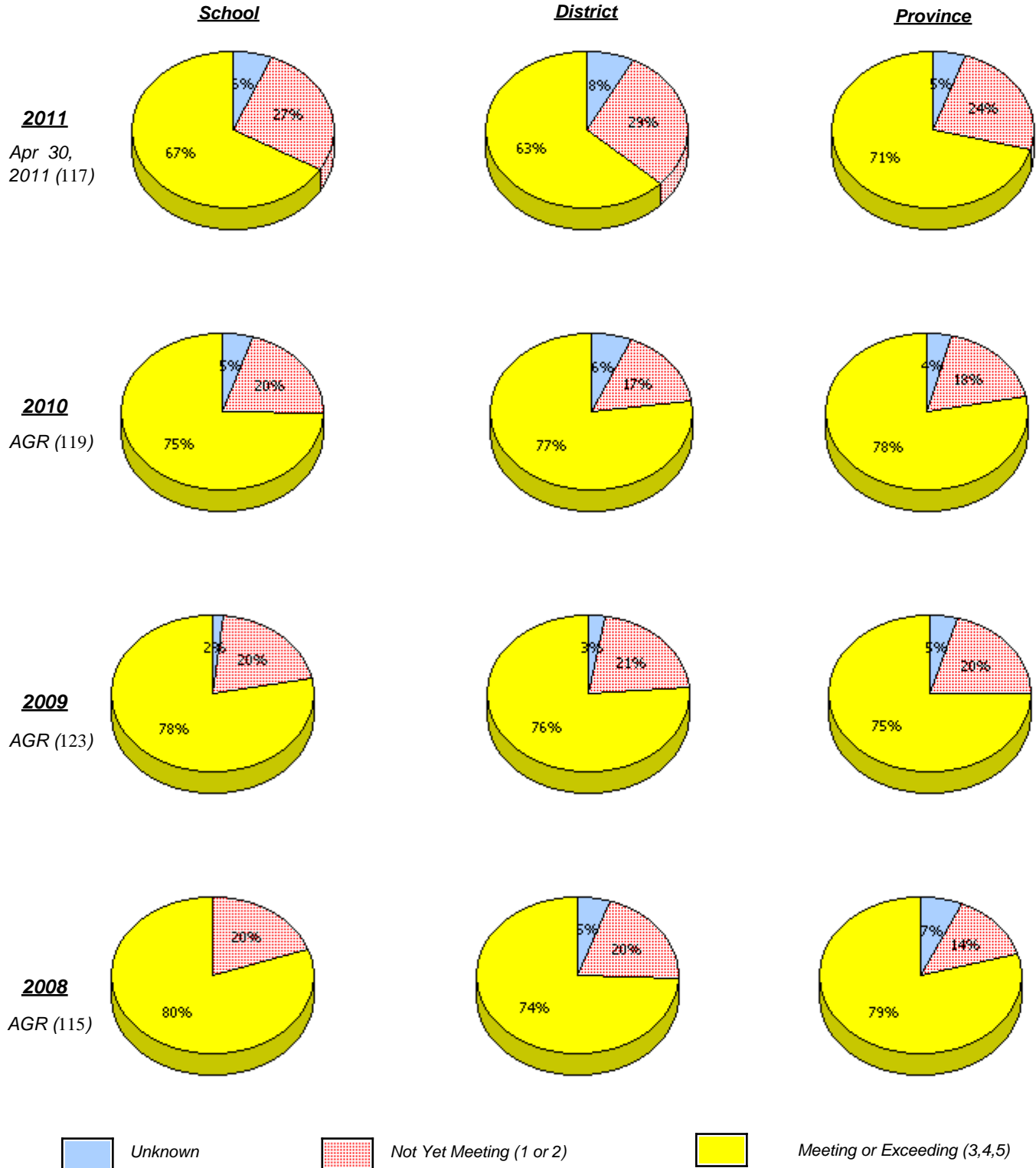
* In some cases, CRT numbers may exceed AGR numbers based on late enrolments. Pie chart is based on the number of students who wrote the CRT.

* Reading score is composite of Information and Poet.

District 1 - Labrador

School #: 381 J.R. Smallwood Middle School

Demand Writing



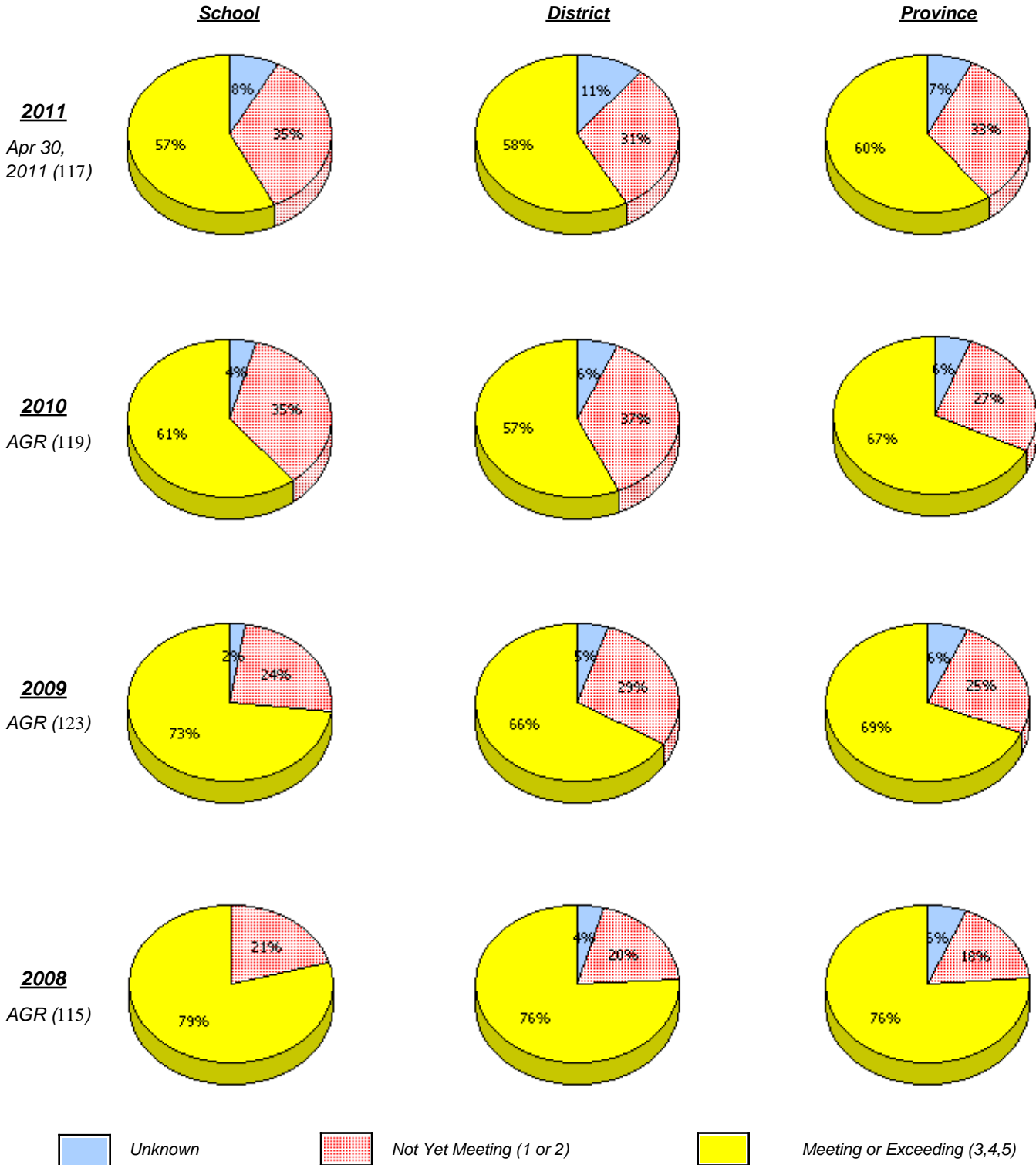
* In some cases, CRT numbers may exceed AGR numbers based on late enrolments. Pie chart is based on the number of students who wrote the CRT.

* Reading score is composite of Information and Poet.

District 1 - Labrador

School #: 381 J.R. Smallwood Middle School

Reading



* In some cases, CRT numbers may exceed AGR numbers based on late enrolments. Pie chart is based on the number of students who wrote the CRT.

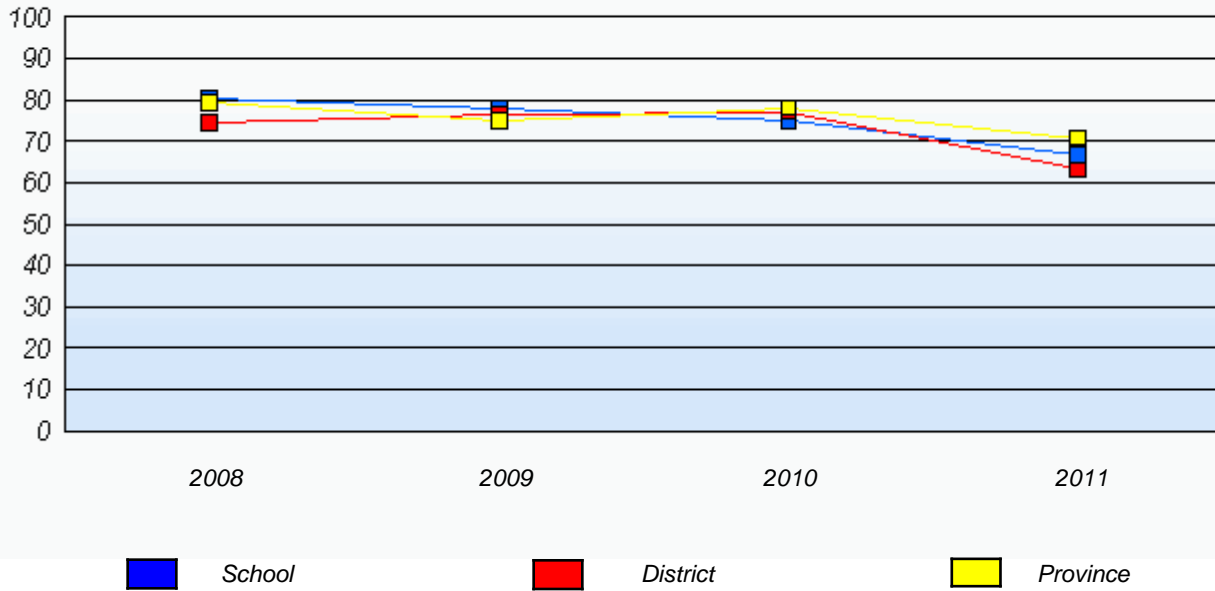
* Reading score is composite of Information and Poet.

District 1 - Labrador

School #: 381 J.R. Smallwood Middle School

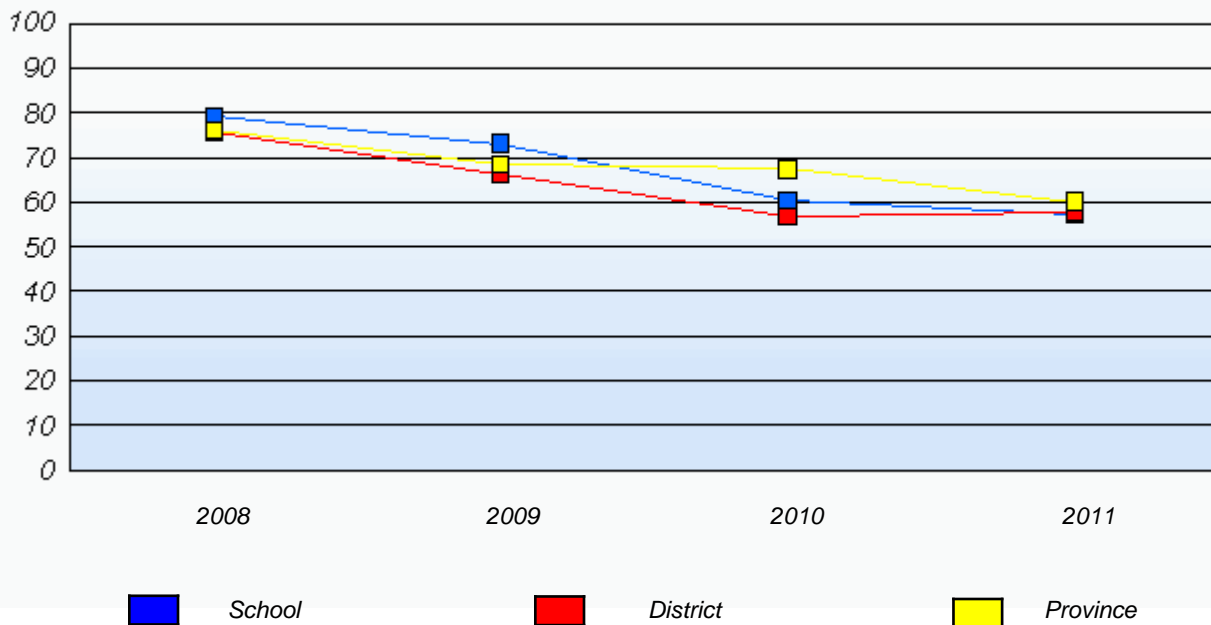
Demand Writing

Percentage of students at level 3 or above (2008 - 2011)



Reading

Percentage of students at level 3 or above (2008 - 2011)



* In some cases, CRT numbers may exceed AGR numbers based on late enrolments. Pie chart is based on the number of students who wrote the CRT.

* Reading score is composite of Information and Poet.