

Mathematics

Number of Students : 9

Closed Constructed

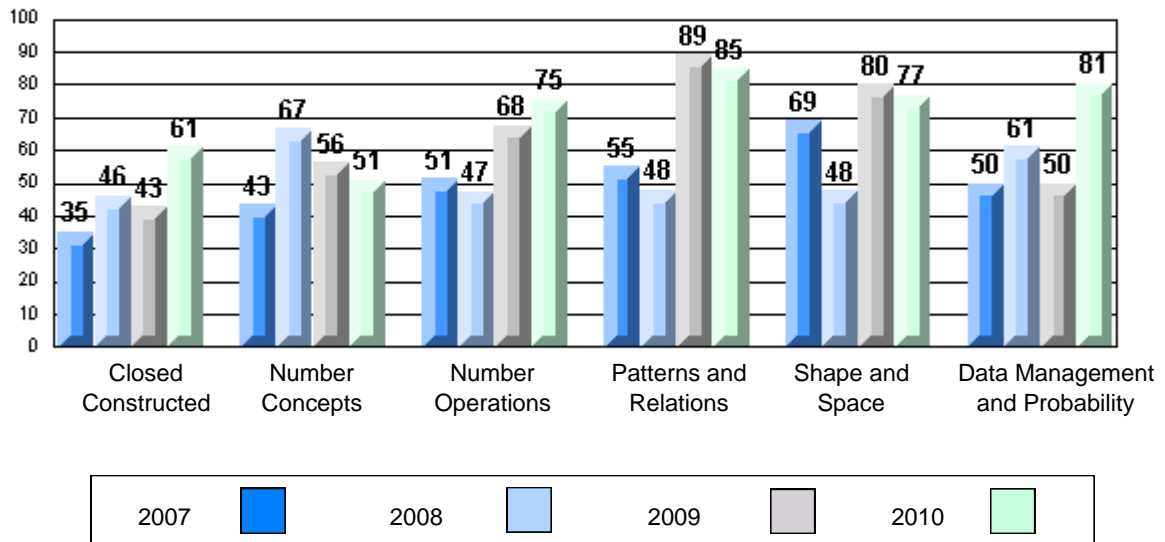
- Number Operations
- Patterns and Relations

Multiple Choice

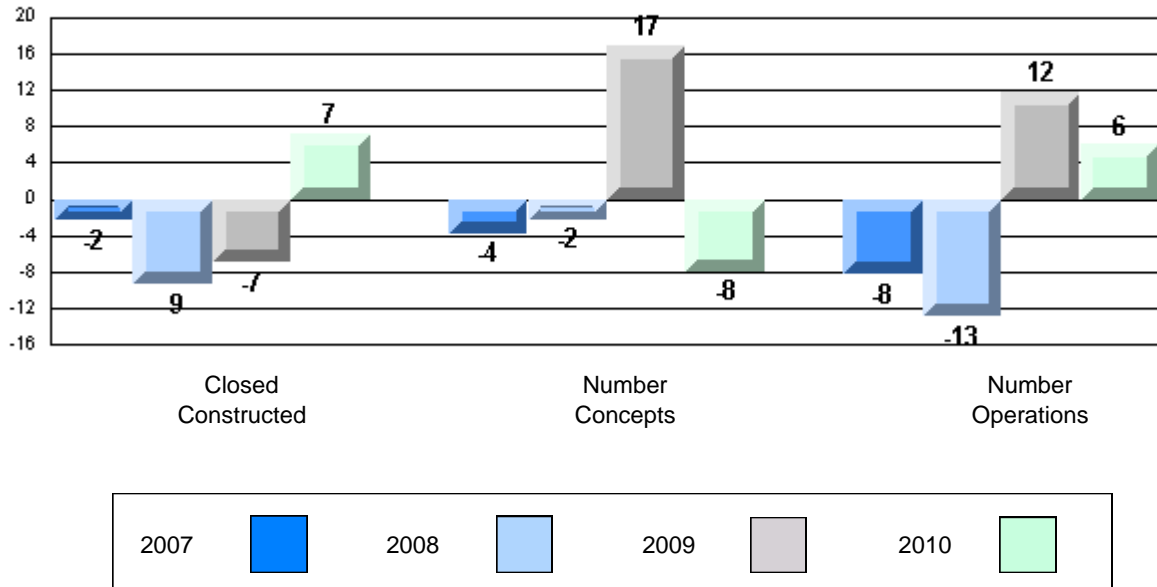
- Number Concepts
- Number Operations
- Patterns and Relations
- Measurement
- Geometry
- Data Management & Probability

	Mark	School vs District	School vs Province
Number Operations	School: 52.8 District: 57.1 Province: 48.9	q	P
Patterns and Relations	School: 72.2 District: 69.3 Province: 60.4	P	P
Number Concepts	School: 51.1 District: 58.0 Province: 59.0	q	q
Number Operations	School: 75.5 District: 74.7 Province: 69.4	P	P
Patterns and Relations	School: 84.9 District: 79.6 Province: 75.2	P	P
Measurement	School: 83.3 District: 72.8 Province: 67.5	P	P
Geometry	School: 66.7 District: 70.8 Province: 69.4	q	q
Data Management & Probability	School: 80.6 District: 65.7 Province: 65.9	P	P

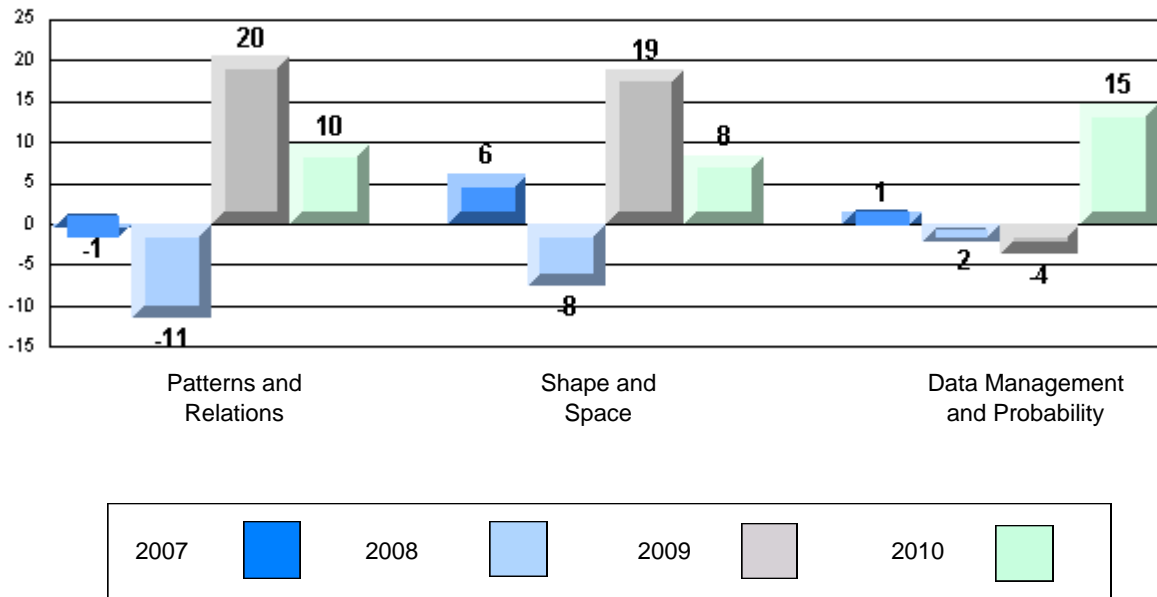
4 Year CRT (Subtest) Mark Trend 2007-2010



Difference from Provincial Mean 2007-10



Difference from Provincial Mean 2007-10



Mathematics

Number of Students : 5

Closed Constructed

- Number Operations
- Patterns and Relations

School
District
Province

School
District
Province

Mark	School vs District	School vs Province
School data with 5 or fewer students withheld for reasons of confidentiality.	Q	P
	Q	Q

Multiple Choice

- Number Concepts
- Number Operations
- Patterns and Relations
- Measurement
- Geometry
- Data Management & Probability

School
District
Province

School
District
Province

School
District
Province

School
District
Province

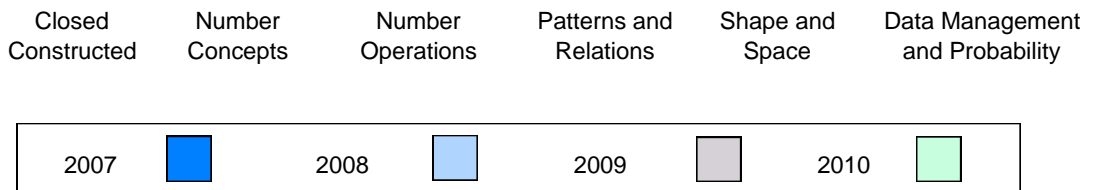
School
District
Province

School
District
Province

	Q	Q
	Q	Q
	Q	Q
	Q	Q
	Q	Q
	Q	Q

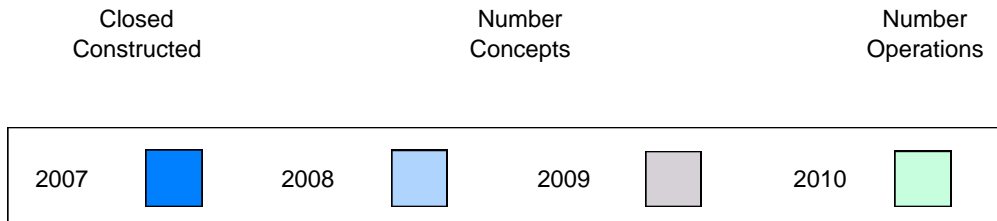
4 Year CRT (Subtest) Mark Trend 2007-2010

School data with 5 or fewer students withheld for reasons of confidentiality.



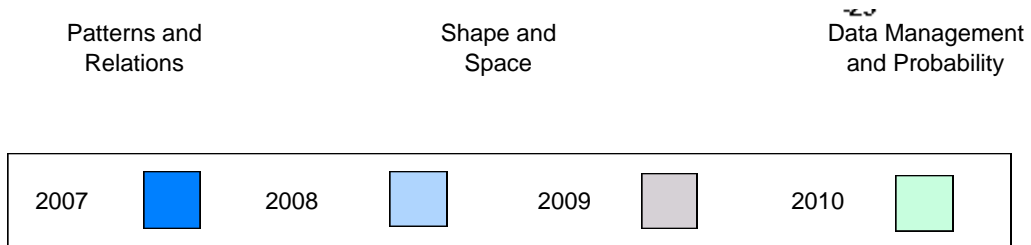
Difference from Provincial Mean 2007-10

School data with 5 or fewer students withheld for reasons of confidentiality.



Difference from Provincial Mean 2007-10

School data with 5 or fewer students withheld for reasons of confidentiality.



Mathematics

Number of Students : 104

Closed Constructed

Number Operations

Patterns and Relations

Multiple Choice

Number Concepts

Number Operations

Patterns and Relations

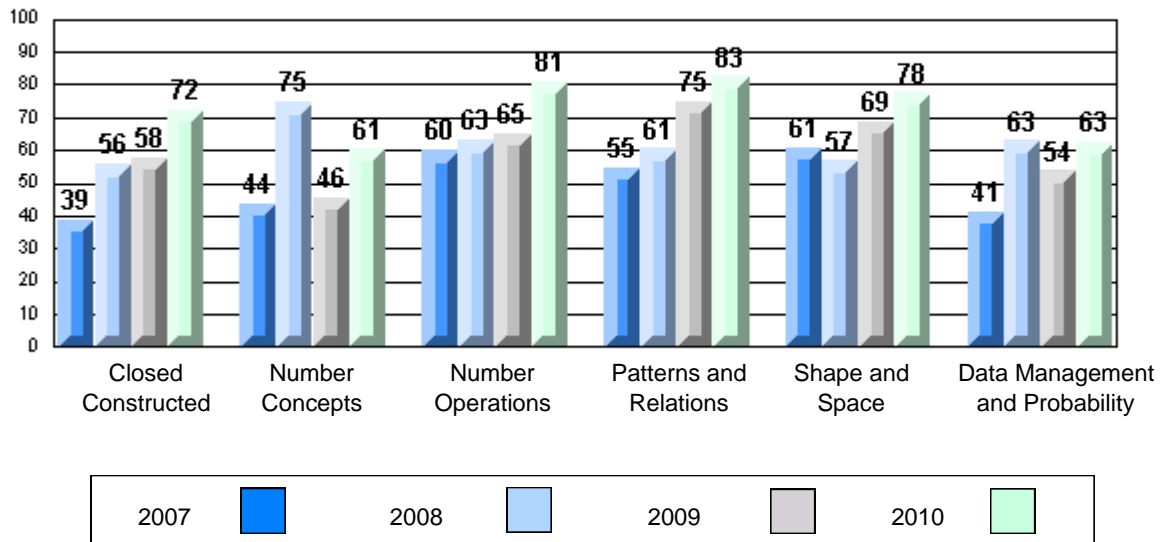
Measurement

Geometry

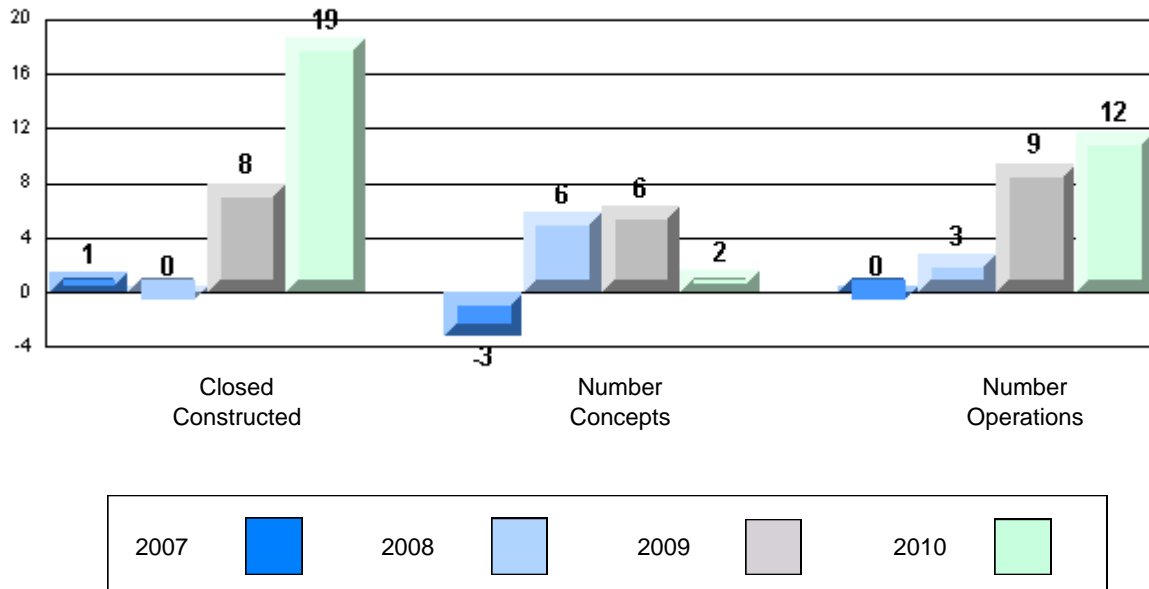
Data Management & Probability

Mark	School vs District	School vs Province
School		
District		
Province		
School		
District		
Province		
School		
District		
Province		
School		
District		
Province		
School		
District		
Province		
School		
District		
Province		

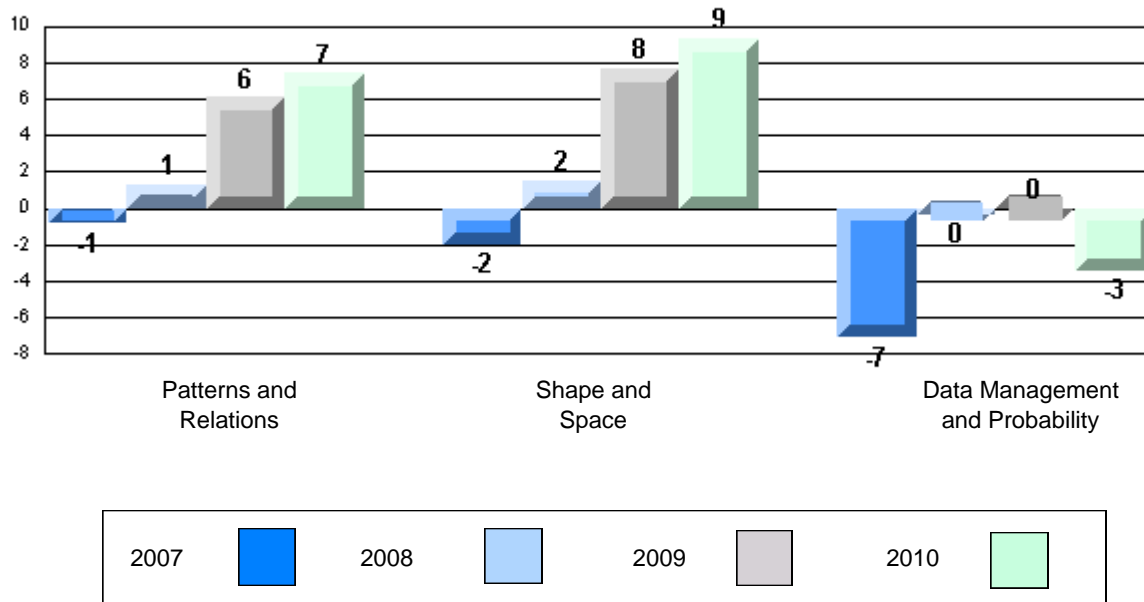
4 Year CRT (Subtest) Mark Trend 2007-2010



Difference from Provincial Mean 2007-10



Difference from Provincial Mean 2007-10



Mathematics

Number of Students : 2

Closed Constructed

Number Operations

Patterns and Relations

Multiple Choice

Number Concepts

Number Operations

Patterns and Relations

Measurement

Geometry

Data Management & Probability

School
District
Province

School
District
Province

School
District
Province

School
District
Province

School
District
Province

School
District
Province

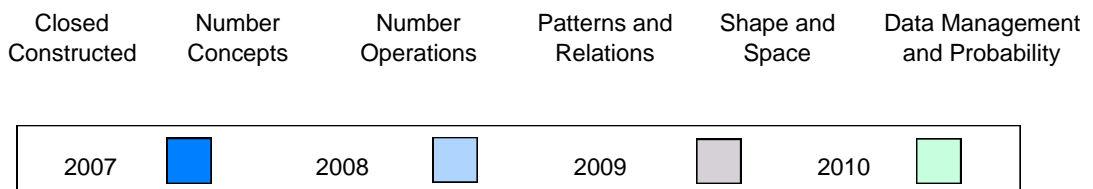
School
District
Province

School
District
Province

Mark	School vs District	School vs Province
School data with 5 or fewer students withheld for reasons of confidentiality.	Q	P
School data with 5 or fewer students withheld for reasons of confidentiality.	Q	Q
	P	P
	Q	Q
	Q	Q
	P	P
	P	P
	Q	Q

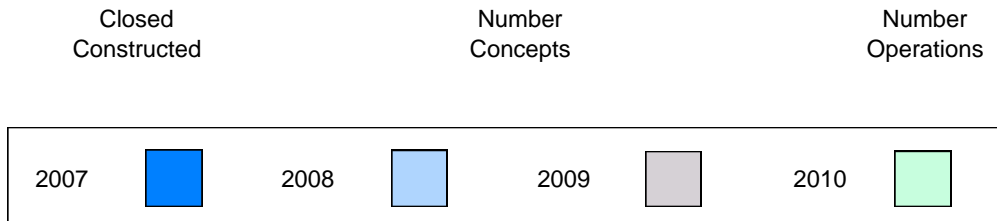
4 Year CRT (Subtest) Mark Trend 2007-2010

School data with 5 or fewer students withheld for reasons of confidentiality.



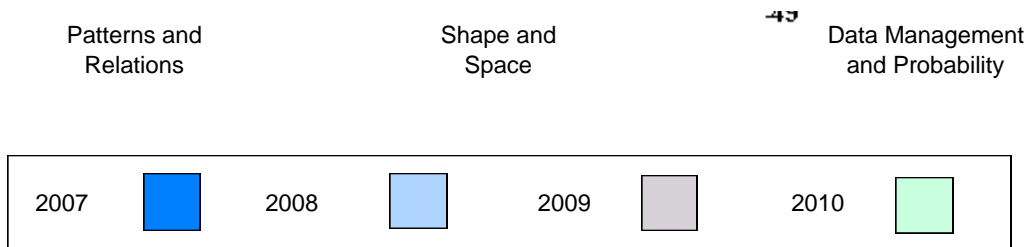
Difference from Provincial Mean 2007-10

School data with 5 or fewer students withheld for reasons of confidentiality.



Difference from Provincial Mean 2007-10

School data with 5 or fewer students withheld for reasons of confidentiality.



Mathematics

Number of Students : 12

Closed Constructed

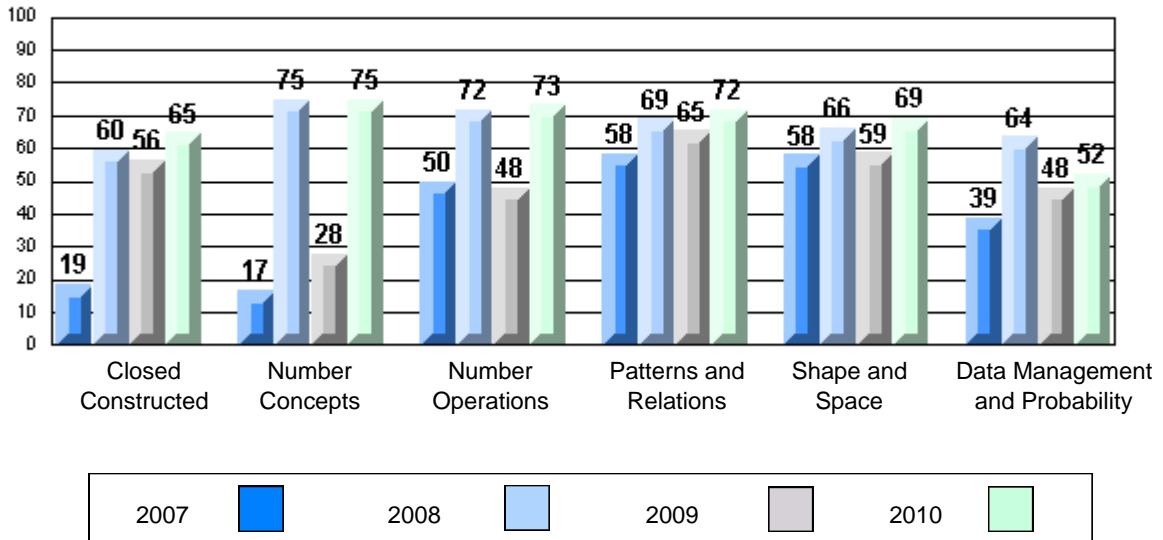
- Number Operations
- Patterns and Relations

Multiple Choice

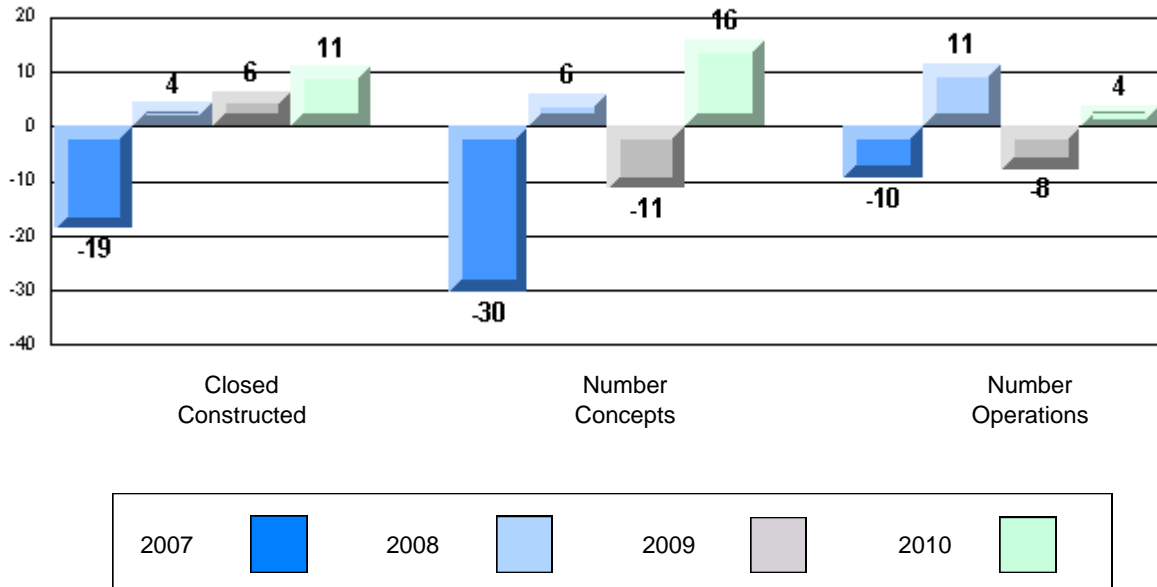
- Number Concepts
- Number Operations
- Patterns and Relations
- Measurement
- Geometry
- Data Management & Probability

Mark	School vs District	School vs Province
School: 60.4	P	P
District: 57.1		
Province: 48.9		
School: 70.8	P	P
District: 69.3		
Province: 60.4		
School: 75.0	P	P
District: 58.0		
Province: 59.0		
School: 73.3	q	P
District: 74.7		
Province: 69.4		
School: 72.0	q	q
District: 79.6		
Province: 75.2		
School: 78.2	P	P
District: 72.8		
Province: 67.5		
School: 55.6	q	q
District: 70.8		
Province: 69.4		
School: 52.1	q	q
District: 65.7		
Province: 65.9		

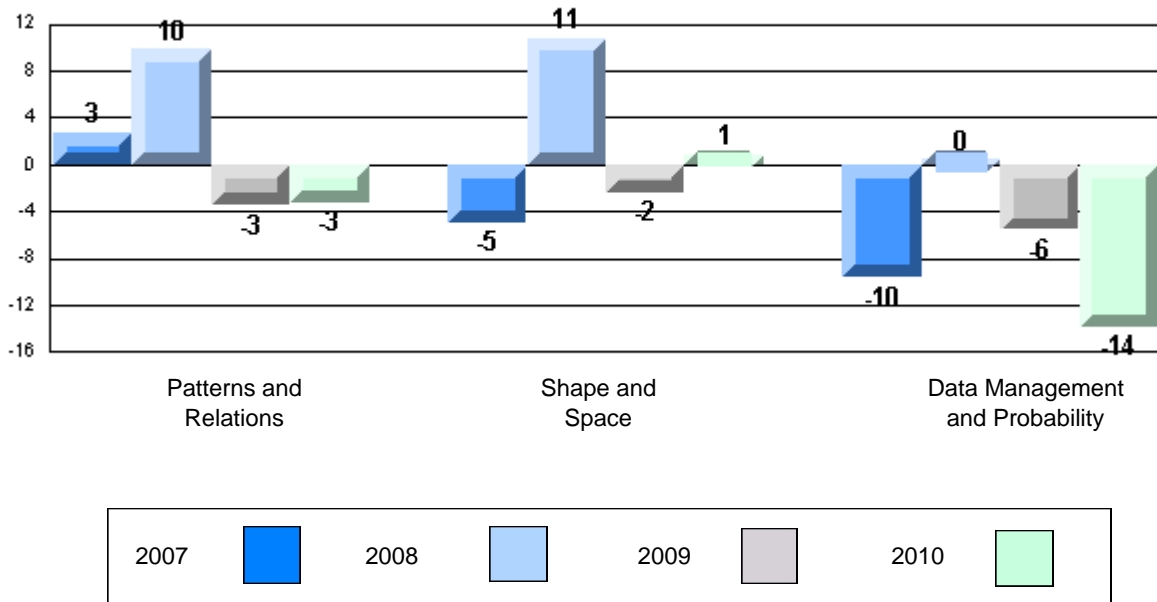
4 Year CRT (Subtest) Mark Trend 2007-2010



Difference from Provincial Mean 2007-10



Difference from Provincial Mean 2007-10



Mathematics

Number of Students : 13

Closed Constructed

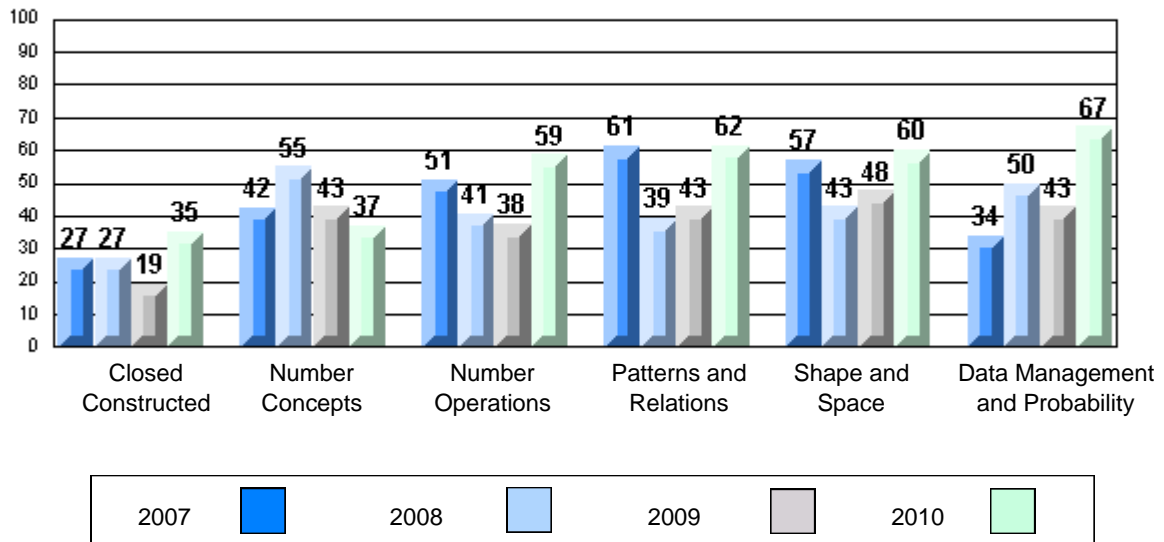
- Number Operations
- Patterns and Relations

Multiple Choice

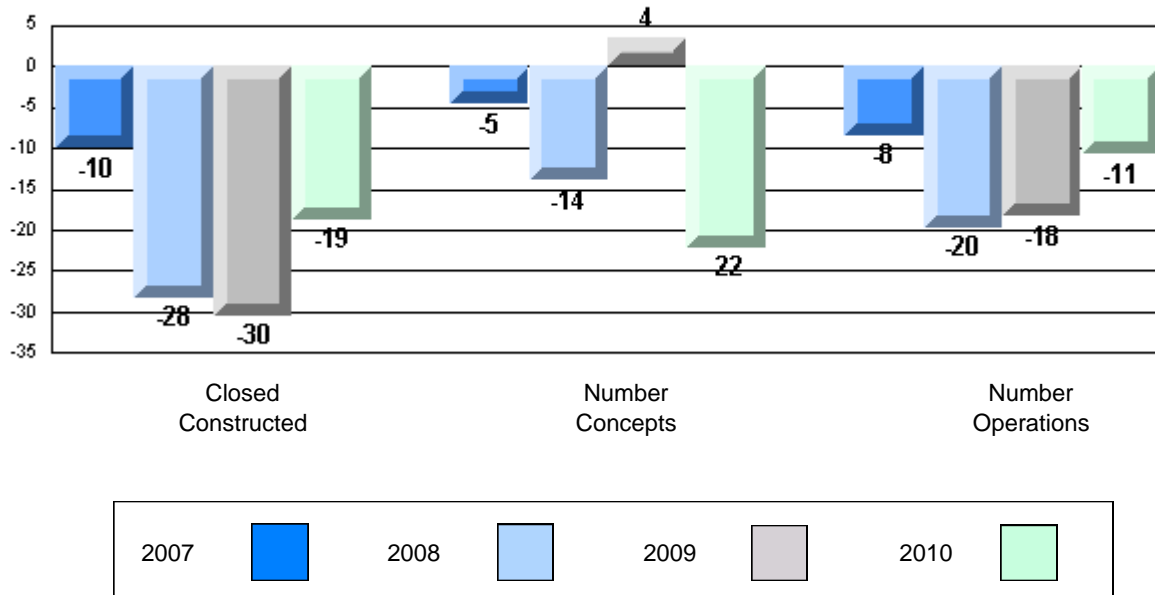
- Number Concepts
- Number Operations
- Patterns and Relations
- Measurement
- Geometry
- Data Management & Probability

Mark	School vs District	School vs Province
School		
District	q	q
Province		
School		
District	q	q
Province		
School		
District	q	q
Province		
School		
District	q	q
Province		
School		
District	q	q
Province		
School		
District	p	p
Province		

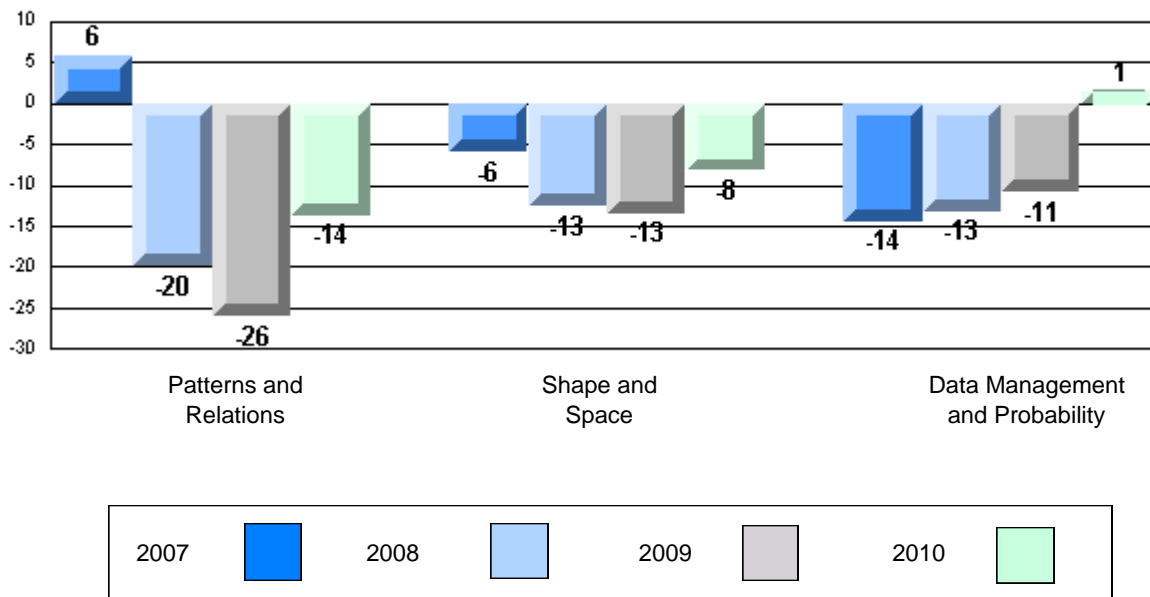
4 Year CRT (Subtest) Mark Trend 2007-2010



Difference from Provincial Mean 2007-10



Difference from Provincial Mean 2007-10



Mathematics

Number of Students : 3

Closed Constructed

Number Operations

Patterns and Relations

Multiple Choice

Number Concepts

Number Operations

Patterns and Relations

Measurement

Geometry

Data Management & Probability

School
District
Province

School
District
Province

School
District
Province

School
District
Province

School
District
Province

School
District
Province

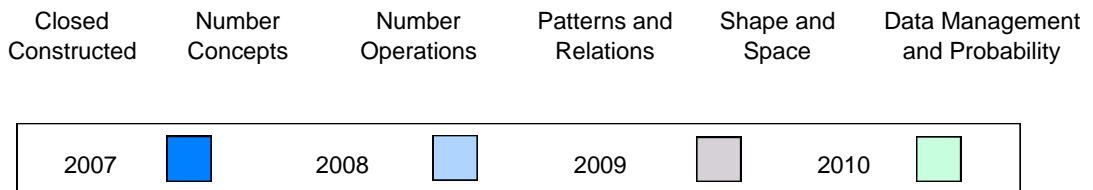
School
District
Province

School
District
Province

Mark	School vs District	School vs Province
School data with 5 or fewer students withheld for reasons of confidentiality.	P	P
	Q	P
	Q	Q
	P	P
	P	P
	P	P
	P	P
	P	P

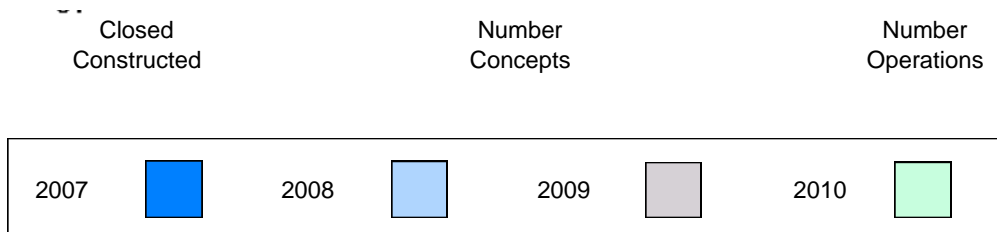
4 Year CRT (Subtest) Mark Trend 2007-2010

School data with 5 or fewer students withheld for reasons of confidentiality.



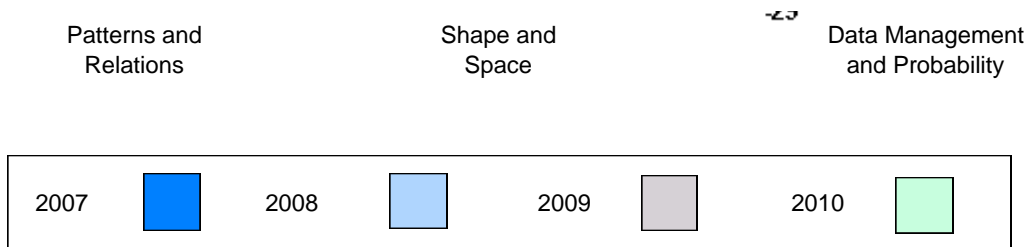
Difference from Provincial Mean 2007-10

School data with 5 or fewer students withheld for reasons of confidentiality.



Difference from Provincial Mean 2007-10

School data with 5 or fewer students withheld for reasons of confidentiality.



Mathematics

Number of Students : 2

Closed Constructed

Number Operations

Patterns and Relations

Multiple Choice

Number Concepts

Number Operations

Patterns and Relations

Measurement

Geometry

Data Management & Probability

School
District
Province

School
District
Province

School
District
Province

School
District
Province

School
District
Province

School
District
Province

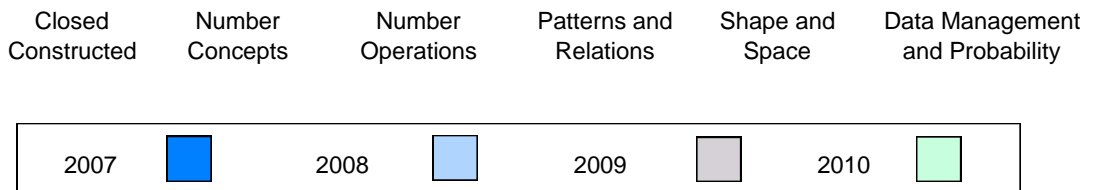
School
District
Province

School
District
Province

Mark	School vs District	School vs Province
School data with 5 or fewer students withheld for reasons of confidentiality.	q	q
	q	q
	q	q
	q	q
	q	q
	p	p
	q	q

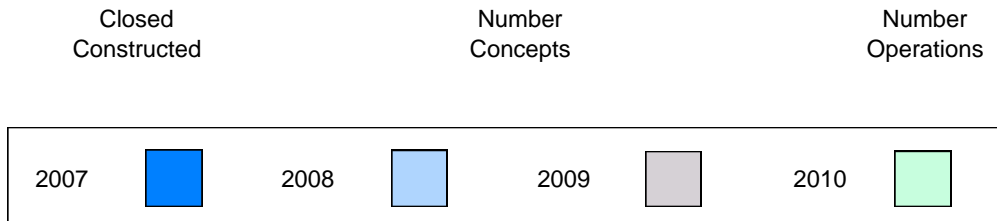
4 Year CRT (Subtest) Mark Trend 2007-2010

School data with 5 or fewer students withheld for reasons of confidentiality.



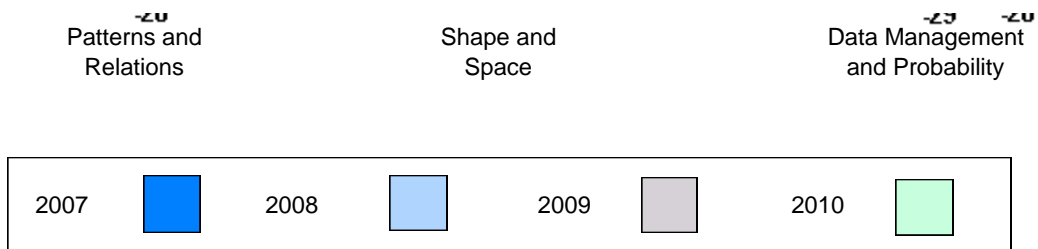
Difference from Provincial Mean 2007-10

School data with 5 or fewer students withheld for reasons of confidentiality.



Difference from Provincial Mean 2007-10

School data with 5 or fewer students withheld for reasons of confidentiality.



Mathematics

Number of Students : 78

Closed Constructed

Number Operations

Patterns and Relations

Multiple Choice

Number Concepts

Number Operations

Patterns and Relations

Measurement

Geometry

Data Management & Probability

School
District
Province

School
District
Province

School
District
Province

School
District
Province

School
District
Province

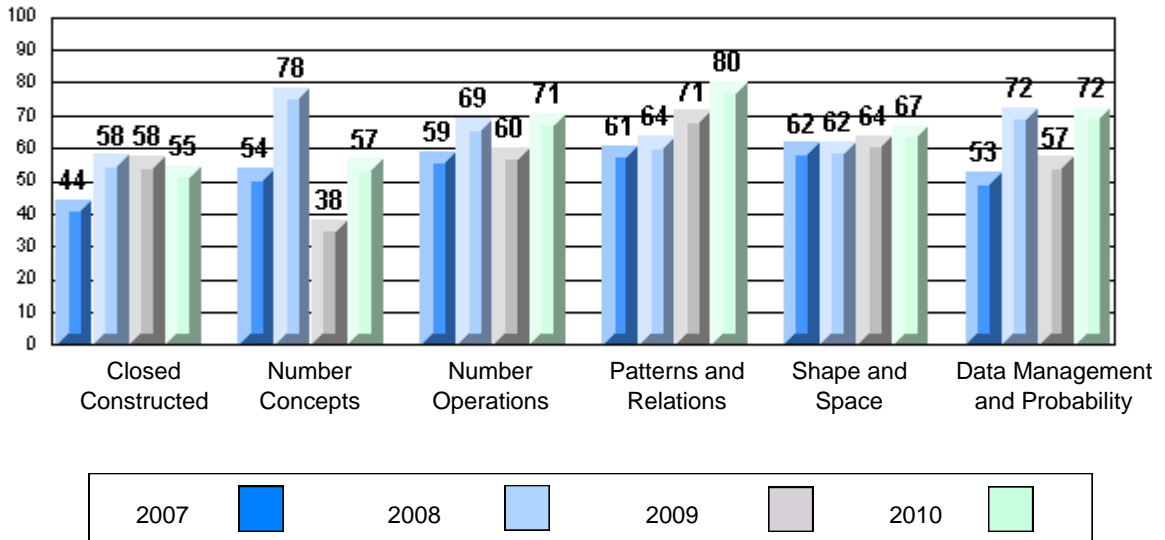
School
District
Province

School
District
Province

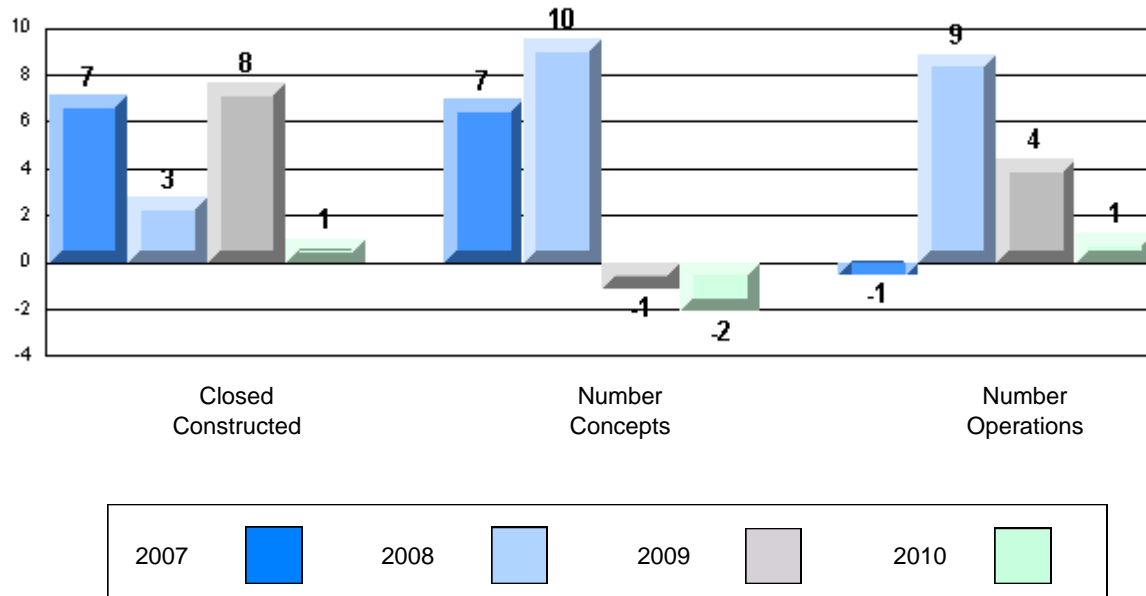
School
District
Province

Mark	School vs District	School vs Province
45.4	q	q
57.1		
48.9		
67.5	q	p
69.3		
60.4		
56.9	q	q
58.0		
59.0		
70.7	q	p
74.7		
69.4		
80.5	p	p
79.6		
75.2		
65.4	q	q
72.8		
67.5		
69.4	q	p
70.8		
69.4		
72.4	p	p
65.7		
65.9		

4 Year CRT (Subtest) Mark Trend 2007-2010



Difference from Provincial Mean 2007-10



Difference from Provincial Mean 2007-10

