

District 803 - Private

School #: 373 First Baptist Academy

Number Operations

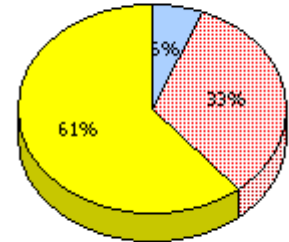
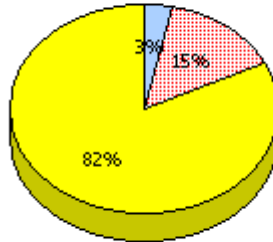
School

District

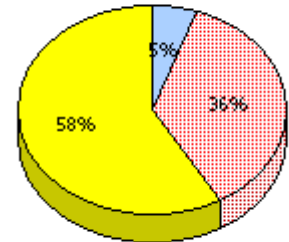
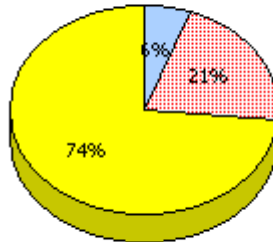
Province

2010
AGR (2)

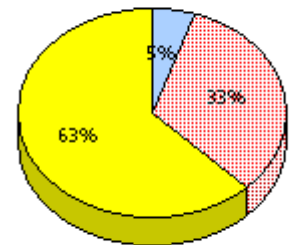
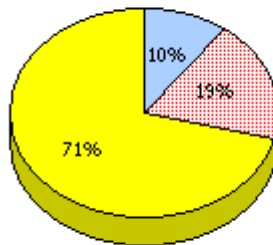
School data with 5 or fewer students withheld for reasons of confidentiality.



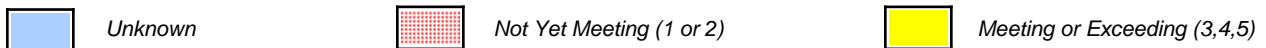
2009
AGR (3)



2008
AGR (6)



2007
AGR (0)



* In some cases, CRT numbers may exceed AGR numbers based on late enrolments. Pie chart is based on the number of students who wrote the CRT.

* Number Operations score is composite of Reasoning, Communication, Connections and Representations, and Problem Solving.

District 803 - Private

School #: 373 First Baptist Academy

Number Operations

Percentage of students at level 3 or above (2007 - 2010)

School data with 5 or fewer students withheld for reasons of confidentiality.



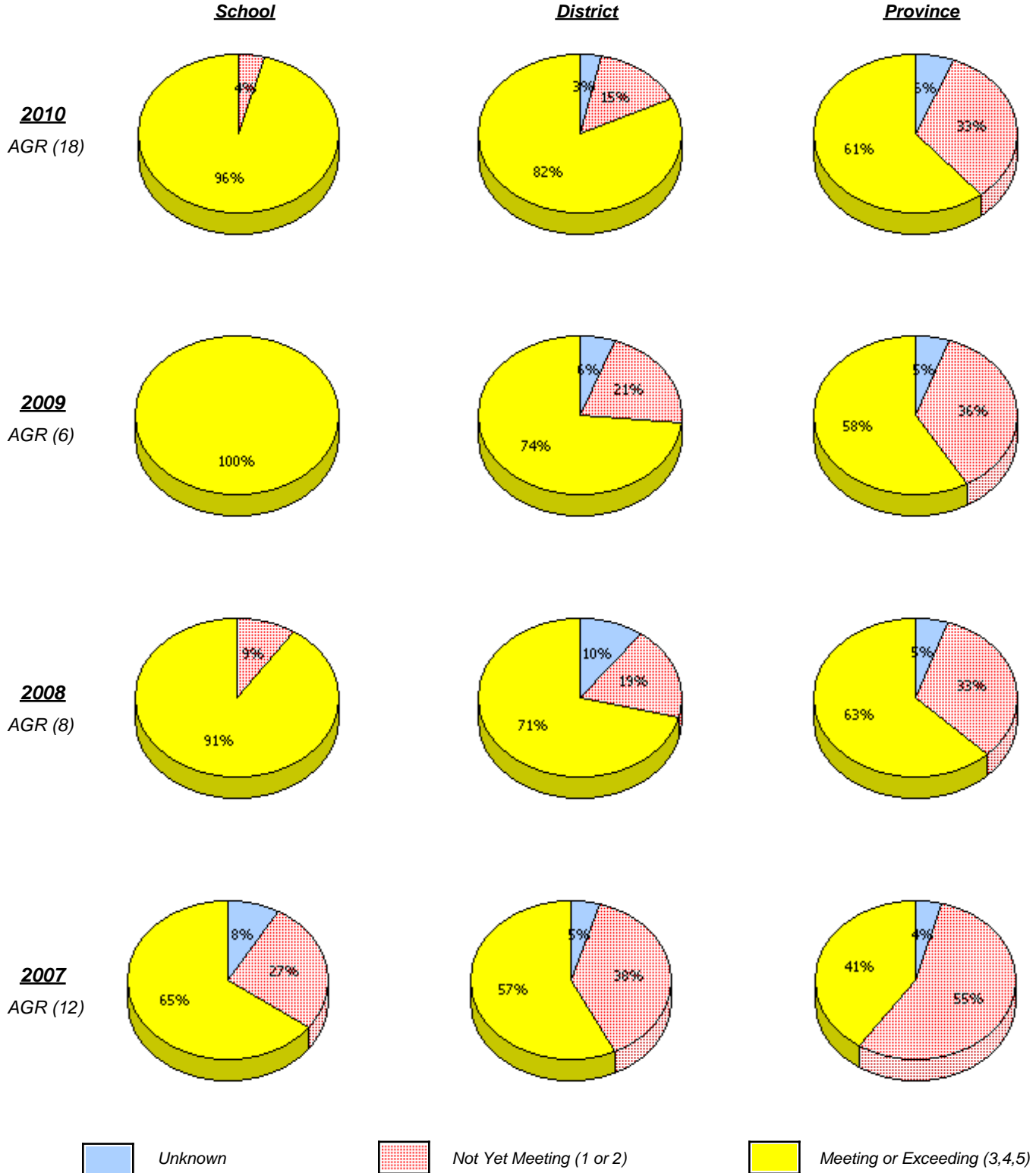
* In some cases, CRT numbers may exceed AGR numbers based on late enrolments. Pie chart is based on the number of students who wrote the CRT.

* Number Operations score is composite of Reasoning, Communication, Connections and Representations, and Problem Solving.

District 803 - Private

School #: 375 Lakecrest -St. John's Independent School

Number Operations



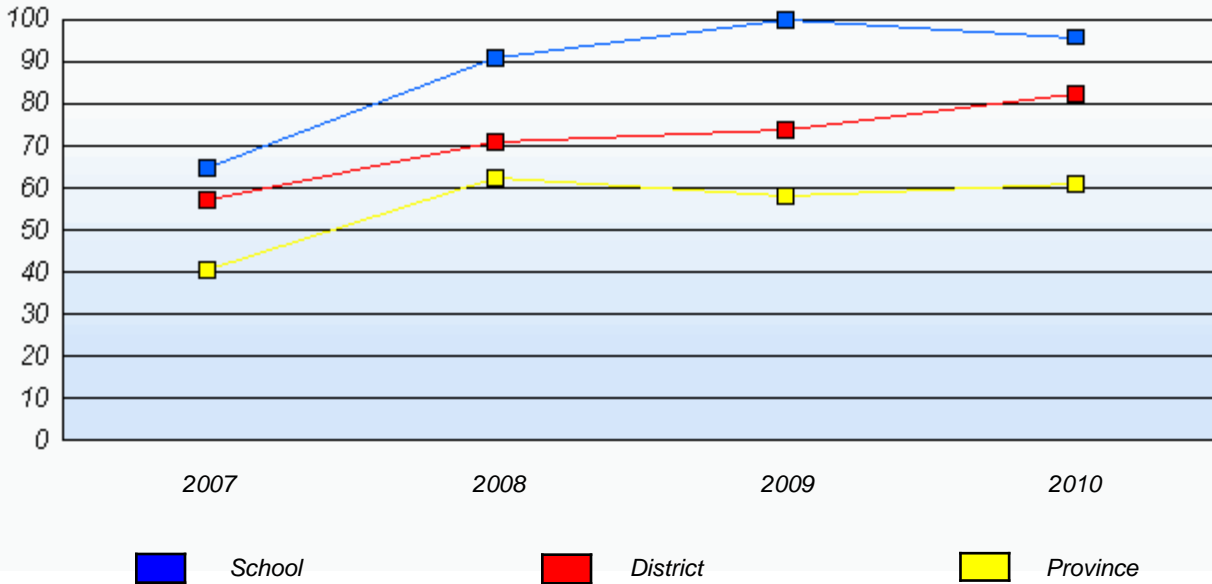
* In some cases, CRT numbers may exceed AGR numbers based on late enrolments. Pie chart is based on the number of students who wrote the CRT.

* Number Operations score is composite of Reasoning, Communication, Connections and Representations, and Problem Solving.

District 803 - Private

School #: 375 Lakecrest -St. John's Independent School

Number Operations
 Percentage of students at level 3 or above (2007 - 2010)



* In some cases, CRT numbers may exceed AGR numbers based on late enrolments. Pie chart is based on the number of students who wrote the CRT.

* Number Operations score is composite of Reasoning, Communication, Connections and Representations, and Problem Solving.

District 803 - Private

School #: 450 St. Bonaventure's College

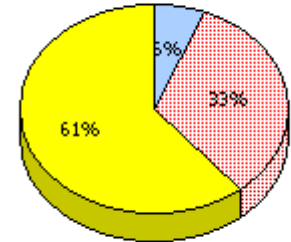
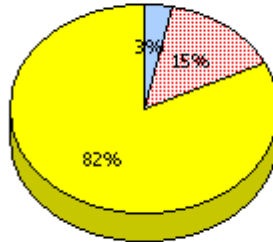
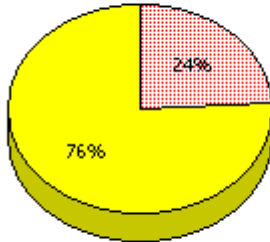
Number Operations

School

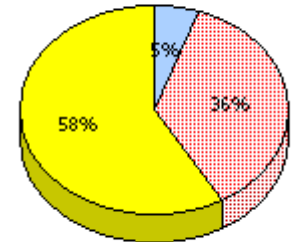
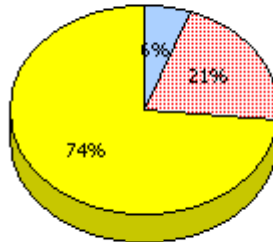
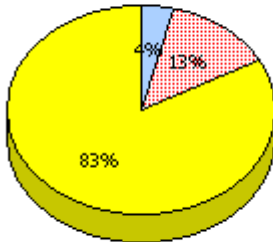
District

Province

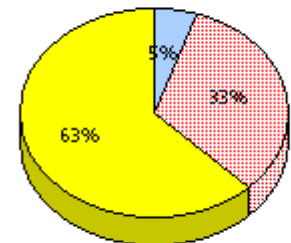
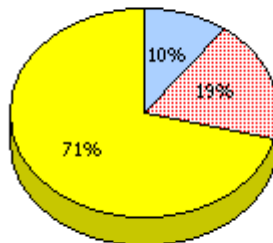
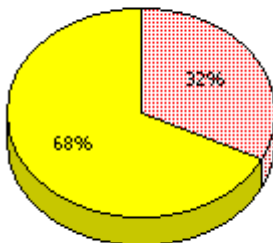
2010
AGR (26)



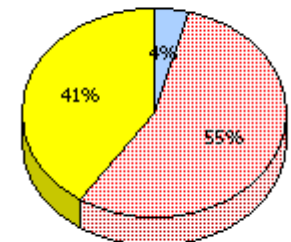
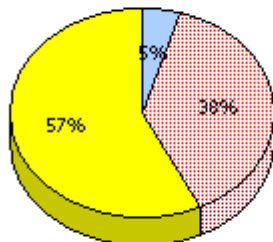
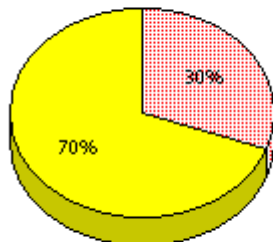
2009
AGR (25)



2008
AGR (21)



2007
AGR (23)



Unknown
 Not Yet Meeting (1 or 2)
 Meeting or Exceeding (3,4,5)

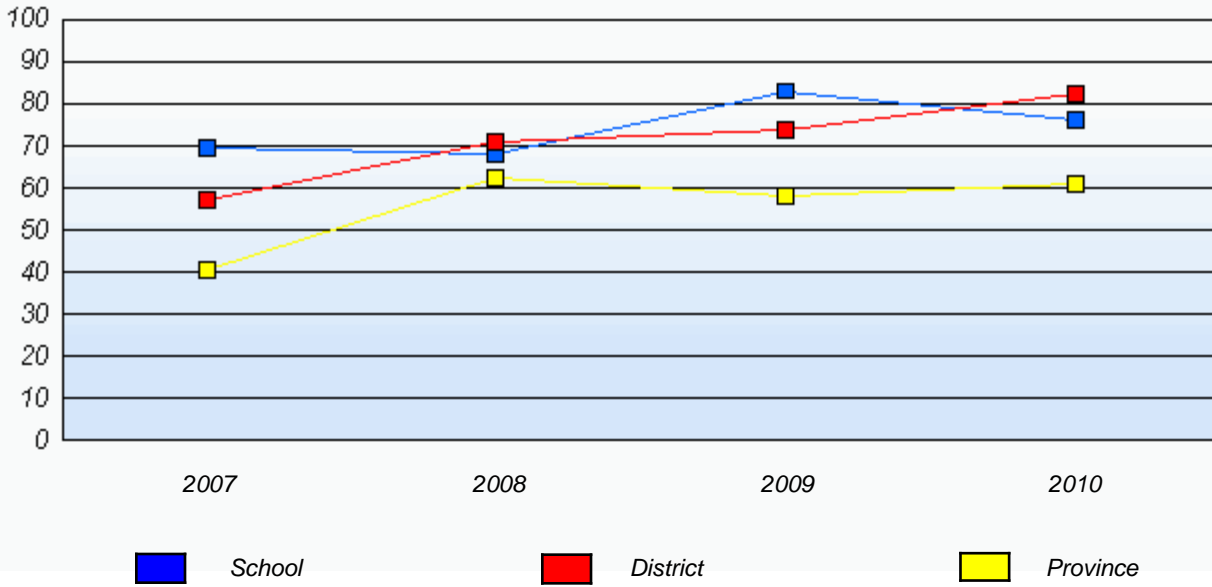
* In some cases, CRT numbers may exceed AGR numbers based on late enrolments. Pie chart is based on the number of students who wrote the CRT.

* Number Operations score is composite of Reasoning, Communication, Connections and Representations, and Problem Solving.

District 803 - Private

School #: 450 St. Bonaventure's College

Number Operations
 Percentage of students at level 3 or above (2007 - 2010)



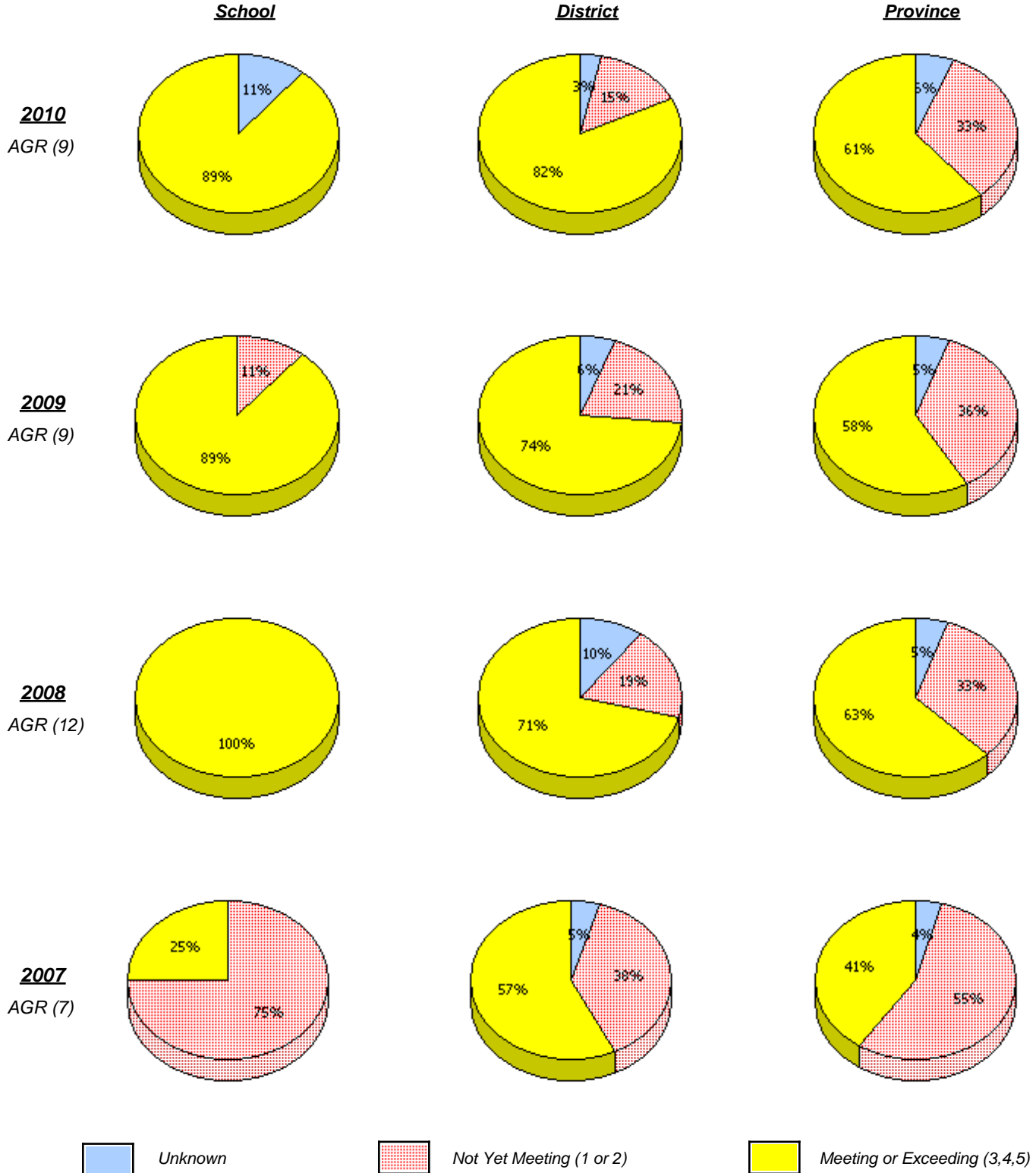
* In some cases, CRT numbers may exceed AGR numbers based on late enrolments. Pie chart is based on the number of students who wrote the CRT.

* Number Operations score is composite of Reasoning, Communication, Connections and Representations, and Problem Solving.

District 803 - Private

School #: 453 Eric G. Lambert All-Grade

Number Operations



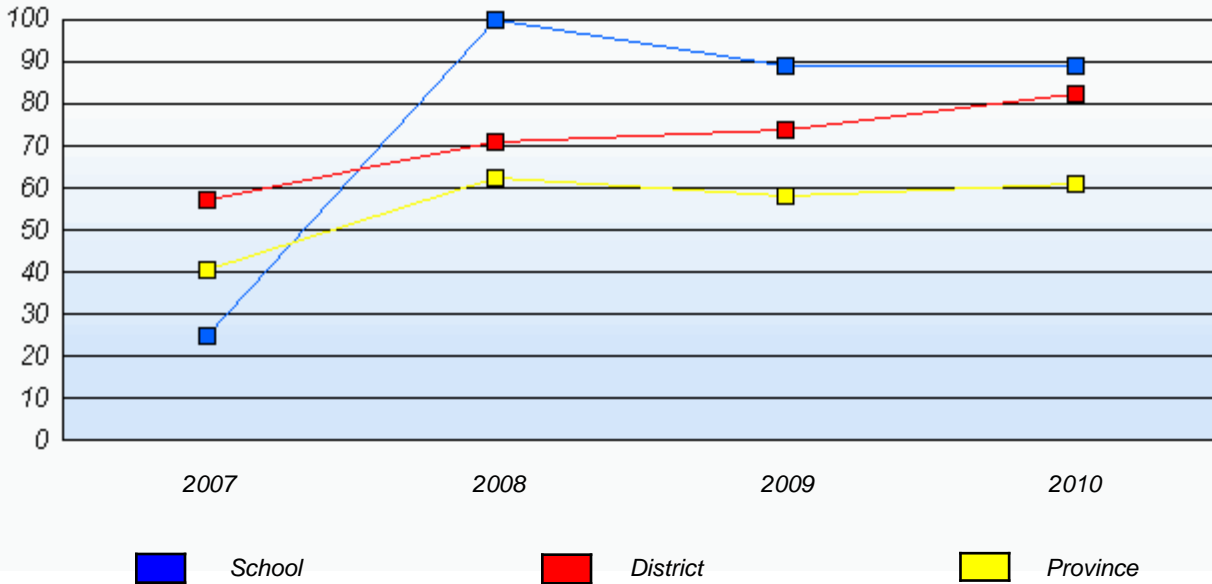
* In some cases, CRT numbers may exceed AGR numbers based on late enrolments. Pie chart is based on the number of students who wrote the CRT.

* Number Operations score is composite of Reasoning, Communication, Connections and Representations, and Problem Solving.

District 803 - Private

School #: 453 Eric G. Lambert All-Grade

Number Operations
 Percentage of students at level 3 or above (2007 - 2010)



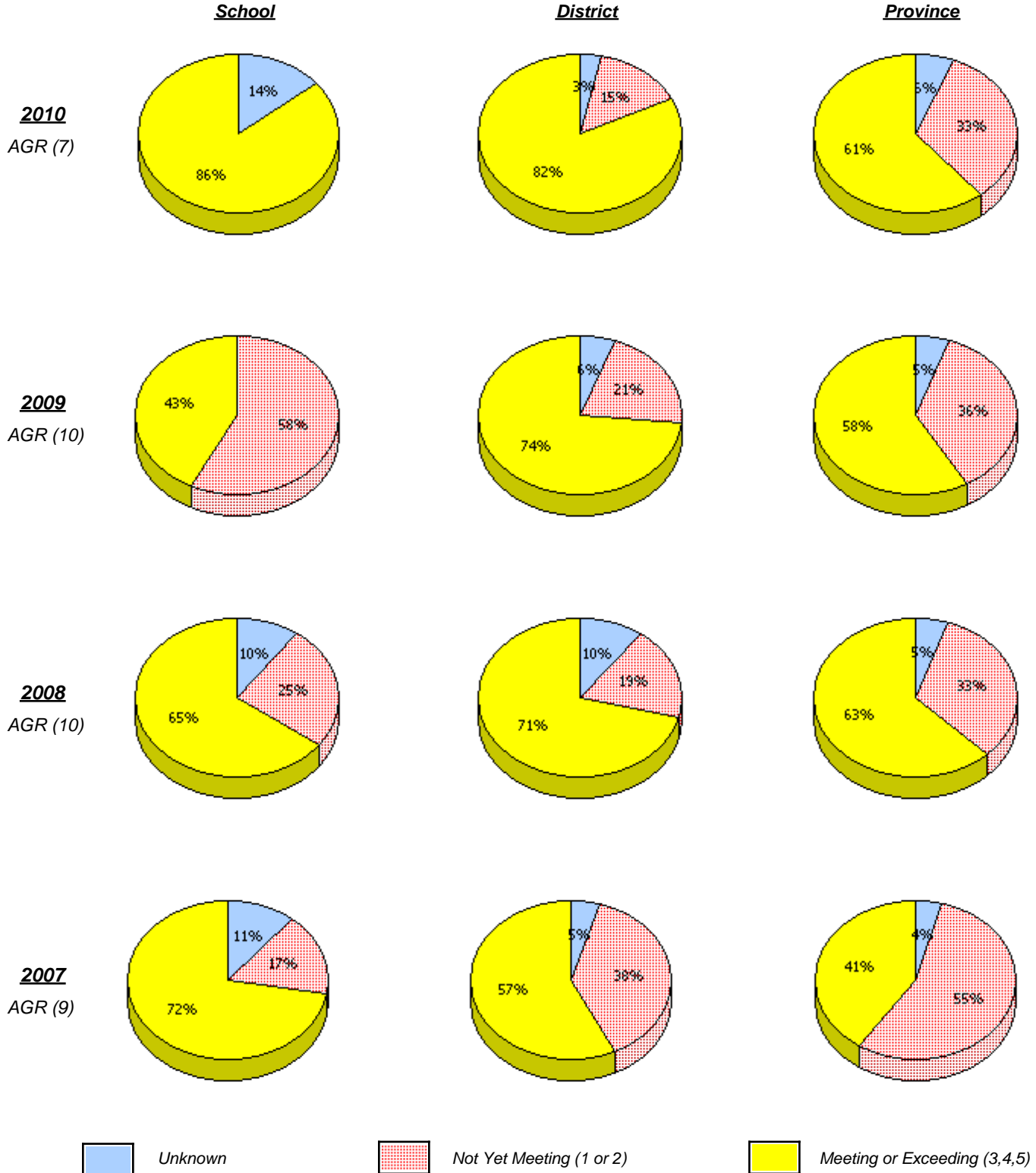
* In some cases, CRT numbers may exceed AGR numbers based on late enrolments. Pie chart is based on the number of students who wrote the CRT.

* Number Operations score is composite of Reasoning, Communication, Connections and Representations, and Problem Solving.

District 803 - Private

School #: 469 Immaculate Heart of Mary School

Number Operations



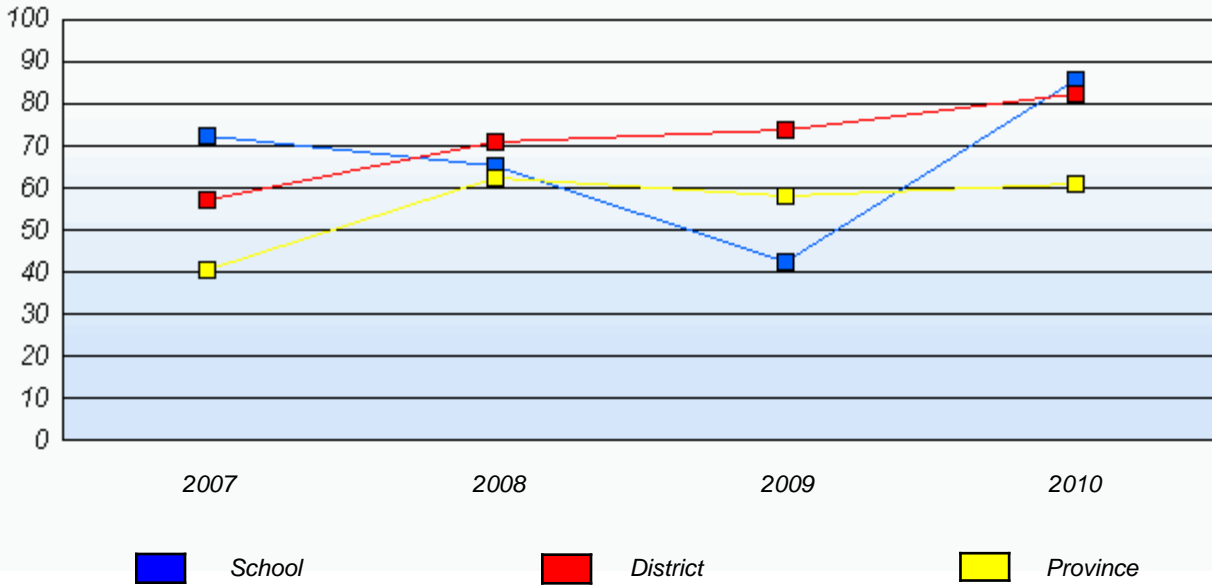
* In some cases, CRT numbers may exceed AGR numbers based on late enrolments. Pie chart is based on the number of students who wrote the CRT.

* Number Operations score is composite of Reasoning, Communication, Connections and Representations, and Problem Solving.

District 803 - Private

School #: 469 Immaculate Heart of Mary School

Number Operations
 Percentage of students at level 3 or above (2007 - 2010)



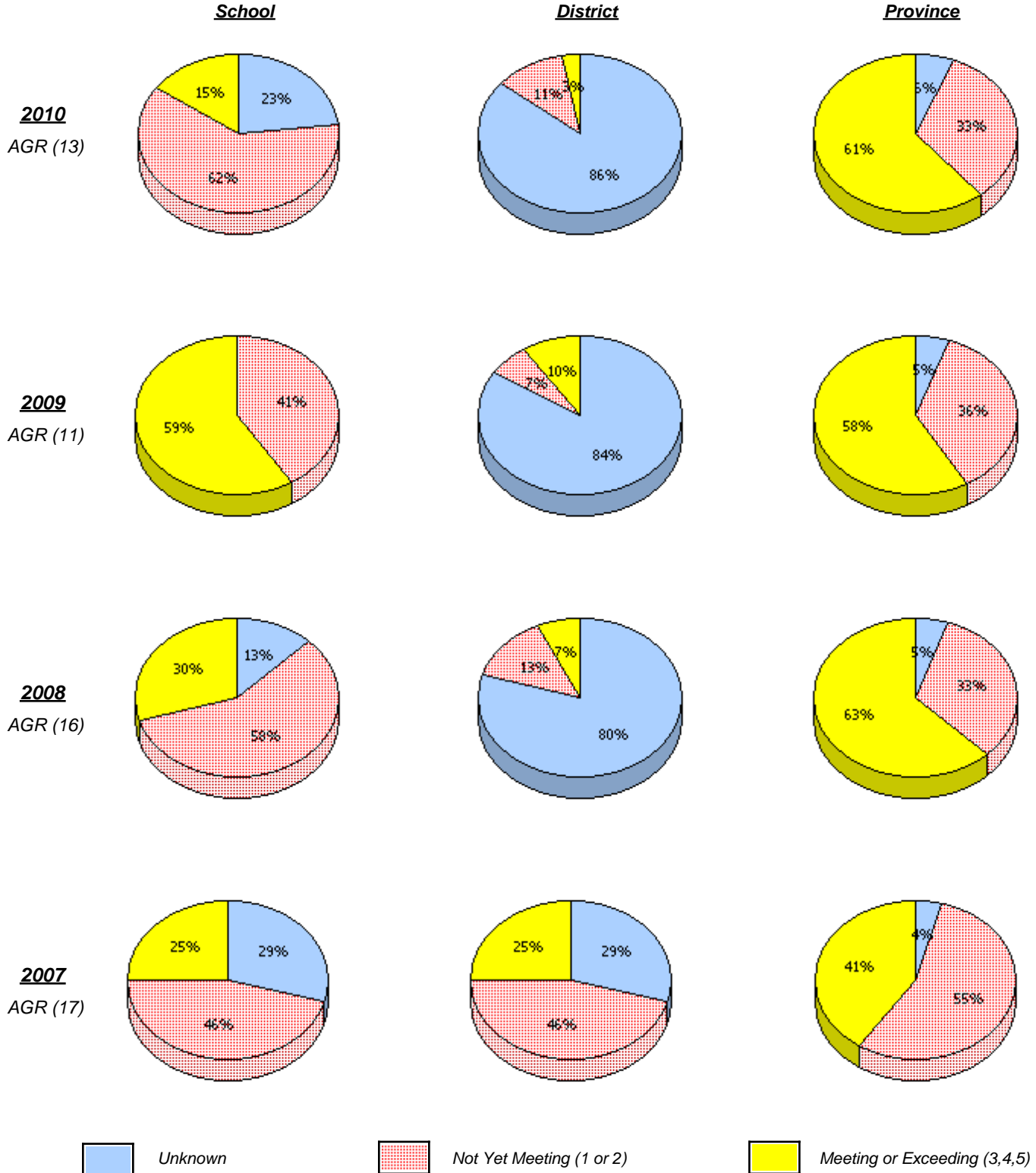
* In some cases, CRT numbers may exceed AGR numbers based on late enrolments. Pie chart is based on the number of students who wrote the CRT.

* Number Operations score is composite of Reasoning, Communication, Connections and Representations, and Problem Solving.

District 804 - Native Federal

School #: 376 Se't Anneway Kegnamogwom

Number Operations



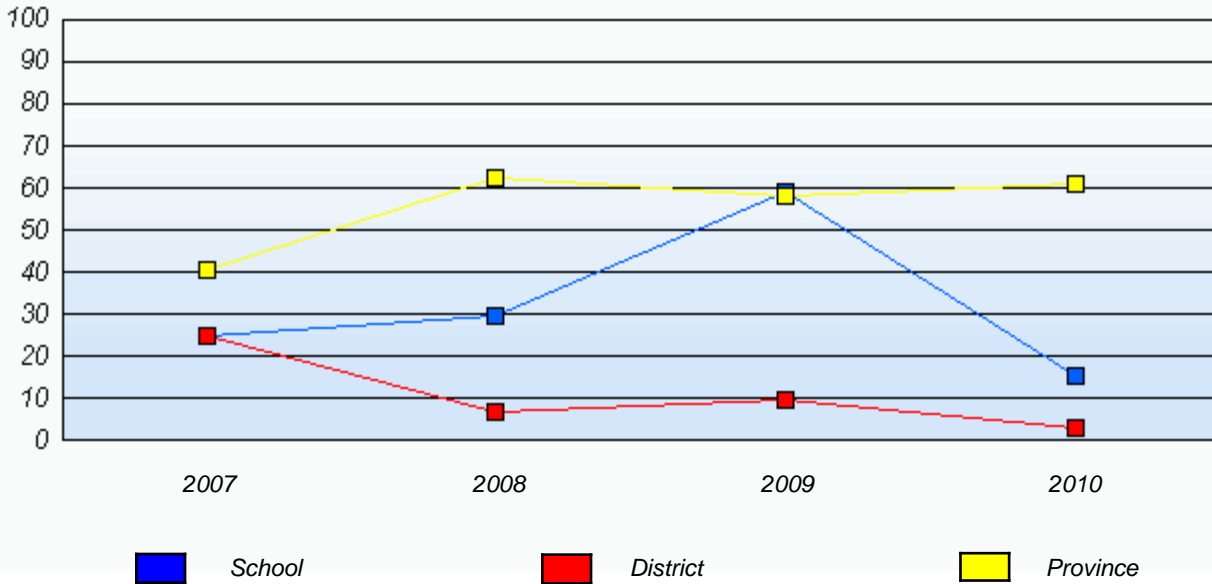
* In some cases, CRT numbers may exceed AGR numbers based on late enrolments. Pie chart is based on the number of students who wrote the CRT.

* Number Operations score is composite of Reasoning, Communication, Connections and Representations, and Problem Solving.

District 804 - Native Federal

School #: 376 Se't Anneway Kegnamogwom

Number Operations
 Percentage of students at level 3 or above (2007 - 2010)



* In some cases, CRT numbers may exceed AGR numbers based on late enrolments. Pie chart is based on the number of students who wrote the CRT.

* Number Operations score is composite of Reasoning, Communication, Connections and Representations, and Problem Solving.