

District 1 - Labrador

School #: 001 St. Peter's School

Total Grade 3(2010) students: 4

### Exemption Rates

#### Demand Writing

*School data with 5 or fewer students withheld for reasons of confidentiality.*

2007

2008

2009

2010

#### Reading

*School data with 5 or fewer students withheld for reasons of confidentiality.*

2007

2008

2009

2010



School



Province

District 1 - Labrador

School #: 001 St. Peter's School

### Participation Rates

#### Demand Writing

*School data with 5 or fewer students withheld for reasons of confidentiality.*



#### Reading

*School data with 5 or fewer students withheld for reasons of confidentiality.*



\* Reading score is composite of Information and Poetry.

District 1 - Labrador

School #: 002 Henry Gordon Academy

Total Grade 3(2010) students: 2

### Exemption Rates

#### Demand Writing

*School data with 5 or fewer students withheld for reasons of confidentiality.*

2007

2008

2009

2010

#### Reading

*School data with 5 or fewer students withheld for reasons of confidentiality.*

2007

2008

2009

2010



School



Province

District 1 - Labrador

School #: 002 Henry Gordon Academy

### Participation Rates

#### Demand Writing

*School data with 5 or fewer students withheld for reasons of confidentiality.*



#### Reading

*School data with 5 or fewer students withheld for reasons of confidentiality.*



\* Reading score is composite of Information and Poetry.

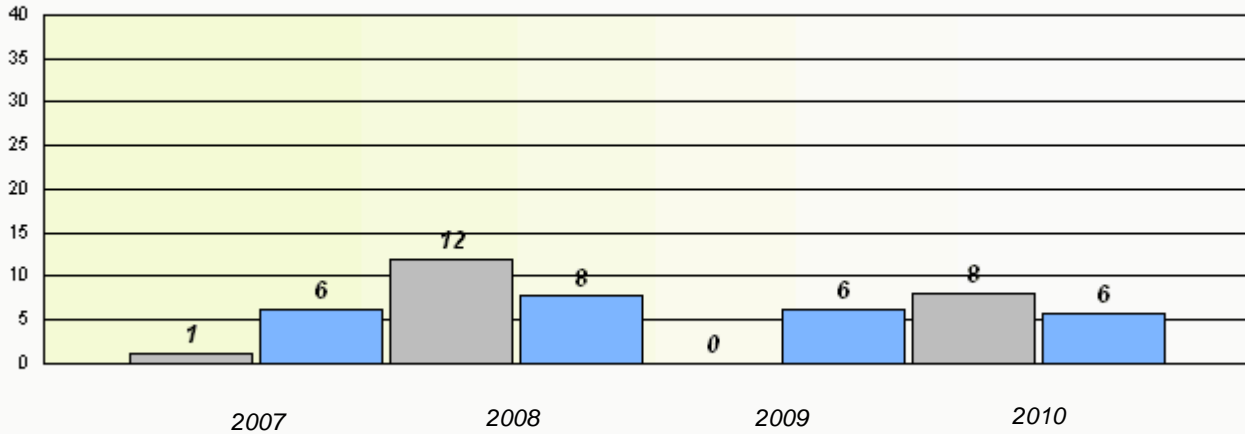
District 1 - Labrador

School #: 005 Peacock Primary School

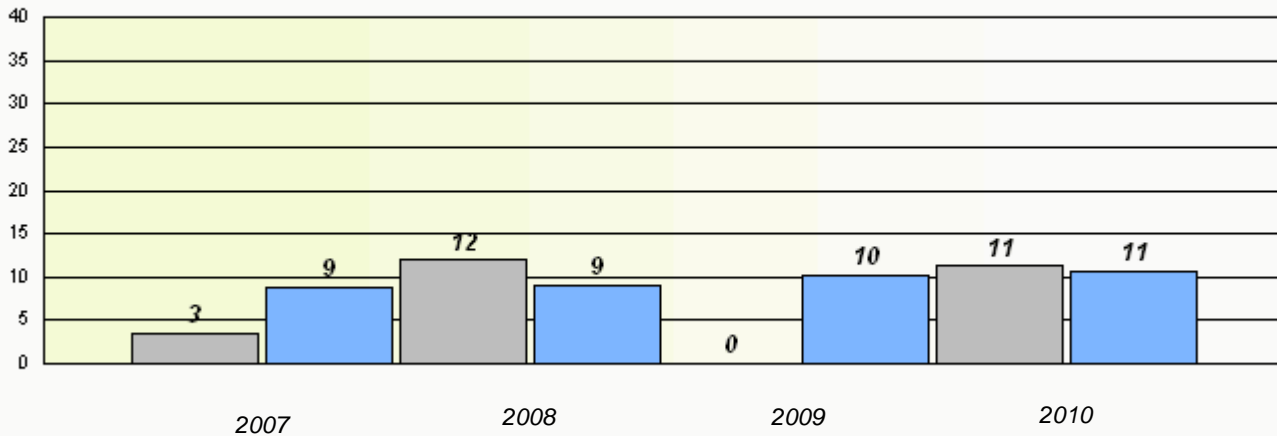
Total Grade 3(2010) students: 57

**Exemption Rates**

**Demand Writing**



**Reading**



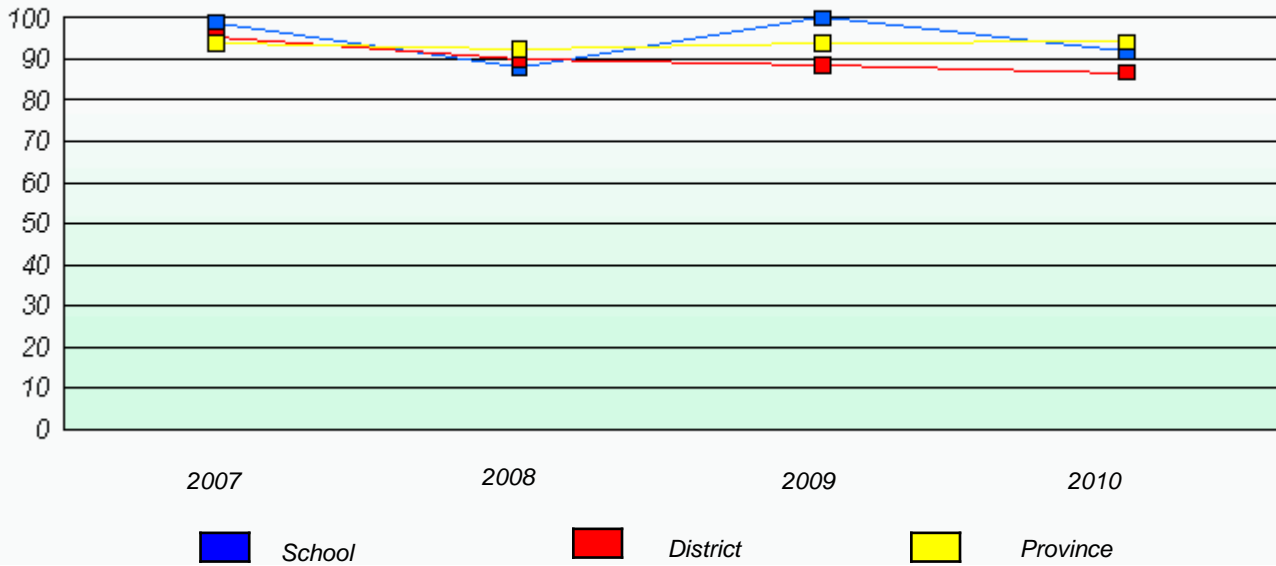
\* Reading score is composite of Information and Poetry.

District 1 - Labrador

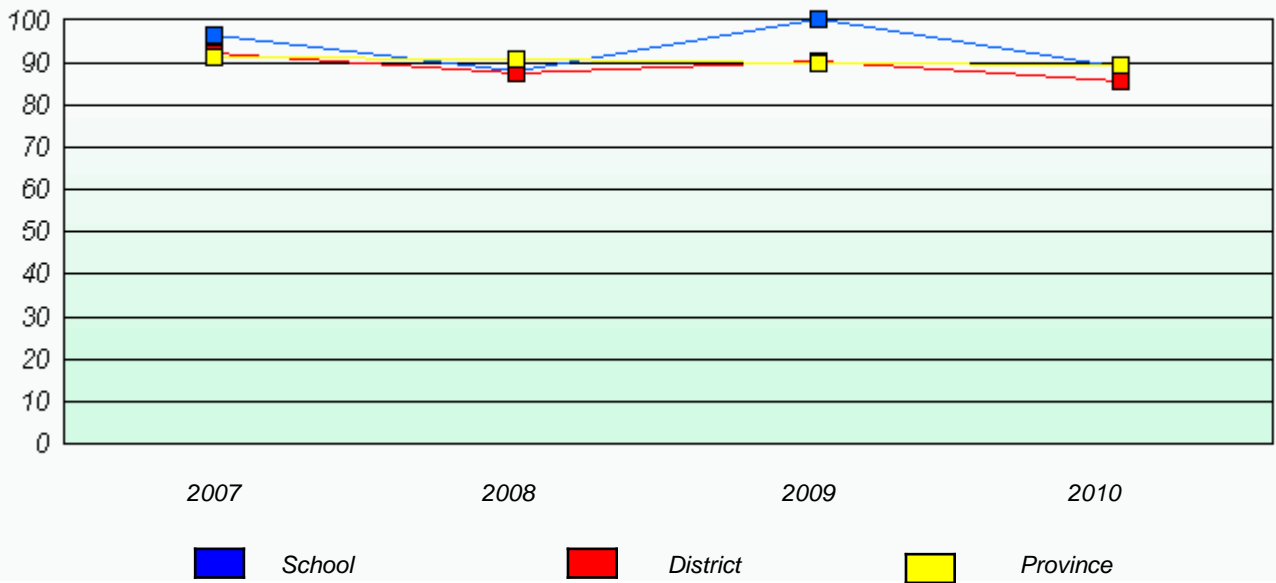
School #: 005 Peacock Primary School

**Participation Rates**

**Demand Writing**



**Reading**



\* Reading score is composite of Information and Poetry.

District 1 - Labrador

School #: 007 Amos Comenius Memorial School

Total Grade 3(2010) students: 5

**Exemption Rates**

**Demand Writing**

*School data with 5 or fewer students withheld for reasons of confidentiality.*

2007

2008

2009

2010

**Reading**

*School data with 5 or fewer students withheld for reasons of confidentiality.*

2007

2008

2009

2010



School



Province

\* Reading score is composite of Information and Poetry.

District 1 - Labrador

School #: 007 Amos Comenius Memorial School

### Participation Rates

#### Demand Writing

*School data with 5 or fewer students withheld for reasons of confidentiality.*



#### Reading

*School data with 5 or fewer students withheld for reasons of confidentiality.*



\* Reading score is composite of Information and Poetry.



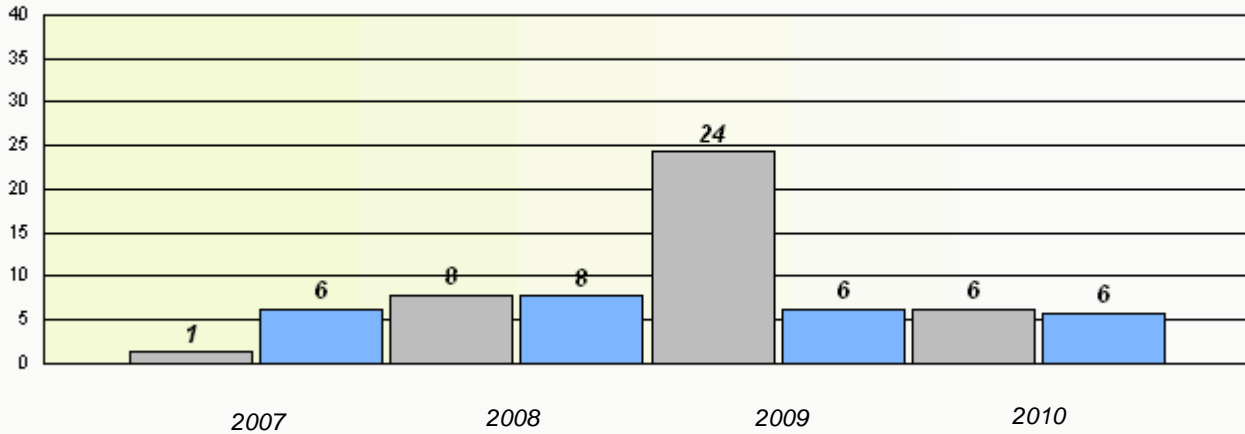
District 1 - Labrador

School #: 008 A. P. Low Primary

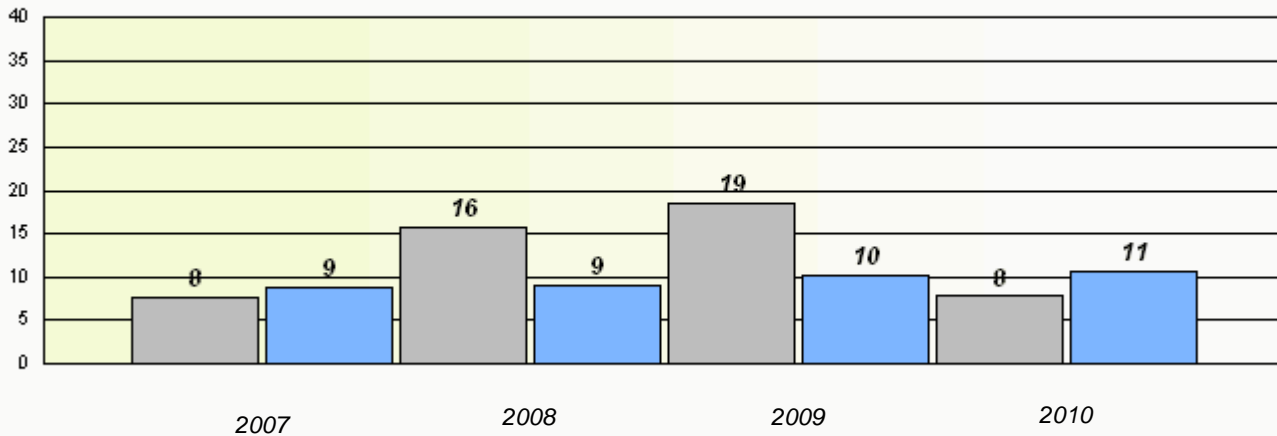
Total Grade 3(2010) students: 60

**Exemption Rates**

**Demand Writing**



**Reading**



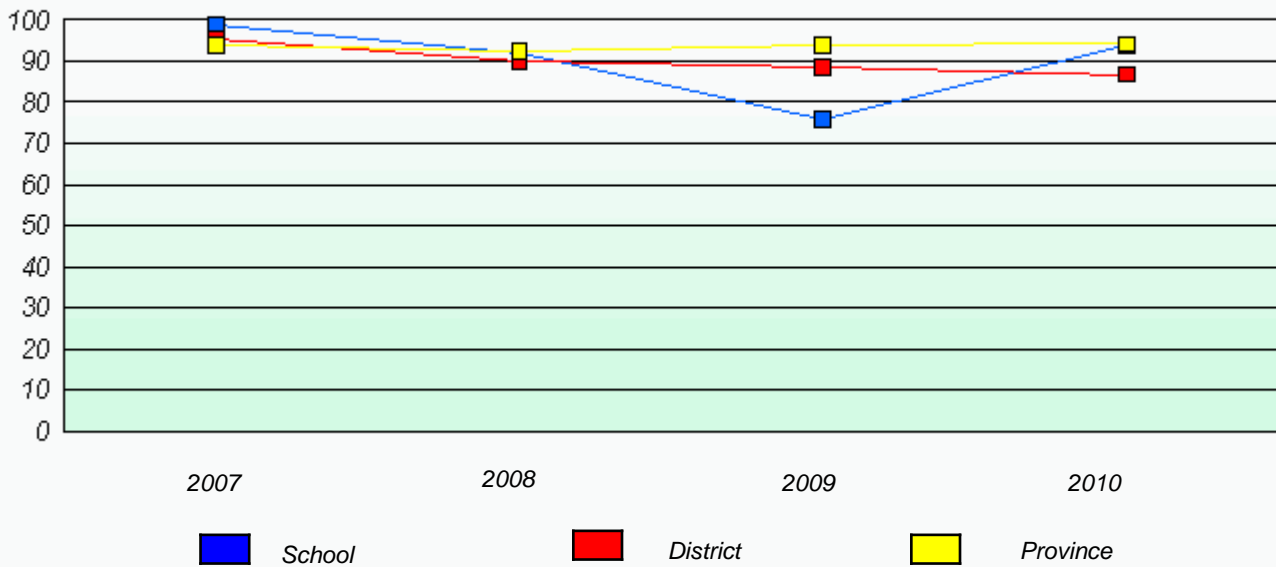
\* Reading score is composite of Information and Poetry.

District 1 - Labrador

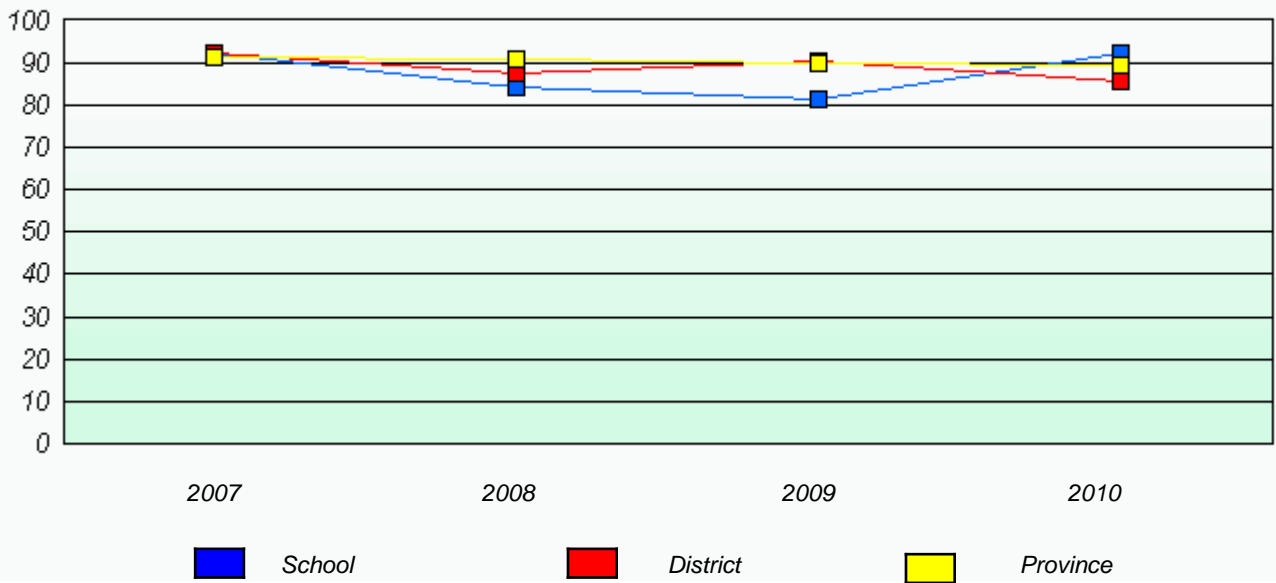
School #: 008 A. P. Low Primary

**Participation Rates**

**Demand Writing**



**Reading**



\* Reading score is composite of Information and Poetry.

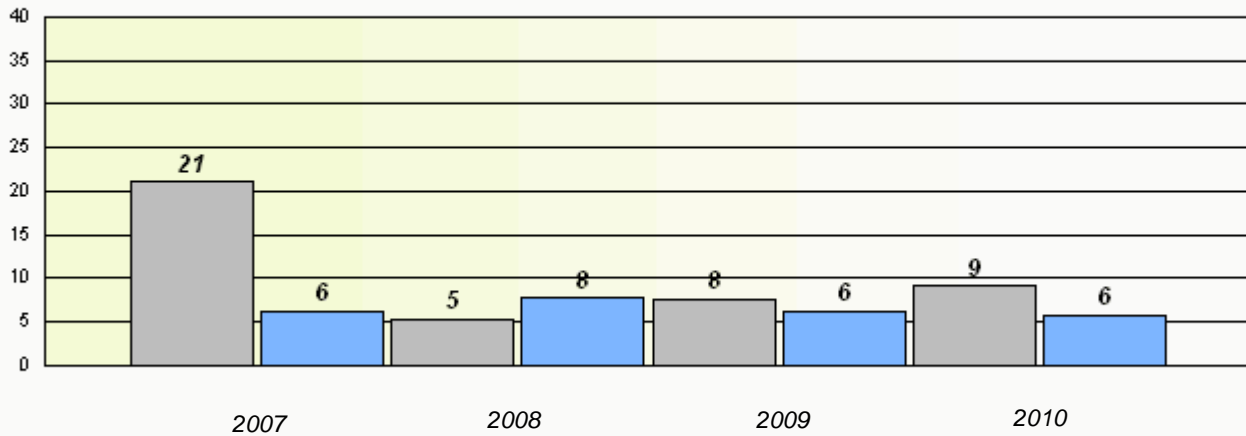
District 1 - Labrador

School #: 014 Jens Haven Memorial

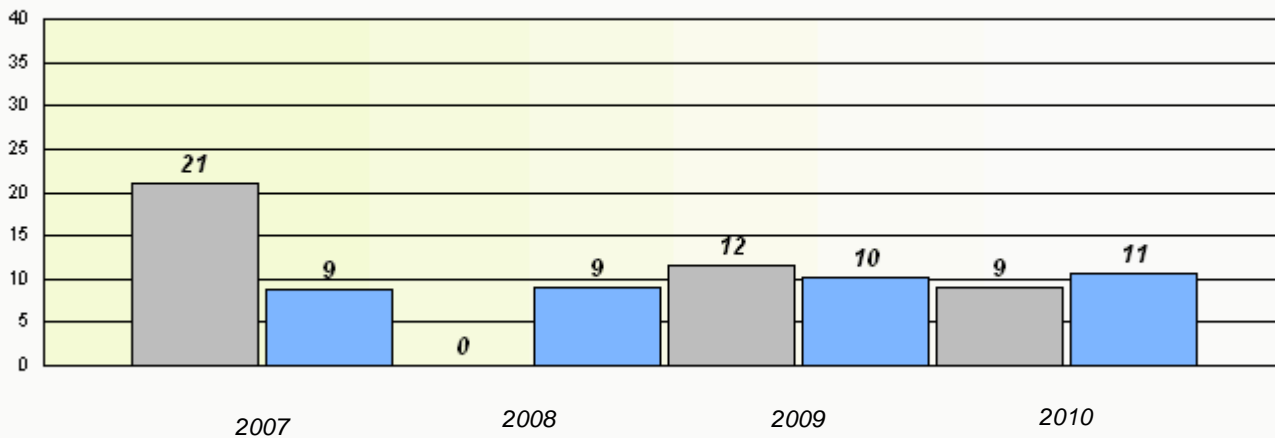
Total Grade 3(2010) students: 10

**Exemption Rates**

**Demand Writing**



**Reading**



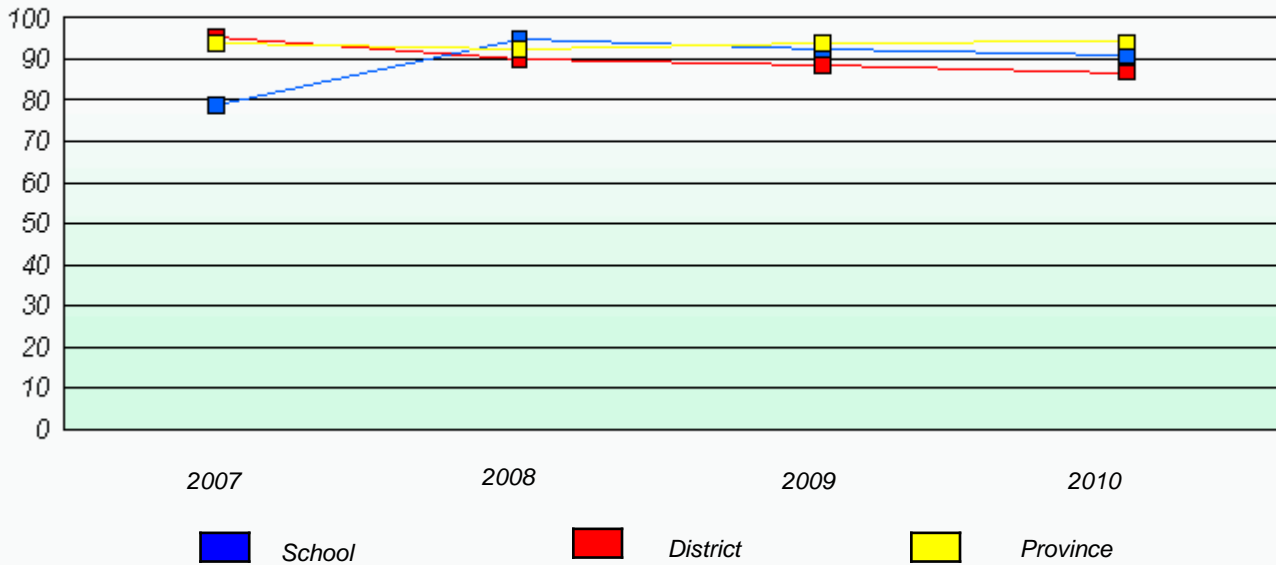
\* Reading score is composite of Information and Poetry.

District 1 - Labrador

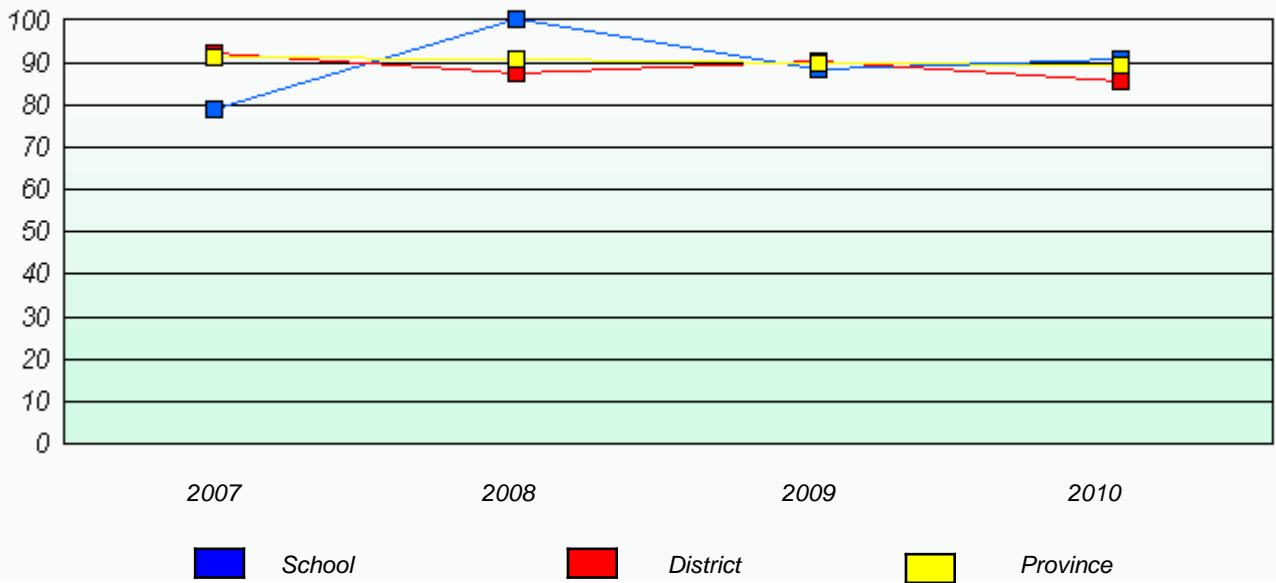
School #: 014 Jens Haven Memorial

**Participation Rates**

**Demand Writing**



**Reading**



\* Reading score is composite of Information and Poetry.

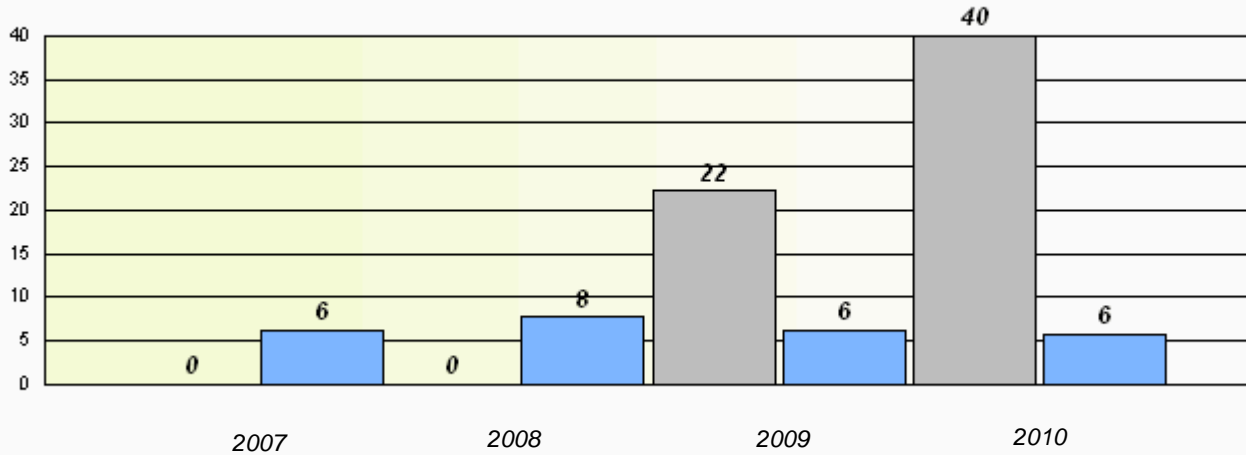
District 1 - Labrador

School #: 015 Lake Melville School

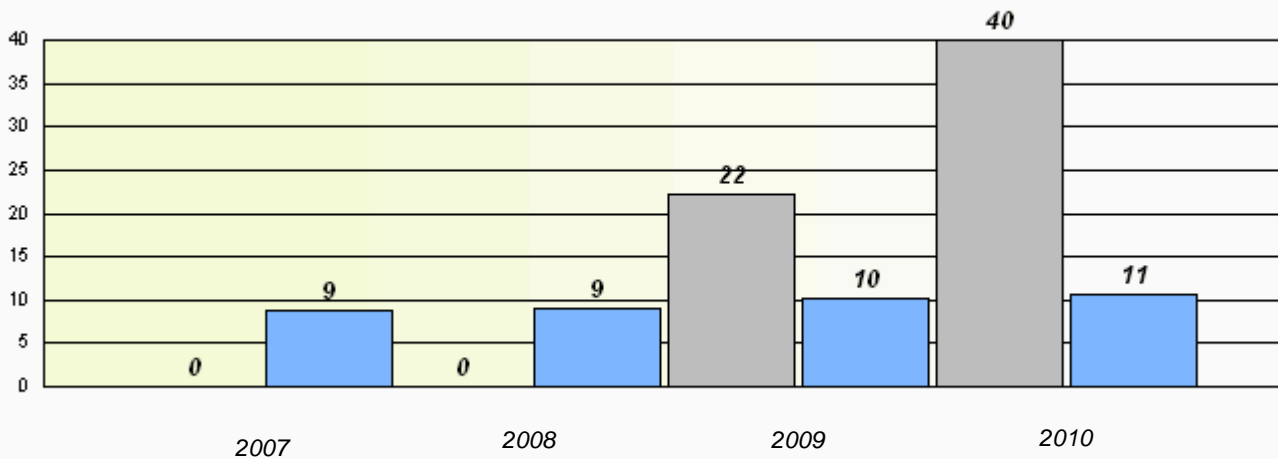
Total Grade 3(2010) students: 6

**Exemption Rates**

**Demand Writing**



**Reading**



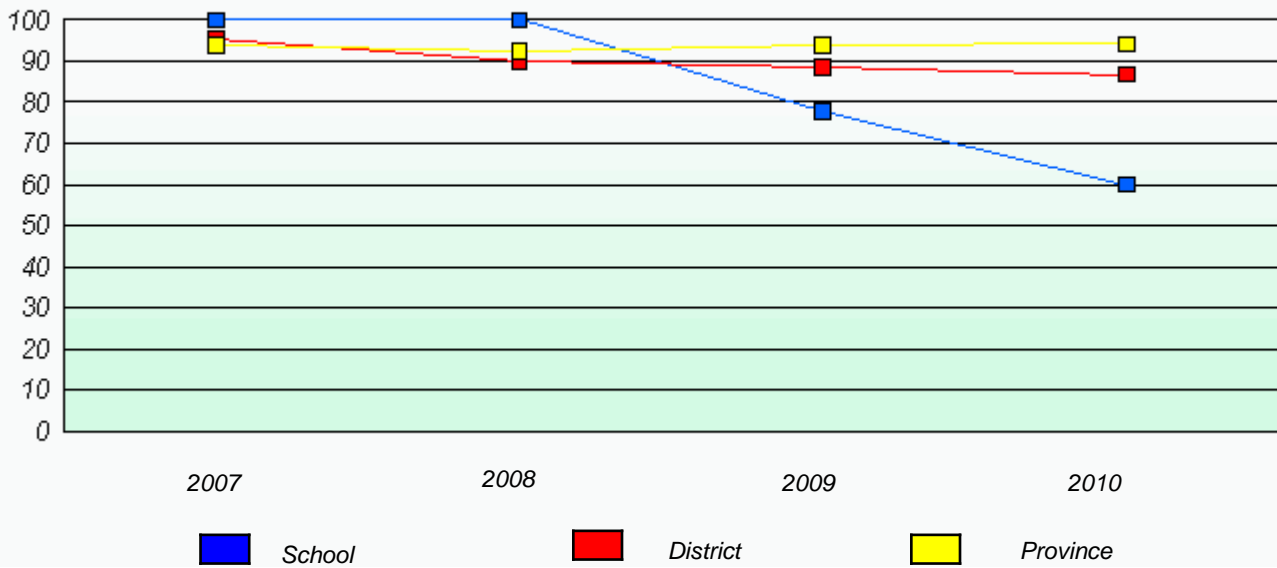
\* Reading score is composite of Information and Poetry.

District 1 - Labrador

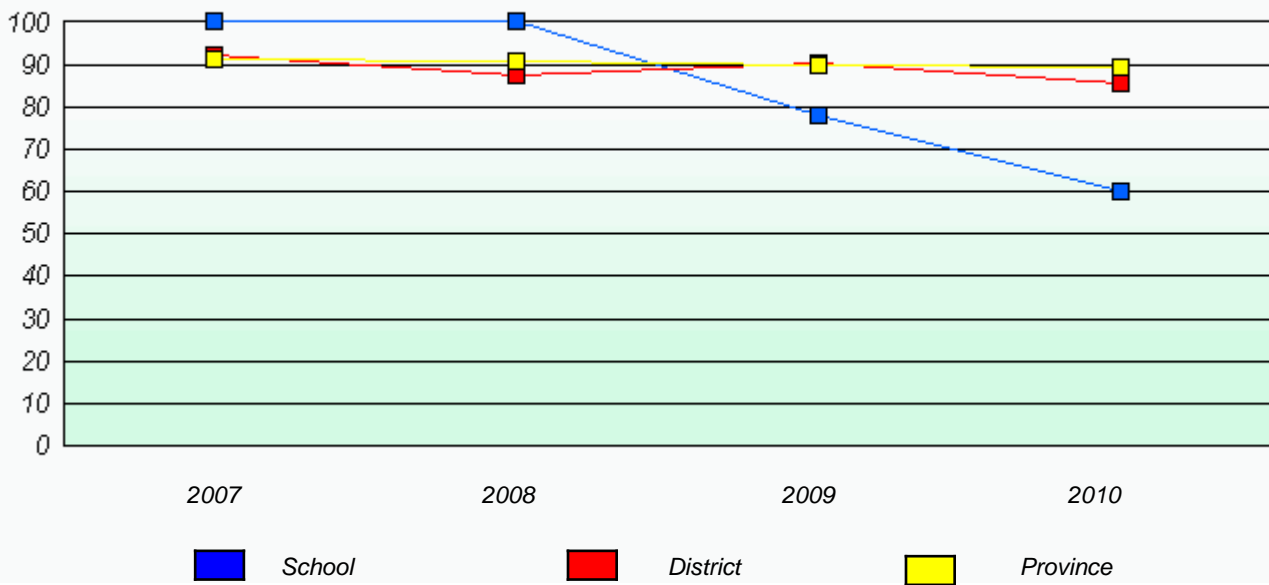
School #: 015 Lake Melville School

**Participation Rates**

**Demand Writing**



**Reading**



\* Reading score is composite of Information and Poetry.

District 1 - Labrador

School #: 016 B.L. Morrison

Total Grade 3(2010) students: 4

**Exemption Rates**

**Demand Writing**

*School data with 5 or fewer students withheld for reasons of confidentiality.*

2007

2008

2009

2010

**Reading**

*School data with 5 or fewer students withheld for reasons of confidentiality.*

2007

2008

2009

2010



School



Province

\* Reading score is composite of Information and Poetry.

District 1 - Labrador

School #: 016 B.L. Morrison

### Participation Rates

#### Demand Writing

*School data with 5 or fewer students withheld for reasons of confidentiality.*



#### Reading

*School data with 5 or fewer students withheld for reasons of confidentiality.*



\* Reading score is composite of Information and Poetry.



District 1 - Labrador

School #: 017 Northern Lights Academy

Total Grade 3(2010) students: 3

### Exemption Rates

#### Demand Writing

*School data with 5 or fewer students withheld for reasons of confidentiality.*

2007

2008

2009

2010

#### Reading

*School data with 5 or fewer students withheld for reasons of confidentiality.*

2007

2008

2009

2010



School



Province

District 1 - Labrador

School #: 017 Northern Lights Academy

### Participation Rates

#### Demand Writing

*School data with 5 or fewer students withheld for reasons of confidentiality.*



#### Reading

*School data with 5 or fewer students withheld for reasons of confidentiality.*



\* Reading score is composite of Information and Poetry.