

**English Language Arts**

Number of Students : 2

**Multiple Choice**

**Poetic**

School  
District  
Province

School data with 5 or fewer students withheld for reasons of confidentiality.

| Mark | School vs District | School vs Province |
|------|--------------------|--------------------|
|      | P                  | P                  |
|      | q                  | P                  |
|      | P                  | P                  |
|      | q                  | q                  |
|      | q                  | q                  |

**Informational**

School  
District  
Province

**Rubrics**

**Demand Writing**

School  
District  
Province

**Poetic Reading**

School  
District  
Province

**Informational Reading**

School  
District  
Province

**4 Year CRT (Subtest) Mark Trend 2007-2010**

Multiple Choice

School data with 5 or fewer students withheld for reasons of confidentiality.

Poetic

Informational

**Rubric Results: Percentage of students performing at Level 3 and Above 2007-2010**

School data with 5 or fewer students withheld for reasons of confidentiality.

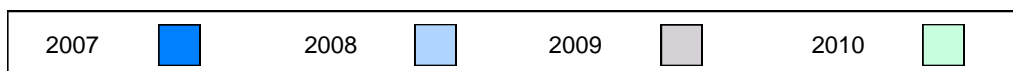
Province

|         |         |         |         |         |         |
|---------|---------|---------|---------|---------|---------|
| P<br>86 | P<br>85 | P<br>73 | q<br>73 | P<br>77 | q<br>70 |
|---------|---------|---------|---------|---------|---------|

Demand Writing

Poetic Reading

Informational Reading



**Difference from Provincial Mean, 2007-10**

Multiple Choice

School data with 5 or fewer students withheld for reasons of confidentiality.

Poetic

Informational

**Difference from Provincial Mean, 2007-10**

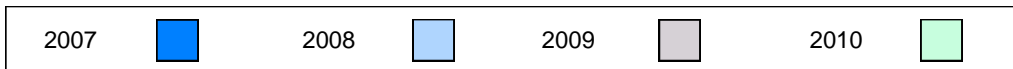
Rubric Results: Percentage of students performing at Level 3 and Above 2007-2010

School data with 5 or fewer students withheld for reasons of confidentiality.

Demand Writing

Poetic Reading

Informational Reading



**English Language Arts**

Number of Students : 7

**Multiple Choice**

**Poetic**

**Informational**

**Rubrics**

**Demand Writing**

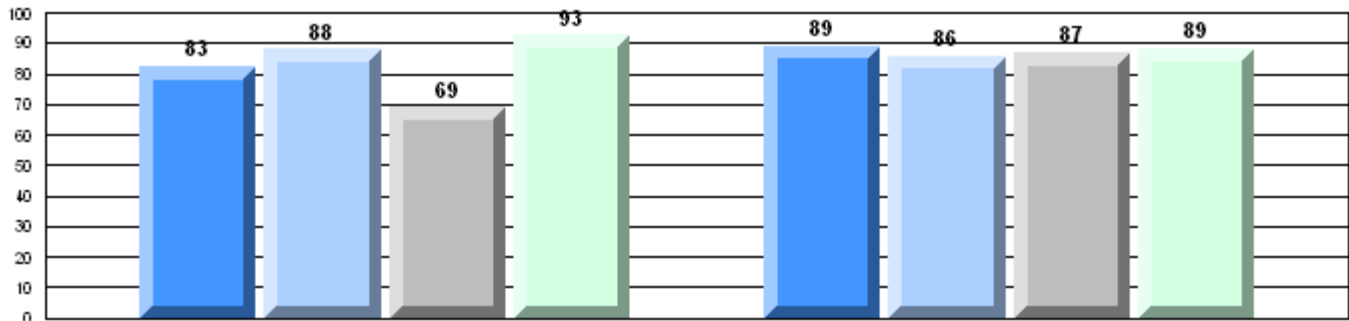
**Poetic Reading**

**Informational Reading**

| Mark            | School vs District | School vs Province |
|-----------------|--------------------|--------------------|
| School: 92.9    | P                  | P                  |
| District: 88.7  |                    |                    |
| Province: 85.2  |                    |                    |
| School: 88.6    | P                  | P                  |
| District: 85.3  |                    |                    |
| Province: 79.3  |                    |                    |
| School: 100.0   | P                  | P                  |
| District: 100.0 |                    |                    |
| Province: 85.5  |                    |                    |
| School: 85.7    | q                  | P                  |
| District: 96.2  |                    |                    |
| Province: 73.2  |                    |                    |
| School: 71.4    | q                  | P                  |
| District: 92.3  |                    |                    |
| Province: 70.2  |                    |                    |

**4 Year CRT (Subtest) Mark Trend 2007-2010**

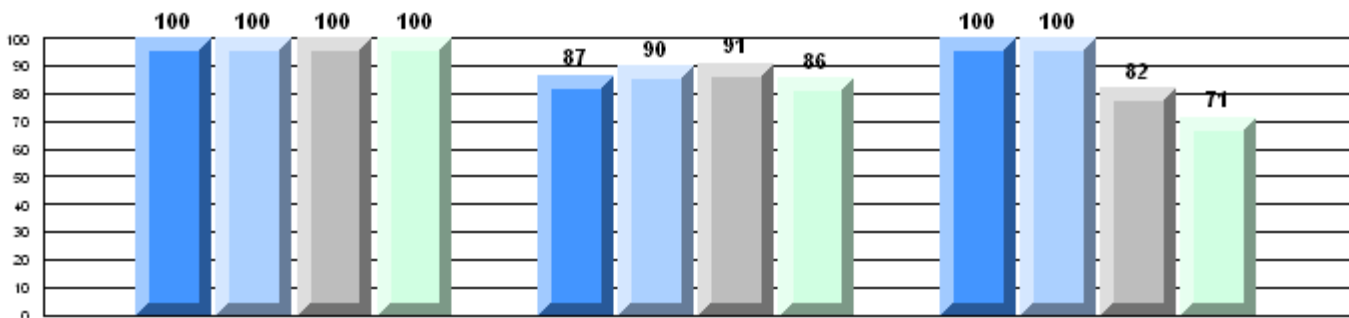
Multiple Choice



Poetic

Informational

**Rubric Results: Percentage of students performing at Level 3 and Above 2007-2010**



Demand Writing

Poetic Reading

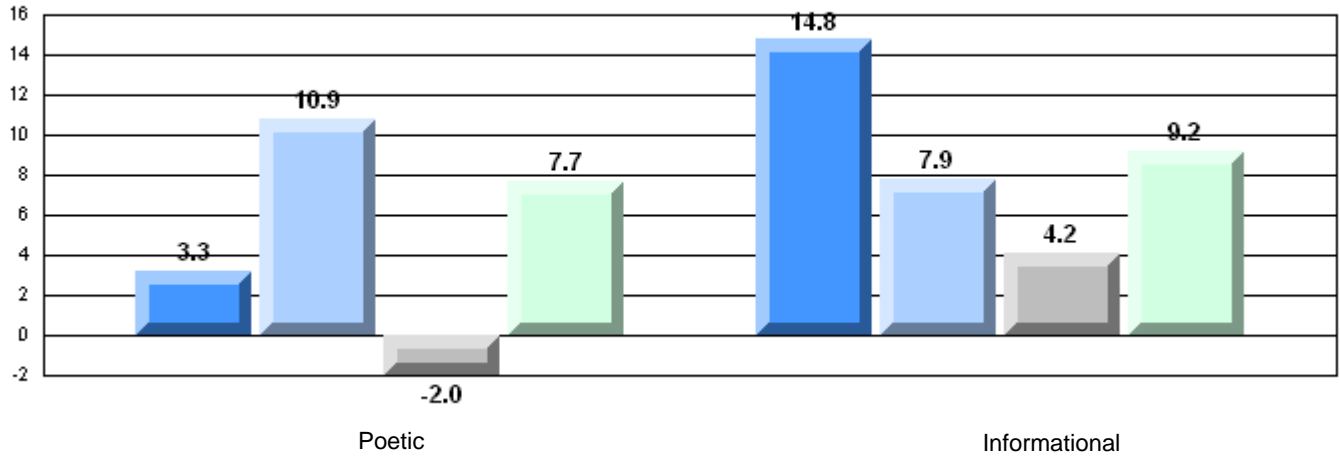
Informational Reading



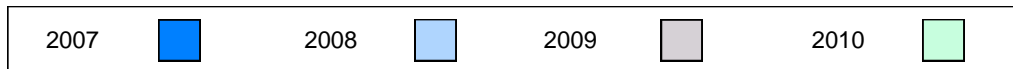
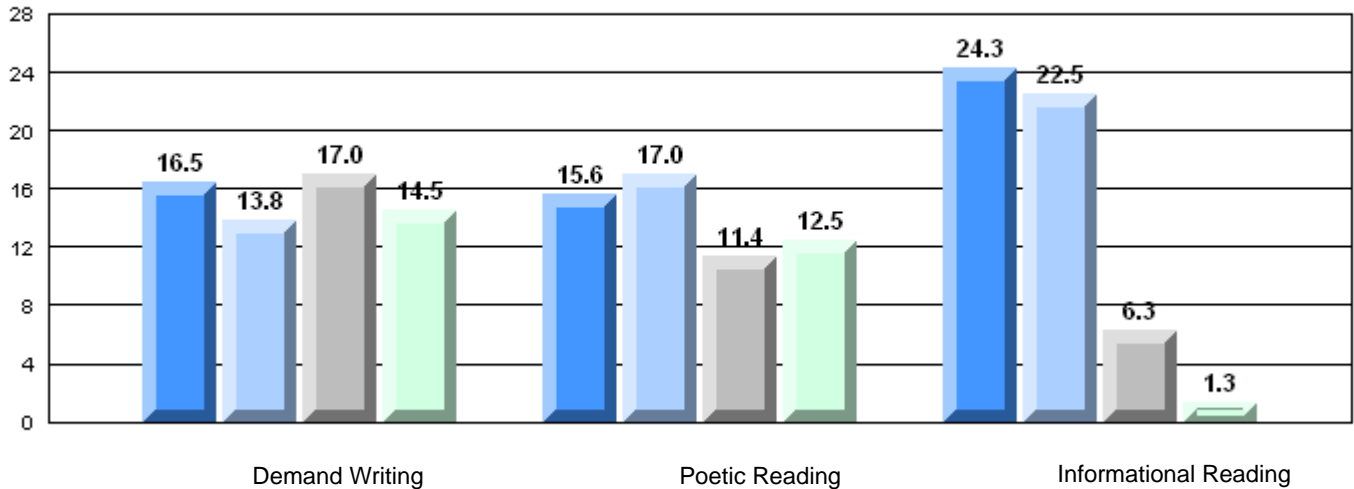
Province

P 84 P 86 P 83 P 85 P 71 P 73 P 79 P 73 P 76 P 77 P 76 P 70

**Difference from Provincial Mean, 2007-10**  
Multiple Choice



**Difference from Provincial Mean, 2007-10**  
Rubric Results: Percentage of students performing at Level 3 and Above 2007-2010



## English Language Arts

Number of Students : 27

### Multiple Choice

**Poetic**

|          |      |
|----------|------|
| School   | 88.5 |
| District | 88.7 |
| Province | 85.2 |

**Informational**

|          |      |
|----------|------|
| School   | 86.7 |
| District | 85.3 |
| Province | 79.3 |

### Rubrics

**Demand Writing**

|          |       |
|----------|-------|
| School   | 100.0 |
| District | 100.0 |
| Province | 85.5  |

**Poetic Reading**

|          |       |
|----------|-------|
| School   | 100.0 |
| District | 96.2  |
| Province | 73.2  |

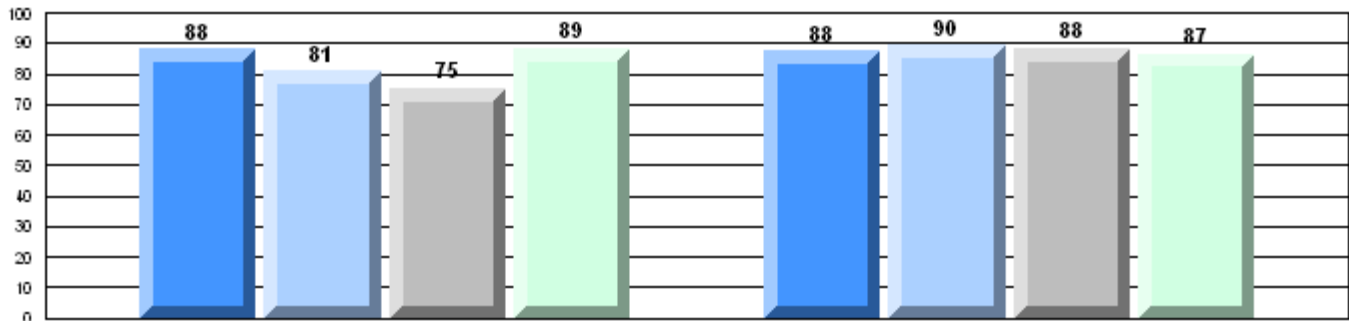
**Informational Reading**

|          |      |
|----------|------|
| School   | 96.3 |
| District | 92.3 |
| Province | 70.2 |

| Mark  | School vs District | School vs Province |
|-------|--------------------|--------------------|
| 88.5  | q                  | P                  |
| 88.7  |                    |                    |
| 85.2  |                    |                    |
| 86.7  | P                  | P                  |
| 85.3  |                    |                    |
| 79.3  |                    |                    |
| 100.0 | P                  | P                  |
| 100.0 |                    |                    |
| 85.5  |                    |                    |
| 100.0 | P                  | P                  |
| 96.2  |                    |                    |
| 73.2  |                    |                    |
| 96.3  | P                  | P                  |
| 92.3  |                    |                    |
| 70.2  |                    |                    |

### 4 Year CRT (Subtest) Mark Trend 2007-2010

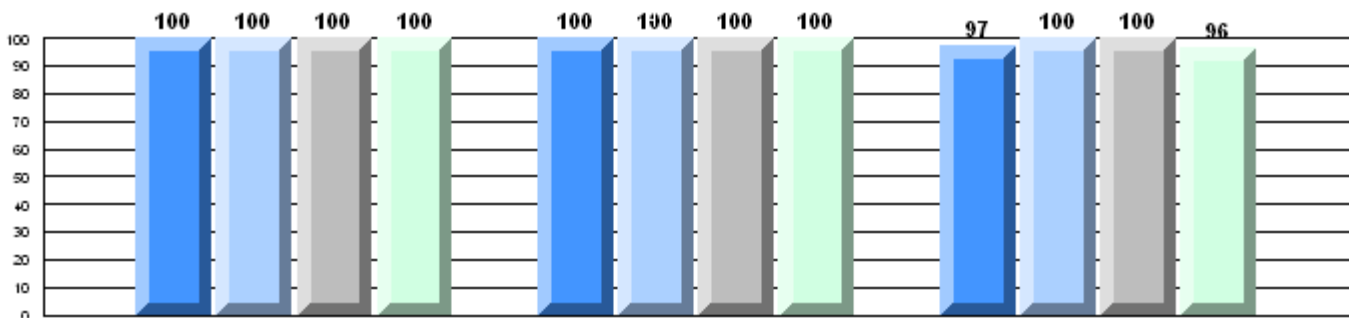
Multiple Choice



Poetic

Informational

### Rubric Results: Percentage of students performing at Level 3 and Above 2007-2010



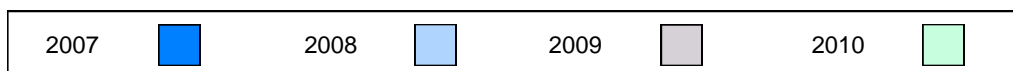
Province

|    |    |    |    |    |    |    |    |    |    |    |    |
|----|----|----|----|----|----|----|----|----|----|----|----|
| P  | P  | P  | P  | P  | P  | P  | P  | P  | P  | P  | P  |
| 84 | 86 | 83 | 85 | 71 | 73 | 79 | 73 | 76 | 77 | 76 | 70 |

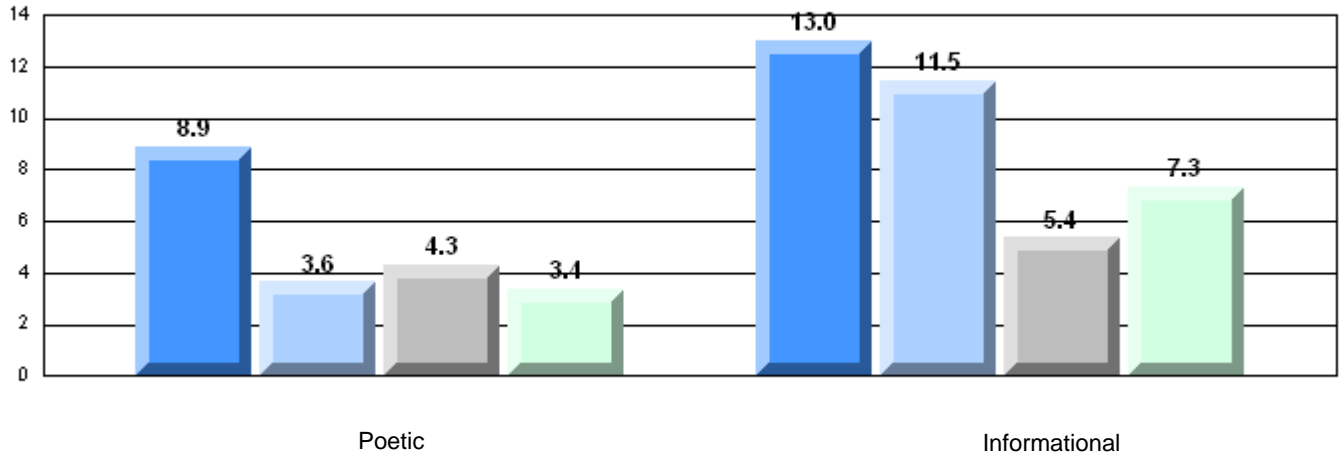
Demand Writing

Poetic Reading

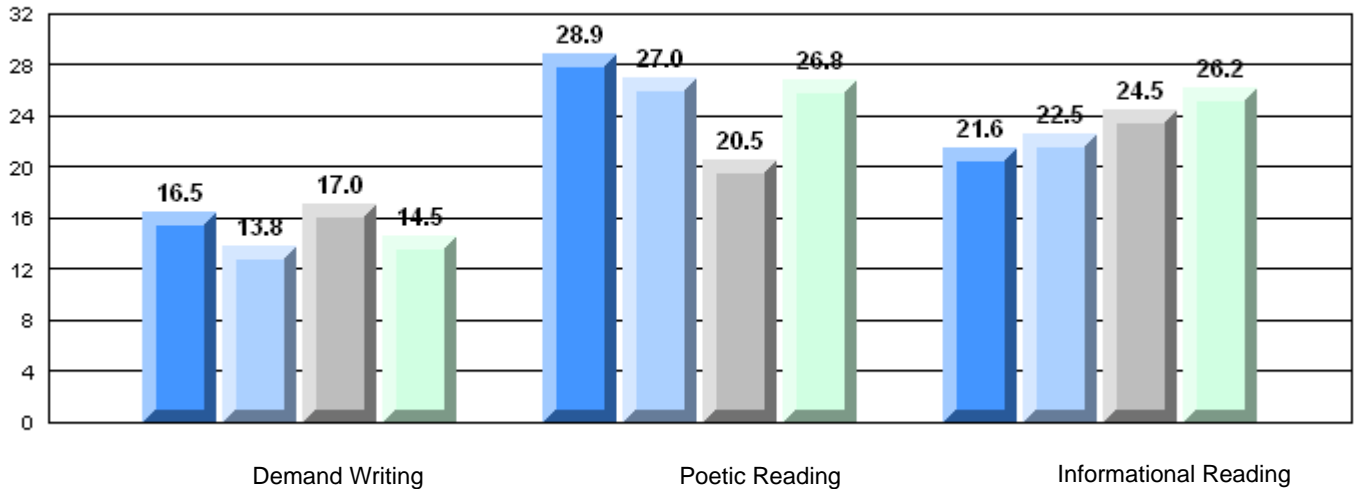
Informational Reading



**Difference from Provincial Mean, 2007-10**  
Multiple Choice



**Difference from Provincial Mean, 2007-10**  
Rubric Results: Percentage of students performing at Level 3 and Above 2007-2010



**English Language Arts**

Number of Students : 16

**Multiple Choice**

**Poetic**

School  
District  
Province

87.5  
88.7  
85.2

q

P

**Informational**

School  
District  
Province

83.1  
85.3  
79.3

q

P

**Rubrics**

**Demand Writing**

School  
District  
Province

100.0  
100.0  
85.5

P

P

**Poetic Reading**

School  
District  
Province

100.0  
96.2  
73.2

P

P

**Informational Reading**

School  
District  
Province

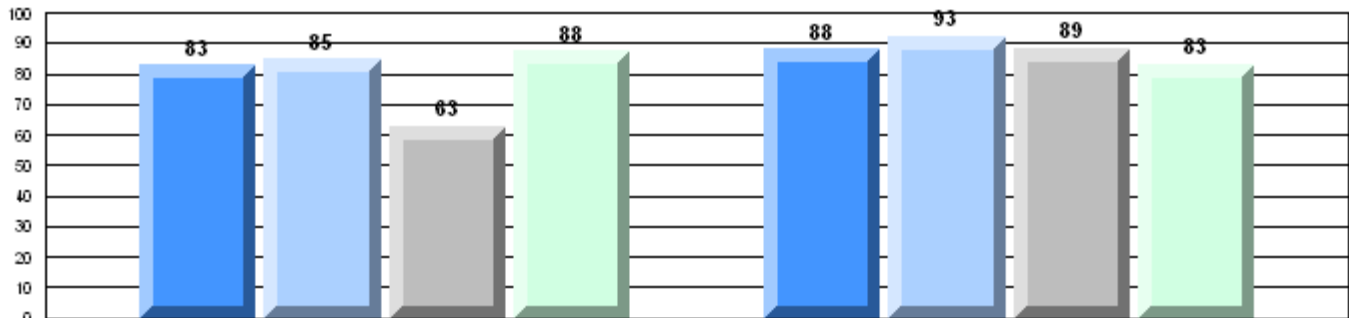
100.0  
92.3  
70.2

P

P

**4 Year CRT (Subtest) Mark Trend 2007-2010**

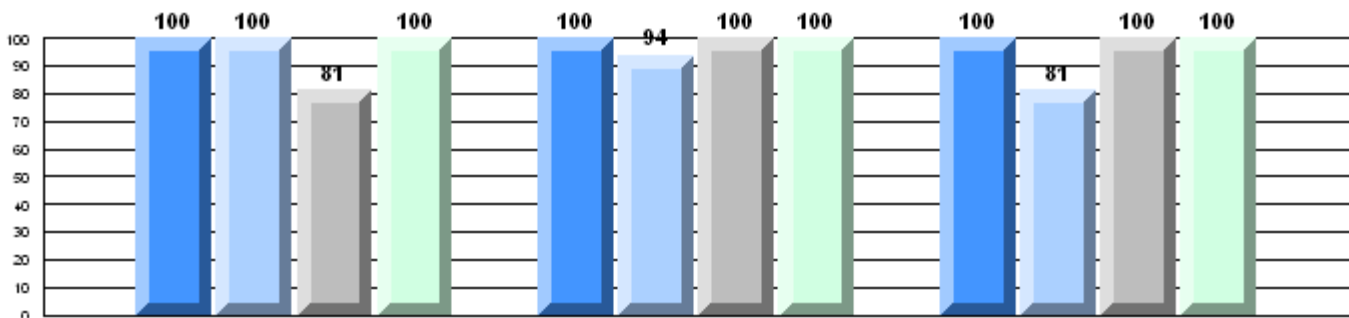
Multiple Choice



Poetic

Informational

**Rubric Results: Percentage of students performing at Level 3 and Above 2007-2010**



Province

P  
84

P  
86

q  
83

P  
85

P  
71

P  
73

P  
79

P  
73

P  
76

P  
81

P  
77

P  
76

P  
70

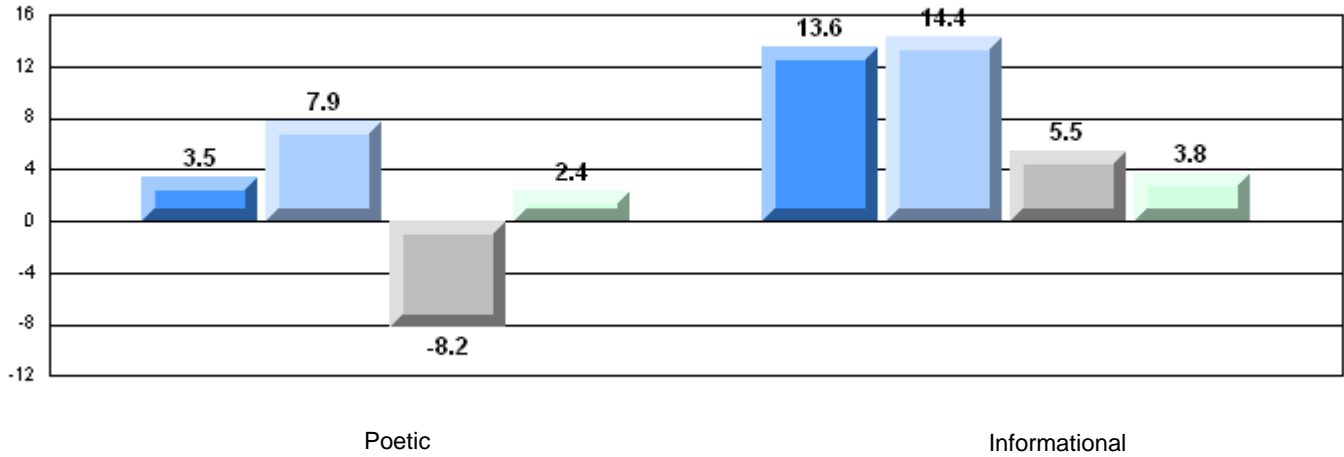
Demand Writing

Poetic Reading

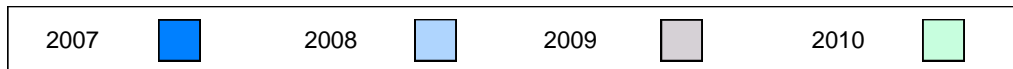
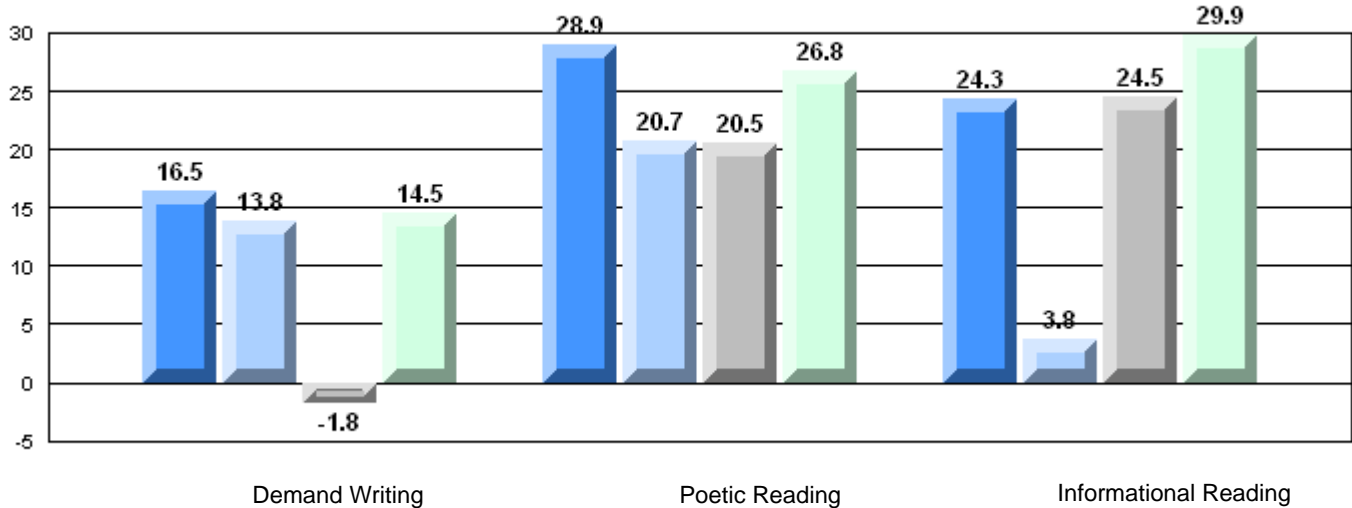
Informational Reading



**Difference from Provincial Mean, 2007-10**  
Multiple Choice



**Difference from Provincial Mean, 2007-10**  
Rubric Results: Percentage of students performing at Level 3 and Above 2007-2010





**English Language Arts**

Number of Students : 1

**Multiple Choice**

**Poetic**

School  
District  
Province

School data with 5 or fewer students withheld for reasons of confidentiality.

| Mark | School vs District | School vs Province |
|------|--------------------|--------------------|
|      | Q                  | Q                  |
|      | Q                  | Q                  |
|      | P                  | P                  |
|      | P                  | P                  |
|      | P                  | P                  |

**Informational**

School  
District  
Province

**Rubrics**

**Demand Writing**

School  
District  
Province

P

P

**Poetic Reading**

School  
District  
Province

P

P

**Informational Reading**

School  
District  
Province

P

P

**4 Year CRT (Subtest) Mark Trend 2007-2010**

Multiple Choice

School data with 5 or fewer students withheld for reasons of confidentiality.

Poetic

Informational

**Rubric Results: Percentage of students performing at Level 3 and Above 2007-2010**

School data with 5 or fewer students withheld for reasons of confidentiality.

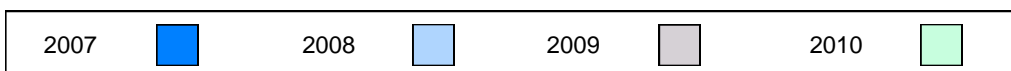
Province

|         |         |         |         |         |         |         |         |         |         |         |         |
|---------|---------|---------|---------|---------|---------|---------|---------|---------|---------|---------|---------|
| P<br>84 | P<br>86 | P<br>83 | P<br>85 | P<br>71 | P<br>73 | P<br>79 | P<br>73 | P<br>76 | P<br>77 | P<br>76 | P<br>70 |
|---------|---------|---------|---------|---------|---------|---------|---------|---------|---------|---------|---------|

Demand Writing

Poetic Reading

Informational Reading



**Difference from Provincial Mean, 2007-10**

Multiple Choice

School data with 5 or fewer students withheld for reasons of confidentiality.

Poetic

Informational

**Difference from Provincial Mean, 2007-10**

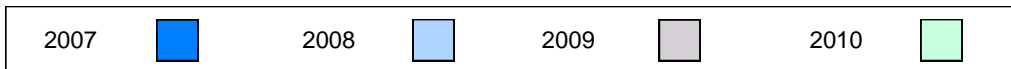
Rubric Results: Percentage of students performing at Level 3 and Above 2007-2010

School data with 5 or fewer students withheld for reasons of confidentiality.

Demand Writing

Poetic Reading

Informational Reading



**English Language Arts**

Number of Students : 17

**Multiple Choice**

**Poetic**  
School: 73.1  
District: 73.1  
Province: 85.2

**Informational**  
School: 70.6  
District: 70.6  
Province: 79.3

**Rubrics**

**Demand Writing**  
School: 76.5  
District: 76.5  
Province: 85.5

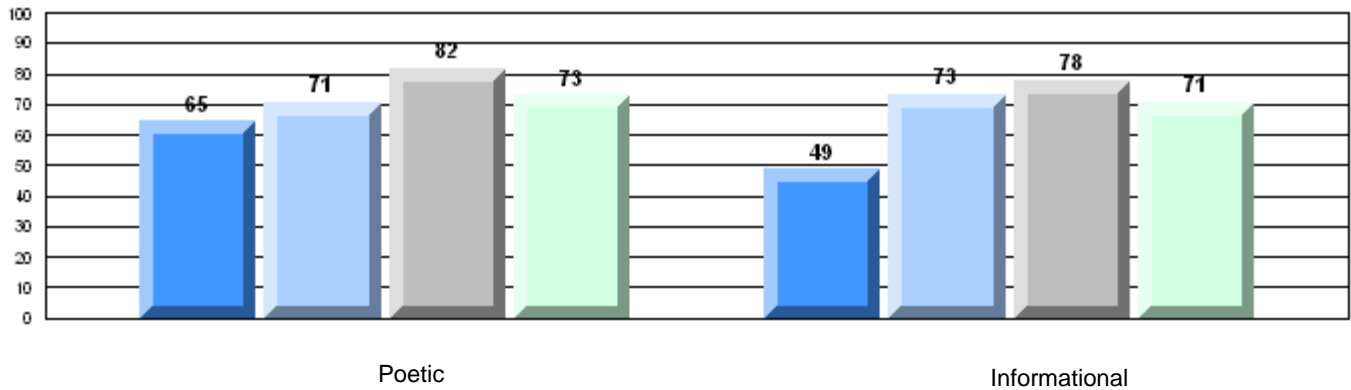
**Poetic Reading**  
School: 17.7  
District: 17.7  
Province: 73.2

**Informational Reading**  
School: 5.9  
District: 5.9  
Province: 70.2

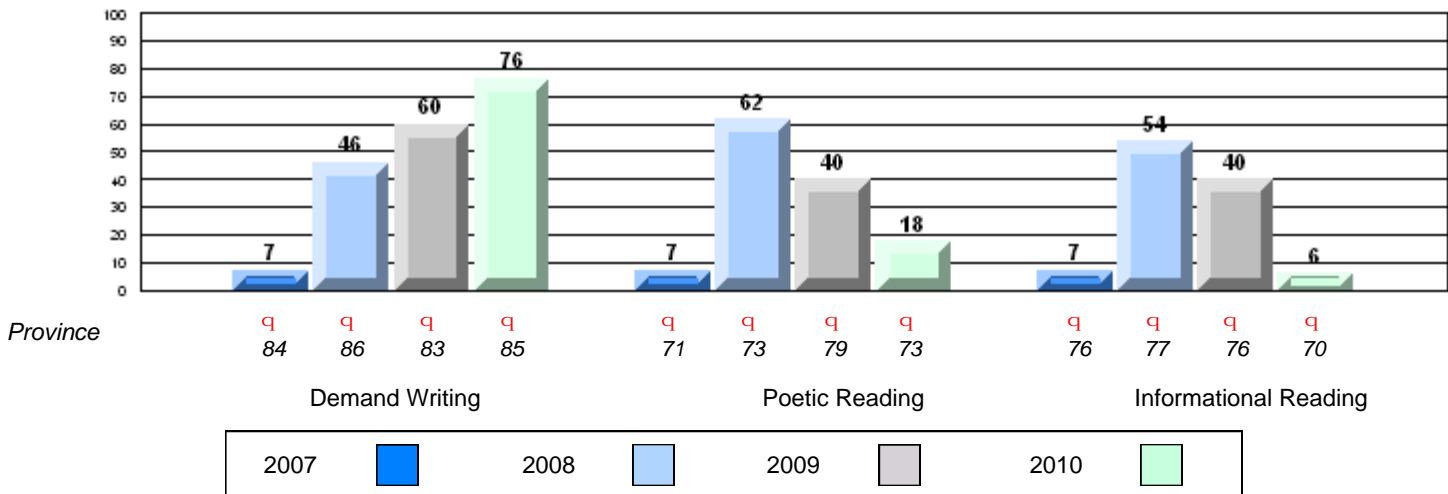
| Mark | School vs District | School vs Province |
|------|--------------------|--------------------|
| 73.1 | P                  | q                  |
| 73.1 |                    |                    |
| 85.2 |                    |                    |
| 70.6 | P                  | q                  |
| 70.6 |                    |                    |
| 79.3 |                    |                    |
| 76.5 | P                  | q                  |
| 76.5 |                    |                    |
| 85.5 |                    |                    |
| 17.7 | P                  | q                  |
| 17.7 |                    |                    |
| 73.2 |                    |                    |
| 5.9  | P                  | q                  |
| 5.9  |                    |                    |
| 70.2 |                    |                    |

**4 Year CRT (Subtest) Mark Trend 2007-2010**

Multiple Choice

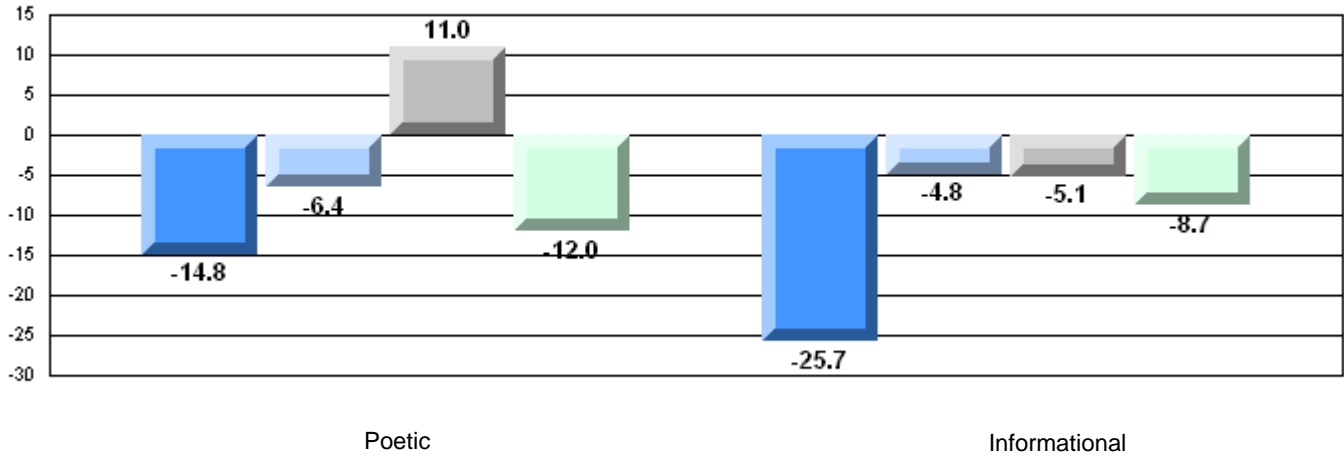


**Rubric Results: Percentage of students performing at Level 3 and Above 2007-2010**



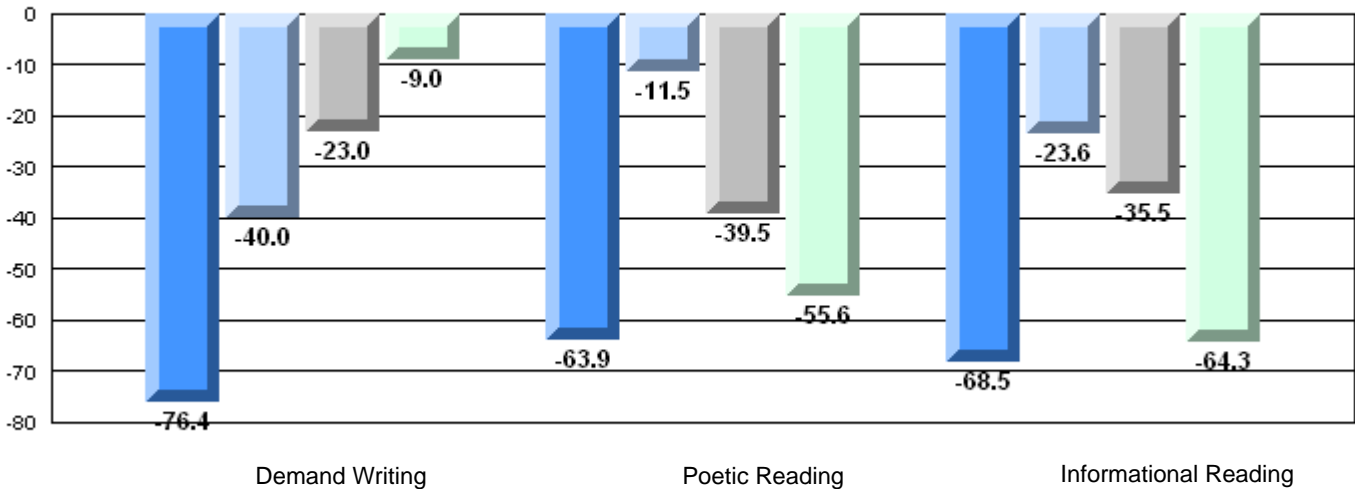
**Difference from Provincial Mean, 2007-10**

Multiple Choice



**Difference from Provincial Mean, 2007-10**

Rubric Results: Percentage of students performing at Level 3 and Above 2007-2010



**English Language Arts**

Number of Students : 1

**Multiple Choice**

**Poetic**

School  
District  
Province

School data with 5 or fewer students withheld for reasons of confidentiality.

| Mark                  | School vs District | School vs Province |
|-----------------------|--------------------|--------------------|
| Poetic                | P                  | Q                  |
| Informational         | P                  | P                  |
| Demand Writing        | P                  | P                  |
| Poetic Reading        | P                  | Q                  |
| Informational Reading | P                  | Q                  |

**Informational**

School  
District  
Province

**Rubrics**

**Demand Writing**

School  
District  
Province

**Poetic Reading**

School  
District  
Province

**Informational Reading**

School  
District  
Province

**4 Year CRT (Subtest) Mark Trend 2007-2010**

Multiple Choice

School data with 5 or fewer students withheld for reasons of confidentiality.

Poetic

Informational

**Rubric Results: Percentage of students performing at Level 3 and Above 2007-2010**

School data with 5 or fewer students withheld for reasons of confidentiality.

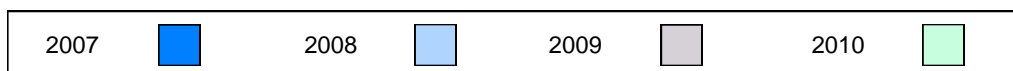
Province



Demand Writing

Poetic Reading

Informational Reading



**Difference from Provincial Mean, 2007-10**

Multiple Choice

School data with 5 or fewer students withheld for reasons of confidentiality.

Poetic

Informational

**Difference from Provincial Mean, 2007-10**

Rubric Results: Percentage of students performing at Level 3 and Above 2007-2010

School data with 5 or fewer students withheld for reasons of confidentiality.

Demand Writing

Poetic Reading

Informational Reading

