

District 803 - Private

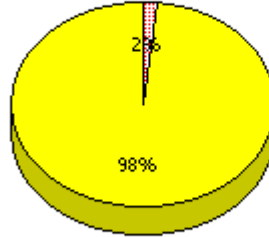
School #: 373 First Baptist Academy

Demand Writing

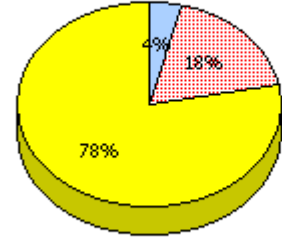
School

School data with 5 or fewer students withheld for reasons of confidentiality.

District



Province



2010

AGR (1)

2009

AGR (0)

2008

AGR (0)

2007

AGR (0)



Unknown



Not Yet Meeting (1 or 2)



Meeting or Exceeding (3,4,5)

* In some cases, CRT numbers may exceed AGR numbers based on late enrolments. Pie chart is based on the number of students who wrote the CRT.

* Reading score is composite of Information, Visual, and Poet.

District 803 - Private

School #: 373 First Baptist Academy

Reading

School

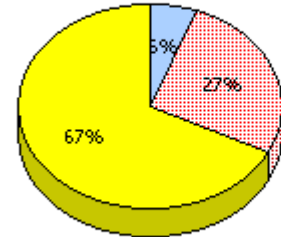
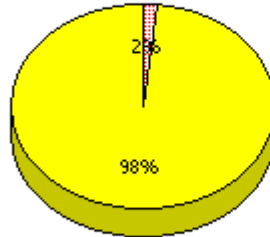
District

Province

School data with 5 or fewer students withheld for reasons of confidentiality.

2010

AGR (1)



2009

AGR (0)

2008

AGR (0)

2007

AGR (0)



Unknown



Not Yet Meeting (1 or 2)



Meeting or Exceeding (3,4,5)

* In some cases, CRT numbers may exceed AGR numbers based on late enrolments. Pie chart is based on the number of students who wrote the CRT.

* Reading score is composite of Information, Visual, and Poet.

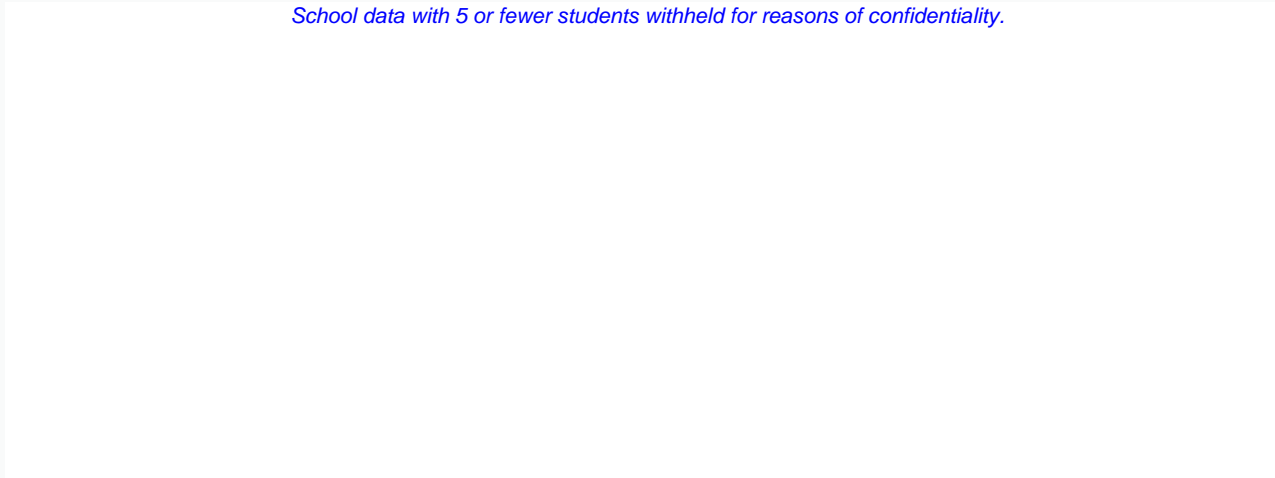
District 803 - Private

School #: 373 First Baptist Academy

Demand Writing

Percentage of students at level 3 or above (2007 - 2010)

School data with 5 or fewer students withheld for reasons of confidentiality.




2007

2008

2009

2010

 School

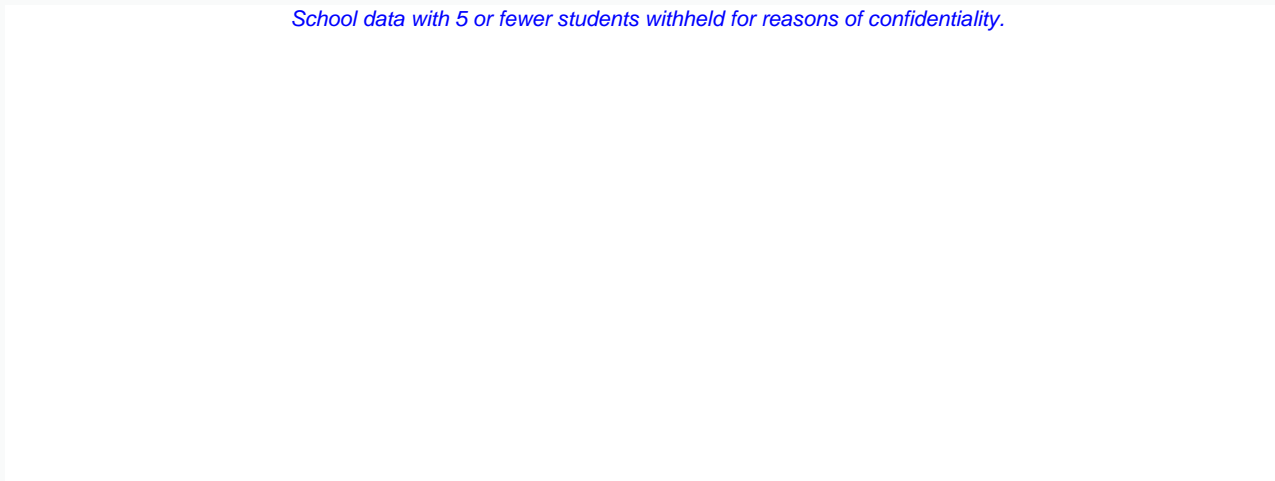
 District

 Province

Reading

Percentage of students at level 3 or above (2007 - 2010)

School data with 5 or fewer students withheld for reasons of confidentiality.





2007

2008

2009

2010

 School

 District

 Province

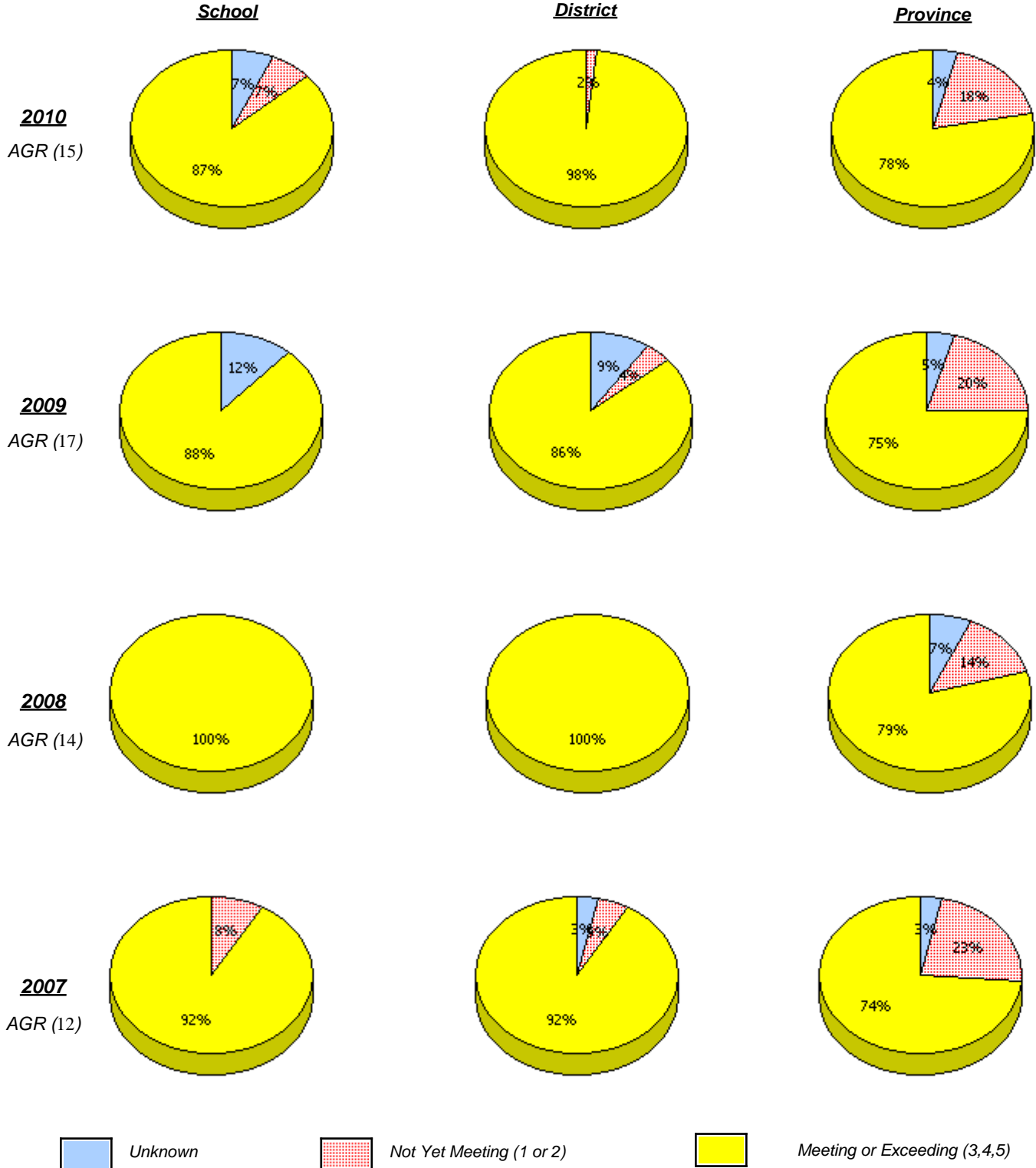
* In some cases, CRT numbers may exceed AGR numbers based on late enrolments. Pie chart is based on the number of students who wrote the CRT.

* Reading score is composite of Information, Visual, and Poet.

District 803 - Private

School #: 375 Lakecrest -St. John's Independent School

Demand Writing



* In some cases, CRT numbers may exceed AGR numbers based on late enrolments. Pie chart is based on the number of students who wrote the CRT.

* Reading score is composite of Information, Visual, and Poet.

District 803 - Private

School #: 375 Lakecrest -St. John's Independent School

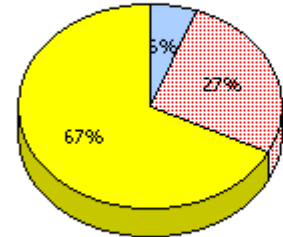
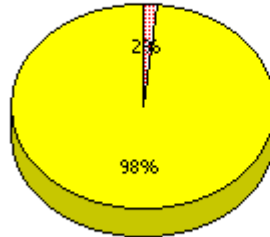
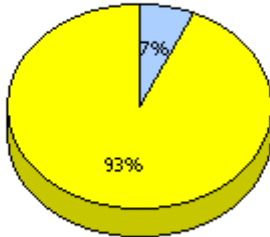
Reading

School

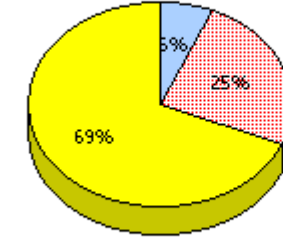
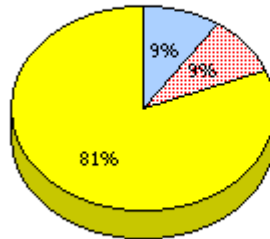
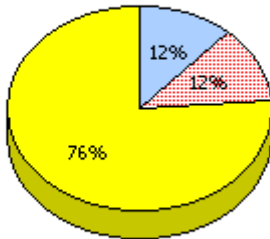
District

Province

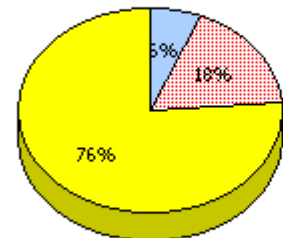
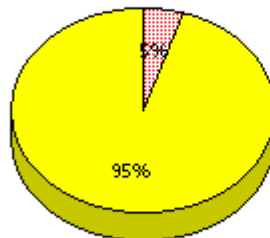
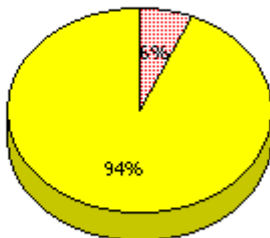
2010
AGR (15)



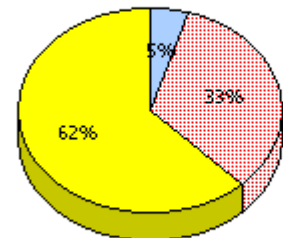
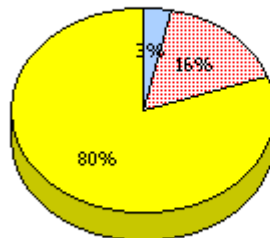
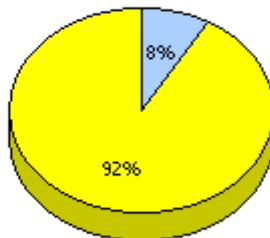
2009
AGR (17)



2008
AGR (14)



2007
AGR (12)



Unknown
 Not Yet Meeting (1 or 2)
 Meeting or Exceeding (3,4,5)

* In some cases, CRT numbers may exceed AGR numbers based on late enrolments. Pie chart is based on the number of students who wrote the CRT.

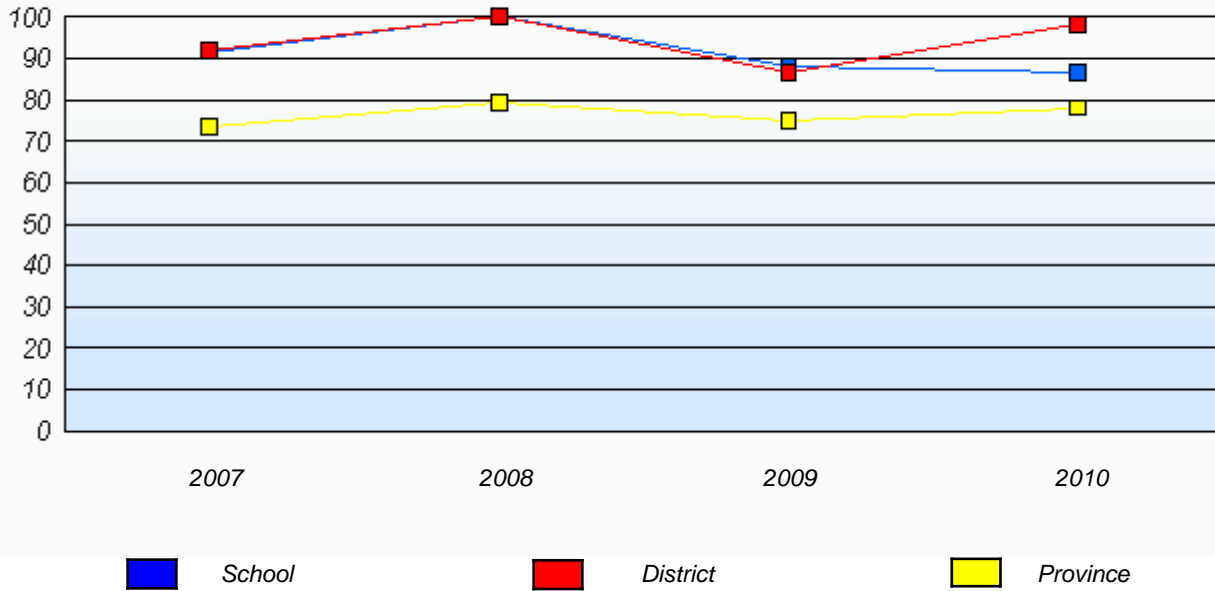
* Reading score is composite of Information, Visual, and Poet.

District 803 - Private

School #: 375 Lakecrest -St. John's Independent School

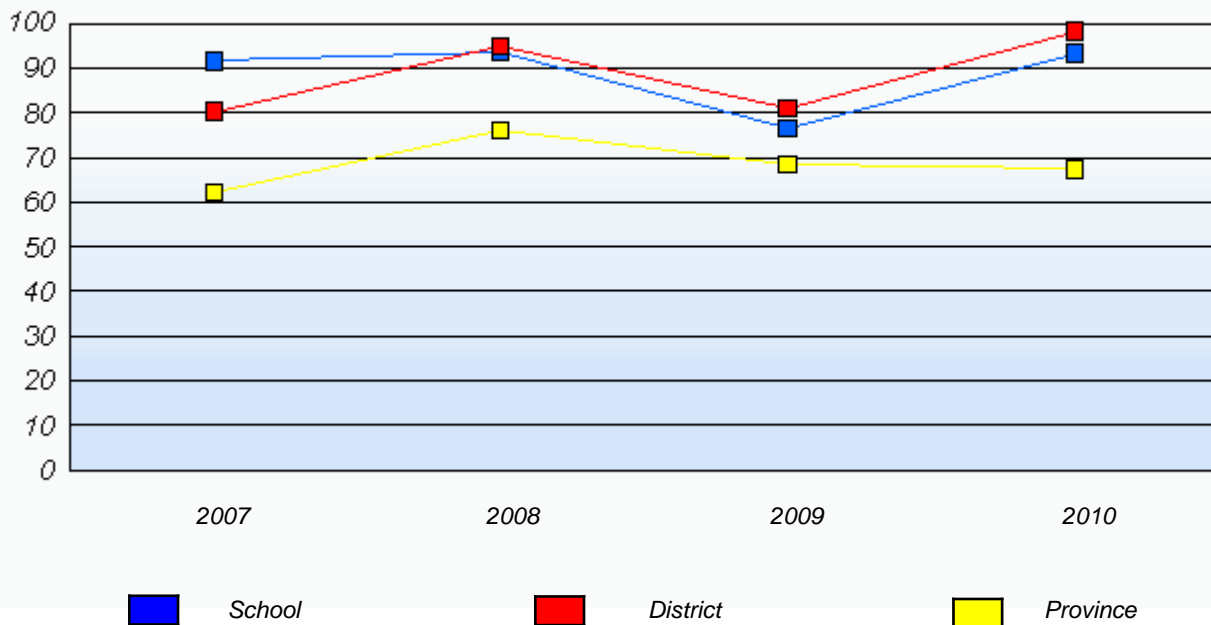
Demand Writing

Percentage of students at level 3 or above (2007 - 2010)



Reading

Percentage of students at level 3 or above (2007 - 2010)



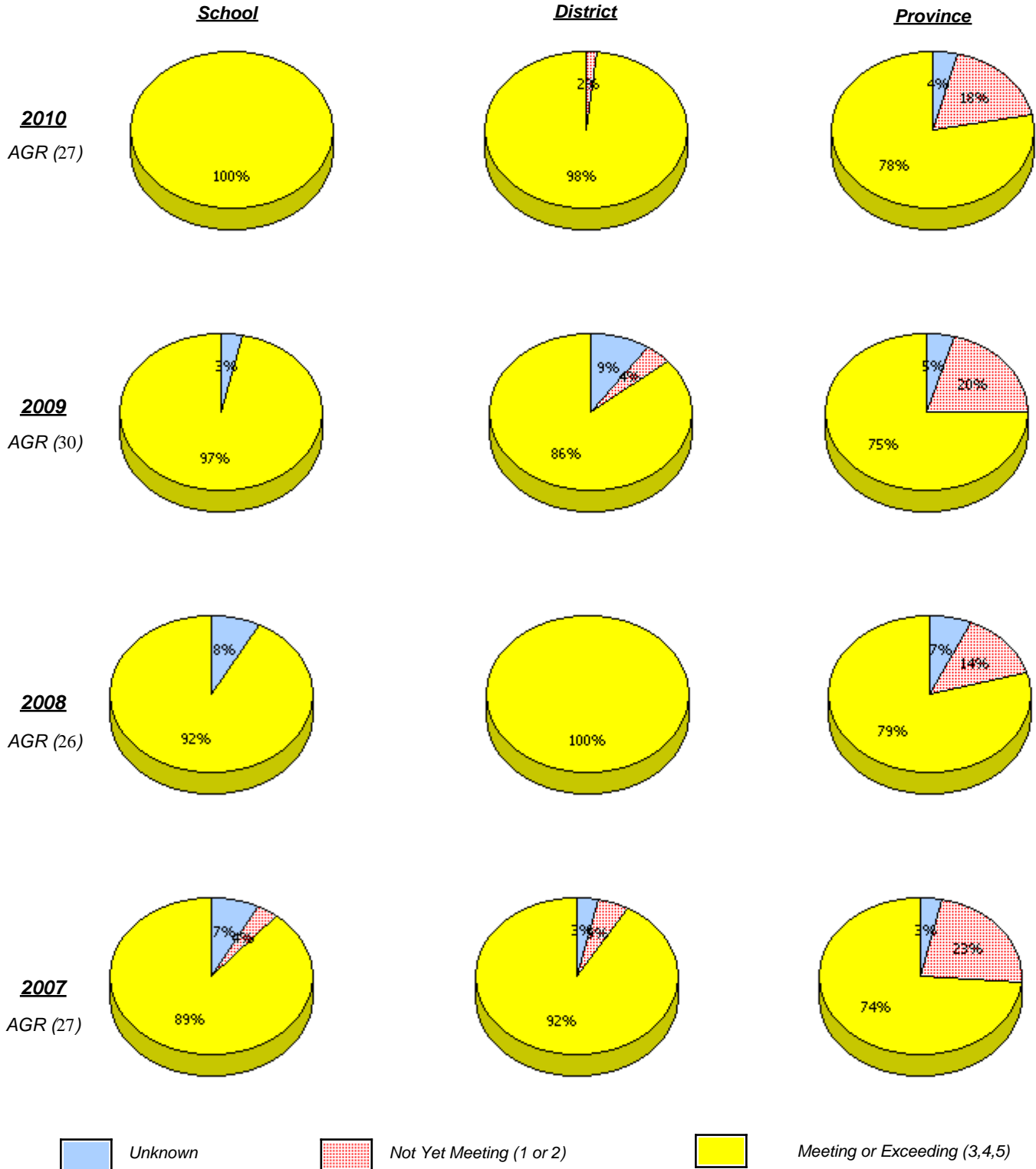
* In some cases, CRT numbers may exceed AGR numbers based on late enrolments. Pie chart is based on the number of students who wrote the CRT.

* Reading score is composite of Information, Visual, and Poet.

District 803 - Private

School #: 450 St. Bonaventure's College

Demand Writing



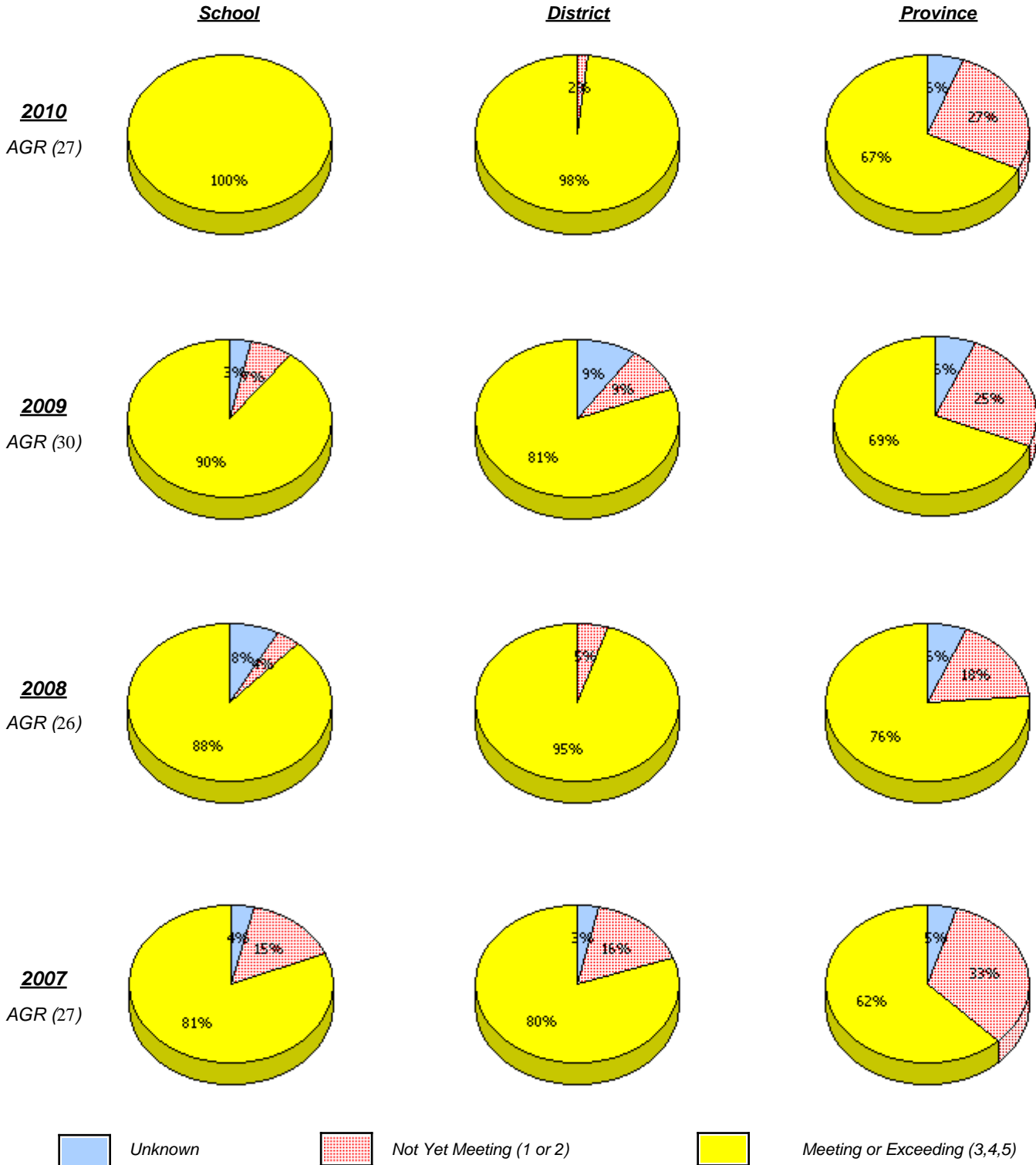
* In some cases, CRT numbers may exceed AGR numbers based on late enrolments. Pie chart is based on the number of students who wrote the CRT.

* Reading score is composite of Information, Visual, and Poet.

District 803 - Private

School #: 450 St. Bonaventure's College

Reading



* In some cases, CRT numbers may exceed AGR numbers based on late enrolments. Pie chart is based on the number of students who wrote the CRT.

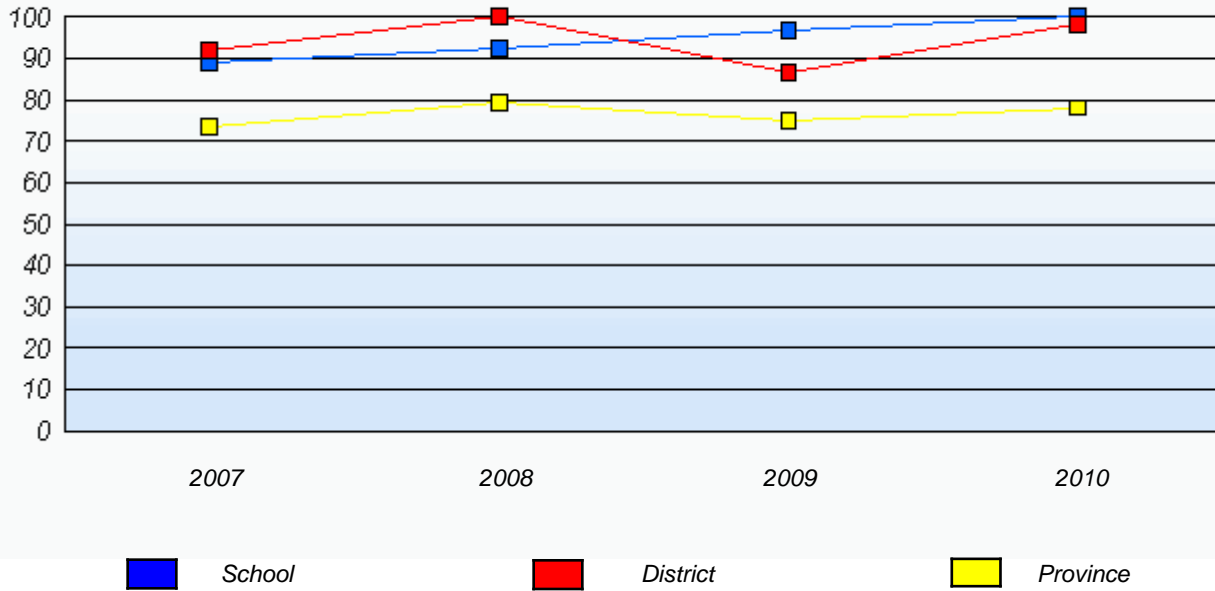
* Reading score is composite of Information, Visual, and Poet.

District 803 - Private

School #: 450 St. Bonaventure's College

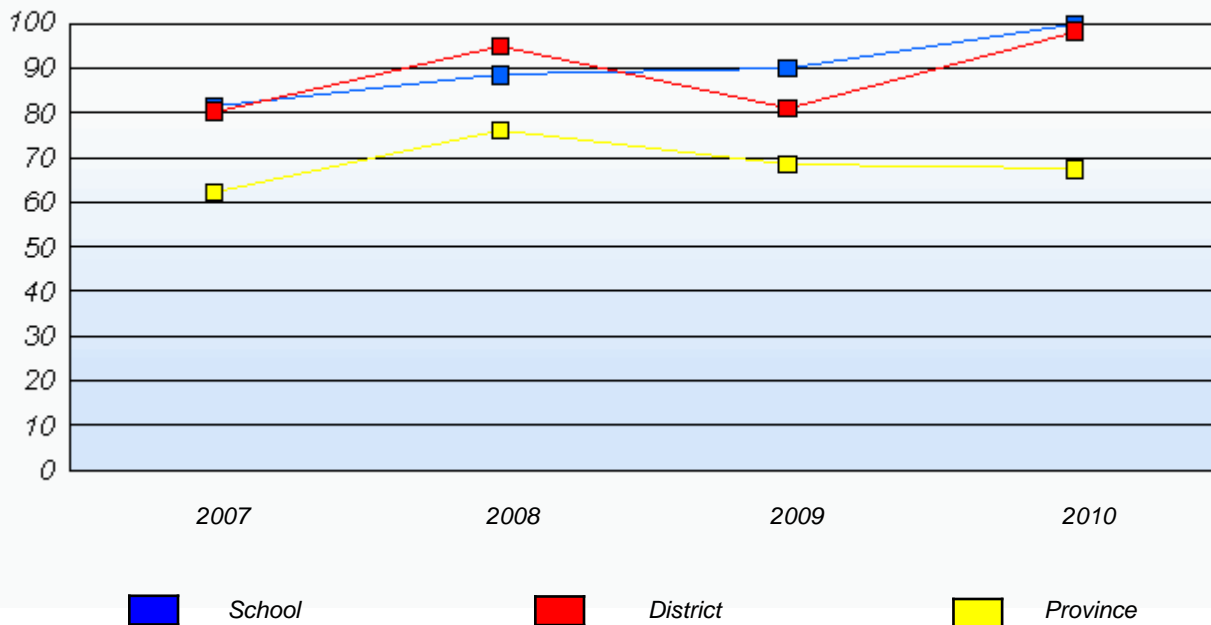
Demand Writing

Percentage of students at level 3 or above (2007 - 2010)



Reading

Percentage of students at level 3 or above (2007 - 2010)



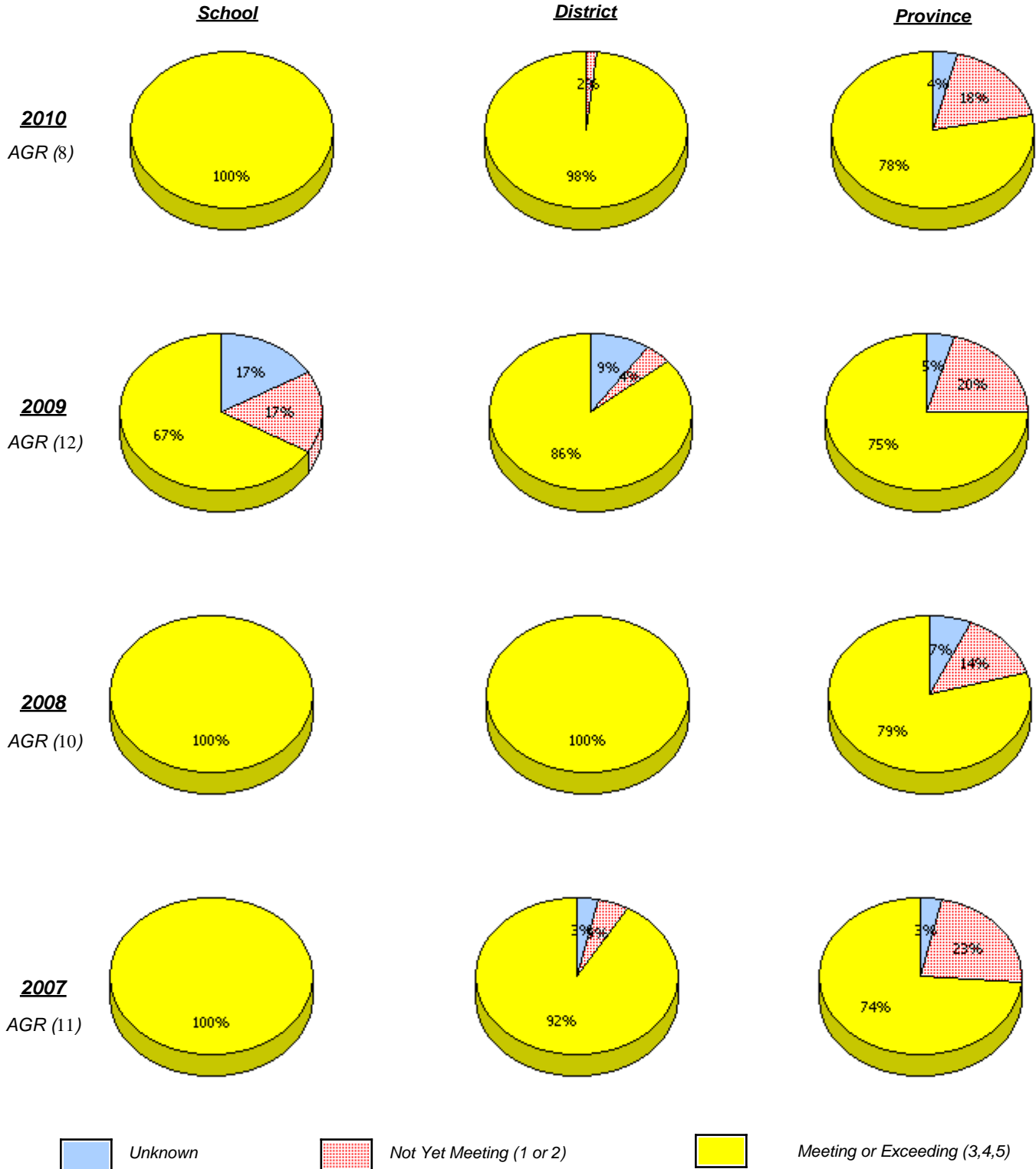
* In some cases, CRT numbers may exceed AGR numbers based on late enrolments. Pie chart is based on the number of students who wrote the CRT.

* Reading score is composite of Information, Visual, and Poet.

District 803 - Private

School #: 453 Eric G. Lambert All-Grade

Demand Writing

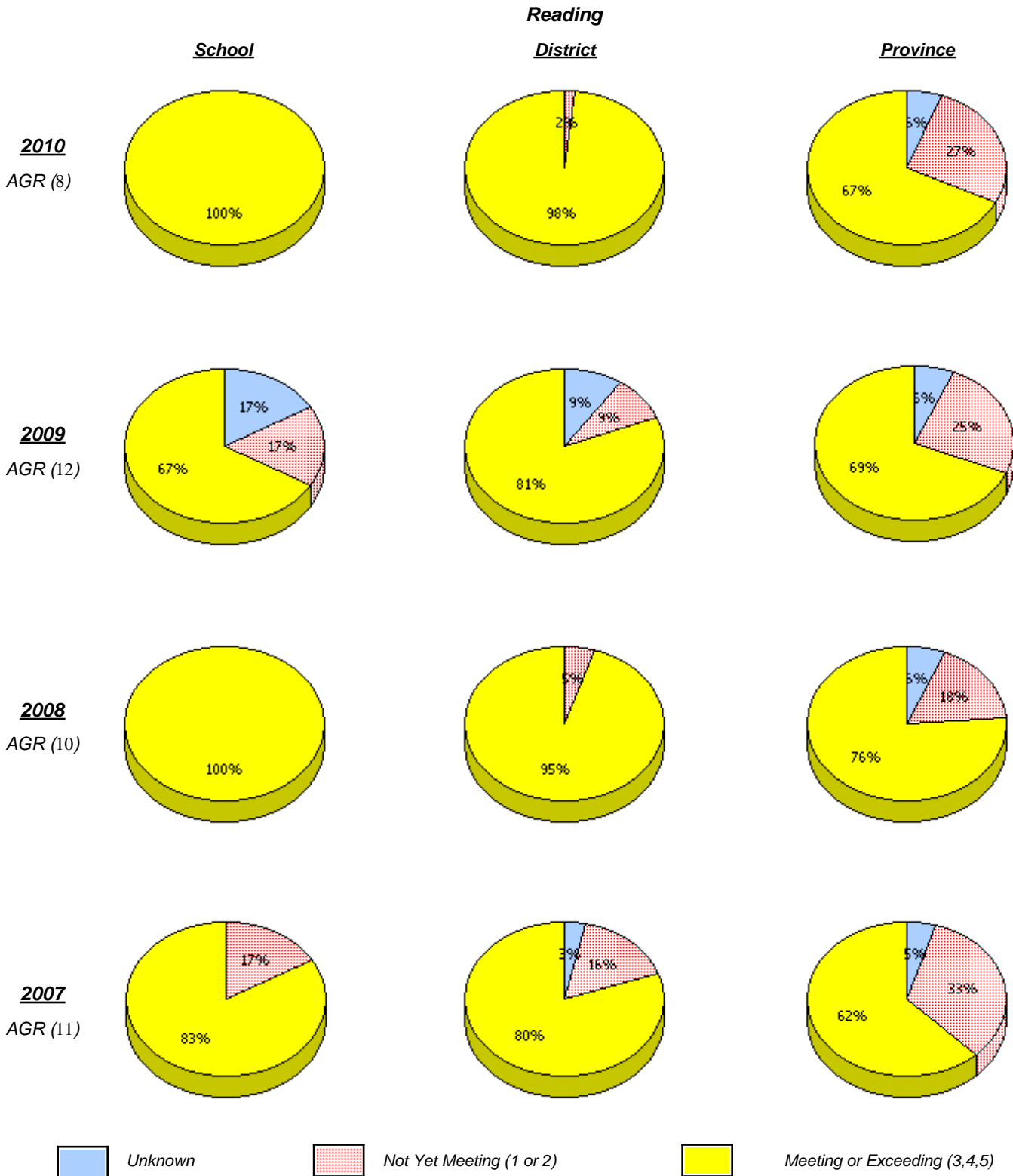


* In some cases, CRT numbers may exceed AGR numbers based on late enrolments. Pie chart is based on the number of students who wrote the CRT.

* Reading score is composite of Information, Visual, and Poet.

District 803 - Private

School #: 453 Eric G. Lambert All-Grade



* In some cases, CRT numbers may exceed AGR numbers based on late enrolments. Pie chart is based on the number of students who wrote the CRT.

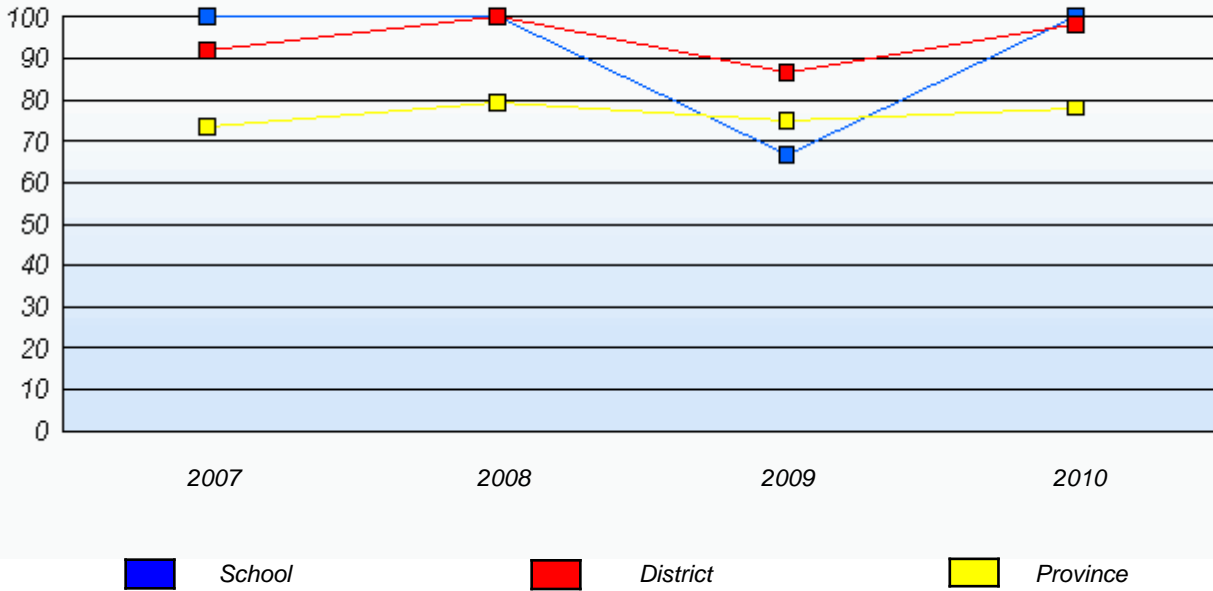
* Reading score is composite of Information, Visual, and Poet.

District 803 - Private

School #: 453 Eric G. Lambert All-Grade

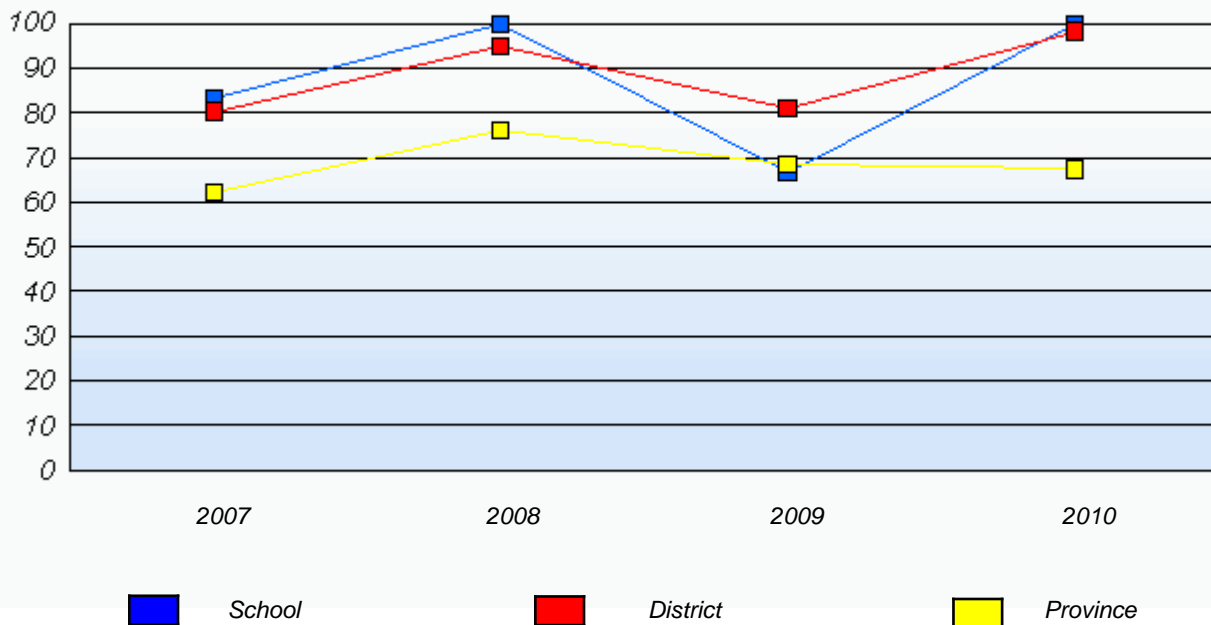
Demand Writing

Percentage of students at level 3 or above (2007 - 2010)



Reading

Percentage of students at level 3 or above (2007 - 2010)



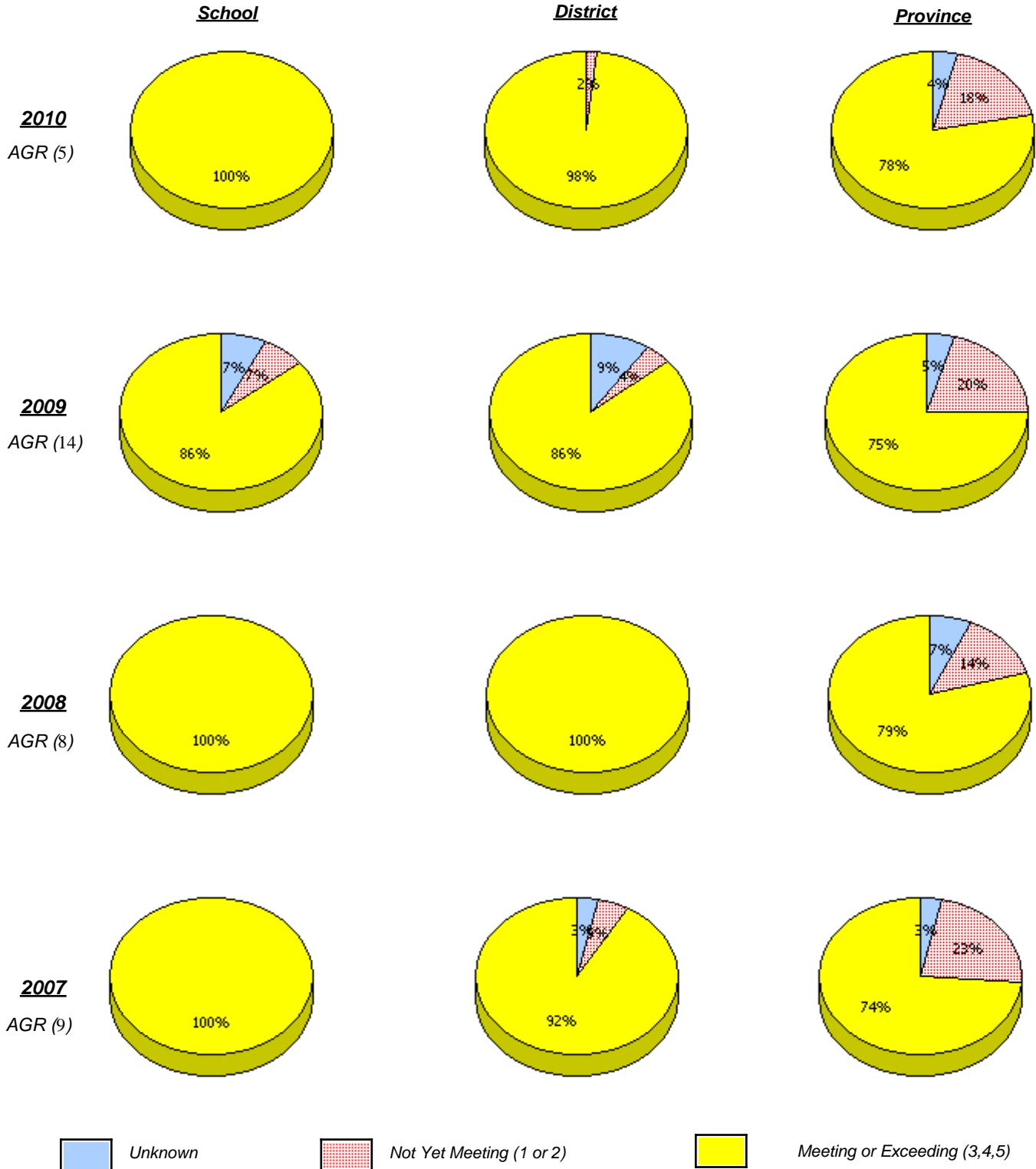
* In some cases, CRT numbers may exceed AGR numbers based on late enrolments. Pie chart is based on the number of students who wrote the CRT.

* Reading score is composite of Information, Visual, and Poet.

District 803 - Private

School #: 469 Immaculate Heart of Mary School

Demand Writing



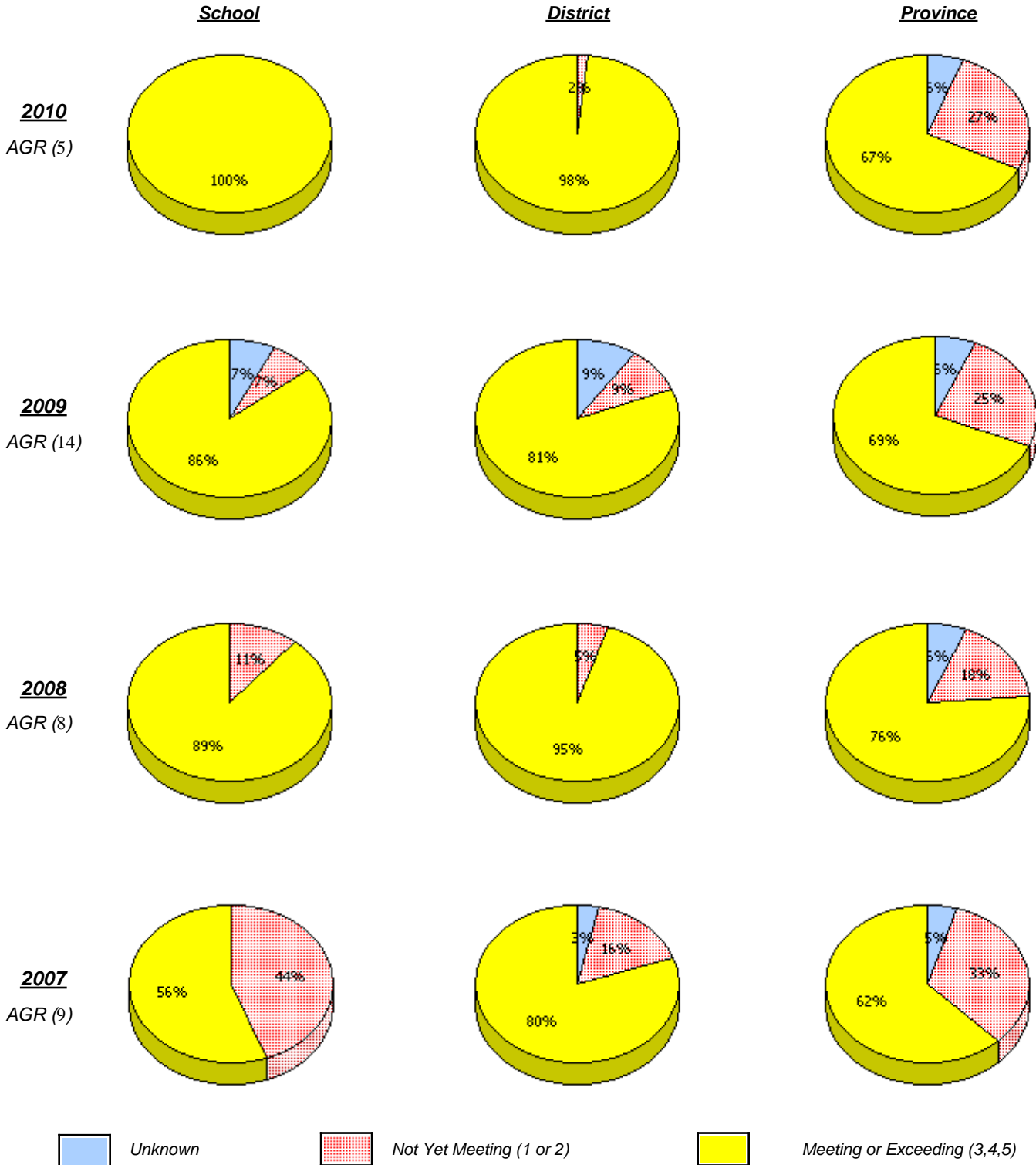
* In some cases, CRT numbers may exceed AGR numbers based on late enrolments. Pie chart is based on the number of students who wrote the CRT.

* Reading score is composite of Information, Visual, and Poet.

District 803 - Private

School #: 469 Immaculate Heart of Mary School

Reading



* In some cases, CRT numbers may exceed AGR numbers based on late enrolments. Pie chart is based on the number of students who wrote the CRT.

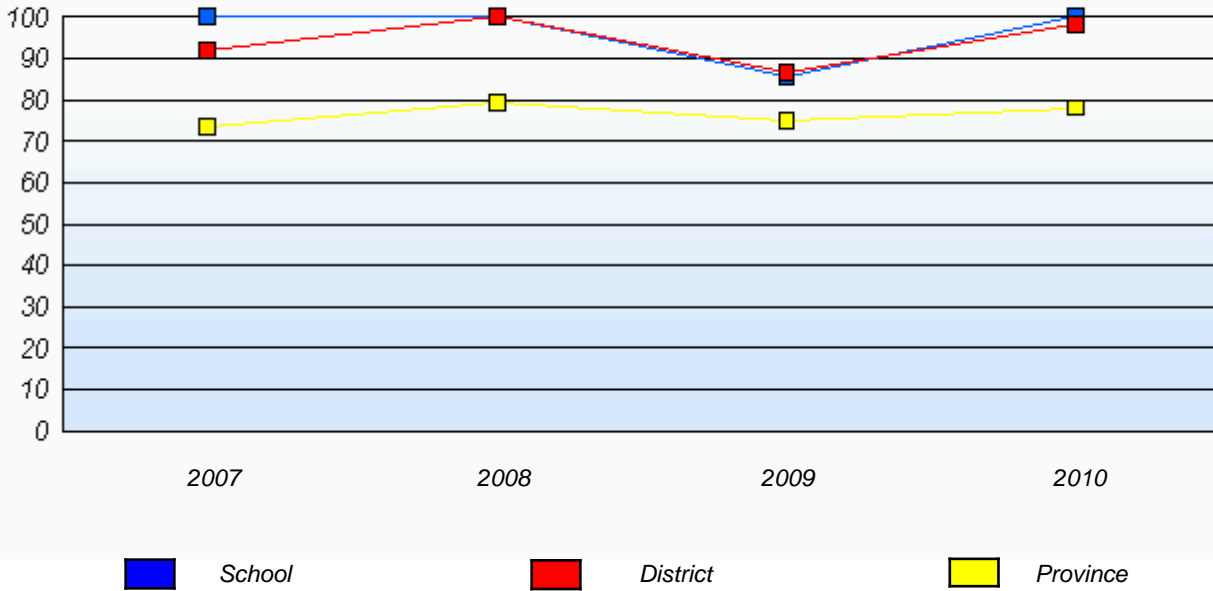
* Reading score is composite of Information, Visual, and Poet.

District 803 - Private

School #: 469 Immaculate Heart of Mary School

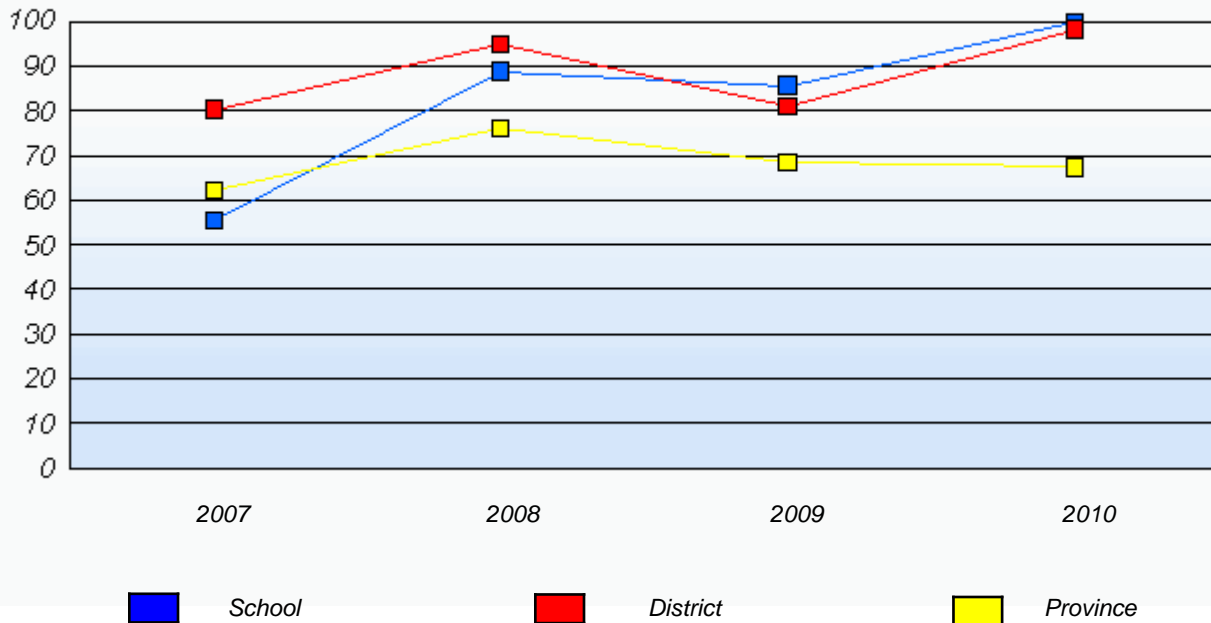
Demand Writing

Percentage of students at level 3 or above (2007 - 2010)



Reading

Percentage of students at level 3 or above (2007 - 2010)



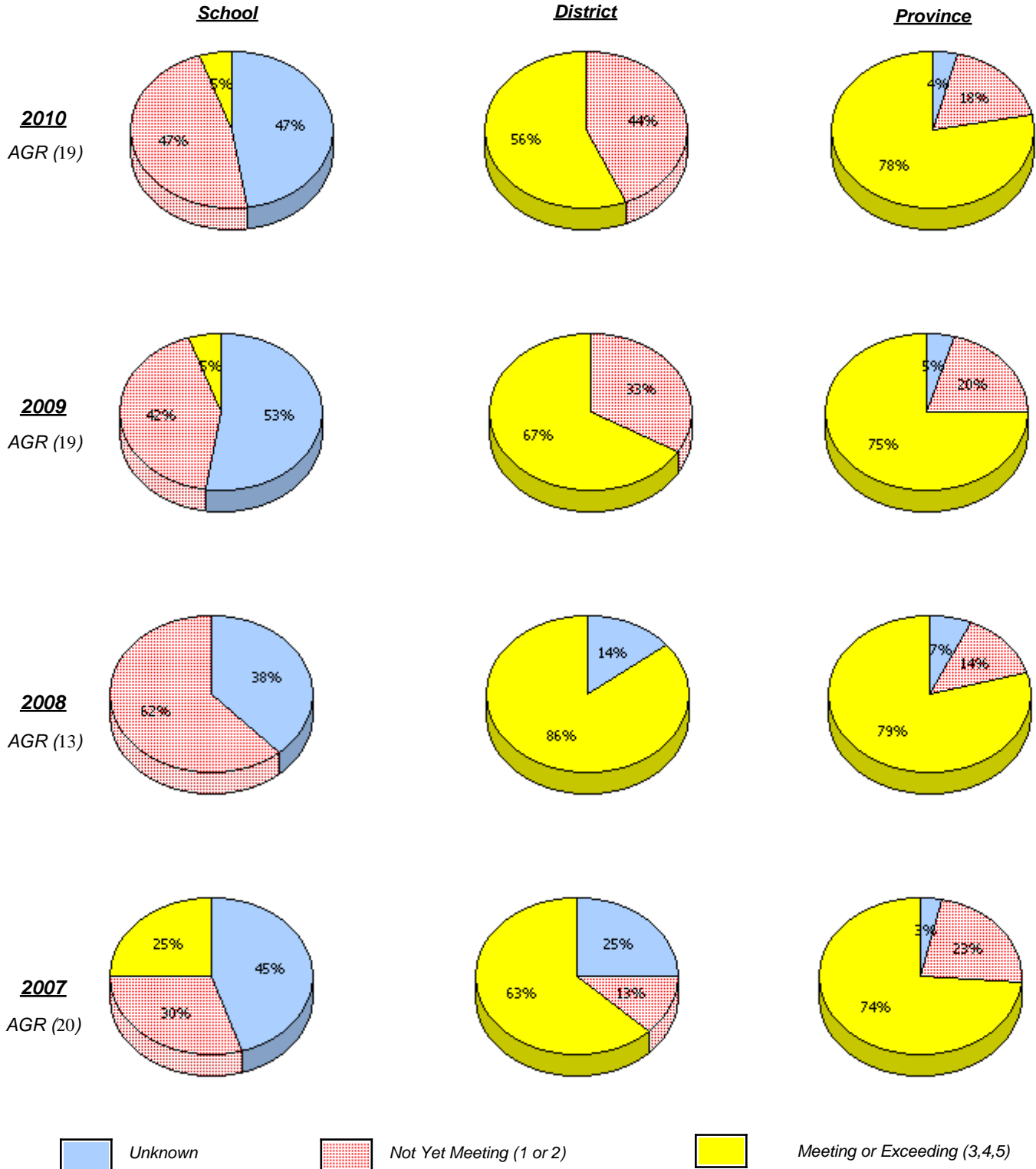
* In some cases, CRT numbers may exceed AGR numbers based on late enrolments. Pie chart is based on the number of students who wrote the CRT.

* Reading score is composite of Information, Visual, and Poet.

District 804 - Native Federal

School #: 019 Mushuau Innu Natuashish School

Demand Writing



* In some cases, CRT numbers may exceed AGR numbers based on late enrolments. Pie chart is based on the number of students who wrote the CRT.

* Reading score is composite of Information, Visual, and Poet.

District 804 - Native Federal

School #: 019 Mushuau Innu Natuashish School

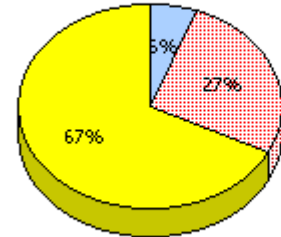
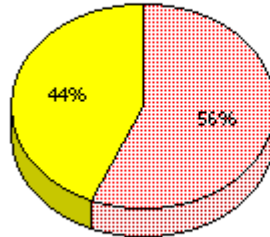
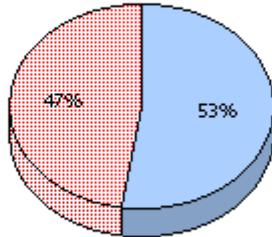
Reading

School

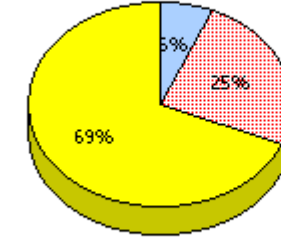
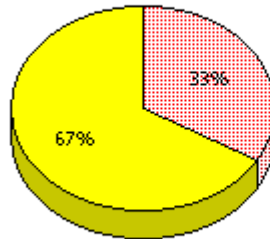
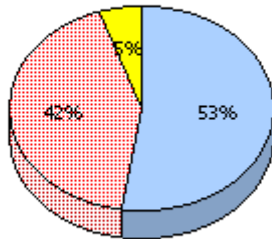
District

Province

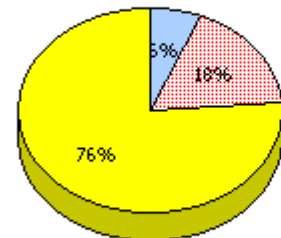
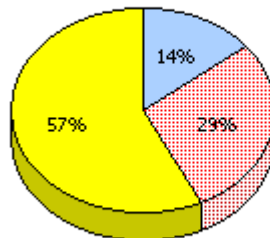
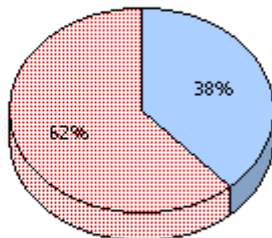
2010
AGR (19)



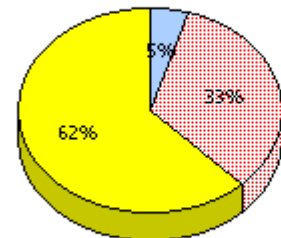
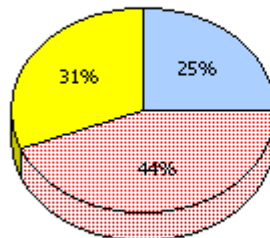
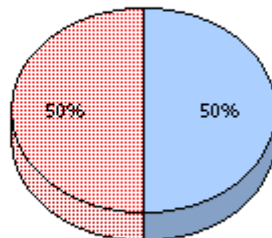
2009
AGR (19)



2008
AGR (13)



2007
AGR (20)



Unknown
 Not Yet Meeting (1 or 2)
 Meeting or Exceeding (3,4,5)

* In some cases, CRT numbers may exceed AGR numbers based on late enrolments. Pie chart is based on the number of students who wrote the CRT.

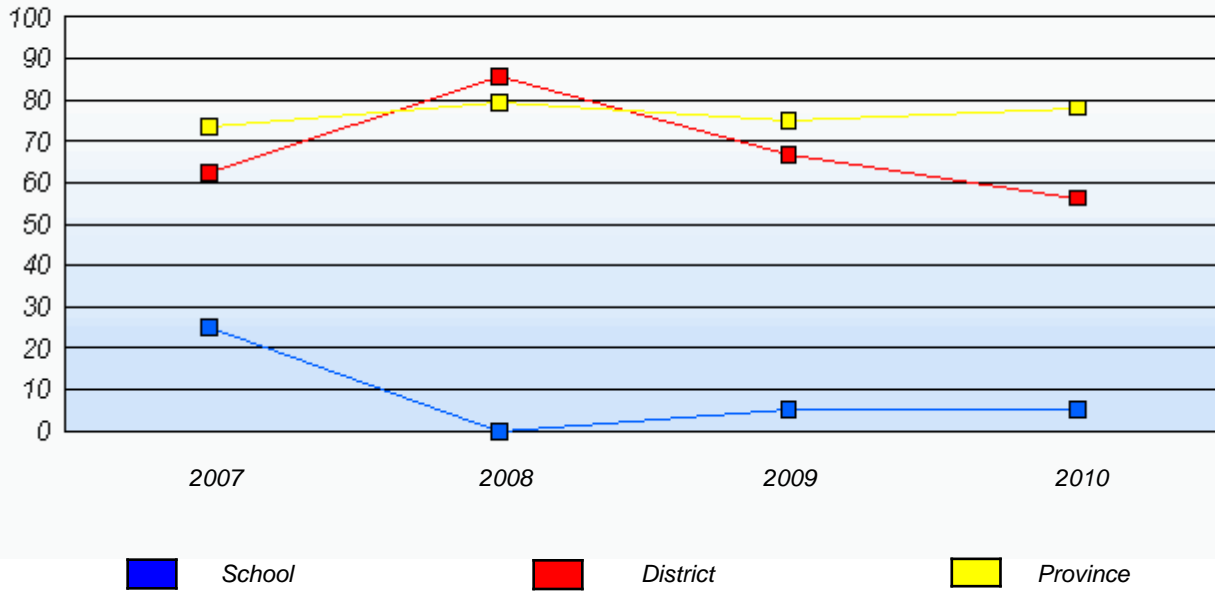
* Reading score is composite of Information, Visual, and Poet.

District 804 - Native Federal

School #: 019 Mushuau Innu Natuashish School

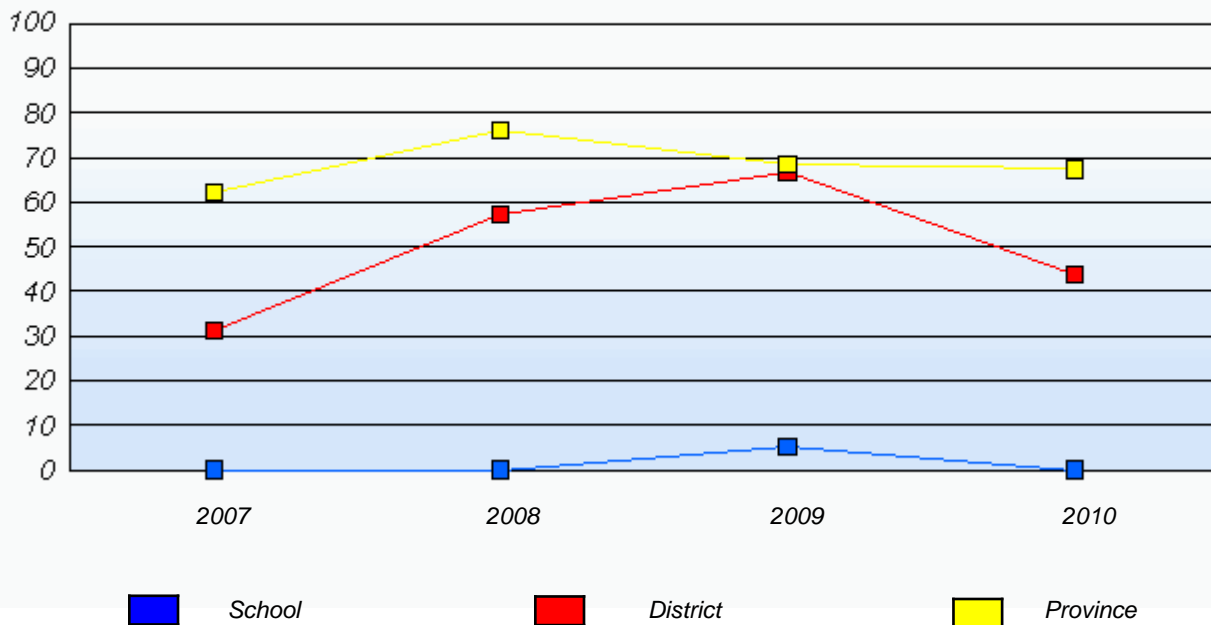
Demand Writing

Percentage of students at level 3 or above (2007 - 2010)



Reading

Percentage of students at level 3 or above (2007 - 2010)



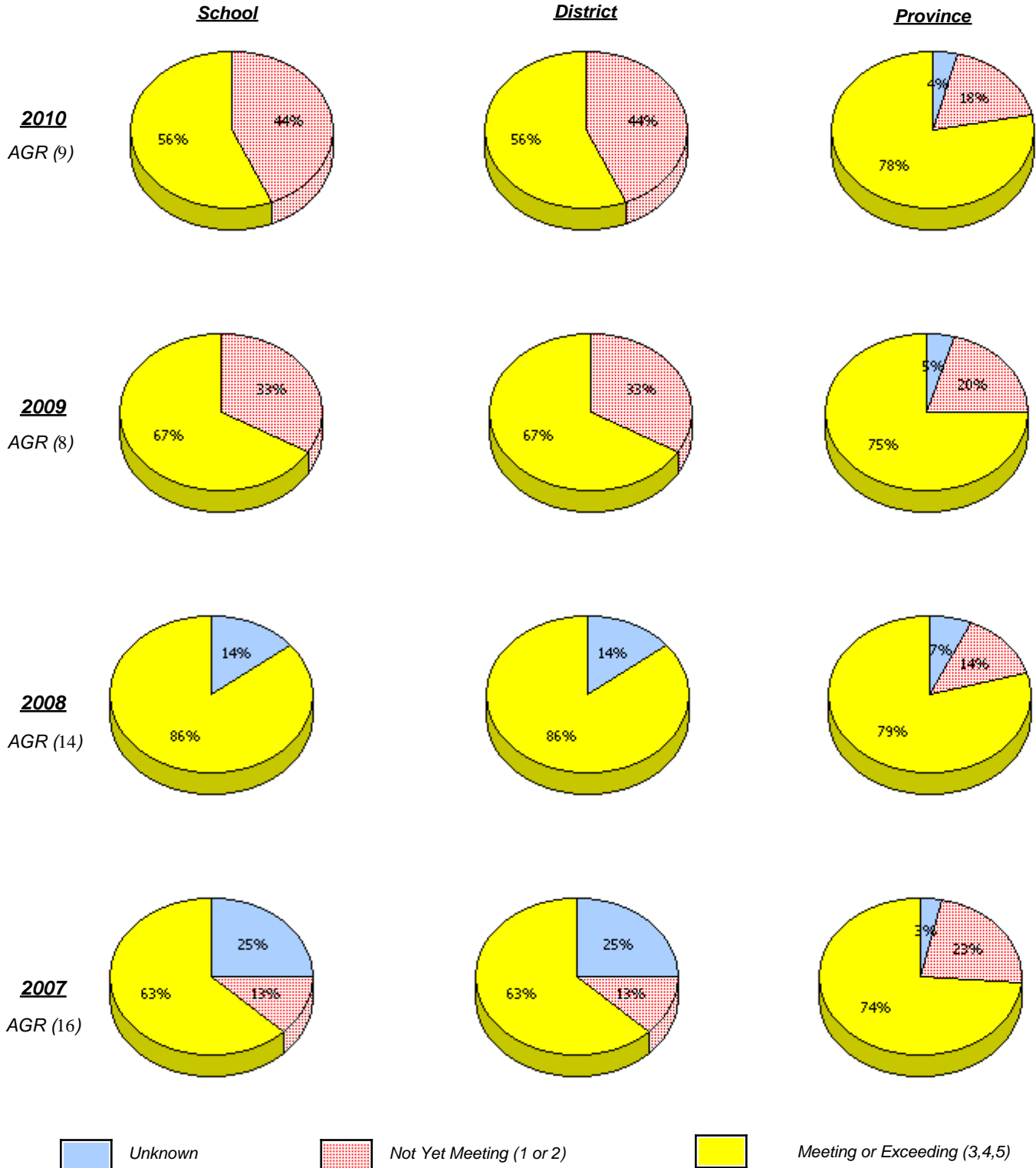
* In some cases, CRT numbers may exceed AGR numbers based on late enrolments. Pie chart is based on the number of students who wrote the CRT.

* Reading score is composite of Information, Visual, and Poet.

District 804 - Native Federal

School #: 376 Se't Anneway Kegnamogwom

Demand Writing



* In some cases, CRT numbers may exceed AGR numbers based on late enrolments. Pie chart is based on the number of students who wrote the CRT.

* Reading score is composite of Information, Visual, and Poet.

**Elementary English Language Arts
4 Year Provincial Assessment, June 2010
School Report Rubrics
(average scores)**

District 804 - Native Federal

School #: 376 Se't Anneway Kegnamogwom

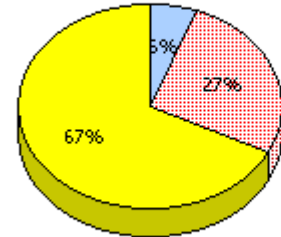
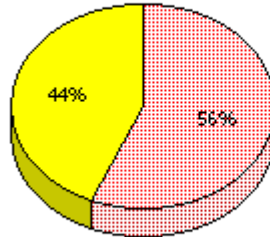
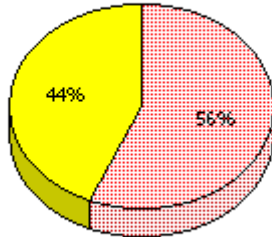
Reading

School

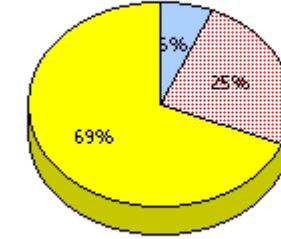
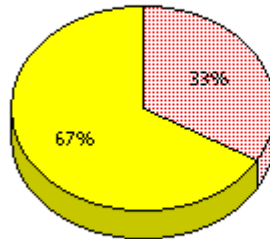
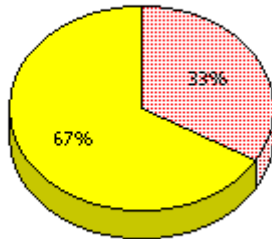
District

Province

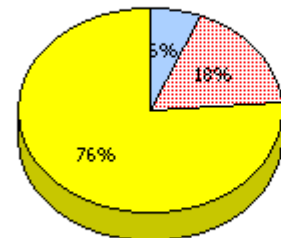
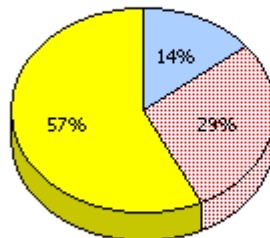
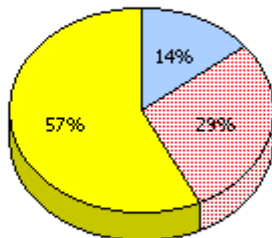
2010
AGR (9)



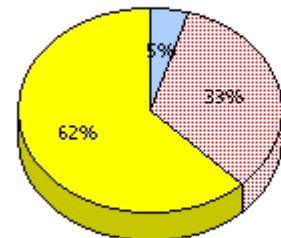
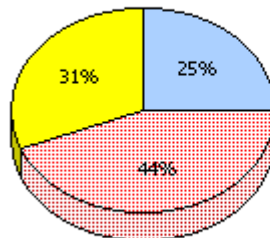
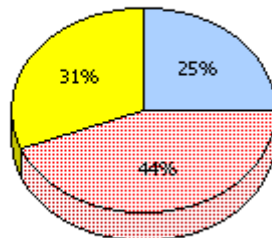
2009
AGR (8)



2008
AGR (14)



2007
AGR (16)



Unknown
 Not Yet Meeting (1 or 2)
 Meeting or Exceeding (3,4,5)

* In some cases, CRT numbers may exceed AGR numbers based on late enrolments. Pie chart is based on the number of students who wrote the CRT.

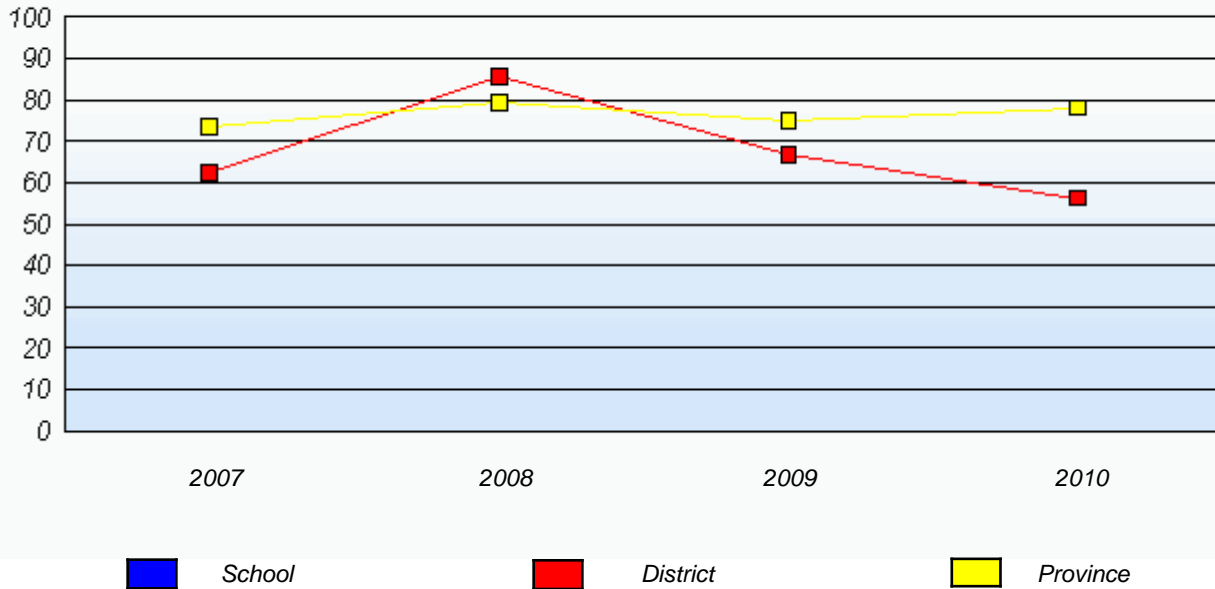
* Reading score is composite of Information, Visual, and Poet.

District 804 - Native Federal

School #: 376 Se't Anneway Kegnamogwom

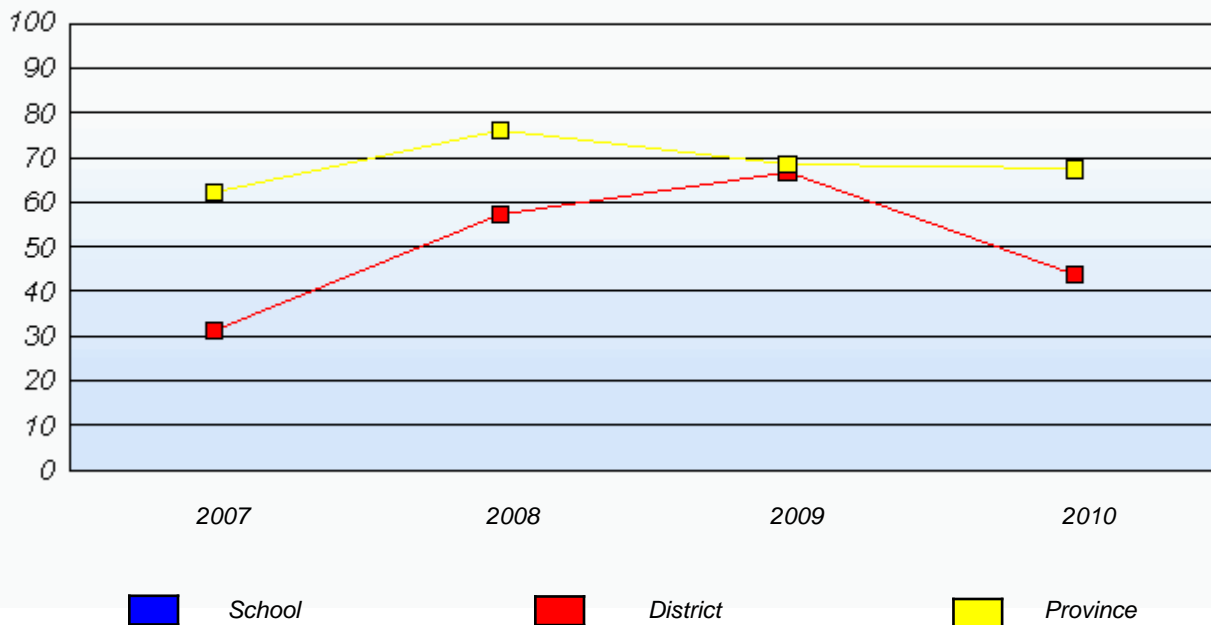
Demand Writing

Percentage of students at level 3 or above (2007 - 2010)



Reading

Percentage of students at level 3 or above (2007 - 2010)



* In some cases, CRT numbers may exceed AGR numbers based on late enrolments. Pie chart is based on the number of students who wrote the CRT.

* Reading score is composite of Information, Visual, and Poet.