

Number of Students: 1

**Multiple Choice**

Number Operations

School  
District  
Province

Number Concepts

School  
District  
Province

Shape and Space

School  
District  
Province

**Written Response**

Number Concepts

School  
District  
Province

Shape and Space

School  
District  
Province

**Rubrics**

Number Operations

- Reasoning
- Communication
- Connections and Representations
- Problem Solving

School  
District  
Province

School  
District  
Province

School  
District  
Province

School  
District  
Province

**Yes/No Items**

Addition

School  
District  
Province

Subtraction

School  
District  
Province

Multiplication

School  
District  
Province

Mark	School vs District	School vs Province
<p style="color: blue;">School data with 5 or fewer students withheld for reasons of confidentiality.</p>	Q	Q
	Q	Q
	Q	Q
	Q	Q
	Q	Q
	Q	Q
	Q	Q
	Q	Q
	Q	Q
	Q	Q
	P	P
	P	P
P	P	

**4 Year CRT (Subtest) Mark Trend 2006-2009**

**Multiple Choice**

School data with 5 or fewer students withheld for reasons of confidentiality.

Number Operations

Number Concepts

Shape and Space

**Rubric Results: Percentage of Students Performing at Level 3 and Above 2006-2009**

**Number Operations**

**100**

School data with 5 or fewer students withheld for reasons of confidentiality.

Reasoning

Communication

Connections and  
Representations

Problem Solving



**Difference from Provincial Mean, 2006-09**

**Multiple Choice**

School data with 5 or fewer students withheld for reasons of confidentiality.

Number Operations

Number Concepts

Shape and Space

**Difference from Provincial Mean, 2006-09**

**Rubric Results: Percentage of Students Performing at Level 3 and Above 2006-2009**

**Number Operations**

School data with 5 or fewer students withheld for reasons of confidentiality.

Reasoning

Communication

Connections and  
Representations

Problem Solving



Number of Students: 6

**Multiple Choice**

Number Operations

School  
District  
Province

90.0  
91.4  
85.0

q

p

Number Concepts

School  
District  
Province

83.3  
83.5  
73.5

q

p

Shape and Space

School  
District  
Province

94.4  
85.0  
81.4

p

p

**Written Response**

Number Concepts

School  
District  
Province

79.8  
66.9  
64.3

p

p

Shape and Space

School  
District  
Province

80.2  
78.5  
73.7

p

p

**Rubrics**

Number Operations

- Reasoning
- Communication
- Connections and Representations
- Problem Solving

School  
District  
Province

100.0  
78.0  
54.3

p

p

School  
District  
Province

100.0  
74.0  
54.2

p

p

School  
District  
Province

100.0  
80.0  
69.0

p

p

School  
District  
Province

100.0  
80.0  
68.9

p

p

**Yes/No Items**

Addition

School  
District  
Province

97.5  
94.6  
91.8

p

p

Subtraction

School  
District  
Province

91.7  
91.1  
84.6

p

p

Multiplication

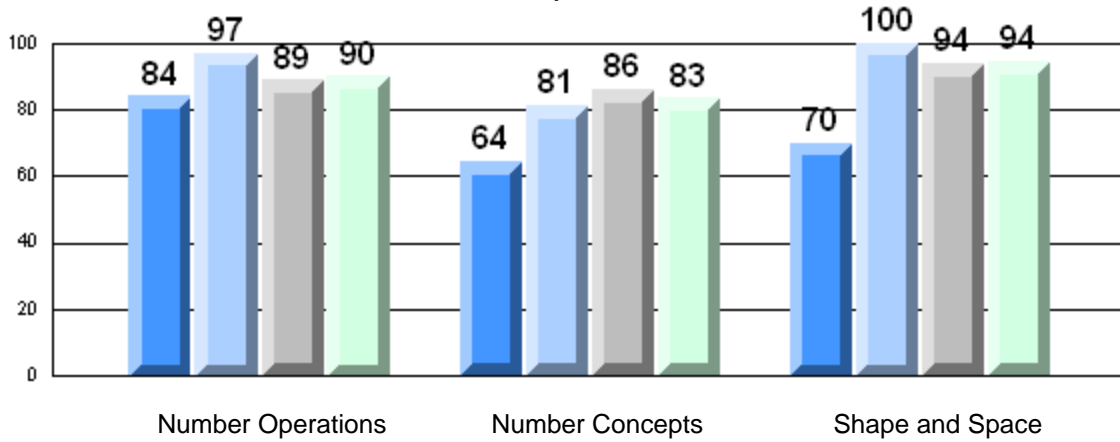
School  
District  
Province

95.0  
88.6  
79.2

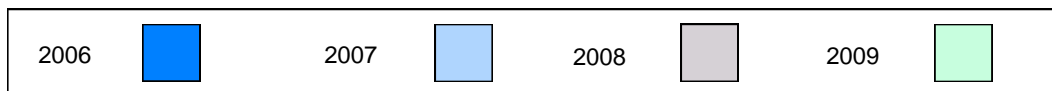
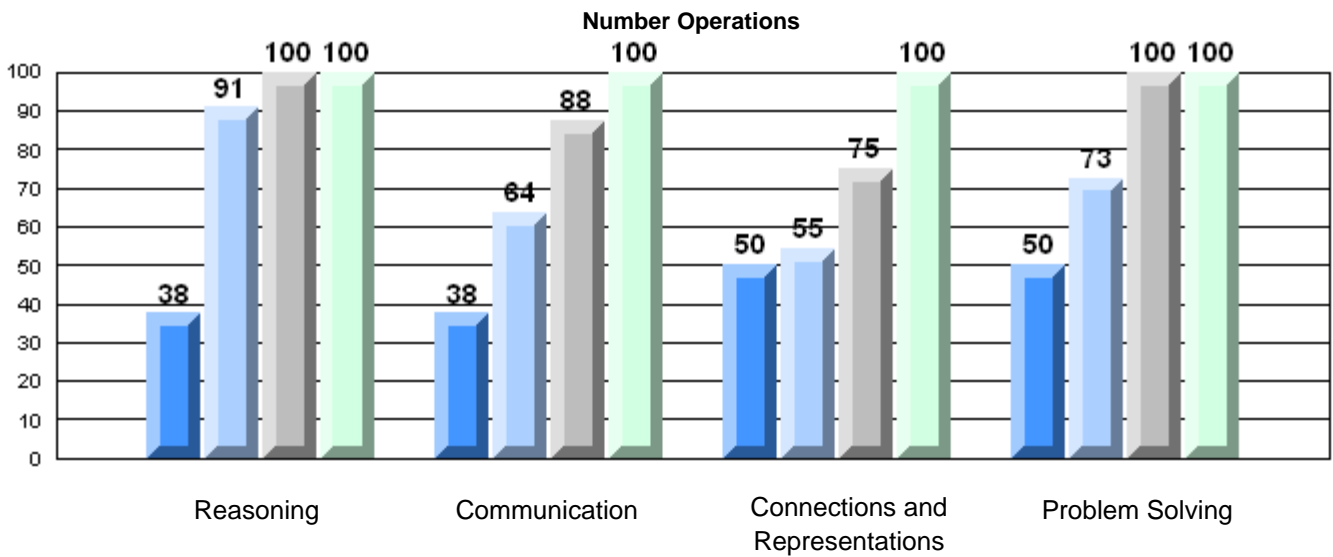
p

p

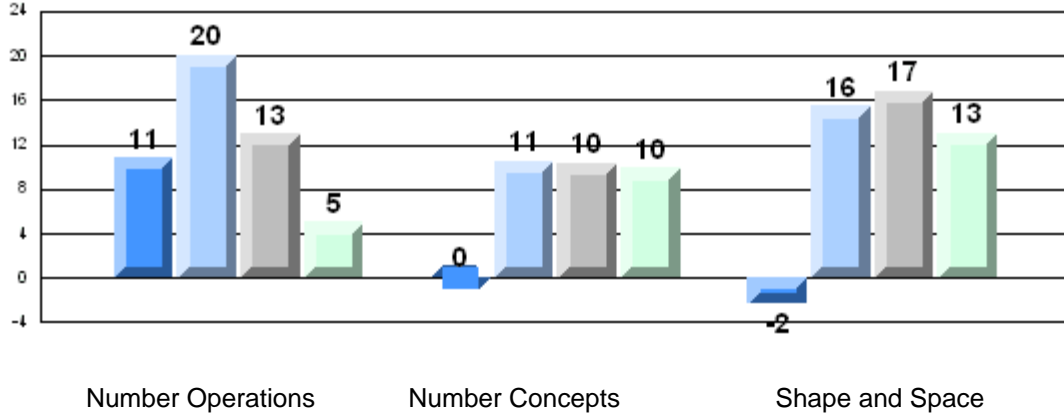
4 Year CRT (Subtest) Mark Trend 2006-2009  
Multiple Choice



Rubric Results: Percentage of Students Performing at Level 3 and Above 2006-2009



**Difference from Provincial Mean, 2006-09**  
**Multiple Choice**

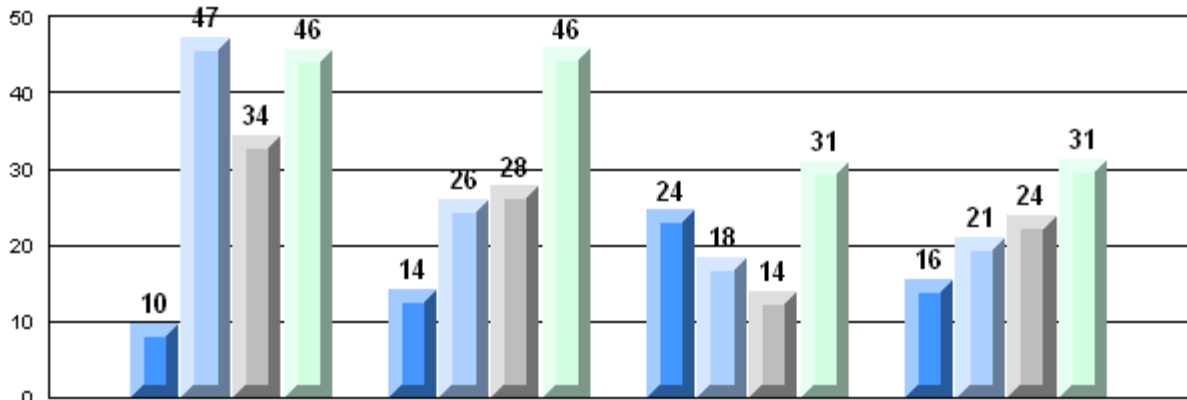


Number Operations

Number Concepts

Shape and Space

**Difference from Provincial Mean, 2006-09**  
**Rubric Results: Percentage of Students Performing at Level 3 and Above 2006-2009**  
**Number Operations**



Reasoning

Communication

Connections and  
Representations

Problem Solving



Number of Students: 24

**Multiple Choice**

Number Operations

School  
District  
Province

90.0  
91.4  
85.0

q

p

Number Concepts

School  
District  
Province

83.9  
83.5  
73.5

p

p

Shape and Space

School  
District  
Province

82.6  
85.0  
81.4

q

p

**Written Response**

Number Concepts

School  
District  
Province

66.1  
66.9  
64.3

q

p

Shape and Space

School  
District  
Province

81.5  
78.5  
73.7

p

p

**Rubrics**

Number Operations

- Reasoning
- Communication
- Connections and Representations
- Problem Solving

School  
District  
Province

83.3  
78.0  
54.3

p

p

School  
District  
Province

79.2  
74.0  
54.2

p

p

School  
District  
Province

95.8  
80.0  
69.0

p

p

School  
District  
Province

87.5  
80.0  
68.9

p

p

**Yes/No Items**

Addition

School  
District  
Province

89.8  
94.6  
91.8

q

q

Subtraction

School  
District  
Province

91.3  
91.1  
84.6

p

p

Multiplication

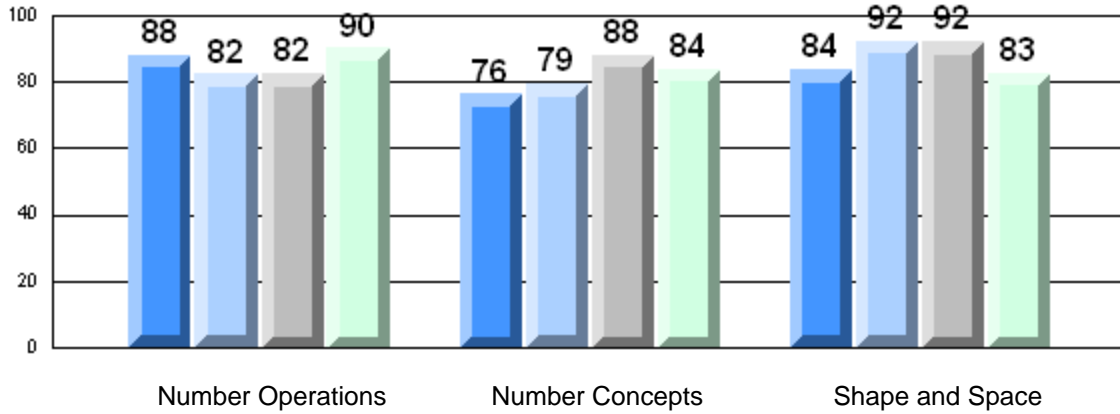
School  
District  
Province

88.7  
88.6  
79.2

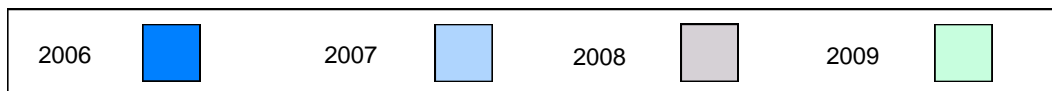
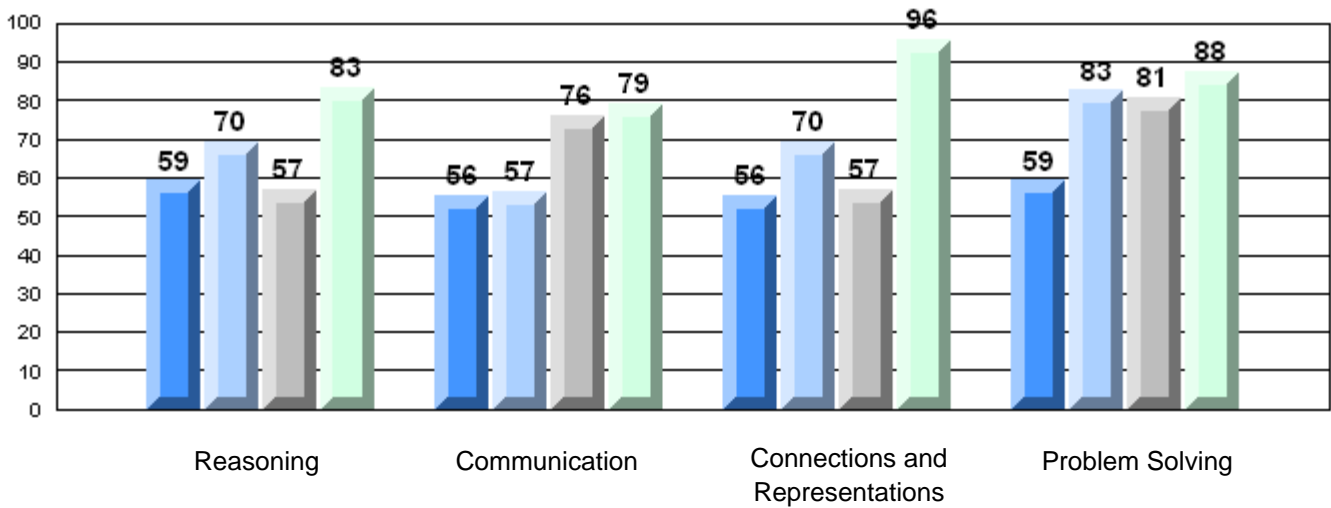
p

p

4 Year CRT (Subtest) Mark Trend 2006-2009  
Multiple Choice



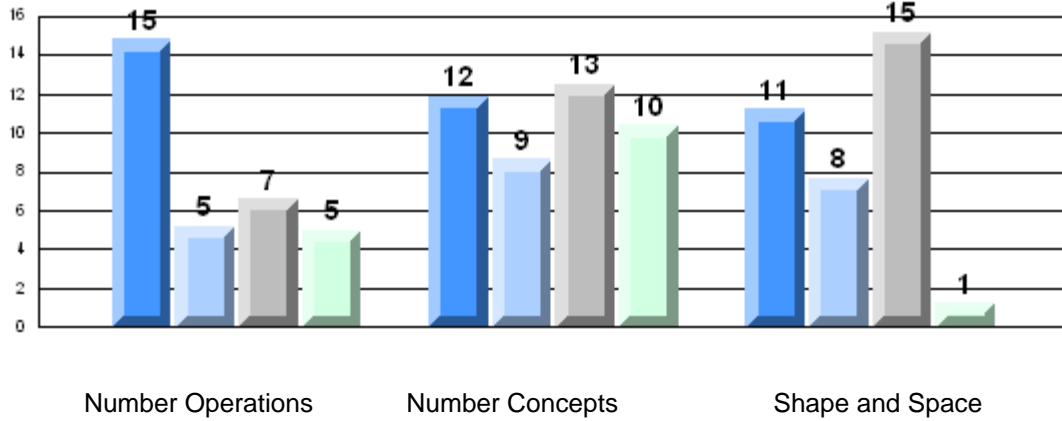
Rubric Results: Percentage of Students Performing at Level 3 and Above 2006-2009  
Number Operations





Difference from Provincial Mean, 2006-09

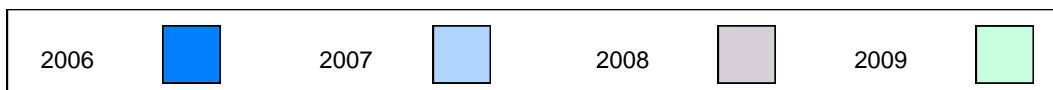
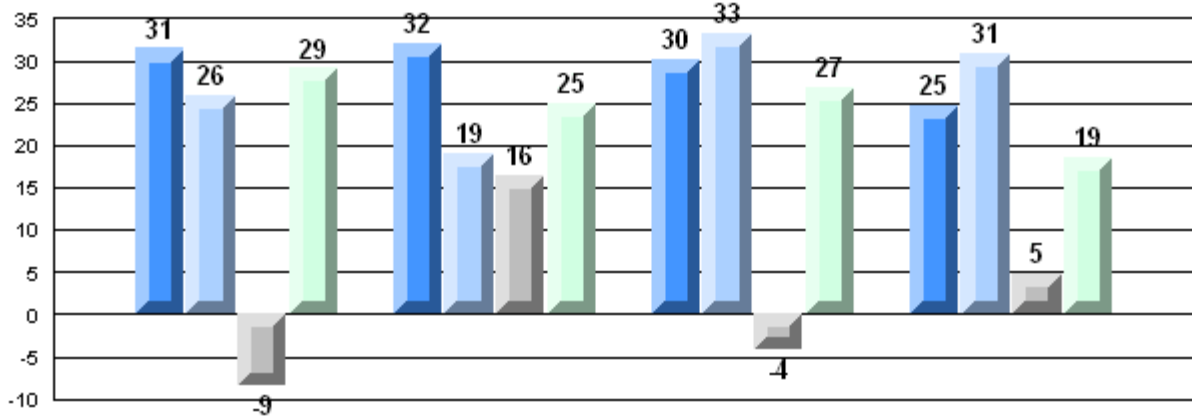
Multiple Choice



Difference from Provincial Mean, 2006-09

Rubric Results: Percentage of Students Performing at Level 3 and Above 2006-2009

Number Operations



Number of Students: 9

**Multiple Choice**

Number Operations

School  
District  
Province

90.0  
91.4  
85.0

q

p

Number Concepts

School  
District  
Province

84.7  
83.5  
73.5

p

p

Shape and Space

School  
District  
Province

94.4  
85.0  
81.4

p

p

**Written Response**

Number Concepts

School  
District  
Province

73.0  
66.9  
64.3

p

p

Shape and Space

School  
District  
Province

84.0  
78.5  
73.7

p

p

**Rubrics**

Number Operations

- Reasoning
- Communication
- Connections and Representations
- Problem Solving

School  
District  
Province

88.9  
78.0  
54.3

p

p

School  
District  
Province

88.9  
74.0  
54.2

p

p

School  
District  
Province

88.9  
80.0  
69.0

p

p

School  
District  
Province

88.9  
80.0  
68.9

p

p

**Yes/No Items**

Addition

School  
District  
Province

99.4  
94.6  
91.8

p

p

Subtraction

School  
District  
Province

93.3  
91.1  
84.6

p

p

Multiplication

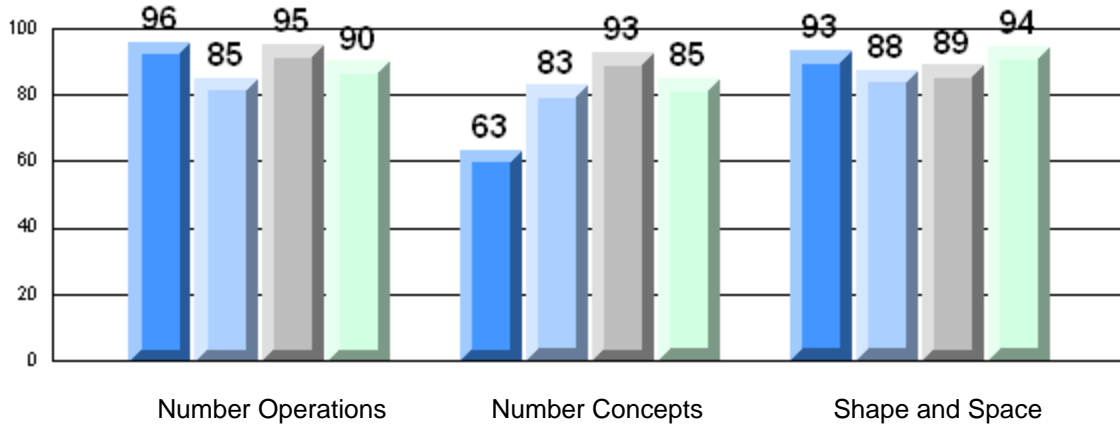
School  
District  
Province

90.0  
88.6  
79.2

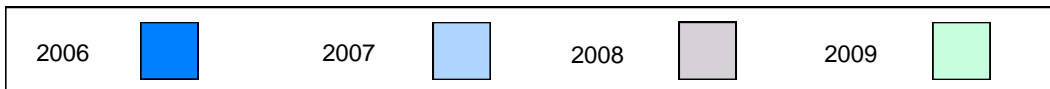
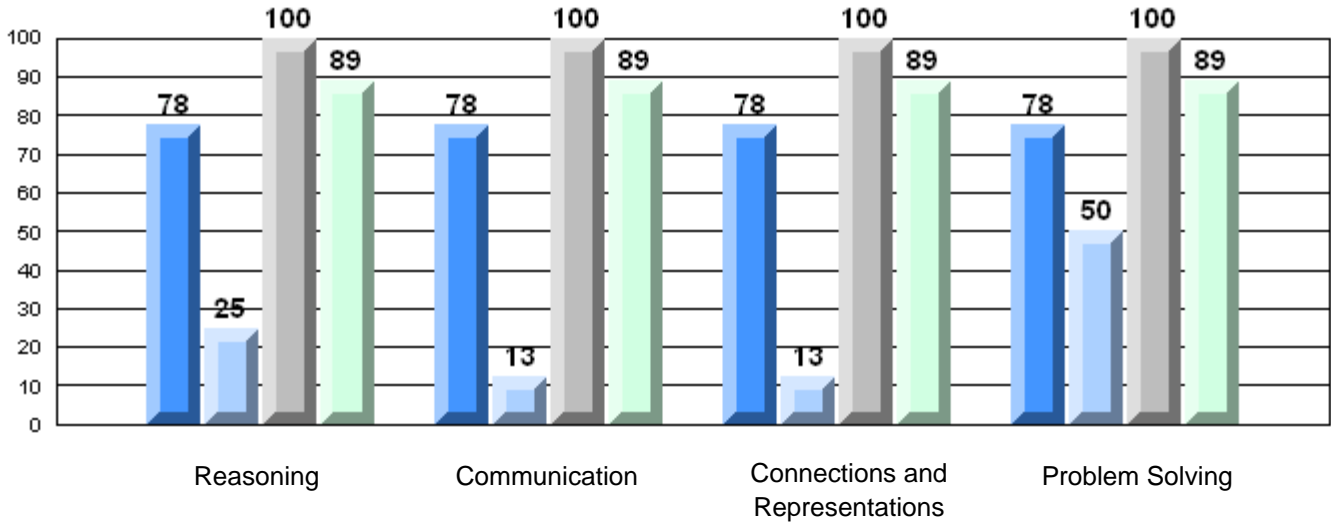
p

p

4 Year CRT (Subtest) Mark Trend 2006-2009  
Multiple Choice

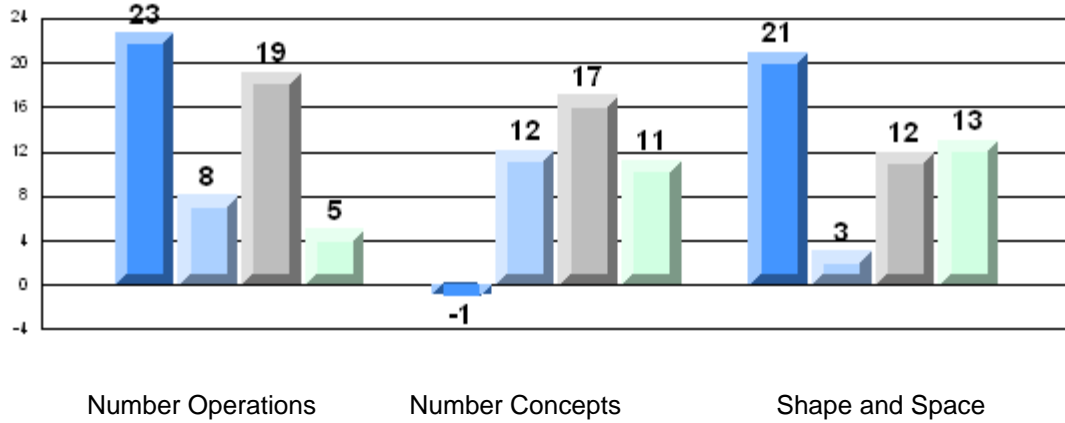


Rubric Results: Percentage of Students Performing at Level 3 and Above 2006-2009  
Number Operations



Difference from Provincial Mean, 2006-09

Multiple Choice



Number Operations

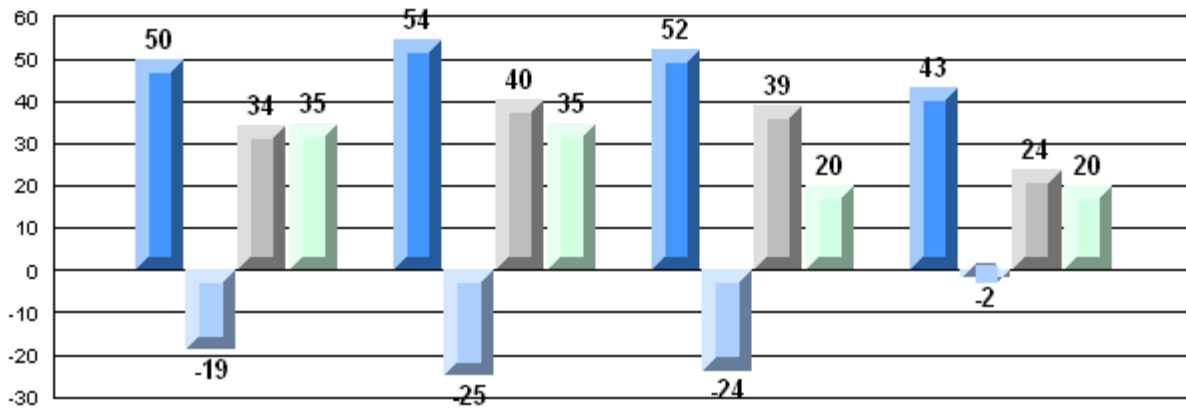
Number Concepts

Shape and Space

Difference from Provincial Mean, 2006-09

Rubric Results: Percentage of Students Performing at Level 3 and Above 2006-2009

Number Operations

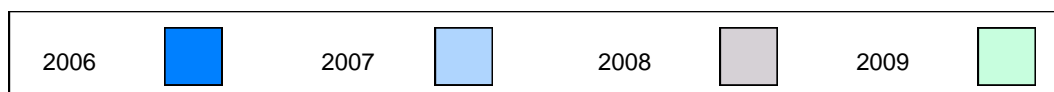


Reasoning

Communication

Connections and  
Representations

Problem Solving



Number of Students: 10

**Multiple Choice**

Number Operations

School  
District  
Province

99.0  
91.4  
85.0

P

P

Number Concepts

School  
District  
Province

86.3  
83.5  
73.5

P

P

Shape and Space

School  
District  
Province

80.0  
85.0  
81.4

Q

Q

**Written Response**

Number Concepts

School  
District  
Province

62.1  
66.9  
64.3

Q

Q

Shape and Space

School  
District  
Province

70.0  
78.5  
73.7

Q

Q

**Rubrics**

Number Operations

- Reasoning
- Communication
- Connections and Representations
- Problem Solving

School  
District  
Province

50.0  
78.0  
54.3

Q

Q

School  
District  
Province

40.0  
74.0  
54.2

Q

Q

School  
District  
Province

30.0  
80.0  
69.0

Q

Q

School  
District  
Province

50.0  
80.0  
68.9

Q

Q

**Yes/No Items**

Addition

School  
District  
Province

99.5  
94.6  
91.8

P

P

Subtraction

School  
District  
Province

87.5  
91.1  
84.6

Q

P

Multiplication

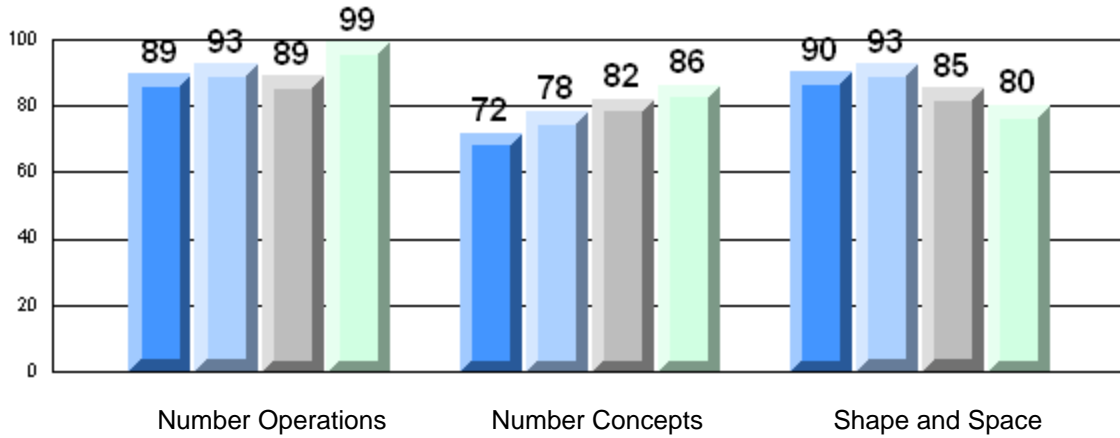
School  
District  
Province

82.0  
88.6  
79.2

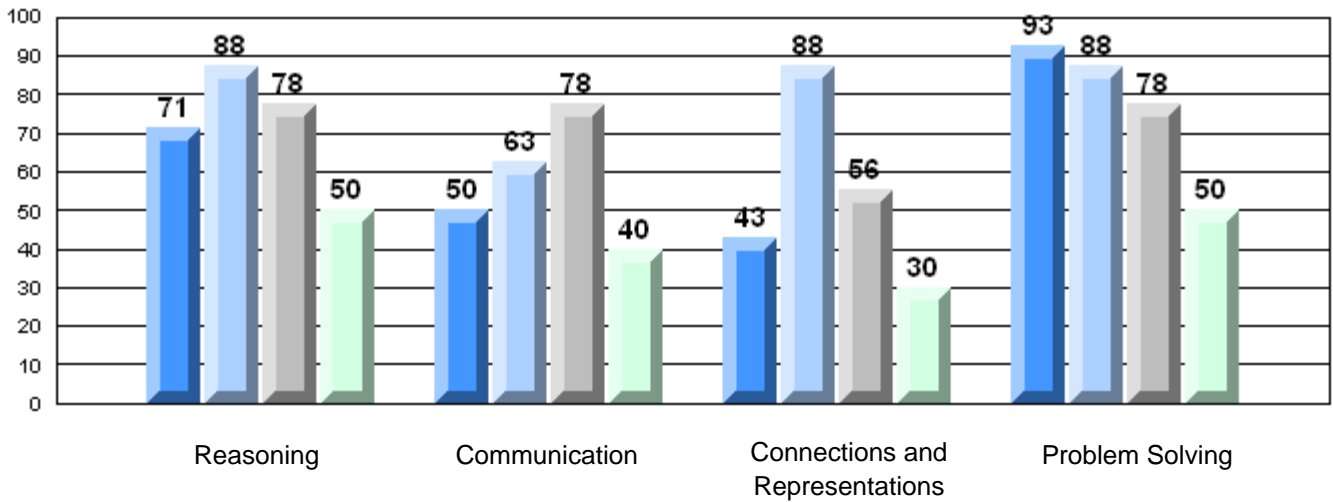
Q

P

4 Year CRT (Subtest) Mark Trend 2006-2009  
Multiple Choice

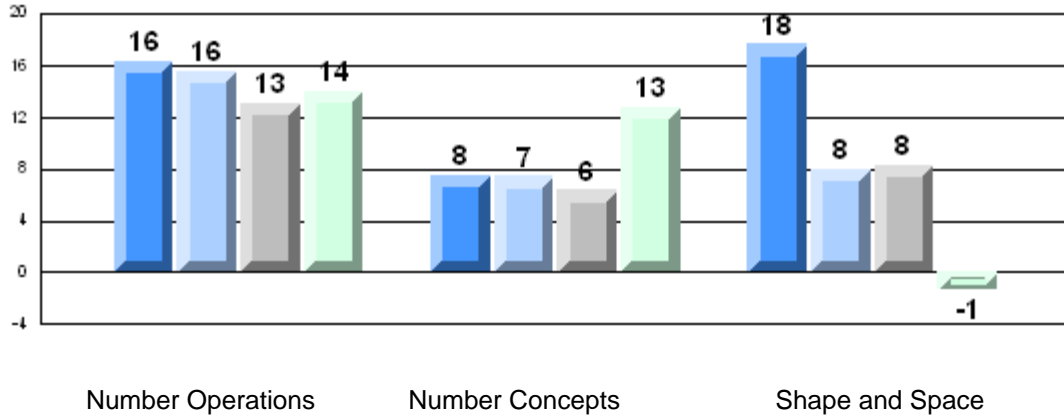


Rubric Results: Percentage of Students Performing at Level 3 and Above 2006-2009  
Number Operations



Difference from Provincial Mean, 2006-09

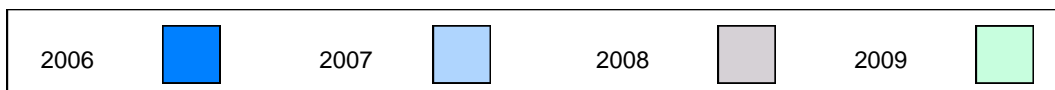
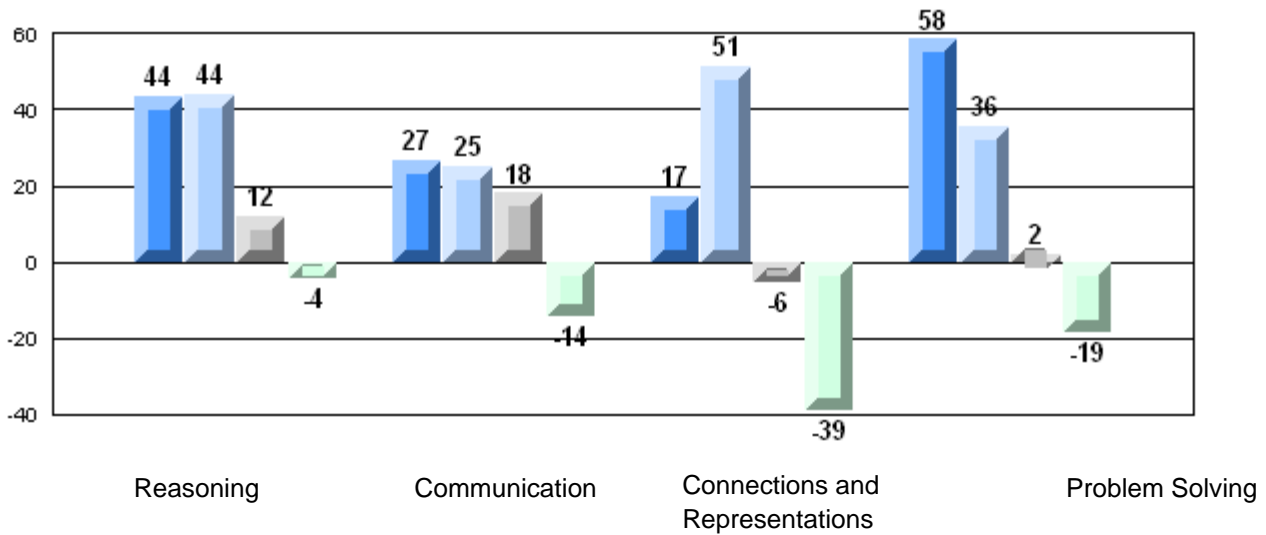
Multiple Choice



Difference from Provincial Mean, 2006-09

Rubric Results: Percentage of Students Performing at Level 3 and Above 2006-2009

Number Operations



Number of Students: 21

**Multiple Choice**

Number Operations

School 37.2  
District 93.6  
Province 85.0

School vs District  
School vs Province

q q

Number Concepts

School 25.9  
District 84.1  
Province 73.5

q q

Shape and Space

School 42.9  
District 78.8  
Province 81.4

q q

**Written Response**

Number Concepts

School 8.9  
District 74.0  
Province 64.3

q q

Shape and Space

School 19.1  
District 58.5  
Province 73.7

q q

**Rubrics**

Number Operations

- Reasoning
- Communication
- Connections and Representations
- Problem Solving

School 0.0  
District 36.4  
Province 54.3

q q

School 0.0  
District 36.4  
Province 54.2

q q

School 0.0  
District 81.8  
Province 69.0

q q

School 0.0  
District 81.8  
Province 68.9

q q

**Yes/No Items**

Addition

School 72.8  
District 86.8  
Province 91.8

q q

Subtraction

School 51.6  
District 84.1  
Province 84.6

q q

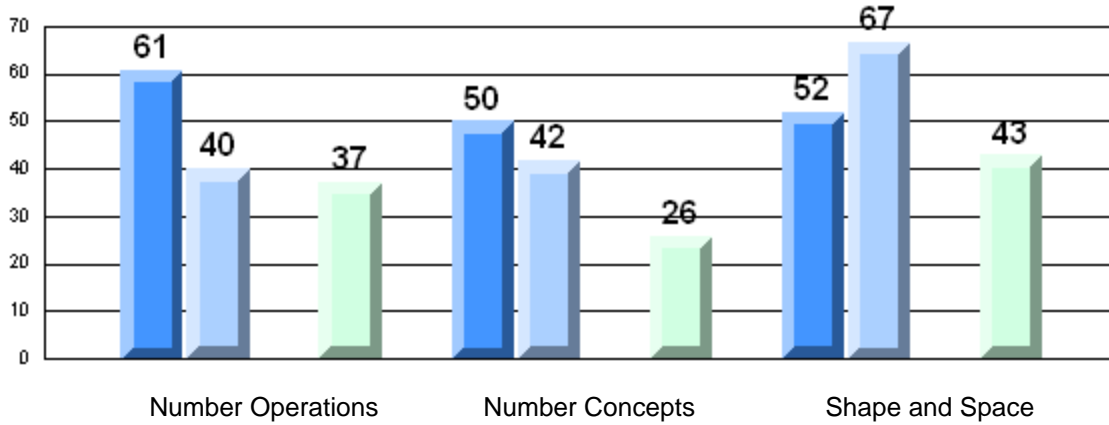
Multiplication

School 50.6  
District 85.0  
Province 79.2

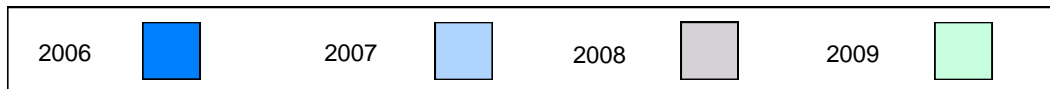
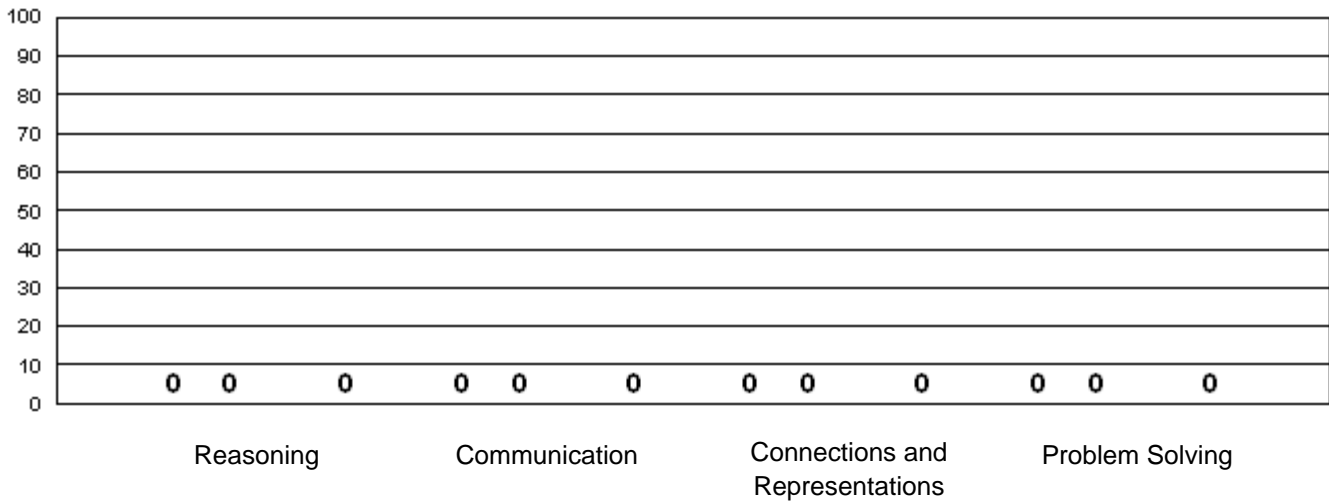
q q



4 Year CRT (Subtest) Mark Trend 2006-2009  
Multiple Choice

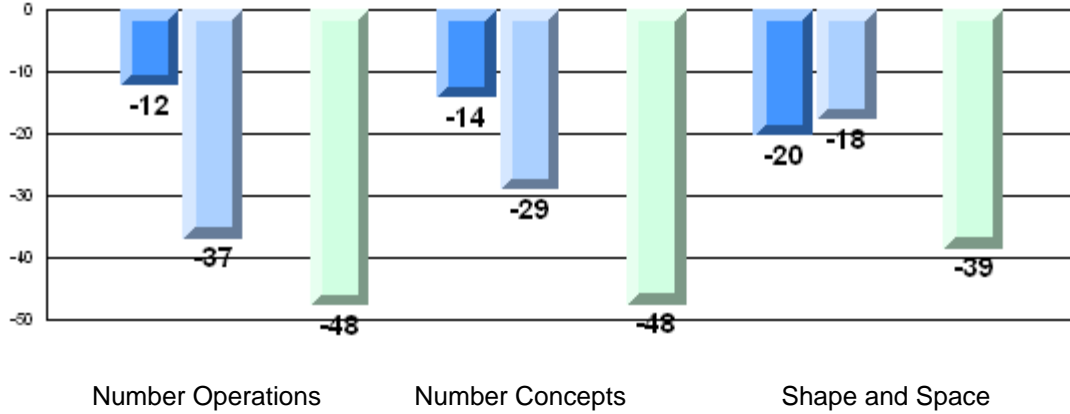


Rubric Results: Percentage of Students Performing at Level 3 and Above 2006-2009  
Number Operations



**Difference from Provincial Mean, 2006-09**

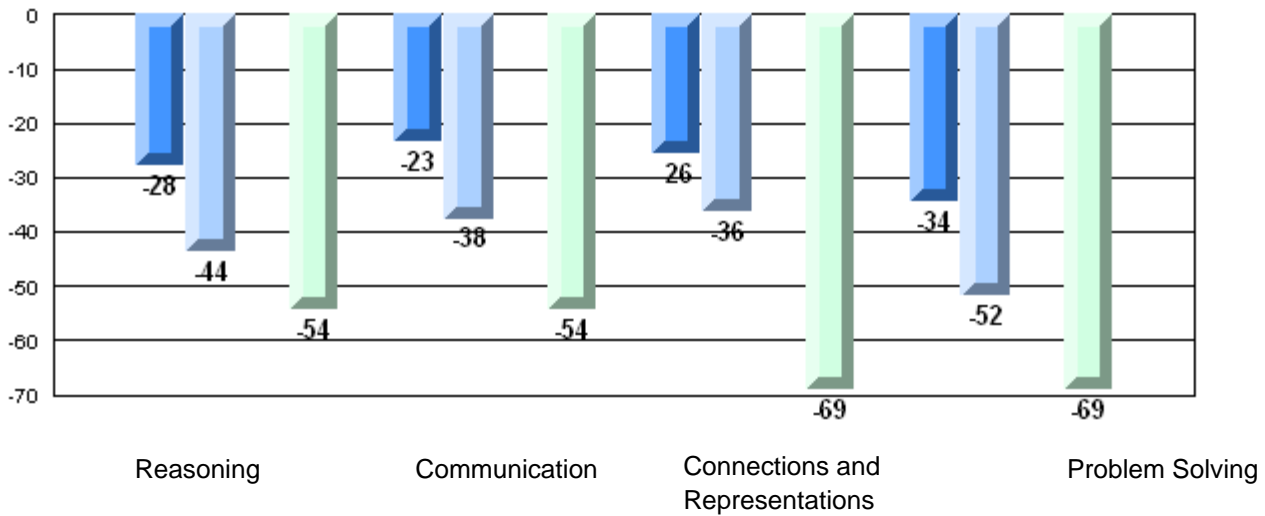
**Multiple Choice**



**Difference from Provincial Mean, 2006-09**

**Rubric Results: Percentage of Students Performing at Level 3 and Above 2006-2009**

**Number Operations**



Number of Students: 15

**Multiple Choice**

Number Operations

School 57.1  
District 93.6  
Province 85.0

School vs District      School vs Province

**Mark**

q

q

Number Concepts

School 37.5  
District 84.1  
Province 73.5

q

q

Shape and Space

School 46.4  
District 78.8  
Province 81.4

q

q

**Written Response**

Number Concepts

School 21.4  
District 74.0  
Province 64.3

q

q

Shape and Space

School 38.0  
District 58.5  
Province 73.7

q

q

**Rubrics**

Number Operations

- Reasoning
- Communication
- Connections and Representations
- Problem Solving

School 0.0  
District 36.4  
Province 54.3

q

q

School 0.0  
District 36.4  
Province 54.2

q

q

School 0.0  
District 81.8  
Province 69.0

q

q

School 0.0  
District 81.8  
Province 68.9

q

q

**Yes/No Items**

Addition

School 63.6  
District 86.8  
Province 91.8

q

q

Subtraction

School 57.7  
District 84.1  
Province 84.6

q

q

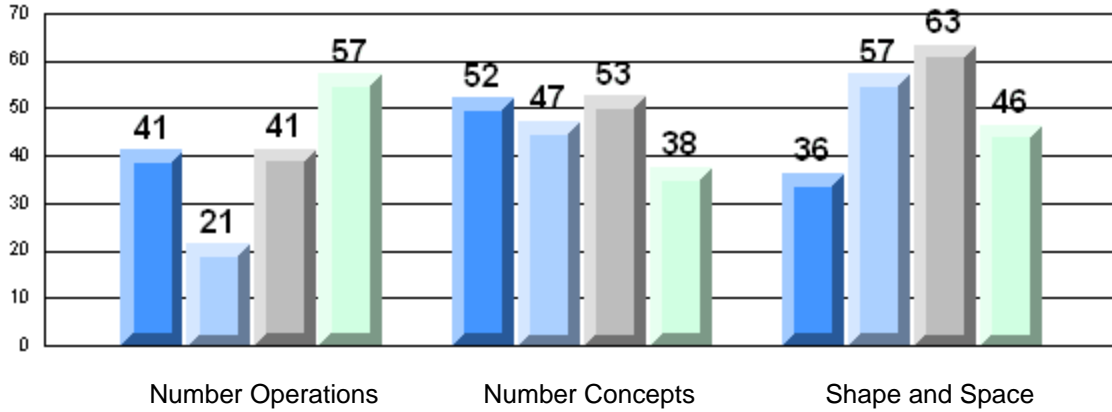
Multiplication

School 20.0  
District 85.0  
Province 79.2

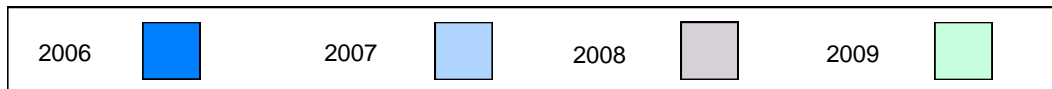
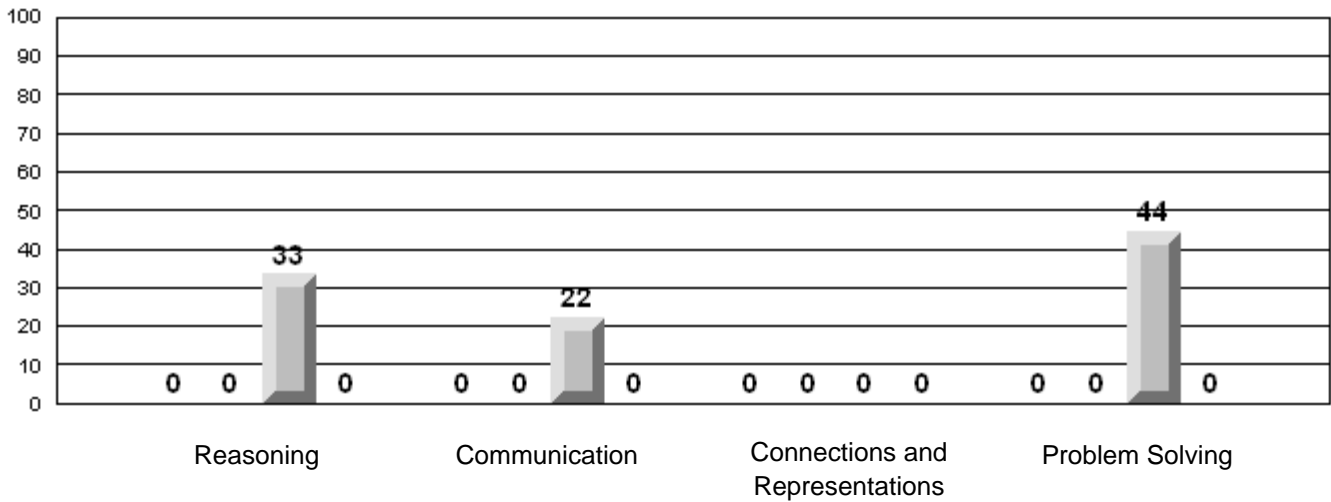
q

q

4 Year CRT (Subtest) Mark Trend 2006-2009  
Multiple Choice

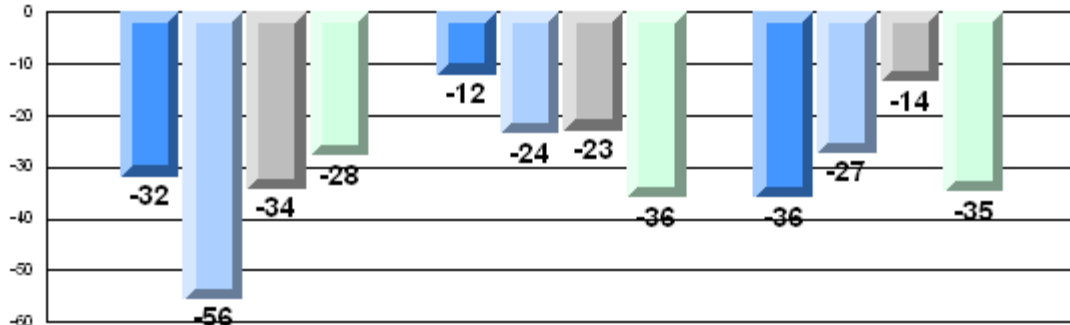


Rubric Results: Percentage of Students Performing at Level 3 and Above 2006-2009  
Number Operations



Difference from Provincial Mean, 2006-09

Multiple Choice



Number Operations

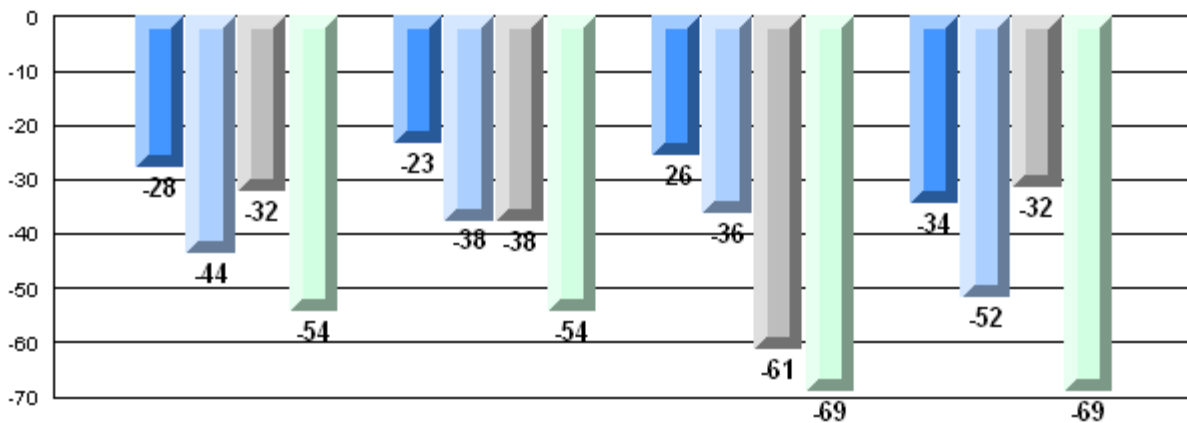
Number Concepts

Shape and Space

Difference from Provincial Mean, 2006-09

Rubric Results: Percentage of Students Performing at Level 3 and Above 2006-2009

Number Operations

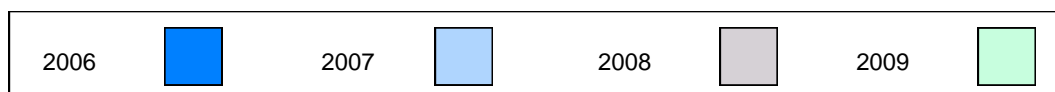


Reasoning

Communication

Connections and  
Representations

Problem Solving



Number of Students: 11

**Multiple Choice**

Number Operations

School  
District  
Province

93.6  
93.6  
85.0

P

P

Number Concepts

School  
District  
Province

84.1  
84.1  
73.5

P

P

Shape and Space

School  
District  
Province

78.8  
78.8  
81.4

P

Q

**Written Response**

Number Concepts

School  
District  
Province

74.0  
74.0  
64.3

P

P

Shape and Space

School  
District  
Province

58.5  
58.5  
73.7

P

Q

**Rubrics**

Number Operations

- Reasoning
- Communication
- Connections and Representations
- Problem Solving

School  
District  
Province

36.4  
36.4  
54.3

P

Q

School  
District  
Province

36.4  
36.4  
54.2

P

Q

School  
District  
Province

81.8  
81.8  
69.0

P

P

School  
District  
Province

81.8  
81.8  
68.9

P

P

**Yes/No Items**

Addition

School  
District  
Province

86.8  
86.8  
91.8

P

Q

Subtraction

School  
District  
Province

84.1  
84.1  
84.6

P

Q

Multiplication

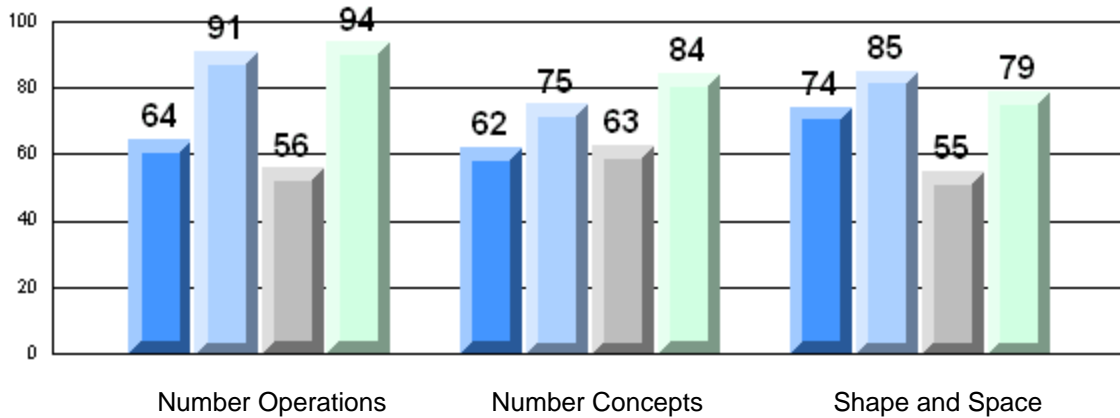
School  
District  
Province

85.0  
85.0  
79.2

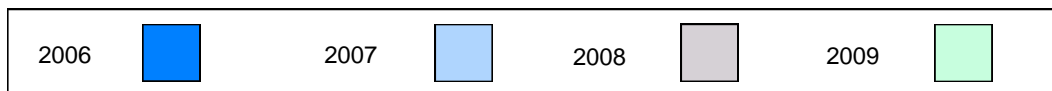
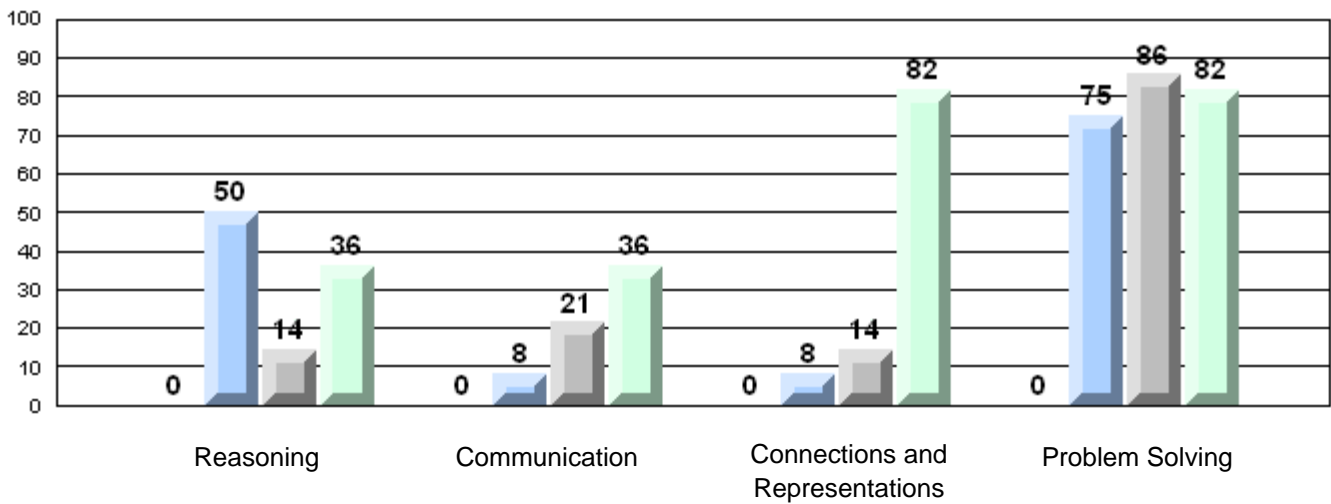
P

P

4 Year CRT (Subtest) Mark Trend 2006-2009  
Multiple Choice

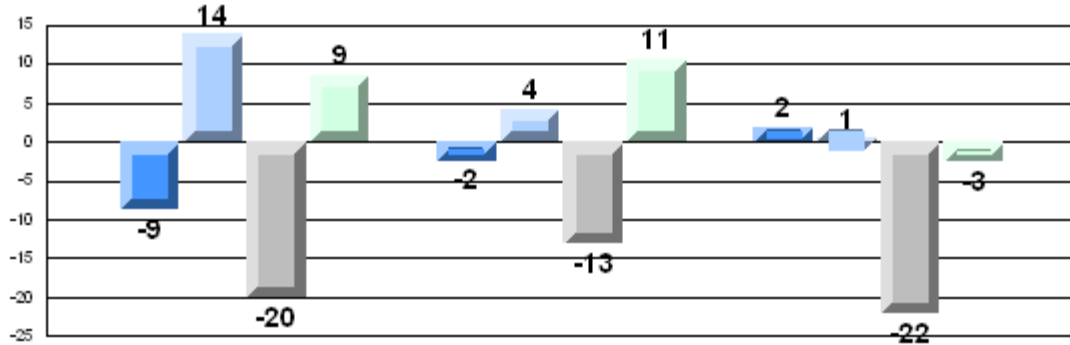


Rubric Results: Percentage of Students Performing at Level 3 and Above 2006-2009  
Number Operations



Difference from Provincial Mean, 2006-09

Multiple Choice



Number Operations

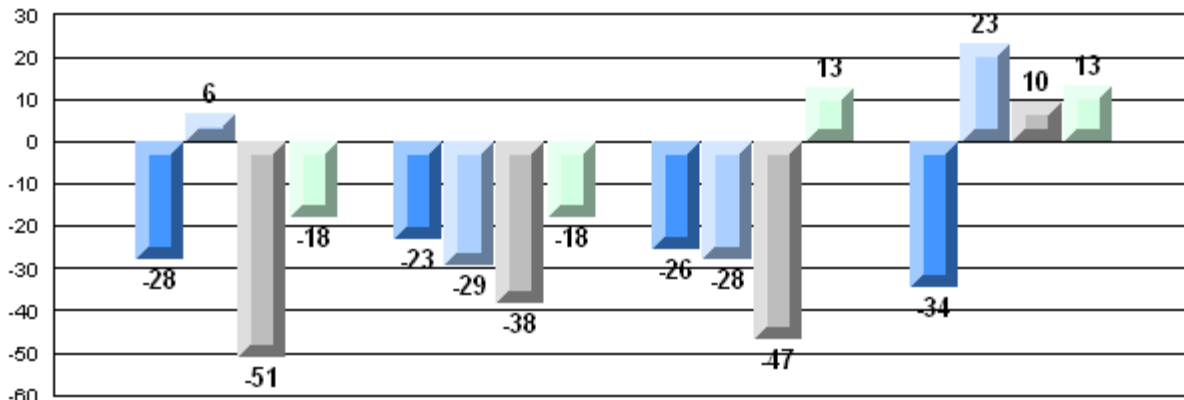
Number Concepts

Shape and Space

Difference from Provincial Mean, 2006-09

Rubric Results: Percentage of Students Performing at Level 3 and Above 2006-2009

Number Operations



Reasoning

Communication

Connections and  
Representations

Problem Solving

