

Number of Students: 1

Multiple Choice

Number Operations

School
District
Province

Number Concepts

School
District
Province

Shape and Space

School
District
Province

Written Response

Number Concepts

School
District
Province

Shape and Space

School
District
Province

Rubrics

Number Operations

- Reasoning
- Communication
- Connections and Representations
- Problem Solving

School
District
Province

School
District
Province

School
District
Province

School
District
Province

Yes/No Items

Addition

School
District
Province

Subtraction

School
District
Province

Multiplication

School
District
Province

Mark	School vs District	School vs Province
School data with 5 or fewer students withheld for reasons of confidentiality.	P	P
	Q	Q
	Q	Q
	Q	Q
	Q	Q
	Q	Q
	Q	Q
	Q	Q
	Q	Q
	Q	Q
	P	P
	P	P

4 Year CRT (Subtest) Mark Trend 2006-2009

Multiple Choice

School data with 5 or fewer students withheld for reasons of confidentiality.

Number Operations

Number Concepts

Shape and Space

Rubric Results: Percentage of Students Performing at Level 3 and Above 2006-2009

Number Operations

School data with 5 or fewer students withheld for reasons of confidentiality.

Reasoning

Communication

Connections and
Representations

Problem Solving



Difference from Provincial Mean, 2006-09

Multiple Choice

School data with 5 or fewer students withheld for reasons of confidentiality.

Number Operations

Number Concepts

Shape and Space

Difference from Provincial Mean, 2006-09

Rubric Results: Percentage of Students Performing at Level 3 and Above 2006-2009

Number Operations

School data with 5 or fewer students withheld for reasons of confidentiality.

Reasoning

Communication

Connections and
Representations

Problem Solving



Number of Students: 6

Multiple Choice

Number Operations

School
District
Province

58.3
83.2
85.0

School vs District School vs Province

q

q

Number Concepts

School
District
Province

52.1
73.8
73.5

q

q

Shape and Space

School
District
Province

69.4
80.1
81.4

q

q

Written Response

Number Concepts

School
District
Province

16.7
59.7
64.3

q

q

Shape and Space

School
District
Province

45.8
69.8
73.7

q

q

Rubrics

Number Operations

- Reasoning
- Communication
- Connections and Representations
- Problem Solving

School
District
Province

0.0
52.5
54.3

q

q

School
District
Province

0.0
49.3
54.2

q

q

School
District
Province

0.0
65.6
69.0

q

q

School
District
Province

0.0
65.2
68.9

q

q

Yes/No Items

Addition

School
District
Province

89.2
93.6
91.8

q

q

Subtraction

School
District
Province

77.5
86.0
84.6

q

q

Multiplication

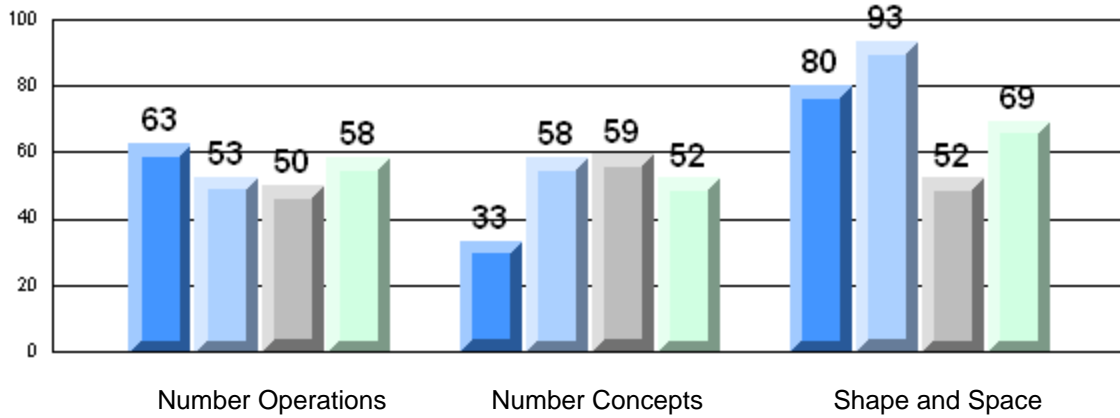
School
District
Province

56.7
81.8
79.2

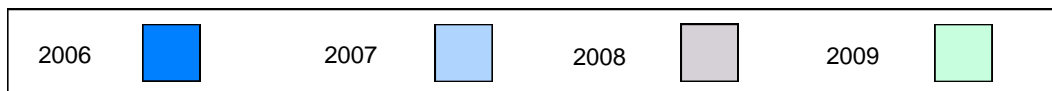
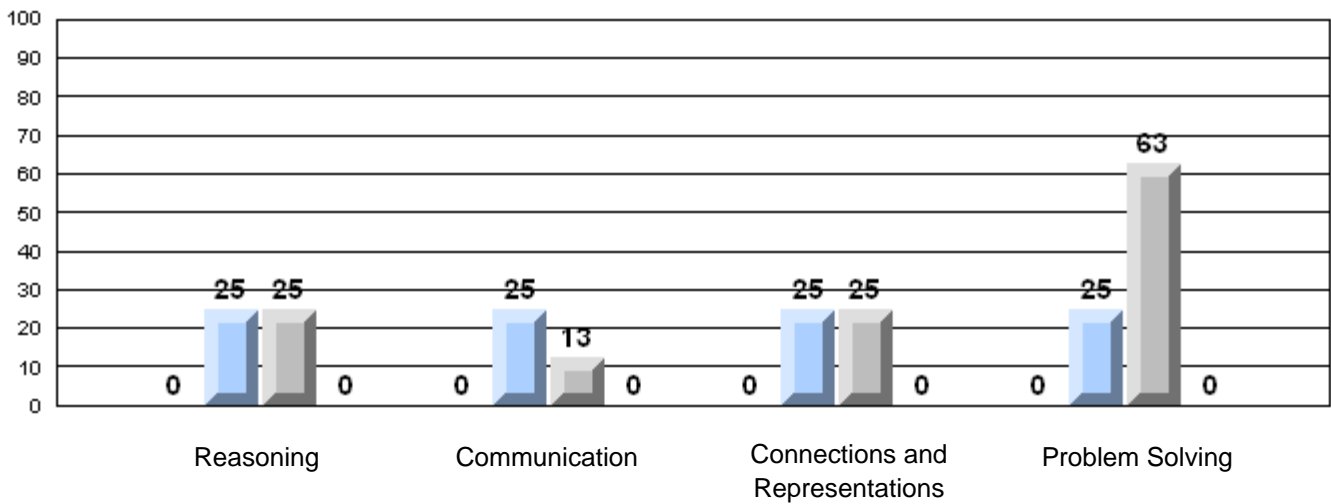
q

q

4 Year CRT (Subtest) Mark Trend 2006-2009
Multiple Choice

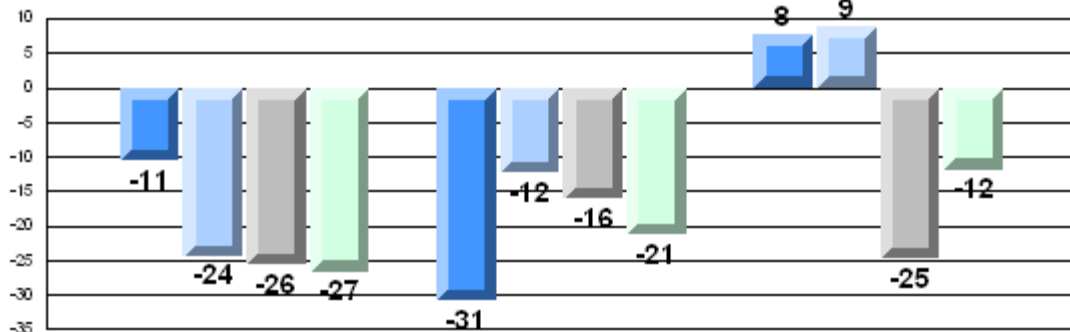


Rubric Results: Percentage of Students Performing at Level 3 and Above 2006-2009
Number Operations



Difference from Provincial Mean, 2006-09

Multiple Choice



Number Operations

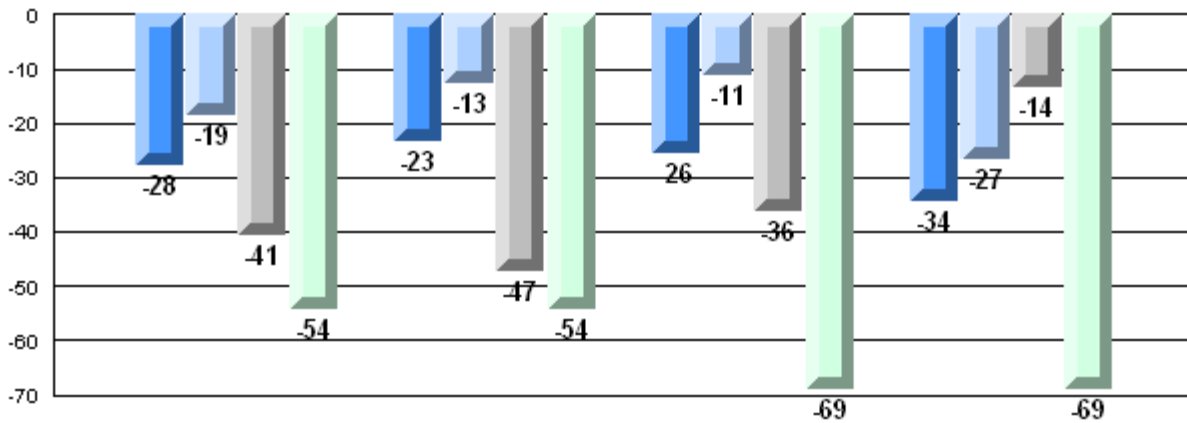
Number Concepts

Shape and Space

Difference from Provincial Mean, 2006-09

Rubric Results: Percentage of Students Performing at Level 3 and Above 2006-2009

Number Operations



Reasoning

Communication

Connections and Representations

Problem Solving



Number of Students: 85

Multiple Choice

Number Operations

School 81.8
District 83.2
Province 85.0

School vs District: Q
School vs Province: Q

Number Concepts

School 71.4
District 73.8
Province 73.5

School vs District: Q
School vs Province: Q

Shape and Space

School 76.0
District 80.1
Province 81.4

School vs District: Q
School vs Province: Q

Written Response

Number Concepts

School 57.7
District 59.7
Province 64.3

School vs District: Q
School vs Province: Q

Shape and Space

School 66.7
District 69.8
Province 73.7

School vs District: Q
School vs Province: Q

Rubrics

Number Operations

- Reasoning
- Communication
- Connections and Representations
- Problem Solving

School 55.3
District 52.5
Province 54.3

School vs District: P
School vs Province: P

School 49.4
District 49.3
Province 54.2

School vs District: P
School vs Province: Q

School 61.2
District 65.6
Province 69.0

School vs District: Q
School vs Province: Q

School 62.4
District 65.2
Province 68.9

School vs District: Q
School vs Province: Q

Yes/No Items

Addition

School 96.0
District 93.6
Province 91.8

School vs District: P
School vs Province: P

Subtraction

School 86.9
District 86.0
Province 84.6

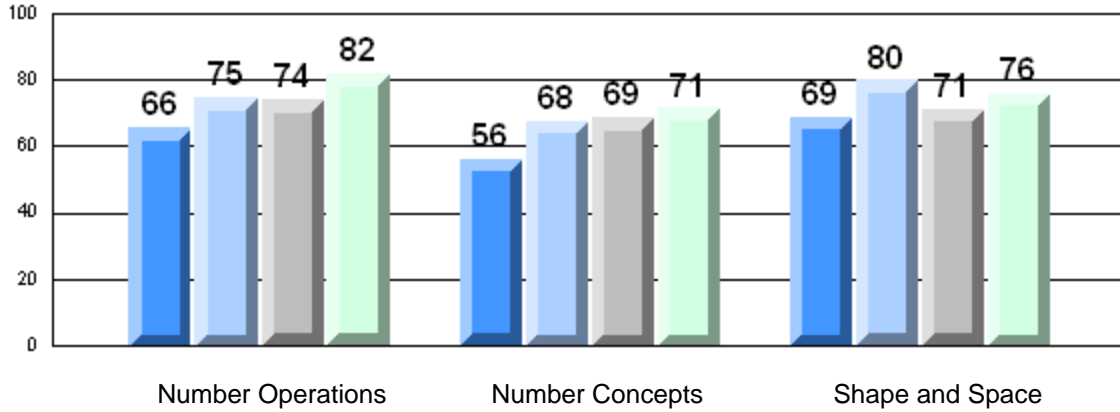
School vs District: P
School vs Province: P

Multiplication

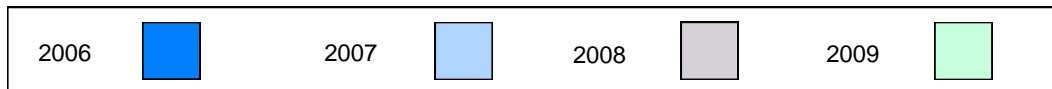
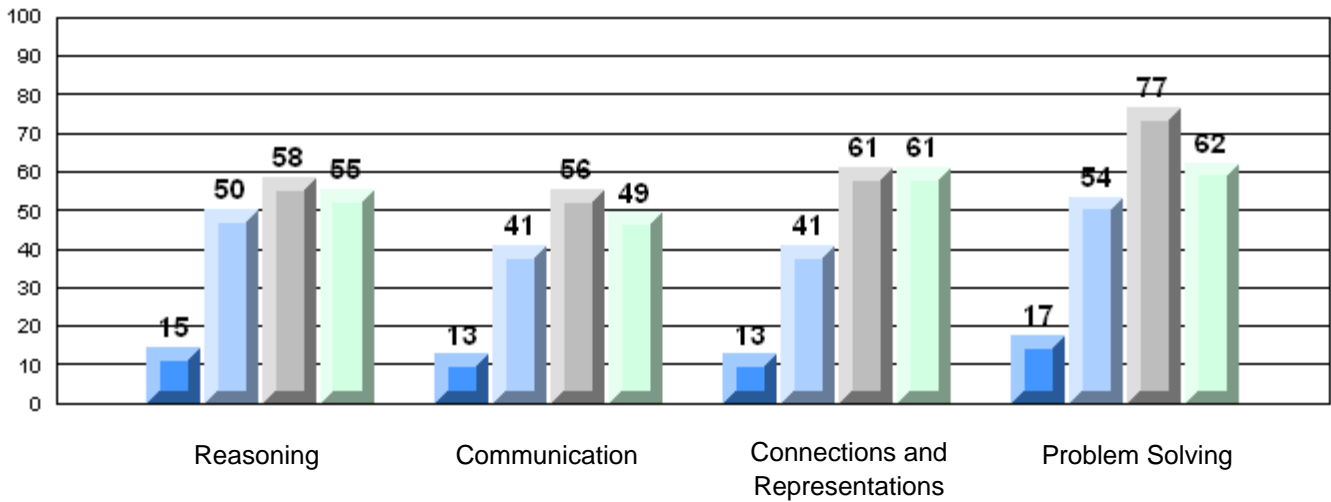
School 85.5
District 81.8
Province 79.2

School vs District: P
School vs Province: P

4 Year CRT (Subtest) Mark Trend 2006-2009
Multiple Choice

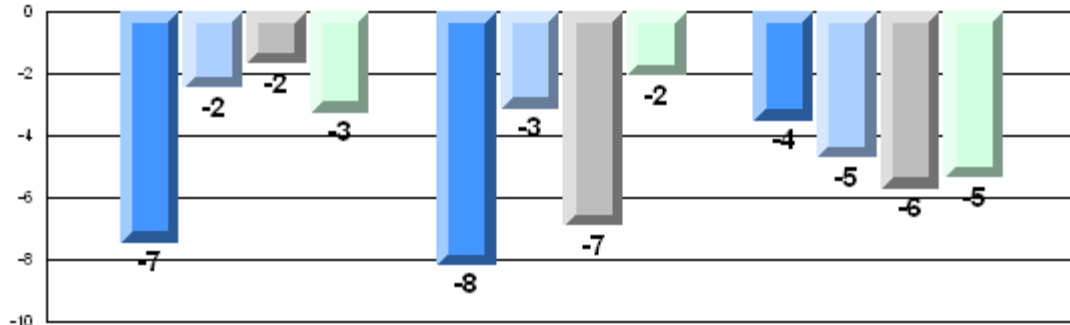


Rubric Results: Percentage of Students Performing at Level 3 and Above 2006-2009
Number Operations



Difference from Provincial Mean, 2006-09

Multiple Choice



Number Operations

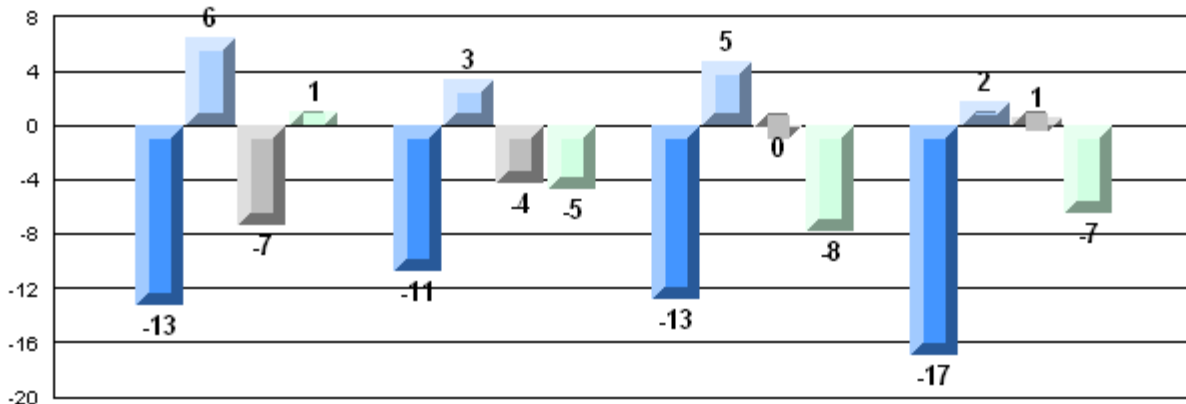
Number Concepts

Shape and Space

Difference from Provincial Mean, 2006-09

Rubric Results: Percentage of Students Performing at Level 3 and Above 2006-2009

Number Operations

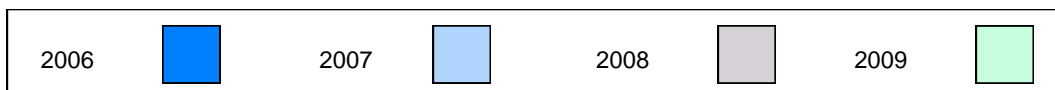


Reasoning

Communication

Connections and
Representations

Problem Solving



Number of Students: 8

Multiple Choice

Number Operations

School
District
Province

66.3
83.2
85.0

School vs District School vs Province

q

q

Number Concepts

School
District
Province

53.1
73.8
73.5

q

q

Shape and Space

School
District
Province

60.4
80.1
81.4

q

q

Written Response

Number Concepts

School
District
Province

39.3
59.7
64.3

q

q

Shape and Space

School
District
Province

68.0
69.8
73.7

q

q

Rubrics

Number Operations

- Reasoning
- Communication
- Connections and Representations
- Problem Solving

School
District
Province

12.5
52.5
54.3

q

q

School
District
Province

37.5
49.3
54.2

q

q

School
District
Province

37.5
65.6
69.0

q

q

School
District
Province

25.0
65.2
68.9

q

q

Yes/No Items

Addition

School
District
Province

91.3
93.6
91.8

q

q

Subtraction

School
District
Province

70.0
86.0
84.6

q

q

Multiplication

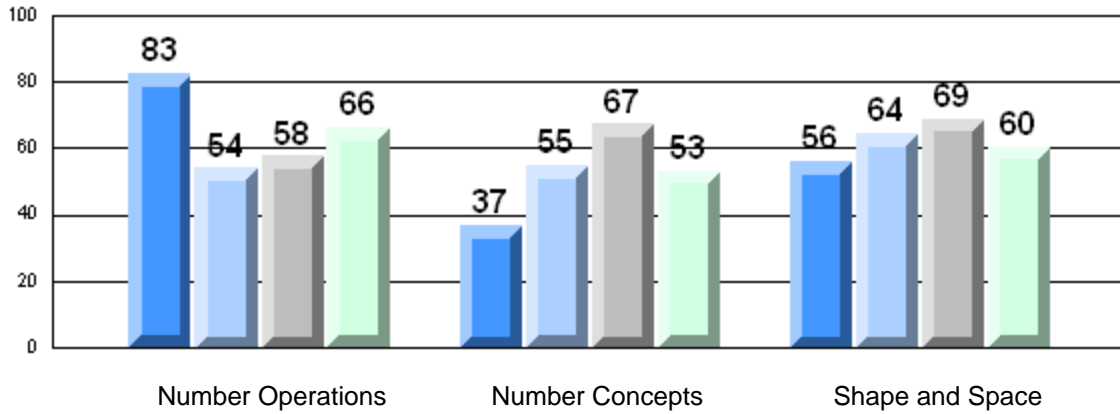
School
District
Province

82.5
81.8
79.2

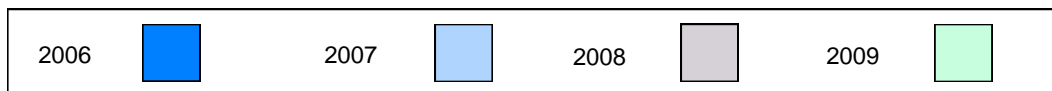
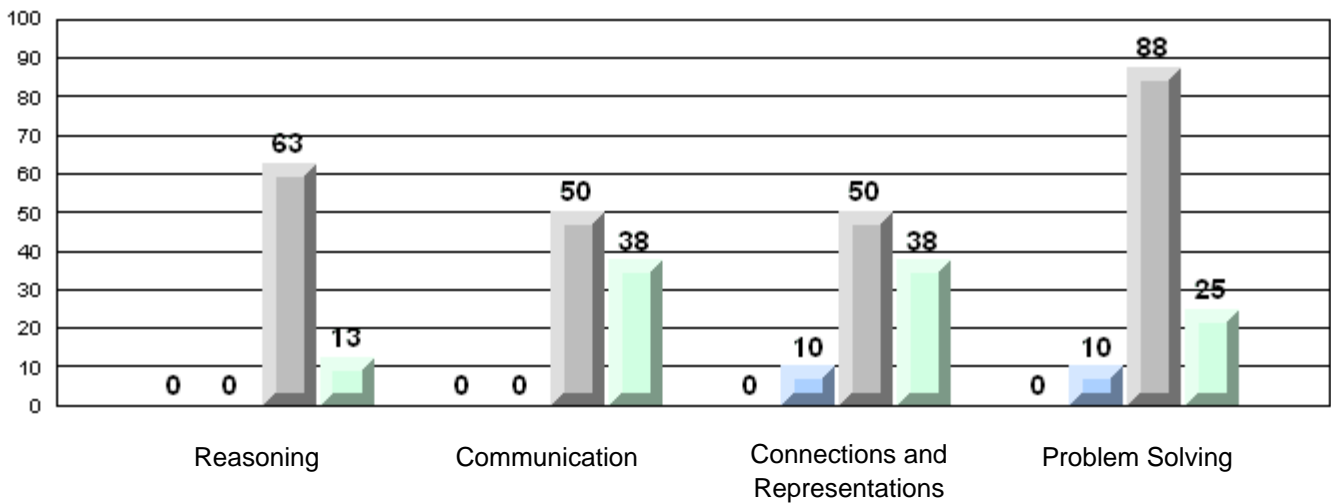
p

p

4 Year CRT (Subtest) Mark Trend 2006-2009
Multiple Choice

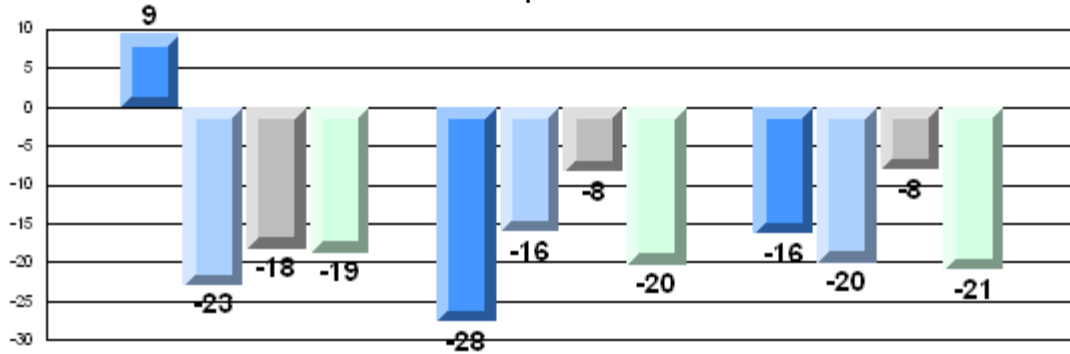


Rubric Results: Percentage of Students Performing at Level 3 and Above 2006-2009
Number Operations



Difference from Provincial Mean, 2006-09

Multiple Choice



Number Operations

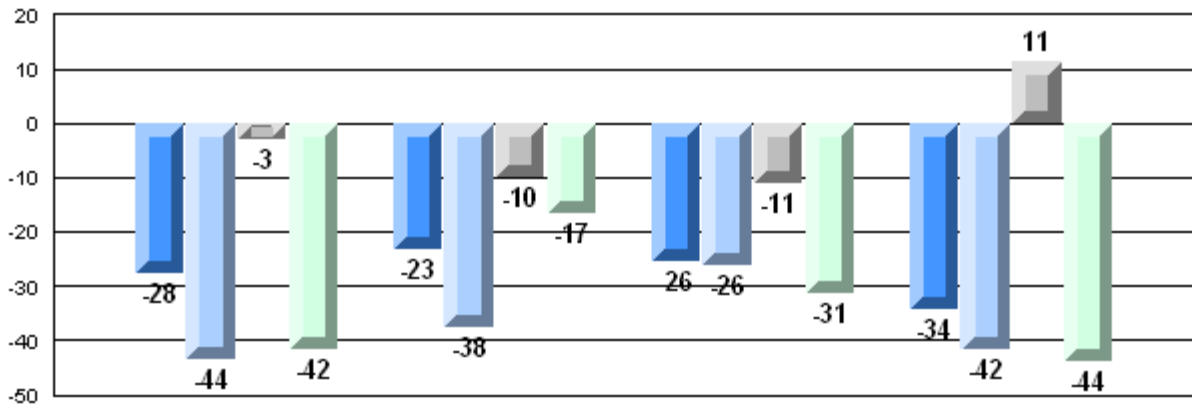
Number Concepts

Shape and Space

Difference from Provincial Mean, 2006-09

Rubric Results: Percentage of Students Performing at Level 3 and Above 2006-2009

Number Operations



Reasoning

Communication

Connections and Representations

Problem Solving



Number of Students: 91

Multiple Choice

Number Operations

School 90.0
District 83.2
Province 85.0

School vs District P School vs Province P

Number Concepts

School 80.5
District 73.8
Province 73.5

School vs District P School vs Province P

Shape and Space

School 88.2
District 80.1
Province 81.4

School vs District P School vs Province P

Written Response

Number Concepts

School 65.4
District 59.7
Province 64.3

School vs District P School vs Province P

Shape and Space

School 76.3
District 69.8
Province 73.7

School vs District P School vs Province P

Rubrics

Number Operations

- Reasoning
- Communication
- Connections and Representations
- Problem Solving

School 63.5
District 52.5
Province 54.3

School vs District P School vs Province P

School 61.2
District 49.3
Province 54.2

School vs District P School vs Province P

School 81.2
District 65.6
Province 69.0

School vs District P School vs Province P

School 81.2
District 65.2
Province 68.9

School vs District P School vs Province P

Yes/No Items

Addition

School 92.7
District 93.6
Province 91.8

School vs District Q School vs Province P

Subtraction

School 87.0
District 86.0
Province 84.6

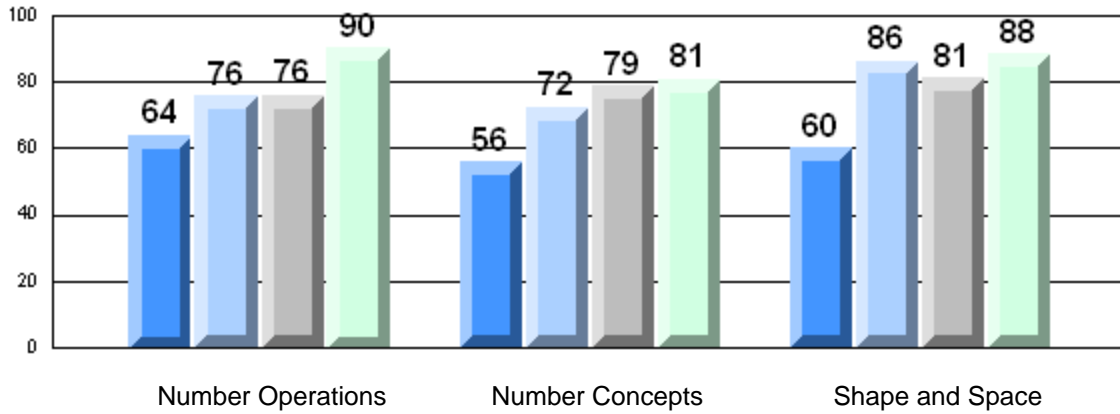
School vs District P School vs Province P

Multiplication

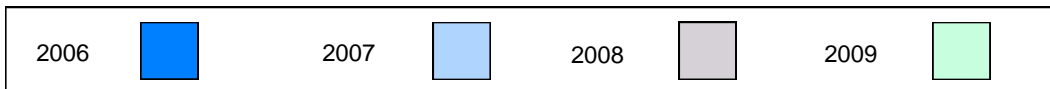
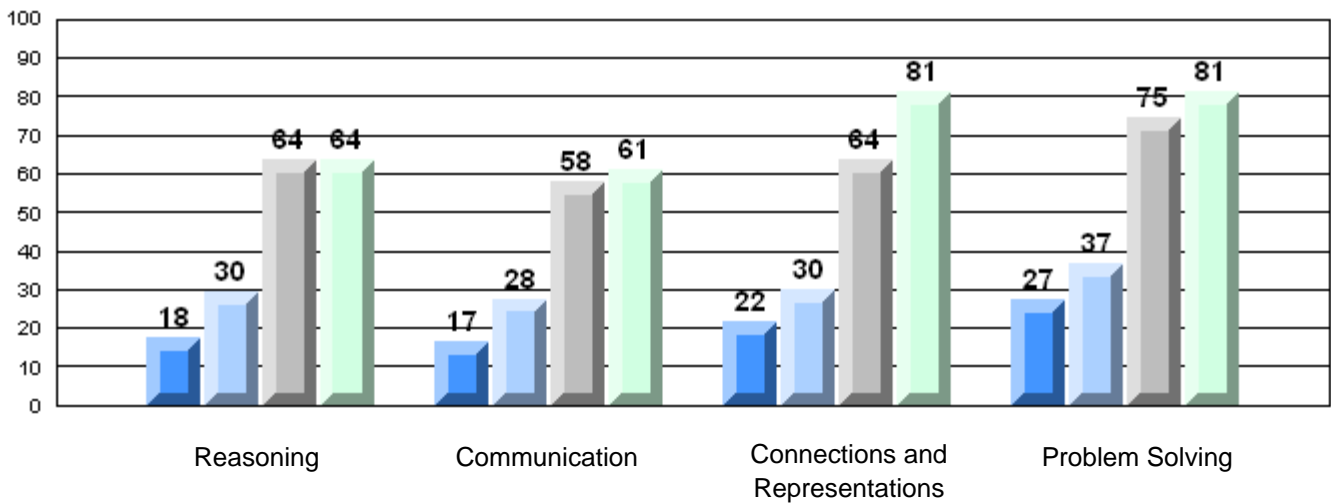
School 81.7
District 81.8
Province 79.2

School vs District Q School vs Province P

4 Year CRT (Subtest) Mark Trend 2006-2009
Multiple Choice

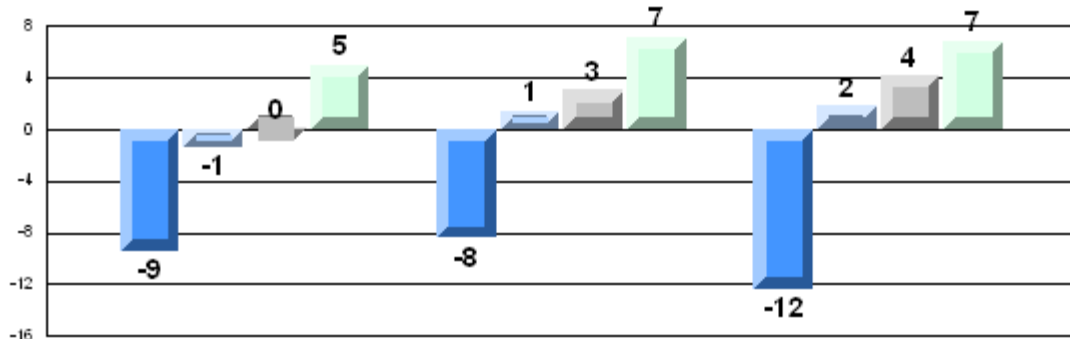


Rubric Results: Percentage of Students Performing at Level 3 and Above 2006-2009
Number Operations



Difference from Provincial Mean, 2006-09

Multiple Choice



Number Operations

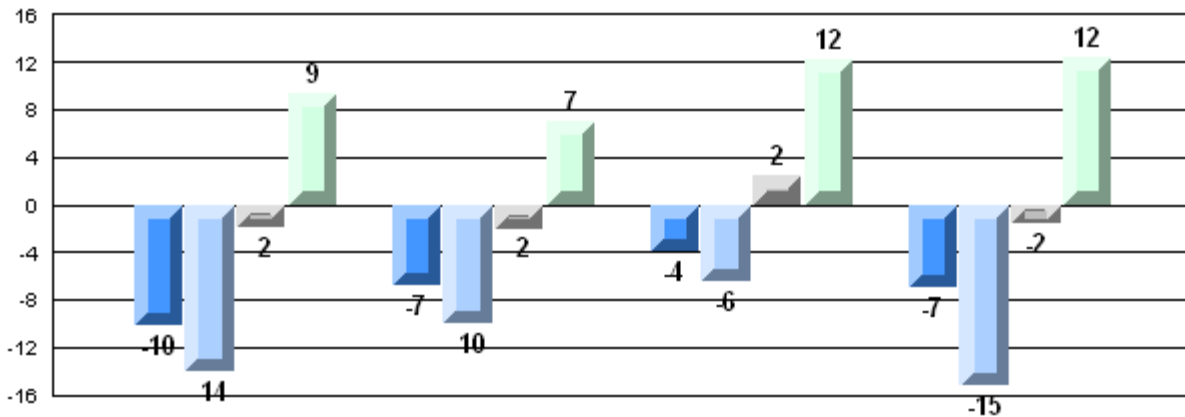
Number Concepts

Shape and Space

Difference from Provincial Mean, 2006-09

Rubric Results: Percentage of Students Performing at Level 3 and Above 2006-2009

Number Operations



Reasoning

Communication

Connections and Representations

Problem Solving



Number of Students: 5

Multiple Choice

Number Operations

School
District
Province

Number Concepts

School
District
Province

Shape and Space

School
District
Province

Written Response

Number Concepts

School
District
Province

Shape and Space

School
District
Province

Rubrics

Number Operations

- Reasoning
- Communication
- Connections and Representations
- Problem Solving

School
District
Province

School
District
Province

School
District
Province

School
District
Province

Yes/No Items

Addition

School
District
Province

Subtraction

School
District
Province

Multiplication

School
District
Province

Mark	School vs District	School vs Province
School data with 5 or fewer students withheld for reasons of confidentiality.	P	P
	Q	Q
	P	P
	P	Q
	Q	Q
	P	P
	P	P
	Q	Q
	Q	Q
	Q	P
	Q	Q
	P	P

4 Year CRT (Subtest) Mark Trend 2006-2009

Multiple Choice

School data with 5 or fewer students withheld for reasons of confidentiality.

Number Operations

Number Concepts

Shape and Space

Rubric Results: Percentage of Students Performing at Level 3 and Above 2006-2009

Number Operations

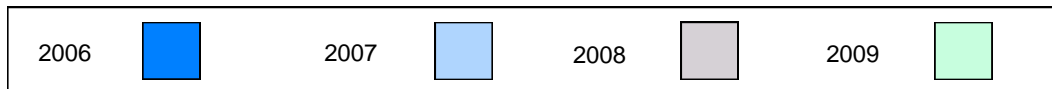
School data with 5 or fewer students withheld for reasons of confidentiality.

Reasoning

Communication

Connections and
Representations

Problem Solving



Difference from Provincial Mean, 2006-09

Multiple Choice

School data with 5 or fewer students withheld for reasons of confidentiality.

Number Operations

Number Concepts

Shape and Space

Difference from Provincial Mean, 2006-09

Rubric Results: Percentage of Students Performing at Level 3 and Above 2006-2009

Number Operations

School data with 5 or fewer students withheld for reasons of confidentiality.

Reasoning

Communication

Connections and
Representations

Problem Solving



Number of Students: 23

Multiple Choice

Number Operations

School
District
Province

79.6
83.2
85.0

q

q

Number Concepts

School
District
Province

77.7
73.8
73.5

p

p

Shape and Space

School
District
Province

78.6
80.1
81.4

q

q

Written Response

Number Concepts

School
District
Province

67.1
59.7
64.3

p

p

Shape and Space

School
District
Province

68.5
69.8
73.7

q

q

Rubrics

Number Operations

- Reasoning
- Communication
- Connections and Representations
- Problem Solving

School
District
Province

40.9
52.5
54.3

q

q

School
District
Province

36.4
49.3
54.2

q

q

School
District
Province

68.2
65.6
69.0

p

q

School
District
Province

59.1
65.2
68.9

q

q

Yes/No Items

Addition

School
District
Province

89.1
93.6
91.8

q

q

Subtraction

School
District
Province

88.9
86.0
84.6

p

p

Multiplication

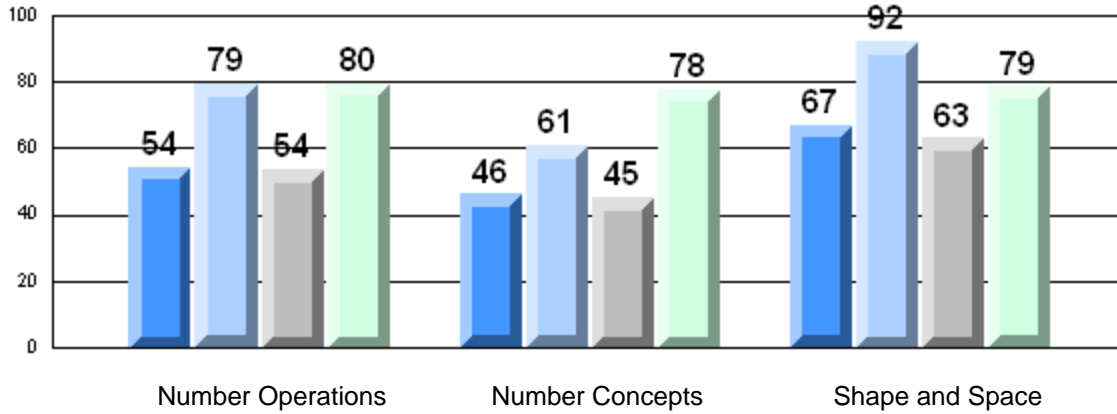
School
District
Province

78.2
81.8
79.2

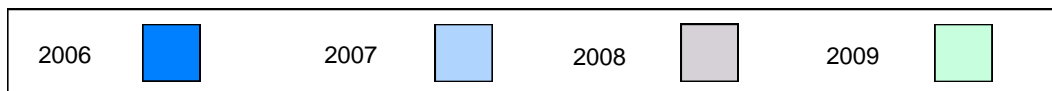
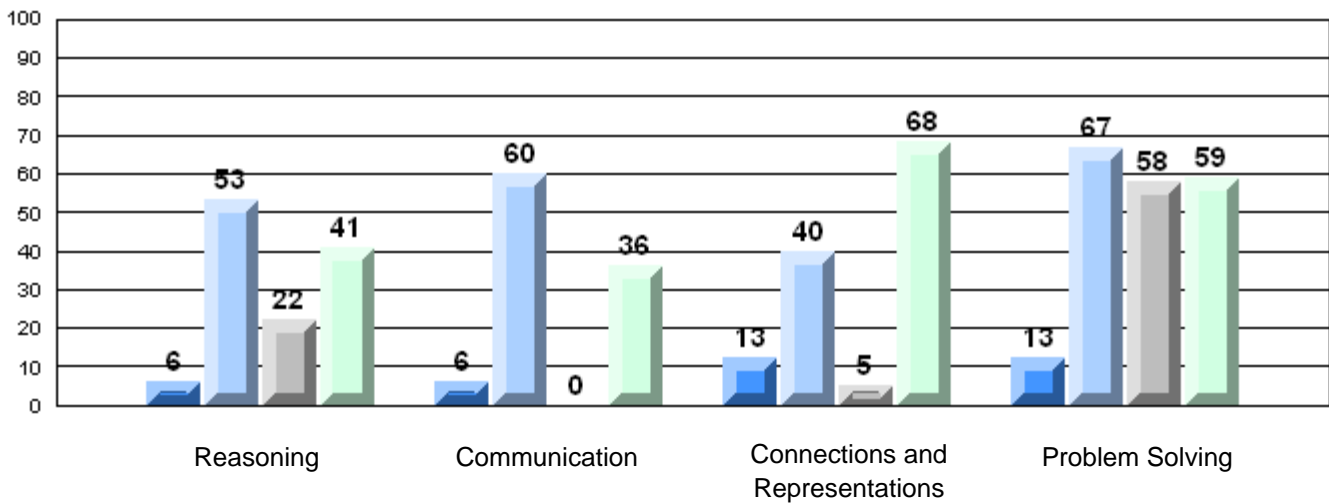
q

q

**4 Year CRT (Subtest) Mark Trend 2006-2009
Multiple Choice**

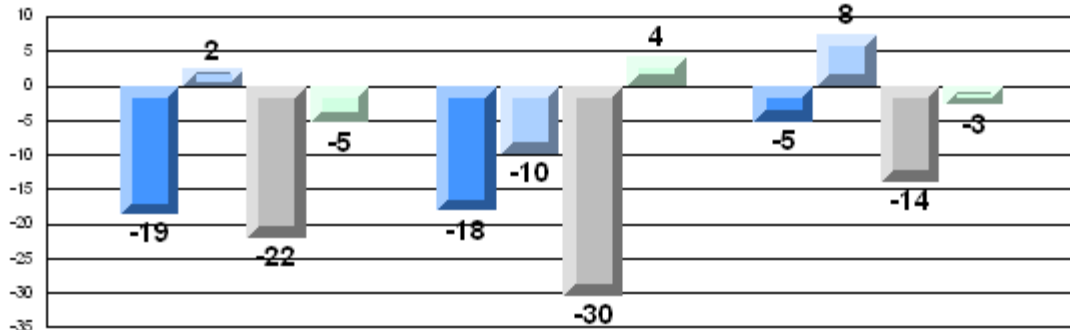


**Rubric Results: Percentage of Students Performing at Level 3 and Above 2006-2009
Number Operations**



Difference from Provincial Mean, 2006-09

Multiple Choice



Number Operations

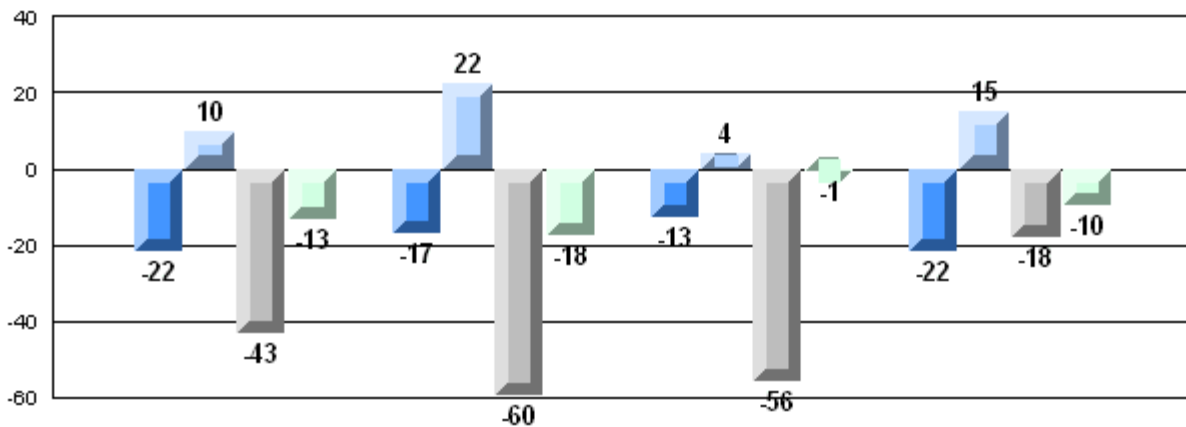
Number Concepts

Shape and Space

Difference from Provincial Mean, 2006-09

Rubric Results: Percentage of Students Performing at Level 3 and Above 2006-2009

Number Operations

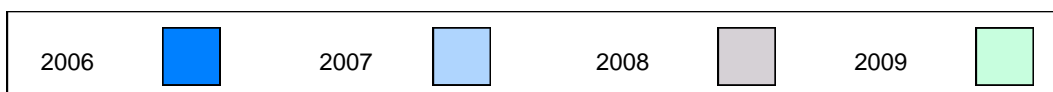


Reasoning

Communication

Connections and
Representations

Problem Solving



Number of Students: 7

Multiple Choice

Number Operations

Number Concepts

Shape and Space

Written Response

Number Concepts

Shape and Space

Rubrics

Number Operations

- Reasoning
- Communication
- Connections and Representations
- Problem Solving

Yes/No Items

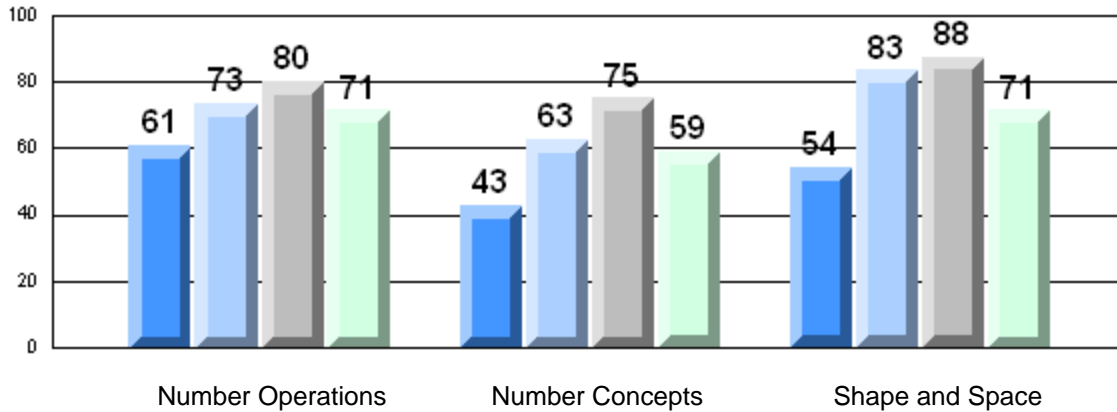
Addition

Subtraction

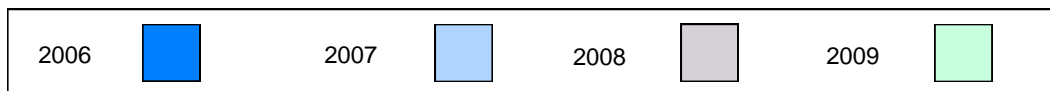
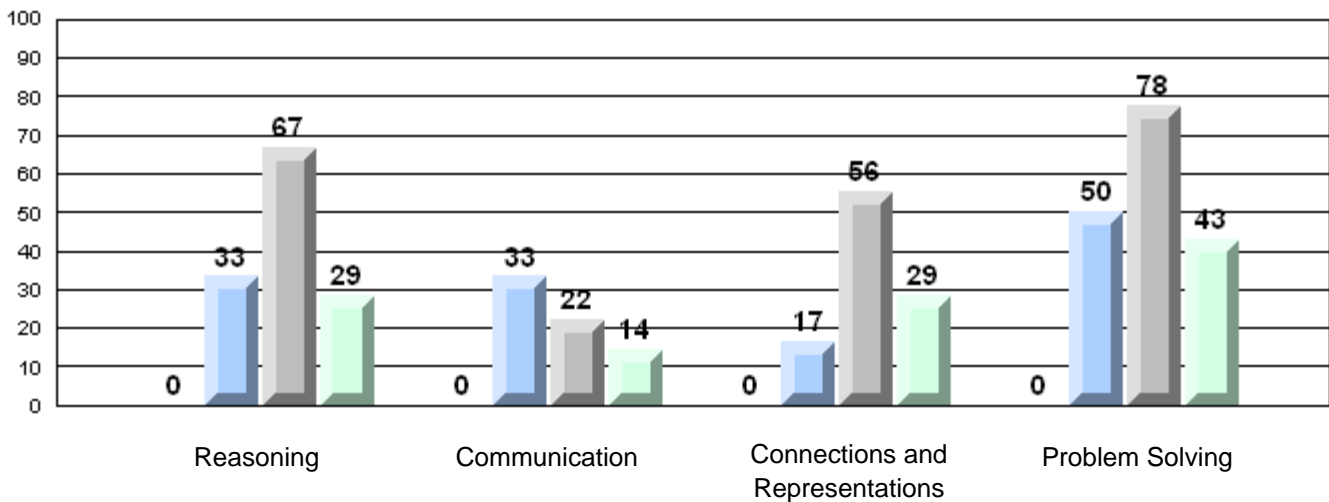
Multiplication

Mark	School vs District	School vs Province
School: 71.4	q	q
District: 83.2		
Province: 85.0		
School: 58.9	q	q
District: 73.8		
Province: 73.5		
School: 71.4	q	q
District: 80.1		
Province: 81.4		
School: 46.9	q	q
District: 59.7		
Province: 64.3		
School: 67.0	q	q
District: 69.8		
Province: 73.7		
School: 28.6	q	q
District: 52.5		
Province: 54.3		
School: 14.3	q	q
District: 49.3		
Province: 54.2		
School: 28.6	q	q
District: 65.6		
Province: 69.0		
School: 42.9	q	q
District: 65.2		
Province: 68.9		
School: 99.3	p	p
District: 93.6		
Province: 91.8		
School: 94.3	p	p
District: 86.0		
Province: 84.6		
School: 84.3	p	p
District: 81.8		
Province: 79.2		

4 Year CRT (Subtest) Mark Trend 2006-2009
Multiple Choice

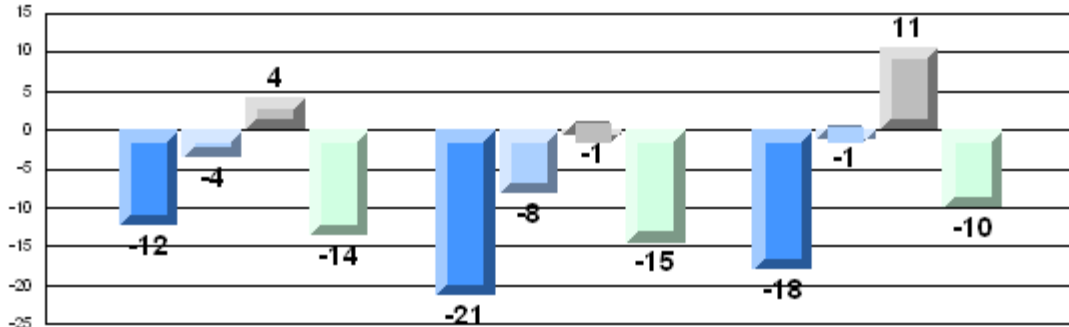


Rubric Results: Percentage of Students Performing at Level 3 and Above 2006-2009
Number Operations



Difference from Provincial Mean, 2006-09

Multiple Choice



Number Operations

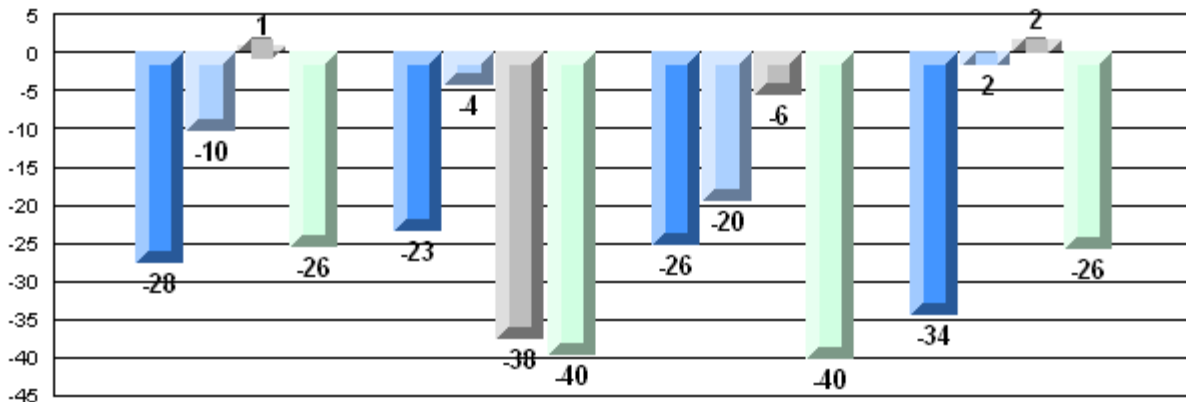
Number Concepts

Shape and Space

Difference from Provincial Mean, 2006-09

Rubric Results: Percentage of Students Performing at Level 3 and Above 2006-2009

Number Operations



Reasoning

Communication

Connections and Representations

Problem Solving



Number of Students: 2

Multiple Choice

Number Operations

School
District
Province

Number Concepts

School
District
Province

Shape and Space

School
District
Province

Written Response

Number Concepts

School
District
Province

Shape and Space

School
District
Province

Rubrics

Number Operations

- Reasoning
- Communication
- Connections and Representations
- Problem Solving

School
District
Province

School
District
Province

School
District
Province

School
District
Province

Yes/No Items

Addition

School
District
Province

Subtraction

School
District
Province

Multiplication

School
District
Province

Mark	School vs District	School vs Province
School data with 5 or fewer students withheld for reasons of confidentiality.	Q	Q
	Q	Q
	Q	Q
	P	P
	Q	Q
	Q	Q
	Q	Q
	Q	Q
	P	P
	Q	Q

4 Year CRT (Subtest) Mark Trend 2006-2009

Multiple Choice

School data with 5 or fewer students withheld for reasons of confidentiality.

Number Operations

Number Concepts

Shape and Space

Rubric Results: Percentage of Students Performing at Level 3 and Above 2006-2009

Number Operations

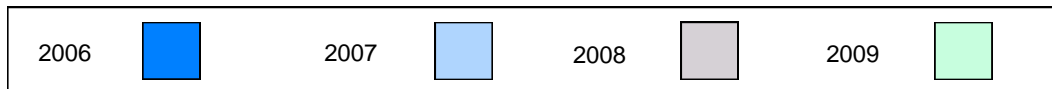
School data with 5 or fewer students withheld for reasons of confidentiality.

Reasoning

Communication

Connections and
Representations

Problem Solving



Difference from Provincial Mean, 2006-09

Multiple Choice

School data with 5 or fewer students withheld for reasons of confidentiality.

Number Operations

Number Concepts

Shape and Space

Difference from Provincial Mean, 2006-09

Rubric Results: Percentage of Students Performing at Level 3 and Above 2006-2009

Number Operations

School data with 5 or fewer students withheld for reasons of confidentiality.

Reasoning Communication Connections and Representations Problem Solving

