

District 1 - Labrador

#010 - Menihék High School, Labrador City

Grades: 8-12

Number of Students

6

Francais 3202

School
 District
 Province

Public Exam Mark

School vs District

School vs Province

68.7
 69.4
 70.1

q

q

Final Mark

School vs District

School vs Province

74.7
 74.4
 73.3

P

P

Subtest

Listening

School
 District
 Province

78.7
 78.5
 75.7

P

P

Reading

School
 District
 Province

66.7
 71.5
 75.1

q

q

Writing

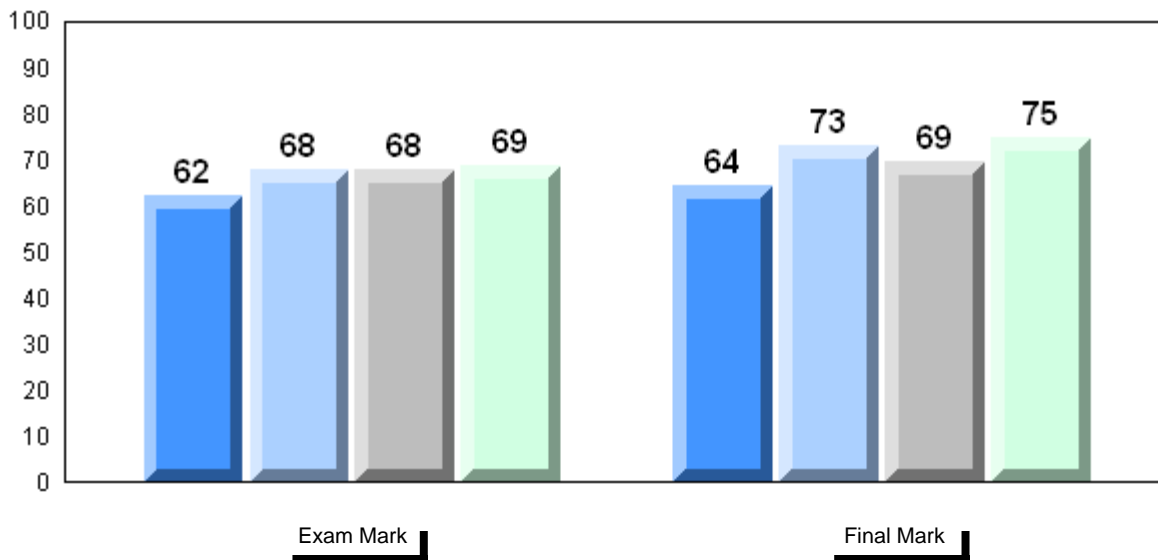
School
 District
 Province

41.3
 40.5
 52.5

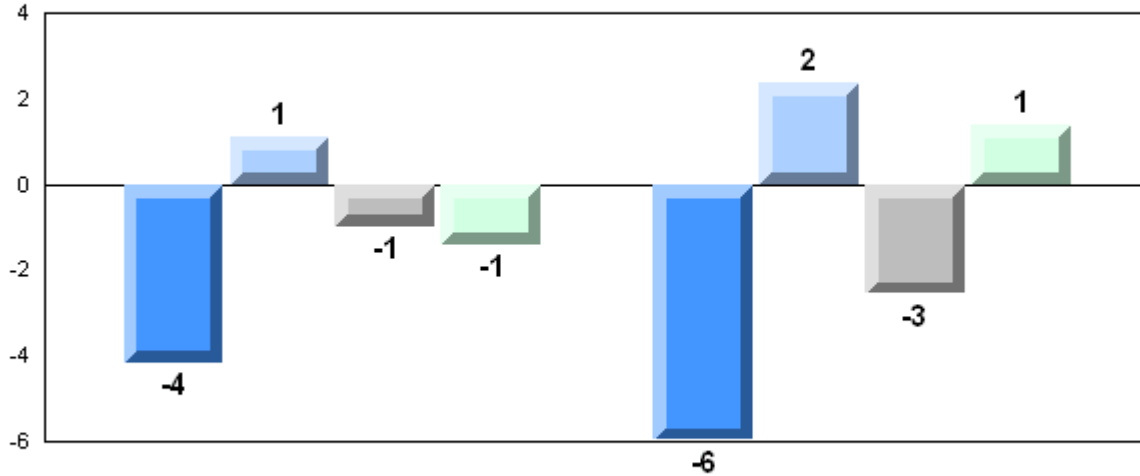
P

q

Average Mark, 2006-2009

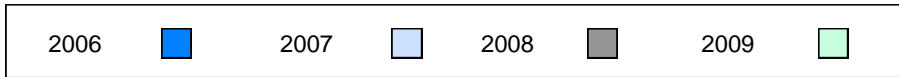


Difference from Provincial Mean, 2006-2009

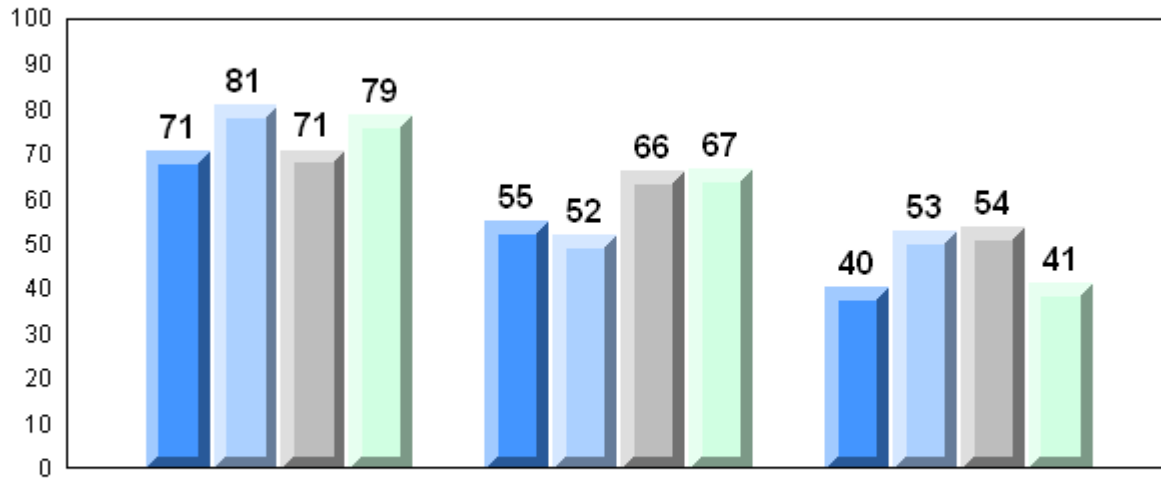


Exam Mark

Final Mark



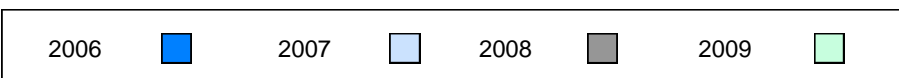
4 Year Public Exam (Subtest) Mark Trend 2006-2009



Listening

Reading

Writing



District 1 - Labrador

#477 - Mealy Mountain Collegiate, Happy Valley-Goose Bay

Grades: 8-12

Number of Students 2

Francais 3202
School
District
Province

Subtest

Listening
School
District
Province

Reading
School
District
Province

Writing
School
District
Province

Public Exam Mark	School vs District	School vs Province
School data with 5 or fewer students withheld for reasons of confidentiality		

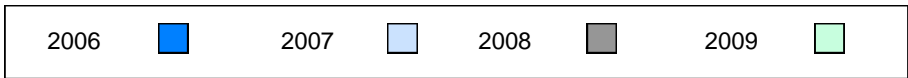
Final Mark	School vs District	School vs Province
School data with 5 or fewer students withheld for reasons of confidentiality		

Average Mark, 2006-2009

School data with 5 or fewer students withheld for reasons of confidentiality

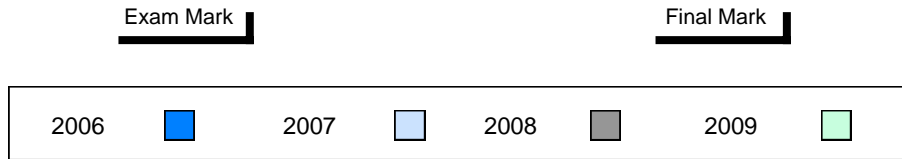
Exam Mark

Final Mark



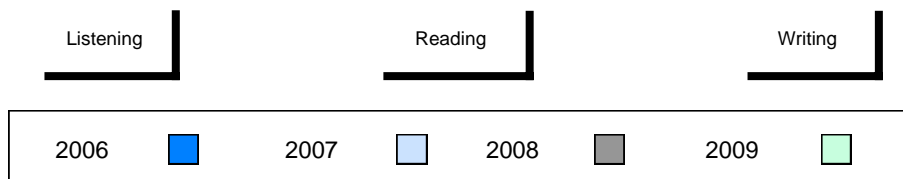
Difference from Provincial Mean, 2006-2009

School data with 5 or fewer students withheld for reasons of confidentiality



4 Year Public Exam (Subtest) Mark Trend 2006-2009

School data with 5 or fewer students withheld for reasons of confidentiality



District 2 - Western

#119 - Stephenville High, Stephenville

Grades: 9-12

Number of Students 10

Francais 3202

School
District
Province

Public Exam Mark

School vs District

School vs Province

73.1
75.1
70.1

q

P

Final Mark

School vs District

School vs Province

76.6
78.4
73.3

q

P

Subtest

Listening

School
District
Province

78.4
81.7
75.7

q

P

Reading

School
District
Province

79.6
80.0
75.1

q

P

Writing

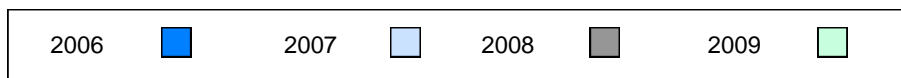
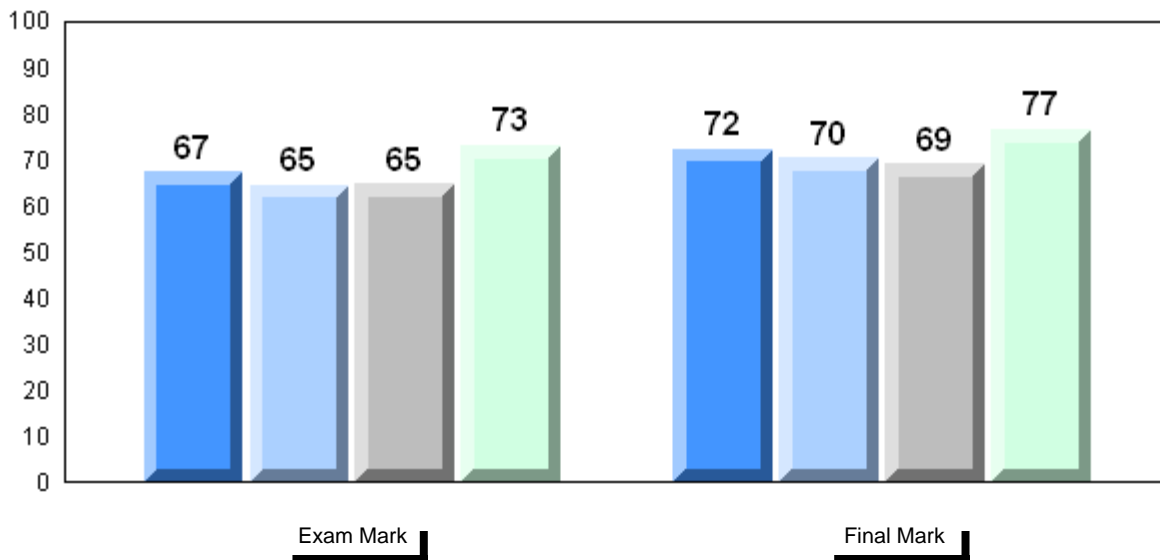
School
District
Province

51.4
55.6
52.5

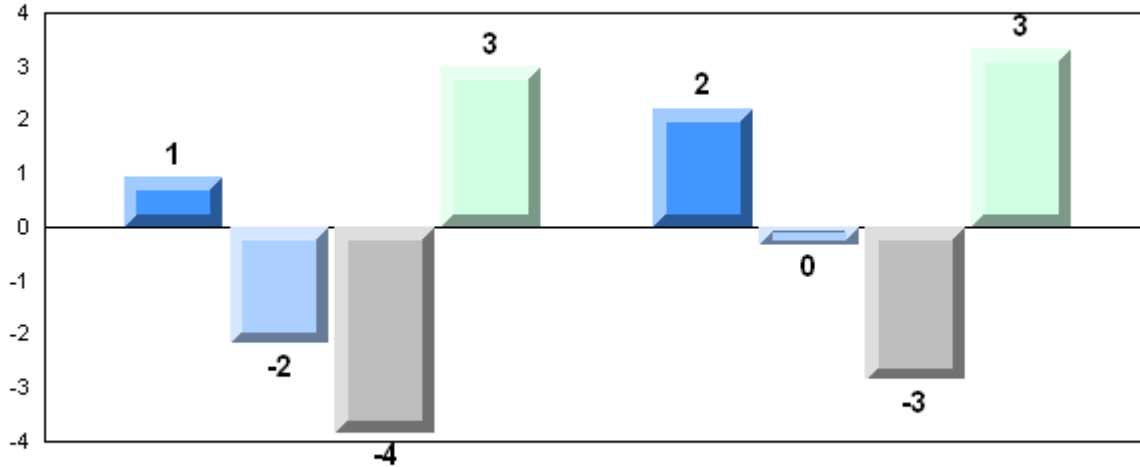
q

q

Average Mark, 2006-2009

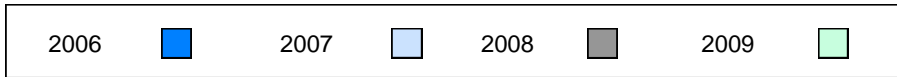


Difference from Provincial Mean, 2006-2009

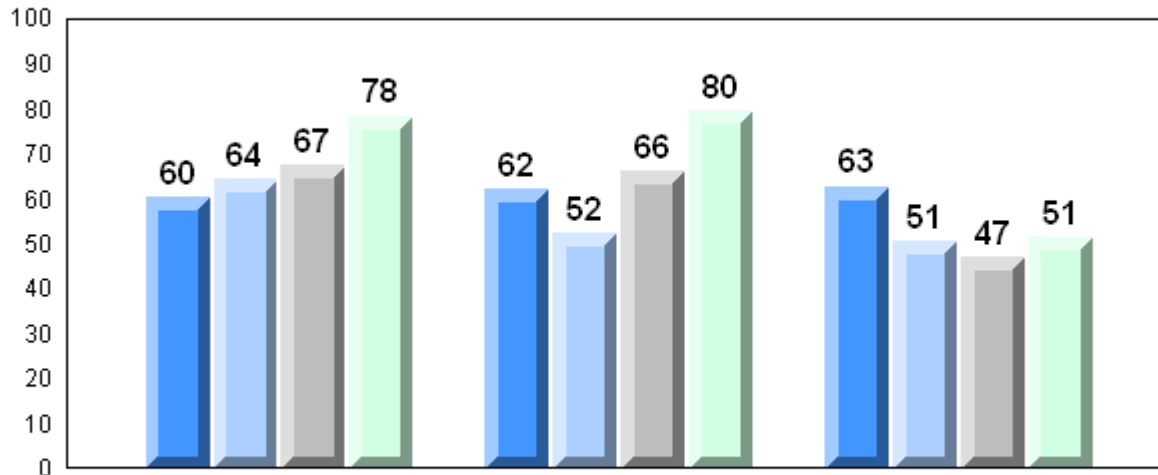


Exam Mark

Final Mark



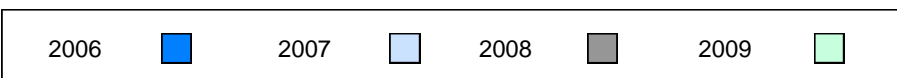
4 Year Public Exam (Subtest) Mark Trend 2006-2009



Listening

Reading

Writing



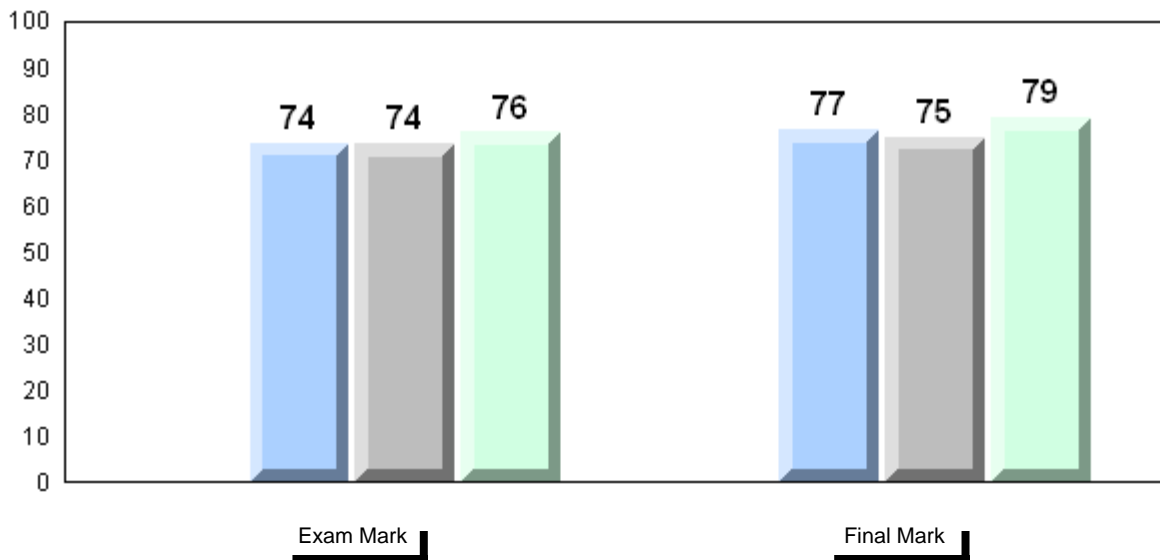
District 2 - Western

#485 - Corner Brook Regional High, Corner Brook

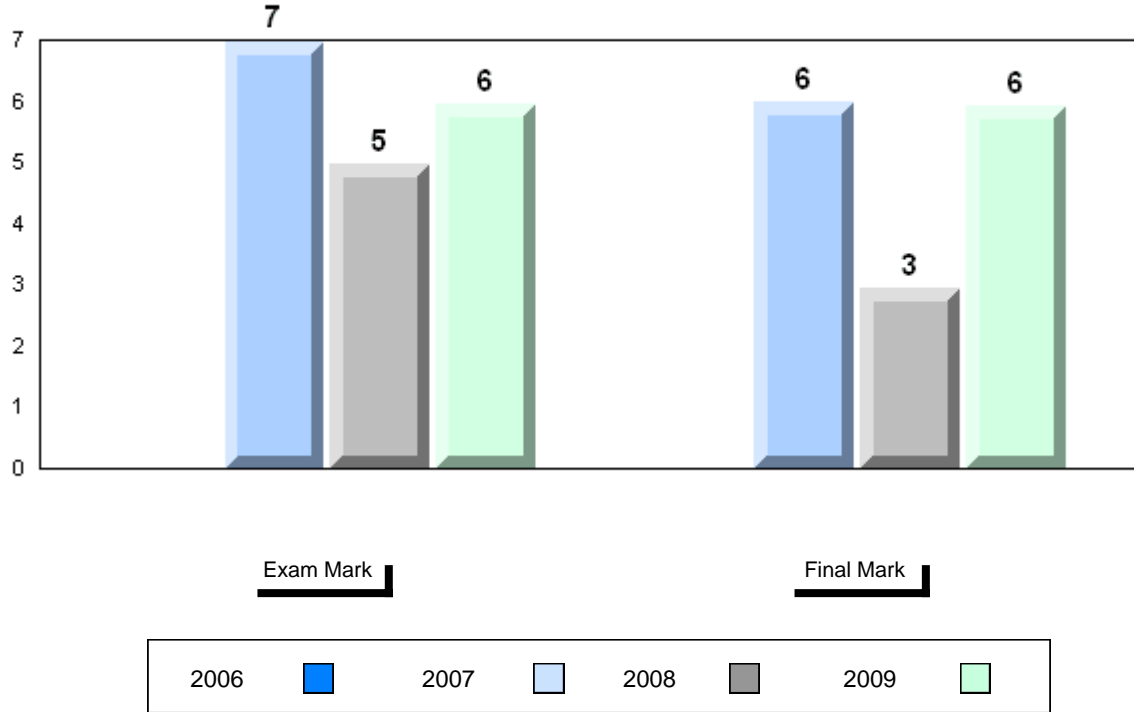
Grades: 10-12

Number of Students		21						
			Public Exam Mark	School vs District	School vs Province	Final Mark	School vs District	School vs Province
Francais 3202	School		76.1	P	P	79.2	P	P
	District		75.1			78.4		
	Province		70.1			73.3		
Subtest								
Listening	School		83.2	P	P			
	District		81.7					
	Province		75.7					
Reading	School		80.2	P	P			
	District		80.0					
	Province		75.1					
Writing	School		57.5	P	P			
	District		55.6					
	Province		52.5					

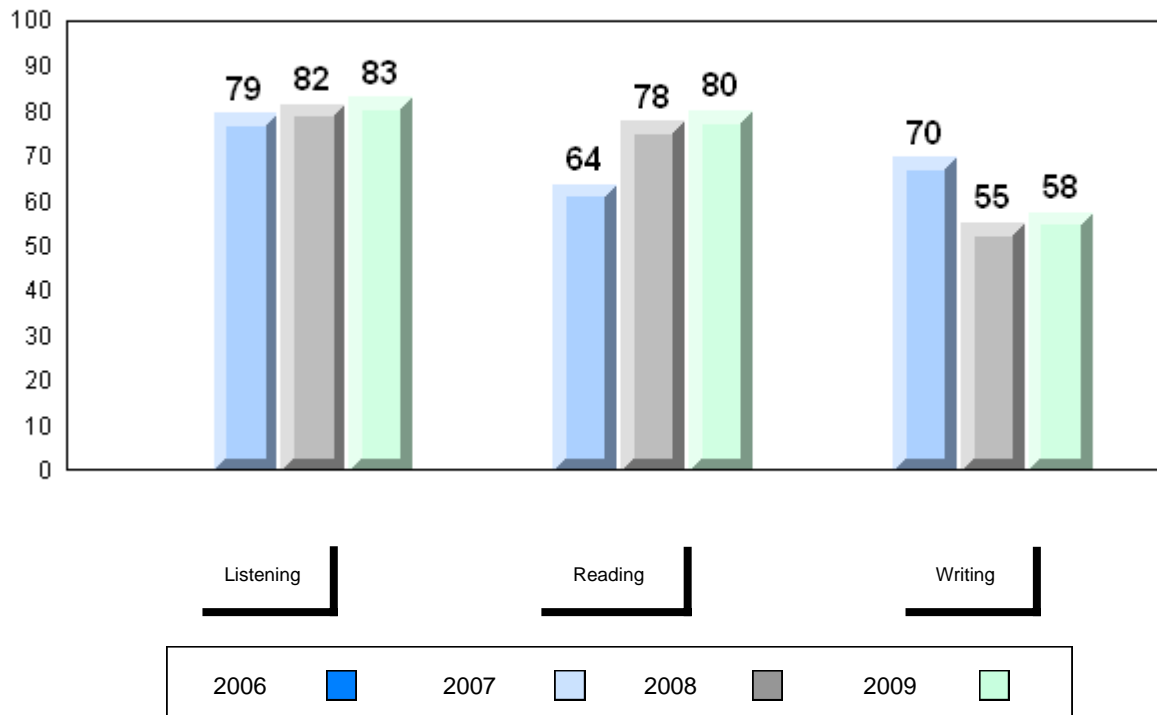
Average Mark, 2006-2009



Difference from Provincial Mean, 2006-2009



4 Year Public Exam (Subtest) Mark Trend 2006-2009



District 3 - Nova Central

#418 - Gander Collegiate, Gander

Grades: 10-12

Number of Students 19

Francais 3202

School
 District
 Province

Public Exam Mark

School vs District

School vs Province

71.3
 69.8
 70.1

P

P

Final Mark

School vs District

School vs Province

72.4
 72.9
 73.3

q

q

Subtest

Listening

School
 District
 Province

75.4
 74.2
 75.7

P

q

Reading

School
 District
 Province

74.1
 72.8
 75.1

P

q

Writing

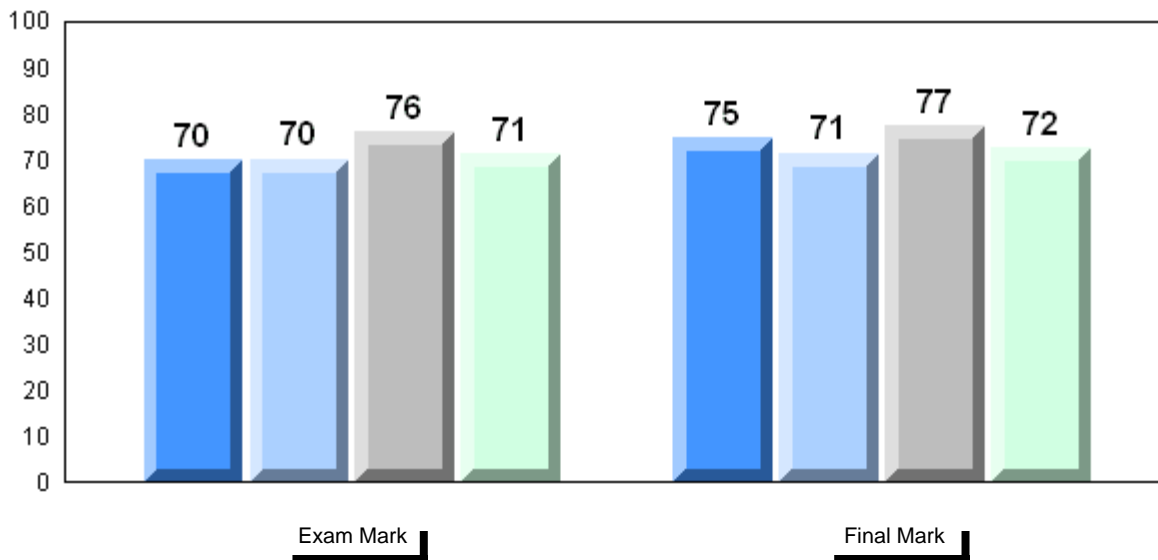
School
 District
 Province

56.1
 51.7
 52.5

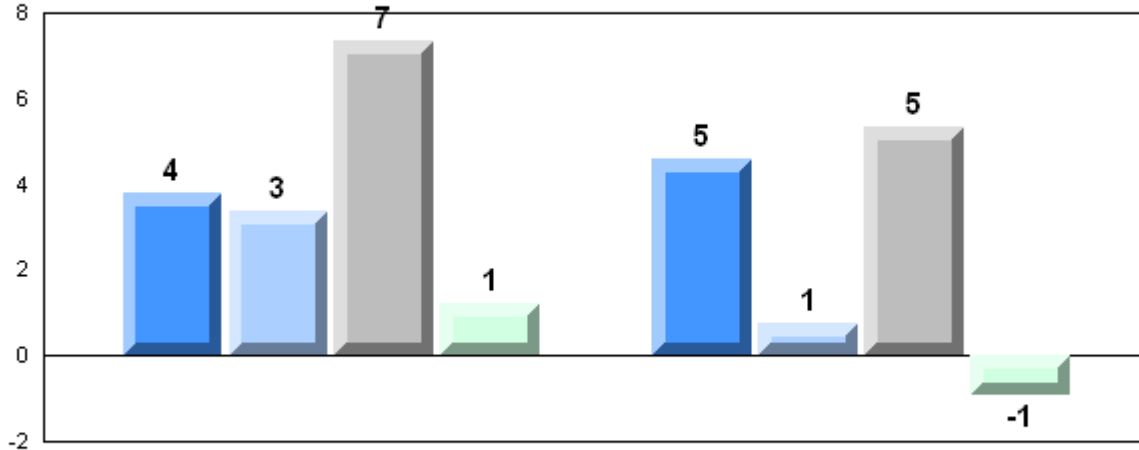
P

P

Average Mark, 2006-2009

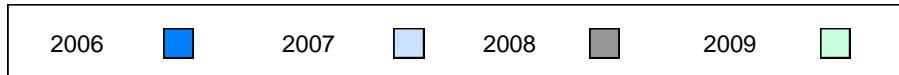


Difference from Provincial Mean, 2006-2009

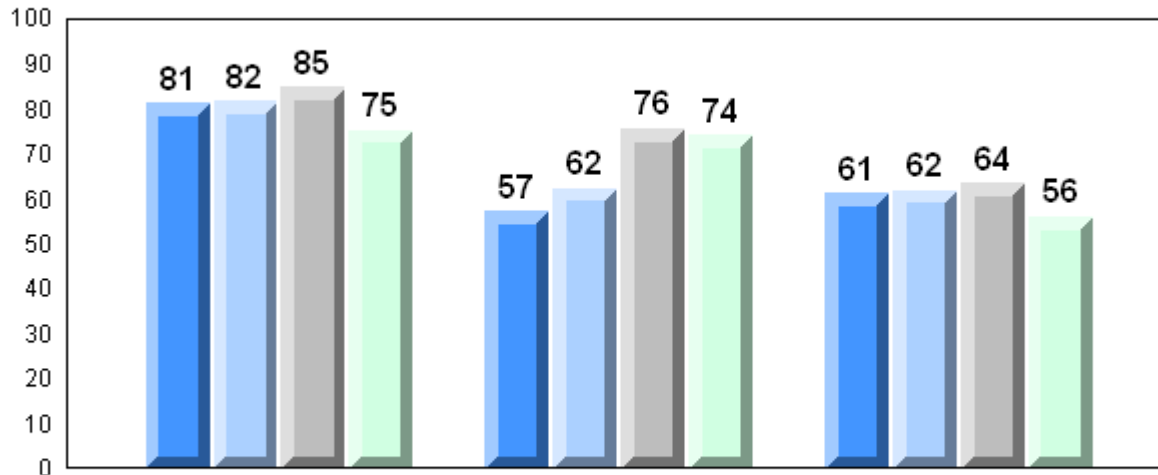


Exam Mark

Final Mark



4 Year Public Exam (Subtest) Mark Trend 2006-2009



Listening

Reading

Writing



District 3 - Nova Central

#480 - Exploits Valley High, Grand Falls-Windsor

Grades: 10-12

Number of Students 17

Francais 3202

School
District
Province

Public Exam Mark

School vs District

School vs Province

68.0
69.8
70.1

q

q

Final Mark

School vs District

School vs Province

73.5
72.9
73.3

P

P

Subtest

Listening

School
District
Province

72.9
74.2
75.7

q

q

Reading

School
District
Province

71.3
72.8
75.1

q

q

Writing

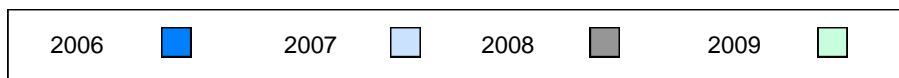
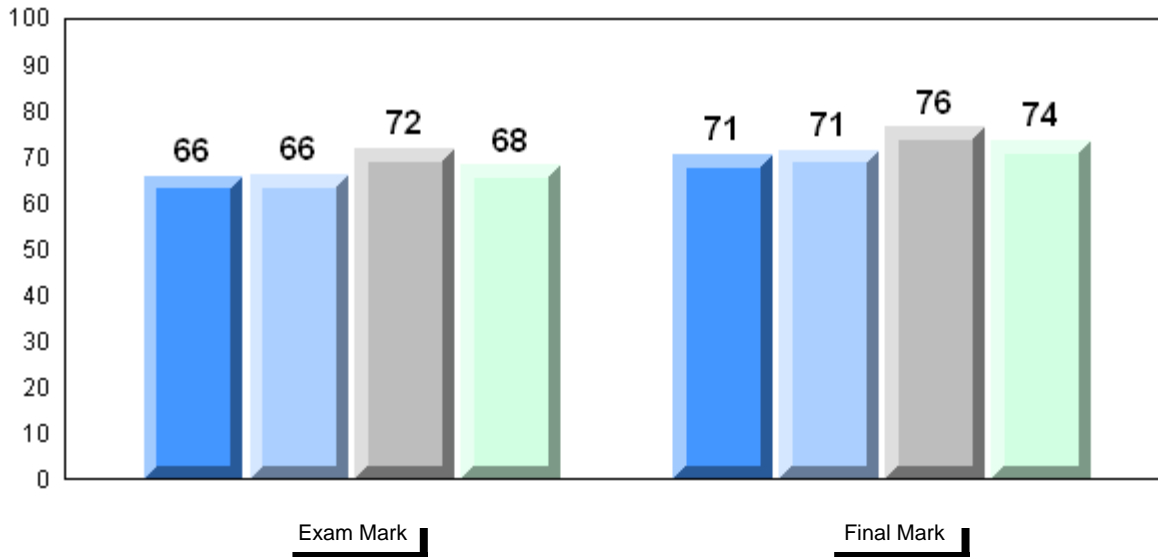
School
District
Province

46.7
51.7
52.5

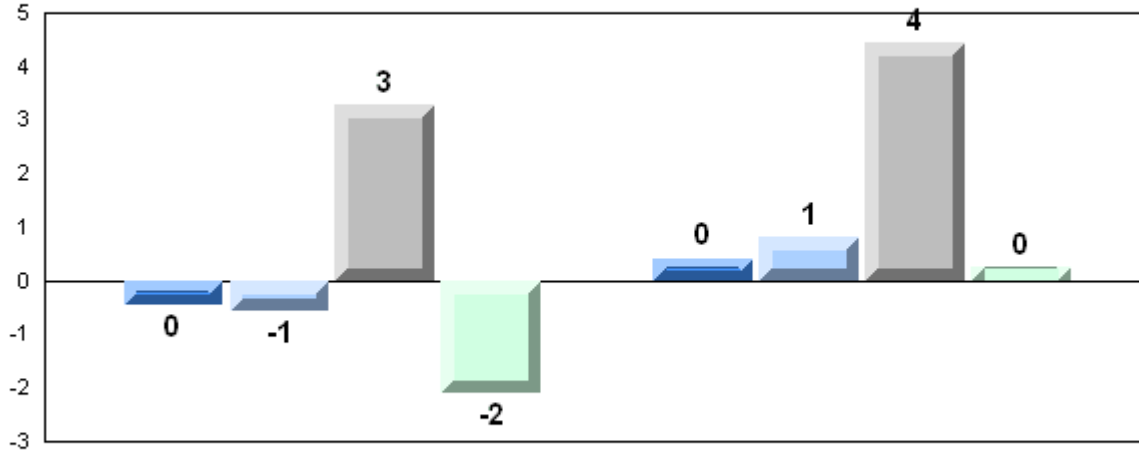
q

q

Average Mark, 2006-2009

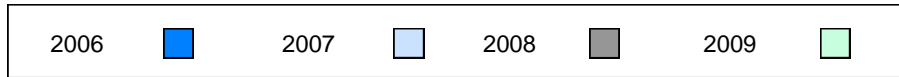


Difference from Provincial Mean, 2006-2009

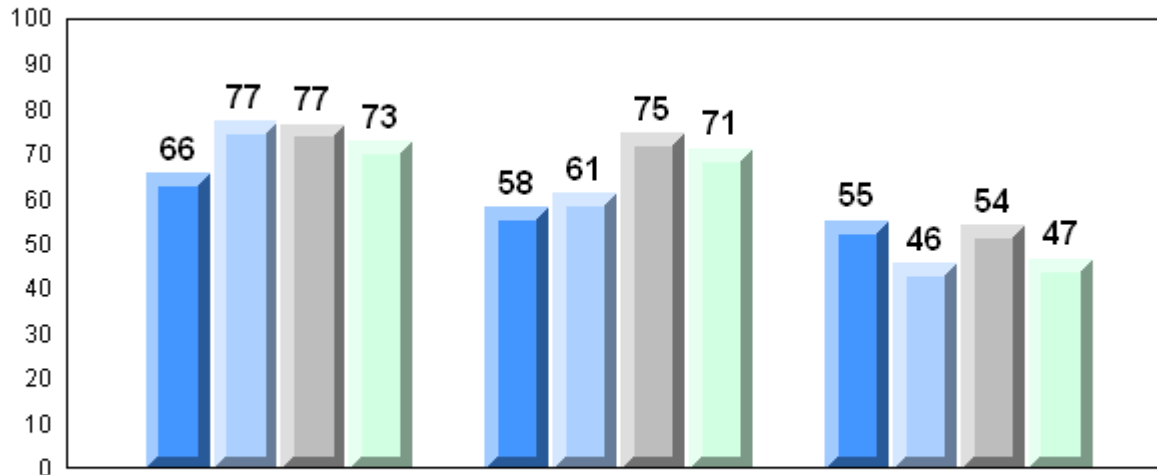


Exam Mark

Final Mark



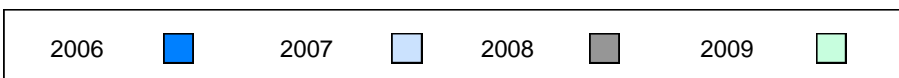
4 Year Public Exam (Subtest) Mark Trend 2006-2009



Listening

Reading

Writing



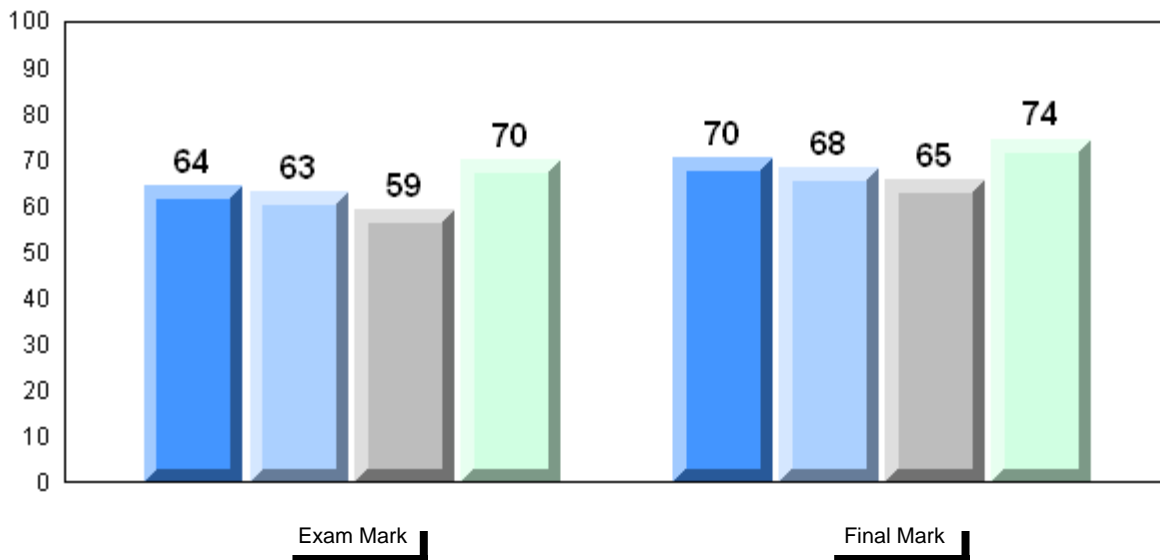
District 4 - Eastern

#219 - Marystown Central High School, Marystown

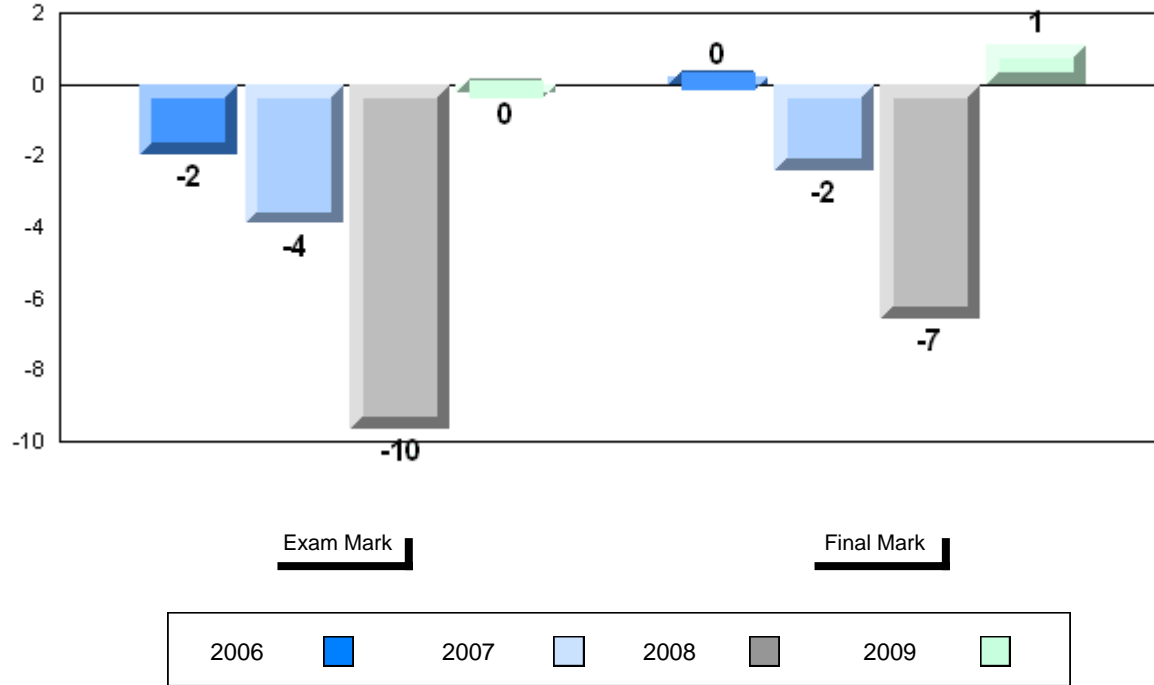
Grades: 10-12

Number of Students	8						
		Public Exam Mark	School vs District	School vs Province	Final Mark	School vs District	School vs Province
Francais 3202	School	69.9	P	Q	74.4	P	P
	District	69.7			72.9		
	Province	70.1			73.3		
Subtest							
Listening	School	69.5	Q	Q			
	District	75.3					
	Province	75.7					
Reading	School	77.0	P	P			
	District	75.0					
	Province	75.1					
Writing	School	49.0	Q	Q			
	District	52.6					
	Province	52.5					

Average Mark, 2006-2009



Difference from Provincial Mean, 2006-2009



Exam Mark

Final Mark

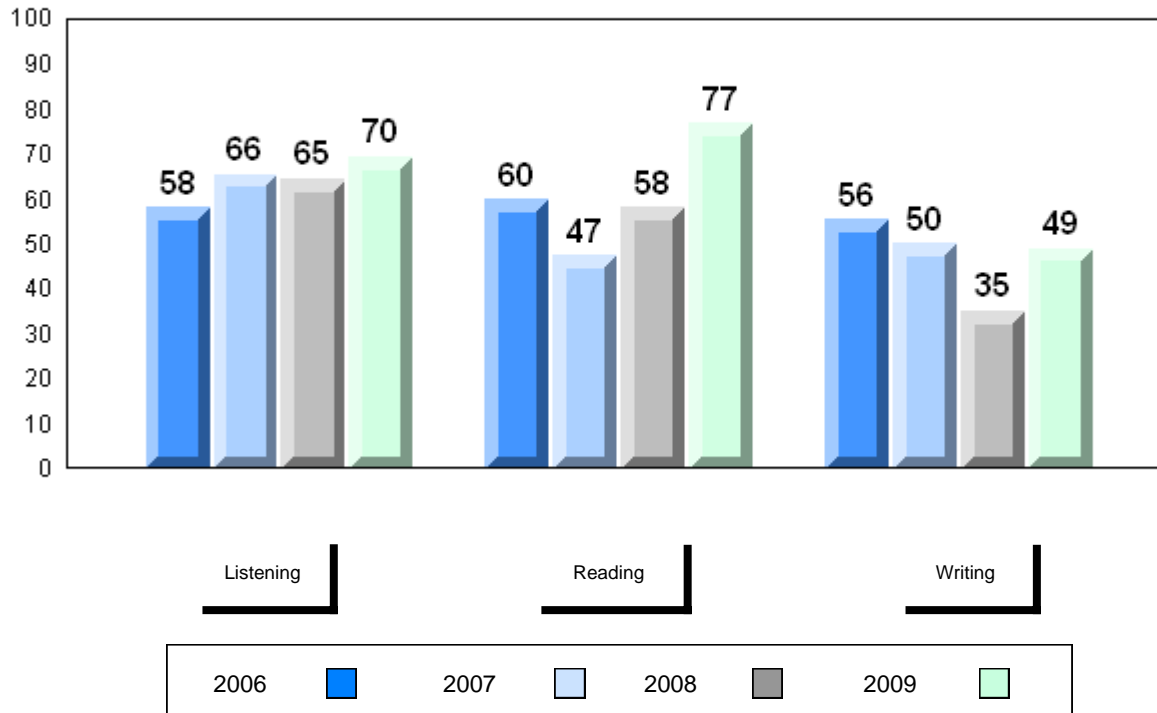
2006

2007

2008

2009

4 Year Public Exam (Subtest) Mark Trend 2006-2009



Listening

Reading

Writing

2006

2007

2008

2009

District 4 - Eastern

#249 - Ascension Collegiate, Bay Roberts

Grades: 10-12

Number of Students 12

Francais 3202

School
 District
 Province

Public Exam Mark

School vs District

School vs Province

75.3
 69.7
 70.1

P

P

Final Mark

School vs District

School vs Province

77.2
 72.9
 73.3

P

P

Subtest

Listening

School
 District
 Province

78.3
 75.3
 75.7

P

P

Reading

School
 District
 Province

80.3
 75.0
 75.1

P

P

Writing

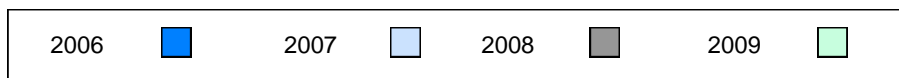
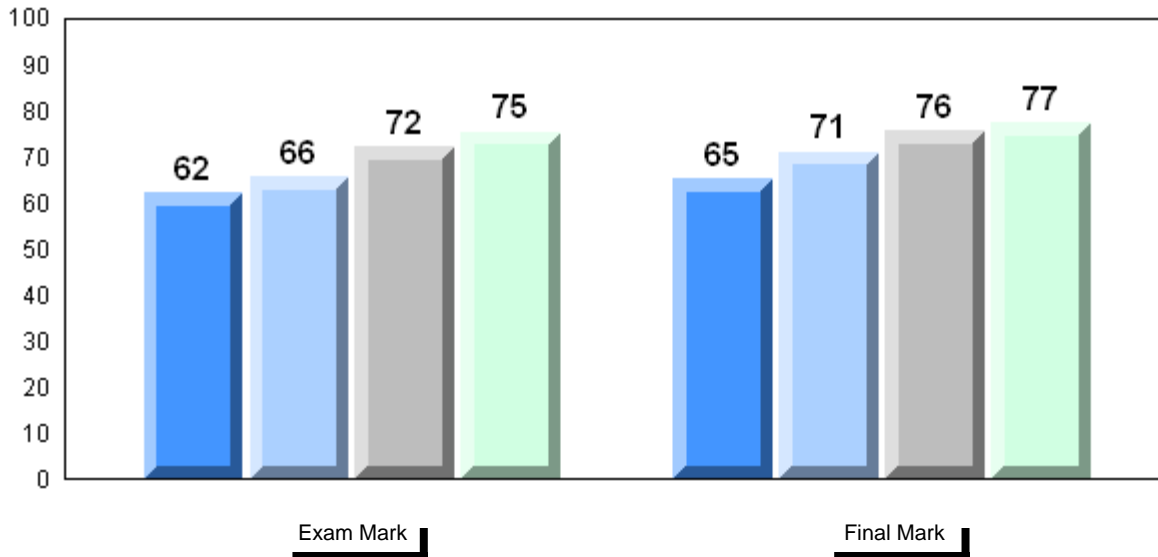
School
 District
 Province

69.2
 52.6
 52.5

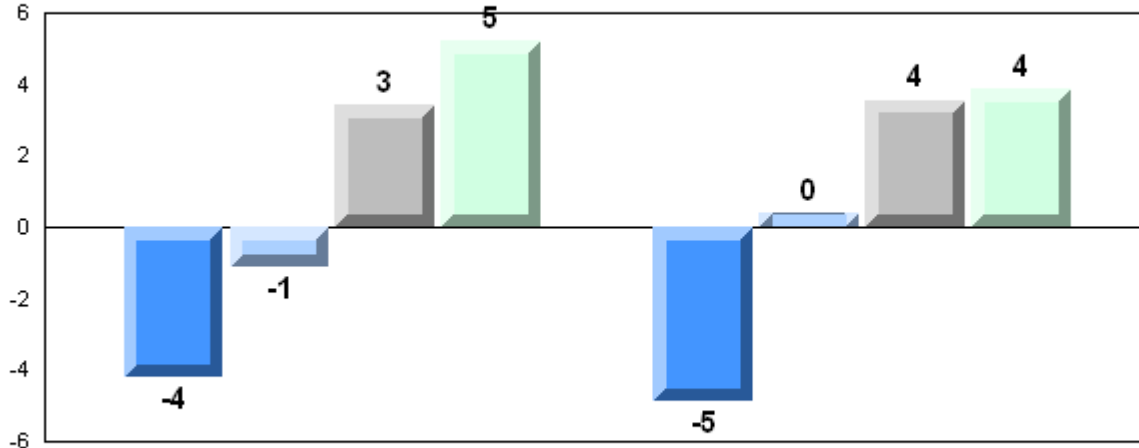
P

P

Average Mark, 2006-2009

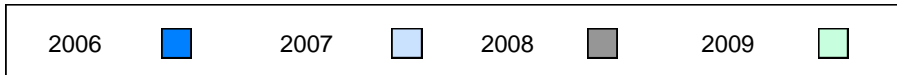


Difference from Provincial Mean, 2006-2009

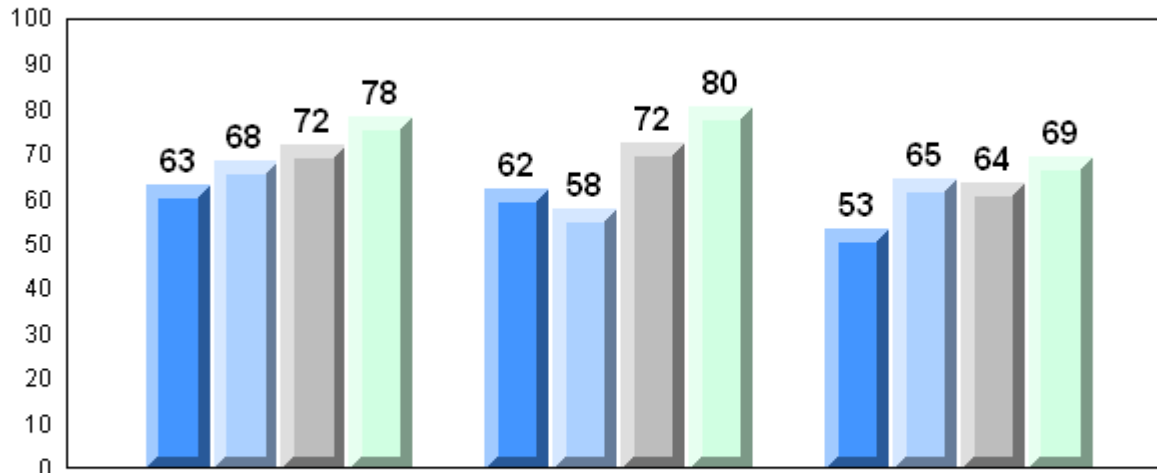


Exam Mark

Final Mark



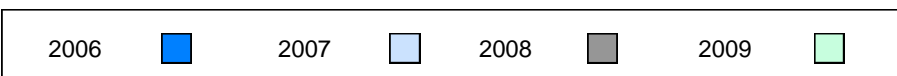
4 Year Public Exam (Subtest) Mark Trend 2006-2009



Listening

Reading

Writing



District 4 - Eastern

#302 - Queen Elizabeth Regional High, Conception Bay South (

Grades: 10-12

Number of Students 15

Francais 3202

School
District
Province

Public Exam Mark	School vs District	School vs Province
-------------------------	--------------------	--------------------

57.8	q	q
69.7		
70.1		

Final Mark	School vs District	School vs Province
-------------------	--------------------	--------------------

63.8	q	q
72.9		
73.3		

Subtest

Listening

School
District
Province

61.1	q	q
75.3		
75.7		

Reading

School
District
Province

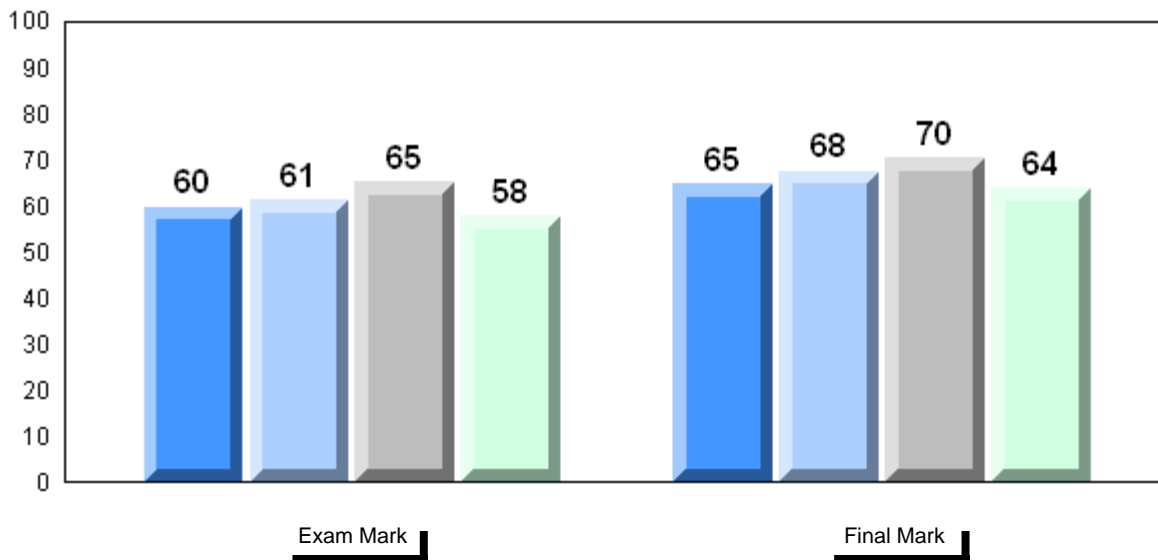
58.9	q	q
75.0		
75.1		

Writing

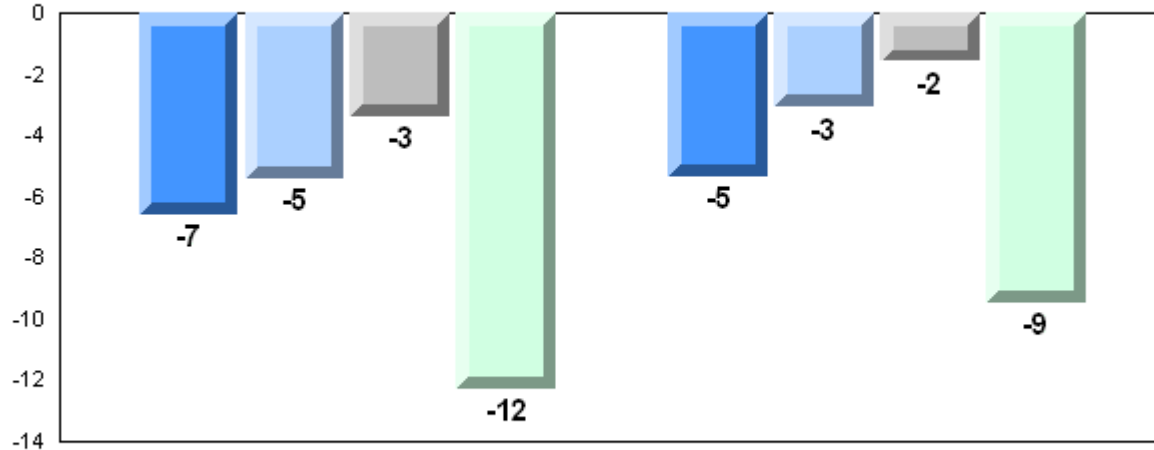
School
District
Province

42.5	q	q
52.6		
52.5		

Average Mark, 2006-2009

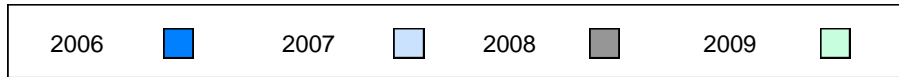


Difference from Provincial Mean, 2006-2009

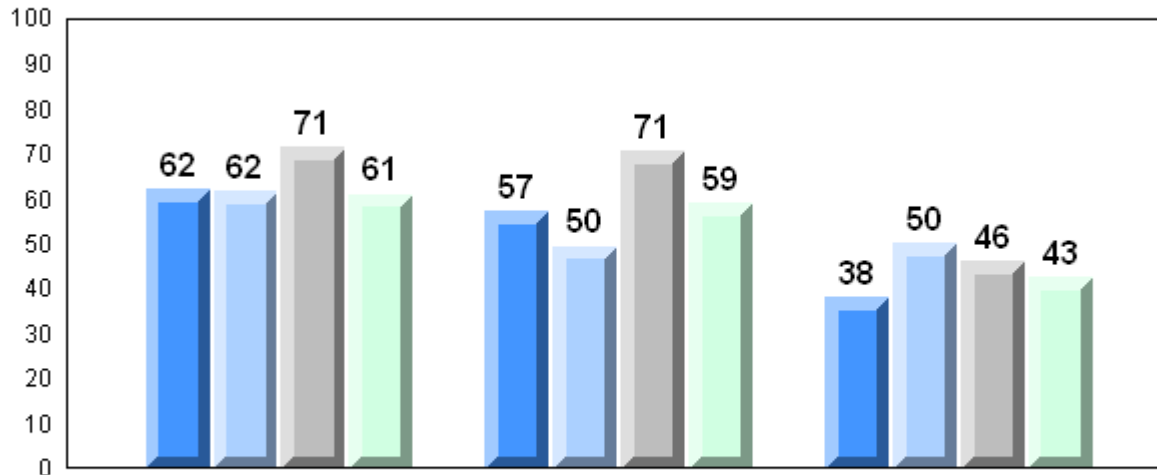


Exam Mark

Final Mark



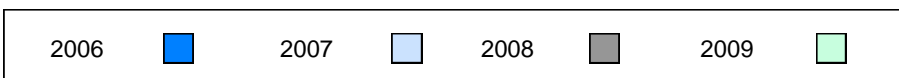
4 Year Public Exam (Subtest) Mark Trend 2006-2009



Listening

Reading

Writing



District 4 - Eastern

#304 - Holy Spirit High, Conception Bay South (Manuels)

Grades: 9-12

Number of Students 36

Francais 3202

School
 District
 Province

Public Exam Mark

School vs District

School vs Province

74.9
 69.7
 70.1

P

P

Final Mark

School vs District

School vs Province

78.3
 72.9
 73.3

P

P

Subtest

Listening

School
 District
 Province

80.8
 75.3
 75.7

P

P

Reading

School
 District
 Province

77.9
 75.0
 75.1

P

P

Writing

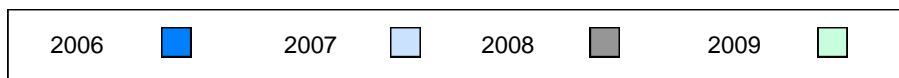
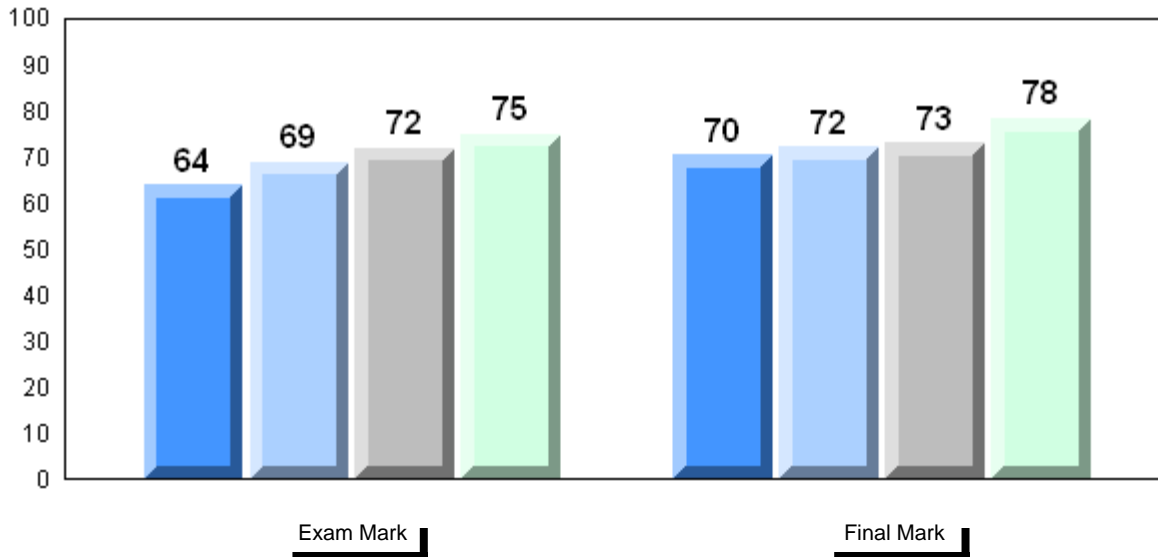
School
 District
 Province

63.4
 52.6
 52.5

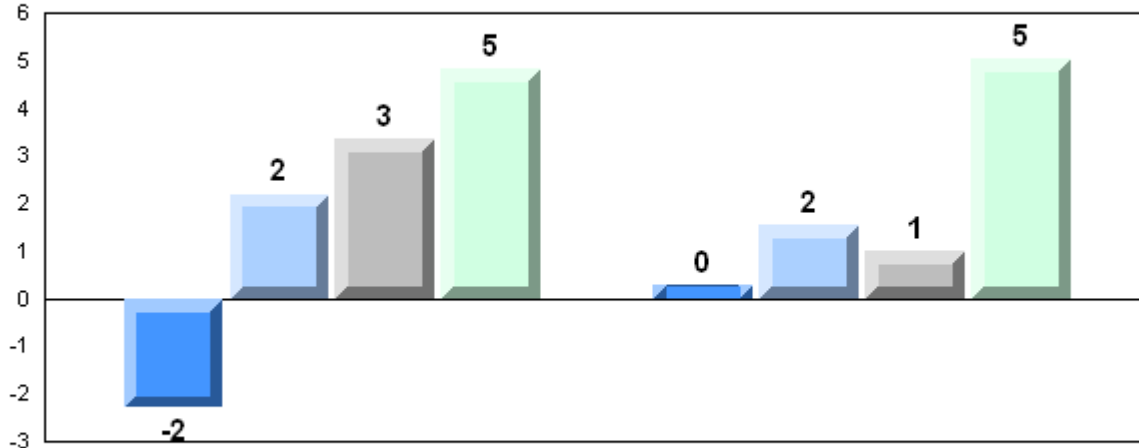
P

P

Average Mark, 2006-2009

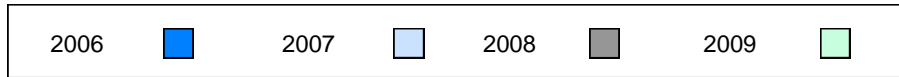


Difference from Provincial Mean, 2006-2009

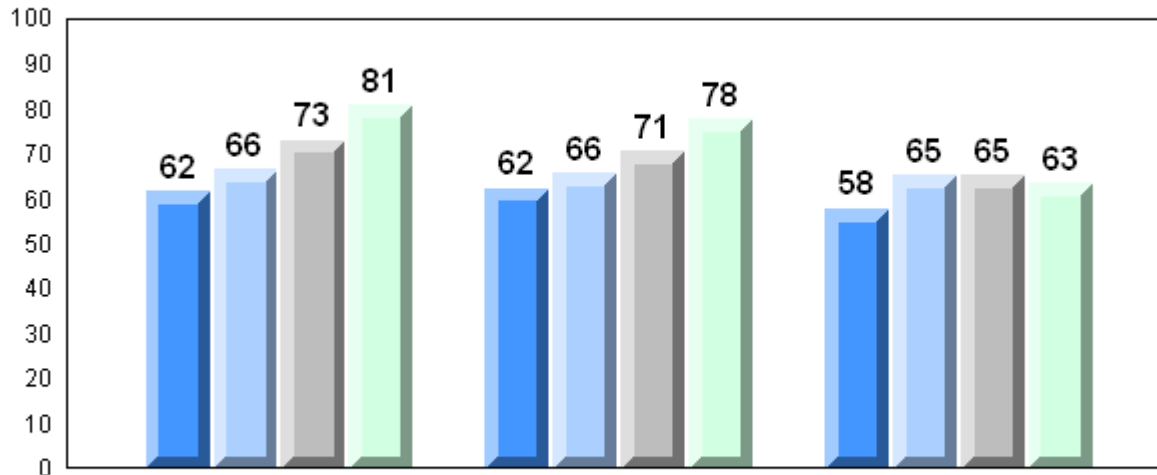


Exam Mark

Final Mark



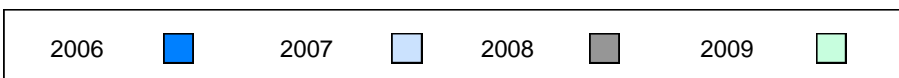
4 Year Public Exam (Subtest) Mark Trend 2006-2009



Listening

Reading

Writing



District 4 - Eastern

#311 - Mount Pearl Senior High, Mount Pearl

Grades: 10-12

Number of Students 64

Francais 3202

School
District
Province

Public Exam Mark

School vs District

School vs Province

70.1
69.7
70.1

P

P

Final Mark

School vs District

School vs Province

75.2
72.9
73.3

P

P

Subtest

Listening

School
District
Province

74.3
75.3
75.7

q

q

Reading

School
District
Province

75.1
75.0
75.1

P

q

Writing

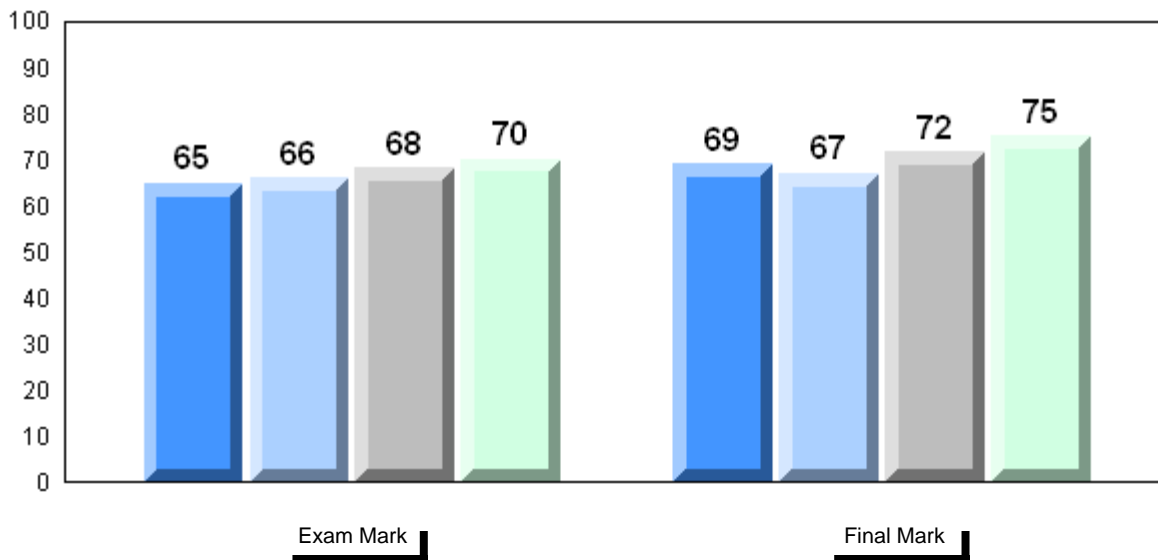
School
District
Province

48.8
52.6
52.5

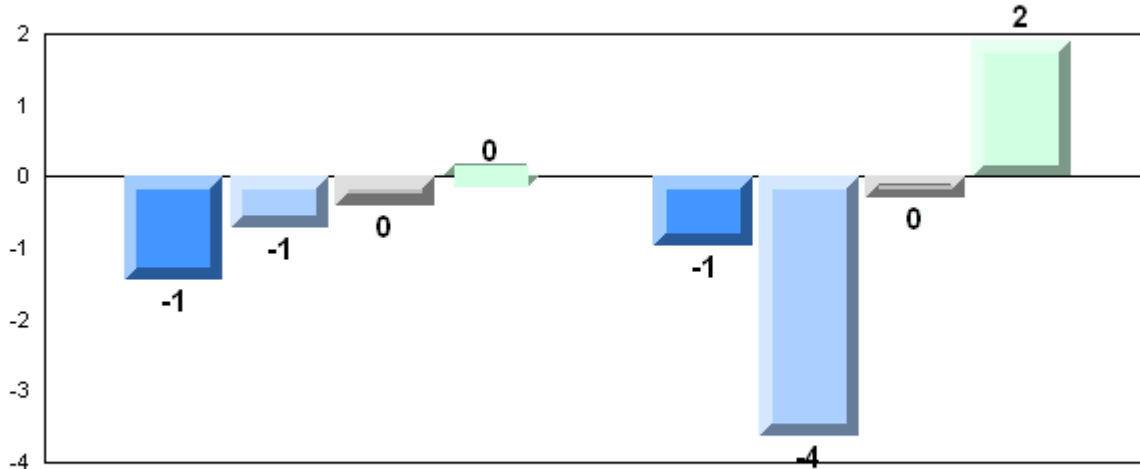
q

q

Average Mark, 2006-2009

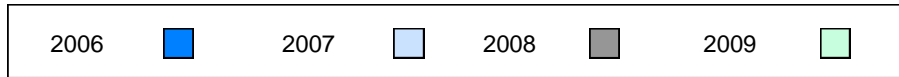


Difference from Provincial Mean, 2006-2009

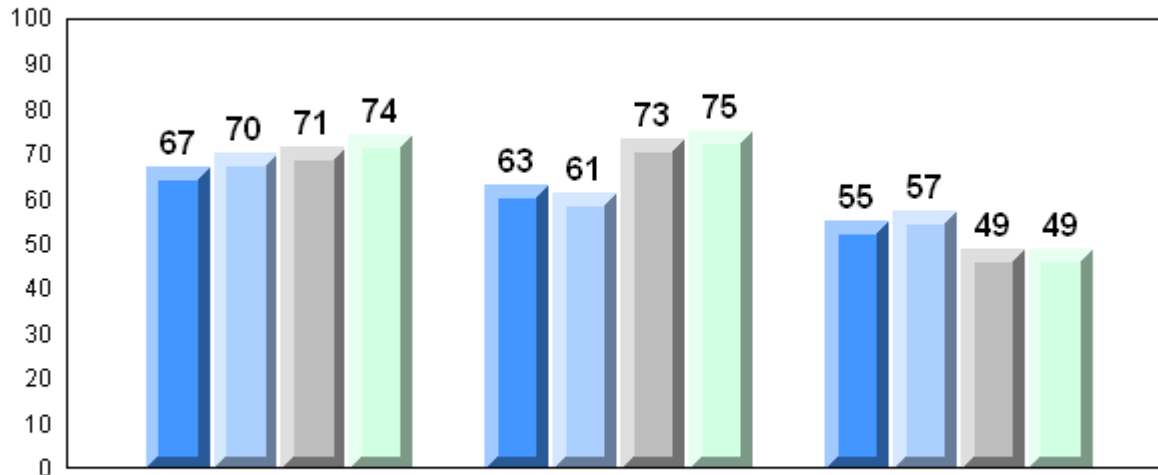


Exam Mark

Final Mark



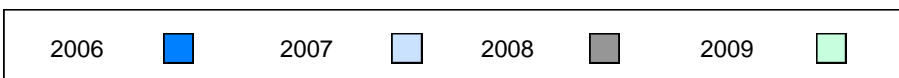
4 Year Public Exam (Subtest) Mark Trend 2006-2009



Listening

Reading

Writing



District 4 - Eastern

#313 - O'Donel High School, Mount Pearl

Grades: 10-12

Number of Students

17

Francais 3202

School
District
Province

Public Exam Mark

School vs District

School vs Province

68.7
69.7
70.1

q

q

Final Mark

School vs District

School vs Province

72.6
72.9
73.3

q

q

Subtest

Listening

School
District
Province

71.3
75.3
75.7

q

q

Reading

School
District
Province

71.1
75.0
75.1

q

q

Writing

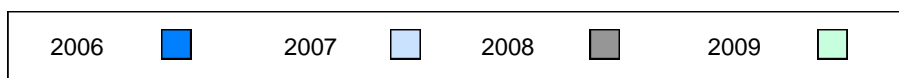
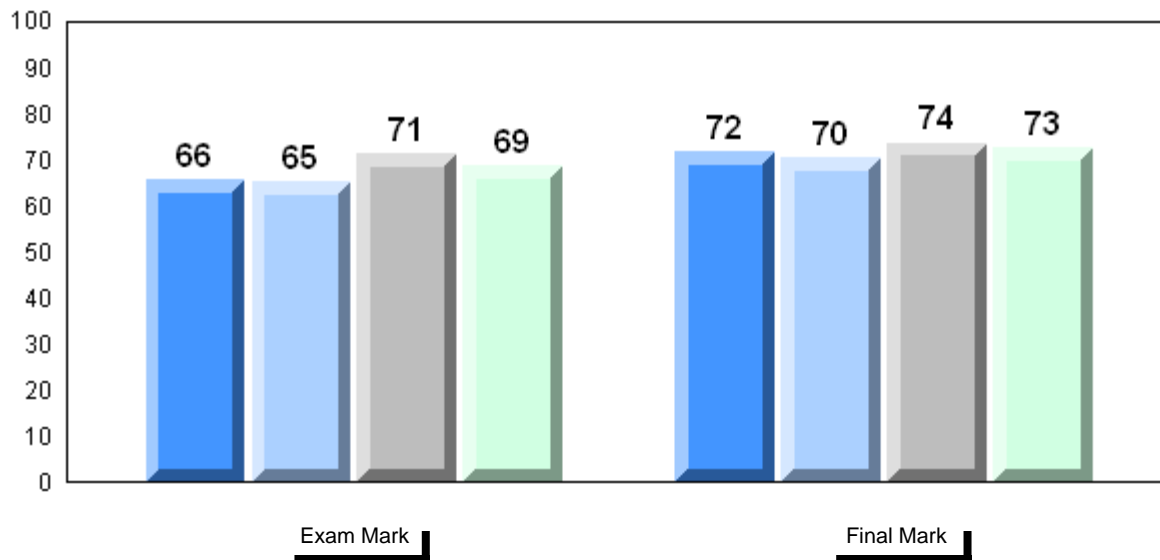
School
District
Province

55.9
52.6
52.5

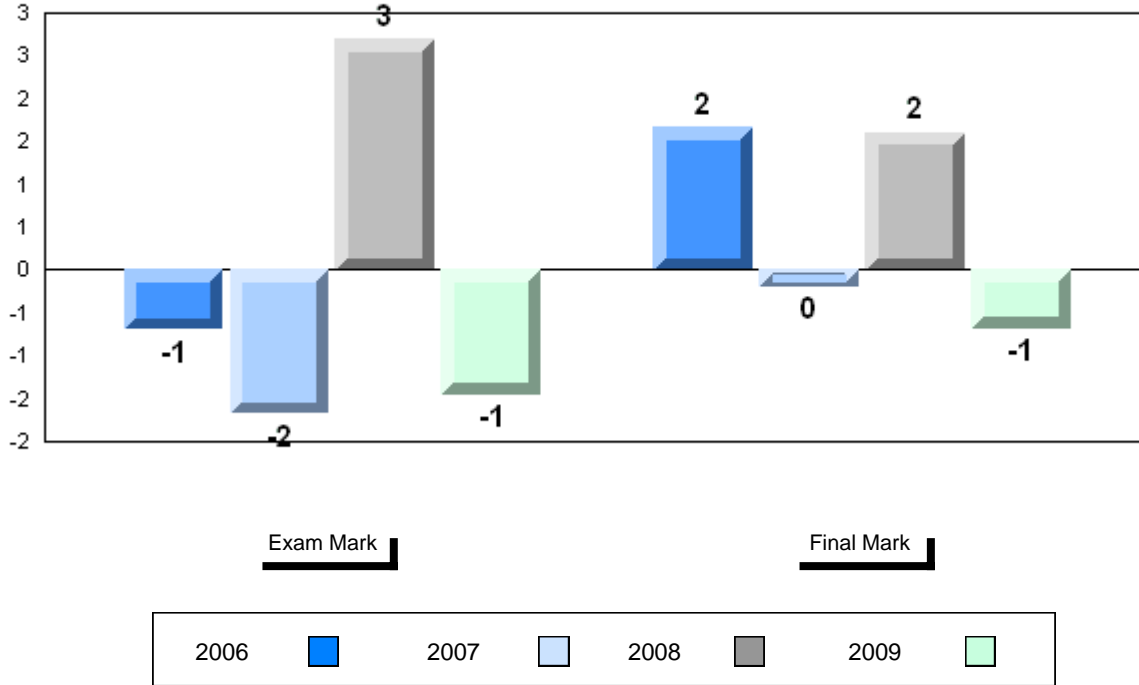
p

p

Average Mark, 2006-2009



Difference from Provincial Mean, 2006-2009



Exam Mark

Final Mark

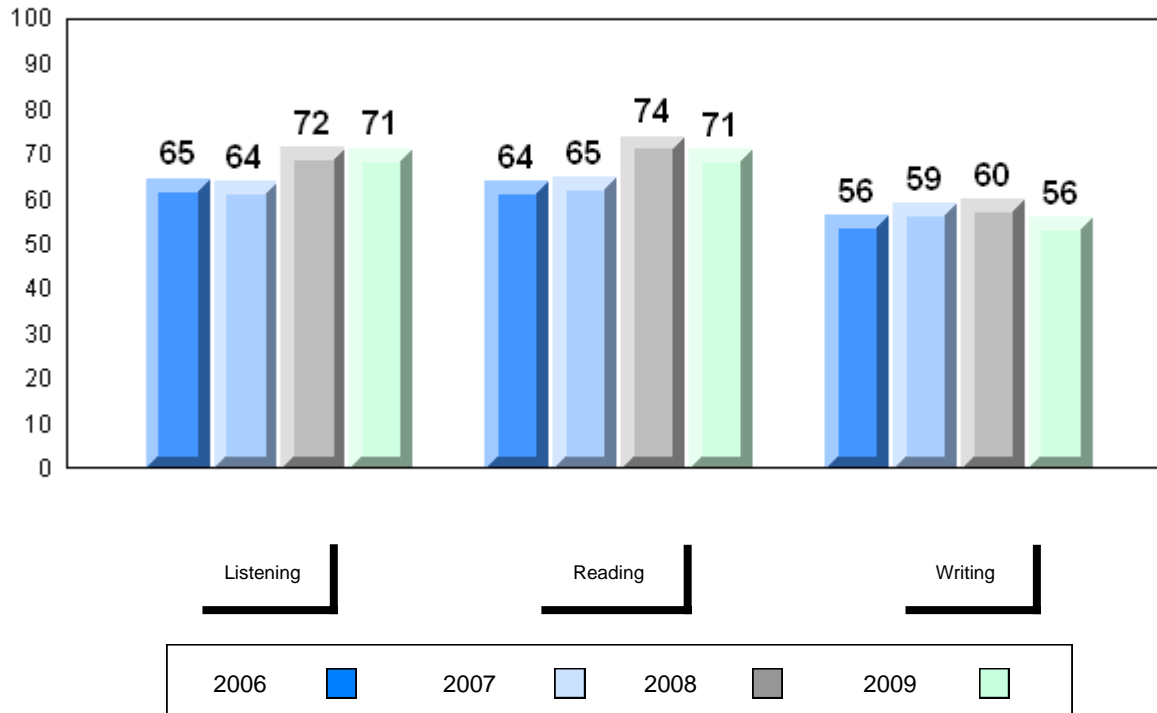
2006

2007

2008

2009

4 Year Public Exam (Subtest) Mark Trend 2006-2009



Listening

Reading

Writing

2006

2007

2008

2009

District 4 - Eastern

#327 - Bishops College High, St. John's

Grades: 10-12

Number of Students 34

Francais 3202

School
District
Province

Public Exam Mark

School vs District

School vs Province

63.7
69.7
70.1

q

q

Final Mark

School vs District

School vs Province

66.5
72.9
73.3

q

q

Subtest

Listening

School
District
Province

65.3
75.3
75.7

q

q

Reading

School
District
Province

68.7
75.0
75.1

q

q

Writing

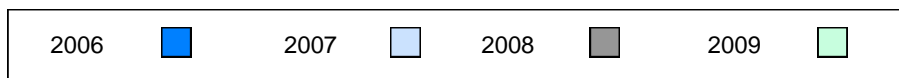
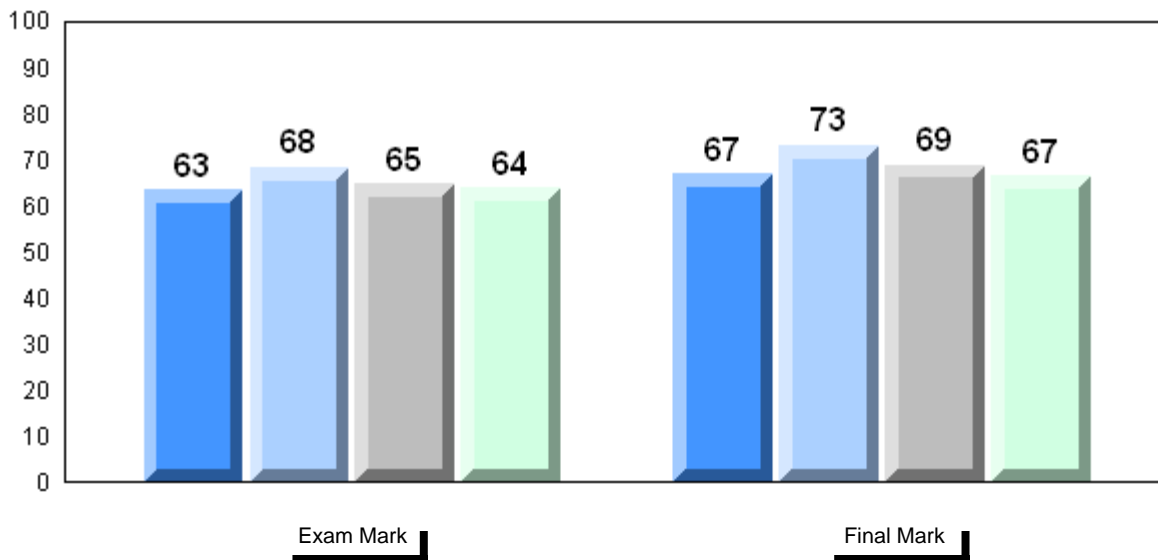
School
District
Province

45.5
52.6
52.5

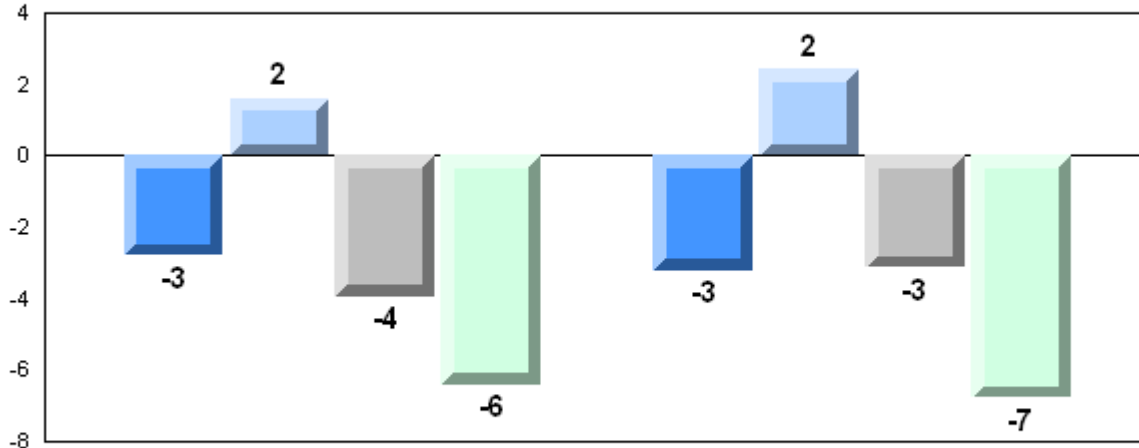
q

q

Average Mark, 2006-2009

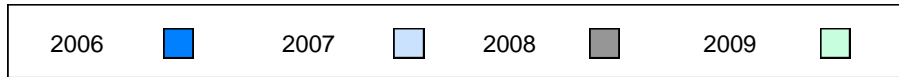


Difference from Provincial Mean, 2006-2009

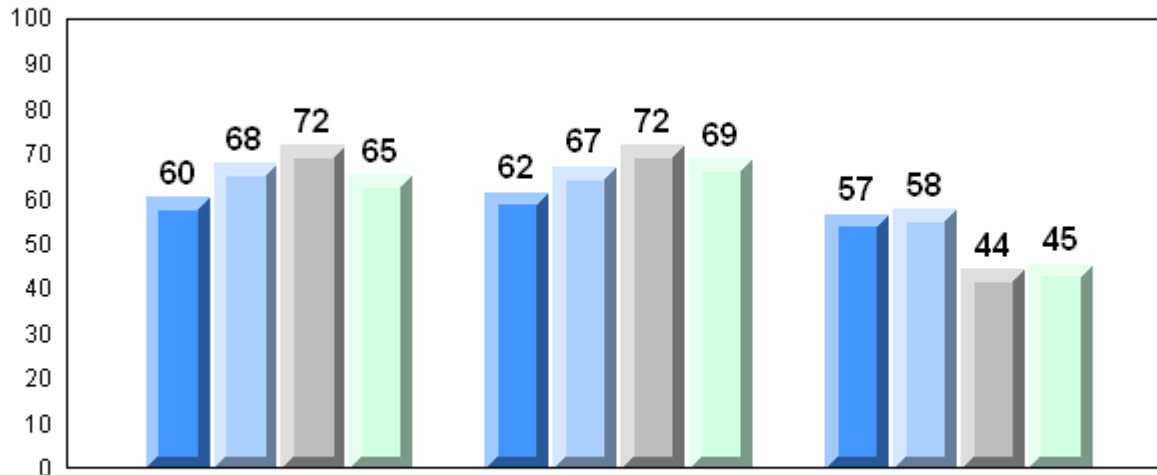


Exam Mark

Final Mark



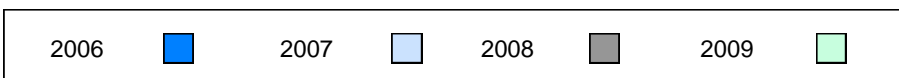
4 Year Public Exam (Subtest) Mark Trend 2006-2009



Listening

Reading

Writing



District 4 - Eastern

#328 - Booth Memorial High School, St. John's

Grades: 10-12

Number of Students 27

Francais 3202

School
District
Province

Public Exam Mark

School vs District

School vs Province

68.3
69.7
70.1

q

q

Final Mark

School vs District

School vs Province

71.8
72.9
73.3

q

q

Subtest

Listening

School
District
Province

71.0
75.3
75.7

q

q

Reading

School
District
Province

69.5
75.0
75.1

q

q

Writing

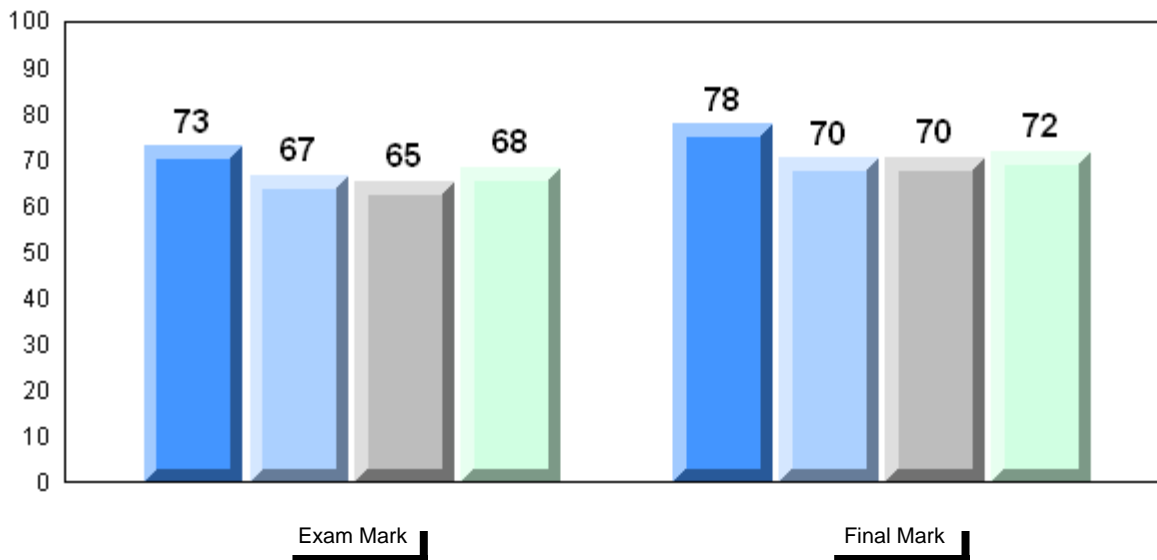
School
District
Province

55.9
52.6
52.5

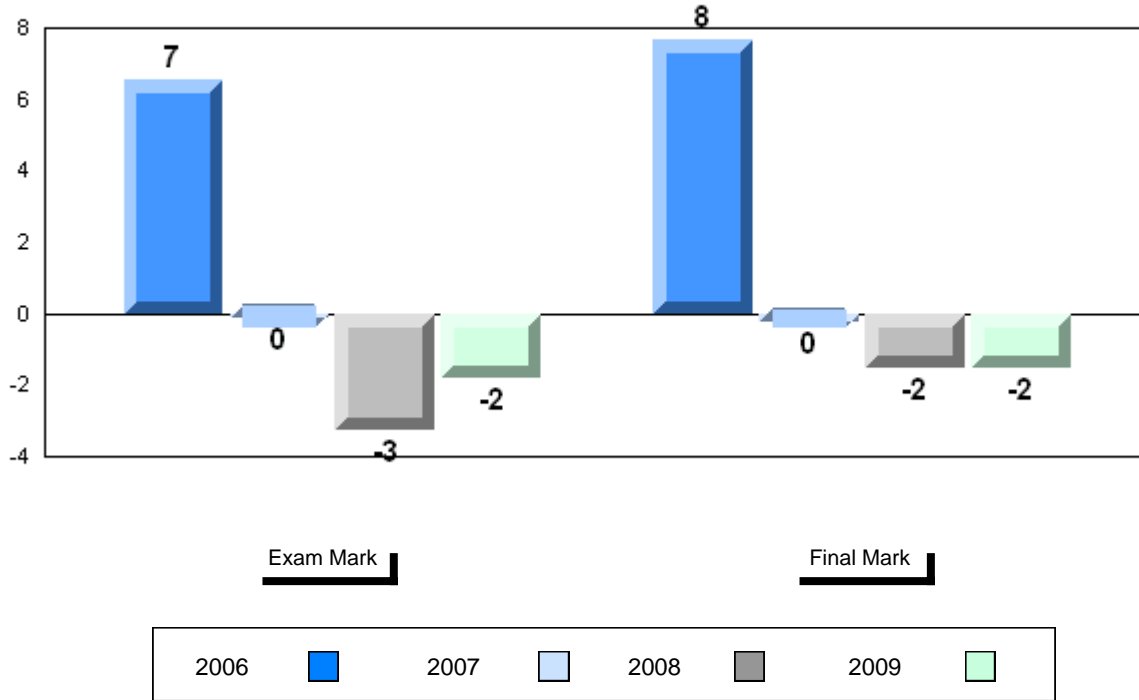
p

p

Average Mark, 2006-2009



Difference from Provincial Mean, 2006-2009



Exam Mark

Final Mark

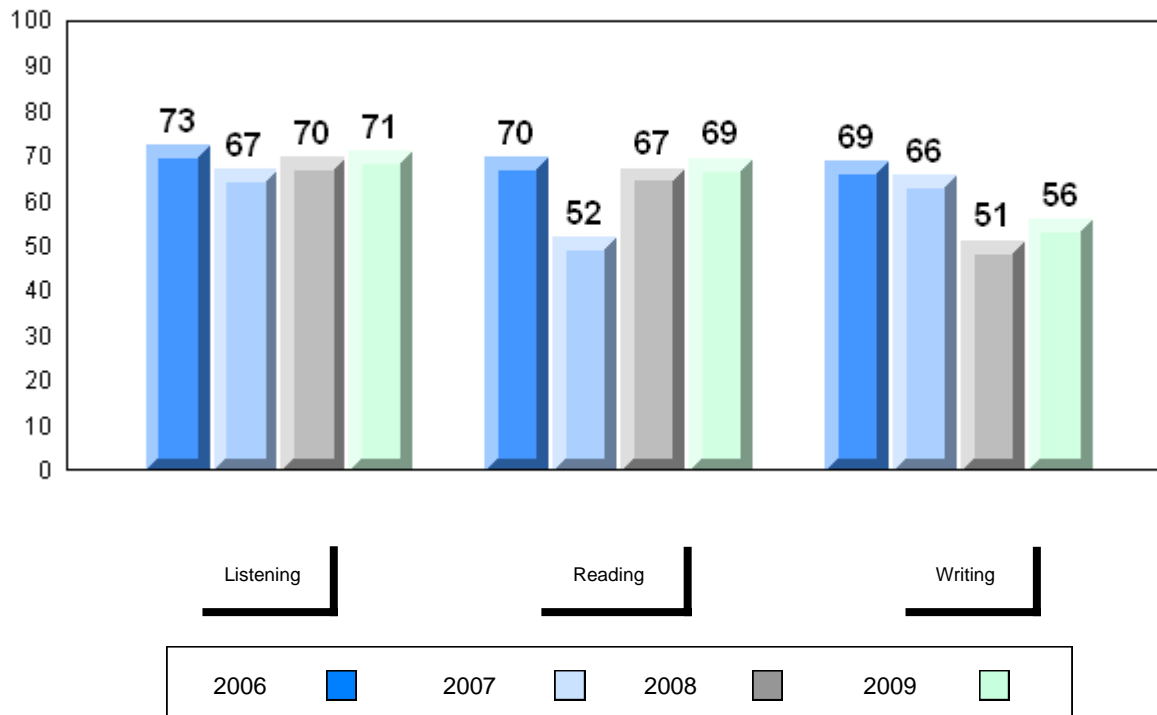
2006

2007

2008

2009

4 Year Public Exam (Subtest) Mark Trend 2006-2009



Listening

Reading

Writing

2006

2007

2008

2009

District 4 - Eastern

#336 - Gonzaga Regional High, St. John's

Grades: 10-12

Number of Students 46

Francais 3202

School
District
Province

Public Exam Mark

School vs District

School vs Province

74.3
69.7
70.1

P

P

Final Mark

School vs District

School vs Province

76.3
72.9
73.3

P

P

Subtest

Listening

School
District
Province

82.2
75.3
75.7

P

P

Reading

School
District
Province

82.5
75.0
75.1

P

P

Writing

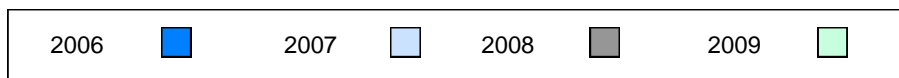
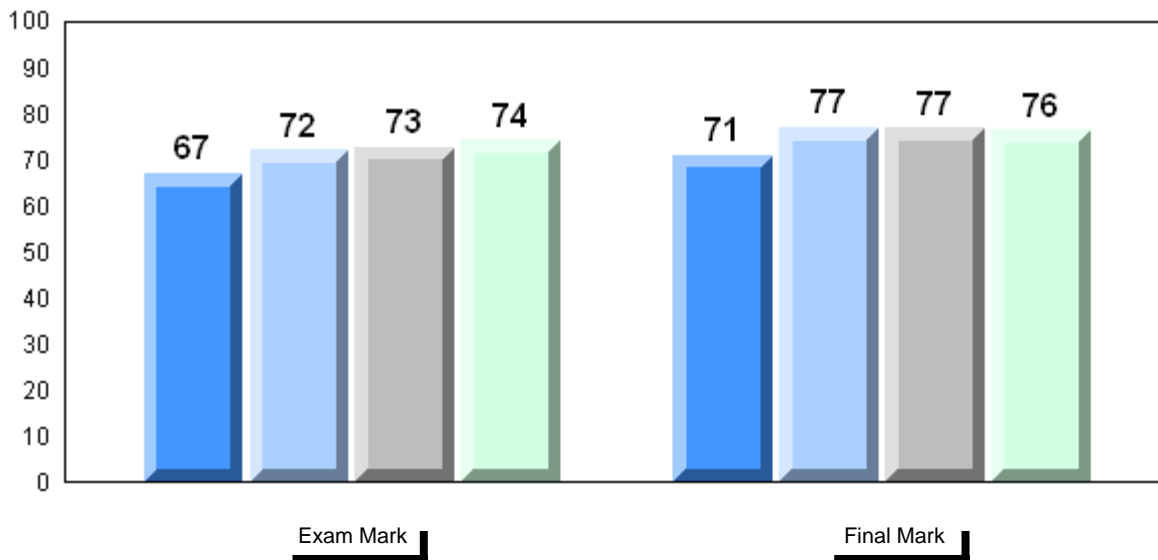
School
District
Province

57.0
52.6
52.5

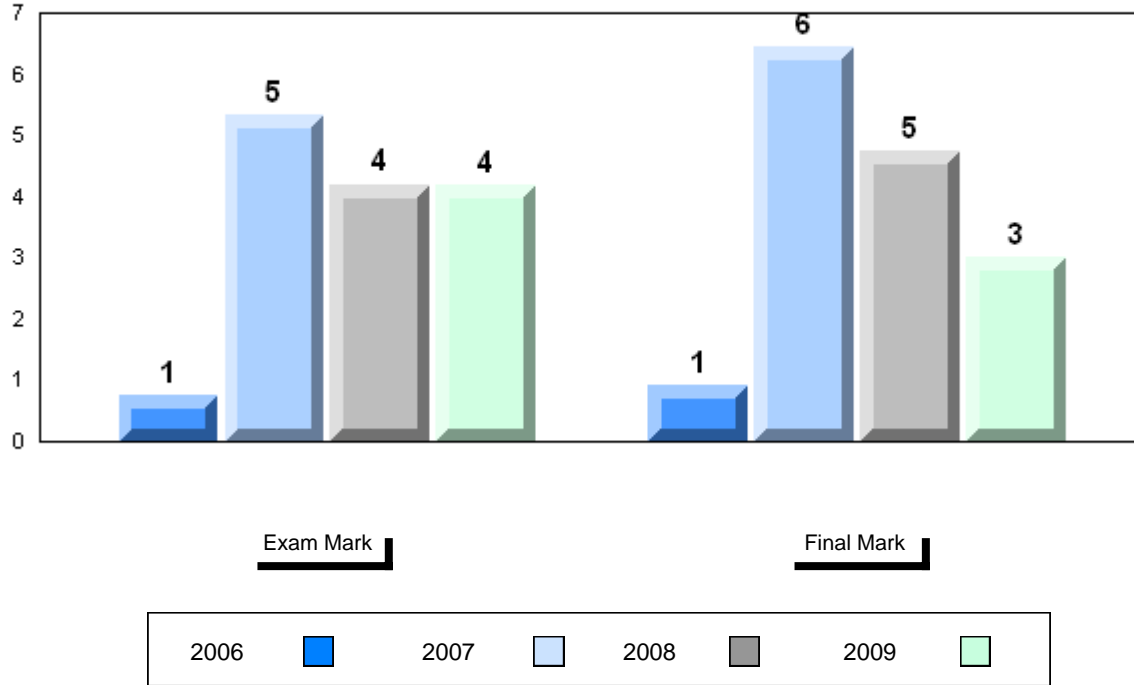
P

P

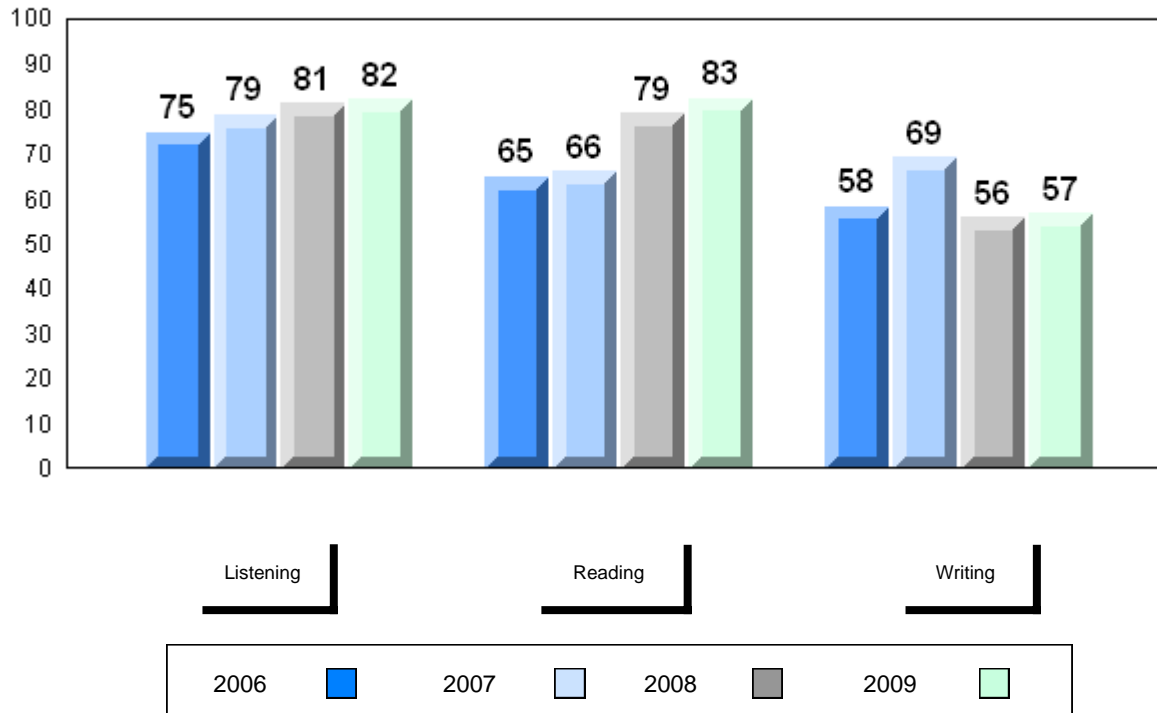
Average Mark, 2006-2009



Difference from Provincial Mean, 2006-2009



4 Year Public Exam (Subtest) Mark Trend 2006-2009



District 4 - Eastern

#340 - Holy Heart of Mary Regional High, St. John's

Grades: 10-12

Number of Students 47

Francais 3202

School
District
Province

Public Exam Mark

School vs District

School vs Province

69.7
69.7
70.1

q

q

Final Mark

School vs District

School vs Province

70.3
72.9
73.3

q

q

Subtest

Listening

School
District
Province

79.7
75.3
75.7

p

p

Reading

School
District
Province

76.5
75.0
75.1

p

p

Writing

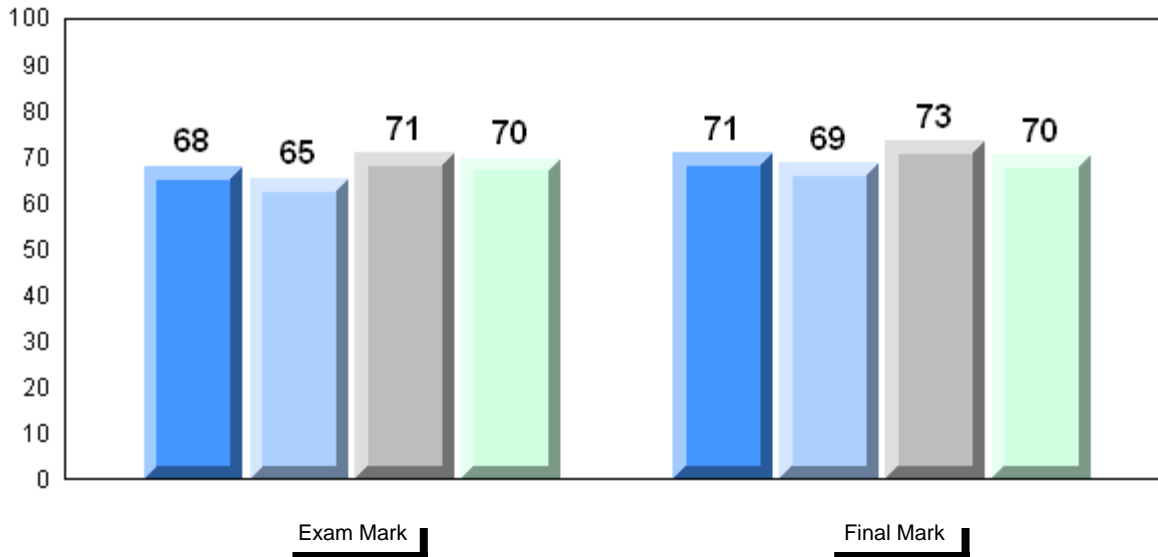
School
District
Province

51.5
52.6
52.5

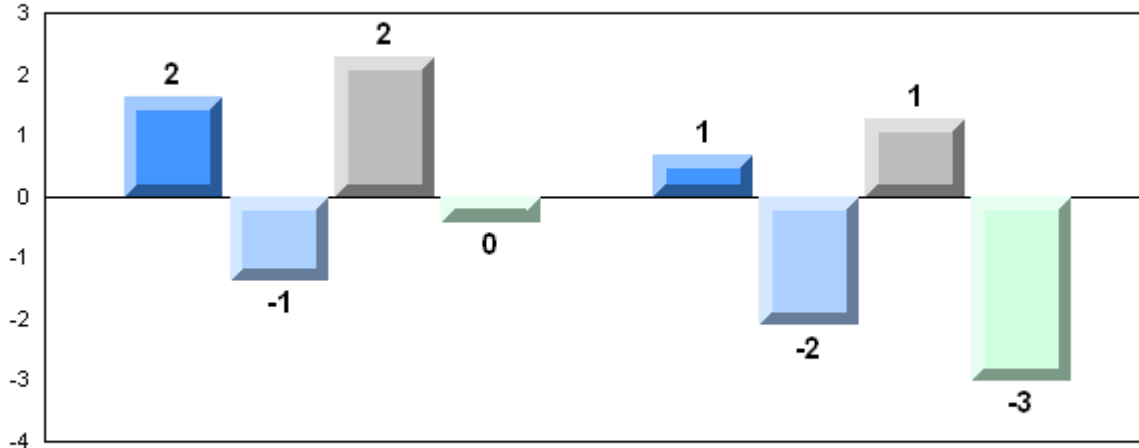
q

q

Average Mark, 2006-2009

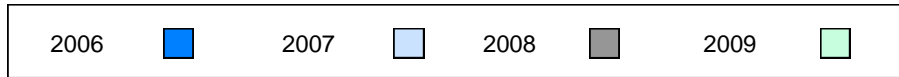


Difference from Provincial Mean, 2006-2009

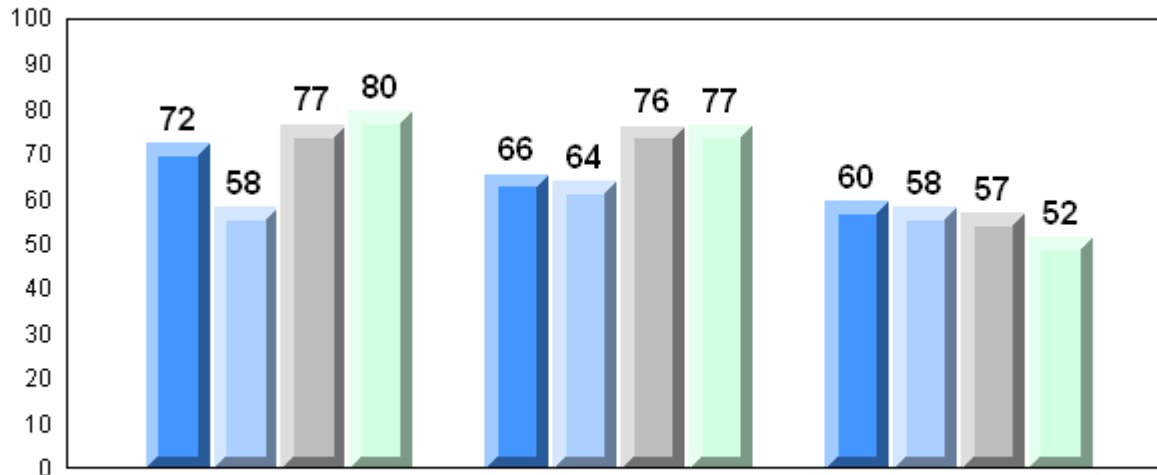


Exam Mark

Final Mark



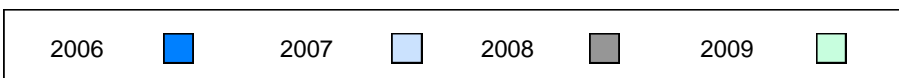
4 Year Public Exam (Subtest) Mark Trend 2006-2009



Listening

Reading

Writing



Number of Students 43

Francais 3202

School
District
Province

Public Exam Mark

School vs District

School vs Province

69.4
69.7
70.1

q

q

Final Mark

School vs District

School vs Province

71.1
72.9
73.3

q

q

Subtest

Listening

School
District
Province

78.1
75.3
75.7

p

p

Reading

School
District
Province

76.8
75.0
75.1

p

p

Writing

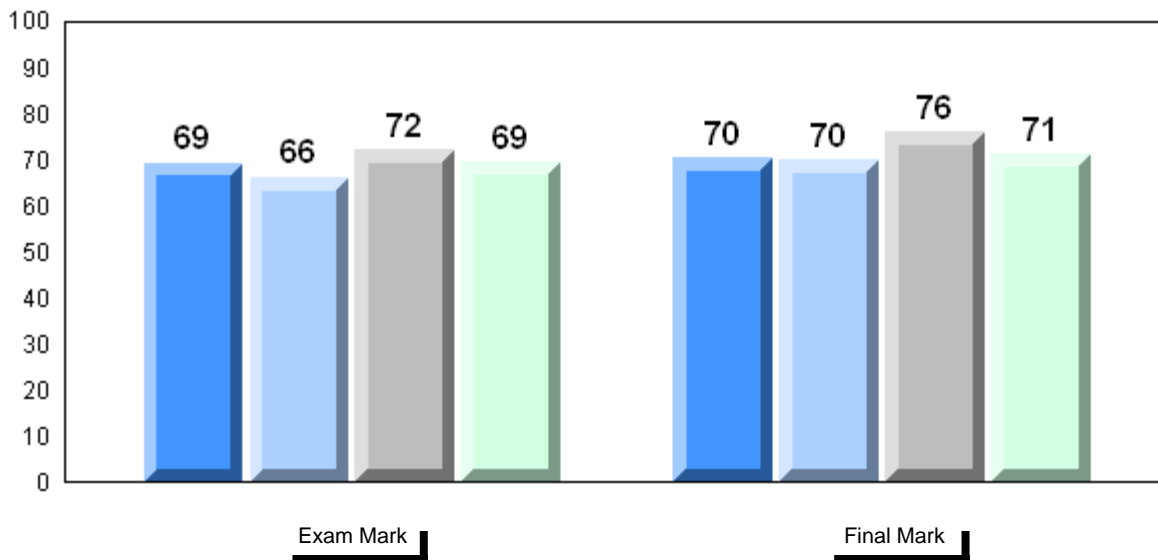
School
District
Province

49.3
52.6
52.5

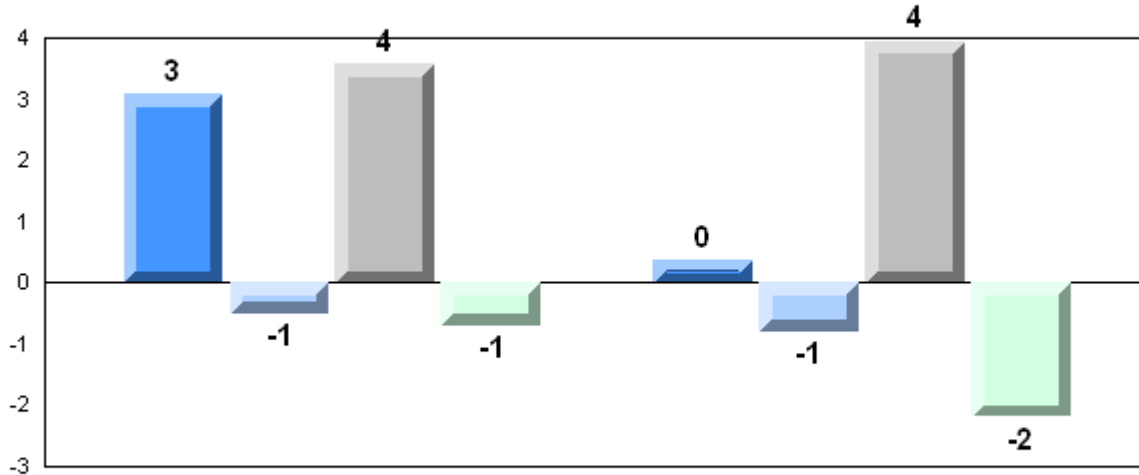
q

q

Average Mark, 2006-2009

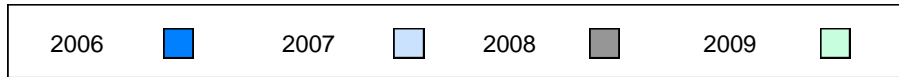


Difference from Provincial Mean, 2006-2009

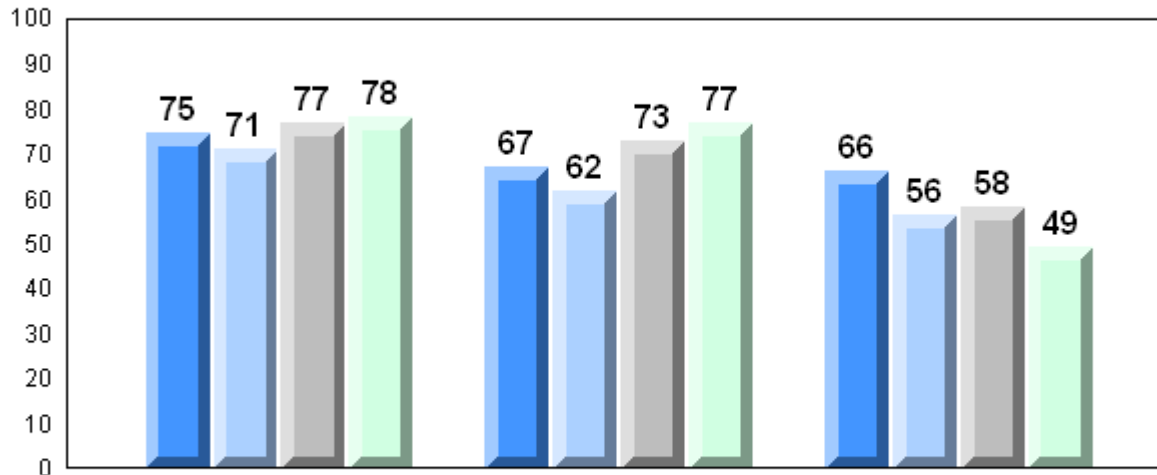


Exam Mark

Final Mark



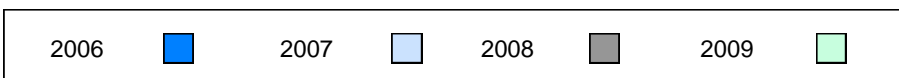
4 Year Public Exam (Subtest) Mark Trend 2006-2009



Listening

Reading

Writing



District 4 - Eastern

#354 - St. Kevin's High, St. John's (Goulds)

Grades: 10-12

Number of Students

17

Francais 3202

School
 District
 Province

Public Exam Mark

School vs District

School vs Province

69.8
 69.7
 70.1

P

Q

Final Mark

School vs District

School vs Province

74.4
 72.9
 73.3

P

P

Subtest

Listening

School
 District
 Province

76.9
 75.3
 75.7

P

P

Reading

School
 District
 Province

76.5
 75.0
 75.1

P

P

Writing

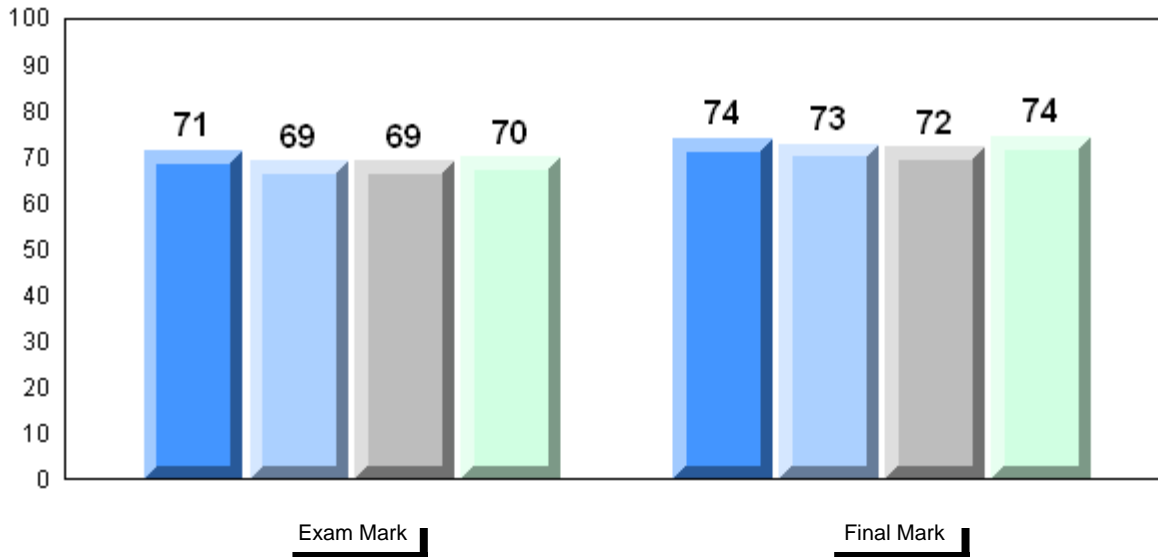
School
 District
 Province

48.6
 52.6
 52.5

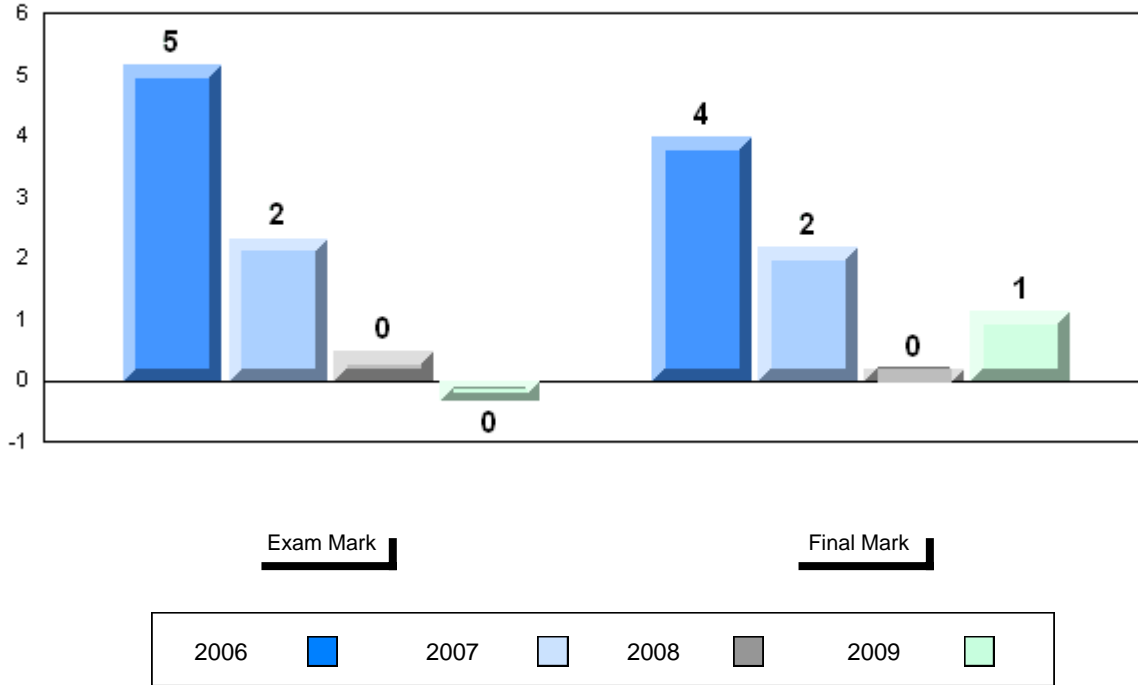
Q

Q

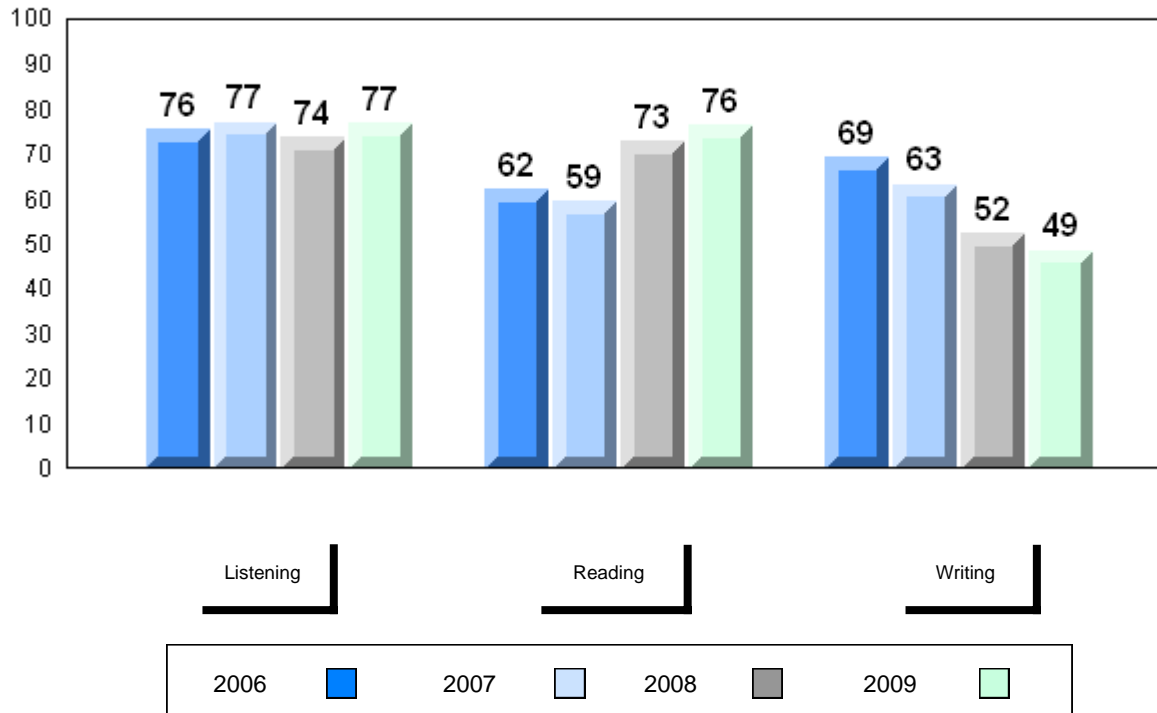
Average Mark, 2006-2009



Difference from Provincial Mean, 2006-2009



4 Year Public Exam (Subtest) Mark Trend 2006-2009



District 4 - Eastern

#464 - Crescent Collegiate, Blaketown

Grades: 7-12

Number of Students 15

Francais 3202

School
District
Province

Public Exam Mark	School vs District	School vs Province
-------------------------	--------------------	--------------------

67.9	q	q
69.7		
70.1		

Final Mark

School vs District	School vs Province
--------------------	--------------------

72.5	q
72.9	
73.3	

Subtest

Listening

School
District
Province

70.7	q	q
75.3		
75.7		

Reading

School
District
Province

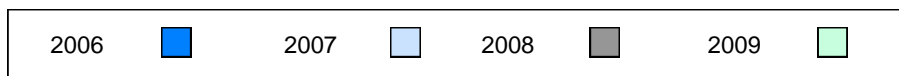
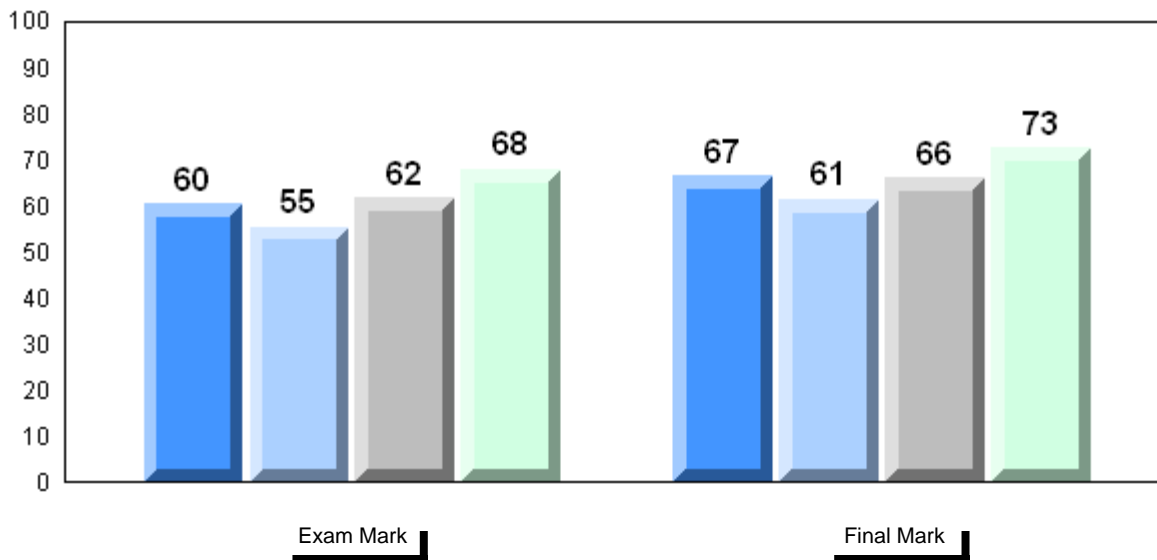
72.5	q	q
75.0		
75.1		

Writing

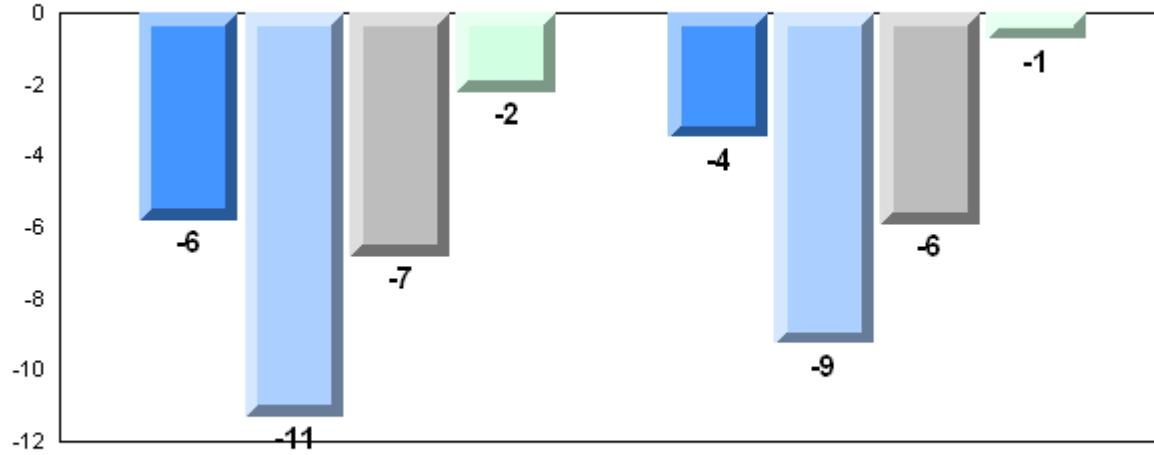
School
District
Province

51.2	q	q
52.6		
52.5		

Average Mark, 2006-2009

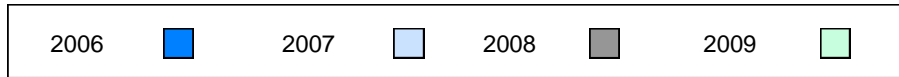


Difference from Provincial Mean, 2006-2009

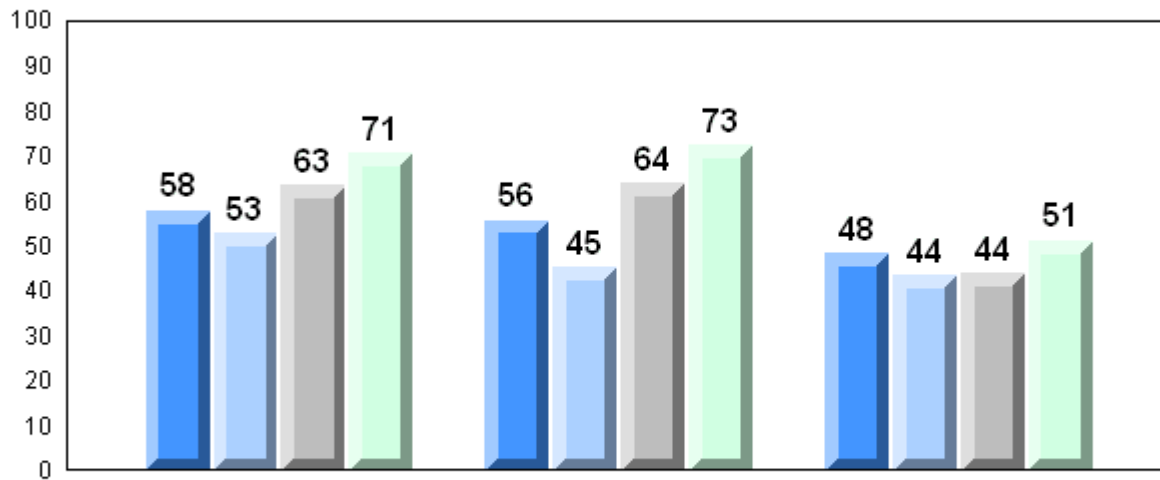


Exam Mark

Final Mark



4 Year Public Exam (Subtest) Mark Trend 2006-2009



Listening

Reading

Writing

