

Number of Students: 5

Multiple Choice

Number Operations

School
District
Province

Mark

71.7
75.8

School vs District
School vs Province

School data with 5 or fewer students withheld for reasons of confidentiality.

Number Concepts

School
District
Province

70.4
75.6

Shape and Space

School
District
Province

73.9
76.9

Written Response

Number Concepts

School
District
Province

55.7
61.4

Shape and Space

School
District
Province

75.7
78.9

Rubrics

Number Operations

- Reasoning
- Communication
- Connections and Representations
- Problem Solving

School
District
Province

57.4
65.7

School
District
Province

49.1
59.9

School
District
Province

56.4
61.3

School
District
Province

73.2
76.1

Yes/No Items

Addition

School
District
Province

91.3
90.9

Subtraction

School
District
Province

81.2
81.1

Multiplication

School
District
Province

85.7
81.4

3 Year CRT (Subtest) Mark Trend 2006-2008
Multiple Choice

School data with 5 or fewer students withheld for reasons of confidentiality.

Number Operations

Number Concepts

Shape and Space

Rubric Results: Percentage of Students Performing at Level 3 and Above 2006-2008
Number Operations

School data with 5 or fewer students withheld for reasons of confidentiality.

Reasoning

Communication

Connections and Representations

Problem Solving



2006



2007



2008

Difference from Provincial Mean, 2006-08
Multiple Choice

School data with 5 or fewer students withheld for reasons of confidentiality.

Number Operations

Number Concepts

Shape and Space

Difference from Provincial Mean, 2006-08

Rubric Results: Percentage of Students Performing at Level 3 and Above 2006-2008

Number Operations

School data with 5 or fewer students withheld for reasons of confidentiality.

Reasoning

Communication

Connections and Representations

Problem Solving



2006



2007



2008

Number of Students: 8

Multiple Choice

Number Operations

School
District
Province

50.0
71.7
75.8

q

q

Number Concepts

School
District
Province

59.4
70.4
75.6

q

q

Shape and Space

School
District
Province

52.1
73.9
76.9

q

q

Written Response

Number Concepts

School
District
Province

55.4
55.7
61.4

q

q

Shape and Space

School
District
Province

67.2
75.7
78.9

q

q

Rubrics

Number Operations

- Reasoning
- Communication
- Connections and Representations
- Problem Solving

School
District
Province

25.0
57.4
65.7

q

q

School
District
Province

12.5
49.1
59.9

q

q

School
District
Province

25.0
56.4
61.3

q

q

School
District
Province

62.5
73.2
76.1

q

q

Yes/No Items

Addition

School
District
Province

91.9
91.3
90.9

p

p

Subtraction

School
District
Province

65.0
81.2
81.1

q

q

Multiplication

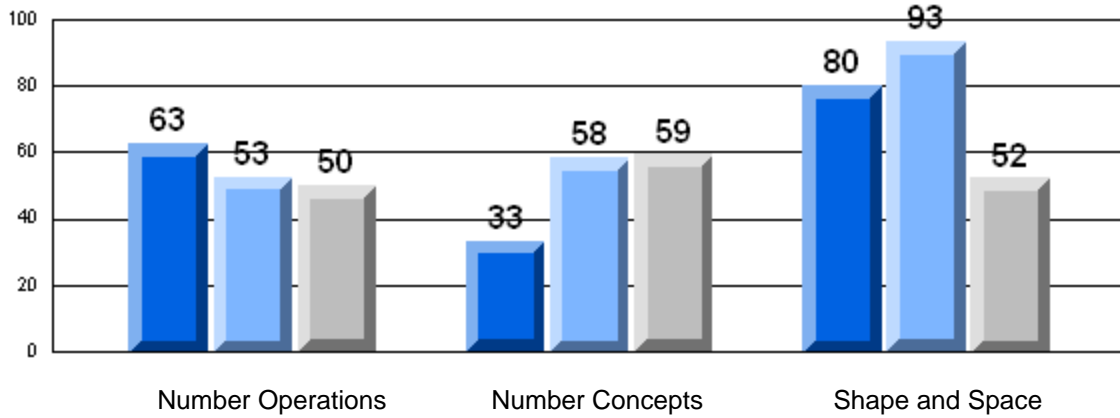
School
District
Province

75.0
85.7
81.4

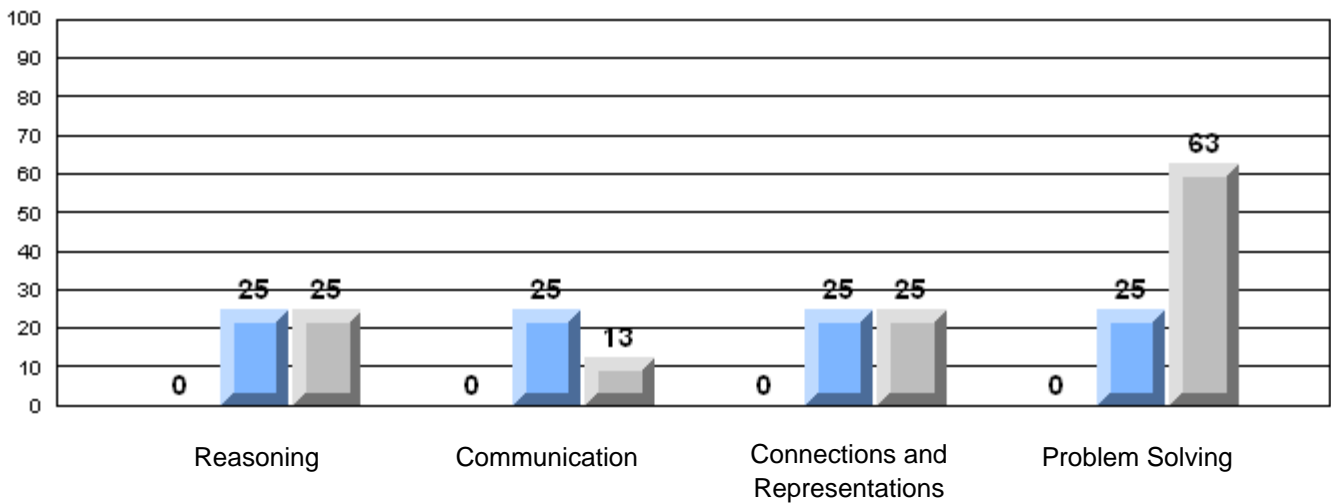
q

q

3 Year CRT (Subtest) Mark Trend 2006-2008
Multiple Choice

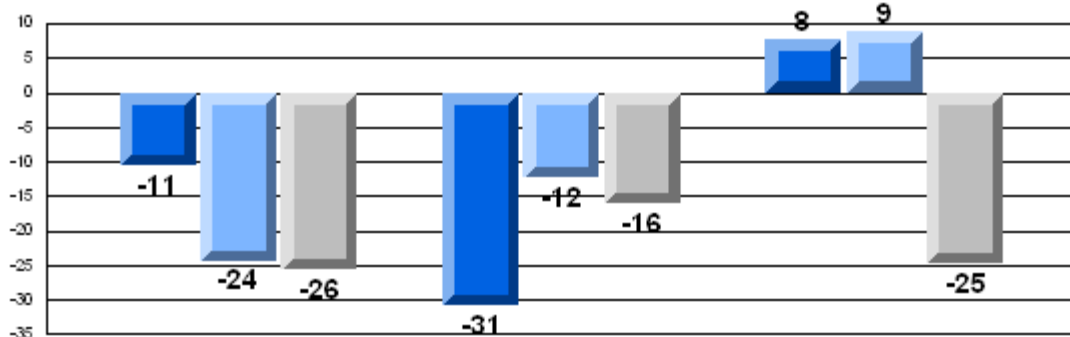


Rubric Results: Percentage of Students Performing at Level 3 and Above 2006-2008
Number Operations



Difference from Provincial Mean, 2006-08

Multiple Choice



Number Operations

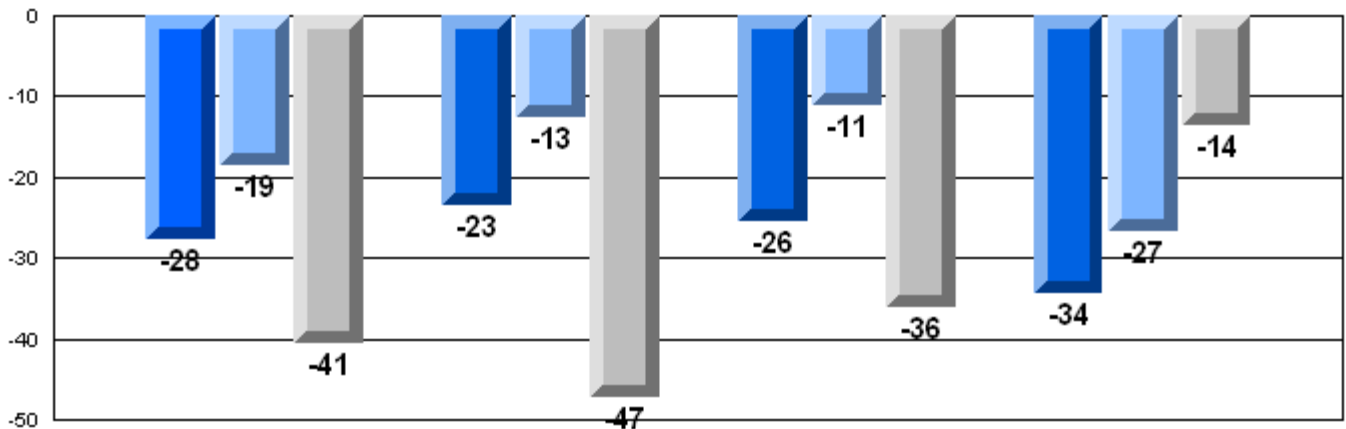
Number Concepts

Shape and Space

Difference from Provincial Mean, 2006-08

Rubric Results: Percentage of Students Performing at Level 3 and Above 2006-2008

Number Operations



Reasoning

Communication

Connections and
Representations

Problem Solving



2006



2007



2008

Number of Students: 108

Multiple Choice

Number Operations

School
District
Province

74.1
71.7
75.8

P

Q

Number Concepts

School
District
Province

68.7
70.4
75.6

Q

Q

Shape and Space

School
District
Province

71.2
73.9
76.9

Q

Q

Written Response

Number Concepts

School
District
Province

54.5
55.7
61.4

Q

Q

Shape and Space

School
District
Province

76.8
75.7
78.9

P

Q

Rubrics

Number Operations

- Reasoning
- Communication
- Connections and Representations
- Problem Solving

School
District
Province

58.3
57.4
65.7

P

Q

School
District
Province

55.6
49.1
59.9

P

Q

School
District
Province

61.1
56.4
61.3

P

Q

School
District
Province

76.6
73.2
76.1

P

P

Yes/No Items

Addition

School
District
Province

92.9
91.3
90.9

P

P

Subtraction

School
District
Province

84.3
81.2
81.1

P

P

Multiplication

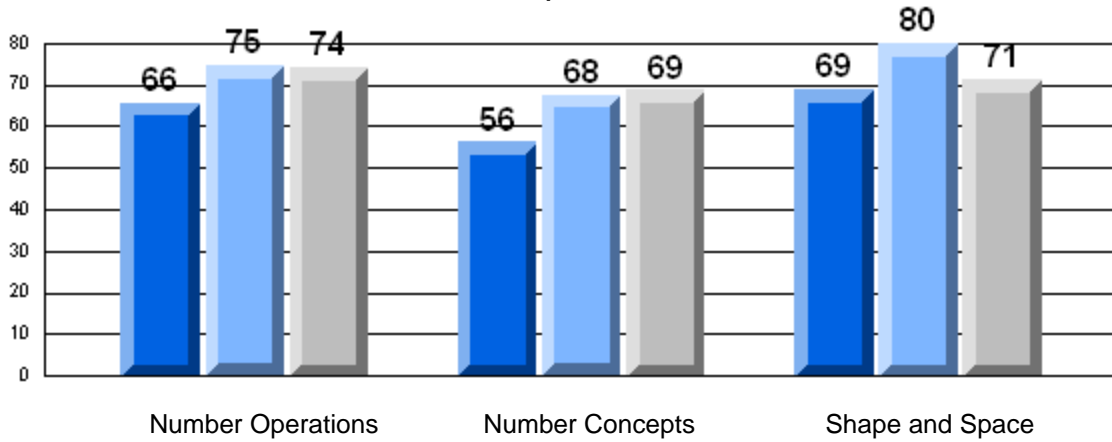
School
District
Province

87.9
85.7
81.4

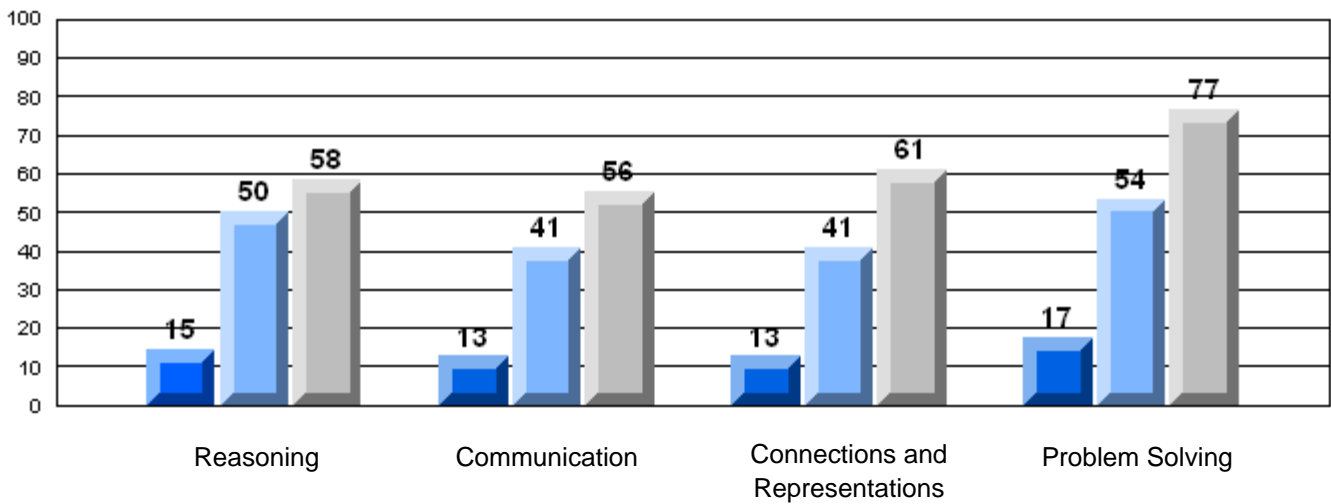
P

P

3 Year CRT (Subtest) Mark Trend 2006-2008
Multiple Choice



Rubric Results: Percentage of Students Performing at Level 3 and Above 2006-2008
Number Operations



2006



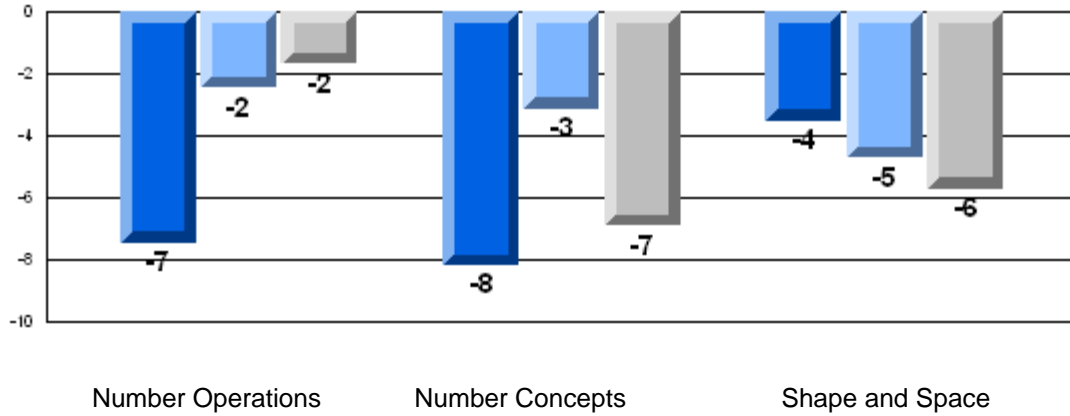
2007



2008

Difference from Provincial Mean, 2006-08

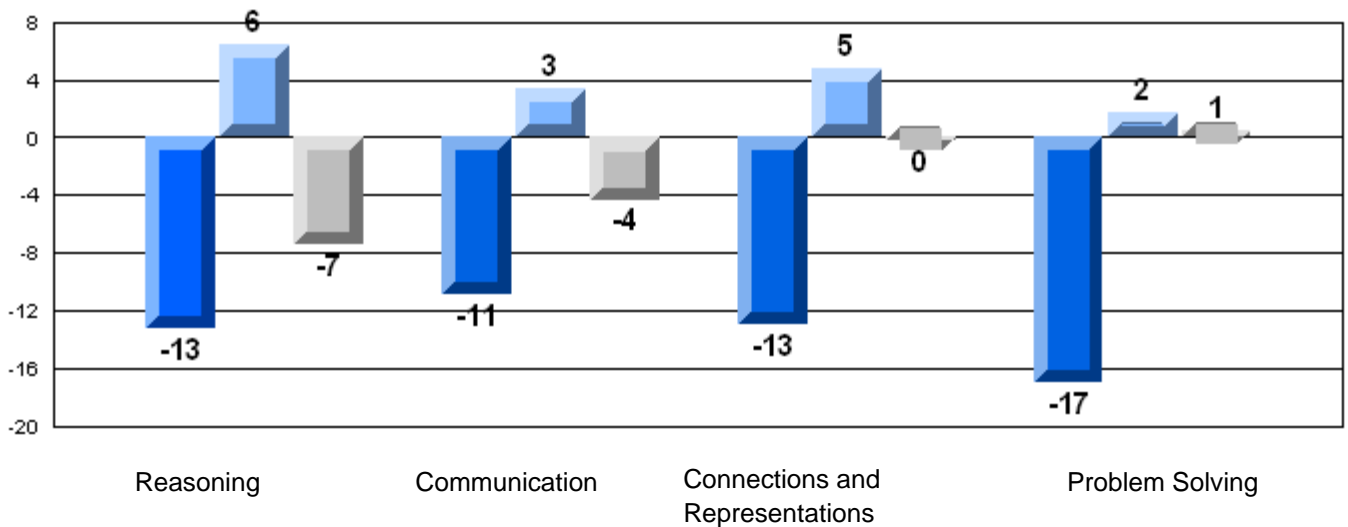
Multiple Choice



Difference from Provincial Mean, 2006-08

Rubric Results: Percentage of Students Performing at Level 3 and Above 2006-2008

Number Operations



Number of Students: 8

Multiple Choice

Number Operations

School
District
Province

57.5
71.7
75.8

School vs District School vs Province

q q

Number Concepts

School
District
Province

67.2
70.4
75.6

q q

Shape and Space

School
District
Province

68.8
73.9
76.9

q q

Written Response

Number Concepts

School
District
Province

69.6
55.7
61.4

p p

Shape and Space

School
District
Province

80.5
75.7
78.9

p p

Rubrics

Number Operations

- Reasoning
- Communication
- Connections and Representations
- Problem Solving

School
District
Province

62.5
57.4
65.7

p q

School
District
Province

50.0
49.1
59.9

p q

School
District
Province

50.0
56.4
61.3

q q

School
District
Province

87.5
73.2
76.1

p p

Yes/No Items

Addition

School
District
Province

93.1
91.3
90.9

p p

Subtraction

School
District
Province

73.1
81.2
81.1

q q

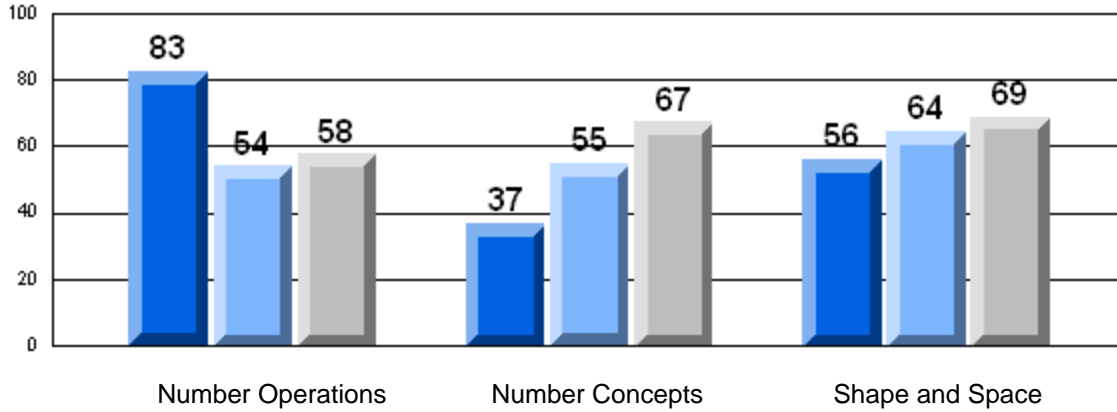
Multiplication

School
District
Province

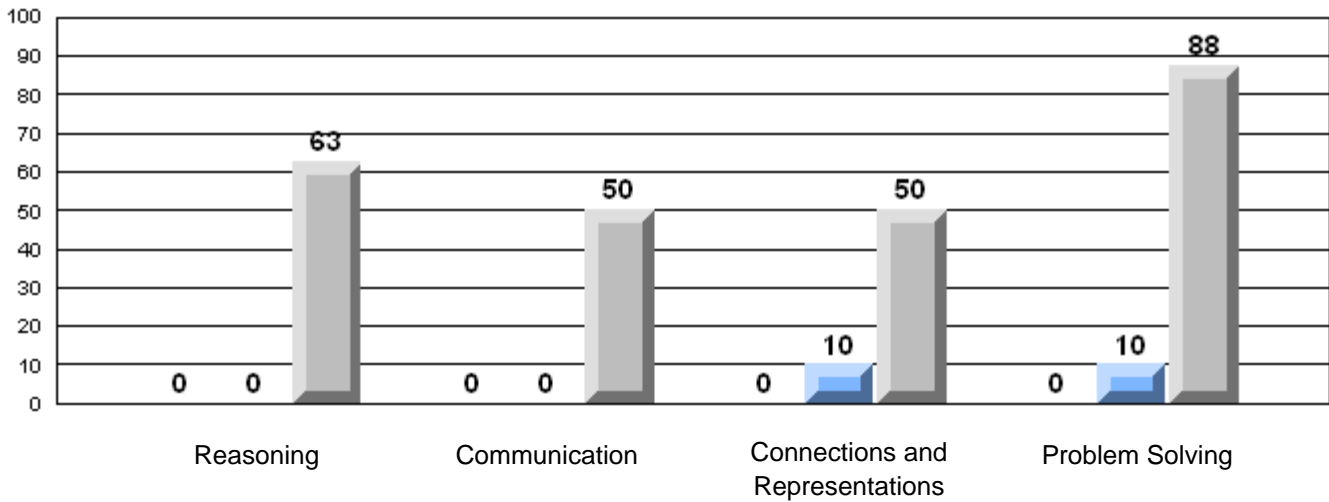
80.0
85.7
81.4

q q

3 Year CRT (Subtest) Mark Trend 2006-2008
Multiple Choice



Rubric Results: Percentage of Students Performing at Level 3 and Above 2006-2008
Number Operations



2006



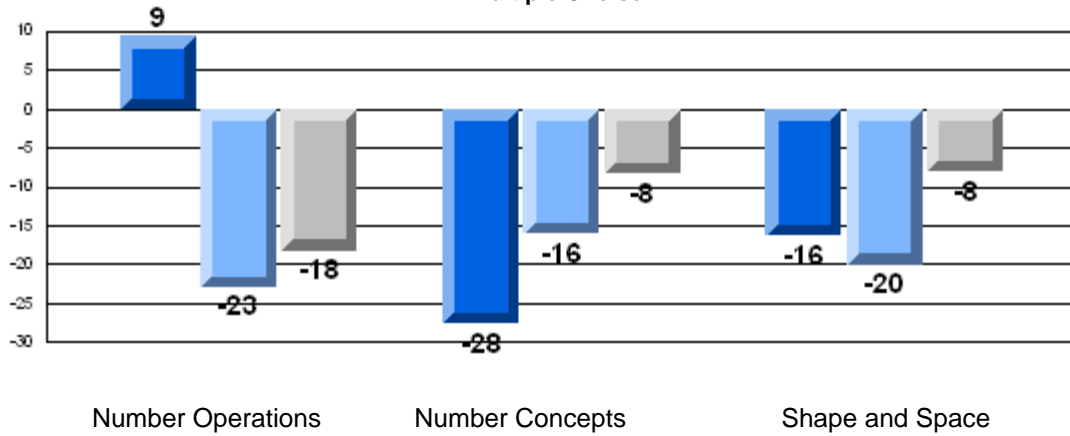
2007



2008

Difference from Provincial Mean, 2006-08

Multiple Choice



Number Operations

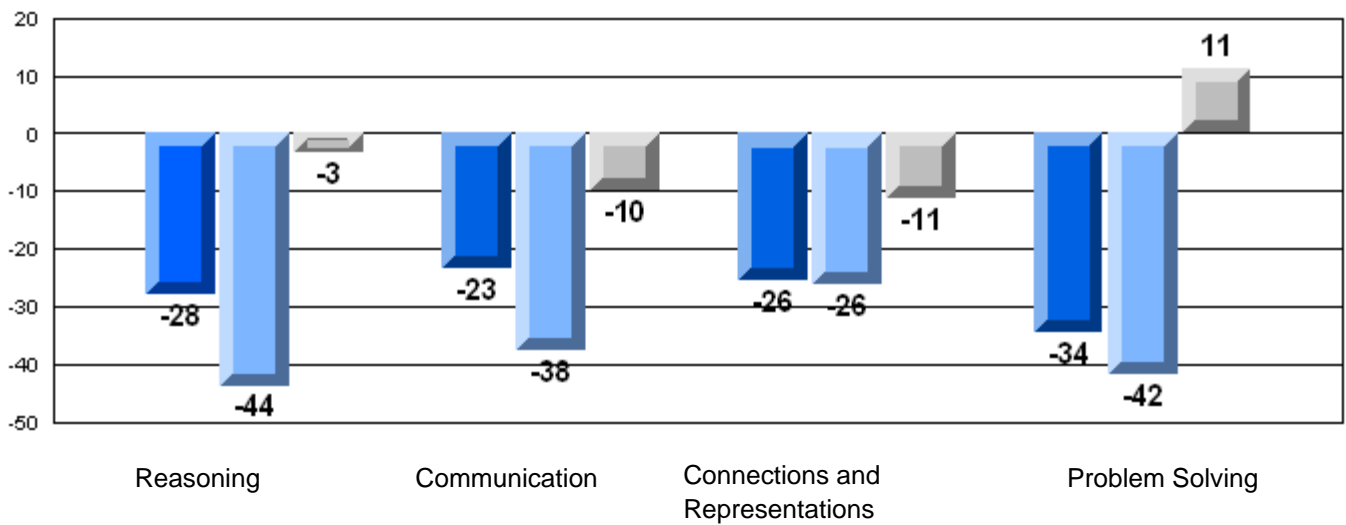
Number Concepts

Shape and Space

Difference from Provincial Mean, 2006-08

Rubric Results: Percentage of Students Performing at Level 3 and Above 2006-2008

Number Operations



Reasoning

Communication

Connections and Representations

Problem Solving



2006



2007



2008

Number of Students: 102

Multiple Choice

Number Operations

School 75.8
District 71.7
Province 75.8

School vs District: P
School vs Province: P

Number Concepts

School 78.6
District 70.4
Province 75.6

School vs District: P
School vs Province: P

Shape and Space

School 81.0
District 73.9
Province 76.9

School vs District: P
School vs Province: P

Written Response

Number Concepts

School 59.1
District 55.7
Province 61.4

School vs District: P
School vs Province: Q

Shape and Space

School 75.9
District 75.7
Province 78.9

School vs District: P
School vs Province: Q

Rubrics

Number Operations

- Reasoning
- Communication
- Connections and Representations
- Problem Solving

School 63.7
District 57.4
Province 65.7

School vs District: P
School vs Province: Q

School 57.8
District 49.1
Province 59.9

School vs District: P
School vs Province: Q

School 63.7
District 56.4
Province 61.3

School vs District: P
School vs Province: P

School 74.5
District 73.2
Province 76.1

School vs District: P
School vs Province: Q

Yes/No Items

Addition

School 91.2
District 91.3
Province 90.9

School vs District: Q
School vs Province: P

Subtraction

School 83.4
District 81.2
Province 81.1

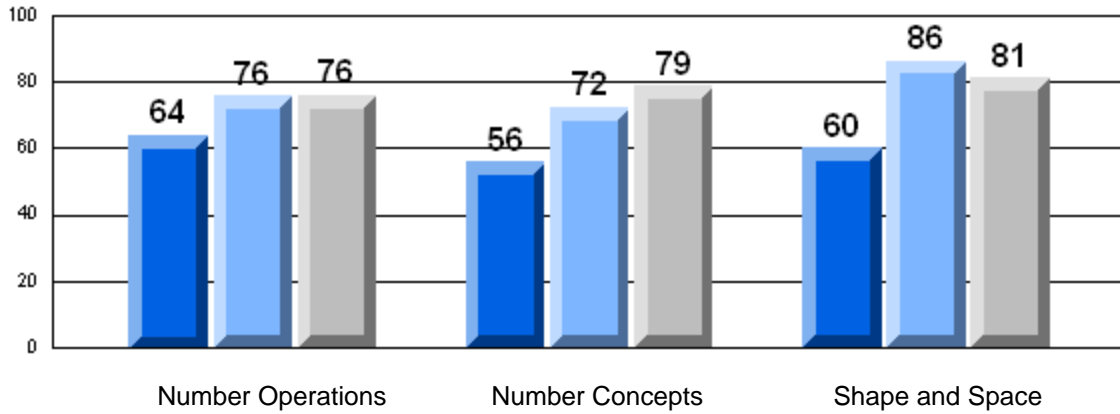
School vs District: P
School vs Province: P

Multiplication

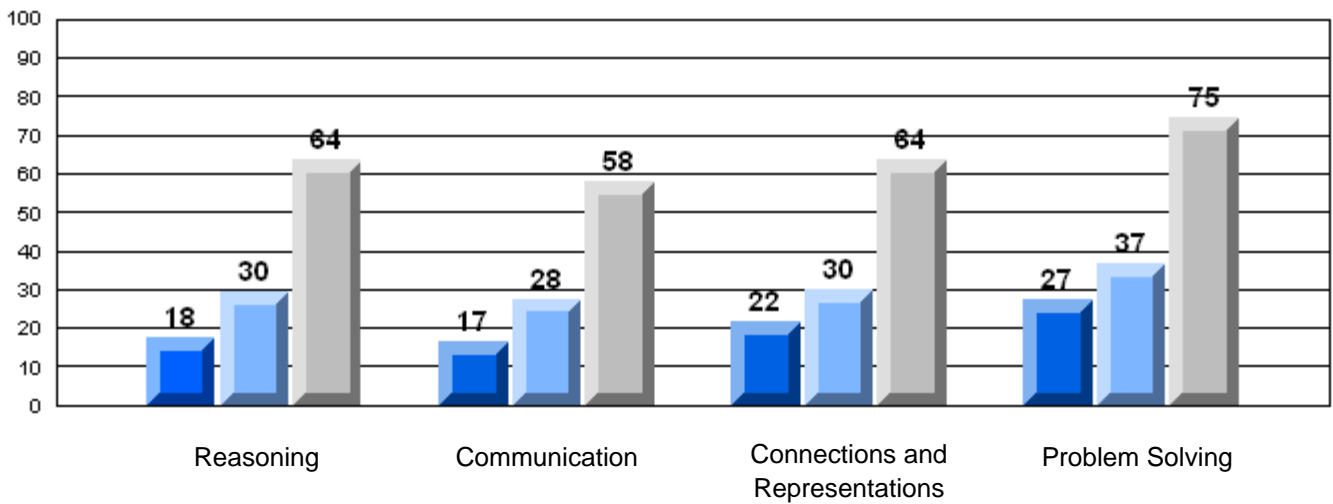
School 88.9
District 85.7
Province 81.4

School vs District: P
School vs Province: P

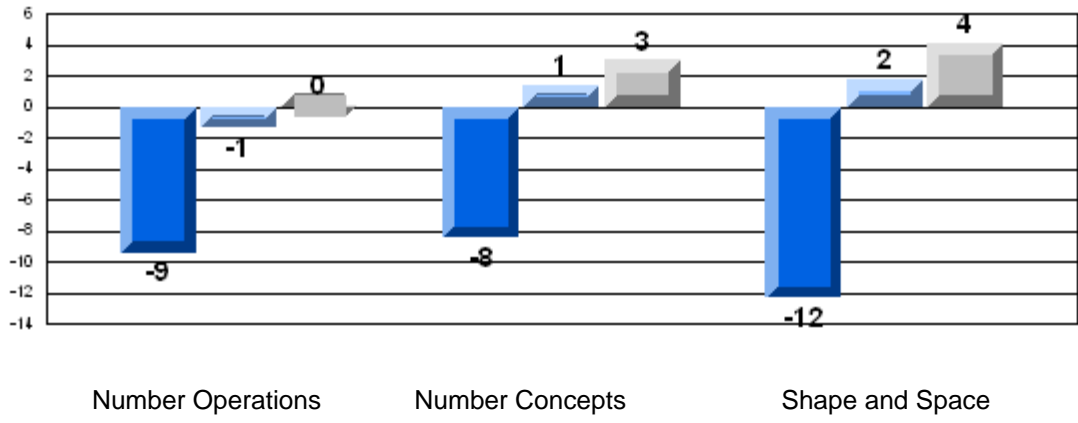
3 Year CRT (Subtest) Mark Trend 2006-2008
Multiple Choice



Rubric Results: Percentage of Students Performing at Level 3 and Above 2006-2008
Number Operations



Difference from Provincial Mean, 2006-08
Multiple Choice

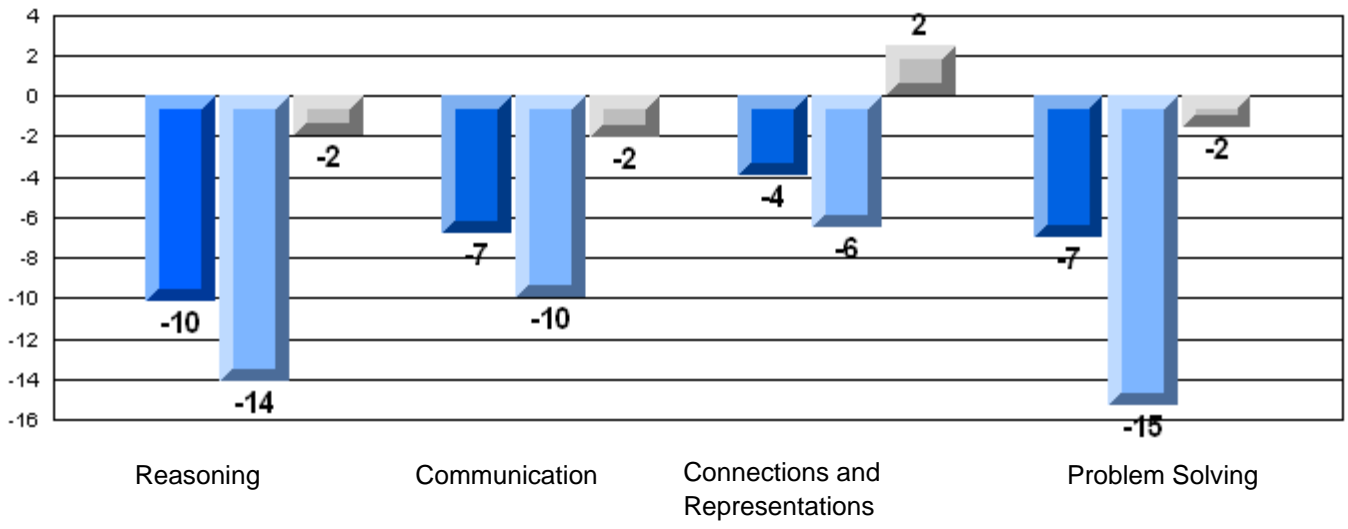


Number Operations

Number Concepts

Shape and Space

Difference from Provincial Mean, 2006-08
Rubric Results: Percentage of Students Performing at Level 3 and Above 2006-2008
Number Operations



Reasoning

Communication

Connections and Representations

Problem Solving

2006

2007

2008

Number of Students: 4

Multiple Choice

Number Operations

School
District
Province

Mark

71.7
75.8

School vs District
School vs Province

School data with 5 or fewer students withheld for reasons of confidentiality.

Number Concepts

School
District
Province

70.4
75.6

Shape and Space

School
District
Province

73.9
76.9

Written Response

Number Concepts

School
District
Province

55.7
61.4

Shape and Space

School
District
Province

75.7
78.9

Rubrics

Number Operations

- Reasoning
- Communication
- Connections and Representations
- Problem Solving

School
District
Province

57.4
65.7

School
District
Province

49.1
59.9

School
District
Province

56.4
61.3

School
District
Province

73.2
76.1

Yes/No Items

Addition

School
District
Province

91.3
90.9

Subtraction

School
District
Province

81.2
81.1

Multiplication

School
District
Province

85.7
81.4

3 Year CRT (Subtest) Mark Trend 2006-2008
Multiple Choice

School data with 5 or fewer students withheld for reasons of confidentiality.

Number Operations

Number Concepts

Shape and Space

Rubric Results: Percentage of Students Performing at Level 3 and Above 2006-2008
Number Operations

School data with 5 or fewer students withheld for reasons of confidentiality.

Reasoning

Communication

Connections and Representations

Problem Solving



2006



2007



2008

**Difference from Provincial Mean, 2006-08
Multiple Choice**

School data with 5 or fewer students withheld for reasons of confidentiality.

Number Operations

Number Concepts

Shape and Space

Difference from Provincial Mean, 2006-08

Rubric Results: Percentage of Students Performing at Level 3 and Above 2006-2008

Number Operations

School data with 5 or fewer students withheld for reasons of confidentiality.

Reasoning

Communication

Connections and Representations

Problem Solving



2006



2007



2008

Number of Students: 19

Multiple Choice

Number Operations

School 53.7
District 71.7
Province 75.8

School vs District School vs Province

q q

Number Concepts

School 45.1
District 70.4
Province 75.6

q q

Shape and Space

School 63.0
District 73.9
Province 76.9

q q

Written Response

Number Concepts

School 36.5
District 55.7
Province 61.4

q q

Shape and Space

School 67.7
District 75.7
Province 78.9

q q

Rubrics

Number Operations

- Reasoning
- Communication
- Connections and Representations
- Problem Solving

School 22.2
District 57.4
Province 65.7

q q

School 0.0
District 49.1
Province 59.9

q q

School 5.3
District 56.4
Province 61.3

q q

School 57.9
District 73.2
Province 76.1

q q

Yes/No Items

Addition

School 88.4
District 91.3
Province 90.9

q q

Subtraction

School 63.7
District 81.2
Province 81.1

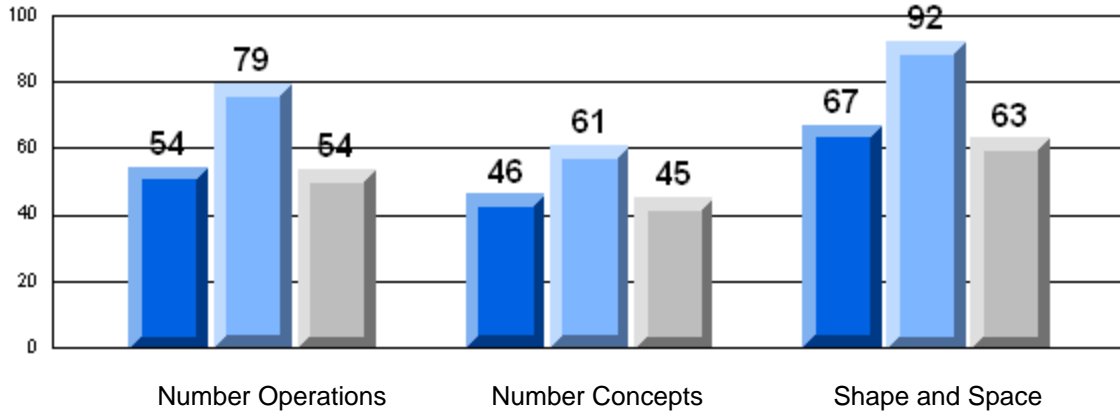
q q

Multiplication

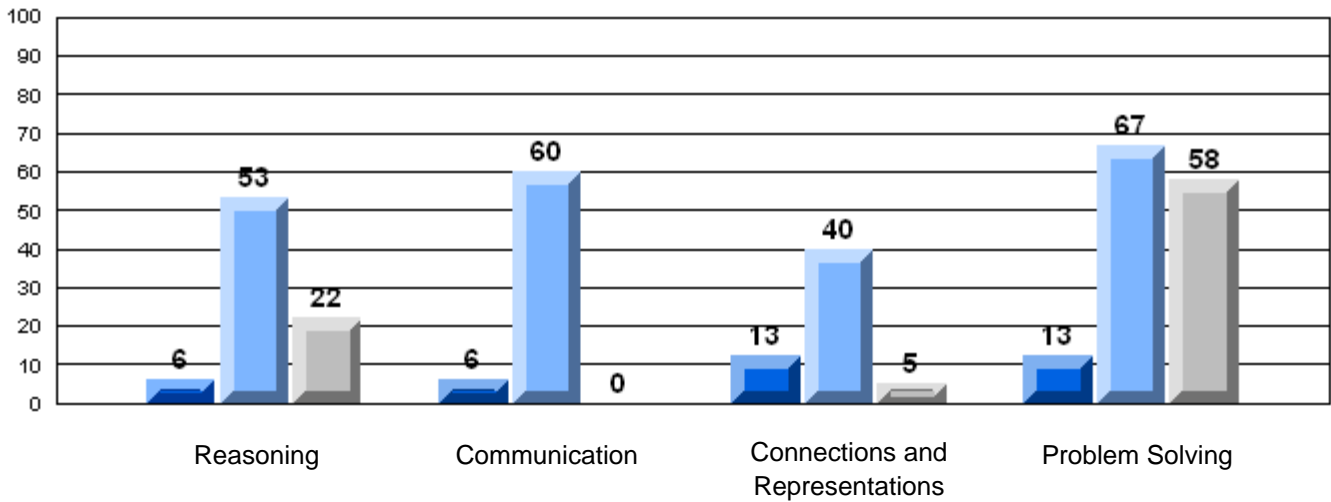
School 67.9
District 85.7
Province 81.4

q q

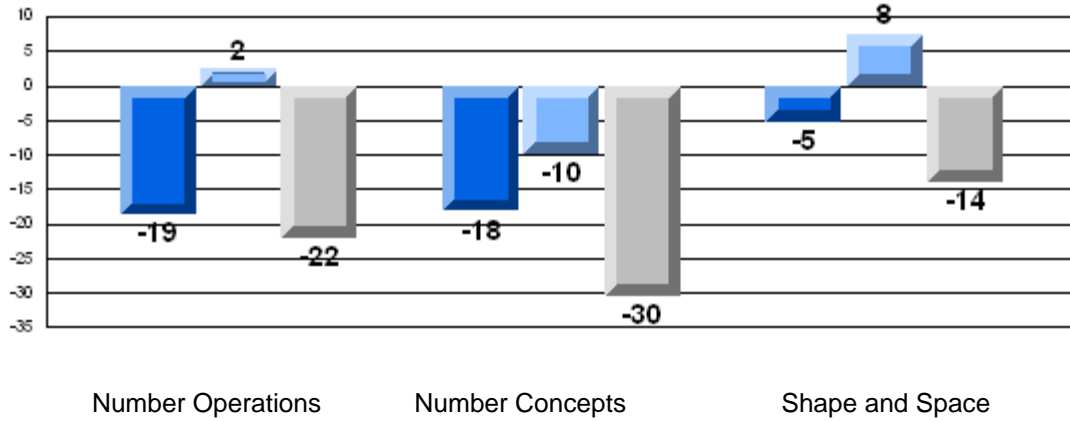
3 Year CRT (Subtest) Mark Trend 2006-2008
Multiple Choice



Rubric Results: Percentage of Students Performing at Level 3 and Above 2006-2008
Number Operations



Difference from Provincial Mean, 2006-08
Multiple Choice

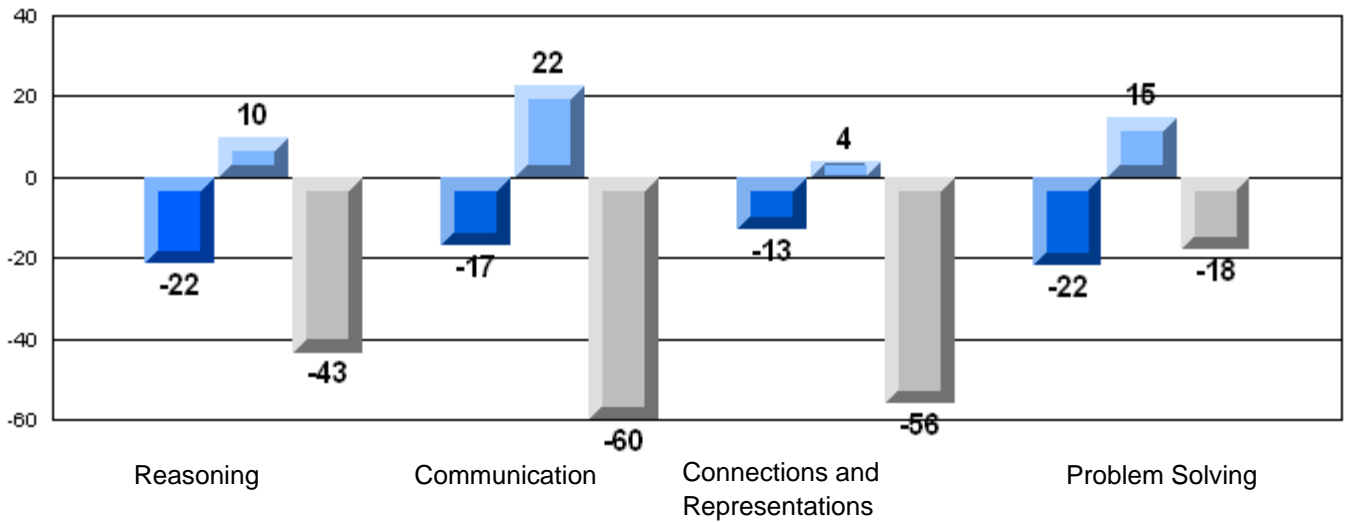


Number Operations

Number Concepts

Shape and Space

Difference from Provincial Mean, 2006-08
Rubric Results: Percentage of Students Performing at Level 3 and Above 2006-2008
Number Operations



Reasoning

Communication

Connections and
Representations

Problem Solving



2006



2007



2008

Number of Students: 9

Multiple Choice

Number Operations

School
District
Province

80.0
71.7
75.8

P

P

Number Concepts

School
District
Province

75.0
70.4
75.6

P

Q

Shape and Space

School
District
Province

87.5
73.9
76.9

P

P

Written Response

Number Concepts

School
District
Province

72.2
55.7
61.4

P

P

Shape and Space

School
District
Province

91.4
75.7
78.9

P

P

Rubrics

Number Operations

- Reasoning
- Communication
- Connections and Representations
- Problem Solving

School
District
Province

66.7
57.4
65.7

P

P

School
District
Province

22.2
49.1
59.9

Q

Q

School
District
Province

55.6
56.4
61.3

Q

Q

School
District
Province

77.8
73.2
76.1

P

P

Yes/No Items

Addition

School
District
Province

82.2
91.3
90.9

Q

Q

Subtraction

School
District
Province

91.3
81.2
81.1

P

P

Multiplication

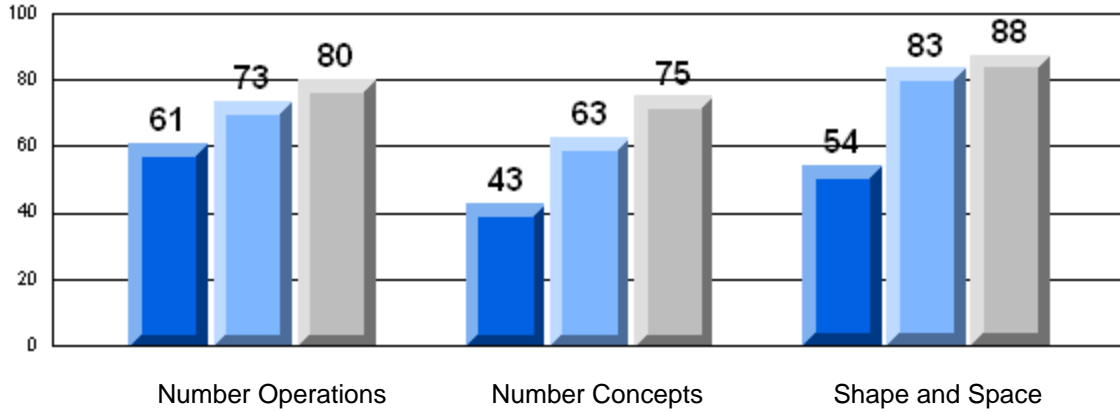
School
District
Province

93.8
85.7
81.4

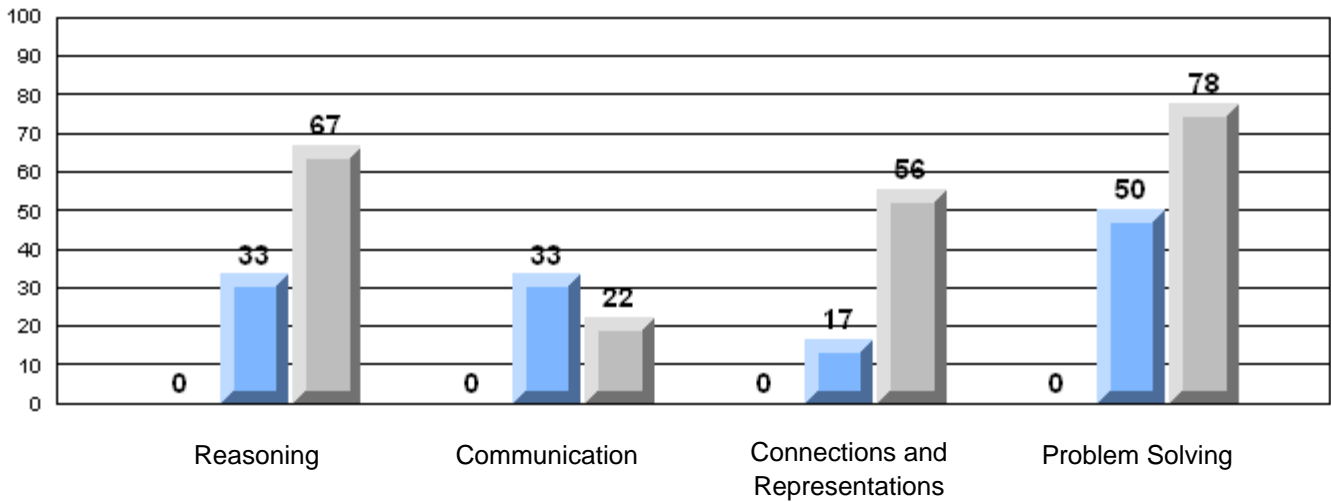
P

P

3 Year CRT (Subtest) Mark Trend 2006-2008
Multiple Choice



Rubric Results: Percentage of Students Performing at Level 3 and Above 2006-2008
Number Operations



2006

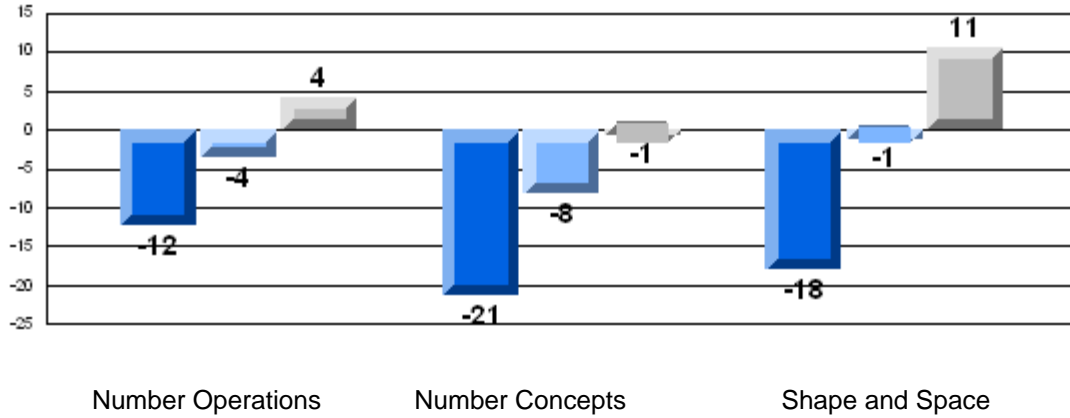


2007



2008

Difference from Provincial Mean, 2006-08
Multiple Choice

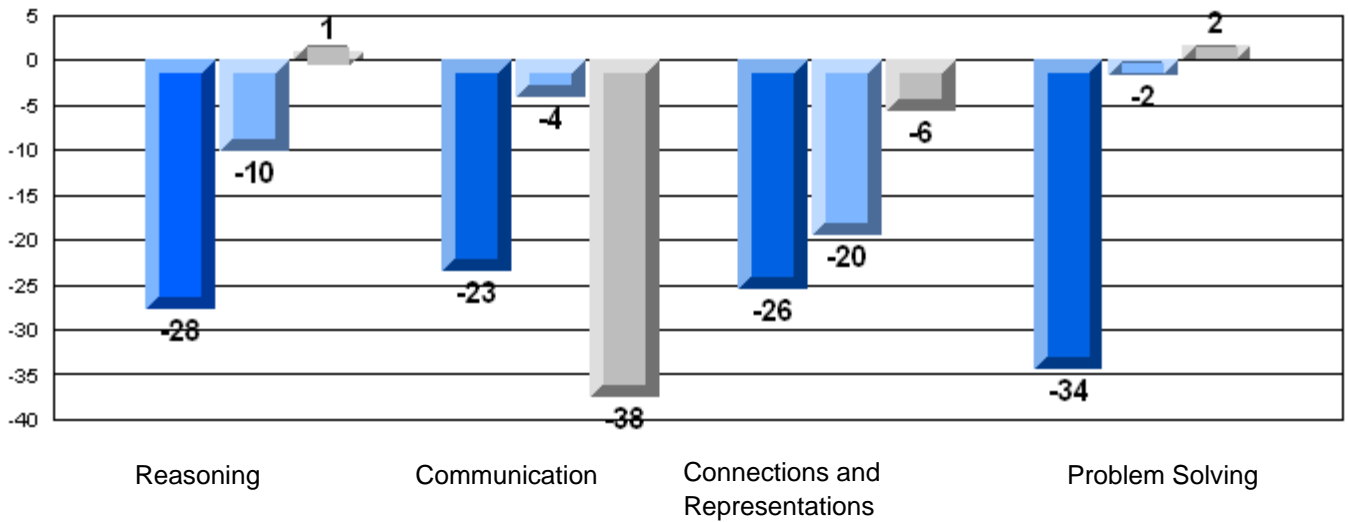


Number Operations

Number Concepts

Shape and Space

Difference from Provincial Mean, 2006-08
Rubric Results: Percentage of Students Performing at Level 3 and Above 2006-2008
Number Operations



Reasoning

Communication

Connections and Representations

Problem Solving



2006



2007



2008

Number of Students: 4

Multiple Choice

Number Operations

School
District
Province

Mark

School
vs
District

School
vs
Province

71.7
75.8

School data with 5 or fewer students withheld for reasons of confidentiality.

Number Concepts

School
District
Province

70.4
75.6

Shape and Space

School
District
Province

73.9
76.9

Written Response

Number Concepts

School
District
Province

55.7
61.4

Shape and Space

School
District
Province

75.7
78.9

Rubrics

Number Operations

- Reasoning
- Communication
- Connections and Representations
- Problem Solving

School
District
Province

57.4
65.7

School
District
Province

49.1
59.9

School
District
Province

56.4
61.3

School
District
Province

73.2
76.1

Yes/No Items

Addition

School
District
Province

91.3
90.9

Subtraction

School
District
Province

81.2
81.1

Multiplication

School
District
Province

85.7
81.4

3 Year CRT (Subtest) Mark Trend 2006-2008
Multiple Choice

School data with 5 or fewer students withheld for reasons of confidentiality.

Number Operations

Number Concepts

Shape and Space

Rubric Results: Percentage of Students Performing at Level 3 and Above 2006-2008
Number Operations

School data with 5 or fewer students withheld for reasons of confidentiality.

Reasoning

Communication

Connections and Representations

Problem Solving



2006



2007



2008

Difference from Provincial Mean, 2006-08
Multiple Choice

School data with 5 or fewer students withheld for reasons of confidentiality.

Number Operations

Number Concepts

Shape and Space

Difference from Provincial Mean, 2006-08

Rubric Results: Percentage of Students Performing at Level 3 and Above 2006-2008

Number Operations

School data with 5 or fewer students withheld for reasons of confidentiality.

Reasoning

Communication

Connections and Representations

Problem Solving



2006



2007



2008

Number of Students: 6

Multiple Choice

Number Operations

School 55.0
District 71.7
Province 75.8

School vs District School vs Province

q q

Number Concepts

School 56.3
District 70.4
Province 75.6

q q

Shape and Space

School 63.9
District 73.9
Province 76.9

q q

Written Response

Number Concepts

School 26.2
District 55.7
Province 61.4

q q

Shape and Space

School 65.6
District 75.7
Province 78.9

q q

Rubrics

Number Operations

- Reasoning
- Communication
- Connections and Representations
- Problem Solving

School 16.7
District 57.4
Province 65.7

q q

School 0.0
District 49.1
Province 59.9

q q

School 16.7
District 56.4
Province 61.3

q q

School 16.7
District 73.2
Province 76.1

q q

Yes/No Items

Addition

School 80.8
District 91.3
Province 90.9

q q

Subtraction

School 69.2
District 81.2
Province 81.1

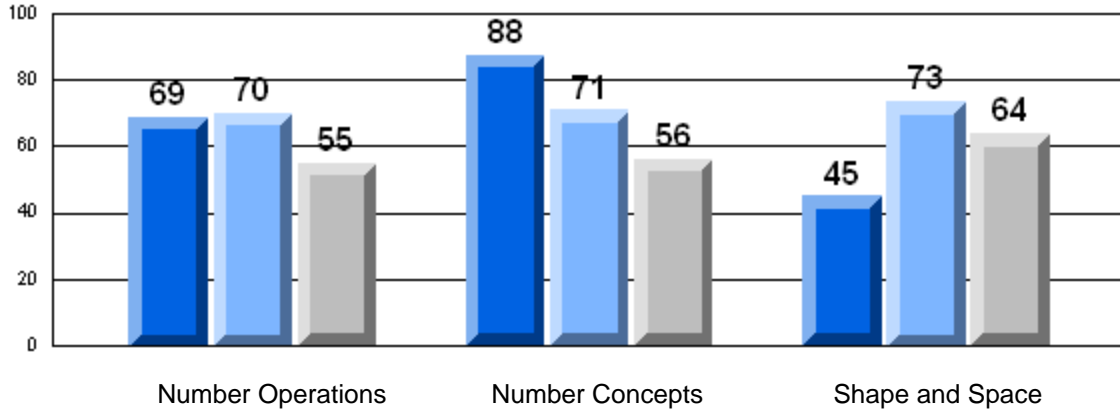
q q

Multiplication

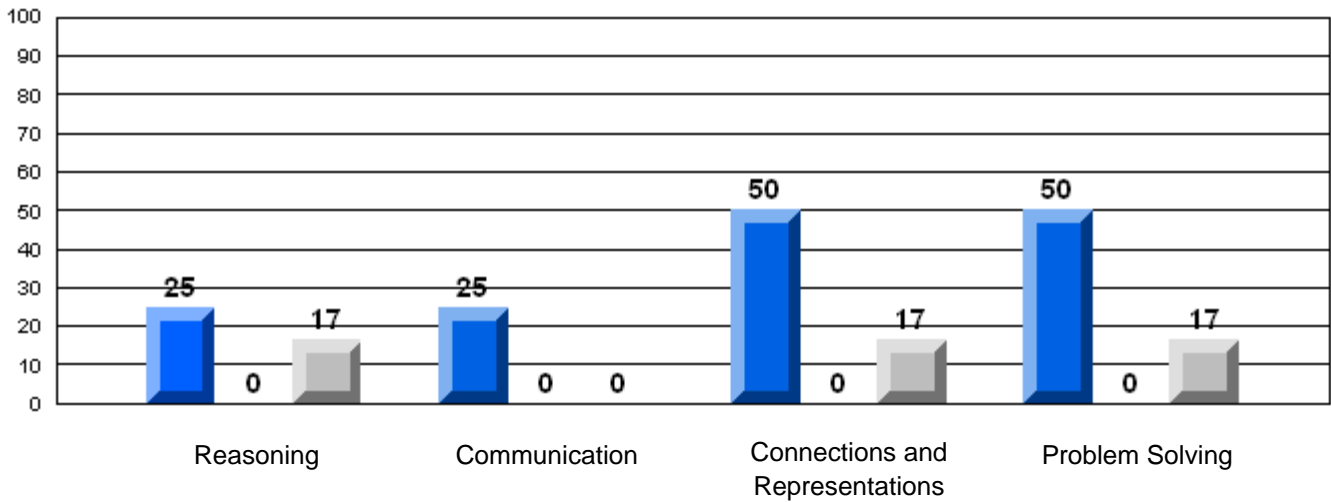
School 86.7
District 85.7
Province 81.4

p p

3 Year CRT (Subtest) Mark Trend 2006-2008
Multiple Choice

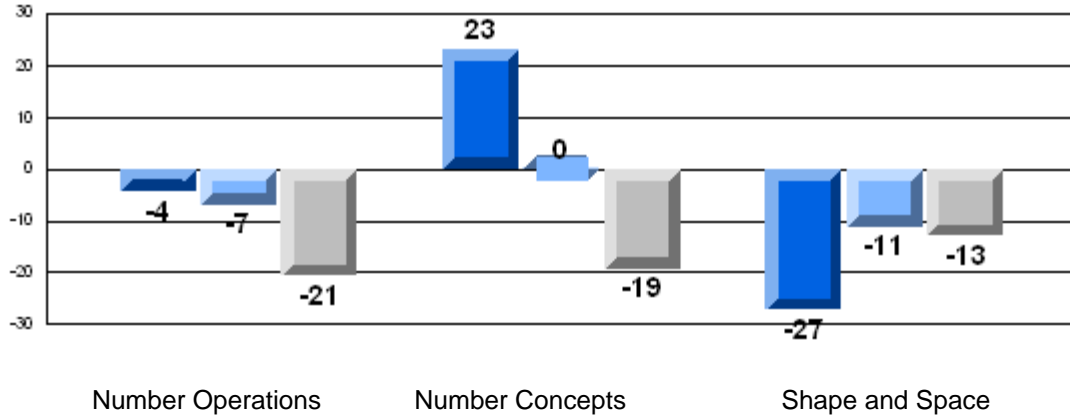


Rubric Results: Percentage of Students Performing at Level 3 and Above 2006-2008
Number Operations



Difference from Provincial Mean, 2006-08

Multiple Choice



Difference from Provincial Mean, 2006-08

Rubric Results: Percentage of Students Performing at Level 3 and Above 2006-2008

Number Operations

