

District 1 - Labrador

#010 - Menihek High School, Labrador City

Grades: 8-12

Number of Students 7

Histoire Mondiale 3231

Subtest

WWI

Challenges and Changes

International Tensions (1930's and WWII)

Cold War

Regional Developments in Post WWII (5.1)

Regional Developments in Post WWII (5.2)

Challenges of the Modern Era

School	60.6	q	q
District	60.6		
Province	67.0		
School	64.6	p	q
District	64.6		
Province	73.7		
School	59.0	p	q
District	59.0		
Province	64.9		
School	66.2	p	q
District	66.2		
Province	68.9		
School	53.6	p	q
District	53.6		
Province	60.6		
School	44.9	p	q
District	44.9		
Province	52.4		
School	0.0	p	q
District	0.0		
Province	55.1		
School	58.2	p	q
District	58.2		
Province	67.3		

Public Exam Mark

School vs District

School vs Province

Final Mark

School vs District

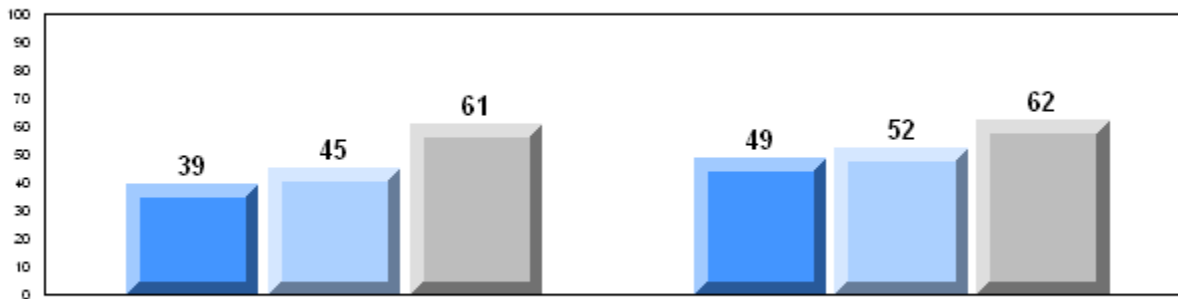
School vs Province

62.0
62.0
70.5

p

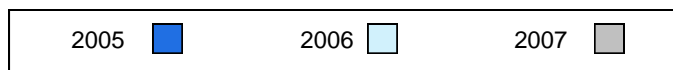
q

Average Mark, 2005-2007

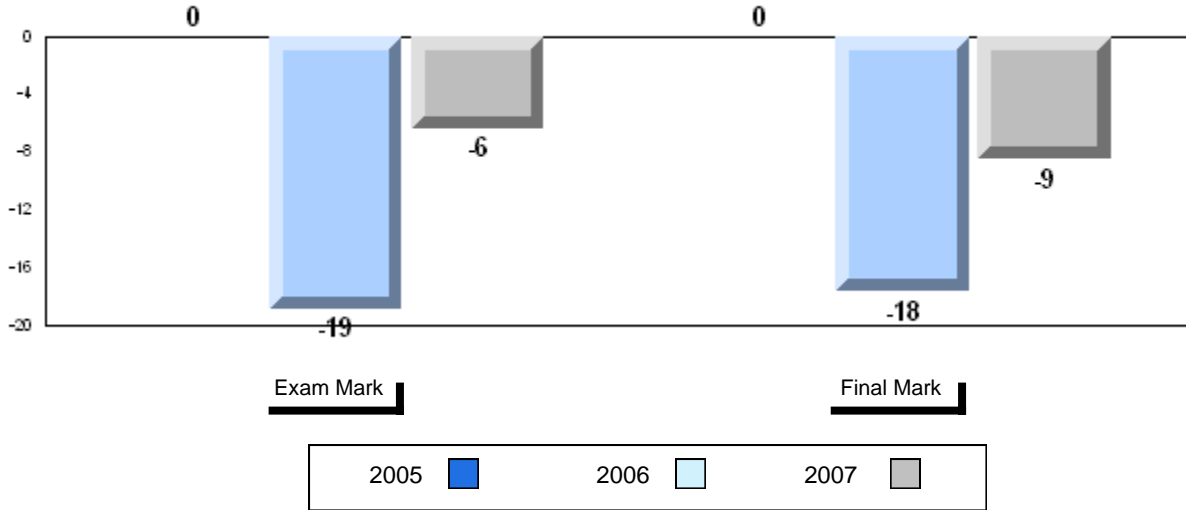


Exam Mark

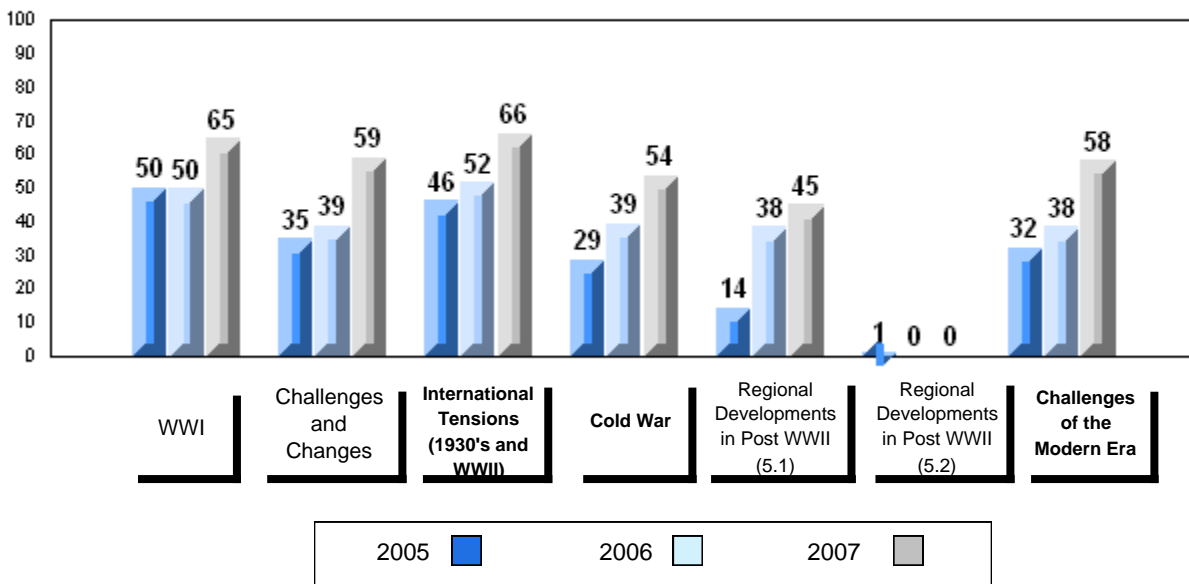
Final Mark



Difference from Provincial Mean, 2005-2007



3 Year Public Exam (Subtest) Mark Trend 2005-2007



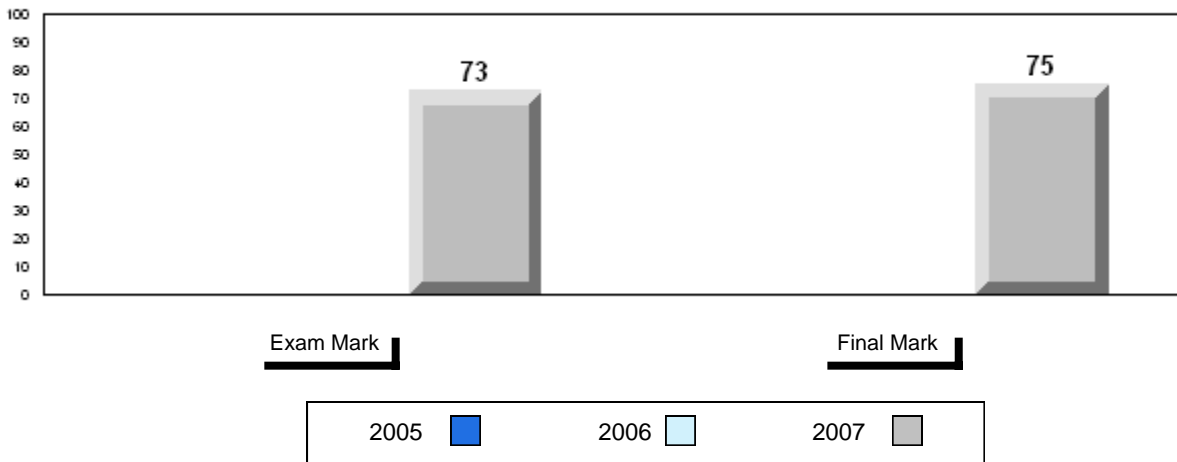
District 2 - Western

#485 - Corner Brook Regional High, Corner Brook

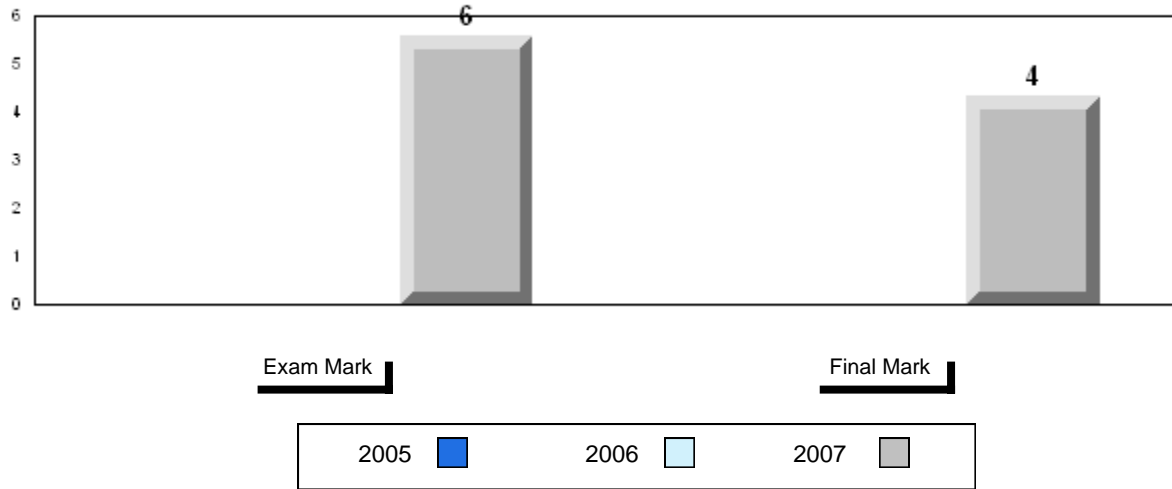
Grades: 10-12

Number of Students		28						
			Public Exam Mark	School vs District	School vs Province	Final Mark	School vs District	School vs Province
Histoire Mondiale 3231	School	72.5		P	P	74.9	Q	P
	District	72.5				74.9		
	Province	67.0				70.5		
Subtest								
WWI	School	80.5		P	P			
	District	80.5						
	Province	73.7						
Challenges and Changes	School	64.8		P	Q			
	District	64.8						
	Province	64.9						
International Tensions (1930's and WWII)	School	76.0		P	P			
	District	76.0						
	Province	68.9						
Cold War	School	73.5		P	P			
	District	73.5						
	Province	60.6						
Regional Developments in Post WWII (5.1)	School	54.2		P	P			
	District	54.2						
	Province	52.4						
Regional Developments in Post WWII (5.2)	School	42.9		P	Q			
	District	42.9						
	Province	55.1						
Challenges of the Modern Era	School	71.9		P	P			
	District	71.9						
	Province	67.3						

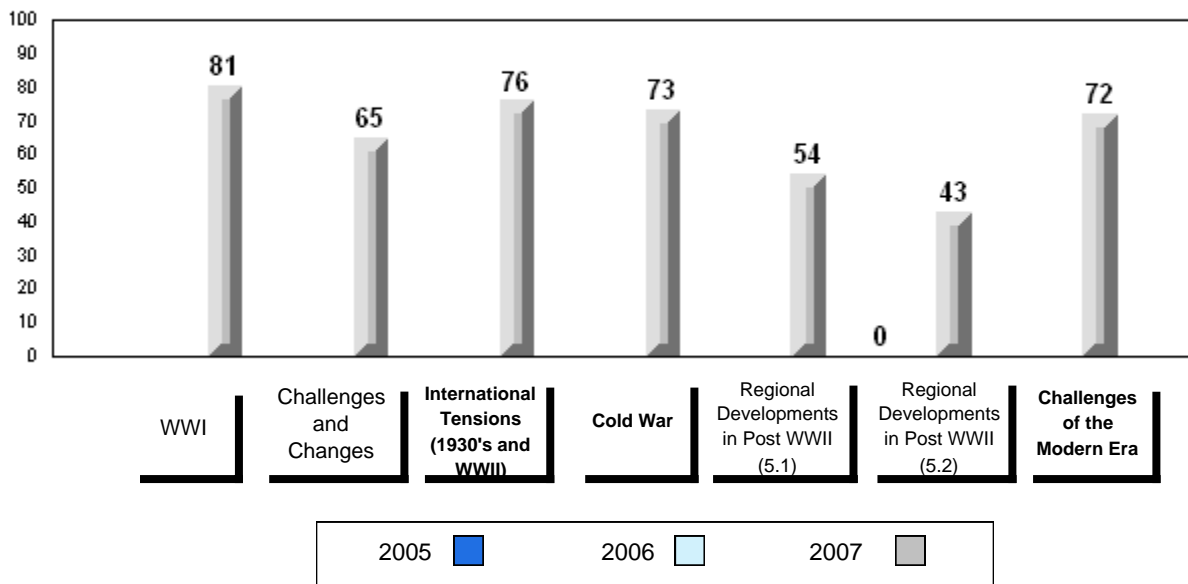
Average Mark, 2005-2007



Difference from Provincial Mean, 2005-2007



3 Year Public Exam (Subtest) Mark Trend 2005-2007



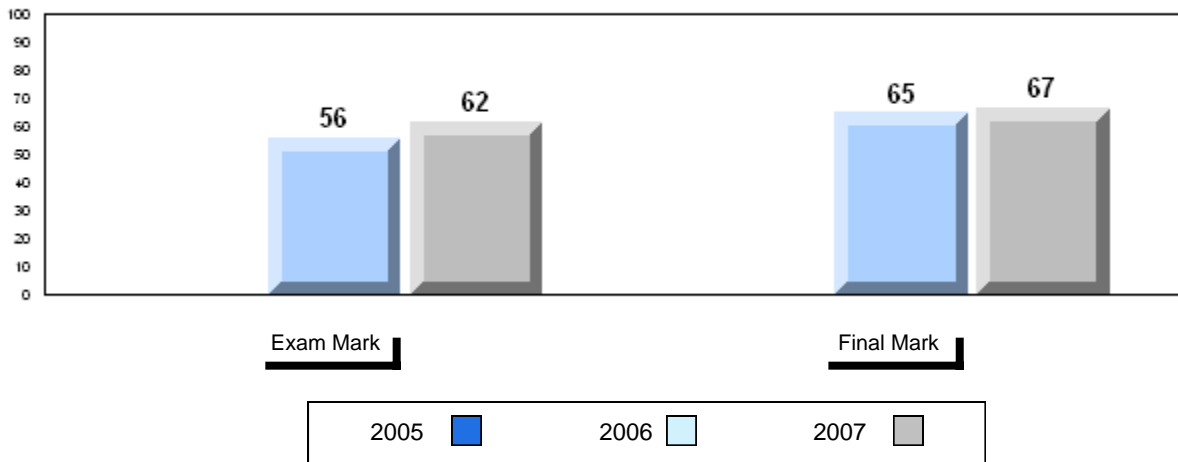
District 3 - Nova Central

#480 - Exploits Valley High, Grand Falls-Windsor

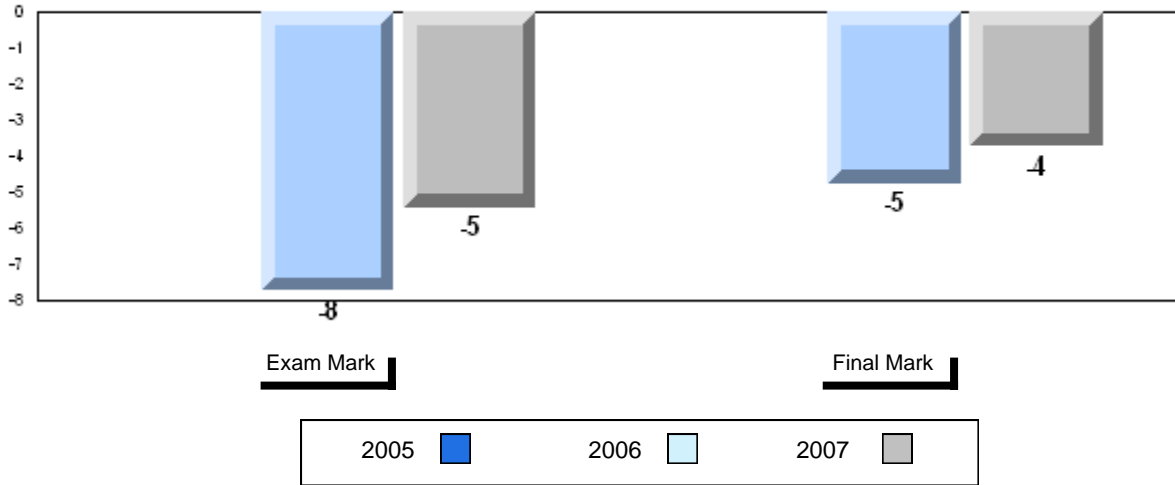
Grades: 10-12

Number of Students		13					
		Public Exam Mark	School vs District	School vs Province	Final Mark	School vs District	School vs Province
Histoire Mondiale 3231	School	61.5	P	Q	66.8 66.8 70.5	Q	Q
	District	61.5					
	Province	67.0					
Subtest							
WWI	School	68.6	P	Q			
	District	68.6					
	Province	73.7					
Challenges and Changes	School	59.2	P	Q			
	District	59.2					
	Province	64.9					
International Tensions (1930's and WWII)	School	60.5	P	Q			
	District	60.5					
	Province	68.9					
Cold War	School	54.4	P	Q			
	District	54.4					
	Province	60.6					
Regional Developments in Post WWII (5.1)	School	28.6	P	Q			
	District	28.6					
	Province	52.4					
Regional Developments in Post WWII (5.2)	School	60.7	P	P			
	District	60.7					
	Province	55.1					
Challenges of the Modern Era	School	63.7	P	Q			
	District	63.7					
	Province	67.3					

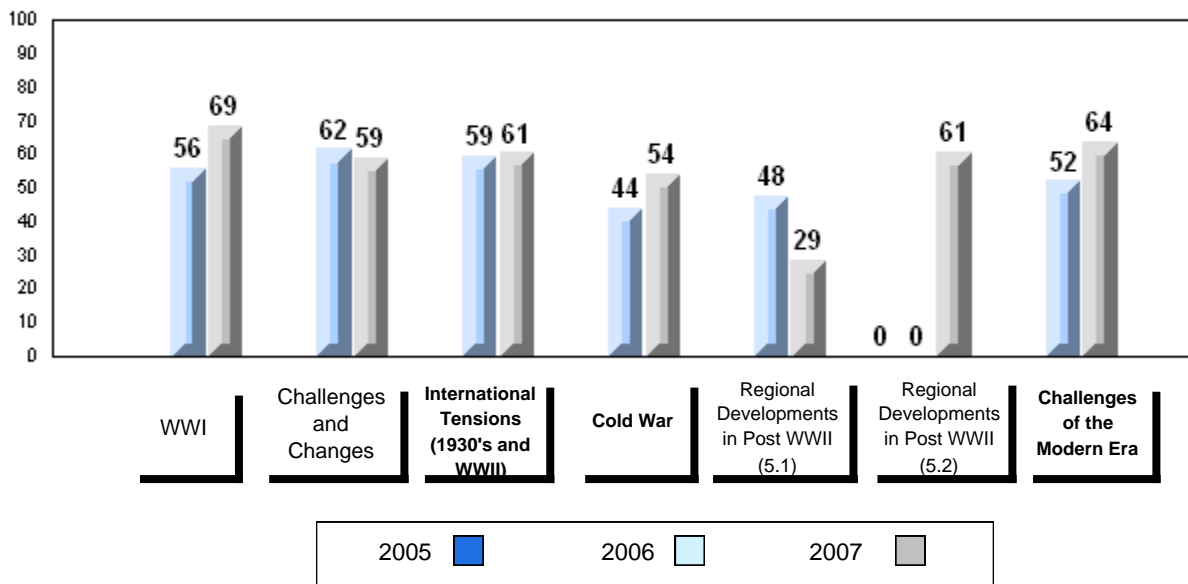
Average Mark, 2005-2007



Difference from Provincial Mean, 2005-2007



3 Year Public Exam (Subtest) Mark Trend 2005-2007



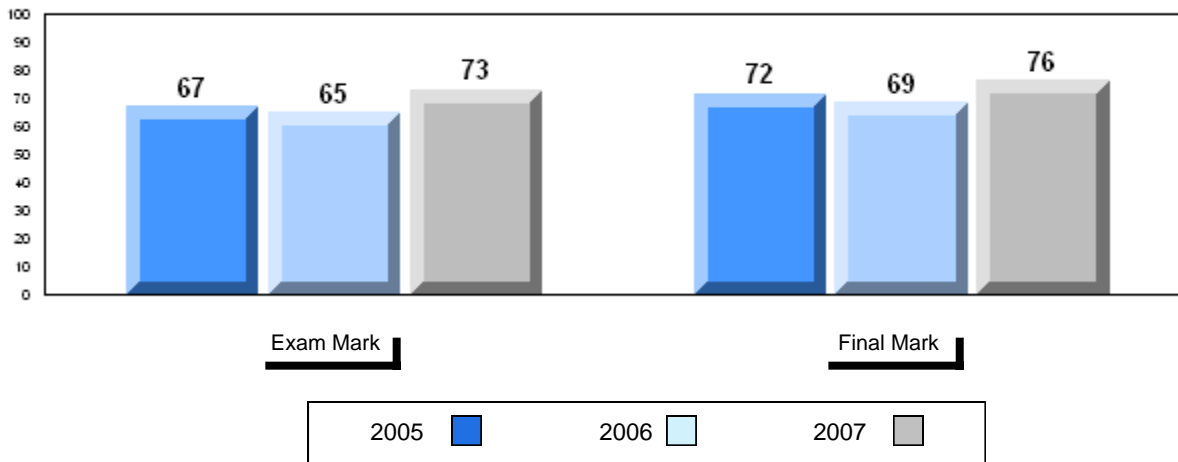
District 4 - Eastern

#249 - Ascension Collegiate, Bay Roberts

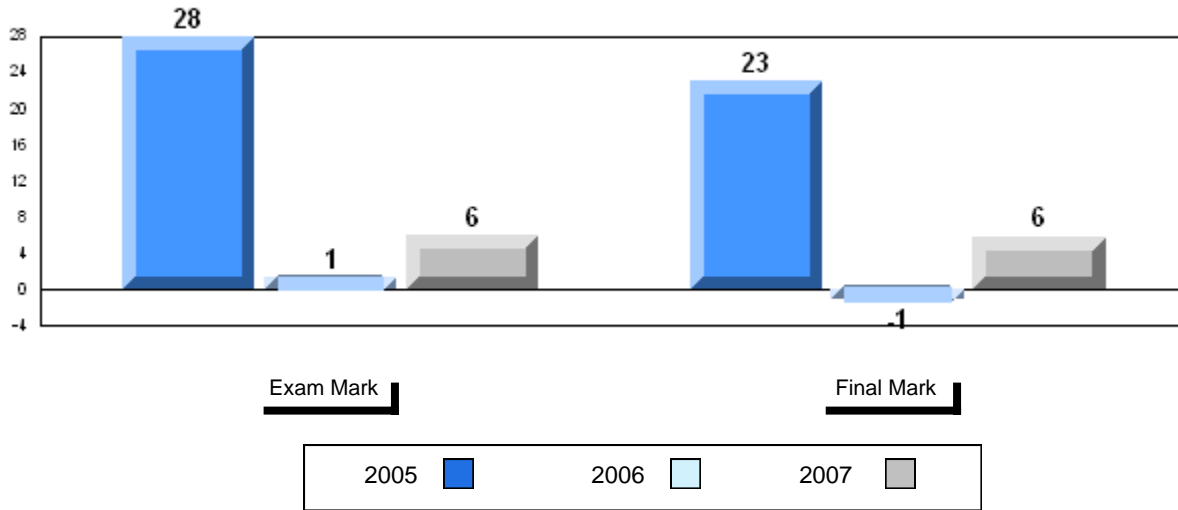
Grades: 10-12

Number of Students		17					
		Public Exam Mark	School vs District	School vs Province	Final Mark	School vs District	School vs Province
Histoire Mondiale 3231	School	72.9	P	P	76.4 70.6 70.5	P	P
	District	67.0					
	Province	67.0					
Subtest	School	80.2	P	P			
	District	73.7					
	Province	73.7					
WWI	School	70.7	P	P			
	District	65.4					
	Province	64.9					
Challenges and Changes	School	73.4	P	P			
	District	68.8					
	Province	68.9					
International Tensions (1930's and WWII)	School	68.1	P	P			
	District	60.1					
	Province	60.6					
Cold War	School	63.8	P	P			
	District	52.6					
	Province	52.4					
Regional Developments in Post WWII (5.1)	School	71.4	P	P			
	District	54.7					
	Province	55.1					
Regional Developments in Post WWII (5.2)	School	71.0	P	P			
	District	67.2					
	Province	67.3					

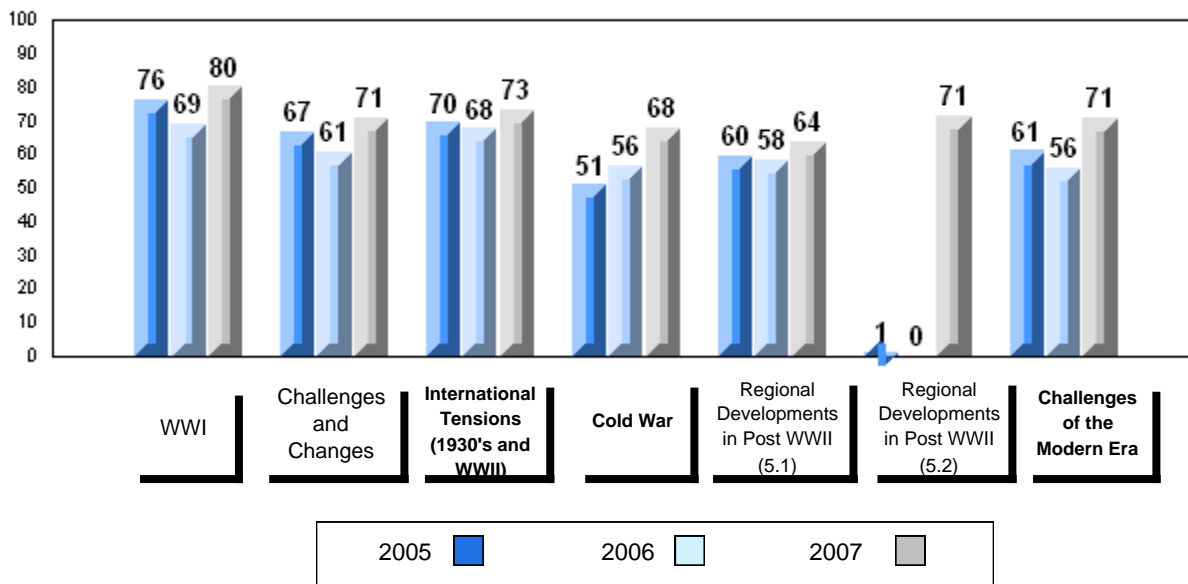
Average Mark, 2005-2007



Difference from Provincial Mean, 2005-2007



3 Year Public Exam (Subtest) Mark Trend 2005-2007



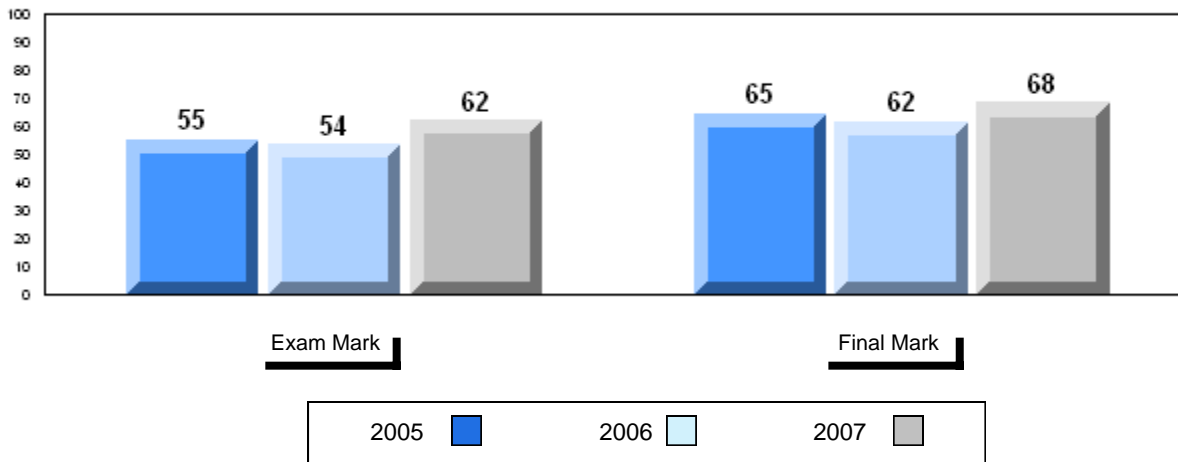
District 4 - Eastern

#302 - Queen Elizabeth Regional High School, Conception Bay S

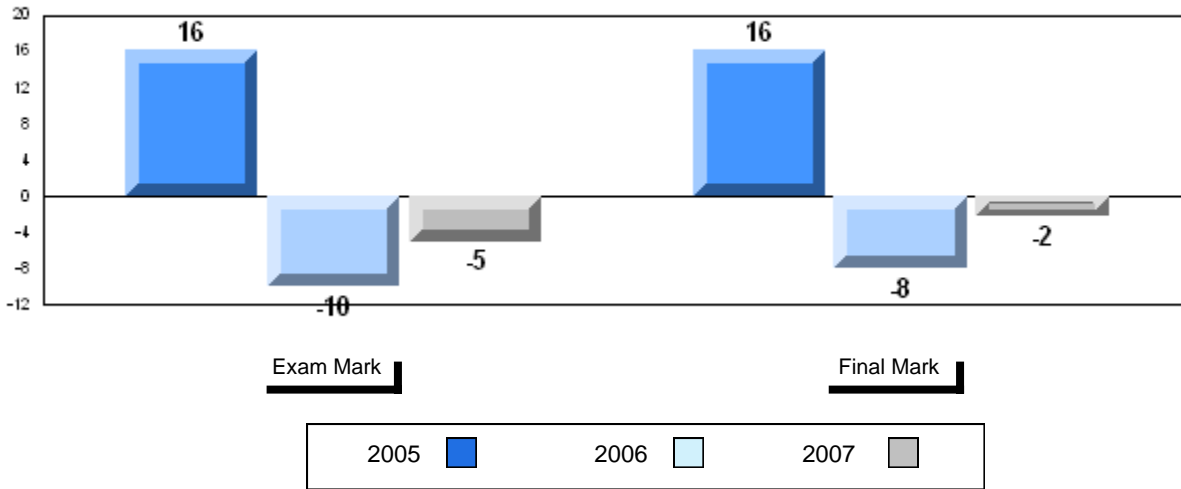
Grades: 10-12

Number of Students		Public Exam Mark			Final Mark		
			School vs District	School vs Province		School vs District	School vs Province
Histoire Mondiale 3231	School	61.9	q	q	68.3	q	q
	District	67.0					
	Province	67.0					
Subtest							
WWI	School	67.3	q	q			
	District	73.7					
	Province	73.7					
Challenges and Changes	School	56.0	q	q			
	District	65.4					
	Province	64.9					
International Tensions (1930's and WWII)	School	62.7	q	q			
	District	68.8					
	Province	68.9					
Cold War	School	58.1	q	q			
	District	60.1					
	Province	60.6					
Regional Developments in Post WWII (5.1)	School	44.3	q	q			
	District	52.6					
	Province	52.4					
Regional Developments in Post WWII (5.2)	School	50.0	q	q			
	District	54.7					
	Province	55.1					
Challenges of the Modern Era	School	66.2	q	q			
	District	67.2					
	Province	67.3					

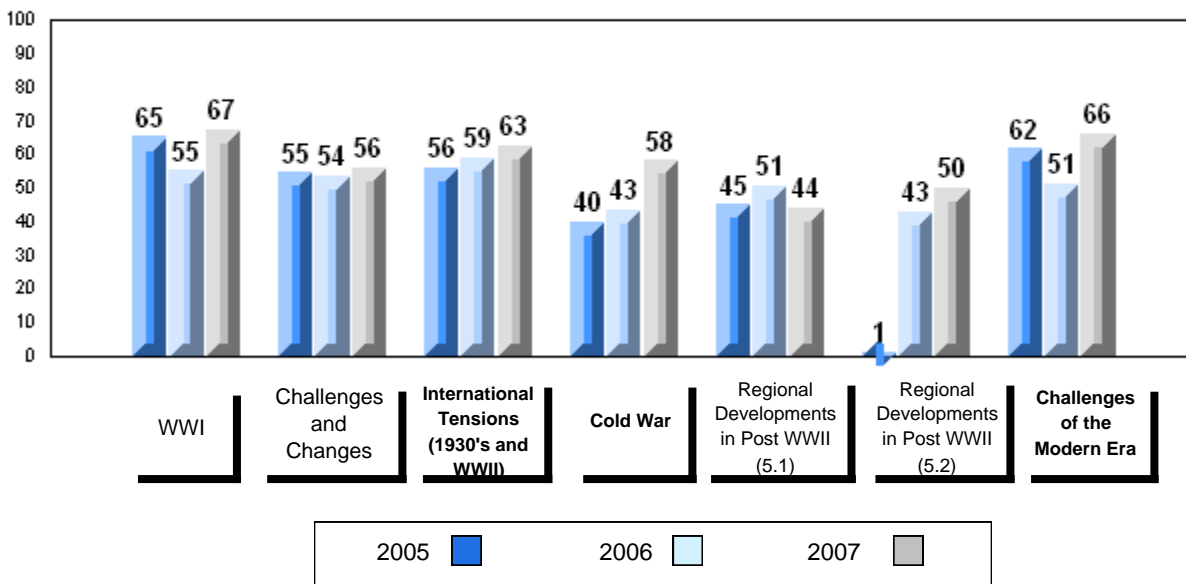
Average Mark, 2005-2007



Difference from Provincial Mean, 2005-2007



3 Year Public Exam (Subtest) Mark Trend 2005-2007



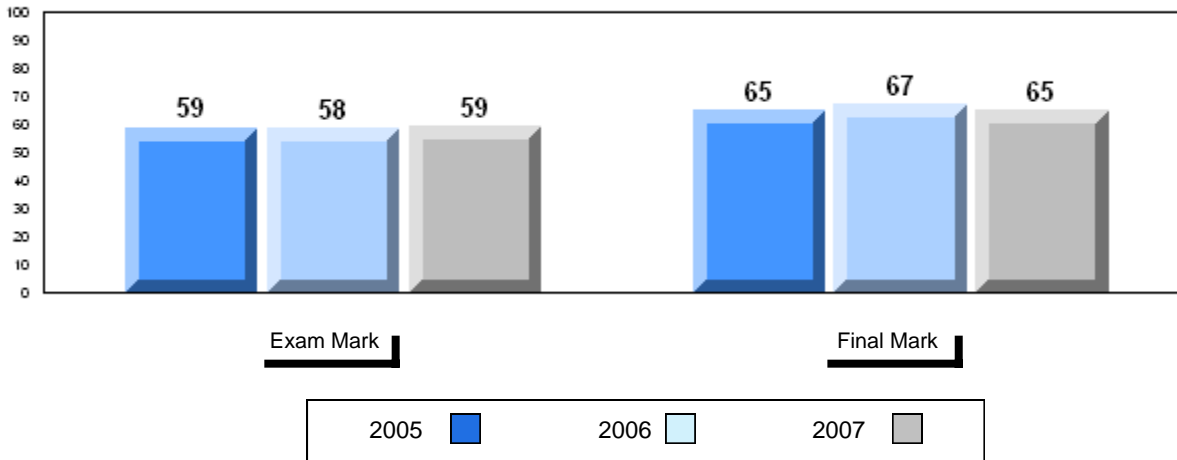
District 4 - Eastern

#304 - Holy Spirit High, Conception Bay South (Manuels)

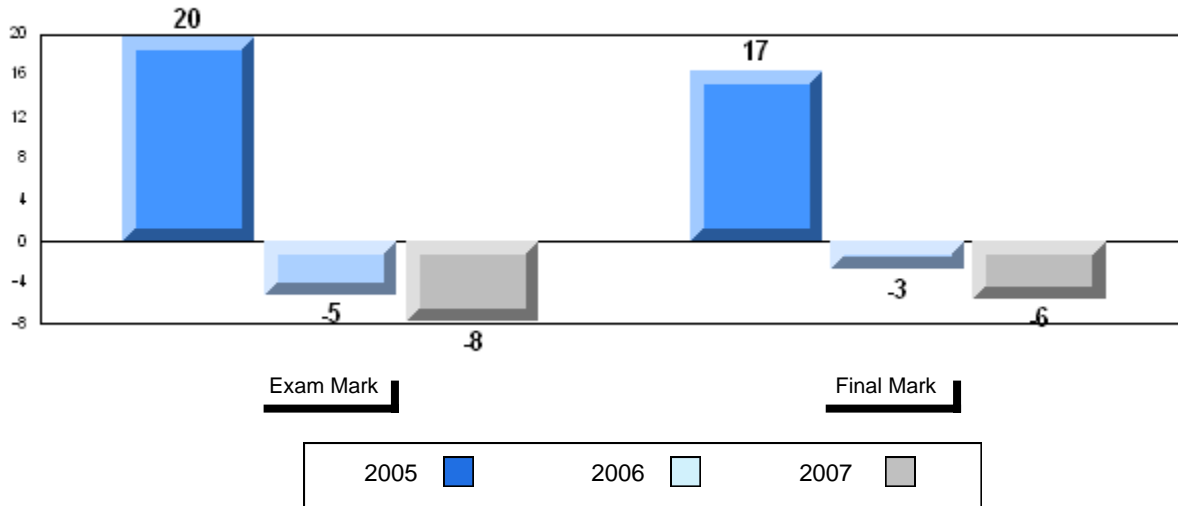
Grades: 10-12

Number of Students		28						
			Public Exam Mark	School vs District	School vs Province	Final Mark	School vs District	School vs Province
Histoire Mondiale 3231	School	59.1	q	q	64.9	70.6	q	q
	District	67.0						
	Province	67.0						
<u>Subtest</u>								
WWI	School	67.0	q	q				
	District	73.7						
	Province	73.7						
Challenges and Changes	School	56.1	q	q				
	District	65.4						
	Province	64.9						
International Tensions (1930's and WWII)	School	59.9	q	q				
	District	68.8						
	Province	68.9						
Cold War	School	51.2	q	q				
	District	60.1						
	Province	60.6						
Regional Developments in Post WWII (5.1)	School	44.3	q	q				
	District	52.6						
	Province	52.4						
Regional Developments in Post WWII (5.2)	School	23.8	q	q				
	District	54.7						
	Province	55.1						
Challenges of the Modern Era	School	62.5	q	q				
	District	67.2						
	Province	67.3						

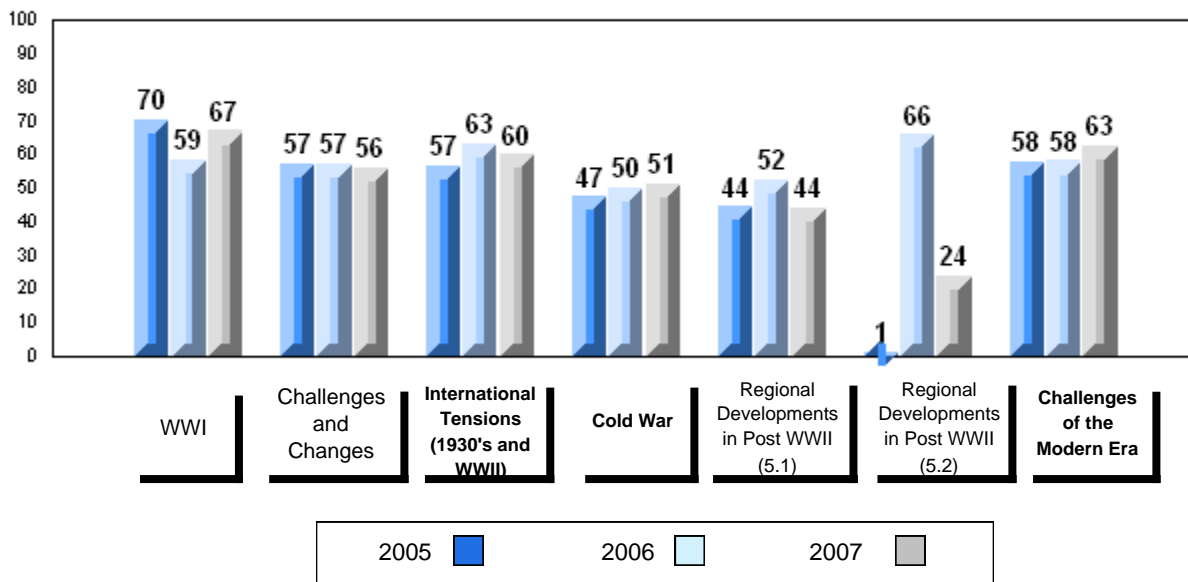
Average Mark, 2005-2007



Difference from Provincial Mean, 2005-2007



3 Year Public Exam (Subtest) Mark Trend 2005-2007



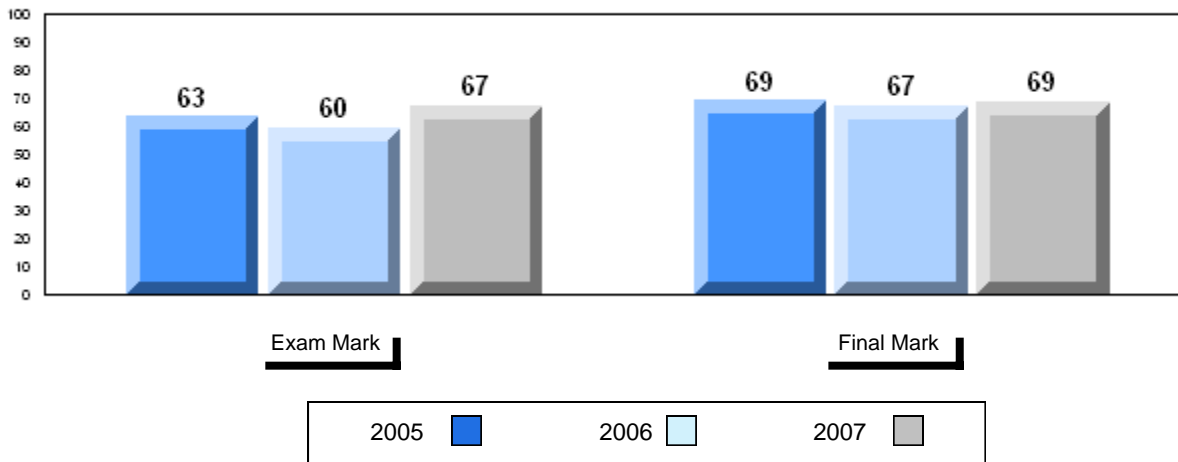
District 4 - Eastern

#311 - Mount Pearl Senior High, Mount Pearl

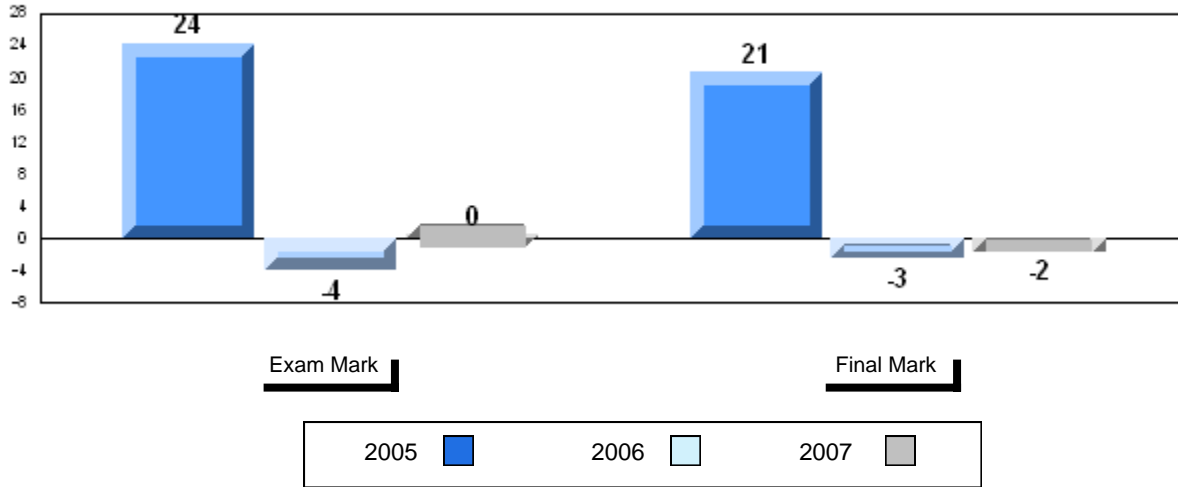
Grades: 10-12

Number of Students		46						
		Public Exam Mark	School vs District	School vs Province	Final Mark	School vs District	School vs Province	
Histoire Mondiale 3231	School	67.4	P	P	68.8 70.6 70.5	q	q	
	District	67.0						
	Province	67.0						
Subtest								
WWI	School	76.0	P	P				
	District	73.7						
	Province	73.7						
Challenges and Changes	School	67.9	P	P				
	District	65.4						
	Province	64.9						
International Tensions (1930's and WWII)	School	69.8	P	P				
	District	68.8						
	Province	68.9						
Cold War	School	57.0	q	q				
	District	60.1						
	Province	60.6						
Regional Developments in Post WWII (5.1)	School	52.3	q	q				
	District	52.6						
	Province	52.4						
Regional Developments in Post WWII (5.2)	School	41.7	q	q				
	District	54.7						
	Province	55.1						
Challenges of the Modern Era	School	63.5	q	q				
	District	67.2						
	Province	67.3						

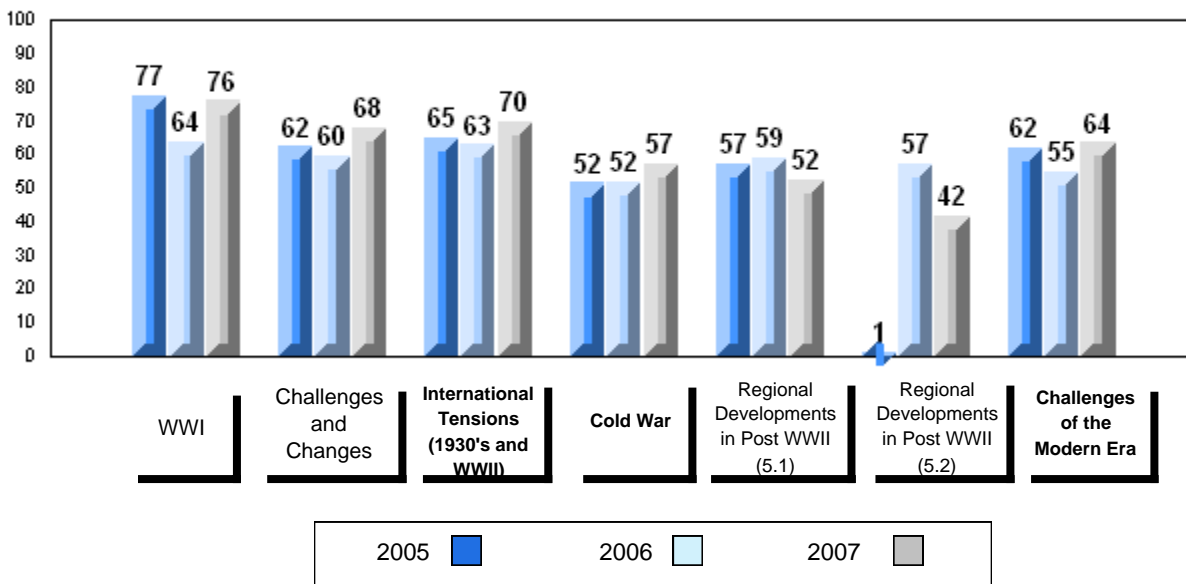
Average Mark, 2005-2007



Difference from Provincial Mean, 2005-2007



3 Year Public Exam (Subtest) Mark Trend 2005-2007



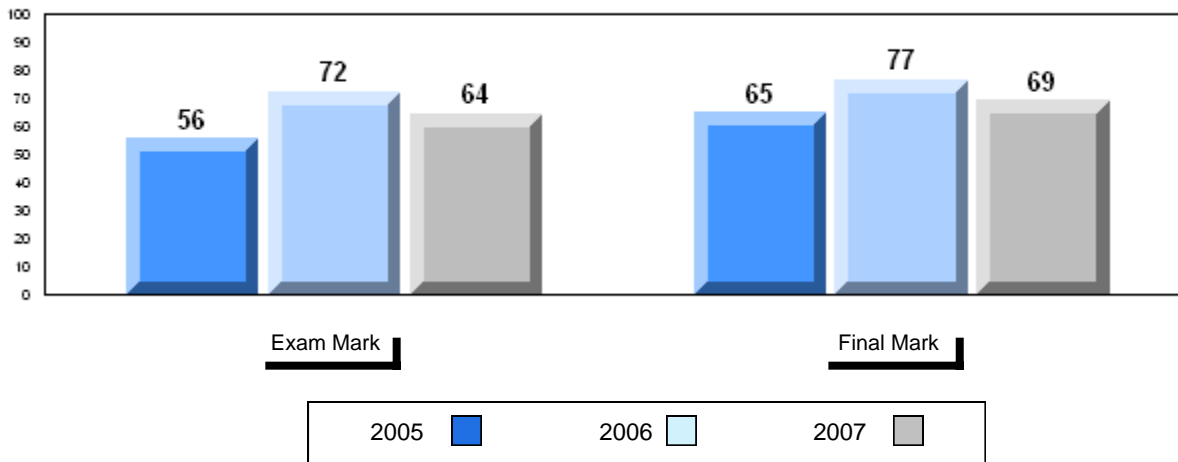
District 4 - Eastern

#313 - O'Donel High, Mount Pearl

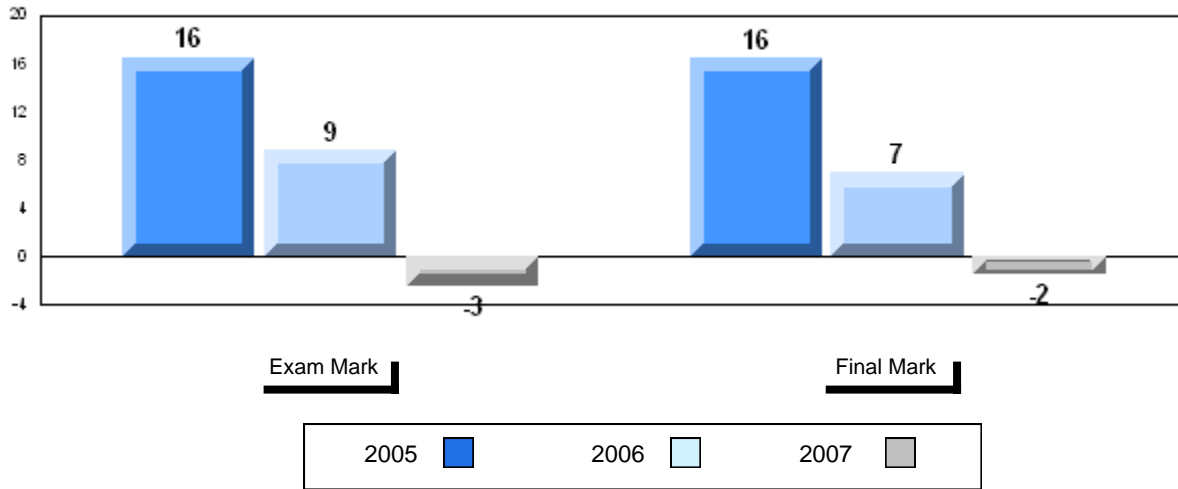
Grades: 10-12

Number of Students		Public Exam Mark			Final Mark		
		School vs District	School vs Province		School vs District	School vs Province	
Histoire Mondiale 3231	School	64.4	q	q	69.0 70.6 70.5	q	q
	District	67.0					
	Province	67.0					
Subtest	School	73.6	q	q			
	District	73.7					
	Province	73.7					
WWI	School	61.1	q	q			
	District	65.4					
	Province	64.9					
Challenges and Changes	School	69.0	p	p			
	District	68.8					
	Province	68.9					
International Tensions (1930's and WWII)	School	59.4	q	q			
	District	60.1					
	Province	60.6					
Cold War	School	46.9	q	q			
	District	52.6					
	Province	52.4					
Regional Developments in Post WWII (5.1)	School	21.4	q	q			
	District	54.7					
	Province	55.1					
Regional Developments in Post WWII (5.2)	School	58.9	q	q			
	District	67.2					
	Province	67.3					

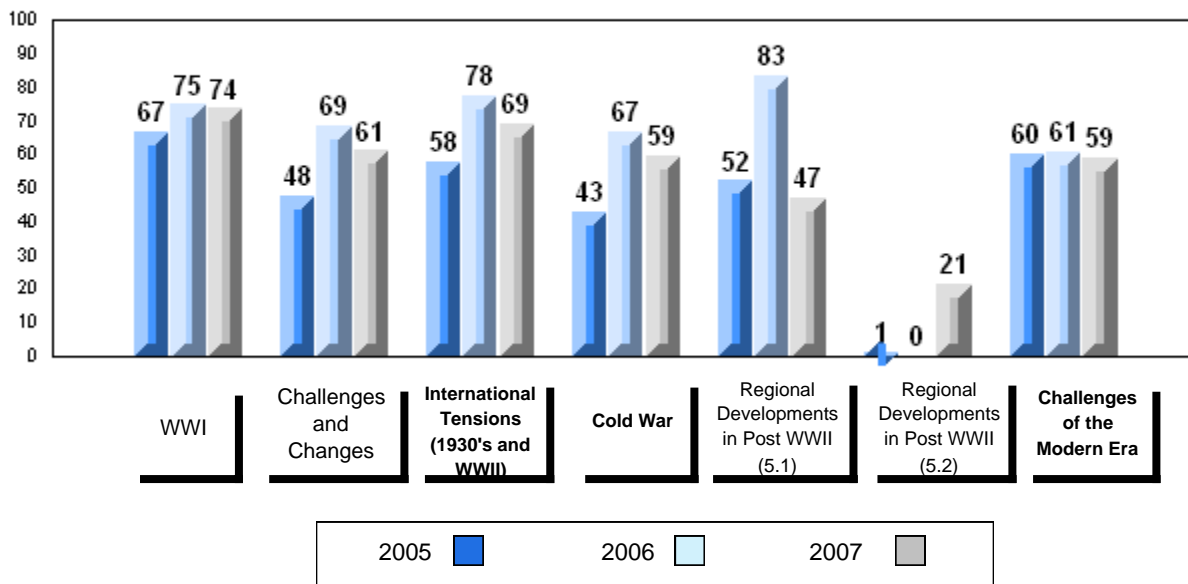
Average Mark, 2005-2007



Difference from Provincial Mean, 2005-2007



3 Year Public Exam (Subtest) Mark Trend 2005-2007



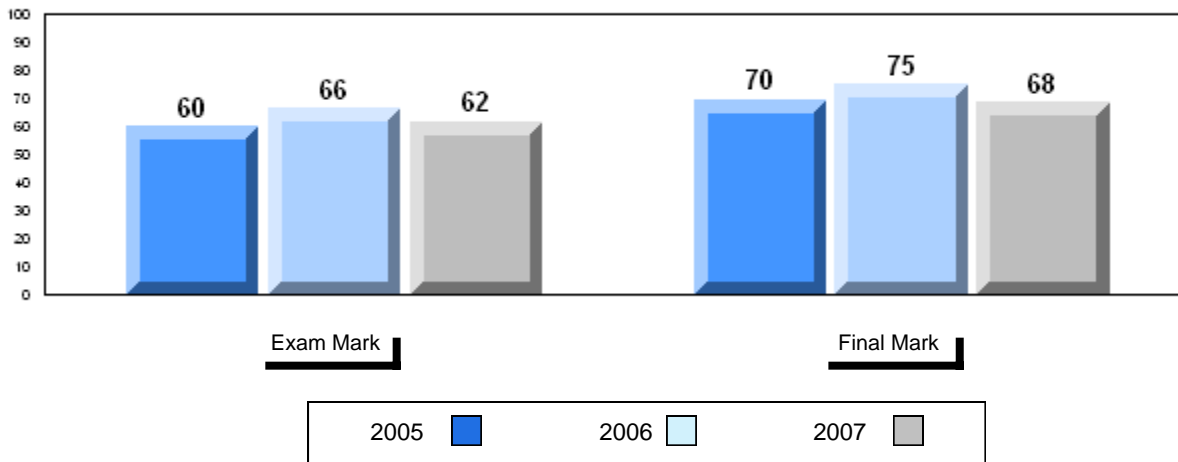
District 4 - Eastern

#327 - Bishops College, St. John's

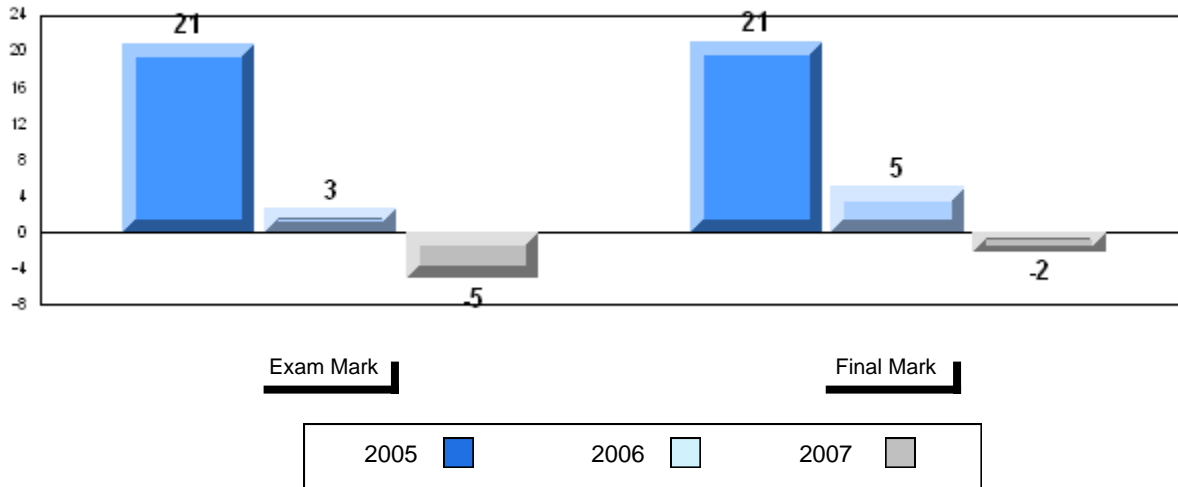
Grades: 10-12

Number of Students		29						
		Public Exam Mark	School vs District	School vs Province	Final Mark	School vs District	School vs Province	
Histoire Mondiale 3231	School	61.8	q	q	68.3 70.6 70.5	q	q	
	District	67.0						
	Province	67.0						
Subtest								
WWI	School	69.0	q	q				
	District	73.7						
	Province	73.7						
Challenges and Changes	School	60.0	q	q				
	District	65.4						
	Province	64.9						
International Tensions (1930's and WWII)	School	62.0	q	q				
	District	68.8						
	Province	68.9						
Cold War	School	55.7	q	q				
	District	60.1						
	Province	60.6						
Regional Developments in Post WWII (5.1)	School	46.6	q	q				
	District	52.6						
	Province	52.4						
Regional Developments in Post WWII (5.2)	School	0.0	q	q				
	District	54.7						
	Province	55.1						
Challenges of the Modern Era	School	69.0	p	p				
	District	67.2						
	Province	67.3						

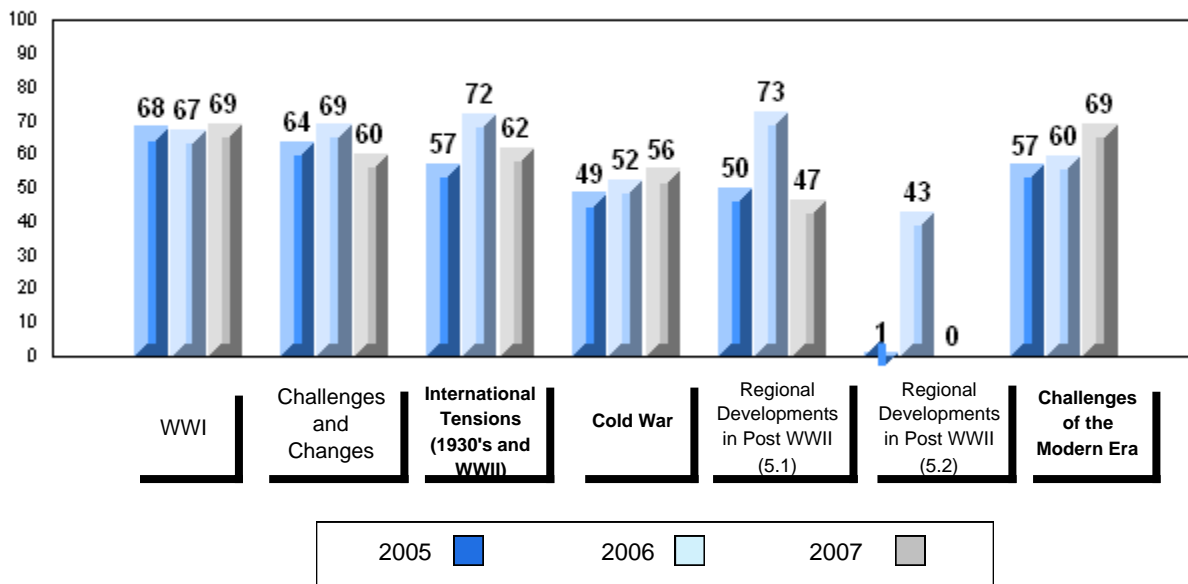
Average Mark, 2005-2007



Difference from Provincial Mean, 2005-2007



3 Year Public Exam (Subtest) Mark Trend 2005-2007



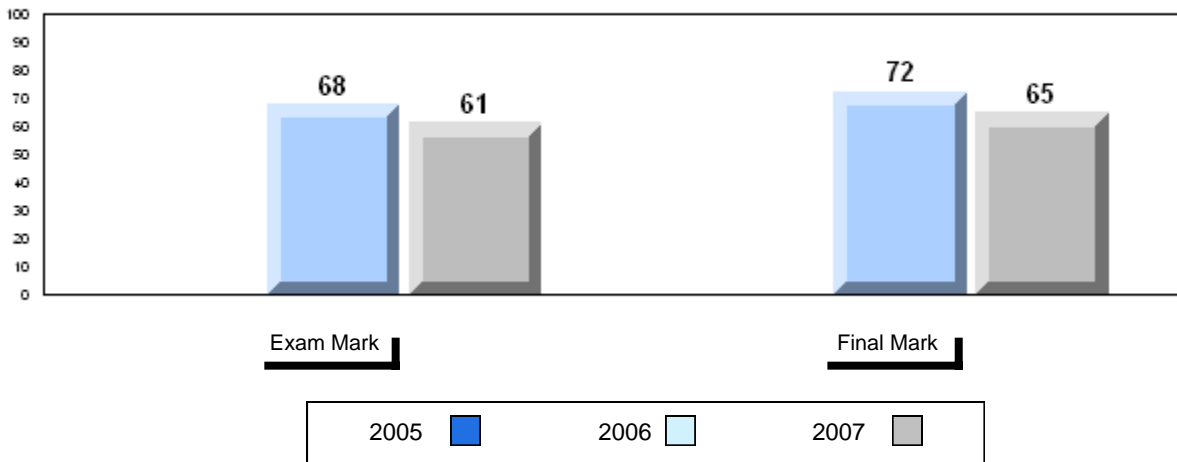
District 4 - Eastern

#328 - Booth Memorial High School, St. John's

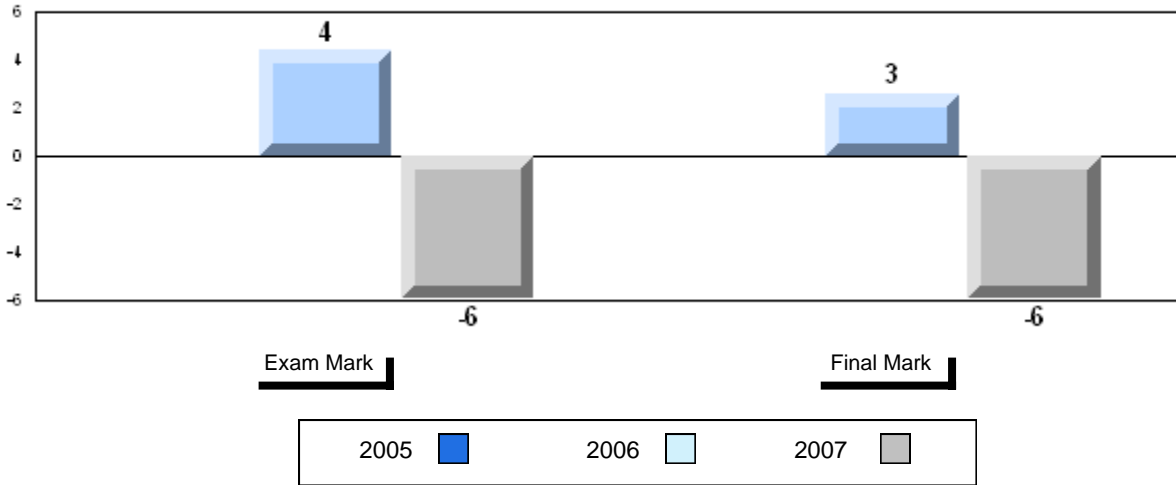
Grades: 10-12

Number of Students		13						
			Public Exam Mark	School vs District	School vs Province	Final Mark	School vs District	School vs Province
Histoire Mondiale 3231	School	61.1	q	q	64.6	70.6	q	q
	District	67.0						
	Province	67.0						
Subtest								
WWI	School	68.9	q	q				
	District	73.7						
	Province	73.7						
Challenges and Changes	School	55.0	q	q				
	District	65.4						
	Province	64.9						
International Tensions (1930's and WWII)	School	66.1	q	q				
	District	68.8						
	Province	68.9						
Cold War	School	53.9	q	q				
	District	60.1						
	Province	60.6						
Regional Developments in Post WWII (5.1)	School	45.6	q	q				
	District	52.6						
	Province	52.4						
Regional Developments in Post WWII (5.2)	School	0.0	q	q				
	District	54.7						
	Province	55.1						
Challenges of the Modern Era	School	60.4	q	q				
	District	67.2						
	Province	67.3						

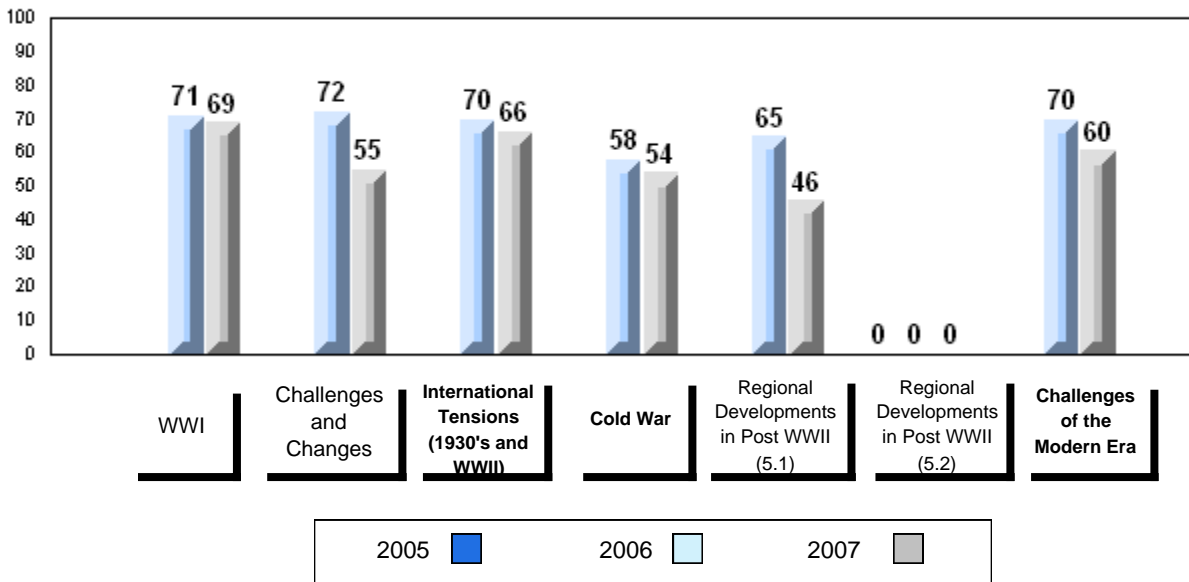
Average Mark, 2005-2007



Difference from Provincial Mean, 2005-2007



3 Year Public Exam (Subtest) Mark Trend 2005-2007



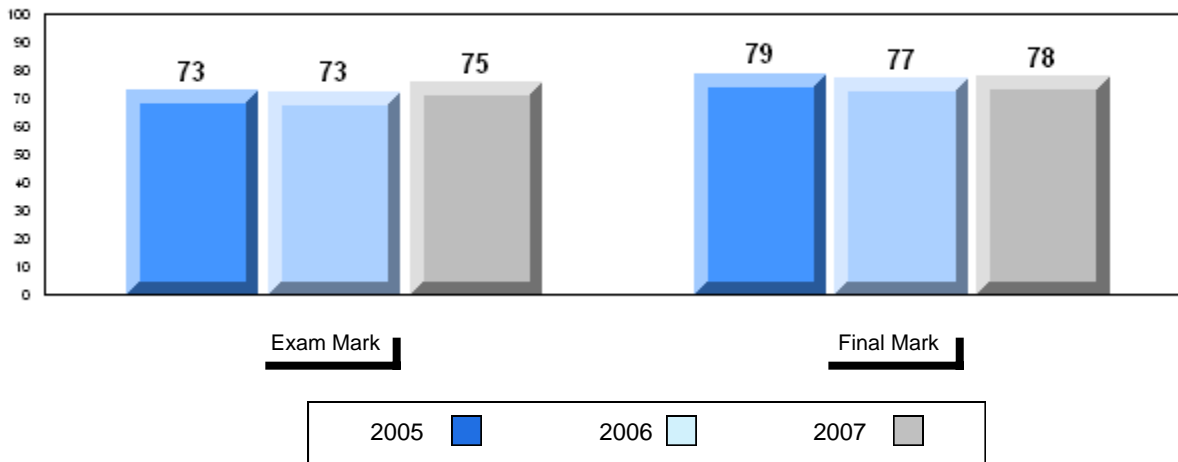
District 4 - Eastern

#336 - Gonzaga High School, St. John's

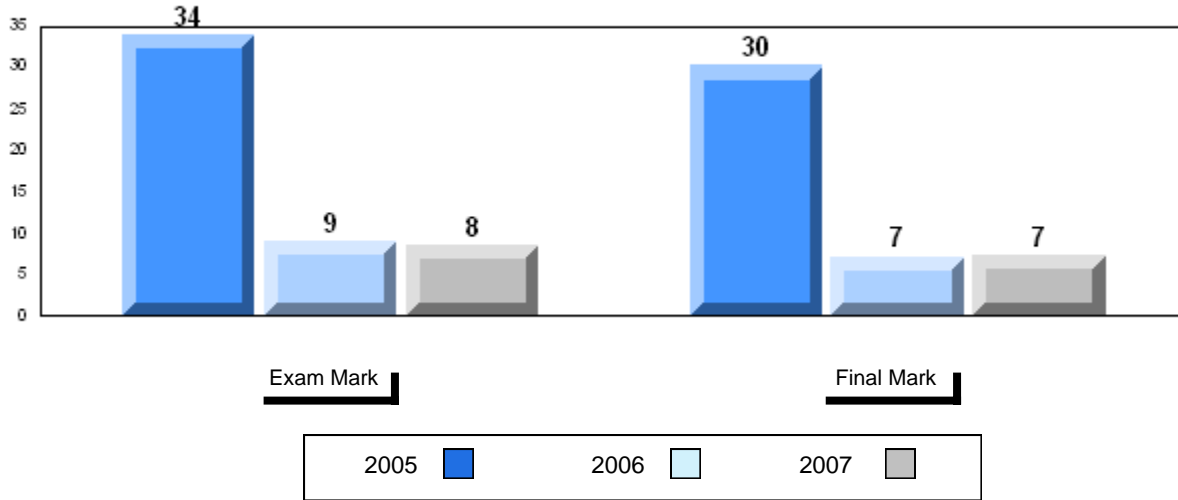
Grades: 10-12

Number of Students		46						
		Public Exam Mark	School vs District	School vs Province	Final Mark	School vs District	School vs Province	
Histoire Mondiale 3231	School	75.4	P	P	77.8 70.6 70.5	P	P	
	District	67.0						
	Province	67.0						
Subtest								
WWI	School	81.7	P	P				
	District	73.7						
	Province	73.7						
Challenges and Changes	School	73.4	P	P				
	District	65.4						
	Province	64.9						
International Tensions (1930's and WWII)	School	75.3	P	P				
	District	68.8						
	Province	68.9						
Cold War	School	70.3	P	P				
	District	60.1						
	Province	60.6						
Regional Developments in Post WWII (5.1)	School	69.7	P	P				
	District	52.6						
	Province	52.4						
Regional Developments in Post WWII (5.2)	School	50.0	Q	Q				
	District	54.7						
	Province	55.1						
Challenges of the Modern Era	School	74.4	P	P				
	District	67.2						
	Province	67.3						

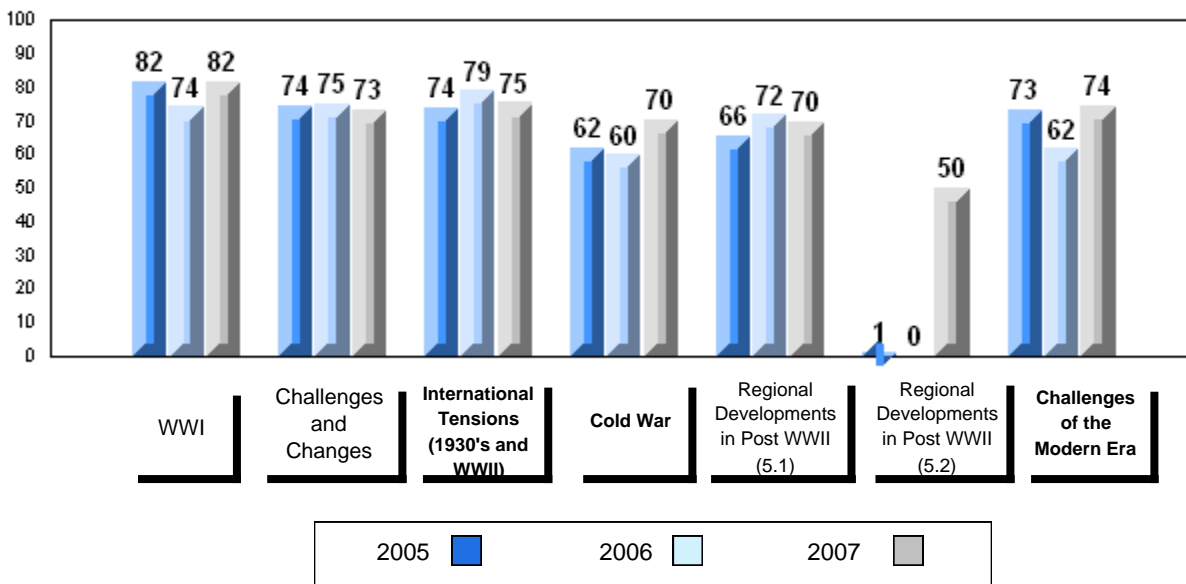
Average Mark, 2005-2007



Difference from Provincial Mean, 2005-2007



3 Year Public Exam (Subtest) Mark Trend 2005-2007



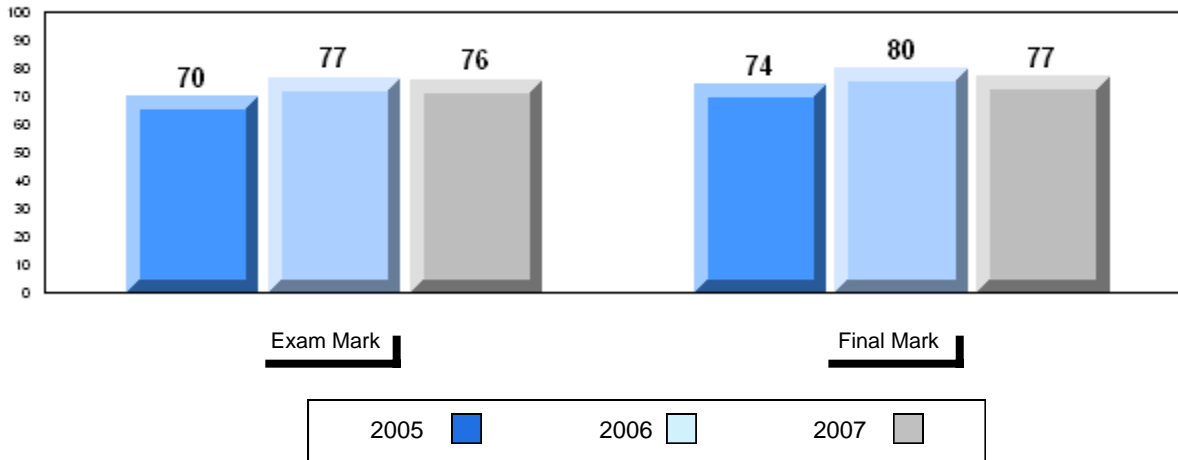
District 4 - Eastern

#340 - Holy Heart High School, St. John's

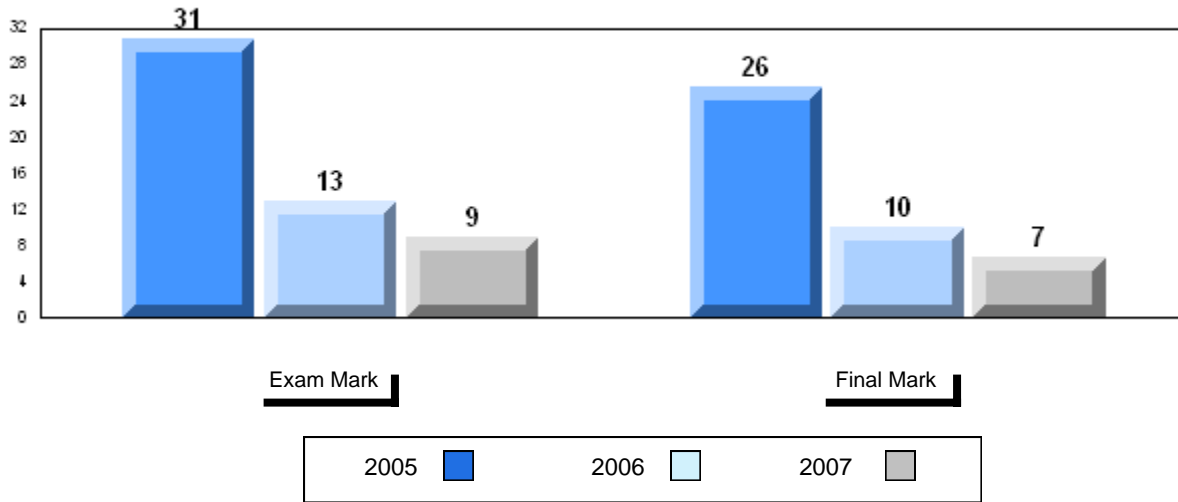
Grades: 10-12

Number of Students		62					
		Public Exam Mark	School vs District	School vs Province	Final Mark	School vs District	School vs Province
Histoire Mondiale 3231	School	75.9	P	P	77.2 70.6 70.5	P	P
	District	67.0					
	Province	67.0					
<u>Subtest</u>							
	WWI	School	78.2	P	P		
		District	73.7				
Province		73.7					
Challenges and Changes	School	76.1	P	P			
	District	65.4					
	Province	64.9					
International Tensions (1930's and WWII)	School	75.7	P	P			
	District	68.8					
	Province	68.9					
Cold War	School	70.4	P	P			
	District	60.1					
	Province	60.6					
Regional Developments in Post WWII (5.1)	School	63.9	P	P			
	District	52.6					
	Province	52.4					
Regional Developments in Post WWII (5.2)	School	74.4	P	P			
	District	54.7					
	Province	55.1					
Challenges of the Modern Era	School	78.8	P	P			
	District	67.2					
	Province	67.3					

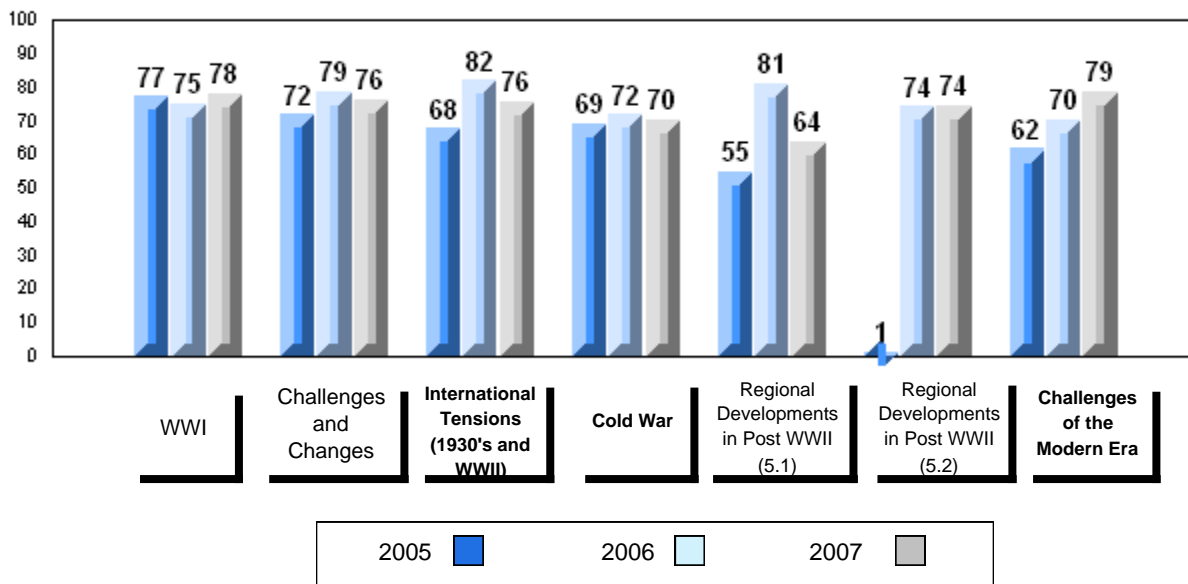
Average Mark, 2005-2007



Difference from Provincial Mean, 2005-2007



3 Year Public Exam (Subtest) Mark Trend 2005-2007



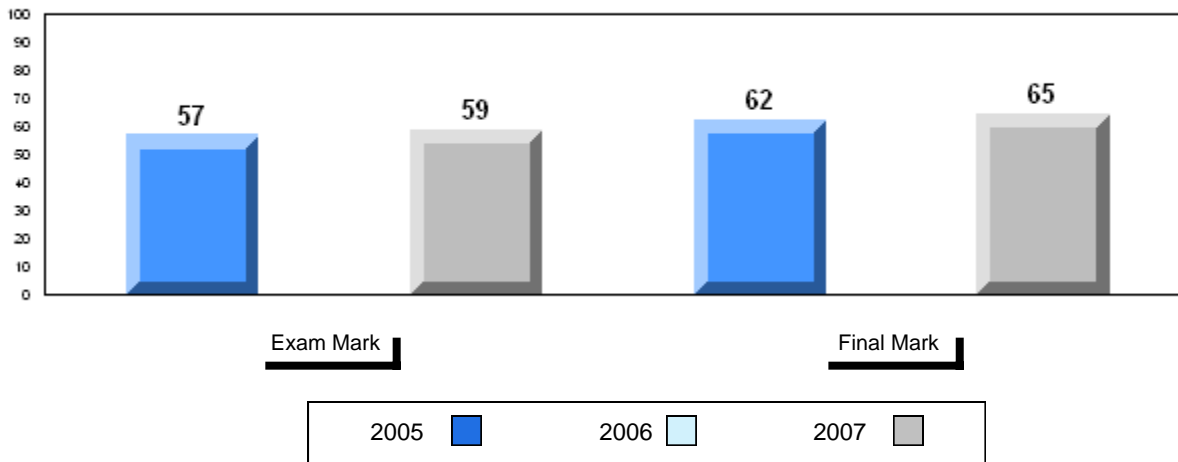
District 4 - Eastern

#347 - Prince of Wales Collegiate, St. John's

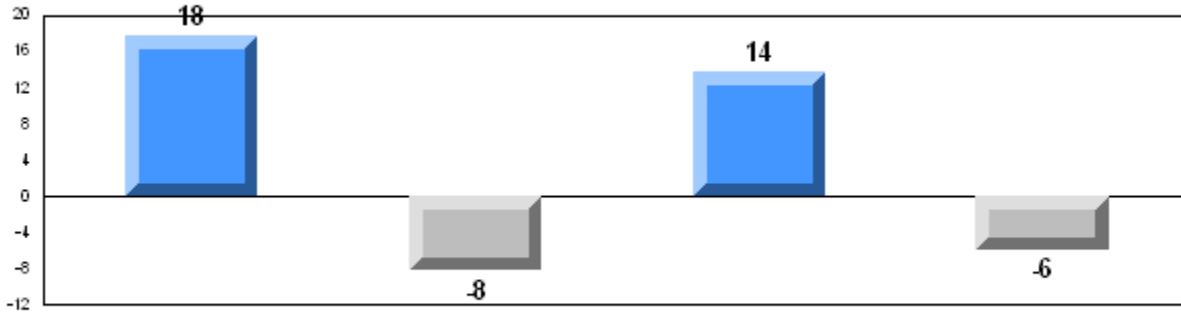
Grades: 10-12

Number of Students		24						
			Public Exam Mark	School vs District	School vs Province	Final Mark	School vs District	School vs Province
Histoire Mondiale 3231	School	58.7	q	q	64.5	q	q	
	District	67.0						
	Province	67.0						
Subtest								
WWI	School	69.0	q	q				
	District	73.7						
	Province	73.7						
Challenges and Changes	School	54.7	q	q				
	District	65.4						
	Province	64.9						
International Tensions (1930's and WWII)	School	62.8	q	q				
	District	68.8						
	Province	68.9						
Cold War	School	50.3	q	q				
	District	60.1						
	Province	60.6						
Regional Developments in Post WWII (5.1)	School	38.1	q	q				
	District	52.6						
	Province	52.4						
Regional Developments in Post WWII (5.2)	School	36.5	q	q				
	District	54.7						
	Province	55.1						
Challenges of the Modern Era	School	55.1	q	q				
	District	67.2						
	Province	67.3						

Average Mark, 2005-2007



Difference from Provincial Mean, 2005-2007

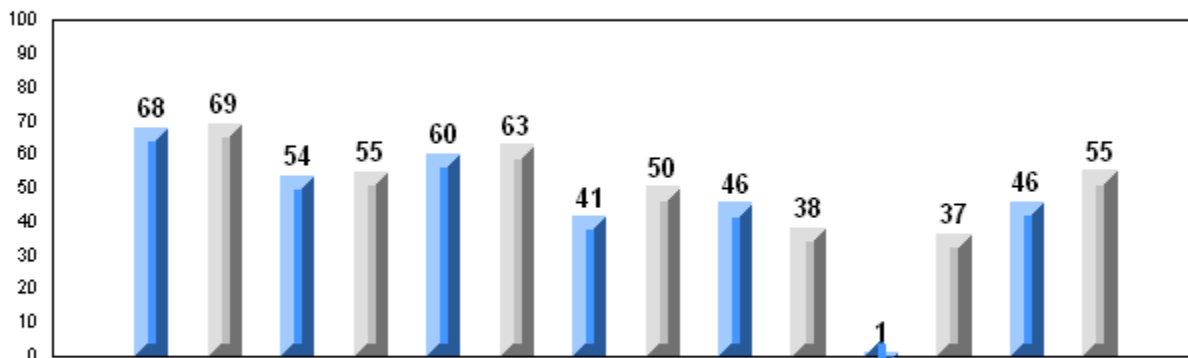


Exam Mark

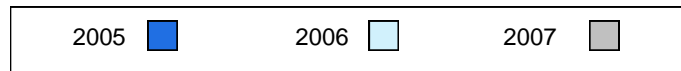
Final Mark



3 Year Public Exam (Subtest) Mark Trend 2005-2007



WWI
 Challenges and Changes
 International Tensions (1930's and WWII)
 Cold War
 Regional Developments in Post WWII (5.1)
 Regional Developments in Post WWII (5.2)
 Challenges of the Modern Era



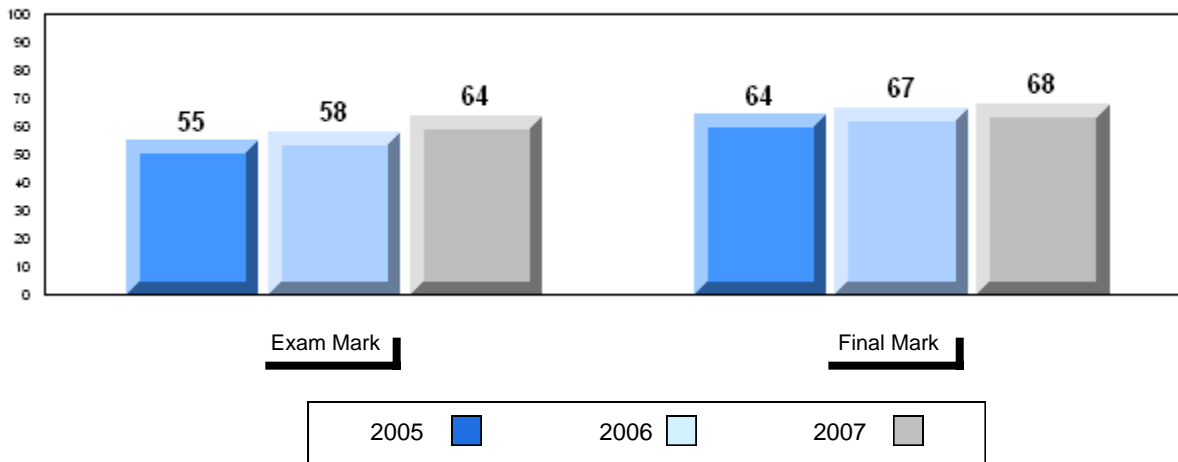
District 4 - Eastern

#368 - Holy Trinity High School, Torbay

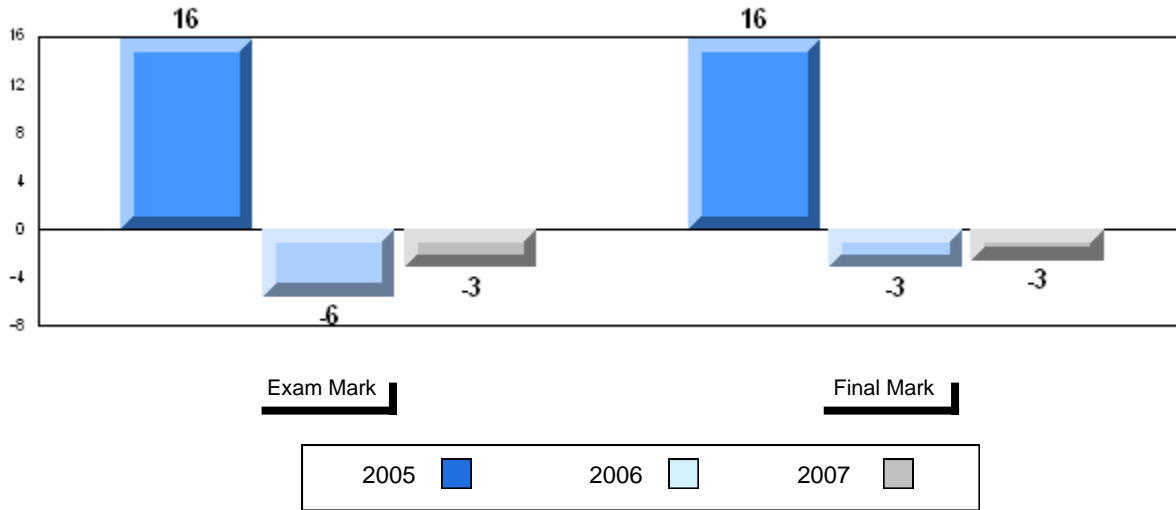
Grades: 7-12

Number of Students		Public Exam Mark			Final Mark		
			School vs District	School vs Province		School vs District	School vs Province
Histoire Mondiale 3231	School	63.7	q	q	67.9 70.6 70.5	q	q
	District	67.0					
	Province	67.0					
Subtest	School	71.9	q	q			
	District	73.7					
	Province	73.7					
WWI	School	65.7	p	p			
	District	65.4					
	Province	64.9					
Challenges and Changes	School	65.1	q	q			
	District	68.8					
	Province	68.9					
International Tensions (1930's and WWII)	School	51.0	q	q			
	District	60.1					
	Province	60.6					
Cold War	School	49.5	q	q			
	District	52.6					
	Province	52.4					
Regional Developments in Post WWII (5.1)	School	7.1	q	q			
	District	54.7					
	Province	55.1					
Regional Developments in Post WWII (5.2)	School	63.3	q	q			
	District	67.2					
	Province	67.3					
Challenges of the Modern Era	School	63.3	q	q			
	District	67.2					
	Province	67.3					

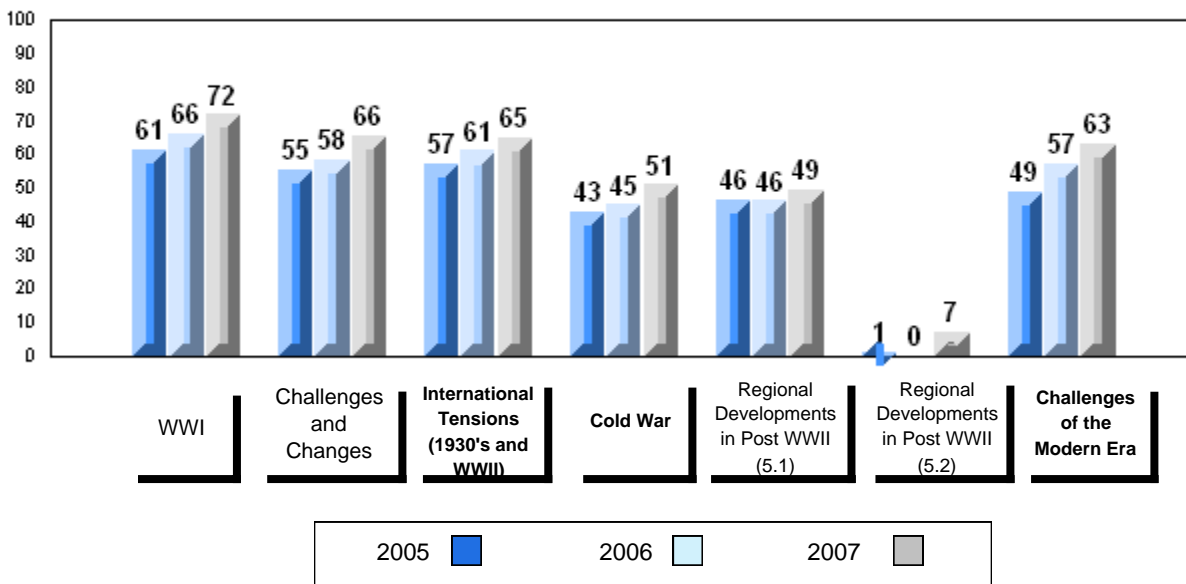
Average Mark, 2005-2007



Difference from Provincial Mean, 2005-2007



3 Year Public Exam (Subtest) Mark Trend 2005-2007



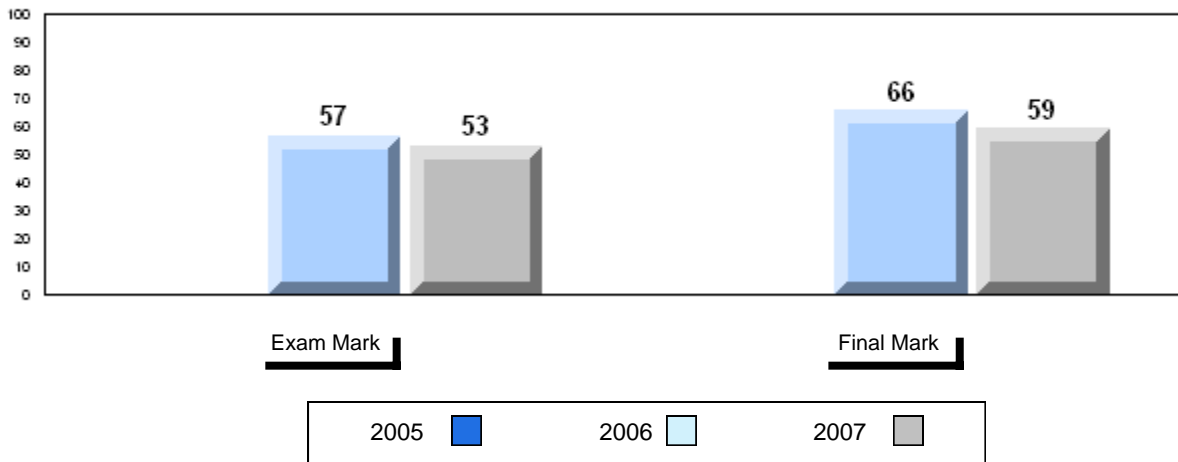
District 4 - Eastern

#464 - Crescent Collegiate, Blaketown

Grades: 7-12

Number of Students		13					
		Public Exam Mark	School vs District	School vs Province	Final Mark	School vs District	School vs Province
Histoire Mondiale 3231	School	53.0	q	q	59.3 70.6 70.5	q	q
	District	67.0					
	Province	67.0					
Subtest							
WWI	School	57.7	q	q			
	District	73.7					
	Province	73.7					
Challenges and Changes	School	48.8	q	q			
	District	65.4					
	Province	64.9					
International Tensions (1930's and WWII)	School	60.8	q	q			
	District	68.8					
	Province	68.9					
Cold War	School	41.2	q	q			
	District	60.1					
	Province	60.6					
Regional Developments in Post WWII (5.1)	School	25.7	q	q			
	District	52.6					
	Province	52.4					
Regional Developments in Post WWII (5.2)	School	19.1	q	q			
	District	54.7					
	Province	55.1					
Challenges of the Modern Era	School	42.9	q	q			
	District	67.2					
	Province	67.3					

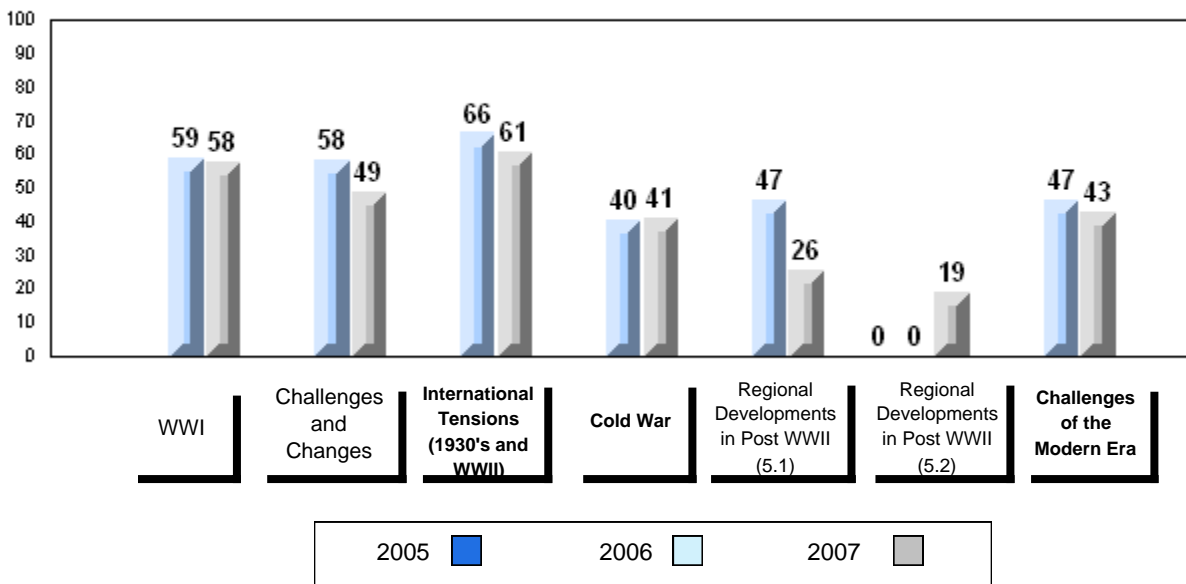
Average Mark, 2005-2007



Difference from Provincial Mean, 2005-2007



3 Year Public Exam (Subtest) Mark Trend 2005-2007



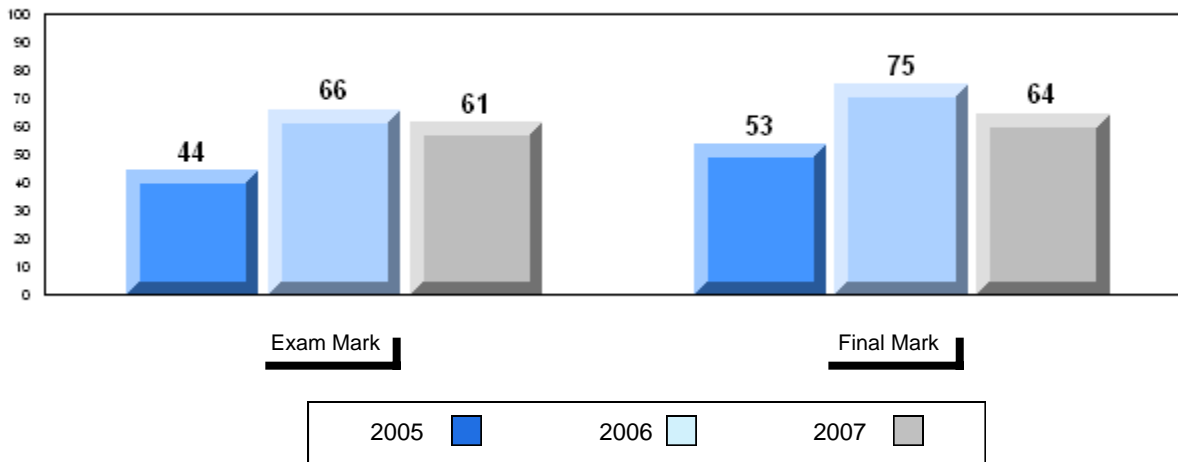
District 5 - Conseil scolaire francophone

#107 - École Ste-Anne, La Grand'Terre

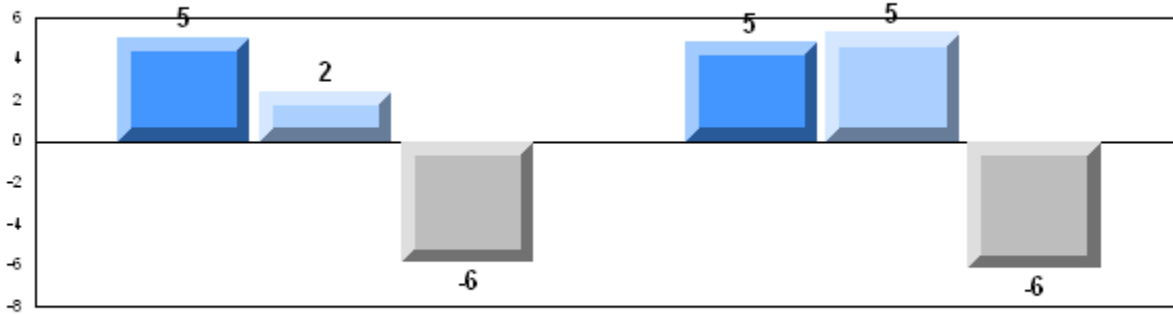
Grades: K-11

Number of Students		Public Exam Mark			Final Mark		
		School vs District	School vs Province		School vs District	School vs Province	
Histoire Mondiale 3231	School	8	61.1	Ⓜ	Ⓜ	64.4	Ⓜ
	District						
	Province						
	Subtest						
	WWI	School	8	67.7	Ⓜ	Ⓜ	
		District					
		Province					
	Challenges and Changes	School	8	57.9	Ⓜ	Ⓜ	
	District						
	Province						
International Tensions (1930's and WWII)	School	8	63.2	Ⓜ	Ⓜ		
	District						
	Province						
Cold War	School	8	54.0	Ⓜ	Ⓜ		
	District						
	Province						
Regional Developments in Post WWII (5.1)	School	8	40.5	Ⓜ	Ⓜ		
	District						
	Province						
Regional Developments in Post WWII (5.2)	School	8	51.4	Ⓜ	Ⓜ		
	District						
	Province						
Challenges of the Modern Era	School	8	66.1	Ⓜ	Ⓜ		
	District						
	Province						

Average Mark, 2005-2007

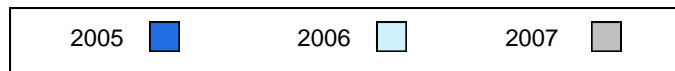


Difference from Provincial Mean, 2005-2007

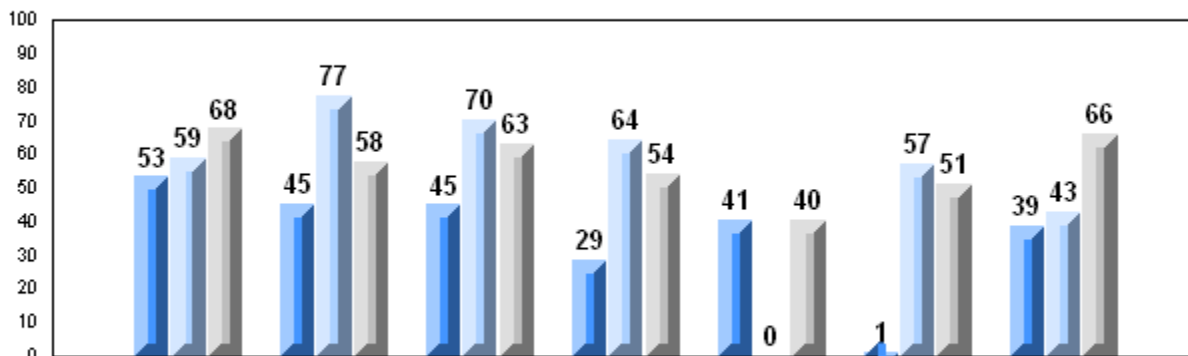


Exam Mark

Final Mark



3 Year Public Exam (Subtest) Mark Trend 2005-2007



WWI | Challenges and Changes | International Tensions (1930's and WWII) | Cold War | Regional Developments in Post WWII (5.1) | Regional Developments in Post WWII (5.2) | Challenges of the Modern Era

