

District 1 - Labrador

#010 - Menihek High School, Labrador City

Grades: 8-12

Number of Students	5					
Francais 3202	School	Public Exam Mark	School vs District	School vs Province	Final Mark	
	District					School data with 5 or fewer students withheld for reasons of confidentiality.
	Province					
		66.7	70.6			
<u>Subtest</u>						
Listening	School	69.7				
	District					
	Province					69.2
Reading	School	52.3				
	District					
	Province					60.2
Writing	School	54.4				
	District					
	Province					59.4

Average Mark, 2005-2007

School data with 5 or fewer students withheld for reasons of confidentiality.

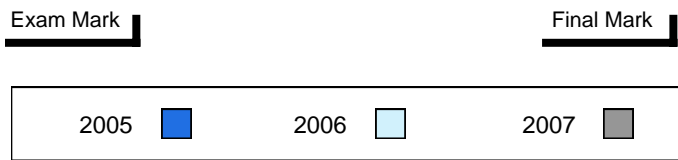
Exam Mark

Final Mark



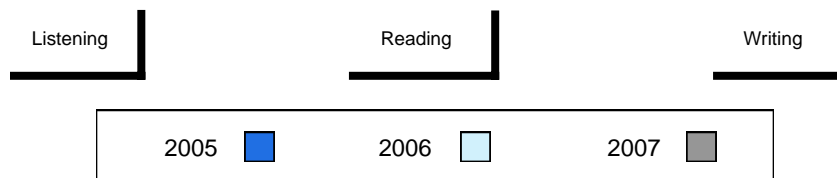
Difference from Provincial Mean, 2005-2007

School data with 5 or fewer students withheld for reasons of confidentiality.



3 Year Public Exam (Subtest) Mark Trend 2005-2007

School data with 5 or fewer students withheld for reasons of confidentiality.



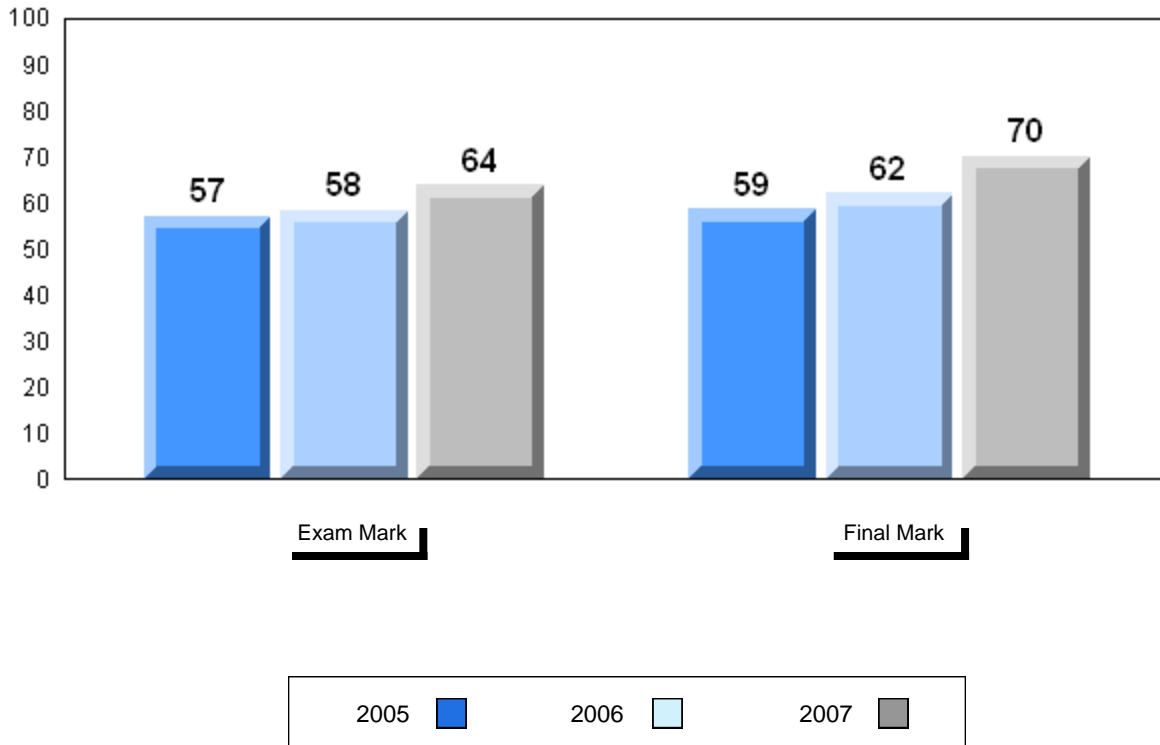
District 1 - Labrador

#477 - Mealy Mountain Collegiate, Happy Valley-Goose Bay

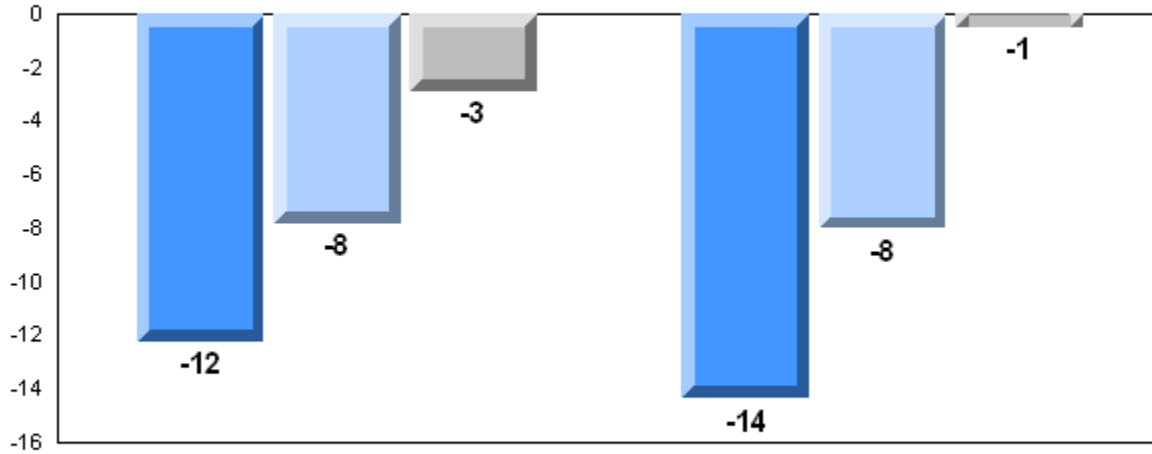
Grades: 8-12

Number of Students	9						
		Public Exam Mark	School vs District	School vs Province	Final Mark	School vs District	School vs Province
Francais 3202	School	63.8	q	q	70.1	q	q
	District	65.2			71.1		
	Province	66.7			70.6		
Subtest							
Listening	School	63.6	q	q			
	District	69.7					
	Province	69.2					
Reading	School	52.4	p	q			
	District	52.3					
	Province	60.2					
Writing	School	55.3	p	q			
	District	54.4					
	Province	59.4					

Average Mark, 2005-2007

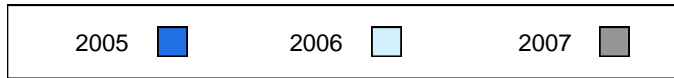


Difference from Provincial Mean, 2005-2007

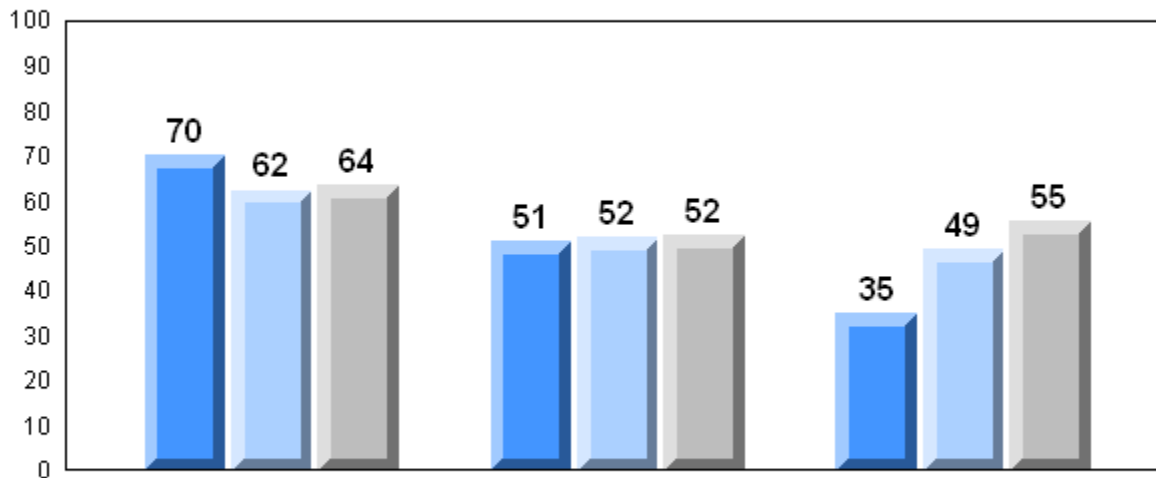


Exam Mark

Final Mark



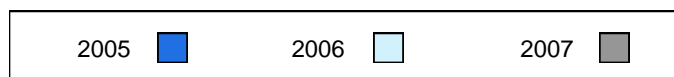
3 Year Public Exam (Subtest) Mark Trend 2005-2007



Listening

Reading

Writing



Number of Students 9

Francais 3202

School
District
Province

Public Exam Mark

School vs District

School vs Province

64.5
71.3
66.7

q

q

Final Mark

School vs District

School vs Province

70.3
75.0
70.6

q

q

Subtest

Listening

School
District
Province

64.4
76.2
69.2

q

q

Reading

School
District
Province

52.4
61.3
60.2

q

q

Writing

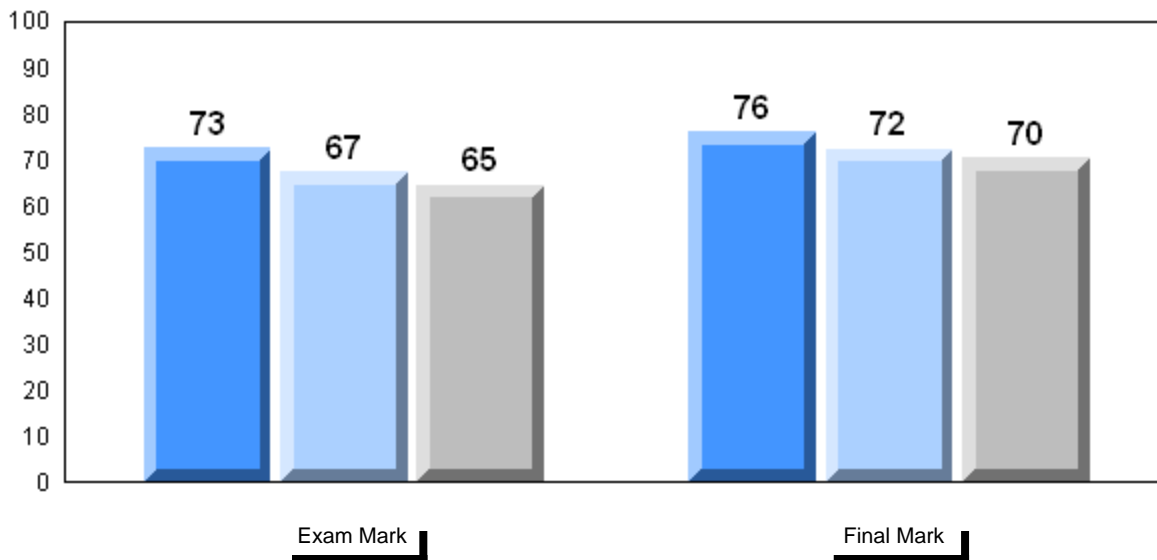
School
District
Province

50.7
65.4
59.4

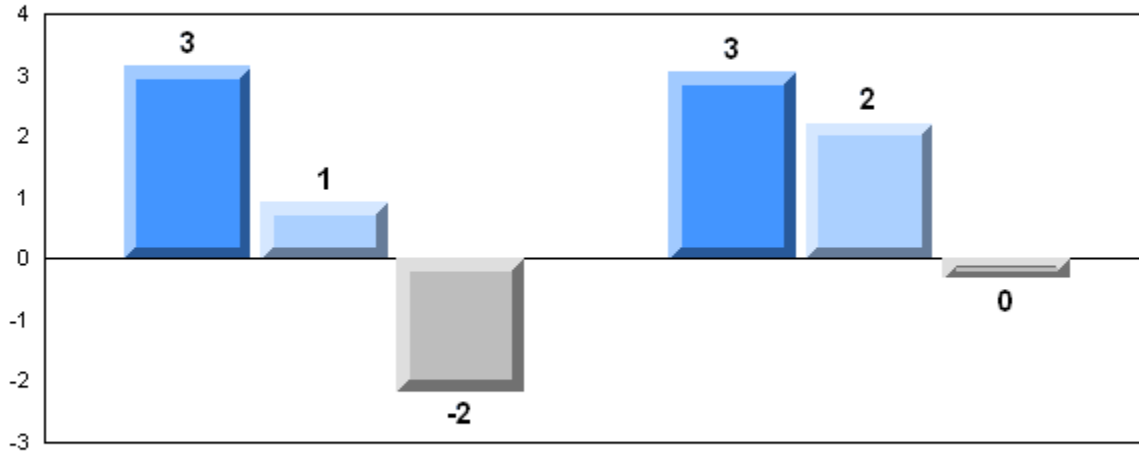
q

q

Average Mark, 2005-2007

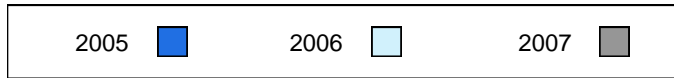


Difference from Provincial Mean, 2005-2007

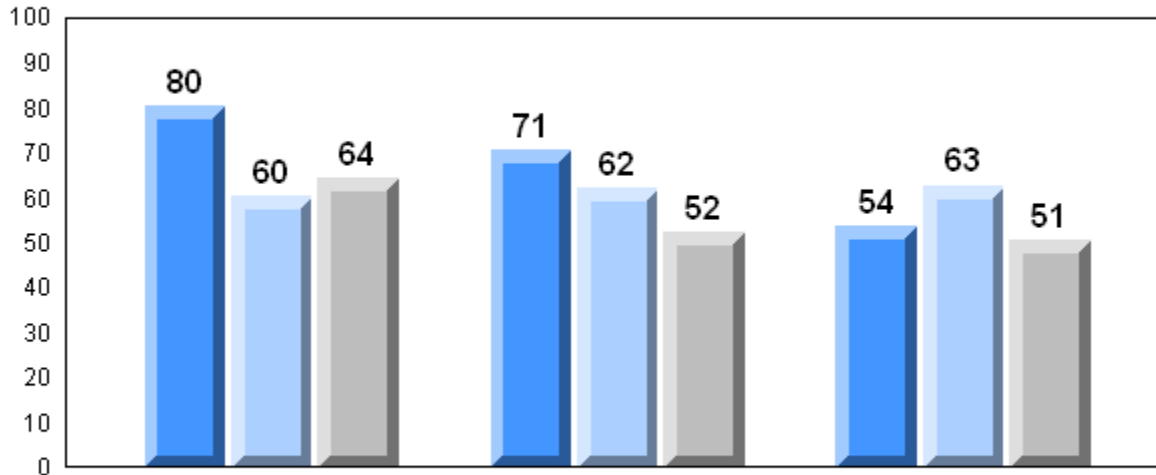


Exam Mark

Final Mark



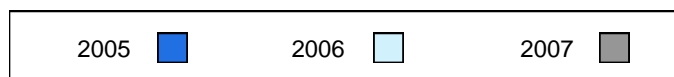
3 Year Public Exam (Subtest) Mark Trend 2005-2007



Listening

Reading

Writing



District 2 - Western

#485 - Corner Brook Regional High, Corner Brook

Grades: 10-12

Number of Students 29

Francais 3202

School
District
Province

Public Exam Mark

School vs District

School vs Province

73.7
71.3
66.7

P

P

Final Mark

School vs District

School vs Province

76.6
75.0
70.6

P

P

Subtest

Listening

School
District
Province

79.5
76.2
69.2

P

P

Reading

School
District
Province

63.7
61.3
60.2

P

P

Writing

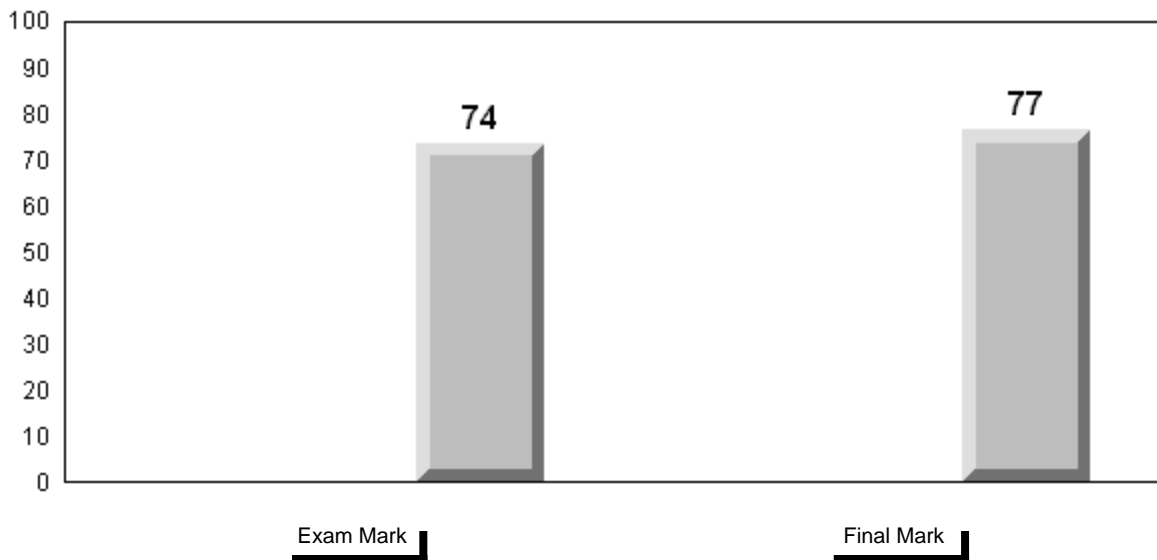
School
District
Province

69.7
65.4
59.4

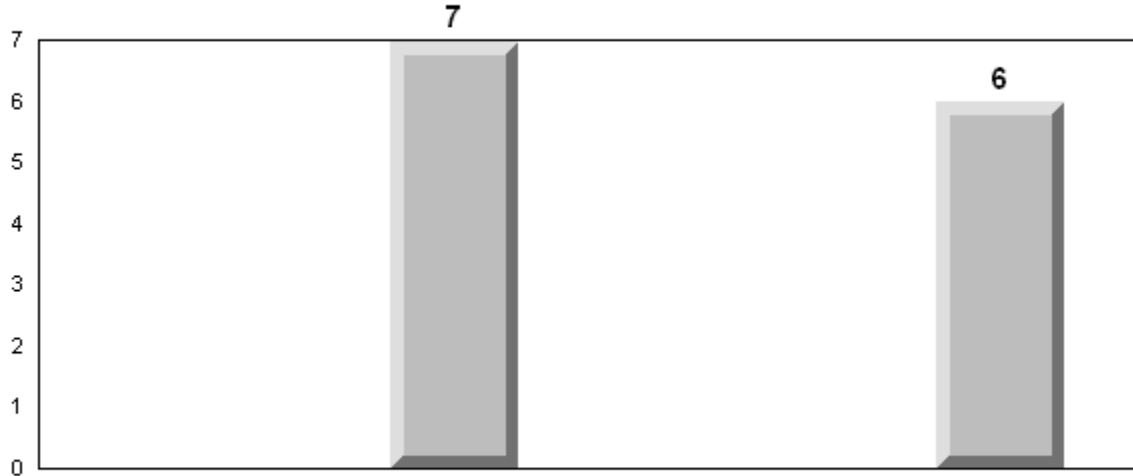
P

P

Average Mark, 2005-2007

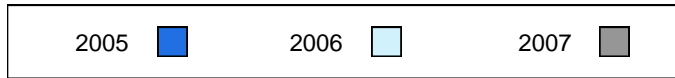


Difference from Provincial Mean, 2005-2007

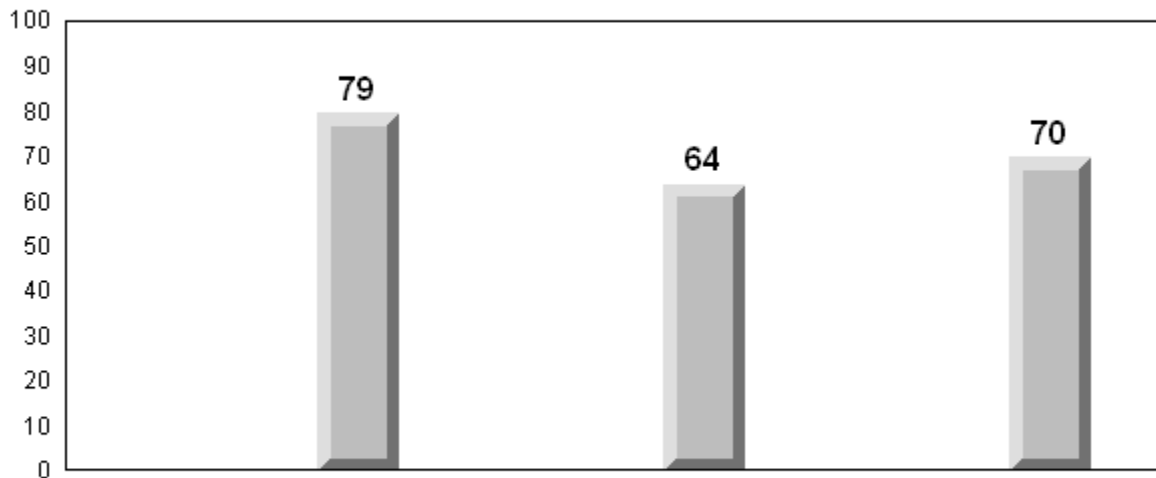


Exam Mark

Final Mark



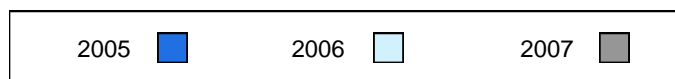
3 Year Public Exam (Subtest) Mark Trend 2005-2007



Listening

Reading

Writing



District 3 - Nova Central

#418 - Gander Collegiate, Gander

Grades: 10-12

Number of Students 15

Francais 3202

School
 District
 Province

Public Exam Mark

School vs District

School vs Province

70.1
 68.6
 66.7

P

P

Final Mark

School vs District

School vs Province

71.4
 71.4
 70.6

P

P

Subtest

Listening

School
 District
 Province

81.9
 80.2
 69.2

P

P

Reading

School
 District
 Province

62.4
 62.0
 60.2

P

P

Writing

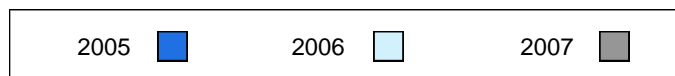
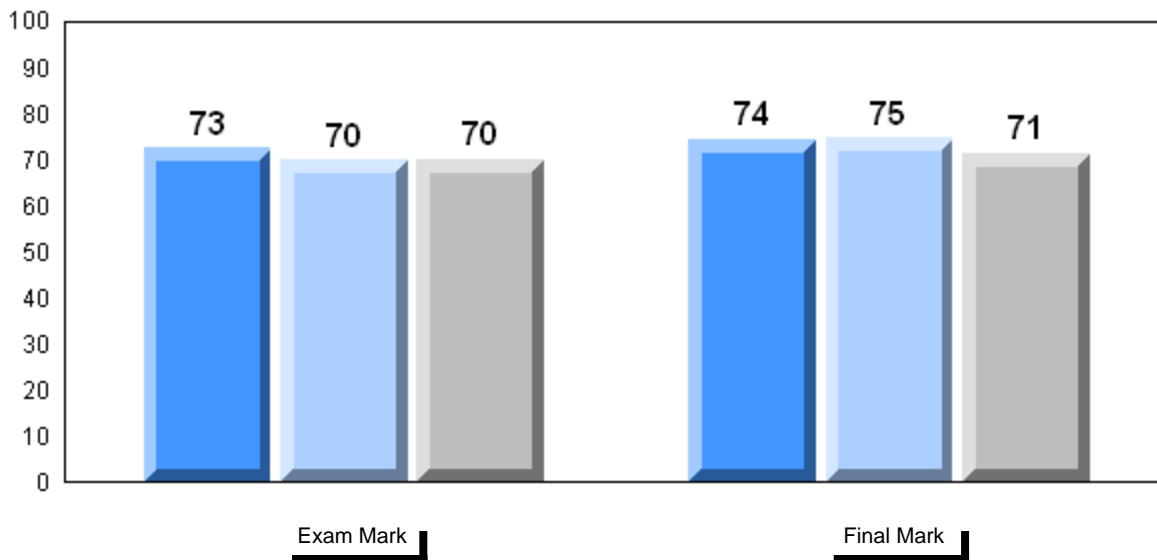
School
 District
 Province

62.0
 55.8
 59.4

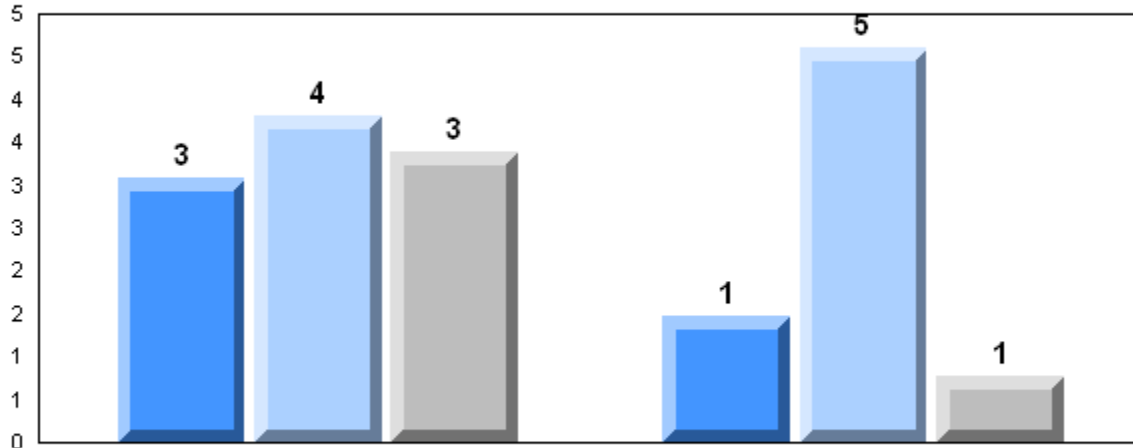
P

P

Average Mark, 2005-2007

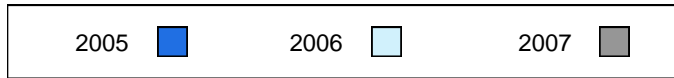


Difference from Provincial Mean, 2005-2007

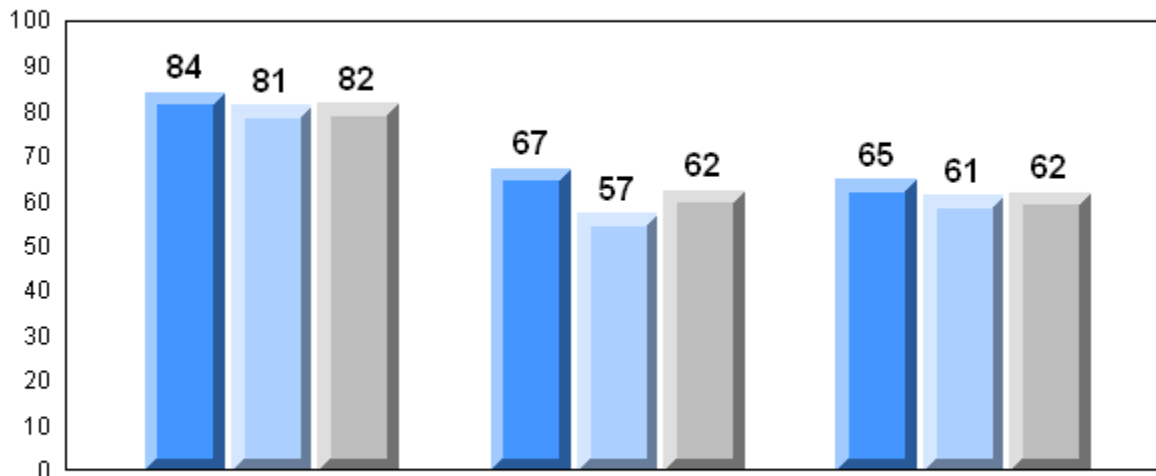


Exam Mark

Final Mark



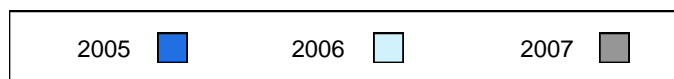
3 Year Public Exam (Subtest) Mark Trend 2005-2007



Listening

Reading

Writing



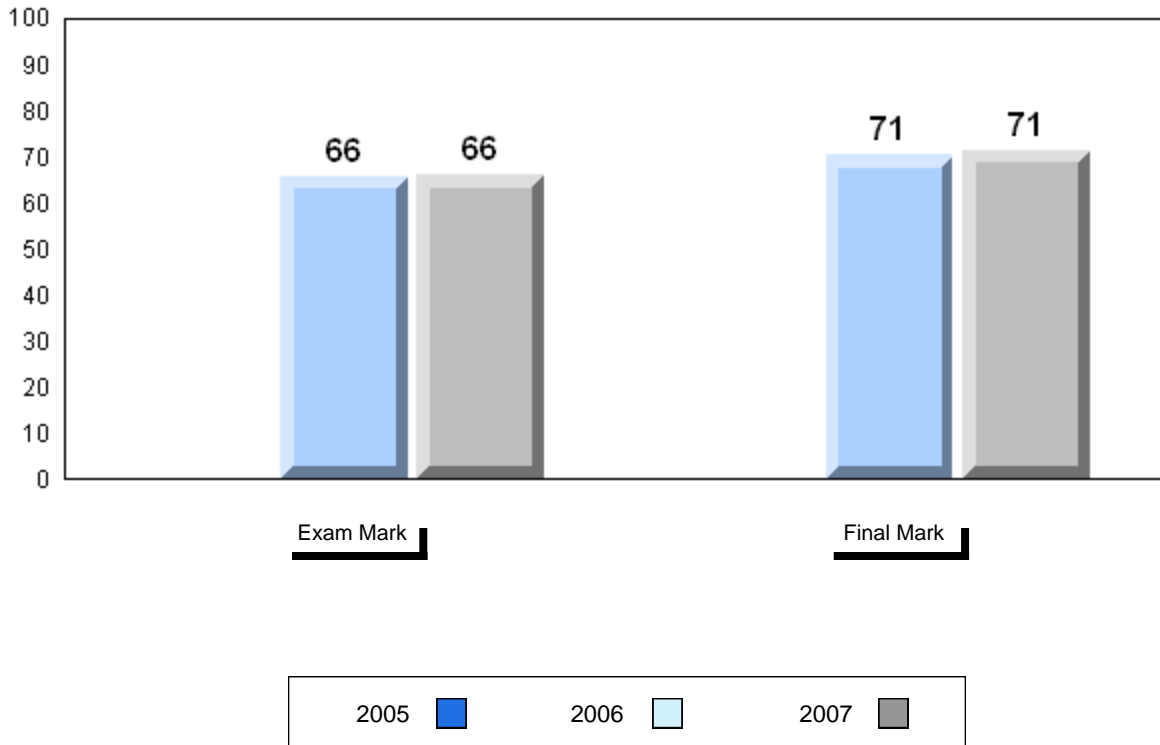
District 3 - Nova Central

#480 - Exploits Valley High, Grand Falls-Windsor

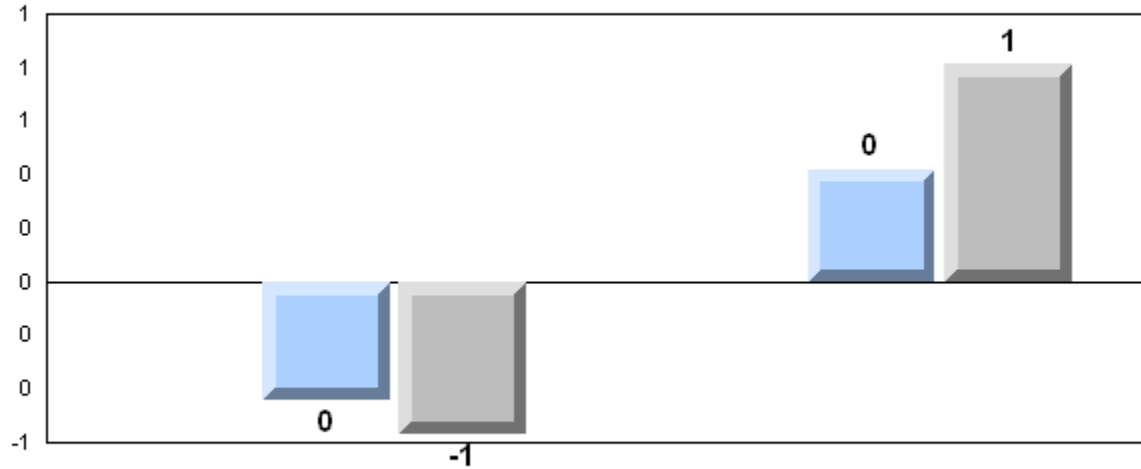
Grades: 10-12

Number of Students	9					
Francais 3202		Public Exam Mark	School vs District	School vs Province	Final Mark	School vs District / School vs Province
	School	66.1	q	q	71.4	p / p
	District	68.6			71.4	
	Province	66.7			70.6	
Subtest						
Listening	School	77.3	q	p		
	District	80.2				
	Province	69.2				
Reading	School	61.3	q	p		
	District	62.0				
	Province	60.2				
Writing	School	45.6	q	q		
	District	55.8				
	Province	59.4				

Average Mark, 2005-2007

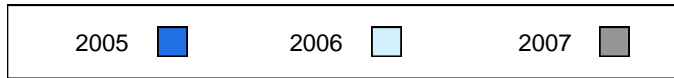


Difference from Provincial Mean, 2005-2007

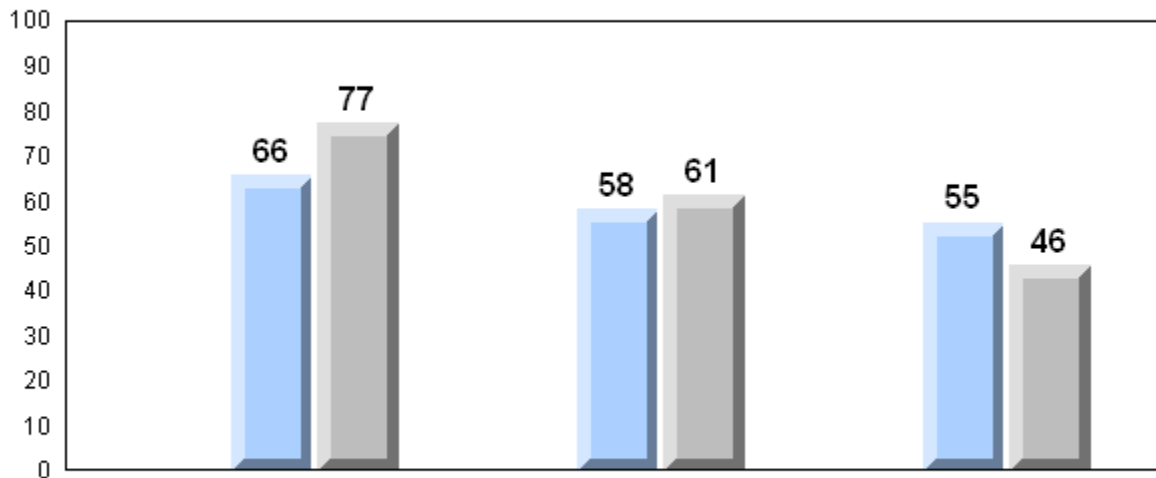


Exam Mark

Final Mark



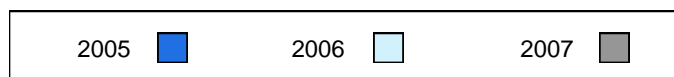
3 Year Public Exam (Subtest) Mark Trend 2005-2007



Listening

Reading

Writing



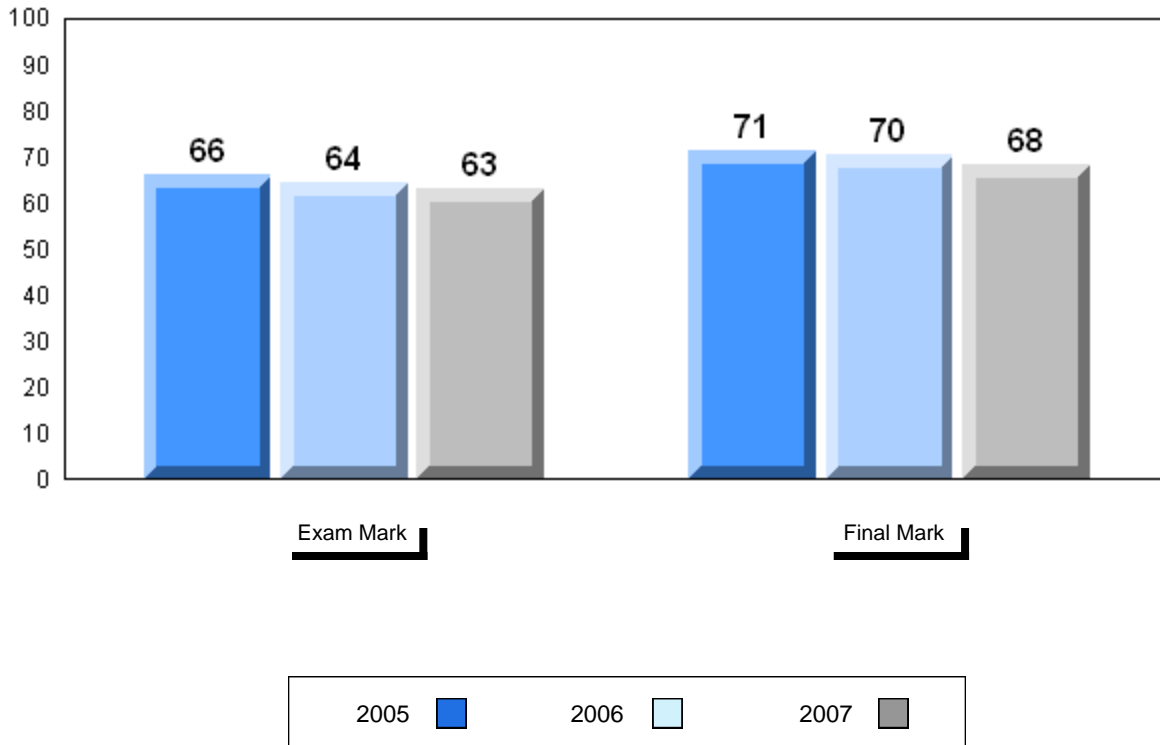
District 4 - Eastern

#219 - Marystown Central High, Marystown

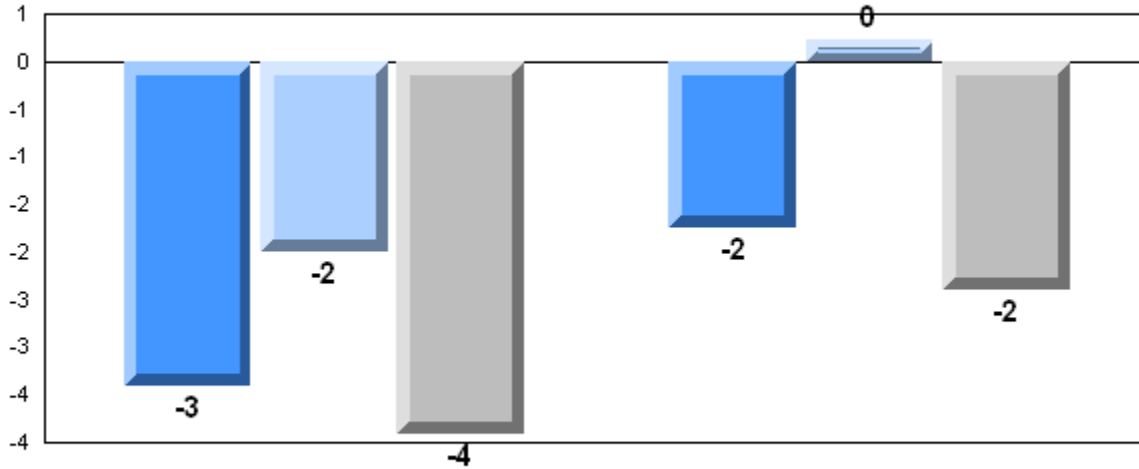
Grades: 10-12

Number of Students	13						
		Public Exam Mark	School vs District	School vs Province	Final Mark	School vs District	School vs Province
Francais 3202	School	62.8	q	q	68.2	q	q
	District	66.1			70.1		
	Province	66.7			70.6		
<u>Subtest</u>							
Listening	School	65.5	q	q			
	District	67.7					
	Province	69.2					
Reading	School	47.4	q	q			
	District	60.3					
	Province	60.2					
Writing	School	50.2	q	q			
	District	59.1					
	Province	59.4					

Average Mark, 2005-2007

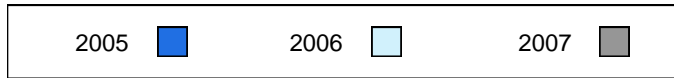


Difference from Provincial Mean, 2005-2007

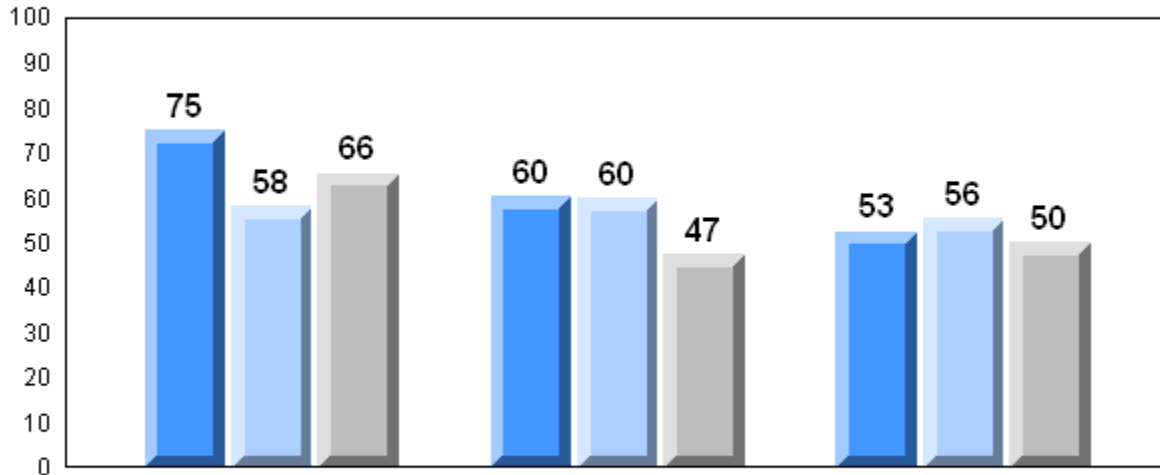


Exam Mark

Final Mark



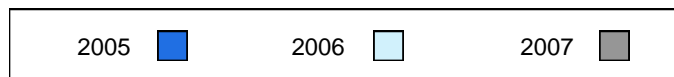
3 Year Public Exam (Subtest) Mark Trend 2005-2007



Listening

Reading

Writing



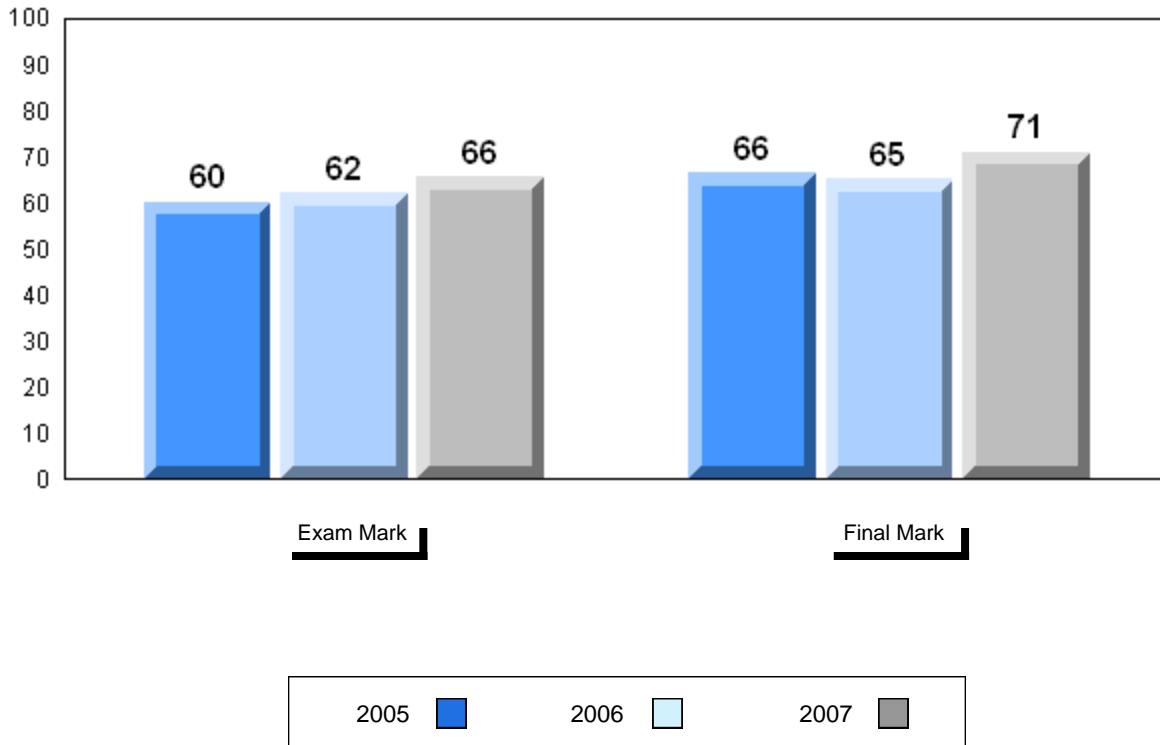
District 4 - Eastern

#249 - Ascension Collegiate, Bay Roberts

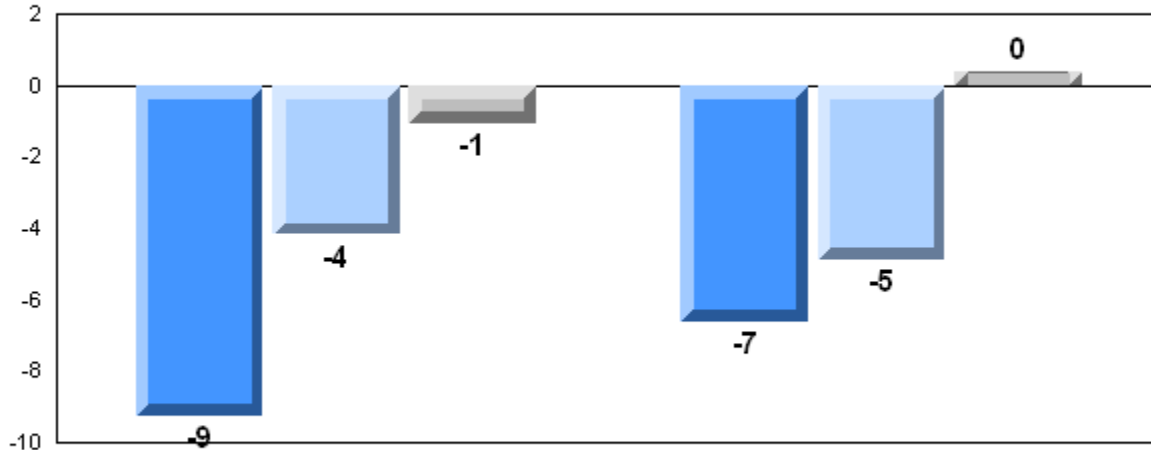
Grades: 10-12

Number of Students	16						
		Public Exam Mark	School vs District	School vs Province	Final Mark	School vs District	School vs Province
Francais 3202	School	65.6	q	q	71.0	p	p
	District	66.1			70.1		
	Province	66.7			70.6		
<u>Subtest</u>							
Listening	School	68.3	p	q			
	District	67.7					
	Province	69.2					
Reading	School	57.8	q	q			
	District	60.3					
	Province	60.2					
Writing	School	64.5	p	p			
	District	59.1					
	Province	59.4					

Average Mark, 2005-2007

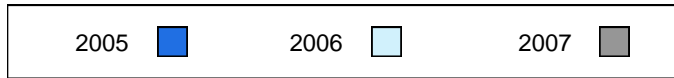


Difference from Provincial Mean, 2005-2007

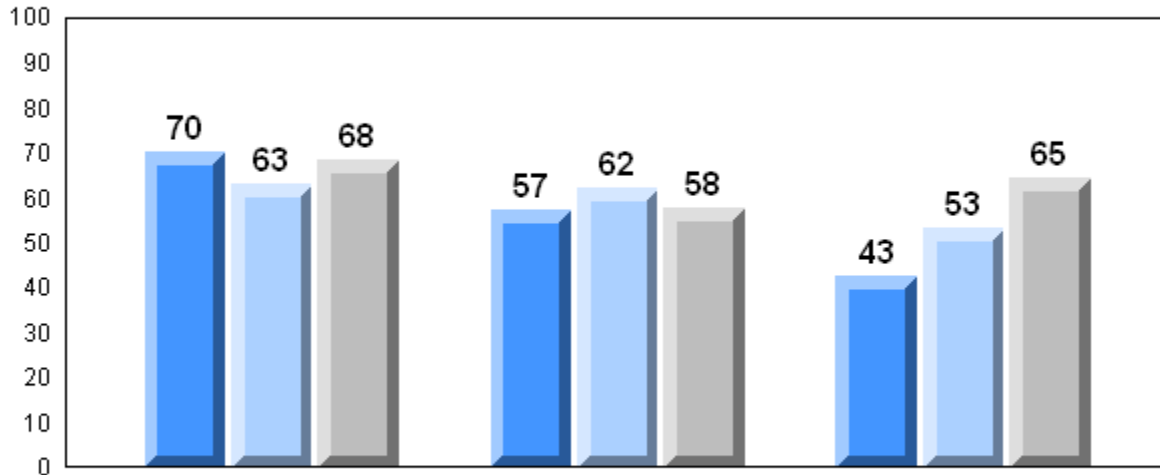


Exam Mark

Final Mark



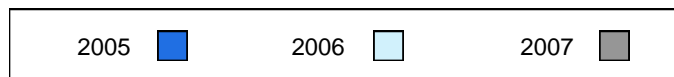
3 Year Public Exam (Subtest) Mark Trend 2005-2007



Listening

Reading

Writing



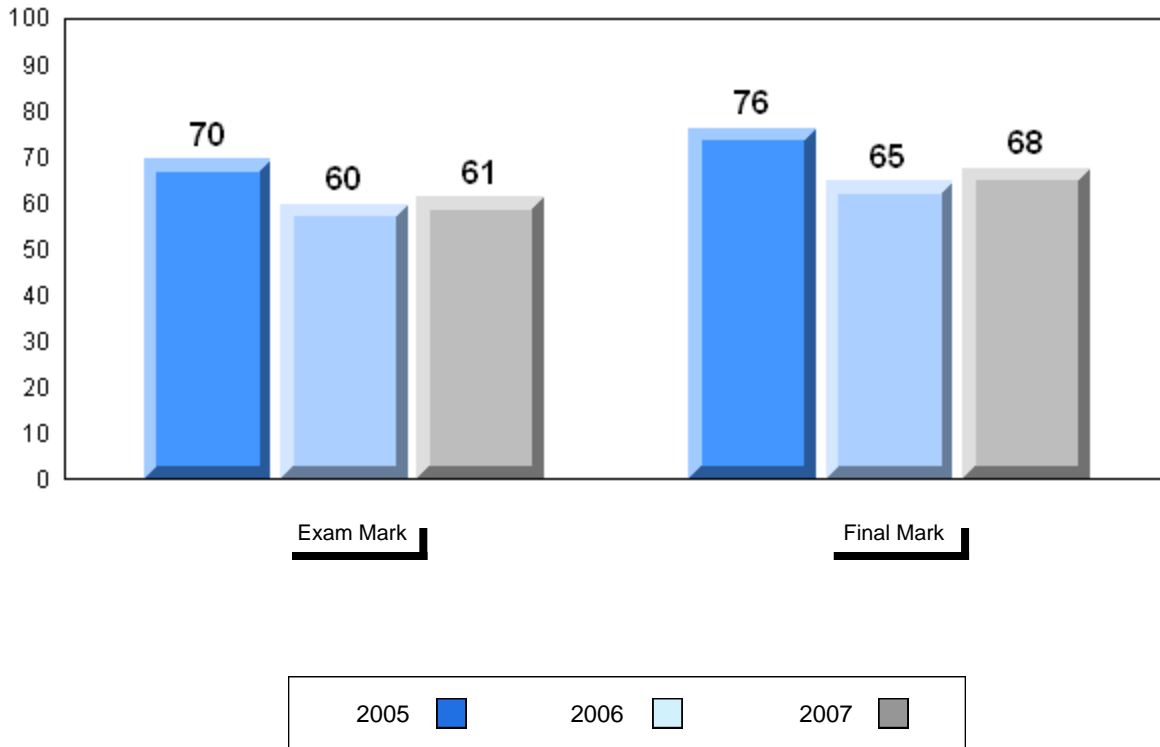
District 4 - Eastern

#302 - Queen Elizabeth Regional High School, Conception Bay S

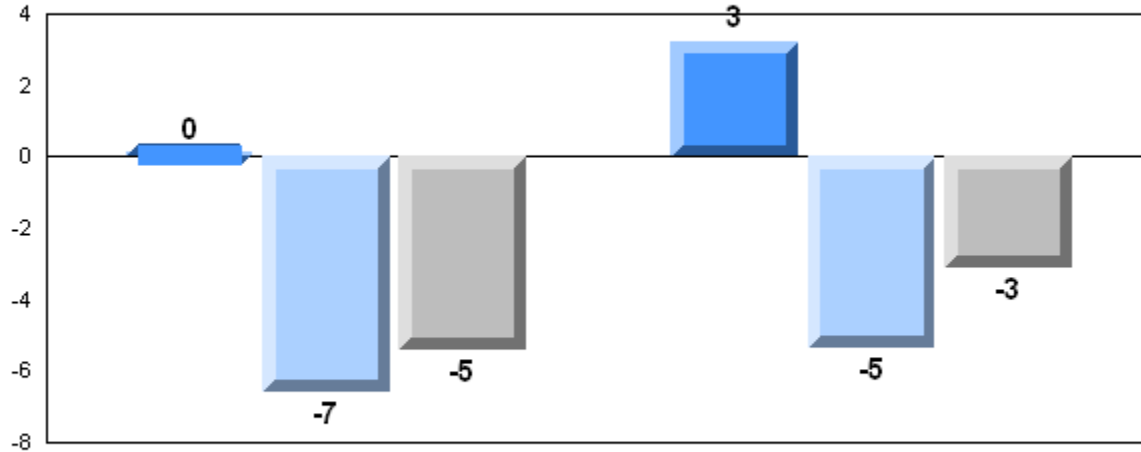
Grades: 10-12

Number of Students	24						
Francais 3202		Public Exam Mark	School vs District	School vs Province	Final Mark	School vs District	School vs Province
	School	61.3	q	q	67.5	q	q
	District	66.1			70.1		
	Province	66.7			70.6		
Subtest							
Listening	School	61.8	q	q			
	District	67.7					
	Province	69.2					
Reading	School	49.5	q	q			
	District	60.3					
	Province	60.2					
Writing	School	50.3	q	q			
	District	59.1					
	Province	59.4					

Average Mark, 2005-2007

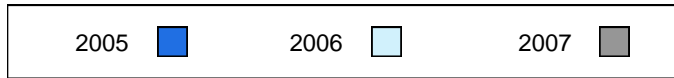


Difference from Provincial Mean, 2005-2007

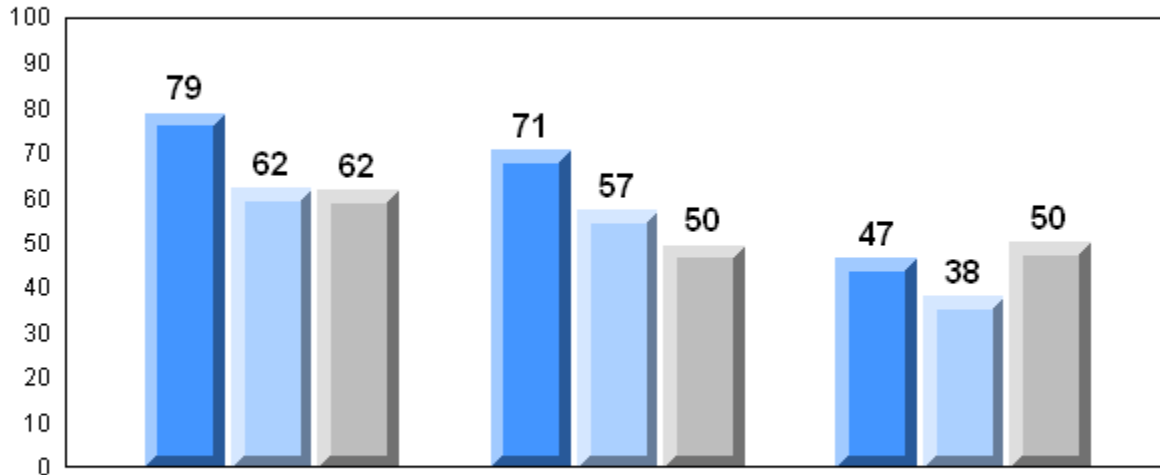


Exam Mark

Final Mark



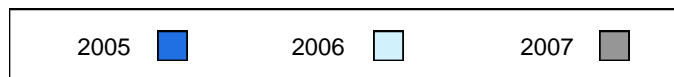
3 Year Public Exam (Subtest) Mark Trend 2005-2007



Listening

Reading

Writing



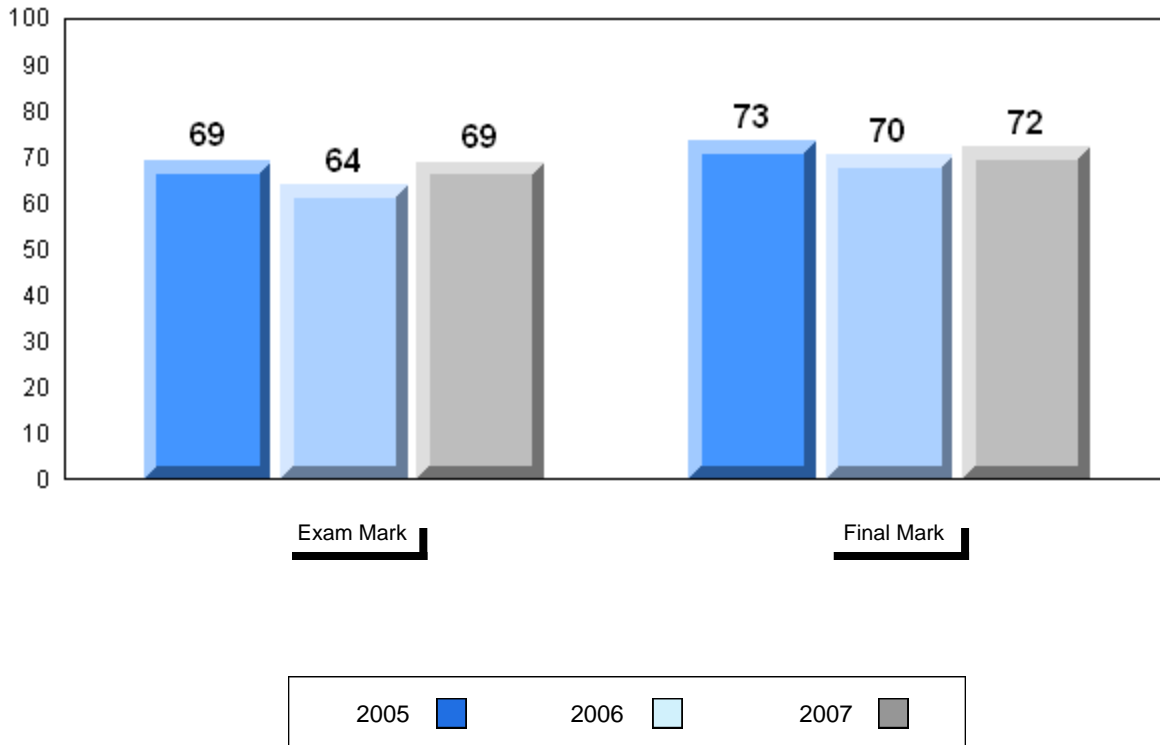
District 4 - Eastern

#304 - Holy Spirit High, Conception Bay South (Manuels)

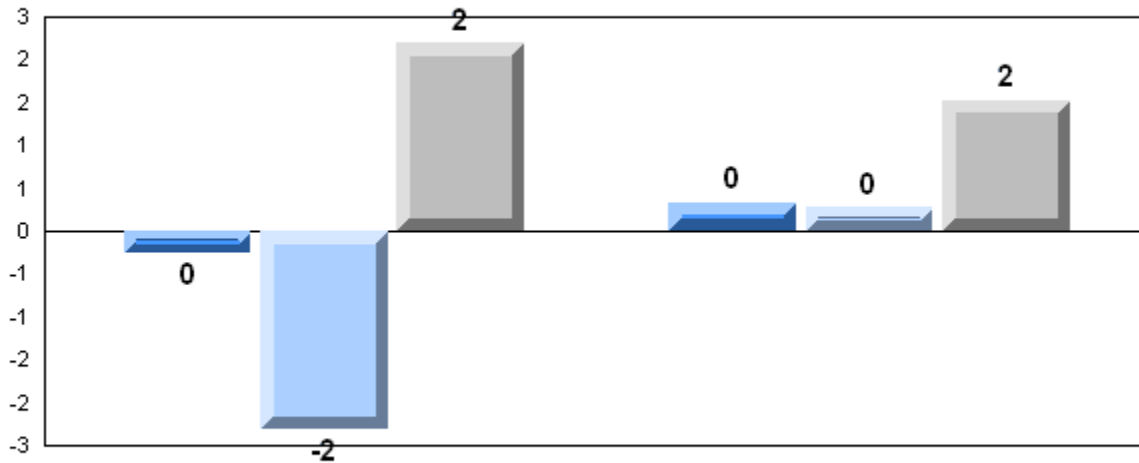
Grades: 10-12

Number of Students	29						
		Public Exam Mark	School vs District	School vs Province	Final Mark	School vs District	School vs Province
Francais 3202	School	68.9	P	P	72.2	P	P
	District	66.1			70.1		
	Province	66.7			70.6		
Subtest							
	School	66.5	q	q			
Listening	District	67.7					
	Province	69.2					
	School	65.7	P	P			
Reading	District	60.3					
	Province	60.2					
	School	65.4	P	P			
Writing	District	59.1					
	Province	59.4					

Average Mark, 2005-2007

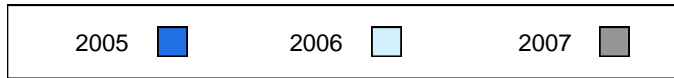


Difference from Provincial Mean, 2005-2007

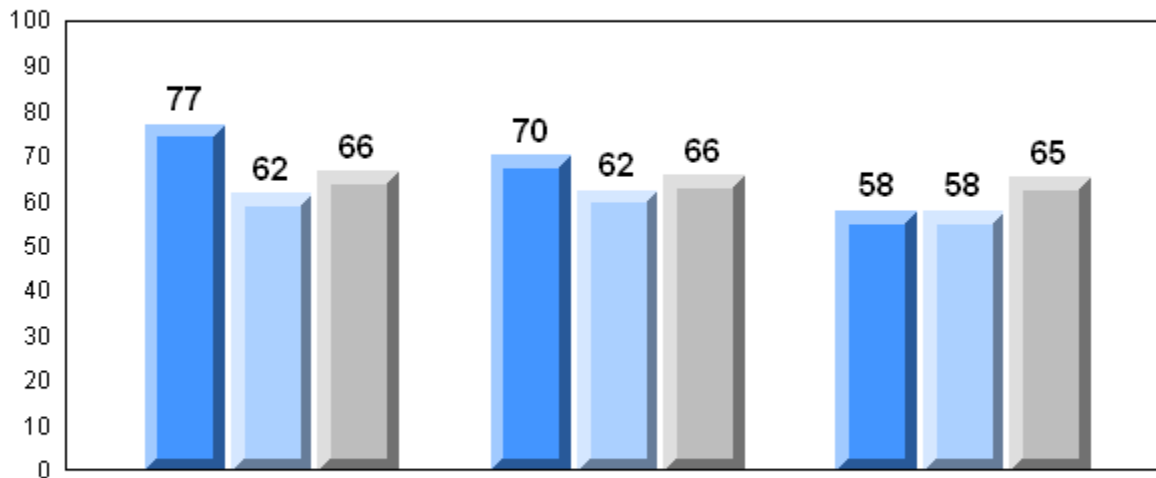


Exam Mark

Final Mark



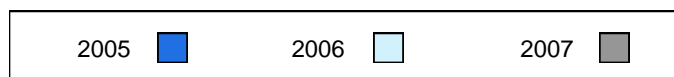
3 Year Public Exam (Subtest) Mark Trend 2005-2007



Listening

Reading

Writing



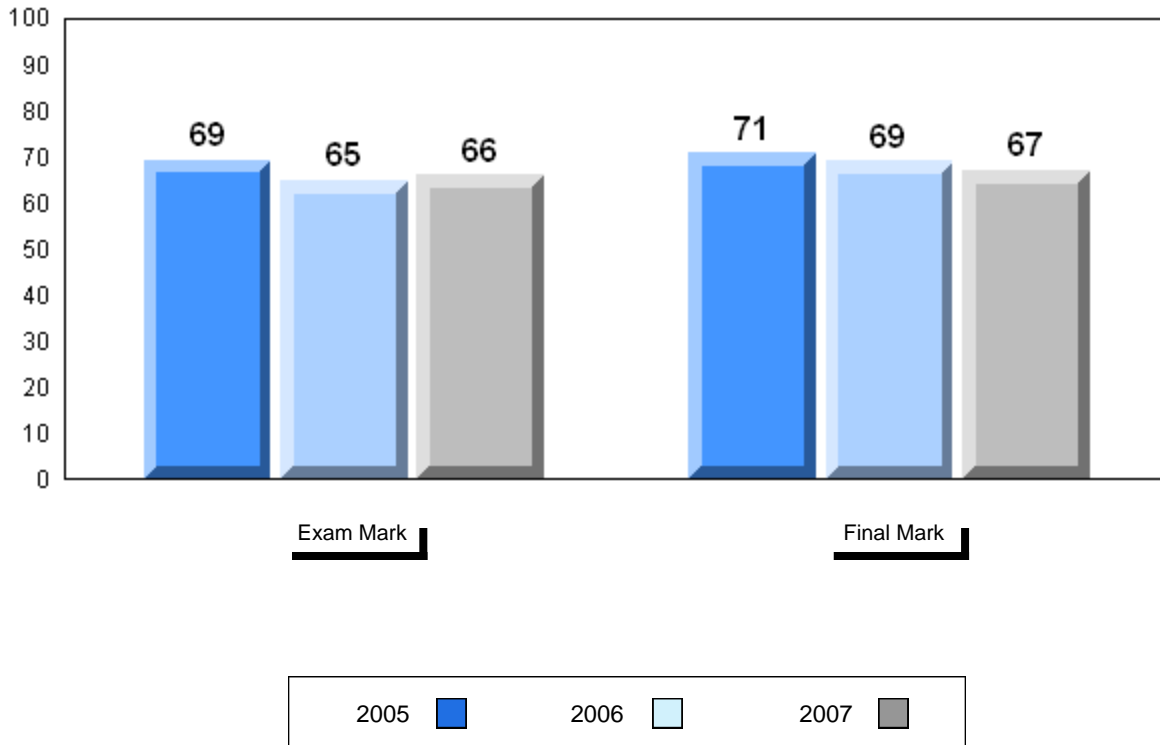
District 4 - Eastern

#311 - Mount Pearl Senior High, Mount Pearl

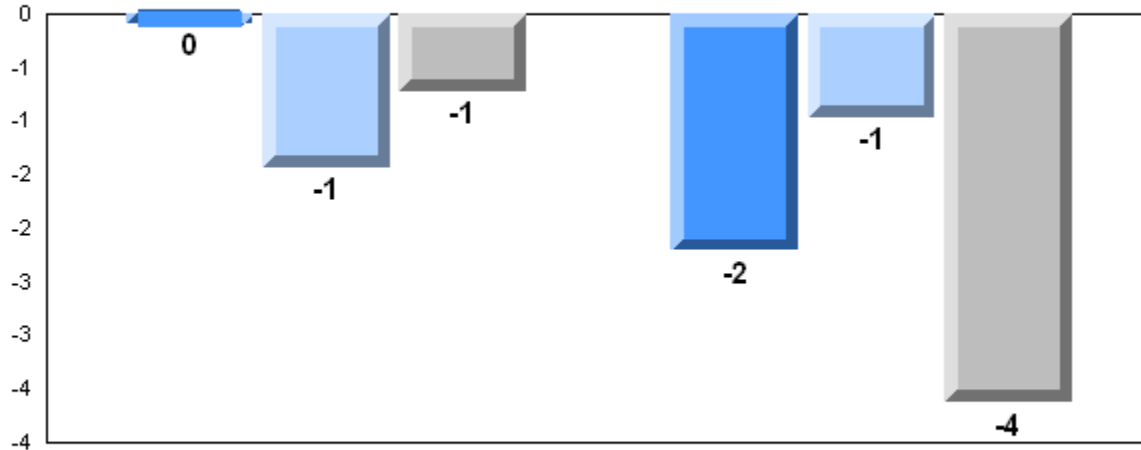
Grades: 10-12

Number of Students	44						
		Public Exam Mark	School vs District	School vs Province	Final Mark	School vs District	School vs Province
Francais 3202	School	66.0	q	q	67.0	q	q
	District	66.1			70.1		
	Province	66.7			70.6		
<u>Subtest</u>							
	School	70.1	p	p			
Listening	District	67.7					
	Province	69.2					
	School	61.3	p	p			
Reading	District	60.3					
	Province	60.2					
	School	57.1	q	q			
Writing	District	59.1					
	Province	59.4					

Average Mark, 2005-2007

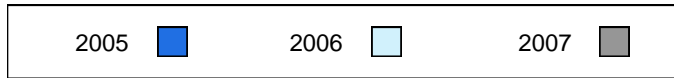


Difference from Provincial Mean, 2005-2007

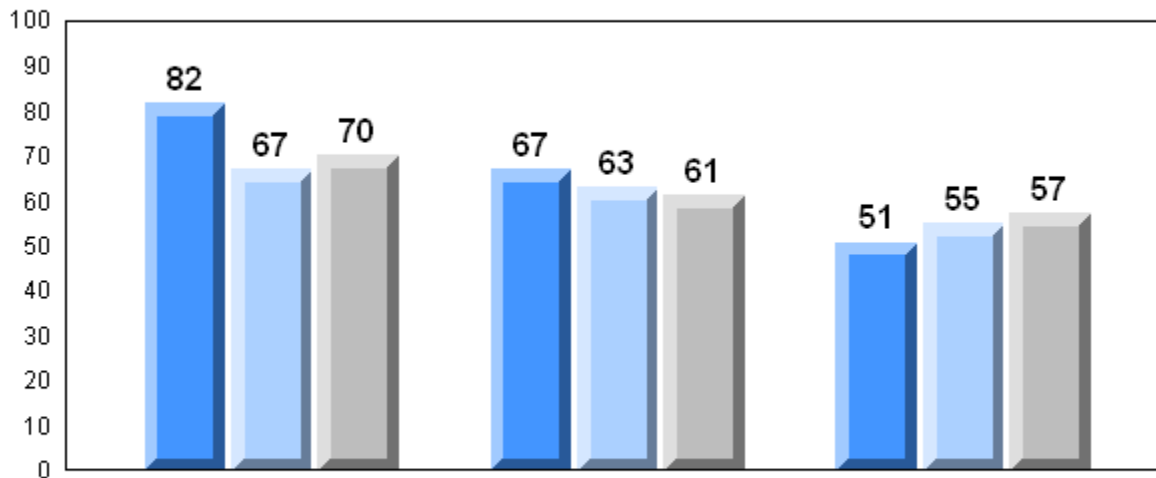


Exam Mark

Final Mark



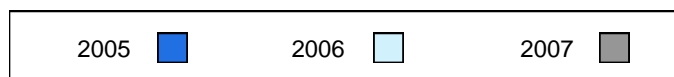
3 Year Public Exam (Subtest) Mark Trend 2005-2007



Listening

Reading

Writing



District 4 - Eastern

#313 - O'Donel High, Mount Pearl

Grades: 10-12

Number of Students 9

Francais 3202

School
 District
 Province

Public Exam Mark

School vs District

School vs Province

65.0
 66.1
 66.7

q

q

Final Mark

School vs District

School vs Province

70.4
 70.1
 70.6

p

q

Subtest

Listening

School
 District
 Province

64.0
 67.7
 69.2

q

q

Reading

School
 District
 Province

64.9
 60.3
 60.2

p

p

Writing

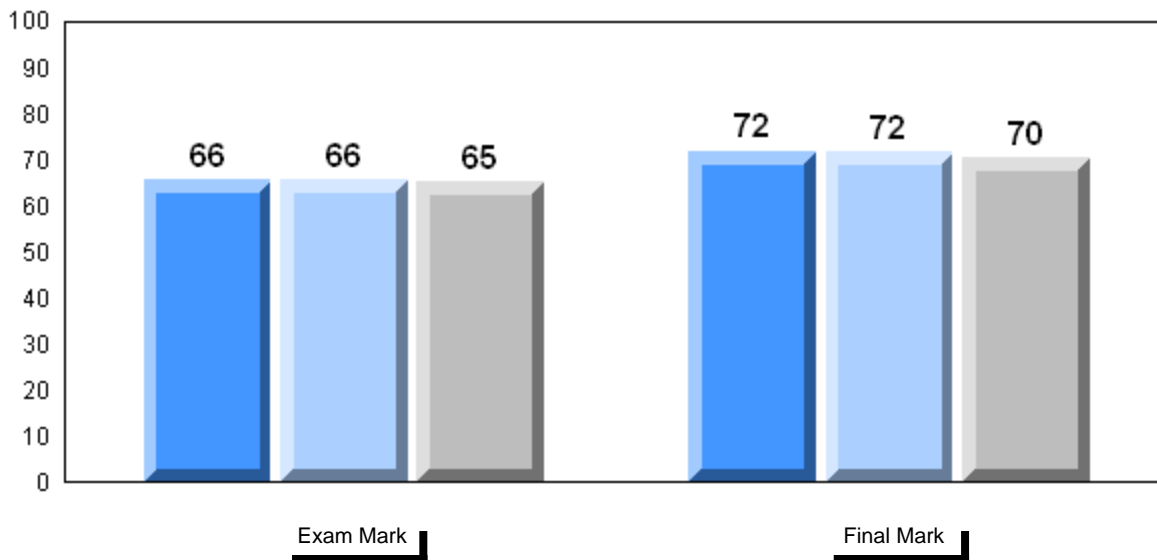
School
 District
 Province

59.1
 59.1
 59.4

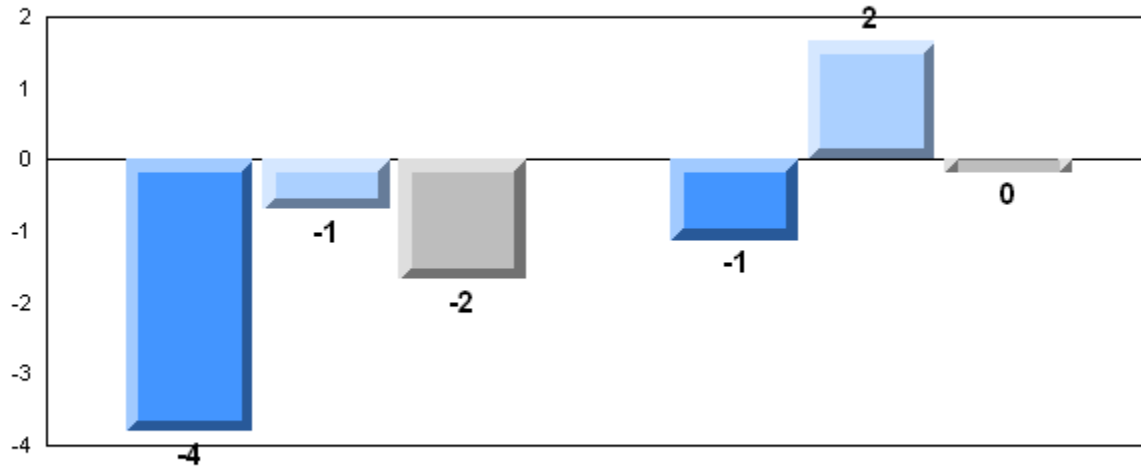
q

q

Average Mark, 2005-2007

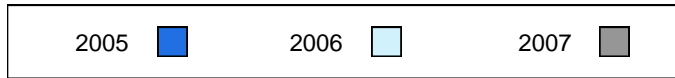


Difference from Provincial Mean, 2005-2007

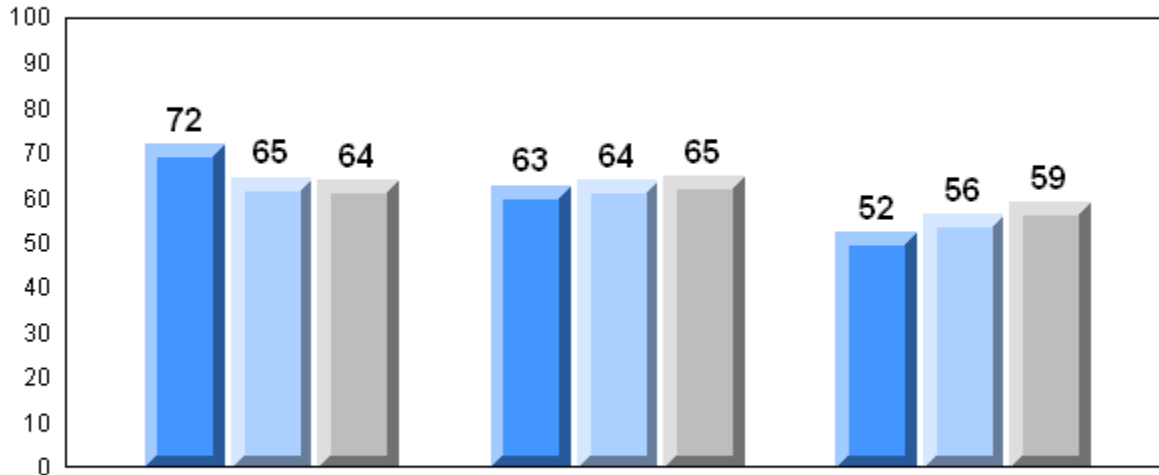


Exam Mark

Final Mark



3 Year Public Exam (Subtest) Mark Trend 2005-2007



Listening

Reading

Writing



District 4 - Eastern

#327 - Bishops College, St. John's

Grades: 10-12

Number of Students 26

Francais 3202

School
 District
 Province

Public Exam Mark

School vs District

School vs Province

68.3
 66.1
 66.7

P

P

Final Mark

School vs District

School vs Province

73.1
 70.1
 70.6

P

P

Subtest

Listening

School
 District
 Province

67.9
 67.7
 69.2

P

q

Reading

School
 District
 Province

67.2
 60.3
 60.2

P

P

Writing

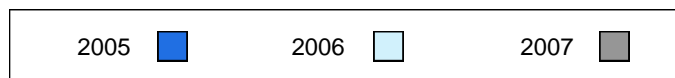
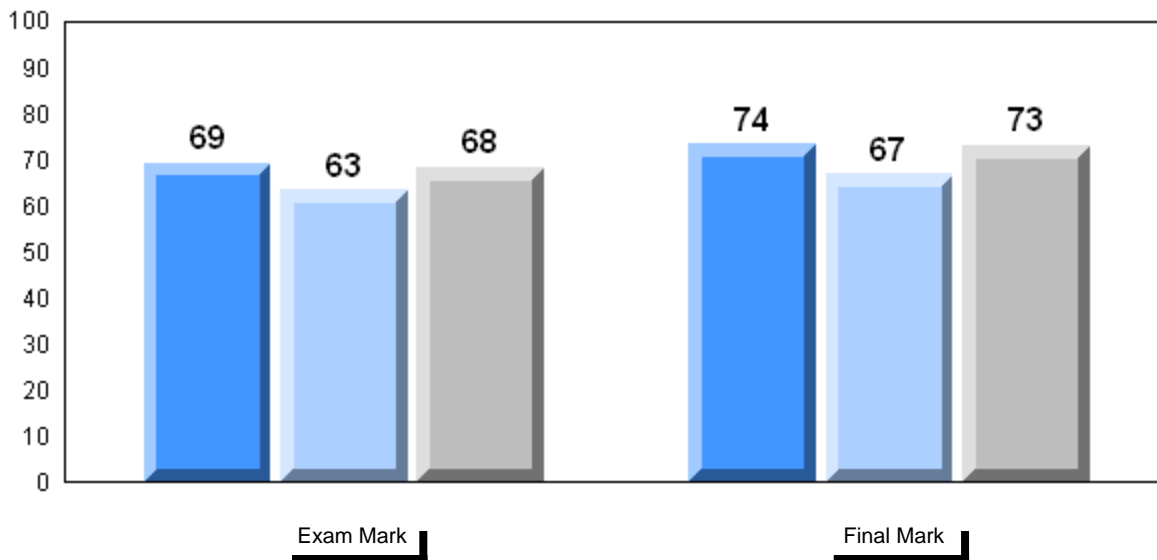
School
 District
 Province

57.7
 59.1
 59.4

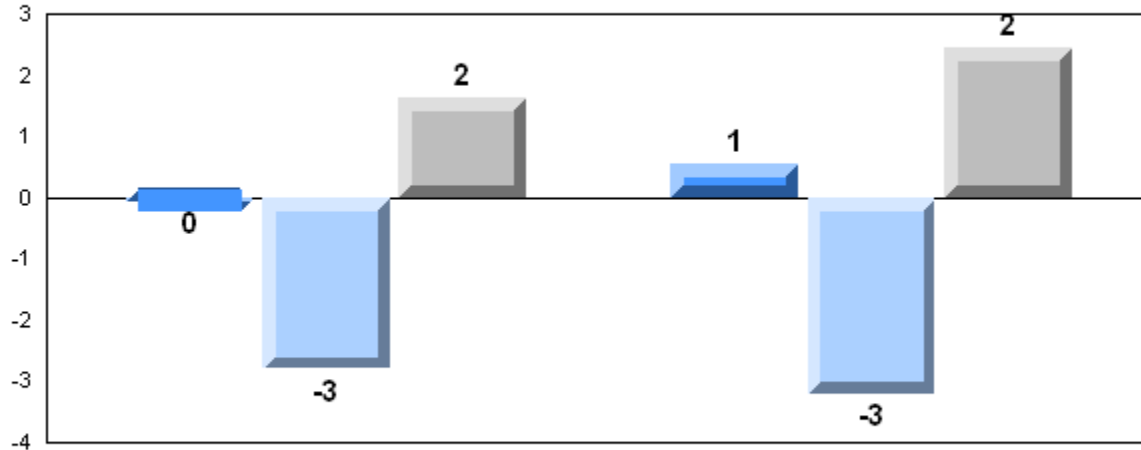
q

q

Average Mark, 2005-2007

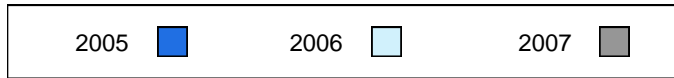


Difference from Provincial Mean, 2005-2007

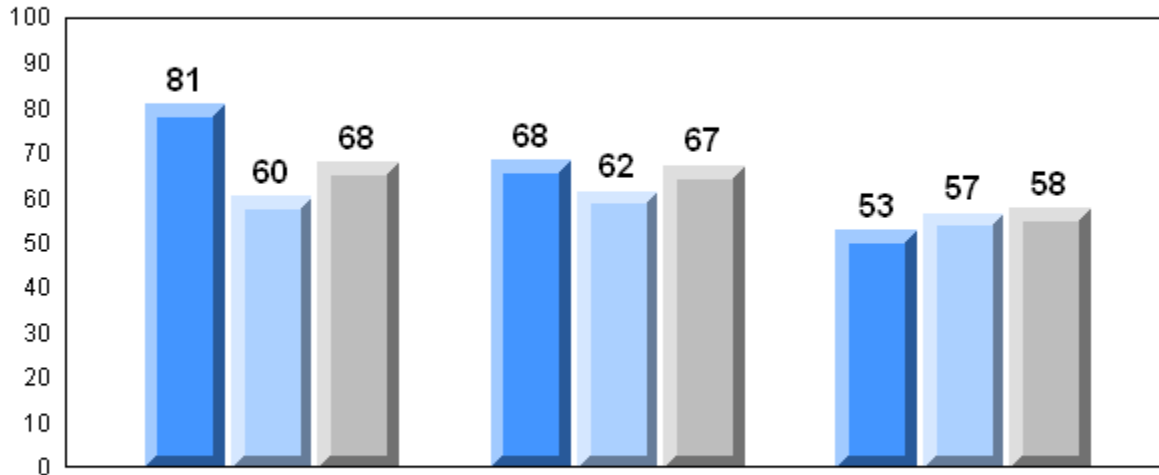


Exam Mark

Final Mark



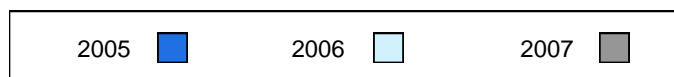
3 Year Public Exam (Subtest) Mark Trend 2005-2007



Listening

Reading

Writing



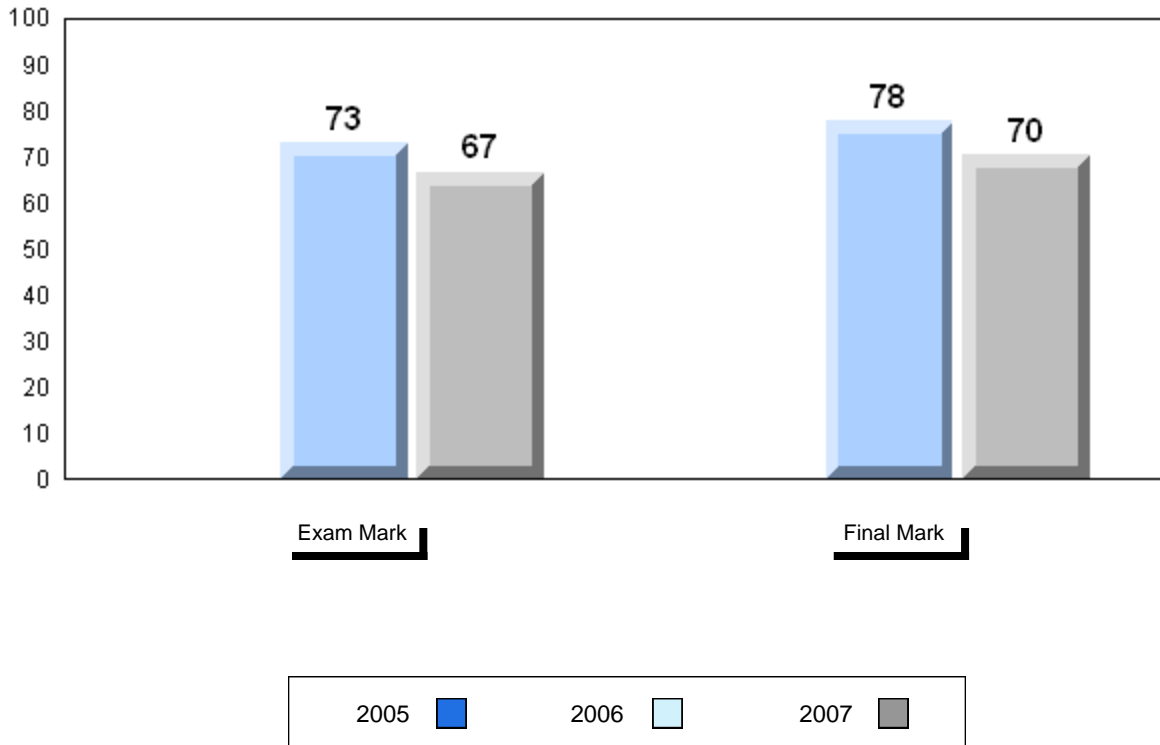
District 4 - Eastern

#328 - Booth Memorial High School, St. John's

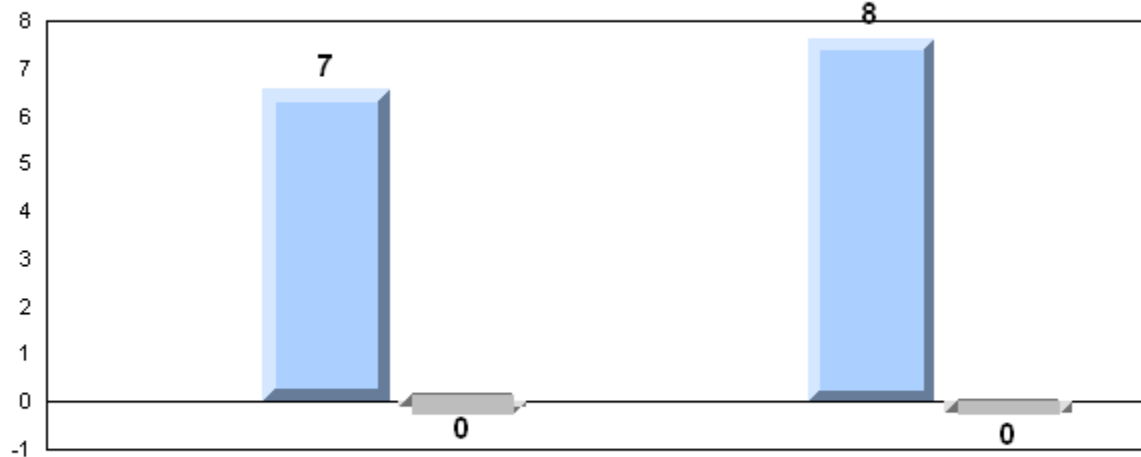
Grades: 10-12

Number of Students	15						
		Public Exam Mark	School vs District	School vs Province	Final Mark	School vs District	School vs Province
Francais 3202	School	66.6	P	Q	70.4	P	Q
	District	66.1			70.1		
	Province	66.7			70.6		
<u>Subtest</u>							
Listening	School	66.9	Q	Q			
	District	67.7					
	Province	69.2					
Reading	School	52.0	Q	Q			
	District	60.3					
	Province	60.2					
Writing	School	65.6	P	P			
	District	59.1					
	Province	59.4					

Average Mark, 2005-2007

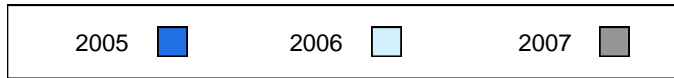


Difference from Provincial Mean, 2005-2007

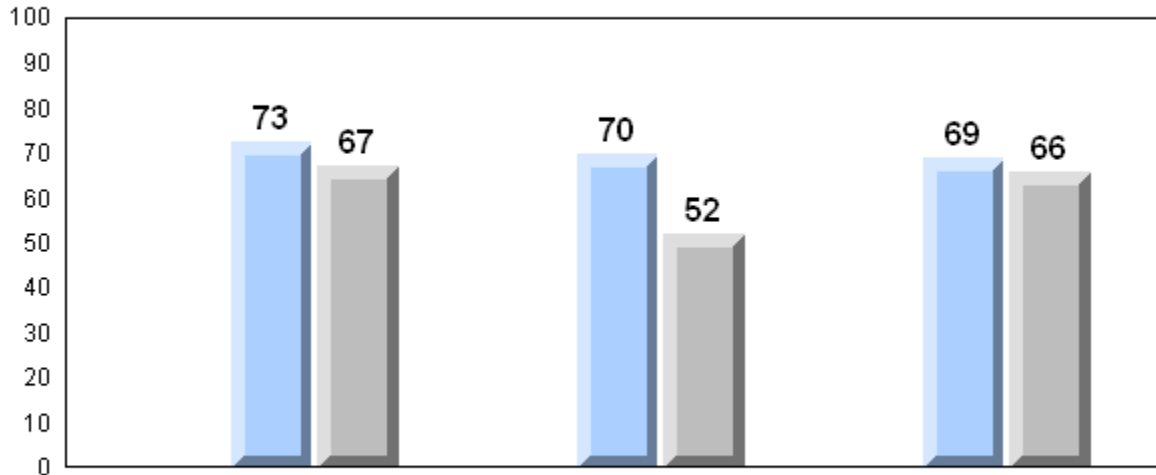


Exam Mark

Final Mark



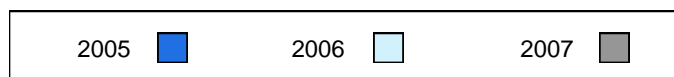
3 Year Public Exam (Subtest) Mark Trend 2005-2007



Listening

Reading

Writing



District 4 - Eastern

#336 - Gonzaga High School, St. John's

Grades: 10-12

Number of Students 45

Francais 3202

School
District
Province

Public Exam Mark

School vs District

School vs Province

72.0
66.1
66.7

P

P

Final Mark

School vs District

School vs Province

77.1
70.1
70.6

P

P

Subtest

Listening

School
District
Province

78.8
67.7
69.2

P

P

Reading

School
District
Province

66.1
60.3
60.2

P

P

Writing

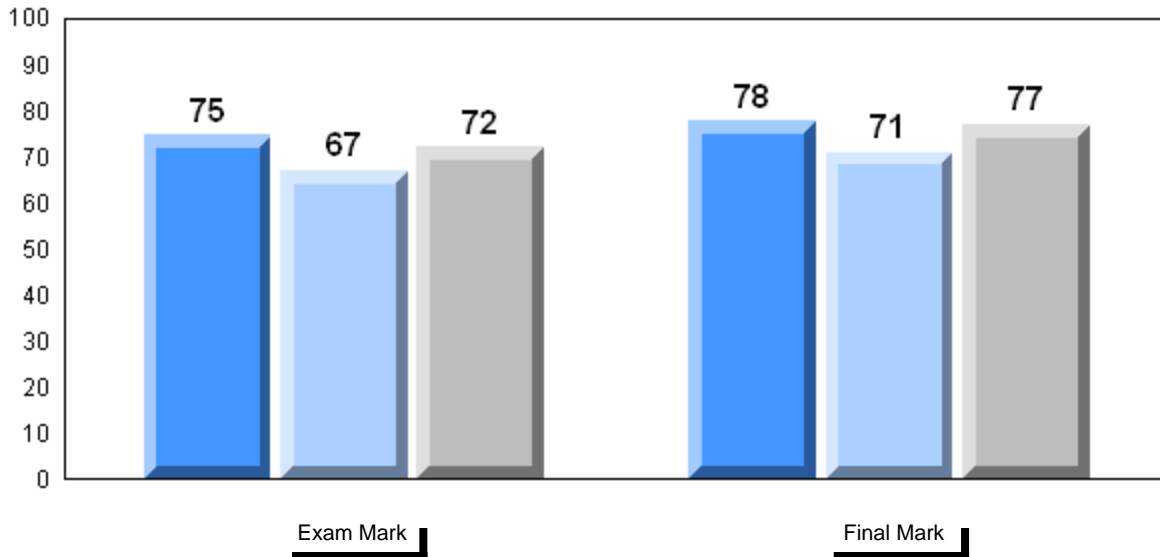
School
District
Province

69.2
59.1
59.4

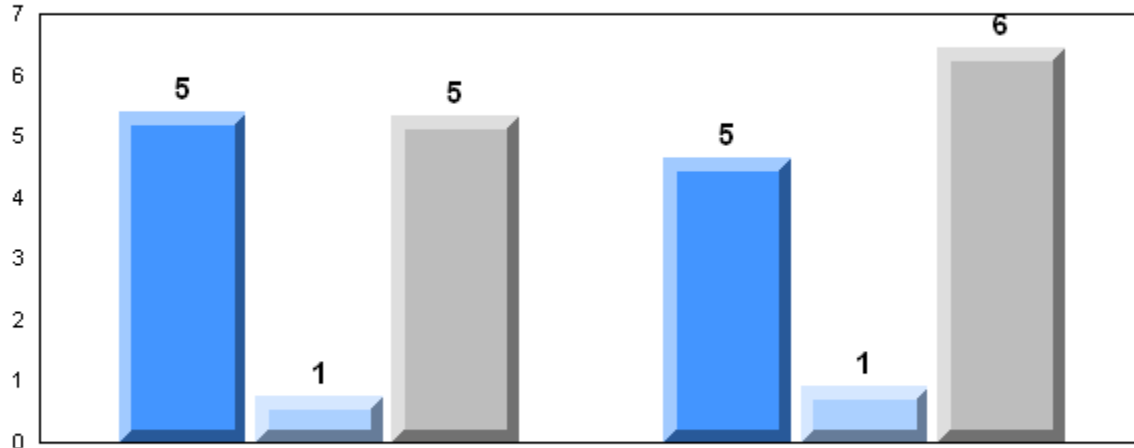
P

P

Average Mark, 2005-2007

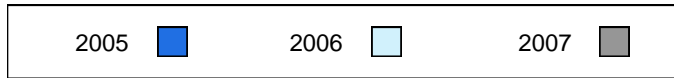


Difference from Provincial Mean, 2005-2007

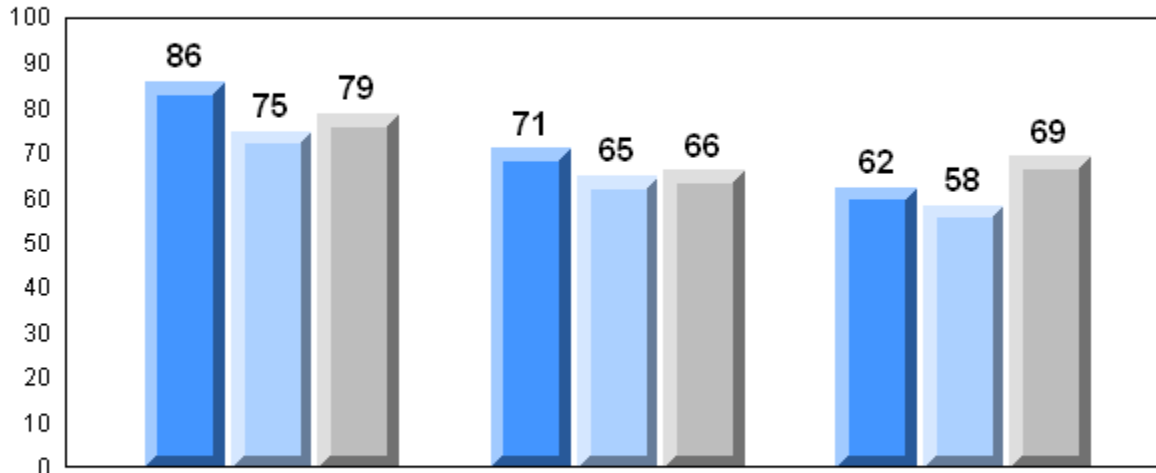


Exam Mark

Final Mark



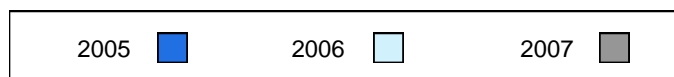
3 Year Public Exam (Subtest) Mark Trend 2005-2007



Listening

Reading

Writing



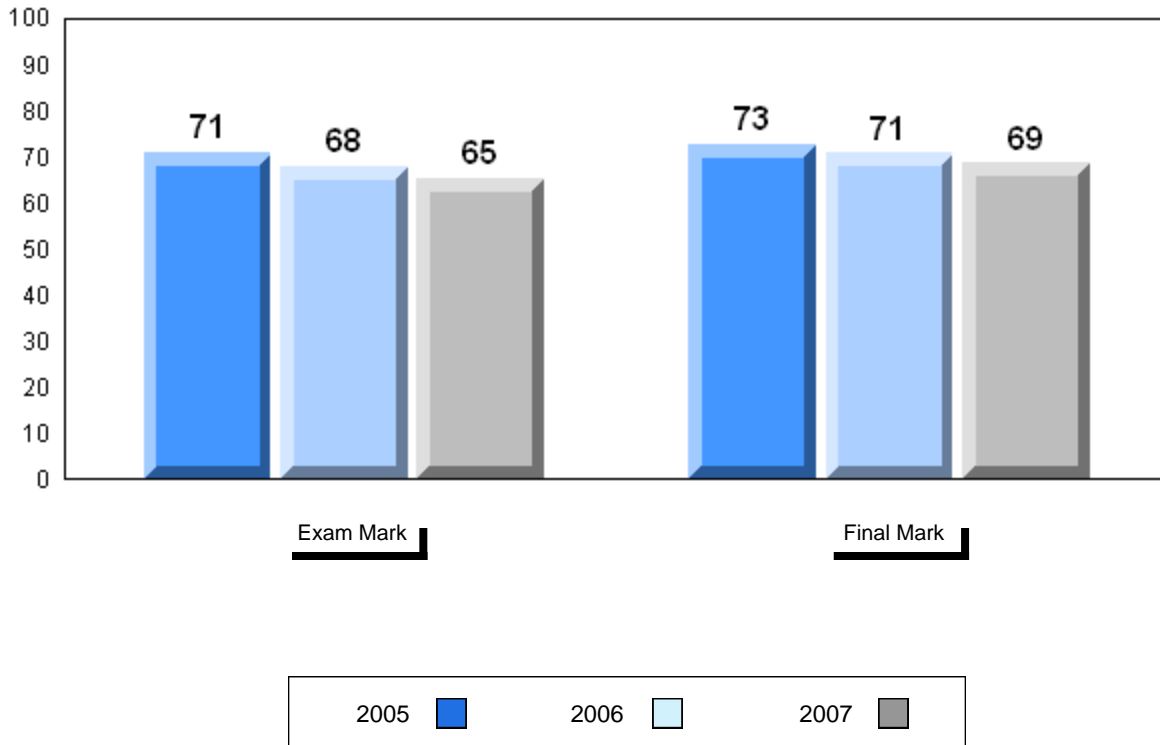
District 4 - Eastern

#340 - Holy Heart High School, St. John's

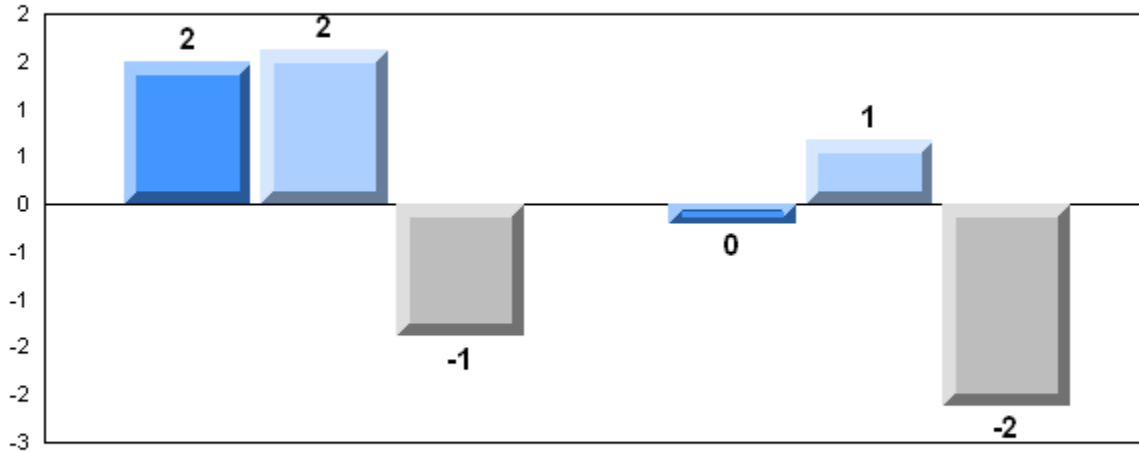
Grades: 10-12

Number of Students	60						
		Public Exam Mark	School vs District	School vs Province	Final Mark	School vs District	School vs Province
Francais 3202	School	65.3	q	q	68.5	q	q
	District	66.1			70.1		
	Province	66.7			70.6		
<u>Subtest</u>							
Listening	School	58.0	q	q			
	District	67.7					
	Province	69.2					
Reading	School	64.1	p	p			
	District	60.3					
	Province	60.2					
Writing	School	58.3	q	q			
	District	59.1					
	Province	59.4					

Average Mark, 2005-2007

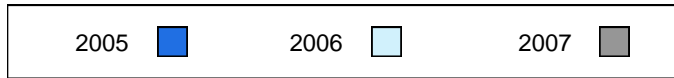


Difference from Provincial Mean, 2005-2007

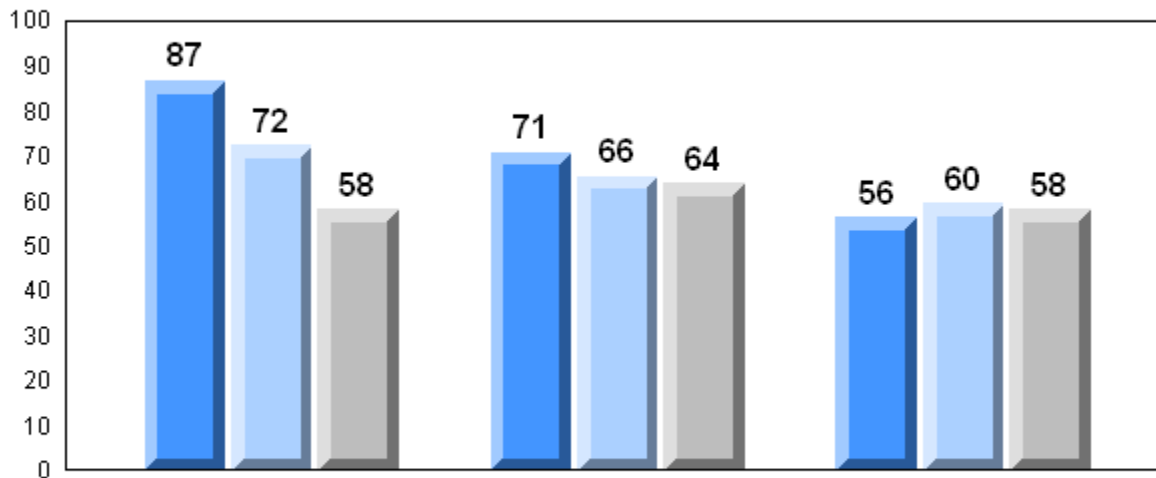


Exam Mark

Final Mark



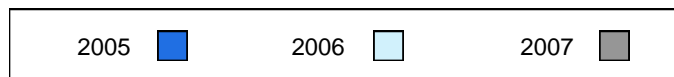
3 Year Public Exam (Subtest) Mark Trend 2005-2007



Listening

Reading

Writing



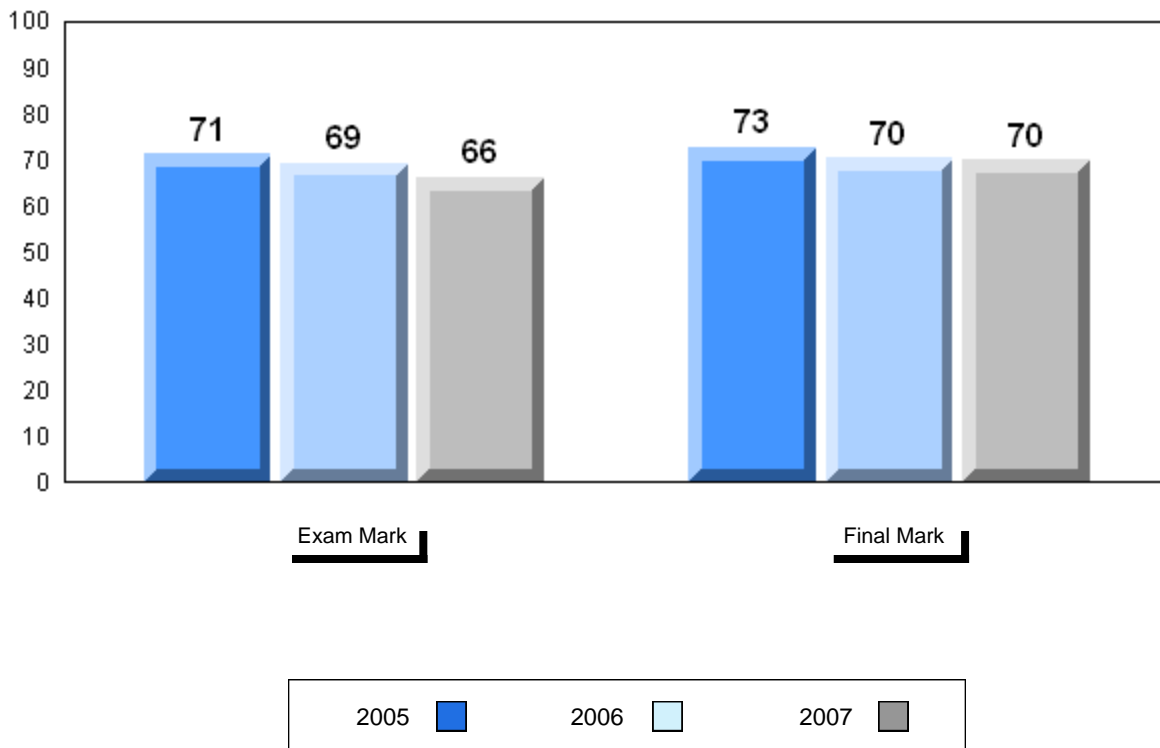
District 4 - Eastern

#347 - Prince of Wales Collegiate, St. John's

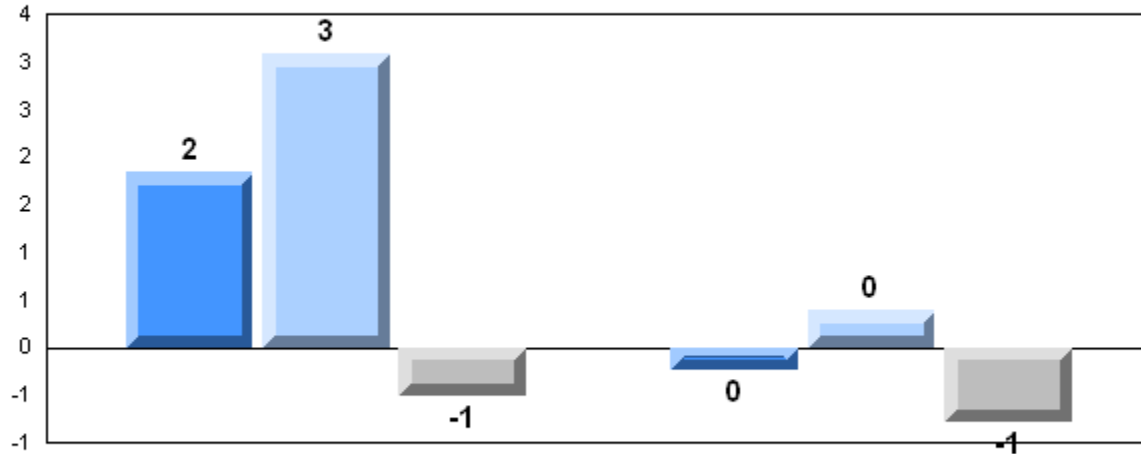
Grades: 10-12

Number of Students	18						
Francais 3202		Public Exam Mark	School vs District	School vs Province	Final Mark	School vs District	School vs Province
	School	66.2	P	Q	69.8	Q	Q
	District	66.1			70.1		
	Province	66.7			70.6		
Subtest							
Listening	School	71.1	P	P			
	District	67.7					
	Province	69.2					
Reading	School	61.8	P	P			
	District	60.3					
	Province	60.2					
Writing	School	56.3	Q	Q			
	District	59.1					
	Province	59.4					

Average Mark, 2005-2007

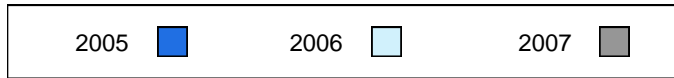


Difference from Provincial Mean, 2005-2007

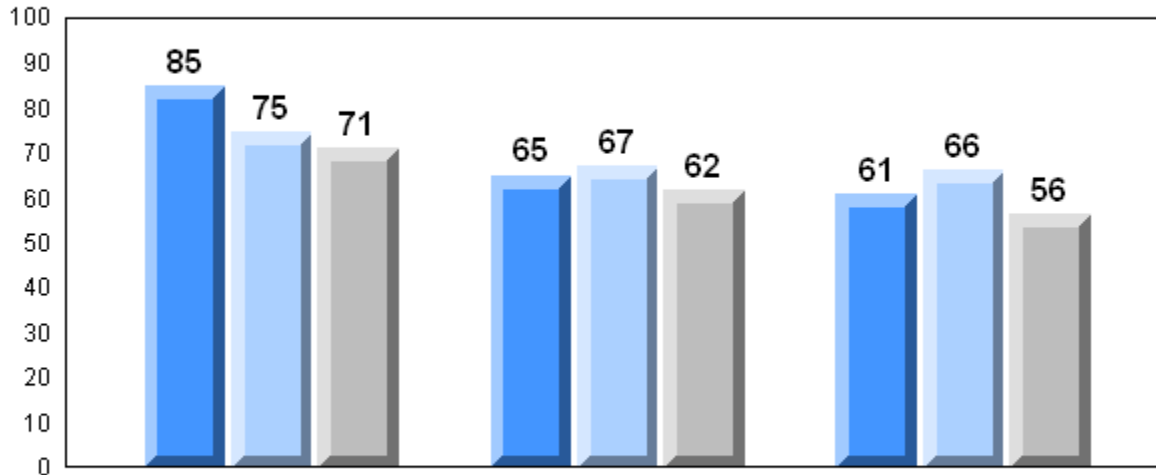


Exam Mark

Final Mark



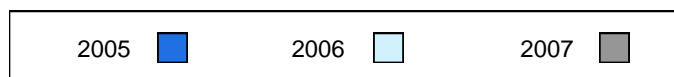
3 Year Public Exam (Subtest) Mark Trend 2005-2007



Listening

Reading

Writing



District 4 - Eastern

#354 - St. Kevin's High, St. John's (Goulds)

Grades: 10-12

Number of Students 18

Francais 3202

School
 District
 Province

Public Exam Mark

School vs District

School vs Province

69.0
 66.1
 66.7

P

P

Final Mark

School vs District

School vs Province

72.8
 70.1
 70.6

P

P

Subtest

Listening

School
 District
 Province

77.1
 67.7
 69.2

P

P

Reading

School
 District
 Province

59.3
 60.3
 60.2

q

q

Writing

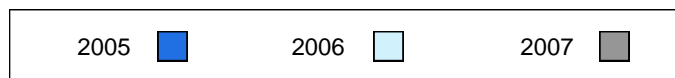
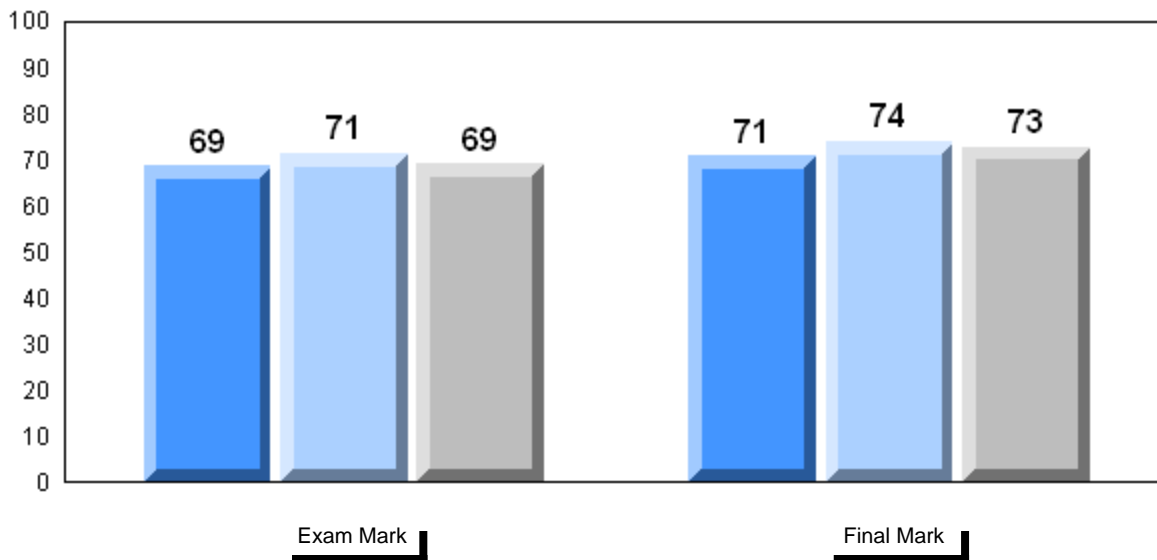
School
 District
 Province

63.3
 59.1
 59.4

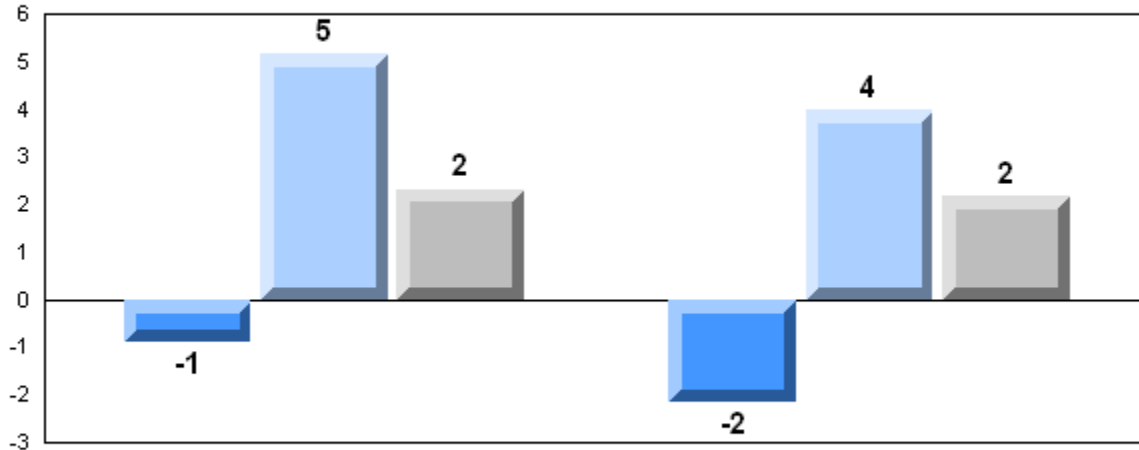
P

P

Average Mark, 2005-2007

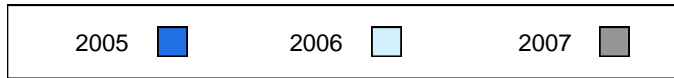


Difference from Provincial Mean, 2005-2007

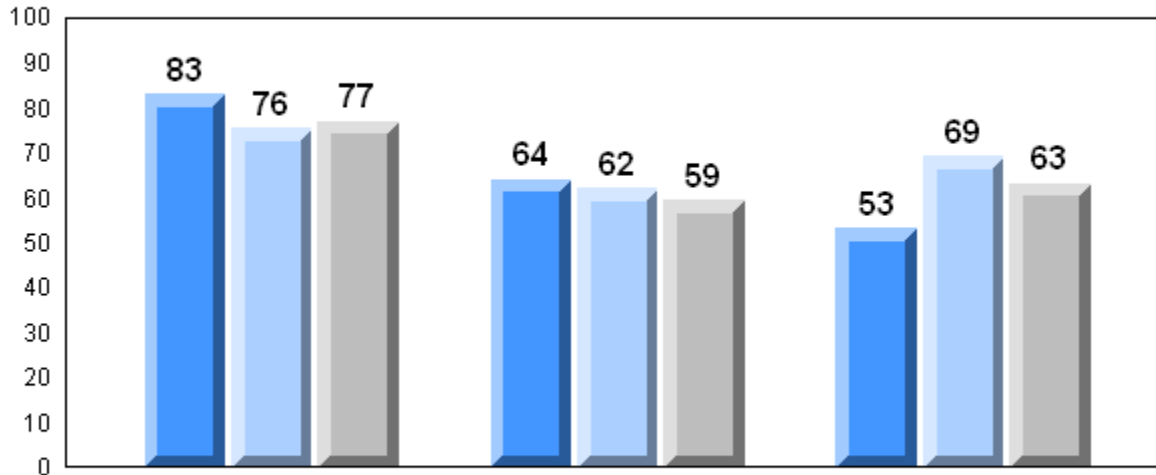


Exam Mark

Final Mark



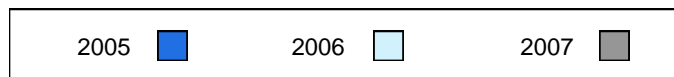
3 Year Public Exam (Subtest) Mark Trend 2005-2007



Listening

Reading

Writing



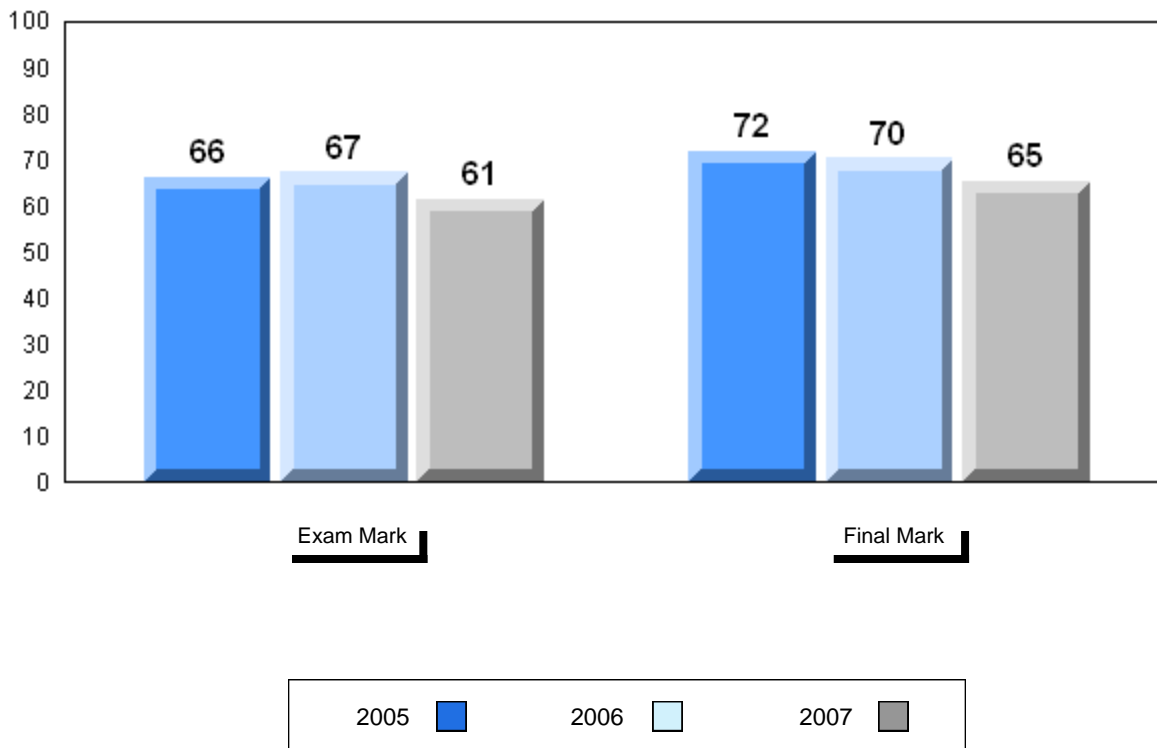
District 4 - Eastern

#368 - Holy Trinity High School, Torbay

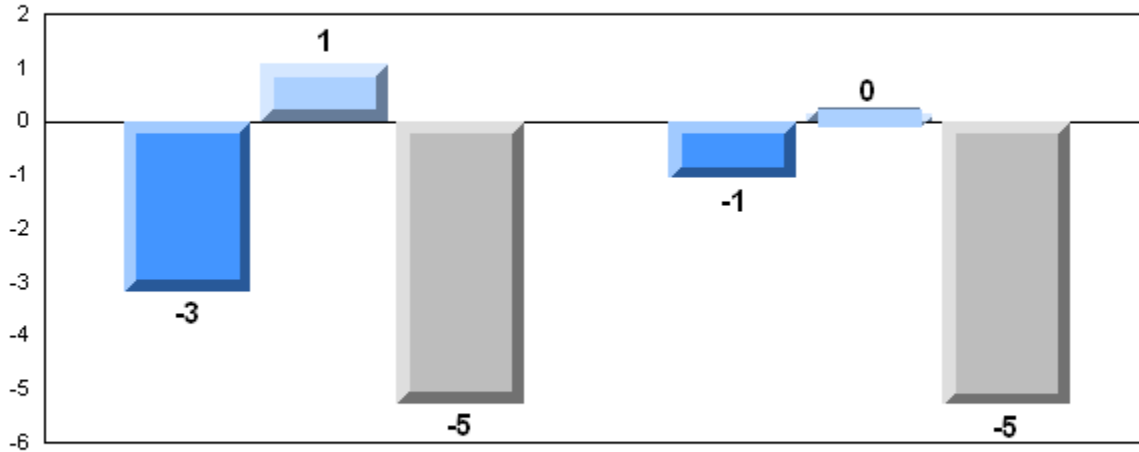
Grades: 7-12

Number of Students	15						
		Public Exam Mark	School vs District	School vs Province	Final Mark	School vs District	School vs Province
Francais 3202	School	61.4	q	q	65.3	q	q
	District	66.1			70.1		
	Province	66.7			70.6		
Subtest							
	School	72.0	p	p			
Listening	District	67.7					
	Province	69.2					
	School	50.1	q	q			
Reading	District	60.3					
	Province	60.2					
	School	52.8	q	q			
Writing	District	59.1					
	Province	59.4					

Average Mark, 2005-2007

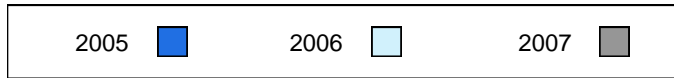


Difference from Provincial Mean, 2005-2007

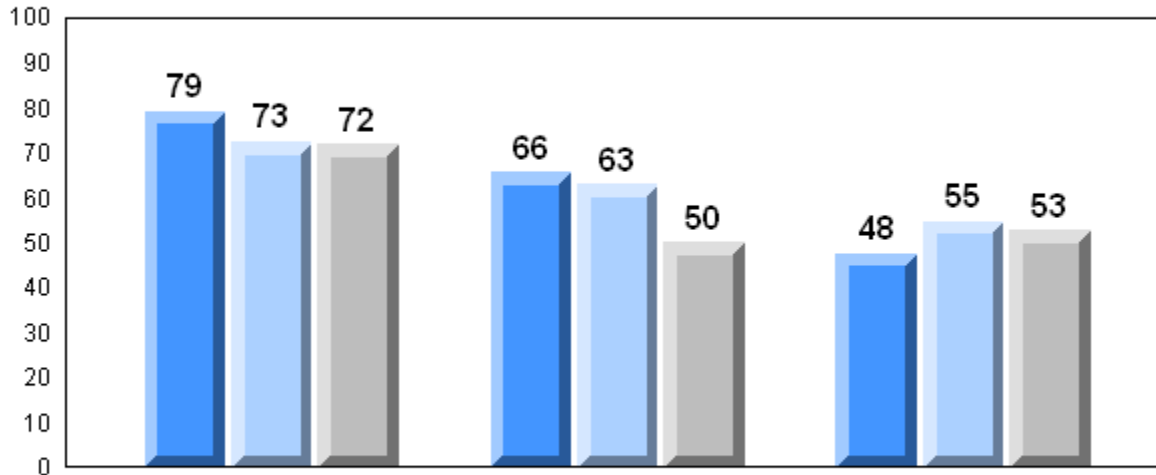


Exam Mark

Final Mark



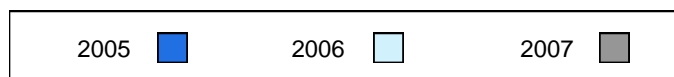
3 Year Public Exam (Subtest) Mark Trend 2005-2007



Listening

Reading

Writing



District 4 - Eastern

#464 - Crescent Collegiate, Blaketown

Grades: 7-12

Number of Students 13

Francais 3202

School
District
Province

Public Exam Mark

School vs District

School vs Province

55.4
66.1
66.7

q

q

Final Mark

School vs District

School vs Province

61.4
70.1
70.6

q

q

Subtest

Listening

School
District
Province

52.9
67.7
69.2

q

q

Reading

School
District
Province

45.2
60.3
60.2

q

q

Writing

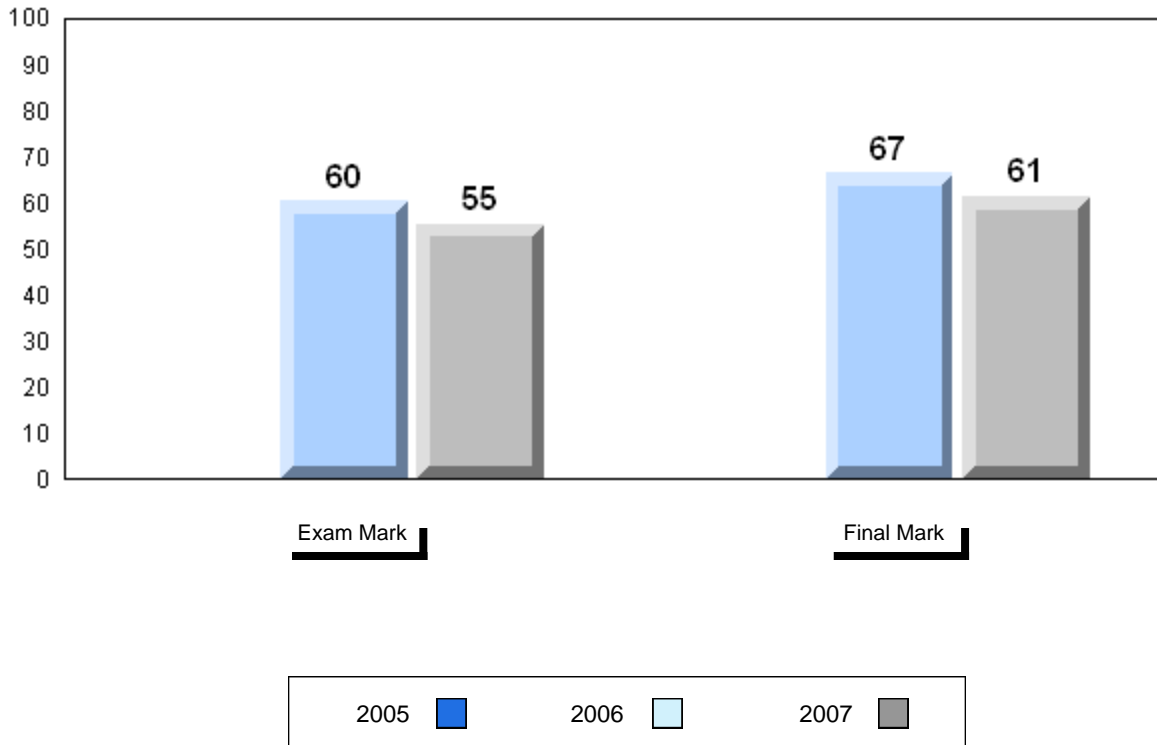
School
District
Province

43.5
59.1
59.4

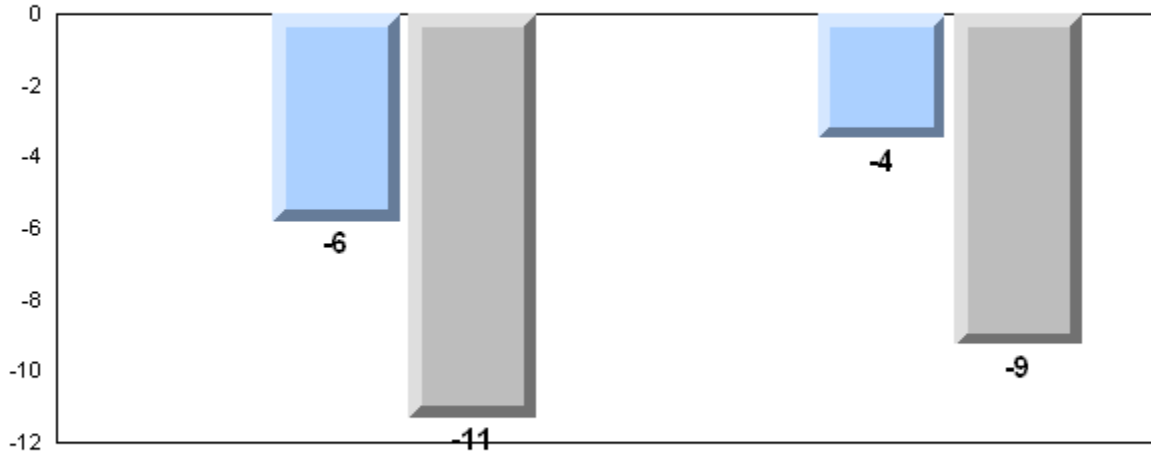
q

q

Average Mark, 2005-2007

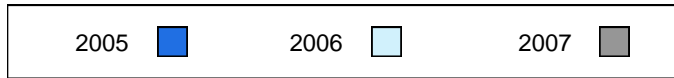


Difference from Provincial Mean, 2005-2007

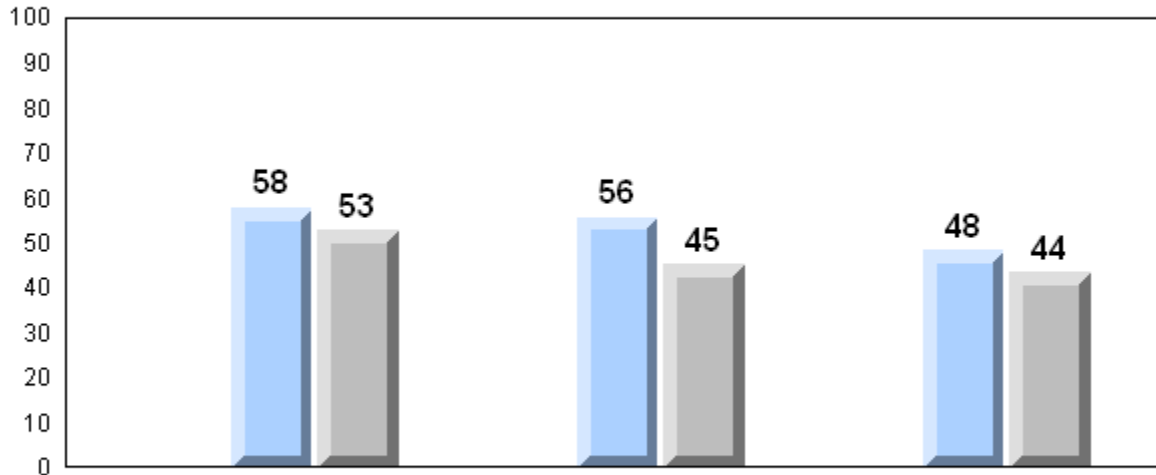


Exam Mark

Final Mark



3 Year Public Exam (Subtest) Mark Trend 2005-2007



Listening

Reading

Writing

